

# Invest

A Weekly e-Publication by [SHAREINVESTOR.com](https://www.shareinvestor.com)

ISSUE

# 152

FRIDAY  
14 APRIL  
2023

Scan/Click QR to Register



Via email, every Friday

## Hari Raya Deals

Promo Period: **17 APRIL – 6 MAY 2023**

**GET EXCLUSIVE RAYA DEALS** and promotions now to start growing your investment portfolio.

SHAREINVESTOR  
**STATION**

SHAREINVESTOR  
**WEBPRO**

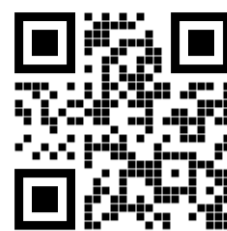
**BURSA STATION**

UPTO  
**15%**  
OFF

Applicable for  
**12 MONTHS**  
SUBSCRIPTIONS ONLY

Coupon code:  
**RAYADEALS23**

**SUBSCRIBE NOW!**



# MALAYSIAN ECONOMY OFF TO SLOW START IN 1Q 2023 - SERC

(page 22)

04 LEADERBOARD

06 SHARIAH HOT STOCKS

07 COMPANY SPOTLIGHT

08 SHARIAH MOMENTUM UP  
STOCKS

10 NON SHARIAH HOT STOCKS

12 UP TRENDING STOCKS

14 VALUE STOCKS

16 GROWTH STOCKS

18 DIVIDEND STOCKS

19 BROKERS' CALL

20 LONG COMPANIES

22 MARKET SENTIMENTS

26 REGIONAL MARKETS

27 FROM THE OBSERVER

30 INSIDER ACTIVITY

33 INVESTOR RELATIONS

40 CAREERS AT  
SHAREINVESTOR



### INVESTOR PLATFORMS

#### Director

Darren Chong  
darren.chong@shareinvestor.com

#### Manager

Heidee Ahmad  
heidee.ahmad@shareinvestor.com

#### Senior Manager

Sharon Lee  
sharon.lee@shareinvestor.com

#### Senior Executive

Daniel Wong  
daniel.wong@shareinvestor.com

#### Executive

Farah Azwani  
farah.azwani@shareinvestor.com

#### Executive

Tan Yong Sheng  
yongsheng.tan@shareinvestor.com

### ADMIN & OPERATIONS

#### Senior Executive

Watie Nordin  
watie.nordin@shareinvestor.com

#### Executive

Silas Emmanuel Joseph  
silas.joseph@shareinvestor.com

### INVESTOR RELATIONS

#### Group Managing Director & Publisher

Edward Stanislaus  
edward@shareinvestor.com

#### Director

Elizabeth Tan  
elizabeth.tan@shareinvestor.com

#### Senior Manager

Letticia Wong  
letticia.wong@shareinvestor.com

### PROCESS AUTOMATION & DATA ANALYTICS

#### Data Analyst

Nickson Aw

### SHAREINVESTOR HOLDINGS BOARD OF DIRECTORS

Chairman	Patrick Daniel
Group CEO	Christopher Lee
Group COO	Lim Dau Hee
Group CFO	Teo Siew May
Group MD	Shanison Lin



“ GIVE A MAN A FISH AND YOU FEED HIM FOR A DAY; TEACH A MAN TO FISH AND YOU FEED HIM FOR A LIFETIME ”

#### ShareInvestor Malaysia Sdn. Bhd.

(200001023956) (526564-M)

Unit No. DF2-07-03A, Level 7,  
Persoft Tower, 6B Persiaran Tropicana,  
47410 Petaling Jaya, Selangor Darul Ehsan.

Hotline : 603 7803 1791

Mobile : 011 6343 8939

Website : [www.ShareInvestor.com.my](http://www.ShareInvestor.com.my)

[www.ShareInvestorHoldings.com](http://www.ShareInvestorHoldings.com)

[www.facebook.com/ShareInvestorMalaysia](https://www.facebook.com/ShareInvestorMalaysia)

ADVERTISEMENT ENQUIRY



## MSWG Seminar : Conducting a Better Annual General Meeting



**11th May 2023, 09.00am - 01.00pm**  
**The Majestic Hotel, Kuala Lumpur**

**Speaker: Mr Devanesan Evanson,**  
**Chief Executive Officer of MSWG**



#### Learning Outcomes :-

Upon completion of the seminar, participants will be aware of:

- What to consider and prepare for when running an effective AGM
- Ways to improve the conduct of AGM and apply best AGM practices
- Suggestions to improve meeting conduct based on MSWG representatives' observation and participation at the AGMs of PLCs
- Director's and shareholders' do's and don'ts before, during and after the AGM

#### Target Audience :

- Company Directors, C-Suite, Management Team, Companies Secretaries

*Please click here for more info*

Contact: Ms. Nor Khalidah Tel: 03 - 2732 0010 / 017-630 0754

Email: [khalidah@mswg.org.my](mailto:khalidah@mswg.org.my)

**kenanga**

Kenanga Futures Sdn Bhd

# GATEWAY TO THE FUTURES

Sign up for a Kenanga Futures Account NOW and enjoy 5 free trades and other rewards\* when you start trading.

[SIGN UP NOW](#)

\*Terms & Conditions apply

**Kenanga Futures Sdn Bhd** 199501024398 (353603-X)

Level 6, Kenanga Tower, 237 Jalan Tun Razak, 50400 Kuala Lumpur, Malaysia.  
T: +603 2172 3888 | E: [futuresmarketing@kenanga.com.my](mailto:futuresmarketing@kenanga.com.my) | W: [www.kenangafutures.com.my](http://www.kenangafutures.com.my)

## Disclaimer:

Listed derivatives products are based on highly leveraged margin trading. These contracts carry a very high degree of risk and trading such instruments may expose investors to substantial losses as well as gains. The price of the products offered may fluctuate higher or lower, and under circumstances an investor may sustain total loss of their investment. As investor should make an appraisal of the risks involved in investing these products and should consult their own legal, financial, tax, accounting and other professional advisors, to ensure that any decision made is suitable with regards to the investor's circumstances and financial positions. This document has been prepared solely for marketing purposes and for the use of the recipient. The above advertisement has not been reviewed by the Securities Commission.

[www.shareinvestor.com](http://www.shareinvestor.com) - market data at your fingertips



## ShareInvestor WebPro ([www.shareinvestor.com/my](http://www.shareinvestor.com/my)) Prices > Stock Prices > Bursa > click Stocks tab

1. mouse over Ranking > select Top Active > all Shariah stocks are denoted with an [S] > mouse over Column Layout > select Edit Customs > select Name > select Volume > select Last Done Price > Mouse Over Column Layout > select Custom
2. mouse over Ranking > select Top Turnover > all Shariah stocks are denoted with an [S] > mouse over Column Layout > select Edit Customs > select Name > select Last Done Price > select Value > Mouse Over Column Layout > select Custom
3. mouse over Ranking > select Top Gainers (Over 5 Trading Days) > mouse over Column Layout > select Edit Customs > select Name > select Last Done Price > select 5 Days Change > select 5 Days % Change > Mouse Over Column Layout > select Custom
4. mouse over Ranking > select Top Losers (Over 5 Trading Days)
5. mouse over Ranking > select Top % Gainers (Over 5 Trading Days)
6. mouse over Ranking > select Top % Losers (Over 5 Trading Days)

### Shariah Top Actives (as at Yesterday)

Name	Price (RM)	Volume
MYEG [S]	0.875	3,241,891.000
BSLCORP [S]	0.050	869,599.000
HONGSENG [S]	0.130	759,296.000
JADEM [S]	0.300	677,967.000
TOPGLOV [S]	1.150	566,360.000
SCIB [S]	0.130	536,809.000
CAPITALA [S]	0.790	444,356.000
VINVEST [S]	0.200	434,211.000
SMRT [S]	0.545	420,689.000
MNHLDG [S]	0.360	355,000.000

### Shariah Top Turnover (as at Yesterday)

Name	Price (RM)	Value (RM)
MYEG [S]	0.875	267,820,604
TOPGLOV [S]	1.150	64,673,973
TENAGA [S]	9.150	44,174,681
CAPITALA [S]	0.790	35,054,977
PCHEM [S]	7.400	33,571,429
GAMUDA [S]	4.220	32,571,527
HARTA [S]	2.130	29,011,618
SALUTE [S]	0.875	27,146,939
PMETAL [S]	5.110	23,697,839
SMRT [S]	0.545	22,207,366

### Top Gainers (over 5 Trading days as at Yesterday)

Name	Price (RM)	Change (RM)
F&N	27.000	+1.580
NESTLE	136.900	+1.100
BLDPLNT	11.000	+0.980
KLK	21.660	+0.800
MPI	29.300	+0.800
PETDAG	22.400	+0.700
PARAGON	2.930	+0.530
AEONCR	12.140	+0.460
PERTAMA	2.490	+0.440
BKAWAN	21.860	+0.420

### Top % Gainers (over 5 Trading days as at Yesterday)

Name	Price (RM)	Change (%)
YONGTAI	0.335	+63.41
SALUTE	0.875	+57.66
ONEGLOVE	0.395	+51.92
DOLPHIN	0.015	+50.00
IVORY	0.070	+40.00
BARAKAH	0.055	+37.50
BCMALL	0.020	+33.33
GOCEAN	0.020	+33.33
MTRONIC	0.020	+33.33
TALAMT	0.020	+33.33

### Top Losers (over 5 Trading days as at Yesterday)

Name	Price (RM)	Change (RM)
HEXTECH	23.000	-0.580
APB	1.030	-0.360
DLADY	26.240	-0.360
HEIM	26.720	-0.280
MALPAC	0.805	-0.245
AMTEL	0.700	-0.170
SMI	0.875	-0.155
AJI	15.880	-0.140
PANAMY	22.760	-0.140
AAX	1.270	-0.130

### Top % Losers (over 5 Trading days as at Yesterday)

Name	Price (RM)	Change (%)
PHB	0.005	-50.00
VSOLAR	0.005	-50.00
EDUSPEC	0.055	-35.29
DGB	0.010	-33.33
FITTERS	0.050	-33.33
JERASIA	0.030	-33.33
PASUKGB	0.010	-33.33
APB	1.030	-25.90
SCOMIES	0.030	-25.00
SEALINK	0.090	-25.00

**Make-A-Wish**  
MALAYSIA

ANNUAL CHARITY GOLF TOURNAMENT  
TROPICANA GCR • 25th May 2023

Main Sponsors



**SRI KOTA  
SPECIALIST  
MEDICAL CENTRE**  
*The Heart of Healthcare*



**Southern Acids (M) Berhad**

**BOOK NOW**

Date: **Thursday 25th May 2023**

Time: **1.30pm Tee Off**

Venue: **Tropicana GCR**

Flight cost: **RM5,000 (for 4 golfers)**

# TEE OFF FOR HOPE

Since 2010, Make-A-Wish Malaysia has been granting wishes of critically ill children around the country. Funds from this event will help us reach these critically ill children without delay.



# SHARE THE POWER OF A WISH

To find out more please call:

Make-A-Wish Malaysia T: (03) 2276 3344 E: info@makeawish.org.my

[www.facebook.com/MakeawishMalaysia](https://www.facebook.com/MakeawishMalaysia) • [www.makeawish.org.my](http://www.makeawish.org.my)

## Price & Volume Distribution Charts (as at Yesterday)

Technical Analysis

**DEFINITION:** Shariah compliant stocks with Technical Analysis showing 5-days & 10-days Moving Average Price below Yesterday's Close over past 3 days and with Volume Spike.

**CHART GUIDE:** Volume Distribution Chart is a statistical interpretation of the current sentiment on each stock in graphical format. The highest bar categorized as >150k is likely to be traded by institutions or super dealers, while the lowest bar categorized as <15k usually represents retail investors. "Buy Up" refers to more buyers snatching up the lots queued at selling price. "Sell Down" refers to sellers selling their shares to the buying queue



ShareInvestor WebPro > Screener > Market Screener (FA & TA) > select BURSA > add criteria

**A. Criteria**

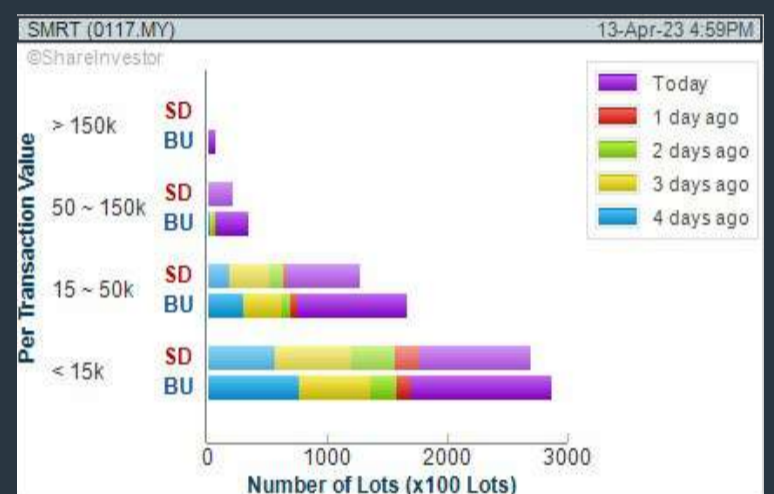
- > click Add Criteria
- Technical Analysis Conditions tab select (i) Moving Average Below Close (ii) Volume Spike
- Fundamental Analysis Conditions tab > select (iii) Revenue
- Prices & Other Conditions tab > select (iv) Is Shariah Compliant
- Technical Analysis Conditions tab select (v) Moving Average Below Close
- Prices & Other Conditions tab > select (vi) Last Done Price
- Technical Analysis Conditions tab select (vii) Moving Average Below Close

**B. Conditions (Criteria Filters)**

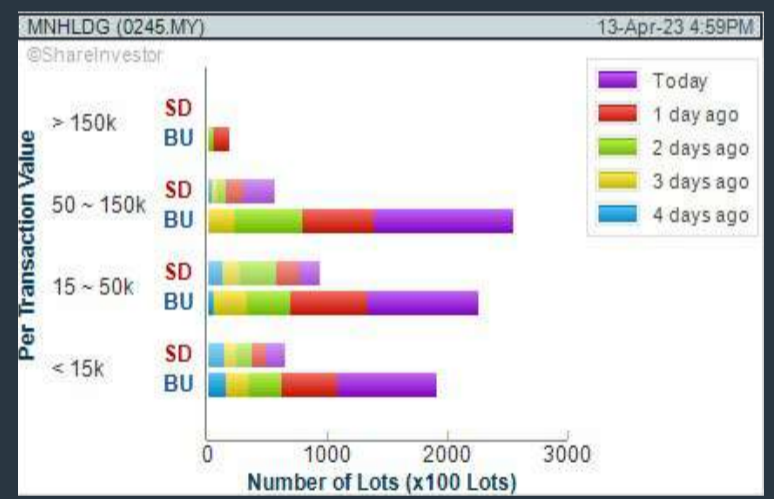
1. Moving Average Below Close - select (MA) type (5) below close price for type (3) days
2. Volume Spike - Volume type (1) greater than type (5) days average
3. Revenue ("000) - select (more than) type (1) for the past select (1) financial year(s)
4. Is Shariah Compliant - select **Yes**
5. Moving Average Below Close - select (MA) type (10) below close price for type (3) days
6. Last Done Price - select (more than) type (0.3)
7. Moving Average Below Close - select (EMA) type (5) below close price for type (3) days

- > click Save Template > Create New Template type (Shariah Hot Stocks) > click Create
- > click Save Template as > select Shariah Hot Stocks > click Save
- > click Screen Now (may take a few minutes)
- > Sort By: Select (Vol) Select (Desc)
- > Mouse over stock name > Charts > click C<sup>2</sup> Charts or Volume Distribution

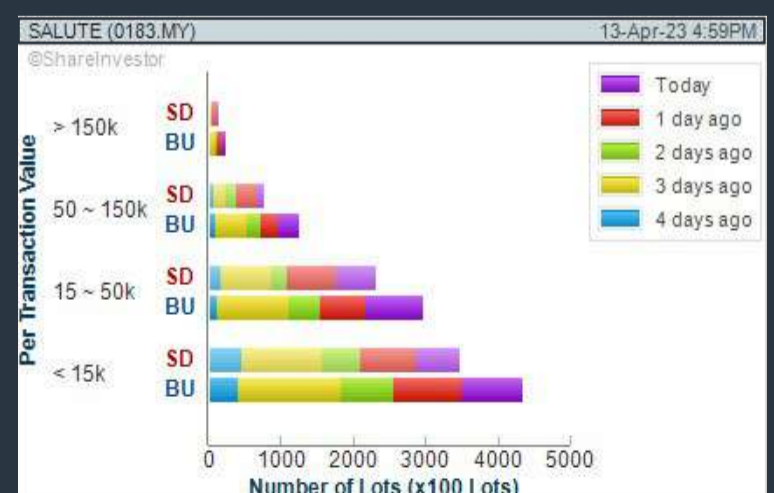
### SMRT HOLDINGS BERHAD (0117) C<sup>2</sup> Chart



### MN HOLDINGS BERHAD (0245) C<sup>2</sup> Chart



### SALUTICA BERHAD (0183) C<sup>2</sup> Chart



**Disclaimer:** The information on this page is provided as a service to readers. It does not constitute financial advice and/or any investment recommendations. Past performance is not indicative of future results. We assume no liability for damages resulting from or arising out of the use of such information. It would be best if you did your own research to make your personal investment decisions wisely or consult a licenced investment advisor.

## COMPANY BACKGROUND

**SMRT Holdings Berhad** is engaged in HR solutions and training programs for organizations internationally. The company operates in three segments: Education, Training, and Technology. The Education segment operates educational institutions and provides educational management services. The Training segment provides human resources development training, consulting, and related services. The Technology segment provides software consultancy and development services. The company operates



exclusively in Malaysia, and the Education segment generates the most revenue.

SMRT SMRT HOLDINGS BERHAD		Updated at 13 Apr 2023 16:59	
Last (MYR): <b>0.545</b> ↑	Change: <b>+0.060</b>	High: 0.550	Remarks: -
	Change (%): <b>+12.37</b>	Low: 0.490	
Open	0.490	Yesterday's Close	0.485
Buy Price	0.545	Sell Price	0.550
Buy Volume ('00)	7,143	Sell Volume ('00)	15,063
Cumulative Volume ('00)	420,689	Cumulative Value	22,207,365.5

### Financial Analysis

<b>Revenue Growth</b> Increasing revenue in last 2 consecutive years	😊	<b>Profit Growth</b> Increasing profit in latest year (with last 2 profitable years)	😊
<b>Piotroski F Score</b> The company has strong financial strength (Piotroski F-Score of 8-9)	😊	<b>Debt to Cashflow</b> High debt to cash flow for most recent year	😟
<b>Debt to Equity</b> High debt to equity for most recent year	😟	<b>Free Cash Flow</b> Negative free cash flow for the most recent year	😟
<b>Gross Profit Margin</b> Consistently high gross profit margin of at least 40% for 3 years	😊	<b>Gross Profit Margin</b> Gross profit margin is improving by 5% a year over the past 60 months.	😊
<b>Net Earnings Margin</b> Net profit margin is decreasing by more than 10% a year over the past 60 months.	😟	<b>Return on Equity (ROE)</b> ROE is improving by 10% a year over the past 36 months.	😊

😊 Excellent    😊 Good    😐 Neutral    😟 Be Alert    😱 Watch Out

### Historical Financials



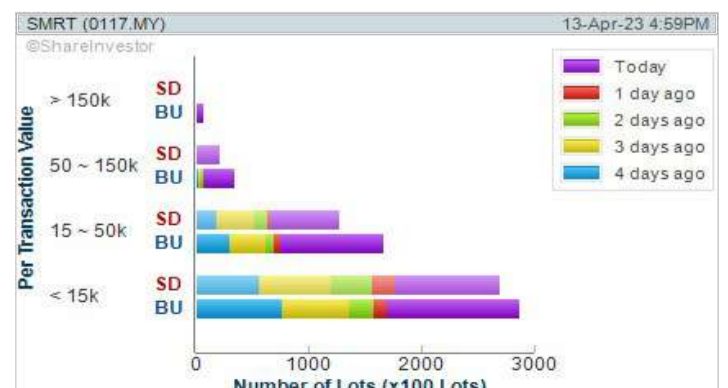
**WebPro 9-Days Free Trial Registration (worth RM9) Sign Up Now**



### Key Statistics with Total Shareholder Returns

#### Total Shareholder Return

Period	Dividend Received	Capital Appreciation	Total Shareholder Return
Short Term Return	5 Days	+0.105	+23.66 %
	10 Days	+0.025	+4.81 %
	20 Days	+0.030	+5.83 %
Medium Term Return	3 Months	+0.360	+194.50 %
	8 Months	+0.435	+395.45 %
Long Term Return	1 Year	+0.435	+395.45 %
	2 Years	+0.375	+220.59 %
	3 Years	+0.495	+990.00 %
5 Years	+0.590	+251.61 %	
Annualised Return	Annualised	-	+28.55 %



**Disclaimer:** The information on this page is provided as a service to readers. It does not constitute financial advice and/or any investment recommendations. Past performance is not indicative of future results. We assume no liability for damages resulting from or arising out of the use of such information. It would be best if you did your own research to make your personal investment decisions wisely or consult a licenced investment advisor.



## Price & Volume Distribution Charts (as at Yesterday)

Technical Analysis

**DEFINITION:** Shariah compliant stocks with Technical Analysis showing Bullish Momentum and Price Uptrend. The share price closed at the highest price yesterday. The typical price was higher than the previous day's typical price.

**CHART GUIDE:** Volume Distribution Chart is a statistical interpretation of the current sentiment on each stock in graphical format. The highest bar categorized as >150k is likely to be traded by institutions or super dealers, while the lowest bar categorized as <15k usually represents retail investors. "Buy Up" refers to more buyers snatching up the lots queued at selling price. "Sell Down" refers to sellers selling their shares to the buying queue.



ShareInvestor WebPro > Screener > Market Screener (FA & TA) > select BURSA > add criteria

**A. Criteria**

- > click Add Criteria
- Fundamental Analysis Conditions tab > select (i) Revenue
- Technical Analysis Conditions tab select (ii) Average Volume
- Prices & Other Conditions tab > select (iii) Last Done Price
- Prices & Other Conditions tab > select (iv) Is Shariah Compliant
- Technical Analysis Conditions tab select (v) RSI Overbought
- Technical Analysis Conditions tab select (vi) Moving Average Below Close
- Technical Analysis Conditions tab select (vii) CCI Overbought

**B. Conditions (Criteria Filters)**

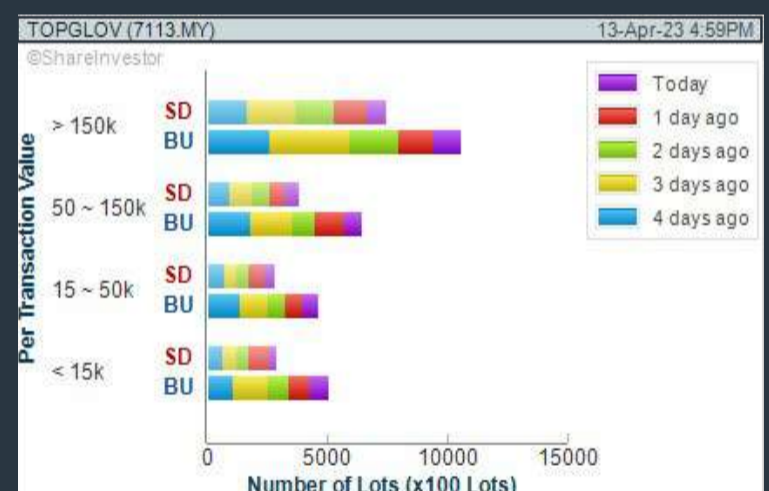
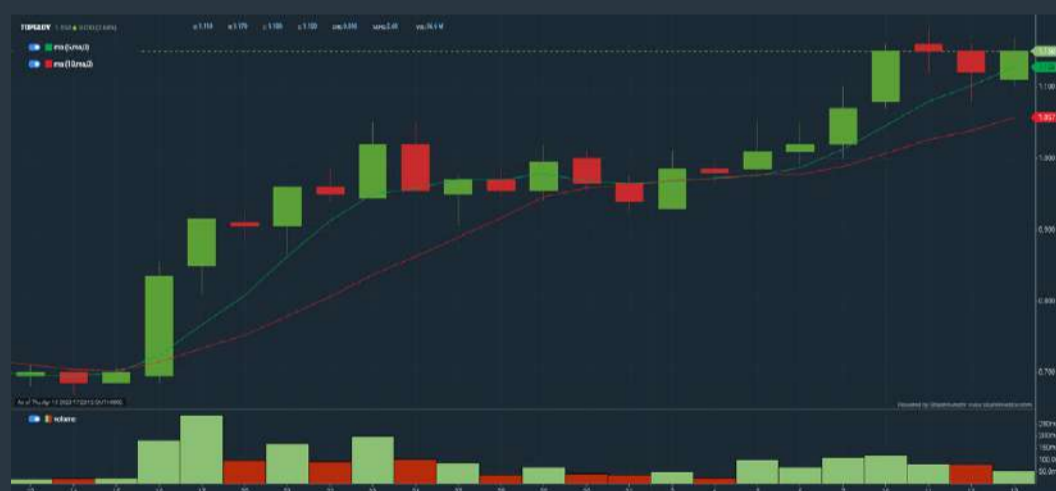
1. Revenue ("000) - select (more than) type (1) for the past select (1) financial year(s)
2. Average Volume - type (1) days average volume greater than type (10000) lots
3. Last Done Price - select (more than) type (0.3)
4. Is Shariah Compliant - select Yes
5. RSI Overbought - select RSI 1 above 99 for 1 days
6. Moving Average Below Close - select (MA) type (10) below close price for type (1) days
7. CCI Overbought - select CCI (2) above (0) for (1) days

- > click Save Template > Create New Template type (Shariah Momentum Up Stocks) > click Create
- > click Save Template as > select Shariah Momentum Up Stocks > click Save
- > click Screen Now (may take a few minutes)
- Sort By: Select (Vol) Select (Desc)
- Mouse over stock name > Charts > click C<sup>2</sup> Charts tab or Volume Distribution

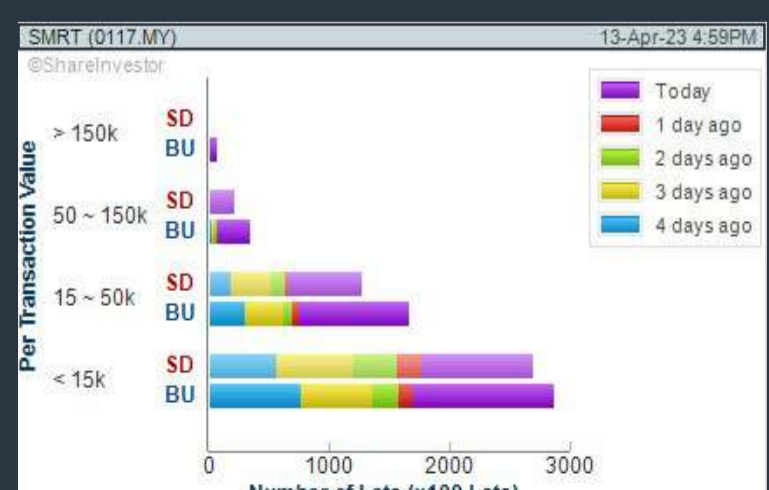
### MY E.G. SERVICES BERHAD (0138) C<sup>2</sup> Chart



### TOP GLOVE CORPORATION BERHAD (7113) C<sup>2</sup> Chart



### SMRT HOLDINGS BERHAD (0117) C<sup>2</sup> Chart



**Disclaimer:** The information on this page is provided as a service to readers. It does not constitute financial advice and/or any investment recommendations. Past performance is not indicative of future results. We assume no liability for damages resulting from or arising out of the use of such information. It would be best if you did your own research to make your personal investment decisions wisely or consult a licenced investment advisor.

# SHARE INVESTOR WEBPRO

## STOCK MARKET DATA AT YOUR FINGERTIPS

Powerful browser-based market analytics platform.  
Access from anywhere



### 8 Markets Data

- ▶ Get access to data from Bursa, NYSE, Nasdaq, HKEX, SGX, IDX, SET & ASX

### Portfolio Management

- ▶ Profit & Loss Summary
- ▶ Stock Alert
- ▶ News & Events filtering
- ▶ Customizable column layout

## Fundamental Analysis

### Financial Analysis Statement

- ▶ Profit & Loss
- ▶ Balance Sheet
- ▶ Cash Flow Statement
- ▶ More than 20 Financial Ratios
- ▶ Dividend Analysis

### Technical Charting

- ▶ C<sup>2</sup> chart (Customisable & Comprehensive)

### Brokers' Call

### Intrinsic Value Calculator

### FactSheet

- ▶ Key Stock Information
- ▶ Ownership
- ▶ Consensus Estimates
- ▶ Annual Report
- ▶ Historical Price
- ▶ Insider Trades

## What's new on WebPro (Stable Release 12.1.0)

In our effort to keep our platform at the forefront of trading technology, we have added on some new features onto our C2 Chart in WebPro

### ADDITIONAL NEW FEATURES:

- ▶ Anchor selector for AVWAP, PVAT, and PAV indicators
- ▶ Volume profile indicator by date range
- ▶ Moving Average Cross indicator
- ▶ Guppy Multiple Moving Average (GMMA) indicator
- ▶ GoNoGo Trend Signal indicators
- ▶ SignalIQ

So what are you waiting for? Head to our platform today and check out our new trading chart features and indicators. We're confident that you'll love the improvements we've made and that they'll help you become a more successful trader.

Click here to start your 9 days FREE trial  
(Valued at RM10)



## Price & Volume Distribution Charts (as at Yesterday)

Technical Analysis

**DEFINITION:** Stocks with Technical Analysis showing 5-days & 10-days Moving Average Price below Close over past 1 days and with Volume Spike

**CHART GUIDE:** Volume Distribution Chart is a statistical interpretation of the current sentiment on each stock in graphical format. The highest bar categorized as >150k is likely to be traded by institutions or super dealers, while the lowest bar categorized as <15k usually represents retail investors. "Buy Up" refers to more buyers snatching up the lots queued at selling price. "Sell Down" refers to sellers selling their shares to the buying queue.



ShareInvestor WebPro > Screener > Market Screener (FA & TA) > select BURSA > add criteria

**A. Criteria**

- > click Add Criteria
- Technical Analysis Conditions tab select (i) Moving Average Below Close (ii) Volume Spike
- Fundamental Analysis Conditions tab >select (iii) Revenue
- Prices & Other Conditions tab > select (iv) Is Shariah Compliant
- Technical Analysis Conditions tab select (v) Moving Average Below Close
- Prices & Other Conditions tab > select (vi) Last Done Price
- Technical Analysis Conditions tab select (vii) Moving Average Below Close

**B. Conditions (Criteria Filters)**

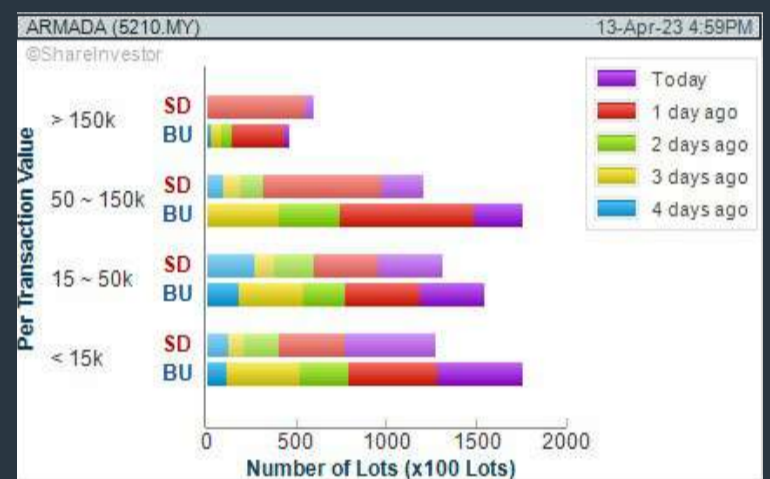
1. Moving Average Below Close - select (MA) type (5) below close price for type (3) days
2. Volume Spike - Volume type (1) greater than type (5) days average
3. Revenue ("000) - select (more than) type (1) for the past select (1) financial year(s)
4. Is Shariah Compliant - select NO
5. Moving Average Below Close - select (MA) type (10) below close price for type (1) days
6. Last Done Price - select (more than) type (0.3)
7. Moving Average Below Close - select (EMA) type (5) below close price for type (1) days

- > click Save Template > Create New Template type (Non-Shariah Hot Stocks) > click Create
- > click Save Template as > select Non-Shariah Hot Stocks > click Save
- > click Screen Now (may take a few minutes)
- Sort By: Select (Vol) Select (Desc)
- Mouse over stock name > Charts > click C<sup>2</sup> Charts tab or Volume Distribution

### BUMI ARMADA BERHAD (5210)

C<sup>2</sup> Chart

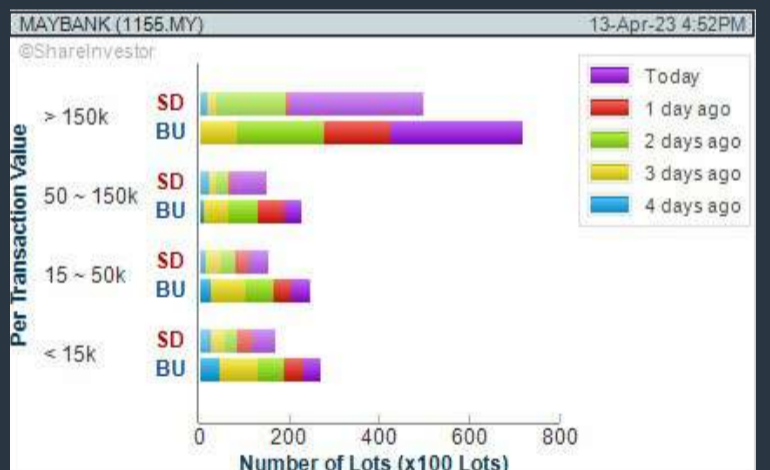
Analysis



### MALAYAN BANKING BERHAD (1155)

C<sup>2</sup> Chart

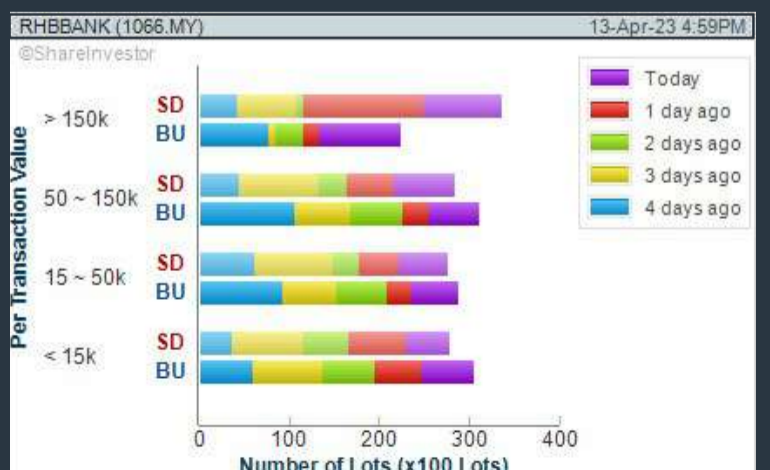
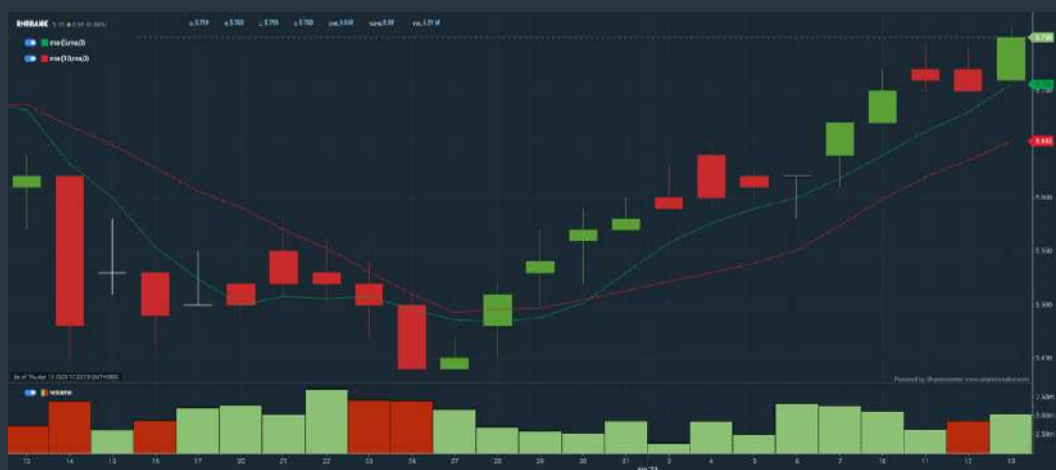
Analysis



### RHB BANK BERHAD (1066)

C<sup>2</sup> Chart

Analysis



**Disclaimer:** The information on this page is provided as a service to readers. It does not constitute financial advice and/or any investment recommendations. Past performance is not indicative of future results. We assume no liability for damages resulting from or arising out of the use of such information. It would be best if you did your own research to make your personal investment decisions wisely or consult a licenced investment advisor.

*Introducing*



# GM SUITE

CONNECTING STAKEHOLDERS

by SHARE**INVESTOR**<sup>®</sup>

**General Meeting Suite (GM Suite)**, an end-to-end technology system to facilitate hybrid, virtual or physical Annual General Meetings.

## THE GOLD STANDARD SOLUTION FOR AGM / EGM



<https://gm-suite.com>

## Price & Volume Distribution Charts (Over 5 trading days as at Yesterday)

Technical Analysis

**DEFINITION:** Stocks with Technical Analysis showing Bullish Momentum and Price Uptrend

**CHART GUIDE:** Volume Distribution Chart is a statistical interpretation of the current sentiment on each stock in graphical format. The highest bar categorized as >150k is likely to be traded by institutions or super dealers, while the lowest bar categorized as <15k usually represents retail investors. "Buy Up" refers to more buyers snatching up the lots queued at selling price. "Sell Down" refers to sellers selling their shares to the buying queue.



ShareInvestor WebPro > Screener > Market Screener (FA & TA) > select BURSA > add criteria

**A. Criteria**

- > click Add Criteria
- Fundamental Analysis Conditions tab > select (i) Revenue
- Technical Analysis Conditions tab select (ii) Moving Average Below Close
- Technical Analysis Conditions tab select (iii) Average Volume
- Prices & Other Conditions tab > select (iv) Last Done Price
- Technical Analysis Conditions tab select (v) Moving Average Below Close
- Technical Analysis Conditions tab select (v) Moving Average Bullish Crossover

**B. Conditions**

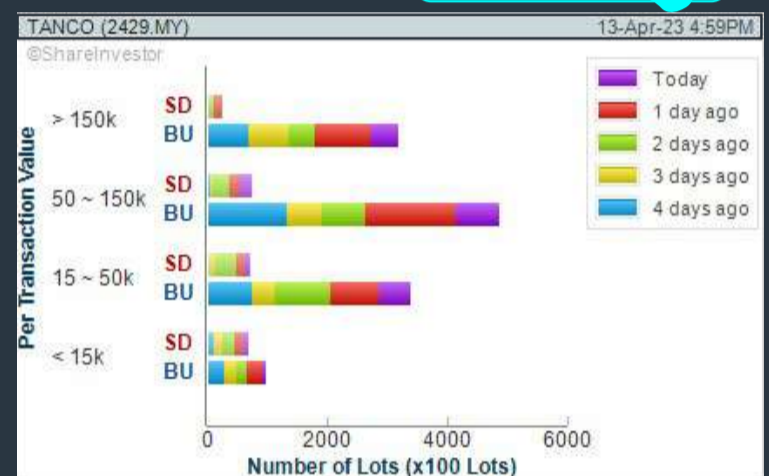
1. Revenue - select (more than) type (1) for the past select (1) financial year(s)
2. Moving Average Below Close - select (MA) type (20) below close price for type (1) days
3. Average Volume - type (5) days average volume type (10000) lots
4. Last Done Price - select (more than) type (0.3)
5. Moving Average Below Close - select (MA) type (10) below close price for type (1) days
6. Moving Average Bullish Crossover - select (MA) type (5) crossed above select (MA) type (10)

> click Save Template > Create New Template type (Non-Shariah Up-Trending Stocks) > click Create Click Save Template As > select Non-Shariah Up Trending Stocks > click Save > click Screen Now (may take a few minutes) Sort By: Select (Vol) Select (Desc) Mouse over stock name > Charts > click C<sup>2</sup> Charts tab or Volume Distribution

### TANCO HOLDINGS BERHAD (2429)

C<sup>2</sup> Chart

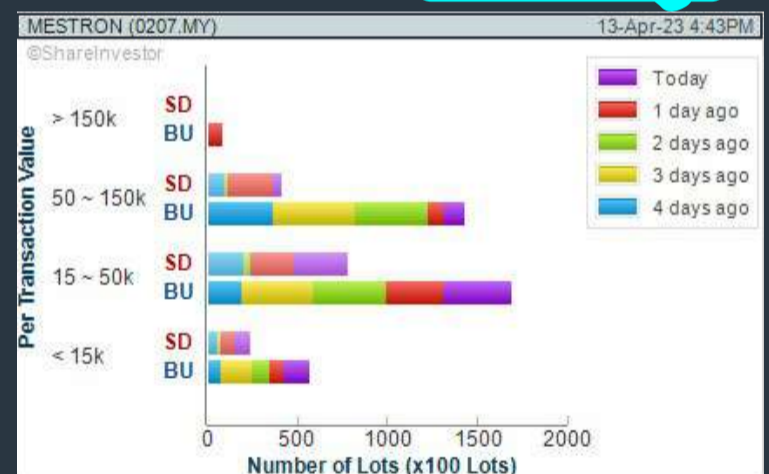
Analysis



### MESTRON HOLDINGS BERHAD (0207)

C<sup>2</sup> Chart

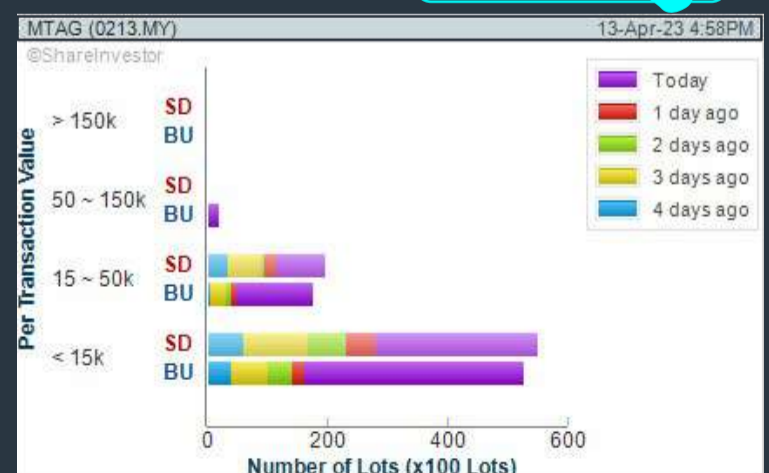
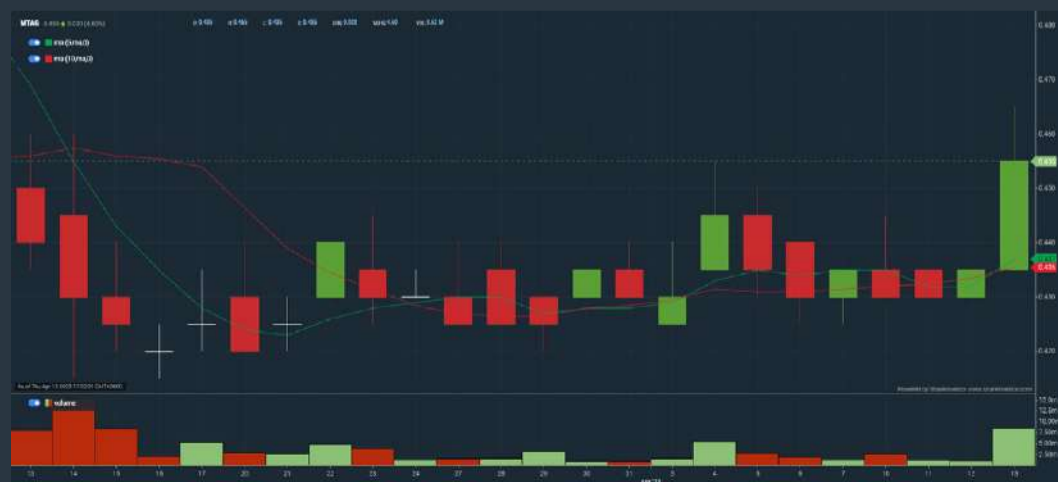
Analysis



### MTAG GROUP BERHAD (0213)

C<sup>2</sup> Chart

Analysis

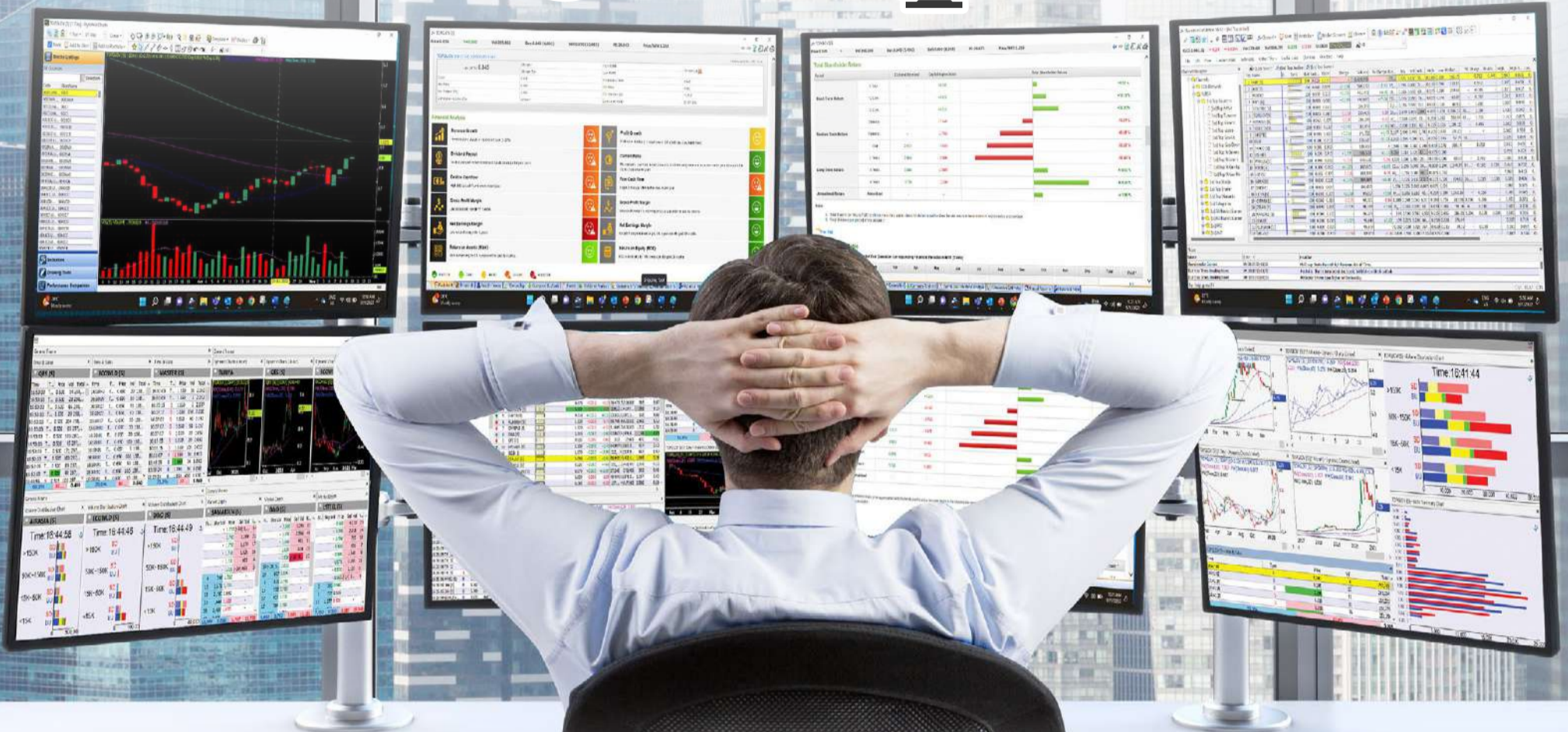


**Disclaimer:** The information on this page is provided as a service to readers. It does not constitute financial advice and/or any investment recommendations. Past performance is not indicative of future results. We assume no liability for damages resulting from or arising out of the use of such information. It would be best if you did your own research to make your personal investment decisions wisely or consult a licenced investment advisor.

# MAKE BETTER TRADING STRATEGIES

with

# SHARE INVESTOR STATION



## 8 Markets Data

- ▶ Get access to data from Bursa, NYSE, Nasdaq, HKEX, SGX, IDX, SET & ASX

## Dynamic Chart

- ▶ Candlestick Pattern Recognition
- ▶ 111 Indicators
- ▶ 39 Drawing Tools
- ▶ Performance Comparison Chart

## Intraday Data

- ▶ Market Depth
- ▶ Trade Summary Matrix & Chart
- ▶ Times & Sales
- ▶ Intraday Market Ticker

## Market Screener

- ▶ 96 criteria ranging from FA, TA, Consensus Estimate
- ▶ Real-time Data

## Power Frame

- ▶ Combining few Dynamic Charts together with intraday information in one frame

## Technical Analysis

## Fundamental Analysis

### Financial Analysis Statement

- ▶ Profit & Loss
- ▶ Balance Sheet
- ▶ Cash Flow Statement
- ▶ More than 20 Financial Ratios
- ▶ Dividend Analysis

### FactSheet

- ▶ Key Stock Information
- ▶ Ownership
- ▶ Consensus Estimates
- ▶ Annual Report
- ▶ Historical Price
- ▶ Insider Trades

Start your 18 days  
**FREE** trial now  
(Valued at RM82)



## Price & Total Shareholder Return (as at Yesterday)

Fundamental Analysis

**DEFINITION:** Share price of a company trading at a lower price as compared to its fundamentals (FA) such as financial performance and dividend, allowing it to be attractive to value investors.

**CHART GUIDE:** Total Shareholder Return (TSR) combines share price appreciation and dividend distributions paid to show the total return to the shareholder expressed as a percentage.



ShareInvestor WebPro > Screener > Market Screener (FA & TA) > select BURSA > add criteria

**A. Criteria**

- > click Add Criteria
- Fundamental Analysis Conditions tab (i) Price Earnings Ratio
- Fundamental Analysis Conditions tab >select (ii) CAGR of Net Earnings
- Fundamental Analysis Conditions tab >select (iii) Net Debt To Equity
- Fundamental Analysis Conditions tab >select (iv) Return On Equity (ROE)

**B. Conditions**

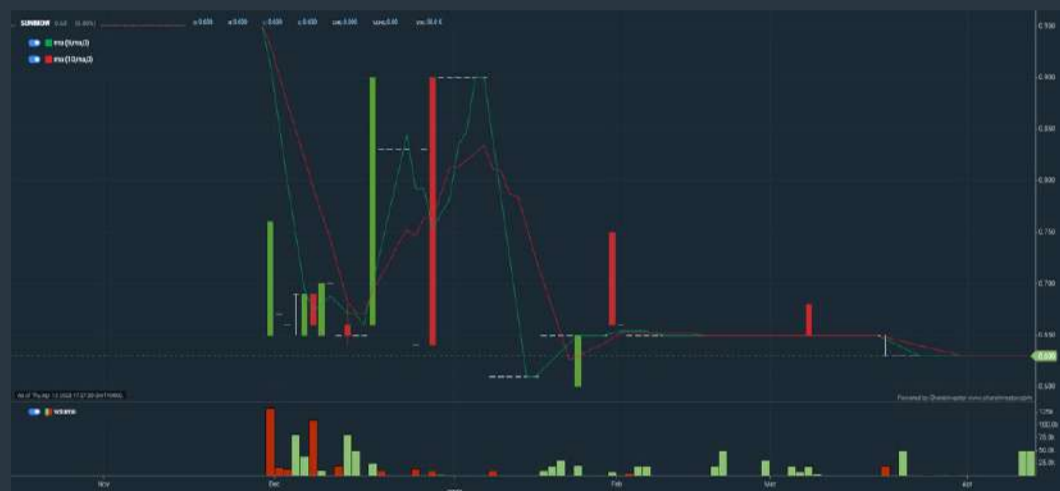
1. Price Earnings Ratio - select (less than) type (15) times now
2. CAGR of Net Earnings - select (more than) type (10) % for the past type (3) financial year(s)
3. Net Debt To Equity – select (less than) type (1) for the past select (1) financial year(s)
4. Return On Equity (ROE) – select (more than) type (10) % for the past select (1) financial year(s)

- > click Save Template > Create New Template type (Value Stock) > click Create
- > click Save Template as > select Value Companies > click Save
- > click Screen Now (may take a few minutes)
- Sort by: Select (PE Ratio) Select (Ascending)
- > Mouse over stock name > Factsheet > looking for Total Shareholder Return
- > Mouse over stock name > Charts > click C2 Charts tab

## SUNMOW HOLDING BERHAD (03050)

C<sup>2</sup> Chart

Analysis



Period	Dividend Received	Capital Appreciation	Total Shareholder Return
Short Term Return	5 Days	-	-
	10 Days	-	-
	20 Days	-	-3.88%
Medium Term Return	3 Months	-0.02	+1.81%
	6 Months	-0.02	-13.81%
	1 Year	-0.05	-13.81%
Annualised Return	Annualised	-	-13.81%

## LION POSIM BERHAD (8486)

C<sup>2</sup> Chart

Analysis



Period	Dividend Received	Capital Appreciation	Total Shareholder Return
Short Term Return	5 Days	-0.02	+6.81%
	10 Days	-	-
	20 Days	-0.06	-4.94%
Medium Term Return	3 Months	-0.50	-10.29%
	6 Months	-0.95	-4.94%
	1 Year	-1.55	-10.27%
Long Term Return	2 Years	-0.26	-13.81%
	3 Years	-0.05	+6.81%
	5 Years	-1.55	-10.27%
Annualised Return	Annualised	-	-8.31%

## ALCOM GROUP BERHAD (2674)

C<sup>2</sup> Chart

Analysis



Period	Dividend Received	Capital Appreciation	Total Shareholder Return
Short Term Return	5 Days	-0.05	-1.81%
	10 Days	-0.05	-1.81%
	20 Days	-0.05	-1.81%
Medium Term Return	3 Months	-0.05	-2.91%
	6 Months	-0.05	+1.81%
	1 Year	0.02	+0.91%
Long Term Return	2 Years	0.02	-2.91%
	3 Years	0.02	+0.91%
	5 Years	0.02	+0.91%
Annualised Return	Annualised	-	-0.81%

**Disclaimer:** The information on this page is provided as a service to readers. It does not constitute financial advice and/or any investment recommendations. Past performance is not indicative of future results. We assume no liability for damages resulting from or arising out of the use of such information. It would be best if you did your own research to make your personal investment decisions wisely or consult a licenced investment advisor.



# Italian Masterpieces

Martha rocking chair designed by Roberto Lazzeroni  
Chester Line sofa designed by Poltrona Frau Style & Design Centre

poltronafrau.com



# XTRA

The Gardens Mall, Mid Valley City, Lot S-236 & 237  
2nd flr Linkaran Syed Putra, Kuala Lumpur  
T. +603 2282 9088 | xtra@xtrafurniture.com | xtrafurniture.com  
f XTRAfurniture | @ xtrafurnituremsia





## Price & Total Shareholder Return (as at Yesterday)

Fundamental Analysis

**DEFINITION:** Company revenue is growing and making good quality of earnings with positive Free Cash Flow.

**CHART GUIDE:** Total Shareholder Return (TSR) combines share price appreciation and distributions paid to show the total return to the shareholder expressed as a percentage.



ShareInvestor WebPro > Screener > Market Screener (FA & TA) > select BURSA > add criteria

**A. Criteria**

1. Fundamental Analysis Conditions tab >select (i) Free Cash Flow, (ii) Revenue Growth, (iii) Gross Profit (Earnings) Margin, (iv) Quality of Earnings, (v) Total Shareholder Returns, > click Add Criteria
2. Fundamental Analysis Conditions tab >select (vi) Total Shareholder Returns > click Add Criteria

**B. Conditions (Criteria Filters)**

1. Free Cash Flow - select (more than) type (1) for the past select (1) financial year(s)
2. Revenue Growth - select (more than) type (1) for the past select (1) financial year(s)
3. Gross Profit (Earnings) Margin - select (more than) type (30) % for the past select (1) financial year(s)
4. Quality of Earnings - select (more than) type (1) for the past select (1) financial year(s)
5. Total Shareholder Return - select (more than) type (5) % for the past select (3) financial year(s)
6. Total Shareholder Return - select (more than) type (5) % for the past select (5) financial year(s)

- > click Save Template > Create New Template type (Growth Companies) > click Create
- > click Save Template as > select Growth Companies > click Save
- > click Screen Now (may take a few minutes)
- > Sort By: Select (Revenue Growth) Select (Desc)
- > Mouse over stock name > Factsheet > looking for Total Shareholder Return

## HIBISCUS PETROLEUM BERHAD (5199)

C<sup>2</sup> Chart

Analysis



Period	Dividend Received	Capital Appreciation	Total Shareholder Return
Short Term Return	5Days	-0.04	+0.7%
	10Days	-0.05	+1.6%
	20Days	-0.08	+7.4%
Medium Term Return	3Months	-0.03	+1.8%
	6Months	0.01	+1.2%
	1Year	0.02	+1.4%
Long Term Return	2Years	0.03	+5.1%
	3Years	0.05	+8.6%
	5Years	0.05	+8.8%
Annualized Return	Annualized	-	+5.2%

## CLASSIC SCENIC BERHAD (7202)

C<sup>2</sup> Chart

Analysis



Period	Dividend Received	Capital Appreciation	Total Shareholder Return
Short Term Return	5Days	0.05	-0.1%
	10Days	0.05	-1.1%
	20Days	0.03	-1.1%
Medium Term Return	3Months	0.05	-8.7%
	6Months	0.05	-1.5%
	1Year	0.05	+8.8%
Long Term Return	2Years	0.05	+1.3%
	3Years	0.05	+8.7%
	5Years	0.05	+4.1%
Annualized Return	Annualized	-	+1.8%

## DAYANG ENTERPRISE HOLDINGS BERHAD (5141)

C<sup>2</sup> Chart

Analysis



Period	Dividend Received	Capital Appreciation	Total Shareholder Return
Short Term Return	5Days	-0.04	+1.0%
	10Days	-0.03	+1.8%
	20Days	-	+1.0%
Medium Term Return	3Months	-0.03	+1.6%
	6Months	-	+2.2%
	1Year	-	+8.7%
Long Term Return	2Years	-0.01	+6.3%
	3Years	-	+6.8%
	5Years	-	+8.8%
Annualized Return	Annualized	-	+1.9%

**Disclaimer:** The information on this page is provided as a service to readers. It does not constitute financial advice and/or any investment recommendations. Past performance is not indicative of future results. We assume no liability for damages resulting from or arising out of the use of such information. It would be best if you did your own research to make your personal investment decisions wisely or consult a licenced investment advisor.

# BURSASTATION

## Professional

### Stock Scanning

- Technical Analysis (TA) Market Scanner
- Fundamental Analysis (FA) Market Scanner

### Monitoring

- Portfolio
- Stock Alerts
- Price Spread Calculator

### Market Data

- Equities
- Derivatives

# Scan. Chart. Analyse.

Be The Intelligent Investor

### Charts

- Intraday Charts
- Interactive Charts
- Historical Charts
- Volume Distribution Charts

### Price Movements

- Streaming Prices
- Time & Sales
- Trade Summary Matrix
- Quote Movements
- 5 Levels Market Depth
- Historical Price Download

### Fundamentals

- Factsheets
- Financials
- Insider Trades

Brought to you as a collaborative effort by ShareInvestor and Bursa Malaysia, **BursaStation Professional** is designed with you, the user, in mind, as a user-friendly yet full of powerful features that will appeal to investors/traders who need instant access to fundamental, technical, and trading data, anytime, anywhere. **BursaStation Professional** is a state-of-the-art Stock Market Tracker with Charting Software that places in your hands the power to make better investment decisions.

[CLICK HERE TO START YOUR 14-DAYS FREE TRIAL](#)

## Price & Total Shareholder Return (as at Yesterday)

Fundamental Analysis

**DEFINITION:** Company is paying out dividend with low or moderate leverage.

**CHART GUIDE:** Total Shareholder Return (TSR) combines share price appreciation and distributions paid to show the total return to the shareholder expressed as a percentage.



ShareInvestor WebPro > Screener > Market Screener (FA & TA) > select BURSA > add criteria

**A. Criteria**

- > click Add Criteria
- Fundamental Analysis Conditions tab >select (i) Dividend Yield (Historical)
- Fundamental Analysis Conditions tab >select (ii) Dividend Payout (Historical)
- Fundamental Analysis Conditions tab >select (iii) Total Debt To Equity
- Fundamental Analysis Conditions tab >select (iv) Total Shareholder Returns
- Fundamental Analysis Conditions tab >select (v) Total Shareholder Returns
- Fundamental Analysis Conditions tab / >select (vi) CAGR of Dividend Per Share

- Fundamental Analysis Conditions tab >select (vii) CAGR of Dividend Per Share

**B. Conditions (Criteria Filters)**

1. Dividend Yield - select (more than) type (1) % for the past select (1) financial year(s)
2. Dividend Payout (Historical) - select (between) type (0.5) to type (1) times for the past select (1) financial year(s)
3. Total Debt to Equity – select (less than) type (1) for the past select (1) financial year(s)
4. Total Shareholder Return – select (more than) type (5) % for the past select (3) financial year(s)
5. Total Shareholder Return – select (more than) type (5) % for the past select (5) financial year(s)

6. CAGR of Dividend Per Share – select (less than) type (30) % for the past select (5) financial year(s)
7. CAGR of Dividend Per Share – select (more than) type (1) % for the past select (5) financial year(s)

- > click Save Template > Create New Template type (Dividend Companies) > click Create
- > click Save Template as > select Dividend Companies > click Save
- > click Screen Now (may take a few minutes)
- > Sort By: Select (Dividend Yield) Select (Desc)
- > Mouse over stock name > Factsheet > looking for Total Shareholder Return

## JAYCORP BERHAD (7152)

C<sup>2</sup> Chart



Period	Dividend Received	Capital Appreciation	Total Shareholder Return
Short Term Return	5 Days	-	-
	10 Days	0.020	+3.84%
	20 Days	0.020	+3.57%
Medium Term Return	3 Months	0.020	+3.88%
	6 Months	0.040	+4.87%
	1 Year	0.080	+3.25%
Long Term Return	2 Years	0.160	+6.67%
	3 Years	0.240	+10.85%
	5 Years	0.400	+18.65%
Annualised Return	Annualised	-	+8.17%

## UNITED PLANTATIONS BERHAD (2089)

C<sup>2</sup> Chart



Period	Dividend Received	Capital Appreciation	Total Shareholder Return
Short Term Return	5 Days	-	+3.88%
	10 Days	-	+3.46%
	20 Days	-	+3.71%
Medium Term Return	3 Months	-	+3.87%
	6 Months	0.400	+2.46%
	1 Year	1.200	+1.84%
Long Term Return	2 Years	2.400	+7.28%
	3 Years	3.600	+5.66%
	5 Years	6.000	+8.86%
Annualised Return	Annualised	-	+3.88%

## UCHI TECHNOLOGIES BERHAD (7100)

C<sup>2</sup> Chart



Period	Dividend Received	Capital Appreciation	Total Shareholder Return
Short Term Return	5 Days	-	+4.88%
	10 Days	-	+4.88%
	20 Days	-	+3.46%
Medium Term Return	3 Months	-	+2.46%
	6 Months	0.120	+4.46%
	1 Year	0.240	+5.81%
Long Term Return	2 Years	0.480	+8.27%
	3 Years	0.720	+7.83%
	5 Years	1.200	+4.85%
Annualised Return	Annualised	-	+4.88%

**Disclaimer:** The information on this page is provided as a service to readers. It does not constitute financial advice and/or any investment recommendations. Past performance is not indicative of future results. We assume no liability for damages resulting from or arising out of the use of such information. It would be best if you did your own research to make your personal investment decisions wisely or consult a licenced investment advisor.

Week: 07 April 2023 – 13 April 2023

More Brokers' Call 

<b>AMINVESTMENT BANK</b> <small>... See More</small>	Call	Target Price	Release Date
Cape EMS Berhad (5311)	<b>BUY</b>	RM1.47	12 Apr 2023
Tan Chong Motor Holdings Berhad (4405)	<b>UNDERWEIGHT</b>	RM0.95	10 Apr 2023
UMW Holdings Berhad (4588)	<b>BUY</b>	RM4.70	11 Apr 2023

<b>BIMB SECURITIES SDN BHD</b> <small>... See More</small>	Call	Target Price	Release Date
MY E.G. Services Berhad (0138)	<b>BUY</b>	RM1.15	13 Apr 2023

<b>CGS CIMB</b> <small>... See More</small>	Call	Target Price	Release Date
BP Plastics Holding Berhad (5100)	<b>ADD</b>	RM1.39	07 Apr 2023
Malaysia Airports Holdings Berhad (5014)	<b>HOLD</b>	RM6.93	11 Apr 2023

<b>KENANGA</b> <small>... See More</small>	Call	Target Price	Release Date
Aeon Credit Service (M) Berhad (5139)	<b>OUTPERFORM</b>	RM16.15	13 Apr 2023
Ancom Nylex Berhad (4758)	<b>OUTPERFORM</b>	RM1.80	13 Apr 2023
Kuala Lumpur Kepong Berhad (2445)	<b>OUTPERFORM</b>	RM27.00	13 Apr 2023
UMW Holdings Berhad (4588)	<b>OUTPERFORM</b>	RM4.80	11 Apr 2023

<b>MALACCA SECURITIES SDN BHD</b> <small>... See More</small>	Call	Target Price	Release Date
Malaysia Smelting Corporation Berhad (5916)	<b>HOLD</b>	RM1.96	10 Apr 2023
Rexit Berhad (0106)	<b>BUY</b>	RM0.83	10 Apr 2023

<b>MIDF</b> <small>... See More</small>	Call	Target Price	Release Date
Aeon Co. (M) Berhad (6599)	<b>BUY</b>	RM1.90	13 Apr 2023
MY E.G. Services Berhad (0138)	<b>BUY</b>	RM1.00	13 Apr 2023
Spritzer Berhad (7103)	<b>BUY</b>	RM2.800	10 Apr 2023

<b>UOB KAYHIAN</b> <small>... See More</small>	Call	Target Price	Release Date
Coraza Integrated Technology Berhad (0240)	<b>BUY</b>	RM1.10	12 Apr 2023
Cypark Resources Berhad (5184)	<b>BUY</b>	RM1.14	12 Apr 2023
Opcom Holdings Berhad (0035)	<b>BUY</b>	RM0.82	11 Apr 2023

**Disclaimer:** InveSt does not accept any liability whatsoever for any direct, indirect or consequential losses (including loss of profit) or damages that may arise from the use of information or opinions in this publication. The information and opinions in InveSt are not to be considered as an offer to sell or buy any of the securities discussed. Opinions expressed are subject to change without notice. The Brokers may, from time to time, have interests or positions in the securities mentioned. For the full report on each item listed on this page, please visit [https://www.shareinvestor.com/my/brokers\\_call](https://www.shareinvestor.com/my/brokers_call).

**DEFINITION:** Top 9 stocks with Technical Analysis plus Pattern Matching by 60 pre-defined indicators by the system showing a higher probability of bullish sentiment on the share price.



ShareInvestor WebPro > Screener > Predefined TA Screens > select market BURSA > Most Long Signals > click Scan Results or mouse over each company

**PERTAMA DIGITAL BERHAD (8532.MY)**

**PERTAMA**

Price updated at 13 Apr 2023 16:58

Last: <b>2.490</b>	Change: -	Volume: <b>74,984</b>
	Change (%): -	Range: <b>2.430 - 2.530</b>

TA Scanner Results based on historical data up to 13 Apr 2023

Condition	Signal	Explanation
Accumulation Distribution: Bullish Accumulation Distribution	Long	Accumulation distribution increasing for the last 7 days
Bollinger Band: High Above Upper Bollinger Band	Neutral	1. High above upper bollinger band(14,2). 2. Average volume(5) is above 100,000.
CCI: Bearish CCI Overbought And Reversing	Short	1. CCI(26) above 100 and CCI(26) 1 day ago increasing for the last 3 days. 2. CCI(26) below CCI(26) 1 day ago
Historical Volatility: Increasing Historical Volatility	Neutral	Historical Volatility(100,365) increasing for the last 10 days
MA: Short Term Bullish Moving Average Crossover	Long	MA(10) crossed above MA(15) within the last 1 day.
Price: Consecutive Days Gains	Long	1. Close price has been increasing over the last 5 days. 2. Average volume(5) above 100,000.
Price: New 52 Week High	Long	1. Stock reach a new 52 week high. 2. Average volume(30) is above 50000.
Volume: 10 Days large value Buy Up trade	Long	1. 150K value Buy Up greater than Sell Down by 20% for 10 days. 2. 50K-100K value Buy Up greater than Sell Down by 20% for 10 days. 3. Average volume(10) is above 1000000
Volume: 5 Days large value Buy Up trade	Long	1. 150K value Buy Up greater than Sell Down by 20% for 5 days. 2. 50K-100K value Buy Up greater than Sell Down by 20% for 5 days. 3. Average volume(10) is above 1000000
Williams %R: Bearish Williams %R	Short	1. Williams %R(26) between 0 and -20. 2. Average volume(5) is above 100,000.

**TANCO HOLDINGS BERHAD (2429.MY)**

**TANCO**

Price updated at 13 Apr 2023 16:59

Last: <b>0.475</b>	Change: <b>-0.005</b>	Volume: <b>215,663</b>
	Change (%): <b>-1.04</b>	Range: <b>0.470 - 0.480</b>

TA Scanner Results based on historical data up to 13 Apr 2023

Condition	Signal	Explanation
Bollinger Band: Bullish Long Term Volatility Breakout and Trending	Long	1. Close price above upper bollinger band(33,1). 2. Volume above average volume(50). 3. Average volume(50) is above 300,000.
Bollinger Band: Bullish Short Term Volatility Breakout and Trending	Long	1. Close price above upper bollinger band(33,1). 2. Volume above average volume(10). 3. Average volume(10) is above 300,000.
MACD: Bullish MACD Crossover	Long	1. MACD(12,26) diff line crossed above the MACD(12,26) signal line. 2. MACD Histogram(12,26) is above 0.
Volume: 10 Days large value Buy Up trade	Long	1. 150K value Buy Up greater than Sell Down by 20% for 10 days. 2. 50K-100K value Buy Up greater than Sell Down by 20% for 10 days. 3. Average volume(10) is above 1000000
Volume: 5 Days large value Buy Up trade	Long	1. 150K value Buy Up greater than Sell Down by 20% for 5 days. 2. 50K-100K value Buy Up greater than Sell Down by 20% for 5 days. 3. Average volume(10) is above 1000000

**WCE HOLDINGS BERHAD (3565.MY)**

**WCEHB**

Price updated at 13 Apr 2023 16:50

Last: <b>0.450</b>	Change: -	Volume: <b>70,416</b>
	Change (%): -	Range: <b>0.445 - 0.460</b>

TA Scanner Results based on historical data up to 13 Apr 2023

Condition	Signal	Explanation
Bollinger Band: High Above Upper Bollinger Band	Neutral	1. High above upper bollinger band(14,2). 2. Average volume(5) is above 100,000.
Candlestick: Bullish Engulfing	Long	Bullish: Engulfing
Price: New 52 Week High	Long	1. Stock reach a new 52 week high. 2. Average volume(30) is above 50000.
Volume: 10 Days large value Buy Up trade	Long	1. 150K value Buy Up greater than Sell Down by 20% for 10 days. 2. 50K-100K value Buy Up greater than Sell Down by 20% for 10 days. 3. Average volume(10) is above 1000000
Volume: 5 Days large value Buy Up trade	Long	1. 150K value Buy Up greater than Sell Down by 20% for 5 days. 2. 50K-100K value Buy Up greater than Sell Down by 20% for 5 days. 3. Average volume(10) is above 1000000
Volume: Consecutive Days Of Increasing Average Volume	Long	1. Average Volume(20) has been increasing over the last 2 weeks. 2. Average volume(20) is above 100000
Williams %R: Bearish Williams %R	Short	1. Williams %R(26) between 0 and -20. 2. Average volume(5) is above 100,000.

**SHIN YANG SHIPPING CORP BERHAD (5173.MY)**

**SYSCORP**

Price updated at 13 Apr 2023 16:59

Last: <b>0.680</b>	Change: <b>+0.030</b>	Volume: <b>153,075</b>
	Change (%): <b>+4.62</b>	Range: <b>0.660 - 0.710</b>

TA Scanner Results based on historical data up to 13 Apr 2023

Condition	Signal	Explanation
Bollinger Band: Bullish Long Term Volatility Breakout and Trending	Long	1. Close price above upper bollinger band(33,1). 2. Volume above average volume(50). 3. Average volume(50) is above 300,000.
Bollinger Band: Bullish Short Term Volatility Breakout and Trending	Long	1. Close price above upper bollinger band(33,1). 2. Volume above average volume(10). 3. Average volume(10) is above 300,000.
Bollinger Band: High Above Upper Bollinger Band	Neutral	1. High above upper bollinger band(14,2). 2. Average volume(5) is above 100,000.
DM: Bullish Directional Movement	Long	-DI(14) crossed below +DI(14)
Donchian Channels: High Above Upper Donchian Channels	Long	High crossed above the upper Donchian Channel(14,4)
RSI: Short Term RSI 50 Bullish Crossover	Long	1. RSI(20) crossed above 50 within the last 1 day and RSI(20) 1 day ago below 50 for the last 5 days. 2. Volume above average volume(125). 3. Average volume(5) is above 100,000.
Volume: Volume Spike	Long	1. Volume is more than 500% above average volume(10). 2. Volume above 200000. 3. Close price above 0.10
Williams %R: Bearish Williams %R	Short	1. Williams %R(26) between 0 and -20. 2. Average volume(5) is above 100,000.

**Disclaimer:** The information on this page is provided as a service to readers. It does not constitute financial advice and/or any investment recommendations. Past performance is not indicative of future results. We assume no liability for damages resulting from or arising out of the use of such information. It would be best if you did your own research to make your personal investment decisions wisely or consult a licenced investment advisor.



**REDTONE DIGITAL BERHAD (0032.MY)**

**REDTONE**

Price updated at 13 Apr 2023 16:52

Last: <b>0.515</b>	Change: <b>+0.005</b>	Volume: <b>6,345</b>
	Change (%): <b>+0.98</b>	Range: <b>0.505 - 0.515</b>

TA Scanner Results based on historical data up to 13 Apr 2023

Condition	Signal	Explanation
Bollinger Band: Bearish Long Term Volatility Breakout and Trending	Short	1. Close price below lower bollinger band(33,1). 2. Volume above average volume(50). 3. Average volume(50) is above 300,000.
Bollinger Band: Bearish Short Term Volatility Breakout and Trending	Short	1. Close price below lower bollinger band(33,1). 2. Volume above average volume(10). 3. Average volume(10) is above 300,000.
Bollinger Band: Low Below Lower Bollinger Band	Neutral	1. Low below lower bollinger band(14,2). 2. Average volume(5) is above 100,000.
MA: Short Term Bullish Moving Average Crossover	Long	MA(10) crossed above MA(15) within the last 1 day.
Volume: 10 Days large value Buy Up trade	Long	1. 150K value Buy Up greater than Sell Down by 20% for 10 days. 2. 50K-100K value Buy Up greater than Sell Down by 20% for 10 days. 3. Average volume(10) is above 1000000
Volume: 5 Days large value Buy Up trade	Long	1. 150K value Buy Up greater than Sell Down by 20% for 5 days. 2. 50K-100K value Buy Up greater than Sell Down by 20% for 5 days. 3. Average volume(10) is above 1000000
Williams %R: Bullish Williams %R	Long	1. Williams %R(26) between -80 and -100. 2. Average volume(5) is above 100,000.



**SALUTICA BERHAD (0183.MY)**

**SALUTE**

Price updated at 13 Apr 2023 16:59

Last: <b>0.875</b>	Change: <b>+0.110</b>	Volume: <b>328,633</b>
	Change (%): <b>+14.38</b>	Range: <b>0.770 - 0.875</b>

TA Scanner Results based on historical data up to 13 Apr 2023

Condition	Signal	Explanation
MACD: Overbought	Short	1. MACD Histogram(12,26,9) reached a new 6 month high. 2. MACD Histogram(12,26,9) has been above 0 for the last 3 weeks.
Price: New 52 Week High	Long	1. Stock reach a new 52 week high. 2. Average volume(30) is above 50000.
RSI: RSI Overbought	Short	1. RSI(20) is above 80. 2. RSI(20) is increasing for the last 3 days. 3. Stock has more than 75 days of historical data.
Volume: 10 Days large value Buy Up trade	Long	1. 150K value Buy Up greater than Sell Down by 20% for 10 days. 2. 50K-100K value Buy Up greater than Sell Down by 20% for 10 days. 3. Average volume(10) is above 1000000
Volume: 5 Days large value Buy Up trade	Long	1. 150K value Buy Up greater than Sell Down by 20% for 5 days. 2. 50K-100K value Buy Up greater than Sell Down by 20% for 5 days. 3. Average volume(10) is above 1000000
Volume: Consecutive Days Of Increasing Average Volume	Long	1. Average Volume(20) has been increasing over the last 2 weeks. 2. Average volume(20) is above 100000
Williams %R: Bearish Williams %R	Short	1. Williams %R(26) between 0 and -20. 2. Average volume(5) is above 100,000.

**Disclaimer:** The information on this page is provided as a service to readers. It does not constitute financial advice and/or any investment recommendations. Past performance is not indicative of future results. We assume no liability for damages resulting from or arising out of the use of such information. It would be best if you did your own research to make your personal investment decisions wisely or consult a licenced investment advisor.



**PETERLABS HOLDINGS BERHAD (0171.MY)**

**PLABS**

Price updated at 13 Apr 2023 16:39

Last: <b>0.195</b>	Change: <b>+0.005</b>	Volume: <b>4,396</b>
	Change (%): <b>+2.63</b>	Range: <b>0.190 - 0.195</b>

TA Scanner Results based on historical data up to 13 Apr 2023

Condition	Signal	Explanation
Bollinger Band: High Above Upper Bollinger Band	Neutral	1. High above upper bollinger band(14,2). 2. Average volume(5) is above 100,000.
DM: Bullish Directional Movement	Long	-DI(14) crossed below +DI(14)
Donchian Channels: High Above Upper Donchian Channels	Long	High crossed above the upper Donchian Channel(14,4)
RSI: Short Term RSI 50 Bullish Crossover	Long	1. RSI(20) crossed above 50 within the last 1 day and RSI(20) 1 day ago below 50 for the last 5 days. 2. Volume above average volume(125). 3. Average volume(5) is above 100,000.
Volume: Volume Spike	Long	1. Volume is more than 500% above average volume(10). 2. Volume above 200000. 3. Close price above 0.10



**SHANGRI-LA HOTELS (M) BERHAD (5517.MY)**

**SHANG**

Price updated at 13 Apr 2023 16:57

Last: <b>2.980</b>	Change: <b>-0.120</b>	Volume: <b>1,817</b>
	Change (%): <b>-3.87</b>	Range: <b>2.940 - 3.050</b>

TA Scanner Results based on historical data up to 13 Apr 2023

Condition	Signal	Explanation
Accumulation Distribution: Bullish Accumulation Distribution	Long	Accumulation distribution increasing for the last 7 days
Bollinger Band: High Above Upper Bollinger Band	Neutral	1. High above upper bollinger band(14,2). 2. Average volume(5) is above 100,000.
Candlestick: Bullish Engulfing	Long	Bullish: Engulfing
DM: Bullish Directional Movement	Long	-DI(14) crossed below +DI(14)
Parabolic SAR: Bearish Parabolic SAR Reversal	Neutral	1. Parabolic SAR 1 day ago above close price 1 day ago for the last 5 days. 2. Parabolic SAR below close price
RSI: Short Term RSI 50 Bullish Crossover	Long	1. RSI(20) crossed above 50 within the last 1 day and RSI(20) 1 day ago below 50 for the last 5 days. 2. Volume above average volume(125). 3. Average volume(5) is above 100,000.



**CNERGENZ BERHAD (0246.MY)**

**CNERGEN**

Price updated at 13 Apr 2023 16:55

Last: <b>0.930</b>	Change: <b>+0.015</b>	Volume: <b>13,163</b>
	Change (%): <b>+1.64</b>	Range: <b>0.900 - 0.935</b>

TA Scanner Results based on historical data up to 13 Apr 2023

Condition	Signal	Explanation
Bollinger Band: Bullish Short Term Volatility Breakout and Trending	Long	1. Close price above upper bollinger band(33,1). 2. Volume above average volume(10). 3. Average volume(10) is above 300,000.
Candlestick: Bullish Engulfing	Long	Bullish: Engulfing
DM: Bullish Directional Movement	Long	-DI(14) crossed below +DI(14)
Donchian Channels: High Above Upper Donchian Channels	Long	High crossed above the upper Donchian Channel(14,4)

# MALAYSIAN ECONOMY OFF TO SLOW START IN 1Q 2023 - SERC

**A**ccording to Socio Economic Research Centre (SERC) executive director Lee Heng Guie, the Malaysian economy is off to a slow start in the first quarter of 2023 due to weakening exports and normalisation of domestic demand. Despite this, the Malaysian economy is still expected to grow this year, albeit at a slower pace compared with last year with an estimated growth rate of 4.1%. After staging a strong recovery growth of 8.7% in 2022 post the Covid-19 pandemic, the Malaysian economy is expected to normalise to an estimated 4.1% in 2023 on a more sustainable pace of private consumption, which made up 60.2% of total GDP in 2022.

Speaking at SERC's media briefing and press conference on Malaysia's quarterly economy tracker (January-March 2023), he said that exports, which had been a strong contributor to the economy, have displayed slowing momentum since late 2022. In addition, SERC expects Bank Negara Malaysia (BNM) to increase the overnight policy rate to 3% this year to address inflation. BNM has stated that any adjustment to the degree of accommodation will take into consideration the evolving global and domestic conditions and their implications on the overall outlook of domestic inflation and growth.

Malaysia's most recent economic data indicates a sluggish beginning to 2023 with the leading index continuing to decline in January 2023, marking three consecutive months of contraction. The industrial production index (IPI) registered a low single-digit growth of 3.6% year-on-year in February and 1.8% in January from 4% in Q4 2022 and 12.2% in Q3 2022, due to dissipating overseas demand besides slower industrial output was weighed down by slower growth in the manufacturing sector (3% in Jan-Feb 2023 vs. 4% in Q4 2022 and 13.4% in Q3 2022) and a decline in the electricity sector.

Meanwhile, manufacturing sales reported double-digit growth of 10.3% y-o-y in February from 6.5% in January and 8.8% in December 2022 and that export-oriented industries, which accounted for 71.1% of total sales, expanded by 10% in February and 6.9% in January, while domestic-oriented industries (28.9% of total sales) accelerated by 11% in February and 5.6% in January.

China's reopening will help to sustain stronger domestic tourism-related spending such as retailing, restaurants and accommodation.

Exports continued to see a much slower growth of 5.4% y-o-y in Jan-Feb compared to 11.8% in Q4 2022. In addition, the banking sector's outstanding loan grew at a slightly more moderate pace at 5.2% y-o-y in February from 5.7% in December 2022, supported by the household sector (5.7%), while loans demand for business and others increased by 4.4%.

## **FOREIGN BUYING OF MALAYSIAN EQUITY TICKED UP TO RM18.8 MIL LAST WEEK - MIDF**

According to MIDF Research's Royce Tan Seng Hooi, in his fund flow weekly report on Monday (10Apr), foreign buying of Malaysian equity on Bursa Malaysia ticked up to RM18.8 mil last week, from RM11.5 mil the prior week. It was a rather mixed trading week with a negative bias among foreign investors, as they net sold for four out the five trading days. However, the net buying of RM63.0 mil on Thursday



cushioned the net selling for the rest of the week. Foreign investors net sold RM150,000 on Monday, RM14.9 mil on Tuesday, RM24.4 mil on Wednesday and RM4.7 mil on Friday. Thursday was the only day with net inflows, which saw the bulk of foreign funds flowing into blue chips, namely Petronas Gas Bhd, QL Resources Bhd and Public Bank Bhd.

Sentiments remain healthy, lifted by Prime Minister Datuk Seri Anwar Ibrahim's recent visit to China, which secured the commitment of RM170.07 billion of Chinese investments into several industries in Malaysia, and also RM2.44 billion of potential exports to China. Top three sectors that saw net foreign inflows last week were Consumer Products & Services (RM39.1 mil), Utilities (RM24.2 mil) and Energy (RM18.2 mil), while the top three sectors that saw net foreign outflows were Financial Services (RM39.1 mil), Healthcare (RM30.2 mil) and Technology (RM16.9 mil). Year-to-date, foreigners have net sold Malaysian equities for nine out of 14 weeks, totalling RM1.86 billion.

Institutional investors returned as net buyers with a total of RM50.1 mil, after briefly turning net sellers at RM3.9 mil the week before. They net sold RM71.0 mil on Thursday but were net buyers for the rest of the week. Year-to-date, institutional investors have been net buyers for 10 out of 14 weeks, with a total of RM1.82 billion.

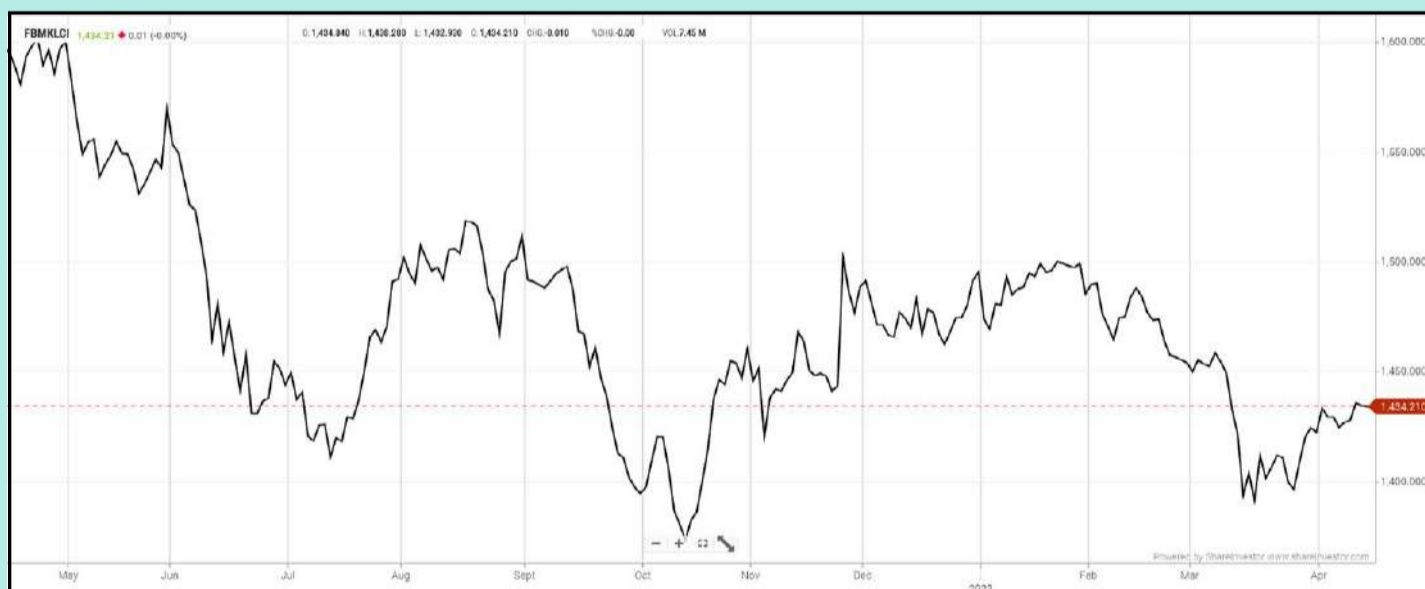
Local retailers net sold for the second consecutive week at RM69.0 mil. They net bought RM8.0 million on Thursday but were net sellers for the rest of the week. They have net bought for seven out of 14 weeks this year, with a total of RM22.9 mil. In terms of participation, there was a decline in average daily trading volume (ADTV) among local retailers by 5.8%, local institutions by 3.2% and foreign investors by 18.8%.

Global markets entered the second quarter of the year rather mixed amid sentiment-dampening news flow and lingering concerns of a slowdown, but hopeful of earlier than expected US Fed pivot. It was a shortened trading week last week, in conjunction with the Good Friday holiday in most major countries and a rather timely one, which allowed investors to digest the data of a cooling labour market, alongside other developments earlier in the week. The S&P 500 declined -0.1% for the week, while the Dow Jones Industrial Average gained 0.63%.

The tech-heavy Nasdaq Composite Index lost 1.1%, dragged by the slump in Tesla’s share price that took a 10.6% hit for the week, as its deliveries in the first quarter fell short of expectations despite it being a record number. The electric car giant also slashed its prices overnight to support demand.

## EYE ON THE MARKETS

This week, on Friday (14Apr), the Ringgit opened at 4.3905 against the USD from 4.4075 on Monday (10Apr). Meanwhile, the Ringgit opened at 3.3126 to the Sing Dollar on Friday (14Apr). On Monday (10Apr), the FBM KLCI opened at 1427.89. As at Friday (14Apr) 10:00am, the FBM KLCI is up 6.32 points for the week at 1434.21. Over in US, the overnight Dow Jones Industrial Average closed up 383.19 points (+1.14%) to 34,029.69 whilst the NASDAQ gained 236.93 points (+1.99%) to 12,166.27.



KLCI 1 Year Chart

## SHAREINVESTOR MARKET DATA PLATFORMS



**SHAREINVESTOR STATION**  
Advanced Charting Software  
(8 Markets)



**SHAREINVESTOR WEBPRO**  
Browser-Based Market Data  
Analytics Platform



**BURSASTATION**  
Advanced Charting Software  
(Bursa Malaysia Only)

## Over 5 trading days



ShareInvestor WebPro ([www.shareinvestor.com/my](http://www.shareinvestor.com/my))

1. Price > Stock Prices
2. Select Market: NASDAQ / NYSE / IDX / SET / HKEX / SGX (One bourse at a time)
3. select Stocks Tab
4. select Ranking Top Gainers or Top Losers (Over 5 Trading Days)
5. Mouse over Column Layout > select Edit Customs > select Name > select Last Done Price > select 5 Days Change > select 52 Weeks High > select 52 Weeks Low > Mouse Over Column Layout > select Custom

### NASDAQ (USD)

#### Top Gainers

Name	Last Done	Change Over 5 Days	52 Weeks High	52 Weeks Low
MERCADOLIBRE INC	1,296.120	+51.120	1,329.490	600.685
CREDIT ACCEPTANCE CORPORATION	478.590	+51.020	648.950	358.000
MICROSTRATEGY	340.720	+50.620	477.280	132.560
BOOKING HOLDINGS INC	2,629.630	+45.780	2,677.180	1,616.850
SHOCKWAVE MEDICAL INC	258.040	+34.990	320.540	113.360

#### Top Losers

Name	Last Done	Change Over 5 Days	52 Weeks High	52 Weeks Low
SAREPTA THERAPEUTICS INC	124.720	-17.830	159.835	61.280
BAIDU INC SPON ADS EACH REP 8 ORD SHS	132.730	-12.260	160.880	73.580
CIRRUS LOGIC INC	90.900	-11.840	111.150	61.940
FIRST CITIZENS BANCSHARES INC NRTH	989.290	-9.570	1,016.655	505.840
MADRIGAL PHARMACEUTICALS INC	239.720	-7.860	315.450	57.153

### NYSE (USD)

#### Top Gainers

Name	Last Done	Change Over 5 Days	52 Weeks High	52 Weeks Low
BERKSHIRE HATHAWAY INC	490,760.000	+12,755.000	526,900.000	393,012.250
NVR INC	5,579.470	+111.390	5,655.000	3,576.010
AUTOZONE INC	2,618.650	+87.970	2,625.710	1,703.320
METTLER-TOLEDO INTERNATIONAL INC	1,581.710	+80.790	1,609.250	1,065.550
WHITE MOUNTAINS INSURANCE GROUP	1,426.500	+62.500	1,560.210	1,030.380

#### Top Losers

Name	Last Done	Change Over 5 Days	52 Weeks High	52 Weeks Low
PROGRESSIVE CORP(OHIO)	138.210	-9.080	149.870	106.350
ALIBABA GROUP HOLDING LTD SPON ADS EACH REP 8 ORD SHS	96.170	-6.570	125.840	58.010
PUBLIC STORAGE	304.510	-6.280	421.760	270.130
MCKESSON CORPORATION	364.320	-5.770	401.780	298.690
ALEXANDRIA REAL ESTATE EQUITIES	119.540	-4.850	203.390	114.945

### IDX (Rupiah)

#### Top Gainers

Name	Last Done	Change Over 5 Days	52 Weeks High	52 Weeks Low
NFC INDONESIA TBK	6,750.000	+1,275.000	13,375.000	4,460.000
UNITED TRACTORS	31,050.000	+1,250.000	36,200.000	23,600.000
RODA VIVATEX	10,925.000	+700.000	17,000.000	6,700.000
TRANSCOAL PACIFIC TBK	7,425.000	+550.000	11,800.000	6,625.000
JEMBO CABLE CO	4,940.000	+480.000	6,125.000	3,600.000

#### Top Losers

Name	Last Done	Change Over 5 Days	52 Weeks High	52 Weeks Low
INDO TAMBANGRAYA MEGAH TBK	34,600.000	-6,525.000	45,650.000	26,300.000
BAYAN RESOURCES TBK	20,100.000	-1,400.000	24,800.000	4,145.000
GUDANG GARAM TBK	24,325.000	-1,325.000	32,125.000	16,500.000
MATAHARI DEPARTMENT STORE TBK PT	4,110.000	-940.000	6,000.000	3,650.000
ASTRA AGRO LESTARI TBK	7,825.000	-400.000	13,400.000	7,800.000

### SET (Thai Baht)

#### Top Gainers

Name	Last Done	Change Over 5 Days	52 Weeks High	52 Weeks Low
DELTA	950.000	+68.000	1,154.000	287.000
NSI	209.000	+46.000	215.000	84.000
AEONTS	190.000	+13.500	208.000	152.000
NEW	108.000	+8.000	123.000	49.000
KBANK	136.000	+6.500	159.000	126.000

#### Top Losers

Name	Last Done	Change Over 5 Days	52 Weeks High	52 Weeks Low
KWC	251.000	-15.000	320.000	224.000
OHTL	488.000	-8.000	610.000	316.000
JTS	31.250	-2.750	594.000	28.250
SMK	0.770	-2.610	19.900	0.770
SCCC	134.000	-2.500	163.000	133.000

### HKEX (HKD)

#### Top Gainers

Name	Last Done	Change Over 5 Days	52 Weeks High	52 Weeks Low
BEIGENE LTD	160.300	+25.900	170.500	73.800
YUM CHINA HOLDINGS INC	503.500	+10.900	505.000	290.000
ASYMCHEM LABORATORIES (TIANJIN) CO	109.900	+10.500	163.286	80.350
KEYMED BIOSCIENCES INC	71.000	+9.550	82.850	18.060
REMEGEN CO LTD	52.000	+7.950	74.800	25.050

#### Top Losers

Name	Last Done	Change Over 5 Days	52 Weeks High	52 Weeks Low
TENCENT HOLDINGS LIMITED	363.200	-22.200	416.600	188.213
TRIP COM GROUP LTD	282.800	-10.600	321.800	152.100
JD.COM INC	149.900	-9.100	286.000	138.900
BAIDU INC	134.100	-8.800	166.300	73.700
BYD COMPANY LIMITED	222.200	-5.200	333.000	161.700

### SGX (SGD)

#### Top Gainers

Name	Last Done	Change Over 5 Days	52 Weeks High	52 Weeks Low
JARDINE C&C	32.500	+0.490	36.850	25.250
JMH USD	49.200	+0.460	59.480	42.600
SHANGRI-LA HKD	7.900	+0.320	8.400	4.300
ENGRO	1.100	+0.195	1.348	0.905
TJ DARENTANG USD	2.030	+0.150	2.090	0.925

#### Top Losers

Name	Last Done	Change Over 5 Days	52 Weeks High	52 Weeks Low
VENTURE	17.380	-0.380	18.750	15.710
DBS	32.520	-0.360	35.855	29.009
CORTINA	3.680	-0.310	4.827	3.420
DIGILIFE TECH	2.450	-0.250	2.880	1.100
ISETAN	2.800	-0.240	3.890	2.800

# IMPROVEMENTS EXPECTED IN CONDUCTING AGMs



Devanesan  
Evanson

**Chief Executive  
Officer, Minority  
Shareholders Watch  
Group**

**T**he month of April marks the beginning of the bustling annual general meetings (AGM) season. As usual, MSWG encourages shareholders to attend AGMs, as it will provide an opportunity for shareholders to provide feedback and raise questions on the operational and financial performance as well as on any other major developments or issues impacting the company. Shareholders should actively participate in the Question & Answer (Q&A) sessions - ask questions, and closely dissect responses made by the Board and senior management for making informed decisions about their investments.

On the other hand, we believe PLCs could do better in conducting their AGMs this year by incorporating the following better practices:

- The introduction of senior management
- Multimedia presentation on annual business performance
- The displaying of shareholders' questions on the screen for the benefit of all participants during the meeting (For virtual and hybrid meetings)

## **THE INTRODUCTION OF MANAGEMENT**

Based on our observation, out of the 382 AGMs (comprising physical, virtual, and hybrid meetings) that we attended in 2022, only 46% of the AGMs introduced the senior management. PLCs are encouraged to introduce key management personnel during the AGM e.g., chief executive officer (CEO), chief financial officer, chief operating officer, finance director. Large PLCs with multiple subsidiaries may introduce the head of respective subsidiaries during the AGM.

## **BUSINESS PERFORMANCE REVIEW**

A briefing on the company's overall business performance is another essential yet often omitted aspect in AGMs. The AGM is a once-in-a-year opportunity for shareholders to learn more about the PLC. A clear, concise and well-articulated multimedia presentation is an effective way to communicate to shareholders to further expand their knowledge about the company and its business. Highlighting the key achievements and challenges faced can facilitate constructive and effective engagement with shareholders.

However, less than half (43% of the 382 AGMs) presented their annual business performance to shareholders through a multi-media presentation or something similar. Often, these sessions came with charts, tables, pictures and videos to present hard facts or figures into easily digestible visuals. The Board should make full use of the presence of the key management personnel at the AGM for a short briefing session as they are the people running the daily business. While some companies may argue that the management analysis and discussion section in annual reports already sufficiently addresses

the business and operational matters, it would be good if the board could update the current challenges, prospects, and outlook as the annual reports and financial statements are dated and a few months old. If PLCs deem the session time-consuming, they can opt for a short presentation and keep it within their preferred timeframe.

## PRESENTATION OF SHAREHOLDERS' QUESTIONS ON SCREEN

Transparency is critical at AGMs especially when it comes to virtual meetings. We find that only 62% of the 295 virtual and hybrid AGMs we attended had displayed shareholders' questions on the screen. For the benefit of all participants, PLCs are encouraged to display shareholders' questions on the screen during meetings (for virtual and hybrid AGMs). The virtual AGM should replicate the physical AGM as far as possible.

PLCs may hesitate to display undesired or controversial questions raised by shareholders or may want to cut the Q&A session short. However, doing so, results in a lack of transparency and lack of time for shareholders to raise questions at AGMs. It is better if shareholders' questions are streamed 'live' instead of being collated and moderated by a moderator. With the latter, there is a risk that the moderator may not forward certain relevant albeit sensitive questions to the Board (for answering). PLCs should consider implementing the best practices above at their upcoming AGMs.

**Norhisam Sidek**

*Manager, Corporate Monitoring*



CHECK OUT  
SHAREINVESTOR  
**BROKERS' CALL**  
Weekly Buy/Sell/Hold calls from leading Malaysian Brokerages.

Go To Brokers' Call







Notice Period is 02 April - 08 April 2023

Effective Change Date	Stock Name	Buyer/ Seller Name [Classification]	Bought / (Sold) ['000]			No. of Shares After Trade ['000]	
			Total	Total	% Held	Total	% Held
05 APR 2023 - 05 APR 2023	SIAB	DATO DR CHANG LIK SEAN [SSH]	-1,500	55,084	11.25		
03 APR 2023 - 04 APR 2023	SIAB	DATO DR CHANG LIK SEAN [SSH]	500	56,584	11.556		
06 APR 2023 - 06 APR 2023	SIME	KUMPULAN WANG PERSARAAN (DIPERBADANKAN) [SSH]	-987	535,281	7.854		
05 APR 2023 - 05 APR 2023	SIME	AMANAHRAYA TRUSTEES BERHAD - AMANAH SAHAM BUMIPUTERA [SSH]	899	2,556,686	37.512		
04 APR 2023 - 04 APR 2023	SIME	EMPLOYEES PROVIDENT FUND BOARD [SSH]	50	906,583	13.301		
04 APR 2023 - 04 APR 2023	SIME	AMANAHRAYA TRUSTEES BERHAD - AMANAH SAHAM BUMIPUTERA [SSH]	1,244	2,555,787	37.499		
03 APR 2023 - 03 APR 2023	SIME	AMANAHRAYA TRUSTEES BERHAD - AMANAH SAHAM BUMIPUTERA [SSH]	1,750	2,554,543	37.481		
31 MAR 2023 - 31 MAR 2023	SIME	AMANAHRAYA TRUSTEES BERHAD - AMANAH SAHAM BUMIPUTERA [SSH]	-513	2,552,793	37.455		
30 MAR 2023 - 30 MAR 2023	SIME	AMANAHRAYA TRUSTEES BERHAD - AMANAH SAHAM BUMIPUTERA [SSH]	-4,250	2,553,306	37.463		
04 APR 2023 - 04 APR 2023	SIMEPLT	EMPLOYEES PROVIDENT FUND BOARD [SSH]	547	999,408	14.451		
28 MAR 2023 - 28 MAR 2023	SIMEPLT	EMPLOYEES PROVIDENT FUND BOARD [SSH]	1,575	998,862	14.443		
29 MAR 2023 - 29 MAR 2023	SIMEPROP	EMPLOYEES PROVIDENT FUND BOARD [SSH]	593	616,254	9.062		
31 MAR 2023 - 31 MAR 2023	SKPRES	EMPLOYEES PROVIDENT FUND BOARD [SSH]	1,055	107,296	6.868		
30 MAR 2023 - 30 MAR 2023	SKPRES	EMPLOYEES PROVIDENT FUND BOARD [SSH]	600	106,241	6.8		
29 MAR 2023 - 29 MAR 2023	SKPRES	EMPLOYEES PROVIDENT FUND BOARD [SSH]	299	105,641	6.762		
30 MAR 2023 - 30 MAR 2023	SOLID	KER MIN CHOO [DIR/CEO]	367	111,777	21.521		
30 MAR 2023 - 30 MAR 2023	SOLID	KER MIN CHOO [SSH]	367	111,777	21.521		
30 MAR 2023 - 30 MAR 2023	SPSETIA	EMPLOYEES PROVIDENT FUND BOARD [SSH]	430	240,273	5.896		
29 MAR 2023 - 29 MAR 2023	SPSETIA	EMPLOYEES PROVIDENT FUND BOARD [SSH]	229	239,843	5.885		
03 APR 2023 - 03 APR 2023	SRIDGE	DATO' KHOO YIK CHOU [DIR/CEO]	-1,025	10,555	5.19		
03 APR 2023 - 03 APR 2023	SRIDGE	DATO' KHOO YIK CHOU [SSH]	-1,025	10,555	5.19		
31 MAR 2023 - 31 MAR 2023	SRIDGE	DATO' KHOO YIK CHOU [DIR/CEO]	-376	11,580	5.694		
31 MAR 2023 - 31 MAR 2023	SRIDGE	DATO' KHOO YIK CHOU [SSH]	-376	11,580	5.694		
04 APR 2023 - 04 APR 2023	STAR	AMANAHRAYA TRUSTEES BERHAD - AMANAH SAHAM BUMIPUTERA [SSH]	-460	37,500	5.174		
03 APR 2023 - 03 APR 2023	STAR	AMANAHRAYA TRUSTEES BERHAD - AMANAH SAHAM BUMIPUTERA [SSH]	-2,040	37,960	5.238		
31 MAR 2023 - 31 MAR 2023	STAR	AMANAHRAYA TRUSTEES BERHAD - AMANAH SAHAM BUMIPUTERA [SSH]	-300	40,000	5.519		
30 MAR 2023 - 30 MAR 2023	STAR	AMANAHRAYA TRUSTEES BERHAD - AMANAH SAHAM BUMIPUTERA [SSH]	-300	40,300	5.56		
04 APR 2023 - 04 APR 2023	SUNCON	EMPLOYEES PROVIDENT FUND BOARD [SSH]	34	124,569	9.661		
04 APR 2023 - 04 APR 2023	SUNREIT	EMPLOYEES PROVIDENT FUND BOARD [SSH]	-117	520,842	15.21		
03 APR 2023 - 03 APR 2023	SUNREIT	EMPLOYEES PROVIDENT FUND BOARD [SSH]	-52	520,959	15.21		
04 APR 2023 - 04 APR 2023	SUNREIT	KUMPULAN WANG PERSARAAN (DIPERBADANKAN) ('KWAP') [SSH]	-32	197,984	5.78		
31 MAR 2023 - 31 MAR 2023	SUNREIT	EMPLOYEES PROVIDENT FUND BOARD [SSH]	433	520,881	15.21		
03 APR 2023 - 03 APR 2023	SUNREIT	KUMPULAN WANG PERSARAAN (DIPERBADANKAN) ('KWAP') [SSH]	-152	198,016	5.78		
30 MAR 2023 - 30 MAR 2023	SUNREIT	EMPLOYEES PROVIDENT FUND BOARD [SSH]	-901	520,447	15.2		
31 MAR 2023 - 31 MAR 2023	SUNREIT	KUMPULAN WANG PERSARAAN (DIPERBADANKAN) ('KWAP') [SSH]	-18	198,168	5.79		
29 MAR 2023 - 29 MAR 2023	SUNREIT	EMPLOYEES PROVIDENT FUND BOARD [SSH]	-690	521,348	15.22		
04 APR 2023 - 04 APR 2023	SUNWAY	EMPLOYEES PROVIDENT FUND BOARD [SSH]	90	417,307	8.54		
03 APR 2023 - 03 APR 2023	SUNWAY	ACTIVE EQUITY SDN BHD [SSH]	6,000	2,979,943	60.95		
03 APR 2023 - 03 APR 2023	SUNWAY	MADAM SARENA CHEAH YEAN TIH [DIR/CEO]	6,000	3,153,038	64.49		
03 APR 2023 - 03 APR 2023	SUNWAY	MADAM SARENA CHEAH YEAN TIH [SSH]	6,000	3,153,038	64.49		
03 APR 2023 - 03 APR 2023	SUNWAY	MR ADRIAN CHEAH YEAN SUN [SSH]	6,000	3,147,787	64.38		
03 APR 2023 - 03 APR 2023	SUNWAY	MR EVAN CHEAH YEAN SHIN [SSH]	6,000	3,151,982	64.47		
03 APR 2023 - 03 APR 2023	SUNWAY	PUAN SRI DATIN SERI (DR) SUSAN CHEAH SEOK CHENG [SSH]	6,000	3,157,230	64.58		
03 APR 2023 - 03 APR 2023	SUNWAY	SUNGEI WAY CORPORATION SDN BHD [SSH]	6,000	2,815,993	57.6		
03 APR 2023 - 03 APR 2023	SUNWAY	TAN SRI DATO' SERI DR JEFFREY CHEAH FOOK LING AO [DIR/CEO]	6,000	3,157,230	64.58		
03 APR 2023 - 03 APR 2023	SUNWAY	TAN SRI DATO' SERI DR JEFFREY CHEAH FOOK LING AO [SSH]	6,000	3,157,230	64.58		
29 MAR 2023 - 29 MAR 2023	SUNWAY	EMPLOYEES PROVIDENT FUND BOARD [SSH]	122	416,073	8.51		
04 APR 2023 - 04 APR 2023	SUPERLN	MR LIN PO-CHIH [DIR/CEO]	4	4,370	2.753		
31 MAR 2023 - 31 MAR 2023	SUPERLN	MR LIN PO-CHIH [DIR/CEO]	15	4,367	2.751		
05 APR 2023 - 05 APR 2023	SWIFT	MR LOO HOUI KEAT [DIR/CEO]	50	352,065	39.952		
05 APR 2023 - 05 APR 2023	SWIFT	MR LOO HOUI KEAT [SSH]	50	352,065	39.952		
29 MAR 2023 - 29 MAR 2023	SWIFT	MR LOO HOUI KEAT [DIR/CEO]	102	352,015	39.946		

Notice Period is 02 April - 08 April 2023

Effective Change Date	Stock Name	Buyer/ Seller Name [Classification]	Bought / (Sold) ['000]			No. of Shares After Trade ['000]	
			Total	Total	% Held	Total	% Held
29 MAR 2023 - 29 MAR 2023	SWIFT	MR LOO HOUI KEAT [SSH]	102	352,015	39.946		
04 APR 2023 - 04 APR 2023	TAFI	DATO' SRI ONG CHEE KEAN [DIR/CEO]	15	850	0.224		
05 APR 2023 - 05 APR 2023	TENAGA	KUMPULAN WANG PERSARAAN (DIPERBADANKAN) [SSH]	862	428,220	7.44		
04 APR 2023 - 04 APR 2023	TENAGA	KUMPULAN WANG PERSARAAN (DIPERBADANKAN) [SSH]	727	427,358	7.43		
31 MAR 2023 - 31 MAR 2023	TENAGA	EMPLOYEES PROVIDENT FUND BOARD [SSH]	167	927,518	16.12		
05 APR 2023 - 05 APR 2023	TEXCYCL	CAN CYCLE SDN. BHD. [SSH]	-6,008	80,000	31.565		
05 APR 2023 - 05 APR 2023	TEXCYCL	HO SIEW CHEONG [DIR/CEO]	-6,008	86,841	34.264		
05 APR 2023 - 05 APR 2023	TEXCYCL	HO SIEW CHEONG [SSH]	-6,008	86,841	34.264		
05 APR 2023 - 05 APR 2023	TEXCYCL	HO SIEW CHOONG [DIR/CEO]	-6,008	95,048	37.503		
05 APR 2023 - 05 APR 2023	TEXCYCL	HO SIEW CHOONG [SSH]	-6,008	95,048	37.503		
05 APR 2023 - 05 APR 2023	TEXCYCL	HO SIEW WENG [DIR/CEO]	-6,008	84,384	33.296		
05 APR 2023 - 05 APR 2023	TEXCYCL	HO SIEW WENG [SSH]	-6,008	84,384	33.296		
05 APR 2023 - 05 APR 2023	TEXCYCL	PERIASAMY A/L SINAKALAI [DIR/CEO]	-6,008	93,070	36.723		
05 APR 2023 - 05 APR 2023	TEXCYCL	PERIASAMY A/L SINAKALAI [SSH]	-6,008	93,070	36.723		
06 APR 2023 - 06 APR 2023	TIMECOM	KUMPULAN WANG PERSARAAN (DIPERBADANKAN) ('KWAP') [SSH]	-105	103,395	5.624		
05 APR 2023 - 05 APR 2023	TIMECOM	KUMPULAN WANG PERSARAAN (DIPERBADANKAN) ('KWAP') [SSH]	28	103,500	5.629		
04 APR 2023 - 04 APR 2023	TIMECOM	KUMPULAN WANG PERSARAAN (DIPERBADANKAN) ('KWAP') [SSH]	113	103,472	5.628		
03 APR 2023 - 03 APR 2023	TM	KUMPULAN WANG PERSARAAN (DIPERBADANKAN) [SSH]	654	417,217	10.917		
29 MAR 2023 - 29 MAR 2023	TM	EMPLOYEE PROVIDENT FUND BOARD (EPF BOARD) [SSH]	88	646,399	16.913		
31 MAR 2023 - 31 MAR 2023	TRC	DATO SR. ABDULL MANAF BIN HJ HASHIM [DIR/CEO]	5	30	0.001		
06 APR 2023 - 06 APR 2023	UMCCA	DATO' SRI TEE LIP SIN [DIR/CEO]	17	51,339	24.474		
06 APR 2023 - 06 APR 2023	UMCCA	MR TEE CHENG HUA [DIR/CEO]	17	45,507	21.694		
04 APR 2023 - 04 APR 2023	UMCCA	DATO' SRI TEE LIP SIN [DIR/CEO]	32	51,322	24.466		
04 APR 2023 - 04 APR 2023	UMCCA	MR TEE CHENG HUA [DIR/CEO]	32	45,491	21.686		
04 APR 2023 - 04 APR 2023	UMCCA	PROSPER CAPITAL HOLDINGS SDN BHD [SSH]	32	26,769	12.761		
31 MAR 2023 - 31 MAR 2023	UMCCA	DATO' SRI TEE LIP SIN [DIR/CEO]	36	51,290	24.451		
31 MAR 2023 - 31 MAR 2023	UMCCA	MR TEE CHENG HUA [DIR/CEO]	36	45,459	21.671		
31 MAR 2023 - 31 MAR 2023	UMCCA	PROSPER CAPITAL HOLDINGS SDN BHD [SSH]	36	26,738	12.746		
04 APR 2023 - 04 APR 2023	UMW	EMPLOYEES PROVIDENT FUND BOARD [SSH]	-1,000	111,435	9.538		
03 APR 2023 - 03 APR 2023	UMW	EMPLOYEES PROVIDENT FUND BOARD [SSH]	-169	112,435	9.624		
31 MAR 2023 - 31 MAR 2023	UMW	EMPLOYEES PROVIDENT FUND BOARD [SSH]	-516	112,604	9.638		
30 MAR 2023 - 30 MAR 2023	UMW	EMPLOYEES PROVIDENT FUND BOARD [SSH]	-421	113,119	9.682		
04 APR 2023 - 04 APR 2023	UTDPLT	EMPLOYEES PROVIDENT FUND BOARD [SSH]	-660	36,821	8.877		
03 APR 2023 - 03 APR 2023	UTDPLT	EMPLOYEES PROVIDENT FUND BOARD [SSH]	-298	37,481	9.036		
29 MAR 2023 - 29 MAR 2023	UWC	EMPLOYEES PROVIDENT FUND BOARD [SSH]	75	57,111	6.818		
28 MAR 2023 - 28 MAR 2023	UWC	EMPLOYEES PROVIDENT FUND BOARD [SSH]	38	75,036	6.811		
05 APR 2023 - 05 APR 2023	VS	KUMPULAN WANG PERSARAAN [SSH]	52	345,137	8.97		
03 APR 2023 - 03 APR 2023	VS	KUMPULAN WANG PERSARAAN [SSH]	2,000	345,085	8.969		
30 MAR 2023 - 30 MAR 2023	VS-WB	DATUK BEH KIM LING [DIR/CEO]	-41	115,258	15.147		
16 MAR 2023 - 05 APR 2023	WANGZNG	MR HUI CHING CHI [DIR/CEO]	150	97,895	61.73		
16 MAR 2023 - 05 APR 2023	WANGZNG	MR HUI CHING CHI [SSH]	150	97,895	61.73		
03 APR 2023 - 04 APR 2023	WANGZNG	MR HUI CHING CHI [DIR/CEO]	200	97,745	61.64		
03 APR 2023 - 04 APR 2023	WANGZNG	MR HUI CHING CHI [SSH]	200	97,745	61.64		
05 APR 2023 - 06 APR 2023	WIDAD	TAN SRI MUHAMMAD IKMAL OPAT BIN ABDULLAH [SSH]	-29,413	1,377,551	48.488		
03 APR 2023 - 04 APR 2023	WIDAD	TAN SRI MUHAMMAD IKMAL OPAT BIN ABDULLAH [SSH]	-727	1,406,964	49.523		
31 MAR 2023 - 31 MAR 2023	WIDAD	TAN SRI MUHAMMAD IKMAL OPAT BIN ABDULLAH [SSH]	-4,800	1,407,691	49.582		
03 APR 2023 - 03 APR 2023	XL	MR NG MIN LIN [DIR/CEO]	400	45,211	18.974		
03 APR 2023 - 03 APR 2023	XL	MR NG MIN LIN [SSH]	400	45,211	18.974		
04 APR 2023 - 04 APR 2023	YINSON	EMPLOYEES PROVIDENT FUND BOARD [SSH]	-43	497,567	17.119		
03 APR 2023 - 03 APR 2023	YINSON	EMPLOYEES PROVIDENT FUND BOARD [SSH]	-244	497,611	17.121		
31 MAR 2023 - 31 MAR 2023	YINSON	EMPLOYEES PROVIDENT FUND BOARD [SSH]	390	497,855	17.129		
30 MAR 2023 - 30 MAR 2023	YINSON	EMPLOYEES PROVIDENT FUND BOARD [SSH]	131	497,465	17.116		
29 MAR 2023 - 29 MAR 2023	YINSON	EMPLOYEES PROVIDENT FUND BOARD [SSH]	-507	497,334	17.111		
04 APR 2023 - 04 APR 2023	YTL	EMPLOYEES PROVIDENT FUND BOARD [SSH]	-1,600	561,204	5.119		
03 APR 2023 - 03 APR 2023	YTL	EMPLOYEES PROVIDENT FUND BOARD [SSH]	-1,545	562,804	5.133		
31 MAR 2023 - 31 MAR 2023	YTL	EMPLOYEES PROVIDENT FUND BOARD [SSH]	-2,500	564,248	5.146		

**Disclaimer:** The Information in Insider Activity is extracted from [www.shareinvestor.com/fundamental/insider\\_trades](http://www.shareinvestor.com/fundamental/insider_trades). The information on this page is provided as a service to readers. It does not constitute financial advice and/or any investment recommendations. We assume no liability for damages resulting from or arising out of the use of such information. Whilst every effort is made to ensure accuracy, the information presented is not the official record of shareholder filings. Readers are advised to read the original filings on the Bursa Malaysia website at [www.bursamalaysia.com](http://www.bursamalaysia.com)

Learn how to identify Hot Stocks using Technical Analysis (TA) and Fundamental Analysis (FA)

**SIGN UP FOR Invest**

**IT'S FREE!!!**

**Click here**

Scan me



Via email, every Friday.



The Board of Directors of **KPJ Healthcare Berhad (KPJ)** wishes to

announce that the shareholders of the Company had approved the resolution as set out in the Notice of Extraordinary General Meeting dated 22 March 2023 at the EGM of the Company held on 12 April 2023. The resolution was passed by way of poll and the results of the poll were validated by Scrutineer Solutions Sdn Bhd, the Independent Scrutineer appointed by the Company.



On behalf of the Board, **Malayan Banking Berhad (MAYBANK)** wishes to announce that Bank Negara Malaysia had, vide its

letter dated 12 April 2023, approved the increase in the total number of issued Shares pursuant to the Proposed ESGP of up to three point five percent (3.5%) of the issued Shares (excluding treasury shares) at any point in time.



Final dividend for the financial year ended 31 December 2022 of RM0.0391 per ordinary share in Malaysia **Airports Holdings Berhad (AIRPORT)**. Kindly be advised of the

following:



- 1) The Company's securities will be traded and quoted "Ex - Dividend" as from: 27 Apr 2023
- 2) The last date of lodgement : 28 Apr 2023
- 3) Date Payable : 25 May 2023

**Remarks:**

Unless otherwise defined, the abbreviations and definitions used in the announcement dated 30 March 2023, 6 April 2023 and 12 April 2023 ("Announcements") shall apply herein.

We refer to the Announcements and the announcement dated 28 February 2023 in relation to the declaration of a final dividend for the financial year ended 31 December 2022.

On 28 February 2023, MAHB had announced a final single-tier dividend for the financial year ended 31 December 2022 of RM0.0391 per MAHB Share. The dividend reinvestment plan will apply to the entire Final Dividend whereby Shareholders will be given an option to reinvest the Final Dividend into DRP Shares. If only part of the Electable Portion is reinvested, the balance of the Electable Portion not reinvested will be paid in cash. Following the above, the issue price of the DRP Shares had been fixed today at RM6.06 per DRP Share.



On behalf of **Maxis Berhad (MAXIS)**, CIMB is pleased to announce that Bursa Securities had through its letter dated 6 April 2023 resolved to approve the listing

of and quotation for such number of new Maxis Shares to be issued pursuant to the Proposed LTIP on the Main Market of Bursa Securities, subject to the following conditions:

1. Maxis and CIMB must fully comply with the relevant provisions under the Listing Requirements pertaining to the implementation of the Proposed LTIP;
2. CIMB is required to submit a confirmation to Bursa Securities of full compliance of the Proposed LTIP pursuant to Paragraph 6.43(1) of the Listing Requirements and stating the effective date of implementation together with a certified true copy of the resolution passed by the shareholders in the general meeting approving the Proposed LTIP; and
3. Maxis is required to furnish Bursa Securities on a quarterly basis a summary of the total number of Maxis Shares listed pursuant to the Proposed LTIP as at the end of each quarter together with a detailed computation of listing fees payable.



The Board of Directors of Mclean Technologies Berhad (MCLEAN) wishes to announce that Mclean proposes to seek the shareholders' approval for the Proposed Renewal of the existing Shareholders' Mandate for Recurrent Related Party

Transactions of a Revenue or Trading Nature at the forthcoming 13th Annual General Meeting of the Company to be convened on a date to be announced later. A circular containing information of the Proposed RRPT Mandate Renewal will be issued to the shareholders together with the 2022 Annual Report in due course.



The Board of Directors of Pentamaster Corporation Berhad (PENTA) wishes to announce that the Company is proposing to seek shareholders' approval for the following at the forthcoming Annual General Meeting of

the Company to be convened at a later date to be announced:-

1. Proposed Renewal of Shareholders' Mandate for Recurrent Related Party Transactions of a Revenue or Trading Nature; and
2. Proposed Renewal of Shareholders' Mandate for PCB to purchase up to 10% of its total number of issued shares.

(collectively referred to as the "Proposals"). A circular/statement to shareholders' containing information on the Proposals will be issued to shareholders in due course.



Reference is made to the article titled "Reach Energy to dispose the Kazakhstan oil field" which was published in The Edge on 10 April 2023. Reach Energy Berhad (REACH) wishes to clarify that the Company did not

receive any offer or interest from the suitors as reported in the article and has no intention to dispose the Kazakhstan asset in immediate future. The Board reiterates that it is cognisant of the need for proper dissemination of information to the public and will continue to release the appropriate announcement(s) on Bursa Securities on a timely basis as required by the Main Market Listing Requirements of the Bursa Securities. In addition, the Board will continue to monitor rumours, reports or inaccurate information affecting the Company.



**Rimbunan Sawit Berhad (RSAWIT)** wishes to announce that the Company intends to seek the approval of the shareholders for the renewal of and new shareholders' mandate for recurrent related party transactions at the Annual General Meeting to be convened at a later date. The

Circular to Shareholders in relation to the Proposed Shareholders' Mandate will be despatched to shareholders in due course.



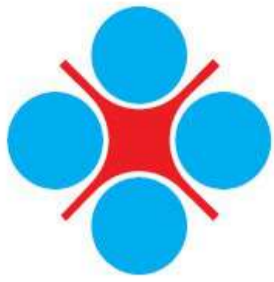
Pursuant to Paragraph 8.23(2)(e) of the Main Market Listing Requirements of Bursa Malaysia Securities Berhad, **Salcon Berhad (SALCON)** wishes to announce that its wholly owned subsidiary, Kencana Kesuma Sdn. Bhd. has not

provided any loan/advance to any party or received any loan/advance from any party in the ordinary course of its business as a licensed moneylender and therefore, there are no outstanding loans/advances for the financial quarter ended 31 March 2023.



On behalf of **Sarawak Consolidated Industries Berhad (SCIB)**, Malacca Securities is pleased to announce that the 1st tranche of the Private Placement comprising 25,000,000 Placement Shares were listed and quoted on the Main Market of Bursa Securities with effect from 9:00 a.m. on 13 April 2023.





**TAN CHONG MOTOR HOLDINGS BERHAD**  
(12969-P)

The Board of Directors of **Tan Chong Motor Holdings Berhad (TCHONG)** wishes to announce that TC Services Vietnam Co., Ltd., a wholly-owned indirect subsidiary of the TCMH, had received from SAIC Motor International Co., Ltd. (“SMIL”), wholly-owned subsidiary of SAIC Motor Corporation Limited, a notice of termination of the Overseas Distribution Agreement dated 18 May 2020 supplemented by Supplementary Agreements dated 30 June 2020, 18 December 2020 and 23 June 2021 (collectively, ODA) executed between TCSV and SMIL due to SAIC’s overall global strategic adjustments. The ODA is to regulate the appointment of TCSV as the sole and exclusive importer and distributor for the sale of Completely-Built-Up MG brand vehicles and after-sales spare parts, and provider of after-sales services for the CBU MG brand vehicles, including the appointment of dealers to perform these obligations and activities in Vietnam. The ODA will terminate on 30 June 2023. The termination of the ODA has no material financial and operational impact on the Group for the current financial year. Notwithstanding the above, TCSV remains open to further discussion with SMIL to explore alternative business opportunities for mutual benefits in Vietnam.



Pursuant to Paragraph 8.23(2) (e) of the Main Market Listing Requirements of Bursa Malaysia Securities Berhad, the Board of Directors of **Titijaya Land Berhad (TITIJYA)** wishes to announce the financial assistance provided by its wholly-owned moneylending subsidiary, Titijaya Capital Sdn. Bhd., pursuant to its ordinary course of business for the quarter ended 31 March 2023.



The Board of Directors of **Teladan Setia Group Berhad (TELADAN)** wishes to announce that the Company is proposing to change its name from "Teladan Setia Group Berhad" to "Teladan Group Berhad" ("Proposed Change of Name"). The proposed name of "Teladan Group Berhad" was approved and reserved by the Companies Commission of Malaysia on 5 April 2023 and the reservation of the name is valid for a period of 30 days from 5 April 2023 ("Validity Period"). The Proposed Change of Name is subject to the approval of the shareholders of the Company at a general meeting to be convened at a date to be announced later. The Proposed Change of Name, if approved by the shareholders, will take effect from the date of the Certificate of Incorporation on Change of Name to be issued by the CCM to the Company.



The Board of Directors of **Wellspire Holdings Berhad (WELLS)** wishes to announce that the Company intends to seek the approval from its shareholders for the Proposed New Shareholders' Mandate for Recurrent Related Party Transactions of a Revenue or Trading Nature (Proposed New Shareholders' Mandate) at the forthcoming 1st Annual General Meeting of the Company. The Circular and Notice of Annual General Meeting setting out the details of the Proposed New Shareholders' Mandate will be sent to the shareholders of the Company in due course.



ShareInvestor is a technology based company with a focus on Internet media and we have operations in Malaysia, Singapore and Thailand.

We are the market leader in providing a combination of market data, analysis and news on various platforms to traders and investors.

Our websites include [www.shareinvestor.com](http://www.shareinvestor.com) and [www.bursastation.com](http://www.bursastation.com).

More information about our products and services can be found at [www.shareinvestorholdings.com](http://www.shareinvestorholdings.com)

**We're looking for Drupal Developers who will be in charge of front-end development and back-end/module development. This role requires expertise in PHP, HTML, CSS, JS, and an eye for design aesthetics. The candidates should be familiar and have a passion working with content management systems.**

Interested candidates are encouraged to apply with full resume, present and expected salary and a recent photograph. Please send these to [hr.my@shareinvestor.com](mailto:hr.my@shareinvestor.com) for processing. ShareInvestor regrets that only shortlisted candidates shall be notified.

## Drupal Developers (2 vacancies)

### Job Responsibilities:

- Active participation in all UI / UX decisions
- Contribute actively to the continuous development and maintenance of development projects
- Enhance Drupal development quality
- Provide solutions to issues and suggestions for improvements.
- Designing and implementing new features to the system
- Ensuring optimal performance

### Required Skills:

- At least 3 years of Drupal Theming and Front-End Development experience
- Proficient in PHP, HTML5/XHTML, CSS, Javascript, jQuery, AJAX, XML, Json
- Good Diploma/Degree in Computer Science/Computer Engineering.
- Experience working with Drupal's main modules, such as CTools, Views, Rules, Webform, and so on
- Ability to create custom Drupal modules
- Strong troubleshooting skills to fix bugs

### Benefits:

- Career & growth opportunities
- Interesting projects
- Medical Insurance
- Incentives

## Ruby on Rails Developer (1 vacancy)

### Job Responsibilities:

- Develop quality web-based software modules on schedule with a focus on Ruby and Ruby on Rails applications.
- Explore and utilize the latest web-based technologies.
- Document design specifications, logic concepts and module description.
- Maintain and enhance existing web-based applications.

### Required Skills:

- Experience in web-based programming/scripting is essential. Candidate must be able to explain clearly technical aspects of his/her past experiences and projects.
- Passion for programming and desire to learn new languages like Go.
- Good Diploma/Degree in Computer Science/Computer Engineering.
- Able to work well in a team and be able to follow documentation and coding standards.
- Knowledge in any of the following would be an added advantage
  - Ruby and Ruby on Rails Framework
  - Javascript and jQuery library
  - Go
  - Perl

**Application Developer (C++/STL) (1 vacancy)**

**Job Responsibilities**

- Deliver quality software modules on schedule.
- Document design specifications, conceptions, module description.
- Maintain and enhance existing applications.

**Required Skills:**

- Passion for programming and desire to learn.
- Good Diploma/Degree in Computer Science/Computer Engineering.
- Skills in C++ is essential.
- Experience with Visual Studio, networking stack and Golang would be an advantage.
- Proactive, resourceful and self-motivated with strong analytical skills.
- Good interpersonal, written and communication skills.
- Able to work with little supervision.

**Junior Market Data Support Specialist**

As a Junior Market Data Support Specialist, you will be involved in reviewing, analysing and collecting accurate and timely financial information on listed companies for our market data information services.

**Job Responsibilities**

- Collect, compute and analyse relevant financial data of listed companies, organise and present them on the company portal, in timely manner, for the consumption by our subscribers and our corporate clients
- Capture corporate events / actions and translate them to adjustments of impacted financial data
- Research, evaluate, propose new solutions or recommendations for adhoc project requirements that are related to the financial data or the financial fundamentals of listed companies
- Provide support to users' queries related to financial information displayed on our platforms
- Perform any other duties assigned from time to time, including rare occasions of working during weekends

**Required Skills**

- Minimum academic qualification: Diploma in any finance-related discipline
- Knowledge of basic accounting and financial terms is required
- Flair for data precision / accuracy / quality / thoroughness plus strict adherence to structured data process and timeline is a must
- Proficient in Microsoft Excel
- Team player with pleasant personality
- Proficient in English, oral and written.

*Fresh graduates are welcome to apply.*

Interested candidates are encouraged to apply with full resume, present and expected salary and a recent photograph. Please send these to [hr.my@shareinvestor.com](mailto:hr.my@shareinvestor.com) for processing. ShareInvestor regrets that only shortlisted candidates shall be notified.