

# Invest

A Weekly e-Publication by SHAREINVESTOR

ISSUE

# 211

FRIDAY  
14 JUNE 2024

Scan/Click QR to Register



Via email, every Friday

# INVEST FAMA<sup>®</sup>

by AlphaInvest

REGISTER  
FOR FREE

22 & 23  
June 2024

MIDVALLEY  
Exhibition Centre Hall 1

10am  
– 9pm

# Our SPEAKERS



Organizers

Supporting partners



# Invest

A Weekly e-Publication by SHAREINVESTOR

ISSUE

211

FRIDAY  
14 JUNE 2024

Scan/Click QR to Register



Via email, every Friday

## MARKET SENTIMENTS

See more on pages 28-31

Kenanga IB bullish on construction sector amid mega projects



SC launches first practical guide on venture capital, private equity

## ALSO

COMPANY SPOTLIGHT  
Karex Berhad

See more on page 07

## MSWG

Minority shareholders are urged to exercise prudent judgment in takeover offers

See more on pages 33-38

## PLUS

BEHIND THE TICKER: DECODING COMPANY FUNDAMENTALS

**Is MKH a value trap?**

**SUMMARY**

- MKH Berhad (MKH:6114MY) is today a diversified Group with its Property Development and Plantations segments as the major revenue and profit contributors.
- Its revenue peaked in 2016 but declined, bottoming in 2020, with plantations offsetting declines in property development. Over the past 13 years, MKH averaged 7% ROIC and 8% ROE. These were higher than its WACC and cost of equity, demonstrating value creation despite recent performance declines.
- MKH is financially sound, and my valuation showed that there are margins of safety under both the Asset Value and Earnings Value. It is not a value trap despite past underperformance.

See more on pages 19-26

04 LEADERBOARD

06 SHARIAH HOT STOCKS

08 SHARIAH MOMENTUM UP STOCKS

10 NON SHARIAH HOT STOCKS

12 UP TRENDING STOCKS

13 VALUE STOCKS

14 GROWTH STOCKS

15 DIVIDEND STOCKS

16 BROKERS' CALL

17 LONG COMPANIES

32 REGIONAL MARKETS

39 INSIDER ACTIVITY

43 INVESTOR RELATIONS

# SHAREINVESTOR®

An AlphaInvest Company

Invest with Knowledge

## INVESTOR PLATFORMS

**Director**  
Darren Chong  
darren.chong@shareinvestor.com

**Business Development Manager**  
Jay Cheong  
jay.cheong.@shareinvestor.com

**Product & Marketing Manager**  
Daniel Wong  
daniel.wong@shareinvestor.com

## ADMIN & OPERATIONS

**Senior Executive**  
Watie Nordin  
watie.nordin@shareinvestor.com

**Executive**  
Silas Emmanuel Joseph  
silas.joseph@shareinvestor.com

## PROCESS AUTOMATION & DATA ANALYTICS

**Data Analyst**  
Tan Yong Sheng

## INVESTOR RELATIONS

**Group Managing Director & Publisher**  
Edward Stanislaus  
edward@shareinvestor.com

**Senior Manager**  
Letticia Wong  
letticia.wong@shareinvestor.com

**Manager**  
Aida Norzeti Talib  
aida.norzeti@shareinvestor.com

## Inve\$t WEEKLY

**Senior Manager Advertising Sales & Marketing**  
Mark Rodrigues  
mark.rodrigues@shareinvestor.com

## ALPHAINVEST HOLDINGS BOARD OF DIRECTORS

<b>Chairman</b>		Patrick Daniel
<b>Group CEO</b>		Christopher Lee
<b>Group COO</b>		Lim Dau Hee
<b>Group MD</b>		Shanison Lin



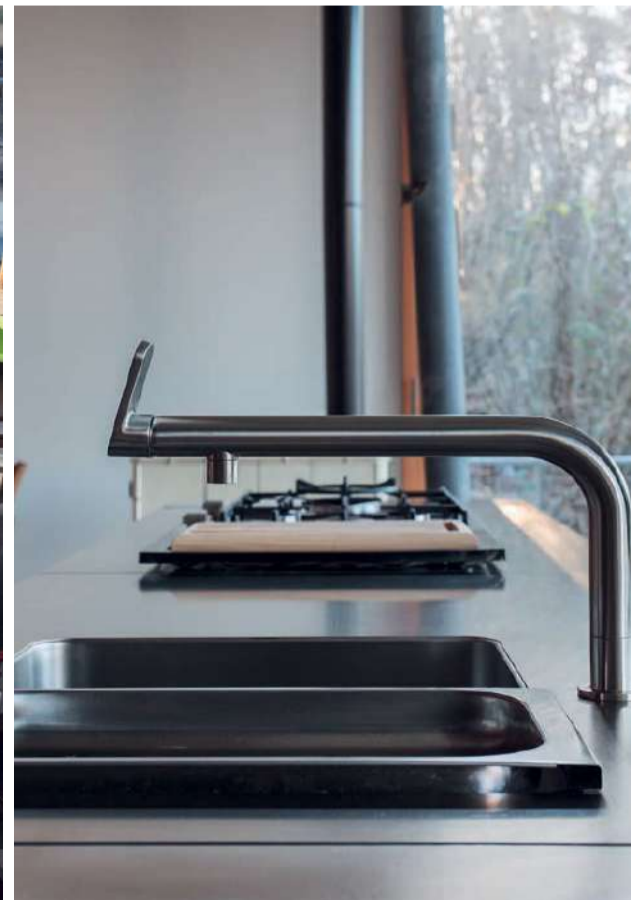
“ GIVE A MAN A FISH AND YOU FEED HIM FOR A DAY; TEACH A MAN TO FISH AND YOU FEED HIM FOR A LIFETIME ”

**ShareInvestor Malaysia Sdn. Bhd.**  
(200001023956) (526564-M)  
Unit No. DF2-07-03A, Level 7,  
Persoft Tower, 6B Persiaran Tropicana,  
47410 Petaling Jaya, Selangor Darul Ehsan.

Hotline : 603 7803 1791  
Mobile : 011 6343 8939  
Website : [www.ShareInvestor.com.my](http://www.ShareInvestor.com.my)  
[www.alphainvestholdings.com](http://www.alphainvestholdings.com)  
[www.Facebook.com/ShareInvestorMalaysia](https://www.Facebook.com/ShareInvestorMalaysia)

ADVERTISEMENT ENQUIRY

bulthaup takes care of the details so that you can enjoy a harmonious environment.



**XTRA**

XTRA FURNITURE SDN BHD  
The Gardens Mall, Mid Valley City  
[xtrafurniture.com/bulthaup](http://xtrafurniture.com/bulthaup)  
[fb.com/bulthaupmalaysia](https://fb.com/bulthaupmalaysia)

bulthaup



# STROM

SWISS TIMEPIECES & JEWELLERY



StromWatch Asia  
Tele : +65.9817.3378 Email : ll.stromasia@gmail.com

[WWW.STROMWATCH.SWISS](http://WWW.STROMWATCH.SWISS)



[www.shareinvestor.com](http://www.shareinvestor.com) - market data at your fingertips



ShareInvestor WebPro ([www.shareinvestor.com/my](http://www.shareinvestor.com/my))  
Prices > Stock Prices > Bursa > click Stocks tab

1. mouse over Ranking > select Top Active > all Shariah stocks are denoted with an [S] > mouse over Column Layout > select Edit Customs > select Name > select Volume > select Last Done Price > Mouse Over Column Layout > select Custom
2. mouse over Ranking > select Top Turnover > all Shariah stocks are denoted with an [S] > mouse over Column Layout > select Edit Customs > select Name > select Last Done Price > select Value > Mouse Over Column Layout > select Custom
3. mouse over Ranking > select Top Gainers (Over 5 Trading Days) > mouse over Column Layout > select Edit Customs > select Name > select Last Done Price > select 5 Days Change > select 5 Days % Change > Mouse Over Column Layout > select Custom
4. mouse over Ranking > select Top Losers (Over 5 Trading Days)
5. mouse over Ranking > select Top % Gainers (Over 5 Trading Days)
6. mouse over Ranking > select Top % Losers (Over 5 Trading Days)

### Shariah Top Actives (as at Yesterday)

Name	Price (RM)	Volume
SAPNRG [S]	0.040	1,592,620.000
JCY [S]	0.895	1,299,929.000
MYEG [S]	1.140	1,041,295.000
SNS [S]	0.845	998,618.000
AEMULUS [S]	0.440	816,278.000
PUC [S]	0.050	697,397.000
AGMO [S]	0.710	691,865.000
TOPGLOV [S]	1.160	689,196.000
MINETEC [S]	0.150	627,101.000
JAKS [S]	0.180	593,747.000

### Shariah Top Turnover (as at Yesterday)

Name	Price (RM)	Value (RM)
TENAGA [S]	14.140	176,646,176
INARI [S]	3.890	160,849,872
MYEG [S]	1.140	117,808,157
JCY [S]	0.895	109,539,883
SIME [S]	2.570	88,391,818
SNS [S]	0.845	86,552,545
TM [S]	6.500	82,092,827
TOPGLOV [S]	1.160	79,078,599
CMSB [S]	1.400	75,929,574
IJM [S]	3.000	68,751,688

### Top Gainers (over 5 Trading days as at Yesterday)

Name	Price (RM)	Change (RM)
MPI	39.960	+1.460
KESM	7.160	+1.030
VITROX	4.760	+0.825
SUNCON	3.930	+0.800
GAMUDA	6.600	+0.550
DAYANG	3.090	+0.510
INARI	3.890	+0.490
VSTECs	4.330	+0.490
TENAGA	14.140	+0.440
IDEAL	3.990	+0.390

### Top % Gainers (over 5 Trading days as at Yesterday)

Name	Price (RM)	Change (%)
PHB	0.010	+100.00
JTGROUP	0.680	+91.55
HUBLINE	0.060	+71.43
MTRONIC	0.025	+66.67
YNHPROP	0.775	+61.46
APPASIA	0.150	+57.89
KEYASIC	0.070	+55.56
YONGTAI	0.370	+54.17
CARZO	0.300	+50.00
HONGSENG	0.015	+50.00

### Top Losers (over 5 Trading days as at Yesterday)

Name	Price (RM)	Change (RM)
NESTLE	123.300	-1.500
DLADY	37.400	-1.060
F&N	31.800	-0.560
PANAMY	20.100	-0.540
PETDAG	17.920	-0.380
UTDPLT	24.140	-0.360
HEIM	23.360	-0.340
KLK	20.760	-0.280
PETGAS	18.000	-0.280
MSM	2.170	-0.250

### Top % Losers (over 5 Trading days as at Yesterday)

Name	Price (RM)	Change (%)
COMPUGT	0.015	-25.00
SJC	0.255	-17.74
PUC	0.050	-16.67
ECOHLDs	0.060	-14.29
MTEC	1.210	-12.95
BARAKAH	0.035	-12.50
PRKCORP	0.345	-11.54
SMTRACK	0.040	-11.11
KNM	0.085	-10.53
KHEESAN	0.260	-10.34

# SHAREINVESTOR WEBPRO

## STOCK MARKET DATA AT YOUR FINGERTIPS

Powerful browser-based market analytics platform.  
Access from anywhere



### 8 Markets Data

- ▶ Get access to data from Bursa, NYSE, Nasdaq, HKEX, SGX, IDX, SET & ASX

### Portfolio Management

- ▶ Profit & Loss Summary
- ▶ Stock Alert
- ▶ News & Events filtering
- ▶ Customizable column layout

## Fundamental Analysis

### Financial Analysis Statement

- ▶ Profit & Loss
- ▶ Balance Sheet
- ▶ Cash Flow Statement
- ▶ More than 20 Financial Ratios
- ▶ Dividend Analysis

### Technical Charting

- ▶ C<sup>2</sup> chart (Customisable & Comprehensive)

### Brokers' Call

### Intrinsic Value Calculator

### FactSheet

- ▶ Key Stock Information
- ▶ Ownership
- ▶ Consensus Estimates
- ▶ Annual Report
- ▶ Historical Price
- ▶ Insider Trades

## What's new on WebPro (Stable Release 12.1.0)

In our effort to keep our platform at the forefront of trading technology, we have added on some new features onto our C2 Chart in WebPro

### ADDITIONAL NEW FEATURES:

- ▶ Anchor selector for AVWAP, PVAT, and PAV indicators
- ▶ Volume profile indicator by date range
- ▶ Moving Average Cross indicator
- ▶ Guppy Multiple Moving Average (GMMA) indicator
- ▶ GoNoGo Trend Signal indicators
- ▶ SignalIQ

So what are you waiting for? Head to our platform today and check out our new trading chart features and indicators. We're confident that you'll love the improvements we've made and that they'll help you become a more successful trader.

Click here to start your 9 days FREE trial  
(Valued at RM10)



## Price & Volume Distribution Charts (as at Yesterday)

Technical Analysis

**DEFINITION:** Shariah compliant stocks with Technical Analysis showing 5-days & 10-days Moving Average Price below Yesterday's Close over past 3 days and with Volume Spike.

**CHART GUIDE:** Volume Distribution Chart is a statistical interpretation of the current sentiment on each stock in graphical format. The highest bar categorized as >150k is likely to be traded by institutions or super dealers, while the lowest bar categorized as <15k usually represents retail investors. "Buy Up" refers to more buyers snatching up the lots queued at selling price. "Sell Down" refers to sellers selling their shares to the buying queue



ShareInvestor WebPro > Screener > Market Screener (FA & TA) > select BURSA > add criteria

**A. Criteria**

- > click Add Criteria
- Technical Analysis Conditions tab select (i) Moving Average Below Close (ii) Volume Spike
- Fundamental Analysis Conditions tab > select (iii) Revenue
- Prices & Other Conditions tab > select (iv) Is Shariah Compliant
- Technical Analysis Conditions tab select (v) Moving Average Below Close
- Prices & Other Conditions tab > select (vi) Last Done Price
- Technical Analysis Conditions tab select (vii) Moving Average Below Close

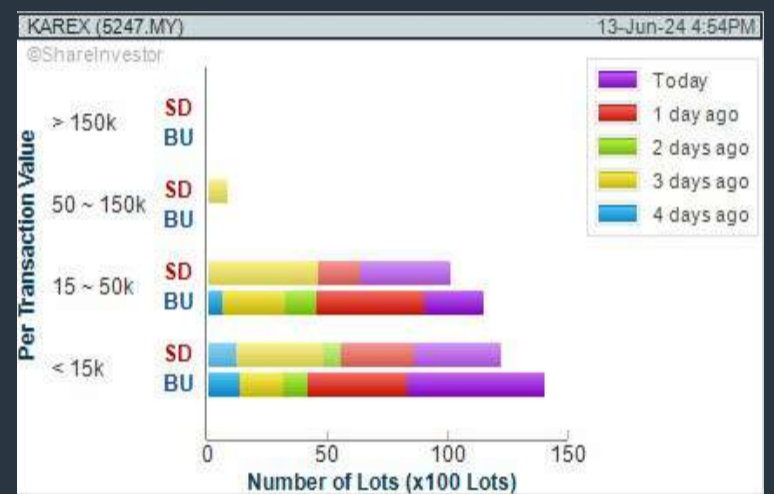
**B. Conditions (Criteria Filters)**

1. Moving Average Below Close - select (MA) type (5) below close price for type (3) days
2. Volume Spike - Volume type (1) greater than type (5) days average
3. Revenue ("000) - select (more than) type (1) for the past select (1) financial year(s)
4. Is Shariah Compliant - select **Yes**
5. Moving Average Below Close - select (MA) type (10) below close price for type (3) days
6. Last Done Price - select (more than) type (0.3)
7. Moving Average Below Close - select (EMA) type (5) below close price for type (3) days

- > click Save Template > Create New Template type (Shariah Hot Stocks) > click Create
- > click Save Template as > select Shariah Hot Stocks > click Save
- > click Screen Now (may take a few minutes)
- > Sort By: Select (Vol) Select (Desc)
- > Mouse over stock name > Charts > click C<sup>2</sup> Charts or Volume Distribution

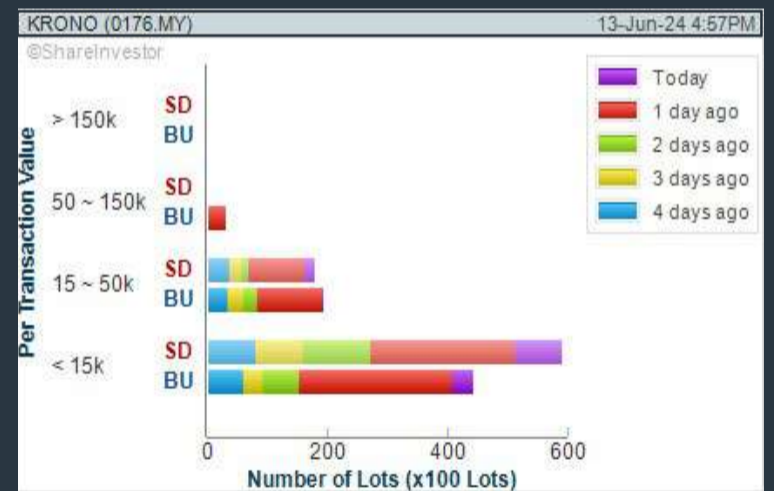
### KAREX BERHAD (5247)

C<sup>2</sup> Chart



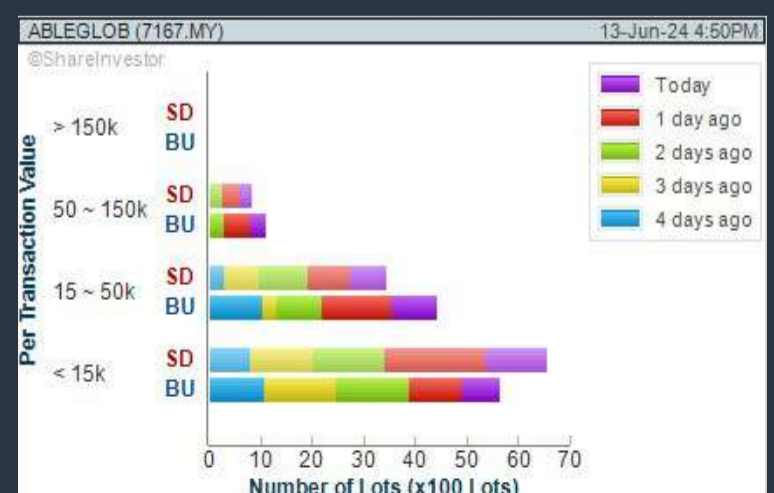
### KRONOLOGI ASIA BERHAD (0176)

C<sup>2</sup> Chart



### ABLE GLOBAL BERHAD (7167)

C<sup>2</sup> Chart



**Disclaimer:** The information on this page is provided as a service to readers. It does not constitute financial advice and/or any investment recommendations. Past performance is not indicative of future results. We assume no liability for damages resulting from or arising out of the use of such information. It would be best if you did your own research to make your personal investment decisions wisely or consult a licenced investment advisor.

## COMPANY BACKGROUND

**Karex Berhad** is the world's largest manufacturer of latex condoms. The company's business activities include investment holding, manufacture and sale of sexual wellness products, medical and other health related products which include condoms, latex probe covers, sterile catheters, lubricating jelly, latex sleeve, rubber finger gloves, hand gloves and other rubber products.

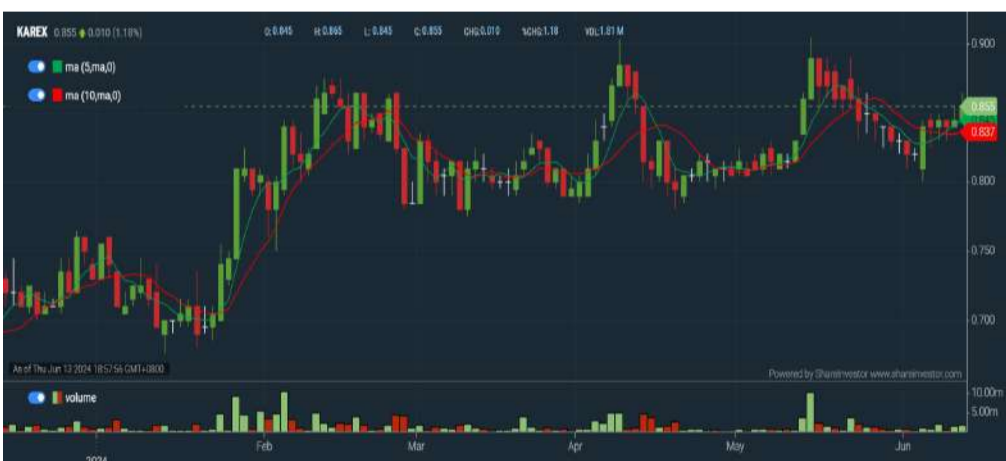


KAREX KAREX BERHAD		Updated at 13 Jun 2024 17:31	
Last (MYR): <b>0.855</b> ↑	Change: <b>+0.010</b>	High: 0.865	Remarks: s ?
	Change (%): <b>+1.18</b>	Low: 0.845	
Open	0.845	Yesterday's Close	0.845
Buy Price	0.835	Sell Price	0.870
Buy Volume ('00)	100	Sell Volume ('00)	1,202
Cumulative Volume ('00)	18,060	Cumulative Value	1,551,294

### Financial Analysis

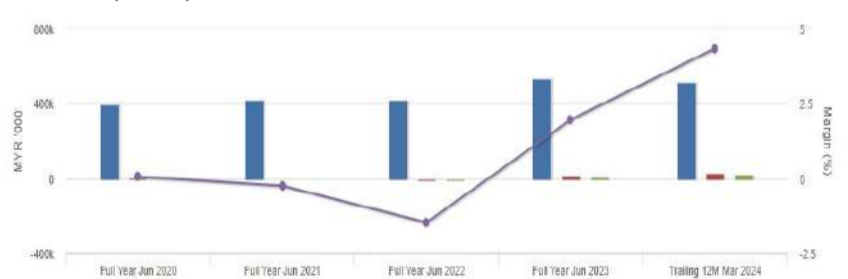
<b>Revenue Growth</b> Increasing revenue in last 4 consecutive years	😊	<b>Profit Growth</b> Profit turnaround in most recent year	😊
<b>Piotroski F Score</b> The company has above average financial strength (Piotroski F-Score of 6-7)	😊	<b>Dividend Payout</b> Dividend is decreasing over the past 50 months.	😟
<b>Current Ratio</b> The company is well-positioned to cover its short-term obligations with its current assets (ratio between 1.5 to 10) for 3 consecutive years	😊	<b>Debt to Cashflow</b> The company has negative cash flow from operations in most recent year	😟
<b>Free Cash Flow</b> Negative free cash flow for two years or more	😟	<b>Gross Profit Margin</b> Consistently good gross profit margin of 20%-40% for 3 years	😊
<b>Net Earnings Margin</b> Low net profit margin for most recent year	😟		

😊 Excellent    😊 Good    😐 Neutral    😟 Be Alert    😱 Watch Out



### Historical Financials

Profit & Loss (MYR '000)

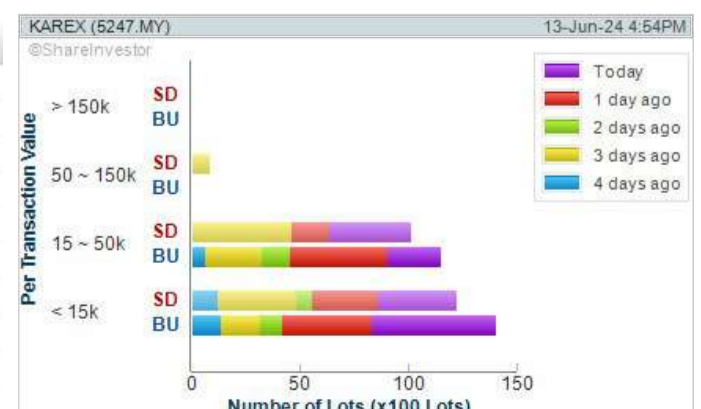


**WebPro 9-Days Free Trial Registration (worth RM10) Sign Up Now**



### Key Statistics with Total Shareholder Returns

Period	Dividend Received	Capital Appreciation	Total Shareholder Return
Short Term Return	5 Days	-	+0.035
	10 Days	-	+0.015
	20 Days	-	-0.035
Medium Term Return	3 Months	-	+0.045
	6 Months	-	+0.135
	1 Year	-	+0.270
Long Term Return	2 Years	-	+0.475
	3 Years	-	+0.285
	5 Years	0.020	+0.290
Annualised Return	Annualised	-	-



**Disclaimer:** The information on this page is provided as a service to readers. It does not constitute financial advice and/or any investment recommendations. Past performance is not indicative of future results. We assume no liability for damages resulting from or arising out of the use of such information. It would be best if you did your own research to make your personal investment decisions wisely or consult a licenced investment advisor.



## Price & Volume Distribution Charts (as at Yesterday)

Technical Analysis

**DEFINITION:** Shariah compliant stocks with Technical Analysis showing Bullish Momentum and Price Uptrend. The share price closed at the highest price yesterday. The typical price was higher than the previous day's typical price.

**CHART GUIDE:** Volume Distribution Chart is a statistical interpretation of the current sentiment on each stock in graphical format. The highest bar categorized as >150k is likely to be traded by institutions or super dealers, while the lowest bar categorized as <15k usually represents retail investors. "Buy Up" refers to more buyers snatching up the lots queued at selling price. "Sell Down" refers to sellers selling their shares to the buying queue.



ShareInvestor WebPro > Screener > Market Screener (FA & TA)>select BURSA>add criteria

**A. Criteria**

- > click Add Criteria
- Fundamental Analysis Conditions tab >select (i) Revenue
- Technical Analysis Conditions tab select (ii) Average Volume
- Prices & Other Conditions tab > select (iii) Last Done Price
- Prices & Other Conditions tab > select (iv) Is Shariah Compliant
- Technical Analysis Conditions tab select (v) RSI Overbought
- Technical Analysis Conditions tab select (vi) Moving Average Below Close
- Technical Analysis Conditions tab select (vii) CCI Overbought

**B. Conditions (Criteria Filters)**

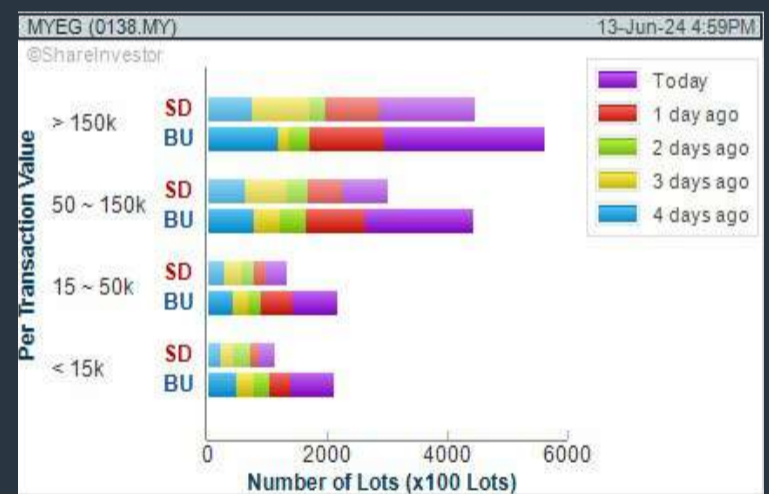
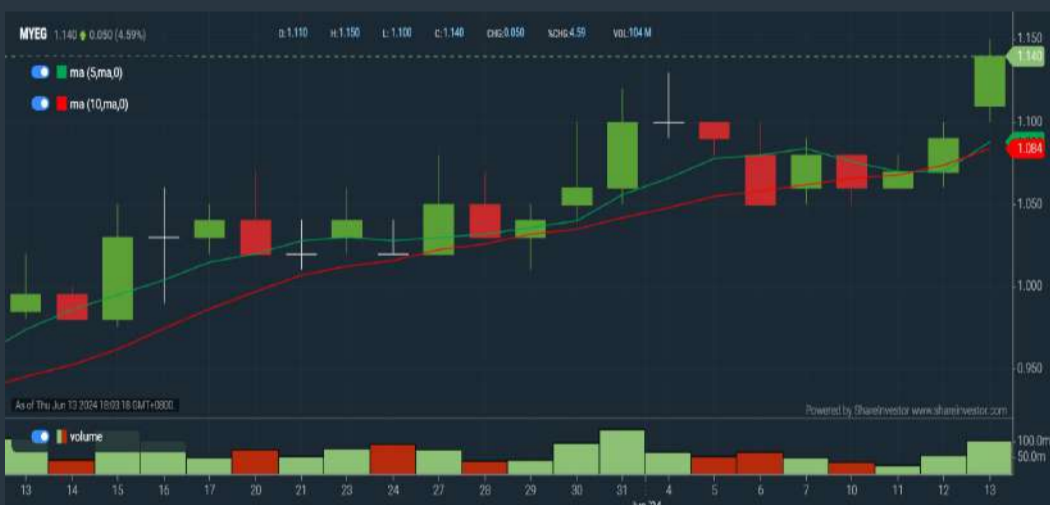
- Revenue ("000) - select (more than) type (1) for the past select (1) financial year(s)
- Average Volume - type (1) days average volume greater than type (10000) lots
- Last Done Price - select (more than) type (0.3)
- Is Shariah Compliant - select Yes
- RSI Overbought - select RSI 1 above 99 for 1 days
- Moving Average Below Close - select (MA) type (10) below close price for type (1) days
- CCI Overbought - select CCI (2) above (0) for (1) days

- > click Save Template > Create New Template type (Shariah Momentum Up Stocks) > click Create
- > click Save Template as > select Shariah Momentum Up Stocks > click Save
- > click Screen Now (may take a few minutes)
- Sort By: Select (Vol) Select (Desc)
- Mouse over stock name > Charts > click C<sup>2</sup> Charts tab or Volume Distribution

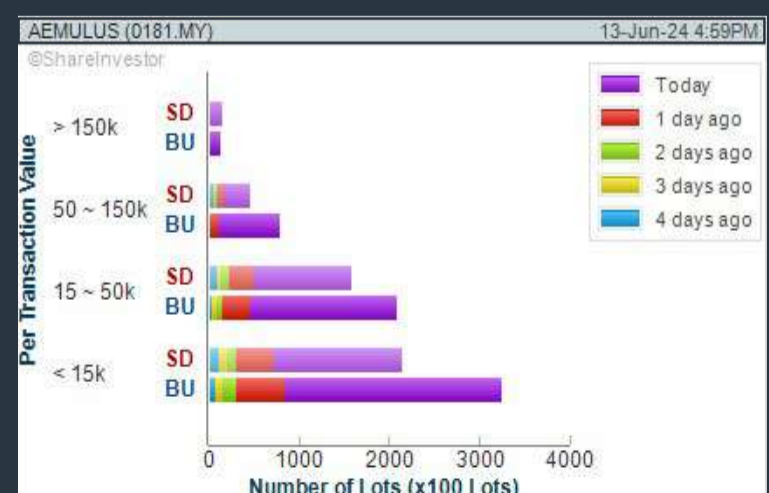
### JCY INTERNATIONAL BERHAD (5161) C<sup>2</sup> Chart



### MY E.G. SERVICES BERHAD (0138) C<sup>2</sup> Chart



### AEMULUS HOLDINGS BERHAD (0181) C<sup>2</sup> Chart



**Disclaimer:** The information on this page is provided as a service to readers. It does not constitute financial advice and/or any investment recommendations. Past performance is not indicative of future results. We assume no liability for damages resulting from or arising out of the use of such information. It would be best if you did your own research to make your personal investment decisions wisely or consult a licenced investment advisor.

# MAKE BETTER TRADING STRATEGIES

with

# SHARE INVESTOR STATION



## 8 Markets Data

- ▶ Get access to data from Bursa, NYSE, Nasdaq, HKEX, SGX, IDX, SET & ASX

## Dynamic Chart

- ▶ Candlestick Pattern Recognition
- ▶ 111 Indicators
- ▶ 39 Drawing Tools
- ▶ Performance Comparison Chart

## Intraday Data

- ▶ Market Depth
- ▶ Trade Summary Matrix & Chart
- ▶ Times & Sales
- ▶ Intraday Market Ticker

## Market Screener

- ▶ 96 criteria ranging from FA, TA, Consensus Estimate
- ▶ Real-time Data

## Power Frame

- ▶ Combining few Dynamic Charts together with intraday information in one frame

## Technical Analysis

## Fundamental Analysis

### Financial Analysis Statement

- ▶ Profit & Loss
- ▶ Balance Sheet
- ▶ Cash Flow Statement
- ▶ More than 20 Financial Ratios
- ▶ Dividend Analysis

### FactSheet

- ▶ Key Stock Information
- ▶ Ownership
- ▶ Consensus Estimates
- ▶ Annual Report
- ▶ Historical Price
- ▶ Insider Trades

**Start your 18 days  
FREE trial now  
(Valued at RM82)**



## Price & Volume Distribution Charts (as at Yesterday)

Technical Analysis

**DEFINITION:** Stocks with Technical Analysis showing 5-days & 10-days Moving Average Price below Close over past 1 days and with Volume Spike

**CHART GUIDE:** Volume Distribution Chart is a statistical interpretation of the current sentiment on each stock in graphical format. The highest bar categorized as >150k is likely to be traded by institutions or super dealers, while the lowest bar categorized as <15k usually represents retail investors. "Buy Up" refers to more buyers snatching up the lots queued at selling price. "Sell Down" refers to sellers selling their shares to the buying queue.



ShareInvestor WebPro > Screener > Market Screener (FA & TA) > select BURSA > add criteria

**A. Criteria**

- > click Add Criteria
- Technical Analysis Conditions tab select (i) Moving Average Below Close (ii) Volume Spike
- Fundamental Analysis Conditions tab >select (iii) Revenue
- Prices & Other Conditions tab > select (iv) Is Shariah Compliant
- Technical Analysis Conditions tab select (v) Moving Average Below Close
- Prices & Other Conditions tab > select (vi) Last Done Price
- Technical Analysis Conditions tab select (vii) Moving Average Below Close

**B. Conditions (Criteria Filters)**

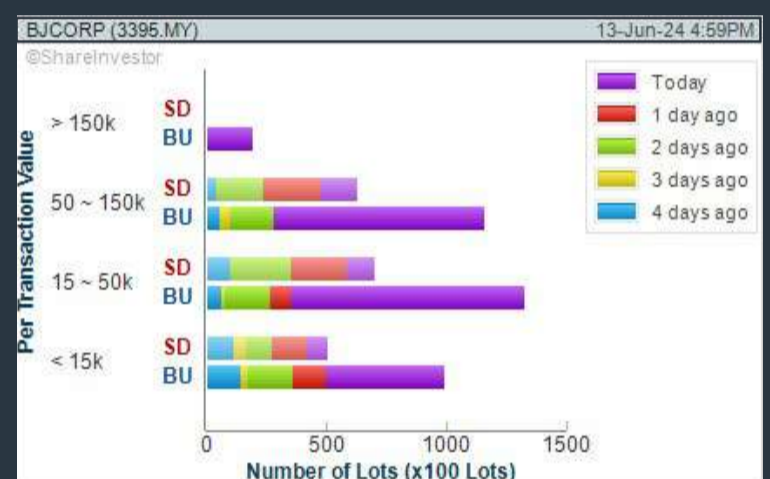
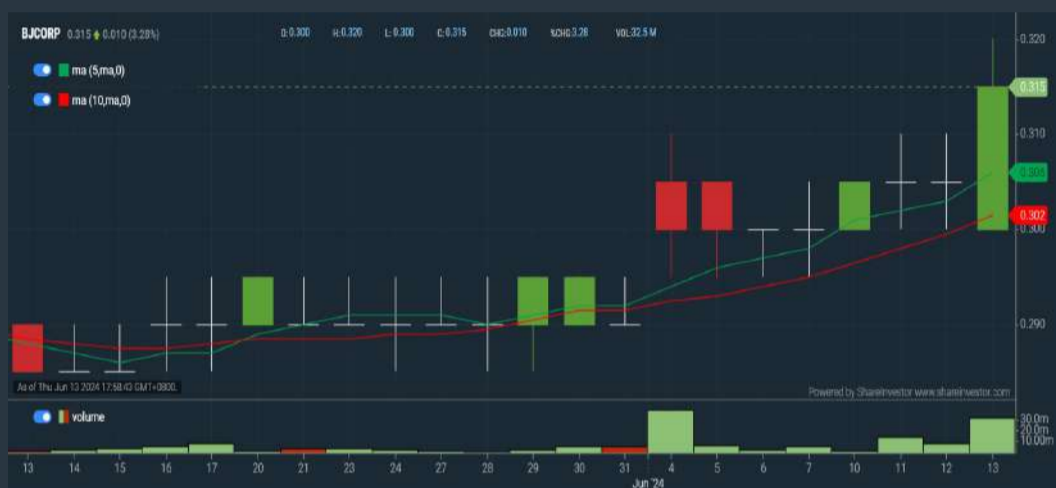
1. Moving Average Below Close - select (MA) type (5) below close price for type (3) days
2. Volume Spike - Volume type (1) greater than type (5) days average
3. Revenue ("000) - select (more than) type (1) for the past select (1) financial year(s)
4. Is Shariah Compliant - select NO
5. Moving Average Below Close - select (MA) type (10) below close price for type (1) days
6. Last Done Price - select (more than) type (0.3)
7. Moving Average Below Close - select (EMA) type (5) below close price for type (1) days

- > click Save Template > Create New Template type (Non-Shariah Hot Stocks) > click Create
- > click Save Template as > select Non-Shariah Hot Stocks > click Save
- > click Screen Now (may take a few minutes)
- Sort By: Select (Vol) Select (Desc)
- Mouse over stock name > Charts > click C² Charts tab or Volume Distribution

### BERJAYA CORPORATION BERHAD (3395)

Analysis

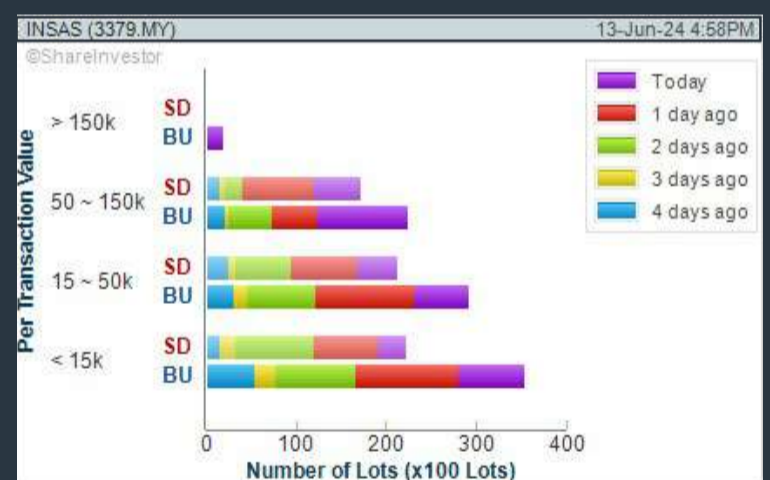
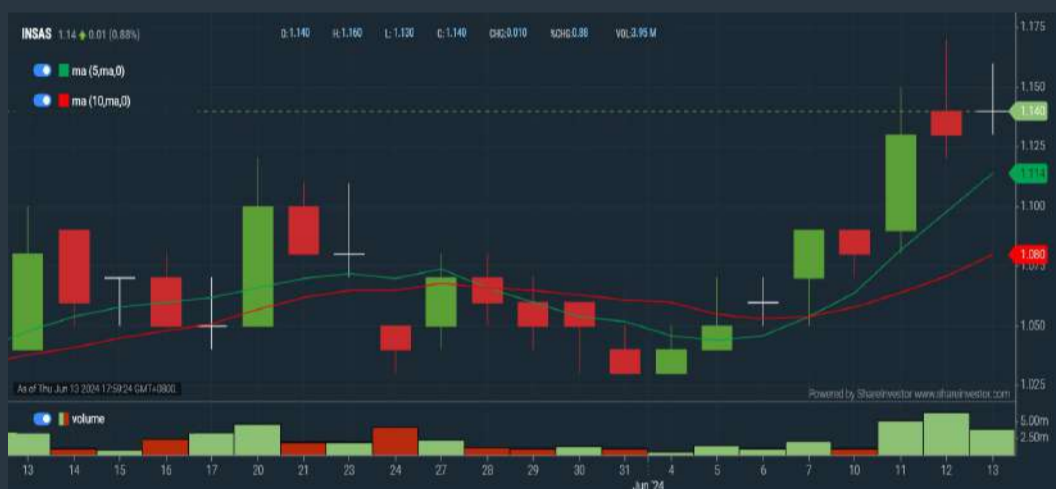
C² Chart



### INSAS BERHAD (3379)

Analysis

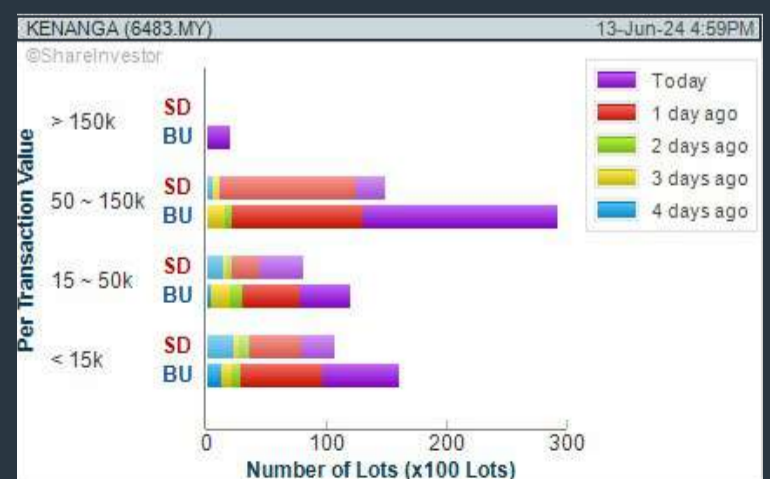
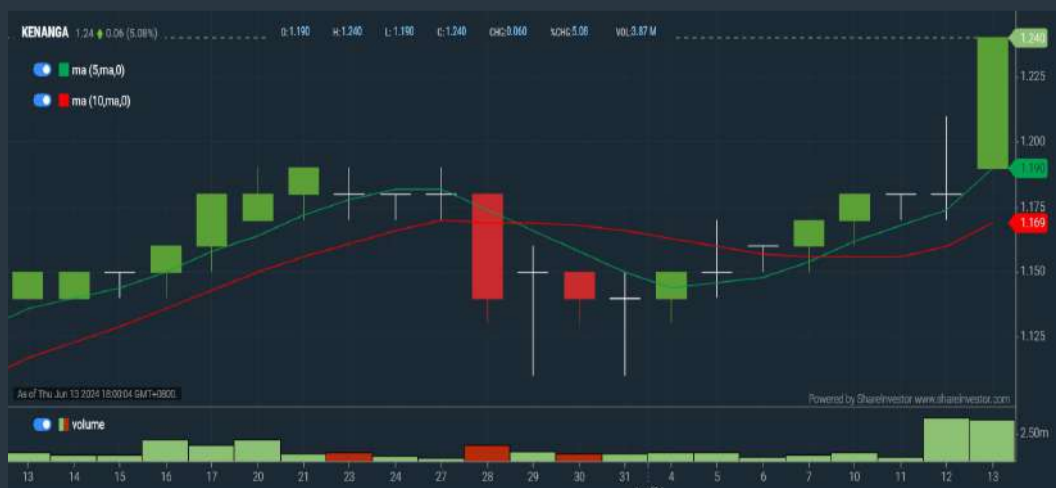
C² Chart



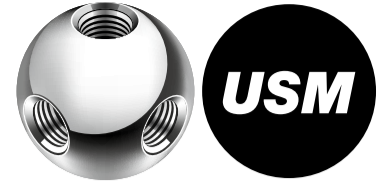
### KENANGA INVESTMENT BANK BERHAD (6483)

Analysis

C² Chart



**Disclaimer:** The information on this page is provided as a service to readers. It does not constitute financial advice and/or any investment recommendations. Past performance is not indicative of future results. We assume no liability for damages resulting from or arising out of the use of such information. It would be best if you did your own research to make your personal investment decisions wisely or consult a licenced investment advisor.



# making places shine



usm.com

# XTRA

XTRA FURNITURE SDN BHD  
The Gardens Mall, Mid Valley City, Lot S-236 & 237  
Lingkar Syed Putra, 59200 Kuala Lumpur  
T. +603 2282 9088 | living@xtrafurniture.com | xtrafurniture.com  
📍 XTRAFurniture | 🌐 xtrafurnituremsia

## Price & Volume Distribution Charts (Over 3 trading days as at Yesterday)

Technical Analysis

**DEFINITION:** Stocks with Technical Analysis showing Bullish Momentum and Price Uptrend

**CHART GUIDE:** Volume Distribution Chart is a statistical interpretation of the current sentiment on each stock in graphical format. The highest bar categorized as >150k is likely to be traded by institutions or super dealers, while the lowest bar categorized as <15k usually represents retail investors. "Buy Up" refers to more buyers snatching up the lots queued at selling price. "Sell Down" refers to sellers selling their shares to the buying queue.



ShareInvestor WebPro > Screener > Market Screener (FA & TA) > select BURSA > add criteria

**A. Criteria**

- > click Add Criteria
- Fundamental Analysis Conditions tab > select (i) Revenue
- Technical Analysis Conditions tab select (ii) Moving Average Below Close
- Technical Analysis Conditions tab select (iii) Average Volume
- Prices & Other Conditions tab > select (iv) Last Done Price
- Technical Analysis Conditions tab select (v) Moving Average Below Close
- Technical Analysis Conditions tab select (v) Moving Average Bullish Crossover

**B. Conditions**

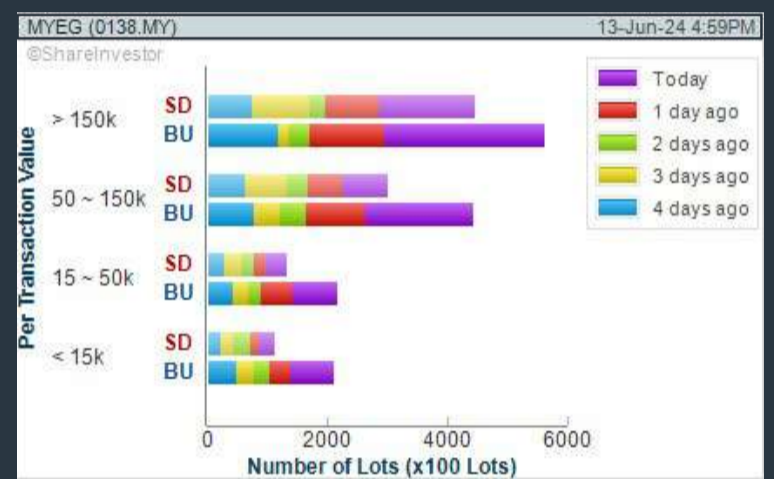
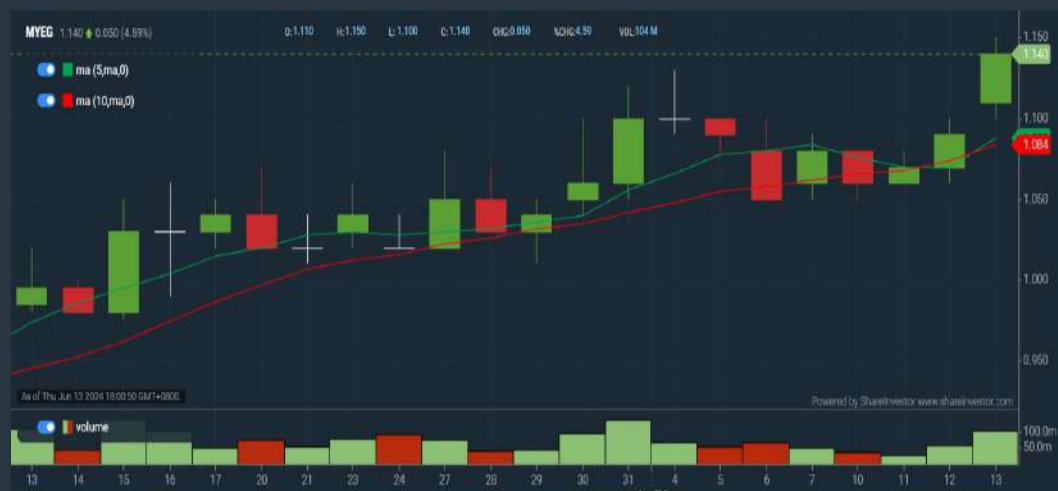
1. Revenue - select (more than) type (1) for the past select (1) financial year(s)
2. Moving Average Below Close - select (MA) type (20) below close price for type (1) days
3. Average Volume - type (5) days average volume type (10000) lots
4. Last Done Price - select (more than) type (0.3)
5. Moving Average Below Close - select (MA) type (10) below close price for type (1) days
6. Moving Average Bullish Crossover - select (MA) type (5) crossed above select (MA) type (10)

> click Save Template > Create New Template type (Non-Shariah Up-Trending Stocks) > click Create Click Save Template As > select Non-Shariah Up Trending Stocks > click Save > click Screen Now (may take a few minutes) Sort By: Select (Vol) Select (Desc) Mouse over stock name > Charts > click C<sup>2</sup> Charts tab or Volume Distribution

### MY E.G. SERVICES BERHAD (0138)

C<sup>2</sup> Chart

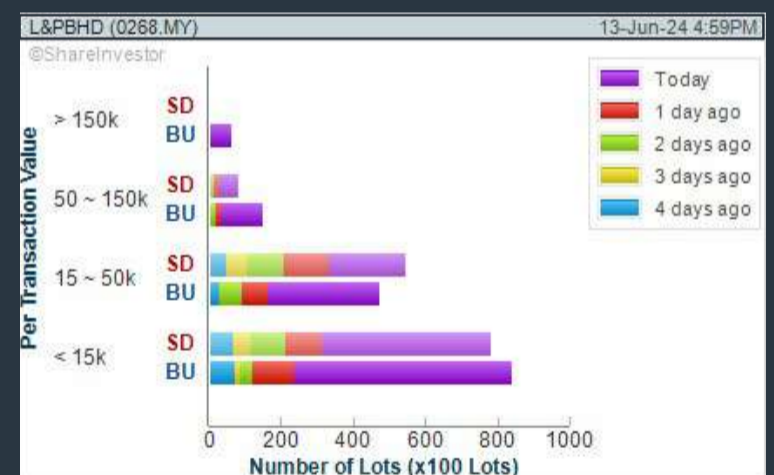
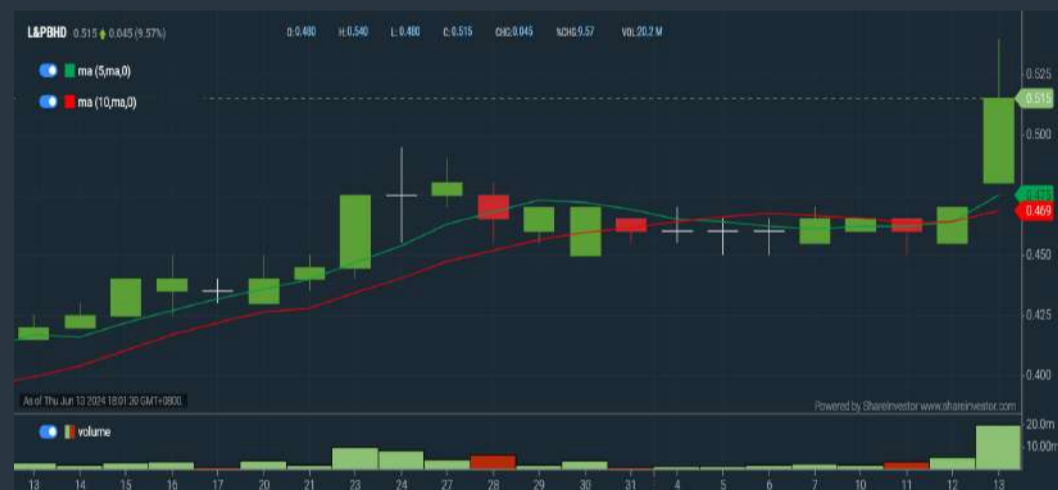
Analysis



### L&P GLOBAL BERHAD (0268)

C<sup>2</sup> Chart

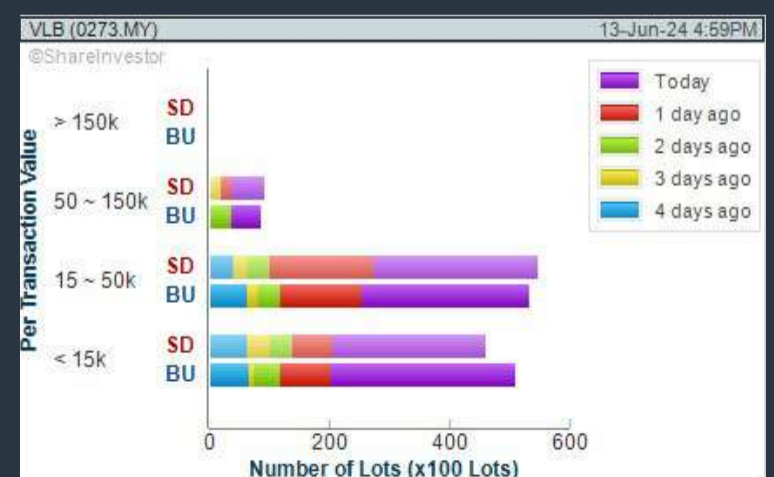
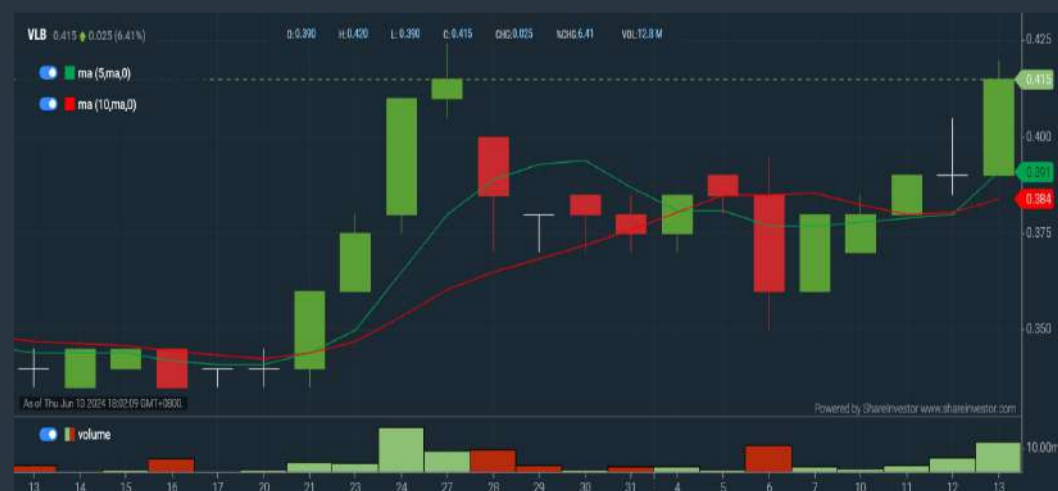
Analysis



### VESTLAND BERHAD (0273)

C<sup>2</sup> Chart

Analysis



**Disclaimer:** The information on this page is provided as a service to readers. It does not constitute financial advice and/or any investment recommendations. Past performance is not indicative of future results. We assume no liability for damages resulting from or arising out of the use of such information. It would be best if you did your own research to make your personal investment decisions wisely or consult a licenced investment advisor.

## Price & Total Shareholder Return (as at Yesterday)

Fundamental Analysis

**DEFINITION:** Share price of a company trading at a lower price as compared to its fundamentals (FA) such as financial performance and dividend, allowing it to be attractive to value investors.

**CHART GUIDE:** Total Shareholder Return (TSR) combines share price appreciation and dividend distributions paid to show the total return to the shareholder expressed as a percentage.



ShareInvestor WebPro > Screener > Market Screener (FA & TA) > select BURSA > add criteria

**A. Criteria**

- > click Add Criteria
- Fundamental Analysis Conditions tab (i) Price Earnings Ratio
- Fundamental Analysis Conditions tab >select (ii) CAGR of Net Earnings
- Fundamental Analysis Conditions tab >select (iii) Net Debt To Equity
- Fundamental Analysis Conditions tab >select (iv) Return On Equity (ROE)

**B. Conditions**

1. Price Earnings Ratio - select (less than) type (15) times now
2. CAGR of Net Earnings - select (more than) type (10) % for the past type (3) financial year(s)
3. Net Debt To Equity – select (less than) type (1) for the past select (1) financial year(s)
4. Return On Equity (ROE) – select (more than) type (10) % for the past select (1) financial year(s)

- > click Save Template > Create New Template type (Value Stock) > click Create
- > click Save Template as > select Value Companies > click Save
- > click Screen Now (may take a few minutes)
- Sort by: Select (PE Ratio) Select (Ascending)
- > Mouse over stock name > Factsheet > looking for Total Shareholder Return
- > Mouse over stock name > Charts > click C2 Charts tab

## SYNERGY HOUSE BERHAD (0279)

C<sup>2</sup> Chart

Analysis



Period	Dividend Received	Capital Appreciation	Total Shareholder Return
Short Term Return	5 Days	-0.210	+13.38%
	10 Days	-0.250	+16.34%
	20 Days	-0.300	+20.27%
Medium Term Return	3 Months	-0.960	+17.07%
	6 Months	+1.120	+18.70%
1 Year	+1.435	+45.94%	
Annualised Return	Annualised	-	+45.94%

## AJINOMOTO (M) BERHAD (2658)

C<sup>2</sup> Chart

Analysis



Period	Dividend Received	Capital Appreciation	Total Shareholder Return
Short Term Return	5 Days	-0.240	-1.52%
	10 Days	-1.960	-5.39%
	20 Days	-1.820	-5.16%
Medium Term Return	3 Months	-0.896	-5.45%
	6 Months	+1.236	+8.64%
1 Year	+2.551	+18.64%	
Long Term Return	2 Years	+4.506	+18.84%
	3 Years	0.383	+14.74%
5 Years	1.346	+8.61%	
Annualised Return	Annualised	-	+1.67%

## TEO SENG CAPITAL BERHAD (7252)

C<sup>2</sup> Chart

Analysis



Period	Dividend Received	Capital Appreciation	Total Shareholder Return
Short Term Return	5 Days	-	-
	10 Days	-0.010	+0.51%
	20 Days	-0.080	-4.40%
Medium Term Return	3 Months	-0.132	-7.65%
	6 Months	+0.154	+8.71%
1 Year	+0.083	+103.03%	
Long Term Return	2 Years	+0.571	+126.27%
	3 Years	+0.571	+126.27%
5 Years	0.030	+71.61%	
Annualised Return	Annualised	-	+11.33%

**Disclaimer:** The information on this page is provided as a service to readers. It does not constitute financial advice and/or any investment recommendations. Past performance is not indicative of future results. We assume no liability for damages resulting from or arising out of the use of such information. It would be best if you did your own research to make your personal investment decisions wisely or consult a licenced investment advisor.

## Price & Total Shareholder Return (as at Yesterday)

Fundamental Analysis

**DEFINITION:** Company revenue is growing and making good quality of earnings with positive Free Cash Flow.

**CHART GUIDE:** Total Shareholder Return (TSR) combines share price appreciation and distributions paid to show the total return to the shareholder expressed as a percentage.



ShareInvestor WebPro > Screener > Market Screener (FA & TA) > select BURSA > add criteria

**A. Criteria**

1. Fundamental Analysis Conditions tab > select (i) Free Cash Flow, (ii) Revenue Growth, (iii) Gross Profit (Earnings) Margin, (iv) Quality of Earnings, (v) Total Shareholder Returns, > click Add Criteria
2. Fundamental Analysis Conditions tab > select (vi) Total Shareholder Returns > click Add Criteria

**B. Conditions (Criteria Filters)**

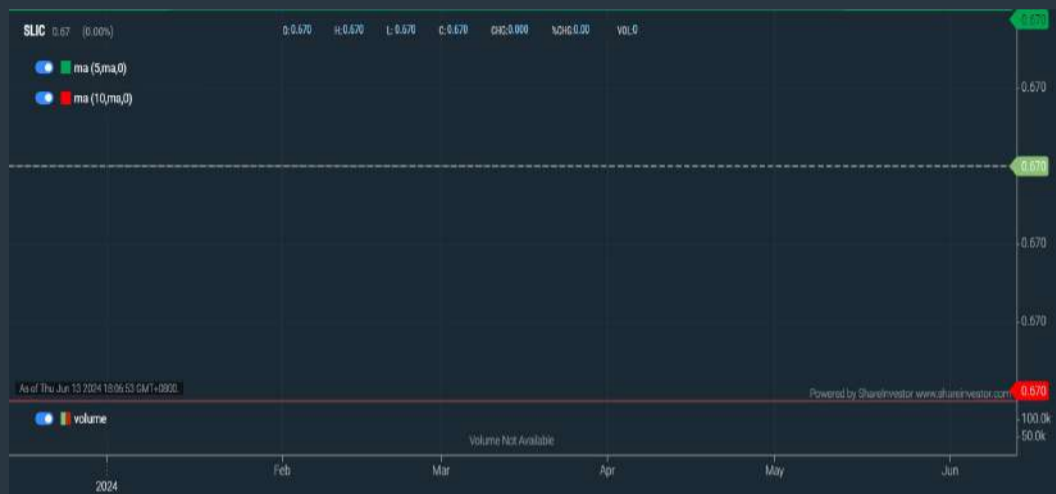
1. Free Cash Flow - select (more than) type (1) for the past select (1) financial year(s)
2. Revenue Growth - select (more than) type (1) for the past select (1) financial year(s)
3. Gross Profit (Earnings) Margin - select (more than) type (30) % for the past select (1) financial year(s)
4. Quality of Earnings - select (more than) type (1) for the past select (1) financial year(s)
5. Total Shareholder Return - select (more than) type (5) % for the past select (3) financial year(s)
6. Total Shareholder Return - select (more than) type (5) % for the past select (5) financial year(s)

- > click Save Template > Create New Template type (Growth Companies) > click Create
- > click Save Template as > select Growth Companies > click Save
- > click Screen Now (may take a few minutes)
- > Sort By: Select (Revenue Growth) Select (Desc)
- > Mouse over stock name > Factsheet > looking for Total Shareholder Return

## SL INNOVATION CAPITAL BERHAD (03008)

C<sup>2</sup> Chart

Analysis



Period	Dividend Received	Capital Appreciation	Total Shareholder Return
Short Term Return	5 Days	-	-
	10 Days	-	-
	20 Days	-	-
Medium Term Return	3 Months	-	-
	6 Months	-	-
	1 Year	+0.285	+74.03%
Long Term Return	2 Years	+0.265	+65.43%
	3 Years	+0.265	+65.43%
	5 Years	0.015	+25.0%
Annualised Return	Annualised	-	+10.28%

## MALAYSIA AIRPORTS HOLDINGS BERHAD (5014)

C<sup>2</sup> Chart

Analysis



Period	Dividend Received	Capital Appreciation	Total Shareholder Return
Short Term Return	5 Days	-0.130	-1.30%
	10 Days	-0.110	-1.10%
	20 Days	-0.530	-5.30%
Medium Term Return	3 Months	+1.220	+12.20%
	6 Months	+2.620	+26.20%
	1 Year	+2.970	+29.70%
Long Term Return	2 Years	+3.400	+34.00%
	3 Years	+3.590	+35.90%
	5 Years	0.100	+1.00%
Annualised Return	Annualised	-	+3.22%

## GOLDEN PHAROS BERHAD (5649)

C<sup>2</sup> Chart

Analysis



Period	Dividend Received	Capital Appreciation	Total Shareholder Return
Short Term Return	5 Days	+0.005	+1.11%
	10 Days	-0.019	-2.45%
	20 Days	-0.025	-5.24%
Medium Term Return	3 Months	-0.115	-20.18%
	6 Months	-0.135	-22.19%
	1 Year	-0.165	-26.30%
Long Term Return	2 Years	0.069	+15.37%
	3 Years	0.069	+15.37%
	5 Years	0.022	+4.86%
Annualised Return	Annualised	-	+15.21%

**Disclaimer:** The information on this page is provided as a service to readers. It does not constitute financial advice and/or any investment recommendations. Past performance is not indicative of future results. We assume no liability for damages resulting from or arising out of the use of such information. It would be best if you did your own research to make your personal investment decisions wisely or consult a licenced investment advisor.

## Price & Total Shareholder Return (as at Yesterday)

Fundamental Analysis

**DEFINITION:** Company is paying out dividend with low or moderate leverage.

**CHART GUIDE:** Total Shareholder Return (TSR) combines share price appreciation and distributions paid to show the total return to the shareholder expressed as a percentage.



ShareInvestor WebPro > Screener > Market Screener (FA & TA) > select BURSA > add criteria

**A. Criteria**

- > click Add Criteria
- Fundamental Analysis Conditions tab >select (i) Dividend Yield
- Fundamental Analysis Conditions tab >select (ii) Dividend Payout (Historical)
- Fundamental Analysis Conditions tab >select (iii) Total Debt To Equity
- Fundamental Analysis Conditions tab >select (iv) Total Shareholder Returns
- Fundamental Analysis Conditions tab >select (v) Total Shareholder Returns
- Fundamental Analysis Conditions tab / >select (vi) CAGR of Dividend Per Share

• Fundamental Analysis Conditions tab >select (vii) CAGR of Dividend Per Share

**B. Conditions (Criteria Filters)**

1. Dividend Yield - select (more than) type (1) % for the past select (1) financial year(s)
2. Dividend Payout (Historical) - select (between) type (0.5) to type (1) times for the past select (1) financial year(s)
3. Total Debt to Equity - select (less than) type (1) for the past select (1) financial year(s)
4. Total Shareholder Return - select (more than) type (5) % for the past select (3) financial year(s)
5. Total Shareholder Return - select (more than) type (5) % for the past select (5) financial year(s)

6. CAGR of Dividend Per Share - select (less than) type (30) % for the past select (5) financial year(s)
7. CAGR of Dividend Per Share - select (more than) type (1) % for the past select (5) financial year(s)

- > click Save Template > Create New Template type (Dividend Companies) > click Create
- > click Save Template as > select Dividend Companies > click Save
- > click Screen Now (may take a few minutes)
- > Sort By: Select (Dividend Yield) Select (Desc)
- > Mouse over stock name > Factsheet > looking for Total Shareholder Return

## AMWAY (M) HOLDINGS BERHAD (6351)

C<sup>2</sup> Chart

Analysis



Period	Dividend Received	Capital Appreciation	Total Shareholder Return
Short Term Return	5 Days	-0.090	-1.23%
	10 Days	-0.100	-2.16%
	20 Days	-0.090	-0.82%
Medium Term Return	3 Months	-0.500	-6.46%
	6 Months	+1.690	+30.45%
Long Term Return	1 Year	+1.690	+34.67%
	2 Years	+2.230	+44.61%
	3 Years	+1.690	+30.45%
5 Years	0.300	+1.382	+28.27%
Annualised Return	Annualised	-	+5.11%

## TA ANN HOLDINGS BERHAD (5012)

C<sup>2</sup> Chart

Analysis



Period	Dividend Received	Capital Appreciation	Total Shareholder Return
Short Term Return	5 Days	-0.100	-3.09%
	10 Days	-0.110	-2.78%
	20 Days	-0.100	2.63%
Medium Term Return	3 Months	-0.100	-4.47%
	6 Months	+0.310	+8.76%
Long Term Return	1 Year	+0.600	+16.46%
	2 Years	-0.630	-14.06%
	3 Years	0.300	+1.170
5 Years	0.500	+1.540	+86.31%
Annualised Return	Annualised	-	+13.49%

## GAS MALAYSIA BERHAD (5209)

C<sup>2</sup> Chart

Analysis



Period	Dividend Received	Capital Appreciation	Total Shareholder Return	
Short Term Return	5 Days	-	-	
	10 Days	-	-	
	20 Days	-	+0.010	+3.15%
Medium Term Return	3 Months	+0.200	+5.88%	
	6 Months	+0.510	+16.50%	
Long Term Return	1 Year	+0.500	+16.13%	
	2 Years	0.069	+0.570	+21.09%
	3 Years	0.231	+0.880	+38.92%
5 Years	0.468	+0.810	+46.81%	
Annualised Return	Annualised	-	+7.83%	

**Disclaimer:** The information on this page is provided as a service to readers. It does not constitute financial advice and/or any investment recommendations. Past performance is not indicative of future results. We assume no liability for damages resulting from or arising out of the use of such information. It would be best if you did your own research to make your personal investment decisions wisely or consult a licenced investment advisor.



Week: 7 June 2024 - 13 June 2024

More Brokers' Call 

AMINVESTMENT BANK <small>... See More</small>	Call	Target Price	Release Date
Bermaz Auto Berhad (5248)	BUY	RM3.42	11 Jun 2024
Sunway Construction Berhad (6777)	BUY	RM3.70	11 Jun 2024
Westports Holdings Berhad (5246)	BUY	RM4.52	9 Jun 2024

APEX <small>... See More</small>	Call	Target Price	Release Date
Maxis Berhad (6012)	BUY	RM4.28	11 Jun 2024

BIMB SECURITIES SDN BHD <small>... See More</small>	Call	Target Price	Release Date
Bermaz Auto Berhad (5248)	BUY	RM2.80	12 Jun 2024
Sunway Construction Group Berhad (5263)	BUY	RM4.01	11 Jun 2024

KENANGA <small>... See More</small>	Call	Target Price	Release Date
Bermaz Auto Berhad (5248)	MARKET PERFORM	RM2.45	12 Jun 2024
S P Setia Berhad (8664)	UNDERPERFORM	RM0.85	12 Jun 2024
BP Plastics Holding Berhad (5100)	MARKET PERFORM	RM1.42	11 Jun 2024
Engtex Group Berhad (5056)	OUTPERFORM	RM1.41	10 Jun 2024

MIDF <small>... See More</small>	Call	Target Price	Release Date
Bermaz Auto Berhad (5248)	BUY	RM3.50	12 Jun 2024
S P Setia Berhad (8664)	BUY	RM1.68	12 Jun 2024
Deleum Berhad (5132)	BUY	RM1.62	11 Jun 2024
Eco World Development Group Berhad (8206)	NEUTRAL	RM1.63	11 Jun 2024

UOB KAYHIAN <small>... See More</small>	Call	Target Price	Release Date
Bermaz Auto Berhad (5248)	BUY	RM3.22	12 Jun 2024
Cepatwawasan Group Berhad (8982)	BUY	RM0.83	12 Jun 2024
Bursa Malaysia Berhad (1818)	BUY	RM9.42	11 Jun 2024
Coastal Contracts Bhd (5071)	BUY	RM1.94	11 Jun 2024

**Disclaimer:** InveSt does not accept any liability whatsoever for any direct, indirect or consequential losses (including loss of profit) or damages that may arise from the use of information or opinions in this publication. The information and opinions in InveSt are not to be considered as an offer to sell or buy any of the securities discussed. Opinions expressed are subject to change without notice. The Brokers may, from time to time, have interests or positions in the securities mentioned. For the full report on each item listed on this page, please visit [https://www.shareinvestor.com/my/brokers\\_call](https://www.shareinvestor.com/my/brokers_call).

**DEFINITION:** Top 8 stocks with Technical Analysis plus Pattern Matching by 60 pre-defined indicators by the system showing a higher probability of bullish sentiment on the share price.



ShareInvestor WebPro > Screener > Predefined TA Screens > select market BURSA > Most Long Signals > click Scan Results or mouse over each company

## BINASAT COMMUNICATIONS BERHAD (0195.MY)

### BINACOM

Price updated at 13 Jun 2024 17:30

Last: <b>0.270</b>	Change: <b>-0.005</b>	Volume: <b>60,638</b>
	Change (%): <b>-1.82</b>	Range: <b>0.260 - 0.285</b>

TA Scanner Results based on historical data up to 13 Jun 2024

Condition	Signal	Explanation
Bollinger Band: Bullish Long Term Volatility Breakout and Trending	Long	1. Close price above upper bollinger band(33,1). 2. Volume above average volume(50). 3. Average volume(50) is above 300,000.
Bollinger Band: Bullish Short Term Volatility Breakout and Trending	Long	1. Close price above upper bollinger band(33,1). 2. Volume above average volume(10). 3. Average volume(10) is above 300,000.
Bollinger Band: High Above Upper Bollinger Band	Neutral	1. High above upper bollinger band(14,2). 2. Average volume(5) is above 100,000.
Donchian Channels: High Above Upper Donchian Channels	Long	High crossed above the upper Donchian Channel(14,4)
MA: Medium Term Bullish Moving Average Crossover	Long	MA(25) crossed above MA(50) within the last 1 day.
MACD: Bullish MACD Crossover	Long	1. MACD(12,26) diff line crossed above the MACD(12,26) signal line. 2. MACD Histogram(12,26) is above 0.
Parabolic SAR: Bearish Parabolic SAR Reversal	Neutral	1. Parabolic SAR 1 day ago above close price 1 day ago for the last 5 days. 2. Parabolic SAR below close price
RSI: Short Term RSI 50 Bullish Crossover	Long	1. RSI(20) crossed above 50 within the last 1 day and RSI(20) 1 day ago below 50 for the last 5 days. 2. Volume above average volume(125). 3. Average volume(5) is above 100,000.
Volume: Volume Spike	Long	1. Volume is more than 500% above average volume(10). 2. Volume above 200000. 3. Close price above 0.10

## CREST BUILDER HOLDINGS BERHAD (8591.MY)

### CRESBLD

Price updated at 13 Jun 2024 17:31

Last: <b>0.615</b>	Change: <b>+0.005</b>	Volume: <b>1,862</b>
	Change (%): <b>+0.82</b>	Range: <b>0.600 - 0.620</b>

TA Scanner Results based on historical data up to 13 Jun 2024

Condition	Signal	Explanation
Accumulation Distribution: Bullish Accumulation Distribution	Long	Accumulation distribution increasing for the last 7 days
Bollinger Band: High Above Upper Bollinger Band	Neutral	1. High above upper bollinger band(14,2). 2. Average volume(5) is above 100,000.
CCI: Bearish CCI Overbought And Reversing	Short	1. CCI(26) above 100 and CCI(26) 1 day ago increasing for the last 3 days. 2. CCI(26) below CCI(26) 1 day ago
Donchian Channels: High Above Upper Donchian Channels	Long	High crossed above the upper Donchian Channel(14,4)
MA: Short Term Bullish Moving Average Crossover	Long	MA(10) crossed above MA(15) within the last 1 day.
Price: New 52 Week High	Long	1. Stock reach a new 52 week high. 2. Average volume(30) is above 50000.
Volume: Volume Spike	Long	1. Volume is more than 500% above average volume(10). 2. Volume above 200000. 3. Close price above 0.10

**Disclaimer:** The information on this page is provided as a service to readers. It does not constitute financial advice and/or any investment recommendations. Past performance is not indicative of future results. We assume no liability for damages resulting from or arising out of the use of such information. It would be best if you did your own research to make your personal investment decisions wisely or consult a licenced investment advisor.

## KERJAYA PROSPEK GROUP BERHAD (7161.MY)

### KERJAYA

Price updated at 13 Jun 2024 17:31

Last: <b>1.920</b>	Change: <b>+0.010</b>	Volume: <b>7,797</b>
	Change (%): <b>+0.52</b>	Range: <b>1.880 - 1.950</b>

TA Scanner Results based on historical data up to 13 Jun 2024

Condition	Signal	Explanation
Bollinger Band: High Above Upper Bollinger Band	Neutral	1. High above upper bollinger band(14,2). 2. Average volume(5) is above 100,000.
DM: Bullish Directional Movement	Long	-DI(14) crossed below +DI(14)
Donchian Channels: High Above Upper Donchian Channels	Long	High crossed above the upper Donchian Channel(14,4)
MACD: Bullish MACD Crossover	Long	1. MACD(12,26) diff line crossed above the MACD(12,26) signal line. 2. MACD Histogram(12,26) is above 0.
Price: New 52 Week High	Long	1. Stock reach a new 52 week high. 2. Average volume(30) is above 50000.
Volume: 10 Days large value Buy Up trade	Long	1. 150K value Buy Up greater than Sell Down by 20% for 10 days. 2. 50K-100K value Buy Up greater than Sell Down by 20% for 10 days. 3. Average volume(10) is above 1000000

## DIVFEX BERHAD (0131.MY)

### DFX

Price updated at 13 Jun 2024 17:30

Last: <b>0.160</b>	Change: <b>+0.005</b>	Volume: <b>139,003</b>
	Change (%): <b>+3.23</b>	Range: <b>0.145 - 0.160</b>

TA Scanner Results based on historical data up to 13 Jun 2024

Condition	Signal	Explanation
Bollinger Band: Bullish Long Term Volatility Breakout and Trending	Long	1. Close price above upper bollinger band(33,1). 2. Volume above average volume(50). 3. Average volume(50) is above 300,000.
Bollinger Band: Bullish Short Term Volatility Breakout and Trending	Long	1. Close price above upper bollinger band(33,1). 2. Volume above average volume(10). 3. Average volume(10) is above 300,000.
Bollinger Band: High Above Upper Bollinger Band	Neutral	1. High above upper bollinger band(14,2). 2. Average volume(5) is above 100,000.
CCI: Bearish CCI Overbought And Reversing	Short	1. CCI(26) above 100 and CCI(26) 1 day ago increasing for the last 3 days. 2. CCI(26) below CCI(26) 1 day ago
DM: Bullish Directional Movement	Long	-DI(14) crossed below +DI(14)
Donchian Channels: High Above Upper Donchian Channels	Long	High crossed above the upper Donchian Channel(14,4)
MACD: Bullish MACD Crossover	Long	1. MACD(12,26) diff line crossed above the MACD(12,26) signal line. 2. MACD Histogram(12,26) is above 0.
Parabolic SAR: Bearish Parabolic SAR Reversal	Neutral	1. Parabolic SAR 1 day ago above close price 1 day ago for the last 5 days. 2. Parabolic SAR below close price
RSI: Short Term RSI 50 Bullish Crossover	Long	1. RSI(20) crossed above 50 within the last 1 day and RSI(20) 1 day ago below 50 for the last 5 days. 2. Volume above average volume(125). 3. Average volume(5) is above 100,000.
Volume: Volume Spike	Long	1. Volume is more than 500% above average volume(10). 2. Volume above 200000. 3. Close price above 0.10



**ONLY WORLD GROUP HOLDINGS BERHAD (5260.MY)**

**OWG**

Price updated at 13 Jun 2024 17:31

Last: <b>0.490</b>	Change: <b>-0.010</b>	Volume: <b>2,053</b>
	Change (%): <b>-2.00</b>	Range: <b>0.490 - 0.500</b>

TA Scanner Results based on historical data up to 13 Jun 2024

Condition	Signal	Explanation
Bollinger Band: Bullish Lower Bollinger Band Support	Long	1. Low 1 day ago below lower bollinger band(20,2). 2. Close above close 1 day ago. 3. Average volume(5) is above 100,000.
Chaikin Volatility: Increasing Chaikin Volatility	Neutral	Chaikin Volatility(10,10) has been increasing for 5 days
DM: Bullish Directional Movement	Long	-DI(14) crossed below +DI(14)
MA: Bullish Price Crossover	Long	1. Close price crossed above MA(40) within the last 1 day. 2. Previous day close price is below the MA(10) for the last 5 days
Parabolic SAR: Bearish Parabolic SAR Reversal	Neutral	1. Parabolic SAR 1 day ago above close price 1 day ago for the last 5 days. 2. Parabolic SAR below close price
RSI: Short Term RSI 50 Bullish Crossover	Long	1. RSI(20) crossed above 50 within the last 1 day and RSI(20) 1 day ago below 50 for the last 5 days. 2. Volume above average volume(125). 3. Average volume(5) is above 100,000.
Stochastic: Fast Stochastic Buy Signal	Long	1. Fast Stochastic(15,5) %K crossed above 20. 2. Fast Stochastic(15,5) %K 1 day ago was below 20 for the last 5 days. 3. Average volume(30) is above 50000



**SENHENG NEW RETAIL BERHAD (5305.MY)**

**SENHENG**

Price updated at 13 Jun 2024 17:31

Last: <b>0.360</b>	Change: -	Volume: <b>35,075</b>
	Change (%): -	Range: <b>0.355 - 0.375</b>

TA Scanner Results based on historical data up to 13 Jun 2024

Condition	Signal	Explanation
Bollinger Band: Bullish Long Term Volatility Breakout and Trending	Long	1. Close price above upper bollinger band(33,1). 2. Volume above average volume(50). 3. Average volume(50) is above 300,000.
Bollinger Band: Bullish Short Term Volatility Breakout and Trending	Long	1. Close price above upper bollinger band(33,1). 2. Volume above average volume(10). 3. Average volume(10) is above 300,000.
Bollinger Band: High Above Upper Bollinger Band	Neutral	1. High above upper bollinger band(14,2). 2. Average volume(5) is above 100,000.
Candlestick: Bullish Engulfing	Long	Bullish: Engulfing
Donchian Channels: High Above Upper Donchian Channels	Long	High crossed above the upper Donchian Channel(14,4)
MACD: Bullish MACD Crossover	Long	1. MACD(12,26) diff line crossed above the MACD(12,26) signal line. 2. MACD Histogram(12,26) is above 0.
Parabolic SAR: Bearish Parabolic SAR Reversal	Neutral	1. Parabolic SAR 1 day ago above close price 1 day ago for the last 5 days. 2. Parabolic SAR below close price
Williams %R: Bearish Williams %R	Short	1. Williams %R(26) between 0 and -20. 2. Average volume(5) is above 100,000.



**KUMPULAN JETSON BERHAD (9083.MY)**

**JETSON**

Price updated at 13 Jun 2024 17:31

Last: <b>0.290</b>	Change: <b>-0.005</b>	Volume: <b>55,378</b>
	Change (%): <b>-1.69</b>	Range: <b>0.280 - 0.300</b>

TA Scanner Results based on historical data up to 13 Jun 2024

Condition	Signal	Explanation
Bollinger Band: Bullish Long Term Volatility Breakout and Trending	Long	1. Close price above upper bollinger band(33,1). 2. Volume above average volume(50). 3. Average volume(50) is above 300,000.
Bollinger Band: Bullish Short Term Volatility Breakout and Trending	Long	1. Close price above upper bollinger band(33,1). 2. Volume above average volume(10). 3. Average volume(10) is above 300,000.
Bollinger Band: High Above Upper Bollinger Band	Neutral	1. High above upper bollinger band(14,2). 2. Average volume(5) is above 100,000.
Donchian Channels: High Above Upper Donchian Channels	Long	High crossed above the upper Donchian Channel(14,4)
MA: Short Term Bullish Moving Average Crossover	Long	MA(10) crossed above MA(15) within the last 1 day.
MACD: Bullish MACD Crossover	Long	1. MACD(12,26) diff line crossed above the MACD(12,26) signal line. 2. MACD Histogram(12,26) is above 0.
Parabolic SAR: Bearish Parabolic SAR Reversal	Neutral	1. Parabolic SAR 1 day ago above close price 1 day ago for the last 5 days. 2. Parabolic SAR below close price



**ATA IMS BERHAD (8176.MY)**

**ATAIMS**

Price updated at 13 Jun 2024 17:31

Last: <b>0.335</b>	Change: -	Volume: <b>47,330</b>
	Change (%): -	Range: <b>0.325 - 0.340</b>

TA Scanner Results based on historical data up to 13 Jun 2024

Condition	Signal	Explanation
Bollinger Band: Bullish Long Term Volatility Breakout and Trending	Long	1. Close price above upper bollinger band(33,1). 2. Volume above average volume(50). 3. Average volume(50) is above 300,000.
Bollinger Band: Bullish Short Term Volatility Breakout and Trending	Long	1. Close price above upper bollinger band(33,1). 2. Volume above average volume(10). 3. Average volume(10) is above 300,000.
Bollinger Band: High Above Upper Bollinger Band	Neutral	1. High above upper bollinger band(14,2). 2. Average volume(5) is above 100,000.
Donchian Channels: High Above Upper Donchian Channels	Long	High crossed above the upper Donchian Channel(14,4)
MACD: Bullish MACD Crossover	Long	1. MACD(12,26) diff line crossed above the MACD(12,26) signal line. 2. MACD Histogram(12,26) is above 0.
Parabolic SAR: Bearish Parabolic SAR Reversal	Neutral	1. Parabolic SAR 1 day ago above close price 1 day ago for the last 5 days. 2. Parabolic SAR below close price
Volume: Volume Spike	Long	1. Volume is more than 500% above average volume(10). 2. Volume above 200000. 3. Close price above 0.10

**Disclaimer:** The information on this page is provided as a service to readers. It does not constitute financial advice and/or any investment recommendations. Past performance is not indicative of future results. We assume no liability for damages resulting from or arising out of the use of such information. It would be best if you did your own research to make your personal investment decisions wisely or consult a licenced investment advisor.



**Dato' Eu Hong Chew**  
Former Group CEO i-Berhad  
Non-Executive Director

He has been associated with the Sumurwang Group for many years charting the path for its manufacturing arm, firstly under Dreamland Holdings Berhad and the subsequent acquisition of I-Berhad.

Before that, he was with PA Management Consulting for a decade where he was the Director of Studies for the Cranfield PA MBA Programme in Malaysia.

Educated at the Royal Military College, Dato' Eu has an engineering degree from the University of Glasgow, and a MBA from the University of Bradford, UK.

# Is MKH a value trap?

## SUMMARY

- MKH Berhad (MKH.6114MY) is today a diversified Group with its Property Development and Plantations segments as the major revenue and profit contributors.
- Its revenue peaked in 2016 but declined, bottoming in 2020, with plantations offsetting declines in property development. Over the past 13 years, MKH averaged 7% ROIC and 8% ROE. These were higher than its WACC and cost of equity, demonstrating value creation despite recent performance declines.
- MKH is financially sound, and my valuation showed that there are margins of safety under both the Asset Value and Earnings Value. It is not a value trap despite past underperformance.

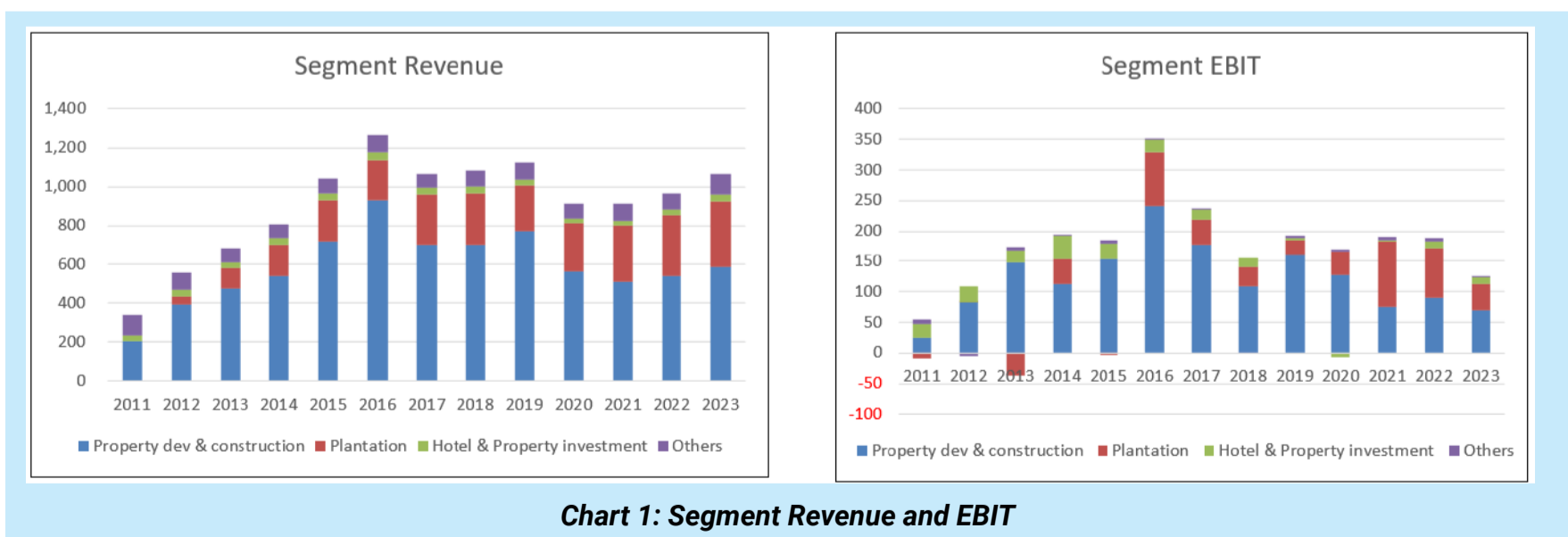
*Disclaimer: This article is written for informational purposes only. It does not constitute a solicitation, offer, advice, counseling or recommendation to buy or sell. As such it is not intended to promote the purchase of shares in any way. As a reminder, any type of asset has a risk factor and needs to be evaluated from multiple perspectives. Therefore, any investment decision and the associated risk remains with the investor. The views expressed here are entirely the writer's own.*

## BACKGROUND

Established in 1979, MKH started as a property developer. Today it is a diversified Group with two major revenue contributors – Property Development and Plantations. A brief history of the Group’s diversification is listed below:

- 1983 – established the building materials trading business.
- 1990 – ventured into furniture manufacturing.
- 1994 – ventured into property investment.
- 2002 – relocated furniture manufacturing to China.
- 2008 – ventured into oil palm plantation with estates in Kalimantan.
- 2024 – listing of the plantation arm under Bursa.

You can see from Chart 1 how the revenue and profit profile of the Group have changed. In the past, the Property Development segment was the main revenue contributor. Today the Plantation segment has become a significant contributor accounting for about 1/3 of the 2023 Group revenue.



\*Please refer to the disclaimer on first page and last page.

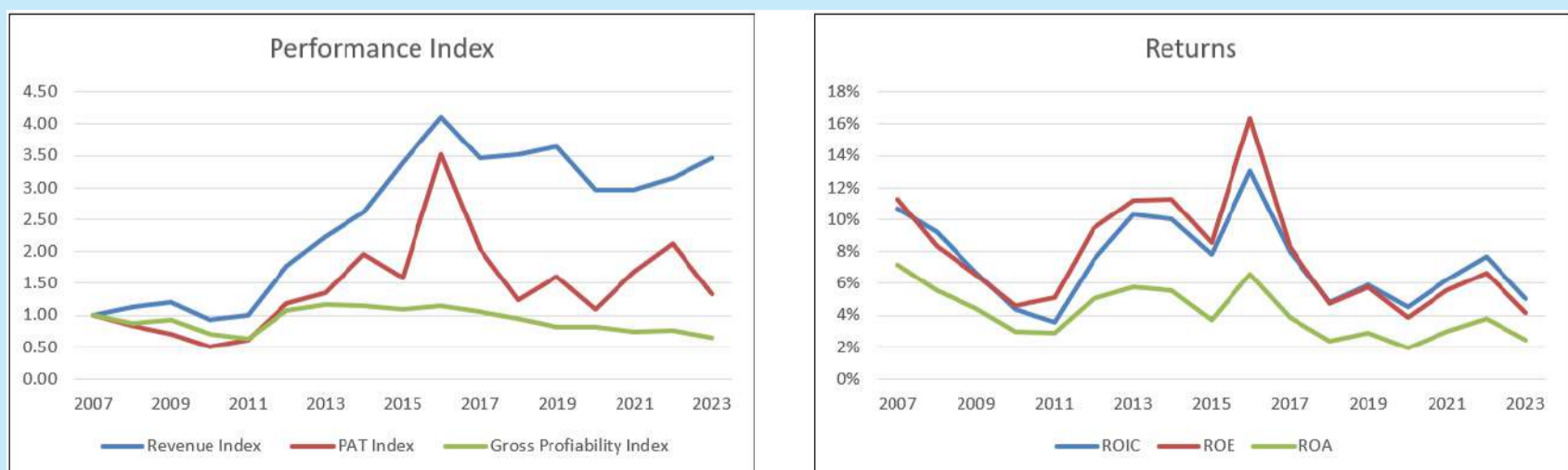
## OPERATING TRENDS

I looked at 3 metrics to get an overview of the overall performance – revenue, PAT, and gross profitability (gross profits / total assets). Refer to the left part of Chart 2.

Revenue grew from 2007 to peak in 2016 and has declined since then. But it seemed to have bottomed in 2020. The left part of Chart 1 shows that the growing Plantation segment revenue offset the declining revenue from the Property Development & Construction segment. PAT generally seemed to follow a similar pattern as that for revenue. But you can see a profit spike in 2016.

- This was due to increased contributions from both the Property and Plantation segments. Refer to the right part of Chart 1.
- Post-2016, the profit contribution from the Plantation segment had become more significant.

The negative sign is that gross profitability has been declining since 2013. In other words, there has not been any improvement in capital efficiency.



**Chart 2: Performance Index and Returns**

**Note to Performance Index chart:** To plot the various metrics onto one chart, I converted them into indices by dividing the values for each year by the respective 2007 values.

Over the past 13 years, returns were volatile, as seen from the right part of Chart 2.

- On average MKH achieved 7% ROIC and 8% ROE.
- Although low, these were higher than the current WACC and cost of equity of 6% and 7% respectively. In other words, despite the declining performance post-2016, MKH managed to create shareholders' value.

Part of reason for the low average return was that not all the segments were pulling their own weights. Table 1 illustrates this. You can see that the best return was from the Plantation and Trading & Manufacturing segments. The return from the Property Development & Construction segment which used almost half of the funds was not exceptional.

Segment	2023 TCE (a) (RM m)	Ave 3 yr EBIT (b) (RM m)	Return c = b / a
Property dev & construction	1,071	79	7%
Plantation	412	77	19%
Hotel & Property investment	375	8	2%
Trading & Mfg	50	5	11%
Others/Consol	422	-0	0%
Total	2,330	169	7%

**Table 1: Segment performance**

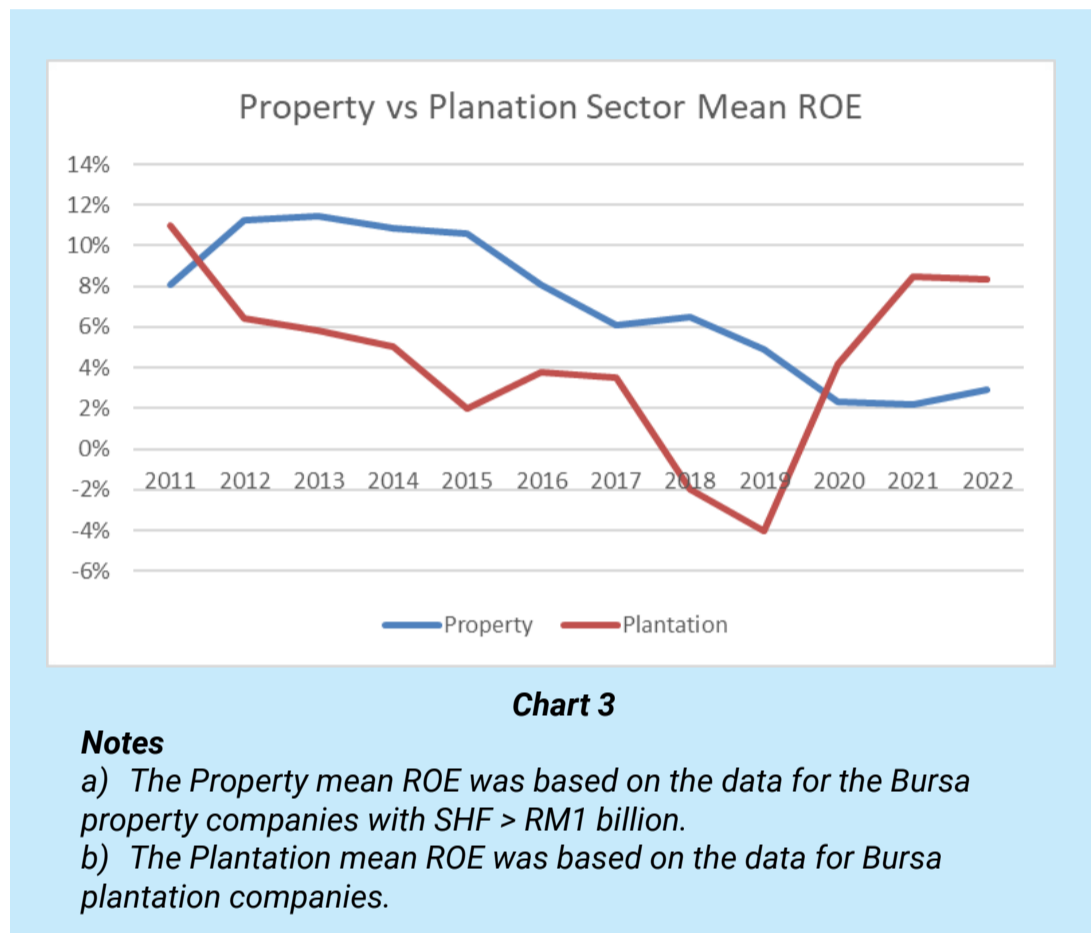
Notes:

a) Total capital employed in 2023. b) Average 2020 to 2023 EBIT

### What are the key takeaways?

- It has to improve the performance of the Property Development & Construction segment in order to deliver better overall performance.

- When you think of MKH today, think beyond property development and construction. Its performance is now affected by 2 different cycles – the property cycle and the plantation cycle. Chart 3 illustrates the differences between these 2 sectors.
- You can see that the plantation sector ROE reached the bottom in 2019 and is now on the uptrend leg. However, the property sector ROE seemed to reach the bottom only in 2020/21 and the recovery is just beginning in 2022. I would expect MKH's performance to be better in the coming years.



## FINANCIAL STRENGTHS

I would rate MKH as financially sound based on the following:

- As of the end of Dec 2023, it had RM236 million cash and short-term securities. This was equivalent to 7% of its total assets.
- It had a debt-equity ratio of 0.2 as of Dec 2023. This has come down from its 2015 high of 0.71.



- Over the past 12 years, it generated positive cash flow from operations every year. During this period, it generated RM1.8 billion from cash flow from operations compared to RM1.3 billion of PAT. This is a good cash conversion ratio.
- The Group also had a reasonable capital allocation plan as shown in Table 2. You can see that its cash flow from operations was well deployed for CAPEX.

Items	Sources	Uses
Cash flow from Op	1,842	
Debt	184	
CAPEX		1,720
Dividends & buybacks		297
Misc		9
<b>Total</b>	<b>2,026</b>	<b>2,026</b>

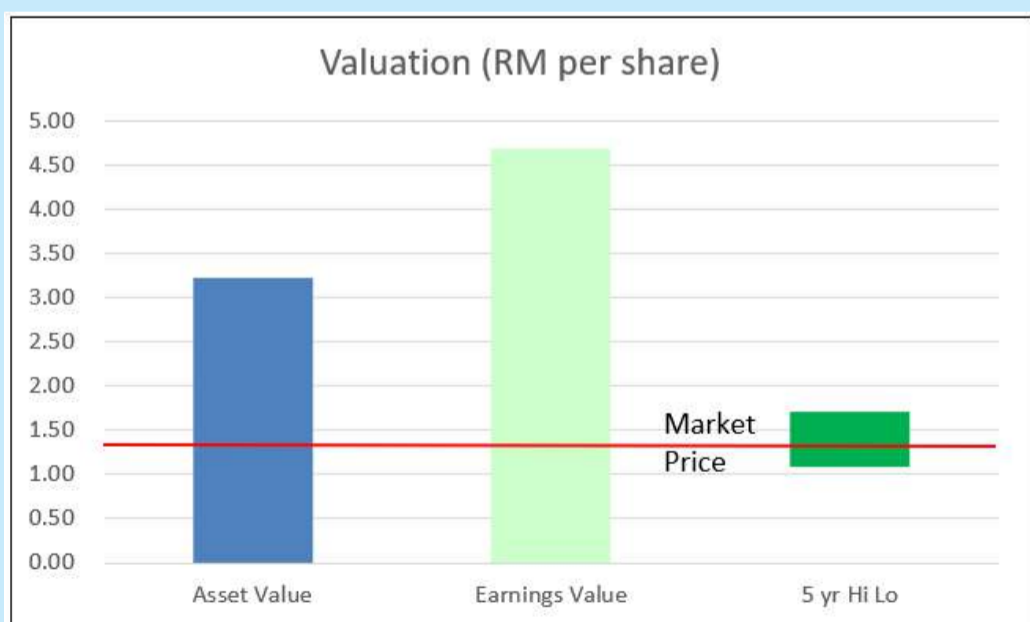
*Table 2: Sources and Uses of Funds 2007 to 2022*

## VALUATION

My valuation of MKH is summarized in Chart 4.

- I estimated its Asset Value as RM3.22 per share
- I estimated its Earnings Value as RM4.68 per share.

The market price for MKH as of 24 May 2024 was RM1.37 per share. You can see that there is more than a 30% margin of safety under both bases.



*Chart 5: Valuation*

## VALUATION MODEL

My Earnings Value of the company was derived based on the average values from 2 valuation approaches:

- Free Cash Flow to the Firm model as per Damodaran.
- Residual Income model as per Penman.

For both models, I used the past 12 years' time-weighted average value to represent the normalized value. The cost of capital used in the model was based on the Capital Asset Pricing Model. I followed Damodaran's approach to determine the Beta and the risk premiums. These resulted in a 6.9% cost of equity and a 5.8% WACC.

Note that part of the reason for the high Earnings Value is because it included RM1.86 per share of non-operating assets. These comprise cash, revaluation surplus, and excess land for development. MKH had land held for development that was acquired more than a decade ago.

- They are mostly recognized in their books at the historical cost. I have estimated a valuation surplus for them.
- I consider some of the land held for development as "excess" relative to the rate of usage. I deemed these as part of the non-operating assets.

But even if you ignore these non-operating assets, there is still more than a 30% margin of safety.

## CONCLUSION

A value trap is an investment that while appearing cheap is facing insurmountable problems. It is cheap for a reason. MKH does not fall into this category. My analysis showed that the Group is financially sound. While its performance was not so good over the past few years compared to the early part of the last decade, this was due to the soft Malaysian property market. The property market is picking up and this would benefit MKH in the coming years. At the same time, its diversification into the plantation sector provided it with another earnings stream.

Both the plantation and property sectors have their respective cycles. But you can imagine the best scenario when both peak around the same time. But I am not even looking at this.

In my valuation, I look at the long-term performance of the Group over the past 12 years' period. With a margin of safety based on this, you can see why I do not consider MKH a value trap.

*I am a long-term value investor who has held onto stocks for more than 5 years. My analysis and valuation are from such a perspective. I consider quarterly results "noisy" and focus on long-term trends.*

*This article was re-purposed from "[MKH – will there be another multi-bagger opportunity?](#)" which was first published on i4value. Asia. Refer to the article for more detailed fundamental analysis and valuation.*

*Disclaimer: This article is written for informational purposes only. It does not constitute a solicitation, offer, advice, counseling or recommendation to buy or sell. As such it is not intended to promote the purchase of shares in any way. As a reminder, any type of asset has a risk factor and needs to be evaluated from multiple perspectives. Therefore, any investment decision and the associated risk remains with the investor. The views expressed here are entirely the writer's own.*



**SIGN UP FOR Invest**  
**IT'S FREE!!!**

[Click here](#)

Scan me



Via email, every Friday.

# UNLOCK THE SECRET OF WEALTH

## DO YOU REALLY WANT TO MASTER VALUE INVESTING



SEE HOW TO GET HIGHER RETURNS WITH LOWER RISK



# KENANGA IB BULLISH ON CONSTRUCTION SECTOR AMID MEGA PROJECTS

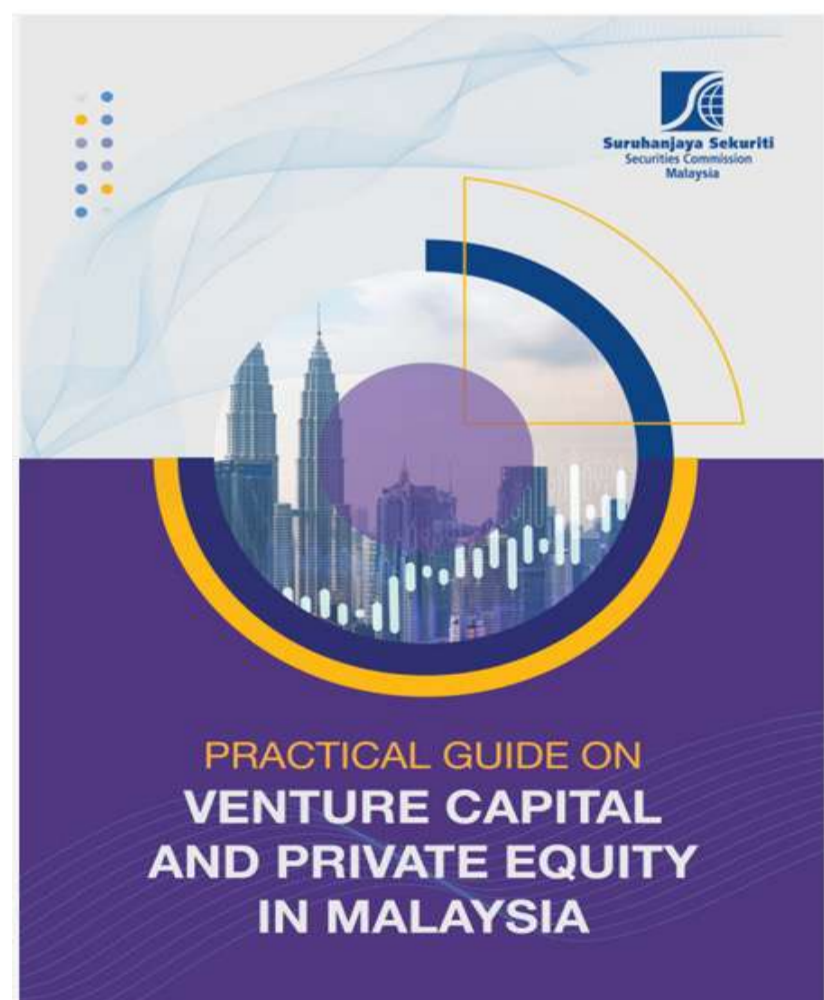
**A**ccording to Kenanga Investment Bank Bhd, it's outlook remains bullish on the construction sector, driven by the impending roll-out of mega infrastructure projects, such as the Mass Rapid Transit Line 3 (MRT3), Pan Borneo Phase 2 and flood mitigation initiatives. In retaining its "overweight" call on the sector, it noted that private-sector building jobs, supported by significant investments in new semiconductor foundries and data centres, will also bolster the sector.

In a note on Thursday, Kenanga IB said that contractors under its coverage delivered a superb first quarter of 2024, with results either meeting or beating expectations. The sector's earnings should improve further throughout the year, as work progresses and new projects come in.

It also noted that in addition to the aforementioned projects, Singapore's Prime Minister Lawrence Wong had reportedly said that the republic is open to new ideas, including proposals for the Kuala Lumpur-Singapore High-Speed Rail (HSR) project. And that this will be discussed at the 11th Malaysia-Singapore Leaders' Retreat, scheduled to be held in Malaysia later this year together with any new ideas that come up.

# SC LAUNCHES FIRST PRACTICAL GUIDE ON VENTURE CAPITAL, PRIVATE EQUITY

The Securities Commission Malaysia (SC) on Thursday issued the first edition of the [Practical Guide on Venture Capital \(VC\) and Private Equity \(PE\) in Malaysia](#). The regulator stated that the guide aims to provide comprehensive practical knowledge to prospective VC and PE fund managers, service providers, and investors navigating Malaysia's regulatory landscape for these sectors.



Key contents of the guide include information on local capital market regulations pertaining to the VC and PE industries, foreign exchange policy, tax matters, fund structuring considerations, and other areas critical to fund operations.

The SC highlighted that issuing the guide is part of its efforts under the Capital Market Masterplan 3 to cultivate a more dynamic private market sector. The initiative supports broader objectives to expand market-based financing options for micro, small, and medium enterprises (MSMEs) and mid-tier companies. The guide will enhance the role of professional fund managers, and cultivate a more vibrant investor base capable of channelling investments into start-ups and high-growth MSMEs.

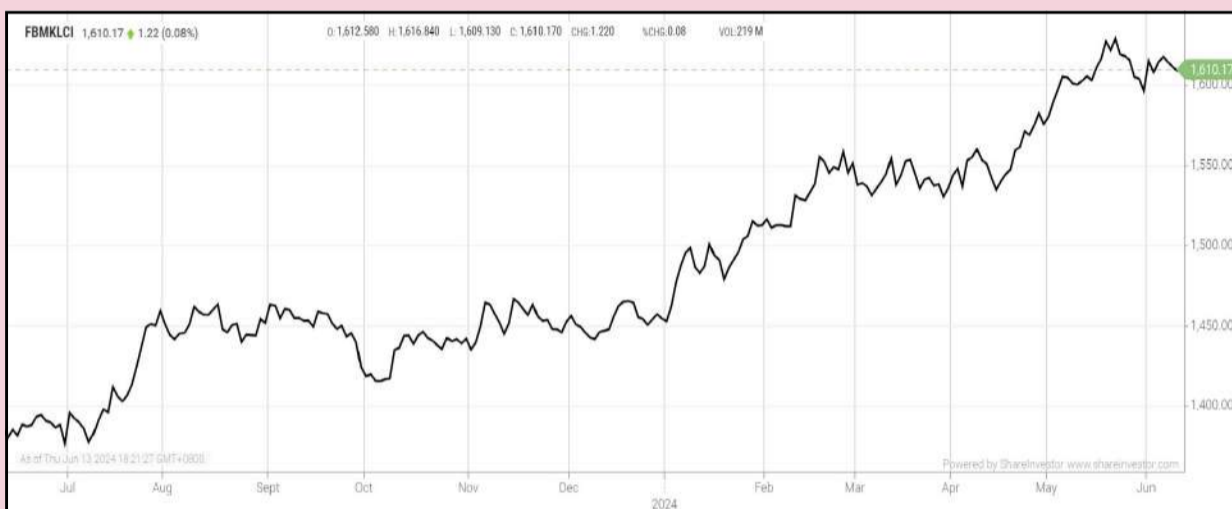
It will also support the national KL20 agenda to establish Malaysia as a leading start-up ecosystem globally by providing practical guidance for prospective fund managers and investors seeking to establish or expand their presence in Malaysia.

According to SC chairman Datuk Seri Dr Awang Adek Hussin, by providing clarity for Malaysia's VC and PE business environment, the SC aims to build a vibrant community of professional investors supporting local entrepreneurs. VC and PE constitute crucial components of Malaysia's alternative financing ecosystem within the capital market.

Total fund commitments for VC and PE reached RM17.85 billion in 2023, up from RM16.08 billion in 2022. Between 2017 and 2023, VC and PE investments accounted for RM5.9 billion of total funds raised in Malaysia's capital market.

## EYE ON THE MARKETS

On Thursday (13 June), the Ringgit closed at 4.7075 against the USD and 3.4900 to the Sing Dollar. On Monday (10 June), the FBM KLCI opened at 1619.24. As at Thursday (13 June) 5:00pm, the FBM KLCI closed down 9.07 points at 1610.17. Over in US, the overnight Dow Jones Industrial Average closed down 65.11 points (-0.17%) to 38,647.10 whilst the NASDAQ gained 57.47 points (+0.33%) to 17,665.90.



KLCI 1 Year Chart

**CHECK OUT**  
**SHAREINVESTOR**  
**BROKERS'**  
**CALL**

Weekly Buy/Sell/Hold calls  
from leading Malaysian Brokerages.

[Go To Brokers' Call](#)

**BUY** **HOLD** **SELL**



## Over 5 trading days



ShareInvestor WebPro ([www.shareinvestor.com/my](http://www.shareinvestor.com/my))

1. Price > Stock Prices
2. Select Market: NASDAQ / NYSE / IDX / SET / HKEX / SGX (One bourse at a time)
3. select Stocks Tab
4. select Ranking Top Gainers or Top Losers (Over 5 Trading Days)
5. Mouse over Column Layout > select Edit Customs > select Name > select Last Done Price > select 5 Days Change > select 52 Weeks High > select 52 Weeks Low > Mouse Over Column Layout > select Custom

### NASDAQ (USD)

#### Top Gainers

Name	Last Done	Change Over 5 Days	52 Weeks High	52 Weeks Low
BROADCOM INC	1,678.990	+277.720	1,465.010	795.090
SUPER MICRO COMPUTER INC	871.100	+93.180	1,229.000	213.080
LAM RESEARCH CORP	1,038.500	+76.310	1,008.500	574.420
MONOLITHIC POWER SYSTEM INC	817.000	+58.390	787.530	392.100
KLA CORPORATION	830.030	+50.770	798.660	440.150

#### Top Losers

Name	Last Done	Change Over 5 Days	52 Weeks High	52 Weeks Low
NVIDIA CORP	129.610	-1,080.370	1,255.870	117.010
MICROSTRATEGY	1,483.880	-172.750	1,999.990	266.000
FIRST CITIZENS BANCSHARES INC NRTH	1,641.490	-54.140	1,810.030	1,181.707
MERCADOLIBRE INC	1,580.530	-40.560	1,825.000	1,063.020
REPLIGEN CORP	125.940	-22.600	211.130	110.450

### NYSE (USD)

#### Top Gainers

Name	Last Done	Change Over 5 Days	52 Weeks High	52 Weeks Low
TEXAS PACIFIC LAND CORPORATION	764.000	+171.250	799.460	422.070
CHIPOTLE MEXICAN GRILL	3,265.260	+96.240	3,293.530	1,768.635
NVR INC	7,657.850	+67.430	8,211.400	5,210.490
FAIR ISAAC CORP	1,379.010	+49.130	1,451.780	764.490
LENNOX INTERNATIONAL INC	540.000	+48.450	537.180	304.355

#### Top Losers

Name	Last Done	Change Over 5 Days	52 Weeks High	52 Weeks Low
BERKSHIRE HATHAWAY INC	611,500.000	-10,791.000	741,971.390	502,000.000
MARKEL GROUP INC	1,550.270	-49.570	1,670.240	1,295.650
BIGLARI HOLDINGS INC	940.030	-39.970	1,077.200	700.000
DECKERS OUTDOOR CORP	1,030.160	-35.270	1,106.890	484.020
HUBSPOT INC	567.000	-31.510	693.850	407.230

### IDX (Rupiah)

#### Top Gainers

Name	Last Done	Change Over 5 Days	52 Weeks High	52 Weeks Low
DIAN SWASTATIKA SENTOSA TBK	220,000.000	+23,000.000	246,000.000	37,300.000
INTI BANGUN SEJAHTERA	6,775.000	+1,935.000	6,900.000	4,000.000
BARITO RENEWABLES ENERGY TBK	8,025.000	+1,325.000	12,200.000	975.000
PETRINDO JAYA KREASI TBK	8,475.000	+1,000.000	13,750.000	740.000
DCI INDONESIA TBK	36,500.000	+900.000	59,050.000	32,525.000

#### Top Losers

Name	Last Done	Change Over 5 Days	52 Weeks High	52 Weeks Low
SINAR MAS MULTIARTHA	14,600.000	-700.000	22,200.000	11,575.000
INDAH KIAT PULP & PAPER	8,750.000	-550.000	11,850.000	7,600.000
UNITED TRACTORS	22,025.000	-550.000	28,775.000	20,925.000
BAYAN RESOURCES TBK	17,300.000	-500.000	21,900.000	14,750.000
GOLDEN ENERGY MINES TBK	6,600.000	-400.000	7,975.000	5,475.000

### SET (Thai Baht)

#### Top Gainers

Name	Last Done	Change Over 5 Days	52 Weeks High	52 Weeks Low
INTUCH	73.250	+6.250	77.500	65.250
ALUCON	174.500	+4.500	190.000	170.000
SSC	39.000	+4.000	39.750	30.000
HANA	45.500	+3.750	66.250	35.250
DELTA	78.500	+3.000	119.500	63.250

#### Top Losers

Name	Last Done	Change Over 5 Days	52 Weeks High	52 Weeks Low
FE	171.000	-20.000	199.500	137.500
AEONTS	133.500	-13.000	199.500	132.000
KWC	265.000	-12.000	362.000	238.000
SCC	226.000	-8.000	336.000	226.000
JTS	62.000	-7.000	93.500	23.200

### HKEX (HKD)

#### Top Gainers

Name	Last Done	Change Over 5 Days	52 Weeks High	52 Weeks Low
QUANTUMPH-P (2228)	5.800	+5.200	6.580	5.310
AAC TECH (2018)	30.850	+4.900	31.750	12.860
BEIGENE (6160)	99.400	+4.500	139.900	75.450
UBTECH ROBOTICS (9880)	163.200	+4.100	328.000	69.800
MEITUAN-W (3690)	116.700	+4.000	150.000	61.100

#### Top Losers

Name	Last Done	Change Over 5 Days	52 Weeks High	52 Weeks Low
SKB BIO-B (6990)	168.700	-17.200	195.000	60.600
OOIL (316)	124.000	-15.700	146.200	91.700
TRIP.COM-S (9961)	393.400	-14.000	452.200	251.400
HKEX (388)	264.000	-9.000	336.000	212.200
HKEX-R (80388)	245.000	-8.600	307.600	196.900

### SGX (SGD)

#### Top Gainers

Name	Last Done	Change Over 5 Days	52 Weeks High	52 Weeks Low
JARDINE C&C	27.050	+0.680	34.900	23.760
DBS	35.840	+0.340	36.150	27.745
IFAST	7.200	+0.230	8.510	4.400
CREATIVE	1.440	+0.170	1.990	1.100
GREAT EASTERN	26.170	+0.170	26.500	16.950

#### Top Losers

Name	Last Done	Change Over 5 Days	52 Weeks High	52 Weeks Low
AZEUS	9.710	-0.930	10.800	7.400
JMH USD	37.040	-0.900	52.570	34.920
NIO Inc. USD OV	4.510	-0.780	15.780	3.730
HONGKONGLAND USD	3.270	-0.200	4.120	2.780
SHANGRI-LA HKD	5.320	-0.150	6.570	4.860

# MINORITY SHAREHOLDERS ARE URGED TO EXERCISE PRUDENT JUDGMENT IN TAKEOVER OFFERS

The recent surge in merger and acquisition (M&A) activities among Malaysian public listed companies (PLCs) can be attributed to challenging market conditions.

These conditions drive companies to merge or acquire others to achieve synergistic benefits, economies of scale, rapid market expansion, entry into new markets, and diversification of products and services. Consequently, many PLCs are targeted for M&A as controlling shareholders seek to reposition their businesses in an evolving market.

## KEY HIGHLIGHTS

- Recently, we have seen a number of PLCs targeted for M&A as controlling shareholders seek to reposition their businesses in an evolving market.
- MSWG suggests minority shareholders conduct thorough analyses before reacting to takeover offers. They should do comprehensive analyses by looking into the details of the proposals from both the offer documents/Circular as well as that of the independent advice circular/letter.

Just last month, there was a flurry of takeover offers, including:

- On 15 May, a Khazanah Nasional Berhad-led consortium unveiled its intention to take Malaysia Airports Holdings Berhad (MAHB) private by offering RM11 apiece for shares that it does not already own.
- On 27 May, NTT Data Japan Corporation (NTTD Japan) unveiled its intention to acquire a 58.73% stake in GHL Systems Berhad for a purchase price of about RM724 million, with a mandatory offer for the remaining shares it does not own at RM1.08 per share.
- On 28 May, YTL Power International Berhad, through its indirect 70%-owned subsidiary SIPP Power Sdn Bhd, offered 99.5 sen/share in Ranhill Utilities Berhad after it scooped up shares related to the company's chairman and chief executive Tan Sri Hamdan Mohamad for RM405.2 million.
- Also, on 28 May, MPHB Capital Berhad said its controlling shareholder and chairman, Tan Sri Surin Upatkoon, plans to take the credit services provider private through a selective capital reduction totalling RM748.11 million. Under the capital repayment proposed by Tan Sri Surin Upatkoon and his family, who together control 43.07% of MPHB, entitled shareholders will receive RM1.70 per share.

## APPRAISING TAKEOVER PROPOSALS

Minority Shareholder Watch Group (MSWG) suggests minority shareholders conduct thorough analyses before reacting to takeover offers. Minority shareholders should be aware that there are four main methods of acquiring control of a PLC in Malaysia, notably via (i) voluntary offer, (ii) mandatory offer, (ii) scheme of

arrangements (SOA), and (iv) acquisition of assets and liabilities (for details, please refer to [Baker McKenzie "Global Public M&A Guide"](#)).

Shareholders should conduct comprehensive analyses by examining the details of the proposals in both the offer documents/Circular and the independent Advice Circular (IAC)/Independent Advice Letter (IAL). Under Paragraph 3.06 of the Rules of Take-Overs, Mergers and Compulsory Acquisitions, the board of directors of the offeree shall appoint an independent adviser (IA) to provide comments, opinions, information and recommendations on the take-over offer in an IAC/IAL. These documents shall contain all information, comments, opinions and recommendations from the IA regarding whether the take-over offer price is fair or reasonable, enabling the shareholder concerned to make an informed decision on the offer.



The following is what the next course of action should be for minority shareholders once the offer document/Circular and IAC/IAL are made available (in no particular order):

## RESEARCH BEFORE REACTING:

It is crucial to peruse the IAC/IAL. Minority shareholders should understand why an offeror is making a potential takeover offer. Generally, the IAC/IAL shall include but not limited to the following information:

- The rationale of the offer
- Valuation of the offeree's shares – is the offer price fair and reasonable?
- IA will select the most appropriate valuation methodologies to assess the offer.
- The offeror's long-term justification for the take-over offer

- The offeror's intentions regarding the offeree company and its employees
- The listing status of the offeree
- Views of the IA and its recommendation to shareholders either to accept or reject the take-over offer based on the fairness and reasonableness of the take-over offer

## **ASSESS THE LISTING STATUS OF THE OFFEREE:**

Understanding the offeror's intention regarding the listing status of the offeree is essential, as this would dictate the availability of options for shareholders to consider a takeover offer. If an offeror intends to maintain the offeree's listing status, shareholders can always realise their investments at prevailing market prices after the closing date. However, prices and trading volume are not guaranteed to remain the same. Conversely, shareholders have limited options if an offeror aims to take the company private and would not address the shortfall in the public shareholding spread. They might end up holding shares in an unlisted entity should they choose not to accept the offer.

But of course, there are cases like FGV Holdings Berhad (FGV), where the offeror tried to take the company private back on 28 December 2020; its notice to shareholders mentioned that it does not intend to maintain FGV's listing status. Nevertheless, the offeror did not successfully take FGV private; FGV remains listed and faces non-compliance with the public shareholding spread under Paragraph 8.02(1) of the Main Market Listing Requirements of Bursa Malaysia Securities Berhad. Subsequently, on 28 August 2023, the Board announced its intention to rectify FGV's non-compliance with the public spread requirement.

## **UNDERSTAND THE ADVICE AND RECOMMENDATIONS FROM THE OFFEREE COMPANY'S INDEPENDENT DIRECTORS:**

Under a proposed selective capital reduction and repayment exercise (proposed SCR), the offer will be put forward to the board of directors (BoD, save for the interested directors) for their deliberations.

Subsequently, the company will decide whether to implement the Proposed SCR for shareholders' consideration and approval in an extraordinary general meeting. The BoD is entitled to make enquiries to satisfy themselves and ensure that the offeror can implement the offer. Then, in the circular to the entitled shareholders, the BoD shall make a statement about whether the SCR offer is fair, reasonable and in the best interests of the company and shall recommend to the company's entitled shareholders whether they should vote in favour of accepting the SCR Offer. Similarly, the BoD would also provide its recommendations for takeover offers to shareholders.

## **EVALUATE THE FAIRNESS AND REASONABLENESS OF THE OFFER:**

In the case of a take-over offer (either voluntary or mandatory), upon the receipt of the offer document from an offeror, the board of the offeree shall appoint an IA to provide comments, opinions, information and recommendations on a take-over offer in an IAC. The IA shall be responsible for all comments, opinions, information, and recommendations disclosed in the IAC. An IA shall determine what information it requires to form its views, opinions and recommendations on a take-over or merger transaction. Meanwhile, the offeree shall provide full access to the relevant premises and documents to the IA so that the latter can perform its duties.

# CONCLUSION

We urge minority shareholders to conduct their comprehensive analysis by examining the granular details of the proposals in both the offer documents/Circular and the IAC/IAL. It is paramount not to rely solely on hearsay from unlicensed and non-qualified social media gurus or influencers, commentators, and bloggers alike. Consult a financial professional adviser if minority shareholders have any doubts about the course of action to be taken regarding take-over offers.

As always, minority shareholders should make their own informed investment decisions according to their respective risk appetites. The decision is yours.

By MSWG Team



Learn how to identify Hot Stocks using Technical Analysis (TA) and Fundamental Analysis (FA)

**SIGN UP FOR Invest NOW IT'S FREE!!!**

[Click here](#)

Scan me



Via email, every Friday.

Get market moving news and analyses. Regular columns include **Behind The Action** and **From The Observer**

- Leaderboard
- Shariah Hot Stocks
- Shariah Momentum Up Stocks
- Non Shariah Hot Stocks
- Up Trending Stocks
- Growth Stocks
- Dividend Stocks
- Long Companies
- Insider Activity
- Investor Relations
- Regional Markets



**DEFINITION:** Insider Activity shows the trades made by substantial shareholders or directors of the company. Purchases by the directors and company share buyback may indicate the share price is undervalued and brings confidence to the price trend of the share price.



ShareInvestor WebPro > Fundamental > Insider Trades > click Search tab > Select Bursa > click Stock name > scroll up and leave at <Select Counter> Type Date Range for Announcement Date > click Search

Notice Period is 2nd June 2024 – 8th June 2024

Effective Change Date	Stock Name	Buyer/ Seller Name [Classification]	Bought / (Sold) ['000]		No. of Shares After Trade ['000]	
			Total	% Held	Total	% Held
05 JUN 2024 - 06 JUN 2024	3A	MR TEO KWEE HOCK [SSH]	336		50,370	10.301
31 MAY 2024 - 04 JUN 2024	3A	MR TEO KWEE HOCK [SSH]	63		50,034	10.232
04 JUN 2024 - 04 JUN 2024	AMB	EMPLOYEES PROVIDENT FUND BOARD [SSH]	-250		156,375	10.101
06 JUN 2024 - 06 JUN 2024	ACME	MR GOH CHOON LYE [SSH]	-890		44,226	12.033
06 JUN 2024 - 06 JUN 2024	ACME	WWT WELLNESS SOLUTIONS SDN BHD [SSH]	-890		44,226	12.033
06 JUN 2024 - 06 JUN 2024	AGX	PUAN AIDA MOSIRA BINTI MOKHTAR [DIR/CEO]	-10		24	0.006
04 JUN 2024 - 04 JUN 2024	ALPHA	DATO DR LEE SOON SOO [SSH]	5,197		2,141,828	44.071
04 JUN 2024 - 04 JUN 2024	ALPHA	DATO' DR LEE SOON SOO [DIR/CEO]	5,197		2,141,828	44.071
04 JUN 2024 - 04 JUN 2024	AMBANK	EMPLOYEES PROVIDENT FUND BOARD [SSH]	-1,770		535,056	16.181
31 MAY 2024 - 31 MAY 2024	AMBANK	EMPLOYEES PROVIDENT FUND BOARD [SSH]	63,420		537,326	16.249
30 MAY 2024 - 04 JUN 2024	ANCOMNY	DATO' SIEW KA WEI [DIR/CEO]	188		156,886	16.384
30 MAY 2024 - 31 MAY 2024	ANCOMNY	DATO' SIEW KA WEI [DIR/CEO]	40		17,927	19.676
30 MAY 2024 - 04 JUN 2024	ANCOMNY	DATO' SIEW KA WEI [SSH]	188		156,886	16.384
29 MAY 2024 - 29 MAY 2024	ANCOMNY	MR LEE CHEUN WEI [DIR/CEO]	2,000		96,378	10.065
29 MAY 2024 - 29 MAY 2024	ANCOMNY	MR LEE CHEUN WEI [SSH]	2,000		96,378	10.065
05 JUN 2024 - 05 JUN 2024	APB	MR KANG WEI LUEN [DIR/CEO]	56		56	0.05
06 JUN 2024 - 06 JUN 2024	APPASIA	MR TOH HONG CHYE [DIR/CEO]	1,000		305,720	27.269
06 JUN 2024 - 06 JUN 2024	APPASIA	MR TOH HONG CHYE [SSH]	1,000		305,720	27.269
05 JUN 2024 - 05 JUN 2024	APPASIA	MR TOH HONG CHYE [DIR/CEO]	1,000		304,720	27.18
05 JUN 2024 - 05 JUN 2024	APPASIA	MR TOH HONG CHYE [SSH]	1,000		304,720	27.18
31 MAY 2024 - 31 MAY 2024	ASIAPLY	MR LIM TECK SENG [DIR/CEO]	350		3,650	0.381
04 JUN 2024 - 04 JUN 2024	AXIATA	EMPLOYEES PROVIDENT FUND BOARD [SSH]	2,055		1,661,644	18.097
31 MAY 2024 - 31 MAY 2024	AXIATA	EMPLOYEES PROVIDENT FUND BOARD [SSH]	4,000		1,659,590	18.075
30 MAY 2024 - 30 MAY 2024	AXIATA	EMPLOYEES PROVIDENT FUND BOARD [SSH]	159		1,655,590	18.031
29 MAY 2024 - 29 MAY 2024	AXIATA	EMPLOYEES PROVIDENT FUND BOARD [SSH]	3,000		1,655,431	18.029
28 MAY 2024 - 28 MAY 2024	AXIATA	EMPLOYEES PROVIDENT FUND BOARD [SSH]	3,679		1,652,431	17.997
30 MAY 2024 - 30 MAY 2024	AXREIT	EMPLOYEES PROVIDENT FUND BOARD [SSH]	131		303,380	17.361
04 JUN 2024 - 04 JUN 2024	BAUTO	EMPLOYEES PROVIDENT FUND BOARD [SSH]	405		156,111	13.369
31 MAY 2024 - 31 MAY 2024	BAUTO	EMPLOYEES PROVIDENT FUND BOARD [SSH]	1,606		155,705	13.335
30 MAY 2024 - 30 MAY 2024	BAUTO	EMPLOYEES PROVIDENT FUND BOARD [SSH]	3,000		153,915	13.181
29 MAY 2024 - 29 MAY 2024	BAUTO	EMPLOYEES PROVIDENT FUND BOARD [SSH]	1,093		150,912	12.924
04 JUN 2024 - 04 JUN 2024	BIMB	EMPLOYEES PROVIDENT FUND BOARD [SSH]	12		390,405	17.225
31 MAY 2024 - 31 MAY 2024	BIMB	EMPLOYEES PROVIDENT FUND BOARD [SSH]	-287		390,393	17.225
30 MAY 2024 - 30 MAY 2024	BIMB	EMPLOYEES PROVIDENT FUND BOARD [SSH]	100		390,680	17.237
04 JUN 2024 - 05 JUN 2024	BJCORP	TAN SRI DATO' SERI VINCENT TAN CHEE YIUON [SSH]	3,164		948,764	16.244
04 JUN 2024 - 04 JUN 2024	BURSA	EMPLOYEES PROVIDENT FUND BOARD [SSH]	-1,000		86,825	10.728
31 MAY 2024 - 31 MAY 2024	BURSA	EMPLOYEES PROVIDENT FUND BOARD [SSH]	-4		87,565	10.82
31 MAY 2024 - 31 MAY 2024	BURSA	EMPLOYEES PROVIDENT FUND BOARD [SSH]	260		87,825	10.852
30 MAY 2024 - 30 MAY 2024	BURSA	EMPLOYEES PROVIDENT FUND BOARD [SSH]	260		87,569	10.82
30 MAY 2024 - 30 MAY 2024	BURSA	EMPLOYEES PROVIDENT FUND BOARD [SSH]	-1,200		87,309	10.788
29 MAY 2024 - 29 MAY 2024	BURSA	EMPLOYEES PROVIDENT FUND BOARD [SSH]	-340		88,509	10.936
31 MAY 2024 - 31 MAY 2024	CAB	MADAM CHAN KIM KEOW [SSH]	127		123,282	17.578
31 MAY 2024 - 31 MAY 2024	CAB	MR CHUAH AH BEE [DIR/CEO]	127		321,315	45.814
31 MAY 2024 - 31 MAY 2024	CAB	MR CHUAH AH BEE [SSH]	127		321,315	45.814
31 MAY 2024 - 31 MAY 2024	CAB	MR CHUAH HOON PHONG [DIR/CEO]	127		14,871	2.12
04 JUN 2024 - 06 JUN 2024	CHINHIN	DATUK SERI CHIAU BENG TEIK JP [DIR/CEO]	11,160		2,042,116	57.706
04 JUN 2024 - 06 JUN 2024	CHINHIN	DATUK SERI CHIAU BENG TEIK JP [SSH]	11,160		2,042,116	57.706
31 MAY 2024 - 31 MAY 2024	CHINHIN	DATUK SERI CHIAU BENG TEIK JP [DIR/CEO]	-29,221		2,030,956	57.391
31 MAY 2024 - 31 MAY 2024	CHINHIN	DATUK SERI CHIAU BENG TEIK JP [SSH]	-29,221		2,030,956	57.391
31 MAY 2024 - 31 MAY 2024	CHINHIN	DIVINE INVENTIONS SDN BHD [SSH]	-29,221		1,313,690	37.122
31 MAY 2024 - 31 MAY 2024	CHINHIN	MR CHIAU HAW CHOON [DIR/CEO]	-29,221		1,517,258	42.874
31 MAY 2024 - 31 MAY 2024	CHINHIN	MR CHIAU HAW CHOON [SSH]	-29,221		1,517,258	42.874
31 MAY 2024 - 31 MAY 2024	CHINHIN	PP CHIN HIN REALTY SDN BHD [SSH]	-29,221		1,313,690	37.122
05 JUN 2024 - 05 JUN 2024	CIMB	KUMPULAN WANG PERSARAAN (DIPERBADANKAN) [SSH]	-500		668,360	6.26
31 MAY 2024 - 31 MAY 2024	CIMB	EMPLOYEES PROVIDENT FUND BOARD [SSH]	5,121		1,637,493	15.33
30 MAY 2024 - 30 MAY 2024	CIMB	EMPLOYEES PROVIDENT FUND BOARD [SSH]	3,824		1,632,372	15.28
29 MAY 2024 - 29 MAY 2024	CIMB	EMPLOYEES PROVIDENT FUND BOARD [SSH]	8,632		1,628,548	15.25
28 MAY 2024 - 28 MAY 2024	CIMB	EMPLOYEES PROVIDENT FUND BOARD [SSH]	6,222		1,619,916	15.17
04 JUN 2024 - 04 JUN 2024	CLMT	EMPLOYEES PROVIDENT FUND BOARD [SSH]	450		430,113	15.175
31 MAY 2024 - 31 MAY 2024	CLMT	EMPLOYEES PROVIDENT FUND BOARD [SSH]	813		429,663	15.16
30 MAY 2024 - 30 MAY 2024	CLMT	EMPLOYEES PROVIDENT FUND BOARD [SSH]	-800		428,850	15.131
29 MAY 2024 - 29 MAY 2024	CLMT	EMPLOYEES PROVIDENT FUND BOARD [SSH]	1,403		429,650	15.159
04 JUN 2024 - 04 JUN 2024	CLOUDPT	ERA JASAKITA SDN. BHD. [SSH]	-2,600		217,111	40.841
04 JUN 2024 - 04 JUN 2024	CLOUDPT	MISS SOO KIT TENG [DIR/CEO]	-1,600		3,586	0.675
04 JUN 2024 - 04 JUN 2024	CLOUDPT	MR CHOONG WAI HOONG [DIR/CEO]	-2,600		260,183	48.943
04 JUN 2024 - 04 JUN 2024	CLOUDPT	MR CHOONG WAI HOONG [SSH]	-2,600		260,183	48.943
04 JUN 2024 - 04 JUN 2024	CLOUDPT	MR YEW CHOONG CHEONG [DIR/CEO]	-2,600		260,183	48.943
04 JUN 2024 - 04 JUN 2024	CLOUDPT	MR YEW CHOONG CHEONG [SSH]	-2,600		260,183	48.943
31 MAY 2024 - 31 MAY 2024	CMSB	LEMBAGA TABUNG HAJI [SSH]	-400		73,080	6.803

Notice Period is 2nd June 2024 – 8th June 2024

Effective Change Date	Stock Name	Buyer/ Seller Name [Classification]	Bought / (Sold) ['000]		No. of Shares After Trade ['000]	
			Total	% Held	Total	% Held
05 JUN 2024 - 05 JUN 2024	CTOS	ABRDN HOLDINGS LIMITED [SSH]	1,484		277,171	11.999
05 JUN 2024 - 05 JUN 2024	CTOS	ABRDN MALAYSIA SDN BHD [SSH]	1,484		274,836	11.898
05 JUN 2024 - 05 JUN 2024	CTOS	ABRDN PLC [SSH]	1,484		277,171	11.999
04 JUN 2024 - 04 JUN 2024	CTOS	EMPLOYEES PROVIDENT FUND BOARD [SSH]	804		345,903	14.974
04 JUN 2024 - 04 JUN 2024	CTOS	ABRDN HOLDINGS LIMITED [SSH]	804		275,687	11.935
04 JUN 2024 - 04 JUN 2024	CTOS	ABRDN MALAYSIA SDN BHD [SSH]	804		273,352	11.833
04 JUN 2024 - 04 JUN 2024	CTOS	ABRDN PLC [SSH]	804		275,687	11.935
31 MAY 2024 - 31 MAY 2024	CTOS	EMPLOYEES PROVIDENT FUND BOARD [SSH]	1,750		344,944	14.933
30 MAY 2024 - 30 MAY 2024	CTOS	EMPLOYEES PROVIDENT FUND BOARD [SSH]	303		343,194	14.857
31 MAY 2024 - 31 MAY 2024	CTOS	ABRDN HOLDINGS LIMITED [SSH]	1,750		274,883	11.9
31 MAY 2024 - 31 MAY 2024	CTOS	ABRDN MALAYSIA SDN BHD [SSH]	1,750		272,548	11.799
31 MAY 2024 - 31 MAY 2024	CTOS	ABRDN PLC [SSH]	1,750		274,883	11.9
30 MAY 2024 - 30 MAY 2024	CTOS	ABRDN HOLDINGS LIMITED [SSH]	303		273,133	11.824
30 MAY 2024 - 30 MAY 2024	CTOS	ABRDN MALAYSIA SDN BHD [SSH]	303		270,798	11.723
30 MAY 2024 - 30 MAY 2024	CTOS	ABRDN PLC [SSH]	303		273,133	11.824
29 MAY 2024 - 29 MAY 2024	CTOS	EMPLOYEES PROVIDENT FUND BOARD [SSH]	1,250		342,891	14.844
06 JUN 2024 - 06 JUN 2024	CYPARK	MR CHUNG CHEE YANG [SSH]	300		48,195	5.857
31 MAY 2024 - 31 MAY 2024	CYPARK	MOHAMED NIZAM BIN MOHAMED JAKEL [SSH]	675		191,515	23.276
04 JUN 2024 - 04 JUN 2024	CYPARK	MR CHUNG CHEE YANG [SSH]	300		47,895	5.821
31 MAY 2024 - 31 MAY 2024	CYPARK	MR CHUNG CHEE YANG [SSH]	200		47,595	5.784
04 JUN 2024 - 04 JUN 2024	D&O	EMPLOYEES PROVIDENT FUND BOARD [SSH]	1,040		90,430	7.299
31 MAY 2024 - 31 MAY 2024	D&O	EMPLOYEES PROVIDENT FUND BOARD [SSH]	-15		89,390	7.218
30 MAY 2024 - 30 MAY 2024	D&O	EMPLOYEES PROVIDENT FUND BOARD [SSH]	-211		89,405	7.219
29 MAY 2024 - 29 MAY 2024	D&O	EMPLOYEES PROVIDENT FUND BOARD [SSH]	40		89,616	7.236
05 JUN 2024 - 06 JUN 2024	DFX	DATO' SRI THONG KOK KHEE [SSH]	2,500		213,866	28.679
05 JUN 2024 - 06 JUN 2024	DFX	INSAS BERHAD [SSH]	2,500		213,866	28.679
05 JUN 2024 - 06 JUN 2024	DFX	INSAS TECHNOLOGY BERHAD [SSH]	2,500		213,866	28.678
04 JUN 2024 - 05 JUN 2024	DFX	DATUK WIRA LAU CHI CHIANG [DIR/CEO]	-7,944		20	0.003
06 JUN 2024 - 06 JUN 2024	DIALOG	KUMPULAN WANG PERSARAAN (DIPERBADANKAN) [SSH]	598		618,318	10.95
05 JUN 2024 - 05 JUN 2024	DIALOG	AU HOLDINGS (L) LTD [SSH]	2,260		446,463	7.91
05 JUN 2024 - 05 JUN 2024	DIALOG	AZAM UTAMA SDN. BHD. [SSH]	2,260		446,463	7.91
05 JUN 2024 - 05 JUN 2024	DIALOG	KEATEE (L) FOUNDATION [SSH]	2,260		446,463	7.91
05 JUN 2024 - 05 JUN 2024	DIALOG	KEATIM (L) FOUNDATION [SSH]	3,448		452,095	8.01
05 JUN 2024 - 05 JUN 2024	DIALOG	WIDE SYNERGY SDN. BHD. [SSH]	3,448		452,095	8.01
05 JUN 2024 - 05 JUN 2024	DIALOG	WS HOLDINGS (L) LTD [SSH]	3,448		452,095	8.01
04 JUN 2024 - 04 JUN 2024	DIALOG	EMPLOYEES PROVIDENT FUND BOARD [SSH]	813		904,248	16.03
05 JUN 2024 - 05 JUN 2024	DIALOG	KUMPULAN WANG PERSARAAN (DIPERBADANKAN) [SSH]	-314		617,720	10.94
04 JUN 2024 - 04 JUN 2024	DIALOG	KUMPULAN WANG PERSARAAN (DIPERBADANKAN) [SSH]	-550		618,033	10.95
30 MAY 2024 - 30 MAY 2024	DIALOG	EMPLOYEES PROVIDENT FUND BOARD [SSH]	-2,063		903,435	16.01
29 MAY 2024 - 29 MAY 2024	DIALOG	EMPLOYEES PROVIDENT FUND BOARD [SSH]	-1,050		905,498	16.05
04 JUN 2024 - 04 JUN 2024	DRBHCORP	EMPLOYEES PROVIDENT FUND BOARD [SSH]	1,000		163,324	8.448
31 MAY 2024 - 31 MAY 2024	DRBHCORP	EMPLOYEES PROVIDENT FUND BOARD [SSH]	460		162,324	8.397
06 JUN 2024 - 06 JUN 2024	DSOINIC	DATO SAFIAN BIN MOHD YUNUS [SSH]	-1,000		410,009	14.7
31 MAY 2024 - 31 MAY 2024	DSOINIC	DEMI MEKAR SDN BHD [SSH]	-4,128		153,846	5.516
06 JUN 2024 - 06 JUN 2024	E&O	KUMPULAN WANG PERSARAAN (DIPERBADANKAN) [SSH]	5,189		108,058	5.337
04 JUN 2024 - 04 JUN 2024	ECONBHD	MR PANG SAR [DIR/CEO]	-30,000		247,000	17.425
04 JUN 2024 - 04 JUN 2024	ECONBHD	MR PANG SAR [SSH]	-30,000		247,000	17.425
31 MAY 2024 - 31 MAY 2024	ECONBHD	EMPLOYEES PROVIDENT FUND BOARD [SSH]	-481		102,454	7.228
30 MAY 2024 - 30 MAY 2024	ECONBHD	EMPLOYEES PROVIDENT FUND BOARD [SSH]	-74		102,936	7.262
29 MAY 2024 - 29 MAY 2024	ECONBHD	EMPLOYEES PROVIDENT FUND BOARD [SSH]	-19		103,009	7.267
05 JUN 2024 - 05 JUN 2024	EITA	JASA SIMBOLIK SDN. BHD. [SSH]	10		27,247	9.028
05 JUN 2024 - 05 JUN 2024	EITA	MADAM GOH KIN BEE [SSH]	14		43,604	14.448
05 JUN 2024 - 05 JUN 2024	EITA	MR LIM JOO SWEE [DIR/CEO]	14		43,711	14.483
05 JUN 2024 - 05 JUN 2024	EITA	MR LIM JOO SWEE [SSH]	14		43,711	14.483
04 JUN 2024 - 05 JUN 2024	ELKDESA	MR TEOH HOCK CHAI @ TEW HOCK CHAI [SSH]	272		194,400	42.744
04 JUN 2024 - 05 JUN 2024	ELKDESA	MR TEOH HOCK CHAI@TEW HOCK CHAI [DIR/CEO]	272		194,400	42.744
05 JUN 2024 - 05 JUN 2024	EPMB	MR PETER THIEN @ PETER THIEN SHIN FOH [DIR/CEO]	100		204	0.093
04 JUN 2024 - 04 JUN 2024	F&N	EMPLOYEES PROVIDENT FUND BOARD [SSH]	-41		41,248	11.246
31 MAY 2024 - 31 MAY 2024	F&N	EMPLOYEES PROVIDENT FUND BOARD [SSH]	239		41,289	11.257
30 MAY 2024 - 30 MAY 2024	F&N	EMPLOYEES PROVIDENT FUND BOARD [SSH]	2		41,050	11.192
29 MAY 2024 - 29 MAY 2024	F&N	EMPLOYEES PROVIDENT FUND BOARD [SSH]	-38		41,048	11.192
06 JUN 2024 - 06 JUN 2024	FAREAST	DATO' ASMIN BINTI YAHYA [DIR/CEO]	0.3		340	0.06
04 JUN 2024 - 04 JUN 2024	FFB	EMPLOYEES PROVIDENT FUND BOARD [SSH]	388		210,248	11.229
29 MAY 2024 - 29 MAY 2024	FFB	EMPLOYEES PROVIDENT FUND BOARD [SSH]	46,810		209,856	11.208
05 JUN 2024 - 05 JUN 2024	FOCUSP					



Notice Period is 2nd June 2024 – 8th June 2024

Effective Change Date	Stock Name	Buyer/ Seller Name [Classification]	Bought / (Sold) ('000)		No. of Shares After Trade ('000)	
			Total	Total	% Held	
30 MAY 2024 - 30 MAY 2024	FOCUSP	PERBADANAN NASIONAL BERHAD [SSH]	-517	50,797	10.995	
04 JUN 2024 - 04 JUN 2024	FRONTKN	EMPLOYEES PROVIDENT FUND BOARD [SSH]	1,417	167,806	10.669	
31 MAY 2024 - 31 MAY 2024	FRONTKN	EMPLOYEES PROVIDENT FUND BOARD [SSH]	-527	166,389	10.578	
30 MAY 2024 - 30 MAY 2024	FRONTKN	EMPLOYEES PROVIDENT FUND BOARD [SSH]	-750	166,917	10.612	
29 MAY 2024 - 29 MAY 2024	FRONTKN	EMPLOYEES PROVIDENT FUND BOARD [SSH]	1,209	167,666	10.66	
04 JUN 2024 - 04 JUN 2024	GAMUDA	EMPLOYEES PROVIDENT FUND BOARD (EPF BOARD) [SSH]	-1,000	256,434	9.26	
31 MAY 2024 - 31 MAY 2024	GAMUDA	EMPLOYEES PROVIDENT FUND BOARD (EPF BOARD) [SSH]	1,960	257,434	9.29	
30 MAY 2024 - 30 MAY 2024	GAMUDA	EMPLOYEES PROVIDENT FUND BOARD (EPF BOARD) [SSH]	-1,095	255,474	9.22	
29 MAY 2024 - 29 MAY 2024	GAMUDA	EMPLOYEES PROVIDENT FUND BOARD (EPF BOARD) [SSH]	578	256,569	9.26	
04 JUN 2024 - 04 JUN 2024	GASMSIA	EMPLOYEES PROVIDENT FUND BOARD [SSH]	232	69,305	5.397	
30 MAY 2024 - 30 MAY 2024	GASMSIA	EMPLOYEES PROVIDENT FUND BOARD [SSH]	-300	69,140	5.384	
29 MAY 2024 - 29 MAY 2024	GASMSIA	EMPLOYEES PROVIDENT FUND BOARD [SSH]	-74	69,440	5.408	
30 MAY 2024 - 30 MAY 2024	GENETEC	EMPLOYEES PROVIDENT FUND BOARD [SSH]	146	55,768	7.181	
29 MAY 2024 - 29 MAY 2024	GENETEC	EMPLOYEES PROVIDENT FUND BOARD [SSH]	1,230	55,622	7.162	
04 JUN 2024 - 04 JUN 2024	GENP	EMPLOYEES PROVIDENT FUND BOARD [SSH]	20	117,465	13.093	
31 MAY 2024 - 31 MAY 2024	GENP	EMPLOYEES PROVIDENT FUND BOARD [SSH]	46	117,446	13.091	
30 MAY 2024 - 30 MAY 2024	GENP	EMPLOYEES PROVIDENT FUND BOARD [SSH]	490	117,399	13.086	
31 MAY 2024 - 31 MAY 2024	GREATEC	MR KHOR LEAN HENG [DIR/CEO]	60	1,459	0.116	
05 JUN 2024 - 06 JUN 2024	HEXRTL	DATO' ONG CHOO MENG [SSH]	6,698	126,472	32.48	
05 JUN 2024 - 06 JUN 2024	HEXRTL	HEXTAR PORTFOLIO SDN BHD (FORMERLY KNOWN AS GETSMART INNOVATION SDN. BHD.) [SSH]	42,863	76,472	19.639	
31 MAY 2024 - 04 JUN 2024	HEXRTL	DATO' ONG CHOO MENG [SSH]	3,883	119,773	30.76	
31 MAY 2024 - 31 MAY 2024	HEXTAR	DATO' ONG CHOO MENG [SSH]	-36,630	2,376,611	61.316	
31 MAY 2024 - 31 MAY 2024	HEXTAR	DATO' ONG SOON HO [DIR/CEO]	-36,630	2,376,611	61.315	
31 MAY 2024 - 31 MAY 2024	HEXTAR	DATO' ONG SOON HO [SSH]	-36,630	2,376,611	61.315	
31 MAY 2024 - 31 MAY 2024	HEXTAR	HEXTAR HOLDINGS SDN. BHD. [SSH]	-26,630	2,034,916	52.5	
06 JUN 2024 - 06 JUN 2024	HHRG	MR GOH BOON LEONG [SSH]	-4,000	187,764	21.626	
31 MAY 2024 - 31 MAY 2024	HHRG	MR CH'NG CHEN MONG [SSH]	-1,291	160,151	18.446	
31 MAY 2024 - 31 MAY 2024	HLBANK	EMPLOYEES PROVIDENT FUND BOARD [SSH]	283	203,829	9.768	
30 MAY 2024 - 30 MAY 2024	HLBANK	EMPLOYEES PROVIDENT FUND BOARD [SSH]	238	203,545	9.755	
29 MAY 2024 - 29 MAY 2024	HLBANK	EMPLOYEES PROVIDENT FUND BOARD [SSH]	397	203,308	9.743	
04 JUN 2024 - 04 JUN 2024	HOHUP	DATIN CHAN BEE LENG [DIR/CEO]	-600	60,619	11.696	
04 JUN 2024 - 04 JUN 2024	HOHUP	DATIN CHAN BEE LENG [SSH]	-600	60,619	11.696	
04 JUN 2024 - 04 JUN 2024	HOHUP	DATO' LOW TUCK CHOY [SSH]	-600	60,619	11.696	
04 JUN 2024 - 04 JUN 2024	HOHUP	LOW CHEE GROUP SDN BHD [SSH]	-600	47,726	9.209	
04 JUN 2024 - 04 JUN 2024	HOHUP	LOW KHENG LUN [DIR/CEO]	-600	47,726	9.209	
04 JUN 2024 - 04 JUN 2024	HOHUP	LOW KHENG LUN [SSH]	-600	47,726	9.209	
04 JUN 2024 - 04 JUN 2024	HOHUP	LOW LAI YOONG [SSH]	-600	49,088	9.472	
31 MAY 2024 - 31 MAY 2024	ICAP	CITY OF LONDON INVESTMENT MANAGEMENT COMPANY LIMITED [SSH]	-144	32,623	23.302	
31 MAY 2024 - 31 MAY 2024	ICON	DATO' SRI HADIAN BIN HASHIM [DIR/CEO]	330	24,350	3.911	
31 MAY 2024 - 31 MAY 2024	IFCAMSC	MR LEONG NYU KUAN [DIR/CEO]	200	1,000	0.165	
30 MAY 2024 - 30 MAY 2024	IFCAMSC	MR LEONG NYU KUAN [DIR/CEO]	200	800	0.132	
05 JUN 2024 - 05 JUN 2024	IGBB	HSBC ASIA HOLDINGS LIMITED (HAHO) [SSH]	-1,251	96,486	7.193	
05 JUN 2024 - 05 JUN 2024	IGBB	HSBC HOLDINGS PLC (HGHQ) [SSH]	-1,251	96,486	7.193	
05 JUN 2024 - 05 JUN 2024	IGBB	HSBC INTERNATIONAL TRUSTEE (HOLDINGS) PTE. LTD. (HTHL) [SSH]	-1,251	96,486	7.193	
05 JUN 2024 - 05 JUN 2024	IGBB	HSBC INTERNATIONAL TRUSTEE LIMITED (HKIT) [SSH]	-1,251	96,486	7.193	
05 JUN 2024 - 05 JUN 2024	IGBB	THE HONGKONG AND SHANGHAI BANKING CORPORATION LIMITED (HBAP) [SSH]	-1,251	96,486	7.193	
05 JUN 2024 - 05 JUN 2024	IGBB	TAN CHIN NAM SDN BHD ("TCNSB") [SSH]	833	663,873	49.494	
31 MAY 2024 - 31 MAY 2024	IGBB	HSBC ASIA HOLDINGS LIMITED (HAHO) [SSH]	-0.5	97,737	7.287	
31 MAY 2024 - 31 MAY 2024	IGBB	HSBC HOLDINGS PLC (HGHQ) [SSH]	-0.5	97,737	7.287	
31 MAY 2024 - 31 MAY 2024	IGBB	HSBC INTERNATIONAL TRUSTEE (HOLDINGS) PTE. LTD. (HTHL) [SSH]	-0.5	97,737	7.287	
31 MAY 2024 - 31 MAY 2024	IGBB	HSBC INTERNATIONAL TRUSTEE LIMITED (HKIT) [SSH]	-0.5	97,737	7.287	
31 MAY 2024 - 31 MAY 2024	IGBB	THE HONGKONG AND SHANGHAI BANKING CORPORATION LIMITED (HBAP) [SSH]	-0.5	97,737	7.287	
04 JUN 2024 - 04 JUN 2024	IGBREIT	EMPLOYEES PROVIDENT FUND BOARD ("EPF BOARD") [SSH]	300	413,063	11.445	
31 MAY 2024 - 31 MAY 2024	IGBREIT	EMPLOYEES PROVIDENT FUND BOARD ("EPF BOARD") [SSH]	-528	412,763	11.436	
30 MAY 2024 - 30 MAY 2024	IGBREIT	EMPLOYEES PROVIDENT FUND BOARD ("EPF BOARD") [SSH]	1,159	413,291	11.451	
29 MAY 2024 - 29 MAY 2024	IGBREIT	EMPLOYEES PROVIDENT FUND BOARD ("EPF BOARD") [SSH]	-200	412,133	11.419	
04 JUN 2024 - 04 JUN 2024	IHH	EMPLOYEES PROVIDENT FUND BOARD [SSH]	-765	985,142	11.186	
31 MAY 2024 - 31 MAY 2024	IHH	EMPLOYEES PROVIDENT FUND BOARD [SSH]	3,754	985,907	11.195	
30 MAY 2024 - 30 MAY 2024	IHH	EMPLOYEES PROVIDENT FUND BOARD [SSH]	-2,600	982,153	11.152	
29 MAY 2024 - 29 MAY 2024	IHH	EMPLOYEES PROVIDENT FUND BOARD [SSH]	3,068	984,753	11.181	
04 JUN 2024 - 04 JUN 2024	IJM	EMPLOYEES PROVIDENT FUND BOARD [SSH]	-960	617,187	17.603	
05 JUN 2024 - 05 JUN 2024	IJM	KUMPULAN WANG PERSARAAN (DIPERBADANKAN) [SSH]	-180	346,474	9.882	
31 MAY 2024 - 31 MAY 2024	IJM	EMPLOYEES PROVIDENT FUND BOARD [SSH]	-1,385	618,147	17.63	
30 MAY 2024 - 30 MAY 2024	IJM	EMPLOYEES PROVIDENT FUND BOARD [SSH]	-2,396	619,532	17.67	
31 MAY 2024 - 31 MAY 2024	IJM	KUMPULAN WANG PERSARAAN (DIPERBADANKAN) [SSH]	-1,081	346,654	9.887	
29 MAY 2024 - 29 MAY 2024	IJM	EMPLOYEES PROVIDENT FUND BOARD [SSH]	-50	621,928	17.738	
06 JUN 2024 - 06 JUN 2024	INARI	KUMPULAN WANG PERSARAAN (DIPERBADANKAN) [SSH]	825	359,511	9.545	
05 JUN 2024 - 06 JUN 2024	INARI	DATO' DR TAN SENG CHUAN [DIR/CEO]	600	1,856	0.049	
05 JUN 2024 - 05 JUN 2024	INARI	DATO' WONG GIAN KUI [DIR/CEO]	250	250	0.007	
04 JUN 2024 - 04 JUN 2024	INARI	EMPLOYEES PROVIDENT FUND BOARD [SSH]	-960	393,662	10.451	
05 JUN 2024 - 05 JUN 2024	INARI	KUMPULAN WANG PERSARAAN (DIPERBADANKAN) [SSH]	684	358,686	9.523	
04 JUN 2024 - 04 JUN 2024	INARI	MR MAI MANG LEE [DIR/CEO]	1,400	13,881	0.369	
31 MAY 2024 - 31 MAY 2024	INARI	EMPLOYEES PROVIDENT FUND BOARD [SSH]	-1,752	393,621	10.45	
04 JUN 2024 - 04 JUN 2024	INARI	KUMPULAN WANG PERSARAAN (DIPERBADANKAN) [SSH]	79	358,002	9.507	
30 MAY 2024 - 30 MAY 2024	INARI	EMPLOYEES PROVIDENT FUND BOARD [SSH]	927	395,373	10.5	
29 MAY 2024 - 29 MAY 2024	INARI	EMPLOYEES PROVIDENT FUND BOARD [SSH]	-1,683	394,445	10.475	
05 JUN 2024 - 06 JUN 2024	INTA	APEXJAYA INDUSTRIES SDN BHD [SSH]	-10,000	177,586	32.573	
05 JUN 2024 - 06 JUN 2024	INTA	MADAM KOK CHIN SEOW [SSH]	-10,000	178,893	32.813	
05 JUN 2024 - 06 JUN 2024	INTA	MR LIM OOI JOO [DIR/CEO]	-10,000	226,701	41.582	
05 JUN 2024 - 06 JUN 2024	INTA	MR LIM OOI JOO [SSH]	-10,000	226,701	41.582	
05 JUN 2024 - 05 JUN 2024	INTA	ENCIK AHMAD BIN AWI [DIR/CEO]	-1,000	64,443	11.82	

Notice Period is 2nd June 2024 – 8th June 2024

Effective Change Date	Stock Name	Buyer/ Seller Name [Classification]	Bought / (Sold) ('000)		No. of Shares After Trade ('000)	
			Total	Total	% Held	
05 JUN 2024 - 05 JUN 2024	INTA	ENCIK AHMAD BIN AWI [SSH]	-1,000	64,443	11.82	
05 JUN 2024 - 06 JUN 2024	INTA-WA	MR LIM OOI JOO [DIR/CEO]	-13,000	45,943	34.333	
05 JUN 2024 - 05 JUN 2024	INTA-WA	ENCIK AHMAD BIN AWI [DIR/CEO]	-1,777	6,861	5.127	
04 JUN 2024 - 04 JUN 2024	IOICORP	EMPLOYEES PROVIDENT FUND BOARD [SSH]	1,415	769,741	12.408	
31 MAY 2024 - 31 MAY 2024	IOICORP	EMPLOYEES PROVIDENT FUND BOARD [SSH]	2,959	768,326	12.385	
30 MAY 2024 - 30 MAY 2024	IOICORP	EMPLOYEES PROVIDENT FUND BOARD [SSH]	1,756	765,367	12.337	
29 MAY 2024 - 29 MAY 2024	IOICORP	EMPLOYEES PROVIDENT FUND BOARD [SSH]	3,000	763,611	12.309	
04 JUN 2024 - 04 JUN 2024	IOIPG	EMPLOYEES PROVIDENT FUND BOARD [SSH]	227	361,192	6.56	
30 MAY 2024 - 30 MAY 2024	IOIPG	EMPLOYEES PROVIDENT FUND BOARD [SSH]	2,000	360,583	6.549	
29 MAY 2024 - 29 MAY 2024	IOIPG	EMPLOYEES PROVIDENT FUND BOARD [SSH]	-509	358,581	6.512	
06 JUN 2024 - 06 JUN 2024	ITRONIC	DATUK CHU BOON TIONG [DIR/CEO]	-2,789	9,246	1.307	
05 JUN 2024 - 05 JUN 2024	JCY	DATO' WONG KING KHENG [DIR/CEO]	2,000	6,800	0.32	
05 JUN 2024 - 05 JUN 2024	JCY	MR YEOW SAI KONG [DIR/CEO]	500	1,176	0.055	
05 JUN 2024 - 07 JUN 2024	KERJAYA	AMAZING PARADE SDN. BHD. [SSH]	-15,000	230,613	18.287	
05 JUN 2024 - 07 JUN 2024	KERJAYA	DATIN TOH SIEW CHUON [DIR/CEO]	-15,000	863,988	68.513	
05 JUN 2024 - 07 JUN 2024	KERJAYA	DATIN TOH SIEW CHUON [SSH]	-15,000	863,988	68.513	
05 JUN 2024 - 07 JUN 2024	KERJAYA	DATO' TEE ENG SENG [DIR/CEO]	-15,000	857,999	68.038	
05 JUN 2024 - 07 JUN 2024	KERJAYA	DATO' TEE ENG SENG [SSH]	-15,000	857,999	68.038	
05 JUN 2024 - 07 JUN 2024	KERJAYA	DATUK TEE ENG HO [DIR/CEO]	-15,000	857,999	68.038	
05 JUN 2024 - 07 JUN 2024	KERJAYA	DATUK TEE ENG HO [SSH]	-15,000	863,988	68.513	
04 JUN 2024 - 04 JUN 2024	KERJAYA	EMPLOYEES PROVIDENT FUND BOARD [SSH]	-164	72,040	5.713	
31 MAY 2024 - 31 MAY 2024	KERJAYA	EMPLOYEES PROVIDENT FUND BOARD [SSH]	5,476	72,203	5.726	
30 MAY 2024 - 30 MAY 2024	KERJAYA	EMPLOYEES PROVIDENT FUND BOARD [SSH]	2,341	66,345	5.261	
30 MAY 2024 - 31 MAY 2024	KERJAYA	AMAZING PARADE SDN. BHD. [SSH]	-10,000	245,613	19.477	
30 MAY 2024 - 31 MAY 2024	KERJAYA	DATIN TOH SIEW CHUON [DIR/CEO]	-10,000	878,988	69.703	
30 MAY 2024 - 31 MAY 2024	KERJAYA	DATIN TOH SIEW CHUON [SSH]	-10,000	878,988	69.703	
30 MAY 2024 - 31 MAY 2024	KERJAYA	DATO' TEE ENG SENG [DIR/CEO]	-10,000	872,999	69.228	
30 MAY 2024 - 31 MAY 2024	KERJAYA	DATO' TEE ENG SENG [SSH]	-10,000	872,999	69.228	
30 MAY 2024 - 31 MAY 2024	KERJAYA	DATUK TEE ENG HO [DIR/CEO]	-10,000	872,999	69.228	
30 MAY 2024 - 31 MAY 2024	KERJAYA	DATUK TEE ENG HO [SSH]	-10,000	878,988	69.703	
29 MAY 2024 - 29 MAY 2024	KERJAYA	EMPLOYEES PROVIDENT FUND BOARD [SSH]	36	63,980	5.074	
31 MAY 2024 - 05 JUN 2024	KGB	MR SOO YUIT WENG [DIR/CEO]	80	500	0.264	
31 MAY 2024 - 31 MAY 2024	KLCC	EMPLOYEES PROVIDENT FUND BOARD [SSH]	-34	190,810	10.569	
31 MAY 2024 - 31 MAY 2024	KLCC	EMPLOYEES PROVIDENT FUND BOARD [SSH]	-34	190,810	10.569	
29 MAY 2024 - 29 MAY 2024	KLCC	EMPLOYEES PROVIDENT FUND BOARD [SSH]	-96	190,844	10.571	
29 MAY 2024 - 29 MAY 2024	KLCC	EMPLOYEES PROVIDENT FUND BOARD [SSH]	-96	190,844	10.571	
04 JUN 2024 - 04 JUN 2024	KLK	EMPLOYEES PROVIDENT FUND BOARD [SSH]	488	153,921	14.039	
31 MAY 2024 - 31 MAY 2024	KLK	EMPLOYEES PROVIDENT FUND BOARD [SSH]	930	152,367	13.897	
31 MAY 2024 - 31 MAY 2024	KLK	ARUSHA ENTERPRISE SDN. BHD. [SSH]	0.2	525,149	47.897	
31 MAY 2024 - 31 MAY 2024	KLK	BATU KAWAN BERHAD [SSH]	0.2	525,149	47.897	
31 MAY 2024 - 31 MAY 2024	KLK	CUBIC CRYSTAL CORPORATION [SSH]	0.2	525,637	47.942	
31 MAY 2024 - 31 MAY 2024	KLK	DATO' LEE HAU HIAN [DIR/CEO]	0.2	525,723	47.95	
31 MAY 2024 - 31 MAY 2024	KLK	DATO' LEE HAU HIAN [SSH]	0.2	525,723	47.95	
31 MAY 2024 - 31 MAY 2024	KLK	DI-YI SDN. BHD. [SSH]	0.2	525,637	47.942	
31 MAY 2024 - 31 MAY 2024	KLK	GRATEFUL BLESSINGS FOUNDATION [SSH]	0.2	525,637	47.942	
31 MAY 2024 - 31 MAY 2024	KLK	GRATEFUL BLESSINGS INC. [SSH]	0.2	525,637	47.942	
31 MAY 2024 - 31 MAY 2024	KLK	HIGH QUEST ANSTALT [SSH]	0.2	525,637	47.942	
31 MAY 2024 - 31 MAY 2024	KLK	HIGH QUEST HOLDINGS SDN BHD [SSH]	0.2	525,637	47.942	
31 MAY 2024 - 31 MAY 2024	KLK	TAN SRI DATO' SERI LEE OI HIAN [SSH]	0.2	525,920	47.968	
31 MAY 2024 - 31 MAY 2024	KLK	TAN SRI DATO' SERI LEE OI HIAN [DIR/CEO]	0.2	525,920	47.968	
31 MAY 2024 - 31 MAY 2024	KLK	WAN HIN INVESTMENTS SDN. BERHAD [SSH]	0.2	525,614	47.939	
30 MAY 2024 - 30 MAY 2024	KLK	EMPLOYEES PROVIDENT FUND BOARD [SSH]	570	151,307	13.8	
29 MAY 2024 - 29 MAY 2024	KLK	EMPLOYEES PROVIDENT FUND BOARD [SSH]	500	150,737	13.748	
05 JUN 2024 - 06 JUN 2024	KNM	DATO' TUNKU YAACOB KHYRA [DIR/CEO]	6,000	705,040	17.434	
05 JUN 2024 - 06 JUN 2024	KNM	DATO' TUNKU YAACOB KHYRA [SSH]	6,000	705,040	17.434	
05 JUN 2024 - 06 JUN 2024	KNM	MAA GROUP BERHAD [SSH]	6,000	666,840	16.489	
05 JUN 2024 - 05 JUN 2024	KOSSAN	ABRDN HOLDINGS LIMITED [SSH]	677	140,890	5.522	
05 JUN 2024 - 05 JUN 2024	KOSSAN	ABRDN MALAYSIA SDN BHD [SSH]	677	138,485	5.427	
05 JUN 2024 - 05 JUN 2024	KOSSAN	ABRDN PLC [SSH]	677	140,890	5.522	
04 JUN 2024 - 04 JUN 2024	KOSSAN	EMPLOYEES PROVIDENT FUND BOARD [SSH]	295	141,479	5.545	
04 JUN 2024 - 04 JUN 2024	KOSSAN	ABRDN HOLDINGS LIMITED [SSH]	295	140,		

Notice Period is 2nd June 2024 – 8th June 2024

Effective Change Date	Stock Name	Buyer/ Seller Name [Classification]	Bought / (Sold) ('000)		No. of Shares After Trade ('000)	
			Total	Total	% Held	% Held
30 MAY 2024 - 30 MAY 2024	MAXIS	EMPLOYEES PROVIDENT FUND BOARD ('EPF BOARD') [SSH]	917	891,979	11.389	
29 MAY 2024 - 29 MAY 2024	MAXIS	EMPLOYEES PROVIDENT FUND BOARD ('EPF BOARD') [SSH]	516	891,062	11.377	
05 JUN 2024 - 05 JUN 2024	MAYBANK	PERMODALAN NASIONAL BERHAD [SSH]	30,000	726,691	6.022	
05 JUN 2024 - 05 JUN 2024	MAYBANK	YAYASAN PELABURAN BUMIPUTRA [SSH]	30,000	726,691	6.022	
04 JUN 2024 - 04 JUN 2024	MAYBANK	EMPLOYEES PROVIDENT FUND BOARD [SSH]	-4,659	1,570,822	13.018	
31 MAY 2024 - 31 MAY 2024	MAYBANK	EMPLOYEES PROVIDENT FUND BOARD [SSH]	3,563	1,575,482	13.056	
31 MAY 2024 - 31 MAY 2024	MAYBANK	AMANAHRAYA TRUSTEES BERHAD - AMANAH SAHAM BUMIPUTERA [SSH]	1,600	3,739,183	30.987	
30 MAY 2024 - 30 MAY 2024	MAYBANK	EMPLOYEES PROVIDENT FUND BOARD [SSH]	1,331	1,571,918	13.027	
30 MAY 2024 - 30 MAY 2024	MAYBANK	AMANAHRAYA TRUSTEES BERHAD - AMANAH SAHAM BUMIPUTERA [SSH]	1,900	3,737,583	30.974	
29 MAY 2024 - 29 MAY 2024	MAYBANK	EMPLOYEES PROVIDENT FUND BOARD [SSH]	7,550	1,570,587	13.016	
31 MAY 2024 - 31 MAY 2024	MCEMENT	PUAN SRI DATIN TAN KAI YONG @ TAN KAY NEONG [SSH]	-66,000	966,616	72.561	
31 MAY 2024 - 31 MAY 2024	MCEMENT	YEOH TIONG LAY & SONS FAMILY HOLDINGS LIMITED [SSH]	-66,000	966,616	72.561	
31 MAY 2024 - 31 MAY 2024	MCEMENT	YEOH TIONG LAY & SONS HOLDINGS SDN BHD [SSH]	-66,000	966,616	72.561	
31 MAY 2024 - 31 MAY 2024	MCEMENT	YEOH TIONG LAY & SONS TRUST COMPANY LIMITED [SSH]	-66,000	966,616	72.561	
31 MAY 2024 - 31 MAY 2024	MCEMENT	PUAN SRI DATIN TAN KAI YONG @ TAN KAY NEONG [SSH]	-66,000	963,616	72.336	
31 MAY 2024 - 31 MAY 2024	MCEMENT	YEOH TIONG LAY & SONS FAMILY HOLDINGS LIMITED [SSH]	-66,000	963,616	72.336	
31 MAY 2024 - 31 MAY 2024	MCEMENT	YEOH TIONG LAY & SONS HOLDINGS SDN BHD [SSH]	-66,000	963,616	72.336	
31 MAY 2024 - 31 MAY 2024	MCEMENT	YEOH TIONG LAY & SONS TRUST COMPANY LIMITED [SSH]	-66,000	963,616	72.336	
31 MAY 2024 - 31 MAY 2024	MCEMENT	YTL CEMENT BERHAD [SSH]	-66,000	963,616	72.336	
31 MAY 2024 - 31 MAY 2024	MCEMENT	YTL CORPORATION BERHAD [SSH]	-66,000	963,616	72.336	
04 JUN 2024 - 05 JUN 2024	MGB	TAN SRI DATO' SRI IR. (DR.) LIM HOCK SAN JP [DIR/CEO]	171	344,559	58.236	
04 JUN 2024 - 05 JUN 2024	MGB	TAN SRI DATO' SRI IR. (DR.) LIM HOCK SAN JP [SSH]	171	344,559	58.236	
05 JUN 2024 - 05 JUN 2024	MICROLN	OMESTI BERHAD [SSH]	-932	314,548	29.331	
05 JUN 2024 - 05 JUN 2024	MICROLN	OMESTI HOLDINGS BERHAD [SSH]	-932	314,548	29.331	
06 JUN 2024 - 06 JUN 2024	MISC	KUMPULAN WANG PERSARAAN (DIPERBADANKAN) (KWAP) [SSH]	-67	234,271	5.249	
04 JUN 2024 - 04 JUN 2024	MISC	EMPLOYEES PROVIDENT FUND BOARD [SSH]	-2,246	528,233	11.834	
31 MAY 2024 - 31 MAY 2024	MISC	EMPLOYEES PROVIDENT FUND BOARD [SSH]	3,517	530,478	11.884	
04 JUN 2024 - 04 JUN 2024	MISC	KUMPULAN WANG PERSARAAN (DIPERBADANKAN) (KWAP) [SSH]	-1,295	234,338	5.25	
30 MAY 2024 - 30 MAY 2024	MISC	EMPLOYEES PROVIDENT FUND BOARD [SSH]	461	526,962	11.805	
31 MAY 2024 - 31 MAY 2024	MISC	KUMPULAN WANG PERSARAAN (DIPERBADANKAN) (KWAP) [SSH]	-790	235,633	5.279	
29 MAY 2024 - 29 MAY 2024	MISC	EMPLOYEES PROVIDENT FUND BOARD [SSH]	-328	526,501	11.795	
04 JUN 2024 - 05 JUN 2024	MKHOP	CHEN CHOY & SONS REALTY SDN. BHD. [SSH]	45	696,403	68.036	
04 JUN 2024 - 05 JUN 2024	MKHOP	DATUK CHEN FOOK WAH [SSH]	45	696,520	68.046	
04 JUN 2024 - 05 JUN 2024	MKHOP	MKH BERHAD [SSH]	45	662,642	64.737	
04 JUN 2024 - 05 JUN 2024	MKHOP	MKH PLANTATION SDN. BHD. [SSH]	45	51,908	5.071	
04 JUN 2024 - 05 JUN 2024	MKHOP	TAN SRI DATO' CHEN KOOI CHIEW @ CHENG NGI CHONG [DIR/CEO]	45	698,843	68.274	
04 JUN 2024 - 05 JUN 2024	MKHOP	TAN SRI DATO' CHEN KOOI CHIEW @ CHENG NGI CHONG [SSH]	45	698,843	68.274	
04 JUN 2024 - 05 JUN 2024	MKHOP	TAN SRI DATUK CHEN LOK LOI [DIR/CEO]	45	699,188	68.307	
04 JUN 2024 - 05 JUN 2024	MKHOP	TAN SRI DATUK CHEN LOK LOI [SSH]	45	699,188	68.307	
31 MAY 2024 - 31 MAY 2024	MPAY	HAZHAR BIN ISMAIL [SSH]	20,000	87,000	9.392	
31 MAY 2024 - 31 MAY 2024	MPAY	SIGMAVIEW DIVERSIFIED SDN BHD [SSH]	20,000	87,000	9.392	
31 MAY 2024 - 31 MAY 2024	MPAY	SYED MOHD RAZALEIGH BIN SYED ABDUL RAHMAN [SSH]	20,000	87,000	9.392	
04 JUN 2024 - 04 JUN 2024	MRDIY	EMPLOYEES PROVIDENT FUND BOARD [SSH]	1,006	603,316	6.384	
31 MAY 2024 - 31 MAY 2024	MRDIY	EMPLOYEES PROVIDENT FUND BOARD [SSH]	2,025	602,310	6.373	
30 MAY 2024 - 30 MAY 2024	MRDIY	EMPLOYEES PROVIDENT FUND BOARD [SSH]	1,616	600,286	6.352	
29 MAY 2024 - 29 MAY 2024	MRDIY	EMPLOYEES PROVIDENT FUND BOARD [SSH]	1,836	598,670	6.335	
06 JUN 2024 - 06 JUN 2024	MYEG	KUMPULAN WANG PERSARAAN (DIPERBADANKAN) [SSH]	-8,511	490,144	6.571	
04 JUN 2024 - 04 JUN 2024	MYEG	EMPLOYEES PROVIDENT FUND BOARD [SSH]	-1,097	382,127	5.123	
06 JUN 2024 - 06 JUN 2024	MYEG	ASIA INTERNET HOLDINGS SDN BHD [SSH]	3,000	1,224,582	16.417	
05 JUN 2024 - 05 JUN 2024	MYEG	KUMPULAN WANG PERSARAAN (DIPERBADANKAN) [SSH]	-1,951	498,655	6.685	
04 JUN 2024 - 04 JUN 2024	MYEG	KUMPULAN WANG PERSARAAN (DIPERBADANKAN) [SSH]	-5,000	500,606	6.711	
31 MAY 2024 - 31 MAY 2024	MYEG	KUMPULAN WANG PERSARAAN (DIPERBADANKAN) [SSH]	3,521	505,606	6.778	
06 JUN 2024 - 06 JUN 2024	NATGATE	DATO' SERI WONG SIEW HAI [DIR/CEO]	-15	6,030	0.291	
06 JUN 2024 - 06 JUN 2024	NATGATE	MR LEE KIM SAN [DIR/CEO]	-500	14,100	0.68	
04 JUN 2024 - 04 JUN 2024	NESTLE	EMPLOYEES PROVIDENT FUND BOARD [SSH]	16	26,942	11.489	
31 MAY 2024 - 31 MAY 2024	NESTLE	EMPLOYEES PROVIDENT FUND BOARD [SSH]	110	26,925	11.482	
30 MAY 2024 - 30 MAY 2024	NESTLE	EMPLOYEES PROVIDENT FUND BOARD [SSH]	76	26,816	11.435	
29 MAY 2024 - 29 MAY 2024	NESTLE	EMPLOYEES PROVIDENT FUND BOARD [SSH]	45	26,740	11.403	
04 JUN 2024 - 04 JUN 2024	NGGB	DATO' MOHD YUSOF BIN DIN [DIR/CEO]	-500	2,500	0.246	
31 MAY 2024 - 31 MAY 2024	NOTION	MR CHOO WING HONG [DIR/CEO]	500	37,673	7.29	
31 MAY 2024 - 31 MAY 2024	NOTION	MR CHOO WING HONG [SSH]	500	37,673	7.29	
30 MAY 2024 - 30 MAY 2024	NOTION-WD	MR CHOO WING HONG [DIR/CEO]	-500	2387	4.626	
05 JUN 2024 - 06 JUN 2024	OMESTI	MR MONTEIRO GERARD CLAIR [DIR/CEO]	-1,168	72,782	13.462	
05 JUN 2024 - 06 JUN 2024	OMESTI	MR MONTEIRO GERARD CLAIR [SSH]	-1,168	72,782	13.462	
04 JUN 2024 - 04 JUN 2024	OMESTI	MR MONTEIRO GERARD CLAIR [DIR/CEO]	-2,393	73,950	13.678	
04 JUN 2024 - 04 JUN 2024	OMESTI	MR MONTEIRO GERARD CLAIR [SSH]	-2,393	73,950	13.678	
04 JUN 2024 - 04 JUN 2024	OPPSTAR	MR CHEAH HUN WAH [DIR/CEO]	-3,600	152,635	23.84	
04 JUN 2024 - 04 JUN 2024	PADINI	EMPLOYEES PROVIDENT FUND BOARD [SSH]	-37	45,957	6.985	
31 MAY 2024 - 31 MAY 2024	PADINI	EMPLOYEES PROVIDENT FUND BOARD [SSH]	180	45,994	6.991	
30 MAY 2024 - 30 MAY 2024	PADINI	EMPLOYEES PROVIDENT FUND BOARD [SSH]	15	45,813	6.963	
29 MAY 2024 - 29 MAY 2024	PADINI	EMPLOYEES PROVIDENT FUND BOARD [SSH]	302	45,799	6.961	
31 MAY 2024 - 31 MAY 2024	PANAMY	EMPLOYEES PROVIDENT FUND BOARD [SSH]	-100	6,346	10.448	
30 MAY 2024 - 30 MAY 2024	PANAMY	EMPLOYEES PROVIDENT FUND BOARD [SSH]	-14	6,446	10.612	
05 JUN 2024 - 05 JUN 2024	PAVREIT	KUMPULAN WANG PERSARAAN (DIPERBADANKAN) [SSH]	-144	211,501	5.783	
31 MAY 2024 - 31 MAY 2024	PAVREIT	EMPLOYEES PROVIDENT FUND BOARD [SSH]	214	439,314	12.013	
30 MAY 2024 - 30 MAY 2024	PAVREIT	EMPLOYEES PROVIDENT FUND BOARD [SSH]	1,975	439,100	12.008	
29 MAY 2024 - 29 MAY 2024	PAVREIT	EMPLOYEES PROVIDENT FUND BOARD [SSH]	849	437,124	11.954	
31 MAY 2024 - 31 MAY 2024	PBBANK	EMPLOYEES PROVIDENT FUND BOARD [SSH]	6,500	3,146,467	16.21	
30 MAY 2024 - 30 MAY 2024	PBBANK	EMPLOYEES PROVIDENT FUND BOARD [SSH]	8,783	3,139,967	16.18	
29 MAY 2024 - 29 MAY 2024	PBBANK	EMPLOYEES PROVIDENT FUND BOARD [SSH]	6,000	3,131,184	16.13	

Notice Period is 2nd June 2024 – 8th June 2024

Effective Change Date	Stock Name	Buyer/ Seller Name [Classification]	Bought / (Sold) ('000)		No. of Shares After Trade ('000)	
			Total	Total	% Held	% Held
28 MAY 2024 - 28 MAY 2024	PBBANK	EMPLOYEES PROVIDENT FUND BOARD [SSH]	2,248	3125184	16.1	
04 JUN 2024 - 04 JUN 2024	PCHEM	EMPLOYEES PROVIDENT FUND BOARD ('EPF BOARD') [SSH]	10	936041	11.701	
31 MAY 2024 - 31 MAY 2024	PENTA	LEMBAGA TABUNG HAJI [SSH]	810	38121	5.359	
29 MAY 2024 - 29 MAY 2024	PENTA	EMPLOYEES PROVIDENT FUND BOARD [SSH]	-226	59913	8.423	
04 JUN 2024 - 04 JUN 2024	PETDAG	EMPLOYEES PROVIDENT FUND BOARD ('EPF BOARD') [SSH]	257	122744	12.355	
31 MAY 2024 - 31 MAY 2024	PETDAG	EMPLOYEES PROVIDENT FUND BOARD ('EPF BOARD') [SSH]	-85	122487	12.329	
30 MAY 2024 - 30 MAY 2024	PETDAG	EMPLOYEES PROVIDENT FUND BOARD ('EPF BOARD') [SSH]	15	122567	12.337	
29 MAY 2024 - 29 MAY 2024	PETDAG	EMPLOYEES PROVIDENT FUND BOARD ('EPF BOARD') [SSH]	-173	122552	12.336	
04 JUN 2024 - 04 JUN 2024	PETGAS	EMPLOYEES PROVIDENT FUND BOARD [SSH]	-2	258469	13.062	
31 MAY 2024 - 31 MAY 2024	PETGAS	EMPLOYEES PROVIDENT FUND BOARD [SSH]	444	258471	13.062	
30 MAY 2024 - 30 MAY 2024	PETGAS	EMPLOYEES PROVIDENT FUND BOARD [SSH]	-9	258028	13.04	
29 MAY 2024 - 29 MAY 2024	PETGAS	EMPLOYEES PROVIDENT FUND BOARD [SSH]	372	258036	13.04	
04 JUN 2024 - 04 JUN 2024	PPB	EMPLOYEES PROVIDENT FUND BOARD [SSH]	61	165733	11.65	
31 MAY 2024 - 31 MAY 2024	PPB	EMPLOYEES PROVIDENT FUND BOARD [SSH]	802	165672	11.646	
30 MAY 2024 - 30 MAY 2024	PPB	EMPLOYEES PROVIDENT FUND BOARD [SSH]	112	164870	11.589	
29 MAY 2024 - 29 MAY 2024	PPB	EMPLOYEES PROVIDENT FUND BOARD [SSH]	310	164757	11.581	
31 MAY 2024 - 04 JUN 2024	PTRB	MR HENG CHANG HOI [DIR/CEO]	-18,219	374540	70.005	
31 MAY 2024 - 04 JUN 2024	PTRB	MR HENG CHANG HOI [SSH]	-18,219	374540	70.005	
31 MAY 2024 - 31 MAY 2024	PWRWELL	MADAM WONG YOKE YEN [DIR/CEO]	-10,000	266235	45.859	
31 MAY 2024 - 31 MAY 2024	PWRWELL	MADAM WONG YOKE YEN [SSH]	-10,000	266235	45.859	
04 JUN 2024 - 04 JUN 2024	QL	EMPLOYEES PROVIDENT FUND BOARD [SSH]	-1,965	133588	5.489	
31 MAY 2024 - 31 MAY 2024	QL	EMPLOYEES PROVIDENT FUND BOARD [SSH]	1,292	135553	5.57	
30 MAY 2024 - 30 MAY 2024	QL	EMPLOYEES PROVIDENT FUND BOARD [SSH]	-844	134261	5.517	
29 MAY 2024 - 29 MAY 2024	QL	EMPLOYEES PROVIDENT FUND BOARD [SSH]	-475	135105	5.552	
04 JUN 2024 - 04 JUN 2024	RGB	DATO' SERI CHUAH KIM SEAH [SSH]	1,000	470062	30.506	
04 JUN 2024 - 04 JUN 2024	RGB	DATO' SERI CHUAH KIM SEAH [DIR/CEO]	1,000	470463	30.532	
31 MAY 2024 - 31 MAY 2024	RGB	DATO' SERI CHUAH KIM SEAH [SSH]	1,000	469062	30.441	
31 MAY 2024 - 31 MAY 2024	RGB	DATO' SERI CHUAH KIM SEAH [DIR/CEO]	1,000	469463	30.467	
06 JUN 2024 - 06 JUN 2024	RHBBANK	KUMPULAN WANG PERSARAAN (DIPERBADANKAN) [SSH]	-63	252877	5.801	
04 JUN 2024 - 04 JUN 2024	RHBBANK	EMPLOYEES PROVIDENT FUND BOARD [SSH]	-657	1766042	40.51	
05 JUN 2024 - 05 JUN 2024	RHBBANK	KUMPULAN WANG PERSARAAN (DIPERBADANKAN) [SSH]	-666	252940	5.802	
31 MAY 2024 - 31 MAY 2024	RHBBANK	EMPLOYEES PROVIDENT FUND BOARD [SSH]	800	1766700	40.525	
04 JUN 2024 - 04 JUN 2024	RHBBANK	KUMPULAN WANG PERSARAAN (DIPERBADANKAN) [SSH]	-900	253605	5.817	
30 MAY 2024 - 30 MAY 2024	RHBBANK	EMPLOYEES PROVIDENT FUND BOARD [SSH]	3,000	1765900	40.507	
29 MAY 2024 - 29 MAY 2024	RHBBANK	EMPLOYEES PROVIDENT FUND BOARD [SSH]	2,500	1762900	40.438	
04 JUN 2024 - 04 JUN 2024	SCIPACK	SAMARANG UCITS - SAMARANG ASIAN PROSPERITY [SSH]	5	19048	5.433	
31 MAY 2024 - 31 MAY 2024	SCIPACK	SAMARANG UCITS - SAMARANG ASIAN PROSPERITY [SSH]	65	19043	5.431	
31 MAY 2024 - 31 MAY 2024	SCOMNET	EMPLOYEES PROVIDENT FUND BOARD [SSH]	139	44572	5.333	
30 MAY 2024 - 30 MAY 2024	SCOMNET	EMPLOYEES PROVIDENT FUND BOARD [SSH]	212	44433	5.317	
29 MAY 2024 - 29 MAY 2024	SCOMNET	EMPLOYEES PROVIDENT FUND BOARD [SSH]	149	44221	5.291	
04 JUN 2024 - 04 JUN 2024	SDG	EMPLOYEES PROVIDENT FUND BOARD [SSH]	3,013	1081219		

Notice Period is 2nd June 2024 – 8th June 2024

Effective Change Date	Stock Name	Buyer/ Seller Name [Classification]	Bought / (Sold) ('000)		No. of Shares After Trade ('000)	
			Total	% Held	Total	% Held
31 MAY 2024 - 31 MAY 2024	SUNWAY	MADAM SARENA CHEAH YEAN TIH [DIR/CEO]	-200,000	3404313	60.45	
31 MAY 2024 - 31 MAY 2024	SUNWAY	MADAM SARENA CHEAH YEAN TIH [SSH]	-200,000	3404313	60.45	
31 MAY 2024 - 31 MAY 2024	SUNWAY	MR ADRIAN CHEAH YEAN SUN [SSH]	-200,000	3398199	60.34	
31 MAY 2024 - 31 MAY 2024	SUNWAY	MR EVAN CHEAH YEAN SHIN [DIR/CEO]	-200,000	3403084	60.43	
31 MAY 2024 - 31 MAY 2024	SUNWAY	MR EVAN CHEAH YEAN SHIN [SSH]	-200,000	3403084	60.43	
31 MAY 2024 - 31 MAY 2024	SUNWAY	PUAN SRI DATIN SERI DR. SUSAN CHEAH SEOK CHENG [SSH]	-200,000	3409195	60.53	
31 MAY 2024 - 31 MAY 2024	SUNWAY	SUNGEI WAY CORPORATION SDN BHD [SSH]	-200,000	2557503	45.41	
31 MAY 2024 - 31 MAY 2024	SUNWAY	TAN SRI SIR DR JEFFREY CHEAH FOOK LING KBE AO [DIR/CEO]	-200,000	3409195	60.53	
31 MAY 2024 - 31 MAY 2024	SUNWAY	TAN SRI SIR DR JEFFREY CHEAH FOOK LING KBE AO [SSH]	-200,000	3409195	60.53	
30 MAY 2024 - 30 MAY 2024	SUNWAY	EMPLOYEES PROVIDENT FUND BOARD [SSH]	1,131	302510	5.37	
29 MAY 2024 - 29 MAY 2024	SUNWAY	EMPLOYEES PROVIDENT FUND BOARD [SSH]	4,572	301379	5.35	
29 MAY 2024 - 30 MAY 2024	SWIFT	MR LOO HOOI KEAT [DIR/CEO]	30	255068	28.89	
29 MAY 2024 - 30 MAY 2024	SWIFT	MR LOO HOOI KEAT [SSH]	30	255068	28.89	
06 JUN 2024 - 06 JUN 2024	SWSCAP	PUAN SRI DATIN SERI CHAN MEI CHENG [SSH]	593	20581	6.808	
06 JUN 2024 - 06 JUN 2024	SWSCAP	TAN SRI DATO' SERI TAN KING TAI @ TAN KHOON HAI [DIR/CEO]	593	20581	6.808	
06 JUN 2024 - 06 JUN 2024	SWSCAP	TAN SRI DATO' SERI TAN KING TAI @ TAN KHOON HAI [SSH]	593	20581	6.808	
04 JUN 2024 - 04 JUN 2024	TAKAFUL	EMPLOYEES PROVIDENT FUND BOARD [SSH]	315	128151	15.305	
31 MAY 2024 - 31 MAY 2024	TAKAFUL	EMPLOYEES PROVIDENT FUND BOARD [SSH]	-5	128036	15.291	
30 MAY 2024 - 30 MAY 2024	TAKAFUL	EMPLOYEES PROVIDENT FUND BOARD [SSH]	20	128041	15.292	
29 MAY 2024 - 29 MAY 2024	TAKAFUL	EMPLOYEES PROVIDENT FUND BOARD [SSH]	-749	128021	15.29	
29 MAY 2024 - 29 MAY 2024	TECHBASE	YI-LAI INDUSTRY BERHAD [SSH]	7,500	28498	10.076	
29 MAY 2024 - 29 MAY 2024	TECHBASE	YI-LAI MARKETING SDN BHD [SSH]	-7,500	20405	7.215	
04 JUN 2024 - 06 JUN 2024	TECHNAX	DATIN LEE CHENG LING [SSH]	-23,000	54206	23.054	
04 JUN 2024 - 06 JUN 2024	TECHNAX	DATUK LIM CHIH LI @ LIN ZHILI [DIR/CEO]	-23,000	54323	23.104	
04 JUN 2024 - 06 JUN 2024	TECHNAX	DATUK LIM CHIH LI @ LIN ZHILI [SSH]	-23,000	54323	23.104	
04 JUN 2024 - 06 JUN 2024	TECHNAX	TAP PARTNERS SDN. BHD. [SSH]	-23,000	54206	23.054	
04 JUN 2024 - 06 JUN 2024	TECHNAX	TREMENDOUS ASIA MANAGEMENT INC. [SSH]	-23,000	54206	23.054	
06 JUN 2024 - 06 JUN 2024	TENAGA	KUMPULAN WANG PERSARAAN (DIPERBADANKAN) [SSH]	-1,696	423493	7.31	
05 JUN 2024 - 05 JUN 2024	TENAGA	AMANAHRAYA TRUSTEES BERHAD - AMANAH SAHAM BUMIPUTERA [SSH]	-21,900	539200	9.32	
04 JUN 2024 - 04 JUN 2024	TENAGA	EMPLOYEES PROVIDENT FUND BOARD [SSH]	-3,972	1044627	18.05	
05 JUN 2024 - 05 JUN 2024	TENAGA	KUMPULAN WANG PERSARAAN (DIPERBADANKAN) [SSH]	-1,000	425189	7.35	
31 MAY 2024 - 31 MAY 2024	TENAGA	EMPLOYEES PROVIDENT FUND BOARD [SSH]	-2,236	1048599	18.12	
04 JUN 2024 - 04 JUN 2024	TENAGA	KUMPULAN WANG PERSARAAN (DIPERBADANKAN) [SSH]	-1,006	426189	7.36	
30 MAY 2024 - 30 MAY 2024	TENAGA	EMPLOYEES PROVIDENT FUND BOARD [SSH]	-379	1050835	18.16	
30 MAY 2024 - 30 MAY 2024	TENAGA	AMANAHRAYA TRUSTEES BERHAD - AMANAH SAHAM BUMIPUTERA [SSH]	-1,300	561100	9.7	
29 MAY 2024 - 29 MAY 2024	TENAGA	EMPLOYEES PROVIDENT FUND BOARD [SSH]	749	1051212	18.16	
31 MAY 2024 - 31 MAY 2024	TEOSENG	MR NA HAP CHENG [SSH]	30	157261	52.837	
06 JUN 2024 - 06 JUN 2024	TEXCYCL	MISS HO AI HOON [DIR/CEO]	52	92	0.037	
31 MAY 2024 - 31 MAY 2024	TIMECOM	EMPLOYEES PROVIDENT FUND BOARD [SSH]	560	223177	12.071	
30 MAY 2024 - 30 MAY 2024	TIMECOM	EMPLOYEES PROVIDENT FUND BOARD [SSH]	2,033	222714	12.046	
29 MAY 2024 - 29 MAY 2024	TIMECOM	EMPLOYEES PROVIDENT FUND BOARD [SSH]	250	220681	11.936	
06 JUN 2024 - 06 JUN 2024	TM	KUMPULAN WANG PERSARAAN (DIPERBADANKAN) [SSH]	-1,000	354896	9.248	
05 JUN 2024 - 05 JUN 2024	TM	AMANAHRAYA TRUSTEES BERHAD-AMANAH SAHAM BUMIPUTERA [SSH]	-7,579	292800	7.63	
04 JUN 2024 - 04 JUN 2024	TM	EMPLOYEE PROVIDENT FUND BOARD (EPF BOARD) [SSH]	127	687662	17.919	
05 JUN 2024 - 05 JUN 2024	TM	KUMPULAN WANG PERSARAAN (DIPERBADANKAN) [SSH]	-1,000	355896	9.274	
31 MAY 2024 - 31 MAY 2024	TM	EMPLOYEE PROVIDENT FUND BOARD (EPF BOARD) [SSH]	3,500	687535	17.915	
04 JUN 2024 - 04 JUN 2024	TM	KUMPULAN WANG PERSARAAN (DIPERBADANKAN) [SSH]	-1,000	356896	9.3	
31 MAY 2024 - 31 MAY 2024	TM	AMANAHRAYA TRUSTEES BERHAD-AMANAH SAHAM BUMIPUTERA [SSH]	-32	300379	7.827	
30 MAY 2024 - 30 MAY 2024	TM	EMPLOYEE PROVIDENT FUND BOARD (EPF BOARD) [SSH]	3,000	684035	17.824	
30 MAY 2024 - 30 MAY 2024	TM	AMANAHRAYA TRUSTEES BERHAD-AMANAH SAHAM BUMIPUTERA [SSH]	-1,770	300411	7.828	
29 MAY 2024 - 29 MAY 2024	TM	EMPLOYEE PROVIDENT FUND BOARD (EPF BOARD) [SSH]	3,075	681035	17.746	
06 JUN 2024 - 06 JUN 2024	TOPGLOV	KUMPULAN WANG PERSARAAN (DIPERBADANKAN) [SSH]	-2,000	524365	6.547	
04 JUN 2024 - 04 JUN 2024	TOPGLOV	KUMPULAN WANG PERSARAAN (DIPERBADANKAN) [SSH]	-879	526365	6.572	
04 JUN 2024 - 04 JUN 2024	UCHITEC	MISS HAN CHIN LING [DIR/CEO]	40	140	0.03	
04 JUN 2024 - 04 JUN 2024	UCHITEC	MR CHARLIE ONG CHYE LEE [DIR/CEO]	100	1196	0.259	

Notice Period is 2nd June 2024 – 8th June 2024

Effective Change Date	Stock Name	Buyer/ Seller Name [Classification]	Bought / (Sold) ('000)		No. of Shares After Trade ('000)	
			Total	% Held	Total	% Held
04 JUN 2024 - 04 JUN 2024	UCHITEC	MR CHIN YAU MENG [DIR/CEO]	80	1008	0.219	
04 JUN 2024 - 04 JUN 2024	UCHITEC	MR HUANG YEN-CHANG ALSO KNOWN AS STANLEY HUANG [DIR/CEO]	90	770	0.167	
04 JUN 2024 - 04 JUN 2024	UCHITEC	MR KAO DE-TSAN ALSO KNOWN AS TED KAO [DIR/CEO]	125	89998	19.529	
04 JUN 2024 - 04 JUN 2024	UCHITEC	MR KAO DE-TSAN ALSO KNOWN AS TED KAO [SSH]	125	86512	18.773	
04 JUN 2024 - 04 JUN 2024	UCHITEC	MR TAN BOON HOE [DIR/CEO]	70	650	0.141	
30 MAY 2024 - 30 MAY 2024	UCHITEC	MR LIM TIAN HOW [DIR/CEO]	-230	44	0.01	
04 JUN 2024 - 04 JUN 2024	UTDPLT	EMPLOYEES PROVIDENT FUND BOARD [SSH]	4	28523	6.876	
31 MAY 2024 - 31 MAY 2024	UTDPLT	EMPLOYEES PROVIDENT FUND BOARD [SSH]	-366	28519	6.876	
30 MAY 2024 - 30 MAY 2024	UTDPLT	EMPLOYEES PROVIDENT FUND BOARD [SSH]	203	28885	6.964	
29 MAY 2024 - 29 MAY 2024	UTDPLT	EMPLOYEES PROVIDENT FUND BOARD [SSH]	104	28682	6.915	
31 MAY 2024 - 31 MAY 2024	UWC	EMPLOYEES PROVIDENT FUND BOARD [SSH]	10	93865	8.518	
04 JUN 2024 - 04 JUN 2024	VERSATL	MR LOH TECK WAH [DIR/CEO]	277	8815	3.147	
04 JUN 2024 - 04 JUN 2024	VERSATL	MR LOH TECK WAH [DIR/CEO]	769	5677	4.054	
04 JUN 2024 - 04 JUN 2024	VOLCANO	MR ANDREW SU MENG KIT [DIR/CEO]	2,000	4300	2.367	
04 JUN 2024 - 04 JUN 2024	VOLCANO	MR KHOO BOO WUI [SSH]	-2,000	17000	9.36	
06 JUN 2024 - 06 JUN 2024	VS	KUMPULAN WANG PERSARAAN [SSH]	-2,500	348598	9.086	
05 JUN 2024 - 05 JUN 2024	VS	KUMPULAN WANG PERSARAAN [SSH]	-700	351098	9.151	
31 MAY 2024 - 31 MAY 2024	VS	EMPLOYEES PROVIDENT FUND BOARD [SSH]	1,002	307425	8.013	
04 JUN 2024 - 04 JUN 2024	VS	KUMPULAN WANG PERSARAAN [SSH]	-2,000	351798	9.169	
30 MAY 2024 - 30 MAY 2024	VS	EMPLOYEES PROVIDENT FUND BOARD [SSH]	1,248	306422	7.986	
31 MAY 2024 - 31 MAY 2024	VS	KUMPULAN WANG PERSARAAN [SSH]	-3,000	353798	9.221	
29 MAY 2024 - 29 MAY 2024	VS	EMPLOYEES PROVIDENT FUND BOARD [SSH]	1,885	305174	7.954	
08 NOV 2023 - 06 JUN 2024	WIDAD	TAN SRI MUHAMMAD IKMAL OPAT BIN ABDULLAH [SSH]	-11,300	503903	16.273	
08 NOV 2023 - 06 JUN 2024	WIDAD	WIDAD BUSINESS GROUP SDN. BHD. [SSH]	-11,300	495828	16.013	
07 JUN 2024 - 07 JUN 2024	WOODLAN	DATO' SERI MUN WENG SUM [DIR/CEO]	0.4	7254	18.134	
07 JUN 2024 - 07 JUN 2024	WOODLAN	DATO' SERI MUN WENG SUM [SSH]	0.4	7254	18.134	
04 JUN 2024 - 04 JUN 2024	WOODLAN	DATO' SERI MUN WENG SUM [DIR/CEO]	2	7254	18.133	
04 JUN 2024 - 04 JUN 2024	WOODLAN	DATO' SERI MUN WENG SUM [SSH]	2	7254	18.133	
31 MAY 2024 - 31 MAY 2024	XOYTECH	MR LIM SENG BOON [SSH]	-500	56605	6.334	
05 JUN 2024 - 05 JUN 2024	YEWLEE-WA	MADAM CHEE WAI YING [DIR/CEO]	-750	127381	48.279	
05 JUN 2024 - 05 JUN 2024	YEWLEE-WA	MR ANG LEE LEONG [DIR/CEO]	-750	133682	50.668	
31 MAY 2024 - 31 MAY 2024	YINSON	KUMPULAN WANG PERSARAAN (DIPERBADANKAN) [SSH]	-36	231088	7.633	
06 JUN 2024 - 06 JUN 2024	YTL	DATO' YEOH SEOK KIAN [DIR/CEO]	1,200	76605	0.696	
04 JUN 2024 - 04 JUN 2024	YTL	DATO' SRI MICHAEL YEOH SOCK SIONG [DIR/CEO]	-3,000	68046	0.619	
04 JUN 2024 - 04 JUN 2024	YTL	PUAN SRI DATIN TAN KAI YONG @ TAN KAY NEONG [SSH]	3,000	5650735	51.359	
04 JUN 2024 - 04 JUN 2024	YTL	YEOH TIONG LAY & SONS FAMILY HOLDINGS LIMITED [SSH]	3,000	5508597	50.067	
04 JUN 2024 - 04 JUN 2024	YTL	YEOH TIONG LAY & SONS HOLDINGS SDN BHD [SSH]	3,000	5508597	50.067	
04 JUN 2024 - 04 JUN 2024	YTL	YEOH TIONG LAY & SONS TRUST COMPANY LIMITED [SSH]	3,000	5508597	50.067	
31 MAY 2024 - 31 MAY 2024	YTL	DATO' YEOH SEOK KIAN [DIR/CEO]	-1,200	75405	0.685	
31 MAY 2024 - 31 MAY 2024	YTL	PUAN SRI DATIN TAN KAI YONG @ TAN KAY NEONG [SSH]	1,200	5647735	51.343	
31 MAY 2024 - 31 MAY 2024	YTL	YEOH TIONG LAY & SONS FAMILY HOLDINGS LIMITED [SSH]	1,200	5505597	50.051	
31 MAY 2024 - 31 MAY 2024	YTL	YEOH TIONG LAY & SONS HOLDINGS SDN BHD [SSH]	1,200	5505597	50.051	
31 MAY 2024 - 31 MAY 2024	YTL	YEOH TIONG LAY & SONS TRUST COMPANY LIMITED [SSH]	1,200	5505597	50.051	
31 MAY 2024 - 31 MAY 2024	YTLPOWR	DATO' SERI YEOH SEOK HONG [DIR/CEO]	24,000	164873	2.012	
31 MAY 2024 - 31 MAY 2024	YTLPOWR	DATO' SRI MICHAEL YEOH SOCK SIONG [DIR/CEO]	5,000	20881	0.255	
31 MAY 2024 - 31 MAY 2024	YTLPOWR	DATO' YEOH SEOK KIAN [DIR/CEO]	-3,000	25693	0.314	
31 MAY 2024 - 31 MAY 2024	YTLPOWR	DATO' YEOH SOO KENG [DIR/CEO]	15,000	36697	0.447	
31 MAY 2024 - 31 MAY 2024	YTLPOWR	DATO' YEOH SOO MIN [DIR/CEO]	2,000	26146	0.319	
31 MAY 2024 - 31 MAY 2024	YTLPOWR	PUAN SRI DATIN TAN KAI YONG @ TAN KAY NEONG [SSH]	3,000	5336818	65.129	
31 MAY 2024 - 31 MAY 2024	YTLPOWR	YEOH TIONG LAY & SONS FAMILY HOLDINGS LIMITED [SSH]	3,000	5311527	64.82	
31 MAY 2024 - 31 MAY 2024	YTLPOWR	YEOH TIONG LAY & SONS HOLDINGS SDN BHD [SSH]	3,000	5311527	64.821	
31 MAY 2024 - 31 MAY 2024	YTLPOWR	YEOH TIONG LAY & SONS TRUST COMPANY LIMITED [SSH]	3,000	5311527	64.82	
06 JUN 2024 - 06 JUN 2024	ZHULIAN	MR TEOH BENG SENG [SSH]	-219	267750	58.203	
06 JUN 2024 - 06 JUN 2024	ZHULIAN	THE BEST SOURCE HOLDINGS PTE. LTD. [SSH]	-219	64803	14.088	
05 JUN 2024 - 05 JUN 2024	ZHULIAN	MR TEOH BENG SENG [SSH]	-42	267969	58.251	
05 JUN 2024 - 05 JUN 2024	ZHULIAN	THE BEST SOURCE HOLDINGS PTE. LTD. [SSH]	-42	65022	14.135	
31 MAY 2024 - 04 JUN 2024	ZHULIAN	MR TEOH BENG SENG [SSH]	-220	268011	58.26	
31 MAY 2024 - 04 JUN 2024	ZHULIAN	THE BEST SOURCE HOLDINGS PTE. LTD. [SSH]	-220	65064	14.144	

**Disclaimer:** The Information in Insider Activity is extracted from [www.shareinvestor.com/fundamental/insider\\_trades](http://www.shareinvestor.com/fundamental/insider_trades). The information on this page is provided as a service to readers. It does not constitute financial advice and/or any investment recommendations. We assume no liability for damages resulting from or arising out of the use of such information. Whilst every effort is made to ensure accuracy, the information presented is not the official record of shareholder filings. Readers are advised to read the original filings on the Bursa Malaysia website at [www.bursamalaysia.com](http://www.bursamalaysia.com)

## SHAREINVESTOR

# WEBPRO

Stock Markets Data  
At Your Fingertips

Powerful browser-based market analytics platform.  
Access from anywhere

Intrinsic Value Calculator

Consensus Estimates

C2 Charts (Customizable & Comprehensive)

Advance Market Screener

Ownership Tracker

click here to start your  
9 Day free trial



On behalf of the Board of **Affin Bank Berhad (AFFIN)**, Affin Hwang IB wishes to

announce that the 7th DRP has been completed on 13 June 2024 following the listing of and quotation for 53,998,201 new ABB Shares on the Main Market of Bursa Securities on 13 June 2024. With the listing of the said new ABB Shares, the enlarged issued share capital of ABB is RM5,488,543,515.73 comprising 2,400,486,539 ABB Shares.



The Board of Directors of **Cypark Resources Berhad (CYPARK)** is proud to announce that its 100MW LSS3 Hybrid Solar Energy Plant in Merchang, Terengganu, has successfully reached its Commercial Operation Date (“COD”) on 9 June 2024. This milestone marks a significant achievement in supporting Malaysia’s ambition for a 70% renewable energy mix by 2050.



**ENGINEERS**

**HSS Engineers Berhad (HSSEB)** is pleased to announce that on 12 June 2024, SMHB Sdn Bhd, an associate of HEB, has accepted a Letter of Acceptance for Perkhidmatan Perunding Kejuruteraan untuk Projek Pembinaan Loji Rawatan Air

Sungai Karangan Fasa 1 di Daerah Kulim, Kedah Darul Aman.





The Board of Directors of **KPJ Healthcare Berhad (KPJ)** wishes to announce that Bandar Dato Onn Specialist Hospital Sdn Bhd, an indirect wholly-owned subsidiary of KPJHB had on 10 June 2024 issued a letter of acceptance to Tg. Langsat Development Sdn. Bhd., a 100% owned subsidiary of TPM Technopark Sdn. Bhd., which in turn is an indirect subsidiary of Johor Corporation for the renovation of floors 8 and 9 at KPJ Bandar



Dato' Onn Specialist Hospital for a contract sum of RM18.3 million.



Kindly be advised that the aforesaid Company, **Malaysia Building Society Berhad (MBSB)** has changed its name to MBSB Berhad. As such, the Company's shares will be traded and quoted under the new name with effect from 9.00 a.m., Tuesday, 18 June 2024.



On behalf of the Board of **Steel Hawk Berhad (SKHAWK)**, UOBKH wishes to announce that the SC had, vide its letter dated 7 June 2024, approved the resultant equity structure of the Company pursuant to the Proposed Listing under the Bumiputera equity requirements for public listed companies.



**YNH PROPERTY BHD**

The Board of Directors of **YNH Property Berhad (YNHPROP)** wishes to announce that Company had on 12 June 2024

appointed UHY as a special independent reviewer to conduct an independent assessment regarding certain joint ventures and turnkey contracts entered into by Kar Sin Bhd, a wholly-owned subsidiary of the Company.



**Disclaimer:** The information in the Investor Relations page is extracted from individual companies' announcements in [www.bursamalaysia.com](http://www.bursamalaysia.com). The information on this page is provided as a service to readers. We assume no liability for damages resulting from or arising out of the use of such information. Whilst every effort is made to ensure accuracy, the information presented has been simplified for your reading pleasure. Readers are advised to read the original and complete filings on the Bursa Malaysia website at [https://www.bursamalaysia.com/market\\_information/announcements/company\\_announcement](https://www.bursamalaysia.com/market_information/announcements/company_announcement)

**Upcoming IPO**

NAME OF COMPANY	OFFER PERIOD		ISSUE PRICE (Per Ordinary Share)	LISTING SOUGHT	DATE OF LISTING
	OPENING	CLOSING			
JOHOR PLANTATIONS GROUP BERHAD	12 June 2024	24 June 2024	RM0.84	MAIN MARKET	9 July 2024
OCEAN FRESH BERHAD	12 June 2024	20 June 2024	RM0.28	ACE MARKET	4 July 2024
GO HUB CAPITAL BERHAD	12 June 2024	20 June 2024	RM0.35	ACE MARKET	3 July 2024
UUE HOLDINGS BERHAD	28 May 2024	18 June 2024	RM0.24	ACE MARKET	2 July 2024
AGRICORE CS HOLDINGS BERHAD	30 May 2024	7 June 2024	RM0.50	ACE MARKET	21 June 2024
KTI LANDMARK BERHAD	21 May 2024	4 June 2024	RM0.30	ACE MARKET	19 June 2024