

Invest

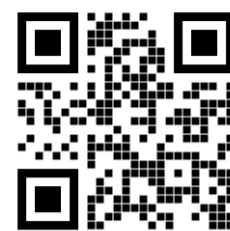
A Weekly e-Publication by SHAREINVESTOR.com

ISSUE

151

FRIDAY
07 APRIL
2023

Scan/Click QR to Register



Via email, every Friday

TWO MISTAKES TO AVOID IN INVESTING

by MSWG

(page 25)

- | | | | | | |
|----|----------------------------|----|-------------------|----|--------------------------|
| 04 | LEADERBOARD | 14 | VALUE STOCKS | 24 | REGIONAL MARKETS |
| 06 | SHARIAH HOT STOCKS | 15 | GROWTH STOCKS | 25 | FROM THE OBSERVER |
| 07 | COMPANY SPOTLIGHT | 16 | DIVIDEND STOCKS | 28 | INSIDER ACTIVITY |
| 08 | SHARIAH MOMENTUM UP STOCKS | 17 | BROKERS' CALL | 32 | INVESTOR RELATIONS |
| 10 | NON SHARIAH HOT STOCKS | 18 | LONG COMPANIES | 37 | CAREERS AT SHAREINVESTOR |
| 12 | UP TRENDING STOCKS | 20 | MARKET SENTIMENTS | | |



INVESTOR PLATFORMS

Director
Darren Chong
darren.chong@shareinvestor.com

Manager
Heidee Ahmad
heidee.ahmad@shareinvestor.com

Senior Manager
Sharon Lee
sharon.lee@shareinvestor.com

Senior Executive
Daniel Wong
daniel.wong@shareinvestor.com

Executive
Farah Azwani
farah.azwani@shareinvestor.com

Executive
Tan Yong Sheng
yongsheng.tan@shareinvestor.com

ADMIN & OPERATIONS

Senior Executive
Watie Nordin
watie.nordin@shareinvestor.com

Executive
Silas Emmanuel Joseph
silas.joseph@shareinvestor.com

INVESTOR RELATIONS

Group Managing Director & Publisher
Edward Stanislaus
edward@shareinvestor.com

Director
Elizabeth Tan
elizabeth.tan@shareinvestor.com

Senior Manager
Letticia Wong
letticia.wong@shareinvestor.com

PROCESS AUTOMATION & DATA ANALYTICS

Data Analyst
Nickson Aw

SHAREINVESTOR HOLDINGS BOARD OF DIRECTORS

Chairman		Patrick Daniel
Group CEO		Christopher Lee
Group COO		Lim Dau Hee
Group CFO		Teo Siew May
Group MD		Shanison Lin



“ GIVE A MAN A FISH AND YOU FEED HIM FOR A DAY; TEACH A MAN TO FISH AND YOU FEED HIM FOR A LIFETIME ”

ShareInvestor Malaysia Sdn. Bhd.
(200001023956) (526564-M)

Unit No. DF2-07-03A, Level 7,
Persoft Tower, 6B Persiaran Tropicana,
47410 Petaling Jaya, Selangor Darul Ehsan.

Hotline : 603 7803 1791
Mobile : 011 6343 8939
Website : www.ShareInvestor.com.my
www.ShareInvestorHoldings.com
www.Facebook.com/ShareInvestorMalaysia

ADVERTISEMENT ENQUIRY

bulthaup takes care of the details so that you can enjoy a harmonious environment.



XTRA

XTRA FURNITURE SDN BHD
The Gardens Mall, Mid Valley City
xtrafurniture.com/bulthaup
fb.com/bulthaupmalaysia



bulthaup

PURNELL

ONLY TOURBILLON



ESCAPE II FORGED CARBON

Purnell Asia

Tel.: +65.9817.3378

Email: sales.sg@purnellwatches.com

@ Purnell_Official

www.purnellwatches.com

PLAY



www.shareinvestor.com - market data at your fingertips



ShareInvestor WebPro (www.shareinvestor.com/my) Prices > Stock Prices > Bursa > click Stocks tab

1. mouse over Ranking > select Top Active > all Shariah stocks are denoted with an [S] > mouse over Column Layout > select Edit Customs > select Name > select Volume > select Last Done Price > Mouse Over Column Layout > select Custom
2. mouse over Ranking > select Top Turnover > all Shariah stocks are denoted with an [S] > mouse over Column Layout > select Edit Customs > select Name > select Last Done Price > select Value > Mouse Over Column Layout > select Custom
3. mouse over Ranking > select Top Gainers (Over 5 Trading Days) > mouse over Column Layout > select Edit Customs > select Name > select Last Done Price > select 5 Days Change > select 5 Days % Change > Mouse Over Column Layout > select Custom
4. mouse over Ranking > select Top Losers (Over 5 Trading Days)
5. mouse over Ranking > select Top % Gainers (Over 5 Trading Days)
6. mouse over Ranking > select Top % Losers (Over 5 Trading Days)

Shariah Top Actives (as at Yesterday)

Name	Price (RM)	Volume
CLASSITA [S]	0.195	802,171.000
TOPGLOV [S]	1.020	714,444.000
VINVEST [S]	0.200	693,974.000
TANCO [S]	0.460	557,728.000
MYEG [S]	0.780	480,345.000
FITTERS [S]	0.075	433,053.000
CAREPLS [S]	0.340	337,857.000
DATAPRP [S]	0.175	316,724.000
MINDA [S]	0.125	274,901.000
MNHLDG [S]	0.320	260,876.000

Shariah Top Turnover (as at Yesterday)

Name	Price (RM)	Value (RM)
TOPGLOV [S]	1.020	72,959,783
PCHEM [S]	7.250	70,707,915
HARTA [S]	1.980	44,195,013
MYEG [S]	0.780	37,514,247
PMETAL [S]	4.950	31,072,831
TANCO [S]	0.460	26,449,605
IHH [S]	5.750	25,415,489
PETGAS [S]	16.780	20,641,096
SIME [S]	2.200	18,728,440
CLASSITA [S]	0.195	17,645,050

Top Gainers (over 5 Trading days as at Yesterday)

Name	Price (RM)	Change (RM)
PETDAG	21.700	+0.700
CARLSBG	22.040	+0.600
KESM	7.560	+0.510
AYER	7.200	+0.500
HARISON	9.120	+0.470
SMI	1.030	+0.450
PETGAS	16.780	+0.300
SUNSURIA	0.615	+0.285
SALUTE	0.555	+0.270
FAREAST	3.800	+0.250

Top % Gainers (over 5 Trading days as at Yesterday)

Name	Price (RM)	Change (%)
AT	0.010	+100.00
PHB	0.010	+100.00
VSOLAR	0.010	+100.00
SALUTE	0.555	+94.74
SUNSURIA	0.615	+86.36
SMI	1.030	+77.59
COMPUGT	0.015	+50.00
DGB	0.015	+50.00
EDUSPEC	0.085	+44.07
CLASSITA	0.195	+34.48

Top Losers (over 5 Trading days as at Yesterday)

Name	Price (RM)	Change (RM)
NESTLE	135.800	-1.600
PPB	16.500	-0.620
MPI	28.500	-0.500
F&N	25.420	-0.440
KEINHIN	1.360	-0.440
BLDPLNT	10.020	-0.400
BAT	10.740	-0.280
FPI	2.790	-0.180
SKHAWK	0.430	-0.170
KLUANG	3.760	-0.160

Top % Losers (over 5 Trading days as at Yesterday)

Name	Price (RM)	Change (%)
REACH	0.045	-35.71
SKHAWK	0.430	-28.33
BCMALL	0.015	-25.00
GOCEAN	0.015	-25.00
JOE	0.015	-25.00
TALAMT	0.015	-25.00
KEINHIN	1.360	-24.44
PESONA	0.195	-23.53
JISHAN	0.380	-20.83
SYF	0.310	-19.48

SHARE INVESTOR WEBPRO

STOCK MARKET DATA AT YOUR FINGERTIPS

Powerful browser-based market analytics platform.
Access from anywhere



8 Markets Data

- ▶ Get access to data from Bursa, NYSE, Nasdaq, HKEX, SGX, IDX, SET & ASX

Portfolio Management

- ▶ Profit & Loss Summary
- ▶ Stock Alert
- ▶ News & Events filtering
- ▶ Customizable column layout

Fundamental Analysis

Financial Analysis Statement

- ▶ Profit & Loss
- ▶ Balance Sheet
- ▶ Cash Flow Statement
- ▶ More than 20 Financial Ratios
- ▶ Dividend Analysis

Technical Charting

- ▶ C² chart (Customisable & Comprehensive)

Brokers' Call

Intrinsic Value Calculator

FactSheet

- ▶ Key Stock Information
- ▶ Ownership
- ▶ Consensus Estimates
- ▶ Annual Report
- ▶ Historical Price
- ▶ Insider Trades

What's new on WebPro (Stable Release 12.1.0)

In our effort to keep our platform at the forefront of trading technology, we have added on some new features onto our C2 Chart in WebPro

ADDITIONAL NEW FEATURES:

- ▶ Anchor selector for AVWAP, PVAT, and PAV indicators
- ▶ Volume profile indicator by date range
- ▶ Moving Average Cross indicator
- ▶ Guppy Multiple Moving Average (GMMA) indicator
- ▶ GoNoGo Trend Signal indicators
- ▶ SignalIQ

So what are you waiting for? Head to our platform today and check out our new trading chart features and indicators. We're confident that you'll love the improvements we've made and that they'll help you become a more successful trader.

Click here to start your 9 days FREE trial
(Valued at RM10)



Price & Volume Distribution Charts (as at Yesterday)

Technical Analysis

DEFINITION: Shariah compliant stocks with Technical Analysis showing 5-days & 10-days Moving Average Price below Yesterday's Close over past 3 days and with Volume Spike.

CHART GUIDE: Volume Distribution Chart is a statistical interpretation of the current sentiment on each stock in graphical format. The highest bar categorized as >150k is likely to be traded by institutions or super dealers, while the lowest bar categorized as <15k usually represents retail investors. "Buy Up" refers to more buyers snatching up the lots queued at selling price. "Sell Down" refers to sellers selling their shares to the buying queue



ShareInvestor WebPro > Screener > Market Screener (FA & TA) > select BURSA > add criteria

A. Criteria

- > click Add Criteria
- Technical Analysis Conditions tab select (i) Moving Average Below Close (ii) Volume Spike
- Fundamental Analysis Conditions tab > select (iii) Revenue
- Prices & Other Conditions tab > select (iv) Is Shariah Compliant
- Technical Analysis Conditions tab select (v) Moving Average Below Close
- Prices & Other Conditions tab > select (vi) Last Done Price
- Technical Analysis Conditions tab select (vii) Moving Average Below Close

B. Conditions (Criteria Filters)

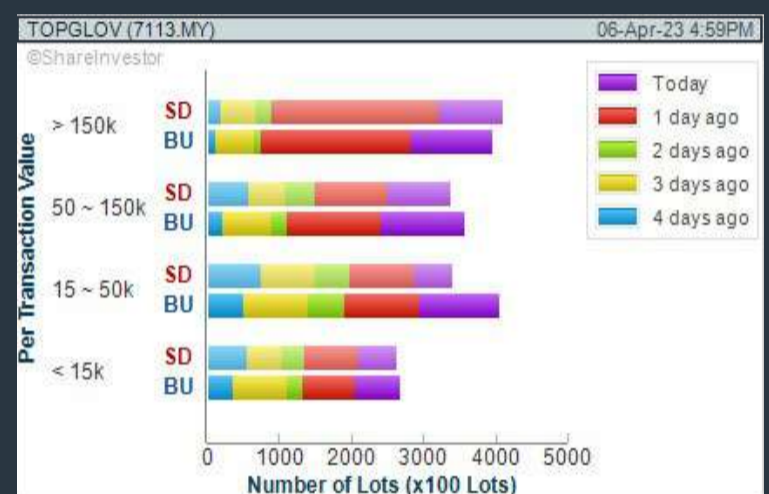
- Moving Average Below Close - select (MA) type (5) below close price for type (3) days
- Volume Spike - Volume type (1) greater than type (5) days average
- Revenue ("000) - select (more than) type (1) for the past select (1) financial year(s)
- Is Shariah Compliant - select **Yes**
- Moving Average Below Close - select (MA) type (10) below close price for type (3) days
- Last Done Price - select (more than) type (0.3)
- Moving Average Below Close - select (EMA) type (5) below close price for type (3) days

- > click Save Template > Create New Template type (Shariah Hot Stocks) > click Create
- > click Save Template as > select Shariah Hot Stocks > click Save
- > click Screen Now (may take a few minutes)
- > Sort By: Select (Vol) Select (Desc)
- > Mouse over stock name > Charts > click C² Charts or Volume Distribution

TOP GLOVE CORPORATION BERHAD (7113)

C² Chart

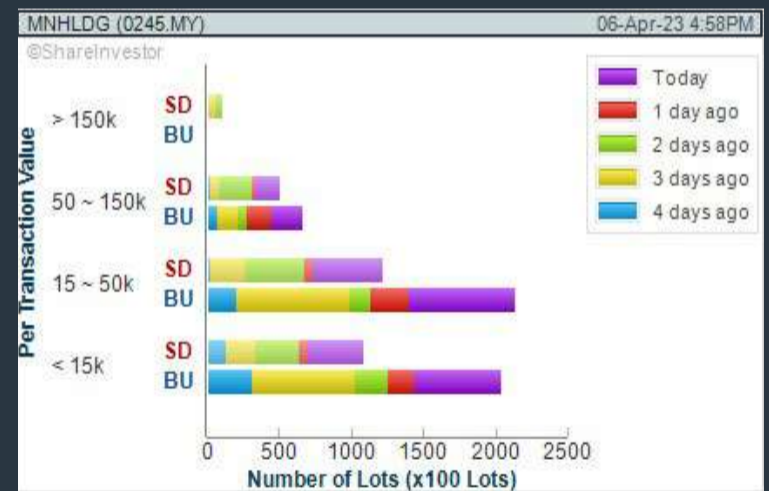
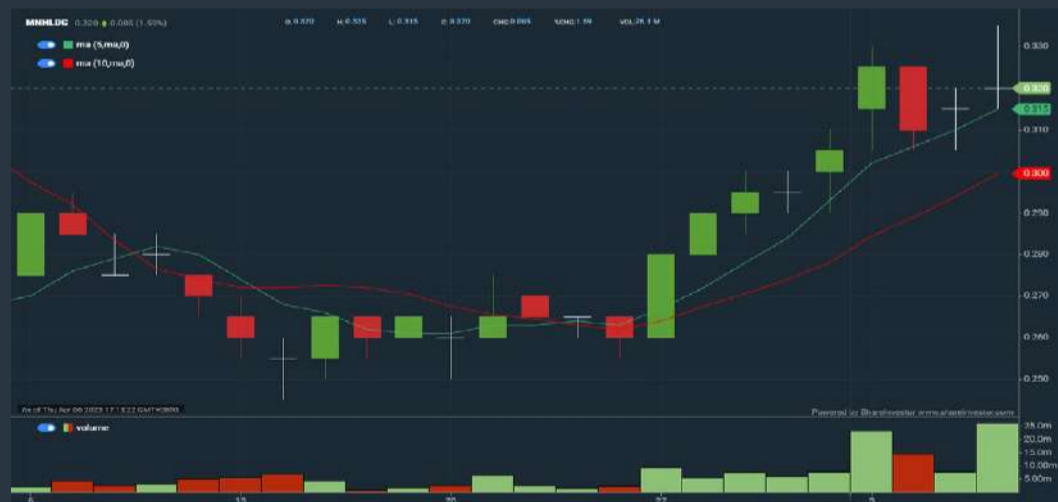
Analysis



MN HOLDINGS BERHAD (0245)

C² Chart

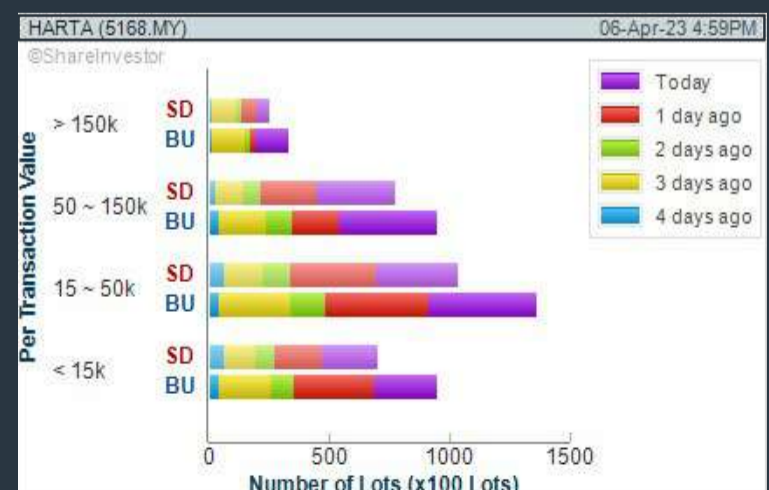
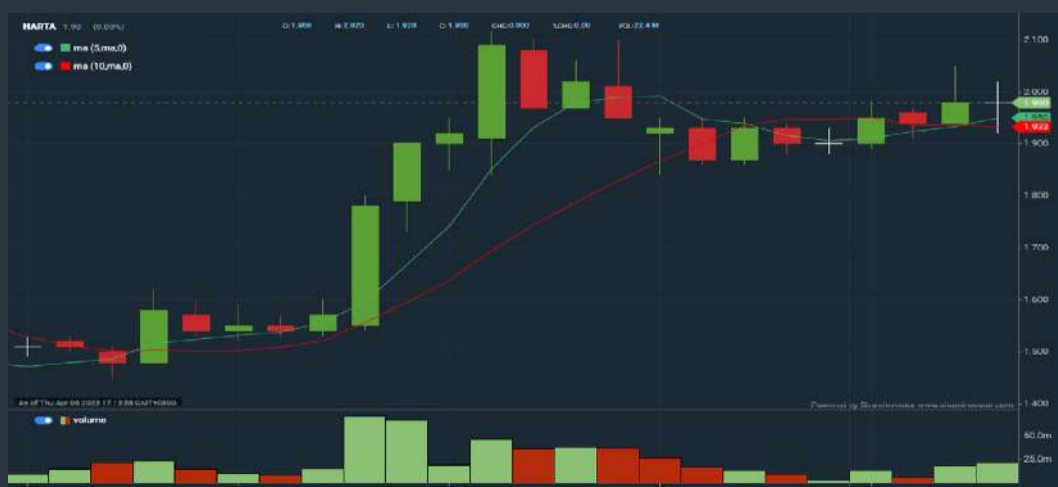
Analysis



HARTALEGA HOLDINGS BERHAD (5168)

C² Chart

Analysis



Disclaimer: The information on this page is provided as a service to readers. It does not constitute financial advice and/or any investment recommendations. Past performance is not indicative of future results. We assume no liability for damages resulting from or arising out of the use of such information. It would be best if you did your own research to make your personal investment decisions wisely or consult a licenced investment advisor.

COMPANY BACKGROUND

RHB Capital is the holding company for **RHB Banking Group**, a group of subsidiaries that offer retail, small business, and commercial banking services (through RHB Bank), as well as financial and investment products such as insurance, securities, asset management, unit trusts, derivatives, corporate finance, and underwriting (through RHB Investment Bank and RHB Insurance). In addition, the group's RHB Islamic Bank unit offers retail and commercial banking services that are sensitive to Islamic and regional laws and principals. RHB operates through a network of more than



200 branch locations, mainly in Malaysia, but also Brunei, Thailand, and Singapore.

RHBANK RHB BANK BERHAD		Updated at 06 Apr 2023 16:57	
Last (MYR)	5.620 ↑	Change: +0.010	High: 5.520
Open	5.620	Change (%): +0.18	Low: 5.500
Buy Price	5.600	Yesterday's Close	5.610
Buy Volume ('00)	459	Sell Price	5.630
Cumulative Volume ('00)	87,122	Sell Volume ('00)	1,510
		Cumulative Value	37,581,762

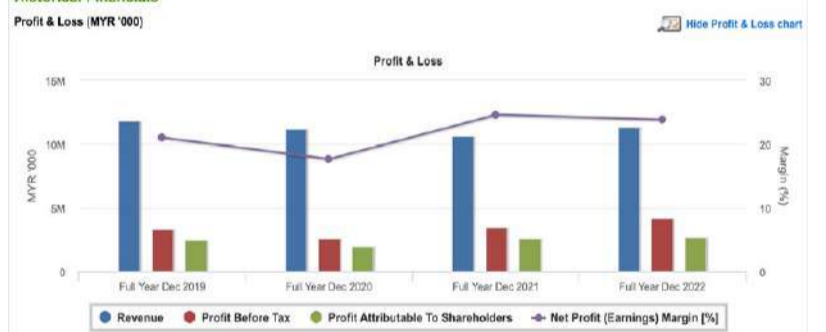
Financial Analysis

Profit Growth Increasing profit in last 2 consecutive years (with last 3 profitable years)	😊	Piotroski F Score The company has below average financial strength (Piotroski F-Score of 3-4)	😟
Dividend Payout Dividend is increasing over the past 60 months.	😊	Current Ratio The company may have difficulty meeting short-term obligations with its current assets for 3 consecutive years	😟
Debt to Cashflow High debt to cash flow for most recent year	😟	Debt to Equity High debt to equity for most recent year	😟
Free Cash Flow Positive and increasing free cash flow for at least three years	😊	Net Earnings Margin Consistently high net profit margin of at least 20% for 2 years	😊

😊 Excellent 😊 Good 😐 Neutral 😟 Be Alert 😱 Watch Out



Historical Financials



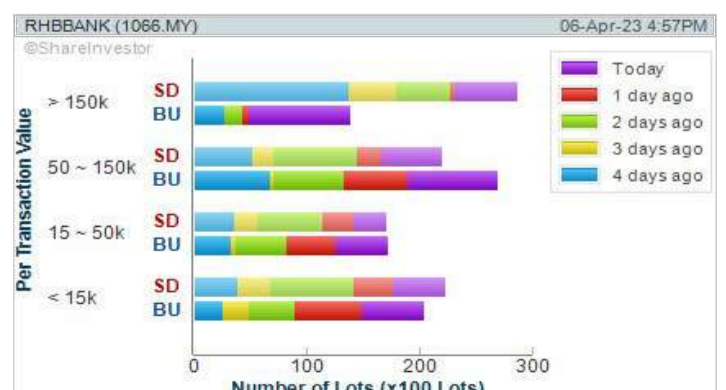
WebPro 9-Days Free Trial Registration (worth RM9) Sign Up Now



Key Statistics with Total Shareholder Returns

Total Shareholder Return

Period	Dividend Received	Capital Appreciation	Total Shareholder Return
Short Term Return	5 Days	+0.103	+1.61%
	10 Days	+0.103	+1.81%
	20 Days	-0.070	-1.25%
Medium Term Return	3 Months	-0.020	-0.35%
	6 Months	0.002	-0.37%
	1 Year	0.004	-0.95%
Long Term Return	2 Years	0.002	+5.59%
	3 Years	0.307	+26.46%
	5 Years	0.797	+24.30%
Annualised Return	Annualised	-	+3.94%



Disclaimer: The information on this page is provided as a service to readers. It does not constitute financial advice and/or any investment recommendations. Past performance is not indicative of future results. We assume no liability for damages resulting from or arising out of the use of such information. It would be best if you did your own research to make your personal investment decisions wisely or consult a licenced investment advisor.

Price & Volume Distribution Charts (as at Yesterday)

Technical Analysis

DEFINITION: Shariah compliant stocks with Technical Analysis showing Bullish Momentum and Price Uptrend. The share price closed at the highest price yesterday. The typical price was higher than the previous day's typical price.

CHART GUIDE: Volume Distribution Chart is a statistical interpretation of the current sentiment on each stock in graphical format. The highest bar categorized as >150k is likely to be traded by institutions or super dealers, while the lowest bar categorized as <15k usually represents retail investors. "Buy Up" refers to more buyers snatching up the lots queued at selling price. "Sell Down" refers to sellers selling their shares to the buying queue.



ShareInvestor WebPro > Screener > Market Screener (FA & TA) > select BURSA > add criteria

A. Criteria

- > click Add Criteria
- Fundamental Analysis Conditions tab > select (i) Revenue
- Technical Analysis Conditions tab select (ii) Average Volume
- Prices & Other Conditions tab > select (iii) Last Done Price
- Prices & Other Conditions tab > select (iv) Is Shariah Compliant
- Technical Analysis Conditions tab select (v) RSI Overbought
- Technical Analysis Conditions tab select (vi) Moving Average Below Close
- Technical Analysis Conditions tab select (vii) CCI Overbought

B. Conditions (Criteria Filters)

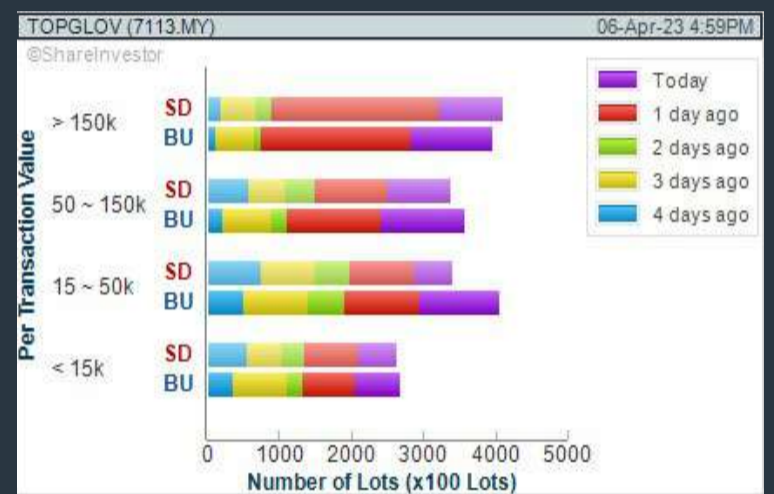
1. Revenue ("000) - select (more than) type (1) for the past select (1) financial year(s)
2. Average Volume - type (1) days average volume greater than type (10000) lots
3. Last Done Price - select (more than) type (0.3)
4. Is Shariah Compliant - select Yes
5. RSI Overbought - select RSI 1 above 99 for 1 days
6. Moving Average Below Close - select (MA) type (10) below close price for type (1) days
7. CCI Overbought - select CCI (2) above (0) for (1) days

- > click Save Template > Create New Template type (Shariah Momentum Up Stocks) > click Create
- > click Save Template as > select Shariah Momentum Up Stocks > click Save
- > click Screen Now (may take a few minutes)
- Sort By: Select (Vol) Select (Desc)
- Mouse over stock name > Charts > click C² Charts tab or Volume Distribution

TOP GLOVE CORPORATION BERHAD (7113)

C² Chart

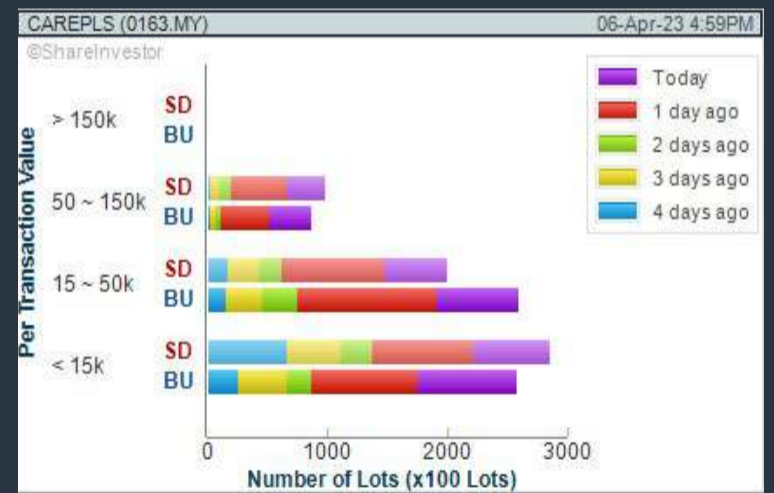
Analysis



CAREPLUS GROUP BERHAD (0163)

C² Chart

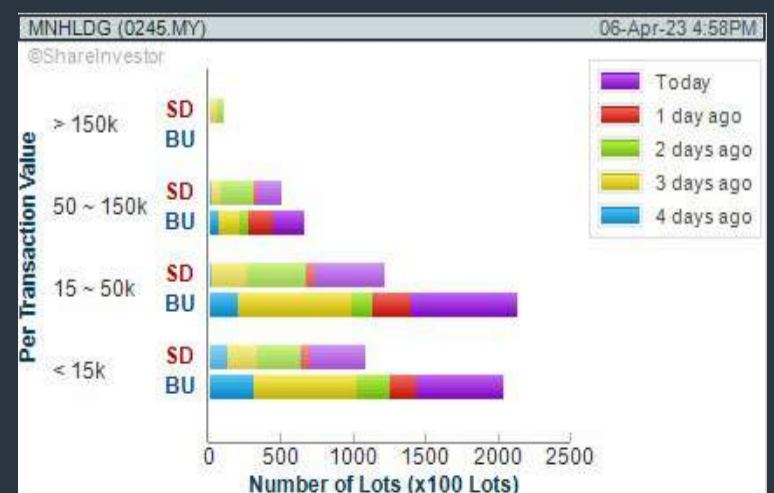
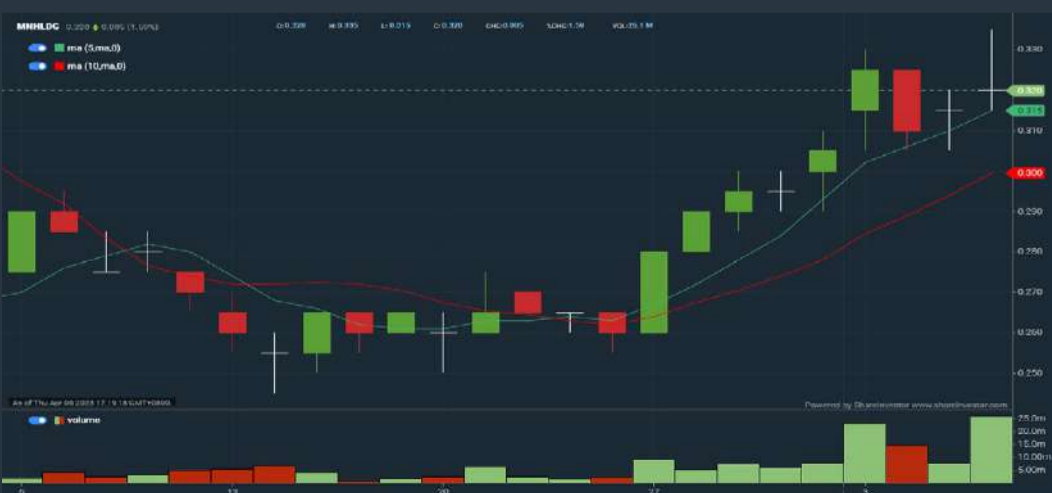
Analysis



MN HOLDINGS BERHAD (0245)

C² Chart

Analysis



Disclaimer: The information on this page is provided as a service to readers. It does not constitute financial advice and/or any investment recommendations. Past performance is not indicative of future results. We assume no liability for damages resulting from or arising out of the use of such information. It would be best if you did your own research to make your personal investment decisions wisely or consult a licenced investment advisor.

MAKE BETTER TRADING STRATEGIES

with

SHARE INVESTOR STATION



8 Markets Data

- ▶ Get access to data from Bursa, NYSE, Nasdaq, HKEX, SGX, IDX, SET & ASX

Dynamic Chart

- ▶ Candlestick Pattern Recognition
- ▶ 111 Indicators
- ▶ 39 Drawing Tools
- ▶ Performance Comparison Chart

Intraday Data

- ▶ Market Depth
- ▶ Trade Summary Matrix & Chart
- ▶ Times & Sales
- ▶ Intraday Market Ticker

Market Screener

- ▶ 96 criteria ranging from FA, TA, Consensus Estimate
- ▶ Real-time Data

Power Frame

- ▶ Combining few Dynamic Charts together with intraday information in one frame

Technical Analysis

Fundamental Analysis

Financial Analysis Statement

- ▶ Profit & Loss
- ▶ Balance Sheet
- ▶ Cash Flow Statement
- ▶ More than 20 Financial Ratios
- ▶ Dividend Analysis

FactSheet

- ▶ Key Stock Information
- ▶ Ownership
- ▶ Consensus Estimates
- ▶ Annual Report
- ▶ Historical Price
- ▶ Insider Trades

**Start your 18 days
FREE trial now
(Valued at RM82)**



Price & Volume Distribution Charts (as at Yesterday)

Technical Analysis

DEFINITION: Stocks with Technical Analysis showing 5-days & 10-days Moving Average Price below Close over past 1 days and with Volume Spike

CHART GUIDE: Volume Distribution Chart is a statistical interpretation of the current sentiment on each stock in graphical format. The highest bar categorized as >150k is likely to be traded by institutions or super dealers, while the lowest bar categorized as <15k usually represents retail investors. "Buy Up" refers to more buyers snatching up the lots queued at selling price. "Sell Down" refers to sellers selling their shares to the buying queue.



ShareInvestor WebPro > Screener > Market Screener (FA & TA) > select BURSA > add criteria

A. Criteria

- > click Add Criteria
- Technical Analysis Conditions tab select (i) Moving Average Below Close (ii) Volume Spike
- Fundamental Analysis Conditions tab >select (iii) Revenue
- Prices & Other Conditions tab > select (iv) Is Shariah Compliant
- Technical Analysis Conditions tab select (v) Moving Average Below Close
- Prices & Other Conditions tab > select (vi) Last Done Price
- Technical Analysis Conditions tab select (vii) Moving Average Below Close

B. Conditions (Criteria Filters)

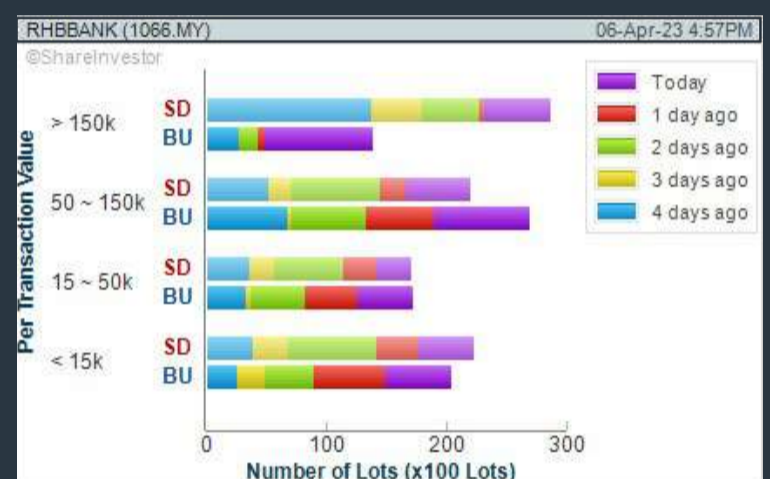
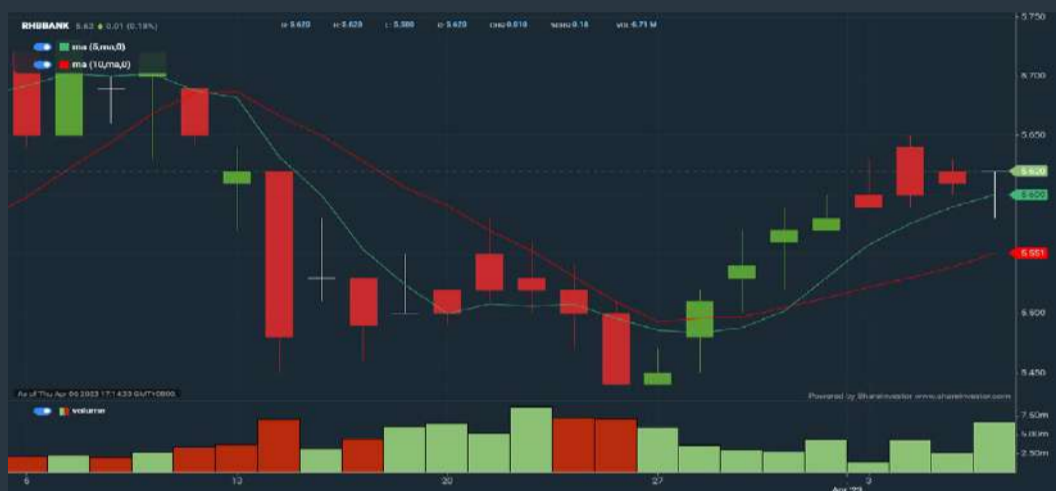
1. Moving Average Below Close - select (MA) type (5) below close price for type (3) days
2. Volume Spike - Volume type (1) greater than type (5) days average
3. Revenue ("000) - select (more than) type (1) for the past select (1) financial year(s)
4. Is Shariah Compliant - select NO
5. Moving Average Below Close - select (MA) type (10) below close price for type (1) days
6. Last Done Price - select (more than) type (0.3)
7. Moving Average Below Close - select (EMA) type (5) below close price for type (1) days

- > click Save Template > Create New Template type (Non-Shariah Hot Stocks) > click Create
- > click Save Template as > select Non-Shariah Hot Stocks > click Save
- > click Screen Now (may take a few minutes)
- Sort By: Select (Vol) Select (Desc)
- Mouse over stock name > Charts > click C² Charts tab or Volume Distribution

RHB BANK BERHAD (1066)

C² Chart

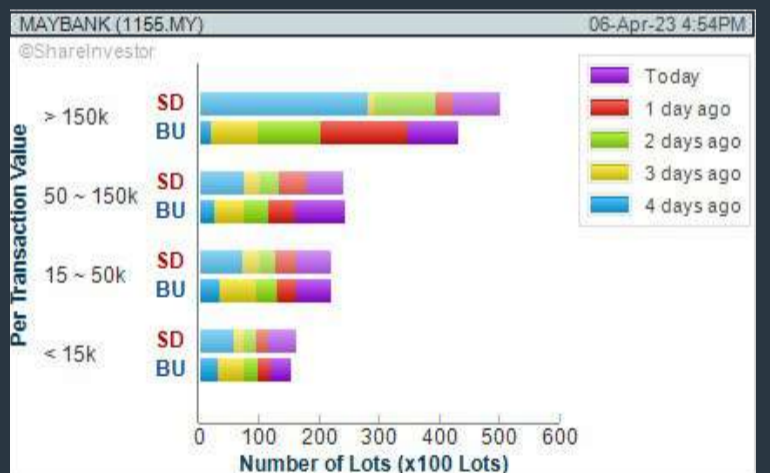
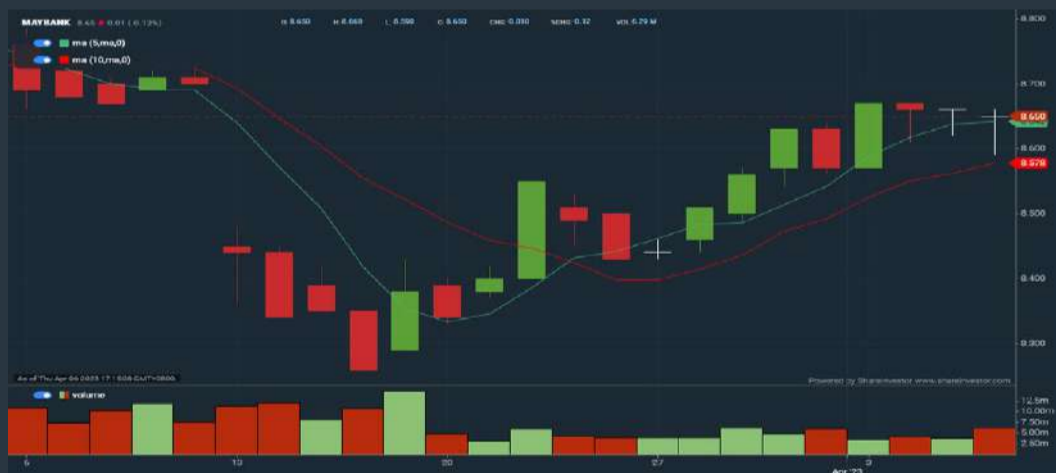
Analysis



MALAYAN BANKING BERHAD (1155)

C² Chart

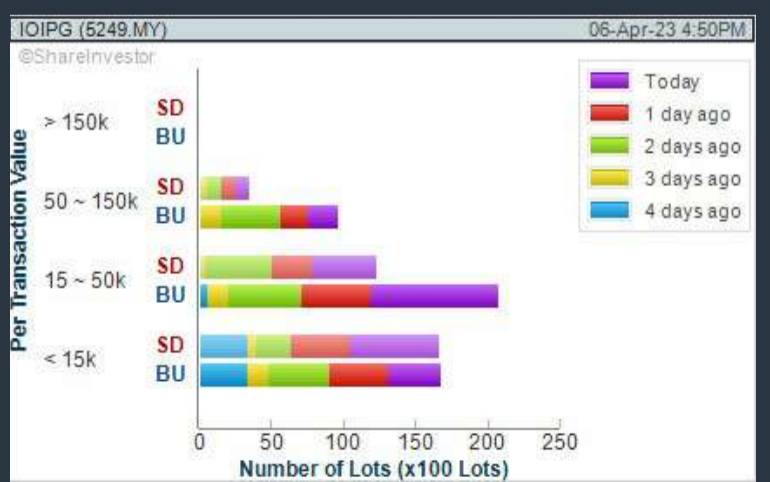
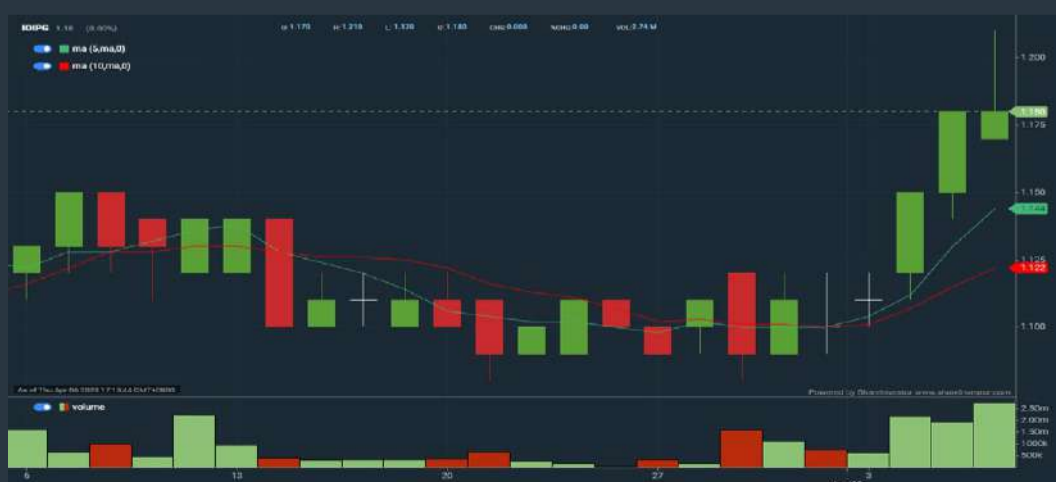
Analysis



IOI PROPERTIES GROUP BERHAD (5249)

C² Chart

Analysis



Disclaimer: The information on this page is provided as a service to readers. It does not constitute financial advice and/or any investment recommendations. Past performance is not indicative of future results. We assume no liability for damages resulting from or arising out of the use of such information. It would be best if you did your own research to make your personal investment decisions wisely or consult a licenced investment advisor.



Italian Masterpieces

Martha rocking chair designed by Roberto Lazzeroni
Chester Line sofa designed by Poltrona Frau Style & Design Centre

poltronafrau.com



XTRA

The Gardens Mall, Mid Valley City, Lot S-236 & 237
2nd flr Linkaran Syed Putra, Kuala Lumpur
T. +603 2282 9088 | xtra@xtrafurniture.com | xtrafurniture.com
f XTRAfurniture | @ xtrafurnituremsia



Price & Volume Distribution Charts (Over 5 trading days as at Yesterday)

Technical Analysis

DEFINITION: Stocks with Technical Analysis showing Bullish Momentum and Price Uptrend

CHART GUIDE: Volume Distribution Chart is a statistical interpretation of the current sentiment on each stock in graphical format. The highest bar categorized as >150k is likely to be traded by institutions or super dealers, while the lowest bar categorized as <15k usually represents retail investors. "Buy Up" refers to more buyers snatching up the lots queued at selling price. "Sell Down" refers to sellers selling their shares to the buying queue.



ShareInvestor WebPro > Screener > Market Screener (FA & TA) > select BURSA > add criteria

A. Criteria

- > click Add Criteria
- Fundamental Analysis Conditions tab > select (i) Revenue
- Technical Analysis Conditions tab select (ii) Moving Average Below Close
- Technical Analysis Conditions tab select (iii) Average Volume
- Prices & Other Conditions tab > select (iv) Last Done Price
- Technical Analysis Conditions tab select (v) Moving Average Below Close
- Technical Analysis Conditions tab select (v) Moving Average Bullish Crossover

B. Conditions

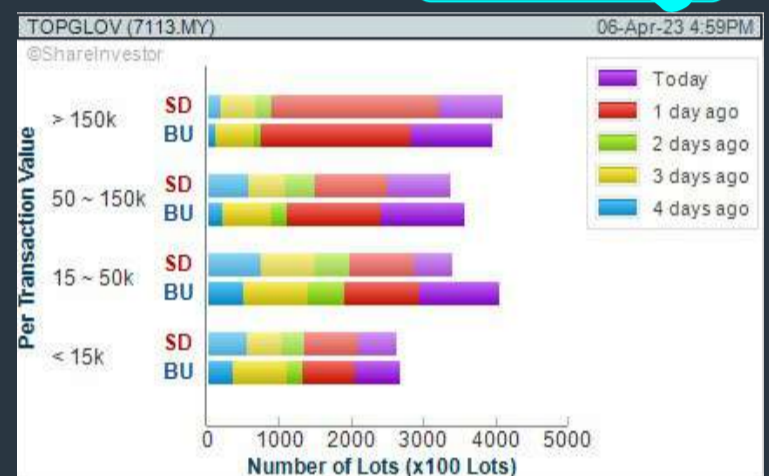
1. Revenue - select (more than) type (1) for the past select (1) financial year(s)
2. Moving Average Below Close - select (MA) type (20) below close price for type (1) days
3. Average Volume - type (5) days average volume type (10000) lots
4. Last Done Price - select (more than) type (0.3)
5. Moving Average Below Close - select (MA) type (10) below close price for type (1) days
6. Moving Average Bullish Crossover - select (MA) type (5) crossed above select (MA) type (10)

> click Save Template > Create New Template type (Non-Shariah Up-Trending Stocks) > click Create Click Save Template As > select Non-Shariah Up Trending Stocks > click Save > click Screen Now (may take a few minutes) Sort By: Select (Vol) Select (Desc) Mouse over stock name > Charts > click C² Charts tab or Volume Distribution

TOP GLOVE CORPORATION BERHAD (7113)

C² Chart

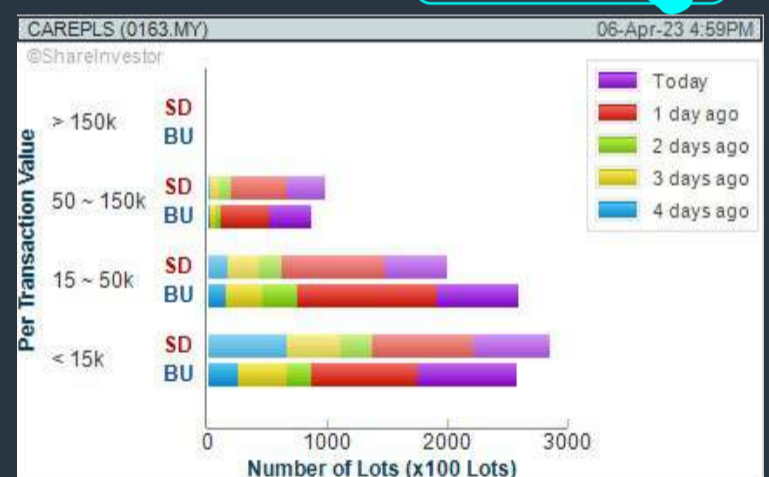
Analysis



CAREPLUS GROUP BERHAD (0163)

C² Chart

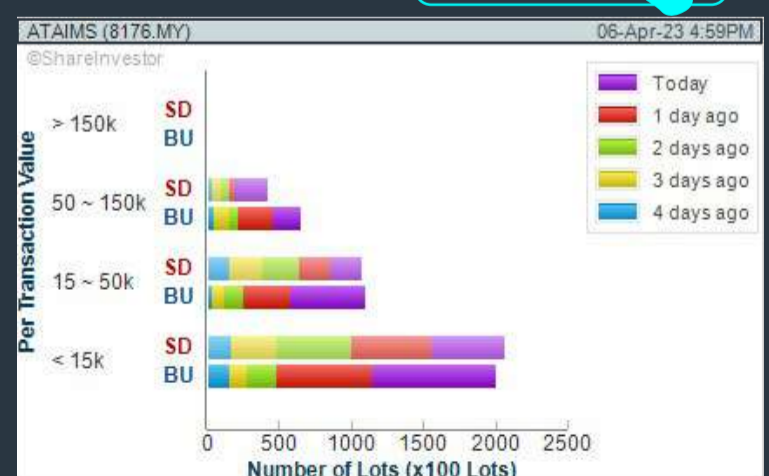
Analysis



ATA IMS BERHAD (8176)

C² Chart

Analysis



Disclaimer: The information on this page is provided as a service to readers. It does not constitute financial advice and/or any investment recommendations. Past performance is not indicative of future results. We assume no liability for damages resulting from or arising out of the use of such information. It would be best if you did your own research to make your personal investment decisions wisely or consult a licenced investment advisor.

BURSASTATION

Professional

Stock Scanning

- Technical Analysis (TA) Market Scanner
- Fundamental Analysis (FA) Market Scanner

Monitoring

- Portfolio
- Stock Alerts
- Price Spread Calculator

Market Data

- Equities
- Derivatives

Scan. Chart. Analyse.

Be The Intelligent Investor

Charts

- Intraday Charts
- Interactive Charts
- Historical Charts
- Volume Distribution Charts

Price Movements

- Streaming Prices
- Time & Sales
- Trade Summary Matrix
- Quote Movements
- 5 Levels Market Depth
- Historical Price Download

Fundamentals

- Factsheets
- Financials
- Insider Trades

Brought to you as a collaborative effort by ShareInvestor and Bursa Malaysia, **BursaStation Professional** is designed with you, the user, in mind, as a user-friendly yet full of powerful features that will appeal to investors/traders who need instant access to fundamental, technical, and trading data, anytime, anywhere. **BursaStation Professional** is a state-of-the-art Stock Market Tracker with Charting Software that places in your hands the power to make better investment decisions.

[CLICK HERE TO START YOUR 14-DAYS FREE TRIAL](#)

Price & Total Shareholder Return (as at Yesterday)

Fundamental Analysis

DEFINITION: Share price of a company trading at a lower price as compared to its fundamentals (FA) such as financial performance and dividend, allowing it to be attractive to value investors.

CHART GUIDE: Total Shareholder Return (TSR) combines share price appreciation and dividend distributions paid to show the total return to the shareholder expressed as a percentage.



ShareInvestor WebPro > Screener > Market Screener (FA & TA) > select BURSA > add criteria

A. Criteria

- > click Add Criteria
- Fundamental Analysis Conditions tab (i) Price Earnings Ratio
- Fundamental Analysis Conditions tab >select (ii) CAGR of Net Earnings
- Fundamental Analysis Conditions tab >select (iii) Net Debt To Equity
- Fundamental Analysis Conditions tab >select (iv) Return On Equity (ROE)

B. Conditions

1. Price Earnings Ratio - select (less than) type (15) times now
2. CAGR of Net Earnings - select (more than) type (10) % for the past type (3) financial year(s)
3. Net Debt To Equity – select (less than) type (1) for the past select (1) financial year(s)
4. Return On Equity (ROE) – select (more than) type (10) % for the past select (1) financial year(s)

- > click Save Template > Create New Template type (Value Stock) > click Create
- > click Save Template as > select Value Companies > click Save
- > click Screen Now (may take a few minutes)
- Sort by: Select (PE Ratio) Select (Ascending)
- > Mouse over stock name > Factsheet > looking for Total Shareholder Return
- > Mouse over stock name > Charts > click C2 Charts tab

SUNMOW HOLDING BERHAD (03050)

C² Chart

Analysis



Period	Dividend Received	Capital Appreciation	Total Shareholder Return	
Short Term Return	5 Days	-	-	
	10 Days	-	-	
	20 Days	-	-0.020	-3.00 %
Medium Term Return	3 Months	-	-0.270	-30.00 %
	6 Months	-	-0.320	-33.68 %
	1 Year	-	-0.305	-32.62 %
Annualised Return	Annualised	-	-32.62 %	

LION POSIM BERHAD (8486)

C² Chart

Analysis



Period	Dividend Received	Capital Appreciation	Total Shareholder Return	
Short Term Return	5 Days	-	-0.025	-5.75 %
	10 Days	-	-0.030	-6.82 %
	20 Days	-	-0.025	-5.75 %
Medium Term Return	3 Months	-	-0.075	-16.46 %
	6 Months	-	-0.100	-24.07 %
	1 Year	-	-0.130	-34.07 %
Long Term Return	2 Years	-	-0.320	-43.84 %
	3 Years	-	+0.115	+38.98 %
	5 Years	-	-0.140	-26.45 %
Annualised Return	Annualised	-	-5.71 %	

TECK GUAN PERDANA BERHAD (7439)

C² Chart

Analysis



Period	Dividend Received	Capital Appreciation	Total Shareholder Return	
Short Term Return	5 Days	-	-0.100	-5.46 %
	10 Days	-	-0.010	-0.57 %
	20 Days	-	-0.130	-6.99 %
Medium Term Return	3 Months	-	-0.050	-2.81 %
	6 Months	-	+0.450	+36.16 %
	1 Year	0.030	-0.530	-22.12 %
Long Term Return	2 Years	0.030	+0.500	+43.09 %
	3 Years	0.030	+0.910	+104.63 %
	5 Years	0.030	+0.670	+66.24 %
Annualised Return	Annualised	-	+10.57 %	

Disclaimer: The information on this page is provided as a service to readers. It does not constitute financial advice and/or any investment recommendations. Past performance is not indicative of future results. We assume no liability for damages resulting from or arising out of the use of such information. It would be best if you did your own research to make your personal investment decisions wisely or consult a licenced investment advisor.

Price & Total Shareholder Return (as at Yesterday)

Fundamental Analysis

DEFINITION: Company revenue is growing and making good quality of earnings with positive Free Cash Flow.

CHART GUIDE: Total Shareholder Return (TSR) combines share price appreciation and distributions paid to show the total return to the shareholder expressed as a percentage.



ShareInvestor WebPro > Screener > Market Screener (FA & TA) > select BURSA > add criteria

A. Criteria

1. Fundamental Analysis Conditions tab >select (i) Free Cash Flow, (ii) Revenue Growth, (iii) Gross Profit (Earnings) Margin, (iv) Quality of Earnings, (v) Total Shareholder Returns, > click Add Criteria
2. Fundamental Analysis Conditions tab >select (vi) Total Shareholder Returns > click Add Criteria

B. Conditions (Criteria Filters)

1. Free Cash Flow - select (more than) type (1) for the past select (1) financial year(s)
2. Revenue Growth - select (more than) type (1) for the past select (1) financial year(s)
3. Gross Profit (Earnings) Margin - select (more than) type (30) % for the past select (1) financial year(s)
4. Quality of Earnings - select (more than) type (1) for the past select (1) financial year(s)
5. Total Shareholder Return - select (more than) type (5) % for the past select (3) financial year(s)
6. Total Shareholder Return - select (more than) type (5) % for the past select (5) financial year(s)

- > click Save Template > Create New Template type (Growth Companies) > click Create
- > click Save Template as > select Growth Companies > click Save
- > click Screen Now (may take a few minutes)
- > Sort By: Select (Revenue Growth) Select (Desc)
- > Mouse over stock name > Factsheet > looking for Total Shareholder Return

HIBISCUS PETROLEUM BERHAD (5199)

C² Chart

Analysis



Period	Dividend Received	Capital Appreciation	Total Shareholder Return
Short Term Return	5 Days	+0.045	+4.52%
	10 Days	+0.000	+0.33%
	20 Days	-0.040	-3.70%
Medium Term Return	3 Months	-0.040	-3.70%
	6 Months	0.010	+11.11%
Long Term Return	1 Year	0.020	-14.52%
	2 Years	0.000	+66.89%
	3 Years	0.035	+112.81%
	5 Years	0.035	+23.56%
	Annualised Return	Annualised	-

CLASSIC SCENIC BERHAD (7202)

C² Chart

Analysis



Period	Dividend Received	Capital Appreciation	Total Shareholder Return
Short Term Return	5 Days	+0.045	+5.26%
	10 Days	+0.040	+4.60%
	20 Days	-0.099	-8.00%
Medium Term Return	3 Months	-0.200	-10.02%
	6 Months	-0.260	-22.22%
Long Term Return	1 Year	+0.185	+25.52%
	2 Years	-	+21.33%
	3 Years	0.030	+288.20%
	5 Years	0.190	+43.79%
	Annualised Return	Annualised	-

MEGA FIRST CORPORATION BERHAD (3069)

C² Chart

Analysis



Period	Dividend Received	Capital Appreciation	Total Shareholder Return
Short Term Return	5 Days	+0.010	+0.28%
	10 Days	+0.040	+1.17%
	20 Days	-0.099	-2.53%
Medium Term Return	3 Months	+0.140	+4.20%
	6 Months	-0.220	-6.77%
Long Term Return	1 Year	-0.200	-5.45%
	2 Years	0.060	-1.72%
	3 Years	0.253	+58.43%
	5 Years	0.313	+123.40%
	Annualised Return	Annualised	-

Disclaimer: The information on this page is provided as a service to readers. It does not constitute financial advice and/or any investment recommendations. Past performance is not indicative of future results. We assume no liability for damages resulting from or arising out of the use of such information. It would be best if you did your own research to make your personal investment decisions wisely or consult a licenced investment advisor.

Price & Total Shareholder Return (as at Yesterday)

Fundamental Analysis

DEFINITION: Company is paying out dividend with low or moderate leverage.

CHART GUIDE: Total Shareholder Return (TSR) combines share price appreciation and distributions paid to show the total return to the shareholder expressed as a percentage.



ShareInvestor WebPro > Screener > Market Screener (FA & TA) > select BURSA > add criteria

A. Criteria

- > click Add Criteria
- Fundamental Analysis Conditions tab >select (i) Dividend Yield (Historical)
- Fundamental Analysis Conditions tab >select (ii) Dividend Payout (Historical)
- Fundamental Analysis Conditions tab >select (iii) Total Debt To Equity
- Fundamental Analysis Conditions tab >select (iv) Total Shareholder Returns
- Fundamental Analysis Conditions tab >select (v) Total Shareholder Returns
- Fundamental Analysis Conditions tab / >select (vi) CAGR of Dividend Per Share

• Fundamental Analysis Conditions tab >select (vii) CAGR of Dividend Per Share

B. Conditions (Criteria Filters)

1. Dividend Yield - select (more than) type (1) % for the past select (1) financial year(s)
2. Dividend Payout (Historical) - select (between) type (0.5) to type (1) times for the past select (1) financial year(s)
3. Total Debt to Equity - select (less than) type (1) for the past select (1) financial year(s)
4. Total Shareholder Return - select (more than) type (5) % for the past select (3) financial year(s)
5. Total Shareholder Return - select (more than) type (5) % for the past select (5) financial year(s)

6. CAGR of Dividend Per Share - select (less than) type (30) % for the past select (5) financial year(s)
7. CAGR of Dividend Per Share - select (more than) type (1) % for the past select (5) financial year(s)

- > click Save Template > Create New Template type (Dividend Companies) > click Create
- > click Save Template as > select Dividend Companies > click Save
- > click Screen Now (may take a few minutes)
- > Sort By: Select (Dividend Yield) Select (Desc)
- > Mouse over stock name > Factsheet > looking for Total Shareholder Return

UNITED PLANTATIONS BERHAD (2089)

C² Chart

Analysis



Period	Dividend Received	Capital Appreciation	Total Shareholder Return
Short Term Return	5 Days	-	+1.23%
	10 Days	-0.168	-0.87%
	20 Days	-0.068	-0.36%
Medium Term Return	3 Months	+1.140	+7.47%
	6 Months	0.400	+17.81%
	1 Year	1.250	+32.73%
Long Term Return	2 Years	2.200	+36.34%
	3 Years	3.450	+72.92%
	5 Years	6.350	+88.81%
Annualised Return	Annualised	-	+15.55%

JAYCORP BERHAD (7152)

C² Chart

Analysis



Period	Dividend Received	Capital Appreciation	Total Shareholder Return
Short Term Return	5 Days	0.020	+1.42%
	10 Days	0.020	+2.88%
	20 Days	0.020	+0.70%
Medium Term Return	3 Months	0.020	+0.70%
	6 Months	0.060	+9.42%
	1 Year	0.080	+5.44%
Long Term Return	2 Years	0.185	-3.83%
	3 Years	0.285	+51.28%
	5 Years	0.435	+17.89%
Annualised Return	Annualised	-	+8.93%

UCHI TECHNOLOGIES BERHAD (7100)

C² Chart

Analysis



Period	Dividend Received	Capital Appreciation	Total Shareholder Return
Short Term Return	5 Days	-	+0.44%
	10 Days	-	+2.80%
	20 Days	-	+0.39%
Medium Term Return	3 Months	-	+1.53%
	6 Months	0.120	+5.88%
	1 Year	0.230	+15.88%
Long Term Return	2 Years	0.415	+14.87%
	3 Years	0.575	+30.70%
	5 Years	0.870	+32.38%
Annualised Return	Annualised	-	+10.18%

Disclaimer: The information on this page is provided as a service to readers. It does not constitute financial advice and/or any investment recommendations. Past performance is not indicative of future results. We assume no liability for damages resulting from or arising out of the use of such information. It would be best if you did your own research to make your personal investment decisions wisely or consult a licenced investment advisor.

Week: 31 March 2023 – 06 April 2023

More Brokers' Call 

AMINVESTMENT BANK <small>... See More</small>	Call	Target Price	Release Date
Malakoff Berhad (2496)	BUY	RM0.810	04 Apr 2023
MISC Berhad (3816)	HOLD	RM7.79	05 Apr 2023
Mynews Holdings Berhad (5275)	HOLD	RM0.54	03 Apr 2023
Sunway Construction Berhad (6777)	BUY	RM1.92	05 Apr 2023
Top Glove Corporation Berhad (7113)	SELL	RM0.60	31 Mar 2023

BIMB SECURITIES SDN BHD <small>... See More</small>	Call	Target Price	Release Date
Spritzer Berhad (7103)	BUY	RM2.60	06 Apr 2023

CGS CIMB <small>... See More</small>	Call	Target Price	Release Date
British American Tobacco (Malaysia) Berhad (4162)	HOLD	RM10.16	03 Apr 2023

KENANGA <small>... See More</small>	Call	Target Price	Release Date
MyNews Holdings Berhad (5275)	UNDERFORM	RM0.50	31 Mar 2023

MIDF <small>... See More</small>	Call	Target Price	Release Date
Deleum Berhad (5132)	BUY	RM1.22	06 Apr 2023
KPJ Healthcare Berhad (5878)	BUY	RM1.48	06 Apr 2023
Ranhill Utilities Berhad (5272)	BUY	RM0.70	04 Apr 2023
Sunway Construction Group Berhad (5263)	BUY	RM2.00	05 Apr 2023

JOB KAYHIAN <small>... See More</small>	Call	Target Price	Release Date
Farm Fresh Berhad (5306)	BUY	RM1.66	05 Apr 2023
Jaya Tiasa Holdings Bhd (4383)	BUY	RM0.87	04 Apr 2023
Malton Berhad (6181)	BUY	RM0.51	05 Apr 2023
MISC Berhad (3816)	BUY	RM8.60	05 Apr 2023
MyNews Holdings Berhad (5275)	BUY	RM0.62	03 Apr 2023
Naim Holdings Berhad (5073)	BUY	RM0.695	04 Apr 2023

Disclaimer: InveSt does not accept any liability whatsoever for any direct, indirect or consequential losses (including loss of profit) or damages that may arise from the use of information or opinions in this publication. The information and opinions in InveSt are not to be considered as an offer to sell or buy any of the securities discussed. Opinions expressed are subject to change without notice. The Brokers may, from time to time, have interests or positions in the securities mentioned. For the full report on each item listed on this page, please visit https://www.shareinvestor.com/my/brokers_call.

DEFINITION: Top 10 stocks with Technical Analysis plus Pattern Matching by 60 pre-defined indicators by the system showing a higher probability of bullish sentiment on the share price.



ShareInvestor WebPro > Screener > Predefined TA Screens > select market BURSA > Most Long Signals > click Scan Results or mouse over each company

TANCO HOLDINGS BERHAD (2429.MY)

TANCO

Price updated at 06 Apr 2023 16:59

Last: 0.460	Change: -0.045	Volume: 557,728
	Change (%): -8.91	Range: 0.455 - 0.505

TA Scanner Results based on historical data up to 06 Apr 2023

Condition	Signal	Explanation
Bollinger Band: Bullish Long Term Volatility Breakout and Trending	Long	1. Close price above upper bollinger band(33,1). 2. Volume above average volume(50). 3. Average volume(50) is above 300,000.
Bollinger Band: Bullish Short Term Volatility Breakout and Trending	Long	1. Close price above upper bollinger band(33,1). 2. Volume above average volume(10). 3. Average volume(10) is above 300,000.
Bollinger Band: High Above Upper Bollinger Band	Neutral	1. High above upper bollinger band(14,2). 2. Average volume(5) is above 100,000.
CCI: Bearish CCI Overbought And Reversing	Short	1. CCI(26) above 100 and CCI(26) 1 day ago increasing for the last 3 days. 2. CCI(26) below CCI(26) 1 day ago
Donchian Channels: High Above Upper Donchian Channels	Long	High crossed above the upper Donchian Channel(14,4)
MACD: Bullish MACD Crossover	Long	1. MACD(12,26) diff line crossed above the MACD(12,26) signal line. 2. MACD Histogram(12,26) is above 0.
Volume: 10 Days large value Buy Up trade	Long	1. 150K value Buy Up greater than Sell Down by 20% for 10 days. 2. 50K-100K value Buy Up greater than Sell Down by 20% for 10 days. 3. Average volume(10) is above 1000000
Volume: 5 Days large value Buy Up trade	Long	1. 150K value Buy Up greater than Sell Down by 20% for 5 days. 2. 50K-100K value Buy Up greater than Sell Down by 20% for 5 days. 3. Average volume(10) is above 1000000
Williams %R: Bearish Williams %R	Short	1. Williams %R(26) between 0 and -20. 2. Average volume(5) is above 100,000.

SEDANIA INNOVATOR BERHAD (0178.MY)

SEDANIA

Price updated at 06 Apr 2023 16:59

Last: 0.215	Change: -0.015	Volume: 45,436
	Change (%): -6.52	Range: 0.210 - 0.235

TA Scanner Results based on historical data up to 06 Apr 2023

Condition	Signal	Explanation
Bollinger Band: Bullish Long Term Volatility Breakout and Trending	Long	1. Close price above upper bollinger band(33,1). 2. Volume above average volume(50). 3. Average volume(50) is above 300,000.
Bollinger Band: Bullish Short Term Volatility Breakout and Trending	Long	1. Close price above upper bollinger band(33,1). 2. Volume above average volume(10). 3. Average volume(10) is above 300,000.
Bollinger Band: High Above Upper Bollinger Band	Neutral	1. High above upper bollinger band(14,2). 2. Average volume(5) is above 100,000.
DM: Bullish Directional Movement	Long	-DI(14) crossed below +DI(14)
Donchian Channels: High Above Upper Donchian Channels	Long	High crossed above the upper Donchian Channel(14,4)
RSI: Short Term RSI 50 Bullish Crossover	Long	1. RSI(20) crossed above 50 within the last 1 day and RSI(20) 1 day ago below 50 for the last 5 days. 2. Volume above average volume(125). 3. Average volume(5) is above 100,000.
Williams %R: Bearish Williams %R	Short	1. Williams %R(26) between 0 and -20. 2. Average volume(5) is above 100,000.

SCOPE INDUSTRIES BERHAD (0028.MY)

SCOPE

Price updated at 06 Apr 2023 16:58

Last: 0.170	Change: -	Volume: 97,385
	Change (%): -	Range: 0.160 - 0.175

TA Scanner Results based on historical data up to 06 Apr 2023

Condition	Signal	Explanation
Bollinger Band: Bullish Long Term Volatility Breakout and Trending	Long	1. Close price above upper bollinger band(33,1). 2. Volume above average volume(50). 3. Average volume(50) is above 300,000.
Bollinger Band: Bullish Short Term Volatility Breakout and Trending	Long	1. Close price above upper bollinger band(33,1). 2. Volume above average volume(10). 3. Average volume(10) is above 300,000.
Bollinger Band: High Above Upper Bollinger Band	Neutral	1. High above upper bollinger band(14,2). 2. Average volume(5) is above 100,000.
DM: Bullish Directional Movement	Long	-DI(14) crossed below +DI(14)
Donchian Channels: High Above Upper Donchian Channels	Long	High crossed above the upper Donchian Channel(14,4)
Parabolic SAR: Bearish Parabolic SAR Reversal	Neutral	1. Parabolic SAR 1 day ago above close price 1 day ago for the last 5 days. 2. Parabolic SAR below close price
RSI: Short Term RSI 50 Bullish Crossover	Long	1. RSI(20) crossed above 50 within the last 1 day and RSI(20) 1 day ago below 50 for the last 5 days. 2. Volume above average volume(125). 3. Average volume(5) is above 100,000.

OSK HOLDINGS BERHAD (5053.MY)

OSK

Price updated at 06 Apr 2023 16:59

Last: 1.000	Change: -0.010	Volume: 21,840
	Change (%): -0.99	Range: 0.995 - 1.020

TA Scanner Results based on historical data up to 06 Apr 2023

Condition	Signal	Explanation
Bollinger Band: High Above Upper Bollinger Band	Neutral	1. High above upper bollinger band(14,2). 2. Average volume(5) is above 100,000.
DM: Bullish Directional Movement	Long	-DI(14) crossed below +DI(14)
MA: Short Term Bullish Moving Average Crossover	Long	MA(10) crossed above MA(15) within the last 1 day.
MACD: Bullish MACD Crossover	Long	1. MACD(12,26) diff line crossed above the MACD(12,26) signal line. 2. MACD Histogram(12,26) is above 0.
Parabolic SAR: Bearish Parabolic SAR Reversal	Neutral	1. Parabolic SAR 1 day ago above close price 1 day ago for the last 5 days. 2. Parabolic SAR below close price
RSI: Short Term RSI 50 Bullish Crossover	Long	1. RSI(20) crossed above 50 within the last 1 day and RSI(20) 1 day ago below 50 for the last 5 days. 2. Volume above average volume(125). 3. Average volume(5) is above 100,000.
Volume: 10 Days large value Buy Up trade	Long	1. 150K value Buy Up greater than Sell Down by 20% for 10 days. 2. 50K-100K value Buy Up greater than Sell Down by 20% for 10 days. 3. Average volume(10) is above 1000000
Volume: 5 Days large value Buy Up trade	Long	1. 150K value Buy Up greater than Sell Down by 20% for 5 days. 2. 50K-100K value Buy Up greater than Sell Down by 20% for 5 days. 3. Average volume(10) is above 1000000

Disclaimer: The information on this page is provided as a service to readers. It does not constitute financial advice and/or any investment recommendations. Past performance is not indicative of future results. We assume no liability for damages resulting from or arising out of the use of such information. It would be best if you did your own research to make your personal investment decisions wisely or consult a licenced investment advisor.

MCE HOLDINGS BERHAD (7004.MY)

MCEHLDG

Price updated at 06 Apr 2023 16:54

Last: 1.970	Change: -	Volume: 5,537
	Change (%): -	Range: 1.920 - 2.000

TA Scanner Results based on historical data up to 06 Apr 2023

Condition	Signal	Explanation
Bollinger Band: Bullish Long Term Volatility Breakout and Trending	Long	1. Close price above upper bollinger band(33,1). 2. Volume above average volume(50). 3. Average volume(50) is above 300,000.
Bollinger Band: High Above Upper Bollinger Band	Neutral	1. High above upper bollinger band(14,2). 2. Average volume(5) is above 100,000.
Donchian Channels: High Above Upper Donchian Channels	Long	High crossed above the upper Donchian Channel(14,4)
MACD: Bullish MACD Crossover	Long	1. MACD(12,26) diff line crossed above the MACD(12,26) signal line. 2. MACD Histogram(12,26) is above 0.
Price: New 52 Week High	Long	1. Stock reach a new 52 week high. 2. Average volume(30) is above 50000.
Williams %R: Bearish Williams %R	Short	1. Williams %R(26) between 0 and -20. 2. Average volume(5) is above 100,000.

HONG LEONG CAPITAL BERHAD (5274.MY)

HLCAP

Price updated at 06 Apr 2023 16:50

Last: 6.170	Change: -0.010	Volume: 16,799
	Change (%): -0.16	Range: 6.140 - 6.200

TA Scanner Results based on historical data up to 06 Apr 2023

Condition	Signal	Explanation
Accumulation Distribution: Bullish Accumulation Distribution	Long	Accumulation distribution increasing for the last 7 days
Volume: 10 Days large value Buy Up trade	Long	1. 150K value Buy Up greater than Sell Down by 20% for 10 days. 2. 50K-100K value Buy Up greater than Sell Down by 20% for 10 days. 3. Average volume(10) is above 1000000
Volume: 5 Days large value Buy Up trade	Long	1. 150K value Buy Up greater than Sell Down by 20% for 5 days. 2. 50K-100K value Buy Up greater than Sell Down by 20% for 5 days. 3. Average volume(10) is above 1000000
Volume: Consecutive Days Of Increasing Average Volume	Long	1. Average Volume(20) has been increasing over the last 2 weeks. 2. Average volume(20) is above 100000
Williams %R: Bearish Williams %R	Short	1. Williams %R(26) between 0 and -20. 2. Average volume(5) is above 100,000.

SIAB HOLDINGS BERHAD (0241.MY)

SIAB

Price updated at 06 Apr 2023 16:50

Last: 0.135	Change: -0.005	Volume: 3,085
	Change (%): -3.57	Range: 0.135 - 0.140

TA Scanner Results based on historical data up to 06 Apr 2023

Condition	Signal	Explanation
Bollinger Band: Bullish Long Term Volatility Breakout and Trending	Long	1. Close price above upper bollinger band(33,1). 2. Volume above average volume(50). 3. Average volume(50) is above 300,000.
Bollinger Band: Bullish Short Term Volatility Breakout and Trending	Long	1. Close price above upper bollinger band(33,1). 2. Volume above average volume(10). 3. Average volume(10) is above 300,000.
Bollinger Band: High Above Upper Bollinger Band	Neutral	1. High above upper bollinger band(14,2). 2. Average volume(5) is above 100,000.
Donchian Channels: High Above Upper Donchian Channels	Long	High crossed above the upper Donchian Channel(14,4)
RSI: Short Term RSI 50 Bullish Crossover	Long	1. RSI(20) crossed above 50 within the last 1 day and RSI(20) 1 day ago below 50 for the last 5 days. 2. Volume above average volume(125). 3. Average volume(5) is above 100,000.

SOUTH MALAYSIA INDUSTRIES BERHAD (4375.MY)

SMI

Price updated at 06 Apr 2023 16:59

Last: 1.030	Change: +0.170	Volume: 26,972
	Change (%): +19.77	Range: 0.865 - 1.080

TA Scanner Results based on historical data up to 06 Apr 2023

Condition	Signal	Explanation
Bollinger Band: High Above Upper Bollinger Band	Neutral	1. High above upper bollinger band(14,2). 2. Average volume(5) is above 100,000.
DM: Bullish Directional Movement	Long	-DI(14) crossed below +DI(14)
Donchian Channels: High Above Upper Donchian Channels	Long	High crossed above the upper Donchian Channel(14,4)
RSI: Short Term RSI 50 Bullish Crossover	Long	1. RSI(20) crossed above 50 within the last 1 day and RSI(20) 1 day ago below 50 for the last 5 days. 2. Volume above average volume(125). 3. Average volume(5) is above 100,000.
Volume: Volume Spike	Long	1. Volume is more than 500% above average volume(10). 2. Volume above 200000. 3. Close price above 0.10
Williams %R: Bearish Williams %R	Short	1. Williams %R(26) between 0 and -20. 2. Average volume(5) is above 100,000.

SIME DARBY PROPERTY BERHAD (5288.MY)

SIMEPROP

Price updated at 06 Apr 2023 16:54

Last: 0.490	Change: -0.005	Volume: 19,611
	Change (%): -1.01	Range: 0.490 - 0.505

TA Scanner Results based on historical data up to 06 Apr 2023

Condition	Signal	Explanation
Chaikin Volatility: Decreasing Chaikin Volatility	Neutral	Chaikin Volatility(10,10) has been decreasing for 5 days
DM: Bullish Directional Movement	Long	-DI(14) crossed below +DI(14)
MA: Bullish Price Crossover	Long	1. Close price crossed above MA(40) within the last 1 day. 2. Previous day close price is below the MA(10) for the last 5 days
RSI: Short Term RSI 50 Bullish Crossover	Long	1. RSI(20) crossed above 50 within the last 1 day and RSI(20) 1 day ago below 50 for the last 5 days. 2. Volume above average volume(125). 3. Average volume(5) is above 100,000.
Volume: 10 Days large value Buy Up trade	Long	1. 150K value Buy Up greater than Sell Down by 20% for 10 days. 2. 50K-100K value Buy Up greater than Sell Down by 20% for 10 days. 3. Average volume(10) is above 1000000

IOI CORPORATION BERHAD (1961.MY)

IOICORP

Price updated at 06 Apr 2023 16:58

Last: 3.740	Change: -0.050	Volume: 40,040
	Change (%): -1.32	Range: 3.740 - 3.790

TA Scanner Results based on historical data up to 06 Apr 2023

Condition	Signal	Explanation
Candlestick: Bullish Harami	Long	Bullish: Harami
MA: Medium Term Bullish Moving Average Crossover	Long	MA(25) crossed above MA(50) within the last 1 day.
Volume: 10 Days large value Buy Up trade	Long	1. 150K value Buy Up greater than Sell Down by 20% for 10 days. 2. 50K-100K value Buy Up greater than Sell Down by 20% for 10 days. 3. Average volume(10) is above 1000000
Volume: 5 Days large value Buy Up trade	Long	1. 150K value Buy Up greater than Sell Down by 20% for 5 days. 2. 50K-100K value Buy Up greater than Sell Down by 20% for 5 days. 3. Average volume(10) is above 1000000

OPR HIKE HINGES ON ECONOMIC STRENGTH, DOMESTIC INFLATION - UNLIKE THE WEST – BNM ASST GOVERNOR

A ccording to Bank Negara assistant governor Fraziali Ismail, while there is still room for normalising the overnight policy rate (OPR) hike to pre-Covid-19 levels, the decision will largely depend on the strength of the domestic economy and the level of inflation. Malaysia does not have an inflation problem like in the West but we need to be careful to make sure inflation remains well behaved. We do not implement interest rate hikes just because the US Federal Reserve (Fed) did so. Rather, we take into account how the global economy and financial markets are affected by the Fed's decision and how this in turn affects Malaysia's prospects in terms of growth and inflation. He

pointed out that the pervasiveness of inflation has declined but it still warrants careful observation.

During a panel discussion organised by the Malaysian Economic Association at the Asia School of Business on Tuesday (4Apr), Fraziali said that inflation has been going at a relatively slower pace. Headline inflation has somewhat peaked in August last year and has calmed down a bit but core inflation is still gradually going up and slowly easing downward. The figures are above the long term average of 2.1% and 2.2% for core and headline inflation respectively. Inflation remains prone to supply shocks and is also dependent on the removal of subsidies. The growth in credit by households and businesses remain supportive of economic activity despite the country's elevated household indebtedness and rising interest rate environment.

He noted some have argued that looking at the high indebtedness levels, would it be the case that monetary policy is being constrained by financial stability concerns. He made it clear that this is not the case for Malaysia. Even though, there is high household indebtedness, but it hasn't come to a point where what we need to do in monetary policy implementation needs to be highly qualified by what is happening on the financial stability side. Although household indebtedness to gross domestic product has dropped further to 81.2% in December last year, it is still relatively higher compared with that of regional economies like Singapore and Indonesia.

Fraziali said that under the country's floating exchange rate regime, the ringgit became a first line shock absorber of the domestic economy. Despite the upheaval in the international financial market for the US dollar, there was hardly any strong overreaction in the real economy. Malaysia's real economy grew by 8.7% last year. One thing about Malaysia is that we have highly open financial markets. There are a lot of foreign players investing in our bond market with ownership of government bonds by non-residents at 22.9%. In fact, the local bond market is the third largest in Asia.

The assistant governor added that what differentiates us from many other parts of the region is also the depth, breadth, and maturity of domestic institutional players, like Employees Provident Fund, Retirement Fund Inc, and insurance players that offers some counter movements whenever non-resident players undertake huge movements in the market.

KLCI PERFORMANCE TENDS TO BE POSITIVE IN APRIL, WITH AVERAGE MONTH-ON-MONTH RETURN OF 0.9% OVER 10 YEARS - CGS-CIMB

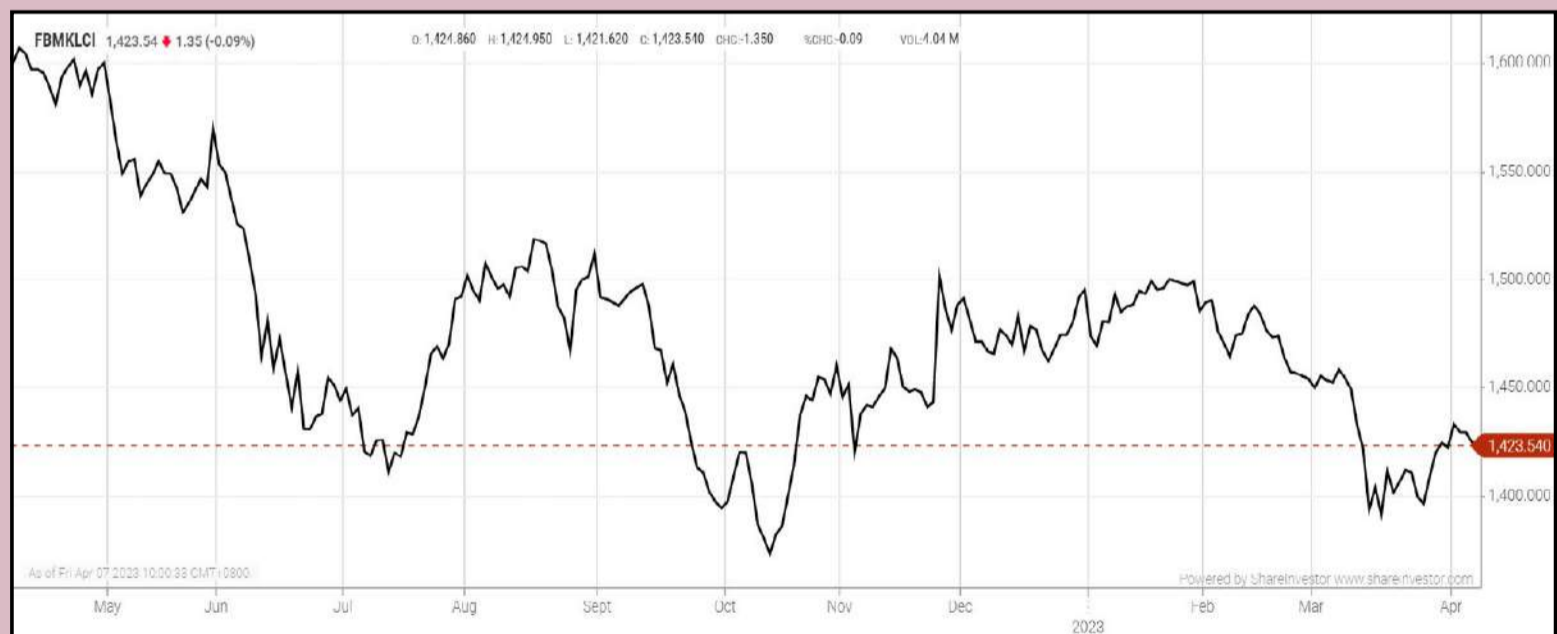
According to CGS-CIMB Securities the FBM KLCI's performance tends to be positive in April, with an average month-on-month (m-o-m) return of 0.9% over the past 10 years, and 2.1% m-o-m over 45 years. This month, investors' attention will be on the industrial production index for February on April 11, and consumer price index data for March on April 20. The focus also will be on the upcoming US Federal Open Market Committee meeting on May 2 to 3. As for the corporates, the market will be looking for more details of some of the Budget 2023 measures, such as the proposed luxury tax and the capital gains tax on non-listed shares. Also in focus will be the government's push for targeted subsidies, plugged leakages and lower cost of living.

The research firm said investors will keep an eye on the latest developments in the Russia-Ukraine war, global inflation, the US' 10-year bond yields, and global interest rate trends. Other than that, investors will be tracking the potential dates of the upcoming state polls (expected in mid-2023), among others. The market will likely remain range-bound in April, as investors weigh potential earnings risks from rising costs, slower global growth, and the government's proposal to implement luxury taxes on fashion and watches in Budget 2023, as well as easing concerns over the global banking crisis. The market's downside is expected to be capped by an earnings lift from the absence of 2022's one-off prosperity tax, the return of foreign workers, additional

liquidity available for domestic funds due to the absence of Employees Provident Fund withdrawal schemes, and the KLCI's undemanding valuations.

EYE ON THE MARKETS

This week, on Friday (7Apr), the Ringgit opened at 4.4010 against the USD from 4.4225 on Monday (3Apr). Meanwhile, the Ringgit opened at 3.3072 to the Sing Dollar on Friday (7Apr). On Monday (3Apr), the FBM KLCI opened at 1426.77. As at Friday (7Apr) 10:00am, the FBM KLCI is down 3.23 points for the week at 1423.54. Over in US, the overnight Dow Jones Industrial Average closed up 2.57 points (+0.01%) to 33,485.29 whilst the NASDAQ gained 91.10 points (+0.76%) to 12,087.96.



KLCI 1 Year Chart

SHAREINVESTOR MARKET DATA PLATFORMS



SHAREINVESTOR STATION
Advanced Charting Software
(8 Markets)



SHAREINVESTOR WEBPRO
Browser-Based Market Data
Analytics Platform



BURSASTATION
Advanced Charting Software
(Bursa Malaysia Only)

Over 5 trading days



ShareInvestor WebPro (www.shareinvestor.com/my)

1. Price > Stock Prices
2. Select Market: NASDAQ / NYSE / IDX / SET / HKEX / SGX (One bourse at a time)
3. select Stocks Tab
4. select Ranking Top Gainers or Top Losers (Over 5 Trading Days)
5. Mouse over Column Layout > select Edit Customs > select Name > select Last Done Price > select 5 Days Change > select 52 Weeks High > select 52 Weeks Low > Mouse Over Column Layout > select Custom

NASDAQ (USD)

Top Gainers

Name	Last Done	Change Over 5 Days	52 Weeks High	52 Weeks Low
FIRST CITIZENS BANCSHARES INC NRTH	998.860	+65.060	988.000	505.840
BEIGENE LTD SPON ADS EACH REPR 13 ORD SHS	238.450	+20.250	280.620	118.180
HESKA CORP	117.340	+19.990	148.765	57.832
OREILLY AUTOMOTIVE INC NEW	861.130	+19.630	873.940	562.900
ARGENX SE SPON ADR EACH REP 1 ORD SHS	387.360	+17.530	407.930	267.345

Top Losers

Name	Last Done	Change Over 5 Days	52 Weeks High	52 Weeks Low
MARKETAXESS HLDGS INC	343.290	-44.570	399.780	217.440
LAM RESEARCH CORP	493.790	-37.570	548.850	299.592
ASCENDIS PHARMA A/S SPON ADR EACH REP 1 ORD SHS	72.690	-35.870	134.525	61.579
CAVCO INDUSTRIES	277.320	-33.680	318.000	179.470
BOOKING HOLDINGS INC	2,583.850	-25.910	2,677.180	1,616.850

NYSE (USD)

Top Gainers

Name	Last Done	Change Over 5 Days	52 Weeks High	52 Weeks Low
BERKSHIRE HATHAWAY INC	478,005.000	+16,225.000	531,880.000	393,012.250
AUTOZONE INC	2,530.680	+124.490	2,610.050	1,703.320
MARKEL CORP	1,318.710	+55.970	1,519.245	1,064.090
NVR INC	5,468.080	+50.970	5,620.000	3,576.010
UNITEDHEALTH GROUP INC	512.810	+42.750	558.100	436.510

Top Losers

Name	Last Done	Change Over 5 Days	52 Weeks High	52 Weeks Low
SAFEHOLD INC	29.560	-88.675	218.783	26.895
DEERE & CO	369.650	-34.050	448.400	283.810
CRANE COMPANY	80.080	-32.000	123.780	72.450
UNITED RENTALS INC	355.270	-30.930	481.990	230.540
ALBEMARLE CORP	194.680	-27.760	334.550	185.150

IDX (Rupiah)

Top Gainers

Name	Last Done	Change Over 5 Days	52 Weeks High	52 Weeks Low
BANK MANDIRI (PERSERO) TBK	5,175.000	+2,618.750	5,300.000	1,793.750
INDO TAMBANGRAYA MEGAH TBK	41,125.000	+1,950.000	45,650.000	26,300.000
M CASH INTEGRASI TBK	8,725.000	+850.000	14,450.000	5,300.000
UNITED TRACTORS	29,800.000	+825.000	36,200.000	23,600.000
BAYAN RESOURCES TBK	21,500.000	+750.000	24,800.000	4,145.000

Top Losers

Name	Last Done	Change Over 5 Days	52 Weeks High	52 Weeks Low
TRANSCOAL PACIFIC TBK	6,875.000	-1,850.000	11,800.000	6,700.000
TELEFAST INDONESIA TBK	3,740.000	-1,610.000	5,900.000	2,310.000
NFC INDONESIA TBK	5,475.000	-1,200.000	13,375.000	4,460.000
GUDANG GARAM TBK	25,650.000	-1,125.000	32,125.000	16,500.000
INDOCEMENT TUNGGAL PRAKARSA	9,900.000	-825.000	11,850.000	8,975.000

SET (Thai Baht)

Top Gainers

Name	Last Done	Change Over 5 Days	52 Weeks High	52 Weeks Low
KWC	266.000	+14.000	320.000	224.000
NSI	163.000	+11.000	215.000	84.000
BH	229.000	+6.000	241.000	158.500
PTTEP	159.500	+6.000	195.000	134.500
CHOTI	150.000	+4.000	179.000	116.000

Top Losers

Name	Last Done	Change Over 5 Days	52 Weeks High	52 Weeks Low
DELTA	882.000	-124.000	1,154.000	287.000
NEW	100.000	-12.000	123.000	49.000
CBG	87.000	-11.000	116.000	80.250
AEONTS	176.500	-8.500	208.000	152.000
JTS	34.000	-7.000	594.000	28.250

HKEX (HKD)

Top Gainers

Name	Last Done	Change Over 5 Days	52 Weeks High	52 Weeks Low
QINGDAO AINNOVATION TECH GP CO LTD	26.000	+10.720	27.500	12.960
TRIP COM GROUP LTD	293.400	+9.400	321.800	152.100
CHINA GOLD INTERNATIONAL RESOURC CP	36.100	+8.350	36.150	16.940
MOG HOLDINGS LTD	28.900	+7.700	31.000	1.150
DPC DASH LTD	55.700	+6.500	60.050	45.100

Top Losers

Name	Last Done	Change Over 5 Days	52 Weeks High	52 Weeks Low
BILIBILI INC	168.700	-22.600	245.200	66.100
WEIBO CORPORATION	143.500	-17.400	217.200	81.300
STAR CM HOLDINGS LIMITED	101.300	-16.600	120.100	32.550
CHINA TOURISM GROUP DUTY FREE CORP	187.500	-13.300	280.000	120.000
MEITUAN	133.800	-8.200	211.600	112.800

SGX (SGD)

Top Gainers

Name	Last Done	Change Over 5 Days	52 Weeks High	52 Weeks Low
JARDINE C&C	32.010	+1.350	36.850	25.080
SHANGRI-LA HKD	7.580	+0.600	8.400	4.300
TJ DARENTANG USD	1.880	+0.390	1.910	0.925
OCBC BANK	12.730	+0.340	13.230	11.200
AEM USD	2.480	+0.300	3.600	2.180

Top Losers

Name	Last Done	Change Over 5 Days	52 Weeks High	52 Weeks Low
NIO Inc. USD OV	9.070	-0.780	25.350	8.030
ENGRO	0.905	-0.145	1.348	0.905
DBS	33.380	-0.120	36.400	29.450
BEST WORLD	2.370	-0.100	2.550	1.360
CITYDEV	7.270	-0.100	8.579	7.020

TWO MISTAKES TO AVOID IN INVESTING



Devanesan
Evanson

**Chief Executive
Officer, Minority
Shareholders Watch
Group**

Some market gurus advise that you should hold onto your stocks for the long term – the term ‘long term’ itself is subjective. Some say for at least three years - and never sell, no matter what. In today’s dynamic risk-laden uncertain world, three years is an eternity. You should not take a passive approach. You should spend time keeping up with stock prices, news on the companies you have invested in, and even what analysts are saying about some of the stocks you own, especially when you find yourself losing a couple of hundred ringgit when stock prices drop. What you should do is consider selling if the stock price dropped significantly or if you read about changes within the company that you feel are not good. The better advice is to invest for the long term but to monitor and stay

alert for changes that may impact the companies you invest in. The better advice will be to take the passive approach to investing when you invest in funds, but the passive approach can hurt your finances a lot when you're investing in individual stocks.

MONITOR

You must monitor a company's performance if you are going to invest in a single stock. Firstly, monitoring is more than just monitoring the share price movements, it's not just about deciding whether to buy or sell. Monitoring is about spending quality time monitoring your portfolio and understanding what problems a business has, how the industry is doing, and overall trends. Knowing these things on a weekly basis can help you make a more level-headed decision as to when to sell the stock and when to hold onto it. And such decisions are not exact sciences that guarantee that you will make money, but they sure will reduce the risk of substantial losses.

Paul Samuelson said that "Investing should be more like watching paint dry or watching grass grow. If you want excitement, take \$800 and go to Las Vegas." Paint dries in a day or two which may be too frequent to monitor your investments. And it takes a long time for grass to grow, and that time horizon is too long to leave your investments untended. The answer is somewhere in-between. A weekly health check is good enough though established blue chips may be left unmonitored for longer than a week.

Don't put your money in a stock and never look at it again. Instead, look at it again and again.

DIVERSIFY

Secondly, it is all about diversification. Never invest substantial portions of your money into stocks in the same sector. A diversified portfolio spreads your risk across unrelated sectors. If one sector suffers, chances are that another sector will prop you up. That way, your

money would be more spread out and more insulated from the risks of investing in individual stocks in the same sector. Diversification is akin to the age-old advice - never put all your eggs in one basket. Those who invested the bulk of their investments in the gloves sector may have suffered unless they were able to exit in a timely manner.

PORTFOLIO RANGE

Of course, there is a constraint to the number of stocks you can monitor effectively. The portfolio of stocks you can effectively monitor by spending quality time directly correlates to the time you can afford for such quality monitoring. As a rule of thumb, five to ten stocks sound just about right. But we often end up with many more stocks in our portfolio. When faced with a buffet of stocks on the stock exchange, we want to taste a bit of everything. A bit of this and a bit of that – they all look good. But when our portfolio attains unmanageable constituent stocks, we must be strictly and unemotionally disciplined. If we ever find ourselves with say thirty stocks and time is a constraint for quality monitoring, there should be a culling process to limit our portfolio to a lower manageable number.

It is about quality monitoring and not about cursory monitoring.



Learn how to identify Hot Stocks using Technical Analysis (TA) and Fundamental Analysis (FA)

SIGN UP FOR Invest

IT'S FREE!!!

[Click here](#)

Scan me



Via email, every Friday.

Notice Period is 26 March – 01 April 2023

Effective Change Date	Stock Name	Buyer/ Seller Name [Classification]	Bought / (Sold) ['000]	No. of Shares After Trade ['000]	
			Total	Total	% Held
29 MAR 2023 - 29 MAR 2023	FOCUSP	PERBADANAN NASIONAL BERHAD [SSH]	-370	48,230	14.615
23 MAR 2023 - 23 MAR 2023	FOCUSP	PERBADANAN NASIONAL BERHAD [SSH]	-400	48,600	14.727
27 MAR 2023 - 28 MAR 2023	FRONTKN	MR OOI KENG THYE [SSH]	-1,696	228,265	14.53
30 MAR 2023 - 30 MAR 2023	GAMUDA	KUMPULAN WANG PERSARAAN (DIPERBADANKAN) [KWAP] [SSH]	-16	132,990	5
29 MAR 2023 - 29 MAR 2023	GAMUDA	KUMPULAN WANG PERSARAAN (DIPERBADANKAN) [KWAP] [SSH]	-2,500	133,006	5
27 MAR 2023 - 27 MAR 2023	GAMUDA	EMPLOYEES PROVIDENT FUND BOARD (EPF BOARD) [SSH]	-593	391,965	14.74
28 MAR 2023 - 28 MAR 2023	GAMUDA	KUMPULAN WANG PERSARAAN (DIPERBADANKAN) [KWAP] [SSH]	-51	135,506	5.1
24 MAR 2023 - 24 MAR 2023	GAMUDA	EMPLOYEES PROVIDENT FUND BOARD (EPF BOARD) [SSH]	-648	392,559	14.76
27 MAR 2023 - 27 MAR 2023	GAMUDA	KUMPULAN WANG PERSARAAN (DIPERBADANKAN) [KWAP] [SSH]	-2,446	135,556	5.1
23 MAR 2023 - 23 MAR 2023	GAMUDA	EMPLOYEES PROVIDENT FUND BOARD (EPF BOARD) [SSH]	-586	393,206	14.79
24 MAR 2023 - 24 MAR 2023	GAMUDA	KUMPULAN WANG PERSARAAN (DIPERBADANKAN) [KWAP] [SSH]	-900	138,002	5.19
28 MAR 2023 - 28 MAR 2023	GDEX	GDEX BERHAD [SSH]	478	96,684	1.71382
27 MAR 2023 - 27 MAR 2023	GENP	EMPLOYEES PROVIDENT FUND BOARD [SSH]	-24	113,061	12.602
30 MAR 2023 - 30 MAR 2023	GLOMAC	SHAPADU CAPITAL SDN. BHD. [SSH]	91	87,764	11.435
27 MAR 2023 - 27 MAR 2023	GLOMAC	SHAPADU CAPITAL SDN. BHD. [SSH]	19	87,673	11.423
24 MAR 2023 - 24 MAR 2023	HANDAL	ENCIK YAMANI HAFEZ BIN MUSA [SSH]	715	46,098	17.28
24 MAR 2023 - 24 MAR 2023	HANDAL	MR SUNILDEEP SINGH DHALIWAL [DIR/CEO]	715	70,980	26.61
24 MAR 2023 - 24 MAR 2023	HANDAL	MR SUNILDEEP SINGH DHALIWAL [SSH]	715	46,098	17.28
24 MAR 2023 - 24 MAR 2023	HANDAL	SEAOFFSHORE CAPITAL SDN BHD [SSH]	715	46,098	17.28
24 MAR 2023 - 24 MAR 2023	HANDAL	SEAOFFSHORE EQUITIES SDN BHD [SSH]	715	46,098	17.28
24 MAR 2023 - 24 MAR 2023	HANDAL	SEAOFFSHORE PRODUCTION SOLUTIONS SDN BHD [SSH]	715	46,098	17.28
24 MAR 2023 - 24 MAR 2023	HCK	HIICHIKOK EQUITIES SDN BHD [SSH]	1,500	241,669	53.099
24 MAR 2023 - 24 MAR 2023	HCK	TAN SRI HII CHII KOK @ HII CHEE KOK [DIR/CEO]	1,500	243,569	53.516
24 MAR 2023 - 24 MAR 2023	HCK	TAN SRI HII CHII KOK @ HII CHEE KOK [SSH]	1,500	243,569	53.516
31 MAR 2023 - 31 MAR 2023	HEXIND	DATO' ONG CHOO MENG [SSH]	1,698	1,982,830	72.173
30 MAR 2023 - 30 MAR 2023	HEXIND	DATO' ONG CHOO MENG [SSH]	3,168	1,981,132	72.111
28 MAR 2023 - 28 MAR 2023	HEXIND	DATO' ONG CHOO MENG [SSH]	6,081	1,977,964	71.996
27 MAR 2023 - 27 MAR 2023	HEXIND	DATO' ONG CHOO MENG [SSH]	3,999	1,971,884	71.775
29 MAR 2023 - 29 MAR 2023	HIBISCS	DATUK MICHAEL TANG VEE MUN [SSH]	-600	223,050	11.084
29 MAR 2023 - 29 MAR 2023	HIGHTEC	KUMPULAN H & L HIGH-TECH BERHAD [SSH]	26	2,399	1.96886
28 MAR 2023 - 28 MAR 2023	HLBANK	EMPLOYEES PROVIDENT FUND BOARD [SSH]	197	215,522	10.329
27 MAR 2023 - 27 MAR 2023	HLBANK	EMPLOYEES PROVIDENT FUND BOARD [SSH]	-66	215,326	10.319
24 MAR 2023 - 24 MAR 2023	HLBANK	EMPLOYEES PROVIDENT FUND BOARD [SSH]	-106	215,391	10.323
23 MAR 2023 - 23 MAR 2023	HLBANK	EMPLOYEES PROVIDENT FUND BOARD [SSH]	-62	215,498	10.328
22 MAR 2023 - 22 MAR 2023	HLBANK	EMPLOYEES PROVIDENT FUND BOARD [SSH]	155	215,560	10.331
28 MAR 2023 - 28 MAR 2023	HUBLINE	BNDM INCORPORATED HOLDINGS SDN. BHD. [SSH]	-16,200	912,501	21.271
28 MAR 2023 - 28 MAR 2023	HUBLINE	DATO RICHARD WEE LIANG HUAT @ RICHARD WEE LIANG CHIAT [DIR/CEO]	-16,200	912,573	21.273
28 MAR 2023 - 28 MAR 2023	HUBLINE	DATO RICHARD WEE LIANG HUAT @ RICHARD WEE LIANG CHIAT [SSH]	-16,200	912,573	21.273
28 MAR 2023 - 28 MAR 2023	HUBLINE	MADAM LAU SWEE ENG [SSH]	16,200	535,185	12.475
28 MAR 2023 - 28 MAR 2023	HUBLINE	MISS KATRINA LING SHIEK NGEE [DIR/CEO]	16,200	535,185	12.475
28 MAR 2023 - 28 MAR 2023	HUBLINE	MISS KATRINA LING SHIEK NGEE [SSH]	16,200	535,185	12.475
28 MAR 2023 - 28 MAR 2023	HUBLINE	MR BERNARD LING ING TAH [SSH]	16,200	535,185	12.475
28 MAR 2023 - 28 MAR 2023	HUBLINE	MR DENNIS LING LI KUANG [DIR/CEO]	16,200	535,185	12.475
28 MAR 2023 - 28 MAR 2023	HUBLINE	MR LING LI KUANG [SSH]	16,200	535,185	12.475
28 MAR 2023 - 28 MAR 2023	HUBLINE	MR ROYSTON LING ING DING [DIR/CEO]	16,200	535,185	12.475
28 MAR 2023 - 28 MAR 2023	HUBLINE	MR ROYSTON LING ING DING [SSH]	16,200	535,185	12.475
23 MAR 2023 - 24 MAR 2023	HWATAI	DATUK SOO CHUNG YEE [DIR/CEO]	53	1,504	2.009
28 MAR 2023 - 29 MAR 2023	IGBB	HSBC ASIA HOLDINGS LIMITED (HAHO) [SSH]	142	69,739	7.747
28 MAR 2023 - 29 MAR 2023	IGBB	HSBC HOLDINGS PLC (HGHO) [SSH]	142	69,739	7.747
28 MAR 2023 - 29 MAR 2023	IGBB	HSBC INTERNATIONAL TRUSTEE (HOLDINGS) PTE. LTD. (HHTL) [SSH]	142	69,739	7.747
28 MAR 2023 - 29 MAR 2023	IGBB	HSBC INTERNATIONAL TRUSTEE LIMITED (HKIT) [SSH]	142	69,739	7.747
28 MAR 2023 - 29 MAR 2023	IGBB	THE HONGKONG AND SHANGHAI BANKING CORPORATION LIMITED (HBAP) [SSH]	142	69,739	7.747
27 MAR 2023 - 27 MAR 2023	IGBB	HSBC ASIA HOLDINGS LIMITED (HAHO) [SSH]	84	69,597	7.731
27 MAR 2023 - 27 MAR 2023	IGBB	HSBC HOLDINGS PLC (HGHO) [SSH]	84	69,597	7.731
27 MAR 2023 - 27 MAR 2023	IGBB	HSBC INTERNATIONAL TRUSTEE (HOLDINGS) PTE. LTD. (HHTL) [SSH]	84	69,597	7.731
27 MAR 2023 - 27 MAR 2023	IGBB	HSBC INTERNATIONAL TRUSTEE LIMITED (HKIT) [SSH]	84	69,597	7.731
27 MAR 2023 - 27 MAR 2023	IGBB	THE HONGKONG AND SHANGHAI BANKING CORPORATION LIMITED (HBAP) [SSH]	84	69,597	7.731
27 MAR 2023 - 27 MAR 2023	IGBB	IGB BERHAD [SSH]	90	5,088	0.56191
24 MAR 2023 - 24 MAR 2023	IGBREIT	EMPLOYEES PROVIDENT FUND BOARD ("EPF BOARD") [SSH]	-570	407,558	11.351
28 MAR 2023 - 28 MAR 2023	IHH	EMPLOYEES PROVIDENT FUND BOARD [SSH]	128	914,865	10.388
27 MAR 2023 - 27 MAR 2023	IHH	EMPLOYEES PROVIDENT FUND BOARD [SSH]	-27,224	914,737	10.386
24 MAR 2023 - 24 MAR 2023	IHH	EMPLOYEES PROVIDENT FUND BOARD [SSH]	2,970	941,961	10.696
23 MAR 2023 - 23 MAR 2023	IHH	EMPLOYEES PROVIDENT FUND BOARD [SSH]	9	938,991	10.662
22 MAR 2023 - 22 MAR 2023	IHH	EMPLOYEES PROVIDENT FUND BOARD [SSH]	12	938,982	10.662
28 MAR 2023 - 28 MAR 2023	IJM	EMPLOYEES PROVIDENT FUND BOARD [SSH]	50	612,771	17.443
27 MAR 2023 - 27 MAR 2023	IJM	EMPLOYEES PROVIDENT FUND BOARD [SSH]	300	612,721	17.442
24 MAR 2023 - 24 MAR 2023	IJM	EMPLOYEES PROVIDENT FUND BOARD [SSH]	109	612,421	17.433
22 MAR 2023 - 22 MAR 2023	IJM	EMPLOYEES PROVIDENT FUND BOARD [SSH]	500	612,312	17.43
30 MAR 2023 - 30 MAR 2023	IMPIANA	DATO' SERI ISMAIL @ FAROUK BIN ABDULLAH [DIR/CEO]	-200	120,612	25.704
30 MAR 2023 - 30 MAR 2023	IMPIANA	DATO' SERI ISMAIL @ FAROUK BIN ABDULLAH [SSH]	-200	120,612	25.704
30 MAR 2023 - 30 MAR 2023	IMPIANA	IMPIANA SDN BHD [SSH]	-200	61,864	13.184
28 MAR 2023 - 28 MAR 2023	INNATURE	PRUDENTIAL PLC [SSH]	80	39,975	5.663
30 MAR 2023 - 30 MAR 2023	IOICORP	IOI CORPORATION BERHAD [SSH]	22	78,847	1.25449
27 MAR 2023 - 27 MAR 2023	IOICORP	EMPLOYEES PROVIDENT FUND BOARD [SSH]	2,328	683,158	11.007
24 MAR 2023 - 24 MAR 2023	IOICORP	EMPLOYEES PROVIDENT FUND BOARD [SSH]	64	680,831	10.968
28 MAR 2023 - 28 MAR 2023	JAG	DATO' NG AIK KEE [SSH]	12,500	171,475	28.827
24 MAR 2023 - 24 MAR 2023	JAG	DATO' NG AIK KEE [SSH]	10,000	158,975	26.726

Notice Period is 26 March – 01 April 2023

Effective Change Date	Stock Name	Buyer/ Seller Name [Classification]	Bought / (Sold) ['000]	No. of Shares After Trade ['000]	
			Total	Total	% Held
27 MAR 2023 - 27 MAR 2023	JSB	ENCIK JEEFRI BIN MUHAMAD YUSUP [DIR/CEO]	1,102	14,965	3.921
27 MAR 2023 - 27 MAR 2023	KAREX	MADAM GOH YIN [SSH]	97	140,642	13.351
23 MAR 2023 - 23 MAR 2023	KKB	DATIN SRI LIEW MOI FAH [SSH]	5	112,668	39.023
23 MAR 2023 - 23 MAR 2023	KKB	DATO SRI KHO KAK BENG [DIR/CEO]	5	117,918	40.841
23 MAR 2023 - 23 MAR 2023	KKB	DATO SRI KHO KAK BENG [SSH]	5	117,430	40.672
23 MAR 2023 - 23 MAR 2023	KKB	KHO KAK BENG HOLDING COMPANY SDN. BHD. [SSH]	5	112,372	38.92
23 MAR 2023 - 23 MAR 2023	KKB	MADAM KHO POH JOO [SSH]	5	112,564	38.987
23 MAR 2023 - 23 MAR 2023	KKB	MADAM KHO POH LIN [DIR/CEO]	5	113,590	39.341
23 MAR 2023 - 23 MAR 2023	KKB	MADAM KHO POH LIN [SSH]	5	112,990	39.134
23 MAR 2023 - 23 MAR 2023	KKB	MR KHO POK TONG [DIR/CEO]	5	113,217	39.213
23 MAR 2023 - 23 MAR 2023	KKB	MR KHO POK TONG [SSH]	5	113,217	39.213
28 MAR 2023 - 28 MAR 2023	KLK	EMPLOYEES PROVIDENT FUND BOARD [SSH]	6	123,050	11.41
27 MAR 2023 - 27 MAR 2023	KLK	EMPLOYEES PROVIDENT FUND BOARD [SSH]	726	123,044	11.409
24 MAR 2023 - 24 MAR 2023	KLK	EMPLOYEES PROVIDENT FUND BOARD [SSH]	73	122,318	11.342
22 MAR 2023 - 22 MAR 2023	KLK	EMPLOYEES PROVIDENT FUND BOARD [SSH]	36	122,245	11.335
27 MAR 2023 - 28 MAR 2023	KYM	MR LIM TZE THEAN [DIR/CEO]	279	24,600	16.207
27 MAR 2023 - 28 MAR 2023	KYM	MR LIM TZE THEAN [SSH]	279	24,600	16.207
23 MAR 2023 - 24 MAR 2023	KYM	MR LIM TZE THEAN [DIR/CEO]	171	24,321	16.023
23 MAR 2023 - 24 MAR 2023	KYM	MR LIM TZE THEAN [SSH]	171	24,321	16.023
27 MAR 2023 - 27 MAR 2023	LAYHONG	DATO' YAP HOONG CHAI [DIR/CEO]	-250	284,944	38.489
22 MAR 2023 - 23 MAR 2023	LAYHONG	DATO' YAP HOONG CHAI [DIR/CEO]	-100	285,194	38.523
22 MAR 2023 - 22 MAR 2023	LAYHONG	DATO' YEAP WENG HONG [DIR/CEO]	-500	8,812	1.19
24 MAR 2023 - 27 MAR 2023	LBICAP	DATIN CHAN LAI HAR [SSH]	-99	65,115	58.4
24 MAR 2023 - 27 MAR 2023	LBICAP	DATIN LOW WEE CHIN [DIR/CEO]	-99	66,477	59.63
24 MAR 2023 - 27 MAR 2023	LBICAP	DATIN LOW WEE CHIN [SSH]	-99	66,477	59.63
24 MAR 2023 - 27 MAR 2023	LBICAP	DATO' NG CHIN HENG [DIR/CEO]	-99	66,477	59.62
24 MAR 2023 - 27 MAR 2023	LBICAP	DATO' NG CHIN HENG [SSH]	-99	66,477	59.62
24 MAR 2023 - 27 MAR 2023	LBICAP	DATO' NG TIONG SENGG [SSH]	-99	66,115	59.3
24 MAR 2023 - 27 MAR 2023	LBICAP	MISS NG POOI CHENG [SSH]	-99	66,115	59.3
24 MAR 2023 - 27 MAR 2023	LBICAP	MISS NG POOI MUN [SSH]	-99	66,477	59.63
24 MAR 2023 - 27 MAR 2023	LBICAP	MISS NG POOI YEE [SSH]	-99	66,115	59.3
24 MAR 2023 - 27 MAR 2023	LBICAP	MR RAYMOND NG YEW FOONG [DIR/CEO]	-99	66,115	59.3
24 MAR 2023 - 27 MAR 2023	LBICAP	MR RAYMOND NG YEW FOONG [SSH]	-99	66,115	59.3
24 MAR 2023 - 27 MAR 2023	LBICAP	NG C. H. HOLDINGS SDN. BHD. [SSH]	108	45,104	40.45
27 MAR 2023 - 27 MAR 2023	LIHLEN	TOK SOON HING [SSH]	15	231,581	42.885
28 MAR 2023 - 28 MAR 2023	LKL	BIOALPHA HOLDINGS BERHAD [SSH]	47,010	47,010	12.114
28 MAR 2023 - 28 MAR 2023	LKL	BOTANICAL DISTRIBUTION SDN. BHD. [SSH]	47,010	47,010	12.114
24 MAR 2023 - 24 MAR 2023	LKL	MR ANG KIAN YOU [SSH]	1,499	6,368	6.554
24 MAR 2023 - 24 MAR 2023	MAG	MR NG MIN LIN [DIR/CEO]	318	426,220	26.846
24 MAR 2023 - 24 MAR 2023	MAG	MR NG MIN LIN [SSH]	318	426,220	26.846
29 MAR 2023 - 30 MAR 2023	MAGNI	MR TAN POAY SENG [DIR/CEO]	38	113,480	26.18
27 MAR 2023 - 28 MAR 2023	MAGNI	MR TAN POAY SENG [DIR/CEO]	94	113,442	26.17
28 MAR 2023 - 28 MAR 2023	MATRIX	EMPLOYEES PROVIDENT FUND BOARD [SSH]	500	103,402	8.263
27 MAR 2023 - 27 MAR 2023	MATRIX	EMPLOYEES PROVIDENT FUND BOARD [SSH]	500	102,902	8.223
24 MAR 2023 - 24 MAR 2023	MATRIX	EMPLOYEES PROVIDENT FUND BOARD [SSH]	480	102,402	8.183
29 MAR 2023 - 29 MAR 2023	MAYBANK	AMANAH TRUSTEES BERHAD - AMANAH SAHAM BUMIPUTERA [SSH]	2,750	3,820,637	31.696
28 MAR 2023 - 28 MAR 2023	MAYBANK	AMANAH TRUSTEES BERHAD - AMANAH SAHAM BUMIPUTERA [SSH]	1,250	3,817,887	31.673
27 MAR 2023 - 27 MAR 2023	MAYBANK	AMANAH TRUSTEES BERHAD - AMANAH SAHAM BUMIPUTERA [SSH]	1,136	3,816,637	31.662
23 MAR 2023 - 23 MAR 2023	MAYBANK	EMPLOYEES PROVIDENT FUND BOARD [SSH]	500	1,672,470	13.875
22 MAR 2023 - 22 MAR 2023	MAYBANK	EMPLOYEES PROVIDENT FUND BOARD [SSH]	250	1,671,970	13.871
28 MAR 2023 - 28 MAR 2023	MBMR	EMPLOYEES PROVIDENT FUND BOARD [SSH]	-60	32,454	8.303
27 MAR 2023 - 27 MAR 2023	MBMR	EMPLOYEES PROVIDENT FUND BOARD [SSH]	-412	32,514	8.318
24 MAR 2023 - 24 MAR 2023	MBMR	EMPLOYEES PROVIDENT FUND BOARD [SSH]	-448	32,926	8.423
23 MAR 2023 - 23 MAR 2023	MBMR	EMPLOYEES PROVIDENT FUND BOARD [SSH]	-981	33,374	8.538
22 MAR 2023 - 22 MAR 2023	MBMR	EMPLOYEES PROVIDENT FUND BOARD [SSH]	-320	34,355	8.789
23 MAR 2023 - 23 MAR 2023	MCEHLDG	MR WOO CHIEW LOONG [SSH]	316	5368	8.69
30 MAR 2023 - 30 MAR 2023	MICROLN	DATO' JAGANATH DEREK STEVEN SABAPATHY [DIR/CEO]	-500	19,222	1.792
28 MAR 2023 - 29 MAR 2023	MICROLN	DATO' JAGANATH DEREK STEVEN SABAPATHY [DIR/CEO]	-250	19,722	1.839
27 MAR 2023 - 27 MAR 2023	MICROLN	RHB TRUSTEES BERHAD [SSH]	5,128	69,058	6.44
23 MAR 2023 - 24 MAR 2023	MICROLN	DATO' JAGANATH DEREK STEVEN SABAPATHY [DIR/CEO]	-250	19,972	1.862
09 MAR 2023 - 09 MAR 2023	MIKROMB	CARTABAN NOMINEES (TEMPATAN) SDN BHD - RHB TRUSTEE BERHAD FOR KENANGA ISLAMIC ABSOLUTE RETURN FUND [SSH]	58,919	58,919	9.09
30 MAR 2023 - 30 MAR 2023	MISC	KUMPULAN WANG PERSARAAN (DIPERBADANKAN) (KWAP) [SSH]	-267	244,110	5.468
27 MAR 2023 - 27 MAR 2023	MPHBCAP	MPHB CAPITAL BERHAD [SSH]	1,955	10,468	1.46401
31 MAR 2023 - 31 MAR 2023	MRDIY	DATO' HAMIDAH BINTI NAZIADIN [DIR/CEO]	20	80	0.001
31 MAR 2023 - 31 MAR 2023	MRDIY	MADAM LENG CHOO YIN [DIR/CEO]	130	618	0.007
31 MAR 2023 - 31 MAR 2023	MRDIY	MADAM NG ING PENG [DIR/CEO]	30	330	0.003
31 MAR 2023 - 31 MAR					

Notice Period is 26 March – 01 April 2023

Effective Change Date	Stock Name	Buyer/ Seller Name [Classification]	Bought / (Sold) ['000]	No. of Shares After Trade ['000]	
			Total	Total	% Held
28 MAR 2023 - 28 MAR 2023	MYEG	MR WONG THEAN SOON [SSH]	2,000	2,263,260	30.559
28 MAR 2023 - 28 MAR 2023	MYEG	ASIA INTERNET HOLDINGS SDN. BHD. [SSH]	9,025	1,340,991	18.106
28 MAR 2023 - 28 MAR 2023	MYEG	MR WONG THEAN SOON [DIR/CEO]	9,025	2,261,260	30.531
28 MAR 2023 - 28 MAR 2023	MYEG	MR WONG THEAN SOON [SSH]	9,025	2,261,260	30.531
27 MAR 2023 - 27 MAR 2023	MYEG	MR WONG THEAN SOON [DIR/CEO]	2,000	2,252,235	30.409
27 MAR 2023 - 27 MAR 2023	MYEG	MR WONG THEAN SOON [SSH]	2,000	2,252,235	30.409
27 MAR 2023 - 27 MAR 2023	NESTLE	EMPLOYEES PROVIDENT FUND BOARD [SSH]	7	21,271	9.071
24 MAR 2023 - 24 MAR 2023	NESTLE	EMPLOYEES PROVIDENT FUND BOARD [SSH]	-6	21,263	9.068
23 MAR 2023 - 23 MAR 2023	NESTLE	EMPLOYEES PROVIDENT FUND BOARD [SSH]	-7	21,269	9.07
22 MAR 2023 - 22 MAR 2023	NESTLE	EMPLOYEES PROVIDENT FUND BOARD [SSH]	-40	21,276	9.073
21 MAR 2023 - 21 MAR 2023	NESTLE	EMPLOYEES PROVIDENT FUND BOARD [SSH]	10	21,316	9.09
17 MAR 2023 - 23 MAR 2023	NWP	MR WU WAI KONG [SSH]	14,965	44,840	7.744
16 MAR 2023 - 16 MAR 2023	NWP	MR WU WAI KONG [SSH]	2,500	29,875	5.159
27 MAR 2023 - 27 MAR 2023	ORIENT	EMPLOYEE PROVIDENT FUND BOARD [SSH]	-18	55,372	8.926
24 MAR 2023 - 24 MAR 2023	ORIENT	EMPLOYEE PROVIDENT FUND BOARD [SSH]	-17	55,390	8.929
24 MAR 2023 - 24 MAR 2023	PADINI	EMPLOYEES PROVIDENT FUND BOARD [SSH]	-35	34,265	5.208
23 MAR 2023 - 23 MAR 2023	PADINI	EMPLOYEES PROVIDENT FUND BOARD [SSH]	-107	34,301	5.214
24 MAR 2023 - 24 MAR 2023	PADINI	KUMPULAN WANG PERSARAAN (DIPERBADANKAN) [SSH]	15	48,671	7.398
28 MAR 2023 - 28 MAR 2023	PBBANK	EMPLOYEES PROVIDENT FUND BOARD [SSH]	440	2,929,692	15.09
27 MAR 2023 - 27 MAR 2023	PBBANK	EMPLOYEES PROVIDENT FUND BOARD [SSH]	500	2,929,252	15.09
21 MAR 2023 - 21 MAR 2023	PBBANK	EMPLOYEES PROVIDENT FUND BOARD [SSH]	688	2,928,752	15.09
27 MAR 2023 - 27 MAR 2023	PCHEM	EMPLOYEES PROVIDENT FUND BOARD ("EPF BOARD") [SSH]	135	873,215	10.915
24 MAR 2023 - 24 MAR 2023	PCHEM	EMPLOYEES PROVIDENT FUND BOARD ("EPF BOARD") [SSH]	85	873,080	10.914
23 MAR 2023 - 23 MAR 2023	PCHEM	EMPLOYEES PROVIDENT FUND BOARD ("EPF BOARD") [SSH]	2,560	872,995	10.912
22 MAR 2023 - 22 MAR 2023	PCHEM	EMPLOYEES PROVIDENT FUND BOARD ("EPF BOARD") [SSH]	85	870,435	10.88
27 MAR 2023 - 27 MAR 2023	PENTA	EMPLOYEES PROVIDENT FUND BOARD [SSH]	-15	49,122	6.906
24 MAR 2023 - 24 MAR 2023	PENTA	EMPLOYEES PROVIDENT FUND BOARD [SSH]	-1,387	49,136	6.908
23 MAR 2023 - 23 MAR 2023	PENTA	EMPLOYEES PROVIDENT FUND BOARD [SSH]	-127	50,524	7.103
22 MAR 2023 - 22 MAR 2023	PENTA	EMPLOYEES PROVIDENT FUND BOARD [SSH]	-16	50,651	7.121
28 MAR 2023 - 28 MAR 2023	PETGAS	EMPLOYEES PROVIDENT FUND BOARD [SSH]	17	285,049	14.406
27 MAR 2023 - 27 MAR 2023	PETGAS	EMPLOYEES PROVIDENT FUND BOARD [SSH]	13	285,032	14.405
24 MAR 2023 - 24 MAR 2023	PETGAS	EMPLOYEES PROVIDENT FUND BOARD [SSH]	-3	285,019	14.404
28 MAR 2023 - 28 MAR 2023	PPB	EMPLOYEES PROVIDENT FUND BOARD [SSH]	21	145,022	10.194
27 MAR 2023 - 27 MAR 2023	PPB	EMPLOYEES PROVIDENT FUND BOARD [SSH]	-14	145,001	10.193
24 MAR 2023 - 24 MAR 2023	PPB	EMPLOYEES PROVIDENT FUND BOARD [SSH]	-503	145,015	10.194
23 MAR 2023 - 23 MAR 2023	PPB	EMPLOYEES PROVIDENT FUND BOARD [SSH]	-515	145,517	10.229
22 MAR 2023 - 22 MAR 2023	PPB	EMPLOYEES PROVIDENT FUND BOARD [SSH]	-200	146,032	10.265
22 MAR 2023 - 22 MAR 2023	PWF	ONG KIM NAM [DIR/CEO]	-20	65	0.03
30 MAR 2023 - 30 MAR 2023	PWROOT	KUMPULAN WANG PERSARAAN (DIPERBADANKAN) [SSH]	65	27,488	6.452
29 MAR 2023 - 29 MAR 2023	PWROOT	KUMPULAN WANG PERSARAAN (DIPERBADANKAN) [SSH]	-41	27,423	6.437
28 MAR 2023 - 28 MAR 2023	PWROOT	KUMPULAN WANG PERSARAAN (DIPERBADANKAN) [SSH]	-248	27,464	6.447
24 MAR 2023 - 24 MAR 2023	PWROOT	KUMPULAN WANG PERSARAAN (DIPERBADANKAN) [SSH]	-290	27,712	6.505
29 MAR 2023 - 29 MAR 2023	RCECAP	AMCORP GROUP BERHAD [SSH]	13	394,542	53.837
29 MAR 2023 - 29 MAR 2023	RCECAP	CEMPAKA EMPAYAR SDN BHD [SSH]	13	394,542	53.837
29 MAR 2023 - 29 MAR 2023	RCECAP	CLEAR GOAL SDN BHD [SSH]	13	394,542	53.837
29 MAR 2023 - 29 MAR 2023	RCECAP	TAN SRI AZMAN HASHIM [SSH]	13	429,938	58.667
27 MAR 2023 - 27 MAR 2023	RCECAP	AMCORP GROUP BERHAD [SSH]	20	394,529	53.835
27 MAR 2023 - 27 MAR 2023	RCECAP	CEMPAKA EMPAYAR SDN BHD [SSH]	20	394,529	53.835
27 MAR 2023 - 27 MAR 2023	RCECAP	CLEAR GOAL SDN BHD [SSH]	20	394,529	53.835
27 MAR 2023 - 27 MAR 2023	RCECAP	TAN SRI AZMAN HASHIM [SSH]	20	429,925	58.665
23 MAR 2023 - 23 MAR 2023	RCECAP	AMCORP GROUP BERHAD [SSH]	31	394,509	53.832
23 MAR 2023 - 23 MAR 2023	RCECAP	CEMPAKA EMPAYAR SDN BHD [SSH]	31	394,509	53.832
23 MAR 2023 - 23 MAR 2023	RCECAP	CLEAR GOAL SDN BHD [SSH]	31	394,509	53.832
23 MAR 2023 - 23 MAR 2023	RCECAP	TAN SRI AZMAN HASHIM [SSH]	31	429,905	58.662
28 MAR 2023 - 28 MAR 2023	REACH	SUPER RACER LIMITED [SSH]	1,032,544	1,032,544	48.5
23 MAR 2023 - 23 MAR 2023	REVENUE	MR NG SHIH FANG [SSH]	-15,296	53,955	11.189
21 MAR 2023 - 21 MAR 2023	REVENUE	MR NG SHIH FANG [SSH]	-16,129	69,251	14.362
27 MAR 2023 - 27 MAR 2023	RHBBANK	EMPLOYEES PROVIDENT FUND BOARD [SSH]	2,000	1,706,892	40.187
28 MAR 2023 - 28 MAR 2023	RHBBANK	KUMPULAN WANG PERSARAAN (DIPERBADANKAN) [SSH]	1,000	244,816	5.764
24 MAR 2023 - 24 MAR 2023	RHBBANK	EMPLOYEES PROVIDENT FUND BOARD [SSH]	-1,660	1,704,892	40.14
23 MAR 2023 - 23 MAR 2023	RHBBANK	EMPLOYEES PROVIDENT FUND BOARD [SSH]	-18,548	1,706,552	40.179
22 MAR 2023 - 22 MAR 2023	RHBBANK	EMPLOYEES PROVIDENT FUND BOARD [SSH]	-3,000	1,725,100	40.616
29 MAR 2023 - 29 MAR 2023	RL	MR THIEN CHIET CHAI [DIR/CEO]	2,300	95,390	32.843
29 MAR 2023 - 29 MAR 2023	RL	MR THIEN CHIET CHAI [SSH]	2,300	95,390	32.843
28 MAR 2023 - 29 MAR 2023	SGGM	DATO' SRI LEE HOCK SENG [DIR/CEO]	-5,821	12,141	6.305
28 MAR 2023 - 29 MAR 2023	SGGM	DATO' SRI LEE HOCK SENG [SSH]	-5,821	12,141	6.305
28 MAR 2023 - 28 MAR 2023	SGGM	MR TAN AH TEK [SSH]	7,750	15,500	8.049
27 MAR 2023 - 27 MAR 2023	SGGM	MR LEE HOCK MENG [DIR/CEO]	-2,350	2,993	1.554
23 MAR 2023 - 23 MAR 2023	SCIENTX	MR LIM PENG CHEONG [DIR/CEO]	160	842,743	54.333
23 MAR 2023 - 23 MAR 2023	SCIENTX	MR LIM PENG CHEONG [SSH]	160	836,725	53.945
23 MAR 2023 - 23 MAR 2023	SCIENTX	MR LIM PENG JIN [DIR/CEO]	160	889,067	57.319
23 MAR 2023 - 23 MAR 2023	SCIENTX	MR LIM PENG JIN [SSH]	160	888,975	57.313
23 MAR 2023 - 23 MAR 2023	SCIENTX	SCIENTX INFINITY SDN BHD [SSH]	160	704,771	45.438
23 MAR 2023 - 23 MAR 2023	SCOMNET	MADAM WU HUEI-CHUNG [DIR/CEO]	2,161	433,134	56.758
23 MAR 2023 - 23 MAR 2023	SCOMNET	MR HSUEH CHIH-YU [DIR/CEO]	1,908	433,134	56.758
23 MAR 2023 - 23 MAR 2023	SCOMNET	MR SHIUE JONG-ZONE A.K.A. JAMES SHIUE [DIR/CEO]	1,899	433,134	56.757
23 MAR 2023 - 23 MAR 2023	SCOMNET	MR WU CHUNG-JUNG [DIR/CEO]	2,283	433,134	56.757
24 MAR 2023 - 28 MAR 2023	SDS	MR TAN KIM SENG [DIR/CEO]	350	103,982	25.384
24 MAR 2023 - 28 MAR 2023	SDS	MR TAN KIM SENG [SSH]	350	103,982	25.384
28 MAR 2023 - 28 MAR 2023	SEB	KHOO CHEE HIONG [SSH]	-57,967	57,967	72.749
29 MAR 2023 - 29 MAR 2023	SEM	TAN SRI DATO' SERI VINCENT TAN CHEE YIOUN [SSH]	-3,989	314,578	28.34
23 MAR 2023 - 23 MAR 2023	SEM	TAN SRI DATO' SERI VINCENT TAN CHEE YIOUN [SSH]	-5,000	318,567	28.699

Notice Period is 26 March – 01 April 2023

Effective Change Date	Stock Name	Buyer/ Seller Name [Classification]	Bought / (Sold) ['000]	No. of Shares After Trade ['000]	
			Total	Total	% Held
30 MAR 2023 - 30 MAR 2023	SERNKOU	MR LOO ENG HUA [DIR/CEO]	-20	580	0.054
29 MAR 2023 - 29 MAR 2023	SIME	AMANAHRAYA TRUSTEES BERHAD - AMANAH SAHAM BUMIPUTERA [SSH]	-1,600	2,557,556	37.525
28 MAR 2023 - 28 MAR 2023	SIME	EMPLOYEES PROVIDENT FUND BOARD [SSH]	2,151	906,533	13.301
28 MAR 2023 - 28 MAR 2023	SIME	AMANAHRAYA TRUSTEES BERHAD - AMANAH SAHAM BUMIPUTERA [SSH]	-134	2,559,156	37.549
24 MAR 2023 - 24 MAR 2023	SIME	EMPLOYEES PROVIDENT FUND BOARD [SSH]	27	904,382	13.27
24 MAR 2023 - 24 MAR 2023	SIME	AMANAHRAYA TRUSTEES BERHAD - AMANAH SAHAM BUMIPUTERA [SSH]	-1,656	2,559,290	37.55
22 MAR 2023 - 22 MAR 2023	SIME	EMPLOYEES PROVIDENT FUND BOARD [SSH]	53	904,355	13.269
23 MAR 2023 - 23 MAR 2023	SIME	AMANAHRAYA TRUSTEES BERHAD - AMANAH SAHAM BUMIPUTERA [SSH]	-1,915	2,560,946	37.575
21 MAR 2023 - 22 MAR 2023	SIME	AMANAHRAYA TRUSTEES BERHAD - AMANAH SAHAM BUMIPUTERA [SSH]	-904	2,562,861	37.603
17 MAR 2023 - 17 MAR 2023	SIME	EMPLOYEES PROVIDENT FUND BOARD [SSH]	3,449	904,302	13.268
27 MAR 2023 - 27 MAR 2023	SIMEPLT	EMPLOYEES PROVIDENT FUND BOARD [SSH]	3,390	997,287	14.421
27 MAR 2023 - 27 MAR 2023	SIMEPLT	KUMPULAN WANG PERSARAAN (DIPERBADANKAN) [SSH]	-1,339	461,385	6.671
23 MAR 2023 - 24 MAR 2023	SIMEPLT	EMPLOYEES PROVIDENT FUND BOARD [SSH]	395	993,897	14.372
22 MAR 2023 - 22 MAR 2023	SIMEPLT	EMPLOYEES PROVIDENT FUND BOARD [SSH]	120	993,501	14.366
28 MAR 2023 - 28 MAR 2023	SIMEPROP	EMPLOYEES PROVIDENT FUND BOARD [SSH]	-179	615,661	9.053
24 MAR 2023 - 24 MAR 2023	SIMEPROP	EMPLOYEES PROVIDENT FUND BOARD [SSH]	-427	615,839	9.055
29 MAR 2023 - 29 MAR 2023	SKPRES	KUMPULAN WANG PERSARAAN (DIPERBADANKAN) [SSH]	264	130,481	8.351
24 MAR 2023 - 24 MAR 2023	SKPRES	EMPLOYEES PROVIDENT FUND BOARD [SSH]	495	105,343	6.743
23 MAR 2023 - 23 MAR 2023	SKPRES	EMPLOYEES PROVIDENT FUND BOARD [SSH]	559	104,847	6.711
22 MAR 2023 - 22 MAR 2023	SKPRES	EMPLOYEES PROVIDENT FUND BOARD [SSH]	86	104,289	6.675
29 MAR 2023 - 29 MAR 2023	SMILE	DATIN WONG CHIEN YUE [DIR/CEO]	117	135,176	53.979
29 MAR 2023 - 29 MAR 2023	SMILE	DATIN WONG CHIEN YUE [SSH]	117	135,176	53.979
29 MAR 2023 - 29 MAR 2023	SMILE	DATO DR WONG RUEN YUAN [SSH]	117	135,521	54.116
29 MAR 2023 - 29 MAR 2023	SMILE	DATO' DR WONG RUEN YUAN [DIR/CEO]	117	135,521	54.116
29 MAR 2023 - 29 MAR 2023	SMILE	SMILE-LINK RESOURCES (M) SDN. BHD. [SSH]	15	116,857	46.663
27 MAR 2023 - 30 MAR 2023	SRIDGE	DATO' KHOO YIK CHOU [DIR/CEO]	-1,246	11,955	5.878
27 MAR 2023 - 30 MAR 2023	SRIDGE	DATO' KHOO YIK CHOU [SSH]	-1,246	11,955	5.878
22 MAR 2023 - 22 MAR 2023	SRIDGE	DATO' KHOO YIK CHOU [SSH]	-3,500	13,201	6.491
22 MAR 2023 - 22 MAR 2023	SRIDGE	MR CHEANG SOON SIANG [SSH]	250	14,743	7.25
22 FEB 2023 - 22 FEB 2023	SRIDGE	DATO' KHOO YIK CHOU [DIR/CEO]	-3,500	13,201	6.491
22 FEB 2023 - 22 FEB 2023	SRIDGE	DATO' KHOO YIK CHOU [SSH]	-3,500	13,201	6.491
27 MAR 2023 - 27 MAR 2023	SSB8	MR CHAI THAM POH [DIR/CEO]	-1,000	20,540	0.904
29 MAR 2023 - 29 MAR 2023	STAR	AMANAHRAYA TRUSTEES BERHAD - AMANAH SAHAM BUMIPUTERA [SSH]	-200	40,600	5.602
28 MAR 2023 - 28 MAR 2023	STAR	AMANAHRAYA TRUSTEES BERHAD - AMANAH SAHAM BUMIPUTERA [SSH]	-200	40,800	5.629
27 MAR 2023 - 27 MAR 2023	STAR	MALAYSIAN CHINESE ASSOCIATION [SSH]	280	32,894	45.386
24 MAR 2023 - 24 MAR 2023	STAR	AMANAHRAYA TRUSTEES BERHAD - AMANAH SAHAM BUMIPUTERA [SSH]	-300	41,000	5.657
23 MAR 2023 - 23 MAR 2023	STAR	AMANAHRAYA TRUSTEES BERHAD - AMANAH SAHAM BUMIPUTERA [SSH]	-700	41,300	5.698
23 MAR 2023 - 24 MAR 2023	STAR	MALAYSIAN CHINESE ASSOCIATION [SSH]	800	32,866	45.347
30 MAR 2023 - 30 MAR 2023	SUNREIT	KUMPULAN WANG PERSARAAN (DIPERBADANKAN) ("KWAP") [SSH]	-183	198,185	5.79
28 MAR 2023 - 28 MAR 2023	SUNREIT	EMPLOYEES PROVIDENT FUND BOARD [SSH]	-24	52,203	15.24
29 MAR 2023 - 29 MAR 2023	SUNREIT	KUMPULAN WANG PERSARAAN (DIPERBADANKAN) ("KWAP") [SSH]	-34	198,368	5.79
24 MAR 2023 - 24 MAR 2023	SUNREIT	EMPLOYEES PROVIDENT FUND BOARD [SSH]	-830	52,207	15.24
28 MAR 2023 - 28 MAR 2023	SUNWAY	ACTIVE EQUITY SDN BHD [SSH]	20,500	297,394	60.82
28 MAR 2023 - 28 MAR 2023	SUNWAY	EMPLOYEES PROVIDENT FUND BOARD [SSH]	582	41,952	8.51
28 MAR 2023 - 28 MAR 2023	SUNWAY	MADAM SARENA CHEAH YEAN TIH [DIR/CEO]	20,500	314,703	64.37
28 MAR 2023 - 28 MAR 2023	SUNWAY	MADAM SARENA CHEAH YEAN TIH [SSH]	20,500	314,703	64.37
28 MAR 2023 - 28 MAR 2023	SUNWAY	MR ADRIAN CHEAH YEAN SUN [SSH]	20,500	314,178	64.26
28 MAR 2023 - 28 MAR 2023	SUNWAY	MR EVAN CHEAH YEAN SHIN [SSH]	20,500	314,598	64.35
28 MAR 2023 - 28 MAR 2023	SUNWAY	PUAN SRI DATIN SERI (DR) SUSAN CHEAH SEOK CHENG [SSH]	20,500	315,123	64.45
28 MAR 2023 - 28 MAR 2023	SUNWAY	SUNGEI WAY CORPORATION SDN BHD [SSH]	20,500	280,993	57.47
28 MAR 2023 - 28 MAR 2023	SUNWAY	TAN SRI DATO' SERI DR JEFFREY CHEAH FOOK LING AO [DIR/CEO]	20,500	315,123	64.46
28 MAR 2023 - 28 MAR 2023	SUNWAY	TAN SRI DATO' SERI DR JEFFREY CHEAH FOOK LING AO [SSH]	20,500	315,123	64.46
27 MAR 2023 - 27 MAR 2023	SUNWAY	EMPLOYEES PROVIDENT FUND BOARD [SSH]	593	41,537	8.5
24 MAR 2023 - 24 MAR 2023	SUNWAY	EMPLOYEES PROVIDENT FUND BOARD [SSH]	-1,730	41,477	8.48
23 MAR 2023 - 23 MAR 2023	SUNWAY	EMPLOYEES PROVIDENT FUND BOARD [SSH]	-1,000	41,230	8.43
29 MAR 2023 - 29 MAR 2023	SUPERLN	MR LIN PO-CHIH [DIR/CEO]	19	4,352	2.742
28 MAR 2023 - 28 MAR 2023	SUPERLN	MR LIN PO-CHIH [DIR/CEO]	3	4,333	2.73
24 MAR 2023 - 24 MAR 2023	TAANN	DATO WONG KUO HEA [DIR/CEO]	310	1,331,04	30.218
24 MAR 2023 - 24 MAR 2023	TAANN	DATO WONG KUO HEA [SSH]	310	1,292,94	29.353
27 MAR 2023 - 27 MAR 2023	TAFI	DATO' SRI WONG SZE CHIEN [DIR/CEO]	1,429	207,588	

Notice Period is 26 March – 01 April 2023

Effective Change Date	Stock Name	Buyer/ Seller Name [Classification]	Bought / (Sold) ['000]	No. of Shares After Trade ['000]	
			Total	Total	% Held
29 MAR 2023 - 29 MAR 2023	TEXCYCL	HO SIEW CHEONG [SSH]	-5,000	92849	36.242
29 MAR 2023 - 29 MAR 2023	TEXCYCL	HO SIEW CHOONG [DIR/CEO]	-5,000	101056	39.446
29 MAR 2023 - 29 MAR 2023	TEXCYCL	HO SIEW CHOONG [SSH]	-5,000	101056	39.446
29 MAR 2023 - 29 MAR 2023	TEXCYCL	HO SIEW WENG [DIR/CEO]	-5,000	90392	35.284
29 MAR 2023 - 29 MAR 2023	TEXCYCL	HO SIEW WENG [SSH]	-5,000	90392	35.284
29 MAR 2023 - 29 MAR 2023	TEXCYCL	PERIASAMY A/L SINAKALAI [DIR/CEO]	-5,000	99078	38.674
29 MAR 2023 - 29 MAR 2023	TEXCYCL	PERIASAMY A/L SINAKALAI [SSH]	-5,000	99078	38.674
29 MAR 2023 - 29 MAR 2023	TIMECOM	KUMPULAN WANG PERSARAAN (DIPERBADANKAN) ('KWAP') [SSH]	40	103359	5.622
28 MAR 2023 - 28 MAR 2023	TIMECOM	KUMPULAN WANG PERSARAAN (DIPERBADANKAN) ('KWAP') [SSH]	234	103319	5.62
27 MAR 2023 - 27 MAR 2023	TIMECOM	KUMPULAN WANG PERSARAAN (DIPERBADANKAN) ('KWAP') [SSH]	306	103085	5.607
24 MAR 2023 - 24 MAR 2023	TIMECOM	KUMPULAN WANG PERSARAAN (DIPERBADANKAN) ('KWAP') [SSH]	-157	102779	5.59
30 MAR 2023 - 30 MAR 2023	TM	KUMPULAN WANG PERSARAAN (DIPERBADANKAN) [SSH]	575	416562	10.9
29 MAR 2023 - 29 MAR 2023	TM	KUMPULAN WANG PERSARAAN (DIPERBADANKAN) [SSH]	1,054	415988	10.884
28 MAR 2023 - 28 MAR 2023	TM	KUMPULAN WANG PERSARAAN (DIPERBADANKAN) [SSH]	807	414933	10.857
27 MAR 2023 - 29 MAR 2023	TRC	DATO' RICHARD KHOO TENG SAN [DIR/CEO]	206	11635	2.47
22 MAR 2023 - 24 MAR 2023	TRC	DATO RICHARD KHOO TENG SAN [DIR/CEO]	191	11430	2.43
28 MAR 2023 - 29 MAR 2023	TWL	DATIN SEK CHIAN NEE [DIR/CEO]	8,162	1173722	29.078
28 MAR 2023 - 29 MAR 2023	TWL	DATIN SEK CHIAN NEE [SSH]	8,162	1173722	29.078
28 MAR 2023 - 29 MAR 2023	TWL	DATO' TAN WEI LIAN [DIR/CEO]	8,162	1173722	29.079
28 MAR 2023 - 29 MAR 2023	TWL	DATO' TAN WEI LIAN [SSH]	8,162	1173722	29.079
28 MAR 2023 - 29 MAR 2023	TWL	MISS TAN LEE CHIN [DIR/CEO]	8,162	1173722	29.078
28 MAR 2023 - 29 MAR 2023	TWL	MISS TAN LEE CHIN [SSH]	8,162	1173722	29.078
28 MAR 2023 - 29 MAR 2023	TWL	TWL CAPITAL BERHAD [SSH]	8,162	1173722	29.078
24 MAR 2023 - 24 MAR 2023	UCHITEC	EMPLOYEES PROVIDENT FUND BOARD [SSH]	27	24048	5.274
30 MAR 2023 - 30 MAR 2023	UMCCA	DATO' SRI TEE LIP SIN [DIR/CEO]	36	51254	24.434
30 MAR 2023 - 30 MAR 2023	UMCCA	MR TEE CHENG HUA [DIR/CEO]	36	45423	21.654
29 MAR 2023 - 29 MAR 2023	UMCCA	MR HAN KEE JUAN [DIR/CEO]	50	335	0.16
28 MAR 2023 - 28 MAR 2023	UMCCA	DATO' SRI TEE LIP SIN [DIR/CEO]	1,344	51218	24.417
28 MAR 2023 - 28 MAR 2023	UMCCA	MR TEE CHENG HUA [DIR/CEO]	1,344	45387	21.637
28 MAR 2023 - 28 MAR 2023	UMCCA	PROSPER CAPITAL HOLDINGS SDN BHD [SSH]	1,344	26702	12.729
27 MAR 2023 - 27 MAR 2023	UMW	EMPLOYEES PROVIDENT FUND BOARD [SSH]	-131	113290	9.697
24 MAR 2023 - 24 MAR 2023	UMW	EMPLOYEES PROVIDENT FUND BOARD [SSH]	-437	113422	9.708
23 MAR 2023 - 23 MAR 2023	UMW	EMPLOYEES PROVIDENT FUND BOARD [SSH]	-110	113859	9.746
22 MAR 2023 - 22 MAR 2023	UMW	EMPLOYEES PROVIDENT FUND BOARD [SSH]	-200	113969	9.755
21 MAR 2023 - 21 MAR 2023	UMW	EMPLOYEES PROVIDENT FUND BOARD [SSH]	-95	114169	9.772
29 MAR 2022 - 29 MAR 2022	UOAREIT	MISS KARN SAU MENG [DIR/CEO]	20	20	0.003
27 MAR 2023 - 27 MAR 2023	UTDPLT	EMPLOYEES PROVIDENT FUND BOARD [SSH]	-264	37731	9.096
24 MAR 2023 - 24 MAR 2023	UTDPLT	DATO' MOHAMAD NASIR BIN AB. LATIF [DIR/CEO]	18	70	0.017
27 MAR 2023 - 27 MAR 2023	UTDPLT	MR R. NADARAJAN [DIR/CEO]	5	154	0.038
24 MAR 2023 - 24 MAR 2023	UTDPLT	EMPLOYEES PROVIDENT FUND BOARD [SSH]	-188	37994	9.16

Notice Period is 26 March – 01 April 2023

Effective Change Date	Stock Name	Buyer/ Seller Name [Classification]	Bought / (Sold) ['000]	No. of Shares After Trade ['000]	
			Total	Total	% Held
23 MAR 2023 - 23 MAR 2023	UTDPLT	EMPLOYEES PROVIDENT FUND BOARD [SSH]	-43	38182	9.205
22 MAR 2023 - 22 MAR 2023	UTDPLT	EMPLOYEES PROVIDENT FUND BOARD [SSH]	1,330	38225	9.216
27 MAR 2023 - 27 MAR 2023	UWC	EMPLOYEES PROVIDENT FUND BOARD [SSH]	361	74998	6.808
30 MAR 2023 - 31 MAR 2023	VS	MR BEH CHERN WEI [DIR/CEO]	350	123156	3.201
29 MAR 2023 - 30 MAR 2023	VS	DATUK BEH KIM LING [DIR/CEO]	320	575747	14.964
29 MAR 2023 - 30 MAR 2023	VS	DATUK BEH KIM LING [SSH]	320	575747	14.964
28 MAR 2023 - 29 MAR 2023	VS	DATUK BEH KIM LING [DIR/CEO]	600	575427	14.955
28 MAR 2023 - 29 MAR 2023	VS	DATUK BEH KIM LING [SSH]	600	575427	14.955
27 MAR 2023 - 28 MAR 2023	VS	MR BEH CHERN WEI [DIR/CEO]	200	122806	3.192
30 MAR 2023 - 30 MAR 2023	VS-WB	DATUK BEH KIM LING [DIR/CEO]	-500	114800	15.087
30 MAR 2023 - 31 MAR 2023	VS-WB	MR BEH CHERN WEI [DIR/CEO]	-3,109	9821	1.291
28 MAR 2023 - 28 MAR 2023	VS-WB	DATUK BEH KIM LING [DIR/CEO]	-500	115300	15.152
24 MAR 2023 - 28 MAR 2023	VS-WB	MR BEH CHERN WEI [DIR/CEO]	-7,041	12929	1.699
28 MAR 2023 - 29 MAR 2023	VSTECs	VSTECs HOLDINGS (SINGAPORE) LIMITED [SSH]	149	155329	43.564
28 MAR 2023 - 29 MAR 2023	VSTECs	VSTECs HOLDINGS LIMITED [SSH]	149	155329	43.564
24 MAR 2023 - 27 MAR 2023	VSTECs	VSTECs HOLDINGS (SINGAPORE) LIMITED [SSH]	161	155180	43.522
24 MAR 2023 - 27 MAR 2023	VSTECs	VSTECs HOLDINGS LIMITED [SSH]	161	155180	43.522
29 MAR 2023 - 30 MAR 2023	WIDAD	TAN SRI MUHAMMAD IKMAL OPAT BIN ABDULLAH [SSH]	-7,700	1412491	49.752
27 MAR 2023 - 28 MAR 2023	WIDAD	TAN SRI MUHAMMAD IKMAL OPAT BIN ABDULLAH [SSH]	15,581	1420191	50.084
24 MAR 2023 - 24 MAR 2023	WIDAD	TAN SRI MUHAMMAD IKMAL OPAT BIN ABDULLAH [SSH]	-3,600	1404609	49.535
30 MAR 2023 - 30 MAR 2023	WOODLAN	DATO' SERI MUN WENG SUM [DIR/CEO]	15	7082	17.704
30 MAR 2023 - 30 MAR 2023	WOODLAN	DATO' SERI MUN WENG SUM [SSH]	15	7082	17.704
28 MAR 2023 - 29 MAR 2023	YENHER	MADAM THEOH MOOI TENG [DIR/CEO]	13	2220	0.74
28 MAR 2023 - 29 MAR 2023	YENHER	MR CHENG MOOH TAT [DIR/CEO]	13	157535	52.512
24 MAR 2023 - 24 MAR 2023	YEWLEE	MADAM CHEE WAI YING [DIR/CEO]	860	344121	64.631
24 MAR 2023 - 24 MAR 2023	YEWLEE	MADAM CHEE WAI YING [SSH]	860	344121	64.631
24 MAR 2023 - 24 MAR 2023	YEWLEE	MR ANG LEE LEONG [DIR/CEO]	860	388065	72.885
24 MAR 2023 - 24 MAR 2023	YEWLEE	MR ANG LEE LEONG [SSH]	860	388065	72.885
24 MAR 2023 - 24 MAR 2023	YEWLEE	MR ANG LEE SENG [DIR/CEO]	860	342621	64.35
24 MAR 2023 - 24 MAR 2023	YEWLEE	MR ANG LEE SENG [SSH]	860	342621	64.35
28 MAR 2023 - 28 MAR 2023	YINSON	EMPLOYEES PROVIDENT FUND BOARD [SSH]	302	497840	17.128
29 MAR 2023 - 29 MAR 2023	YINSON	KUMPULAN WANG PERSARAAN (DIPERBADANKAN) [SSH]	2,090	192632	6.627
27 MAR 2023 - 27 MAR 2023	YINSON	EMPLOYEES PROVIDENT FUND BOARD [SSH]	279	497538	17.118
24 MAR 2023 - 24 MAR 2023	YINSON	EMPLOYEES PROVIDENT FUND BOARD [SSH]	398	497259	17.108
23 MAR 2023 - 23 MAR 2023	YINSON	EMPLOYEES PROVIDENT FUND BOARD [SSH]	-616	496861	17.095
22 MAR 2023 - 22 MAR 2023	YINSON	EMPLOYEES PROVIDENT FUND BOARD [SSH]	500	497477	17.116
23 MAR 2023 - 23 MAR 2023	YSPSAH	MADAM LEE LING CHIN [DIR/CEO]	40	54756	38.781
23 MAR 2023 - 23 MAR 2023	YSPSAH	MADAM LEE LING CHIN [SSH]	40	54756	38.781
28 MAR 2023 - 28 MAR 2023	YTLPOWR	EMPLOYEES PROVIDENT FUND BOARD [SSH]	500	441318	5.447
24 MAR 2023 - 24 MAR 2023	YTLPOWR	EMPLOYEES PROVIDENT FUND BOARD [SSH]	1,000	440818	5.441
22 MAR 2023 - 22 MAR 2023	YTLPOWR	EMPLOYEES PROVIDENT FUND BOARD [SSH]	801	439818	5.428

Disclaimer: The Information in Insider Activity is extracted from www.shareinvestor.com/fundamental/insider_trades. The information on this page is provided as a service to readers. It does not constitute financial advice and/or any investment recommendations. We assume no liability for damages resulting from or arising out of the use of such information. Whilst every effort is made to ensure accuracy, the information presented is not the official record of shareholder filings. Readers are advised to read the original filings on the Bursa Malaysia website at www.bursamalaysia.com

**CHECK OUT
SHAREINVESTOR
BROKERS'
CALL**

Weekly Buy/Sell/Hold calls
from leading Malaysian Brokerages.

[Go To Brokers' Call](#)

BUY **HOLD** **SELL**



Further to the Company's announcement made on 15 September 2020, **AirAsia X Berhad (AAX)** is pleased to announce that the Board of

Directors of AAX has approved the extension of the redemption and travel validity period of the Shareholders' Benefit Programme, and the complimentary flight vouchers that were rewarded to the eligible shareholders who attended the Company's Thirteenth Annual General Meeting held on 26 June 2019, until 30 June 2023.



AwanBiru Technology Berhad (AWANTEC) had on 13 February 2023 announced that Bursa Securities had, vide its letter

dated 10 February 2023, granted the Company an extension of time of 6 months up to 28 July 2023 to submit its regularisation plan to Bursa Securities. The Company has approximately 4 months to submit its regularisation plan to the relevant authorities for approval and will make further announcements pertaining to any latest development in accordance with the requirements under Paragraph 8.03A of the Listing Requirements.



Pursuant to Paragraph 8.23(2)(e) of the Main Market Listing Requirements of Bursa Malaysia Securities Berhad, the **Axiata Group Berhad (AXIATA)** wishes to announce that its subsidiary Axiata Digital Capital Sdn. Bhd.

has not extended any loans/advances to any party or received any loans/advances from any party in the ordinary course of its business as a licensed moneylender and therefore, there are no outstanding loans/advances from 1 January 2023 up to the financial quarter ended 31 March 2023.



The Board of Directors of **Ayer Holdings Berhad (AYER)** is pleased to propose a first and final dividend of 20.0 sen per ordinary share in respect of the financial year ended 31 December 2022 for the approval of the shareholders at the forthcoming Company's One Hundred and Twelfth Annual General Meeting. The proposed entitlement and payment dates for the first and final dividend shall be determined at a later date and announced accordingly.



Pursuant to **Bintai Kinden Corporation Berhad (BINTAI)** announcement made on 30 March 2023 and 31 March 2023, the Board of Directors of BINTAI wishes to provide further information as follows:

1. Whether the default in payment constitutes an event of default under a different agreement for indebtedness (cross default) and the details of such other default, where applicable.

Not applicable.

2. Where the default in payment is in respect of a listed issuer, major subsidiary or major associated company, as the case may be, a statement as to whether the listed issuer is solvent.

The default in payment did not trigger any cross default under a different agreement for indebtedness, however, the Company is not solvent as the operation for the ongoing and future projects will be affected, considering the Company’s status as a PN17 listed issuer.



Boustead Holdings Berhad

Pursuant to paragraph 19.05 of the Rules, **Boustead Holdings Berhad (BSTEAD)** wish to announce that the Offeror has dealt in the BHB Shares, details as follows:

Date of transaction	Name	Nature of transaction	Quantity (No. of shares)	Transacted price* (RM)
05/04/2023	Lembaga Tabung Angkatan Tentera (LTAT)	Acquisition from the open market	2,662,100	0.855
		Total	2,662,100	

**Exclude brokerage fees and other incidental costs*



Pursuant to paragraph 4.1(c) of PN17 of the Main LR, the Board of Directors of **Capital A Berhad (CAPITALA)** wishes to announce that the Company and

the appointed advisers are in the midst of formulating a regularisation plan to address its financial condition. As announced on 21 December 2022, Bursa Securities had granted the Company an extension of time of six (6) months until 7 July 2023 for the Company to submit its regularisation plan to the relevant regulatory authorities. Therefore, the Company has approximately three (3) months to submit its regularisation plan to the relevant regulatory authorities for approval to implement the same. The Company will make the necessary announcement(s) regarding the development of the proposed regularisation plan accordingly.



Reference is made on the Company's announcement dated 13 January 2023 on the Company's change of financial year end from 31 October to 30 April. The Board of Directors of **Cypark Resources Berhad (CYPARK)** wishes to inform that the Companies Commission of Malaysia had approved the Company's application for an extension of time until 30 October 2023 to hold its Eighteenth Annual General Meeting pursuant to Section 340 of the Companies Act 2016.



The Board of Directors of **Dayang Enterprise Holdings Bhd (DAYANG)** is pleased to announce that its wholly-owned subsidiary company, DESB Marine Services Sdn Bhd, has been awarded a contract for the Provision of Accommodation Work Boat from PETRONAS Carigali Sdn Bhd.

VALUE AND DURATION OF THE CONTRACT

The value of the Contract is based on work orders issued by PCSB throughout the contract duration. The contract is effective from 17 March 2023. The contract duration is approximately One Hundred Twenty-Nine (129) days with an option to extend up to Sixty (60) days.

RISK FACTORS

Risk factors affecting the Contract include execution risks such as availability of skilled manpower and materials, changes in prices of materials, changes in political, economic and regulatory conditions. DESB Marine shall ensure strict compliance with the safety and operational procedures in the execution of contract requirements.

FINANCIAL EFFECTS

The Contract will have no effect on the issued capital of the Company and is expected to contribute to the earnings of DEHB over the duration of the Contract.

DIRECTORS' AND MAJOR SHAREHOLDERS' INTEREST

None of the directors, major shareholders and/or persons connected to them has any direct or indirect interest in the Contract.

DIRECTORS' STATEMENT

The Board of Directors of the Company is of the opinion that the acceptance of the Contract is in the best interest of the Company.

ShareInvestor is a technology based company with a focus on Internet media and we have operations in Malaysia, Singapore and Thailand.

We are the market leader in providing a combination of market data, analysis and news on various platforms to traders and investors.

Our websites include www.shareinvestor.com and www.bursastation.com.

More information about our products and services can be found at www.shareinvestorholdings.com

We're looking for Drupal Developers who will be in charge of front-end development and back-end/module development. This role requires expertise in PHP, HTML, CSS, JS, and an eye for design aesthetics. The candidates should be familiar and have a passion working with content management systems.

Interested candidates are encouraged to apply with full resume, present and expected salary and a recent photograph. Please send these to hr.my@shareinvestor.com for processing. ShareInvestor regrets that only shortlisted candidates shall be notified.

Drupal Developers (2 vacancies)

Job Responsibilities:

- Active participation in all UI / UX decisions
- Contribute actively to the continuous development and maintenance of development projects
- Enhance Drupal development quality
- Provide solutions to issues and suggestions for improvements.
- Designing and implementing new features to the system
- Ensuring optimal performance

Required Skills:

- At least 3 years of Drupal Theming and Front-End Development experience
- Proficient in PHP, HTML5/XHTML, CSS, Javascript, jQuery, AJAX, XML, Json
- Good Diploma/Degree in Computer Science/Computer Engineering.
- Experience working with Drupal's main modules, such as CTools, Views, Rules, Webform, and so on
- Ability to create custom Drupal modules
- Strong troubleshooting skills to fix bugs

Benefits:

- Career & growth opportunities
- Interesting projects
- Medical Insurance
- Incentives

Ruby on Rails Developer (1 vacancy)

Job Responsibilities:

- Develop quality web-based software modules on schedule with a focus on Ruby and Ruby on Rails applications.
- Explore and utilize the latest web-based technologies.
- Document design specifications, logic concepts and module description.
- Maintain and enhance existing web-based applications.

Required Skills:

- Experience in web-based programming/scripting is essential. Candidate must be able to explain clearly technical aspects of his/her past experiences and projects.
- Passion for programming and desire to learn new languages like Go.
- Good Diploma/Degree in Computer Science/Computer Engineering.
- Able to work well in a team and be able to follow documentation and coding standards.
- Knowledge in any of the following would be an added advantage
 - Ruby and Ruby on Rails Framework
 - Javascript and jQuery library
 - Go
 - Perl

Application Developer (C++/STL) (1 vacancy)

Job Responsibilities

- Deliver quality software modules on schedule.
- Document design specifications, conceptions, module description.
- Maintain and enhance existing applications.

Required Skills:

- Passion for programming and desire to learn.
- Good Diploma/Degree in Computer Science/Computer Engineering.
- Skills in C++ is essential.
- Experience with Visual Studio, networking stack and Golang would be an advantage.
- Proactive, resourceful and self-motivated with strong analytical skills.
- Good interpersonal, written and communication skills.
- Able to work with little supervision.

Junior Market Data Support Specialist

As a Junior Market Data Support Specialist, you will be involved in reviewing, analysing and collecting accurate and timely financial information on listed companies for our market data information services.

Job Responsibilities

- Collect, compute and analyse relevant financial data of listed companies, organise and present them on the company portal, in timely manner, for the consumption by our subscribers and our corporate clients
- Capture corporate events / actions and translate them to adjustments of impacted financial data
- Research, evaluate, propose new solutions or recommendations for adhoc project requirements that are related to the financial data or the financial fundamentals of listed companies
- Provide support to users' queries related to financial information displayed on our platforms
- Perform any other duties assigned from time to time, including rare occasions of working during weekends

Required Skills

- Minimum academic qualification: Diploma in any finance-related discipline
- Knowledge of basic accounting and financial terms is required
- Flair for data precision / accuracy / quality / thoroughness plus strict adherence to structured data process and timeline is a must
- Proficient in Microsoft Excel
- Team player with pleasant personality
- Proficient in English, oral and written.

Fresh graduates are welcome to apply.

Interested candidates are encouraged to apply with full resume, present and expected salary and a recent photograph. Please send these to hr.my@shareinvestor.com for processing. ShareInvestor regrets that only shortlisted candidates shall be notified.