

Invest

A Weekly e-Publication by SHAREINVESTOR

ISSUE

233

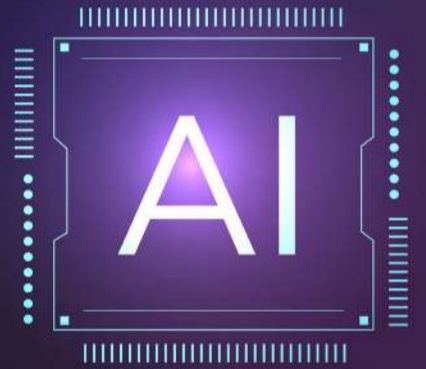
FRIDAY
22 NOVEMBER
2024

Scan/Click QR to Register



MARKET SENTIMENTS

- Malaysia's trade shows sustained growth in October, reaches RM244.3 billion - DOSM [on page 28](#)
- Malaysia to align real economy & capital market to drive inclusive growth – Amir Hamzah [on page 31](#)
- AI, digitalisation and green economy to reshape Malaysian job market: Sim [on page 33](#)



ALSO

COMPANY
SPOTLIGHT
Steel Hawk
Berhad

See more on page 06



See more on pages 19-26



See more on
pages 41-44

04 LEADERBOARD

05 SHARIAH HOT STOCKS

08 SHARIAH MOMENTUM UP STOCKS

10 NON SHARIAH HOT STOCKS

11 UP TRENDING STOCKS

12 VALUE STOCKS

13 GROWTH STOCKS

15 DIVIDEND STOCKS

16 BROKERS' CALL

17 LONG COMPANIES

36 REGIONAL MARKETS

37 INSIDER ACTIVITY

45 INVESTOR RELATIONS

SHAREINVESTOR®

An AlphaInvest Company

Invest with Knowledge

INVESTOR PLATFORMS

Director
Darren Chong
darren.chong@shareinvestor.com

Business Development Manager
Jay Cheong
jay.cheong.@shareinvestor.com

Product & Marketing Manager
Daniel Wong
daniel.wong@shareinvestor.com

ADMIN & OPERATIONS

Senior Executive
Watie Nordin
watie.nordin@shareinvestor.com

Executive
Silas Emmanuel Joseph
silas.joseph@shareinvestor.com

PROCESS AUTOMATION & DATA ANALYTICS

Data Analyst
Tan Yong Sheng

INVESTOR RELATIONS

Group Managing Director & Publisher
Edward Stanislaus
edward@shareinvestor.com

Senior Manager
Letticia Wong
letticia.wong@shareinvestor.com

Manager
Aida Norzeti Talib
aida.norzeti@shareinvestor.com

ALPHAINVEST HOLDINGS BOARD OF DIRECTORS

Chairman	Patrick Daniel
Group CEO	Christopher Lee
Group COO	Lim Dau Hee
Group MD	Shanison Lin



ShareInvestor Malaysia Sdn. Bhd.
(200001023956) (526564-M)

L15-03 & 03A, PJX HM Shah Tower,
No 16A, Jalan Persiaran Barat, PJS 52,
46200 Petaling Jaya, Selangor

Hotline : 603 8681 0580

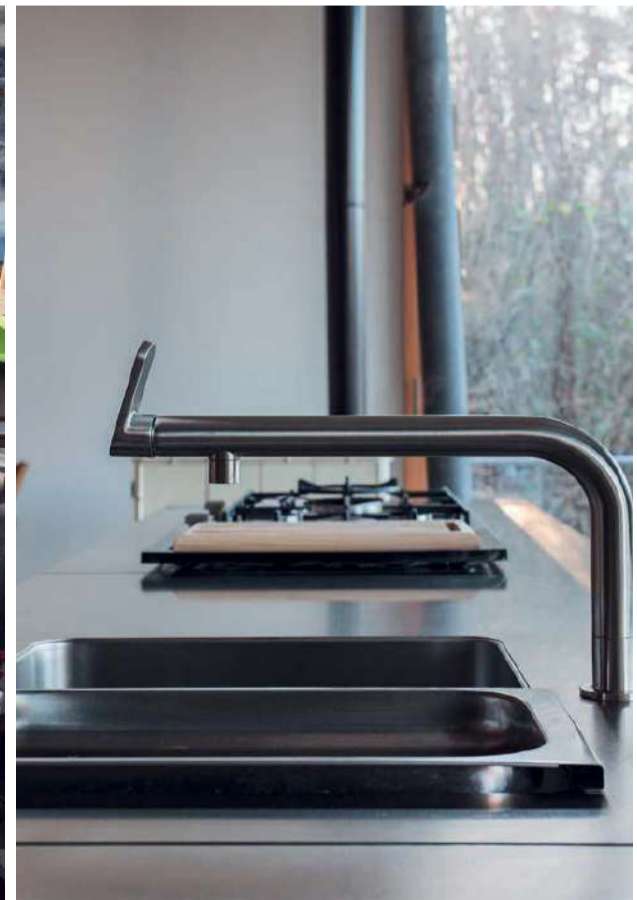
Mobile : 011 6343 8939

Website : www.ShareInvestor.com.my
www.alphainvestholdings.com

www.facebook.com/ShareInvestorMalaysia

ADVERTISEMENT ENQUIRY

bulthaup takes care of the details so that you can enjoy a harmonious environment.



XTRA

XTRA FURNITURE SDN BHD
The Gardens Mall, Mid Valley City
xtrafurniture.com/bulthaup
fb.com/bulthaupmalaysia

bulthaup

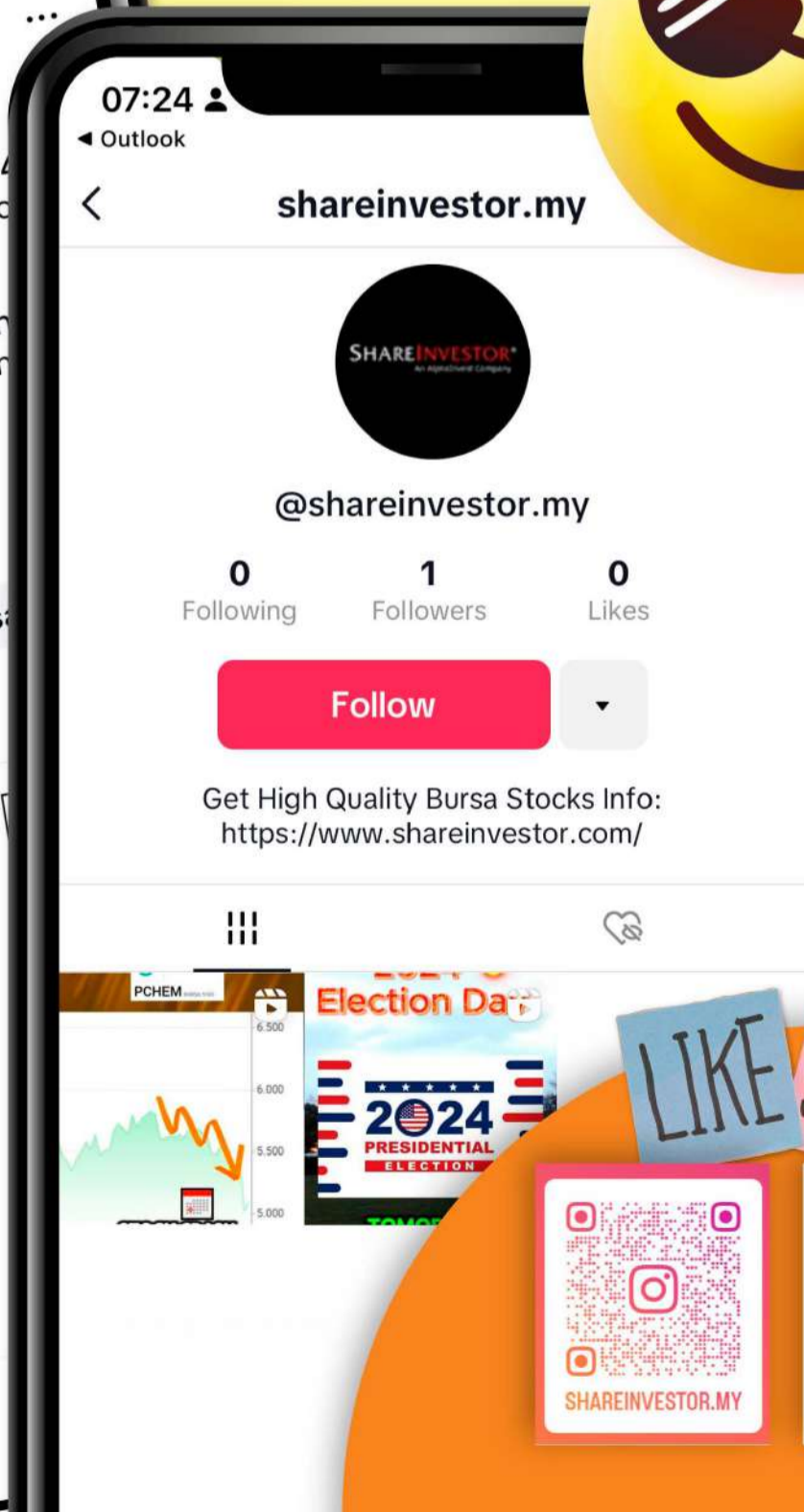
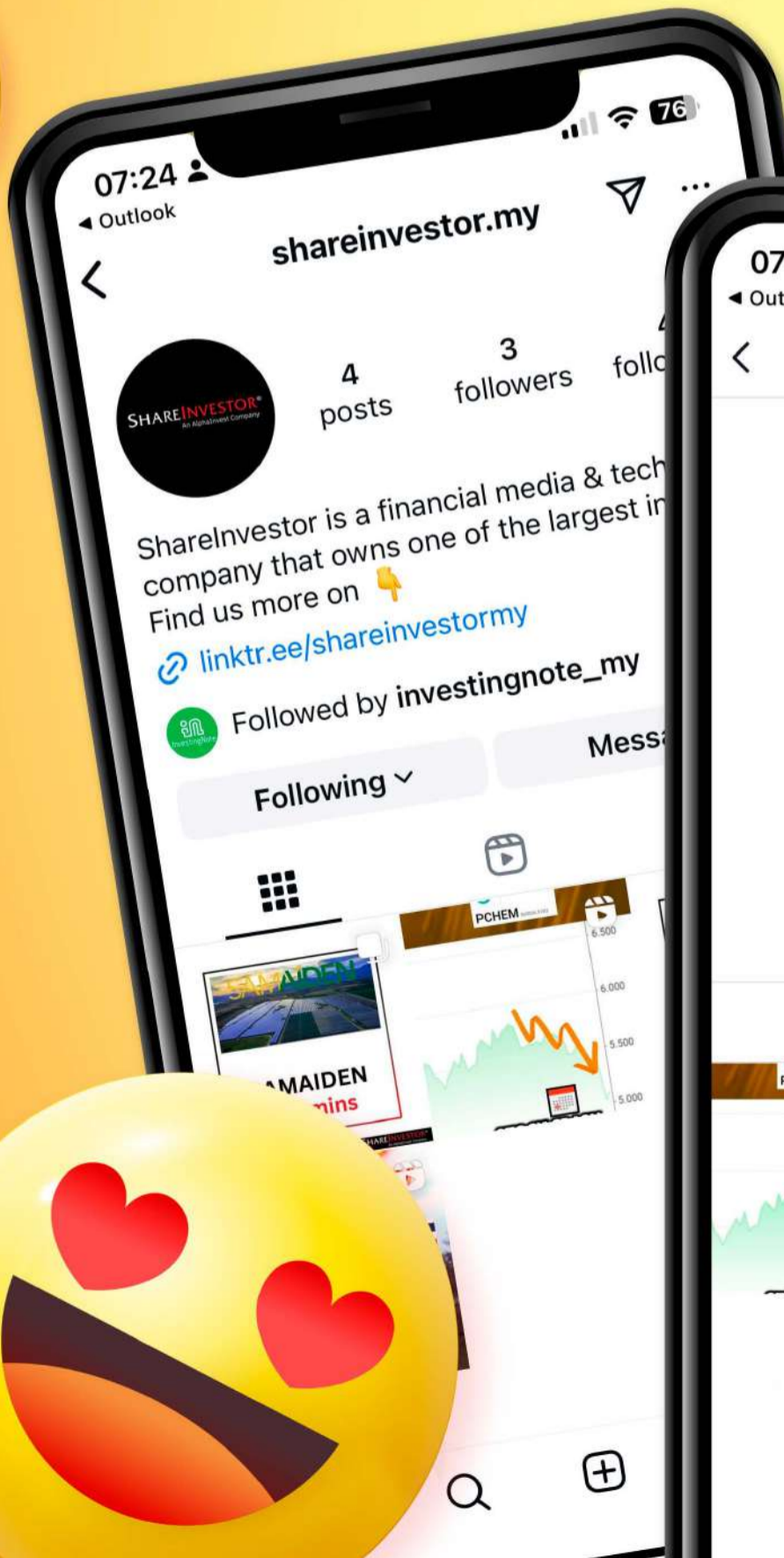
SHAREINVESTOR[®]
An AlphaInvest Company



We're Officially on TikTok & Instagram!



Follow us now for more information!



LIKE SHARE



SHAREINVESTOR.MY

www.shareinvestor.com - market data at your fingertips



ShareInvestor WebPro (www.shareinvestor.com/my)
 Prices > Stock Prices > Bursa > click Stocks tab

1. mouse over Ranking > select Top Active > all Shariah stocks are denoted with an [S] > mouse over Column Layout > select Edit Customs > select Name > select Volume > select Last Done Price > Mouse Over Column Layout > select Custom
2. mouse over Ranking > select Top Turnover > all Shariah stocks are denoted with an [S] > mouse over Column Layout > select Edit Customs > select Name > select Last Done Price > select Value > Mouse Over Column Layout > select Custom
3. mouse over Ranking > select Top Gainers (Over 5 Trading Days) > mouse over Column Layout > select Edit Customs > select Name > select Last Done Price > select 5 Days Change > select 5 Days % Change > Mouse Over Column Layout > select Custom
4. mouse over Ranking > select Top Losers (Over 5 Trading Days)
5. mouse over Ranking > select Top % Gainers (Over 5 Trading Days)
6. mouse over Ranking > select Top % Losers (Over 5 Trading Days)

Shariah Top Actives (as at Yesterday)

Name	Price (RM)	Volume
ZENTECH [S]	0.015	3,523,430.000
MYEG [S]	0.910	980,431.000
VS [S]	1.050	535,005.000
MQTECH [S]	0.115	522,459.000
PERDANA [S]	0.285	390,484.000
AIZO [S]	0.140	311,421.000
HAWK [S]	0.470	266,980.000
PERMAJU [S]	0.040	266,249.000
SEALINK [S]	0.320	243,689.000
SCABLE [S]	0.110	239,078.000

Shariah Top Turnover (as at Yesterday)

Name	Price (RM)	Value (RM)
TENAGA [S]	13.800	116,464,398
MYEG [S]	0.910	89,007,615
PCHEM [S]	4.830	87,988,209
SUNWAY [S]	4.970	67,605,831
VS [S]	1.050	56,299,346
GAMUDA [S]	8.870	53,479,085
IHH [S]	7.170	38,506,807
TM [S]	6.340	29,452,790
UTDPLT [S]	30.860	28,156,992
TANCO [S]	1.560	28,008,668

Top Gainers (over 5 Trading days as at Yesterday)

Name	Price (RM)	Change (RM)
DLADY	30.020	+1.160
LYSAGHT	3.380	+0.680
ORIENT	7.650	+0.390
AIRPORT	10.660	+0.380
SUNWAY	4.970	+0.380
SUNMOW	2.000	+0.350
PCHEM	4.830	+0.290
UTDPLT	30.860	+0.280
VSTECs	3.770	+0.260
PMETAL	4.640	+0.240

Top % Gainers (over 5 Trading days as at Yesterday)

Name	Price (RM)	Change (%)
HONGSENG	0.015	+50.00
SANICHI	0.015	+50.00
ZENTECH	0.015	+50.00
XDL	0.020	+33.33
HAWK	0.470	+30.56
PENSONI	0.600	+29.03
LYSAGHT	3.380	+25.19
XOXNET	0.025	+25.00
IFCAMSC	0.660	+23.36
SCABLE	0.110	+22.22

Top Losers (over 5 Trading days as at Yesterday)

Name	Price (RM)	Change (RM)
NESTLE	97.800	-2.000
MPI	24.360	-0.940
PPB	13.500	-0.700
BAT	7.440	-0.590
HEIM	23.340	-0.560
F&N	28.160	-0.540
KLK	21.900	-0.500
TENAGA	13.800	-0.500
PETDAG	17.580	-0.420
MISC	7.550	-0.400

Top % Losers (over 5 Trading days as at Yesterday)

Name	Price (RM)	Change (%)
AMLEX	0.250	-44.44
PRKCORP	0.310	-29.55
MTRONIC	0.015	-25.00
MPIRE	0.135	-25.00
SG	0.015	-25.00
SMTRACK	0.015	-25.00
REKATECH	0.035	-22.22
BSLCORP	0.020	-20.00
GPACKET	0.020	-20.00
MALPAC	0.880	-18.52

Disclaimer: The information on this page is provided as a service to readers. It does not constitute financial advice and/or any investment recommendations. Past performance is not indicative of future results. We assume no liability for damages resulting from or arising out of the use of such information. It would be best if you did your own research to make your personal investment decisions wisely or consult a licenced investment advisor.

Price & Volume Distribution Charts (as at Yesterday)

Technical Analysis

DEFINITION: Shariah compliant stocks with Technical Analysis showing 5-days & 10-days Moving Average Price below Yesterday's Close over past 3 days and with Volume Spike.

CHART GUIDE: Volume Distribution Chart is a statistical interpretation of the current sentiment on each stock in graphical format. The highest bar categorized as >150k is likely to be traded by institutions or super dealers, while the lowest bar categorized as <15k usually represents retail investors. "Buy Up" refers to more buyers snatching up the lots queued at selling price. "Sell Down" refers to sellers selling their shares to the buying queue



ShareInvestor WebPro > Screener > Market Screener (FA & TA) > select BURSA > add criteria

A. Criteria

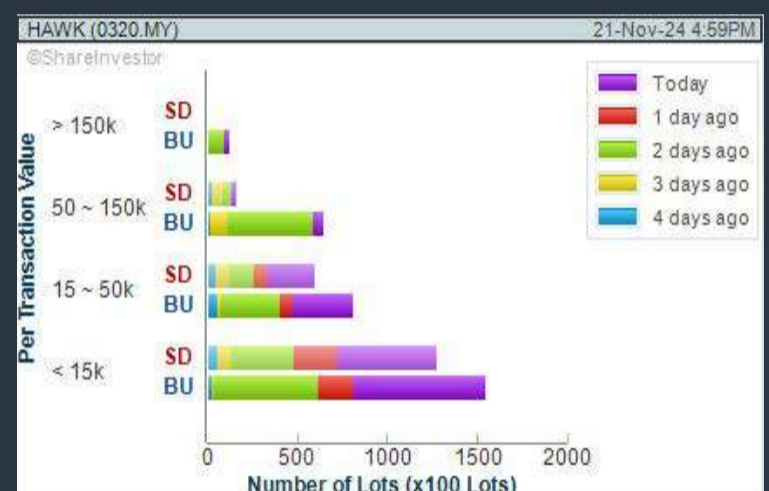
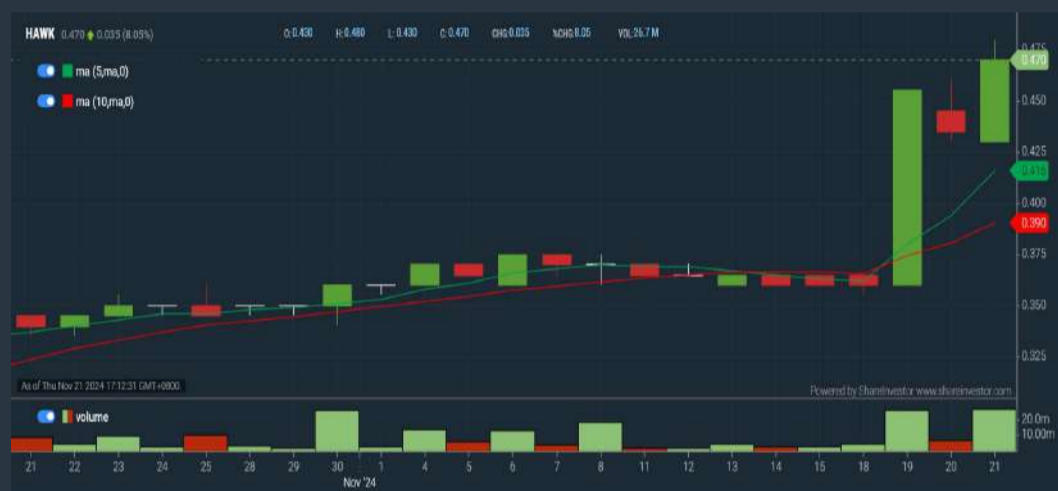
- > click Add Criteria
- Technical Analysis Conditions tab select (i) Moving Average Below Close (ii) Volume Spike
- Fundamental Analysis Conditions tab > select (iii) Revenue
- Prices & Other Conditions tab > select (iv) Is Shariah Compliant
- Technical Analysis Conditions tab select (v) Moving Average Below Close
- Prices & Other Conditions tab > select (vi) Last Done Price
- Technical Analysis Conditions tab select (vii) Moving Average Below Close

B. Conditions (Criteria Filters)

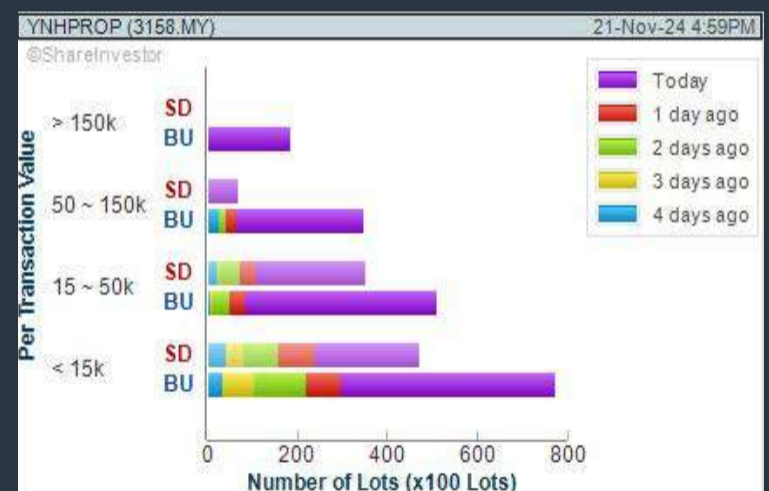
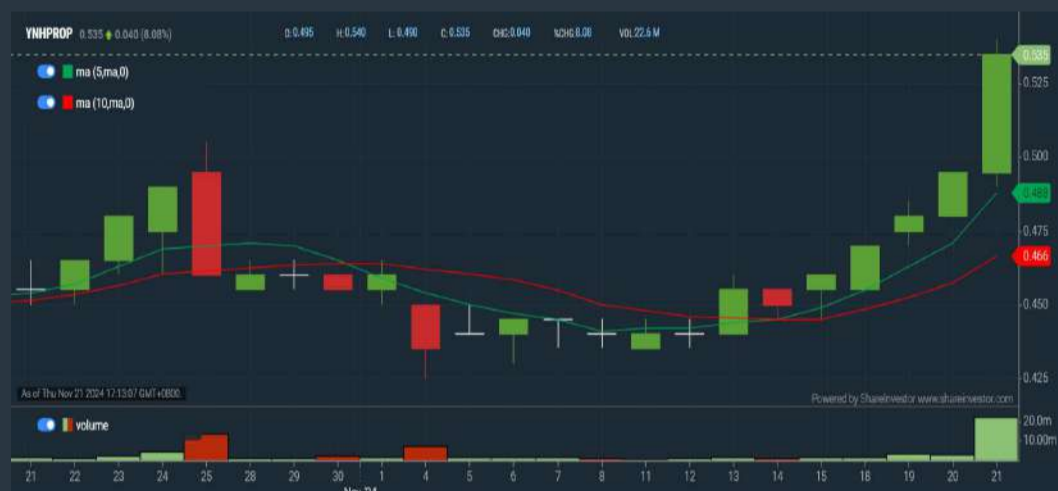
1. Moving Average Below Close - select (MA) type (5) below close price for type (3) days
2. Volume Spike - Volume type (1) greater than type (5) days average
3. Revenue ("000) - select (more than) type (1) for the past select (1) financial year(s)
4. Is Shariah Compliant - select **Yes**
5. Moving Average Below Close - select (MA) type (10) below close price for type (3) days
6. Last Done Price - select (more than) type (0.3)
7. Moving Average Below Close - select (EMA) type (5) below close price for type (3) days

- > click Save Template > Create New Template type (Shariah Hot Stocks) > click Create
- > click Save Template as > select Shariah Hot Stocks > click Save
- > click Screen Now (may take a few minutes)
- > Sort By: Select (Vol) Select (Desc)
- > Mouse over stock name > Charts > click C² Charts or Volume Distribution

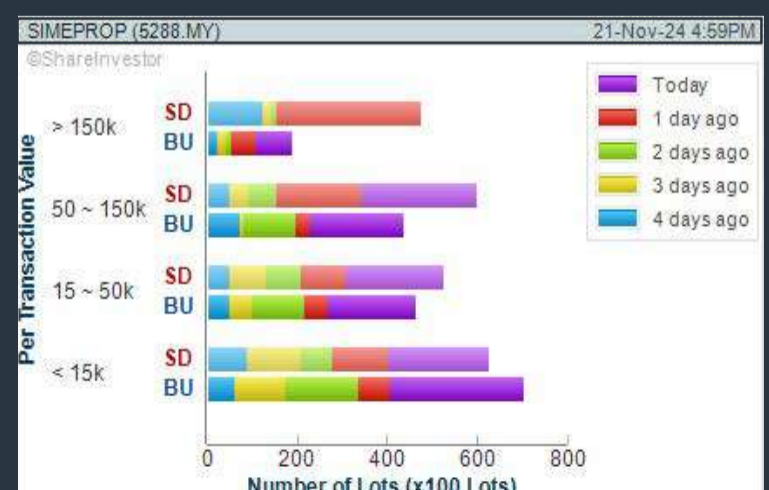
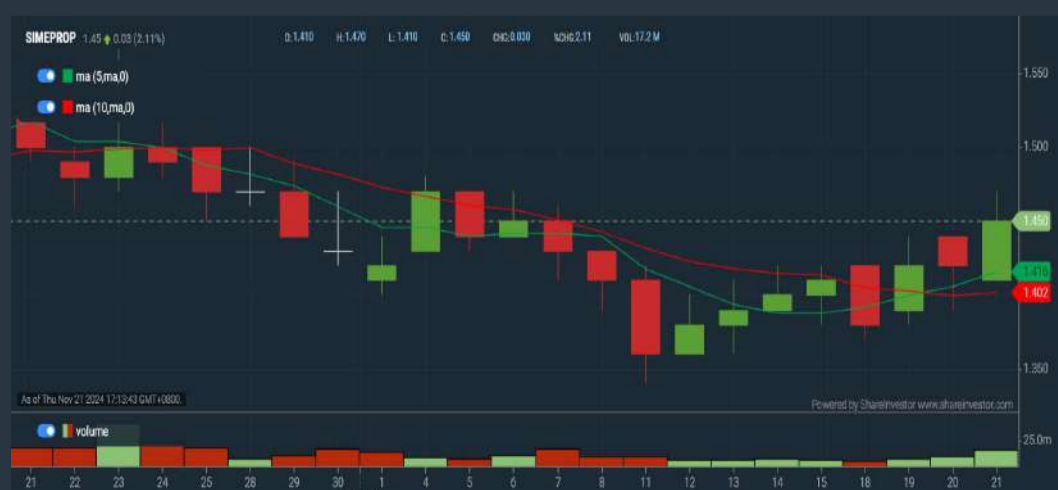
STEEL HAWK BERHAD (0320) C² Chart



YNH PROPERTY BERHAD (3158) C² Chart



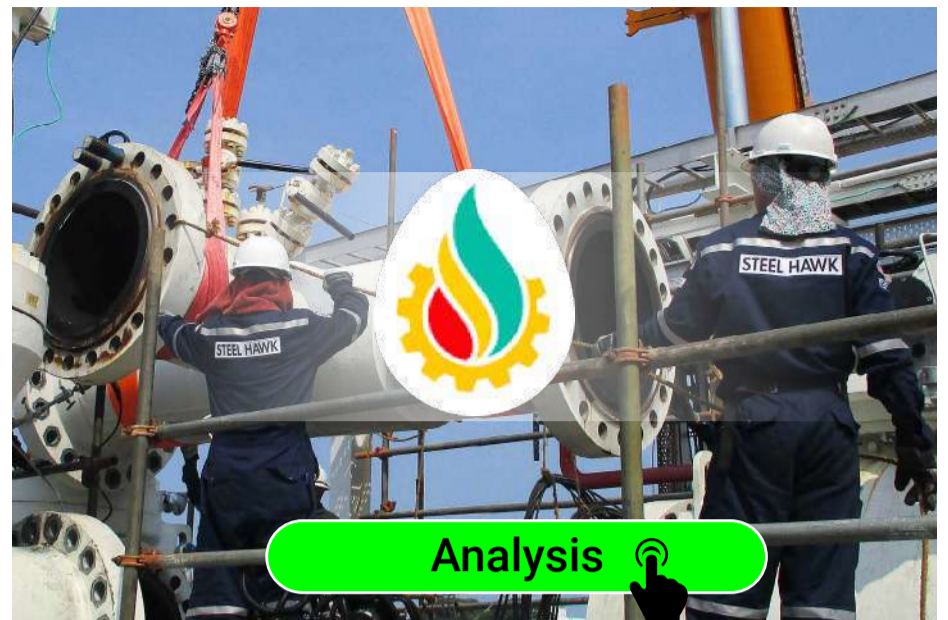
SIME DARBY PROPERTY BERHAD (5288) C² Chart



Disclaimer: The information on this page is provided as a service to readers. It does not constitute financial advice and/or any investment recommendations. Past performance is not indicative of future results. We assume no liability for damages resulting from or arising out of the use of such information. It would be best if you did your own research to make your personal investment decisions wisely or consult a licenced investment advisor.

COMPANY BACKGROUND

Steel Hawk Berhad, through its subsidiaries, is engaged in the provision of onshore and offshore support services for the oil and gas (O&G) industry. The Company operates through three segments: Engineering, Procurement, Construction and Commissioning (EPCC) services and facilities improvement/maintenance; Installation and Maintenance (I&M) of oilfield equipment; and Supply of oilfield equipment.



Select Counter: Bursa HAWK (0320.MY) View Free Trial Broker's Call

HAWK STEEL HAWK BERHAD Updated at 21 Nov 2024 16:59

Last (MYR): 0.470 ↑	Change: +0.035	High: 0.480	Remarks: -
	Change (%): +8.04	Low: 0.430	
Open	0.430	Yesterday's Close	0.435
Buy Price	0.465	Sell Price	0.480
Buy Volume ('00)	200	Sell Volume ('00)	2,140
Cumulative Volume ('00)	266,980	Cumulative Value	12,415,553.5

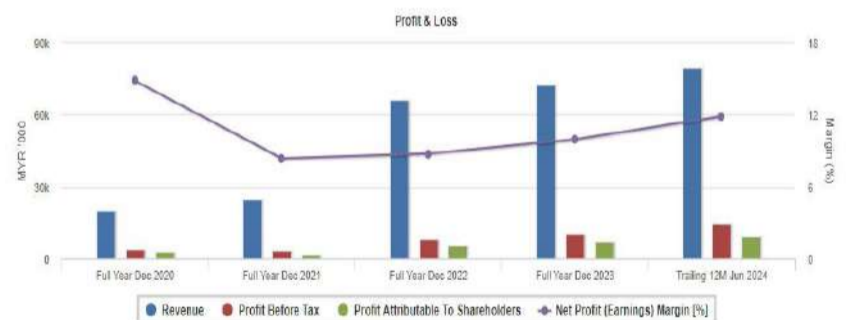
Financial Analysis

Revenue Growth Increasing revenue in last 3 consecutive years	😊	Profit Growth Increasing profit in last 2 consecutive years (with last 3 profitable years)	😊
Dividend Payout No dividend paid in most recent year but dividends paid in prior years	😟	Current Ratio The company is well-positioned to cover its short-term obligations with its current assets (ratio between 1.5 to 10) for 3 consecutive years	😊
Debt to Cashflow The company has negative cash flow from operations in most recent year	😟	Free Cash Flow Negative free cash flow for the most recent year	😟
Gross Profit Margin Consistently good gross profit margin of 20%-40% for 3 years	😊	Return on Assets (ROA) ROA above 10% for 3 consecutive years	😊
Return on Equity (ROE) ROE above 20% for 3 consecutive years	😊		

😊 Excellent 😊 Good 😐 Neutral 😟 Be Alert 😡 Watch Out

Historical Financials

Profit & Loss (MYR '000)

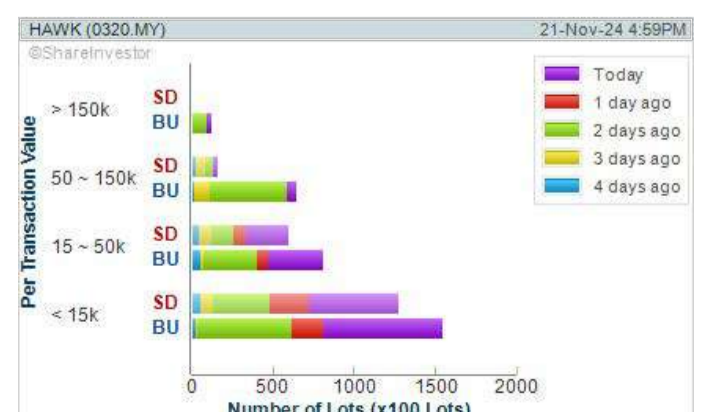


WebPro 9-Days Free Trial Registration (worth RM10) Sign Up Now



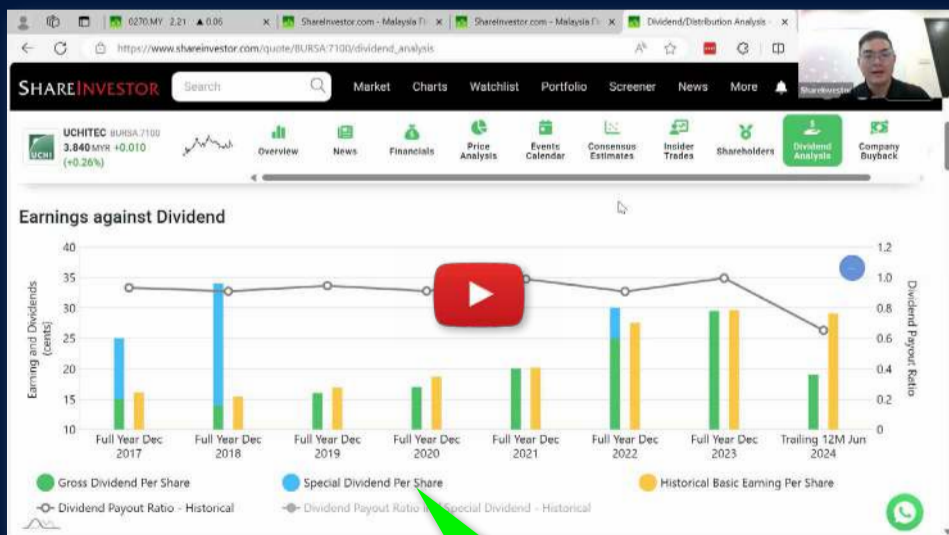
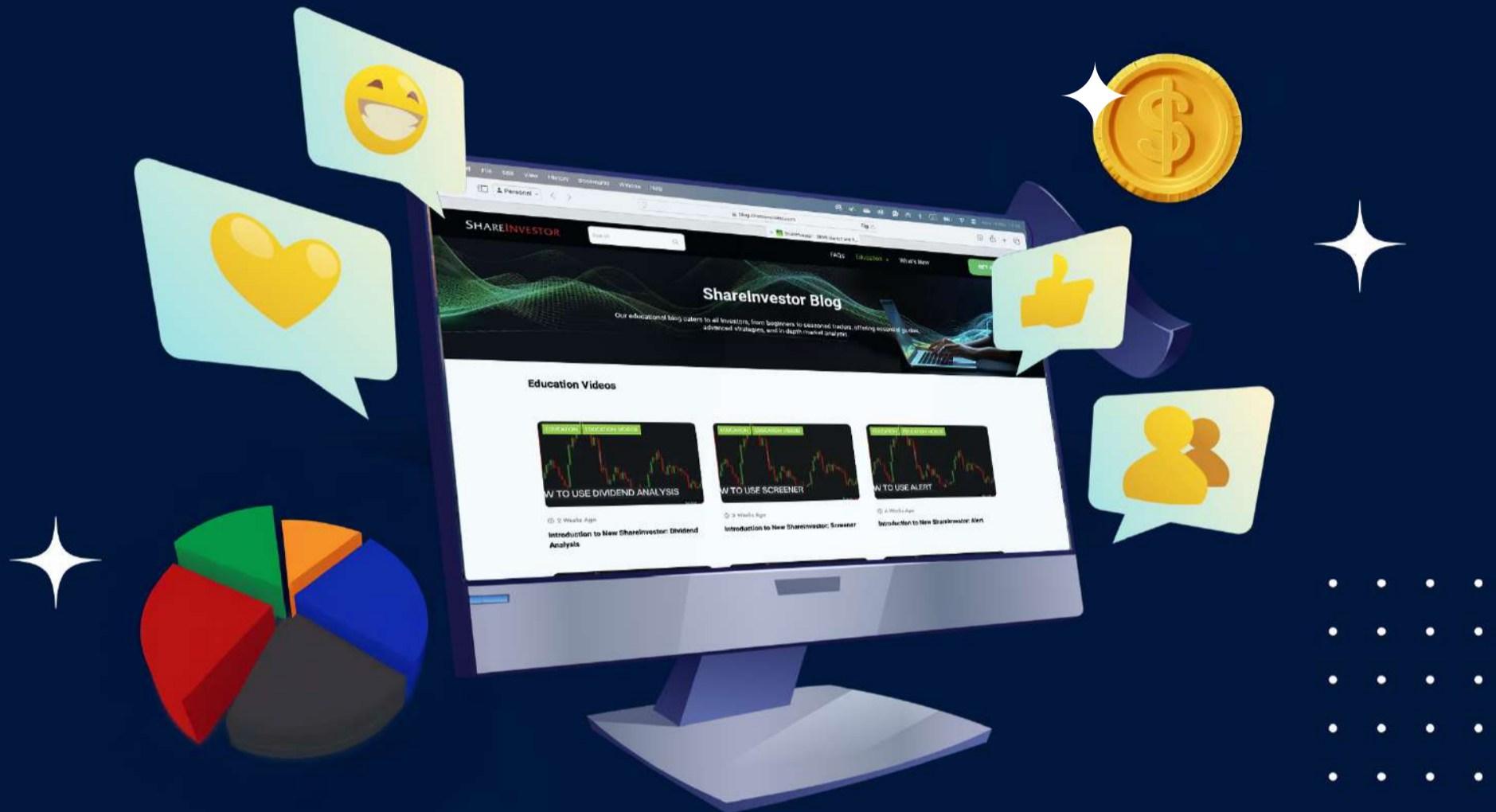
Key Statistics with Total Shareholder Returns

Period	Dividend Received	Capital Appreciation	Total Shareholder Return
Short Term Return	5 Days	-	+28.77 %
	10 Days	-	+26.33 %
	20 Days	-	+34.29 %



Disclaimer: The information on this page is provided as a service to readers. It does not constitute financial advice and/or any investment recommendations. Past performance is not indicative of future results. We assume no liability for damages resulting from or arising out of the use of such information. It would be best if you did your own research to make your personal investment decisions wisely or consult a licenced investment advisor.

Ultimate Guide to use **ShareInvestor**



YOU WILL LEARN HOW TO USE:

- Company Financials
- Market Screener
- Company Insider Trades
- Dividend Analysis
- Consensus Estimation
and more...

**Watch
now!**

Price & Volume Distribution Charts (as at Yesterday)

Technical Analysis

DEFINITION: Shariah compliant stocks with Technical Analysis showing Bullish Momentum and Price Uptrend. The share price closed at the highest price yesterday. The typical price was higher than the previous day's typical price.

CHART GUIDE: Volume Distribution Chart is a statistical interpretation of the current sentiment on each stock in graphical format. The highest bar categorized as >150k is likely to be traded by institutions or super dealers, while the lowest bar categorized as <15k usually represents retail investors. "Buy Up" refers to more buyers snatching up the lots queued at selling price. "Sell Down" refers to sellers selling their shares to the buying queue.



ShareInvestor WebPro > Screener > Market Screener (FA & TA)>select BURSA>add criteria

A. Criteria

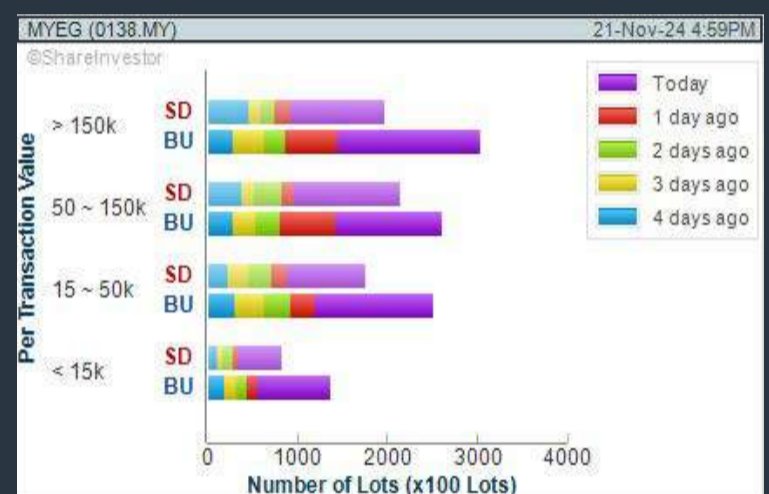
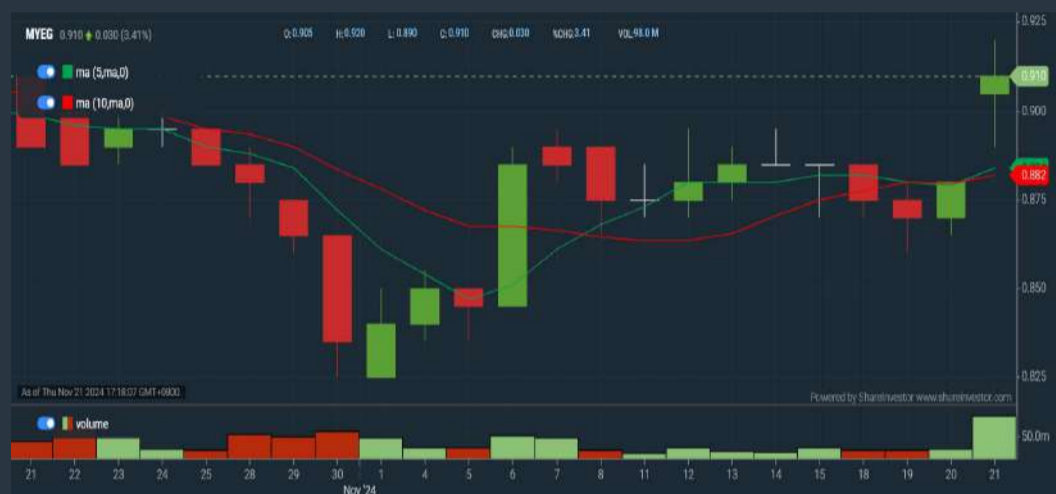
- > click Add Criteria
- Fundamental Analysis Conditions tab >select (i) Revenue
- Technical Analysis Conditions tab select (ii) Average Volume
- Prices & Other Conditions tab > select (iii) Last Done Price
- Prices & Other Conditions tab > select (iv) Is Shariah Compliant
- Technical Analysis Conditions tab select (v) RSI Overbought
- Technical Analysis Conditions tab select (vi) Moving Average Below Close
- Technical Analysis Conditions tab select (vii) CCI Overbought

B. Conditions (Criteria Filters)

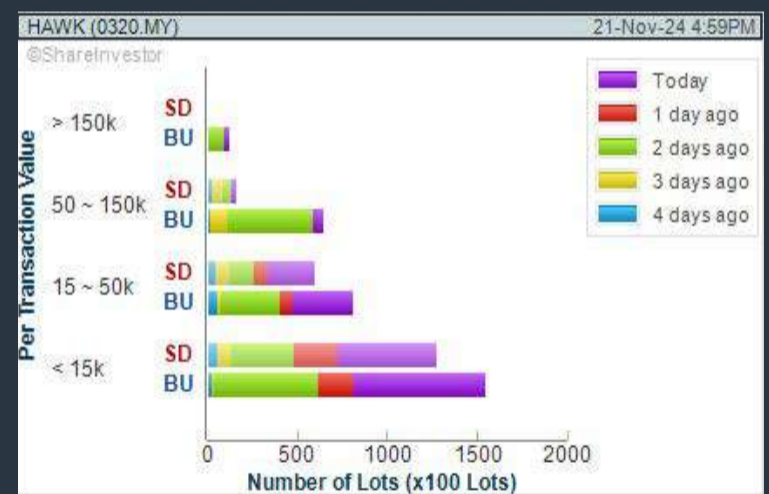
- Revenue ("000) - select (more than) type (1) for the past select (1) financial year(s)
- Average Volume - type (1) days average volume greater than type (10000) lots
- Last Done Price - select (more than) type (0.3)
- Is Shariah Compliant - select Yes
- RSI Overbought - select RSI 1 above 99 for 1 days
- Moving Average Below Close - select (MA) type (10) below close price for type (1) days
- CCI Overbought - select CCI (2) above (0) for (1) days

- > click Save Template > Create New Template type (Shariah Momentum Up Stocks) > click Create
- > click Save Template as > select Shariah Momentum Up Stocks > click Save
- > click Screen Now (may take a few minutes)
- Sort By: Select (Vol) Select (Desc)
- Mouse over stock name > Charts > click C² Charts tab or Volume Distribution

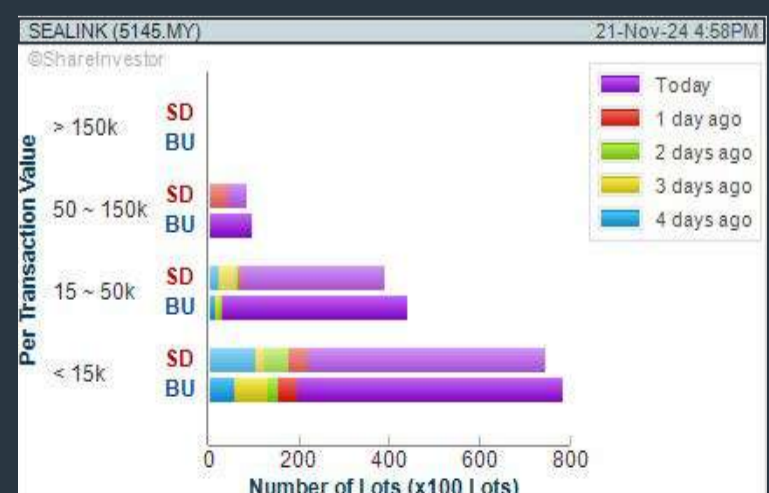
MY E.G. SERVICES BERHAD (0138) C² Chart



STEEL HAWK BERHAD (0320) C² Chart



SEALINK INTERNATIONAL BERHAD (5145) C² Chart



Disclaimer: The information on this page is provided as a service to readers. It does not constitute financial advice and/or any investment recommendations. Past performance is not indicative of future results. We assume no liability for damages resulting from or arising out of the use of such information. It would be best if you did your own research to make your personal investment decisions wisely or consult a licenced investment advisor.



Endorsed by **Chiropractic Associations in
USA, Australia & Singapore**

ISO9001 (quality) & ISO14001 (environment)



XTRA

Price & Volume Distribution Charts (as at Yesterday)

Technical Analysis

DEFINITION: Stocks with Technical Analysis showing 5-days & 10-days Moving Average Price below Close over past 1 days and with Volume Spike

CHART GUIDE: Volume Distribution Chart is a statistical interpretation of the current sentiment on each stock in graphical format. The highest bar categorized as >150k is likely to be traded by institutions or super dealers, while the lowest bar categorized as <15k usually represents retail investors. "Buy Up" refers to more buyers snatching up the lots queued at selling price. "Sell Down" refers to sellers selling their shares to the buying queue.



ShareInvestor WebPro > Screener > Market Screener (FA & TA) > select BURSA > add criteria

A. Criteria

- > click Add Criteria
- Technical Analysis Conditions tab select (i) Moving Average Below Close (ii) Volume Spike
- Fundamental Analysis Conditions tab >select (iii) Revenue
- Prices & Other Conditions tab > select (iv) Is Shariah Compliant
- Technical Analysis Conditions tab select (v) Moving Average Below Close
- Prices & Other Conditions tab > select (vi) Last Done Price
- Technical Analysis Conditions tab select (vii) Moving Average Below Close

B. Conditions (Criteria Filters)

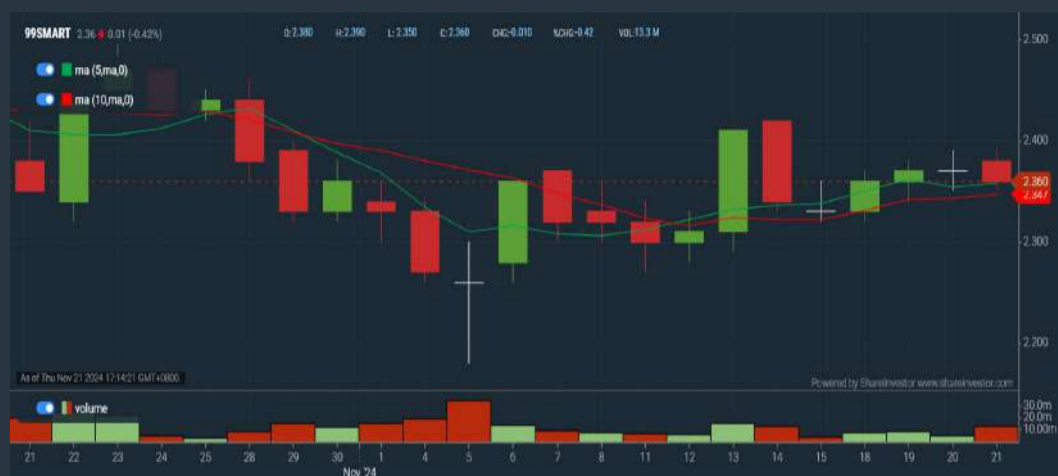
1. Moving Average Below Close - select (MA) type (5) below close price for type (3) days
2. Volume Spike - Volume type (1) greater than type (5) days average
3. Revenue ("000) - select (more than) type (1) for the past select (1) financial year(s)
4. Is Shariah Compliant - select NO
5. Moving Average Below Close - select (MA) type (10) below close price for type (1) days
6. Last Done Price - select (more than) type (0.3)
7. Moving Average Below Close - select (EMA) type (5) below close price for type (1) days

- > click Save Template > Create New Template type (Non-Shariah Hot Stocks) > click Create
- > click Save Template as > select Non-Shariah Hot Stocks > click Save
- > click Screen Now (may take a few minutes)
- Sort By: Select (Vol) Select (Desc)
- Mouse over stock name > Charts > click C² Charts tab or Volume Distribution

99 SPEED MART RETAIL HOLDINGS BERHAD (5326)

C² Chart

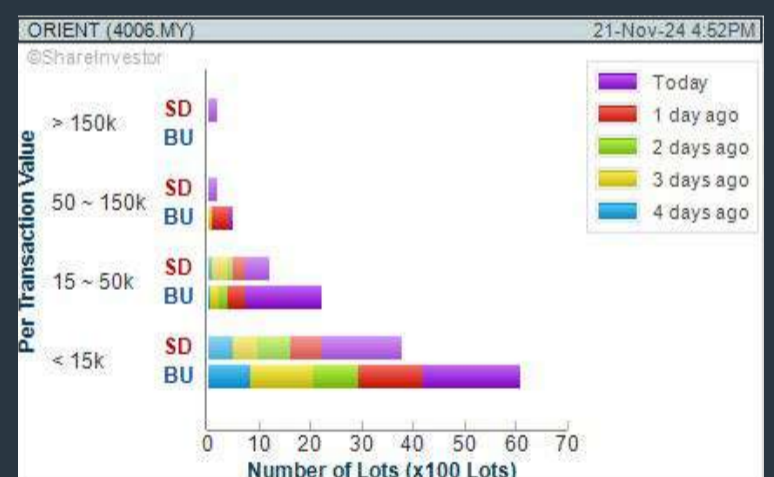
Analysis



ORIENTAL HOLDINGS BERHAD (4006)

C² Chart

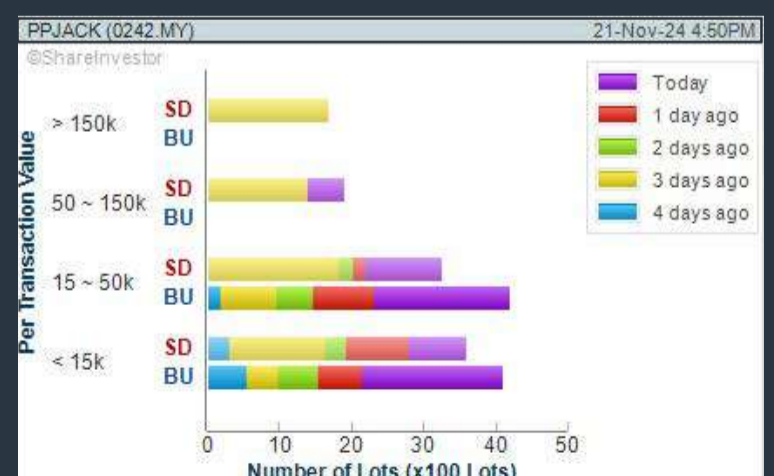
Analysis



PAPPAJACK BERHAD (0242)

C² Chart

Analysis



Disclaimer: The information on this page is provided as a service to readers. It does not constitute financial advice and/or any investment recommendations. Past performance is not indicative of future results. We assume no liability for damages resulting from or arising out of the use of such information. It would be best if you did your own research to make your personal investment decisions wisely or consult a licenced investment advisor.

Price & Volume Distribution Charts (Over 3 trading days as at Yesterday)

Technical Analysis

DEFINITION: Stocks with Technical Analysis showing Bullish Momentum and Price Uptrend

CHART GUIDE: Volume Distribution Chart is a statistical interpretation of the current sentiment on each stock in graphical format. The highest bar categorized as >150k is likely to be traded by institutions or super dealers, while the lowest bar categorized as <15k usually represents retail investors. "Buy Up" refers to more buyers snatching up the lots queued at selling price. "Sell Down" refers to sellers selling their shares to the buying queue.



ShareInvestor WebPro > Screener > Market Screener (FA & TA) > select BURSA > add criteria

A. Criteria

- > click Add Criteria
- Fundamental Analysis Conditions tab > select (i) Revenue
- Technical Analysis Conditions tab select (ii) Moving Average Below Close
- Technical Analysis Conditions tab select (iii) Average Volume
- Prices & Other Conditions tab > select (iv) Last Done Price
- Technical Analysis Conditions tab select (v) Moving Average Below Close
- Technical Analysis Conditions tab select (v) Moving Average Bullish Crossover

B. Conditions

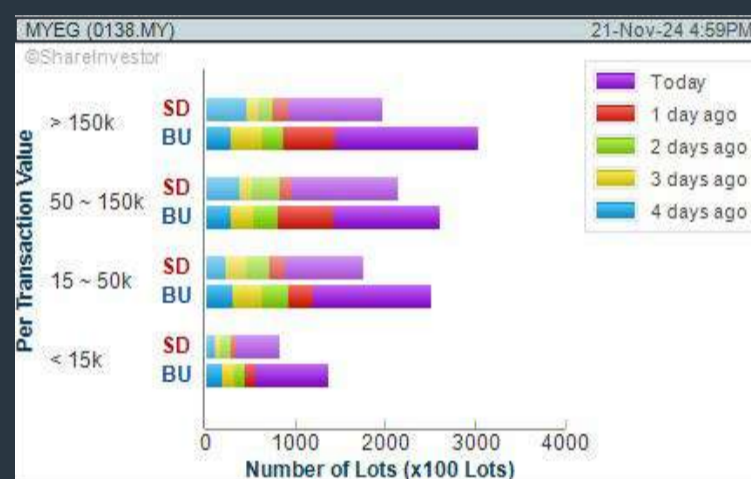
1. Revenue - select (more than) type (1) for the past select (1) financial year(s)
2. Moving Average Below Close - select (MA) type (20) below close price for type (1) days
3. Average Volume - type (5) days average volume type (10000) lots
4. Last Done Price - select (more than) type (0.3)
5. Moving Average Below Close - select (MA) type (10) below close price for type (1) days
6. Moving Average Bullish Crossover - select (MA) type (5) crossed above select (MA) type (10)

> click Save Template > Create New Template type (Non-Shariah Up-Trending Stocks) > click Create Click Save Template As > select Non-Shariah Up Trending Stocks > click Save
> click Screen Now (may take a few minutes)
Sort By: Select (Vol) Select (Desc)
Mouse over stock name > Charts > click C² Charts tab or Volume Distribution

MY E.G. SERVICES BERHAD (0138)

C² Chart

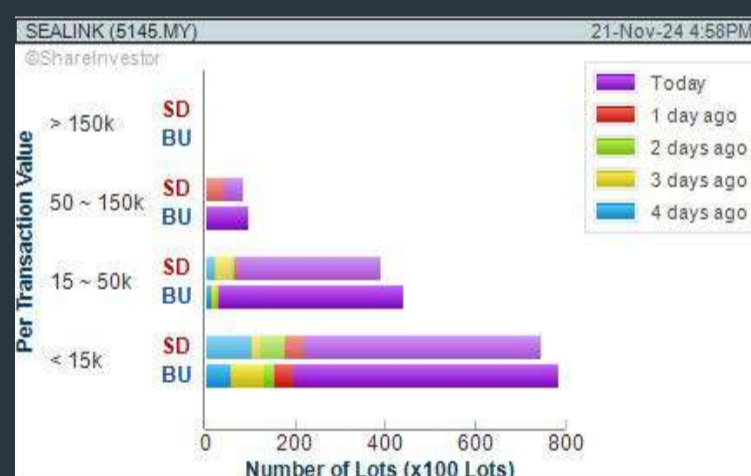
Analysis



SEALINK INTERNATIONAL BERHAD (5145)

C² Chart

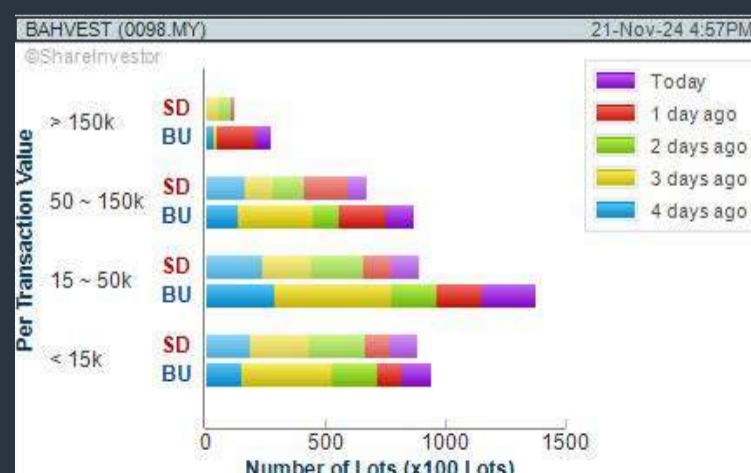
Analysis



BAHVEST RESOURCES BERHAD (0098)

C² Chart

Analysis



Disclaimer: The information on this page is provided as a service to readers. It does not constitute financial advice and/or any investment recommendations. Past performance is not indicative of future results. We assume no liability for damages resulting from or arising out of the use of such information. It would be best if you did your own research to make your personal investment decisions wisely or consult a licenced investment advisor.

Price & Total Shareholder Return (as at Yesterday)

Fundamental Analysis

DEFINITION: Share price of a company trading at a lower price as compared to its fundamentals (FA) such as financial performance and dividend, allowing it to be attractive to value investors.

CHART GUIDE: Total Shareholder Return (TSR) combines share price appreciation and dividend distributions paid to show the total return to the shareholder expressed as a percentage.



ShareInvestor WebPro > Screener > Market Screener (FA & TA) > select BURSA > add criteria

A. Criteria

- > click Add Criteria
- Fundamental Analysis Conditions tab (i) Price Earnings Ratio
- Fundamental Analysis Conditions tab >select (ii) CAGR of Net Earnings
- Fundamental Analysis Conditions tab >select (iii) Net Debt To Equity
- Fundamental Analysis Conditions tab >select (iv) Return On Equity (ROE)

B. Conditions

1. Price Earnings Ratio - select (less than) type (15) times now
2. CAGR of Net Earnings - select (more than) type (10) % for the past type (3) financial year(s)
3. Net Debt To Equity – select (less than) type (1) for the past select (1) financial year(s)
4. Return On Equity (ROE) – select (more than) type (10) % for the past select (1) financial year(s)

- > click Save Template > Create New Template type (Value Stock) > click Create
- > click Save Template as > select Value Companies > click Save
- > click Screen Now (may take a few minutes)
- Sort by: Select (PE Ratio) Select (Ascending)
- > Mouse over stock name > Factsheet > looking for Total Shareholder Return
- > Mouse over stock name > Charts > click C2 Charts tab

SYNERGY HOUSE BERHAD (0279)

C² Chart

Analysis



Period	Dividend Received	Capital Appreciation	Total Shareholder Return
Short Term Return	5 Days	+0.000	+6.56%
	10 Days	+0.000	+7.44%
	20 Days	+0.270	+26.21%
Medium Term Return	3 Months	+0.230	+21.50%
	6 Months	+0.310	+19.25%
1 Year	+0.725	+126.08%	
Annualised Return	Annualised	-	+126.08%

AJINOMOTO (M) BERHAD (2658)

C² Chart

Analysis

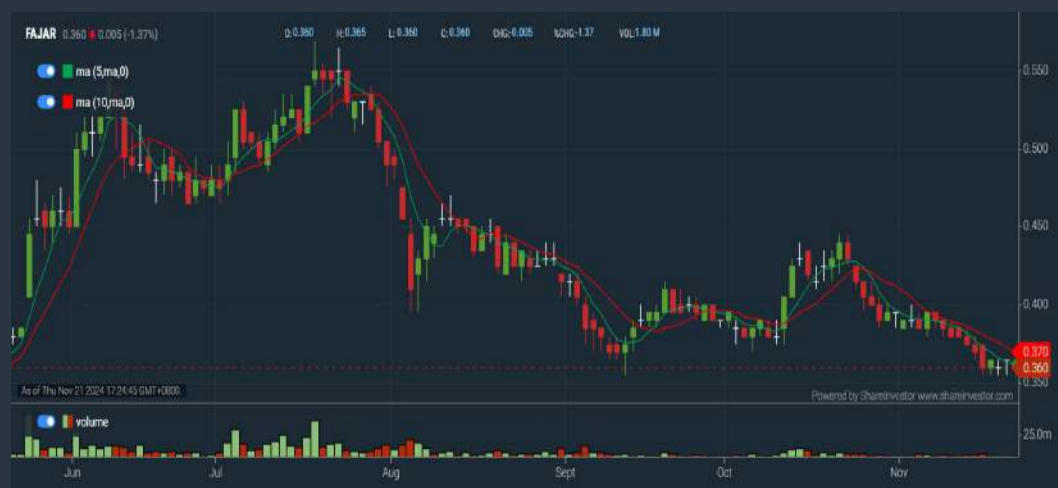


Period	Dividend Received	Capital Appreciation	Total Shareholder Return
Short Term Return	5 Days	+0.320	+2.18%
	10 Days	+0.140	+0.94%
	20 Days	+0.100	+0.67%
Medium Term Return	3 Months	+0.460	+3.16%
	6 Months	-1.220	-7.52%
1 Year	+1.007	+7.81%	
Long Term Return	2 Years	+4.876	+38.69%
	3 Years	+0.901	+7.00%
	5 Years	0.875	+16.49%
Annualised Return	Annualised	-	+3.10%

FAJARBARU BUILDER GRP BERHAD (7047)

C² Chart

Analysis



Period	Dividend Received	Capital Appreciation	Total Shareholder Return
Short Term Return	5 Days	-0.015	-4.01%
	10 Days	-0.035	-8.66%
	20 Days	-0.055	-13.25%
Medium Term Return	3 Months	-0.080	-18.18%
	6 Months	-0.020	-5.26%
1 Year	+0.090	+20.00%	
Long Term Return	2 Years	+0.095	+36.86%
	3 Years	-	-
5 Years	0.033	+0.135	+74.67%
Annualised Return	Annualised	-	+11.80%

Disclaimer: The information on this page is provided as a service to readers. It does not constitute financial advice and/or any investment recommendations. Past performance is not indicative of future results. We assume no liability for damages resulting from or arising out of the use of such information. It would be best if you did your own research to make your personal investment decisions wisely or consult a licenced investment advisor.

Price & Total Shareholder Return (as at Yesterday)

Fundamental Analysis

DEFINITION: Company revenue is growing and making good quality of earnings with positive Free Cash Flow.

CHART GUIDE: Total Shareholder Return (TSR) combines share price appreciation and distributions paid to show the total return to the shareholder expressed as a percentage.



ShareInvestor WebPro > Screener > Market Screener (FA & TA) > select BURSA > add criteria

A. Criteria

1. Fundamental Analysis Conditions tab >select (i) Free Cash Flow, (ii) Revenue Growth, (iii) Gross Profit (Earnings) Margin, (iv) Quality of Earnings, (v) Total Shareholder Returns, > click Add Criteria
2. Fundamental Analysis Conditions tab >select (vi) Total Shareholder Returns > click Add Criteria

B. Conditions (Criteria Filters)

1. Free Cash Flow - select (more than) type (1) for the past select (1) financial year(s)
2. Revenue Growth - select (more than) type (1) for the past select (1) financial year(s)
3. Gross Profit (Earnings) Margin - select (more than) type (30) % for the past select (1) financial year(s)
4. Quality of Earnings - select (more than) type (1) for the past select (1) financial year(s)
5. Total Shareholder Return - select (more than) type (5) % for the past select (3) financial year(s)
6. Total Shareholder Return - select (more than) type (5) % for the past select (5) financial year(s)

- > click Save Template > Create New Template type (Growth Companies) > click Create
- > click Save Template as > select Growth Companies > click Save
- > click Screen Now (may take a few minutes)
- > Sort By: Select (Revenue Growth) Select (Desc)
- > Mouse over stock name > Factsheet > looking for Total Shareholder Return

SL INNOVATION CAPITAL BERHAD (03008)

C² Chart

Analysis



Period	Dividend Received	Capital Appreciation	Total Shareholder Return
Short Term Return	5 Days	-	-
Short Term Return	10 Days	-	-
Short Term Return	20 Days	-	-
Medium Term Return	3 Months	-4.0%	-4.0%
Medium Term Return	6 Months	-4.0%	-4.0%
Medium Term Return	1 Year	-4.0%	-4.0%
Long Term Return	2 Years	+0.0%	+0.0%
Long Term Return	3 Years	+0.0%	+0.0%
Long Term Return	5 Years	+0.0%	+0.0%
Annualized Return	Annualized	-	-0.8%

MALAYSIA AIRPORTS HOLDINGS BERHAD (5014)

C² Chart

Analysis



Period	Dividend Received	Capital Appreciation	Total Shareholder Return
Short Term Return	5 Days	-0.0%	-0.0%
Short Term Return	10 Days	+0.0%	+0.0%
Short Term Return	20 Days	+0.0%	+0.0%
Medium Term Return	3 Months	+0.0%	+0.0%
Medium Term Return	6 Months	+0.0%	+0.0%
Medium Term Return	1 Year	+0.0%	+0.0%
Long Term Return	2 Years	+0.0%	+0.0%
Long Term Return	3 Years	+0.0%	+0.0%
Long Term Return	5 Years	0.0%	+0.0%
Annualized Return	Annualized	-	+0.0%

CHIN TECK PLANTATIONS BERHAD (1929)

C² Chart

Analysis



Period	Dividend Received	Capital Appreciation	Total Shareholder Return
Short Term Return	5 Days	-0.0%	-0.0%
Short Term Return	10 Days	+0.0%	+0.0%
Short Term Return	20 Days	+0.0%	+0.0%
Medium Term Return	3 Months	+0.0%	+0.0%
Medium Term Return	6 Months	+0.0%	+0.0%
Medium Term Return	1 Year	+0.0%	+0.0%
Long Term Return	2 Years	-0.0%	-0.0%
Long Term Return	3 Years	0.0%	+0.0%
Long Term Return	5 Years	0.0%	+0.0%
Annualized Return	Annualized	-	+0.0%

Disclaimer: The information on this page is provided as a service to readers. It does not constitute financial advice and/or any investment recommendations. Past performance is not indicative of future results. We assume no liability for damages resulting from or arising out of the use of such information. It would be best if you did your own research to make your personal investment decisions wisely or consult a licenced investment advisor.

Tired of low returns? Let's talk high-paying Dividends!



- ✓ **Top Dividend Picks Right Now**
- ✓ **Insider Tips – Advanced strategies for experienced investors**
- ✓ **Easy-to-Follow Tutorial**

Get the most out of dividends, use our Dividend Analysis function –
Click to Watch Our Tutorial Below!

Upgrade Your Dividend Strategy Here



Price & Total Shareholder Return (as at Yesterday)

Fundamental Analysis

DEFINITION: Company is paying out dividend with low or moderate leverage.

CHART GUIDE: Total Shareholder Return (TSR) combines share price appreciation and distributions paid to show the total return to the shareholder expressed as a percentage.



ShareInvestor WebPro > Screener > Market Screener (FA & TA) > select BURSA > add criteria

A. Criteria

- > click Add Criteria
- Fundamental Analysis Conditions tab >select (i) Dividend Yield (Historical)
- Fundamental Analysis Conditions tab >select (ii) Dividend Payout (Historical)
- Fundamental Analysis Conditions tab >select (iii) Total Debt To Equity
- Fundamental Analysis Conditions tab >select (iv) Total Shareholder Returns
- Fundamental Analysis Conditions tab >select (v) Total Shareholder Returns
- Fundamental Analysis Conditions tab / >select (vi) CAGR of Dividend Per Share

• Fundamental Analysis Conditions tab >select (vii) CAGR of Dividend Per Share

B. Conditions (Criteria Filters)

1. Dividend Yield - select (more than) type (1) % for the past select (1) financial year(s)
2. Dividend Payout (Historical) - select (between) type (0.5) to type (1) times for the past select (1) financial year(s)
3. Total Debt to Equity - select (less than) type (1) for the past select (1) financial year(s)
4. Total Shareholder Return - select (more than) type (5) % for the past select (3) financial year(s)
5. Total Shareholder Return - select (more than) type (5) % for the past select (5) financial year(s)

6. CAGR of Dividend Per Share - select (less than) type (30) % for the past select (5) financial year(s)
7. CAGR of Dividend Per Share - select (more than) type (1) % for the past select (5) financial year(s)

- > click Save Template > Create New Template type (Dividend Companies) > click Create
- > click Save Template as > select Dividend Companies > click Save
- > click Screen Now (may take a few minutes)
- > Sort By: Select (Dividend Yield) Select (Desc)
- > Mouse over stock name > Factsheet > looking for Total Shareholder Return

AMWAY (M) HOLDINGS BERHAD (6351)

C² Chart

Analysis

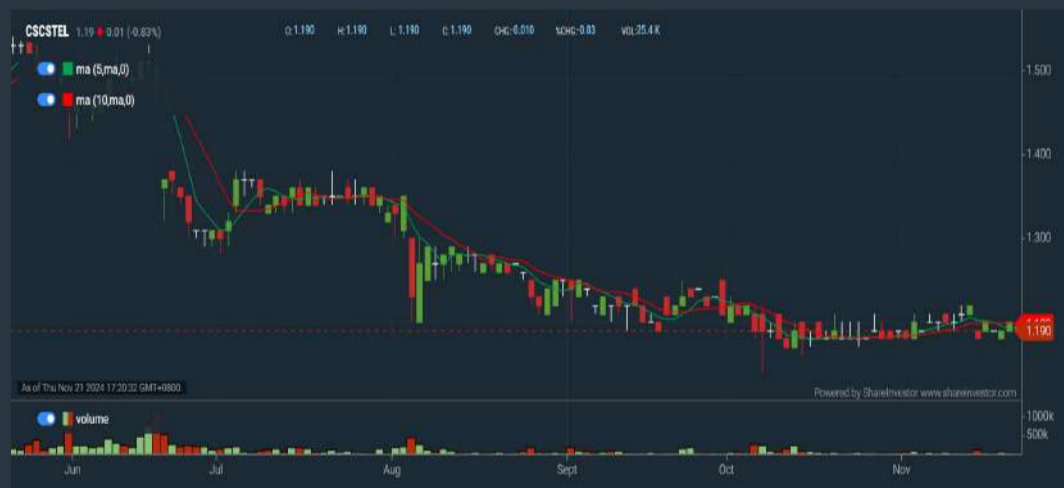


Period	Dividend Received	Capital Appreciation	Total Shareholder Return
Short Term Return	10 Days	-0.00	-0.25%
	20 Days	-0.00	-0.25%
	30 Days	-0.00	-0.14%
Medium Term Return	6 Months	-0.00	-0.25%
	1 Year	+0.00	-0.21%
Long Term Return	2 Years	+0.00	-0.21%
	3 Years	+0.00	-0.21%
Annualized Return	Annualized	-	-0.21%

CSC STEEL HOLDINGS BERHAD (5094)

C² Chart

Analysis



Period	Dividend Received	Capital Appreciation	Total Shareholder Return
Short Term Return	10 Days	-0.00	-0.61%
	20 Days	-0.00	-0.61%
	30 Days	-0.00	-0.61%
Medium Term Return	6 Months	-0.00	-0.21%
	1 Year	-0.00	-0.21%
Long Term Return	2 Years	+0.00	-0.21%
	3 Years	0.00	-0.21%
Annualized Return	Annualized	-	-0.21%

SHL CONSOLIDATED BERHAD (6017)

C² Chart

Analysis



Period	Dividend Received	Capital Appreciation	Total Shareholder Return
Short Term Return	10 Days	-0.00	-0.59%
	20 Days	-0.00	-0.59%
	30 Days	-0.00	-0.59%
Medium Term Return	6 Months	+0.00	+0.21%
	1 Year	+0.00	+0.21%
Long Term Return	2 Years	+0.00	+0.21%
	3 Years	0.00	+0.21%
Annualized Return	Annualized	-	+0.21%

Disclaimer: The information on this page is provided as a service to readers. It does not constitute financial advice and/or any investment recommendations. Past performance is not indicative of future results. We assume no liability for damages resulting from or arising out of the use of such information. It would be best if you did your own research to make your personal investment decisions wisely or consult a licenced investment advisor.

Week: 15 November 2024 - 21 November 2024

More Brokers' Call 

AMINVESTMENT BANK <small>... See More</small>	Call	Target Price	Release Date
Keyfield International Berhad (5321)	BUY	RM3.25	15 Nov 2024
UOA Real Estate Investment Trust (5110)	HOLD	RM1.06	15 Nov 2024
APEX SECURITIES BERHAD <small>... See More</small>	Call	Target Price	Release Date
Hap Seng Plantations Holdings Berhad (5138)	HOLD	RM2.20	21 Nov 2024
SD Guthrie Berhad (5285)	HOLD	RM4.50	21 Nov 2024
BIMB SECURITIES SDN BHD <small>... See More</small>	Call	Target Price	Release Date
Dutch Lady Milk Industries Berhad (3026)	BUY	RM34.00	20 Nov 2024
Hibiscus Petroleum Berhad (5199)	BUY	RM3.40	20 Nov 2024
Hong Leong Investment Bank <small>... See More</small>	Call	Target Price	Release Date
Hap Seng Plantations Holdings Berhad (5138)	BUY	RM2.44	21 Nov 2024
Sports Toto Berhad (1562)	HOLD	RM1.60	21 Nov 2024
KENANGA <small>... See More</small>	Call	Target Price	Release Date
Petronas Chemicals Group Berhad (5183)	MARKET PERFORM	RM5.00	21 Nov 2024
UOA Development Berhad (5200)	MARKET PERFORM	RM1.79	21 Nov 2024
MALACCA SECURITIES SDN BHD <small>... See More</small>	Call	Target Price	Release Date
UOA Real Estate Investment Trust (5110)	HOLD	RM0.93	15 Nov 2024
Nova Wellness Group Berhad (0201)	SELL	RM0.31	20 Nov 2024
MIDF <small>... See More</small>	Call	Target Price	Release Date
MY E.G. Services berhad (0138)	BUY	RM1.14	21 Nov 2024
Petronas Chemicals Group Berhad (5183)	NEUTRAL	RM4.89	21 Nov 2024
PUBLIC INVESTMENT BANK <small>... See More</small>	Call	Target Price	Release Date
Kawan Food Berhad (7216)	OUTPERFORM	RM2.45	21 Nov 2024
Mi Technovation Berhad (5286)	OUTPERFORM	RM2.92	21 Nov 2024
UOB KAYHIAN <small>... See More</small>	Call	Target Price	Release Date
Dialog Group Berhad (7277)	BUY	RM3.00	20 Nov 2024
V.S. Industry Berhad (6963)	BUY	RM1.35	20 Nov 2024

Disclaimer: InveSt does not accept any liability whatsoever for any direct, indirect or consequential losses (including loss of profit) or damages that may arise from the use of information or opinions in this publication. The information and opinions in InveSt are not to be considered as an offer to sell or buy any of the securities discussed. Opinions expressed are subject to change without notice. The Brokers may, from time to time, have interests or positions in the securities mentioned. For the full report on each item listed on this page, please visit https://www.shareinvestor.com/my/brokers_call.

DEFINITION: Top 10 stocks with Technical Analysis plus Pattern Matching by 60 pre-defined indicators by the system showing a higher probability of bullish sentiment on the share price.



ShareInvestor WebPro > Screener > Predefined TA Screens > select market BURSA > Most Long Signals > click Scan Results or mouse over each company

CENGILD MEDICAL BERHAD (0243.MY)

CENGILD

Price updated at 21 Nov 2024 17:30

Last: 0.270	Change: -	Volume: 7,859
	Change (%): -	Range: 0.265 - 0.280

TA Scanner Results based on historical data up to 21 Nov 2024

Condition	Signal	Explanation
Bollinger Band: Bullish Long Term Volatility Breakout and Trending	Long	1. Close price above upper bollinger band(33,1). 2. Volume above average volume(50). 3. Average volume(50) is above 300,000.
Bollinger Band: Bullish Short Term Volatility Breakout and Trending	Long	1. Close price above upper bollinger band(33,1). 2. Volume above average volume(10). 3. Average volume(10) is above 300,000.
Bollinger Band: High Above Upper Bollinger Band	Neutral	1. High above upper bollinger band(14,2). 2. Average volume(5) is above 100,000.
CCI: Bearish CCI Overbought And Reversing	Short	1. CCI(26) above 100 and CCI(26) 1 day ago increasing for the last 3 days. 2. CCI(26) below CCI(26) 1 day ago
Donchian Channels: High Above Upper Donchian Channels	Long	High crossed above the upper Donchian Channel(14,4)
Historical Volatility: Increasing Historical Volatility	Neutral	Historical Volatility(100,365) increasing for the last 10 days
RSI: Short Term RSI 50 Bullish Crossover	Long	1. RSI(20) crossed above 50 within the last 1 day and RSI(20) 1 day ago below 50 for the last 5 days. 2. Volume above average volume(125). 3. Average volume(5) is above 100,000.
Volume: Volume Spike	Long	1. Volume is more than 500% above average volume(10). 2. Volume above 200000. 3. Close price above 0.10
Williams %R: Bearish Williams %R	Short	1. Williams %R(26) between 0 and -20. 2. Average volume(5) is above 100,000.

XOX NETWORKS BERHAD (0140.MY)

XOXNET

Price updated at 21 Nov 2024 17:30

Last: 0.025	Change: -	Volume: -
	Change (%): -	Range: 0.025 - 0.025

TA Scanner Results based on historical data up to 21 Nov 2024

Condition	Signal	Explanation
DM: Bullish Directional Movement	Long	-DI(14) crossed below +DI(14)
MA: Bullish Price Crossover	Long	1. Close price crossed above MA(40) within the last 1 day. 2. Previous day close price is below the MA(10) for the last 5 days
Price: New 52 Week Low	Short	1. Stock reach a new 52 week low. 2. Average volume(30) is above 50000.
RSI: Short Term RSI 50 Bullish Crossover	Long	1. RSI(20) crossed above 50 within the last 1 day and RSI(20) 1 day ago below 50 for the last 5 days. 2. Volume above average volume(125). 3. Average volume(5) is above 100,000.
Stochastic: Fast Stochastic Buy Signal	Long	1. Fast Stochastic(15,5) %K crossed above 20. 2. Fast Stochastic(15,5) %K 1 day ago was below 20 for the last 5 days. 3. Average volume(30) is above 50000

Disclaimer: The information on this page is provided as a service to readers. It does not constitute financial advice and/or any investment recommendations. Past performance is not indicative of future results. We assume no liability for damages resulting from or arising out of the use of such information. It would be best if you did your own research to make your personal investment decisions wisely or consult a licenced investment advisor.

AMMB HOLDINGS BERHAD (1015.MY)

AMMBANK

Price updated at 21 Nov 2024 17:31

Last: 5.250	Change: -	Volume: 46,361
	Change (%): -	Range: 5.190 - 5.260

TA Scanner Results based on historical data up to 21 Nov 2024

Condition	Signal	Explanation
Bollinger Band: Bullish Short Term Volatility Breakout and Trending	Long	1. Close price above upper bollinger band(33,1). 2. Volume above average volume(10). 3. Average volume(10) is above 300,000.
MACD: Bullish MACD Crossover	Long	1. MACD(12,26) diff line crossed above the MACD(12,26) signal line. 2. MACD Histogram(12,26) is above 0.
Volume: 10 Days large value Buy Up trade	Long	1. 150K value Buy Up greater than Sell Down by 20% for 10 days. 2. 50K-100K value Buy Up greater than Sell Down by 20% for 10 days. 3. Average volume(10) is above 1000000
Volume: 5 Days large value Buy Up trade	Long	1. 150K value Buy Up greater than Sell Down by 20% for 5 days. 2. 50K-100K value Buy Up greater than Sell Down by 20% for 5 days. 3. Average volume(10) is above 1000000

MIECO CHIPBOARD BERHAD (5001.MY)

MIECO

Price updated at 21 Nov 2024 17:31

Last: 0.710	Change: -	Volume: 3,727
	Change (%): -	Range: 0.690 - 0.710

TA Scanner Results based on historical data up to 21 Nov 2024

Condition	Signal	Explanation
Bollinger Band: Bullish Lower Bollinger Band Support	Long	1. Low 1 day ago below lower bollinger band(20,2). 2. Close above close 1 day ago. 3. Average volume(5) is above 100,000.
Bollinger Band: High Above Upper Bollinger Band	Neutral	1. High above upper bollinger band(14,2). 2. Average volume(5) is above 100,000.
MACD: Bullish MACD Crossover	Long	1. MACD(12,26) diff line crossed above the MACD(12,26) signal line. 2. MACD Histogram(12,26) is above 0.
Price: New 52 Week High	Long	1. Stock reach a new 52 week high. 2. Average volume(30) is above 50000.
Volume: Volume Spike	Long	1. Volume is more than 500% above average volume(10). 2. Volume above 200000. 3. Close price above 0.10

PLB ENGINEERING BERHAD (7055.MY)

PLB

Price updated at 21 Nov 2024 17:31

Last: 1.140	Change: -	Volume: 2,765
	Change (%): -	Range: 1.140 - 1.150

TA Scanner Results based on historical data up to 21 Nov 2024

Condition	Signal	Explanation
Candlestick: Bullish Engulfing	Long	Bullish: Engulfing
MA: Short Term Bullish Moving Average Crossover	Long	MA(10) crossed above MA(15) within the last 1 day.
MACD: Bullish MACD Crossover	Long	1. MACD(12,26) diff line crossed above the MACD(12,26) signal line. 2. MACD Histogram(12,26) is above 0.
Volume: Consecutive Days Of Increasing Average Volume	Long	1. Average Volume(20) has been increasing over the last 2 weeks. 2. Average volume(20) is above 100000

DS SIGMA HOLDINGS BERHAD (0269.MY)

DSS

Price updated at 21 Nov 2024 17:31

Last: 0.310	Change: -	Volume: 620
	Change (%): -	Range: 0.305 - 0.310

TA Scanner Results based on historical data up to 21 Nov 2024

Condition	Signal	Explanation
Bollinger Band: Low Below Lower Bollinger Band	Neutral	1. Low below lower bollinger band(14,2). 2. Average volume(5) is above 100,000.
CCI: Bullish CCI Oversold And Reversing	Long	1. CCI(26) below -100 and CCI(26) 1 day ago decreasing for the last 3 days. 2. CCI(26) above CCI(26) 1 day ago
Candlestick: Bullish Hammer	Long	Bullish: Hammer
Price: New 52 Week Low	Short	1. Stock reach a new 52 week low. 2. Average volume(30) is above 50000.
Volume: Consecutive Days Of Increasing Average Volume	Long	1. Average Volume(20) has been increasing over the last 2 weeks. 2. Average volume(20) is above 100000
Williams %R: Bullish Williams %R	Long	1. Williams %R(26) between -80 and -100. 2. Average volume(5) is above 100,000.

RADIANT GLOBALTECH BERHAD (0202.MY)

RGTECH

Price updated at 21 Nov 2024 17:30

Last: 0.345	Change: +0.005	Volume: 20
	Change (%): +1.47	Range: 0.330 - 0.345

TA Scanner Results based on historical data up to 21 Nov 2024

Condition	Signal	Explanation
MA: Bullish Price Crossover	Long	1. Close price crossed above MA(40) within the last 1 day. 2. Previous day close price is below the MA(10) for the last 5 days
MA: Short Term Bullish Moving Average Crossover	Long	MA(10) crossed above MA(15) within the last 1 day.
MACD: Bullish MACD Crossover	Long	1. MACD(12,26) diff line crossed above the MACD(12,26) signal line. 2. MACD Histogram(12,26) is above 0.
Stochastic: Fast Stochastic Buy Signal	Long	1. Fast Stochastic(15,5) %K crossed above 20. 2. Fast Stochastic(15,5) %K 1 day ago was below 20 for the last 5 days. 3. Average volume(30) is above 50000

CELCOMDIGI BERHAD (6947.MY)

CDB

Price updated at 21 Nov 2024 17:31

Last: 3.550	Change: +0.020	Volume: 44,429
	Change (%): +0.57	Range: 3.490 - 3.560

TA Scanner Results based on historical data up to 21 Nov 2024

Condition	Signal	Explanation
Bollinger Band: High Above Upper Bollinger Band	Neutral	1. High above upper bollinger band(14,2). 2. Average volume(5) is above 100,000.
DM: Bullish Directional Movement	Long	-DI(14) crossed below +DI(14)
Price: Consecutive Days Gains	Long	1. Close price has been increasing over the last 5 days. 2. Average volume(5) above 100,000.
RSI: Short Term RSI 50 Bullish Crossover	Long	1. RSI(20) crossed above 50 within the last 1 day and RSI(20) 1 day ago below 50 for the last 5 days. 2. Volume above average volume(125). 3. Average volume(5) is above 100,000.

LEBTECH BERHAD (9628.MY)

LEBTECH

Price updated at 21 Nov 2024 17:31

Last: 0.790	Change: -	Volume: 202
	Change (%): -	Range: 0.790 - 0.790

TA Scanner Results based on historical data up to 21 Nov 2024

Condition	Signal	Explanation
DM: Bearish Directional Movement	Short	-DI(14) crossed above +DI(14)
Donchian Channels: High Above Upper Donchian Channels	Long	High crossed above the upper Donchian Channel(14,4)
MA: Medium Term Bullish Moving Average Crossover	Long	MA(25) crossed above MA(50) within the last 1 day.
MA: Short Term Bullish Moving Average Crossover	Long	MA(10) crossed above MA(15) within the last 1 day.
MACD: Bullish MACD Crossover	Long	1. MACD(12,26) diff line crossed above the MACD(12,26) signal line. 2. MACD Histogram(12,26) is above 0.
Parabolic SAR: Bullish Parabolic SAR Reversal	Neutral	1. Parabolic SAR 1 day ago below close price 1 day ago for the last 5 days. 2. Parabolic SAR above close price

AIRASIA X BERHAD (5238.MY)

AAX

Price updated at 21 Nov 2024 17:31

Last: 2.080	Change: -0.040	Volume: 49,967
	Change (%): -1.89	Range: 2.070 - 2.160

TA Scanner Results based on historical data up to 21 Nov 2024

Condition	Signal	Explanation
Bollinger Band: High Above Upper Bollinger Band	Neutral	1. High above upper bollinger band(14,2). 2. Average volume(5) is above 100,000.
Donchian Channels: High Above Upper Donchian Channels	Long	High crossed above the upper Donchian Channel(14,4)
Historical Volatility: Increasing Historical Volatility	Neutral	Historical Volatility(100,365) increasing for the last 10 days
MACD: Bullish MACD Crossover	Long	1. MACD(12,26) diff line crossed above the MACD(12,26) signal line. 2. MACD Histogram(12,26) is above 0.
Volume: 10 Days large value Buy Up trade	Long	1. 150K value Buy Up greater than Sell Down by 20% for 10 days. 2. 50K-100K value Buy Up greater than Sell Down by 20% for 10 days. 3. Average volume(10) is above 1000000
Volume: 5 Days large value Buy Up trade	Long	1. 150K value Buy Up greater than Sell Down by 20% for 5 days. 2. 50K-100K value Buy Up greater than Sell Down by 20% for 5 days. 3. Average volume(10) is above 1000000
Williams %R: Bearish Williams %R	Short	1. Williams %R(26) between 0 and -20. 2. Average volume(5) is above 100,000.

Disclaimer: The information on this page is provided as a service to readers. It does not constitute financial advice and/or any investment recommendations. Past performance is not indicative of future results. We assume no liability for damages resulting from or arising out of the use of such information. It would be best if you did your own research to make your personal investment decisions wisely or consult a licenced investment advisor.

Condition	Signal	Explanation
Volume: 10 Days large value Buy Up trade	Long	1. 150K value Buy Up greater than Sell Down by 20% for 10 days. 2. 50K-100K value Buy Up greater than Sell Down by 20% for 10 days. 3. Average volume(10) is above 1000000



Dato' Eu Hong Chew
Former Group CEO i-Berhad
Non-Executive Director

He has been associated with the Sumurwang Group for many years charting the path for its manufacturing arm, firstly under Dreamland Holdings Berhad and the subsequent acquisition of I-Berhad.

Before that, he was with PA Management Consulting for a decade where he was the Director of Studies for the Cranfield PA MBA Programme in Malaysia.

Educated at the Royal Military College, Dato' Eu has an engineering degree from the University of Glasgow, and a MBA from the University of Bradford, UK.

Is CREST BUILDER a value trap?

SUMMARY

- Crest Builder Holdings Bhd's (Crest Builder or the Group) (**CRESBLD.8591.MY**) revenue growth has stagnated over the last 12 years. There have been significant losses since 2019 primarily due to COVID-19 impacts, increased material costs, and labour shortages. The only profitable segment during this period was the Concession Arrangement.

Disclaimer: This article is written for informational purposes only. It does not constitute a solicitation, offer, advice, counseling or recommendation to buy or sell. As such it is not intended to promote the purchase of shares in any way. As a reminder, any type of asset has a risk factor and needs to be evaluated from multiple perspectives. Therefore, any investment decision and the associated risk remains with the investor. The views expressed here are entirely the writer's own.

- The Group is focusing on turning around the Construction and Property Development segments, which have seen declines in revenue and margins. But they have a substantial pipeline of ongoing projects.
- Crest Builder maintains a manageable debt level, strong cash flow generation, and reasonable capital allocation. However, it has a negative interest coverage ratio and a low average ROE of 1%, indicating challenges in creating shareholder value.

BACKGROUND

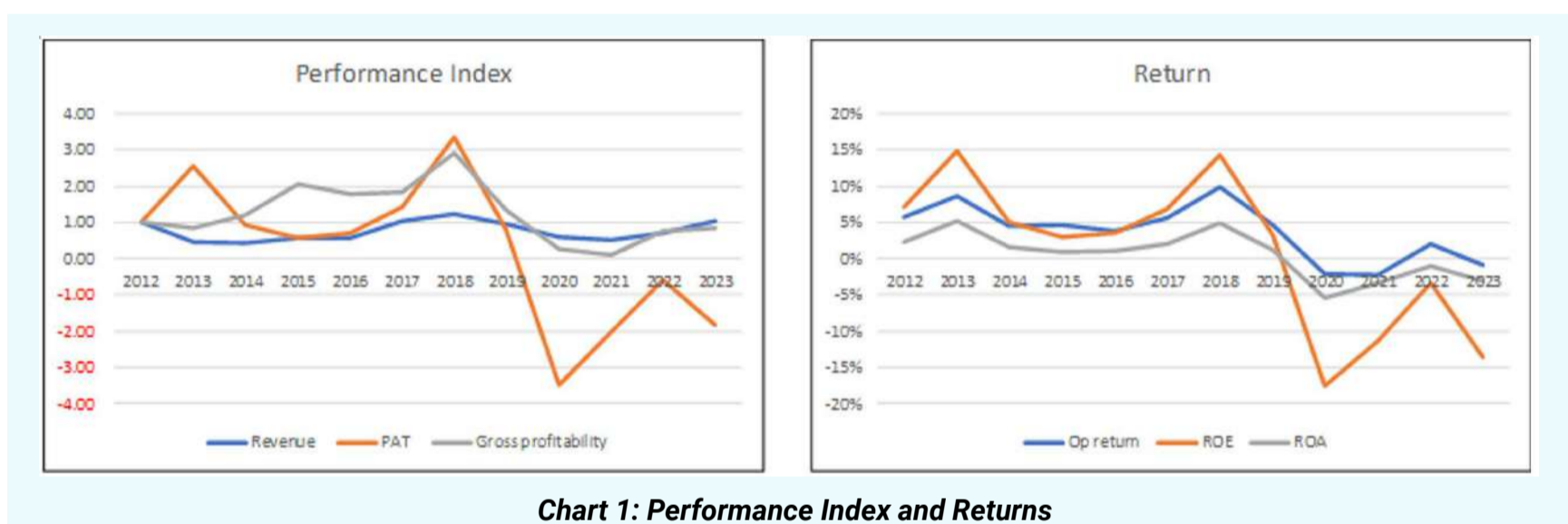
The Group today reports its performance under 4 business segments:

- **Construction:** The Group is a registered Class A contractor with the Malaysian Ministry of Entrepreneur Development and Cooperatives. The segment primarily focuses on infrastructure and building works.
- **Concession Arrangement:** This segment has a 23-year agreement with the Malaysian Ministry of Education and Universiti Teknologi MARA (UiTM). It involves the construction and management of the 5,000-student capacity UiTM Tapah 2 campus.
- **Property Development:** Together with the conventional developments, the Group has also secured the privatization and the redevelopment of Dang Wangi LRT station and Kelana Jaya LRT station.
- **Investment Holding:** The key earnings are from the rental of two properties in Petaling Jaya.

OPERATING PERFORMANCE

There was hardly any revenue growth over the past 12 years. PAT was volatile with losses post-2019. Refer to the left part of Chart 1.

- The loss in 2020 and 2021 was due to COVID-19. This led to lower revenue and gross profit margins. The lower gross profit margins were due to higher building material costs and labour shortages. The only profitable segment for the 2 years was the Concession Arrangement.
- The Construction and Property Development segments continued to experience losses in 2022 and 2023. The Property Development performance was impacted by the lack of any new projects launched over the past 5 years.



Given the PAT trend, you should not be surprised to see that there were declining trends for all the 3 returns metrics. Refer to the right part of Chart 1. The returns mirror the profit drops after peaking in 2018. Over the past 12 years, the Group achieved an average ROE of 1%. This was because of the poor post-2019 performances.

SEGMENT PERFORMANCE

The performance of the Group is very dependent on the performance of the Construction and Property Development segments. The EBIT of these 2 segments pre-2019 and post-2019 illustrates my point. Refer to the right part of Chart 2.

- Historically, the Construction segment was the biggest revenue contributor. From 2013 to 2022, it accounted for about 2/3 of the Group's revenue.
- The Property Development segment was the next biggest revenue contributor accounting for an average of 21% of the Group revenue from 2013 to 2022.
- The Concession Arrangement segment was the biggest EBIT contributor. It accounted for 72% of the consolidated EBIT from 2013 to 2022.
- Despite being the largest revenue contributor, the Construction segment only accounted for 6% of the consolidated EBIT from 2012 to 2022.



*Please refer to the disclaimer on first page and last page.

PROSPECTS

The Group is undergoing a turnaround. However, the prospects for all the segments are not the same. I do not expect much improvement from the Concession Arrangement segment as historically the revenue average is about RM46 million per annum. About 78% of the revenue came from financing with the balance from the provision of maintenance services.

At the same time, the bulk of the income from the Investment segment came from rental. Unless the Group acquires new properties, I do not expect a significant increase in revenue from this segment. It is obvious that to perform better, the Group has to turn around the Construction and Property Development segments.

For the Construction segment, it meant re-building the margins that it enjoyed pre-2019. From 2012 to 2018, it achieved an average EBIT margin of 9%. From 2020 to 2022, this had dropped to an average of negative 14%.

For the Property Development segment, the challenge is building back the property development revenue. From 2012 to 2018, it achieved an average revenue of RM100 million annually. From 2020 to 2022, this had dropped to an average of RM 6 million per year.

I am positive about Crest Builder's prospects as the Construction and Property Development sectors are not sunset sectors in Malaysia. Furthermore, as reported in its 2023 Annual Report, the Group had a substantial pipeline of projects:

- RM2.6 billion in ongoing construction projects. Of these, 88% were 3rd party projects with the balance for property development operations.
- RM1.5 billion GDV of property development projects. These were from the Dang Wangi project and its Bandar Bukit Tinggi development.

FINANCIAL POSITION

I would rate Crest Builder as financially sound based on the following:

- It has a DE of 1.98 as of Dec 2023. But of its total Debt of RM570 million, about RM 257 million was for the Concession Arrangement segment. The concession debt is ring-fenced and covered by the concession assets. Ignoring this, the DE would be less than 1.
- As of the end of Jun 2024, it had RM76 million cash and short-term investments. This is about 6% of its total assets.
- During the past 12 years, it generated a cumulative RM262 million cash flow from operations compared to a cumulative PAT of RM73 million. This is a very good cash conversion ratio.
- It had a reasonable capital allocation plan. Refer to Table 1. Its cash flow from operations was sufficient to cover its CAPEX and Acquisitions. If all the balance was distributed as dividends, it would be about RM0.08 per share.

There are of course some negative points:

- It currently has a negative interest coverage ratio. I defined this as EBIT/interest. This is equal to a D (Fitch) synthetic rating as per the Damodaran approach. You should not be surprised by this due to the negative earnings.

Item	Sources RM m	Uses RM m
Cash flow from Ops	262	
New shares	53	
Net Debt	290	
CAPEX & Acquisitions		116
Dividends		57
Buybacks		13
Others		419
Total	605	605

Table 1: Sources and Uses of Funds 2012 to 2023

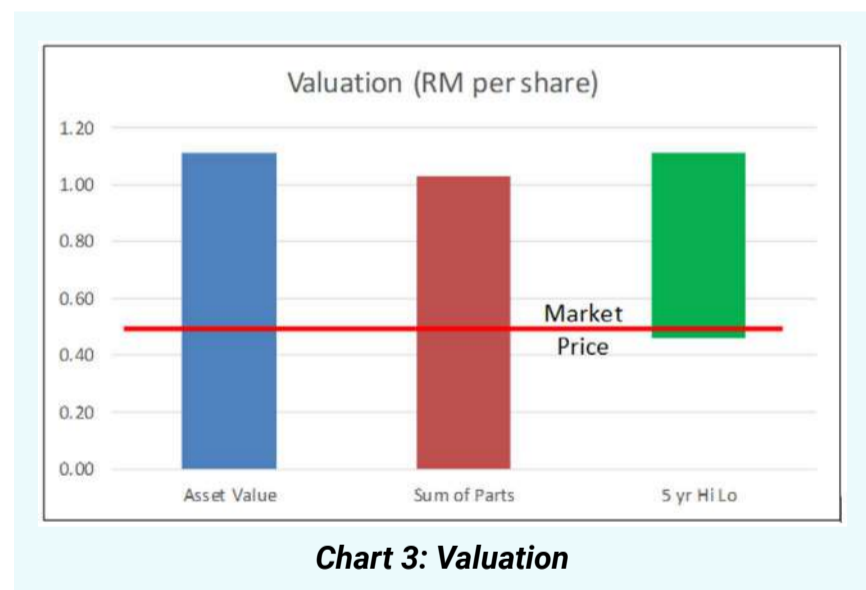
- Its average ROE over the past 12 years of 1 % meant that it did not create shareholders' value.

VALUATION

Crest Builder is undergoing a turnaround. The value of Crest Builder should take into account the losses during the turnaround phase and the value after the turnaround. In this context, I assumed:

- The losses during the turnaround phase are to be equal to the average of the 2022 to 2023 losses. There would be another 4 years of losses before the Group becomes profitable.
- I looked at 2 scenarios to estimate the value after the turnaround – Asset-based and sum-of-parts.

I estimated the intrinsic value of Crest Builder to be RM1.11 per share based on its Asset Value and RM1.03 per share based on its sum-of-parts value. The market price of Crest Builder as of 8 April 2024 was RM0.47 per share. There is more than a 30% margin of safety under both bases. Refer to the original article for details of the valuation.



CONCLUSION

The company's success depends heavily on its Construction and Property Development areas. To become profitable again, Crest Builder needs to improve these two segments.

- **Construction:** They need to rebuild their profit margins.
- **Property Development:** They should focus on launching new projects.

On the bright side, Crest Builder has a solid track record in construction. Financially, the company is stable enough to give them time to make these changes. My analysis of Crest Builder's value shows there is over a 30% margin of safety. You can understand why I do not consider it a value trap. A value trap is a company that not only looks cheap, but is cheap because it has fundamental issues. I do not think that this applies to Crest Builder.

I am a long-term value investor who has held onto stocks for more than 5 years. My analysis and valuation are from such a perspective. I consider quarterly results "noisy" and focus on long-term trends.

This article was re-purposed from ["Is Crest Builder a value trap?"](#) which was first published on i4value. Asia. Refer to the article for more detailed fundamental analysis and valuation.

Disclaimer: This article is written for informational purposes only. It does not constitute a solicitation, offer, advice, counseling or recommendation to buy or sell. As such it is not intended to promote the purchase of shares in any way. As a reminder, any type of asset has a risk factor and needs to be evaluated from multiple perspectives. Therefore, any investment decision and the associated risk remains with the investor. The views expressed here are entirely the writer's own.



Learn how to identify Hot Stocks using Technical Analysis (TA) and Fundamental Analysis (FA)

SIGN UP FOR Invest

IT'S FREE!!!

[Click here](#)

Scan me



Via email, every Friday.

UNLOCK THE SECRET OF WEALTH

DO YOU REALLY WANT TO MASTER VALUE INVESTING



SEE HOW TO GET HIGHER RETURNS WITH LOWER RISK



MALAYSIA'S TRADE SHOWS SUSTAINED GROWTH IN OCTOBER, REACHES RM244.3 BILLION - DOSM

According to Department of Statistics Malaysia (DOSM) chief statistician Datuk Seri Dr Mohd Uzir Mahidin, Malaysia's trade showed sustained growth in October 2024, with gains in both exports and imports reflecting a positive economic trajectory.

Total trade increased 2.1% to RM244.3 billion last month from RM239.3 billion in October 2023. The improved performance was driven by growth in exports by 1.6% or RM2 billion and imports by 2.6%, reaching RM116.1 billion. On the contrary, the trade balance

fell by 7.6% to RM12 billion in October 2024, the 54th consecutive month of surplus since May 2020.

Malaysia's exports increased in line with the rise in domestic exports in October 2024. Domestic exports (77.6% of total exports), worth RM99.4 billion, were up by 3.1% compared to October 2023 while re-exports (22.4% of total exports) went down by 3.5% to RM28.7 billion. Imports were worth RM116.1 billion, higher by 2.6%. Compared with September 2024, exports, imports and total trade recorded increases of 3.7%, 4.8% and 4.2%, respectively. On the contrary, the trade balance recorded a decrease of 6.2%.

From the perspective of commodity group, 129 out of 259 export groups and 151 out of 259 import groups showed increases compared to the same month of the previous year. The higher exports were attributable mainly to shipments to the United States (+RM4.6 billion), followed by Taiwan (+RM1.9 billion), Singapore (+RM998.3 million), India (+RM921.5 million), Turkiye (+RM757.7 million), the European Union (+RM748 million) and Indonesia (+RM618.3 million).

Higher imports were mainly contributed from the United States (+RM3.1 billion), followed by Taiwan (+RM2.1 billion), Mexico (+RM1.1 billion), Angola (+RM707.4 million), the European Union (+RM399.2 million), Kuwait (+RM274.7 million) and South Africa (+RM244.3 million).

The increase in exports was in line with the rise in electrical & electronic products (+RM3.8 billion); other manufactures (+RM991.1 million); palm oil and palm-based agriculture products (+RM785.3 million); rubber products (+RM610.8 million); processed food (+RM554.0 million); machinery, equipment & parts (+RM549.4 million); and palm oil-based manufactured products (+RM487.2 million). In addition, the increase in imports was logged

for electrical & electronic products (+RM9 billion); machinery, equipment & parts (+RM2 billion); other agriculture (+RM830.6 million); crude petroleum (+RM547.1 million); liquefied natural gas (+RM523.7 million); and other vegetable oils (+RM249.5 million).

The upsurge in imports by end-use was in accordance with higher demand for intermediate goods and consumption goods. Imports of intermediate goods (53.9% of total imports), valued at RM62.6 billion, registered an increase of 12.3% or RM6.8 billion as compared to October 2023. Consumption goods (8.3% of total imports), grew by 3.0% or RM276.4 million to reach RM9.6 billion. However, capital goods (10.6% of total imports) with a value of RM12.4 billion, decreased by 2.7% or RM344.2 million.

Total trade, exports and imports for the period of January to October 2024 registered an increase. Total trade grew by 9.3%, from RM2.2 trillion to RM2.4 trillion, in line with the rise in exports (+4.8%) as well as imports (+14.6%). Meanwhile, the trade surplus decreased by 46.3% compared to the same period in 2023, with a value of RM102.8 billion.



Learn how to identify Hot Stocks using Technical Analysis (TA) and Fundamental Analysis (FA)

SIGN UP FOR Invest NOW IT'S FREE!!!

[Click here](#)

Scan me



Via email, every Friday.

Get market moving news and analyses. Regular columns include **Behind The Action** and **From The Observer**

- Leaderboard • Shariah Hot Stocks • Shariah Momentum Up Stocks • Non Shariah Hot Stocks • Up Trending Stocks • Growth Stocks • Dividend Stocks • Long Companies • Insider Activity • Investor Relations • Regional Markets



MALAYSIA TO ALIGN REAL ECONOMY & CAPITAL MARKET TO DRIVE INCLUSIVE GROWTH — AMIR HAMZAH

According to Finance Minister II Datuk Seri Amir Hamzah Azizan, Malaysia is aiming to align its real economy with ongoing developments in the capital market as the nation reinvents its economic framework. He said that the country is working to elevate its industries to foster wealth creation to ensure a more equitable distribution of prosperity across society and promote growth across the diverse economic sectors to propel the nation forward.

He was speaking during a Fireside Chat Session at the 63rd World Federation of Exchanges (WFE) General Assembly and Annual Meeting this week when he said that what's critical for the capital market is its role in facilitating growth—providing businesses with the capital they need to expand, opening up opportunities across various market segments, and accelerating economic progress for Malaysians.

He noted that Malaysia's economy has been performing well this year, with growth averaging 5.2% over the first three quarters.

He also highlighted the increased vibrancy in Bursa Malaysia, with the benchmark FTSE Bursa Malaysia KLCI surpassing the 1,600-point mark and the total market capitalisation hitting RM2 trillion. Moreover the 46 new initial public offerings (IPOs) have been introduced this year across the Main Market, ACE Market, and LEAP Market which represents strong connectivity within the market pipeline.

He added that 11 companies from the ACE Market successfully transitioned to the Main Market this year saying this is an encouraging trend, as it showcases a healthy progression of companies up the market chain. He is optimistic about Malaysia's long-term market prospects, driven by consistent IPO activity and a vibrant pipeline of growth-ready businesses.

He emphasised Malaysia's position as a major beneficiary of global supply chain disruptions, particularly due to its strong presence in the electrical and electronics (E&E) sector, noting that Malaysia accounts for approximately seven per cent of global trade in E&E and 17% of the global semiconductor market. The government is focused on creating a robust ecosystem to attract and retain multinational corporations. The goal is to ensure Malaysia remains a comfortable choice for these companies by building a skilled talent pool, strengthening supply chains, and improving logistics infrastructure. He also highlighted the importance of government-linked investment companies (GLICs) channelling funds into private markets to develop these ecosystems. He added that by investing in such initiatives, we are building long-term resilience for the domestic economy.

AI, DIGITALISATION AND GREEN ECONOMY TO RESHAPE MALAYSIAN JOB MARKET: SIM

According to Human Resources Minister Steven Sim, Artificial intelligence (AI), digitalisation and the green economy will fundamentally reshape the job market, introduce 60 new roles and upskill 1.8 million domestic workers in 10 key sectors by 2025.

The Human Resources Ministry has identified more than 600,000 jobs that need skill enhancements, while new roles will emerge to meet the growing demands of these sectors. He was speaking at the launch of TalentCorp's report titled "[Impact of AI, Digital and the Green Economy on the Malaysian Workforce](#)" at MITEC. The report highlighted 10 key sectors in the first phase of the upskilling initiative – aerospace, chemicals, electrical and electronics, energy

and power, food manufacturing and services, global business services, information and communications technology, medical devices, pharmaceutical manufacturing, and wholesale and retail trade. These sectors contributed about 60% of Malaysia's gross domestic product in 2023, amounting to RM933 billion, and employed 31% of the country's skilled and semi-skilled workforce.

He added that these sectors were chosen because they form the backbone of the economy. Understanding their future trajectory is critical for shaping the policies. The emerging roles such as AI engineers, sustainability specialists and bioprocess engineers are expected to become increasingly significant, driven by advancements in AI and sustainability initiatives. He said the report is not just about the future and that it is a roadmap for ensuring our workforce is prepared to meet these challenges.

In response to the anticipated demand for upskilling, the government has allocated RM3 billion in funding for training programmes. This will be channelled through agencies like TalentCorp, HRD Corp, and Perkeso. By 2025, the aim is to empower workers through targeted skills training that aligns with the future needs of our economy.

He said that one key initiative is the launch of the MyMahir portal, a living document that provides real-time updates on employment trends and training opportunities. MyMahir is not just a platform, it is a game changer. It will enable small and medium enterprises, job seekers and policymakers to align their strategies with evolving market demands.

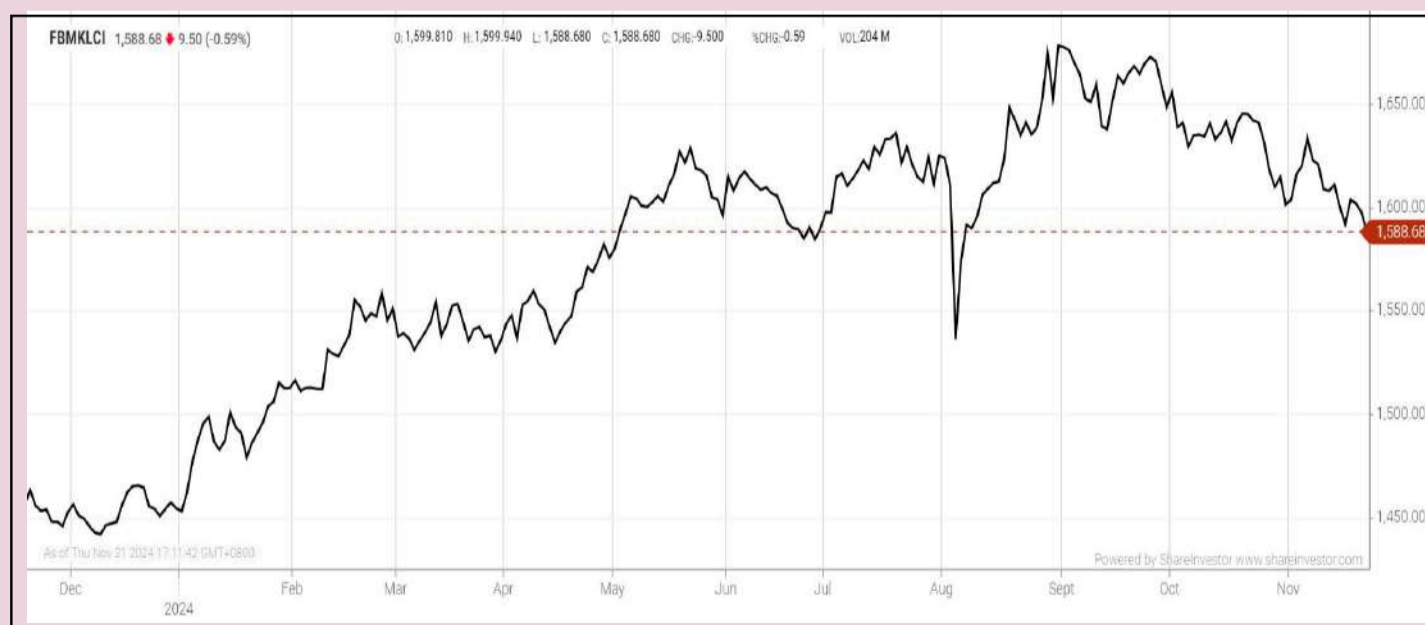
The report underscores the importance of adapting to technological and environmental changes. Approximately 1.8 million workers will require targeted skill enhancements to remain competitive. As such his ministry is not just addressing today's jobs but preparing for tomorrow's jobs.

He added that phase two of the initiative would expand the study to include 12 additional sectors, providing a deeper understanding of Malaysia’s labour market. Phase two will be released next year, and the goal is to ensure no sector is left behind and that collaboration across ministries and industries is key to achieving this.

He emphasised that the initiative aligns with Malaysia’s broader economic goals, including transitioning to a high-income nation and fostering inclusive growth. Upskilling and reskilling are not just policy objectives; they are essential for securing a sustainable and resilient future.

EYE ON THE MARKETS

On Thursday (21Nov), the Ringgit closed at 4.4600 against the USD and 3.3240 to the Sing Dollar. On Monday (18Nov), the FBM KLCI opened at 1592.91. As at Thursday (21Nov) 5:00pm, the FBM KLCI closed down 4.23 points at 1588.68. Over in US, the overnight Dow Jones Industrial Average closed up 461.88 points (+1.06%) to 43,870.35 whilst the NASDAQ added 7.00 points +0.04%) to 18,973.14.



KLCI 1 Year Chart

Over 5 Trading Days (as at Wednesday)



ShareInvestor WebPro (www.shareinvestor.com/my)

1. Price > Stock Prices
2. Select Market: NASDAQ / NYSE / IDX / SET / HKEX / SGX (One bourse at a time)
3. select Stocks Tab
4. select Ranking Top Gainers or Top Losers (Over 5 Trading Days)
5. Mouse over Column Layout > select Edit Customs > select Name > select Last Done Price > select 5 Days Change > select 52 Weeks High > select 52 Weeks Low > Mouse Over Column Layout > select Custom

NASDAQ (USD)

Top Gainers

Name	Last Done	Change Over 5 Days	52 Weeks High	52 Weeks Low
MICROSTRATEGY	473.830	+146.160	449.000	43.874
FIRST CITIZENS BANCSHARES INC NRTH	2,258.670	+106.650	2,275.900	1,363.970
MERCADOLIBRE INC	1,931.260	+55.060	2,161.730	1,324.990
NETFLIX INC	883.850	+46.590	874.490	445.730
BOOKING HOLDINGS INC	5,016.430	+45.450	5,069.440	3,079.495

Top Losers

Name	Last Done	Change Over 5 Days	52 Weeks High	52 Weeks Low
INTUIT INC	650.600	-50.160	714.780	557.290
ULTA BEAUTY INC	343.260	-39.510	574.760	318.170
REGENERON PHARMACEUTICALS INC	743.350	-39.160	1,211.200	736.190
POWELL INDUSTRIES INC	261.820	-38.690	364.980	75.050
O'REILLY AUTOMOTIVE INC NEW	1,188.870	-35.530	1,255.300	914.500

NYSE (USD)

Top Gainers

Name	Last Done	Change Over 5 Days	52 Weeks High	52 Weeks Low
BERKSHIRE HATHAWAY INC	703,299.990	+2,700.110	741,971.390	533,700.010
TEXAS PACIFIC LAND CORPORATION	1,450.700	+89.500	1,456.830	467.617
WILLIAMS-SONOMA INC	175.040	+44.220	181.424	89.870
COMFORT SYSTEMS USA	476.250	+36.840	481.805	185.830
WHITE MOUNTAINS INSURANCE GROUP	1,944.990	+21.560	1,947.870	1,401.010

Top Losers

Name	Last Done	Change Over 5 Days	52 Weeks High	52 Weeks Low
NVR INC	9,000.000	-179.610	9,964.770	6,052.575
AUTOZONE INC	3,049.580	-86.480	3,256.370	2,510.000
METTLER-TOLEDO INTERNATIONAL INC	1,166.900	-70.880	1,546.930	1,059.080
CACI INTERNATIONAL INC	454.900	-36.420	588.260	314.060
ELI LILLY AND COMPANY	753.410	-32.820	972.530	561.650

IDX (Rupiah)

Top Gainers

Name	Last Done	Change Over 5 Days	52 Weeks High	52 Weeks Low
JAKARTA SETIABUDI INTERNASIONAL	7,825.000	+4,645.000	7,825.000	830.000
DCI INDONESIA TBK	44,800.000	+3,900.000	63,800.000	32,525.000
MERATUS JASA PRIMA	6,050.000	+1,760.000	7,850.000	50.000
CITA MINERAL INVESTINDO TBK	4,000.000	+810.000	4,550.000	1,850.000
INDO TAMBANGRAYA MEGAH TBK	26,700.000	+500.000	28,775.000	23,575.000

Top Losers

Name	Last Done	Change Over 5 Days	52 Weeks High	52 Weeks Low
DIAN SWASTATIKA SENTOSA TBK	37,075.000	-1,975.000	48,250.000	5,120.000
MULTIPOLAR TECHNOLOGY TBK	24,200.000	-1,700.000	37,000.000	1,185.000
PANTAI INDAH KAPUK DUA TBK	14,225.000	-1,625.000	18,800.000	4,240.000
GOLDEN ENERGY MINES TBK	10,200.000	-750.000	18,800.000	5,475.000
FORTUNE INDONESIA TBK	4,740.000	-710.000	8,075.000	130.000

SET (Thai Baht)

Top Gainers

Name	Last Done	Change Over 5 Days	52 Weeks High	52 Weeks Low
DELTA	173.500	+11.500	173.500	63.250
SAPPE	76.500	+8.500	107.500	64.250
TCOAT	31.750	+6.500	31.750	20.000
NEW	70.000	+6.000	141.500	60.000
PTTEP	127.500	+5.500	164.500	120.500

Top Losers

Name	Last Done	Change Over 5 Days	52 Weeks High	52 Weeks Low
KWC	303.000	-56.000	366.000	247.000
BH	207.000	-17.000	284.000	204.000
OHTL	350.000	-11.000	486.000	340.000
HANA	29.250	-5.750	55.000	28.500
AEONTS	123.000	-4.500	168.500	107.000

HKEX (HKD)

Top Gainers

Name	Last Done	Change Over 5 Days	52 Weeks High	52 Weeks Low
KINGFARPROPERTY (1354)	41.250	+21.350	41.550	5.100
LAOPU GOLD (6181)	202.200	+15.200	232.200	60.950
NTES-S (9999)	134.900	+14.300	182.500	116.000
QUNABOX GROUP (917)	58.550	+13.150	60.350	27.000
CHINAGOLDINTL (2099)	42.750	+10.650	58.600	28.000

Top Losers

Name	Last Done	Change Over 5 Days	52 Weeks High	52 Weeks Low
EASOU TECH (2550)	9.660	-38.140	67.250	7.620
BILIBILI-W (9626)	149.500	-19.300	238.800	67.800
SPROCOMM INTEL (1401)	1.500	-13.040	15.300	1.070
BYD COMPANY (1211)	265.400	-9.600	320.800	167.800
BYD COMPANY-R (81211)	246.400	-8.200	291.400	155.000

SGX (SGD)

Top Gainers

Name	Last Done	Change Over 5 Days	52 Weeks High	52 Weeks Low
JMH USD	43.290	+2.740	43.900	33.720
UOB	36.230	+0.730	37.080	26.970
SGX	12.160	+0.580	12.200	8.870
JARDINE C&C	28.310	+0.460	30.100	23.760
VENTURE	12.910	+0.330	15.640	12.380

Top Losers

Name	Last Done	Change Over 5 Days	52 Weeks High	52 Weeks Low
AZEUS	10.890	-0.610	12.000	7.400
DBS	42.210	-0.570	43.020	28.191
PRUDENTIAL USD	8.350	-0.300	10.010	8.350
SHANGRI-LA HKD	5.110	-0.250	6.100	4.620
ST ENGINEERING	4.570	-0.180	4.810	3.660

DEFINITION: Insider Activity shows the trades made by substantial shareholders or directors of the company. Purchases by the directors and company share buyback may indicate the share price is undervalued and brings confidence to the price trend of the share price.



ShareInvestor WebPro > Fundamental > Insider Trades > click Search tab > Select Bursa > click Stock name > scroll up and leave at <Select Counter> Type Date Range for Announcement Date > click Search

Notice Period is 10th November 2024 – 16th November 2024

Effective Change Date	Stock Name	Buyer/ Seller Name [Classification]	Bought / (Sold) ['000]	No. of Shares After Trade ['000]	
			Total	Total	% Held
12 NOV 2024 - 12 NOV 2024	ABMB	EMPLOYEES PROVIDENT FUND BOARD [SSH]	-518	118,997	7.687
11 NOV 2024 - 11 NOV 2024	ABMB	EMPLOYEES PROVIDENT FUND BOARD [SSH]	-747	119,515	7.72
06 NOV 2024 - 06 NOV 2024	ABMB	EMPLOYEES PROVIDENT FUND BOARD [SSH]	-116	120,262	7.768
08 NOV 2024 - 08 NOV 2024	AGX	DATO' ROZALILA BINTI ABDUL RAHMAN [DIR/CEO]	-2	3,898	0.9
11 NOV 2024 - 11 NOV 2024	ALPHA	DATO DR LEE SOON SOO [SSH]	500	2,151,958	44.279
11 NOV 2024 - 11 NOV 2024	ALPHA	DATO' DR LEE SOON SOO [DIR/CEO]	500	2,151,958	44.279
07 NOV 2024 - 07 NOV 2024	ALPHA	DATO DR LEE SOON SOO [SSH]	6,345	2,151,458	44.268
07 NOV 2024 - 07 NOV 2024	ALPHA	DATO' DR LEE SOON SOO [DIR/CEO]	6,345	2,601,653	44.268
12 NOV 2024 - 12 NOV 2024	AMBANK	EMPLOYEES PROVIDENT FUND BOARD [SSH]	1,138	460,637	13.915
11 NOV 2024 - 11 NOV 2024	AMBANK	EMPLOYEES PROVIDENT FUND BOARD [SSH]	-134	459,498	13.88
08 NOV 2024 - 08 NOV 2024	AMBANK	EMPLOYEES PROVIDENT FUND BOARD [SSH]	1,549	459,633	13.884
07 NOV 2024 - 07 NOV 2024	AMBANK	EMPLOYEES PROVIDENT FUND BOARD [SSH]	1,650	458,083	13.837
06 NOV 2024 - 06 NOV 2024	AMBANK	EMPLOYEES PROVIDENT FUND BOARD [SSH]	897	456,433	13.788
07 NOV 2024 - 07 NOV 2024	ANNJOO	ANN JOO CORPORATION SDN BHD [SSH]	48,100	247,329	35.245
07 NOV 2024 - 07 NOV 2024	ANNJOO	DATO' LIM AUN CHUAN [DIR/CEO]	603	3,012	0.429
07 NOV 2024 - 07 NOV 2024	ANNJOO	DATO' LIM HONG THYE [DIR/CEO]	1,519	6,702	0.955
07 NOV 2024 - 07 NOV 2024	ANNJOO	DATO' LIM KIAM LAM [DIR/CEO]	72,459	352,641	50.253
07 NOV 2024 - 07 NOV 2024	ANNJOO	DATO' LIM KIAM LAM [SSH]	74,510	352,168	50.185
07 NOV 2024 - 07 NOV 2024	ANNJOO	LIM SENG CHEE & SONS SDN BERHAD [SSH]	71,178	346,336	49.354
07 NOV 2024 - 07 NOV 2024	ANNJOO	LIM SIN SEONG SDN BHD [SSH]	53,722	271,551	38.697
07 NOV 2024 - 07 NOV 2024	ANNJOO	LSQ & SONS SDN BERHAD [SSH]	67,846	332,126	47.329
07 NOV 2024 - 07 NOV 2024	ANNJOO	MR LIM HONG HOCK [DIR/CEO]	260	1,301	0.185
07 NOV 2024 - 07 NOV 2024	ANNJOO	MR LIM SENG QWEE [SSH]	69,473	340,263	48.489
07 NOV 2024 - 07 NOV 2024	ANNJOO	MR LIM SIN SEONG [SSH]	53,722	271,551	38.697
07 NOV 2024 - 07 NOV 2024	ANNJOO	ANN JOO CORPORATION SDN BHD [SSH]	48,100	247,329	34.402
07 NOV 2024 - 07 NOV 2024	ANNJOO	LIM SENG CHEE & SONS SDN BERHAD [SSH]	71,178	346,336	48.173
07 NOV 2024 - 07 NOV 2024	ANNJOO	LIM SIN SEONG SDN BHD [SSH]	53,722	271,551	37.771
07 NOV 2024 - 07 NOV 2024	ANNJOO	LSQ & SONS SDN BERHAD [SSH]	67,846	332,126	46.197
07 NOV 2024 - 07 NOV 2024	ANNJOO	MR LIM SENG QWEE [SSH]	69,473	340,263	47.329
07 NOV 2024 - 07 NOV 2024	ANNJOO	MR LIM SIN SEONG [SSH]	53,722	271,551	37.772
07 NOV 2024 - 07 NOV 2024	ANN-JOO-WC	DATO' LIM AUN CHUAN [DIR/CEO]	603	603	0.429
07 NOV 2024 - 07 NOV 2024	ANN-JOO-WC	DATO' LIM HONG THYE [DIR/CEO]	1,519	1,519	1.082
07 NOV 2024 - 07 NOV 2024	ANN-JOO-WC	DATO' LIM KIAM LAM [DIR/CEO]	72,459	72,459	51.629
07 NOV 2024 - 07 NOV 2024	ANN-JOO-WC	MR LIM HONG HOCK [DIR/CEO]	260	260	0.185
11 NOV 2024 - 11 NOV 2024	APPA-SIA-WA	MR TOH HONG CHYE [DIR/CEO]	32	24,180	32.074
08 NOV 2024 - 08 NOV 2024	ASIAFLE	AMANAHRAYA TRUSTEES BERHAD-AMANAH SAHAM BUMIPUTERA [SSH]	-605	25,837	13.645
07 NOV 2024 - 07 NOV 2024	ASIAFLE	AMANAHRAYA TRUSTEES BERHAD-AMANAH SAHAM BUMIPUTERA [SSH]	-161	26,442	13.942
08 NOV 2024 - 08 NOV 2024	ASIAPLY	DATO' YEO BOON LEONG [DIR/CEO]	367	211,794	22.096
08 NOV 2024 - 08 NOV 2024	ASIAPLY	DATO' YEO BOON LEONG [SSH]	367	211,794	22.096
08 NOV 2024 - 08 NOV 2024	ASTEEL	TAN SRI SOH THIAN LAI [DIR/CEO]	208	25,306	5.22
08 NOV 2024 - 08 NOV 2024	ASTEEL	TAN SRI SOH THIAN LAI [SSH]	208	24,469	5.047
11 NOV 2024 - 13 NOV 2024	AWANTEC	LEMBAGA TABUNG AMANAH WARISAN NEGERI TERENGGANU [SSH]	114	40,374	5.122
07 NOV 2024 - 08 NOV 2024	AWANTEC	LEMBAGA TABUNG AMANAH WARISAN NEGERI TERENGGANU [SSH]	36	40,260	5.107
12 NOV 2024 - 12 NOV 2024	AXIATA	EMPLOYEES PROVIDENT FUND BOARD [SSH]	-300	1,662,970	18.11
07 NOV 2024 - 07 NOV 2024	AXIATA	EMPLOYEES PROVIDENT FUND BOARD [SSH]	200	1,663,270	18.113
06 NOV 2024 - 06 NOV 2024	AXIATA	EMPLOYEES PROVIDENT FUND BOARD [SSH]	1,034	1,663,070	18.111
08 NOV 2024 - 08 NOV 2024	AXREIT	EMPLOYEES PROVIDENT FUND BOARD [SSH]	500	305,770	17.498
07 NOV 2024 - 07 NOV 2024	AXREIT	EMPLOYEES PROVIDENT FUND BOARD [SSH]	345	305,270	17.469
11 NOV 2024 - 11 NOV 2024	AZAMJAYA	MISS CHUNG YUE LIN @ ERICA [DIR/CEO]	-70	30	0.006
15 NOV 2024 - 15 NOV 2024	BAHVEST	DR CHONG MEE FAH @ FREDERICK CHONG [DIR/CEO]	100	30,667	1.684
14 NOV 2024 - 14 NOV 2024	BAHVEST	DR CHONG MEE FAH @ FREDERICK CHONG [DIR/CEO]	500	30,567	1.678
14 NOV 2024 - 14 NOV 2024	BAHVEST	MR CHONG TZU KHEN [DIR/CEO]	50	1,950	0.107
12 NOV 2024 - 12 NOV 2024	BAHVEST	MR CHONG MEE FAH @ FREDERICK CHONG [DIR/CEO]	575	30,067	1.651
11 NOV 2024 - 11 NOV 2024	BAHVEST	MR CHONG MEE FAH @ FREDERICK CHONG [DIR/CEO]	500	29,493	1.619
12 NOV 2024 - 12 NOV 2024	BAUTO	EMPLOYEES PROVIDENT FUND BOARD [SSH]	36	155,928	13.34
11 NOV 2024 - 11 NOV 2024	BIMB	EMPLOYEES PROVIDENT FUND BOARD [SSH]	-327	385,934	17.028
08 NOV 2024 - 08 NOV 2024	BIMB	EMPLOYEES PROVIDENT FUND BOARD [SSH]	-500	386,257	17.042
07 NOV 2024 - 07 NOV 2024	BIMB	EMPLOYEES PROVIDENT FUND BOARD [SSH]	-435	386,757	17.064
06 NOV 2024 - 06 NOV 2024	BIMB	EMPLOYEES PROVIDENT FUND BOARD [SSH]	-427	387,192	17.083
07 NOV 2024 - 08 NOV 2024	BJFOOD	BERJAYA CORPORATION BERHAD [SSH]	7,900	1,107,635	62.515
07 NOV 2024 - 08 NOV 2024	BJFOOD	BERJAYA GROUP BERHAD [SSH]	7,900	1,006,649	56.815

Notice Period is 10th November 2024 – 16th November 2024

Effective Change Date	Stock Name	Buyer/ Seller Name [Classification]	Bought / (Sold) ['000]	No. of Shares After Trade ['000]	
			Total	Total	% Held
07 NOV 2024 - 08 NOV 2024	BJFOOD	JUARA SEJATI SDN BHD [SSH]	7,900	248,041	13.999
11 NOV 2024 - 11 NOV 2024	BURSA	EMPLOYEES PROVIDENT FUND BOARD [SSH]	496	79,272	9.795
11 NOV 2024 - 11 NOV 2024	BURSA	EMPLOYEES PROVIDENT FUND BOARD [SSH]	-54	78,775	9.734
06 NOV 2024 - 06 NOV 2024	BURSA	EMPLOYEES PROVIDENT FUND BOARD [SSH]	20	78,830	9.74
13 NOV 2024 - 13 NOV 2024	CAPITALA	DATUK KAMARUDIN BIN MERANUN [DIR/CEO]	233	1,454	39.36
13 NOV 2024 - 13 NOV 2024	CAPITALA	DATUK KAMARUDIN BIN MERANUN [SSH]	233	344,483	39.36
11 NOV 2024 - 11 NOV 2024	CAPITALA	DATUK KAMARUDIN BIN MERANUN [DIR/CEO]	1,222	344,250	39.32
11 NOV 2024 - 11 NOV 2024	CAPITALA	DATUK KAMARUDIN BIN MERANUN [SSH]	1,222	344,250	39.32
08 NOV 2024 - 08 NOV 2024	CDB	EMPLOYEES PROVIDENT FUND BOARD [SSH]	291	1,201,069	10.238
07 NOV 2024 - 07 NOV 2024	CDB	EMPLOYEES PROVIDENT FUND BOARD [SSH]	1,478	1,200,778	10.235
06 NOV 2024 - 06 NOV 2024	CDB	EMPLOYEES PROVIDENT FUND BOARD [SSH]	100	1,199,300	10.223
12 NOV 2024 - 12 NOV 2024	CGB-WA	MR CHEW HIAN TAT [DIR/CEO]	-415	56,020	83.291
14 NOV 2024 - 14 NOV 2024	CHINHIN	DATUK SERI CHIAU BENG TEIK JP [DIR/CEO]	17,084	2,157,021	60.953
14 NOV 2024 - 14 NOV 2024	CHINHIN	DATUK SERI CHIAU BENG TEIK JP [SSH]	17,084	2,157,021	60.953
14 NOV 2024 - 14 NOV 2024	CHINHIN	DIVINE INVENTIONS SDN BHD [SSH]	17,084	1,354,092	38.264
14 NOV 2024 - 14 NOV 2024	CHINHIN	MR CHIAU HAW CHOOH [DIR/CEO]	17,084	1,557,659	44.016
14 NOV 2024 - 14 NOV 2024	CHINHIN	MR CHIAU HAW CHOOH [SSH]	17,084	1,557,659	44.016
14 NOV 2024 - 14 NOV 2024	CHINHIN	PP CHIN HIN REALTY SDN BHD [SSH]	17,084	1,354,092	38.264
13 NOV 2024 - 13 NOV 2024	CIMB	KUMPULAN WANG PERSARAAN (DIPERBADANKAN) [SSH]	-35	642,340	5.99
12 NOV 2024 - 12 NOV 2024	CIMB	EMPLOYEES PROVIDENT FUND BOARD [SSH]	-2,756	1,649,475	15.39
11 NOV 2024 - 11 NOV 2024	CIMB	EMPLOYEES PROVIDENT FUND BOARD [SSH]	1,184	1,652,230	15.41
08 NOV 2024 - 08 NOV 2024	CIMB	EMPLOYEES PROVIDENT FUND BOARD [SSH]	613	1,651,047	15.4
07 NOV 2024 - 07 NOV 2024	CIMB	EMPLOYEES PROVIDENT FUND BOARD [SSH]	7,990	1,650,434	15.4
06 NOV 2024 - 06 NOV 2024	CIMB	EMPLOYEES PROVIDENT FUND BOARD [SSH]	-2,106	1,642,444	15.32
12 NOV 2024 - 12 NOV 2024	CLMT	EMPLOYEES PROVIDENT FUND BOARD [SSH]	200	441,314	15.324
11 NOV 2024 - 11 NOV 2024	CLMT	EMPLOYEES PROVIDENT FUND BOARD [SSH]	-5,000	441,114	15.317
12 NOV 2024 - 12 NOV 2024	COMPUGT	CURATE HOLDINGS SDN. BHD. [SSH]	-100,000	906,488	14.982
12 NOV 2024 - 12 NOV 2024	COMPUGT	HIAN HOLDINGS SDN. BHD. [SSH]	250,000	800,037	13.223
12 NOV 2024 - 12 NOV 2024	COMPUGT	MADAM SEE THOO CHAN [DIR/CEO]	-150,000	601,016	9.933
12 NOV 2024 - 12 NOV 2024	COMPUGT	MADAM SEE THOO CHAN [SSH]	-150,000	601,016	9.933
12 NOV 2024 - 12 NOV 2024	COMPUGT	MR GOH KHENG PEOW [SSH]	-150,000	601,016	9.933
14 NOV 2024 - 14 NOV 2024	CTOS	KUMPULAN WANG PERSARAAN (DIPERBADANKAN) [SSH]	-845	177,211	7.671
12 NOV 2024 - 12 NOV 2024	CTOS	KUMPULAN WANG PERSARAAN (DIPERBADANKAN) [SSH]	-619	178,056	7.708
11 NOV 2024 - 11 NOV 2024	CTOS	KUMPULAN WANG PERSARAAN (DIPERBADANKAN) [SSH]	-320	178,675	7.735
08 NOV 2024 - 08 NOV 2024	CTOS	KUMPULAN WANG PERSARAAN (DIPERBADANKAN) [SSH]	-511	178,995	7.749
13 NOV 2024 - 13 NOV 2024	CYPARK	MR CHUNG CHEE YANG [SSH]	100	72,995	8.871
12 NOV 2024 - 12 NOV 2024	D&O	EMPLOYEES PROVIDENT FUND BOARD [SSH]	-264	83,955	6.773
13 NOV 2024 - 13 NOV 2024	D&O	KUMPULAN WANG PERSARAAN (DIPERBADANKAN) [SSH]	12	70,088	5.655
12 NOV 2024 - 12 NOV 2024	D&O	KUMPULAN WANG PERSARAAN (DIPERBADANKAN) [SSH]	106	70,076	5.654
08 NOV 2024 - 08 NOV 2024	D&O	EMPLOYEES PROVIDENT FUND BOARD [SSH]	-22	84,207	6.794
07 NOV 2024 - 07 NOV 2024	D&O	EMPLOYEES PROVIDENT FUND BOARD [SSH]	-344	84,229	6.795
14 NOV 2024 - 14 NOV 2024	DATAPRP	ENCIK SHAMSHURI BIN ABDUL MAJID [SSH]	10,250	103,060	13.637
07 NOV 2024 - 07 NOV 2024	DIALOG	EMPLOYEES PROVIDENT FUND BOARD [SSH]	-500	930,196	16.48
12 NOV 2024 - 12 NOV 2024	DPHARMA	EMPLOYEES PROVIDENT FUND BOARD [SSH]	450	83,220	8.651
08 NOV 2024 - 08 NOV 2024	DPHARMA	EMPLOYEES PROVIDENT FUND BOARD [SSH]	78	82,770	8.604
07 NOV 2024 - 07 NOV 2024	DPHARMA	EMPLOYEES PROVIDENT FUND BOARD [SSH]	400	82,693	8.596
06 NOV 2024 - 06 NOV 2024	DPHARMA	EMPLOYEES PROVIDENT FUND BOARD [SSH]	703	82,293	8.555
12 NOV 2024 - 12 NOV 2024	DRBHCOR	EMPLOYEES PROVIDENT FUND BOARD [SSH]	15	146,465	7.576
11 NOV 2024 - 11 NOV 2024	DRBHCOR	EMPLOYEES PROVIDENT FUND BOARD [SSH]	-425	146,540	7.575
07 NOV 2024 - 07 NOV 2024	DRBHCOR	EMPLOYEES PROVIDENT FUND BOARD [SSH]	-64	146,791	7.593
06 NOV 2024 - 06 NOV 2024	DRBHCOR	EMPLOYEES PROVIDENT FUND BOARD [SSH]	-500	146,855	7.596
11 NOV 2024 - 11 NOV 2024	DXN	DATUK LIM SIOW JIN [DIR/CEO]	79,000	79,939	1.608
11 NOV 2024 - 11 NOV 2024	DXN	DATUK LIM SIOW JIN [SSH]	79,000	79,939	1.608
07 NOV 2024 - 07 NOV 2024	DXN	GANO GLOBAL SUPPLEMENTS PTE. LTD. [SSH]	-223,774	438,086	8.788
07 NOV 2024 - 07 NOV 2024	DXN	KV ASIA CAPITAL FUND I L.P. [SSH]	-223,774	438,086	8.788
07 NOV 2024 - 07 NOV 2024	DXN	KV ASIA CAPITAL MASTER FUND I PTE. LTD. [SSH]	-223,774	438,086	8.788
11 NOV 2024 - 12 NOV 2024	ECOFIRS	MR TEOH SENG AUN [SSH]	-11,800	64,001	5.413
07 NOV 2024 - 07 NOV 2024	ECOFIRS	MR CHEW HIAN TAT [DIR/CEO]	1,852	99,967	8.455
07 NOV 2024 - 07 NOV 2024	ECOFIRS	MR CHEW HIAN TAT [SSH]	1,852	99,967	8.455
06 NOV 2024 - 06 NOV 2024	ECONBHD	EMPLOYEES PROVIDENT FUND BOARD [SSH]	-1,057	115,857	8.173
13 NOV 2024 - 13 NOV 2024	EDARAN	VALIANT CHAPTER SDN BHD [SSH]	70	14,139	24.417
12 NOV 2024 - 12 NOV 2024	EDARAN	VALIANT CHAPTER SDN BHD [SSH]	100	14,069	24.296

Disclaimer: The information in Insider Activity is extracted from www.shareinvestor.com/fundamental/insider_trades. The information on this page is provided as a service to readers. It does not constitute financial advice and/or any investment recommendations. We assume no liability for damages resulting from or arising out of the use of such information. Whilst every effort is made to ensure accuracy, the information presented is not the official record of shareholder filings. Readers are advised to read the original filings on the Bursa Malaysia website at www.bursamalaysia.com



STROM
SWISS TIMEPIECES & JEWELLERY



StromWatch Asia
Tele : +65.9817.3378
Email : ll.stromasia@gmail.com
WWW.STROMWATCH.SWISS

Notice Period is 10th November 2024 – 16th November 2024

Effective Change Date	Stock Name	Buyer/ Seller Name [Classification]	Bought / (Sold) ['000]	No. of Shares After Trade ['000]	
			Total	Total	% Held
11 NOV 2024 - 11 NOV 2024	EDARAN	VALIANT CHAPTER SDN BHD [SSH]	60	13,969	24.123
15 NOV 2024 - 15 NOV 2024	EPB	MADAM OOI KIM KEW [DIR/CEO]	50	202,377	54.402
15 NOV 2024 - 15 NOV 2024	EPB	MR YEOH CHEE MIN [DIR/CEO]	50	202,377	54.402
15 NOV 2024 - 15 NOV 2024	EPB	MR YEOH CHEE MIN [SSH]	50	202,377	54.402
14 NOV 2024 - 14 NOV 2024	EPB	MADAM OOI KIM KEW [DIR/CEO]	761	202,327	54.389
14 NOV 2024 - 14 NOV 2024	EPB	MR YEOH CHEE MIN [DIR/CEO]	761	202,327	54.389
14 NOV 2024 - 14 NOV 2024	EPB	MR YEOH CHEE MIN [SSH]	761	202,327	54.389
07 NOV 2024 - 07 NOV 2024	ES CERAM	MISS TAN SAN LI [DIR/CEO]	5,000	32,100	4.54
04 JUL 2024 - 04 JUL 2024	EWINT	DATO' LEONG KOK WAH [SSH]	-2,000	774,727	32.28
13 NOV 2024 - 13 NOV 2024	EXSIMHB	EXSIM HOSPITALITY HOLDINGS SDN BHD [SSH]	11,100	645,007	69.44
13 NOV 2024 - 13 NOV 2024	EXSIMHB	MR LIM AIK FU [SSH]	11,100	645,007	69.44
13 NOV 2024 - 13 NOV 2024	EXSIMHB	MR LIM AIK HOE [SSH]	11,100	645,007	69.44
13 NOV 2024 - 13 NOV 2024	EXSIMHB	MR LIM AIK KIAT [SSH]	11,100	645,007	69.44
12 NOV 2024 - 12 NOV 2024	F&N	EMPLOYEES PROVIDENT FUND BOARD [SSH]	39	42,654	11.629
06 NOV 2024 - 06 NOV 2024	F&N	EMPLOYEES PROVIDENT FUND BOARD [SSH]	100	42,404	11.561
12 NOV 2024 - 12 NOV 2024	FFB	EMPLOYEES PROVIDENT FUND BOARD [SSH]	-1,000	179,426	9.571
11 NOV 2024 - 11 NOV 2024	FFB	EMPLOYEES PROVIDENT FUND BOARD [SSH]	-100	180,426	9.625
08 NOV 2024 - 08 NOV 2024	FFB	EMPLOYEES PROVIDENT FUND BOARD [SSH]	-1,062	180,526	9.63
07 NOV 2024 - 07 NOV 2024	FFB	EMPLOYEES PROVIDENT FUND BOARD [SSH]	-979	181,589	9.687
06 NOV 2024 - 06 NOV 2024	FFB	EMPLOYEES PROVIDENT FUND BOARD [SSH]	-1,500	182,567	9.739
12 NOV 2024 - 12 NOV 2024	FRONTKN	EMPLOYEES PROVIDENT FUND BOARD [SSH]	-540	168,680	10.661
11 NOV 2024 - 11 NOV 2024	FRONTKN	EMPLOYEES PROVIDENT FUND BOARD [SSH]	-160	169,220	10.696
08 NOV 2024 - 08 NOV 2024	FRONTKN	EMPLOYEES PROVIDENT FUND BOARD [SSH]	-1,000	169,380	10.706
06 NOV 2024 - 06 NOV 2024	FRONTKN	EMPLOYEES PROVIDENT FUND BOARD [SSH]	-500	170,380	10.769
12 NOV 2024 - 12 NOV 2024	GAMUDA	EMPLOYEES PROVIDENT FUND BOARD (EPF BOARD) [SSH]	-1,335	247,268	8.76
11 NOV 2024 - 11 NOV 2024	GAMUDA	EMPLOYEES PROVIDENT FUND BOARD (EPF BOARD) [SSH]	-58	248,603	8.81
08 NOV 2024 - 08 NOV 2024	GAMUDA	EMPLOYEES PROVIDENT FUND BOARD (EPF BOARD) [SSH]	-643	248,661	8.81
07 NOV 2024 - 07 NOV 2024	GAMUDA	EMPLOYEES PROVIDENT FUND BOARD (EPF BOARD) [SSH]	-1,419	249,304	8.84
06 NOV 2024 - 06 NOV 2024	GAMUDA	EMPLOYEES PROVIDENT FUND BOARD (EPF BOARD) [SSH]	-1,165	250,723	8.89
12 NOV 2024 - 12 NOV 2024	GBAY	MR PETER LING EE KONG [DIR/CEO]	4	10,697	13.149
12 NOV 2024 - 12 NOV 2024	GBAY	MR PETER LING EE KONG [SSH]	4	10,697	13.149
08 NOV 2024 - 08 NOV 2024	GBAY	MR PETER LING EE KONG [DIR/CEO]	4	10,694	13.145
08 NOV 2024 - 08 NOV 2024	GBAY	MR PETER LING EE KONG [SSH]	4	10,694	13.145
07 NOV 2024 - 07 NOV 2024	GENETEC	EMPLOYEES PROVIDENT FUND BOARD [SSH]	-2,274	40,306	5.135
06 NOV 2024 - 06 NOV 2024	GENETEC	EMPLOYEES PROVIDENT FUND BOARD [SSH]	-1,495	42,580	5.425
12 NOV 2024 - 12 NOV 2024	GENP	EMPLOYEES PROVIDENT FUND BOARD [SSH]	-800	120,978	13.485
11 NOV 2024 - 11 NOV 2024	GENP	EMPLOYEES PROVIDENT FUND BOARD [SSH]	-28	121,778	13.574
12 NOV 2024 - 12 NOV 2024	GENP	KUMPULAN WANG PERSARAAN (DIPERBADANKAN) [SSH]	510	66,420	7.403
11 NOV 2024 - 11 NOV 2024	GENP	KUMPULAN WANG PERSARAAN (DIPERBADANKAN) [SSH]	10	65,910	7.346
06 NOV 2024 - 06 NOV 2024	GENP	EMPLOYEES PROVIDENT FUND BOARD [SSH]	-9	121,786	13.575
12 NOV 2024 - 12 NOV 2024	GLOMAC	SHAPADU CAPITAL SDN. BHD. [SSH]	10	91,264	11.891
11 NOV 2024 - 11 NOV 2024	GLOMAC	SHAPADU CAPITAL SDN. BHD. [SSH]	10	91,254	11.89
13 NOV 2024 - 13 NOV 2024	HARTA	KUMPULAN WANG PERSARAAN (DIPERBADANKAN) [SSH]	220	204,599	5.994
12 NOV 2024 - 12 NOV 2024	HARTA	KUMPULAN WANG PERSARAAN (DIPERBADANKAN) [SSH]	1,450	204,379	5.988
11 NOV 2024 - 11 NOV 2024	HARTA	KUMPULAN WANG PERSARAAN (DIPERBADANKAN) [SSH]	103	202,929	5.945
14 NOV 2024 - 15 NOV 2024	HEXIND	DATO' ONG CHOO MENG [SSH]	-7,192	1,450,567	52.799
14 NOV 2024 - 15 NOV 2024	HEXIND	DATO' ONG SOON HO [SSH]	-7,192	1,434,134	52.201
14 NOV 2024 - 15 NOV 2024	HEXIND	HEXTAR HOLDINGS SDN BHD [SSH]	-7,192	1,434,134	52.201
14 NOV 2024 - 14 NOV 2024	HEXTAR	DATO' ONG CHOO MENG [SSH]	-1,686	2,291,039	59.107
14 NOV 2024 - 14 NOV 2024	HEXTAR	DATO' ONG SOON HO [DIR/CEO]	-1,686	2,291,039	59.107
14 NOV 2024 - 14 NOV 2024	HEXTAR	DATO' ONG CHOO MENG [SSH]	-1,686	2,291,039	59.107
13 NOV 2024 - 13 NOV 2024	HEXTAR	DATO' ONG CHOO MENG [SSH]	-3,220	2,292,725	59.151
13 NOV 2024 - 13 NOV 2024	HEXTAR	DATO' ONG SOON HO [DIR/CEO]	-3,220	2,292,725	59.151
13 NOV 2024 - 13 NOV 2024	HEXTAR	DATO' ONG SOON HO [SSH]	-3,220	2,292,725	59.151
08 NOV 2024 - 08 NOV 2024	HLBANK	EMPLOYEES PROVIDENT FUND BOARD [SSH]	380	182,624	8.752
07 NOV 2024 - 07 NOV 2024	HLBANK	EMPLOYEES PROVIDENT FUND BOARD [SSH]	354	182,244	8.734
06 NOV 2024 - 06 NOV 2024	HLBANK	EMPLOYEES PROVIDENT FUND BOARD [SSH]	535	181,890	8.717
12 NOV 2024 - 12 NOV 2024	HTPADU	MFIVESOUTHSEA SDN BHD [SSH]	440	25,000	22.452
12 NOV 2024 - 12 NOV 2024	HTPADU	ROSETTA PARTNERS SDN BHD [SSH]	440	25,000	22.452
12 NOV 2024 - 12 NOV 2024	HTPADU	TENGGU MUHAMMAD FARIS PETRA IBNI SULTAN ISMAIL PETRA [SSH]	440	25,000	22.452
11 NOV 2024 - 11 NOV 2024	HTPADU	MFIVESOUTHSEA SDN BHD [SSH]	3,500	24,560	22.057
11 NOV 2024 - 11 NOV 2024	HTPADU	MR WONG THEAN SOON [SSH]	-1,800	17,924	16.097
11 NOV 2024 - 11 NOV 2024	HTPADU	ROSETTA PARTNERS SDN BHD [SSH]	3,500	24,560	22.057
11 NOV 2024 - 11 NOV 2024	HTPADU	TENGGU MUHAMMAD FARIS PETRA IBNI SULTAN ISMAIL PETRA [SSH]	3,500	24,560	22.057
11 NOV 2024 - 12 NOV 2024	IBHD	SUMUR VENTURES SDN BHD [SSH]	164	1,337,759	72.027
11 NOV 2024 - 12 NOV 2024	IBHD	SUMURWANG SDN BHD [SSH]	164	1,183,841	63.74
11 NOV 2024 - 12 NOV 2024	IBHD	TAN SRI LIM KIM HONG [DIR/CEO]	164	1,410,557	75.947
11 NOV 2024 - 12 NOV 2024	IBHD	TAN SRI LIM KIM HONG [SSH]	164	1,410,557	75.947
07 NOV 2024 - 07 NOV 2024	IGBCR	MISS TAN MEI SIAN [DIR/CEO]	985	4,608	0.192
07 NOV 2024 - 07 NOV 2024	IGBCR	TAN CHIN NAM SENDIRIAN BERHAD ("TCNSB") [SSH]	-14,638	1,662,659	69.298
07 MAR 2024 - 08 NOV 2024	IGBCR	MISS TAN LEI CHENG [DIR/CEO]	308	24,659	1.028
12 NOV 2024 - 12 NOV 2024	IGBREIT	EMPLOYEES PROVIDENT FUND BOARD ("EPF BOARD") [SSH]	768	384,834	10.644
11 NOV 2024 - 11 NOV 2024	IGBREIT	EMPLOYEES PROVIDENT FUND BOARD ("EPF BOARD") [SSH]	-1,367	384,066	10.623
08 NOV 2024 - 08 NOV 2024	IGBREIT	EMPLOYEES PROVIDENT FUND BOARD ("EPF BOARD") [SSH]	1,400	385,433	10.661
07 NOV 2024 - 07 NOV 2024	IGBREIT	EMPLOYEES PROVIDENT FUND BOARD ("EPF BOARD") [SSH]	3,650	384,033	10.622
06 NOV 2024 - 06 NOV 2024	IGBREIT	EMPLOYEES PROVIDENT FUND BOARD ("EPF BOARD") [SSH]	140	380,383	10.521
12 NOV 2024 - 12 NOV 2024	IHH	EMPLOYEES PROVIDENT FUND BOARD [SSH]	-594	890,472	10.106
11 NOV 2024 - 11 NOV 2024	IHH	EMPLOYEES PROVIDENT FUND BOARD [SSH]	-1,077	891,065	10.113
08 NOV 2024 - 08 NOV 2024	IHH	EMPLOYEES PROVIDENT FUND BOARD [SSH]	-755	892,142	10.125

Notice Period is 10th November 2024 – 16th November 2024

Effective Change Date	Stock Name	Buyer/ Seller Name [Classification]	Bought / (Sold) ['000]	No. of Shares After Trade ['000]	
			Total	Total	% Held
07 NOV 2024 - 07 NOV 2024	IHH	EMPLOYEES PROVIDENT FUND BOARD [SSH]	3,991	892,897	10.134
06 NOV 2024 - 06 NOV 2024	IHH	EMPLOYEES PROVIDENT FUND BOARD [SSH]	4,608	888,906	10.088
12 NOV 2024 - 12 NOV 2024	IJM	EMPLOYEES PROVIDENT FUND BOARD [SSH]	245	484,043	13.805
11 NOV 2024 - 11 NOV 2024	IJM	EMPLOYEES PROVIDENT FUND BOARD [SSH]	1,435	483,799	13.799
12 NOV 2024 - 12 NOV 2024	IJM	KUMPULAN WANG PERSARAAN (DIPERBADANKAN) [SSH]	236	330,755	9.434
08 NOV 2024 - 08 NOV 2024	IJM	EMPLOYEES PROVIDENT FUND BOARD [SSH]	1,812	482,364	13.758
11 NOV 2024 - 11 NOV 2024	IJM	KUMPULAN WANG PERSARAAN (DIPERBADANKAN) [SSH]	171	330,519	9.427
07 NOV 2024 - 07 NOV 2024	IJM	EMPLOYEES PROVIDENT FUND BOARD [SSH]	2,153	480,552	13.706
08 NOV 2024 - 08 NOV 2024	IJM	KUMPULAN WANG PERSARAAN (DIPERBADANKAN) [SSH]	160	330,347	9.422
06 NOV 2024 - 06 NOV 2024	IJM	EMPLOYEES PROVIDENT FUND BOARD [SSH]	-1,000	478,399	13.644
13 NOV 2024 - 13 NOV 2024	INARI	KUMPULAN WANG PERSARAAN (DIPERBADANKAN) [SSH]	150	365,988	9.661
07 NOV 2024 - 07 NOV 2024	INARI	EMPLOYEES PROVIDENT FUND BOARD [SSH]	1,600	413,724	10.921
08 NOV 2024 - 08 NOV 2024	INARI	KUMPULAN WANG PERSARAAN (DIPERBADANKAN) [SSH]	-101	365,838	9.657
06 NOV 2024 - 06 NOV 2024	INARI	EMPLOYEES PROVIDENT FUND BOARD [SSH]	1,881	412,124	10.879
14 NOV 2024 - 14 NOV 2024	INTA	APEXJAYA INDUSTRIES SDN BHD [SSH]	100	168,373	30.516
14 NOV 2024 - 14 NOV 2024	INTA	MADAM KOK CHIN SEOW [SSH]	100	169,680	30.753
14 NOV 2024 - 14 NOV 2024	INTA	MR LIM OOI JOO [DIR/CEO]	100	217,528	39.425
14 NOV 2024 - 14 NOV 2024	INTA	MR LIM OOI JOO [SSH]	100	217,528	39.425
12 NOV 2024 - 12 NOV 2024	IOICORP	EMPLOYEES PROVIDENT FUND BOARD [SSH]	-1,799	826,322	13.32
11 NOV 2024 - 11 NOV 2024	IOICORP	EMPLOYEES PROVIDENT FUND BOARD [SSH]	224	828,122	13.349
08 NOV 2024 - 08 NOV 2024	IOICORP	EMPLOYEES PROVIDENT FUND BOARD [SSH]	-301	827,897	13.345
07 NOV 2024 - 07 NOV 2024	IOICORP	EMPLOYEES PROVIDENT FUND BOARD [SSH]	500	828,198	13.35
12 NOV 2024 - 12 NOV 2024	IOIPG	EMPLOYEES PROVIDENT FUND BOARD [SSH]	268	427,785	7.769
11 NOV 2024 - 11 NOV 2024	IOIPG	EMPLOYEES PROVIDENT FUND BOARD [SSH]	-3,144	427,517	7.764
08 NOV 2024 - 08 NOV 2024	IOIPG	EMPLOYEES PROVIDENT FUND BOARD [SSH]	323	430,536	7.819
07 NOV 2024 - 07 NOV 2024	IOIPG	EMPLOYEES PROVIDENT FUND BOARD [SSH]	3,323	430,213	7.813
06 NOV 2024 - 06 NOV 2024	IOIPG	EMPLOYEES PROVIDENT FUND BOARD [SSH]	323	426,890	7.753
14 NOV 2024 - 14 NOV 2024	JIANKUN	MR EDWIN SILVESTER DAS [DIR/CEO]	-2,500	29,124	5.643
14 NOV 2024 - 14 NOV 2024	JIANKUN	MR EDWIN SILVESTER DAS [SSH]	-2,500	29,124	5.643
12 NOV 2024 - 12 NOV 2024	JPG	EMPLOYEES PROVIDENT FUND BOARD [SSH]	-7,857	213,431	8.537
11 NOV 2024 - 11 NOV 2024	JPG	EMPLOYEES PROVIDENT FUND BOARD [SSH]	-12,729	221,288	8.852
08 NOV 2024 - 08 NOV 2024	JPG	EMPLOYEES PROVIDENT FUND BOARD [SSH]	-2,292	234,017	9.361
07 NOV 2024 - 07 NOV 2024	JPG	EMPLOYEES PROVIDENT FUND BOARD [SSH]	-4,386	236,308	9.452
06 NOV 2024 - 06 NOV 2024	JPG	EMPLOYEES PROVIDENT FUND BOARD [SSH]	-3,547	240,695	9.628
12 NOV 2024 - 13 NOV 2024	KARYON	DR CHUA KEE LAM [SSH]	975	72,889	15.32
12 NOV 2024 - 13 NOV 2024	KARYON	MADAM CHUA LING LEE [SSH]	975	72,889	15.33
12 NOV 2024 - 13 NOV 2024	KARYON	MADAM TEOH KOOI KIM [SSH]	975	105,852	22.25
12 NOV 2024 - 13 NOV 2024	KARYON	MR CHUA LING HONG [DIR/CEO]	975	72,889	15.32
12 NOV 2024 - 13 NOV 2024	KARYON	MR CHUA LING HONG [SSH]	975	72,889	15.32
13 NOV 2024 - 13 NOV 2024	KGB	ABRDN HOLDINGS LIMITED [SSH]	122	45,027	6.514
13 NOV 2024 - 13 NOV 2024	KGB	ABRDN MALAYSIA SDN BHD [SSH]	122	44,150	6.387
13 NOV 2024 - 13 NOV 2024	KGB	ABRDN PLC [SSH]	122	45,027	6.514
08 NOV 2024 - 08 NOV 2024	KLCC	EMPLOYEES PROVIDENT FUND BOARD [SSH]	499	202,068	11.193
08 NOV 2024 - 08 NOV 2024	KLCC	EMPLOYEES PROVIDENT FUND BOARD [SSH]	499	202,068	11.193
08 NOV 2024 - 08 NOV 2024	KLCC	AMANAHRAYA TRUSTEES BERHAD - AMANAH SAHAM BUMIPUTERA [SSH]	-500	92,681	5.134
08 NOV 2024 - 08 NOV 2024	KLCC	AMANAHRAYA TRUSTEES BERHAD - AMANAH SAHAM BUMIPUTERA [SSH]	-500	92,681	5.134
07 NOV 2024 - 07 NOV 2024	KLCC	EMPLOYEES PROVIDENT FUND BOARD [SSH]	1,091	201,570	11.165
07 NOV 2024 - 07 NOV 2024	KLCC	EMPLOYEES PROVIDENT FUND BOARD [SSH]	1,091	201,570	11.165
07 NOV 2024 - 07 NOV 2024	KLCC	AMANAHRAYA TRUSTEES BERHAD - AMANAH SAHAM BUMIPUTERA [SSH]	-1,000	93,181	5.161
07 NOV 2024 - 07 NOV 2024	KLCC	AMANAHRAYA TRUSTEES BERHAD - AMANAH SAHAM BUMIPUTERA [SSH]	-1,000	93,181	5.161
06 NOV 202					

Notice Period is 10th November 2024 – 16th November 2024

Effective Change Date	Stock Name	Buyer/ Seller Name [Classification]	Bought / (Sold) ['000]	No. of Shares After Trade ['000]	
			Total	Total	% Held
12 NOV 2024 - 12 NOV 2024	MAG	MR NG MIN LIN [DIR/CEO]	2,488	479,802	25.619
12 NOV 2024 - 12 NOV 2024	MAG	MR NG MIN LIN [DIR/CEO]	2,488	36,336	54.33
12 NOV 2024 - 12 NOV 2024	MAG	MR NG MIN LIN [SSH]	2,488	479,802	25.619
14 NOV 2024 - 14 NOV 2024	MAGNI	KP HOLDINGS SDN. BHD. [SSH]	10	59,060	13.63
14 NOV 2024 - 14 NOV 2024	MAGNI	TAN SRI DATO' SERI TAN KOK PING [DIR/CEO]	10	107,383	24.77
14 NOV 2024 - 14 NOV 2024	MAGNI	TAN SRI DATO' SERI TAN KOK PING [SSH]	10	79,583	18.36
12 NOV 2024 - 12 NOV 2024	MALAKOF	EMPLOYEES PROVIDENT FUND BOARD [SSH]	99	556,499	11.387
08 NOV 2024 - 08 NOV 2024	MALAKOF	EMPLOYEES PROVIDENT FUND BOARD [SSH]	1,000	556,400	11.385
07 NOV 2024 - 07 NOV 2024	MALAKOF	EMPLOYEES PROVIDENT FUND BOARD [SSH]	1,458	555,400	11.364
12 NOV 2024 - 12 NOV 2024	MATRIX	EMPLOYEES PROVIDENT FUND BOARD [SSH]	211	63,510	5.075
11 NOV 2024 - 11 NOV 2024	MATRIX	EMPLOYEES PROVIDENT FUND BOARD [SSH]	211	63,298	5.058
08 NOV 2024 - 08 NOV 2024	MATRIX	EMPLOYEES PROVIDENT FUND BOARD [SSH]	231	63,087	5.042
08 NOV 2024 - 08 NOV 2024	MAXIS	EMPLOYEES PROVIDENT FUND BOARD ('EPF BOARD') [SSH]	257	918,769	11.73
07 NOV 2024 - 07 NOV 2024	MAXIS	EMPLOYEES PROVIDENT FUND BOARD ('EPF BOARD') [SSH]	743	918,512	11.726
12 NOV 2024 - 12 NOV 2024	MAYBANK	EMPLOYEES PROVIDENT FUND BOARD [SSH]	-2,387	1,542,632	12.784
11 NOV 2024 - 11 NOV 2024	MAYBANK	EMPLOYEES PROVIDENT FUND BOARD [SSH]	-672	1,545,020	12.804
08 NOV 2024 - 08 NOV 2024	MAYBANK	EMPLOYEES PROVIDENT FUND BOARD [SSH]	1,960	1,545,692	12.809
07 NOV 2024 - 07 NOV 2024	MAYBANK	EMPLOYEES PROVIDENT FUND BOARD [SSH]	7,100	1,543,732	12.793
06 NOV 2024 - 06 NOV 2024	MAYBANK	EMPLOYEES PROVIDENT FUND BOARD [SSH]	2,991	1,536,632	12.734
07 NOV 2024 - 07 NOV 2024	MEGAFB	OVERSEA-CHINESE BANKING CORPORATION LIMITED [SSH]	-147,871	549,228	65
07 NOV 2024 - 07 NOV 2024	MEGAFB	DATO NG MENG KEE [DIR/CEO]	-147,871	549,228	65
07 NOV 2024 - 07 NOV 2024	MEGAFB	DATO NG MENG KEE [SSH]	-147,871	549,228	65
07 NOV 2024 - 07 NOV 2024	MEGAFB	DATUK NG MENG POH [DIR/CEO]	-147,871	549,228	65
07 NOV 2024 - 07 NOV 2024	MEGAFB	DATUK NG MENG POH [SSH]	-147,871	549,228	65
07 NOV 2024 - 07 NOV 2024	MEGAFB	LEW SIEW YEN [DIR/CEO]	500	500	0.059
07 NOV 2024 - 07 NOV 2024	MEGAFB	LION-OCBC CAPITAL ASIA I HOLDING PTE LTD [SSH]	-147,871	549,228	65
07 NOV 2024 - 07 NOV 2024	MEGAFB	MEGA FORTRIS CAPITAL LTD. [SSH]	-147,871	549,228	65
07 NOV 2024 - 07 NOV 2024	MEGAFB	MEGA FORTRIS GLOBAL PTE. LTD. [SSH]	-147,871	549,228	65
07 NOV 2024 - 07 NOV 2024	MEGAFB	NG BROTHERS ESTATE SDN. BHD. [SSH]	-147,871	549,228	65
07 NOV 2024 - 07 NOV 2024	MEGAFB	NG WENG CHOI [DIR/CEO]	2,500	2,500	0.296
07 NOV 2024 - 07 NOV 2024	MEGAFB	SHIREEN IQBAL BINTI MOHAMED IQBAL [DIR/CEO]	500	500	0.059
07 NOV 2024 - 07 NOV 2024	MEGAFB	TAN KOK YANG [DIR/CEO]	500	500	0.059
14 NOV 2024 - 14 NOV 2024	MESTRON	MR POR TEONG ENG [DIR/CEO]	1,000	145,865	14.575
14 NOV 2024 - 14 NOV 2024	MESTRON	MR POR TEONG ENG [SSH]	1,000	145,865	14.575
12 NOV 2024 - 12 NOV 2024	MESTRON	MR LOON CHIN SENG [DIR/CEO]	-6,000	117,753	17.762
12 NOV 2024 - 12 NOV 2024	MESTRON	MR LOON CHIN SENG [SSH]	-6,000	177,753	17.762
12 NOV 2024 - 12 NOV 2024	MESTRON	MR POR TEONG ENG [DIR/CEO]	6,000	144,865	14.476
12 NOV 2024 - 12 NOV 2024	MESTRON	MR POR TEONG ENG [SSH]	6,000	144,865	14.476
13 NOV 2024 - 13 NOV 2024	METRO	CIK ROSE ZILAWATI BINTI MOHAMED ARIFIN [DIR/CEO]	80	80	0.01
13 NOV 2024 - 13 NOV 2024	METRO	DR YEE MENG KHEONG [DIR/CEO]	80	80	0.01
13 NOV 2024 - 13 NOV 2024	METRO	MISS CHUA LENG LEEK [DIR/CEO]	80	80	0.01
13 NOV 2024 - 13 NOV 2024	METRO	MR LIM WAI KHONG [DIR/CEO]	480	6,654	0.68
13 NOV 2024 - 13 NOV 2024	METRO	MR SEAH CHEONG WEI [DIR/CEO]	160	160	0.02
06 NOV 2024 - 06 NOV 2024	MIKROMB	CARTABAN NOMINEES (TEMPATAN) SDN BHD - RHB TRUSTEES BERHAD FOR KENANGA ISLAMIC ABSOLUTE RETURN FUND [SSH]	60,297	382,337	35.616
12 NOV 2024 - 12 NOV 2024	MISC	EMPLOYEES PROVIDENT FUND BOARD [SSH]	1,404	514,532	11.527
11 NOV 2024 - 11 NOV 2024	MISC	EMPLOYEES PROVIDENT FUND BOARD [SSH]	563	513,128	11.495
08 NOV 2024 - 08 NOV 2024	MISC	EMPLOYEES PROVIDENT FUND BOARD [SSH]	444	512,504	11.481
07 NOV 2024 - 07 NOV 2024	MISC	EMPLOYEES PROVIDENT FUND BOARD [SSH]	3,053	512,060	11.472
06 NOV 2024 - 06 NOV 2024	MISC	EMPLOYEES PROVIDENT FUND BOARD [SSH]	-745	509,008	11.403
12 NOV 2024 - 12 NOV 2024	MRDIY	EMPLOYEES PROVIDENT FUND BOARD [SSH]	-1,000	657,696	6.954
11 NOV 2024 - 11 NOV 2024	MRDIY	EMPLOYEES PROVIDENT FUND BOARD [SSH]	-276	658,696	6.965
08 NOV 2024 - 08 NOV 2024	MRDIY	EMPLOYEES PROVIDENT FUND BOARD [SSH]	-2,025	658,971	6.968
07 NOV 2024 - 07 NOV 2024	MRDIY	EMPLOYEES PROVIDENT FUND BOARD [SSH]	-3,686	660,996	6.989
06 NOV 2024 - 06 NOV 2024	MRDIY	EMPLOYEES PROVIDENT FUND BOARD [SSH]	-1,000	664,682	7.028
13 NOV 2024 - 13 NOV 2024	MSNIAGA	SHAPADU CAPITAL SDN. BHD. [SSH]	2	16,937	28.041
12 NOV 2024 - 12 NOV 2024	MSNIAGA	SHAPADU CAPITAL SDN. BHD. [SSH]	2	16,935	28.038
13 NOV 2024 - 13 NOV 2024	MTRONIC	CITA REALITI SDN. BHD. [SSH]	10	264,749	17.291
08 NOV 2024 - 08 NOV 2024	MTRONIC	CITA REALITI SDN BHD [SSH]	10	264,739	17.291
13 NOV 2024 - 14 NOV 2024	NCT	CHONG KEAT SDN. BHD. [SSH]	-590	107,060	5.844
12 NOV 2024 - 12 NOV 2024	NCT	DATO' SRI YAP NGAN CHOY [DIR/CEO]	564	950,302	51.866
12 NOV 2024 - 12 NOV 2024	NCT	DATO' SRI YAP NGAN CHOY [SSH]	564	950,302	51.866
12 NOV 2024 - 12 NOV 2024	NCT	DATO' YAP FOOK CHOY [DIR/CEO]	564	943,649	51.503
12 NOV 2024 - 12 NOV 2024	NCT	DATO' YAP FOOK CHOY [SSH]	564	943,649	51.503
12 NOV 2024 - 12 NOV 2024	NCT	YBG YAP CONSOLIDATED SDN. BHD. [SSH]	564	919,519	50.186
12 NOV 2024 - 12 NOV 2024	NESTLE	EMPLOYEES PROVIDENT FUND BOARD [SSH]	17	28,478	12.144
11 NOV 2024 - 11 NOV 2024	NESTLE	EMPLOYEES PROVIDENT FUND BOARD [SSH]	12	28,461	12.136
08 NOV 2024 - 08 NOV 2024	NESTLE	EMPLOYEES PROVIDENT FUND BOARD [SSH]	4	28,449	12.132
07 NOV 2024 - 07 NOV 2024	NESTLE	EMPLOYEES PROVIDENT FUND BOARD [SSH]	6	28,445	12.13
07 NOV 2024 - 08 NOV 2024	PA	TAN SRI LAU KUAN KAM [DIR/CEO]	1,510	96,460	6.41
07 NOV 2024 - 08 NOV 2024	PA	TAN SRI LAU KUAN KAM [SSH]	1,510	96,460	6.41
14 NOV 2024 - 14 NOV 2024	PADINI	KUMPULAN WANG PERSARAAN (DIPERBADANKAN) [SSH]	-12	66,832	10.159
12 NOV 2024 - 12 NOV 2024	PANAMY	EMPLOYEES PROVIDENT FUND BOARD [SSH]	8	6,166	10.151
11 NOV 2024 - 11 NOV 2024	PANAMY	EMPLOYEES PROVIDENT FUND BOARD [SSH]	5	6,158	10.137
08 NOV 2024 - 08 NOV 2024	PANAMY	EMPLOYEES PROVIDENT FUND BOARD [SSH]	5	6,154	10.13
11 NOV 2024 - 11 NOV 2024	PAOS	MISS LIM CHANG CHING [DIR/CEO]	-61,676	61,706	34.061
11 NOV 2024 - 11 NOV 2024	PAOS	TAN SRI DATO' LIM TONG YONG @ LIM TONG YAIM [SSH]	-22,000	22,000	12.144
11 NOV 2024 - 11 NOV 2024	PAVREIT	EMPLOYEES PROVIDENT FUND BOARD [SSH]	-599	451,829	12.343
08 NOV 2024 - 08 NOV 2024	PAVREIT	EMPLOYEES PROVIDENT FUND BOARD [SSH]	738	452,428	12.359
07 NOV 2024 - 07 NOV 2024	PAVREIT	EMPLOYEES PROVIDENT FUND BOARD [SSH]	2,303	451,690	12.339

Notice Period is 10th November 2024 – 16th November 2024

Effective Change Date	Stock Name	Buyer/ Seller Name [Classification]	Bought / (Sold) ['000]	No. of Shares After Trade ['000]	
			Total	Total	% Held
06 NOV 2024 - 06 NOV 2024	PAVREIT	EMPLOYEES PROVIDENT FUND BOARD [SSH]	752	449,387	12.276
12 NOV 2024 - 12 NOV 2024	PBBANK	EMPLOYEES PROVIDENT FUND BOARD [SSH]	198	2,944,553	15.17
11 NOV 2024 - 11 NOV 2024	PBBANK	EMPLOYEES PROVIDENT FUND BOARD [SSH]	-6,000	2,944,355	15.17
08 NOV 2024 - 08 NOV 2024	PBBANK	EMPLOYEES PROVIDENT FUND BOARD [SSH]	3,997	2,950,355	15.2
07 NOV 2024 - 07 NOV 2024	PBBANK	EMPLOYEES PROVIDENT FUND BOARD [SSH]	10,865	2,946,358	15.18
06 NOV 2024 - 06 NOV 2024	PBBANK	EMPLOYEES PROVIDENT FUND BOARD [SSH]	6,088	2,935,492	15.12
12 NOV 2024 - 12 NOV 2024	PCHEM	EMPLOYEES PROVIDENT FUND BOARD ('EPF BOARD') [SSH]	-1,273	927,871	11.598
07 NOV 2024 - 07 NOV 2024	PCHEM	EMPLOYEES PROVIDENT FUND BOARD ('EPF BOARD') [SSH]	-491	929,144	11.614
06 NOV 2024 - 06 NOV 2024	PCHEM	EMPLOYEES PROVIDENT FUND BOARD ('EPF BOARD') [SSH]	-86	929,635	11.62
11 NOV 2024 - 11 NOV 2024	PENSONI	MR CHEW CHUON FANG [DIR/CEO]	-1,000	5,181	3.401
12 NOV 2024 - 12 NOV 2024	PENTA	EMPLOYEES PROVIDENT FUND BOARD [SSH]	-200	59316	8.339
13 NOV 2024 - 13 NOV 2024	PENTA	KUMPULAN WANG PERSARAAN (DIPERBADANKAN) [SSH]	-130	42,474	5.971
08 NOV 2024 - 08 NOV 2024	PENTA	EMPLOYEES PROVIDENT FUND BOARD [SSH]	383	59,516	8.367
07 NOV 2024 - 07 NOV 2024	PENTA	EMPLOYEES PROVIDENT FUND BOARD [SSH]	917	59,132	8.313
08 NOV 2024 - 08 NOV 2024	PENTA	KUMPULAN WANG PERSARAAN (DIPERBADANKAN) [SSH]	-216	42,604	5.99
06 NOV 2024 - 06 NOV 2024	PENTA	EMPLOYEES PROVIDENT FUND BOARD [SSH]	1,058	58,216	8.184
14 NOV 2024 - 14 NOV 2024	PESONA	MR WIE HOCK BENG [DIR/CEO]	246	119,446	17.187
14 NOV 2024 - 14 NOV 2024	PESONA	MR WIE HOCK BENG [SSH]	246	119,446	17.187
14 NOV 2024 - 14 NOV 2024	PESONA	SINCERE GOLDFEED SDN. BHD. [SSH]	246	119,446	17.187
07 NOV 2024 - 07 NOV 2024	PESONA	MR WIE HOCK BENG [DIR/CEO]	207	118,607	17.066
07 NOV 2024 - 07 NOV 2024	PESONA	MR WIE HOCK BENG [SSH]	207	118,607	17.066
07 NOV 2024 - 07 NOV 2024	PESONA	SINCERE GOLDFEED SDN. BHD. [SSH]	207	118,607	17.066
13 NOV 2024 - 13 NOV 2024	PESONA	MR WIE HOCK BENG [DIR/CEO]	200	119,393	17.179
13 NOV 2024 - 13 NOV 2024	PESONA	MR WIE HOCK BENG [SSH]	200	119,393	17.179
13 NOV 2024 - 13 NOV 2024	PESONA	SINCERE GOLDFEED SDN. BHD. [SSH]	200	119,393	17.179
12 NOV 2024 - 12 NOV 2024	PESONA	MR WIE HOCK BENG [DIR/CEO]	200	119,193	17.15
12 NOV 2024 - 12 NOV 2024	PESONA	MR WIE HOCK BENG [SSH]	200	119,193	17.15
12 NOV 2024 - 12 NOV 2024	PESONA	SINCERE GOLDFEED SDN. BHD. [SSH]	200	119,193	17.15
08 NOV 2024 - 08 NOV 2024	PESONA	MR WIE HOCK BENG [DIR/CEO]	193	118,993	17.122
08 NOV 2024 - 08 NOV 2024	PESONA	MR WIE HOCK BENG [SSH]	193	118,993	17.122
08 NOV 2024 - 08 NOV 2024	PESONA	SINCERE GOLDFEED SDN. BHD. [SSH]	193	118,993	17.122
12 NOV 2024 - 12 NOV 2024	PETDAG	EMPLOYEES PROVIDENT FUND BOARD ('EPF BOARD') [SSH]	213	122,239	12.304
11 NOV 2024 - 11 NOV 2024	PETDAG	EMPLOYEES PROVIDENT FUND BOARD ('EPF BOARD') [SSH]	151	122,042	12.285
08 NOV 2024 - 08 NOV 2024	PETDAG	EMPLOYEES PROVIDENT FUND BOARD ('EPF BOARD') [SSH]	28	121,891	12.269
07 NOV 2024 - 07 NOV 2024	PETDAG	EMPLOYEES PROVIDENT FUND BOARD ('EPF BOARD') [SSH]	143	121,862	12.267
06 NOV 2024 - 06 NOV 2024	PETDAG	EMPLOYEES PROVIDENT FUND BOARD ('EPF BOARD') [SSH]	-23	121,719	12.252
12 NOV 2024 - 12 NOV 2024	PETGAS	EMPLOYEES PROVIDENT FUND BOARD [SSH]	373	245,305	12.397
11 NOV 2024 - 11 NOV 2024	PETGAS	EMPLOYEES PROVIDENT FUND BOARD [SSH]	561	244,931	12.378
08 NOV 2024 - 08 NOV 2024	PETGAS	EMPLOYEES PROVIDENT FUND BOARD [SSH]	82	244,370	12.35
07 NOV 2024 - 07 NOV 2024	PETGAS	EMPLOYEES PROVIDENT FUND BOARD [SSH]	472	244,287	12.346
06 NOV 2024 - 06 NOV 2024	PETGAS	EMPLOYEES PROVIDENT FUND BOARD [SSH]	-62	243,816	12.322
12 NOV 2024 - 12 NOV 2024	PHB	MR TAN CHIN HOONG [SSH]	-13,300	59,548	5.502
12 NOV 2024 - 12 NOV 2024	PLINTAS	EMPLOYEES PROVIDENT FUND BOARD [SSH]	73	85,430	7.766
11 NOV 2024 - 11 NOV 2024	PLINTAS	EMPLOYEES PROVIDENT FUND BOARD [SSH]	63	85,358	7.76
08 NOV 2024 - 08 NOV 2024	PLINTAS	EMPLOYEES PROVIDENT FUND BOARD [SSH]	3	85,295	7.754
07 NOV 2024 - 07 NOV 2024	PLINTAS	EMPLOYEES PROVIDENT FUND BOARD [SSH]	28	85,293	7.754
15 OCT 2024 - 15 OCT 2024	POHKONG	DATO TAN CHUON HWA @ ESTHER TAN CHUON HWA [DIR/CEO]	30	30	0.01
12 NOV 2024 - 12 NOV 2024	PPB	EMPLOYEES PROVIDENT FUND BOARD [SSH]	300	181,251	12.741
11 NOV 2024 - 11 NOV 2024	PPB	EMPLOYEES PROVIDENT FUND BOARD [SSH]	157	180,951	12.72
08 NOV 2024 - 08 NOV 2024	PPB	EMPLOYEES PROVIDENT FUND BOARD [SSH]	8	180,793	12.709
07 NOV 2024 - 07 NOV 2024	PPB	EMPLOYEES PROVIDENT FUND BOARD [SSH]	300	180,821	12.711
06 NOV 2024 - 06 NOV 2024	PPB	EMPLOYEES PROVIDENT FUND BOARD [SSH]	5	180,551	12.692
13 NOV 2024 - 13 NOV 2024	PPJACK	MADAM LEE KOOL LAN [SSH]	57	38,135	49.64
13 NOV 2024 - 13 NOV 2024	PPJACK	MR LIM BOON HUA [DIR/CEO]	57	38,135	49.64
13 NOV 2024 - 13 NOV 2024	PPJACK	MR LIM BOON HUA [SSH]	57	38,135	49.64
12 NOV 2024 - 12 NOV 2024	PPJACK	MADAM LEE KOOL LAN [SSH]	72	38,130	49.64
12 NOV 2024 - 12 NOV 2024	PPJACK	MR LIM BOON HUA [DIR/CEO]	72	38,130	49.64
12 NOV 2024 - 12 NOV 2024	PPJACK	MR LIM BOON HUA [SSH]	72	38,130	49.64
11 NOV 2024 - 11 NOV 2024	PPJACK	MADAM LEE KOOL LAN [SSH]	47	38,128	49.63
11 NOV 2024 - 11 NOV 2024	PPJACK	MR LIM BOON HUA [DIR/CEO]	47	38,128	49.63
11 NOV 2024 - 11 NOV 2024	PPJACK	MR LIM BOON HUA [SSH]	47	38,128	49.63
08 NOV 2024 - 08 NOV 2024	PPJACK	MADAM LEE KOOL LAN [SSH]	50	38,118	49.62
08 NOV 2024 - 08 NOV 2024	PPJACK	MR LIM BOON HUA [DIR/CEO]	50	38,118	49.62
08 NOV 2024 - 08 NOV 2024	PPJACK	MR LIM BOON HUA [SSH]	50	38,118	49.62
08 NOV 2024 - 08 NOV 2024	PWRWELL	MADAM WONG YOKE YEN [DIR/CEO]	-600	81,	

Notice Period is 10th November 2024 – 16th November 2024

Effective Change Date	Stock Name	Buyer/ Seller Name [Classification]	Bought / (Sold) ['000]		No. of Shares After Trade ['000]	
			Total	% Held	Total	% Held
11 NOV 2024 - 11 NOV 2024	SAPIND	MR KOH KOK HOI [SSH]	4	10.576	7697	10.576
11 NOV 2024 - 11 NOV 2024	SASBADI	MR LEE SWEE HANG [DIR/CEO]	104	26.219	114347	26.219
11 NOV 2024 - 11 NOV 2024	SASBADI	MR LEE SWEE HANG [SSH]	104	26.219	114347	26.219
08 NOV 2024 - 08 NOV 2024	SASBADI	MR LEE SWEE HANG [DIR/CEO]	153	26.195	114243	26.195
08 NOV 2024 - 08 NOV 2024	SASBADI	MR LEE SWEE HANG [SSH]	153	26.195	114243	26.195
07 NOV 2024 - 07 NOV 2024	SASBADI	MR LEE SWEE HANG [DIR/CEO]	60	26.16	114090	26.16
07 NOV 2024 - 07 NOV 2024	SASBADI	MR LEE SWEE HANG [SSH]	60	26.16	114090	26.16
08 NOV 2024 - 08 NOV 2024	SBH	MR TAN YOK JIN [DIR/CEO]	301	6.445	57229	6.445
08 NOV 2024 - 08 NOV 2024	SBH	MR TAN YOK JIN [SSH]	301	6.445	57229	6.445
12 NOV 2024 - 12 NOV 2024	SCIENTX	MR LIM PENG CHEONG [DIR/CEO]	5,000	50.641	49773	50.641
12 NOV 2024 - 12 NOV 2024	SCIENTX	MR LIM PENG CHEONG [DIR/CEO]	5,000	55.52	864046	55.52
12 NOV 2024 - 12 NOV 2024	SCIENTX	MR LIM PENG CHEONG [SSH]	5,000	55.131	857988	55.131
12 NOV 2024 - 12 NOV 2024	SCIENTX	MR LIM PENG JIN [DIR/CEO]	5,000	58.483	910157	58.483
12 NOV 2024 - 12 NOV 2024	SCIENTX	MR LIM PENG JIN [DIR/CEO]	-5,000	53.844	52921	53.844
12 NOV 2024 - 12 NOV 2024	SCIENTX	MR LIM PENG JIN [SSH]	5,000	58.478	910065	58.478
12 NOV 2024 - 12 NOV 2024	SCIENTX	SCIENTX INFINITY SDN BHD [SSH]	5,000	46.64	725841	46.64
12 NOV 2024 - 12 NOV 2024	SCIENTX	SIM SWEE TIN SDN BHD [SSH]	5,000	10.087	156983	10.087
12 NOV 2024 - 12 NOV 2024	SCIENTX	TM LIM SDN BHD [SSH]	5,000	5.401	84052	5.401
14 NOV 2024 - 14 NOV 2024	SDG	KUMPULAN WANG PERSARAAN (DIPERBADANKAN) [SSH]	-135	6.729	465349	6.729
13 NOV 2024 - 13 NOV 2024	SDG	KUMPULAN WANG PERSARAAN (DIPERBADANKAN) [SSH]	-128	6.731	465483	6.731
12 NOV 2024 - 12 NOV 2024	SDG	EMPLOYEES PROVIDENT FUND BOARD [SSH]	-3,314	16.413	1135063	16.413
11 NOV 2024 - 11 NOV 2024	SDG	EMPLOYEES PROVIDENT FUND BOARD [SSH]	-348	16.461	1138377	16.461
12 NOV 2024 - 12 NOV 2024	SDG	KUMPULAN WANG PERSARAAN (DIPERBADANKAN) [SSH]	-1,026	6.733	465611	6.733
08 NOV 2024 - 08 NOV 2024	SDG	EMPLOYEES PROVIDENT FUND BOARD [SSH]	-1,000	16.466	1138724	16.466
07 NOV 2024 - 07 NOV 2024	SDG	EMPLOYEES PROVIDENT FUND BOARD [SSH]	756	16.48	1139724	16.48
11 NOV 2024 - 11 NOV 2024	SIME	EMPLOYEES PROVIDENT FUND BOARD [SSH]	728	16.016	1091574	16.016
08 NOV 2024 - 08 NOV 2024	SIME	AMANAHRAYA TRUSTEES BERHAD - AMANAH SAHAM BUMIPUTERA [SSH]	-450	35.249	2402421	35.249
07 NOV 2024 - 07 NOV 2024	SIME	EMPLOYEES PROVIDENT FUND BOARD [SSH]	2,754	16.006	1090847	16.006
07 NOV 2024 - 07 NOV 2024	SIME	AMANAHRAYA TRUSTEES BERHAD - AMANAH SAHAM BUMIPUTERA [SSH]	-260	35.255	2402871	35.255
12 NOV 2024 - 12 NOV 2024	SIMEPROP	EMPLOYEES PROVIDENT FUND BOARD [SSH]	2,800	10.449	710588	10.449
13 NOV 2024 - 13 NOV 2024	SIMEPROP	KUMPULAN WANG PERSARAAN (DIPERBADANKAN) [SSH]	-400	6.127	416697	6.127
11 NOV 2024 - 11 NOV 2024	SIMEPROP	EMPLOYEES PROVIDENT FUND BOARD [SSH]	225	10.408	707788	10.408
07 NOV 2024 - 07 NOV 2024	SIMEPROP	EMPLOYEES PROVIDENT FUND BOARD [SSH]	5,000	10.404	707563	10.404
07 NOV 2024 - 07 NOV 2024	SIMEPROP	AMANAHRAYA TRUSTEES BERHAD - AMANAH SAHAM BUMIPUTERA [SSH]	-6,110	38.251	2601379	38.251
06 NOV 2024 - 06 NOV 2024	SIMEPROP	EMPLOYEES PROVIDENT FUND BOARD [SSH]	714	10.33	702563	10.33
07 NOV 2024 - 07 NOV 2024	SJC	CIMB COMMERCE TRUSTEE BERHAD [SSH]	-808	6.369	13600	6.369
11 NOV 2024 - 11 NOV 2024	SKPRES	EMPLOYEES PROVIDENT FUND BOARD [SSH]	-89	9.987	156035	9.987
08 NOV 2024 - 08 NOV 2024	SLVEST	EMPLOYEES PROVIDENT FUND BOARD [SSH]	-329	7.684	54937	7.684
07 NOV 2024 - 07 NOV 2024	SLVEST	EMPLOYEES PROVIDENT FUND BOARD [SSH]	-662	7.73	55266	7.73
12 NOV 2024 - 12 NOV 2024	SPSETIA	EMPLOYEES PROVIDENT FUND BOARD [SSH]	2,000	8.637	432044	8.637
08 NOV 2024 - 08 NOV 2024	SPSETIA	EMPLOYEES PROVIDENT FUND BOARD [SSH]	1,011	8.597	430044	8.597
07 NOV 2024 - 07 NOV 2024	SPSETIA	EMPLOYEES PROVIDENT FUND BOARD [SSH]	2,352	8.576	429032	8.576
06 NOV 2024 - 06 NOV 2024	SPSETIA	EMPLOYEES PROVIDENT FUND BOARD [SSH]	17	8.529	426681	8.529
11 NOV 2024 - 13 NOV 2024	SUCCESS	DATO' YEOH KIM WAH [DIR/CEO]	-67	0.392	926	0.392
07 NOV 2024 - 07 NOV 2024	SUCCESS	DATO' YEOH KIM WAH [DIR/CEO]	-82	0.42	992	0.42
12 NOV 2024 - 12 NOV 2024	SUNCON	EMPLOYEES PROVIDENT FUND BOARD [SSH]	674	6.407	82604	6.407
11 NOV 2024 - 11 NOV 2024	SUNCON	EMPLOYEES PROVIDENT FUND BOARD [SSH]	1,262	6.354	81931	6.354
08 NOV 2024 - 08 NOV 2024	SUNCON	EMPLOYEES PROVIDENT FUND BOARD [SSH]	3,123	6.257	80669	6.257
07 NOV 2024 - 07 NOV 2024	SUNCON	EMPLOYEES PROVIDENT FUND BOARD [SSH]	723	6.014	77546	6.014
06 NOV 2024 - 06 NOV 2024	SUNCON	EMPLOYEES PROVIDENT FUND BOARD [SSH]	123	5.953	76751	5.953
12 NOV 2024 - 12 NOV 2024	SUNREIT	EMPLOYEES PROVIDENT FUND BOARD [SSH]	289	16.011	548334	16.011
11 NOV 2024 - 11 NOV 2024	SUNREIT	EMPLOYEES PROVIDENT FUND BOARD [SSH]	999	16.002	548045	16.002
08 NOV 2024 - 08 NOV 2024	SUNREIT	EMPLOYEES PROVIDENT FUND BOARD [SSH]	782	15.973	547046	15.973
12 NOV 2024 - 12 NOV 2024	SUNWAY	EMPLOYEES PROVIDENT FUND BOARD [SSH]	-2,564	6.36	361861	6.36
11 NOV 2024 - 11 NOV 2024	SUNWAY	EMPLOYEES PROVIDENT FUND BOARD [SSH]	1,080	6.4	364165	6.4
08 NOV 2024 - 08 NOV 2024	SUNWAY	EMPLOYEES PROVIDENT FUND BOARD [SSH]	-1,691	6.38	363086	6.38
07 NOV 2024 - 07 NOV 2024	SUNWAY	EMPLOYEES PROVIDENT FUND BOARD [SSH]	-2,334	6.4	364192	6.4
06 NOV 2024 - 06 NOV 2024	SUNWAY	EMPLOYEES PROVIDENT FUND BOARD [SSH]	-3,975	6.51	370404	6.51
12 NOV 2024 - 12 NOV 2024	TAKAFUL	EMPLOYEES PROVIDENT FUND BOARD [SSH]	558	17.815	149170	17.815
11 NOV 2024 - 11 NOV 2024	TAKAFUL	EMPLOYEES PROVIDENT FUND BOARD [SSH]	830	17.749	148612	17.749
08 NOV 2024 - 08 NOV 2024	TAKAFUL	EMPLOYEES PROVIDENT FUND BOARD [SSH]	962	17.649	147779	17.649
07 NOV 2024 - 07 NOV 2024	TAKAFUL	EMPLOYEES PROVIDENT FUND BOARD [SSH]	586	17.534	146817	17.534
06 NOV 2024 - 06 NOV 2024	TAKAFUL	EMPLOYEES PROVIDENT FUND BOARD [SSH]	0.9	17.465	146232	17.465
15 NOV 2024 - 15 NOV 2024	TANCO	DATO' SRI ANDREW TAN JUN SUAN [DIR/CEO]	-731	18.029	104078	18.029
14 NOV 2024 - 14 NOV 2024	TANCO	DATO' SRI ANDREW TAN JUN SUAN [DIR/CEO]	-508	18.122	104809	18.122
12 NOV 2024 - 12 NOV 2024	TECHBND	MR OOI GUAN HOE [DIR/CEO]	113	0.02	138	0.02
08 NOV 2024 - 08 NOV 2024	TECHBND	MR LEE SEH MENG [DIR/CEO]	261	0.191	1283	0.191
08 NOV 2024 - 08 NOV 2024	TECHBND	MR LEE YUEN SHIUAN [DIR/CEO]	261	0.191	1283	0.191
12 NOV 2024 - 12 NOV 2024	TEKSENG	MR LOH ENG CHUN [DIR/CEO]	1,000	2.06	7412	2.06
12 NOV 2024 - 12 NOV 2024	TEKSENG	MR LOH JIA WOOL [DIR/CEO]	1,000	2.06	7412	2.06
12 NOV 2024 - 12 NOV 2024	TENAGA	EMPLOYEES PROVIDENT FUND BOARD [SSH]	-669	17.66	1026630	17.66
13 NOV 2024 - 13 NOV 2024	TENAGA	KUMPULAN WANG PERSARAAN (DIPERBADANKAN) [SSH]	-404	7.01	407598	7.01
11 NOV 2024 - 11 NOV 2024	TENAGA	EMPLOYEES PROVIDENT FUND BOARD [SSH]	588	17.67	1027299	17.67
08 NOV 2024 - 08 NOV 2024	TENAGA	EMPLOYEES PROVIDENT FUND BOARD [SSH]	393	17.66	1026711	17.66
07 NOV 2024 - 07 NOV 2024	TENAGA	EMPLOYEES PROVIDENT FUND BOARD [SSH]	4,568	17.66	1026319	17.66
08 NOV 2024 - 08 NOV 2024	TENAGA	KUMPULAN WANG PERSARAAN (DIPERBADANKAN) [SSH]	-400	7.01	408002	7.01
06 NOV 2024 - 06 NOV 2024	TENAGA	EMPLOYEES PROVIDENT FUND BOARD [SSH]	2,012	17.58	1021751	17.58

Notice Period is 10th November 2024 – 16th November 2024

Effective Change Date	Stock Name	Buyer/ Seller Name [Classification]	Bought / (Sold) ['000]		No. of Shares After Trade ['000]	
			Total	% Held	Total	% Held
14 NOV 2024 - 14 NOV 2024	TM	KUMPULAN WANG PERSARAAN (DIPERBADANKAN) [SSH]	381	9.052	347357	9.052
12 NOV 2024 - 12 NOV 2024	TM	EMPLOYEE PROVIDENT FUND BOARD (EPF BOARD) [SSH]	282	15.419	591754	15.419
13 NOV 2024 - 13 NOV 2024	TM	KUMPULAN WANG PERSARAAN (DIPERBADANKAN) [SSH]	-288	9.042	346976	9.042
11 NOV 2024 - 11 NOV 2024	TM	EMPLOYEE PROVIDENT FUND BOARD (EPF BOARD) [SSH]	1,967	15.412	591472	15.412
12 NOV 2024 - 12 NOV 2024	TM	KUMPULAN WANG PERSARAAN (DIPERBADANKAN) [SSH]	1,624	9.049	347264	9.049
08 NOV 2024 - 08 NOV 2024	TM	EMPLOYEE PROVIDENT FUND BOARD (EPF BOARD) [SSH]	-1,544	15.361	589505	15.361
11 NOV 2024 - 11 NOV 2024	TM	KUMPULAN WANG PERSARAAN (DIPERBADANKAN) [SSH]	-33	9.006	345640	9.006
07 NOV 2024 - 07 NOV 2024	TM	EMPLOYEE PROVIDENT FUND BOARD (EPF BOARD) [SSH]	-966	15.401	591049	15.401
08 NOV 2024 - 08 NOV 2024	TM	KUMPULAN WANG PERSARAAN (DIPERBADANKAN) [SSH]	2,038	9.007	345673	9.007
06 NOV 2024 - 06 NOV 2024	TM	EMPLOYEE PROVIDENT FUND BOARD (EPF BOARD) [SSH]	-1,712	15.426	592015	15.426
14 NOV 2024 - 14 NOV 2024	TOMYPAK	MR YONG KWET ON [DIR/CEO]	55	23.955	103273	23.955
14 NOV 2024 - 14 NOV 2024	TOMYPAK	MR YONG KWET ON [SSH]	55	23.955	103273	23.955
11 NOV 2024 - 11 NOV 2024	TOMYPAK	MR YONG KWET ON [DIR/CEO]	45	23.942	103218	23.942
11 NOV 2024 - 11 NOV 2024	TOMYPAK	MR YONG KWET ON [SSH]	45	23.942	103218	23.942
13 NOV 2024 - 13 NOV 2024	TOPGLOV	KUMPULAN WANG PERSARAAN (DIPERBADANKAN) [SSH]	543	7.679	615191	7.679
12 NOV 2024 - 12 NOV 2024	TOPGLOV	KUMPULAN WANG PERSARAAN (DIPERBADANKAN) [SSH]	281	7.672	614649	7.672
08 NOV 2024 - 08 NOV 2024	TOPGLOV	KUMPULAN WANG PERSARAAN (DIPERBADANKAN) [SSH]	7,349	7.669	614367	7.669
14 NOV 2024 - 14 NOV 2024	TRIMODE	DATIN SAM CHOI LAI [DIR/CEO]	-5,911	17.124	28426	17.124
14 NOV 2024 - 14 NOV 2024	TRIMODE	DATIN SAM CHOI LAI [SSH]	-5,911	17.124	28426	17.124
14 NOV 2024 - 14 NOV 2024	TRIMODE	DATO' HEW HAN SENG [DIR/CEO]	-6,677	67.206	111562	67.206
14 NOV 2024 - 14 NOV 2024	TRIMODE	DATO' HEW HAN SENG [SSH]	-6,677	67.206	111562	67.206
07 NOV 2024 - 07 NOV 2024	UOADEV	EMPLOYEES PROVIDENT FUND BOARD ("EPF BOARD") [SSH]	190	12.518	328446	12.518
12 NOV 2024 - 12 NOV 2024	UTDPLT	EMPLOYEES PROVIDENT FUND BOARD [SSH]	77	5.675	23539	5.675
11 NOV 2024 - 11 NOV 2024	UTDPLT	EMPLOYEES PROVIDENT FUND BOARD [SSH]	-95	5.657	23463	5.657
08 NOV 2024 - 08 NOV 2024	UTDPLT	EMPLOYEES PROVIDENT FUND BOARD [SSH]	95	5.679	23557	5.679
07 NOV 2024 - 07 NOV 2024	UTDPLT	EMPLOYEES PROVIDENT FUND BOARD [SSH]	-116	5.656	23462	5.656
06 NOV 2024 - 06 NOV 2024	UTDPLT	EMPLOYEES PROVIDENT FUND BOARD [SSH]	-213	5.685	23578	5.685
06 NOV 2024 - 06 NOV 2024	UWC	EMPLOYEES PROVIDENT FUND BOARD [SSH]	467	8.414	92726	8.414
12 NOV 2024 - 12 NOV 2024	UZMA	URUSHARTA JAMAAH SDN. BHD. [SSH]	-43	6.259	27247	6.259
11 NOV 2024 - 12 NOV 2024	VERSATL	MR LIM AH CHAI [SSH]	146	43.29	121256	43.29
11 NOV 2024 - 12 NOV 2024	VERSATL	MR LIM AH CHUAN [SSH]	146	43.29	121256	43.29
11 NOV 2024 - 12 NOV 2024	VERSATL	MR LIM CHOU BU [SSH]	146	43.29	121256	43.29
11 NOV 2024 - 12 NOV 2024	VERSATL	NSK TRADING SDN BHD [SSH]	146	43.29	121256	43.29
08 NOV 2024 - 08 NOV 2024	VERSATL	MR LIM AH CHAI [SSH]	178	43.239	121111	43.239
08 NOV 2024 - 08 NOV 2024	VERSATL	MR LIM AH CHUAN [SSH]	178	43.239	121111	43.239
08 NOV 2024 - 08 NOV 2024	VERSATL	MR LIM CHOU BU [SSH]	178	43.239	121111	43.239
08 NOV 2024 - 08 NOV 2024	VERSATL	NSK TRADING SDN BHD [SSH]	178	43.239	121111	43.239
08 NOV 2024 - 08 NOV 2024	VS	EMPLOYEES PROVIDENT FUND BOARD [SSH]	300	8.788	340174	8.788
07 NOV 2024 - 07 NOV 2024	VS	EMPLOYEES PROVIDENT FUND BOARD [SSH]	-597	8.781	339874	8.781
06 NOV 2024 - 06 NOV 2024	VS					

Alpha**Invest** 25th CELEBRATES ANNIVERSARY



**"Around The World"
theme makes it a
night to remember**

The grand ballroom of Novotel@Stevens in Singapore came alive with grandeur as AlphaInvest (formerly known as ShareInvestor) marked its silver jubilee in spectacular style. Under the spotlights, the **“Around the World”** themed celebration brought together 81 people comprising colleagues from Thailand, Indonesia, Malaysia, and Singapore as well as founding shareholders and former staff, transforming the evening into a vibrant showcase of the company’s regional success story.

The evening’s highlight was a captivating retrospective that chronicled AlphaInvest’s journey from its humble beginnings in 1999 to its current position as a leading regional financial media technology services provider.

AlphaInvest Chairman Patrick Daniel and Group CEO Christopher Lee shared inspiring stories of breakthrough moments and technological milestones, while video montages of the company’s pioneering



Patrick Daniel



Christopher Lee



Lim Dau Hee



(From Left) Kitti Kitifu, Pimpattra Patsadupradit, Janista Taosuwan, Piyanat Kimhamanon, Yongyoot Fupongsiripant, Kasemsant Weerakun, Suparat Fupongsiripant & Sansern Ratanaprapaporn



achievements drew enthusiastic applause. Nostalgic photographs of the company's early days brought back great memories among long-serving staff, many of whom had been part of those early chapters.



Dau Hee & Mohammed Qassem



(L to R) Patrick Daniel, Christopher Lee & Lim Dau Hee



Watie Nordin & Silas Joseph



Ng Wee Heong & Tan Yong Shen



Long Service Awards were presented to Christopher Lee (25 Years), Lim Dau Hee (25 Years), Sheila Low (10 Years), Teo Siew May (20 Years), Andric See, Amir Yusoff & Edward Stanislaus (5 Years).

In a heartfelt speech, Group CEO Christopher Lee traced the company's evolution through its technological breakthroughs, including the launch of the original Shareinvestor.com platform.





(Seated from Left) Katrina del Rosario, Yunita Sari Tan, Poh Lam Huat, Jessie Ho, Tan Yong Sheng & Adelle Chong
(Standing from Left) Edward Stanislaus, Adnes Yeo & Andy Lin



Lavinia Chua



Christopher Lee & Darren Chong



Colin Chan & Edison Lee

The launch of its latest iteration ShareInvestor PRO – unveiled just days before the celebration – served as a powerful bridge between cherished memories and future aspirations for greater innovation.



(From Left) Jared Niang, Annabel Leong, Aaron Leong & Irene Ong



Lian Kok Keong



(From left) Irene Ong, Aaron Leong, Annabel Leong, Jared Niang, Audrey Michelle Thng, Loh Soon Heng, Christopher Lee, Rosa Daniel, Lavinia Chua & Janista Taosuwan



(Seated from Left): Lau Teck Wei, Darren Chong, Anthony Lau, Lew Hui Chin & Ang Shi Chyi

(Standing from Left): Kerwin Chia, Sheila Low, Vivien Ong, Law Kee Chai & Wayne Khoo



(Seated): Andric See, Ng Jin Yng, Daniel Wong
(Standing from Left): Silas Joseph, Ester Ong, Herling Ferdinand & Jay Cheong

The international gathering, with team members dressed in an array of cultural attire, from abayas to kimonos, perfectly captured AlphaInvest's growth from a Singapore startup in the heyday of the dotcom era to a regional digital powerhouse. As colleagues from across borders put up spectacular performances, the atmosphere buzzed with the shared excitement of what the next 25 years will bring.



(From Left): Alan Goh, Vincent Tan, Henry Seah, Shanison Lin & Wayne Khoo



Letticia Wong



Shireen Goh



Ivy Yap



Law Kee Chai & Katrina



(From Left): Nigel Lim, Yanjing, Vivien, Sheila, Adnes, Wee Heong, Dau Hee, Christopher, Kee Chai, Teo Siew May, Katrina, Pang Xin Yi & Hoo Wen Li



(Seated from Left): Mohammed Qassem, Amir Yusoff, Alifya Aini Fauziyah, Nurul Atiqah, Watie Nordin & Aida Norzeti

(Standing from Left): Mufti Nurhadi, Muhamad Nor Aiman, Harris Mulyadi, Ahmad Mustafid, Mohamad Nor Izwan & Arfan Septianto



The Board of Directors of **Capital A Berhad (CAPITALA)** wishes to announce that Asia Aviation Capital Limited,

an indirect wholly owned subsidiary of the Company, has on 20 November 2024, entered into aircraft lease renewal and amendment agreement with AirAsia X Berhad for the leasing of one Airbus A330-300 aircraft bearing manufacturer serial number 1596 and subject to the terms and conditions as stipulated in the Agreement.

[READ MORE](#) 



The Board of Directors of **Cypark Resources Berhad (CYPARK)** is pleased to attach herewith a press release entitled "CYPARK RESOURCES BERHAD AND CHINA TIANYING INC. FORGE PARTNERSHIP TO DEPLOY INNOVATIVE PLASMA WASTE-TO-ENERGY TECHNOLOGY IN MALAYSIA".

[READ MORE](#) 



On behalf of the Board of **NextGreen Global Berhad (NGGB)**, TA Securities wishes to announce that the Board had on even date fixed the issue price for the Private Placement

at RM0.89 per Placement Share. The Issue Price represents a discount of 0.49% to the 5-day VWAP of Nextgreen Shares up to and including 15 November 2024 of RM0.8944, being the last market day immediately preceding the Price-fixing Date.

[READ MORE](#)



The Board of Directors of **Sunsuria Berhad (SUNSURIA)** wishes to announce that the Company had, on 15 November 2024, entered into a conditional shares sale and

purchase agreement with Scenic Starhill Sdn Bhd in relation to the proposed acquisition by the Company of 470,589 ordinary shares in KL City Gateway Sdn Bhd (KLCG), representing 20.00% of the total issued share capital of KLCG, from Scenic Starhill for a total cash consideration of RM10,470,589 . Upon completion of the Proposed Acquisition, the Company's shareholding in KLCG will increase from nil to 20%.

[READ MORE](#)

Upcoming IPO

NAME OF COMPANY	OFFER PERIOD		ISSUE PRICE (Per Ordinary Share)	LISTING SOUGHT	DATE OF LISTING
	OPENING	CLOSING			
SUPREME CONSOLIDATED RESOURCES BHD	28 Oct 2024	15 Nov 2024	RM0.25	ACE MARKET	29 Nov 2024
CROPMATE BERHAD	15 Nov 2024	22 Nov 2024	RM0.20	ACE MARKET	5 Dec 2024

Disclaimer: The information in the Investor Relations page is extracted from individual companies' announcements in www.bursamalaysia.com. The information on this page is provided as a service to readers. We assume no liability for damages resulting from or arising out of the use of such information. Whilst every effort is made to ensure accuracy, the information presented has been simplified for your reading pleasure. Readers are advised to read the original and complete filings on the Bursa Malaysia website at https://www.bursamalaysia.com/market_information/announcements/company_announcement