



## MARKET SENTIMENTS

# 4.4% GDP Growth in 1Q2025 Fortifies Malaysia's Fundamentals – Finance Minister II

page 27



## ALSO

**COMPANY  
SPOTLIGHT**  
**Central Global  
Berhad**

See more on page 06



**From MSWG's  
The Observer  
Make it Count**

See more on pages 32-36



See more on pages 19-25

**04** LEADERBOARD

**05** SHARIAH HOT STOCKS

**08** SHARIAH MOMENTUM UP STOCKS

**10** NON SHARIAH HOT STOCKS

**11** UP TRENDING STOCKS

**12** VALUE STOCKS

**13** GROWTH STOCKS

**15** DIVIDEND STOCKS

**16** BROKERS' CALL

**17** LONG COMPANIES

**31** REGIONAL MARKETS

**37** INSIDER ACTIVITY

**41** INVESTOR RELATIONS

# SHAREINVESTOR®

An AlphaInvest Company

Invest with Knowledge

## INVESTOR PLATFORMS

### Director

Darren Chong

darren.chong@shareinvestor.com

### Business Development Manager

Jay Cheong

jay.cheong@shareinvestor.com

## ADMIN & OPERATIONS

### Senior Executive

Watie Nordin

watie.nordin@shareinvestor.com

### Executive

Silas Emmanuel Joseph

silas.joseph@shareinvestor.com

## PROCESS AUTOMATION & DATA ANALYTICS

### Data Analyst

Lee Khai Bing

## INVESTOR RELATIONS

### Group Managing Director & Publisher

Edward Stanislaus

edward@shareinvestor.com

### Senior Manager

Letticia Wong

letticia.wong@shareinvestor.com

### Manager

Aida Norzeti Talib

aida.norzeti@shareinvestor.com

## ALPHAINVEST HOLDINGS BOARD OF DIRECTORS

### Chairman

| Patrick Daniel

### Group CEO

| Christopher Lee

### Group COO

| Lim Dau Hee

### Group MD

| Shanison Lin



## ShareInvestor Malaysia Sdn. Bhd.

(200001023956) (526564-M)

L15-03 & 03A, PJX HM Shah Tower,  
No 16A, Jalan Persiaran Barat, PJS 52,  
46200 Petaling Jaya, Selangor

Hotline : 603 8681 0580

Mobile : 011 6343 8939

Website : [www.ShareInvestor.com.my](http://www.ShareInvestor.com.my)

[www.alphainvestholdings.com](http://www.alphainvestholdings.com)

[www.facebook.com/ShareInvestorMalaysia](https://www.facebook.com/ShareInvestorMalaysia)

ADVERTISEMENT ENQUIRY

**Invest 246**  
A Weekly e-Publication by SHAREINVESTOR  
ISSUE 246  
FRIDAY 14 MARCH 2025

**What's Next for Steel Hawk?**  
After a stellar IPO and major contract wins in hand...

**Dato' Sharman K Michael**  
Deputy Chairman and Executive Director  
Steel Hawk Berhad

**MARKET SENTIMENTS**  
IRB, MyDigital ID strengthen cooperation to accelerate digital identity adoption  
+  
Gig Workers Bill aims to make SOCISO contribution mandatory - Steven Sim

**Is there an investment opportunity in AMCOR?**

Learn how to identify Hot Stocks using Technical Analysis (TA) and Fundamental Analysis (FA)

**SIGN UP FOR Invest NOW IT'S FREE!!!**

**Click here**

Get market moving news and analyses. Regular columns include **Behind The Action** and **From The Observer**

**Leaderboard • Shariah Hot Stocks • Shariah Momentum Up Stocks • Non Shariah Hot Stocks • Up Trending Stocks • Growth Stocks • Dividend Stocks • Long Companies • Insider Activity • Investor Relations • Regional Markets**

Scan me



Via email, every Friday.

**MARKET SENTIMENTS**  
MALAYSIA'S DIVERSIFIED ECONOMIC STRUCTURE  
GATE DISRUPTED BY RUSSIA-UKRAINE  
Bank Negara Malaysia (BNM) governs and Yum, although Malaysia as a small island, which has always been the court of military conflict in Ukraine is expected via several channels, including digital. But having said that, she also highly diversified economy with various sources of net commodity exports, Malaysia would and crude palm oil prices. The higher Malaysia's trade surplus...

**SHARIAH HOT STOCKS**  
Price & Volume Distribution Charts (as at Yesterday)

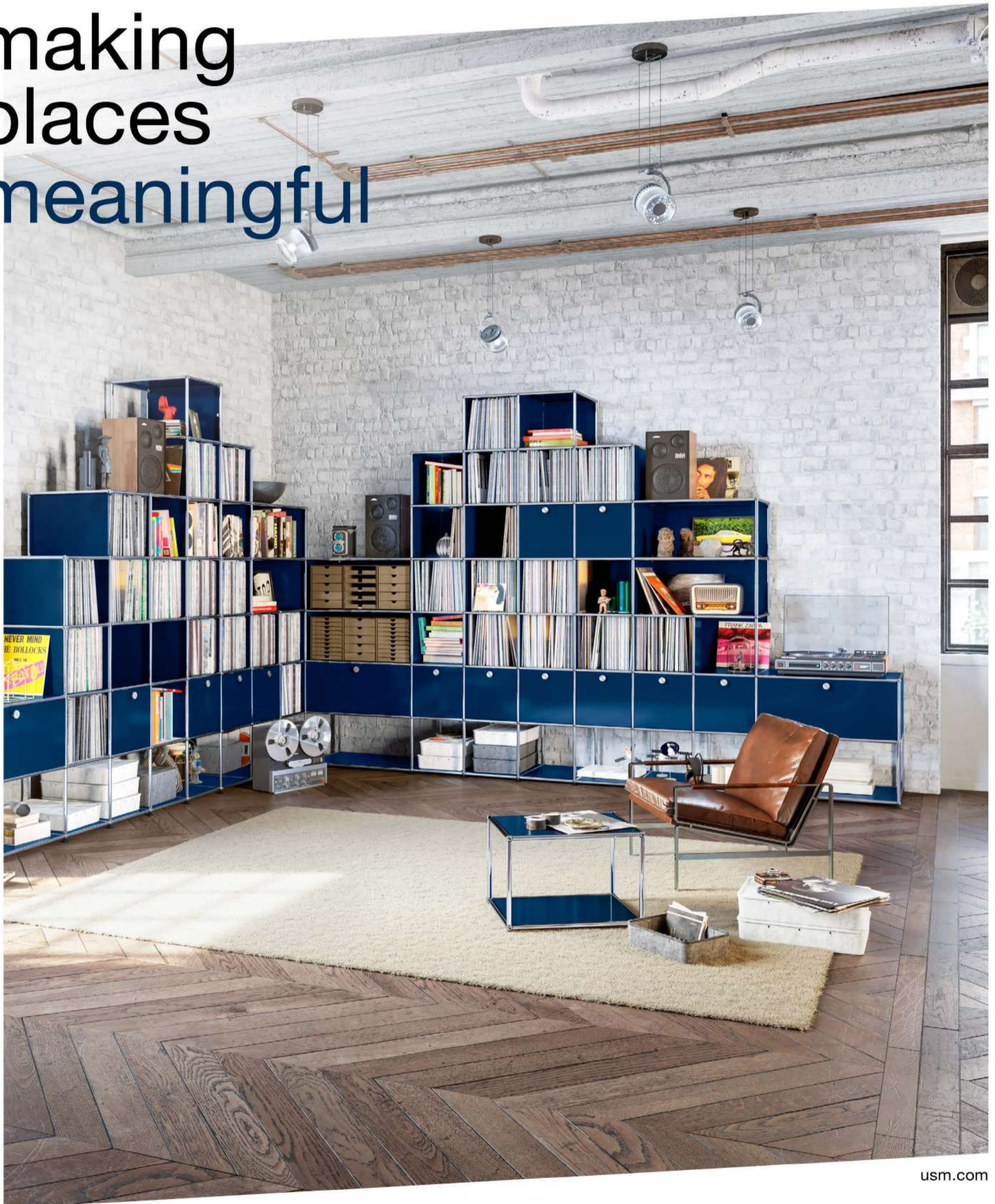
**LONG COMPANIES**  
MALAYSIA AIRPORTS HOLDINGS BERHAD (5014-MY)  
AIRPORT  
Last: 6.880 Change: +0.310 Volume: 16,496  
Open: 6.570 High: 6.810 Low: 6.390

**INSIDER ACTIVITY**  
KCPJ Healthcare Berhad  
The Board of Directors of KCPJ Healthcare Berhad (KCPJ) is pleased to announce that it has today, via Point Zone (M) Sdn Bhd, a wholly-owned subsidiary of KCPJ Healthcare Berhad, issued RM650.0 million in nominal value Sukuk Wakalah pursuant to the Sukuk Wakalah Programme. The Sukuk Wakalah Programme has been assigned a final rating of AA-(C) (stable) by Malaysia Rating Corporation Berhad. Proceeds from the issuance shall be utilized by KCPJ to fund amongst others Shariah-compliant financing activities comprising the expansion, working capital requirements and general corporate purposes of the and general corporate purposes of the and general corporate purposes of the...

**NON SHARIAH HOT STOCK**  
Price & Volume Distribution Charts (as at Yesterday)



# making places meaningful



usm.com

## XTRA

XTRA FURNITURE SDN BHD  
The Gardens Mall, Mid Valley City, Lot S-236 & 237  
Lingkaran Syed Putra, 59200 Kuala Lumpur  
T. +603 2282 9088 | [living@xtrafurniture.com](mailto:living@xtrafurniture.com) | [xtrafurniture.com](http://xtrafurniture.com)  
📍 XTRAFurniture | 🌐 xtrafurnituremsia

[www.shareinvestor.com](http://www.shareinvestor.com) - market data at your fingertips



ShareInvestor WebPro ([www.shareinvestor.com/my](http://www.shareinvestor.com/my))  
Prices > Stock Prices > Bursa > click Stocks tab

1. mouse over Ranking > select Top Active > all Shariah stocks are denoted with an [S] > mouse over Column Layout > select Edit Customs > select Name > select Volume > select Last Done Price > Mouse Over Column Layout > select Custom

2. mouse over Ranking > select Top Turnover > all Shariah stocks are denoted with an [S] > mouse over Column Layout > select Edit Customs > select Name > select Last Done Price > select Value > Mouse Over Column Layout > select Custom
3. mouse over Ranking > select Top Gainers (Over 5 Trading Days) > mouse over Column Layout > select Edit Customs > select Name > select Last Done Price > select 5 Days Change > select 5 Days % Change > Mouse Over Column Layout > select Custom

4. mouse over Ranking > select Top Losers (Over 5 Trading Days)

5. mouse over Ranking > select Top % Gainers (Over 5 Trading Days)

6. mouse over Ranking > select Top % Losers (Over 5 Trading Days)

Shariah Top Actives (as at Yesterday)

Name	Price (RM)	Volume
VELESTO [S]	0.170	455,981.000
TANCO [S]	0.950	340,005.000
NATGATE [S]	1.590	326,779.000
SCABLE [S]	0.020	314,791.000
MYEG [S]	0.895	257,867.000
AVANGAAD [S]	0.275	245,982.000
JAKS [S]	0.105	173,437.000
TAWIN [S]	0.020	167,238.000
SDCG [S]	0.525	150,937.000
PERDANA [S]	0.180	146,143.000

Shariah Top Turnover (as at Yesterday)

Name	Price (RM)	Value (RM)
TENAGA [S]	14.000	80,830,532
TM [S]	6.960	58,839,835
NATGATE [S]	1.590	51,374,759
GAMUDA [S]	4.530	47,368,473
KPJ [S]	2.900	39,886,537
SUNCON [S]	5.150	33,043,839
TANCO [S]	0.950	32,579,001
SUNWAY [S]	4.830	25,131,597
PMETAL [S]	5.030	24,839,602
INARI [S]	1.900	23,592,350

Top Gainers (over 5 Trading days as at Yesterday)

Name	Price (RM)	Change (RM)
DLADY	30.100	+0.700
LPI	15.000	+0.620
UTDPLT	22.880	+0.560
HEIM	28.300	+0.480
F&N	27.240	+0.440
KLUANG	5.900	+0.340
AYER	7.980	+0.280
NSOP	4.550	+0.240
GASMSIA	4.350	+0.210
PETRONM	3.690	+0.210

Top % Gainers (over 5 Trading days as at Yesterday)

Name	Price (RM)	Change (%)
HONGSENG	0.010	+100.00
MTRONIC	0.015	+50.00
SG	0.015	+50.00
ALAM	0.035	+40.00
MAXLAND	0.045	+28.57
AGRICOR	0.490	+27.27
ECOHLD	0.030	+20.00
BERTAM	0.165	+17.86
RAPID	0.675	+17.39
CHUAN	0.345	+16.95

Top Losers (over 5 Trading days as at Yesterday)

Name	Price (RM)	Change (RM)
NESTLE	80.000	-4.000
MPI	18.000	-3.700
KLK	19.620	-1.080
PETDAG	19.040	-0.940
PPB	11.600	-0.700
SAM	3.850	-0.610
PIE	4.090	-0.590
PCHEM	3.320	-0.550
ALLIANZ	18.880	-0.500
HLBANK	19.780	-0.500

Top % Losers (over 5 Trading days as at Yesterday)

Name	Price (RM)	Change (%)
ANNUM	0.005	-90.00
SCABLE	0.020	-71.43
SNTORIA	0.005	-50.00
MERIDIAN	0.020	-42.86
PARKWD	0.060	-33.33
SMTRACK	0.010	-33.33
TIMWELL	0.365	-25.51
G3	0.015	-25.00
WAJA	0.045	-25.00
XDL	0.015	-25.00

**Disclaimer:** The information on this page is provided as a service to readers. It does not constitute financial advice and/or any investment recommendations. Past performance is not indicative of future results. We assume no liability for damages resulting from or arising out of the use of such information. It would be best if you did your own research to make your personal investment decisions wisely or consult a licenced investment advisor.

Price & Volume Distribution Charts (as at Yesterday)

Technical Analysis

**DEFINITION:** Shariah compliant stocks with Technical Analysis showing 5-days & 10-days Moving Average Price below Yesterday's Close over past 3 days and with Volume Spike.

**CHART GUIDE:** Volume Distribution Chart is a statistical interpretation of the current sentiment on each stock in graphical format. The highest bar categorized as >150k is likely to be traded by institutions or super dealers, while the lowest bar categorized as <15k usually represents retail investors. "Buy Up" refers to more buyers snatching up the lots queued at selling price. "Sell Down" refers to sellers selling their shares to the buying queue



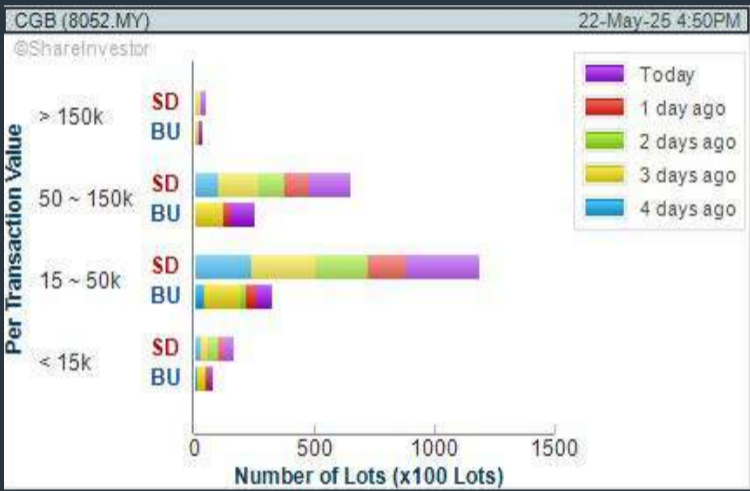
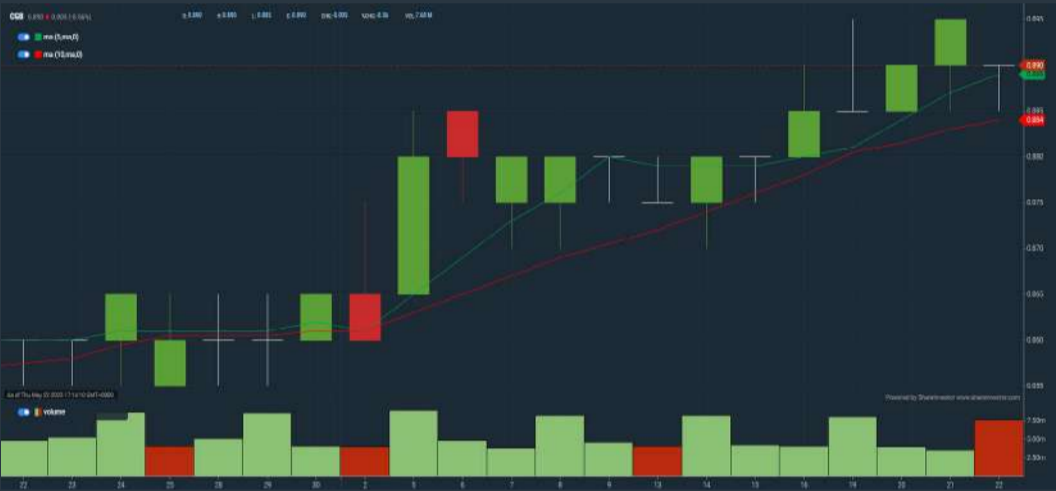
ShareInvestor WebPro > Screener > Market Screener (FA & TA)>select BURSA>add criteria  
**A. Criteria**  
> click Add Criteria  
• Technical Analysis Conditions tab select (i) Moving Average Below Close (ii) Volume Spike  
• Fundamental Analysis Conditions tab >select (iii) Revenue  
• Prices & Other Conditions tab > select (iv) Is Shariah Compliant  
• Technical Analysis Conditions tab select (v) Moving Average Below Close  
• Prices & Other Conditions tab > select (vi) Last Done Price  
• Technical Analysis Conditions tab select (vii) Moving Average Below Close

**B. Conditions (Criteria Filters)**  
1. Moving Average Below Close - select (MA) type (5) below close price for type (3) days  
2. Volume Spike – Volume type (1) greater than type (5) days average  
3. Revenue ("000) - select (more than) type (1) for the past select (1) financial year(s)  
4. Is Shariah Compliant – select **Yes**  
5. Moving Average Below Close - select (MA) type (10) below close price for type (3) days  
6. Last Done Price - select (more than) type (0.3)  
7. Moving Average Below Close - select (EMA) type (5) below close price for type (3) days

> click Save Template > Create New Template type (Shariah Hot Stocks) > click Create  
> click Save Template as > select Shariah Hot Stocks > click Save  
> click Screen Now (may take a few minutes)  
> Sort By: Select (Vol) Select (Desc)  
> Mouse over stock name > Charts > click C² Charts or Volume Distribution

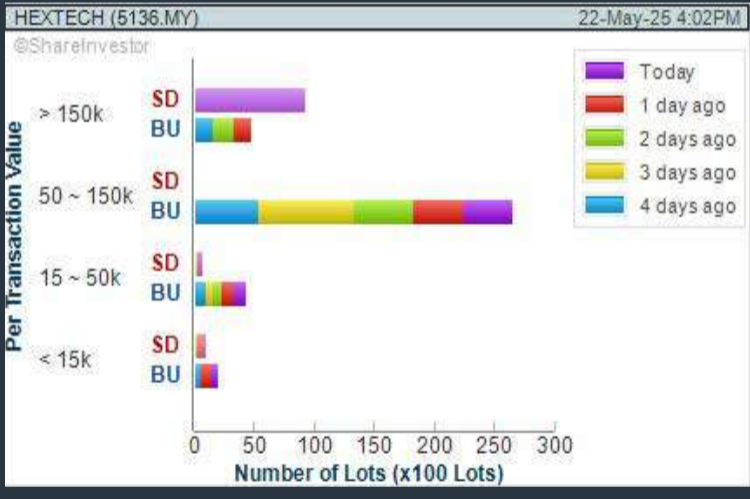
CENTRAL GLOBAL BERHAD (8052)  
C² Chart

Analysis



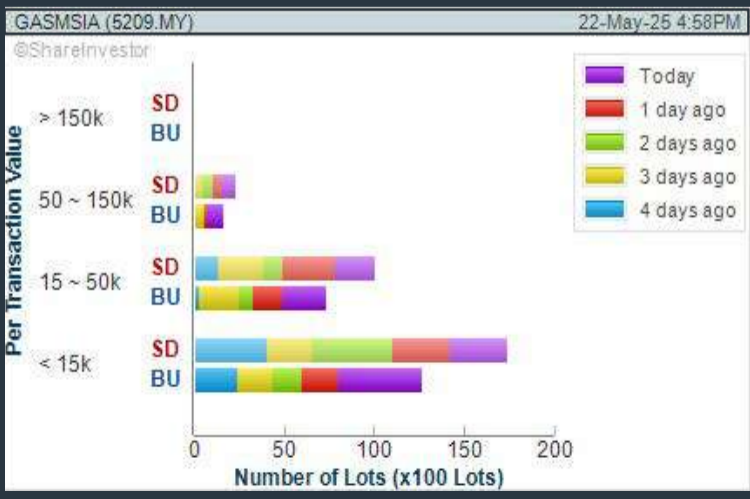
HEXTAR TECHNOLOGIES SOLUTIONS BERHAD (5136)  
C² Chart

Analysis



GAS MALAYSIA BERHAD (5209)  
C² Chart

Analysis



**Disclaimer:** The information on this page is provided as a service to readers. It does not constitute financial advice and/or any investment recommendations. Past performance is not indicative of future results. We assume no liability for damages resulting from or arising out of the use of such information. It would be best if you did your own research to make your personal investment decisions wisely or consult a licenced investment advisor.

COMPANY BACKGROUND

Central Global Berhad is an investment holding company. Its subsidiaries' principal businesses include manufacturing and sales of self-adhesive label stocks and tapes; construction of buildings and engineering projects; contractors for infrastructure and trading of building materials; provision of information technology and related services; buying, selling, renting and operating self-owned or leased real estate, residential buildings and land; operation of general facilities that produce electric energy and construction of power plants.



Analysis

Select Counter: Bursa

CGB (8052.MY)

View

Free Trial

Broker's Call

CGB CENTRAL GLOBAL BERHAD

Updated at 22 May 2025 17:31

Last (MYR): 0.890	Change: -0.005	High: 0.890	Remarks: s
	Change (%): -0.56	Low: 0.885	
Open	0.890	Yesterday's Close	0.895
Buy Price	0.880	Sell Price	0.890
Buy Volume (00)	800	Sell Volume (00)	1,389
Cumulative Volume (00)	76,774	Cumulative Value	6,813,339

Financial Analysis

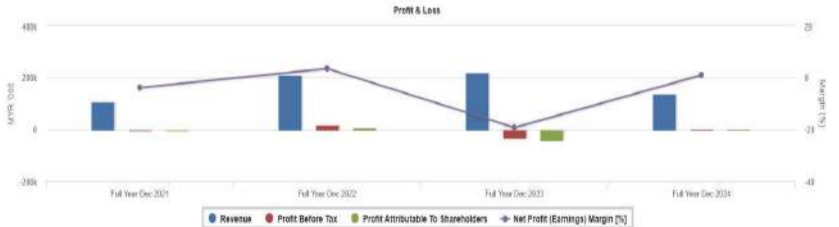
<b>Revenue Growth</b> Revenue down sharply in most recent year (> 25%)	<b>Profit Growth</b> Profit turnaround in most recent year
<b>Current Ratio</b> The company is well-positioned to cover its short-term obligations with its current assets (ratio between 1.5 to 10) for 3 consecutive years	<b>Debt to Cashflow</b> The company has negative cash flow from operations in most recent year
<b>Free Cash Flow</b> Negative free cash flow for two years or more	<b>Gross Profit Margin</b> Low gross profit margin for 3 years
<b>Net Earnings Margin</b> Low net profit margin for most recent year	<b>Return on Assets (ROA)</b> ROA is decreasing by 5% a year over the past 36 months.
<b>Return on Equity (ROE)</b> ROE is decreasing by 10% a year over the past 36 months	

Excellent Good Neutral Be Alert Watch Out



Historical Financials

Profit & Loss (MYR '000)



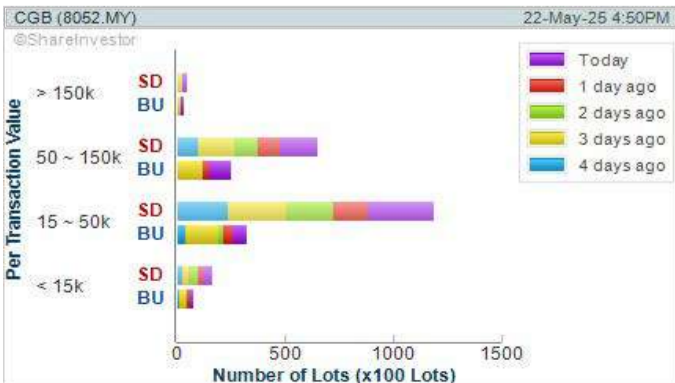
WebPro 9-Days Free Trial Registration (worth RM10) Sign Up Now



Key Statistics with Total Shareholder Returns

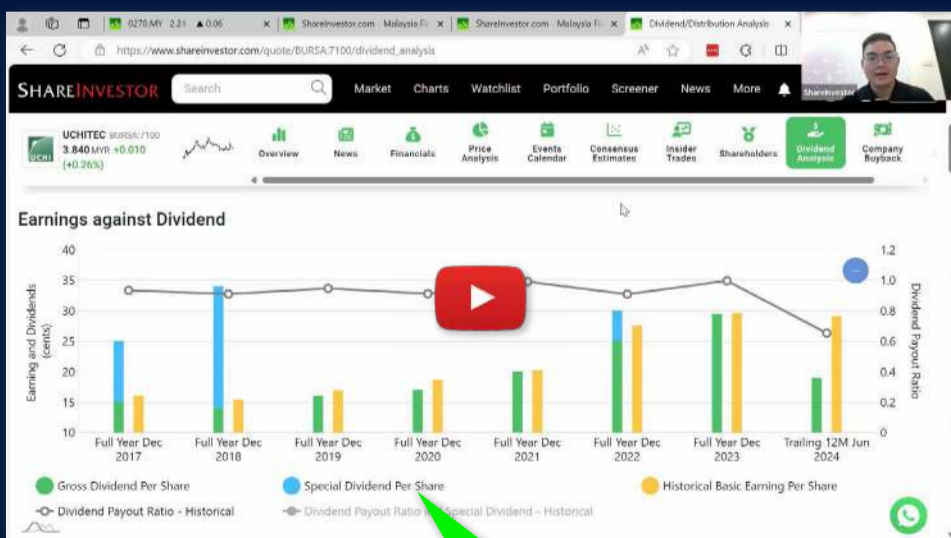
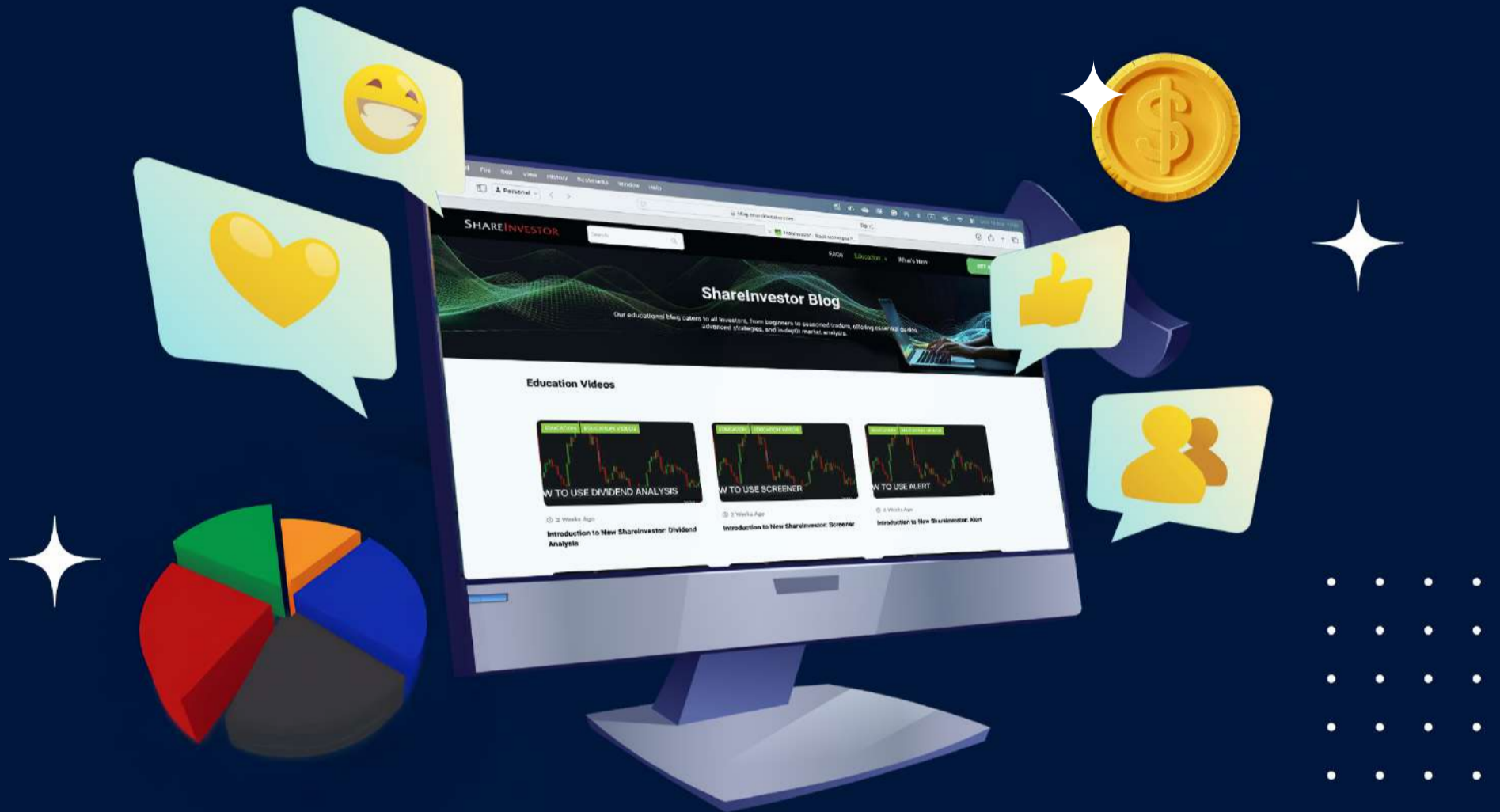
Period		Dividend Received	Capital Appreciation	Total Shareholder Return	
Short Term Return	5 Days	-	+0.010		+1.14 %
	10 Days	-	+0.010		+1.14 %
	20 Days	-	+0.030		+3.49 %
Medium Term Return	3 Months	-	+0.010		+1.14 %
	6 Months	-	+0.050		+5.95 %
	1 Year	-	+0.060		+7.23 %
Long Term Return	2 Years	-	+0.583		+189.90 %
	3 Years	-	+0.731		+459.75 %
	5 Years	-	+0.826		+1290.62 %
Annualised Return	Annualised	-	-		+69.29 %

Disclaimer: The information on this page is provided as a service to readers. It does not constitute financial advice and/or any investment recommendations. Past performance is not indicative of future results. We assume no liability for damages resulting from or arising out of the use of such information. It would be best if you did your own research to make your personal investment decisions wisely or consult a licenced investment advisor.



**SHAREINVESTOR®**  
An AlphaInvest Company

# Ultimate Guide to use **ShareInvestor**



**Watch  
now!**

## YOU WILL LEARN HOW TO USE:

- Company Financials
  - Market Screener
  - Company Insider Trades
  - Dividend Analysis
  - Consensus Estimation
- and more...**

Price & Volume Distribution Charts (as at Yesterday)

Technical Analysis

**DEFINITION:** Shariah compliant stocks with Technical Analysis showing Bullish Momentum and Price Uptrend. The share price closed at the highest price yesterday. The typical price was higher than the previous day's typical price.

**CHART GUIDE:** Volume Distribution Chart is a statistical interpretation of the current sentiment on each stock in graphical format. The highest bar categorized as >150k is likely to be traded by institutions or super dealers, while the lowest bar categorized as <15k usually represents retail investors. "Buy Up" refers to more buyers snatching up the lots queued at selling price. "Sell Down" refers to sellers selling their shares to the buying queue.

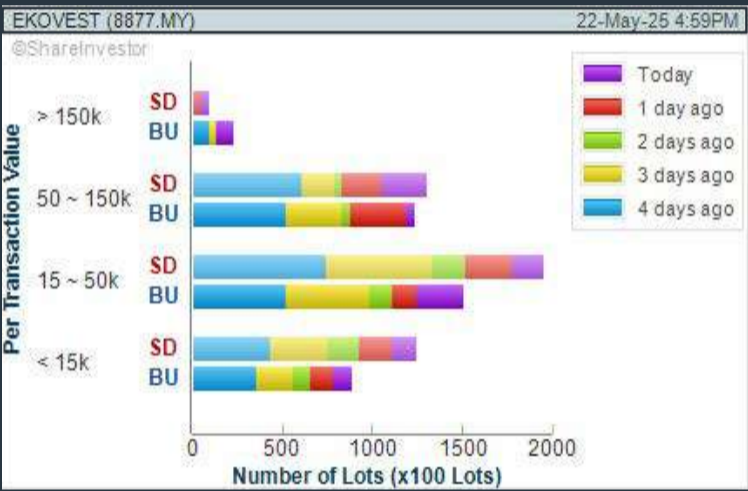


- ShareInvestor WebPro > Screener > Market Screener (FA & TA)>select BURSA>add criteria
- A. Criteria**
- > click Add Criteria
  - Fundamental Analysis Conditions tab >select (i) Revenue
  - Technical Analysis Conditions tab select (ii) Average Volume
  - Prices & Other Conditions tab > select (iii) Last Done Price
  - Prices & Other Conditions tab > select (iv) Is Shariah Compliant
  - Technical Analysis Conditions tab select (v) RSI Overbought
  - Technical Analysis Conditions tab select (vi) Moving Average Below Close
  - Technical Analysis Conditions tab select (vii) CCI Overbought

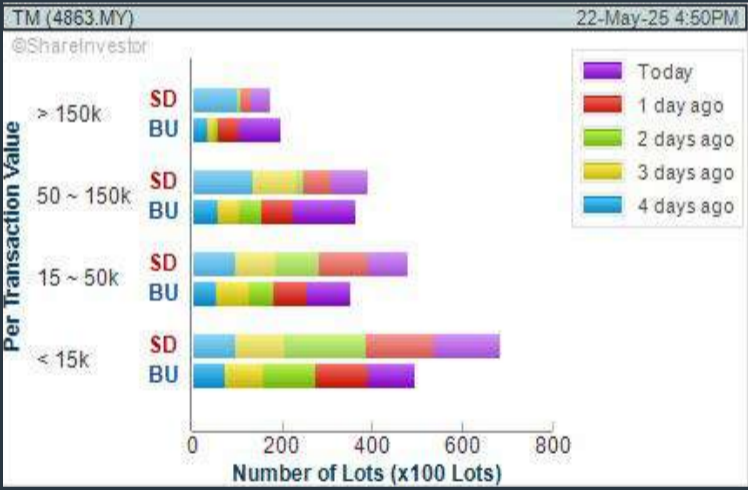
- B. Conditions (Criteria Filters)**
1. Revenue (\*000) - select (more than) type (1) for the past select (1) financial year(s)
  2. Average Volume - type (1) days average volume greater than type (10000) lots
  3. Last Done Price - select (more than) type (0.3)
  4. Is Shariah Compliant - select Yes
  5. RSI Overbought - select RSI 1 above 99 for 1 days
  6. Moving Average Below Close - select (MA) type (10) below close price for type (1) days
  7. CCI Overbought - select CCI (2) above (0) for (1) days

- > click Save Template > Create New Template type (Shariah Momentum Up Stocks) > click Create
- > click Save Template as > select Shariah Momentum Up Stocks > click Save
- > click Screen Now (may take a few minutes)
- Sort By: Select (Vol) Select (Desc)
- Mouse over stock name > Charts > click C² Charts tab or Volume Distribution

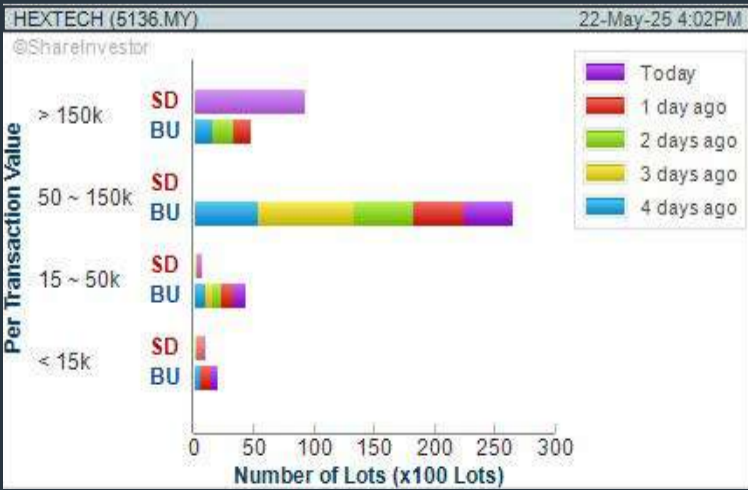
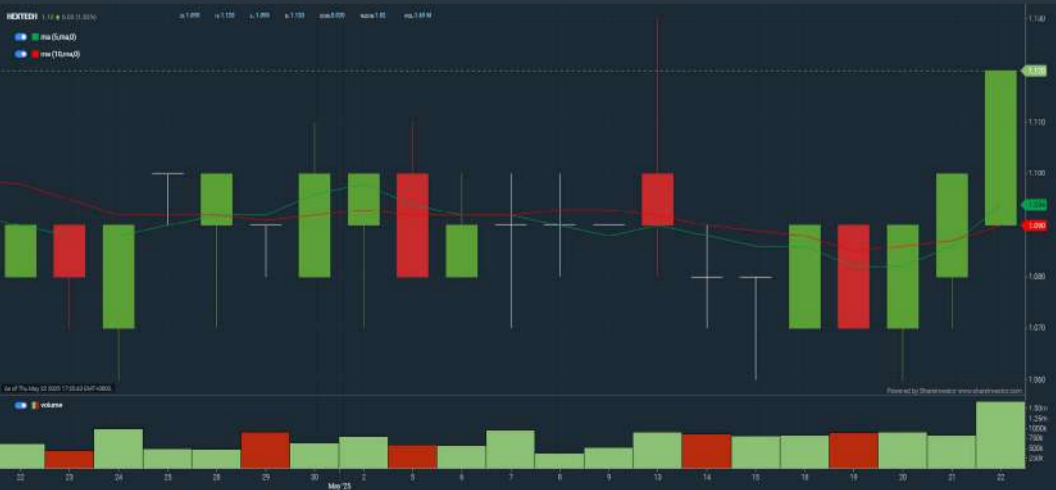
EKOVEST BERHAD (8877)  
C² Chart



TELEKOM MALAYSIA BERHAD (4863)  
C² Chart



HEXTAR TECHNOLOGIES SOLUTIONS BERHAD (5136)  
C² Chart

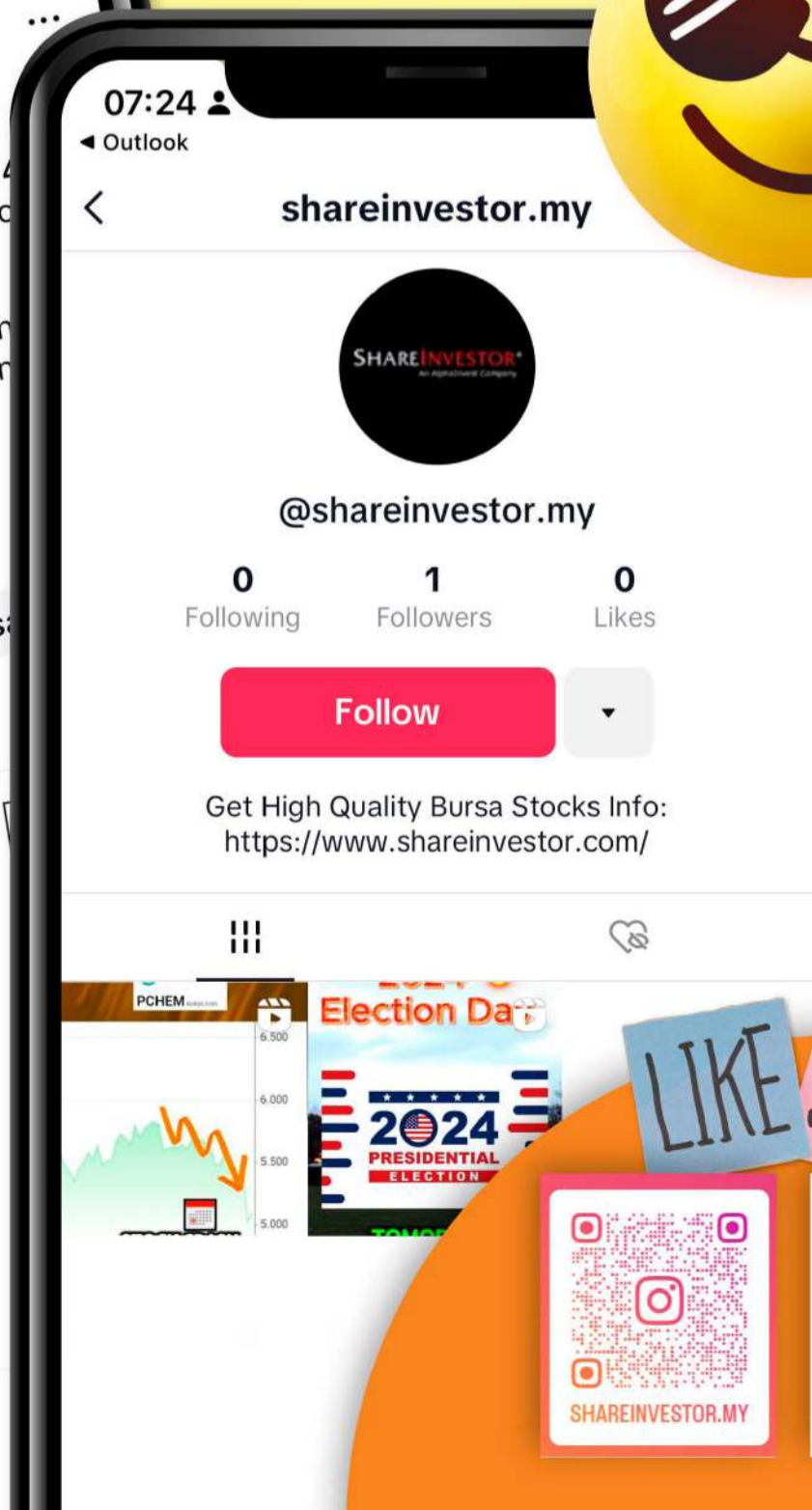
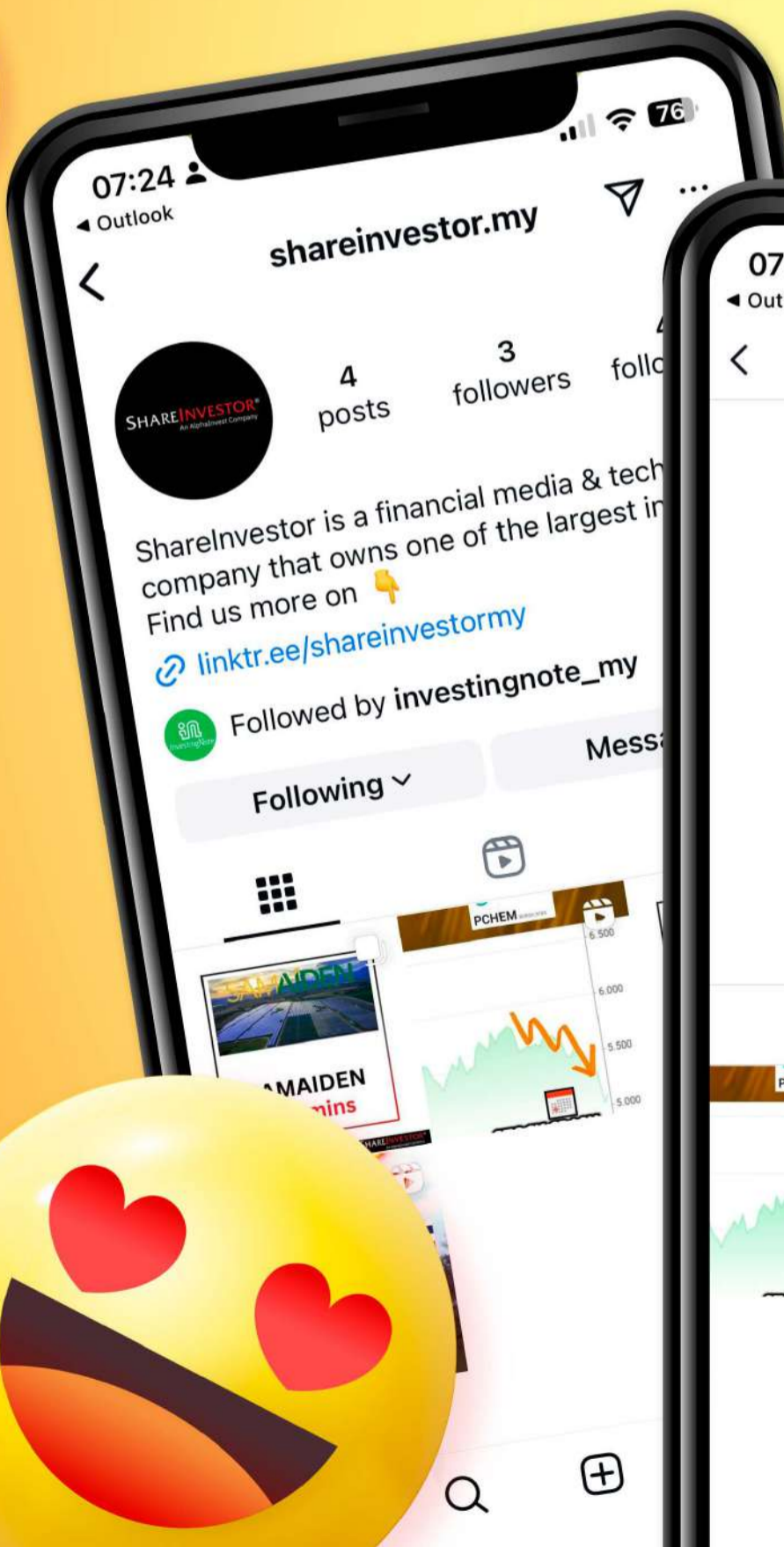


**Disclaimer:** The information on this page is provided as a service to readers. It does not constitute financial advice and/or any investment recommendations. Past performance is not indicative of future results. We assume no liability for damages resulting from or arising out of the use of such information. It would be best if you did your own research to make your personal investment decisions wisely or consult a licenced investment advisor.

**SHAREINVESTOR®**  
An AlphaInvest Company

# We're Officially on TikTok & Instagram!

Follow us now for more information!



Price & Volume Distribution Charts (as at Yesterday)

Technical Analysis

**DEFINITION:** Stocks with Technical Analysis showing 5-days & 10-days Moving Average Price below Close over past 1 days and with Volume Spike

**CHART GUIDE:** Volume Distribution Chart is a statistical interpretation of the current sentiment on each stock in graphical format. The highest bar categorized as >150k is likely to be traded by institutions or super dealers, while the lowest bar categorized as <15k usually represents retail investors. "Buy Up" refers to more buyers snatching up the lots queued at selling price. "Sell Down" refers to sellers selling their shares to the buying queue.



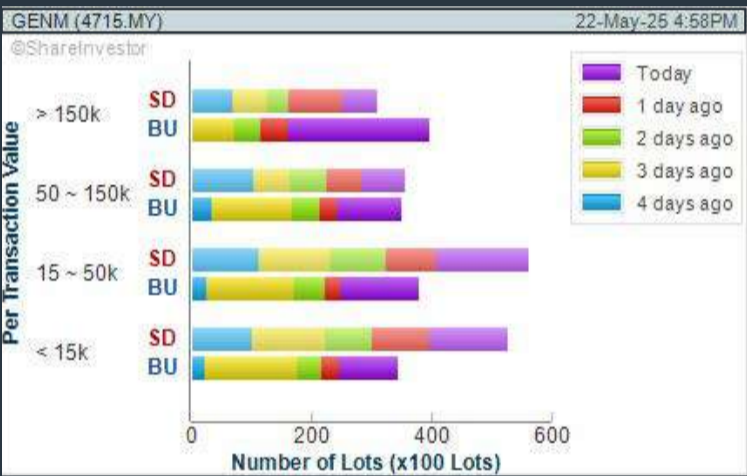
- ShareInvestor WebPro > Screener > Market Screener (FA & TA) > select BURSA > add criteria
- A. Criteria**
- > click Add Criteria
  - Technical Analysis Conditions tab select (i) Moving Average Below Close (ii) Volume Spike
  - Fundamental Analysis Conditions tab >select (iii) Revenue
  - Prices & Other Conditions tab > select (iv) Is Shariah Compliant
  - Technical Analysis Conditions tab select (v) Moving Average Below Close
  - Prices & Other Conditions tab > select (vi) Last Done Price
  - Technical Analysis Conditions tab select (vii) Moving Average Below Close

- B. Conditions (Criteria Filters)**
1. Moving Average Below Close - select (MA) type (5) below close price for type (3) days
  2. Volume Spike - Volume type (1) greater than type (5) days average
  3. Revenue ("000) - select (more than) type (1) for the past select (1) financial year(s)
  4. Is Shariah Compliant - select NO
  5. Moving Average Below Close - select (MA) type (10) below close price for type (1) days
  6. Last Done Price - select (more than) type (0.3)
  7. Moving Average Below Close - select (EMA) type (5) below close price for type (1) days

- > click Save Template > Create New Template type (Non-Shariah Hot Stocks) > click Create
  - > click Save Template as > select Non-Shariah Hot Stocks > click Save
  - > click Screen Now (may take a few minutes)
- Sort By: Select (Vol) Select (Desc)
- Mouse over stock name > Charts > click C² Charts tab or Volume Distribution

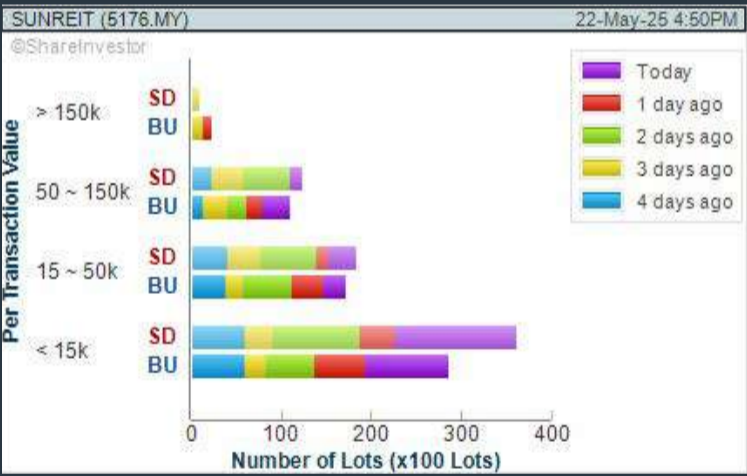
GENTING MALAYSIA BERHAD (4715)  
C² Chart

Analysis



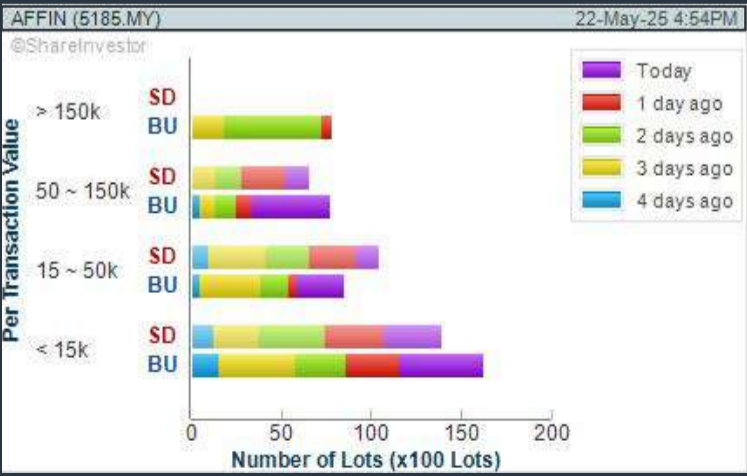
SUNWAY REAL ESTATE INVT TRUST (5176)  
C² Chart

Analysis



AFFIN BANK BERHAD (5185)  
C² Chart

Analysis



**Disclaimer:** The information on this page is provided as a service to readers. It does not constitute financial advice and/or any investment recommendations. Past performance is not indicative of future results. We assume no liability for damages resulting from or arising out of the use of such information. It would be best if you did your own research to make your personal investment decisions wisely or consult a licenced investment advisor.

Price & Volume Distribution Charts (Over 3 trading days as at Yesterday)

Technical Analysis

DEFINITION: Stocks with Technical Analysis showing Bullish Momentum and Price Uptrend

CHART GUIDE: Volume Distribution Chart is a statistical interpretation of the current sentiment on each stock in graphical format. The highest bar categorized as >150k is likely to be traded by institutions or super dealers, while the lowest bar categorized as <15k usually represents retail investors. "Buy Up" refers to more buyers snatching up the lots queued at selling price. "Sell Down" refers to sellers selling their shares to the buying queue.



ShareInvestor WebPro > Screener > Market Screener (FA & TA) > select BURSA > add criteria

**A. Criteria**

- > click Add Criteria
- Fundamental Analysis Conditions tab > select (i) Revenue
- Technical Analysis Conditions tab select (ii) Moving Average Below Close
- Technical Analysis Conditions tab select (iii) Average Volume
- Prices & Other Conditions tab > select (iv) Last Done Price
- Technical Analysis Conditions tab select (v) Moving Average Below Close
- Technical Analysis Conditions tab select (v) Moving Average Bullish Crossover

**B. Conditions**

1. Revenue - select (more than) type (1) for the past select (1) financial year(s)
2. Moving Average Below Close - select (MA) type (20) below close price for type (1) days
3. Average Volume - type (5) days average volume type (10000) lots
4. Last Done Price - select (more than) type (0.3)
5. Moving Average Below Close - select (MA) type (10) below close price for type (1) days
6. Moving Average Bullish Crossover - select (MA) type (5) crossed above select (MA) type (10)

> click Save Template > Create New Template type (Non-Shariah Up-Trending Stocks) > click Create Click Save Template As > select Non-Shariah Up Trending Stocks > click Save

> click Screen Now (may take a few minutes)

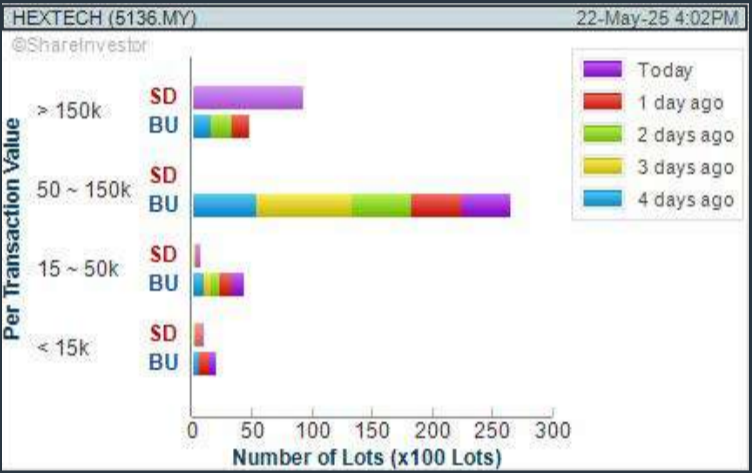
Sort By: Select (Vol) Select (Desc)

Mouse over stock name > Charts > click C² Charts tab or Volume Distribution

HEXTAR TECHNOLOGIES SOLUTIONS BERHAD (5136)

Analysis

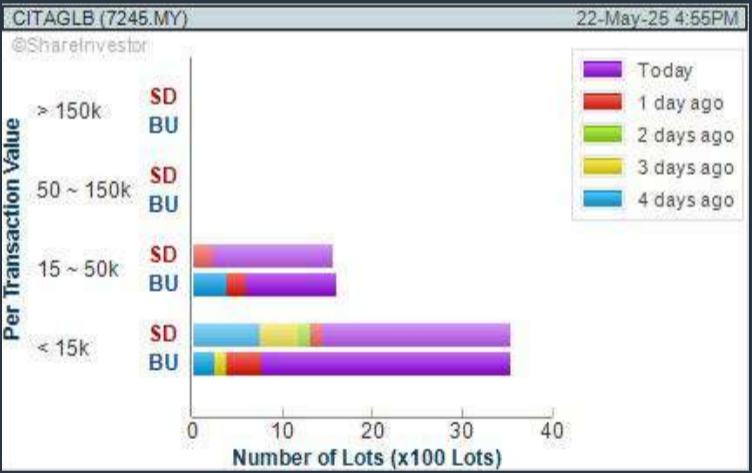
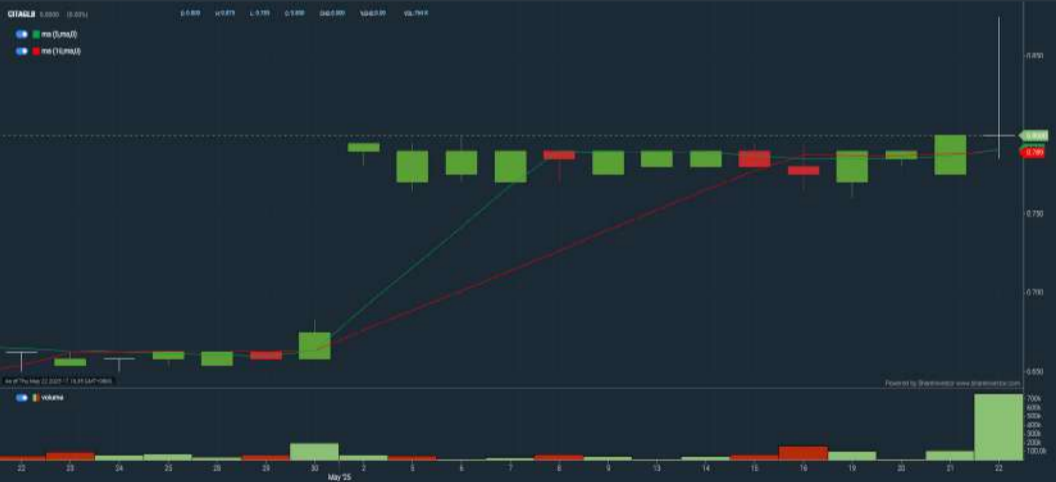
C² Chart



CITAGLOBAL BERHAD (7245)

Analysis

C² Chart



Disclaimer: The information on this page is provided as a service to readers. It does not constitute financial advice and/or any investment recommendations. Past performance is not indicative of future results. We assume no liability for damages resulting from or arising out of the use of such information. It would be best if you did your own research to make your personal investment decisions wisely or consult a licenced investment advisor.

CHECK OUT

SHAREINVESTOR

**BROKERS' CALL**

Weekly Buy/Sell/Hold calls from leading Malaysian Brokerages.

Go To Brokers' Call

Price & Total Shareholder Return (as at Yesterday)

Fundamental Analysis

**DEFINITION:** Share price of a company trading at a lower price as compared to its fundamentals (FA) such as financial performance and dividend, allowing it to be attractive to value investors.

**CHART GUIDE:** Total Shareholder Return (TSR) combines share price appreciation and dividend distributions paid to show the total return to the shareholder expressed as a percentage.



ShareInvestor WebPro > Screener > Market Screener (FA & TA) > select BURSA > add criteria

**A. Criteria**

- > click Add Criteria
- Fundamental Analysis Conditions tab (i) Price Earnings Ratio
- Fundamental Analysis Conditions tab >select (ii) CAGR of Net Earnings
- Fundamental Analysis Conditions tab >select (iii) Net Debt To Equity
- Fundamental Analysis Conditions tab >select (iv) Return On Equity (ROE)

**B. Conditions**

1. Price Earnings Ratio - select (less than) type (15) times now
2. CAGR of Net Earnings - select (more than) type (10) % for the past type (3) financial year(s)
3. Net Debt To Equity – select (less than) type (1) for the past select (1) financial year(s)
4. Return On Equity (ROE) – select (more than) type (10) % for the past select (1) financial year(s)

- > click Save Template > Create New Template type (Value Stock) > click Create
- > click Save Template as > select Value Companies > click Save
- > click Screen Now (may take a few minutes)
- Sort by: Select (PE Ratio) Select (Ascending)
- > Mouse over stock name > Factsheet > looking for Total Shareholder Return
- > Mouse over stock name > Charts > click C2 Charts tab

CRESCENDO CORPORATION BERHAD (6718)

C² Chart

Analysis



CRESNDO (6718.MY)		Dividend Received	Capital Appreciation	Total Shareholder Return	
Short Term Return	5 Days	-	+0.040		+3.36 %
	10 Days	-	+0.050		+4.24 %
	20 Days	-	+0.050		+4.24 %
Medium Term Return	3 Months	-	-0.106		-7.83 %
	6 Months	-	-0.057		-4.43 %
	1 Year	-	+0.101		+8.55 %
Long Term Return	2 Years	-	+0.078		+249.43 %
	3 Years	-	+0.072		+243.58 %
	5 Years	-	+0.056		+348.91 %
Annualised Return	Annualised	-	-		+35.03 %

INGENIEUR GUDANG BERHAD (5178)

C² Chart

Analysis



INGENIEU (5178.MY)		Dividend Received	Capital Appreciation	Total Shareholder Return	
Short Term Return	5 Days	-	+0.005		+16.67 %
	10 Days	-	-		-
	20 Days	-	-		-
Medium Term Return	3 Months	-	-0.020		-36.36 %
	6 Months	-	-0.005		-12.50 %
	1 Year	-	-0.035		-50.00 %
Long Term Return	2 Years	-	-0.065		-65.00 %
	3 Years	-	-0.105		-75.00 %
	5 Years	-	-0.020		-36.36 %
Annualised Return	Annualised	-	-		-6.64 %

SOLID AUTOMOTIVE BHD (5242)

C² Chart

Analysis



SOLID (5242.MY)		Dividend Received	Capital Appreciation	Total Shareholder Return	
Short Term Return	5 Days	-	-0.015		-8.82 %
	10 Days	-	-0.005		-3.12 %
	20 Days	-	-0.005		-3.12 %
Medium Term Return	3 Months	-	-0.025		-13.89 %
	6 Months	-	-0.025		-13.89 %
	1 Year	-	-0.030		-16.22 %
Long Term Return	2 Years	-	-0.030		-16.22 %
	3 Years	-	-0.030		-16.22 %
	5 Years	-	-0.065		-29.55 %
Annualised Return	Annualised	-	-		-6.76 %

**Disclaimer:** The information on this page is provided as a service to readers. It does not constitute financial advice and/or any investment recommendations. Past performance is not indicative of future results. We assume no liability for damages resulting from or arising out of the use of such information. It would be best if you did your own research to make your personal investment decisions wisely or consult a licenced investment advisor.

Price & Total Shareholder Return (as at Yesterday)

Fundamental Analysis

**DEFINITION:** Company revenue is growing and making good quality of earnings with positive Free Cash Flow.

**CHART GUIDE:** Total Shareholder Return (TSR) combines share price appreciation and distributions paid to show the total return to the shareholder expressed as a percentage.



ShareInvestor WebPro > Screener > Market Screener (FA & TA) > select BURSA > add criteria

**A. Criteria**

1. Fundamental Analysis Conditions tab >select (i) Free Cash Flow, (ii) Revenue Growth, (iii) Gross Profit (Earnings) Margin, (iv) Quality of Earnings, (v) Total Shareholder Returns, > click Add Criteria

2. Fundamental Analysis Conditions tab >select (vi) Total Shareholder Returns > click Add Criteria

**B. Conditions (Criteria Filters)**

1. Free Cash Flow - select (more than) type (1) for the past select (1) financial year(s)

2. Revenue Growth - select (more than) type (1) for the past select (1) financial year(s)

3. Gross Profit (Earnings) Margin - select (more than) type (30) % for the past select (1) financial year(s)

4. Quality of Earnings - select (more than) type (1) for the past select (1) financial year(s)

5. Total Shareholder Return - -- select (more than) type (5) % for the past select (3) financial year(s)

6. Total Shareholder Return - -- select (more than) type (5) % for the past select (5) financial year(s)

> click Save Template > Create New Template type (Growth Companies) > click Create

> click Save Template as > select Growth Companies > click Save

> click Screen Now (may take a few minutes)

> Sort By: Select (Revenue Growth) Select (Desc)

> Mouse over stock name > Factsheet > looking for Total Shareholder Return

COUNTRY VIEW BERHAD (5049)

C² Chart

Analysis



Period		Dividend Received	Capital Appreciation	Total Shareholder Return	
Short Term Return	5 Days	-	-0.320		-12.31 %
	10 Days	-	-0.200		-8.06 %
	20 Days	-	+0.450		+24.59 %
Medium Term Return	3 Months	-	+0.420		+22.58 %
	6 Months	-	+0.530		+30.29 %
	1 Year	-	+0.680		+62.86 %
Long Term Return	2 Years	-	+1.350		+145.16 %
	3 Years	-	+1.210		+113.08 %
	5 Years	0.150	+1.230		+131.43 %
Annualised Return	Annualised	-	-		+16.27 %

SIGNATURE INTERNATIONAL BERHAD (7246)

C² Chart

Analysis



Period		Dividend Received	Capital Appreciation	Total Shareholder Return	
Short Term Return	5 Days	-	-		-
	10 Days	-	-0.010		-0.71 %
	20 Days	-	-0.010		-0.71 %
Medium Term Return	3 Months	-	-0.170		-10.83 %
	6 Months	-	-0.070		-4.76 %
	1 Year	-	-0.020		-1.41 %
Long Term Return	2 Years	-	+0.110		+8.53 %
	3 Years	-	+0.715		+104.38 %
	5 Years	-	+1.230		+773.53 %
Annualised Return	Annualised	-	-		+52.45 %

IFCA MSC BERHAD (0023)

C² Chart

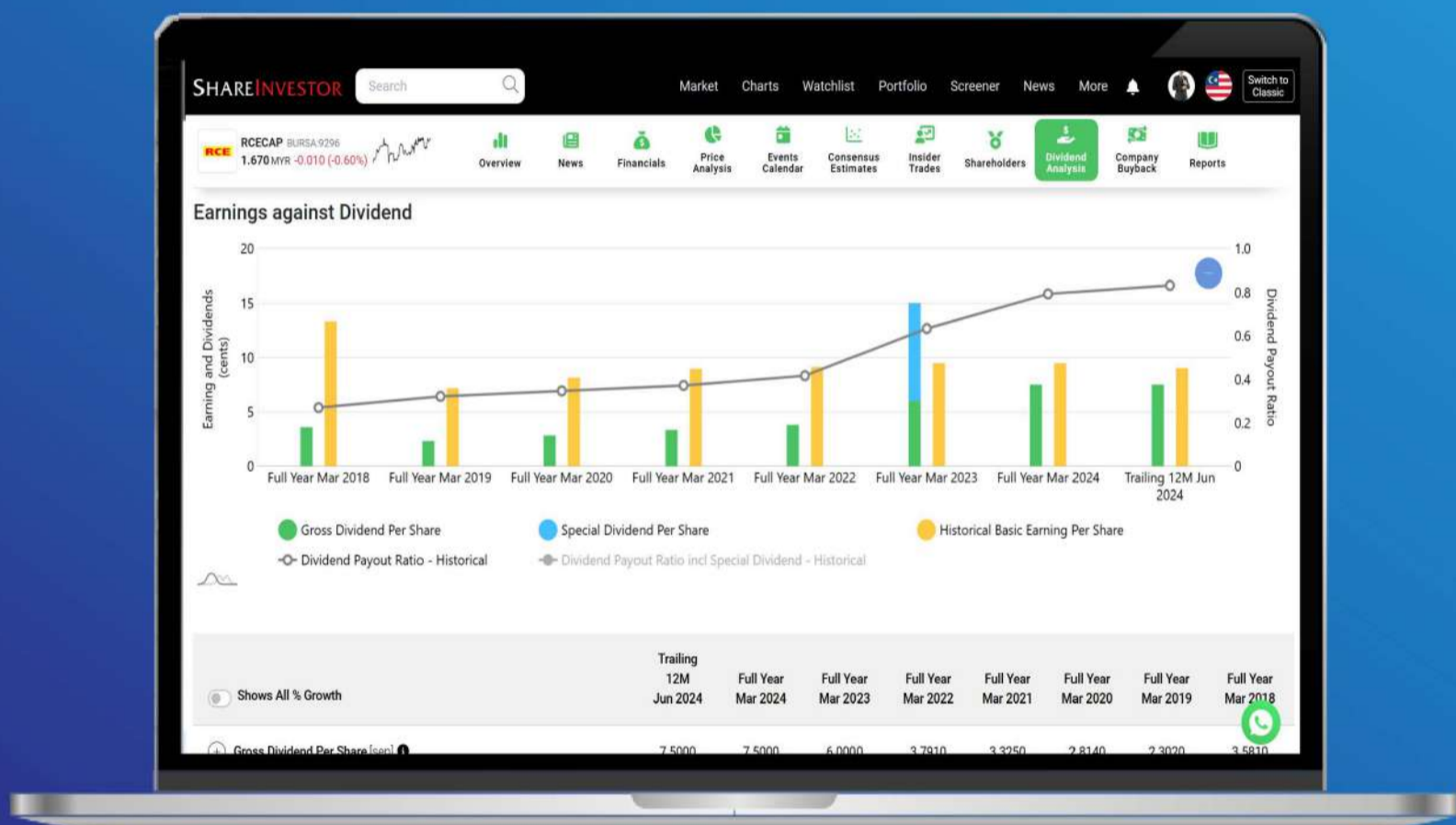
Analysis



Period		Dividend Received	Capital Appreciation	Total Shareholder Return	
Short Term Return	5 Days	-	-0.055		-12.08 %
	10 Days	-	-0.040		-9.09 %
	20 Days	-	-0.020		-4.76 %
Medium Term Return	3 Months	-	-0.170		-26.82 %
	6 Months	-	-0.265		-39.86 %
	1 Year	-	-0.145		-26.61 %
Long Term Return	2 Years	-	+0.165		+70.21 %
	3 Years	-	+0.105		+35.59 %
	5 Years	0.010	+0.025		+9.33 %
Annualised Return	Annualised	-	-		+1.80 %

**Disclaimer:** The information on this page is provided as a service to readers. It does not constitute financial advice and/or any investment recommendations. Past performance is not indicative of future results. We assume no liability for damages resulting from or arising out of the use of such information. It would be best if you did your own research to make your personal investment decisions wisely or consult a licenced investment advisor.

# Tired of low returns? Let's talk high-paying Dividends!



- ✓ **Top Dividend Picks Right Now**
- ✓ **Insider Tips** – Advanced strategies for experienced investors
- ✓ **Easy-to-Follow Tutorial**

Get the most out of dividends, use our Dividend Analysis function –  
Click to Watch Our Tutorial Below!

**Upgrade Your Dividend Strategy Here**



Price & Total Shareholder Return (as at Yesterday)

Fundamental Analysis

DEFINITION: Company is paying out dividend with low or moderate leverage.

CHART GUIDE: Total Shareholder Return (TSR) combines share price appreciation and distributions paid to show the total return to the shareholder expressed as a percentage.



ShareInvestor WebPro > Screener > Market Screener (FA & TA) > select BURSA > add criteria  
A. Criteria  
> click Add Criteria  
• Fundamental Analysis Conditions tab >select (i) Dividend Yield  
• Fundamental Analysis Conditions tab >select (ii) Dividend Payout (Historical)  
• Fundamental Analysis Conditions tab >select (iii) Total Debt To Equity  
• Fundamental Analysis Conditions tab >select (iv) Total Shareholder Returns  
• Fundamental Analysis Conditions tab >select (v) Total Shareholder Returns  
• Fundamental Analysis Conditions tab / >select (vi) CAGR of Dividend Per Share

• Fundamental Analysis Conditions tab >select (vii) CAGR of Dividend Per Share  
B. Conditions (Criteria Filters)  
1. Dividend Yield - select (more than) type (1) % for the past select (1) financial year(s)  
2. Dividend Payout (Historical) - select (between) type (0.5) to type (1) times for the past select (1) financial year(s)  
3. Total Debt to Equity - select (less than) type (1) for the past select (1) financial year(s)  
4. Total Shareholder Return - select (more than) type (5) % for the past select (3) financial year(s)  
5. Total Shareholder Return - select (more than) type (5) % for the past select (5) financial year(s)

6. CAGR of Dividend Per Share - select (less than) type (30) % for the past select (5) financial year(s)  
7. CAGR of Dividend Per Share - select (more than) type (1) % for the past select (5) financial year(s)  
  
> click Save Template > Create New Template type (Dividend Companies) > click Create  
> click Save Template as > select Dividend Companies > click Save  
> click Screen Now (may take a few minutes)  
> Sort By: Select (Dividend Yield) Select (Desc)  
> Mouse over stock name > Factsheet > looking for Total Shareholder Return

AMWAY (MALAYSIA) HOLDINGS BERHAD (6351)

C² Chart

Analysis



AMWAY (6351.MY)		Dividend Received	Capital Appreciation	Total Shareholder Return	
Short Term Return	5 Days	-	-0.350		-6.25 %
	10 Days	-	-0.250		-4.55 %
	20 Days	-	0.000		-1.50 %
Medium Term Return	3 Months	-	-1.210		-18.73 %
	6 Months	-	-1.210		-18.73 %
	1 Year	-	-1.725		-24.73 %
Long Term Return	2 Years	-	+0.268		+6.40 %
	3 Years	-	+0.466		+9.74 %
	5 Years	0.075	+0.650		+16.65 %
Annualised Return	Annualised	-	-		+3.46 %

PETRA ENERGY BERHAD (5133)

C² Chart

Analysis



PENERGY (5133.MY)		Dividend Received	Capital Appreciation	Total Shareholder Return	
Short Term Return	5 Days	-	-0.020		-1.67 %
	10 Days	-	+0.030		+2.61 %
	20 Days	-	+0.008		+7.27 %
Medium Term Return	3 Months	-	-0.180		-13.24 %
	6 Months	-	-0.110		-8.53 %
	1 Year	-	-0.350		-22.88 %
Long Term Return	2 Years	-	+0.410		+53.25 %
	3 Years	-	+0.448		+61.42 %
	5 Years	-	+0.448		+61.42 %
Annualised Return	Annualised	-	-		+10.05 %

APM AUTOMOTIVE HOLDINGS BERHAD (5015)

C² Chart

Analysis



APM (5015.MY)		Dividend Received	Capital Appreciation	Total Shareholder Return	
Short Term Return	5 Days	-	-		-
	10 Days	-	-0.040		-1.13 %
	20 Days	-	+0.450		+14.80 %
Medium Term Return	3 Months	-	+0.730		+26.45 %
	6 Months	-	+0.600		+24.20 %
	1 Year	-	+0.590		+20.34 %
Long Term Return	2 Years	-	+1.430		+66.42 %
	3 Years	-	+1.300		+55.36 %
	5 Years	0.050	+1.010		+110.71 %
Annualised Return	Annualised	-	-		+16.08 %

Disclaimer: The information on this page is provided as a service to readers. It does not constitute financial advice and/or any investment recommendations. Past performance is not indicative of future results. We assume no liability for damages resulting from or arising out of the use of such information. It would be best if you did your own research to make your personal investment decisions wisely or consult a licenced investment advisor.

Week: 16 May 2025 - 22 May 2025

More Brokers' Call 

AMINVESTMENT BANK <span>... See More</span>	Call	Target Price	Release Date
Johor Plantations Group Berhad (5323)	BUY	RM1.67	20 May 2025
TSH Resources Berhad (9059)	BUY	RM1.38	21 May 2025

APEX SECURITIES BERHAD <span>... See More</span>	Call	Target Price	Release Date
Mega First Corporation Berhad (3069)	BUY	RM5.43	22 May 2025
Solarvest Holdings Berhad (0215)	BUY	RM2.61	22 May 2025

BIMB SECURITIES SDN BHD <span>... See More</span>	Call	Target Price	Release Date
Inari Amertron Berhad (0166)	HOLD	RM2.23	21 May 2025
Sunway Construction Group Berhad (5263)	BUY	RM6.61	21 May 2025

Hong Leong Investment Bank <span>... See More</span>	Call	Target Price	Release Date
MBM Resources Berhad (5983)	BUY	RM7.40	22 May 2025
Public Bank Berhad (1295)	BUY	RM5.10	22 May 2025
Solarvest Holdings Berhad (0215)	BUY	RM2.25	22 May 2025

KENANGA <span>... See More</span>	Call	Target Price	Release Date
Aeon Co. (M) Berhad (6599)	MARKET PERFORM	RM1.59	22 May 2025
Inari Amertron Berhad (0166)	MARKET PERFORM	RM2.00	22 May 2025

MIDF <span>... See More</span>	Call	Target Price	Release Date
Public Bank Berhad (1295)	BUY	RM4.77	22 May 2025
S P Setia Berhad (8664)	NEUTRAL	RM1.17	22 May 2025
Sarawak Plantation Berhad (5135)	NEUTRAL	RM2.29	22 May 2025

PUBLIC INVESTMENT BANK <span>... See More</span>	Call	Target Price	Release Date
Mega First Corporation Berhad (3069)	OUTPERFORM	RM5.80	22 May 2025
Sarawak Plantation Berhad (5135)	OUTPERFORM	RM2.86	22 May 2025

UOB KAYHIAN <span>... See More</span>	Call	Target Price	Release Date
Pekat Group Berhad (0233)	BUY	RM1.70	21 May 2025
Sunway Construction Group Berhad (5263)	BUY	RM5.46	21 May 2025

**Disclaimer:** InveSt does not accept any liability whatsoever for any direct, indirect or consequential losses (including loss of profit) or damages that may arise from the use of information or opinions in this publication. The information and opinions in InveSt are not to be considered as an offer to sell or buy any of the securities discussed. Opinions expressed are subject to change without notice. The Brokers may, from time to time, have interests or positions in the securities mentioned. For the full report on each item listed on this page , please visit [https://www.shareinvestor.com/my/brokers\\_call](https://www.shareinvestor.com/my/brokers_call).

**DEFINITION:** Top 9 stocks with Technical Analysis plus Pattern Matching by 60 pre-defined indicators by the system showing a higher probability of bullish sentiment on the share price.



ShareInvestor WebPro > Screener > Predefined TA Screens > select market BURSA > Most Long Signals > click Scan Results or mouse over each company

JOHOR PLANTATIONS GROUP BERHAD (5323.MY)

JPG

Price updated at 22 May 2025 16:59

Last: <b>1.200</b>	Change: <b>-0.020</b>	Volume: <b>33,930</b>
	Change (%): <b>-1.64</b>	Range: <b>1.200 - 1.240</b>

TA Scanner Results based on historical data up to 22 May 2025

Condition	Signal	Explanation
Bollinger Band: Bullish Long Term Volatility Breakout and Trending	Long	1. Close price above upper bollinger band(33,1). 2. Volume above average volume(50). 3. Average volume(50) is above 300,000.
Bollinger Band: Bullish Short Term Volatility Breakout and Trending	Long	1. Close price above upper bollinger band(33,1). 2. Volume above average volume(10). 3. Average volume(10) is above 300,000.
Bollinger Band: High Above Upper Bollinger Band	Neutral	1. High above upper bollinger band(14,2). 2. Average volume(5) is above 100,000.
DM: Bullish Directional Movement	Long	-DI(14) crossed below +DI(14)
Donchian Channels: High Above Upper Donchian Channels	Long	High crossed above the upper Donchian Channel(14,4)
Volume: 5 Days large value Buy Up trade	Long	1. 150K value Buy Up greater than Sell Down by 20% for 5 days. 2. 50K-100K value Buy Up greater than Sell Down by 20% for 5 days. 3. Average volume(10) is above 1000000
Williams %R: Bearish Williams %R	Short	1. Williams %R(26) between 0 and -20. 2. Average volume(5) is above 100,000.

TT VISION HOLDINGS BERHAD (0272.MY)

TTVHB

Price updated at 22 May 2025 16:59

Last: <b>0.625</b>	Change: -	Volume: <b>19,987</b>
	Change (%): -	Range: <b>0.610 - 0.635</b>

TA Scanner Results based on historical data up to 22 May 2025

Condition	Signal	Explanation
CCI: Bullish CCI Oversold And Reversing	Long	1. CCI(26) below -100 and CCI(26) 1 day ago decreasing for the last 3 days. 2. CCI(26) above CCI(26) 1 day ago
DM: Bearish Directional Movement	Short	-DI(14) crossed above +DI(14)
Volume: 10 Days large value Buy Up trade	Long	1. 150K value Buy Up greater than Sell Down by 20% for 10 days. 2. 50K-100K value Buy Up greater than Sell Down by 20% for 10 days. 3. Average volume(10) is above 1000000
Volume: 5 Days large value Buy Up trade	Long	1. 150K value Buy Up greater than Sell Down by 20% for 5 days. 2. 50K-100K value Buy Up greater than Sell Down by 20% for 5 days. 3. Average volume(10) is above 1000000
Williams %R: Bullish Williams %R	Long	1. Williams %R(26) between -80 and -100. 2. Average volume(5) is above 100,000.

INTA BINA GROUP BERHAD (0192.MY)

INTA

Price updated at 22 May 2025 16:58

Last: <b>0.500</b>	Change: <b>-0.010</b>	Volume: <b>21,988</b>
	Change (%): <b>-1.96</b>	Range: <b>0.495 - 0.510</b>

TA Scanner Results based on historical data up to 22 May 2025

Condition	Signal	Explanation
Bollinger Band: Bullish Long Term Volatility Breakout and Trending	Long	1. Close price above upper bollinger band(33,1). 2. Volume above average volume(50). 3. Average volume(50) is above 300,000.
Bollinger Band: Bullish Short Term Volatility Breakout and Trending	Long	1. Close price above upper bollinger band(33,1). 2. Volume above average volume(10). 3. Average volume(10) is above 300,000.
Bollinger Band: High Above Upper Bollinger Band	Neutral	1. High above upper bollinger band(14,2). 2. Average volume(5) is above 100,000.
Donchian Channels: High Above Upper Donchian Channels	Long	High crossed above the upper Donchian Channel(14,4)
MACD: Bullish MACD Crossover	Long	1. MACD(12,26) diff line crossed above the MACD(12,26) signal line. 2. MACD Histogram(12,26) is above 0.
Williams %R: Bearish Williams %R	Short	1. Williams %R(26) between 0 and -20. 2. Average volume(5) is above 100,000.

ECOMATE HOLDINGS BERHAD (0239.MY)

ECOMATE

Price updated at 22 May 2025 16:50

Last: <b>1.210</b>	Change: -	Volume: <b>11,280</b>
	Change (%): -	Range: <b>1.190 - 1.210</b>

TA Scanner Results based on historical data up to 22 May 2025

Condition	Signal	Explanation
Accumulation Distribution: Bullish Accumulation Distribution	Long	Accumulation distribution increasing for the last 7 days
Bollinger Band: High Above Upper Bollinger Band	Neutral	1. High above upper bollinger band(14,2). 2. Average volume(5) is above 100,000.
Price: New 52 Week High	Long	1. Stock reach a new 52 week high. 2. Average volume(30) is above 50000.
Volume: 10 Days large value Buy Up trade	Long	1. 150K value Buy Up greater than Sell Down by 20% for 10 days. 2. 50K-100K value Buy Up greater than Sell Down by 20% for 10 days. 3. Average volume(10) is above 1000000
Volume: 5 Days large value Buy Up trade	Long	1. 150K value Buy Up greater than Sell Down by 20% for 5 days. 2. 50K-100K value Buy Up greater than Sell Down by 20% for 5 days. 3. Average volume(10) is above 1000000
Volume: Consecutive Days Of Increasing Average Volume	Long	1. Average Volume(20) has been increasing over the last 2 weeks. 2. Average volume(20) is above 100000

Disclaimer:

The information on this page is provided as a service to readers. It does not constitute financial advice and/or any investment recommendations. Past performance is not indicative of future results. We assume no liability for damages resulting from or arising out of the use of such information. It would be best if you did your own research to make your personal investment decisions wisely or consult a licenced investment advisor.



MR D.I.Y. GROUP (M) BERHAD  
(5296.MY)

MRDIY

Price updated at 22 May 2025 16:59

Last: <b>1.570</b>	Change: -	Volume: <b>135,695</b>
	Change (%): -	Range: <b>1.510 - 1.580</b>

TA Scanner Results based on historical data up to 22 May 2025

Condition	Signal	Explanation
Bollinger Band: Bullish Lower Bollinger Band Support	Long	1. Low 1 day ago below lower bollinger band(20,2). 2. Close above close 1 day ago. 3. Average volume(5) is above 100,000.
Bollinger Band: Low Below Lower Bollinger Band	Neutral	1. Low below lower bollinger band(14,2). 2. Average volume(5) is above 100,000.
CCI: Bullish CCI Oversold And Reversing	Long	1. CCI(26) below -100 and CCI(26) 1 day ago decreasing for the last 3 days. 2. CCI(26) above CCI(26) 1 day ago
Candlestick: Bullish Harami	Long	Bullish: Harami
MA: Bullish Price Crossover	Long	1. Close price crossed above MA(40) within the last 1 day. 2. Previous day close price is below the MA(10) for the last 5 days
MA: Short Term Bearish Moving Average Crossover	Short	MA(10) crossed below MA(15) within the last 1 day.



PESONA METRO HOLDINGS  
BERHAD (8311.MY)

PESONA

Price updated at 22 May 2025 16:57

Last: <b>0.295</b>	Change: -	Volume: <b>7,307</b>
	Change (%): -	Range: <b>0.290 - 0.295</b>

TA Scanner Results based on historical data up to 22 May 2025

Condition	Signal	Explanation
Bollinger Band: Bullish Long Term Volatility Breakout and Trending	Long	1. Close price above upper bollinger band(33,1). 2. Volume above average volume(50). 3. Average volume(50) is above 300,000.
Bollinger Band: Bullish Short Term Volatility Breakout and Trending	Long	1. Close price above upper bollinger band(33,1). 2. Volume above average volume(10). 3. Average volume(10) is above 300,000.
DM: Bullish Directional Movement	Long	-DI(14) crossed below +DI(14)
MA: Medium Term Bullish Moving Average Crossover	Long	MA(25) crossed above MA(50) within the last 1 day.



YEW LEE PACIFIC GROUP  
BERHAD (0248.MY)

YEWLEE

Price updated at 22 May 2025 16:51

Last: <b>0.415</b>	Change: <b>-0.005</b>	Volume: <b>73,318</b>
	Change (%): <b>-1.19</b>	Range: <b>0.415 - 0.420</b>

TA Scanner Results based on historical data up to 22 May 2025

Condition	Signal	Explanation
Candlestick: Bullish Harami Cross	Long	Bullish: Harami Cross
Candlestick: Indecision Doji	Neutral	Indecision: Doji
Volume: 10 Days large value Buy Up trade	Long	1. 150K value Buy Up greater than Sell Down by 20% for 10 days. 2. 50K-100K value Buy Up greater than Sell Down by 20% for 10 days. 3. Average volume(10) is above 1000000



AURO HOLDINGS BERHAD  
(5025.MY)

AURO

Price updated at 22 May 2025 16:50

Last: <b>0.155</b>	Change: <b>-0.005</b>	Volume: <b>9,538</b>
	Change (%): <b>-3.13</b>	Range: <b>0.150 - 0.160</b>

TA Scanner Results based on historical data up to 22 May 2025

Condition	Signal	Explanation
Bollinger Band: Bullish Long Term Volatility Breakout and Trending	Long	1. Close price above upper bollinger band(33,1). 2. Volume above average volume(50). 3. Average volume(50) is above 300,000.
Bollinger Band: Bullish Short Term Volatility Breakout and Trending	Long	1. Close price above upper bollinger band(33,1). 2. Volume above average volume(10). 3. Average volume(10) is above 300,000.
Bollinger Band: High Above Upper Bollinger Band	Neutral	1. High above upper bollinger band(14,2). 2. Average volume(5) is above 100,000.
DM: Bullish Directional Movement	Long	-DI(14) crossed below +DI(14)
Donchian Channels: High Above Upper Donchian Channels	Long	High crossed above the upper Donchian Channel(14,4)



CELCOMDIGI BERHAD (6947.MY)

CDB

Price updated at 22 May 2025 16:59

Last: <b>3.920</b>	Change: <b>+0.020</b>	Volume: <b>58,721</b>
	Change (%): <b>+0.51</b>	Range: <b>3.890 - 3.950</b>

TA Scanner Results based on historical data up to 22 May 2025

Condition	Signal	Explanation
Bollinger Band: Bullish Long Term Volatility Breakout and Trending	Long	1. Close price above upper bollinger band(33,1). 2. Volume above average volume(50). 3. Average volume(50) is above 300,000.
Bollinger Band: Bullish Short Term Volatility Breakout and Trending	Long	1. Close price above upper bollinger band(33,1). 2. Volume above average volume(10). 3. Average volume(10) is above 300,000.
Candlestick: Indecision Doji	Neutral	Indecision: Doji
Volume: 10 Days large value Buy Up trade	Long	1. 150K value Buy Up greater than Sell Down by 20% for 10 days. 2. 50K-100K value Buy Up greater than Sell Down by 20% for 10 days. 3. Average volume(10) is above 1000000
Volume: 5 Days large value Buy Up trade	Long	1. 150K value Buy Up greater than Sell Down by 20% for 5 days. 2. 50K-100K value Buy Up greater than Sell Down by 20% for 5 days. 3. Average volume(10) is above 1000000
Williams %R: Bearish Williams %R	Short	1. Williams %R(26) between 0 and -20. 2. Average volume(5) is above 100,000.

**Disclaimer:** The information on this page is provided as a service to readers. It does not constitute financial advice and/or any investment recommendations. Past performance is not indicative of future results. We assume no liability for damages resulting from or arising out of the use of such information. It would be best if you did your own research to make your personal investment decisions wisely or consult a licenced investment advisor.

Condition	Signal	Explanation
Volume: 5 Days large value Buy Up trade	Long	1. 150K value Buy Up greater than Sell Down by 20% for 5 days. 2. 50K-100K value Buy Up greater than Sell Down by 20% for 5 days. 3. Average volume(10) is above 1000000
Williams %R: Bullish Williams %R	Long	1. Williams %R(26) between -80 and -100. 2. Average volume(5) is above 100,000.



**Dato' Eu Hong Chew**  
Former Group CEO i-Berhad  
Non-Executive Director

He has been associated with the Sumurwang Group for many years charting the path for its manufacturing arm, firstly under Dreamland Holdings Berhad and the subsequent acquisition of I-Berhad.

Before that, he was with PA Management Consulting for a decade where he was the Director of Studies for the Cranfield PA MBA Programme in Malaysia.

Educated at the Royal Military College, Dato' Eu has an engineering degree from the University of Glasgow, and a MBA from the University of Bradford, UK.

# *Is* Found Pac an investment opportunity?

## SUMMARY

- **FoundPac Group Berhad (BURSA:5277)** started as a precision parts manufacturer, expanding into new segments like cables and automation. While revenue grew 5.4% CAGR over the past 9 years, newer segments have lower margins, dragging down overall profitability.

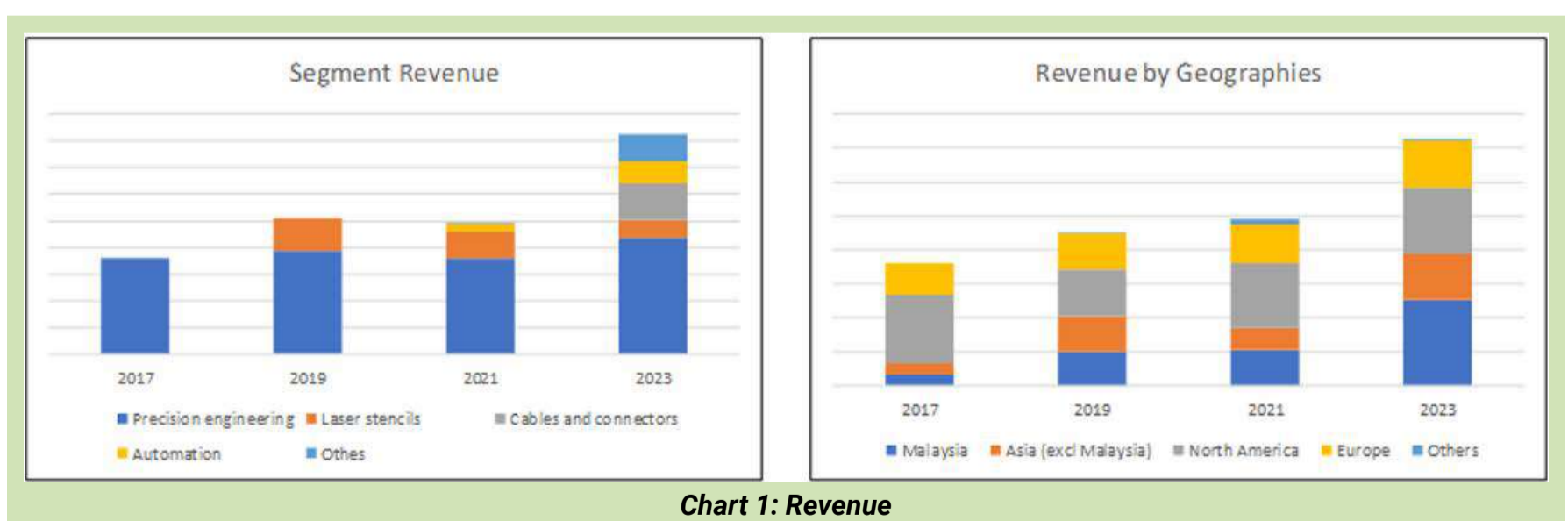
*Disclaimer: This article is written for informational purposes only. It does not constitute a solicitation, offer, advice, counseling or recommendation to buy or sell. As such it is not intended to promote the purchase of shares in any way. As a reminder, any type of asset has a risk factor and needs to be evaluated from multiple perspectives. Therefore, any investment decision and the associated risk remains with the investor. The views expressed here are entirely the writer's own.*

- Despite growth, the Group has shown no clear improvement in productivity or capital efficiency. Margins have declined, fixed costs have risen, and return metrics remain modest and below the cost of capital.
- While FoundPac has a sound financial position with low debt, strong cash flows, and disciplined capital allocation, my valuation did not provide enough margin of safety.

## BACKGROUND

FoundPac IPOed on Bursa Malaysia in 2016 as a precision parts manufacturer. Since then, the Group has expanded its product range to include laser stencils, industrial equipment, machinery, and cables. Its main customers are large multinational semiconductor firms, outsourced semiconductor assembly and test companies, and PCB design houses.

While the business remains globally focused, Malaysia's revenue contribution has grown significantly from 9% in 2017 to 35% in 2023. Refer to the right part of Chart 1.



FoundPac reported performance across the following segments (refer to the left part of Chart 1):

- Precision Engineering (the largest in terms of revenue).

- Laser Stencils.
- Cables and Connectors (added in 2022).
- Automation (added in 2021).
- Others.

The bulk of the contribution came from only one – Precision Engineering. Table 1 shows the relative return on net assets for the various business segments. The lower returns for the non-precision engineering segments meant that as the Group ventured into them, the Group’s return got worse.

Segment	Net Assets 2023 RM '000 a	Segment Profit 2022 to 23 ave RM '000 b	Return on Net Assets c = b/a
Precision engineering	66,150	13,062	20%
Laser stencils	23,764	871	4%
Cables and connectors	10,360	-4,334	-42%
Automation	6,228	588	9%
Others	637	-604	-95%

Table 1: Segment returns

## OPERATING PERFORMANCE

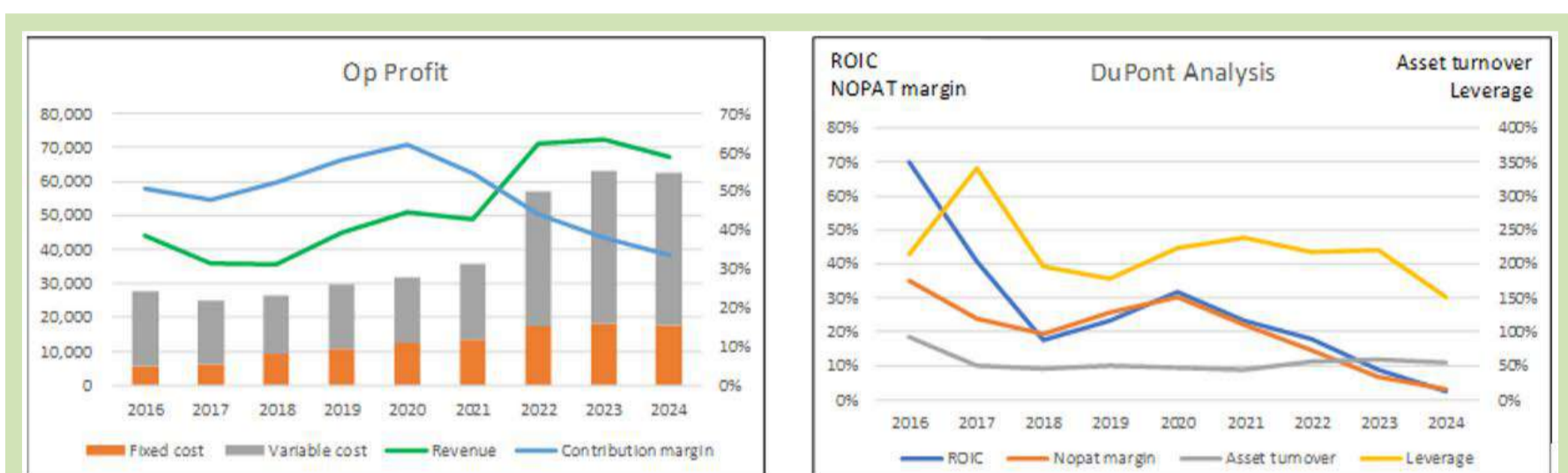
The ROIC and ROE have been declining since its 2016 IPO. There seemed to be a turnaround in 2019. But this seemed to peak in 2020 with the returns in 2024 lower than those in 2020.

The ROIC and ROE over the past 3 years (2022 to 2024) averaged 10% and 7%, respectively, compared to the current 9% each for the WACC and cost of equity. This is not exactly a great performance. Unless the Group can turn around and/or improve the performance of the non-precision engineering segments, we are not going to have any improvement in return.

The issue facing the Group is not revenue growth – it is operational efficiency and margin improvement. Over the past nine years, there has been no clear evidence of gains in productivity or efficiency.

\*Please refer to the disclaimer on first page and last page.

- Capital efficiency, as reflected by gross profitability, has steadily declined since 2016.
- While contribution margin improved from 2016 to 2020, it has since deteriorated, with the 2024 margin falling below 2016 levels (see Chart 2, left).
- Fixed costs have risen from 21% to 29% of total costs between 2016 and 2023, mirroring a higher SG&A margin.
- A DuPont analysis shows no meaningful improvement in asset turnover or leverage (see Chart 2, right).



**Chart 2: Operating Profit and DuPont Analysis**

**Note to Op Profit Profile:** I broke down the operating profits into fixed costs and variable costs.

- Fixed cost = SG&A, Depreciation & Amortization and Others.
- Variable cost = Cost of Sales – Depreciation & Amortization.
- Contribution = Revenue – Variable Cost.
- Contribution margin = Contribution/Revenue

## PEER PERFORMANCE

FoundPac operates in the precision parts sector. This is a growing sector, with global market forecasts projecting strong growth, ranging from a 6.8% to 13.3% CAGR through 2030 or beyond. While the industry outlook is robust, FoundPac's revenue has grown at a more modest 5.4% CAGR over the past nine years. If it sustains this pace, its revenue performance would remain respectable relative to long-term industry trends.

The precision-machined component industry is a global one. In this context, FoundPac did well compared to some of its international peers for 2 metrics – Return on Capital and EBIT margin. Refer to Chart 3.

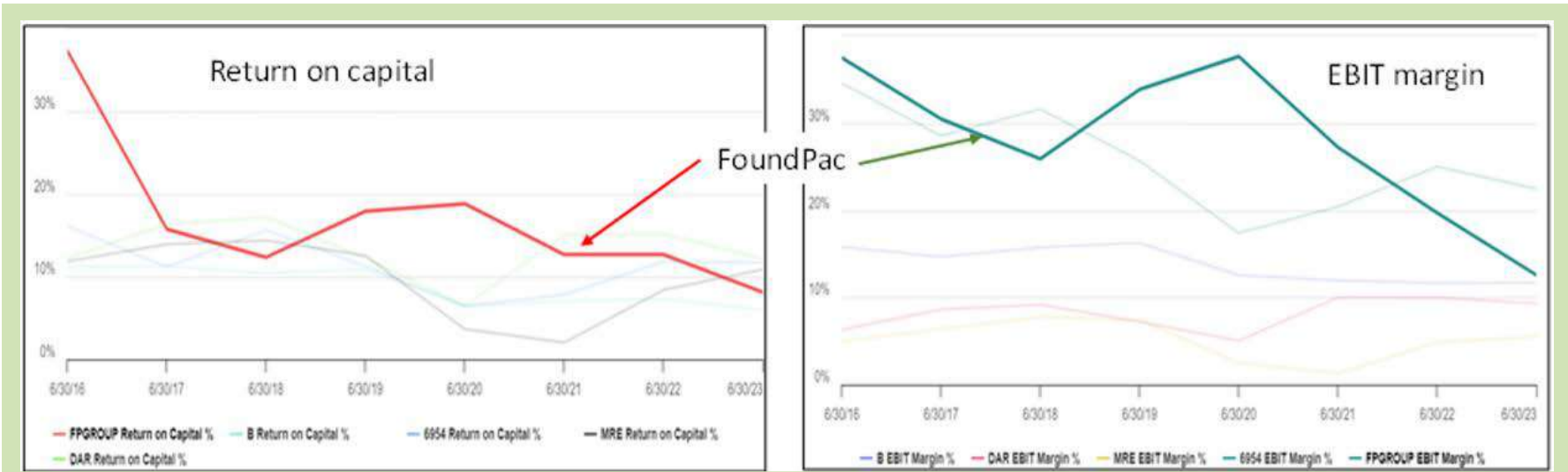


Chart 3: International Peer Return on Capital and EBIT Margin

- Notes on the peers:
- B - Barnes Group Inc.
  - DAR - Datron AG.
  - MRE - Martinrea International Inc.
  - 6954 – Fanuc Corporation.

FINANCIAL POSITION

I would rate FoundPac as financially sound. As of the end of December 2024,

- It had a debt-equity ratio of 36%.
- It had RM29 million in cash, equal to 18% of its total assets.

Over the past 9 years, it has generated positive cash flow from operations annually. During this period, its total cash flow from operations amounted to RM130 million compared to its total PAT of RM99 million. This is a very good cash conversion ratio.

It has a reasonable capital allocation plan as shown in Table 2. Looking at the Table, you may be concerned about the comparatively high amount spent on CAPEX.

My main concern is the moderately high Reinvestment rate incurred by the Group. Over the past 9 years, this averaged 55%. This high Reinvestment

Item	Sources RM '000	Uses RM '000
Cash flow from Ops	113,823	
New shares	29,809	
Other financing	9,030	
Net Debt		5,399
CAPEX		78,529
Dividends		53,121
Buybacks		1,341
Cash and Others		14,271
Total	152,662	152,662

Table 2: Sources and Uses of Funds 2017 to 2024

\*Please refer to the disclaimer on first page and last page.

rate is in line with the high CAPEX shown in Table 2.

I defined Reinvestment = CAPEX + Acquisition – Depreciation & Amortization + Increase in Net Working Capital.

Reinvestment rate = Reinvestment / NOPAT

Of course, you may argue that this Reinvestment rate is because the Group was driving revenue growth and that it would come down as the Group matures.

## VALUATION

The key takeaways from the above analysis are:

- While FoundPac's returns declined since 2016, it was one of the better performers compared to the global peers.
- There does not seem to be an improvement in operating or capital efficiencies.
- Looking at its returns and declining trends, I am not sure whether FoundPac has a sustainable moat.

As such, I considered the following in valuing FoundPac. (Refer to the original article for the details.)

- I estimated FoundPac's Asset Value to be RM0.20 per share based on its Book Value as of Dec 2024.
- Its Earnings Value based on its historical average rate was estimated to be RM0.45 per share. This assumes a 4% perpetual growth rate.

The Earnings Value provided a 25% margin of safety when compared with the market price of FoundPac at the end of

December 2024 of RM0.36 per share. But this is a bit below my 30% target.

## CONCLUSION

While the Group has delivered consistent revenue growth over the past nine years, this was driven by expansion into new product segments with weaker margins, leading to declining profitability. The core precision engineering business remains solid, but the newer ventures - cables, connectors, and automation - have yet to contribute meaningfully.

This suggests two things: first, growth within its core business may be reaching a ceiling; second, future upside depends on the success of these newer segments. Optimists might view current losses as part of a learning curve, but there is little operational evidence so far to support a turnaround, particularly in productivity or efficiency.

The Group is financially sound, but this strength will only matter if it is used to improve execution. Unless that happens, or unless margins improve meaningfully, FoundPac does not present a compelling investment case today from a long-term value investing perspective.

*I am a long-term value investor who has held onto stocks for more than 5 years. My analysis and valuation are from such a perspective. I consider quarterly results "noisy" and focus on long-term trends.*

*This article was derived from a detailed analysis, emphasizing the intersection of business performance and valuation metrics, which was first published on i4value as ["Is FoundPac a value trap?"](#) Refer to the article for further insights on its investment risk vs business performance.*

# UNLOCK THE SECRET OF WEALTH

DO YOU REALLY WANT TO MASTER VALUE INVESTING



SEE HOW TO GET HIGHER  
RETURNS WITH LOWER RISK



# 4.4% GDP Growth in 1Q2025 Fortifies Malaysia's Fundamentals – Finance Minister II

**A**ccording to Finance Minister II YB Senator Datuk Seri Amir Hamzah Azizan, the rousing performance across key economic sectors lifted Malaysia's GDP by 4.4% in Q1 2025, in line with the GDP Advance Estimates and higher than the 4.2% growth recorded in Q1 2024.

The GDP growth in Q1 2025 was buoyed by Services (5%), Manufacturing (4.1%), and Construction (14.2%) sectors. Further fuelling the growth momentum was stronger consumer spending during the Chinese New Year and pre-Hari Raya festive periods, the implementation of the new minimum wage in February 2025, and the recent increase in civil servant salaries.

He noted that private consumption grew 5% in Q1 2025. This was supported by encouraging labour market performance with a decline in the unemployment rate to 3.1% and benign inflation at 1.5% – both marking the lowest levels recorded under the MADANI administration. This is compared to the performance in Q1 2024 where private consumption rose by 4.7%, while the unemployment rate stood at 3.3% and inflation registered at 1.7%.

He added that investments continued their growth momentum in Q1 2025, recording a 9.7% increase – reflecting the positive response from global investors to the MADANI Government's pro-development policies and strong emphasis on sustainability, as outlined in the National Energy Transition Roadmap (NETR), New Industrial Master Plan (NIMP) 2030, National Semiconductor Strategy (NSS), and other key national policy frameworks.

The Government is also actively working to attract more high-quality foreign direct investment (FDI) to stimulate growth, while maintaining a dynamic ecosystem – after recording the decade-high domestic investment in 2024.

At the same time, the Government acknowledges the presence of downside risks to the official 2025 GDP growth forecast of 4.5% to 5.5%, owing to tapering global demand, heightened geopolitical tensions, and the rising prevalence of protectionist trade policies – particularly the recent announcement of reciprocal tariffs by the United States of America (US).

The MADANI Government will revise the 2025 GDP forecast once the reciprocal tariff situation stabilises and greater clarity emerges. In the meantime, the Government will implement several mitigation measures to further strengthen the country's fundamentals – including efforts to boost domestic direct investment (DDI). Government-Linked Investment Companies (GLICs) have committed to invest a combined RM25 billion in DDI this year under the GEARuP programme.

The MADANI Government will also continue to engage the US in bilateral trade discussions, while also leveraging multilateral platforms such as the Association of Southeast Asian Nations (ASEAN) and the Regional Comprehensive Economic Partnership (RCEP) to uphold a fair and conducive global trade environment.

The MADANI Government will redouble efforts to diversify export markets and secure new trade agreements to mitigate the impact of global trade disruptions. These efforts have already borne early fruit in 2024, as reflected in increased investment and exports to non-traditional markets such as Egypt, Pakistan, and Cambodia – alongside stronger export growth to other ASEAN member states.

The Government will also work to accelerate the implementation of the Ekonomi MADANI reform agenda, focusing on fiscal sustainability, strengthening Malaysia's economic value chains, protecting the welfare of the broader population through social safety nets, and unlocking the potential of the local talent pool.

The MADANI Government will continue to closely monitor both domestic and global economic developments, and is prepared to implement responsive and appropriate policy measures to ensure that Malaysia's economic growth remains consistent, sustainable, and inclusive – for the well-being of all segments of society. The Government remains committed to maintaining investor confidence and protecting domestic industries amid an increasingly complex global economic landscape.



Learn how to identify Hot Stocks using Technical Analysis (TA) and Fundamental Analysis (FA)

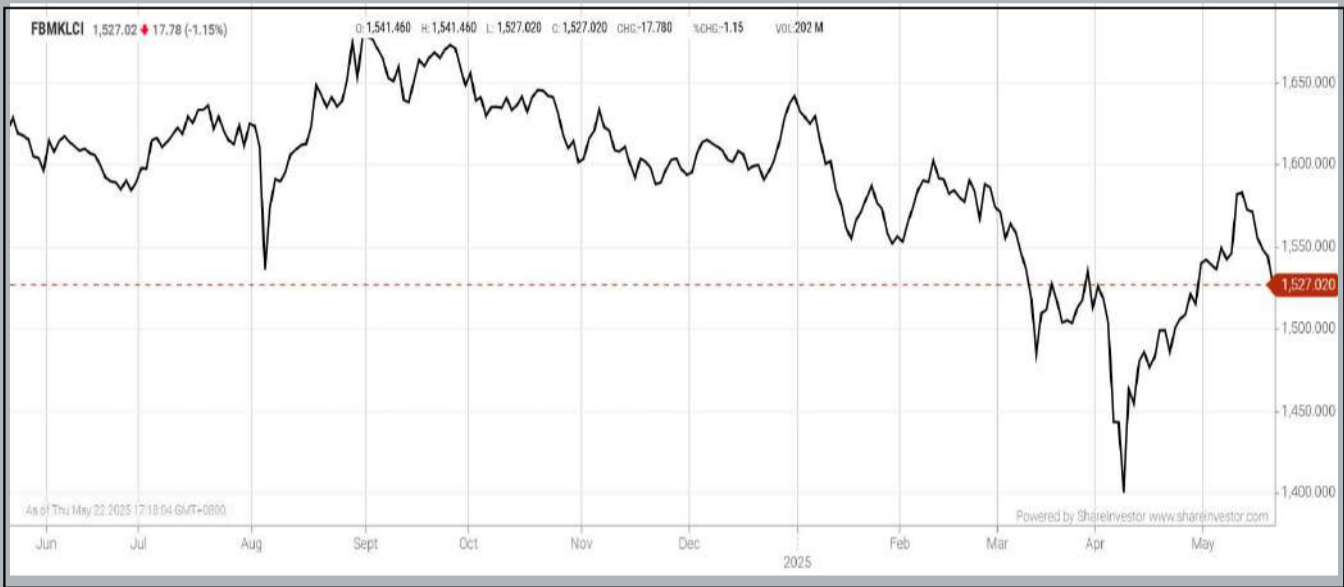
**SIGN UP FOR Invest**  
**IT'S FREE!!!**

[Click here](#)



EYE ON THE MARKETS

On Thursday (22May), the Ringgit closed at 4.2610 against the USD and 3.3020 to the Sing Dollar. On Monday (19May), the FBM KLCI opened at 1566.57. As at Thursday (22May) 5:00pm, the FBM KLCI closed down 39.55 points at 1527.02. Over in US, the overnight Dow Jones Industrial Average closed down 1.35 points (-0.00%) to 41,859.09 whilst the NASDAQ added 53.09 points (+0.28%) to 18,925.74.



KLCI 1 Year Chart

bulthaup takes care of the details so that you can enjoy a harmonious environment.



XTRA

XTRA FURNITURE SDN BHD  
The Gardens Mall, Mid Valley City  
xtrafurniture.com/bulthaup  
fb.com/bulthaupmalaysia



bulthaup

Over 5 Trading Days  
(as at Yesterday)



- ShareInvestor WebPro (www.shareinvestor.com/my)
1. Price > Stock Prices
  2. Select Market: NASDAQ / NYSE / IDX / SET / HKEX / SGX (One bourse at a time)
  3. select Stocks Tab
  4. select Ranking Top Gainers or Top Losers (Over 5 Trading Days)
  5. Mouse over Column Layout > select Edit Customs > select Name > select Last Done Price > select 5 Days Change > select 52 Weeks High > select 52 Weeks Low > Mouse Over Column Layout > select Custom

NASDAQ (USD)

Top Gainers					Top Losers				
Name	Last Done	Change Over 5 Days	52 Weeks High	52 Weeks Low	Name	Last Done	Change Over 5 Days	52 Weeks High	52 Weeks Low
REGENCELL BIOSCIENCE HOLDINGS	415.000	+72.010	550.000	3.030	FIRST CITIZENS BANCSHARES A	1,841.770	-121.150	2,412.930	1,473.620
BOOKING HOLDINGS	5,293.310	+55.570	5,379.980	3,180.000	MONOLITHIC POWER SYSTEMS	678.620	-55.660	959.640	438.860
ARGENX ADR	584.950	+52.680	678.210	356.380	WIX COM	152.340	-37.270	247.110	137.940
O REILLY AUTOMOTIVE	1,370.490	+44.760	1,458.370	947.490	KLA	778.940	-26.060	896.320	551.330
NETFLIX	1,194.630	+43.640	1,196.500	587.040	COCA-COLA CONSOLIDATED	1,137.970	-7.080	1,460.920	941.910

NYSE (USD)

Top Gainers					Top Losers				
Name	Last Done	Change Over 5 Days	52 Weeks High	52 Weeks Low	Name	Last Done	Change Over 5 Days	52 Weeks High	52 Weeks Low
BERKSHIRE HATHAWAY A	761,380.000	+2,280.000	812,855.000	607,135.000	FAIR ISAAC	1,707.940	-417.960	2,402.515	1,266.720
AUTOZONE	3,872.600	+114.230	3,916.810	2,728.965	NVR	7,078.090	-89.490	9,964.770	6,562.850
WHITE MOUNTAINS INSURANCE GROUP	1,835.010	+66.060	2,023.000	1,666.220	TX PAC LAND	1,355.660	-50.260	1,769.140	578.560
MCKESSON	718.730	+36.450	731.000	464.415	HUBSPOT	621.250	-48.750	881.130	434.840
DYCOM INDUSTRIES	224.130	+30.760	207.200	131.370	GLOBANT	102.750	-30.920	238.320	88.030

IDX (Rupiah)

Top Gainers					Top Losers				
Name	Last Done	Change Over 5 Days	52 Weeks High	52 Weeks Low	Name	Last Done	Change Over 5 Days	52 Weeks High	52 Weeks Low
PETRINDO JAYA KREASI TBK	11,175.000	+1,500.000	15,600.000	4,730.000	DCI INDONESIA TBK	151,975.000	-6,425.000	226,150.000	35,000.000
UNGGUL INDAH CAHAYA TBK	9,150.000	+1,500.000	9,800.000	6,500.000	MULTIPOLAR TECHNOLOGY TBK	26,250.000	-3,775.000	48,000.000	1,195.000
DIAN SWASTATIKA SENTOSA TBK	50,825.000	+925.000	53,200.000	15,680.000	CITRA TUBINDO TBK	4,880.000	-945.000	5,825.000	1,075.000
RODA VIVATEX TBK	12,725.000	+675.000	16,250.000	11,050.000	BANGUN KOSAMBI SUKSES TBK	6,400.000	-525.000	11,450.000	4,060.000
MERATUS JASA PRIMA TBK	1,835.000	+535.000	7,850.000	272.000	BANK OF INDIA INDONESIA TBK	1,495.000	-410.000	3,100.000	1,495.000

SET (Thai Baht)

Top Gainers					Top Losers				
Name	Last Done	Change Over 5 Days	52 Weeks High	52 Weeks Low	Name	Last Done	Change Over 5 Days	52 Weeks High	52 Weeks Low
BBL	148.000	+5.000	161.500	129.000	DELTA	106.500	-7.500	173.500	51.250
OHTL	315.000	+5.000	434.000	298.000	BH	158.500	-7.000	284.000	158.000
SPI	50.750	+4.750	52.500	38.500	MOSHI	38.500	-5.500	50.000	33.750
MFC	29.500	+4.250	31.250	17.200	ADVANC	297.000	-5.000	309.000	202.000
CHOTI	64.750	+2.500	80.000	60.250	KYE	310.000	-5.000	342.000	280.000

HKEX (HKD)

Top Gainers					Top Losers				
Name	Last Done	Change Over 5 Days	52 Weeks High	52 Weeks Low	Name	Last Done	Change Over 5 Days	52 Weeks High	52 Weeks Low
LAOPU GOLD (6181)	801.000	+117.000	881.000	60.950	YUM CHINA (9987)	340.000	-23.800	421.400	225.200
MIXUE GROUP (2097)	538.000	+80.200	544.500	256.000	TRIP.COM-S (9961)	500.000	-14.500	598.000	300.200
BYD COMPANY (1211)	462.600	+48.000	464.800	202.800	GUOFUHEE (2582)	121.100	-12.100	156.700	76.800
BYD COMPANY-R (81211)	426.400	+44.800	426.800	187.000	ZTO EXPRESS-W (2057)	136.200	-11.300	219.000	123.700
REFIRE (2570)	232.400	+36.400	316.200	118.000	BABA-WR (89988)	113.000	-7.300	135.500	65.500

SGX (SGD)

Top Gainers					Top Losers				
Name	Last Done	Change Over 5 Days	52 Weeks High	52 Weeks Low	Name	Last Done	Change Over 5 Days	52 Weeks High	52 Weeks Low
HPL	4.540	+0.540	4.720	3.200	JMH USD	46.460	-1.670	49.790	33.720
AZEUS	11.910	+0.460	12.400	8.200	JARDINE C&C	25.780	-0.280	29.500	23.100
ST ENGINEERING	7.480	+0.290	7.670	3.980	SHANGRI-LA HKD	4.380	-0.270	6.100	4.020
BUKIT SEMBAWANG	3.890	+0.230	3.940	3.190	PC PARTNER	1.240	-0.180	2.320	0.800
SIA ENGINEERING	2.550	+0.200	2.550	1.870	NIO INC. USD OV	4.040	-0.120	7.750	3.090

**Disclaimer:** The information on this page is provided as a service to readers. It does not constitute financial advice and/or any investment recommendations. Past performance is not indicative of future results. We assume no liability for damages resulting from or arising out of the use of such information. It would be best if you did your own research to make your personal investment decisions wisely or consult a licenced investment advisor.

# MAKE IT COUNT



*Disclaimer: This article is reproduced from MSWG's column, originally published on 10 May 2025 in Starbiz7.*

**W**ith the AGM season now in full swing, it is time for meaningful engagement between companies and shareholders. Again, shareholders are urged to show up, speak up and ask tough questions. At the end of the day, it lies in us to shape the corporate landscape and hold companies accountable.

## **AGMs ARE NOT A RITUAL. THEY'RE A RECKONING**

It's that time of year again - the Annual General Meeting (AGM) season is in full swing. Over the coming months, more than 500 public listed companies in Malaysia will convene their

AGMs. Some companies treat the AGM as a serious platform for shareholder engagement, well-organised, transparent, and reflective of a genuine desire to build trust. Others, however, do the bare minimum to comply with the regulations, offering little substance and even less willingness to be questioned or held accountable.

But make no mistake. Regardless of how grand or modest the AGM may appear; it is more than a line item on the corporate calendar. It is the one forum where shareholders, especially minority shareholders, have the right to participate, question, and vote on matters that affect the direction and governance of the company. The AGM is not a courtesy extended by the board. It is a right guaranteed to every shareholder and must be exercised with clarity, purpose, and diligence.

## **BEFORE THE AGM: EVERY PAGE TELLS YOU SOMETHING**

Good shareholder activism begins before the AGM. The AGM notice and annual report should not be received passively but read with intent. This is the moment to assess how well the company is performing, not just in terms of profit but also operations, strategy, and sustainability. Pay attention to how the company is governed. Is the board diverse and effective? Are there enough independent directors? Do they bring the right mix of skills, or is the board merely a collection of familiar names?

Scrutinising resolutions is equally important. Look closely at director reappointments, especially if they have been on the board for a long time. If a so-called “independent” director has served more than nine years, ask whether they still bring a fresh perspective. Is there an overconcentration of power by executive directors or the chairman? How was each director selected through a transparent process or personal networks?

Another important area is remuneration. If the board seeks

approval for higher fees or executive bonuses, shareholders should ask whether these are justified by performance. A company struggling financially but rewarding its top brass handsomely raises legitimate concerns.

Shareholders should also examine closely any proposed transactions listed as resolutions, particularly those involving issuing new shares or dealings with related parties. Transactions that dilute existing shareholders' equity or benefit parties connected to the board warrant careful attention and scrutiny. If the company seeks approval for a private placement, rights issue, or share scheme, ask whether it is value-accretive or merely a short-term funding patch. Similarly, assess whether the company has provided enough justification for related party transactions and whether the terms are conducted at arm's length. Resolutions of this nature are not procedural formalities as they can significantly alter shareholder value and must be evaluated with the same rigour as any investment decision.

The AGM notice and circular, the annual report, the sustainability report, and the Corporate Governance Report are the only lenses shareholders have into the company's inner workings. Approach them not as a formality, but as due diligence.

## **DURING THE AGM: ASK, OBSERVE, REFLECT**

The AGM is not just a reporting session. It is a dialogue; at least, it should be. This is when the board and management must be accountable, in real time, to the people they represent. Shareholders should use this opportunity to engage respectfully but firmly. Ask about the company's financial performance, business strategies, how risks are managed, sustainability priorities, climate strategy, or digital transformation plans.

Be observant, too. Are all board members, management and the auditor present? Does the board chair encourage questions, or does he or she brush them off? Are responses specific and

sincere, or vague and evasive? Often, the tone and conduct of an AGM say more than the answers themselves.

Pay attention to the meeting's structure. Rushing the meeting with little time for questions or ignoring pre-submitted queries are red flags. A company that sees shareholders as partners will welcome scrutiny, not avoid it.

## **AFTER THE AGM: THE FOLLOW-THROUGH MATTERS**

What happens after the AGM is as important as what occurs during it. Companies are required to publish a summary of the “Key Matters Discussed” on their websites as soon as practicable after the conclusion of the AGM.

Shareholders should read this summary critically. Does it honestly reflect the meeting, or has it been sanitised into a press release? Are the responses and discussions documented, or are shareholders left with a list of resolutions passed?

Beyond documentation, shareholders must monitor whether the company delivers on its promises. Were any issues raised at the AGM subsequently addressed? Are ESG targets being acted upon, or have they become marketing slogans? How is the company managing emerging risks like cyber threats, supply chain instability, or regulatory compliance?

Communication after the AGM is a good indicator of corporate culture. Does the company offer a clear channel for shareholders to engage, ask follow-up questions, or express concerns? Or is it radio silence until the next AGM?

## **SHAREHOLDERS AS CATALYSTS FOR CHANGE**

Shareholders play an increasingly vital role in shaping companies' direction, accountability, and values. In today's corporate

landscape, where governance and sustainability standards are under growing public and regulatory scrutiny, the expectations placed on boards and, by extension, on shareholders are higher than ever. The AGM offers a unique platform for shareholders to exercise their rights and reinforce the principles of transparency, fairness, and long-term stewardship.

When shareholders show up, speak up, and ask tough questions, it shifts the balance of power. Directors and management are reminded that they do not operate in a vacuum. In its most constructive form, shareholder activism can nudge companies toward stronger governance, longer-term thinking, and greater transparency.

It is time to normalise shareholder participation, not treat it as an exception. Regardless of the number of shares you hold, your questions matter. And your vigilance helps shape a healthier capital market.

The AGM is not a theatre. It is a test. It tests whether the board is transparent, whether shareholders care enough to question, and whether companies do governance because they have to or because they believe in it.

As hundreds of companies open their physical doors to shareholders this season, let us not squander the opportunity. Attend the AGM. Ask the hard questions. Challenge what needs to be challenged. Follow up after the meeting. Hold the company accountable.

We at the Minority Shareholders Watch Group (MSWG) remain committed to supporting this journey by raising essential and pertinent questions, amplifying shareholder concerns, and encouraging companies to do better.

But ultimately, the power to shape the corporate landscape lies with shareholders themselves. If you don't ask, they won't tell. If you don't vote, they won't change.

**DEFINITION:** Insider Activity shows the trades made by substantial shareholders or directors of the company. Purchases by the directors and company share buyback may indicate the share price is undervalued and brings confidence to the price trend of the share price.



ShareInvestor WebPro > Fundamental > Insider Trades > click Search tab > Select Bursa > click Stock name > scroll up and leave at <Select Counter> Type Date Range for Announcement Date > click Search

Notice Period is 11th May 2025 – 17th May 2025					
Effective Change Date	Stock Name	Buyer/ Seller Name [Classification]	Bought / (Sold) ['000]	No. of Shares After Trade ['000]	
			Total	Total	% Held
08 MAY 2025 - 08 MAY 2025	ABMB	EMPLOYEES PROVIDENT FUND BOARD [SSH]	-46	143,033	9.239
09 MAY 2025 - 09 MAY 2025	AEON	EMPLOYEES PROVIDENT FUND BOARD [SSH]	-235	87,165	6.208
13 MAY 2025 - 13 MAY 2025	AMBank	EMPLOYEES PROVIDENT FUND BOARD [SSH]	-608	422,821	12.797
08 MAY 2025 - 08 MAY 2025	AMBank	EMPLOYEES PROVIDENT FUND BOARD [SSH]	-247	423,429	12.815
07 MAY 2025 - 07 MAY 2025	AMBank	EMPLOYEES PROVIDENT FUND BOARD [SSH]	100	423,676	12.823
07 MAY 2025 - 07 MAY 2025	AME	EMPLOYEES PROVIDENT FUND BOARD [SSH]	-33	35,739	5.592
14 MAY 2025 - 14 MAY 2025	ANCOMNY	DATUK LEE CHEUN WEI [DIR/CEO]	3,400	132,211	12.436
14 MAY 2025 - 14 MAY 2025	ANCOMNY	DATUK LEE CHEUN WEI [SSH]	3,400	132,211	12.436
13 MAY 2025 - 14 MAY 2025	ANEKA	IR CHONG NGIT SOOI [DIR/CEO]	20	92,781	13.373
13 MAY 2025 - 14 MAY 2025	ANEKA	IR CHONG NGIT SOOI [SSH]	20	92,781	13.373
13 MAY 2025 - 14 MAY 2025	ANEKA	MR LOKE KIEN TUCK [DIR/CEO]	20	101,154	14.58
13 MAY 2025 - 14 MAY 2025	ANEKA	MR LOKE KIEN TUCK [SSH]	20	101,154	14.58
15 MAY 2025 - 15 MAY 2025	ASIAPLY	DATO' YEO BOON LEONG [DIR/CEO]	2,670	209,268	19.848
15 MAY 2025 - 15 MAY 2025	ASIAPLY	DATO' YEO BOON LEONG [SSH]	2,670	209,268	19.848
14 MAY 2025 - 14 MAY 2025	ASIAPLY	DATO' YEO BOON LEONG [DIR/CEO]	2,500	206,598	19.595
14 MAY 2025 - 14 MAY 2025	ASIAPLY	DATO' YEO BOON LEONG [SSH]	2,500	206,598	19.595
13 MAY 2025 - 13 MAY 2025	ASIAPLY	DATO' YEO BOON LEONG [DIR/CEO]	1,158	204,098	19.358
13 MAY 2025 - 13 MAY 2025	ASIAPLY	DATO' YEO BOON LEONG [SSH]	1,158	204,098	19.358
13 MAY 2025 - 13 MAY 2025	ATECH	EMPLOYEES PROVIDENT FUND BOARD [SSH]	-2,454	52,195	12.039
08 MAY 2025 - 08 MAY 2025	ATECH	EMPLOYEES PROVIDENT FUND BOARD [SSH]	474	54,649	12.606
07 MAY 2025 - 07 MAY 2025	ATECH	EMPLOYEES PROVIDENT FUND BOARD [SSH]	-307	54,175	12.496
08 MAY 2025 - 09 MAY 2025	AWANTEC	LEMBAGA TABUNG AMANAH WARISAN NEGERI TERENGGANU [SSH]	3	42,924	5.445
13 MAY 2025 - 13 MAY 2025	AXIATA	EMPLOYEES PROVIDENT FUND BOARD [SSH]	2,160	1,629,689	17.742
09 MAY 2025 - 09 MAY 2025	AXIATA	EMPLOYEES PROVIDENT FUND BOARD [SSH]	2,464	1,627,529	17.719
08 MAY 2025 - 08 MAY 2025	AXIATA	EMPLOYEES PROVIDENT FUND BOARD [SSH]	2,578	1,625,066	17.692
13 MAY 2025 - 13 MAY 2025	AXREIT	EMPLOYEES PROVIDENT FUND BOARD [SSH]	-135	368,871	18.254
09 MAY 2025 - 09 MAY 2025	AXREIT	EMPLOYEES PROVIDENT FUND BOARD [SSH]	-774	369,006	18.261
08 MAY 2025 - 08 MAY 2025	AXREIT	EMPLOYEES PROVIDENT FUND BOARD [SSH]	150	369,780	18.299
08 MAY 2025 - 08 MAY 2025	AXREIT	PRUDENTIAL PLC [SSH]	-200	103,307	5.112
07 MAY 2025 - 07 MAY 2025	AXREIT	EMPLOYEES PROVIDENT FUND BOARD [SSH]	-1,025	369,630	18.292
09 MAY 2025 - 09 MAY 2025	BAUTO	EMPLOYEES PROVIDENT FUND BOARD [SSH]	136	169,688	14.613
13 MAY 2025 - 13 MAY 2025	BIMB	EMPLOYEES PROVIDENT FUND BOARD [SSH]	-1,108	395,728	17.46
09 MAY 2025 - 09 MAY 2025	BIMB	EMPLOYEES PROVIDENT FUND BOARD [SSH]	-5	396,837	17.509
08 MAY 2025 - 08 MAY 2025	BIMB	EMPLOYEES PROVIDENT FUND BOARD [SSH]	-38	396,836	17.509
07 MAY 2025 - 07 MAY 2025	BIMB	EMPLOYEES PROVIDENT FUND BOARD [SSH]	2,092	396,874	17.511
13 MAY 2025 - 13 MAY 2025	BJASSET	TAN SRI DATO' SERI VINCENT TAN CHEE YOUN [SSH]	43	1,196,867	46.784
13 MAY 2025 - 13 MAY 2025	BJCORP	MISS CHRYSEIS TAN SHEIK LING [DIR/CEO]	-0.2	23,329	0.4
14 MAY 2025 - 14 MAY 2025	BLDPLNT	TUAN HAJI WAN ABDILLAH BIN WAN HAMID [DIR/CEO]	-20	16,484	17.63
14 MAY 2025 - 14 MAY 2025	BLDPLNT	TUAN HAJI WAN ABDILLAH BIN WAN HAMID [SSH]	-20	16,484	17.63
16 MAY 2025 - 16 MAY 2025	BORNOIL	DATUK JOSEPH LEE YOK MIN @ AMBROSE [DIR/CEO]	1,300	2,827,237	20.286
16 MAY 2025 - 16 MAY 2025	BORNOIL	DATUK JOSEPH LEE YOK MIN @ AMBROSE [SSH]	1,300	1,349,222	20.286
16 MAY 2025 - 16 MAY 2025	BORNOIL	MR RIORN LEE KAH VUI [DIR/CEO]	1,300	1,569,040	11.258
16 MAY 2025 - 16 MAY 2025	BORNOIL	MR RIORN LEE KAH VUI [SSH]	1,300	219,818	11.258
15 MAY 2025 - 15 MAY 2025	BORNOIL	DATUK JOSEPH LEE YOK MIN @ AMBROSE [DIR/CEO]	11,400	2,825,937	20.277
15 MAY 2025 - 15 MAY 2025	BORNOIL	DATUK JOSEPH LEE YOK MIN @ AMBROSE [SSH]	11,400	1,347,922	20.277
15 MAY 2025 - 15 MAY 2025	BORNOIL	MR RIORN LEE KAH VUI [DIR/CEO]	11,400	1,567,740	11.249
15 MAY 2025 - 15 MAY 2025	BORNOIL	MR RIORN LEE KAH VUI [SSH]	11,400	219,818	11.249
14 MAY 2025 - 14 MAY 2025	BORNOIL	DATUK JOSEPH LEE YOK MIN @ AMBROSE [DIR/CEO]	1,300	2,814,537	20.195
14 MAY 2025 - 14 MAY 2025	BORNOIL	DATUK JOSEPH LEE YOK MIN @ AMBROSE [SSH]	1,300	1,336,522	20.195
14 MAY 2025 - 14 MAY 2025	BORNOIL	MR RIORN LEE KAH VUI [DIR/CEO]	1,300	1,556,340	11.167
14 MAY 2025 - 14 MAY 2025	BORNOIL	MR RIORN LEE KAH VUI [SSH]	1,300	219,818	11.167
13 MAY 2025 - 13 MAY 2025	BORNOIL	DATUK JOSEPH LEE YOK MIN @ AMBROSE [DIR/CEO]	1,300	2,813,237	20.186
13 MAY 2025 - 13 MAY 2025	BORNOIL	DATUK JOSEPH LEE YOK MIN @ AMBROSE [SSH]	1,300	1,335,222	20.186
13 MAY 2025 - 13 MAY 2025	BORNOIL	MR RIORN LEE KAH VUI [DIR/CEO]	1,300	1,555,040	11.158
13 MAY 2025 - 13 MAY 2025	BORNOIL	MR RIORN LEE KAH VUI [SSH]	1,300	219,818	11.158
13 MAY 2025 - 13 MAY 2025	BURSA	EMPLOYEES PROVIDENT FUND BOARD [SSH]	1,515	110,329	13.633
13 MAY 2025 - 13 MAY 2025	BURSA	EMPLOYEES PROVIDENT FUND BOARD [SSH]	-500	108,815	13.446
09 MAY 2025 - 09 MAY 2025	BURSA	EMPLOYEES PROVIDENT FUND BOARD [SSH]	669	109,315	13.507
09 MAY 2025 - 09 MAY 2025	BURSA	EMPLOYEES PROVIDENT FUND BOARD [SSH]	-300	108,646	13.425
08 MAY 2025 - 08 MAY 2025	BURSA	EMPLOYEES PROVIDENT FUND BOARD [SSH]	504	108,946	13.462
07 MAY 2025 - 07 MAY 2025	BURSA	EMPLOYEES PROVIDENT FUND BOARD [SSH]	561	108,612	13.42
13 MAY 2025 - 13 MAY 2025	CDB	EMPLOYEES PROVIDENT FUND BOARD [SSH]	746	1,247,029	10.63
09 MAY 2025 - 09 MAY 2025	CDB	EMPLOYEES PROVIDENT FUND BOARD [SSH]	632	1,246,284	10.623
08 MAY 2025 - 08 MAY 2025	CDB	EMPLOYEES PROVIDENT FUND BOARD [SSH]	855	1,245,652	10.618
07 MAY 2025 - 07 MAY 2025	CDB	EMPLOYEES PROVIDENT FUND BOARD [SSH]	416	1,244,797	10.611

Notice Period is 11th May 2025 – 17th May 2025					
Effective Change Date	Stock Name	Buyer/ Seller Name [Classification]	Bought / (Sold) ['000]	No. of Shares After Trade ['000]	
			Total	Total	% Held
15 MAY 2025 - 15 MAY 2025	CIMB	KUMPULAN WANG PERSARAAN (DIPERBADANKAN) [SSH]	-1,732	685,213	6.37
13 MAY 2025 - 13 MAY 2025	CIMB	EMPLOYEES PROVIDENT FUND BOARD [SSH]	-9,948	1,868,911	17.39
14 MAY 2025 - 14 MAY 2025	CIMB	KUMPULAN WANG PERSARAAN (DIPERBADANKAN) [SSH]	-200	686,945	6.39
09 MAY 2025 - 09 MAY 2025	CIMB	EMPLOYEES PROVIDENT FUND BOARD [SSH]	-1,795	1,878,859	17.48
13 MAY 2025 - 13 MAY 2025	CIMB	KUMPULAN WANG PERSARAAN (DIPERBADANKAN) [SSH]	966	687,145	6.39
08 MAY 2025 - 08 MAY 2025	CIMB	EMPLOYEES PROVIDENT FUND BOARD [SSH]	-544	1,880,654	17.5
16 MAY 2025 - 16 MAY 2025	CITA-GLB-WC	DATO' SRI MOHAN A/L C SINNATHAMBY [DIR/CEO]	320	320	0.376
16 MAY 2025 - 16 MAY 2025	CITA-GLB-WC	ENCIK IKHLAS BIN KAMARUDIN [DIR/CEO]	1,206	1,206	1.417
16 MAY 2025 - 16 MAY 2025	CITA-GLB-WC	TAN SRI DATO' SRI DR MOHAMAD NORZA BIN ZAKARIA [DIR/CEO]	27,614	27,614	32.452
13 MAY 2025 - 13 MAY 2025	CLMT	EMPLOYEES PROVIDENT FUND BOARD [SSH]	-1,000	447,718	15.325
09 MAY 2025 - 09 MAY 2025	CLMT	EMPLOYEES PROVIDENT FUND BOARD [SSH]	-1,000	448,718	15.359
13 MAY 2025 - 13 MAY 2025	COASTAL	MR JACOB O PANG SU YIN [DIR/CEO]	-10	150	0.028
09 MAY 2025 - 09 MAY 2025	COASTAL	MR JACOB O PANG SU YIN [DIR/CEO]	-20	160	0.029
15 MAY 2025 - 15 MAY 2025	CPETECH	NORGES BANK [SSH]	462	34,152	5.087
14 MAY 2025 - 14 MAY 2025	CTOS	ABERDEEN GROUP PLC (FORMERLY KNOWN AS ABRDN PLC) [SSH]	609	346,245	14.989
14 MAY 2025 - 14 MAY 2025	CTOS	ABRDN HOLDINGS LIMITED [SSH]	609	346,245	14.989
14 MAY 2025 - 14 MAY 2025	CTOS	ABRDN MALAYSIA SDN BHD [SSH]	609	342,647	14.833
13 MAY 2025 - 13 MAY 2025	CTOS	EMPLOYEES PROVIDENT FUND BOARD [SSH]	-3,500	461,758	19.999
14 MAY 2025 - 14 MAY 2025	CTOS	KUMPULAN WANG PERSARAAN (DIPERBADANKAN) [SSH]	609	194,299	8.411
13 MAY 2025 - 13 MAY 2025	CTOS	ABERDEEN GROUP PLC (FORMERLY KNOWN AS ABRDN PLC) [SSH]	1,072	345,636	14.963
13 MAY 2025 - 13 MAY 2025	CTOS	ABRDN HOLDINGS LIMITED [SSH]	1,072	345,636	14.963
13 MAY 2025 - 13 MAY 2025	CTOS	ABRDN MALAYSIA SDN BHD [SSH]	1,072	342,038	14.807
13 MAY 2025 - 13 MAY 2025	CTOS	KUMPULAN WANG PERSARAAN (DIPERBADANKAN) [SSH]	1,072	193,690	8.385
08 MAY 2025 - 08 MAY 2025	CTOS	EMPLOYEES PROVIDENT FUND BOARD [SSH]	-1,236	465,489	20.151
07 MAY 2025 - 07 MAY 2025	CTOS	EMPLOYEES PROVIDENT FUND BOARD [SSH]	-1,067	467,669	20.245
15 MAY 2025 - 15 MAY 2025	CYBERE	MR MAHA RAMANATHAN PALAN [DIR/CEO]	65	4,209	2.469
14 MAY 2025 - 14 MAY 2025	CYBERE	MR MAHA RAMANATHAN PALAN [DIR/CEO]	86	4,144	2.431
09 MAY 2025 - 09 MAY 2025	CYBERE	MR MAHA RAMANATHAN PALAN [DIR/CEO]	45	4,058	2.381
13 MAY 2025 - 13 MAY 2025	D&O	EMPLOYEES PROVIDENT FUND BOARD [SSH]	1,132	104,294	8.414
13 MAY 2025 - 13 MAY 2025	D&O	ABERDEEN GROUP PLC (FORMERLY KNOWN AS ABRDN PLC) [SSH]	155	73,969	5.968
13 MAY 2025 - 13 MAY 2025	D&O	ABRDN HOLDINGS LIMITED [SSH]	155	73,969	5.968
13 MAY 2025 - 13 MAY 2025	D&O	ABRDN MALAYSIA SDN BHD [SSH]	155	73,969	5.968
13 MAY 2025 - 13 MAY 2025	D&O	KUMPULAN WANG PERSARAAN (DIPERBADANKAN) [SSH]	14	83,764	6.758
08 MAY 2025 - 08 MAY 2025	D&O	EMPLOYEES PROVIDENT FUND BOARD [SSH]	764	103,213	8.327
08 MAY 2025 - 08 MAY 2025	D&O	ABERDEEN GROUP PLC (FORMERLY KNOWN AS ABRDN PLC) [SSH]	764	73,813	5.955
08 MAY 2025 - 08 MAY 2025	D&O	ABRDN HOLDINGS LIMITED [SSH]	764	73,813	5.955
08 MAY 2025 - 08 MAY 2025	D&O	ABRDN MALAYSIA SDN BHD [SSH]	764	73,813	5.955
07 MAY 2025 - 07 MAY 2025	D&O	EMPLOYEES PROVIDENT FUND BOARD [SSH]	421	102,449	8.265
13 MAY 2025 - 13 MAY 2025	DAYANG	EMPLOYEES PROVIDENT FUND BOARD [SSH]	5,677	78,786	6.805
07 MAY 2025 - 07 MAY 2025	DAYANG	EMPLOYEES PROVIDENT FUND BOARD [SSH]	40	73,109	6.315
15 MAY 2025 - 15 MAY 2025	DIALOG	KUMPULAN WANG PERSARAAN (DIPERBADANKAN) [SSH]	468	597,388	10.59
14 MAY 2025 - 14 MAY 2025	DIALOG	KUMPULAN WANG PERSARAAN (DIPERBADANKAN) [SSH]	358	596,921	10.58
13 MAY 2025 - 13 MAY 2025	DIALOG	KUMPULAN WANG PERSARAAN (DIPERBADANKAN) [SSH]	1,420	596,563	10.57
07 MAY 2025 - 07 MAY 2025	DIALOG	EMPLOYEES PROVIDENT FUND BOARD [SSH]	49	943,561	16.72
08 MAY 2025 - 08 MAY 2025	DPHARMA	EMPLOYEES PROVIDENT FUND BOARD [SSH]	227	84,384	8.772
07 MAY 2025 - 07 MAY 2025	DPHARMA	EMPLOYEES PROVIDENT FUND BOARD [SSH]	73	84,157	8.749
08 MAY 2025 - 08 MAY 2025	DRBHCOM	EMPLOYEES PROVIDENT FUND BOARD [SSH]	2,033	141,622	7.326
13 MAY 2025 - 13 MAY 2025	DUFU	LEE WEN-JUNG [SSH]	-400	49,225	9.242
08 MAY 2025 - 08 MAY 2025	DUFU	LEE SU HUI-FEN ALSO KNOWN AS FLORA SU [SSH]	-400	49,182	9.234
08 MAY 2025 - 08 MAY 2025	DUFU	PERFECT COMMERCE SDN. BHD. [SSH]	-400	49,160	9.23
09 MAY 2025 - 09 MAY 2025	E&O	EMPLOYEES PROVIDENT FUND BOARD [SSH]	-4,910	151,536	6.086
09 MAY 2025 - 09 MAY 2025	E&O	ABERDEEN GROUP PLC (FORMERLY KNOWN AS ABRDN PLC) [SSH]	1,335	144,561	5.805
09 MAY 2025 - 09 MAY 2025	E&O	ABRDN HOLDINGS LIMITED [SSH]	1,335	144,561	5.805
09 MAY 2025 - 09 MAY 2025	E&O	ABRDN MALAYSIA SDN BHD [SSH]	1,335	143,215	5.751
09 MAY 2025 - 09 MAY 2025	E&O	AMAZING PARADE SDN BHD [SSH]	2,798	627,652	25.206
09 MAY 2025 - 09 MAY 2025	E&O	DATIN SERI TOH SIEW CHUON [SSH]	2,798	778,134	31.249

**Disclaimer:** The Information in Insider Activity is extracted from [www.shareinvestor.com/fundamental/insider\\_trades](http://www.shareinvestor.com/fundamental/insider_trades). The information on this page is provided as a service to readers. It does not constitute financial advice and/or any investment recommendations. We assume no liability for damages resulting from or arising out of the use of such information. Whilst every effort is made to ensure accuracy, the information presented is not the official record of shareholder filings. Readers are advised to read the original filings on the Bursa Malaysia website at [www.bursamalaysia.com](http://www.bursamalaysia.com)



STROM  
SWISS TIMEPIECES & JEWELLERY



StromWatch Asia  
Tele : +65.9817.3378  
Email : [ll.stromasia@gmail.com](mailto:ll.stromasia@gmail.com)  
[WWW.STROMWATCH.SWISS](http://WWW.STROMWATCH.SWISS)

Notice Period is 11th May 2025 – 17th May 2025					
Effective Change Date	Stock Name	Buyer/ Seller Name [Classification]	Bought / (Sold) ['000]	No. of Shares After Trade ['000]	
			Total	Total	% Held
09 MAY 2025 - 09 MAY 2025	E&O	DATO' TEE ENG SENG [DIR/CEO]	2,798	1,462,215	58.721
09 MAY 2025 - 09 MAY 2025	E&O	DATO' TEE ENG SENG [SSH]	2,798	1,462,215	58.721
09 MAY 2025 - 09 MAY 2025	E&O	DATO' SERI TEE ENG HO [DIR/CEO]	2,798	1,467,732	58.943
09 MAY 2025 - 09 MAY 2025	E&O	DATO' SERI TEE ENG HO [SSH]	2,798	1,462,215	58.721
09 MAY 2025 - 09 MAY 2025	E&O	KUMPULAN WANG PERSARAAN (DIPERBADANKAN) [SSH]	131	152,889	6.14
07 MAY 2025 - 07 MAY 2025	E&O	EMPLOYEES PROVIDENT FUND BOARD [SSH]	52	156,446	6.283
13 MAY 2025 - 13 MAY 2025	ECOWLD	EMPLOYEES PROVIDENT FUND BOARD [SSH]	-3,229	166,718	5.619
09 MAY 2025 - 09 MAY 2025	ECOWLD	EMPLOYEES PROVIDENT FUND BOARD [SSH]	4,214	169,947	5.728
08 MAY 2025 - 08 MAY 2025	ECOWLD	EMPLOYEES PROVIDENT FUND BOARD [SSH]	-1,227	165,734	5.586
07 MAY 2025 - 07 MAY 2025	ECOWLD	EMPLOYEES PROVIDENT FUND BOARD [SSH]	922	166,960	5.629
13 MAY 2025 - 13 MAY 2025	EDUSPEC	DATO' SRI GAN CHOW TEE [DIR/CEO]	1,000	88,805	6.688
13 MAY 2025 - 13 MAY 2025	EDUSPEC	DATO' SRI GAN CHOW TEE [SSH]	1,000	88,805	6.688
09 MAY 2025 - 09 MAY 2025	EDUSPEC	DATO' SRI GAN CHOW TEE [DIR/CEO]	700	87,805	6.612
09 MAY 2025 - 09 MAY 2025	EDUSPEC	DATO' SRI GAN CHOW TEE [SSH]	700	87,805	6.612
15 MAY 2025 - 15 MAY 2025	EFORCE	MR WONG THEAN SOON [SSH]	8	186,506	30.581
15 MAY 2025 - 15 MAY 2025	EFORCE	MR WONG THEAN SOON [SSH]	500	186,498	30.58
14 MAY 2025 - 14 MAY 2025	EFORCE	MR WONG THEAN SOON [SSH]	3,021	185,998	30.498
15 MAY 2025 - 15 MAY 2025	EFRAME	DATO HOOI JIA HAO [SSH]	80	54,563	14.667
14 MAY 2025 - 15 MAY 2025	EFRAME	DATO NG WEI YEE [SSH]	749	30,186	8.114
13 MAY 2025 - 14 MAY 2025	EFRAME	DATO HOOI JIA HAO [SSH]	1,380	54,483	14.645
09 MAY 2025 - 09 MAY 2025	EFRAME	DATO NG WEI YEE [SSH]	637	29,437	7.913
14 MAY 2025 - 14 MAY 2025	EMETALL	MR CHUAH THEONG YEE [SSH]	-880	19,004	6.237
09 MAY 2025 - 13 MAY 2025	EMETALL	MR CHUAH THEONG YEE [SSH]	-1,295	19,884	6.526
13 MAY 2025 - 13 MAY 2025	ENGTEX-WB	NKG RESOURCES SDN. BHD. [SSH]	-1,690	8,100	4.698
13 MAY 2025 - 13 MAY 2025	ENGTEX-WB	PUAN SRI DATIN YAP SENG KUAN [DIR/CEO]	-1,690	54,747	31.755
13 MAY 2025 - 13 MAY 2025	ENGTEX-WB	PUAN SRI DATIN YAP SENG KUAN [SSH]	-1,690	54,747	31.755
13 MAY 2025 - 13 MAY 2025	ENGTEX-WB	TAN SRI DATO' NG HOOK [DIR/CEO]	-1,690	54,747	31.755
13 MAY 2025 - 13 MAY 2025	ENGTEX-WB	TAN SRI DATO' NG HOOK [SSH]	-1,690	54,747	31.755
09 MAY 2025 - 09 MAY 2025	ENGTEX-WB	NKG RESOURCES SDN. BHD. [SSH]	-439	9,790	5.678
09 MAY 2025 - 09 MAY 2025	ENGTEX-WB	PUAN SRI DATIN YAP SENG KUAN [DIR/CEO]	-439	56,437	32.734
09 MAY 2025 - 09 MAY 2025	ENGTEX-WB	PUAN SRI DATIN YAP SENG KUAN [SSH]	-439	56,437	32.735
09 MAY 2025 - 09 MAY 2025	ENGTEX-WB	TAN SRI DATO' NG HOOK [DIR/CEO]	-439	56,437	32.735
09 MAY 2025 - 09 MAY 2025	ENGTEX-WB	TAN SRI DATO' NG HOOK [SSH]	-439	56,437	32.735
16 MAY 2025 - 16 MAY 2025	EPB	MADAM OOI KIM KEW [DIR/CEO]	100	205,148	55.147
16 MAY 2025 - 16 MAY 2025	EPB	MR YEOH CHEE MIN [DIR/CEO]	100	205,148	55.147
16 MAY 2025 - 16 MAY 2025	EPB	MR YEOH CHEE MIN [SSH]	100	205,148	55.147
15 MAY 2025 - 15 MAY 2025	EPB	MADAM OOI KIM KEW [DIR/CEO]	110	205,048	55.12
15 MAY 2025 - 15 MAY 2025	EPB	MR YEOH CHEE MIN [DIR/CEO]	110	205,048	55.12
15 MAY 2025 - 15 MAY 2025	EPB	MR YEOH CHEE MIN [SSH]	110	205,048	55.12
14 MAY 2025 - 14 MAY 2025	EPB	MADAM OOI KIM KEW [DIR/CEO]	170	204,938	55.091
14 MAY 2025 - 14 MAY 2025	EPB	MR YEOH CHEE MIN [DIR/CEO]	170	204,938	55.091
14 MAY 2025 - 14 MAY 2025	EPB	MR YEOH CHEE MIN [SSH]	170	204,938	55.091
13 MAY 2025 - 13 MAY 2025	EPB	MADAM OOI KIM KEW [DIR/CEO]	200	204,768	55.045
13 MAY 2025 - 13 MAY 2025	EPB	MR YEOH CHEE MIN [DIR/CEO]	200	204,768	55.045
13 MAY 2025 - 13 MAY 2025	EPB	MR YEOH CHEE MIN [SSH]	200	204,768	55.045
13 MAY 2025 - 13 MAY 2025	F&N	EMPLOYEES PROVIDENT FUND BOARD [SSH]	-14	43,416	11.837
08 MAY 2025 - 08 MAY 2025	F&N	EMPLOYEES PROVIDENT FUND BOARD [SSH]	11	43,430	11.841
07 MAY 2025 - 07 MAY 2025	F&N	EMPLOYEES PROVIDENT FUND BOARD [SSH]	-200	43,418	11.838
15 MAY 2025 - 15 MAY 2025	FFB	KUMPULAN WANG PERSARAAN (DIPERBADANKAN) [SSH]	441	171,526	9.145
14 MAY 2025 - 14 MAY 2025	FFB	ABERDEEN GROUP PLC (FORMERLY KNOWN AS ABRDN PLC) [SSH]	763	142,620	7.603
14 MAY 2025 - 14 MAY 2025	FFB	ABRDN HOLDINGS LIMITED [SSH]	763	142,620	7.603
14 MAY 2025 - 14 MAY 2025	FFB	ABRDN MALAYSIA SDN BHD [SSH]	763	141,220	7.529
13 MAY 2025 - 13 MAY 2025	FFB	EMPLOYEES PROVIDENT FUND BOARD [SSH]	-329	159,297	8.493
14 MAY 2025 - 14 MAY 2025	FFB	KUMPULAN WANG PERSARAAN (DIPERBADANKAN) [SSH]	65	171,085	9.121
13 MAY 2025 - 13 MAY 2025	FFB	ABERDEEN GROUP PLC (FORMERLY KNOWN AS ABRDN PLC) [SSH]	876	141,856	7.563
13 MAY 2025 - 13 MAY 2025	FFB	ABRDN HOLDINGS LIMITED [SSH]	876	141,856	7.563
13 MAY 2025 - 13 MAY 2025	FFB	ABRDN MALAYSIA SDN BHD [SSH]	876	140,457	7.488
09 MAY 2025 - 09 MAY 2025	FFB	EMPLOYEES PROVIDENT FUND BOARD [SSH]	-233	159,626	8.51
13 MAY 2025 - 13 MAY 2025	FFB	KUMPULAN WANG PERSARAAN (DIPERBADANKAN) [SSH]	175	171,020	9.118
08 MAY 2025 - 08 MAY 2025	FFB	EMPLOYEES PROVIDENT FUND BOARD [SSH]	-524	159,859	8.523
09 MAY 2025 - 09 MAY 2025	FFB	ABERDEEN GROUP PLC (FORMERLY KNOWN AS ABRDN PLC) [SSH]	1,616	140,980	7.516
09 MAY 2025 - 09 MAY 2025	FFB	ABRDN HOLDINGS LIMITED [SSH]	1,616	140,980	7.516
09 MAY 2025 - 09 MAY 2025	FFB	ABRDN MALAYSIA SDN BHD [SSH]	1,616	139,581	7.441
08 MAY 2025 - 08 MAY 2025	FFB	ABERDEEN GROUP PLC (FORMERLY KNOWN AS ABRDN PLC) [SSH]	1,054	139,365	7.43
08 MAY 2025 - 08 MAY 2025	FFB	ABRDN HOLDINGS LIMITED [SSH]	1,054	139,365	7.43
08 MAY 2025 - 08 MAY 2025	FFB	ABRDN MALAYSIA SDN BHD [SSH]	1,054	137,965	7.355
07 MAY 2025 - 07 MAY 2025	FFB	EMPLOYEES PROVIDENT FUND BOARD [SSH]	-2,072	160,050	8.533
09 MAY 2025 - 09 MAY 2025	FIBRO	ENCIK MOHD TARMIM BIN SIDEK [DIR/CEO]	-316	3,000	1.208
06 MAY 2025 - 06 MAY 2025	FIBRO	MR NG KIAN BOON [DIR/CEO]	-24,427	158,440	63.816
06 MAY 2025 - 06 MAY 2025	FIBRO	MR NG KIAN BOON [SSH]	-24,427	158,440	63.816
25 FEB 2025 - 25 FEB 2025	FLBHD	MR LIN HAO YU [SSH]	123	30,005	13.737
05 FEB 2025 - 19 FEB 2025	FLBHD	MR LIN HAO YU [SSH]	162	29,682	13.589
13 MAY 2025 - 13 MAY 2025	FRONTKN	EMPLOYEES PROVIDENT FUND BOARD [SSH]	1,869	157,600	9.944
09 MAY 2025 - 09 MAY 2025	FRONTKN	EMPLOYEES PROVIDENT FUND BOARD [SSH]	710	155,731	9.826
08 MAY 2025 - 08 MAY 2025	FRONTKN	EMPLOYEES PROVIDENT FUND BOARD [SSH]	1,395	155,021	9.782
07 MAY 2025 - 07 MAY 2025	FRONTKN	EMPLOYEES PROVIDENT FUND BOARD [SSH]	2,163	153,626	9.694
13 MAY 2025 - 13 MAY 2025	GAMUDA	EMPLOYEES PROVIDENT FUND BOARD (EPF BOARD) [SSH]	20,876	742,066	12.87
09 MAY 2025 - 09 MAY 2025	GAMUDA	EMPLOYEES PROVIDENT FUND BOARD (EPF BOARD) [SSH]	3,188	721,190	12.5
08 MAY 2025 - 08 MAY 2025	GAMUDA	EMPLOYEES PROVIDENT FUND BOARD (EPF BOARD) [SSH]	2,105	718,001	12.45
07 MAY 2025 - 07 MAY 2025	GAMUDA	EMPLOYEES PROVIDENT FUND BOARD (EPF BOARD) [SSH]	1,699	715,897	12.42
15 MAY 2025 - 15 MAY 2025	GASMSIA	LEMBAGA TABUNG HAJI [SSH]	-100	83,227	6.481
14 MAY 2025 - 14 MAY 2025	GASMSIA	LEMBAGA TABUNG HAJI [SSH]	-250	83,327	6.489

**Disclaimer:** The Information in Insider Activity is extracted from [www.shareinvestor.com/fundamental/insider\\_trades](http://www.shareinvestor.com/fundamental/insider_trades). The information on this page is provided as a service to readers. It does not constitute financial advice and/or any investment recommendations. We assume no liability for damages resulting from or arising out of the use of such information. Whilst every effort is made to ensure accuracy, the information presented is not the official record of shareholder filings. Readers are advised to read the original filings on the Bursa Malaysia website at [www.bursamalaysia.com](http://www.bursamalaysia.com)

Notice Period is 11th May 2025 – 17th May 2025					
Effective Change Date	Stock Name	Buyer/ Seller Name [Classification]	Bought / (Sold) ['000]	No. of Shares After Trade ['000]	
			Total	Total	% Held
13 MAY 2025 - 13 MAY 2025	GASMSIA	LEMBAGA TABUNG HAJI [SSH]	-250	83,577	6.509
09 MAY 2025 - 09 MAY 2025	GASMSIA	LEMBAGA TABUNG HAJI [SSH]	-250	83,827	6.528
14 MAY 2025 - 14 MAY 2025	GENP	KUMPULAN WANG PERSARAAN (DIPERBADANKAN) [SSH]	293	68,116	7.592
07 MAY 2025 - 07 MAY 2025	HARNLEN	MR LOW KUECK SHIN [DIR/CEO]	16,070	265,674	43.49
07 MAY 2025 - 07 MAY 2025	HARNLEN	MR LOW KUECK SHIN [SSH]	16,070	265,544	43.469
06 MAY 2025 - 06 MAY 2025	HEKTAR	HEKTAR BLACK SDN BHD [SSH]	-400	120,164	16.941
14 MAY 2025 - 14 MAY 2025	HEXTECH	DATO' ONG CHOO MENG [DIR/CEO]	1,567	1,221,059	59.321
14 MAY 2025 - 14 MAY 2025	HEXTECH	DATO' ONG CHOO MENG [SSH]	1,567	1,221,059	59.321
13 MAY 2025 - 13 MAY 2025	HLBANK	EMPLOYEES PROVIDENT FUND BOARD [SSH]	-136	184,211	8.828
09 MAY 2025 - 09 MAY 2025	HLBANK	EMPLOYEES PROVIDENT FUND BOARD [SSH]	-209	184,347	8.835
08 MAY 2025 - 08 MAY 2025	HLBANK	EMPLOYEES PROVIDENT FUND BOARD [SSH]	93	184,555	8.845
07 MAY 2025 - 07 MAY 2025	HLBANK	EMPLOYEES PROVIDENT FUND BOARD [SSH]	223	184,463	8.84
13 MAY 2025 - 13 MAY 2025	HLFG	EMPLOYEES PROVIDENT FUND BOARD [SSH]	-241	60,012	5.23
13 MAY 2025 - 13 MAY 2025	ICAP	CITY OF LONDON INVESTMENT MANAGEMENT COMPANY LIMITED [SSH]	-145	27,779	19.697
13 MAY 2025 - 13 MAY 2025	IGBREIT	EMPLOYEES PROVIDENT FUND BOARD [SSH]	-100	395,924	10.932
14 MAY 2025 - 14 MAY 2025	IGBREIT	KUMPULAN WANG PERSARAAN (DEPERBADANKAN) [SSH]	-55	250,039	6.905
09 MAY 2025 - 09 MAY 2025	IGBREIT	EMPLOYEES PROVIDENT FUND BOARD [SSH]	-802	396,024	10.935
13 MAY 2025 - 13 MAY 2025	IGBREIT	KUMPULAN WANG PERSARAAN (DEPERBADANKAN) [SSH]	-100	250,094	6.906
08 MAY 2025 - 08 MAY 2025	IGBREIT	EMPLOYEES PROVIDENT FUND BOARD [SSH]	-670	396,826	10.957
09 MAY 2025 - 09 MAY 2025	IGBREIT	KUMPULAN WANG PERSARAAN (DEPERBADANKAN) [SSH]	-120	250,194	6.909
07 MAY 2025 - 07 MAY 2025	IGBREIT	EMPLOYEES PROVIDENT FUND BOARD [SSH]	-463	397,495	10.976
13 MAY 2025 - 13 MAY 2025	IHH	EMPLOYEES PROVIDENT FUND BOARD [SSH]	-3,004	961,728	10.901
09 MAY 2025 - 09 MAY 2025	IHH	EMPLOYEES PROVIDENT FUND BOARD [SSH]	2,221	964,731	10.936
08 MAY 2025 - 08 MAY 2025	IHH	EMPLOYEES PROVIDENT FUND BOARD [SSH]	2,216	962,511	10.911
07 MAY 2025 - 07 MAY 2025	IHH	EMPLOYEES PROVIDENT FUND BOARD [SSH]	1,327	960,295	10.885
15 MAY 2025 - 15 MAY 2025	IJM	KUMPULAN WANG PERSARAAN (DIPERBADANKAN) [SSH]	-124	343,849	9.81
13 MAY 2025 - 13 MAY 2025	IJM	EMPLOYEES PROVIDENT FUND BOARD [SSH]	2,632	546,767	15.599
14 MAY 2025 - 14 MAY 2025	IJM	KUMPULAN WANG PERSARAAN (DIPERBADANKAN) [SSH]	-1,114	343,973	9.813
09 MAY 2025 - 09 MAY 2025	IJM	EMPLOYEES PROVIDENT FUND BOARD [SSH]	2,821	544,135	15.524
13 MAY 2025 - 13 MAY 2025	IJM	KUMPULAN WANG PERSARAAN (DIPERBADANKAN) [SSH]	-1,000	345,087	9.845
08 MAY 2025 - 08 MAY 2025	IJM	EMPLOYEES PROVIDENT FUND BOARD [SSH]	2,200	541,314	15.443
15 MAY 2025 - 15 MAY 2025	INARI	KUMPULAN WANG PERSARAAN (DIPERBADANKAN) [SSH]	-500	398,110	10.507
13 MAY 2025 - 13 MAY 2025	INARI	EMPLOYEES PROVIDENT FUND BOARD [SSH]	4,484	470,448	12.416
15 MAY 2025 - 15 MAY 2025	INARI	INSAS TECHNOLOGY BERHAD [SSH]	-1,500	414,986	10.953
14 MAY 2025 - 15 MAY 2025	INARI	DATO' SRI THONG KOK KHEE [DIR/CEO]	-3,500	512,283	13.521
14 MAY 2025 - 15 MAY 2025	INARI	DATO' SRI THONG KOK KHEE [SSH]	-3,500	512,283	13.521
14 MAY 2025 - 15 MAY 2025	INARI	INSAS BERHAD [SSH]	-3,500	508,739	13.427
14 MAY 2025 - 14 MAY 2025	INARI	KUMPULAN WANG PERSARAAN (DIPERBADANKAN) [SSH]	-2,000	398,610	10.52
13 MAY 2025 - 13 MAY 2025	INARI	DATO' SRI THONG KOK KHEE [DIR/CEO]	-700	515,783	13.613
13 MAY 2025 - 13 MAY 2025	INARI	DATO' SRI THONG KOK KHEE [SSH]	-700	515,783	13.613
13 MAY 2025 - 13 MAY 2025	INARI	INSAS BERHAD [SSH]	-700	512,239	13.519
13 MAY 2025 - 13 MAY 2025	INARI	KUMPULAN WANG PERSARAAN (DIPERBADANKAN) [SSH]	-5,979	400,610	10.573
14 MAY 2025 - 14 MAY 2025	INFOM	MR LIM LEONG PING @ RAYMOND LIM [DIR/CEO]	30	35,732	5.943
14 MAY 2025 - 14 MAY 2025	INFOM	MR LIM LEONG PING @ RAYMOND LIM [SSH]	30	35,732	5.943
14 MAY 2025 - 14 MAY 2025	INTA	APEXJAYA INDUSTRIES SDN BHD [SSH]	100	170,912	30.892
14 MAY 2025 - 14 MAY 2025	INTA	MADAM KOK CHIN SEOW [SSH]	100	172,219	31.128
14 MAY 2025 - 14 MAY 2025	INTA	MR LIM OOI JOO [DIR/CEO]	100	220,067	39.777
14 MAY 2025 - 14 MAY 2025	INTA	MR LIM OOI JOO [SSH]	100	220,067	39.777
09 MAY 2025 - 09 MAY 2025	INTA	APEXJAYA INDUSTRIES SDN BHD [SSH]	100	170,812	30.874
09 MAY 2025 - 09 MAY 2025	INTA	MADAM KOK CHIN SEOW [SSH]	100	172,119	31.11
09 MAY 2025 - 09 MAY 2025	INTA	MR LIM OOI JOO [DIR/CEO]	100	219,967	39.759
09 MAY 2025 - 09 MAY 2025	INTA	MR LIM OOI JOO [SSH]	100	219967	39.759
13 MAY 2025 - 13 MAY 2025	IOIPG	EMPLOYEES PROVIDENT FUND BOARD [SSH]	-127	460,845	8.37
14 MAY 2025 - 14 MAY 2025	JAG	DATO' NG AIK KEE [SSH]	-4,000	206,600	28.856
13 MAY 2025 - 13 MAY 2025	JPG	EMPLOYEES PROVIDENT FUND BOARD [SSH]	4,013	224,597	8.984
09 MAY 2025 - 09 MAY 2025	JPG	EMPLOYEES PROVIDENT FUND BOARD [SSH]	218	220,584	8.823
08 MAY 2025 - 08 MAY 2025	JPG	EMPLOYEES PROVIDENT FUND BOARD [SSH]	777	220,366	8.815
07 MAY 2025 - 07 MAY 2025	JPG	EMPLOYEES PROVIDENT FUND BOARD [SSH]	407	219,589	8.784
14 MAY 2025 - 14 MAY 2025	KAREX	ABERDEEN GROUP PLC (FKA ABRDN PLC) [SSH]	975	56,934	5.404
14 MAY 2025 - 14 MAY 2025	KAREX	ABRDN HOLDINGS LIMITED [SSH]	975	56,934	5.404
14 MAY 2025 - 14 MAY 2025	KAREX	ABRDN MALAYSIA SDN. BHD. [SSH]	975	54,253	5.15
13 MAY 2025 - 13 MAY 2025	KAREX	ABERDEEN GROUP PLC (FKA ABRDN PLC) [SSH]	8	55,959	5.312
13 MAY 2025 - 13 MAY 2025	KAREX	ABRDN HOLDINGS LIMITED [SSH]	8	55,959	5.312
13 MAY 2025 - 13 MAY 2025	KAREX	ABRDN MALAYSIA SDN. BHD. [SSH]	8	53,278	5.057
09 MAY 2025 - 09 MAY 2025	KAREX	ABERDEEN GROUP PLC (FKA ABRDN PLC) [SSH]	20	55,951	5.311
09 MAY 2025 - 09 MAY 2025	KAREX	ABRDN HOLDINGS LIMITED [SSH]	20	55,951	5.311
09 MAY 2025 - 09 MAY 2025	KAREX	ABRDN MALAYSIA SDN. BHD. [SSH]	20	53,270	5.057
08 MAY 2025 - 08 MAY 2025	KAREX	ABERDEEN GROUP PLC (FKA ABRDN PLC) [SSH]	30	55,931	5.309
08 MAY 2025 - 08 MAY 2025	KAREX	ABRDN HOLDINGS LIMITED [SSH]	30	55,931	5.309
08 MAY 2025 - 08 MAY 2025	KAREX	ABRDN MALAYSIA SDN. BHD. [SSH]	30	53,250	5.055
13 MAY 2025 - 13 MAY 2025	KGB	EMPLOYEES PROVIDENT FUND BOARD [SSH]	88	49,803	6.862
13 MAY 2025 - 13 MAY 2025	KGB	ABERDEEN GROUP PLC (FORMERLY KNOWN AS ABRDN PLC) [SSH]	35	54,258	7.476
13 MAY 2025 - 13 MAY 2025	KGB	ABRDN HOLDINGS LIMITED [SSH]	35	54,258	7.476
13 MAY 2025 - 13 MAY 2025	KGB	ABRDN MALAYSIA SDN BHD [SSH]	35	53,381	7.355
09 MAY 2025 - 09 MAY 2025	KGB	EMPLOYEES PROVIDENT FUND BOARD [SSH]	256	49,716	6.85
07 MAY 2025 - 07 MAY 2025	KGB	EMPLOYEES PROVIDENT FUND BOARD [SSH]	200	49,460	6.814
13 MAY 2025 - 13 MAY 2025	KLCC	EMPLOYEES PROVIDENT FUND BOARD [SSH]	-154	210,715	11.672
13 MAY 2025 - 13 MAY 2025	KLCC	EMPLOYEES PROVIDENT FUND BOARD [SSH]	-154	210,715	11.672
09 MAY 2025 - 09 MAY 2025	KLCC	EMPLOYEES PROVIDENT FUND BOARD [SSH]	141	210,868	11.68
09 MAY 2025 - 09 MAY 2025	KLCC	EMPLOYEES PROVIDENT FUND BOARD [SSH]	141	210,868	11.68
08 MAY 2025 - 08 MAY 2025	KLCC	EMPLOYEES PROVIDENT FUND BOARD [SSH]	-78	210,727	11.672
08 MAY 2025 - 08 MAY 2025	KLCC	EMPLOYEES PROVIDENT FUND BOARD [SSH]	-78	210,727	11.672

Notice Period is 11th May 2025 – 17th May 2025					
Effective Change Date	Stock Name	Buyer/ Seller Name [Classification]	Bought / (Sold) ['000]	No. of Shares After Trade ['000]	
			Total	Total	% Held
07 MAY 2025 - 07 MAY 2025	KLCC	EMPLOYEES PROVIDENT FUND BOARD [SSH]	10,786	210,805	11.677
07 MAY 2025 - 07 MAY 2025	KLCC	EMPLOYEES PROVIDENT FUND BOARD [SSH]	10,786	210,805	11.677
08 MAY 2025 - 08 MAY 2025	KLK	EMPLOYEES PROVIDENT FUND BOARD [SSH]	3	178,974	16.071
07 MAY 2025 - 07 MAY 2025	KLK	EMPLOYEES PROVIDENT FUND BOARD [SSH]	14	178,971	16.071
14 MAY 2025 - 14 MAY 2025	KOSSAN	MR TAN KONG CHANG [DIR/CEO]	200	50,550	1.988
13 MAY 2025 - 13 MAY 2025	KSSC	DATUK LOW CHIN KOON [DIR/CEO]	30	935	0.505
15 MAY 2025 - 15 MAY 2025	M&A	CIK SITI NUR AISHAH BINTI ISHAK [SSH]	330	138,952	6.952
14 MAY 2025 - 14 MAY 2025	M&A	CIK SITI NUR AISHAH BINTI ISHAK [SSH]	200	138,622	6.936
13 MAY 2025 - 13 MAY 2025	M&A	CIK SITI NUR AISHAH BINTI ISHAK [SSH]	264	138,422	6.926
09 MAY 2025 - 09 MAY 2025	M&A	CIK SITI NUR AISHAH BINTI ISHAK [SSH]	40	138,158	6.912
15 MAY 2025 - 15 MAY 2025	MALAKOF	KUMPULAN WANG PERSARAAN (DIPERBADANKAN) ("KWAP") [SSH]	-1,500	437,023	8.942
13 MAY 2025 - 13 MAY 2025	MALAKOF	EMPLOYEES PROVIDENT FUND BOARD [SSH]	1,779	640,463	13.105
14 MAY 2025 - 14 MAY 2025	MALAKOF	KUMPULAN WANG PERSARAAN (DIPERBADANKAN) ("KWAP") [SSH]	-700	438,523	8.973
13 MAY 2025 - 13 MAY 2025	MALAKOF	KUMPULAN WANG PERSARAAN (DIPERBADANKAN) ("KWAP") [SSH]	-500	439,223	8.987
08 MAY 2025 - 08 MAY 2025	MALAKOF	EMPLOYEES PROVIDENT FUND BOARD [SSH]	1,975	638,684	13.069
07 MAY 2025 - 07 MAY 2025	MALAKOF	EMPLOYEES PROVIDENT FUND BOARD [SSH]	901	636,709	13.028
15 MAY 2025 - 15 MAY 2025	MATRIX	LEMBAGA TABUNG HAJI [SSH]	500	109,617	5.84
13 MAY 2025 - 13 MAY 2025	MATRIX	EMPLOYEES PROVIDENT FUND BOARD [SSH]	-5,836	94,141	5.015
14 MAY 2025 - 14 MAY 2025	MATRIX	LEMBAGA TABUNG HAJI [SSH]	400	109,117	5.813
09 MAY 2025 - 09 MAY 2025	MATRIX	EMPLOYEES PROVIDENT FUND BOARD [SSH]	-1,314	99,977	5.326
13 MAY 2025 - 13 MAY 2025	MATRIX	LEMBAGA TABUNG HAJI [SSH]	400	108,717	5.792
08 MAY 2025 - 08 MAY 2025	MATRIX	EMPLOYEES PROVIDENT FUND BOARD [SSH]	-3,665	101,291	5.396
09 MAY 2025 - 09 MAY 2025	MATRIX	LEMBAGA TABUNG HAJI [SSH]	400	108,317	5.771
13 MAY 2025 - 13 MAY 2025	MAXIS	EMPLOYEES PROVIDENT FUND BOARD ("EPF BOARD") [SSH]	240	947,618	12.098
09 MAY 2025 - 09 MAY 2025	MAXIS	EMPLOYEES PROVIDENT FUND BOARD ("EPF BOARD") [SSH]	426	947,378	12.095
08 MAY 2025 - 08 MAY 2025	MAXIS	EMPLOYEES PROVIDENT FUND BOARD ("EPF BOARD") [SSH]	407	946,952	12.089
07 MAY 2025 - 07 MAY 2025	MAXIS	EMPLOYEES PROVIDENT FUND BOARD ("EPF BOARD") [SSH]	236	946,545	12.084
15 MAY 2025 - 15 MAY 2025	MAYBANK	AMANAHRAYA TRUSTEES BERHAD - AMANAH SAHAM BUMIPUTERA [SSH]	-1,208	3,636,811	30.104
15 MAY 2025 - 15 MAY 2025	MAYBANK	KUMPULAN WANG PERSARAAN (DIPERBADANKAN) ("KWAP") [SSH]	100	616,786	5.105
15 MAY 2025 - 15 MAY 2025	MAYBANK	PERMODALAN NASIONAL BERHAD [SSH]	-463	801,501	6.635
15 MAY 2025 - 15 MAY 2025	MAYBANK	YAYASAN PELABURAN BUMIPUTRA [SSH]	-463	801,501	6.635
13 MAY 2025 - 13 MAY 2025	MAYBANK	EMPLOYEES PROVIDENT FUND BOARD [SSH]	6,680	1,567,013	12.971
14 MAY 2025 - 14 MAY 2025	MAYBANK	KUMPULAN WANG PERSARAAN (DIPERBADANKAN) ("KWAP") [SSH]	600	616,686	5.104
14 MAY 2025 - 14 MAY 2025	MAYBANK	PERMODALAN NASIONAL BERHAD [SSH]	-2,537	801,964	6.638
14 MAY 2025 - 14 MAY 2025	MAYBANK	YAYASAN PELABURAN BUMIPUTRA [SSH]	-2,537	801,964	6.638
09 MAY 2025 - 09 MAY 2025	MAYBANK	EMPLOYEES PROVIDENT FUND BOARD [SSH]	-1,448	1,560,334	12.916
13 MAY 2025 - 13 MAY 2025	MAYBANK	KUMPULAN WANG PERSARAAN (DIPERBADANKAN) ("KWAP") [SSH]	1,600	616,086	5.099
08 MAY 2025 - 08 MAY 2025	MAYBANK	EMPLOYEES PROVIDENT FUND BOARD [SSH]	-1,247	1,561,782	12.928
07 MAY 2025 - 07 MAY 2025	MAYBANK	EMPLOYEES PROVIDENT FUND BOARD [SSH]	-160	1,563,028	12.938
13 MAY 2025 - 13 MAY 2025	MFCB	EMPLOYEES PROVIDENT FUND BOARD [SSH]	221	73,328	7.78
09 MAY 2025 - 09 MAY 2025	MFCB	EMPLOYEES PROVIDENT FUND BOARD [SSH]	68	73,107	7.757
08 MAY 2025 - 08 MAY 2025	MFCB	EMPLOYEES PROVIDENT FUND BOARD [SSH]	30	73,039	7.75
07 MAY 2025 - 07 MAY 2025	MFCB	EMPLOYEES PROVIDENT FUND BOARD [SSH]	1,006	73,009	7.747
06 MAY 2025 - 06 MAY 2025	MFCB	EMPLOYEES PROVIDENT FUND BOARD [SSH]	658	72,003	7.64
15 MAY 2025 - 15 MAY 2025	MINOX	MR CHEONG CHEE SON [DIR/CEO]	100	174,628	48.51
15 MAY 2025 - 15 MAY 2025	MINOX	MR CHEONG CHEE SON [SSH]	100	174,628	48.51
13 MAY 2025 - 13 MAY 2025	MISC	EMPLOYEES PROVIDENT FUND BOARD [SSH]	1,675	619,063	13.869
09 MAY 2025 - 09 MAY 2025	MISC	EMPLOYEES PROVIDENT FUND BOARD [SSH]	1,409	617,389	13.831
08 MAY 2025 - 08 MAY 2025	MISC	EMPLOYEES PROVIDENT FUND BOARD [SSH]	2,781	615,980	13.8
07 MAY 2025 - 07 MAY 2025	MISC	EMPLOYEES PROVIDENT FUND BOARD [SSH]	178	613,199	13.737
13 MAY 2025 - 13 MAY 2025	MRDIY	EMPLOYEES PROVIDENT FUND BOARD [SSH]	-104	738,892	7.802
08 MAY 2025 - 08 MAY 2025	MRDIY	EMPLOYEES PROVIDENT FUND BOARD [SSH]	300	738,793	7.801
07 MAY 2025 - 07 MAY 2025	MRDIY	EMPLOYEES PROVIDENT FUND BOARD [SSH]	1,517	738,493	7.798
14 MAY 2025 - 14 MAY 2025	MYEG	KUMPULAN WANG PERSARAAN (DIPERBADANKAN) [SSH]	-3,000	405,127	5.256
14 MAY 2025 - 14 MAY 2025	MYEG	ASIA INTERNET HOLDINGS SDN. BHD. [SSH]	-5,000	1,077,703	13.982
13 MAY 2025 - 13 MAY 2025	MYEG	KUMPULAN WANG PERSARAAN (DIPERBADANKAN) [SSH]	3,000	408,127	5.295
09 MAY 2025 - 09 MAY 2025	NESTLE	EMPLOYEES PROVIDENT FUND BOARD [SSH]	0.8	29,630	12.635
07 MAY 2025 - 07 MAY 2025	NESTLE	EMPLOYEES PROVIDENT FUND BOARD [SSH]	-1	29,640	12.64
14 MAY 2025 - 14 MAY 2025	OMESTI	MR MONTEIRO GERARD CLAIR [DIR/CEO]	135	70,017	12.95
14 MAY 2025 - 14 MAY 2025	OMESTI	MR MONTEIRO GERARD CLAIR [SSH]	135	70,017	12.95
15 MAY 2025 - 15 MAY 2025	OMESTI-PB	MR MONTEIRO GERARD CLAIR [DIR/CEO]	10	201	0.188
14 MAY 2025 - 14 MAY 2025	OMESTI-PB	MR MONTEIRO GERARD CLAIR [DIR/CEO]	126	191	0.179
09 MAY 2025 - 09 MAY 2025	PADINI	EMPLOYEES PROVIDENT FUND BOARD [SSH]	100	76,567	7.759
09 MAY 2025 - 09 MAY 2025	PADINI	CHONG CHIN LIN [SSH]	1,905	453,818	45.985
09 MAY 2025 - 09 MAY 2025	PADINI	YONG PANG CHAUN [DIR/CEO]	1,905	453,818	45.986
09 MAY 2025 - 09 MAY 2025	PADINI	YONG PANG CHAUN [SSH]	1,905	453,818	45.986
09 MAY 2025 - 09 MAY 2025	PANTECH	DATIN SHUM KAH LIN [SSH]	53	161,306	19.476
09 MAY 2025 - 09 MAY 2025	PANTECH	DATO' CHEW TING LENG [DIR/CEO]	53	161,306	19.477
09 MAY 2025 - 09 MAY 2025	PANTECH	DATO' CHEW TING LENG [SSH]	53	161,306	19.477
14 MAY 2025 - 14 MAY 2025	PAVREIT	KUMPULAN WANG PERSARAAN (DIPERBADANKAN) [SSH]	150	208,864	5.699
09 MAY 2025 - 09 MAY 2025	PAVREIT	EMPLOYEES PROVIDENT FUND BOARD [SSH]	200	408,255	11.141
13 MAY 2025 - 13 MAY 2025	PBBANK	EMPLOYEES PROVIDENT FUND BOARD [SSH]	6,806	2,972,073	15.31
09 MAY 2025 - 09 MAY 2025	PBBANK	EMPLOYEES PROVIDENT FUND BOARD [SSH]	-2,137	2,965,267	15.28
08 MAY 2025 - 08 MAY 2025	PBBANK	EMPLOYEES PROVIDENT FUND BOARD [SSH]	-2,335	2967404	15.29
07 MAY 2025 - 07 MAY 2025	PBBANK	EMPLOYEES PROVIDENT FUND BOARD [SSH]	3,774	2,969,739	15.3
13 MAY 2025 - 13 MAY 2025	PCHEM	EMPLOYEES PROVIDENT FUND BOARD ("EPF BOARD") [SSH]	228	921,701	11.521

Notice Period is 11th May 2025 – 17th May 2025					
Effective Change Date	Stock Name	Buyer/ Seller Name [Classification]	Bought / (Sold) ['000]	No. of Shares After Trade ['000]	
			Total	Total	% Held
09 MAY 2025 - 09 MAY 2025	PCHEM	EMPLOYEES PROVIDENT FUND BOARD ("EPF BOARD") [SSH]	229	921,474	11.518
08 MAY 2025 - 08 MAY 2025	PCHEM	EMPLOYEES PROVIDENT FUND BOARD ("EPF BOARD") [SSH]	1,446	921,245	11.516
14 MAY 2025 - 15 MAY 2025	PEKAT	MR WEE CHEK AIK [SSH]	-1,500	49,217	7.631
14 MAY 2025 - 14 MAY 2025	PENTA	MR CHUAH CHONG EWE [SSH]	-20	53,038	7.457
09 MAY 2025 - 09 MAY 2025	PENTA	EMPLOYEES PROVIDENT FUND BOARD [SSH]	269	70,201	9.869
13 MAY 2025 - 13 MAY 2025	PENTA	KUMPULAN WANG PERSARAAN (DIPERBADANKAN) [SSH]	-712	58,103	8.168
09 MAY 2025 - 09 MAY 2025	PENTA	KUMPULAN WANG PERSARAAN (DIPERBADANKAN) [SSH]	760	58,815	8.268
15 MAY 2025 - 15 MAY 2025	PETGAS	KUMPULAN WANG PERSARAAN (DIPERBADANKAN) ("KWAP") [SSH]	-318	199,695	10.092
13 MAY 2025 - 13 MAY 2025	PETGAS	EMPLOYEES PROVIDENT FUND BOARD [SSH]	137	257221	12.999
09 MAY 2025 - 09 MAY 2025	PETGAS	EMPLOYEES PROVIDENT FUND BOARD [SSH]	185	257084	12.992
13 MAY 2025 - 13 MAY 2025	PETGAS	KUMPULAN WANG PERSARAAN (DIPERBADANKAN) ("KWAP") [SSH]	62	200012	10.108
08 MAY 2025 - 08 MAY 2025	PETGAS	EMPLOYEES PROVIDENT FUND BOARD [SSH]	1,365	256,771	12.977
15 MAY 2025 - 15 MAY 2025	PLABS	DATIN LIN CHING YEIN [SSH]	200	33,830	12.292
15 MAY 2025 - 15 MAY 2025	PLABS	DATUK LOH SAW FOONG [DIR/CEO]	200	33,830	12.292
15 MAY 2025 - 15 MAY 2025	PLABS	DATUK LOH SAW FOONG [SSH]	200	33,830	12.292
15 MAY 2025 - 15 MAY 2025	PLABS	MR BU YAW SENG [SSH]	100	27,586	10.023
15 MAY 2025 - 15 MAY 2025	PLABS	MR TEO CHIN HENG [DIR/CEO]	150	22,604	8.213
15 MAY 2025 - 15 MAY 2025	PLABS	MR TEO CHIN HENG [SSH]	150	22,604	8.213
14 MAY 2025 - 14 MAY 2025	PLABS	DATIN LIN CHING YEIN [SSH]	100	33,630	12.219
14 MAY 2025 - 14 MAY 2025	PLABS	DATUK LOH SAW FOONG [DIR/CEO]	100	33,630	12.219
14 MAY 2025 - 14 MAY 2025	PLABS	DATUK LOH SAW FOONG [SSH]	100	33,630	12.219
14 MAY 2025 - 14 MAY 2025	PLABS	MR TEO CHIN HENG [DIR/CEO]	424	22,454	8.159
14 MAY 2025 - 14 MAY 2025	PLABS	MR TEO CHIN HENG [SSH]	424	22,454	8.159
13 MAY 2025 - 13 MAY 2025	PLABS	DATIN LIN CHING YEIN [SSH]	100	33,530	12.183
13 MAY 2025 - 13 MAY 2025	PLABS	DATUK LOH SAW FOONG [DIR/CEO]	100	33,530	12.183
13 MAY 2025 - 13 MAY 2025	PLABS	DATUK LOH SAW FOONG [SSH]	100	33,530	12.183
13 MAY 2025 - 13 MAY 2025	PLABS	MR BU YAW SENG [SSH]	100	27,486	9.987
13 MAY 2025 - 13 MAY 2025	PLABS	MR TEO CHIN HENG [DIR/CEO]	180	22,030	8.005
13 MAY 2025 - 13 MAY 2025	PLABS	MR TEO CHIN HENG [SSH]	180	22030	8.005
09 MAY 2025 - 09 MAY 2025	PLABS	DATIN LIN CHING YEIN [SSH]	200	33430	12.147
09 MAY 2025 - 09 MAY 2025	PLABS	DATUK LOH SAW FOONG [DIR/CEO]	200	33430	12.147
09 MAY 2025 - 09 MAY 2025	PLABS	DATUK LOH SAW FOONG [SSH]	200	33430	12.147
09 MAY 2025 - 09 MAY 2025	PLABS	MR BU YAW SENG [SSH]	100	27386	9.951
13 MAY 2025 - 13 MAY 2025	PLINTAS	EMPLOYEES PROVIDENT FUND BOARD [SSH]	27	85867	7.806
09 MAY 2025 - 09 MAY 2025	PLINTAS	EMPLOYEES PROVIDENT FUND BOARD [SSH]	50	85840	7.804
08 MAY 2025 - 08 MAY 2025	PLINTAS	EMPLOYEES PROVIDENT FUND BOARD [SSH]	53	85790	7.799
13 MAY 2025 - 13 MAY 2025	PMETAL	EMPLOYEES PROVIDENT FUND BOARD [SSH]	2,292	468407	5.685
09 MAY 2025 - 09 MAY 2025	PMETAL	EMPLOYEES PROVIDENT FUND BOARD [SSH]	1,054	466116	5.657
08 MAY 2025 - 08 MAY 2025	PMETAL	EMPLOYEES PROVIDENT FUND BOARD [SSH]	1,951	465062	5.644
07 MAY 2025 - 07 MAY 2025	PMETAL	EMPLOYEES PROVIDENT FUND BOARD [SSH]	679	463112	5.621
08 MAY 2025 - 08 MAY 2025	PTRANS	DATIN SRI LIM SOW KENG [SSH]	-18,500	183494	16.19
08 MAY 2025 - 08 MAY 2025	PTRANS	DATO' SRI CHEONG KONG FITT [DIR/CEO]	-18,500	183494	16.191
08 MAY 2025 - 08 MAY 2025	PTRANS	DATO' SRI CHEONG KONG FITT [SSH]	-18,500	183494	16.191
13 MAY 2025 - 13 MAY 2025	RHBBANK	EMPLOYEES PROVIDENT FUND BOARD [SSH]	-3,500	1698365	38.958
09 MAY 2025 - 09 MAY 2025	RHBBANK	EMPLOYEES PROVIDENT FUND BOARD [SSH]	-1,790	1701865	39.038
08 MAY 2025 - 08 MAY 2025	RHBBANK	EMPLOYEES PROVIDENT FUND BOARD [SSH]	-1,495	1703655	39.079
07 MAY 2025 - 07 MAY 2025	RHBBANK	EMPLOYEES PROVIDENT FUND BOARD [SSH]	-527	1705150	39.114
15 MAY 2025 - 15 MAY 2025	RHONEMA	DR YIP LAI SIONG [DIR/CEO]	75,632	81808	36.98
13 MAY 2025 - 13 MAY 2025	RL	MR THIEN CHIET CHAI [DIR/CEO]	-12,000	68110	18.871
13 MAY 2025 - 13 MAY 2025	RL	MR THIEN CHIET CHAI [SSH]	-12,000	68110	18.871
13 MAY 2025 - 13 MAY 2025	RL	PROPEL GLOBAL BERHAD [SSH]	12,000	35460	9.825
13 MAY 2025 - 13 MAY 2025	SAM	EMPLOYEES PROVIDENT FUND BOARD [SSH]	89	40007	5.91
09 MAY 2025 - 09 MAY 2025	SAM	EMPLOYEES PROVIDENT FUND BOARD [SSH]	-138	39918	5.896
08 MAY 2025 - 08 MAY 2025	SAM	EMPLOYEES PROVIDENT FUND BOARD [SSH]	-397	40056	5.917
07 MAY 2025 - 07 MAY 2025	SAM	EMPLOYEES PROVIDENT FUND BOARD [SSH]	-239	40453	5.975
15 MAY 2025 - 15 MAY 2025	SAPIND	MR KOH KOK HOOI [SSH]	23	8084	11.108
14 MAY 2025 - 14 MAY 2025	SAPIND	MR KOH KOK HOOI [SSH]	3	8061	11.076
13 MAY 2025 - 13 MAY 2025	SCOMNET	EMPLOYEES PROVIDENT FUND BOARD [SSH]	-273	71465	8.317
15 MAY 2025 - 15 MAY 2025	SDG	KUMPULAN WANG PERSARAAN (DIPERBADANKAN) [SSH]	323	507530	7.339
09 MAY 2025 - 13 MAY 2025	SDG	EMPLOYEES PROVIDENT FUND BOARD [SSH]	-1,670	1153242	16.676
14 MAY 2025 - 14 MAY 2025	SDG	KUMPULAN WANG PERSARAAN (DIPERBADANKAN) [SSH]	1,534	507206	7.334
13 MAY 2025 - 13 MAY 2025	SDG	KUMPULAN WANG PERSARAAN (DIPERBADANKAN) [SSH]	500	505672	7.312
08 MAY 2025 - 08 MAY 2025	SDG	EMPLOYEES PROVIDENT FUND BOARD [SSH]	2,628	1154682	16.696
07 MAY 2025 - 07 MAY 2025	SDG	EMPLOYEES PROVIDENT FUND BOARD [SSH]	1,622	1152055	16.658
13 MAY 2025 - 13 MAY 2025	SDS	MR TAN KIM SENG [DIR/CEO]	20	106322	25.956
09 MAY 2025 - 09 MAY 2025	SDS	MR TAN KEE JIN [DIR/CEO]	53	1185	0.289
13 MAY 2025 - 13 MAY 2025	SENFONG	MR ER HOCK LAI [DIR/CEO]	459	443134	61.405
13 MAY 2025 - 13 MAY 2025	SENFONG	MR ER HOCK LAI [SSH]	459	443134	61.405
13 MAY 2025 - 13 MAY 2025	SENFONG	SUMBER PANJI SDN. BHD. [SSH]	459	442334	61.294
15 MAY 2025 - 15 MAY 2025	SERNKOU	MR LOW PENG SIAN @ CHUA PENG SIAN [DIR/CEO]	3,670	261530	24.259
15 MAY 2025 - 15 MAY 2025	SERNKOU	MR LOW PENG SIAN @ CHUA PENG SIAN [SSH]	3,670	261530	24.259
16 MAY 2025 - 16 MAY 2025	SFPTECH	MR KEOH BENG HUAT [DIR/CEO]	-24,600	1555657	64.819
16 MAY 2025 - 16 MAY 2025	SFPTECH	MR KEOH BENG HUAT [SSH]	-24,600	1555657	64.819
13 MAY 2025 - 13 MAY 2025	SIME	KUMPULAN WANG PERSARAAN (DIPERBADANKAN) [SSH]	49	450972	6.617
09 MAY 2025 - 09 MAY 2025	SIME	EMPLOYEES PROVIDENT FUND BOARD [SSH]	1,115	1160019	17.02
07 MAY 2025 - 07 MAY 2025	SIME	EMPLOYEES PROVIDENT FUND BOARD [SSH]	200	1158904	17.004
07 MAY 2025 - 07 MAY 2025	SIME	KUMPULAN WANG PERSARAAN (DIPERBADANKAN) [SSH]	514	450922	6.616
15 MAY 2025 - 15 MAY 2025	SIMEPROP	KUMPULAN WANG PERSARAAN (DIPERBADANKAN) [SSH]	1,969	433705	6.377

Notice Period is 11th May 2025 – 17th May 2025					
Effective Change Date	Stock Name	Buyer/ Seller Name [Classification]	Bought / (Sold) ['000]	No. of Shares After Trade ['000]	
			Total	Total	% Held
15 MAY 2025 - 15 MAY 2025	SIMEPROP	PERMODALAN NASIONAL BERHAD [SSH]	-3,691	348028	5.117
15 MAY 2025 - 15 MAY 2025	SIMEPROP	YAYASAN PELABURAN BUMIPUTRA [SSH]	-3,691	348028	5.117
13 MAY 2025 - 13 MAY 2025	SIMEPROP	EMPLOYEES PROVIDENT FUND BOARD [SSH]	4,686	811918	11.938
14 MAY 2025 - 14 MAY 2025	SIMEPROP	KUMPULAN WANG PERSARAAN (DIPERBADANKAN) [SSH]	2,585	431736	6.348
14 MAY 2025 - 14 MAY 2025	SIMEPROP	PERMODALAN NASIONAL BERHAD [SSH]	-2,231	351719	5.172
14 MAY 2025 - 14 MAY 2025	SIMEPROP	YAYASAN PELABURAN BUMIPUTRA [SSH]	-2,231	351719	5.172
09 MAY 2025 - 09 MAY 2025	SIMEPROP	EMPLOYEES PROVIDENT FUND BOARD [SSH]	10,586	807232	11.869
13 MAY 2025 - 13 MAY 2025	SIMEPROP	KUMPULAN WANG PERSARAAN (DIPERBADANKAN) [SSH]	1,604	429151	6.31
08 MAY 2025 - 08 MAY 2025	SIMEPROP	EMPLOYEES PROVIDENT FUND BOARD [SSH]	19,334	796646	11.714
09 MAY 2025 - 09 MAY 2025	SIMEPROP	KUMPULAN WANG PERSARAAN (DIPERBADANKAN) [SSH]	3,150	427548	6.287
07 MAY 2025 - 07 MAY 2025	SIMEPROP	EMPLOYEES PROVIDENT FUND BOARD [SSH]	2,925	777312	11.43
13 MAY 2025 - 13 MAY 2025	SKPRES	EMPLOYEES PROVIDENT FUND BOARD [SSH]	110	167377	10.713
09 MAY 2025 - 09 MAY 2025	SKPRES	EMPLOYEES PROVIDENT FUND BOARD [SSH]	908	167267	10.706
08 MAY 2025 - 08 MAY 2025	SKPRES	EMPLOYEES PROVIDENT FUND BOARD [SSH]	118	166360	10.648
09 MAY 2025 - 09 MAY 2025	SKPRES	ABERDEEN GROUP PLC (FORMERLY KNOWN AS ABRDN PLC) [SSH]	122	106217	6.798
09 MAY 2025 - 09 MAY 2025	SKPRES	ABRDN HOLDINGS LIMITED [SSH]	122	106217	6.798
09 MAY 2025 - 09 MAY 2025	SKPRES	ABRDN MALAYSIA SDN BHD [SSH]	122	106217	6.798
08 MAY 2025 - 08 MAY 2025	SKPRES	ABERDEEN GROUP PLC (FORMERLY KNOWN AS ABRDN PLC) [SSH]	118	106095	6.791
08 MAY 2025 - 08 MAY 2025	SKPRES	ABRDN HOLDINGS LIMITED [SSH]	118	106095	6.791
08 MAY 2025 - 08 MAY 2025	SKPRES	ABRDN MALAYSIA SDN BHD [SSH]	118	106095	6.791
07 MAY 2025 - 07 MAY 2025	SKPRES	EMPLOYEES PROVIDENT FUND BOARD [SSH]	42	166242	10.64
13 MAY 2025 - 13 MAY 2025	SLVEST	EMPLOYEES PROVIDENT FUND BOARD [SSH]	-527	45302	6.008
09 MAY 2025 - 09 MAY 2025	SLVEST	EMPLOYEES PROVIDENT FUND BOARD [SSH]	-58	45829	6.078
13 MAY 2025 - 13 MAY 2025	SPSETIA	EMPLOYEES PROVIDENT FUND BOARD [SSH]	1,839	463703	9.268
09 MAY 2025 - 09 MAY 2025	SPSETIA	EMPLOYEES PROVIDENT FUND BOARD [SSH]	1,500	461864	9.232
15 MAY 2025 - 15 MAY 2025	SRIDGE	ENCIK SYAKUR BIN DATO' MOHD SUHAIMI [DIR/CEO]	100	28714	10.229
15 MAY 2025 - 15 MAY 2025	SRIDGE	ENCIK SYAUQAT BIN DATO' MOHD SUHAIMI [DIR/CEO]	100	28716	10.23
13 MAY 2025 - 13 MAY 2025	SUNCON	EMPLOYEES PROVIDENT FUND BOARD [SSH]	-2,049	100066	7.753
09 MAY 2025 - 09 MAY 2025	SUNCON	EMPLOYEES PROVIDENT FUND BOARD [SSH]	-496	102115	7.912
08 MAY 2025 - 08 MAY 2025	SUNCON	EMPLOYEES PROVIDENT FUND BOARD [SSH]	-579	102595	7.952
07 MAY 2025 - 07 MAY 2025	SUNCON	EMPLOYEES PROVIDENT FUND BOARD [SSH]	209	103174	7.997
15 MAY 2025 - 15 MAY 2025	SUNREIT	KUMPULAN WANG PERSARAAN (DIPERBADANKAN) ('KWAP') [SSH]	750	206025	6.015
13 MAY 2025 - 13 MAY 2025	SUNREIT	EMPLOYEES PROVIDENT FUND BOARD [SSH]	-500	541727	15.818
14 MAY 2025 - 14 MAY 2025	SUNREIT	KUMPULAN WANG PERSARAAN (DIPERBADANKAN) ('KWAP') [SSH]	225	205275	5.993
09 MAY 2025 - 09 MAY 2025	SUNREIT	EMPLOYEES PROVIDENT FUND BOARD [SSH]	1,993	542227	15.832
07 MAY 2025 - 07 MAY 2025	SUNREIT	EMPLOYEES PROVIDENT FUND BOARD [SSH]	968	540234	15.774
13 MAY 2025 - 13 MAY 2025	SUNWAY	EMPLOYEES PROVIDENT FUND BOARD [SSH]	-4,785	532482	8.55
09 MAY 2025 - 09 MAY 2025	SUNWAY	EMPLOYEES PROVIDENT FUND BOARD [SSH]	3,147	537185	8.63
08 MAY 2025 - 08 MAY 2025	SUNWAY	EMPLOYEES PROVIDENT FUND BOARD [SSH]	-45	532208	8.55
07 MAY 2025 - 07 MAY 2025	SUNWAY	EMPLOYEES PROVIDENT FUND BOARD [SSH]	-2,136	532270	8.55
13 MAY 2025 - 13 MAY 2025	TAKAFUL	EMPLOYEES PROVIDENT FUND BOARD [SSH]	-817	163360	18.73
08 MAY 2025 - 08 MAY 2025	TAKAFUL	EMPLOYEES PROVIDENT FUND BOARD [SSH]	-61	164177	18.824
07 MAY 2025 - 07 MAY 2025	TAKAFUL	EMPLOYEES PROVIDENT FUND BOARD [SSH]	-310	164238	18.831
16 MAY 2025 - 16 MAY 2025	TANCO	DATO' SRI ANDREW TAN JUN SUAN [DIR/CEO]	4,135	2981598	56.03
16 MAY 2025 - 16 MAY 2025	TANCO	DATO' SRI ANDREW TAN JUN SUAN [SSH]	4,135	2981598	56.03
15 MAY 2025 - 15 MAY 2025	TANCO	DATO' SRI ANDREW TAN JUN SUAN [DIR/CEO]	-3,500	2976413	55.932
15 MAY 2025 - 15 MAY 2025	TANCO	DATO' SRI ANDREW TAN JUN SUAN [DIR/CEO]	1,050	2977463	55.952
15 MAY 2025 - 15 MAY 2025	TANCO	DATO' SRI ANDREW TAN JUN SUAN [SSH]	-3,500	2976413	55.932
15 MAY 2025 - 15 MAY 2025	TANCO	DATO' SRI ANDREW TAN JUN SUAN [SSH]	1,050	2977463	55.952
14 MAY 2025 - 14 MAY 2025	TANCO	DATO' SRI ANDREW TAN JUN SUAN [DIR/CEO]	-300	2979913	55.998
14 MAY 2025 - 14 MAY 2025	TANCO	DATO' SRI ANDREW TAN JUN SUAN [SSH]	-300	2979913	55.998
13 MAY 2025 - 13 MAY 2025	TANCO	DATO' SRI ANDREW TAN JUN SUAN [DIR/CEO]	600	2980213	56.004
13 MAY 2025 - 13 MAY 2025	TANCO	DATO' SRI ANDREW TAN JUN SUAN [SSH]	600	2980213	56.004
15 MAY 2025 - 15 MAY 2025	TENAGA	DATUK IR MEGAT JALALUDDIN BIN MEGAT HASSAN [DIR/CEO]	-20	149	0.003
13 MAY 2025 - 13 MAY 2025	TENAGA	EMPLOYEES PROVIDENT FUND BOARD [SSH]	-826	1166323	20.01
14 MAY 2025 - 14 MAY 2025	TENAGA	KUMPULAN WANG PERSARAAN (DIPERBADANKAN) [SSH]	400	410317	7.04
09 MAY 2025 - 09 MAY 2025	TENAGA	EMPLOYEES PROVIDENT FUND BOARD [SSH]	-2,118	1167149	20.02
13 MAY 2025 - 13 MAY 2025	TENAGA	KUMPULAN WANG PERSARAAN (DIPERBADANKAN) [SSH]	400	409917	7.04
08 MAY 2025 - 08 MAY 2025	TENAGA	EMPLOYEES PROVIDENT FUND BOARD [SSH]	-830	1169267	20.06
09 MAY 2025 - 09 MAY 2025	TENAGA	KUMPULAN WANG PERSARAAN (DIPERBADANKAN) [SSH]	265	409517	7.03
07 MAY 2025 - 07 MAY 2025	TENAGA	EMPLOYEES PROVIDENT FUND BOARD [SSH]	-3,346	1170097	20.07
14 MAY 2025 - 14 MAY 2025	TEXCYCL	DATUK LOW CHIN KOON [DIR/CEO]	121	2146	0.771
13 MAY 2025 - 13 MAY 2025	TEXCYCL	DATUK LOW CHIN KOON [DIR/CEO]	140	2025	0.727
09 MAY 2025 - 09 MAY 2025	TEXCYCL	DATUK LOW CHIN KOON [DIR/CEO]	46	1885	0.677
14 MAY 2025 - 14 MAY 2025	THETA	MR HILARY FERNANDEZ [SSH]	15	7627	6.465
13 MAY 2025 - 13 MAY 2025	THETA	MR HILARY FERNANDEZ [SSH]	24	7612	6.452
08 MAY 2025 - 09 MAY 2025	THETA	BERJAYA CORPORATION BERHAD [SSH]	80	17402	14.751
08 MAY 2025 - 09 MAY 2025	THETA	BERJAYA GROUP BERHAD [SSH]	80	17402	14.751
08 MAY 2025 - 09 MAY 2025	THETA	JUARA SEJATI SDN BHD [SSH]	80	17402	14.751
08 MAY 2025 - 09 MAY 2025	THETA	REDTONE DIGITAL BERHAD [SSH]	80	17402	14.751
13 MAY 2025 - 13 MAY 2025	TIMECOM	EMPLOYEES PROVIDENT FUND BOARD [SSH]	-43	245127	13.259
09 MAY 2025 - 09 MAY 2025	TIMECOM	EMPLOYEES PROVIDENT FUND BOARD [SSH]	-2,121	245170	13.261
08 MAY 2025 - 08 MAY 2025	TIMECOM	EMPLOYEES PROVIDENT FUND BOARD [SSH]	2,417	247291	13.376
07 MAY 2025 - 07 MAY 2025	TIMECOM	EMPLOYEES PROVIDENT FUND BOARD [SSH]	-306	244874	13.245
15 MAY 2025 - 15 MAY 2025	TM	KUMPULAN WANG PERSARAAN (DIPERBADANKAN) [KWAP] [SSH]	2,253	387404	10.095
13 MAY 2025 - 13 MAY 2025	TM	EMPLOYEES PROVIDENT FUND BOARD (EPF BOARD) [SSH]	1,849	645274	16.814

**Disclaimer:** The Information in Insider Activity is extracted from [www.shareinvestor.com/fundamental/insider\\_trades](http://www.shareinvestor.com/fundamental/insider_trades). The information on this page is provided as a service to readers. It does not constitute financial advice and/or any investment recommendations. We assume no liability for damages resulting from or arising out of the use of such information. Whilst every effort is made to ensure accuracy, the information presented is not the official record of shareholder filings. Readers are advised to read the original filings on the Bursa Malaysia website at [www.bursamalaysia.com](http://www.bursamalaysia.com)

Notice Period is 11th May 2025 – 17th May 2025					
Effective Change Date	Stock Name	Buyer/ Seller Name [Classification]	Bought / (Sold) ['000]	No. of Shares After Trade ['000]	
			Total	Total	% Held
14 MAY 2025 - 14 MAY 2025	TM	KUMPULAN WANG PERSARAAN (DIPERBADANKAN) [KWAP] [SSH]	4,340	385151	10.036
09 MAY 2025 - 09 MAY 2025	TM	EMPLOYEES PROVIDENT FUND BOARD (EPF BOARD) [SSH]	-415	643426	16.766
13 MAY 2025 - 13 MAY 2025	TM	KUMPULAN WANG PERSARAAN (DIPERBADANKAN) [KWAP] [SSH]	1,481	380811	9.923
08 MAY 2025 - 08 MAY 2025	TM	EMPLOYEES PROVIDENT FUND BOARD (EPF BOARD) [SSH]	-1,024	643841	16.777
07 MAY 2025 - 07 MAY 2025	TM	EMPLOYEES PROVIDENT FUND BOARD (EPF BOARD) [SSH]	-5,635	644865	16.803
14 MAY 2025 - 14 MAY 2025	TOMYPAK	MR YONG KWET ON [DIR/CEO]	118	106263	24.648
14 MAY 2025 - 14 MAY 2025	TOMYPAK	MR YONG KWET ON [SSH]	118	106263	24.648
16 MAY 2025 - 16 MAY 2025	TROP	TAN SRI DATO' TAN CHEE SING [DIR/CEO]	100	1397867	55.599
16 MAY 2025 - 16 MAY 2025	TROP	TAN SRI DATO' TAN CHEE SING [SSH]	100	1397867	55.599
15 MAY 2025 - 15 MAY 2025	TROP	TAN SRI DATO' TAN CHEE SING [DIR/CEO]	100	1397767	55.595
15 MAY 2025 - 15 MAY 2025	TROP	TAN SRI DATO' TAN CHEE SING [SSH]	100	440160	55.595
13 MAY 2025 - 13 MAY 2025	UMCCA	DATO' SRI TEE LIP SIN [DIR/CEO]	25	65912	31.422
09 MAY 2025 - 09 MAY 2025	UOADEV	EMPLOYEES PROVIDENT FUND BOARD ("EPF BOARD") [SSH]	8	341166	13.003
08 MAY 2025 - 08 MAY 2025	UOADEV	EMPLOYEES PROVIDENT FUND BOARD ("EPF BOARD") [SSH]	104	341158	13.002
07 MAY 2025 - 07 MAY 2025	UOADEV	EMPLOYEES PROVIDENT FUND BOARD ("EPF BOARD") [SSH]	32	341054	12.998
14 MAY 2025 - 14 MAY 2025	UPA	MR CHUA NGEUN LOK [DIR/CEO]	764	15471	6.679
14 MAY 2025 - 14 MAY 2025	UPA	MR CHUA NGEUN LOK [SSH]	764	15471	6.679
13 MAY 2025 - 13 MAY 2025	UTDPLT	EMPLOYEES PROVIDENT FUND BOARD [SSH]	165	36220	5.822
09 MAY 2025 - 09 MAY 2025	UTDPLT	EMPLOYEES PROVIDENT FUND BOARD [SSH]	207	36056	5.795
08 MAY 2025 - 08 MAY 2025	UTDPLT	EMPLOYEES PROVIDENT FUND BOARD [SSH]	467	35849	5.762
07 MAY 2025 - 07 MAY 2025	UTDPLT	EMPLOYEES PROVIDENT FUND BOARD [SSH]	433	35382	5.687
14 MAY 2025 - 14 MAY 2025	VELESTO	ABERDEEN GROUP PLC (FORMERLY KNOWN AS ABRDN PLC) [SSH]	23,093	484027	5.891
14 MAY 2025 - 14 MAY 2025	VELESTO	ABRDN HOLDINGS LIMITED [SSH]	23,093	484027	5.891
14 MAY 2025 - 14 MAY 2025	VELESTO	ABRDN MALAYSIA SDN BHD [SSH]	23,093	484027	5.891
13 MAY 2025 - 13 MAY 2025	VELESTO	ABERDEEN GROUP PLC (FORMERLY KNOWN AS ABRDN PLC) [SSH]	2,369	460934	5.61
13 MAY 2025 - 13 MAY 2025	VELESTO	ABRDN HOLDINGS LIMITED [SSH]	2,369	460934	5.61
13 MAY 2025 - 13 MAY 2025	VELESTO	ABRDN MALAYSIA SDN BHD [SSH]	2,369	460934	5.61
09 MAY 2025 - 09 MAY 2025	VELESTO	ABERDEEN GROUP PLC (FORMERLY KNOWN AS ABRDN PLC) [SSH]	7,114	458565	5.581
09 MAY 2025 - 09 MAY 2025	VELESTO	ABRDN HOLDINGS LIMITED [SSH]	7,114	458565	5.581
09 MAY 2025 - 09 MAY 2025	VELESTO	ABRDN MALAYSIA SDN BHD [SSH]	7,114	458565	5.581
14 MAY 2025 - 14 MAY 2025	VERSATL	MR LIM AH CHAI [SSH]	100	123872	44.224
14 MAY 2025 - 14 MAY 2025	VERSATL	MR LIM AH CHUAN [SSH]	100	123872	44.224
14 MAY 2025 - 14 MAY 2025	VERSATL	MR LIM CHOU BU [SSH]	100	123872	44.224
14 MAY 2025 - 14 MAY 2025	VERSATL	NSK TRADING SDN BHD [SSH]	100	123872	44.224
13 MAY 2025 - 13 MAY 2025	VITROX	EMPLOYEES PROVIDENT FUND BOARD [SSH]	680	106275	5.614
09 MAY 2025 - 09 MAY 2025	VITROX	EMPLOYEES PROVIDENT FUND BOARD [SSH]	263	105595	5.578
08 MAY 2025 - 08 MAY 2025	VITROX	EMPLOYEES PROVIDENT FUND BOARD [SSH]	1,013	105332	5.564
07 MAY 2025 - 07 MAY 2025	VITROX	EMPLOYEES PROVIDENT FUND BOARD [SSH]	210	104318	5.51
14 MAY 2025 - 14 MAY 2025	VOLCANO	MR ANDREW SU MENG KIT [DIR/CEO]	40	17140	9.437
14 MAY 2025 - 14 MAY 2025	VOLCANO	MR ANDREW SU MENG KIT [SSH]	40	17140	9.437
13 MAY 2025 - 13 MAY 2025	VS	EMPLOYEES PROVIDENT FUND BOARD [SSH]	12,310	331908	8.634
08 MAY 2025 - 08 MAY 2025	VS	EMPLOYEES PROVIDENT FUND BOARD [SSH]	-479	319598	8.314
13 MAY 2025 - 13 MAY 2025	WPRTS	EMPLOYEES PROVIDENT FUND BOARD [SSH]	2,430	303655	8.905
14 MAY 2025 - 14 MAY 2025	WPRTS	KUMPULAN WANG PERSARAAN (DIPERBADANKAN) [SSH]	9	239268	7.017
09 MAY 2025 - 09 MAY 2025	WPRTS	EMPLOYEES PROVIDENT FUND BOARD [SSH]	1,886	301225	8.834
13 MAY 2025 - 13 MAY 2025	WPRTS	KUMPULAN WANG PERSARAAN (DIPERBADANKAN) [SSH]	163	239259	7.016
08 MAY 2025 - 08 MAY 2025	WPRTS	EMPLOYEES PROVIDENT FUND BOARD [SSH]	1,681	299339	8.778
09 MAY 2025 - 09 MAY 2025	WPRTS	KUMPULAN WANG PERSARAAN (DIPERBADANKAN) [SSH]	100	239096	7.012
07 MAY 2025 - 07 MAY 2025	WPRTS	EMPLOYEES PROVIDENT FUND BOARD [SSH]	-529	297658	8.729
15 MAY 2025 - 15 MAY 2025	YINSON	KUMPULAN WANG PERSARAAN (DIPERBADANKAN) [SSH]	1,152	197160	7.081
13 MAY 2025 - 13 MAY 2025	YINSON	EMPLOYEES PROVIDENT FUND BOARD [SSH]	1,547	494469	17.758
14 MAY 2025 - 14 MAY 2025	YINSON	KUMPULAN WANG PERSARAAN (DIPERBADANKAN) [SSH]	-2,606	196008	7.04
14 MAY 2025 - 14 MAY 2025	YINSON	MR LIM HAN WENG [DIR/CEO]	50	740623	26.599
14 MAY 2025 - 14 MAY 2025	YINSON	MR LIM HAN WENG [SSH]	50	740623	26.599
09 MAY 2025 - 09 MAY 2025	YINSON	EMPLOYEES PROVIDENT FUND BOARD [SSH]	-2,340	492922	17.703
13 MAY 2025 - 13 MAY 2025	YINSON	KUMPULAN WANG PERSARAAN (DIPERBADANKAN) [SSH]	-1,308	198613	7.133
08 MAY 2025 - 08 MAY 2025	YINSON	EMPLOYEES PROVIDENT FUND BOARD [SSH]	-229	495262	17.787
13 MAY 2025 - 13 MAY 2025	YTL	EMPLOYEES PROVIDENT FUND BOARD [SSH]	4,710	670215	6.029
09 MAY 2025 - 09 MAY 2025	YTL	EMPLOYEES PROVIDENT FUND BOARD [SSH]	4,351	665505	6.022
08 MAY 2025 - 08 MAY 2025	YTL	EMPLOYEES PROVIDENT FUND BOARD [SSH]	1,124	661155	5.983
07 MAY 2025 - 07 MAY 2025	YTL	EMPLOYEES PROVIDENT FUND BOARD [SSH]	573	660031	5.972
07 MAR 2025 - 07 MAR 2025	YTL	EMPLOYEES PROVIDENT FUND BOARD [SSH]	573	660031	5.972
13 MAY 2025 - 13 MAY 2025	YTLPOWR	EMPLOYEES PROVIDENT FUND BOARD [SSH]	4,774	570876	6.933
09 MAY 2025 - 09 MAY 2025	YTLPOWR	EMPLOYEES PROVIDENT FUND BOARD [SSH]	659	566101	6.885
08 MAY 2025 - 08 MAY 2025	YTLPOWR	EMPLOYEES PROVIDENT FUND BOARD [SSH]	2,841	565443	



READ MORE



The Board of Directors of **Aemulus Holdings Berhad (AEMULUS)** is pleased to announce that Aemulus Corporation Sdn Bhd, a wholly-owned subsidiary of the Company has secured new orders worth USD1 million, approximately RM4.3 million on 20 May 2025.



On behalf of the Board of Directors of **Avillion Berhad (AVI)**, RHB Investment Bank Berhad wishes to announce that the Company proposes to undertake the following: (i) proposed private placement of up to 283,322,100 new ordinary shares in Avillion, representing up to approximately 25% of the total number of issued shares of Avillion and (ii) proposed variation to the utilisation of proceeds raised from the Company's previous private placement of new ordinary shares.

READ MORE



READ MORE



The Board of Directors of **Dayang Enterprise Holdings Bhd (DAYANG)** is pleased to announce that its wholly-owned subsidiary company, DESB Marine Services Sdn Bhd, has been awarded a Work Order for the Provision of Landing Craft Tank from PETRONAS Carigali Sdn Bhd.



The Board of Directors of **Gamuda Berhad (GAMUDA)** wishes to announce that the Company, via its wholly-owned subsidiary, Gamuda Land Sdn Bhd, has on 16 May 2025 entered into three separate Sale and Purchase Agreements for the acquisition of three parcels of leasehold land known as Lot PT45805, PT45806, and Lot 19302, Mukim Tanjong Duabelas, Kuala Langat, Selangor, measuring approximately 336 acres, for a total purchase price of RM248.7 million.

[READ MORE](#)

The Board of Directors of **Smart Asia Chemical Bhd (SMART)** wishes to announce that the Company had, on 16 May 2025, entered into two separate Shareholders' Agreements with Keshun International Construction and Trading Sdn Bhd to formalise the joint venture arrangement between SAC and Keshun and to set out the terms governing the management and operations of two newly incorporated companies, namely Smart CKS Manufacturing Sdn. Bhd. and Smart CKS Marketing Sdn. Bhd.

[READ MORE](#)

Reference is made to **Sarawak Plantation Berhad (SWKPLNT)** Circular to Shareholders dated 23 April 2024 in relation to the proposed renewal of existing shareholders' mandate and proposed new shareholders' mandate for RRPT of a revenue or trading nature. The proposed mandate was approved by the shareholders at the Annual General Meeting held on 24 May 2024.

[READ MORE](#)



Reference is made to the  
**Sunsuria Berhad (SUNSURIA)**  
announcements dated 2  
December 2022, 9 April 2024, 28  
October 2024 and 19 March 2025 in relation to the same.

The Company wishes to announce that  
out of the three SPA, pursuant to the  
terms, the completion of the two SPA took  
place today.



**UEM Sunrise Berhad (UEMS)** sale  
and purchase agreement between  
Nusajaya Heights Sdn Bhd and  
Phoenix Legacy Sdn Bhd for HS(D)  
358840 PTD 124159 in mukim  
Pulai, district of Johor Bahru or  
Iskandar Puteri, Johor for a total  
consideration of RM2.1 million  
signed on 19 May 2023 (ISKANDAR  
SPA 2)

**Disclaimer:** The information in the Investor Relations page is extracted from individual companies’ announcements in [www.bursamalaysia.com](https://www.bursamalaysia.com). The information on this page is provided as a service to readers. We assume no liability for damages resulting from or arising out of the use of such information. Whilst every effort is made to ensure accuracy, the information presented has been simplified for your reading pleasure. Readers are advised to read the original and complete filings on the Bursa Malaysia website at [https://www.bursamalaysia.com/market\\_information/announcements/company\\_announcement](https://www.bursamalaysia.com/market_information/announcements/company_announcement)

Upcoming IPO					
NAME OF COMPANY	OFFER PERIOD		ISSUE PRICE (Per Ordinary Share)	LISTING SOUGHT	DATE OF LISTING
	OPENING	CLOSING			
ECO-SHOP MARKETING BERHAD	29 Apr 2025	7 May 2025	RM1.21	MAIN MARKET	23 May 2025
OASIS HOME HOLDING BERHAD	25 Apr 2025	9 May 2025	RM0.28	ACE MARKET	28 May 2025
HARTANAH KENYALANG BERHAD	30 Apr 2025	27 May 2025	RM0.16	ACE MARKET	9 Jun 2025
CUCKOO INTERNATIONAL (MAL) BERHAD	26 Mar 2025	5 Jun 2025	RM1.29	MAIN MARKET	24 Jun 2025