

Invest

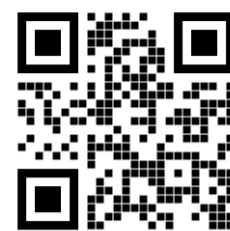
A Weekly e-Publication by SHAREINVESTOR.com

ISSUE

143

FRIDAY
10 FEBRUARY
2023

Scan/Click QR to Register



Via email, every Friday

Angpau BONANZA

PROMOTION PERIOD: 20 January 2023 - 19 February 2023

Get ahead of the game with ShareInvestor!

up to **RM240 off***

Make informed investment decisions with our comprehensive financial tools and data driven analysis.

SHAREINVESTOR
WEBPRO

Normal price: RM397

RM60 off

New User : CNYWP
Renew/Extend: CNYWPR

SUBSCRIBE NOW

SHAREINVESTOR
STATION

Normal price: RM1,606

RM240 off

New User : CNYSIS
Renew/Extend: CNYSISR

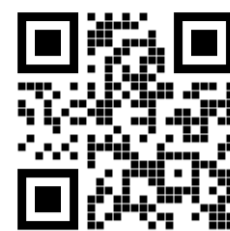
SUBSCRIBE NOW

BURSA
STATION

Normal price: RM1,048

RM157 off

SUBSCRIBE NOW



MALAYSIA'S JOB MARKET RECOVERY CONTINUES, UNEMPLOYMENT RATE MAINTAINS AT 3.6% IN DEC 2022 – MIDF

(page 22)

04	LEADERBOARD	14	VALUE STOCKS	26	REGIONAL MARKETS
06	SHARIAH HOT STOCKS	16	GROWTH STOCKS	27	FROM THE OBSERVER
07	COMPANY SPOTLIGHT	18	DIVIDEND STOCKS	30	INSIDER ACTIVITY
08	SHARIAH MOMENTUM UP STOCKS	19	BROKERS' CALL	33	INVESTOR RELATIONS
10	NON SHARIAH HOT STOCKS	20	LONG COMPANIES	38	CAREERS AT SHAREINVESTOR
12	UP TRENDING STOCKS	22	MARKET SENTIMENTS		



INVESTOR PLATFORMS

General Manager
Darren Chong
darren.chong@shareinvestor.com

MARKET DATA SERVICES
(marketdata.my@shareinvestor.com)

Account Manager
Heidee Ahmad
heidee.ahmad@shareinvestor.com

Admin
Watie Nordin
watie.nordin@shareinvestor.com

Community Growth
Tan Yong Sheng
yongsheng.tan@shareinvestor.com

PROCESS AUTOMATION & DATA ANALYTICS

Data Analyst
Nickson Aw

Market Data & Media Coordinator
Silas Emmanuel Joseph

ADS & EVENTS SPONSORSHIP SALES

Manager
Sharon Lee
sharon.lee@shareinvestor.com

Senior Marketing Executive
Daniel Wong
daniel.wong@shareinvestor.com

CORPORATE

Managing Director (Malaysia) & Publisher
Edward Stanislaus
edward@shareinvestor.com

INVESTOR RELATIONS

Director
Elizabeth Tan
elizabeth.tan@shareinvestor.com

Manager
Letticia Wong
letticia.wong@shareinvestor.com

MARKETING COMMUNICATIONS

Marcomm Manager
Danny Ng
danny.ng@shareinvestor.com

Marcomm Executive
Farah Azwani
farah.azwani@shareinvestor.com

CREATIVE & DESIGN

Manager	Andric See
Asst. Manager	Ivy Yap
Sr. Graphic Designer	Anthony Lau
Web Developers	Nurul Atiqah
	Aiman Jasmin
	Izwan Rusli

IT APPS

Project Manager	Amir Yusoff
Sr. Software Engineers	Mohd. Qasem
	Harris Mulyadi
	Mark Leona
Systems Team Lead	Lucky Phan
Sr. Systems Admin	Law Kee Chai
Software Engineers	Lau Teck Wei
	Lian Kok Keong
	Gary Ooi
Technical Architect	Katrina Delrosario

FINANCE, ADMIN & HR

Manager	Shireen Goh
Sr. Accounts Executive	Jessie Ho
Accounts Assistant	Ng Jin Yng

SHAREINVESTOR HOLDINGS

BOARD OF DIRECTORS

Chairman	Patrick Daniel
Group CEO	Christopher Lee
Group COO	Lim Dau Hee
Group CFO	Teo Siew May
Group MD	Shanison Lin

ShareInvestor Malaysia Sdn. Bhd.
(200001023956) (526564-M)
Unit No. DF2-07-03A, Level 7,
Persoft Tower, 6B Persiaran Tropicana,
47410 Petaling Jaya, Selangor Darul Ehsan.

Hotline : 603 7803 1791
Mobile : 011 6343 8939
Website : www.ShareInvestor.com.my
www.ShareInvestorHoldings.com
www.Facebook.com/ShareInvestorMalaysia

ADVERTISEMENT ENQUIRY



PURNELL

ONLY TOURBILLON



ESCAPE II
FORGED CARBON

Purnell Asia

Tel.: +65.9817.3378

Email: sales.sg@purnellwatches.com

@ Purnell_Official

www.purnellwatches.com

PLAY



www.shareinvestor.com - market data at your fingertips



ShareInvestor WebPro (www.shareinvestor.com/my) Prices > Stock Prices > Bursa > click Stocks tab

1. mouse over Ranking > select Top Active > all Shariah stocks are denoted with an [S] > mouse over Column Layout > select Edit Customs > select Name > select Volume > select Last Done Price > Mouse Over Column Layout > select Custom
2. mouse over Ranking > select Top Turnover > all Shariah stocks are denoted with an [S] > mouse over Column Layout > select Edit Customs > select Name > select Last Done Price > select Value > Mouse Over Column Layout > select Custom
3. mouse over Ranking > select Top Gainers (Over 5 Trading Days) > mouse over Column Layout > select Edit Customs > select Name > select Last Done Price > select 5 Days Change > select 5 Days % Change > Mouse Over Column Layout > select Custom
4. mouse over Ranking > select Top Losers (Over 5 Trading Days)
5. mouse over Ranking > select Top % Gainers (Over 5 Trading Days)
6. mouse over Ranking > select Top % Losers (Over 5 Trading Days)

Shariah Top Actives (as at Yesterday)

Name	Price (RM)	Volume
SAPNRG [S]	0.045	2,012,267.000
MYEG [S]	0.715	1,665,465.000
SMTRACK [S]	0.045	1,213,496.000
ZENTECH [S]	0.050	1,190,887.000
VELESTO [S]	0.220	772,434.000
HONGSENG [S]	0.195	691,119.000
ATAIMS [S]	0.365	542,638.000
IRIS [S]	0.140	403,868.000
CYPARK [S]	1.200	387,316.000
PICORP [S]	0.310	374,463.000

Shariah Top Turnover (as at Yesterday)

Name	Price (RM)	Value (RM)
MYEG [S]	0.715	120,728,709
CYPARK [S]	1.200	46,174,475
TENAGA [S]	9.530	42,310,133
DIALOG [S]	2.500	34,081,139
IHH [S]	5.950	32,031,637
PCHEM [S]	8.240	28,727,627
CORAZA [S]	1.150	26,685,808
GAMUDA [S]	3.780	25,352,771
SUNVIEW [S]	0.870	21,918,031
HARTA [S]	1.550	19,864,598

Top Gainers (over 5 Trading days as at Yesterday)

Name	Price (RM)	Change (RM)
F&N	26.400	+1.000
PANAMY	23.580	+0.600
MPI	34.200	+0.560
CHINHIN	4.220	+0.430
PMBTECH	4.650	+0.430
KESM	7.900	+0.400
KEINHIN	2.550	+0.380
SCIPACK	2.740	+0.310
DKSH	4.800	+0.250
CORAZA	1.150	+0.220

Top % Gainers (over 5 Trading days as at Yesterday)

Name	Price (RM)	Change (%)
VSOLAR	0.010	+100.00
KHEESAN	0.170	+54.55
BSLCORP	0.095	+53.23
PRKCORP	0.300	+50.00
VOLCANO	0.720	+39.81
SCABLE	0.120	+26.32
MLAB	0.025	+25.00
TFP	0.075	+25.00
EFFICEN	0.235	+23.68
CORAZA	1.150	+23.66

Top Losers (over 5 Trading days as at Yesterday)

Name	Price (RM)	Change (RM)
BAT	12.200	-0.880
HEXTECH	28.440	-0.680
HLBANK	19.900	-0.640
ALLIANZ	13.500	-0.460
HLFG	17.960	-0.420
HLCAP	6.170	-0.410
NESTLE	135.100	-0.400
PETDAG	21.900	-0.400
CIMB	5.370	-0.330
RAPID	15.980	-0.300

Top % Losers (over 5 Trading days as at Yesterday)

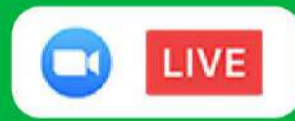
Name	Price (RM)	Change (%)
COMPUGT	0.010	-33.33
ZENTECH	0.050	-28.57
MYEG	0.715	-22.70
BCMALL	0.020	-20.00
MTRONIC	0.020	-20.00
PASUKGB	0.020	-20.00
OCR	0.085	-19.05
AEMULUS	0.390	-18.75
MQTECH	0.045	-18.18
SCBUILD	0.045	-18.18

PANEL DISCUSSION & SHARING

OPPORTUNITIES OF LIQUOR INDUSTRY: EMPERADOR INC.

Panelist 1
SAMANTHA CO
Investor Relations Associate

Panelist 2
KENNETH NERECINA
Investor Relations Officer



THURSDAY
16 FEB 2023
START : 8PM - 9:30PM

★★★
World's #1 largest
brandy producer

★★★
5th largest Scotch
whisky producer

SCAN TO REGISTER



EMPERADOR INC.

Organized by



Price & Volume Distribution Charts (as at Yesterday)

Technical Analysis

DEFINITION: Shariah compliant stocks with Technical Analysis showing 5-days & 10-days Moving Average Price below Yesterday's Close over past 3 days and with Volume Spike.

CHART GUIDE: Volume Distribution Chart is a statistical interpretation of the current sentiment on each stock in graphical format. The highest bar categorized as >150k is likely to be traded by institutions or super dealers, while the lowest bar categorized as <15k usually represents retail investors. "Buy Up" refers to more buyers snatching up the lots queued at selling price. "Sell Down" refers to sellers selling their shares to the buying queue



ShareInvestor WebPro > Screener > Market Screener (FA & TA)>select BURSA>add criteria

A. Criteria

- > click Add Criteria
- Technical Analysis Conditions tab select (i) Moving Average Below Close (ii) Volume Spike
- Fundamental Analysis Conditions tab >select (iii) Revenue
- Prices & Other Conditions tab > select (iv) Is Shariah Compliant
- Technical Analysis Conditions tab select (v) Moving Average Below Close
- Prices & Other Conditions tab > select (vi) Last Done Price
- Technical Analysis Conditions tab select (vii) Moving Average Below Close

B. Conditions (Criteria Filters)

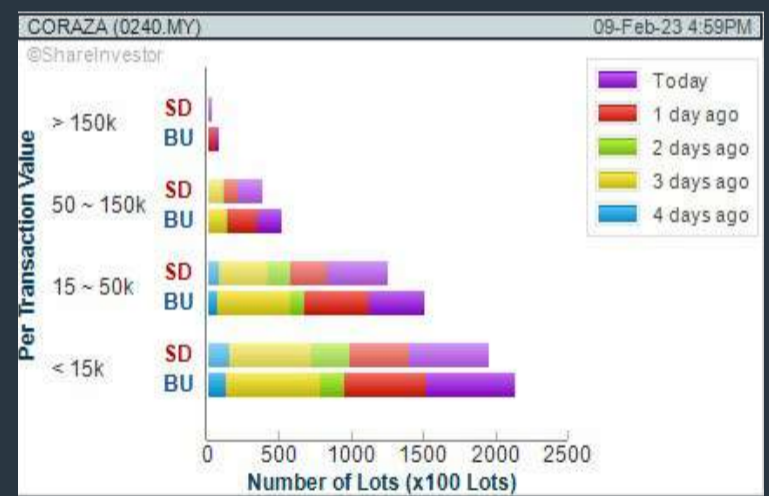
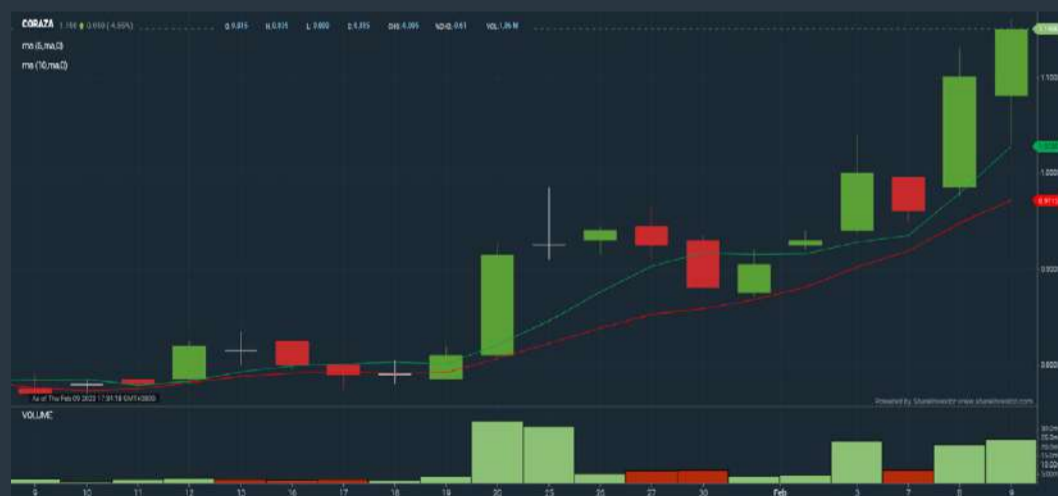
1. Moving Average Below Close - select (MA) type (5) below close price for type (3) days
2. Volume Spike - Volume type (1) greater than type (5) days average
3. Revenue ("000) - select (more than) type (1) for the past select (1) financial year(s)
4. Is Shariah Compliant - select **Yes**
5. Moving Average Below Close - select (MA) type (10) below close price for type (3) days
6. Last Done Price - select (more than) type (0.3)
7. Moving Average Below Close - select (EMA) type (5) below close price for type (3) days

- > click Save Template > Create New Template type (Shariah Hot Stocks) > click Create
- > click Save Template as > select Shariah Hot Stocks > click Save
- > click Screen Now (may take a few minutes)
- > Sort By: Select (Vol) Select (Desc)
- > Mouse over stock name > Charts > click C² Charts or Volume Distribution

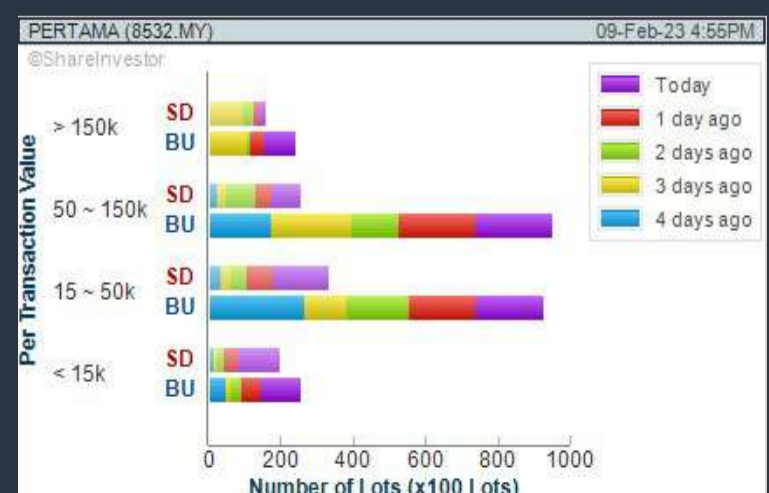
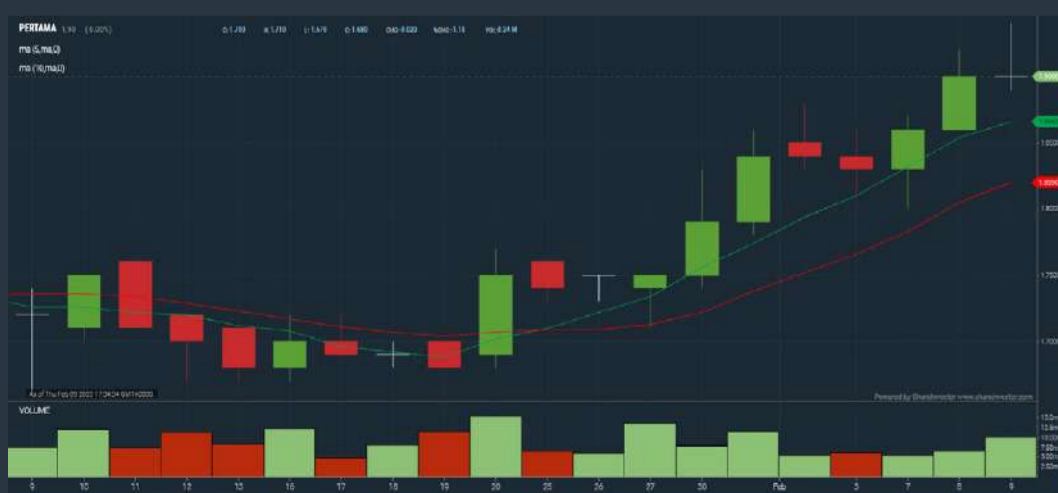
TANCO HOLDINGS BERHAD (2429) C² Chart



CORAZA INTEGRATED TECHNOLOGY BERHAD (0240) C² Chart



PERTAMA DIGITAL BERHAD (8532) C² Chart



Disclaimer: The information on this page is provided as a service to readers. It does not constitute financial advice and/or any investment recommendations. Past performance is not indicative of future results. We assume no liability for damages resulting from or arising out of the use of such information. It would be best if you did your own research to make your personal investment decisions wisely or consult a licenced investment advisor.

COMPANY BACKGROUND

Tanco Holdings Berhad and its subsidiaries have been involved in the property development sector since 1995. The Group is an integrated resort developer through its beachside properties and tourism and leisure businesses. The Group is also involved in the construction business via infrastructure projects and the supplying of construction materials. It is pursuing relevant regulatory approvals for its health supplements business.



TANCO (2429.MY)		Updated at 09 Feb 2023 16:59	
Last (MYR): 0.470 ↑	Change: +0.040	High: 0.480	Remarks: -
	Change (%): +9.30	Low: 0.425	
Open	0.430	Yesterday's Close	0.430
Buy Price	0.470	Sell Price	0.475
Buy Volume ('00)	121	Sell Volume ('00)	2,728
Cumulative Volume ('00)	339,523	Cumulative Value	15,443,152

Financial Analysis

Revenue Growth Increasing revenue in last 3 consecutive years and min growth is 15% in last 2 years	Excellent	Profit Growth Losses for past 4 years	Watch Out
Piotroski F Score The company has weak financial strength (Piotroski F-Score of 0-2)	Be Alert	Current Ratio The company may have difficulty meeting short-term obligations with its current assets for 3 consecutive years	Watch Out
Debt to Cashflow The company has negative cash flow from operations in most recent year	Be Alert	Free Cash Flow Negative free cash flow for two years or more	Watch Out
Gross Profit Margin Low gross profit margin for 2 years	Be Alert	Gross Profit Margin Gross profit margin is decreasing by more than 10% a year over the past 60 months.	Watch Out
Net Earnings Margin Company is losing money but net profit margin is improving by more than 10% a year over the past 60 months.	Neutral	Return on Assets (ROA) Negative ROA for 3 consecutive years	Watch Out
Return on Equity (ROE) Negative ROE for 3 consecutive years	Watch Out		

Excellent Good Neutral Be Alert Watch Out



Historical Financials

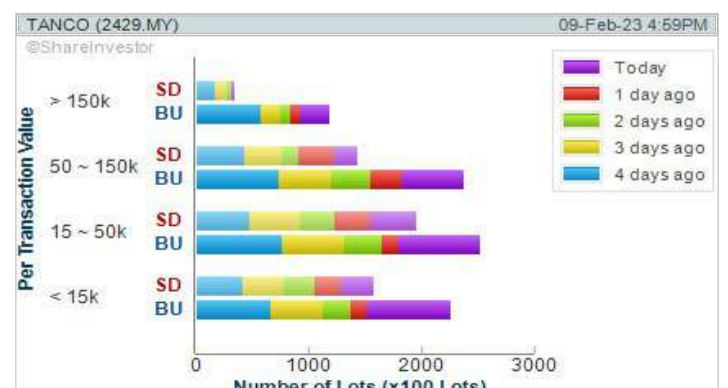


WebPro 9-Days Free Trial Registration (worth RM9) Sign Up Now



Key Statistics with Total Shareholder Returns

Period	Dividend Received	Capital Appreciation	Total Shareholder Return
Short Term Return	5 Days	-0.095	+25.33%
	10 Days	-0.115	+32.30%
	20 Days	-0.090	+25.98%
Medium Term Return	3 Months	-0.105	+28.77%
	6 Months	-0.240	+64.35%
	1 Year	-0.295	+68.57%
Long Term Return	2 Years	-0.425	+68.69%
	3 Years	-0.425	+64.44%
	5 Years	-0.379	+61.68%
Annualised Return	Annualised	-	+38.07%



Disclaimer: The information on this page is provided as a service to readers. It does not constitute financial advice and/or any investment recommendations. Past performance is not indicative of future results. We assume no liability for damages resulting from or arising out of the use of such information. It would be best if you did your own research to make your personal investment decisions wisely or consult a licenced investment advisor.

Price & Volume Distribution Charts (as at Yesterday)

Technical Analysis

DEFINITION: Shariah compliant stocks with Technical Analysis showing Bullish Momentum and Price Uptrend. The share price closed at the highest price yesterday. The typical price was higher than the previous day's typical price.

CHART GUIDE: Volume Distribution Chart is a statistical interpretation of the current sentiment on each stock in graphical format. The highest bar categorized as >150k is likely to be traded by institutions or super dealers, while the lowest bar categorized as <15k usually represents retail investors. "Buy Up" refers to more buyers snatching up the lots queued at selling price. "Sell Down" refers to sellers selling their shares to the buying queue.



ShareInvestor WebPro > Screener > Market Screener (FA & TA)>select BURSA>add criteria

A. Criteria

- > click Add Criteria
- Fundamental Analysis Conditions tab >select (i) Revenue
- Technical Analysis Conditions tab select (ii) Average Volume
- Prices & Other Conditions tab > select (iii) Last Done Price
- Prices & Other Conditions tab > select (iv) Is Shariah Compliant
- Technical Analysis Conditions tab select (v) RSI Overbought
- Technical Analysis Conditions tab select (vi) Moving Average Below Close
- Technical Analysis Conditions tab select (vii) CCI Overbought

B. Conditions (Criteria Filters)

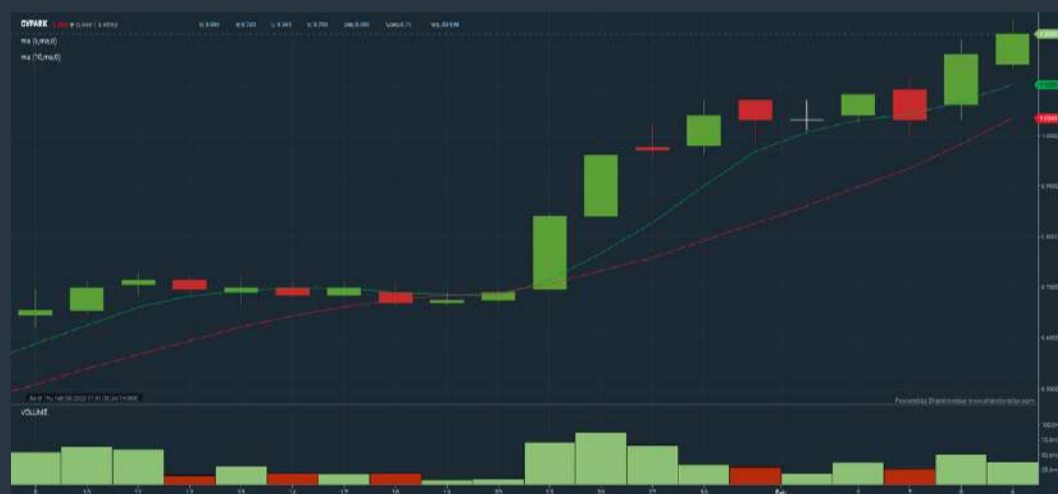
1. Revenue ("000) - select (more than) type (1) for the past select (1) financial year(s)
2. Average Volume - type (1) days average volume greater than type (10000) lots
3. Last Done Price - select (more than) type (0.3)
4. Is Shariah Compliant - select Yes
5. RSI Overbought - select RSI 1 above 99 for 1 days
6. Moving Average Below Close - select (MA) type (10) below close price for type (1) days
7. CCI Overbought - select CCI (2) above (0) for (1) days

- > click Save Template > Create New Template type (Shariah Momentum Up Stocks) > click Create
- > click Save Template as > select Shariah Momentum Up Stocks > click Save
- > click Screen Now (may take a few minutes)
- Sort By: Select (Vol) Select (Desc)
- Mouse over stock name > Charts > click C² Charts tab or Volume Distribution

CYPARK RESOURCES BERHAD (5184)

C² Chart

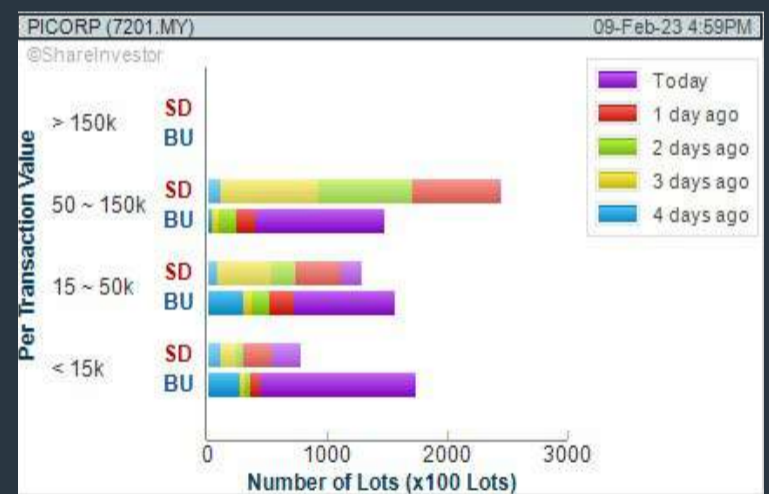
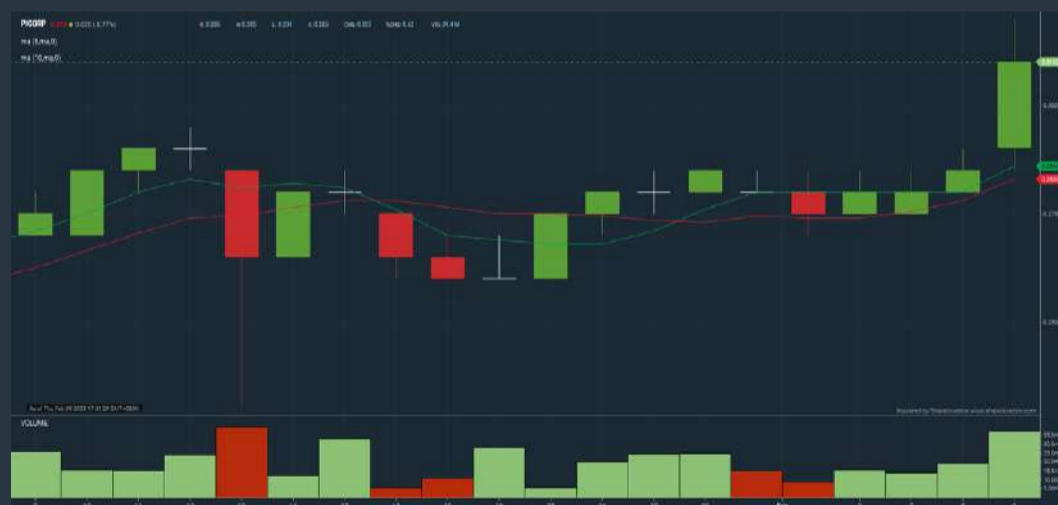
Analysis



PROGRESSIVE IMPACT CORPORATION (7201)

C² Chart

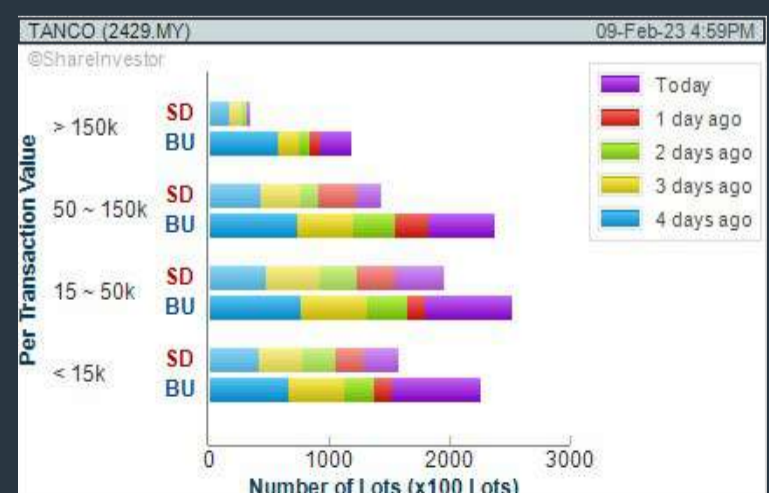
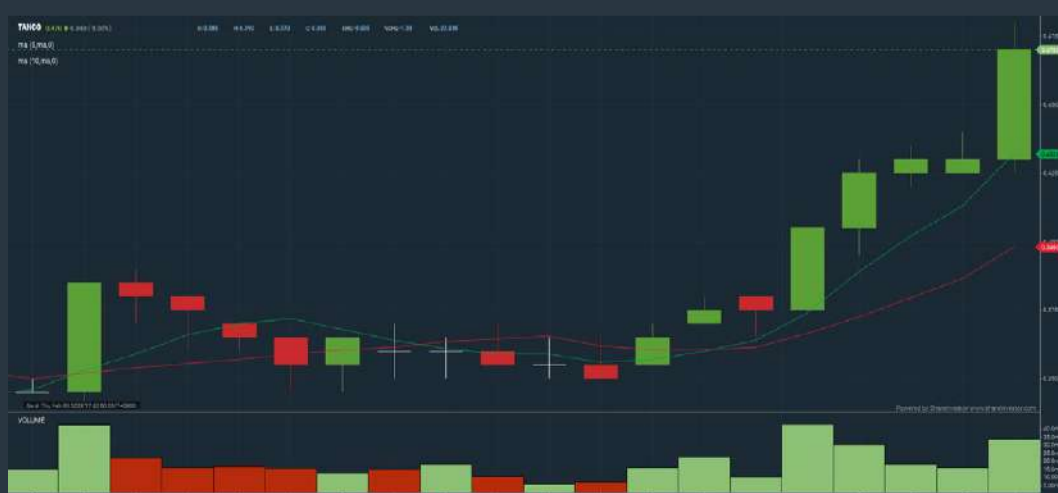
Analysis



TANCO HOLDINGS BERHAD (2429)

C² Chart

Analysis



Disclaimer: The information on this page is provided as a service to readers. It does not constitute financial advice and/or any investment recommendations. Past performance is not indicative of future results. We assume no liability for damages resulting from or arising out of the use of such information. It would be best if you did your own research to make your personal investment decisions wisely or consult a licenced investment advisor.

SHARE INVESTOR WEBPRO

STOCK MARKET DATA AT YOUR FINGERTIPS

Powerful browser-based market analytics platform.
Access from anywhere



8 Markets Data

- ▶ Get access to data from Bursa, NYSE, Nasdaq, HKEX, SGX, IDX, SET & ASX

Portfolio Management

- ▶ Profit & Loss Summary
- ▶ Stock Alert
- ▶ News & Events filtering
- ▶ Customizable column layout

Fundamental Analysis

Financial Analysis Statement

- ▶ Profit & Loss
- ▶ Balance Sheet
- ▶ Cash Flow Statement
- ▶ More than 20 Financial Ratios
- ▶ Dividend Analysis

Technical Charting

- ▶ C² chart (Customisable & Comprehensive)

Brokers' Call

Intrinsic Value Calculator

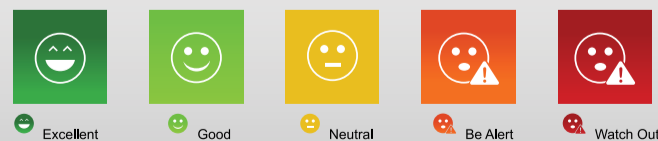
FactSheet

- ▶ Key Stock Information
- ▶ Ownership
- ▶ Consensus Estimates
- ▶ Annual Report
- ▶ Historical Price
- ▶ Insider Trades

Introducing Smiley Grid



- ▶ Smiley Grid makes the Factsheet fast and easy to understand.
- ▶ It is a shortcut where key financial data have now been interpreted for you, and presented in easy-to-understand, colour coded icons



Click here to start your
9 days FREE trial
(Valued at RM10)



Price & Volume Distribution Charts (as at Yesterday)

Technical Analysis

DEFINITION: Stocks with Technical Analysis showing 5-days & 10-days Moving Average Price below Close over past 1 days and with Volume Spike

CHART GUIDE: Volume Distribution Chart is a statistical interpretation of the current sentiment on each stock in graphical format. The highest bar categorized as >150k is likely to be traded by institutions or super dealers, while the lowest bar categorized as <15k usually represents retail investors. "Buy Up" refers to more buyers snatching up the lots queued at selling price. "Sell Down" refers to sellers selling their shares to the buying queue.



ShareInvestor WebPro > Screener > Market Screener (FA & TA) > select BURSA > add criteria

A. Criteria

- > click Add Criteria
- Technical Analysis Conditions tab select (i) Moving Average Below Close (ii) Volume Spike
- Fundamental Analysis Conditions tab >select (iii) Revenue
- Prices & Other Conditions tab > select (iv) Is Shariah Compliant
- Technical Analysis Conditions tab select (v) Moving Average Below Close
- Prices & Other Conditions tab > select (vi) Last Done Price
- Technical Analysis Conditions tab select (vii) Moving Average Below Close

B. Conditions (Criteria Filters)

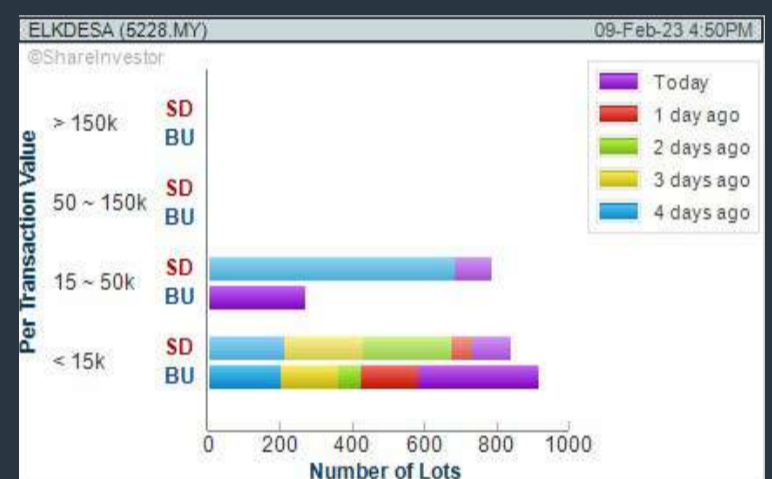
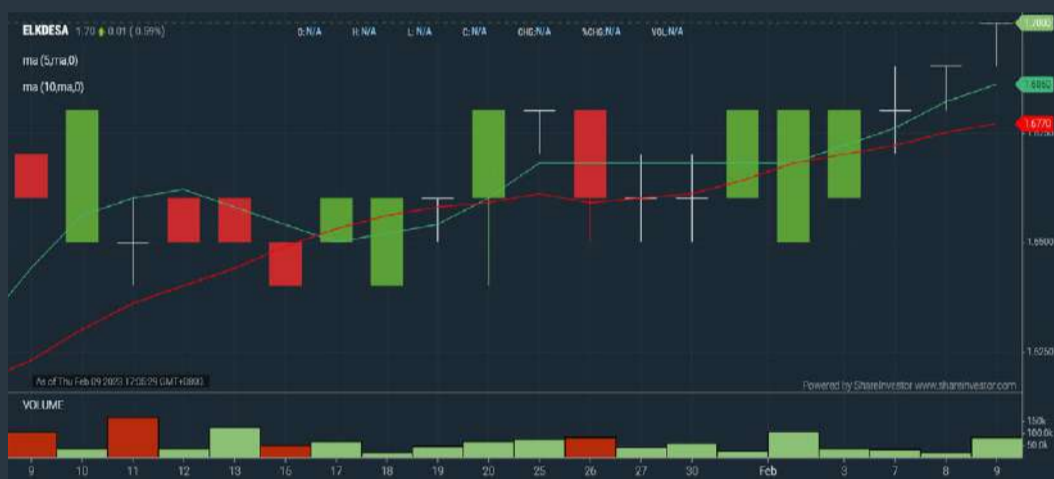
1. Moving Average Below Close - select (MA) type (5) below close price for type (3) days
2. Volume Spike - Volume type (1) greater than type (5) days average
3. Revenue ("000) - select (more than) type (1) for the past select (1) financial year(s)
4. Is Shariah Compliant - select NO
5. Moving Average Below Close - select (MA) type (10) below close price for type (1) days
6. Last Done Price - select (more than) type (0.3)
7. Moving Average Below Close - select (EMA) type (5) below close price for type (1) days

- > click Save Template > Create New Template type (Non-Shariah Hot Stocks) > click Create
- > click Save Template as > select Non-Shariah Hot Stocks > click Save
- > click Screen Now (may take a few minutes)
- Sort By: Select (Vol) Select (Desc)
- Mouse over stock name > Charts > click C² Charts tab or Volume Distribution

ELK-DESA RESOURCES BERHAD (5228)

C² Chart

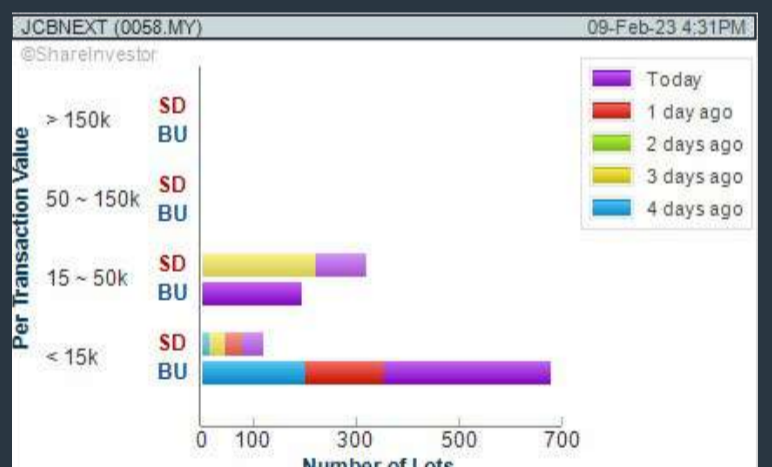
Analysis



JCBNEXT BERHAD (0058)

C² Chart

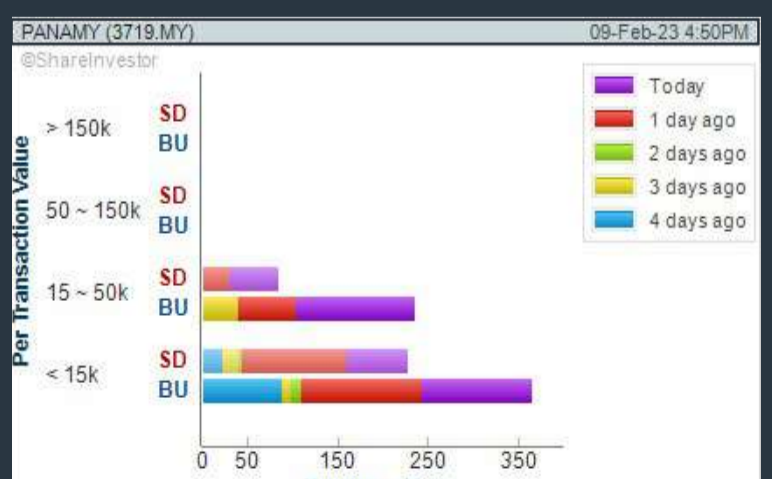
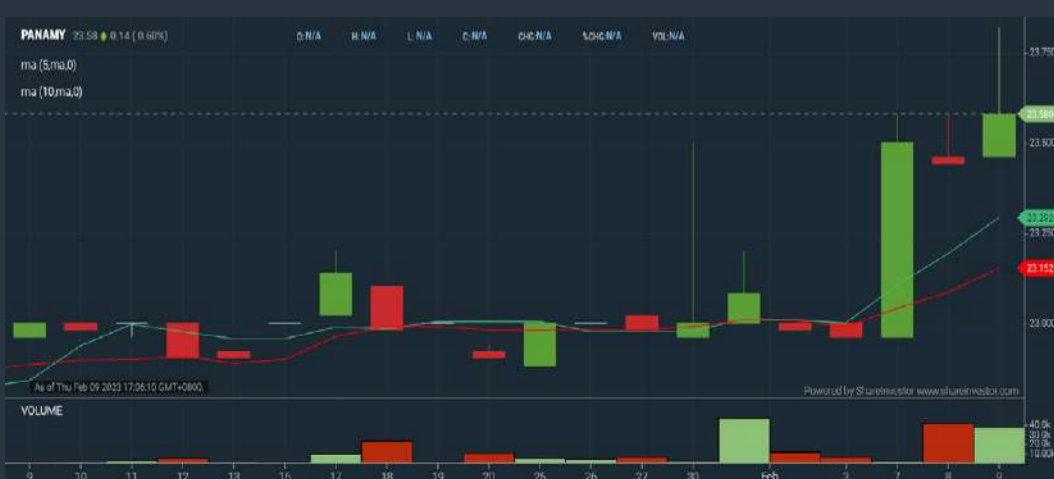
Analysis



PANASONIC MANUFACTURING MSIA (3719)

C² Chart

Analysis



Disclaimer: The information on this page is provided as a service to readers. It does not constitute financial advice and/or any investment recommendations. Past performance is not indicative of future results. We assume no liability for damages resulting from or arising out of the use of such information. It would be best if you did your own research to make your personal investment decisions wisely or consult a licenced investment advisor.

MAKE BETTER TRADING STRATEGIES

with
SHARE INVESTOR
STATION



8 Markets Data

- ▶ Get access to data from Bursa, NYSE, Nasdaq, HKEX, SGX, IDX, SET & ASX

Dynamic Chart

- ▶ Candlestick Pattern Recognition
- ▶ 111 Indicators
- ▶ 39 Drawing Tools
- ▶ Performance Comparison Chart

Intraday Data

- ▶ Market Depth
- ▶ Trade Summary Matrix & Chart
- ▶ Times & Sales
- ▶ Intraday Market Ticker

Market Screener

- ▶ 96 criteria ranging from FA, TA, Consensus Estimate
- ▶ Real-time Data

Power Frame

- ▶ Combining few Dynamic Charts together with intraday information in one frame

Technical Analysis

Fundamental Analysis

Financial Analysis Statement

- ▶ Profit & Loss
- ▶ Balance Sheet
- ▶ Cash Flow Statement
- ▶ More than 20 Financial Ratios
- ▶ Dividend Analysis

FactSheet

- ▶ Key Stock Information
- ▶ Ownership
- ▶ Consensus Estimates
- ▶ Annual Report
- ▶ Historical Price
- ▶ Insider Trades

**Start your 18 days
 FREE trial now
 (Valued at RM82)**



Price & Volume Distribution Charts (Over 5 trading days as at Yesterday)

Technical Analysis

DEFINITION: Stocks with Technical Analysis showing Bullish Momentum and Price Uptrend

CHART GUIDE: Volume Distribution Chart is a statistical interpretation of the current sentiment on each stock in graphical format. The highest bar categorized as >150k is likely to be traded by institutions or super dealers, while the lowest bar categorized as <15k usually represents retail investors. "Buy Up" refers to more buyers snatching up the lots queued at selling price. "Sell Down" refers to sellers selling their shares to the buying queue.



ShareInvestor WebPro > Screener > Market Screener (FA & TA) > select BURSA > add criteria

A. Criteria

- > click Add Criteria
- Fundamental Analysis Conditions tab > select (i) Revenue
- Technical Analysis Conditions tab select (ii) Moving Average Below Close
- Technical Analysis Conditions tab select (iii) Average Volume
- Prices & Other Conditions tab > select (iv) Last Done Price
- Technical Analysis Conditions tab select (v) Moving Average Below Close
- Technical Analysis Conditions tab select (v) Moving Average Bullish Crossover

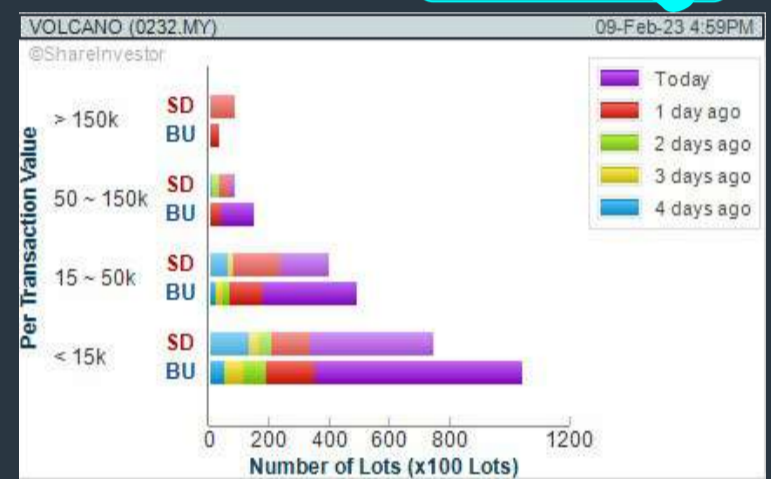
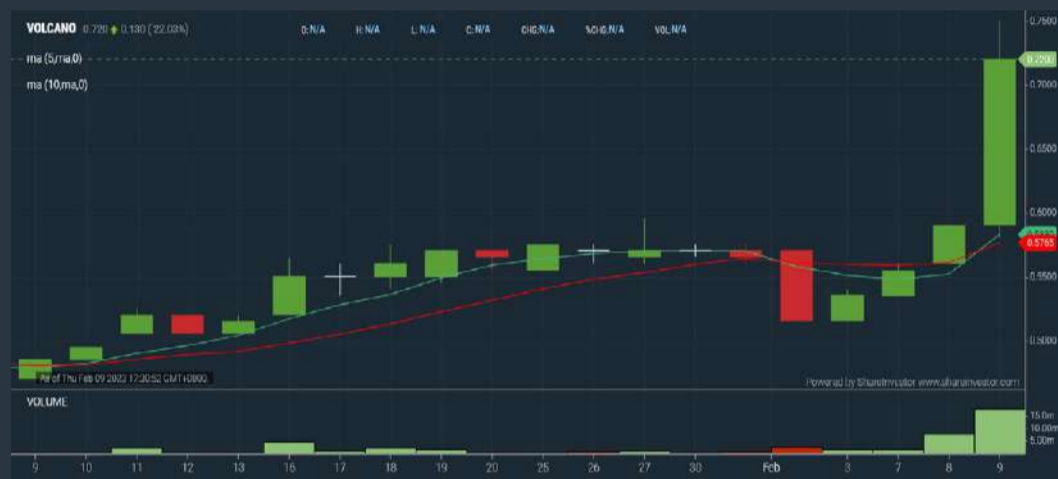
B. Conditions

1. Revenue - select (more than) type (1) for the past select (1) financial year(s)
2. Moving Average Below Close - select (MA) type (20) below close price for type (1) days
3. Average Volume - type (5) days average volume type (10000) lots
4. Last Done Price - select (more than) type (0.3)
5. Moving Average Below Close - select (MA) type (10) below close price for type (1) days
6. Moving Average Bullish Crossover - select (MA) type (5) crossed above select (MA) type (10)

> click Save Template > Create New Template type (Non-Shariah Up-Trending Stocks) > click Create Click Save Template As > select Non-Shariah Up Trending Stocks > click Save > click Screen Now (may take a few minutes) Sort By: Select (Vol) Select (Desc) Mouse over stock name > Charts > click C² Charts tab or Volume Distribution

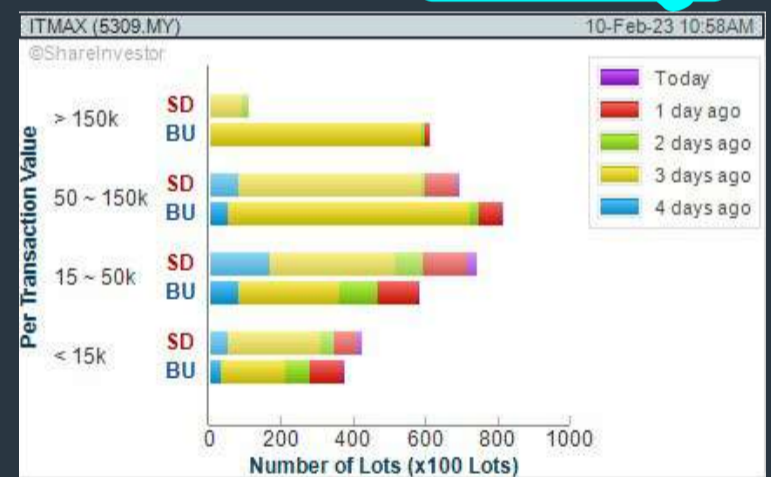
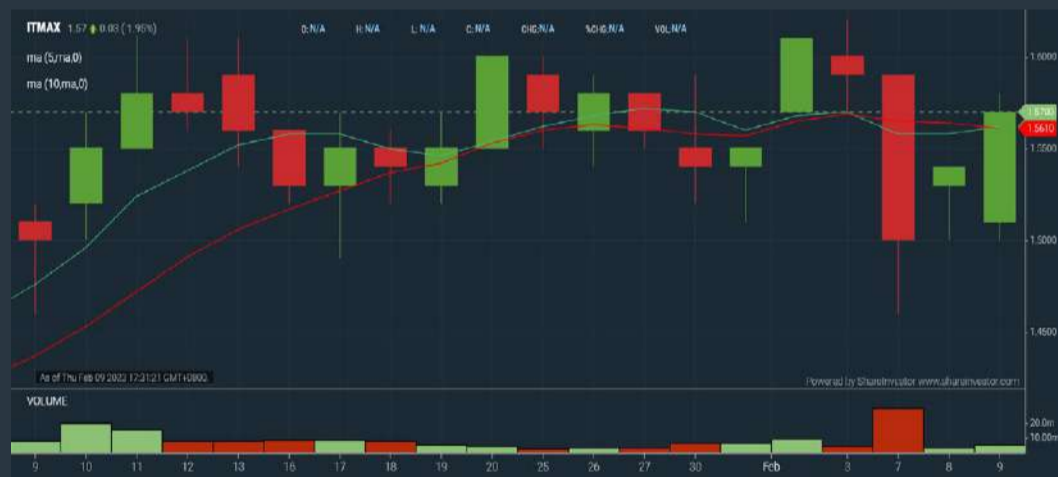
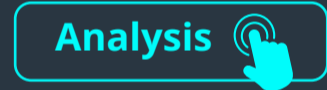
VOLCANO BERHAD (0232)

C² Chart



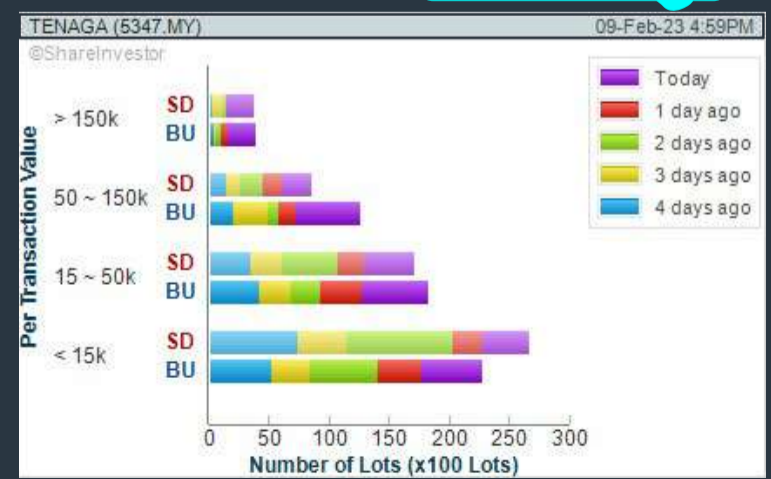
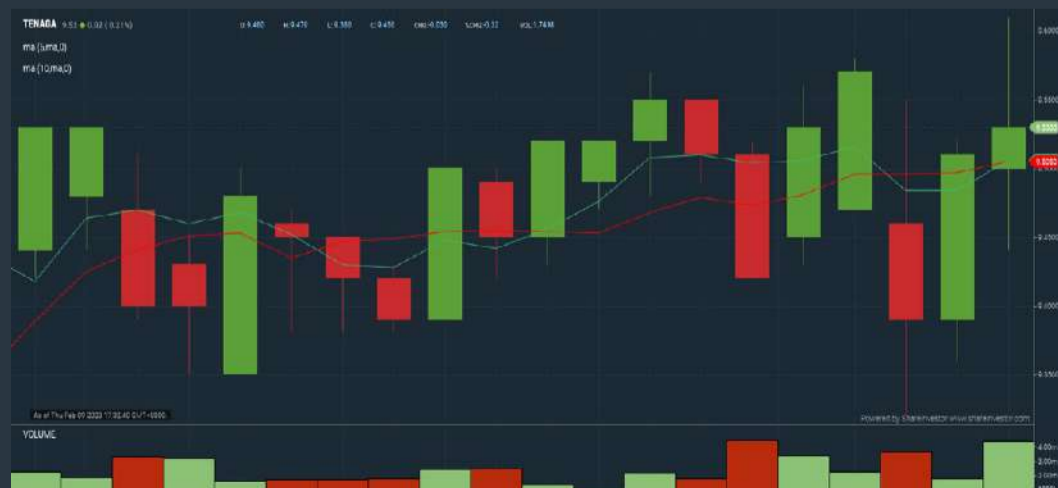
ITMAX SYSTEM BERHAD (5309)

C² Chart



TENAGA NASIONAL BERHAD (5347)

C² Chart



Disclaimer: The information on this page is provided as a service to readers. It does not constitute financial advice and/or any investment recommendations. Past performance is not indicative of future results. We assume no liability for damages resulting from or arising out of the use of such information. It would be best if you did your own research to make your personal investment decisions wisely or consult a licenced investment advisor.



FREE



English

Intermediate

Equities

Advance Technical Analysis:

Easy Way to

**IDENTIFY
BIG BOYS**

**Accumulation
in KLSE**

**FEB 13 | 8.30pm
9.30pm**

Register Here

**Limited to first 300
registrations only.**



Kelvin Yap

Price & Total Shareholder Return (as at Yesterday)

Fundamental Analysis

DEFINITION: Share price of a company trading at a lower price as compared to its fundamentals (FA) such as financial performance and dividend, allowing it to be attractive to value investors.

CHART GUIDE: Total Shareholder Return (TSR) combines share price appreciation and dividend distributions paid to show the total return to the shareholder expressed as a percentage.



ShareInvestor WebPro > Screener > Market Screener (FA & TA) > select BURSA > add criteria

A. Criteria

- > click Add Criteria
- Fundamental Analysis Conditions tab (i) Price Earnings Ratio
- Fundamental Analysis Conditions tab >select (ii) CAGR of Net Earnings
- Fundamental Analysis Conditions tab >select (iii) Net Debt To Equity
- Fundamental Analysis Conditions tab >select (iv) Return On Equity (ROE)

B. Conditions

1. Price Earnings Ratio - select (less than) type (15) times now
2. CAGR of Net Earnings - select (more than) type (10) % for the past type (3) financial year(s)
3. Net Debt To Equity – select (less than) type (1) for the past select (1) financial year(s)
4. Return On Equity (ROE) – select (more than) type (10) % for the past select (1) financial year(s)

- > click Save Template > Create New Template type (Value Stock) > click Create
- > click Save Template as > select Value Companies > click Save
- > click Screen Now (may take a few minutes)
- Sort by: Select (PE Ratio) Select (Ascending)
- > Mouse over stock name > Factsheet > looking for Total Shareholder Return
- > Mouse over stock name > Charts > click C2 Charts tab

COMFORT GLOVES BERHAD (2127)

C² Chart

Analysis



Period	Dividend Received	Capital Appreciation	Total Shareholder Return
Short Term Return	5 Days	-	-1.10 %
	10 Days	-	-1.10 %
	20 Days	-	-1.10 %
Medium Term Return	3 Months	-	-12.62 %
	6 Months	-	-10.00 %
	1 Year	-	-52.38 %
Long Term Return	2 Years	0.110	-80.25 %
	3 Years	0.125	-34.88 %
	5 Years	0.150	-41.63 %
Annualised Return	Annualised	-	-10.21 %

ES CERAMICS TECHNOLOGY BERHAD (0100)

C² Chart

Analysis



Period	Dividend Received	Capital Appreciation	Total Shareholder Return
Short Term Return	5 Days	-	-2.38 %
	10 Days	-	-2.38 %
	20 Days	-	-2.38 %
Medium Term Return	3 Months	-	-10.87 %
	6 Months	-	-19.61 %
	1 Year	-	-48.75 %
Long Term Return	2 Years	0.040	-63.97 %
	3 Years	0.050	+54.55 %
	5 Years	0.062	+167.00 %

CEPATWAWASAN GROUP BERHAD (8982)

C² Chart

Analysis



Period	Dividend Received	Capital Appreciation	Total Shareholder Return
Short Term Return	5 Days	-	-0.71 %
	10 Days	-	+1.46 %
	20 Days	-	-2.11 %
Medium Term Return	3 Months	-	-5.44 %
	6 Months	-	-0.71 %
	1 Year	0.045	-2.25 %
Long Term Return	2 Years	0.070	+21.43 %
	3 Years	0.065	+37.57 %
	5 Years	0.120	+5.84 %
Annualised Return	Annualised	-	+1.14 %

Disclaimer: The information on this page is provided as a service to readers. It does not constitute financial advice and/or any investment recommendations. Past performance is not indicative of future results. We assume no liability for damages resulting from or arising out of the use of such information. It would be best if you did your own research to make your personal investment decisions wisely or consult a licenced investment advisor.



Italian Masterpieces

Martha rocking chair designed by Roberto Lazzeroni
Chester Line sofa designed by Poltrona Frau Style & Design Centre

poltronafrau.com



XTRA

The Gardens Mall, Mid Valley City, Lot S-236 & 237
2nd flr Linkaran Syed Putra, Kuala Lumpur
T. +603 2282 9088 | xtra@xtrafurniture.com | xtrafurniture.com
f XTRAfurniture | @ xtrafurnituremsia



Price & Total Shareholder Return (as at Yesterday)

Fundamental Analysis

DEFINITION: Company revenue is growing and making good quality of earnings with positive Free Cash Flow.

CHART GUIDE: Total Shareholder Return (TSR) combines share price appreciation and distributions paid to show the total return to the shareholder expressed as a percentage.



ShareInvestor WebPro > Screener > Market Screener (FA & TA) > select BURSA > add criteria

A. Criteria

1. Fundamental Analysis Conditions tab >select (i) Free Cash Flow, (ii) Revenue Growth, (iii) Gross Profit (Earnings) Margin, (iv) Quality of Earnings, (v) Total Shareholder Returns, > click Add Criteria
2. Fundamental Analysis Conditions tab >select (vi) Total Shareholder Returns > click Add Criteria

B. Conditions (Criteria Filters)

1. Free Cash Flow - select (more than) type (1) for the past select (1) financial year(s)
2. Revenue Growth - select (more than) type (1) for the past select (1) financial year(s)
3. Gross Profit (Earnings) Margin - select (more than) type (30) % for the past select (1) financial year(s)
4. Quality of Earnings - select (more than) type (1) for the past select (1) financial year(s)
5. Total Shareholder Return - select (more than) type (5) % for the past select (3) financial year(s)
6. Total Shareholder Return - select (more than) type (5) % for the past select (5) financial year(s)

- > click Save Template > Create New Template type (Growth Companies) > click Create
- > click Save Template as > select Growth Companies > click Save
- > click Screen Now (may take a few minutes)
- > Sort By: Select (Revenue Growth) Select (Desc)
- > Mouse over stock name > Factsheet > looking for Total Shareholder Return

DAGANG NEXCHANGE BERHAD (4456)

C² Chart

Analysis



Period	Dividend Received	Capital Appreciation	Total Shareholder Return
Short Term Return	5 Days	-0.005	-0.76 %
	10 Days	+0.025	+4.00 %
	20 Days	+0.090	+16.07 %
Medium Term Return	3 Months	-0.110	-14.47 %
	6 Months	-0.220	-25.29 %
	1 Year	0.006	-35.89 %
Long Term Return	2 Years	0.006	+92.94 %
	3 Years	0.006	+167.76 %
	5 Years	0.011	+46.27 %
Annualised Return	Annualised	-	+7.76 %

HIBISCUS PETROLEUM BERHAD (5199)

C² Chart

Analysis



Period	Dividend Received	Capital Appreciation	Total Shareholder Return
Short Term Return	5 Days	+0.020	+1.75 %
	10 Days	+0.020	+1.75 %
	20 Days	+0.080	+7.41 %
Medium Term Return	3 Months	0.010	+13.59 %
	6 Months	0.010	+43.58 %
	1 Year	0.020	+8.26 %
Long Term Return	2 Years	0.035	+94.31 %
	3 Years	0.035	+31.32 %
	5 Years	0.035	+32.78 %
Annualised Return	Annualised	-	+5.83 %

AYER HOLDINGS BERHAD (2305)

C² Chart

Analysis



Period	Dividend Received	Capital Appreciation	Total Shareholder Return
Short Term Return	5 Days	+0.150	+2.29 %
	10 Days	+0.150	+2.29 %
	20 Days	+0.180	+1.52 %
Medium Term Return	3 Months	+0.650	+10.74 %
	6 Months	+0.800	+13.56 %
	1 Year	0.100	+25.93 %
Long Term Return	2 Years	0.141	+21.08 %
	3 Years	0.186	+30.68 %
	5 Years	0.286	+7.48 %
Annualised Return	Annualised	-	+1.45 %

Disclaimer: The information on this page is provided as a service to readers. It does not constitute financial advice and/or any investment recommendations. Past performance is not indicative of future results. We assume no liability for damages resulting from or arising out of the use of such information. It would be best if you did your own research to make your personal investment decisions wisely or consult a licenced investment advisor.

BURSASTATION

Professional

Stock Scanning

- Technical Analysis (TA) Market Scanner
- Fundamental Analysis (FA) Market Scanner

Monitoring

- Portfolio
- Stock Alerts
- Price Spread Calculator

Market Data

- Equities
- Derivatives

Scan. Chart. Analyse.

Be The Intelligent Investor

Charts

- Intraday Charts
- Interactive Charts
- Historical Charts
- Volume Distribution Charts

Price Movements

- Streaming Prices
- Time & Sales
- Trade Summary Matrix
- Quote Movements
- 5 Levels Market Depth
- Historical Price Download

Fundamentals

- Factsheets
- Financials
- Insider Trades

Brought to you as a collaborative effort by ShareInvestor and Bursa Malaysia, **BursaStation Professional** is designed with you, the user, in mind, as a user-friendly yet full of powerful features that will appeal to investors/traders who need instant access to fundamental, technical, and trading data, anytime, anywhere. **BursaStation Professional** is a state-of-the-art Stock Market Tracker with Charting Software that places in your hands the power to make better investment decisions.

[CLICK HERE TO START YOUR 14-DAYS FREE TRIAL](#)

Price & Total Shareholder Return (as at Yesterday)

Fundamental Analysis

DEFINITION: Company is paying out dividend with low or moderate leverage.

CHART GUIDE: Total Shareholder Return (TSR) combines share price appreciation and distributions paid to show the total return to the shareholder expressed as a percentage.



ShareInvestor WebPro > Screener > Market Screener (FA & TA) > select BURSA > add criteria

A. Criteria

- > click Add Criteria
- Fundamental Analysis Conditions tab >select (i) Dividend Yield (Historical)
- Fundamental Analysis Conditions tab >select (ii) Dividend Payout (Historical)
- Fundamental Analysis Conditions tab >select (iii) Total Debt To Equity
- Fundamental Analysis Conditions tab >select (iv) Total Shareholder Returns
- Fundamental Analysis Conditions tab >select (v) Total Shareholder Returns
- Fundamental Analysis Conditions tab / >select (vi) CAGR of Dividend Per Share

- Fundamental Analysis Conditions tab >select (vii) CAGR of Dividend Per Share

B. Conditions (Criteria Filters)

1. Dividend Yield - select (more than) type (1) % for the past select (1) financial year(s)
2. Dividend Payout (Historical) - select (between) type (0.5) to type (1) times for the past select (1) financial year(s)
3. Total Debt to Equity – select (less than) type (1) for the past select (1) financial year(s)
4. Total Shareholder Return – select (more than) type (5) % for the past select (3) financial year(s)
5. Total Shareholder Return – select (more than) type (5) % for the past select (5) financial year(s)

6. CAGR of Dividend Per Share – select (less than) type (30) % for the past select (5) financial year(s)
7. CAGR of Dividend Per Share – select (more than) type (1) % for the past select (5) financial year(s)

- > click Save Template > Create New Template type (Dividend Companies) > click Create
- > click Save Template as > select Dividend Companies > click Save
- > click Screen Now (may take a few minutes)
- > Sort By: Select (Dividend Yield) Select (Desc)
- > Mouse over stock name > Factsheet > looking for Total Shareholder Return

JAYCORP BERHAD (7152)

C² Chart



Analysis



Period	Dividend Received	Capital Appreciation	Total Shareholder Return
Short Term Return	5 Days	-	+0.005
	10 Days	-	+0.005
	20 Days	-	+0.005
Medium Term Return	3 Months	0.040	-
	6 Months	0.040	+0.045
	1 Year	0.060	-0.060
Long Term Return	2 Years	0.165	-0.135
	3 Years	0.265	+0.210
	5 Years	0.415	+0.120
Annualised Return	Annualised	-	-
			+13.51 %

UNITED PLANTATIONS BERHAD (2089)

C² Chart



Analysis



Period	Dividend Received	Capital Appreciation	Total Shareholder Return
Short Term Return	5 Days	-	+0.300
	10 Days	-	+0.340
	20 Days	-	+0.400
Medium Term Return	3 Months	0.400	+1.180
	6 Months	0.400	+1.460
	1 Year	1.250	+1.870
Long Term Return	2 Years	2.200	+2.248
	3 Years	3.450	+3.705
	5 Years	6.350	+3.648
Annualised Return	Annualised	-	-
			+12.76 %

UCHI TECHNOLOGIES BERHAD (7100)

C² Chart



Analysis



Period	Dividend Received	Capital Appreciation	Total Shareholder Return
Short Term Return	5 Days	-	+0.110
	10 Days	-	+0.090
	20 Days	-	+0.010
Medium Term Return	3 Months	0.120	-0.010
	6 Months	0.120	+0.170
	1 Year	0.230	+0.250
Long Term Return	2 Years	0.415	+0.360
	3 Years	0.575	+0.590
	5 Years	0.870	+0.668
Annualised Return	Annualised	-	-
			+9.73 %

Disclaimer: The information on this page is provided as a service to readers. It does not constitute financial advice and/or any investment recommendations. Past performance is not indicative of future results. We assume no liability for damages resulting from or arising out of the use of such information. It would be best if you did your own research to make your personal investment decisions wisely or consult a licenced investment advisor.

Week: 03 February 2022 – 09 February 2023

More Brokers' Call 

AMINVESTMENT BANK <small>... See More</small>	Call	Target Price	Release Date
Kuala Lumpur Kepong Berhad (2445)	HOLD	RM22.20	07 Feb 2023
Hartalega Holdings Berhad (5168)	HOLD	RM1.40	08 Feb 2023
APEX <small>... See More</small>	Call	Target Price	Release Date
Tasco Berhad (5140)	HOLD	RM0.91	03 Feb 2023
Hartalega Holdings Berhad (5168)	SELL	RM1.40	08 Feb 2023
BIMB SECURITIES SDN BHD <small>... See More</small>	Call	Target Price	Release Date
Velesto Energy Berhad (5243)	BUY	RM0.30	03 Feb 2023
MY E.G. Services Berhad (0138)	BUY	RM1.20	08 Feb 2023
CGS CIMB <small>... See More</small>	Call	Target Price	Release Date
Fraser & Neave Holdings Berhad (3689)	ADD	RM28.30	06 Feb 2023
MY E.G. Services Berhad (0138)	ADD	RM1.00	07 Feb 2023
KENANGA <small>... See More</small>	Call	Target Price	Release Date
Sime Darby Plantation Berhad (5285)	MARKET PERFORM	RM3.65	07 Feb 2023
LPI Capital Berhad (8621)	OUTPERFORM	RM14.50	08 Feb 2023
British American Tobacco (Malaysia) Berhad (4162)	MARKET PERFORM	RM12.00	09 Feb 2023
MALACCA SECURITIES SDN BHD <small>... See More</small>	Call	Target Price	Release Date
Hartalega Holdings Berhad (5168)	SELL	RM1.26	08 Feb 2023
MIDF <small>... See More</small>	Call	Target Price	Release Date
Fraser & Neave Holdings Berhad (3689)	BUY	RM33.50	07 Feb 2023
Hartalega Holdings Berhad (5168)	NEUTRAL	RM1.60	08 Feb 2023
Pharmaniaga Berhad (7081)	BUY	RM0.77	09 Feb 2023
JOB KAYHIAN <small>... See More</small>	Call	Target Price	Release Date
United U-Li Corporation Berhad (7133)	BUY	RM1.52	03 Feb 2023
GFM Services Berhad (0039)	BUY	RM0.33	07 Feb 2023
PT Resources Holdings Berhad (0260)	BUY	RM0.78	08 Feb 2023

Disclaimer: InveSt does not accept any liability whatsoever for any direct, indirect or consequential losses (including loss of profit) or damages that may arise from the use of information or opinions in this publication. The information and opinions in InveSt are not to be considered as an offer to sell or buy any of the securities discussed. Opinions expressed are subject to change without notice. The Brokers may, from time to time, have interests or positions in the securities mentioned. For the full report on each item listed on this page, please visit https://www.shareinvestor.com/my/brokers_call.

DEFINITION: Top 9 stocks with Technical Analysis plus Pattern Matching by 60 pre-defined indicators by the system showing a higher probability of bullish sentiment on the share price.



ShareInvestor WebPro > Screener > Predefined TA Screens > select market BURSA > Most Long Signals > click Scan Results or mouse over each company

FSBM HOLDINGS BERHAD (9377.MY)

FSBM

Price updated at 09 Feb 2023 15:27

Last: 0.280	Change: +0.005	Volume: 2,022
	Change (%): +1.82	Range: 0.270 - 0.285

TA Scanner Results based on historical data up to 09 Feb 2023

Condition	Signal	Explanation
Bollinger Band: High Above Upper Bollinger Band	Neutral	1. High above upper bollinger band(14,2). 2. Average volume(5) is above 100,000.
Bollinger Band: Low Below Lower Bollinger Band	Neutral	1. Low below lower bollinger band(14,2). 2. Average volume(5) is above 100,000.
Candlestick: Bullish Engulfing	Long	Bullish: Engulfing
Donchian Channels: High Above Upper Donchian Channels	Long	High crossed above the upper Donchian Channel(14,4)
MA: Bullish Price Crossover	Long	1. Close price crossed above MA(40) within the last 1 day. 2. Previous day close price is below the MA(10) for the last 5 days
MA: Short Term Bullish Moving Average Crossover	Long	MA(10) crossed above MA(15) within the last 1 day.
MACD: Bullish MACD Crossover	Long	1. MACD(12,26) diff line crossed above the MACD(12,26) signal line. 2. MACD Histogram(12,26) is above 0.
RSI: Short Term RSI 50 Bullish Crossover	Long	1. RSI(20) crossed above 50 within the last 1 day and RSI(20) 1 day ago below 50 for the last 5 days. 2. Volume above average volume(125). 3. Average volume(5) is above 100,000.
Volume: Volume Spike	Long	1. Volume is more than 500% above average volume(10). 2. Volume above 200000. 3. Close price above 0.10

SDS GROUP BERHAD (0212.MY)

SDS

Price updated at 09 Feb 2023 16:59

Last: 0.840	Change: +0.045	Volume: 86,122
	Change (%): +5.66	Range: 0.795 - 0.855

TA Scanner Results based on historical data up to 09 Feb 2023

Condition	Signal	Explanation
Bollinger Band: Bullish Long Term Volatility Breakout and Trending	Long	1. Close price above upper bollinger band(33,1). 2. Volume above average volume(50). 3. Average volume(50) is above 300,000.
Bollinger Band: Bullish Lower Bollinger Band Support	Long	1. Low 1 day ago below lower bollinger band(20,2). 2. Close above close 1 day ago. 3. Average volume(5) is above 100,000.
Bollinger Band: Bullish Short Term Volatility Breakout and Trending	Long	1. Close price above upper bollinger band(33,1). 2. Volume above average volume(10). 3. Average volume(10) is above 300,000.
Bollinger Band: High Above Upper Bollinger Band	Neutral	1. High above upper bollinger band(14,2). 2. Average volume(5) is above 100,000.
DM: Bullish Directional Movement	Long	-DI(14) crossed below +DI(14)
Donchian Channels: High Above Upper Donchian Channels	Long	High crossed above the upper Donchian Channel(14,4)
MACD: Bullish MACD Crossover	Long	1. MACD(12,26) diff line crossed above the MACD(12,26) signal line. 2. MACD Histogram(12,26) is above 0.
Williams %R: Bearish Williams %R	Short	1. Williams %R(26) between 0 and -20. 2. Average volume(5) is above 100,000.

SOUTHERN SCORE BUILDERS BERHAD (0045.MY)

SSB8

Price updated at 09 Feb 2023 16:58

Last: 0.205	Change: -0.005	Volume: 56,535
	Change (%): -2.38	Range: 0.205 - 0.210

TA Scanner Results based on historical data up to 09 Feb 2023

Condition	Signal	Explanation
Bollinger Band: Bullish Long Term Volatility Breakout and Trending	Long	1. Close price above upper bollinger band(33,1). 2. Volume above average volume(50). 3. Average volume(50) is above 300,000.
Bollinger Band: Bullish Short Term Volatility Breakout and Trending	Long	1. Close price above upper bollinger band(33,1). 2. Volume above average volume(10). 3. Average volume(10) is above 300,000.
Candlestick: Bullish Engulfing	Long	Bullish: Engulfing
Donchian Channels: High Above Upper Donchian Channels	Long	High crossed above the upper Donchian Channel(14,4)
Historical Volatility: Increasing Historical Volatility	Neutral	Historical Volatility(100,365) increasing for the last 10 days
MACD: Bullish MACD Crossover	Long	1. MACD(12,26) diff line crossed above the MACD(12,26) signal line. 2. MACD Histogram(12,26) is above 0.

ECOMATE HOLDINGS BERHAD (0239.MY)

ECOMATE

Price updated at 09 Feb 2023 16:56

Last: 0.750	Change: +0.010	Volume: 69,616
	Change (%): +1.35	Range: 0.735 - 0.765

TA Scanner Results based on historical data up to 09 Feb 2023

Condition	Signal	Explanation
Bollinger Band: Bullish Long Term Volatility Breakout and Trending	Long	1. Close price above upper bollinger band(33,1). 2. Volume above average volume(50). 3. Average volume(50) is above 300,000.
Bollinger Band: Bullish Short Term Volatility Breakout and Trending	Long	1. Close price above upper bollinger band(33,1). 2. Volume above average volume(10). 3. Average volume(10) is above 300,000.
Bollinger Band: High Above Upper Bollinger Band	Neutral	1. High above upper bollinger band(14,2). 2. Average volume(5) is above 100,000.
DM: Bullish Directional Movement	Long	-DI(14) crossed below +DI(14)
MA: Short Term Bullish Moving Average Crossover	Long	MA(10) crossed above MA(15) within the last 1 day.
Parabolic SAR: Bearish Parabolic SAR Reversal	Neutral	1. Parabolic SAR 1 day ago above close price 1 day ago for the last 5 days. 2. Parabolic SAR below close price
RSI: Short Term RSI 50 Bullish Crossover	Long	1. RSI(20) crossed above 50 within the last 1 day and RSI(20) 1 day ago below 50 for the last 5 days. 2. Volume above average volume(125). 3. Average volume(5) is above 100,000.
Williams %R: Bearish Williams %R	Short	1. Williams %R(26) between 0 and -20. 2. Average volume(5) is above 100,000.

Disclaimer: The information on this page is provided as a service to readers. It does not constitute financial advice and/or any investment recommendations. Past performance is not indicative of future results. We assume no liability for damages resulting from or arising out of the use of such information. It would be best if you did your own research to make your personal investment decisions wisely or consult a licenced investment advisor.



PESONA METRO HOLDINGS BERHAD (8311.MY)

PESONA

Price updated at 09 Feb 2023 16:51

Last: 0.275	Change: -0.005	Volume: 8,590
	Change (%): -1.79	Range: 0.265 - 0.280

TA Scanner Results based on historical data up to 09 Feb 2023

Condition	Signal	Explanation
Bollinger Band: Bullish Long Term Volatility Breakout and Trending	Long	1. Close price above upper bollinger band(33,1). 2. Volume above average volume(50). 3. Average volume(50) is above 300,000.
Bollinger Band: Bullish Short Term Volatility Breakout and Trending	Long	1. Close price above upper bollinger band(33,1). 2. Volume above average volume(10). 3. Average volume(10) is above 300,000.
Bollinger Band: High Above Upper Bollinger Band	Neutral	1. High above upper bollinger band(14,2). 2. Average volume(5) is above 100,000.
Donchian Channels: High Above Upper Donchian Channels	Long	High crossed above the upper Donchian Channel(14,4)
Price: New 52 Week High	Long	1. Stock reach a new 52 week high. 2. Average volume(30) is above 50000.
Volume: Volume Spike	Long	1. Volume is more than 500% above average volume(10). 2. Volume above 200000. 3. Close price above 0.10
Williams %R: Bearish Williams %R	Short	1. Williams %R(26) between 0 and -20. 2. Average volume(5) is above 100,000.



TMC LIFE SCIENCES BERHAD (0101.MY)

TMCLIFE

Price updated at 09 Feb 2023 16:59

Last: 0.600	Change: -0.055	Volume: 28,309
	Change (%): -8.40	Range: 0.600 - 0.630

TA Scanner Results based on historical data up to 09 Feb 2023

Condition	Signal	Explanation
Bollinger Band: Bullish Long Term Volatility Breakout and Trending	Long	1. Close price above upper bollinger band(33,1). 2. Volume above average volume(50). 3. Average volume(50) is above 300,000.
Bollinger Band: Bullish Short Term Volatility Breakout and Trending	Long	1. Close price above upper bollinger band(33,1). 2. Volume above average volume(10). 3. Average volume(10) is above 300,000.
Candlestick: Bullish Engulfing	Long	Bullish: Engulfing
MA: Short Term Bullish Moving Average Crossover	Long	MA(10) crossed above MA(15) within the last 1 day.
MACD: Bullish MACD Crossover	Long	1. MACD(12,26) diff line crossed above the MACD(12,26) signal line. 2. MACD Histogram(12,26) is above 0.
Williams %R: Bearish Williams %R	Short	1. Williams %R(26) between 0 and -20. 2. Average volume(5) is above 100,000.



UOA REITS (5110.MY)

UOAREIT

Price updated at 09 Feb 2023 16:56

Last: 1.140	Change: -	Volume: 1,731
	Change (%): -	Range: 1.140 - 1.140

TA Scanner Results based on historical data up to 09 Feb 2023

Condition	Signal	Explanation
Bollinger Band: Low Below Lower Bollinger Band	Neutral	1. Low below lower bollinger band(14,2). 2. Average volume(5) is above 100,000.
CCI: Bullish CCI Oversold And Reversing	Long	1. CCI(26) below -100 and CCI(26) 1 day ago decreasing for the last 3 days. 2. CCI(26) above CCI(26) 1 day ago
Candlestick: Bullish Hammer	Long	Bullish: Hammer



CENSOF HOLDINGS BERHAD (5195.MY)

CENSOF

Price updated at 09 Feb 2023 16:59

Last: 0.280	Change: -0.010	Volume: 27,090
	Change (%): -3.45	Range: 0.275 - 0.290

TA Scanner Results based on historical data up to 09 Feb 2023

Condition	Signal	Explanation
Bollinger Band: Bullish Long Term Volatility Breakout and Trending	Long	1. Close price above upper bollinger band(33,1). 2. Volume above average volume(50). 3. Average volume(50) is above 300,000.
Bollinger Band: Bullish Short Term Volatility Breakout and Trending	Long	1. Close price above upper bollinger band(33,1). 2. Volume above average volume(10). 3. Average volume(10) is above 300,000.
Bollinger Band: High Above Upper Bollinger Band	Neutral	1. High above upper bollinger band(14,2). 2. Average volume(5) is above 100,000.
Candlestick: Bullish Engulfing	Long	Bullish: Engulfing
Donchian Channels: High Above Upper Donchian Channels	Long	High crossed above the upper Donchian Channel(14,4)
Parabolic SAR: Bullish Parabolic SAR Reversal	Neutral	1. Parabolic SAR 1 day ago below close price 1 day ago for the last 5 days. 2. Parabolic SAR above close price
Williams %R: Bearish Williams %R	Short	1. Williams %R(26) between 0 and -20. 2. Average volume(5) is above 100,000.



HONG LEONG BANK BERHAD (5819.MY)

HLBANK

Price updated at 09 Feb 2023 16:55

Last: 19.900	Change: -0.100	Volume: 15,728
	Change (%): -0.50	Range: 19.840 - 20.120

TA Scanner Results based on historical data up to 09 Feb 2023

Condition	Signal	Explanation
Bollinger Band: Low Below Lower Bollinger Band	Neutral	1. Low below lower bollinger band(14,2). 2. Average volume(5) is above 100,000.
CCI: Bullish CCI Oversold And Reversing	Long	1. CCI(26) below -100 and CCI(26) 1 day ago decreasing for the last 3 days. 2. CCI(26) above CCI(26) 1 day ago
MA: Short Term Bearish Moving Average Crossover	Short	MA(10) crossed below MA(15) within the last 1 day.
Volume: 10 Days large value Buy Up trade	Long	1. 150K value Buy Up greater than Sell Down by 20% for 10 days. 2. 50K-100K value Buy Up greater than Sell Down by 20% for 10 days. 3. Average volume(10) is above 1000000
Volume: 5 Days large value Buy Up trade	Long	1. 150K value Buy Up greater than Sell Down by 20% for 5 days. 2. 50K-100K value Buy Up greater than Sell Down by 20% for 5 days. 3. Average volume(10) is above 1000000
Williams %R: Bullish Williams %R	Long	1. Williams %R(26) between -80 and -100. 2. Average volume(5) is above 100,000.

Disclaimer: The information on this page is provided as a service to readers. It does not constitute financial advice and/or any investment recommendations. Past performance is not indicative of future results. We assume no liability for damages resulting from or arising out of the use of such information. It would be best if you did your own research to make your personal investment decisions wisely or consult a licenced investment advisor.

Condition	Signal	Explanation
Volume: Consecutive Days Of Increasing Average Volume	Long	1. Average Volume(20) has been increasing over the last 2 weeks. 2. Average volume(20) is above 100000
Williams %R: Bullish Williams %R	Long	1. Williams %R(26) between -80 and -100. 2. Average volume(5) is above 100,000.

MALAYSIA'S JOB MARKET RECOVERY CONTINUES, UNEMPLOYMENT RATE MAINTAINS AT 3.6% IN DEC 2022 – MIDF

A ccording to MIDF Research, Malaysia's labour market recovery continued as the unemployment rate was maintained at 3.6% in Dec 2022. The unemployment rate for youth aged 15-24 descended to a new pandemic low of 11.8% but remained higher than the pre-pandemic level of 10.4% in 2019. Labour force and employment continued expanding 2.4% year-on-year (y-o-y) and 3.1% y-o-y respectively supported by robust domestic economic growth and an upbeat external front.

Unemployment dipped further by 12.8% y-o-y, marking the 16 consecutive months of contraction rate. Outside labour force reduced

by 1.3% y-o-y, registering the 14 straight months of negative growth rate. Employment growth for 2022 hit a new record high at 3.5% with solid support from additional job gains of employer by 9.5%, employee (1.8%), own account worker (9.7%) and unpaid family workers (6.2%). The jobless rate averaged lower at 3.8% but still higher than the pre-pandemic 2019's average of 3.3%. Even though robust economic growth pace recorded last year, labour shortages, tightness in global supply chain and Covid-19 concerns are among downside factors for solid recovery of the job market.

Manufacturing employment contribution to total employment declined to 14.5% in 2022, the lowest ever recorded. However manufacturing employment rose slower than total employment growth at 3.2% versus 3.5% in 2022 respectively despite of booming external trade sector during the pandemic years. The average monthly wage level stayed on an uptrend from RM2,765 in 2016 to RM3,420 in 2022.

By sub-sector, electrical and electronics (E&E) related industries remained the main employment pool, particularly electronic integrated circuits, electrical resistor component and computers and peripherals equipment which accommodated 12.2% of the manufacturing job market in 2022.

On the external front, the US job market improved in the first month of 2023 with the jobless rate descending to 3.4%, the lowest since May 1969, despite the elevated inflationary pressure and tightening monetary policy. The research house foresees the jobless rate declining steadily following the improving local economic activities and international borders reopening in China.

BNM INTERNATIONAL RESERVES ROSE TO US\$115.2B AS AT JAN 31

According to Bank Negara Malaysia (BNM), its international reserves rose to US\$115.2 billion (RM496.63 billion) as at Jan 31, from US\$114.9 billion as at Jan 13. The reserves position is sufficient to finance 5.3 months of imports of goods and services, and is one times the total

short-term external debt. Of the five main components of the reserves, only one component – foreign currency reserves – rose. It climbed to US\$103 billion from US\$102.6 billion.

Three were unchanged, including International Monetary Fund reserves, which stood at US\$1.4 billion, IMF-linked special drawing rights or SDR, which stayed at US\$5.7 billion, and gold at US\$2.3 billion. Other reserve assets dipped slightly to US\$2.8 billion from US\$2.9 billion.

The central bank's total assets rose to RM623.55 billion as at Jan 31, from RM621.81 billion as at Jan 13, while currency in circulation rose to RM166.1 billion from RM164.62 billion.

FOREIGN NET SELLING OF RM380.8M ON BURSA MALAYSIA LAST WEEK – MIDF

According to MIDF Research, in a statement on Tuesday 7Feb, foreign investors net sold RM380.8 million worth of Malaysian equities on Bursa Malaysia last week, 89.6% higher than in the week prior. It was the fourth consecutive week of net foreign selling, noting that it was a shortened trading week of four days due to the Federal Territory Day holiday on Wednesday.

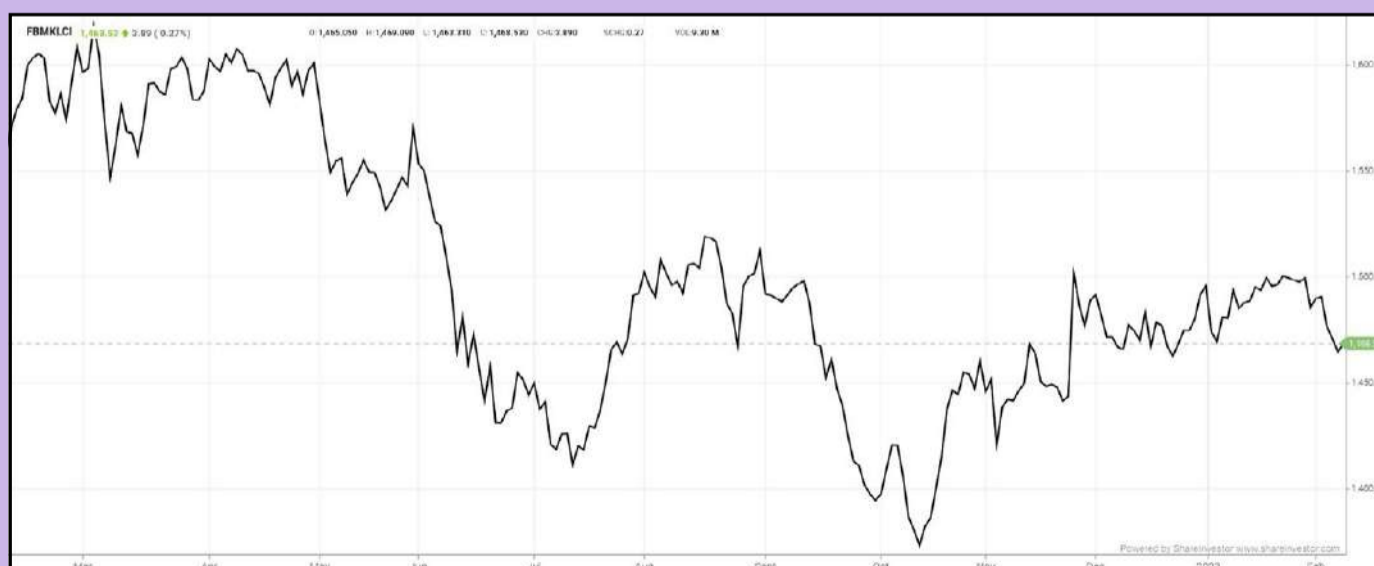
Foreign investors net bought RM35.6 million on Thursday, but net sold RM48.6 million on Monday, RM98.9 million on Tuesday and RM68.1 million on Friday. There may be renewed signs of political uncertainties that have emerged following the sacking and suspension of senior and influential Umno members, as the party is part of the unity government. The appointment of the prime minister's daughter as his economic and senior adviser also sparked debates from various parties.

The top three sectors which saw net inflows by foreign investors last week were consumer products and services at RM58.7 million, technology at RM23.7 million as well as telecommunications and media at RM15.7 million. The bottom three sectors with net outflows were financial services at RM174.0 million, healthcare at RM43.3 million and plantation at RM35.9 million. Year-to-date, foreign investors have net sold RM89.1 million.

MIDF Research said that local institutions maintained their streak of net buying to RM130.6 million last week. Local institutions net bought RM9.6 million on Monday, RM59.3 million on Tuesday, RM0.5 million on Thursday and RM61.2 million on Friday. Year-to-date, local institutions have net bought RM816.0 million. Local retailers turned net buyers last week, reversing the net selling trend of three consecutive weeks. They net bought RM49.4 million as of last Friday. They only net sold RM36.0 million on Thursday but were net buyers of RM38.9 million on Monday, RM39.6 million on Tuesday and RM6.9 million on Friday. In terms of participation, there was an increase in average daily trading volume across the board by 64.7%, 19.6% and 7.8% from foreign investors, local institutions and local retailers respectively.

EYE ON THE MARKETS

This week, on Friday (10Feb), the Ringgit opened at 4.3260 against the USD from 4.3085 on Tuesday (7Feb). Meanwhile, the Ringgit was 3.263 to the Sing Dollar on Friday (10Feb). On Tuesday (7Feb), the FBM KLCI opened at 1487.82. As at Friday (10Feb) 10:00am, the FBM KLCI is down 19.35 points for the week at 1468.47. Over in US, the overnight Dow Jones Industrial Average closed down 249.13 points (-0.73%) to 33,699.88 whilst the NASDAQ shed 120.94 points (-1.02%) to 11,789.58.



KLCI 1 Year Chart

Over 5 trading days



ShareInvestor WebPro (www.shareinvestor.com/my)

1. Price > Stock Prices
2. Select Market: NASDAQ / NYSE / IDX / SET / HKEX / SGX (One bourse at a time)
3. select Stocks Tab
4. select Ranking Top Gainers or Top Losers (Over 5 Trading Days)
5. Mouse over Column Layout > select Edit Customs > select Name > select Last Done Price > select 5 Days Change > select 52 Weeks High > select 52 Weeks Low > Mouse Over Column Layout > select Custom

NASDAQ (USD)

Top Gainers

Name	Last Done	Change Over 5 Days	52 Weeks High	52 Weeks Low
MONOLITHIC POWER SYSTEM INC	510.430	+36.470	541.390	301.690
TESLA INC	207.320	+19.050	384.290	101.810
LPL FINL HLDGS INC	242.250	+17.720	271.560	140.650
ARCBEST CORP	101.860	+11.710	103.570	65.155
ZSCALER INC	139.060	+14.900	290.470	99.640

Top Losers

Name	Last Done	Change Over 5 Days	52 Weeks High	52 Weeks Low
MERCADOLIBRE INC	1,143.650	-82.930	1,275.820	600.685
CREDIT ACCEPTANCE CORPORATION	484.230	-64.760	648.950	358.000
POOL CORPORATION	376.950	-45.220	488.750	278.100
MICROSTRATEGY	249.040	-43.090	522.803	132.560
INTUIT INC	419.740	-32.420	579.960	339.360

NYSE (USD)

Top Gainers

Name	Last Done	Change Over 5 Days	52 Weeks High	52 Weeks Low
AUTOZONE INC	2,490.280	+91.770	2,610.050	1,703.320
MARKEL CORP	1,355.000	+51.360	1,519.245	1,064.090
EVEREST RE GROUP	378.460	+37.030	362.010	244.575
WHITE MOUNTAINS INSURANCE GROUP	1,478.990	+35.800	1,539.475	1,017.584
TRANSDIGM GROUP INC	746.980	+35.140	758.430	499.630

Top Losers

Name	Last Done	Change Over 5 Days	52 Weeks High	52 Weeks Low
BERKSHIRE HATHAWAY INC	466,020.000	-734.980	544,389.260	393,012.250
NVR INC	5,050.460	-355.210	5,500.000	3,576.010
CHIPOTLE MEXICAN GRILL	1,606.910	-82.760	1,754.560	1,196.280
TEXAS PACIFIC LAND CORPORATION	1,876.590	-57.290	2,739.000	986.005
METTLER-TOLEDO INTERNATIONAL INC	1,534.640	-49.240	1,609.250	1,065.550

IDX (Rupiah)

Top Gainers

Name	Last Done	Change Over 5 Days	52 Weeks High	52 Weeks Low
GUDANG GARAM TBK	26,950.000	+1650.000	33,575.000	16,500.000
PETROSEA	5,525.000	+825.000	5,775.000	2,280.000
MAP AKTIF ADIPERKASA TBK	4,580.000	+700.000	4,650.000	2,250.000
INDOCEMENT TUNGGAL PRAKARSA	10,975.000	+625.000	11,400.000	8,975.000
BANK MANDIRI (PERSERO) TBK	10,250.000	+525.000	11,000.000	7,175.000

Top Losers

Name	Last Done	Change Over 5 Days	52 Weeks High	52 Weeks Low
METROPOLITAN KENTJ	28,000.000	-6,600.000	46,200.000	16,950.000
RODA VIVATEX	10,025.000	-1,275.000	17,000.000	6,700.000
BAYAN RESOURCES TBK	19,225.000	-675.000	24,800.000	3,532.500
INDOINTERNET TBK	19,800.000	-500.000	25,625.000	18,300.000
MASKAPAI REASURANSI INDONESIA TBK	5,050.000	-425.000	6,500.000	2,870.000

SET (Thai Baht)

Top Gainers

Name	Last Done	Change Over 5 Days	52 Weeks High	52 Weeks Low
TCCC	38.750	+9.000	39.000	25.000
FE	180.000	+8.500	246.000	158.500
OHTL	472.000	+8.000	610.000	316.000
DELTA	922.000	+6.000	996.000	287.000
MASTER	82.250	+6.000	85.500	61.250

Top Losers

Name	Last Done	Change Over 5 Days	52 Weeks High	52 Weeks Low
METCO	264.000	-32.000	298.000	224.000
JTS	40.000	-8.250	594.000	28.250
KCE	48.500	-8.250	67.500	39.750
BBIK	132.000	-7.000	143.500	48.250
PTTEP	163.000	-7.000	195.000	126.500

HKEX (HKD)

Top Gainers

Name	Last Done	Change Over 5 Days	52 Weeks High	52 Weeks Low
STAR CM HOLDINGS LIMITED	107.800	+28.750	113.200	32.550
YUM CHINA HOLDINGS INC	481.600	+20.400	500.000	281.000
NOAH HOLDINGS PRIVATE WEALTH AND AS	323.800	+15.400	326.800	200.800
3D MEDICINES INC	71.850	+13.200	76.150	27.700
TENCENT HOLDINGS LIMITED	395.600	+12.600	462.478	188.213

Top Losers

Name	Last Done	Change Over 5 Days	52 Weeks High	52 Weeks Low
MEITUAN	153.500	-23.100	235.800	103.500
CHINA TOURISM GROUP DUTY FREE CORP	219.600	-17.200	280.000	120.000
BILIBILI INC	186.600	-14.600	298.000	66.100
BYD COMPANY LIMITED	249.400	-12.600	333.000	161.700
ASYMCHEM LABORATORIES (TIANJIN) CO	120.500	-12.000	205.714	80.350

SGX (SGD)

Top Gainers

Name	Last Done	Change Over 5 Days	52 Weeks High	52 Weeks Low
SHANGRI-LA HKD	8.100	+0.950	8.100	4.300
DBS	35.920	+0.840	37.490	29.450
UOB	30.400	+0.770	33.330	25.910
HAW PAR	10.560	+0.680	12.070	8.980
PEGASUS SPAC	4.700	+0.300	5.000	4.300

Top Losers

Name	Last Done	Change Over 5 Days	52 Weeks High	52 Weeks Low
JMH USD	51.820	-2.240	61.470	42.600
NIO INC. USD OV	10.880	-1.010	25.350	9.000
KEPPEL CORP	7.080	-0.570	7.720	5.800
MICRO-MECHANICS	2.170	-0.260	3.306	2.170
UMS	1.150	-0.170	1.360	0.860

ENTRY PRICES ARE IRRELEVANT



Devanesan
Evanson

**Chief Executive
Officer, Minority
Shareholders Watch
Group**

To make a spectacular gain from a stock investment, one needs to get both the entry point and exit point right. While we do not have a crystal ball, every one of us enters a share purchase transaction with the hope of making a gain. However, when the hope does not materialise, and the investment turns sour subsequently, be it due to a misjudgement or a black swan event, more often than not, the decision of whether to continue to hold on to or to exit the investment depends largely on the entry cost.

Rationally, the entry price of a stock investment is irrelevant to an exit decision. It is a lot easier to walk away from an investment if the investment is profitable, even after a substantial portion of the gain has evaporated, than to liquidate an investment at a loss. Most investors are reluctant to 'cut loss' because it is painful to do so as it is tantamount to an admission of a mistake. Also, they are in the illusion that the share price will

eventually recover one day if they continue to hold on to the stock and the unrealised loss will therefore be erased.

This is a financial behaviour known as the disposition effect, which relates to a tendency of investors to sell winners but hold on to losers. It arises from a stronger dislike of losing compared to the joy of winning. It may turn out to be selling stocks after a small gain only to watch them gain further, and holding stocks with small losses, only to see them lose further. For some, the psychological barrier is so strong that they hesitate to cut loss even though they consciously know that it is the right thing to do.

As we all know, the share price of a company is a leading indicator of the fundamentals of its business. The share price generally moves a few months ahead of the company's financial performance as it reflects the market's expectation of a company's financial performance. The perceived or expected performance dictates the movement of the share price. For example, the acute supply shortage globally and panic buying of medical gloves during the Covid-19 pandemic boosted the earnings of the top four listed glove

players, namely Top Glove Corporation Bhd, Hartalega Holdings Berhad, Kossan Rubber Industries Bhd and Supermax Corporation Berhad, to all-time-high for the quarter ended 28 February 2021, 30 June 2021, 30 June 2021 and 31 December 2020 respectively, with their share prices hitting historical highs in early August 2020, a few months ahead of disclosure of their record earnings.

Sensibly, investment decisions such as whether to hold, sell or increase the position in a stock should be based on periodical reviews of the company's outlook, its fundamentals together with its valuation, but not on the historical entry price, which has no bearing on the movement of the share price.

Easier said than done. High-risk stock speculation is not encouraged but if one emotionally jumps into a stock at an astronomical price, aiming for a quick gain, it is crucial to execute damage limitation when the euphoria subsides.

Some are reluctant to bite the bullet just because the share price is below their entry prices. They stay on until a substantial amount of their investment is wiped out or the share is on the brink of trading suspension/ delisting after which the share price is near worthless. For example, after the euphoria, the share prices of several glove stocks nosedived by more than 90% from their peaks.

Separately, during the super bull run of the Second Board back in the mid-1990s, the share price of a biscuit maker topped RM200 before crashing. Its current share price, of below 60 sen, is a shadow of its former price. Another Second-Board company that made a splash saw its share price surge above RM140, but it was subsequently delisted.

It may take forever for these companies with weak fundamentals to see their share price recover to their previous peak. When the share price goes south arising from earnings disappointment, market fear or adverse news e.g., a qualified opinion in an auditor's report, admission into Practice Note 17, accounting fraud or board tussle, investors should be forward-looking and evaluate the outlook, fundamentals, and valuation of the company. They should assess whether there is a better alternative such as switching to another stock or converting the investment into cash.

Entry costs are irrelevant. On some occasions, though unlikely for companies with accounting fraud, the temporary setback may present a golden opportunity to accumulate the stock at a bargain price. On the other hand, when the share price performs, do not realise the investment merely because the share price has hit a certain percentage of gain from the entry price. Evaluate the prospects of the company together with its present valuation to find out whether the stock could potentially be a multi-bagger stock.

In a nutshell, share prices are forward-looking. Historical entry prices are irrelevant.

Ooi Beng Hooi

Manager, Corporate Monitoring

Notice Period is 29 January - 04 February 2023

Effective Change Date	Stock Name	Buyer/ Seller Name [Classification]	Bought / (Sold) ['000]	No. of Shares After Trade ('000)	
			Total	Total	% Held
26 Jan 2023 - 26 Jan 2023	SIMPLT	EMPLOYEES PROVIDENT FUND BOARD [SSH]	722	978,165	14.144
25 Jan 2023 - 25 Jan 2023	SIMPLT	EMPLOYEES PROVIDENT FUND BOARD [SSH]	165	977,442	14.134
27 Jan 2023 - 27 Jan 2023	SIMEPROP	EMPLOYEES PROVIDENT FUND BOARD [SSH]	-484	622,001	9.146
26 Jan 2023 - 26 Jan 2023	SIMEPROP	EMPLOYEES PROVIDENT FUND BOARD [SSH]	-1,000	622,486	9.153
30 Jan 2023 - 30 Jan 2023	SKPRES	EMPLOYEES PROVIDENT FUND BOARD [SSH]	1,391	95,681	6.124
31 Jan 2023 - 31 Jan 2023	SKPRES	KUMPULAN WANG PERSARAAN (DIPERBADANKAN) [SSH]	-866	129,707	8.302
27 Jan 2023 - 27 Jan 2023	SKPRES	EMPLOYEES PROVIDENT FUND BOARD [SSH]	644	94,289	6.035
30 Jan 2023 - 30 Jan 2023	SKPRES	KUMPULAN WANG PERSARAAN (DIPERBADANKAN) [SSH]	-751	130,573	8.357
26 Jan 2023 - 26 Jan 2023	SKPRES	EMPLOYEES PROVIDENT FUND BOARD [SSH]	231	93,645	5.994
25 Jan 2023 - 25 Jan 2023	SKPRES	EMPLOYEES PROVIDENT FUND BOARD [SSH]	89	93,414	5.979
31 Jan 2023 - 31 Jan 2023	SRIDGE	DATO' KHOO YIK CHOU [SSH]	-5,000	15,896	8.037
31 Jan 2023 - 31 Jan 2023	SRIDGE	DATO' KHOO YIK CHOU [DIR/CEO]	-5,000	15,896	8.037
31 Jan 2023 - 31 Jan 2023	STAR	AMANAHRAYA TRUSTEES BERHAD - AMANAH SAHAM BUMIPUTERA [SSH]	-566	51,434	7.097
27 Jan 2023 - 27 Jan 2023	STAR	AMANAHRAYA TRUSTEES BERHAD - AMANAH SAHAM BUMIPUTERA [SSH]	-1,322	52,000	7.17
26 Jan 2023 - 26 Jan 2023	STAR	AMANAHRAYA TRUSTEES BERHAD - AMANAH SAHAM BUMIPUTERA [SSH]	-1,178	53,322	7.36
31 Jan 2023 - 31 Jan 2023	SUCCESS	BLUEJAY LUX 1 S.A.R.L. [SSH]	-9	12,996	5.667
31 Jan 2023 - 31 Jan 2023	SUCCESS	FIDELITY INVESTMENTS CANADA ULC [SSH]	-9	12,996	5.667
31 Jan 2023 - 31 Jan 2023	SUCCESS	PANDANUS ASSOCIATES INC. [SSH]	-9	12,996	5.667
31 Jan 2023 - 31 Jan 2023	SUCCESS	FIDELITY MANAGEMENT & RESEARCH COMPANY LLC [SSH]	-9	12,996	5.667
31 Jan 2023 - 31 Jan 2023	SUCCESS	FIL LIMITED [SSH]	-9	12,996	5.667
31 Jan 2023 - 31 Jan 2023	SUCCESS	483A BAY STREET HOLDINGS MANAGEMENT LIMITED [SSH]	-9	12,996	5.667
31 Jan 2023 - 31 Jan 2023	SUCCESS	483A BAY STREET HOLDINGS MANAGEMENT LLC [SSH]	-9	12,996	5.667
31 Jan 2023 - 31 Jan 2023	SUCCESS	ABIGAIL P. JOHNSON [SSH]	-9	12,996	5.667
31 Jan 2023 - 31 Jan 2023	SUCCESS	FIL FINANCIAL SERVICES HOLDINGS LIMITED [SSH]	-9	12,996	5.667
31 Jan 2023 - 31 Jan 2023	SUCCESS	FMR LLC [SSH]	-9	12,996	5.667
26 Jan 2023 - 27 Jan 2023	SUCCESS	FIL FINANCIAL SERVICES HOLDINGS LIMITED [SSH]	-204	13,005	5.671
26 Jan 2023 - 27 Jan 2023	SUCCESS	FIDELITY INVESTMENTS CANADA ULC [SSH]	-122	13,005	5.671
26 Jan 2023 - 27 Jan 2023	SUCCESS	483A BAY STREET HOLDINGS MANAGEMENT LLC [SSH]	-204	13,005	5.671
26 Jan 2023 - 27 Jan 2023	SUCCESS	FIL LIMITED [SSH]	-204	13,005	5.671
26 Jan 2023 - 27 Jan 2023	SUCCESS	FMR LLC [SSH]	-204	13,005	5.671
26 Jan 2023 - 27 Jan 2023	SUCCESS	483A BAY STREET HOLDINGS MANAGEMENT LIMITED [SSH]	-204	13,005	5.671
26 Jan 2023 - 27 Jan 2023	SUCCESS	ABIGAIL P. JOHNSON [SSH]	-204	13,005	5.671
26 Jan 2023 - 27 Jan 2023	SUCCESS	FIDELITY MANAGEMENT & RESEARCH COMPANY LLC [SSH]	-204	13,005	5.671
26 Jan 2023 - 27 Jan 2023	SUCCESS	BLUEJAY LUX 1 S.A.R.L. [SSH]	-204	13,005	5.671
26 Jan 2023 - 27 Jan 2023	SUCCESS	PANDANUS ASSOCIATES INC. [SSH]	-204	13,005	5.671
30 Jan 2023 - 30 Jan 2023	SUNCON	EMPLOYEES PROVIDENT FUND BOARD [SSH]	300	122,024	9.464
26 Jan 2023 - 26 Jan 2023	SUNCON	EMPLOYEES PROVIDENT FUND BOARD [SSH]	300	121,724	9.441
25 Jan 2023 - 25 Jan 2023	SUNCON	EMPLOYEES PROVIDENT FUND BOARD [SSH]	52	121,424	9.417
30 Jan 2023 - 30 Jan 2023	SUNREIT	EMPLOYEES PROVIDENT FUND BOARD [SSH]	-400	522,746	15.26
27 Jan 2023 - 27 Jan 2023	SUNWAY	EMPLOYEES PROVIDENT FUND BOARD [SSH]	551	409,585	8.38
26 Jan 2023 - 26 Jan 2023	SUNWAY	EMPLOYEES PROVIDENT FUND BOARD [SSH]	1,099	409,030	8.37
30 Jan 2023 - 30 Jan 2023	SWIFT	MR LOO YONG HUI [SSH]	-2,000	335,971	38.079
30 Jan 2023 - 30 Jan 2023	SWIFT	MR LOO YONG HUI [DIR/CEO]	-2,000	335,971	38.079
30 Jan 2023 - 30 Jan 2023	SWIFT	DATO' HAJI MD YUSOFF @ MOHD YUSOFF BIN JAAFAR [SSH]	-2,000	335,921	38.073
30 Jan 2023 - 30 Jan 2023	SWIFT	PERSADA BINA SDN. BHD. [SSH]	-2,000	335,921	38.073
30 Jan 2023 - 30 Jan 2023	SWIFT	DATO' HAJI MD YUSOFF @ MOHD YUSOFF BIN JAAFAR [DIR/CEO]	-2,000	335,921	38.073
27 Jan 2023 - 27 Jan 2023	SWSCAP	TAN SRI DATO' SERI TAN KING TAI @ TAN KHOON HAI [DIR/CEO]	-923	19,272	7.006
27 Jan 2023 - 27 Jan 2023	SWSCAP	PUAN SRI DATIN SERI CHAN MEI CHENG [SSH]	-923	19,272	7.006
27 Jan 2023 - 27 Jan 2023	SWSCAP	TAN SRI DATO' SERI TAN KING TAI @ TAN KHOON HAI [SSH]	-923	19,272	7.006
30 Jan 2023 - 30 Jan 2023	TAFI	DATO' SRI ANDREW LIM ENG GUAN [SSH]	34,679	206,951	54.543
30 Jan 2023 - 30 Jan 2023	TAFI	DATO' SRI ANDREW LIM ENG GUAN [DIR/CEO]	34,679	206,951	54.543
30 Jan 2023 - 30 Jan 2023	TAFI	DATO' SRI WONG SZE CHIEN [SSH]	34,679	205,658	54.203
30 Jan 2023 - 30 Jan 2023	TAFI	DATO' SRI WONG SZE CHIEN [DIR/CEO]	34,679	205,658	54.203
30 Jan 2023 - 30 Jan 2023	TAFI	DATO' SRI AZLAN BIN AZMI [SSH]	34,679	199,127	52.481
30 Jan 2023 - 30 Jan 2023	TAFI	DATO' SRI AZLAN BIN AZMI [DIR/CEO]	34,679	199,127	52.481
27 Jan 2023 - 27 Jan 2023	TAKAFUL	EMPLOYEES PROVIDENT FUND BOARD [SSH]	300	106,020	12.662
26 Jan 2023 - 26 Jan 2023	TAKAFUL	EMPLOYEES PROVIDENT FUND BOARD [SSH]	200	105,720	12.626

Notice Period is 29 January - 04 February 2023

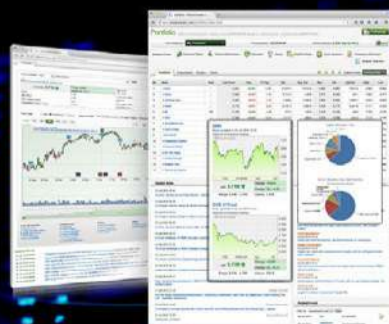
Effective Change Date	Stock Name	Buyer/ Seller Name [Classification]	Bought / (Sold) ['000]	No. of Shares After Trade ('000)	
			Total	Total	% Held
25 Jan 2023 - 25 Jan 2023	TAKAFUL	EMPLOYEES PROVIDENT FUND BOARD [SSH]	91	105,520	12.602
31 Jan 2023 - 31 Jan 2023	TANCO	DATO' SRI ANDREW TAN JUN SUAN [SSH]	-45,000	934,459	52.432
31 Jan 2023 - 31 Jan 2023	TANCO	DATO' SRI ANDREW TAN JUN SUAN [DIR/CEO]	-45,000	934,459	52.432
31 Jan 2023 - 31 Jan 2023	TANCO	TJN CAPITAL SDN. BHD. [SSH]	-45,000	774,059	43.432
31 Jan 2023 - 31 Jan 2023	TANCO	DATO' SRI ANDREW TAN JUN SUAN [DIR/CEO]	-50,000	268,702	30.42
27 Jan 2023 - 27 Jan 2023	TENAGA	EMPLOYEES PROVIDENT FUND BOARD [SSH]	-500	926,291	16.1
27 Jan 2023 - 27 Jan 2023	TENAGA	KUMPULAN WANG PERSARAAN (DIPERBADANKAN) [SSH]	59	422,322	7.34
02 Feb 2023 - 02 Feb 2023	TIMECOM	KUMPULAN WANG PERSARAAN (DIPERBADANKAN) ('KWAP') [SSH]	97	106,187	5.776
30 Jan 2023 - 30 Jan 2023	TIMECOM	EMPLOYEES PROVIDENT FUND BOARD [SSH]	-124	92,365	5.024
27 Jan 2023 - 27 Jan 2023	TIMECOM	EMPLOYEES PROVIDENT FUND BOARD [SSH]	1,604	92,489	5.03
25 Jan 2023 - 25 Jan 2023	TIMECOM	EMPLOYEES PROVIDENT FUND BOARD [SSH]	7	92,060	5.007
02 Feb 2023 - 02 Feb 2023	TM	KUMPULAN WANG PERSARAAN (DIPERBADANKAN) [SSH]	312	414,168	10.839
30 Jan 2023 - 30 Jan 2023	TM	EMPLOYEE PROVIDENT FUND BOARD (EPF BOARD) [SSH]	1,058	621,016	16.253
31 Jan 2023 - 31 Jan 2023	TM	KUMPULAN WANG PERSARAAN (DIPERBADANKAN) [SSH]	161	413,856	10.831
27 Jan 2023 - 27 Jan 2023	TM	EMPLOYEE PROVIDENT FUND BOARD (EPF BOARD) [SSH]	2,138	619,958	16.225
30 Jan 2023 - 30 Jan 2023	TM	KUMPULAN WANG PERSARAAN (DIPERBADANKAN) [SSH]	1,000	413,695	10.827
26 Jan 2023 - 26 Jan 2023	TM	EMPLOYEE PROVIDENT FUND BOARD (EPF BOARD) [SSH]	270	617,820	16.169
27 Jan 2023 - 27 Jan 2023	TM	KUMPULAN WANG PERSARAAN (DIPERBADANKAN) [SSH]	-77	412,695	10.8
25 Jan 2023 - 25 Jan 2023	TM	EMPLOYEE PROVIDENT FUND BOARD (EPF BOARD) [SSH]	1,031	617,550	16.162
31 Jan 2023 - 31 Jan 2023	TOPGLOV	TAN SRI DR LIM WEE CHAI [DIR/CEO]	160	7,409	0.092
31 Jan 2023 - 31 Jan 2023	TOPGLOV	MR LIM HOOI SIN [DIR/CEO]	160	7,120	0.089
31 Jan 2023 - 31 Jan 2023	TOPGLOV	MR NG YONG LIN [DIR/CEO]	82	1,040	0.013
31 Jan 2023 - 31 Jan 2023	TOPGLOV	MR LIM CHEONG GUAN [DIR/CEO]	76	1,000	0.012
27 Jan 2023 - 27 Jan 2023	UCHITEC	EMPLOYEES PROVIDENT FUND BOARD [SSH]	136	24,112	5.288
26 Jan 2023 - 26 Jan 2023	UCHITEC	EMPLOYEES PROVIDENT FUND BOARD [SSH]	145	23,977	5.258
02 Feb 2023 - 02 Feb 2023	UMCCA	MR HAN KEE JUAN [DIR/CEO]	3	238	0.114
30 Jan 2023 - 30 Jan 2023	UMW	EMPLOYEES PROVIDENT FUND BOARD [SSH]	-68	127,713	10.932
27 Jan 2023 - 27 Jan 2023	UMW	AMANAHRAYA TRUSTEES BERHAD - AMANAH SAHAM BUMIPUTERA [SSH]	20,000	525,263	44.96
27 Jan 2023 - 27 Jan 2023	UMW	EMPLOYEES PROVIDENT FUND BOARD [SSH]	-790	127,781	10.937
26 Jan 2023 - 26 Jan 2023	UMW	EMPLOYEES PROVIDENT FUND BOARD [SSH]	-196	128,571	11.005
25 Jan 2023 - 25 Jan 2023	UMW	EMPLOYEES PROVIDENT FUND BOARD [SSH]	-184	128,767	11.022
25 Jan 2023 - 25 Jan 2023	VERS-ATL-WA	MR LOH TECK WAH [DIR/CEO]	3,909	3,909	2.791
27 Jan 2023 - 27 Jan 2023	VLB	DATUK LIEW FOO HEEN [DIR/CEO]	-60,180	597,982	63.33
27 Jan 2023 - 27 Jan 2023	VLB	DATUK LIEW FOO HEEN [SSH]	-60,180	597,982	63.33
27 Jan 2023 - 27 Jan 2023	VLB	MR WONG SAI KIT [SSH]	-10,620	105,526	11.17
27 Jan 2023 - 27 Jan 2023	VLB	MR WONG SAI KIT [DIR/CEO]	-10,620	105,526	11.17
27 Jan 2023 - 27 Jan 2023	VLB	MR ONG WEI LIAM @ JEREMY ONG [DIR/CEO]	300	300	0.03
27 Jan 2023 - 27 Jan 2023	VLB	DATO' MATHIALAKAN A/L CHELLIAH [DIR/CEO]	300	300	0.03
27 Jan 2023 - 27 Jan 2023	VLB	MR WEE CHUEN LII [DIR/CEO]	300	300	0.03
02 Feb 2023 - 02 Feb 2023	VS	KUMPULAN WANG PERSARAAN [SSH]	329	339,264	8.821
30 Jan 2023 - 30 Jan 2023	VS	EMPLOYEES PROVIDENT FUND BOARD [SSH]	198	215,240	5.6
27 Jan 2023 - 27 Jan 2023	VS	EMPLOYEES PROVIDENT FUND BOARD [SSH]	251	215,042	5.591
27 Jan 2023 - 27 Jan 2023	VSTEC	VSTEC HOLDINGS LIMITED [SSH]	153,998	153,998	43.19
27 Jan 2023 - 27 Jan 2023	VSTEC	VSTEC HOLDINGS (SINGAPORE) LIMITED [SSH]	153,998	153,998	43.19
30 Jan 2023 - 30 Jan 2023	WIDAD	TAN SRI MUHAMMAD IKMAL OPAT BIN ABDULLAH [SSH]	2,700	1,408,810	50.151
27 Jan 2023 - 27 Jan 2023	WIDAD	TAN SRI MUHAMMAD IKMAL OPAT BIN ABDULLAH [SSH]	-4,050	1,406,110	50.055
30 Jan 2023 - 30 Jan 2023	WPRTS	EMPLOYEES PROVIDENT FUND BOARD [SSH]	910	306,408	8.986
27 Jan 2023 - 27 Jan 2023	WPRTS	EMPLOYEES PROVIDENT FUND BOARD [SSH]	128	305,499	8.959
26 Jan 2023 - 26 Jan 2023	WPRTS	EMPLOYEES PROVIDENT FUND BOARD [SSH]	246	305,371	8.955
25 Jan 2023 - 25 Jan 2023	WPRTS	EMPLOYEES PROVIDENT FUND BOARD [SSH]	2,800	305,125	8.948
02 Feb 2023 - 02 Feb 2023	YINSON	KUMPULAN WANG PERSARAAN (DIPERBADANKAN) [SSH]	-2,323	203,749	7.034
30 Jan 2023 - 30 Jan 2023	YINSON	EMPLOYEES PROVIDENT FUND BOARD [SSH]	-564	501,180	17.304
27 Jan 2023 - 27 Jan 2023	YINSON	EMPLOYEES PROVIDENT FUND BOARD [SSH]	-1,031	501,744	17.323
26 Jan 2023 - 26 Jan 2023	YINSON	EMPLOYEES PROVIDENT FUND BOARD [SSH]	-2,052	502,775	17.359
25 Jan 2023 - 25 Jan 2023	YINSON	EMPLOYEES PROVIDENT FUND BOARD [SSH]	269	504,827	17.432
26 Jan 2023 - 26 Jan 2023	YTL	EMPLOYEES PROVIDENT FUND BOARD [SSH]	-706	611,987	5.582

Disclaimer: The Information in Insider Activity is extracted from www.shareinvestor.com/fundamental/insider_trades. The information on this page is provided as a service to readers. It does not constitute financial advice and/or any investment recommendations. We assume no liability for damages resulting from or arising out of the use of such information. Whilst every effort is made to ensure accuracy, the information presented is not the official record of shareholder filings. Readers are advised to read the original filings on the Bursa Malaysia website at www.bursamalaysia.com

SHAREINVESTOR MARKET DATA PLATFORMS



**SHAREINVESTOR
STATION**
Advanced Charting Software
(8 Markets)



**SHAREINVESTOR
WEBPRO**
Browser-Based Market Data
Analytics Platform



BURSASTATION
Advanced Charting Software
(Bursa Malaysia Only)



The Board of **Aemulus Holdings Berhad (AEMULUS)** would like to announce that the shareholders of the Company had approved all resolutions as set out in the Notice of Eighth Annual

General Meeting dated 6 January 2023 at Eighth AGM of the Company held on 7 February 2023. All the resolutions were passed by way of poll and the results of the poll were validated by Aldpro Corporate Services Sdn. Bhd, the independent Scrutineer appointed by the Company.



The Board of Directors of **Airasia X Berhad (AAX)** wishes to announce that the Company and the appointed advisers are in the midst of formulating and/or evaluating the proposals to develop the Proposed Regularisation Plan to holistically restructure its business and financial condition.

Pursuant to the announcement dated 2 November 2022 in relation to the approval from Bursa Securities for the extension of time up to 28 April 2023 for the Company to submit its regularisation plan to the relevant regulatory authorities, the Company has approximately three (3) months to submit the Proposed Regularisation Plan to the relevant regulatory authorities for approval to implement the same. The Company shall make the necessary announcement(s) with regard to any material development thereof accordingly.



The Board of Directors is pleased to announce that **Bintai Kinden Corporation Berhad (BINTAI)** has on 6 February 2023 entered into a Memorandum of Understanding with Sarawak Consolidated Industries Berhad for the purpose of establishing a joint venture with SCIB for expansion of business opportunities, securing of new projects and sharing of profits in Malaysia. The Parties shall be jointly responsible: (a) to contribute proportionate resources, skills and experience to complete the bidding process for, or securing the award of any projects as specified by the prospective clients; (b) to comply with all terms, conditions, obligations and instructions which may be specified in all the bidding/award constituent documents; and (c) carry out and complete the implementation of projects in accordance with its terms and conditions. This MOU shall come into force on the date of signing and shall remain in force for the period of six (6) months or until the relevant Agreement is executed, whichever is earlier. Notwithstanding anything in this MOU, either Party may terminate this MOU by notifying the other Party of its intention to terminate this MOU by giving one (1) months' notice in writing in between its enforcement period, prior to its intention to do so. The termination of this MOU shall not affect the implementation of ongoing activities and/or programs that have been agreed upon by the Parties prior to the date of the termination of this MOU.



Pursuant to paragraph 4.1(c) of PN17 of the Main LR, the Board of Directors of **Capital A Berhad (CAPITALA)** wishes to announce

that the Company and the appointed advisers are in the midst of formulating a regularisation plan to address its financial condition. As announced on 21 December 2022, Bursa Securities had granted the Company an extension of time of six (6) months until 7 July 2023 for the Company to submit its regularisation plan to the relevant regulatory authorities. Therefore, the Company has approximately five (5) months to submit its regularisation plan to the relevant regulatory authorities for approval to implement the same. The Company will make the necessary announcement(s) regarding the development of the proposed regularisation plan accordingly.



The Board of Directors of **Cypark Resources Berhad (CYPARK)** wishes to announce that Cypark Smart Technology Sdn. Bhd., a wholly-owned subsidiary of the Company, has on 3 February 2023 received from SEDA the Confirmation of Feed-in Tariff Commencement Date as 14 December 2022, to commercially operate the Solid Waste Modular Advanced Recovery and Treatment Waste-to-Energy plant at Ladang Tanah Merah, Port Dickson, Negeri

Sembilan. The SMART WTE is a renewable energy power plant using biomass (solid waste) as feed stock with an installed capacity of 19.7300MW. The FiTCD is effective for a period of sixteen (16) years from the feed-in tariff commencement date. Pursuant to the FiTCD, Tenaga Nasional Berhad will purchase electricity from the Company at the pre-agreed Feed-in Tariff rate. The Board is of the opinion that the

Project is in the best interest of the Group. The Project is expected to have material impact on the earnings and net assets of the CRB Group for the financial year ending 30 April 2023 and subsequent financial years for the FiTCD Period. None of the Directors or major shareholders of CRB and persons connected with them has any interests, direct or indirect, in the Project.



On behalf of the Board of Directors of **Ecomate Holdings Berhad (ECOMATE)**, M & A Securities Sdn Bhd wishes to announce that Ecomate proposes to undertake the transfer of the listing of and quotation for its entire issued share

capital from the ACE Market to the Main Market of Bursa Malaysia Securities Berhad. Ecomate and its subsidiary, have satisfied the requirements for the Proposed Transfer based on the Equity Guidelines issued by the Securities Commission Malaysia and the Main Market Listing Requirements of Bursa Securities, which include, amongst others, the following: (i) Profit requirements Pursuant to the SC Equity Guidelines, a corporation which is listed on the ACE Market of Bursa Securities may seek a transfer listing to the Main Market of Bursa Securities if it meets the profit requirements of an aggregate profit after tax of at least RM20.0 million for the past 3 to 5 full financial years prior to submission to the SC with a PAT of at least RM6.0 million for the most recent financial year. Ecomate Group has satisfied the above profit requirements as the Group's aggregate adjusted PAT attributable to owners of the Company for the past 3 financial years ended 28/29 February 2020 to 2022 after adjusting for non-recurring items and items not in the ordinary course of Ecomate's business is RM22.9 million with adjusted PAT attributable to owners of the Company of RM7.1 million for FYE 2022, being the most recent financial year.



On behalf of the Board of Knusford Berhad (KNUSFOR), UOB

Kay Hian wishes to

announce that the conditions precedent

under the SPA and Settlement Agreement have been fulfilled, and that the Acquisition and Settlement was completed on 7 December 2022.



Kindly be informed that **Mr D.I.Y. Group (M) Berhad (MRDIY)** has scheduled to release its financial results for the

fourth quarter ended 31 December 2022 on Tuesday, 14 February 2023 in accordance with Paragraph 9.22 of the Main Market Listing Requirements of Bursa Malaysia Securities Berhad.



ShareInvestor is a technology based company with a focus on Internet media and we have operations in Malaysia, Singapore and Thailand.

We are the market leader in providing a combination of market data, analysis and news on various platforms to traders and investors.

Our websites include www.shareinvestor.com and www.bursastation.com.

More information about our products and services can be found at www.shareinvestorholdings.com

We're looking for Drupal Developers who will be in charge of front-end development and back-end/module development. This role requires expertise in PHP, HTML, CSS, JS, and an eye for design aesthetics. The candidates should be familiar and have a passion working with content management systems.

Interested candidates are encouraged to apply with full resume, present and expected salary and a recent photograph. Please send these to hr.my@shareinvestor.com for processing. ShareInvestor regrets that only shortlisted candidates shall be notified.

Drupal Developers (2 vacancies)

Job Responsibilities:

- Active participation in all UI / UX decisions
- Contribute actively to the continuous development and maintenance of development projects
- Enhance Drupal development quality
- Provide solutions to issues and suggestions for improvements.
- Designing and implementing new features to the system
- Ensuring optimal performance

Required Skills:

- At least 3 years of Drupal Theming and Front-End Development experience
- Proficient in PHP, HTML5/XHTML, CSS, Javascript, jQuery, AJAX, XML, Json
- Good Diploma/Degree in Computer Science/Computer Engineering.
- Experience working with Drupal's main modules, such as CTools, Views, Rules, Webform, and so on
- Ability to create custom Drupal modules
- Strong troubleshooting skills to fix bugs

Benefits:

- Career & growth opportunities
- Interesting projects
- Medical Insurance
- Incentives

Ruby on Rails Developer (1 vacancy)

Job Responsibilities:

- Develop quality web-based software modules on schedule with a focus on Ruby and Ruby on Rails applications.
- Explore and utilize the latest web-based technologies.
- Document design specifications, logic concepts and module description.
- Maintain and enhance existing web-based applications.

Required Skills:

- Experience in web-based programming/scripting is essential. Candidate must be able to explain clearly technical aspects of his/her past experiences and projects.
- Passion for programming and desire to learn new languages like Go.
- Good Diploma/Degree in Computer Science/Computer Engineering.
- Able to work well in a team and be able to follow documentation and coding standards.
- Knowledge in any of the following would be an added advantage
 - Ruby and Ruby on Rails Framework
 - Javascript and jQuery library
 - Go
 - Perl

Application Developer (C++/STL) (1 vacancy)

Job Responsibilities

- Deliver quality software modules on schedule.
- Document design specifications, conceptions, module description.
- Maintain and enhance existing applications.

Required Skills:

- Passion for programming and desire to learn.
- Good Diploma/Degree in Computer Science/Computer Engineering.
- Skills in C++ is essential.
- Experience with Visual Studio, networking stack and Golang would be an advantage.
- Proactive, resourceful and self-motivated with strong analytical skills.
- Good interpersonal, written and communication skills.
- Able to work with little supervision.

Junior Market Data Support Specialist

As a Junior Market Data Support Specialist, you will be involved in reviewing, analysing and collecting accurate and timely financial information on listed companies for our market data information services.

Job Responsibilities

- Collect, compute and analyse relevant financial data of listed companies, organise and present them on the company portal, in timely manner, for the consumption by our subscribers and our corporate clients
- Capture corporate events / actions and translate them to adjustments of impacted financial data
- Research, evaluate, propose new solutions or recommendations for adhoc project requirements that are related to the financial data or the financial fundamentals of listed companies
- Provide support to users' queries related to financial information displayed on our platforms
- Perform any other duties assigned from time to time, including rare occasions of working during weekends

Required Skills

- Minimum academic qualification: Diploma in any finance-related discipline
- Knowledge of basic accounting and financial terms is required
- Flair for data precision / accuracy / quality / thoroughness plus strict adherence to structured data process and timeline is a must
- Proficient in Microsoft Excel
- Team player with pleasant personality
- Proficient in English, oral and written.

Fresh graduates are welcome to apply.

Interested candidates are encouraged to apply with full resume, present and expected salary and a recent photograph. Please send these to hr.my@shareinvestor.com for processing. ShareInvestor regrets that only shortlisted candidates shall be notified.