



MARKET SENTIMENTS

- Overnight Policy Rate (OPR) maintained at 3.0% - BNM
- SC'S Fikra Ace Seeks Fintech Startups to Enhance Islamic Capital Market

- Malaysia's wholesale and retail sales growth accelerates to 7.1% in May 2024 - DOSM

See more on page **28-33**

PLUS

See more on pages **19-26**



ALSO

COMPANY SPOTLIGHT
Ekovest Berhad

See more on page **07**

MSWG
Be Aware of ESG Bogus

See more on pages **35-42**

04 LEADERBOARD

06 SHARIAH HOT STOCKS

08 SHARIAH MOMENTUM UP STOCKS

10 NON SHARIAH HOT STOCKS

12 UP TRENDING STOCKS

13 VALUE STOCKS

14 GROWTH STOCKS

15 DIVIDEND STOCKS

16 BROKERS' CALL

17 LONG COMPANIES

34 REGIONAL MARKETS

43 INSIDER ACTIVITY

48 INVESTOR RELATIONS

SHAREINVESTOR®

An AlphaInvest Company

Invest with Knowledge

INVESTOR PLATFORMS

Director
Darren Chong
darren.chong@shareinvestor.com

Business Development Manager
Jay Cheong
jay.cheong@shareinvestor.com

Product & Marketing Manager
Daniel Wong
daniel.wong@shareinvestor.com

ADMIN & OPERATIONS

Senior Executive
Watie Nordin
watie.nordin@shareinvestor.com

Executive
Silas Emmanuel Joseph
silas.joseph@shareinvestor.com

PROCESS AUTOMATION & DATA ANALYTICS

Data Analyst
Tan Yong Sheng

INVESTOR RELATIONS

Group Managing Director & Publisher
Edward Stanislaus
edward@shareinvestor.com

Senior Manager
Letticia Wong
letticia.wong@shareinvestor.com

Manager
Aida Norzeti Talib
aida.norzeti@shareinvestor.com

Inve\$t WEEKLY

Senior Manager
Advertising Sales & Marketing
Mark Rodrigues
mark.rodrigues@shareinvestor.com

ALPHAINVEST HOLDINGS BOARD OF DIRECTORS

Chairman	Patrick Daniel
Group CEO	Christopher Lee
Group COO	Lim Dau Hee
Group MD	Shanison Lin



“ GIVE A MAN A FISH AND YOU FEED HIM FOR A DAY; TEACH A MAN TO FISH AND YOU FEED HIM FOR A LIFETIME ”

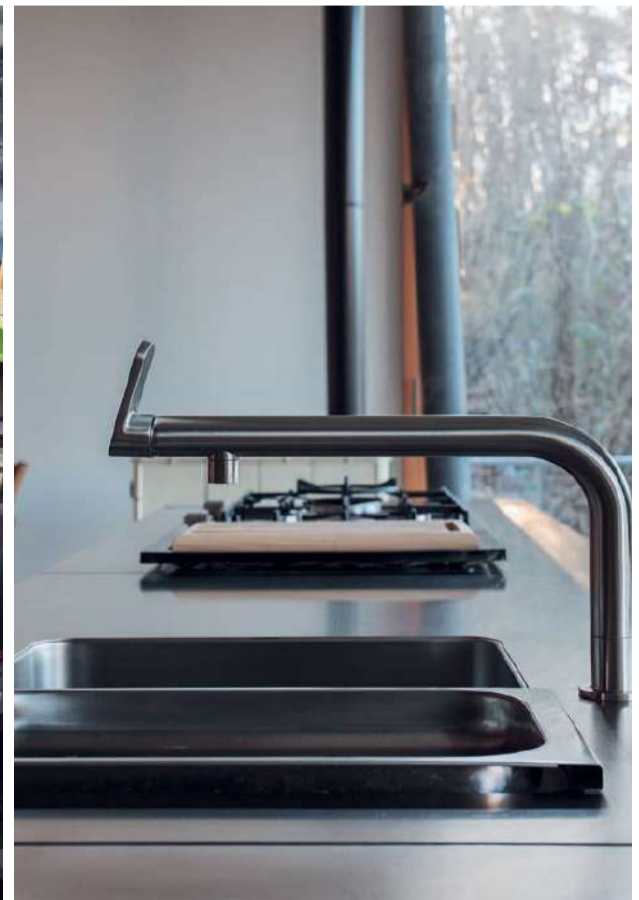
ShareInvestor Malaysia Sdn. Bhd.
(200001023956) (526564-M)

Unit No. DF2-07-03A. Level 7,
Persoft Tower, 6B Persiaran Tropicana,
47410 Petaling Jaya, Selangor Darul Ehsan.

Hotline : 603 7803 1791
Mobile : 011 6343 8939
Website : www.ShareInvestor.com.my
www.alphainvestholdings.com
www.Facebook.com/ShareInvestorMalaysia

ADVERTISEMENT ENQUIRY

bulthaup takes care of the details so that you can enjoy a harmonious environment.



XTRA

XTRA FURNITURE SDN BHD
The Gardens Mall, Mid Valley City
xtrafurniture.com/bulthaup
fb.com/bulthaupmalaysia

bulthaup



STROM

SWISS TIMEPIECES & JEWELLERY



StromWatch Asia
Tele : +65.9817.3378 Email : ll.stromasia@gmail.com

WWW.STROMWATCH.SWISS



www.shareinvestor.com - market data at your fingertips



ShareInvestor WebPro (www.shareinvestor.com/my)
 Prices > Stock Prices > Bursa > click Stocks tab

1. mouse over Ranking > select Top Active > all Shariah stocks are denoted with an [S] > mouse over Column Layout > select Edit Customs > select Name > select Volume > select Last Done Price > Mouse Over Column Layout > select Custom
2. mouse over Ranking > select Top Turnover > all Shariah stocks are denoted with an [S] > mouse over Column Layout > select Edit Customs > select Name > select Last Done Price > select Value > Mouse Over Column Layout > select Custom
3. mouse over Ranking > select Top Gainers (Over 5 Trading Days) > mouse over Column Layout > select Edit Customs > select Name > select Last Done Price > select 5 Days Change > select 5 Days % Change > Mouse Over Column Layout > select Custom
4. mouse over Ranking > select Top Losers (Over 5 Trading Days)
5. mouse over Ranking > select Top % Gainers (Over 5 Trading Days)
6. mouse over Ranking > select Top % Losers (Over 5 Trading Days)

Shariah Top Actives (as at Yesterday)

Name	Price (RM)	Volume
NOVAMSC [S]	0.200	2,042,407.000
ATAIMS [S]	0.520	1,366,376.000
DATAPRP [S]	0.225	929,707.000
G3 [S]	0.035	803,170.000
AIMFLEX [S]	0.195	769,306.000
EKOVEST [S]	0.475	701,410.000
WCT [S]	1.100	633,011.000
SPSETIA [S]	1.570	565,078.000
TECHBASE [S]	0.215	500,767.000
CABNET [S]	0.705	459,903.000

Shariah Top Turnover (as at Yesterday)

Name	Price (RM)	Value (RM)
GAMUDA [S]	7.880	219,867,793
TENAGA [S]	14.600	173,012,228
TM [S]	7.020	132,784,367
SUNWAY [S]	4.100	125,385,390
IJM [S]	3.390	92,357,079
SPSETIA [S]	1.570	88,055,333
ATAIMS [S]	0.520	78,065,444
WCT [S]	1.100	69,610,993
PMETAL [S]	6.000	69,542,318
INARI [S]	4.000	69,434,620

Top Gainers (over 5 Trading days as at Yesterday)

Name	Price (RM)	Change (RM)
MPI	41.000	+1.300
MCEMENT	5.700	+0.700
GAMUDA	7.880	+0.590
VITROX	4.510	+0.480
SUNCON	4.590	+0.460
AFFIN	2.890	+0.410
TENAGA	14.600	+0.360
BURSA	9.400	+0.340
MSC	3.000	+0.340
GREATEC	5.830	+0.320

Top % Gainers (over 5 Trading days as at Yesterday)

Name	Price (RM)	Change (%)
BORNOIL	0.010	+100.00
CHHB	0.395	+31.67
CABNET	0.705	+29.36
HUBLINE	0.075	+25.00
WAJA	0.080	+23.08
CRG	0.270	+22.73
BINTAI	0.110	+22.22
HAILY	0.735	+21.49
UUE	0.860	+21.13
AWC	1.280	+20.75

Top Losers (over 5 Trading days as at Yesterday)

Name	Price (RM)	Change (RM)
DLADY	33.800	-1.880
NESTLE	120.800	-1.200
F&N	31.120	-0.660
KLK	19.760	-0.520
AYER	7.000	-0.300
MISC	8.600	-0.240
ANNJOO	1.150	-0.220
TOYOVEN	0.840	-0.220
SYNERGY	1.390	-0.190
PANAMY	20.000	-0.180

Top % Losers (over 5 Trading days as at Yesterday)

Name	Price (RM)	Change (%)
EAH	0.005	-50.00
PHB	0.005	-50.00
HONGSENG	0.010	-33.33
MQTECH	0.010	-33.33
XOX	0.010	-33.33
TOYOVEN	0.840	-20.75
CME	0.020	-20.00
SALUTE	0.545	-19.85
HEXCARE	0.230	-17.86
REACH	0.025	-16.67

Disclaimer: The information on this page is provided as a service to readers. It does not constitute financial advice and/or any investment recommendations. Past performance is not indicative of future results. We assume no liability for damages resulting from or arising out of the use of such information. It would be best if you did your own research to make your personal investment decisions wisely or consult a licenced investment advisor.

SHAREINVESTOR WEBPRO

STOCK MARKET DATA AT YOUR FINGERTIPS

Powerful browser-based market analytics platform.
Access from anywhere



8 Markets Data

- ▶ Get access to data from Bursa, NYSE, Nasdaq, HKEX, SGX, IDX, SET & ASX

Portfolio Management

- ▶ Profit & Loss Summary
- ▶ Stock Alert
- ▶ News & Events filtering
- ▶ Customizable column layout

Fundamental Analysis

Financial Analysis Statement

- ▶ Profit & Loss
- ▶ Balance Sheet
- ▶ Cash Flow Statement
- ▶ More than 20 Financial Ratios
- ▶ Dividend Analysis

Technical Charting

- ▶ C² chart (Customisable & Comprehensive)

Brokers' Call

Intrinsic Value Calculator

FactSheet

- ▶ Key Stock Information
- ▶ Ownership
- ▶ Consensus Estimates
- ▶ Annual Report
- ▶ Historical Price
- ▶ Insider Trades

What's new on WebPro (Stable Release 12.1.0)

In our effort to keep our platform at the forefront of trading technology, we have added on some new features onto our C² Chart in WebPro

ADDITIONAL NEW FEATURES:

- ▶ Anchor selector for AVWAP, PVAT, and PAV indicators
- ▶ Volume profile indicator by date range
- ▶ Moving Average Cross indicator
- ▶ Guppy Multiple Moving Average (GMMA) indicator
- ▶ GoNoGo Trend Signal indicators
- ▶ SignalIQ

So what are you waiting for? Head to our platform today and check out our new trading chart features and indicators. We're confident that you'll love the improvements we've made and that they'll help you become a more successful trader.

Click here to start your 9 days FREE trial
(Valued at RM10)



Price & Volume Distribution Charts (as at Yesterday)

Technical Analysis

DEFINITION: Shariah compliant stocks with Technical Analysis showing 5-days & 10-days Moving Average Price below Yesterday's Close over past 3 days and with Volume Spike.

CHART GUIDE: Volume Distribution Chart is a statistical interpretation of the current sentiment on each stock in graphical format. The highest bar categorized as >150k is likely to be traded by institutions or super dealers, while the lowest bar categorized as <15k usually represents retail investors. "Buy Up" refers to more buyers snatching up the lots queued at selling price. "Sell Down" refers to sellers selling their shares to the buying queue



ShareInvestor WebPro > Screener > Market Screener (FA & TA) > select BURSA > add criteria

A. Criteria

- > click Add Criteria
- Technical Analysis Conditions tab select (i) Moving Average Below Close (ii) Volume Spike
- Fundamental Analysis Conditions tab > select (iii) Revenue
- Prices & Other Conditions tab > select (iv) Is Shariah Compliant
- Technical Analysis Conditions tab select (v) Moving Average Below Close
- Prices & Other Conditions tab > select (vi) Last Done Price
- Technical Analysis Conditions tab select (vii) Moving Average Below Close

B. Conditions (Criteria Filters)

1. Moving Average Below Close - select (MA) type (5) below close price for type (3) days
2. Volume Spike - Volume type (1) greater than type (5) days average
3. Revenue ("000) - select (more than) type (1) for the past select (1) financial year(s)
4. Is Shariah Compliant - select **Yes**
5. Moving Average Below Close - select (MA) type (10) below close price for type (3) days
6. Last Done Price - select (more than) type (0.3)
7. Moving Average Below Close - select (EMA) type (5) below close price for type (3) days

- > click Save Template > Create New Template type (Shariah Hot Stocks) > click Create
- > click Save Template as > select Shariah Hot Stocks > click Save
- > click Screen Now (may take a few minutes)
- > Sort By: Select (Vol) Select (Desc)
- > Mouse over stock name > Charts > click C² Charts or Volume Distribution

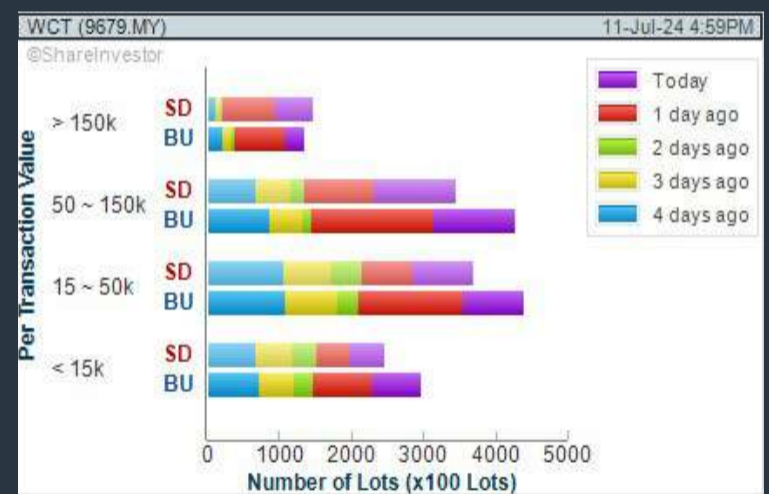
EKOVEST BERHAD (8877)

C² Chart



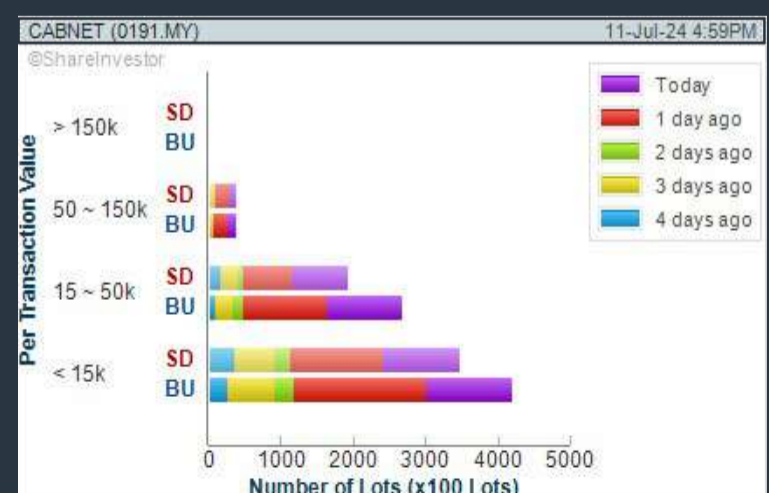
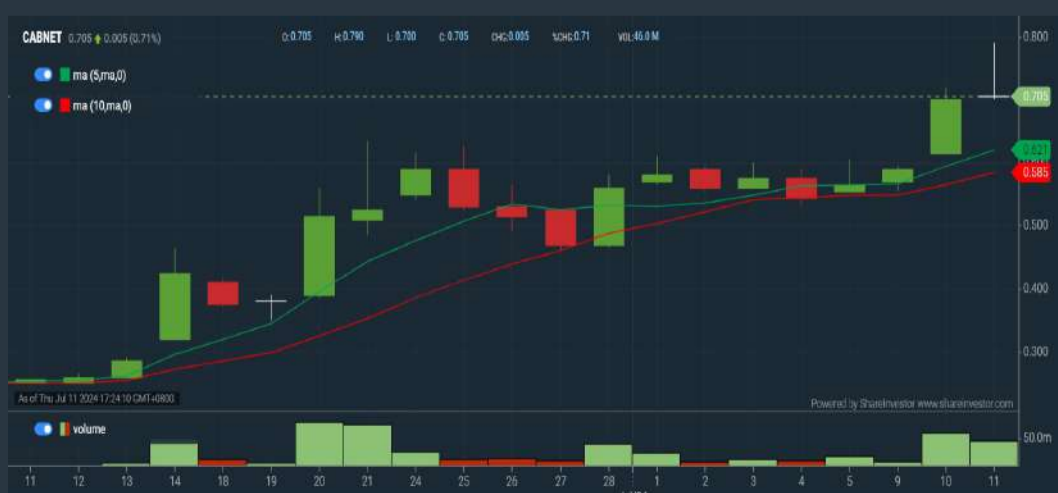
WCT HOLDINGS BERHAD (9679)

C² Chart



CABNET HOLDINGS BERHAD (0191)

C² Chart



Disclaimer: The information on this page is provided as a service to readers. It does not constitute financial advice and/or any investment recommendations. Past performance is not indicative of future results. We assume no liability for damages resulting from or arising out of the use of such information. It would be best if you did your own research to make your personal investment decisions wisely or consult a licenced investment advisor.

COMPANY BACKGROUND

Ekovest Berhad is principally engaged in civil engineering and building construction works such as turnkey, design and build projects and project management. It is also in property, construction and infrastructure business.



EKOVEST EKOVEST EHD		Updated at 11 Jul 2024 17:31	
Last (MYR): 0.475 ↑	Change: +0.010	High: 0.480	Remarks: s
	Change (%): +2.15	Low: 0.460	
Open	0.470	Yesterday's Close	0.465
Buy Price	0.470	Sell Price	0.475
Buy Volume ('00)	35,357	Sell Volume ('00)	29,918
Cumulative Volume ('00)	701,410	Cumulative Value	33,140,689

Financial Analysis

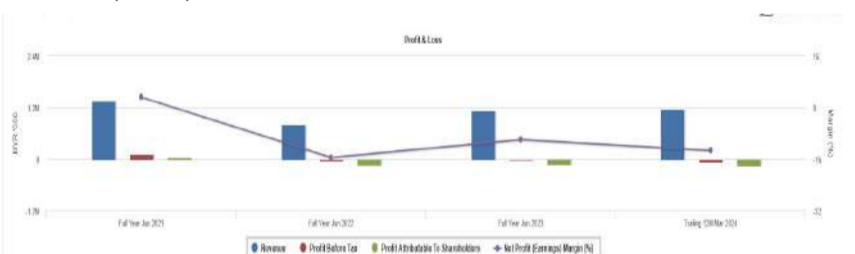
Revenue Growth Revenue up and down in past years	Neutral	Profit Growth Losses for past 2 years	Be Alert
Piotroski F Score The company has below average financial strength (Piotroski F-Score of 3-4)	Be Alert	Debt to Assets High debt to assets for most recent year	Be Alert
Debt to Cashflow High debt to cash flow for most recent year	Be Alert	Debt to Equity High debt to equity for most recent year	Be Alert
Gross Profit Margin Consistently good gross profit margin of 20%-40% for 3 years	Good	Net Earnings Margin Company is losing money but net profit margin is improving by 5% a year over the past 60 months.	Good
Return on Assets (ROA) Negative ROA for 2 consecutive years	Be Alert	Return on Equity (ROE) Negative ROE for 2 consecutive years	Be Alert

🟢 Excellent
🟡 Good
🟠 Neutral
🔴 Be Alert
🔴 Watch Out



Historical Financials

Profit & Loss (MYR '000)

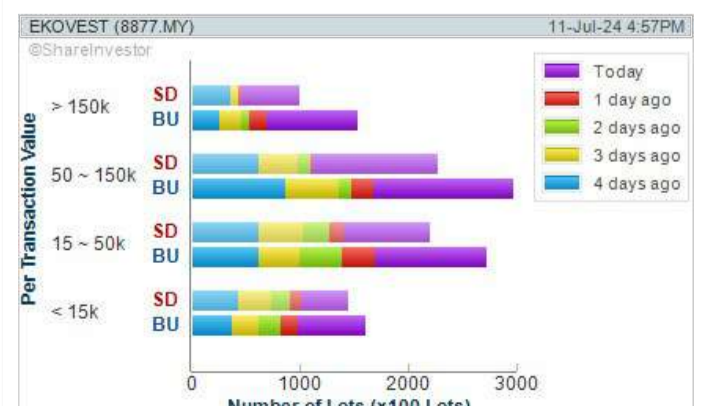


WebPro 9-Days Free Trial Registration (worth RM10) Sign Up Now



Key Statistics with Total Shareholder Returns

Period	Dividend Received	Capital Appreciation	Total Shareholder Return
Short Term Return	5 Days	-	+0.010 +2.15 %
	10 Days	-	+0.035 +7.95 %
	20 Days	-	-
Medium Term Return	3 Months	-	+0.005 +1.06 %
	6 Months	-	-0.090 -15.93 %
	1 Year	-	+0.100 +26.07 %
Long Term Return	2 Years	-	+0.090 +23.38 %
	3 Years	-	+0.080 +20.25 %
	5 Years	0.015	-0.365
Annualised Return	Annualised	-	-10.22 %



Disclaimer: The information on this page is provided as a service to readers. It does not constitute financial advice and/or any investment recommendations. Past performance is not indicative of future results. We assume no liability for damages resulting from or arising out of the use of such information. It would be best if you did your own research to make your personal investment decisions wisely or consult a licenced investment advisor.

Price & Volume Distribution Charts (as at Yesterday)

Technical Analysis

DEFINITION: Shariah compliant stocks with Technical Analysis showing Bullish Momentum and Price Uptrend. The share price closed at the highest price yesterday. The typical price was higher than the previous day's typical price.

CHART GUIDE: Volume Distribution Chart is a statistical interpretation of the current sentiment on each stock in graphical format. The highest bar categorized as >150k is likely to be traded by institutions or super dealers, while the lowest bar categorized as <15k usually represents retail investors. "Buy Up" refers to more buyers snatching up the lots queued at selling price. "Sell Down" refers to sellers selling their shares to the buying queue.



ShareInvestor WebPro > Screener > Market Screener (FA & TA)>select BURSA>add criteria

A. Criteria

- > click Add Criteria
- Fundamental Analysis Conditions tab >select (i) Revenue
- Technical Analysis Conditions tab select (ii) Average Volume
- Prices & Other Conditions tab > select (iii) Last Done Price
- Prices & Other Conditions tab > select (iv) Is Shariah Compliant
- Technical Analysis Conditions tab select (v) RSI Overbought
- Technical Analysis Conditions tab select (vi) Moving Average Below Close
- Technical Analysis Conditions tab select (vii) CCI Overbought

B. Conditions (Criteria Filters)

1. Revenue ("000) - select (more than) type (1) for the past select (1) financial year(s)
2. Average Volume - type (1) days average volume greater than type (10000) lots
3. Last Done Price - select (more than) type (0.3)
4. Is Shariah Compliant - select Yes
5. RSI Overbought - select RSI 1 above 99 for 1 days
6. Moving Average Below Close - select (MA) type (10) below close price for type (1) days
7. CCI Overbought - select CCI (2) above (0) for (1) days

- > click Save Template > Create New Template type (Shariah Momentum Up Stocks) > click Create
- > click Save Template as > select Shariah Momentum Up Stocks > click Save
- > click Screen Now (may take a few minutes)
- Sort By: Select (Vol) Select (Desc)
- Mouse over stock name > Charts > click C² Charts tab or Volume Distribution

EKOVEST BERHAD (8877)

C² Chart

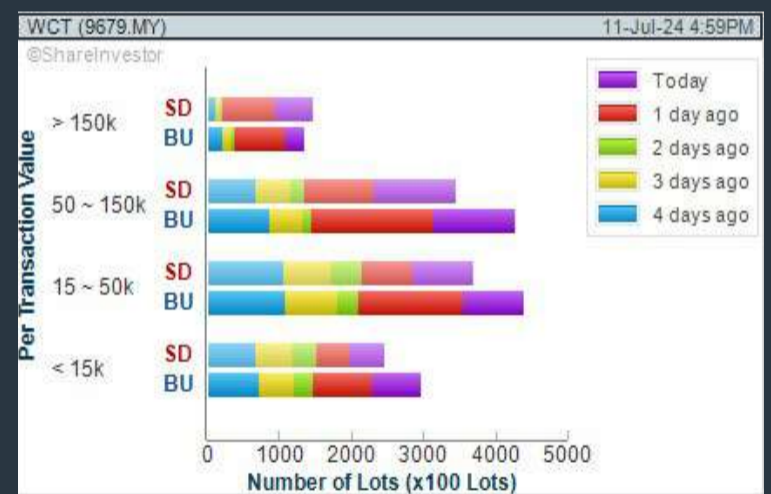
Analysis



WCT HOLDINGS BERHAD (9679)

C² Chart

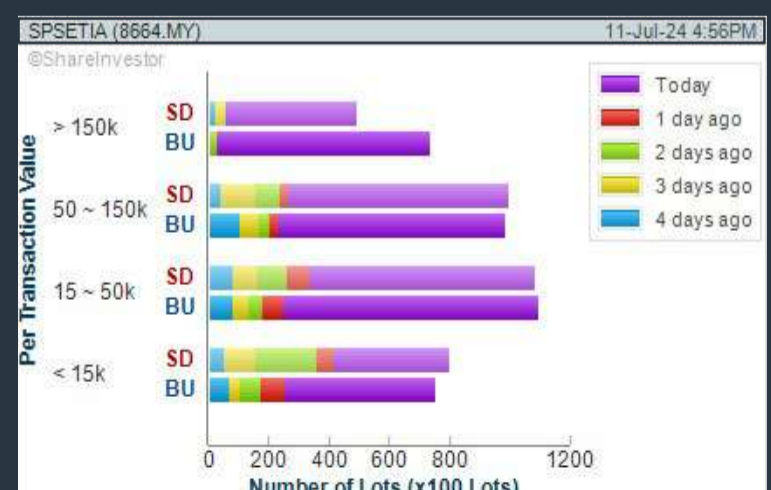
Analysis



SP SETIA BERHAD (8664)

C² Chart

Analysis



Disclaimer: The information on this page is provided as a service to readers. It does not constitute financial advice and/or any investment recommendations. Past performance is not indicative of future results. We assume no liability for damages resulting from or arising out of the use of such information. It would be best if you did your own research to make your personal investment decisions wisely or consult a licenced investment advisor.

MAKE BETTER TRADING STRATEGIES

with

SHARE INVESTOR STATION



8 Markets Data

- ▶ Get access to data from Bursa, NYSE, Nasdaq, HKEX, SGX, IDX, SET & ASX

Dynamic Chart

- ▶ Candlestick Pattern Recognition
- ▶ 111 Indicators
- ▶ 39 Drawing Tools
- ▶ Performance Comparison Chart

Intraday Data

- ▶ Market Depth
- ▶ Trade Summary Matrix & Chart
- ▶ Times & Sales
- ▶ Intraday Market Ticker

Market Screener

- ▶ 96 criteria ranging from FA, TA, Consensus Estimate
- ▶ Real-time Data

Power Frame

- ▶ Combining few Dynamic Charts together with intraday information in one frame

Technical Analysis

Fundamental Analysis

Financial Analysis Statement

- ▶ Profit & Loss
- ▶ Balance Sheet
- ▶ Cash Flow Statement
- ▶ More than 20 Financial Ratios
- ▶ Dividend Analysis

FactSheet

- ▶ Key Stock Information
- ▶ Ownership
- ▶ Consensus Estimates
- ▶ Annual Report
- ▶ Historical Price
- ▶ Insider Trades

**Start your 18 days
FREE trial now
(Valued at RM82)**



Price & Volume Distribution Charts (as at Yesterday)

Technical Analysis

DEFINITION: Stocks with Technical Analysis showing 5-days & 10-days Moving Average Price below Close over past 1 days and with Volume Spike

CHART GUIDE: Volume Distribution Chart is a statistical interpretation of the current sentiment on each stock in graphical format. The highest bar categorized as >150k is likely to be traded by institutions or super dealers, while the lowest bar categorized as <15k usually represents retail investors. "Buy Up" refers to more buyers snatching up the lots queued at selling price. "Sell Down" refers to sellers selling their shares to the buying queue.



ShareInvestor WebPro > Screener > Market Screener (FA & TA) > select BURSA > add criteria

A. Criteria

- > click Add Criteria
- Technical Analysis Conditions tab select (i) Moving Average Below Close (ii) Volume Spike
- Fundamental Analysis Conditions tab >select (iii) Revenue
- Prices & Other Conditions tab > select (iv) Is Shariah Compliant
- Technical Analysis Conditions tab select (v) Moving Average Below Close
- Prices & Other Conditions tab > select (vi) Last Done Price
- Technical Analysis Conditions tab select (vii) Moving Average Below Close

B. Conditions (Criteria Filters)

1. Moving Average Below Close - select (MA) type (5) below close price for type (3) days
2. Volume Spike - Volume type (1) greater than type (5) days average
3. Revenue ("000) - select (more than) type (1) for the past select (1) financial year(s)
4. Is Shariah Compliant - select NO
5. Moving Average Below Close - select (MA) type (10) below close price for type (1) days
6. Last Done Price - select (more than) type (0.3)
7. Moving Average Below Close - select (EMA) type (5) below close price for type (1) days

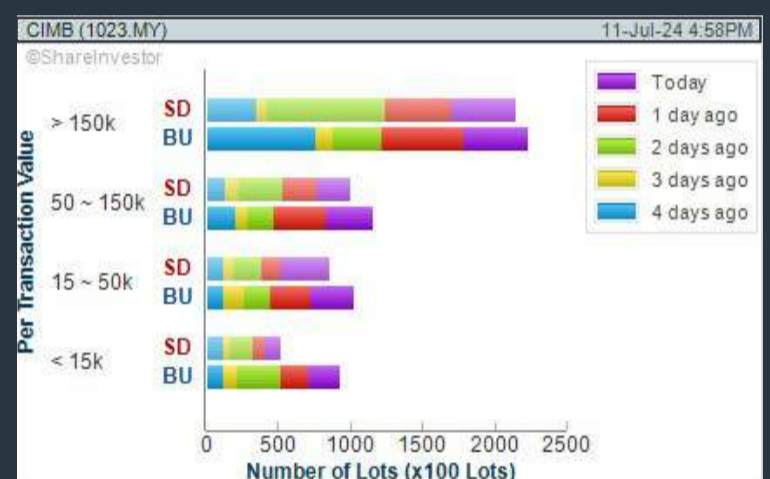
- > click Save Template > Create New Template type (Non-Shariah Hot Stocks) > click Create
- > click Save Template as > select Non-Shariah Hot Stocks > click Save
- > click Screen Now (may take a few minutes)
- Sort By: Select (Vol) Select (Desc)
- Mouse over stock name > Charts > click C² Charts tab or Volume Distribution

CIMB GROUP HOLDINGS BERHAD (1023)

C² Chart



Analysis

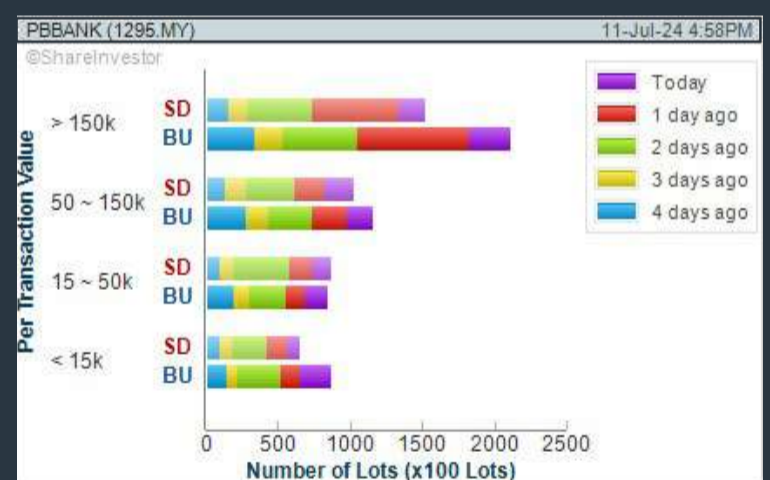


PUBLIC BANK BERHAD (1295)

C² Chart

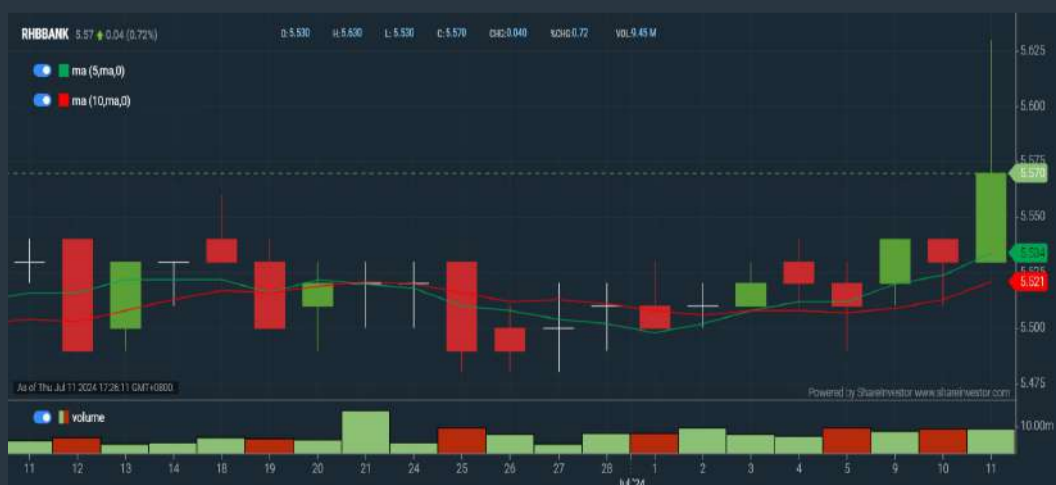


Analysis

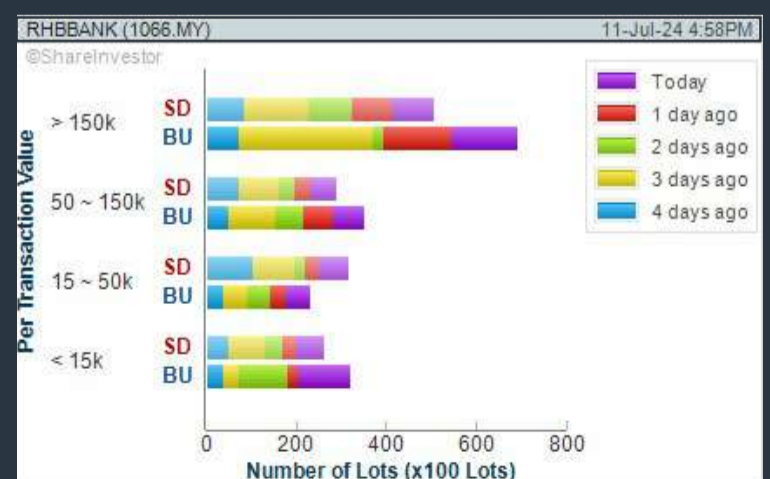


RHB BANK BERHAD (1066)

C² Chart



Analysis



Disclaimer: The information on this page is provided as a service to readers. It does not constitute financial advice and/or any investment recommendations. Past performance is not indicative of future results. We assume no liability for damages resulting from or arising out of the use of such information. It would be best if you did your own research to make your personal investment decisions wisely or consult a licenced investment advisor.



making places shine



usm.com

XTRA

XTRA FURNITURE SDN BHD
The Gardens Mall, Mid Valley City, Lot S-236 & 237
Lingkar Syed Putra, 59200 Kuala Lumpur
T. +603 2282 9088 | living@xtrafurniture.com | xtrafurniture.com
📍 XTRAfurniture | 🌐 xtrafurnituremsia

Price & Volume Distribution Charts (Over 3 trading days as at Yesterday)

Technical Analysis

DEFINITION: Stocks with Technical Analysis showing Bullish Momentum and Price Uptrend

CHART GUIDE: Volume Distribution Chart is a statistical interpretation of the current sentiment on each stock in graphical format. The highest bar categorized as >150k is likely to be traded by institutions or super dealers, while the lowest bar categorized as <15k usually represents retail investors. "Buy Up" refers to more buyers snatching up the lots queued at selling price. "Sell Down" refers to sellers selling their shares to the buying queue.



ShareInvestor WebPro > Screener > Market Screener (FA & TA) > select BURSA > add criteria

A. Criteria

- > click Add Criteria
- Fundamental Analysis Conditions tab > select (i) Revenue
- Technical Analysis Conditions tab select (ii) Moving Average Below Close
- Technical Analysis Conditions tab select (iii) Average Volume
- Prices & Other Conditions tab > select (iv) Last Done Price
- Technical Analysis Conditions tab select (v) Moving Average Below Close
- Technical Analysis Conditions tab select (v) Moving Average Bullish Crossover

B. Conditions

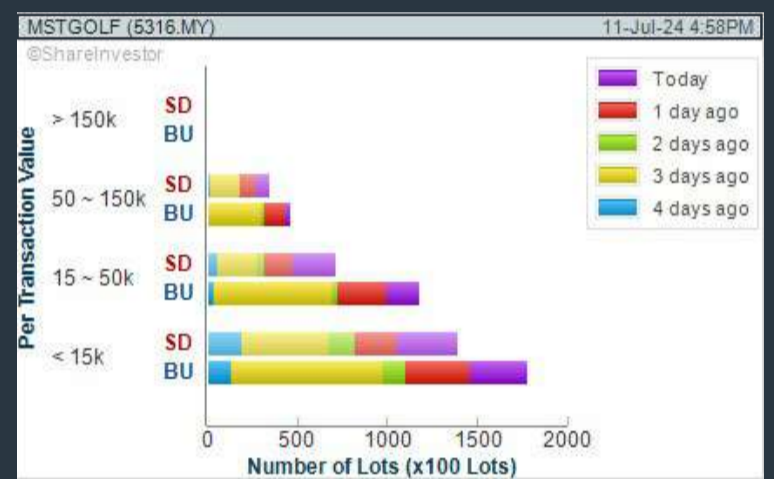
1. Revenue - select (more than) type (1) for the past select (1) financial year(s)
2. Moving Average Below Close - select (MA) type (20) below close price for type (1) days
3. Average Volume - type (5) days average volume type (10000) lots
4. Last Done Price - select (more than) type (0.3)
5. Moving Average Below Close - select (MA) type (10) below close price for type (1) days
6. Moving Average Bullish Crossover - select (MA) type (5) crossed above select (MA) type (10)

> click Save Template > Create New Template type (Non-Shariah Up-Trending Stocks) > click Create Click Save Template As > select Non-Shariah Up Trending Stocks > click Save
 > click Screen Now (may take a few minutes)
 Sort By: Select (Vol) Select (Desc)
 Mouse over stock name > Charts > click C² Charts tab or Volume Distribution

MST GOLF GROUP BERHAD (5316)

C² Chart

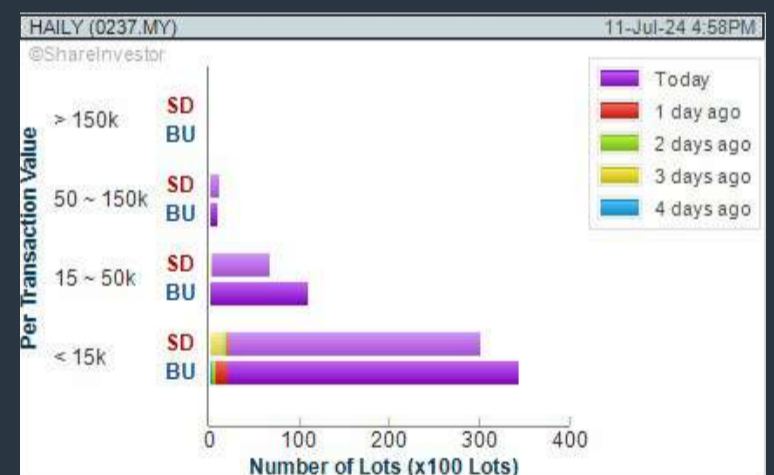
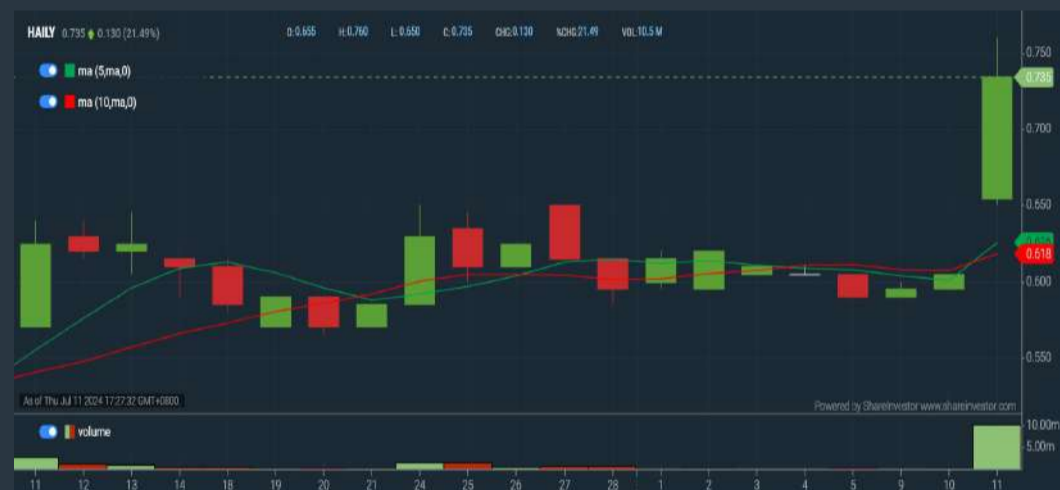
Analysis



HAILY GROUP BERHAD (0237)

C² Chart

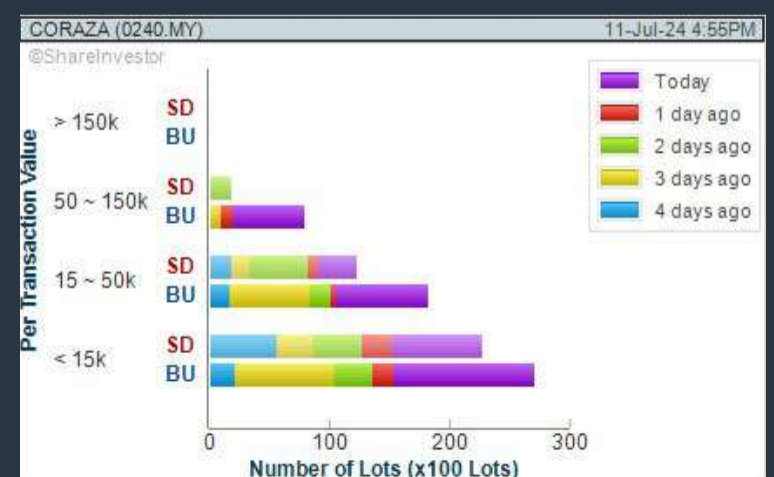
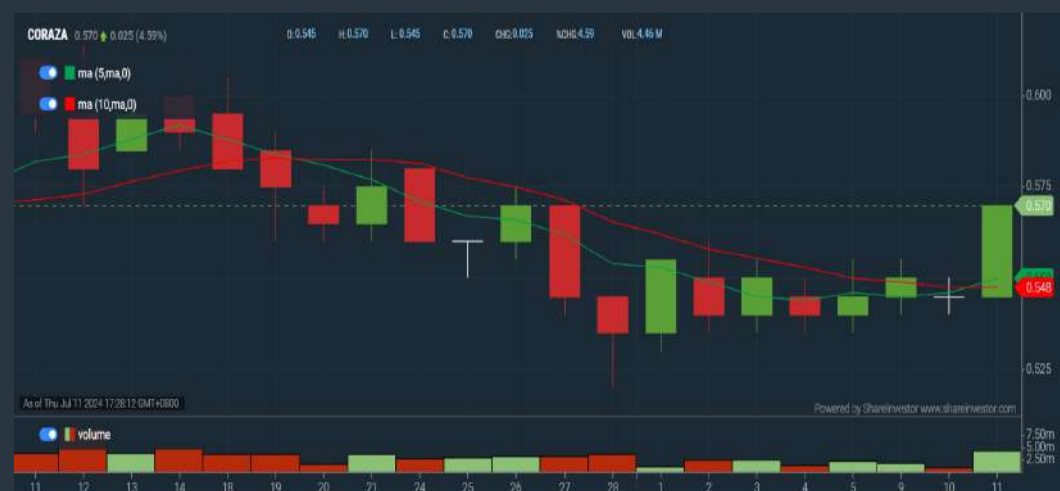
Analysis



CORAZA INTEGRATED TECHNOLOGY BERHAD (0240)

C² Chart

Analysis



Disclaimer: The information on this page is provided as a service to readers. It does not constitute financial advice and/or any investment recommendations. Past performance is not indicative of future results. We assume no liability for damages resulting from or arising out of the use of such information. It would be best if you did your own research to make your personal investment decisions wisely or consult a licenced investment advisor.

Price & Total Shareholder Return (as at Yesterday)

Fundamental Analysis

DEFINITION: Share price of a company trading at a lower price as compared to its fundamentals (FA) such as financial performance and dividend, allowing it to be attractive to value investors.

CHART GUIDE: Total Shareholder Return (TSR) combines share price appreciation and dividend distributions paid to show the total return to the shareholder expressed as a percentage.



ShareInvestor WebPro > Screener > Market Screener (FA & TA) > select BURSA > add criteria

A. Criteria

- > click Add Criteria
- Fundamental Analysis Conditions tab (i) Price Earnings Ratio
- Fundamental Analysis Conditions tab >select (ii) CAGR of Net Earnings
- Fundamental Analysis Conditions tab >select (iii) Net Debt To Equity
- Fundamental Analysis Conditions tab >select (iv) Return On Equity (ROE)

B. Conditions

1. Price Earnings Ratio - select (less than) type (15) times now
2. CAGR of Net Earnings - select (more than) type (10) % for the past type (3) financial year(s)
3. Net Debt To Equity – select (less than) type (1) for the past select (1) financial year(s)
4. Return On Equity (ROE) – select (more than) type (10) % for the past select (1) financial year(s)

- > click Save Template > Create New Template type (Value Stock) > click Create
- > click Save Template as > select Value Companies > click Save
- > click Screen Now (may take a few minutes)
- Sort by: Select (PE Ratio) Select (Ascending)
- > Mouse over stock name > Factsheet > looking for Total Shareholder Return
- > Mouse over stock name > Charts > click C2 Charts tab

SYNERGY HOUSE BERHAD (0279)

C² Chart

Analysis



Period	Dividend Received	Capital Appreciation	Total Shareholder Return
Short Term Return	5 Days	-0.310	-18.24%
	10 Days	-0.240	-14.72%
	20 Days	-0.370	-21.62%
Medium Term Return	3 Months	+0.430	+44.73%
	6 Months	+0.670	+93.06%
	1 Year	+0.980	+239.02%
Annualised Return	Annualised	-	+239.02%

AJINOMOTO (M) BERHAD (2658)

C² Chart

Analysis

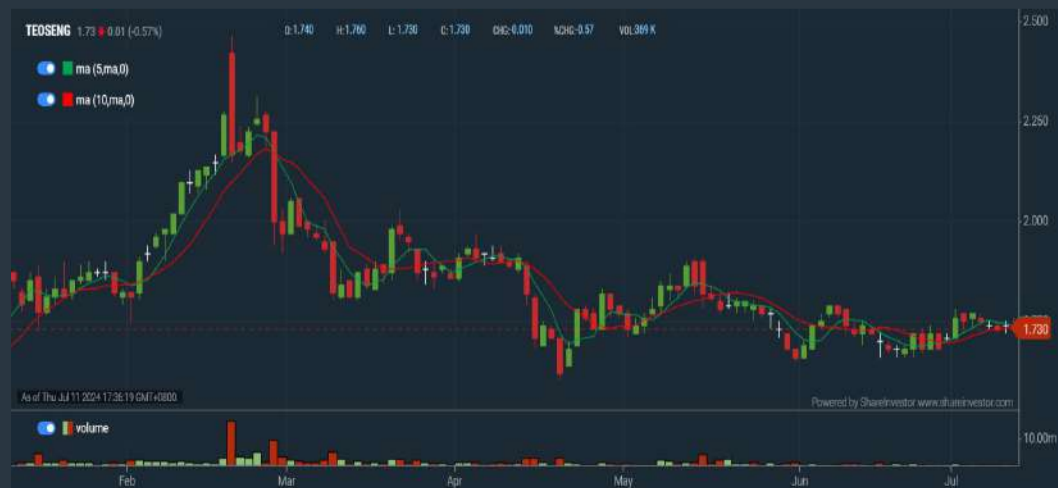


Period	Dividend Received	Capital Appreciation	Total Shareholder Return
Short Term Return	5 Days	-0.320	-2.08%
	10 Days	-0.200	-1.31%
	20 Days	-0.500	-3.21%
Medium Term Return	3 Months	-2.402	-13.72%
	6 Months	-0.903	+6.36%
	1 Year	+1.454	+10.66%
Long Term Return	2 Years	+4.350	+40.47%
	3 Years	0.383	+1.01%
	5 Years	1.346	+7.13%
Annualised Return	Annualised	-	+1.38%

TEO SENG CAPITAL BERHAD (7252)

C² Chart

Analysis



Period	Dividend Received	Capital Appreciation	Total Shareholder Return
Short Term Return	5 Days	-0.040	-2.26%
	10 Days	+0.010	+0.58%
	20 Days	+0.010	+0.58%
Medium Term Return	3 Months	-0.160	-8.47%
	6 Months	-0.132	-7.69%
	1 Year	+0.789	+46.02%
Long Term Return	2 Years	+0.961	+56.13%
	3 Years	+1.021	+64.01%
	5 Years	0.030	+1.73%
Annualised Return	Annualised	-	+8.94%

Disclaimer: The information on this page is provided as a service to readers. It does not constitute financial advice and/or any investment recommendations. Past performance is not indicative of future results. We assume no liability for damages resulting from or arising out of the use of such information. It would be best if you did your own research to make your personal investment decisions wisely or consult a licenced investment advisor.

Price & Total Shareholder Return (as at Yesterday)

Fundamental Analysis

DEFINITION: Company revenue is growing and making good quality of earnings with positive Free Cash Flow.

CHART GUIDE: Total Shareholder Return (TSR) combines share price appreciation and distributions paid to show the total return to the shareholder expressed as a percentage.



ShareInvestor WebPro > Screener > Market Screener (FA & TA) > select BURSA > add criteria

A. Criteria

1. Fundamental Analysis Conditions tab > select (i) Free Cash Flow, (ii) Revenue Growth, (iii) Gross Profit (Earnings) Margin, (iv) Quality of Earnings, (v) Total Shareholder Returns, > click Add Criteria
2. Fundamental Analysis Conditions tab > select (vi) Total Shareholder Returns > click Add Criteria

B. Conditions (Criteria Filters)

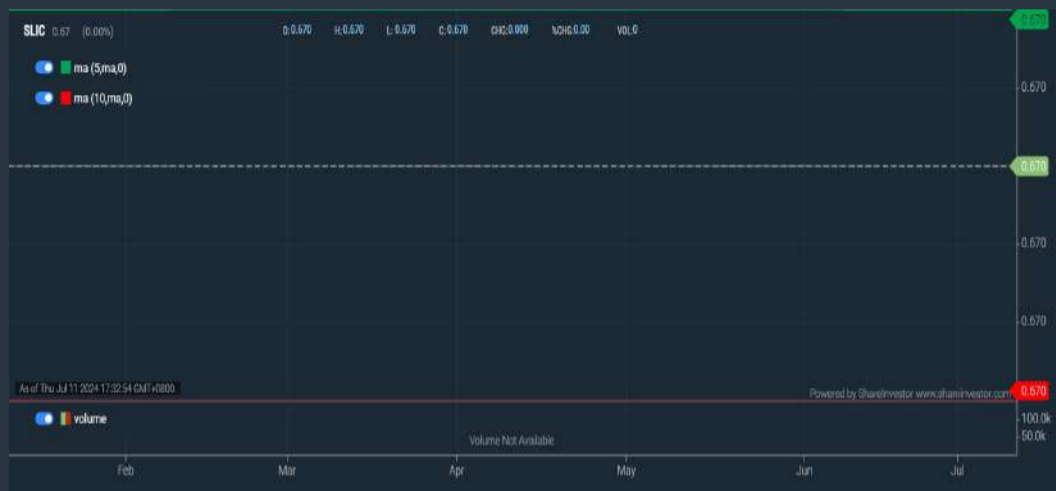
1. Free Cash Flow - select (more than) type (1) for the past select (1) financial year(s)
2. Revenue Growth - select (more than) type (1) for the past select (1) financial year(s)
3. Gross Profit (Earnings) Margin - select (more than) type (30) % for the past select (1) financial year(s)
4. Quality of Earnings - select (more than) type (1) for the past select (1) financial year(s)
5. Total Shareholder Return - select (more than) type (5) % for the past select (3) financial year(s)
6. Total Shareholder Return - select (more than) type (5) % for the past select (5) financial year(s)

- > click Save Template > Create New Template type (Growth Companies) > click Create
- > click Save Template as > select Growth Companies > click Save
- > click Screen Now (may take a few minutes)
- > Sort By: Select (Revenue Growth) Select (Desc)
- > Mouse over stock name > Factsheet > looking for Total Shareholder Return

SL INNOVATION CAPITAL BERHAD (03008)

C² Chart

Analysis



Period	Dividend Received	Capital Appreciation	Total Shareholder Return	
Short Term Return	5 Days	-	-	
	10 Days	-	-	
	20 Days	-	-	
Medium Term Return	3 Months	-	-	
	6 Months	-	-	
	1 Year	-0.015	-	-2.16 %
Long Term Return	2 Years	+0.265	-	+65.43 %
	3 Years	+0.265	-	+65.43 %
	5 Years	0.015	+0.250	+63.10 %
Annualised Return	Annualised	-	-	+18.28 %

MALAYSIA AIRPORTS HOLDINGS BERHAD (5014)

C² Chart

Analysis



Period	Dividend Received	Capital Appreciation	Total Shareholder Return	
Short Term Return	5 Days	+0.130	-	+1.30 %
	10 Days	+0.520	-	+5.47 %
	20 Days	+0.220	-	+2.22 %
Medium Term Return	3 Months	+0.060	-	+0.60 %
	6 Months	+2.440	-	+31.77 %
	1 Year	+3.170	-	+45.61 %
Long Term Return	2 Years	+3.970	-	+64.55 %
	3 Years	+4.400	-	+76.92 %
	5 Years	0.100	+1.560	+19.39 %
Annualised Return	Annualised	-	-	+3.61 %

PGF CAPITAL BERHAD (8117)

C² Chart

Analysis



Period	Dividend Received	Capital Appreciation	Total Shareholder Return	
Short Term Return	5 Days	-0.050	-	-2.26 %
	10 Days	-0.019	-	-0.46 %
	20 Days	-0.009	-	-0.57 %
Medium Term Return	3 Months	+1.150	-	+9.64 %
	6 Months	+0.820	-	+61.19 %
	1 Year	+0.910	-	+72.80 %
Long Term Return	2 Years	+1.140	-	+111.76 %
	3 Years	+1.620	-	+308.00 %
	5 Years	-	+1.043	+51.39 %
Annualised Return	Annualised	-	-	+46.78 %

Disclaimer: The information on this page is provided as a service to readers. It does not constitute financial advice and/or any investment recommendations. Past performance is not indicative of future results. We assume no liability for damages resulting from or arising out of the use of such information. It would be best if you did your own research to make your personal investment decisions wisely or consult a licenced investment advisor.

Price & Total Shareholder Return (as at Yesterday)

Fundamental Analysis

DEFINITION: Company is paying out dividend with low or moderate leverage.

CHART GUIDE: Total Shareholder Return (TSR) combines share price appreciation and distributions paid to show the total return to the shareholder expressed as a percentage.



ShareInvestor WebPro > Screener > Market Screener (FA & TA) > select BURSA > add criteria

A. Criteria

- > click Add Criteria
- Fundamental Analysis Conditions tab >select (i) Dividend Yield (Historical)
- Fundamental Analysis Conditions tab >select (ii) Dividend Payout (Historical)
- Fundamental Analysis Conditions tab >select (iii) Total Debt To Equity
- Fundamental Analysis Conditions tab >select (iv) Total Shareholder Returns
- Fundamental Analysis Conditions tab >select (v) Total Shareholder Returns
- Fundamental Analysis Conditions tab / >select (vi) CAGR of Dividend Per Share

- Fundamental Analysis Conditions tab >select (vii) CAGR of Dividend Per Share

B. Conditions (Criteria Filters)

1. Dividend Yield - select (more than) type (1) % for the past select (1) financial year(s)
2. Dividend Payout (Historical) - select (between) type (0.5) to type (1) times for the past select (1) financial year(s)
3. Total Debt to Equity - select (less than) type (1) for the past select (1) financial year(s)
4. Total Shareholder Return - select (more than) type (5) % for the past select (3) financial year(s)
5. Total Shareholder Return - select (more than) type (5) % for the past select (5) financial year(s)

6. CAGR of Dividend Per Share - select (less than) type (30) % for the past select (5) financial year(s)
7. CAGR of Dividend Per Share - select (more than) type (1) % for the past select (5) financial year(s)

- > click Save Template > Create New Template type (Dividend Companies) > click Create
- > click Save Template as > select Dividend Companies > click Save
- > click Screen Now (may take a few minutes)
- > Sort By: Select (Dividend Yield) Select (Desc)
- > Mouse over stock name > Factsheet > looking for Total Shareholder Return

AMWAY (M) HOLDINGS BERHAD (6351)

C² Chart



Period	Dividend Received	Capital Appreciation	Total Shareholder Return
Short Term Return	5 Days	+0.040	+0.67%
	10 Days	+0.030	+0.42%
	20 Days	-0.140	-1.84%
Medium Term Return	3 Months	-0.410	-6.47%
	6 Months	+0.950	+15.47%
Long Term Return	1 Year	+1.790	+33.77%
	2 Years	+2.000	+41.62%
	3 Years	+1.990	+30.91%
5 Years	0.300	+1.056	+22.47%
Annualised Return	Annualised	-	+4.14%

CSC STEEL HOLDINGS BERHAD (5094)

C² Chart



Period	Dividend Received	Capital Appreciation	Total Shareholder Return
Short Term Return	5 Days	-0.020	-1.46%
	10 Days	+0.040	+3.05%
	20 Days	-0.140	-0.46%
Medium Term Return	3 Months	-0.030	-2.17%
	6 Months	+0.100	+8.00%
Long Term Return	1 Year	+0.210	+16.42%
	2 Years	+0.270	+25.00%
	3 Years	0.140	+0.040
5 Years	0.276	+0.310	+56.35%
Annualised Return	Annualised	-	+9.35%

TA ANN HOLDINGS BERHAD (5012)

C² Chart



Period	Dividend Received	Capital Appreciation	Total Shareholder Return
Short Term Return	5 Days	+0.060	+1.67%
	10 Days	+0.080	+2.11%
	20 Days	-0.030	-0.77%
Medium Term Return	3 Months	-0.300	-8.02%
	6 Months	+0.300	+8.08%
Long Term Return	1 Year	+0.400	+14.12%
	2 Years	+0.170	+4.60%
	3 Years	0.300	+1.230
5 Years	0.500	+1.610	+92.95%
Annualised Return	Annualised	-	+14.05%

Disclaimer: The information on this page is provided as a service to readers. It does not constitute financial advice and/or any investment recommendations. Past performance is not indicative of future results. We assume no liability for damages resulting from or arising out of the use of such information. It would be best if you did your own research to make your personal investment decisions wisely or consult a licenced investment advisor.

Week: 5 July 2024 - 11 July 2024

More Brokers' Call 

AMINVESTMENT BANK <small>... See More</small>	Call	Target Price	Release Date
Malayan Banking Berhad (1155)	HOLD	RM10.80	05 Jul 2024
Glomac Berhad (5020)	HOLD	RM0.40	09 Jul 2024
Vestland Berhad (0273)	BUY	RM0.70	10 Jul 2024

APEX <small>... See More</small>	Call	Target Price	Release Date
Kucingko Berhad (0315)	BUY	RM0.54	09 Jul 2024
Seng Fong Holdings Berhad (5308)	BUY	RM1.90	10 Jul 2024
EPB Group Berhad (0317)	BUY	RM0.66	11 Jul 2024

BIMB SECURITIES SDN BHD <small>... See More</small>	Call	Target Price	Release Date
MISC Berhad (3816)	BUY	RM10.30	08 Jul 2024

KENANGA <small>... See More</small>	Call	Target Price	Release Date
Tenaga Nasional Berhad (5347)	MARKET PERFORM	RM14.50	09 Jul 2024
Aeon Co. (M) Berhad (6599)	MARKET PERFORM	RM1.21	10 Jul 2024
CTOS Digital Berhad (5301)	OUTPERFORM	RM2.00	10 Jul 2024
Aeon Credit Service (M) Berhad (5139)	OUTPERFORM	RM8.55	11 Jul 2024

MALACCA SECURITIES SDN BHD <small>... See More</small>	Call	Target Price	Release Date
Smelting Corporation Berhad (5916)	BUY	RM3.40	09 Jul 2024

MIDF <small>... See More</small>	Call	Target Price	Release Date
Glomac Berhad (5020)	NEUTRAL	RM0.43	05 Jul 2024
QL Resources Berhad (7084)	BUY	RM7.25	11 Jul 2024

JOB KAYHIAN <small>... See More</small>	Call	Target Price	Release Date
Berjaya Land Berhad (4219)	BUY	RM0.50	09 Jul 2024
Hiap Teck Venture Berhad (5072)	BUY	RM0.60	10 Jul 2024
Matrix Concepts Holdings Berhad (5236)	BUY	RM3.10	10 Jul 2024
Pharmaniaga Berhad (7081)	BUY	RM0.50	10 Jul 2024

Disclaimer: InveSt does not accept any liability whatsoever for any direct, indirect or consequential losses (including loss of profit) or damages that may arise from the use of information or opinions in this publication. The information and opinions in InveSt are not to be considered as an offer to sell or buy any of the securities discussed. Opinions expressed are subject to change without notice. The Brokers may, from time to time, have interests or positions in the securities mentioned. For the full report on each item listed on this page, please visit https://www.shareinvestor.com/my/brokers_call.

DEFINITION: Top 9 stocks with Technical Analysis plus Pattern Matching by 60 pre-defined indicators by the system showing a higher probability of bullish sentiment on the share price.



ShareInvestor WebPro > Screener > Predefined TA Screens > select market BURSA > Most Long Signals > click Scan Results or mouse over each company

FRONTKEN CORPORATION BERHAD (0128.MY)

FRONTKN

Price updated at 11 Jul 2024 17:31

Last: 4.670	Change: -0.070	Volume: 27,759
	Change (%): -1.48	Range: 4.660 - 4.780

TA Scanner Results based on historical data up to 11 Jul 2024

Condition	Signal	Explanation
Bollinger Band: Bullish Long Term Volatility Breakout and Trending	Long	1. Close price above upper bollinger band(33,1). 2. Volume above average volume(50). 3. Average volume(50) is above 300,000.
Bollinger Band: Bullish Short Term Volatility Breakout and Trending	Long	1. Close price above upper bollinger band(33,1). 2. Volume above average volume(10). 3. Average volume(10) is above 300,000.
Bollinger Band: High Above Upper Bollinger Band	Neutral	1. High above upper bollinger band(14,2). 2. Average volume(5) is above 100,000.
Candlestick: Bullish Engulfing	Long	Bullish: Engulfing
Donchian Channels: High Above Upper Donchian Channels	Long	High crossed above the upper Donchian Channel(14,4)
MACD: Bullish MACD Crossover	Long	1. MACD(12,26) diff line crossed above the MACD(12,26) signal line. 2. MACD Histogram(12,26) is above 0.
Parabolic SAR: Bearish Parabolic SAR Reversal	Neutral	1. Parabolic SAR 1 day ago above close price 1 day ago for the last 5 days. 2. Parabolic SAR below close price
Williams %R: Bearish Williams %R	Short	1. Williams %R(26) between 0 and -20. 2. Average volume(5) is above 100,000.

NATIONGATE HOLDINGS BERHAD (0270.MY)

NATGATE

Price updated at 11 Jul 2024 17:31

Last: 2.270	Change: +0.120	Volume: 93,385
	Change (%): +5.58	Range: 2.150 - 2.300

TA Scanner Results based on historical data up to 11 Jul 2024

Condition	Signal	Explanation
Bollinger Band: High Above Upper Bollinger Band	Neutral	1. High above upper bollinger band(14,2). 2. Average volume(5) is above 100,000.
CCI: Bearish CCI Overbought And Reversing	Short	1. CCI(26) above 100 and CCI(26) 1 day ago increasing for the last 3 days. 2. CCI(26) below CCI(26) 1 day ago
MA: Short Term Bullish Moving Average Crossover	Long	MA(10) crossed above MA(15) within the last 1 day.
Price: Consecutive Days Gains	Long	1. Close price has been increasing over the last 5 days. 2. Average volume(5) above 100,000.
Price: New 52 Week High	Long	1. Stock reach a new 52 week high. 2. Average volume(30) is above 50000.
Volume: 10 Days large value Buy Up trade	Long	1. 150K value Buy Up greater than Sell Down by 20% for 10 days. 2. 50K-100K value Buy Up greater than Sell Down by 20% for 10 days. 3. Average volume(10) is above 1000000
Volume: 5 Days large value Buy Up trade	Long	1. 150K value Buy Up greater than Sell Down by 20% for 5 days. 2. 50K-100K value Buy Up greater than Sell Down by 20% for 5 days. 3. Average volume(10) is above 1000000
Williams %R: Bearish Williams %R	Short	1. Williams %R(26) between 0 and -20. 2. Average volume(5) is above 100,000.

Disclaimer: The information on this page is provided as a service to readers. It does not constitute financial advice and/or any investment recommendations. Past performance is not indicative of future results. We assume no liability for damages resulting from or arising out of the use of such information. It would be best if you did your own research to make your personal investment decisions wisely or consult a licenced investment advisor.

BURSA MALAYSIA BERHAD (1818.MY)

BURSA

Price updated at 11 Jul 2024 17:31

Last: 9.400	Change: +0.220	Volume: 40,182
	Change (%): +2.40	Range: 9.210 - 9.400

TA Scanner Results based on historical data up to 11 Jul 2024

Condition	Signal	Explanation
Bollinger Band: High Above Upper Bollinger Band	Neutral	1. High above upper bollinger band(14,2). 2. Average volume(5) is above 100,000.
MACD: Bullish MACD Crossover	Long	1. MACD(12,26) diff line crossed above the MACD(12,26) signal line. 2. MACD Histogram(12,26) is above 0.
Price: New 52 Week High	Long	1. Stock reach a new 52 week high. 2. Average volume(30) is above 50000.
Volume: 10 Days large value Buy Up trade	Long	1. 150K value Buy Up greater than Sell Down by 20% for 10 days. 2. 50K-100K value Buy Up greater than Sell Down by 20% for 10 days. 3. Average volume(10) is above 1000000
Volume: 5 Days large value Buy Up trade	Long	1. 150K value Buy Up greater than Sell Down by 20% for 5 days. 2. 50K-100K value Buy Up greater than Sell Down by 20% for 5 days. 3. Average volume(10) is above 1000000
Williams %R: Bearish Williams %R	Short	1. Williams %R(26) between 0 and -20. 2. Average volume(5) is above 100,000.

MATRIX CONCEPTS HOLDINGS BERHAD (5236.MY)

MATRIX

Price updated at 11 Jul 2024 17:31

Last: 1.920	Change: +0.030	Volume: 21,134
	Change (%): +1.59	Range: 1.890 - 1.950

TA Scanner Results based on historical data up to 11 Jul 2024

Condition	Signal	Explanation
Bollinger Band: High Above Upper Bollinger Band	Neutral	1. High above upper bollinger band(14,2). 2. Average volume(5) is above 100,000.
CCI: Bearish CCI Overbought And Reversing	Short	1. CCI(26) above 100 and CCI(26) 1 day ago increasing for the last 3 days. 2. CCI(26) below CCI(26) 1 day ago
Candlestick: Bearish Shooting Star	Short	Bearish: Shooting Star
MA: Short Term Bullish Moving Average Crossover	Long	MA(10) crossed above MA(15) within the last 1 day.
Price: Consecutive Days Gains	Long	1. Close price has been increasing over the last 5 days. 2. Average volume(5) above 100,000.
Price: New 52 Week High	Long	1. Stock reach a new 52 week high. 2. Average volume(30) is above 50000.
Volume: 10 Days large value Buy Up trade	Long	1. 150K value Buy Up greater than Sell Down by 20% for 10 days. 2. 50K-100K value Buy Up greater than Sell Down by 20% for 10 days. 3. Average volume(10) is above 1000000
Volume: 5 Days large value Buy Up trade	Long	1. 150K value Buy Up greater than Sell Down by 20% for 5 days. 2. 50K-100K value Buy Up greater than Sell Down by 20% for 5 days. 3. Average volume(10) is above 1000000
Williams %R: Bearish Williams %R	Short	1. Williams %R(26) between 0 and -20. 2. Average volume(5) is above 100,000.

TELEKOM MALAYSIA BERHAD (4863.MY)

TM

Price updated at 11 Jul 2024 17:31

Last: 7.020	Change: +0.080	Volume: 189,320
	Change (%): +1.15	Range: 6.960 - 7.060

TA Scanner Results based on historical data up to 11 Jul 2024

Condition	Signal	Explanation
Bollinger Band: High Above Upper Bollinger Band	Neutral	1. High above upper bollinger band(14,2). 2. Average volume(5) is above 100,000.
Donchian Channels: High Above Upper Donchian Channels	Long	High crossed above the upper Donchian Channel(14,4)
MACD: Bullish MACD Crossover	Long	1. MACD(12,26) diff line crossed above the MACD(12,26) signal line. 2. MACD Histogram(12,26) is above 0.
Price: New 52 Week High	Long	1. Stock reach a new 52 week high. 2. Average volume(30) is above 50000.
Volume: 5 Days large value Buy Up trade	Long	1. 150K value Buy Up greater than Sell Down by 20% for 5 days. 2. 50K-100K value Buy Up greater than Sell Down by 20% for 5 days. 3. Average volume(10) is above 1000000
Williams %R: Bearish Williams %R	Short	1. Williams %R(26) between 0 and -20. 2. Average volume(5) is above 100,000.

SALUTICA BERHAD (0183.MY)

SALUTE

Price updated at 11 Jul 2024 17:31

Last: 0.545	Change: +0.010	Volume: 34,433
	Change (%): +1.87	Range: 0.525 - 0.545

TA Scanner Results based on historical data up to 11 Jul 2024

Condition	Signal	Explanation
Bollinger Band: Bullish Lower Bollinger Band Support	Long	1. Low 1 day ago below lower bollinger band(20,2). 2. Close above close 1 day ago. 3. Average volume(5) is above 100,000.
Bollinger Band: Low Below Lower Bollinger Band	Neutral	1. Low below lower bollinger band(14,2). 2. Average volume(5) is above 100,000.
Candlestick: Bullish Harami	Long	Bullish: Harami
Volume: 10 Days large value Buy Up trade	Long	1. 150K value Buy Up greater than Sell Down by 20% for 10 days. 2. 50K-100K value Buy Up greater than Sell Down by 20% for 10 days. 3. Average volume(10) is above 1000000
Volume: 5 Days large value Buy Up trade	Long	1. 150K value Buy Up greater than Sell Down by 20% for 5 days. 2. 50K-100K value Buy Up greater than Sell Down by 20% for 5 days. 3. Average volume(10) is above 1000000
Williams %R: Bullish Williams %R	Long	1. Williams %R(26) between -80 and -100. 2. Average volume(5) is above 100,000.

KUALA LUMPUR KEPONG BERHAD (2445.MY)

KLK

Price updated at 11 Jul 2024 17:31

Last: 19.760	Change: -0.260	Volume: 6,919
	Change (%): -1.30	Range: 19.760 - 20.100

TA Scanner Results based on historical data up to 11 Jul 2024

Condition	Signal	Explanation
Bollinger Band: Bullish Lower Bollinger Band Support	Long	1. Low 1 day ago below lower bollinger band(20,2). 2. Close above close 1 day ago. 3. Average volume(5) is above 100,000.
CCI: Bullish CCI Oversold And Reversing	Long	1. CCI(26) below -100 and CCI(26) 1 day ago decreasing for the last 3 days. 2. CCI(26) above CCI(26) 1 day ago
Candlestick: Bullish Harami	Long	Bullish: Harami

SUNWAY REAL ESTATE INVT TRUST (5176.MY)

SUNREIT

Price updated at 11 Jul 2024 17:31

Last: 1.610	Change: +0.010	Volume: 1,719
	Change (%): +0.63	Range: 1.600 - 1.610

TA Scanner Results based on historical data up to 11 Jul 2024

Condition	Signal	Explanation
Bollinger Band: High Above Upper Bollinger Band	Neutral	1. High above upper bollinger band(14,2). 2. Average volume(5) is above 100,000.
Donchian Channels: High Above Upper Donchian Channels	Long	High crossed above the upper Donchian Channel(14,4)
MA: Short Term Bullish Moving Average Crossover	Long	MA(10) crossed above MA(15) within the last 1 day.
Volume: 10 Days large value Buy Up trade	Long	1. 150K value Buy Up greater than Sell Down by 20% for 10 days. 2. 50K-100K value Buy Up greater than Sell Down by 20% for 10 days. 3. Average volume(10) is above 1000000
Volume: 5 Days large value Buy Up trade	Long	1. 150K value Buy Up greater than Sell Down by 20% for 5 days. 2. 50K-100K value Buy Up greater than Sell Down by 20% for 5 days. 3. Average volume(10) is above 1000000
Williams %R: Bearish Williams %R	Short	1. Williams %R(26) between 0 and -20. 2. Average volume(5) is above 100,000.

PERDANA PETROLEUM BERHAD (7108.MY)

PERDANA

Price updated at 11 Jul 2024 17:31

Last: 0.485	Change: +0.010	Volume: 284,160
	Change (%): +2.11	Range: 0.455 - 0.500

TA Scanner Results based on historical data up to 11 Jul 2024

Condition	Signal	Explanation
Bollinger Band: High Above Upper Bollinger Band	Neutral	1. High above upper bollinger band(14,2). 2. Average volume(5) is above 100,000.
CCI: Bearish CCI Overbought And Reversing	Short	1. CCI(26) above 100 and CCI(26) 1 day ago increasing for the last 3 days. 2. CCI(26) below CCI(26) 1 day ago
Price: Consecutive Days Gains	Long	1. Close price has been increasing over the last 5 days. 2. Average volume(5) above 100,000.
Price: New 52 Week High	Long	1. Stock reach a new 52 week high. 2. Average volume(30) is above 50000.
Volume: 10 Days large value Buy Up trade	Long	1. 150K value Buy Up greater than Sell Down by 20% for 10 days. 2. 50K-100K value Buy Up greater than Sell Down by 20% for 10 days. 3. Average volume(10) is above 1000000
Volume: 5 Days large value Buy Up trade	Long	1. 150K value Buy Up greater than Sell Down by 20% for 5 days. 2. 50K-100K value Buy Up greater than Sell Down by 20% for 5 days. 3. Average volume(10) is above 1000000
Williams %R: Bearish Williams %R	Short	1. Williams %R(26) between 0 and -20. 2. Average volume(5) is above 100,000.

Disclaimer: The information on this page is provided as a service to readers. It does not constitute financial advice and/or any investment recommendations. Past performance is not indicative of future results. We assume no liability for damages resulting from or arising out of the use of such information. It would be best if you did your own research to make your personal investment decisions wisely or consult a licenced investment advisor.

Condition	Signal	Explanation
MA: Short Term Bearish Moving Average Crossover	Short	MA(10) crossed below MA(15) within the last 1 day.
Price: New 52 Week Low	Short	1. Stock reach a new 52 week low. 2. Average volume(30) is above 50000.
Williams %R: Bullish Williams %R	Long	1. Williams %R(26) between -80 and -100. 2. Average volume(5) is above 100,000.



Dato' Eu Hong Chew
Former Group CEO i-Berhad
Non-Executive Director

He has been associated with the Sumurwang Group for many years charting the path for its manufacturing arm, firstly under Dreamland Holdings Berhad and the subsequent acquisition of I-Berhad.

Before that, he was with PA Management Consulting for a decade where he was the Director of Studies for the Cranfield PA MBA Programme in Malaysia.

Educated at the Royal Military College, Dato' Eu has an engineering degree from the University of Glasgow, and a MBA from the University of Bradford, UK.

Is PROTASCO an investment opportunity?

SUMMARY

- Although Protasco Berhad (Protasco or the Group) (PRTASCO:5070:MY) reported its performance under 11 business segments in 2023, the legacy maintenance segment was the main revenue and earnings contributor.

Disclaimer: This article is written for informational purposes only. It does not constitute a solicitation, offer, advice, counseling or recommendation to buy or sell. As such it is not intended to promote the purchase of shares in any way. As a reminder, any type of asset has a risk factor and needs to be evaluated from multiple perspectives. Therefore, any investment decision and the associated risk remains with the investor. The views expressed here are entirely the writer's own.

- Over the past 12 years, revenue grew at a 3.3% CAGR, while PAT was volatile and declined. This led to diminishing returns from operating profit, ROE, and ROA perspectives.
- Despite poor operating performance, Protasco is financially sound. My valuation showed that there is more than a 30% margin of safety.

INVESTMENT THESIS

Protasco's performance had declined over the past 12 years. Although the Group had tried to diversify into other businesses, the road maintenance business is still the main revenue and profit contributor. The Group is undergoing a turnaround. This would depend on it improving its road maintenance margin and finding a profitable venture. While there is a margin of safety, the business fundamentals are not that good. I think there are construction companies with similar margins of safety but better business fundamentals.

BACKGROUND

The history of the Group can be traced back to the 1990s when its founders started the road maintenance business. Since then, Protasco has diversified and restructured so that in 2023 it reported its performance under 11 business segments. Despite having many business segments, the bulk of the revenue and earnings came from 2 segments – Maintenance and Construction as can be seen from Chart 1.



Chart 1: Segment revenue and PBT

Notes:

- a) I have combined the Maintenance and Construction revenue and PBT in the charts.
- b) The Others included the Clean Energy, Hotel, and hospitality segments

The Maintenance segment continued to be the largest revenue and profit contributor to the Group.

- In 2023, the Maintenance segment alone contributed about 63% of the Group’s revenue. This declined from 73% in 2012.
- In 2023, the Maintenance segment achieved RM46.4 million PBT compared to the Group’s consolidated PBT of RM34.8 million. The consolidated PBT was smaller than the Maintenance segment PBT due to losses from the other segments.

While the Group had been trying to diversify its earnings base for more than a decade, its revenue and profit track record from the diversification was not good. Refer to Table 1.

Segment	Net Assets RM '000	PBT RM '000
Maintenance	110,634	28,865
Construction	84,141	-5,099
Property	1,667	-8,749
Engineering services	-14,930	-8,449
Trading & Mfg	25,324	926
Education	9,143	-15,697
Clean Energy	-3,436	-1,038
Hotel & hospitality	5,143	-118
Others	258,438	-1,499
Consol elimination	-148,270	-4,492
Total	327,854	-15,350

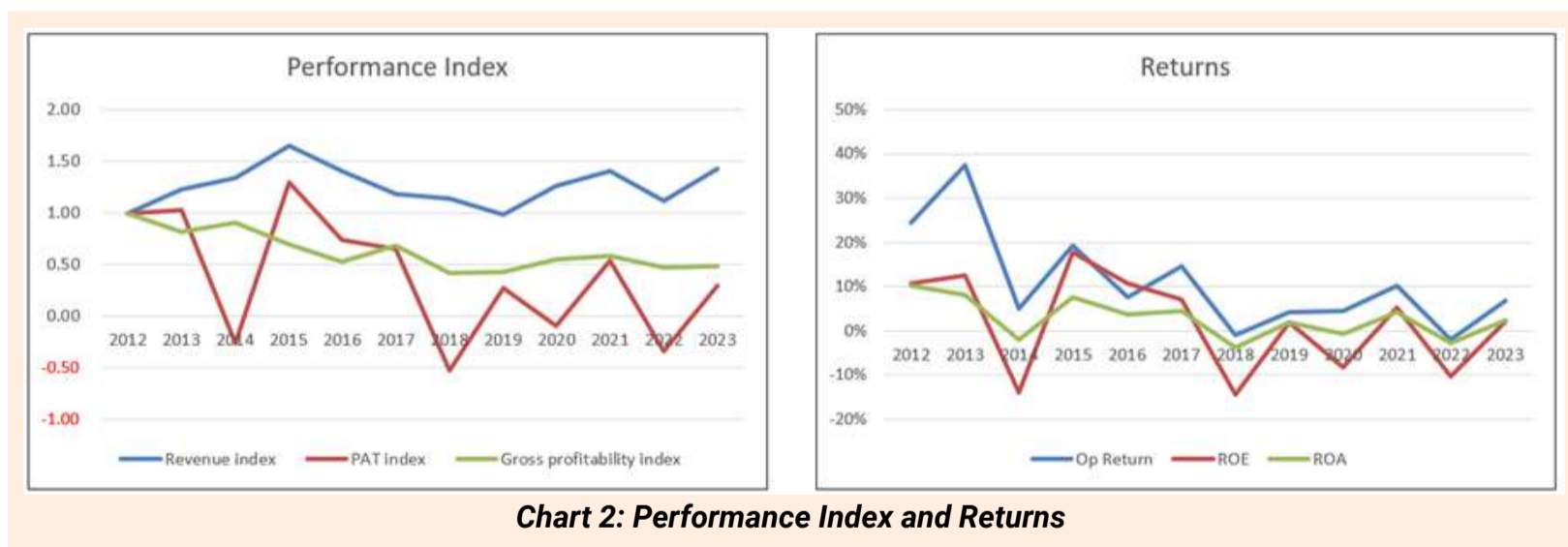
Table 1: Table 1: Segment Performance 2022

The other deduction from Table 1 is that 2/3 of the Group's funds have not been generating returns. You can either see this as a terrible performance or an opportunity for the Group to turn around.

OPERATING TRENDS

I would not rate Protasco's performance over the past 12 years as good. Refer to Chart 2.

- From 2012 to 2023 revenue grew at 3.3% CAGR. You can see that revenue showed a cyclical pattern with at least 2 peaks during the past 12 years.
- PAT was very volatile with a declining trend. The PAT in 2023 was lower than that in 2012. There were even 4 years where the Group incurred losses.
- Gross profitability reduced by about half over the past 12 years from 30% in 2012 to 14% in 2023.



Given the profit picture, you should not be surprised to see declining returns from the Operating Return (Operating Profit/Total Capital Employed), ROE, and ROA perspectives. Refer to the right part of Chart 2. Over the past 12 years, the Group achieved:

- An average Operating Return of 11%.
- An average ROE of 2%.

FINANCIAL POSITION

Despite its poor business performance, I would rate Protasco as financially sound based on the following:

- As of the end of Dec 2023, it had RM170 million in cash and short-term investments. This is about 19% of its total assets.
- It has a DE of 0.67 as of Dec 2023 compared to my cut-off of 1.0.
- It currently has an interest coverage ratio of 3.4. I defined this as EBIT/interest. This is equal to a BB (Fitch) synthetic rating as per the Damodaran approach.
- During these 12 years, it generated a cumulative RM613 million cash flow from operations compared to a cumulative PAT of RM327 million. This is a very good cash conversion ratio.
- It had a good capital allocation track record. As can be seen from Table 2, its cash flow from operations was sufficient to fund its CAPEX & Acquisitions, dividends, and buybacks.

Item	Sources RM m	Uses RM m
Cash flow from Ops	613	
New shares	74	
Net Debt	60	
CAPEX & Acquisitions		308
Dividends		215
Buybacks		21
Others		203
Total	747	747

Table 2: Sources and Uses of Funds 2012 to 2023

The key negative point is that it only generated positive cash flow from operations annually for half of the past 12 years.

But looking at Table 2, I would consider it a good cash cow. The only concern I have is that over the past 12 years, some of the funds were badly deployed into ventures with dubious returns such as the Oil & Gas and coal ventures.

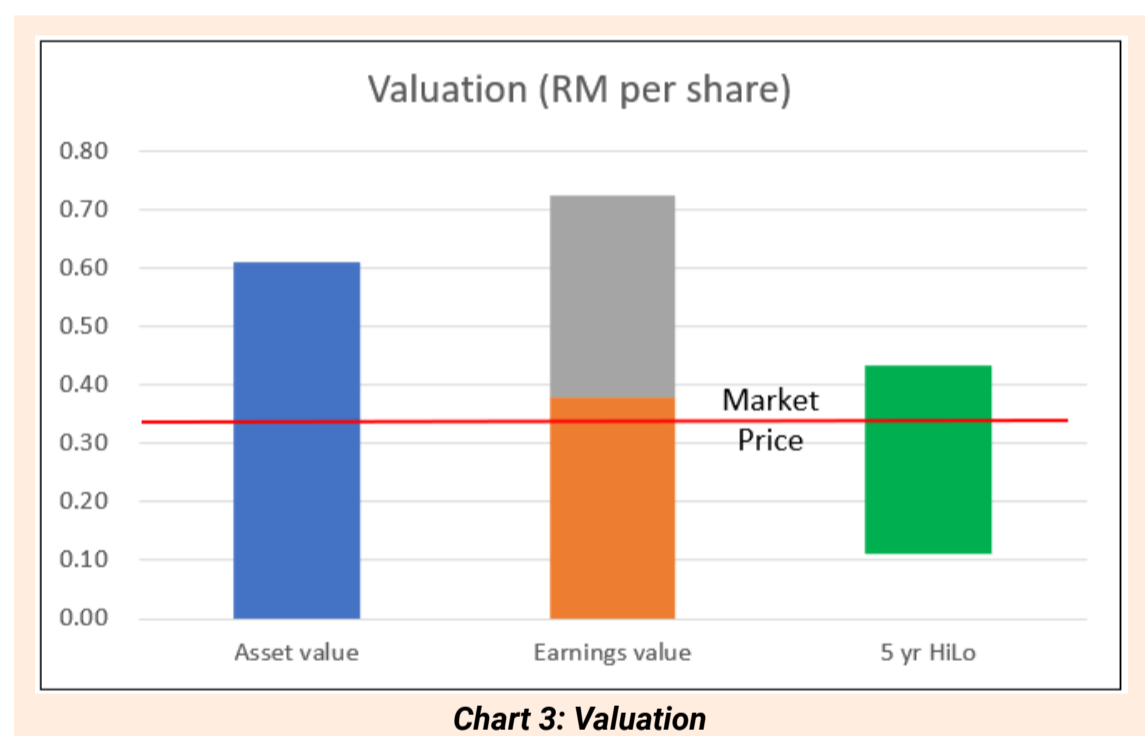
VALUATION

I triangulated Protasco's Intrinsic Value based on both its Asset Value and Earnings Value.

- The Asset Value was based on its Book Value of RM0.61 per share.
- The Earnings Value of RM0.70 per share was based on its Earning Power Value (EPV). I broke this down into non-operating assets and the value of the operating assets. I adopted the EPV approach because Protasco was undergoing a turnaround. In such a case, it was more conservative to assume zero growth.

The market price of Protasco as of 28 Jun 2024 was RM0.33 per share.

Chart 3 illustrates the valuation. You can see that there is more than a 30% margin of safety under both the Asset Value and EPV.



VALUATION MODEL

My Earnings Value of the company was derived based on the average values from 2 valuation approaches:

- Free Cash Flow to the Firm model as per Damodaran.
- Residual Income model as per Penman.

For both models, I used the past 12 years' time-weighted average value to represent the normalized value. The cost of capital used in the model was based on the Capital Asset Pricing Model. I followed Damodaran's approach to determine the Beta and the risk premiums. These resulted in a 9.6% cost of equity and a 6.7% WACC. Note that part of the reason for the high Earnings Value is because it included RM0.38 per share of non-operating assets. These comprise mostly cash. If you ignore the non-operating assets, there will not be any margin of safety. In other words, the margin of safety did not come from its operations.

CONCLUSION

There are two general questions value investors ask before investing in a company:

- Is it a good company? In other words, is it fundamentally strong?
- Is it a good investment? I assess this by looking at whether there is a sufficient margin of safety (> 30%) at the current price.

Protasco did not meet the first test. But it did well on the second test. From a fundamental perspective, while it is a cash cow and financially sound, it had a declining performance. It is dependent on the road maintenance contract for most of its earnings. I suspect its future would depend very much on how it develops the other non-road maintenance business. But its diversification track record has not been good.

You can see the various challenges to rebuilding back to its historical peak performance. However, my valuation is not based on Protasco matching its historical peak performance. Rather it was based on the past 12 years' performance covering the peak and decline. Even on such a basis, there is a sufficient margin of safety.

From a value investment perspective, this can be an opportunity. However, you should not look at Protasco in isolation. Rather look at other construction companies to see whether there are companies with better business fundamentals and similar margins of safety.

I am a long-term value investor who has held onto stocks for more than 5 years. My analysis and valuation are from such a perspective. I consider quarterly results "noisy" and focus on long-term trends.

This article was re-purposed from "[Is Protasco an investment opportunity?](#)" which was first published on i4value. Asia. Refer to the article for more detailed fundamental analysis and valuation.

Disclaimer: This article is written for informational purposes only. It does not constitute a solicitation, offer, advice, counseling or recommendation to buy or sell. As such it is not intended to promote the purchase of shares in any way. As a reminder, any type of asset has a risk factor and needs to be evaluated from multiple perspectives. Therefore, any investment decision and the associated risk remains with the investor. The views expressed here are entirely the writer's own.

SHAREINVESTOR WEBPRO

Stock Market Data
At Your Fingertips

Powerful browser-based market analytics platform.
Access from anywhere

- Intrinsic Value Calculator
- Consensus Estimates
- C2 Charts (Customizable & Comprehensive)
- Advance Market Screener
- Ownership Tracker

click here to start your
9 Day free trial

Rank	Symbol	Price	Change	Volume	Market Cap	PE Ratio	Div Yield	52W High	52W Low
1	AMZN	178.12	+1.23	45,123,456	1,800,000,000,000	35.2	0.00	185.00	145.00
2	GOOGL	142.56	-0.87	32,456,789	1,500,000,000,000	28.1	0.00	155.00	115.00
3	MSFT	415.23	+2.15	28,765,432	1,200,000,000,000	38.5	0.00	430.00	350.00
4	FB	289.87	-1.54	25,678,901	1,100,000,000,000	25.3	0.00	300.00	220.00
5	BRK.A	345.67	+0.98	15,432,109	700,000,000,000	15.8	0.00	360.00	280.00

UNLOCK THE SECRET OF WEALTH

DO YOU REALLY WANT TO MASTER VALUE INVESTING



SEE HOW TO GET HIGHER RETURNS WITH LOWER RISK



OVERNIGHT POLICY RATE (OPR) MAINTAINED AT 3.0% - BNM

The Monetary Policy Committee (MPC) of Bank Negara Malaysia (BNM) decided to maintain the Overnight Policy Rate (OPR) at 3%. The MPC, in a statement, said that the global economy continues to expand amid resilient labour markets and continued recovery in global trade.

Looking ahead, global growth is expected to be sustained, as headwinds from tight monetary policy and reduced fiscal support will be cushioned by positive labour market conditions and moderating inflation. Global trade continues to strengthen as the global tech upcycle gains momentum. Global headline and core inflation continued to edge downwards in recent months with some central banks commencing monetary policy easing. The growth outlook remains subject to downside risks, mainly from further escalation of geopolitical tensions, higher-than-anticipated inflation outturns, and volatility in global financial markets.

For the Malaysian economy, the latest indicators point towards sustained strength in economic activity in the second quarter of 2024, driven by resilient domestic expenditure and better export performance. Going forward, exports are expected to be further lifted by the global tech upcycle given Malaysia's position in the semiconductor supply chain, as well as continued strength in non-

electrical and electronics goods. Tourist arrivals and spending are also poised to rise further. Continued employment and wage growth, as well as policy measures, will continue to support household spending.

Investment activity would be supported by the ongoing progress of multi-year projects in both the private and public sectors, the implementation of catalytic initiatives under the national master plans, as well as the higher realisation of approved investments. The growth outlook is subject to downside risks from weaker-than-expected external demand and larger declines in commodity production. Meanwhile, upside risks to growth mainly emanate from greater spillover from the tech upcycle, more robust tourism activity, and faster implementation of existing and new projects.

Both headline and core inflation averaged 1.8% in the first five months of the year. As expected, inflation will trend higher in the second half of 2024, amid the recent rationalisation of diesel subsidies. Nevertheless, the increase in inflation will remain manageable given the mitigation measures to minimise the cost impact on businesses.

Going forward, the upside risk to inflation would be dependent on the extent of spillover effects of further domestic policy measures on subsidies and price controls to broader price trends, as well as global commodity prices and financial market developments. For the year as a whole, headline and core inflation are expected to average within the earlier projected ranges of 2.0% - 3.5% and 2.0% - 3.0% respectively.

The Ringgit continues to be primarily driven by external factors, namely expectations of major economies' monetary policy paths and ongoing geopolitical tensions. The positive impact of the coordinated initiatives by the Government and BNM with the GLCs and GLICs, and corporate engagements have continued to cushion the pressure on the Ringgit. BNM will continue to manage risks

arising from heightened financial market volatility. Over the medium term, domestic structural reforms will provide more enduring support to the ringgit.

At the current OPR level, the monetary policy stance remains supportive of the economy and is consistent with the current assessment of inflation and growth prospects. The MPC remains vigilant to ongoing developments to inform the assessment on the domestic inflation and growth trajectories. The MPC will ensure that the monetary policy stance remains conducive to sustainable economic growth amid price stability.

SC'S FIKRA ACE SEEKS FINTECH STARTUPS TO ENHANCE ISLAMIC CAPITAL MARKET

The Securities Commission Malaysia (SC) is inviting applications for the second cohort of its FIKRA ACE Accelerator programme, part of the FIKRA ACE initiative. Launched in 2023, FIKRA ACE is a three-year initiative aimed at

advancing the Islamic Capital Market (ICM) through innovative Islamic fintech solutions. The programme comprises an Accelerator, Circle and Excel components.

Following the success of the first cohort last year, the SC is now inviting applications for its 2024 cohort. FIKRA Accelerator provides a platform for startups to develop innovative solutions, from ideation to minimum-viable product. The eight-week structured programme consists of workshops, mentorship, networking activities, and funding facilitation. The Accelerator programme is expected to start in August. It is opened to individuals or companies with less than three years market presence. Applications are open to both local and international applicants.

The Malaysia Digital Economy Corporation (MDEC) is the strategic local ecosystem partner for the programme. MDEC will continue to support startups participating in the programme with the infrastructure, resources, and market knowledge to scale their businesses more effectively.

The SC will also collaborate with the Islamic Development Bank as the global ecosystem partner, to help enrich contents of the programme with international insights and perspectives. Those interested are encouraged to register [here](#) from today until 31 July 2024. For more information on the FIKRA ACE Accelerator programme, please visit <https://www.sc.com.my/fikra>.



CHECK OUT
SHAREINVESTOR
BROKERS' CALL
Weekly Buy/Sell/Hold calls from leading Malaysian Brokerages.

[Go To Brokers' Call](#)

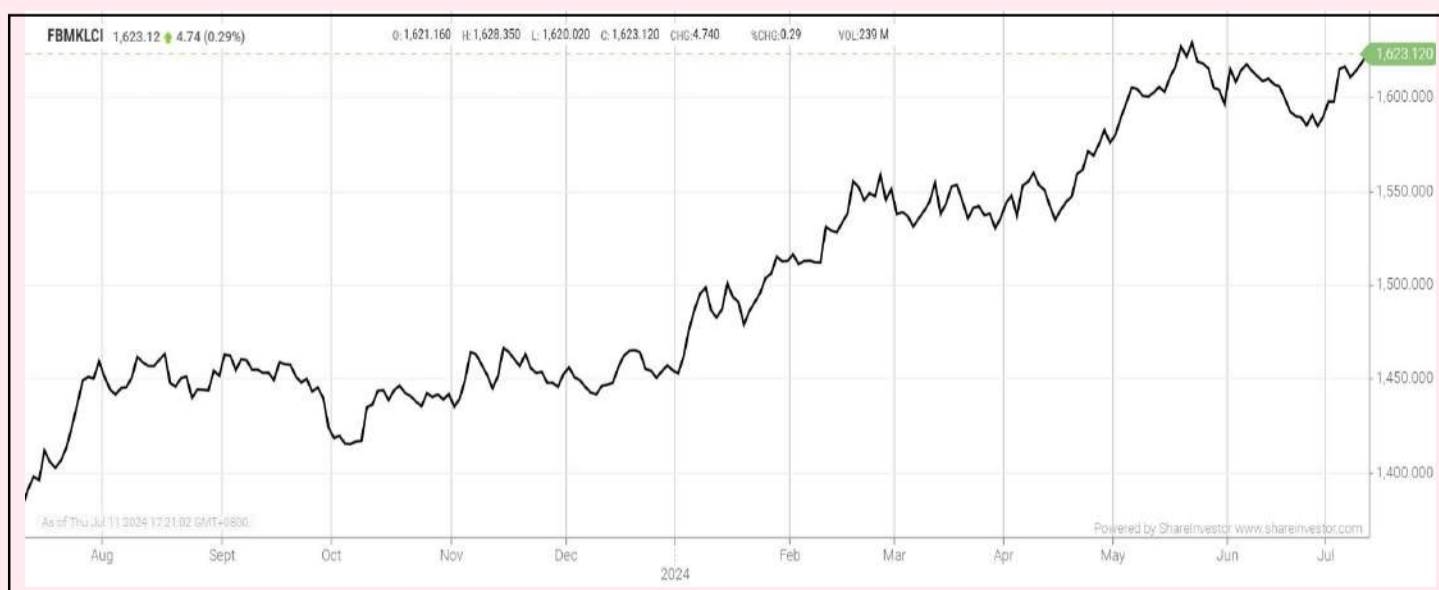
MALAYSIA'S WHOLESALE AND RETAIL SALES GROWTH ACCELERATES TO 7.1% IN MAY 2024 - DOSM

According to the Department of Statistics Malaysia (DOSM), official data showed Malaysia's wholesale and retail sales accelerated to 7.1% in May this year, from a year earlier, led by higher retail sales in non-specialised stores. Wholesale and retail trade totalled RM147.9 billion in May. The pace of sales growth was faster than April's 6.6% YOY growth. On a month-on-month basis, distributive trade climbed 2.0% in May. Overall retail trade grew 8.7% to RM64.0 billion and the wholesale sector expanded 4.7% to RM65.1 billion. Sales of motor vehicles gained 10.5% to RM18.8 billion.

The retail sector rose 7.1% to RM62.8 billion and the wholesale segment expanded 4% to RM64.1 billion. Meanwhile, sales in the motor vehicle industry increased 3.2% to RM18.8 billion in March. The growth in retail was mainly led by sales in non-specialised stores, which expanded 10.7%. In the wholesale sector, other specialised wholesale was up 4.0%. The motor vehicle segment growth, meanwhile, was fuelled by an 11.1% increase in sales of motor vehicles, followed by parts and accessories. On a month-on-month basis, the retail sector inched up 0.3%, while wholesale trade was up 2% and motor vehicle sales climbed 8.8%.

EYE ON THE MARKETS

On Thursday (11 July), the Ringgit closed at 4.6885 against the USD and 3.4786 to the Sing Dollar. On Tuesday (09 July), the FBM KLCI opened at 1617.14. As at Thursday (11 July) 5:00pm, the FBM KLCI closed up 5.98 points at 1623.12. Over in US, the overnight Dow Jones Industrial Average closed up 32.39 points (+0.08%) to 39,753.75 whilst the NASDAQ shed 358.82 points (-1.92%) to 18,288.62.



KLCI 1 Year Chart

Over 5 trading days



ShareInvestor WebPro (www.shareinvestor.com/my)

1. Price > Stock Prices
2. Select Market: NASDAQ / NYSE / IDX / SET / HKEX / SGX (One bourse at a time)
3. select Stocks Tab
4. select Ranking Top Gainers or Top Losers (Over 5 Trading Days)
5. Mouse over Column Layout > select Edit Customs > select Name > select Last Done Price > select 5 Days Change > select 52 Weeks High > select 52 Weeks Low > Mouse Over Column Layout > select Custom

NASDAQ (USD)

Top Gainers

Name	Last Done	Change Over 5 Days	52 Weeks High	52 Weeks Low
MERCADOLIBRE INC	1,708.650	+117.210	1,825.000	1,081.370
MICROSTRATEGY	1,358.560	+56.470	1,999.990	307.110
REGENERON PHARMACEUTICALS INC	1,080.270	+56.180	1,081.170	705.030
EQUINIX INC	797.800	+48.800	914.930	677.800
LANTHEUS HOLDINGS INC	123.620	+44.060	91.810	50.200

Top Losers

Name	Last Done	Change Over 5 Days	52 Weeks High	52 Weeks Low
WINGSTOP INC	383.600	-34.890	431.034	150.080
INTUIT INC	629.410	-30.490	676.620	455.560
NETFLIX INC	652.750	-29.760	697.490	344.730
HELEN OF TROY CORP	64.475	-27.145	143.680	60.000
BROADCOM INC	1,705.950	-23.270	1,851.620	795.090

NYSE (USD)

Top Gainers

Name	Last Done	Change Over 5 Days	52 Weeks High	52 Weeks Low
BERKSHIRE HATHAWAY INC	629,080.000	+17,705.000	741,971.390	502,000.000
NVR INC	8,069.890	+612.900	8,211.400	5,210.490
AUTOZONE INC	2,881.900	+66.900	3,256.370	2,375.350
TOPBUILD CORP	423.400	+44.210	452.870	217.080
FAIR ISAAC CORP	1,567.520	+37.460	1,575.010	804.280

Top Losers

Name	Last Done	Change Over 5 Days	52 Weeks High	52 Weeks Low
HUBSPOT INC	489.770	-102.540	693.850	407.230
DECKERS OUTDOOR CORP	888.640	-47.050	1,106.890	484.020
SERVICENOW INC	749.140	-36.780	815.320	527.240
BIGLARI HOLDINGS INC	909.880	-29.990	1,077.200	700.000
TRANSDIGM GROUP INC	1,255.640	-27.860	1,369.575	802.460

IDX (Rupiah)

Top Gainers

Name	Last Done	Change Over 5 Days	52 Weeks High	52 Weeks Low
DIAN SWASTATIKA SENTOSA TBK	280,000.000	+11,300.000	292,200.000	42,500.000
SIANTAR TOP	13,800.000	+2,575.000	16,900.000	7,500.000
INDOSAT (PT INDOSAT TBK)	11,500.000	+1,050.000	12,250.000	8,350.000
NFC INDONESIA TBK	2,650.000	+965.000	7,375.000	1,000.000
PANTAI INDAH KAPUK DUA TBK	5,300.000	+460.000	6,150.000	1,590.000

Top Losers

Name	Last Done	Change Over 5 Days	52 Weeks High	52 Weeks Low
BARITO RENEWABLES ENERGY TBK	9,425.000	-975.000	12,200.000	975.000
PETRINDO JAYA KREASI TBK	9,150.000	-750.000	13,750.000	925.000
INDO TAMBANGRAYA MEGAH TBK	25,500.000	-650.000	31,425.000	23,575.000
LIPPO GENERAL INSURANCE	3,000.000	-500.000	6,275.000	2,780.000
PABRIK KERTAS TJIWI KIMIA	8,575.000	-350.000	10,375.000	6,125.000

SET (Thai Baht)

Top Gainers

Name	Last Done	Change Over 5 Days	52 Weeks High	52 Weeks Low
ADVANC	222.000	+12.000	231.000	193.000
KWC	275.000	+12.000	362.000	240.000
JTS	66.500	+7.000	93.500	23.200
SCC	233.000	+7.000	330.000	217.000
DELTA	90.750	+6.250	119.500	63.250

Top Losers

Name	Last Done	Change Over 5 Days	52 Weeks High	52 Weeks Low
STANLY	204.000	-14.000	233.000	171.500
AEONTS	118.000	-7.500	179.000	113.500
TOPP	168.500	-5.500	180.000	130.000
FE	185.000	-5.000	199.500	137.500
GYT	176.500	-3.500	212.000	174.000

HKEX (HKD)

Top Gainers

Name	Last Done	Change Over 5 Days	52 Weeks High	52 Weeks Low
BIDU-SW (9888)	97.200	+9.900	155.800	83.400
BIDU-SWR (89888)	90.700	+9.150	143.000	78.050
BILIBILI-W (9626)	134.300	+8.800	151.300	67.800
CONCORD HC GP (2453)	48.050	+6.850	55.000	9.700
BYD COMPANY (1211)	241.400	+6.800	280.600	167.800

Top Losers

Name	Last Done	Change Over 5 Days	52 Weeks High	52 Weeks Low
UBTECH ROBOTICS (9880)	110.000	-40.000	328.000	69.800
ROBOSENSE (2498)	16.580	-34.370	137.500	14.300
OOIL (316)	116.300	-16.000	146.200	91.700
SKB BIO-B (6990)	142.200	-9.700	195.000	62.000
REMEGEN (9995)	15.760	-5.590	50.300	13.340

SGX (SGD)

Top Gainers

Name	Last Done	Change Over 5 Days	52 Weeks High	52 Weeks Low
VENTURE	14.830	+0.630	15.250	11.360
HAW PAR	10.460	+0.540	10.490	9.170
DBS	38.380	+0.400	38.550	28.191
JMH USD	35.710	+0.400	50.490	33.720
UOB	32.960	+0.390	33.330	26.820

Top Losers

Name	Last Done	Change Over 5 Days	52 Weeks High	52 Weeks Low
AZEUS	9.970	-0.470	10.800	7.400
JARDINE C&C	25.860	-0.290	34.790	23.760
IFAST	7.490	-0.180	8.510	4.620
YZJ SHIPBLDG SGD	2.280	-0.160	2.530	1.370
17LIVE GROUP	0.475	-0.135	4.790	0.470

BE AWARE OF ESG BOGUS



KEY HIGHLIGHTS

- Companies must exercise caution when engaging 'ESG experts' due to risks of inadequate expertise.
- Developing internal ESG capacities is crucial for tailored, sustainable long-term strategies and compliance.

The global push for sustainability is becoming increasingly urgent. According to the World Economic Forum, sustainability has become critical for organisations to remain relevant and competitive in today's world. Much like digital transformation, driving sustainability requires organisations to transform every division of their business.

The Paris Climate Agreement has made it clear that governments must be stricter. Countries like Sweden and Germany have legally binding net-zero targets for 2045, while the UK, Canada, Japan, and others have a 2050 net-zero commitment. The EU's taxonomy, which regulates businesses based on their environmental sustainability, affects not only EU businesses but also global firms that do business in the EU. Considering the move by many governments toward sustainability, organisations should start transforming their operations to become more sustainable. Being proactive about sustainability will lead to better relations with regulatory bodies.

Investor pressure is one of the most powerful factors shaping the shift towards sustainability. Investors increasingly pay attention to environmental, social, and governance (ESG) factors when making investment decisions. Companies that demonstrate a commitment to sustainability are often seen as more attractive investment opportunities. Gartner research finds that 85% of investors considered ESG factors in their investments in 2020, while 91% of banks monitor the ESG performance of investments. Moreover, minority shareholders are recognising that addressing sustainability is equally important as financial and operational performance, as these issues can significantly impact a company's overall performance. Therefore, minority shareholders should ask and challenge the board and management at AGMs on how the company addresses sustainability risks and opportunities and what their sustainability strategies and plans are.

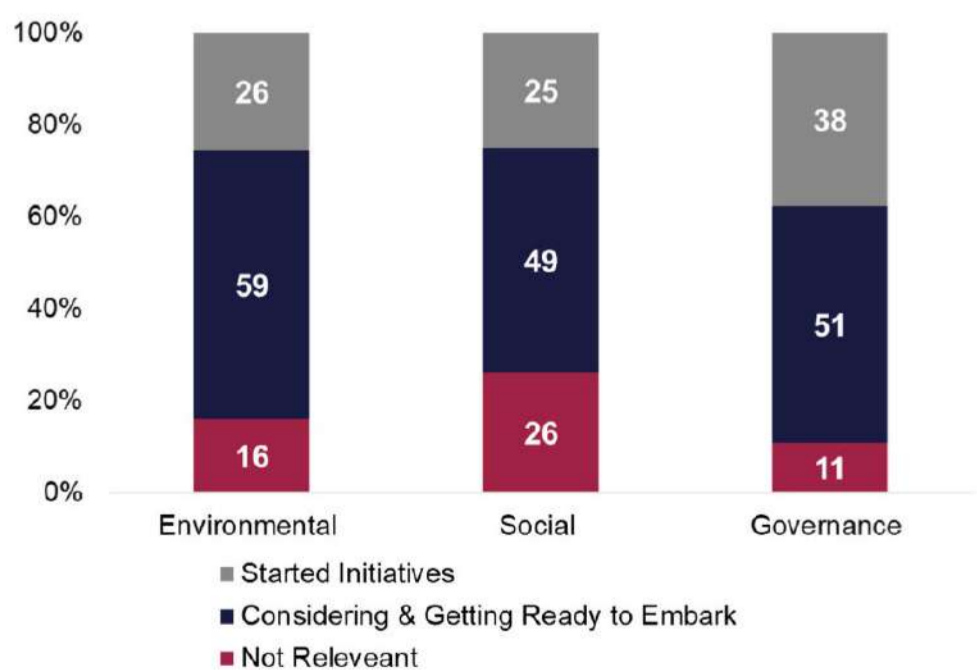
The pressure for better sustainable practices has landed on our shores. Increasing pressure from trade partners has led to an obligation to comply with growing domestic regulations for better ESG practices. Malaysia's exports amount to RM129.7B, primarily to Singapore, China, the USA, and the EU. This immense trade volume means that Malaysian companies must adhere to

international standards and expectations regarding ESG practices. A notable example is the Malaysian glove industry, where exports were halted due to issues related to social compliance. This incident underscores the importance of robust ESG practices, as failures in these areas can lead to significant business disruptions and loss of market access.

Locally, regulators have implemented numerous requirements to strengthen practices, including moving towards the adoption of IFRS S1 and IFRS S2, emphasising the need for robust ESG practices. These initiatives reflect a broader global trend where regulatory bodies increasingly prioritise sustainability. Companies that fail to comply with these regulations risk facing penalties, losing investor confidence, and damaging their reputation.

With an increasing number of millennials and Gen-Z consumers, demand for sustainable products is also rising. According to the Institute of Capital Market Research, in Malaysia, 70% of investors are more likely to invest in options that promote ESG, while 74% will invest in options that enable good causes. This generational wealth transfer represents a significant opportunity for companies prioritising ESG, as younger investors are more inclined to support businesses that align with their values.

According to the UN Global Compact, despite growing demands for ESG requirements, only one-third of Malaysian companies have started with the initiative. One reason may be the need for more capacity to understand the subject matter, build in the



Source: The Malaysian Sustainability Pulse Report, 2022

requirements, identify risks, and develop further. Many companies need help navigating the complex and evolving landscape of ESG, which encompasses many issues, from carbon emissions and waste management to human rights and corporate governance.

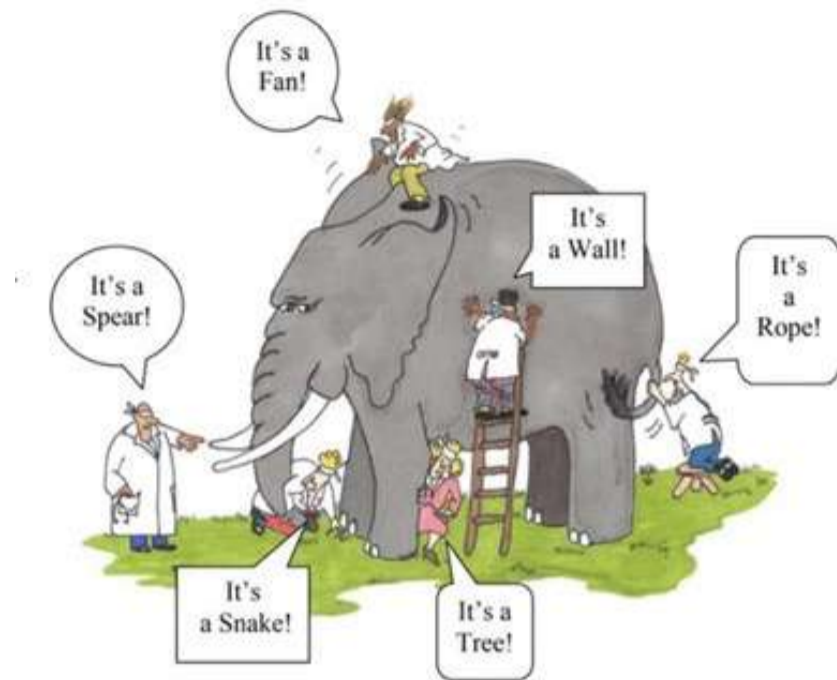
THE TRAJECTORY OF ESG CONSULTING

Companies may resort to external parties to facilitate advising, strategising, and managing ESG matters. The trajectory of ESG consulting is undeniably upward. As regulatory requirements tighten and investor scrutiny intensifies, companies recognise that ESG is not a passing trend but a fundamental aspect of business strategy. ESG consultants will continue to play a pivotal role in this transformation, helping companies navigate the complexities of sustainability, ethical governance, and social responsibility. Verdantix's latest research shows that the ESG and sustainability consulting market is expected to grow to \$16 billion by 2027. It will grow at a compound annual growth rate (CAGR) of 17% per year until the end of 2027, meaning the market will have grown 156% from its 2021 size. Several factors drive this growth, including increasing regulatory requirements, investor expectations, and consumer demand for sustainable products and services.

THE RISE OF SELF-PROCLAIMED ESG EXPERTS

However, the rapid growth of the ESG consulting market has also led to the rise of self-proclaimed ESG experts. Some of these consultants, primarily from boutique firms, are merely self-proclaimed ESG experts with no proper technical capacity to understand the complexity of the issues that relate to the company. One can't be an expert on overall ESG matters. You may be technically sound in policy compliance, reporting, carbon

trading, or emission data collection, but only ESG partially. This field is still new, and people are still settling down with the concept and finding ways to implement it effectively. We want to avoid the pitfalls described by John Godfrey Saxe in his parable "The Blind Men and the Elephant."



The presence of unqualified consultants poses a significant risk for companies. Engaging with a consultant needing more expertise can lead to effective or harmful ESG strategies. Companies may invest in initiatives that do not deliver the expected benefits or fail to meet regulatory requirements. Additionally, relying on poor advice can damage a company's reputation and erode stakeholder trust.

CHOOSING THE RIGHT ESG CONSULTANT

Given the importance of ESG and the potential pitfalls of engaging an unqualified consultant, companies should consider several factors when identifying a suitable consultant for advising on ESG or sustainability matters.

Credentials and Experience: Look for consultants with relevant credentials and a proven track record in ESG. This includes academic qualifications, professional certifications, and practical experience with other companies in your industry. Verifying the consultant's claims and ensuring they have the expertise needed to address your specific ESG challenges is essential.

Specialisation: Ensure the consultant has expertise in the specific ESG areas most relevant to your business. A one-size-fits-all approach is rarely practical, and specialised knowledge can make a significant difference. For example, a company in the manufacturing sector may require expertise in environmental management and supply chain sustainability. At the same time, a financial services firm may need advice on governance and ethical investing.

Reputation and References: Check the consultant's reputation in the market. Seek references from other businesses that have used their services and ask about their experiences and outcomes. Positive testimonials and case studies can provide valuable insights into the consultant's capabilities and the results they have achieved for other clients.

Transparency and Methodology: Understand the consultant's methodology and ensure they are transparent about their processes. A good consultant should be able to explain their approach clearly and how it will be tailored to meet your company's needs. Transparency in methodology ensures that the consultant's recommendations are based on sound principles and can be effectively implemented.

Integration with Business Strategy: The consultant should demonstrate how ESG practices can be integrated into your overall business strategy rather than being treated as an isolated set of activities. ESG initiatives should align with your company's goals and objectives, enhancing long-term value creation and competitive advantage.

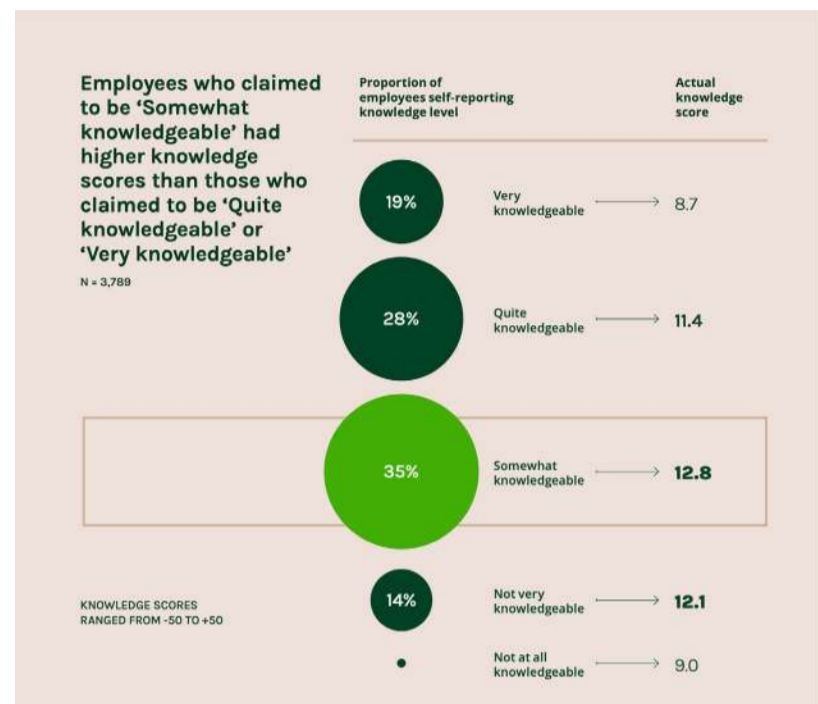
External experts will undoubtedly know more than you do, but that doesn't mean they know what you need to know. This is why we believe incorporating ESG expertise into a company's operations is crucial. Engaging external ESG consultants can provide the necessary knowledge and strategies to jump-start ESG initiatives. However, relying solely on external experts is not a sustainable long-term strategy. Companies must develop internal capacities, as internal teams possess a deeper understanding of the business, its culture, and its unique challenges. This dual approach allows companies to leverage external expertise while building a solid internal foundation for ongoing ESG efforts.

A recent survey by Kite Insight of over 7,000 employees from different industries revealed a surprising finding: respondents who claimed to be only 'somewhat' knowledgeable about climate

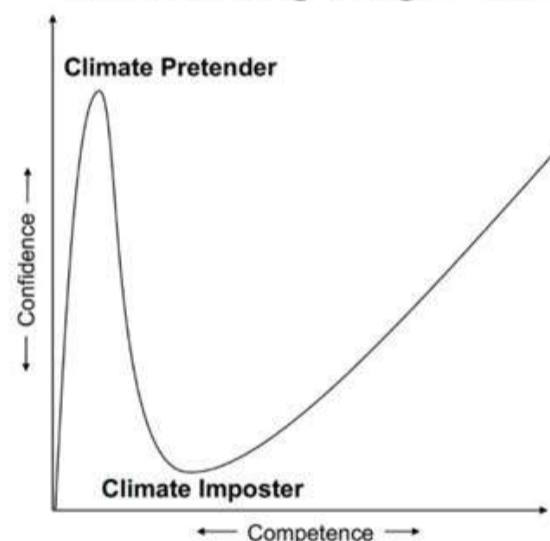
change had higher knowledge scores than those who claimed to be 'quite' or 'very' knowledgeable. This highlights a critical issue: overconfidence in one's knowledge about ESG and climate change can lead to ineffective solutions.

According to Professor Andreas Rasche, many people are overconfident regarding their climate knowledge, a phenomenon psychologists call the "Dunning-Kruger" effect. This cognitive bias means that those with lower levels of competence in an area tend to overestimate their expertise. In the context of sustainability, this overconfidence can be particularly dangerous, as ESG-related problems often require testing new knowledge and acknowledging that some existing solutions need to be revised in specific contexts.

The fast-paced evolution of sustainability knowledge underscores the importance of building internal ESG capacity within companies. By developing their teams' expertise, companies can ensure that their ESG strategies are current and tailored to their specific needs. Overreliance on external consultants can result in generic solutions that may not fully address a company's unique challenges. Moreover, an internal team continuously updating its knowledge and skills will be better equipped to adapt to emerging trends and regulations. While external ESG consultants can provide valuable short-term assistance, investing in internal capacity building is essential for long-term sustainability success.



The 'Dunning-Kruger' Effect



As the global focus on sustainability intensifies, companies must navigate the complexities of ESG with care and strategic foresight. While external ESG consultants can provide valuable expertise and guidance, it is essential to be wary of self-proclaimed experts and ensure thorough vetting. Equally important is developing internal ESG capabilities, enabling organisations to implement tailored, effective, and sustainable strategies that align with their unique needs and long-term goals. By balancing external support with robust internal capacity, companies can achieve compliance, enhance their market position, and drive meaningful progress in their sustainability journey.

Sources:

- 1) <https://www.icmr.my/wp-content/uploads/2023/08/ESG-Integration-in-Malaysia.pdf>
- 2) <https://kiteinsights.com/hubfs/Every-Job-Is-A-Climate-Job-Kite-Insights.pdf>
- 3) <https://www.verdantix.com/insights/blogs/verdantix-forecasts-17-annual-growth-rate-in-esg-and-sustainability-consulting-spend-between-2022-and-2027.pdf>
- 4) <https://www.icmr.my/wp-content/uploads/2021/10/FINAL-VERSION-The-Rise-of-Millennial-and-Gen-Z-Investors.pdf>



SIGN UP FOR Invest
IT'S FREE!!!

[Click here](#)

Scan me



Via email, every Friday.

DEFINITION: Insider Activity shows the trades made by substantial shareholders or directors of the company. Purchases by the directors and company share buyback may indicate the share price is undervalued and brings confidence to the price trend of the share price.



ShareInvestor WebPro > Fundamental > Insider Trades > click Search tab > Select Bursa > click Stock name > scroll up and leave at <Select Counter> Type Date Range for Announcement Date > click Search

Notice Period is 30th June 2024 – 06th July 2024

Effective Change Date	Stock Name	Buyer/ Seller Name [Classification]	Bought / (Sold) ['000]	No. of Shares After Trade ['000]	
			Total	Total	% Held
03 JUL 2024 - 03 JUL 2024	3A	MR TEO KWEE HOCK [SSH]	33	50,730	10.374
02 JUL 2024 - 02 JUL 2024	AMBANK	EMPLOYEES PROVIDENT FUND BOARD [SSH]	-826	531,573	16.081
01 JUL 2024 - 01 JUL 2024	AMBANK	EMPLOYEES PROVIDENT FUND BOARD [SSH]	-160	532,400	16.106
28 JUN 2024 - 28 JUN 2024	AMBANK	EMPLOYEES PROVIDENT FUND BOARD [SSH]	-1,210	532,560	16.111
26 JUN 2024 - 26 JUN 2024	AMBANK	EMPLOYEES PROVIDENT FUND BOARD [SSH]	-3,000	533,770	16.147
28 JUN 2024 - 28 JUN 2024	AME	MR TAN TECK ENG [DIR/CEO]	20	136	0.021
28 JUN 2024 - 02 JUL 2024	ANCOMNY	DATO' SIEW KA WEI [DIR/CEO]	29	18,253	20.057
28 JUN 2024 - 28 JUN 2024	ANCOMNY	MR SIEW KA KHEONG [DIR/CEO]	-1,000	25,338	2.673
02 JUL 2024 - 02 JUL 2024	APB	MR LIAW WAY GIAN [DIR/CEO]	280	2,173	1.925
04 JUL 2024 - 04 JUL 2024	APPASIA	PELABURAN MARA BERHAD [SSH]	-2,000	70250	6.217
28 JUN 2024 - 28 JUN 2024	ASTINO	MADAM LIM MEE HWA [SSH]	50	24487	5.051
28 JUN 2024 - 28 JUN 2024	ASTINO	MR YEO SENG CHONG [SSH]	50	24487	5.051
02 JUL 2024 - 02 JUL 2024	ATECH	EMPLOYEES PROVIDENT FUND BOARD [SSH]	-888	32,522	7.503
01 JUL 2024 - 01 JUL 2024	ATECH	EMPLOYEES PROVIDENT FUND BOARD [SSH]	-572	33,410	7.708
28 JUN 2024 - 28 JUN 2024	ATECH	EMPLOYEES PROVIDENT FUND BOARD [SSH]	-37	33,982	7.84
27 JUN 2024 - 27 JUN 2024	ATECH	EMPLOYEES PROVIDENT FUND BOARD [SSH]	-89	34,019	7.848
02 JUL 2024 - 02 JUL 2024	AXIATA	EMPLOYEES PROVIDENT FUND BOARD [SSH]	3,000	1,686,572	18.368
01 JUL 2024 - 01 JUL 2024	AXIATA	EMPLOYEES PROVIDENT FUND BOARD [SSH]	1,117	1,683,572	18.336
28 JUN 2024 - 28 JUN 2024	AXIATA	EMPLOYEES PROVIDENT FUND BOARD [SSH]	9,945	1,682,455	18.324
27 JUN 2024 - 27 JUN 2024	AXIATA	EMPLOYEES PROVIDENT FUND BOARD [SSH]	3,296	1,672,510	18.215
26 JUN 2024 - 26 JUN 2024	AXIATA	EMPLOYEES PROVIDENT FUND BOARD [SSH]	2,580	1,669,214	18.179
01 JUL 2024 - 01 JUL 2024	AXREIT	EMPLOYEES PROVIDENT FUND BOARD [SSH]	500	308,435	17.65
28 JUN 2024 - 28 JUN 2024	AXREIT	EMPLOYEES PROVIDENT FUND BOARD [SSH]	474	307,935	17.622
27 JUN 2024 - 27 JUN 2024	AXREIT	EMPLOYEES PROVIDENT FUND BOARD [SSH]	120	307,461	17.594
03 JUL 2024 - 03 JUL 2024	BAHVEST	MR CHONG TZU KHEN [DIR/CEO]	50	1,850	0.149
04 JUL 2024 - 04 JUL 2024	BAUTO	LEMBAGA TABUNG HAJI [SSH]	250	58,859	5.036
03 JUL 2024 - 03 JUL 2024	BAUTO	DATO' LEE KOK CHUAN [DIR/CEO]	80	178,161	15.243
03 JUL 2024 - 03 JUL 2024	BAUTO	DATO' LEE KOK CHUAN [SSH]	80	178,161	15.243
03 JUL 2024 - 03 JUL 2024	BAUTO	TAN SRI DATO' SRI YEOH CHOOAN SAN [DIR/CEO]	96	178,180	15.245
03 JUL 2024 - 03 JUL 2024	BAUTO	TAN SRI DATO' SRI YEOH CHOOAN SAN [SSH]	96	178,180	15.245
02 JUL 2024 - 02 JUL 2024	BAUTO	EMPLOYEES PROVIDENT FUND BOARD [SSH]	409	153,310	13.123
01 JUL 2024 - 01 JUL 2024	BAUTO	EMPLOYEES PROVIDENT FUND BOARD [SSH]	73	152,901	13.088
28 JUN 2024 - 28 JUN 2024	BAUTO	EMPLOYEES PROVIDENT FUND BOARD [SSH]	-233	152,828	13.082
27 JUN 2024 - 27 JUN 2024	BAUTO	EMPLOYEES PROVIDENT FUND BOARD [SSH]	-63	153,060	13.102
26 JUN 2024 - 26 JUN 2024	BAUTO	EMPLOYEES PROVIDENT FUND BOARD [SSH]	1,198	153,124	13.111
28 JUN 2024 - 28 JUN 2024	BERTAM	PERFECT LINK VENTURES SDN. BHD. [SSH]	40	39,956	12.388
02 JUL 2024 - 02 JUL 2024	BIMB	EMPLOYEES PROVIDENT FUND BOARD [SSH]	764	396,900	17.511
01 JUL 2024 - 01 JUL 2024	BIMB	EMPLOYEES PROVIDENT FUND BOARD [SSH]	203	396,136	17.478
28 JUN 2024 - 28 JUN 2024	BIMB	EMPLOYEES PROVIDENT FUND BOARD [SSH]	445	395,933	17.469
27 JUN 2024 - 27 JUN 2024	BIMB	EMPLOYEES PROVIDENT FUND BOARD [SSH]	120	395,488	17.449
26 JUN 2024 - 26 JUN 2024	BIMB	EMPLOYEES PROVIDENT FUND BOARD [SSH]	-180	395,368	17.444
04 JUL 2024 - 04 JUL 2024	BINTAI	MR TEO LAY BAN [SSH]	2,721	82,721	6.78
01 JUL 2024 - 01 JUL 2024	BJCORP	MISS CHRYSEIS TAN SHEIK LING [DIR/CEO]	-6,000	52,444	0.898
28 JUN 2024 - 01 JUL 2024	BJCORP	TAN SRI DATO' SRI VINCENT TAN CHEE YIOUN [SSH]	2,200	957,964	16.401
28 JUN 2024 - 28 JUN 2024	BJFOOD	BERJAYA CORPORATION BERHAD [SSH]	9,090	1,101,341	62.159
28 JUN 2024 - 28 JUN 2024	BJFOOD	BERJAYA GROUP BERHAD [SSH]	9,090	1,000,355	56.459
28 JUN 2024 - 28 JUN 2024	BJFOOD	JUARA SEJATI SDN BHD [SSH]	9,090	221,247	12.487
02 JUL 2024 - 02 JUL 2024	BURSA	EMPLOYEES PROVIDENT FUND BOARD [SSH]	-732	83,921	10.37
02 JUL 2024 - 02 JUL 2024	BURSA	EMPLOYEES PROVIDENT FUND BOARD [SSH]	302	84,223	10.407
01 JUL 2024 - 01 JUL 2024	BURSA	EMPLOYEES PROVIDENT FUND BOARD [SSH]	-481	84,653	10.46
28 JUN 2024 - 28 JUN 2024	BURSA	EMPLOYEES PROVIDENT FUND BOARD [SSH]	-439	84,255	10.411
28 JUN 2024 - 28 JUN 2024	BURSA	EMPLOYEES PROVIDENT FUND BOARD [SSH]	880	85,134	10.52
27 JUN 2024 - 27 JUN 2024	BURSA	EMPLOYEES PROVIDENT FUND BOARD [SSH]	128	84,694	10.465
26 JUN 2024 - 26 JUN 2024	BURSA	EMPLOYEES PROVIDENT FUND BOARD [SSH]	-45	84,466	10.437
26 JUN 2024 - 26 JUN 2024	BURSA	EMPLOYEES PROVIDENT FUND BOARD [SSH]	100	84,566	10.449
03 JUL 2024 - 04 JUL 2024	CBIP	DATUK LIM CHAI BENG [DIR/CEO]	171	198,105	42.27
03 JUL 2024 - 04 JUL 2024	CBIP	DATUK LIM CHAI BENG [SSH]	171	198,105	42.27
03 JUL 2024 - 04 JUL 2024	CBIP	ZEE CAPITAL SDN BHD [SSH]	171	36,028	7.687
01 JUL 2024 - 02 JUL 2024	CBIP	DATUK LIM CHAI BENG [DIR/CEO]	322	197,934	42.234
01 JUL 2024 - 02 JUL 2024	CBIP	DATUK LIM CHAI BENG [SSH]	322	197,934	42.234
01 JUL 2024 - 02 JUL 2024	CBIP	ZEE CAPITAL SDN BHD [SSH]	322	35,857	7.651
27 JUN 2024 - 28 JUN 2024	CBIP	DATUK LIM CHAI BENG [DIR/CEO]	278	197,612	42.165
27 JUN 2024 - 28 JUN 2024	CBIP	DATUK LIM CHAI BENG [SSH]	278	197,612	42.165
27 JUN 2024 - 28 JUN 2024	CBIP	ZEE CAPITAL SDN BHD [SSH]	278	35,535	7.582
04 JUL 2024 - 04 JUL 2024	CCK	PUAN SRI DATIN WONG BAK HEE [SSH]	100	244,285	39.345
04 JUL 2024 - 04 JUL 2024	CCK	TAN SRI DATUK TIONG SU KOUK [DIR/CEO]	100	275,157	44.317

Notice Period is 30th June 2024 – 06th July 2024

Effective Change Date	Stock Name	Buyer/ Seller Name [Classification]	Bought / (Sold) ['000]	No. of Shares After Trade ['000]	
			Total	Total	% Held
02 JUL 2024 - 02 JUL 2024	CDB	EMPLOYEES PROVIDENT FUND BOARD [SSH]	250	1,160,697	9.894
28 JUN 2024 - 28 JUN 2024	CDB	EMPLOYEES PROVIDENT FUND BOARD [SSH]	1,000	1,160,447	9.892
28 JUN 2024 - 28 JUN 2024	CHGP	CHIN HIN GROUP BERHAD [SSH]	595	406,510	61.555
28 JUN 2024 - 28 JUN 2024	CHGP	DATUK SERI CHIAU BENG TEIK [DIR/CEO]	595	422,300	63.946
28 JUN 2024 - 28 JUN 2024	CHGP	DATUK SERI CHIAU BENG TEIK [SSH]	595	422,300	63.946
28 JUN 2024 - 28 JUN 2024	CHGP	DIVINE INVENTIONS SDN BHD [SSH]	595	422,300	63.946
28 JUN 2024 - 28 JUN 2024	CHGP	MR CHIAU HAW CHOON [DIR/CEO]	595	422,300	63.946
28 JUN 2024 - 28 JUN 2024	CHGP	MR CHIAU HAW CHOON [SSH]	595	422,300	63.946
28 JUN 2024 - 28 JUN 2024	CHGP	PP CHIN HIN REALTY SDN BHD [SSH]	595	422,300	63.946
02 JUL 2024 - 04 JUL 2024	CHINHIN	DATUK SERI CHIAU BENG TEIK JP [DIR/CEO]	5,375	2,076,571	58.679
02 JUL 2024 - 04 JUL 2024	CHINHIN	DATUK SERI CHIAU BENG TEIK JP [SSH]	5,375	2,076,571	58.679
27 JUN 2024 - 28 JUN 2024	CHINHIN	DATUK SERI CHIAU BENG TEIK JP [DIR/CEO]	4,150	2,071,196	58.528
27 JUN 2024 - 28 JUN 2024	CHINHIN	DATUK SERI CHIAU BENG TEIK JP [SSH]	4,150	2,071,196	58.528
24 JUN 2024 - 26 JUN 2024	CHINHIN	DATUK SERI CHIAU BENG TEIK JP [DIR/CEO]	5,726	2,067,046	58.41
24 JUN 2024 - 26 JUN 2024	CHINHIN	DATUK SERI CHIAU BENG TEIK JP [SSH]	5,726	2,067,046	58.41
19 JUN 2024 - 21 JUN 2024	CHINHIN	DATUK SERI CHIAU BENG TEIK JP [DIR/CEO]	7,816	2,061,319	58.248
19 JUN 2024 - 21 JUN 2024	CHINHIN	DATUK SERI CHIAU BENG TEIK JP [SSH]	7,816	2,061,319	58.248
27 JUN 2024 - 28 JUN 2024	CHINHIN	DATUK SERI CHIAU BENG TEIK JP [DIR/CEO]	4,150	2,066,181	58.386
27 JUN 2024 - 28 JUN 2024	CHINHIN	DATUK SERI CHIAU BENG TEIK JP [SSH]	4,150	2,066,181	58.386
03 JUL 2024 - 03 JUL 2024	CIMB	KUMPULAN WANG PERSARAAN (DIPERBADANKAN) [SSH]	1,000	667,644	6.25
02 JUL 2024 - 02 JUL 2024	CIMB	EMPLOYEES PROVIDENT FUND BOARD [SSH]	841	1,604,781	15.03
01 JUL 2024 - 01 JUL 2024	CIMB	EMPLOYEES PROVIDENT FUND BOARD [SSH]	-11,487	1,603,940	15.02
02 JUL 2024 - 02 JUL 2024	CIMB	KUMPULAN WANG PERSARAAN (DIPERBADANKAN) [SSH]	-683	668,644	6.26
28 JUN 2024 - 28 JUN 2024	CIMB	EMPLOYEES PROVIDENT FUND BOARD [SSH]	-5,814	1,615,427	15.13
28 JUN 2024 - 28 JUN 2024	CIMB	KUMPULAN WANG PERSARAAN (DIPERBADANKAN) [SSH]	206	669,327	6.27
27 JUN 2024 - 27 JUN 2024	CIMB	EMPLOYEES PROVIDENT FUND BOARD [SSH]	-5,995	1,621,240	15.18
26 JUN 2024 - 26 JUN 2024	CIMB	EMPLOYEES PROVIDENT FUND BOARD [SSH]	-214	1,627,235	15.24
04 JUL 2024 - 04 JUL 2024	CLMT	KUMPULAN WANG PERSARAAN (DIPERBADANKAN) [SSH]	-1,500	296,350	10.456
01 JUL 2024 - 01 JUL 2024	CLMT	KUMPULAN WANG PERSARAAN (DIPERBADANKAN) [SSH]	-794	297,850	10.508
04 JUL 2024 - 04 JUL 2024	CTOS	KUMPULAN WANG PERSARAAN (DIPERBADANKAN) [SSH]	477	164,113	7.104
03 JUL 2024 - 03 JUL 2024	CTOS	ABRDN HOLDINGS LIMITED [SSH]	1,269	302,950	13.115
03 JUL 2024 - 03 JUL 2024	CTOS	ABRDN MALAYSIA SDN BHD [SSH]	1,265	300,530	13.01
03 JUL 2024 - 03 JUL 2024	CTOS	ABRDN PLC [SSH]	1,269	302,950	13.115
02 JUL 2024 - 02 JUL 2024	CTOS	EMPLOYEES PROVIDENT FUND BOARD [SSH]	2,779	374,811	16.226
03 JUL 2024 - 03 JUL 2024	CTOS	KUMPULAN WANG PERSARAAN (DIPERBADANKAN) [SSH]	249	163,636	7.073
02 JUL 2024 - 02 JUL 2024	CTOS	ABRDN HOLDINGS LIMITED [SSH]	3,692	301,680	13.06
02 JUL 2024 - 02 JUL 2024	CTOS	ABRDN MALAYSIA SDN BHD [SSH]	3,678	299,266	12.955
02 JUL 2024 - 02 JUL 2024	CTOS	ABRDN PLC [SSH]	3,692	301,680	13.06
01 JUL 2024 - 01 JUL 2024	CTOS	EMPLOYEES PROVIDENT FUND BOARD [SSH]	865	372,012	16.104
02 JUL 2024 - 02 JUL 2024	CTOS	KUMPULAN WANG PERSARAAN (DIPERBADANKAN) [SSH]	724	163,387	7.073
01 JUL 2024 - 01 JUL 2024	CTOS	ABRDN HOLDINGS LIMITED [SSH]	1,150	297,988	12.9
01 JUL 2024 - 01 JUL 2024	CTOS	ABRDN MALAYSIA SDN BHD [SSH]	1,146	295,587	12.796
01 JUL 2024 - 01 JUL 2024	CTOS	ABRDN PLC [SSH]	1,150	297,988	12.9
28 JUN 2024 - 28 JUN 2024	CTOS	EMPLOYEES PROVIDENT FUND BOARD [SSH]	1,129	371,147	16.067
01 JUL 2024 - 01 JUL 2024	CTOS	KUMPULAN WANG PERSARAAN (DIPERBADANKAN) [SSH]	226	162,663	7.042
28 JUN 2024 - 28 JUN 2024	CTOS	ABRDN HOLDINGS LIMITED [SSH]	1,500	296,838	12.85
28 JUN 2024 - 28 JUN 2024	CTOS	ABRDN MALAYSIA SDN BHD [SSH]	1,495	294,442	12.746
28 JUN 2024 - 28 JUN 2024	CTOS	ABRDN PLC [SSH]	1,500	296,838	12.85
27 JUN 2024 - 27 JUN 2024	CTOS	EMPLOYEES PROVIDENT FUND BOARD [SSH]	922	370,014	16.018
28 JUN 2024 - 28 JUN 2024	CTOS	KUMPULAN WANG PERSARAAN (DIPERBADANKAN) [SSH]	294	162,438	7.032
27 JUN 2024 - 27 JUN 2024	CTOS	ABRDN HOLDINGS LIMITED [SSH]	1,226	295,338	12.785
27 JUN 2024 - 27 JUN 2024	CTOS	ABRDN MALAYSIA SDN BHD [SSH]	1,221	292,947	12.682
27 JUN 2024 - 27 JUN 2024	CTOS	ABRDN PLC [SSH]	1,226	295,338	12.785
26 JUN 2024 - 26 JUN 2024	CTOS	EMPLOYEES PROVIDENT FUND BOARD [SSH]	2,038	371,212	16.07
01 JUL 2024 - 01 JUL 2024	CVIEW	PUAN SADIHAH BINI SULEIMAN [SSH]	-50	9,650	9.65
02 JUL 2024 - 02 JUL 2024	D&O	EMPLOYEES PROVIDENT FUND BOARD [SSH]	140	94,705	7.641
01 JUL 2024 - 01 JUL 2024	D&O	EMPLOYEES PROVIDENT FUND BOARD [SSH]	107	94,694	7.64
28 JUN 2023 - 28 JUN 2024	D&O	EMPLOYEES PROVIDENT FUND BOARD [SSH]	128	94,587	7.631
26 JUN 2024 - 26 JUN 2024	D&O	EMPLOYEES PROVIDENT FUND BOARD [SSH]	146	94,459	7.621
04 JUL 2024 - 04 JUL 2024	DIALOG	KUMPULAN WANG PERSARAAN (DIPERBADANKAN) [SSH]	-1,000	618,238	10.96

Disclaimer: The Information in Insider Activity is extracted from www.shareinvestor.com/fundamental/insider_trades. The information on this page is provided as a service to readers. It does not constitute financial advice and/or any investment recommendations. We assume no liability for damages resulting from or arising out of the use of such information. Whilst every effort is made to ensure accuracy, the information presented is not the official record of shareholder filings. Readers are advised to read the original filings on the Bursa Malaysia website at www.bursamalaysia.com



STROM
SWISS TIMEPIECES & JEWELLERY



StromWatch Asia
Tele : +65.9817.3378
Email : ll.stromasia@gmail.com
WWW.STROMWATCH.SWISS

Notice Period is 30th June 2024 – 06th July 2024

Effective Change Date	Stock Name	Buyer/ Seller Name [Classification]	Bought / (Sold) ['000]		No. of Shares After Trade ['000]	
			Total	Total	% Held	
02 JUL 2024 - 02 JUL 2024	DIALOG	EMPLOYEES PROVIDENT FUND BOARD [SSH]	633	918,079	16.27	
01 JUL 2024 - 01 JUL 2024	DIALOG	EMPLOYEES PROVIDENT FUND BOARD [SSH]	250	917,446	16.26	
27 JUN 2024 - 27 JUN 2024	DIALOG	EMPLOYEES PROVIDENT FUND BOARD [SSH]	60	917,196	16.25	
26 JUN 2024 - 26 JUN 2024	DIALOG	EMPLOYEES PROVIDENT FUND BOARD [SSH]	140	917,136	16.25	
02 JUL 2024 - 02 JUL 2024	DPHARMA	EMPLOYEES PROVIDENT FUND BOARD [SSH]	-165	83,562	8.687	
01 JUL 2024 - 01 JUL 2024	DPHARMA	EMPLOYEES PROVIDENT FUND BOARD [SSH]	-169	83,727	8.704	
28 JUN 2024 - 28 JUN 2024	DPHARMA	EMPLOYEES PROVIDENT FUND BOARD [SSH]	100	83,896	8.721	
27 JUN 2024 - 27 JUN 2024	DPHARMA	EMPLOYEES PROVIDENT FUND BOARD [SSH]	-364	83,796	8.711	
26 JUN 2024 - 26 JUN 2024	DPHARMA	EMPLOYEES PROVIDENT FUND BOARD [SSH]	-136	84,160	8.749	
02 JUL 2024 - 02 JUL 2024	DPS	EDMUND SOW YONG MING [SSH]	3,173	95,815	44.613	
02 JUL 2024 - 02 JUL 2024	DPS	EDWARD SOW YUEN SENG [DIR/CEO]	3,173	95,815	44.613	
02 JUL 2024 - 02 JUL 2024	DPS	EMILY SOW MEI CHET [DIR/CEO]	3,173	95,815	44.613	
02 JUL 2024 - 02 JUL 2024	DPS	EUGENE SOW CHUAN SHENG [DIR/CEO]	3,173	95,815	44.613	
02 JUL 2024 - 02 JUL 2024	DPS	EUGENE SOW CHUAN SHENG [SSH]	3,173	95,815	44.613	
02 JUL 2024 - 02 JUL 2024	DPS	MISS EMILY SOW MEI CHET [SSH]	3,173	95,815	44.613	
02 JUL 2024 - 02 JUL 2024	DPS	MR EDWARD SOW YUEN SENG [SSH]	3,173	95,815	44.613	
02 JUL 2024 - 02 JUL 2024	DPS	MR ERIC SOW YONG SHING [SSH]	3,173	95,857	44.633	
02 JUL 2024 - 02 JUL 2024	DPS	PUAN SRI CHU KIM GUEK [DIR/CEO]	3,173	95,857	44.633	
02 JUL 2024 - 02 JUL 2024	DPS	PUAN SRI CHU KIM GUEK [SSH]	3,173	95,857	44.633	
02 JUL 2024 - 02 JUL 2024	DPS	TAN SRI (DR) SOW CHIN CHUAN [DIR/CEO]	3,173	13,087	44.632	
02 JUL 2024 - 02 JUL 2024	DPS	TAN SRI (DR) SOW CHIN CHUAN [SSH]	3,173	95,857	44.632	
01 JUL 2024 - 01 JUL 2024	DSOINIC	DATIN POPI RIANDANI BINTI DODY MUGHTAR [SSH]	1,500	223,121	7.519	
04 JUL 2024 - 04 JUL 2024	E&O	KUMPULAN WANG PERSARAAN (DIPERBADANKAN) [SSH]	800	113,082	5.445	
03 JUL 2024 - 03 JUL 2024	E&O	KUMPULAN WANG PERSARAAN (DIPERBADANKAN) [SSH]	800	112,282	5.406	
02 JUL 2024 - 02 JUL 2024	E&O	KUMPULAN WANG PERSARAAN (DIPERBADANKAN) [SSH]	800	111,482	5.368	
02 JUL 2024 - 02 JUL 2024	ECONBHD	EMPLOYEES PROVIDENT FUND BOARD [SSH]	-400	104,354	7.362	
27 JUN 2024 - 27 JUN 2024	ECONBHD	EMPLOYEES PROVIDENT FUND BOARD [SSH]	-200	104,754	7.39	
02 JUL 2024 - 04 JUL 2024	ECOWLD-WB	LIEW TIAN XIONG [DIR/CEO]	3,300	47,845	8.186	
28 JUN 2024 - 01 JUL 2024	ECOWLD-WB	MR LIEW TIAN XIONG [DIR/CEO]	1,389	44,545	7.621	
28 JUN 2024 - 28 JUN 2024	EFRAME	DATO HOOI JIA HAO [SSH]	4,000	52,053	14.339	
01 JUL 2024 - 01 JUL 2024	ELSOFT	MADAM TAN AI JIEW [SSH]	-6,464	85,617	12.365	
03 JUL 2024 - 03 JUL 2024	EMETALL	DATIN TAN PAK SAY [SSH]	92	125,178	45.193	
03 JUL 2024 - 03 JUL 2024	EMETALL	DATO' GOH CHENG HUAT [DIR/CEO]	92	125,178	45.193	
03 JUL 2024 - 03 JUL 2024	EMETALL	DATO' GOH CHENG HUAT [SSH]	92	125,178	45.193	
01 JUL 2024 - 02 JUL 2024	EMETALL	DATIN TAN PAK SAY [SSH]	2,087	125,087	45.16	
01 JUL 2024 - 02 JUL 2024	EMETALL	DATO' GOH CHENG HUAT [DIR/CEO]	2,087	125,087	45.16	
01 JUL 2024 - 02 JUL 2024	EMETALL	DATO' GOH CHENG HUAT [SSH]	2,087	125,087	45.16	
28 JUN 2024 - 28 JUN 2024	EMETALL	DATIN TAN PAK SAY [SSH]	370	122,999	44.406	
28 JUN 2024 - 28 JUN 2024	EMETALL	DATO' GOH CHENG HUAT [DIR/CEO]	370	122,999	44.406	
28 JUN 2024 - 28 JUN 2024	EMETALL	DATO' GOH CHENG HUAT [SSH]	370	122,999	44.406	
03 JUL 2024 - 03 JUL 2024	EVD	DATUK WONG SAK KUAN [SSH]	26,483	52,967	12.208	
03 JUL 2024 - 03 JUL 2024	EVD	IR GAN WEE PENG [SSH]	-40,933	42,733	9.849	
03 JUL 2024 - 03 JUL 2024	EVD-PA	DATUK WONG SAK KUAN [DIR/CEO]	69,317	615,300	25.106	
02 JUL 2024 - 02 JUL 2024	F&N	EMPLOYEES PROVIDENT FUND BOARD [SSH]	-11	41,769	11.388	
01 JUL 2024 - 01 JUL 2024	F&N	EMPLOYEES PROVIDENT FUND BOARD [SSH]	-0.2	41,779	11.391	
28 JUN 2024 - 28 JUN 2024	F&N	EMPLOYEES PROVIDENT FUND BOARD [SSH]	45	41,779	11.391	
27 JUN 2024 - 27 JUN 2024	F&N	EMPLOYEES PROVIDENT FUND BOARD [SSH]	-119	41,734	11.379	
26 JUN 2024 - 26 JUN 2024	F&N	EMPLOYEES PROVIDENT FUND BOARD [SSH]	59	41,853	11.411	
05 JUL 2024 - 05 JUL 2024	FAREAST	DATO' SRI KAMARUDDIN MOHAMMED [DIR/CEO]	153	16,820	2.832	
04 JUL 2024 - 04 JUL 2024	FAREAST	DATO' SRI KAMARUDDIN MOHAMMED [DIR/CEO]	87	16,667	2.807	
03 JUL 2024 - 03 JUL 2024	FAREAST	DATO' SRI KAMARUDDIN MOHAMMED [DIR/CEO]	20	16,580	2.792	
02 JUL 2024 - 02 JUL 2024	FAREAST	DATO' SRI KAMARUDDIN MOHAMMED [DIR/CEO]	800	16,560	2.654	
28 JUN 2024 - 28 JUN 2024	FFB	EMPLOYEES PROVIDENT FUND BOARD [SSH]	50	210,210	11.225	
27 JUN 2024 - 27 JUN 2024	FFB	EMPLOYEES PROVIDENT FUND BOARD [SSH]	133	210,154	11.222	
02 JUL 2024 - 04 JUL 2024	FIAMMA	MR LIM SOO KONG (LIM SOO CHONG) [SSH]	-350	89,333	16.848	
01 JUL 2024 - 01 JUL 2024	FOCUSP	PERBADANAN NASIONAL BERHAD [SSH]	-102	42,728	9.249	
28 JUN 2024 - 28 JUN 2024	FOCUSP	PERBADANAN NASIONAL BERHAD [SSH]	-431	42,830	9.271	
27 JUN 2024 - 27 JUN 2024	FRONTKN	EMPLOYEES PROVIDENT FUND BOARD [SSH]	-58	175,216	11.136	
26 JUN 2024 - 26 JUN 2024	FRONTKN	EMPLOYEES PROVIDENT FUND BOARD [SSH]	42	175,273	11.14	
02 JUL 2024 - 02 JUL 2024	GAMUDA	EMPLOYEES PROVIDENT FUND BOARD (EPF BOARD) [SSH]	1,351	250,715	9.04	
01 JUL 2024 - 01 JUL 2024	GAMUDA	EMPLOYEES PROVIDENT FUND BOARD (EPF BOARD) [SSH]	-1,537	249,364	8.99	
28 JUN 2024 - 28 JUN 2024	GAMUDA	EMPLOYEES PROVIDENT FUND BOARD (EPF BOARD) [SSH]	-25	250,901	9.05	
27 JUN 2024 - 27 JUN 2024	GAMUDA	EMPLOYEES PROVIDENT FUND BOARD (EPF BOARD) [SSH]	2,233	250,927	9.05	
26 JUN 2024 - 26 JUN 2024	GAMUDA	EMPLOYEES PROVIDENT FUND BOARD (EPF BOARD) [SSH]	-2,503	248,694	8.97	
02 JUL 2024 - 02 JUL 2024	GASMSIA	EMPLOYEES PROVIDENT FUND BOARD [SSH]	351	70,695	5.505	
27 JUN 2024 - 27 JUN 2024	GBAY	MR PETER LING EE KONG [DIR/CEO]	43	10,651	13.092	
27 JUN 2024 - 27 JUN 2024	GBAY	MR PETER LING EE KONG [SSH]	43	10,651	13.092	
03 JUL 2024 - 03 JUL 2024	GDB	MR ALEXANDER LO TZONE LEONG [DIR/CEO]	-1,000	49,525	19.81	
28 JUN 2024 - 28 JUN 2024	GENETEC	EMPLOYEES PROVIDENT FUND BOARD [SSH]	-800	52,368	6.743	
01 JUL 2024 - 01 JUL 2024	GENP	EMPLOYEES PROVIDENT FUND BOARD [SSH]	44	117,495	13.096	
28 JUN 2024 - 28 JUN 2024	GENP	EMPLOYEES PROVIDENT FUND BOARD [SSH]	93	117,452	13.091	
27 JUN 2024 - 27 JUN 2024	GENP	EMPLOYEES PROVIDENT FUND BOARD [SSH]	14	117,359	13.081	
04 JUL 2024 - 04 JUL 2024	GHLSYS	NTT DATA JAPAN CORPORATION [SSH]	44,112	1,058,316	92.713	
01 JUL 2024 - 03 JUL 2024	GHLSYS	NTT DATA JAPAN CORPORATION [SSH]	72,084	1,014,204	88.848	
28 JUN 2024 - 28 JUN 2024	GHLSYS	NTT DATA JAPAN CORPORATION [SSH]	2,955	942,120	82.534	
01 JUL 2024 - 01 JUL 2024	GOHUB	ENCIK ZULKIFLY BIN ZAKARIA [DIR/CEO]	500	500	0.125	
01 JUL 2024 - 01 JUL 2024	GOHUB	MADAM LEE LI YEE [DIR/CEO]	220,000	220,000	55	
01 JUL 2024 - 01 JUL 2024	GOHUB	MISS POH ZUAN YIN [DIR/CEO]	300	300	0.075	
01 JUL 2024 - 01 JUL 2024	GOHUB	MR LEE YEW WENG [DIR/CEO]	300	300	0.075	
01 JUL 2024 - 01 JUL 2024	GOHUB	MR TAN CHERNG THONG [DIR/CEO]	57,418	227,120	56.78	
01 JUL 2024 - 01 JUL 2024	GOHUB	MR TAN CHERNG THONG [SSH]	57,418	227,120	56.78	

Notice Period is 30th June 2024 – 06th July 2024

Effective Change Date	Stock Name	Buyer/ Seller Name [Classification]	Bought / (Sold) ['000]		No. of Shares After Trade ['000]	
			Total	Total	% Held	
01 JUL 2024 - 01 JUL 2024	GOHUB	PUAN ALWIZAH AL-YAFII BINTI AHMAD KAMAL [DIR/CEO]	300	300	0.075	
02 JUL 2024 - 02 JUL 2024	GREENYB	MR THAM FOO KEONG [DIR/CEO]	-56	309,842	57.135	
02 JUL 2024 - 02 JUL 2024	GREENYB	MR THAM FOO KEONG [SSH]	-56	309,842	57.135	
02 JUL 2024 - 02 JUL 2024	GREENYB	MR THAM KIN-ON [DIR/CEO]	-56	23,003	4.242	
01 JUL 2024 - 01 JUL 2024	GREENYB	MR THAM FOO CHOON [DIR/CEO]	-5,000	251,949	46.46	
01 JUL 2024 - 01 JUL 2024	GREENYB	MR THAM FOO CHOON [SSH]	-5,000	251,949	46.46	
26 JUN 2024 - 26 JUN 2024	GREENYB	MR THAM FOO KEONG [DIR/CEO]	-351	309,898	57.146	
26 JUN 2024 - 26 JUN 2024	GREENYB	MR THAM FOO KEONG [SSH]	-351	309,898	57.146	
26 JUN 2024 - 26 JUN 2024	GREENYB	MR THAM KIN-ON [DIR/CEO]	-351	23,059	4.252	
02 JUL 2024 - 02 JUL 2024	GUH	DATUK SERI KENNETH H'NG BAK TEE [DIR/CEO]	180	7,959	2.822	
28 JUN 2024 - 28 JUN 2024	GUH	DATUK SERI KENNETH H'NG BAK TEE [DIR/CEO]	160	7,779	2.758	
02 JUL 2024 - 04 JUL 2024	HGBLOB	KEH CHUAN SENG [SSH]	-54,250	54,000	6.906	
03 JUL 2024 - 03 JUL 2024	HCK	DATO' DIONG TAK CHONG @ TIONG TAK CHONG [DIR/CEO]	2,200	22,547	4.11	
03 JUL 2024 - 03 JUL 2024	HCK-WA	DATO' DIONG TAK CHONG @ TIONG TAK CHONG [DIR/CEO]	2,200	37,555	44.242	
02 JUL 2024 - 02 JUL 2024	HEGROUP	IR DR NG KOK CHIANG [DIR/CEO]	-50	100	0.023	
01 JUL 2024 - 02 JUL 2024	HEGROUP	MISS CHRISTINE TOH HUNG MEI [DIR/CEO]	-100	150	0.034	
02 JUL 2024 - 02 JUL 2024	HEXCAP	DATIN SRI M. SARASWATHY A/P MANIKUM [SSH]	-10,000	52,942	11.845	
02 JUL 2024 - 02 JUL 2024	HEXCAP	DATO SRI J.O. NANTHA KUMAR A/L J.C. RAMALU [SSH]	-10,000	52,942	11.845	
04 JUL 2024 - 04 JUL 2024	HEXTECH	DATO' ONG CHOO MENG [DIR/CEO]	-2,775	1,305,894	63.442	
04 JUL 2024 - 04 JUL 2024	HEXTECH	DATO' ONG CHOO MENG [SSH]	-2,775	1,305,894	63.442	
02 JUL 2024 - 02 JUL 2024	HIBISCS	DATUK MICHAEL TANG VEE MUN [SSH]	446	92,545	11.588	
02 JUL 2024 - 02 JUL 2024	HLBANK	EMPLOYEES PROVIDENT FUND BOARD [SSH]	629	208,059	9.971	
01 JUL 2024 - 01 JUL 2024	HLBANK	EMPLOYEES PROVIDENT FUND BOARD [SSH]	113	207,430	9.941	
28 JUN 2024 - 28 JUN 2024	HLBANK	EMPLOYEES PROVIDENT FUND BOARD [SSH]	534	207,317	9.936	
27 JUN 2024 - 27 JUN 2024	HLBANK	EMPLOYEES PROVIDENT FUND BOARD [SSH]	637	206,783	9.91	
26 JUN 2024 - 26 JUN 2024	HLBANK	EMPLOYEES PROVIDENT FUND BOARD [SSH]	81	206,146	9.879	
28 JUN 2024 - 01 JUL 2024	IBHD	TAN SRI LIM KIM HONG [DIR/CEO]	138	1,399,007	75.325	
28 JUN 2024 - 01 JUL 2024	IBHD	TAN SRI LIM KIM HONG [SSH]	138	1,399,007	75.325	
01 JUL 2024 - 01 JUL 2024	IFCAMSC	IFCA SOFTWARE (ASIA) SDN BHD [SSH]	-10,000	198,605	32.816	
01 JUL 2024 - 01 JUL 2024	IFCAMSC	MR ENG KIM HAW [DIR/CEO]	-45	42	0.007	
01 JUL 2024 - 01 JUL 2024	IFCAMSC	MR YONG KEANG CHEUN [DIR/CEO]	-10,000	219,546	36.277	
01 JUL 2024 - 01 JUL 2024	IFCAMSC	MR YONG KEANG CHEUN [SSH]	-10,000	219,546	36.277	
01 JUL 2024 - 01 JUL 2024	IFCAMSC	MR YONG KIAN KEONG [DIR/CEO]	-10,000	219,546	36.277	
01 JUL 2024 - 01 JUL 2024	IFCAMSC	MR YONG KIAN KEONG [SSH]	-10,000	219,546	36.277	
03 JUL 2024 - 03 JUL 2024	IGBB	TAN CHIN NAM SDN BHD ("TCNSB") [SSH]	1,130	668,170	50.005	
04 JUL 2024 - 04 JUL 2024	IGBREIT	KUMPULAN WANG PERSARAAN (DIPERBADANKAN) [SSH]	-509	246,338	6.826	
27 JUN 2024 - 27 JUN 2024	IGBREIT	EMPLOYEES PROVIDENT FUND BOARD ("EPF BOARD") [SSH]	-2,292	410,328	11.369	
26 JUN 2024 - 26 JUN 2024	IGBREIT	EMPLOYEES PROVIDENT FUND BOARD ("EPF BOARD") [SSH]	-176	412,620	11.432	
02 JUL 2024 - 02 JUL 2024	IHH	EMPLOYEES PROVIDENT FUND BOARD [SSH]	2,258	991,724	11.261	
01 JUL 2024 - 01 JUL 2024	IHH	EMPLOYEES PROVIDENT FUND BOARD [SSH]	-443	989,466	11.235	
28 JUN 2024 - 28 JUN 2024	IHH	EMPLOYEES PROVIDENT FUND BOARD [SSH]	-3,175	989,909	11.24	
27 JUN 2024 - 27 JUN 2024	IHH	EMPLOYEES PROVIDENT FUND BOARD [SSH]	-74	992,877	11.274	
26 JUN 2024 - 26 JUN 2024	IHH	EMPLOYEES PROVIDENT FUND BOARD [SSH]	610	992,951	11.275	
02 JUL 2024 - 02 JUL 2024	IJM	EMPLOYEES PROVIDENT FUND BOARD [SSH]	227	567,724	16.192	
03 JUL 2024 - 03 JUL 2024	IJM	KUMPULAN WANG PERSARAAN (DIPERBADANKAN) [SSH]	464	340,787	9.72	
01 JUL 2024 - 01 JUL 2024	IJM	EMPLOYEES PROVIDENT FUND BOARD [SSH]	-4,234	567,496	16.186	
02 JUL 2024 - 02 JUL 2024	IJM	KUMPULAN WANG PERSARAAN (DIPERBADANKAN) [SSH]	523	340,323	9.706	
28 JUN 2024 - 28 JUN 2024	IJM	EMPLOYEES PROVIDENT FUND BOARD [SSH]	-2,127	571,730	16.306	
27 JUN 2024 - 27 JUN 2024	IJM	EMPLOYEES PROVIDENT FUND BOARD [SSH]	-2,394	573,857	16.367	
28 JUN 2024 - 28 JUN 2024	IJM	KUMPULAN WANG PERSARAAN (DIPERBADANKAN) [SSH]	-600	339,801	9.692	
26 JUN 2024 - 26 JUN 2024	IJM	EMPLOYEES PROVIDENT FUND BOARD [SSH]	-1,011	576,251	16.435	
04 JUL 2024 - 04 JUL 2024	INARI	KUMPULAN WANG PERSARAAN (DIPERBADANKAN) [SSH]	-902	355,841	9.426	
03 JUL 2024 - 03 JUL 2024	INARI	DATO' SRI THONG KOK KHEE [DIR/CEO]	-500	519,053	13.751	
03 JUL 2024 - 03 JUL 2024	INARI	DATO' SRI THONG KOK KHEE [SSH]	-500	519,053	13.751	
03 JUL 2024 - 03 JUL 2024	INARI	INSAS BERHAD [SSH]	-500	515,509	13.657	
02 JUL 2024 - 02 JUL 2024	INARI	EMPLOYEES PROVIDENT FUND BOARD [SSH]	5,657	351,481	9.311	
03 JUL 2024 - 03 JUL 2024	INARI	KUMPULAN WANG PERSARAAN (DIPERBADANKAN) [SSH]	-629	356,742	9.451	
02 JUL 2024 - 02 JUL 2024	INARI	DATO' DR TAN SENG CHUAN [DIR/CEO]	-250	1,606	0.043	
01 JUL 2024 - 01 JUL 2024	INARI	EMPLOYEES PROVIDENT FUND BOARD [SSH]	-280	345,825	9.162	
02 JUL 2024 - 02 JUL 2024	INARI	KUMPULAN WANG PERSARAAN (DIPERBADANKAN) [SSH]	728	357,371	9.468	
28 JUN 2024 - 28 JUN 2024	INARI	EMPLOYEES PROVIDENT FUND				

Notice Period is 30th June 2024 – 06th July 2024

Effective Change Date	Stock Name	Buyer/ Seller Name [Classification]	Bought / (Sold) ('000)		No. of Shares After Trade ('000)	
			Total	Total	% Held	% Held
03 JUL 2024 - 04 JUL 2024	JTIASA	GENINE CHAIN LIMITED [SSH]	-1,382	61,102	6.312	
03 JUL 2024 - 04 JUL 2024	JTIASA	MR CHANG MENG [SSH]	-1,382	61,102	6.312	
03 JUL 2024 - 04 JUL 2024	JTIASA	MR HO CHEUNG CHOI [SSH]	-1,382	61,102	6.312	
01 JUL 2024 - 02 JUL 2024	JTIASA	GENINE CHAIN LIMITED [SSH]	-539	62,484	6.455	
01 JUL 2024 - 02 JUL 2024	JTIASA	MR CHANG MENG [SSH]	-539	62,484	6.455	
01 JUL 2024 - 02 JUL 2024	JTIASA	MR HO CHEUNG CHOI [SSH]	-539	62,484	6.455	
02 JUL 2024 - 02 JUL 2024	KERJAYA	EMPLOYEES PROVIDENT FUND BOARD [SSH]	-172	70,145	5.562	
01 JUL 2024 - 01 JUL 2024	KERJAYA	EMPLOYEES PROVIDENT FUND BOARD [SSH]	-48	70,317	5.576	
28 JUN 2024 - 28 JUN 2024	KERJAYA	EMPLOYEES PROVIDENT FUND BOARD [SSH]	21	70,365	5.58	
27 JUN 2024 - 27 JUN 2024	KERJAYA	EMPLOYEES PROVIDENT FUND BOARD [SSH]	341	70,344	5.578	
26 JUN 2024 - 26 JUN 2024	KERJAYA	EMPLOYEES PROVIDENT FUND BOARD [SSH]	47	70,003	5.551	
01 JUL 2024 - 01 JUL 2024	KEYFIELD	PUAN HAIDA SHENNY BINTI HAZRI [DIR/CEO]	-15	150	0.02	
28 JUN 2024 - 28 JUN 2024	KGB	MR CHAM TECK KUANG [DIR/CEO]	165	135,682	20.049	
28 JUN 2024 - 28 JUN 2024	KGB	MR CHAM TECK KUANG [SSH]	165	135,682	20.049	
28 JUN 2024 - 28 JUN 2024	KGB	MR GAN HUNG KENG [DIR/CEO]	165	140,378	20.743	
28 JUN 2024 - 28 JUN 2024	KGB	MR GAN HUNG KENG [SSH]	165	140,378	20.743	
28 JUN 2024 - 28 JUN 2024	KGB	MR HU KEQIN [DIR/CEO]	165	135,682	20.049	
28 JUN 2024 - 28 JUN 2024	KGB	MR HU KEQIN [SSH]	165	135,682	20.049	
28 JUN 2024 - 28 JUN 2024	KGB	MR ONG WENG LEONG [DIR/CEO]	165	140,074	20.698	
28 JUN 2024 - 28 JUN 2024	KGB	MR ONG WENG LEONG [SSH]	165	140,074	20.698	
28 JUN 2024 - 28 JUN 2024	KGB	MR SOH TONG HWA [DIR/CEO]	165	139,628	20.632	
28 JUN 2024 - 28 JUN 2024	KGB	MR SOH TONG HWA [SSH]	165	139,628	20.632	
28 JUN 2024 - 28 JUN 2024	KGB	MR SOO YUIT WENG [DIR/CEO]	8	2,145	0.317	
05 JUL 2024 - 05 JUL 2024	KGW	MADAM CHEOK HUI YEN [DIR/CEO]	-2,500	31,213	6.465	
05 JUL 2024 - 05 JUL 2024	KGW	MADAM CHEOK HUI YEN [SSH]	-2,500	31,213	6.465	
27 JUN 2024 - 27 JUN 2024	KHIND	MADAM KOH GUAT KUAN [SSH]	663	3,558	8.464	
27 JUN 2024 - 27 JUN 2024	KHIND	MR CHENG PING KEAT [DIR/CEO]	663	26,235	62.405	
02 JUL 2024 - 02 JUL 2024	KLCC	EMPLOYEES PROVIDENT FUND BOARD [SSH]	107	192,311	10.652	
02 JUL 2024 - 02 JUL 2024	KLCC	EMPLOYEES PROVIDENT FUND BOARD [SSH]	107	192,311	10.652	
01 JUL 2024 - 01 JUL 2024	KLCC	EMPLOYEES PROVIDENT FUND BOARD [SSH]	86	192,204	10.646	
01 JUL 2024 - 01 JUL 2024	KLCC	EMPLOYEES PROVIDENT FUND BOARD [SSH]	86	192,204	10.646	
27 JUN 2024 - 27 JUN 2024	KLCC	EMPLOYEES PROVIDENT FUND BOARD [SSH]	59	192,119	10.642	
27 JUN 2024 - 27 JUN 2024	KLCC	EMPLOYEES PROVIDENT FUND BOARD [SSH]	59	192,119	10.642	
02 JUL 2024 - 02 JUL 2024	KLK	EMPLOYEES PROVIDENT FUND BOARD [SSH]	206	163,401	14.903	
01 JUL 2024 - 01 JUL 2024	KLK	EMPLOYEES PROVIDENT FUND BOARD [SSH]	190	163,195	14.885	
28 JUN 2024 - 28 JUN 2024	KLK	EMPLOYEES PROVIDENT FUND BOARD [SSH]	194	162,693	14.839	
27 JUN 2024 - 27 JUN 2024	KLK	EMPLOYEES PROVIDENT FUND BOARD [SSH]	574	161,985	14.774	
26 JUN 2024 - 26 JUN 2024	KLK	EMPLOYEES PROVIDENT FUND BOARD [SSH]	792	161,411	14.722	
28 JUN 2024 - 28 JUN 2024	KOSSAN	EMPLOYEES PROVIDENT FUND BOARD [SSH]	-32	140,565	5.509	
27 JUN 2024 - 27 JUN 2024	KOSSAN	EMPLOYEES PROVIDENT FUND BOARD [SSH]	-284	140,596	5.51	
26 JUN 2024 - 26 JUN 2024	KOSSAN	EMPLOYEES PROVIDENT FUND BOARD [SSH]	-81	140,880	5.521	
02 JUL 2024 - 02 JUL 2024	LBS	TAN SRI DATO' SRI IR. (DR.) LIM HOCK SAN JP [DIR/CEO]	100	613,572	39.586	
02 JUL 2024 - 02 JUL 2024	LBS	TAN SRI DATO' SRI IR. (DR.) LIM HOCK SAN JP [SSH]	100	608,819	39.279	
25 JUN 2024 - 25 JUN 2024	LEESK	DATO' LEE KONG SIM [DIR/CEO]	48,920	146,760	58.319	
25 JUN 2024 - 25 JUN 2024	LEESK	DATO' LEE KONG SIM [SSH]	48,920	146,760	58.319	
25 JUN 2024 - 25 JUN 2024	LEESK	LEE SWEE KIAT & SONS SDN BHD [SSH]	46,789	140,367	55.778	
25 JUN 2024 - 25 JUN 2024	LEESK	MADAM TAN KUIN LUAN [DIR/CEO]	47,539	142,617	56.672	
25 JUN 2024 - 25 JUN 2024	LEESK	MADAM TAN KUIN LUAN [SSH]	46,789	140,367	55.778	
25 JUN 2024 - 25 JUN 2024	LEESK	MR LEE AH BAH @ LEE SWEE KIAT [DIR/CEO]	49,099	147,297	58.532	
25 JUN 2024 - 25 JUN 2024	LEESK	MR LEE AH BAH @ LEE SWEE KIAT [SSH]	48,349	145,047	57.638	
25 JUN 2024 - 25 JUN 2024	LEESK	MR LEE KONG YAM [SSH]	47,539	142,617	56.672	
03 JUL 2024 - 04 JUL 2024	M&A	CIK SITI NUR AISHAH BINTI ISHAK [SSH]	-263	116,362	5.822	
02 JUL 2024 - 02 JUL 2024	M&A	CIK SITI NUR AISHAH BINTI ISHAK [SSH]	658	116,625	5.835	
28 JUN 2024 - 28 JUN 2024	M&A	CIK SITI NUR AISHAH BINTI ISHAK [SSH]	1,163	115,967	5.802	
03 JUL 2024 - 03 JUL 2024	MAGNI	TAN SRI DATO' SRI TAN KOK PING [DIR/CEO]	23	106,108	24.48	
03 JUL 2024 - 03 JUL 2024	MAGNI	TAN SRI DATO' SRI TAN KOK PING [SSH]	23	88,308	20.38	
01 JUL 2024 - 01 JUL 2024	MAGNI	KP HOLDINGS SDN. BHD. [SSH]	84	58,285	13.45	
01 JUL 2024 - 01 JUL 2024	MAGNI	TAN SRI DATO' SRI TAN KOK PING [DIR/CEO]	84	106,085	24.47	
01 JUL 2024 - 01 JUL 2024	MAGNI	TAN SRI DATO' SRI TAN KOK PING [SSH]	84	88,285	20.37	
28 JUN 2024 - 28 JUN 2024	MAGNI	KP HOLDINGS SDN. BHD. [SSH]	201	58,201	13.43	
28 JUN 2024 - 28 JUN 2024	MAGNI	TAN SRI DATO' SRI TAN KOK PING [DIR/CEO]	201	106,001	24.45	
28 JUN 2024 - 28 JUN 2024	MAGNI	TAN SRI DATO' SRI TAN KOK PING [SSH]	201	88,201	20.35	
02 JUL 2024 - 02 JUL 2024	MALAKOF	EMPLOYEES PROVIDENT FUND BOARD [SSH]	3,000	492,857	10.085	
01 JUL 2024 - 01 JUL 2024	MALAKOF	EMPLOYEES PROVIDENT FUND BOARD [SSH]	3,847	490,666	10.04	
28 JUN 2024 - 28 JUN 2024	MALAKOF	EMPLOYEES PROVIDENT FUND BOARD [SSH]	-816	486,819	9.961	
27 JUN 2024 - 27 JUN 2024	MALAKOF	EMPLOYEES PROVIDENT FUND BOARD [SSH]	-150	487,636	9.978	
02 JUL 2024 - 02 JUL 2024	MATRIX	EMPLOYEES PROVIDENT FUND BOARD [SSH]	-320	63,645	5.086	
03 JUL 2024 - 03 JUL 2024	MAYBANK	AMANAHRAYA TRUSTEES BERHAD - AMANAH SAHAM BUMIPUTERA [SSH]	25,000	3,773,350	31.27	
02 JUL 2024 - 02 JUL 2024	MAYBANK	EMPLOYEES PROVIDENT FUND BOARD [SSH]	-3,736	1,557,359	12.906	
02 JUL 2024 - 02 JUL 2024	MAYBANK	PERMODALAN NASIONAL BERHAD [SSH]	-25,000	762,191	6.316	
02 JUL 2024 - 02 JUL 2024	MAYBANK	YAYASAN PELABURAN BUMIPUTERA [SSH]	-25,000	762,191	6.316	
02 JUL 2024 - 02 JUL 2024	MAYBANK	AMANAHRAYA TRUSTEES BERHAD - AMANAH SAHAM BUMIPUTERA [SSH]	25,000	3,748,350	31.063	
01 JUL 2024 - 01 JUL 2024	MAYBANK	EMPLOYEES PROVIDENT FUND BOARD [SSH]	-867	1,561,095	12.937	
28 JUN 2024 - 28 JUN 2024	MAYBANK	EMPLOYEES PROVIDENT FUND BOARD [SSH]	944	1,561,963	12.944	
27 JUN 2024 - 27 JUN 2024	MAYBANK	EMPLOYEES PROVIDENT FUND BOARD [SSH]	4,806	156,109	12.936	
27 JUN 2024 - 27 JUN 2024	MAYBANK	AMANAHRAYA TRUSTEES BERHAD - AMANAH SAHAM BUMIPUTERA [SSH]	646	3,723,350	30.856	
26 JUN 2024 - 26 JUN 2024	MAYBANK	EMPLOYEES PROVIDENT FUND BOARD [SSH]	2,400	1,556,213	12.896	
02 JUL 2024 - 02 JUL 2024	MCLEAN	DECOR INDUSTRIES PTE LTD [SSH]	-28,063	23,665	12	
02 JUL 2024 - 02 JUL 2024	MCLEAN	DGC HOLDINGS PTE LTD [SSH]	-28,063	23,665	12	
02 JUL 2024 - 02 JUL 2024	MCLEAN	JCS GROUP PTE. LTD. [SSH]	-17,059	21,689	11	
02 JUL 2024 - 02 JUL 2024	MCLEAN	MISS YEO SEOW LAI [DIR/CEO]	-11,067	50	0.03	
02 JUL 2024 - 02 JUL 2024	MCLEAN	MR LIM HAN KIAU [DIR/CEO]	-28,143	23,665	12	
02 JUL 2024 - 02 JUL 2024	MCLEAN	MR LIM HAN KIAU [SSH]	-28,143	23,665	12	
02 JUL 2024 - 02 JUL 2024	MCLEAN	MR YEO HOCK HUAT [DIR/CEO]	-28,126	21,739	11.03	

Notice Period is 30th June 2024 – 06th July 2024

Effective Change Date	Stock Name	Buyer/ Seller Name [Classification]	Bought / (Sold) ('000)		No. of Shares After Trade ('000)	
			Total	Total	% Held	% Held
02 JUL 2024 - 02 JUL 2024	MCLEAN	MR YEO HOCK HUAT [SSH]	-28,126	21,739	11.03	
05 JUL 2024 - 05 JUL 2024	MENANG	MISS LIEW SOOK PIN [DIR/CEO]	6,129	93396	14.135	
05 JUL 2024 - 05 JUL 2024	MENANG	MISS LIEW SOOK PIN [SSH]	6,129	93396	14.135	
05 JUL 2024 - 05 JUL 2024	MENANG	MR TOH MAY FOOK [DIR/CEO]	6,000	118109	17.875	
05 JUL 2024 - 05 JUL 2024	MENANG	MR TOH MAY FOOK [SSH]	6,000	118,109	17.875	
05 JUL 2024 - 05 JUL 2024	MENANG	TTYC HOLDINGS SDN. BHD. [SSH]	6,000	57,009	8.628	
01 JUL 2024 - 01 JUL 2024	MENANG	MISS LIEW SOOK PIN [DIR/CEO]	10,000	87,267	15.156	
01 JUL 2024 - 01 JUL 2024	MENANG	MISS LIEW SOOK PIN [SSH]	10,000	87,267	15.156	
01 JUL 2024 - 01 JUL 2024	MENANG	MR TOH MAY FOOK [DIR/CEO]	10,000	112,109	19.471	
01 JUL 2024 - 01 JUL 2024	MENANG	MR TOH MAY FOOK [SSH]	10,000	112,109	19.471	
01 JUL 2024 - 01 JUL 2024	MENANG	TTYC HOLDINGS SDN. BHD. [SSH]	10,000	51,009	8.859	
28 JUN 2024 - 28 JUN 2024	MI	MR HENG KOK LIN [DIR/CEO]	35	2,922	0.325	
04 JUL 2024 - 04 JUL 2024	MISC	KUMPULAN WANG PERSARAAN (DIPERBADANKAN) (KWAP) [SSH]	-1,429	230,657	5.167	
02 JUL 2024 - 02 JUL 2024	MISC	EMPLOYEES PROVIDENT FUND BOARD [SSH]	-327	543,060	12.166	
03 JUL 2024 - 03 JUL 2024	MISC	KUMPULAN WANG PERSARAAN (DIPERBADANKAN) (KWAP) [SSH]	99	232,085	5.199	
01 JUL 2024 - 01 JUL 2024	MISC	EMPLOYEES PROVIDENT FUND BOARD [SSH]	-626	543,387	12.173	
28 JUN 2024 - 28 JUN 2024	MISC	EMPLOYEES PROVIDENT FUND BOARD [SSH]	714	544,012	12.187	
01 JUL 2024 - 01 JUL 2024	MISC	KUMPULAN WANG PERSARAAN (DIPERBADANKAN) (KWAP) [SSH]	10	231,987	5.197	
27 JUN 2024 - 27 JUN 2024	MISC	EMPLOYEES PROVIDENT FUND BOARD [SSH]	-87	543,299	12.171	
26 JUN 2024 - 26 JUN 2024	MISC	EMPLOYEES PROVIDENT FUND BOARD [SSH]	6,000	543,385	12.173	
02 JUL 2024 - 02 JUL 2024	MKH	TAN SRI DATUK CHEN LOK LOI [DIR/CEO]	100	255,924	44.324	
02 JUL 2024 - 02 JUL 2024	MKH	TAN SRI DATUK CHEN LOK LOI [SSH]	100	255,924	44.324	
04 JUL 2024 - 04 JUL 2024	MPI	MR MANUEL ZARAUZA BRANDULAS [DIR/CEO]	-12	300	0.151	
28 JUN 2024 - 28 JUN 2024	MRCB	LEMBAGA TABUNG HAJI [SSH]	-700	238960	5.349	
02 JUL 2024 - 02 JUL 2024	MRDIY	EMPLOYEES PROVIDENT FUND BOARD [SSH]	4,040	624789	6.61	
03 JUL 2024 - 04 JUL 2024	MRDIY	MR ONG CHU JIN ADRIAN [DIR/CEO]	-8,800	48722	0.515	
01 JUL 2024 - 01 JUL 2024	MRDIY	EMPLOYEES PROVIDENT FUND BOARD [SSH]	2,358	620749	6.568	
27 JUN 2024 - 27 JUN 2024	MRDIY	EMPLOYEES PROVIDENT FUND BOARD [SSH]	124	618391	6.543	
26 JUN 2024 - 26 JUN 2024	MRDIY	EMPLOYEES PROVIDENT FUND BOARD [SSH]	-3,072	618267	6.541	
02 JUL 2024 - 03 JUL 2024	MSTGOLF	ALL SPORTZ SDN BHD [SSH]	1,000	435437	53.046	
02 JUL 2024 - 03 JUL 2024	MSTGOLF	MR LOW KOK POH [DIR/CEO]	1,000	465327	56.687	
02 JUL 2024 - 03 JUL 2024	MSTGOLF	MR LOW KOK POH [SSH]	1,000	465327	56.687	
02 JUL 2024 - 03 JUL 2024	MSTGOLF	MR NG YAP SIO [DIR/CEO]	1,000	497704	60.632	
02 JUL 2024 - 03 JUL 2024	MSTGOLF	MR NG YAP SIO [SSH]	1,000	497704	60.632	
28 JUN 2024 - 28 JUN 2024	MYEG	KUMPULAN WANG PERSARAAN (DIPERBADANKAN) [SSH]	-2,025	425898	5.71	
04 JUL 2024 - 04 JUL 2024	NATGATE	DATO' SERI WONG SIEW HAI [DIR/CEO]	-20	6010	0.29	
02 JUL 2024 - 02 JUL 2024	NCT	DATO' SRI YAP NGAN CHOY [DIR/CEO]	110,625	945003	56.547	
02 JUL 2024 - 02 JUL 2024	NCT	DATO' SRI YAP NGAN CHOY [SSH]	110,625	945003	56.547	
02 JUL 2024 - 03 JUL 2024	NCT	DATO' YAP FOOK CHOY [DIR/CEO]	110,663	924269	55.306	
02 JUL 2024 - 03 JUL 2024	NCT	DATO' YAP FOOK CHOY [SSH]	110,663	924269	55.306	
02 JUL 2024 - 02 JUL 2024	NCT	YBG YAP CONSOLIDATED SDN. BHD. [SSH]	110,625	915556	54.785	
01 JUL 2024 - 01 JUL 2024	NCT	DATUK SERI CHIAU BENG TEIK [SSH]	-5,940	127725	7.643	
01 JUL 2024 - 02 JUL 2024	NCT	MR CHIAU HAW CHOON [SSH]	-27,910	138485	8.287	
28 JUN 2024 - 01 JUL 2024	NCT	DATO' YAP FOOK CHOY [DIR/CEO]	2,354	813606	48.684	
28 JUN 2024 - 01 JUL 2024	NCT	DATO' YAP FOOK CHOY [SSH]	2,354	813606	48.684	
02 JUL 2024 - 02 JUL 2024	NESTLE	EMPLOYEES PROVIDENT FUND BOARD [SSH]	99	27556	11.751	
01 JUL 2024 - 01 JUL 2024	NESTLE	EMPLOYEES PROVIDENT FUND BOARD [SSH]	84	27458	11.709	
28 JUN 2024 - 28 JUN 2024	NESTLE	EMPLOYEES PROVIDENT FUND BOARD [SSH]	16	27374	11.673	
27 JUN 2024 - 27 JUN 2024	NESTLE	EMPLOYEES PROVIDENT FUND BOARD [SSH]	-14	27358	11.667	
26 JUN 2024 - 26 JUN 2024	NESTLE	EMPLOYEES PROVIDENT FUND BOARD [SSH]	34	27372	11.673	
28 JUN 2024 - 28 JUN 2024	NEXGRAM	RF HOLDINGS SDN BHD [SSH]	-10,000	46616	5.245	
27 JUN 2024 - 27 JUN 2024	NHFATT	MADAM KAM FOONG KENG [DIR/CEO]	28,681	57361	34.692	
27 JUN 2024						

Notice Period is 30th June 2024 – 06th July 2024

Effective Change Date	Stock Name	Buyer/ Seller Name [Classification]	Bought / (Sold) ('000)		No. of Shares After Trade ('000)	
			Total	Total	% Held	% Held
01 JUL 2024 - 01 JUL 2024	PANAMY	EMPLOYEES PROVIDENT FUND BOARD [SSH]	-5	6270	10.322	
28 JUN 2024 - 28 JUN 2024	PANAMY	EMPLOYEES PROVIDENT FUND BOARD [SSH]	6	6275	10.329	
27 JUN 2024 - 27 JUN 2024	PANAMY	EMPLOYEES PROVIDENT FUND BOARD [SSH]	-5	6269	10.319	
27 JUN 2024 - 27 JUN 2024	PAVREIT	EMPLOYEES PROVIDENT FUND BOARD [SSH]	1,447	441,490	12.073	
02 JUL 2024 - 02 JUL 2024	PBBANK	EMPLOYEES PROVIDENT FUND BOARD [SSH]	4,671	316,787	16.32	
01 JUL 2024 - 01 JUL 2024	PBBANK	EMPLOYEES PROVIDENT FUND BOARD [SSH]	349	316,314	16.3	
28 JUN 2024 - 28 JUN 2024	PBBANK	EMPLOYEES PROVIDENT FUND BOARD [SSH]	-2,109	316,297	16.29	
26 JUN 2024 - 26 JUN 2024	PBBANK	EMPLOYEES PROVIDENT FUND BOARD [SSH]	-4,961	316,496	16.3	
02 JUL 2024 - 02 JUL 2024	PBSB	MR LOO HOOI KEAT [DIR/CEO]	263	144,592	23.971	
02 JUL 2024 - 02 JUL 2024	PBSB	MR LOO HOOI KEAT [SSH]	263	144,453	23.948	
02 JUL 2024 - 02 JUL 2024	PCHEM	EMPLOYEES PROVIDENT FUND BOARD ("EPF BOARD") [SSH]	728	937,325	11.717	
27 JUN 2024 - 27 JUN 2024	PCHEM	EMPLOYEES PROVIDENT FUND BOARD ("EPF BOARD") [SSH]	90	936,793	11.71	
04 JUL 2024 - 04 JUL 2024	PENTA	KUMPULAN WANG PERSARAAN (DIPERBADANKAN) [SSH]	-90	44,280	6.225	
04 JUL 2024 - 04 JUL 2024	PENTA	LEMBAGA TABUNG HAJI [SSH]	120	38,378	5.395	
02 JUL 2024 - 02 JUL 2024	PENTA	EMPLOYEES PROVIDENT FUND BOARD [SSH]	-177	58,750	8.259	
03 JUL 2024 - 03 JUL 2024	PENTA	KUMPULAN WANG PERSARAAN (DIPERBADANKAN) [SSH]	-43	44,371	6.238	
03 JUL 2024 - 03 JUL 2024	PENTA	LEMBAGA TABUNG HAJI [SSH]	24	38,258	5.378	
02 JUL 2024 - 02 JUL 2024	PENTA	KUMPULAN WANG PERSARAAN (DIPERBADANKAN) [SSH]	-501	44,413	6.244	
28 JUN 2024 - 28 JUN 2024	PENTA	EMPLOYEES PROVIDENT FUND BOARD [SSH]	-119	58,927	8.284	
01 JUL 2024 - 01 JUL 2024	PENTA	LEMBAGA TABUNG HAJI [SSH]	113	38,233	5.375	
27 JUN 2024 - 27 JUN 2024	PENTA	EMPLOYEES PROVIDENT FUND BOARD [SSH]	-348	59,046	8.301	
28 JUN 2024 - 28 JUN 2024	PENTA	KUMPULAN WANG PERSARAAN (DIPERBADANKAN) [SSH]	-69	44,914	6.314	
02 JUL 2024 - 02 JUL 2024	PETDAG	EMPLOYEES PROVIDENT FUND BOARD ("EPF BOARD") [SSH]	-254	122,908	12.372	
28 JUN 2024 - 28 JUN 2024	PETDAG	EMPLOYEES PROVIDENT FUND BOARD ("EPF BOARD") [SSH]	84	123,186	12.4	
26 JUN 2024 - 26 JUN 2024	PETDAG	EMPLOYEES PROVIDENT FUND BOARD ("EPF BOARD") [SSH]	80	123,129	12.394	
02 JUL 2024 - 02 JUL 2024	PETGAS	EMPLOYEES PROVIDENT FUND BOARD [SSH]	53	260,067	13.143	
01 JUL 2024 - 01 JUL 2024	PETGAS	EMPLOYEES PROVIDENT FUND BOARD [SSH]	7	260,014	13.14	
28 JUN 2024 - 28 JUN 2024	PETGAS	EMPLOYEES PROVIDENT FUND BOARD [SSH]	292	260,008	13.14	
27 JUN 2024 - 27 JUN 2024	PETGAS	EMPLOYEES PROVIDENT FUND BOARD [SSH]	268	259,716	13.125	
04 JUL 2024 - 04 JUL 2024	PGB	DATO' TAN YEE BOON [DIR/CEO]	667	10,329	1.528	
03 JUL 2024 - 03 JUL 2024	PINEAPP	MR LIM KEAN CHOONG [DIR/CEO]	30	30	0.062	
02 JUL 2024 - 02 JUL 2024	PLINTAS	EMPLOYEES PROVIDENT FUND BOARD [SSH]	-1,024	67,154	6.105	
02 JUL 2024 - 02 JUL 2024	PLINTAS	URUSHARTA JAMAHAH SDN. BHD. [SSH]	1,281	63,580	5.78	
01 JUL 2024 - 01 JUL 2024	PLINTAS	EMPLOYEES PROVIDENT FUND BOARD [SSH]	-854	68,178	6.198	
28 JUN 2024 - 28 JUN 2024	PLINTAS	EMPLOYEES PROVIDENT FUND BOARD [SSH]	-77	69,033	6.276	
27 JUN 2024 - 27 JUN 2024	PLINTAS	EMPLOYEES PROVIDENT FUND BOARD [SSH]	-429	69,110	6.283	
26 JUN 2024 - 26 JUN 2024	PLINTAS	EMPLOYEES PROVIDENT FUND BOARD [SSH]	1,513	69,538	6.322	
26 JUN 2024 - 26 JUN 2024	PLINTAS	URUSHARTA JAMAHAH SDN. BHD. [SSH]	-475	62,299	5.664	
03 JUL 2024 - 03 JUL 2024	PLS	EKOVEST BERHAD [SSH]	-168	270,657	61.566	
03 JUL 2024 - 03 JUL 2024	PLS	TAN SRI DATO' LIM KANG HOO [DIR/CEO]	-168	270,657	61.566	
03 JUL 2024 - 03 JUL 2024	PLS	TAN SRI DATO' LIM KANG HOO [SSH]	-168	270,657	61.566	
02 JUL 2024 - 02 JUL 2024	PPB	EMPLOYEES PROVIDENT FUND BOARD [SSH]	235	169,954	11.947	
01 JUL 2024 - 01 JUL 2024	PPB	EMPLOYEES PROVIDENT FUND BOARD [SSH]	81	169,719	11.93	
28 JUN 2024 - 28 JUN 2024	PPB	EMPLOYEES PROVIDENT FUND BOARD [SSH]	600	169,637	11.924	
27 JUN 2024 - 27 JUN 2024	PPB	EMPLOYEES PROVIDENT FUND BOARD [SSH]	167	169,037	11.882	
26 JUN 2024 - 26 JUN 2024	PPB	EMPLOYEES PROVIDENT FUND BOARD [SSH]	240	168,870	11.871	
28 JUN 2024 - 28 JUN 2024	PTT	MR TEO SWEE LENG [DIR/CEO]	-10,100	108,291	50.115	
28 JUN 2024 - 28 JUN 2024	PTT	MR TEO SWEE LENG [SSH]	-10,100	108,291	50.115	
28 JUN 2024 - 28 JUN 2024	PTT	MR TEO SWEE PHIN [DIR/CEO]	10,100	126,811	58.686	
28 JUN 2024 - 28 JUN 2024	PTT	MR TEO SWEE PHIN [SSH]	10,100	126,811	58.686	
28 JUN 2024 - 28 JUN 2024	PUNCAK	ENCIK AZLAN SHAH BIN ROZALI [DIR/CEO]	102	491	0.11	
28 JUN 2024 - 28 JUN 2024	PUNCAK	PUAN SRI FARIDAH BINTI IDRIS [SSH]	1,800	17,694	39.562	
28 JUN 2024 - 28 JUN 2024	PUNCAK	TAN SRI ROZALI BIN ISMAIL [DIR/CEO]	-1,902	175,141	39.16	
28 JUN 2024 - 28 JUN 2024	PUNCAK	TAN SRI ROZALI BIN ISMAIL [SSH]	-1,902	175,141	39.16	
04 JUL 2024 - 04 JUL 2024	PWROOT	KUMPULAN WANG PERSARAAN (DIPERBADANKAN) [SSH]	-30	26,067	5.671	
03 JUL 2024 - 03 JUL 2024	PWROOT	KUMPULAN WANG PERSARAAN (DIPERBADANKAN) [SSH]	-35	26,097	5.677	
02 JUL 2024 - 02 JUL 2024	PWROOT	KUMPULAN WANG PERSARAAN (DIPERBADANKAN) [SSH]	-73	26,132	5.685	
02 JUL 2024 - 02 JUL 2024	QL	EMPLOYEES PROVIDENT FUND BOARD [SSH]	1,609	135,651	5.574	
01 JUL 2024 - 01 JUL 2024	QL	EMPLOYEES PROVIDENT FUND BOARD [SSH]	1,675	134,042	5.508	
28 JUN 2024 - 28 JUN 2024	QL	EMPLOYEES PROVIDENT FUND BOARD [SSH]	539	132,367	5.439	
27 JUN 2024 - 27 JUN 2024	QL	EMPLOYEES PROVIDENT FUND BOARD [SSH]	1,708	131,828	5.417	
26 JUN 2024 - 26 JUN 2024	QL	EMPLOYEES PROVIDENT FUND BOARD [SSH]	129	130,121	5.347	
01 JUL 2024 - 04 JUL 2024	RANHILL	PUAN SRI DATIN SERI TAN KAI YONG @ TAN KAY NEONG [SSH]	0.241	687,309	53.035	
01 JUL 2024 - 04 JUL 2024	RANHILL	SIPP POWER SDN BHD [SSH]	0.241	442,763	34.165	
01 JUL 2024 - 04 JUL 2024	RANHILL	YEOH TIONG LAY & SONS FAMILY HOLDINGS LIMITED [SSH]	0.241	687,309	53.035	
01 JUL 2024 - 04 JUL 2024	RANHILL	YEOH TIONG LAY & SONS HOLDINGS SDN BHD [SSH]	0.241	687,309	53.035	
01 JUL 2024 - 04 JUL 2024	RANHILL	YEOH TIONG LAY & SONS TRUST COMPANY LIMITED [SSH]	0.241	687,309	53.035	
01 JUL 2024 - 04 JUL 2024	RANHILL	YTL CORPORATION BERHAD [SSH]	0.241	687,309	53.035	
01 JUL 2024 - 04 JUL 2024	RANHILL	YTL POWER INTERNATIONAL BERHAD [SSH]	0.241	687,309	53.035	
03 JUL 2024 - 03 JUL 2024	RGT-BHD-WC	DATO' IR LOW KENG KOK [DIR/CEO]	133	133	0.193	
03 JUL 2024 - 03 JUL 2024	RGT-BHD-WC	DATO LIM YONG JIN [DIR/CEO]	153	153	0.221	
03 JUL 2024 - 03 JUL 2024	RGT-BHD-WC	DATUK LIM SEAT HOE [DIR/CEO]	19,040	19,040	27.502	
03 JUL 2024 - 03 JUL 2024	RGT-BHD-WC	DR OOI HUN PIN [DIR/CEO]	53	53	0.077	
03 JUL 2024 - 03 JUL 2024	RGT-BHD-WC	MADAM LEE SOO CHING [DIR/CEO]	243	243	0.351	
03 JUL 2024 - 03 JUL 2024	RGT-BHD-WC	MR NG CHOON KEAT [DIR/CEO]	21,362	21,362	30.856	

Notice Period is 30th June 2024 – 06th July 2024

Effective Change Date	Stock Name	Buyer/ Seller Name [Classification]	Bought / (Sold) ('000)		No. of Shares After Trade ('000)	
			Total	Total	% Held	% Held
04 JUL 2024 - 04 JUL 2024	RHBBANK	KUMPULAN WANG PERSARAAN (DIPERBADANKAN) [SSH]	-1,000	245,628	5.634	
02 JUL 2024 - 02 JUL 2024	RHBBANK	EMPLOYEES PROVIDENT FUND BOARD [SSH]	1,750	174,916	40.123	
03 JUL 2024 - 03 JUL 2024	RHBBANK	KUMPULAN WANG PERSARAAN (DIPERBADANKAN) [SSH]	-1,000	246,628	5.657	
01 JUL 2024 - 01 JUL 2024	RHBBANK	EMPLOYEES PROVIDENT FUND BOARD [SSH]	-17,000	174,717	40.083	
02 JUL 2024 - 02 JUL 2024	RHBBANK	KUMPULAN WANG PERSARAAN (DIPERBADANKAN) [SSH]	-1,000	247,628	5.68	
28 JUN 2024 - 28 JUN 2024	RHBBANK	EMPLOYEES PROVIDENT FUND BOARD [SSH]	-1,161	176,447	40.473	
27 JUN 2024 - 27 JUN 2024	RHBBANK	EMPLOYEES PROVIDENT FUND BOARD [SSH]	1,100	176,557	40.5	
26 JUN 2024 - 26 JUN 2024	RHBBANK	EMPLOYEES PROVIDENT FUND BOARD [SSH]	-2,163	176,447	40.474	
02 JUL 2024 - 03 JUL 2024	RHONEMA	TEO KWEE HOCK [SSH]	127	11,976	5.414	
02 JUL 2024 - 02 JUL 2024	SAM	EMPLOYEES PROVIDENT FUND BOARD [SSH]	-117	41,091	6.07	
01 JUL 2024 - 01 JUL 2024	SAM	EMPLOYEES PROVIDENT FUND BOARD [SSH]	-19	41,208	6.087	
29 MAY 2024 - 28 JUN 2024	SAM	EMPLOYEES PROVIDENT FUND BOARD [SSH]	-2,484	41,227	6.09	
03 JUL 2024 - 03 JUL 2024	SCABLE	DATIN SERI H'NG HSIEH LING [SSH]	-1,000	23,291	5.837	
03 JUL 2024 - 03 JUL 2024	SCABLE	DATO' H'NG CHUN HSIANG [SSH]	-1,000	23,441	5.875	
03 JUL 2024 - 03 JUL 2024	SCABLE	HNG CAPITAL SDN BHD [SSH]	-1,000	20,821	5.218	
03 JUL 2024 - 03 JUL 2024	SCABLE	TAN SRI DATO' SERI H'NG BOK SAN @ H'NG AH BA [SSH]	-1,000	20,821	5.218	
01 JUL 2024 - 01 JUL 2024	SCABLE	DATIN SERI H'NG HSIEH LING [SSH]	-553	24,291	6.088	
01 JUL 2024 - 01 JUL 2024	SCABLE	DATO' H'NG CHUN HSIANG [SSH]	-553	24,441	6.126	
01 JUL 2024 - 01 JUL 2024	SCABLE	HNG CAPITAL SDN BHD [SSH]	-553	21,821	5.469	
01 JUL 2024 - 01 JUL 2024	SCABLE	TAN SRI DATO' SERI H'NG BOK SAN @ H'NG AH BA [SSH]	-553	21,821	5.469	
03 JUL 2024 - 03 JUL 2024	SCIENTX	TAN SRI DATO' MOHD SHERIFF BIN MOHD KASSIM [DIR/CEO]	-5	805	0.052	
27 JUN 2024 - 27 JUN 2024	SCIENTX	MR LIM PENG CHEONG [DIR/CEO]	541	85,463	55.094	
27 JUN 2024 - 27 JUN 2024	SCIENTX	MR LIM PENG CHEONG [SSH]	541	84,862	54.704	
27 JUN 2024 - 27 JUN 2024	SCIENTX	MR LIM PENG JIN [DIR/CEO]	541	90,089	58.069	
27 JUN 2024 - 27 JUN 2024	SCIENTX	MR LIM PENG JIN [SSH]	541	90,071	58.063	
27 JUN 2024 - 27 JUN 2024	SCIENTX	SCIENTEX INFINITY SDN BHD [SSH]	541	71,649	46.188	
02 JUL 2024 - 02 JUL 2024	SCOMNET	EMPLOYEES PROVIDENT FUND BOARD [SSH]	301	47,414	5.533	
01 JUL 2024 - 01 JUL 2024	SCOMNET	EMPLOYEES PROVIDENT FUND BOARD [SSH]	100	47,112	5.498	
28 JUN 2024 - 28 JUN 2024	SCOMNET	EMPLOYEES PROVIDENT FUND BOARD [SSH]	271	47,013	5.486	
28 JUN 2024 - 28 JUN 2024	SCOMNET	MR SHIUE JYH-JEH @ JERRY [SSH]	-300	46,413	54.163	
27 JUN 2024 - 27 JUN 2024	SCOMNET	EMPLOYEES PROVIDENT FUND BOARD [SSH]	17	46,741	5.455	
26 JUN 2024 - 26 JUN 2024	SCOMNET	EMPLOYEES PROVIDENT FUND BOARD [SSH]	61	46,725	5.453	
02 JUL 2024 - 02 JUL 2024	SDG	EMPLOYEES PROVIDENT FUND BOARD [SSH]	1,301	110,782	16.019	
01 JUL 2024 - 01 JUL 2024	SDG	EMPLOYEES PROVIDENT FUND BOARD [SSH]	3,046	110,653	16	
28 JUN 2024 - 28 JUN 2024	SDG	EMPLOYEES PROVIDENT FUND BOARD [SSH]	724	110,348	15.956	
28 JUN 2024 - 28 JUN 2024	SDG	KUMPULAN WANG PERSARAAN (DIPERBADANKAN) [SSH]	300	46,214	6.682	
27 JUN 2024 - 27 JUN 2024	SDG	EMPLOYEES PROVIDENT FUND BOARD [SSH]	4,427	110,272	15.945	
26 JUN 2024 - 26 JUN 2024	SDG	EMPLOYEES PROVIDENT FUND BOARD [SSH]	2,263	109,834	15.881	
25 JUN 2024 - 25 JUN 2024	SDG	EMPLOYEES PROVIDENT FUND BOARD [SSH]	3,000	109,621	15.851	
28 JUN 2024 - 28 JUN 2024	SDRED	MISS TEH LIP KIM [DIR/CEO]	200	25,872	60.72	
28 JUN 2024 - 28 JUN 2024	SDRED	MISS TEH LIP KIM [SSH]	200	25,783	60.51	
04 JUL 2024 - 04 JUL 2024	SENTRAL	KUMPULAN WANG PERSARAAN (DIPERBADANKAN) [SSH]	-50	67,604	5.655	
28 JUN 2024 - 28 JUN 2024	SENTRAL	KUMPULAN WANG PERSARAAN (DIPERBADANKAN) [SSH]	-100	67,654	5.659	
03 JUL 2024 - 03 JUL 2024	SERSOL	MITSUBISHI UFJ FINANCIAL GROUP INC [SSH]	-1,245	47,223	6.456	
03 JUL 2024 - 03 JUL 2024	SERSOL	MORGAN STANLEY [SSH]	-1,245	47,223	6.456	
03 JUL 2024 - 03 JUL 2024	SHCHAN	DATO' CHOO KENG WENG [DIR/CEO]	-1,000	61,111	20.515	
03 JUL 2024 - 03 JUL 2024	SHCHAN	DATO' CHOO KENG WENG [SSH]	-1,000	61,111	20.515	
03 JUL 2024 - 03 JUL 2024	SHCHAN	MR CHOO KIN CHOONG [DIR/CEO]	-1,000	61,111	20.515	</

Notice Period is 30th June 2024 – 06th July 2024

Effective Change Date	Stock Name	Buyer/ Seller Name [Classification]	Bought / (Sold) ['000]		No. of Shares After Trade ['000]	
			Total	Total	% Held	% Held
28 JUN 2024 - 28 JUN 2024	SIMEPROP	EMPLOYEES PROVIDENT FUND BOARD [SSH]	1,855	372801	5.482	
27 JUN 2024 - 27 JUN 2024	SIMEPROP	EMPLOYEES PROVIDENT FUND BOARD [SSH]	5,934	370946	5.454	
28 JUN 2024 - 28 JUN 2024	SIMEPROP	KUMPULAN WANG PERSARAAN (DIPERBADANKAN) [SSH]	-350	441488	6.492	
26 JUN 2024 - 26 JUN 2024	SIMEPROP	EMPLOYEES PROVIDENT FUND BOARD [SSH]	1,449	365012	5.367	
03 JUL 2024 - 03 JUL 2024	SKBSHUT	MADAM CHOU LEE SIN [DIR/CEO]	1,434	29185	45.055	
03 JUL 2024 - 03 JUL 2024	SKBSHUT	MADAM CHOU LEE SIN [DIR/CEO]	2,868	78371	58.828	
03 JUL 2024 - 03 JUL 2024	SKBSHUT	MADAM CHOU LEE SIN [SSH]	2,868	78371	58.828	
03 JUL 2024 - 03 JUL 2024	SKBSHUT	MR SIN KHENG LEE [DIR/CEO]	2,868	78371	58.827	
03 JUL 2024 - 03 JUL 2024	SKBSHUT	MR SIN KHENG LEE [DIR/CEO]	1,434	29185	45.055	
03 JUL 2024 - 03 JUL 2024	SKBSHUT	MR SIN KHENG LEE [SSH]	2,868	78371	58.827	
01 JUL 2024 - 01 JUL 2024	SKPRES	EMPLOYEES PROVIDENT FUND BOARD [SSH]	500	149866	9.592	
28 JUN 2024 - 28 JUN 2024	SKPRES	EMPLOYEES PROVIDENT FUND BOARD [SSH]	-2,077	149366	9.56	
27 JUN 2024 - 27 JUN 2024	SKPRES	EMPLOYEES PROVIDENT FUND BOARD [SSH]	70	151442	9.693	
26 JUN 2024 - 26 JUN 2024	SKPRES	EMPLOYEES PROVIDENT FUND BOARD [SSH]	466	151372	9.689	
25 JUN 2024 - 25 JUN 2024	SKPRES	EMPLOYEES PROVIDENT FUND BOARD [SSH]	-42	150906	9.659	
24 JUN 2024 - 24 JUN 2024	SKPRES	EMPLOYEES PROVIDENT FUND BOARD [SSH]	81	150948	9.662	
21 JUN 2024 - 21 JUN 2024	SKPRES	EMPLOYEES PROVIDENT FUND BOARD [SSH]	-789	150867	9.656	
20 JUN 2024 - 20 JUN 2024	SKPRES	EMPLOYEES PROVIDENT FUND BOARD [SSH]	-725	151655	9.707	
13 JUN 2024 - 13 JUN 2024	SKPRES	EMPLOYEES PROVIDENT FUND BOARD [SSH]	361	152380	9.753	
12 JUN 2024 - 12 JUN 2024	SKPRES	EMPLOYEES PROVIDENT FUND BOARD [SSH]	300	152019	9.73	
11 JUN 2024 - 11 JUN 2024	SKPRES	EMPLOYEES PROVIDENT FUND BOARD [SSH]	541	151719	9.711	
05 JUN 2024 - 05 JUN 2024	SKPRES	EMPLOYEES PROVIDENT FUND BOARD [SSH]	127	151178	9.676	
04 JUN 2024 - 04 JUN 2024	SKPRES	EMPLOYEES PROVIDENT FUND BOARD [SSH]	194	151051	9.668	
30 MAY 2024 - 30 MAY 2024	SKPRES	EMPLOYEES PROVIDENT FUND BOARD [SSH]	-51	150857	9.656	
29 MAY 2024 - 29 MAY 2024	SKPRES	EMPLOYEES PROVIDENT FUND BOARD [SSH]	-326	150909	9.659	
28 MAY 2024 - 28 MAY 2024	SKPRES	EMPLOYEES PROVIDENT FUND BOARD [SSH]	-25	151235	9.68	
27 MAY 2024 - 27 MAY 2024	SKPRES	EMPLOYEES PROVIDENT FUND BOARD [SSH]	-964	151259	9.681	
02 JUL 2024 - 02 JUL 2024	SLVEST	EMPLOYEES PROVIDENT FUND BOARD [SSH]	688	41232	5.922	
01 JUL 2024 - 01 JUL 2024	SLVEST	EMPLOYEES PROVIDENT FUND BOARD [SSH]	461	40544	5.823	
28 JUN 2024 - 28 JUN 2024	SLVEST	EMPLOYEES PROVIDENT FUND BOARD [SSH]	94	40083	5.757	
27 JUN 2024 - 27 JUN 2024	SLVEST	EMPLOYEES PROVIDENT FUND BOARD [SSH]	758	39989	5.749	
26 JUN 2024 - 26 JUN 2024	SLVEST	EMPLOYEES PROVIDENT FUND BOARD [SSH]	78	39231	5.64	
02 JUL 2024 - 02 JUL 2024	SMI	HONSIN APPAREL SDN BHD [SSH]	19,677	35390	16.86	
02 JUL 2024 - 05 JUL 2024	SMI	TECHBASE INDUSTRIES BERHAD (FORMERLY KNOWN AS PROLEXUS BERHAD) [SSH]	19,677	40693	19.38	
28 JUN 2024 - 28 JUN 2024	SMRT	URUSHARTA JAMAHAH SDN. BHD. [SSH]	61	38371	8.471	
27 JUN 2024 - 27 JUN 2024	SMRT	URUSHARTA JAMAHAH SDN. BHD. [SSH]	46	38311	8.458	
04 JUL 2024 - 04 JUL 2024	SMTRACK	DATUK AZMI BIN OSMAN [DIR/CEO]	5,556	94199	7.184	
04 JUL 2024 - 04 JUL 2024	SMTRACK	DATUK AZMI BIN OSMAN [SSH]	5,556	94199	7.184	
01 JUL 2024 - 01 JUL 2024	SPRITZER	MR LAM SANG [DIR/CEO]	75	3023	0.947	
04 JUL 2024 - 04 JUL 2024	SPSETIA	KUMPULAN WANG PERSARAAN (DIPERBADANKAN) [SSH]	375	430607	9.043	
02 JUL 2024 - 02 JUL 2024	SPSETIA	EMPLOYEES PROVIDENT FUND BOARD [SSH]	500	250095	5.252	
03 JUL 2024 - 03 JUL 2024	SPSETIA	KUMPULAN WANG PERSARAAN (DIPERBADANKAN) [SSH]	375	430232	9.035	
01 JUL 2024 - 01 JUL 2024	SPSETIA	EMPLOYEES PROVIDENT FUND BOARD [SSH]	3,038	249595	5.242	
02 JUL 2024 - 02 JUL 2024	SPSETIA	KUMPULAN WANG PERSARAAN (DIPERBADANKAN) [SSH]	375	429857	9.027	
28 JUN 2024 - 28 JUN 2024	SPSETIA	EMPLOYEES PROVIDENT FUND BOARD [SSH]	3,740	246557	5.178	
27 JUN 2024 - 27 JUN 2024	SPSETIA	AMANAHRAYA TRUSTEES BERHAD - AMANAH SAHAM BUMIPUTERA [SSH]	-2,301	1052602	22.107	
27 JUN 2024 - 27 JUN 2024	SSB8	MR CHAI THAM POH [DIR/CEO]	-115	1408	0.062	
01 JUL 2024 - 04 JUL 2024	SSF	MISS LIM SU MAY [DIR/CEO]	-200	100	0.013	
02 JUL 2024 - 02 JUL 2024	SUNCON	EMPLOYEES PROVIDENT FUND BOARD [SSH]	-578	82862	6.427	
01 JUL 2024 - 01 JUL 2024	SUNCON	EMPLOYEES PROVIDENT FUND BOARD [SSH]	-611	83440	6.471	
28 JUN 2024 - 28 JUN 2024	SUNCON	EMPLOYEES PROVIDENT FUND BOARD [SSH]	151	84051	6.519	
27 JUN 2024 - 27 JUN 2024	SUNCON	EMPLOYEES PROVIDENT FUND BOARD [SSH]	248	83900	6.507	
26 JUN 2024 - 26 JUN 2024	SUNCON	EMPLOYEES PROVIDENT FUND BOARD [SSH]	-475	83651	6.488	
02 JUL 2024 - 02 JUL 2024	SUNWAY	EMPLOYEES PROVIDENT FUND BOARD [SSH]	-2,000	337687	5.99	
02 JUL 2024 - 03 JUL 2024	SUNWAY	TAN SRI DATO' (DR.) CHEW CHEE KIN [DIR/CEO]	-3,200	9202	0.16	
01 JUL 2024 - 01 JUL 2024	SUNWAY	EMPLOYEES PROVIDENT FUND BOARD [SSH]	-2,936	339687	6.02	
28 JUN 2024 - 28 JUN 2024	SUNWAY	EMPLOYEES PROVIDENT FUND BOARD [SSH]	-597	342624	6.07	
27 JUN 2024 - 27 JUN 2024	SUNWAY	EMPLOYEES PROVIDENT FUND BOARD [SSH]	4,513	343221	6.08	
26 JUN 2024 - 26 JUN 2024	SUNWAY	EMPLOYEES PROVIDENT FUND BOARD [SSH]	366	343688	6.09	
03 JUL 2024 - 04 JUL 2024	SUNWAY-PA	TAN SRI DATO' (DR.) CHEW CHEE KIN [DIR/CEO]	1,880	6401	0.65	
04 JUL 2024 - 04 JUL 2024	SUNWAY-WB	TAN SRI DATO' (DR.) CHEW CHEE KIN [DIR/CEO]	-107	2921	5.29	
02 JUL 2024 - 02 JUL 2024	SWIFT	MR LOO HOUI KEAT [DIR/CEO]	50	256078	29.003	
02 JUL 2024 - 02 JUL 2024	SWIFT	MR LOO HOUI KEAT [SSH]	50	256078	29.003	
01 JUL 2024 - 02 JUL 2024	SYS-TECH-WA	DATO' HOUI JIA HAO [DIR/CEO]	-2,128	28497	17.738	
27 JUN 2024 - 28 JUN 2024	SYS-TECH-WA	DATO' HOUI JIA HAO [DIR/CEO]	-5,867	30625	19.062	
01 JUL 2024 - 01 JUL 2024	TAKAFUL	EMPLOYEES PROVIDENT FUND BOARD [SSH]	240	128555	15.353	
27 JUN 2024 - 27 JUN 2024	TAKAFUL	EMPLOYEES PROVIDENT FUND BOARD [SSH]	186	128315	15.325	
03 JUL 2024 - 03 JUL 2024	TALIWRK	DATO' LIM CHEE MENG [SSH]	-1,125	109020	54.074	
03 JUL 2024 - 03 JUL 2024	TALIWRK	MR LIM CHIN SEAN [SSH]	-1,125	100598	49.903	
04 JUL 2024 - 04 JUL 2024	TANCO	DATO' SRI ANDREW TAN JUN SUAN [DIR/CEO]	2,000	1085621	51.856	
04 JUL 2024 - 04 JUL 2024	TANCO	DATO' SRI ANDREW TAN JUN SUAN [SSH]	2,000	1085621	51.856	
28 JUN 2024 - 28 JUN 2024	TAWIN	DATO' YEO BOON LEONG JP [DIR/CEO]	1,000	481641	14.02	
02 JUL 2024 - 04 JUL 2024	TCHONG	DATO' TAN HENG CHEW [DIR/CEO]	36	323796	49.686	
02 JUL 2024 - 04 JUL 2024	TCHONG	DATO' TAN HENG CHEW [SSH]	36	308215	47.295	
04 JUL 2024 - 04 JUL 2024	TENAGA	KUMPULAN WANG PERSARAAN (DIPERBADANKAN) [SSH]	-500	419183	7.22	
02 JUL 2024 - 02 JUL 2024	TENAGA	EMPLOYEES PROVIDENT FUND BOARD [SSH]	996	1006328	17.31	
03 JUL 2024 - 03 JUL 2024	TENAGA	KUMPULAN WANG PERSARAAN (DIPERBADANKAN) [SSH]	-112	419683	7.22	
01 JUL 2024 - 01 JUL 2024	TENAGA	EMPLOYEES PROVIDENT FUND BOARD [SSH]	-446	1005332	17.3	
28 JUN 2024 - 28 JUN 2024	TENAGA	EMPLOYEES PROVIDENT FUND BOARD [SSH]	-108	1005777	17.3	
27 JUN 2024 - 27 JUN 2024	TENAGA	EMPLOYEES PROVIDENT FUND BOARD [SSH]	883	1005885	17.38	

Notice Period is 30th June 2024 – 06th July 2024

Effective Change Date	Stock Name	Buyer/ Seller Name [Classification]	Bought / (Sold) ['000]		No. of Shares After Trade ['000]	
			Total	Total	% Held	% Held
28 JUN 2024 - 28 JUN 2024	TENAGA	KUMPULAN WANG PERSARAAN (DIPERBADANKAN) [SSH]	231	419795	7.22	
26 JUN 2024 - 26 JUN 2024	TENAGA	EMPLOYEES PROVIDENT FUND BOARD [SSH]	-770	1004960	17.36	
01 JUL 2024 - 01 JUL 2024	TGUAN	DATO' ANG POON KHIM [DIR/CEO]	167	4949	1.233	
27 JUN 2024 - 27 JUN 2024	THRIVEN	DATO' LIM CHEE MENG [SSH]	-1,483	41918	7.66	
01 JUL 2024 - 01 JUL 2024	TIMECOM	KUMPULAN WANG PERSARAAN (DIPERBADANKAN) ("KWAP") [SSH]	304	132906	7.189	
04 JUL 2024 - 04 JUL 2024	TM	KUMPULAN WANG PERSARAAN (DIPERBADANKAN) [SSH]	-256	356170	9.281	
03 JUL 2024 - 03 JUL 2024	TM	AMANAHRAYA TRUSTEES BERHAD-AMANAH SAHAM BUMIPUTERA [SSH]	-3,000	228800	5.962	
02 JUL 2024 - 02 JUL 2024	TM	EMPLOYEE PROVIDENT FUND BOARD (EPF BOARD) [SSH]	3,896	668887	17.429	
02 JUL 2024 - 02 JUL 2024	TM	AMANAHRAYA TRUSTEES BERHAD-AMANAH SAHAM BUMIPUTERA [SSH]	-3,000	231800	6.04	
01 JUL 2024 - 01 JUL 2024	TM	EMPLOYEE PROVIDENT FUND BOARD (EPF BOARD) [SSH]	4,532	664992	17.328	
01 JUL 2024 - 01 JUL 2024	TM	AMANAHRAYA TRUSTEES BERHAD-AMANAH SAHAM BUMIPUTERA [SSH]	-3,000	234800	6.118	
28 JUN 2024 - 28 JUN 2024	TM	EMPLOYEE PROVIDENT FUND BOARD (EPF BOARD) [SSH]	2,365	660459	17.21	
01 JUL 2024 - 01 JUL 2024	TM	KUMPULAN WANG PERSARAAN (DIPERBADANKAN) [SSH]	-500	356425	9.288	
28 JUN 2024 - 28 JUN 2024	TM	AMANAHRAYA TRUSTEES BERHAD-AMANAH SAHAM BUMIPUTERA [SSH]	-4,000	237800	6.196	
27 JUN 2024 - 27 JUN 2024	TM	EMPLOYEE PROVIDENT FUND BOARD (EPF BOARD) [SSH]	5,214	658094	17.148	
27 JUN 2024 - 27 JUN 2024	TM	AMANAHRAYA TRUSTEES BERHAD-AMANAH SAHAM BUMIPUTERA [SSH]	-4,390	241800	6.301	
26 JUN 2024 - 26 JUN 2024	TM	EMPLOYEE PROVIDENT FUND BOARD (EPF BOARD) [SSH]	4,324	652881	17.012	
04 JUL 2024 - 04 JUL 2024	TOPGLOV	KUMPULAN WANG PERSARAAN (DIPERBADANKAN) [SSH]	849	525219	6.557	
28 JUN 2024 - 28 JUN 2024	TRIVE	MISS DORIS WONG SING EE [DIR/CEO]	28,500	28500	2.255	
28 JUN 2024 - 28 JUN 2024	TURIYA	JAYAPALASINGAM A/L KANDIAH [DIR/CEO]	-50	50	0.022	
02 JUL 2024 - 02 JUL 2024	TWL	DATIN SEK CHIAN NEE [DIR/CEO]	36,567	1295921	22.534	
02 JUL 2024 - 02 JUL 2024	TWL	DATIN SEK CHIAN NEE [SSH]	36,567	1295921	22.534	
02 JUL 2024 - 02 JUL 2024	TWL	DATO' TAN WEI LIAN [DIR/CEO]	36,567	1295921	22.534	
02 JUL 2024 - 02 JUL 2024	TWL	DATO' TAN WEI LIAN [SSH]	36,567	1295921	22.534	
02 JUL 2024 - 02 JUL 2024	TWL	MISS TAN LEE CHIN [DIR/CEO]	36,567	1295921	22.534	
02 JUL 2024 - 02 JUL 2024	TWL	MISS TAN LEE CHIN [SSH]	36,567	1295921	22.534	
02 JUL 2024 - 02 JUL 2024	TWL	TWL CAPITAL BERHAD [SSH]	36,567	1295921	22.534	
28 JUN 2024 - 28 JUN 2024	UMCCA	MR TEE CHENG HUA [DIR/CEO]	12	59520	28.375	
01 JUL 2024 - 01 JUL 2024	UNIMECH	ENCK KHAILANUAR BIN TUN ABDUL RAHMAN [DIR/CEO]	-10	36	0.025	
01 JUL 2024 - 01 JUL 2024	UOAEV	EMPLOYEES PROVIDENT FUND BOARD ("EPF BOARD") [SSH]	45	304740	12.236	
28 JUN 2024 - 28 JUN 2024	UOAEV	EMPLOYEES PROVIDENT FUND BOARD ("EPF BOARD") [SSH]	-80	304695	12.235	
27 JUN 2024 - 27 JUN 2024	UOAEV	EMPLOYEES PROVIDENT FUND BOARD ("EPF BOARD") [SSH]	-88	304774	12.238	
26 JUN 2024 - 26 JUN 2024	UOAEV	EMPLOYEES PROVIDENT FUND BOARD ("EPF BOARD") [SSH]	-331	304863	12.241	
02 JUL 2024 - 02 JUL 2024	UTDPLT	EMPLOYEES PROVIDENT FUND BOARD [SSH]	74	29511	7.114	
01 JUL 2024 - 01 JUL 2024	UTDPLT	EMPLOYEES PROVIDENT FUND BOARD [SSH]	27	29437	7.097	
28 JUN 2024 - 28 JUN 2024	UTDPLT	EMPLOYEES PROVIDENT FUND BOARD [SSH]	-46	29409	7.09	
27 JUN 2024 - 27 JUN 2024	UTDPLT	EMPLOYEES PROVIDENT FUND BOARD [SSH]	48	29455	7.101	
26 JUN 2024 - 26 JUN 2024	UTDPLT	EMPLOYEES PROVIDENT FUND BOARD [SSH]	21	29407	7.09	
02 JUL 2024 - 02 JUL 2024	UWC	EMPLOYEES PROVIDENT FUND BOARD [SSH]	52	91343	8.289	
01 JUL 2024 - 01 JUL 2024	UWC	EMPLOYEES PROVIDENT FUND BOARD [SSH]	490	91795	8.33	
28 JUN 2024 - 28 JUN 2024	UWC	EMPLOYEES PROVIDENT FUND BOARD [SSH]	275	91306	8.286	
27 JUN 2024 - 27 JUN 2024	UWC	EMPLOYEES PROVIDENT FUND BOARD [SSH]	197	91031	8.261	
27 JUN 2024 - 27 JUN 2024	UWC	DATO' FNG MEOW CHENG [DIR/CEO]	10	554	0.05	
26 JUN 2024 - 26 JUN 2024	UWC	EMPLOYEES PROVIDENT FUND BOARD [SSH]	129	90834	8.243	
05 JUL 2024 - 05 JUL 2024	VS	MR CHONG CHIN SIONG [DIR/CEO]	-400	810	0.021	
04 JUL 2024 - 04 JUL 2024	VS	KUMPULAN WANG PERSARAAN [SSH]	-2,300	279702	7.262	
02 JUL 2024 - 02 JUL 2024	VS	EMPLOYEES PROVIDENT FUND BOARD [SSH]	2,897	296716	7.704	
04 JUL 2024 - 04 JUL 2024	VS	DATUK GAN SEM YAM [DIR/CEO]	-5,000	202263	5.252	
03 JUL 2024 - 03 JUL 2024	VS	KUMPULAN WANG PERSARAAN [SSH]	-2,000	282002	7.322	
01 JUL 2024 - 01 JUL 2024	VS	EMPLOYEES PROVIDENT FUND BOARD [SSH]	402	293819	7.629	
03 JUL 2024 - 03 JUL 2024	VS	DATO' GAN TIONG SIA [DIR/CEO]	660	64876	1.684	
02 JUL 2024 - 02 JUL 2024	VS	KUMPULAN WANG PERSARAAN [SSH]	-2,000	284002	7.374	
28 JUN 2024 - 28 JUN 2024	VS	EMPLOYEES PROVIDENT FUND BOARD [SSH]	4,661	293417	7.618	
01 JUL 2024 - 01 JUL 2024	VS	KUMPULAN WANG PERSARAAN [SSH]	-7,000	286002	7.429	
27 JUN 2024 - 27 JUN 2024	VS	EMPLOYEES PROVIDENT FUND BOARD [SSH]	-3,618	288757	7.501	
28 JUN 2024 - 28 JUN 2024	VS	KUMPULAN WANG PERSARAAN [SSH]	-2,551	293002	7.611	
26 JUN 2024 - 26 JUN 2024	VS	EMPLOYEES PROVIDENT FUND BOARD [SSH]	-7,292	292375		



The Board of Directors of **AGX Group Berhad (AGX)** wishes to announce that the Company had on 3 July 2024 entered into a shareholders' agreement with Dang Huynh Ba Thanh and Lam Minh Tu for the subscription of 180,000 shares representing 60% equity interest in AGX Logistics Co., Ltd for a total cash consideration of VND1,800,000,000 (approximately equivalent to RM334,000). The shareholders' agreement entails the shareholders' rights and obligations, management, operation of the business, and board reserved matters.

[READ MORE](#)



BONIA CORPORATION BERHAD
(223934-T)

Further to the Company's Announcement¹, the Board of **Bonia Corporation Berhad (BONIA)** wishes to inform that the Company had on 09 July 2024, inked a subscription agreement with ITSH to formalise the subscription by Bonia of 6,669,231 new ordinary shares equivalent to or representing 30% of the total enlarged number of issued shares of ITSH at the total subscription consideration of RM7,500,217.18.

[READ MORE](#)



CapitaLand Malaysia REIT Management Sdn. Bhd., the manager of **CapitaLand Malaysia Trust (CLMT)**, wishes to announce that it will release the unaudited financial results of CLMT for the second quarter ended 30 June 2024 after 5.00 p.m. on Wednesday, 24 July 2024.

[READ MORE](#)



MClean Technologies Berhad (MCLEAN) is pleased to announce its successful board restructuring following the strategic acquisition by Accrelist Ltd. that was completed on 2 July

2024. This significant move aligns MClean Technologies with Accrelist's ambitious goals for growth.



On behalf of the Board of Directors of **QL Resources Berhad (QL)**, UOB Kay Hian Securities (M) Sdn

Bhd wishes to announce that the Company proposes to undertake a bonus issue of up to 1,216,828,569 new ordinary shares in QL on the basis of 1 Bonus Share for every 2 existing ordinary shares in QL held by the shareholders of QL whose names appear in the Company's Record of Depositors on an entitlement date to be determined and announced later, upon the receipt of all relevant approvals.



On behalf of the Board of **Rimbunan Sawit Berhad (RSAWIT)**, RHB Investment Bank wishes to announce that the Disposals have been completed today following the receipt of the payment of the total balance disposal

consideration by the Vendors from MSBPSB in accordance with the terms and conditions of the CSPAs.





Pursuant to Paragraph 8.23(2) (e) of the Main Market Listing Requirements of Bursa Malaysia Securities Berhad, the Board of Directors of **Titijaya Land Berhad**

(**TTJYA**) wishes to announce the financial assistance provided by its wholly-owned moneylending subsidiary, Titijaya Capital Sdn. Bhd., pursuant to its ordinary course of business for the quarter ended 30 June 2024.



TAN CHONG MOTOR HOLDINGS BERHAD
(12969-P)

Pursuant to paragraph 8.23(2)(e) of the Main Market Listing Requirements of Bursa Malaysia Securities Berhad, the Board of Directors of **Tan Chong Motor Holdings Berhad (TChong)** is pleased to announce the information in relation to the loans extended by TC Capital Resources Sdn. Bhd., a wholly-owned subsidiary of TCMH, in the ordinary course of its business as a licensed money lender for the second quarter ended 30 June 2024.



ELK-Desa Resources Berhad (ELKDESA) wishes to announce the money lending activities of its wholly owned subsidiary, ELK-Desa Capital Sdn Bhd for the quarter ended 30 June 2024.





On behalf of the Board of Directors of **Capital A Berhad (CAPITALA)**, RHB Investment Bank Berhad wishes to announce

that the Company had on 9 July 2024 submitted an application to Bursa Malaysia Securities Berhad to vary its application for an extension of time until 31 December 2024 for the Company to submit its regularisation plan to Bursa Securities. Notwithstanding that, the Board wishes to highlight that the Board endeavours to submit a regularisation plan to Bursa Securities by 30 August 2024 and that the Company together with its advisers are working closely to achieve the target submission date. For clarity, the Company has applied for additional time to submit its regularisation plan to cater for any contingencies that may cause a delay in the submission of its regularisation plan beyond the targeted submission date.



Disclaimer: The information in the Investor Relations page is extracted from individual companies' announcements in www.bursamalaysia.com. The information on this page is provided as a service to readers. We assume no liability for damages resulting from or arising out of the use of such information. Whilst every effort is made to ensure accuracy, the information presented has been simplified for your reading pleasure. Readers are advised to read the original and complete filings on the Bursa Malaysia website at https://www.bursamalaysia.com/market_information/announcements/company_announcement

Upcoming IPO					
NAME OF COMPANY	OFFER PERIOD		ISSUE PRICE (Per Ordinary Share)	LISTING SOUGHT	DATE OF LISTING
	OPENING	CLOSING			
EPB GROUP BERHAD	27 June 2024	31 July 2024	RM0.56	ACE MARKET	23 Aug 2024
KUCINGKO BERHAD	28 June 2024	12 July 2024	RM0.30	ACE MARKET	26 July 2024
WELL CHIP GROUP BERHAD	26 June 2024	10 July 2024	RM1.15	ACE MARKET	23 July 2024
BWYS GROUP BERHAD	18 June 2024	5 July 2024	RM0.22	ACE MARKET	22 July 2024