

# Invest

A Weekly e-Publication by SHAREINVESTOR

ISSUE

236

FRIDAY  
13 DECEMBER  
2024

Scan/Click QR to Register



Via email, every Friday

## MARKET SENTIMENTS

- Strong digital ecosystem will help elevate Malaysia to high-income nation status - PM Anwar on page 28
- Microsoft launches AIForMYFuture to equip 800,000 Malaysians with AI skills by end-2025 on page 29
- Nine-month approved investments up 10.7% y-o-y to **RM254.7 billion** - Zafrul on page 32

## ALSO

### COMPANY SPOTLIGHT

Datasonic Group Berhad

See more on page 06

### From MSWG's The Observer

Time Is Running Out

See more on pages 36-41

BEHIND THE TICKER  
DECODING COMPANY FUNDAMENTALS

Invest | 19



He has been associated with the Securities Group for many years holding the post of the Managing Director, Equity and Fixed Income, and the Managing Director, Equity and Fixed Income, and the Managing Director, Equity and Fixed Income.

## Is there an investment opportunity in STEELCASE

### SUMMARY

- Steelcase Inc. (NYSE:SCS) is undergoing a turnaround after a challenging decade of little revenue growth.
- The company has seen volatile profits and a decline in key metrics like operating margin and asset turnover, although it has improved its contribution margin and controlled expenses.

The author has no position in the securities mentioned in this article. The views expressed here are solely for informational purposes and do not constitute an offer or recommendation to buy or sell any security. The author is not a financial advisor and the information provided here is not intended to be used as a basis for investment decisions. The author is not a financial advisor and the information provided here is not intended to be used as a basis for investment decisions.

See more on pages 19-26

04 LEADERBOARD

05 SHARIAH HOT STOCKS

08 SHARIAH MOMENTUM UP STOCKS

10 NON SHARIAH HOT STOCKS

11 UP TRENDING STOCKS

12 VALUE STOCKS

13 GROWTH STOCKS

15 DIVIDEND STOCKS

16 BROKERS' CALL

17 LONG COMPANIES

35 REGIONAL MARKETS

42 INSIDER ACTIVITY

46 SPECIAL EVENTS

50 INVESTOR RELATIONS

# SHAREINVESTOR®

An AlphaInvest Company

Invest with Knowledge

## INVESTOR PLATFORMS

**Director**  
Darren Chong  
darren.chong@shareinvestor.com

**Business Development Manager**  
Jay Cheong  
jay.cheong@shareinvestor.com

**Product & Marketing Manager**  
Daniel Wong  
daniel.wong@shareinvestor.com

## ADMIN & OPERATIONS

**Senior Executive**  
Watie Nordin  
watie.nordin@shareinvestor.com

**Executive**  
Silas Emmanuel Joseph  
silas.joseph@shareinvestor.com

## PROCESS AUTOMATION & DATA ANALYTICS

**Data Analyst**  
Tan Yong Sheng

## INVESTOR RELATIONS

**Group Managing Director & Publisher**  
Edward Stanislaus  
edward@shareinvestor.com

**Senior Manager**  
Letticia Wong  
letticia.wong@shareinvestor.com

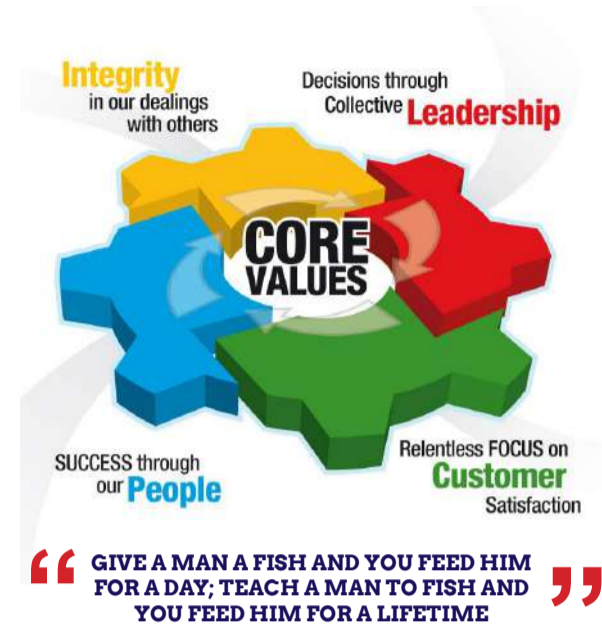
**Manager**  
Aida Norzeti Talib  
aida.norzeti@shareinvestor.com

## Inve\$t WEEKLY

**Senior Manager**  
**Advertising Sales & Marketing**  
Tang Kooi Ching  
kooiching.tang@shareinvestor.com  
+6016- 403 2789

## ALPHAINVEST HOLDINGS BOARD OF DIRECTORS

<b>Chairman</b>	Patrick Daniel
<b>Group CEO</b>	Christopher Lee
<b>Group COO</b>	Lim Dau Hee
<b>Group MD</b>	Shanison Lin

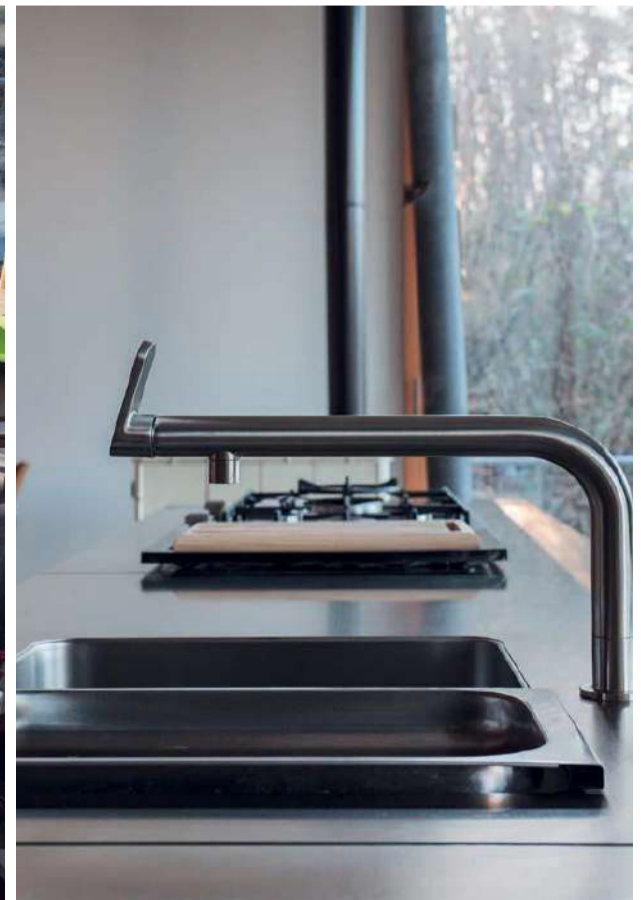


**ShareInvestor Malaysia Sdn. Bhd.**  
(200001023956) (526564-M)  
L15-03 & 03A, PJX HM Shah Tower,  
No 16A, Jalan Persiaran Barat, PJS 52,  
46200 Petaling Jaya, Selangor

Hotline : 603 8681 0580  
Mobile : 011 6343 8939  
Website : [www.ShareInvestor.com.my](http://www.ShareInvestor.com.my)  
[www.alphainvestholdings.com](http://www.alphainvestholdings.com)  
[www.Facebook.com/ShareInvestorMalaysia](http://www.Facebook.com/ShareInvestorMalaysia)

**ADVERTISEMENT ENQUIRY**

bulthaup takes care of the details so that you can enjoy a harmonious environment.



**XTRA**

XTRA FURNITURE SDN BHD  
The Gardens Mall, Mid Valley City  
[xtrafurniture.com/bulthaup](http://xtrafurniture.com/bulthaup)  
[fb.com/bulthaupmalaysia](https://fb.com/bulthaupmalaysia)

bulthaup



Endorsed by **Chiropractic Associations in  
USA, Australia & Singapore**

**ISO9001 (quality) & ISO14001 (environment)**



Rome recliner ↗

↘ Tokyo recliner



**XTRA**

[www.shareinvestor.com](http://www.shareinvestor.com) - market data at your fingertips



ShareInvestor WebPro ([www.shareinvestor.com/my](http://www.shareinvestor.com/my))

Prices > Stock Prices > Bursa > click Stocks tab

1. mouse over Ranking > select Top Active > all Shariah stocks are denoted with an [S] > mouse over Column Layout > select Edit Customs > select Name > select Volume > select Last Done Price > Mouse Over Column Layout > select Custom
2. mouse over Ranking > select Top Turnover > all Shariah stocks are denoted with an [S] > mouse over Column Layout > select Edit Customs > select Name > select Last Done Price > select Value > Mouse Over Column Layout > select Custom
3. mouse over Ranking > select Top Gainers (Over 5 Trading Days) > mouse over Column Layout > select Edit Customs > select Name > select Last Done Price > select 5 Days Change > select 5 Days % Change > Mouse Over Column Layout > select Custom
4. mouse over Ranking > select Top Losers (Over 5 Trading Days)
5. mouse over Ranking > select Top % Gainers (Over 5 Trading Days)
6. mouse over Ranking > select Top % Losers (Over 5 Trading Days)

### Shariah Top Actives (as at Yesterday)

Name	Price (RM)	Volume
ZENTECH [S]	0.005	1,623,064.000
TWL [S]	0.030	1,467,217.000
AIZO [S]	0.130	513,341.000
TMK [S]	1.920	474,905.000
KPJ [S]	2.340	443,949.000
DSONIC [S]	0.430	413,404.000
VELESTO [S]	0.160	391,784.000
MYEG [S]	0.945	384,861.000
DNEX [S]	0.400	377,336.000
TOPGLOV [S]	1.320	286,917.000

### Shariah Top Turnover (as at Yesterday)

Name	Price (RM)	Value (RM)
KPJ [S]	2.340	102,344,327
TENAGA [S]	13.560	100,009,956
TMK [S]	1.920	93,648,158
IHH [S]	7.170	89,168,885
GAMUDA [S]	9.600	77,575,107
SUNWAY [S]	4.600	59,154,506
INARI [S]	3.000	47,539,920
TOPGLOV [S]	1.320	38,310,073
NATGATE [S]	2.520	37,695,834
MYEG [S]	0.945	36,405,312

### Top Gainers (over 5 Trading days as at Yesterday)

Name	Price (RM)	Change (RM)
NESTLE	98.780	+1.160
DLADY	30.700	+0.680
GAMUDA	9.600	+0.480
ATECH	3.380	+0.350
FAREAST	3.700	+0.220
HEIM	24.000	+0.220
EDARAN	1.910	+0.210
AZAMJAYA	1.020	+0.195
SKYGATE	0.940	+0.195
BLDPLNT	11.480	+0.180

### Top % Gainers (over 5 Trading days as at Yesterday)

Name	Price (RM)	Change (%)
MMM	0.095	+35.71
CARZO	0.400	+33.33
MICROLN	0.200	+29.03
SKYGATE	0.940	+26.17
FOCUS	0.025	+25.00
REACH	0.025	+25.00
TAWIN	0.025	+25.00
AZAMJAYA	1.020	+23.64
AEM	0.080	+23.08
JHM	0.470	+20.51

### Top Losers (over 5 Trading days as at Yesterday)

Name	Price (RM)	Change (RM)
PETGAS	17.100	-0.760
CARLSBG	20.440	-0.420
KLK	21.300	-0.380
PPB	12.700	-0.380
TAANN	4.240	-0.350
GASMSIA	4.170	-0.330
AYER	7.120	-0.280
HLFG	18.220	-0.280
PETDAG	20.520	-0.280
UTDPLT	31.240	-0.260

### Top % Losers (over 5 Trading days as at Yesterday)

Name	Price (RM)	Change (%)
SANICHI	0.015	-90.00
ZENTECH	0.005	-50.00
SNTORIA	0.020	-33.33
MERIDIAN	0.055	-26.67
YNHPROP	0.565	-19.86
WIDAD	0.045	-18.18
LFECORP	0.270	-16.92
ALRICH	0.025	-16.67
OWG	0.275	-16.67
TALAMT	0.025	-16.67

## Price & Volume Distribution Charts (as at Yesterday)

Technical Analysis

**DEFINITION:** Shariah compliant stocks with Technical Analysis showing 5-days & 10-days Moving Average Price below Yesterday's Close over past 3 days and with Volume Spike.

**CHART GUIDE:** Volume Distribution Chart is a statistical interpretation of the current sentiment on each stock in graphical format. The highest bar categorized as >150k is likely to be traded by institutions or super dealers, while the lowest bar categorized as <15k usually represents retail investors. "Buy Up" refers to more buyers snatching up the lots queued at selling price. "Sell Down" refers to sellers selling their shares to the buying queue



ShareInvestor WebPro > Screener > Market Screener (FA & TA) > select BURSA > add criteria

**A. Criteria**

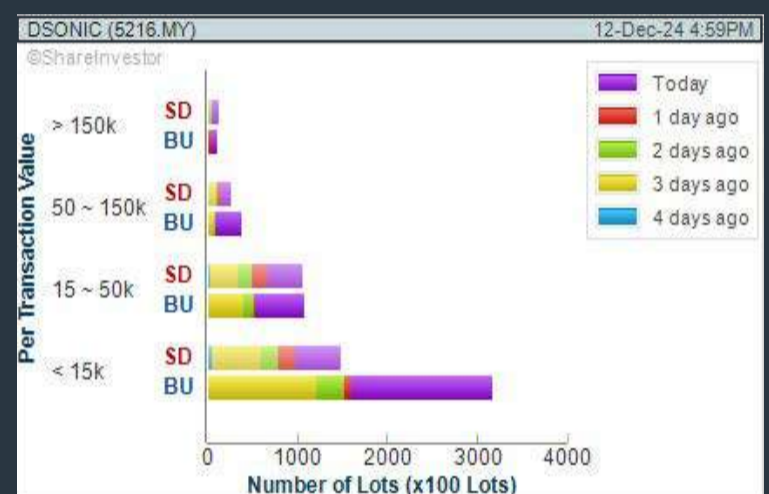
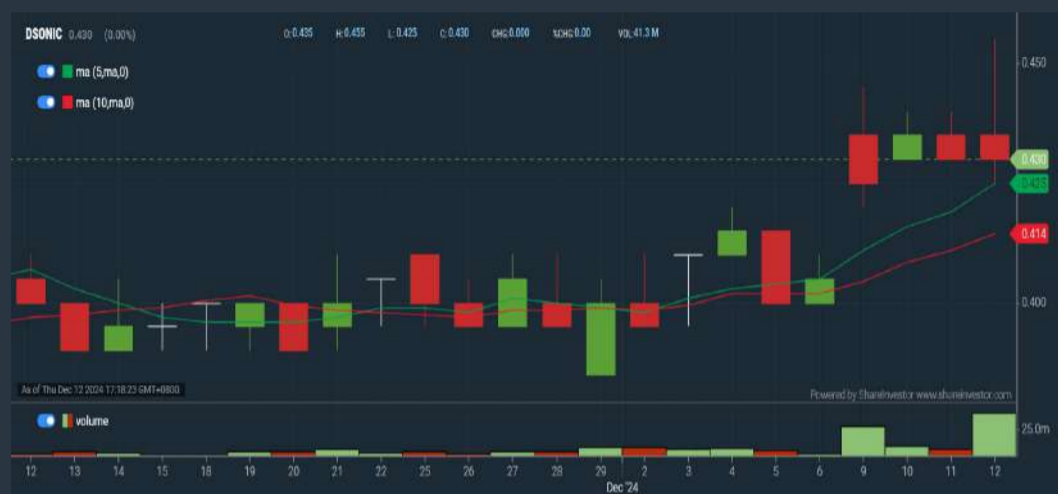
- > click Add Criteria
- Technical Analysis Conditions tab select (i) Moving Average Below Close (ii) Volume Spike
- Fundamental Analysis Conditions tab > select (iii) Revenue
- Prices & Other Conditions tab > select (iv) Is Shariah Compliant
- Technical Analysis Conditions tab select (v) Moving Average Below Close
- Prices & Other Conditions tab > select (vi) Last Done Price
- Technical Analysis Conditions tab select (vii) Moving Average Below Close

**B. Conditions (Criteria Filters)**

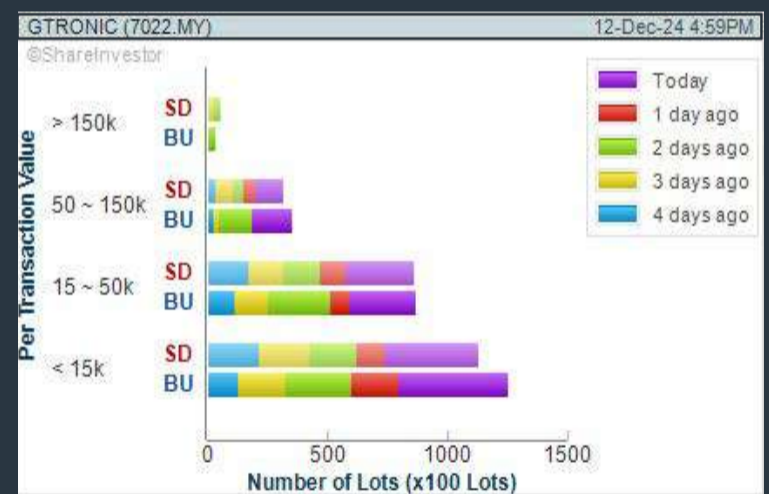
1. Moving Average Below Close - select (MA) type (5) below close price for type (3) days
2. Volume Spike - Volume type (1) greater than type (5) days average
3. Revenue ("000) - select (more than) type (1) for the past select (1) financial year(s)
4. Is Shariah Compliant - select **Yes**
5. Moving Average Below Close - select (MA) type (10) below close price for type (3) days
6. Last Done Price - select (more than) type (0.3)
7. Moving Average Below Close - select (EMA) type (5) below close price for type (3) days

- > click Save Template > Create New Template type (Shariah Hot Stocks) > click Create
- > click Save Template as > select Shariah Hot Stocks > click Save
- > click Screen Now (may take a few minutes)
- > Sort By: Select (Vol) Select (Desc)
- > Mouse over stock name > Charts > click C<sup>2</sup> Charts or Volume Distribution

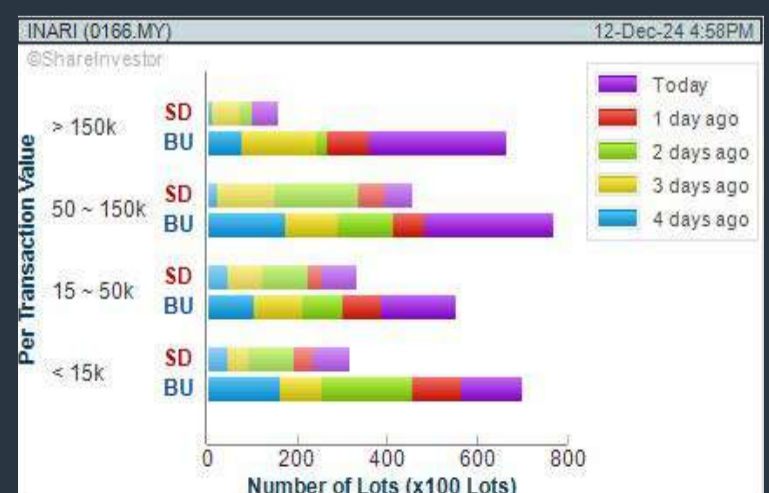
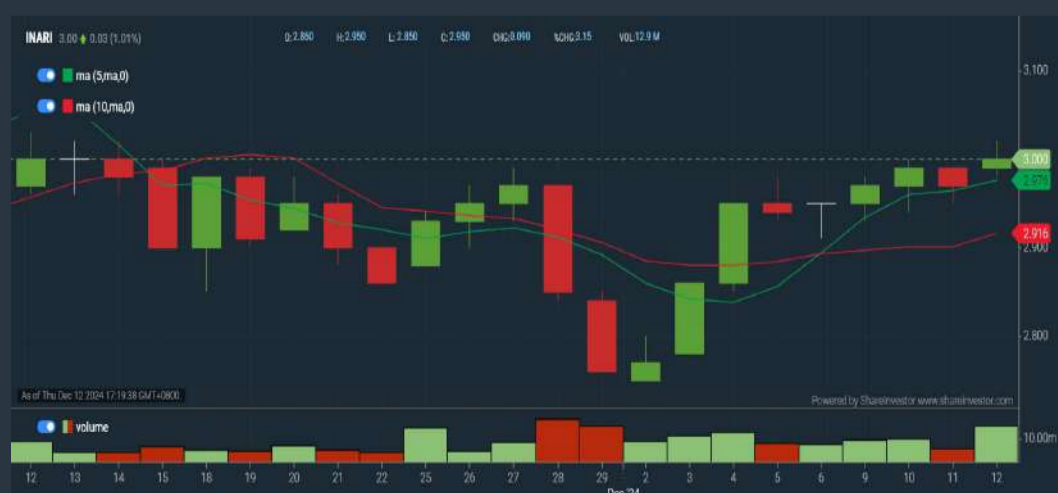
### DATASONIC GROUP BERHAD (5216) C<sup>2</sup> Chart



### GLOBETRONICS TECHNOLOGY BERHAD (7022) C<sup>2</sup> Chart



### INARI AMERTRON BERHAD (0166) C<sup>2</sup> Chart



**Disclaimer:** The information on this page is provided as a service to readers. It does not constitute financial advice and/or any investment recommendations. Past performance is not indicative of future results. We assume no liability for damages resulting from or arising out of the use of such information. It would be best if you did your own research to make your personal investment decisions wisely or consult a licenced investment advisor.

## COMPANY BACKGROUND

**Datasonic Group Berhad** is a security-based ICT solutions provider in Malaysia for mission-critical national projects. Through its subsidiaries, it is involved in the provision of ICT solutions including smart card personalisation such as secure ID or chip-based credit / debit / bank cards, customisation of software and hardware solutions, project management, consultancy, R&D and technical consultancy services. The group is also involved in manufacturing of cards.



DSONIC DATASONIC GROUP BERHAD		Updated at 12 Dec 2024 16:58	
Last (MYR): <b>0.430</b>	Change: -	High: 0.455	Remarks: s ?
Open	0.435	Low: 0.425	Yesterday's Close
Buy Price	0.425	Yesterdays Close	0.430
Buy Volume ('00)	34,297	Sell Price	0.430
Cumulative Volume ('00)	413,404	Sell Volume ('00)	2,816
		Cumulative Value	18,234,421.5

### Financial Analysis

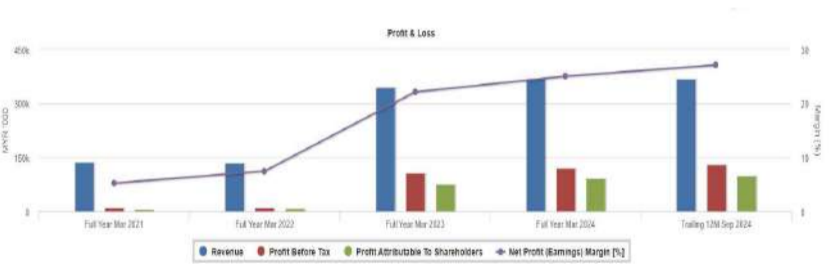
<b>Revenue Growth</b> Increasing revenue in last 2 consecutive years	😊	<b>Profit Growth</b> Increasing profit in last 3 consecutive years and min growth is 10% (with at least 4 profitable years)	😊
<b>Piotroski F Score</b> The company has above average financial strength (Piotroski F-Score of 6-7)	😊	<b>Dividend Payout</b> Dividend is increasing over the past 60 months.	😊
<b>Current Ratio</b> The company is well-positioned to cover its short-term obligations with its current assets (ratio between 1.5 to 10) for 3 consecutive years	😊	<b>Debt to Cashflow</b> High debt to cash flow for most recent year	😟
<b>Gross Profit Margin</b> Consistently high gross profit margin of at least 40% for 3 years	😊	<b>Net Earnings Margin</b> Consistently high net profit margin of at least 20% for 2 years	😊
<b>Return on Assets (ROA)</b> ROA above 10% for 2 consecutive years	😊	<b>Return on Assets (ROA)</b> ROA is improving by 5% a year over the past 36 months.	😊
<b>Return on Equity (ROE)</b> ROE above 20% for 2 consecutive years	😊	<b>Return on Equity (ROE)</b> ROE is improving by 10% a year over the past 36 months.	😊

😊 Excellent    😊 Good    😐 Neutral    😟 Be Alert    😡 Watch Out



### Historical Financials

Profit & Loss (MYR '000)



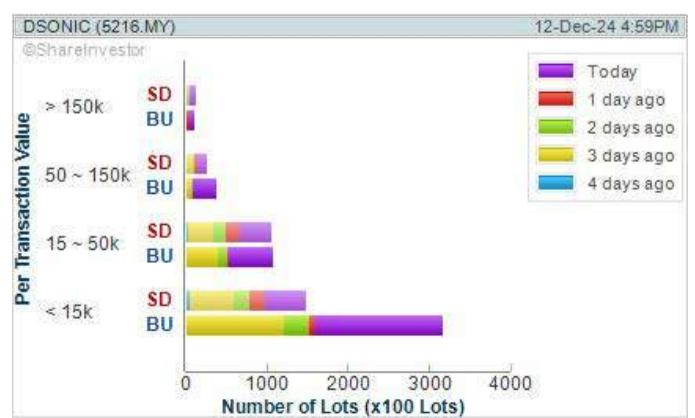
**WebPro 9-Days Free Trial Registration (worth RM10) Sign Up Now**



### Key Statistics with Total Shareholder Returns

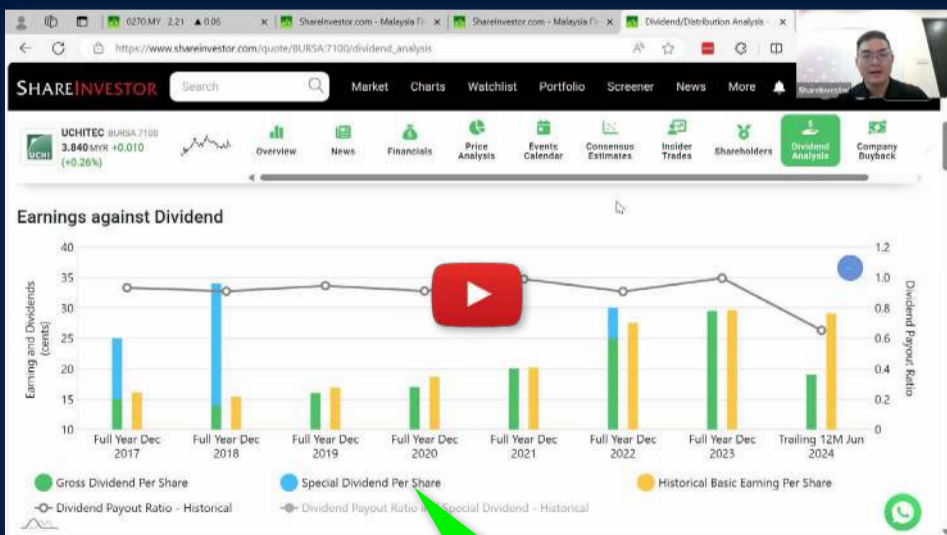
#### Total Shareholder Return

Period	Dividend Received	Capital Appreciation	Total Shareholder Return
Short Term Return	5 Days	+0.015	+3.61%
	10 Days	+0.025	+6.17%
	20 Days	+0.040	+10.26%
Medium Term Return	3 Months	-0.029	-4.44%
	6 Months	-0.120	-21.82%
	1 Year	+0.010	+2.38%
Long Term Return	2 Years	-0.065	-13.13%
	3 Years	0.003	+4.34%
	5 Years	0.037	+9.48%
Annualised Return	-	-	+2.24%



**Disclaimer:** The information on this page is provided as a service to readers. It does not constitute financial advice and/or any investment recommendations. Past performance is not indicative of future results. We assume no liability for damages resulting from or arising out of the use of such information. It would be best if you did your own research to make your personal investment decisions wisely or consult a licenced investment advisor.

# Ultimate Guide to use **ShareInvestor**



## YOU WILL LEARN HOW TO USE:

- Company Financials
- Market Screener
- Company Insider Trades
- Dividend Analysis
- Consensus Estimation  
*and more...*

**Watch  
now!**

## Price & Volume Distribution Charts (as at Yesterday)

Technical Analysis

**DEFINITION:** Shariah compliant stocks with Technical Analysis showing Bullish Momentum and Price Uptrend. The share price closed at the highest price yesterday. The typical price was higher than the previous day's typical price.

**CHART GUIDE:** Volume Distribution Chart is a statistical interpretation of the current sentiment on each stock in graphical format. The highest bar categorized as >150k is likely to be traded by institutions or super dealers, while the lowest bar categorized as <15k usually represents retail investors. "Buy Up" refers to more buyers snatching up the lots queued at selling price. "Sell Down" refers to sellers selling their shares to the buying queue.



ShareInvestor WebPro > Screener > Market Screener (FA & TA)>select BURSA>add criteria

**A. Criteria**

- > click Add Criteria
- Fundamental Analysis Conditions tab >select (i) Revenue
- Technical Analysis Conditions tab select (ii) Average Volume
- Prices & Other Conditions tab > select (iii) Last Done Price
- Prices & Other Conditions tab > select (iv) Is Shariah Compliant
- Technical Analysis Conditions tab select (v) RSI Overbought
- Technical Analysis Conditions tab select (vi) Moving Average Below Close
- Technical Analysis Conditions tab select (vii) CCI Overbought

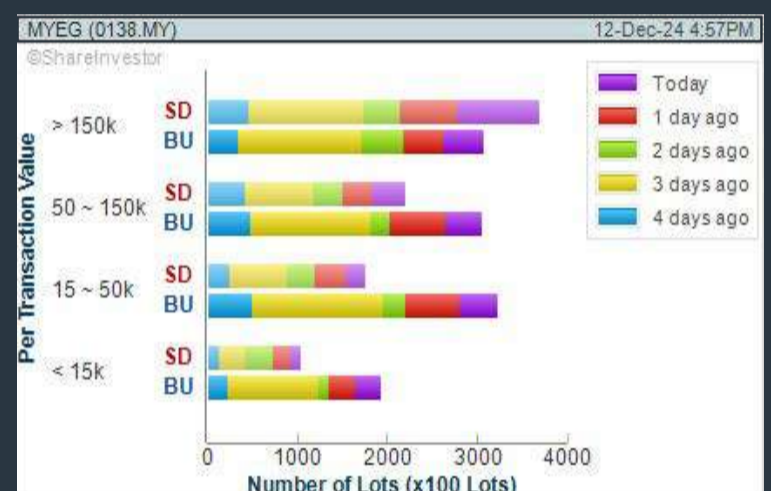
**B. Conditions (Criteria Filters)**

1. Revenue ("000) - select (more than) type (1) for the past select (1) financial year(s)
2. Average Volume - type (1) days average volume greater than type (10000) lots
3. Last Done Price - select (more than) type (0.3)
4. Is Shariah Compliant - select Yes
5. RSI Overbought - select RSI 1 above 99 for 1 days
6. Moving Average Below Close - select (MA) type (10) below close price for type (1) days
7. CCI Overbought - select CCI (2) above (0) for (1) days

- > click Save Template > Create New Template type (Shariah Momentum Up Stocks) > click Create
- > click Save Template as > select Shariah Momentum Up Stocks > click Save
- > click Screen Now (may take a few minutes)
- Sort By: Select (Vol) Select (Desc)
- Mouse over stock name > Charts > click C<sup>2</sup> Charts tab or Volume Distribution

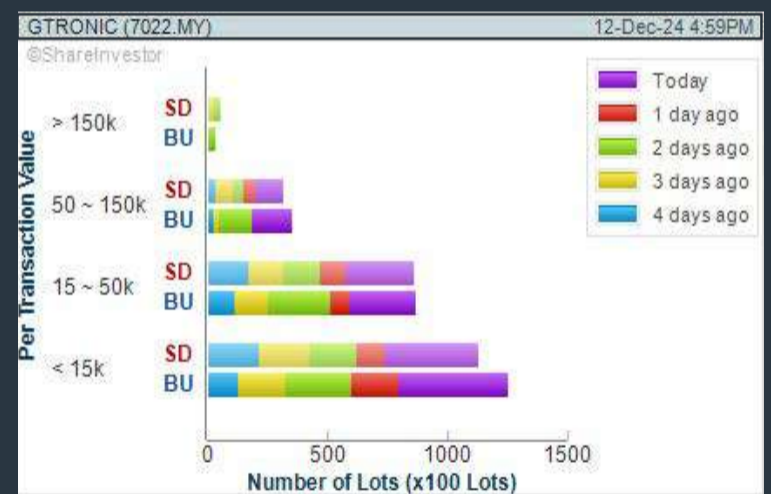
### MY E.G. SERVICES BERHAD (0138) C<sup>2</sup> Chart

Analysis



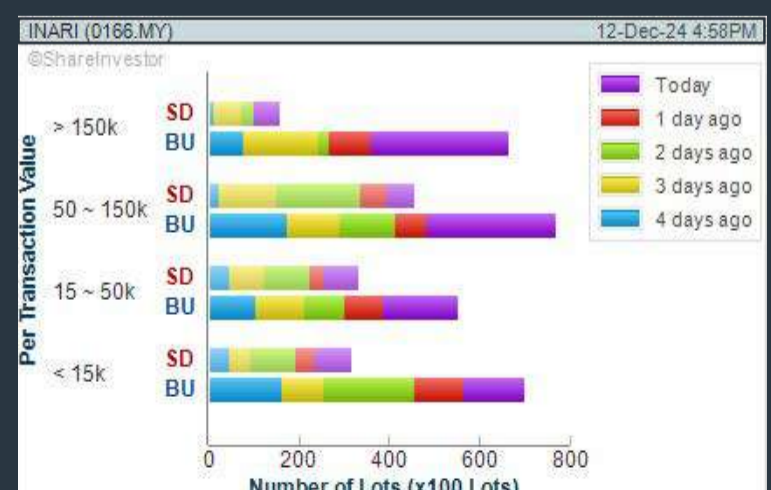
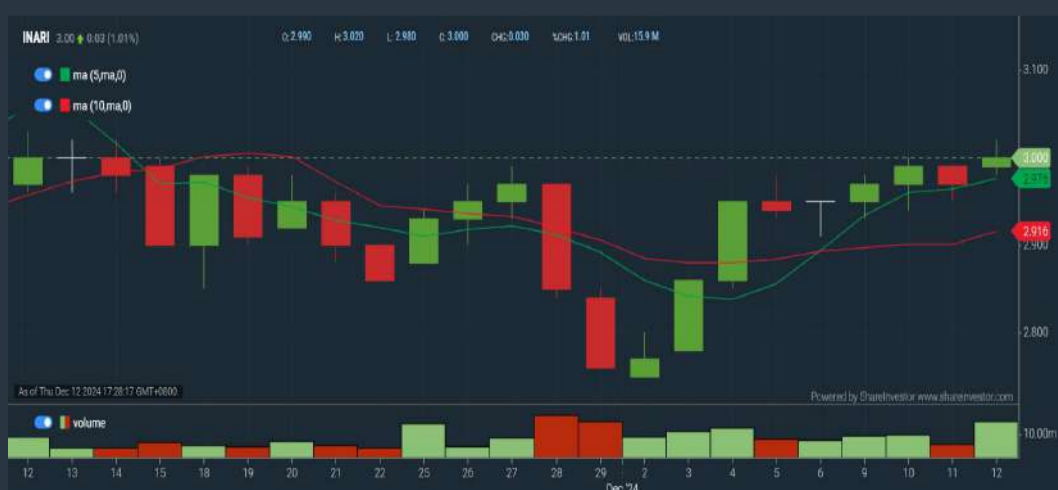
### GLOBETRONICS TECHNOLOGY BERHAD (7022) C<sup>2</sup> Chart

Analysis



### INARI AMERTRON BERHAD (0166) C<sup>2</sup> Chart

Analysis



**Disclaimer:** The information on this page is provided as a service to readers. It does not constitute financial advice and/or any investment recommendations. Past performance is not indicative of future results. We assume no liability for damages resulting from or arising out of the use of such information. It would be best if you did your own research to make your personal investment decisions wisely or consult a licenced investment advisor.



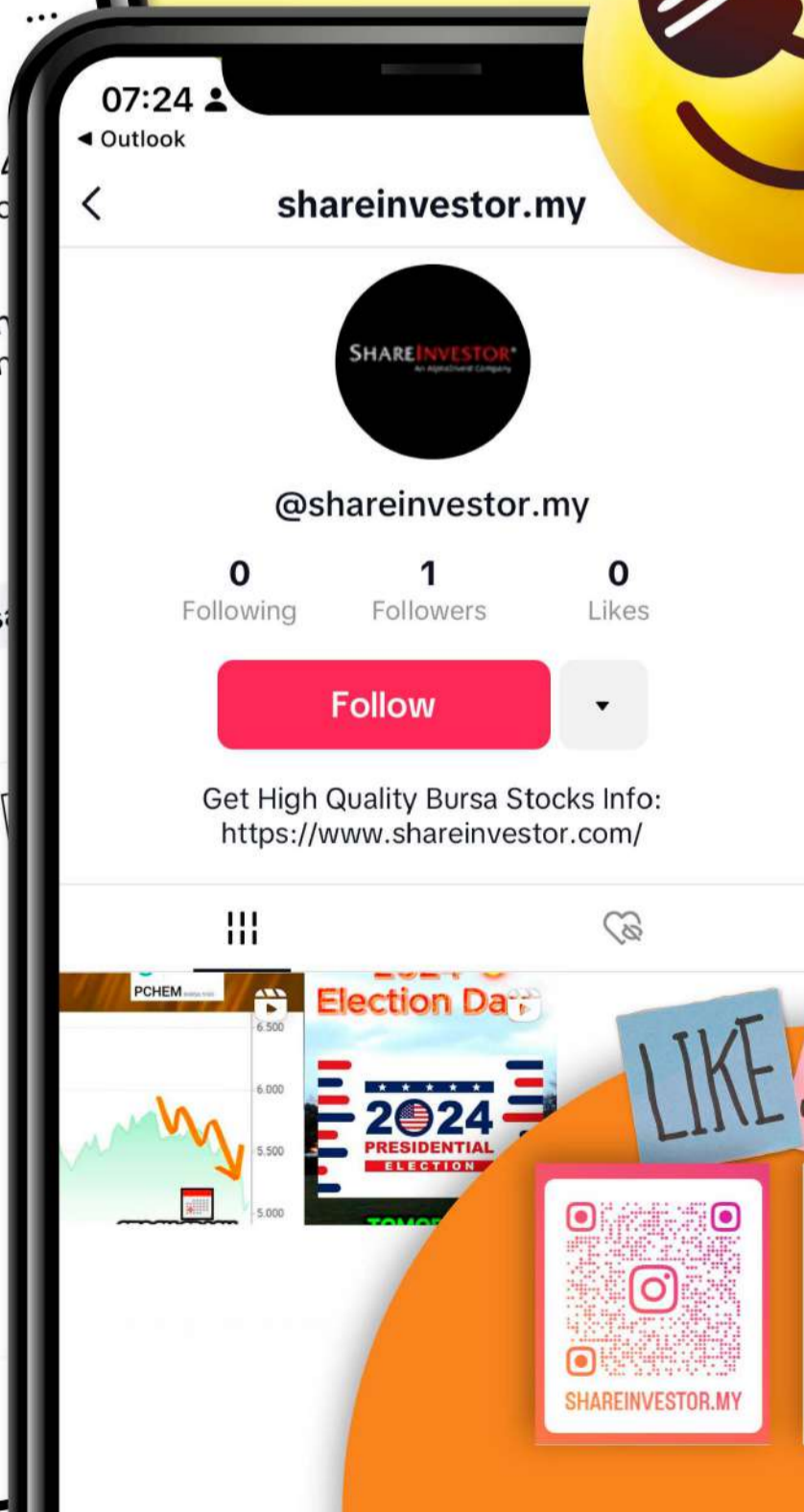
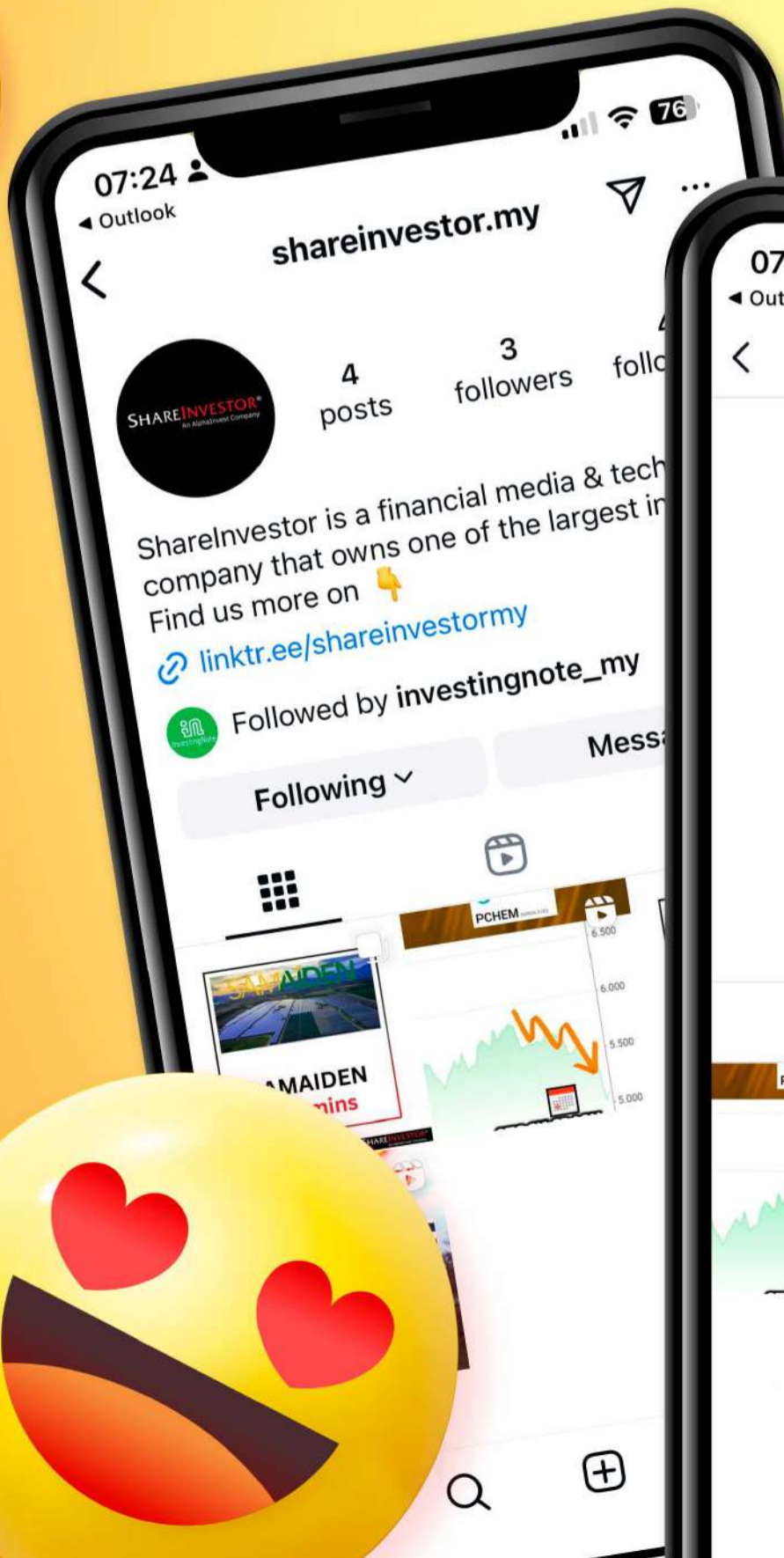
**SHAREINVESTOR**<sup>®</sup>  
An AlphaInvest Company



# We're Officially on TikTok & Instagram!



Follow us now for more information!



LIKE SHARE



## Price & Volume Distribution Charts (as at Yesterday)

Technical Analysis

**DEFINITION:** Stocks with Technical Analysis showing 5-days & 10-days Moving Average Price below Close over past 1 days and with Volume Spike

**CHART GUIDE:** Volume Distribution Chart is a statistical interpretation of the current sentiment on each stock in graphical format. The highest bar categorized as >150k is likely to be traded by institutions or super dealers, while the lowest bar categorized as <15k usually represents retail investors. "Buy Up" refers to more buyers snatching up the lots queued at selling price. "Sell Down" refers to sellers selling their shares to the buying queue.



ShareInvestor WebPro > Screener > Market Screener (FA & TA) > select BURSA > add criteria

**A. Criteria**

- > click Add Criteria
- Technical Analysis Conditions tab select (i) Moving Average Below Close (ii) Volume Spike
- Fundamental Analysis Conditions tab > select (iii) Revenue
- Prices & Other Conditions tab > select (iv) Is Shariah Compliant
- Technical Analysis Conditions tab select (v) Moving Average Below Close
- Prices & Other Conditions tab > select (vi) Last Done Price
- Technical Analysis Conditions tab select (vii) Moving Average Below Close

**B. Conditions (Criteria Filters)**

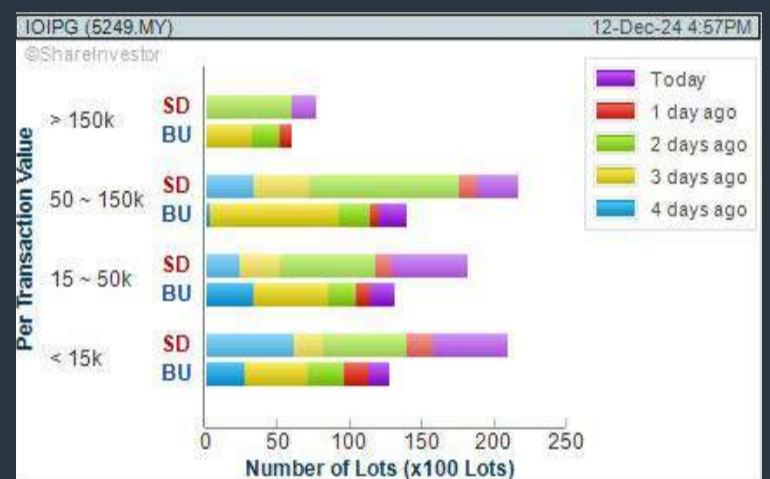
1. Moving Average Below Close - select (MA) type (5) below close price for type (3) days
2. Volume Spike - Volume type (1) greater than type (5) days average
3. Revenue ("000) - select (more than) type (1) for the past select (1) financial year(s)
4. Is Shariah Compliant - select NO
5. Moving Average Below Close - select (MA) type (10) below close price for type (1) days
6. Last Done Price - select (more than) type (0.3)
7. Moving Average Below Close - select (EMA) type (5) below close price for type (1) days

- > click Save Template > Create New Template type (Non-Shariah Hot Stocks) > click Create
- > click Save Template as > select Non-Shariah Hot Stocks > click Save
- > click Screen Now (may take a few minutes)
- Sort By: Select (Vol) Select (Desc)
- Mouse over stock name > Charts > click C<sup>2</sup> Charts tab or Volume Distribution

### IOI PROPERTIES GROUP BERHAD (5249)

C<sup>2</sup> Chart

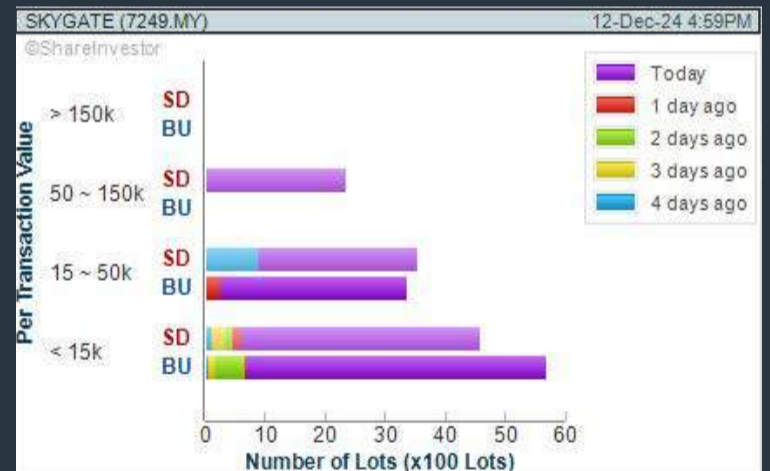
Analysis



### SKYGATE SOLUTIONS BERHAD (7249)

C<sup>2</sup> Chart

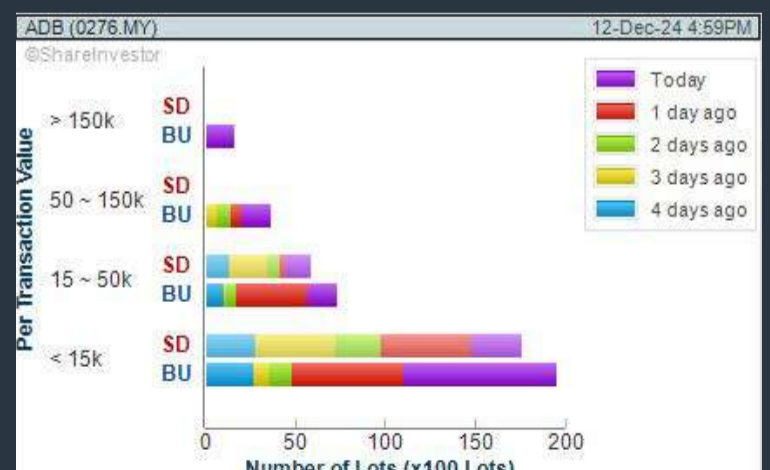
Analysis



### AUTOCOUNT DOTCOM BERHAD (0276)

C<sup>2</sup> Chart

Analysis



**Disclaimer:** The information on this page is provided as a service to readers. It does not constitute financial advice and/or any investment recommendations. Past performance is not indicative of future results. We assume no liability for damages resulting from or arising out of the use of such information. It would be best if you did your own research to make your personal investment decisions wisely or consult a licenced investment advisor.

## Price & Volume Distribution Charts (Over 3 trading days as at Yesterday)

Technical Analysis

**DEFINITION:** Stocks with Technical Analysis showing Bullish Momentum and Price Uptrend

**CHART GUIDE:** Volume Distribution Chart is a statistical interpretation of the current sentiment on each stock in graphical format. The highest bar categorized as >150k is likely to be traded by institutions or super dealers, while the lowest bar categorized as <15k usually represents retail investors. "Buy Up" refers to more buyers snatching up the lots queued at selling price. "Sell Down" refers to sellers selling their shares to the buying queue.



ShareInvestor WebPro > Screener > Market Screener (FA & TA) > select BURSA > add criteria

**A. Criteria**

- > click Add Criteria
- Fundamental Analysis Conditions tab > select (i) Revenue
- Technical Analysis Conditions tab select (ii) Moving Average Below Close
- Technical Analysis Conditions tab select (iii) Average Volume
- Prices & Other Conditions tab > select (iv) Last Done Price
- Technical Analysis Conditions tab select (v) Moving Average Below Close
- Technical Analysis Conditions tab select (v) Moving Average Bullish Crossover

**B. Conditions**

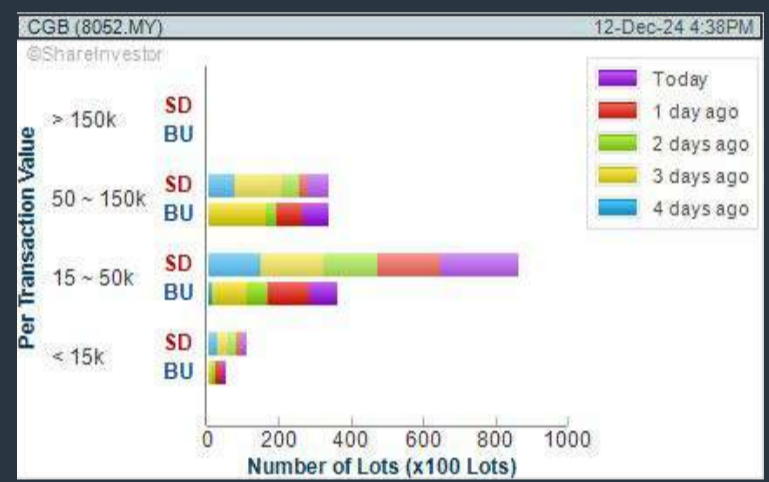
1. Revenue - select (more than) type (1) for the past select (1) financial year(s)
2. Moving Average Below Close - select (MA) type (20) below close price for type (1) days
3. Average Volume - type (5) days average volume type (10000) lots
4. Last Done Price - select (more than) type (0.3)
5. Moving Average Below Close - select (MA) type (10) below close price for type (1) days
6. Moving Average Bullish Crossover - select (MA) type (5) crossed above select (MA) type (10)

> click Save Template > Create New Template type (Non-Shariah Up-Trending Stocks) > click Create Click Save Template As > select Non-Shariah Up Trending Stocks > click Save > click Screen Now (may take a few minutes) Sort By: Select (Vol) Select (Desc) Mouse over stock name > Charts > click C<sup>2</sup> Charts tab or Volume Distribution

### CENTRAL GLOBAL BERHAD (8052)

C<sup>2</sup> Chart

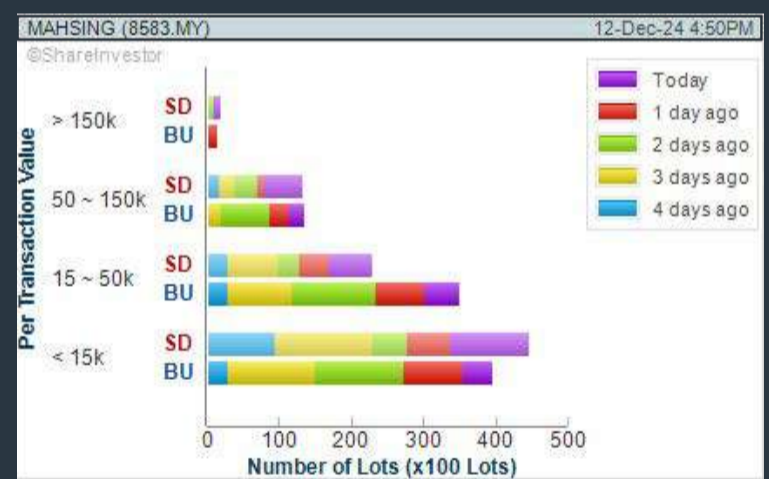
Analysis



### MAH SING GROUP BERHAD (8583)

C<sup>2</sup> Chart

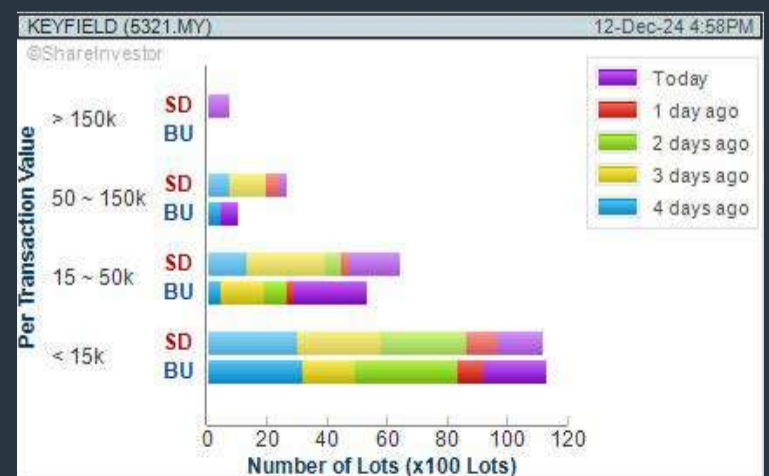
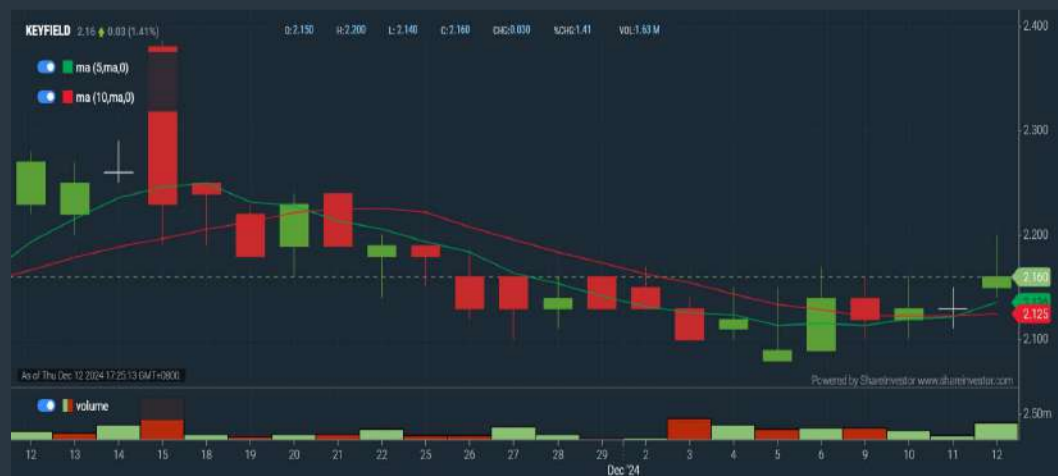
Analysis



### KEYFIELD INTERNATIONAL BERHAD (5321)

C<sup>2</sup> Chart

Analysis



**Disclaimer:** The information on this page is provided as a service to readers. It does not constitute financial advice and/or any investment recommendations. Past performance is not indicative of future results. We assume no liability for damages resulting from or arising out of the use of such information. It would be best if you did your own research to make your personal investment decisions wisely or consult a licenced investment advisor.

## Price & Total Shareholder Return (as at Yesterday)

Fundamental Analysis

**DEFINITION:** Share price of a company trading at a lower price as compared to its fundamentals (FA) such as financial performance and dividend, allowing it to be attractive to value investors.

**CHART GUIDE:** Total Shareholder Return (TSR) combines share price appreciation and dividend distributions paid to show the total return to the shareholder expressed as a percentage.



ShareInvestor WebPro > Screener > Market Screener (FA & TA) > select BURSA > add criteria

**A. Criteria**

- > click Add Criteria
- Fundamental Analysis Conditions tab (i) Price Earnings Ratio
- Fundamental Analysis Conditions tab >select (ii) CAGR of Net Earnings
- Fundamental Analysis Conditions tab >select (iii) Net Debt To Equity
- Fundamental Analysis Conditions tab >select (iv) Return On Equity (ROE)

**B. Conditions**

1. Price Earnings Ratio - select (less than) type (15) times now
2. CAGR of Net Earnings - select (more than) type (10) % for the past type (3) financial year(s)
3. Net Debt To Equity – select (less than) type (1) for the past select (1) financial year(s)
4. Return On Equity (ROE) – select (more than) type (10) % for the past select (1) financial year(s)

- > click Save Template > Create New Template type (Value Stock) > click Create
- > click Save Template as > select Value Companies > click Save
- > click Screen Now (may take a few minutes)
- Sort by: Select (PE Ratio) Select (Ascending)
- > Mouse over stock name > Factsheet > looking for Total Shareholder Return
- > Mouse over stock name > Charts > click C2 Charts tab

### LAY HONG BERHAD (9385)

C<sup>2</sup> Chart



Period	Dividend Received	Capital Appreciation	Total Shareholder Return
Short Term Return	5 Days	-0.010	-2.78%
	10 Days	-0.015	-4.11%
	20 Days	-0.020	-5.41%
Medium Term Return	3 Months	-0.025	-6.67%
	6 Months	-0.055	-13.58%
	1 Year	+0.080	+20.59%
Long Term Return	2 Years	+0.080	+20.53%
	3 Years	+0.120	+32.17%
	5 Years	0.008	-0.690
Annualised Return	Annualised	-	-4.04%

### AJINOMOTO (M) BERHAD (2658)

C<sup>2</sup> Chart



Period	Dividend Received	Capital Appreciation	Total Shareholder Return
Short Term Return	5 Days	-0.200	-1.28%
	10 Days	-0.220	-4.44%
	20 Days	-0.300	-6.46%
Medium Term Return	3 Months	-0.700	-4.51%
	6 Months	-0.120	-0.77%
	1 Year	+1.176	+8.22%
Long Term Return	2 Years	+4.819	+18.20%
	3 Years	+1.756	+11.14%
	5 Years	0.875	+2.420
Annualised Return	Annualised	-	+4.60%

### FAJARBARU BUILDER GRP BERHAD (7047)

C<sup>2</sup> Chart



Period	Dividend Received	Capital Appreciation	Total Shareholder Return
Short Term Return	5 Days	-0.015	-4.00%
	10 Days	-0.005	-1.37%
	20 Days	-0.015	-4.00%
Medium Term Return	3 Months	-0.015	-4.00%
	6 Months	-0.135	-27.27%
	1 Year	+0.000	+20.57%
Long Term Return	2 Years	+0.070	+24.14%
	3 Years	+0.020	+5.80%
	5 Years	0.010	+0.135
Annualised Return	Annualised	-	+10.83%

**Disclaimer:** The information on this page is provided as a service to readers. It does not constitute financial advice and/or any investment recommendations. Past performance is not indicative of future results. We assume no liability for damages resulting from or arising out of the use of such information. It would be best if you did your own research to make your personal investment decisions wisely or consult a licenced investment advisor.

## Price & Total Shareholder Return (as at Yesterday)

Fundamental Analysis

**DEFINITION:** Company revenue is growing and making good quality of earnings with positive Free Cash Flow.

**CHART GUIDE:** Total Shareholder Return (TSR) combines share price appreciation and distributions paid to show the total return to the shareholder expressed as a percentage.



ShareInvestor WebPro > Screener > Market Screener (FA & TA) > select BURSA > add criteria

**A. Criteria**

1. Fundamental Analysis Conditions tab >select (i) Free Cash Flow, (ii) Revenue Growth, (iii) Gross Profit (Earnings) Margin, (iv) Quality of Earnings, (v) Total Shareholder Returns, > click Add Criteria
2. Fundamental Analysis Conditions tab >select (vi) Total Shareholder Returns > click Add Criteria

**B. Conditions (Criteria Filters)**

1. Free Cash Flow - select (more than) type (1) for the past select (1) financial year(s)
2. Revenue Growth - select (more than) type (1) for the past select (1) financial year(s)
3. Gross Profit (Earnings) Margin - select (more than) type (30) % for the past select (1) financial year(s)
4. Quality of Earnings - select (more than) type (1) for the past select (1) financial year(s)
5. Total Shareholder Return - select (more than) type (5) % for the past select (3) financial year(s)
6. Total Shareholder Return - select (more than) type (5) % for the past select (5) financial year(s)

- > click Save Template > Create New Template type (Growth Companies) > click Create
- > click Save Template as > select Growth Companies > click Save
- > click Screen Now (may take a few minutes)
- > Sort By: Select (Revenue Growth) Select (Desc)
- > Mouse over stock name > Factsheet > looking for Total Shareholder Return

## CHIN TECK PLANTATIONS BHD (1929)

C<sup>2</sup> Chart

Analysis



Period	Dividend Received	Capital Appreciation	Total Shareholder Return
Short Term Return	5 Days	+0.040	+0.46 %
	10 Days	+0.230	+2.84 %
	20 Days	+0.240	+2.96 %
Medium Term Return	3 Months	+0.040	+1.20 %
	6 Months	+0.997	+13.58 %
	1 Year	+0.958	+12.98 %
Long Term Return	2 Years	+0.048	+0.59 %
	3 Years	0.150	+2.04 %
	5 Years	0.590	+8.20 %
Annualised Return	Annualised	-	+6.73 %

## BAHVEST RESOURCES BERHAD (0098)

C<sup>2</sup> Chart

Analysis



Period	Dividend Received	Capital Appreciation	Total Shareholder Return
Short Term Return	5 Days	-0.036	-3.57 %
	10 Days	-0.065	-7.43 %
	20 Days	-0.066	-8.50 %
Medium Term Return	3 Months	+0.245	+30.38 %
	6 Months	+0.100	+12.57 %
	1 Year	+0.335	+41.53 %
Long Term Return	2 Years	+0.585	+72.57 %
	3 Years	+0.375	+46.21 %
	5 Years	+0.320	+39.31 %
Annualised Return	Annualised	-	+10.58 %

## MALAYSIA AIRPORTS HOLDINGS BERHAD (5014)

C<sup>2</sup> Chart

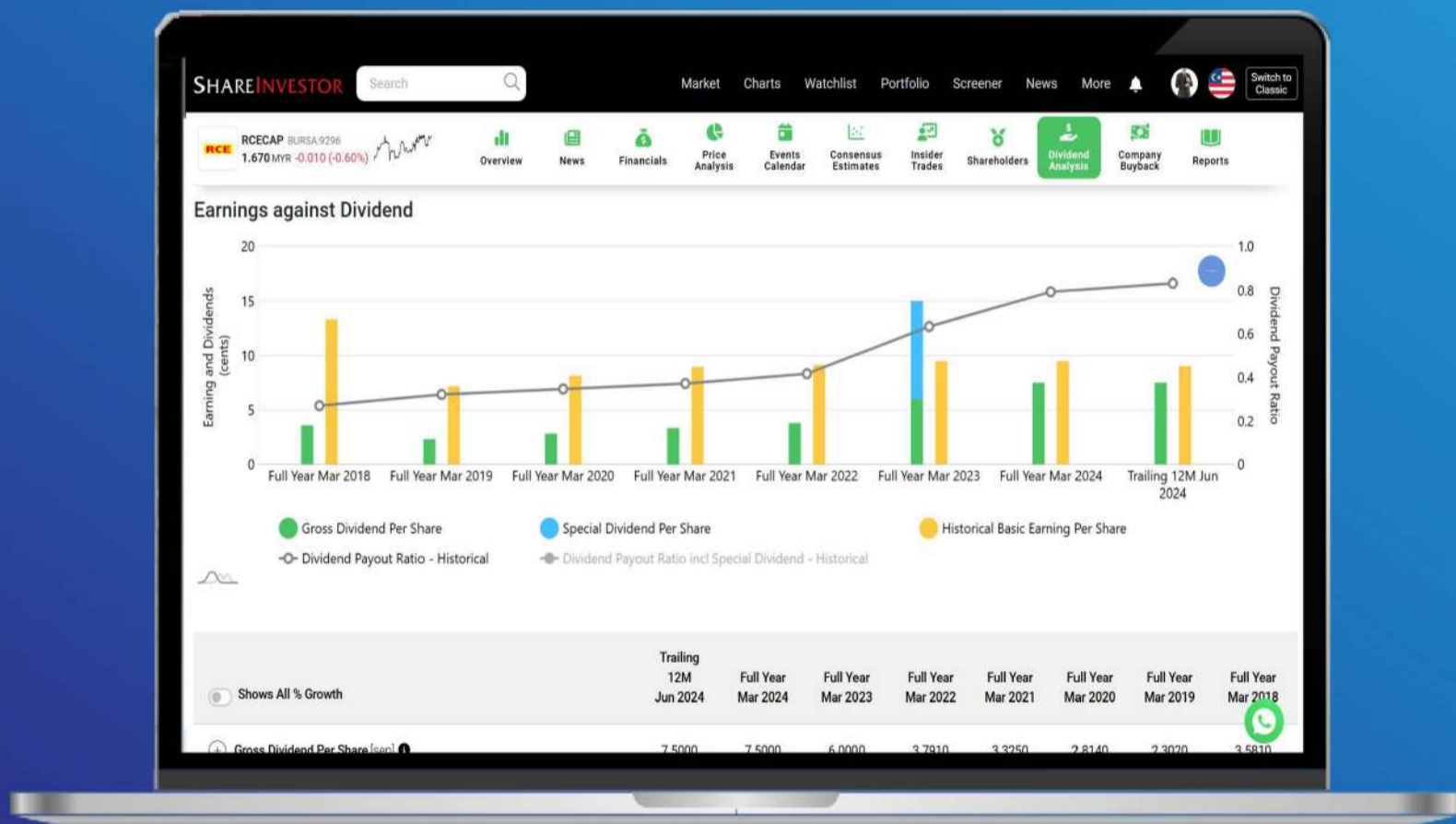
Analysis



Period	Dividend Received	Capital Appreciation	Total Shareholder Return
Short Term Return	5 Days	-	-
	10 Days	-0.040	-0.38 %
	20 Days	+0.180	+1.73 %
Medium Term Return	3 Months	+0.380	+3.72 %
	6 Months	+0.700	+7.07 %
	1 Year	+3.380	+29.21 %
Long Term Return	2 Years	+4.220	+36.14 %
	3 Years	+4.820	+41.39 %
	5 Years	0.400	+3.47 %

**Disclaimer:** The information on this page is provided as a service to readers. It does not constitute financial advice and/or any investment recommendations. Past performance is not indicative of future results. We assume no liability for damages resulting from or arising out of the use of such information. It would be best if you did your own research to make your personal investment decisions wisely or consult a licenced investment advisor.

# Tired of low returns? Let's talk high-paying Dividends!



- ✓ **Top Dividend Picks Right Now**
- ✓ **Insider Tips – Advanced strategies for experienced investors**
- ✓ **Easy-to-Follow Tutorial**

Get the most out of dividends, use our Dividend Analysis function –  
Click to Watch Our Tutorial Below!

**Upgrade Your Dividend Strategy Here**



## Price & Total Shareholder Return (as at Yesterday)

Fundamental Analysis

**DEFINITION:** Company is paying out dividend with low or moderate leverage.

**CHART GUIDE:** Total Shareholder Return (TSR) combines share price appreciation and distributions paid to show the total return to the shareholder expressed as a percentage.



ShareInvestor WebPro > Screener > Market Screener (FA & TA) > select BURSA > add criteria

**A. Criteria**

- > click Add Criteria
- Fundamental Analysis Conditions tab >select (i) Dividend Yield (Historical)
- Fundamental Analysis Conditions tab >select (ii) Dividend Payout (Historical)
- Fundamental Analysis Conditions tab >select (iii) Total Debt To Equity
- Fundamental Analysis Conditions tab >select (iv) Total Shareholder Returns
- Fundamental Analysis Conditions tab >select (v) Total Shareholder Returns
- Fundamental Analysis Conditions tab / >select (vi) CAGR of Dividend Per Share

• Fundamental Analysis Conditions tab >select (vii) CAGR of Dividend Per Share

**B. Conditions (Criteria Filters)**

1. Dividend Yield - select (more than) type (1) % for the past select (1) financial year(s)
2. Dividend Payout (Historical) - select (between) type (0.5) to type (1) times for the past select (1) financial year(s)
3. Total Debt to Equity - select (less than) type (1) for the past select (1) financial year(s)
4. Total Shareholder Return - select (more than) type (5) % for the past select (3) financial year(s)
5. Total Shareholder Return - select (more than) type (5) % for the past select (5) financial year(s)

6. CAGR of Dividend Per Share - select (less than) type (30) % for the past select (5) financial year(s)
7. CAGR of Dividend Per Share - select (more than) type (1) % for the past select (5) financial year(s)

- > click Save Template > Create New Template type (Dividend Companies) > click Create
- > click Save Template as > select Dividend Companies > click Save
- > click Screen Now (may take a few minutes)
- > Sort By: Select (Dividend Yield) Select (Desc)
- > Mouse over stock name > Factsheet > looking for Total Shareholder Return

## AMWAY (M) HOLDINGS BERHAD (6351)

C<sup>2</sup> Chart

Analysis

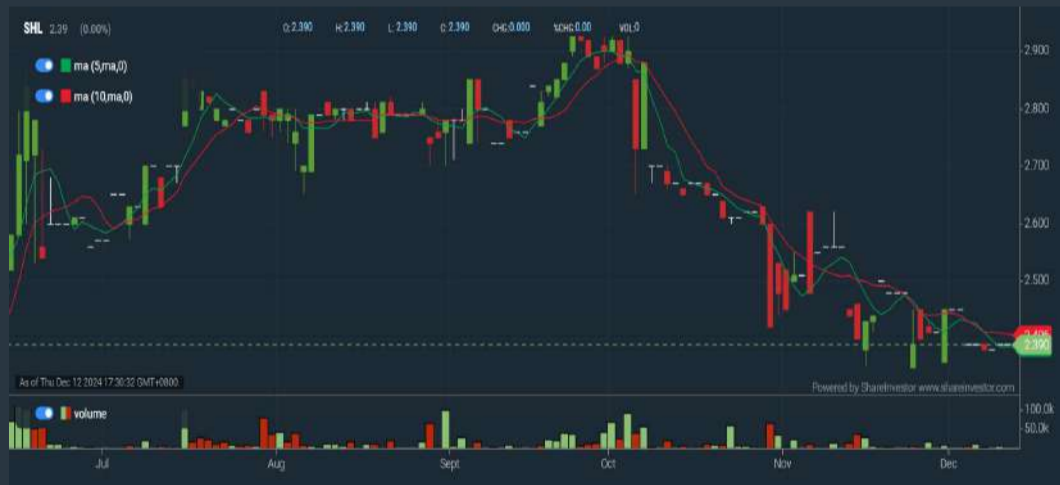


Period	Dividend Received	Capital Appreciation	Total Shareholder Return	
Short Term Return	5 Days	-	-	
	10 Days	-	-	
	20 Days	-	-0.026	-0.44%
Medium Term Return	3 Months	-	-	
	6 Months	-	-0.350	-5.39%
	1 Year	-	+1.230	+23.24%
Long Term Return	2 Years	-	+1.030	+38.18%
	3 Years	-	+1.250	+22.36%
	5 Years	0.200	+1.254	+26.83%
Annualised Return	Annualised	-	-	+4.74%

## SHL CONSOLIDATED BHD (6017)

C<sup>2</sup> Chart

Analysis



Period	Dividend Received	Capital Appreciation	Total Shareholder Return	
Short Term Return	5 Days	-	-	
	10 Days	-	-0.020	-0.83%
	20 Days	-	-0.050	-2.06%
Medium Term Return	3 Months	-	-0.300	-13.09%
	6 Months	-	-0.190	-7.36%
	1 Year	-	+0.340	+16.53%
Long Term Return	2 Years	-	+0.490	+26.79%
	3 Years	-	+0.390	+16.50%
	5 Years	0.120	+0.940	+6.91%
Annualised Return	Annualised	-	-	+1.33%

## PARAMOUNT CORPORATION BERHAD (1724)

C<sup>2</sup> Chart

Analysis



Period	Dividend Received	Capital Appreciation	Total Shareholder Return	
Short Term Return	5 Days	-	-0.050	-4.59%
	10 Days	-	-0.010	-0.96%
	20 Days	-	-0.010	-0.96%
Medium Term Return	3 Months	-	-0.010	-0.96%
	6 Months	-	-0.120	-10.34%
	1 Year	-	+0.115	+12.43%
Long Term Return	2 Years	-	+0.380	+58.75%
	3 Years	-	+0.445	+74.79%
	5 Years	0.335	+0.215	+66.87%
Annualised Return	Annualised	-	-	+18.76%

**Disclaimer:** The information on this page is provided as a service to readers. It does not constitute financial advice and/or any investment recommendations. Past performance is not indicative of future results. We assume no liability for damages resulting from or arising out of the use of such information. It would be best if you did your own research to make your personal investment decisions wisely or consult a licenced investment advisor.

Week: 6 December 2024 - 12 December 2024

More Brokers' Call 

AMINVESTMENT BANK <a href="#">... See More</a>	Call	Target Price	Release Date
V.S. Industry Berhad (6963)	BUY	RM1.45	9 Dec 2024
Spritzer Berhad (7103)	BUY	RM3.54	10 Dec 2024

APEX SECURITIES BERHAD <a href="#">... See More</a>	Call	Target Price	Release Date
Mega First Corporation Berhad (3069)	BUY	RM5.15	11 Dec 2024
Axiata Group Berhad (6888)	BUY	RM2.60	12 Dec 2024
UUE Holdings Berhad (0310)	BUY	RM1.10	12 Dec 2024

BIMB SECURITIES SDN BHD <a href="#">... See More</a>	Call	Target Price	Release Date
T7 Global Berhad (7228)	BUY	RM0.69	6 Dec 2024
Axiata Group Berhad (6888)	HOLD	RM2.50	12 Dec 2024

Hong Leong Investment Bank <a href="#">... See More</a>	Call	Target Price	Release Date
Astro Malaysia Holdings Berhad (6399)	SELL	RM0.20	12 Dec 2024
SMRT Holdings Berhad (0117)	BUY	RM2.19	12 Dec 2024

KENANGA <a href="#">... See More</a>	Call	Target Price	Release Date
Astro Malaysia Holdings Berhad (6399)	UNDERPERFORM	RM0.20	12 Dec 2024
Axiata Group Berhad (6888)	OUTPERFORM	RM2.60	12 Dec 2024

MIDF <a href="#">... See More</a>	Call	Target Price	Release Date
Axiata Group Berhad (6888)	NEUTRAL	RM2.44	12 Dec 2024
Gamuda Berhad (5398)	BUY	RM10.68	11 Dec 2024

PUBLIC INVESTMENT BANK <a href="#">... See More</a>	Call	Target Price	Release Date
Astro Malaysia Holdings Berhad (6399)	NEUTRAL	RM0.25	12 Dec 2024
Axiata Group Berhad (6888)	NEUTRAL	RM2.35	12 Dec 2024
Gamuda Berhad (5398)	OUTPERFORM	RM10.40	11 Dec 2024

UOB KAYHIAN <a href="#">... See More</a>	Call	Target Price	Release Date
Kumpulan Jetson Berhad (9083)	BUY	RM0.31	11 Dec 2024
Ocean Fresh Berhad (0312)	BUY	RM0.57	11 Dec 2024



**DEFINITION:** Top 10 stocks with Technical Analysis plus Pattern Matching by 60 pre-defined indicators by the system showing a higher probability of bullish sentiment on the share price.



ShareInvestor WebPro > Screener > Predefined TA Screens > select market BURSA > Most Long Signals > click Scan Results or mouse over each company

**MALAYSIAN PACIFIC INDUSTRIES (3867.MY)**

**MPI**

Price updated at 12 Dec 2024 17:31

Last: <b>25.580</b>	Change: <b>-0.120</b>	Volume: <b>999</b>
	Change (%): <b>-0.47</b>	Range: <b>25.400 - 25.800</b>

TA Scanner Results based on historical data up to 12 Dec 2024

Condition	Signal	Explanation
Accumulation Distribution: Bullish Accumulation Distribution	Long	Accumulation distribution increasing for the last 7 days
Candlestick: Bullish Engulfing	Long	Bullish: Engulfing
Donchian Channels: High Above Upper Donchian Channels	Long	High crossed above the upper Donchian Channel(14,4)
RSI: Short Term RSI 50 Bullish Crossover	Long	1. RSI(20) crossed above 50 within the last 1 day and RSI(20) 1 day ago below 50 for the last 5 days. 2. Volume above average volume(125). 3. Average volume(5) is above 100,000.

**DAGANG NEXCHANGE BERHAD (4456.MY)**

**DNEX**

Price updated at 12 Dec 2024 17:31

Last: <b>0.400</b>	Change: -	Volume: <b>377,336</b>
	Change (%): -	Range: <b>0.385 - 0.400</b>

TA Scanner Results based on historical data up to 12 Dec 2024

Condition	Signal	Explanation
Bollinger Band: Bullish Long Term Volatility Breakout and Trending	Long	1. Close price above upper bollinger band(33,1). 2. Volume above average volume(50). 3. Average volume(50) is above 300,000.
Bollinger Band: Bullish Short Term Volatility Breakout and Trending	Long	1. Close price above upper bollinger band(33,1). 2. Volume above average volume(10). 3. Average volume(10) is above 300,000.
Bollinger Band: High Above Upper Bollinger Band	Neutral	1. High above upper bollinger band(14,2). 2. Average volume(5) is above 100,000.
Donchian Channels: High Above Upper Donchian Channels	Long	High crossed above the upper Donchian Channel(14,4)
Volume: Volume Spike	Long	1. Volume is more than 500% above average volume(10). 2. Volume above 200000. 3. Close price above 0.10
Williams %R: Bearish Williams %R	Short	1. Williams %R(26) between 0 and -20. 2. Average volume(5) is above 100,000.

**FARLIM GROUP (M) BERHAD (6041.MY)**

**FARLIM**

Price updated at 12 Dec 2024 17:31

Last: <b>0.210</b>	Change: -	Volume: -
	Change (%): -	Range: <b>0.210 - 0.210</b>

TA Scanner Results based on historical data up to 12 Dec 2024

Condition	Signal	Explanation
MA: Bullish Price Crossover	Long	1. Close price crossed above MA(40) within the last 1 day. 2. Previous day close price is below the MA(10) for the last 5 days
MA: Short Term Bullish Moving Average Crossover	Long	MA(10) crossed above MA(15) within the last 1 day.
MACD: Bullish MACD Crossover	Long	1. MACD(12,26) diff line crossed above the MACD(12,26) signal line. 2. MACD Histogram(12,26) is above 0.

**EG INDUSTRIES BERHAD (8907.MY)**

**EG**

Price updated at 12 Dec 2024 17:31

Last: <b>2.240</b>	Change: <b>-0.050</b>	Volume: <b>10,976</b>
	Change (%): <b>-2.18</b>	Range: <b>2.230 - 2.340</b>

TA Scanner Results based on historical data up to 12 Dec 2024

Condition	Signal	Explanation
Bollinger Band: High Above Upper Bollinger Band	Neutral	1. High above upper bollinger band(14,2). 2. Average volume(5) is above 100,000.
Price: New 52 Week High	Long	1. Stock reach a new 52 week high. 2. Average volume(30) is above 50000.
Volume: 10 Days large value Buy Up trade	Long	1. 150K value Buy Up greater than Sell Down by 20% for 10 days. 2. 50K-100K value Buy Up greater than Sell Down by 20% for 10 days. 3. Average volume(10) is above 1000000
Volume: 5 Days large value Buy Up trade	Long	1. 150K value Buy Up greater than Sell Down by 20% for 5 days. 2. 50K-100K value Buy Up greater than Sell Down by 20% for 5 days. 3. Average volume(10) is above 1000000
Williams %R: Bearish Williams %R	Short	1. Williams %R(26) between 0 and -20. 2. Average volume(5) is above 100,000.

**ELSOFT RESEARCH BERHAD (0090.MY)**

**ELSOFT**

Price updated at 12 Dec 2024 17:31

Last: <b>0.435</b>	Change: <b>-0.005</b>	Volume: <b>7,925</b>
	Change (%): <b>-1.14</b>	Range: <b>0.435 - 0.445</b>

TA Scanner Results based on historical data up to 12 Dec 2024

Condition	Signal	Explanation
RSI: Short Term RSI 50 Bullish Crossover	Long	1. RSI(20) crossed above 50 within the last 1 day and RSI(20) 1 day ago below 50 for the last 5 days. 2. Volume above average volume(125). 3. Average volume(5) is above 100,000.
Volume: 10 Days large value Buy Up trade	Long	1. 150K value Buy Up greater than Sell Down by 20% for 10 days. 2. 50K-100K value Buy Up greater than Sell Down by 20% for 10 days. 3. Average volume(10) is above 1000000
Volume: 5 Days large value Buy Up trade	Long	1. 150K value Buy Up greater than Sell Down by 20% for 5 days. 2. 50K-100K value Buy Up greater than Sell Down by 20% for 5 days. 3. Average volume(10) is above 1000000
Volume: Volume Spike	Long	1. Volume is more than 500% above average volume(10). 2. Volume above 200000. 3. Close price above 0.10

**Disclaimer:** The information on this page is provided as a service to readers. It does not constitute financial advice and/or any investment recommendations. Past performance is not indicative of future results. We assume no liability for damages resulting from or arising out of the use of such information. It would be best if you did your own research to make your personal investment decisions wisely or consult a licenced investment advisor.

MR D.I.Y. GROUP (M) BERHAD  
(5296.MY)

## MRDIY

Price updated at 12 Dec 2024 17:31

Last: <b>1.820</b>	Change: <b>+0.010</b>	Volume: <b>37,537</b>
	Change (%): <b>+0.55</b>	Range: <b>1.800 - 1.830</b>

TA Scanner Results based on historical data up to 12 Dec 2024

Condition	Signal	Explanation
Bollinger Band: Bearish Short Term Volatility Breakout and Trending	Short	1. Close price below lower bollinger band(33,1). 2. Volume above average volume(10). 3. Average volume(10) is above 300,000.
MACD: Bullish MACD Divergence	Long	1. Close price is decreasing for the last 3 days. 2. MACD(12,26) diff line is increasing for the last 3 days.
Volume: 5 Days large value Buy Up trade	Long	1. 150K value Buy Up greater than Sell Down by 20% for 5 days. 2. 50K-100K value Buy Up greater than Sell Down by 20% for 5 days. 3. Average volume(10) is above 1000000
Williams %R: Bullish Williams %R	Long	1. Williams %R(26) between -80 and -100. 2. Average volume(5) is above 100,000.

KINERGY ADVANCEMENT  
BERHAD (0193.MY)

## KAB

Price updated at 12 Dec 2024 17:31

Last: <b>0.345</b>	Change: <b>+0.005</b>	Volume: <b>78,834</b>
	Change (%): <b>+1.47</b>	Range: <b>0.340 - 0.350ss</b>

TA Scanner Results based on historical data up to 12 Dec 2024

Condition	Signal	Explanation
MA: Medium Term Bullish Moving Average Crossover	Long	MA(25) crossed above MA(50) within the last 1 day.
Volume: 10 Days large value Buy Up trade	Long	1. 150K value Buy Up greater than Sell Down by 20% for 10 days. 2. 50K-100K value Buy Up greater than Sell Down by 20% for 10 days. 3. Average volume(10) is above 1000000
Volume: 5 Days large value Buy Up trade	Long	1. 150K value Buy Up greater than Sell Down by 20% for 5 days. 2. 50K-100K value Buy Up greater than Sell Down by 20% for 5 days. 3. Average volume(10) is above 1000000

**Disclaimer:** The information on this page is provided as a service to readers. It does not constitute financial advice and/or any investment recommendations. Past performance is not indicative of future results. We assume no liability for damages resulting from or arising out of the use of such information. It would be best if you did your own research to make your personal investment decisions wisely or consult a licenced investment advisor.



LANDMARKS BERHAD (1643.MY)

## LANDMRK

Price updated at 12 Dec 2024 17:31

Last: <b>0.165</b>	Change: -	Volume: <b>1,000</b>
	Change (%): -	Range: <b>0.165 - 0.165</b>

TA Scanner Results based on historical data up to 12 Dec 2024

Condition	Signal	Explanation
DM: Bullish Directional Movement	Long	-DI(14) crossed below +DI(14)
MA: Bullish Price Crossover	Long	1. Close price crossed above MA(40) within the last 1 day. 2. Previous day close price is below the MA(10) for the last 5 days
MACD: Bullish MACD Crossover	Long	1. MACD(12,26) diff line crossed above the MACD(12,26) signal line. 2. MACD Histogram(12,26) is above 0.
Parabolic SAR: Bearish Parabolic SAR Reversal	Neutral	1. Parabolic SAR 1 day ago above close price 1 day ago for the last 5 days. 2. Parabolic SAR below close price



CAPITAL A BERHAD (5099.MY)

## CAPITALA

Price updated at 12 Dec 2024 17:31

Last: <b>0.995</b>	Change: <b>-0.015</b>	Volume: <b>71,788</b>
	Change (%): <b>-1.49</b>	Range: <b>0.995 - 1.020</b>

TA Scanner Results based on historical data up to 12 Dec 2024

Condition	Signal	Explanation
Candlestick: Bullish Engulfing	Long	Bullish: Engulfing
MA: Bullish Price Crossover	Long	1. Close price crossed above MA(40) within the last 1 day. 2. Previous day close price is below the MA(10) for the last 5 days
Volume: 5 Days large value Buy Up trade	Long	1. 150K value Buy Up greater than Sell Down by 20% for 5 days. 2. 50K-100K value Buy Up greater than Sell Down by 20% for 5 days. 3. Average volume(10) is above 1000000

HARBOUR-LINK GROUP BERHAD  
(2062.MY)

## HARBOUR

Price updated at 12 Dec 2024 17:31

Last: <b>1.430</b>	Change: <b>-0.010</b>	Volume: <b>3,281</b>
	Change (%): <b>-0.69</b>	Range: <b>1.420 - 1.440</b>

TA Scanner Results based on historical data up to 12 Dec 2024

Condition	Signal	Explanation
Bollinger Band: Low Below Lower Bollinger Band	Neutral	1. Low below lower bollinger band(14,2). 2. Average volume(5) is above 100,000.
CCI: Bullish CCI Oversold And Reversing	Long	1. CCI(26) below -100 and CCI(26) 1 day ago decreasing for the last 3 days. 2. CCI(26) above CCI(26) 1 day ago
Candlestick: Bullish Hammer	Long	Bullish: Hammer
Williams %R: Bullish Williams %R	Long	1. Williams %R(26) between -80 and -100. 2. Average volume(5) is above 100,000.



**Dato' Eu Hong Chew**  
Former Group CEO i-Berhad  
Non-Executive Director

He has been associated with the Sumurwang Group for many years charting the path for its manufacturing arm, firstly under Dreamland Holdings Berhad and the subsequent acquisition of I-Berhad.

Before that, he was with PA Management Consulting for a decade where he was the Director of Studies for the Cranfield PA MBA Programme in Malaysia.

Educated at the Royal Military College, Dato' Eu has an engineering degree from the University of Glasgow, and a MBA from the University of Bradford, UK.

# Is there an investment opportunity in STEELCASE

## SUMMARY

- Steelcase Inc. (NYSE SCS) is undergoing a turnaround after a challenging decade of little revenue growth.
- The company has seen volatile profits and a decline in key metrics like operating margin and asset turnover, although it has improved its contribution margin and controlled expenses.

- Steelcase is financially sound, with positive cash flow and a favourable debt ratio. Its estimated intrinsic value suggests a margin of safety for investors.

## **BACKGROUND**

Steelcase designs and provides innovative furniture and architectural solutions globally. It sells its products through a network of dealers and caters to consumers through web-based and retail distribution channels. In 2023, the Americas (North America, the Caribbean Islands, and Latin America) accounted for about 72% of the total revenue and almost all operating income. The past decade has been a very challenging one for Steelcase. As I will show in the later sections, Steelcase is undergoing a turnaround.

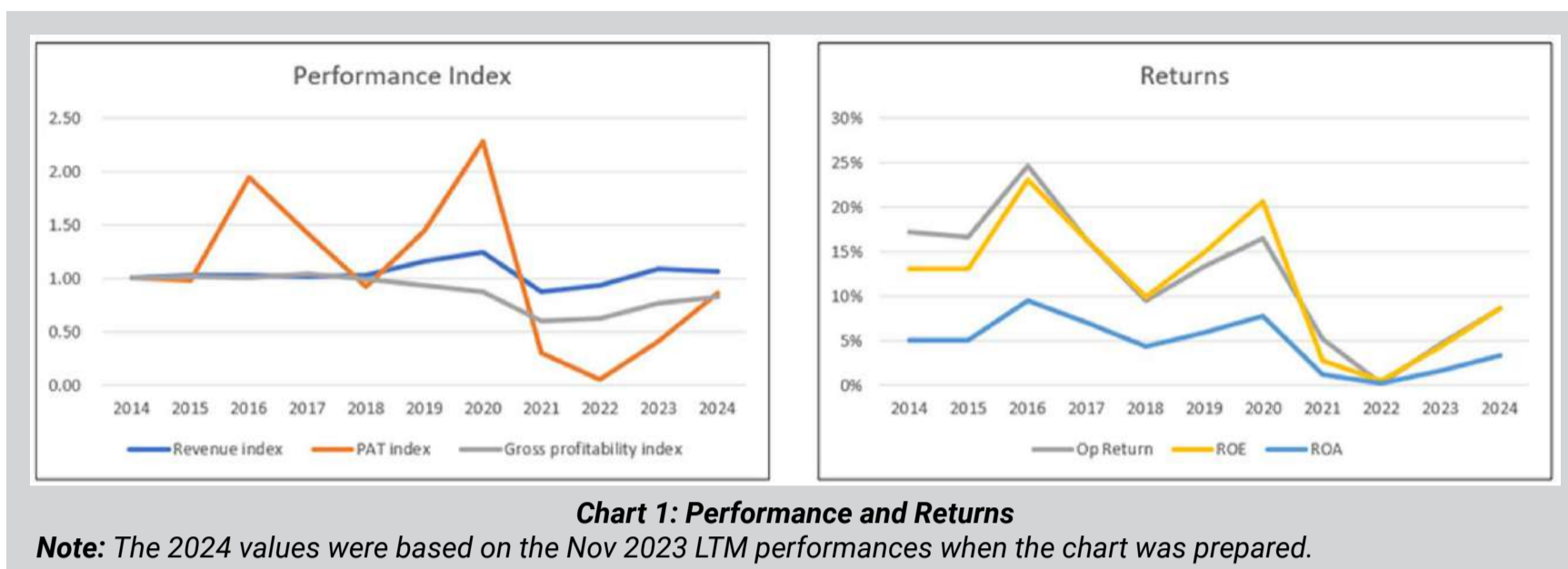
## **OPERATING PERFORMANCE**

Over the past decade, there was hardly any revenue growth, and its PAT had been very volatile. Correspondingly, its returns were also volatile. Refer to Chart 1.

From 2016 to 2018 and again from 2020 to 2022, the company's profits declined.

- In 2016, profits were boosted by the reversal of a valuation allowance and a gain from the partial sale of an investment in an unconsolidated affiliate. However, in 2018, profits dropped because costs were higher.
- The decline in 2021 and 2022 was mainly due to COVID-19 and supply chain issues.

The good news is that profits and revenue have bounced back and are now close to where they were in 2014.



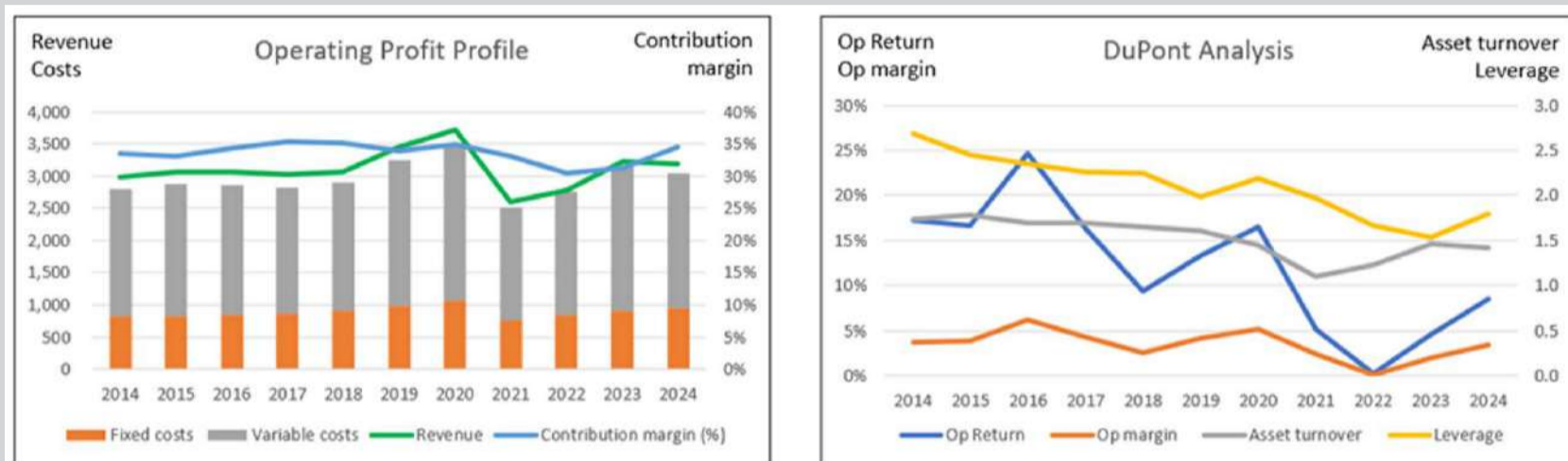
However, in 2024, the company's capital efficiency is still not as good as it was in 2014 when looking at key measures like gross profitability, and several return metrics. I also found that from 2014 to 2024, there was no growth in the key DuPont metrics.

- The operating margin went down by 1.0% each year.
- The asset turnover also dropped because revenue only grew by 0.6% each year, while total assets grew by 2.7% each year.
- Leverage decreased by 3.9% each year since the debt was increasing faster than the total assets.

But there were two good things for Steelcase, as shown in Chart 2:

- **Contribution margin recovery:** The contribution margin improved, reaching 34.5% in 2024 compared to 33.5% in 2014.
- **Control of expenses:** The company has kept its Selling, General, and Administration (SGA) expenses in check, with an SGA margin of 25.8% in 2024 compared to 25.3% in 2014.

However, the decline in asset turnover and leverage is linked to the company's acquisitions, which management can control. So, there is still hope for improving these areas. Overall, for Steelcase to return to its stronger performance, it needs to not only improve its operating efficiency but also focus on growing its revenue.



**Chart 3: Operating Profit Profile and DuPont Analysis**

**Notes to Op Profit Profile. I broke down the operating profits into fixed costs and variable costs.**

- Fixed cost = SGA, Depreciation & Amortization and Others.
- Variable cost = Cost of Sales - Depreciation & Amortization.
- Contribution = Revenue - Variable Cost.
- Contribution margin = Contribution/Revenue.

## REVENUE GROWTH

From 2014 to 2023, Steelcase's revenue increased by USD244 million, with organic growth accounting for USD233 million, which is about 0.8% per year. During this same period, Steelcase invested around USD646 million in net capital expenditures, which is nearly 2.8 times the organic revenue growth. This suggests that the investment-to-growth ratio is not favourable.

Additionally, the company spent USD374 million on net acquisitions. When you subtract the organic growth from the total revenue increase, only USD11 million is left. This meant most of the low growth came from acquisitions, divestitures, and currency changes. This raises concerns about whether the acquisitions have created real value for the company.

Given the above, I would rate Steelcase's revenue growth as poor. Even if we ignore the Covid-19 period, from 2014 to 2019, Steelcase's revenue grew at 2.9% CAGR. This was poor compared to the market growth rate. *"The office furniture market in the US to grow at a CAGR of 11.27%, in terms of consumption, over the period 2014-2019."* Business Wire News.

On a positive note, the office furniture industry is still growing. According to market research reports, the U.S. market is expected to grow at a rate of 5.1% per year until 2030. Globally, the furniture market is projected to grow at a CAGR of 7.5%. However, while this is not a sunset industry, growth may be limited due to the rise of remote work. Steelcase is trying to turn things around, but there are not many external factors boosting its growth at the moment.

## FINANCIAL POSITION

I would rate Steelcase as financially sound based on the following:

- It has a 40% debt-capital ratio as of Aug 2024. According to the Damodaran dataset for Jan 2024, the debt-capital ratio for the US furniture/home furnishing sector was 32 %. It was 34% for the office equipment and services sector.
- As of Aug 2024, it had USD336 million in cash. This was about 15% of its total assets.

Items	Sources (USD m)	Uses (USD m)
Cash flow from Ops	1,730	
Net Debt	140	
Sale of investments	308	
Dividends & buybacks		967
Net CAPEX incl intangibles		668
Acquisitions		374
Cash and misc		169
<b>Total</b>	<b>2,178</b>	<b>2,178</b>

*Table 1: Sources and Uses of Funds 2014 to 2024*

\*Please refer to the disclaimer on first page and last page.

- From 2014 to 2024, it generated positive cash flow from operations every year. During this period, it generated USD1.7 billion in cash flow from operations compared to a net income of USD1.0 billion. This is a good cash conversion ratio.
- It has a good capital allocation track record. Refer to Table 1 which shows the sources and uses of funds from 2014 to 2024. The cash flow from operations was sufficient to fund its CAPEX, dividends, and share buybacks.

## VALUATION

In valuing Steelcase, I adopted the following picture:

- **This is not a high-growth company:** Over the past 11 years, organic growth has been offset by divestitures and currency effects. From a conservative perspective, it is better to look at its Earning Power Value ("EPV") with the 2024 revenue as the base.
- **The company is undergoing a turnaround:** As such it may be better to consider its average margins and capital turnover ratio over the past 11 years period. Turnaround generally takes longer than expected. I used the "normalized" margins rather than the latest one.

Based on the above I estimated the EPV of Steelcase to be USD19 per share. Refer to the original article for the details and other assumptions. With a market price of USD13 per share (5 March 2024), there is more than a 30% margin of safety.



## VALUATION RISKS AND LIMITATIONS

I have taken a conservative view by assuming no growth for Steelcase. If I were to assume some growth, I would use a single-stage model, which suggests an intrinsic value of USD30 per share with a perpetual growth rate of 4%. The good news is that there is a margin of safety even under these conservative assumptions. In reality, some growth is likely.

Over the past 11 years, Steelcase has paid an average dividend of about USD0.47 per share. At the current market price of USD13 per share, this gives a dividend yield of 3.6%. While it's not the highest yield, it is decent while investors wait for potential capital gains.

Lastly, my valuation does not assume any improvement in Steelcase's revenue and margins during its turnaround. This can be seen as an additional "qualitative" margin of safety.

## CONCLUSION

Steelcase faced significant challenges over the past decade. The company is currently undergoing a turnaround. While revenue increased by USD244 million from 2014 to 2023, most of this growth came from organic sources and acquisitions, raising concerns about the overall effectiveness of these investments. Key metrics such as operating margin and asset turnover have declined.

But there are positive points:

- The company is financially sound.
- This is not a sunset sector.
- Its SGA margins did not deteriorate and there are signs of improving contribution margin.

My valuation suggests that Steelcase's intrinsic value exceeds its market price, offering a margin of safety for investors. Overall, while Steelcase has the potential for recovery, it must focus on improving operational efficiency and capitalizing on growth opportunities in a changing market landscape.

*I am a long-term value investor who has held onto stocks for more than 5 years. My analysis and valuation are from such a perspective. I consider quarterly results "noisy" and focus on long-term trends.*

*This article was repurposed from my article "Steelcase: A Challenging Turnaround Case" which was first published in Seeking Alpha. Refer to this [link](#) for more of my insights on other US companies.*

Disclaimer: This article is written for informational purposes only. It does not constitute a solicitation, offer, advice, counseling or recommendation to buy or sell. As such it is not intended to promote the purchase of shares in any way. As a reminder, any type of asset has a risk factor and needs to be evaluated from multiple perspectives. Therefore, any investment decision and the associated risk remains with the investor. The views expressed here are entirely the writer's own.



Learn how to identify Hot Stocks using Technical Analysis (TA) and Fundamental Analysis (FA)

**SIGN UP FOR Invest NOW IT'S FREE!!!**

**Click here**

Scan me



Via email, every Friday.

Get market moving news and analyses. Regular columns include **Behind The Action** and **From The Observer**

Leaderboard • Shariah Hot Stocks • Shariah Momentum Up Stocks • Non Shariah Hot Stocks • Up Trending Stocks • Growth Stocks • Dividend Stocks • Long Companies • Insider Activity • Investor Relations • Regional Markets



# UNLOCK THE SECRET OF WEALTH

DO YOU REALLY WANT TO MASTER VALUE INVESTING



SEE HOW TO GET HIGHER RETURNS WITH LOWER RISK



# **STRONG DIGITAL ECOSYSTEM WILL HELP ELEVATE MALAYSIA TO HIGH-INCOME NATION STATUS - PM ANWAR**

**A** ccording to Prime Minister Datuk Seri Anwar Ibrahim, building a strong digital ecosystem through the establishment of the National Artificial Intelligence Office (NAIO) is a must in a bid to elevate Malaysia to a high-income nation status. Speaking at the NAIO launch on Thursday, he said this is because the status of a high-income nation can only be achieved if driven by digital use.

He added, "Some 20, 30 years ago when I helmed the Ministry of Finance, these things were only considered an initiative, a beginning, but it has now become a must that is called empowerment. That is why I once again emphasise why we (Malaysia) are among the first few countries in the world to have

a Digital Ministry because this will determine the success of our country.”

The PM also described the establishment of NAI0 as a historic moment and a testament to the country’s determination and commitment to implementing digital transformation, thus driving Malaysia to the level of an innovative country.

# **MICROSOFT LAUNCHES AIFORMYFUTURE TO EQUIP 800,000 MALAYSIANS WITH AI SKILLS BY END-2025**

**M**icrosoft has launched “AI for Malaysia’s Future” (AIForMYFuture), an initiative aimed at equipping 800,000 Malaysians with skills in artificial intelligence by the end of 2025. This was announced at the Microsoft Cloud and AI Summit Malaysia in Kuala Lumpur this week.

AIForMYFuture supports broader efforts by the government to upskill and reskill the Malaysian workforce and ensuring a robust talent pipeline for AI-related jobs. This includes working closely with Malaysia's National AI Office (NAIO), led by the Ministry of Digital, in advancing the AI agenda through cross-sector collaborations.

According to Digital Minister Gobind Singh Deo, when public and private sectors collaborate in AI transformation, then AI can truly scale in Malaysia – from the agriculture sector in the north to the semiconductor industry in Penang as well as businesses in urban centres and entrepreneurs across the nation – resulting in smart economic hubs and a conducive AI ecosystem – one which fosters local innovation, creates opportunities and enables employability – and, ultimately, delivering benefits for businesses and the rakyat.

Meanwhile Microsoft Malaysia managing director Laurence Si said that Microsoft's 2024 Work Trend Index found that 84% of Malaysian knowledge workers are already using AI at work, signalling a strong opportunity to channel the enthusiasm into widespread impact. He added that the launch of AIForMYFuture reinforces their commitment to equipping Malaysians with the skills needed to be part of Malaysia's AI economy and contribute to the country's AI-powered growth journey.

Through AIForMYFuture, Microsoft will collaborate with a broad cross-section of stakeholders including government, industry, education and civil society to drive AI skilling opportunities at all levels of society. It will offer tailored learning experiences for diverse groups of people – from government officials and civil servants, professionals in key industries, teachers, students, underserved and marginalised communities, to general job seekers and employees looking to upskill.

As part of the initiative, Microsoft will work with multiple partners, including Biji-Biji Initiative, HRD Corp, International Women’s Federation of Commerce and Industry Malaysia (IWFCIM), Jobstreet by SEEK, MyDIGITAL Corporation, National TVET Council Secretariat, and Talent Corporation Malaysia Bhd.

The AIForMYFuture commitment builds on Microsoft’s recent skilling initiatives in Malaysia, including the success of providing digital skills to more than 1.53 million Malaysians by 2023, as part of the Bersama Malaysia initiative. Earlier this year, Microsoft introduced the AI TEACH Malaysia programme with Biji-Biji Initiative to equip TVET educators and students with AI skills. To ensure inclusive skilling, Microsoft is also partnering with IWFCIM for the Ready4AI&Security programme, supporting women in building careers in AI and cybersecurity. As of October, more than 73,000 people had benefited from these programmes.



Learn how to identify Hot Stocks using Technical Analysis (TA) and Fundamental Analysis (FA)

**SIGN UP FOR Invest NOW IT'S FREE!!!**

[Click here](#)

Scan me



Via email, every Friday.

Get market moving news and analyses. Regular columns include **Behind The Action** and **From The Observer**

- Leaderboard • Shariah Hot Stocks • Shariah Momentum Up Stocks • Non Shariah Hot Stocks • Up Trending Stocks • Growth Stocks • Dividend Stocks • Long Companies • Insider Activity • Investor Relations • Regional Markets



# NINE-MONTH APPROVED INVESTMENTS UP 10.7% Y-O-Y TO RM254.7 BILLION - ZAFRUL

**A** ccording to Investment, Trade and Industry Minister Tengku Datuk Seri Zafrul Abdul Aziz, the approved investments of RM254.7 billion for the first nine months of 2024 underscore investors' unwavering confidence in Malaysia's economic policies and direction.

In a statement, he mentioned that the 10.7% y-o-y growth and the creation of over 159,000 jobs speak volumes of Malaysia's strategic frameworks and the government's concerted efforts to attract high-impact investments for sustainable growth. Malaysia's policy consistency and adaptability have encouraged investors to implement longer-term commitments while equipping the country with the capacity to navigate evolving global challenges effectively.

He said that as we progress towards our goal of becoming one of the top 30 global economies by 2033, the Madani Government is steadfast in its commitment to fostering an environment where



both domestic and international investors can thrive. Our focus extends beyond achieving investment targets and we are laying the foundation for a sustainable and inclusive economy that will empower all Malaysians.

According to Malaysian Investment Development Authority (MIDA) CEO Datuk Sikh Shamsul Ibrahim Sikh Abdul Majid, the agency is committed to ensuring these investments translate into tangible economic benefits, quality job opportunities, and long-term prosperity. MIDA has seen a remarkable value of approved investments in the 9M'24, reflecting its strategic commitment to building a thriving, innovation-driven economy. The continued growth in domestic investments highlights the strong confidence of local businesses in Malaysia's robust investment ecosystem. He added that as we approach the end of the year, MITI and MIDA's priority remains focused on enhancing Malaysia's competitiveness in an ever-evolving global market.

Domestic investments led the way, accounting for 58.1% of the total approved investments in 9M'24, valued at RM148 billion, while foreign investors contributed RM106.7 billion, or 41.9%. Domestic businesses rose and displayed commendable resilience despite current challenging times. This healthy ratio between robust domestic participation and strong foreign interest forms a solid foundation for Malaysia's future economic growth and resilience.

Selangor (RM66.8 billion in approved investments), Kuala Lumpur (RM63.9 billion), Kedah (RM34.0 billion), Penang (RM22.6 billion) and Johor (RM18.1 billion) were the top-performing states. Germany (RM30.9 billion), China (RM10.8 billion), USA (RM8.4 billion), Netherlands (RM4.9 billion) and Singapore (RM4.4 billion) were the top five in foreign investments.

The National Investment Aspirations sectors, comprising electrical and electronics, pharmaceuticals, digital economy, aerospace and chemicals, were the key catalysts for economic transformation. The sectors secured RM119.9 billion involving 882 high-impact projects and are expected to create 55,892 skilled jobs.

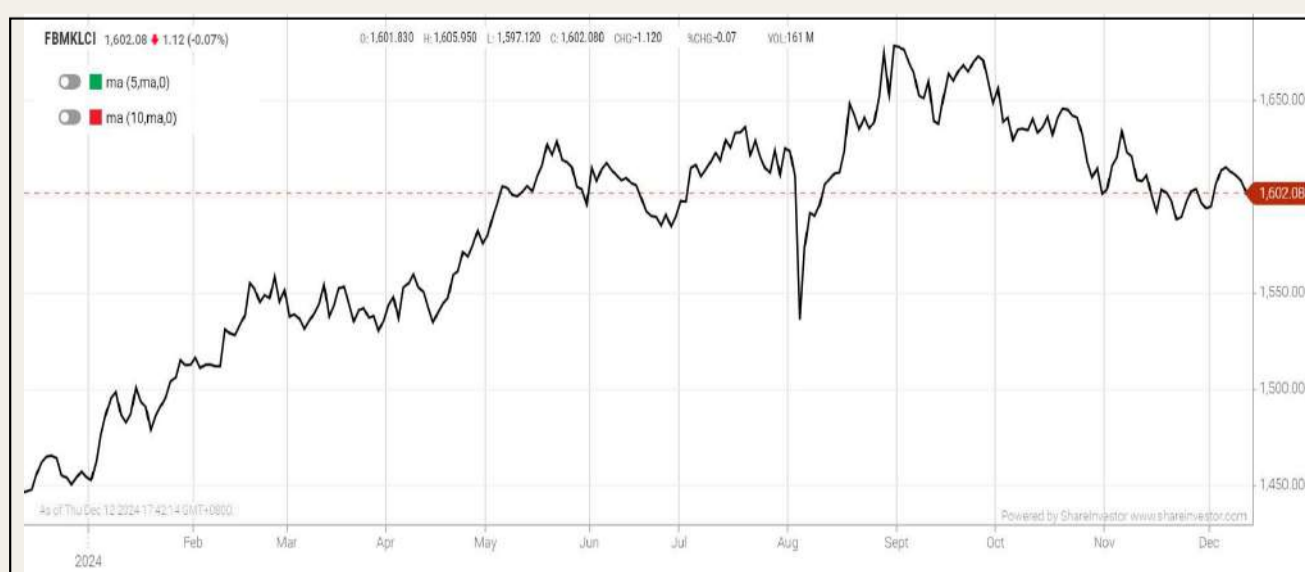
The services sector continues to drive Malaysia’s economic growth, with RM160.7 billion in approved investments, or 63.1% of the total approvals. They are expected to create 100,914 new jobs. Domestic investments were instrumental in this growth, contributing RM121.5 billion, or 75.6%. Foreign investments contributed RM39.2 billion, representing 24.4%.

Top performers were information and communications at RM71.1 billion, real estate RM48.8 billion, support services RM10.3 billion, distributive trade RM8 billion and utilities RM6.8 billion.

The manufacturing sector remains the cornerstone of industrial growth, attracting RM88.8 billion in approved investments in 9M’24 with foreign investments leading the way, contributing RM66.9 billion (75.4%), while domestic investments accounted for RM21.9 billion (24.6%).

## EYE ON THE MARKETS

On Thursday (12Dec), the Ringgit closed at 4.4380 against the USD and 3.3018 to the Sing Dollar. On Monday (09Dec), the FBM KLCI opened at 1610.62. As at Thursday (12Dec) 5:00pm, the FBM KLCI closed down 8.54 points at 1602.08. Over in US, the overnight Dow Jones Industrial Average closed down 234.44 points (-0.53%) to 43,914.12 whilst the NASDAQ shed 129.70 points (-0.65%) to 19,905.19.



KLCI 1 Year Chart

## Over 5 Trading Days (as at Wednesday)



ShareInvestor WebPro ([www.shareinvestor.com/my](http://www.shareinvestor.com/my))

1. Price > Stock Prices
2. Select Market: NASDAQ / NYSE / IDX / SET / HKEX / SGX (One bourse at a time)
3. select Stocks Tab
4. select Ranking Top Gainers or Top Losers (Over 5 Trading Days)
5. Mouse over Column Layout > select Edit Customs > select Name > select Last Done Price > select 5 Days Change > select 52 Weeks High > select 52 Weeks Low > Mouse Over Column Layout > select Custom

### NASDAQ (USD)

#### Top Gainers

Name	Last Done	Change Over 5 Days	52 Weeks High	52 Weeks Low
TESLA INC	424.770	+66.840	404.800	138.803
LULULEMON ATHLETICA INC	399.750	+57.480	516.390	226.010
MONOLITHIC POWER SYSTEM INC	623.820	+42.190	959.640	546.705
SITIME CORPORATION	261.030	+37.610	253.510	72.390
ULTA BEAUTY INC	430.090	+30.280	574.760	318.170

#### Top Losers

Name	Last Done	Change Over 5 Days	52 Weeks High	52 Weeks Low
FIRST CITIZENS BANCSHARES INC NRTH	2,097.670	-100.250	2,388.780	1,363.970
MERCADOLIBRE INC	1,897.870	-89.560	2,161.730	1,324.990
SYNOPSIS INC	512.060	-75.940	629.380	457.515
SEZZLE INC	320.060	-48.490	477.525	11.060
AXON ENTERPRISE INC	642.450	-47.330	698.670	238.070

### NYSE (USD)

#### Top Gainers

Name	Last Done	Change Over 5 Days	52 Weeks High	52 Weeks Low
AUTOZONE INC	3,342.720	+152.650	3,416.710	2,510.000
BIGLARI HOLDINGS INC	1,132.130	+32.130	1,149.990	750.000
SERVICENOW INC	1,147.180	+24.050	1,147.370	637.990
RH	398.950	+22.880	400.490	212.430
BLACKROCK INC	1,065.260	+20.480	1,082.450	745.551

#### Top Losers

Name	Last Done	Change Over 5 Days	52 Weeks High	52 Weeks Low
BERKSHIRE HATHAWAY INC	690,666.000	-13,740.000	741,971.390	538,260.010
NVR INC	8,848.690	-201.270	9,964.770	6,500.610
TEXAS PACIFIC LAND CORPORATION	1,207.000	-180.920	1,769.140	467.617
FAIR ISAAC CORP	2,196.050	-179.780	2,402.515	1,105.650
UNITEDHEALTH GROUP INC	533.530	-77.260	630.730	436.380

### IDX (Rupiah)

#### Top Gainers

Name	Last Done	Change Over 5 Days	52 Weeks High	52 Weeks Low
PANTAI INDAH KAPUK DUA TBK	19,100.000	+3,925.000	19,650.000	4,280.000
PETROSEA	26,400.000	+3,225.000	26,725.000	3,940.000
DIAN SWASTATIKA SENTOSA TBK	39,775.000	+1,775.000	48,250.000	6,870.000
JAKARTA SETIABUDI INTERNASIONAL	10,800.000	+1,625.000	11,250.000	910.000
BARITO RENEWABLES ENERGY TBK	8,400.000	+925.000	12,200.000	3,930.000

#### Top Losers

Name	Last Done	Change Over 5 Days	52 Weeks High	52 Weeks Low
DCI INDONESIA TBK	42,500.000	-2,025.000	63,800.000	32,525.000
MULTIPOLAR TECHNOLOGY TBK	20,550.000	-1,350.000	37,000.000	1,185.000
MERATUS JASA PRIMA	5,700.000	-1,000.000	7,850.000	50.000
SIANTAR TOP	12,500.000	-700.000	17,000.000	9,300.000
GOLDEN ENERGY MINES TBK	10,850.000	-500.000	18,800.000	5,475.000

### SET (Thai Baht)

#### Top Gainers

Name	Last Done	Change Over 5 Days	52 Weeks High	52 Weeks Low
OHTL	356.000	+10.000	486.000	340.000
CBG	80.250	+2.500	86.250	61.250
HL	11.200	+2.300	12.600	7.100
LTS	17.600	+2.200	18.700	5.450
TTI	27.750	+1.750	34.000	22.200

#### Top Losers

Name	Last Done	Change Over 5 Days	52 Weeks High	52 Weeks Low
SSC	49.500	-13.000	63.500	31.500
BH	199.500	-11.500	284.000	198.500
SCC	173.000	-10.000	307.000	172.500
CHOTI	66.000	-7.750	133.000	58.250
BCT	66.250	-3.750	76.750	54.000

### HKEX (HKD)

#### Top Gainers

Name	Last Done	Change Over 5 Days	52 Weeks High	52 Weeks Low
MAO GEPING (1318)	51.950	+51.320	57.200	47.650
MARKETINGFORCE (2556)	139.200	+34.200	141.800	45.000
TRIP.COM-S (9961)	561.500	+32.000	598.000	258.200
UBTECH ROBOTICS (9880)	103.600	+19.150	328.000	69.800
FOURTH PARADIGM (6682)	55.750	+16.300	115.000	18.800

#### Top Losers

Name	Last Done	Change Over 5 Days	52 Weeks High	52 Weeks Low
BEIGENE (6160)	111.000	-12.100	153.000	75.450
SINOSYNERGY (9663)	10.400	-8.600	26.450	9.990
MANULIFE-S (945)	244.000	-5.200	255.000	159.600
DEKON AGR (2419)	32.350	-5.150	62.000	31.050
EASOU TECH (2550)	6.580	-4.240	67.250	6.000

### SGX (SGD)

#### Top Gainers

Name	Last Done	Change Over 5 Days	52 Weeks High	52 Weeks Low
UOB	37.100	+0.450	37.260	27.330
OCBC BANK	16.630	+0.330	16.900	12.270
YZJ SHIPBLDG SGD	2.750	+0.170	2.800	1.400
HAI LECK	0.540	+0.130	0.545	0.310
SEMBCORP IND	5.610	+0.110	5.870	4.350

#### Top Losers

Name	Last Done	Change Over 5 Days	52 Weeks High	52 Weeks Low
JMH USD	43.710	-1.290	46.430	33.720
SGX	12.400	-0.350	13.090	8.870
JARDINE C&C	29.110	-0.240	30.100	23.760
POWERMATIC DATA	2.970	-0.190	3.931	2.709
DFIRG USD	2.360	-0.180	2.610	1.710



**A**s an affected listed issuer under Paragraph 8.03A of the LR, clock is ticking for Pertama Digital to submit a regularisation plan to the relevant authorities by 9 February 2025. With only two months left, the pressure is mounting for the Board and management.

## CLOCK TICKING FOR PERTAMA DIGITAL

Suffice it to say that 2024 has been a tumultuous year for Pertama Digital Berhad, marked by an overturn of concession suspension, volatile share price movements, and lastly, an unusual market activity (UMA) query from regulator. The Company has experienced meteoric rises and devastating falls, making it nothing short of a roller coaster ride.

As the year draws to a close, Pertama Digital is not out of the woods yet. Now, the Company's immediate priority is to submit a regularisation plan to regulators by 9 February 2025 to address its status as an affected issuer under Paragraph 8.03A of the Bursa Malaysia Listing Requirements (LR). This classification stems from an inadequate level of operations required to maintain its listing status.

Pertama Digital, formerly known as Sinotop Holdings Berhad, was known to be involved in the textile business with significant operations in China. In August 2020, the Company divested its textile operations and pivoted to mobile and digital solutions through the acquisition of a 51% stake in Television Airtime Services Sdn Bhd (TAS). TAS holds an 80% stake in DAPAT Vista (M) Sdn Bhd, the operator of the eJamin digital bail payment platform and the MyPay mobile payment app.

In line with this strategic shift, the Company renamed itself Pertama Digital to reflect its renewed focus on the fintech and government tech sectors. However, following the disposal of the entire equity interest in Be Top Group Limited – a China-based textile arm - on 10 August 2022, Pertama Digital was classified as an affected listed issuer under Paragraph 8.03A of the LR. The sale was considered a disposal of major business by the Company, leaving it the possibility of trading suspension or delisting according to LR.

As an affected listed issuer, Pertama Digital is required to regularise its condition within the next 12 months (from the date of the first announcement) by submitting a regularisation plan to the relevant authorities and obtaining their approval to implement the plan. After receiving an initial 12-month extension until 9 August 2024, the Company sought a second extension of 12 months, which Bursa Malaysia only granted an additional six months until 9 February 2025.

## **PINNING HOPES ON KRIDENTIA TECH**

Pertama Digital's lifeline now hinges on the potential acquisition of Kridentia Tech Sdn Bhd (KT). The utmost priority for the Board and management is to enter into a definitive agreement and finalise the acquisition, as outlined in an MOU signed with Kridentia Holdings Sdn Bhd on 28 August 2024.

KT, described as having "impressive top-line performance, sound EBITDA and consistent profitability", is an integral part of Pertama Digital's broader regularisation plan, which the Company targets to submit by year-end. While Pertama Digital remains optimistic about the acquisition, the patience of shareholders and regulators might be waning, adding urgency to the situation.

With only two months left, the pressure is mounting. Notably, this marks the second extension granted to the digital services provider by Bursa Malaysia. Failure to submit a regularisation plan within the stipulated timeline could lead to trading suspension or eventual delisting from the stock exchange.

## **MULTIPLE SETBACKS**

This year has been fraught with challenges for Pertama Digital. On 16 May 2024, Pertama Digital shocked the market with an announcement that the e-Jamin digital bail payment system would be suspended following a directive from the Chief Registrar of the Federal Court (DOJ). The directive instructed a reversion to the conventional bail process from 19 May onwards and mandated the transfer of bail funds to the Prime Minister's Consolidated Fund.

News of the suspension dealt a significant blow to the Company, as e-Jamin has been a cornerstone of its operations. In the absence of a core business, e-Jamin has been the key revenue driver for the Group. Although the Legal Affairs Division of the Prime Minister's Department later clarified that the e-Jamin services would continue in applicable courts in Malaysia, the initial

announcement already cast uncertainties among investors and sent jittery across the market.

Adding to its woes, Pertama Digital's fateful journey continued with a catastrophic decline in share prices in late September 2024. After trading at RM2.10 on 26 September, the stock plummeted to just 24.5 sen by 9 October - a staggering 88% drop in just two weeks. This precipitous drop was particularly perplexing, as the company claimed to be "unaware of the reasons" behind it in its response to Bursa Malaysia's UMA query. No wonder they say the stock market is not for the faint-hearted. It is indeed terrifying to see one's wealth dissipate by 90% within a fortnight.

Pertama Digital's share prices recorded a remarkable rally since early 2022, rising from 60 sen to an all-time high of RM4.65 on 20 November 2023, representing a 675% gain in just two years. However, the uptrend reversed sharply by late 2023. By the end of 2023, its share price already fell to around RM2.60, a 44% decline from the all-time high level within a month. Its share prices largely hovered around RM2.10 to RM2.60 during 2024 till the tragic downfall occurred.

Against the share prices, Pertama Digital's financial performance has been nothing but lacklustre. The Company has been incurring losses from continuing operations for the past five years. In FY2023, its losses widened to RM10.52 million against a lower revenue of RM6.18 million.

### Pertama Digital's financial performance FY2019 - FY2023

Item	Classification	FY2023	FY2022	18-month FPE2022 <sup>^</sup>	FY2020	FY2019
		RM'000	RM'000	RM'000	RM'000	RM'000
Revenue	Continuing operation	6,182	8,779	8,277	8,651	16,236
	Discontinued operation *	-	-	104,425	93,887	109,876
Profit / (Loss) for the financial year/period	Continuing operation	(10,521)	(9,918)	(27,409)	(851)	(1,097)
	Discontinued operation	-	(28,094)	13,937	2,924	(72,770)

Note:

<sup>^</sup> Pertama Digital changed its financial year end from 30 June 2020 to 31 December 2021

\* Revenue from discontinued operation referred to revenue and disposal of Be Top Group Limited

Source: *Pertama Digital Annual Report*

The prolonged underperformance highlights a significant detachment between its fundamentals and the meteoric rise in share prices. Perhaps true to the adage, what goes up must come down, and share price surges unsupported by strong fundamentals resemble castles in the sky; they eventually crumble under the weight of reality. For now, all eyes are on the submission and successful implementation of a regularisation plan. Shareholders must also remain vigilant and closely monitor the Company's developments, especially given the looming risk of trading suspension or delisting.

Keeping a pulse on the company's financial health, regulatory compliance, and operational progress is crucial to safeguarding investments and making informed decisions in this uncertain environment.

As legendary investor Peter Lynch wisely said: "Know what you own and why you own it." This advice is particularly relevant here - understanding the company's fundamentals and strategic direction is essential before making any investment decisions.

## **MSWG HIGHLIGHTS**

### **MSWG ADVOCATES FOR PURPOSE-DRIVEN SUSTAINABILITY**

MSWG's Chief Executive Officer, Dr Ismet Yusoff, participated as a panel member at the "Beyond COP: From Insights to Competitive Advantage" webinar, co-organized by PwC and Climate Governance Malaysia with support from Bursa Malaysia. The event convened industry leaders, policymakers, and sustainability experts to discuss strategies for achieving a net-zero economy following the recent COP29 outcomes.



Dr Ismet emphasised the critical role of corporate governance and transparency in aligning Malaysian businesses with global climate goals. He spotlighted the transformative potential of the \$300 billion annual climate finance pledge and called for companies to leverage opportunities under Article 6 of the Paris Agreement to integrate carbon markets into their sustainability frameworks.

Dr Ismet also addressed the growing demand for climate accountability, particularly from younger shareholders, urging companies to shift from compliance-driven approaches to purpose-driven sustainability practices. He underscored the need for actionable, measurable strategies that align with long-term environmental, social, and governance (ESG) objectives to create meaningful impact and shareholder value.

The panel discussion, moderated by Dr Yasmin Rasyid of Sime Darby Property, explored Malaysia's challenges, such as rising energy demands and transportation emissions, while highlighting solutions including promoting renewable energy, sustainable urban mobility, and nature-based investments.



**DEFINITION:** Insider Activity shows the trades made by substantial shareholders or directors of the company. Purchases by the directors and company share buyback may indicate the share price is undervalued and brings confidence to the price trend of the share price.



ShareInvestor WebPro > Fundamental > Insider Trades > click Search tab > Select Bursa > click Stock name > scroll up and leave at <Select Counter> Type Date Range for Announcement Date > click Search

Notice Period is 01st December 2024 – 07th December 2024

Effective Change Date	Stock Name	Buyer/ Seller Name [Classification]	Bought / (Sold) ['000]	No. of Shares After Trade ['000]	
			Total	Total	% Held
02 DEC 2024 - 03 DEC 2024	3A	MR TEO KWEE HOCK [SSH]	700	53,803	11.002
03 DEC 2024 - 03 DEC 2024	AHB	MR TERENCE CHEAH EU LEE [DIR/CEO]	2,250	7,940	1.067
06 DEC 2024 - 06 DEC 2024	AIZO	DATO ABANG ABDILLAH IZZARIM BIN TAN SRI DATUK PATINGGI ABANG HAJI ABDUL RAHMAN ZOHARI [DIR/CEO]	15,048	15,048	28
06 DEC 2024 - 06 DEC 2024	AIZO	ENCIK AHMAD RAHIZAL BIN DATO' AHMAD RASIDI [DIR/CEO]	13,598	13,598	25.3
06 DEC 2024 - 06 DEC 2024	AIZO	MISS EMMA YAZMEEN YIP BINTI MOHD JEFFREY YIP [DIR/CEO]	14,598	14,598	27.16
27 NOV 2024 - 28 NOV 2024	ALPHA	DATO DR LEE SOON SOO [SSH]	1,206	2,153,784	44.317
27 NOV 2024 - 28 NOV 2024	ALPHA	DATO' DR LEE SOON SOO [DIR/CEO]	1,206	2,153,784	44.317
03 DEC 2024 - 03 DEC 2024	AMBANK	EMPLOYEES PROVIDENT FUND BOARD [SSH]	3,140	419,887	12.684
02 DEC 2024 - 02 DEC 2024	AMBANK	EMPLOYEES PROVIDENT FUND BOARD [SSH]	10,708	416,747	12.589
29 NOV 2024 - 29 NOV 2024	AMBANK	EMPLOYEES PROVIDENT FUND BOARD [SSH]	5,524	406,038	12.265
28 NOV 2024 - 28 NOV 2024	AMBANK	EMPLOYEES PROVIDENT FUND BOARD [SSH]	17,550	400,514	12.098
27 NOV 2024 - 27 NOV 2024	AMBANK	EMPLOYEES PROVIDENT FUND BOARD [SSH]	-79,649	382,964	11.568
02 DEC 2024 - 02 DEC 2024	AME	EMPLOYEES PROVIDENT FUND BOARD [SSH]	9	36,815	5.76
02 DEC 2024 - 04 DEC 2024	AME	MR TAN TECK ENG [DIR/CEO]	395	551	0.086
04 DEC 2024 - 04 DEC 2024	AMWAY	KUMPULAN WANG PERSARAAN (DIPERBADANKAN) [SSH]	-23	14,677	8.928
02 DEC 2024 - 02 DEC 2024	APPASIA	MR TOH HONG CHYE [DIR/CEO]	30,000	348,827	26.082
02 DEC 2024 - 02 DEC 2024	APPASIA	MR TOH HONG CHYE [SSH]	30,000	222,827	26.082
04 DEC 2024 - 04 DEC 2024	ASIAFLE	AMANAHRAYA TRUSTEES BERHAD-AMANAH SAHAM BUMIPUTERA [SSH]	-524	24,400	12.886
03 DEC 2024 - 03 DEC 2024	ASIAFLE	AMANAHRAYA TRUSTEES BERHAD-AMANAH SAHAM BUMIPUTERA [SSH]	-52	24,924	13.162
29 NOV 2024 - 29 NOV 2024	ASIAFLE	AMANAHRAYA TRUSTEES BERHAD-AMANAH SAHAM BUMIPUTERA [SSH]	-15	24,975	13.189
28 NOV 2024 - 28 NOV 2024	ASIAFLE	AMANAHRAYA TRUSTEES BERHAD-AMANAH SAHAM BUMIPUTERA [SSH]	-98	24,990	13.197
04 DEC 2024 - 04 DEC 2024	ASIAPLY	DATO' YEO BOON LEONG [DIR/CEO]	79	214,920	22.422
04 DEC 2024 - 04 DEC 2024	ASIAPLY	DATO' YEO BOON LEONG [SSH]	79	214,920	22.422
02 DEC 2024 - 02 DEC 2024	ASIAPLY	DATO' YEO BOON LEONG [DIR/CEO]	864	214,841	22.414
02 DEC 2024 - 02 DEC 2024	ASIAPLY	DATO' YEO BOON LEONG [SSH]	864	214,841	22.414
02 DEC 2024 - 02 DEC 2024	ATECH	KUMPULAN WANG PERSARAAN (DIPERBADANKAN) [SSH]	439	22,655	5.226
29 NOV 2024 - 29 NOV 2024	ATECH	KUMPULAN WANG PERSARAAN (DIPERBADANKAN) [SSH]	-31	22,216	5.125
27 NOV 2024 - 27 NOV 2024	ATECH	EMPLOYEES PROVIDENT FUND BOARD [SSH]	18	47,536	10.966
02 DEC 2024 - 04 DEC 2024	AWANTEC	LEMBAGA TABUNG AMANAH WARISAN NEGERI TERENGGANU [SSH]	128	40,761	5.171
28 NOV 2024 - 29 NOV 2024	AWANTEC	LEMBAGA TABUNG AMANAH WARISAN NEGERI TERENGGANU [SSH]	50	40,633	5.155
03 DEC 2024 - 03 DEC 2024	AXREIT	EMPLOYEES PROVIDENT FUND BOARD [SSH]	1,000	378,325	18.818
27 NOV 2024 - 27 NOV 2024	AXREIT	EMPLOYEES PROVIDENT FUND BOARD [SSH]	500	377,325	18.768
02 DEC 2024 - 02 DEC 2024	AYER	MR LIM KEE CHOON [DIR/CEO]	1,000	18,229	24.354
02 DEC 2024 - 02 DEC 2024	AYER	MR LIM KEE CHOON [SSH]	1,000	18,229	24.354
02 DEC 2024 - 02 DEC 2024	AYER	TWIN TREES HOLDINGS SDN BHD [SSH]	1,000	15,045	20.099
28 NOV 2024 - 28 NOV 2024	BAHVEST	DR CHONG MEE FAH @ FREDERICK CHONG [DIR/CEO]	200	32,767	1.799
29 NOV 2024 - 29 NOV 2024	BAUTO	DATO' AMER HAMZAH BIN AHMAD [SSH]	50	179,361	15.338
29 NOV 2024 - 02 DEC 2024	BAUTO	DATO' LEE KOK CHUAN [DIR/CEO]	70	179,137	15.319
29 NOV 2024 - 02 DEC 2024	BAUTO	DATO' LEE KOK CHUAN [SSH]	70	179,137	15.319
29 NOV 2024 - 29 NOV 2024	BAUTO	DYNAMIC MILESTONE SDN BHD [SSH]	50	174,917	14.958
29 NOV 2024 - 02 DEC 2024	BAUTO	TAN SRI DATO' SRI YEOH CHOON SAN [DIR/CEO]	74	179,135	15.319
29 NOV 2024 - 02 DEC 2024	BAUTO	TAN SRI DATO' SRI YEOH CHOON SAN [SSH]	74	179,135	15.319
03 DEC 2024 - 03 DEC 2024	BIMB	EMPLOYEES PROVIDENT FUND BOARD [SSH]	591	388,789	17.154
29 NOV 2024 - 29 NOV 2024	BIMB	EMPLOYEES PROVIDENT FUND BOARD [SSH]	1,559	388,199	17.128
27 NOV 2024 - 27 NOV 2024	BIMB	EMPLOYEES PROVIDENT FUND BOARD [SSH]	-90	386,640	17.06
06 DEC 2024 - 06 DEC 2024	BORNOIL	DATUK JOSEPH LEE YOK MIN @ AMBROSE [DIR/CEO]	500	1,729,947	14.426
06 DEC 2024 - 06 DEC 2024	BORNOIL	DATUK JOSEPH LEE YOK MIN @ AMBROSE [SSH]	500	471,192	14.426
05 DEC 2024 - 05 DEC 2024	BORNOIL	DATUK JOSEPH LEE YOK MIN @ AMBROSE [DIR/CEO]	500	1,729,447	14.422
05 DEC 2024 - 05 DEC 2024	BORNOIL	DATUK JOSEPH LEE YOK MIN @ AMBROSE [SSH]	500	470,692	14.422
04 DEC 2024 - 04 DEC 2024	BORNOIL	DATUK JOSEPH LEE YOK MIN @ AMBROSE [DIR/CEO]	500	1,728,947	14.418
04 DEC 2024 - 04 DEC 2024	BORNOIL	DATUK JOSEPH LEE YOK MIN @ AMBROSE [SSH]	500	470,192	14.418
03 DEC 2024 - 03 DEC 2024	BORNOIL	DATUK JOSEPH LEE YOK MIN @ AMBROSE [DIR/CEO]	3,800	1,728,447	14.414
03 DEC 2024 - 03 DEC 2024	BORNOIL	DATUK JOSEPH LEE YOK MIN @ AMBROSE [SSH]	3,800	469,692	14.414
02 DEC 2024 - 02 DEC 2024	BORNOIL	DATUK JOSEPH LEE YOK MIN @ AMBROSE [DIR/CEO]	2,800	1,724,647	14.382
02 DEC 2024 - 02 DEC 2024	BORNOIL	DATUK JOSEPH LEE YOK MIN @ AMBROSE [SSH]	2,800	1,724,647	14.382
03 DEC 2024 - 03 DEC 2024	BSLCCORP	MR HO KEE WEE [SSH]	5,550	179,368	9.293
05 DEC 2024 - 05 DEC 2024	BURSA	KUMPULAN WANG PERSARAAN (DIPERBADANKAN) [SSH]	18	88,397	10.923
03 DEC 2024 - 03 DEC 2024	BURSA	EMPLOYEES PROVIDENT FUND BOARD [SSH]	21	81,602	10.083
04 DEC 2024 - 04 DEC 2024	BURSA	KUMPULAN WANG PERSARAAN (DIPERBADANKAN) [SSH]	44	88,379	10.92
29 NOV 2024 - 29 NOV 2024	BURSA	EMPLOYEES PROVIDENT FUND BOARD [SSH]	493	81,581	9.903
27 NOV 2024 - 27 NOV 2024	BURSA	EMPLOYEES PROVIDENT FUND BOARD [SSH]	289	81,133	10.025
29 NOV 2024 - 29 NOV 2024	CBIP	DATUK LIM CHAI BENG [DIR/CEO]	68	201,255	43.069
29 NOV 2024 - 29 NOV 2024	CBIP	DATUK LIM CHAI BENG [SSH]	68	201,255	43.069
29 NOV 2024 - 29 NOV 2024	CBIP	ZEE CAPITAL SDN BHD [SSH]	68	39,041	8.355
03 DEC 2024 - 03 DEC 2024	CDB	EMPLOYEES PROVIDENT FUND BOARD [SSH]	948	1,210,819	10.321
29 NOV 2024 - 29 NOV 2024	CDB	EMPLOYEES PROVIDENT FUND BOARD [SSH]	1,452	1,210,207	10.316
28 NOV 2024 - 28 NOV 2024	CDB	EMPLOYEES PROVIDENT FUND BOARD [SSH]	2,000	1,208,885	10.305

Notice Period is 01st December 2024 – 07th December 2024

Effective Change Date	Stock Name	Buyer/ Seller Name [Classification]	Bought / (Sold) ['000]	No. of Shares After Trade ['000]	
			Total	Total	% Held
27 NOV 2024 - 27 NOV 2024	CDB	EMPLOYEES PROVIDENT FUND BOARD [SSH]	618	1,207,015	10.289
04 DEC 2024 - 04 DEC 2024	CEB	MR CHUNG CHEE YANG [SSH]	100	80,300	8.095
03 DEC 2024 - 04 DEC 2024	CEB	MR CHUNG CHEE YANG [SSH]	200	80,200	8.085
29 NOV 2024 - 02 DEC 2024	CEB	MR CHUNG CHEE YANG [SSH]	7,000	80,000	8.065
02 DEC 2024 - 02 DEC 2024	CEKD	CEKD HOLDING SDN BHD [SSH]	-16,000	127,983	65.776
02 DEC 2024 - 02 DEC 2024	CEKD	MISS YAP KAI MIN [DIR/CEO]	-16,000	127,983	65.776
02 DEC 2024 - 02 DEC 2024	CEKD	MISS YAP KAI MIN [SSH]	-16,000	127,983	65.776
02 DEC 2024 - 02 DEC 2024	CEKD	MISS YAP KAI NING [DIR/CEO]	-16,000	127,983	65.776
02 DEC 2024 - 02 DEC 2024	CEKD	MISS YAP KAI NING [SSH]	-16,000	127,983	65.776
02 DEC 2024 - 02 DEC 2024	CEKD	MR YAP KAI JIE [SSH]	-16,000	127,983	65.776
29 NOV 2024 - 29 NOV 2024	CGB	MR LEE CHEE VUI [DIR/CEO]	35,000	120,464	15.79
29 NOV 2024 - 29 NOV 2024	CGB	MR LEE CHEE VUI [SSH]	35,000	120,464	15.79
29 NOV 2024 - 29 NOV 2024	CGB	MR SOO YU CHAI [SSH]	35,000	108,828	14.265
29 NOV 2024 - 29 NOV 2024	CGB	RYRT HOLDINGS SDN. BHD. [SSH]	35,000	108,046	14.162
02 DEC 2024 - 02 DEC 2024	CIMB	EMPLOYEES PROVIDENT FUND BOARD [SSH]	8,183	1,667,762	15.55
29 NOV 2024 - 29 NOV 2024	CIMB	EMPLOYEES PROVIDENT FUND BOARD [SSH]	16,736	1,659,579	15.48
02 DEC 2024 - 02 DEC 2024	CIMB	KUMPULAN WANG PERSARAAN (DIPERBADANKAN) [SSH]	-155	643,046	6
28 NOV 2024 - 28 NOV 2024	CIMB	EMPLOYEES PROVIDENT FUND BOARD [SSH]	14,407	1,642,843	15.32
29 NOV 2024 - 29 NOV 2024	CIMB	KUMPULAN WANG PERSARAAN (DIPERBADANKAN) [SSH]	29	643,201	6
27 NOV 2024 - 27 NOV 2024	CIMB	EMPLOYEES PROVIDENT FUND BOARD [SSH]	19,225	1,628,436	15.19
26 NOV 2024 - 26 NOV 2024	CIMB	EMPLOYEES PROVIDENT FUND BOARD [SSH]	-42,529	1,609,210	15.01
29 NOV 2024 - 29 NOV 2024	CITAGLB	RHB TRUSTEES BERHAD [SSH]	-3,719	23,000	5.406
05 DEC 2024 - 05 DEC 2024	CLMT	KUMPULAN WANG PERSARAAN (DIPERBADANKAN) [SSH]	232	298,047	10.349
04 DEC 2024 - 04 DEC 2024	CLMT	KUMPULAN WANG PERSARAAN (DIPERBADANKAN) [SSH]	583	297,816	10.341
29 NOV 2024 - 29 NOV 2024	CLOUDPT	DATUK WIRA CHOONG WAI HOONG [DIR/CEO]	400	226,203	42.551
29 NOV 2024 - 29 NOV 2024	CLOUDPT	DATUK WIRA CHOONG WAI HOONG [SSH]	400	226,203	42.551
29 NOV 2024 - 29 NOV 2024	CLOUDPT	ERA JASAKITA SDN. BHD. [SSH]	400	183,130	34.449
29 NOV 2024 - 29 NOV 2024	CLOUDPT	MR YEW CHOONG CHEONG [DIR/CEO]	400	226,203	42.551
29 NOV 2024 - 29 NOV 2024	CLOUDPT	MR YEW CHOONG CHEONG [SSH]	400	226,203	42.551
29 NOV 2024 - 02 DEC 2024	CNERGEN	MR LYE THIM LOONG [DIR/CEO]	38	10,560	2.121
03 DEC 2024 - 03 DEC 2024	CORAZA	MR PAUL HENG WENG SENG [DIR/CEO]	1,300	207,970	42.131
03 DEC 2024 - 03 DEC 2024	CORAZA	MR PAUL HENG WENG SENG [SSH]	1,300	207,970	42.131
03 DEC 2024 - 04 DEC 2024	CYBERE	SPECIAL FLAGSHIP HOLDINGS SDN BHD [SSH]	37	103,396	60.771
03 DEC 2024 - 04 DEC 2024	CYBERE	TAN SRI DATO' DR PALANIAPPAN A/L RAMANATHAN CHETTIAR [DIR/CEO]	37	103,396	60.771
03 DEC 2024 - 04 DEC 2024	CYBERE	TAN SRI DATO' DR PALANIAPPAN A/L RAMANATHAN CHETTIAR [SSH]	37	103,396	60.771
02 DEC 2024 - 03 DEC 2024	CYBERE	MR MAHA RAMANATHAN PALAN [DIR/CEO]	136	1,046	0.615
03 DEC 2024 - 03 DEC 2024	CYPARK	MR CHUNG CHEE YANG [SSH]	50	73,045	8.877
05 DEC 2024 - 05 DEC 2024	D&O	KUMPULAN WANG PERSARAAN (DIPERBADANKAN) [SSH]	85	70,508	5.689
03 DEC 2024 - 03 DEC 2024	D&O	EMPLOYEES PROVIDENT FUND BOARD [SSH]	339	84,258	6.798
04 DEC 2024 - 04 DEC 2024	D&O	KUMPULAN WANG PERSARAAN (DIPERBADANKAN) [SSH]	40	70,424	5.682
02 DEC 2024 - 02 DEC 2024	D&O	EMPLOYEES PROVIDENT FUND BOARD [SSH]	803	84,107	6.786
03 DEC 2024 - 03 DEC 2024	D&O	KUMPULAN WANG PERSARAAN (DIPERBADANKAN) [SSH]	-208	70,384	5.679
29 NOV 2024 - 29 NOV 2024	D&O	EMPLOYEES PROVIDENT FUND BOARD [SSH]	-500	83,305	6.721
02 DEC 2024 - 02 DEC 2024	D&O	KUMPULAN WANG PERSARAAN (DIPERBADANKAN) [SSH]	69	70,591	5.696
02 DEC 2024 - 02 DEC 2024	DFX	DATO' SRI THONG KOK KHEE [SSH]	1,718	215,584	28.909
02 DEC 2024 - 02 DEC 2024	DFX	INSAS BERHAD [SSH]	1,718	215,584	28.909
02 DEC 2024 - 02 DEC 2024	DFX	INSAS TECHNOLOGY BERHAD [SSH]	1,718	215,584	28.909
02 DEC 2024 - 02 DEC 2024	DIALOG	KUMPULAN WANG PERSARAAN (DIPERBADANKAN) [SSH]	1,000	603,215	10.69
29 NOV 2024 - 29 NOV 2024	DIALOG	KUMPULAN WANG PERSARAAN (DIPERBADANKAN) [SSH]	-600	602,215	10.68
27 NOV 2024 - 27 NOV 2024	DIALOG	EMPLOYEES PROVIDENT FUND BOARD [SSH]	-151	928,423	16.45
03 DEC 2024 - 03 DEC 2024	DRBHCOM	EMPLOYEES PROVIDENT FUND BOARD [SSH]	109	150,404	7.78
02 DEC 2024 - 02 DEC 2024	DRBHCOM	EMPLOYEES PROVIDENT FUND BOARD [SSH]	-1,121	150,295	7.774
29 NOV 2024 - 29 NOV 2024	DRBHCOM	EMPLOYEES PROVIDENT FUND BOARD [SSH]	603	151,416	7.832
28 NOV 2024 - 28 NOV 2024	DRBHCOM	EMPLOYEES PROVIDENT FUND BOARD [SSH]	278	150,813	7.801
27 NOV 2024 - 27 NOV 2024	DRBHCOM	EMPLOYEES PROVIDENT FUND BOARD [SSH]	313	150,536	7.787
02 DEC 2024 - 02 DEC 2024	DUFU	LEE SU HUI-FEN ALSO KNOWN AS FLORA SU [SSH]	-100	50,566	9.494
02 DEC 2024 - 02 DEC 2024	DUFU	LEE WEN-JUNG [SSH]	-100	50,625	9.505
02 DEC 2024 - 02 DEC 2024	DUFU	PERFECT COMMERCE SDN. BHD. [SSH]	-100	50,560	9.493
03 DEC 2024 - 03 DEC 2024	E&O	EMPLOYEES PROVIDENT FUND BOARD [SSH]	1,000	116,384	5.597
04 DEC 2024 - 04 DEC 2024	E&O	BRIGHT MILESTONE SDN BHD [SSH]	104,107	232,604	9.425
04 DEC 2024 - 04 DEC 2024	E&O	DATIN SERI TOH SIEW CHUON [SSH]	125,198	753,896	30.547
04 DEC 2024 - 04 DEC 2024	E&O	DATO' TEE ENG SENG [DIR/CEO]	376,137	1,437,976	58.266
04 DEC 2024 - 04 DEC 2024	E&O	DATO' TEE ENG SENG [SSH]	376,137	1,437,976	58.266
04 DEC 2024 - 04 DEC 2024	E&O	DATO' SERI TEE ENG HO [DIR/CEO]	381,369	1,443,494	58.49
04 DEC 2024 - 04 DEC 2024	E&O	DATO' SERI TEE ENG HO [SSH]	376,137	1,437,976	58.266
04 DEC 2024 - 04 DEC 2024	E&O	KERJAYA PROSPEK DEVELOPMENT (M) SDN BHD [SSH]	148,065	452,993	18.355
04 DEC 2024 - 04 DEC 2024	E&O	MR KHOO SIONG KEE [DIR/CEO]	101	226	0.009
04 DEC 2024 - 04 DEC 2024	E&O	MR KOK TUCK CHEONG [DIR/CEO]	4,600	5,400	0.219
04 DEC 2024 - 04 DEC 2024	E&O	PARAMOUNT SPRING SDN BHD [SSH]	104,107	232,604	9.425

<

Notice Period is 01st December 2024 – 07th December 2024

Effective Change Date	Stock Name	Buyer/ Seller Name [Classification]	Bought / (Sold) ['000]	No. of Shares After Trade ['000]	
			Total	Total	% Held
04 DEC 2024 - 04 DEC 2024	E&O	SUMMERCHROME SDN BHD [SSH]	104,107	232,604	9.425
02 DEC 2024 - 02 DEC 2024	E&O	EMPLOYEES PROVIDENT FUND BOARD [SSH]	1,000	115,384	5.549
29 NOV 2024 - 29 NOV 2024	E&O	EMPLOYEES PROVIDENT FUND BOARD [SSH]	2,869	114,384	5.5
27 NOV 2024 - 27 NOV 2024	E&O	EMPLOYEES PROVIDENT FUND BOARD [SSH]	50	111,044	5.34
28 NOV 2024 - 29 NOV 2024	ECOFIRS	MR CHEW HIAN TAT [DIR/CEO]	1,720	104,368	8.827
28 NOV 2024 - 29 NOV 2024	ECOFIRS	MR CHEW HIAN TAT [SSH]	1,720	104,368	8.827
02 DEC 2024 - 02 DEC 2024	ECONBHD	EMPLOYEES PROVIDENT FUND BOARD [SSH]	-1,619	108,769	7.673
29 NOV 2024 - 29 NOV 2024	ECONBHD	EMPLOYEES PROVIDENT FUND BOARD [SSH]	376	110,387	7.787
28 NOV 2024 - 28 NOV 2024	ECONBHD	EMPLOYEES PROVIDENT FUND BOARD [SSH]	500	110,011	7.761
27 NOV 2024 - 27 NOV 2024	ECONBHD	EMPLOYEES PROVIDENT FUND BOARD [SSH]	-3,004	109,511	7.726
05 DEC 2024 - 05 DEC 2024	EDARAN	VALIANT CHAPTER SDN BHD [SSH]	100	14,239	24.59
29 NOV 2024 - 29 NOV 2024	EFRAME	MADAM LIM SAW NEE [DIR/CEO]	-3,000	7,926	2.154
04 DEC 2024 - 04 DEC 2024	EG	DATO' KANG PANG KIANG [DIR/CEO]	649	65,096	14.321
04 DEC 2024 - 04 DEC 2024	EG	DATO' KANG PANG KIANG [SSH]	649	65,096	14.321
02 DEC 2024 - 03 DEC 2024	EG	DATO' KANG PANG KIANG [DIR/CEO]	562	64,447	14.178
02 DEC 2024 - 03 DEC 2024	EG	DATO' KANG PANG KIANG [SSH]	562	64,447	14.178
04 DEC 2024 - 04 DEC 2024	EITA	MADAM GOH KIN BEE [SSH]	27	43,681	14.473
04 DEC 2024 - 04 DEC 2024	EITA	MR LIM JOO SWEE [DIR/CEO]	27	43,788	14.508
04 DEC 2024 - 04 DEC 2024	EITA	MR LIM JOO SWEE [SSH]	27	43,788	14.508
04 DEC 2024 - 04 DEC 2024	ELKDESA	MR TEOH SENG HUI [DIR/CEO]	50	5,300	1.165
29 NOV 2024 - 29 NOV 2024	EPMB	ENCIK AIDAN HAMIDON [DIR/CEO]	33,042	59,221	20.679
29 NOV 2024 - 29 NOV 2024	EPMB	ENCIK AIDAN HAMIDON [SSH]	33,042	59,221	20.679
29 NOV 2024 - 29 NOV 2024	EPMB	ENCIK HAMIDON BIN ABDULLAH [SSH]	33,042	68,268	23.838
29 NOV 2024 - 29 NOV 2024	EPMB	HAMIDON BIN ABDULLAH [DIR/CEO]	33,042	68,268	23.838
29 NOV 2024 - 29 NOV 2024	EPMB	MUTUAL CONCEPT SDN. BHD. [SSH]	33,042	54,426	19.011
02 DEC 2024 - 02 DEC 2024	F&N	EMPLOYEES PROVIDENT FUND BOARD [SSH]	-25	42,870	11.688
29 NOV 2024 - 29 NOV 2024	F&N	EMPLOYEES PROVIDENT FUND BOARD [SSH]	-9	42,895	11.695
28 NOV 2024 - 28 NOV 2024	F&N	EMPLOYEES PROVIDENT FUND BOARD [SSH]	100	42,904	11.697
03 DEC 2024 - 03 DEC 2024	FAREAST	MR TEE LIP TENG [DIR/CEO]	100	1,760	0.296
29 NOV 2024 - 02 DEC 2024	FAREAST	DATO' ASMIN BINI YAHYA [DIR/CEO]	5	357	0.06
02 DEC 2024 - 02 DEC 2024	FEYTECH	ABRDN HOLDINGS LIMITED [SSH]	612	44,523	5.28
02 DEC 2024 - 02 DEC 2024	FEYTECH	ABRDN MALAYSIA SDN BHD [SSH]	612	44,523	5.28
02 DEC 2024 - 02 DEC 2024	FEYTECH	ABRDN PLC [SSH]	612	44,523	5.28
29 NOV 2024 - 29 NOV 2024	FEYTECH	ABRDN HOLDINGS LIMITED [SSH]	1,701	43,911	5.208
29 NOV 2024 - 29 NOV 2024	FEYTECH	ABRDN MALAYSIA SDN BHD [SSH]	1,701	43,911	5.208
29 NOV 2023 - 29 NOV 2023	FEYTECH	ABRDN PLC [SSH]	1,701	43,911	5.208
05 DEC 2024 - 05 DEC 2024	FFB	KUMPULAN WANG PERSARAAN (DIPERBADANKAN) [SSH]	-385	138,889	7.408
03 DEC 2024 - 03 DEC 2024	FFB	EMPLOYEES PROVIDENT FUND BOARD [SSH]	-85	177,290	9.457
03 DEC 2024 - 03 DEC 2024	FFB	ABRDN HOLDINGS LIMITED [SSH]	-85	118,049	6.297
03 DEC 2024 - 03 DEC 2024	FFB	ABRDN MALAYSIA SDN BHD [SSH]	-85	116,649	6.222
03 DEC 2024 - 03 DEC 2024	FFB	ABRDN PLC [SSH]	-85	118,049	6.297
02 DEC 2024 - 02 DEC 2024	FFB	EMPLOYEES PROVIDENT FUND BOARD [SSH]	-315	177,375	9.461
02 DEC 2024 - 02 DEC 2024	FFB	ABRDN HOLDINGS LIMITED [SSH]	-315	118,134	6.301
02 DEC 2024 - 02 DEC 2024	FFB	ABRDN MALAYSIA SDN BHD [SSH]	-315	116,734	6.227
02 DEC 2024 - 02 DEC 2024	FFB	ABRDN PLC [SSH]	-315	118,134	6.301
29 NOV 2024 - 29 NOV 2024	FFB	EMPLOYEES PROVIDENT FUND BOARD [SSH]	95	177,690	9.478
02 DEC 2024 - 02 DEC 2024	FFB	KUMPULAN WANG PERSARAAN (DIPERBADANKAN) [SSH]	3,000	139,274	7.429
28 NOV 2024 - 28 NOV 2024	FFB	EMPLOYEES PROVIDENT FUND BOARD [SSH]	-305	177,595	9.473
29 NOV 2024 - 29 NOV 2024	FFB	KUMPULAN WANG PERSARAAN (DIPERBADANKAN) [SSH]	385	136,274	7.269
27 NOV 2024 - 27 NOV 2024	FFB	EMPLOYEES PROVIDENT FUND BOARD [SSH]	-1,000	177,900	9.49
03 DEC 2024 - 03 DEC 2024	FRONTKN	EMPLOYEES PROVIDENT FUND BOARD [SSH]	-957	160,517	10.146
02 DEC 2024 - 02 DEC 2024	FRONTKN	EMPLOYEES PROVIDENT FUND BOARD [SSH]	-356	161,473	10.206
29 NOV 2024 - 29 NOV 2024	FRONTKN	EMPLOYEES PROVIDENT FUND BOARD [SSH]	-476	161,829	10.228
28 NOV 2024 - 28 NOV 2024	FRONTKN	EMPLOYEES PROVIDENT FUND BOARD [SSH]	-782	162,305	10.259
27 NOV 2024 - 27 NOV 2024	FRONTKN	EMPLOYEES PROVIDENT FUND BOARD [SSH]	-229	163,087	10.308
03 DEC 2024 - 03 DEC 2024	GAMUDA	EMPLOYEES PROVIDENT FUND BOARD (EPF BOARD) [SSH]	-752	204,283	7.2
02 DEC 2024 - 02 DEC 2024	GAMUDA	EMPLOYEES PROVIDENT FUND BOARD (EPF BOARD) [SSH]	859	205,035	7.23
04 DEC 2024 - 04 DEC 2024	GAMUDA	MR JUSTIN CHIN JING HO [DIR/CEO]	600	600	0.02
29 NOV 2024 - 29 NOV 2024	GAMUDA	EMPLOYEES PROVIDENT FUND BOARD (EPF BOARD) [SSH]	705	204,176	7.2
28 NOV 2024 - 28 NOV 2024	GAMUDA	EMPLOYEES PROVIDENT FUND BOARD (EPF BOARD) [SSH]	10,708	203,471	7.21
27 NOV 2024 - 27 NOV 2024	GAMUDA	EMPLOYEES PROVIDENT FUND BOARD (EPF BOARD) [SSH]	704	192,763	6.83
02 DEC 2024 - 02 DEC 2024	GBAY	MR PETER LING EE KONG [DIR/CEO]	18	10,762	13.228
02 DEC 2024 - 02 DEC 2024	GBAY	MR PETER LING EE KONG [SSH]	18	10,762	13.228
29 NOV 2024 - 29 NOV 2024	GCB	GUAN CHONG RESOURCES SDN. BHD. [SSH]	150	585,027	49.81
29 NOV 2024 - 03 DEC 2024	GCB	MR HIA CHENG [DIR/CEO]	300	79,962	6.808
29 NOV 2024 - 03 DEC 2024	GCB	MR HIA CHENG [SSH]	300	79,962	6.808
28 NOV 2024 - 28 NOV 2024	GCB	MR HIA CHENG [DIR/CEO]	200	79,662	6.782
28 NOV 2024 - 28 NOV 2024	GCB	MR HIA CHENG [SSH]	200	79,662	6.782
02 DEC 2024 - 02 DEC 2024	GENETEC	EMPLOYEES PROVIDENT FUND BOARD [SSH]	2,000	42,822	5.456
29 NOV 2024 - 29 NOV 2024	GENP	EMPLOYEES PROVIDENT FUND BOARD [SSH]	-123	120,822	13.467
04 DEC 2024 - 04 DEC 2024	GLOMAC	SHAPADU CAPITAL SDN. BHD. [SSH]	15	91,392	11.908
03 DEC 2024 - 03 DEC 2024	GLOMAC	DATUK SERI FATEH ISKANDAR BIN TAN SRI DATO' MOHAMED MANSOR [DIR/CEO]	70	309,179	40.285
03 DEC 2024 - 03 DEC 2024	GLOMAC	DATUK SERI FATEH ISKANDAR BIN TAN SRI DATO' MOHAMED MANSOR [SSH]	70	308,677	40.219
03 DEC 2024 - 03 DEC 2024	GLOMAC	TAN SRI DATO' MOHAMED MANSOR BIN FATEH DIN [DIR/CEO]	70	316,003	41.173
03 DEC 2024 - 03 DEC 2024	GLOMAC	TAN SRI DATO' MOHAMED MANSOR BIN FATEH DIN [SSH]	70	308,677	40.219
29 NOV 2024 - 29 NOV 2024	HAILY	HAILY HOLDINGS SDN. BHD. [SSH]	-10,000	240,441	61.289
29 NOV 2024 - 29 NOV 2024	HAILY	MADAM KIK SIEW LEE [SSH]	-10,000	240,441	61.289
29 NOV 2024 - 29 NOV 2024	HAILY	MR SEE TIN HAI [DIR/CEO]	-10,000	240,681	61.351
29 NOV 2024 - 29 NOV 2024	HAILY	MR SEE TIN HAI [SSH]	-10,000	240,681	61.351
02 DEC 2024 - 02 DEC 2024	HARTA	KUMPULAN WANG PERSARAAN (DIPERBADANKAN) [SSH]	127	209,410	6.135
05 DEC 2024 - 05 DEC 2024	HCK	DATO' DIONG TAK CHONG @ TIONG TAK CHONG [DIR/CEO]	1,500	27,177	4.841
05 DEC 2024 - 05 DEC 2024	HCK-WA	DATO' DIONG TAK CHONG @ TIONG TAK CHONG [DIR/CEO]	1,500	33,055	45.908
02 DEC 2024 - 03 DEC 2024	HEGROUP	MR HAW CHEE SENG [DIR/CEO]	27	90,095	20.476
02 DEC 2024 - 03 DEC 2024	HEGROUP	MR HAW CHEE SENG [SSH]	27	90,095	20.476
04 DEC 2024 - 05 DEC 2024	HHRG	BATU KAWI CAPITAL SDN BHD [SSH]	294	60,594	6.339
04 DEC 2024 - 05 DEC 2024	HHRG	MR TAI CHIN HWANG [SSH]	294	78,787	8.242
29 NOV 2024 - 02 DEC 2024	HHRG	BATU KAWI CAPITAL SDN BHD [SSH]	613	60,300	6.308
29 NOV 2024 - 02 DEC 2024	HHRG	MR TAI CHIN HWANG [SSH]	613	78,493	8.211
03 DEC 2024 - 03 DEC 2024	HLBANK	EMPLOYEES PROVIDENT FUND BOARD [SSH]	1,250	180,196	8.636
02 DEC 2024 - 02 DEC 2024	HLBANK	EMPLOYEES PROVIDENT FUND BOARD [SSH]	1,400	178,946	8.576
02 DEC 2024 - 02 DEC 2024	HLBANK	TAN SRI QUEK LENG CHAN [SSH]	-0.6	1,346,027	64.508
28 NOV 2024 - 28 NOV 2024	HLBANK	EMPLOYEES PROVIDENT FUND BOARD [SSH]	3,870	177,546	8.509

Notice Period is 01st December 2024 – 07th December 2024

Effective Change Date	Stock Name	Buyer/ Seller Name [Classification]	Bought / (Sold) ['000]	No. of Shares After Trade ['000]	
			Total	Total	% Held
27 NOV 2024 - 27 NOV 2024	HLBANK	EMPLOYEES PROVIDENT FUND BOARD [SSH]	-8,845	173,676	8.323
02 DEC 2024 - 02 DEC 2024	HLFG	TAN SRI QUEK LENG CHAN [SSH]	-66	899,075	78.35
02 DEC 2024 - 04 DEC 2024	ICON	DATO' SRI HADIAN BIN HASHIM [DIR/CEO]	-700	23,261	3.73
02 DEC 2024 - 04 DEC 2024	ICON-WA	DATO' SRI HADIAN BIN HASHIM [DIR/CEO]	-339	944	0.727
29 NOV 2024 - 29 NOV 2024	IGBREIT	EMPLOYEES PROVIDENT FUND BOARD ("EPF BOARD") [SSH]	362	393,789	10.892
27 NOV 2024 - 27 NOV 2024	IGBREIT	EMPLOYEES PROVIDENT FUND BOARD ("EPF BOARD") [SSH]	1,100	389,427	10.771
03 DEC 2024 - 03 DEC 2024	IHH	EMPLOYEES PROVIDENT FUND BOARD [SSH]	53	903,106	10.249
02 DEC 2024 - 02 DEC 2024	IHH	EMPLOYEES PROVIDENT FUND BOARD [SSH]	-234	903,053	10.248
29 NOV 2024 - 29 NOV 2024	IHH	EMPLOYEES PROVIDENT FUND BOARD [SSH]	-5,946	903,288	10.251
28 NOV 2024 - 28 NOV 2024	IHH	EMPLOYEES PROVIDENT FUND BOARD [SSH]	741	909,234	10.318
28 NOV 2024 - 27 NOV 2024	IHH	EMPLOYEES PROVIDENT FUND BOARD [SSH]	5,630	908,492	10.31
05 DEC 2024 - 05 DEC 2024	INARI	KUMPULAN WANG PERSARAAN (DIPERBADANKAN) [SSH]	643	368,386	9.723
03 DEC 2024 - 03 DEC 2024	INARI	EMPLOYEES PROVIDENT FUND BOARD [SSH]	1,050	424,084	11.194
04 DEC 2024 - 04 DEC 2024	INARI	KUMPULAN WANG PERSARAAN (DIPERBADANKAN) [SSH]	-251	367,743	9.706
28 NOV 2024 - 28 NOV 2024	INARI	EMPLOYEES PROVIDENT FUND BOARD [SSH]	3,412	423,792	11.186
27 NOV 2024 - 27 NOV 2024	INARI	EMPLOYEES PROVIDENT FUND BOARD [SSH]	1,500	420,380	11.096
29 NOV 2024 - 29 NOV 2024	INFOM	MR YEE CHEE MENG [SSH]	100	371,418	61.775
27 NOV 2024 - 29 NOV 2024	INFOM	MR YEE CHEE MENG [DIR/CEO]	232	371,418	61.775
04 DEC 2024 - 04 DEC 2024	INTA	ENCIK AHMAD BIN AWI [DIR/CEO]	-5,000	53,873	9.761
04 DEC 2024 - 04 DEC 2024	INTA	ENCIK AHMAD BIN AWI [SSH]	-5,000	53,873	9.761
04 DEC 2024 - 04 DEC 2024	INTA	MR YAP YOON KONG [DIR/CEO]	5,000	17,595	3.188
03 DEC 2024 - 03 DEC 2024	IOICORP	EMPLOYEES PROVIDENT FUND BOARD [SSH]	247	831,462	13.403
02 DEC 2024 - 02 DEC 2024	IOICORP	EMPLOYEES PROVIDENT FUND BOARD [SSH]	558	831,215	13.399
29 NOV 2024 - 29 NOV 2024	IOICORP	EMPLOYEES PROVIDENT FUND BOARD [SSH]	1,006	830,657	13.39
28 NOV 2024 - 28 NOV 2024	IOICORP	EMPLOYEES PROVIDENT FUND BOARD [SSH]	450	829,652	13.374
03 DEC 2024 - 03 DEC 2024	JPG	EMPLOYEES PROVIDENT FUND BOARD [SSH]	498	185,001	7.4
02 DEC 2024 - 02 DEC 2024	JPG	EMPLOYEES PROVIDENT FUND BOARD [SSH]	-1,965	184,503	7.38
29 NOV 2024 - 29 NOV 2024	JPG	EMPLOYEES PROVIDENT FUND BOARD [SSH]	-4,357	186,468	7.459
28 NOV 2024 - 28 NOV 2024	JPG	EMPLOYEES PROVIDENT FUND BOARD [SSH]	251	190,825	7.633
27 NOV 2024 - 27 NOV 2024	JPG	EMPLOYEES PROVIDENT FUND BOARD [SSH]	-1,277	190,574	7.623
29 NOV 2024 - 29 NOV 2024	KERJAYA	EMPLOYEES PROVIDENT FUND BOARD [SSH]	1,254	71,548	5.674
27 NOV 2024 - 27 NOV 2024	KERJAYA	EMPLOYEES PROVIDENT FUND BOARD [SSH]	-587	70,294	5.574
27 NOV 2024 - 27 NOV 2024	KGB	EMPLOYEES PROVIDENT FUND BOARD [SSH]	25	35,282	4.965
03 DEC 2024 - 03 DEC 2024	KLCC	EMPLOYEES PROVIDENT FUND BOARD [SSH]	-7	202,810	11.234
03 DEC 2024 - 03 DEC 2024	KLCC	EMPLOYEES PROVIDENT FUND BOARD [SSH]	-7	202,810	11.234
02 DEC 2024 - 02 DEC 2024	KLCC	EMPLOYEES PROVIDENT FUND BOARD [SSH]	-5	202,817	11.234
02 DEC 2024 - 02 DEC 2024	KLCC	EMPLOYEES PROVIDENT FUND BOARD [SSH]	-5	202,817	11.234
29 NOV 2024 - 29 NOV 2024	KLCC	EMPLOYEES PROVIDENT FUND BOARD [SSH]	-47	202,822	11.235
29 NOV 2024 - 29 NOV 2024	KLCC	EMPLOYEES PROVIDENT FUND BOARD [SSH]	-47	202,822	11.235
28 NOV 2024 - 28 NOV 2024	KLCC	EMPLOYEES PROVIDENT FUND BOARD [SSH]	0.7	202,869	11.237
28 NOV 2024 - 28 NOV 2024	KLCC	EMPLOYEES PROVIDENT FUND BOARD [SSH]	0.7	202,869	11.237
27 NOV 2024 - 27 NOV 2024	KLCC	EMPLOYEES PROVIDENT FUND BOARD [SSH]	224	202,869	11.237
27 NOV 2024 - 27 NOV 2024	KLCC	EMPLOYEES PROVIDENT FUND BOARD [SSH]	224	202,869	11.237
03 DEC 2024 - 03 DEC 2024	KLK	ARUSHA ENTERPRISE SDN. BHD. [SSH]	6	525,741	47.951
03 DEC 2024 - 03 DEC 2024	KLK	BATU KAWAN BERHAD [SSH]	6	525,741	47.951
03 DEC 2024 - 03 DEC 2024	KLK	CUBIC CRYSTAL CORPORATION [SSH]	6	526,228	47.996
03 DEC 2024 - 03 DEC 2024	KLK	DATO' LEE HAU HIAN [DIR/CEO]	6	526,315	48.004
03 DEC 2024 - 03 DEC 2024	KLK	DATO' LEE HAU HIAN [SSH]	6	526,315	48.004
03 DEC 2024 - 03 DEC 2024	KLK	DI-YI SDN. BHD. [SSH]	6	526,228	47.996
03 DEC 2024 - 03 DEC 2024	KLK	EMPLOYEES PROVIDENT FUND BOARD [SSH]	0.2	171,757	15.666
03 DEC 2024 - 03 DEC 2024	KLK	GRATEFUL BLESSINGS FOUNDATION [SSH]	6	526,228	47.996
03 DEC 2024 - 03 DEC 2024	KLK	GRATEFUL BLESSINGS INC. [SSH]	6	526,228	47.996
03					

Notice Period is 01st December 2024 – 07th December 2024

Effective Change Date	Stock Name	Buyer/ Seller Name [Classification]	Bought / (Sold) ['000]	No. of Shares After Trade ['000]	
			Total	Total	% Held
02 DEC 2024 - 02 DEC 2024	LBS	KUMPULAN WANG PERSARAAN (DIPERBADANKAN) [SSH]	-87	141,553	9.157
29 NOV 2024 - 29 NOV 2024	LBS	KUMPULAN WANG PERSARAAN (DIPERBADANKAN) [SSH]	-480	141,640	9.162
29 NOV 2024 - 29 NOV 2024	LBS	TAN SRI DATO' SRI IR. (DR.) LIM HOCK SAN JP [DIR/CEO]	150	613,317	39.676
29 NOV 2024 - 29 NOV 2024	LBS	TAN SRI DATO' SRI IR. (DR.) LIM HOCK SAN JP [SSH]	150	610,047	39.465
04 DEC 2024 - 04 DEC 2024	LWSABAH	MR LIAW HEN KONG [DIR/CEO]	60	173,674	36.703
29 NOV 2024 - 29 NOV 2024	LWSABAH	MADAM CHIN LEE LING [DIR/CEO]	60	173,674	36.704
29 NOV 2024 - 29 NOV 2024	LWSABAH	MADAM CHIN LEE LING [SSH]	60	173,674	36.704
29 NOV 2024 - 29 NOV 2024	LWSABAH	MR LIAW HEN KONG [SSH]	60	173,674	36.703
04 DEC 2024 - 04 DEC 2024	M&A	CIK SITI NUR AISHAH BINTI ISHAK [SSH]	100	125,992	6.304
02 DEC 2024 - 02 DEC 2024	M&A	CIK SITI NUR AISHAH BINTI ISHAK [SSH]	-300	125,892	6.299
29 NOV 2024 - 29 NOV 2024	M&A	CIK SITI NUR AISHAH BINTI ISHAK [SSH]	10	126,192	6.314
03 DEC 2024 - 05 DEC 2024	MAG	MR MELVIN LIM CHUN WOI [DIR/CEO]	-9,651	38,000	2.029
03 DEC 2024 - 03 DEC 2024	MALAKOF	EMPLOYEES PROVIDENT FUND BOARD [SSH]	667	562,693	11.514
03 DEC 2024 - 03 DEC 2024	MALAKOF	KUMPULAN WANG PERSARAAN (DIPERBADANKAN) ("KWAP") [SSH]	-1,000	453,307	9.275
29 NOV 2024 - 29 NOV 2024	MALAKOF	EMPLOYEES PROVIDENT FUND BOARD [SSH]	438	562,026	11.5
27 NOV 2024 - 27 NOV 2024	MALAKOF	EMPLOYEES PROVIDENT FUND BOARD [SSH]	276	561,587	11.491
27 NOV 2024 - 27 NOV 2024	MAXIS	EMPLOYEES PROVIDENT FUND BOARD ("EPF BOARD") [SSH]	-81	920,063	11.746
04 DEC 2024 - 04 DEC 2024	MAYBANK	AMANAHRAYA TRUSTEES BERHAD - AMANAH SAHAM BUMIPUTERA [SSH]	1,417	3,635,756	30.13
03 DEC 2024 - 03 DEC 2024	MAYBANK	EMPLOYEES PROVIDENT FUND BOARD [SSH]	1,121	1,537,564	12.742
03 DEC 2024 - 03 DEC 2024	MAYBANK	AMANAHRAYA TRUSTEES BERHAD - AMANAH SAHAM BUMIPUTERA [SSH]	478	3,634,339	30.118
02 DEC 2024 - 02 DEC 2024	MAYBANK	EMPLOYEES PROVIDENT FUND BOARD [SSH]	2,900	1,536,444	12.733
29 NOV 2024 - 29 NOV 2024	MAYBANK	EMPLOYEES PROVIDENT FUND BOARD [SSH]	5,628	1,533,544	12.709
28 NOV 2024 - 28 NOV 2024	MAYBANK	EMPLOYEES PROVIDENT FUND BOARD [SSH]	7,175	1,527,916	12.662
27 NOV 2024 - 27 NOV 2024	MAYBANK	EMPLOYEES PROVIDENT FUND BOARD [SSH]	14,385	1,520,740	12.603
04 DEC 2024 - 04 DEC 2024	METRO	MR LIM WAI KHONG [DIR/CEO]	48	7,054	0.721
29 NOV 2024 - 29 NOV 2024	METRO	DR TAY SWI PENG @ TEE SWI PENG [DIR/CEO]	331	473,814	48.402
29 NOV 2024 - 29 NOV 2024	METRO	DR TAY SWI PENG @ TEE SWI PENG [SSH]	331	424,429	48.402
28 NOV 2024 - 28 NOV 2024	METRO	MR LIM WAI KHONG [DIR/CEO]	353	7,007	0.716
03 DEC 2024 - 03 DEC 2024	MFCB	EMPLOYEES PROVIDENT FUND BOARD [SSH]	-102	56,372	5.981
02 DEC 2024 - 02 DEC 2024	MFCB	EMPLOYEES PROVIDENT FUND BOARD [SSH]	-64	56,474	5.992
04 DEC 2024 - 05 DEC 2024	MGB	TAN SRI DATO' SRI IR. (DR.) LIM HOCK SAN JP [DIR/CEO]	125	342,465	57.882
04 DEC 2024 - 05 DEC 2024	MGB	TAN SRI DATO' SRI IR. (DR.) LIM HOCK SAN JP [SSH]	125	342,465	57.882
02 DEC 2024 - 02 DEC 2024	MGB	DATO' BEH HANG KONG [DIR/CEO]	27	3689	0.624
02 DEC 2024 - 03 DEC 2024	MGB	TAN SRI DATO' SRI IR. (DR.) LIM HOCK SAN JP [DIR/CEO]	120	342,340	57.861
02 DEC 2024 - 03 DEC 2024	MGB	TAN SRI DATO' SRI IR. (DR.) LIM HOCK SAN JP [SSH]	120	342,340	57.861
29 NOV 2024 - 29 NOV 2024	MIKROMB	CARTABAN NOMINEES (TEMPATAN) SDN BHD - RHB TRUSTEES BERHAD FOR KENANGA ISLAMIC ABSOLUTE RETURN FUND [SSH]	-64,409	317,928	29.616
03 DEC 2024 - 04 DEC 2024	MINOX	MR NG KUAN HUA [DIR/CEO]	-600	2,300	0.639
03 DEC 2024 - 03 DEC 2024	MISC	EMPLOYEES PROVIDENT FUND BOARD [SSH]	207	539,242	12.08
02 DEC 2024 - 02 DEC 2024	MISC	EMPLOYEES PROVIDENT FUND BOARD [SSH]	1,599	539,035	12.076
29 NOV 2024 - 29 NOV 2024	MISC	EMPLOYEES PROVIDENT FUND BOARD [SSH]	75	537,437	12.04
28 NOV 2024 - 28 NOV 2024	MISC	EMPLOYEES PROVIDENT FUND BOARD [SSH]	717	537,423	12.04
27 NOV 2024 - 27 NOV 2024	MISC	EMPLOYEES PROVIDENT FUND BOARD [SSH]	466	536,707	12.024
04 DEC 2024 - 04 DEC 2024	MITRA	MISS TAN MEI YIN [DIR/CEO]	100	4,898	0.646
04 DEC 2024 - 04 DEC 2024	MKHOP	TAN SRI DATO' CHEN KOOI CHEW @ CHENG NGI CHONG [SSH]	50	698918	68.76
04 DEC 2024 - 04 DEC 2024	MKHOP	TAN SRI DATO' CHEN KOOI CHEW @ CHENG NGI CHONG [DIR/CEO]	50	698918	68.76
29 NOV 2024 - 02 DEC 2024	MKHOP	CHEN CHOY & SONS REALTY SDN. BHD. [SSH]	-35	696428	68.515
29 NOV 2024 - 29 NOV 2024	MKHOP	DATUK CHEN FOOK WAH [SSH]	-35	696,545	68.526
29 NOV 2024 - 29 NOV 2024	MKHOP	MKH BERHAD [SSH]	-35	662,667	65.193
29 NOV 2024 - 29 NOV 2024	MKHOP	TAN SRI DATO' CHEN KOOI CHEW @ CHENG NGI CHONG [DIR/CEO]	-35	698,868	68.755
29 NOV 2024 - 29 NOV 2024	MKHOP	TAN SRI DATO' CHEN KOOI CHEW @ CHENG NGI CHONG [SSH]	-35	698,868	68.755
29 NOV 2024 - 29 NOV 2024	MKHOP	TAN SRI DATUK CHEN LOK LOI [DIR/CEO]	-35	699,214	68.789
29 NOV 2024 - 29 NOV 2024	MKHOP	TAN SRI DATUK CHEN LOK LOI [SSH]	-35	699,214	68.789
29 NOV 2024 - 02 DEC 2024	MPAY	DATO' CHEW CHEE SENG [DIR/CEO]	1,750	283,242	27.444
29 NOV 2024 - 02 DEC 2024	MPAY	DATO' CHEW CHEE SENG [SSH]	1,750	283,242	27.444
02 DEC 2024 - 02 DEC 2024	MRDIY	EMPLOYEES PROVIDENT FUND BOARD [SSH]	266	672,061	7.104
29 NOV 2024 - 29 NOV 2024	MRDIY	EMPLOYEES PROVIDENT FUND BOARD [SSH]	1,705	671,796	7.101
28 NOV 2024 - 28 NOV 2024	MRDIY	EMPLOYEES PROVIDENT FUND BOARD [SSH]	3,000	670,091	7.083
29 NOV 2024 - 29 NOV 2024	MSNIAGA	SHAPADU CAPITAL SDN. BHD. [SSH]	2	16,944	28.053
03 DEC 2024 - 04 DEC 2024	MUDA	MADAM SIN POAY SIM [SSH]	18	118,468	38.837
03 DEC 2024 - 04 DEC 2024	MUDA	MISS LIM SIEW LING [DIR/CEO]	18	118,498	38.845
03 DEC 2024 - 04 DEC 2024	MUDA	MISS LIM SIEW LING [SSH]	18	118,498	38.845
02 DEC 2024 - 02 DEC 2024	MUDA	MADAM SIN POAY SIM [SSH]	13	118,450	38.83
29 NOV 2024 - 02 DEC 2024	MUDA	MISS LIM SIEW LING [DIR/CEO]	43	118,480	38.84
29 NOV 2024 - 02 DEC 2024	MUDA	MISS LIM SIEW LING [SSH]	43	118480	38.84
02 DEC 2024 - 02 DEC 2024	MUDA	MADAM SIN POAY SIM [SSH]	50	118487	38.842
29 NOV 2024 - 02 DEC 2024	MUDA	MISS LIM SIEW LING [DIR/CEO]	80	118517	38.852
29 NOV 2024 - 02 DEC 2024	MUDA	MISS LIM SIEW LING [SSH]	80	118517	38.852
05 DEC 2024 - 05 DEC 2024	NATGATE	DATO' SERI WONG SIEW HAI [DIR/CEO]	-25	5521	0.242
28 NOV 2024 - 29 NOV 2024	NATGATE	DATIN TAN AH GEOK [SSH]	770	1245390	54.703
28 NOV 2024 - 29 NOV 2024	NATGATE	DATO' OOI ENG LEONG [DIR/CEO]	770	1245392	54.703
28 NOV 2024 - 29 NOV 2024	NATGATE	DATO' OOI ENG LEONG [SSH]	770	1245390	54.703
02 DEC 2024 - 04 DEC 2024	NCT	CHONG KEAT SDN. BHD. [SSH]	-580	106480	5.812
29 NOV 2024 - 29 NOV 2024	NCT	DATO' SRI YAP NGAN CHOY [DIR/CEO]	210	983088	53.655
29 NOV 2024 - 29 NOV 2024	NCT	DATO' SRI YAP NGAN CHOY [SSH]	210	983088	53.655
29 NOV 2024 - 29 NOV 2024	NCT	DATO' YAP FOOK CHOY [DIR/CEO]	210	957280	52.247
29 NOV 2024 - 29 NOV 2024	NCT	DATO' YAP FOOK CHOY [SSH]	210	957280	52.247
29 NOV 2024 - 29 NOV 2024	NCT	YBG YAP CONSOLIDATED SDN. BHD. [SSH]	210	921448	50.291
02 DEC 2024 - 02 DEC 2024	NE	MR NG CHAY CHIN [DIR/CEO]	1,679	429710	58.069
02 DEC 2024 - 02 DEC 2024	NE	MR NG CHAY CHIN [SSH]	1,679	429710	58.069
03 DEC 2024 - 03 DEC 2024	NESTLE	EMPLOYEES PROVIDENT FUND BOARD [SSH]	9	28976	12.356
02 DEC 2024 - 02 DEC 2024	NESTLE	EMPLOYEES PROVIDENT FUND BOARD [SSH]	13	28967	12.353
29 NOV 2024 - 29 NOV 2024	NESTLE	EMPLOYEES PROVIDENT FUND BOARD [SSH]	28	28961	12.35
28 NOV 2024 - 28 NOV 2024	NESTLE	EMPLOYEES PROVIDENT FUND BOARD [SSH]	12	28933	12.338
27 NOV 2024 - 27 NOV 2024	NESTLE	EMPLOYEES PROVIDENT FUND BOARD [SSH]	34	28911	12.329
05 DEC 2024 - 05 DEC 2024	NOTION	MR CHOO WING YEW [DIR/CEO]	300	8200	1.561
28 NOV 2024 - 29 NOV 2024	OASIS	OASIS HARVEST HOLDINGS SDN. BHD. [SSH]	3,580	17235	11.711
28 NOV 2024 - 29 NOV 2024	OASIS	DATO' SRI TAN OOI HAN [DIR/CEO]	3,580	35285	23.976
28 NOV 2024 - 29 NOV 2024	OASIS	DATO' SRI TAN OOI HAN [SSH]	3,580	35285	23.976
03 DEC 2024 - 05 DEC 2024	OLYMPIA	DATO' SRI YAP WEE KEAT [DIR/CEO]	2,375	560603	54.774
03 DEC 2024 - 05 DEC 2024	OLYMPIA	DATO' SRI YAP WEE KEAT [SSH]	2,375	560603	54.774
03 DEC 2024 - 05 DEC 2024	OLYMPIA	DATUK YAP WEE CHUN [SSH]	2,375	560559	54.77
03 DEC 2024 - 05 DEC 2024	OLYMPIA	DUTA EQUITIES SDN BHD [SSH]	2,375	560559	54.77

Notice Period is 01st December 2024 – 07th December 2024

Effective Change Date	Stock Name	Buyer/ Seller Name [Classification]	Bought / (Sold) ['000]	No. of Shares After Trade ['000]	
			Total	Total	% Held
03 DEC 2024 - 05 DEC 2024	OLYMPIA	TAN SRI DATO' YAP YONG SEONG [DIR/CEO]	2,375	560614	54.775
03 DEC 2024 - 05 DEC 2024	OLYMPIA	TAN SRI DATO' YAP YONG SEONG [SSH]	2,375	560614	54.775
28 NOV 2024 - 02 DEC 2024	OLYMPIA	DATO' SRI YAP WEE KEAT [DIR/CEO]	4,571	558229	54.544
28 NOV 2024 - 02 DEC 2024	OLYMPIA	DATO' SRI YAP WEE KEAT [SSH]	4,571	558229	54.544
28 NOV 2024 - 02 DEC 2024	OLYMPIA	DATUK YAP WEE CHUN [SSH]	4,571	558184	54.54
28 NOV 2024 - 02 DEC 2024	OLYMPIA	DUTA EQUITIES SDN BHD [SSH]	4,571	558184	54.54
28 NOV 2024 - 02 DEC 2024	OLYMPIA	TAN SRI DATO' YAP YONG SEONG [DIR/CEO]	4,571	558240	54.545
28 NOV 2024 - 02 DEC 2024	OLYMPIA	TAN SRI DATO' YAP YONG SEONG [SSH]	4,571	558240	54.545
05 DEC 2024 - 05 DEC 2024	PADINI	KUMPULAN WANG PERSARAAN (DIPERBADANKAN) [SSH]	48	67000	10.184
03 DEC 2024 - 03 DEC 2024	PADINI	EMPLOYEES PROVIDENT FUND BOARD [SSH]	150	48484	7.369
04 DEC 2024 - 04 DEC 2024	PADINI	KUMPULAN WANG PERSARAAN (DIPERBADANKAN) [SSH]	120	66952	10.177
02 DEC 2024 - 02 DEC 2024	PADINI	EMPLOYEES PROVIDENT FUND BOARD [SSH]	200	48334	7.347
02 DEC 2024 - 02 DEC 2024	PADINI	CHONG CHIN LIN [SSH]	55	301105	45.766
02 DEC 2024 - 02 DEC 2024	PADINI	MR BENJAMIN YONG TZE JET [DIR/CEO]	55	337	0.051
02 DEC 2024 - 02 DEC 2024	PADINI	YONG PANG CHAUN [DIR/CEO]	55	301105	45.767
02 DEC 2024 - 02 DEC 2024	PADINI	YONG PANG CHAUN [SSH]	55	301105	45.767
28 NOV 2024 - 28 NOV 2024	PADINI	EMPLOYEES PROVIDENT FUND BOARD [SSH]	25	48134	7.316
29 NOV 2024 - 29 NOV 2024	PADINI	CHONG CHIN LIN [SSH]	13	301050	45.758
29 NOV 2024 - 29 NOV 2024	PADINI	MR BENJAMIN YONG TZE JET [DIR/CEO]	13	282	0.043
29 NOV 2024 - 29 NOV 2024	PADINI	YONG PANG CHAUN [DIR/CEO]	13	301050	45.758
29 NOV 2024 - 29 NOV 2024	PADINI	YONG PANG CHAUN [SSH]	13	301050	45.758
05 DEC 2024 - 05 DEC 2024	PANAMY	KUMPULAN WANG PERSARAAN (DIPERBADANKAN) [SSH]	5	3566	5.87
03 DEC 2024 - 03 DEC 2024	PANAMY	EMPLOYEES PROVIDENT FUND BOARD [SSH]	21	6272	10.325
04 DEC 2024 - 04 DEC 2024	PANAMY	KUMPULAN WANG PERSARAAN (DIPERBADANKAN) [SSH]	22	3561	5.862
02 DEC 2024 - 02 DEC 2024	PANAMY	EMPLOYEES PROVIDENT FUND BOARD [SSH]	53	6251	10.29
28 NOV 2024 - 28 NOV 2024	PANAMY	EMPLOYEES PROVIDENT FUND BOARD [SSH]	1	6198	10.203
27 NOV 2024 - 27 NOV 2024	PANAMY	EMPLOYEES PROVIDENT FUND BOARD [SSH]	15	6197	10.201
05 DEC 2024 - 05 DEC 2024	PAVREIT	KUMPULAN WANG PERSARAAN (DIPERBADANKAN) [SSH]	104	210613	5.754
04 DEC 2024 - 04 DEC 2024	PAVREIT	KUMPULAN WANG PERSARAAN (DIPERBADANKAN) [SSH]	266	210510	5.751
03 DEC 2024 - 03 DEC 2024	PBBANK	EMPLOYEES PROVIDENT FUND BOARD [SSH]	1,939	2894565	14.91
02 DEC 2024 - 02 DEC 2024	PBBANK	EMPLOYEES PROVIDENT FUND BOARD [SSH]	923	2892626	14.9
04 DEC 2024 - 04 DEC 2024	PBBANK	CONSOLIDATED TEH HOLDINGS SDN BERHAD [SSH]	-220,294	4200680	21.64
04 DEC 2024 - 04 DEC 2024	PBBANK	THE ESTATE OF THE LATE TAN SRI DATO' SRI DR. TEH HONG PIOW [SSH]	-220,294	4324237	22.28
29 NOV 2024 - 29 NOV 2024	PBBANK	EMPLOYEES PROVIDENT FUND BOARD [SSH]	9,429	2891704	14.9
28 NOV 2024 - 28 NOV 2024	PBBANK	EMPLOYEES PROVIDENT FUND BOARD [SSH]	5,335	2882275	14.85
27 NOV 2024 - 27 NOV 2024	PBBANK	EMPLOYEES PROVIDENT FUND BOARD [SSH]	7,901	2876740	14.82
04 DEC 2024 - 05 DEC 2024	PCCS	MADAM TAN KWEE KEE [SSH]	110	101122	45.842
04 DEC 2024 - 05 DEC 202					

Notice Period is 01st December 2024 – 07th December 2024

Effective Change Date	Stock Name	Buyer/ Seller Name [Classification]	Bought / (Sold) ['000]	No. of Shares After Trade ['000]	
			Total	Total	% Held
05 DEC 2024 - 05 DEC 2024	SCIPACK	SAMARANG UCITS - SAMARANG ASIAN PROSPERITY [SSH]	-0.7	19045	5.432
04 DEC 2024 - 04 DEC 2024	SCIPACK	SAMARANG UCITS - SAMARANG ASIAN PROSPERITY [SSH]	-2	19045	5.432
03 DEC 2024 - 03 DEC 2024	SCIPACK	SAMARANG UCITS - SAMARANG ASIAN PROSPERITY [SSH]	-0.3	19048	5.433
29 NOV 2024 - 29 NOV 2024	SCOMNET	EMPLOYEES PROVIDENT FUND BOARD [SSH]	1,571	59087	6.87
05 DEC 2024 - 05 DEC 2024	SDG	KUMPULAN WANG PERSARAAN (DIPERBADANKAN) [SSH]	1,000	470132	6.798
03 DEC 2024 - 03 DEC 2024	SDG	EMPLOYEES PROVIDENT FUND BOARD [SSH]	500	1132070	16.37
03 DEC 2024 - 03 DEC 2024	SDG	KUMPULAN WANG PERSARAAN (DIPERBADANKAN) [SSH]	305	469132	6.783
29 NOV 2024 - 29 NOV 2024	SDG	EMPLOYEES PROVIDENT FUND BOARD [SSH]	941	1131726	16.364
02 DEC 2024 - 02 DEC 2024	SDG	KUMPULAN WANG PERSARAAN (DIPERBADANKAN) [SSH]	856	468827	6.779
27 NOV 2024 - 28 NOV 2024	SDG	EMPLOYEES PROVIDENT FUND BOARD [SSH]	600	1130785	16.351
29 NOV 2024 - 29 NOV 2024	SDG	KUMPULAN WANG PERSARAAN (DIPERBADANKAN) [SSH]	832	467971	6.766
28 NOV 2024 - 28 NOV 2024	SDG	KUMPULAN WANG PERSARAAN (DIPERBADANKAN) [SSH]	-89	467138	6.755
02 DEC 2024 - 02 DEC 2024	SDS	MR TAN KIM CHAI [DIR/CEO]	-200	100377	24.504
02 DEC 2024 - 02 DEC 2024	SDS	MR TAN KIM CHAI [SSH]	-200	98886	24.504
03 DEC 2024 - 03 DEC 2024	SEEHUP	DATO LEE HEAN GUAN [SSH]	152	23626	29.723
03 DEC 2024 - 03 DEC 2024	SEEHUP	HEAN BROTHERS HOLDINGS SDN BHD [SSH]	152	10373	13.05
03 DEC 2024 - 03 DEC 2024	SEEHUP	MR LEE HEAN BENG [SSH]	152	10778	13.56
03 DEC 2024 - 03 DEC 2024	SEEHUP	MR LEE HEAN HUAT [SSH]	152	10948	13.773
03 DEC 2024 - 03 DEC 2024	SEEHUP	MR LEE HEAN SENG [SSH]	152	10812	13.602
03 DEC 2024 - 03 DEC 2024	SEEHUP	MR LEE HEAN TEIK [SSH]	152	10826	13.62
05 DEC 2024 - 05 DEC 2024	SENTRAL	KUMPULAN WANG PERSARAAN (DIPERBADANKAN) [SSH]	196	63102	5.278
04 DEC 2024 - 04 DEC 2024	SENTRAL	KUMPULAN WANG PERSARAAN (DIPERBADANKAN) [SSH]	498	62905	5.261
05 DEC 2024 - 05 DEC 2024	SIME	KUMPULAN WANG PERSARAAN (DIPERBADANKAN) [SSH]	320	446884	6.556
03 DEC 2024 - 03 DEC 2024	SIME	EMPLOYEES PROVIDENT FUND BOARD [SSH]	3,131	1106794	16.239
04 DEC 2024 - 04 DEC 2024	SIME	KUMPULAN WANG PERSARAAN (DIPERBADANKAN) [SSH]	392	446564	6.552
02 DEC 2024 - 03 DEC 2024	SIME	AMANAHRAYA TRUSTEES BERHAD - AMANAH SAHAM BUMIPUTERA [SSH]	4,135	2428557	35.632
29 NOV 2024 - 02 DEC 2024	SIME	EMPLOYEES PROVIDENT FUND BOARD [SSH]	2,784	1103663	16.193
02 DEC 2024 - 02 DEC 2024	SIME	KUMPULAN WANG PERSARAAN (DIPERBADANKAN) [SSH]	685	446172	6.546
28 NOV 2024 - 28 NOV 2024	SIME	EMPLOYEES PROVIDENT FUND BOARD [SSH]	1,000	1101110	16.156
28 NOV 2024 - 28 NOV 2024	SIME	KUMPULAN WANG PERSARAAN (DIPERBADANKAN) [SSH]	500	445487	6.536
27 NOV 2024 - 28 NOV 2024	SIME	AMANAHRAYA TRUSTEES BERHAD - AMANAH SAHAM BUMIPUTERA [SSH]	7,000	2424421	35.572
26 NOV 2024 - 26 NOV 2024	SIME	EMPLOYEES PROVIDENT FUND BOARD [SSH]	300	1100110	16.141
05 DEC 2024 - 05 DEC 2024	SIMEPROP	KUMPULAN WANG PERSARAAN (DIPERBADANKAN) [SSH]	99	415693	6.113
04 DEC 2024 - 04 DEC 2024	SIMEPROP	AMANAHRAYA TRUSTEES BERHAD - AMANAH SAHAM BUMIPUTERA [SSH]	-7,000	2560000	37.642
03 DEC 2024 - 03 DEC 2024	SIMEPROP	EMPLOYEES PROVIDENT FUND BOARD [SSH]	-4,350	698094	10.265
04 DEC 2024 - 04 DEC 2024	SIMEPROP	KUMPULAN WANG PERSARAAN (DIPERBADANKAN) [SSH]	251	415594	6.111
03 DEC 2024 - 03 DEC 2024	SIMEPROP	AMANAHRAYA TRUSTEES BERHAD - AMANAH SAHAM BUMIPUTERA [SSH]	-10,000	2567000	37.745
02 DEC 2024 - 02 DEC 2024	SIMEPROP	EMPLOYEES PROVIDENT FUND BOARD [SSH]	-2,100	702444	10.329
29 NOV 2024 - 29 NOV 2024	SIMEPROP	EMPLOYEES PROVIDENT FUND BOARD [SSH]	2,279	704544	10.36
02 DEC 2024 - 02 DEC 2024	SIMEPROP	KUMPULAN WANG PERSARAAN (DIPERBADANKAN) [SSH]	-751	415343	6.107
29 NOV 2024 - 29 NOV 2024	SIMEPROP	AMANAHRAYA TRUSTEES BERHAD - AMANAH SAHAM BUMIPUTERA [SSH]	-3,300	2577000	37.892
28 NOV 2024 - 28 NOV 2024	SIMEPROP	AMANAHRAYA TRUSTEES BERHAD - AMANAH SAHAM BUMIPUTERA [SSH]	-12,200	2580300	37.941
27 NOV 2024 - 27 NOV 2024	SIMEPROP	EMPLOYEES PROVIDENT FUND BOARD [SSH]	-284	702264	10.326
28 NOV 2024 - 28 NOV 2024	SJC	CIMB COMMERCE TRUSTEE BERHAD [SSH]	-233	12808	5.997
04 DEC 2024 - 04 DEC 2024	SKPRES	KUMPULAN WANG PERSARAAN (DIPERBADANKAN) [SSH]	-732	143866	9.208
29 NOV 2024 - 29 NOV 2024	SKPRES	EMPLOYEES PROVIDENT FUND BOARD [SSH]	59	155883	9.977
27 NOV 2024 - 27 NOV 2024	SKPRES	NORGES BANK [SSH]	-2,484	78830	5.046
26 NOV 2024 - 26 NOV 2024	SKPRES	NORGES BANK [SSH]	2,000	81313	5.205
18 NOV 2024 - 18 NOV 2024	SKPRES	NORGES BANK [SSH]	-2,000	79313	5.077
12 NOV 2024 - 12 NOV 2024	SKPRES	NORGES BANK [SSH]	1,249	81313	5.205
11 NOV 2024 - 11 NOV 2024	SKPRES	NORGES BANK [SSH]	1,407	80064	5.125
29 NOV 2024 - 29 NOV 2024	SKPRES	KUMPULAN WANG PERSARAAN (DIPERBADANKAN) [SSH]	121	144598	9.255
28 NOV 2024 - 28 NOV 2024	SLVEST	EMPLOYEES PROVIDENT FUND BOARD [SSH]	-92	50846	7.044
27 NOV 2024 - 27 NOV 2024	SLVEST	EMPLOYEES PROVIDENT FUND BOARD [SSH]	-432	50939	7.026
04 DEC 2024 - 04 DEC 2024	SPRITZER	DATIN CHUA SHOK TIM @ CHUA SIOK HOON [SSH]	4	166373	52.258
04 DEC 2024 - 04 DEC 2024	SPRITZER	DATO SERI LIM A HENG @ LIM KOK CHEONG [SSH]	4	166373	52.257
03 DEC 2024 - 03 DEC 2024	SPRITZER	MR LAM SANG [DIR/CEO]	40	3280	1.03
28 NOV 2024 - 28 NOV 2024	SPRITZER	MR LAM SANG [DIR/CEO]	40	3240	1.018
05 DEC 2024 - 05 DEC 2024	SPSETIA	KUMPULAN WANG PERSARAAN (DIPERBADANKAN) [SSH]	-632	400929	8.015
03 DEC 2024 - 03 DEC 2024	SPSETIA	EMPLOYEES PROVIDENT FUND BOARD [SSH]	2,300	457749	9.15
29 NOV 2024 - 29 NOV 2024	SPSETIA	EMPLOYEES PROVIDENT FUND BOARD [SSH]	773	455449	9.104
27 NOV 2024 - 27 NOV 2024	SPSETIA	EMPLOYEES PROVIDENT FUND BOARD [SSH]	549	454676	9.089
03 DEC 2024 - 03 DEC 2024	SRIDGE	MR TAN WIN SEN [DIR/CEO]	46	46	0.018
03 DEC 2024 - 03 DEC 2024	SUNCON	EMPLOYEES PROVIDENT FUND BOARD [SSH]	6	100357	7.784
02 DEC 2024 - 02 DEC 2024	SUNCON	EMPLOYEES PROVIDENT FUND BOARD [SSH]	2	100351	7.783
29 NOV 2024 - 29 NOV 2024	SUNCON	EMPLOYEES PROVIDENT FUND BOARD [SSH]	1,119	100350	7.783
28 NOV 2024 - 28 NOV 2024	SUNCON	EMPLOYEES PROVIDENT FUND BOARD [SSH]	368	99230	7.696
27 NOV 2024 - 27 NOV 2024	SUNCON	EMPLOYEES PROVIDENT FUND BOARD [SSH]	10,108	98862	7.668
05 DEC 2024 - 05 DEC 2024	SUNREIT	KUMPULAN WANG PERSARAAN (DIPERBADANKAN) ("KWAP") [SSH]	31	203015	5.928
03 DEC 2024 - 03 DEC 2024	SUNREIT	EMPLOYEES PROVIDENT FUND BOARD [SSH]	298	553773	16.169
04 DEC 2024 - 04 DEC 2024	SUNREIT	KUMPULAN WANG PERSARAAN (DIPERBADANKAN) ("KWAP") [SSH]	215	202984	5.927
02 DEC 2024 - 02 DEC 2024	SUNREIT	EMPLOYEES PROVIDENT FUND BOARD [SSH]	150	553475	16.161
04 DEC 2024 - 04 DEC 2024	SUNWAY	ACTIVE EQUITY SDN BHD [SSH]	320,129	2996278	48.5
04 DEC 2024 - 04 DEC 2024	SUNWAY	MADAM SARENA CHEAH YEAN TIH [DIR/CEO]	360,139	3664452	59.32
04 DEC 2024 - 04 DEC 2024	SUNWAY	MADAM SARENA CHEAH YEAN TIH [SSH]	360,139	3664452	59.32
04 DEC 2024 - 04 DEC 2024	SUNWAY	MR ADRIAN CHEAH YEAN SUN [SSH]	359,609	3657808	59.21
04 DEC 2024 - 04 DEC 2024	SUNWAY	MR EVAN CHEAH YEAN SHIN [DIR/CEO]	360,029	3663112	59.3
04 DEC 2024 - 04 DEC 2024	SUNWAY	MR EVAN CHEAH YEAN SHIN [SSH]	360,029	3663112	59.3
04 DEC 2024 - 04 DEC 2024	SUNWAY	PUAN SRI DATIN SERI DR. SUSAN CHEAH SEOK CHENG [SSH]	360,554	3669749	59.4
04 DEC 2024 - 04 DEC 2024	SUNWAY	SUNGEI WAY CORPORATION SDN BHD [SSH]	304,474	2811978	45.52
04 DEC 2024 - 04 DEC 2024	SUNWAY	TAN SRI SIR DR. JEFFREY CHEAH FOOK LING KBE AO [DIR/CEO]	360,554	3669749	59.4
04 DEC 2024 - 04 DEC 2024	SUNWAY	TAN SRI SIR DR. JEFFREY CHEAH FOOK LING KBE AO [SSH]	360,554	3669749	59.4
03 DEC 2024 - 03 DEC 2024	SUNWAY	EMPLOYEES PROVIDENT FUND BOARD [SSH]	1,253	440081	7.12
03 DEC 2024 - 04 DEC 2024	SUNWAY	TAN SRI DATO' (DR.) CHEW CHEE KIN [DIR/CEO]	3,637	11660	0.18
29 NOV 2024 - 29 NOV 2024	SUNWAY	EMPLOYEES PROVIDENT FUND BOARD [SSH]	2,052	436828	7.07
28 NOV 2024 - 28 NOV 2024	SUNWAY	EMPLOYEES PROVIDENT FUND BOARD [SSH]	63,893	434777	7.64

Notice Period is 01st December 2024 – 07th December 2024

Effective Change Date	Stock Name	Buyer/ Seller Name [Classification]	Bought / (Sold) ['000]	No. of Shares After Trade ['000]	
			Total	Total	% Held
28 NOV 2024 - 28 NOV 2024	SUNWAY	ACTIVE EQUITY SDN BHD [SSH]	-50,000	2676149	47.04
28 NOV 2024 - 28 NOV 2024	SUNWAY	MADAM SARENA CHEAH YEAN TIH [DIR/CEO]	-100,000	3304313	58.08
28 NOV 2024 - 28 NOV 2024	SUNWAY	MADAM SARENA CHEAH YEAN TIH [SSH]	-100,000	3304313	58.08
28 NOV 2024 - 28 NOV 2024	SUNWAY	MR ADRIAN CHEAH YEAN SUN [SSH]	-100,000	3298199	57.97
28 NOV 2024 - 28 NOV 2024	SUNWAY	MR EVAN CHEAH YEAN SHIN [DIR/CEO]	-100,000	3303084	58.06
28 NOV 2024 - 28 NOV 2024	SUNWAY	MR EVAN CHEAH YEAN SHIN [SSH]	-100,000	3303084	58.06
28 NOV 2024 - 28 NOV 2024	SUNWAY	PUAN SRI DATIN SERI DR. SUSAN CHEAH SEOK CHENG [SSH]	-100,000	3309195	58.17
28 NOV 2024 - 28 NOV 2024	SUNWAY	SUNGEI WAY CORPORATION SDN BHD [SSH]	-50,000	2507503	44.08
28 NOV 2024 - 28 NOV 2024	SUNWAY	TAN SRI SIR DR. JEFFREY CHEAH FOOK LING KBE AO [DIR/CEO]	-100,000	3309195	58.17
28 NOV 2024 - 28 NOV 2024	SUNWAY	TAN SRI SIR DR. JEFFREY CHEAH FOOK LING KBE AO [SSH]	-100,000	3309195	58.17
27 NOV 2024 - 27 NOV 2024	SUNWAY	EMPLOYEES PROVIDENT FUND BOARD [SSH]	241	370884	6.52
04 DEC 2024 - 04 DEC 2024	SUNWAY-PA	MADAM SARENA CHEAH YEAN TIH [DIR/CEO]	360,139	360139	73.67
04 DEC 2024 - 04 DEC 2024	SUNWAY-PA	MR EVAN CHEAH YEAN SHIN [DIR/CEO]	360,029	360029	73.65
04 DEC 2024 - 04 DEC 2024	SUNWAY-PA	TAN SRI DATO' (DR.) CHEW CHEE KIN [DIR/CEO]	4,609	4609	0.95
04 DEC 2024 - 04 DEC 2024	SUNWAY-PA	TAN SRI SIR DR. JEFFREY CHEAH FOOK LING KBE AO [DIR/CEO]	360,554	360554	73.75
29 NOV 2024 - 29 NOV 2024	SYSTECH	DATO' HOOI JIA HAO [DIR/CEO]	-1,355	260630	40.557
29 NOV 2024 - 29 NOV 2024	SYSTECH	DATO' HOOI JIA HAO [SSH]	-1,355	260630	40.557
05 DEC 2024 - 05 DEC 2024	TAANN	UMANG NANGKU JABU [DIR/CEO]	10	10	0.002
03 DEC 2024 - 03 DEC 2024	TAKAFUL	EMPLOYEES PROVIDENT FUND BOARD [SSH]	482	154164	18.412
02 DEC 2024 - 02 DEC 2024	TECHBND	MADAM TAN SIEW GEAK [DIR/CEO]	500	611	0.089
02 DEC 2024 - 02 DEC 2024	TECHBND	MR LEE SENG THYE [DIR/CEO]	1,350	345781	50.334
02 DEC 2024 - 02 DEC 2024	TECHBND	MR LEE SENG THYE [SSH]	1,350	345781	50.334
02 DEC 2024 - 02 DEC 2024	TECHBND	SONICBOND SDN BHD [SSH]	1,350	345781	50.334
03 DEC 2024 - 03 DEC 2024	TENAGA	EMPLOYEES PROVIDENT FUND BOARD [SSH]	2,733	1039341	17.88
02 DEC 2024 - 02 DEC 2024	TENAGA	EMPLOYEES PROVIDENT FUND BOARD [SSH]	1,062	1036608	17.83
29 NOV 2024 - 29 NOV 2024	TENAGA	EMPLOYEES PROVIDENT FUND BOARD [SSH]	7,021	1035545	17.81
28 NOV 2024 - 28 NOV 2024	TENAGA	EMPLOYEES PROVIDENT FUND BOARD [SSH]	6,923	1028524	17.69
27 NOV 2024 - 27 NOV 2024	TENAGA	EMPLOYEES PROVIDENT FUND BOARD [SSH]	6,000	1021601	17.57
27 NOV 2024 - 29 NOV 2024	TENAGA	KUMPULAN WANG PERSARAAN (DIPERBADANKAN) [SSH]	-269	405759	6.98
29 NOV 2024 - 29 NOV 2024	THETA	ENCIK ZAINAL 'ABIDIN BIN ABD JALIL [DIR/CEO]	-2,000	10000	8.477
29 NOV 2024 - 29 NOV 2024	THETA	ENCIK ZAINAL 'ABIDIN BIN ABD JALIL [SSH]	-2,000	10000	8.477
29 NOV 2024 - 29 NOV 2024	THETA	PUAN HASLINAH HASSAN [SSH]	-2,000	10000	8.477
29 NOV 2024 - 29 NOV 2024	THETA	THREADSTONE CAPITAL SDN. BHD. [SSH]	-2,000	10000	8.477
05 DEC 2024 - 05 DEC 2024	TIMECOM	KUMPULAN WANG PERSARAAN (DIPERBADANKAN) [SSH]	32	133410	7.216
03 DEC 2024 - 03 DEC 2024	TIMECOM	EMPLOYEES PROVIDENT FUND BOARD [SSH]	63	243809	13.187
04 DEC 2024 - 04 DEC 2024	TIMECOM	KUMPULAN WANG PERSARAAN (DIPERBADANKAN) [SSH]	83	133378	7.214
03 DEC 2024 - 03 DEC 2024	TIMECOM	KUMPULAN WANG PERSARAAN (DIPERBADANKAN) [SSH]	93	133295	7.21
28 NOV 2024 - 28 NOV 2024	TIMECOM	EMPLOYEES PROVIDENT FUND BOARD [SSH]	14	243746	13.184
27 NOV 2024 - 27 NOV 2024	TIMECOM	EMPLOYEES PROVIDENT FUND BOARD [SSH]	107	243732	13.183
03 DEC 2024 - 03 DEC 2024	TM	EMPLOYEE PROVIDENT FUND BOARD (EPF BOARD) [SSH]	3,000	604558	15.735
04 DEC 2024 - 04 DEC 2024	TM	KUMPULAN WANG PERSARAAN (DIPERBADANKAN) [KWAP] [SSH]	1,209	354233	9.231
02 DEC 2024 - 02 DEC 2024	TM	EMPLOYEE PROVIDENT FUND BOARD (EPF BOARD) [SSH]	-336	60	

★ ★ SWAN Consultancy Hosts ★ ★

Night Of  
**GLAMOUR In**

**HOLLYWOODLAND**

Swan Consultancy marked a successful 2024 with an unforgettable year-end networking event themed 'Hollywoodland.' Held recently at the elegant Florentine La Bisteccheria Steakhouse, at Jalan Doraisamy, Kuala Lumpur, the event brought together industry leaders, clients, and partners for an evening of celebration and camaraderie.

The night was a culinary and musical delight, featuring a lavish Italian-

inspired menu, including Caprese, Pizzette, Bruschette, Quinoa Salad, Risotto, Costata Di Manzo, Bigne, Cannoli, and Tiramisu.



**Top:** Jazzmin Wan, Xinyi Ching, Melanie Toh, Renee Toh, Joel Teruya, Stefani Wan, Mandy Tan, Stephanie Chow, Nazaruddin Azmi

**Bottom:** Kahjin Gan, Chris Ser, William Yeo and Asyraf Hakimi from Swan Consultancy



Xinyi Ching and Datuk Benson Lau



Min Yuan Fong and Laurine Pereira-Fong



Bingley Sim and Stefani Wan



Sze Chiah Tee and Yan Jin Loh

The evening's ambiance was further elevated by a curated soundtrack of iconic movie themes spun by the talented DJ Jai Khan, creating a festive atmosphere reminiscent of classic Hollywood glamour.

The event featured a "Best Dressed Oscars" competition, awarding two main prizes and four consolation prizes to guests who embraced the theme with style. Additionally,



Raymond Hew, Mandy Tan, Prof. Dato Sri Dr. How Kok Choong J.P., Joel Teruya and JJ Teo



Jayden Pang, Max Tan and HY Tan



Wong Yih Ming and Xinyi Ching



Mandy Tan and Jonathan Edward



Amber Ang and Chee Wai Ching



Mohd Ariff bin Abdul Gani, Yusoff Iskandar Mohd Zaki, Fakhrol Haziq Mohd Setia, Sr. Muhammad Haziq Bahari, Sr Anuar Husin, YM Tunku Rozita Tunku Abdul Malek, Ahmad Marzuki Abu Manshor, Nazatul Syima Khairuddin, Suryani Baharudin, Noor Atiyya Mahmud



Heng Hooi Tan and Yao Yen Goh



Jia Hui Tan and Yi Ching Low



Jia Ying Lee and JL Lee



Jayden Pang and Steven Koh



George Low and Shin Kao Jack



Tony Goh



YC Lee



Leticia Wong



Fintan Ng

guests were treated to 150 thoughtfully curated giveaways, ensuring everyone left with a piece of the night's magic.

Swan's Hollywoodland, its XV such event, was co-sponsored by its clients



and partners including AmanahRaya REIT, Amazfit, Arkwood Trustee, Agape ATP Corp, Central Café, Eco Asia Capital Advisory,



Kahjin Gan, Pui Yee Liew, Jeslyn Tee Zhi Lyn, Suzanne Leong and Jia Yu Wong



Shiok Mei Yew and Ivy Yong





Eunice Ling, Wayne Oh and Sabrina Halim



Kelly Neng and Woon Soon Fai



Adrian Chen, Dawne Chin and Steven Khoo



Kahjin Gan and Ryan Liang



Xinyi Ching, Shin See Tho Pey and Evelyn Kit

FGCM Sdn. Bhd., Hektor REIT, Izen Event Management, JBL, Magma Group Berhad, Mercury Securities Group Berhad, Ni Hsin Group Berhad, Propel Global Berhad,



Wong Yoke Hoe, Simon Lim and Yap Kai Jie



Edwin Lau, Monica Fung and Henry Yap



Wong Yoke Hoe, Kahjin Gan, Sunny Yeo and Chee Pun Ching

Sarawak Consolidated Industries Berhad, ShareInvestor Malaysia, SSF Home Group Berhad, Taghill Holdings Berhad, and Vanry Communications Sdn. Bhd.



Leticia Wong, Edward Stanislaus and Fintan Ng



Jia Hui Tan, Eunice Ng, Zing Sheng Khoo and Cai Yu Lee



Kahjin Gan and Mun Fong Ku



Aileen Tan and Christine Lee



Sabrina Halim and Bro Framestone



**Axiata Group Berhad (AXIATA)** had announced the signing of a definitive agreement with Sinar Mas to progress the proposed merger of PT XL Axiata Tbk, PT Smartfren Telecom Tbk, and

Smartfren’s subsidiary – PT Smart Telcom – in Indonesia. The transaction marks a major milestone in advancing Axiata’s long-standing commitment to the Indonesian market.



**Cypark Resources Berhad (CYPARK)**, and Terengganu Incorporated Sdn Bhd, the strategic investment arm of the Terengganu State Government, have signed a Heads of Agreement to establish a joint venture for the development of a 500MW Hybrid Hydro Floating Solar plant at Tasik Kenyir, Terengganu, Malaysia. This ground-breaking project, set to begin design in 2025, combines hybrid hydro and floating solar photovoltaic- technologies, marking a major milestone in Malaysia's transition to renewable energy.



The Board of Directors of **Feytech Holdings Berhad (FEYTECH)** wishes to announce that it had on 10 December 2024 entered into a joint venture

agreement with Wuhu Ruitai Auto Parts Co., Ltd. to jointly engage in the design, manufacturing and assembly of any components and/ or parts relating to automotive seats for the supply within Malaysia or overseas.





**FSBM Holdings Berhad (FSBM)**, through its wholly owned subsidiary FSBM I-Centre Sdn. Bhd is partnering with Synergies Intelligent Systems, Inc., a US based leader in AI-driven solutions, to technologically revolutionise the manufacturing landscape in Malaysia and Southeast Asia. This collaboration will introduce an innovative Consumer-to-Manufacturer (C2M) Platform, transforming how custom-machining parts are designed, produced, and delivered.



The Board of Directors of **Gamuda Berhad (GAMUDA)** wishes to inform that its wholly-owned subsidiary, Gamuda Technologies Sdn Bhd has entered into a Joint Venture and Shareholders Agreement with DNeX Solutions Sdn Bhd, a wholly-owned subsidiary of Dagang NeXchange Berhad on 10 December 2024 pertaining to the setting up of a joint venture company with equal shareholding of 50% (JV Company).



MALAYSIA BUILDING SOCIETY BERHAD (9417-K)



The Board of Directors of **MBSB** is pleased to announce that a Single-Tier Interim Cash Dividend of 2.75 sen per share has been declared for the financial year ending 31 December 2024 to be payable on 6 January 2025 to shareholders whose names appear in the Records of Depositors at the closure of business on 24 December 2024.



**SkyWorld Development Berhad (SKYWLD)**, an urban property developer, today entered into two strategic agreements with Penang Development Corporation and PDC Properties Sdn Bhd to jointly develop

more than 35,000 affordable housing units worth an estimated gross development value of RM13 billion in Penang. The joint development agreement stipulates that the three parties will jointly develop both Rumah Mampu Milik and the newly announced Rumah Bakat Baru MADANI schemes with homes priced between RM225,000 and a maximum of RM420,000, making home-ownership more accessible for the B40 and M40 segments.

[READ MORE](#) 

**Upcoming IPO**

NAME OF COMPANY	OFFER PERIOD		ISSUE PRICE (Per Ordinary Share)	LISTING SOUGHT	DATE OF LISTING
	OPENING	CLOSING			
SWIFT ENERGY TECHNOLOGY BERHAD	9 Dec 2024	23 Dec 2024	RM0.28	ACE MARKET	8 Jan 2025
WINSTAR CAPITAL BERHAD	26 Nov 2024	3 Dec 2024	RM0.35	ACE MARKET	19 Dec 2024
CARLO RINO GROUP BERHAD	28 Nov 2024	5 Dec 2024	RM0.27	ACE MARKET	18 Dec 2024
VANZO HOLDINGS BERHAD	27 Nov 2024	4 Dec 2024	RM0.15	ACE MARKET	17 Dec 2024
TOPVISION EYE SPECIALIST BERHAD	25 Dec 2024	3 Dec 2024	RM0.33	MAIN MARKET	16 Dec 2024
HYDROPIPES BERHAD	-	-	RM0.25	LEAP MARKET	13 Dec 2024

**Disclaimer:** The information in the Investor Relations page is extracted from individual companies' announcements in [www.bursamalaysia.com](http://www.bursamalaysia.com). The information on this page is provided as a service to readers. We assume no liability for damages resulting from or arising out of the use of such information. Whilst every effort is made to ensure accuracy, the information presented has been simplified for your reading pleasure. Readers are advised to read the original and complete filings on the Bursa Malaysia website at [https://www.bursamalaysia.com/market\\_information/announcements/company\\_announcement](https://www.bursamalaysia.com/market_information/announcements/company_announcement)