

# Invest

A Weekly e-Publication by [SHAREINVESTOR.com](http://SHAREINVESTOR.com)

ISSUE

170

FRIDAY  
18 AUGUST  
2023

Scan/Click QR to Register



Via email, every Friday

## EPF RECORDS HIGHER INVESTMENT INCOME OF RM33.19BIL FOR 1H 2023

## ASNB EYES 1MIL UNITHOLDERS ANNUALLY THROUGH TNGD'S GOINVEST

## HEINEKEN MALAYSIA'S NET PROFIT UP 5% IN 2QFY2023

(page 25-30)

## 32 MSWG Investing vs Trading

- |    |                            |    |                    |    |                          |
|----|----------------------------|----|--------------------|----|--------------------------|
| 04 | LEADERBOARD                | 12 | UP TRENDING STOCKS | 25 | MARKET SENTIMENTS        |
| 06 | SHARIAH HOT STOCKS         | 14 | VALUE STOCKS       | 31 | REGIONAL MARKETS         |
| 07 | COMPANY SPOTLIGHT          | 16 | GROWTH STOCKS      | 32 | FROM THE OBSERVER        |
| 08 | SHARIAH MOMENTUM UP STOCKS | 18 | DIVIDEND STOCKS    | 36 | INSIDER ACTIVITY         |
| 10 | NON SHARIAH HOT STOCKS     | 20 | BROKERS' CALL      | 40 | INVESTOR RELATIONS       |
|    |                            | 22 | LONG COMPANIES     | 43 | CAREERS AT SHAREINVESTOR |



**INVESTOR PLATFORMS**

**Director**  
Darren Chong  
darren.chong@shareinvestor.com

**Business Development Manager**  
Jay Cheong  
jay.cheong.@shareinvestor.com

**Senior Executive**  
Daniel Wong  
daniel.wong@shareinvestor.com

**Executive**  
Farah Azwani  
farah.azwani@shareinvestor.com

**Executive**  
Tan Yong Sheng  
yongsheng.tan@shareinvestor.com

**ADMIN & OPERATIONS**

**Senior Executive**  
Watie Nordin  
watie.nordin@shareinvestor.com

**Executive**  
Silas Emmanuel Joseph  
silas.joseph@shareinvestor.com

**INVESTOR RELATIONS**

**Group Managing Director & Publisher**  
Edward Stanislaus  
edward@shareinvestor.com

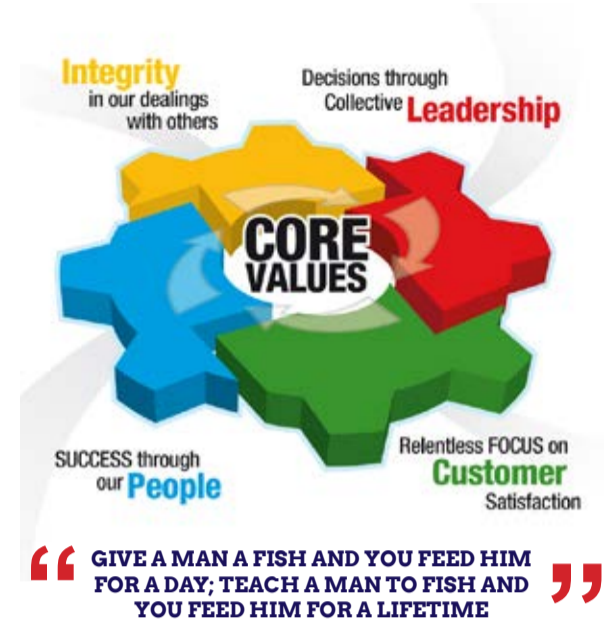
**Senior Manager**  
Letticia Wong  
letticia.wong@shareinvestor.com

**PROCESS AUTOMATION & DATA ANALYTICS**

**Data Analyst**  
Nickson Aw

**SHAREINVESTOR HOLDINGS BOARD OF DIRECTORS**

- |                  |                 |
|------------------|-----------------|
| <b>Chairman</b>  | Patrick Daniel  |
| <b>Group CEO</b> | Christopher Lee |
| <b>Group COO</b> | Lim Dau Hee     |
| <b>Group CFO</b> | Teo Siew May    |
| <b>Group MD</b>  | Shanison Lin    |



**ShareInvestor Malaysia Sdn. Bhd.**  
(200001023956) (526564-M)  
Unit No. DF2-07-03A. Level 7,  
Persoft Tower, 6B Persiaran Tropicana,  
47410 Petaling Jaya, Selangor Darul Ehsan.

Hotline : 603 7803 1791  
Mobile : 011 6343 8939  
Website : [www.ShareInvestor.com.my](http://www.ShareInvestor.com.my)  
[www.ShareInvestorHoldings.com](http://www.ShareInvestorHoldings.com)  
[www.Facebook.com/ShareInvestorMalaysia](http://www.Facebook.com/ShareInvestorMalaysia)

**ADVERTISEMENT ENQUIRY**

bulthaup takes care of the details so that you can enjoy a harmonious environment.



**XTRA**

XTRA FURNITURE SDN BHD  
The Gardens Mall, Mid Valley City  
[xtrafurniture.com/bulthaup](http://xtrafurniture.com/bulthaup)  
[fb.com/bulthaupmalaysia](https://fb.com/bulthaupmalaysia)



bulthaup



# BEYOND INFIN<sup>8</sup>



8 AUG 2023 – 31 JAN 2024

**TRADE & WIN  
AMAZING PRIZES**



**FIND OUT MORE**

T&C APPLY

[www.shareinvestor.com](http://www.shareinvestor.com) - market data at your fingertips



ShareInvestor WebPro ([www.shareinvestor.com/my](http://www.shareinvestor.com/my))  
Prices > Stock Prices > Bursa > click Stocks tab

1. mouse over Ranking > select Top Active > all Shariah stocks are denoted with an [S] > mouse over Column Layout > select Edit Customs > select Name > select Volume > select Last Done Price > Mouse Over Column Layout > select Custom
2. mouse over Ranking > select Top Turnover > all Shariah stocks are denoted with an [S] > mouse over Column Layout > select Edit Customs > select Name > select Last Done Price > select Value > Mouse Over Column Layout > select Custom
3. mouse over Ranking > select Top Gainers (Over 5 Trading Days) > mouse over Column Layout > select Edit Customs > select Name > select Last Done Price > select 5 Days Change > select 5 Days % Change > Mouse Over Column Layout > select Custom
4. mouse over Ranking > select Top Losers (Over 5 Trading Days)
5. mouse over Ranking > select Top % Gainers (Over 5 Trading Days)
6. mouse over Ranking > select Top % Losers (Over 5 Trading Days)

### Shariah Top Actives (as at Yesterday)

Name	Price (RM)	Volume
HONGSENG [S]	0.065	5,586,324.000
AIMFLEX [S]	0.220	1,526,232.000
UEMS [S]	0.630	963,369.000
AWANTEC [S]	0.175	950,370.000
SPSETIA [S]	0.855	795,700.000
HANDAL [S]	0.135	734,765.000
MRCB [S]	0.425	630,168.000
SAPNRG [S]	0.055	613,950.000
BAHVEST [S]	0.365	578,215.000
SIMEPROP [S]	0.675	534,860.000

### Shariah Top Turnover (as at Yesterday)

Name	Price (RM)	Value (RM)
TENAGA [S]	9.950	76,083,588
SPSETIA [S]	0.855	67,547,364
UEMS [S]	0.630	58,166,226
HONGSENG [S]	0.065	39,928,406
SUNWAY [S]	1.920	37,266,720
PMETAL [S]	4.850	36,946,076
SIMEPROP [S]	0.675	35,835,534
CAPITALA [S]	1.060	33,160,349
AIMFLEX [S]	0.220	32,248,476
INARI [S]	3.000	30,333,301

### Top Gainers (over 5 Trading days as at Yesterday)

Name	Price (RM)	Change (RM)
HEXTECH	27.680	+0.680
ALLIANZ	15.820	+0.620
HEIM	26.580	+0.620
PANAMY	20.460	+0.400
F&N	25.560	+0.360
ICAP	2.800	+0.340
KSENG	4.530	+0.310
MCEMENT	3.470	+0.290
SCIENTX	3.900	+0.290
HUMEIND	1.880	+0.280

### Top % Gainers (over 5 Trading days as at Yesterday)

Name	Price (RM)	Change (%)
EAH	0.010	+100.00
AT	0.015	+50.00
SCBUILD	0.050	+42.86
AIMFLEX	0.220	+41.94
ZELAN	0.035	+40.00
FOCUS	0.020	+33.33
ZENTECH	0.020	+33.33
SEACERA	0.275	+30.95
IMPIANA	0.085	+30.77
JADI	0.050	+25.00

### Top Losers (over 5 Trading days as at Yesterday)

Name	Price (RM)	Change (RM)
MPI	27.200	-1.100
PPB	15.740	-1.060
NESTLE	131.500	-1.000
KLK	22.500	-0.680
HLCAP	5.470	-0.630
PERSTIM	3.650	-0.340
AEONCR	11.540	-0.300
HLFG	18.280	-0.300
SUNMOW	1.200	-0.300
PETGAS	16.960	-0.260

### Top % Losers (over 5 Trading days as at Yesterday)

Name	Price (RM)	Change (%)
AWANTEC	0.175	-53.95
DGB	0.005	-50.00
KGROUP	0.005	-50.00
NYLEX	0.250	-45.05
HANDAL	0.135	-37.21
COMPUGT	0.010	-33.33
JOE	0.010	-33.33
MMAG	0.010	-33.33
CLASSITA	0.065	-31.58
ALRICH	0.025	-28.57

# 投资ETF 就像投资 股票一样

但是风险  
比较低!

还不知道什么是ETF?  
你就 Out啦!

点击  
阅读 

赢取  
假日!

在2023年12月31日之前，通过Bursa Malaysia 交易ETF，就有机会赢取前往东京/巴厘岛/浮罗交怡的旅行 (须符合条款和细则)



## Price & Volume Distribution Charts (as at Yesterday)

Technical Analysis

**DEFINITION:** Shariah compliant stocks with Technical Analysis showing 5-days & 10-days Moving Average Price below Yesterday's Close over past 3 days and with Volume Spike.

**CHART GUIDE:** Volume Distribution Chart is a statistical interpretation of the current sentiment on each stock in graphical format. The highest bar categorized as >150k is likely to be traded by institutions or super dealers, while the lowest bar categorized as <15k usually represents retail investors. "Buy Up" refers to more buyers snatching up the lots queued at selling price. "Sell Down" refers to sellers selling their shares to the buying queue



ShareInvestor WebPro > Screener > Market Screener (FA & TA) > select BURSA > add criteria

**A. Criteria**

- > click Add Criteria
- Technical Analysis Conditions tab select (i) Moving Average Below Close (ii) Volume Spike
- Fundamental Analysis Conditions tab > select (iii) Revenue
- Prices & Other Conditions tab > select (iv) Is Shariah Compliant
- Technical Analysis Conditions tab select (v) Moving Average Below Close
- Prices & Other Conditions tab > select (vi) Last Done Price
- Technical Analysis Conditions tab select (vii) Moving Average Below Close

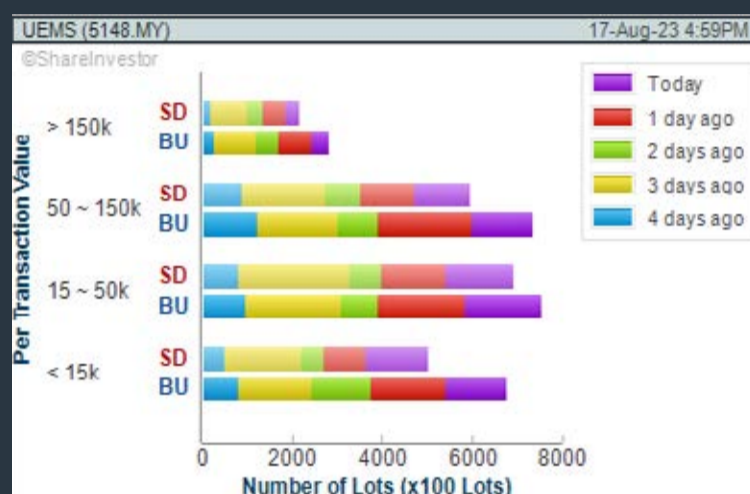
**B. Conditions (Criteria Filters)**

1. Moving Average Below Close - select (MA) type (5) below close price for type (3) days
2. Volume Spike - Volume type (1) greater than type (5) days average
3. Revenue ("000) - select (more than) type (1) for the past select (1) financial year(s)
4. Is Shariah Compliant - select **Yes**
5. Moving Average Below Close - select (MA) type (10) below close price for type (3) days
6. Last Done Price - select (more than) type (0.3)
7. Moving Average Below Close - select (EMA) type (5) below close price for type (3) days

- > click Save Template > Create New Template type (Shariah Hot Stocks) > click Create
- > click Save Template as > select Shariah Hot Stocks > click Save
- > click Screen Now (may take a few minutes)
- > Sort By: Select (Vol) Select (Desc)
- > Mouse over stock name > Charts > click C<sup>2</sup> Charts or Volume Distribution

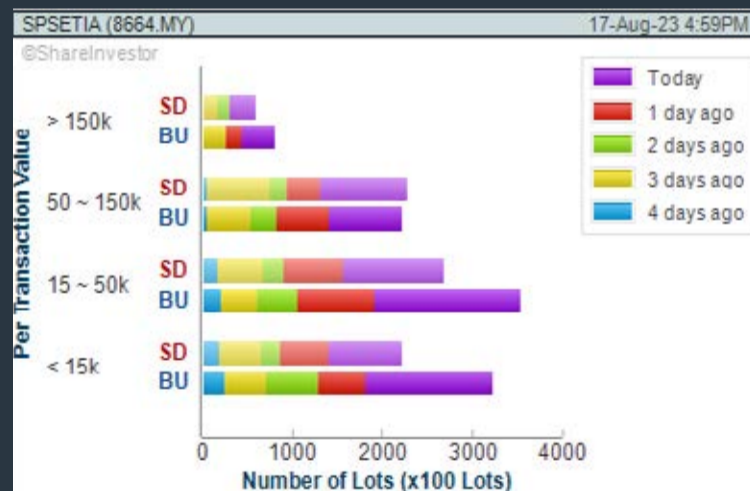
### UEM SUNRISE BERHAD (5148)

C<sup>2</sup> Chart



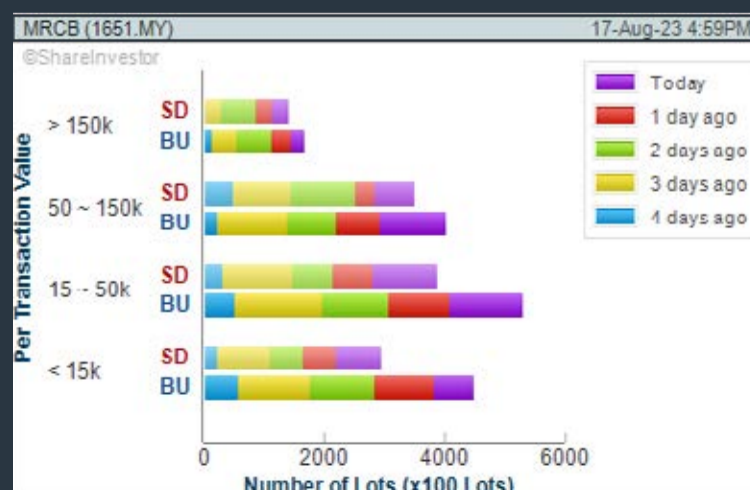
### SP SETIA BHD (8664)

C<sup>2</sup> Chart



### MALAYSIAN RESOURCES CORPORATION BERHAD (1651)

C<sup>2</sup> Chart



**Disclaimer:** The information on this page is provided as a service to readers. It does not constitute financial advice and/or any investment recommendations. Past performance is not indicative of future results. We assume no liability for damages resulting from or arising out of the use of such information. It would be best if you did your own research to make your personal investment decisions wisely or consult a licenced investment advisor.

## COMPANY BACKGROUND

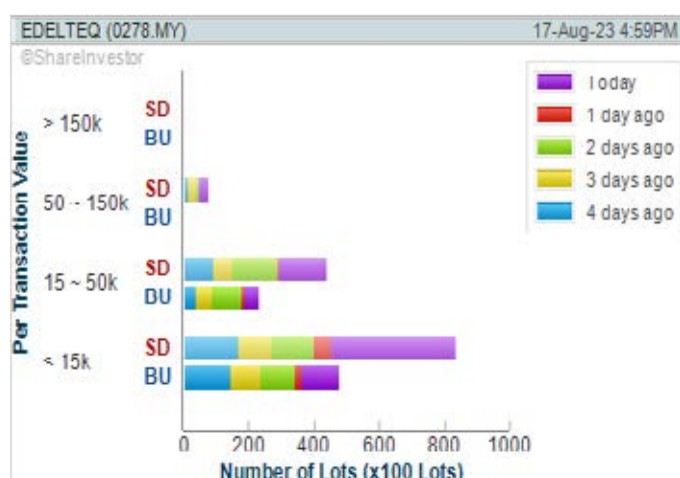
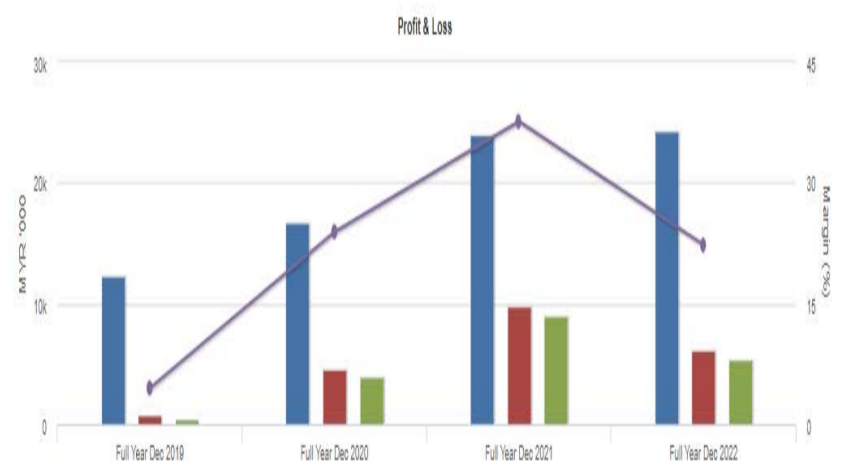
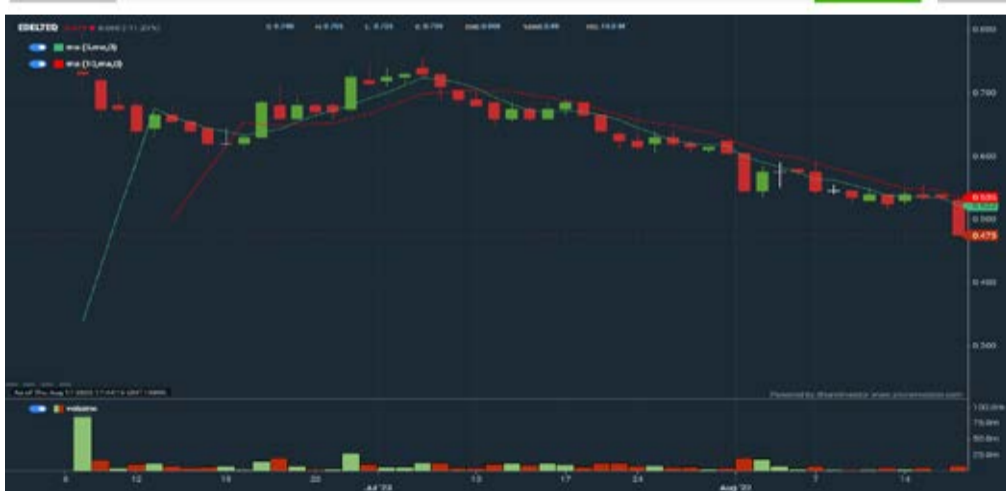
**Edeltec Holdings Berhad** is a semiconductor manufacturing solutions provider. It is engaged in the provision of products and services for the semiconductor industry in the form of engineering support for IC assembly and test processes.



EDELTEQ EDELTEQ HOLDINGS BERHAD		Updated at 17 Aug 2023 16:53	
Last (MYR): <b>0.475</b> ↓	Change: -0.080	High: 0.535	Remarks: -
	Change (%): -11.21	Low: 0.475	
Open: 0.530		Yesterday's Close: 0.535	
Buy Price: 0.475		Sell Price: 0.480	
Buy Volume ('00): 285		Sell Volume ('00): 810	
Cumulative Volume ('00): 01,915		Cumulative Value: 4,003,913.5	

### Financial Analysis

<b>Revenue Growth</b> Increasing revenue in last 3 consecutive years	😊	<b>Profit Growth</b> Profit down sharply in latest year (< 35%) (with last 3 profitable years)	😞
<b>Cash Ratio</b> Good cash ratio of at least 0.8 for 2 consecutive years	😊	<b>Current Ratio</b> The company is well-positioned to cover its short-term obligations with its current assets (ratio between 1.5 to 10) for 3 consecutive years	😊
<b>Gross Profit Margin</b> Consistently high gross profit margin of at least 10% for 3 years	😊	<b>Gross Profit Margin</b> Gross profit margin is improving by 5% a year over the past 36 months.	😊
<b>Net Earnings Margin</b> Consistently high net profit margin of at least 20% for 3 years	😊	<b>Net Earnings Margin</b> Net profit margin is improving by 5% a year over the past 36 months.	😊
<b>Return on Assets (ROA)</b> ROA above 10% for 3 consecutive years	😊	<b>Return on Assets (ROA)</b> ROA is improving by 5% a year over the past 36 months.	😊
<b>Return on Equity (ROE)</b> ROE above 20% for 3 consecutive years	😊	<b>Return on Equity (ROE)</b> ROE is improving by 5% a year over the past 36 months.	😊



### Key Statistics with Total Shareholder Returns

Period	Dividend Received	Capital Appreciation	Total Shareholder Return
5 Days	-	-0.080	-11.21%
10 Days	-	-0.100	-17.39%
20 Days	-	-0.190	-28.57%

**WebPro 9-Days Free Trial Registration (worth RM9) Sign Up Now**



## Price & Volume Distribution Charts (as at Yesterday)

Technical Analysis

**DEFINITION:** Shariah compliant stocks with Technical Analysis showing Bullish Momentum and Price Uptrend. The share price closed at the highest price yesterday. The typical price was higher than the previous day's typical price.

**CHART GUIDE:** Volume Distribution Chart is a statistical interpretation of the current sentiment on each stock in graphical format. The highest bar categorized as >150k is likely to be traded by institutions or super dealers, while the lowest bar categorized as <15k usually represents retail investors. "Buy Up" refers to more buyers snatching up the lots queued at selling price. "Sell Down" refers to sellers selling their shares to the buying queue.



ShareInvestor WebPro > Screener > Market Screener (FA & TA) > select BURSA > add criteria

**A. Criteria**

- > click Add Criteria
- Fundamental Analysis Conditions tab > select (i) Revenue
- Technical Analysis Conditions tab select (ii) Average Volume
- Prices & Other Conditions tab > select (iii) Last Done Price
- Prices & Other Conditions tab > select (iv) Is Shariah Compliant
- Technical Analysis Conditions tab select (v) RSI Overbought
- Technical Analysis Conditions tab select (vi) Moving Average Below Close
- Technical Analysis Conditions tab select (vii) CCI Overbought

**B. Conditions (Criteria Filters)**

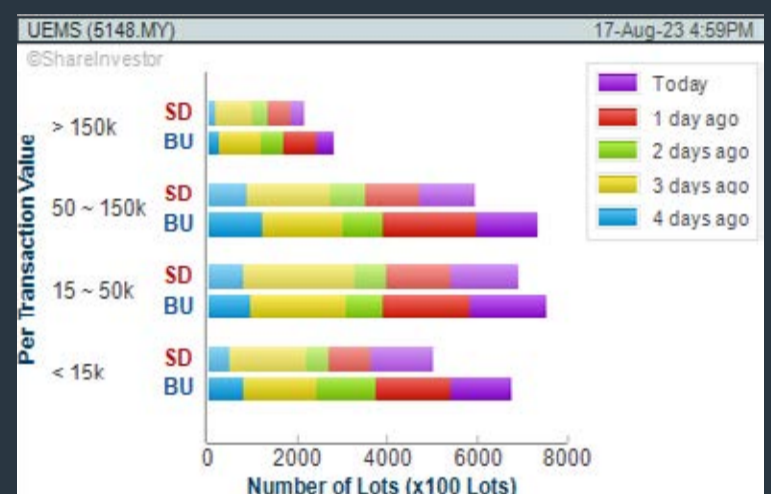
1. Revenue ("000) - select (more than) type (1) for the past select (1) financial year(s)
2. Average Volume - type (1) days average volume greater than type (10000) lots
3. Last Done Price - select (more than) type (0.3)
4. Is Shariah Compliant - select Yes
5. RSI Overbought - select RSI 1 above 99 for 1 days
6. Moving Average Below Close - select (MA) type (10) below close price for type (1) days
7. CCI Overbought - select CCI (2) above (0) for (1) days

- > click Save Template > Create New Template type (Shariah Momentum Up Stocks) > click Create
- > click Save Template as > select Shariah Momentum Up Stocks > click Save
- > click Screen Now (may take a few minutes)
- Sort By: Select (Vol) Select (Desc)
- Mouse over stock name > Charts > click C<sup>2</sup> Charts tab or Volume Distribution

### UEM SUNRISE BERHAD (5148)

C<sup>2</sup> Chart

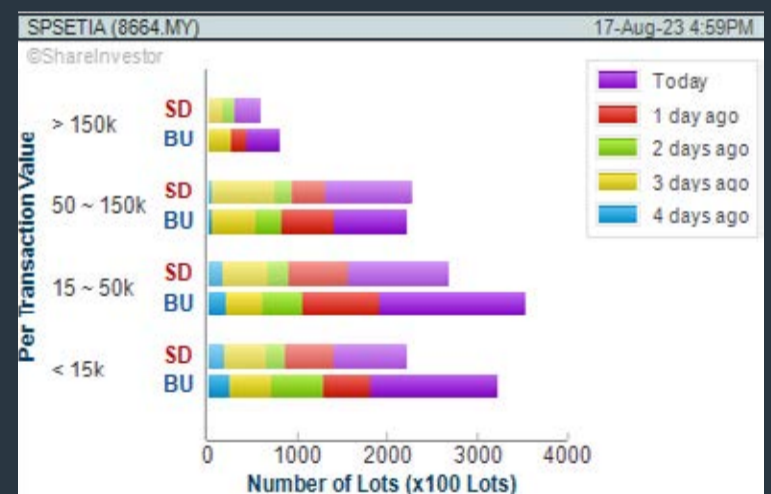
Analysis



### SP SETIA BHD (8664)

C<sup>2</sup> Chart

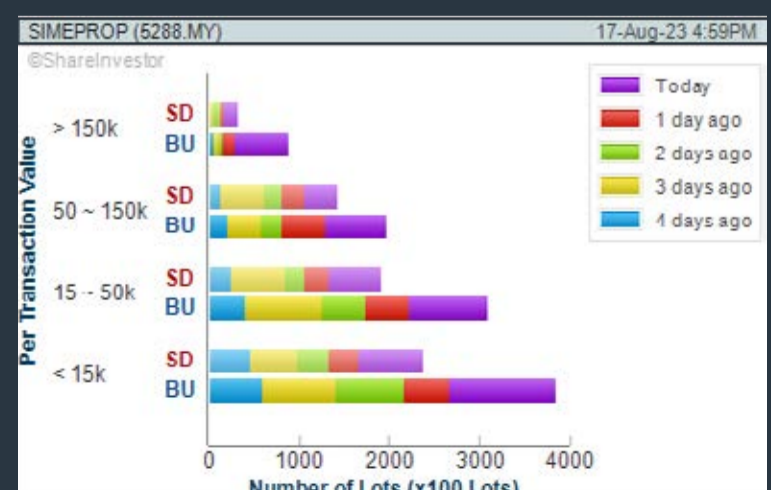
Analysis



### SIME DARBY PROPERTY BERHAD (5288)

C<sup>2</sup> Chart

Analysis



**Disclaimer:** The information on this page is provided as a service to readers. It does not constitute financial advice and/or any investment recommendations. Past performance is not indicative of future results. We assume no liability for damages resulting from or arising out of the use of such information. It would be best if you did your own research to make your personal investment decisions wisely or consult a licenced investment advisor.





**AUG  
2023**



**by Li Chye, Tan**  
Financial Analyst & Coach  
at Beyond Insights



# MARKET UPDATES FOR BUSY PEOPLE

Get Up to Date with the Global Stock Market  
while having your lunch!



**29 AUG 2023**  
TUESDAY



**12:30PM - 12:50PM**  
(GMT+8)

SCAN TO REGISTER -->

**REGISTER NOW**



**BEYOND INSIGHTS**  
INVESTMENT and TRADING EDUCATION

[beyondinsights.info/marketupdate](https://beyondinsights.info/marketupdate)

## Price & Volume Distribution Charts (as at Yesterday)

Technical Analysis

**DEFINITION:** Stocks with Technical Analysis showing 5-days & 10-days Moving Average Price below Close over past 1 days and with Volume Spike

**CHART GUIDE:** Volume Distribution Chart is a statistical interpretation of the current sentiment on each stock in graphical format. The highest bar categorized as >150k is likely to be traded by institutions or super dealers, while the lowest bar categorized as <15k usually represents retail investors. "Buy Up" refers to more buyers snatching up the lots queued at selling price. "Sell Down" refers to sellers selling their shares to the buying queue.



ShareInvestor WebPro > Screener > Market Screener (FA & TA) > select BURSA > add criteria

**A. Criteria**

- > click Add Criteria
- Technical Analysis Conditions tab select (i) Moving Average Below Close (ii) Volume Spike
- Fundamental Analysis Conditions tab >select (iii) Revenue
- Prices & Other Conditions tab > select (iv) Is Shariah Compliant
- Technical Analysis Conditions tab select (v) Moving Average Below Close
- Prices & Other Conditions tab > select (vi) Last Done Price
- Technical Analysis Conditions tab select (vii) Moving Average Below Close

**B. Conditions (Criteria Filters)**

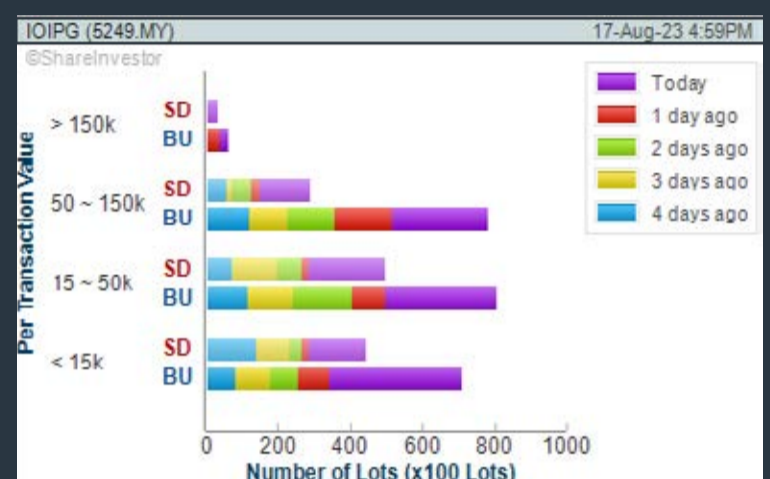
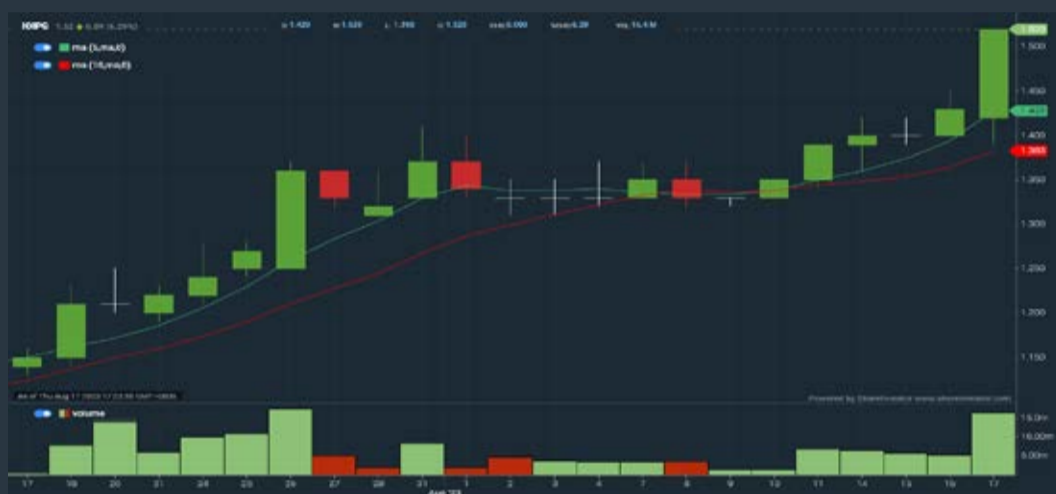
1. Moving Average Below Close - select (MA) type (5) below close price for type (3) days
2. Volume Spike - Volume type (1) greater than type (5) days average
3. Revenue ("000) - select (more than) type (1) for the past select (1) financial year(s)
4. Is Shariah Compliant - select NO
5. Moving Average Below Close - select (MA) type (10) below close price for type (1) days
6. Last Done Price - select (more than) type (0.3)
7. Moving Average Below Close - select (EMA) type (5) below close price for type (1) days

- > click Save Template > Create New Template type (Non-Shariah Hot Stocks) > click Create
- > click Save Template as > select Non-Shariah Hot Stocks > click Save
- > click Screen Now (may take a few minutes)
- Sort By: Select (Vol) Select (Desc)
- Mouse over stock name > Charts > click C<sup>2</sup> Charts tab or Volume Distribution

### IOI PROPERTIES GROUP BERHAD (5249)

C<sup>2</sup> Chart

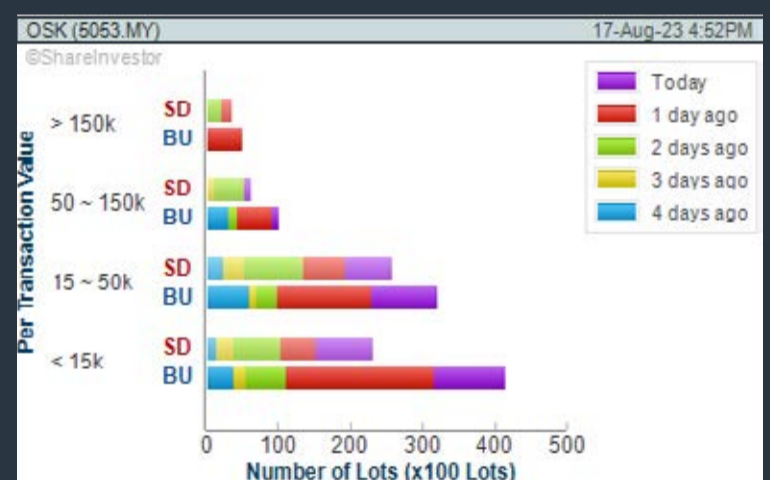
Analysis



### OSK HOLDINGS BHD (5053)

C<sup>2</sup> Chart

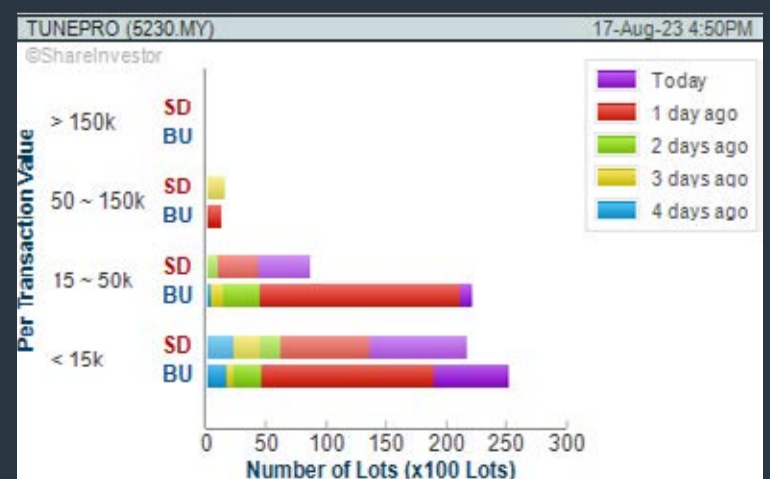
Analysis



### TUNE PROTECT GROUP BERHAD (5230)

C<sup>2</sup> Chart

Analysis



**Disclaimer:** The information on this page is provided as a service to readers. It does not constitute financial advice and/or any investment recommendations. Past performance is not indicative of future results. We assume no liability for damages resulting from or arising out of the use of such information. It would be best if you did your own research to make your personal investment decisions wisely or consult a licenced investment advisor.

# DARI PELAN CARAN IPO KE PENGUASAAN AQ VAR: PELAN PERDAGANGAN SAHAM



LIVE

23 OGOS, RABU  
8PM - 9.00PM

## Menilai sebuah IPO: Metrik utama dan tanda bahaya

### Kesalahan Umum Pemilihan Saham dan Cara Mengelaknya

DAFTAR SEKARANG!



Tetamu Istimewa  
Penceramah Dijemput:

**MUHAMAD FIRDAUS  
BIN MAJID (CFTE)**  
FOUNDER AND COO,  
ALTHEA QUANT



**TN. FAIZAL YUSUP**  
REMISIER, ALTHEA QUANT

## Price & Volume Distribution Charts (Over 5 trading days as at Yesterday)

Technical Analysis

**DEFINITION:** Stocks with Technical Analysis showing Bullish Momentum and Price Uptrend

**CHART GUIDE:** Volume Distribution Chart is a statistical interpretation of the current sentiment on each stock in graphical format. The highest bar categorized as >150k is likely to be traded by institutions or super dealers, while the lowest bar categorized as <15k usually represents retail investors. "Buy Up" refers to more buyers snatching up the lots queued at selling price. "Sell Down" refers to sellers selling their shares to the buying queue.



ShareInvestor WebPro > Screener > Market Screener (FA & TA) > select BURSA > add criteria

**A. Criteria**

- > click Add Criteria
- Fundamental Analysis Conditions tab > select (i) Revenue
- Technical Analysis Conditions tab select (ii) Moving Average Below Close
- Technical Analysis Conditions tab select (iii) Average Volume
- Prices & Other Conditions tab > select (iv) Last Done Price
- Technical Analysis Conditions tab select (v) Moving Average Below Close
- Technical Analysis Conditions tab select (v) Moving Average Bullish Crossover

**B. Conditions**

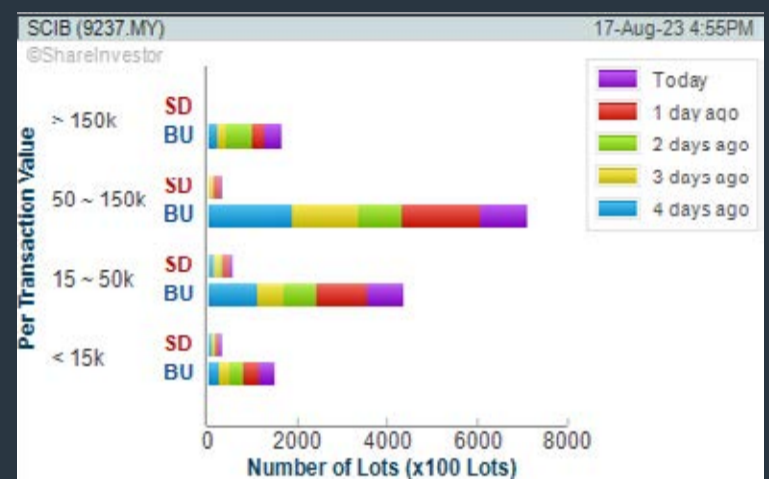
1. Revenue - select (more than) type (1) for the past select (1) financial year(s)
2. Moving Average Below Close - select (MA) type (20) below close price for type (1) days
3. Average Volume - type (5) days average volume type (10000) lots
4. Last Done Price - select (more than) type (0.3)
5. Moving Average Below Close - select (MA) type (10) below close price for type (1) days
6. Moving Average Bullish Crossover - select (MA) type (5) crossed above select (MA) type (10)

> click Save Template > Create New Template type (Non-Shariah Up-Trending Stocks) > click Create Click Save Template As > select Non-Shariah Up Trending Stocks > click Save > click Screen Now (may take a few minutes) Sort By: Select (Vol) Select (Desc) Mouse over stock name > Charts > click C<sup>2</sup> Charts tab or Volume Distribution

### SARAWAK CONSOLIDATED IND BHD (9237)

C<sup>2</sup> Chart

Analysis



### FAJARBARU BUILDER GRP BHD (7047)

C<sup>2</sup> Chart

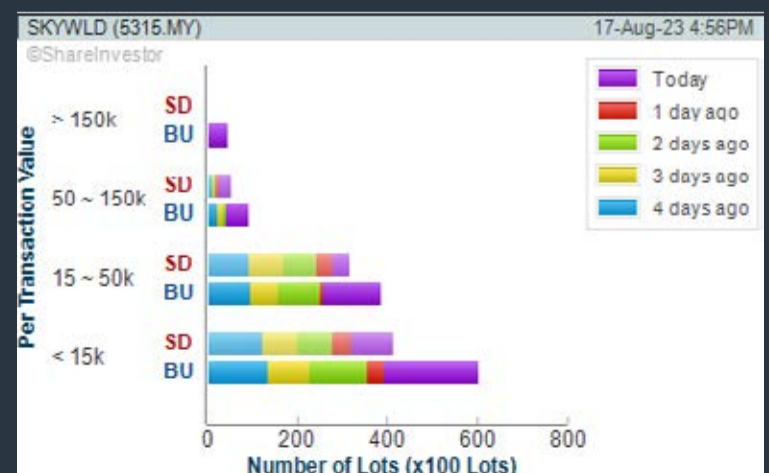
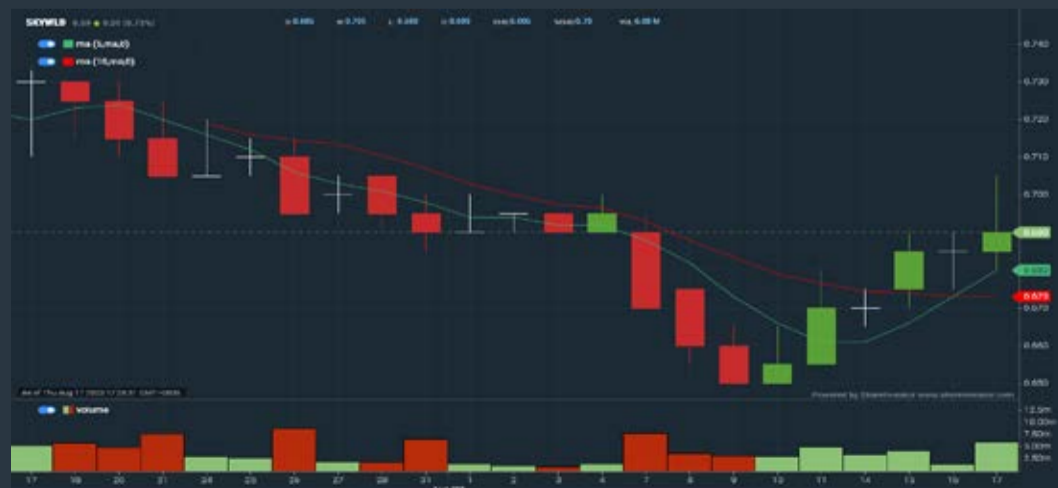
Analysis



### SKYWORLD DEVELOPMENT BERHAD (5315)

C<sup>2</sup> Chart

Analysis



**Disclaimer:** The information on this page is provided as a service to readers. It does not constitute financial advice and/or any investment recommendations. Past performance is not indicative of future results. We assume no liability for damages resulting from or arising out of the use of such information. It would be best if you did your own research to make your personal investment decisions wisely or consult a licenced investment advisor.



# Foreign Stocks Fiesta



US stocks



SG stocks



HK stocks

Trade & Earn Up to  
RM70\* e-Cash Reward

\*T&C Apply



Open account and trade now

## Price & Total Shareholder Return (as at Yesterday)

Fundamental Analysis

**DEFINITION:** Share price of a company trading at a lower price as compared to its fundamentals (FA) such as financial performance and dividend, allowing it to be attractive to value investors.

**CHART GUIDE:** Total Shareholder Return (TSR) combines share price appreciation and dividend distributions paid to show the total return to the shareholder expressed as a percentage.



ShareInvestor WebPro > Screener > Market Screener (FA & TA) > select BURSA > add criteria

**A. Criteria**

- > click Add Criteria
- Fundamental Analysis Conditions tab (i) Price Earnings Ratio
- Fundamental Analysis Conditions tab >select (ii) CAGR of Net Earnings
- Fundamental Analysis Conditions tab >select (iii) Net Debt To Equity
- Fundamental Analysis Conditions tab >select (iv) Return On Equity (ROE)

**B. Conditions**

1. Price Earnings Ratio - select (less than) type (15) times now
2. CAGR of Net Earnings - select (more than) type (10) % for the past type (3) financial year(s)
3. Net Debt To Equity – select (less than) type (1) for the past select (1) financial year(s)
4. Return On Equity (ROE) – select (more than) type (10) % for the past select (1) financial year(s)

- > click Save Template > Create New Template type (Value Stock) > click Create
- > click Save Template as > select Value Companies > click Save
- > click Screen Now (may take a few minutes)
- Sort by: Select (PE Ratio) Select (Ascending)
- > Mouse over stock name > Factsheet > looking for Total Shareholder Return
- > Mouse over stock name > Charts > click C2 Charts tab

## EDELTEQ HOLDINGS BERHAD (0278.MY)

C<sup>2</sup> Chart

Analysis



Period	Dividend Received	Capital Appreciation	Total Shareholder Return
Short Term Return	5 Days	-0.060	-11.21%
	10 Days	-0.100	-17.39%
	20 Days	-0.190	-28.57%

## SUNMOW HOLDING BERHAD (03050)

C<sup>2</sup> Chart

Analysis



Period	Dividend Received	Capital Appreciation	Total Shareholder Return
Short Term Return	5 Days	-0.100	-7.69%
	10 Days	-	-
	20 Days	-0.650	-4.35%
Medium Term Return	3 Months	+0.550	+4.62%
	6 Months	+0.550	+4.62%
	1 Year	+1.420	+9.00%
Annualised Return	Annualised	-	+9.00%

## SCGM BHD (7247)

C<sup>2</sup> Chart

Analysis



Period	Dividend Received	Capital Appreciation	Total Shareholder Return
Short Term Return	5 Days	-0.015	-2.58%
	10 Days	-	-
	20 Days	-	-
Medium Term Return	3 Months	+0.040	+7.24%
	6 Months	-0.035	-10.87%
	1 Year	-0.025	-6.66%
Long Term Return	2 Years	0.051	+5.68%
	3 Years	0.126	+14.48%
	5 Years	0.173	+16.20%
Annualised Return	Annualised	-	+13.23%

**Disclaimer:** The information on this page is provided as a service to readers. It does not constitute financial advice and/or any investment recommendations. Past performance is not indicative of future results. We assume no liability for damages resulting from or arising out of the use of such information. It would be best if you did your own research to make your personal investment decisions wisely or consult a licenced investment advisor.



# 如何投资 泰国蓝筹股

## 通过SDR投资泰国市场

泰国蓝筹股有哪些投资机会？

主讲人：



线上分享会



LIVE

25 AUG 2023 (星期五), 8PM

董孛翎 Jou Tang

TrendWalker顺势为王创办人



**TRENDWALKER**

顺势为王

INVESTMENT IDEA

SCAN TO  
REGISTER



## Price & Total Shareholder Return (as at Yesterday)

Fundamental Analysis

**DEFINITION:** Company revenue is growing and making good quality of earnings with positive Free Cash Flow.

**CHART GUIDE:** Total Shareholder Return (TSR) combines share price appreciation and distributions paid to show the total return to the shareholder expressed as a percentage.



ShareInvestor WebPro > Screener > Market Screener (FA & TA) > select BURSA > add criteria

**A. Criteria**

1. Fundamental Analysis Conditions tab >select (i) Free Cash Flow, (ii) Revenue Growth, (iii) Gross Profit (Earnings) Margin, (iv) Quality of Earnings, (v) Total Shareholder Returns, > click Add Criteria
2. Fundamental Analysis Conditions tab >select (vi) Total Shareholder Returns > click Add Criteria

**B. Conditions (Criteria Filters)**

1. Free Cash Flow - select (more than) type (1) for the past select (1) financial year(s)
2. Revenue Growth - select (more than) type (1) for the past select (1) financial year(s)
3. Gross Profit (Earnings) Margin - select (more than) type (30) % for the past select (1) financial year(s)
4. Quality of Earnings - select (more than) type (1) for the past select (1) financial year(s)
5. Total Shareholder Return - -- select (more than) type (5) % for the past select (3) financial year(s)
6. Total Shareholder Return - -- select (more than) type (5) % for the past select (5) financial year(s)

- > click Save Template > Create New Template type (Growth Companies) > click Create
- > click Save Template as > select Growth Companies > click Save
- > click Screen Now (may take a few minutes)
- > Sort By: Select (Revenue Growth) Select (Desc)
- > Mouse over stock name > Factsheet > looking for Total Shareholder Return

## CLASSIC SCENIC BHD (7202)

C<sup>2</sup> Chart

Analysis



Period	Dividend Received	Capital Appreciation	Total Shareholder Return
Short Term Return	5 Days	-0.000	+0.10%
	10 Days	-0.000	+25.29%
	20 Days	-0.000	+25.29%
Medium Term Return	3 Months	-0.000	-0.00%
	6 Months	-0.075	-24.51%
	1 Year	-0.070	-12.82%
Long Term Return	2 Years	-0.070	+56.70%
	3 Years	0.030	+100.48%
	5 Years	0.190	+20.00%
Annualised Return	Annualised	-	+5.95%

## FOCUS POINT HOLDINGS BERHAD (0157)

C<sup>2</sup> Chart

Analysis



Period	Dividend Received	Capital Appreciation	Total Shareholder Return
Short Term Return	5 Days	-0.015	-0.84%
	10 Days	-0.010	-1.23%
	20 Days	-	-
Medium Term Return	3 Months	-0.040	+5.26%
	6 Months	-0.120	-13.89%
	1 Year	-0.201	+1.23%
Long Term Return	2 Years	-0.100	+65.96%
	3 Years	-0.020	+10.65%
	5 Years	0.035	+101.51%
Annualised Return	Annualised	-	+11.93%

## IGB BERHAD (5606)

C<sup>2</sup> Chart

Analysis



Period	Dividend Received	Capital Appreciation	Total Shareholder Return
Short Term Return	5 Days	-	-
	10 Days	-0.020	-0.55%
	20 Days	-	-
Medium Term Return	3 Months	-0.100	-0.89%
	6 Months	-0.000	+30.00%
	1 Year	-0.007	+35.51%
Long Term Return	2 Years	0.190	+79.72%
	3 Years	0.270	+100.00%
	5 Years	0.600	+58.83%
Annualised Return	Annualised	-	+47.05%

**Disclaimer:** The information on this page is provided as a service to readers. It does not constitute financial advice and/or any investment recommendations. Past performance is not indicative of future results. We assume no liability for damages resulting from or arising out of the use of such information. It would be best if you did your own research to make your personal investment decisions wisely or consult a licenced investment advisor.



## THE FUTURE OF FINANCE IS *Here.*

### ONE OF TWO

INITIAL EXCHANGE OFFERING  
PLATFORM IN THE NATION



REGISTERED AND REGULATED BY THE  
**SECURITIES  
COMMISSION  
OF MALAYSIA**

### WHAT IS KLDX?

#### 3 THINGS YOU NEED TO KNOW

- A PLATFORM THAT EMPOWERS YOUR PRIVATE MARKET INVESTMENTS
- LED BY AN EXPERIENCED TEAM OF INVESTMENT PROFESSIONALS
- REGISTERED WITH THE SECURITIES COMMISSION MALAYSIA

## PRIVATE MARKETS

Composite Private Equity Performance across State Pensions



<https://www.moonfare.com/glossary/private-markets>

**UNLOCK  
OPPORTUNITIES.  
INFLATION PROTECTION.  
PORTFOLIO  
DIVERSIFICATION.**

Private markets have outperformed public markets across 10 and 20 year time horizons, across multiple geographies such as US, UK, China.

## WHY INVEST WITH US?

- PLATFORM FOR PRIVATE MARKET INVESTING
- COMPREHENSIVE SCREENING PROCESS
- SECURE METHODS TO DIVERSE PORTFOLIO
- INVEST IN EXCLUSIVE OPPORTUNITIES



**REGISTER HERE**  
[www.kldx.com](http://www.kldx.com)



## Price & Total Shareholder Return (as at Yesterday)

Fundamental Analysis

**DEFINITION:** Company is paying out dividend with low or moderate leverage.

**CHART GUIDE:** Total Shareholder Return (TSR) combines share price appreciation and distributions paid to show the total return to the shareholder expressed as a percentage.



ShareInvestor WebPro > Screener > Market Screener (FA & TA) > select BURSA > add criteria

**A. Criteria**

- > click Add Criteria
- Fundamental Analysis Conditions tab >select (i) Dividend Yield (Historical)
- Fundamental Analysis Conditions tab >select (ii) Dividend Payout (Historical)
- Fundamental Analysis Conditions tab >select (iii) Total Debt To Equity
- Fundamental Analysis Conditions tab >select (iv) Total Shareholder Returns
- Fundamental Analysis Conditions tab >select (v) Total Shareholder Returns
- Fundamental Analysis Conditions tab / >select (vi) CAGR of Dividend Per Share

• Fundamental Analysis Conditions tab >select (vii) CAGR of Dividend Per Share

**B. Conditions (Criteria Filters)**

1. Dividend Yield - select (more than) type (1) % for the past select (1) financial year(s)
2. Dividend Payout (Historical) - select (between) type (0.5) to type (1) times for the past select (1) financial year(s)
3. Total Debt to Equity - select (less than) type (1) for the past select (1) financial year(s)
4. Total Shareholder Return - select (more than) type (5) % for the past select (3) financial year(s)
5. Total Shareholder Return - select (more than) type (5) % for the past select (5) financial year(s)

6. CAGR of Dividend Per Share - select (less than) type (30) % for the past select (5) financial year(s)
7. CAGR of Dividend Per Share - select (more than) type (1) % for the past select (5) financial year(s)

- > click Save Template > Create New Template type (Dividend Companies) > click Create
- > click Save Template as > select Dividend Companies > click Save
- > click Screen Now (may take a few minutes)
- > Sort By: Select (Dividend Yield) Select (Desc)
- > Mouse over stock name > Factsheet > looking for Total Shareholder Return

## JAYCORP BHD (7152)

C<sup>2</sup> Chart



Analysis

Period	Dividend Received	Capital Appreciation	Total Shareholder Return
Short Term Return	5 Days	+0.010	+1.44%
	10 Days	+0.010	+1.44%
	20 Days	+0.010	+2.87%
Medium Term Return	3 Months	+0.010	+2.87%
	6 Months	-0.329	-2.78%
	1 Year	+0.010	+2.87%
Long Term Return	2 Years	0.355	+4.48%
	3 Years	0.476	+6.87%
	5 Years	0.355	+9.52%
Annualized Return	Annualized	-	+7.88%

## FORMOSA PROSONIC INDUSTRIES (9172)

C<sup>2</sup> Chart



Analysis

Period	Dividend Received	Capital Appreciation	Total Shareholder Return
Short Term Return	5 Days	+0.070	+3.72%
	10 Days	+0.060	+3.12%
	20 Days	+0.060	+3.53%
Medium Term Return	3 Months	+0.060	+3.40%
	6 Months	+0.060	+3.40%
	1 Year	+0.060	+3.40%
Long Term Return	2 Years	0.220	+4.39%
	3 Years	0.340	+6.72%
	5 Years	0.220	+4.39%
Annualized Return	Annualized	-	+7.88%

## GAS MALAYSIA BERHAD (5209)

C<sup>2</sup> Chart



Analysis

Period	Dividend Received	Capital Appreciation	Total Shareholder Return
Short Term Return	5 Days	-	-
	10 Days	+0.030	+0.99%
	20 Days	-	-
Medium Term Return	3 Months	+0.210	+6.04%
	6 Months	+0.240	+7.41%
	1 Year	+0.270	+8.28%
Long Term Return	2 Years	0.177	+5.54%
	3 Years	0.327	+10.11%
	5 Years	0.162	+5.28%
Annualized Return	Annualized	-	+8.32%

**Disclaimer:** The information on this page is provided as a service to readers. It does not constitute financial advice and/or any investment recommendations. Past performance is not indicative of future results. We assume no liability for damages resulting from or arising out of the use of such information. It would be best if you did your own research to make your personal investment decisions wisely or consult a licenced investment advisor.

Anywhere you are,  
opportunities are never far,  
*any time.*

## Introducing a brand new way to build your wealth.





No matter where you are in the world, you will be able to invest in a wide range of conventional and Shariah-compliant investments locally and globally. With our investment expertise and research capabilities, you will have full control of your investments at your fingertips.

Scan here to start your investment journey with us.



**Get in touch with RHB Asset Management.**  
Log on to [rhbgroup.com/myinvest](https://rhbgroup.com/myinvest)

### Explore the new RHBAM MyInvest digital platform.

-  Online account opening and onboarding with ease
-  Easy online access to your investments 24/7
-  Readily available digital tools and resources to help you make better decisions
-  Opportunity to invest in professionally managed local and global funds



**Investment Disclaimer:** This advertisement is for general information only. The information is based on certain assumptions, information and conditions available as at the date of this advertisement and may be subject to change at any time without notice. Past performance is not necessarily indicative of future performance. This advertisement does not constitute an offer, solicitation or recommendation to invest into any fund / scheme available in RHBAM MyInvest. A Product Highlights Sheet ("PHS") highlighting the key features and risks of the of the fund(s) / scheme(s) is available and investors have the right to request for a PHS. Investors are advised to obtain, read and understand the contents of the PHS and relevant Prospectus / Master Prospectus / Information Memorandum / Replacement Master Prospectus / Disclosure Document / Replacement Disclosure Document and its relevant supplementary(ies) (if any) ("collectively known as "Prospectuses") before investing. The

Prospectuses have been registered with the Securities Commission Malaysia ("SC") who takes no responsibility for its contents. The SC's approval and authorization of the registration of the Prospectuses should not be taken to indicate that the SC has recommended or endorsed the fund(s) / scheme(s). Amongst others, investors should consider the fees and charges involved. Investors should also note that the price of units and distributions payable, if any, may go down as well as up. Where a distribution is declared, investors are advised that following the issue of additional units/distribution, the net asset value ("NAV") per unit will be reduced from cum-distribution NAV to ex-distribution NAV. Any issue of units to which the Prospectuses relates will only be made on receipt of a form of application referred to in the Prospectuses. A copy of the PHS and the Prospectuses can be obtained from RHBAM MyInvest. Investors are advised that investments are subject to investment risk and that there can be no guarantee that any investment objectives will be achieved. Investors should conduct their own assessment before investing and seek professional advice, where necessary and should not make an investment decision based solely on this advertisement. Please refer to the Prospectuses for more information and risks of investing. The specific risks and other general risks of the fund(s) / scheme(s) are elaborated in the Prospectuses. This advertisement has not been reviewed by the SC.

Week: 11 Aug 2023 - 17 Aug 2023

More Brokers' Call 

AMINVESTMENT BANK <small>... See More</small>	Call	Target Price	Release Date
Alliance Bank Malaysia Berhad (2488)	BUY	RM4.00	15 Aug 2023
PPB Group Berhad (4065)	BUY	RM19.40	14 Aug 2023
UEM Sunrise Berhad (5148)	HOLD	RM0.6	16 Aug 2023

BIMB <small>... See More</small>	Call	Target Price	Release Date
Malaysia Marine And Heavy Engineering Holdings Berhad (5186)	BUY	RM0.94	17 Aug 2023
QL Resources Berhad (7084)	BUY	RM6.30	17 Aug 2023

CGS CIMB <small>... See More</small>	Call	Target Price	Release Date
Dialog Group Berhad (7277)	ADD	RM2.700	16 Aug 2023
Malayan Cement Berhad (3794)	ADD	RM5.55	14 Aug 2023

KENANGA <small>... See More</small>	Call	Target Price	Release Date
Dialog Group Berhad (7277)	OUTPERFORM	RM3.10	16 Aug 2023
PPB Group Berhad (4065)	OUTPERFORM	RM19.30	14 Aug 2023
S P Setia Berhad (8664)	UNDERPERFORM	RM0.68	17 Aug 2023
YTL Power International Bhd (6742)	OUTPERFORM	RM1.85	15 Aug 2023

MIDF <small>... See More</small>	Call	Target Price	Release Date
KLCCP Stapled Group (5235)	NEUTRAL	RM7.08	15 Aug 2023
Malaysia Marine And Heavy Engineering Holdings Berhad (5186)	NEUTRAL	RM0.51	17 Aug 2023
PPB Group Berhad (4065)	NEUTRAL	RM15.17	14 Aug 2023
Ranhill Utilities Berhad (5272)	BUY	RM0.73	16 Aug 2023
S P Setia Berhad (8664)	BUY	RM0.92	17 Aug 2023

UOB KAYHIAN <small>... See More</small>	Call	Target Price	Release Date
Dialog Group Berhad (7277)	BUY	RM2.85	16 Aug 2023
KLCCP Stapled Group (5235)	HOLD	RM7.19	15 Aug 2023

**Disclaimer:** InveSt does not accept any liability whatsoever for any direct, indirect or consequential losses (including loss of profit) or damages that may arise from the use of information or opinions in this publication. The information and opinions in InveSt are not to be considered as an offer to sell or buy any of the securities discussed. Opinions expressed are subject to change without notice. The Brokers may, from time to time, have interests or positions in the securities mentioned. For the full report on each item listed on this page, please visit [https://www.shareinvestor.com/my/brokers\\_call](https://www.shareinvestor.com/my/brokers_call).



# The first on Bursa Malaysia - warrants over the **Dow Jones** and **NASDAQ-100 Index**

**DEFINITION:** Top 9 stocks with Technical Analysis plus Pattern Matching by 60 pre-defined indicators by the system showing a higher probability of bullish sentiment on the share price.



ShareInvestor WebPro > Screener > Predefined TA Screens > select market BURSA > Most Long Signals > click Scan Results or mouse over each company

**AVALAND BERHAD (5182.MY)**

**AVALAND**

Price updated at 17 Aug 2023 16:58

Last: <b>0.220</b>	Change: -	Volume: <b>58,607</b>
	Change (%): -	Range: <b>0.215 - 0.225</b>

TA Scanner Results based on historical data up to 17 Aug 2023

Condition	Signal	Explanation
Bollinger Band: High Above Upper Bollinger Band	Neutral	"1. High above upper bollinger band(14,2). 2. Average volume(5) is above 100,000."
Donchian Channels: High Above Upper Donchian Channels	Long	High crossed above the upper Donchian Channel(14,4)
MA: Short Term Bullish Moving Average Crossover	Long	MA(10) crossed above MA(15) within the last 1 day.
MACD: Bullish MACD Crossover	Long	"1. MACD(12,26) diff line crossed above the MACD(12,26) signal line. 2. MACD Histogram(12,26) is above 0."
Price: New 52 Week High	Long	"1. Stock reach a new 52 week high. 2. Average volume(30) is above 50000."
Volume: Volume Spike	Long	"1. Volume is more than 500% above average volume(10). 2. Volume above 200000. 3. Close price above 0.10"

**AIMFLEX BERHAD (0209.MY)**

**AIMFLEX**

Price updated at 17 Aug 2023 16:59

Last: <b>0.220</b>	Change: <b>+0.015</b>	Volume: <b>1,526,232</b>
	Change (%): <b>+7.32</b>	Range: <b>0.195 - 0.225</b>

TA Scanner Results based on historical data up to 17 Aug 2023

Condition	Signal	Explanation
Bollinger Band: Bullish Long Term Volatility Breakout and Trending	Long	"1. Close price above upper bollinger band(33,1). 2. Volume above average volume(50). 3. Average volume(50) is above 300,000."
Bollinger Band: Bullish Short Term Volatility Breakout and Trending	Long	"1. Close price above upper bollinger band(33,1). 2. Volume above average volume(10). 3. Average volume(10) is above 300,000."
Bollinger Band: High Above Upper Bollinger Band	Neutral	"1. High above upper bollinger band(14,2). 2. Average volume(5) is above 100,000."
CCI: Bearish CCI Overbought And Reversing	Short	"1. CCI(26) above 100 and CCI(26) 1 day ago increasing for the last 3 days. 2. CCI(26) below CCI(26) 1 day ago"
Chaikin Volatility: Increasing Chaikin Volatility	Neutral	Chaikin Volatility(10,10) has been increasing for 5 days
Donchian Channels: High Above Upper Donchian Channels	Long	High crossed above the upper Donchian Channel(14,4)
MA: Short Term Bullish Moving Average Crossover	Long	MA(10) crossed above MA(15) within the last 1 day.
Parabolic SAR: Bearish Parabolic SAR Reversal	Neutral	"1. Parabolic SAR 1 day ago above close price 1 day ago for the last 5 days. 2. Parabolic SAR below close price"
Price: New 52 Week High	Long	"1. Stock reach a new 52 week high. 2. Average volume(30) is above 50000."
RSI: Short Term RSI 50 Bullish Crossover	Long	"1. RSI(20) crossed above 50 within the last 1 day and RSI(20) 1 day ago below 50 for the last 5 days. 2. Volume above average volume(125). 3. Average volume(5) is above 100,000."
Volume: Volume Spike	Long	"1. Volume is more than 500% above average volume(10). 2. Volume above 200000. 3. Close price above 0.10"
Williams %R: Bearish Williams %R	Short	"1. Williams %R(26) between 0 and -20. 2. Average volume(5) is above 100,000."

**CAB CAKARAN CORPORATION BHD (7174.MY)**

**CAB**

Price updated at 17 Aug 2023 16:58

Last: <b>0.675</b>	Change: -	Volume: <b>13,564</b>
	Change (%): -	Range: <b>0.665 - 0.680</b>

TA Scanner Results based on historical data up to 17 Aug 2023

Condition	Signal	Explanation
Bollinger Band: Bullish Long Term Volatility Breakout and Trending	Long	"1. Close price above upper bollinger band(33,1). 2. Volume above average volume(50). 3. Average volume(50) is above 300,000."
Bollinger Band: Bullish Short Term Volatility Breakout and Trending	Long	"1. Close price above upper bollinger band(33,1). 2. Volume above average volume(10). 3. Average volume(10) is above 300,000."
Bollinger Band: High Above Upper Bollinger Band	Neutral	"1. High above upper bollinger band(14,2). 2. Average volume(5) is above 100,000."
Candlestick: Bullish Engulfing	Long	Bullish: Engulfing
Donchian Channels: High Above Upper Donchian Channels	Long	High crossed above the upper Donchian Channel(14,4)
Historical Volatility: Decreasing Historical Volatility	Neutral	Historical Volatility(100,365) decreasing for the last 10 days
Volume: 10 Days large value Buy Up trade	Long	"1. 150K value Buy Up greater than Sell Down by 20% for 10 days. 2. 50K-100K value Buy Up greater than Sell Down by 20% for 10 days. 3. Average volume(10) is above 1000000"
Volume: 5 Days large value Buy Up trade	Long	"1. 150K value Buy Up greater than Sell Down by 20% for 5 days. 2. 50K-100K value Buy Up greater than Sell Down by 20% for 5 days. 3. Average volume(10) is above 1000000"

**SCOPE INDUSTRIES BHD (0028.MY)**

**SCOPE**

Price updated at 17 Aug 2023 16:50

Last: <b>0.135</b>	Change: <b>-0.005</b>	Volume: <b>74,378</b>
	Change (%): <b>-3.57</b>	Range: <b>0.130 - 0.140</b>

TA Scanner Results based on historical data up to 17 Aug 2023

Condition	Signal	Explanation
Bollinger Band: Bullish Long Term Volatility Breakout and Trending	Long	"1. Close price above upper bollinger band(33,1). 2. Volume above average volume(50). 3. Average volume(50) is above 300,000."
Bollinger Band: Bullish Short Term Volatility Breakout and Trending	Long	"1. Close price above upper bollinger band(33,1). 2. Volume above average volume(10). 3. Average volume(10) is above 300,000."
DM: Bullish Directional Movement	Long	-DI(14) crossed below +DI(14)
MA: Bullish Price Crossover	Long	"1. Close price crossed above MA(40) within the last 1 day. 2. Previous day close price is below the MA(10) for the last 5 days"
MACD: Bullish MACD Crossover	Long	"1. MACD(12,26) diff line crossed above the MACD(12,26) signal line. 2. MACD Histogram(12,26) is above 0."
RSI: Short Term RSI 50 Bullish Crossover	Long	"1. RSI(20) crossed above 50 within the last 1 day and RSI(20) 1 day ago below 50 for the last 5 days. 2. Volume above average volume(125). 3. Average volume(5) is above 100,000."

**Disclaimer:** The information on this page is provided as a service to readers. It does not constitute financial advice and/or any investment recommendations. Past performance is not indicative of future results. We assume no liability for damages resulting from or arising out of the use of such information. It would be best if you did your own research to make your personal investment decisions wisely or consult a licenced investment advisor.



# TRADE STOCKS/ETFs NOW

FROM ~~USD6.80~~ **USD3.80**

*But Wait..* There's More!

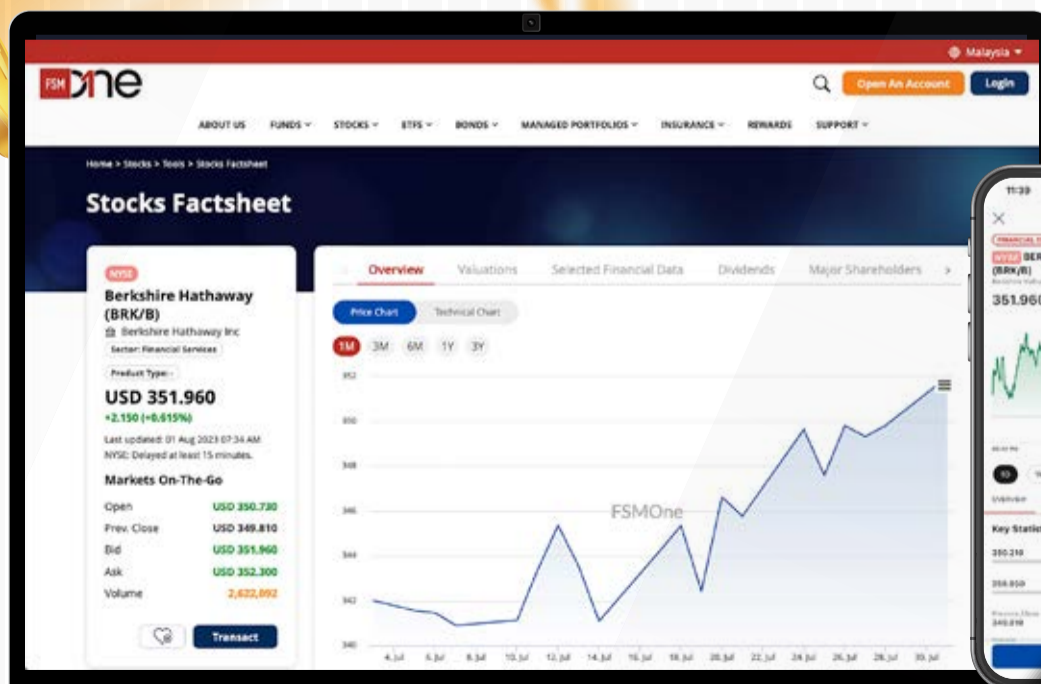
Trade US Stocks / ETFs & **WIN**

# FREE

**Popular US Stocks\*!**

1 August 2023 – 31 August 2023

*\*Terms and conditions apply*



Scan for more info on the Campaign

**UNIQUE FIRE HOLDINGS BERHAD**  
(0257.MY)

**UNIQUE**

Price updated at 17 Aug 2023 15:57

Last: <b>0.215</b>	Change: -	Volume: <b>9,697</b>
	Change (%): -	Range: <b>0.215 - 0.215</b>

TA Scanner Results based on historical data up to 17 Aug 2023

Condition	Signal	Explanation
Bollinger Band: Bullish Long Term Volatility Breakout and Trending	Long	"1. Close price above upper bollinger band(33,1). 2. Volume above average volume(50). 3. Average volume(50) is above 300,000."
Bollinger Band: Bullish Short Term Volatility Breakout and Trending	Long	"1. Close price above upper bollinger band(33,1). 2. Volume above average volume(10). 3. Average volume(10) is above 300,000."
Bollinger Band: High Above Upper Bollinger Band	Neutral	"1. High above upper bollinger band(14,2). 2. Average volume(5) is above 100,000."
Donchian Channels: High Above Upper Donchian Channels	Long	High crossed above the upper Donchian Channel(14,4)
MA: Short Term Bullish Moving Average Crossover	Long	MA(10) crossed above MA(15) within the last 1 day.

**LUSTER INDUSTRIES BHD**  
(5068.MY)

**LUSTER**

Price updated at 17 Aug 2023 16:58

Last: <b>0.085</b>	Change: -	Volume: <b>50,953</b>
	Change (%): -	Range: <b>0.080 - 0.090</b>

TA Scanner Results based on historical data up to 17 Aug 2023

Condition	Signal	Explanation
Bollinger Band: Bullish Long Term Volatility Breakout and Trending	Long	"1. Close price above upper bollinger band(33,1). 2. Volume above average volume(50). 3. Average volume(50) is above 300,000."
Bollinger Band: Bullish Short Term Volatility Breakout and Trending	Long	"1. Close price above upper bollinger band(33,1). 2. Volume above average volume(10). 3. Average volume(10) is above 300,000."
Bollinger Band: High Above Upper Bollinger Band	Neutral	"1. High above upper bollinger band(14,2). 2. Average volume(5) is above 100,000."
CCI: Bearish CCI Overbought And Reversing	Short	"1. CCI(26) above 100 and CCI(26) 1 day ago increasing for the last 3 days. 2. CCI(26) below CCI(26) 1 day ago"
Donchian Channels: High Above Upper Donchian Channels	Long	High crossed above the upper Donchian Channel(14,4)
MACD: Bullish MACD Crossover	Long	"1. MACD(12,26) diff line crossed above the MACD(12,26) signal line. 2. MACD Histogram(12,26) is above 0."
Parabolic SAR: Bearish Parabolic SAR Reversal	Neutral	"1. Parabolic SAR 1 day ago above close price 1 day ago for the last 5 days. 2. Parabolic SAR below close price"
RSI: Short Term RSI 50 Bullish Crossover	Long	"1. RSI(20) crossed above 50 within the last 1 day and RSI(20) 1 day ago below 50 for the last 5 days. 2. Volume above average volume(125). 3. Average volume(5) is above 100,000."

**SINMAH CAPITAL BERHAD**  
(9776.MY)

**SMCAP**

Price updated at 17 Aug 2023 16:55

Last: <b>0.120</b>	Change: <b>+0.005</b>	Volume: <b>59,525</b>
	Change (%): <b>+4.35</b>	Range: <b>0.115 - 0.130</b>

TA Scanner Results based on historical data up to 17 Aug 2023

Condition	Signal	Explanation
Bollinger Band: Bullish Short Term Volatility Breakout and Trending	Long	"1. Close price above upper bollinger band(33,1). 2. Volume above average volume(10). 3. Average volume(10) is above 300,000."

**PECCA GROUP BERHAD**  
(5271.MY)

**PECCA**

Price updated at 17 Aug 2023 16:53

Last: <b>0.920</b>	Change: <b>-0.005</b>	Volume: <b>11,365</b>
	Change (%): <b>-0.54</b>	Range: <b>0.915 - 0.930</b>

TA Scanner Results based on historical data up to 17 Aug 2023

Condition	Signal	Explanation
Bollinger Band: Bullish Lower Bollinger Band Support	Long	"1. Low 1 day ago below lower bollinger band(20,2). 2. Close above close 1 day ago. 3. Average volume(5) is above 100,000."
Volume: 10 Days large value Buy Up trade	Long	"1. 150K value Buy Up greater than Sell Down by 20% for 10 days. 2. 50K-100K value Buy Up greater than Sell Down by 20% for 10 days. 3. Average volume(10) is above 1000000"
Volume: 5 Days large value Buy Up trade	Long	"1. 150K value Buy Up greater than Sell Down by 20% for 5 days. 2. 50K-100K value Buy Up greater than Sell Down by 20% for 5 days. 3. Average volume(10) is above 1000000"
Williams %R: Bullish Williams %R	Long	"1. Williams %R(26) between -80 and -100. 2. Average volume(5) is above 100,000."

**UEM SUNRISE BERHAD**  
(5148.MY)

**UEMS**

Price updated at 17 Aug 2023 16:59

Last: <b>0.630</b>	Change: <b>+0.020</b>	Volume: <b>963,369</b>
	Change (%): <b>+3.28</b>	Range: <b>0.575 - 0.630</b>

TA Scanner Results based on historical data up to 17 Aug 2023

Condition	Signal	Explanation
Bollinger Band: High Above Upper Bollinger Band	Neutral	"1. High above upper bollinger band(14,2). 2. Average volume(5) is above 100,000."
CCI: Bearish CCI Overbought And Reversing	Short	"1. CCI(26) above 100 and CCI(26) 1 day ago increasing for the last 3 days. 2. CCI(26) below CCI(26) 1 day ago"
Donchian Channels: High Above Upper Donchian Channels	Long	High crossed above the upper Donchian Channel(14,4)
Price: New 52 Week High	Long	"1. Stock reach a new 52 week high. 2. Average volume(30) is above 50000."
Volume: 10 Days large value Buy Up trade	Long	"1. 150K value Buy Up greater than Sell Down by 20% for 10 days. 2. 50K-100K value Buy Up greater than Sell Down by 20% for 10 days. 3. Average volume(10) is above 1000000"
Volume: 5 Days large value Buy Up trade	Long	"1. 150K value Buy Up greater than Sell Down by 20% for 5 days. 2. 50K-100K value Buy Up greater than Sell Down by 20% for 5 days. 3. Average volume(10) is above 1000000"
Williams %R: Bearish Williams %R	Short	"1. Williams %R(26) between 0 and -20. 2. Average volume(5) is above 100,000."

**Disclaimer:** The information on this page is provided as a service to readers. It does not constitute financial advice and/or any investment recommendations. Past performance is not indicative of future results. We assume no liability for damages resulting from or arising out of the use of such information. It would be best if you did your own research to make your personal investment decisions wisely or consult a licenced investment advisor.

Bollinger Band: High Above Upper Bollinger Band	Neutral	"1. High above upper bollinger band(14,2). 2. Average volume(5) is above 100,000."
Donchian Channels: High Above Upper Donchian Channels	Long	High crossed above the upper Donchian Channel(14,4)
MACD: Bullish MACD Crossover	Long	"1. MACD(12,26) diff line crossed above the MACD(12,26) signal line. 2. MACD Histogram(12,26) is above 0."
Price: New 52 Week High	Long	"1. Stock reach a new 52 week high. 2. Average volume(30) is above 50000."
Volume: Volume Spike	Long	"1. Volume is more than 500% above average volume(10). 2. Volume above 200000. 3. Close price above 0.10"



# EPF RECORDS HIGHER INVESTMENT INCOME OF RM33.19BIL FOR 1H 2023

**T**he Employees Provident Fund (EPF) recorded total investment income of RM33.19 billion for the first half of the year ended June 30, 2023 (1H 2023), an increase of RM9.44 billion, compared with the RM23.75 billion recorded in the corresponding period in 2022. The amount was after netting off listed equity write-downs recorded for the period under review. Of the RM33.19 billion, RM4.79 billion was generated from mark-to-market (MTM) gains of securities that have not been realised. The MTM gains were mainly due to fluctuation of foreign exchange rates.

EPF's total investment income for the second quarter (2Q 2023) was RM18.03 billion, up RM9.05 billion from RM8.98 billion recorded in the same quarter last year. Equity investments continued to be the main contributor of income for the second quarter at RM9.6 billion. Due to active portfolio management by EPF's fund managers, write-downs for 2Q 2023 were minimal at RM0.35 billion, compared with RM2.15 billion recorded in the same quarter of 2022.

According to EPF CEO Datuk Seri Amir Hamzah Azizan, the performance of the global equity markets in the first half of 2023 had been positive, led by a run-up in the developed markets, notably in the US which continues to show resilience despite the rise in interest rates. The EPF's agility and adaptability in its investment strategy paved the way for the investment managers to take advantage and capitalise on the market rally, which contributed to the higher return from equities during the period. This is in contrast to the equity market performance seen in the first half of 2022, which saw several indices suffering significant declines, with most markets including the US posting their worst first-half performance in decades.

For Malaysia, the 5.6% GDP growth in 1Q 2023 had surpassed expectations, driven mainly by firm domestic demand and improvement in the labour market. Resilient growth tempered tighter financial conditions, providing a floor for the domestic capital markets. Fixed income instruments, which serve as a capital preservation role, have been the anchor for EPF's investment portfolio and continues to provide stability for the retirement savings fund's overall income. This asset class, comprising Malaysian Government Securities and equivalents, as well as loans and bonds, contributed 27% or RM4.83 billion, to EPF's total investment income for 2Q 2023. Real estate and infrastructure registered an income of RM2.72 billion, while income from money market Instruments generated RM0.88 billion, in line with the return expectations set for these asset classes.

EPF's assets recorded strong growth on the back of higher income generated from its investments as well as the healthy net contributions received. As at June 2023, EPF investment assets stood at RM1,082.45

billion, of which 38.6% were invested overseas. The increase in overseas exposure was largely in part due to positive movement in global markets, pushing valuations of EPF's investment higher, as well as favourable foreign exchange movements. Excluding the movements of foreign exchange rates during the quarter, EPF's overseas investments would have been around 37.5%. The fund's overseas investments generated RM11.07 billion, or 61% of the total investment income recorded.

Meanwhile, EPF's domestic investments, which accounted for 61.4% of total assets, have grown by RM57 billion compared to one year ago. EPF remains dedicated to supporting and contributing towards strengthening the domestic market by allocating more than 80% of its new annual investments to domestic investment.

During 2Q 2023, a total of RM16.27 billion out of the RM18.03 billion investment income was generated for Simpanan Konvensional and RM1.76 billion for Simpanan Syariah. Simpanan Syariah derives its income solely from its portion of the shariah segment while income for Simpanan Konvensional is generated by a share of shariah and conventional portfolios.

As at 1H 2023, EPF membership has grown to 15.9 million. Of that, active members reached an all-time high of 8.47 million.

## **ASNB eyes 1mil unitholders annually through TNGD's GOinvest**

According to Permodalan Nasional Bhd (PNB) CEO Muzaffar Othman, PNB's wholly owned subsidiary Amanah Saham Nasional Bhd (ASNB) expects to onboard more than one million unitholders yearly to invest in its unit trusts through its partnership with TNG Digital Sdn Bhd's (TNGD) eWallet, GOinvest feature launched today.

He said that ASNB has 12 million individual unitholders and 15 million unit trust accounts, while TNGD has about 21 million users. Through the partnership, it hopes to tap into the significant overlap between its unitholders and TNGD's users.

Speaking at the ASNB Investment feature on GOinvest launch event

press conference, he said that ASNB does not have the numbers yet, however he hopes to onboard a million people annually from the big overlap. He added that ASNB will be the first and only eWallet agent to offer investments in its unit trusts for Malaysians through GOinvest Touch 'n Go eWallet. The partnership is geared more towards financial inclusion and financial literacy to grow investment and to save for the future. He was hopeful that through this collaboration, there would be more unitholders coming in via this channel, enabling them to save and invest with ASNB.

Meanwhile, according to Touch n' Go Digital CEO Alan Ni, the introduction of ASNB to its growing financial services portfolio aligns with its commitment towards digital inclusion and making financial investment accessible for everyone. With a relatively low risk and long-term investment instrument, the users can save and invest with a consistent and competitive return on investment through ASNB. With an incredibly low minimum initial investment of just RM10, over 12 million ASNB unitholders can now effortlessly invest through GOinvest in the Touch 'n Go eWallet.

This innovative partnership further diversifies GOinvest's offerings to a total of 26 unit trusts that caters to different risk appetites, while making online investments convenient and affordable for the masses. The partnership enables Malaysians to subscribe to all 17 ASNB unit trusts via the feature in the eWallet, which will complement the nine unit trusts that are currently available.

Existing ASNB unitholders can now invest in ASNB unit trust through the feature such as checking portfolio performances and make new investments. New users are also encouraged to access their ASNB account through the eWallet for hassle-free investing once they have completed the easy online registration via the MyASNB app. For the second phase, new users from ASNB can expect to onboard themselves by the end of 2023 or Q1 of next year.

In conjunction with the launch, TNGD and ASNB are running a "Labur Online Laju" cashback campaign between Aug 16 to Sept 30, to reward users who subscribe to ASNB Investment GOinvest in the Touch 'n Go eWallet.

## Heineken Malaysia's net profit up 5% in 2QFY2023

Heineken Malaysia Berhad announced its financial results for 2Q and 1H FY2023 ended 30 June, reporting net profit growth amidst challenging market conditions leading to a decrease in sales.

In the 2Q 2023, Group revenue decreased by 12% as compared to the same quarter in 2022, mainly due to lower sales attributed to weak consumer sentiment driven by rising cost of living and currency volatility. The Group had a strong base in the second quarter of 2022 as the market had an upsurge in sales (Revenue +84% versus the second quarter of 2021) following the re-opening of the economy and international borders at the start of the endemic phase. The Group views this quarter's performance as a form of market correction. Group profit before tax decreased by 7% alongside lower revenue, mitigated by efficiency gains through cost and value initiatives.

For 1H 2023, Group revenue was 2% lower, mainly due to the market correction as mentioned above, buffered by higher sales in the first quarter due to early

Chinese New Year festive

period in January 2023. In the period under review, persistent soft market sentiment has impacted the sales performance of the Group. Group PBT declined by 7% due to lower revenue and relatively higher promotional and marketing expenses as the Group continued to invest behind its brands.

Commenting on the results, Roland Bala, Managing Director of HEINEKEN Malaysia, said, "1H 2023 remained challenging as the market goes through corrections following a huge rebound in 2022 and weaker consumer sentiments due to macroeconomic concerns. We remain focused on our EverGreen strategy to deliver long-term



(L to R) Heineken Malaysia's Karsten Folkerts, Finance Director; Roland Bala, Managing Director, & Renuka Indrarajah, Corporate Affairs and Legal Director.

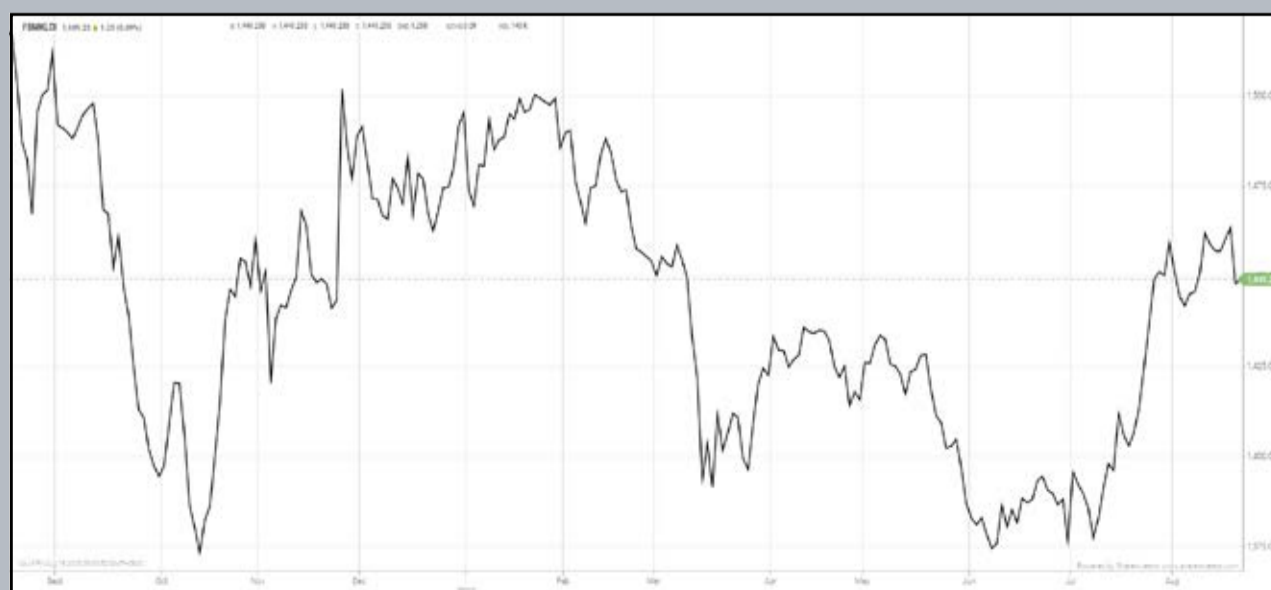
sustainable and superior growth.”

On outlook, Roland shared, “In light of cautious consumer spending due to macroeconomic concerns, we anticipate the market to remain challenging. We will stay agile to the volatile business environment and continue to focus on our EverGreen strategy to future-proof our business. We will continue to drive efficiency through cost optimisation across the organisation while investing in our brands and innovations. In the absence of the one-off prosperity tax, we look forward to a positive impact on our group net profit this year.”

In terms of challenges, the Group’s ongoing concern revolves around illicit alcohol. HEINEKEN Malaysia views illicit alcohol seriously and remains committed to supporting the authorities in addressing illicit trade through comprehensive efforts, which encompass bolstering enforcement measures and promoting greater awareness within the market.

## EYE ON THE MARKETS

On Thursday (17Aug), the Ringgit closed at 4.6490 against the USD and 3.4142 to the Sing Dollar. On Monday (14Aug), the FBM KLCI opened at 1457.19. As at Thursday (17Aug) 5:00pm, the FBM KLCI was down 9.21 points at 1447.98. Over in US, the overnight Dow Jones Industrial Average closed down 290.91 points (-084%) to 34,474.83 whilst the NASDAQ shed 157.70 points (-1.17%) to 13,316.93.



KLCI 1 Year Chart

## Over 5 trading days



ShareInvestor WebPro ([www.shareinvestor.com/my](http://www.shareinvestor.com/my))

1. Price > Stock Prices
2. Select Market: NASDAQ / NYSE / IDX / SET / HKEX / SGX (One bourse at a time)
3. select Stocks Tab
4. select Ranking Top Gainers or Top Losers (Over 5 Trading Days)
5. Mouse over Column Layout > select Edit Customs > select Name > select Last Done Price > select 5 Days Change > select 52 Weeks High > select 52 Weeks Low > Mouse Over Column Layout > select Custom

### NASDAQ (USD)

#### Top Gainers

Name	Last Done	Change Over 5 Days	52 Weeks High	52 Weeks Low
MARKETAXESS HLDGS INC	249.180	+12.550	399.780	217.440
ZEBRA TECHNOLOGIES	266.030	+10.610	351.740	224.865
NVIDIA CORP	433.435	+9.555	480.880	108.130
SENECA FOODS	49.300	+8.300	69.830	31.510
HELIUS MEDICAL TECHNOLOGIES INC	7.870	+7.680	0.737	0.138

#### Top Losers

Name	Last Done	Change Over 5 Days	52 Weeks High	52 Weeks Low
MERCADOLIBRE INC	1,196.560	-190.500	1,388.390	754.760
BOOKING HOLDINGS INC	3,112.060	-111.130	3,251.709	1,616.850
FIRST CITIZENS BANCSHARES INC NRTH	1,392.600	-72.420	1,512.070	505.840
ATRIION CORP	487.410	-40.960	705.740	500.000
FORWARD AIR CORPORATION	63.410	-40.610	121.380	67.370

### NYSE (USD)

#### Top Gainers

Name	Last Done	Change Over 5 Days	52 Weeks High	52 Weeks Low
TEXAS PACIFIC LAND CORPORATION	1,908.480	+90.380	2,739.000	1,266.210
DIEBOLD NIXDORF INCORPORATED	19.290	+19.040	25.380	0.240
TELEDYNE TECHNOLOGIES INC	400.430	+16.590	448.710	325.000
BOSTON BEER CO INC	371.170	+12.420	422.750	296.270
ELI LILLY AND COMPANY	537.660	+16.320	552.870	296.320

#### Top Losers

Name	Last Done	Change Over 5 Days	52 Weeks High	52 Weeks Low
BERKSHIRE HATHAWAY INC	535,821.000	-7,079.000	556,117.000	393,012.250
NVR INC	6,022.000	-97.330	6,474.530	3,816.555
BIGLARI HOLDINGS INC	933.020	-31.350	1,058.500	597.000
METTLER-TOLEDO INTERNATIONAL INC	1,205.100	-40.350	1,615.970	1,065.550
INSPIRE MEDICAL SYSTEMS INC	210.920	-35.830	330.000	159.615

### IDX (Rupiah)

#### Top Gainers

Name	Last Done	Change Over 5 Days	52 Weeks High	52 Weeks Low
TRANSCOAL PACIFIC TBK	8,450.000	+1,300.000	11,025.000	5,875.000
SUCACO(SUPREME CABLE MANUFACTURING)	10,100.000	+700.000	11,200.000	7,750.000
PETRINDO JAYA KREASI TBK	2,570.000	+660.000	2,690.000	240.000
PABRIK KERTAS TJIWI KIMIA	7,925.000	+650.000	8,525.000	5,600.000
GRAHA LAYAR PRIMA	2,600.000	+610.000	4,540.000	1,770.000

#### Top Losers

Name	Last Done	Change Over 5 Days	52 Weeks High	52 Weeks Low
DIAN SWASTATIKA SENTOSA TBK	51,500.000	-3,025.000	56,050.000	31,700.000
SIANTAR TOP	12,025.000	-2,075.000	16,900.000	6,800.000
M CASH INTEGRASI TBK	6,850.000	-575.000	12,400.000	5,300.000
PRODIA WIDYAHUSADA TBK	5,925.000	-425.000	6,600.000	4,910.000
JEMBO CABLE CO	3,500.000	-400.000	5,000.000	3,500.000

### SET (Thai Baht)

#### Top Gainers

Name	Last Done	Change Over 5 Days	52 Weeks High	52 Weeks Low
GYT	209.000	+29.000	212.000	173.000
BH	260.000	+14.000	266.000	180.500
CHOTI	127.000	+12.000	179.000	112.000
HANA	60.250	+10.000	65.000	32.750
OHTL	484.000	+10.000	610.000	329.000

#### Top Losers

Name	Last Done	Change Over 5 Days	52 Weeks High	52 Weeks Low
INSURE	123.500	-7.000	536.000	123.000
MASTER	63.500	-6.750	91.500	58.000
BTNC	34.250	-4.250	61.000	10.000
KYE	290.000	-4.000	338.000	289.000
UPF	44.000	-4.000	64.500	42.500

### HKEX (HKD)

#### Top Gainers

Name	Last Done	Change Over 5 Days	52 Weeks High	52 Weeks Low
KEEP INC	36.950	+7.650	38.650	25.100
SICHUAN KELUN-BIOTECH BIOPHARMACEUT	78.300	+5.800	86.950	60.600
YSB INC	59.250	+5.150	61.500	19.000
SAMSONITE INTL SA	26.550	+2.750	26.700	16.300
JENSCARE SCIENTIFIC CO LTD	36.500	+2.500	94.700	26.000

#### Top Losers

Name	Last Done	Change Over 5 Days	52 Weeks High	52 Weeks Low
BYD COMPANY LIMITED	234.000	-25.400	288.600	161.700
BYD COMPANY LIMITED	219.000	-20.400	255.800	209.400
YUM CHINA HOLDINGS INC	428.800	-15.400	514.500	300.000
HONG KONG EXCHANGES & CLEARING	297.200	-15.200	382.400	208.200
TRIP COM GROUP LTD	311.200	-15.200	330.200	159.800

### SGX (SGD)

#### Top Gainers

Name	Last Done	Change Over 5 Days	52 Weeks High	52 Weeks Low
Frencken	0.985	+0.140	1.230	0.765
ST Engineering	3.870	+0.130	3.970	3.120
Southern Pkg	0.545	+0.120	0.600	0.186
MindChamps	0.275	+0.118	0.315	0.150
World Precision	0.380	+0.094	0.500	0.295

#### Top Losers

Name	Last Done	Change Over 5 Days	52 Weeks High	52 Weeks Low
JMH USD	45.600	-2.440	57.800	42.600
NIO Inc. USD OV	11.850	-1.750	22.150	7.420
DBS	32.770	-1.460	35.855	30.300
UOB	28.110	-1.070	31.400	25.910
OCCB Bank	12.310	-0.940	13.390	11.420

# INVESTING VS TRADING



Devanesan  
Evanson

**Chief Executive  
Officer, Minority  
Shareholders Watch  
Group**

One of the critical questions to ponder when we embark on our investing journey is the strategy to adopt, whether investing or trading, to enable us to fully reap the financial gain. There is no hard and fast rule as to which strategy to adopt. It is possible to profit from either one of the strategies or a combination of both if it fits the investing goals, risk appetite, experience and time horizon.

Investors need to understand what investment and trading strategies are, and hopefully, it will guide investors to choose the suitable investment strategy for their investment journey for financial gain. Investing and trading are two different methods of attempting to profit in the financial markets. Both investors and traders seek profits through market participation.

Investors generally seek more significant returns over an extended period through buying and holding. Traders, by contrast, take advantage of both rising and falling markets to enter and exit positions over a shorter time frame, taking smaller, more frequent profits.



## WHAT IS INVESTING?

The ultimate objective of investing is to build wealth gradually over an extended period. This is done by buying, selling and holding a portfolio of one or more asset classes, including stocks, mutual funds, bonds, exchange-traded funds (ETFs), and other investment instruments. Investing normally has a longer time horizon, typically more than a year. Investments are often held for a few years or even decades, taking advantage of compounding interest, dividend distribution, and stock splits.

While markets inevitably fluctuate, investors typically ride out the downtrends with the expectation that prices will rebound and any losses eventually will be recovered, if they invest in quality assets. Generally, investors are more concerned with business fundamentals. They are concerned with the business and industry outlooks. They look at the profit and loss statement, balance sheet, and cashflow statement. They analyse the price-to-earnings ratios and other financial metrics to determine the valuation of a stock.

Investors generally tend to take one of two types of investment approaches below:

- **Active investing:** Investors who take an active investing approach tend to monitor the markets on a regular basis and make changes accordingly. Active investors generally seek out investments that try to mimic or outperform the returns of a specific benchmark index.
- **Passive investing:** Passive investors follow a buy-and-hold strategy. They usually spend minimal effort to monitor the markets. on a daily or even regular basis.

## WHAT IS TRADING?

Trading involves frequently buying and selling stocks, commodities, currencies, or other instruments. The goal of trading is to generate

returns that outperform buy-and-hold investing. Traders take advantage of price changes by buying at a lower price and selling at a higher price within a relatively short time frame. They use technical analysis tools like moving averages and stochastic oscillators to find high-probability trading setups.

Traders typically hold onto their investments for short time frames, to as little as a few minutes. This short-term approach sets traders apart from investors who are in for the long haul. Trading requires a great deal of time and effort, constantly monitoring the market, understanding the markets, and researching. Many traders are experienced and have a greater sense of how the markets work.

Traders generally fall into the four categories below:

- **Position Trader:** Positions are held from months to years.
- **Swing Trader:** Positions are held from days to weeks.
- **Day Trader:** Positions are held throughout the day only with no overnight positions.
- **Scalp Trader:** Positions are held for seconds to minutes with no overnight positions.

## WHICH IS MORE PROFITABLE, INVESTING OR TRADING?

There is no easy answer to this question, mainly because it is subject to one's risk appetite and tolerance level. Trading suits individuals who have a good grasp of the markets and how they work. Generally, traders are also more risk-tolerant, so they may not be easily intimidated by the ups and downs in the market. Meanwhile, people who are more risk-averse and want to preserve their capital do better with investing.

## IS TRADING TOUGHER THAN INVESTING?

Trading is generally more complex than investing. That is because trading requires consistent monitoring of the markets and a deeper understanding of how assets and markets work. Traders tend to buy and sell regularly. They may dip their hands into more straightforward instruments like stocks and bonds or complicated ones like futures and swaps. Unlike many investors, traders must strictly keep their emotions at bay. This can be difficult as significant losses can be hard to swallow.

The table below summarises the key differences between investing and trading.

	Investing	Trading
Holding period	Medium to long term	Short
Trading frequency	Low	High
Portfolio diversification	Yes	No
Time required to manage	Low to medium	High
Importance of fundamental analysis	High	Low
Importance of technical analysis	Low	High
Use of leverage	No	Yes
Buy-and-hold	Yes	No

Both investing and trading come with the possibility of risk and reward. After all, there are no guarantees in life, including the markets. Although the degree varies, every asset has the potential for loss the same way they promise big gains.

In summary, trading involves ‘timing the market,’ whereas investing is all about ‘time in the market.’”

**Lee Chee Meng**

**Manager, Corporate Monitoring**

**DEFINITION:** Insider Activity shows the trades made by substantial shareholders or directors of the company. Purchases by the directors and company share buyback may indicate the share price is undervalued and brings confidence to the price trend of the share price.



ShareInvestor WebPro > Fundamental > Insider Trades > click Search tab > Select Bursa > click Stock name > scroll up and leave at <Select Counter> Type Date Range for Announcement Date > click Search

Notice Period is 06th - 12th August 2023

Effective Change Date	Stock Name	Buyer/ Seller Name [Classification]	Bought / (Sold) ['000]	No. of Shares After Trade ['000]	
			Total	Total	% Held
07 AUG 2023 - 07 AUG 2023	1TECH	MR KOH KEAN MUM [SSH]	750	8,972	11.66
10 AUG 2023 - 10 AUG 2023	ADVPKG	MR PETER LING EE KONG [DIR/CEO]	6	9,197	11.39
10 AUG 2023 - 10 AUG 2023	ADVPKG	MR PETER LING EE KONG [SSH]	6	9,197	11.39
08 AUG 2023 - 08 AUG 2023	AEON	EMPLOYEES PROVIDENT FUND BOARD [SSH]	-981	149,974	10.682
08 AUG 2023 - 08 AUG 2023	AIRPORT	EMPLOYEES PROVIDENT FUND BOARD [SSH]	-2,350	179,400	10.752
08 AUG 2023 - 08 AUG 2023	AIRPORT	KUMPULAN WANG PERSARAAN (DIPERBADANKAN) [SSH]	375	113,381	6.795
07 AUG 2023 - 07 AUG 2023	AIRPORT	EMPLOYEES PROVIDENT FUND BOARD [SSH]	-320	181,750	10.893
04 AUG 2023 - 04 AUG 2023	AIRPORT	EMPLOYEES PROVIDENT FUND BOARD [SSH]	-1,249	182,070	10.912
02 AUG 2023 - 02 AUG 2023	AIRPORT	EMPLOYEES PROVIDENT FUND BOARD [SSH]	-530	183,319	10.987
07 AUG 2023 - 07 AUG 2023	ALLIANZ	EMPLOYEES PROVIDENT FUND BOARD [SSH]	-8	12,642	7.104
09 AUG 2023 - 09 AUG 2023	ANCOMNY	MR CHAN THYE SENG [DIR/CEO]	-225	3,625	0.382
09 AUG 2023 - 09 AUG 2023	ANCOMNY	MR LEE CHEUN WEI [DIR/CEO]	2,010	7,9937	8.421
09 AUG 2023 - 09 AUG 2023	ANCOMNY	MR LEE CHEUN WEI [SSH]	2,010	7,9937	8.421
07 AUG 2023 - 07 AUG 2023	ANCOMNY	MR LEE CHEUN WEI [DIR/CEO]	2,000	13,590	13.062
04 AUG 2023 - 04 AUG 2023	ANCOMNY	MR LEE CHEUN WEI [DIR/CEO]	1,620	77,927	8.209
04 AUG 2023 - 04 AUG 2023	ANCOMNY	MR LEE CHEUN WEI [SSH]	1,620	77,927	8.209
04 AUG 2023 - 07 AUG 2023	ANCOMNY	MR CHAN THYE SENG [DIR/CEO]	-430	3,849	0.405
09 AUG 2023 - 09 AUG 2023	APOLLO	AMANAHRAYA TRUSTEES BERHAD-AMANAH SAHAM BUMIPUTERA [SSH]	-6	7,794	9.742
08 AUG 2023 - 08 AUG 2023	APOLLO	AMANAHRAYA TRUSTEES BERHAD-AMANAH SAHAM BUMIPUTERA [SSH]	-200	7,800	9.75
03 AUG 2023 - 03 AUG 2023	APOLLO	AMANAHRAYA TRUSTEES BERHAD-AMANAH SAHAM BUMIPUTERA [SSH]	-90	8,000	10
08 AUG 2023 - 09 AUG 2023	ASDION	MILLION SAINT CONSULTANCY SDN BHD [SSH]	-464	30,929	6.915
03 AUG 2023 - 07 AUG 2023	ASDION	MILLION SAINT CONSULTANCY SDN BHD [SSH]	-911	31,393	7.018
03 AUG 2023 - 03 AUG 2023	AURO	DATO' TAN LIK HOUE [DIR/CEO]	-14,350	58,189	10.049
03 AUG 2023 - 03 AUG 2023	AURO	DATO' TAN LIK HOUE [SSH]	-14,350	58,189	10.049
03 AUG 2023 - 03 AUG 2023	AURO	MR TAN WYE CHUAN [DIR/CEO]	-14,350	91,840	15.861
03 AUG 2023 - 03 AUG 2023	AURO	MR TAN WYE CHUAN [SSH]	-14,350	91,840	15.861
03 AUG 2023 - 03 AUG 2023	AXIATA	EMPLOYEES PROVIDENT FUND BOARD [SSH]	2,834	1,618,742	17.635
02 AUG 2023 - 02 AUG 2023	AXIATA	EMPLOYEES PROVIDENT FUND BOARD [SSH]	220	1,615,909	17.604
01 AUG 2023 - 01 AUG 2023	AXIATA	EMPLOYEES PROVIDENT FUND BOARD [SSH]	331	1,615,689	17.602
31 JUL 2023 - 31 JUL 2023	AXIATA	EMPLOYEES PROVIDENT FUND BOARD [SSH]	30	1,615,358	17.598
09 AUG 2023 - 09 AUG 2023	BAHVEST	MR CHONG MEE FAH @ FREDERICK CHONG [DIR/CEO]	1,000	24,447	1.97
07 AUG 2023 - 10 AUG 2023	BAHVEST	INNOSABAH CAPITAL HOLDINGS SDN BHD [SSH]	15,975	142,154	11.47
08 AUG 2023 - 09 AUG 2023	BAUTO	DATO' AMER HAMZAH BIN AHMAD [SSH]	150	177,530	15.241
08 AUG 2023 - 09 AUG 2023	BAUTO	DATO' LEE KOK CHUAN [DIR/CEO]	150	176,989	15.194
08 AUG 2023 - 09 AUG 2023	BAUTO	DATO' LEE KOK CHUAN [SSH]	150	176,989	15.194
08 AUG 2023 - 09 AUG 2023	BAUTO	DYNAMIC MILESTONE SDN BHD [SSH]	150	173,086	14.859
08 AUG 2023 - 08 AUG 2023	BAUTO	EMPLOYEES PROVIDENT FUND BOARD [SSH]	-232	119,360	10.243
08 AUG 2023 - 09 AUG 2023	BAUTO	TAN SRI DATO' SRI YEOH CHOON SAN [DIR/CEO]	150	177,121	15.205
08 AUG 2023 - 09 AUG 2023	BAUTO	TAN SRI DATO' SRI YEOH CHOON SAN [SSH]	150	177,121	15.205
07 AUG 2023 - 07 AUG 2023	BAUTO	EMPLOYEES PROVIDENT FUND BOARD [SSH]	241	119,592	10.261
04 AUG 2023 - 04 AUG 2023	BAUTO	EMPLOYEES PROVIDENT FUND BOARD [SSH]	2,943	119,351	10.239
04 AUG 2023 - 07 AUG 2023	BAUTO	DATO' AMER HAMZAH BIN AHMAD [SSH]	125	177,380	15.218
04 AUG 2023 - 07 AUG 2023	BAUTO	DATO' LEE KOK CHUAN [DIR/CEO]	125	176,839	15.172
04 AUG 2023 - 07 AUG 2023	BAUTO	DATO' LEE KOK CHUAN [SSH]	125	176,839	15.172
04 AUG 2023 - 07 AUG 2023	BAUTO	DYNAMIC MILESTONE SDN BHD [SSH]	125	172,936	14.837
04 AUG 2023 - 07 AUG 2023	BAUTO	TAN SRI DATO' SRI YEOH CHOON SAN [DIR/CEO]	125	176,971	15.183
04 AUG 2023 - 07 AUG 2023	BAUTO	TAN SRI DATO' SRI YEOH CHOON SAN [SSH]	125	176,971	15.183
03 AUG 2023 - 03 AUG 2023	BAUTO	EMPLOYEES PROVIDENT FUND BOARD [SSH]	1,615	116,409	9.985
02 AUG 2023 - 02 AUG 2023	BAUTO	EMPLOYEES PROVIDENT FUND BOARD [SSH]	-764	114,794	9.847
08 AUG 2023 - 08 AUG 2023	BIMB	EMPLOYEES PROVIDENT FUND BOARD [SSH]	50	364,594	16.086
09 AUG 2023 - 09 AUG 2023	BINTAI	ENCIK MOHD IDZWAN IZUDDIN BIN DATUK AB RAHMAN [DIR/CEO]	400	600	0.064
08 AUG 2023 - 08 AUG 2023	BINTAI	ENCIK MOHD IDZWAN IZUDDIN BIN DATUK AB RAHMAN [DIR/CEO]	200	200	0.021
04 AUG 2023 - 04 AUG 2023	BINTAI	DATUK NG CHOON KOON [DIR/CEO]	4,000	51,104	5.446
04 AUG 2023 - 04 AUG 2023	BINTAI	DATUK NG CHOON KOON [SSH]	4,000	51,104	5.446
04 AUG 2023 - 04 AUG 2023	BINTAI	DATUK NG CHOON KOON [DIR/CEO]	3,000	50,104	5.339
04 AUG 2023 - 04 AUG 2023	BINTAI	DATUK NG CHOON KOON [SSH]	3,000	50,104	5.339
28 JUL 2023 - 28 JUL 2023	BJLAND	BERJAYA GROUP BERHAD [SSH]	-2,000	3,581,150	72.78
28 JUL 2023 - 28 JUL 2023	BJLAND	BIZURAI BIJAK (M) SDN BHD [SSH]	-2,000	895,454	18.199
28 JUL 2023 - 28 JUL 2023	BJLAND	JUARA SEJATI SDN BHD [SSH]	-2,000	1,720,129	34.958

Notice Period is 06th - 12th August 2023

Effective Change Date	Stock Name	Buyer/ Seller Name [Classification]	Bought / (Sold) ['000]	No. of Shares After Trade ['000]	
			Total	Total	% Held
08 AUG 2023 - 08 AUG 2023	BURSA	EMPLOYEES PROVIDENT FUND BOARD [SSH]	50	81,484	10.068
07 AUG 2023 - 07 AUG 2023	BURSA	EMPLOYEES PROVIDENT FUND BOARD [SSH]	31	81,434	10.062
04 AUG 2023 - 04 AUG 2023	BURSA	EMPLOYEES PROVIDENT FUND BOARD [SSH]	50	81,403	10.058
03 AUG 2023 - 03 AUG 2023	BURSA	EMPLOYEES PROVIDENT FUND BOARD [SSH]	50	81,353	10.052
11 AUG 2023 - 11 AUG 2023	CBIP	DATUK LIM CHAI BENG [DIR/CEO]	43	197,120	41.33
07 AUG 2023 - 07 AUG 2023	CDB	EMPLOYEES PROVIDENT FUND BOARD [SSH]	-56	1,123,461	9.576
04 AUG 2023 - 04 AUG 2023	CDB	EMPLOYEES PROVIDENT FUND BOARD [SSH]	-67	1,123,517	9.577
10 AUG 2023 - 10 AUG 2023	CEB	FORTRESS CAPITAL ASSET MANAGEMENT (M) SDN. BHD. [SSH]	193	154,284	16.715
09 AUG 2023 - 09 AUG 2023	CEB	FORTRESS CAPITAL ASSET MANAGEMENT (M) SDN. BHD. [SSH]	380	154,091	16.695
08 AUG 2023 - 08 AUG 2023	CGB	MR LEE CHEE VUI [DIR/CEO]	555	12,297	7.804
08 AUG 2023 - 08 AUG 2023	CGB	MR LEE CHEE VUI [SSH]	555	12,297	7.804
08 AUG 2023 - 08 AUG 2023	CGB	MR SOO YU CHAI [SSH]	555	9,985	6.337
08 AUG 2023 - 08 AUG 2023	CGB	RYRT HOLDINGS SDN. BHD. [SSH]	555	9,968	6.326
07 AUG 2023 - 07 AUG 2023	CHHB	PUAN SRI TAN BEE HONG [SSH]	-5,000	166,024	55.95
07 AUG 2023 - 07 AUG 2023	CHHB	TAN SRI LEE KIM TIONG @ LEE KIM YEW [SSH]	-5,000	166,024	55.95
09 AUG 2023 - 09 AUG 2023	CIMB	KUMPULAN WANG PERSARAAN (DIPERBADANKAN) [SSH]	1,114	718,518	6.74
08 AUG 2023 - 08 AUG 2023	CIMB	EMPLOYEES PROVIDENT FUND BOARD [SSH]	4,459	1,627,843	15.26
08 AUG 2023 - 08 AUG 2023	CIMB	KUMPULAN WANG PERSARAAN (DIPERBADANKAN) [SSH]	108	717,404	6.73
07 AUG 2023 - 07 AUG 2023	CIMB	EMPLOYEES PROVIDENT FUND BOARD [SSH]	22	1,623,384	15.22
04 AUG 2023 - 04 AUG 2023	CIMB	EMPLOYEES PROVIDENT FUND BOARD [SSH]	2,566	1,623,363	15.22
03 AUG 2023 - 03 AUG 2023	CIMB	EMPLOYEES PROVIDENT FUND BOARD [SSH]	2,100	1,620,797	12.2
02 AUG 2023 - 02 AUG 2023	CIMB	EMPLOYEES PROVIDENT FUND BOARD [SSH]	5,362	1,618,697	15.18
01 AUG 2023 - 01 AUG 2023	CIMB	EMPLOYEES PROVIDENT FUND BOARD [SSH]	5,816	1,613,335	15.13
08 AUG 2023 - 08 AUG 2023	CLMT	EMPLOYEES PROVIDENT FUND BOARD [SSH]	1,000	373,030	13.826
09 AUG 2023 - 09 AUG 2023	CLOUDPT	ERA JASAKITA SDN BHD [SSH]	1,000	281,204	52.898
09 AUG 2023 - 09 AUG 2023	CLOUDPT	MR CHOONG WAI HOONG [DIR/CEO]	1,000	324,276	61
09 AUG 2023 - 09 AUG 2023	CLOUDPT	MR CHOONG WAI HOONG [SSH]	1,000	324,276	61
09 AUG 2023 - 09 AUG 2023	CLOUDPT	MR YEW CHOONG CHEONG [DIR/CEO]	1,000	324,276	61
09 AUG 2023 - 09 AUG 2023	CLOUDPT	MR YEW CHOONG CHEONG [SSH]	1,000	324,276	61
09 AUG 2023 - 09 AUG 2023	COMCORP	MR LEE SENG YONG [DIR/CEO]	1,691	36,781	9.616
09 AUG 2023 - 09 AUG 2023	COMCORP	MR LEE SENG YONG [SSH]	1,691	36,781	9.616
08 AUG 2023 - 08 AUG 2023	COMPUGT	MADAM SEE THOO CHAN [DIR/CEO]	2,179	851,016	15.472
08 AUG 2023 - 08 AUG 2023	COMPUGT	MADAM SEE THOO CHAN [SSH]	2,179	851,016	15.472
08 AUG 2023 - 08 AUG 2023	COMPUGT	MR GOH KHENG PEOW [SSH]	2,179	851,016	15.472
08 AUG 2023 - 08 AUG 2023	CTOS	ABRDN HOLDINGS LIMITED (FORMERLY KNOWN AS ABERDEEN ASSET MANAGEMENT PLC) [SSH]	80	127,472	5.518
08 AUG 2023 - 08 AUG 2023	CTOS	ABRDN MALAYSIA SDN BHD [SSH]	80	125,753	5.444
08 AUG 2023 - 08 AUG 2023	CTOS	ABRDN PLC [SSH]	80	127,472	5.518
07 AUG 2023 - 07 AUG 2023	CTOS	ABRDN HOLDINGS LIMITED (FORMERLY KNOWN AS ABERDEEN ASSET MANAGEMENT PLC) [SSH]	254	127,392	5.515
07 AUG 2023 - 07 AUG 2023	CTOS	ABRDN MALAYSIA SDN BHD [SSH]	254	125,674	5.44
07 AUG 2023 - 07 AUG 2023	CTOS	ABRDN PLC [SSH]	254	127,392	5.515
04 AUG 2023 - 04 AUG 2023	CTOS	ABRDN HOLDINGS LIMITED (FORMERLY KNOWN AS ABERDEEN ASSET MANAGEMENT PLC) [SSH]	375	127,139	5.504
04 AUG 2023 - 04 AUG 2023	CTOS	ABRDN MALAYSIA SDN BHD [SSH]	375	125,420	5.429
04 AUG 2023 - 04 AUG 2023	CTOS	ABRDN PLC [SSH]	375	127,139	5.504
03 AUG 2023 - 03 AUG 2023	CTOS	ABRDN HOLDINGS LIMITED (FORMERLY KNOWN AS ABERDEEN ASSET MANAGEMENT PLC) [SSH]	394	126,763	5.488
03 AUG 2023 - 03 AUG 2023	CTOS	ABRDN MALAYSIA SDN BHD [SSH]	394	125,045	5.413
03 AUG 2023 - 03 AUG 2023	CTOS	ABRDN PLC [SSH]	394	126,763	5.488
04 AUG 2023 - 04 AUG 2023	DIALOG	EMPLOYEES PROVIDENT FUND BOARD [SSH]	877	826,998	14.66
03 AUG 2023 - 03 AUG 2023	DIALOG	EMPLOYEES PROVIDENT FUND BOARD [SSH]	506	826,121	14.64
04 AUG 2023 - 04 AUG 2023	DIALOG	KUMPULAN WANG PERSARAAN (DIPERBADANKAN) [SSH]	81	555,796	9.85
11 AUG 2023 - 11 AUG 2023	DIGISTA	LWC CAPITAL SDN BHD [SSH]	10,000	126,657	27.096
11 AUG 2023 - 11 AUG 2023	DIGISTA	MEJAR (K) DATUK WIRA LEE WAH CHONG [DIR/CEO]	10,000	126,876	27.143
11 AUG 2023 - 11 AUG 2023	DIGISTA	MEJAR (K) DATUK WIRA LEE WAH CHONG [SSH]	10,000	126,876	27.143
08 AUG 2023 - 08 AUG 2023	DLADY	CITIGROUP NOMINEES (TEMPATAN) SDN BHD EMPLOYEES PROVIDENT FUND BOARD [SSH]	-1	6,351	9.923
07 AUG 2023 - 07 AUG 2023	DLADY	CITIGROUP NOMINEES (TEMPATAN) SDN BHD EMPLOYEES PROVIDENT FUND BOARD [SSH]	-1	6,352	9.924
04 AUG 2023 - 04 AUG 2023	DLADY	CITIGROUP NOMINEES (TEMPATAN) SDN BHD EMPLOYEES PROVIDENT FUND BOARD [SSH]	-0.8	6,353	9.926
03 AUG 2023 - 03 AUG 2023	DLADY	CITIGROUP NOMINEES (TEMPATAN) SDN BHD EMPLOYEES PROVIDENT FUND BOARD [SSH]	-13	6,354	9.928

**Disclaimer:** The Information in Insider Activity is extracted from [www.shareinvestor.com/fundamental/insider\\_trades](http://www.shareinvestor.com/fundamental/insider_trades). The information on this page is provided as a service to readers. It does not constitute financial advice and/or any investment recommendations. We assume no liability for damages resulting from or arising out of the use of such information. Whilst every effort is made to ensure accuracy, the information presented is not the official record of shareholder filings. Readers are advised to read the original filings on the Bursa Malaysia website at [www.bursamalaysia.com](http://www.bursamalaysia.com)



**PURNELL**

**ESCAPE II  
ABSOLUTE  
SAPPHIRE**

PLAY



Notice Period is 06th - 12th August 2023

Effective Change Date	Stock Name	Buyer/ Seller Name [Classification]	Bought / (Sold) ['000]		No. of Shares After Trade ['000]	
			Total	% Held	Total	% Held
02 AUG 2023 - 02 AUG 2023	DLADY	CITIGROUP NOMINEES (TEMPATAN) SDN BHD EMPLOYEES PROVIDENT FUND BOARD [SSH]	-0.2		6,367	9.948
07 AUG 2023 - 07 AUG 2023	DPHARMA	EMPLOYEES PROVIDENT FUND BOARD [SSH]	-42		89,021	9.254
04 AUG 2023 - 04 AUG 2023	DPHARMA	EMPLOYEES PROVIDENT FUND BOARD [SSH]	-1,954		89,063	9.259
03 AUG 2023 - 03 AUG 2023	DPHARMA	EMPLOYEES PROVIDENT FUND BOARD [SSH]	-2,593		91,017	9.462
02 AUG 2023 - 02 AUG 2023	DPHARMA	EMPLOYEES PROVIDENT FUND BOARD [SSH]	-2,532		93,610	9.731
08 AUG 2023 - 08 AUG 2023	DRBHCORP	EMPLOYEES PROVIDENT FUND BOARD [SSH]	-900		184,579	9.548
07 AUG 2023 - 07 AUG 2023	DRBHCORP	EMPLOYEES PROVIDENT FUND BOARD [SSH]	-498		185,479	9.594
04 AUG 2023 - 04 AUG 2023	DRBHCORP	EMPLOYEES PROVIDENT FUND BOARD [SSH]	-480		185,977	9.62
04 AUG 2023 - 04 AUG 2023	ECONBHD	EMPLOYEES PROVIDENT FUND BOARD [SSH]	-230		118,369	8.351
03 AUG 2023 - 03 AUG 2023	ECONBHD	EMPLOYEES PROVIDENT FUND BOARD [SSH]	-300		118,599	8.367
02 AUG 2023 - 02 AUG 2023	ECONBHD	EMPLOYEES PROVIDENT FUND BOARD [SSH]	-500		118,899	8.388
09 AUG 2023 - 09 AUG 2023	ESCCERAM	MR WONG FOOK LIN [DIR/CEO]	-5,000		54,925	10.348
09 AUG 2023 - 09 AUG 2023	ESCCERAM	MR WONG FOOK LIN [SSH]	-5,000		54,925	10.348
08 AUG 2023 - 08 AUG 2023	F&N	EMPLOYEES PROVIDENT FUND BOARD [SSH]	-48		42,470	11.579
07 AUG 2023 - 07 AUG 2023	F&N	EMPLOYEES PROVIDENT FUND BOARD [SSH]	36		42,518	11.592
04 AUG 2023 - 04 AUG 2023	F&N	EMPLOYEES PROVIDENT FUND BOARD [SSH]	-185		42,482	11.583
02 AUG 2023 - 02 AUG 2023	F&N	EMPLOYEES PROVIDENT FUND BOARD [SSH]	200		42,667	11.633
10 AUG 2023 - 10 AUG 2023	FAJAR	TAN SRI DATUK TA KIN YAN [SSH]	200		89,942	12.128
04 AUG 2023 - 04 AUG 2023	FAJAR	TAN SRI DATUK TA KIN YAN [SSH]	580		89,742	12.101
04 AUG 2023 - 04 AUG 2023	FFB	EMPLOYEES PROVIDENT FUND BOARD [SSH]	27		161,025	8.602
03 AUG 2023 - 03 AUG 2023	FFB	EMPLOYEES PROVIDENT FUND BOARD [SSH]	170		160,998	8.601
01 AUG 2023 - 01 AUG 2023	FFB	EMPLOYEES PROVIDENT FUND BOARD [SSH]	1,384		160,828	8.592
08 AUG 2023 - 08 AUG 2023	GAMUDA	EMPLOYEES PROVIDENT FUND BOARD (EPF BOARD) [SSH]	-50		346,248	13
07 AUG 2023 - 07 AUG 2023	GAMUDA	EMPLOYEES PROVIDENT FUND BOARD (EPF BOARD) [SSH]	-162		346,298	13
07 AUG 2023 - 10 AUG 2023	GAMUDA	YTM RAJA DATO' SERI ELEENA BINTI ALMARHUM SULTAN AZLAN MUHIBBUDDIN SHAH AL-MAGHFUR-LAH [DIR/CEO]	-610		116,119	4.36
04 AUG 2023 - 04 AUG 2023	GAMUDA	EMPLOYEES PROVIDENT FUND BOARD (EPF BOARD) [SSH]	-750		346,460	13.01
03 AUG 2023 - 03 AUG 2023	GAMUDA	EMPLOYEES PROVIDENT FUND BOARD (EPF BOARD) [SSH]	-101		347,210	13.04
02 AUG 2023 - 02 AUG 2023	GAMUDA	EMPLOYEES PROVIDENT FUND BOARD (EPF BOARD) [SSH]	595		347,311	13.04
07 AUG 2023 - 07 AUG 2023	GENP	EMPLOYEES PROVIDENT FUND BOARD [SSH]	-5		110,858	12.356
04 AUG 2023 - 04 AUG 2023	GENP	EMPLOYEES PROVIDENT FUND BOARD [SSH]	-270		110,863	12.357
02 AUG 2023 - 02 AUG 2023	GENP	EMPLOYEES PROVIDENT FUND BOARD [SSH]	-1,107		111,133	12.387
09 AUG 2023 - 09 AUG 2023	HANDAL	MR SUNILDEEP SINGH DHALIWAL [DIR/CEO]	-53,452		17,100	6.41
09 AUG 2023 - 09 AUG 2023	HANDAL	MR SUNILDEEP SINGH DHALIWAL [SSH]	-53,452		17,100	6.41
08 AUG 2023 - 08 AUG 2023	HCK	HIICHIKOK EQUITIES SDN BHD [SSH]	4,165		287,303	56.699
08 AUG 2023 - 08 AUG 2023	HCK	TAN SRI HII CHII KOK @ HII CHEE KOK [DIR/CEO]	4,165		289,353	57.104
08 AUG 2023 - 08 AUG 2023	HCK	TAN SRI HII CHII KOK @ HII CHEE KOK [SSH]	4,165		289,353	57.104
08 AUG 2023 - 08 AUG 2023	HCK-WA	TAN SRI HII CHII KOK @ HII CHEE KOK [DIR/CEO]	4,165		32,408	25.584
02 AUG 2023 - 07 AUG 2023	HEKTAR	HEKTAR BLACK SDN BHD [SSH]	-366		129,769	26.017
07 AUG 2023 - 09 AUG 2023	HEXIND	DATO' ONG CHOO MENG [SSH]	-67,402		1,595,486	58.074
07 AUG 2023 - 09 AUG 2023	HEXIND	DATO' ONG SOON HO [SSH]	-67,402		1,579,054	57.476
07 AUG 2023 - 09 AUG 2023	HEXIND	HEXTAR HOLDINGS SDN BHD [SSH]	-67,402		1,579,054	57.476
07 AUG 2023 - 07 AUG 2023	HHRG	MR NG CHIN NAM [DIR/CEO]	-1,000		52,256	6.071
07 AUG 2023 - 07 AUG 2023	HHRG	MR NG CHIN NAM [SSH]	-1,000		52,256	6.071
09 AUG 2023 - 09 AUG 2023	HIL	MR YAP KOK WENG [SSH]	2,400		18,925	5.701
07 AUG 2023 - 07 AUG 2023	HLBANK	EMPLOYEES PROVIDENT FUND BOARD [SSH]	61		217,160	10.407
04 AUG 2023 - 04 AUG 2023	HLBANK	EMPLOYEES PROVIDENT FUND BOARD [SSH]	392		217,099	10.404
03 AUG 2023 - 03 AUG 2023	HLBANK	EMPLOYEES PROVIDENT FUND BOARD [SSH]	345		216,707	10.386
02 AUG 2023 - 02 AUG 2023	HLBANK	EMPLOYEES PROVIDENT FUND BOARD [SSH]	810		216,362	10.369
07 AUG 2023 - 07 AUG 2023	HUBLINE	MADAM LAU SWEE ENG [SSH]	13,900		664,041	15.479
07 AUG 2023 - 07 AUG 2023	HUBLINE	MISS KATRINA LING SHIEK NGEE [DIR/CEO]	13,900		664,041	15.479
07 AUG 2023 - 07 AUG 2023	HUBLINE	MISS KATRINA LING SHIEK NGEE [SSH]	13,900		664,041	15.479
07 AUG 2023 - 07 AUG 2023	HUBLINE	MR BERNARD LING ING TAH [SSH]	13,900		664,041	15.479
07 AUG 2023 - 07 AUG 2023	HUBLINE	MR LING LI KUANG [DIR/CEO]	13,900		664,041	15.479
07 AUG 2023 - 07 AUG 2023	HUBLINE	MR LING LI KUANG [SSH]	13,900		664,041	15.479
07 AUG 2023 - 07 AUG 2023	HUBLINE	MR ROYSTON LING ING DING [DIR/CEO]	13,900		664,041	15.479
01 AUG 2023 - 07 AUG 2023	HUBLINE	MR ROYSTON LING ING DING [SSH]	13,900		664,041	15.479
10 AUG 2023 - 10 AUG 2023	ICAP	CITY OF LONDON INVESTMENT MANAGEMENT COMPANY LIMITED [SSH]	136		31,617	22.583
07 AUG 2023 - 07 AUG 2023	ICAP	CITY OF LONDON INVESTMENT MANAGEMENT COMPANY LIMITED [SSH]	79		31,481	22.486
07 AUG 2023 - 07 AUG 2023	IGBB	HSBC ASIA HOLDINGS LIMITED (HAHO) [SSH]	8		109,905	8.146
07 AUG 2023 - 07 AUG 2023	IGBB	HSBC HOLDINGS PLC (HGQ) [SSH]	8		109,905	8.146
07 AUG 2023 - 07 AUG 2023	IGBB	HSBC INTERNATIONAL TRUSTEE (HOLDINGS) PTE. LTD. (HTHL) [SSH]	8		109,905	8.146
07 AUG 2023 - 07 AUG 2023	IGBB	HSBC INTERNATIONAL TRUSTEE LIMITED (HKIT) [SSH]	8		109,905	8.146
07 AUG 2023 - 07 AUG 2023	IGBB	THE HONGKONG AND SHANGHAI BANKING CORPORATION LIMITED (HBAP) [SSH]	8		109,905	8.146
02 AUG 2023 - 03 AUG 2023	IGBB	HSBC ASIA HOLDINGS LIMITED (HAHO) [SSH]	67		109,897	8.145
02 AUG 2023 - 03 AUG 2023	IGBB	HSBC HOLDINGS PLC (HGQ) [SSH]	67		109,897	8.145
02 AUG 2023 - 03 AUG 2023	IGBB	HSBC INTERNATIONAL TRUSTEE (HOLDINGS) PTE. LTD. (HTHL) [SSH]	67		109,897	8.145
02 AUG 2023 - 03 AUG 2023	IGBB	HSBC INTERNATIONAL TRUSTEE LIMITED (HKIT) [SSH]	67		109,897	8.145
02 AUG 2023 - 03 AUG 2023	IGBB	THE HONGKONG AND SHANGHAI BANKING CORPORATION LIMITED (HBAP) [SSH]	67		109,897	8.145
08 AUG 2023 - 08 AUG 2023	IGBREIT	KUMPULAN WANG PERSARAAN (DIPERBADANKAN) [SSH]	386		265,289	7.373
07 AUG 2023 - 07 AUG 2023	IGBREIT	KUMPULAN WANG PERSARAAN (DIPERBADANKAN) [SSH]	168		264,903	7.363
08 AUG 2023 - 08 AUG 2023	IHH	EMPLOYEES PROVIDENT FUND BOARD [SSH]	2,837		904,441	10.27
07 AUG 2023 - 07 AUG 2023	IHH	EMPLOYEES PROVIDENT FUND BOARD [SSH]	191		901,604	10.237

Notice Period is 06th - 12th August 2023

Effective Change Date	Stock Name	Buyer/ Seller Name [Classification]	Bought / (Sold) ['000]		No. of Shares After Trade ['000]	
			Total	% Held	Total	% Held
04 AUG 2023 - 04 AUG 2023	IHH	EMPLOYEES PROVIDENT FUND BOARD [SSH]	-1,682		901,413	10.235
03 AUG 2023 - 03 AUG 2023	IHH	EMPLOYEES PROVIDENT FUND BOARD [SSH]	304		903,095	10.254
08 AUG 2023 - 08 AUG 2023	IJM	EMPLOYEES PROVIDENT FUND BOARD [SSH]	-796		586,505	16.728
07 AUG 2023 - 07 AUG 2023	IJM	EMPLOYEES PROVIDENT FUND BOARD [SSH]	-1,165		587,301	16.751
04 AUG 2023 - 04 AUG 2023	IJM	EMPLOYEES PROVIDENT FUND BOARD [SSH]	-1,131		588,465	16.784
04 AUG 2023 - 04 AUG 2023	IJM	URUSHARTA JAMAHAH SDN BHD [SSH]	200		211,009	6.018
07 AUG 2023 - 08 AUG 2023	IJM	TAN SRI DATO' TAN BOON SENG @ KRISHNAN [DIR/CEO]	200		10,769	0.307
03 AUG 2023 - 03 AUG 2023	IJM	EMPLOYEES PROVIDENT FUND BOARD [SSH]	-1,923		589,596	16.816
04 AUG 2023 - 04 AUG 2023	IJM	TAN SRI DATO' TAN BOON SENG @ KRISHNAN [DIR/CEO]	100		10,669	0.304
02 AUG 2023 - 02 AUG 2023	IJM	EMPLOYEES PROVIDENT FUND BOARD [SSH]	-2,483		591,519	16.871
02 AUG 2023 - 02 AUG 2023	IJM	URUSHARTA JAMAHAH SDN BHD [SSH]	200		210,809	6.013
03 AUG 2023 - 03 AUG 2023	IMPIANA	ADVANCE OPPORTUNITIES FUND I [SSH]	45,000		45,040	7.42
03 AUG 2023 - 03 AUG 2023	IMPIANA	ADVANCE OPPORTUNITIES FUND [SSH]	65,000		65,000	10.708
08 AUG 2023 - 08 AUG 2023	INARI	EMPLOYEES PROVIDENT FUND BOARD [SSH]	-455		385,093	10.31
04 AUG 2023 - 04 AUG 2023	INARI	EMPLOYEES PROVIDENT FUND BOARD [SSH]	-572		383,748	10.274
03 AUG 2023 - 03 AUG 2023	INARI	EMPLOYEES PROVIDENT FUND BOARD [SSH]	-3,000		384,320	10.289
04 AUG 2023 - 04 AUG 2023	INARI	KUMPULAN WANG PERSARAAN (DIPERBADANKAN) [SSH]	-450		354,715	9.496
02 AUG 2023 - 02 AUG 2023	INARI	EMPLOYEES PROVIDENT FUND BOARD [SSH]	1,122		387,320	10.369
08 AUG 2023 - 08 AUG 2023	IOICORP	EMPLOYEES PROVIDENT FUND BOARD [SSH]	-699		689,681	11.117
07 AUG 2023 - 07 AUG 2023	IOICORP	EMPLOYEES PROVIDENT FUND BOARD [SSH]	-207		690,380	11.129
04 AUG 2023 - 04 AUG 2023	IOICORP	EMPLOYEES PROVIDENT FUND BOARD [SSH]	-9		690,587	11.132
03 AUG 2023 - 03 AUG 2023	IOICORP	EMPLOYEES PROVIDENT FUND BOARD [SSH]	342		690,595	11.132
02 AUG 2023 - 02 AUG 2023	IOICORP	EMPLOYEES PROVIDENT FUND BOARD [SSH]	473		690,253	11.126
08 AUG 2023 - 08 AUG 2023	IOIPG	EMPLOYEES PROVIDENT FUND BOARD [SSH]	-790		426,620	7.748
07 AUG 2023 - 07 AUG 2023	IOIPG	EMPLOYEES PROVIDENT FUND BOARD [SSH]	-461		427,410	7.762
04 AUG 2023 - 04 AUG 2023	IOIPG	EMPLOYEES PROVIDENT FUND BOARD [SSH]	-1,193		427,871	7.771
03 AUG 2023 - 03 AUG 2023	IOIPG	EMPLOYEES PROVIDENT FUND BOARD [SSH]	-535		429,064	7.792
02 AUG 2023 - 02 AUG 2023	IOIPG	EMPLOYEES PROVIDENT FUND BOARD [SSH]	-1,674		429,599	7.802
08 AUG 2023 - 08 AUG 2023	KAWAN	MR NARESHCHANDRA GORDHANDAS NAGRECHA [SSH]	-71		72,001	19.906
04 AUG 2023 - 04 AUG 2023	KERJAYA	EMPLOYEES PROVIDENT FUND BOARD [SSH]	334		89,233	7.076
03 AUG 2023 - 03 AUG 2023	KERJAYA	EMPLOYEES PROVIDENT FUND BOARD [SSH]	216		88,900	7.05
02 AUG 2023 - 02 AUG 2023	KERJAYA	EMPLOYEES PROVIDENT FUND BOARD [SSH]	208		88,684	7.033
08 AUG 2023 - 08 AUG 2023	KLK	EMPLOYEES PROVIDENT FUND BOARD [SSH]	557		118,274	10.967
07 AUG 2023 - 07 AUG 2023	KLK	EMPLOYEES PROVIDENT FUND BOARD [SSH]	512		117,717	10.915
04 AUG 2023 - 04 AUG 2023	KLK	EMPLOYEES PROVIDENT FUND BOARD [SSH]	-374		117,205	10.868
03 AUG 2023 - 03 AUG 2023	KLK	EMPLOYEES PROVIDENT FUND BOARD [SSH]	-50		117,579	10.903
02 AUG 2023 - 02 AUG 2023	KLK	EMPLOYEES PROVIDENT FUND BOARD [SSH]	-367		117,608	10.905
09 AUG 2023 - 09 AUG 2023	KOSSAN	KOSSAN HOLDINGS (M) SDN BHD [SSH]	1,700		1,256,918	49.26
09 AUG 2023 - 09 AUG 2023	KOSSAN	MR LIM KUANG WANG [SSH]	1,700		1,258,618	49.327
09 AUG 2023 - 09 AUG 2023	KOSSAN	MR LIM KUANG YONG [SSH]	1,700		1,260,496	49.4
09 AUG 2023 - 09 AUG 2023	KOSSAN	MR LIM LENG BUNG [SSH]	1,700		1,259,236	49.351
09 AUG 2023 - 09 AUG 2023	KOSSAN	TAN SRI DATO' LIM KUANG SIA [DIR/CEO]	1,700		1,267,115	49.659
09 AUG 2023 - 09 AUG 2023	KOSSAN	TAN SRI DATO' LIM KUANG SIA [SSH]	1,700		1,267,115	49.659
07 AUG 2023 - 07 AUG 2023	KPSCB	MR KOH POH SENG [SSH]	41		68,232	41.96
10 AUG 2023 - 10 AUG 2023	KRONO	MR EDMOND TAY NAM HIONG [DIR/CEO]	8,352		8,352	5.641
10 AUG 2023 - 10 AUG 2023	KRONO	MR KOK CHEANG-HUNG [DIR/CEO]	4		4	0.003
10 AUG 2023 - 10 AUG 2023	KRONO	MR TAN JECK MIN [DIR/CEO]	19,927		19,927	13.458
08 AUG 2023 - 08 AUG 2023	LITRAK	AMANAHRAYA TRUSTEES BERHAD-AMANAH SAHAM BUMIPUTERA [SSH]	-350		41,133	7.553
04 AUG 2023 - 04 AUG 2023	LITRAK	AMANAHRAYA TRUSTEES BERHAD-AMANAH SAHAM BUMIPUTERA [SSH]	-250		41,483	7.617
03 AUG 2023 - 03 AUG 2023	LITRAK	AMANAHRAYA TRUSTEES BERHAD-AMANAH SAHAM BUMIPUTERA [SSH]	-395		41,	

Notice Period is 06th - 12th August 2023

Effective Change Date	Stock Name	Buyer/ Seller Name [Classification]	Bought / (Sold) ['000]	No. of Shares After Trade ['000]	
			Total	Total	% Held
11 AUG 2023 - 11 AUG 2023	MAXIM	MR NOMIS SIM SIANG LENG [SSH]	28,500	96,647	6.575
11 AUG 2023 - 11 AUG 2023	MAXIM	MR SIM KENG CHOR [SSH]	28,500	103,358	7.031
11 AUG 2023 - 11 AUG 2023	MAXIM	MR SIMSON SIM XIAN ZHI [SSH]	28,500	97,037	6.601
11 AUG 2023 - 11 AUG 2023	MAXIM	SANLENS SDN BHD [SSH]	90,037	90,037	6.125
11 AUG 2023 - 11 AUG 2023	MAXIM	TAN SRI DATUK SERI GAN SEONG LIAM [DIR/CEO]	39,239	312,164	21.235
11 AUG 2023 - 11 AUG 2023	MAXIM	TAN SRI DATUK SERI GAN SEONG LIAM [SSH]	39,239	312,164	21.235
08 AUG 2023 - 08 AUG 2023	MAXIS	EMPLOYEES PROVIDENT FUND BOARD (EPF BOARD) [SSH]	-1,021	897,916	11.465
03 AUG 2023 - 03 AUG 2023	MAXIS	EMPLOYEES PROVIDENT FUND BOARD (EPF BOARD) [SSH]	-1,536	898,936	11.478
02 AUG 2023 - 02 AUG 2023	MAXIS	EMPLOYEES PROVIDENT FUND BOARD (EPF BOARD) [SSH]	-1,316	900,472	11.497
10 AUG 2023 - 10 AUG 2023	MAYBANK	KUMPULAN WANG PERSARAAN (DIPERBADANKAN) ("KWAP") [SSH]	-537	604,605	5.016
09 AUG 2023 - 09 AUG 2023	MAYBANK	AMANAHRAYA TRUSTEES BERHAD - AMANAH SAHAM BUMIPUTERA [SSH]	2,000	3,780,000	31.359
08 AUG 2023 - 08 AUG 2023	MAYBANK	EMPLOYEES PROVIDENT FUND BOARD [SSH]	-6,000	1,591,303	13.201
08 AUG 2023 - 08 AUG 2023	MAYBANK	PERMODALAN NASIONAL BERHAD [SSH]	-100	832,283	6.905
08 AUG 2023 - 08 AUG 2023	MAYBANK	YAYASAN PELABURAN BUMIPUTRA [SSH]	-100	832,283	6.905
09 AUG 2023 - 09 AUG 2023	MAYBANK	KUMPULAN WANG PERSARAAN (DIPERBADANKAN) ("KWAP") [SSH]	-929	605,142	5.02
08 AUG 2023 - 08 AUG 2023	MAYBANK	KUMPULAN WANG PERSARAAN (DIPERBADANKAN) ("KWAP") [SSH]	1,800	606,071	5.028
07 AUG 2023 - 07 AUG 2023	MAYBANK	EMPLOYEES PROVIDENT FUND BOARD [SSH]	-2,439	1,597,303	13.251
04 AUG 2023 - 04 AUG 2023	MAYBANK	EMPLOYEES PROVIDENT FUND BOARD [SSH]	-6,000	1,599,742	13.271
04 AUG 2023 - 04 AUG 2023	MAYBANK	AMANAHRAYA TRUSTEES BERHAD - AMANAH SAHAM BUMIPUTERA [SSH]	-109	3,778,000	31.342
04 AUG 2023 - 04 AUG 2023	MAYBANK	PERMODALAN NASIONAL BERHAD [SSH]	-38	832,383	6.905
04 AUG 2023 - 04 AUG 2023	MAYBANK	YAYASAN PELABURAN BUMIPUTRA [SSH]	-38	832,383	6.905
03 AUG 2023 - 03 AUG 2023	MAYBANK	EMPLOYEES PROVIDENT FUND BOARD [SSH]	-1,393	1,605,742	13.321
02 AUG 2023 - 02 AUG 2023	MAYBANK	EMPLOYEES PROVIDENT FUND BOARD [SSH]	-2,970	1,607,135	13.333
08 AUG 2023 - 08 AUG 2023	MBMR	EMPLOYEES PROVIDENT FUND BOARD [SSH]	-215	22,707	5.809
07 AUG 2023 - 07 AUG 2023	MBMR	EMPLOYEES PROVIDENT FUND BOARD [SSH]	-196	22,922	5.864
04 AUG 2023 - 04 AUG 2023	MBMR	EMPLOYEES PROVIDENT FUND BOARD [SSH]	-237	23,118	5.914
03 AUG 2023 - 03 AUG 2023	MBMR	EMPLOYEES PROVIDENT FUND BOARD [SSH]	-913	23,355	5.975
02 AUG 2023 - 02 AUG 2023	MBMR	EMPLOYEES PROVIDENT FUND BOARD [SSH]	-755	24,268	6.208
03 AUG 2023 - 03 AUG 2023	MISC	EMPLOYEES PROVIDENT FUND BOARD [SSH]	1,000	574,247	12.865
02 AUG 2023 - 02 AUG 2023	MISC	EMPLOYEES PROVIDENT FUND BOARD [SSH]	2,000	573,247	12.842
07 AUG 2023 - 07 AUG 2023	MPSOL	MR CHIN WING WAH [DIR/CEO]	750	138,851	62.306
07 AUG 2023 - 07 AUG 2023	MPSOL	MR CHIN WING WAH [SSH]	750	138,851	62.306
04 AUG 2023 - 04 AUG 2023	MRCB	LEMBAGA TABUNG HAJI [SSH]	-1,000	251,188	5.623
10 AUG 2023 - 10 AUG 2023	MRDIY	DATO' HAMIDAH BINTI NAZIADIN [DIR/CEO]	20	100	0.001
09 AUG 2023 - 09 AUG 2023	MRDIY	MR ONG CHU JIN ADRIAN [DIR/CEO]	623	57,211	0.606
09 AUG 2023 - 09 AUG 2023	MRDIY	MR TAN YU WEI [SSH]	1,058	4,826,802	51.134
09 AUG 2023 - 09 AUG 2023	MRDIY	MR TAN YU YEH [DIR/CEO]	1,238	4,875,781	51.653
09 AUG 2023 - 09 AUG 2023	MRDIY	MR TAN YU YEH [SSH]	1,238	4,875,781	51.653
08 AUG 2023 - 08 AUG 2023	MSTGOLF	MR LOW KOK POH [DIR/CEO]	320	463,157	56.423
08 AUG 2023 - 08 AUG 2023	MSTGOLF	MR LOW KOK POH [SSH]	320	463,157	56.423
08 AUG 2023 - 08 AUG 2023	MSTGOLF	MR NG YAP SIO [DIR/CEO]	375	495,544	60.368
08 AUG 2023 - 08 AUG 2023	MSTGOLF	MR NG YAP SIO [SSH]	375	495,544	60.368
09 AUG 2023 - 09 AUG 2023	NATGATE	MR LEE KIM SAN [DIR/CEO]	-200	15,471	0.746
08 AUG 2023 - 08 AUG 2023	NESTLE	EMPLOYEES PROVIDENT FUND BOARD [SSH]	-17	21,334	9.098
07 AUG 2023 - 07 AUG 2023	NESTLE	EMPLOYEES PROVIDENT FUND BOARD [SSH]	-5	21,351	9.105
04 AUG 2023 - 04 AUG 2023	NESTLE	EMPLOYEES PROVIDENT FUND BOARD [SSH]	-0.1	21,356	9.107
03 AUG 2023 - 03 AUG 2023	NESTLE	EMPLOYEES PROVIDENT FUND BOARD [SSH]	-20	21,356	9.107
02 AUG 2023 - 02 AUG 2023	NESTLE	EMPLOYEES PROVIDENT FUND BOARD [SSH]	-5	21,376	9.116
11 AUG 2023 - 11 AUG 2023	NGGB	DATO' LIM THIAM HUAT [DIR/CEO]	2,800	129,512	15.135
11 AUG 2023 - 11 AUG 2023	NGGB	DATO' LIM THIAM HUAT [SSH]	2,800	129,512	15.135
11 AUG 2023 - 11 AUG 2023	NGGB	MISS LIM KAH YEE [DIR/CEO]	2,800	102,480	11.976
11 AUG 2023 - 11 AUG 2023	NGGB	MISS LIM KAH YEE [SSH]	2,800	102,480	11.976
11 AUG 2023 - 11 AUG 2023	NGGB	MISS LIM KAH YEN [DIR/CEO]	2,800	118,177	13.81
11 AUG 2023 - 11 AUG 2023	NGGB	MISS LIM KAH YEN [SSH]	2,800	118,177	13.81
08 AUG 2023 - 08 AUG 2023	ORIENT	EMPLOYEE PROVIDENT FUND BOARD [SSH]	-53	53,490	8.622
04 AUG 2023 - 04 AUG 2023	ORIENT	EMPLOYEE PROVIDENT FUND BOARD [SSH]	-38	53,542	8.631
03 AUG 2023 - 03 AUG 2023	ORIENT	EMPLOYEE PROVIDENT FUND BOARD [SSH]	-79	53,580	8.637
02 AUG 2023 - 02 AUG 2023	ORIENT	EMPLOYEE PROVIDENT FUND BOARD [SSH]	-70	53,658	8.65
08 AUG 2023 - 08 AUG 2023	PADINI	EMPLOYEES PROVIDENT FUND BOARD [SSH]	153	35,297	5.365
07 AUG 2023 - 07 AUG 2023	PADINI	EMPLOYEES PROVIDENT FUND BOARD [SSH]	83	35,144	5.342
04 AUG 2023 - 04 AUG 2023	PADINI	EMPLOYEES PROVIDENT FUND BOARD [SSH]	21	35,061	5.329
03 AUG 2023 - 03 AUG 2023	PADINI	EMPLOYEES PROVIDENT FUND BOARD [SSH]	6	35,040	5.326
02 AUG 2023 - 02 AUG 2023	PADINI	EMPLOYEES PROVIDENT FUND BOARD [SSH]	111	35,034	5.325
08 AUG 2023 - 08 AUG 2023	PANAMY	EMPLOYEES PROVIDENT FUND BOARD [SSH]	-37	7,652	12.597
07 AUG 2023 - 07 AUG 2023	PANAMY	EMPLOYEES PROVIDENT FUND BOARD [SSH]	-10	7,688	12.657
03 AUG 2023 - 03 AUG 2023	PANAMY	EMPLOYEES PROVIDENT FUND BOARD [SSH]	-3	7,698	12.673
02 AUG 2023 - 02 AUG 2023	PANAMY	EMPLOYEES PROVIDENT FUND BOARD [SSH]	-0.1	7,702	12.679
08 AUG 2023 - 08 AUG 2023	PANTECH	MR TAN ANG ANG [DIR/CEO]	-3,000	12,865	1.557
08 AUG 2023 - 08 AUG 2023	PAVREIT	EMPLOYEES PROVIDENT FUND BOARD [SSH]	878	392,900	10.768
07 AUG 2023 - 07 AUG 2023	PAVREIT	EMPLOYEES PROVIDENT FUND BOARD [SSH]	1,171	392,022	10.744
04 AUG 2023 - 04 AUG 2023	PAVREIT	EMPLOYEES PROVIDENT FUND BOARD [SSH]	234	390,851	10.711
03 AUG 2023 - 03 AUG 2023	PAVREIT	EMPLOYEES PROVIDENT FUND BOARD [SSH]	267	390,617	10.704
07 AUG 2023 - 07 AUG 2023	PBBANK	EMPLOYEES PROVIDENT FUND BOARD [SSH]	165	2,937,125	15.13
04 AUG 2023 - 04 AUG 2023	PBBANK	EMPLOYEES PROVIDENT FUND BOARD [SSH]	3,000	2,936,960	15.13
03 AUG 2023 - 03 AUG 2023	PBBANK	EMPLOYEES PROVIDENT FUND BOARD [SSH]	3,000	2,933,960	15.12
02 AUG 2023 - 02 AUG 2023	PBBANK	EMPLOYEES PROVIDENT FUND BOARD [SSH]	100	2,930,960	15.1
08 AUG 2023 - 08 AUG 2023	PCHEM	EMPLOYEES PROVIDENT FUND BOARD ("EPF BOARD") [SSH]	984	914,059	11.426

Notice Period is 06th - 12th August 2023

Effective Change Date	Stock Name	Buyer/ Seller Name [Classification]	Bought / (Sold) ['000]	No. of Shares After Trade ['000]	
			Total	Total	% Held
04 AUG 2023 - 04 AUG 2023	PCHEM	EMPLOYEES PROVIDENT FUND BOARD ("EPF BOARD") [SSH]	1,006	909,736	11.372
03 AUG 2023 - 03 AUG 2023	PCHEM	EMPLOYEES PROVIDENT FUND BOARD ("EPF BOARD") [SSH]	1,535	908,780	11.36
02 AUG 2023 - 02 AUG 2023	PCHEM	EMPLOYEES PROVIDENT FUND BOARD ("EPF BOARD") [SSH]	1,990	907,255	11.341
07 AUG 2023 - 08 AUG 2023	PECCA	DATO' LIM CHENG LING [SSH]	-6,748	38,027	5.058
10 AUG 2023 - 10 AUG 2023	PENTA	KUMPULAN WANG PERSARAAN (DIPERBADANKAN) [SSH]	67	36,985	5.199
08 AUG 2023 - 08 AUG 2023	PENTA	EMPLOYEES PROVIDENT FUND BOARD [SSH]	-567	49,980	7.026
08 AUG 2023 - 09 AUG 2023	PENTA	KUMPULAN WANG PERSARAAN (DIPERBADANKAN) [SSH]	-307	36,918	5.19
07 AUG 2023 - 07 AUG 2023	PENTA	EMPLOYEES PROVIDENT FUND BOARD [SSH]	366	50,547	7.106
04 AUG 2023 - 04 AUG 2023	PENTA	EMPLOYEES PROVIDENT FUND BOARD [SSH]	-117	50,181	7.055
03 AUG 2023 - 03 AUG 2023	PENTA	EMPLOYEES PROVIDENT FUND BOARD [SSH]	134	50,298	7.071
04 AUG 2023 - 04 AUG 2023	PENTA	KUMPULAN WANG PERSARAAN (DIPERBADANKAN) [SSH]	-78	37,225	5.233
02 AUG 2023 - 02 AUG 2023	PENTA	EMPLOYEES PROVIDENT FUND BOARD [SSH]	25	50,164	7.052
08 AUG 2023 - 08 AUG 2023	PETDAG	EMPLOYEES PROVIDENT FUND BOARD ("EPF BOARD") [SSH]	-126	123,210	12.402
07 AUG 2023 - 07 AUG 2023	PETDAG	EMPLOYEES PROVIDENT FUND BOARD ("EPF BOARD") [SSH]	-74	123,336	12.415
04 AUG 2023 - 04 AUG 2023	PETDAG	EMPLOYEES PROVIDENT FUND BOARD ("EPF BOARD") [SSH]	17	123,410	12.422
03 AUG 2023 - 03 AUG 2023	PETDAG	EMPLOYEES PROVIDENT FUND BOARD ("EPF BOARD") [SSH]	55	123,393	12.421
08 AUG 2023 - 08 AUG 2023	PETGAS	EMPLOYEES PROVIDENT FUND BOARD [SSH]	-8	280,869	14.194
07 AUG 2023 - 07 AUG 2023	PETGAS	EMPLOYEES PROVIDENT FUND BOARD [SSH]	-102	280,877	14.195
04 AUG 2023 - 04 AUG 2023	PETGAS	EMPLOYEES PROVIDENT FUND BOARD [SSH]	510	280,979	14.2
02 AUG 2023 - 02 AUG 2023	PETGAS	EMPLOYEES PROVIDENT FUND BOARD [SSH]	173	280,469	14.174
02 AUG 2023 - 02 AUG 2023	PGF	MR TAN MING CHONG [DIR/CEO]	2	128	0.08
07 AUG 2023 - 09 AUG 2023	PJBUMI	PUAN HAFIDAH BINTI PAWANCIK [SSH]	-558	4541	5.537
10 AUG 2023 - 10 AUG 2023	PLS	EKOVEST BERHAD [SSH]	-10,000	282,058	64.159
10 AUG 2023 - 10 AUG 2023	PLS	TAN SRI DATO' LIM KANG HOO [DIR/CEO]	-10,000	282,058	64.159
10 AUG 2023 - 10 AUG 2023	PLS	TAN SRI DATO' LIM KANG HOO [SSH]	-10,000	282,058	64.159
08 AUG 2023 - 08 AUG 2023	PPB	EMPLOYEES PROVIDENT FUND BOARD [SSH]	448	148,554	10.442
07 AUG 2023 - 07 AUG 2023	PPB	EMPLOYEES PROVIDENT FUND BOARD [SSH]	7	148,106	10.411
03 AUG 2023 - 03 AUG 2023	PPB	EMPLOYEES PROVIDENT FUND BOARD [SSH]	39	148,100	10.411
02 AUG 2023 - 02 AUG 2023	PPB	EMPLOYEES PROVIDENT FUND BOARD [SSH]	1,500	148,061	10.408
11 AUG 2023 - 11 AUG 2023	PTRANS	CBS LINK SDN BHD [SSH]	-14,000	57,607	7.895
07 AUG 2023 - 07 AUG 2023	PTT	AIM TETAP TEGUH GROUP SDN. BHD. [SSH]	48,649	100,766	55.956
07 AUG 2023 - 07 AUG 2023	PTT	DATO' ABD RAHIM BIN JAAFAR [DIR/CEO]	48,649	100,766	55.956
07 AUG 2023 - 07 AUG 2023	PTT	DATO' ABD RAHIM BIN JAAFAR [SSH]	48,649	100,766	55.956
07 AUG 2023 - 07 AUG 2023	PTT	MR TEO SWEE LENG [DIR/CEO]	66,273	118,391	65.743
07 AUG 2023 - 07 AUG 2023	PTT	MR TEO SWEE LENG [SSH]	66,273	118,391	65.743
07 AUG 2023 - 07 AUG 2023	PTT	MR TEO SWEE PHIN [DIR/CEO]	63,456	115,686	64.241
07 AUG 2023 - 07 AUG 2023	PTT	MR TEO SWEE PHIN [SSH]	63,456	115,686	64.241
04 AUG 2023 - 04 AUG 2023	PWF	ESTATE OF TAN AH BAH @ TAN BOON PIN [SSH]	144	14,510	6.5
04 AUG 2023 - 04 AUG 2023	PWF	TROPICAL CONSOLIDATED CORPORATION SDN BHD [SSH]	144	14,510	6.5
04 AUG 2023 - 04 AUG 2023	PWF	TROPICAL TC BOY SDN BHD [SSH]	144	14,510	6.5
08 AUG 2023 - 09 AUG 2023	PWRWELL	MADAM WONG YOKE YEN [DIR/CEO]	719	328,735	56.625
08 AUG 2023 - 09 AUG 2023	PWRWELL	MADAM WONG YOKE YEN [SSH]	719	328,735	56.625
03 AUG 2023 - 04 AUG 2023	RADIUM	MR GAN TIONG KIAN [DIR/CEO]	200	338,202	9.752
03 AUG 2023 - 04 AUG 2023	RADIUM	MR GAN TIONG KIAN [SSH]	200	338,202	9.752
08 AUG 2023 - 08 AUG 2023	RGTECH	MR TEVANAIGAM RANDY CHITTY [DIR/CEO]	70	2,200	0.419
07 AUG 2023 - 07 AUG 2023	RHBBANK	EMPLOYEES PROVIDENT FUND BOARD [SSH]	121	1,742,779	40.659
04 AUG 2023 - 04 AUG 2023	RHBBANK	EMPLOYEES PROVIDENT FUND BOARD [SSH]	-646	1,742,657	40.656
03 AUG 2023 - 03 AUG 2023	RHBBANK	EMPLOYEES PROVIDENT FUND BOARD [SSH]	-466	1,743,304	40.671
04 AUG 2023 - 04 AUG 2023	RHBBANK	KUMPULAN WANG PERSARAAN (DIPERBADANKAN) [SSH]	500	254,396	5.935
02 AUG 2023 - 02 AUG 2023	RHBBANK	EMPLOYEES PROVIDENT FUND BOARD [SSH]	1,406	1,743,770	40.682
09 AUG 2023 - 09 AUG 2023	SAPIND	MR KOH KOK HOI [SSH]	7	6,560	9.013
08 AUG 2023 - 08 AUG 2023	SAPIND	MR KOH KOK HOI [SSH]	26	6,553	9.004
07 AUG 2023 - 07 AUG 2023	SAPIND	MR KOH KOK HOI [SSH]	1	6,527	8.968
03 AUG 2023 - 03 AUG 2023	SAPIND	MR KOH KOK HOI [SSH]	1	6,526	8.967
04 AUG 2023 - 04 AUG 2023	SEAL	MR CHEN KHAI VOON [SSH]	390	109,641	28.916
07 AUG 2023 - 07 AUG 2023	SERNKOU	GENIUS SUCCESS CAPITAL SDN BHD [SSH]	-18,000	137,000	12.708
07 AUG 2023 - 07 AUG 2023	SERNKOU	MR LOW PENG SIAN @ CHUA PENG SIAN [DIR/CEO]	-18,000	291,165	27.008
07 AUG 2023 - 07 AUG 2023	SERNKOU	MR LOW PENG SIAN @ CHUA PENG SIAN [SSH]	-18,000	291,165	27.008
07 AUG 2023 - 07 AUG 2023	SIAB	DATO DR CHANG LIK SEAN [SSH]	1,000	57,084	11.658
10 AUG 2023 - 10 AUG 2023	SIME	KUMPULAN WANG PERSARAAN (DIPERBADANKAN) [SSH]	-244	535,037	7.851
03 AUG 2023 - 04 AUG 2023	SIME	EMPLOYEES PROVIDENT FUND BOARD [SSH]	3,004	957,675	14.051
02 AUG 2023 - 02 AUG 2023	SIME	EMPLOYEES PROVIDENT FUND BOARD [SSH]	1,715	954,670	14.007
04 AUG 2023 - 04 AUG 2023	SIMEPLT	EMPLOYEES PROVIDENT FUND BOARD [SSH]	85	101,429	14.667
03 AUG 2023 - 03 AUG 2023	SIMEPLT	AMANAHRAYA TRUSTEES BERHAD - AMANAH SAHAM BUMIPUTERA [SSH]	-8	317,374	45.892
02 AUG 2023 - 02 AUG 2023	SIMEPLT	EMPLOYEES PROVIDENT FUND BOARD [SSH]	330	101,424	14.665
08 AUG 2023 - 08 AUG 2023</					

Notice Period is 06th - 12th August 2023

Effective Change Date	Stock Name	Buyer/ Seller Name [Classification]	Bought / (Sold) ['000]		No. of Shares After Trade ['000]	
			Total	% Held	Total	% Held
08 AUG 2023 - 08 AUG 2023	SKPRES	KUMPULAN WANG PERSARAAN (DIPERBADANKAN) [SSH]	66	7.781	121569	7.781
07 AUG 2023 - 07 AUG 2023	SKPRES	EMPLOYEES PROVIDENT FUND BOARD [SSH]	139	8.096	126485	8.096
04 AUG 2023 - 04 AUG 2023	SKPRES	EMPLOYEES PROVIDENT FUND BOARD [SSH]	357	8.087	126346	8.087
07 AUG 2023 - 07 AUG 2023	SKPRES	KUMPULAN WANG PERSARAAN (DIPERBADANKAN) [SSH]	60	7.777	121503	7.777
03 AUG 2023 - 03 AUG 2023	SKPRES	EMPLOYEES PROVIDENT FUND BOARD [SSH]	308	8.064	125988	8.064
04 AUG 2023 - 04 AUG 2023	SKPRES	KUMPULAN WANG PERSARAAN (DIPERBADANKAN) [SSH]	155	7.773	121443	7.773
02 AUG 2023 - 02 AUG 2023	SKPRES	EMPLOYEES PROVIDENT FUND BOARD [SSH]	363	8.044	125681	8.044
03 AUG 2023 - 03 AUG 2023	SMTRACK	MR AZMI BIN OSMAN [DIR/CEO]	3,676	3.744	45037	3.744
09 AUG 2023 - 09 AUG 2023	SNTORIA	DATUK CHU BOON TIONG [DIR/CEO]	500	1.7	10428	1.7
08 AUG 2023 - 08 AUG 2023	SNTORIA	DATUK CHU BOON TIONG [DIR/CEO]	3,680	1.619	9928	1.619
07 AUG 2023 - 07 AUG 2023	SNTORIA	DATUK CHU BOON TIONG [DIR/CEO]	4,109	1.019	6248	1.019
09 AUG 2023 - 09 AUG 2023	SPSETIA	KUMPULAN WANG PERSARAAN (DIPERBADANKAN) [SSH]	450	9.971	406834	9.971
09 AUG 2023 - 09 AUG 2023	SRIDGE	DATO' KHOO YIK CHOU [SSH]	41	5.516	11456	5.516
08 AUG 2023 - 08 AUG 2023	SRIDGE	MR TAN WIN SEN [DIR/CEO]	65	0.084	174	0.084
07 AUG 2023 - 08 AUG 2023	SSB8	TAN SRI DATUK SERI GAN YU CHAI [DIR/CEO]	8,000	54.646	1241889	54.646
07 AUG 2023 - 08 AUG 2023	SSB8	TAN SRI DATUK SERI GAN YU CHAI [SSH]	8,000	54.646	1241889	54.646
02 AUG 2023 - 02 AUG 2023	SUNCON	EMPLOYEES PROVIDENT FUND BOARD [SSH]	72	9.714	125250	9.714
08 AUG 2023 - 08 AUG 2023	SUNWAY	EMPLOYEES PROVIDENT FUND BOARD [SSH]	-4,574	8.35	413842	8.35
07 AUG 2023 - 07 AUG 2023	SUNWAY	EMPLOYEES PROVIDENT FUND BOARD [SSH]	-3,220	8.44	418016	8.44
04 AUG 2023 - 04 AUG 2023	SUNWAY	EMPLOYEES PROVIDENT FUND BOARD [SSH]	-3,200	8.5	421237	8.5
03 AUG 2023 - 03 AUG 2023	SUNWAY	EMPLOYEES PROVIDENT FUND BOARD [SSH]	-2,786	8.57	424437	8.57
02 AUG 2023 - 02 AUG 2023	SUNWAY	EMPLOYEES PROVIDENT FUND BOARD [SSH]	-1,350	8.62	427222	8.62
06 JAN 2023 - 16 JAN 2023	SWKPLNT	DATO WONG KUO HEA [DIR/CEO]	207	31.732	88543	31.732
06 JAN 2023 - 16 JAN 2023	SWKPLNT	DATO WONG KUO HEA [SSH]	207	31.732	88543	31.732
11 AUG 2023 - 11 AUG 2023	SWSCAP	DR LOH YEE FEE [DIR/CEO]	500	2.732	7515	2.732
08 AUG 2023 - 08 AUG 2023	TENAGA	EMPLOYEES PROVIDENT FUND BOARD [SSH]	-1,388	14.82	857574	14.82
07 AUG 2023 - 07 AUG 2023	TENAGA	EMPLOYEES PROVIDENT FUND BOARD [SSH]	262	14.84	858962	14.84
04 AUG 2023 - 04 AUG 2023	TENAGA	EMPLOYEES PROVIDENT FUND BOARD [SSH]	1,503	14.84	858701	14.84
03 AUG 2023 - 03 AUG 2023	TENAGA	EMPLOYEES PROVIDENT FUND BOARD [SSH]	732	14.81	857198	14.81
02 AUG 2023 - 02 AUG 2023	TENAGA	EMPLOYEES PROVIDENT FUND BOARD [SSH]	525	14.8	856466	14.8
08 AUG 2023 - 08 AUG 2023	TIMECOM	EMPLOYEES PROVIDENT FUND BOARD [SSH]	-89	7.803	144100	7.803
07 AUG 2023 - 07 AUG 2023	TIMECOM	EMPLOYEES PROVIDENT FUND BOARD [SSH]	622	7.807	144189	7.807
07 AUG 2023 - 07 AUG 2023	TIMECOM	KUMPULAN WANG PERSARAAN (DIPERBADANKAN) ("KWAP") [SSH]	-200	6.202	114542	6.202
08 AUG 2023 - 08 AUG 2023	TM	EMPLOYEE PROVIDENT FUND BOARD (EPF BOARD) [SSH]	1,172	16.456	628954	16.456
07 AUG 2023 - 07 AUG 2023	TM	EMPLOYEE PROVIDENT FUND BOARD (EPF BOARD) [SSH]	46	16.426	627782	16.426
04 AUG 2023 - 04 AUG 2023	TM	EMPLOYEE PROVIDENT FUND BOARD (EPF BOARD) [SSH]	2,047	16.424	627737	16.424

Notice Period is 06th - 12th August 2023

Effective Change Date	Stock Name	Buyer/ Seller Name [Classification]	Bought / (Sold) ['000]		No. of Shares After Trade ['000]	
			Total	% Held	Total	% Held
03 AUG 2023 - 03 AUG 2023	TM	EMPLOYEE PROVIDENT FUND BOARD (EPF BOARD) [SSH]	1,134	16.371	625690	16.371
02 AUG 2023 - 02 AUG 2023	TM	EMPLOYEE PROVIDENT FUND BOARD (EPF BOARD) [SSH]	3,000	16.341	624556	16.341
07 AUG 2023 - 07 AUG 2023	TOCEAN	ENCIK MUHAMMAD HARIZ BIN MOHD NADZMI [SSH]	-2,420	20.892	13600	20.892
07 AUG 2023 - 07 AUG 2023	TOCEAN	IBRONI SDN. BHD. [SSH]	-2,420	20.892	13600	20.892
07 AUG 2023 - 07 AUG 2023	TOCEAN	KUMPULAN KENDERAAN MALAYSIA BERHAD [SSH]	-2,420	20.892	13600	20.892
07 AUG 2023 - 07 AUG 2023	TOCEAN	NADI CORPORATION SDN. BHD. [SSH]	-2,420	20.892	13600	20.892
07 AUG 2023 - 07 AUG 2023	TOCEAN	NADICORP HOLDINGS SDN. BHD. [SSH]	-2,420	20.892	13600	20.892
07 AUG 2023 - 07 AUG 2023	TOCEAN	TRISILCO EQUITY SDN. BHD. [SSH]	-2,420	20.892	13600	20.892
03 AUG 2023 - 03 AUG 2023	TWL	MISS LOW SWEE FOONG [SSH]	133,000	6.092	266292	6.092
02 AUG 2023 - 02 AUG 2023	UEMS	URUSHARTA JAMAAH SDN BHD [SSH]	-2,044	5.107	258318	5.107
08 AUG 2023 - 08 AUG 2023	UMW	EMPLOYEES PROVIDENT FUND BOARD [SSH]	-2,100	8.551	99899	8.551
09 AUG 2023 - 09 AUG 2023	UMW	KUMPULAN WANG PERSARAAN (DIPERBADANKAN) (KWAP) [SSH]	138	9.254	108108	9.254
07 AUG 2023 - 07 AUG 2023	UMW	EMPLOYEES PROVIDENT FUND BOARD [SSH]	-210	8.731	102000	8.731
04 AUG 2023 - 04 AUG 2023	UMW	EMPLOYEES PROVIDENT FUND BOARD [SSH]	-427	8.749	102210	8.749
03 AUG 2023 - 03 AUG 2023	UMW	EMPLOYEES PROVIDENT FUND BOARD [SSH]	-492	8.785	102637	8.785
02 AUG 2023 - 02 AUG 2023	UMW	EMPLOYEES PROVIDENT FUND BOARD [SSH]	-2,074	8.827	103129	8.827
08 AUG 2023 - 08 AUG 2023	UTDPLT	EMPLOYEES PROVIDENT FUND BOARD [SSH]	-59	7.116	29514	7.116
08 AUG 2023 - 08 AUG 2023	UTDPLT	DATO' MOHAMAD NASIR BIN AB. LATIF [DIR/CEO]	5	0.024	100	0.024
07 AUG 2023 - 07 AUG 2023	UTDPLT	EMPLOYEES PROVIDENT FUND BOARD [SSH]	-75	7.129	29573	7.129
04 AUG 2023 - 04 AUG 2023	UTDPLT	EMPLOYEES PROVIDENT FUND BOARD [SSH]	-65	7.148	29647	7.148
03 AUG 2023 - 03 AUG 2023	UTDPLT	EMPLOYEES PROVIDENT FUND BOARD [SSH]	-25	7.163	29713	7.163
02 AUG 2023 - 02 AUG 2023	UTDPLT	EMPLOYEES PROVIDENT FUND BOARD [SSH]	-22	7.169	29738	7.169
07 AUG 2023 - 07 AUG 2023	VS	DATUK BEH KIM LING [DIR/CEO]	100	15.032	577572	15.032
07 AUG 2023 - 07 AUG 2023	VS	DATUK BEH KIM LING [SSH]	100	15.032	577572	15.032
07 AUG 2023 - 07 AUG 2023	VS-WB	DATUK BEH KIM LING [DIR/CEO]	-4,000	10.686	81316	10.686
09 AUG 2023 - 09 AUG 2023	WIDAD	TAN SRI MUHAMMAD IKMAL OPAT BIN ABDULLAH [SSH]	2,097	39.282	1216347	39.282
08 AUG 2023 - 08 AUG 2023	WIDAD	TAN SRI MUHAMMAD IKMAL OPAT BIN ABDULLAH [SSH]	-500	39.214	1214250	39.214
03 AUG 2023 - 03 AUG 2023	WIDAD	TAN SRI MUHAMMAD IKMAL OPAT BIN ABDULLAH [SSH]	1,290	39.507	1214750	39.507
08 AUG 2023 - 08 AUG 2023	WOODLAN	DATO' SERI MUN WENG SUM [DIR/CEO]	1	17.828	7131	17.828
08 AUG 2023 - 08 AUG 2023	WOODLAN	DATO' SERI MUN WENG SUM [SSH]	1	17.828	7131	17.828
08 AUG 2023 - 08 AUG 2023	XL	DATO' KHOO YIK CHOU [DIR/CEO]	200	0.597	1452	0.597
08 AUG 2023 - 08 AUG 2023	YINSON	EMPLOYEES PROVIDENT FUND BOARD [SSH]	300	16.353	475344	16.353
07 AUG 2023 - 07 AUG 2023	YINSON	EMPLOYEES PROVIDENT FUND BOARD [SSH]	1,438	16.343	475044	16.343
04 AUG 2023 - 04 AUG 2023	YINSON	EMPLOYEES PROVIDENT FUND BOARD [SSH]	292	16.294	473606	16.294
03 AUG 2023 - 03 AUG 2023	YINSON	EMPLOYEES PROVIDENT FUND BOARD [SSH]	33	16.284	473314	16.284
02 AUG 2023 - 02 AUG 2023	YINSON	EMPLOYEES PROVIDENT FUND BOARD [SSH]	480	16.282	473281	16.282

**Disclaimer:** The Information in Insider Activity is extracted from [www.shareinvestor.com/fundamental/insider\\_trades](http://www.shareinvestor.com/fundamental/insider_trades). The information on this page is provided as a service to readers. It does not constitute financial advice and/or any investment recommendations. We assume no liability for damages resulting from or arising out of the use of such information. Whilst every effort is made to ensure accuracy, the information presented is not the official record of shareholder filings. Readers are advised to read the original filings on the Bursa Malaysia website at [www.bursamalaysia.com](http://www.bursamalaysia.com)



Learn how to identify Hot Stocks using Technical Analysis (TA) and Fundamental Analysis (FA)

**SIGN UP FOR Invest NOW IT'S FREE!!!**

[Click here](#)

Scan me



Via email, every Friday.

Get market moving news and analyses. Regular columns include **Behind The Action** and **From The Observer**

**Leaderboard • Shariah Hot Stocks • Shariah Momentum Up Stocks • Non Shariah Hot Stocks • Up Trending Stocks • Growth Stocks • Dividend Stocks • Long Companies • Insider Activity • Investor Relations • Regional Markets**



# celcomdigi

On behalf of the Board of Directors of **CelcomDigi Berhad (CDB)** (formerly known as Digi.Com

Berhad), Maybank Investment Bank Berhad wishes to announce that CelcomDigi had on 17 August 2023 established an executive share grant plan of up to 0.5% of the total number of issued ordinary shares in CelcomDigi Shares (excluding treasury shares, if any) at any point in time during the duration of the share grant plan of 10 years, commencing from 17 August 2023, for the eligible employees who hold senior management position in CelcomDigi and its subsidiaries (excluding subsidiaries which are dormant) (CelcomDigi Group). Details of the Executive Share Grant Plan serves to attract, retain, motivate and reward the Eligible Persons who fulfil the eligibility criteria set out in Section 2.1.2 of this Announcement through the award of CelcomDigi Shares in accordance with the provisions of the by-laws governing the ESGP. The ESGP is administered by CelcomDigi's Board Nomination and Remuneration Committee in accordance with the By-Laws. Pursuant to the By-Laws, the BNRC may, in its sole discretion, decide to satisfy any of the offers, made by the BNRC under the By-Laws to the Eligible Persons, which have been accepted by the Selected Persons using any of the following methods: (a) transfer of the Company's treasury shares to the Selected Person who accepted the Offer; and/or (b) payment of cash.



On behalf of the Board of **Maxis Berhad (MAXIS)**, RHB Investment Bank wishes to announce that Maxis Broadband and DNB have executed the Access Agreement on 14 August 2023, pursuant to which Maxis Broadband will subscribe for 5G Products and Services provided on a

wholesale basis by Digital Nasional Berhad, including the National 5G Wholesale Network Product.



**ENGINEERS**

**HSS Engineers Berhad (HSSEB)** wishes to announce that on 15 August 2023, a consortium comprising HSS Engineering Sdn Bhd, Shizen Malaysia Sdn Bhd, Solarvest Asset Management Sdn Bhd and Aziho Trading Sdn Bhd accepted a Letter of Notification from the Suruhanjaya Tenaga (Energy Commission) informing them that ST have offered the Consortium to develop a Photovoltaic Plant with an export capacity of 29.99MW at Lot 744 & 777, Mukim Bandar Gurun, Daerah Kuala Muda, Kedah. HSSE is a wholly owned subsidiary of HEB. HSSE owns 10% ordinary shares in the Consortium.

The Project is undertaken pursuant to the Corporate Green Power Programme, an initiative by the Government of Malaysia to provide opportunity for business entities to participate in the promotion and use of renewable energy in their business operation. The programme supports the growing number of electricity consumers that aspire to achieve the Environmental, Social and Governance target. The Project involves the proposed development, financing, construction, ownership, operation and maintenance of the PV Plant on a build, operate and transfer basis. The estimated Commercial Operation Date is December 2025.



The Board of Directors of **Kinergy Advancement Berhad (KAB)** wishes to announce that the Consortium comprising Salcon Berhad and KAB Smart Solar Energy Sdn. Bhd., a wholly-owned subsidiary of the Company has received a Letter of Notification dated 7 August 2023 from the Energy Commission. The Letter of Notification informs that the Consortium has met the criteria outlined in the Information Guide for CGPP (for Solar PV Plant) pertaining to the development of a Photovoltaic Plant with a capacity of 7MW situated at Sungai Siput, Kuala Kangsar, Perak.



**Salcon Berhad (SALCON)** is pleased to announce that its consortium with KAB Smart Solar Energy Sdn Bhd has received a Letter of Notification from the Energy Commission of Malaysia. The Letter of Notification informs that the Consortium has met the criteria outlined in the Information Guide for Corporate Green Power Programme in developing a Solar Photovoltaic Plant with an export capacity of 7MW at Sungai Siput, Kuala Kangsar Perak. Subject to the fulfilment of the requirements of the Information Guide for CGPP and participation in the New

Enhanced Dispatch Arrangement programme, the Project is expected to commence operations in 2024. This Project is aligned with our Group’s direction to expand our renewable energy portfolio, contributing to our Group’s vision to “transform lives for the better”.



**VSTECS Berhad (VSTECS)** has today released its second quarter financial results for the three (3) months ended 30 June 2023 which achieves 20.3% YOY net profit growth to RM15.7 million in 2Q FY2023.

In the first six (6) months of the year, the Group posted a slightly lower revenue of RM1.27 billion as compared to RM1.35 billion in 6M FY2022. However, net profit grew by 22.5% to RM30.5 million driven by Enterprise Systems and ICT Services segments which typically enjoy higher margins. In the first half of this year, revenue from Enterprise Systems grew 10.0% while ICT Services grew 51.1% YoY. The ICT Distribution segment however experienced a revenue decline of 28.7% compared to 6M FY2022, as the consumer spending trend continues to be muted.



ShareInvestor Malaysia is a technology company with offices in the region. The company's services include Online Investor Relations and Corporate Website Design services to public listed companies (B2B); Subscription (SAAS) and Investor Education to retail investors (B2C) and publishing Inve\$t weekly. More information about the company can be found at [www.shareinvestor.com.my](http://www.shareinvestor.com.my). We are looking for a suitably experienced, matured and dynamic candidate to join our Malaysia operations.

# WE'RE HIRING!

Position:

## SALES MANAGER

*Investor Relations Division*



### Job Responsibilities:

**Reporting to the Group Managing Director - Investor Relations, you will be responsible for:**

- the full sales cycle from initial client contact to presentation, contract negotiation and closing of sales.
- identifying and acquiring new clients.
- managing existing client accounts and maintain excellent relationships for contract renewals and to up-sell new business solutions.
- meeting and exceeding Quarterly & Annual sales targets and KPIs.
- coordinating internal resources for service delivery and clients' satisfaction to ensure quality of service fulfilment.
- working as part of a dynamic sales team where high performance will be highly rewarded.

### Job Requirements:

- Minimum 3-5 years of working experience in sales with strengths in writing, pitching, negotiating & closing sales.
- Degree/Diploma in any discipline.
- Knowledge in Investor Relations (IR) and/or Public Relations (PR) will be an advantage.
- Independent and career-minded.
- Results oriented and performance driven.
- Possess good interpersonal and communication skills.

### Compensation scheme:

- **Hybrid working arrangement:** Work from home option on certain day/s of each week (but subject to change by management).
- Attractive basic salary and incentive scheme plus entertainment, travelling & mobile phone allowance.
- Annual performance review with opportunity for career advancement.
- Opportunity to collaborate with colleagues from other ASEAN countries and cultures.

If you are interested, please send your updated resume, current and expected salary, and a recent photograph via email to [hr.my@shareinvestor.com](mailto:hr.my@shareinvestor.com) before **30th August 2023**.