

Invest

A Weekly e-Publication by SHAREINVESTOR.com

ISSUE

175

FRIDAY
22 SEPTEMBER
2023

Scan/Click QR to Register



Via email, every Friday

MARKET SENTIMENTS

RM132.6B APPROVED INVESTMENTS IN FIRST HALF OF 2023 - MITI +

Putrajaya to unveil
KL20 – a development
blueprint for VCs &
startup ecosystem in
1Q2024 - Rafizi

See more on pages 23-26

ALSO

08 COMPANY
SPOTLIGHT
Eastern & Oriental
Berhad

28 MSWG
Costly
misjudgements at the
expense of minority
shareholders



05 LEADERBOARD

07 SHARIAH HOT STOCKS

09 SHARIAH MOMENTUM UP
STOCKS

11 NON SHARIAH HOT STOCKS

13 UP TRENDING STOCKS

15 VALUE STOCKS

17 GROWTH STOCKS

19 DIVIDEND STOCKS

20 BROKERS' CALL

21 LONG COMPANIES

27 REGIONAL MARKETS

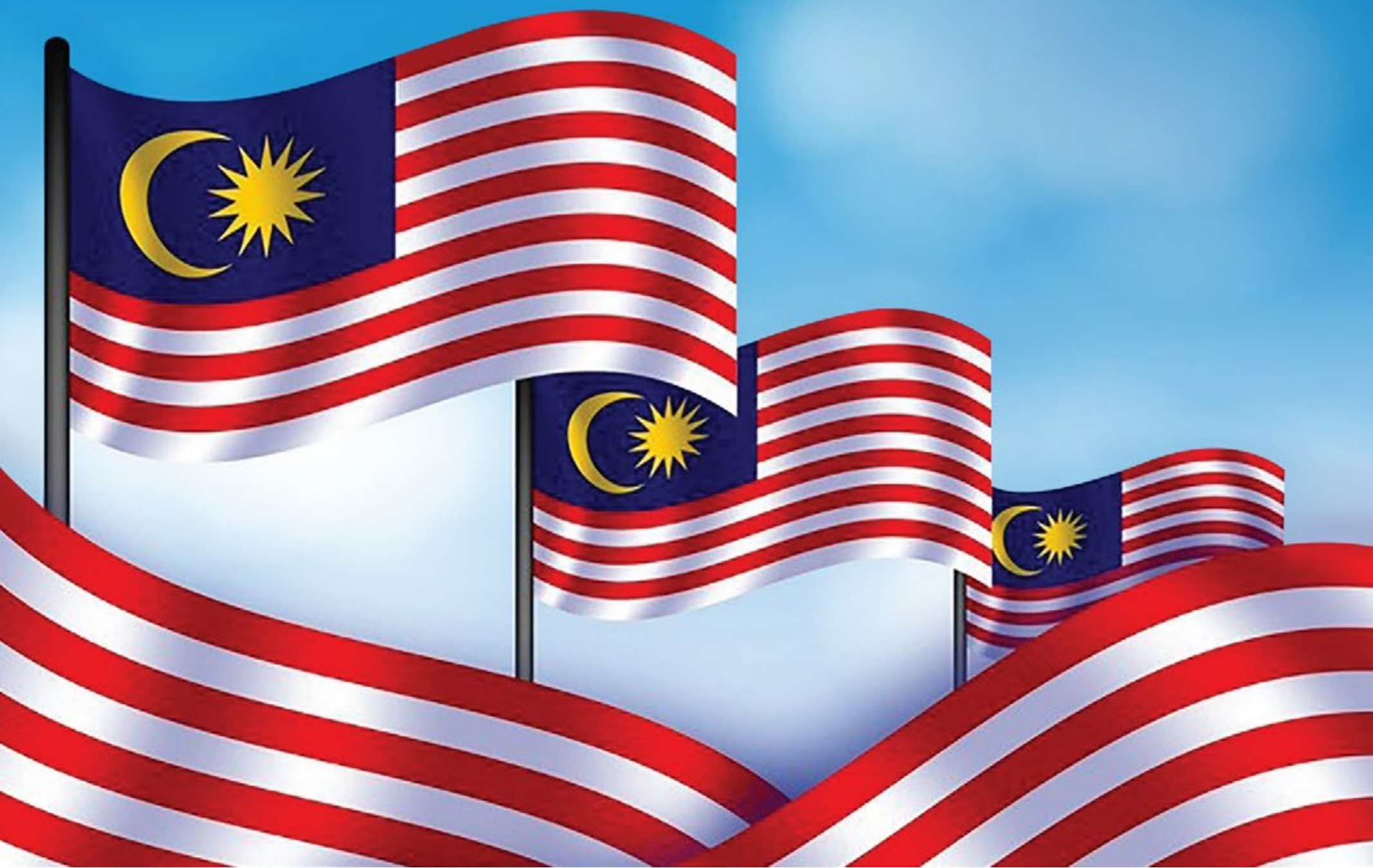
32 INSIDER ACTIVITY

36 INVESTOR RELATIONS



Wishes all Malaysians

Happy 60th
Malaysia Day





INVESTOR PLATFORMS

Director
Darren Chong
darren.chong@shareinvestor.com

Business Development Manager
Jay Cheong
jay.cheong.@shareinvestor.com

Senior Executive
Daniel Wong
daniel.wong@shareinvestor.com

Executive
Farah Azwani
farah.azwani@shareinvestor.com

Executive
Tan Yong Sheng
yongsheng.tan@shareinvestor.com

ADMIN & OPERATIONS

Senior Executive
Watie Nordin
watie.nordin@shareinvestor.com

Executive
Silas Emmanuel Joseph
silas.joseph@shareinvestor.com

INVESTOR RELATIONS

Group Managing Director & Publisher
Edward Stanislaus
edward@shareinvestor.com

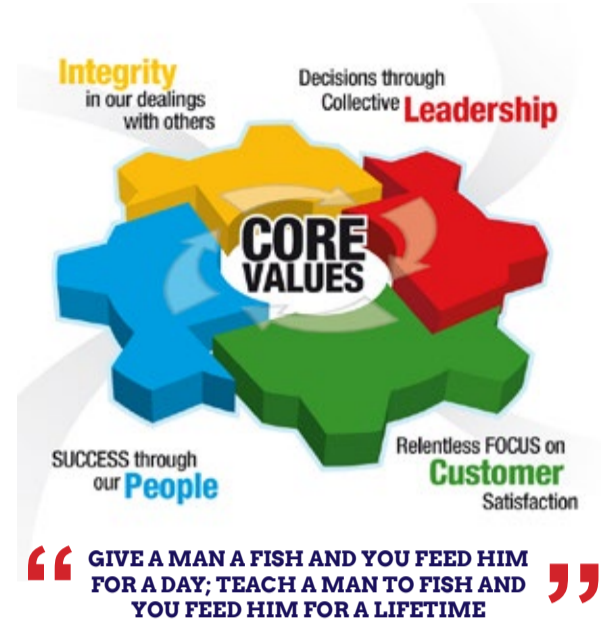
Senior Manager
Letticia Wong
letticia.wong@shareinvestor.com

PROCESS AUTOMATION & DATA ANALYTICS

Data Analyst
Nickson Aw

SHAREINVESTOR HOLDINGS BOARD OF DIRECTORS

- | | |
|------------------|-----------------|
| Chairman | Patrick Daniel |
| Group CEO | Christopher Lee |
| Group COO | Lim Dau Hee |
| Group CFO | Teo Siew May |
| Group MD | Shanison Lin |

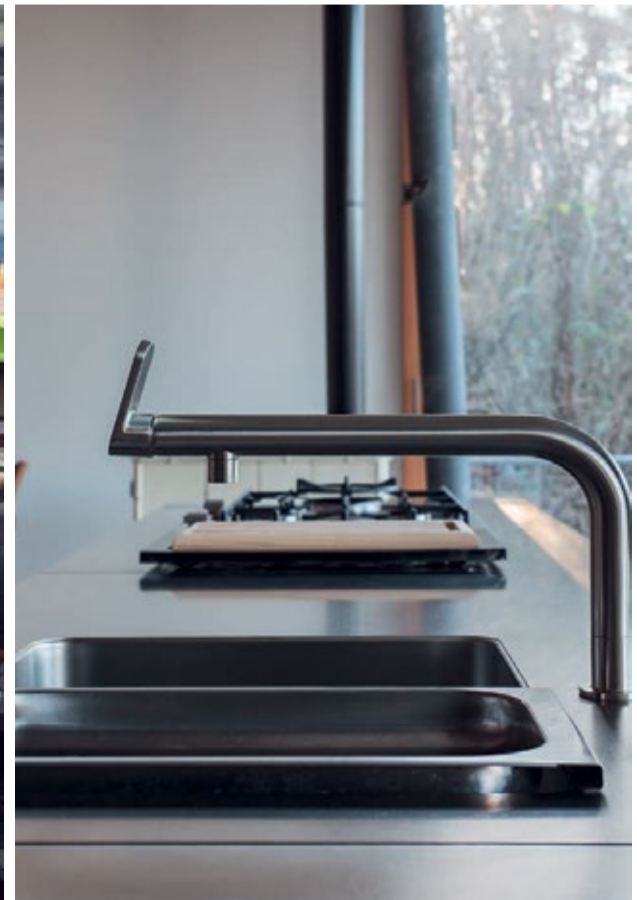


ShareInvestor Malaysia Sdn. Bhd.
(200001023956) (526564-M)
Unit No. DF2-07-03A. Level 7,
Persoft Tower, 6B Persiaran Tropicana,
47410 Petaling Jaya, Selangor Darul Ehsan.

Hotline : 603 7803 1791
Mobile : 011 6343 8939
Website : www.ShareInvestor.com.my
www.ShareInvestorHoldings.com
www.Facebook.com/ShareInvestorMalaysia

ADVERTISEMENT ENQUIRY

bulthaup takes care of the details so that you can enjoy a harmonious environment.



XTRA

XTRA FURNITURE SDN BHD
The Gardens Mall, Mid Valley City
xtrafurniture.com/bulthaup
fb.com/bulthaupmalaysia

bulthaup

PURNELL

ONLY TOURBILLON



ESCAPE II
ABSOLUTE
SAPPHIRE

Purnell Asia

Tel. : +65.9817.3378

Email : sales.sg@purnellwatches.com

@ Purnell_Official

www.purnellwatches.com

PLAY



www.shareinvestor.com - market data at your fingertips



ShareInvestor WebPro (www.shareinvestor.com/my)

Prices > Stock Prices > Bursa > click Stocks tab

1. mouse over Ranking > select Top Active > all Shariah stocks are denoted with an [S] > mouse over Column Layout > select Edit Customs > select Name > select Volume > select Last Done Price > Mouse Over Column Layout > select Custom
2. mouse over Ranking > select Top Turnover > all Shariah stocks are denoted with an [S] > mouse over Column Layout > select Edit Customs > select Name > select Last Done Price > select Value > Mouse Over Column Layout > select Custom
3. mouse over Ranking > select Top Gainers (Over 5 Trading Days) > mouse over Column Layout > select Edit Customs > select Name > select Last Done Price > select 5 Days Change > select 5 Days % Change > Mouse Over Column Layout > select Custom
4. mouse over Ranking > select Top Losers (Over 5 Trading Days)
5. mouse over Ranking > select Top % Gainers (Over 5 Trading Days)
6. mouse over Ranking > select Top % Losers (Over 5 Trading Days)

Shariah Top Actives (as at Yesterday)

Name	Price (RM)	Volume
TWL [S]	0.030	1,508,243.000
UEMS [S]	0.880	761,960.000
TOPGLOV [S]	0.805	654,701.000
EKOVEST [S]	0.565	541,012.000
MYEG [S]	0.825	477,071.000
E&O [S]	0.650	468,197.000
MQTECH [S]	0.030	420,368.000
WIDAD [S]	0.500	406,696.000
VELESTO [S]	0.260	401,234.000
MRCB [S]	0.475	392,862.000

Shariah Top Turnover (as at Yesterday)

Name	Price (RM)	Value (RM)
UEMS [S]	0.880	68,924,679
TOPGLOV [S]	0.805	53,914,967
MYEG [S]	0.825	39,445,187
TENAGA [S]	10.060	34,752,356
EKOVEST [S]	0.565	30,399,501
E&O [S]	0.650	29,852,103
IWCITY [S]	0.745	26,420,408
CYPARK [S]	1.040	26,173,304
PCHEM [S]	7.310	22,886,734
MISC [S]	7.130	21,211,079

Top Gainers (over 5 Trading days as at Yesterday)

Name	Price (RM)	Change (RM)
UTDPLT	17.280	+0.820
HAPSENG	4.660	+0.570
MASTER	3.140	+0.490
APOLLO	5.370	+0.460
HEIM	23.900	+0.340
POLYDM	0.690	+0.300
ITMAX	1.700	+0.270
CYPARK	1.040	+0.245
PETDAG	23.020	+0.220
UEMS	0.880	+0.195

Top % Gainers (over 5 Trading days as at Yesterday)

Name	Price (RM)	Change (%)
POLYDM	0.690	+76.92
XDL	0.025	+66.67
DGB	0.180	+56.52
AT	0.015	+50.00
GOCEAN	0.015	+50.00
NETX	0.135	+35.00
MLAB	0.020	+33.33
NEXGRAM	0.020	+33.33
CYPARK	1.040	+30.82
WAJA	0.090	+28.57

Top Losers (over 5 Trading days as at Yesterday)

Name	Price (RM)	Change (RM)
MPI	27.000	-0.820
NESTLE	129.400	-0.800
BAT	9.230	-0.520
PMBTECH	3.200	-0.430
KLK	21.300	-0.420
HLFG	17.620	-0.360
CARLSBG	19.880	-0.280
PPB	15.600	-0.280
SUNMOW	1.150	-0.250
CIHLDG	3.150	-0.230

Top % Losers (over 5 Trading days as at Yesterday)

Name	Price (RM)	Change (%)
EAH	0.005	-50.00
KGROUP	0.005	-50.00
JOE	0.010	-33.33
BCMALL	0.015	-25.00
FOCUS	0.015	-25.00
PMHLDG	0.045	-18.18
SUNMOW	1.150	-17.86
IMPIANA	0.070	-17.65
CNOUHUA	0.050	-16.67
SAPNRG	0.050	-16.67

Investing in the US Stock Market



26 Sep (Tue)
8 PM - 9 PM

Speaker >

Scan Me



Ziet

Fong Wei Ziet
Finance Content Creator
in Ziet Invests

Price & Volume Distribution Charts (as at Yesterday)

Technical Analysis

DEFINITION: Shariah compliant stocks with Technical Analysis showing 5-days & 10-days Moving Average Price below Yesterday's Close over past 3 days and with Volume Spike.

CHART GUIDE: Volume Distribution Chart is a statistical interpretation of the current sentiment on each stock in graphical format. The highest bar categorized as >150k is likely to be traded by institutions or super dealers, while the lowest bar categorized as <15k usually represents retail investors. "Buy Up" refers to more buyers snatching up the lots queued at selling price. "Sell Down" refers to sellers selling their shares to the buying queue



ShareInvestor WebPro > Screener > Market Screener (FA & TA) > select BURSA > add criteria

A. Criteria

- > click Add Criteria
- Technical Analysis Conditions tab select (i) Moving Average Below Close (ii) Volume Spike
- Fundamental Analysis Conditions tab > select (iii) Revenue
- Prices & Other Conditions tab > select (iv) Is Shariah Compliant
- Technical Analysis Conditions tab select (v) Moving Average Below Close
- Prices & Other Conditions tab > select (vi) Last Done Price
- Technical Analysis Conditions tab select (vii) Moving Average Below Close

B. Conditions (Criteria Filters)

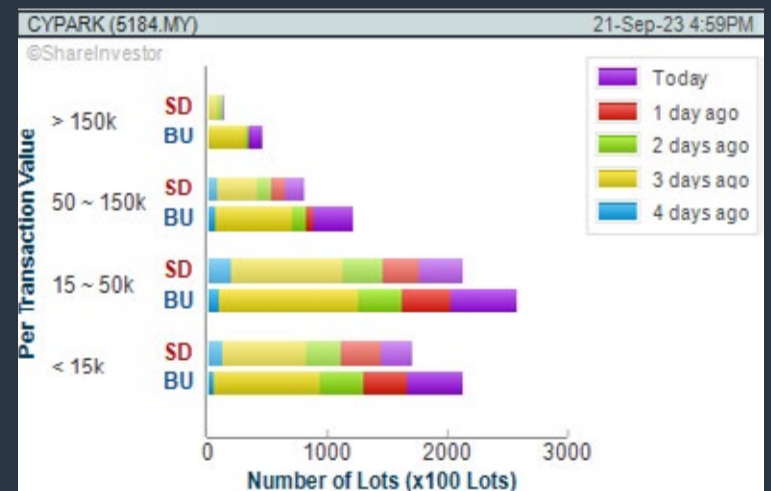
- Moving Average Below Close - select (MA) type (5) below close price for type (3) days
- Volume Spike - Volume type (1) greater than type (5) days average
- Revenue ("000) - select (more than) type (1) for the past select (1) financial year(s)
- Is Shariah Compliant - select **Yes**
- Moving Average Below Close - select (MA) type (10) below close price for type (3) days
- Last Done Price - select (more than) type (0.3)
- Moving Average Below Close - select (EMA) type (5) below close price for type (3) days

- > click Save Template > Create New Template type (Shariah Hot Stocks) > click Create
- > click Save Template as > select Shariah Hot Stocks > click Save
- > click Screen Now (may take a few minutes)
- > Sort By: Select (Vol) Select (Desc)
- > Mouse over stock name > click C² Charts or Volume Distribution

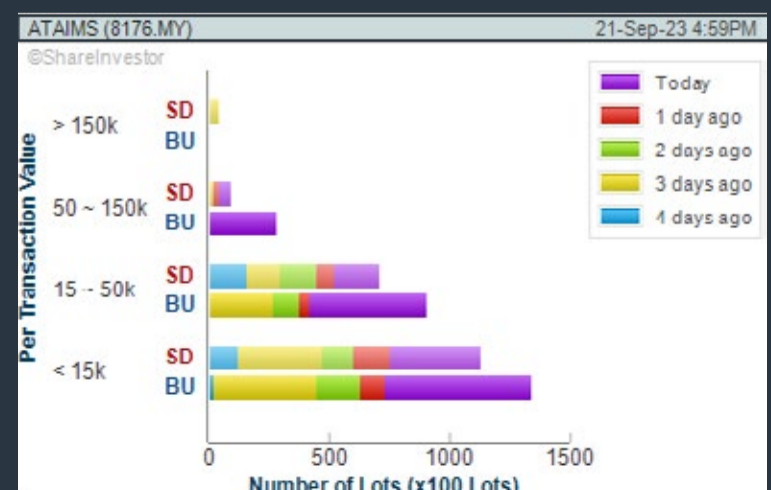
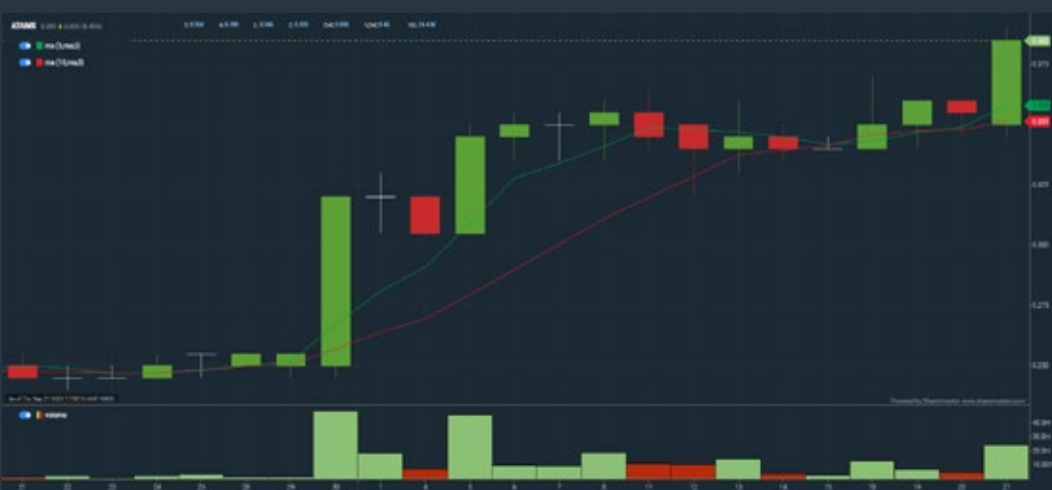
EASTERN & ORIENTAL BERHAD (3417) C² Chart



CYPARK RESOURCES BERHAD (5184) C² Chart



ATA IMS BERHAD (8176) C² Chart



Disclaimer: The information on this page is provided as a service to readers. It does not constitute financial advice and/or any investment recommendations. Past performance is not indicative of future results. We assume no liability for damages resulting from or arising out of the use of such information. It would be best if you did your own research to make your personal investment decisions wisely or consult a licenced investment advisor.

COMPANY BACKGROUND

Eastern & Oriental Berhad is a lifestyle property development company involved in investment holding and investment management services. The Company operates through three segments: Properties (residential and commercial development), Hospitality (hotel and restaurant management), and Investments.

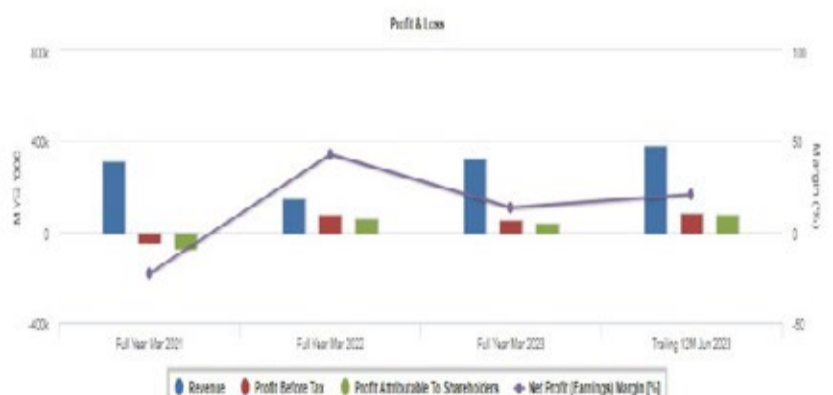
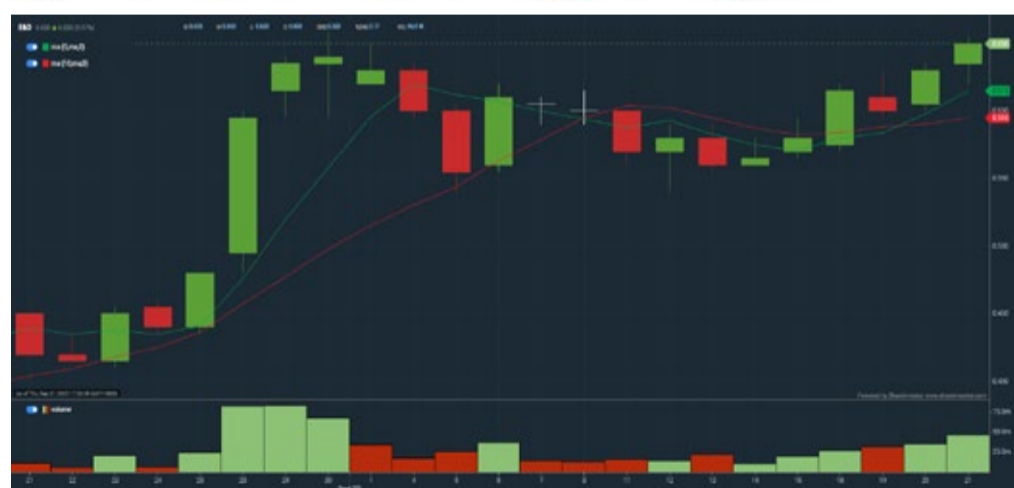


E&O EASTERN & ORIENTAL BHD		Updated at 21 Sep 2023 16:59	
Last (MYR): 0.650 ↑	Change: +0.020	High: 0.655	Remarks: s ?
	Change (%): +3.17	Low: 0.620	
Open	0.635	Yesterday's Close	0.630
Buy Price	0.650	Sell Price	0.655
Buy Volume ('00)	13,497	Sell Volume ('00)	2,810
Cumulative Volume ('00)	468,197	Cumulative Value	29,852,103

Financial Analysis

Revenue Growth Increasing revenue in most recent year after at least 4 years of consecutive decreasing revenue		Profit Growth Decreasing profit in latest year (with last 2 profitable years)	
Piotroski F Score The company has weak financial strength (Piotroski F-Score of 0-2)		Debt to Cashflow The company has negative cash flow from operations in most recent year	
Free Cash Flow Negative free cash flow for two years or more		Gross Profit Margin Consistently high gross profit margin of at least 40% for 3 years	
Return on Equity (ROE) ROE is improving by 5% a year over the past 36 months.			

Excellent
 Good
 Neutral
 Be Alert
 Watch Out

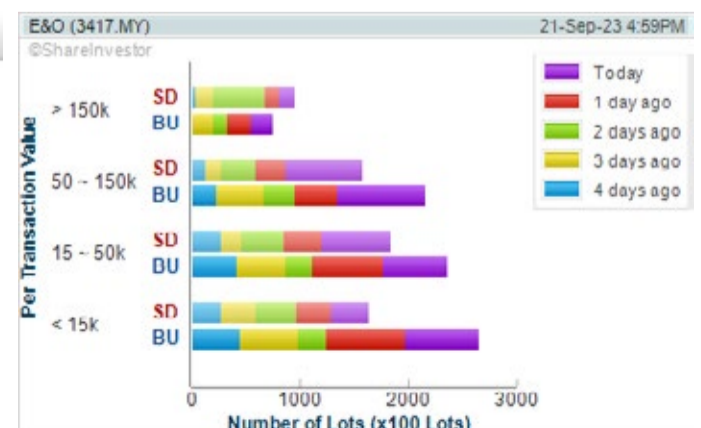


WebPro 9-Days Free Trial Registration (worth RM9) Sign Up Now



Key Statistics with Total Shareholder Returns

Period	Dividend Received	Capital Appreciation	Total Shareholder Return
Short Term Return	8 Days	+0.000	+16.07%
	10 Days	+0.040	+6.86%
	20 Days	+0.200	+44.44%
Medium Term Return	3 Months	+0.345	+113.11%
	6 Months	+0.340	+109.68%
	1 Year	+0.220	+51.16%
Long Term Return	2 Years	+0.030	+4.84%
	3 Years	+0.280	+66.67%
	5 Years	0.040	-48.51%
Annualised Return	-	-	-12.42%



Disclaimer: The information on this page is provided as a service to readers. It does not constitute financial advice and/or any investment recommendations. Past performance is not indicative of future results. We assume no liability for damages resulting from or arising out of the use of such information. It would be best if you did your own research to make your personal investment decisions wisely or consult a licenced investment advisor.

Price & Volume Distribution Charts (as at Yesterday)

Technical Analysis

DEFINITION: Shariah compliant stocks with Technical Analysis showing Bullish Momentum and Price Uptrend. The share price closed at the highest price yesterday. The typical price was higher than the previous day's typical price.

CHART GUIDE: Volume Distribution Chart is a statistical interpretation of the current sentiment on each stock in graphical format. The highest bar categorized as >150k is likely to be traded by institutions or super dealers, while the lowest bar categorized as <15k usually represents retail investors. "Buy Up" refers to more buyers snatching up the lots queued at selling price. "Sell Down" refers to sellers selling their shares to the buying queue.



ShareInvestor WebPro > Screener > Market Screener (FA & TA) > select BURSA > add criteria

A. Criteria

- > click Add Criteria
- Fundamental Analysis Conditions tab > select (i) Revenue
- Technical Analysis Conditions tab select (ii) Average Volume
- Prices & Other Conditions tab > select (iii) Last Done Price
- Prices & Other Conditions tab > select (iv) Is Shariah Compliant
- Technical Analysis Conditions tab select (v) RSI Overbought
- Technical Analysis Conditions tab select (vi) Moving Average Below Close
- Technical Analysis Conditions tab select (vii) CCI Overbought

B. Conditions (Criteria Filters)

1. Revenue ("000) - select (more than) type (1) for the past select (1) financial year(s)
2. Average Volume - type (1) days average volume greater than type (10000) lots
3. Last Done Price - select (more than) type (0.3)
4. Is Shariah Compliant - select Yes
5. RSI Overbought - select RSI 1 above 99 for 1 days
6. Moving Average Below Close - select (MA) type (10) below close price for type (1) days
7. CCI Overbought - select CCI (2) above (0) for (1) days

- > click Save Template > Create New Template type (Shariah Momentum Up Stocks) > click Create
- > click Save Template as > select Shariah Momentum Up Stocks > click Save
- > click Screen Now (may take a few minutes)
- Sort By: Select (Vol) Select (Desc)
- Mouse over stock name > Charts > click C² Charts tab or Volume Distribution

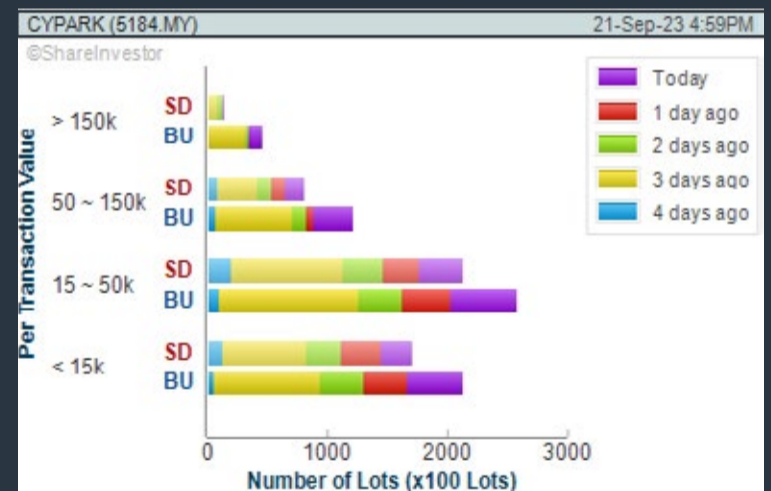
EASTERN & ORIENTAL BERHAD (3417) C² Chart

Analysis



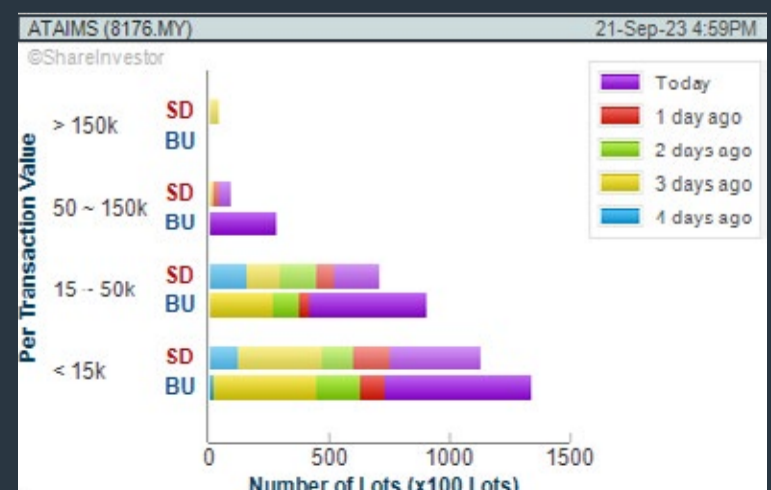
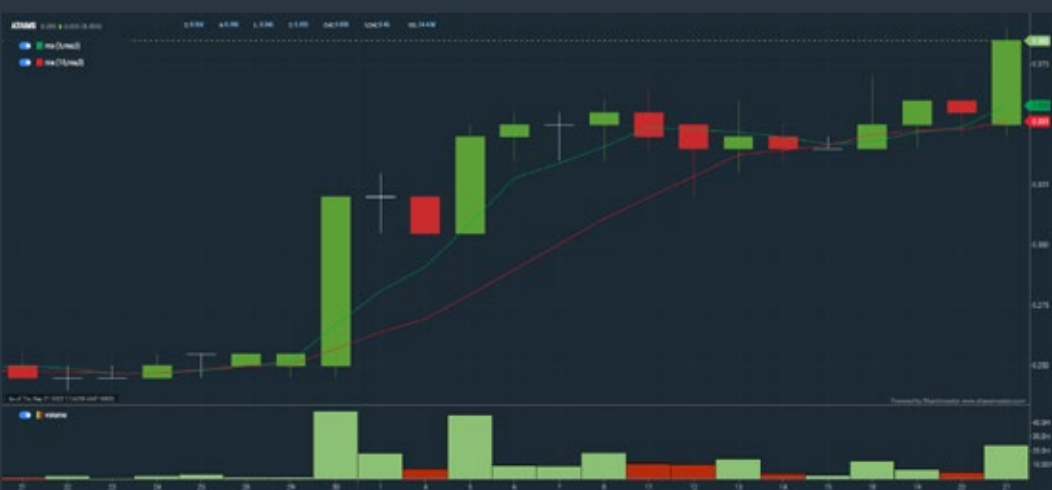
CYPARK RESOURCES BERHAD (5184) C² Chart

Analysis



ATA IMS BERHAD (8176) C² Chart

Analysis



Disclaimer: The information on this page is provided as a service to readers. It does not constitute financial advice and/or any investment recommendations. Past performance is not indicative of future results. We assume no liability for damages resulting from or arising out of the use of such information. It would be best if you did your own research to make your personal investment decisions wisely or consult a licenced investment advisor.

Organised by



Sponsored by



Invest | 10

VOTE AND WIN!

13 – 26 SEP 2023

HOW TO WIN

AI?

GOLD?

S&P 500?

Apple
Facebook
Microsoft
Nvidia
Amazon

1

VOTE FOR
YOUR
FAVOURITE
ETF
(x1 chance)

2

COMMENT
WHY YOU
LIKE IT
(x3 chances)

[CLICK HERE TO VOTE](#)



50
lucky winners

X

RM 50
worth ETF

The Disclaimer: The companies shown in the visual is for illustration purpose, not investment advice.

*T&C Apply

Price & Volume Distribution Charts (as at Yesterday)

Technical Analysis

DEFINITION: Stocks with Technical Analysis showing 5-days & 10-days Moving Average Price below Close over past 1 days and with Volume Spike

CHART GUIDE: Volume Distribution Chart is a statistical interpretation of the current sentiment on each stock in graphical format. The highest bar categorized as >150k is likely to be traded by institutions or super dealers, while the lowest bar categorized as <15k usually represents retail investors. "Buy Up" refers to more buyers snatching up the lots queued at selling price. "Sell Down" refers to sellers selling their shares to the buying queue.



ShareInvestor WebPro > Screener > Market Screener (FA & TA) > select BURSA > add criteria

A. Criteria

- > click Add Criteria
- Technical Analysis Conditions tab select (i) Moving Average Below Close (ii) Volume Spike
- Fundamental Analysis Conditions tab >select (iii) Revenue
- Prices & Other Conditions tab > select (iv) Is Shariah Compliant
- Technical Analysis Conditions tab select (v) Moving Average Below Close
- Prices & Other Conditions tab > select (vi) Last Done Price
- Technical Analysis Conditions tab select (vii) Moving Average Below Close

B. Conditions (Criteria Filters)

1. Moving Average Below Close - select (MA) type (5) below close price for type (3) days
2. Volume Spike - Volume type (1) greater than type (5) days average
3. Revenue ("000) - select (more than) type (1) for the past select (1) financial year(s)
4. Is Shariah Compliant - select NO
5. Moving Average Below Close - select (MA) type (10) below close price for type (1) days
6. Last Done Price - select (more than) type (0.3)
7. Moving Average Below Close - select (EMA) type (5) below close price for type (1) days

- > click Save Template > Create New Template type (Non-Shariah Hot Stocks) > click Create
- > click Save Template as > select Non-Shariah Hot Stocks > click Save
- > click Screen Now (may take a few minutes)
- Sort By: Select (Vol) Select (Desc)
- Mouse over stock name > Charts > click C² Charts tab or Volume Distribution

WCE HOLDINGS BERHAD (3565)

C² Chart

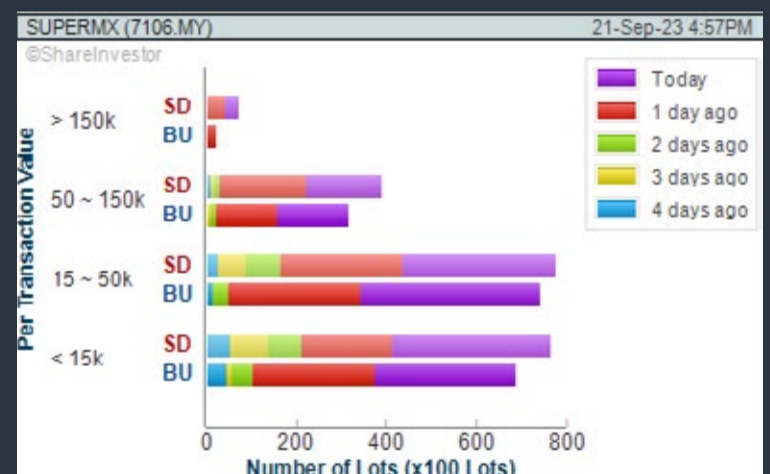
Analysis



SUPERMAX CORPORATION BERHAD (7106)

C² Chart

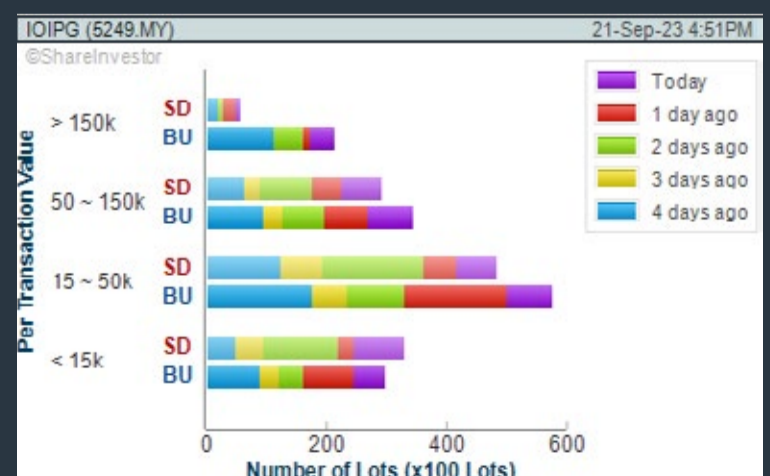
Analysis



IOI PROPERTIES GROUP BERHAD (5249)

C² Chart

Analysis

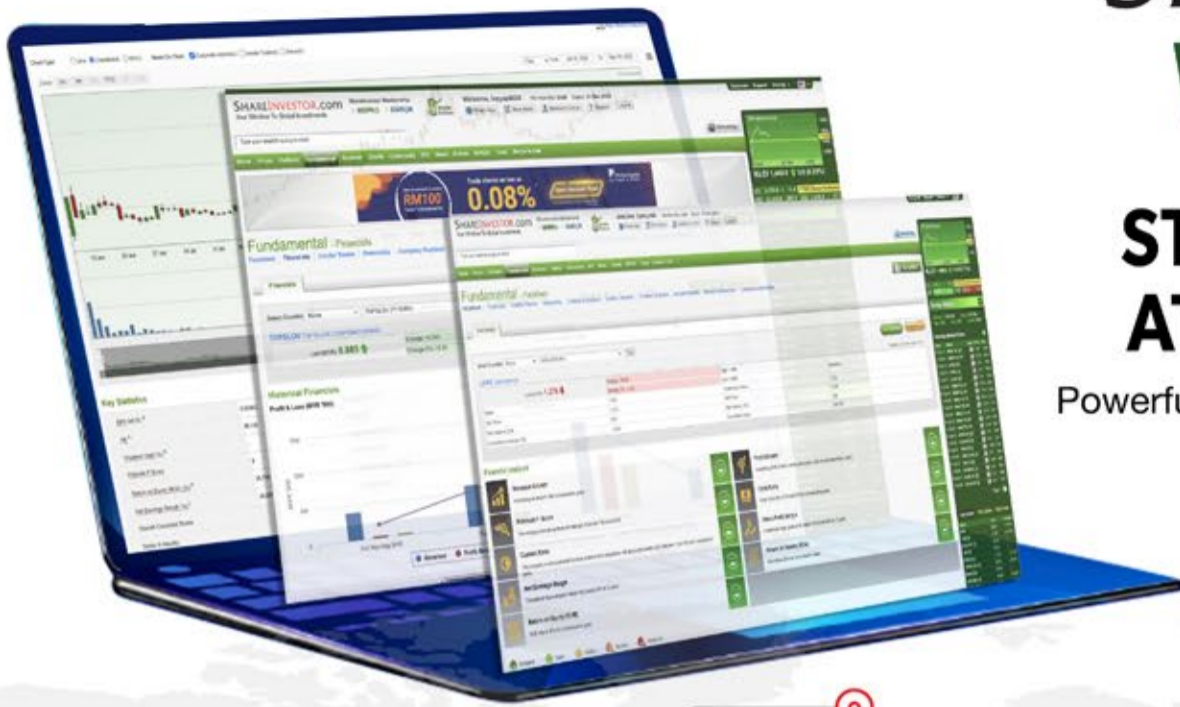


Disclaimer: The information on this page is provided as a service to readers. It does not constitute financial advice and/or any investment recommendations. Past performance is not indicative of future results. We assume no liability for damages resulting from or arising out of the use of such information. It would be best if you did your own research to make your personal investment decisions wisely or consult a licenced investment advisor.

SHAREINVESTOR WEBPRO

STOCK MARKET DATA AT YOUR FINGERTIPS

Powerful browser-based market analytics platform.
Access from anywhere



8 Markets Data

- ▶ Get access to data from Bursa, NYSE, Nasdaq, HKEX, SGX, IDX, SET & ASX

Portfolio Management

- ▶ Profit & Loss Summary
- ▶ Stock Alert
- ▶ News & Events filtering
- ▶ Customizable column layout

Fundamental Analysis

Financial Analysis Statement

- ▶ Profit & Loss
- ▶ Balance Sheet
- ▶ Cash Flow Statement
- ▶ More than 20 Financial Ratios
- ▶ Dividend Analysis

Technical Charting

- ▶ C² chart (Customisable & Comprehensive)

Brokers' Call

Intrinsic Value Calculator

FactSheet

- ▶ Key Stock Information
- ▶ Ownership
- ▶ Consensus Estimates
- ▶ Annual Report
- ▶ Historical Price
- ▶ Insider Trades

What's new on WebPro (Stable Release 12.1.0)

In our effort to keep our platform at the forefront of trading technology, we have added on some new features onto our C² Chart in WebPro

ADDITIONAL NEW FEATURES:

- ▶ Anchor selector for AVWAP, PVAT, and PAV indicators
- ▶ Volume profile indicator by date range
- ▶ Moving Average Cross indicator
- ▶ Guppy Multiple Moving Average (GMMA) indicator
- ▶ GoNoGo Trend Signal indicators
- ▶ SignalIQ

So what are you waiting for? Head to our platform today and check out our new trading chart features and indicators. We're confident that you'll love the improvements we've made and that they'll help you become a more successful trader.

Click here to start your 9 days FREE trial
(Valued at RM10)



Price & Volume Distribution Charts (Over 5 trading days as at Yesterday)

Technical Analysis

DEFINITION: Stocks with Technical Analysis showing Bullish Momentum and Price Uptrend

CHART GUIDE: Volume Distribution Chart is a statistical interpretation of the current sentiment on each stock in graphical format. The highest bar categorized as >150k is likely to be traded by institutions or super dealers, while the lowest bar categorized as <15k usually represents retail investors. "Buy Up" refers to more buyers snatching up the lots queued at selling price. "Sell Down" refers to sellers selling their shares to the buying queue.



ShareInvestor WebPro > Screener > Market Screener (FA & TA) > select BURSA > add criteria

A. Criteria

- > click Add Criteria
- Fundamental Analysis Conditions tab > select (i) Revenue
- Technical Analysis Conditions tab select (ii) Moving Average Below Close
- Technical Analysis Conditions tab select (iii) Average Volume
- Prices & Other Conditions tab > select (iv) Last Done Price
- Technical Analysis Conditions tab select (v) Moving Average Below Close
- Technical Analysis Conditions tab select (v) Moving Average Bullish Crossover

B. Conditions

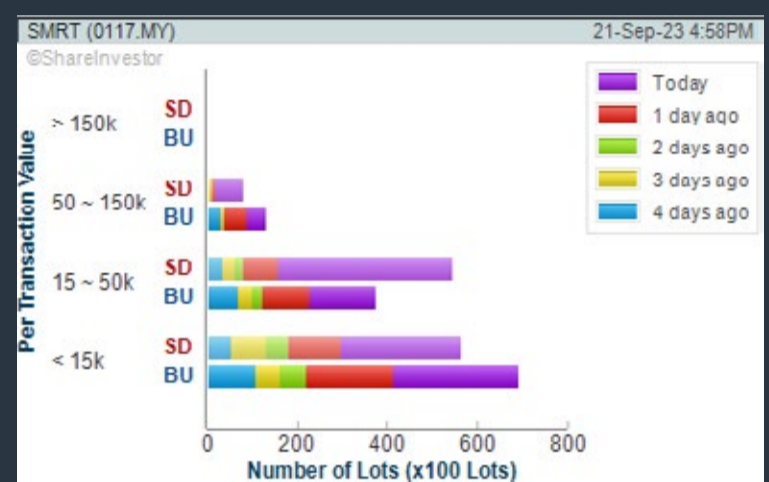
1. Revenue - select (more than) type (1) for the past select (1) financial year(s)
2. Moving Average Below Close - select (MA) type (20) below close price for type (1) days
3. Average Volume - type (5) days average volume type (10000) lots
4. Last Done Price - select (more than) type (0.3)
5. Moving Average Below Close - select (MA) type (10) below close price for type (1) days
6. Moving Average Bullish Crossover - select (MA) type (5) crossed above select (MA) type (10)

> click Save Template > Create New Template type (Non-Shariah Up-Trending Stocks) > click Create Click Save Template As > select Non-Shariah Up Trending Stocks > click Save
> click Screen Now (may take a few minutes)
Sort By: Select (Vol) Select (Desc)
Mouse over stock name > Charts > click C² Charts tab or Volume Distribution

SMRT HOLDINGS BERHAD (0117)

C² Chart

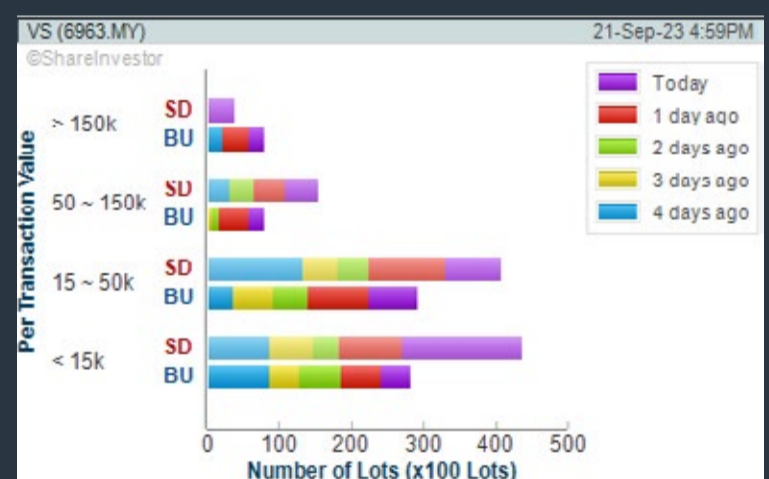
Analysis



V.S INDUSTRY BERHAD (6963)

C² Chart

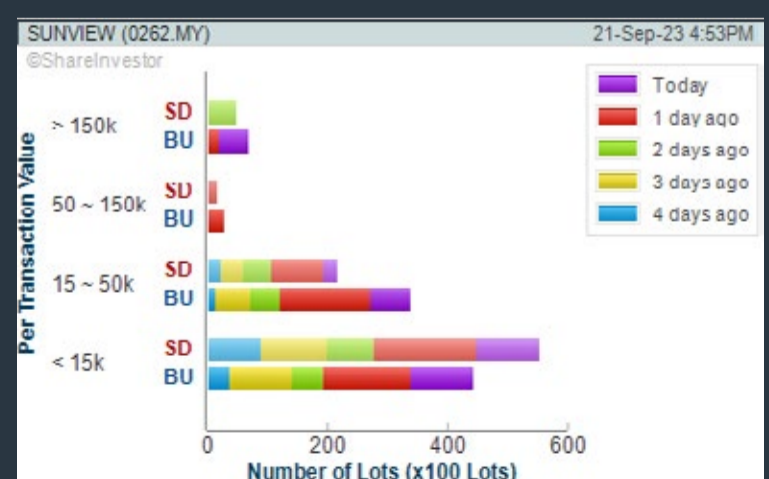
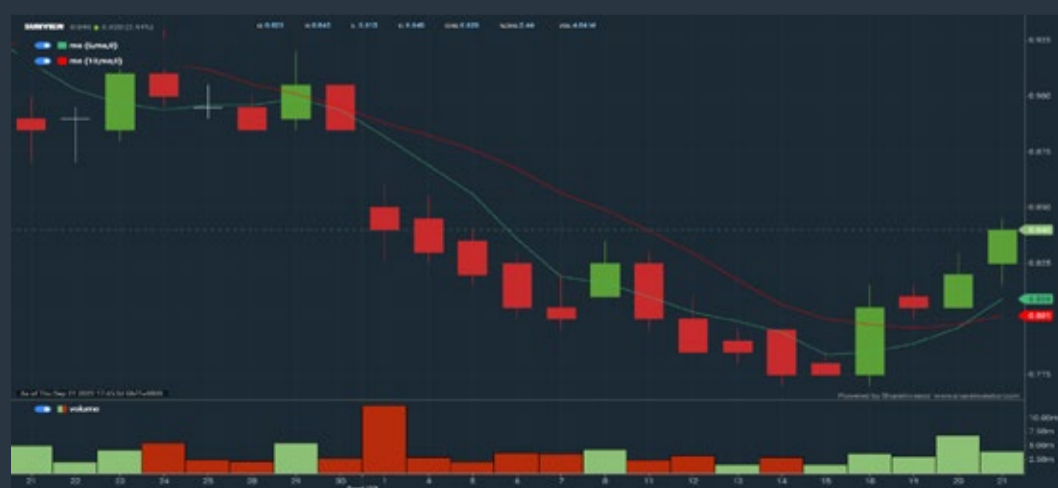
Analysis



SUNVIEW GROUP BERHAD (0262)

C² Chart

Analysis



Disclaimer: The information on this page is provided as a service to readers. It does not constitute financial advice and/or any investment recommendations. Past performance is not indicative of future results. We assume no liability for damages resulting from or arising out of the use of such information. It would be best if you did your own research to make your personal investment decisions wisely or consult a licenced investment advisor.

BURSASTATION

Professional

Scan. Chart. Analyse.

Be The Intelligent Investor

Stock Scanning

- Technical Analysis (TA) Market Scanner
- Fundamental Analysis (FA) Market Scanner

Monitoring

- Portfolio
- Stock Alerts
- Price Spread Calculator

Market Data

- Equities
- Derivatives

Charts

- Intraday Charts
- Interactive Charts
- Historical Charts
- Volume Distribution Charts

Price Movements

- Streaming Prices
- Time & Sales
- Trade Summary Matrix
- Quote Movements
- 5 Levels Market Depth
- Historical Price Download

Fundamentals

- Factsheets
- Financials
- Insider Trades

Brought to you as a collaborative effort by ShareInvestor and Bursa Malaysia, **BursaStation Professional** is designed with you, the user, in mind, as a user-friendly yet full of powerful features that will appeal to investors/traders who need instant access to fundamental, technical, and trading data, anytime, anywhere. **BursaStation Professional** is a state-of-the-art Stock Market Tracker with Charting Software that places in your hands the power to make better investment decisions.

[CLICK HERE TO START YOUR 14-DAYS FREE TRIAL](#)

Price & Total Shareholder Return (as at Yesterday)

Fundamental Analysis

DEFINITION: Share price of a company trading at a lower price as compared to its fundamentals (FA) such as financial performance and dividend, allowing it to be attractive to value investors.

CHART GUIDE: Total Shareholder Return (TSR) combines share price appreciation and dividend distributions paid to show the total return to the shareholder expressed as a percentage.



ShareInvestor WebPro > Screener > Market Screener (FA & TA) > select BURSA > add criteria

A. Criteria

- > click Add Criteria
- Fundamental Analysis Conditions tab (i) Price Earnings Ratio
- Fundamental Analysis Conditions tab >select (ii) CAGR of Net Earnings
- Fundamental Analysis Conditions tab >select (iii) Net Debt To Equity
- Fundamental Analysis Conditions tab >select (iv) Return On Equity (ROE)

B. Conditions

1. Price Earnings Ratio - select (less than) type (15) times now
2. CAGR of Net Earnings - select (more than) type (10) % for the past type (3) financial year(s)
3. Net Debt To Equity – select (less than) type (1) for the past select (1) financial year(s)
4. Return On Equity (ROE) – select (more than) type (10) % for the past select (1) financial year(s)

- > click Save Template > Create New Template type (Value Stock) > click Create
- > click Save Template as > select Value Companies > click Save
- > click Screen Now (may take a few minutes)
- Sort by: Select (PE Ratio) Select (Ascending)
- > Mouse over stock name > Factsheet > looking for Total Shareholder Return
- > Mouse over stock name > Charts > click C2 Charts tab

SYNERGY HOUSE BERHAD (0279)

C² Chart



Period	Dividend Received	Capital Appreciation	Total Shareholder Return	
Short Term Return	5 Days	-0.015		-3.95%
	10 Days	-0.025		-6.41%
	20 Days	-0.035		-8.75%
Medium Term Return	3 Months	-0.110		-2.67%

SUNMOW HOLDING BERHAD (03050)

C² Chart



Period	Dividend Received	Capital Appreciation	Total Shareholder Return	
Short Term Return	5 Days	-0.250		-17.88%
	10 Days	-0.050		-4.17%
	20 Days	-0.050		-4.17%
Medium Term Return	3 Months	+0.150		+16.16%
	6 Months	+0.520		+22.54%
	1 Year	+0.200		+21.85%
Annualised Return	Annualised	-		+21.85%

EDELTEQ HOLDINGS BERHAD (0278)

C² Chart



Period	Dividend Received	Capital Appreciation	Total Shareholder Return	
Short Term Return	5 Days	-0.015		-3.26%
	10 Days	-0.035		-7.29%
	20 Days	-0.030		-6.32%
Medium Term Return	3 Months	-0.240		-35.04%

Disclaimer: The information on this page is provided as a service to readers. It does not constitute financial advice and/or any investment recommendations. Past performance is not indicative of future results. We assume no liability for damages resulting from or arising out of the use of such information. It would be best if you did your own research to make your personal investment decisions wisely or consult a licenced investment advisor.

MAKE BETTER TRADING STRATEGIES

with

SHARE INVESTOR STATION



8 Markets Data

- ▶ Get access to data from Bursa, NYSE, Nasdaq, HKEX, SGX, IDX, SET & ASX

Dynamic Chart

- ▶ Candlestick Pattern Recognition
- ▶ 111 Indicators
- ▶ 39 Drawing Tools
- ▶ Performance Comparison Chart

Intraday Data

- ▶ Market Depth
- ▶ Trade Summary Matrix & Chart
- ▶ Times & Sales
- ▶ Intraday Market Ticker

Market Screener

- ▶ 96 criteria ranging from FA, TA, Consensus Estimate
- ▶ Real-time Data

Power Frame

- ▶ Combining few Dynamic Charts together with intraday information in one frame

Technical Analysis

Fundamental Analysis

Financial Analysis Statement

- ▶ Profit & Loss
- ▶ Balance Sheet
- ▶ Cash Flow Statement
- ▶ More than 20 Financial Ratios
- ▶ Dividend Analysis

FactSheet

- ▶ Key Stock Information
- ▶ Ownership
- ▶ Consensus Estimates
- ▶ Annual Report
- ▶ Historical Price
- ▶ Insider Trades

Start your 18 days
FREE trial now
(Valued at RM82)



Price & Total Shareholder Return (as at Yesterday)

Fundamental Analysis

DEFINITION: Company revenue is growing and making good quality of earnings with positive Free Cash Flow.

CHART GUIDE: Total Shareholder Return (TSR) combines share price appreciation and distributions paid to show the total return to the shareholder expressed as a percentage.



ShareInvestor WebPro > Screener > Market Screener (FA & TA) > select BURSA > add criteria

A. Criteria

1. Fundamental Analysis Conditions tab >select (i) Free Cash Flow, (ii) Revenue Growth, (iii) Gross Profit (Earnings) Margin, (iv) Quality of Earnings, (v) Total Shareholder Returns, > click Add Criteria
2. Fundamental Analysis Conditions tab >select (vi) Total Shareholder Returns > click Add Criteria

B. Conditions (Criteria Filters)

1. Free Cash Flow - select (more than) type (1) for the past select (1) financial year(s)
2. Revenue Growth - select (more than) type (1) for the past select (1) financial year(s)
3. Gross Profit (Earnings) Margin - select (more than) type (30) % for the past select (1) financial year(s)
4. Quality of Earnings - select (more than) type (1) for the past select (1) financial year(s)
5. Total Shareholder Return - select (more than) type (5) % for the past select (3) financial year(s)
6. Total Shareholder Return - select (more than) type (5) % for the past select (5) financial year(s)

- > click Save Template > Create New Template type (Growth Companies) > click Create
- > click Save Template as > select Growth Companies > click Save
- > click Screen Now (may take a few minutes)
- > Sort By: Select (Revenue Growth) Select (Desc)
- > Mouse over stock name > Factsheet > looking for Total Shareholder Return

SEAL INCORPORATED BERHAD (4286)

C² Chart

Analysis



Period	Dividend Received	Capital Appreciation	Total Shareholder Return
Short Term Return	5 Days	-0.005	-0.02 %
	10 Days	-0.020	-0.04 %
	20 Days	-	-
Medium Term Return	3 Months	-0.100	+22.47 %
	6 Months	-0.245	+81.67 %
	1 Year	-0.330	+152.48 %
Long Term Return	2 Years	-0.200	+57.97 %
	3 Years	-0.205	+60.29 %
	5 Years	-0.175	+47.20 %
Annualised Return	Annualised	-	+5.35 %

IGB BERHAD (5606)

C² Chart

Analysis



Period	Dividend Received	Capital Appreciation	Total Shareholder Return
Short Term Return	5 Days	-0.000	+1.41 %
	10 Days	-0.000	+1.85 %
	20 Days	-0.000	+2.36 %
Medium Term Return	3 Months	-0.190	+9.94 %
	6 Months	-0.207	+16.32 %
	1 Year	-0.072	+26.11 %
Long Term Return	2 Years	0.120	+42.33 %
	3 Years	0.220	+54.64 %
	5 Years	0.300	+67.72 %
Annualised Return	Annualised	-	+9.94 %

PECCA GROUP BERHAD (5271)

C² Chart

Analysis



Period	Dividend Received	Capital Appreciation	Total Shareholder Return
Short Term Return	5 Days	-	-
	10 Days	-0.000	+7.27 %
	20 Days	-0.255	+29.56 %
Medium Term Return	3 Months	-0.180	+18.00 %
	6 Months	-0.210	+22.28 %
	1 Year	-0.220	+25.64 %
Long Term Return	2 Years	-0.400	+63.29 %
	3 Years	-0.605	+74.90 %
	5 Years	0.120	+58.90 %
Annualised Return	Annualised	-	+45.76 %

Disclaimer: The information on this page is provided as a service to readers. It does not constitute financial advice and/or any investment recommendations. Past performance is not indicative of future results. We assume no liability for damages resulting from or arising out of the use of such information. It would be best if you did your own research to make your personal investment decisions wisely or consult a licenced investment advisor.



making
places
remarkable



usm.com

XTRA

XTRA FURNITURE SDN BHD
The Gardens Mall, Mid Valley City, Lot S-236 & 237
Lingkaran Syed Putra, 59200 Kuala Lumpur
T. +603 2282 9088 | living@xtrafurniture.com | xtrafurniture.com
XTRAFurniture | xtrafurnituremsia

Price & Total Shareholder Return (as at Yesterday)

Fundamental Analysis

DEFINITION: Company is paying out dividend with low or moderate leverage.

CHART GUIDE: Total Shareholder Return (TSR) combines share price appreciation and distributions paid to show the total return to the shareholder expressed as a percentage.



ShareInvestor WebPro > Screener > Market Screener (FA & TA) > select BURSA > add criteria

A. Criteria

- > click Add Criteria
- Fundamental Analysis Conditions tab >select (i) Dividend Yield
- Fundamental Analysis Conditions tab >select (ii) Dividend Payout (Historical)
- Fundamental Analysis Conditions tab >select (iii) Total Debt To Equity
- Fundamental Analysis Conditions tab >select (iv) Total Shareholder Returns
- Fundamental Analysis Conditions tab >select (v) Total Shareholder Returns
- Fundamental Analysis Conditions tab / >select (vi) CAGR of Dividend Per Share

• Fundamental Analysis Conditions tab >select (vii) CAGR of Dividend Per Share

B. Conditions (Criteria Filters)

1. Dividend Yield - select (more than) type (1) % for the past select (1) financial year(s)
2. Dividend Payout (Historical) - select (between) type (0.5) to type (1) times for the past select (1) financial year(s)
3. Total Debt to Equity – select (less than) type (1) for the past select (1) financial year(s)
4. Total Shareholder Return – select (more than) type (5) % for the past select (3) financial year(s)
5. Total Shareholder Return – select (more than) type (5) % for the past select (5) financial year(s)

6. CAGR of Dividend Per Share – select (less than) type (30) % for the past select (5) financial year(s)
7. CAGR of Dividend Per Share – select (more than) type (1) % for the past select (5) financial year(s)

- > click Save Template > Create New Template type (Dividend Companies) > click Create
- > click Save Template as > select Dividend Companies > click Save
- > click Screen Now (may take a few minutes)
- > Sort By: Select (Dividend Yield) Select (Desc)
- > Mouse over stock name > Factsheet > looking for Total Shareholder Return

JAYCORP BERHAD (7152)

C² Chart



Period	Dividend Received	Capital Appreciation	Total Shareholder Return	
Short Term Return	5 Days	-	-	
	10 Days	-	-	
	20 Days	-	+0.010	+1.43%
Medium Term Return	3 Months	-	+0.015	+2.95%
	6 Months	-	+0.015	+2.95%
	1 Year	-	+0.085	+9.71%
Long Term Return	2 Years	0.055	-0.125	-8.28%
	3 Years	0.176	+0.180	+68.04%
	5 Years	0.355	+0.287	+140.41%
Annualized Return	Annualized	-	+15.18%	

FORMOSA PROSONIC INDUSTRIES (9172)

C² Chart



Period	Dividend Received	Capital Appreciation	Total Shareholder Return	
Short Term Return	5 Days	-	-0.020	-0.75%
	10 Days	-	-0.030	-1.13%
	20 Days	-	-0.040	-1.47%
Medium Term Return	3 Months	-	-0.200	-11.67%
	6 Months	-	-0.260	-15.75%
	1 Year	-	-0.490	-32.89%
Long Term Return	2 Years	0.230	-1.220	-28.08%
	3 Years	0.540	+1.180	+104.33%
	5 Years	0.820	+1.120	+107.68%
Annualized Return	Annualized	-	+15.67%	

GAS MALAYSIA BERHAD (5209)

C² Chart



Period	Dividend Received	Capital Appreciation	Total Shareholder Return	
Short Term Return	5 Days	-	-	
	10 Days	-	-0.040	-5.26%
	20 Days	-	-0.030	-8.65%
Medium Term Return	3 Months	-	-0.020	-0.87%
	6 Months	-	-0.150	-4.73%
	1 Year	-	-0.410	-15.95%
Long Term Return	2 Years	0.177	-0.320	-18.41%
	3 Years	0.205	-0.300	-21.91%
	5 Years	0.550	-0.120	+23.38%
Annualized Return	Annualized	-	+3.29%	

Disclaimer: The information on this page is provided as a service to readers. It does not constitute financial advice and/or any investment recommendations. Past performance is not indicative of future results. We assume no liability for damages resulting from or arising out of the use of such information. It would be best if you did your own research to make your personal investment decisions wisely or consult a licenced investment advisor.

Week: 15 Sept – 21 Sept 2023

More Brokers' Call 

AMINVESTMENT BANK <small>... See More</small>	Call	Target Price	Release Date
Duopharma Biotech Berhad (7148)	BUY	RM1.69	15 Sep 2023
Chin Teck Plantations Berhad (1929)	HOLD	RM7.55	18 Sep 2023
Cape Ems Berhad (5311)	BUY	RM1.47	19 Sep 2023
Syarikat Takaful Malaysia Keluarga Berhad (6139)	BUY	RM4.80	20 Sep 2023

BIMB <small>... See More</small>	Call	Target Price	Release Date
Hibiscus Petroleum Berhad (5199)	BUY	RM1.30	17 Sep 2023

CGS CIMB <small>... See More</small>	Call	Target Price	Release Date
Petronas Chemicals Group Berhad (5183)	REDUCE	RM6.85	16 Sep 2023
CelcomDigi Berhad (6947)	ADD	RM5.18	18 Sep 2023

KENANGA <small>... See More</small>	Call	Target Price	Release Date
BP Plastics Holding Bhd (5100)	MARKET PERFORM	RM1.23	15 Sep 2023
Syarikat Takaful Malaysia Keluarga Berhad (6139)	OUTPERFORM	RM4.10	19 Sep 2023
Scientex Berhad (4731)	UNDERPERFORM	RM3.23	21 Sep 2023
Supermax Corporation Berhad (7106)	MARKET PERFORM	RM0.85	21 Sep 2023

MIDF <small>... See More</small>	Call	Target Price	Release Date
Capital A Berhad (5099)	NEUTRAL	RM0.90	21 Sep 2023
Pekat Group Berhad (0233)	BUY	RM0.63	21 Sep 2023
Rhong Khen International Berhad (7006)	NEUTRAL	RM1.35	21 Sep 2023

UOB KAYHIAN <small>... See More</small>	Call	Target Price	Release Date
Malaysia Marine And Heavy Engineering Holdings Berhad (5186)	BUY	RM0.70	19 Sep 2023
PJBUMI Berhad (7163)	BUY	RM1.29	19 Sep 2023
Bina Darulaman Berhad (6173)	BUY	RM0.39	20 Sep 2023
Cape EMS Berhad (5311)	BUY	RM1.68	20 Sep 2023

DEFINITION: Top 9 stocks with Technical Analysis plus Pattern Matching by 60 pre-defined indicators by the system showing a higher probability of bullish sentiment on the share price.



ShareInvestor WebPro > Screener > Predefined TA Screens > select market BURSA > Most Long Signals > click Scan Results or mouse over each company

I-BHD (4251.MY)

IBHD

Price updated at 21 Sep 2023 16:45

Last: 0.275	Change: -0.010	Volume: 4,891
	Change (%): -3.51	Range: 0.275 - 0.285

TA Scanner Results based on historical data up to 21 Sep 2023

Condition	Signal	Explanation
Bollinger Band: Bullish Long Term Volatility Breakout and Trending	Long	1. Close price above upper bollinger band(33,1). 2. Volume above average volume(50). 3. Average volume(50) is above 300,000.
Bollinger Band: Bullish Short Term Volatility Breakout and Trending	Long	1. Close price above upper bollinger band(33,1). 2. Volume above average volume(10). 3. Average volume(10) is above 300,000.
Bollinger Band: High Above Upper Bollinger Band	Neutral	1. High above upper bollinger band(14,2). 2. Average volume(5) is above 100,000.
DM: Bullish Directional Movement	Long	-DI(14) crossed below +DI(14)
Donchian Channels: High Above Upper Donchian Channels	Long	High crossed above the upper Donchian Channel(14,4)
MA: Bullish Price Crossover	Long	1. Close price crossed above MA(40) within the last 1 day. 2. Previous day close price is below the MA(10) for the last 5 days
Parabolic SAR: Bearish Parabolic SAR Reversal	Neutral	1. Parabolic SAR 1 day ago above close price 1 day ago for the last 5 days. 2. Parabolic SAR below close price
Price: New 52 Week High	Long	1. Stock reach a new 52 week high. 2. Average volume(30) is above 50000.
Volume: Volume Spike	Long	1. Volume is more than 500% above average volume(10). 2. Volume above 200000. 3. Close price above 0.10
Williams %R: Bearish Williams %R	Short	1. Williams %R(26) between 0 and -20. 2. Average volume(5) is above 100,000.

EKOVEST BERHAD (8877.MY)

EKOVEST

Price updated at 21 Sep 2023 16:59

Last: 0.565	Change: -0.005	Volume: 541,012
	Change (%): -0.88	Range: 0.550 - 0.580

TA Scanner Results based on historical data up to 21 Sep 2023

Condition	Signal	Explanation
Bollinger Band: High Above Upper Bollinger Band	Neutral	1. High above upper bollinger band(14,2). 2. Average volume(5) is above 100,000.
CCI: Bearish CCI Overbought And Reversing	Short	1. CCI(26) above 100 and CCI(26) 1 day ago increasing for the last 3 days. 2. CCI(26) below CCI(26) 1 day ago
Donchian Channels: High Above Upper Donchian Channels	Long	High crossed above the upper Donchian Channel(14,4)
MACD: Bullish MACD Crossover	Long	1. MACD(12,26) diff line crossed above the MACD(12,26) signal line. 2. MACD Histogram(12,26) is above 0.
Parabolic SAR: Bearish Parabolic SAR Reversal	Neutral	1. Parabolic SAR 1 day ago above close price 1 day ago for the last 5 days. 2. Parabolic SAR below close price
Price: New 52 Week High	Long	1. Stock reach a new 52 week high. 2. Average volume(30) is above 50000.
Volume: 5 Days large value Buy Up trade	Long	1. 150K value Buy Up greater than Sell Down by 20% for 5 days. 2. 50K-100K value Buy Up greater than Sell Down by 20% for 5 days. 3. Average volume(10) is above 1000000
Volume: Consecutive Days Of Increasing Average Volume	Long	1. Average Volume(20) has been increasing over the last 2 weeks. 2. Average volume(20) is above 100000
Williams %R: Bearish Williams %R	Short	1. Williams %R(26) between 0 and -20. 2. Average volume(5) is above 100,000.

ACME HOLDINGS BERHAD (7131.MY)

ACME

Price updated at 21 Sep 2023 16:59

Last: 0.285	Change: +0.020	Volume: 56,373
	Change (%): +7.55	Range: 0.260 - 0.285

TA Scanner Results based on historical data up to 21 Sep 2023

Condition	Signal	Explanation
Bollinger Band: Bullish Long Term Volatility Breakout and Trending	Long	1. Close price above upper bollinger band(33,1). 2. Volume above average volume(50). 3. Average volume(50) is above 300,000.
Bollinger Band: Bullish Short Term Volatility Breakout and Trending	Long	1. Close price above upper bollinger band(33,1). 2. Volume above average volume(10). 3. Average volume(10) is above 300,000.
Bollinger Band: High Above Upper Bollinger Band	Neutral	1. High above upper bollinger band(14,2). 2. Average volume(5) is above 100,000.
Donchian Channels: High Above Upper Donchian Channels	Long	High crossed above the upper Donchian Channel(14,4)
MACD: Bullish MACD Crossover	Long	1. MACD(12,26) diff line crossed above the MACD(12,26) signal line. 2. MACD Histogram(12,26) is above 0.
Price: New 52 Week High	Long	1. Stock reach a new 52 week high. 2. Average volume(30) is above 50000.
Volume: Volume Spike	Long	1. Volume is more than 500% above average volume(10). 2. Volume above 200000. 3. Close price above 0.10

OPCOM HOLDINGS BERHAD (0035.MY)

OPCOM

Price updated at 21 Sep 2023 16:57

Last: 0.725	Change: -0.025	Volume: 18,649
	Change (%): -3.33	Range: 0.720 - 0.765

TA Scanner Results based on historical data up to 21 Sep 2023

Condition	Signal	Explanation
Bollinger Band: Bullish Long Term Volatility Breakout and Trending	Long	1. Close price above upper bollinger band(33,1). 2. Volume above average volume(50). 3. Average volume(50) is above 300,000.
Bollinger Band: Bullish Short Term Volatility Breakout and Trending	Long	1. Close price above upper bollinger band(33,1). 2. Volume above average volume(10). 3. Average volume(10) is above 300,000.
Bollinger Band: High Above Upper Bollinger Band	Neutral	1. High above upper bollinger band(14,2). 2. Average volume(5) is above 100,000.
DM: Bullish Directional Movement	Long	-DI(14) crossed below +DI(14)
Donchian Channels: High Above Upper Donchian Channels	Long	High crossed above the upper Donchian Channel(14,4)
MACD: Bullish MACD Crossover	Long	1. MACD(12,26) diff line crossed above the MACD(12,26) signal line. 2. MACD Histogram(12,26) is above 0.
Parabolic SAR: Bearish Parabolic SAR Reversal	Neutral	1. Parabolic SAR 1 day ago above close price 1 day ago for the last 5 days. 2. Parabolic SAR below close price
RSI: Short Term RSI 50 Bullish Crossover	Long	1. RSI(20) crossed above 50 within the last 1 day and RSI(20) 1 day ago below 50 for the last 5 days. 2. Volume above average volume(125). 3. Average volume(5) is above 100,000.
Volume: Volume Spike	Long	1. Volume is more than 500% above average volume(10). 2. Volume above 200000. 3. Close price above 0.10
Williams %R: Bearish Williams %R	Short	1. Williams %R(26) between 0 and -20. 2. Average volume(5) is above 100,000.



PUNCAK NIAGA HOLDINGS BERHAD (6807.MY)

PUNCAK

Price updated at 21 Sep 2023 16:54

Last: 0.340	Change: -0.005	Volume: 13,111
	Change (%): -1.45	Range: 0.335 - 0.350

TA Scanner Results based on historical data up to 21 Sep 2023

Condition	Signal	Explanation
Bollinger Band: Bullish Long Term Volatility Breakout and Trending	Long	1. Close price above upper bollinger band(33,1). 2. Volume above average volume(50). 3. Average volume(50) is above 300,000.
Bollinger Band: Bullish Short Term Volatility Breakout and Trending	Long	1. Close price above upper bollinger band(33,1). 2. Volume above average volume(10). 3. Average volume(10) is above 300,000.
Candlestick: Bullish Engulfing	Long	Bullish: Engulfing
DM: Bullish Directional Movement	Long	-DI(14) crossed below +DI(14)
MA: Bullish Price Crossover	Long	1. Close price crossed above MA(40) within the last 1 day. 2. Previous day close price is below the MA(10) for the last 5 days
Williams %R: Bearish Williams %R	Short	1. Williams %R(26) between 0 and -20. 2. Average volume(5) is above 100,000.



PECCA GROUP BERHAD (5271.MY)

PECCA

Price updated at 21 Sep 2023 16:57

Last: 1.180	Change: -0.040	Volume: 45,729
	Change (%): -3.28	Range: 1.160 - 1.230

TA Scanner Results based on historical data up to 21 Sep 2023

Condition	Signal	Explanation
Donchian Channels: High Above Upper Donchian Channels	Long	High crossed above the upper Donchian Channel(14,4)
MA: Medium Term Bullish Moving Average Crossover	Long	MA(25) crossed above MA(50) within the last 1 day.
Price: New 52 Week High	Long	1. Stock reach a new 52 week high. 2. Average volume(30) is above 50000.
Volume: 10 Days large value Buy Up trade	Long	1. 150K value Buy Up greater than Sell Down by 20% for 10 days. 2. 50K-100K value Buy Up greater than Sell Down by 20% for 10 days. 3. Average volume(10) is above 1000000
Volume: 5 Days large value Buy Up trade	Long	1. 150K value Buy Up greater than Sell Down by 20% for 5 days. 2. 50K-100K value Buy Up greater than Sell Down by 20% for 5 days. 3. Average volume(10) is above 1000000
Williams %R: Bearish Williams %R	Short	1. Williams %R(26) between 0 and -20. 2. Average volume(5) is above 100,000.



JISHAN BERHAD (03040.MY)

JISHAN

Price updated at 21 Sep 2023 11:19

Last: 0.405	Change: -	Volume: 100
	Change (%): -	Range: 0.405 - 0.405

TA Scanner Results based on historical data up to 21 Sep 2023

Condition	Signal	Explanation
Bollinger Band: High Above Upper Bollinger Band	Neutral	1. High above upper bollinger band(14,2). 2. Average volume(5) is above 100,000.
DM: Bullish Directional Movement	Long	-DI(14) crossed below +DI(14)
Donchian Channels: High Above Upper Donchian Channels	Long	High crossed above the upper Donchian Channel(14,4)



BANK ISLAM MALAYSIA BERHAD (5258.MY)

BIMB

Price updated at 21 Sep 2023 16:59

Last: 2.140	Change: -0.020	Volume: 5,065
	Change (%): -0.93	Range: 2.130 - 2.170

TA Scanner Results based on historical data up to 21 Sep 2023

Condition	Signal	Explanation
Bollinger Band: Bullish Long Term Volatility Breakout and Trending	Long	1. Close price above upper bollinger band(33,1). 2. Volume above average volume(50). 3. Average volume(50) is above 300,000.
Bollinger Band: Bullish Short Term Volatility Breakout and Trending	Long	1. Close price above upper bollinger band(33,1). 2. Volume above average volume(10). 3. Average volume(10) is above 300,000.
Candlestick: Bullish Engulfing	Long	Bullish: Engulfing
DM: Bullish Directional Movement	Long	-DI(14) crossed below +DI(14)
Donchian Channels: High Above Upper Donchian Channels	Long	High crossed above the upper Donchian Channel(14,4)
Williams %R: Bearish Williams %R	Short	1. Williams %R(26) between 0 and -20. 2. Average volume(5) is above 100,000.



MAH SING GROUP BERHAD (8583.MY)

MAHSING

Price updated at 21 Sep 2023 16:59

Last: 0.850	Change: +0.010	Volume: 141,071
	Change (%): +1.19	Range: 0.835 - 0.865

TA Scanner Results based on historical data up to 21 Sep 2023

Condition	Signal	Explanation
Bollinger Band: High Above Upper Bollinger Band	Neutral	1. High above upper bollinger band(14,2). 2. Average volume(5) is above 100,000.
CCI: Bearish CCI Overbought And Reversing	Short	1. CCI(26) above 100 and CCI(26) 1 day ago increasing for the last 3 days. 2. CCI(26) below CCI(26) 1 day ago
Donchian Channels: High Above Upper Donchian Channels	Long	High crossed above the upper Donchian Channel(14,4)
Price: Consecutive Days Gains	Long	1. Close price has been increasing over the last 5 days. 2. Average volume(5) above 100,000.
Price: New 52 Week High	Long	1. Stock reach a new 52 week high. 2. Average volume(30) is above 50000.
Volume: 10 Days large value Buy Up trade	Long	1. 150K value Buy Up greater than Sell Down by 20% for 10 days. 2. 50K-100K value Buy Up greater than Sell Down by 20% for 10 days. 3. Average volume(10) is above 1000000
Volume: 5 Days large value Buy Up trade	Long	1. 150K value Buy Up greater than Sell Down by 20% for 5 days. 2. 50K-100K value Buy Up greater than Sell Down by 20% for 5 days. 3. Average volume(10) is above 1000000
Williams %R: Bearish Williams %R	Short	1. Williams %R(26) between 0 and -20. 2. Average volume(5) is above 100,000.

Disclaimer: The information on this page is provided as a service to readers. It does not constitute financial advice and/or any investment recommendations. Past performance is not indicative of future results. We assume no liability for damages resulting from or arising out of the use of such information. It would be best if you did your own research to make your personal investment decisions wisely or consult a licenced investment advisor.

Condition	Signal	Explanation
MA: Medium Term Bullish Moving Average Crossover	Long	MA(25) crossed above MA(50) within the last 1 day.
MA: Short Term Bullish Moving Average Crossover	Long	MA(10) crossed above MA(15) within the last 1 day.
Volume: Volume Spike	Long	1. Volume is more than 500% above average volume(10). 2. Volume above 200000. 3. Close price above 0.10

RM132.6B APPROVED INVESTMENTS IN FIRST HALF OF 2023 - MITI

The Ministry of Investment, Trade and Industry (Miti) expects approved investments to record stronger growth in 2H2023, on track to hit its target for the year, after achieving RM132.6 billion worth of approved investment in 1H2023.

Noting his pleasure with the achievement in 1H2023, having secured RM132.6 billion, representing 60.3% of the annual target he said that this achievement closely mirrors the 10-year average of RM222.6 billion, emphasising consistent efforts in attracting quality investments and driving economic growth.

Malaysia attracted a total of RM132.6 billion (US\$28.4 billion) worth of approved investments in the services, manufacturing and primary sectors involving 2,651 projects from January to June and is expected to create 51,853 job opportunities in the country. The investments are a vote of confidence in Malaysia's economy and its offerings to investors, including a government that supports and develops pro-business

policies and continuously enhances the ease of doing business in Malaysia.

Malaysia is a trusted hub for the ecosystem, supply chain, capital and talent, flows of goods and data and growing innovation capabilities and managed to attract roughly a similar amount of approved investments in 1H2023 y-o-y, reflecting confidence in the nation's economic growth prospects despite global demand slowdown and a higher interest rate environment in key markets.

Direct domestic investment increased by 58% and represented over 52% of approved investments which is a clear vote of confidence in the Madani Economy policies. As various global supply chains shift to Asia, the key aim is to position Malaysia as a regional hub for both international companies and entrepreneurs seeking to expand their footprint in Asia. To that end, the recently unveiled New Industrial Master Plan (NIMP) 2023 represents a pivotal step in Malaysia's journey toward sustainable industrial transformation and enhanced global competitiveness.

Domestic direct investment (DDI) accounted for 52.2% of the total approved investment, or RM69.3 billion, driven by investments in the services sector, particularly real estate and primary sector. The government's commitment to ensure quality housing for the people has been a major factor in this growth. Miti and the Malaysian Investment Development Authority (MIDA) remained steadfast in their commitment to achieve a balanced blend of foreign direct investment (FDI) and DDI. This balance is clearly demonstrated in the amount of FDI, which contributed 47.8%, or RM63.3 billion, to the approved investments.

The country's source of FDI came from Singapore with approved investments totalling RM13.7 billion followed by Japan RM9.1 billion, the Netherlands RM9 billion, China RM8.4 billion and British Virgin Islands RM7.1 billion. Five states/zones recorded significant improvement in approved investments, namely Kuala Lumpur (RM31.7 billion), Selangor (RM29.7 billion), Kedah (RM14.6 billion), Johor (RM14.2 billion) and Sabah (RM9 billion). Together, they accounted for 74.9% of the total approved investments.

Putrajaya to unveil KL20 – a development blueprint for VCs & startup ecosystem in 1Q2024 - Rafizi

According to Minister of Economy Mohd Rafizi Ramli, the government is aiming to ascend Kuala Lumpur to be among the top 20 cities globally that offer the best ecosystem to incubate startup businesses, up from the current 42nd place. To achieve the aspiration, a blueprint called KL20 will be announced in the first quarter of next year. He was speaking after launching a RM500 million new fund for Kumpulan Wang Persaraan (Diperbadankan) (KWAP) that will focus on investments in VC funds and startups in Malaysia.

Putrajaya intends to achieve this goal by forming a marketplace that is conducive for startups to be incubated, through measures like attracting more foreign venture capitals (VCs) to invest in Malaysia, streamlining efforts to cut red tape that deters the establishment of new businesses, and organising tech conferences by early next year to encourage engagement within the startup community.

With the idea to place Kuala Lumpur in the top 20 of global startup ecosystems in the world, his ministry is putting everything in place. It's going to be in the first quarter of 2024. The government hopes that the KL20 blueprint will congregate the world's most renowned sovereign investors, VCs, incubators and founders.

During that conference (KL20), the government will also announce a series of policy changes to make Kuala Lumpur the best place to build a startup with the full commitment of the government. Technology is not just a concept or a status symbol but is also something that must affect the lives of people in a positive way. After the blueprints and roadmaps, now is the time to think about the use cases that could be developed: computing powers needed to run advanced models, location nodes for incubators, funding schemes, university tie-ups and a host of other initiatives.

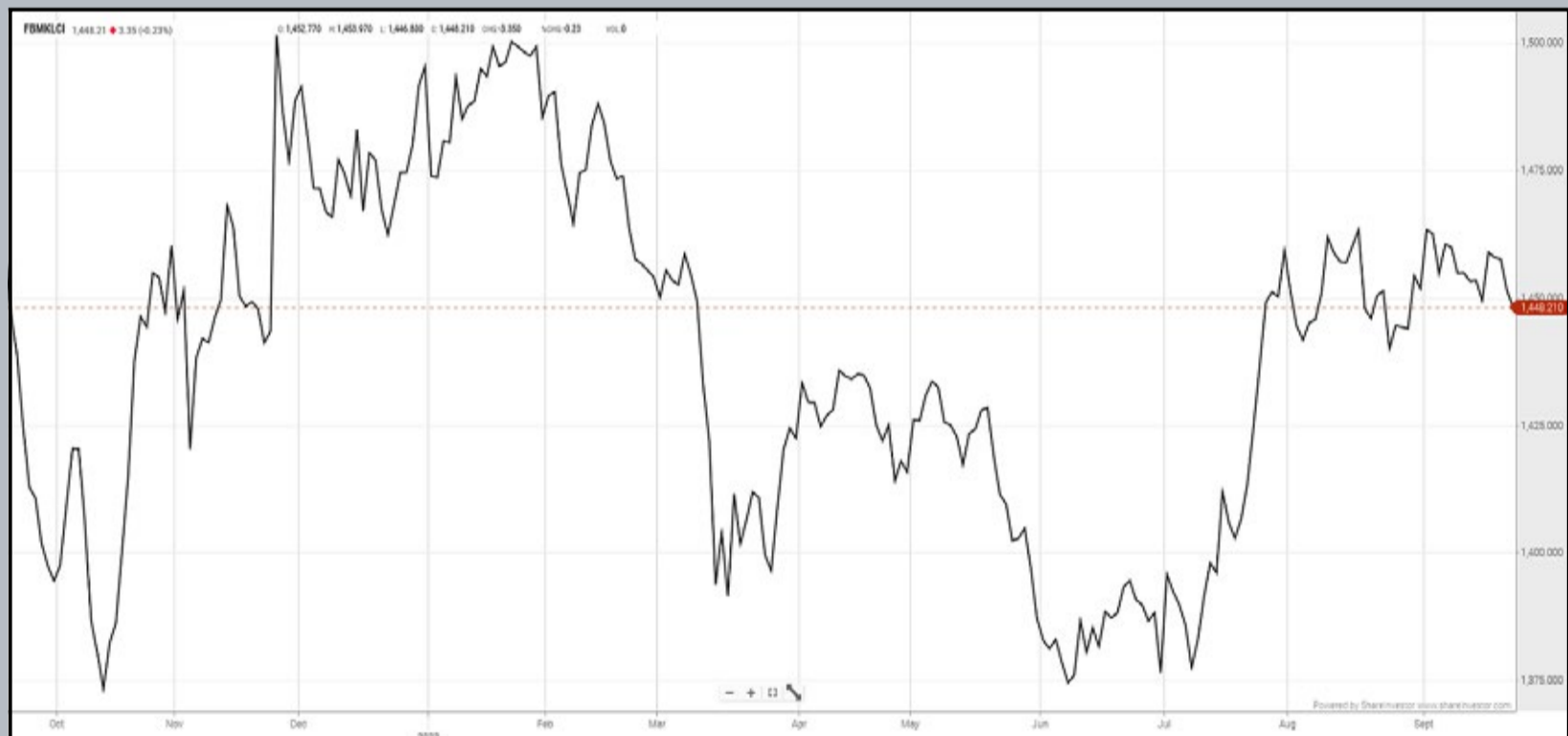
He said that when unveiled, at the heart of KL20 will be that capital follows talents and ideas in startups. The like-mindedness of a group of people usually creates the scene. Once the scene is there, all the other things will fall in place. Based on the government's recent engagement

with foreign VCs, it appears that the latter are keener on investments in Malaysia than locally established VCs.

He ended by saying that they are more excited than local VCs to come here. And most of the time, VCs are quite agnostic. They follow value, and they follow scalability and talent more than anything else.

EYE ON THE MARKETS

On Thursday (21Sept), the Ringgit closed at 4.6890 against the USD and 3.4285 to the Sing Dollar. On Monday (18Sept), the FBM KLCI opened at 1456.96. As at Thursday (21Sept) 5:00pm, the FBM KLCI closed down 8.75 points at 1448.21. Over in US, the overnight Dow Jones Industrial Average closed down 370.46 points (-1.08%) to 34,070.42 whilst the NASDAQ shed 245.14 points (-1.82%) to 13,223.99.



KLCI 1 Year Chart

**CHECK OUT
SHAREINVESTOR
BROKERS' CALL**

Weekly Buy/Sell/Hold calls from leading Malaysian Brokerages.

[Go To Brokers' Call](#)

Over 5 trading days



ShareInvestor WebPro (www.shareinvestor.com/my)

1. Price > Stock Prices
2. Select Market: NASDAQ / NYSE / IDX / SET / HKEX / SGX (One bourse at a time)
3. select Stocks Tab
4. select Ranking Top Gainers or Top Losers (Over 5 Trading Days)
5. Mouse over Column Layout > select Edit Customs > select Name > select Last Done Price > select 5 Days Change > select 52 Weeks High > select 52 Weeks Low > Mouse Over Column Layout > select Custom

NASDAQ (USD)

Top Gainers

Name	Last Done	Change Over 5 Days	52 Weeks High	52 Weeks Low
FIRST CITIZENS BANCSHARES INC NRTH	1,380.000	+23.760	1,512.070	505.840
SPLUNK INC	144.430	+22.280	125.910	65.000
MAPLEBEAR INC	30.650	+17.600	42.950	33.670
CAMBRIDGE BANCORP	62.940	+10.910	93.000	44.620
INTER PARFUMS INC	143.630	+9.850	161.170	72.470

Top Losers

Name	Last Done	Change Over 5 Days	52 Weeks High	52 Weeks Low
BOOKING HOLDINGS INC	3,036.270	-161.290	3,251.709	1,616.850
MERCADOLIBRE INC	1,293.280	-90.150	1,451.560	754.760
EQUINIX INC	733.510	-48.660	821.630	494.890
LAM RESEARCH CORP	610.390	-46.040	726.525	299.592
NVIDIA CORP	410.170	-45.640	502.660	108.130

NYSE (USD)

Top Gainers

Name	Last Done	Change Over 5 Days	52 Weeks High	52 Weeks Low
TEXAS PACIFIC LAND CORPORATION	1,870.470	+76.550	2,739.000	1,266.210
HUMANA INC	494.060	+22.490	571.300	423.290
MCKESSON CORPORATION	438.240	+18.640	444.800	331.750
UNITEDHEALTH GROUP INC	501.140	+17.540	558.100	436.510
CABLE ONE INC	638.340	+17.180	984.790	602.700

Top Losers

Name	Last Done	Change Over 5 Days	52 Weeks High	52 Weeks Low
BERKSHIRE HATHAWAY INC	551,030.000	-8,469.990	566,569.970	393,012.250
NVR INC	5,888.470	-312.780	6,525.000	3,816.555
METTLER-TOLEDO INTERNATIONAL INC	1,094.030	-63.640	1,615.970	1,065.550
WHITE MOUNTAINS INSURANCE GROUP	1,506.930	-60.140	1,617.000	1,172.000
CHIPOTLE MEXICAN GRILL	1,866.010	-46.490	2,175.010	1,344.050

IDX (Rupiah)

Top Gainers

Name	Last Done	Change Over 5 Days	52 Weeks High	52 Weeks Low
RODA VIVATEX	14,500.000	+1,875.000	17,000.000	8,600.000
GUDANG GARAM TBK	25,300.000	+1,050.000	30,050.000	16,500.000
UNITED TRACTORS	28,325.000	+925.000	35,100.000	22,200.000
PABRIK KERTAS TJIWI KIMIA	9,700.000	+825.000	10,025.000	5,600.000
PLAZA INDONESIA REALTY	3,300.000	+550.000	3,450.000	1,940.000

Top Losers

Name	Last Done	Change Over 5 Days	52 Weeks High	52 Weeks Low
METROPOLITAN KENTJ	33,100.000	-2,400.000	46,200.000	16,950.000
HOTEL SAHID JAYA INTERNATIONAL	2,230.000	-1,170.000	3,620.000	1,390.000
MNC DIGITAL ENTERTAINMENT TBK	2,950.000	-750.000	5,175.000	1,655.000
INDOCEMENT TUNGGAL PRAKARSA	10,250.000	-650.000	11,850.000	9,000.000
MD PICTURES TBK	2,880.000	-620.000	4,020.000	610.000

SET (Thai Baht)

Top Gainers

Name	Last Done	Change Over 5 Days	52 Weeks High	52 Weeks Low
TFMAMA	197.500	+3.500	206.000	187.000
SCGP	40.500	+2.500	60.500	34.500
SSC	36.750	+2.500	42.000	29.000
COCOCO	10.300	+2.400	10.400	7.700
TNL	36.500	+2.000	49.750	22.410

Top Losers

Name	Last Done	Change Over 5 Days	52 Weeks High	52 Weeks Low
OHTL	480.000	-16.000	610.000	410.000
SCB	108.500	-6.000	118.500	97.500
EGCO	125.500	-5.000	178.500	124.500
KBANK	127.000	-4.000	157.500	121.500
SCC	306.000	-4.000	360.000	300.000

HKEX (HKD)

Top Gainers

Name	Last Done	Change Over 5 Days	52 Weeks High	52 Weeks Low
ASYMCHEM LABORATORIES (TIANJIN) CO	104.100	+6.400	140.800	80.350
BEIJING LUZHU BIOTECHNOLOGY CO LTD	39.000	+6.300	42.000	16.140
ENN ENERGY HOLDINGS LTD	63.750	+6.050	127.200	53.850
YUM CHINA HOLDINGS INC	439.800	+5.800	514.500	300.000
SICHUAN KELUN-BIOTECH BIOPHARMACEUT	79.900	+5.550	89.600	60.600

Top Losers

Name	Last Done	Change Over 5 Days	52 Weeks High	52 Weeks Low
TENCENT HOLDINGS LIMITED (700.HK)	303.000	-16.800	416.600	188.213
TENCENT HOLDINGS LIMITED (80700.HK)	283.000	-14.600	342.000	282.200
NOAH HOLDINGS PRIVATE WEALTH AND AS	192.500	-13.900	326.800	192.500
HONG KONG EXCHANGES & CLEARING (388.HK)	287.000	-13.200	382.400	208.200
HONG KONG EXCHANGES & CLEARING (80388.HK)	268.400	-11.600	307.600	259.000

SGX (SGD)

Top Gainers

Name	Last Done	Change Over 5 Days	52 Weeks High	52 Weeks Low
DFIRG USD	2.730	+0.160	3.380	1.950
Digilife Tech	2.070	+0.120	2.880	1.100
Singtel 10	2.430	+0.080	2.810	2.300
Singtel	2.430	+0.070	2.768	2.288
Food Empire	1.100	+0.060	1.180	0.480

Top Losers

Name	Last Done	Change Over 5 Days	52 Weeks High	52 Weeks Low
NIO Inc. USD OV	8.850	-1.250	18.900	7.420
DBS	33.220	-0.870	35.855	30.300
UOB	28.260	-0.730	31.400	25.910
Azeus	8.600	-0.300	9.190	6.700
Venture	12.900	-0.280	18.750	12.600

COSTLY MISJUDGEMENTS AT THE EXPENSE OF MINORITY SHAREHOLDERS



Devanesan
Evanson

**Chief Executive
Officer, Minority
Shareholders Watch
Group**

Wyncorp Advisory Sdn Bhd, the independent adviser (IA) to minority shareholders of Fitters Diversified Berhad, was spot on for passing the verdict that the Company's acquisition of shares and warrants in Computer Forms (M) Berhad (CFM) (collectively referred to as the Acquisitions) back in March 2023 were "not reasonable and detrimental" to non-interested shareholders. In a circular dated 7 September 2023 (the Circular), Wyncorp added that the Acquisitions were 'premature, not substantiated by prevailing fundamentals and involves a high degree of investment risks'.

The IA's view is premised on CFM being a loss-making entity with its net asset per share being significantly lower than the prevailing market share price as well as its share price being relatively volatile and recording a rapid increase despite its financial performance not turning around yet.

Perhaps, the remarks by Wyncorp may offer some closure to Fitters' shareholders, albeit the damage is done on the acquisitions of CFM shares and warrants not long ago. To recap, Fitters acquired 4.54% or 12.14 million shares in CFM between 7 and 8 March for RM26.44 million together with 4.78% or 6.18 million warrants for RM8.33 million, fully funded via internally generated funds. Collectively, the Acquisitions had cost the Company RM34.78 million inclusive of stamp duty and brokerage fees. Fitters said the Group carried out the Acquisitions after taking into consideration the prospects of CFM in light of its new venture into the EV business. In September 2022, CFM announced that it clinched a lucrative electric vehicle (EV) deal from Thailand's EA Mobility Holding Co Ltd to market and distribute EVs in Malaysia. EA Mobility was founded by Somphote Ahunai, also known as Thailand's Elon Musk. In essence, the Acquisitions were viewed as a proxy for investing in the EV industry.

Besides, the Board of Fitters opined that, upon the Acquisitions, the cash and cash equivalents of the Fitters remain at a positive and manageable level. However, shareholders were caught off guard when they learned that Fitters swiftly disposed of CFM shares and warrants within a fortnight after seeing the prices of CFM shares and warrants tumble. On 14 March, Fitters disposed of its entire CFM warrants in several tranches for RM1.23 million via the open market. Later, Fitters further disposed of its entire CFM shares in several tranches for RM7.26 million via the open market on 21 and 22 March (the Disposals). Fitters ended up recognising a loss on disposal of RM26.3 million, being the difference between the acquisition considerations of RM34.78 million (for both mother shares and warrants) and the disposal considerations of RM8.48 million. Despite a good start to the year, CFM's share price has performed disastrously upon hitting its 52-week high of RM2.96 on 5 January. The counter plunged from RM2.73 on 1 March to 21.5 sen on 31 March, representing a 90% drop within a month.

'INADVERTENT' OVERSIGHTS

Another point of contention amid this chain of events is the 'inadvertent'

oversight of Fitters' board to seek greenlight from non-interested shareholders for the Acquisitions and Disposals as the transactions were deemed related party transactions (RPT). Fitters had on 4 April 2023 announced that Bursa Securities advised the Company that the Acquisitions are deemed to be RPT that fall under Paragraph 10.08 of the Main Market Listing Requirements (MMLR) after taking into consideration the common directors and common major shareholder in Fitters and CFM. They are Fitters executive director Hoo Swee Guan, who is also an executive director of CFM while its independent non-executive directors (INED) Wong Kok Seong and Kho See Yiing also sit on the board of CFM as senior INED and INED respectively. In addition to the trio, there was also a common shareholder, Dato' Sri Pang Chow Huat who held a 7.90% equity interest in Fitters and a 54.25% equity interest in CFM.

Under Paragraph 10.08 of the MMLR, an acquisition or disposal by a listed issuer from or to a third party in another corporation where the related party holds 10% or more in that other corporation other than via the listed issuer shall be deemed as RPT. A 'related party' is defined to be a director, major shareholder, or person connected with such director or major shareholder of a corporation. In view that Pang had held more than 5% interest in Fitters and was the largest shareholder of Fitters, he fits the description as a major shareholder of the company and therefore, deemed a related party during the material acquisition/disposal time.

In the Circular, Fitters clarified that it inadvertently did not consider Pang to be a major shareholder of Fitters during the Acquisitions and Disposals. This was premised on the erroneous belief that only a person who has an interest of 10% or more of the total number of voting shares in a corporation shall be deemed as a major shareholder under the Listing Requirements. Fitters inadvertently did not consider the fact that, while Pang held less than 10% interest in Fitters, he still held more than 5% interest in Fitters and was also the largest shareholder of Fitters.

On top of this, the highest percentage ratios applicable to the Acquisitions and the Disposals were both 9.51% (or 19.02%, when aggregated) which is higher than the 5% threshold for triggering the

requirement of Shareholders' approval for RPTs under Paragraph 10.08 of MMLR. Accordingly, Fitters shall seek the approval of its non-interested shareholders for the proposed ratification of the Acquisitions (Proposed Acquisition Ratification). Similarly, the Disposals should also be deemed as RPT and require shareholders' approval for the Proposed Disposal Ratification.

CONCLUSION

There is little doubt that the optimism to ride on the EV boom cost Fitters dearly with a loss of RM26.3 million recorded on its book. Amid brouhaha from the public, Fitters insisted that the Acquisitions and the Disposals were undertaken in the best interest of the Company after taking into consideration the rationale for the Acquisitions and the Disposals. With hindsight, Fitters may suffer even wider losses should it fail to dispose of CFM shares on time. However, such losses would have been avoided if not for the ill-timed investments into CFM. Damage has been done and the question is where the accountability should lie.

Ironically, CFM recently terminated its JV with EA Mobility. On 14 September, CFM closed at 17 sen per share, valuing the company at RM45 million, a far cry from the RM790 million market cap it recorded a few months back. Wyncorp advised non-interested shareholders to vote against the Proposed Acquisition Ratification while voting in favour of the Proposed Disposal Ratification. The IA added that if the Proposed Acquisition Ratification is not approved by non-interested shareholders of Fitters at the forthcoming EGM on 22 September, the proposed ratifications will be deemed not approved in its entirety. Consequently, Fitters and its directors will be held liable for their oversights in seeking prior approval from its shareholders before undertaking the Acquisitions and Disposals, and shareholders of Fitters may seek recourse as permissible.

Shareholders are encouraged to participate in the EGM and cast their votes accordingly.

By MSWG Team

DEFINITION: Insider Activity shows the trades made by substantial shareholders or directors of the company. Purchases by the directors and company share buyback may indicate the share price is undervalued and brings confidence to the price trend of the share price.



ShareInvestor WebPro > Fundamental > Insider Trades > click Search tab > Select Bursa > click Stock name > scroll up and leave at <Select Counter> Type Date Range for Announcement Date > click Search

Notice Period is 10th September - 16th September 2023

Effective Change Date	Stock Name	Buyer/ Seller Name [Classification]	Bought / (Sold) ['000]	No. of Shares After Trade ['000]	
			Total	Total	% Held
07 SEP 2023 - 07 SEP 2023	3A	MR TEO KWEE HOCK [SSH]	-12	48,594	9.937
14 SEP 2023 - 14 SEP 2023	AASIA	DATO' LIM KANG POH [DIR/CEO]	5,676	95,228	14.43
14 SEP 2023 - 14 SEP 2023	AASIA	DATO' LIM KANG POH [SSH]	5,676	95,228	14.43
13 SEP 2023 - 13 SEP 2023	ADVPKG	MR PETER LING EE KONG [DIR/CEO]	700	9,901	12.262
13 SEP 2023 - 13 SEP 2023	ADVPKG	MR PETER LING EE KONG [SSH]	700	9,901	12.262
11 SEP 2023 - 11 SEP 2023	AEON	EMPLOYEES PROVIDENT FUND BOARD [SSH]	-930	132,148	9.412
08 SEP 2023 - 08 SEP 2023	AEON	EMPLOYEES PROVIDENT FUND BOARD [SSH]	-156	133,078	9.479
07 SEP 2023 - 07 SEP 2023	AEON	EMPLOYEES PROVIDENT FUND BOARD [SSH]	-500	133,234	9.49
06 SEP 2023 - 06 SEP 2023	AEON	EMPLOYEES PROVIDENT FUND BOARD [SSH]	-1,050	133,734	9.525
14 SEP 2023 - 14 SEP 2023	AIRPORT	KUMPULAN WANG PERSARAAN (DIPERBADANKAN) [SSH]	-113	111,854	6.703
12 SEP 2023 - 12 SEP 2023	AIRPORT	EMPLOYEES PROVIDENT FUND BOARD [SSH]	959	166,516	9.98
11 SEP 2023 - 11 SEP 2023	AIRPORT	EMPLOYEES PROVIDENT FUND BOARD [SSH]	-320	165,556	9.922
12 SEP 2023 - 12 SEP 2023	AIRPORT	KUMPULAN WANG PERSARAAN (DIPERBADANKAN) [SSH]	135	111,967	6.71
07 SEP 2023 - 07 SEP 2023	AIRPORT	EMPLOYEES PROVIDENT FUND BOARD [SSH]	-554	165,876	9.941
06 SEP 2023 - 06 SEP 2023	AIRPORT	EMPLOYEES PROVIDENT FUND BOARD [SSH]	-495	166,430	9.974
11 SEP 2023 - 11 SEP 2023	ALLIANZ	EMPLOYEES PROVIDENT FUND BOARD [SSH]	-8	12,620	7.091
08 SEP 2023 - 08 SEP 2023	ALLIANZ	EMPLOYEES PROVIDENT FUND BOARD [SSH]	-13	12,628	7.095
07 SEP 2023 - 07 SEP 2023	ALLIANZ	EMPLOYEES PROVIDENT FUND BOARD [SSH]	-44	12,640	7.102
06 SEP 2023 - 06 SEP 2023	ALLIANZ	EMPLOYEES PROVIDENT FUND BOARD [SSH]	-10	12,684	7.127
11 SEP 2023 - 11 SEP 2023	AMBANK	EMPLOYEES PROVIDENT FUND BOARD [SSH]	852	332,357	10.041
11 SEP 2023 - 11 SEP 2023	AMWAY	KUMPULAN WANG PERSARAAN (DIPERBADANKAN) [SSH]	-5	15,025	9.141
12 SEP 2023 - 12 SEP 2023	ANCOMNY	DATO' SIEW KA WEI [DIR/CEO]	-2,400	22,586	21.88
11 SEP 2023 - 13 SEP 2023	ANCOMNY	MR LEE CHEUN WEI [DIR/CEO]	2,200	82,485	8.667
11 SEP 2023 - 13 SEP 2023	ANCOMNY	MR LEE CHEUN WEI [SSH]	2,200	82,485	8.667
08 SEP 2023 - 11 SEP 2023	ANCOMNY	MR LEE CHEUN WEI [DIR/CEO]	348	80,285	8.44
08 SEP 2023 - 11 SEP 2023	ANCOMNY	MR LEE CHEUN WEI [SSH]	348	80,285	8.44
07 SEP 2023 - 07 SEP 2023	ANCOMNY	DATO' SIEW KA WEI [DIR/CEO]	3,000	24,986	24.105
07 SEP 2023 - 07 SEP 2023	ANCOMNY	MR LEE CHEUN WEI [DIR/CEO]	1,489	15,079	14.548
07 SEP 2023 - 08 SEP 2023	APM	DATO' TAN HENG CHEW [DIR/CEO]	40	104,576	53.493
07 SEP 2023 - 08 SEP 2023	APM	DATO' TAN HENG CHEW [SSH]	40	96,522	49.373
12 SEP 2023 - 12 SEP 2023	APOLLO	AMANAHRAYA TRUSTEES BERHAD-AMANAH SAHAM BUMIPUTERA [SSH]	-100	5,850	7.312
11 SEP 2023 - 11 SEP 2023	APOLLO	AMANAHRAYA TRUSTEES BERHAD-AMANAH SAHAM BUMIPUTERA [SSH]	-50	5,950	7.437
07 SEP 2023 - 07 SEP 2023	APOLLO	AMANAHRAYA TRUSTEES BERHAD-AMANAH SAHAM BUMIPUTERA [SSH]	-111	6,000	7.5
11 SEP 2023 - 11 SEP 2023	ATLAN	BERJAYA CORPORATION BERHAD [SSH]	550	67,284	26.527
11 SEP 2023 - 11 SEP 2023	ATLAN	BERJAYA GROUP BERHAD [SSH]	550	23,084	9.101
11 SEP 2023 - 11 SEP 2023	ATLAN	JUARA SEJATI SDN BHD [SSH]	550	19,550	7.707
11 SEP 2023 - 11 SEP 2023	BAHVEST	MR CHONG TZU KHEN [DIR/CEO]	50	1,600	0.129
13 SEP 2023 - 13 SEP 2023	BAUTO	PRUDENTIAL PLC [SSH]	-104	67,545	5.798
12 SEP 2023 - 12 SEP 2023	BAUTO	EMPLOYEES PROVIDENT FUND BOARD [SSH]	2,905	127,135	10.914
12 SEP 2023 - 12 SEP 2023	BAUTO	PRUDENTIAL PLC [SSH]	-62	67,649	5.807
11 SEP 2023 - 11 SEP 2023	BAUTO	EMPLOYEES PROVIDENT FUND BOARD [SSH]	1,042	124,230	10.664
08 SEP 2023 - 08 SEP 2023	BAUTO	EMPLOYEES PROVIDENT FUND BOARD [SSH]	91	123,188	10.575
07 SEP 2023 - 07 SEP 2023	BAUTO	EMPLOYEES PROVIDENT FUND BOARD [SSH]	2	123,097	10.567
06 SEP 2023 - 06 SEP 2023	BAUTO	EMPLOYEES PROVIDENT FUND BOARD [SSH]	1,105	123,094	10.567
06 SEP 2023 - 06 SEP 2023	BIMB	EMPLOYEES PROVIDENT FUND BOARD [SSH]	-1,222	365,086	16.108
15 SEP 2023 - 15 SEP 2023	BINACOM	ENCIK ZULAMRAN BIN HAMAT [DIR/CEO]	-500	2,500	0.644
11 SEP 2023 - 11 SEP 2023	BIPORT	EMPLOYEES PROVIDENT FUND BOARD [SSH]	-0.1	24,114	5.242
08 SEP 2023 - 08 SEP 2023	BIPORT	EMPLOYEES PROVIDENT FUND BOARD [SSH]	-22	24,115	5.243
07 SEP 2023 - 07 SEP 2023	BIPORT	EMPLOYEES PROVIDENT FUND BOARD [SSH]	-6	24,137	5.247
06 SEP 2023 - 06 SEP 2023	BIPORT	EMPLOYEES PROVIDENT FUND BOARD [SSH]	-3	24,142	5.248
14 SEP 2023 - 14 SEP 2023	BJFOOD	DATO' (DR) MUSTAPHA BIN ABD HAMID [DIR/CEO]	-100	805	0.046
12 SEP 2023 - 12 SEP 2023	BJFOOD	BERJAYA CORPORATION BERHAD [SSH]	20,000	970,274	55.309
12 SEP 2023 - 12 SEP 2023	BJFOOD	BERJAYA GROUP BERHAD [SSH]	20,000	970,274	55.309
13 SEP 2023 - 13 SEP 2023	BJLAND	BERJAYA CAPITAL BERHAD [SSH]	-1,000	285,768	5.808
13 SEP 2023 - 13 SEP 2023	BJLAND	BERJAYA CORPORATION BERHAD [SSH]	-1,000	3,774,828	76.716
13 SEP 2023 - 13 SEP 2023	BJLAND	BERJAYA GROUP BERHAD [SSH]	-1,000	3,356,728	68.219
13 SEP 2023 - 13 SEP 2023	BJLAND	BIZURAI BIJAK (M) SDN BHD [SSH]	-1,000	892,454	18.138
13 SEP 2023 - 13 SEP 2023	BJLAND	JUARA SEJATI SDN BHD [SSH]	-1,000	1,717,129	34.897
12 SEP 2023 - 12 SEP 2023	BSLCORP	CITA REALITI SDN. BHD. [SSH]	5	114,726	5.944

Notice Period is 10th September - 16th September 2023

Effective Change Date	Stock Name	Buyer/ Seller Name [Classification]	Bought / (Sold) ['000]	No. of Shares After Trade ['000]	
			Total	Total	% Held
12 SEP 2023 - 12 SEP 2023	BURSA	EMPLOYEES PROVIDENT FUND BOARD [SSH]	323	92,542	11.435
11 SEP 2023 - 11 SEP 2023	BURSA	EMPLOYEES PROVIDENT FUND BOARD [SSH]	859	92,219	11.395
08 SEP 2023 - 08 SEP 2023	BURSA	EMPLOYEES PROVIDENT FUND BOARD [SSH]	570	91,359	11.289
07 SEP 2023 - 07 SEP 2023	BURSA	EMPLOYEES PROVIDENT FUND BOARD [SSH]	440	90,789	11.218
06 SEP 2023 - 06 SEP 2023	BURSA	EMPLOYEES PROVIDENT FUND BOARD [SSH]	376	90,350	11.164
08 SEP 2023 - 08 SEP 2023	CDB	EMPLOYEES PROVIDENT FUND BOARD [SSH]	500	1,125,572	9.594
07 SEP 2023 - 07 SEP 2023	CDB	EMPLOYEES PROVIDENT FUND BOARD [SSH]	253	1,125,072	9.59
06 SEP 2023 - 06 SEP 2023	CDB	EMPLOYEES PROVIDENT FUND BOARD [SSH]	93	1,124,819	9.588
13 SEP 2023 - 13 SEP 2023	CEB	FORTRESS CAPITAL ASSET MANAGEMENT (M) SDN. BHD. [SSH]	-325,301	135,358	14.665
12 SEP 2023 - 12 SEP 2023	CGB	MR CHEW HIAN TAT [DIR/CEO]	1,000	48,680	30.303
12 SEP 2023 - 12 SEP 2023	CGB	MR CHEW HIAN TAT [SSH]	1,000	48,680	30.303
07 SEP 2023 - 07 SEP 2023	CGB	MR CHEW HIAN TAT [DIR/CEO]	1,000	47,680	30.068
07 SEP 2023 - 07 SEP 2023	CGB	MR CHEW HIAN TAT [SSH]	1,000	47,680	30.068
13 SEP 2023 - 13 SEP 2023	CHGP	DATIN LEE TEOH KEE [SSH]	-51	38,130	6.928
13 SEP 2023 - 13 SEP 2023	CHHB	COUNTRY HEIGHTS INTERNATIONAL SDN. BHD. [SSH]	-8,000	27,932	9.413
13 SEP 2023 - 13 SEP 2023	CHHB	MR LIM CHOW SEN @ LIM CHOW SOON [SSH]	8,000	20,000	6.74
13 SEP 2023 - 13 SEP 2023	CHHB	PUAN SRI TAN BEE HONG [SSH]	-8,000	156,024	52.58
13 SEP 2023 - 13 SEP 2023	CHHB	TAN SRI LEE KIM TIONG @ LEE KIM YEW [SSH]	-8,000	156,024	52.58
12 SEP 2023 - 12 SEP 2023	CIMB	EMPLOYEES PROVIDENT FUND BOARD [SSH]	2,247	1,718,765	16.12
11 SEP 2023 - 11 SEP 2023	CIMB	EMPLOYEES PROVIDENT FUND BOARD [SSH]	947	1,716,518	16.09
12 SEP 2023 - 12 SEP 2023	CIMB	KUMPULAN WANG PERSARAAN (DIPERBADANKAN) [SSH]	-163	719,274	6.74
08 SEP 2023 - 08 SEP 2023	CIMB	EMPLOYEES PROVIDENT FUND BOARD [SSH]	2,584	1,715,571	16.09
07 SEP 2023 - 07 SEP 2023	CIMB	EMPLOYEES PROVIDENT FUND BOARD [SSH]	1,878	1,712,987	16.06
06 SEP 2023 - 06 SEP 2023	CIMB	EMPLOYEES PROVIDENT FUND BOARD [SSH]	1,285	1,711,109	16.04
14 SEP 2023 - 14 SEP 2023	CLMT	KUMPULAN WANG PERSARAAN (DIPERBADANKAN) [SSH]	124	246,392	9.132
12 SEP 2023 - 12 SEP 2023	CLMT	EMPLOYEES PROVIDENT FUND BOARD [SSH]	188	383,439	14.211
13 SEP 2023 - 13 SEP 2023	CLMT	KUMPULAN WANG PERSARAAN (DIPERBADANKAN) [SSH]	238	246,268	9.127
11 SEP 2023 - 11 SEP 2023	CLMT	EMPLOYEES PROVIDENT FUND BOARD [SSH]	255	383,251	14.204
12 SEP 2023 - 12 SEP 2023	CLMT	KUMPULAN WANG PERSARAAN (DIPERBADANKAN) [SSH]	129	246,030	9.119
08 SEP 2023 - 08 SEP 2023	CLMT	EMPLOYEES PROVIDENT FUND BOARD [SSH]	389	382,996	14.195
11 SEP 2023 - 11 SEP 2023	CLMT	KUMPULAN WANG PERSARAAN (DIPERBADANKAN) [SSH]	176	245,901	9.114
07 SEP 2023 - 07 SEP 2023	CLMT	EMPLOYEES PROVIDENT FUND BOARD [SSH]	367	382,607	14.181
08 SEP 2023 - 08 SEP 2023	CLMT	KUMPULAN WANG PERSARAAN (DIPERBADANKAN) [SSH]	268	245,725	9.107
06 SEP 2023 - 06 SEP 2023	CLMT	EMPLOYEES PROVIDENT FUND BOARD [SSH]	592	382,240	14.167
08 SEP 2023 - 08 SEP 2023	CMSB	NORGES BANK [SSH]	54,051	54,051	5.031
13 SEP 2023 - 14 SEP 2023	CYPARK	PERTUBUHAN KESELAMATAN SOSIAL [SSH]	2,897	52,872	6.738
12 SEP 2023 - 12 SEP 2023	DLADY	CITIGROUP NOMINEES (TEMPATAN) SDN BHD EMPLOYEES PROVIDENT FUND BOARD [SSH]	-3	5,970	9.328
11 SEP 2023 - 11 SEP 2023	DLADY	CITIGROUP NOMINEES (TEMPATAN) SDN BHD EMPLOYEES PROVIDENT FUND BOARD [SSH]	-4	5,973	9.332
08 SEP 2023 - 08 SEP 2023	DLADY	CITIGROUP NOMINEES (TEMPATAN) SDN BHD EMPLOYEES PROVIDENT FUND BOARD [SSH]	-0.6	5,977	9.338
06 SEP 2023 - 06 SEP 2023	DLADY	CITIGROUP NOMINEES (TEMPATAN) SDN BHD EMPLOYEES PROVIDENT FUND BOARD [SSH]	-6	5,977	9.339
11 SEP 2023 - 11 SEP 2023	DPHARMA	EMPLOYEES PROVIDENT FUND BOARD [SSH]	-414	76,291	7.931
08 SEP 2023 - 08 SEP 2023	DPHARMA	EMPLOYEES PROVIDENT FUND BOARD [SSH]	-106	76,705	7.974
07 SEP 2023 - 07 SEP 2023	DPHARMA	EMPLOYEES PROVIDENT FUND BOARD [SSH]	-1,914	77,041	8.01
06 SEP 2023 - 06 SEP 2023	DPHARMA	EMPLOYEES PROVIDENT FUND BOARD [SSH]	-752	78,955	8.208
06 SEP 2023 - 06 SEP 2023	DPS	DATUK ABDULLAH BIN MOHD TAHA [SSH]	2,001	8,914	6.319
06 SEP 2023 - 06 SEP 2023	DPS	GOLDPEACE CORPORATION SDN BHD [SSH]	2,001	8,914	6.319
06 SEP 2023 - 06 SEP 2023	DPS	SUHAIMI BIN HARUN [SSH]	2,001	8,914	6.319
07 SEP 2023 - 07 SEP 2023	DRBHCORP	EMPLOYEES PROVIDENT FUND BOARD [SSH]	-200	181,994	9.414
06 SEP 2023 - 06 SEP 2023	DRBHCORP	EMPLOYEES PROVIDENT FUND BOARD [SSH]	-78	182,194	9.424
12 SEP 2023 - 12 SEP 2023	DXN	DATIN LEONG BEE LING [SSH]	1,864	3,392,389	68.052
12 SEP 2023 - 12 SEP 2023	DXN	DATUK LIM SIOW JIN [DIR/CEO]	1,864	3,392,389	68.052
12 SEP 2023 - 12 SEP 2023	DXN	DATUK LIM SIOW JIN [SSH]	1,864	3,392,389	68.052
12 SEP 2023 - 12 SEP 2023	DXN	LSJ GLOBAL SDN. BHD. [SSH]	1,864	3,392,389	68.052
11 SEP 2023 - 11 SEP 2023	DXN	DATIN LEONG BEE LING [SSH]	60	3,390,525	68.014
11 SEP 2023 - 11 SEP 2023	DXN	DATUK LIM SIOW JIN [DIR/CEO]	60	3,390,525	68.014
11 SEP 2023 - 11 SEP 2023	DXN	DATUK LIM SIOW JIN [SSH]	60	3,390,525	68.014
11 SEP 2023 - 11 SEP 2023	DXN	LSJ GLOBAL SDN. BHD. [SSH]	60	3,390,525	68.014

Disclaimer: The Information in Insider Activity is extracted from www.shareinvestor.com/fundamental/insider_trades. The information on this page is provided as a service to readers. It does not constitute financial advice and/or any investment recommendations. We assume no liability for damages resulting from or arising out of the use of such information. Whilst every effort is made to ensure accuracy, the information presented is not the official record of shareholder filings. Readers are advised to read the original filings on the Bursa Malaysia website at www.bursamalaysia.com



STROM
SWISS TIMEPIECES & JEWELLERY



StromWatch Asia
Tele : +65.9817.3378
Email : ll.stromasia@gmail.com
WWW.STROMWATCH.SWISS

Notice Period is 10th September - 16th September 2023

Effective Change Date	Stock Name	Buyer/ Seller Name [Classification]	Bought / (Sold) ['000]		No. of Shares After Trade ['000]	
			Total	% Held	Total	% Held
11 SEP 2023 - 11 SEP 2023	E&O	KUMPULAN WANG PERSARAAN (DIPERBADANKAN) [SSH]	600		103,044	6.03
11 SEP 2023 - 11 SEP 2023	EVD-PA	MR MAH SEONG HUAK [DIR/CEO]	-7,000		1,170,000	47.323
12 SEP 2023 - 12 SEP 2023	F&N	EMPLOYEES PROVIDENT FUND BOARD [SSH]	3		41,977	11.445
11 SEP 2023 - 11 SEP 2023	F&N	EMPLOYEES PROVIDENT FUND BOARD [SSH]	-17		41,974	11.444
08 SEP 2023 - 08 SEP 2023	F&N	EMPLOYEES PROVIDENT FUND BOARD [SSH]	-42		41,991	11.449
06 SEP 2023 - 06 SEP 2023	F&N	EMPLOYEES PROVIDENT FUND BOARD [SSH]	-47		42,033	11.46
11 SEP 2023 - 12 SEP 2023	FRONTKN	MR OOI KENG THYE [SSH]	-1,395		196,599	12.515
07 SEP 2023 - 07 SEP 2023	FRONTKN	MR OOI KENG THYE [SSH]	-1,479		197,994	12.603
12 SEP 2023 - 12 SEP 2023	GAMUDA	EMPLOYEES PROVIDENT FUND BOARD (EPF BOARD) [SSH]	-2,000		334,243	12.4
11 SEP 2023 - 11 SEP 2023	GAMUDA	EMPLOYEES PROVIDENT FUND BOARD (EPF BOARD) [SSH]	-1,238		336,243	12.47
08 SEP 2023 - 08 SEP 2023	GAMUDA	EMPLOYEES PROVIDENT FUND BOARD (EPF BOARD) [SSH]	-1,265		337,503	12.52
07 SEP 2023 - 07 SEP 2023	GAMUDA	EMPLOYEES PROVIDENT FUND BOARD (EPF BOARD) [SSH]	-261		338,768	12.57
06 SEP 2023 - 06 SEP 2023	GAMUDA	EMPLOYEES PROVIDENT FUND BOARD (EPF BOARD) [SSH]	-1,500		339,029	12.58
12 SEP 2023 - 12 SEP 2023	GASMSIA	EMPLOYEES PROVIDENT FUND BOARD [SSH]	-5		84,496	6.58
11 SEP 2023 - 11 SEP 2023	GASMSIA	EMPLOYEES PROVIDENT FUND BOARD [SSH]	-2		84,501	6.581
08 SEP 2023 - 08 SEP 2023	GASMSIA	EMPLOYEES PROVIDENT FUND BOARD [SSH]	-370		84,503	6.581
07 SEP 2023 - 07 SEP 2023	GASMSIA	EMPLOYEES PROVIDENT FUND BOARD [SSH]	-282		84,873	6.61
06 SEP 2023 - 06 SEP 2023	GASMSIA	EMPLOYEES PROVIDENT FUND BOARD [SSH]	-293		85,156	6.632
11 SEP 2023 - 11 SEP 2023	GBGAQRS	EMPLOYEES PROVIDENT FUND BOARD [SSH]	2,048		28,413	5.235
12 SEP 2023 - 12 SEP 2023	GENP	EMPLOYEES PROVIDENT FUND BOARD [SSH]	682		108,027	12.041
11 SEP 2023 - 11 SEP 2023	GENP	EMPLOYEES PROVIDENT FUND BOARD [SSH]	159		107,345	11.964
07 SEP 2023 - 07 SEP 2023	GENP	EMPLOYEES PROVIDENT FUND BOARD [SSH]	503		107,186	11.947
06 SEP 2023 - 06 SEP 2023	GENP	EMPLOYEES PROVIDENT FUND BOARD [SSH]	152		105,683	11.779
14 SEP 2023 - 14 SEP 2023	HHRG	MR CH'NG CHEN MONG [SSH]	4,261		174,468	20.151
12 SEP 2023 - 12 SEP 2023	HLBANK	EMPLOYEES PROVIDENT FUND BOARD [SSH]	587		220,658	10.575
11 SEP 2023 - 11 SEP 2023	HLBANK	EMPLOYEES PROVIDENT FUND BOARD [SSH]	288		220,071	10.547
08 SEP 2023 - 08 SEP 2023	HLBANK	EMPLOYEES PROVIDENT FUND BOARD [SSH]	71		219,783	10.533
07 SEP 2023 - 07 SEP 2023	HLBANK	EMPLOYEES PROVIDENT FUND BOARD [SSH]	516		219,712	10.53
06 SEP 2023 - 06 SEP 2023	HLBANK	EMPLOYEES PROVIDENT FUND BOARD [SSH]	40		219,196	10.505
14 SEP 2023 - 14 SEP 2023	ICAP	CITY OF LONDON INVESTMENT MANAGEMENT COMPANY LIMITED [SSH]	80		32,330	23.093
11 SEP 2023 - 11 SEP 2023	ICON	DATO' SRI HADIAN BIN HASHIM [DIR/CEO]	1,508		104,724	3.869
07 SEP 2023 - 07 SEP 2023	ICON	DATO' SRI HADIAN BIN HASHIM [DIR/CEO]	2,000		103,216	3.814
11 SEP 2023 - 12 SEP 2023	IGBB	TAN CHIN NAM SDN BHD ('TCNSB') [SSH]	88		657,096	48.708
06 SEP 2023 - 08 SEP 2023	IGBB	TAN CHIN NAM SDN BHD ('TCNSB') [SSH]	42		657,008	48.698
11 SEP 2023 - 13 SEP 2023	IGBCR	TAN CHIN NAM SENDIRIAN BERHAD ('TCNSB') [SSH]	37		1,650,454	70.015
05 SEP 2023 - 06 SEP 2023	IGBCR	TAN CHIN NAM SENDIRIAN BERHAD ('TCNSB') [SSH]	243		1,650,417	70.014
12 SEP 2023 - 12 SEP 2023	IHH	EMPLOYEES PROVIDENT FUND BOARD [SSH]	-481		931,994	10.582
11 SEP 2023 - 11 SEP 2023	IHH	EMPLOYEES PROVIDENT FUND BOARD [SSH]	-775		932,475	10.588
08 SEP 2023 - 08 SEP 2023	IHH	EMPLOYEES PROVIDENT FUND BOARD [SSH]	40		933,250	10.597
07 SEP 2023 - 07 SEP 2023	IHH	EMPLOYEES PROVIDENT FUND BOARD [SSH]	2,969		933,210	10.596
06 SEP 2023 - 06 SEP 2023	IHH	EMPLOYEES PROVIDENT FUND BOARD [SSH]	1,132		930,241	10.563
12 SEP 2023 - 12 SEP 2023	IJM	URUSHARTA JAMAAH SDN BHD [SSH]	-2,000		179,181	5.11
11 SEP 2023 - 11 SEP 2023	IJM	URUSHARTA JAMAAH SDN BHD [SSH]	-185		181,181	5.167
08 SEP 2023 - 08 SEP 2023	IJM	URUSHARTA JAMAAH SDN BHD [SSH]	4,029		181,366	5.173
07 SEP 2023 - 07 SEP 2023	IJM	URUSHARTA JAMAAH SDN BHD [SSH]	175		177,337	5.058
06 SEP 2023 - 06 SEP 2023	IJM	URUSHARTA JAMAAH SDN BHD [SSH]	138		177,162	5.053
07 SEP 2023 - 14 SEP 2023	IMPIANA	ADVANCE OPPORTUNITIES FUND [SSH]	-21,250		48,750	6.44
14 SEP 2023 - 14 SEP 2023	INARI	KUMPULAN WANG PERSARAAN (DIPERBADANKAN) [SSH]	300		357,737	9.563
12 SEP 2023 - 12 SEP 2023	INARI	EMPLOYEES PROVIDENT FUND BOARD [SSH]	-88		380,006	10.159
13 SEP 2023 - 13 SEP 2023	INARI	KUMPULAN WANG PERSARAAN (DIPERBADANKAN) [SSH]	-900		357,437	9.555
11 SEP 2023 - 11 SEP 2023	INARI	EMPLOYEES PROVIDENT FUND BOARD [SSH]	5,061		380,094	10.161
12 SEP 2023 - 12 SEP 2023	INARI	KUMPULAN WANG PERSARAAN (DIPERBADANKAN) [SSH]	-24		358,337	9.579
08 SEP 2023 - 08 SEP 2023	INARI	EMPLOYEES PROVIDENT FUND BOARD [SSH]	-1,289		375,033	10.026
11 SEP 2023 - 11 SEP 2023	INARI	KUMPULAN WANG PERSARAAN (DIPERBADANKAN) [SSH]	434		358,361	9.58
07 SEP 2023 - 07 SEP 2023	INARI	EMPLOYEES PROVIDENT FUND BOARD [SSH]	2,697		376,322	10.06
08 SEP 2023 - 08 SEP 2023	INARI	KUMPULAN WANG PERSARAAN (DIPERBADANKAN) [SSH]	2,110		357,927	9.568
06 SEP 2023 - 06 SEP 2023	INARI	EMPLOYEES PROVIDENT FUND BOARD [SSH]	-2,190		373,626	9.988
11 SEP 2023 - 11 SEP 2023	INFOTEC	MR CHOO WEI CHUEN [DIR/CEO]	-19,285		171,109	47.108
11 SEP 2023 - 11 SEP 2023	INFOTEC	MR CHOO WEI CHUEN [DIR/CEO]	-19,285		171,109	47.108
11 SEP 2023 - 11 SEP 2023	INFOTEC	MR CHOO WEI CHUEN [SSH]	-19,285		171,109	47.108
08 SEP 2023 - 08 SEP 2023	INFOTEC	MR CHOO WEI CHUEN [DIR/CEO]	-3,500		190,394	52.417
08 SEP 2023 - 08 SEP 2023	INFOTEC	MR CHOO WEI CHUEN [SSH]	-3,500		190,394	52.417
12 SEP 2023 - 12 SEP 2023	INGENIEU	MR SIN CHIN CHAI [DIR/CEO]	60,000		60,000	4.162
12 SEP 2023 - 12 SEP 2023	IOICORP	EMPLOYEES PROVIDENT FUND BOARD [SSH]	48		680,168	10.964
11 SEP 2023 - 11 SEP 2023	IOICORP	EMPLOYEES PROVIDENT FUND BOARD [SSH]	2		680,120	10.963
07 SEP 2023 - 07 SEP 2023	IOICORP	EMPLOYEES PROVIDENT FUND BOARD [SSH]	3		680,118	10.963
06 SEP 2023 - 06 SEP 2023	IOICORP	EMPLOYEES PROVIDENT FUND BOARD [SSH]	829		680,115	10.963
12 SEP 2023 - 12 SEP 2023	IOIPG	EMPLOYEES PROVIDENT FUND BOARD [SSH]	-252		413,605	7.512
08 SEP 2023 - 11 SEP 2023	IOIPG	MISS LEE YOKE HAR [DIR/CEO]	15		7,065	0.129
13 SEP 2023 - 13 SEP 2023	IOIPG	DATUK TAN KIM LEONG @ TAN CHONG MIN [DIR/CEO]	-20		94	0.001
11 SEP 2023 - 11 SEP 2023	IOIPG	EMPLOYEES PROVIDENT FUND BOARD [SSH]	-312		413,857	7.516
08 SEP 2023 - 08 SEP 2023	IOIPG	EMPLOYEES PROVIDENT FUND BOARD [SSH]	-208		414,169	7.522

Notice Period is 10th September - 16th September 2023

Effective Change Date	Stock Name	Buyer/ Seller Name [Classification]	Bought / (Sold) ['000]		No. of Shares After Trade ['000]	
			Total	% Held	Total	% Held
06 SEP 2023 - 06 SEP 2023	IOIPG	EMPLOYEES PROVIDENT FUND BOARD [SSH]	-3,000		414,377	7.526
11 SEP 2023 - 13 SEP 2023	ITRONIC	BLUEMOUNT INVESTMENT FUND SPC [SSH]	-9,410		74,850	10.578
13 SEP 2023 - 14 SEP 2023	JTIASA	GENINE CHAIN LIMITED [SSH]	-3,079		76,233	7.875
13 SEP 2023 - 14 SEP 2023	JTIASA	MR CHANG MENG [SSH]	-3,079		76,233	7.875
13 SEP 2023 - 14 SEP 2023	JTIASA	MR HO CHEUNG CHOI [SSH]	-3,079		76,233	7.875
11 SEP 2023 - 11 SEP 2023	JTIASA	GENINE CHAIN LIMITED [SSH]	-680		79,312	8.193
11 SEP 2023 - 11 SEP 2023	JTIASA	MR CHANG MENG [SSH]	-680		79,312	8.193
11 SEP 2023 - 11 SEP 2023	JTIASA	MR HO CHEUNG CHOI [SSH]	-680		79,312	8.193
08 SEP 2023 - 08 SEP 2023	JTIASA	GENINE CHAIN LIMITED [SSH]	-1,063		79,992	8.264
08 SEP 2023 - 08 SEP 2023	JTIASA	MR CHANG MENG [SSH]	-1,063		79,992	8.264
08 SEP 2023 - 08 SEP 2023	JTIASA	MR HO CHEUNG CHOI [SSH]	-1,063		79,992	8.264
13 SEP 2023 - 13 SEP 2023	KAWAN	MADAM KWAN SOK KAY [DIR/CEO]	-10,712		19,724	5.453
13 SEP 2023 - 13 SEP 2023	KAWAN	MADAM KWAN SOK KAY [SSH]	-10,712		19,724	5.453
13 SEP 2023 - 13 SEP 2023	KAWAN	MR GAN THIAM CHAI [DIR/CEO]	4,014		106,533	29.453
13 SEP 2023 - 13 SEP 2023	KAWAN	MR GAN THIAM CHAI [SSH]	4,014		106,533	29.453
12 SEP 2023 - 12 SEP 2023	KENANGA	ENCIK JEREMY BIN NASRULHAQ [DIR/CEO]	-188		188	0.026
11 SEP 2023 - 11 SEP 2023	KERJAYA	EMPLOYEES PROVIDENT FUND BOARD [SSH]	-21		80,918	6.417
12 SEP 2023 - 12 SEP 2023	KFIMA	BHR ENTERPRISE SDN BHD [SSH]	3		150,301	53.255
12 SEP 2023 - 12 SEP 2023	KFIMA	DATIN ROZILAWATI BINTI HAJI BASIR [DIR/CEO]	3		171,091	60.62
12 SEP 2023 - 12 SEP 2023	KFIMA	DR ROZHAYATI BINTI BASIR [SSH]	3		171,091	60.621
12 SEP 2023 - 12 SEP 2023	KFIMA	PUAN ROZANA ZETI BINTI BASIR [DIR/CEO]	3		171,091	60.621
12 SEP 2023 - 12 SEP 2023	KFIMA	PUAN ROZANA ZETI BINTI BASIR [SSH]	3		171,091	60.621
11 SEP 2023 - 11 SEP 2023	KIMLUN	MR PANG TIN @ PANG YON TIN [DIR/CEO]	115		163,357	46.229
08 SEP 2023 - 08 SEP 2023	KIMLUN	MR PANG TIN @ PANG YON TIN [DIR/CEO]	35		163,242	46.197
12 SEP 2023 - 12 SEP 2023	KLK	EMPLOYEES PROVIDENT FUND BOARD [SSH]	5		115,317	10.693
11 SEP 2023 - 11 SEP 2023	KLK	EMPLOYEES PROVIDENT FUND BOARD [SSH]	-99		115,312	10.693
08 SEP 2023 - 08 SEP 2023	KLK	EMPLOYEES PROVIDENT FUND BOARD [SSH]	-178		115,411	10.702
07 SEP 2023 - 07 SEP 2023	KLK	EMPLOYEES PROVIDENT FUND BOARD [SSH]	-254		115,589	10.718
06 SEP 2023 - 06 SEP 2023	KLK	EMPLOYEES PROVIDENT FUND BOARD [SSH]	-141		115,843	10.742
12 SEP 2023 - 12 SEP 2023	KOSSAN	ABRDN HOLDINGS LIMITED (FORMERLY KNOWN AS ABERDEEN ASSET MANAGEMENT PLC) [SSH]	98		148,365	5.815
12 SEP 2023 - 12 SEP 2023	KOSSAN	ABRDN MALAYSIA SDN BHD [SSH]	98		145,960	5.72
12 SEP 2023 - 12 SEP 2023	KOSSAN	ABRDN PLC [SSH]	98		148,365	5.815
08 SEP 2023 - 08 SEP 2023	LBS	TAN SRI DATO' SRI IR. LIM HOCK SAN JP [DIR/CEO]	50		608,772	39.521
08 SEP 2023 - 08 SEP 2023	LBS	TAN SRI DATO' SRI IR. LIM HOCK SAN JP [SSH]	50		604,019	39.212
12 SEP 2023 - 13 SEP 2023	LIHEN	MR CHUA LEE SENG [DIR/CEO]	50		231,226	42.82
12 SEP 2023 - 13 SEP 2023	LIHEN	MR CHUA LEE SENG [SSH]	50		231,226	42.82
11 SEP 2023 - 11 SEP 2023	MAGNI	MR TAN POAY SENG [DIR/CEO]	92		118,559	27.35
08 SEP 2023 - 08 SEP 2023	MAGNI	MR TAN POAY SENG [DIR/CEO]	79		118,467	27.33
11 SEP 2023 - 12 SEP 2023	MATANG	HUAREN HOLDINGS SDN BHD [SSH]	3,800		400,642	16.769
11 SEP 2023 - 12 SEP 2023	MATANG	MALAYSIAN CHINESE ASSOCIATION [SSH]	3,800		422,460	17.682
13 SEP 2023 - 13 SEP 2023	MATRIX	DATO' SERI LEE TIAN HOCK [DIR/CEO]	-4,500		405,137	32.376
13 SEP 2023 - 13 SEP 2023	MATRIX	DATO' SERI LEE TIAN HOCK [SSH]	-4,500		405,137	32.376
13 SEP 2023 - 13 SEP 2023	MATRIX	DATO' MOHAMAD HASLAH BIN MOHAMAD AMIN [DIR/CEO]	-1,500		2,014	0.161
08 SEP 2023 - 08 SEP 2023	MAXIS	EMPLOYEES PROVIDENT FUND BOARD (EPF BOARD) [SSH]	-100		878,620	11.218
07 SEP 2023 - 07 SEP 2023	MAXIS	EMPLOYEES PROVIDENT FUND BOARD (EPF BOARD) [SSH]	-698		878,720	11.219
13 SEP 2023 - 13 SEP 2023	MAYBANK	AMANAHRAYA TRUSTEES BERHAD - AMANAH SAHAM BUMIPUTERA [SSH]	-256		3,782,819	31.382
12 SEP 2023 - 12 SEP 2023	MAYBANK	EMPLOYEES PROVIDENT FUND BOARD [SSH]	6,000		1,600,054	13.274
12 SEP 2023 - 12 SEP 2023	MAYBANK	AMANAHRAYA TRUSTEES BERHAD - AMANAH SAHAM BUMIPUTERA [SSH]	-16,000		3,783,074	31.384
11 SEP 2023 - 11 SEP 2023	MAYBANK	EMPLOYEES PROVIDENT FUND BOARD [SSH]	3,803		1,594,054	13.224
11 SEP 2023 - 11 SEP 2023	MAYBANK	AMANAHRAYA TRUSTEES BERHAD - AMANAH SAHAM BUMIPUTERA [SSH]	-3,000		3,799,074	31.517
08 SEP 2023 - 08 SEP 2023	MAYBANK	EMPLOYEES PROVIDENT				

Notice Period is 10th September - 16th September 2023

Effective Change Date	Stock Name	Buyer/ Seller Name [Classification]	Bought / (Sold) ['000]	No. of Shares After Trade ['000]	
			Total	Total	% Held
07 SEP 2023 - 07 SEP 2023	TIMECOM	EMPLOYEES PROVIDENT FUND BOARD [SSH]	-882	141637	7.669
06 SEP 2023 - 06 SEP 2023	TIMECOM	EMPLOYEES PROVIDENT FUND BOARD [SSH]	117	142518	7.717
14 SEP 2023 - 14 SEP 2023	TM	KUMPULAN WANG PERSARAAN (DIPERBADANKAN) (KWAP) [SSH]	-2,455	404769	10.59
13 SEP 2023 - 13 SEP 2023	TM	KUMPULAN WANG PERSARAAN (DIPERBADANKAN) (KWAP) [SSH]	-384	407224	10.655
12 SEP 2023 - 12 SEP 2023	TM	KUMPULAN WANG PERSARAAN (DIPERBADANKAN) [SSH]	-570	407608	10.665
08 SEP 2023 - 08 SEP 2023	TM	EMPLOYEE PROVIDENT FUND BOARD (EPF BOARD) [SSH]	2,810	651693	17.051
07 SEP 2023 - 07 SEP 2023	TM	EMPLOYEE PROVIDENT FUND BOARD (EPF BOARD) [SSH]	1,517	648883	16.978
06 SEP 2023 - 06 SEP 2023	TM	EMPLOYEE PROVIDENT FUND BOARD (EPF BOARD) [SSH]	2,250	647366	16.938
08 AUG 2023 - 08 AUG 2023	TM	KUMPULAN WANG PERSARAAN (DIPERBADANKAN) [SSH]	-1,000	408177	10.679
12 SEP 2023 - 12 SEP 2023	ULICORP	TAN SRI DATO' LEE YOON KONG [DIR/CEO]	11	86862	39.881
12 SEP 2023 - 12 SEP 2023	ULICORP	TAN SRI DATO' LEE YOON KONG [SSH]	11	86862	39.881
11 SEP 2023 - 11 SEP 2023	ULICORP	LIM MEE HWA [SSH]	-250	13275	6.095
11 SEP 2023 - 11 SEP 2023	ULICORP	YEO SENG CHONG [SSH]	-250	13275	6.095
11 SEP 2023 - 11 SEP 2023	ULICORP	YEOMAN 3-RIGHTS VALUE ASIA FUND VCC [SSH]	-250	11000	5.051
11 SEP 2023 - 11 SEP 2023	ULICORP	YEOMAN CAPITAL MANAGEMENT PTE LTD [SSH]	-250	11250	5.165
08 SEP 2023 - 08 SEP 2023	ULICORP	TAN SRI DATO' WIRA LEE YOON WAH [DIR/CEO]	46	87829	40.325
08 SEP 2023 - 08 SEP 2023	ULICORP	TAN SRI DATO' WIRA LEE YOON WAH [SSH]	46	87783	40.325
06 SEP 2023 - 06 SEP 2023	UMW	EMPLOYEES PROVIDENT FUND BOARD [SSH]	129	86350	7.391
12 SEP 2023 - 12 SEP 2023	UOAEV	EMPLOYEES PROVIDENT FUND BOARD ('EPF BOARD') [SSH]	33	303376	12.182
11 SEP 2023 - 11 SEP 2023	UOAEV	EMPLOYEES PROVIDENT FUND BOARD ('EPF BOARD') [SSH]	38,010	303342	12.18
06 SEP 2023 - 06 SEP 2023	UOAEV	EMPLOYEES PROVIDENT FUND BOARD ('EPF BOARD') [SSH]	-30	265332	10.915
14 SEP 2023 - 15 SEP 2023	UTDPLT	MR LOH HANG PAI @ LOW HENG FONG [DIR/CEO]	-10	120	0.029
12 SEP 2023 - 12 SEP 2023	UTDPLT	EMPLOYEES PROVIDENT FUND BOARD [SSH]	-32	27477	6.624
11 SEP 2023 - 11 SEP 2023	UTDPLT	EMPLOYEES PROVIDENT FUND BOARD [SSH]	-400	27509	6.632
08 SEP 2023 - 08 SEP 2023	UTDPLT	EMPLOYEES PROVIDENT FUND BOARD [SSH]	-49	27909	6.728
07 SEP 2023 - 07 SEP 2023	UTDPLT	EMPLOYEES PROVIDENT FUND BOARD [SSH]	-104	27958	6.74
06 SEP 2023 - 06 SEP 2023	UTDPLT	EMPLOYEES PROVIDENT FUND BOARD [SSH]	-16	28062	6.765
12 SEP 2023 - 12 SEP 2023	UWC	EMPLOYEES PROVIDENT FUND BOARD [SSH]	9	79450	7.212

Notice Period is 10th September - 16th September 2023

Effective Change Date	Stock Name	Buyer/ Seller Name [Classification]	Bought / (Sold) ['000]	No. of Shares After Trade ['000]	
			Total	Total	% Held
11 SEP 2023 - 11 SEP 2023	UWC	EMPLOYEES PROVIDENT FUND BOARD [SSH]	91	79441	7.211
08 SEP 2023 - 08 SEP 2023	UWC	EMPLOYEES PROVIDENT FUND BOARD [SSH]	412	79420	7.209
07 SEP 2023 - 07 SEP 2023	UWC	EMPLOYEES PROVIDENT FUND BOARD [SSH]	173	79008	7.172
06 SEP 2023 - 06 SEP 2023	UWC	EMPLOYEES PROVIDENT FUND BOARD [SSH]	182	78836	7.156
11 SEP 2023 - 12 SEP 2023	VERSATL	MR LIM AH CHAI [SSH]	225	107267	38.296
11 SEP 2023 - 12 SEP 2023	VERSATL	MR LIM AH CHUAN [SSH]	225	107267	38.296
11 SEP 2023 - 12 SEP 2023	VERSATL	MR LIM CHOU BU [SSH]	225	107267	38.296
11 SEP 2023 - 12 SEP 2023	VERSATL	NSK TRADING SDN BHD [SSH]	225	107267	38.296
12 SEP 2023 - 12 SEP 2023	VS	EMPLOYEES PROVIDENT FUND BOARD [SSH]	-30	261527	6.803
11 SEP 2023 - 11 SEP 2023	VS	EMPLOYEES PROVIDENT FUND BOARD [SSH]	-158	261557	6.804
08 SEP 2023 - 08 SEP 2023	VS	EMPLOYEES PROVIDENT FUND BOARD [SSH]	-250	261715	6.808
06 SEP 2023 - 06 SEP 2023	VS	EMPLOYEES PROVIDENT FUND BOARD [SSH]	2,661	261965	6.815
11 SEP 2023 - 11 SEP 2023	WATTA	MR SANJAY MURLIDHAR DARYANANI [SSH]	19,344	19344	22.9
13 SEP 2023 - 13 SEP 2023	WIDAD	TAN SRI MUHAMMAD IKMAL OPAT BIN ABDULLAH [SSH]	-3,825	1185266	38.278
13 SEP 2023 - 13 SEP 2023	WIDAD	WIDAD BUSINESS GROUP SDN. BHD. [SSH]	-7,825	1073532	34.67
11 SEP 2023 - 12 SEP 2023	WIDAD	TAN SRI MUHAMMAD IKMAL OPAT BIN ABDULLAH [SSH]	-83	1189091	38.402
08 SEP 2023 - 08 SEP 2023	WIDAD	TAN SRI MUHAMMAD IKMAL OPAT BIN ABDULLAH [SSH]	-1,500	1189174	38.404
08 SEP 2023 - 08 SEP 2023	WIDAD	WIDAD BUSINESS GROUP SDN. BHD. [SSH]	-1,500	1081357	34.922
14 SEP 2023 - 14 SEP 2023	WOODLAN	DATO' SERI MUN WENG SUM [DIR/CEO]	4	7137	17.84
14 SEP 2023 - 14 SEP 2023	WOODLAN	DATO' SERI MUN WENG SUM [SSH]	4	7137	17.84
14 SEP 2023 - 14 SEP 2023	YINSON	KUMPULAN WANG PERSARAAN (DIPERBADANKAN) [SSH]	-633	182243	6.269
12 SEP 2023 - 12 SEP 2023	YINSON	EMPLOYEES PROVIDENT FUND BOARD [SSH]	-259	475700	16.365
13 SEP 2023 - 13 SEP 2023	YINSON	KUMPULAN WANG PERSARAAN (DIPERBADANKAN) [SSH]	-236	182875	6.291
11 SEP 2023 - 11 SEP 2023	YINSON	EMPLOYEES PROVIDENT FUND BOARD [SSH]	-700	475959	16.374
12 SEP 2023 - 12 SEP 2023	YINSON	KUMPULAN WANG PERSARAAN (DIPERBADANKAN) [SSH]	-360	183111	6.299
08 SEP 2023 - 08 SEP 2023	YINSON	EMPLOYEES PROVIDENT FUND BOARD [SSH]	-737	476659	16.399
07 SEP 2023 - 07 SEP 2023	YINSON	EMPLOYEES PROVIDENT FUND BOARD [SSH]	-175	477395	16.424
08 SEP 2023 - 08 SEP 2023	YINSON	KUMPULAN WANG PERSARAAN (DIPERBADANKAN) [SSH]	-1,500	183471	6.312
06 SEP 2023 - 06 SEP 2023	YINSON	EMPLOYEES PROVIDENT FUND BOARD [SSH]	-255	477571	16.43

Disclaimer: The Information in Insider Activity is extracted from www.shareinvestor.com/fundamental/insider_trades. The information on this page is provided as a service to readers. It does not constitute financial advice and/or any investment recommendations. We assume no liability for damages resulting from or arising out of the use of such information. Whilst every effort is made to ensure accuracy, the information presented is not the official record of shareholder filings. Readers are advised to read the original filings on the Bursa Malaysia website at www.bursamalaysia.com



Learn how to identify Hot Stocks using Technical Analysis (TA) and Fundamental Analysis (FA)

SIGN UP FOR Invest NOW IT'S FREE!!!

[Click here](#)

Scan me



Via email, every Friday.

Get market moving news and analyses. Regular columns include **Behind The Action** and **From The Observer**

Leaderboard • Shariah Hot Stocks • Shariah Momentum Up Stocks • Non Shariah Hot Stocks • Up Trending Stocks • Growth Stocks • Dividend Stocks • Long Companies • Insider Activity • Investor Relations • Regional Markets





The Board of Directors of **Capital A Berhad (CAPITALA)** wishes to announce that Asia Digital Engineering Sdn Bhd, wholly-owned subsidiary of Capital A, has on 20th September 2023 entered into a Shareholders Agreement with Sivilai Asia Co., Ltd for the subscription of 60% of the issued and paid-up capital of a Cambodian joint venture company incorporated under the name ADE (Cambodia) Co., Ltd to establish a Maintenance Repair And Overhaul business in Cambodia. The Shareholders Agreement also records the rights and obligations of each party relating to the operation and management as well as their shareholding in ADE Cambodia.

[READ MORE](#)

The Board of Directors of **Dayang Enterprise Holdings Bhd (DAYANG)** is pleased to announce that its wholly-owned subsidiary company, Dayang Enterprise Sdn Bhd, has been awarded with the contract amendment and extension for the Provision of Pan Malaysia Maintenance, Construction and Modification Contractor for Year 2018 to 2023 – Package C (East Malaysia) from SapuraOMV.

[READ MORE](#)



Malayan Banking Berhad (MAYBANK) wishes to announce that it has on 20 September 2023, made an award of new ordinary shares in Maybank (Maybank Shares) for the Employees' Share Grant Plan Shares to eligible employee(s) and executive director(s) of Maybank and its branches and subsidiaries in Malaysia and overseas, excluding dormant subsidiaries, who fulfil the criteria for eligibility stipulated in the by-laws governing the ESGP (Eligible Employee(s)).



[READ MORE](#)



Reference is made to Section 5.20(iii) of **Radium Development Berhad (RADIUM)**'s prospectus dated 27 April 2023 in respect of the joint venture agreement dated 20 September 2022 entered into between Kadar Jutajaya Sdn. Bhd. and Rasa Wangi Development Sdn. Bhd., a 100% owned subsidiary of Radium.

The Board of Directors wishes to announce that pursuant to clause 2.4 of the Joint Venture Agreement, both Kadar Jutajaya Sdn Bhd and Rasa Wangi Development Sdn Bhd are agreeable to extend the period for fulfilment of Condition Precedent for a further twelve months commencing from 20 September 2023 to 19 September 2024 free of interest (First Extension of Time).

[READ MORE](#)

Upcoming IPO

NAME OF COMPANY	OFFER PERIOD		ISSUE PRICE (Per Ordinary Share)	LISTING SOUGHT	DATE OF LISTING
	OPENING	CLOSING			
EVERGREEN MAX CASH CAPITAL BERHAD	29 Aug 2023	12 Sept 2023	RM0.24	ACE MARKET	26 Sept 2023
SSF HOME GROUP BERHAD	08 Sept 2023	27 Sept 2023	RM0.25	ACE MARKET	12 Oct 2023

Disclaimer: The information in the Investor Relations page is extracted from individual companies' announcements in www.bursamalaysia.com. The information on this page is provided as a service to readers. We assume no liability for damages resulting from or arising out of the use of such information. Whilst every effort is made to ensure accuracy, the information presented has been simplified for your reading pleasure. Readers are advised to read the original and complete filings on the Bursa Malaysia website at https://www.bursamalaysia.com/market_information/announcements/company_announcement