

Invest

A Weekly e-Publication by SHAREINVESTOR

ISSUE

228

FRIDAY
11 OCTOBER 2024

Scan/Click QR to Register



Via email, every Friday

ALSO

COMPANY SPOTLIGHT

MYE.G.
Services Berhad

See more on page 07



From MSWG's
The Observer

REACHING
GREATER HEIGHTS

See more on pages 34-47



See more on pages 20-27

MARKET SENTIMENTS

- World Bank upgrades MALAYSIA'S GROWTH FORECAST TO 4.9% in 2024 on page 29
- Protect gains as Bursa may be volatile in 4Q - RHB IB on page 30

04 LEADERBOARD

06 SHARIAH HOT STOCKS

08 SHARIAH MOMENTUM UP STOCKS

10 NON SHARIAH HOT STOCKS

12 UP TRENDING STOCKS

14 VALUE STOCKS

15 GROWTH STOCKS

16 DIVIDEND STOCKS

17 BROKERS' CALL

18 LONG COMPANIES

33 REGIONAL MARKETS

48 INSIDER ACTIVITY

52 INVESTOR RELATIONS

SHAREINVESTOR®

An AlphaInvest Company

Invest with Knowledge

INVESTOR PLATFORMS

Director
Darren Chong
darren.chong@shareinvestor.com

Business Development Manager
Jay Cheong
jay.cheong.@shareinvestor.com

Product & Marketing Manager
Daniel Wong
daniel.wong@shareinvestor.com

ADMIN & OPERATIONS

Senior Executive
Watie Nordin
watie.nordin@shareinvestor.com

Executive
Silas Emmanuel Joseph
silas.joseph@shareinvestor.com

PROCESS AUTOMATION & DATA ANALYTICS

Data Analyst
Tan Yong Sheng

INVESTOR RELATIONS

Group Managing Director & Publisher
Edward Stanislaus
edward@shareinvestor.com

Senior Manager
Letticia Wong
letticia.wong@shareinvestor.com

Manager
Aida Norzeti Talib
aida.norzeti@shareinvestor.com

ALPHAINVEST HOLDINGS BOARD OF DIRECTORS

Chairman	Patrick Daniel
Group CEO	Christopher Lee
Group COO	Lim Dau Hee
Group MD	Shanison Lin



ShareInvestor Malaysia Sdn. Bhd.
(200001023956) (526564-M)

L15-03 & 03A, PJX HM Shah Tower,
No 16A, Jalan Persiaran Barat, PJS 52,
46200 Petaling Jaya, Selangor

Hotline : 603 8681 0580

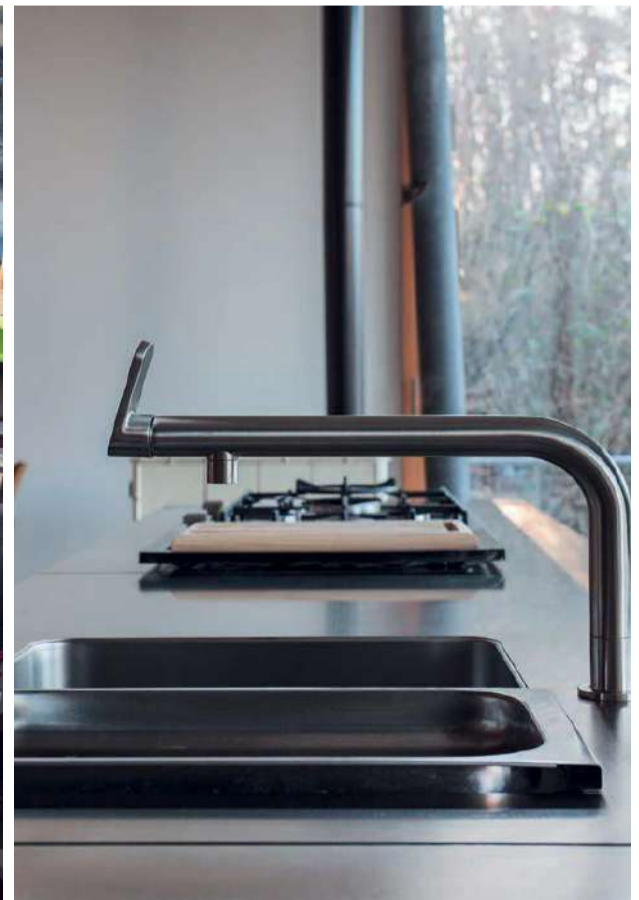
Mobile : 011 6343 8939

Website : www.ShareInvestor.com.my
www.alphainvestholdings.com

www.facebook.com/ShareInvestorMalaysia

ADVERTISEMENT ENQUIRY

bulthaup takes care of the details so that you can enjoy a harmonious environment.



XTRA

XTRA FURNITURE SDN BHD
The Gardens Mall, Mid Valley City
xtrafurniture.com/bulthaup
fb.com/bulthaupmalaysia

bulthaup

 **Webull** | First Choice for US Stocks Trading

✦ Deposit and Choose Your ✦

*USD 100 WORTH OF FREE US SHARES



REGISTER NOW



*T&C Apply. For more details, please refer to Webull Malaysia's website at <https://www.webull.com.my>. This advertisement has not been reviewed by Securities Commission of Malaysia. Webull reserves the right in its absolute discretion to terminate, vary, delete, or add to the Campaign's terms and conditions without prior notice.

www.shareinvestor.com - market data at your fingertips



ShareInvestor WebPro (www.shareinvestor.com/my)

Prices > Stock Prices > Bursa > click Stocks tab

1. mouse over Ranking > select Top Active > all Shariah stocks are denoted with an [S] > mouse over Column Layout > select Edit Customs > select Name > select Volume > select Last Done Price > Mouse Over Column Layout > select Custom
2. mouse over Ranking > select Top Turnover > all Shariah stocks are denoted with an [S] > mouse over Column Layout > select Edit Customs > select Name > select Last Done Price > select Value > Mouse Over Column Layout > select Custom
3. mouse over Ranking > select Top Gainers (Over 5 Trading Days) > mouse over Column Layout > select Edit Customs > select Name > select Last Done Price > select 5 Days Change > select 5 Days % Change > Mouse Over Column Layout > select Custom
4. mouse over Ranking > select Top Losers (Over 5 Trading Days)
5. mouse over Ranking > select Top % Gainers (Over 5 Trading Days)
6. mouse over Ranking > select Top % Losers (Over 5 Trading Days)

Shariah Top Actives (as at Yesterday)

Name	Price (RM)	Volume
PERTAMA [S]	0.310	1,114,657.000
MYEG [S]	0.935	650,534.000
TOPGLOV [S]	1.030	641,915.000
MRCB [S]	0.600	366,510.000
BPURI [S]	0.370	345,030.000
CAPITALA [S]	0.935	299,548.000
KHB [S]	0.205	266,236.000
NICE [S]	0.150	245,929.000
VELESTO [S]	0.205	232,351.000
EKOVEST [S]	0.375	228,620.000

Shariah Top Turnover (as at Yesterday)

Name	Price (RM)	Value (RM)
TENAGA [S]	14.380	113,941,540
GAMUDA [S]	8.190	84,796,461
TOPGLOV [S]	1.030	67,118,887
MYEG [S]	0.935	60,126,794
IHH [S]	7.260	44,659,390
PERTAMA [S]	0.310	32,633,514
HARTA [S]	2.910	32,485,560
INARI [S]	2.890	30,490,576
SUNWAY [S]	4.270	29,162,606
TM [S]	6.560	28,645,369

Top Gainers (over 5 Trading days as at Yesterday)

Name	Price (RM)	Change (RM)
HLIND	13.980	+0.580
HTPADU	4.120	+0.470
HENGYUAN	2.740	+0.390
SUNCON	4.540	+0.350
GAMUDA	8.190	+0.310
LPI	13.000	+0.280
SPRITZER	2.850	+0.250
SBAGAN	6.160	+0.250
ITMAX	3.750	+0.240
THETA	1.680	+0.220

Top % Gainers (over 5 Trading days as at Yesterday)

Name	Price (RM)	Change (%)
BORNOIL	0.010	+100.00
IREKA	0.445	+56.14
HONGSENG	0.015	+50.00
IFCAMSC	0.720	+25.22
SMTRACK	0.025	+25.00
TALAMT	0.025	+25.00
XOXNET	0.025	+25.00
PRKCORP	0.345	+23.21
GPACKET	0.030	+20.00
NICE	0.150	+20.00

Top Losers (over 5 Trading days as at Yesterday)

Name	Price (RM)	Change (RM)
NESTLE	103.700	-1.700
F&N	30.620	-1.380
PERTAMA	0.310	-0.810
DLADY	31.460	-0.640
PETGAS	17.520	-0.380
MSC	2.330	-0.330
BOXPAK	0.605	-0.245
SHL	2.670	-0.230
PPB	14.420	-0.220
HEIM	23.220	-0.200

Top % Losers (over 5 Trading days as at Yesterday)

Name	Price (RM)	Change (%)
PERTAMA	0.310	-72.32
KGROUP	0.005	-50.00
OCR	0.030	-33.33
SCABLE	0.090	-33.33
BOXPAK	0.605	-28.82
EURO	0.050	-23.08
SOLUTN	0.125	-21.88
IQGROUP	0.630	-21.25
FOCUS	0.020	-20.00
KAMDAR	0.180	-20.00

Exclusive
**MEMBERS'
NIGHT**

SHAREINVESTOR[®]
An AlphaInvest Company

Fireside Chat

INTEREST RATES, RECESSION OR GROWTH IN MALAYSIA?



Nixon Wong

CIO
Tradeview Capital



Kenny Yee

Head of Research
Rakuten Trade



Jay (Moderator)

Business Development Manager
Investor Platforms, AlphaInvest

OCT
WED | **23** | 7.10 pm
2024

Common Ground Jaya One

Register Now 

Price & Volume Distribution Charts (as at Yesterday)

Technical Analysis

DEFINITION: Shariah compliant stocks with Technical Analysis showing 5-days & 10-days Moving Average Price below Yesterday's Close over past 3 days and with Volume Spike.

CHART GUIDE: Volume Distribution Chart is a statistical interpretation of the current sentiment on each stock in graphical format. The highest bar categorized as >150k is likely to be traded by institutions or super dealers, while the lowest bar categorized as <15k usually represents retail investors. "Buy Up" refers to more buyers snatching up the lots queued at selling price. "Sell Down" refers to sellers selling their shares to the buying queue



ShareInvestor WebPro > Screener > Market Screener (FA & TA) > select BURSA > add criteria

A. Criteria

- > click Add Criteria
- Technical Analysis Conditions tab select (i) Moving Average Below Close (ii) Volume Spike
- Fundamental Analysis Conditions tab > select (iii) Revenue
- Prices & Other Conditions tab > select (iv) Is Shariah Compliant
- Technical Analysis Conditions tab select (v) Moving Average Below Close
- Prices & Other Conditions tab > select (vi) Last Done Price
- Technical Analysis Conditions tab select (vii) Moving Average Below Close

B. Conditions (Criteria Filters)

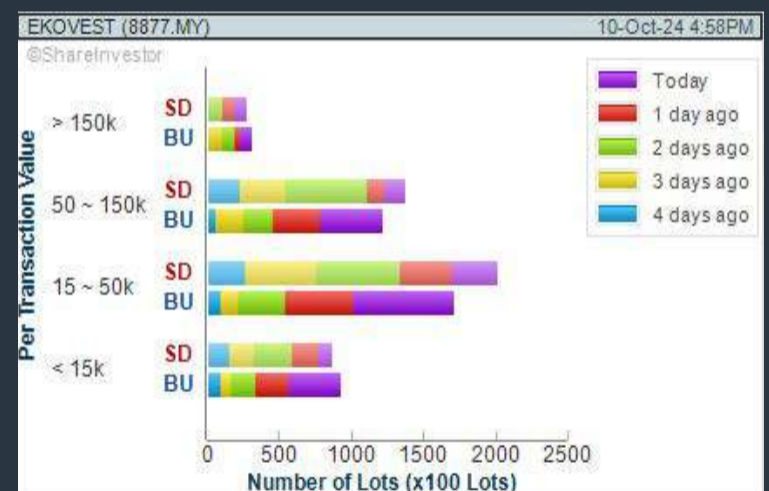
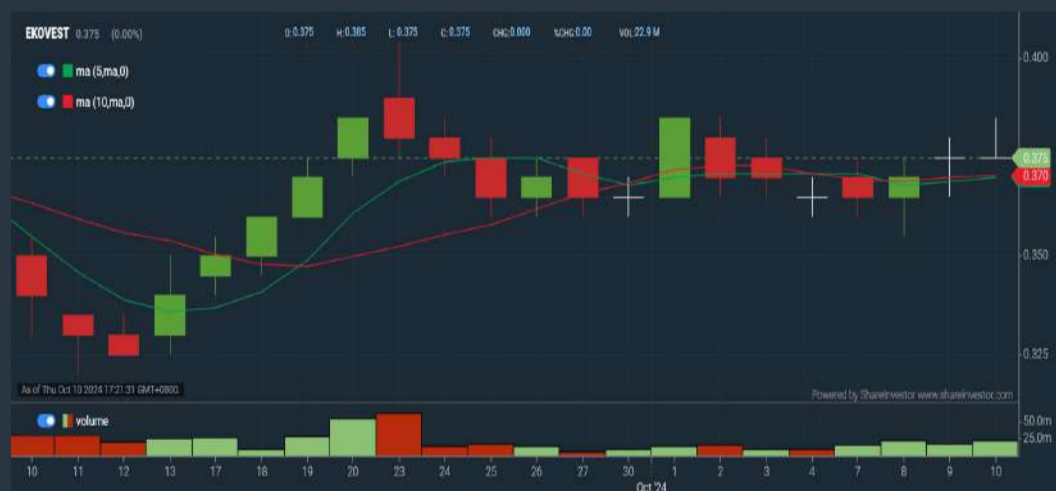
1. Moving Average Below Close - select (MA) type (5) below close price for type (3) days
2. Volume Spike - Volume type (1) greater than type (5) days average
3. Revenue ("000) - select (more than) type (1) for the past select (1) financial year(s)
4. Is Shariah Compliant - select **Yes**
5. Moving Average Below Close - select (MA) type (10) below close price for type (3) days
6. Last Done Price - select (more than) type (0.3)
7. Moving Average Below Close - select (EMA) type (5) below close price for type (3) days

- > click Save Template > Create New Template type (Shariah Hot Stocks) > click Create
- > click Save Template as > select Shariah Hot Stocks > click Save
- > click Screen Now (may take a few minutes)
- > Sort By: Select (Vol) Select (Desc)
- > Mouse over stock name > Charts > click C² Charts or Volume Distribution

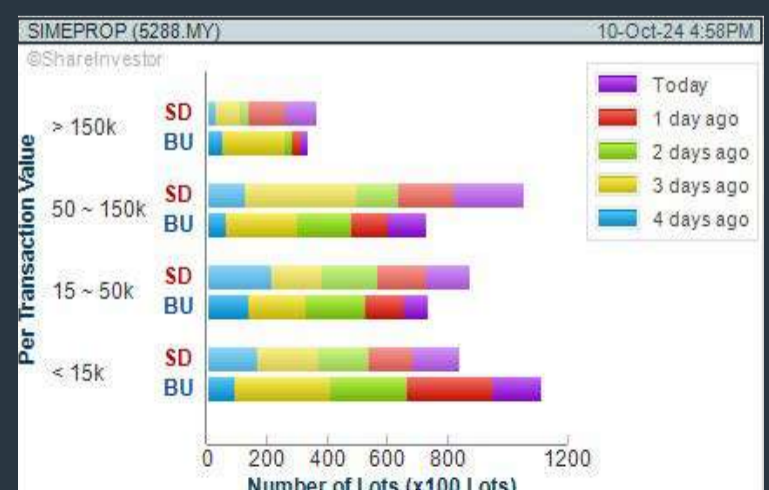
MY E.G. SERVICES BERHAD (0138) C² Chart



EKOVEST BERHAD (8877) C² Chart



SIME DARBY PROPERTY BERHAD (5288) C² Chart



Disclaimer: The information on this page is provided as a service to readers. It does not constitute financial advice and/or any investment recommendations. Past performance is not indicative of future results. We assume no liability for damages resulting from or arising out of the use of such information. It would be best if you did your own research to make your personal investment decisions wisely or consult a licenced investment advisor.

COMPANY BACKGROUND

MY E.G. Services Berhad (MYEG) is a digital services company. It is a concessionaire for the Malaysia Electronic-Government (E-Government) MSC Flagship Application. The Company builds, operates and owns the electronic channel to deliver services from various Government agencies to Malaysian citizens and businesses in the areas of immigration, automotive, healthcare and financial services, among others. Beyond Malaysia, MYEG has operations in other key regional markets such as the Philippines, Hong Kong and China.



MYEG MY E.G. SERVICES BHD		Updated at 10 Oct 2024 17:31	
Last (MYR)	0.935 ↑	Change: +0.030	High: 0.935
		Change (%): +3.31	Low: 0.910
Open	0.910	Yesterday's Close	0.905
Buy Price	0.935	Sell Price	0.940
Buy Volume ('00)	11,000	Sell Volume ('00)	10,321
Cumulative Volume ('00)	650,534	Cumulative Value	60,126,794

Financial Analysis

Revenue Growth Revenue up and down in past years	😊	Profit Growth Increasing profit in last 3 consecutive years and min growth is 10% (with at least 4 profitable years)	😊😊
Dividend Payout Dividend is increasing over the past 48 months.	😊😊	Current Ratio The company is well-positioned to cover its short-term obligations with its current assets (ratio between 1.5 to 10) for 3 consecutive years	😊😊
Debt to Cashflow High debt to cash flow for most recent year	😟	Gross Profit Margin Consistently high gross profit margin of at least 40% for 3 years	😊😊
Net Earnings Margin Consistently high net profit margin of at least 20% for 3 years	😊😊	Return on Assets (ROA) ROA above 10% for 3 consecutive years	😊😊
Return on Equity (ROE) ROE above 20% for 3 consecutive years	😊😊		

😊 Excellent 😊 Good 😐 Neutral 😟 Be Alert 😡 Watch Out

Historical Financials

Profit & Loss (MYR '000)

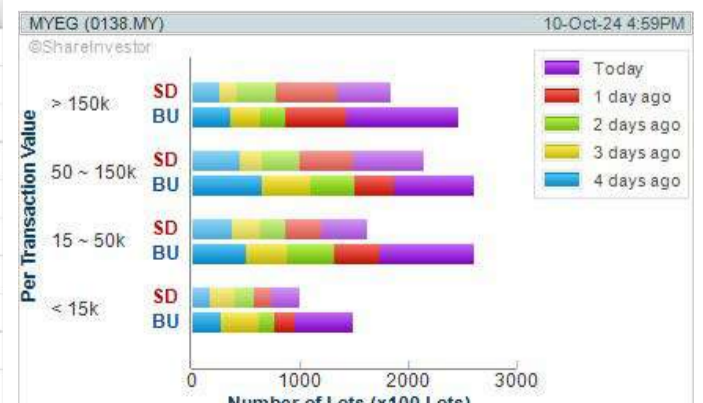


WebPro 9-Days Free Trial Registration (worth RM10) Sign Up Now



Key Statistics with Total Shareholder Returns

Period	Dividend Received	Capital Appreciation	Total Shareholder Return
Short Term Return	5 Days	-	+5.06 %
	10 Days	-	+3.89 %
	20 Days	-	+2.75 %
Medium Term Return	3 Months	-0.085	-8.33 %
	6 Months	-	+17.61 %
	1 Year	-	+16.88 %
Long Term Return	2 Years	+0.065	+7.47 %
	3 Years	-0.123	-11.63 %
	5 Years	0.042	+0.243
Annualised Return	Annualised	-	+7.14 %



Disclaimer: The information on this page is provided as a service to readers. It does not constitute financial advice and/or any investment recommendations. Past performance is not indicative of future results. We assume no liability for damages resulting from or arising out of the use of such information. It would be best if you did your own research to make your personal investment decisions wisely or consult a licenced investment advisor.

Price & Volume Distribution Charts (as at Yesterday)

Technical Analysis

DEFINITION: Shariah compliant stocks with Technical Analysis showing Bullish Momentum and Price Uptrend. The share price closed at the highest price yesterday. The typical price was higher than the previous day's typical price.

CHART GUIDE: Volume Distribution Chart is a statistical interpretation of the current sentiment on each stock in graphical format. The highest bar categorized as >150k is likely to be traded by institutions or super dealers, while the lowest bar categorized as <15k usually represents retail investors. "Buy Up" refers to more buyers snatching up the lots queued at selling price. "Sell Down" refers to sellers selling their shares to the buying queue.



ShareInvestor WebPro > Screener > Market Screener (FA & TA) > select BURSA > add criteria

A. Criteria

- > click Add Criteria
- Fundamental Analysis Conditions tab > select (i) Revenue
- Technical Analysis Conditions tab select (ii) Average Volume
- Prices & Other Conditions tab > select (iii) Last Done Price
- Prices & Other Conditions tab > select (iv) Is Shariah Compliant
- Technical Analysis Conditions tab select (v) RSI Overbought
- Technical Analysis Conditions tab select (vi) Moving Average Below Close
- Technical Analysis Conditions tab select (vii) CCI Overbought

B. Conditions (Criteria Filters)

1. Revenue ("000) - select (more than) type (1) for the past select (1) financial year(s)
2. Average Volume - type (1) days average volume greater than type (10000) lots
3. Last Done Price - select (more than) type (0.3)
4. Is Shariah Compliant - select Yes
5. RSI Overbought - select RSI 1 above 99 for 1 days
6. Moving Average Below Close - select (MA) type (10) below close price for type (1) days
7. CCI Overbought - select CCI (2) above (0) for (1) days

- > click Save Template > Create New Template type (Shariah Momentum Up Stocks) > click Create
- > click Save Template as > select Shariah Momentum Up Stocks > click Save
- > click Screen Now (may take a few minutes)
- Sort By: Select (Vol) Select (Desc)
- Mouse over stock name > Charts > click C² Charts tab or Volume Distribution

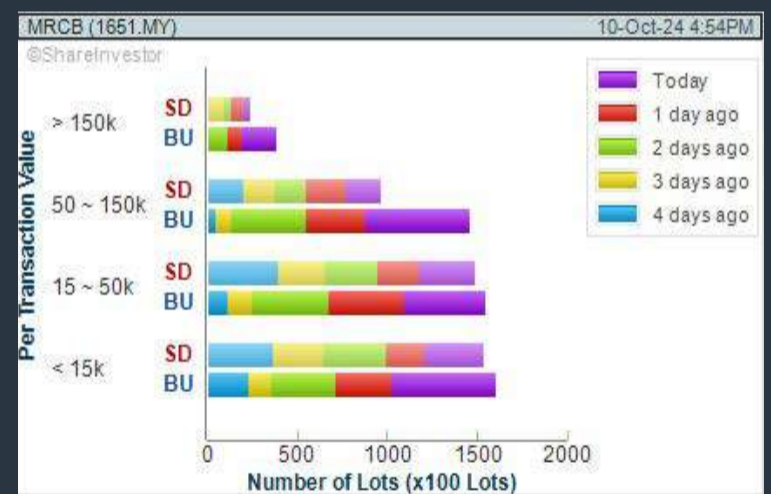
MY E.G. SERVICES BERHAD (0138) C² Chart

Analysis



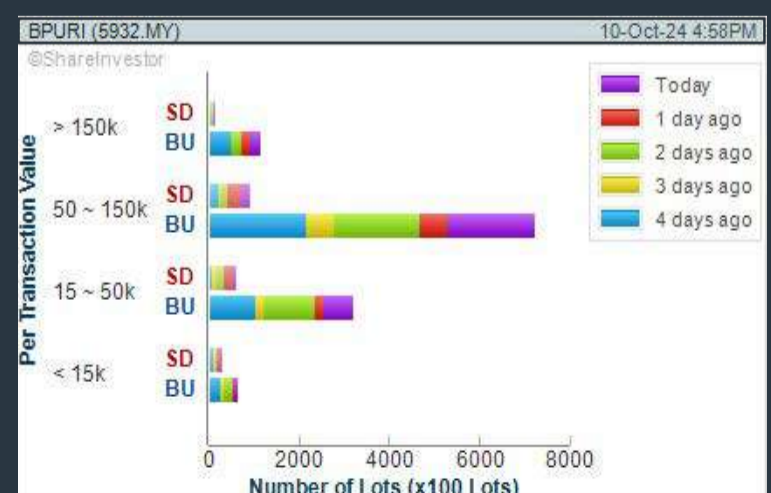
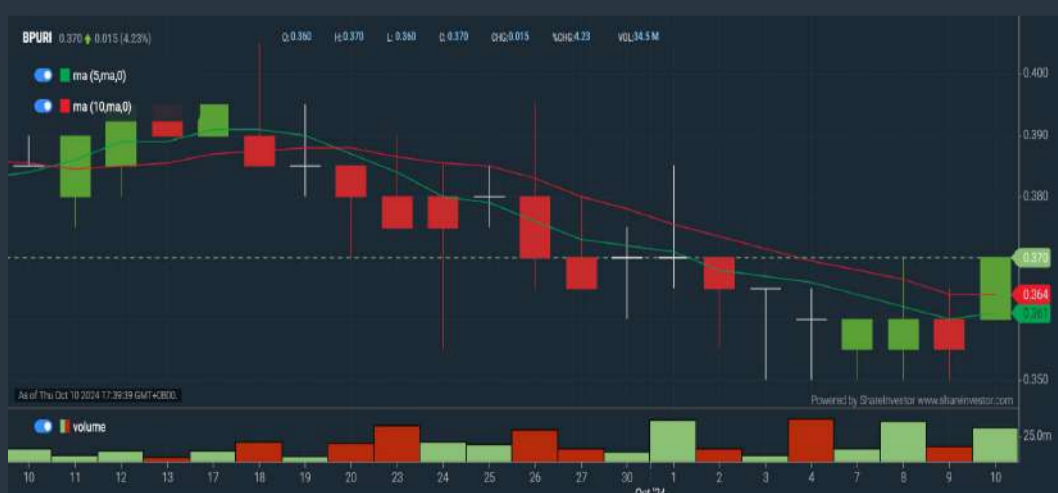
MALAYSIAN RESOURCES CORPORATION BERHAD (1651) C² Chart

Analysis



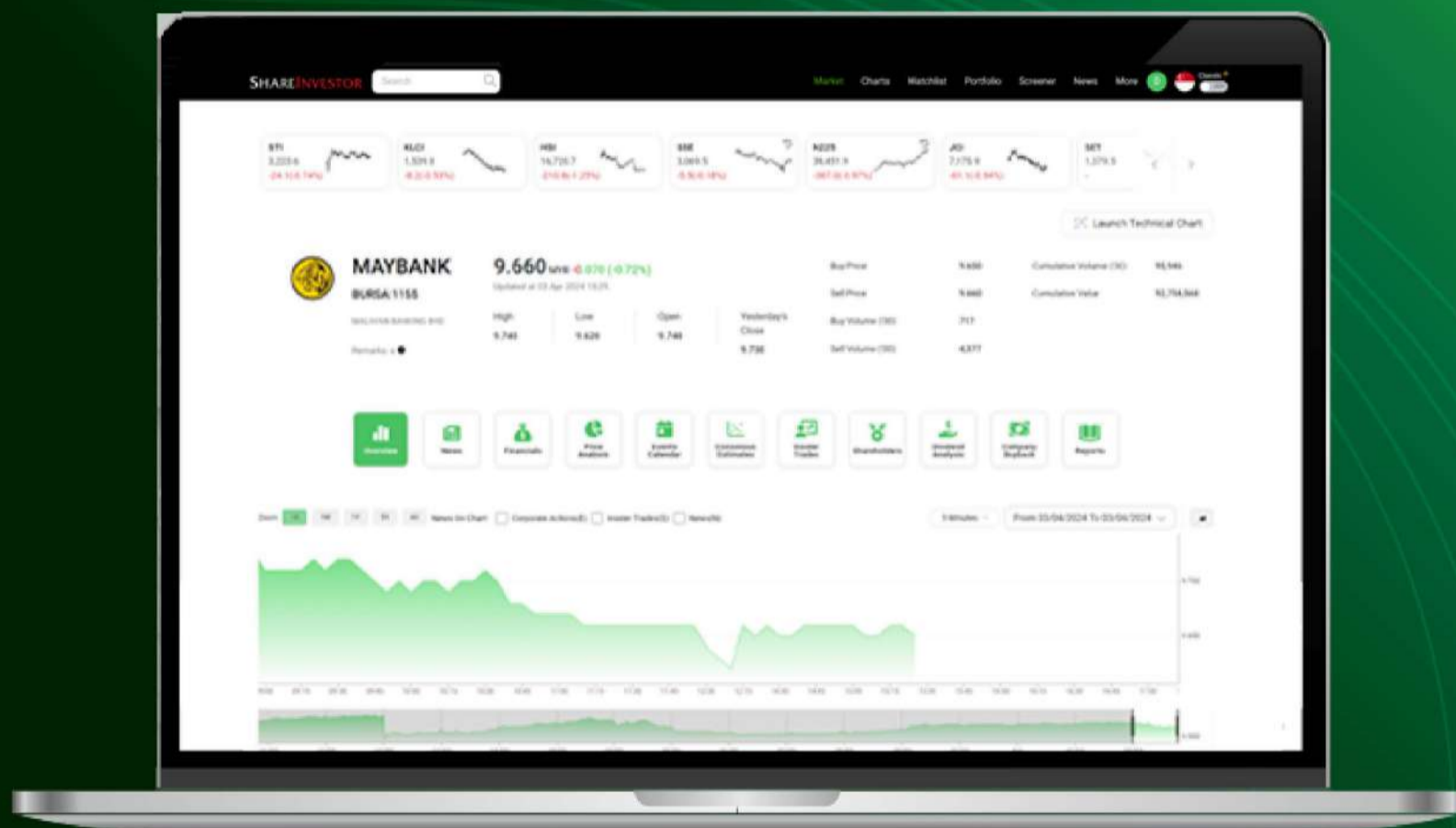
BINA PURI HOLDINGS BERHAD (5932) C² Chart

Analysis



Disclaimer: The information on this page is provided as a service to readers. It does not constitute financial advice and/or any investment recommendations. Past performance is not indicative of future results. We assume no liability for damages resulting from or arising out of the use of such information. It would be best if you did your own research to make your personal investment decisions wisely or consult a licenced investment advisor.

Understanding ShareInvestor's Consensus Estimates



- ✓ Over 70 contributors from local and international research houses
- ✓ Insights about companies listed in Singapore, Malaysia, U.S. Hong Kong, Thailand, Indonesia and Australia exchanges
- ✓ 2 Years of estimates history available

To find out more about the new ShareInvestor platform's Consensus Estimates function, click here to watch our latest webinar.

[Click to Watch The Webinar](#)



Price & Volume Distribution Charts (as at Yesterday)

Technical Analysis

DEFINITION: Stocks with Technical Analysis showing 5-days & 10-days Moving Average Price below Close over past 1 days and with Volume Spike

CHART GUIDE: Volume Distribution Chart is a statistical interpretation of the current sentiment on each stock in graphical format. The highest bar categorized as >150k is likely to be traded by institutions or super dealers, while the lowest bar categorized as <15k usually represents retail investors. "Buy Up" refers to more buyers snatching up the lots queued at selling price. "Sell Down" refers to sellers selling their shares to the buying queue.



ShareInvestor WebPro > Screener > Market Screener (FA & TA) > select BURSA > add criteria

A. Criteria

- > click Add Criteria
- Technical Analysis Conditions tab select (i) Moving Average Below Close (ii) Volume Spike
- Fundamental Analysis Conditions tab >select (iii) Revenue
- Prices & Other Conditions tab > select (iv) Is Shariah Compliant
- Technical Analysis Conditions tab select (v) Moving Average Below Close
- Prices & Other Conditions tab > select (vi) Last Done Price
- Technical Analysis Conditions tab select (vii) Moving Average Below Close

B. Conditions (Criteria Filters)

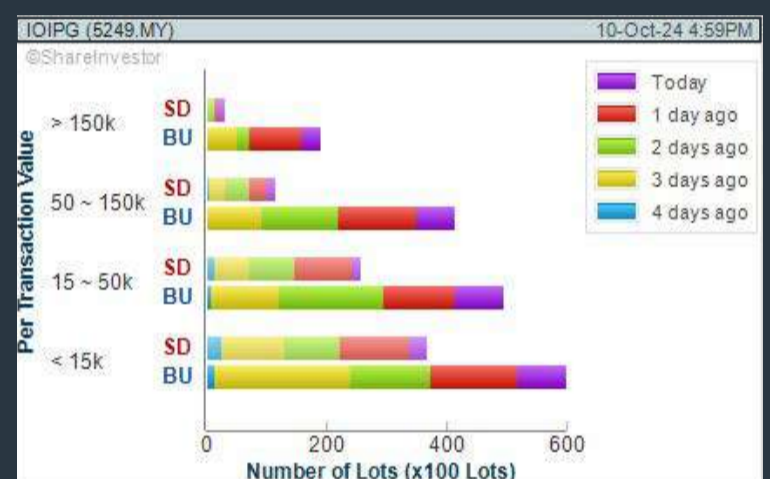
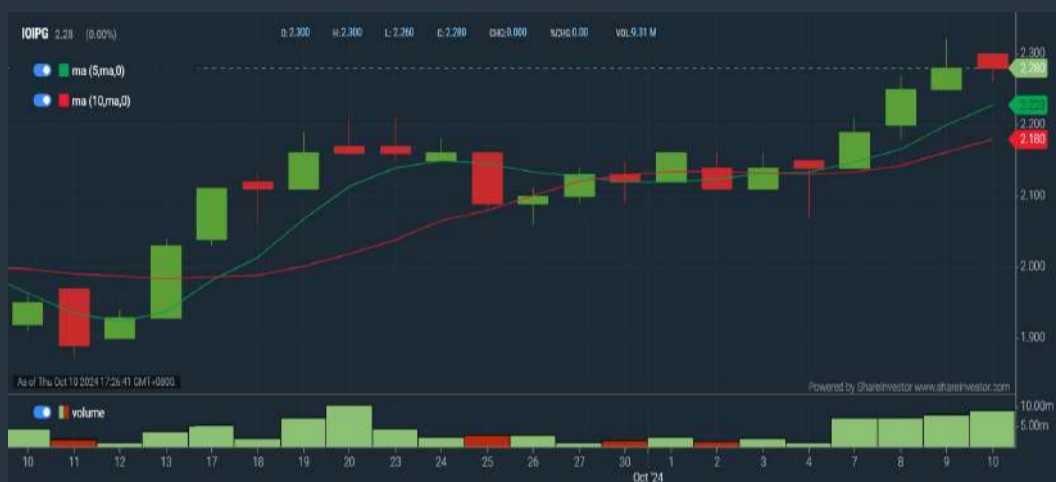
1. Moving Average Below Close - select (MA) type (5) below close price for type (3) days
2. Volume Spike - Volume type (1) greater than type (5) days average
3. Revenue ("000) - select (more than) type (1) for the past select (1) financial year(s)
4. Is Shariah Compliant - select NO
5. Moving Average Below Close - select (MA) type (10) below close price for type (1) days
6. Last Done Price - select (more than) type (0.3)
7. Moving Average Below Close - select (EMA) type (5) below close price for type (1) days

- > click Save Template > Create New Template type (Non-Shariah Hot Stocks) > click Create
- > click Save Template as > select Non-Shariah Hot Stocks > click Save
- > click Screen Now (may take a few minutes)
- Sort By: Select (Vol) Select (Desc)
- Mouse over stock name > Charts > click C² Charts tab or Volume Distribution

IOI PROPERTIES GROUP BERHAD (5249)

C² Chart

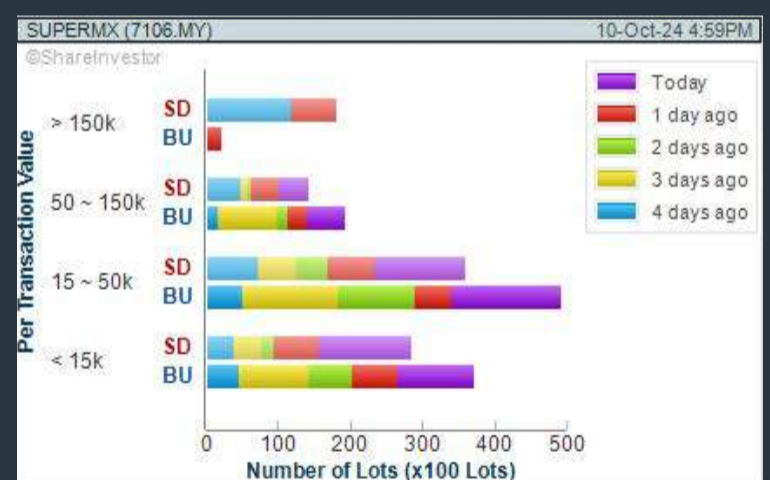
Analysis



SUPERMAX CORPORATION BERHAD (7106)

C² Chart

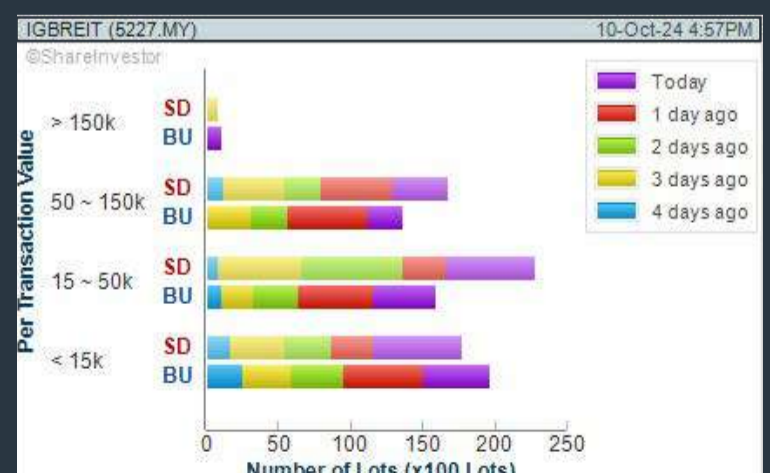
Analysis



IGB REAL ESTATE INV TRUST (5227)

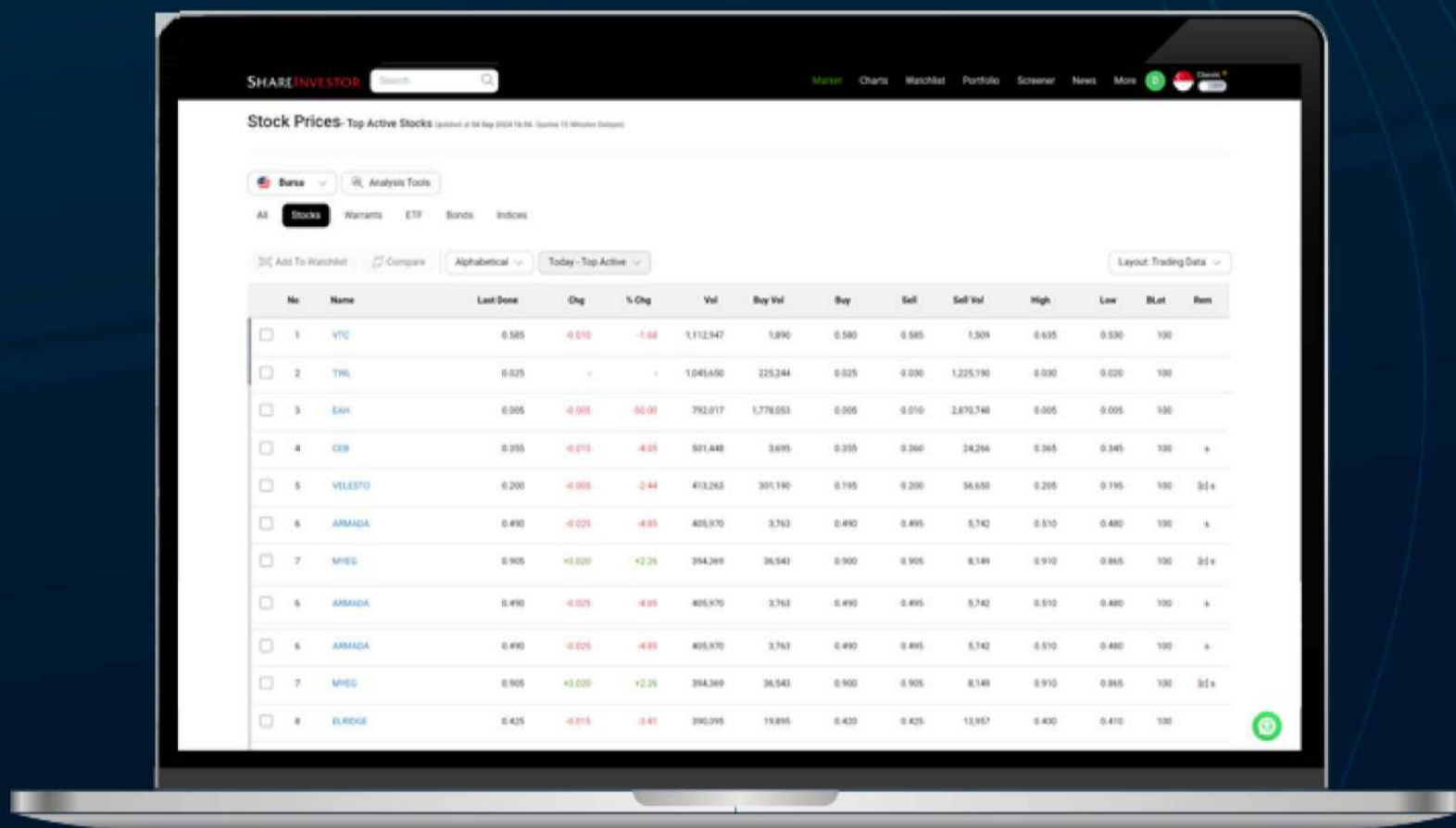
C² Chart

Analysis



Disclaimer: The information on this page is provided as a service to readers. It does not constitute financial advice and/or any investment recommendations. Past performance is not indicative of future results. We assume no liability for damages resulting from or arising out of the use of such information. It would be best if you did your own research to make your personal investment decisions wisely or consult a licenced investment advisor.

Navigating the **New** ShareInvestor A Step-by-Step Guide



Learn more about some of our new platform's exciting features and functions, including:

- ✓ The functionalities of ShareInvestor's Factsheet
- ✓ Key differences in the updated ShareInvestor Factsheet
- ✓ Case study on how to utilize the Factsheet effectively

Click to Watch The Webinar



Price & Volume Distribution Charts (Over 3 trading days as at Yesterday)

Technical Analysis

DEFINITION: Stocks with Technical Analysis showing Bullish Momentum and Price Uptrend

CHART GUIDE: Volume Distribution Chart is a statistical interpretation of the current sentiment on each stock in graphical format. The highest bar categorized as >150k is likely to be traded by institutions or super dealers, while the lowest bar categorized as <15k usually represents retail investors. "Buy Up" refers to more buyers snatching up the lots queued at selling price. "Sell Down" refers to sellers selling their shares to the buying queue.



ShareInvestor WebPro > Screener > Market Screener (FA & TA) > select BURSA > add criteria

A. Criteria

- > click Add Criteria
- Fundamental Analysis Conditions tab > select (i) Revenue
- Technical Analysis Conditions tab select (ii) Moving Average Below Close
- Technical Analysis Conditions tab select (iii) Average Volume
- Prices & Other Conditions tab > select (iv) Last Done Price
- Technical Analysis Conditions tab select (v) Moving Average Below Close
- Technical Analysis Conditions tab select (v) Moving Average Bullish Crossover

B. Conditions

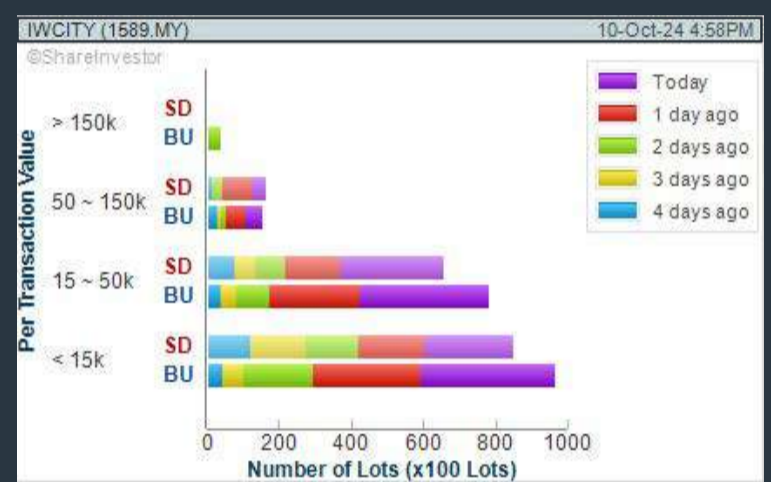
1. Revenue - select (more than) type (1) for the past select (1) financial year(s)
2. Moving Average Below Close - select (MA) type (20) below close price for type (1) days
3. Average Volume - type (5) days average volume type (10000) lots
4. Last Done Price - select (more than) type (0.3)
5. Moving Average Below Close - select (MA) type (10) below close price for type (1) days
6. Moving Average Bullish Crossover - select (MA) type (5) crossed above select (MA) type (10)

> click Save Template > Create New Template type (Non-Shariah Up-Trending Stocks) > click Create Click Save Template As > select Non-Shariah Up Trending Stocks > click Save > click Screen Now (may take a few minutes) Sort By: Select (Vol) Select (Desc) Mouse over stock name > Charts > click C² Charts tab or Volume Distribution

ISKANDAR WATERFRONT CITY BERHAD (1589)

C² Chart

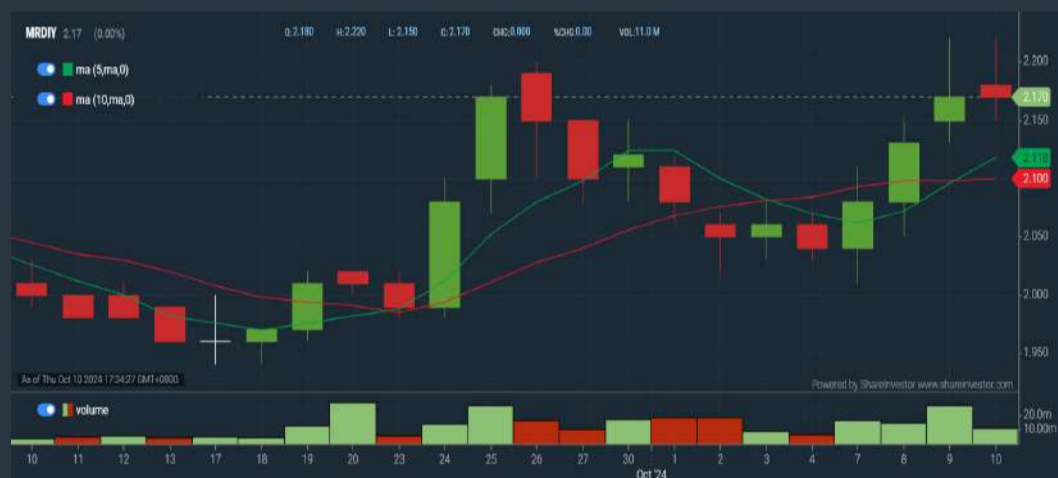
Analysis



MR D.I.Y. GROUP (M) BERHAD (5296)

C² Chart

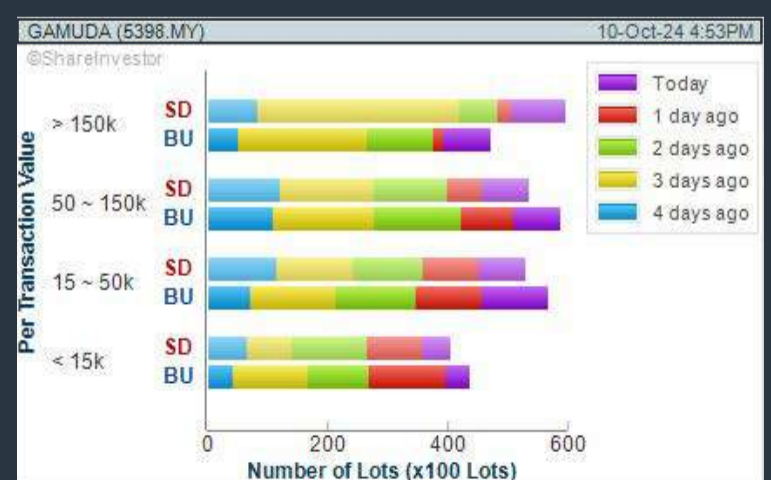
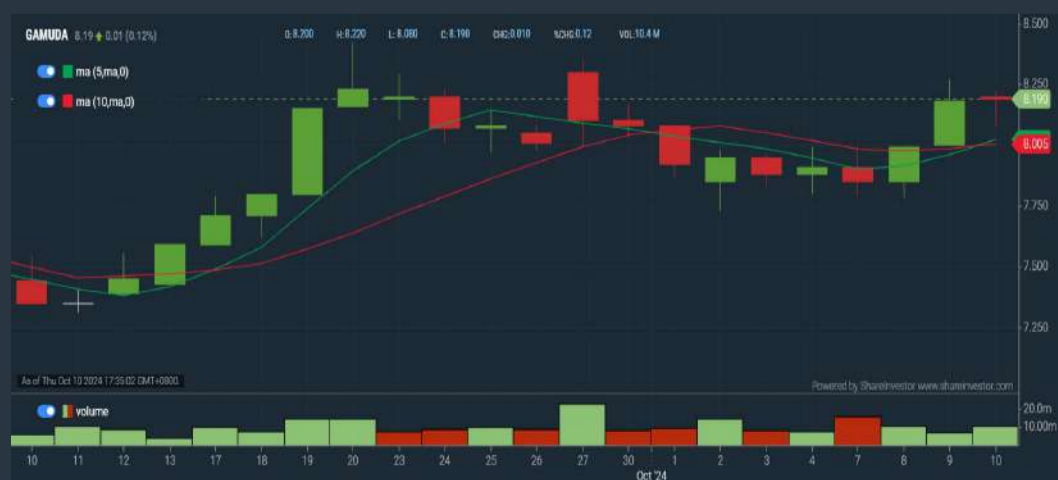
Analysis



GAMUDA BERHAD (5398)

C² Chart

Analysis



Disclaimer: The information on this page is provided as a service to readers. It does not constitute financial advice and/or any investment recommendations. Past performance is not indicative of future results. We assume no liability for damages resulting from or arising out of the use of such information. It would be best if you did your own research to make your personal investment decisions wisely or consult a licenced investment advisor.



Endorsed by **Chiropractic Associations in
USA, Australia & Singapore**

ISO9001 (quality) & ISO14001 (environment)



XTRA

Price & Total Shareholder Return (as at Yesterday)

Fundamental Analysis

DEFINITION: Share price of a company trading at a lower price as compared to its fundamentals (FA) such as financial performance and dividend, allowing it to be attractive to value investors.

CHART GUIDE: Total Shareholder Return (TSR) combines share price appreciation and dividend distributions paid to show the total return to the shareholder expressed as a percentage.



ShareInvestor WebPro > Screener > Market Screener (FA & TA) > select BURSA > add criteria

A. Criteria

- > click Add Criteria
- Fundamental Analysis Conditions tab (i) Price Earnings Ratio
- Fundamental Analysis Conditions tab >select (ii) CAGR of Net Earnings
- Fundamental Analysis Conditions tab >select (iii) Net Debt To Equity
- Fundamental Analysis Conditions tab >select (iv) Return On Equity (ROE)

B. Conditions

1. Price Earnings Ratio - select (less than) type (15) times now
2. CAGR of Net Earnings - select (more than) type (10) % for the past type (3) financial year(s)
3. Net Debt To Equity - select (less than) type (1) for the past select (1) financial year(s)
4. Return On Equity (ROE) - select (more than) type (10) % for the past select (1) financial year(s)

- > click Save Template > Create New Template type (Value Stock) > click Create
- > click Save Template as > select Value Companies > click Save
- > click Screen Now (may take a few minutes)
- Sort by: Select (PE Ratio) Select (Ascending)
- > Mouse over stock name > Factsheet > looking for Total Shareholder Return
- > Mouse over stock name > Charts > click C2 Charts tab

SYNERGY HOUSE BERHAD (0279)

C² Chart



Period	Dividend Received	Capital Appreciation	Total Shareholder Return
Short Term Return	5 Days	+0.010	+1.01 %
	10 Days	-0.040	-3.85 %
	20 Days	-	-
Medium Term Return	3 Months	-0.400	-28.57 %
	6 Months	+0.040	+4.17 %
	1 Year	+0.535	+115.05 %
Annualised Return	Annualised	-	+115.05 %

AJINOMOTO (M) BERHAD (2658)

C² Chart



Period	Dividend Received	Capital Appreciation	Total Shareholder Return
Short Term Return	5 Days	-	-
	10 Days	-0.200	-1.29 %
	20 Days	+0.600	+4.08 %
Medium Term Return	3 Months	+0.160	+1.06 %
	6 Months	-2.202	-12.58 %
	1 Year	+1.370	+9.83 %
Long Term Return	2 Years	+5.527	+36.55 %
	3 Years	+0.908	+6.31 %
	5 Years	0.875	+15.02 %
Annualised Return	Annualised	-	+2.98 %

SOLID AUTOMOTIVE BERHAD (5242)

C² Chart



Period	Dividend Received	Capital Appreciation	Total Shareholder Return
Short Term Return	5 Days	-0.010	-4.88 %
	10 Days	-0.010	-4.88 %
	20 Days	-0.010	-4.88 %
Medium Term Return	3 Months	-0.035	-15.22 %
	6 Months	+0.010	+5.41 %
	1 Year	-	-
Long Term Return	2 Years	+0.010	+5.41 %
	3 Years	-0.045	-18.75 %
	5 Years	-0.110	-56.07 %
Annualised Return	Annualised	-	-8.56 %

Disclaimer: The information on this page is provided as a service to readers. It does not constitute financial advice and/or any investment recommendations. Past performance is not indicative of future results. We assume no liability for damages resulting from or arising out of the use of such information. It would be best if you did your own research to make your personal investment decisions wisely or consult a licenced investment advisor.

Price & Total Shareholder Return (as at Yesterday)

Fundamental Analysis

DEFINITION: Company revenue is growing and making good quality of earnings with positive Free Cash Flow.

CHART GUIDE: Total Shareholder Return (TSR) combines share price appreciation and distributions paid to show the total return to the shareholder expressed as a percentage.



ShareInvestor WebPro > Screener > Market Screener (FA & TA) > select BURSA > add criteria

A. Criteria

1. Fundamental Analysis Conditions tab >select (i) Free Cash Flow, (ii) Revenue Growth, (iii) Gross Profit (Earnings) Margin, (iv) Quality of Earnings, (v) Total Shareholder Returns, > click Add Criteria
2. Fundamental Analysis Conditions tab >select (vi) Total Shareholder Returns > click Add Criteria

B. Conditions (Criteria Filters)

1. Free Cash Flow - select (more than) type (1) for the past select (1) financial year(s)
2. Revenue Growth - select (more than) type (1) for the past select (1) financial year(s)
3. Gross Profit (Earnings) Margin - select (more than) type (30) % for the past select (1) financial year(s)
4. Quality of Earnings - select (more than) type (1) for the past select (1) financial year(s)
5. Total Shareholder Return - -- select (more than) type (5) % for the past select (3) financial year(s)
6. Total Shareholder Return - -- select (more than) type (5) % for the past select (5) financial year(s)

- > click Save Template > Create New Template type (Growth Companies) > click Create
- > click Save Template as > select Growth Companies > click Save
- > click Screen Now (may take a few minutes)
- > Sort By: Select (Revenue Growth) Select (Desc)
- > Mouse over stock name > Factsheet > looking for Total Shareholder Return

EDARAN BERHAD (5036)

C² Chart

Analysis



Period	Dividend Received	Capital Appreciation	Total Shareholder Return
Short Term Return	5 Days	+0.060	+3.97 %
	10 Days	-	-
	20 Days	+0.260	+19.85 %
Medium Term Return	3 Months	+0.370	+36.83 %
	6 Months	+0.370	+36.83 %
	1 Year	+1.060	+207.84 %
Long Term Return	2 Years	+1.065	+210.89 %
	3 Years	0.035	+91.07 %
	5 Years	0.653	+273.10 %
Annualised Return	Annualised	-	+30.13 %

SL INNOVATION CAPITAL BERHAD (03008)

C² Chart

Analysis



Period	Dividend Received	Capital Appreciation	Total Shareholder Return
Short Term Return	5 Days	-	-
	10 Days	-0.030	-4.48 %
	20 Days	-0.030	-4.48 %
Medium Term Return	3 Months	-0.030	-4.48 %
	6 Months	-0.030	-4.48 %
	1 Year	-0.030	-4.48 %
Long Term Return	2 Years	+0.250	+64.10 %
	3 Years	+0.235	+58.02 %
	5 Years	0.005	+57.32 %
Annualised Return	Annualised	-	+9.49 %

M & A EQUITY HOLDINGS BERHAD (7082)

C² Chart

Analysis



Period	Dividend Received	Capital Appreciation	Total Shareholder Return
Short Term Return	5 Days	-0.010	-3.23 %
	10 Days	-0.015	-4.76 %
	20 Days	-0.020	-6.25 %
Medium Term Return	3 Months	-0.050	-14.29 %
	6 Months	-0.060	-21.05 %
	1 Year	-0.045	-13.04 %
Long Term Return	2 Years	0.001	+88.12 %
	3 Years	0.001	+71.02 %
	5 Years	0.013	+200.96 %
Annualised Return	Annualised	-	+24.65 %

Disclaimer: The information on this page is provided as a service to readers. It does not constitute financial advice and/or any investment recommendations. Past performance is not indicative of future results. We assume no liability for damages resulting from or arising out of the use of such information. It would be best if you did your own research to make your personal investment decisions wisely or consult a licenced investment advisor.

Price & Total Shareholder Return (as at Yesterday)

Fundamental Analysis

DEFINITION: Company is paying out dividend with low or moderate leverage.

CHART GUIDE: Total Shareholder Return (TSR) combines share price appreciation and distributions paid to show the total return to the shareholder expressed as a percentage.



ShareInvestor WebPro > Screener > Market Screener (FA & TA) > select BURSA > add criteria

A. Criteria

- > click Add Criteria
- Fundamental Analysis Conditions tab >select (i) Dividend Yield
- Fundamental Analysis Conditions tab >select (ii) Dividend Payout (Historical)
- Fundamental Analysis Conditions tab >select (iii) Total Debt To Equity
- Fundamental Analysis Conditions tab >select (iv) Total Shareholder Returns
- Fundamental Analysis Conditions tab >select (v) Total Shareholder Returns
- Fundamental Analysis Conditions tab / >select (vi) CAGR of Dividend Per Share

• Fundamental Analysis Conditions tab >select (vii) CAGR of Dividend Per Share

B. Conditions (Criteria Filters)

1. Dividend Yield - select (more than) type (1) % for the past select (1) financial year(s)
2. Dividend Payout (Historical) - select (between) type (0.5) to type (1) times for the past select (1) financial year(s)
3. Total Debt to Equity - select (less than) type (1) for the past select (1) financial year(s)
4. Total Shareholder Return - select (more than) type (5) % for the past select (3) financial year(s)
5. Total Shareholder Return - select (more than) type (5) % for the past select (5) financial year(s)

6. CAGR of Dividend Per Share - select (less than) type (30) % for the past select (5) financial year(s)
7. CAGR of Dividend Per Share - select (more than) type (1) % for the past select (5) financial year(s)

- > click Save Template > Create New Template type (Dividend Companies) > click Create
- > click Save Template as > select Dividend Companies > click Save
- > click Screen Now (may take a few minutes)
- > Sort By: Select (Dividend Yield) Select (Desc)
- > Mouse over stock name > Factsheet > looking for Total Shareholder Return

AMWAY (M) HOLDINGS BERHAD (6351)

C² Chart

Analysis



Period	Dividend Received	Capital Appreciation	Total Shareholder Return
Short Term Return	5 Days	-0.080	-1.16 %
	10 Days	-0.100	-1.45 %
	20 Days	-0.040	-0.50 %
Medium Term Return	3 Months	-0.260	-3.68 %
	6 Months	-0.700	-9.33 %
	1 Year	+1.500	+28.30 %
Long Term Return	2 Years	+1.870	+37.93 %
	3 Years	+1.310	+23.86 %
	5 Years	0.250 +1.350	+29.36 %
Annualised Return	Annualised	-	+5.28 %

SHL CONSOLIDATED BERHAD (6017)

C² Chart

Analysis



Period	Dividend Received	Capital Appreciation	Total Shareholder Return
Short Term Return	5 Days	-0.210	-7.29 %
	10 Days	-0.250	-8.56 %
	20 Days	-0.090	-2.91 %
Medium Term Return	3 Months	-0.030	-1.11 %
	6 Months	+0.520	+24.19 %
	1 Year	+0.590	+28.37 %
Long Term Return	2 Years	+0.970	+57.06 %
	3 Years	+0.670	+33.50 %
	5 Years	0.120 +0.370	+21.30 %
Annualised Return	Annualised	-	+3.04 %

PARAMOUNT CORPORATION BERHAD (1724)

C² Chart

Analysis



Period	Dividend Received	Capital Appreciation	Total Shareholder Return
Short Term Return	5 Days	+0.030	+2.88 %
	10 Days	+0.010	+0.94 %
	20 Days	+0.020	+1.90 %
Medium Term Return	3 Months	-0.050	-4.46 %
	6 Months	-0.080	-6.96 %
	1 Year	+0.095	+9.74 %
Long Term Return	2 Years	+0.480	+81.36 %
	3 Years	+0.393	+58.05 %
	5 Years	0.336 +0.212	+63.75 %
Annualised Return	Annualised	-	+10.37 %

Disclaimer: The information on this page is provided as a service to readers. It does not constitute financial advice and/or any investment recommendations. Past performance is not indicative of future results. We assume no liability for damages resulting from or arising out of the use of such information. It would be best if you did your own research to make your personal investment decisions wisely or consult a licenced investment advisor.

Week: 04 October 2024 - 10 October 2024

More Brokers' Call 

AMINVESTMENT BANK <small>... See More</small>	Call	Target Price	Release Date
IOI Properties Group Berhad (5249)	HOLD	RM4.10	7 Oct 2024

KENANGA <small>... See More</small>	Call	Target Price	Release Date
Hartalega Holdings Berhad (5168)	OUTPERFORM	RM3.25	10 Oct 2024
Solarvest Holdings Berhad (0215)	OUTPERFORM	RM1.91	10 Oct 2024
AEON Co. (M) Berhad (6599)	UNDERPERFORM	RM1.21	9 Oct 2024
Public Bank Berhad (1295)	OUTPERFORM	RM5.10	9 Oct 2024
Dayang Enterprise Holdings Berhad (5141)	OUTPERFORM	RM3.80	8 Oct 2024
Bursa Malaysia Berhad (1818)	MARKET PERFORM	RM10.00	7 Oct 2024

MIDF <small>... See More</small>	Call	Target Price	Release Date
Westports Holdings Berhad (5246)	NEUTRAL	RM4.30	10 Oct 2024
LPI Capital Berhad (8621)	BUY	RM14.52	9 Oct 2024
Public Bank Berhad (1295)	BUY	RM5.16	9 Oct 2024
Ta Ann Holdings Berhad (5012)	BUY	RM4.41	9 Oct 2024

UOB KAYHIAN <small>... See More</small>	Call	Target Price	Release Date
Autocount Dotcom Berhad (0276)	BUY	RM1.27	9 Oct 2024
Infoline Tec Group Berhad (0253)	BUY	RM1.11	9 Oct 2024
ITMAX System Berhad (5309)	BUY	RM4.10	9 Oct 2024
WCT Holdings Berhad (9679)	BUY	RM1.31	9 Oct 2024
Hartalega Holdings Berhad (5168)	BUY	RM3.65	8 Oct 2024
KPJ Healthcare Berhad (5878)	HOLD	RM1.90	8 Oct 2024
Sime Darby Berhad (4197)	BUY	RM2.84	8 Oct 2024

DEFINITION: Top 9 stocks with Technical Analysis plus Pattern Matching by 60 pre-defined indicators by the system showing a higher probability of bullish sentiment on the share price.



ShareInvestor WebPro > Screener > Predefined TA Screens > select market BURSA > Most Long Signals > click Scan Results or mouse over each company

SWS CAPITAL BERHAD (7186.MY)

SWSCAP

Price updated at 10 Oct 2024 16:51

Last: 0.205	Change: -0.005	Volume: 2,926
	Change (%): -2.38	Range: 0.205 - 0.215

TA Scanner Results based on historical data up to 10 Oct 2024

Condition	Signal	Explanation
Bollinger Band: Bullish Long Term Volatility Breakout and Trending	Long	1. Close price above upper bollinger band(33,1). 2. Volume above average volume(50). 3. Average volume(50) is above 300,000.
Bollinger Band: Bullish Short Term Volatility Breakout and Trending	Long	1. Close price above upper bollinger band(33,1). 2. Volume above average volume(10). 3. Average volume(10) is above 300,000.
Bollinger Band: High Above Upper Bollinger Band	Neutral	1. High above upper bollinger band(14,2). 2. Average volume(5) is above 100,000.
DM: Bullish Directional Movement	Long	-DI(14) crossed below +DI(14)
MA: Medium Term Bullish Moving Average Crossover	Long	MA(25) crossed above MA(50) within the last 1 day.
MACD: Bullish MACD Crossover	Long	1. MACD(12,26) diff line crossed above the MACD(12,26) signal line. 2. MACD Histogram(12,26) is above 0.
RSI: Short Term RSI 50 Bullish Crossover	Long	1. RSI(20) crossed above 50 within the last 1 day and RSI(20) 1 day ago below 50 for the last 5 days. 2. Volume above average volume(125). 3. Average volume(5) is above 100,000.

APB RESOURCES BERHAD (5568.MY)

APB

Price updated at 10 Oct 2024 16:59

Last: 0.465	Change: -0.010	Volume: 35,687
	Change (%): -2.11	Range: 0.460 - 0.485

TA Scanner Results based on historical data up to 10 Oct 2024

Condition	Signal	Explanation
MACD: Bullish MACD Divergence	Long	1. Close price is decreasing for the last 3 days. 2. MACD(12,26) diff line is increasing for the last 3 days.
Price: New 52 Week Low	Short	1. Stock reach a new 52 week low. 2. Average volume(30) is above 50000.
RSI: RSI Oversold	Long	1. RSI(20) is below 20. 2. RSI(20) is decreasing for the last 3 days. 3. Stock has more than 75 days of historical data.
Volume: 10 Days large value Buy Up trade	Long	1. 150K value Buy Up greater than Sell Down by 20% for 10 days. 2. 50K-100K value Buy Up greater than Sell Down by 20% for 10 days. 3. Average volume(10) is above 1000000
Volume: Consecutive Days Of Increasing Average Volume	Long	1. Average Volume(20) has been increasing over the last 2 weeks. 2. Average volume(20) is above 100000
Williams %R: Bullish Williams %R	Long	1. Williams %R(26) between -80 and -100. 2. Average volume(5) is above 100,000.

Disclaimer: The information on this page is provided as a service to readers. It does not constitute financial advice and/or any investment recommendations. Past performance is not indicative of future results. We assume no liability for damages resulting from or arising out of the use of such information. It would be best if you did your own research to make your personal investment decisions wisely or consult a licenced investment advisor.

SOLARVEST HOLDINGS BERHAD (0215.MY)

SLVEST

Price updated at 10 Oct 2024 16:57

Last: 1.640	Change: +0.010	Volume: 25,013
	Change (%): +0.61	Range: 1.610 - 1.660

TA Scanner Results based on historical data up to 10 Oct 2024

Condition	Signal	Explanation
Bollinger Band: Bullish Long Term Volatility Breakout and Trending	Long	1. Close price above upper bollinger band(33,1). 2. Volume above average volume(50). 3. Average volume(50) is above 300,000.
Bollinger Band: Bullish Short Term Volatility Breakout and Trending	Long	1. Close price above upper bollinger band(33,1). 2. Volume above average volume(10). 3. Average volume(10) is above 300,000.
Bollinger Band: High Above Upper Bollinger Band	Neutral	1. High above upper bollinger band(14,2). 2. Average volume(5) is above 100,000.
DM: Bullish Directional Movement	Long	-DI(14) crossed below +DI(14)
Donchian Channels: High Above Upper Donchian Channels	Long	High crossed above the upper Donchian Channel(14,4)
Volume: 10 Days large value Buy Up trade	Long	1. 150K value Buy Up greater than Sell Down by 20% for 10 days. 2. 50K-100K value Buy Up greater than Sell Down by 20% for 10 days. 3. Average volume(10) is above 1000000
Volume: 5 Days large value Buy Up trade	Long	1. 150K value Buy Up greater than Sell Down by 20% for 5 days. 2. 50K-100K value Buy Up greater than Sell Down by 20% for 5 days. 3. Average volume(10) is above 1000000
Williams %R: Bearish Williams %R	Short	1. Williams %R(26) between 0 and -20. 2. Average volume(5) is above 100,000.

TA WIN HOLDINGS BERHAD (7097.MY)

TAWIN

Price updated at 10 Oct 2024 16:54

Last: 0.025	Change: -0.005	Volume: 30,786
	Change (%): -16.67	Range: 0.020 - 0.030

TA Scanner Results based on historical data up to 10 Oct 2024

Condition	Signal	Explanation
Bollinger Band: Bullish Long Term Volatility Breakout and Trending	Long	1. Close price above upper bollinger band(33,1). 2. Volume above average volume(50). 3. Average volume(50) is above 300,000.
Bollinger Band: Bullish Short Term Volatility Breakout and Trending	Long	1. Close price above upper bollinger band(33,1). 2. Volume above average volume(10). 3. Average volume(10) is above 300,000.
MA: Bullish Price Crossover	Long	1. Close price crossed above MA(40) within the last 1 day. 2. Previous day close price is below the MA(10) for the last 5 days
MACD: Bullish MACD Crossover	Long	1. MACD(12,26) diff line crossed above the MACD(12,26) signal line. 2. MACD Histogram(12,26) is above 0.
RSI: Short Term RSI 50 Bullish Crossover	Long	1. RSI(20) crossed above 50 within the last 1 day and RSI(20) 1 day ago below 50 for the last 5 days. 2. Volume above average volume(125). 3. Average volume(5) is above 100,000.

**YEW LEE PACIFIC GROUP BERHAD (0248.MY)****YEWLEE**

Price updated at 10 Oct 2024 16:58

Last: 0.445	Change: +0.015	Volume: 139,501
	Change (%): +3.49	Range: 0.430 - 0.445

TA Scanner Results based on historical data up to 10 Oct 2024

Condition	Signal	Explanation
Bollinger Band: Bullish Long Term Volatility Breakout and Trending	Long	1. Close price above upper bollinger band(33,1). 2. Volume above average volume(50). 3. Average volume(50) is above 300,000.
Bollinger Band: Bullish Short Term Volatility Breakout and Trending	Long	1. Close price above upper bollinger band(33,1). 2. Volume above average volume(10). 3. Average volume(10) is above 300,000.
Bollinger Band: High Above Upper Bollinger Band	Neutral	1. High above upper bollinger band(14,2). 2. Average volume(5) is above 100,000.
Donchian Channels: High Above Upper Donchian Channels	Long	High crossed above the upper Donchian Channel(14,4)
Price: New 52 Week High	Long	1. Stock reach a new 52 week high. 2. Average volume(30) is above 50000.
Volume: 10 Days large value Buy Up trade	Long	1. 150K value Buy Up greater than Sell Down by 20% for 10 days. 2. 50K-100K value Buy Up greater than Sell Down by 20% for 10 days. 3. Average volume(10) is above 1000000
Volume: 5 Days large value Buy Up trade	Long	1. 150K value Buy Up greater than Sell Down by 20% for 5 days. 2. 50K-100K value Buy Up greater than Sell Down by 20% for 5 days. 3. Average volume(10) is above 1000000

**ITMAX SYSTEM BERHAD (5309.MY)****ITMAX**

Price updated at 10 Oct 2024 16:58

Last: 3.750	Change: +0.010	Volume: 11,292
	Change (%): +0.27	Range: 3.710 - 3.750

TA Scanner Results based on historical data up to 10 Oct 2024

Condition	Signal	Explanation
Bollinger Band: High Above Upper Bollinger Band	Neutral	1. High above upper bollinger band(14,2). 2. Average volume(5) is above 100,000.
Donchian Channels: High Above Upper Donchian Channels	Long	High crossed above the upper Donchian Channel(14,4)
MACD: Bullish MACD Crossover	Long	1. MACD(12,26) diff line crossed above the MACD(12,26) signal line. 2. MACD Histogram(12,26) is above 0.
Price: New 52 Week High	Long	1. Stock reach a new 52 week high. 2. Average volume(30) is above 50000.
Volume: 5 Days large value Buy Up trade	Long	1. 150K value Buy Up greater than Sell Down by 20% for 5 days. 2. 50K-100K value Buy Up greater than Sell Down by 20% for 5 days. 3. Average volume(10) is above 1000000
Williams %R: Bearish Williams %R	Short	1. Williams %R(26) between 0 and -20. 2. Average volume(5) is above 100,000.

Disclaimer: The information on this page is provided as a service to readers. It does not constitute financial advice and/or any investment recommendations. Past performance is not indicative of future results. We assume no liability for damages resulting from or arising out of the use of such information. It would be best if you did your own research to make your personal investment decisions wisely or consult a licenced investment advisor.

**SUNWAY CONSTRUCTION GROUP BERHAD (5263.MY)****SUNCON**

Price updated at 10 Oct 2024 16:57

Last: 4.540	Change: -	Volume: 38,856
	Change (%): -	Range: 4.500 - 4.650

TA Scanner Results based on historical data up to 10 Oct 2024

Condition	Signal	Explanation
Bollinger Band: Bullish Short Term Volatility Breakout and Trending	Long	1. Close price above upper bollinger band(33,1). 2. Volume above average volume(10). 3. Average volume(10) is above 300,000.
DM: Bullish Directional Movement	Long	-DI(14) crossed below +DI(14)
MA: Medium Term Bullish Moving Average Crossover	Long	MA(25) crossed above MA(50) within the last 1 day.
Volume: 5 Days large value Buy Up trade	Long	1. 150K value Buy Up greater than Sell Down by 20% for 5 days. 2. 50K-100K value Buy Up greater than Sell Down by 20% for 5 days. 3. Average volume(10) is above 1000000
Williams %R: Bearish Williams %R	Short	1. Williams %R(26) between 0 and -20. 2. Average volume(5) is above 100,000.

**MSM MALAYSIA HOLDINGS BERHAD (5202.MY)****MSM**

Price updated at 10 Oct 2024 16:57

Last: 1.310	Change: -0.030	Volume: 26,843
	Change (%): -2.24	Range: 1.310 - 1.360

TA Scanner Results based on historical data up to 10 Oct 2024

Condition	Signal	Explanation
Bollinger Band: Bullish Long Term Volatility Breakout and Trending	Long	1. Close price above upper bollinger band(33,1). 2. Volume above average volume(50). 3. Average volume(50) is above 300,000.
Bollinger Band: Bullish Short Term Volatility Breakout and Trending	Long	1. Close price above upper bollinger band(33,1). 2. Volume above average volume(10). 3. Average volume(10) is above 300,000.
Candlestick: Bullish Engulfing	Long	Bullish: Engulfing

**GDB HOLDINGS BERHAD (0198.MY)****GDB**

Price updated at 10 Oct 2024 16:47

Last: 0.320	Change: -	Volume: 11,516
	Change (%): -	Range: 0.315 - 0.325

TA Scanner Results based on historical data up to 10 Oct 2024

Condition	Signal	Explanation
Candlestick: Bullish Engulfing	Long	Bullish: Engulfing
DM: Bullish Directional Movement	Long	-DI(14) crossed below +DI(14)
MA: Bullish Price Crossover	Long	1. Close price crossed above MA(40) within the last 1 day. 2. Previous day close price is below the MA(10) for the last 5 days
Stochastic: Fast Stochastic Buy Signal	Long	1. Fast Stochastic(15,5) %K crossed above 20. 2. Fast Stochastic(15,5) %K 1 day ago was below 20 for the last 5 days. 3. Average volume(30) is above 50000



Dato' Eu Hong Chew
Former Group CEO i-Berhad
Non-Executive Director

He has been associated with the Sumurwang Group for many years charting the path for its manufacturing arm, firstly under Dreamland Holdings Berhad and the subsequent acquisition of I-Berhad.

Before that, he was with PA Management Consulting for a decade where he was the Director of Studies for the Cranfield PA MBA Programme in Malaysia.

Educated at the Royal Military College, Dato' Eu has an engineering degree from the University of Glasgow, and a MBA from the University of Bradford, UK.

Is there an investment opportunity in CORE MOLDING TECHNOLOGY

SUMMARY

- Core Molding Technologies (NYSE: CMT) has more than doubled its sales and profits over the last decade, but this growth is expected to slow down due to falling thermoplastic prices, which have returned to 2014 levels.

Disclaimer: This article is written for informational purposes only. It does not constitute a solicitation, offer, advice, counseling or recommendation to buy or sell. As such it is not intended to promote the purchase of shares in any way. As a reminder, any type of asset has a risk factor and needs to be evaluated from multiple perspectives. Therefore, any investment decision and the associated risk remains with the investor. The views expressed here are entirely the writer's own.

- Despite increased revenues, CMT has not significantly improved its profitability or operational efficiency during this period. But the company is financially sound.
- My valuation indicates a lack of safety margin, raising concerns about the investment's attractiveness.

INVESTMENT THESIS

Over the last ten years, CMT has doubled its sales and profits. However, this growth is not likely to continue. Thermoplastic prices were about 33% higher on average over the last three years compared to 2014-2016. Now, those prices have dropped back to 2014 levels.

Despite the sales increase, CMT did not become significantly more profitable or efficient during this time. However, the company is financially stable. When looking at its overall performance over the cycle, there does not appear to be a safe investment opportunity at this time, given the valuation (as of Jan 2024).

BACKGROUND

CMT is a molder of thermoplastic and thermoset structural products. The US is the biggest revenue contributor accounting for about 61% of the total revenue in 2022. Refer to the left part of Chart 1. The company operates in the reinforced plastics market. Reinforced plastics are combinations of resins and reinforcing fibres that are molded to shape. The Company believes it is one of North America's largest compounders and molders of thermoset and thermoplastic structural products.

A key characteristic of the business is that its top 5 customers accounted for a significant part of the revenue. You can see this clearly in the right part of Chart 1.

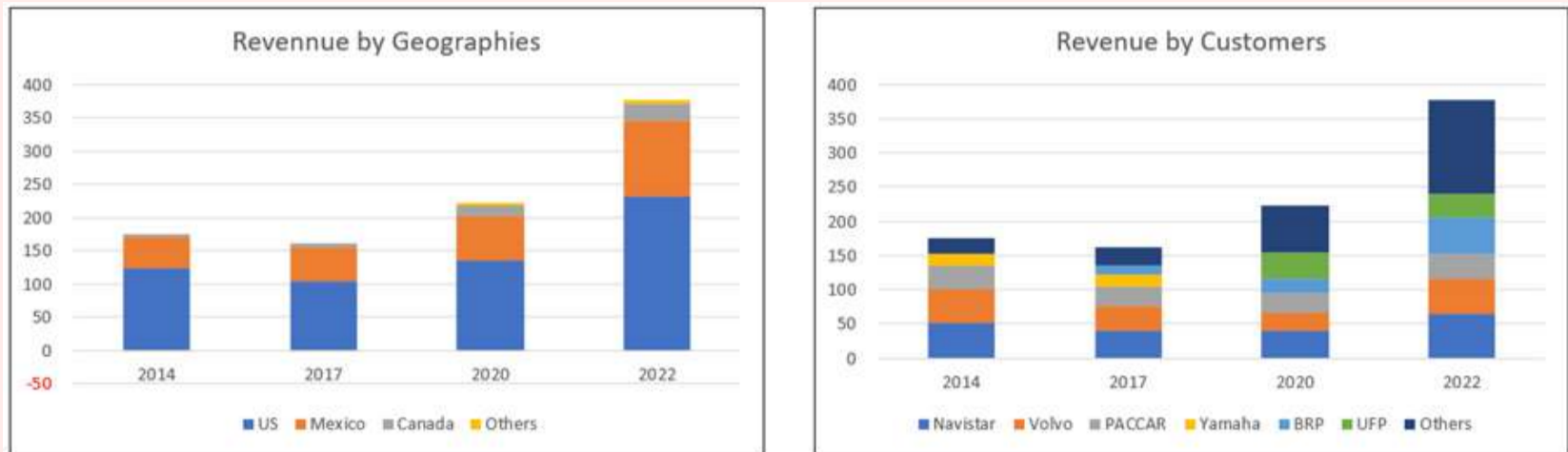


Chart 1: Revenue Profile

OPERATING PERFORMANCE

Over the past 10 years, revenue grew at 8.7% CAGR while PAT grew at 10.1% CAGR. A big part of the growth came over the past 3 years. Refer to the left part of Chart 2. The profit growth was also not a steady one. In 2018 and 2019, the company incurred losses despite growing revenue. This can be attributed to a drop in the gross profit margins from 15% in 2017 to 10% and 8% in 2018 and 2019 respectively. The good sign is that the company bounced back in 2020 with improving gross profitability and contribution

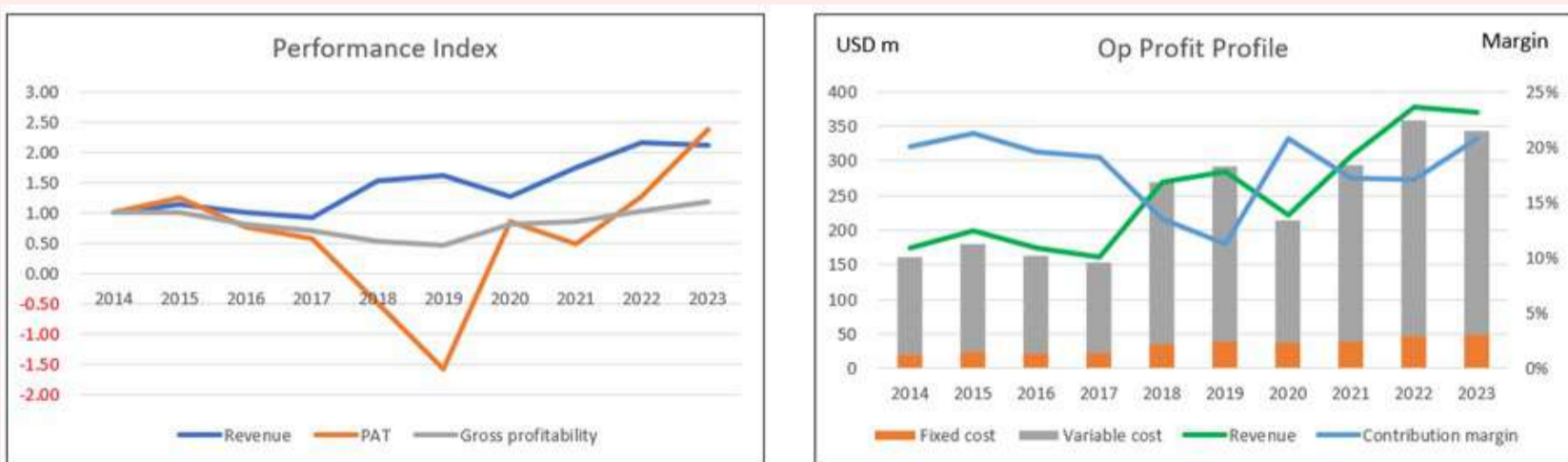


Chart 2: Performance Index and Operating Profit Profile

Note to Op Profit Profile: I broke down the operating profits into fixed costs and variable costs.

- Fixed cost = SGA, Depreciation & Amortization and Others.
- Variable cost = Cost of Sales - Depreciation & Amortization.
- Contribution = Revenue - Variable Cost.
- Contribution margin = Contribution/Revenue.

margins. Unfortunately, the gross profitability and contribution margins in 2023 were about the same as those in 2014.

Over the past decade, growth came from a combination of organic growth and acquisitions. From 2014 to 2023, CMT spent USD80 million on CAPEX and USD78 million on acquisitions. The company did not provide a breakdown of the growth due to organic growth and acquisitions. But assuming a proportionate contribution from the amount spent on CAPEX and acquisitions, I would deduce that there was equal contribution from each.

Looking at Chart 2, you can see the cyclical performance. This is not surprising as thermoplastic prices are cyclical and experienced a high price spike in 2021 and 2022. Refer to Chart 3. You can see that current prices seem to have come down to the 2014/15 level.



Chart 3: Thermoplastics price trends

FINANCIAL POSITION

I would assess CMT as financially sound based on the following:

- It has a 17% Debt Equity ratio as of the end of Jun 2024. This has come down from its 2019 high of 64%.
- As of the end of Jun 2024, it had USD38 million in cash and short-term investments. This was about 17% of its total assets.

- Over the past 10 years, except for 2018, it generated positive cash flow from operations every year. During this period, it generated about USD167 million in cash flow from operations compared to the total PAT of USD60 million. This is a good cash conversion ratio.
- It has a good capital allocation track record as can be seen from Table 1. It was able to cover its CAPEX and acquisitions with the cash flow from operation.

Items	Sources (USD m)	Uses (USD m)
Cash flow from Ops	169	
New shares	0	
Net Debt	17	
Dividends, Buybacks		6
CAPEX		80
Acquisitions		78
Cash and misc		22
Total	186	186

Table 1: Sources and Uses of Funds 2014 to 2023.

Note: The 2023 data for the table was based on the LTM Sep 2023 data as the original analysis was carried out in Jan 2024

My main concern was the high Reinvestment rate.

I defined Reinvestment = CAPEX & acquisitions – Depreciation & amortization + increase in Net Working Capital.

Reinvestment rate = Reinvestment/NOPAT

Over the past decade, the company had an average 85% Reinvestment rate. This meant that there was not enough operating income (NOPAT) left that could be distributed to shareholders.

VALUATION

In valuing CMT, I based it on the following picture.

- CMT is a cyclical company and I looked at its normalized performance over the cycle. I assumed that the normalized revenue was the 2023 revenue adjusted downwards based on the 2023 price factor. I use the FRED producer price index for 2023 compared to the average producer price index from 2014 to 2020 as the factor. Effectively it was a 0.82 price factor.

- Its operating efficiency and capital efficiency as represented by the contribution margin and capital turnover respectively were based on the 2014 to 2023 average values. I assumed that there was no improvement in these efficiencies.
- There would not be any major acquisition. Revenue was projected to grow at the long-term GDP growth rate of 4%.

On such a basis, I estimate the intrinsic value to be USD7 per share compared to the market price of USD18 per share (as of Jan 2024). There is no margin of safety despite the optimistic view. Refer to the original article for details of the valuation.

VALUATION RISKS AND LIMITATION

When evaluating my valuation, keep these key points in mind:

- **Market Trends:** The performance of the company varies with market cycles. I am focusing on how the price of thermoplastics affects the company, while the company itself looks at how demand for its products changes based on economic conditions and seasons.
- **Revenue Size:** The revenue figure for 2023 includes both how much was sold and the prices charged. Since the company did not provide any volume information, I used the FRED Producer Price Index to scale the 2023 revenue. It is important to note that the 2023 revenue alone does not truly reflect the company's long-term potential.
- **Optimistic Assumptions:** I used data from 2014 to 2023 to estimate profit margins and how well the company uses its capital. This period includes some unusual years that might not represent the typical performance. While I believe this optimistic view is valid, it is essential to recognize that even with these positive assumptions, there is no margin of safety.

SIMULATION

Some may argue that using the average historical performance to represent future performance may not be realistic. The view is that the historical values were volatile and that there were times when the margins and capital turnover were better than the average. You may argue that if I had used the higher values, then the value would be higher.

To address this issue, I used a Monte Carlo simulation of the valuation. I assumed that the following key variables – revenue, contribution margin, capital turnover, reinvestment margin, and WACC - follow a triangular distribution.

- The maximum and minimum values of the distribution were plus 10% and minus 10% of the respective base values.
- I also assumed that to address the high Reinvestment rate, there would be a 10% improvement in the contribution margin and reinvestment margin in year 6.

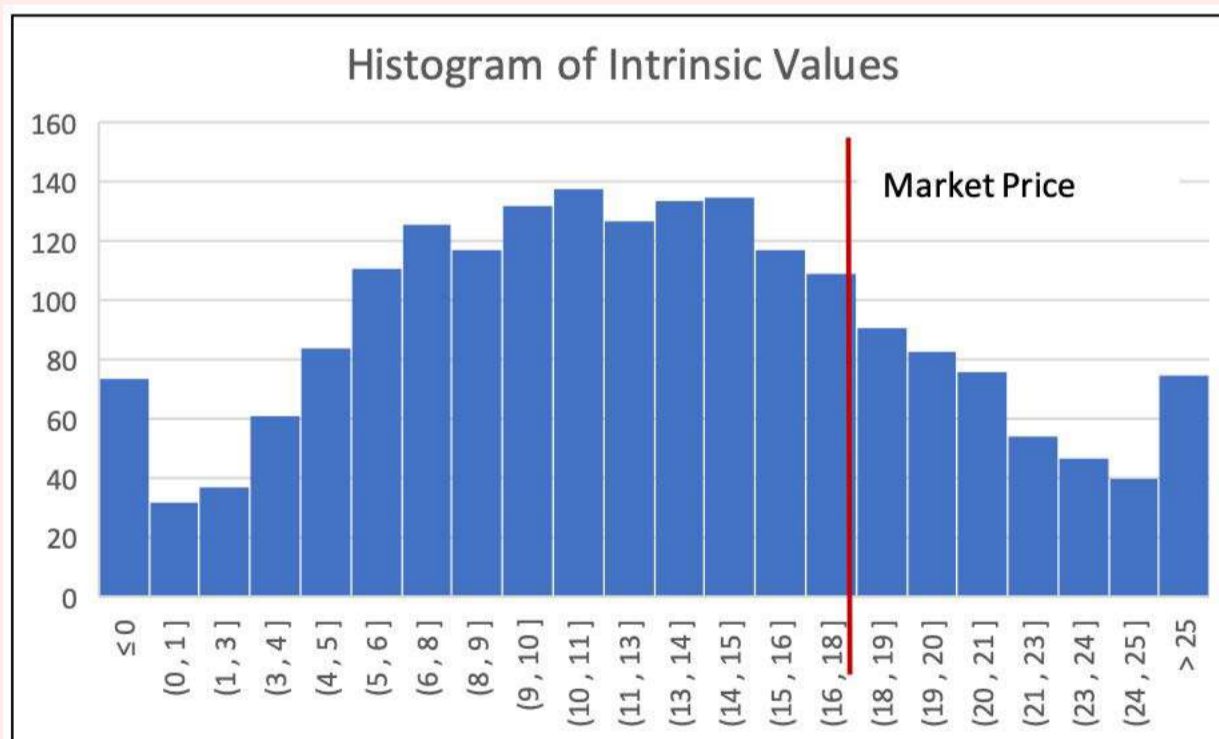


Chart 4: Monte Carlo simulation

Note: : I used a 2 stage-valuation model to be able to reflect the improvements in the contribution margin and reinvestment margin.

The result of such a simulation is shown in Chart 4. You can see that $\frac{3}{4}$ of the valuation is lower than the market price. I interpret it as not enough

margin of safety despite the improvements in the metrics that drove the Reinvestment rate.

CONCLUSION

While CMT has successfully doubled its sales and profits over the past decade, the outlook for continued growth appears limited. The recent decline in thermoplastic prices back to 2014/15 levels suggests that the favourable conditions of the last few years may not be sustainable.

Furthermore, despite increased revenues, the company has not significantly improved its profitability or efficiency. But CMT remains financially stable, with a solid cash position and a manageable debt ratio.

However, when assessing the overall performance and future potential, the current valuation raises concerns. The lack of a safety margin in the valuation indicates that it may not be the safest investment opportunity at this time.

I am a long-term value investor who has held onto stocks for more than 5 years. My analysis and valuation are from such a perspective. I consider quarterly results "noisy" and focus on long-term trends.

*This article was re-purposed from my article "**Core Molding Technologies: Outlier Product Prices Painted A Misleading Performance**" which was first published in **Seeking Alpha**. Refer to this [link](#) for more of my insights on other US companies.*

UNLOCK THE SECRET OF WEALTH

DO YOU REALLY WANT TO MASTER VALUE INVESTING



SEE HOW TO GET HIGHER RETURNS WITH LOWER RISK



WORLD BANK UPGRADES MALAYSIA'S GROWTH FORECAST TO 4.9% IN 2024

A ccording to The World Bank Group's lead economist for Malaysia Apurva Sanghi, Malaysia's economic growth forecast has been upgraded to 4.9% in 2024, an increase of 14% from its initial 4.3% forecast set in April. He said both domestic and external factors back the upgraded growth forecast as the global economy is doing much better than expected six months ago.

On the domestic front, the positive economic momentum, rising political stability, and an increasingly conducive policy environment that boosts and mobilises more investments, have contributed to the upgraded growth projection.

He added that global growth is expected to stabilise at around 2.6% this year, despite ongoing geopolitical tensions and high interest rates, while inflation is receding, hence there is a new appetite for growth especially in advanced economies.

Speaking during a media briefing on the October 2024 Malaysia Economic Monitor at the World Bank office, he said Malaysia is in a good place. He noted that there are positive trends in consumer confidence, manufacturing and services in emerging markets.

PROTECT GAINS AS BURSA MAY BE VOLATILE IN 4Q - RHB IB

According to RHB Investment Bank (RHB IB), the final quarter of 2024 will likely be volatile for Malaysia's stock market, pushing investors to protect gains made and identifying opportunities for next year. In its strategy note, it said that Bursa Malaysia's relative outperformance indicates that aggressive window-dressing activity towards year end is unlikely. Risk-averse investors should adopt a more defensive investment profile.

Key investment themes include near-term defensive posturing, staying nimble to build positions on broad-based market weakness, a tactical focus on laggards, and concentration on stocks with a Johor angle, coupled with a bottom-fishing strategy for small-caps and mid-caps.

Malaysia's benchmark FBM KLCI rose more than 13% from January to September due to sharp foreign inflows amid a strengthening ringgit in the past few months. Close to RM5 billion went into Malaysian equities from abroad in 3Q2024.

However, the KLCI has pared gains this month, and the ringgit has eased, as investors watch the escalating Middle East tensions and await the US presidential election in November. The government is also expected to present Budget 2025 on Oct 18.

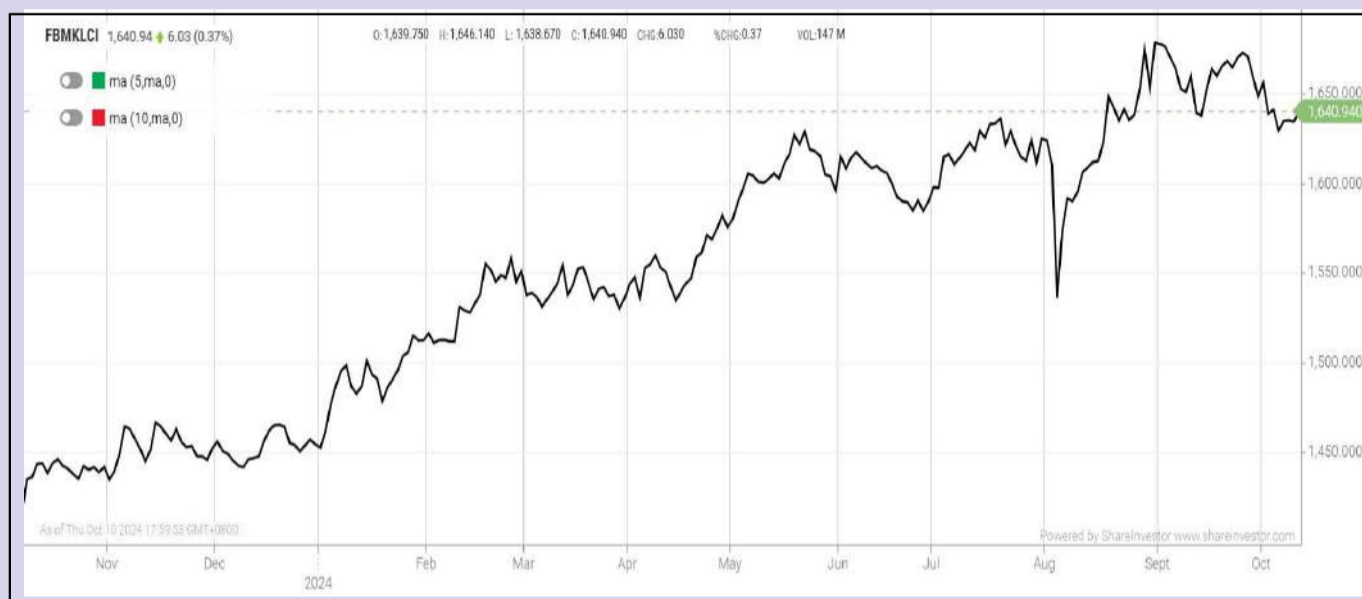
The research house said that the domestic news flow is positive; and resilient domestic demand and a steady pace of direct investments is expected to support economic growth, while a stable political environment will allow the government to serve out its full five-year term. This would provide the government with ample political capital to make further meaningful progress on subsidies and initiatives to broaden the tax base in order to improve public finances.

RHB IB is seeking clarity and details of the RON95 fuel subsidy retargeting, high-value goods tax, progressive wage system, and the new civil servant remuneration scheme under Budget 2025.

For strategy, RHB IB is 'overweight' on the banking, property, real estate investment trust, construction, technology, healthcare, basic materials, energy, utilities and rubber products sectors. It also retained its end-2024 KLCI target at 1,720.

EYE ON THE MARKETS

On Thursday (10Oct), the Ringgit closed at 4.2925 against the USD and 3.2814 to the Sing Dollar. On Monday (07Oct), the FBM KLCI opened at 1633.58. As at Thursday (10Oct) 5:00pm, the FBM KLCI closed up 7.36 points at 1640.94. Over in US, the overnight Dow Jones Industrial Average closed down 57.88 points (-0.14%) to 42,454.12 whilst the NASDAQ shed 7.72 points (-0.04%) to 18,283.90.



KLCI 1 Year Chart

CHECK OUT
SHAREINVESTOR
BROKERS' CALL

Weekly Buy/Sell/Hold calls
from leading Malaysian Brokerages.

[Go To Brokers' Call](#)

BUY **HOLD** **SELL**

Over 5 trading days



ShareInvestor WebPro (www.shareinvestor.com/my)

1. Price > Stock Prices
2. Select Market: NASDAQ / NYSE / IDX / SET / HKEX / SGX (One bourse at a time)
3. select Stocks Tab
4. select Ranking Top Gainers or Top Losers (Over 5 Trading Days)
5. Mouse over Column Layout > select Edit Customs > select Name > select Last Done Price > select 5 Days Change > select 52 Weeks High > select 52 Weeks Low > Mouse Over Column Layout > select Custom

NASDAQ (USD)

Top Gainers

Name	Last Done	Change Over 5 Days	52 Weeks High	52 Weeks Low
FIRST CITIZENS BANCSHARES INC NRTH	1,996.730	+134.020	2,174.800	1,290.600
BOOKING HOLDINGS INC	4,288.220	+100.520	4,304.770	2,733.040
MERCADOLIBRE INC	2,040.500	+81.300	2,161.730	1,141.040
BLACKROCK ETF TRUST II ISHARES SHORT-TERM CLIFORA MUNI ACTV ETF	50.300	+49.700	8.770	0.500
MONGODB INC	292.690	+39.690	509.620	212.740

Top Losers

Name	Last Done	Change Over 5 Days	52 Weeks High	52 Weeks Low
FIRST SOLAR INC	205.040	-30.080	306.770	129.215
COCA-COLA CONSOLIDATED INC	1,267.000	-5.830	1,376.841	614.220
CONSTELLATION ENERGY CORPORATION	262.310	-15.060	288.753	109.440
WINGSTOP INC	395.000	-19.130	433.860	173.030
FUTU HOLDINGS LIMITED SPON ADS EACH REP 8 ORD SHS CL A	107.170	-15.620	130.500	43.610

NYSE (USD)

Top Gainers

Name	Last Done	Change Over 5 Days	52 Weeks High	52 Weeks Low
AUTOZONE INC	3,106.550	+72.970	3,256.370	2,375.350
FAIR ISAAC CORP	1,984.520	+48.570	2,043.595	811.990
SERVICENOW INC	944.630	+53.990	945.460	527.240
WHITE MOUNTAINS INSURANCE GROUP	1,811.190	+52.450	1,899.210	1,401.010
TEXAS PACIFIC LAND CORPORATION	1,002.200	+31.740	995.708	467.617

Top Losers

Name	Last Done	Change Over 5 Days	52 Weeks High	52 Weeks Low
BERKSHIRE HATHAWAY INC	682,470.000	-11,369.000	741,971.390	502,000.000
NVR INC	9,485.550	-150.510	9,912.560	5,210.490
SONY GROUP CORPORATION SPON ADS EACH REPR 1 ORD SHS	18.860	-75.140	100.880	18.710
TRANSDIGM GROUP INC	1,368.980	-50.110	1,451.320	811.420
METTLER-TOLEDO INTERNATIONAL INC	1,442.340	-21.060	1,546.930	928.495

IDX (Rupiah)

Top Gainers

Name	Last Done	Change Over 5 Days	52 Weeks High	52 Weeks Low
JAKARTA SETIABUDI INTERNASIONAL	3,520.000	+1,170.000	3,520.000	830.000
AKASHA WIRA INTERNATIONAL TBK	11,025.000	+1,125.000	12,000.000	8,725.000
MSIG LIFE INSURANCE INDONESIA TBK	8,850.000	+950.000	11,600.000	4,610.000
DIAN SWASTATIKA SENTOSA TBK	41,650.000	+850.000	44,775.000	5,000.000
MULTIPOLAR TECHNOLOGY TBK	6,050.000	+400.000	6,900.000	1,185.000

Top Losers

Name	Last Done	Change Over 5 Days	52 Weeks High	52 Weeks Low
FKS MULTI AGRO TBK	9,300.000	-2,200.000	11,800.000	5,450.000
DCI INDONESIA TBK	49,500.000	-1,500.000	63,800.000	32,525.000
UNITED TRACTORS	25,900.000	-1,325.000	28,150.000	20,925.000
GOLDEN ENERGY MINES TBK	11,050.000	-1,150.000	18,800.000	5,475.000
INDAH KIAT PULP & PAPER	8,250.000	-600.000	10,925.000	7,600.000

SET (Thai Baht)

Top Gainers

Name	Last Done	Change Over 5 Days	52 Weeks High	52 Weeks Low
OHTL	386.000	+24.000	486.000	352.000
DELTA	116.000	+9.500	118.000	63.250
INTUCH	103.000	+7.500	105.000	65.250
AEONTS	142.500	+6.000	168.500	107.000
BKIH	313.000	+6.000	315.000	279.000

Top Losers

Name	Last Done	Change Over 5 Days	52 Weeks High	52 Weeks Low
KWC	309.000	-21.000	362.000	246.000
FE	174.500	-15.500	199.500	137.500
GYT	150.000	-5.500	197.500	135.000
SCC	240.000	-4.000	307.000	195.500
SCC-F	242.000	-3.000	302.000	203.000

HKEX (HKD)

Top Gainers

Name	Last Done	Change Over 5 Days	52 Weeks High	52 Weeks Low
EASOU TECH (2550)	58.000	+37.150	66.500	8.500
AUTOSTREETS (2443)	9.240	+4.720	117.100	3.800
GTJA (2611)	12.280	+4.374	18.000	7.570
LAOPU GOLD (6181)	175.000	+4.100	181.500	60.950
SMIC (981)	25.600	+3.900	35.500	13.880

Top Losers

Name	Last Done	Change Over 5 Days	52 Weeks High	52 Weeks Low
BILIBILI-W (9626)	175.500	-51.700	238.800	67.800
HKEX (388)	333.600	-39.400	397.800	212.200
HKEX-R (80388)	304.200	-33.200	362.200	196.900
TENCENT (700)	438.800	-33.000	482.400	260.200
TENCENT-R (80700)	399.000	-27.400	439.200	240.000

SGX (SGD)

Top Gainers

Name	Last Done	Change Over 5 Days	52 Weeks High	52 Weeks Low
DBS	38.740	+0.900	39.700	28.191
IFAST	7.980	+0.720	8.510	5.290
AZEUS	10.650	+0.350	10.800	7.400
SEATRIUM LTD	2.020	+0.250	0.147	0.074
UOB	31.920	+0.210	33.380	26.820

Top Losers

Name	Last Done	Change Over 5 Days	52 Weeks High	52 Weeks Low
NIO Inc. USD OV	6.260	-0.680	9.450	3.710
JMH USD	39.100	-0.610	44.160	33.720
CITYDEV	5.260	-0.220	6.763	5.010
JARDINE C&C	27.060	-0.180	31.280	23.760
SIA	6.480	-0.170	7.380	5.860

REACHING GREATER HEIGHTS

The inaugural NACGSA assessment highlighted positive progress from Malaysian PLCs in adopting ESG practices. However, there remains significant scope for enhancing the quality of sustainability-related disclosures.

NACGSA 2024: POSITIVE CG AND SUSTAINABILITY PRACTICES ADOPTION, BETTER ESG DISCLOSURE QUALITY REQUIRED

The Minority Shareholders Watch Group (MSWG) recently hosted the National Corporate Governance & Sustainability Awards (NACGSA) to honour the exemplary



corporate governance (CG) and sustainability practices of Malaysian public listed companies (PLCs).

Held on 26 September 2024 at the Mandarin Oriental Hotel Kuala Lumpur, the award ceremony was officiated by Datuk Dr. Shahrazat Haji Ahmad, Deputy Secretary General of Treasury (Investment), Ministry of Finance. The ceremony gathered over 550 attendees, including industry leaders, representatives from PLCs, institutional investors, and key CG stakeholders, making it a notable event for Malaysia's business community.



NACGSA, which was supported by Bursa Malaysia Berhad as the Platinum Sponsor, along with Kumpulan Wang Awam Persaraan (KWAP), Ernst & Young, MBSB Bank, Lembaga Tabung Angkatan Tentera (LTAT), PERKESO, Permodalan Nasional Berhad (PNB), and the Securities Industry Development Corporation (SIDC), underscores the importance of elevating CG and sustainability standards in Malaysia.

NACGSA is a testament to Malaysia's collective progress in CG and sustainability, representing the country's most comprehensive and rigorous evaluation of PLCs. This independent assessment, supported by the Capital Market Development Fund (CMDf), integrates three globally recognised frameworks: the ASEAN Corporate Governance Scorecard (ACGS), the Malaysian Code on Corporate Governance (MCCG), and the Sustainability Scorecard. Endorsed by the Corporate Governance Council, chaired by the Securities Commission Malaysia, the NACGSA assessment process ensures that Malaysia's CG and sustainability standards are aligned with the highest global benchmarks, promoting transparency, accountability, and long-term business resilience.

An independent Adjudication Committee, chaired by Salleh Hassan, Director of SIDC, reviewed the shortlisted companies. The committee included experienced professionals such as Suhana Dewi Selamat, executive director of Khazanah Nasional Berhad; Emilia Tee, former director of Bursa Malaysia; Norhisham Abd Bahrin, partner at Azmi and Associates; and Nadia Hassan, senior journalist at The Edge Malaysia. Their combined expertise ensured a thorough and impartial evaluation process.

That evening, excellence was celebrated across five key categories, namely the prestigious Overall Excellence Award, the Mid Cap Excellence Award (for companies with a market cap between RM1 billion to RM2 billion), the Niche Cap Excellence Award (for companies with a market cap below RM1 billion), the Industry Excellence Award, and the REITs Excellence Award.

A significant highlight of the evening was the official launch of the NACGSA 2024 Assessment Report by Datuk Dr. Shahrazat. This comprehensive report provides detailed insights into the assessment findings, serving as a valuable resource for understanding the performance of Malaysian PLCs in CG and sustainability.

The report highlights the top-performing companies and identifies key trends, challenges, and areas



for improvement within the broader corporate landscape. It underscores the growing importance of transparency, ethical business practices, and long-term sustainability as critical components for building resilient organisations that thrive in a dynamic global environment. The report serves as a benchmark for PLCs, encouraging continuous enhancement of governance frameworks and sustainability practices in line with international standards.

The assessment findings revealed that the Top 100 PLCs by market cap set the benchmark for CG and sustainability disclosures, achieving an average NACGSA score of 77.3%, significantly higher than the overall average score of 63.8%. Notably, the Top 50 PLCs demonstrated even stronger leadership, with an impressive average score of 83.7%, and all companies in this group scored above 80%. These companies exemplify the highest standards of transparency, governance, and sustainable business practices, setting a strong example for the rest of the industry.

For the 2024 assessment, MSWG evaluated 854 out of 944 PLCs, excluding companies under Practice Note 17/Guidance Note 3 or those with changes in financial year-end or newly listed through initial public offerings (IPOs). The evaluations were based on publicly available disclosures covering the financial year from 1 January 2022 to 31 December 2022, including annual reports, Corporate Governance Reports (CGR), Sustainability Reports, and other public sources.

Malayan Banking Berhad emerged as the overall winner of the evening, a testament to its outstanding CG and sustainability practices. In addition to this top honour, the Bank also secured the Industry Excellence Award for the Financial Services Sector, further underscoring its leadership in promoting transparency, ethical governance, and longterm sustainability. Tan Sri Dato' Sri



Ir. Zamzamzairani Mohd Isa, Non-Independent Non-Executive Chairman, accepted the award on behalf of Malayan Banking.

Following closely, CIMB Group Holdings Berhad secured second place, while Axiata Group Berhad took third place. Duopharma Biotech Berhad claimed fourth, and AMMB Holdings Berhad rounded out the top five. Their commitment to ethical business practices, transparency, and sustainable growth cements their roles as distinguished role models within Malaysia's corporate landscape.

Some of the key findings from the NACGSA assessment are:

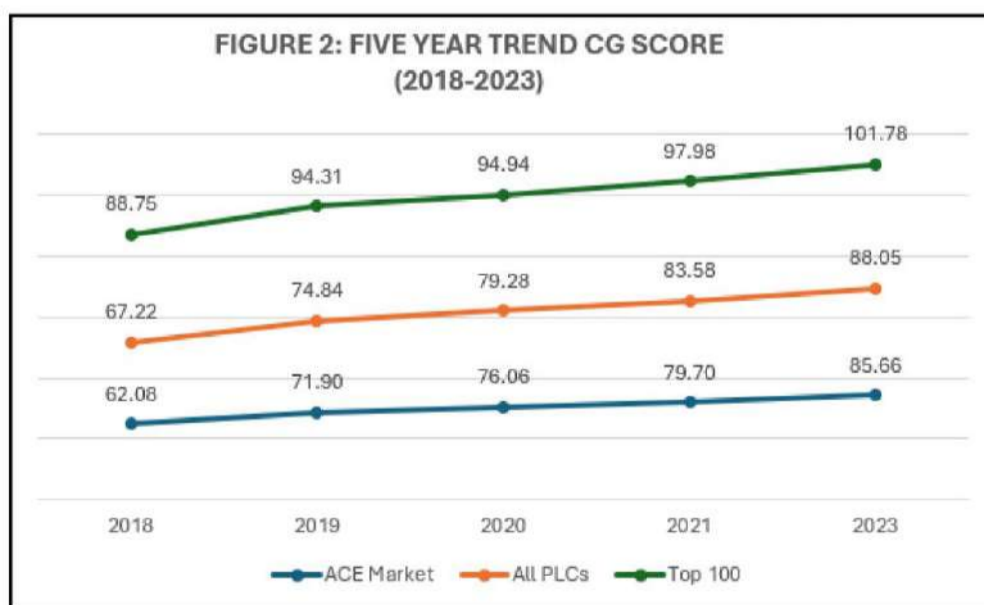
1) Large-cap PLCs lead the way in CG and sustainability practices and disclosures.

The Top 100 PLCs are leading the way in CG and sustainability disclosures in Malaysia, with an average NACGSA score of 77.3%, significantly higher than the overall average NACGSA score of 63.8%. Main Market PLCs registered an average score of 64.6%, while ACE Market PLCs registered an average score of 59.4%.

Notably, the Malaysian Top 50 PLCs outperformed all other categories, with an average NACGSA score of 83.7%. All the Malaysian Top 50 PLCs had attained scores of above 80%.

2) Disclosures of CG best practices under ACGS show continuous improvement.

MSWG has conducted CG disclosure assessments for Malaysian PLCs using the ACGS framework since 2012. Since then, the performances of Malaysian PLCs have continuously improved, with the average ACGS score improving from 67.22 points in 2018 to 88.05 points in 2023. As reflected in the figure below, an upward trend is also observed in both the Top 100 and ACE Market PLCs.



NACGSA 2024 Award Winners

Overall Excellence Award (by Rank)

1. Malayan Banking Berhad
2. CIMB Group Holdings Berhad
3. Axiata Group Berhad
4. Duopharma Biotech Berhad
5. AMMB Holdings Berhad
6. British American Tobacco (Malaysia) Berhad
7. Top Glove Corporation Bhd
8. Sunway Construction Group Berhad
9. IOI Corporation Berhad
10. Sunway Berhad
11. Gamuda Berhad
12. Alliance Bank Malaysia Berhad
13. Kenanga Investment Bank Berhad
14. Hong Leong Bank Berhad
15. Celcomdigi Berhad
16. Press Metal Aluminium Holdings Berhad
17. Telekom Malaysia Berhad
18. Eastern & Oriental Berhad
19. MSM Malaysia Holdings Berhad
20. DRB-HICOM Berhad
21. IOI Properties Group Berhad
22. Sime Darby Berhad
23. MISC Berhad
24. S P Setia Berhad
25. Malaysia Marine And Heavy Engineering Holdings Berhad
26. Eco World International Berhad
27. SD Guthrie Berhad
28. Tenaga Nasional Berhad
29. IHH Healthcare Berhad
30. Malaysia Airports Holdings Berhad
31. Petronas Chemicals Group Berhad
32. Eco World Development Group Berhad
33. Lotte Chemical Titan Holding Berhad
34. Fraser & Neave Holdings Bhd
35. AEON Credit Service (M) Berhad
36. Nestle (Malaysia) Berhad
37. Velesto Energy Berhad
38. Tune Protect Group Berhad
39. Greatech Technology Berhad
40. Bank Islam Malaysia Berhad
41. Deleum Berhad
42. RHB Bank Berhad
43. Allianz Malaysia Berhad
44. Malaysian Resources Corporation Berhad
45. Petronas Dagangan Berhad
46. Affin Bank Berhad
47. Gadang Holdings Berhad
48. Mr D.I.Y. Group (M) Berhad
49. Genting Plantations Berhad
50. Public Bank Berhad

Mid Cap Excellence Award
(Market Capitalisation Between RM1 Billion – RM2 Billion)
Eco World Development Group Berhad

Niche Cap Excellence Award
(Market Capitalisation Below RM1 Billion)
Kenanga Investment Bank Berhad

Industry Excellence Award | Construction
Sunway Construction Group Berhad

Industry Excellence Award | Healthcare
Duopharma Biotech Berhad

Industry Excellence Award | Plantation
IOI Corporation Berhad

Industry Excellence Award | Technology
Greatech Technology Berhad

Industry Excellence Award | Transportation & Logistics
MISC Berhad

Industry Excellence Award | Financial Services
Malayan Banking Berhad

Industry Excellence Award | Industrial Products & Services
Sunway Berhad

Industry Excellence Award | Property
Eastern & Oriental Berhad

Industry Excellence Award | Telecommunications & Media
Axiata Group Berhad

Industry Excellence Award | Utilities
Tenaga Nasional Berhad

Industry Excellence Award | Consumer Products & Services
British American Tobacco (Malaysia) Berhad

Industry Excellence Award | Energy
Malaysia Marine And Heavy Engineering Holdings Berhad

REITs Excellence Award
Sunway Real Estate Investment Trust

3) The quality of sustainability and ESG reporting needs further enhancement in terms of the scope and depth of disclosures

Our sustainability assessment revealed that the Top 100 PLCs are moving in the right direction in terms of reporting and implementing sustainability and ESG practices. They recorded an average disclosure quality score of 70%, much higher than the 46% recorded across all PLCs.

Their better sustainability disclosures and reporting may be due to their early adoption of various international sustainability standards and enhanced sustainability reporting framework requirements by Bursa Malaysia in September 2022.

Additional observations noticed from the sustainability assessment are as follows:

- a) The sustainability governance structure is well-established in PLCs, with the Board as the highest oversight body for the development of sustainability strategies in 96% of companies assessed.
- b) Poor disclosures on the linkage of sustainability-related key performance indicators (KPIs) to the remuneration of directors and senior management, as guided by Practice 4.4 of the MCCG, which recommends that performance evaluations of the board and senior management include a review of their performance in addressing the company's material sustainability risks and opportunities.
- c) Disclosure of quantitative commitments and performance targets for indicators must be improved to enable greater transparency on the company's sustainability progress to stakeholders.

4) Good disclosures on the adoption of MCCG principles and best practices.

The MCCG component forms 30% of the total NACGSA score and measures the quality of disclosure of practices as disclosed in the CGR. The overall average quality score for MCCG was 75%, with one company attaining a perfect score for its overarching disclosure of all MCCG principles and best practices. In comparison, the lowest score was 49%. Details on the quality of disclosure of the MCCG principles and best practices are reported in the CG Monitor Report published by SC Malaysia.

Overall, the positive findings from the inaugural NACGSA assessment demonstrate that Malaysian PLCs are on the right path in adopting the best CG and sustainability practices. That said, there is still room for improvement, especially in the quality of disclosures related to ESG and sustainability initiatives.

Moreover, 94% of the companies we assessed did not provide independent assurance or internal review for their sustainability statement and report. This underscores the critical need for independent external assurance of sustainability data and reports to enhance the credibility of disclosed information and foster stakeholders' trust in the companies' ESG commitments.

Lastly, only 18% of the companies we assessed had integrated sustainability into their core business strategy. This highlights the importance of setting the tone from the top, converting governance and sustainability commitments into actionable strategies and embedding these strategies into day-to-day operations.

MSWG HIGHLIGHTS

NACGSA 2024 ASSESSMENT REPORT A complimentary copy of the report can be downloaded on MSWG's website – <https://bit.ly/NACGSA2024>

NACGSA IN NUMBERS

MAIN MARKET	ACE MARKET	TOTAL
713	141	854

The assessments are based on disclosures in the annual report, Corporate Governance Report and Sustainability Report for the financial year from 1 January 2022 to 31 December 2022. Other sources of information include information on PLCs' websites, announcements to Bursa Malaysia and any other publicly available information.

NACGSA SCORE

TOP 100 PLCs	77.3%
MALAYSIA TOP 50	83.7%

OVERALL EXCELLENCE AWARD 2024
MSWG



MSWG
MATERIALITY & SUSTAINABILITY WORKING GROUP

We sincerely appreciate our sponsors and ESG supporters for their invaluable support.

Platinum Sponsor
BURSA MALAYSIA 3

Sponsored by
CMDF
Data Partnership Point-to-Point
Carbon Market Development Fund

Silver Sponsors
KWAP, EY, MBSB, PERKESO, PNB, SIDC

Gold ESG Supporters
ECO, CIMB, MISC, MSB, AIRPORTS, AmBank Group, AFFIN

Silver ESG Supporters
ECOWORLD, Core: For good, AEON CREDIT, MIBUS, IOI GROUP

Bronze ESG Supporters
TOP GLOVE, GREATECH, WCT, TEX CYCLE

MOMENTS FROM THE NACGSA 2024 AWARD CEREMONY









NACGSA 2024 WAS FEATURED ON THE EDGE MALAYSIA

NACGSA
NATIONAL CORPORATE GOVERNANCE & SUSTAINABILITY AWARDS

26 September 2024 | 7:00 pm | Mandarin Oriental Kuala Lumpur

A night of recognition for the leaders who set the benchmark for governance and sustainability.

854 PLCs Assessed | 50 Top PLCs Recognized | 5 Award Categories

NACGSA is a prestigious accolade that honours exemplary corporate governance and sustainability practices among public listed companies (PLCs) in Malaysia. It enhances and replaces the former MSWG-ASEAN Corporate Governance Awards, which have been successfully held since 2009. This new award leverages a more comprehensive methodology endorsed by the Corporate Governance Council. This methodology integrates three key assessments, namely the ASEAN Corporate Governance Scorecard, the Malaysian Code on Corporate Governance (MCCG), and the Sustainability assessment.

- Independently Assessed:** No entry fees or nominations required for the assessment.
- Comprehensively Covered:** Includes all public listed companies.
- Methodology Endorsed:** by the Corporate Governance Council.
- Globally Recognised Framework:** CG Framework recognized globally and endorsed by ASEAN.
- Independently Adjudicated:** Results adjudicated by an independent committee.

As Malaysia continues to raise the bar for corporate governance and sustainability, NACGSA stands as a testament to our unwavering commitment to fostering excellence among PLCs. NACGSA adopts a forward-looking approach, recognising companies that excel in governance and demonstrate a strong commitment to sustainability. It highlights the importance of responsible business practices, driving long-term value and resilience in today's evolving corporate landscape.

Dr Ismet Yusoff
Chief Executive Officer
Minority Shareholders Watch Group

mswg.org.my

NACGSA 2024 Celebrates Excellence in Corporate Governance and Sustainability

NACGSA 2024 was launched by Yang Di-Pa Ti, Sultan Ibrahim, Deputy Secretary General of Ministry of Finance, Ministry of Finance Malaysia. Datuk Umar Noor was accompanied by Yang Di-Pa Ti, Menteri Kanan (K) Perdagangan & Industri, Chairman MAMPU, HMB & Orisan Yusoff, Chief Executive Officer MSWG (right).

The Minority Shareholders Watch Group (MSWG) proudly announced the 2024 National Corporate Governance & Sustainability Awards (NACGSA) winners last night. The event recognises Malaysian public-listed companies (PLCs) that have set new benchmarks in corporate governance and sustainability practices.

The Top 100 PLCs by market capitalisation achieved an outstanding average NACGSA score of 77.3%, well above the overall score of 63.8%. Leading this group, the Top 50 PLCs posted an exceptional average score of 83.7%, showcasing their leadership in governance and sustainability.

Malayan Banking Berhad emerged as the NACGSA 2024 winner, followed by CIMB Group Holdings Berhad, Avicita Group Berhad, Duopharma Biotech Berhad, and AMMB Holdings Berhad, recognised for their exemplary standards and commitment to sustainable business practices.

Dr Ismet Yusoff, CEO MSWG, commended the winners, "In a rapidly evolving business environment, these companies have shown that sustainable success is built on the foundation of strong governance. Their achievements in balancing growth, accountability, and responsibility set a new benchmark for others to follow."

MSWG assessed 854 PLCs, applying frameworks like the ASEAN CG Scorecard (ACGS), the Malaysian Code on Corporate Governance (MCCG), and the Sustainability Scorecard. The findings revealed a continuous improvement in corporate governance disclosures and identified growth areas in sustainability reporting.

The awards serve as a crucial platform for recognising best practices, promoting long-term value creation, and encouraging companies to strengthen their governance and sustainability efforts. Full details of the NACGSA winners and assessment findings can be accessed at www.mswg.org.my.

NACGSA 2024 Award Winners

Overall Excellence Award (Top Rank)

1. Malayan Banking Berhad
2. CIMB Group Holdings Berhad
3. Avicita Group Berhad
4. Duopharma Biotech Berhad
5. AMMB Holdings Berhad
6. Duopharma Biotech Berhad
7. Top Global Corporation Bhd
8. Sunway Construction Group Berhad
9. ICI Corporation Berhad
10. Sunway Berhad
11. Garuda Berhad
12. Alliance Bank Malaysia Berhad
13. Himpunan Investment Bank Berhad
14. Hong Leong Bank Berhad
15. Capasong Berhad
16. Inveco Asset Management Holdings Berhad
17. Triforce Molecule Berhad
18. Eastern & Oriental Berhad
19. MAM Malaysia Holdings Berhad
20. UMS-UMC Berhad
21. ICI Properties Group Berhad
22. Sinar Berhad Berhad
23. MISC Berhad
24. S P Setia Berhad
25. Malaysia Airline Holdings Heavy Engineering Holdings Berhad
26. Baramidi International Berhad
27. SOI Berhad
28. Energy Resources Berhad
29. IHH Healthcare Berhad
30. Malaysia Airports Holdings Berhad
31. Himpunan Bersejua Group Berhad
32. Karamati Development Group Berhad
33. Lankat Chemical Technology Berhad
34. Pagar & Pagar Holdings Bhd
35. ACCN Credit Service Bhd Berhad
36. Sinar Mas Group Berhad
37. Winkul Energy Berhad
38. Rime Petroli Group Berhad
39. Greenhill Technology Berhad
40. Bank Islam Malaysia Berhad
41. Calsonic Berhad
42. IIB Bank Berhad
43. Allianz Malaysia Berhad
44. Malayan Business Corporation Berhad
45. Himpunan Sagarani Berhad
46. MSL Berhad
47. Taring Holdings Berhad
48. Air CEM Group Bhd Berhad
49. Gearing Resources Berhad
50. Public Bank Berhad

MSWG Excellence Award

1. Malayan Banking Berhad (RM1 Billion - RM2 Billion)
2. CIMB Group Holdings Berhad
3. Avicita Group Berhad
4. Duopharma Biotech Berhad
5. AMMB Holdings Berhad
6. Duopharma Biotech Berhad
7. Top Global Corporation Bhd
8. Sunway Construction Group Berhad
9. ICI Corporation Berhad
10. Sunway Berhad
11. Garuda Berhad
12. Alliance Bank Malaysia Berhad
13. Himpunan Investment Bank Berhad
14. Hong Leong Bank Berhad
15. Capasong Berhad
16. Inveco Asset Management Holdings Berhad
17. Triforce Molecule Berhad
18. Eastern & Oriental Berhad
19. MAM Malaysia Holdings Berhad
20. UMS-UMC Berhad
21. ICI Properties Group Berhad
22. Sinar Berhad Berhad
23. MISC Berhad
24. S P Setia Berhad
25. Malaysia Airline Holdings Heavy Engineering Holdings Berhad
26. Baramidi International Berhad
27. SOI Berhad
28. Energy Resources Berhad
29. IHH Healthcare Berhad
30. Malaysia Airports Holdings Berhad
31. Himpunan Bersejua Group Berhad
32. Karamati Development Group Berhad
33. Lankat Chemical Technology Berhad
34. Pagar & Pagar Holdings Bhd
35. ACCN Credit Service Bhd Berhad
36. Sinar Mas Group Berhad
37. Winkul Energy Berhad
38. Rime Petroli Group Berhad
39. Greenhill Technology Berhad
40. Bank Islam Malaysia Berhad
41. Calsonic Berhad
42. IIB Bank Berhad
43. Allianz Malaysia Berhad
44. Malayan Business Corporation Berhad
45. Himpunan Sagarani Berhad
46. MSL Berhad
47. Taring Holdings Berhad
48. Air CEM Group Bhd Berhad
49. Gearing Resources Berhad
50. Public Bank Berhad

MSWG Excellence Award | Healthcare

1. Duopharma Biotech Berhad

MSWG Excellence Award | Technology

1. Greenhill Technology Berhad

MSWG Excellence Award | Transportation & Logistics

1. MISC Berhad

MSWG Excellence Award | Financial Services

1. Malayan Banking Berhad
2. CIMB Group Holdings Berhad
3. Avicita Group Berhad
4. Duopharma Biotech Berhad
5. AMMB Holdings Berhad
6. Duopharma Biotech Berhad
7. Top Global Corporation Bhd
8. Sunway Construction Group Berhad
9. ICI Corporation Berhad
10. Sunway Berhad
11. Garuda Berhad
12. Alliance Bank Malaysia Berhad
13. Himpunan Investment Bank Berhad
14. Hong Leong Bank Berhad
15. Capasong Berhad
16. Inveco Asset Management Holdings Berhad
17. Triforce Molecule Berhad
18. Eastern & Oriental Berhad
19. MAM Malaysia Holdings Berhad
20. UMS-UMC Berhad
21. ICI Properties Group Berhad
22. Sinar Berhad Berhad
23. MISC Berhad
24. S P Setia Berhad
25. Malaysia Airline Holdings Heavy Engineering Holdings Berhad
26. Baramidi International Berhad
27. SOI Berhad
28. Energy Resources Berhad
29. IHH Healthcare Berhad
30. Malaysia Airports Holdings Berhad
31. Himpunan Bersejua Group Berhad
32. Karamati Development Group Berhad
33. Lankat Chemical Technology Berhad
34. Pagar & Pagar Holdings Bhd
35. ACCN Credit Service Bhd Berhad
36. Sinar Mas Group Berhad
37. Winkul Energy Berhad
38. Rime Petroli Group Berhad
39. Greenhill Technology Berhad
40. Bank Islam Malaysia Berhad
41. Calsonic Berhad
42. IIB Bank Berhad
43. Allianz Malaysia Berhad
44. Malayan Business Corporation Berhad
45. Himpunan Sagarani Berhad
46. MSL Berhad
47. Taring Holdings Berhad
48. Air CEM Group Bhd Berhad
49. Gearing Resources Berhad
50. Public Bank Berhad

mswg.org.my

This article appeared in The Observer, a weekly newsletter published by The Minority Shareholders Watch Group (MSWG) and reproduced here with their permission. Do follow MSWG's Twitter account at @MSWGMalaysia and share your thought on their tweets from time to time.

Invest 212
A Weekly e-Publication by SHAREINVESTOR
FRIDAY 21 JUNE 2024

Sky World's purpose to make living better

Lee Chee Seng
Chief Executive Officer
SkyWorld Development Berhad

MARKET SENTIMENTS
ESG ratings for Main Market companies by end 2024, ACE Market by June 2025 - Bursa

Malaysia's health expenditure to grow at CAGR of 8.3% from 2023 to 2028 - BMI

Learn how to identify Hot Stocks using Technical Analysis (TA) and Fundamental Analysis (FA)

SIGN UP FOR Invest NOW IT'S FREE!!!

Click here

Scan me

Via email, every Friday.

Get market moving news and analyses. Regular columns include **Behind The Action** and **From The Observer**

Leaderboard • Shariah Hot Stocks • Shariah Momentum Up Stocks • Non Shariah Hot Stocks • Up Trending Stocks • Growth Stocks • Dividend Stocks • Long Companies • Insider Activity • Investor Relations • Regional Markets

Articles include: LAYSIA'S DIVERSIFIED TOMIC STRUCTURE, SHARIAH HOT STOCKS, LONG COMPANIES, INSIDER ACTIVITY, INVESTOR RELATIONS, KPJ Healthcare Berhad.

DEFINITION: Insider Activity shows the trades made by substantial shareholders or directors of the company. Purchases by the directors and company share buyback may indicate the share price is undervalued and brings confidence to the price trend of the share price.



ShareInvestor WebPro > Fundamental > Insider Trades > click Search tab > Select Bursa > click Stock name > scroll up and leave at <Select Counter> Type Date Range for Announcement Date > click Search

Notice Period is 29th September 2024 – 05th October 2024

Effective Change Date	Stock Name	Buyer/ Seller Name [Classification]	Bought / (Sold) ['000]		
			Total	No. of Shares After Trade ['000]	% Held
01 OCT 2024 - 01 OCT 2024	AEON	EMPLOYEES PROVIDENT FUND BOARD [SSH]	-409	90,175	6.423
30 SEP 2024 - 30 SEP 2024	AEON	EMPLOYEES PROVIDENT FUND BOARD [SSH]	-91	90,584	6.452
27 SEP 2024 - 27 SEP 2024	AEON	EMPLOYEES PROVIDENT FUND BOARD [SSH]	-224	90,675	6.458
26 SEP 2024 - 26 SEP 2024	AEON	EMPLOYEES PROVIDENT FUND BOARD [SSH]	-1,681	90,899	6.474
25 SEP 2024 - 25 SEP 2024	AEON	EMPLOYEES PROVIDENT FUND BOARD [SSH]	-1,721	92,580	6.594
01 OCT 2024 - 02 OCT 2024	AGRICOR	MR OON BOON KHONG [DIR/CEO]	150	61,054	30.106
01 OCT 2024 - 02 OCT 2024	AGRICOR	MR OON BOON KHONG [SSH]	150	61,054	30.106
01 OCT 2024 - 01 OCT 2024	AMBANK	EMPLOYEES PROVIDENT FUND BOARD [SSH]	1,235	430,240	12.996
26 SEP 2024 - 26 SEP 2024	AMBANK	EMPLOYEES PROVIDENT FUND BOARD [SSH]	-571	429,005	12.959
25 SEP 2024 - 25 SEP 2024	AMBANK	EMPLOYEES PROVIDENT FUND BOARD [SSH]	-441	429,576	12.976
27 SEP 2024 - 27 SEP 2024	ANCOMNY	DATUK LEE CHEUN WEI [DIR/CEO]	1,230	19,318	25.689
27 SEP 2024 - 27 SEP 2024	ANCOMNY	DATUK LEE CHEUN WEI [DIR/CEO]	1,230	10,121	10.379
27 SEP 2024 - 27 SEP 2024	ANCOMNY	DATUK LEE CHEUN WEI [SSH]	1,230	10,121	10.379
25 SEP 2024 - 27 SEP 2024	ANCOMNY	DATO' SIEW KA WEI [DIR/CEO]	-500	17,953	24.549
30 SEP 2024 - 01 OCT 2024	APB	MR CHA WEAY CHIA [DIR/CEO]	2,777	6,609	5.856
30 SEP 2024 - 30 SEP 2024	APM	DATO' TAN HENG CHEW [DIR/CEO]	30	104,833	53.624
30 SEP 2024 - 30 SEP 2024	APM	DATO' TAN HENG CHEW [SSH]	30	96,778	49.504
27 SEP 2024 - 27 SEP 2024	APPASIA	MR TOH HONG CHYE [DIR/CEO]	267	318,827	24.876
27 SEP 2024 - 27 SEP 2024	APPASIA	MR TOH HONG CHYE [SSH]	267	318,827	24.876
01 OCT 2024 - 01 OCT 2024	APPASIA-WA	MR TOH HONG CHYE [DIR/CEO]	1,425	14,564	17.887
27 SEP 2024 - 27 SEP 2024	APPASIA-WA	MR TOH HONG CHYE [DIR/CEO]	404	13,139	13.733
02 OCT 2024 - 02 OCT 2024	ASIAFLE	AMANAHRAYA TRUSTEES BERHAD-AMANAH SAHAM BUMIPUTERA [SSH]	-87	31,913	16.545
01 OCT 2024 - 01 OCT 2024	ASIAFLE	AMANAHRAYA TRUSTEES BERHAD-AMANAH SAHAM BUMIPUTERA [SSH]	-286	32,000	16.581
30 SEP 2024 - 30 SEP 2024	ASIAFLE	AMANAHRAYA TRUSTEES BERHAD-AMANAH SAHAM BUMIPUTERA [SSH]	-215	32,286	16.721
26 SEP 2024 - 26 SEP 2024	ASIAFLE	AMANAHRAYA TRUSTEES BERHAD-AMANAH SAHAM BUMIPUTERA [SSH]	-300	32,500	16.826
01 OCT 2024 - 03 OCT 2024	ASTEEL	TAN SRI SOH THIAN LAI [DIR/CEO]	292	24,798	5.114
01 OCT 2024 - 03 OCT 2024	ASTEEL	TAN SRI SOH THIAN LAI [SSH]	292	24,251	5.004
30 SEP 2024 - 30 SEP 2024	ASTINO	MADAM LIM MEE HWA [SSH]	250	25,487	5.31
30 SEP 2024 - 30 SEP 2024	ASTINO	MR YEO SENG CHONG [SSH]	250	25,487	5.31
03 OCT 2024 - 03 OCT 2024	ATECH	KUMPULAN WANG PERSARAAN (DIPERBADANKAN) [SSH]	20	21,739	5.015
02 OCT 2024 - 02 OCT 2024	ATECH	ABRDN HOLDINGS LIMITED [SSH]	190	37,529	8.658
02 OCT 2024 - 02 OCT 2024	ATECH	ABRDN MALAYSIA SDN. BHD. [SSH]	190	37,004	8.537
02 OCT 2024 - 02 OCT 2024	ATECH	ABRDN PLC [SSH]	190	37,529	8.658
01 OCT 2024 - 01 OCT 2024	ATECH	EMPLOYEES PROVIDENT FUND BOARD [SSH]	34	45,319	10.455
01 OCT 2024 - 01 OCT 2024	ATECH	ABRDN HOLDINGS LIMITED [SSH]	48	37,339	8.614
01 OCT 2024 - 01 OCT 2024	ATECH	ABRDN MALAYSIA SDN. BHD. [SSH]	48	36,814	8.493
01 OCT 2024 - 01 OCT 2024	ATECH	ABRDN PLC [SSH]	48	37,339	8.614
30 SEP 2024 - 30 SEP 2024	ATECH	EMPLOYEES PROVIDENT FUND BOARD [SSH]	274	45,286	10.448
30 SEP 2024 - 30 SEP 2024	ATECH	ABRDN HOLDINGS LIMITED [SSH]	389	37,291	8.603
30 SEP 2024 - 30 SEP 2024	ATECH	ABRDN MALAYSIA SDN. BHD. [SSH]	389	36,766	8.482
30 SEP 2024 - 30 SEP 2024	ATECH	ABRDN PLC [SSH]	389	37,291	8.603
27 SEP 2024 - 27 SEP 2024	ATECH	EMPLOYEES PROVIDENT FUND BOARD [SSH]	48	45,012	10.384
27 SEP 2024 - 27 SEP 2024	ATECH	ABRDN HOLDINGS LIMITED [SSH]	68	36,902	8.513
27 SEP 2024 - 27 SEP 2024	ATECH	ABRDN MALAYSIA SDN. BHD. [SSH]	68	36,377	8.392
27 SEP 2024 - 27 SEP 2024	ATECH	ABRDN PLC [SSH]	68	36,902	8.513
26 SEP 2024 - 26 SEP 2024	ATECH	EMPLOYEES PROVIDENT FUND BOARD [SSH]	520	44,964	10.373
26 SEP 2024 - 26 SEP 2024	ATECH	ABRDN HOLDINGS LIMITED [SSH]	728	36,834	8.497
26 SEP 2024 - 26 SEP 2024	ATECH	ABRDN MALAYSIA SDN. BHD. [SSH]	728	36,309	8.376
26 SEP 2024 - 26 SEP 2024	ATECH	ABRDN PLC [SSH]	728	36,834	8.497
25 SEP 2024 - 25 SEP 2024	ATECH	EMPLOYEES PROVIDENT FUND BOARD [SSH]	983	44,444	10.252
02 OCT 2024 - 02 OCT 2024	AWANTEC	LEMBAGA TABUNG AMANAH WARISAN NEGERI TERENGGANU [SSH]	2	39,839	5.054
30 SEP 2024 - 01 OCT 2024	AWANTEC	LEMBAGA TABUNG AMANAH WARISAN NEGERI TERENGGANU [SSH]	41	39,837	5.054
26 SEP 2024 - 27 SEP 2024	AWANTEC	LEMBAGA TABUNG AMANAH WARISAN NEGERI TERENGGANU [SSH]	10	39,796	5.048
01 OCT 2024 - 01 OCT 2024	AXIATA	EMPLOYEES PROVIDENT FUND BOARD [SSH]	-1,000	1,648,241	17.951
30 SEP 2024 - 30 SEP 2024	AXIATA	EMPLOYEES PROVIDENT FUND BOARD [SSH]	-4,140	1,649,241	17.962
27 SEP 2024 - 27 SEP 2024	AXIATA	EMPLOYEES PROVIDENT FUND BOARD [SSH]	-2,020	1,653,381	18.007
26 SEP 2024 - 26 SEP 2024	AXIATA	EMPLOYEES PROVIDENT FUND BOARD [SSH]	-17,258	1,655,401	18.029
25 SEP 2024 - 25 SEP 2024	AXIATA	EMPLOYEES PROVIDENT FUND BOARD [SSH]	-4,770	1,672,659	18.217
27 SEP 2024 - 27 SEP 2024	AXREIT	EMPLOYEES PROVIDENT FUND BOARD [SSH]	-587	308,037	17.627
26 SEP 2024 - 26 SEP 2024	AXREIT	EMPLOYEES PROVIDENT FUND BOARD [SSH]	-80	308,625	17.661
25 SEP 2024 - 25 SEP 2024	AXREIT	EMPLOYEES PROVIDENT FUND BOARD [SSH]	-60	308,705	17.666
27 SEP 2024 - 27 SEP 2024	BAUTO	EMPLOYEES PROVIDENT FUND BOARD [SSH]	80	156,662	13.403
26 SEP 2024 - 26 SEP 2024	BAUTO	EMPLOYEES PROVIDENT FUND BOARD [SSH]	194	156,582	13.397
26 SEP 2024 - 26 SEP 2024	BERTAM	DATUK RICHARD LING DO NYEAN [SSH]	19,087	56,700	11.719
26 SEP 2024 - 26 SEP 2024	BERTAM	MR KOO JENN MAN [DIR/CEO]	349	743	0.153
26 SEP 2024 - 26 SEP 2024	BERTAM	MR LAW NGIA MENG [SSH]	18,683	56,048	11.585
26 SEP 2024 - 26 SEP 2024	BERTAM	MR PANG KEE CHAU [SSH]	13,404	40,723	8.417
26 SEP 2024 - 26 SEP 2024	BERTAM	PERFECT LINK VENTURES SDN. BHD. [SSH]	13,404	40,723	8.417
26 SEP 2024 - 26 SEP 2024	BERTAM-WA	MR KOO JENN MAN [DIR/CEO]	349	349	0.217
02 OCT 2024 - 03 OCT 2024	BESHOM	MADAM PHAN VAN DENH [SSH]	113	78,952	26.321
02 OCT 2024 - 03 OCT 2024	BESHOM	MR TAN KENG KANG [DIR/CEO]	113	78,952	26.321
02 OCT 2024 - 03 OCT 2024	BESHOM	MR TAN KENG KANG [SSH]	113	78,952	26.321

Notice Period is 29th September 2024 – 05th October 2024

Effective Change Date	Stock Name	Buyer/ Seller Name [Classification]	Bought / (Sold) ['000]		
			Total	No. of Shares After Trade ['000]	% Held
02 OCT 2024 - 03 OCT 2024	BESHOM	TAN KAI HEE FAMILY HOLDINGS SDN BHD [SSH]	113	64,929	21.645
01 OCT 2024 - 01 OCT 2024	BIMB	EMPLOYEES PROVIDENT FUND BOARD [SSH]	446	386,854	17.069
30 SEP 2024 - 30 SEP 2024	BIMB	EMPLOYEES PROVIDENT FUND BOARD [SSH]	13	386,409	17.049
27 SEP 2024 - 27 SEP 2024	BIMB	EMPLOYEES PROVIDENT FUND BOARD [SSH]	600	386,396	17.048
26 SEP 2024 - 26 SEP 2024	BIMB	EMPLOYEES PROVIDENT FUND BOARD [SSH]	792	385,796	17.022
01 OCT 2024 - 01 OCT 2024	BJFOOD	BERJAYA CORPORATION BERHAD [SSH]	700	1,120,235	63.226
01 OCT 2024 - 01 OCT 2024	BJFOOD	BERJAYA GROUP BERHAD [SSH]	700	1,019,249	57.526
01 OCT 2024 - 01 OCT 2024	BJFOOD	JUARA SEJATI SDN BHD [SSH]	700	240,141	13.553
30 SEP 2024 - 30 SEP 2024	BJFOOD	BERJAYA CORPORATION BERHAD [SSH]	720	1,119,535	63.186
30 SEP 2024 - 30 SEP 2024	BJFOOD	BERJAYA GROUP BERHAD [SSH]	720	1,018,549	57.486
30 SEP 2024 - 30 SEP 2024	BJFOOD	JUARA SEJATI SDN BHD [SSH]	720	239,441	13.514
26 SEP 2024 - 27 SEP 2024	BJFOOD	BERJAYA CORPORATION BERHAD [SSH]	1,200	1,118,815	63.146
26 SEP 2024 - 27 SEP 2024	BJFOOD	BERJAYA GROUP BERHAD [SSH]	1,200	1,017,829	57.446
26 SEP 2024 - 27 SEP 2024	BJFOOD	JUARA SEJATI SDN BHD [SSH]	1,200	238,721	13.473
02 OCT 2024 - 02 OCT 2024	BPURI-WB	DATUK MATTHEW TEE KAI WOON [DIR/CEO]	-10,000	6,036	11.673
02 OCT 2024 - 02 OCT 2024	BPURI-WB	TAN SRI DATUK TEE HOCK SENG JP [DIR/CEO]	-10,000	6,036	11.673
01 OCT 2024 - 01 OCT 2024	BURSA	EMPLOYEES PROVIDENT FUND BOARD [SSH]	-552	74,039	9.149
01 OCT 2024 - 01 OCT 2024	BURSA	EMPLOYEES PROVIDENT FUND BOARD [SSH]	500	74,591	9.217
30 SEP 2024 - 30 SEP 2024	BURSA	EMPLOYEES PROVIDENT FUND BOARD [SSH]	-202	74,091	9.155
27 SEP 2024 - 27 SEP 2024	BURSA	EMPLOYEES PROVIDENT FUND BOARD [SSH]	500	74,764	9.238
27 SEP 2024 - 27 SEP 2024	BURSA	EMPLOYEES PROVIDENT FUND BOARD [SSH]	-471	74,293	9.18
26 SEP 2024 - 26 SEP 2024	BURSA	EMPLOYEES PROVIDENT FUND BOARD [SSH]	-719	74,264	9.176
25 SEP 2024 - 25 SEP 2024	BURSA	EMPLOYEES PROVIDENT FUND BOARD [SSH]	381	74,983	9.265
03 OCT 2024 - 03 OCT 2024	CAB	MADAM CHAN KIM KEOW [SSH]	83	123,439	17.6
03 OCT 2024 - 03 OCT 2024	CAB	MR CHUAH AH BEE [DIR/CEO]	83	321,471	45.836
03 OCT 2024 - 03 OCT 2024	CAB	MR CHUAH AH BEE [SSH]	83	321,471	45.836
03 OCT 2024 - 03 OCT 2024	CAB	MR CHUAH HOON PHONG [DIR/CEO]	83	15,027	2.142
01 OCT 2024 - 01 OCT 2024	CDB	EMPLOYEES PROVIDENT FUND BOARD [SSH]	194	1,193,737	10.175
30 SEP 2024 - 30 SEP 2024	CDB	EMPLOYEES PROVIDENT FUND BOARD [SSH]	467	1,193,543	10.174
27 SEP 2024 - 27 SEP 2024	CDB	EMPLOYEES PROVIDENT FUND BOARD [SSH]	321	1,193,075	10.17
25 SEP 2024 - 25 SEP 2024	CDB	EMPLOYEES PROVIDENT FUND BOARD [SSH]	574	1,192,754	10.167
01 OCT 2024 - 03 OCT 2024	CHINHIN	DATUK SERI CHIAU BENG TEIK JP [DIR/CEO]	1,963	2,135,231	60.337
01 OCT 2024 - 03 OCT 2024	CHINHIN	DATUK SERI CHIAU BENG TEIK JP [SSH]	1,963	2,135,231	60.337
27 SEP 2024 - 30 SEP 2024	CHINHIN	DATUK SERI CHIAU BENG TEIK JP [DIR/CEO]	1,141	2,133,268	60.282
27 SEP 2024 - 30 SEP 2024	CHINHIN	DATUK SERI CHIAU BENG TEIK JP [SSH]	1,141	2,133,268	60.282
03 OCT 2024 - 03 OCT 2024	CIMB	KUMPULAN WANG PERSARAAN (DIPERBADANKAN) [SSH]	22	644,005	6.01
01 OCT 2024 - 01 OCT 2024	CIMB	EMPLOYEES PROVIDENT FUND BOARD [SSH]	10,007	1,624,767	15.17
02 OCT 2024 - 02 OCT 2024	CIMB	KUMPULAN WANG PERSARAAN (DIPERBADANKAN) [SSH]	41	643,982	6.01
30 AUG 2024 - 30 SEP 2024	CIMB	EMPLOYEES PROVIDENT FUND BOARD [SSH]	5,973	1,614,760	15.08
27 SEP 2024 - 27 SEP 2024	CIMB	EMPLOYEES PROVIDENT FUND BOARD [SSH]	4,725	1,608,788	15.02
30 SEP 2024 - 30 SEP 2024	CIMB	KUMPULAN WANG PERSARAAN (DIPERBADANKAN) [SSH]	157	643,942	6.01
27 SEP 2024 - 27 SEP 2024	CIMB	KUMPULAN WANG PERSARAAN (DIPERBADANKAN) [SSH]	-726	643,785	6.01
26 SEP 2024 - 26 SEP 2024	CIMB	EMPLOYEES PROVIDENT FUND BOARD [SSH]	11,207	1,604,062	14.97
25 SEP 2024 - 25 SEP 2024	CIMB	EMPLOYEES PROVIDENT FUND BOARD [SSH]	11,251	1,592,855	14.87
01 OCT 2024 - 01 OCT 2024	CLMT	EMPLOYEES PROVIDENT FUND BOARD [SSH]	243	445,954	15.526
30 SEP 2024 - 30 SEP 2024	CLMT	EMPLOYEES PROVIDENT FUND BOARD [SSH]	155	445,710	15.517
27 SEP 2024 - 27 SEP 2024	CLMT	EMPLOYEES PROVIDENT FUND BOARD [SSH]	230	445,555	15.512
26 SEP 2024 - 26 SEP 2024	CLMT	EMPLOYEES PROVIDENT FUND BOARD [SSH]	-3,116	445,325	15.504
25 SEP 2024 - 25 SEP 2024	CLMT	EMPLOYEES PROVIDENT FUND BOARD [SSH]	275	448,441	15.612
25 SEP 2024 - 25 SEP 2024	CRESNDO	ASCENDANT CAPITAL SDN. BHD. [SSH]	384,296	576,444	68.741
25 SEP 2024 - 25 SEP 2024	CRESNDO	ETERNAL PROFITS WORLDWIDE SDN. BHD. [SSH]	384,296	576,444	68.741
25 SEP 2024 - 25 SEP 2024	CRESNDO	MR CHEW CHING CHONG [DIR/CEO]	20	30	0.003
25 SEP 2024 - 25 SEP 2024	CRESNDO	MR GOOI KHAI SHIN [DIR/CEO]	7,551	11,327	1.351
25 SEP 2024 - 25 SEP 2024	CRESNDO	MR GOOI SEONG CHNEH [DIR/CEO]	392,584	588,877	70.224
25 SEP 2024 - 25 SEP 2024	CRESNDO	MR GOOI SEONG CHNEH [SSH]	392,584	588,877	70.224
25 SEP 2024 - 25 SEP 2024	CRESNDO	MR GOOI SEONG GUM [DIR/CEO]	384,376	576,564	68.755
25 SEP 2024 - 25 SEP 2024	CRESNDO	MR GOOI SEONG GUM [SSH]	384,376	576,564	68.755
25 SEP 2024 - 25 SEP 2024	CRESNDO	MR GOOI SEONG HEEN [DIR/CEO]	393,550	590,326	70.397
25 SEP 2024 - 25 SEP 2024	CRESNDO	MR GOOI SEONG HEEN [SSH]	393,550	590,326	70.397
25 SEP 2024 - 25 SEP 2024	CRESNDO	MR GOOI SEONG LIM [DIR/CEO]	394,728	592,093	70.607
25 SEP 2024 - 25 SEP 2024	CRESNDO	MR GOOI SEONG LIM [SSH]	394,728	592,093	70.607
25 SEP 2024 - 25 SEP 2024	CRESNDO	SG GOOI HOLDINGS SDN. BHD. [SSH]	384,296	576,444	68.741
25 SEP 2024 - 25 SEP 2024	CRESNDO	SHARIKAT KIM LOONG SENDIRIAN BERHAD [SSH]	384,296	576,444	68.741
25 SEP 2024 - 25 SEP 2024	CRESNDO	WILGAIN PROSPERITY SDN. BHD. [SSH]	384,296	576,444	68.741
03 OCT 2024 - 03 OCT 2024	CRG	DATO' SRI CHIANG FONG YEE [DIR/CEO]	0.55	281,221	34.906
03 OCT 2024 - 03 OCT 2024	CRG	DATO' SRI CHIANG FONG YEE [SSH]	0.55	257,052	31.906
30 SEP 2024 - 02 OCT 2024	CRG	DATO' SRI CHIANG FONG YEE [SSH]	23	257,051	31.906
10 JAN 2024 - 30 SEP 2024	CRG	DATO' SRI CHIANG FONG YEE [DIR/			

Notice Period is 29th September 2024 – 05th October 2024

Effective Change Date	Stock Name	Buyer/ Seller Name [Classification]	Bought / (Sold) ['000]	No. of Shares After Trade ['000]	
			Total	Total	% Held
30 SEP 2024 - 30 SEP 2024	CVIEW	PUAN SADIAH BINTI SULEIMAN [SSH]	-18	9,545	9.545
03 OCT 2024 - 03 OCT 2024	CWG	ANB EQUITY SDN. BHD. [SSH]	7,725	20,599	7.865
03 OCT 2024 - 03 OCT 2024	CWG	DATO KHOR WAN TAT [SSH]	5,298	14,137	5.397
03 OCT 2024 - 03 OCT 2024	CWG	DATUK HONG CHOON HAU [DIR/CEO]	17,422	46,459	17.738
03 OCT 2024 - 03 OCT 2024	CWG	DATUK HONG CHOON HAU [SSH]	17,422	46,459	17.738
03 OCT 2024 - 03 OCT 2024	CWG	MISS LAI TJHIN TJHIN [SSH]	7,725	20,599	7.865
03 OCT 2024 - 03 OCT 2024	CWG	MR NG TIANG YONG [DIR/CEO]	760	2,027	0.774
03 OCT 2024 - 03 OCT 2024	CWG	MR OOI CHIN SOON [DIR/CEO]	17,580	46,880	17.898
03 OCT 2024 - 03 OCT 2024	CWG	OOI CHIN SOON [SSH]	17,580	46,880	17.898
03 OCT 2024 - 03 OCT 2024	CWG-WA	MR OOI CHIN SOON [DIR/CEO]	3,112	17,662	17.782
01 OCT 2024 - 01 OCT 2024	D&O	EMPLOYEES PROVIDENT FUND BOARD [SSH]	-422	87,467	7.057
30 SEP 2024 - 30 SEP 2024	D&O	EMPLOYEES PROVIDENT FUND BOARD [SSH]	-89	87,889	7.091
27 SEP 2024 - 27 SEP 2024	D&O	EMPLOYEES PROVIDENT FUND BOARD [SSH]	-281	87,978	7.098
30 SEP 2024 - 30 SEP 2024	D&O	KUMPULAN WANG PERSARAAN (DIPERBADANKAN) [SSH]	784	66,118	5.334
27 SEP 2024 - 27 SEP 2024	D&O	KUMPULAN WANG PERSARAAN (DIPERBADANKAN) [SSH]	142	65,334	5.271
01 OCT 2024 - 02 OCT 2024	DAYANG	DATUK LING SUK KIONG [DIR/CEO]	-300	147,708	12.758
01 OCT 2024 - 02 OCT 2024	DAYANG	DATUK LING SUK KIONG [SSH]	-300	147,708	12.758
01 OCT 2024 - 02 OCT 2024	DAYANG	MR JOE LING SIEW LOUNG @ LIN SHOU LONG [DIR/CEO]	-300	147,708	12.758
01 OCT 2024 - 02 OCT 2024	DAYANG	MR JOE LING SIEW LOUNG @ LIN SHOU LONG [SSH]	-300	147,708	12.758
03 OCT 2024 - 03 OCT 2024	DIALOG	KUMPULAN WANG PERSARAAN (DIPERBADANKAN) [SSH]	126	603,873	10.7
30 SEP 2024 - 30 SEP 2024	DPHARMA	EMPLOYEES PROVIDENT FUND BOARD [SSH]	101	81,238	8.445
26 SEP 2024 - 26 SEP 2024	DPHARMA	EMPLOYEES PROVIDENT FUND BOARD [SSH]	-4,712	81,137	8.435
01 OCT 2024 - 01 OCT 2024	DRBHCORP	EMPLOYEES PROVIDENT FUND BOARD [SSH]	-1,000	156,169	8.078
30 SEP 2024 - 30 SEP 2024	DRBHCORP	EMPLOYEES PROVIDENT FUND BOARD [SSH]	500	157,153	8.129
27 SEP 2024 - 27 SEP 2024	DRBHCORP	EMPLOYEES PROVIDENT FUND BOARD [SSH]	-1,000	156,653	8.103
26 SEP 2024 - 26 SEP 2024	DRBHCORP	EMPLOYEES PROVIDENT FUND BOARD [SSH]	-26	158,023	8.174
01 OCT 2024 - 01 OCT 2024	ECONBHD	EMPLOYEES PROVIDENT FUND BOARD [SSH]	376	121,432	8.567
30 SEP 2024 - 30 SEP 2024	ECONBHD	EMPLOYEES PROVIDENT FUND BOARD [SSH]	653	121,056	8.54
27 SEP 2024 - 27 SEP 2024	ECONBHD	EMPLOYEES PROVIDENT FUND BOARD [SSH]	808	120,403	8.494
26 SEP 2024 - 26 SEP 2024	ECONBHD	EMPLOYEES PROVIDENT FUND BOARD [SSH]	1,300	119,595	8.437
25 SEP 2024 - 25 SEP 2024	ECONBHD	EMPLOYEES PROVIDENT FUND BOARD [SSH]	1,591	118,295	8.345
30 SEP 2024 - 30 SEP 2024	ECOWLD	DATO' LEONG KOK WAH [DIR/CEO]	-219,875	969,919	32.893
30 SEP 2024 - 30 SEP 2024	ECOWLD	DATO' LEONG KOK WAH [SSH]	-219,875	969,919	32.893
30 SEP 2024 - 30 SEP 2024	ECOWLD-WB	DATO' LEONG KOK WAH [DIR/CEO]	-44,495	193,984	33.188
30 SEP 2024 - 30 SEP 2024	EUPE	ENCIK ALFIAN BIN MOHAMED BASIR [DIR/CEO]	125	125	3.035
30 SEP 2024 - 30 SEP 2024	EUPE	ENCIK ISKANDAR ABDULLAH @ SIM KIA MIANG [DIR/CEO]	107	107	2.598
30 SEP 2024 - 30 SEP 2024	EUPE	ENCIK MUHAMAD FAISAL BIN TAJUDIN [DIR/CEO]	100	100	2.428
30 SEP 2024 - 30 SEP 2024	EUPE	MADAM THAM SAU KIEN [DIR/CEO]	100	100	2.428
30 SEP 2024 - 30 SEP 2024	EUPE	MISS BEH YEOW SEANG [DIR/CEO]	100	100	2.428
30 SEP 2024 - 30 SEP 2024	EUPE	MISS LEOW PEEN FONG [DIR/CEO]	100	100	2.428
21 AUG 2024 - 21 AUG 2024	EVD-PA	MR MAH SEONG HUAK [DIR/CEO]	-10,000	1,061,000	43.337
01 OCT 2024 - 01 OCT 2024	F&N	EMPLOYEES PROVIDENT FUND BOARD [SSH]	-190	42,096	11.477
30 SEP 2024 - 30 SEP 2024	F&N	EMPLOYEES PROVIDENT FUND BOARD [SSH]	-6	42,286	11.529
27 SEP 2024 - 27 SEP 2024	F&N	EMPLOYEES PROVIDENT FUND BOARD [SSH]	-105	42,292	11.531
26 SEP 2024 - 26 SEP 2024	F&N	EMPLOYEES PROVIDENT FUND BOARD [SSH]	-197	42,396	11.559
25 SEP 2024 - 25 SEP 2024	F&N	EMPLOYEES PROVIDENT FUND BOARD [SSH]	-36	42,593	11.613
04 OCT 2024 - 04 OCT 2024	FAREAST	DATO' ASMIN BINTI YAHYA [DIR/CEO]	2	351	0.059
01 OCT 2024 - 01 OCT 2024	FFB	EMPLOYEES PROVIDENT FUND BOARD [SSH]	-3,091	205,342	10.961
30 SEP 2024 - 30 SEP 2024	FFB	EMPLOYEES PROVIDENT FUND BOARD [SSH]	-4,798	208,433	11.126
27 SEP 2024 - 27 SEP 2024	FFB	EMPLOYEES PROVIDENT FUND BOARD [SSH]	-2,683	213,231	11.383
26 SEP 2024 - 26 SEP 2024	FFB	EMPLOYEES PROVIDENT FUND BOARD [SSH]	-2,700	215,914	11.526
25 SEP 2024 - 25 SEP 2024	FFB	EMPLOYEES PROVIDENT FUND BOARD [SSH]	-2,000	218,614	11.67
01 OCT 2024 - 01 OCT 2024	GAMUDA	EMPLOYEES PROVIDENT FUND BOARD (EPF BOARD) [SSH]	185	292,655	10.38
30 SEP 2024 - 30 SEP 2024	GAMUDA	EMPLOYEES PROVIDENT FUND BOARD (EPF BOARD) [SSH]	9	292,469	10.37
27 SEP 2024 - 27 SEP 2024	GAMUDA	EMPLOYEES PROVIDENT FUND BOARD (EPF BOARD) [SSH]	988	292,461	10.37
26 SEP 2024 - 26 SEP 2024	GAMUDA	EMPLOYEES PROVIDENT FUND BOARD (EPF BOARD) [SSH]	685	290,695	10.31
25 SEP 2024 - 25 SEP 2024	GAMUDA	EMPLOYEES PROVIDENT FUND BOARD (EPF BOARD) [SSH]	595	290,011	10.28
01 OCT 2024 - 01 OCT 2024	GENP	EMPLOYEES PROVIDENT FUND BOARD [SSH]	-245	120,712	13.455
30 SEP 2024 - 30 SEP 2024	GENP	EMPLOYEES PROVIDENT FUND BOARD [SSH]	-151	120,957	13.482
27 SEP 2024 - 27 SEP 2024	GENP	EMPLOYEES PROVIDENT FUND BOARD [SSH]	-264	121,107	13.499
26 SEP 2024 - 26 SEP 2024	GENP	EMPLOYEES PROVIDENT FUND BOARD [SSH]	-416	121,371	13.528
25 SEP 2024 - 25 SEP 2024	GENP	EMPLOYEES PROVIDENT FUND BOARD [SSH]	-85	121,787	13.575
01 OCT 2024 - 03 OCT 2024	GUH	DATUK SERI KENNETH H'NG BAK TEE [DIR/CEO]	320	8,878	3.148
27 SEP 2024 - 27 SEP 2024	HARNLEN	LNH ENTERPRISE SDN. BHD. [SSH]	14,200	118,279	20.995
27 SEP 2024 - 27 SEP 2024	HARNLEN	MR LOW KOK YAOV [DIR/CEO]	14,200	273,121	48.48
27 SEP 2024 - 27 SEP 2024	HARNLEN	MR LOW KOK YAOV [SSH]	14,200	273,121	48.48
27 SEP 2024 - 27 SEP 2024	HARNLEN	MR LOW KUEK SHIN [DIR/CEO]	14,200	261,434	46.406
27 SEP 2024 - 27 SEP 2024	HARNLEN	MR LOW KUEK SHIN [SSH]	14,200	261,304	46.383
27 SEP 2024 - 27 SEP 2024	HARNLEN	MR LOW KUEK KONG [DIR/CEO]	14,200	261,054	46.338
27 SEP 2024 - 27 SEP 2024	HARNLEN	MR LOW KUEK KONG [SSH]	14,200	261,054	46.338
27 SEP 2024 - 27 SEP 2024	HARNLEN	MR LOW KWEK LEE [DIR/CEO]	14,200	261,264	46.376
27 SEP 2024 - 27 SEP 2024	HARNLEN	MR LOW KWEK LEE [SSH]	14,200	261,264	46.376
27 SEP 2024 - 27 SEP 2024	HARNLEN	MR LOW QUEK KIONG [DIR/CEO]	14,200	296,591	52.646
27 SEP 2024 - 27 SEP 2024	HARNLEN	MR LOW QUEK KIONG [SSH]	14,200	288,911	51.283
27 SEP 2024 - 27 SEP 2024	HARNLEN	PUAN SRI DATIN CHAN PUI LEORN [DIR/CEO]	14,200	274,148	48.662
27 SEP 2024 - 27 SEP 2024	HARNLEN	PUAN SRI DATIN CHAN PUI LEORN [SSH]	14,200	274,148	48.662
27 SEP 2024 - 27 SEP 2024	HARNLEN	TAN SRI LOW NAM HUI [SSH]	14,200	260,264	46.198
01 OCT 2024 - 01 OCT 2024	HARTA	KUMPULAN WANG PERSARAAN (DIPERBADANKAN) [SSH]	1,000	182,427	5.344
03 OCT 2024 - 03 OCT 2024	HCK	DATO' DIONG TAK CHONG @ TIONG TAK CHONG [DIR/CEO]	130	22,677	4.132
30 SEP 2024 - 30 SEP 2024	HEVEA	MISS YOONG LI YEN [DIR/CEO]	71	187,525	33.14
30 SEP 2024 - 30 SEP 2024	HEVEA	MISS YOONG LI YEN [SSH]	71	187,525	33.14
30 SEP 2024 - 30 SEP 2024	HEVEA	MR LOO CHIN MENG [DIR/CEO]	120,790	125,452	22.17
30 SEP 2024 - 30 SEP 2024	HEVEA	MR YOONG HAU CHUN [DIR/CEO]	71	188,852	33.374
30 SEP 2024 - 30 SEP 2024	HEVEA	MR YOONG HAU CHUN [SSH]	71	188,852	33.374
30 SEP 2024 - 30 SEP 2024	HEVEA	MR YOONG TEIN SENG @ YONG KIAN SENG [DIR/CEO]	71	198,304	35.045
30 SEP 2024 - 30 SEP 2024	HEVEA	MR YOONG TEIN SENG @ YONG KIAN SENG [SSH]	71	198,304	35.045
30 SEP 2024 - 30 SEP 2024	HEVEA	TENSON HOLDINGS SDN. BHD. [SSH]	71	183,788	32.479
27 SEP 2024 - 27 SEP 2024	HEVEA	MISS YOONG LI YEN [DIR/CEO]	228	187,454	33.127
27 SEP 2024 - 27 SEP 2024	HEVEA	MISS YOONG LI YEN [SSH]	228	187,454	33.127
27 SEP 2024 - 27 SEP 2024	HEVEA	MR YOONG HAU CHUN [DIR/CEO]	228	188,780	33.362
27 SEP 2024 - 27 SEP 2024	HEVEA	MR YOONG HAU CHUN [SSH]	228	188,780	33.362
27 SEP 2024 - 27 SEP 2024	HEVEA	MR YOONG TEIN SENG @ YONG KIAN SENG [DIR/CEO]	228	198,233	35.032
27 SEP 2024 - 27 SEP 2024	HEVEA	MR YOONG TEIN SENG @ YONG KIAN SENG [SSH]	228	198,233	35.032

Notice Period is 29th September 2024 – 05th October 2024

Effective Change Date	Stock Name	Buyer/ Seller Name [Classification]	Bought / (Sold) ['000]	No. of Shares After Trade ['000]	
			Total	Total	% Held
27 SEP 2024 - 27 SEP 2024	HEVEA	TENSON HOLDINGS SDN. BHD. [SSH]	228	183,717	32.466
01 OCT 2024 - 01 OCT 2024	HHHCORP	DATIN CHOW PUI LING [DIR/CEO]	9,837	82,227	20.81
01 OCT 2024 - 01 OCT 2024	HHHCORP	DATIN CHOW PUI LING [SSH]	9,837	82,227	20.81
01 OCT 2024 - 01 OCT 2024	HHHCORP	DATO' CHAN SAY HWA [DIR/CEO]	9,837	82,227	20.81
01 OCT 2024 - 01 OCT 2024	HHHCORP	DATO' CHAN SAY HWA [SSH]	9,837	82,227	20.81
30 SEP 2024 - 02 OCT 2024	HIGHTEC	MR TAN LYE HUAT [SSH]	543	62,719	53.607
10 JAN 2024 - 30 SEP 2024	HIGHTEC	MR TAN LYE HUAT [DIR/CEO]	543	62,719	53.607
26 SEP 2024 - 26 SEP 2024	HLBANK	EMPLOYEES PROVIDENT FUND BOARD [SSH]	-429	183,355	8.787
01 OCT 2024 - 04 OCT 2024	IBHD	TAN SRI LIM KIM HONG [DIR/CEO]	484	1,406,643	75.736
01 OCT 2024 - 04 OCT 2024	IBHD	TAN SRI LIM KIM HONG [SSH]	484	1,406,643	75.736
26 SEP 2024 - 30 SEP 2024	IBHD	TAN SRI LIM KIM HONG [DIR/CEO]	137	1,406,159	75.71
26 SEP 2024 - 30 SEP 2024	IBHD	TAN SRI LIM KIM HONG [SSH]	137	1,406,159	75.71
30 SEP 2024 - 30 SEP 2024	ICAP	CITY OF LONDON INVESTMENT MANAGEMENT COMPANY LIMITED [SSH]	-167	31,485	22.489
27 SEP 2024 - 27 SEP 2024	IDBTECH	MR CHEAH KAH BENG [DIR/CEO]	-2,500	131,950	26.39
27 SEP 2024 - 27 SEP 2024	IDBTECH	MR CHEAH KAH BENG [SSH]	-2,500	131,950	26.39
02 OCT 2024 - 02 OCT 2024	IFCAMSC	MR ENG KIM HAW [DIR/CEO]	15	197	0.032
26 SEP 2024 - 26 SEP 2024	IGBREIT	EMPLOYEES PROVIDENT FUND BOARD ("EPF BOARD") [SSH]	137	384,223	10.636
25 SEP 2024 - 25 SEP 2024	IGBREIT	EMPLOYEES PROVIDENT FUND BOARD ("EPF BOARD") [SSH]	-2,052	382,519	10.589
01 OCT 2024 - 01 OCT 2024	IHH	EMPLOYEES PROVIDENT FUND BOARD [SSH]	-177	896,130	10.172
30 SEP 2024 - 30 SEP 2024	IHH	EMPLOYEES PROVIDENT FUND BOARD [SSH]	-868	896,307	10.174
27 SEP 2024 - 27 SEP 2024	IHH	EMPLOYEES PROVIDENT FUND BOARD [SSH]	-3,221	897,174	10.184
26 SEP 2024 - 26 SEP 2024	IHH	EMPLOYEES PROVIDENT FUND BOARD [SSH]	-1,336	900,395	10.223
25 SEP 2024 - 25 SEP 2024	IHH	EMPLOYEES PROVIDENT FUND BOARD [SSH]	355	901,731	10.238
01 OCT 2024 - 01 OCT 2024	IJM	KUMPULAN WANG PERSARAAN (DIPERBADANKAN) [SSH]	160	331,456	9.454
27 SEP 2024 - 27 SEP 2024	IJM	EMPLOYEES PROVIDENT FUND BOARD [SSH]	19	485,401	13.844
26 SEP 2024 - 26 SEP 2024	IJM	EMPLOYEES PROVIDENT FUND BOARD [SSH]	500	484,382	13.815
25 SEP 2024 - 25 SEP 2024	IJM	EMPLOYEES PROVIDENT FUND BOARD [SSH]	927	483,882	13.801
25 SEP 2024 - 25 SEP 2024	INARI	EMPLOYEES PROVIDENT FUND BOARD [SSH]	1,040	390,809	10.316
02 OCT 2024 - 02 OCT 2024	IOICORP	DATO' LEE YEOW CHOR [DIR/CEO]	800	3,140,354	50.621
01 OCT 2024 - 01 OCT 2024	IOICORP	EMPLOYEES PROVIDENT FUND BOARD [SSH]	105	817,940	13.185
30 SEP 2024 - 30 SEP 2024	IOICORP	EMPLOYEES PROVIDENT FUND BOARD [SSH]	1,666	817,835	13.183
27 SEP 2024 - 27 SEP 2024	IOICORP	EMPLOYEES PROVIDENT FUND BOARD [SSH]	-80	816,169	13.156
26 SEP 2024 - 26 SEP 2024	IOICORP	EMPLOYEES PROVIDENT FUND BOARD [SSH]	3,000	816,249	13.157
01 OCT 2024 - 01 OCT 2024	JPG	EMPLOYEES PROVIDENT FUND BOARD [SSH]	300	299,511	11.98
30 SEP 2024 - 30 SEP 2024	JPG	EMPLOYEES PROVIDENT FUND BOARD [SSH]	264	299,211	11.968
27 SEP 2024 - 27 SEP 2024	JPG	EMPLOYEES PROVIDENT FUND BOARD [SSH]	336	298,947	11.958
26 SEP 2024 - 26 SEP 2024					

Notice Period is 29th September 2024 – 05th October 2024

Effective Change Date	Stock Name	Buyer/ Seller Name [Classification]	Bought / (Sold) ['000]	No. of Shares After Trade ['000]	
			Total	Total	% Held
25 SEP 2024 - 25 SEP 2024	MAXIS	EMPLOYEES PROVIDENT FUND BOARD ("EPF BOARD") [SSH]	95	919,053	11.733
03 OCT 2024 - 03 OCT 2024	MAXLAND	DATO' ABD AZIZ BIN HAJI SHEIKH FADZIR [DIR/CEO]	30	24,333	1.517
01 OCT 2024 - 01 OCT 2024	MAXLAND	DATO' ABD AZIZ BIN HAJI SHEIKH FADZIR [DIR/CEO]	50	24,303	1.516
27 SEP 2024 - 27 SEP 2024	MAXLAND	DATO' ABD AZIZ BIN HAJI SHEIKH FADZIR [DIR/CEO]	90	24,253	1.512
02 OCT 2024 - 02 OCT 2024	MAYBANK	AMANAHRAYA TRUSTEES BERHAD - AMANAH SAHAM BUMIPUTERA [SSH]	1,650	3,629,550	30.078
02 OCT 2024 - 02 OCT 2024	MAYBANK	PERMODALAN NASIONAL BERHAD [SSH]	3,003	764,191	6.333
02 OCT 2024 - 02 OCT 2024	MAYBANK	YAYASAN PELABURAN BUMIPUTRA [SSH]	3,003	764,191	6.333
01 OCT 2024 - 01 OCT 2024	MAYBANK	EMPLOYEES PROVIDENT FUND BOARD [SSH]	-2,094	1,535,833	12.728
02 OCT 2024 - 02 OCT 2024	MAYBANK	KUMPULAN WANG PERSARAAN (DIPERBADANKAN) ("KWAP") [SSH]	73	606,106	5.023
01 OCT 2024 - 01 OCT 2024	MAYBANK	AMANAHRAYA TRUSTEES BERHAD - AMANAH SAHAM BUMIPUTERA [SSH]	1,850	3,627,900	30.065
01 OCT 2024 - 01 OCT 2024	MAYBANK	PERMODALAN NASIONAL BERHAD [SSH]	997	761,188	6.308
01 OCT 2024 - 01 OCT 2024	MAYBANK	YAYASAN PELABURAN BUMIPUTRA [SSH]	997	761,188	6.308
30 SEP 2024 - 30 SEP 2024	MAYBANK	EMPLOYEES PROVIDENT FUND BOARD [SSH]	1,795	1,537,927	12.745
30 SEP 2024 - 30 SEP 2024	MAYBANK	AMANAHRAYA TRUSTEES BERHAD - AMANAH SAHAM BUMIPUTERA [SSH]	3,146	3,626,050	30.049
27 SEP 2024 - 27 SEP 2024	MAYBANK	EMPLOYEES PROVIDENT FUND BOARD [SSH]	3,402	1,536,132	12.73
26 SEP 2024 - 26 SEP 2024	MAYBANK	EMPLOYEES PROVIDENT FUND BOARD [SSH]	3,841	1,532,730	12.702
26 SEP 2024 - 26 SEP 2024	MAYBANK	AMANAHRAYA TRUSTEES BERHAD - AMANAH SAHAM BUMIPUTERA [SSH]	-23,505	3,622,904	30.023
26 SEP 2024 - 26 SEP 2024	MAYBANK	PERMODALAN NASIONAL BERHAD [SSH]	23,000	760,191	6.3
26 SEP 2024 - 26 SEP 2024	MAYBANK	YAYASAN PELABURAN BUMIPUTRA [SSH]	23,000	760,191	6.3
25 SEP 2024 - 25 SEP 2024	MAYBANK	EMPLOYEES PROVIDENT FUND BOARD [SSH]	4,829	1,528,889	12.67
27 SEP 2024 - 27 SEP 2024	MBSB	EMPLOYEES PROVIDENT FUND BOARD [SSH]	-20,000	4,694,774	57.098
26 SEP 2024 - 26 SEP 2024	MBSB	EMPLOYEES PROVIDENT FUND BOARD [SSH]	-2,377	4,715,324	57.348
01 OCT 2024 - 01 OCT 2024	MCEHLDG	MR WOO CHIEW LOONG [SSH]	-600	10,400	8.417
01 OCT 2024 - 01 OCT 2024	MCEHLDG	DR GOH KAR CHUN [DIR/CEO]	600	5,840	4.727
03 OCT 2024 - 03 OCT 2024	MCMENT	DATO' YEOH SOO KENG [DIR/CEO]	-2,000	1,000	0.075
03 OCT 2024 - 03 OCT 2024	MCMENT	PUAN SRI DATIN TAN KAI YONG @ TAN KAY NEONG [SSH]	2,000	968,616	72.459
03 OCT 2024 - 03 OCT 2024	MCMENT	YEOH TIONG LAY & SONS FAMILY HOLDINGS LIMITED [SSH]	2,000	968,616	72.459
03 OCT 2024 - 03 OCT 2024	MCMENT	YEOH TIONG LAY & SONS HOLDINGS SDN BHD [SSH]	2,000	968,616	72.459
03 OCT 2024 - 03 OCT 2024	MCMENT	YEOH TIONG LAY & SONS TRUST COMPANY LIMITED [SSH]	2,000	968,616	72.459
30 SEP 2024 - 30 SEP 2024	MIECO	DATO' SRI NG AH CHAI [DIR/CEO]	-726	619,732	61.973
30 SEP 2024 - 30 SEP 2024	MIECO	DATO' SRI NG AH CHAI [SSH]	-726	619,732	61.973
26 SEP 2024 - 26 SEP 2024	MIECO	DATO' SRI NG AH CHAI [DIR/CEO]	726	620,458	62.046
26 SEP 2024 - 26 SEP 2024	MIECO	DATO' SRI NG AH CHAI [SSH]	726	620,458	62.046
01 OCT 2024 - 01 OCT 2024	MINOX	MR NG KUAN HUA [DIR/CEO]	300	2,900	0.806
27 SEP 2024 - 27 SEP 2024	MINOX	MR NG KUAN HUA [DIR/CEO]	100	2,600	0.722
30 SEP 2024 - 30 SEP 2024	MISC	EMPLOYEES PROVIDENT FUND BOARD [SSH]	320	504,579	11.304
27 SEP 2024 - 27 SEP 2024	MISC	EMPLOYEES PROVIDENT FUND BOARD [SSH]	803	504,259	11.297
26 SEP 2024 - 26 SEP 2024	MISC	EMPLOYEES PROVIDENT FUND BOARD [SSH]	-1,204	503,456	11.279
25 SEP 2024 - 25 SEP 2024	MISC	EMPLOYEES PROVIDENT FUND BOARD [SSH]	-14,574	504,659	11.306
01 OCT 2024 - 01 OCT 2024	MRDIY	EMPLOYEES PROVIDENT FUND BOARD [SSH]	-2,793	653,694	6.914
30 SEP 2024 - 30 SEP 2024	MRDIY	EMPLOYEES PROVIDENT FUND BOARD [SSH]	5,000	656,487	6.943
27 SEP 2024 - 27 SEP 2024	MRDIY	EMPLOYEES PROVIDENT FUND BOARD [SSH]	-3,000	651,487	6.891
30 SEP 2024 - 01 OCT 2024	MRDIY	MR TAN YU YEH [DIR/CEO]	-67,156	4,809,544	50.869
30 SEP 2024 - 01 OCT 2024	MRDIY	MR TAN YU YEH [SSH]	-67,156	4,809,544	50.869
26 SEP 2024 - 26 SEP 2024	MRDIY	EMPLOYEES PROVIDENT FUND BOARD [SSH]	-5,782	654,487	6.922
25 SEP 2024 - 25 SEP 2024	MRDIY	EMPLOYEES PROVIDENT FUND BOARD [SSH]	-4,000	660,269	6.983
27 SEP 2024 - 27 SEP 2024	MSC	MISS CHEW GEK KHIM [DIR/CEO]	27	1,697	0.404
03 OCT 2024 - 03 OCT 2024	MSNIAGA	SHAPADU CAPITAL SDN. BHD. [SSH]	10	16,900	28
30 SEP 2024 - 30 SEP 2024	MSNIAGA	SHAPADU CAPITAL SDN. BHD. [SSH]	5	16,890	28
27 SEP 2024 - 27 SEP 2024	MSNIAGA	SHAPADU CAPITAL SDN. BHD. [SSH]	4	16,885	28
03 OCT 2024 - 03 OCT 2024	MYEG	ASIA INTERNET HOLDINGS SDN BHD [SSH]	-12,000	1,112,743	14.777
30 SEP 2024 - 30 SEP 2024	NATGATE	DATO' OOI ENG LEONG [DIR/CEO]	1	1,244,622	54.67
30 SEP 2024 - 30 SEP 2024	NATGATE	MR LEE KIM SAN [DIR/CEO]	11	13,511	0.593
26 SEP 2024 - 26 SEP 2024	NCT	DATO' SRI YAP NGAN CHOY [DIR/CEO]	-8,888	937,828	52.621
26 SEP 2024 - 26 SEP 2024	NCT	DATO' SRI YAP NGAN CHOY [SSH]	-8,888	937,828	52.621
26 SEP 2024 - 26 SEP 2024	NCT	DATO' YAP FOOK CHOY [DIR/CEO]	-8,888	931,298	52.255
26 SEP 2024 - 26 SEP 2024	NCT	DATO' YAP FOOK CHOY [SSH]	-8,888	931,298	52.255
26 SEP 2024 - 26 SEP 2024	NCT	YBG YAP CONSOLIDATED SDN. BHD. [SSH]	-8,888	906,668	50.873
01 OCT 2024 - 01 OCT 2024	NESTLE	EMPLOYEES PROVIDENT FUND BOARD [SSH]	3	28256	12.049
30 SEP 2024 - 30 SEP 2024	NESTLE	EMPLOYEES PROVIDENT FUND BOARD [SSH]	41	28254	12.048
27 SEP 2024 - 27 SEP 2024	NESTLE	EMPLOYEES PROVIDENT FUND BOARD [SSH]	17	28213	12.031
26 SEP 2024 - 26 SEP 2024	NESTLE	EMPLOYEES PROVIDENT FUND BOARD [SSH]	10	28196	12.024
02 OCT 2024 - 02 OCT 2024	NOTION	MR CHOO WING ONN [DIR/CEO]	-2,000	32138	6.123
02 OCT 2024 - 02 OCT 2024	NOTION	MR CHOO WING ONN [SSH]	-2,000	32138	6.123
30 SEP 2024 - 30 SEP 2024	NOVAMSC	MR LOH GUAN HUAT SUNNY [DIR/CEO]	-71,000	436,879	52.701
02 OCT 2024 - 02 OCT 2024	NPC	DATO' LOO PANG KEE [DIR/CEO]	2,712	61,146	52.399
02 OCT 2024 - 02 OCT 2024	NPC	DATO' LOO PANG KEE [SSH]	2,712	61,146	52.399
01 OCT 2024 - 02 OCT 2024	NTPM	MR LEE SEE JIN [DIR/CEO]	1,089	47,273	42.094
01 OCT 2024 - 02 OCT 2024	NTPM	MR LEE SEE JIN [SSH]	1,089	47,273	42.095
30 SEP 2024 - 30 SEP 2024	NTPM	MR LEE SEE JIN [DIR/CEO]	1,342	47,169	41.998
30 SEP 2024 - 30 SEP 2024	NTPM	MR LEE SEE JIN [SSH]	1,342	47,169	41.998
27 SEP 2024 - 27 SEP 2024	PADINI	EMPLOYEES PROVIDENT FUND BOARD [SSH]	200	49,921	7.588
26 SEP 2024 - 26 SEP 2024	PADINI	EMPLOYEES PROVIDENT FUND BOARD [SSH]	74	49,721	7.557
30 SEP 2024 - 30 SEP 2024	PANAMY	EMPLOYEES PROVIDENT FUND BOARD [SSH]	-24	6,142	10.11
27 SEP 2024 - 27 SEP 2024	PANAMY	EMPLOYEES PROVIDENT FUND BOARD [SSH]	-16	6,166	10.15
04 OCT 2024 - 04 OCT 2024	PANTECH	MR TAN ANG ANG [DIR/CEO]	100	13,848	1.661
01 OCT 2024 - 01 OCT 2024	PAVREIT	EMPLOYEES PROVIDENT FUND BOARD [SSH]	-1,498	444,535	12.143
30 SEP 2024 - 30 SEP 2024	PAVREIT	EMPLOYEES PROVIDENT FUND BOARD [SSH]	-1,053	446,033	12.184
26 SEP 2024 - 26 SEP 2024	PAVREIT	EMPLOYEES PROVIDENT FUND BOARD [SSH]	-255	447,086	12.213
25 SEP 2024 - 25 SEP 2024	PAVREIT	EMPLOYEES PROVIDENT FUND BOARD [SSH]	-100	447,340	12.22
01 OCT 2024 - 01 OCT 2024	PBBANK	EMPLOYEES PROVIDENT FUND BOARD [SSH]	-444	284,043	14.63
30 SEP 2024 - 30 SEP 2024	PBBANK	EMPLOYEES PROVIDENT FUND BOARD [SSH]	3,946	284,087	14.64
27 SEP 2024 - 27 SEP 2024	PBBANK	EMPLOYEES PROVIDENT FUND BOARD [SSH]	-746	283,691	14.62
26 SEP 2024 - 26 SEP 2024	PBBANK	EMPLOYEES PROVIDENT FUND BOARD [SSH]	-4,503	283,768	14.62
25 SEP 2024 - 25 SEP 2024	PBBANK	EMPLOYEES PROVIDENT FUND BOARD [SSH]	-319	284,216	14.64
25 SEP 2024 - 25 SEP 2024	PCHEM	EMPLOYEES PROVIDENT FUND BOARD ("EPF BOARD") [SSH]	-5,445	927,904	11.599
01 OCT 2024 - 01 OCT 2024	PENTA	KUMPULAN WANG PERSARAAN (DIPERBADANKAN) [SSH]	-12	42,494	5.974
01 OCT 2024 - 01 OCT 2024	PETDAG	EMPLOYEES PROVIDENT FUND BOARD ("EPF BOARD") [SSH]	-180	123,005	12.382
30 SEP 2024 - 30 SEP 2024	PETDAG	EMPLOYEES PROVIDENT FUND BOARD ("EPF BOARD") [SSH]	-120	123,162	12.397
27 SEP 2024 - 27 SEP 2024	PETDAG	EMPLOYEES PROVIDENT FUND BOARD ("EPF BOARD") [SSH]	-100	123,272	12.408
26 SEP 2024 - 26 SEP 2024	PETDAG	EMPLOYEES PROVIDENT FUND BOARD ("EPF BOARD") [SSH]	-64	123,372	12.419

Notice Period is 29th September 2024 – 05th October 2024

Effective Change Date	Stock Name	Buyer/ Seller Name [Classification]	Bought / (Sold) ['000]	No. of Shares After Trade ['000]	
			Total	Total	% Held
25 SEP 2024 - 25 SEP 2024	PETDAG	EMPLOYEES PROVIDENT FUND BOARD ("EPF BOARD") [SSH]	-50	123,437	12.425
01 OCT 2024 - 01 OCT 2024	PETGAS	EMPLOYEES PROVIDENT FUND BOARD [SSH]	-25	24,554	12.41
27 SEP 2024 - 27 SEP 2024	PETGAS	EMPLOYEES PROVIDENT FUND BOARD [SSH]	-8	24,568	12.413
26 SEP 2024 - 26 SEP 2024	PETGAS	EMPLOYEES PROVIDENT FUND BOARD [SSH]	-453	24,562	12.413
25 SEP 2024 - 25 SEP 2024	PETGAS	EMPLOYEES PROVIDENT FUND BOARD [SSH]	-139	24,607	12.436
02 OCT 2024 - 02 OCT 2024	PGB	DATO' TAN YEE BOON [DIR/CEO]	1,000	8129	1.203
30 SEP 2024 - 30 SEP 2024	PLINTAS	EMPLOYEES PROVIDENT FUND BOARD [SSH]	30	8,319	7.563
27 SEP 2024 - 27 SEP 2024	PLINTAS	EMPLOYEES PROVIDENT FUND BOARD [SSH]	25	8,316	7.56
26 SEP 2024 - 26 SEP 2024	PLINTAS	EMPLOYEES PROVIDENT FUND BOARD [SSH]	939	8,315	7.558
25 SEP 2024 - 25 SEP 2024	PLINTAS	EMPLOYEES PROVIDENT FUND BOARD [SSH]	999	8,219	7.472
30 SEP 2024 - 30 SEP 2024	POHKONG	MADAM LIM MEE HWA [SSH]	250	27,200	6.629
30 SEP 2024 - 30 SEP 2024	POHKONG	MR YEO SENG CHONG [SSH]	250	27,200	6.629
30 SEP 2024 - 30 SEP 2024	POHKONG	YEOMAN 3-RIGHTS VALUE ASIA FUND VCC [SSH]	250	22,000	5.361
30 SEP 2024 - 30 SEP 2024	POHKONG	YEOMAN CAPITAL MANAGEMENT PTE LTD [SSH]	250	22,950	5.593
01 OCT 2024 - 01 OCT 2024	PPB	EMPLOYEES PROVIDENT FUND BOARD [SSH]	28	17,641	12.401
30 SEP 2024 - 30 SEP 2024	PPB	EMPLOYEES PROVIDENT FUND BOARD [SSH]	-13	17,638	12.399
27 SEP 2024 - 27 SEP 2024	PPB	EMPLOYEES PROVIDENT FUND BOARD [SSH]	-100	17,640	12.4
26 SEP 2024 - 26 SEP 2024	PPB	EMPLOYEES PROVIDENT FUND BOARD [SSH]	500	17,650	12.407
25 SEP 2024 - 25 SEP 2024	PPB	EMPLOYEES PROVIDENT FUND BOARD [SSH]	5	17,600	12.372
03 OCT 2024 - 03 OCT 2024	PTRANS	DATO' ONG CHOO MENG [SSH]	-3,670	94,711	8.494
01 OCT 2024 - 01 OCT 2024	PTRANS	DATIN SRI LIM SOW KENG [SSH]	7,125	332,509	29.993
01 OCT 2024 - 01 OCT 2024	PTRANS	DATO' SRI CHEONG KONG FITT [DIR/CEO]	7,125	65,465	37.047
01 OCT 2024 - 01 OCT 2024	PTRANS	DATO' SRI CHEONG KONG FITT [DIR/CEO]	7,125	332,509	29.993
01 OCT 2024 - 01 OCT 2024	PTRANS	DATO' SRI CHEONG KONG FITT [SSH]	7,125	332,509	29.993
30 SEP 2024 - 30 SEP 2024	PWRWELL	MADAM WONG YOKE YEN [DIR/CEO]	-37,000	21,003	36.179
30 SEP 2024 - 30 SEP 2024	PWRWELL	MADAM WONG YOKE YEN [SSH]	-37,000	21,003	36.179
30 SEP 2024 - 30 SEP 2024	PWRWELL	MR THAM KIEN WAI [DIR/CEO]	-37,000	20,658	35.585
30 SEP 2024 - 30 SEP 2024	PWRWELL	MR THAM KIEN WAI [SSH]	-37,000	20,658	35.585
30 SEP 2024 - 30 SEP 2024	PWRWELL	PW SYNERGY SDN BHD [SSH]	-37,000	19,902	34.292
01 OCT 2024 - 01 OCT 2024	RADIUM	CENGAL 2020 SDN. BHD. [SSH]	-18,500	106,037	30.576
01 OCT 2024 - 01 OCT 2024	RADIUM	DATUK GAN KAH SIONG [DIR/CEO]	-18,500	156,988	45.213
01 OCT 2024 - 01 OCT 2024	RADIUM	DATUK GAN KAH SIONG [SSH]	-18,500	156,988	45.213
25 SEP 2024 - 25 SEP 2024	RADIUM	CENGAL 2020 SDN. BHD. [SSH]	-8,456	107,887	31.109
25 SEP 2024 - 25 SEP 2024	RADIUM	DATUK GAN KAH SIONG [DIR/CEO]	-8,456	156,488	45.746
25 SEP 2024 - 25 SEP 2024	RADIUM	DATUK GAN KAH SIONG [SSH]	-8,456	156,488	45.746
01 OCT 2024 - 03 OCT 2024	RGTECH	MR TEVANAIGAM RANDY CHITTY [DIR/CEO]	150	2,330	0.444
03 OCT 2024 - 03 OCT 2024	RHBBANK	KUMPULAN WANG PERSARAAN (DIPERBADANKAN) [SSH]	-575	22,867	5.244
01 OCT 2024 - 01 OCT 2024	RHBBANK	EMPLOYEES PROVIDENT FUND BOARD [SSH]	535	172,	

Notice Period is 29th September 2024 – 05th October 2024

Effective Change Date	Stock Name	Buyer/ Seller Name [Classification]	Bought / (Sold) ['000]	No. of Shares After Trade ['000]	
			Total	Total	% Held
27 SEP 2024 - 27 SEP 2024	SIMEPROP	EMPLOYEES PROVIDENT FUND BOARD [SSH]	1,177	589447	8.667
30 SEP 2024 - 30 SEP 2024	SIMEPROP	KUMPULAN WANG PERSARAAN (DIPERBADANKAN) [SSH]	625	422906	6.219
26 SEP 2024 - 26 SEP 2024	SIMEPROP	EMPLOYEES PROVIDENT FUND BOARD [SSH]	2,000	588270	8.65
27 SEP 2024 - 27 SEP 2024	SIMEPROP	KUMPULAN WANG PERSARAAN (DIPERBADANKAN) [SSH]	970	422281	6.209
26 SEP 2024 - 26 SEP 2024	SIMEPROP	PERMODALAN NASIONAL BERHAD [SSH]	-1,546	356630	5.244
26 SEP 2024 - 26 SEP 2024	SIMEPROP	YAYASAN PELABURAN BUMIPUTRA [SSH]	-1,546	356630	5.244
25 SEP 2024 - 25 SEP 2024	SIMEPROP	EMPLOYEES PROVIDENT FUND BOARD [SSH]	1,020	586270	8.621
01 OCT 2024 - 02 OCT 2024	SJC	CIMB COMMERCE TRUSTEE BERHAD [SSH]	-119	14937	6.995
30 SEP 2024 - 30 SEP 2024	SJC	CIMB COMMERCE TRUSTEE BERHAD [SSH]	-66	15056	7.05
26 SEP 2024 - 26 SEP 2024	SJC	CIMB COMMERCE TRUSTEE BERHAD [SSH]	-300	15122	7.081
27 SEP 2023 - 27 SEP 2024	SLVEST	EMPLOYEES PROVIDENT FUND BOARD [SSH]	-364	55575	7.87
26 SEP 2024 - 26 SEP 2024	SLVEST	EMPLOYEES PROVIDENT FUND BOARD [SSH]	641	55939	7.921
25 SEP 2024 - 25 SEP 2024	SLVEST	EMPLOYEES PROVIDENT FUND BOARD [SSH]	254	55298	7.834
01 OCT 2024 - 01 OCT 2024	SMILE	DATIN WONG CHIEN YUE [DIR/CEO]	10	130670	51.802
01 OCT 2024 - 01 OCT 2024	SMILE	DATIN WONG CHIEN YUE [SSH]	10	130670	51.802
01 OCT 2024 - 01 OCT 2024	SMILE	DATO DR WONG RUEN YUAN [SSH]	10	131015	51.94
01 OCT 2024 - 01 OCT 2024	SMILE	DATO' DR WONG RUEN YUAN [DIR/CEO]	10	131015	51.94
27 SEP 2024 - 27 SEP 2024	SMRT	EMPLOYEES PROVIDENT FUND BOARD [SSH]	100	24227	5.349
02 OCT 2024 - 03 OCT 2024	SPRITZER	DATIN CHUA SHOK TIM @ CHUA SIOK HOON [SSH]	90	165933	52.12
02 OCT 2024 - 03 OCT 2024	SPRITZER	DATO' LIM A HENG @ LIM KOK CHEONG [DIR/CEO]	90	165933	52.12
02 OCT 2024 - 03 OCT 2024	SPRITZER	DATO' LIM A HENG @ LIM KOK CHEONG [SSH]	90	165933	52.12
02 OCT 2024 - 03 OCT 2024	SPRITZER	LANGIT MAKMUR SDN. BHD. [SSH]	90	102620	32.233
02 OCT 2024 - 03 OCT 2024	SPRITZER	UNIKAMPAR CREDIT AND LEASING SDN. BHD. [SSH]	90	136838	42.981
02 OCT 2024 - 03 OCT 2024	SPRITZER	UNIVELEE SDN. BHD. [SSH]	90	136838	42.981
02 OCT 2024 - 03 OCT 2024	SPRITZER	YEE LEE CORPORATION BHD. [SSH]	90	102620	32.233
02 OCT 2024 - 03 OCT 2024	SPRITZER	YEE LEE ORGANIZATION BHD. [SSH]	90	136838	42.981
02 OCT 2024 - 03 OCT 2024	SPRITZER	YELETA HOLDINGS SDN. BHD. [SSH]	90	136838	42.981
02 OCT 2024 - 03 OCT 2024	SPRITZER	YOUNG WEI HOLDINGS SDN. BHD. [SSH]	90	136838	42.981
02 OCT 2024 - 02 OCT 2024	SPSETIA	AMANAHRAYA TRUSTEES BERHAD - AMANAH SAHAM BUMIPUTERA [SSH]	-4,800	1020602	21.006
01 OCT 2024 - 01 OCT 2024	SPSETIA	EMPLOYEES PROVIDENT FUND BOARD [SSH]	353	388329	7.992
01 OCT 2024 - 01 OCT 2024	SPSETIA	AMANAHRAYA TRUSTEES BERHAD - AMANAH SAHAM BUMIPUTERA [SSH]	-4,415	1025402	21.104
30 SEP 2024 - 30 SEP 2024	SPSETIA	AMANAHRAYA TRUSTEES BERHAD - AMANAH SAHAM BUMIPUTERA [SSH]	-2,946	1029817	21.195
27 SEP 2024 - 27 SEP 2024	SPSETIA	EMPLOYEES PROVIDENT FUND BOARD [SSH]	108	387976	7.985
30 SEP 2024 - 30 SEP 2024	SPSETIA	KUMPULAN WANG PERSARAAN (DIPERBADANKAN) [SSH]	-250	399806	8.229
26 SEP 2024 - 26 SEP 2024	SPSETIA	EMPLOYEES PROVIDENT FUND BOARD [SSH]	230	387868	7.983
25 SEP 2024 - 25 SEP 2024	SPSETIA	EMPLOYEES PROVIDENT FUND BOARD [SSH]	2,000	387638	7.978
02 OCT 2024 - 02 OCT 2024	SSF	MISS CHIN SEE KEW [DIR/CEO]	420	47520	5.94
02 OCT 2024 - 02 OCT 2024	SSF	MISS CHIN SEE KEW [SSH]	420	47520	5.94
01 OCT 2024 - 01 OCT 2024	SUNCON	EMPLOYEES PROVIDENT FUND BOARD [SSH]	124	93188	7.227
27 SEP 2024 - 27 SEP 2024	SUNCON	EMPLOYEES PROVIDENT FUND BOARD [SSH]	265	93118	7.222
26 SEP 2024 - 26 SEP 2024	SUNCON	EMPLOYEES PROVIDENT FUND BOARD [SSH]	710	92853	7.201
25 SEP 2024 - 25 SEP 2024	SUNCON	EMPLOYEES PROVIDENT FUND BOARD [SSH]	603	92142	7.146
01 OCT 2024 - 01 OCT 2024	SUN-MOW-PA	BENE SKY SDN. BHD. [SSH]	1,266	1266	8.784
01 OCT 2024 - 01 OCT 2024	SUN-MOW-PA	BENECAP SDN. BHD. [SSH]	1,266	1266	8.784
01 OCT 2024 - 01 OCT 2024	SUN-MOW-PA	MR KONG CHIONG MIEW [DIR/CEO]	6,854	6854	47.548
01 OCT 2024 - 01 OCT 2024	SUN-MOW-PA	MR KONG CHIONG MIEW [SSH]	6,854	6854	47.548
01 OCT 2024 - 01 OCT 2024	SUN-MOW-PA	MR KONG CHIONG UNG [DIR/CEO]	4,495	4495	31.183
01 OCT 2024 - 01 OCT 2024	SUN-MOW-PA	MR KONG CHIONG UNG [SSH]	4,495	4495	31.183
01 OCT 2024 - 01 OCT 2024	SUN-MOW-PA	MR LEE YEW CHEN [DIR/CEO]	1,761	1761	12.216
01 OCT 2024 - 01 OCT 2024	SUN-MOW-PA	MR LEE YEW CHEN [SSH]	1,761	1761	12.216
01 OCT 2024 - 01 OCT 2024	SUN-MOW-WA	MR KONG CHIONG MIEW [DIR/CEO]	6,854	6854	47.548
01 OCT 2024 - 01 OCT 2024	SUN-MOW-WA	MR KONG CHIONG UNG [DIR/CEO]	4,495	4495	31.183
01 OCT 2024 - 01 OCT 2024	SUN-MOW-WA	MR LEE YEW CHEN [DIR/CEO]	1,761	1761	12.216
30 SEP 2024 - 30 SEP 2024	SUNREIT	KUMPULAN WANG PERSARAAN (DIPERBADANKAN) ("KWAP") [SSH]	543	202769	5.921
01 OCT 2024 - 01 OCT 2024	SUNWAY	EMPLOYEES PROVIDENT FUND BOARD [SSH]	-255	379813	6.68
30 SEP 2024 - 30 SEP 2024	SUNWAY	EMPLOYEES PROVIDENT FUND BOARD [SSH]	444	380068	6.68
27 SEP 2024 - 27 SEP 2024	SUNWAY	EMPLOYEES PROVIDENT FUND BOARD [SSH]	1,786	380094	6.69
26 SEP 2024 - 26 SEP 2024	SUNWAY	EMPLOYEES PROVIDENT FUND BOARD [SSH]	1,694	372573	6.56
25 SEP 2024 - 25 SEP 2024	SUNWAY	EMPLOYEES PROVIDENT FUND BOARD [SSH]	2,244	370679	6.52
27 SEP 2024 - 27 SEP 2024	SYMLIFE	XOX (HONG KONG) LIMITED [SSH]	98,091	98091	13.7
26 SEP 2024 - 26 SEP 2024	SYSTECH	DATO' HOOI JIA HAO [DIR/CEO]	-4,535	263665	41.03
26 SEP 2024 - 26 SEP 2024	SYSTECH	DATO' HOOI JIA HAO [SSH]	-4,535	263665	41.03
27 SEP 2024 - 27 SEP 2024	TAKAFUL	EMPLOYEES PROVIDENT FUND BOARD [SSH]	-209	130820	15.624
30 SEP 2024 - 30 SEP 2024	TCHONG	EMPLOYEES PROVIDENT FUND BOARD [SSH]	-156	36618	5.619
27 SEP 2024 - 27 SEP 2024	TCHONG	EMPLOYEES PROVIDENT FUND BOARD [SSH]	-945	36774	5.643
26 SEP 2024 - 30 SEP 2024	TCHONG	DATO' TAN HENG CHEW [DIR/CEO]	130	324288	49.764
26 SEP 2024 - 30 SEP 2024	TCHONG	DATO' TAN HENG CHEW [SSH]	130	308706	47.373
26 SEP 2024 - 26 SEP 2024	TCHONG	EMPLOYEES PROVIDENT FUND BOARD [SSH]	-1,000	37719	5.788
03 OCT 2024 - 03 OCT 2024	TENAGA	KUMPULAN WANG PERSARAAN (DIPERBADANKAN) [SSH]	23	408465	7.02
01 OCT 2024 - 01 OCT 2024	TENAGA	EMPLOYEES PROVIDENT FUND BOARD [SSH]	5,704	976663	16.8
30 SEP 2024 - 30 SEP 2024	TENAGA	EMPLOYEES PROVIDENT FUND BOARD [SSH]	1,185	971024	16.7
27 SEP 2024 - 27 SEP 2024	TENAGA	EMPLOYEES PROVIDENT FUND BOARD [SSH]	1,142	969839	16.68
30 SEP 2024 - 30 SEP 2024	TENAGA	KUMPULAN WANG PERSARAAN (DIPERBADANKAN) [SSH]	700	408442	7.02
26 SEP 2024 - 26 SEP 2024	TENAGA	EMPLOYEES PROVIDENT FUND BOARD [SSH]	1,943	968697	16.66
27 SEP 2024 - 27 SEP 2024	TENAGA	KUMPULAN WANG PERSARAAN (DIPERBADANKAN) [SSH]	-37	407742	7.01
25 SEP 2024 - 25 SEP 2024	TENAGA	EMPLOYEES PROVIDENT FUND BOARD [SSH]	-643	966754	16.63
30 SEP 2024 - 30 SEP 2024	TGUAN	PRUDENTIAL PLC [SSH]	-90	20834	5.187
03 OCT 2024 - 03 OCT 2024	TM	KUMPULAN WANG PERSARAAN (DIPERBADANKAN) [SSH]	592	337075	8.783
01 OCT 2024 - 01 OCT 2024	TM	EMPLOYEE PROVIDENT FUND BOARD (EPF BOARD) [SSH]	-480	623351	16.243
30 SEP 2024 - 30 SEP 2024	TM	EMPLOYEE PROVIDENT FUND BOARD (EPF BOARD) [SSH]	-1,084	623831	16.255
27 SEP 2024 - 27 SEP 2024	TM	EMPLOYEE PROVIDENT FUND BOARD (EPF BOARD) [SSH]	-2,500	624916	16.284

Notice Period is 29th September 2024 – 05th October 2024

Effective Change Date	Stock Name	Buyer/ Seller Name [Classification]	Bought / (Sold) ['000]	No. of Shares After Trade ['000]	
			Total	Total	% Held
30 SEP 2024 - 30 SEP 2024	TM	KUMPULAN WANG PERSARAAN (DIPERBADANKAN) [SSH]	-600	336483	8.768
26 SEP 2024 - 26 SEP 2024	TM	EMPLOYEE PROVIDENT FUND BOARD (EPF BOARD) [SSH]	1,562	627416	16.349
26 SEP 2024 - 26 SEP 2024	TM	KUMPULAN WANG PERSARAAN (DIPERBADANKAN) [SSH]	129	337083	8.784
25 SEP 2024 - 25 SEP 2024	TM	EMPLOYEE PROVIDENT FUND BOARD (EPF BOARD) [SSH]	592	625854	16.308
01 OCT 2024 - 03 OCT 2024	TOMYPAK	MR YONG KWET ON [DIR/CEO]	145	101719	23.595
01 OCT 2024 - 03 OCT 2024	TOMYPAK	MR YONG KWET ON [SSH]	145	101719	23.595
26 SEP 2024 - 27 SEP 2024	TOMYPAK	MR YONG KWET ON [DIR/CEO]	350	101575	23.561
26 SEP 2024 - 27 SEP 2024	TOMYPAK	MR YONG KWET ON [SSH]	350	101575	23.561
03 OCT 2024 - 03 OCT 2024	TOPGLOV	KUMPULAN WANG PERSARAAN (DIPERBADANKAN) [SSH]	767	564787	7.05
02 OCT 2024 - 02 OCT 2024	TRC	DATO RICHARD KHOO TENG SAN [DIR/CEO]	150	12561	2.665
27 SEP 2024 - 27 SEP 2024	TRC	DATO RICHARD KHOO TENG SAN [DIR/CEO]	100	12411	2.633
02 OCT 2024 - 02 OCT 2024	UMCCA	MR HAN KEE JUAN [DIR/CEO]	20	684	0.326
27 SEP 2024 - 27 SEP 2024	UMCCA	HSBC ASIA HOLDINGS LIMITED (HAHO) [SSH]	-400	14051	6.698
27 SEP 2024 - 27 SEP 2024	UMCCA	HSBC HOLDINGS PLC (HGHC) [SSH]	-400	14051	6.698
27 SEP 2024 - 27 SEP 2024	UMCCA	HSBC INTERNATIONAL TRUSTEE (HOLDINGS) PTE. LTD. (HTHL) [SSH]	-400	14051	6.698
27 SEP 2024 - 27 SEP 2024	UMCCA	HSBC INTERNATIONAL TRUSTEE LIMITED [SSH]	-400	14051	6.698
27 SEP 2024 - 27 SEP 2024	UMCCA	HSBC TRUSTEE (SINGAPORE) LIMITED [SSH]	-400	14051	6.698
27 SEP 2024 - 27 SEP 2024	UMCCA	THE HONGKONG AND SHANGHAI BANKING CORPORATION LIMITED (HBAP) [SSH]	-400	14051	6.698
25 SEP 2024 - 26 SEP 2024	UMCCA	HSBC ASIA HOLDINGS LIMITED (HAHO) [SSH]	-3,287	14451	6.889
25 SEP 2024 - 26 SEP 2024	UMCCA	HSBC HOLDINGS PLC (HGHC) [SSH]	-3,287	14451	6.889
25 SEP 2024 - 26 SEP 2024	UMCCA	HSBC INTERNATIONAL TRUSTEE (HOLDINGS) PTE. LTD (HTHL) [SSH]	-3,287	14451	6.889
25 SEP 2024 - 26 SEP 2024	UMCCA	HSBC INTERNATIONAL TRUSTEE LIMITED [SSH]	-3,287	14451	6.889
25 SEP 2024 - 26 SEP 2024	UMCCA	HSBC TRUSTEE (SINGAPORE) LIMITED [SSH]	-3,287	14451	6.889
25 SEP 2024 - 26 SEP 2024	UMCCA	THE HONGKONG AND SHANGHAI BANKING CORPORATION LIMITED (HBAP) [SSH]	-3,287	14451	6.889
27 SEP 2024 - 27 SEP 2024	UMCCA	DATO' SRI TEE LIP SIN [DIR/CEO]	389	67955	32.395
27 SEP 2024 - 27 SEP 2024	UMCCA	MR TEE CHENG HUA [DIR/CEO]	389	62101	29.604
27 SEP 2024 - 27 SEP 2024	UMCCA	PROSPER CAPITAL HOLDINGS SDN BHD [SSH]	389	41684	19.871
01 OCT 2024 - 01 OCT 2024	UTDPLT	EMPLOYEES PROVIDENT FUND BOARD [SSH]	-91	26119	6.297
30 SEP 2024 - 30 SEP 2024	UTDPLT	EMPLOYEES PROVIDENT FUND BOARD [SSH]	122	26210	6.319
27 SEP 2024 - 27 SEP 2024	UTDPLT	EMPLOYEES PROVIDENT FUND BOARD [SSH]	96	26103	6.293
26 SEP 2024 - 26 SEP 2024	UTDPLT	EMPLOYEES PROVIDENT FUND BOARD [SSH]	-43	26024	6.274
25 SEP 2024 - 25 SEP 2024	UTDPLT	EMPLOYEES PROVIDENT FUND BOARD [SSH]	-76	26067	6.284
02 OCT 2024 - 02 OCT 2024	UWC	ABRDN HOLDINGS LIMITED [SSH]	672	59558	5.404
02 OCT 2024 - 02 OCT 2024	UWC	ABRDN MALAYSIA SDN BHD [SSH]	672	59174	5.37
02 OCT 2024 - 02 OCT 2024	UWC	ABRDN PLC [SSH]	672	59558	5.404
01 OCT 2024 - 01 OCT 2024	UWC	EMPLOYEES PROVIDENT FUND BOARD [SSH]	120	87394	7.93
30 SEP 2024 - 30 SEP 2024	UWC	EMPLOYEES PROVIDENT FUND BOARD [SSH]	402	87733	7.961
27 SEP 2024 - 27 SEP 2024	UWC	ABRDN HOLDINGS LIMITED [SSH]	550	58886	5.343
27 SEP 2024 - 27 SEP 2024	UWC	ABRDN MALAYSIA SDN BHD [SSH]	550	58502	5.309
27 SEP 2024 - 27 SEP 2024	UWC	ABRDN PLC [SSH]	550	58886	5.343
26 SEP 2024 - 26 SEP 2024	UWC	ABRDN HOLDINGS LIMITED [SSH]	391	58336	5.294
26 SEP 2024 - 26 SEP 2024	UWC	ABRDN MALAYSIA SDN BHD [SSH]	391	57952	5.259
26 SEP 2024 - 26 SEP 2024	UWC	ABRDN PLC [SSH]	391	58336	5.294
02 OCT 2024 - 02 OCT 2024	VERSATL	MR LIM AH CHAI [SSH]	313	118806	42.416
02 OCT 2024 - 02 OCT 2024	VERSATL	MR LIM AH CHUAN [SSH]	313	118806	42.416
02 OCT 2024 - 02 OCT 2024	VERSATL	MR LIM CHOU BU [SSH]	313	118806	42.416
02 OCT 2024 - 02 OCT 2024	VERSATL	NSK TRADING SDN BHD [SSH]	313	118806	42.416
30 SEP 2024 - 01 OCT 2024	VERSATL	MR LIM AH CHAI [SSH]	293	118493	42.304
30 SEP 2024 - 01 OCT 2024	VERSATL	MR LIM AH CHUAN [SSH]	293	118493	42.304
30 SEP 2024 - 01 OCT 2024	VERSATL	MR LIM CHOU BU [SSH]	293	118493	42.304
30 SEP 2024 - 01 OCT 2024	VERSATL	NSK			



The Board of Directors of **Dayang Enterprise Holdings Bhd (DAYANG)** is pleased to announce that its wholly-owned subsidiary company, DESB Marine Services Sdn Bhd, has received six (6) work order awards from PETRONAS Carigali Sdn Bhd on 30 July 2024, 1 July 2024 and 1 August 2024, respectively, for the Provision of Six (6) Units of Accommodation Work Boat Vessels.

[READ MORE](#)

Further to the announcement made by the Company on 28 August 2024, the Board of Directors of **SkyWorld Development Berhad (SKYWLD)** wishes to announce that Aspirasi Cekap Sdn Bhd, a wholly-owned subsidiary of the Company, had on 9 October 2024, entered into a Joint Development Agreement with PR1MA Corporation Malaysia to undertake the proposed development and construction of quality affordable homes together with all the amenities and infrastructure on a leasehold land measuring approximately 1.97 acres located at Brickfields at Lot 20005 Seksyen 95 (PT28), Daerah Kuala Lumpur, Wilayah Persekutuan Kuala Lumpur for a total consideration of RM32,170,000.00 (collectively referred to as the (Proposed Development)).

[READ MORE](#)



MClean Technologies Berhad (MCLEAN), announced a series of strategic corporate proposals aimed at solidifying the Company's financial position, diversifying its revenue stream and driving growth.

The proposals include a 25.0% private placement, acquisition of a plastic injection moulding business and proposed diversification into the plastic injection moulding business, together with a proposed share capital reduction.



Sunsuria Berhad (SUNSURIA) has announced the signing of a Territorial Exclusivity Agreement with Concord College International Limited, through its subsidiary Sunsuria Education International, catalysing the expansion of the Concord College brand of British international education in key markets across Asia.

Limited, through its subsidiary Sunsuria Education International, catalysing the expansion of the Concord College brand of British international education in key markets across Asia.



Upcoming IPO

NAME OF COMPANY	OFFER PERIOD		ISSUE PRICE (Per Ordinary Share)	LISTING SOUGHT	DATE OF LISTING
	OPENING	CLOSING			
3REN BERHAD	9 Oct 2024	23 Oct 2024	RM0.28	ACE MARKET	6 Nov 2024
OB HOLDINGS BERHAD	27 Sept 2024	15 Oct 2024	RM0.24	ACE MARKET	29 Oct 2024
SORENTO CAPITAL BERHAD	07 Oct 2024	15 Oct 2024	RM0.37	ACE MARKET	28 Oct 2024
NORTHEAST GROUP BERHAD	26 Sept 2024	3 Oct 2024	RM0.50	ACE MARKET	15 Oct 2024

Disclaimer: The information in the Investor Relations page is extracted from individual companies' announcements in www.bursamalaysia.com. The information on this page is provided as a service to readers. We assume no liability for damages resulting from or arising out of the use of such information. Whilst every effort is made to ensure accuracy, the information presented has been simplified for your reading pleasure. Readers are advised to read the original and complete filings on the Bursa Malaysia website at https://www.bursamalaysia.com/market_information/announcements/company_announcement