

# Invest

A Weekly e-Publication by SHAREINVESTOR

ISSUE

217

FRIDAY  
26 JULY 2024

Scan/Click QR to Register



Via email, every Friday

## MARKET SENTIMENTS

SC Issues Guidance  
For Financial  
Influencers

+

InvestKL secures  
RM3.3 billion in  
investments in 1h2024

see more  
on pages  
28-32

## ALSO

See more on page 07

## COMPANY SPOTLIGHT

AGX Group Berhad

MSWG See more on pages 34-38

Little resistance on Ajiya's  
RM250 mil loans to Chin  
Hin, RPT carried

## PLUS

See more on pages 19-26



04 LEADERBOARD

06 SHARIAH HOT STOCKS

08 SHARIAH MOMENTUM UP STOCKS

10 NON SHARIAH HOT STOCKS

12 UP TRENDING STOCKS

13 VALUE STOCKS

14 GROWTH STOCKS

15 DIVIDEND STOCKS

16 BROKERS' CALL

17 LONG COMPANIES

33 REGIONAL MARKETS

39 INSIDER ACTIVITY

44 INVESTOR RELATIONS

# SHAREINVESTOR®

An AlphaInvest Company

Invest with Knowledge

## INVESTOR PLATFORMS

**Director**  
Darren Chong  
darren.chong@shareinvestor.com

**Business Development Manager**  
Jay Cheong  
jay.cheong@shareinvestor.com

**Product & Marketing Manager**  
Daniel Wong  
daniel.wong@shareinvestor.com

## ADMIN & OPERATIONS

**Senior Executive**  
Watie Nordin  
watie.nordin@shareinvestor.com

**Executive**  
Silas Emmanuel Joseph  
silas.joseph@shareinvestor.com

## PROCESS AUTOMATION & DATA ANALYTICS

**Data Analyst**  
Tan Yong Sheng

## INVESTOR RELATIONS

**Group Managing Director & Publisher**  
Edward Stanislaus  
edward@shareinvestor.com

**Senior Manager**  
Letticia Wong  
letticia.wong@shareinvestor.com

**Manager**  
Aida Norzeti Talib  
aida.norzeti@shareinvestor.com

## Inve\$t WEEKLY

**Senior Manager**  
Advertising Sales & Marketing  
Mark Rodrigues  
mark.rodrigues@shareinvestor.com

## ALPHAINVEST HOLDINGS BOARD OF DIRECTORS

<b>Chairman</b>	Patrick Daniel
<b>Group CEO</b>	Christopher Lee
<b>Group COO</b>	Lim Dau Hee
<b>Group MD</b>	Shanison Lin



“ GIVE A MAN A FISH AND YOU FEED HIM FOR A DAY; TEACH A MAN TO FISH AND YOU FEED HIM FOR A LIFETIME ”

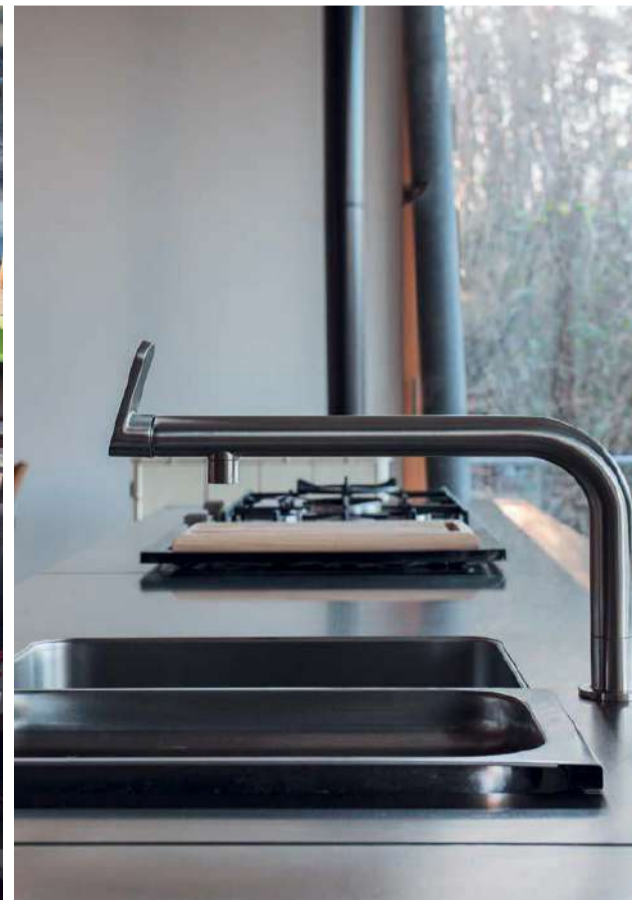
### ShareInvestor Malaysia Sdn. Bhd.

(200001023956) (526564-M)  
Unit No. DF2-07-03A. Level 7,  
Persoft Tower, 6B Persiaran Tropicana,  
47410 Petaling Jaya, Selangor Darul Ehsan.

Hotline : 603 7803 1791  
Mobile : 011 6343 8939  
Website : [www.ShareInvestor.com.my](http://www.ShareInvestor.com.my)  
[www.alphainvestholdings.com](http://www.alphainvestholdings.com)  
[www.Facebook.com/ShareInvestorMalaysia](http://www.Facebook.com/ShareInvestorMalaysia)

ADVERTISEMENT ENQUIRY

bulthaup takes care of the details so that you can enjoy a harmonious environment.



**XTRA**

XTRA FURNITURE SDN BHD  
The Gardens Mall, Mid Valley City  
[xtrafurniture.com/bulthaup](http://xtrafurniture.com/bulthaup)  
[fb.com/bulthaupmalaysia](https://fb.com/bulthaupmalaysia)

bulthaup

# **INVEST** **MEETUP**

# #4

Join us to

- ✓ See what's **HOT** in Fintech now!
- ✓ Try-lah P2P Financing for **FREE!**
- ✓ Network with the **PROS!**

## Balancing Risk and Reward:

P2P Investments in Comprehensive Financial Planning

Session Time: **7:30PM – 8:15PM**



**Moderator: Darren Chong**  
Director  
InvestingNote



**Panelist: Easter Lee**  
Investments Relationship Manager  
CapBay



**Panelist: Ka Hoe**  
Licensed Financial Planner  
Wealth Vantage Advisory

 **13 August 2024**  
**6:30PM – 9:30PM**

 **Level 12, Experiential Hall**  
**Tropicana Gardens Office Tower**

**REGISTER HERE**



[www.shareinvestor.com](http://www.shareinvestor.com) - market data at your fingertips



ShareInvestor WebPro ([www.shareinvestor.com/my](http://www.shareinvestor.com/my))  
Prices > Stock Prices > Bursa > click Stocks tab

1. mouse over Ranking > select Top Active > all Shariah stocks are denoted with an [S] > mouse over Column Layout > select Edit Customs > select Name > select Volume > select Last Done Price > Mouse Over Column Layout > select Custom
2. mouse over Ranking > select Top Turnover > all Shariah stocks are denoted with an [S] > mouse over Column Layout > select Edit Customs > select Name > select Last Done Price > select Value > Mouse Over Column Layout > select Custom
3. mouse over Ranking > select Top Gainers (Over 5 Trading Days) > mouse over Column Layout > select Edit Customs > select Name > select Last Done Price > select 5 Days Change > select 5 Days % Change > Mouse Over Column Layout > select Custom
4. mouse over Ranking > select Top Losers (Over 5 Trading Days)
5. mouse over Ranking > select Top % Gainers (Over 5 Trading Days)
6. mouse over Ranking > select Top % Losers (Over 5 Trading Days)

### Shariah Top Actives (as at Yesterday)

Name	Price (RM)	Volume
ZENTECH [S]	0.015	799,468.000
OCR [S]	0.100	691,115.000
EKOVEST [S]	0.465	606,030.000
HUBLINE [S]	0.130	601,024.000
AZRB [S]	0.330	501,259.000
MYEG [S]	0.995	442,930.000
ARTRONIQ [S]	0.200	386,447.000
VELESTO [S]	0.230	362,713.000
BWYS [S]	0.345	344,032.000
TECHNAX [S]	0.365	334,873.000

### Shariah Top Turnover (as at Yesterday)

Name	Price (RM)	Value (RM)
TENAGA [S]	14.000	219,670,474
GAMUDA [S]	7.850	145,398,539
INARI [S]	3.700	71,307,138
SUNWAY [S]	4.230	53,146,498
PMETAL [S]	5.200	48,750,360
MYEG [S]	0.995	44,094,054
NATGATE [S]	2.080	42,896,545
MISC [S]	8.610	42,165,473
TM [S]	6.880	41,962,874
IHH [S]	6.260	40,901,041

### Top Gainers (over 5 Trading days as at Yesterday)

Name	Price (RM)	Change (RM)
CRESNDO	4.130	+0.340
EDARAN	1.800	+0.340
UTDPLT	25.300	+0.320
PETDAG	17.100	+0.220
RCECAP	3.100	+0.200
SDG	4.490	+0.190
CEPCO	1.230	+0.170
SUNWAY	4.230	+0.140
SENDAI	0.635	+0.125
SKBSHUT	1.080	+0.115

### Top % Gainers (over 5 Trading days as at Yesterday)

Name	Price (RM)	Change (%)
PHB	0.010	+100.00
HONGSENG	0.015	+50.00
MQTECH	0.015	+50.00
SCBUILD	0.015	+50.00
COMPUGT	0.020	+33.33
G3	0.040	+33.33
HUBLINE	0.130	+30.00
AGX	0.520	+26.83
SENDAI	0.635	+24.51
EDARAN	1.800	+23.29

### Top Losers (over 5 Trading days as at Yesterday)

Name	Price (RM)	Change (RM)
DLADY	31.540	-1.880
MPI	37.580	-1.600
HARISON	9.100	-0.830
HEIM	22.680	-0.820
CARLSBG	18.600	-0.580
PMBTECH	1.710	-0.540
PPB	14.500	-0.500
PETGAS	18.060	-0.460
TENAGA	14.000	-0.440
GAMUDA	7.850	-0.430

### Top % Losers (over 5 Trading days as at Yesterday)

Name	Price (RM)	Change (%)
KGROUP	0.005	-50.00
MLAB	0.155	-29.55
SANICHI	0.015	-25.00
ZENTECH	0.015	-25.00
PMBTECH	1.710	-24.00
ALRICH	0.035	-22.22
OCR	0.100	-20.00
SAPRES	0.300	-20.00
EKOVEST	0.465	-19.13
MJPERAK	0.235	-17.54

# SHAREINVESTOR WEBPRO

## STOCK MARKET DATA AT YOUR FINGERTIPS

Powerful browser-based market analytics platform.  
Access from anywhere



### 8 Markets Data

- ▶ Get access to data from Bursa, NYSE, Nasdaq, HKEX, SGX, IDX, SET & ASX

### Portfolio Management

- ▶ Profit & Loss Summary
- ▶ Stock Alert
- ▶ News & Events filtering
- ▶ Customizable column layout

## Fundamental Analysis

### Financial Analysis Statement

- ▶ Profit & Loss
- ▶ Balance Sheet
- ▶ Cash Flow Statement
- ▶ More than 20 Financial Ratios
- ▶ Dividend Analysis

### Technical Charting

- ▶ C<sup>2</sup> chart (Customisable & Comprehensive)

### Brokers' Call

### Intrinsic Value Calculator

### FactSheet

- ▶ Key Stock Information
- ▶ Ownership
- ▶ Consensus Estimates
- ▶ Annual Report
- ▶ Historical Price
- ▶ Insider Trades

## What's new on WebPro (Stable Release 12.1.0)

In our effort to keep our platform at the forefront of trading technology, we have added on some new features onto our C<sup>2</sup> Chart in WebPro

### ADDITIONAL NEW FEATURES:

- ▶ Anchor selector for AVWAP, PVAT, and PAV indicators
- ▶ Volume profile indicator by date range
- ▶ Moving Average Cross indicator
- ▶ Guppy Multiple Moving Average (GMMA) indicator
- ▶ GoNoGo Trend Signal indicators
- ▶ SignalIQ

So what are you waiting for? Head to our platform today and check out our new trading chart features and indicators. We're confident that you'll love the improvements we've made and that they'll help you become a more successful trader.

Click here to start your 9 days FREE trial  
(Valued at RM10)



## Price & Volume Distribution Charts (as at Yesterday)

Technical Analysis

**DEFINITION:** Shariah compliant stocks with Technical Analysis showing 5-days & 10-days Moving Average Price below Yesterday's Close over past 3 days and with Volume Spike.

**CHART GUIDE:** Volume Distribution Chart is a statistical interpretation of the current sentiment on each stock in graphical format. The highest bar categorized as >150k is likely to be traded by institutions or super dealers, while the lowest bar categorized as <15k usually represents retail investors. "Buy Up" refers to more buyers snatching up the lots queued at selling price. "Sell Down" refers to sellers selling their shares to the buying queue



ShareInvestor WebPro > Screener > Market Screener (FA & TA) > select BURSA > add criteria

**A. Criteria**

- > click Add Criteria
- Technical Analysis Conditions tab select (i) Moving Average Below Close (ii) Volume Spike
- Fundamental Analysis Conditions tab > select (iii) Revenue
- Prices & Other Conditions tab > select (iv) Is Shariah Compliant
- Technical Analysis Conditions tab select (v) Moving Average Below Close
- Prices & Other Conditions tab > select (vi) Last Done Price
- Technical Analysis Conditions tab select (vii) Moving Average Below Close

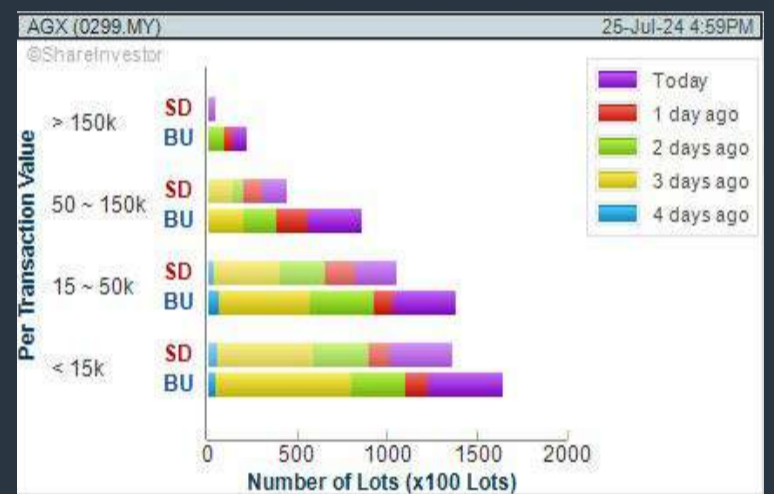
**B. Conditions (Criteria Filters)**

1. Moving Average Below Close - select (MA) type (5) below close price for type (3) days
2. Volume Spike - Volume type (1) greater than type (5) days average
3. Revenue ("000) - select (more than) type (1) for the past select (1) financial year(s)
4. Is Shariah Compliant - select **Yes**
5. Moving Average Below Close - select (MA) type (10) below close price for type (3) days
6. Last Done Price - select (more than) type (0.3)
7. Moving Average Below Close - select (EMA) type (5) below close price for type (3) days

- > click Save Template > Create New Template type (Shariah Hot Stocks) > click Create
- > click Save Template as > select Shariah Hot Stocks > click Save
- > click Screen Now (may take a few minutes)
- > Sort By: Select (Vol) Select (Desc)
- > Mouse over stock name > Charts > click C<sup>2</sup> Charts or Volume Distribution

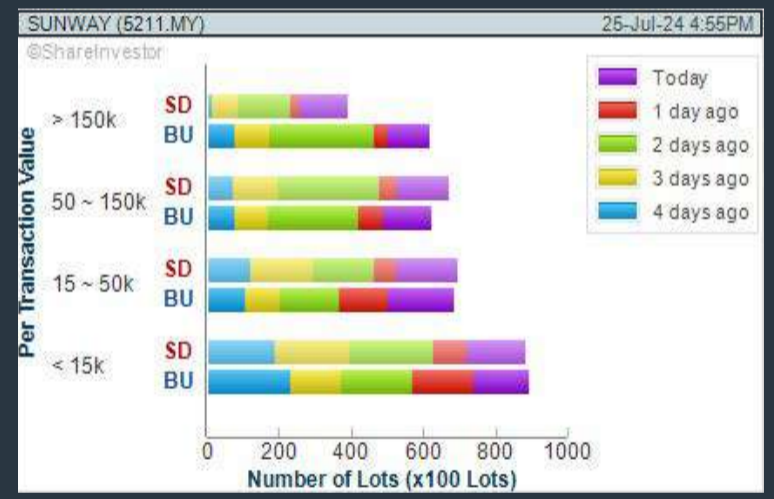
### AGX GROUP BERHAD (0299)

C<sup>2</sup> Chart



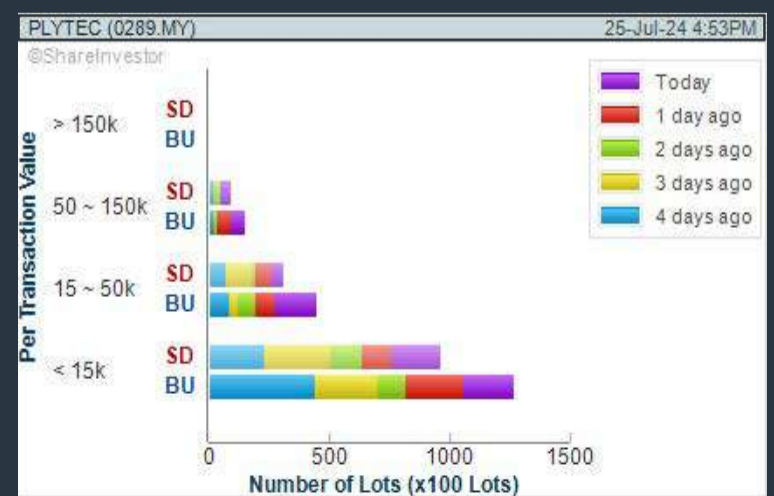
### SUNWAY BERHAD (5211)

C<sup>2</sup> Chart



### PLYTEC HOLDING BERHAD (0289)

C<sup>2</sup> Chart



**Disclaimer:** The information on this page is provided as a service to readers. It does not constitute financial advice and/or any investment recommendations. Past performance is not indicative of future results. We assume no liability for damages resulting from or arising out of the use of such information. It would be best if you did your own research to make your personal investment decisions wisely or consult a licenced investment advisor.

## COMPANY BACKGROUND

**AGX Group Berhad** operates as a global freight forwarding and logistics company. The Company's services include freight forwarding services by air, sea and road. It also provides aerospace logistics services, warehousing and distribution services.



Select Counter: Bursa AGX (0299.MY) View Free Trial Broker's Call

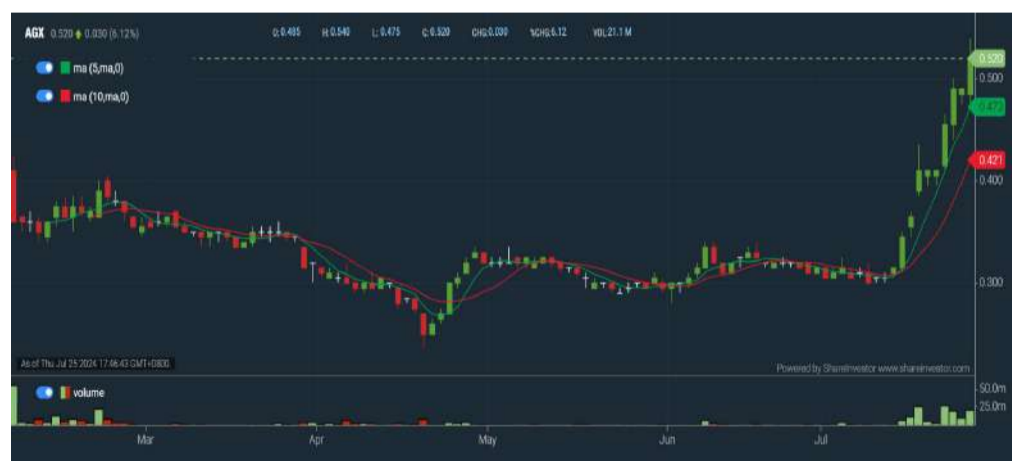
**AGX AGX GROUP BERHAD** Updated at 25 Jul 2024 17:30

Last (MYR): <b>0.520</b> ↑	Change: <b>+0.030</b>	High: <b>0.540</b>	Remarks: -
	Change (%): <b>+6.12</b>	Low: <b>0.475</b>	
Open	0.485	Yesterday's Close	0.490
Buy Price	0.520	Sell Price	0.525
Buy Volume ('00)	2	Sell Volume ('00)	100
Cumulative Volume ('00)	210,715	Cumulative Value	10,805,217

### Financial Analysis

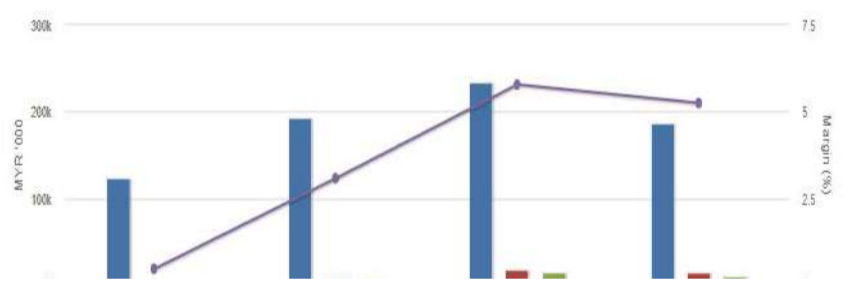
<b>Profit Growth</b> Decreasing profit in latest year (with last 3 profitable years)		<b>Dividend Payout</b> Dividend is increasing over the past 36 months.	
<b>Current Ratio</b> The company is well-positioned to cover its short-term obligations with its current assets (ratio between 1.5 to 10) for 3 consecutive years.		<b>Debt to Cashflow</b> High debt to cash flow for most recent year.	
<b>Gross Profit Margin</b> Consistently good gross profit margin of 20%-40% for 3 years.		<b>Return on Equity (ROE)</b> ROE above 10% for 3 consecutive years.	

Excellent 
 Good 
 Neutral 
 Be Alert 
 Watch Out



### Historical Financials

Profit & Loss (MYR '000)

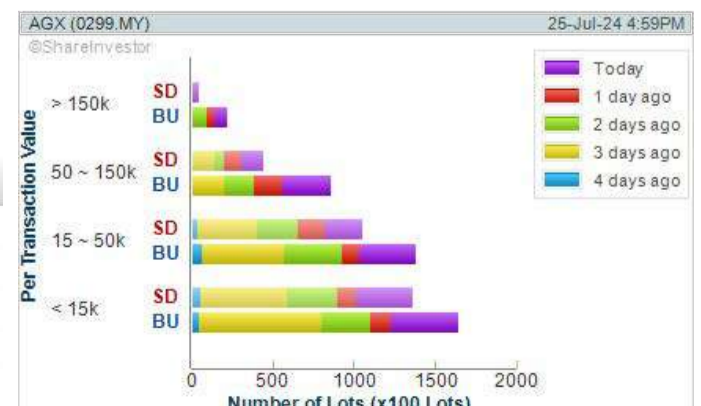


**WebPro 9-Days Free Trial Registration (worth RM10) Sign Up Now**



### Key Statistics with Total Shareholder Returns

Period	Dividend Received	Capital Appreciation	Total Shareholder Return
Short Term Return	5 Days	-	+26.83%
	10 Days	-	+70.49%
	20 Days	-	+65.08%
Medium Term Return	3 Months	-	+73.33%



**Disclaimer:** The information on this page is provided as a service to readers. It does not constitute financial advice and/or any investment recommendations. Past performance is not indicative of future results. We assume no liability for damages resulting from or arising out of the use of such information. It would be best if you did your own research to make your personal investment decisions wisely or consult a licenced investment advisor.

## Price & Volume Distribution Charts (as at Yesterday)

Technical Analysis

**DEFINITION:** Shariah compliant stocks with Technical Analysis showing Bullish Momentum and Price Uptrend. The share price closed at the highest price yesterday. The typical price was higher than the previous day's typical price.

**CHART GUIDE:** Volume Distribution Chart is a statistical interpretation of the current sentiment on each stock in graphical format. The highest bar categorized as >150k is likely to be traded by institutions or super dealers, while the lowest bar categorized as <15k usually represents retail investors. "Buy Up" refers to more buyers snatching up the lots queued at selling price. "Sell Down" refers to sellers selling their shares to the buying queue.



ShareInvestor WebPro > Screener > Market Screener (FA & TA)>select BURSA>add criteria

**A. Criteria**

- > click Add Criteria
- Fundamental Analysis Conditions tab >select (i) Revenue
- Technical Analysis Conditions tab select (ii) Average Volume
- Prices & Other Conditions tab > select (iii) Last Done Price
- Prices & Other Conditions tab > select (iv) Is Shariah Compliant
- Technical Analysis Conditions tab select (v) RSI Overbought
- Technical Analysis Conditions tab select (vi) Moving Average Below Close
- Technical Analysis Conditions tab select (vii) CCI Overbought

**B. Conditions (Criteria Filters)**

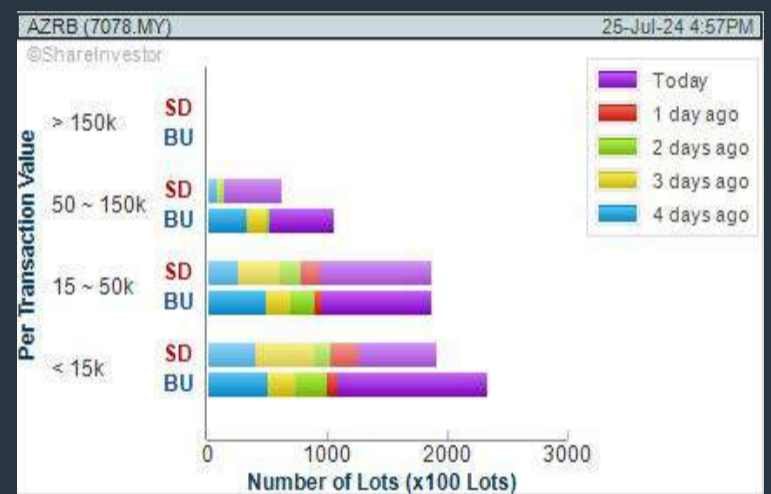
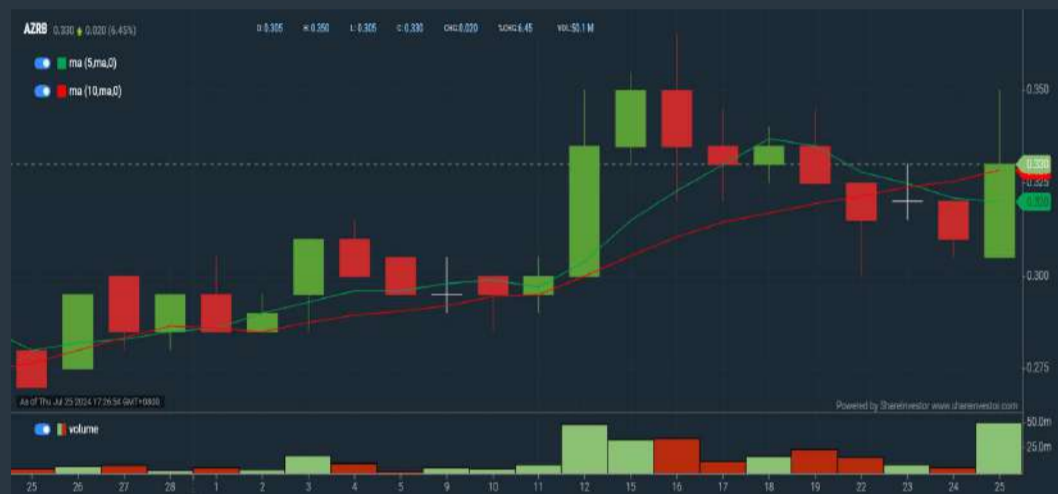
1. Revenue ("000) - select (more than) type (1) for the past select (1) financial year(s)
2. Average Volume - type (1) days average volume greater than type (10000) lots
3. Last Done Price - select (more than) type (0.3)
4. Is Shariah Compliant - select Yes
5. RSI Overbought - select RSI 1 above 99 for 1 days
6. Moving Average Below Close - select (MA) type (10) below close price for type (1) days
7. CCI Overbought - select CCI (2) above (0) for (1) days

- > click Save Template > Create New Template type (Shariah Momentum Up Stocks) > click Create
- > click Save Template as > select Shariah Momentum Up Stocks > click Save
- > click Screen Now (may take a few minutes)
- Sort By: Select (Vol) Select (Desc)
- Mouse over stock name > Charts > click C<sup>2</sup> Charts tab or Volume Distribution

### AHMAD ZAKI RESOURCES BERHAD (7078)

C<sup>2</sup> Chart

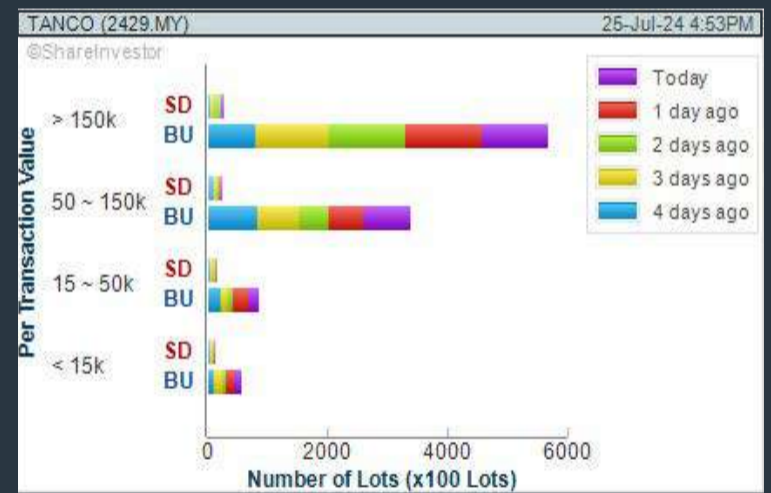
Analysis



### TANCO HOLDINGS BERHAD (2429)

C<sup>2</sup> Chart

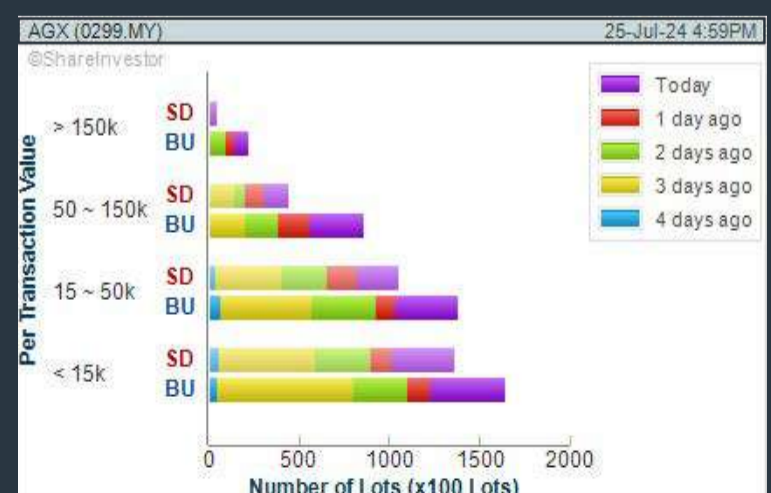
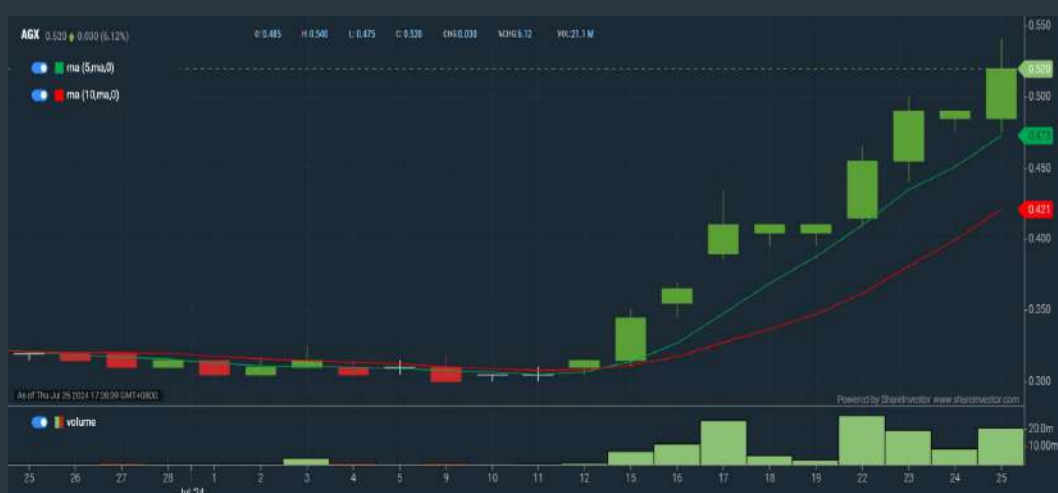
Analysis



### AGX GROUP BERHAD (0299)

C<sup>2</sup> Chart

Analysis



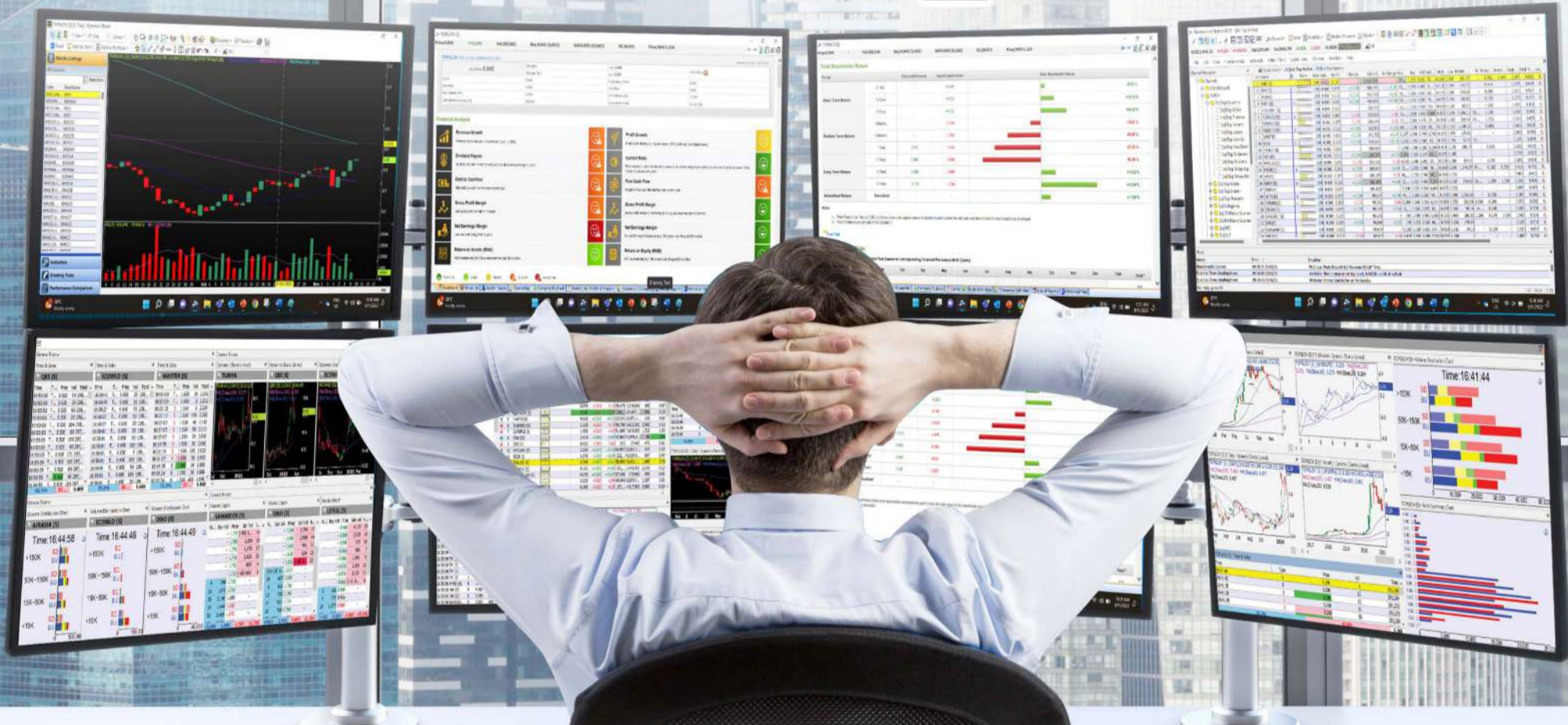
**Disclaimer:** The information on this page is provided as a service to readers. It does not constitute financial advice and/or any investment recommendations. Past performance is not indicative of future results. We assume no liability for damages resulting from or arising out of the use of such information. It would be best if you did your own research to make your personal investment decisions wisely or consult a licenced investment advisor.



# MAKE BETTER TRADING STRATEGIES

with

# SHARE INVESTOR STATION



## 8 Markets Data

- ▶ Get access to data from Bursa, NYSE, Nasdaq, HKEX, SGX, IDX, SET & ASX

## Dynamic Chart

- ▶ Candlestick Pattern Recognition
- ▶ 111 Indicators
- ▶ 39 Drawing Tools
- ▶ Performance Comparison Chart

## Intraday Data

- ▶ Market Depth
- ▶ Trade Summary Matrix & Chart
- ▶ Times & Sales
- ▶ Intraday Market Ticker

## Market Screener

- ▶ 96 criteria ranging from FA, TA, Consensus Estimate
- ▶ Real-time Data

## Power Frame

- ▶ Combining few Dynamic Charts together with intraday information in one frame

## Technical Analysis

## Fundamental Analysis

### Financial Analysis Statement

- ▶ Profit & Loss
- ▶ Balance Sheet
- ▶ Cash Flow Statement
- ▶ More than 20 Financial Ratios
- ▶ Dividend Analysis

### FactSheet

- ▶ Key Stock Information
- ▶ Ownership
- ▶ Consensus Estimates
- ▶ Annual Report
- ▶ Historical Price
- ▶ Insider Trades

**Start your 18 days  
FREE trial now  
(Valued at RM82)**



## Price & Volume Distribution Charts (as at Yesterday)

Technical Analysis

**DEFINITION:** Stocks with Technical Analysis showing 5-days & 10-days Moving Average Price below Close over past 1 days and with Volume Spike

**CHART GUIDE:** Volume Distribution Chart is a statistical interpretation of the current sentiment on each stock in graphical format. The highest bar categorized as >150k is likely to be traded by institutions or super dealers, while the lowest bar categorized as <15k usually represents retail investors. "Buy Up" refers to more buyers snatching up the lots queued at selling price. "Sell Down" refers to sellers selling their shares to the buying queue.



ShareInvestor WebPro > Screener > Market Screener (FA & TA) > select BURSA > add criteria

**A. Criteria**

- > click Add Criteria
- Technical Analysis Conditions tab select (i) Moving Average Below Close (ii) Volume Spike
- Fundamental Analysis Conditions tab >select (iii) Revenue
- Prices & Other Conditions tab > select (iv) Is Shariah Compliant
- Technical Analysis Conditions tab select (v) Moving Average Below Close
- Prices & Other Conditions tab > select (vi) Last Done Price
- Technical Analysis Conditions tab select (vii) Moving Average Below Close

**B. Conditions (Criteria Filters)**

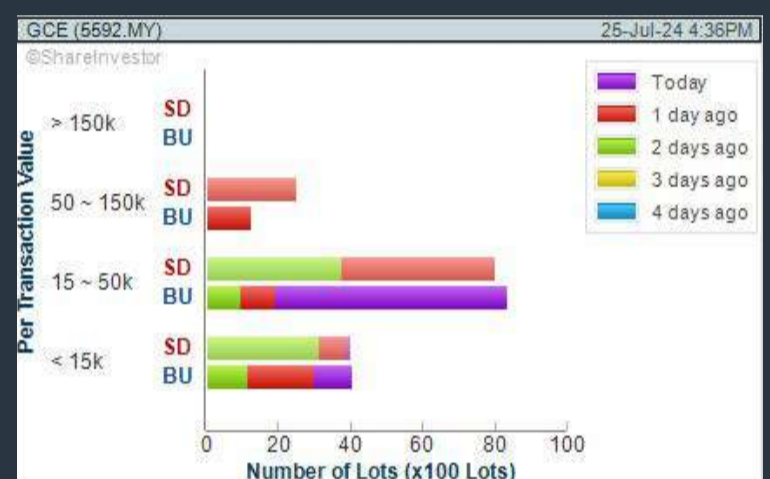
1. Moving Average Below Close - select (MA) type (5) below close price for type (3) days
2. Volume Spike - Volume type (1) greater than type (5) days average
3. Revenue ("000) - select (more than) type (1) for the past select (1) financial year(s)
4. Is Shariah Compliant - select NO
5. Moving Average Below Close - select (MA) type (10) below close price for type (1) days
6. Last Done Price - select (more than) type (0.3)
7. Moving Average Below Close - select (EMA) type (5) below close price for type (1) days

- > click Save Template > Create New Template type (Non-Shariah Hot Stocks) > click Create
- > click Save Template as > select Non-Shariah Hot Stocks > click Save
- > click Screen Now (may take a few minutes)
- Sort By: Select (Vol) Select (Desc)
- Mouse over stock name > Charts > click C<sup>2</sup> Charts tab or Volume Distribution

### GRAND CENTRAL ENTERPRISES BERHAD (5592)

C<sup>2</sup> Chart

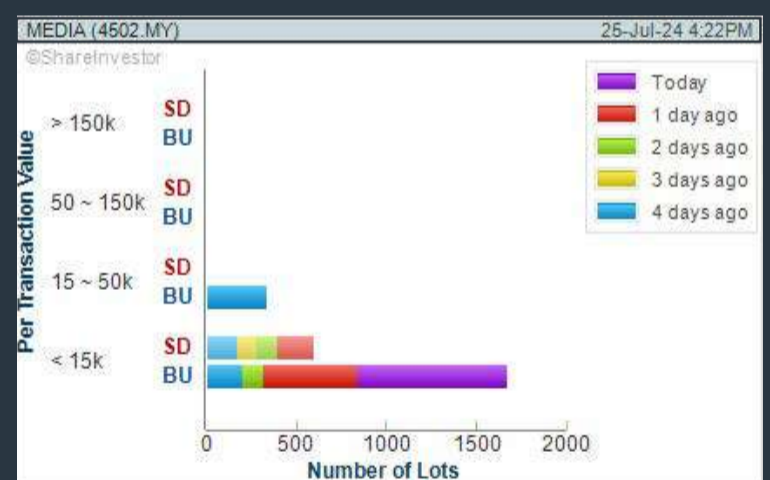
Analysis



### MEDIA PRIMA BERHAD (4502)

C<sup>2</sup> Chart

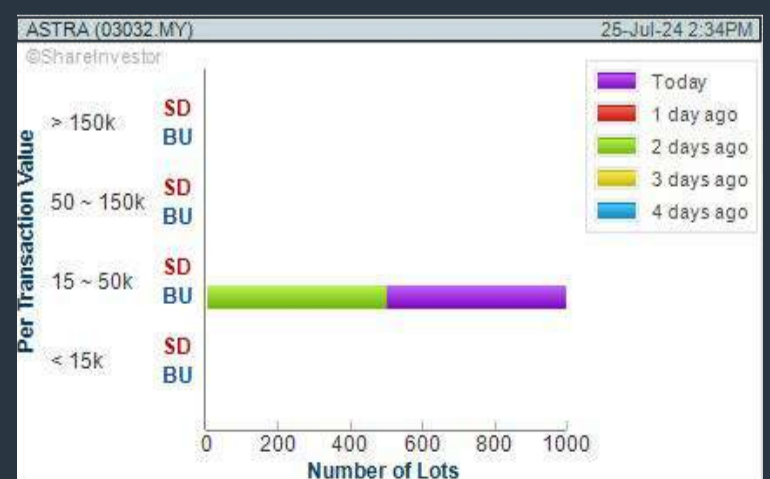
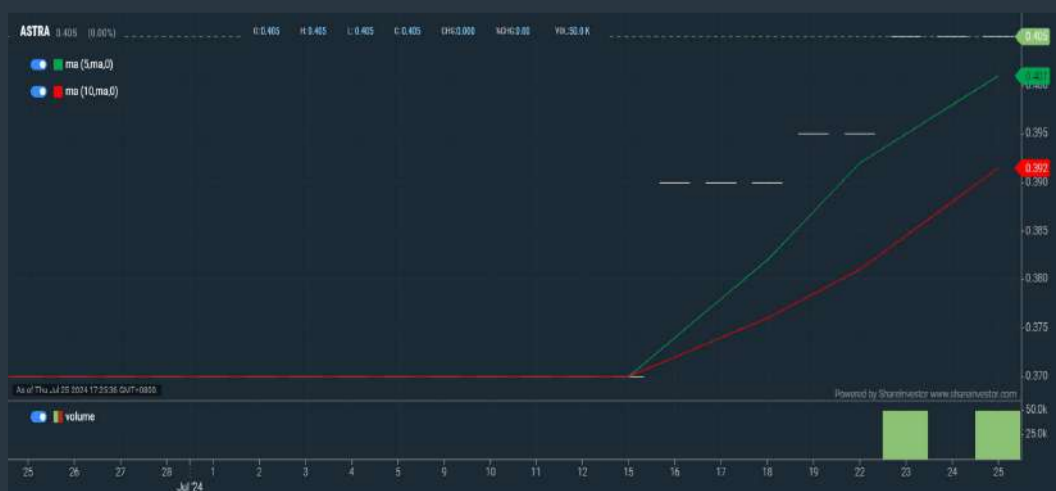
Analysis



### ASTRAMINA GROUP BERHAD (03032)

C<sup>2</sup> Chart

Analysis



**Disclaimer:** The information on this page is provided as a service to readers. It does not constitute financial advice and/or any investment recommendations. Past performance is not indicative of future results. We assume no liability for damages resulting from or arising out of the use of such information. It would be best if you did your own research to make your personal investment decisions wisely or consult a licenced investment advisor.



making  
places  
infinite



usm.com

**XTRA**

XTRA FURNITURE SDN BHD  
The Gardens Mall, Mid Valley City, Lot S-236 & 237  
Lingkar Syed Putra, 59200 Kuala Lumpur  
T. +603 2282 9088 | living@xtrafurniture.com | xtrafurniture.com  
📍 XTRAFurniture | 🌐 xtrafurnituremsia

## Price & Volume Distribution Charts (Over 3 trading days as at Yesterday)

Technical Analysis

**DEFINITION:** Stocks with Technical Analysis showing Bullish Momentum and Price Uptrend

**CHART GUIDE:** Volume Distribution Chart is a statistical interpretation of the current sentiment on each stock in graphical format. The highest bar categorized as >150k is likely to be traded by institutions or super dealers, while the lowest bar categorized as <15k usually represents retail investors. "Buy Up" refers to more buyers snatching up the lots queued at selling price. "Sell Down" refers to sellers selling their shares to the buying queue.



ShareInvestor WebPro > Screener > Market Screener (FA & TA) > select BURSA > add criteria

**A. Criteria**

- > click Add Criteria
- Fundamental Analysis Conditions tab > select (i) Revenue
- Technical Analysis Conditions tab select (ii) Moving Average Below Close
- Technical Analysis Conditions tab select (iii) Average Volume
- Prices & Other Conditions tab > select (iv) Last Done Price
- Technical Analysis Conditions tab select (v) Moving Average Below Close
- Technical Analysis Conditions tab select (v) Moving Average Bullish Crossover

**B. Conditions**

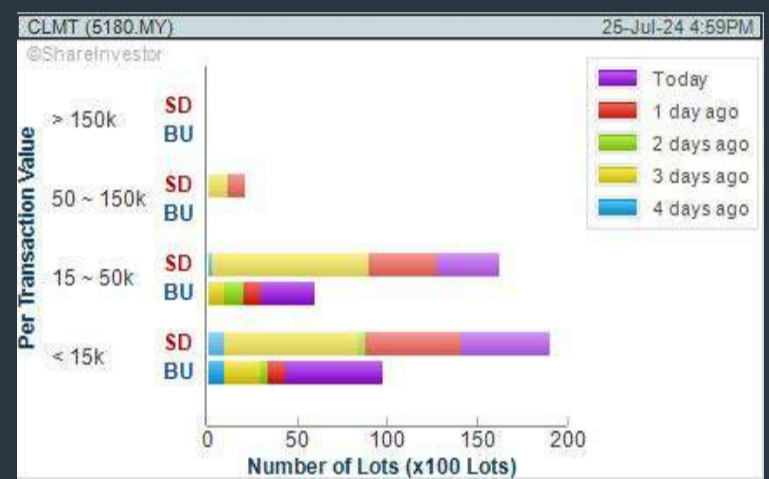
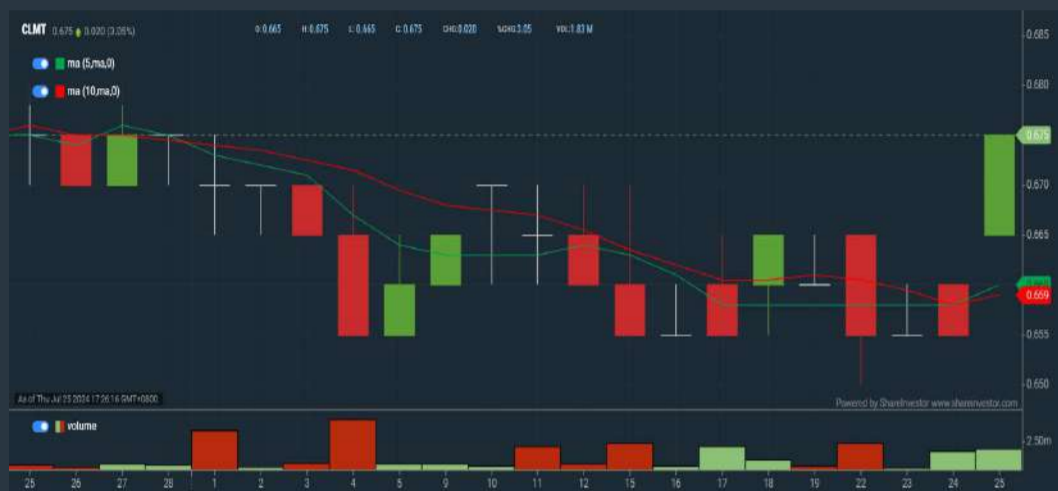
1. Revenue - select (more than) type (1) for the past select (1) financial year(s)
2. Moving Average Below Close - select (MA) type (20) below close price for type (1) days
3. Average Volume - type (5) days average volume type (10000) lots
4. Last Done Price - select (more than) type (0.3)
5. Moving Average Below Close - select (MA) type (10) below close price for type (1) days
6. Moving Average Bullish Crossover - select (MA) type (5) crossed above select (MA) type (10)

> click Save Template > Create New Template type (Non-Shariah Up-Trending Stocks) > click Create Click Save Template As > select Non-Shariah Up Trending Stocks > click Save  
> click Screen Now (may take a few minutes)  
Sort By: Select (Vol) Select (Desc)  
Mouse over stock name > Charts > click C<sup>2</sup> Charts tab or Volume Distribution

## CAPITALAND MALAYSIA TRUST (5180)

C<sup>2</sup> Chart

Analysis



**Disclaimer:** The information on this page is provided as a service to readers. It does not constitute financial advice and/or any investment recommendations. Past performance is not indicative of future results. We assume no liability for damages resulting from or arising out of the use of such information. It would be best if you did your own research to make your personal investment decisions wisely or consult a licenced investment advisor.

# SHAREINVESTOR WEBPRO

Stock Market Data At Your Fingertips

Powerful browser-based market analytics platform. Access from anywhere

click here to start your 9 Day free trial

## Price & Total Shareholder Return (as at Yesterday)

Fundamental Analysis

**DEFINITION:** Share price of a company trading at a lower price as compared to its fundamentals (FA) such as financial performance and dividend, allowing it to be attractive to value investors.

**CHART GUIDE:** Total Shareholder Return (TSR) combines share price appreciation and dividend distributions paid to show the total return to the shareholder expressed as a percentage.



ShareInvestor WebPro > Screener > Market Screener (FA & TA) > select BURSA > add criteria

**A. Criteria**

- > click Add Criteria
- Fundamental Analysis Conditions tab (i) Price Earnings Ratio
- Fundamental Analysis Conditions tab >select (ii) CAGR of Net Earnings
- Fundamental Analysis Conditions tab >select (iii) Net Debt To Equity
- Fundamental Analysis Conditions tab >select (iv) Return On Equity (ROE)

**B. Conditions**

1. Price Earnings Ratio - select (less than) type (15) times now
2. CAGR of Net Earnings - select (more than) type (10) % for the past type (3) financial year(s)
3. Net Debt To Equity – select (less than) type (1) for the past select (1) financial year(s)
4. Return On Equity (ROE) – select (more than) type (10) % for the past select (1) financial year(s)

- > click Save Template > Create New Template type (Value Stock) > click Create
- > click Save Template as > select Value Companies > click Save
- > click Screen Now (may take a few minutes)
- Sort by: Select (PE Ratio) Select (Ascending)
- > Mouse over stock name > Factsheet > looking for Total Shareholder Return
- > Mouse over stock name > Charts > click C2 Charts tab

## SYNERGY HOUSE BERHAD (0279)

C<sup>2</sup> Chart



Period	Dividend Received	Capital Appreciation	Total Shareholder Return
Short Term Return	5 Days	-0.170	-15.89%
	10 Days	-0.160	-11.43%
	20 Days	-0.290	-23.93%
Medium Term Return	3 Months	-0.070	-5.34%
	6 Months	+0.435	+54.04%
	1 Year	+0.850	+217.95%
Annualised Return	Annualised	-	+217.95%

## AJINOMOTO (M) BERHAD (2658)

C<sup>2</sup> Chart



Period	Dividend Received	Capital Appreciation	Total Shareholder Return
Short Term Return	5 Days	-0.280	-1.04%
	10 Days	-0.220	-1.45%
	20 Days	-0.300	-2.48%
Medium Term Return	3 Months	-2.298	-13.36%
	6 Months	+0.421	+2.90%
	1 Year	+0.355	+2.85%
Long Term Return	2 Years	+4.348	+11.13%
	3 Years	0.383	+0.99%
	5 Years	1.346	+5.10%
Annualised Return	Annualised	-	+1.00%

## SOLID AUTOMOTIVE BERHAD (5242)

C<sup>2</sup> Chart



Period	Dividend Received	Capital Appreciation	Total Shareholder Return
Short Term Return	5 Days	-	-
	10 Days	-0.005	-2.17%
	20 Days	+0.025	+12.50%
Medium Term Return	3 Months	+0.040	+21.62%
	6 Months	+0.040	+21.62%
	1 Year	+0.040	+21.62%
Long Term Return	2 Years	+0.040	+21.62%
	3 Years	-0.035	-11.46%
	5 Years	-0.060	-21.05%
Annualised Return	Annualised	-	-4.62%

**Disclaimer:** The information on this page is provided as a service to readers. It does not constitute financial advice and/or any investment recommendations. Past performance is not indicative of future results. We assume no liability for damages resulting from or arising out of the use of such information. It would be best if you did your own research to make your personal investment decisions wisely or consult a licenced investment advisor.

## Price & Total Shareholder Return (as at Yesterday)

Fundamental Analysis

**DEFINITION:** Company revenue is growing and making good quality of earnings with positive Free Cash Flow.

**CHART GUIDE:** Total Shareholder Return (TSR) combines share price appreciation and distributions paid to show the total return to the shareholder expressed as a percentage.



ShareInvestor WebPro > Screener > Market Screener (FA & TA) > select BURSA > add criteria

**A. Criteria**

1. Fundamental Analysis Conditions tab >select (i) Free Cash Flow, (ii) Revenue Growth, (iii) Gross Profit (Earnings) Margin, (iv) Quality of Earnings, (v) Total Shareholder Returns, > click Add Criteria
2. Fundamental Analysis Conditions tab >select (vi) Total Shareholder Returns > click Add Criteria

**B. Conditions (Criteria Filters)**

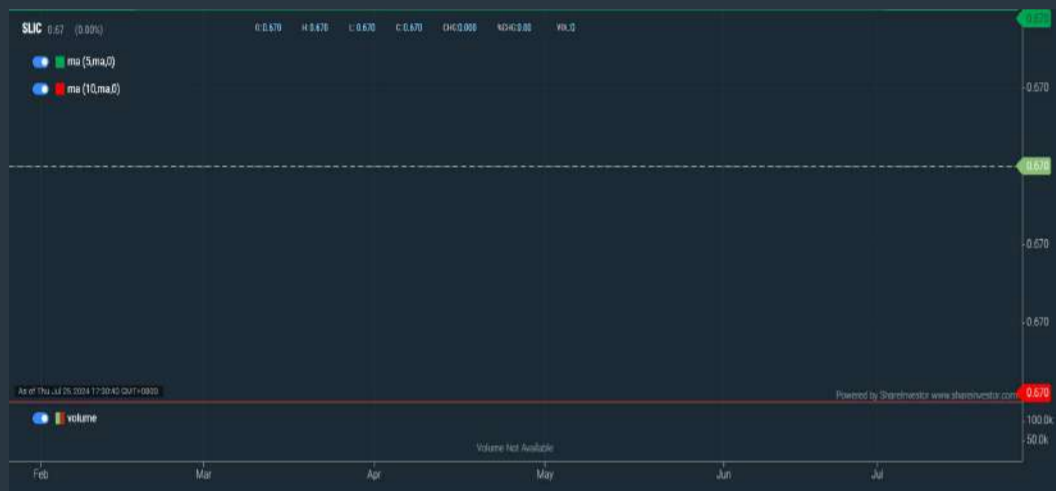
1. Free Cash Flow - select (more than) type (1) for the past select (1) financial year(s)
2. Revenue Growth - select (more than) type (1) for the past select (1) financial year(s)
3. Gross Profit (Earnings) Margin - select (more than) type (30) % for the past select (1) financial year(s)
4. Quality of Earnings - select (more than) type (1) for the past select (1) financial year(s)
5. Total Shareholder Return - select (more than) type (5) % for the past select (3) financial year(s)
6. Total Shareholder Return - select (more than) type (5) % for the past select (5) financial year(s)

- > click Save Template > Create New Template type (Growth Companies) > click Create
- > click Save Template as > select Growth Companies > click Save
- > click Screen Now (may take a few minutes)
- > Sort By: Select (Revenue Growth) Select (Desc)
- > Mouse over stock name > Factsheet > looking for Total Shareholder Return

## SL INNOVATION CAPITAL BERHAD (03008)

C<sup>2</sup> Chart

Analysis



Period	Dividend Received	Capital Appreciation	Total Shareholder Return
Short Term Return	5 Days	-	-
	10 Days	-	-
	20 Days	-	-
Medium Term Return	3 Months	-	-
	6 Months	-	-
	1 Year	-	-
Long Term Return	2 Years	+0.265	+85.43%
	3 Years	+0.265	+85.43%
	5 Years	0.015	+0.250
Annualised Return	Annualised	-	+10.28%

## MALAYSIA AIRPORTS HOLDINGS BERHAD (5014)

C<sup>2</sup> Chart

Analysis



Period	Dividend Received	Capital Appreciation	Total Shareholder Return
Short Term Return	5 Days	+0.020	+0.20%
	10 Days	-0.006	-0.79%
	20 Days	+0.420	+4.38%
Medium Term Return	3 Months	+0.020	+0.20%
	6 Months	+2.410	+31.67%
	1 Year	+3.120	+45.22%
Long Term Return	2 Years	+3.720	+50.05%
	3 Years	+4.190	+71.87%
	5 Years	0.100	+1.630
Annualised Return	Annualised	-	+3.82%

## PGF CAPITAL BERHAD (8117)

C<sup>2</sup> Chart

Analysis



Period	Dividend Received	Capital Appreciation	Total Shareholder Return
Short Term Return	5 Days	+0.010	+0.44%
	10 Days	+0.100	+4.88%
	20 Days	+0.100	+4.88%
Medium Term Return	3 Months	+0.200	+10.41%
	6 Months	+0.780	+30.33%
	1 Year	+1.820	+68.15%
Long Term Return	2 Years	+1.200	+112.95%
	3 Years	+1.694	+294.10%
	5 Years	+1.695	+699.30%
Annualised Return	Annualised	-	+51.54%

**Disclaimer:** The information on this page is provided as a service to readers. It does not constitute financial advice and/or any investment recommendations. Past performance is not indicative of future results. We assume no liability for damages resulting from or arising out of the use of such information. It would be best if you did your own research to make your personal investment decisions wisely or consult a licenced investment advisor.

## Price & Total Shareholder Return (as at Yesterday)

Fundamental Analysis

**DEFINITION:** Company is paying out dividend with low or moderate leverage.

**CHART GUIDE:** Total Shareholder Return (TSR) combines share price appreciation and distributions paid to show the total return to the shareholder expressed as a percentage.



ShareInvestor WebPro > Screener > Market Screener (FA & TA) > select BURSA > add criteria

**A. Criteria**

- > click Add Criteria
- Fundamental Analysis Conditions tab >select (i) Dividend Yield
- Fundamental Analysis Conditions tab >select (ii) Dividend Payout (Historical)
- Fundamental Analysis Conditions tab >select (iii) Total Debt To Equity
- Fundamental Analysis Conditions tab >select (iv) Total Shareholder Returns
- Fundamental Analysis Conditions tab >select (v) Total Shareholder Returns
- Fundamental Analysis Conditions tab / >select (vi) CAGR of Dividend Per Share

• Fundamental Analysis Conditions tab >select (vii) CAGR of Dividend Per Share

**B. Conditions (Criteria Filters)**

1. Dividend Yield - select (more than) type (1) % for the past select (1) financial year(s)
2. Dividend Payout (Historical) - select (between) type (0.5) to type (1) times for the past select (1) financial year(s)
3. Total Debt to Equity - select (less than) type (1) for the past select (1) financial year(s)
4. Total Shareholder Return - - select (more than) type (5) % for the past select (3) financial year(s)
5. Total Shareholder Return - - select (more than) type (5) % for the past select (5) financial year(s)

6. CAGR of Dividend Per Share - - select (less than) type (30) % for the past select (5) financial year(s)
7. CAGR of Dividend Per Share - - select (more than) type (1) % for the past select (5) financial year(s)

- > click Save Template > Create New Template type (Dividend Companies) > click Create
- > click Save Template as > select Dividend Companies > click Save
- > click Screen Now (may take a few minutes)
- > Sort By: Select (Dividend Yield) Select (Desc)
- > Mouse over stock name > Factsheet > looking for Total Shareholder Return

## AMWAY (M) HOLDINGS BERHAD (6351)

C<sup>2</sup> Chart

Analysis



Period	Dividend Received	Capital Appreciation	Total Shareholder Return
Short Term Return	5 Days	-0.050	-0.71%
	10 Days	-0.060	-0.85%
	20 Days	-0.060	-0.85%
Medium Term Return	3 Months	-0.230	-3.18%
	6 Months	+0.510	+7.88%
Long Term Return	1 Year	+1.660	+31.89%
	2 Years	+1.970	+35.45%
	3 Years	+1.400	+26.81%
5 Years	0.300	+1.141	+26.59%
Annualised Return	Annualised	-	+4.50%

## CSC STEEL HOLDINGS BERHAD (5094)

C<sup>2</sup> Chart

Analysis



Period	Dividend Received	Capital Appreciation	Total Shareholder Return
Short Term Return	5 Days	-0.010	-0.74%
	10 Days	+0.010	+0.75%
	20 Days	+0.040	+3.05%
Medium Term Return	3 Months	-0.040	-2.88%
	6 Months	+0.010	+0.87%
Long Term Return	1 Year	+0.190	+16.38%
	2 Years	+0.160	+13.45%
	3 Years	0.140	+12.88%
5 Years	0.276	+0.310	+56.35%
Annualised Return	Annualised	-	+9.35%

## TA ANN HOLDINGS BERHAD (5012)

C<sup>2</sup> Chart

Analysis



Period	Dividend Received	Capital Appreciation	Total Shareholder Return
Short Term Return	5 Days	+0.050	+1.26%
	10 Days	+0.000	+2.06%
	20 Days	+0.160	+4.21%
Medium Term Return	3 Months	-0.200	-4.81%
	6 Months	+0.240	+6.45%
Long Term Return	1 Year	+0.170	+4.49%
	2 Years	+0.320	+8.79%
	3 Years	0.200	+1.300
5 Years	0.500	+1.710	+98.22%
Annualised Return	Annualised	-	+14.86%

**Disclaimer:** The information on this page is provided as a service to readers. It does not constitute financial advice and/or any investment recommendations. Past performance is not indicative of future results. We assume no liability for damages resulting from or arising out of the use of such information. It would be best if you did your own research to make your personal investment decisions wisely or consult a licenced investment advisor.

Week: 19 July 2024 - 25 July 2024

More Brokers' Call 

<b>AMINVESTMENT BANK</b> <small>... See More</small>	Call	Target Price	Release Date
MISC Berhad (3816)	<b>HOLD</b>	RM8.60	23 Jul 2024
CelcomDigi Berhad (6947)	<b>BUY</b>	RM4.50	24 Jul 2024
IOI Properties Berhad (1635)	<b>BUY</b>	RM2.83	24 Jul 2024

<b>APEX</b> <small>... See More</small>	Call	Target Price	Release Date
Group Berhad (6888)	<b>HOLD</b>	RM2.55	25 Jul 2024
Ramssol Group Berhad (0236)	<b>BUY</b>	RM0.89	25 Jul 2024
United Plantations Berhad (2089)	<b>HOLD</b>	RM27.21	25 Jul 2024

<b>BIMB SECURITIES SDN BHD</b> <small>... See More</small>	Call	Target Price	Release Date
Gamuda Berhad (5398)	<b>BUY</b>	RM9.50	19 Jul 2024
T7 Global Berhad (7228)	<b>BUY</b>	RM0.62	24 Jul 2024

<b>KENANGA</b> <small>... See More</small>	Call	Target Price	Release Date
IOI Properties Group Berhad (5249)	<b>UNDERPERFORM</b>	RM1.75	24 Jul 2024
Bumi Armada Berhad (6793)	<b>MARKET PERFORM</b>	RM0.58	25 Jul 2024
CapitaLand Malaysia Trust (5180)	<b>UNDERPERFORM</b>	RM0.58	25 Jul 2024

<b>MALACCA SECURITIES SDN BHD</b> <small>... See More</small>	Call	Target Price	Release Date
Rexit Berhad (0106)	<b>BUY</b>	RM1.16	23 Jul 2024

<b>MIDF</b> <small>... See More</small>	Call	Target Price	Release Date
Axis Real Estate Investment Trust (5106)	<b>BUY</b>	RM2.12	24 Jul 2024
IOI Properties Group Berhad (5249)	<b>NEUTRAL</b>	RM2.25	24 Jul 2024
YTL Corporation Berhad (4677)	<b>BUY</b>	RM4.19	24 Jul 2024

<b>UOB KAYHIAN</b> <small>... See More</small>	Call	Target Price	Release Date
Axis Real Estate Investment Trust (5106)	<b>HOLD</b>	RM1.92	24 Jul 2024
Omesti Berhad (9008)	<b>BUY</b>	RM0.30	24 Jul 2024
Top Glove Corporation Berhad (7113)	<b>BUY</b>	RM1.45	24 Jul 2024

**Disclaimer:** InveSt does not accept any liability whatsoever for any direct, indirect or consequential losses (including loss of profit) or damages that may arise from the use of information or opinions in this publication. The information and opinions in InveSt are not to be considered as an offer to sell or buy any of the securities discussed. Opinions expressed are subject to change without notice. The Brokers may, from time to time, have interests or positions in the securities mentioned. For the full report on each item listed on this page, please visit [https://www.shareinvestor.com/my/brokers\\_call](https://www.shareinvestor.com/my/brokers_call).



**DEFINITION:** Top 10 stocks with Technical Analysis plus Pattern Matching by 60 pre-defined indicators by the system showing a higher probability of bullish sentiment on the share price.



ShareInvestor WebPro > Screener > Predefined TA Screens > select market BURSA > Most Long Signals > click Scan Results or mouse over each company

**SC ESTATE BUILDER BERHAD (0109.MY)**

**SCBUILD**

Price updated at 25 Jul 2024 17:30

Last: <b>0.015</b>	Change: <b>-0.005</b>	Volume: <b>217,234</b>
	Change (%): <b>-25.00</b>	Range: <b>0.015 - 0.020</b>

TA Scanner Results based on historical data up to 25 Jul 2024

Condition	Signal	Explanation
Bollinger Band: Bullish Long Term Volatility Breakout and Trending	Long	1. Close price above upper bollinger band(33,1). 2. Volume above average volume(50). 3. Average volume(50) is above 300,000.
Bollinger Band: Bullish Short Term Volatility Breakout and Trending	Long	1. Close price above upper bollinger band(33,1). 2. Volume above average volume(10). 3. Average volume(10) is above 300,000.
Bollinger Band: High Above Upper Bollinger Band	Neutral	1. High above upper bollinger band(14,2). 2. Average volume(5) is above 100,000.
Donchian Channels: High Above Upper Donchian Channels	Long	High crossed above the upper Donchian Channel(14,4)
MA: Medium Term Bullish Moving Average Crossover	Long	MA(25) crossed above MA(50) within the last 1 day.
MA: Short Term Bullish Moving Average Crossover	Long	MA(10) crossed above MA(15) within the last 1 day.
MACD: Overbought	Short	1. MACD Histogram(12,26,9) reached a new 6 month high. 2. MACD Histogram(12,26,9) has been above 0 for the last 3 weeks.
RSI: Short Term RSI 50 Bullish Crossover	Long	1. RSI(20) crossed above 50 within the last 1 day and RSI(20) 1 day ago below 50 for the last 5 days. 2. Volume above average volume(125). 3. Average volume(5) is above 100,000.
Stochastic: Fast Stochastic Buy Signal	Long	1. Fast Stochastic(15,5) %K crossed above 20. 2. Fast Stochastic(15,5) %K 1 day ago was below 20 for the last 5 days. 3. Average volume(30) is above 50000

**MELEWAR INDUSTRIAL GROUP BERHAD (3778.MY)**

**MELEWAR**

Price updated at 25 Jul 2024 17:31

Last: <b>0.305</b>	Change: <b>-0.010</b>	Volume: <b>35,317</b>
	Change (%): <b>-3.17</b>	Range: <b>0.305 - 0.320</b>

TA Scanner Results based on historical data up to 25 Jul 2024

Condition	Signal	Explanation
Bollinger Band: Bullish Long Term Volatility Breakout and Trending	Long	1. Close price above upper bollinger band(33,1). 2. Volume above average volume(50). 3. Average volume(50) is above 300,000.
Bollinger Band: Bullish Short Term Volatility Breakout and Trending	Long	1. Close price above upper bollinger band(33,1). 2. Volume above average volume(10). 3. Average volume(10) is above 300,000.
Bollinger Band: High Above Upper Bollinger Band	Neutral	1. High above upper bollinger band(14,2). 2. Average volume(5) is above 100,000.
Donchian Channels: High Above Upper Donchian Channels	Long	High crossed above the upper Donchian Channel(14,4)
MA: Short Term Bullish Moving Average Crossover	Long	MA(10) crossed above MA(15) within the last 1 day.
MACD: Bullish MACD Crossover	Long	1. MACD(12,26) diff line crossed above the MACD(12,26) signal line. 2. MACD Histogram(12,26) is above 0.
Price: New 52 Week High	Long	1. Stock reach a new 52 week high. 2. Average volume(30) is above 50000.
Williams %R: Bearish Williams %R	Short	1. Williams %R(26) between 0 and -20. 2. Average volume(5) is above 100,000.

**MARINE & GENERAL BERHAD (5078.MY)**

**M&G**

Price updated at 25 Jul 2024 17:31

Last: <b>0.365</b>	Change: -	Volume: <b>67,946</b>
	Change (%): -	Range: <b>0.345 - 0.370</b>

TA Scanner Results based on historical data up to 25 Jul 2024

Condition	Signal	Explanation
Bollinger Band: Bullish Long Term Volatility Breakout and Trending	Long	1. Close price above upper bollinger band(33,1). 2. Volume above average volume(50). 3. Average volume(50) is above 300,000.
Bollinger Band: Bullish Short Term Volatility Breakout and Trending	Long	1. Close price above upper bollinger band(33,1). 2. Volume above average volume(10). 3. Average volume(10) is above 300,000.
DM: Bullish Directional Movement	Long	-DI(14) crossed below +DI(14)
Volume: 10 Days large value Buy Up trade	Long	1. 150K value Buy Up greater than Sell Down by 20% for 10 days. 2. 50K-100K value Buy Up greater than Sell Down by 20% for 10 days. 3. Average volume(10) is above 1000000
Volume: 5 Days large value Buy Up trade	Long	1. 150K value Buy Up greater than Sell Down by 20% for 5 days. 2. 50K-100K value Buy Up greater than Sell Down by 20% for 5 days. 3. Average volume(10) is above 1000000

**GDEX BERHAD (0078.MY)**

**GDEX**

Price updated at 25 Jul 2024 17:31

Last: <b>0.170</b>	Change: -	Volume: <b>5,534</b>
	Change (%): -	Range: <b>0.160 - 0.170</b>

TA Scanner Results based on historical data up to 25 Jul 2024

Condition	Signal	Explanation
Bollinger Band: Bullish Long Term Volatility Breakout and Trending	Long	1. Close price above upper bollinger band(33,1). 2. Volume above average volume(50). 3. Average volume(50) is above 300,000.
Bollinger Band: Bullish Lower Bollinger Band Support	Long	1. Low 1 day ago below lower bollinger band(20,2). 2. Close above close 1 day ago. 3. Average volume(5) is above 100,000.
Bollinger Band: Bullish Short Term Volatility Breakout and Trending	Long	1. Close price above upper bollinger band(33,1). 2. Volume above average volume(10). 3. Average volume(10) is above 300,000.
Bollinger Band: High Above Upper Bollinger Band	Neutral	1. High above upper bollinger band(14,2). 2. Average volume(5) is above 100,000.
MACD: Bullish MACD Crossover	Long	1. MACD(12,26) diff line crossed above the MACD(12,26) signal line. 2. MACD Histogram(12,26) is above 0.
Parabolic SAR: Bearish Parabolic SAR Reversal	Neutral	1. Parabolic SAR 1 day ago above close price 1 day ago for the last 5 days. 2. Parabolic SAR below close price
RSI: Short Term RSI 50 Bullish Crossover	Long	1. RSI(20) crossed above 50 within the last 1 day and RSI(20) 1 day ago below 50 for the last 5 days. 2. Volume above average volume(125). 3. Average volume(5) is above 100,000.

**Disclaimer:** The information on this page is provided as a service to readers. It does not constitute financial advice and/or any investment recommendations. Past performance is not indicative of future results. We assume no liability for damages resulting from or arising out of the use of such information. It would be best if you did your own research to make your personal investment decisions wisely or consult a licenced investment advisor.

**TANCO HOLDINGS BERHAD**  
(2429.MY)

**TANCO**

Price updated at 25 Jul 2024 17:31

Last: <b>1.050</b>	Change: <b>+0.010</b>	Volume: <b>189,320</b>
	Change (%): <b>+0.96</b>	Range: <b>6.960 - 7.060</b>

TA Scanner Results based on historical data up to 11 Jul 2024

Condition	Signal	Explanation
Bollinger Band: High Above Upper Bollinger Band	Neutral	1. High above upper bollinger band(14,2). 2. Average volume(5) is above 100,000.
Donchian Channels: High Above Upper Donchian Channels	Long	High crossed above the upper Donchian Channel(14,4)
MACD: Bullish MACD Crossover	Long	1. MACD(12,26) diff line crossed above the MACD(12,26) signal line. 2. MACD Histogram(12,26) is above 0.
Price: New 52 Week High	Long	1. Stock reach a new 52 week high. 2. Average volume(30) is above 50000.
Volume: 5 Days large value Buy Up trade	Long	1. 150K value Buy Up greater than Sell Down by 20% for 5 days. 2. 50K-100K value Buy Up greater than Sell Down by 20% for 5 days. 3. Average volume(10) is above 1000000
Williams %R: Bearish Williams %R	Short	1. Williams %R(26) between 0 and -20. 2. Average volume(5) is above 100,000.

**DXN HOLDINGS BERHAD**  
(5318.MY)

**DXN**

Price updated at 25 Jul 2024 17:31

Last: <b>0.630</b>	Change: <b>-0.005</b>	Volume: <b>25,109</b>
	Change (%): <b>-0.79</b>	Range: <b>0.630 - 0.635</b>

TA Scanner Results based on historical data up to 25 Jul 2024

Condition	Signal	Explanation
Candlestick: Indecision Doji	Neutral	Indecision: Doji
DM: Bullish Directional Movement	Long	-DI(14) crossed below +DI(14)
MACD: Bullish MACD Crossover	Long	1. MACD(12,26) diff line crossed above the MACD(12,26) signal line. 2. MACD Histogram(12,26) is above 0.
Volume: 10 Days large value Buy Up trade	Long	1. 150K value Buy Up greater than Sell Down by 20% for 10 days. 2. 50K-100K value Buy Up greater than Sell Down by 20% for 10 days. 3. Average volume(10) is above 1000000
Volume: 5 Days large value Buy Up trade	Long	1. 150K value Buy Up greater than Sell Down by 20% for 5 days. 2. 50K-100K value Buy Up greater than Sell Down by 20% for 5 days. 3. Average volume(10) is above 1000000

**D'NONCE TECHNOLOGY BERHAD**  
(7114.MY)

**DNONCE**

Price updated at 25 Jul 2024 17:31

Last: <b>0.070</b>	Change: -	Volume: <b>7,238</b>
	Change (%): -	Range: <b>0.065 - 0.070</b>

TA Scanner Results based on historical data up to 25 Jul 2024

Condition	Signal	Explanation
Bollinger Band: Bullish Short Term Volatility Breakout and Trending	Long	"1. Close price above upper bollinger band(33,1). 2. Volume above average volume(10). 3. Average volume(10) is above 300,000."
Bollinger Band: High Above Upper Bollinger Band	Neutral	"1. High above upper bollinger band(14,2). 2. Average volume(5) is above 100,000."
MA: Bullish Price Crossover	Long	"1. Close price crossed above MA(40) within the last 1 day. 2. Previous day close price is below the MA(10) for the last 5 days"
MA: Short Term Bullish Moving Average Crossover	Long	MA(10) crossed above MA(15) within the last 1 day.
MACD: Bullish MACD Crossover	Long	"1. MACD(12,26) diff line crossed above the MACD(12,26) signal line. 2. MACD Histogram(12,26) is above 0."

**CENTRAL GLOBAL BERHAD**  
(8052.MY)

**CGB**

Price updated at 25 Jul 2024 17:31

Last: <b>0.815</b>	Change: -	Volume: <b>52,277</b>
	Change (%): -	Range: <b>0.805 - 0.815</b>

TA Scanner Results based on historical data up to 25 Jul 2024

Condition	Signal	Explanation
Bollinger Band: Low Below Lower Bollinger Band	Neutral	1. Low below lower bollinger band(14,2). 2. Average volume(5) is above 100,000.
Stochastic: Fast Stochastic Buy Signal	Long	1. Fast Stochastic(15,5) %K crossed above 20. 2. Fast Stochastic(15,5) %K 1 day ago was below 20 for the last 5 days. 3. Average volume(30) is above 50000
Volume: 10 Days large value Buy Up trade	Long	1. 150K value Buy Up greater than Sell Down by 20% for 10 days. 2. 50K-100K value Buy Up greater than Sell Down by 20% for 10 days. 3. Average volume(10) is above 1000000
Volume: 5 Days large value Buy Up trade	Long	1. 150K value Buy Up greater than Sell Down by 20% for 5 days. 2. 50K-100K value Buy Up greater than Sell Down by 20% for 5 days. 3. Average volume(10) is above 1000000
Williams %R: Bullish Williams %R	Long	1. Williams %R(26) between -80 and -100. 2. Average volume(5) is above 100,000.

**PDZ HOLDINGS BERHAD**  
(6254.MY)

**PDZ**

Price updated at 25 Jul 2024 17:31

Last: <b>0.055</b>	Change: <b>-0.005</b>	Volume: <b>110,710</b>
	Change (%): <b>-8.33</b>	Range: <b>0.055 - 0.060</b>

TA Scanner Results based on historical data up to 25 Jul 2024

Condition	Signal	Explanation
Bollinger Band: Bullish Long Term Volatility Breakout and Trending	Long	1. Close price above upper bollinger band(33,1). 2. Volume above average volume(50). 3. Average volume(50) is above 300,000.
Bollinger Band: Bullish Short Term Volatility Breakout and Trending	Long	1. Close price above upper bollinger band(33,1). 2. Volume above average volume(10). 3. Average volume(10) is above 300,000.
Bollinger Band: High Above Upper Bollinger Band	Neutral	1. High above upper bollinger band(14,2). 2. Average volume(5) is above 100,000.
Donchian Channels: High Above Upper Donchian Channels	Long	High crossed above the upper Donchian Channel(14,4)
MACD: Bullish MACD Crossover	Long	1. MACD(12,26) diff line crossed above the MACD(12,26) signal line. 2. MACD Histogram(12,26) is above 0.

**SKB SHUTTERS CORPORATION BERHAD**  
(7115.MY)

**SKBSHUT**

Price updated at 25 Jul 2024 17:31

Last: <b>1.080</b>	Change: <b>-0.050</b>	Volume: <b>60,685</b>
	Change (%): <b>-4.42</b>	Range: <b>1.070 - 1.190</b>

TA Scanner Results based on historical data up to 25 Jul 2024

Condition	Signal	Explanation
Bollinger Band: High Above Upper Bollinger Band	Neutral	1. High above upper bollinger band(14,2). 2. Average volume(5) is above 100,000.
Donchian Channels: High Above Upper Donchian Channels	Long	High crossed above the upper Donchian Channel(14,4)
MACD: Bullish MACD Crossover	Long	1. MACD(12,26) diff line crossed above the MACD(12,26) signal line. 2. MACD Histogram(12,26) is above 0.
Price: New 52 Week High	Long	1. Stock reach a new 52 week high. 2. Average volume(30) is above 50000.
Volume: Consecutive Days Of Increasing Average Volume	Long	1. Average Volume(20) has been increasing over the last 2 weeks. 2. Average volume(20) is above 100000
Williams %R: Bearish Williams %R	Short	1. Williams %R(26) between 0 and -20. 2. Average volume(5) is above 100,000.



**Dato' Eu Hong Chew**  
Former Group CEO i-Berhad  
Non-Executive Director

He has been associated with the Sumurwang Group for many years charting the path for its manufacturing arm, firstly under Dreamland Holdings Berhad and the subsequent acquisition of I-Berhad.

Before that, he was with PA Management Consulting for a decade where he was the Director of Studies for the Cranfield PA MBA Programme in Malaysia.

Educated at the Royal Military College, Dato' Eu has an engineering degree from the University of Glasgow, and a MBA from the University of Bradford, UK.

# Is DELEUM an investment opportunity?

## SUMMARY

- Deleum's (**DELEUM:5132MY**) performance is closely tied to crude oil prices. It improved when oil prices were high, but deteriorated during low-price periods (2015-2019).
- Recent years have seen a performance rebound due to better oil prices, and over the cycle, Deleum's returns exceeded its cost of funds. Deleum is also financially sound.

*Disclaimer: This article is written for informational purposes only. It does not constitute a solicitation, offer, advice, counseling or recommendation to buy or sell. As such it is not intended to promote the purchase of shares in any way. As a reminder, any type of asset has a risk factor and needs to be evaluated from multiple perspectives. Therefore, any investment decision and the associated risk remains with the investor. The views expressed here are entirely the writer's own.*

- The company's valuation suggests a more than 30% margin of safety based on its market price of RM 1.29 (as of 12 Jul 2024). Its strong fundamentals, and improved returns indicate it is not a value trap.

## **INVESTMENT THESIS**

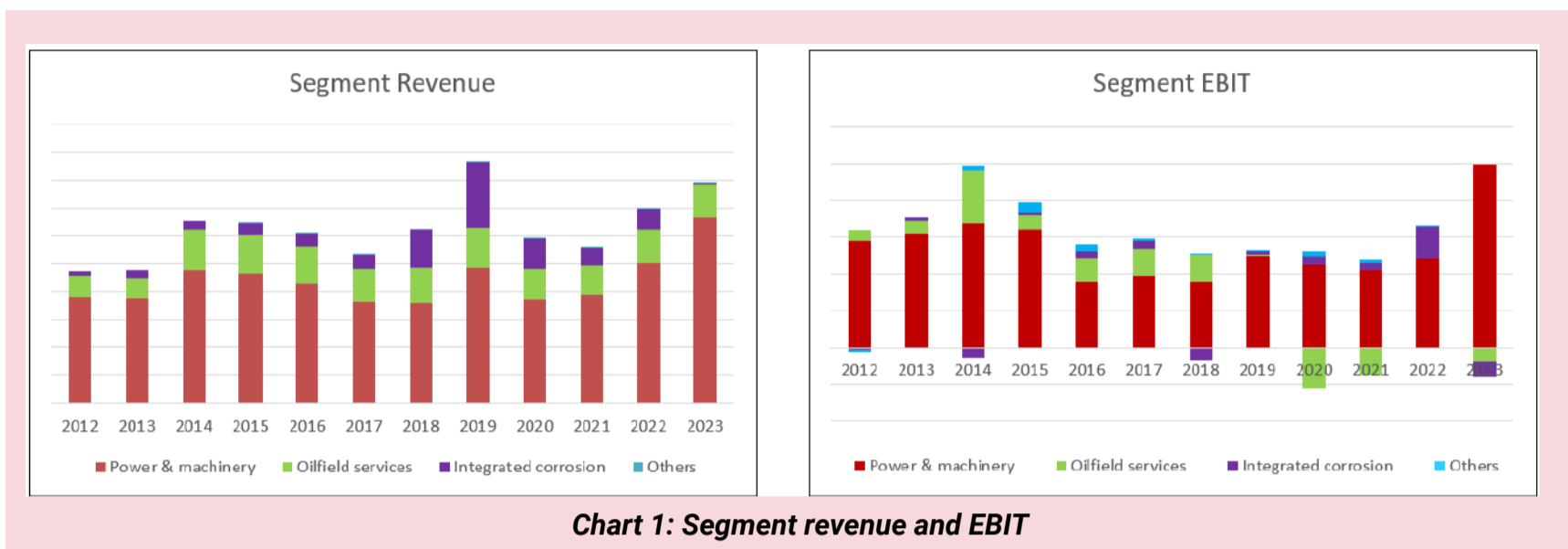
Deleum Berhad through its subsidiaries (The Group) provides a range of products and services to the Malaysian oil and gas exploration and production sector. And as such, its prospects are tied to the performance of the industry. The Group did well when crude oil prices were high. However, when oil prices were in the trough part of the cycle from 2015 to 2019, the company's performance deteriorated. Its performance improved over the past 3 years due to the better crude oil prices. Over the cycle, the Group delivered average returns that were greater than its cost of funds. The Group is also financially sound. A valuation based on the performance over the cycle showed that there is more than a 30% margin of safety based on the market price of RM1.29 (as of 12 Jul 2024).

## **BACKGROUND**

The Group provides a diverse range of supporting specialised products and services to the oil and gas industry, particularly in the exploration and production sector. It has 3 business segments:

- Power & Machinery.
- Oilfield Services.
- Integrated Corrosion Services.

The Power & Machinery segment is the biggest revenue and earnings contributor over the past 13 years. Refer to the Chart 1.



Not all the segments were pulling the same weight. Refer to Table 1 where I have estimated the return (based on EBIT/TCE) from each segment.

- The Power & machinery segment used the most capital and delivered the best return.
- Although the Oilfield services segment used the next highest amount of capital, it delivered the worst operating return.

Segment	TCE (RM '000)	Revenue (RM '000)	Revenue/TCE	EBIT (RM '000)	EBIT/TCE
Power & machinery	180,699	421,775	233%	46,774	26%
Oilfield services	140,703	119,708	85%	1,380	1%
Integrated corrosion	25,021	89,813	359%	3,726	15%
Others	76,913	448	1%	1,786	2%

**Table 1**

**Notes to Table 1:**

- a) TCE = 2022 Total capital employed = Equity + Debt. I apportioned the Debt for the segment based on the segment's interest expenses.
- b) The revenue and EBIT were based on 2011 to 2022 weighted average values.

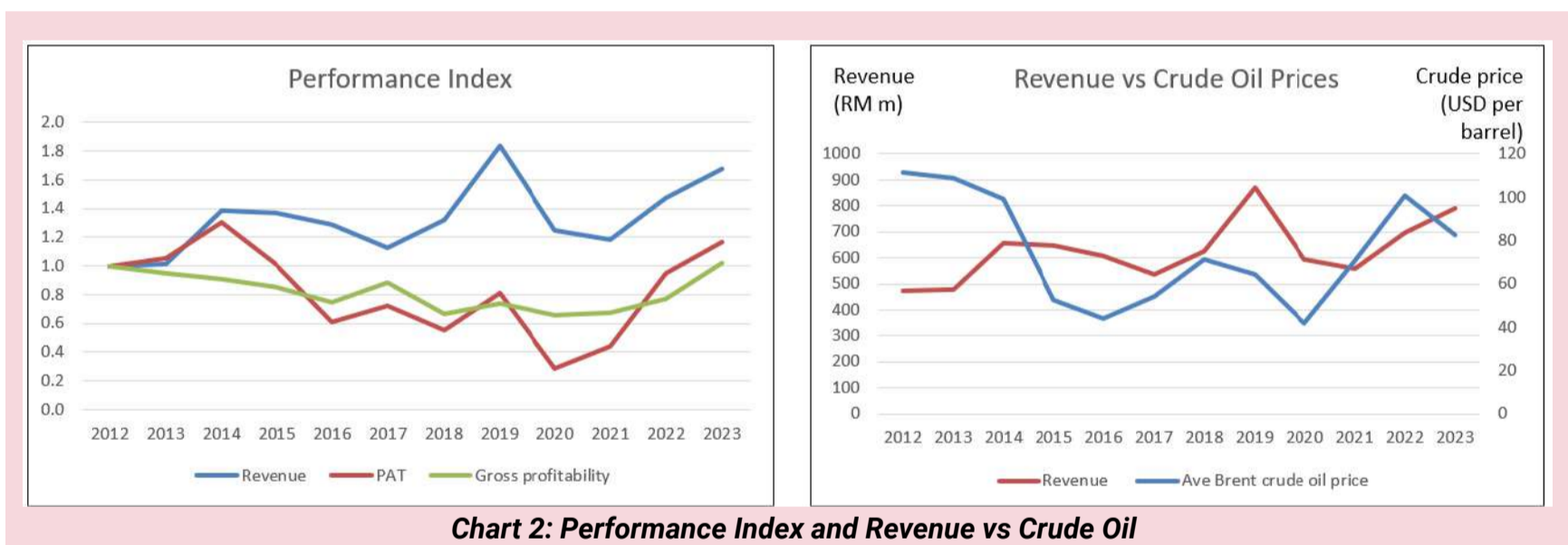
## OPERATING TRENDS

Revenue over the past 13 years showed a cyclical pattern. The revenue spike in 2019 was due to growths in the Power & Machinery and Integrated Corrosion segments. Refer to the left part of Chart 1.

As an oil & gas services company, the performance of Deleum would be correlated to the crude oil prices. Refer to the right part of Chart 2. From 2012 to 2023:

- There was a negative 0.18 correlation between revenue and Brent crude oil for the same year.
- There was a negative 0.79 correlation between current-year revenue and Brent crude oil in the following year.

I would not consider any correlation less than 0.7 as significant. While there is some correlation, it is not so straightforward as there is some time lag issue. However, it shows that Deleum's performance is tied to crude oil prices.



You can see that profits have turned around from the 2020 low. As such you should not be surprised to see improving returns. The ROE in 2023 was 14% compared to the 4% in 2020.

## FINANCIAL POSITION

I would rate Deleum as financially sound based on the following:

- As of the end of Dec 2023, it had RM216 million cash. This was equivalent to 35% of its total assets.

- It had a debt-equity ratio of 1% as of Dec 2023.
- Over the past 12 years, it generated positive cash flow from operations every year.
- Over the past 12 years, it generated RM760 million cash flow from operations compared to RM536 million of PAT. This is a very good cash conversion ratio.
- The Group also had a good capital allocation track record where its cash flow from operations was well deployed for CAPEX and dividends.
- It had a low Reinvestment rate of about 22%. The low Reinvestment rate was because of the low Reinvestments. This in turn was because there were several years when the Depreciation & Amortization far exceeded what was spent on CAPEX and Net Changes in Working Capital.

## VALUATION

Oil prices have been cyclical as can be seen from Chart 3. While prices in 2023 have been high, it was not the historical high which occurred in 2012/14.

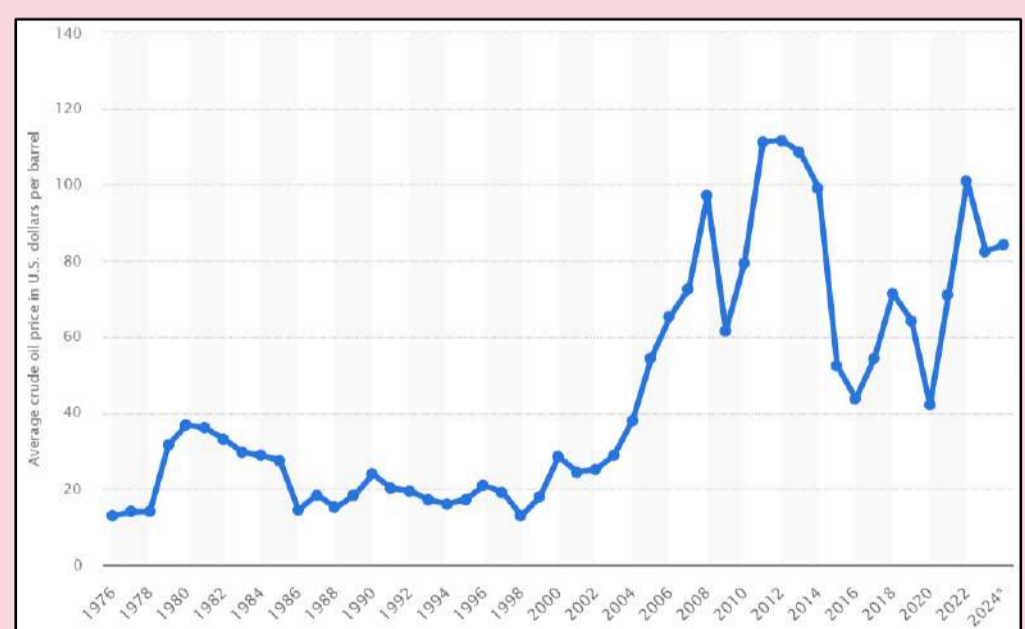
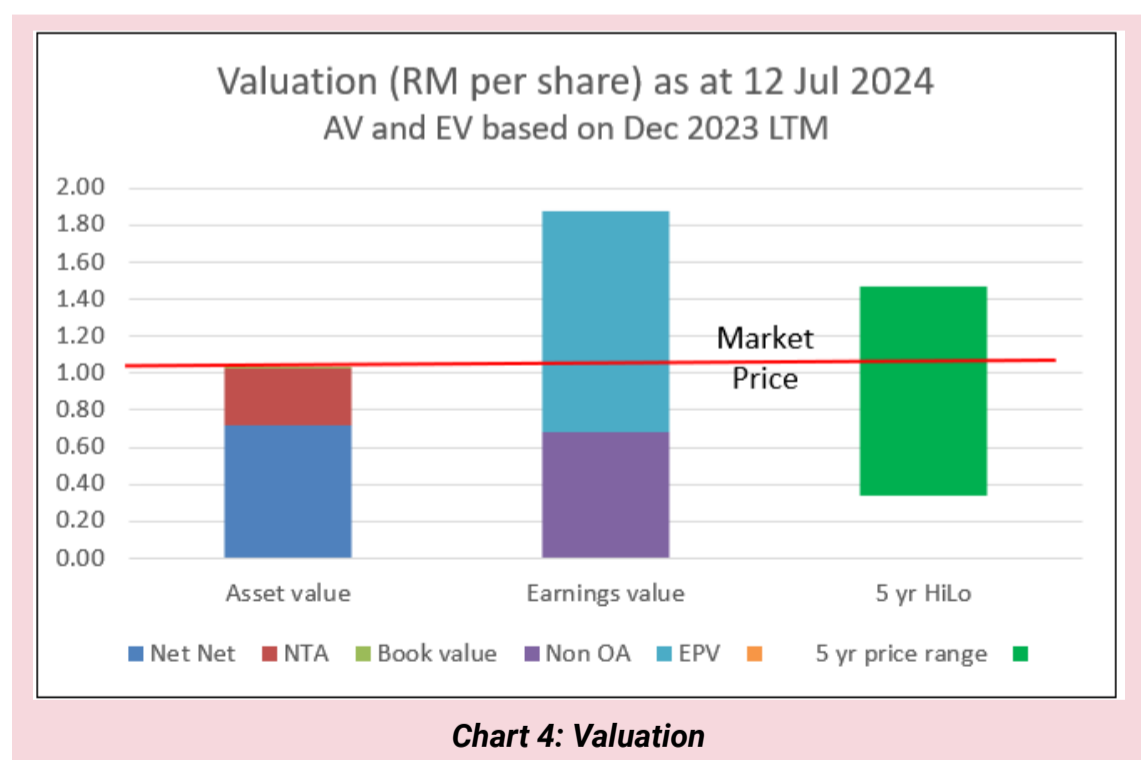


Chart 3: Brent Crude Oil Price. Source: Statista

Crude oil prices and CAPEX by oil and gas companies are interrelated. When oil prices are high, companies are more likely to increase their CAPEX to take advantage of the favourable pricing environment and expand their operations. Conversely, in periods of low oil prices, CAPEX tends to be reduced to manage costs and conserve capital. These dynamics can contribute to the cyclical nature of the oil and gas industry and have a significant impact on the performance of the oilfield services companies. Given the cyclical nature of oil prices and the link between Deleum’s revenue and crude prices, we should look at the performance over the cycle when valuing it.

My value of Deluem on such a basis is summarized in Chart 4.

- I estimated its Asset Value as RM1.03 per share broken down into Graham Net Net, NTA, and Book Value. Note that the Book Value is a value close to the NTA due to the small intangibles.
- I estimated its Earnings Value as RM1.88 per share. You can see that the non-operating assets accounted for about 36% of this value. A significant part of the balance came from its Earnings Power Value.





At RM1.29 per share (12 Jul 2024), Deleum is trading significantly below the Earnings Value. There is more than a 30% margin of safety.

## **VALUATION MODEL**

My Earnings Value of the company was derived based on the average values from 2 valuation approaches:

- Free Cash Flow to the Firm model as per Damodaran.
- Residual Income model as per Penman.

For both models, I used the past 12 years' time-weighted average value to represent the normalized value. The cost of capital used in the model was based on the Capital Asset Pricing Model. I followed Damodaran's approach to determine the Beta and the risk premiums. These resulted in 7.2% each for the cost of equity and WACC. Note that the values for both are about the same due to the low debt situation.

## **CONCLUSION**

My analysis of Deleum showed that it had turned around its poor performance resulting from the low oil prices. The company is fundamentally sound based on the following:

- It is financially sound with a strong cash holding and a good cash conversion ratio.
- The returns are showing uptrends.
- Despite going through the trough of the 2015 to 2019 crude oil cycle, there were no significant assets written off.

It is a cyclical business and I value it as such. My valuation showed that there is more than a 30% margin of safety based on the Earnings Power Value. You may be concerned that this is a value trap. A value trap is a company that looks cheap but is cheap for a fundamental reason. The trap springs after you buy it. This is not the case with Deleum. It has strong fundamentals. The comparatively low market price is due to market sentiments rather than business performance.

Deleum's intrinsic value is greater than the market price. This is a value estimated on its performance over the cycle. As such I do not consider Deleum a value trap.

*I am a long-term value investor who has held onto stocks for more than 5 years. My analysis and valuation are from such a perspective. I consider quarterly results "noisy" and focus on long-term trends.*

*This article was re-purposed from "[Is Deleum a value trap?](#)" which was first published on i4value. Asia. Refer to the article for more detailed fundamental analysis and valuation.*

*Disclaimer: This article is written for informational purposes only. It does not constitute a solicitation, offer, advice, counseling or recommendation to buy or sell. As such it is not intended to promote the purchase of shares in any way. As a reminder, any type of asset has a risk factor and needs to be evaluated from multiple perspectives. Therefore, any investment decision and the associated risk remains with the investor. The views expressed here are entirely the writer's own.*



**SIGN UP FOR Invest**  
**IT'S FREE!!!**

[Click here](#)

Scan me



Via email, every Friday.

# UNLOCK THE SECRET OF WEALTH

DO YOU REALLY WANT TO MASTER VALUE INVESTING



SEE HOW TO GET HIGHER RETURNS WITH LOWER RISK



# SC ISSUES GUIDANCE FOR FINANCIAL INFLUENCERS

**T**he Securities Commission Malaysia (SC) has updated the Guidance Note on the Provision of Investment Advice (Guidance Note). This is to address the growing popularity of financial influencers (finfluencers) promoting capital market products and services on social media, as well as to create greater public awareness. The update clarifies the SC's regulatory expectation on finfluencers' sharing of financial insights and recommendations on social media. The SC aims to uphold parity in terms of regulatory treatment of finfluencers' activities as providing investment advice is a regulated activity under the securities laws.

In particular, the Guidance Note clarifies that promotion of a capital market product on social media platforms may require a licence from the SC in certain circumstances. For example, the sharing of financial insights or recommendations that promote certain capital market products to followers with expectation of commissions or other rewards will require a licence.

Finfluencers should take note that engaging in unlicensed regulated activities is an offence which is punishable under the Capital Markets and Services Act 2007 (CMSA). Any person found guilty may be liable to a fine not exceeding RM10 million or imprisonment not exceeding ten years or both. To guide finfluencers to comply with the CMSA, the SC has also published an informative infographic with frequently asked questions and a checklist.

Finfluencers should verify that the companies they promote are licensed or approved by the SC by using the [SC's Investment Checker](#).

The SC, as part of its discharge of its regulatory function, actively monitors the capital market and will continue to address any developments and trends by, amongst others, issuance of guidance to the public. The regulator will take actions, where necessary, towards ensuring a fair and orderly market.

The Guidance Note can be downloaded at <https://www.sc.com.my/regulation/guidance-notes-and-guiding-principles> and the infographic is available at <https://www.sc.com.my/investor-empowerment/info-on-finfluencer>.



CHECK OUT  
SHAREINVESTOR  
**BROKERS' CALL**  
Weekly Buy/Sell/Hold calls from leading Malaysian Brokerages.

Go To Brokers' Call

# INVESTKL SECURES RM3.3 BILLION IN INVESTMENTS IN 1H2024



*(photo courtesy of InvestKL)*

According to CEO of InvestKL Datuk Muhammad Azmi Zulkifli, InvestKL has successfully secured RM3.3 billion in investments, creating 3,389 high-value regional jobs through the establishment

of six global services hubs. These investments, secured amidst global challenges, reaffirm Greater Kuala Lumpur's (Greater KL) appeal as a top investment destination, bolstered by the country's ease of doing business, robust infrastructure, skilled talent pool, and vibrant ecosystem driven by collaboration and innovation.

The 1H2024 results demonstrate InvestKL's continued impact in solidifying Greater KL's status as a top investment destination in the region. This aligns well with its 2024 target to attract global services hubs with a focus on technology and cutting-edge activities that will spur high-skilled jobs for Malaysians. Through engagements, it is evident that more eyes are now on Malaysia, and global companies are eager to capitalise on the country's strength to deepen their investments and broaden their regional presence from Greater KL.

Reflecting these results, InvestKL's new investments include the establishment of 6 services hubs from the Americas, Europe, and Asia region:

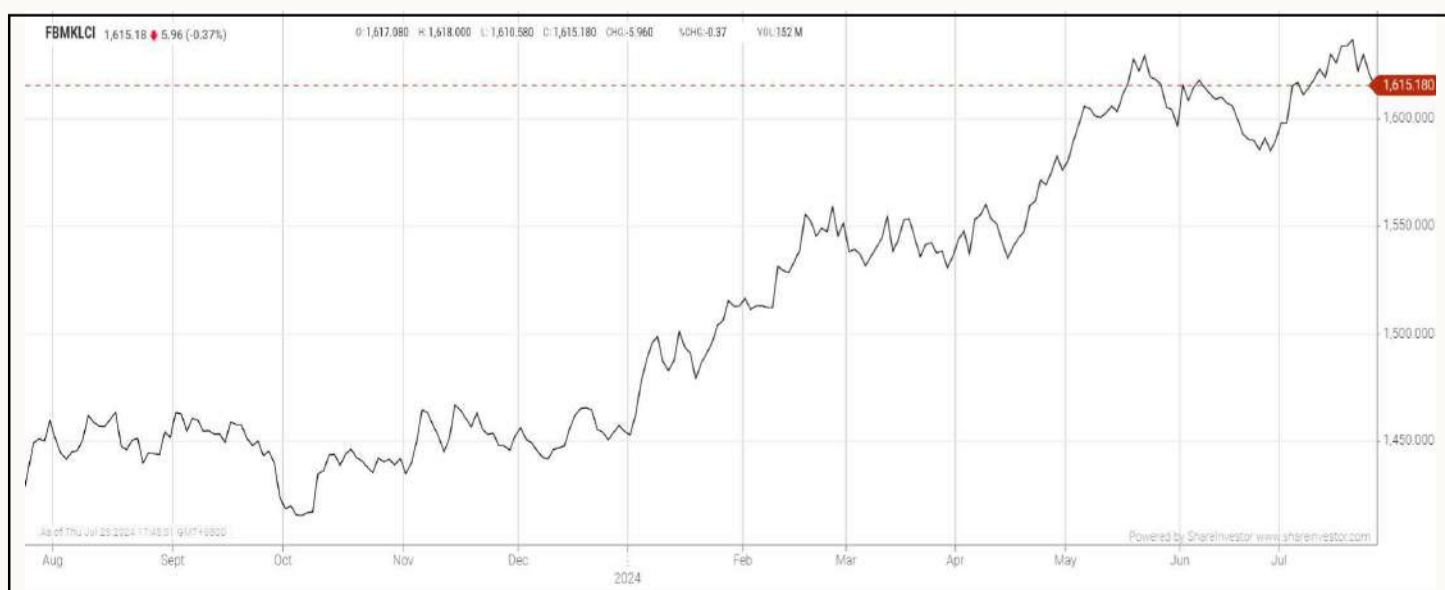
- A Data Centre by the largest global data centre and co-location provider from the USA;
- A Centre of Excellence by the world's largest premium label and packaging provider from the USA;
- A Global Operation Centre by a leading provider of integrated software solutions from the United Kingdom;
- An APAC Global Business Services Hub by the United Kingdom's leading global recruitment company;
- An EPCI Execution Centre by a global offshore energy solutions company from Japan;
- A Digital Lab Headquarters by Singapore's foremost telecommunication provider of innovative technologies and sustainable solutions.

As of today, InvestKL has attracted over 140 Global Services Hubs by leading companies employing more than 27,000 executives with an average monthly salary of RM17,000.

With Malaysia’s anticipated economic growth of 4% to 5% this year, driven by improved investment and external demand, InvestKL’s strategic direction will focus on attracting global services from key sectors such as digital and technology, engineering, health tech, and renewable energy, while also emphasising human capital development.

## EYE ON THE MARKETS

On Thursday (25July), the Ringgit closed at 4.6630 against the USD and 3.4719 to the Sing Dollar. On Monday (22July), the FBM KLCI opened at 1637.12. As at Thursday (25July) 5:00pm, the FBM KLCI closed down 21.94 points at 1615.18. Over in US, the overnight Dow Jones Industrial Average closed up 81.20 points (+0.20%) to 39,935.07 whilst the NASDAQ shed 162.01 points (-0.93%) to 17,180.40.



KLCI 1 Year Chart



## Over 5 trading days



ShareInvestor WebPro ([www.shareinvestor.com/my](http://www.shareinvestor.com/my))

1. Price > Stock Prices
2. Select Market: NASDAQ / NYSE / IDX / SET / HKEX / SGX (One bourse at a time)
3. select Stocks Tab
4. select Ranking Top Gainers or Top Losers (Over 5 Trading Days)
5. Mouse over Column Layout > select Edit Customs > select Name > select Last Done Price > select 5 Days Change > select 52 Weeks High > select 52 Weeks Low > Mouse Over Column Layout > select Custom

### NASDAQ (USD)

#### Top Gainers

Name	Last Done	Change Over 5 Days	52 Weeks High	52 Weeks Low
FIRST CITIZENS BANCSHARES INC NRTH	2,051.050	+218.360	1,884.080	1,274.910
LINEAGE INC	80.780	+80.600	11.510	0.090
OREILLY AUTOMOTIVE INC NEW	1,092.910	+64.820	1,169.110	860.100
MICROSTRATEGY	1,606.470	+51.310	1,999.990	307.110
DAILY JOURNAL CO	463.640	+31.040	470.720	286.050

#### Top Losers

Name	Last Done	Change Over 5 Days	52 Weeks High	52 Weeks Low
BOOKING HOLDINGS INC	3,659.880	-307.370	4,144.320	2,733.040
SUPER MICRO COMPUTER INC	695.610	-106.000	1,229.000	226.590
CROWDSTRIKE HOLDINGS INC	254.150	-88.900	398.327	140.520
LAM RESEARCH CORP	884.120	-68.480	1,130.000	574.420
MONOLITHIC POWER SYSTEM INC	789.900	-53.570	891.670	392.100

### NYSE (USD)

#### Top Gainers

Name	Last Done	Change Over 5 Days	52 Weeks High	52 Weeks Low
SERVICENOW INC	828.790	+90.020	815.320	527.240
AUTOZONE INC	3,030.970	+80.570	3,256.370	2,375.350
NVR INC	8,471.880	+64.220	8,695.000	5,210.490
METTLER-TOLEDO INTERNATIONAL INC	1,411.000	+54.930	1,535.860	928.495
THERMO FISHER SCIENTIFIC INC	594.500	+53.880	603.820	415.600

#### Top Losers

Name	Last Done	Change Over 5 Days	52 Weeks High	52 Weeks Low
BERKSHIRE HATHAWAY INC	649,950.020	-12,869.980	741,971.390	502,000.000
DECKERS OUTDOOR CORP	841.500	-45.360	1,106.890	484.020
MARKEL GROUP INC	1,570.610	-42.420	1,670.240	1,295.650
WEST PHARMACEUTICAL SERVICES INC	277.160	-39.180	415.730	310.000
ELI LILLY AND COMPANY	821.190	-27.710	966.100	446.560

### IDX (Rupiah)

#### Top Gainers

Name	Last Done	Change Over 5 Days	52 Weeks High	52 Weeks Low
DCI INDONESIA TBK	41,650.000	+2,150.000	59,050.000	32,525.000
GOLDEN ENERGY MINES TBK	9,000.000	+900.000	11,575.000	5,475.000
UNITED TRACTORS	24,900.000	+550.000	28,775.000	20,925.000
FKS MULTI AGRO TBK	6,725.000	+500.000	6,750.000	5,450.000
JASA MARGA	5,475.000	+350.000	5,700.000	3,560.000

#### Top Losers

Name	Last Done	Change Over 5 Days	52 Weeks High	52 Weeks Low
SIANTAR TOP	13,600.000	-600.000	16,900.000	9,000.000
PETROSEA	8,100.000	-550.000	9,850.000	2,810.000
INDAH KIAT PULP & PAPER	8,050.000	-450.000	11,850.000	7,600.000
BAYAN RESOURCES TBK	17,500.000	-425.000	21,025.000	14,950.000
PABRIK KERTAS TJIWI KIMIA	7,800.000	-425.000	10,375.000	6,125.000

### SET (Thai Baht)

#### Top Gainers

Name	Last Done	Change Over 5 Days	52 Weeks High	52 Weeks Low
FE	190.000	+12.000	199.500	137.500
NEW	91.000	+6.750	141.500	60.000
STANLY	204.000	+4.000	233.000	171.500
ADVANC	223.000	+3.000	231.000	193.000
TTI	24.500	+2.200	33.500	22.100

#### Top Losers

Name	Last Done	Change Over 5 Days	52 Weeks High	52 Weeks Low
OHTL	364.000	-33.000	500.000	352.000
AEONTS	110.500	-9.500	179.000	107.000
MASTER	48.750	-8.750	81.750	41.500
JTS	59.250	-7.750	93.500	27.250
BH	241.000	-6.000	272.000	210.000

### HKEX (HKD)

#### Top Gainers

Name	Last Done	Change Over 5 Days	52 Weeks High	52 Weeks Low
MARKETINGFORCE (2556)	96.150	+9.150	99.200	45.000
TIANJUDIHE (2479)	71.350	+6.550	117.200	59.750
XD INC (2400)	19.040	+3.000	22.250	7.470
POWER ASSETS (6)	49.450	+2.700	49.600	36.100
KINGFARPROPERTY (1354)	10.800	+2.620	11.800	5.100

#### Top Losers

Name	Last Done	Change Over 5 Days	52 Weeks High	52 Weeks Low
ASMPT (522)	78.700	-38.100	119.000	64.700
TENCENT-R (80700)	325.400	-18.600	372.800	240.000
TENCENT (700)	351.200	-18.000	401.000	260.200
YUM CHINA (9987)	228.400	-15.600	485.000	225.200
MEITUAN-WR (83690)	99.100	-12.600	137.200	56.950

### SGX (SGD)

#### Top Gainers

Name	Last Done	Change Over 5 Days	52 Weeks High	52 Weeks Low
17LIVE GROUP	0.830	+0.305	4.790	0.425
VENTURE	15.000	+0.170	15.050	11.360
BHG RETAIL REIT	0.490	+0.090	0.505	0.325
DYNA-MAC	0.585	+0.080	0.595	0.221
UOI	7.210	+0.080	7.500	5.801

#### Top Losers

Name	Last Done	Change Over 5 Days	52 Weeks High	52 Weeks Low
DBS	36.540	-0.360	38.550	28.191
IFAST	7.110	-0.310	8.510	5.000
AZEUS	9.500	-0.300	10.800	7.400
NIO INC. USD OV	4.410	-0.270	15.780	3.730
FRENCKEN	1.340	-0.250	1.740	0.805

# LITTLE RESISTANCE ON AJIYA'S RM250 MIL LOANS TO CHIN HIN, RPT CARRIED

Non-interested shareholders voted in favour of an RPT between Ajiya and its holding company Chin Hin Group, in an EGM, despite extensive debates and discussions on its capital management, Chin Hin Group's credit profile and the management of cash flow, liquidity and risk. Despite being scrutinised over a controversial related party transaction (RPT) with its holding company, Chin Hin Group Berhad (CHGB), Ajiya Berhad managed to garner support from non-interested shareholders in a recently held extraordinary general meeting (EGM).

On 15 July 2024, Ajiya sought non-interested shareholders' approval for a Proposed Provision of Financial Assistance (collectively known as the Resolution) amounting to RM250 million to CHGB, Ajiya's holding company with a 55.85% equity

interest. As this transaction was an RPT involving CHGB, Ajiya directors, including Executive Chairman Datuk Seri Chiau Beng Teik, Managing Director Chiau Haw Choon and Independent Non-executive Director (INED) Datuk Hj Mohd Yusri Md Yusof, were deemed “Interested Directors” due to their roles in both Ajiya and CHGB. The Interested Directors abstained from the deliberations and voting on the Proposed Provision of Financial Assistance during the EGM.

Extensive debates and discussions about the transaction were held before the meeting. Earlier, the MSWG Team thoroughly delved into this matter in the 14 June 2024 issue of The Observer newsletter, titled “Ajiya’s RM250 million loans to Chin Hin - A strategic investment or risky bet?”. Additionally, the media and analysts discussed the financial conditions of the companies involved, the pros and cons, and the treatment of minority shareholders in this deal. Despite the lively discourse, the voting results were overwhelmingly in favour of the Resolution. By the number of shares, 99.19% (32.74 million shares) voted in favour, while 0.81% (266,630 shares) voted against. Regarding the number of shareholders, 64.7% (22 shareholders with 64 records) voted for the Resolution, while 35.3% (12 shareholders with 12 records) voted against it. The Resolution was passed with little resistance from non-interested shareholders.

In our letter to Ajiya dated 12 July 2024, we raised a list of questions on the Resolution. The Board flashed our questions and their responses in the EGM on screen without any verbal presentation. The full text of our questions and Ajiya’s responses is available [here](#).

## **QUESTION 1: WHY NOT KEEP IT FOR YOUR USE?**

For context, Ajiya needs RM250 million in ready cash to lend to CHGB. To generate sufficient funds for the loan, it would need to liquidate its investments in properties, bonds, money market funds and securities. We believe that Ajiya could have used these resources to grow its own building materials business instead of channelling it to Chin Hin, which is also involved in a similar industry. We questioned how this provision was a promising move for Ajiya compared to expanding its business.

In response, Ajiya emphasised that its products (primarily metal and glass-made building materials) distinctly differ from CHGB's, which focuses on concrete-based products. Given its distinct product offerings, Ajiya believes CHGB's expansion plan would benefit itself through increased product orders and demand. Moreover, Ajiya explained that the financial assistance reflects a strategic and prudent allocation of resources, as it lacks immediate expansion plans that could fully unleash the potential and returns of available financial resources, unlike CHGB, which has "well-defined and actionable growth initiatives that require immediate funding". By extending financial assistance to CHGB, Ajiya not only supports the growth of its holding company but also generates an attractive return of 7.5% per annum from its investments.

## **QUESTION 2: CHGB'S CREDIT PROFILE, STRETCHED BALANCE SHEET AND GEARING LEVEL**

Secondly, we questioned the creditworthiness of CHGB, given its stretched balance sheet and high gearing level, which could be a concern for Ajiya. Ajiya reassured shareholders that CHGB consistently generates sufficient cash from its building material

division and receives dividend income from strategic investment subsidiaries and associates, e.g., Signature International Berhad, Fiamma Holdings Berhad and Ajiya, all of which boast significant levels of retained earnings, ample liquidity, and strong cash generating abilities.

Additionally, Ajiya pointed out that CHGB's Property and Construction divisions have substantial unbilled sales of RM604.2 million and an order book of RM1.3 billion, respectively. These projects are anticipated to contribute significantly and positively to CHGB in the medium term. Furthermore, CHGB could tap into its perpetual programme or other equity-raising channels to support its growth initiatives.

### **QUESTION 3: AJIYA'S CASH FLOW, LIQUIDITY, RISK EXPOSURE AND POTENTIAL COI**

We also focused on Ajiya's cash flow and liquidity management in case CHGB delays or defaults in payment if its expansion plan hits a roadblock. In response, Ajiya outlined several measures to manage its cash flow and ensure liquidity resilience. The measures include rigorous cash flow forecasting and monitoring, maintaining contingency reserves and liquidity buffers, and regular communication and collaboration with CHGB to ensure cash flow and liquidity stability and sustainability.

We then queried Ajiya's risk exposure over CHGB's interconnectedness with its subsidiaries and related companies, as CHGB intends to deploy up to RM50 million of the provision for other investment purposes, including raising its stakes in Signature International and Chin Hin Group Property Berhad (CHGP). CHGB also plans to use RM110 million from the provision to acquire two of CHGP's subsidiaries. Ajiya reiterated that it would

implement a risk management framework to continuously monitor CHGB's financial performance and ensure robust repayment terms. As mentioned, it will maintain regular communication with CHGB to promptly and effectively address potential risks.

Lastly, Ajiya emphasised that the financial assistance to CHGB should not be perceived as prioritising CHGB's growth over itself. This move should not be seen as a conflict of interest or a disregard for minority shareholders' interests. Ajiya said the Board had deliberated extensively, with advice and analysis from the independent adviser, FHMH Corporate Advisory Sdn Bhd. The conclusion was that the provision was a strategic move to capitalise on immediate growth opportunities and serve the best interests of all shareholders. Consequently, the Board and independent adviser recommended non-interested shareholders to vote in favour of the Resolution.

## **DUST SETTLED**

Recalled that the RPT caused a brouhaha when first announced in May 2024. Alas, despite the attention paid to the deal, the Board did not provide any presentation on the transaction. Nevertheless, Ajiya responded to our questions in detail, though its responses primarily recapitulated the points in the Circular dated 28 June 2024. Now that the dust has settled, Ajiya's directors and management are responsible for ensuring the transaction is carried out transparently and at arm's length.

As minority shareholders, we shall continue to monitor these companies actively.

**DEFINITION:** Insider Activity shows the trades made by substantial shareholders or directors of the company. Purchases by the directors and company share buyback may indicate the share price is undervalued and brings confidence to the price trend of the share price.



ShareInvestor WebPro > Fundamental > Insider Trades > click Search tab > Select Bursa > click Stock name > scroll up and leave at <Select Counter> Type Date Range for Announcement Date > click Search

Notice Period is 14th July 2024 – 20th July 2024

Effective Change Date	Stock Name	Buyer/ Seller Name [Classification]	Bought / (Sold) ['000]		
			Total	No. of Shares After Trade ['000]	% Held
16 JUL 2024 - 17 JUL 2024	3A	MR TEO KWEE HOCK [SSH]	174	51,461	10.524
12 JUL 2024 - 12 JUL 2024	ABMB	EMPLOYEES PROVIDENT FUND BOARD [SSH]	-1,063	156,357	10.1
10 JUL 2024 - 10 JUL 2024	ABMB	EMPLOYEES PROVIDENT FUND BOARD [SSH]	300	157,416	10.168
15 JUL 2024 - 15 JUL 2024	AEON	EMPLOYEES PROVIDENT FUND BOARD [SSH]	1,000	94,063	6.7
12 JUL 2024 - 12 JUL 2024	AGX	DATO' GEORGE ALFONSO MIRANDA [DIR/CEO]	-35	115	0.027
11 JUL 2024 - 11 JUL 2024	AMBANK	EMPLOYEES PROVIDENT FUND BOARD [SSH]	-1,366	522,580	15.809
10 JUL 2024 - 10 JUL 2024	AMBANK	EMPLOYEES PROVIDENT FUND BOARD [SSH]	-3,852	523,946	15.85
15 JUL 2024 - 17 JUL 2024	ANCOMNY	DATO' SIEW KA WEI [DIR/CEO]	11	18,311	20.878
11 JUL 2024 - 11 JUL 2024	ANCOMNY	MR LEE CHEUN WEI [DIR/CEO]	3,300	99,883	10.556
11 JUL 2024 - 11 JUL 2024	ANCOMNY	MR LEE CHEUN WEI [DIR/CEO]	-3,300	172,799	19.702
11 JUL 2024 - 11 JUL 2024	ANCOMNY	MR LEE CHEUN WEI [SSH]	3,300	99,883	10.556
15 JUL 2024 - 15 JUL 2024	APB	MR LIAW WAY GIAN [DIR/CEO]	11	2,253	1.997
15 JUL 2024 - 15 JUL 2024	APEX	DATUK WIRA FARHASH WAFSA SALVADOR J.P. [DIR/CEO]	1,680	3,617	1.785
17 JUL 2024 - 17 JUL 2024	APPASIA	PELABURAN MARA BERHAD [SSH]	-2,000	67,250	5.95
16 JUL 2024 - 16 JUL 2024	ATECH	EMPLOYEES PROVIDENT FUND BOARD [SSH]	-218	30,437	7.022
15 JUL 2024 - 15 JUL 2024	ATECH	EMPLOYEES PROVIDENT FUND BOARD [SSH]	-349	30,655	7.072
15 JUL 2024 - 15 JUL 2024	ATECH	ABRDN HOLDINGS LIMITED [SSH]	-53	27,324	6.303
15 JUL 2024 - 15 JUL 2024	ATECH	ABRDN MALAYSIA SDN. BHD. [SSH]	-53	26,799	6.182
15 JUL 2024 - 15 JUL 2024	ATECH	ABRDN PLC [SSH]	-53	27,324	6.303
12 JUL 2024 - 12 JUL 2024	ATECH	ABRDN HOLDINGS LIMITED [SSH]	-89	27,376	6.316
12 JUL 2024 - 12 JUL 2024	ATECH	ABRDN MALAYSIA SDN. BHD. [SSH]	-89	26,851	6.194
12 JUL 2024 - 12 JUL 2024	ATECH	ABRDN PLC [SSH]	-89	27,376	6.316
12 JUL 2024 - 12 JUL 2024	ATECH	EMPLOYEES PROVIDENT FUND BOARD [SSH]	-229	31,004	7.153
11 JUL 2024 - 11 JUL 2024	ATECH	EMPLOYEES PROVIDENT FUND BOARD [SSH]	-301	31,233	7.206
11 JUL 2024 - 11 JUL 2024	ATECH	ABRDN HOLDINGS LIMITED [SSH]	-77	27,465	6.336
11 JUL 2024 - 11 JUL 2024	ATECH	ABRDN MALAYSIA SDN. BHD. [SSH]	-77	26,940	6.215
11 JUL 2024 - 11 JUL 2024	ATECH	ABRDN PLC [SSH]	-77	27,465	6.336
10 JUL 2024 - 10 JUL 2024	ATECH	EMPLOYEES PROVIDENT FUND BOARD [SSH]	-434	31,533	7.275
16 JUL 2024 - 16 JUL 2024	AXIATA	EMPLOYEES PROVIDENT FUND BOARD [SSH]	7,847	1,699,887	18.513
15 JUL 2024 - 15 JUL 2024	AXIATA	EMPLOYEES PROVIDENT FUND BOARD [SSH]	2,586	1,692,040	18.428
12 JUL 2024 - 12 JUL 2024	AXIATA	AMANAHRAYA TRUSTEES BERHAD-AMANAH SAHAM BUMIPUTERA [SSH]	3,500	1,123,704	12.238
11 JUL 2024 - 11 JUL 2024	AXIATA	EMPLOYEES PROVIDENT FUND BOARD [SSH]	753	1,689,454	18.4
18 JUL 2024 - 18 JUL 2024	AXREIT	KUMPULAN WANG PERSARAAN (DIPERBADANKAN) [SSH]	-397	181,165	10.367
17 JUL 2024 - 17 JUL 2024	AXREIT	KUMPULAN WANG PERSARAAN (DIPERBADANKAN) [SSH]	-392	181,562	10.39
16 JUL 2024 - 16 JUL 2024	AXREIT	KUMPULAN WANG PERSARAAN (DIPERBADANKAN) [SSH]	-251	181,955	10.412
12 JUL 2024 - 12 JUL 2024	AXREIT	EMPLOYEES PROVIDENT FUND BOARD [SSH]	500	311,299	17.814
15 JUL 2024 - 15 JUL 2024	AXREIT	KUMPULAN WANG PERSARAAN (DIPERBADANKAN) [SSH]	-91	182,206	10.427
11 JUL 2024 - 11 JUL 2024	AXREIT	EMPLOYEES PROVIDENT FUND BOARD [SSH]	559	310,799	17.785
12 JUL 2024 - 12 JUL 2024	AXREIT	KUMPULAN WANG PERSARAAN (DIPERBADANKAN) [SSH]	-15	182,297	10.432
18 JUL 2024 - 18 JUL 2024	BAUTO	LEMBAGA TABUNG HAJI [SSH]	500	61,807	5.288
16 JUL 2024 - 16 JUL 2024	BAUTO	EMPLOYEES PROVIDENT FUND BOARD [SSH]	2,101	153,159	13.104
17 JUL 2024 - 17 JUL 2024	BAUTO	LEMBAGA TABUNG HAJI [SSH]	500	61,307	5.245
15 JUL 2024 - 15 JUL 2024	BAUTO	EMPLOYEES PROVIDENT FUND BOARD [SSH]	-956	151,058	12.924
16 JUL 2024 - 16 JUL 2024	BAUTO	LEMBAGA TABUNG HAJI [SSH]	500	60,807	5.202
12 JUL 2024 - 12 JUL 2024	BAUTO	EMPLOYEES PROVIDENT FUND BOARD [SSH]	-1,377	152,015	13.006
15 JUL 2024 - 15 JUL 2024	BAUTO	LEMBAGA TABUNG HAJI [SSH]	250	60,307	5.16
11 JUL 2024 - 11 JUL 2024	BAUTO	EMPLOYEES PROVIDENT FUND BOARD [SSH]	1,917	153,391	13.124
12 JUL 2024 - 12 JUL 2024	BAUTO	LEMBAGA TABUNG HAJI [SSH]	250	60,057	5.138
10 JUL 2024 - 10 JUL 2024	BAUTO	EMPLOYEES PROVIDENT FUND BOARD [SSH]	-115	151,475	12.96
17 JUL 2024 - 18 JUL 2024	BJCORP	MISS CHRYSEIS TAN SHEIK LING [DIR/CEO]	-7,318	37,997	0.651
17 JUL 2024 - 17 JUL 2024	BJCORP	TAN SRI DATO' SERI VINCENT TAN CHEE YIUON [SSH]	1,800	971,778	16.639
15 JUL 2024 - 16 JUL 2024	BJCORP	TAN SRI DATO' SERI VINCENT TAN CHEE YIUON [SSH]	9,314	969,978	16.608
12 JUL 2024 - 12 JUL 2024	BJCORP	MISS CHRYSEIS TAN SHEIK LING [DIR/CEO]	-1,129	45,315	0.776
12 JUL 2024 - 12 JUL 2024	BJCORP	TAN SRI DATO' SERI VINCENT TAN CHEE YIUON [SSH]	500	960,664	16.448
16 JUL 2024 - 16 JUL 2024	BKAWAN	TAN SRI DATO' SERI LEE OI HIAN [DIR/CEO]	50	220,306	56.097
16 JUL 2024 - 16 JUL 2024	BKAWAN	TAN SRI DATO' SERI LEE OI HIAN [SSH]	50	220,306	56.097
15 JUL 2024 - 15 JUL 2024	BMGREEN	MR CHIA LIK KHAJ [DIR/CEO]	5,000	5,500	1.07
16 JUL 2024 - 16 JUL 2024	BURSA	EMPLOYEES PROVIDENT FUND BOARD [SSH]	-1,408	79,813	9.862
16 JUL 2024 - 16 JUL 2024	BURSA	EMPLOYEES PROVIDENT FUND BOARD [SSH]	1,171	80,984	10.007
15 JUL 2024 - 15 JUL 2024	BURSA	EMPLOYEES PROVIDENT FUND BOARD [SSH]	793	81,220	10.036
15 JUL 2024 - 15 JUL 2024	BURSA	EMPLOYEES PROVIDENT FUND BOARD [SSH]	-750	80,428	9.938
12 JUL 2024 - 12 JUL 2024	BURSA	EMPLOYEES PROVIDENT FUND BOARD [SSH]	-845	80,728	9.975

Notice Period is 14th July 2024 – 20th July 2024

Effective Change Date	Stock Name	Buyer/ Seller Name [Classification]	Bought / (Sold) ['000]		
			Total	No. of Shares After Trade ['000]	% Held
12 JUL 2024 - 12 JUL 2024	BURSA	EMPLOYEES PROVIDENT FUND BOARD [SSH]	450	81,178	10.031
11 JUL 2024 - 11 JUL 2024	BURSA	EMPLOYEES PROVIDENT FUND BOARD [SSH]	670	81,572	10.079
11 JUL 2024 - 11 JUL 2024	BURSA	EMPLOYEES PROVIDENT FUND BOARD [SSH]	-1,250	80,902	9.997
10 JUL 2024 - 10 JUL 2024	BURSA	EMPLOYEES PROVIDENT FUND BOARD [SSH]	-1,538	81,622	10.086
10 JUL 2024 - 10 JUL 2024	BURSA	EMPLOYEES PROVIDENT FUND BOARD [SSH]	530	82,152	10.151
16 JUL 2024 - 16 JUL 2024	CABNET	MR TAN BOON SIANG [SSH]	-180	17,282	9.668
15 JUL 2024 - 15 JUL 2024	CDB	EMPLOYEES PROVIDENT FUND BOARD [SSH]	318	1,161,379	9.9
16 JUL 2024 - 18 JUL 2024	CHINHIN	DATUK SERI CHIAU BENG TEIK JP [DIR/CEO]	-4,350	2,077,742	58.713
16 JUL 2024 - 18 JUL 2024	CHINHIN	DATUK SERI CHIAU BENG TEIK JP [SSH]	-4,350	2,077,742	58.713
16 JUL 2024 - 16 JUL 2024	CHINHIN	DIVINE INVENTIONS SDN BHD [SSH]	-5,350	1,308,340	36.971
16 JUL 2024 - 16 JUL 2024	CHINHIN	MR CHIAU HAW CHOON [DIR/CEO]	-5,350	1,511,908	42.723
16 JUL 2024 - 16 JUL 2024	CHINHIN	MR CHIAU HAW CHOON [SSH]	-5,350	1,511,908	42.723
16 JUL 2024 - 16 JUL 2024	CHINHIN	PP CHIN HIN REALTY SDN BHD [SSH]	-5,350	1,308,340	36.971
11 JUL 2024 - 11 JUL 2024	CHINHIN	DATUK SERI CHIAU BENG TEIK JP [DIR/CEO]	1,100	2,082,092	58.835
11 JUL 2024 - 11 JUL 2024	CHINHIN	DATUK SERI CHIAU BENG TEIK JP [SSH]	1,100	2,082,092	58.835
15 JUL 2024 - 15 JUL 2024	CIMB	EMPLOYEES PROVIDENT FUND BOARD [SSH]	-5,979	1,603,712	14.99
16 JUL 2024 - 16 JUL 2024	CIMB	KUMPULAN WANG PERSARAAN (DIPERBADANKAN) [SSH]	-543	664,524	6.21
12 JUL 2024 - 12 JUL 2024	CIMB	EMPLOYEES PROVIDENT FUND BOARD [SSH]	-4,714	1,609,691	15.05
11 JUL 2024 - 11 JUL 2024	CIMB	EMPLOYEES PROVIDENT FUND BOARD [SSH]	-2,779	1,614,405	15.09
11 JUL 2024 - 11 JUL 2024	CIMB	KUMPULAN WANG PERSARAAN (DIPERBADANKAN) [SSH]	-1,583	665,067	6.21
10 JUL 2024 - 10 JUL 2024	CIMB	EMPLOYEES PROVIDENT FUND BOARD [SSH]	-6,079	1,617,184	15.12
09 JUL 2024 - 09 JUL 2024	CIMB	EMPLOYEES PROVIDENT FUND BOARD [SSH]	5,530	1,623,264	15.17
05 JUL 2024 - 05 JUL 2024	CIMB	EMPLOYEES PROVIDENT FUND BOARD [SSH]	16,776	1,617,734	15.12
05 JUL 2024 - 05 JUL 2024	CIMB	KHAZANAH NASIONAL BERHAD [SSH]	-35,000	2,311,307	21.61
15 JUL 2024 - 15 JUL 2024	CLMT	KUMPULAN WANG PERSARAAN (DIPERBADANKAN) [SSH]	-1,300	294,050	10.374
18 JUL 2024 - 18 JUL 2024	CTOS	KUMPULAN WANG PERSARAAN (DIPERBADANKAN) [SSH]	120	166,483	7.207
18 JUL 2024 - 18 JUL 2024	CTOS	WASATCH ADVISORS LP [SSH]	-219	127,629	5.525
17 JUL 2024 - 17 JUL 2024	CTOS	ABRDN HOLDINGS LIMITED [SSH]	1,900	321,174	13.904
17 JUL 2024 - 17 JUL 2024	CTOS	ABRDN MALAYSIA SDN BHD [SSH]	1,863	318,424	13.785
17 JUL 2024 - 17 JUL 2024	CTOS	ABRDN PLC [SSH]	1,900	321,174	13.904
16 JUL 2024 - 16 JUL 2024	CTOS	EMPLOYEES PROVIDENT FUND BOARD [SSH]	1,546	401,709	17.39
17 JUL 2024 - 17 JUL 2024	CTOS	KUMPULAN WANG PERSARAAN (DIPERBADANKAN) [SSH]	262	166,363	7.202
16 JUL 2024 - 16 JUL 2024	CTOS	ABRDN HOLDINGS LIMITED [SSH]	2,450	319,274	13.821
16 JUL 2024 - 16 JUL 2024	CTOS	ABRDN MALAYSIA SDN BHD [SSH]	2,402	316,562	13.704
16 JUL 2024 - 16 JUL 2024	CTOS	ABRDN PLC [SSH]	2,450	319,274	13.821
15 JUL 2024 - 15 JUL 2024	CTOS	EMPLOYEES PROVIDENT FUND BOARD [SSH]	947	400,163	17.323
16 JUL 2024 - 16 JUL 2024	CTOS	KUMPULAN WANG PERSARAAN (DIPERBADANKAN) [SSH]	338	166,101	7.191
15 JUL 2024 - 15 JUL 2024	CTOS	ABRDN HOLDINGS LIMITED [SSH]	1,500	316,824	13.715
15 JUL 2024 - 15 JUL 2024	CTOS	ABRDN MALAYSIA SDN BHD [SSH]	1,470	314,160	13.6
15 JUL 2024 - 15 JUL 2024	CTOS	ABRDN PLC [SSH]	1,500	316,824	13.715
12 JUL 2024 - 12 JUL 2024	CTOS	EMPLOYEES PROVIDENT FUND BOARD [SSH]	880	398,991	17.272
15 JUL 2024 - 15 JUL 2024	CTOS	KUMPULAN WANG PERSARAAN (DIPERBADANKAN) [SSH]	207	165,763	7.176
15 JUL 2024 - 15 JUL 2024	CTOS	WASATCH ADVISORS LP [SSH]	0.9	127,848	5.535
12 JUL 2024 - 12 JUL 2024	CTOS	ABRDN HOLDINGS LIMITED [SSH]	650	315,324	13.65
12 JUL 2024 - 12 JUL 2024	CTOS	ABRDN MALAYSIA SDN BHD [SSH]	637	312,690	13.536
12 JUL 2024 - 12 JUL 2024	CTOS	ABRDN PLC [SSH]	650	315,324	13.65
11 JUL 2024 - 11 JUL 2024	CTOS	EMPLOYEES PROVIDENT FUND BOARD [SSH]	1,029	398,112	17.234
12 JUL 2024 - 12 JUL 2024	CTOS	KUMPULAN WANG PERSARAAN (DIPERBADANKAN) [SSH]	90	165,556	7.167
12 JUL 2024 - 12 JUL 2024	CTOS	WASATCH ADVISORS LP [SSH]	86	127,848	5.535
11 JUL 2024 - 11 JUL 2024	CTOS	ABRDN HOLDINGS LIMITED [SSH]	650	314,674	13.622
11 JUL 2024 - 11 JUL 2024	CTOS	ABRDN MALAYSIA SDN BHD [SSH]	638	312,052	13.509
11 JUL 2024 - 11 JUL 2024	CTOS	ABRDN PLC [SSH]	650	314,674	13.622
10 JUL 2024 - 10 JUL 2024	CTOS	EMPLOYEES PROVIDENT FUND BOARD [SSH]	10,274	397,083	17.19
15 JUL 2024 - 15 JUL 2024	CVIEW	PUAN SADIAH BINTI SULEIMAN [SSH]	-50	9,600	9.6
16 JUL 2024 - 16 JUL 2024	CYPARK	MR CHUNG CHEE YANG [SSH]	80	49,595	6.027
15 JUL 2024 - 15 JUL 2024	D&O	EMPLOYEES PROVIDENT FUND BOARD [SSH]	-168	94,510	7.625
11 JUL 2024 - 11 JUL 2024	D&O	EMPLOYEES PROVIDENT FUND BOARD [SSH]	-14	94,678	7.639
10 JUL 2024 - 10 JUL 2024	D&O	EMPLOYEES PROVIDENT FUND BOARD [SSH]	-9	94,691	7.64
12 JUL 2024 - 12 JUL 2024	DELEUM	DATUK VIVEKANANTHAN A/L M.V. NATHAN [DIR/CEO]	100	125,244	31.19
12 JUL 2024 - 12 JUL 2024	DELEUM	DATUK VIVEKANANTHAN A/L M.V. NATHAN [SSH]	100	125,244	31.19
15 JUL 2024 - 15 JUL 2024	DIALOG	EMPLOYEES PROVIDENT FUND BOARD [SSH]	200	919,624	16.3
15 JUL 2024 - 15 JUL 2024	DIALOG	KUMPULAN WANG PERSARAAN (DIPERBADANKAN) [SSH]	-1,000	616,238	10.92

**Disclaimer:** The Information in Insider Activity is extracted from [www.shareinvestor.com/fundamental/insider\\_trades](http://www.shareinvestor.com/fundamental/insider_trades). The information on this page is provided as a service to readers. It does not constitute financial advice and/or any investment recommendations. We assume no liability for damages resulting from or arising out of the use of such information. Whilst every effort is made to ensure accuracy, the information presented is not the official record of shareholder filings. Readers are advised to read the original filings on the Bursa Malaysia website at [www.bursamalaysia.com](http://www.bursamalaysia.com)



**STROM**  
SWISS TIMEPIECES & JEWELLERY



StromWatch Asia  
Tele : +65.9817.3378  
Email : ll.stromasia@gmail.com  
[WWW.STROMWATCH.SWISS](http://WWW.STROMWATCH.SWISS)

Notice Period is 14th July 2024 – 20th July 2024

Effective Change Date	Stock Name	Buyer/ Seller Name [Classification]	Bought / (Sold) ['000]	No. of Shares After Trade ['000]	
			Total	Total	% Held
11 JUL 2024 - 11 JUL 2024	DIALOG	EMPLOYEES PROVIDENT FUND BOARD [SSH]	778	919,424	16.29
16 JUL 2024 - 16 JUL 2024	DLADY	AMANAHRAYA TRUSTEES BERHAD - AMANAH SAHAM BUMIPUTERA [SSH]	-13	4,518	7.059
15 JUL 2024 - 15 JUL 2024	DLADY	AMANAHRAYA TRUSTEES BERHAD - AMANAH SAHAM BUMIPUTERA [SSH]	-11	4,531	7.079
12 JUL 2024 - 12 JUL 2024	DLADY	AMANAHRAYA TRUSTEES BERHAD - AMANAH SAHAM BUMIPUTERA [SSH]	-59	4,541	7.096
11 JUL 2024 - 11 JUL 2024	DLADY	AMANAHRAYA TRUSTEES BERHAD - AMANAH SAHAM BUMIPUTERA [SSH]	-41	4,600	7.188
10 JUL 2024 - 10 JUL 2024	DPHARMA	EMPLOYEES PROVIDENT FUND BOARD [SSH]	166	83,044	8.633
17 JUL 2024 - 17 JUL 2024	DPS	EDMUND SOW YONG MING [SSH]	6,956	124,670	51.078
17 JUL 2024 - 17 JUL 2024	DPS	EDWARD SOW YUEN SENG [DIR/CEO]	6,956	124,670	51.078
17 JUL 2024 - 17 JUL 2024	DPS	EMILY SOW MEI CHET [DIR/CEO]	6,956	124,670	51.078
17 JUL 2024 - 17 JUL 2024	DPS	EUGENE SOW CHUAN SHENG [DIR/CEO]	6,956	124,670	51.078
17 JUL 2024 - 17 JUL 2024	DPS	EUGENE SOW CHUAN SHENG [SSH]	6,956	124,670	51.078
17 JUL 2024 - 17 JUL 2024	DPS	MISS EMILY SOW MEI CHET [SSH]	6,956	124,670	51.078
17 JUL 2024 - 17 JUL 2024	DPS	MR EDWARD SOW YUEN SENG [SSH]	6,956	124,670	51.078
17 JUL 2024 - 17 JUL 2024	DPS	MR ERIC SOW YONG SHING [SSH]	6,956	124,712	51.095
17 JUL 2024 - 17 JUL 2024	DPS	PUAN SRI CHU KIM GUEK [DIR/CEO]	6,956	124,712	51.095
17 JUL 2024 - 17 JUL 2024	DPS	PUAN SRI CHU KIM GUEK [SSH]	6,956	124,712	51.095
17 JUL 2024 - 17 JUL 2024	DPS	TAN SRI (DR) SOW CHIN CHUAN [DIR/CEO]	6,956	124,712	51.095
17 JUL 2024 - 17 JUL 2024	DPS	TAN SRI (DR) SOW CHIN CHUAN [SSH]	6,956	124,712	51.095
15 JUL 2024 - 15 JUL 2024	DPS	EDMUND SOW YONG MING [SSH]	21,899	117,714	49.716
15 JUL 2024 - 15 JUL 2024	DPS	EDWARD SOW YUEN SENG [DIR/CEO]	21,899	117,714	49.716
15 JUL 2024 - 15 JUL 2024	DPS	EMILY SOW MEI CHET [DIR/CEO]	21,899	117,714	49.716
15 JUL 2024 - 15 JUL 2024	DPS	EUGENE SOW CHUAN SHENG [DIR/CEO]	21,899	117,714	49.716
15 JUL 2024 - 15 JUL 2024	DPS	EUGENE SOW CHUAN SHENG [SSH]	21,899	117,714	49.716
15 JUL 2024 - 15 JUL 2024	DPS	MISS EMILY SOW MEI CHET [SSH]	21,899	117,714	49.716
15 JUL 2024 - 15 JUL 2024	DPS	MR EDWARD SOW YUEN SENG [SSH]	21,899	117,714	49.716
15 JUL 2024 - 15 JUL 2024	DPS	MR ERIC SOW YONG SHING [SSH]	21,899	117,756	49.734
15 JUL 2024 - 15 JUL 2024	DPS	PUAN SRI CHU KIM GUEK [DIR/CEO]	21,899	117,756	49.734
15 JUL 2024 - 15 JUL 2024	DPS	PUAN SRI CHU KIM GUEK [SSH]	21,899	117,756	49.734
15 JUL 2024 - 15 JUL 2024	DPS	TAN SRI (DR) SOW CHIN CHUAN [DIR/CEO]	21,899	117,756	49.734
15 JUL 2024 - 15 JUL 2024	DPS	TAN SRI (DR) SOW CHIN CHUAN [SSH]	21,899	117,756	49.734
16 JUL 2024 - 16 JUL 2024	DRBHC0M	EMPLOYEES PROVIDENT FUND BOARD [SSH]	-500	161,824	8.371
18 JUL 2024 - 18 JUL 2024	DS0NIC	MR CHEW CHI HONG [DIR/CEO]	1,950	146,812	5.259
18 JUL 2024 - 18 JUL 2024	DS0NIC	MR CHEW CHI HONG [SSH]	1,950	146,812	5.259
11 JUL 2024 - 11 JUL 2024	DS0NIC	DATO SAFIAN BIN MOHD YUNUS [SSH]	-600	406,409	14.559
15 JUL 2024 - 15 JUL 2024	ECONBHD	EMPLOYEES PROVIDENT FUND BOARD [SSH]	1,000	105,354	7.432
15 JUL 2024 - 15 JUL 2024	ECONBHD	KUMPULAN WANG PERSARAAN (DIPERBADANKAN) [SSH]	-2,398	72,521	5.116
12 JUL 2024 - 15 JUL 2024	ECOWLD-WB	MR LIEW TIAN XIONG [DIR/CEO]	1,384	49,960	8.547
18 JUL 2024 - 18 JUL 2024	EFRAME-WA	MADAM LIM SAW NEE [DIR/CEO]	-15,000	5,010	3.712
17 JUL 2024 - 17 JUL 2024	EKSONS	MR TAY HUA SIN [DIR/CEO]	561	78,564	48.65
17 JUL 2024 - 17 JUL 2024	EKSONS	MR TAY HUA SIN [SSH]	561	78,564	48.65
12 JUL 2024 - 12 JUL 2024	ENGKAH	MADAM NEOH LAY HWA [SSH]	1,471	59,542	50.41
12 JUL 2024 - 12 JUL 2024	ENGKAH	MR EWE ENG KAH [DIR/CEO]	1,471	59,542	50.41
12 JUL 2024 - 12 JUL 2024	ENGKAH	MR EWE ENG KAH [SSH]	1,471	59,542	50.41
11 JUL 2024 - 11 JUL 2024	ENGT0X-WB	MR NG CHOOI GUAN [DIR/CEO]	-324	3,370	3.09
17 JUL 2024 - 17 JUL 2024	F&N	AMANAHRAYA TRUSTEES BERHAD - AMANAH SAHAM BUMIPUTERA [SSH]	-15	27,401	7.471
16 JUL 2024 - 16 JUL 2024	F&N	AMANAHRAYA TRUSTEES BERHAD - AMANAH SAHAM BUMIPUTERA [SSH]	-40	27,417	7.475
16 JUL 2024 - 16 JUL 2024	F&N	EMPLOYEES PROVIDENT FUND BOARD [SSH]	133	41,823	11.403
15 JUL 2024 - 15 JUL 2024	F&N	EMPLOYEES PROVIDENT FUND BOARD [SSH]	-6	41,690	11.367
15 JUL 2024 - 15 JUL 2024	F&N	AMANAHRAYA TRUSTEES BERHAD - AMANAH SAHAM BUMIPUTERA [SSH]	-4	27,456	7.486
12 JUL 2024 - 12 JUL 2024	F&N	EMPLOYEES PROVIDENT FUND BOARD [SSH]	-165	41,696	11.368
12 JUL 2024 - 12 JUL 2024	F&N	AMANAHRAYA TRUSTEES BERHAD - AMANAH SAHAM BUMIPUTERA [SSH]	-1	27,460	7.487
11 JUL 2024 - 11 JUL 2024	F&N	EMPLOYEES PROVIDENT FUND BOARD [SSH]	875	41,862	11.413
11 JUL 2024 - 11 JUL 2024	F&N	AMANAHRAYA TRUSTEES BERHAD - AMANAH SAHAM BUMIPUTERA [SSH]	-15	27,462	7.487
10 JUL 2024 - 10 JUL 2024	F&N	EMPLOYEES PROVIDENT FUND BOARD [SSH]	134	40,987	11.175
16 JUL 2024 - 16 JUL 2024	FAREAST	MISS NG YEE KIM [DIR/CEO]	13	73	0.012
12 JUL 2024 - 12 JUL 2024	FAREAST	MISS NG YEE KIM [DIR/CEO]	40	60	0.01
18 JUL 2024 - 18 JUL 2024	FAVCO	ENCIK MAZLAN BIN ABDUL HAMID [DIR/CEO]	217	2,667	1.135
17 JUL 2024 - 17 JUL 2024	FFB	ABRDN HOLDINGS LIMITED [SSH]	-817	119,733	6.393
17 JUL 2024 - 17 JUL 2024	FFB	ABRDN MALAYSIA SDN BHD [SSH]	-817	118,333	6.318
17 JUL 2024 - 17 JUL 2024	FFB	ABRDN PLC [SSH]	-817	119,733	6.393
16 JUL 2024 - 16 JUL 2024	FFB	EMPLOYEES PROVIDENT FUND BOARD [SSH]	339	218,339	11.658
16 JUL 2024 - 16 JUL 2024	FFB	ABRDN HOLDINGS LIMITED [SSH]	-1,000	120,549	6.436
16 JUL 2024 - 16 JUL 2024	FFB	ABRDN MALAYSIA SDN BHD [SSH]	-1,000	119,150	6.362
16 JUL 2024 - 16 JUL 2024	FFB	ABRDN PLC [SSH]	-1,000	120,549	6.436
15 JUL 2024 - 15 JUL 2024	FFB	EMPLOYEES PROVIDENT FUND BOARD [SSH]	2	218,000	11.64
15 JUL 2024 - 15 JUL 2024	FFB	ABRDN HOLDINGS LIMITED [SSH]	-128	121,549	6.49
15 JUL 2024 - 15 JUL 2024	FFB	ABRDN MALAYSIA SDN BHD [SSH]	-128	120,150	6.415
15 JUL 2024 - 15 JUL 2024	FFB	ABRDN PLC [SSH]	-128	121,549	6.49
12 JUL 2024 - 12 JUL 2024	FFB	EMPLOYEES PROVIDENT FUND BOARD [SSH]	316	217,997	11.64
12 JUL 2024 - 12 JUL 2024	FFB	ABRDN HOLDINGS LIMITED [SSH]	-281	121,677	6.497
12 JUL 2024 - 12 JUL 2024	FFB	ABRDN MALAYSIA SDN BHD [SSH]	-281	120,277	6.422
12 JUL 2024 - 12 JUL 2024	FFB	ABRDN PLC [SSH]	-281	121,677	6.497
11 JUL 2024 - 11 JUL 2024	FFB	EMPLOYEES PROVIDENT FUND BOARD [SSH]	294	217,681	11.623
11 JUL 2024 - 11 JUL 2024	FFB	ABRDN HOLDINGS LIMITED [SSH]	-310	121,958	6.512
11 JUL 2024 - 11 JUL 2024	FFB	ABRDN MALAYSIA SDN BHD [SSH]	-310	120,559	6.437
11 JUL 2024 - 11 JUL 2024	FFB	ABRDN PLC [SSH]	-310	121,958	6.512
10 JUL 2024 - 10 JUL 2024	FFB	EMPLOYEES PROVIDENT FUND BOARD [SSH]	1,307	217,387	11.607
10 JUL 2024 - 10 JUL 2024	FOCUSP	PERBADANAN NASIONAL BERHAD [SSH]	-100	41,500	8.983
18 JUL 2024 - 18 JUL 2024	FPGROUP	DATO' ONG CHOON HENG [DIR/CEO]	625	189,400	34.685
18 JUL 2024 - 18 JUL 2024	FPGROUP	DATO' ONG CHOON HENG [SSH]	625	189,400	34.685
18 JUL 2024 - 18 JUL 2024	FPGROUP	MR LEE CHUN WAH [DIR/CEO]	400	188,280	34.48

Notice Period is 14th July 2024 – 20th July 2024

Effective Change Date	Stock Name	Buyer/ Seller Name [Classification]	Bought / (Sold) ['000]	No. of Shares After Trade ['000]	
			Total	Total	% Held
18 JUL 2024 - 18 JUL 2024	FPGROUP	MR LEE CHUN WAH [SSH]	400	188,280	34.48
16 JUL 2024 - 16 JUL 2024	FPHB	MRS LIEW TSUEY ER [DIR/CEO]	-33,354	281,646	62.588
16 JUL 2024 - 16 JUL 2024	FPHB	MRS LIEW TSUEY ER [SSH]	-33,354	281,646	62.588
16 JUL 2024 - 16 JUL 2024	FPHB	MR TIONG LEE CHIAN [DIR/CEO]	-11,600	303,400	67.422
16 JUL 2024 - 16 JUL 2024	FPHB	MR TIONG LEE CHIAN [SSH]	-11,600	303,400	67.422
15 JUL 2024 - 15 JUL 2024	GAMUDA	EMPLOYEES PROVIDENT FUND BOARD (EPF BOARD) [SSH]	2,531	275,378	9.93
12 JUL 2024 - 12 JUL 2024	GAMUDA	EMPLOYEES PROVIDENT FUND BOARD (EPF BOARD) [SSH]	7,061	272,847	9.84
11 JUL 2024 - 11 JUL 2024	GAMUDA	EMPLOYEES PROVIDENT FUND BOARD (EPF BOARD) [SSH]	7,110	265,786	9.59
10 JUL 2024 - 10 JUL 2024	GAMUDA	EMPLOYEES PROVIDENT FUND BOARD (EPF BOARD) [SSH]	641	258,676	9.33
12 JUL 2024 - 12 JUL 2024	GASMSIA	EMPLOYEES PROVIDENT FUND BOARD [SSH]	725	71,462	5.565
11 JUL 2024 - 11 JUL 2024	GASMSIA	EMPLOYEES PROVIDENT FUND BOARD [SSH]	91	70,737	5.509
09 JUL 2024 - 09 JUL 2024	GCAP	MR LEE POH HIN [SSH]	240	46,160	14.078
09 JUL 2024 - 09 JUL 2024	GCAP	MR LEE YEE LONG [SSH]	240	43,772	13.35
09 JUL 2024 - 09 JUL 2024	GCAP	PERCETAKAN SANWA INDUSTRIES SDN BHD [SSH]	240	19,660	5.996
17 JUL 2024 - 17 JUL 2024	GENETEC	MR CHEN KHAI VOON [SSH]	-2,357	57,383	7.388
16 JUL 2024 - 16 JUL 2024	GENETEC	EMPLOYEES PROVIDENT FUND BOARD [SSH]	-1,000	49,671	6.396
11 JUL 2024 - 11 JUL 2024	GENETEC	EMPLOYEES PROVIDENT FUND BOARD [SSH]	-1,000	50,671	6.524
15 JUL 2024 - 15 JUL 2024	GENP	EMPLOYEES PROVIDENT FUND BOARD [SSH]	300	119,812	13.355
12 JUL 2024 - 12 JUL 2024	GENP	EMPLOYEES PROVIDENT FUND BOARD [SSH]	82	119,512	13.321
11 JUL 2024 - 11 JUL 2024	GENP	EMPLOYEES PROVIDENT FUND BOARD [SSH]	800	119,411	13.31
10 JUL 2024 - 10 JUL 2024	GENP	EMPLOYEES PROVIDENT FUND BOARD [SSH]	500	118,611	13.221
15 JUL 2024 - 17 JUL 2024	GHL0YS	NTT DATA JAPAN CORPORATION [SSH]	909	1,124,470	98.508
12 JUL 2024 - 12 JUL 2024	GHL0YS	NTT DATA JAPAN CORPORATION [SSH]	1,656	1,123,560	98.428
12 JUL 2024 - 12 JUL 2024	HARNLEN	LNH ENTERPRISE SDN. BHD. [SSH]	-14,000	103,819	18.423
12 JUL 2024 - 12 JUL 2024	HARNLEN	MR LOW KOK YAOW [DIR/CEO]	-14,000	258,661	45.899
12 JUL 2024 - 12 JUL 2024	HARNLEN	MR LOW KOK YAOW [SSH]	-14,000	258,661	45.899
12 JUL 2024 - 12 JUL 2024	HARNLEN	MR LOW KOK YONG [SSH]	-14,000	259,656	46.076
12 JUL 2024 - 12 JUL 2024	HARNLEN	MR LOW KUECK SHIN [DIR/CEO]	-14,000	246,974	43.825
12 JUL 2024 - 12 JUL 2024	HARNLEN	MR LOW KUECK SHIN [SSH]	-14,000	246,844	43.802
12 JUL 2024 - 12 JUL 2024	HARNLEN	MR LOW KUEK KONG [DIR/CEO]	-14,000	246,594	43.757
12 JUL 2024 - 12 JUL 2024	HARNLEN	MR LOW KUEK KONG [SSH]	-14,000	246,594	43.757
12 JUL 2024 - 12 JUL 2024	HARNLEN	MR LOW KWEE LEE [DIR/CEO]	-14,000	246,804	43.794
12 JUL 2024 - 12 JUL 2024	HARNLEN	MR LOW KWEE LEE [SSH]	-14,000	246,804	43.794
12 JUL 2024 - 12 JUL 2024	HARNLEN	MR LOW QUEK KIONG [DIR/CEO]	-14,000	282,391	50.109
12 JUL 2024 - 12 JUL 2024	HARNLEN	MR LOW QUEK KIONG [SSH]	-14,000	274,711	48.746
12 JUL 2024 - 12 JUL 2024	HARNLEN	PUAN SRI DATIN CHAN PUI LEORN [DIR/CEO]	-14,000	259,688	46.081
12 JUL 2024 - 12 JUL 2024	HARNLEN	PUAN SRI DATIN CHAN PUI LEORN [SSH]	-14,000	259,688	46.081
12 JUL 2024 - 12 JUL 2024	HARNLEN	TAN SRI LOW NAM HUI [SSH]	-14,000	245,804	43.617
11 JUL 2024 - 11 JUL 2024	HARNLEN	LNH ENTERPRISE SDN. BHD. [SSH]	-7,500	117,819	20.907
11 JUL 2024 - 11 JUL 2024	HARNLEN	MR LOW KOK YAOW [DIR/CEO]	-7,500	272,661	48.383
11 JUL 2024 - 11 JUL 2024	HARNLEN	MR LOW KOK YAOW [SSH]	-7,500	272,661	48.383
11 JUL 2024 - 11 JUL 2024	HARNLEN	MR LOW KOK YONG [SSH]	-7,500	273,656	48.56
11 JUL 2024 - 11 JUL 2024	HARNLEN	MR LOW KUECK SHIN [DIR/CEO]	-7,500	260,974	46.31
11 JUL 2024 - 11 JUL 2024	HARNLEN	MR LOW KUECK SHIN [SSH]	-7,500	260,844	46.287
11 JUL 2024 - 11 JUL 2024	HARNLEN	MR LOW KUEK KONG [DIR/CEO]	-7,500	260,594	46.242
11 JUL 2024 - 11 JUL 2024	HARNLEN	MR LOW KUEK KONG [SSH]	-7,500	260,594	46.242
11 JUL 2024 - 11 JUL 2024	HARNLEN	MR LOW KWEE LEE [DIR/CEO]	-7,500	260,804	46.279
11 JUL 2024 - 11 JUL 2024	HARNLEN	MR LOW KWEE LEE [SSH]	-7,500	260,804	46.279
11 JUL 2024 - 11 JUL 2024	HARNLEN	MR LOW QUEK KIONG [DIR/CEO]	-7,500	296,391	52.593
11 JUL 2024 - 11 JUL 2024	HARNLEN	MR LOW QUEK KIONG [SSH]	-7,500	288,711	51.231
11 JUL 2024 - 11 JUL 2024	HARNLEN	PUAN SRI DATIN CHAN PUI LEORN [DIR/CEO]	-7,500	273,688	48.565
11 JUL 2024 - 11 JUL 2024	HARNLEN	PUAN SRI DATIN CHAN PUI LEORN [SSH]	-7,500	273,688	48.565
11 JUL 2024 - 11 JUL 2024	HARNLEN	TAN SRI LOW NAM HUI [SSH]	-7,500	259,804	46.102
16 JUL 2024 - 17 JUL 2024	HEXIND	DATO' ONG CHOO MENG [SSH]	-19,790	1,518,364	55.267
16 JUL 2024 - 17 JUL 2024	HEXIND	DATO' ONG SOON HO [SSH]	-19,790	1,501,931	54.669
16 JUL 2024 - 17 JUL 2024	HEXIND	HEXTAR HOLDINGS SDN BHD [SSH]	-19,790	1,501,931	54.669
16 JUL 2024 - 16 JUL 2024	HLBANK	EMPLOYEES PROVIDENT FUND BOARD [SSH]	1,000	204,857	9.818
15 JUL 2024 - 15 JUL 2024	HLBANK	EMPLOYEES PROVIDENT FUND BOARD [SSH]	-1,316	203,857	9.77
12 JUL 2024 - 12 JUL 2024	HLBANK	EMPLOYEES PROVIDENT FUND BOARD [SSH]	696	205,173	9.833
11 JUL 2024 - 11 JUL 2024	HLBANK	EMPLOYEES PROVIDENT FUND BOARD [SSH]	-4,534	204,477	9.799
10 JUL 2024 - 10 JUL 2024	HLBANK	EMPLOYEES PROVIDENT FUND BOARD [SSH]	1,000	209,011	10.



Notice Period is 14th July 2024 – 20th July 2024

Effective Change Date	Stock Name	Buyer/ Seller Name [Classification]	Bought / (Sold) ['000]	No. of Shares After Trade ['000]	
			Total	Total	% Held
11 JUL 2024 - 11 JUL 2024	IGBB	THE HONGKONG AND SHANGHAI BANKING CORPORATION LIMITED (HBAP) [SSH]	-96	88,521	6.625
16 JUL 2024 - 16 JUL 2024	IHH	EMPLOYEES PROVIDENT FUND BOARD [SSH]	-408	984,374	11.177
15 JUL 2024 - 15 JUL 2024	IHH	EMPLOYEES PROVIDENT FUND BOARD [SSH]	-3,068	984,828	11.182
12 JUL 2024 - 12 JUL 2024	IHH	EMPLOYEES PROVIDENT FUND BOARD [SSH]	-473	987,896	11.217
11 JUL 2024 - 11 JUL 2024	IHH	EMPLOYEES PROVIDENT FUND BOARD [SSH]	-1,500	988,369	11.222
10 JUL 2024 - 10 JUL 2024	IHH	EMPLOYEES PROVIDENT FUND BOARD [SSH]	3,855	989,869	11.239
16 JUL 2024 - 16 JUL 2024	IJM	KUMPULAN WANG PERSARAAN (DIPERBADANKAN) [SSH]	-1,000	340,299	9.706
15 JUL 2024 - 15 JUL 2024	IJM	AMANAHRAYA TRUSTEES BERHAD - AMANAH SAHAM BUMIPUTERA [SSH]	-353	215,875	6.157
12 JUL 2024 - 12 JUL 2024	IJM	EMPLOYEES PROVIDENT FUND BOARD [SSH]	-4,374	545,863	15.569
12 JUL 2024 - 12 JUL 2024	IJM	AMANAHRAYA TRUSTEES BERHAD - AMANAH SAHAM BUMIPUTERA [SSH]	-4,090	216,228	6.167
11 JUL 2024 - 11 JUL 2024	IJM	EMPLOYEES PROVIDENT FUND BOARD [SSH]	-5,273	550,236	15.693
11 JUL 2024 - 11 JUL 2024	IJM	AMANAHRAYA TRUSTEES BERHAD - AMANAH SAHAM BUMIPUTERA [SSH]	-6,116	220,319	6.284
10 JUL 2024 - 10 JUL 2024	IJM	EMPLOYEES PROVIDENT FUND BOARD [SSH]	-4,536	555,510	15.844
18 JUL 2024 - 18 JUL 2024	INARI	KUMPULAN WANG PERSARAAN (DIPERBADANKAN) [SSH]	-419	350,227	9.275
17 JUL 2024 - 17 JUL 2024	INARI	KUMPULAN WANG PERSARAAN (DIPERBADANKAN) [SSH]	-482	350,645	9.286
15 JUL 2024 - 15 JUL 2024	INARI	EMPLOYEES PROVIDENT FUND BOARD [SSH]	1,633	359,270	9.514
16 JUL 2024 - 16 JUL 2024	INARI	KUMPULAN WANG PERSARAAN (DIPERBADANKAN) [SSH]	-495	351,128	9.299
15 JUL 2024 - 15 JUL 2024	INARI	KUMPULAN WANG PERSARAAN (DIPERBADANKAN) [SSH]	-488	351,622	9.312
11 JUL 2024 - 15 JUL 2024	INARI	DATO' DR TAN SENG CHUAN [DIR/CEO]	228	1,834	0.049
11 JUL 2024 - 15 JUL 2024	INARI	DATO' WONG GIAN KUI [DIR/CEO]	112	350	0.009
11 JUL 2024 - 11 JUL 2024	INARI	EMPLOYEES PROVIDENT FUND BOARD [SSH]	2,372	357,365	9.464
10 JUL 2024 - 10 JUL 2024	INARI	EMPLOYEES PROVIDENT FUND BOARD [SSH]	725	354,991	9.401
15 JUL 2024 - 15 JUL 2024	INNATURE	DATO' FOONG CHOONG HENG [DIR/CEO]	3,600	481,429	68.202
15 JUL 2024 - 15 JUL 2024	INNATURE	DATO' FOONG CHOONG HENG [SSH]	3,600	481,429	68.202
15 JUL 2024 - 16 JUL 2024	INTA	APEXJAYA INDUSTRIES SDN BHD [SSH]	-4,009	165,477	30.184
15 JUL 2024 - 16 JUL 2024	INTA	MADAM KOK CHIN SEOW [SSH]	-4,009	166,784	30.424
15 JUL 2024 - 16 JUL 2024	INTA	MR LIM OOI JOO [DIR/CEO]	-4,009	214,632	39.15
15 JUL 2024 - 16 JUL 2024	INTA	MR LIM OOI JOO [SSH]	-4,009	214,632	39.15
11 JUL 2024 - 12 JUL 2024	INTA	APEXJAYA INDUSTRIES SDN BHD [SSH]	-6,900	169,486	31.433
11 JUL 2024 - 12 JUL 2024	INTA	MADAM KOK CHIN SEOW [SSH]	-6,900	170,793	31.673
11 JUL 2024 - 12 JUL 2024	INTA	MR LIM OOI JOO [DIR/CEO]	-6,900	218,641	40.4
11 JUL 2024 - 12 JUL 2024	INTA	MR LIM OOI JOO [SSH]	-6,900	218,641	40.4
12 JUL 2024 - 12 JUL 2024	IOICORP	EMPLOYEES PROVIDENT FUND BOARD [SSH]	417	799,445	12.887
11 JUL 2024 - 11 JUL 2024	IOICORP	EMPLOYEES PROVIDENT FUND BOARD [SSH]	1,335	799,028	12.88
10 JUL 2024 - 10 JUL 2024	IOICORP	EMPLOYEES PROVIDENT FUND BOARD [SSH]	1,249	797,993	12.863
12 JUL 2024 - 12 JUL 2024	IOIPG	EMPLOYEES PROVIDENT FUND BOARD [SSH]	2,262	396,955	7.209
10 JUL 2024 - 10 JUL 2024	IOIPG	EMPLOYEES PROVIDENT FUND BOARD [SSH]	1,527	394,683	7.168
18 JUL 2024 - 18 JUL 2024	IWCITY	CRENDENCE RESOURCES SDN BHD [SSH]	-8,000	307,846	33.421
18 JUL 2024 - 18 JUL 2024	IWCITY	ISKANDAR WATERFRONT HOLDINGS SDN. BHD. [SSH]	-8,000	307,846	33.421
18 JUL 2024 - 18 JUL 2024	IWCITY	KUMPULAN PRASARANA RAKYAT JOHOR SDN BHD [SSH]	-8,000	335,607	36.435
18 JUL 2024 - 18 JUL 2024	IWCITY	TAN SRI DATO' LIM KANG HOO [DIR/CEO]	-8,000	313,387	34.022
18 JUL 2024 - 18 JUL 2024	IWCITY	TAN SRI DATO' LIM KANG HOO [SSH]	-8,000	313,387	34.022
18 JUL 2024 - 18 JUL 2024	JPG	KUMPULAN WANG PERSARAAN (DIPERBADANKAN) [SSH]	-3,000	141,961	5.678
17 JUL 2024 - 17 JUL 2024	JPG	KUMPULAN WANG PERSARAAN (DIPERBADANKAN) [SSH]	-3,000	144,961	5.798
12 JUL 2024 - 12 JUL 2024	JPG	EMPLOYEES PROVIDENT FUND BOARD [SSH]	7,484	248,999	9.96
15 JUL 2024 - 15 JUL 2024	JPG	KUMPULAN WANG PERSARAAN (DIPERBADANKAN) [SSH]	-1,000	147,961	5.918
11 JUL 2024 - 11 JUL 2024	JPG	EMPLOYEES PROVIDENT FUND BOARD [SSH]	8,141	241,514	9.661
12 JUL 2024 - 12 JUL 2024	JPG	KUMPULAN WANG PERSARAAN (DIPERBADANKAN) [SSH]	989	148,961	5.958
10 JUL 2024 - 10 JUL 2024	JPG	EMPLOYEES PROVIDENT FUND BOARD [SSH]	10,978	233,373	9.335
12 JUL 2024 - 12 JUL 2024	KAB	DATO' LAI KENG ONN [DIR/CEO]	-13,300	558,197	28.1
12 JUL 2024 - 12 JUL 2024	KAB	DATO' LAI KENG ONN [SSH]	-13,300	558,197	28.1
16 JUL 2024 - 16 JUL 2024	KERJAYA	AMAZING PARADE SDN. BHD. [SSH]	-5,000	225,613	17.891
16 JUL 2024 - 16 JUL 2024	KERJAYA	DATIN TOH SIEW CHUON [DIR/CEO]	-5,000	858,988	68.117
16 JUL 2024 - 16 JUL 2024	KERJAYA	DATIN TOH SIEW CHUON [SSH]	-5,000	858,988	68.117
16 JUL 2024 - 16 JUL 2024	KERJAYA	DATO' TEE ENG SENG [DIR/CEO]	-5,000	852,999	67.642
16 JUL 2024 - 16 JUL 2024	KERJAYA	DATO' TEE ENG SENG [SSH]	-5,000	852,999	67.642
16 JUL 2024 - 16 JUL 2024	KERJAYA	DATUK TEE ENG HO [DIR/CEO]	-5,000	852,999	67.642
16 JUL 2024 - 16 JUL 2024	KERJAYA	DATUK TEE ENG HO [SSH]	-5,000	858,988	68.117
16 JUL 2024 - 16 JUL 2024	KERJAYA	EMPLOYEES PROVIDENT FUND BOARD [SSH]	-200	69,654	5.524
11 JUL 2024 - 11 JUL 2024	KERJAYA	EMPLOYEES PROVIDENT FUND BOARD [SSH]	-150	69,853	5.539
19 JUL 2024 - 19 JUL 2024	KIPREIT	DATO ONG CHOO MENG [SSH]	-12,000	108,857	17.596
19 JUL 2024 - 19 JUL 2024	KIPREIT	HEXTAR RUBBER SDN BHD [SSH]	-12,000	108,857	17.596
19 JUL 2024 - 19 JUL 2024	KIPREIT	MADAM ONG TZU CHUEN [DIR/CEO]	-12,000	108,857	17.596
19 JUL 2024 - 19 JUL 2024	KIPREIT	MADAM ONG TZU CHUEN [SSH]	-12,000	108,857	17.596
16 JUL 2024 - 16 JUL 2024	KLK	EMPLOYEES PROVIDENT FUND BOARD [SSH]	213	166,456	15.182
15 JUL 2024 - 15 JUL 2024	KLK	EMPLOYEES PROVIDENT FUND BOARD [SSH]	513	166,243	15.163
12 JUL 2024 - 12 JUL 2024	KLK	EMPLOYEES PROVIDENT FUND BOARD [SSH]	500	165,730	15.116
11 JUL 2024 - 11 JUL 2024	KLK	EMPLOYEES PROVIDENT FUND BOARD [SSH]	263	165,230	15.07
10 JUL 2024 - 10 JUL 2024	KLK	EMPLOYEES PROVIDENT FUND BOARD [SSH]	422	164,967	15.046
17 JUL 2024 - 17 JUL 2024	KOSSAN	ABRDN HOLDINGS LIMITED [SSH]	-1,011	135,909	5.326
17 JUL 2024 - 17 JUL 2024	KOSSAN	ABRDN MALAYSIA SDN BHD [SSH]	-962	133,698	5.24
17 JUL 2024 - 17 JUL 2024	KOSSAN	ABRDN PLC [SSH]	-1,011	135,909	5.326
16 JUL 2024 - 16 JUL 2024	KOSSAN	EMPLOYEES PROVIDENT FUND BOARD [SSH]	477	138,850	5.442
16 JUL 2024 - 16 JUL 2024	KOSSAN	ABRDN HOLDINGS LIMITED [SSH]	-47	136,920	5.366
16 JUL 2024 - 16 JUL 2024	KOSSAN	ABRDN MALAYSIA SDN BHD [SSH]	-35	134,660	5.277
16 JUL 2024 - 16 JUL 2024	KOSSAN	ABRDN PLC [SSH]	-47	136,920	5.366
15 JUL 2024 - 15 JUL 2024	KOSSAN	EMPLOYEES PROVIDENT FUND BOARD [SSH]	101	138,373	5.423
15 JUL 2024 - 15 JUL 2024	KOSSAN	ABRDN HOLDINGS LIMITED [SSH]	-133	136,967	5.368
15 JUL 2024 - 15 JUL 2024	KOSSAN	ABRDN MALAYSIA SDN BHD [SSH]	-81	134,695	5.279

Notice Period is 14th July 2024 – 20th July 2024

Effective Change Date	Stock Name	Buyer/ Seller Name [Classification]	Bought / (Sold) ['000]	No. of Shares After Trade ['000]	
			Total	Total	% Held
15 JUL 2024 - 15 JUL 2024	KOSSAN	ABRDN PLC [SSH]	-133	136,967	5.368
12 JUL 2024 - 12 JUL 2024	KOSSAN	EMPLOYEES PROVIDENT FUND BOARD [SSH]	-63	138,272	5.419
12 JUL 2024 - 12 JUL 2024	KOSSAN	ABRDN HOLDINGS LIMITED [SSH]	-146	137,101	5.373
12 JUL 2024 - 12 JUL 2024	KOSSAN	ABRDN MALAYSIA SDN BHD [SSH]	-88	134,775	5.282
12 JUL 2024 - 12 JUL 2024	KOSSAN	ABRDN PLC [SSH]	-146	137,101	5.373
11 JUL 2024 - 11 JUL 2024	KOSSAN	EMPLOYEES PROVIDENT FUND BOARD [SSH]	-631	138,334	5.421
11 JUL 2024 - 11 JUL 2024	KOSSAN	ABRDN HOLDINGS LIMITED [SSH]	-631	137,247	5.379
11 JUL 2024 - 11 JUL 2024	KOSSAN	ABRDN MALAYSIA SDN BHD [SSH]	-631	134,864	5.285
11 JUL 2024 - 11 JUL 2024	KOSSAN	ABRDN PLC [SSH]	-631	137,247	5.379
10 JUL 2024 - 10 JUL 2024	KOSSAN	EMPLOYEES PROVIDENT FUND BOARD [SSH]	-957	138,965	5.446
18 JUL 2024 - 18 JUL 2024	KPJ	MR CHIN KEAT CHYUAN [DIR/CEO]	100	600	0.014
17 JUL 2024 - 17 JUL 2024	KPPROP	DATIN TOH SIEW CHUON [DIR/CEO]	40,000	405,850	74.109
17 JUL 2024 - 17 JUL 2024	KPPROP	DATIN TOH SIEW CHUON [DIR/CEO]	-200,000	1,718,055	100
17 JUL 2024 - 17 JUL 2024	KPPROP	DATIN TOH SIEW CHUON [SSH]	40,000	405,850	74.109
17 JUL 2024 - 17 JUL 2024	KPPROP	DATO' TEE ENG SENG [DIR/CEO]	-200,000	1,718,055	100
17 JUL 2024 - 17 JUL 2024	KPPROP	DATO' TEE ENG SENG [DIR/CEO]	40,000	405,850	74.109
17 JUL 2024 - 17 JUL 2024	KPPROP	DATO' TEE ENG SENG [SSH]	40,000	405,850	74.109
17 JUL 2024 - 17 JUL 2024	KPPROP	DATUK TEE ENG HO [SSH]	40,000	405,850	74.109
17 JUL 2024 - 17 JUL 2024	KPPROP	JAWAWANA SDN BHD [SSH]	40,000	405,850	74.109
15 JUL 2024 - 15 JUL 2024	LAGENDA	DATO' DOH JEE MING [DIR/CEO]	200	497,562	59.423
15 JUL 2024 - 15 JUL 2024	LAGENDA	DATO' DOH JEE MING [SSH]	200	497,562	59.423
15 JUL 2024 - 15 JUL 2024	LAGENDA	DATO' DOH TEE LEONG [SSH]	200	488,241	58.31
11 JUL 2024 - 12 JUL 2024	LAGENDA	DATO' DOH JEE MING [DIR/CEO]	700	497,362	59.399
11 JUL 2024 - 12 JUL 2024	LAGENDA	DATO' DOH JEE MING [SSH]	700	497,362	59.399
11 JUL 2024 - 12 JUL 2024	LAGENDA	DATO' DOH TEE LEONG [SSH]	700	488,041	58.286
17 JUL 2024 - 17 JUL 2024	LAYHONG	NH FOODS LTD [SSH]	-33,849	98651	13.057
16 JUL 2024 - 16 JUL 2024	MALAKOF	EMPLOYEES PROVIDENT FUND BOARD [SSH]	2,905	505,966	10.353
12 JUL 2024 - 12 JUL 2024	MALAKOF	EMPLOYEES PROVIDENT FUND BOARD [SSH]	37	503,056	10.293
11 JUL 2024 - 11 JUL 2024	MALAKOF	EMPLOYEES PROVIDENT FUND BOARD [SSH]	2,041	503,018	10.293
10 JUL 2024 - 10 JUL 2024	MALAKOF	EMPLOYEES PROVIDENT FUND BOARD [SSH]	2,358	500,973	10.251
16 JUL 2024 - 16 JUL 2024	MATRIX	EMPLOYEES PROVIDENT FUND BOARD [SSH]	629	69846	5.582
15 JUL 2024 - 15 JUL 2024	MATRIX	EMPLOYEES PROVIDENT FUND BOARD [SSH]	632	69,218	5.531
11 JUL 2024 - 11 JUL 2024	MATRIX	EMPLOYEES PROVIDENT FUND BOARD [SSH]	941	68,586	5.481
10 JUL 2024 - 10 JUL 2024	MATRIX	EMPLOYEES PROVIDENT FUND BOARD [SSH]	947	67,645	5.406
18 JUL 2024 - 18 JUL 2024	MAXIM	TAN SRI DATUK SERI GAN SEONG LIAM [DIR/CEO]	100	190,278	25.887
18 JUL 2024 - 18 JUL 2024	MAXIM	TAN SRI DATUK SERI GAN SEONG LIAM [SSH]	100	190,278	25.887
15 JUL 2024 - 15 JUL 2024	MAXIS	EMPLOYEES PROVIDENT FUND BOARD (EPF BOARD) [SSH]	329	896,720	11.448
12 JUL 2024 - 12 JUL 2024	MAXIS	EMPLOYEES PROVIDENT FUND BOARD (EPF BOARD) [SSH]	39	896,390	11.444
11 JUL 2024 - 11 JUL 2024	MAXIS	EMPLOYEES PROVIDENT FUND BOARD (EPF BOARD) [SSH]	43	896,352	11.443
10 JUL 2024 - 10 JUL 2024	MAXIS	EMPLOYEES PROVIDENT FUND BOARD (EPF BOARD) [SSH]	583	896,308	11.443
16 JUL 2024 - 16 JUL 2024	MAYBANK	AMANAHRAYA TRUSTEES BERHAD - AMANAH SAHAM BUMIPUTERA [SSH]	-1,296	376,5054	31.201
15 JUL 2024 - 15 JUL 2024	MAYBANK	EMPLOYEES PROVIDENT FUND BOARD [SSH]	-5,609	156,6942	12.985
15 JUL 2024 - 15 JUL 2024	MAYBANK	AMANAHRAYA TRUSTEES BERHAD - AMANAH SAHAM BUMIPUTERA [SSH]	-7,000	376,6350	31.212
12 JUL 2024 - 12 JUL 2024	MAYBANK	EMPLOYEES PROVIDENT FUND BOARD [SSH]	4,803	157,2551	13.032
11 JUL 2024 - 11 JUL 2024	MAYBANK	EMPLOYEES PROVIDENT FUND BOARD [SSH]	2,750	156,7748	12.992
10 JUL 2024 - 10 JUL 2024	MAYBANK	EMPLOYEES PROVIDENT FUND BOARD [SSH]	5,596	156,4998	12.969
15 JUL 2024 - 15 JUL 2024	MCLEAN	JCS GROUP PTE. LTD. [SSH]	-5,000	16,689	8.46
15 JUL 2024 - 15 JUL 2024	MCLEAN	MR YEO HOCK HUAT [DIR/CEO]	-5,000	16,689	8.46
15 JUL 2024 - 15 JUL 2024	MCLEAN	MR YEO HOCK HUAT [SSH]	-5,000	16,689	8.46
17 JUL 2024 - 17 JUL 2024	MFCB	DATO' SETIA PROF DR TAN HUI MENG [DIR/CEO]	13	3,392	0.36
16 JUL 2024 - 1					

Notice Period is 14th July 2024 – 20th July 2024

Effective Change Date	Stock Name	Buyer/ Seller Name [Classification]	Bought / (Sold) ['000]	No. of Shares After Trade ['000]	
			Total	Total	% Held
16 JUL 2024 - 18 JUL 2024	MULPHA	MR LEE SENG HUANG [DIR/CEO]	-764	219659	70.75
16 JUL 2024 - 18 JUL 2024	MULPHA	MR LEE SENG HUANG [SSH]	-764	219659	70.75
12 JUL 2024 - 12 JUL 2024	MYEG	KUMPULAN WANG PERSARAAN (DIPERBADANKAN) [SSH]	-1,120	414205	5.553
17 JUL 2024 - 17 JUL 2024	NATGATE	MISS TAN AH GEOK [SSH]	-700	1348316	65.012
17 JUL 2024 - 17 JUL 2024	NATGATE	MR OOI ENG LEONG [DIR/CEO]	-700	1348316	65.012
17 JUL 2024 - 17 JUL 2024	NATGATE	MR OOI ENG LEONG [SSH]	-700	1348316	65.012
15 JUL 2024 - 15 JUL 2024	NATGATE	DATO' SERI WONG SIEW HAI [DIR/CEO]	-109	5176	0.249
15 JUL 2024 - 15 JUL 2024	NESTLE	EMPLOYEES PROVIDENT FUND BOARD [SSH]	21	27243	11.617
12 JUL 2024 - 12 JUL 2024	NESTLE	EMPLOYEES PROVIDENT FUND BOARD [SSH]	-32	27222	11.608
11 JUL 2024 - 11 JUL 2024	NESTLE	EMPLOYEES PROVIDENT FUND BOARD [SSH]	-9	27253	11.622
10 JUL 2024 - 10 JUL 2024	NESTLE	EMPLOYEES PROVIDENT FUND BOARD [SSH]	-419	27263	11.626
11 JUL 2024 - 11 JUL 2024	NOTION	MR CHOO WING HONG [DIR/CEO]	1,800	37693	7.197
11 JUL 2024 - 11 JUL 2024	NOTION	MR CHOO WING HONG [SSH]	1,800	37693	7.197
11 JUL 2024 - 11 JUL 2024	NOTION	MR CHOO WING ONN [DIR/CEO]	300	33538	6.403
11 JUL 2024 - 11 JUL 2024	NOTION	MR CHOO WING ONN [SSH]	300	33538	6.403
18 JUL 2024 - 19 JUL 2024	NOTION-WD	MR THOO CHOW FAH [DIR/CEO]	-1,402	743	1.441
04 JUL 2024 - 04 JUL 2024	OFB	MR SIANG HAI YONG [SSH]	-2,665	26178	12.46
04 JUL 2024 - 04 JUL 2024	OFB	SIANG HAI YONG [DIR/CEO]	-2,665	26178	12.46
12 JUL 2024 - 12 JUL 2024	OLYMPIA	DATO' SRI YAP WEE KEAT [DIR/CEO]	650	544688	53.224
12 JUL 2024 - 12 JUL 2024	OLYMPIA	DATO' SRI YAP WEE KEAT [SSH]	650	544688	53.224
12 JUL 2024 - 12 JUL 2024	OLYMPIA	DATUK YAP WEE CHUN [SSH]	650	544643	53.22
12 JUL 2024 - 12 JUL 2024	OLYMPIA	DUTA EQUITIES SDN BHD [SSH]	650	544643	53.22
12 JUL 2024 - 12 JUL 2024	OLYMPIA	TAN SRI DATO' YAP YONG SEONG [DIR/CEO]	650	544699	53.225
12 JUL 2024 - 12 JUL 2024	OLYMPIA	TAN SRI DATO' YAP YONG SEONG [SSH]	650	544699	53.225
15 JUL 2024 - 15 JUL 2024	PADINI	EMPLOYEES PROVIDENT FUND BOARD [SSH]	100	47753	7.258
12 JUL 2024 - 12 JUL 2024	PADINI	EMPLOYEES PROVIDENT FUND BOARD [SSH]	27	47653	7.243
11 JUL 2024 - 11 JUL 2024	PADINI	EMPLOYEES PROVIDENT FUND BOARD [SSH]	100	47627	7.239
10 JUL 2024 - 10 JUL 2024	PADINI	EMPLOYEES PROVIDENT FUND BOARD [SSH]	150	47527	7.224
16 JUL 2024 - 16 JUL 2024	PANAMY	EMPLOYEES PROVIDENT FUND BOARD [SSH]	-15	6292	10.358
15 JUL 2024 - 15 JUL 2024	PANAMY	EMPLOYEES PROVIDENT FUND BOARD [SSH]	-10	6308	10.384
12 JUL 2024 - 12 JUL 2024	PANAMY	EMPLOYEES PROVIDENT FUND BOARD [SSH]	-15	6317	10.399
10 JUL 2024 - 10 JUL 2024	PANAMY	EMPLOYEES PROVIDENT FUND BOARD [SSH]	91	6332	10.424
15 JUL 2024 - 15 JUL 2024	PAVREIT	EMPLOYEES PROVIDENT FUND BOARD [SSH]	1,615	443823	12.137
12 JUL 2024 - 12 JUL 2024	PAVREIT	EMPLOYEES PROVIDENT FUND BOARD [SSH]	167	442208	12.093
10 JUL 2024 - 10 JUL 2024	PAVREIT	EMPLOYEES PROVIDENT FUND BOARD [SSH]	551	442041	12.088
15 JUL 2024 - 15 JUL 2024	PBBANK	EMPLOYEES PROVIDENT FUND BOARD [SSH]	15,920	3132608	16.14
12 JUL 2024 - 12 JUL 2024	PBBANK	EMPLOYEES PROVIDENT FUND BOARD [SSH]	10,167	3116689	16.06
11 JUL 2024 - 11 JUL 2024	PBBANK	EMPLOYEES PROVIDENT FUND BOARD [SSH]	14,200	3106522	16
10 JUL 2024 - 10 JUL 2024	PBBANK	EMPLOYEES PROVIDENT FUND BOARD [SSH]	-32,134	3092322	15.93
12 JUL 2024 - 12 JUL 2024	PCHEM	EMPLOYEES PROVIDENT FUND BOARD ("EPF BOARD") [SSH]	-15	938646	11.733
11 JUL 2024 - 11 JUL 2024	PCHEM	EMPLOYEES PROVIDENT FUND BOARD ("EPF BOARD") [SSH]	-263	938590	11.732
10 JUL 2024 - 10 JUL 2024	PCHEM	EMPLOYEES PROVIDENT FUND BOARD ("EPF BOARD") [SSH]	-265	938937	11.737
18 JUL 2024 - 18 JUL 2024	PECCA	DATIN SAM YIN THING [DIR/CEO]	300	425837	56.643
18 JUL 2024 - 18 JUL 2024	PECCA	DATIN SAM YIN THING [SSH]	300	425837	56.643
17 JUL 2024 - 17 JUL 2024	PECCA	DATIN SAM YIN THING [DIR/CEO]	400	425537	56.603
17 JUL 2024 - 17 JUL 2024	PECCA	DATIN SAM YIN THING [SSH]	400	425537	56.603
16 JUL 2024 - 16 JUL 2024	PECCA	DATIN SAM YIN THING [DIR/CEO]	100	425137	56.55
16 JUL 2024 - 16 JUL 2024	PECCA	DATIN SAM YIN THING [SSH]	100	425137	56.55
15 JUL 2024 - 16 JUL 2024	PEKAT	MR WEE CHEK AIK [SSH]	-2,121	53517	8.298
18 JUL 2024 - 18 JUL 2024	PENTA	LEMBAGA TABUNG HAJI [SSH]	200	38826	5.458
17 JUL 2024 - 17 JUL 2024	PENTA	KUMPULAN WANG PERSARAAN (DIPERBADANKAN) [SSH]	-158	41435	5.825
15 JUL 2024 - 15 JUL 2024	PENTA	EMPLOYEES PROVIDENT FUND BOARD [SSH]	114	57247	8.048
16 JUL 2024 - 16 JUL 2024	PENTA	KUMPULAN WANG PERSARAAN (DIPERBADANKAN) [SSH]	-127	41593	5.847
16 JUL 2024 - 16 JUL 2024	PENTA	LEMBAGA TABUNG HAJI [SSH]	174	38626	5.43
15 JUL 2024 - 15 JUL 2024	PENTA	KUMPULAN WANG PERSARAAN (DIPERBADANKAN) [SSH]	-378	41719	5.865
11 JUL 2024 - 11 JUL 2024	PENTA	EMPLOYEES PROVIDENT FUND BOARD [SSH]	-420	57133	8.032
12 JUL 2024 - 12 JUL 2024	PENTA	KUMPULAN WANG PERSARAAN (DIPERBADANKAN) [SSH]	-362	42097	5.918
12 JUL 2024 - 12 JUL 2024	PENTA	LEMBAGA TABUNG HAJI [SSH]	33	38452	5.406
10 JUL 2024 - 10 JUL 2024	PENTA	EMPLOYEES PROVIDENT FUND BOARD [SSH]	-684	57553	8.091
10 JUL 2024 - 11 JUL 2024	PESTECH	MR LIM PAY CHUAN [DIR/CEO]	-5,000	124571	12.652
10 JUL 2024 - 11 JUL 2024	PESTECH	MR LIM PAY CHUAN [SSH]	-5,000	124571	12.652
16 JUL 2024 - 16 JUL 2024	PETDAG	EMPLOYEES PROVIDENT FUND BOARD ("EPF BOARD") [SSH]	167	124845	12.567
15 JUL 2024 - 15 JUL 2024	PETDAG	EMPLOYEES PROVIDENT FUND BOARD ("EPF BOARD") [SSH]	179	124678	12.55
12 JUL 2024 - 12 JUL 2024	PETDAG	EMPLOYEES PROVIDENT FUND BOARD ("EPF BOARD") [SSH]	300	124499	12.532
11 JUL 2024 - 11 JUL 2024	PETDAG	EMPLOYEES PROVIDENT FUND BOARD ("EPF BOARD") [SSH]	200	124199	12.502
10 JUL 2024 - 10 JUL 2024	PETDAG	EMPLOYEES PROVIDENT FUND BOARD ("EPF BOARD") [SSH]	200	123501	12.431
16 JUL 2024 - 16 JUL 2024	PETGAS	EMPLOYEES PROVIDENT FUND BOARD [SSH]	136	261220	13.201
15 JUL 2024 - 15 JUL 2024	PETGAS	EMPLOYEES PROVIDENT FUND BOARD [SSH]	12	261084	13.195
12 JUL 2024 - 12 JUL 2024	PETGAS	EMPLOYEES PROVIDENT FUND BOARD [SSH]	41	261072	13.194
11 JUL 2024 - 11 JUL 2024	PETGAS	EMPLOYEES PROVIDENT FUND BOARD [SSH]	22	261031	13.192
10 JUL 2024 - 10 JUL 2024	PETGAS	EMPLOYEES PROVIDENT FUND BOARD [SSH]	215	261009	13.191
12 JUL 2024 - 12 JUL 2024	PLABS	MR BU YAW SENG [SSH]	1,575	22008	7.997
15 JUL 2024 - 15 JUL 2024	PLINTAS	EMPLOYEES PROVIDENT FUND BOARD [SSH]	-100	65501	5.955
12 JUL 2024 - 12 JUL 2024	PLINTAS	EMPLOYEES PROVIDENT FUND BOARD [SSH]	-55	65601	5.964
11 JUL 2024 - 11 JUL 2024	PLINTAS	EMPLOYEES PROVIDENT FUND BOARD [SSH]	-400	65656	5.969
10 JUL 2024 - 10 JUL 2024	PLINTAS	EMPLOYEES PROVIDENT FUND BOARD [SSH]	-272	66056	6.005
15 JUL 2024 - 15 JUL 2024	PPB	EMPLOYEES PROVIDENT FUND BOARD [SSH]	184	171499	12.055
12 JUL 2024 - 12 JUL 2024	PPB	EMPLOYEES PROVIDENT FUND BOARD [SSH]	273	171314	12.042
11 JUL 2024 - 11 JUL 2024	PPB	EMPLOYEES PROVIDENT FUND BOARD [SSH]	202	171041	12.023

Notice Period is 14th July 2024 – 20th July 2024

Effective Change Date	Stock Name	Buyer/ Seller Name [Classification]	Bought / (Sold) ['000]	No. of Shares After Trade ['000]	
			Total	Total	% Held
10 JUL 2024 - 10 JUL 2024	PPB	EMPLOYEES PROVIDENT FUND BOARD [SSH]	304	170839	12.009
16 JUL 2024 - 17 JUL 2024	PTRANS	DATO' ONG CHOO MENG [SSH]	-3,500	105076	9.565
12 JUL 2024 - 12 JUL 2024	PWROOT	KUMPULAN WANG PERSARAAN (DIPERBADANKAN) [SSH]	-19	25905	5.635
15 JUL 2024 - 15 JUL 2024	QL	EMPLOYEES PROVIDENT FUND BOARD [SSH]	-1,349	126074	5.18
12 JUL 2024 - 12 JUL 2024	QL	EMPLOYEES PROVIDENT FUND BOARD [SSH]	-4,788	127423	5.236
12 JUL 2024 - 12 JUL 2024	QL	MR CHIA LIK KHAI [DIR/CEO]	-400	2687	0.111
11 JUL 2024 - 11 JUL 2024	QL	EMPLOYEES PROVIDENT FUND BOARD [SSH]	-4,445	132431	5.442
10 JUL 2024 - 10 JUL 2024	QL	EMPLOYEES PROVIDENT FUND BOARD [SSH]	-721	136875	5.624
15 JUL 2024 - 15 JUL 2024	RANHILL	PUAN SRI DATIN SERI TAN KAI YONG @ TAN KAY NEONG [SSH]	32	687343	53.038
15 JUL 2024 - 15 JUL 2024	RANHILL	SIPP POWER SDN BHD [SSH]	32	442797	34.168
15 JUL 2024 - 15 JUL 2024	RANHILL	YEOH TIONG LAY & SONS FAMILY HOLDINGS LIMITED [SSH]	32	687343	53.038
15 JUL 2024 - 15 JUL 2024	RANHILL	YEOH TIONG LAY & SONS HOLDINGS SDN BHD [SSH]	32	687343	53.038
15 JUL 2024 - 15 JUL 2024	RANHILL	YEOH TIONG LAY & SONS TRUST COMPANY LIMITED [SSH]	32	687343	53.038
15 JUL 2024 - 15 JUL 2024	RANHILL	YTL CORPORATION BERHAD [SSH]	32	687343	53.038
15 JUL 2024 - 15 JUL 2024	RANHILL	YTL POWER INTERNATIONAL BERHAD [SSH]	32	687343	53.038
17 JUL 2024 - 17 JUL 2024	RHBBANK	KUMPULAN WANG PERSARAAN (DIPERBADANKAN) [SSH]	-1,000	242628	5.566
15 JUL 2024 - 15 JUL 2024	RHBBANK	EMPLOYEES PROVIDENT FUND BOARD [SSH]	5,000	1721486	39.488
12 JUL 2024 - 12 JUL 2024	RHBBANK	EMPLOYEES PROVIDENT FUND BOARD [SSH]	9,000	1716486	39.374
11 JUL 2024 - 11 JUL 2024	RHBBANK	EMPLOYEES PROVIDENT FUND BOARD [SSH]	2,125	1707486	39.167
10 JUL 2024 - 10 JUL 2024	RHBBANK	EMPLOYEES PROVIDENT FUND BOARD [SSH]	-32,998	1705361	39.118
11 JUL 2024 - 11 JUL 2024	SALCON	BERJAYA CORPORATION BERHAD [SSH]	500	179528	17.718
11 JUL 2024 - 11 JUL 2024	SALCON	BERJAYA GROUP BERHAD [SSH]	500	179528	17.718
11 JUL 2024 - 11 JUL 2024	SALCON	JUARA SEJATI SDN BHD [SSH]	500	179528	17.717
15 JUL 2024 - 15 JUL 2024	SAM	EMPLOYEES PROVIDENT FUND BOARD [SSH]	-300	41443	6.122
12 JUL 2024 - 12 JUL 2024	SAM	EMPLOYEES PROVIDENT FUND BOARD [SSH]	200	41743	6.166
11 JUL 2024 - 11 JUL 2024	SAM	EMPLOYEES PROVIDENT FUND BOARD [SSH]	21	41543	6.136
10 JUL 2024 - 10 JUL 2024	SAM	EMPLOYEES PROVIDENT FUND BOARD [SSH]	40	41523	6.133
03 MAY 2024 - 07 JUN 2024	SAPNRG	AMANAHRAYA TRUSTEES BERHAD - AMANAH SAHAM BUMIPUTERA [SSH]	-99,843	6794218	36.973
27 FEB 2024 - 20 JUN 2024	SCGM	MR SAW CHAI SOON [SSH]	2,922	12660	6.575
28 MAR 2023 - 05 APR 2023	SCGM	MISS LEE LIH CHYONG [DIR/CEO]	-7,821	10141	5.266
28 MAR 2023 - 05 APR 2023	SCGM	MISS LEE LIH CHYONG [SSH]	-7,821	10141	5.266
06 FEB 2023 - 06 APR 2023	SCGM	CHIN KOK TIAN [SSH]	52	31052	16.125
06 FEB 2023 - 06 APR 2023	SCGM	YAN HUA LAN [SSH]	52	31052	16.125
16 JUL 2024 - 16 JUL 2024	SCOMNET	EMPLOYEES PROVIDENT FUND BOARD [SSH]	-1,148	43595	5.086
16 JUL 2024 - 16 JUL 2024	SCOMNET	MR LIM ENG CHUAN [DIR/CEO]	-650	54003	6.301
16 JUL 2024 - 16 JUL 2024	SCOMNET	MR LIM ENG CHUAN [SSH]	-650	54003	6.301
15 JUL 2024 - 15 JUL 2024	SCOMNET	EMPLOYEES PROVIDENT FUND BOARD [SSH]	800	44743	5.22
15 JUL 2024 - 15 JUL 2024	SCOMNET	MADAM WU HUEI-CHUNG [DIR/CEO]	-2,350	459020	53.554
15 JUL 2024 - 15 JUL 2024	SCOMNET	MADAM WU HUEI-CHUNG [SSH]	-2,350	459020	53.554
15 JUL 2024 - 15 JUL 2024	SCOMNET	MR HSUEH CHIH-YU [DIR/CEO]	-2,350	459020	53.554
15 JUL 2024 - 15 JUL 2024	SCOMNET	MR HSUEH CHIH-YU [SSH]	-2,350	459020	53.554
15 JUL 2024 - 15 JUL 2024	SCOMNET	MR SHIUE JONG-ZONE A.K.A. JAMES SHIUE [DIR/CEO]	-2,350	459020	53.554
15 JUL 2024 - 15 JUL 2024	SCOMNET	MR SHIUE JONG-ZONE A.K.A. JAMES SHIUE [SSH]	-2,350	459020	53.554
15 JUL 2024 - 15 JUL 2024	SCOMNET	MR SHIUE JYH-JEH @ JERRY [SSH]	-2,350	461187	53.807
15 JUL 2024 - 15 JUL 2024	SCOMNET	MR SHIUE JYH-JEH @ JERRY [SSH]	-600	463537	54.368
15 JUL 2024 - 15 JUL 2024	SCOMNET	MR WU CHUNG-JUNG [DIR/CEO]	-2,350	459020	53.554
15 JUL 2024 - 15 JUL 2024	SCOMNET	MR WU CHUNG-JUNG [SSH]	-2,350	459020	53.554
12 JUL 2024 - 12 JUL 2024	SCOMNET	EMPLOYEES PROVIDENT FUND BOARD [SSH]	400	43943	5.127
11 JUL 2024 - 11 JUL 2024	SCOMNET	EMPLOYEES PROVIDENT FUND BOARD [SSH]	-1,181	43543	5.08
10 JUL 2024 - 10 JUL 2024	SCOMNET	EMPLOYEES PROVIDENT FUND BOARD [SSH]	-1,161	44724	5.218
16 JUL 2024 - 16 JUL 2024	SDG	EMPLOYEES PROVIDENT FUND BOARD [SSH]	986	1116747	16.148
15 JUL 2024 - 15 JUL 2024	SDG	EMPLOYEES PROVIDENT FUND BOARD [SSH]	1,712	1115760	16.133
12 JUL 2024 - 12 JUL 2024	SDG	EMPLOYEES PROVIDENT FUND BOARD [SSH]	44	1114048	16.109
12 JUL 2024 - 12 JUL 2024	SDG	KUMPULAN WANG PERSARAAN (DIPERBADANKAN) [SSH]	-322	461722	6.676
11 JUL 2024 - 11 JUL 2024	SDG	KUMPULAN WANG PERSARAAN (DIPERBADANKAN) [SSH]	-105	462043	6.681
10 JUL 2024 - 10 JUL 2024	SDG	EMPLOYEES PROVIDENT FUND BOARD [SSH]	500	1114005	16.108
09 JUL 2024 - 09 JUL 2024	SDG	EMPLOYEES PROVIDENT FUND BOARD [SSH]	4,195	1113505	16.101
15 JUL 2024 - 17 JUL 2024	SDS	MR TAN KIM SENG [DIR/CEO]	168	106185	25.922
15 JUL 2024 - 17 JUL 2024	SDS	MR TAN KIM SENG [SSH]	168	106185	25.922
18 JUL 2024 - 18 JUL 2024	SENTRAL	KUMPULAN WANG PERSARAAN (DIPERBADANKAN) [SSH]	-553	63949	5.349
17 JUL 2024 - 17 JUL 2024	SENTRAL	KUMPULAN WANG PERSARAAN (DIPERBADANKAN) [SSH]	-313	64501	5.396
16 JUL 2024 - 16 JUL 2024	SENTRAL	KUMPULAN WANG PERSARAAN (DIPERBADANKAN) [SSH]	-300	64814	5.422
15 JUL 2024 - 15 JUL 2024	SENTRAL	KUMPULAN WANG PERSARAAN (DIPERBADANKAN) [SSH]	-1,000	65114	5.447
12 JUL 2024 - 12 JUL 2024	SENTRAL	KUMPULAN WANG PERSARAAN (DIPERBADANKAN) [SSH]	-1,000	66114	5.53
12 JUL 2024 - 12 JUL 2024	SIME	EMPLOYEES PROVIDENT FUND BOARD [SSH]	-1,481	1026277	15.057

Notice Period is 14th July 2024 – 20th July 2024

Effective Change Date	Stock Name	Buyer/ Seller Name [Classification]	Bought / (Sold) ['000]	No. of Shares After Trade ['000]	
			Total	Total	% Held
16 JUL 2024 - 16 JUL 2024	SIMEPROP	KUMPULAN WANG PERSARAAN (DIPERBADANKAN) [SSH]	-68	439508	6.463
15 JUL 2024 - 15 JUL 2024	SIMEPROP	AMANAHRAYA TRUSTEES BERHAD - AMANAH SAHAM BUMIPUTERA [SSH]	-15,000	2905000	42.715
12 JUL 2024 - 12 JUL 2024	SIMEPROP	EMPLOYEES PROVIDENT FUND BOARD [SSH]	1,649	377513	5.551
12 JUL 2024 - 12 JUL 2024	SIMEPROP	AMANAHRAYA TRUSTEES BERHAD - AMANAH SAHAM BUMIPUTERA [SSH]	-15,642	2920000	42.936
12 JUL 2024 - 12 JUL 2024	SIMEPROP	PERMODALAN NASIONAL BERHAD [SSH]	-1,049	368581	5.42
12 JUL 2024 - 12 JUL 2024	SIMEPROP	YAYASAN PELABURAN BUMIPUTRA [SSH]	-1,049	368581	5.42
11 JUL 2024 - 11 JUL 2024	SIMEPROP	EMPLOYEES PROVIDENT FUND BOARD [SSH]	-4,868	375864	5.527
11 JUL 2024 - 11 JUL 2024	SIMEPROP	AMANAHRAYA TRUSTEES BERHAD - AMANAH SAHAM BUMIPUTERA [SSH]	-4,230	2935642	43.166
11 JUL 2024 - 11 JUL 2024	SIMEPROP	PERMODALAN NASIONAL BERHAD [SSH]	-2,000	369630	5.435
11 JUL 2024 - 11 JUL 2024	SIMEPROP	YAYASAN PELABURAN BUMIPUTRA [SSH]	-2,000	369630	5.435
10 JUL 2024 - 10 JUL 2024	SIMEPROP	EMPLOYEES PROVIDENT FUND BOARD [SSH]	1,462	380733	5.598
15 JUL 2024 - 15 JUL 2024	SKYGATE	MR GOH KIANG TENG [DIR/CEO]	6,180	14207	4.446
15 JUL 2024 - 15 JUL 2024	SKYGATE	MR OOI ENG LEONG [SSH]	0.404	134872	42.205
16 JUL 2024 - 16 JUL 2024	SLVEST	EMPLOYEES PROVIDENT FUND BOARD [SSH]	1,800	43243	6.2
11 JUL 2024 - 11 JUL 2024	SMILE	DATIN WONG CHIEN YUE [DIR/CEO]	130	128446	50.921
11 JUL 2024 - 11 JUL 2024	SMILE	DATIN WONG CHIEN YUE [SSH]	130	128446	50.921
11 JUL 2024 - 11 JUL 2024	SMILE	DATO DR WONG RUEN YUAN [SSH]	130	128364	50.889
11 JUL 2024 - 11 JUL 2024	SMILE	DATO' DR WONG RUEN YUAN [DIR/CEO]	130	128364	50.889
16 JUL 2024 - 18 JUL 2024	SPRITZER	DATIN CHUA SHOK TIM @ CHUA SIOK HOON [SSH]	80	165192	51.736
16 JUL 2024 - 18 JUL 2024	SPRITZER	DATO' LIM A HENG @ LIM KOK CHEONG [DIR/CEO]	80	165192	51.735
16 JUL 2024 - 18 JUL 2024	SPRITZER	DATO' LIM A HENG @ LIM KOK CHEONG [SSH]	80	165192	51.735
16 JUL 2024 - 18 JUL 2024	SPRITZER	LANGIT MAKAMUR SDN. BHD. [SSH]	80	102373	32.061
16 JUL 2024 - 18 JUL 2024	SPRITZER	UNIKAMPAR CREDIT AND LEASING SDN. BHD. [SSH]	80	136590	42.778
16 JUL 2024 - 18 JUL 2024	SPRITZER	UNYEELEE SDN. BHD. [SSH]	80	136590	42.778
16 JUL 2024 - 18 JUL 2024	SPRITZER	YEE LEE CORPORATION BHD. [SSH]	80	102373	32.061
16 JUL 2024 - 18 JUL 2024	SPRITZER	YEE LEE ORGANIZATION BHD. [SSH]	80	136590	42.778
16 JUL 2024 - 18 JUL 2024	SPRITZER	YELETA HOLDINGS SDN. BHD. [SSH]	80	136590	42.778
16 JUL 2024 - 18 JUL 2024	SPRITZER	YOUNG WEI HOLDINGS SDN. BHD. [SSH]	80	136590	42.778
12 JUL 2024 - 15 JUL 2024	SPRITZER	DATIN CHUA SHOK TIM @ CHUA SIOK HOON [SSH]	42	165112	51.711
12 JUL 2024 - 15 JUL 2024	SPRITZER	DATO' LIM A HENG @ LIM KOK CHEONG [DIR/CEO]	42	165112	51.71
12 JUL 2024 - 15 JUL 2024	SPRITZER	DATO' LIM A HENG @ LIM KOK CHEONG [SSH]	42	165112	51.71
12 JUL 2024 - 15 JUL 2024	SPRITZER	LANGIT MAKAMUR SDN. BHD. [SSH]	42	102293	32.036
12 JUL 2024 - 15 JUL 2024	SPRITZER	UNIKAMPAR CREDIT AND LEASING SDN. BHD. [SSH]	42	136510	42.753
12 JUL 2024 - 15 JUL 2024	SPRITZER	UNYEELEE SDN. BHD. [SSH]	42	136510	42.753
12 JUL 2024 - 15 JUL 2024	SPRITZER	YEE LEE CORPORATION BHD. [SSH]	42	102293	32.036
12 JUL 2024 - 15 JUL 2024	SPRITZER	YEE LEE ORGANIZATION BHD. [SSH]	42	136510	42.753
12 JUL 2024 - 15 JUL 2024	SPRITZER	YELETA HOLDINGS SDN. BHD. [SSH]	42	136510	42.753
12 JUL 2024 - 15 JUL 2024	SPRITZER	YOUNG WEI HOLDINGS SDN. BHD. [SSH]	42	136510	42.753
10 JUL 2024 - 10 JUL 2024	SPRITZER	CIK NIK MARNI BINTI NIK MOHAMAD PENA [DIR/CEO]	10	10	0.003
18 JUL 2024 - 18 JUL 2024	SPSETIA	KUMPULAN WANG PERSARAAN (DIPERBADANKAN) [SSH]	-415	431094	9.052
16 JUL 2024 - 16 JUL 2024	SPSETIA	EMPLOYEES PROVIDENT FUND BOARD [SSH]	-2,909	245018	5.145
15 JUL 2024 - 15 JUL 2024	SPSETIA	EMPLOYEES PROVIDENT FUND BOARD [SSH]	349	247927	5.206
16 JUL 2024 - 16 JUL 2024	SPSETIA	KUMPULAN WANG PERSARAAN (DIPERBADANKAN) [SSH]	-225	431509	9.061
12 JUL 2024 - 12 JUL 2024	SPSETIA	EMPLOYEES PROVIDENT FUND BOARD [SSH]	-5,039	247578	5.199
11 JUL 2024 - 11 JUL 2024	SPSETIA	EMPLOYEES PROVIDENT FUND BOARD [SSH]	-5,481	252617	5.304
12 JUL 2024 - 12 JUL 2024	SPSETIA	KUMPULAN WANG PERSARAAN (DIPERBADANKAN) [SSH]	-25	431734	9.066
10 JUL 2024 - 10 JUL 2024	SPSETIA	EMPLOYEES PROVIDENT FUND BOARD [SSH]	687	258098	5.42
12 JUL 2024 - 12 JUL 2024	SRIDGE	MR LOH SEONG YEW [DIR/CEO]	200	1283	0.54
15 JUL 2024 - 16 JUL 2024	SSBB	MR CHAI THAM POH [DIR/CEO]	-500	908	0.04
17 JUL 2024 - 17 JUL 2024	SUBUR	DATO' TIONG ING [DIR/CEO]	10	2591	1.375
16 JUL 2024 - 16 JUL 2024	SUNCON	EMPLOYEES PROVIDENT FUND BOARD [SSH]	-836	79469	6.163
15 JUL 2024 - 15 JUL 2024	SUNCON	EMPLOYEES PROVIDENT FUND BOARD [SSH]	-489	80305	6.228
12 JUL 2024 - 12 JUL 2024	SUNCON	EMPLOYEES PROVIDENT FUND BOARD [SSH]	831	80793	6.266
16 JUL 2024 - 16 JUL 2024	SUNWAY	EMPLOYEES PROVIDENT FUND BOARD [SSH]	309	352150	6.24
15 JUL 2024 - 15 JUL 2024	SUNWAY	EMPLOYEES PROVIDENT FUND BOARD [SSH]	1,250	351840	6.23
12 JUL 2024 - 12 JUL 2024	SUNWAY	EMPLOYEES PROVIDENT FUND BOARD [SSH]	475	349009	6.18
11 JUL 2024 - 11 JUL 2024	SUNWAY	EMPLOYEES PROVIDENT FUND BOARD [SSH]	1,504	347729	6.16
10 JUL 2024 - 10 JUL 2024	SUNWAY	EMPLOYEES PROVIDENT FUND BOARD [SSH]	5,827	346225	6.14
15 JUL 2024 - 16 JUL 2024	SUNWAY-PA	TAN SRI DATO' (DR.) CHEW CHEE KIN [DIR/CEO]	553	6954	0.71
15 JUL 2024 - 15 JUL 2024	SUNWAY-WB	TAN SRI DATO' (DR.) CHEW CHEE KIN [DIR/CEO]	-708	2212	4.4
17 JUL 2024 - 17 JUL 2024	SWIFT	MR LOO HOOI KEAT [DIR/CEO]	155	256233	29.017
17 JUL 2024 - 17 JUL 2024	SWIFT	MR LOO HOOI KEAT [SSH]	155	256233	29.017
11 JUL 2024 - 11 JUL 2024	SYS-TECH-WA	DATO' HOOI JIA HAO [DIR/CEO]	-3,737	24760	15.411
10 JUL 2024 - 10 JUL 2024	TAKAFUL	EMPLOYEES PROVIDENT FUND BOARD [SSH]	265	129602	15.478
18 JUL 2024 - 18 JUL 2024	TANCO	DATO' SRI ANDREW TAN JUN SUAN [DIR/CEO]	6,000	1094621	51.624
18 JUL 2024 - 18 JUL 2024	TANCO	DATO' SRI ANDREW TAN JUN SUAN [SSH]	6,000	1094621	51.624
15 JUL 2024 - 17 JUL 2024	TCHONG	DATO' TAN HENG CHEW [DIR/CEO]	60	323896	49.702
15 JUL 2024 - 17 JUL 2024	TCHONG	DATO' TAN HENG CHEW [SSH]	60	308315	47.311
17 JUL 2024 - 17 JUL 2024	TENAGA	AMANAHRAYA TRUSTEES BERHAD - AMANAH SAHAM BUMIPUTERA [SSH]	-1,039	522826	8.99
16 JUL 2024 - 16 JUL 2024	TENAGA	EMPLOYEES PROVIDENT FUND BOARD [SSH]	2,890	1002797	17.25
16 JUL 2024 - 16 JUL 2024	TENAGA	AMANAHRAYA TRUSTEES BERHAD - AMANAH SAHAM BUMIPUTERA [SSH]	-4,338	523865	9.01
15 JUL 2024 - 15 JUL 2024	TENAGA	EMPLOYEES PROVIDENT FUND BOARD [SSH]	-156	999907	17.2
15 JUL 2024 - 15 JUL 2024	TENAGA	AMANAHRAYA TRUSTEES BERHAD - AMANAH SAHAM BUMIPUTERA [SSH]	-1,000	528203	9.09
12 JUL 2024 - 12 JUL 2024	TENAGA	EMPLOYEES PROVIDENT FUND BOARD [SSH]	1,074	1000064	17.2
12 JUL 2024 - 12 JUL 2024	TENAGA	AMANAHRAYA TRUSTEES BERHAD - AMANAH SAHAM BUMIPUTERA [SSH]	-1,787	529203	9.1
11 JUL 2024 - 11 JUL 2024	TENAGA	EMPLOYEES PROVIDENT FUND BOARD [SSH]	-4,000	998989	17.19
11 JUL 2024 - 11 JUL 2024	TENAGA	AMANAHRAYA TRUSTEES BERHAD - AMANAH SAHAM BUMIPUTERA [SSH]	-4,000	530990	9.13

Notice Period is 14th July 2024 – 20th July 2024

Effective Change Date	Stock Name	Buyer/ Seller Name [Classification]	Bought / (Sold) ['000]	No. of Shares After Trade ['000]	
			Total	Total	% Held
10 JUL 2024 - 10 JUL 2024	TENAGA	EMPLOYEES PROVIDENT FUND BOARD [SSH]	862	1002989	17.25
15 JUL 2024 - 16 JUL 2024	THETA	BERJAYA CORPORATION BERHAD [SSH]	505	10405	8.82
15 JUL 2024 - 16 JUL 2024	THETA	BERJAYA GROUP BERHAD [SSH]	505	10405	8.82
15 JUL 2024 - 16 JUL 2024	THETA	JUARA SEJATI SDN BHD [SSH]	505	10405	8.82
15 JUL 2024 - 16 JUL 2024	THETA	REDTONE DIGITAL BERHAD [SSH]	505	10405	8.82
11 JUL 2024 - 12 JUL 2024	THETA	BERJAYA CORPORATION BERHAD [SSH]	3,500	9900	8.392
11 JUL 2024 - 12 JUL 2024	THETA	BERJAYA GROUP BERHAD [SSH]	3,500	9900	8.392
11 JUL 2024 - 12 JUL 2024	THETA	JUARA SEJATI SDN BHD [SSH]	3,500	9900	8.392
11 JUL 2024 - 12 JUL 2024	THETA	REDTONE DIGITAL BERHAD [SSH]	3,500	9900	8.392
18 JUL 2024 - 18 JUL 2024	TIMECOM	KUMPULAN WANG PERSARAAN (DIPERBADANKAN) [SSH]	265	133471	7.219
12 JUL 2024 - 12 JUL 2024	TIMECOM	EMPLOYEES PROVIDENT FUND BOARD [SSH]	687	230471	12.466
11 JUL 2024 - 11 JUL 2024	TIMECOM	EMPLOYEES PROVIDENT FUND BOARD [SSH]	386	229784	12.429
12 JUL 2024 - 12 JUL 2024	TIMECOM	KUMPULAN WANG PERSARAAN (DIPERBADANKAN) [SSH]	103	133206	7.205
10 JUL 2024 - 10 JUL 2024	TIMECOM	EMPLOYEES PROVIDENT FUND BOARD [SSH]	295	229638	12.421
17 JUL 2024 - 17 JUL 2024	TM	AMANAHRAYA TRUSTEES BERHAD-AMANAH SAHAM BUMIPUTERA [SSH]	-132	200204	5.217
16 JUL 2024 - 16 JUL 2024	TM	EMPLOYEE PROVIDENT FUND BOARD (EPF BOARD) [SSH]	1,830	669213	17.438
16 JUL 2024 - 16 JUL 2024	TM	AMANAHRAYA TRUSTEES BERHAD-AMANAH SAHAM BUMIPUTERA [SSH]	-6,065	200335	5.22
15 JUL 2024 - 15 JUL 2024	TM	EMPLOYEE PROVIDENT FUND BOARD (EPF BOARD) [SSH]	1,137	667383	17.39
15 JUL 2024 - 15 JUL 2024	TM	AMANAHRAYA TRUSTEES BERHAD-AMANAH SAHAM BUMIPUTERA [SSH]	-6,400	206400	5.378
12 JUL 2024 - 12 JUL 2024	TM	EMPLOYEE PROVIDENT FUND BOARD (EPF BOARD) [SSH]	-965	666246	17.361
15 JUL 2024 - 15 JUL 2024	TM	KUMPULAN WANG PERSARAAN (DIPERBADANKAN) [SSH]	-96	355205	9.255
12 JUL 2024 - 12 JUL 2024	TM	AMANAHRAYA TRUSTEES BERHAD-AMANAH SAHAM BUMIPUTERA [SSH]	-4,183	212800	5.545
11 JUL 2024 - 11 JUL 2024	TM	EMPLOYEE PROVIDENT FUND BOARD (EPF BOARD) [SSH]	-2,575	667211	17.386
12 JUL 2024 - 12 JUL 2024	TM	KUMPULAN WANG PERSARAAN (DIPERBADANKAN) [SSH]	346	355300	9.259
11 JUL 2024 - 11 JUL 2024	TM	AMANAHRAYA TRUSTEES BERHAD-AMANAH SAHAM BUMIPUTERA [SSH]	-4,000	216983	5.654
10 JUL 2024 - 10 JUL 2024	TM	EMPLOYEE PROVIDENT FUND BOARD (EPF BOARD) [SSH]	661	669786	17.453
18 JUL 2024 - 18 JUL 2024	TOPGLOV	KUMPULAN WANG PERSARAAN (DIPERBADANKAN) [SSH]	65	523536	6.536
15 JUL 2024 - 15 JUL 2024	TOPGLOV	KUMPULAN WANG PERSARAAN (DIPERBADANKAN) [SSH]	-17	523471	6.535
15 JUL 2024 - 15 JUL 2024	TWL	DATIN SEK CHIAN NEE [DIR/CEO]	12,427	1308348	22.75
15 JUL 2024 - 15 JUL 2024	TWL	DATIN SEK CHIAN NEE [SSH]	12,427	1308348	22.75
15 JUL 2024 - 15 JUL 2024	TWL	DATO' TAN WEI LIAN [DIR/CEO]	12,427	1308348	22.75
15 JUL 2024 - 15 JUL 2024	TWL	DATO' TAN WEI LIAN [SSH]	12,427	1308348	22.75
15 JUL 2024 - 15 JUL 2024	TWL	MISS TAN LEE CHIN [DIR/CEO]	12,427	1308348	22.75
15 JUL 2024 - 15 JUL 2024	TWL	MISS TAN LEE CHIN [SSH]	12,427	1308348	22.75
15 JUL 2024 - 15 JUL 2024	TWL	TWL CAPITAL BERHAD [SSH]	12,427	1308348	22.75
15 JUL 2024 - 15 JUL 2024	UMCCA	MR HAN KEE JUAN [DIR/CEO]	13	444	0.212
12 JUL 2024 - 12 JUL 2024	UMCCA	MR TEE CHENG HUA [DIR/CEO]	2	59540	28.384
11 JUL 2024 - 12 JUL 2024	UMCCA	MR HAN KEE JUAN [DIR/CEO]	25	431	0.206
11 JUL 2024 - 11 JUL 2024	UNIMECH	MADAM LIM MEE HWA [SSH]	24	8133	5.539
11 JUL 2024 - 11 JUL 2024	UNIMECH	MR YEO SENG CHONG [SSH]	24	8133	5.539
12 JUL 2024 - 12 JUL 2024	UOAEV	EMPLOYEES PROVIDENT FUND BOARD ("EPF BOARD") [SSH]	800	306284	12.298
11 JUL 2024 - 11 JUL 2024	UOAEV	EMPLOYEES PROVIDENT FUND BOARD ("EPF BOARD") [SSH]	300	305484	12.266
10 JUL 2024 - 10 JUL 2024	UOAEV	EMPLOYEES PROVIDENT FUND BOARD ("EPF BOARD") [SSH]	300	305184	12.254
15 JUL 2024 - 15 JUL 2024	UTDPLT	EMPLOYEES PROVIDENT FUND BOARD [SSH]	-36	30082	7.252
12 JUL 2024 - 12 JUL 2024	UTDPLT	EMPLOYEES PROVIDENT FUND BOARD [SSH]	117	30118	7.261
11 JUL 2024 - 11 JUL 2024	UTDPLT	EMPLOYEES PROVIDENT FUND BOARD [SSH]	21	30001	7.233
10 JUL 2024 - 10 JUL 2024	UTDPLT	EMPLOYEES PROVIDENT FUND BOARD [SSH]	53	29980	7.228
12 JUL 2024 - 12 JUL 2024	VERSATL	MR LOH TECK WAH [DIR/CEO]	119	8935	3.19
17 JUL 2024 - 17 JUL 2024	VS	KUMPULAN WANG PERSARAAN [SSH]	-1,585	257233	6.67
15 JUL 2024 - 15 JUL 2024	VS	KUMPULAN WANG PERSARAAN [SSH]	-5,000	258818	6.711
17 JUL 2024 - 19 JUL 2024	WOODLAN	DATO' SERI MUN WENG SUM [DIR/CEO]	10	7276	18.188
17 JUL 2024 - 19 JUL 2024	WOODLAN	DATO' SERI MUN WENG SUM [SSH]	10	7276	18.188
15 JUL 2024 - 15 JUL 2024	WOODLAN	DATO' SERI MUN WENG SUM [DIR/CEO]	1		



The Board of Directors of **Hua Yang Berhad (HUAYANG)** is proposing to table the shareholder mandate to give power to the Company to purchase its own shares of up to 10% of the total number issued shares of the Company for the shareholders' approval at the forthcoming Annual General Meeting.

[READ MORE](#)

**Knusford Berhad (KNUSFOR)** wishes to announce that in accordance with Paragraph 10.09 and Practice Note 12 of the Main Market Listing Requirements of Bursa Malaysia Securities Berhad on Recurrent Related Party Transactions of a Revenue or Trading Nature, the Board of Directors of KB proposes to seek Shareholders' approval for the proposed renewal of shareholders' mandate for KB and its subsidiaries to enter into RRPTs at the forthcoming 28th Annual General Meeting of the Company.

[READ MORE](#)

The Board of Directors of **CapitaLand Malaysia Trust (CLMT)** announces, CapitaLand Malaysia REIT Management Sdn. Bhd., being the Manager of CLMT, had proposed the income distribution of 2.36 sen per CLMT Unit for the period from 1 January 2024 to 30 June 2024.

[READ MORE](#)



The Board of Directors of **FSBM Holdings Berhad (FSBM)** wishes to announce that FSBM has on 23 July 2024 entered into a Share Sale and Purchase Agreement with Dato' Tan Hock San @ Tan Hock Ming

and Mr Tan Ee Ern to dispose of FSBM's entire shareholdings in Asian Technology Resources Sdn Bhd which is a wholly-owned subsidiary of the Company. The Disposal is a Related Party Transaction as Dato' Tan is a Non-Independent Non-Executive Director of FSBM, Ms Tan Wan Yen is an Executive Director of FSBM and TEE is a person connected with such Directors are regarded as related parties and are interested/deemed interested in the Disposal.

[READ MORE](#) 



On behalf of the Board of **Kinergy Advancement Berhad (KAB)** Malacca Securities wishes to announce that Bursa Securities had vide its letter dated 19 July

2024, resolved to approve the listing and quotation of up to 198,634,288 new ordinary shares to be issued pursuant to the Proposed Private Placement.

[READ MORE](#) 



**Optimax Holdings Berhad (OPTIMAX)** inks Memorandum of Understanding with Ministry of Health Malaysia.

[READ MORE](#) 



On behalf of the Board of **QL Resources Berhad (QL)**, UOBKH wishes to announce that Bursa Securities

has, vide its letter dated 22 July 2024, resolved to approve the listing of and quotation for up to 1,216,828,569 Bonus Shares to be issued pursuant to the Proposed Bonus Issue of Shares.

[READ MORE](#)



The Board of Directors of **Sarawak Consolidated Industries Berhad (SCIB)** wishes to announce that

SCIBP, had on 25 July 2024 accepted a Letter of Award from AWANA for securing an EPCC contract subject to the terms and conditions as stipulated in the LOA.

[READ MORE](#)

**Disclaimer:** The information in the Investor Relations page is extracted from individual companies' announcements in [www.bursamalaysia.com](http://www.bursamalaysia.com). The information on this page is provided as a service to readers. We assume no liability for damages resulting from or arising out of the use of such information. Whilst every effort is made to ensure accuracy, the information presented has been simplified for your reading pleasure. Readers are advised to read the original and complete filings on the Bursa Malaysia website at [https://www.bursamalaysia.com/market\\_information/announcements/company\\_announcement](https://www.bursamalaysia.com/market_information/announcements/company_announcement)

**Upcoming IPO**

NAME OF COMPANY	OFFER PERIOD		ISSUE PRICE (Per Ordinary Share)	LISTING SOUGHT	DATE OF LISTING
	OPENING	CLOSING			
EPB GROUP BERHAD	27 June 2024	31 July 2024	RM0.56	ACE MARKET	23 Aug 2024
SIK CHEONG BERHAD	19 July 2024	30 July 2024	RM0.27	ACE MARKET	13 Aug 2024
KUCINGKO BERHAD	28 June 2024	12 July 2024	RM0.30	ACE MARKET	26 July 2024