

# Invest

A Weekly e-Publication by SHAREINVESTOR.com

ISSUE

# 171

FRIDAY  
25 AUGUST  
2023

Scan/Click QR to Register



Via email, every Friday

# Merdeka Kaw Kaw Promotion

23 Aug 2023 - 17 Sep 2023

Enjoy

# 31% off

SHAREINVESTOR<sup>®</sup>  
**STATION**

SHAREINVESTOR<sup>®</sup>  
**WEBPRO**

**BURSA STATION**  
*Professional*

**SUBSCRIBE NOW!**

**SUBSCRIBE NOW!**

Coupon Code:  
**MYMERDEKA23**

Valid for 12-month  
subscription

T & C Apply



## FINANCIAL PLANNING INDUSTRY TO PLAY PIVOTAL ROLE IN FINANCIAL WELL-BEING OF MALAYSIANS - SC CHAIRMAN

## ECONOMIC GROWTH IN MALAYSIA TO PICK UP IN 2H2023 - BMI

(page 22-25)

### 27 MSWG

Perplexing developments at EA Holdings  
over the restraint to convene EGM

04 LEADERBOARD

06 SHARIAH HOT STOCKS

07 COMPANY SPOTLIGHT

08 SHARIAH MOMENTUM UP  
STOCKS

10 NON SHARIAH HOT STOCKS

12 UP TRENDING STOCKS

14 VALUE STOCKS

16 GROWTH STOCKS

18 DIVIDEND STOCKS

19 BROKERS' CALL

20 LONG COMPANIES

22 MARKET SENTIMENTS

26 REGIONAL MARKETS

27 FROM THE OBSERVER

30 INSIDER ACTIVITY

34 INVESTOR RELATIONS

36 CAREERS AT  
SHAREINVESTOR



**INVESTOR PLATFORMS**

**Director**  
Darren Chong  
darren.chong@shareinvestor.com

**Business Development Manager**  
Jay Cheong  
jay.cheong.@shareinvestor.com

**Senior Executive**  
Daniel Wong  
daniel.wong@shareinvestor.com

**Executive**  
Farah Azwani  
farah.azwani@shareinvestor.com

**Executive**  
Tan Yong Sheng  
yongsheng.tan@shareinvestor.com

**ADMIN & OPERATIONS**

**Senior Executive**  
Watie Nordin  
watie.nordin@shareinvestor.com

**Executive**  
Silas Emmanuel Joseph  
silas.joseph@shareinvestor.com

**INVESTOR RELATIONS**

**Group Managing Director & Publisher**  
Edward Stanislaus  
edward@shareinvestor.com

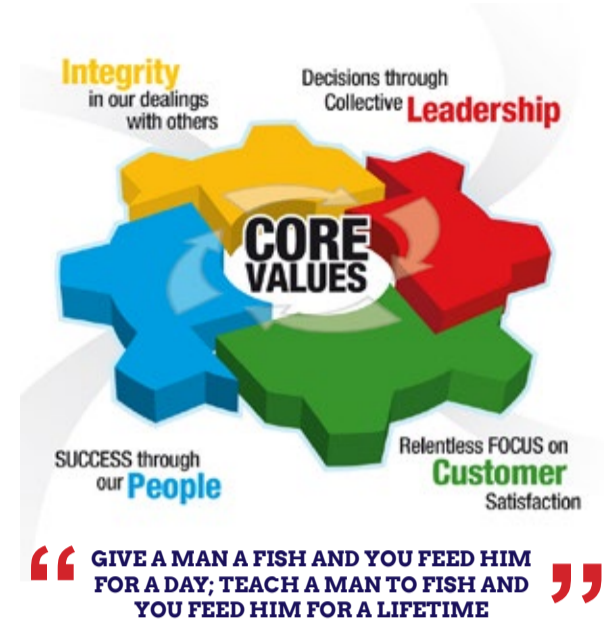
**Senior Manager**  
Letticia Wong  
letticia.wong@shareinvestor.com

**PROCESS AUTOMATION & DATA ANALYTICS**

**Data Analyst**  
Nickson Aw

**SHAREINVESTOR HOLDINGS BOARD OF DIRECTORS**

- |                  |                 |
|------------------|-----------------|
| <b>Chairman</b>  | Patrick Daniel  |
| <b>Group CEO</b> | Christopher Lee |
| <b>Group COO</b> | Lim Dau Hee     |
| <b>Group CFO</b> | Teo Siew May    |
| <b>Group MD</b>  | Shanison Lin    |

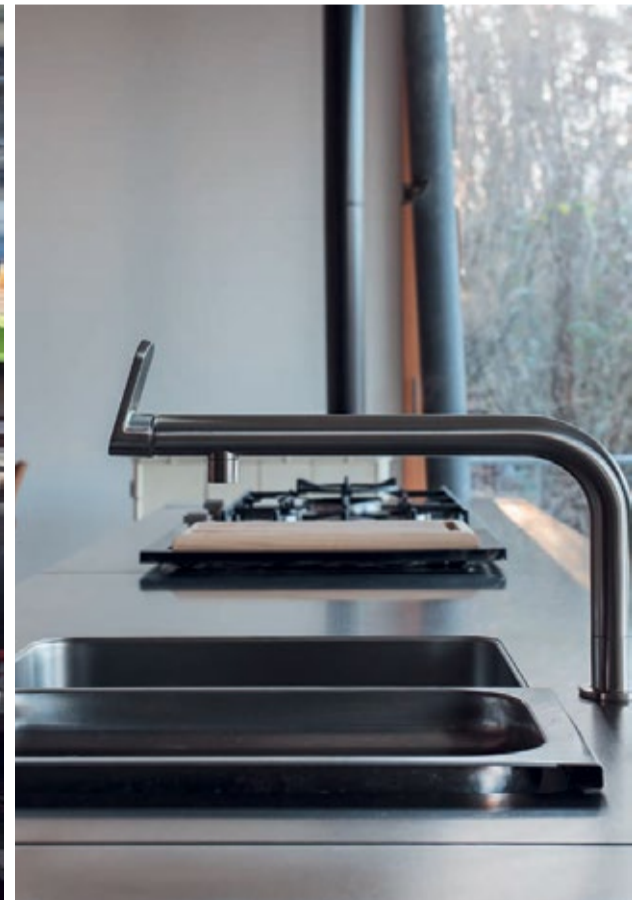


**ShareInvestor Malaysia Sdn. Bhd.**  
(200001023956) (526564-M)  
Unit No. DF2-07-03A. Level 7,  
Persoft Tower, 6B Persiaran Tropicana,  
47410 Petaling Jaya, Selangor Darul Ehsan.

Hotline : 603 7803 1791  
Mobile : 011 6343 8939  
Website : [www.ShareInvestor.com.my](http://www.ShareInvestor.com.my)  
[www.ShareInvestorHoldings.com](http://www.ShareInvestorHoldings.com)  
[www.Facebook.com/ShareInvestorMalaysia](http://www.Facebook.com/ShareInvestorMalaysia)

**ADVERTISEMENT ENQUIRY**

bulthaup takes care of the details so that you can enjoy a harmonious environment.



**XTRA**

XTRA FURNITURE SDN BHD  
The Gardens Mall, Mid Valley City  
[xtrafurniture.com/bulthaup](http://xtrafurniture.com/bulthaup)  
[fb.com/bulthaupmalaysia](https://fb.com/bulthaupmalaysia)

bulthaup



**ETF Power Players**  
Incentive Programme

## Strategise your portfolio with ETFs

Start trading in **Bursa-listed Exchange-traded Funds (ETFs)** with a minimum value of **RM20,000\*** and be in the running for valuable cash incentives!

**17 July 2023 - 29 December 2023**

Find out more at:  
[www.bursamarketplace.com/ETFpowerplayers](http://www.bursamarketplace.com/ETFpowerplayers)

[Trade Now!](#)

*\*Terms and conditions apply*

[www.shareinvestor.com](http://www.shareinvestor.com) - market data at your fingertips



ShareInvestor WebPro ([www.shareinvestor.com/my](http://www.shareinvestor.com/my))  
Prices > Stock Prices > Bursa > click Stocks tab

1. mouse over Ranking > select Top Active > all Shariah stocks are denoted with an [S] > mouse over Column Layout > select Edit Customs > select Name > select Volume > select Last Done Price > Mouse Over Column Layout > select Custom
2. mouse over Ranking > select Top Turnover > all Shariah stocks are denoted with an [S] > mouse over Column Layout > select Edit Customs > select Name > select Last Done Price > select Value > Mouse Over Column Layout > select Custom
3. mouse over Ranking > select Top Gainers (Over 5 Trading Days) > mouse over Column Layout > select Edit Customs > select Name > select Last Done Price > select 5 Days Change > select 5 Days % Change > Mouse Over Column Layout > select Custom
4. mouse over Ranking > select Top Losers (Over 5 Trading Days)
5. mouse over Ranking > select Top % Gainers (Over 5 Trading Days)
6. mouse over Ranking > select Top % Losers (Over 5 Trading Days)

### Shariah Top Actives (as at Yesterday)

Name	Price (RM)	Volume
HONGSENG [S]	0.050	2,684,919.000
SAPNRG [S]	0.050	1,197,297.000
PERDANA [S]	0.215	982,946.000
CNASIA [S]	0.230	825,948.000
VELESTO [S]	0.240	520,801.000
PARKSON [S]	0.335	509,333.000
SYSTECH [S]	0.370	451,369.000
MYEG [S]	0.810	406,486.000
SCIB [S]	0.445	374,070.000
BINACOM [S]	0.345	359,500.000

### Shariah Top Turnover (as at Yesterday)

Name	Price (RM)	Value (RM)
MBMR [S]	4.070	50,832,337
TENAGA [S]	10.000	42,618,905
KLK [S]	22.400	37,789,338
MYEG [S]	0.810	32,976,453
PCHEM [S]	6.850	25,435,012
PERDANA [S]	0.215	22,157,032
CNASIA [S]	0.230	20,013,067
UMW [S]	4.620	19,197,918
SUNWAY [S]	1.910	18,125,870
PARKSON [S]	0.335	17,481,677

### Top Gainers (over 5 Trading days as at Yesterday)

Name	Price (RM)	Change (RM)
PANAMY	21.200	+0.740
RAPID	23.480	+0.640
MBMR	4.070	+0.540
HEXTECH	28.200	+0.520
IMASPRO	5.600	+0.410
MCEMENT	3.850	+0.380
ALLIANZ	16.140	+0.320
EWEIN	1.570	+0.260
HAPSENG	3.520	+0.240
UTDPLT	16.040	+0.240

### Top % Gainers (over 5 Trading days as at Yesterday)

Name	Price (RM)	Change (%)
DGB	0.010	+100.00
KGROUP	0.010	+100.00
DOLPHIN	0.025	+66.67
PARKSON	0.335	+52.27
GOCEAN	0.015	+50.00
JOE	0.015	+50.00
NEXGRAM	0.015	+50.00
CNASIA	0.230	+39.39
REACH	0.040	+33.33
TALAMT	0.020	+33.33

### Top Losers (over 5 Trading days as at Yesterday)

Name	Price (RM)	Change (RM)
HEIM	25.480	-1.100
PETDAG	21.880	-0.840
NESTLE	130.700	-0.800
KSENG	4.330	-0.200
MPI	27.000	-0.200
VITROX	7.710	-0.190
AMBANK	3.670	-0.180
BKAWAN	21.020	-0.180
KLUANG	3.700	-0.170
HARISON	8.500	-0.160

### Top % Losers (over 5 Trading days as at Yesterday)

Name	Price (RM)	Change (%)
IQZAN	0.020	-33.33
TECHNAX	0.010	-33.33
SCBUILD	0.035	-30.00
ZENTECH	0.015	-25.00
HONGSENG	0.050	-23.08
XOXNET	0.025	-16.67
SALUTE	0.560	-14.50
DIGISTA	0.060	-14.29
REKATECH	0.060	-14.29
SAUDEE	0.030	-14.29

# TRADE STOCKS/ETFs NOW

FROM ~~USD8.80~~ **USD3.80**

*But Wait..* There's More!

Trade US Stocks / ETFs & **WIN**

# FREE

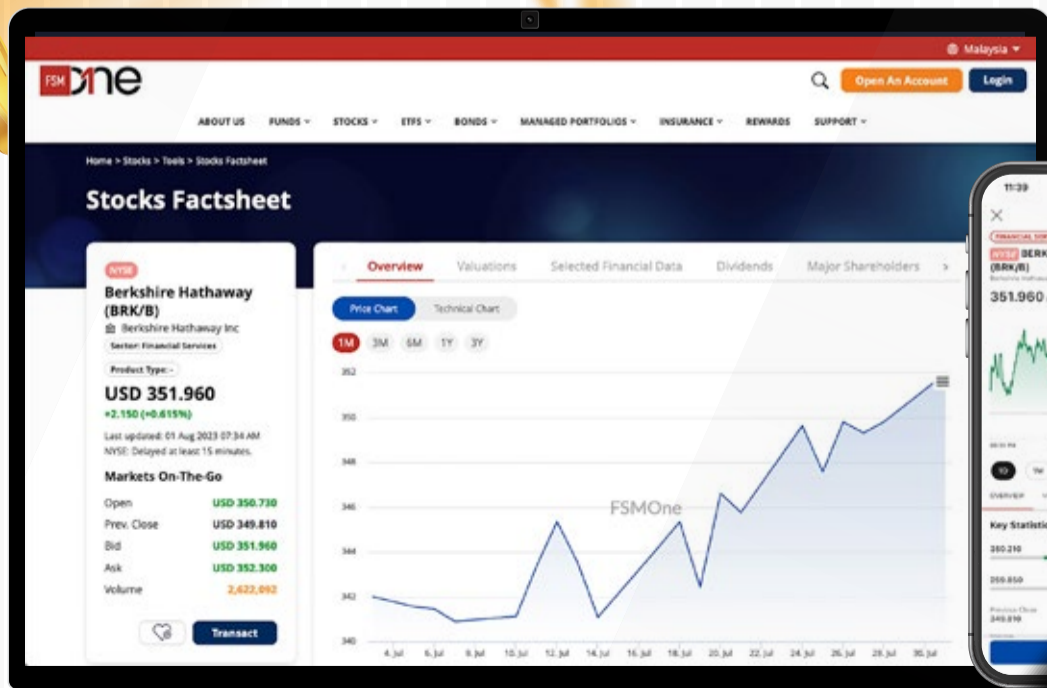
**Popular US Stocks\*!**

1 August 2023 - 31 August 2023

*\*Terms and conditions apply*



Scan for more info on the Campaign



## Price & Volume Distribution Charts (as at Yesterday)

Technical Analysis

**DEFINITION:** Shariah compliant stocks with Technical Analysis showing 5-days & 10-days Moving Average Price below Yesterday's Close over past 3 days and with Volume Spike.

**CHART GUIDE:** Volume Distribution Chart is a statistical interpretation of the current sentiment on each stock in graphical format. The highest bar categorized as >150k is likely to be traded by institutions or super dealers, while the lowest bar categorized as <15k usually represents retail investors. "Buy Up" refers to more buyers snatching up the lots queued at selling price. "Sell Down" refers to sellers selling their shares to the buying queue



ShareInvestor WebPro > Screener > Market Screener (FA & TA) > select BURSA > add criteria

**A. Criteria**

- > click Add Criteria
- Technical Analysis Conditions tab select (i) Moving Average Below Close (ii) Volume Spike
- Fundamental Analysis Conditions tab > select (iii) Revenue
- Prices & Other Conditions tab > select (iv) Is Shariah Compliant
- Technical Analysis Conditions tab select (v) Moving Average Below Close
- Prices & Other Conditions tab > select (vi) Last Done Price
- Technical Analysis Conditions tab select (vii) Moving Average Below Close

**B. Conditions (Criteria Filters)**

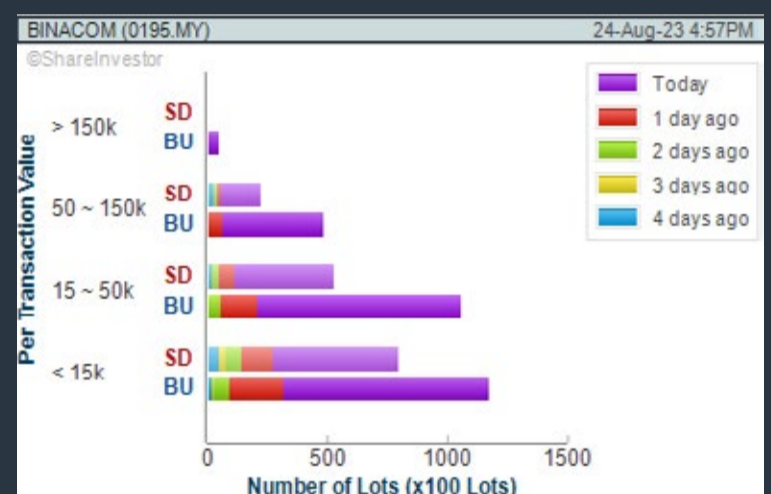
- Moving Average Below Close - select (MA) type (5) below close price for type (3) days
- Volume Spike - Volume type (1) greater than type (5) days average
- Revenue ("000) - select (more than) type (1) for the past select (1) financial year(s)
- Is Shariah Compliant - select **Yes**
- Moving Average Below Close - select (MA) type (10) below close price for type (3) days
- Last Done Price - select (more than) type (0.3)
- Moving Average Below Close - select (EMA) type (5) below close price for type (3) days

- > click Save Template > Create New Template type (Shariah Hot Stocks) > click Create
- > click Save Template as > select Shariah Hot Stocks > click Save
- > click Screen Now (may take a few minutes)
- > Sort By: Select (Vol) Select (Desc)
- > Mouse over stock name > Charts > click C<sup>2</sup> Charts or Volume Distribution

### BINASAT COMMUNICATIONS BERHAD (0195)

C<sup>2</sup> Chart

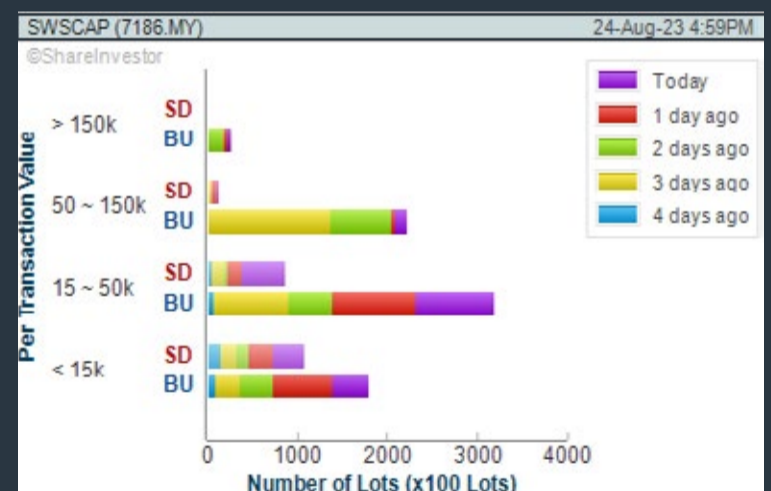
Analysis



### SWS CAPITAL BERHAD (7186)

C<sup>2</sup> Chart

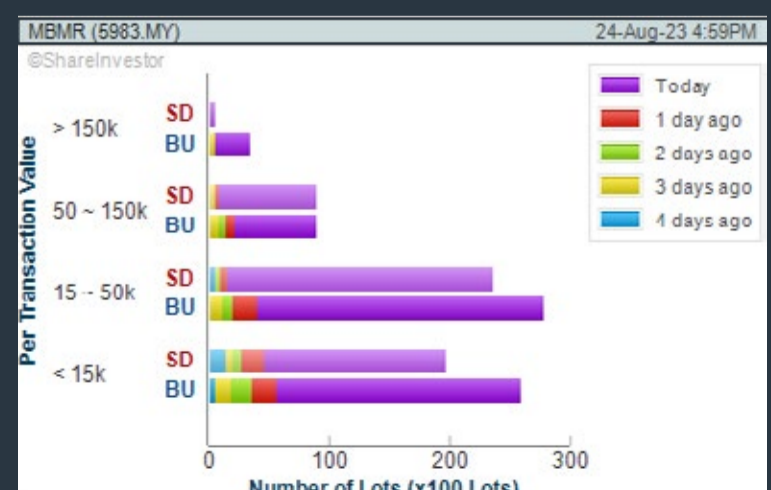
Analysis



### MBM RESOURCES BHD (5983)

C<sup>2</sup> Chart

Analysis



**Disclaimer:** The information on this page is provided as a service to readers. It does not constitute financial advice and/or any investment recommendations. Past performance is not indicative of future results. We assume no liability for damages resulting from or arising out of the use of such information. It would be best if you did your own research to make your personal investment decisions wisely or consult a licenced investment advisor.

## COMPANY BACKGROUND

**Binasat Communications Berhad** is engaged in the provision of support services for VSAT Network Engineering, Mobile and Fiber Network Engineering, Satellite Hub / Teleport and Digital Satellite News Gathering (DSNG).



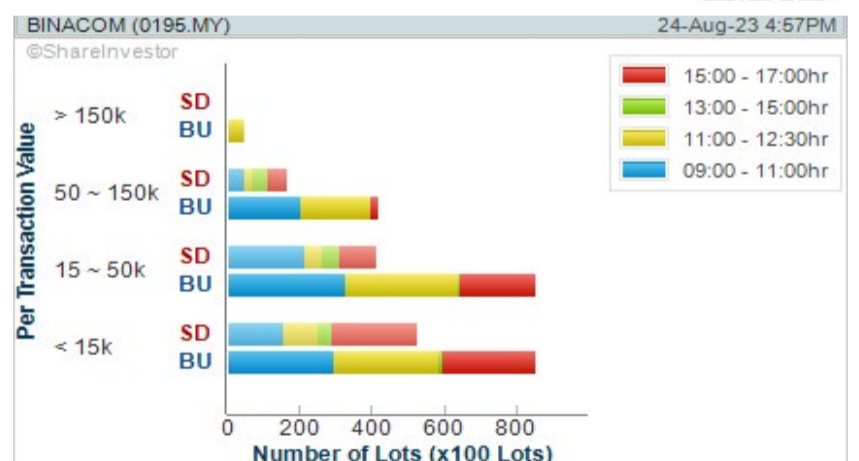
BINACOM BINASAT COMMUNICATIONS BERHAD		Updated at 24 Aug 2023 16:59	
Last (MYR): <b>0.345</b> ↑	Change: +0.030	High: 0.355	Remarks: -
	Change (%): +9.52	Low: 0.315	
Open	0.315	Yesterday's Close	0.315
Buy Price	0.345	Sell Price	0.350
Buy Volume ('00)	252	Sell Volume ('00)	6,226
Cumulative Volume ('00)	359,500	Cumulative Value	12,098,375

### Financial Analysis

<b>Revenue Growth</b> Increasing revenue in last 2 consecutive years	<b>Profit Growth</b> Increasing profit in latest year (with last 2 profitable years)
<b>Piotroski F Score</b> The company has below average financial strength (Piotroski F-Score of 3-4)	<b>Cash Ratio</b> Good cash ratio of at least 0.8 for 3 consecutive years
<b>Current Ratio</b> The company is well-positioned to cover its short-term obligations with its current assets (ratio between 1.5 to 10) for 3 consecutive years	<b>Debt to Cashflow</b> The company has negative cash flow from operations in most recent year
<b>Free Cash Flow</b> Negative free cash flow for two years or more	<b>Gross Profit Margin</b> Low gross profit margin for 3 years

Excellent 
 Good 
 Neutral 
 Be Alert 
 Watch Out

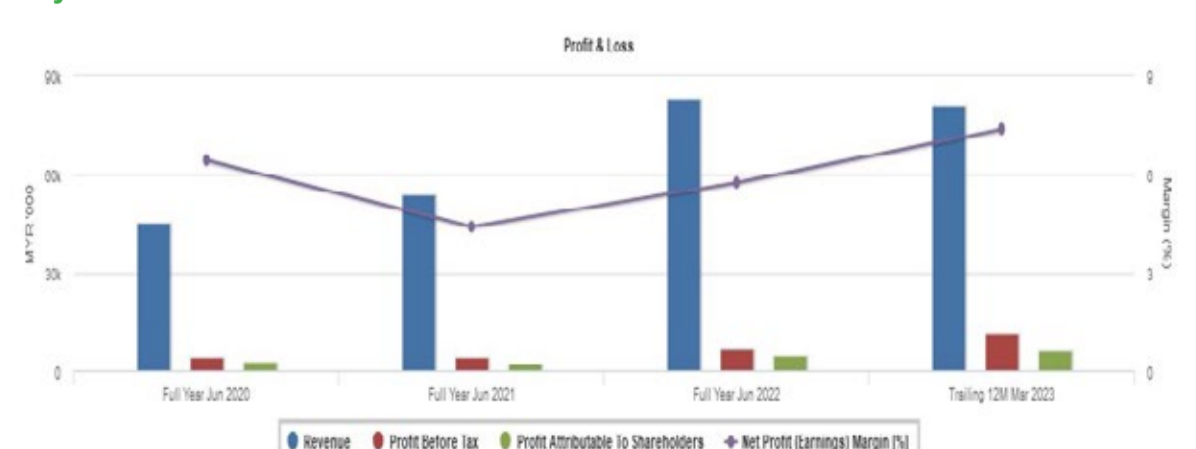
WebPro 9-Days Free Trial Registration (worth RM9) Sign Up Now



### Total Shareholder Return

Period	Dividend Received	Capital Appreciation	Total Shareholder Return
Short Term Return	5 Days	+0.040	+13.11%
	10 Days	+0.000	+21.05%
	20 Days	+0.060	+21.06%
Medium Term Return	3 Months	+0.065	+23.21%
	6 Months	+0.085	+32.69%
	1 Year	+0.100	+44.35%
Long Term Return	2 Years	+0.010	+2.99%
	3 Years	-0.041	-10.62%
	5 Years	0.005	-24.41%
Annualised Return	-	-	-5.44%

### Key Statistics with Total Shareholder Returns



**Disclaimer:** The information on this page is provided as a service to readers. It does not constitute financial advice and/or any investment recommendations. Past performance is not indicative of future results. We assume no liability for damages resulting from or arising out of the use of such information. It would be best if you did your own research to make your personal investment decisions wisely or consult a licenced investment advisor.



## Price & Volume Distribution Charts (as at Yesterday)

Technical Analysis

**DEFINITION:** Shariah compliant stocks with Technical Analysis showing Bullish Momentum and Price Uptrend. The share price closed at the highest price yesterday. The typical price was higher than the previous day's typical price.

**CHART GUIDE:** Volume Distribution Chart is a statistical interpretation of the current sentiment on each stock in graphical format. The highest bar categorized as >150k is likely to be traded by institutions or super dealers, while the lowest bar categorized as <15k usually represents retail investors. "Buy Up" refers to more buyers snatching up the lots queued at selling price. "Sell Down" refers to sellers selling their shares to the buying queue.



ShareInvestor WebPro > Screener > Market Screener (FA & TA)>select BURSA>add criteria

**A. Criteria**

- > click Add Criteria
- Fundamental Analysis Conditions tab >select (i) Revenue
- Technical Analysis Conditions tab select (ii) Average Volume
- Prices & Other Conditions tab > select (iii) Last Done Price
- Prices & Other Conditions tab > select (iv) Is Shariah Compliant
- Technical Analysis Conditions tab select (v) RSI Overbought
- Technical Analysis Conditions tab select (vi) Moving Average Below Close
- Technical Analysis Conditions tab select (vii) CCI Overbought

**B. Conditions (Criteria Filters)**

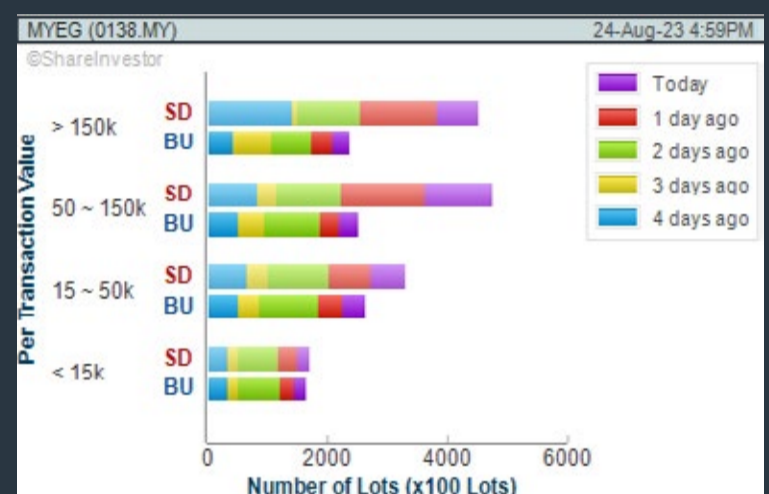
- Revenue ("000) - select (more than) type (1) for the past select (1) financial year(s)
- Average Volume - type (1) days average volume greater than type (10000) lots
- Last Done Price - select (more than) type (0.3)
- Is Shariah Compliant - select Yes
- RSI Overbought - select RSI 1 above 99 for 1 days
- Moving Average Below Close - select (MA) type (10) below close price for type (1) days
- CCI Overbought - select CCI (2) above (0) for (1) days

- > click Save Template > Create New Template type (Shariah Momentum Up Stocks) > click Create
- > click Save Template as > select Shariah Momentum Up Stocks > click Save
- > click Screen Now (may take a few minutes)
- Sort By: Select (Vol) Select (Desc)
- Mouse over stock name > Charts > click C<sup>2</sup> Charts tab or Volume Distribution

### MY E.G. SERVICES BHD (0138)

C<sup>2</sup> Chart

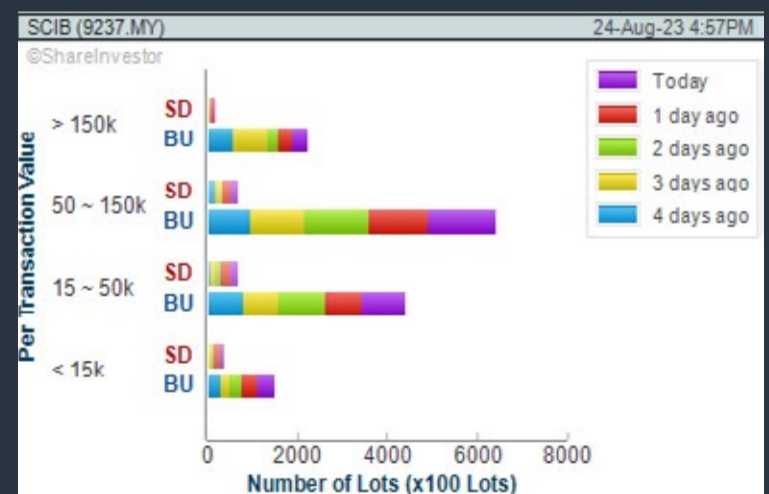
Analysis



### SARAWAK CONSOLIDATED IND BHD (9237)

C<sup>2</sup> Chart

Analysis



### BINASAT COMMUNICATIONS BERHAD (0195)

C<sup>2</sup> Chart

Analysis



**Disclaimer:** The information on this page is provided as a service to readers. It does not constitute financial advice and/or any investment recommendations. Past performance is not indicative of future results. We assume no liability for damages resulting from or arising out of the use of such information. It would be best if you did your own research to make your personal investment decisions wisely or consult a licenced investment advisor.



# BEYOND INFIN<sup>8</sup>



8 AUG 2023 – 31 JAN 2024

**TRADE & WIN  
AMAZING PRIZES**



**FIND OUT MORE**

T&C APPLY

## Price & Volume Distribution Charts (as at Yesterday)

Technical Analysis

**DEFINITION:** Stocks with Technical Analysis showing 5-days & 10-days Moving Average Price below Close over past 1 days and with Volume Spike

**CHART GUIDE:** Volume Distribution Chart is a statistical interpretation of the current sentiment on each stock in graphical format. The highest bar categorized as >150k is likely to be traded by institutions or super dealers, while the lowest bar categorized as <15k usually represents retail investors. "Buy Up" refers to more buyers snatching up the lots queued at selling price. "Sell Down" refers to sellers selling their shares to the buying queue.



ShareInvestor WebPro > Screener > Market Screener (FA & TA) > select BURSA > add criteria

**A. Criteria**

- > click Add Criteria
- Technical Analysis Conditions tab select (i) Moving Average Below Close (ii) Volume Spike
- Fundamental Analysis Conditions tab >select (iii) Revenue
- Prices & Other Conditions tab > select (iv) Is Shariah Compliant
- Technical Analysis Conditions tab select (v) Moving Average Below Close
- Prices & Other Conditions tab > select (vi) Last Done Price
- Technical Analysis Conditions tab select (vii) Moving Average Below Close

**B. Conditions (Criteria Filters)**

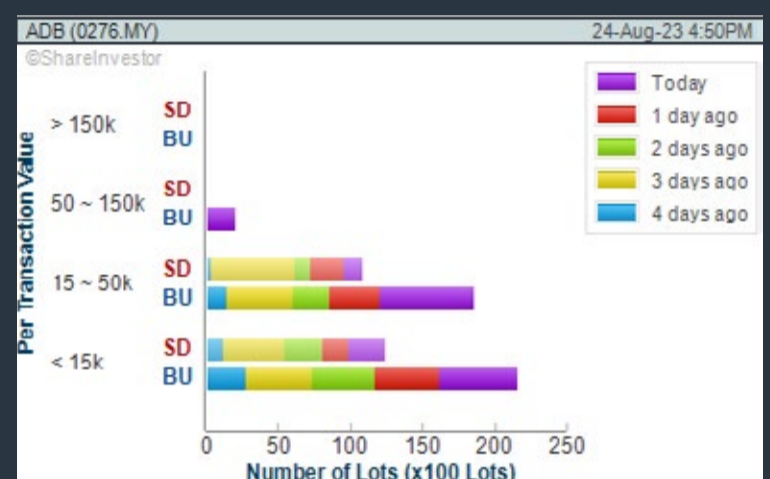
1. Moving Average Below Close - select (MA) type (5) below close price for type (3) days
2. Volume Spike - Volume type (1) greater than type (5) days average
3. Revenue ("000) - select (more than) type (1) for the past select (1) financial year(s)
4. Is Shariah Compliant - select NO
5. Moving Average Below Close - select (MA) type (10) below close price for type (1) days
6. Last Done Price - select (more than) type (0.3)
7. Moving Average Below Close - select (EMA) type (5) below close price for type (1) days

- > click Save Template > Create New Template type (Non-Shariah Hot Stocks) > click Create
- > click Save Template as > select Non-Shariah Hot Stocks > click Save
- > click Screen Now (may take a few minutes)
- Sort By: Select (Vol) Select (Desc)
- Mouse over stock name > Charts > click C<sup>2</sup> Charts tab or Volume Distribution

### AUTOCOUNT DOTCOM BERHAD (0276)

C<sup>2</sup> Chart

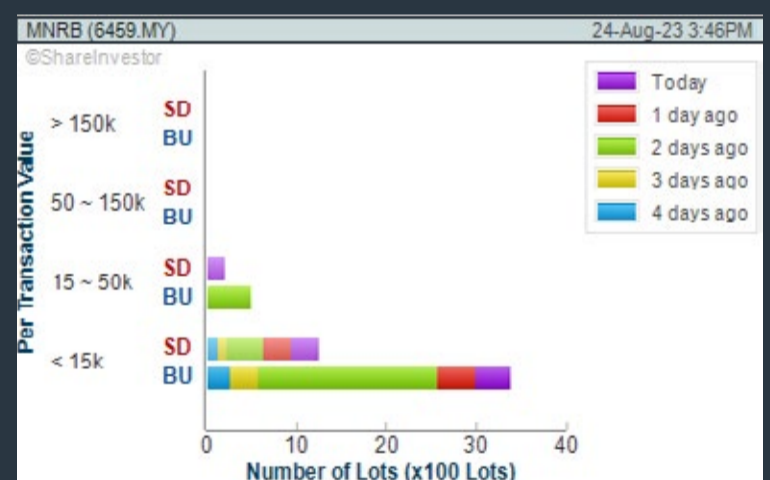
Analysis



### MNRB HOLDINGS BHD (6459)

C<sup>2</sup> Chart

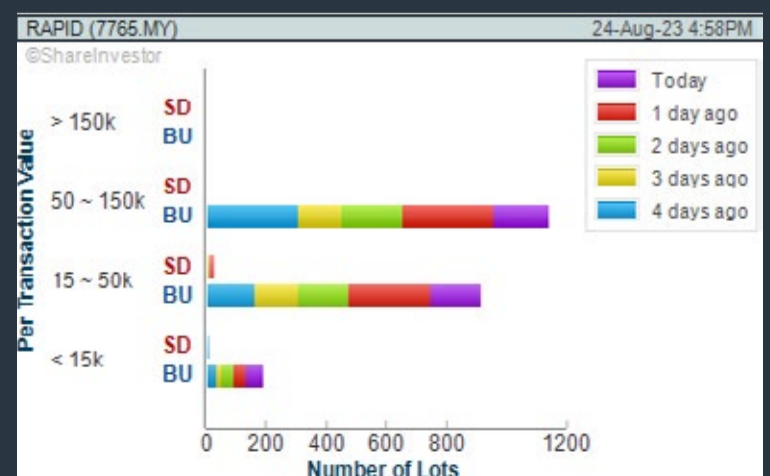
Analysis



### RAPID SYNERGY BHD (7765)

C<sup>2</sup> Chart

Analysis



**Disclaimer:** The information on this page is provided as a service to readers. It does not constitute financial advice and/or any investment recommendations. Past performance is not indicative of future results. We assume no liability for damages resulting from or arising out of the use of such information. It would be best if you did your own research to make your personal investment decisions wisely or consult a licenced investment advisor.



# Foreign Stocks Fiesta



US stocks



SG stocks



HK stocks

Trade & Earn Up to  
RM70\* e-Cash Reward

\*T&C Apply



Open account and trade now

## Price & Volume Distribution Charts (Over 5 trading days as at Yesterday)

Technical Analysis

**DEFINITION:** Stocks with Technical Analysis showing Bullish Momentum and Price Uptrend

**CHART GUIDE:** Volume Distribution Chart is a statistical interpretation of the current sentiment on each stock in graphical format. The highest bar categorized as >150k is likely to be traded by institutions or super dealers, while the lowest bar categorized as <15k usually represents retail investors. "Buy Up" refers to more buyers snatching up the lots queued at selling price. "Sell Down" refers to sellers selling their shares to the buying queue.



ShareInvestor WebPro > Screener > Market Screener (FA & TA) > select BURSA > add criteria

**A. Criteria**

- > click Add Criteria
- Fundamental Analysis Conditions tab > select (i) Revenue
- Technical Analysis Conditions tab select (ii) Moving Average Below Close
- Technical Analysis Conditions tab select (iii) Average Volume
- Prices & Other Conditions tab > select (iv) Last Done Price
- Technical Analysis Conditions tab select (v) Moving Average Below Close
- Technical Analysis Conditions tab select (v) Moving Average Bullish Crossover

**B. Conditions**

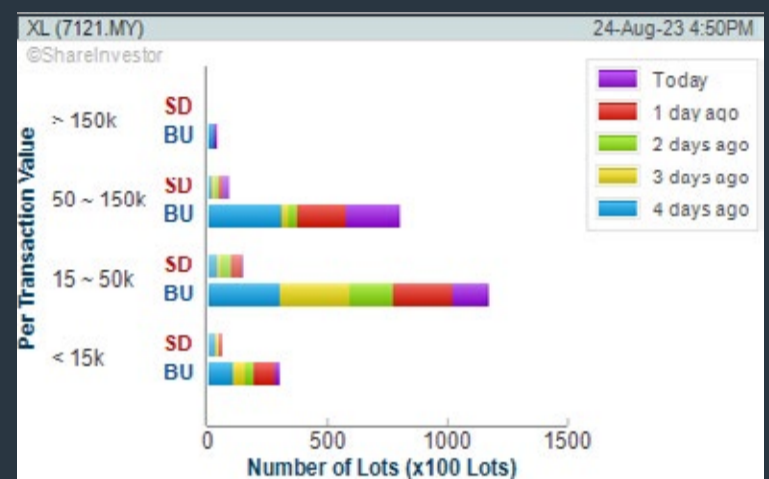
1. Revenue - select (more than) type (1) for the past select (1) financial year(s)
2. Moving Average Below Close - select (MA) type (20) below close price for type (1) days
3. Average Volume - type (5) days average volume type (10000) lots
4. Last Done Price - select (more than) type (0.3)
5. Moving Average Below Close - select (MA) type (10) below close price for type (1) days
6. Moving Average Bullish Crossover - select (MA) type (5) crossed above select (MA) type (10)

> click Save Template > Create New Template type (Non-Shariah Up-Trending Stocks) > click Create Click Save Template As > select Non-Shariah Up Trending Stocks > click Save  
 > click Screen Now (may take a few minutes)  
 Sort By: Select (Vol) Select (Desc)  
 Mouse over stock name > Charts > click C<sup>2</sup> Charts tab or Volume Distribution

### XL HOLDINGS BERHAD (7121)

C<sup>2</sup> Chart

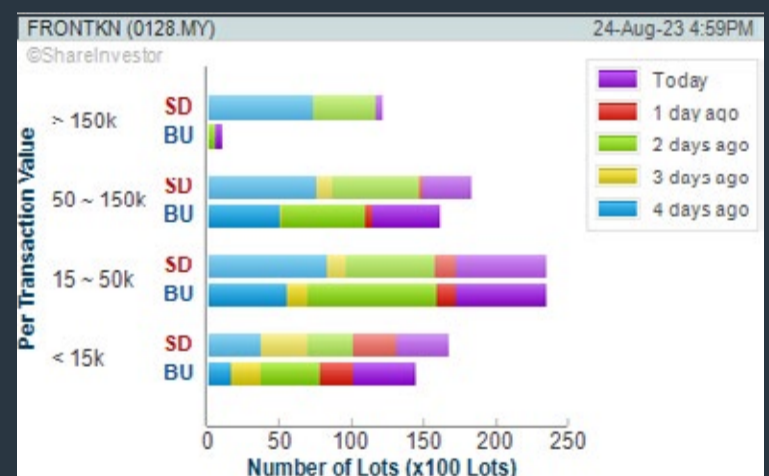
Analysis



### FRONTKEN CORPORATION BHD (0128)

C<sup>2</sup> Chart

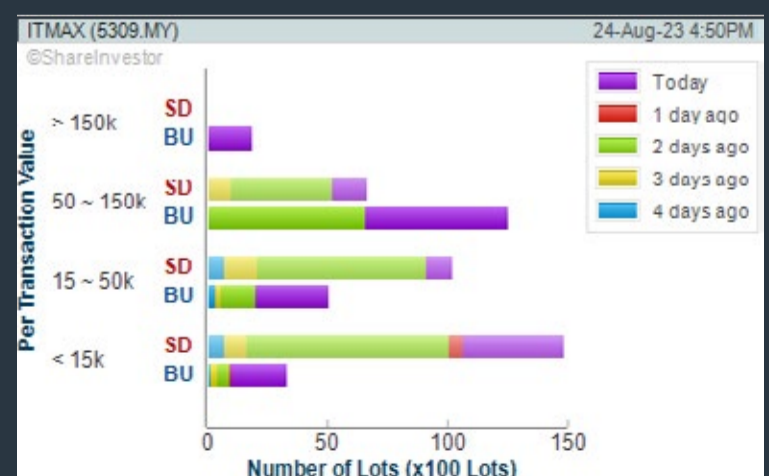
Analysis



### ITMAX SYSTEM BERHAD (5309)

C<sup>2</sup> Chart

Analysis



**Disclaimer:** The information on this page is provided as a service to readers. It does not constitute financial advice and/or any investment recommendations. Past performance is not indicative of future results. We assume no liability for damages resulting from or arising out of the use of such information. It would be best if you did your own research to make your personal investment decisions wisely or consult a licenced investment advisor.



## Try out the Warrant Heatmap

See which underlyings are bullish or bearish in the short to medium term

## Price & Total Shareholder Return (as at Yesterday)

Fundamental Analysis

**DEFINITION:** Share price of a company trading at a lower price as compared to its fundamentals (FA) such as financial performance and dividend, allowing it to be attractive to value investors.

**CHART GUIDE:** Total Shareholder Return (TSR) combines share price appreciation and dividend distributions paid to show the total return to the shareholder expressed as a percentage.



ShareInvestor WebPro > Screener > Market Screener (FA & TA) > select BURSA > add criteria

**A. Criteria**

- > click Add Criteria
- Fundamental Analysis Conditions tab (i) Price Earnings Ratio
- Fundamental Analysis Conditions tab >select (ii) CAGR of Net Earnings
- Fundamental Analysis Conditions tab >select (iii) Net Debt To Equity
- Fundamental Analysis Conditions tab >select (iv) Return On Equity (ROE)

**B. Conditions**

1. Price Earnings Ratio - select (less than) type (15) times now
2. CAGR of Net Earnings - select (more than) type (10) % for the past type (3) financial year(s)
3. Net Debt To Equity – select (less than) type (1) for the past select (1) financial year(s)
4. Return On Equity (ROE) – select (more than) type (10) % for the past select (1) financial year(s)

- > click Save Template > Create New Template type (Value Stock) > click Create
- > click Save Template as > select Value Companies > click Save
- > click Screen Now (may take a few minutes)
- Sort by: Select (PE Ratio) Select (Ascending)
- > Mouse over stock name > Factsheet > looking for Total Shareholder Return
- > Mouse over stock name > Charts > click C2 Charts tab

### SUNMOW HOLDING BERHAD (03050)

C<sup>2</sup> Chart



Period	Dividend Received	Capital Appreciation	Total Shareholder Return
Short Term Return	5 Days	-	-
	10 Days	-0.100	-7.69%
	20 Days	-0.400	-25.00%
Medium Term Return	3 Months	+0.400	+50.00%
	6 Months	+0.550	+64.62%
	1 Year	+0.250	+26.32%
Annualised Return	Annualised	-	+26.32%

### EDELTEQ HOLDINGS BERHAD (0278.MY)

C<sup>2</sup> Chart



Period	Dividend Received	Capital Appreciation	Total Shareholder Return
Short Term Return	5 Days	-0.020	-3.74%
	10 Days	-0.020	-3.74%
	20 Days	-0.105	-16.94%

### SCGM BHD (7247)

C<sup>2</sup> Chart



Period	Dividend Received	Capital Appreciation	Total Shareholder Return
Short Term Return	5 Days	-	-
	10 Days	-0.015	-2.50%
	20 Days	-	-
Medium Term Return	3 Months	+0.040	+7.24%
	6 Months	-0.095	-16.80%
	1 Year	-0.090	-15.91%
Long Term Return	2 Years	0.051	+6.69%
	3 Years	0.126	+16.16%
	5 Years	0.173	+19.32%
Annualised Return	Annualised	-	+15.24%

**Disclaimer:** The information on this page is provided as a service to readers. It does not constitute financial advice and/or any investment recommendations. Past performance is not indicative of future results. We assume no liability for damages resulting from or arising out of the use of such information. It would be best if you did your own research to make your personal investment decisions wisely or consult a licenced investment advisor.

**BEYOND INSIGHTS**<sup>®</sup>  
INVESTMENT and TRADING EDUCATION

Discover the Potential  
of U.S. stock market

# Your Path To Sustainable Trading & Investing Results



JOIN US AT THE 3-HOUR  
GLOBAL INVESTING & TRADING  
MADE SIMPLE



Scan to Register



[beyondinsights.info/globalinvesting](https://beyondinsights.info/globalinvesting)



**by Kathlyn toh**

Founder of Beyond insights  
Professional Trader & Investor  
in the US Stock Market.



## Price & Total Shareholder Return (as at Yesterday)

Fundamental Analysis

**DEFINITION:** Company revenue is growing and making good quality of earnings with positive Free Cash Flow.

**CHART GUIDE:** Total Shareholder Return (TSR) combines share price appreciation and distributions paid to show the total return to the shareholder expressed as a percentage.



ShareInvestor WebPro > Screener > Market Screener (FA & TA) > select BURSA > add criteria

**A. Criteria**

1. Fundamental Analysis Conditions tab >select (i) Free Cash Flow, (ii) Revenue Growth, (iii) Gross Profit (Earnings) Margin, (iv) Quality of Earnings, (v) Total Shareholder Returns, > click Add Criteria
2. Fundamental Analysis Conditions tab >select (vi) Total Shareholder Returns > click Add Criteria

**B. Conditions (Criteria Filters)**

1. Free Cash Flow - select (more than) type (1) for the past select (1) financial year(s)
2. Revenue Growth - select (more than) type (1) for the past select (1) financial year(s)
3. Gross Profit (Earnings) Margin - select (more than) type (30) % for the past select (1) financial year(s)
4. Quality of Earnings - select (more than) type (1) for the past select (1) financial year(s)
5. Total Shareholder Return - select (more than) type (5) % for the past select (3) financial year(s)
6. Total Shareholder Return - select (more than) type (5) % for the past select (5) financial year(s)

- > click Save Template > Create New Template type (Growth Companies) > click Create
- > click Save Template as > select Growth Companies > click Save
- > click Screen Now (may take a few minutes)
- > Sort By: Select (Revenue Growth) Select (Desc)
- > Mouse over stock name > Factsheet > looking for Total Shareholder Return

## CLASSIC SCENIC BHD (7202)

C<sup>2</sup> Chart

Analysis



Period	Dividend Received	Capital Appreciation	Total Shareholder Return
Short Term Return	5 Days	-0.000	-0.00%
	10 Days	+0.015	+3.02%
	20 Days	+0.075	+17.24%
Medium Term Return	3 Months	-0.010	-1.92%
	6 Months	-0.250	-32.89%
	1 Year	-0.177	-25.78%
Long Term Return	2 Years	+0.021	+4.32%
	3 Years	0.030	+53.41%
	5 Years	0.110	+67.72%
Annualised Return	Annualised	-	+7.87%

## FOCUS POINT HOLDINGS BERHAD (0157)

C<sup>2</sup> Chart

Analysis

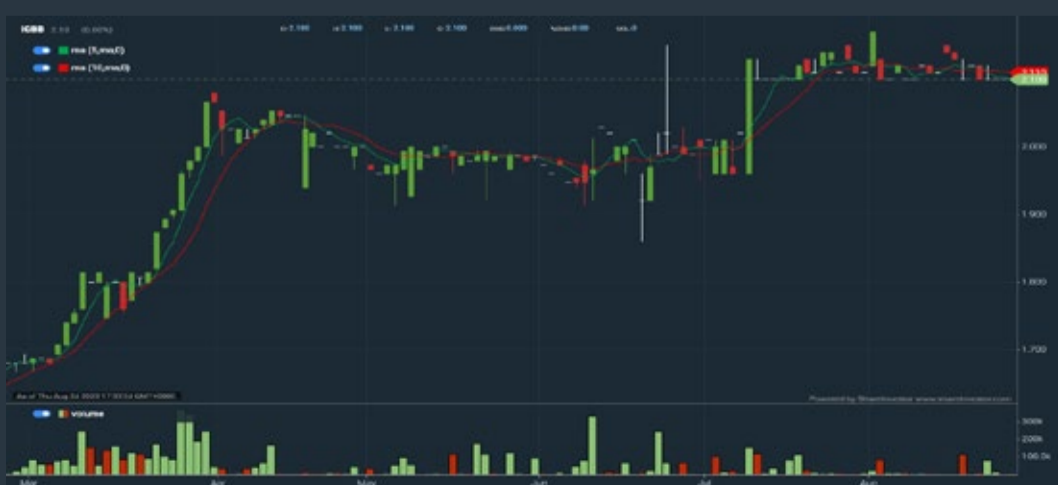


Period	Dividend Received	Capital Appreciation	Total Shareholder Return
Short Term Return	5 Days	-0.020	-2.60%
	10 Days	-0.035	-4.29%
	20 Days	-0.020	-2.60%
Medium Term Return	3 Months	+0.015	+1.86%
	6 Months	-0.140	-16.24%
	1 Year	-0.222	-28.04%
Long Term Return	2 Years	-0.204	-25.62%
	3 Years	-0.405	-50.41%
	5 Years	0.025	+3.14%
Annualised Return	Annualised	-	+0.20%

## IGB BERHAD (5606)

C<sup>2</sup> Chart

Analysis



Period	Dividend Received	Capital Appreciation	Total Shareholder Return
Short Term Return	5 Days	-	-
	10 Days	-0.020	-2.54%
	20 Days	-0.010	-1.27%
Medium Term Return	3 Months	+0.110	+13.89%
	6 Months	-0.407	-50.24%
	1 Year	-0.050	-6.25%
Long Term Return	2 Years	0.190	+23.74%
	3 Years	0.279	+34.72%
	5 Years	0.400	+50.04%
Annualised Return	Annualised	-	+8.38%

**Disclaimer:** The information on this page is provided as a service to readers. It does not constitute financial advice and/or any investment recommendations. Past performance is not indicative of future results. We assume no liability for damages resulting from or arising out of the use of such information. It would be best if you did your own research to make your personal investment decisions wisely or consult a licenced investment advisor.



making  
places  
remarkable



usm.com

**XTRA**

XTRA FURNITURE SDN BHD  
The Gardens Mall, Mid Valley City, Lot S-236 & 237  
Lingkar Syed Putra, 59200 Kuala Lumpur  
T. +603 2282 9088 | living@xtrafurniture.com | xtrafurniture.com  
● XTRAFurniture | ● xtrafurnituremsia

## Price & Total Shareholder Return (as at Yesterday)

Fundamental Analysis

**DEFINITION:** Company is paying out dividend with low or moderate leverage.

**CHART GUIDE:** Total Shareholder Return (TSR) combines share price appreciation and distributions paid to show the total return to the shareholder expressed as a percentage.



ShareInvestor WebPro > Screener > Market Screener (FA & TA) > select BURSA > add criteria

**A. Criteria**

- > click Add Criteria
- Fundamental Analysis Conditions tab >select (i) Dividend Yield (Historical)
- Fundamental Analysis Conditions tab >select (ii) Dividend Payout (Historical)
- Fundamental Analysis Conditions tab >select (iii) Total Debt To Equity
- Fundamental Analysis Conditions tab >select (iv) Total Shareholder Returns
- Fundamental Analysis Conditions tab >select (v) Total Shareholder Returns
- Fundamental Analysis Conditions tab / >select (vi) CAGR of Dividend Per Share

- Fundamental Analysis Conditions tab >select (vii) CAGR of Dividend Per Share

**B. Conditions (Criteria Filters)**

1. Dividend Yield - select (more than) type (1) % for the past select (1) financial year(s)
2. Dividend Payout (Historical) - select (between) type (0.5) to type (1) times for the past select (1) financial year(s)
3. Total Debt to Equity - select (less than) type (1) for the past select (1) financial year(s)
4. Total Shareholder Return - select (more than) type (5) % for the past select (3) financial year(s)
5. Total Shareholder Return - select (more than) type (5) % for the past select (5) financial year(s)

6. CAGR of Dividend Per Share - select (less than) type (30) % for the past select (5) financial year(s)
7. CAGR of Dividend Per Share - select (more than) type (1) % for the past select (5) financial year(s)

- > click Save Template > Create New Template type (Dividend Companies) > click Create
- > click Save Template as > select Dividend Companies > click Save
- > click Screen Now (may take a few minutes)
- > Sort By: Select (Dividend Yield) Select (Desc)
- > Mouse over stock name > Factsheet > looking for Total Shareholder Return

## JAYCORP BHD (7152)

C<sup>2</sup> Chart



Analysis



Period	Dividend Received	Capital Appreciation	Total Shareholder Return
Short Term Return	5 Days	-	-
	10 Days	-0.085	+0.72%
	20 Days	-0.085	+0.72%
Medium Term Return	3 Months	-	-
	6 Months	-0.315	-2.18%
	1 Year	-0.010	+1.45%
Long Term Return	2 Years	0.355	+4.41%
	3 Years	0.170	+14.29%
	5 Years	0.355	+30.35%
Annualized Return	Annualized	-	+10.16%

## FORMOSA PROSONIC INDUSTRIES (9172)

C<sup>2</sup> Chart



Analysis



Period	Dividend Received	Capital Appreciation	Total Shareholder Return
Short Term Return	5 Days	-0.090	+0.42%
	10 Days	-0.130	+5.84%
	20 Days	-0.150	+5.84%
Medium Term Return	3 Months	-0.370	+5.78%
	6 Months	-0.010	-20.55%
	1 Year	-0.000	-12.24%
Long Term Return	2 Years	0.230	+15.78%
	3 Years	0.340	+54.90%
	5 Years	0.520	+102.21%
Annualized Return	Annualized	-	+18.43%

## UCHI TECHNOLOGIES BHD (7100)

C<sup>2</sup> Chart



Analysis



Period	Dividend Received	Capital Appreciation	Total Shareholder Return
Short Term Return	5 Days	-0.010	+0.20%
	10 Days	-0.130	+4.35%
	20 Days	-0.100	+2.85%
Medium Term Return	3 Months	-0.200	+8.40%
	6 Months	-0.450	+14.87%
	1 Year	-0.540	+17.84%
Long Term Return	2 Years	0.230	+22.83%
	3 Years	0.370	+45.42%
	5 Years	0.670	+98.31%
Annualized Return	Annualized	-	+16.95%

**Disclaimer:** The information on this page is provided as a service to readers. It does not constitute financial advice and/or any investment recommendations. Past performance is not indicative of future results. We assume no liability for damages resulting from or arising out of the use of such information. It would be best if you did your own research to make your personal investment decisions wisely or consult a licenced investment advisor.

Week: 18 Aug 2023 - 24 Aug 2023

More Brokers' Call 

<b>AMINVESTMENT BANK</b> <small>... See More</small>	Call	Target Price	Release Date
Cape EMS Berhad (5311)	<b>BUY</b>	RM1.47	23 Aug 2023
Lee Swee Kiat Group Berhad (8079)	<b>BUY</b>	RM1.19	22 Aug 2023
<b>APEX</b> <small>... See More</small>	Call	Target Price	Release Date
Hap Seng Plantations Holdings Berhad (5138)	<b>HOLD</b>	RM1.80	24 Aug 2023
Sarawak Plantation Berhad (5135)	<b>SELL</b>	RM1.80	23 Aug 2023
<b>BIMB</b> <small>... See More</small>	Call	Target Price	Release Date
Sunway Construction Berhad (6777)	<b>BUY</b>	RM1.99	24 Aug 2023
TSH Resources Berhad (9059)	<b>HOLD</b>	RM1.01	24 Aug 2023
<b>CGS CIMB</b> <small>... See More</small>	Call	Target Price	Release Date
AMMB Holdings Berhad (1015)	<b>ADD</b>	RM4.39	21 Aug 2023
Petronas Chemicals Group Berhad (5183)	<b>REDUCE</b>	RM5.70	23 Aug 2023
<b>KENANGA</b> <small>... See More</small>	Call	Target Price	Release Date
Genting Plantations Berhad (2291)	<b>MARKET PERFORM</b>	RM5.50	24 Aug 2023
Hap Seng Plantations Holdings Berhad (5138)	<b>MARKET PERFORM</b>	RM1.80	24 Aug 2023
Hong Leong Industries Berhad (3301)	<b>OUTPERFORM</b>	RM11.40	24 Aug 2023
<b>MALACCA SECURITIES</b> <small>... See More</small>	Call	Target Price	Release Date
Rexit Bhd (0106)	<b>BUY</b>	RM0.92	23 Aug 2023
Supercomnet Technologies Bhd (0001)	<b>BUY</b>	RM1.90	23 Aug 2023
<b>MIDF</b> <small>... See More</small>	Call	Target Price	Release Date
Sime Darby Plantation Berhad (5285)	<b>NEUTRAL</b>	RM4.10	24 Aug 2023
Sunway Construction Group Berhad (5263)	<b>BUY</b>	RM2.09	24 Aug 2023
TSH Resources Berhad (9059)	<b>NEUTRAL</b>	RM0.97	24 Aug 2023
<b>JOB KAY HIAN</b> <small>... See More</small>	Call	Target Price	Release Date
IOI Corporation Berhad (1961)	<b>BUY</b>	RM4.80	23 Aug 2023
Matrix Concepts Holdings Berhad (5236)	<b>BUY</b>	RM1.92	23 Aug 2023

**Disclaimer:** InveSt does not accept any liability whatsoever for any direct, indirect or consequential losses (including loss of profit) or damages that may arise from the use of information or opinions in this publication. The information and opinions in InveSt are not to be considered as an offer to sell or buy any of the securities discussed. Opinions expressed are subject to change without notice. The Brokers may, from time to time, have interests or positions in the securities mentioned. For the full report on each item listed on this page, please visit [https://www.shareinvestor.com/my/brokers\\_call](https://www.shareinvestor.com/my/brokers_call).

**DEFINITION:** Top 10 stocks with Technical Analysis plus Pattern Matching by 60 pre-defined indicators by the system showing a higher probability of bullish sentiment on the share price.



ShareInvestor WebPro > Screener > Predefined TA Screens > select market BURSA > Most Long Signals > click Scan Results or mouse over each company

## PLS PLANTATIONS BERHAD (9695.MY)

### PLS

Price updated at 24 Aug 2023 16:50

Last: <b>0.915</b>	Change: -	Volume: <b>8,500</b>
	Change (%): -	Range: <b>0.910 - 0.925</b>

TA Scanner Results based on historical data up to 24 Aug 2023

Condition	Signal	Explanation
Bollinger Band: Bullish Lower Bollinger Band Support	Long	"1. Low 1 day ago below lower bollinger band(20,2). 2. Close above close 1 day ago. 3. Average volume(5) is above 100,000."
DM: Bullish Directional Movement	Long	-DI(14) crossed below +DI(14)
MA: Bullish Price Crossover	Long	"1. Close price crossed above MA(40) within the last 1 day. 2. Previous day close price is below the MA(10) for the last 5 days"
Stochastic: Fast Stochastic Buy Signal	Long	"1. Fast Stochastic(15,5) %K crossed above 20. 2. Fast Stochastic(15,5) %K 1 day ago was below 20 for the last 5 days. 3. Average volume(30) is above 50000"

## LOTUS KFM BERHAD (8303.MY)

### LOTUS

Price updated at 24 Aug 2023 16:59

Last: <b>0.285</b>	Change: <b>-0.005</b>	Volume: <b>26,027</b>
	Change (%): <b>-1.72</b>	Range: <b>0.280 - 0.295</b>

TA Scanner Results based on historical data up to 24 Aug 2023

Condition	Signal	Explanation
Bollinger Band: Bullish Long Term Volatility Breakout and Trending	Long	"1. Close price above upper bollinger band(33,1). 2. Volume above average volume(50). 3. Average volume(50) is above 300,000."
Bollinger Band: Bullish Short Term Volatility Breakout and Trending	Long	"1. Close price above upper bollinger band(33,1). 2. Volume above average volume(10). 3. Average volume(10) is above 300,000."
Bollinger Band: High Above Upper Bollinger Band	Neutral	"1. High above upper bollinger band(14,2). 2. Average volume(5) is above 100,000."
Donchian Channels: High Above Upper Donchian Channels	Long	High crossed above the upper Donchian Channel(14,4)
Price: New 52 Week High	Long	"1. Stock reach a new 52 week high. 2. Average volume(30) is above 50000."
Williams %R: Bearish Williams %R	Short	"1. Williams %R(26) between 0 and -20. 2. Average volume(5) is above 100,000."

## EDUSPEC HOLDINGS BERHAD (0107.MY)

### EDUSPEC

Price updated at 24 Aug 2023 16:53

Last: <b>0.040</b>	Change: -	Volume: <b>32,175</b>
	Change (%): -	Range: <b>0.035 - 0.040</b>

TA Scanner Results based on historical data up to 24 Aug 2023

Condition	Signal	Explanation
MA: Bullish Price Crossover	Long	"1. Close price crossed above MA(40) within the last 1 day. 2. Previous day close price is below the MA(10) for the last 5 days"
MACD: Bullish MACD Crossover	Long	"1. MACD(12,26) diff line crossed above the MACD(12,26) signal line. 2. MACD Histogram(12,26) is above 0."
Stochastic: Fast Stochastic Buy Signal	Long	"1. Fast Stochastic(15,5) %K crossed above 20. 2. Fast Stochastic(15,5) %K 1 day ago was below 20 for the last 5 days. 3. Average volume(30) is above 50000"

## Y.S.P.SOUTHEAST ASIA HOLDING (7178.MY)

### YSPSAH

Price updated at 24 Aug 2023 16:52

Last: <b>2.500</b>	Change: <b>+0.020</b>	Volume: <b>1,246</b>
	Change (%): <b>+0.81</b>	Range: <b>2.480 - 2.500</b>

TA Scanner Results based on historical data up to 24 Aug 2023

Condition	Signal	Explanation
Bollinger Band: High Above Upper Bollinger Band	Neutral	"1. High above upper bollinger band(14,2). 2. Average volume(5) is above 100,000."
Donchian Channels: High Above Upper Donchian Channels	Long	High crossed above the upper Donchian Channel(14,4)
MA: Medium Term Bullish Moving Average Crossover	Long	MA(25) crossed above MA(50) within the last 1 day.
MA: Short Term Bullish Moving Average Crossover	Long	MA(10) crossed above MA(15) within the last 1 day.
Parabolic SAR: Bearish Parabolic SAR Reversal	Neutral	"1. Parabolic SAR 1 day ago above close price 1 day ago for the last 5 days. 2. Parabolic SAR below close price"
Volume: Volume Spike	Long	"1. Volume is more than 500% above average volume(10). 2. Volume above 200000. 3. Close price above 0.10"
Williams %R: Bearish Williams %R	Short	"1. Williams %R(26) between 0 and -20. 2. Average volume(5) is above 100,000."

## SYSTECH BHD (0050.MY)

### SYSTECH

Price updated at 24 Aug 2023 16:59

Last: <b>0.370</b>	Change: <b>-0.020</b>	Volume: <b>451,369</b>
	Change (%): <b>-5.13</b>	Range: <b>0.355 - 0.410</b>

TA Scanner Results based on historical data up to 24 Aug 2023

Condition	Signal	Explanation
Bollinger Band: Bullish Long Term Volatility Breakout and Trending	Long	"1. Close price above upper bollinger band(33,1). 2. Volume above average volume(50). 3. Average volume(50) is above 300,000."
Bollinger Band: Bullish Short Term Volatility Breakout and Trending	Long	"1. Close price above upper bollinger band(33,1). 2. Volume above average volume(10). 3. Average volume(10) is above 300,000."
Bollinger Band: High Above Upper Bollinger Band	Neutral	"1. High above upper bollinger band(14,2). 2. Average volume(5) is above 100,000."
Candlestick: Bullish Engulfing	Long	Bullish: Engulfing
DM: Bullish Directional Movement	Long	-DI(14) crossed below +DI(14)
Donchian Channels: High Above Upper Donchian Channels	Long	High crossed above the upper Donchian Channel(14,4)
Price: New 52 Week High	Long	"1. Stock reach a new 52 week high. 2. Average volume(30) is above 50000."

**Disclaimer:** The information on this page is provided as a service to readers. It does not constitute financial advice and/or any investment recommendations. Past performance is not indicative of future results. We assume no liability for damages resulting from or arising out of the use of such information. It would be best if you did your own research to make your personal investment decisions wisely or consult a licenced investment advisor.

**MAH SING GROUP BHD (8583.MY)**

**MAHSING**

Price updated at 24 Aug 2023 16:58

Last: <b>0.740</b>	Change: <b>+0.020</b>	Volume: <b>63,118</b>
	Change (%): <b>+2.78</b>	Range: <b>0.720 - 0.745</b>

TA Scanner Results based on historical data up to 24 Aug 2023

Condition	Signal	Explanation
Bollinger Band: Bullish Long Term Volatility Breakout and Trending	Long	"1. Close price above upper bollinger band(33,1). 2. Volume above average volume(50). 3. Average volume(50) is above 300,000."
Candlestick: Bullish Harami	Long	Bullish: Harami
Volume: 10 Days large value Buy Up trade	Long	"1. 150K value Buy Up greater than Sell Down by 20% for 10 days. 2. 50K-100K value Buy Up greater than Sell Down by 20% for 10 days. 3. Average volume(10) is above 1000000"
Volume: 5 Days large value Buy Up trade	Long	"1. 150K value Buy Up greater than Sell Down by 20% for 5 days. 2. 50K-100K value Buy Up greater than Sell Down by 20% for 5 days. 3. Average volume(10) is above 1000000"

**YINSON HOLDINGS BHD (7293.MY)**

**YINSON**

Price updated at 24 Aug 2023 16:59

Last: <b>2.530</b>	Change: <b>-0.070</b>	Volume: <b>9,029</b>
	Change (%): <b>-2.69</b>	Range: <b>2.530 - 2.580</b>

TA Scanner Results based on historical data up to 24 Aug 2023

Condition	Signal	Explanation
Bollinger Band: Bullish Long Term Volatility Breakout and Trending	Long	"1. Close price above upper bollinger band(33,1). 2. Volume above average volume(50). 3. Average volume(50) is above 300,000."
Bollinger Band: Bullish Short Term Volatility Breakout and Trending	Long	"1. Close price above upper bollinger band(33,1). 2. Volume above average volume(10). 3. Average volume(10) is above 300,000."
Candlestick: Bullish Engulfing	Long	Bullish: Engulfing
DM: Bullish Directional Movement	Long	-DI(14) crossed below +DI(14)
Williams %R: Bearish Williams %R	Short	"1. Williams %R(26) between 0 and -20. 2. Average volume(5) is above 100,000."

**SINARAN ADVANCE GROUP BERHAD (5172.MY)**

**SINARAN**

Price updated at 24 Aug 2023 16:48

Last: <b>0.060</b>	Change: <b>-0.005</b>	Volume: <b>6,478</b>
	Change (%): <b>-7.69</b>	Range: <b>0.060 - 0.065</b>

TA Scanner Results based on historical data up to 24 Aug 2023

Condition	Signal	Explanation
Bollinger Band: High Above Upper Bollinger Band	Neutral	"1. High above upper bollinger band(14,2). 2. Average volume(5) is above 100,000."
DM: Bullish Directional Movement	Long	-DI(14) crossed below +DI(14)
Donchian Channels: High Above Upper Donchian Channels	Long	High crossed above the upper Donchian Channel(14,4)
MA: Short Term Bullish Moving Average Crossover	Long	MA(10) crossed above MA(15) within the last 1 day.
RSI: Short Term RSI 50 Bullish Crossover	Long	"1. RSI(20) crossed above 50 within the last 1 day and RSI(20) 1 day ago below 50 for the last 5 days. 2. Volume above average volume(125). 3. Average volume(5) is above 100,000."

**AGMO HOLDINGS BERHAD (0258.MY)**

**AGMO**

Price updated at 24 Aug 2023 16:59

Last: <b>0.635</b>	Change: <b>+0.015</b>	Volume: <b>78,942</b>
	Change (%): <b>+2.42</b>	Range: <b>0.620 - 0.640</b>

TA Scanner Results based on historical data up to 24 Aug 2023

Condition	Signal	Explanation
Bollinger Band: Bullish Long Term Volatility Breakout and Trending	Long	"1. Close price above upper bollinger band(33,1). 2. Volume above average volume(50). 3. Average volume(50) is above 300,000."
Bollinger Band: Bullish Short Term Volatility Breakout and Trending	Long	"1. Close price above upper bollinger band(33,1). 2. Volume above average volume(10). 3. Average volume(10) is above 300,000."
Bollinger Band: High Above Upper Bollinger Band	Neutral	"1. High above upper bollinger band(14,2). 2. Average volume(5) is above 100,000."
Donchian Channels: High Above Upper Donchian Channels	Long	High crossed above the upper Donchian Channel(14,4)
MA: Short Term Bullish Moving Average Crossover	Long	MA(10) crossed above MA(15) within the last 1 day.
MACD: Bullish MACD Crossover	Long	"1. MACD(12,26) diff line crossed above the MACD(12,26) signal line. 2. MACD Histogram(12,26) is above 0."

**PRIVASIA TECHNOLOGY BERHAD (0123.MY)**

**PRIVA**

Price updated at 24 Aug 2023 16:59

Last: <b>0.105</b>	Change: <b>-0.005</b>	Volume: <b>7,429</b>
	Change (%): <b>-4.55</b>	Range: <b>0.105 - 0.110</b>

TA Scanner Results based on historical data up to 24 Aug 2023

Condition	Signal	Explanation
Bollinger Band: Bullish Long Term Volatility Breakout and Trending	Long	"1. Close price above upper bollinger band(33,1). 2. Volume above average volume(50). 3. Average volume(50) is above 300,000."
Bollinger Band: Bullish Short Term Volatility Breakout and Trending	Long	"1. Close price above upper bollinger band(33,1). 2. Volume above average volume(10). 3. Average volume(10) is above 300,000."
Bollinger Band: High Above Upper Bollinger Band	Neutral	"1. High above upper bollinger band(14,2). 2. Average volume(5) is above 100,000."
Chaikin Volatility: Increasing Chaikin Volatility	Neutral	Chaikin Volatility(10,10) has been increasing for 5 days
Donchian Channels: High Above Upper Donchian Channels	Long	High crossed above the upper Donchian Channel(14,4)
MA: Short Term Bullish Moving Average Crossover	Long	MA(10) crossed above MA(15) within the last 1 day.
MACD: Bullish MACD Crossover	Long	"1. MACD(12,26) diff line crossed above the MACD(12,26) signal line. 2. MACD Histogram(12,26) is above 0."
Parabolic SAR: Bearish Parabolic SAR Reversal	Neutral	"1. Parabolic SAR 1 day ago above close price 1 day ago for the last 5 days. 2. Parabolic SAR below close price"
Volume: Volume Spike	Long	"1. Volume is more than 500% above average volume(10). 2. Volume above 200000. 3. Close price above 0.10"

**Disclaimer:** The information on this page is provided as a service to readers. It does not constitute financial advice and/or any investment recommendations. Past performance is not indicative of future results. We assume no liability for damages resulting from or arising out of the use of such information. It would be best if you did your own research to make your personal investment decisions wisely or consult a licenced investment advisor.

# FINANCIAL PLANNING INDUSTRY TO PLAY PIVOTAL ROLE IN FINANCIAL WELL-BEING OF MALAYSIANS - SC CHAIRMAN

**A**ccording to The Securities Commission Malaysia (SC) executive chairman Datuk Seri Dr Awang Adek Hussin, the financial planning industry has grown considerably and played an increasingly pivotal role in the financial well-being of many Malaysians. Between 2015 and 2022, the number of financial planning firms increased by 42%, from 31 to 44 firms as at end-2022, while the number of licensed representatives grew by 145% over the same period to 1,455.

It is important for the financial planning industry to keep up with changing market conditions and investor demands. In his keynote address at the Financial Planning Association of Malaysia (FPAM) Annual Signature Financial Planning Symposium 2023, he said that the financial planning industry must broaden its offerings to meet investors' preference for socially responsible investment (SRI), invest in technology for more personalised services and build a skilled talent pipeline for the future.

Regional and local wealth trends indicate that investors are seeking holistic investment strategies that consider their entire portfolio, rather than focusing on individual products. The evolving service model and access demanded by clients is led by increased demand for personalised advice with deeper investor engagement over the long term. Towards this end, the SC seeks to facilitate and empower firms and consultants to move towards more comprehensive wealth management offering across the capital market and financial sectors in a bid to meet Malaysians' evolving needs.

He urged the industry to take more initiatives to build talent pipeline at their own accord by collaborating closely with universities and other professional associations to enable firms and industry associations to develop courses to mould the next generation of financial planners and ensure a steady stream of high-quality local talents. Through these means, the industry will be able to cultivate the next generation of talent, ensuring the sustainability and continuity of the Malaysian financial planning industry, he said.

Initiatives under the Madani Economy framework are expected to improve investor confidence in the Malaysian economy and attract greater inflows and foreign investors into the domestic capital market. This in turn will provide better opportunities for financial planners to expand their client base as well as enable existing clients to grow their wealth.

The government is also looking at policies to facilitate and attract the setting up of family offices in Malaysia with the aim of attracting a larger pool of investors to support financing for small and medium



enterprises (SMEs) and the new economy. These family offices will require specialist advice in a broad range of investments and services, from traditional investments to tax and estate planning to name a few. Licensed financial planners are uniquely placed to capitalise on this invaluable opportunity to service family offices that will be looking to set up operations in Malaysia.

## **Economic growth in Malaysia to pick up in 2H2023 – BMI**

According to BMI, a Fitch Solutions company, Malaysia's economic recovery over the coming quarters will be slower than it initially expected due to the ongoing impact of weakening global demand and tight monetary conditions. The firm said Malaysia's real GDP growth slowed sharply to 2.9% year-on-year in 2Q2023 from 5.6% 1Q2023, falling below consensus and house expectations. Overall, our forecast for Malaysia's real GDP growth has been revised down to 4.0% in 2023, from 4.2% previously, marking a sharp slowdown from 8.7% in 2022. The new forecast is slightly below consensus estimates of 4.2%.

The weaker-than-expected reading for 2Q2023 leaves its prevailing 2023 growth forecast of 4.2% looking too upbeat, as it suggests that the economy must grow by an average of 4.1% y-o-y in the second half of 2023. However, this will be challenging to attain given the backdrop of weakening global demand and tight monetary conditions.

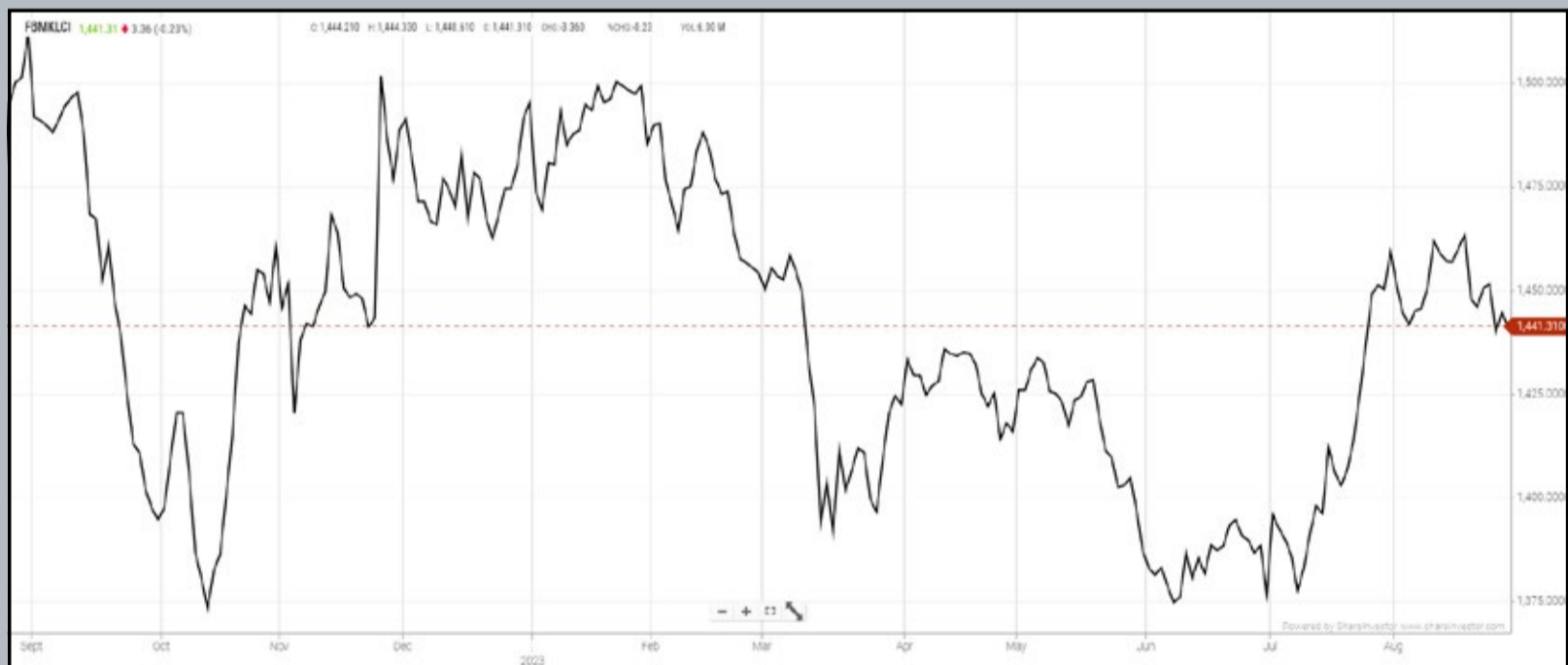
Malaysia's economic resilience was mainly driven by consumption, but this strength is expected to falter as the impact of tight monetary conditions feeds through the economy. Beyond domestic challenges, it maintains the view that weakness in global demand with a forecasted growth of 2.4% across 2023 will keep a lid on Malaysia's export performance this year.

Net exports already removed 0.7 percentage points (pp) off GDP growth in the second quarter, extending the -2.3pp in the first quarter. The year-to-date nominal figures further showed exports contracting by an average of 5% y-o-y in the first seven months of the year, with a sharp contraction of 14% y-o-y in June, although this eased to a contraction of 13% y-o-y in July.

However, two factors - domestic challenges and weakness in global demand - could point to the fact that most of the weakness could now be behind us.

## Eye On The Markets

On Thursday (24Aug), the Ringgit closed at 4.6450 against the USD and 3.4340 to the Sing Dollar. On Monday (21Aug), the FBM KLCI opened at 1446.69. As at Thursday (24Aug) 5:00pm, the FBM KLCI closed down 2.02 points at 1444.67. Over in US, the overnight Dow Jones Industrial Average closed down 373.56 points (-1.08%) to 34,099.42 whilst the NASDAQ shed 257.06 points (-1.87%) to 13,463.97.



KLCI 1 Year Chart

**CHECK OUT  
SHAREINVESTOR  
BROKERS' CALL**

Weekly Buy/Sell/Hold calls from leading Malaysian Brokerages.

[Go To Brokers' Call](#)

## Over 5 trading days



ShareInvestor WebPro ([www.shareinvestor.com/my](http://www.shareinvestor.com/my))

1. Price > Stock Prices
2. Select Market: NASDAQ / NYSE / IDX / SET / HKEX / SGX (One bourse at a time)
3. select Stocks Tab
4. select Ranking Top Gainers or Top Losers (Over 5 Trading Days)
5. Mouse over Column Layout > select Edit Customs > select Name > select Last Done Price > select 5 Days Change > select 52 Weeks High > select 52 Weeks Low > Mouse Over Column Layout > select Custom

### NASDAQ (USD)

#### Top Gainers

Name	Last Done	Change Over 5 Days	52 Weeks High	52 Weeks Low
NVIDIA CORP	471.630	+38.195	481.870	108.130
REGENERON PHARMACEUTICALS INC	831.210	+34.480	847.500	572.220
VINFAST AUTO LTD	49.000	+29.000	46.980	11.610
BROADCOM INC	854.460	+27.360	923.180	415.068
FREEDOM HOLDING CORP	92.970	+23.120	99.500	47.642

#### Top Losers

Name	Last Done	Change Over 5 Days	52 Weeks High	52 Weeks Low
BOOKING HOLDINGS INC	3,026.390	-32.040	3,251.709	1,616.850
ULTA BEAUTY INC	422.740	-23.930	556.600	373.795
FIRST CITIZENS BANCSHARES INC NRTH	1,369.460	-23.140	1,512.070	505.840
ATRION CORP	464.700	-22.510	705.740	474.700
LANCASTER COLONY CORP	161.640	-20.640	220.650	143.790

### NYSE (USD)

#### Top Gainers

Name	Last Done	Change Over 5 Days	52 Weeks High	52 Weeks Low
BERKSHIRE HATHAWAY INC	537,780.000	+1,963.210	556,117.000	393,012.250
NVR INC	6,070.010	+48.010	6,474.530	3,816.555
FABRINET	158.910	+42.680	163.880	90.190
CHIPOTLE MEXICAN GRILL	1,872.320	+23.120	2,175.010	1,344.050
TRANSDIGM GROUP INC	859.000	+15.230	940.000	499.630

#### Top Losers

Name	Last Done	Change Over 5 Days	52 Weeks High	52 Weeks Low
METTLER-TOLEDO INTERNATIONAL INC	1,161.960	-43.140	1,615.970	1,065.550
DECKERS OUTDOOR CORP	521.780	-35.510	568.470	298.610
DICKS SPORTING GOODS INC	113.550	-30.750	152.608	98.010
MARKEL GROUP INC	1,467.270	-25.610	1,519.960	1,064.090
KEYSIGHT TECHNOLOGIES INC	127.700	-22.350	189.450	125.890

### IDX (Rupiah)

#### Top Gainers

Name	Last Done	Change Over 5 Days	52 Weeks High	52 Weeks Low
RODA VIVATEX	12,925.000	+1,075.000	17,000.000	8,450.000
BAYAN RESOURCES TBK	18,800.000	+1,050.000	24,800.000	6,350.000
INDO TAMBANGRAYA MEGAH TBK	29,150.000	+950.000	45,650.000	22,125.000
PANTAI INDAH KAPUK DUA TBK	3,010.000	+820.000	3,120.000	810.000
AMMAN MINERAL INTERNASIONAL TBK	3,950.000	+650.000	4,020.000	1,700.000

#### Top Losers

Name	Last Done	Change Over 5 Days	52 Weeks High	52 Weeks Low
UNITED TRACTORS	26,700.000	-800.000	36,200.000	22,200.000
GUDANG GARAM TBK	24,750.000	-700.000	30,050.000	16,500.000
AKASHA WIRA INTERNATIONAL TBK	11,350.000	-600.000	14,125.000	6,125.000
SUCACO(SUPREME CABLE MANUFACTURING)	9,525.000	-575.000	11,200.000	7,750.000
PABRIK KERTAS TJIWI KIMIA	7,450.000	-475.000	8,525.000	5,600.000

### SET (Thai Baht)

#### Top Gainers

Name	Last Done	Change Over 5 Days	52 Weeks High	52 Weeks Low
AEONTS	176.000	+18.500	208.000	151.500
SAPPE	95.750	+8.750	95.750	37.000
CBG	85.500	+7.500	107.500	61.250
EA	63.750	+6.250	99.750	51.500
DELTA	110.500	+6.000	119.500	48.800

#### Top Losers

Name	Last Done	Change Over 5 Days	52 Weeks High	52 Weeks Low
OHTL	474.000	-10.000	610.000	365.000
GYT	200.000	-9.000	212.000	173.000
OISHI	51.000	-7.500	59.000	44.000
BBL	166.500	-4.500	175.000	132.500
INTUCH	72.750	-3.500	78.750	68.250

### HKEX (HKD)

#### Top Gainers

Name	Last Done	Change Over 5 Days	52 Weeks High	52 Weeks Low
MOG DIGITECH HOLDINGS LTD	98.650	+7.150	104.300	2.660
MINISO GROUP HLDG LTD	47.200	+7.100	47.750	8.760
BEIGENE LTD	123.200	+6.900	170.500	74.900
TRIP COM GROUP LTD	317.800	+6.600	330.200	159.800
ANTA SPORTS PRODUCTS	87.700	+6.500	125.300	67.850

#### Top Losers

Name	Last Done	Change Over 5 Days	52 Weeks High	52 Weeks Low
STAR CM HOLDINGS LIMITED	66.500	-57.500	132.000	32.550
NOAH HOLDINGS PRIVATE WEALTH AND AS	209.800	-13.000	326.800	200.800
TENCENT HOLDINGS LIMITED	302.400	-9.800	342.000	293.000
YSB INC	49.500	-9.750	64.500	19.000
COSMOPOLITAN INTERNATIONAL HLDGS	1.150	-9.550	17.100	1.020

### SGX (SGD)

#### Top Gainers

Name	Last Done	Change Over 5 Days	52 Weeks High	52 Weeks Low
JMH USD	46.030	+0.430	57.800	42.600
AEM SGD	3.510	+0.260	4.710	2.700
Azeus	8.590	+0.240	8.690	6.700
AEM USD	2.540	+0.220	3.600	2.180
Pegasus SPAC	4.600	+0.200	4.900	4.300

#### Top Losers

Name	Last Done	Change Over 5 Days	52 Weeks High	52 Weeks Low
Jardine C&C	32.240	-0.780	36.850	27.250
NIO Inc. USD OV	11.090	-0.760	22.150	7.420
Great Eastern	17.880	-0.710	19.460	16.850
Haw Par	9.400	-0.330	11.380	8.980
Sembcorp Ind	5.270	-0.310	6.100	2.744

# PERPLEXING DEVELOPMENTS AT EA HOLDINGS OVER THE RESTRAINT TO CONVENE EGM



Devanesan  
Evanson

**Chief Executive  
Officer, Minority  
Shareholders Watch  
Group**

Recently, EA Holdings Berhad (EAH) found itself in the limelight over its announcement of calling an extraordinary general meeting (EGM) convened by a shareholder, Ng Cheng Shin, as 'defective and void.' EAH also urged shareholders to refrain from attending and voting at the EGM scheduled on 22 August 2023.

The calling arose from two Ad Interim Order for Injunction served on the Company in relation to two material litigation. Based on the Ad Interim Order for Injunction (collectively Ad Interim Injunction Orders) dated 1 and 2

August 2023, EAH, who is named defendant in both cases, is prohibited from 'exercising any rights to hold, call and/or requisition for any extraordinary general meeting and/or to pass any resolutions in relation to the Company.'

On 25 July 2023, EAH announced that it received a Special Notice from Ng, a member of the Company who claimed he holds 10% or more of the issued share capital of EAH, to call for an EGM on 22 August 2023 with the intent to move 11 resolutions for the removal and appointment of directors. Ng seeks to remove CEO Mohammad Sobri Saad, chairman Datuk Azahar Rasul, and directors Basir Bachik, Abdul Fattah Mohamed Yatim, Choo Seng Choon, and Wong Wan Rou from the board. At the same time, he seeks to appoint himself, Chin Yew Thong, Dr Adrian Foong Heng Nian, and Dr Teh Chee Chong to the board.

Ng's move to call for an EGM is pursuant to Section 310(b) of the Companies Act 2016 (CA2016). The Act states that an EGM may be convened by either the board of directors or any member(s) of the company holding at least 10% of the issued share capital of a company.

## **POINTS OF CONTENTION**

The current state of events at EAH may baffle EAH's shareholders. Arguably, this EGM is called by Ng, an independent party who is exercising his rights as a shareholder under CA2016. Further, under Section 311 of CA2016, shareholders who hold at least 10% of the paidup capital of a company may require the directors to convene a meeting of members of the company.

Pursuant to this, directors shall call for the meeting within 14 days from the date of the requisition and hold the meeting on a date not more than 28 days after the date of the notice to convene the meeting (refer to Section 312 of CA2016). In convening a meeting requisitioned by the members, the board of directors of the listed company shall assume the responsibility of issuing and disseminating the notice of the meeting as well as making all the necessary preparations for such meeting.

# STERN WARNING

In an announcement dated 10 August 2023, EAH informed shareholders that ‘any intended or purported attempt(s) to hold any extraordinary general meeting(s) in the name of the company is in breach of the said Ad Interim Injunction Orders and any individual(s) attempting such a step may be subject to contempt proceedings.’ Besides, shareholders were urged not to attend and vote at the EGM and that EAH would treat any resolutions purported to be approved at the said EGM as invalid and void in light of the Ad Interim Injunction Orders served on the Company. As such, the Company said it would not hesitate to take legal action against any individual(s) who continue to create unnecessary confusion for the members of the Company and the general public.

# CONCLUSION

Only time will tell how the issues pan out during legal proceedings and the implications for minority shareholders who want to call for an EGM.

By MSWG Team

*This article appeared in the The Observer, a weekly newsletter published by The Minority Shareholders Watch Group (MSWG) and reproduced here with their permission. Do follow MSWG's Twitter account at @MSWGMalaysia and share your thought on their tweets from time to time.*

Learn how to identify Hot Stocks using Technical Analysis (TA) and Fundamental Analysis (FA)

Scan me

**SIGN UP FOR Invest NOW IT'S FREE!!!**

[Click here](#)

Get market moving news and analyses. Regular columns include **Behind The Action** and **From The Observer**

**Leaderboard • Shariah Hot Stocks • Shariah Momentum Up Stocks • Non Shariah Hot Stocks • Up Trending Stocks • Growth Stocks • Dividend Stocks • Long Companies • Insider Activity • Investor Relations • Regional Markets**

Via email, every Friday.













**Advance Synergy Berhad (ASB)** wishes to inform Bursa Securities that Captii Limited, our subsidiary which is listed on the SGX, had on 18 August 2023 released their announcement on the notice of payment of interim dividend and record date to the SGX. Further to the financial statements and dividend announcement for the second quarter ended 30 June 2023 released on 11 August 2023, the Board of Directors of Captii Limited wishes to announce that the Company's Interim tax-exempt (one-tier) dividend will be paid on 20 September 2023. Notice is hereby given that the Share Transfer Books and Register of Members of the Company will be closed on 29 August 2023 for the preparation of dividend warrants.

The Board of Directors of **Boustead Plantations Berhad (BPLANT)** wishes to announce that the controlling shareholders of the Company, BHB and LTAT, have informed the Company that they have entered into a strategic collaboration agreement with KLK on 24 August 2023 in relation to, among others, the following:

- (i) proposed disposal by BHB of a total of 739,199,966 ordinary shares in BPlant, representing 33% and 1 share of the total issued shares of BPlant, to KLK for a cash consideration of RM1,145,759,947.30 or RM1.55 per BPlant Share;
- (ii) proposed mandatory take-over offer to acquire all remaining BPlant Shares not already owned by BHB, LTAT, KLK resulting from the Proposed Disposal at a cash offer price of RM1.55 per BPlant Share; and
- (iii) improving the operational efficiencies and crude palm oil yields of the plantations of BPlant over the long-term





The Board of Directors of **Dayang Enterprise Holdings Bhd (DAYANG)** is pleased to announce that its wholly-owned subsidiary company, Dayang Enterprise Sdn Bhd, has been awarded an extension to the Pan Malaysia Maintenance, Construction and Modification Contract for Years 2018 to 2023 from SEA Hibiscus Sdn Bhd.

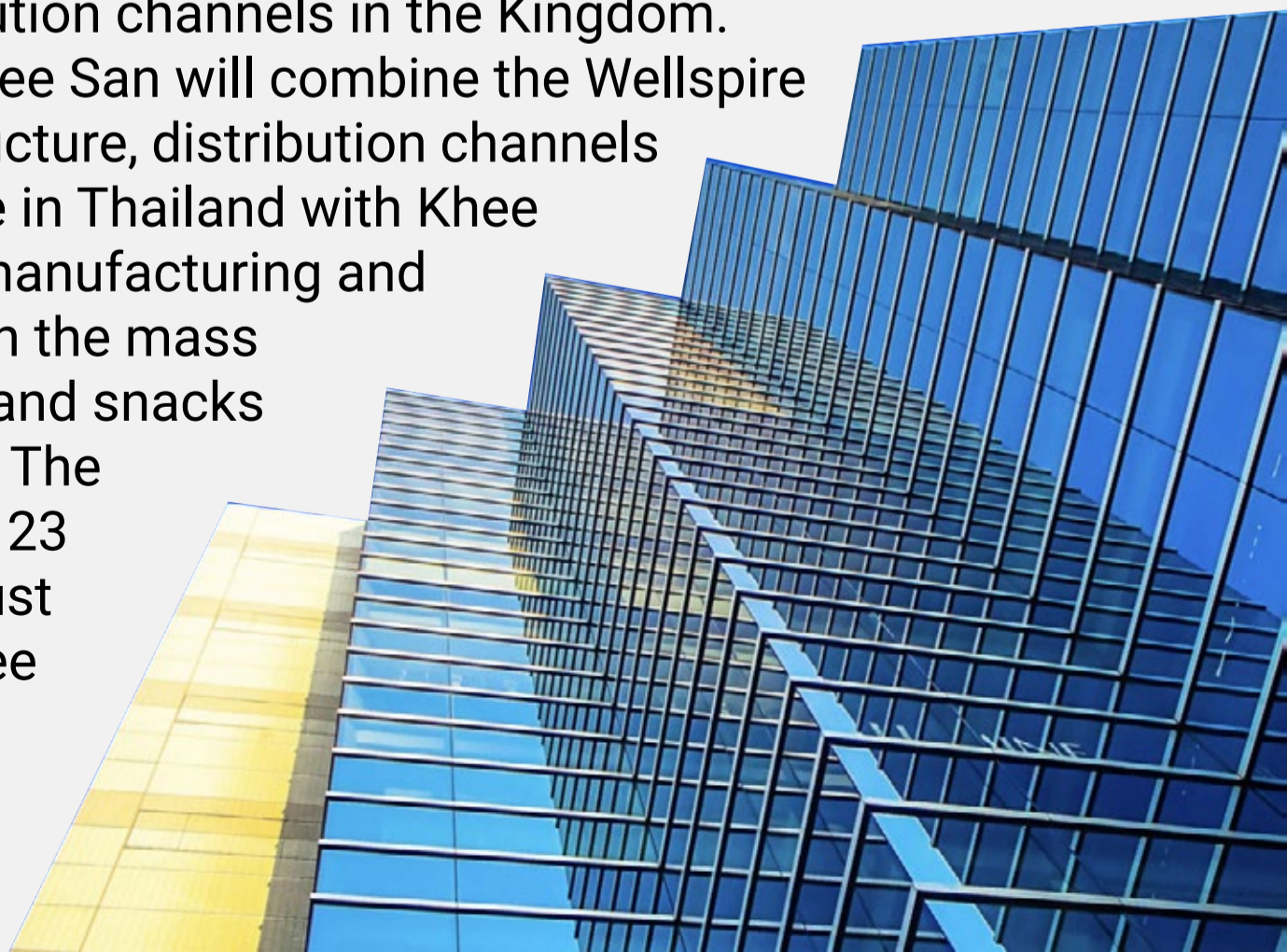
The value of the Extended Contract is based on work orders issued by SEA Hibiscus throughout the extended contract duration. The contract extension duration is for approximately one year, five months and fifteen days, effective from 17th July 2023 until 31st December 2024.



**Wellspire Holdings Berhad (WELLS)**, a distributor of consumer-packaged foods in Thailand, through its wholly-owned subsidiary, Wellspire Global

Trading, today signed a strategic cooperation agreement with Khee San Food Industries Sdn Bhd, a subsidiary of Khee San Berhad. Under this agreement, Wellspire will become Khee San's sole and exclusive distributor in Thailand. Wellspire will distribute, import, export, sell and resell Khee San products, namely Fruit Plus and Kiss Me. This strategic cooperation with Khee San is part of Wellspire's plans to cooperate with local companies to penetrate the Thai market via the Wellspire group's well-established distribution channels in the Kingdom.

The partnership with Khee San will combine the Wellspire group's leading infrastructure, distribution channels and marketing expertise in Thailand with Khee San's well-established manufacturing and packaging capabilities in the mass market consumer food and snacks manufacturing industry. The agreement is valid from 23 August 2023 to 22 August 2026 for a period of three years.





ShareInvestor Malaysia is a technology company with offices in the region. The company's services include Online Investor Relations and Corporate Website Design services to public listed companies (B2B); Subscription (SAAS) and Investor Education to retail investors (B2C) and publishing Inve\$t weekly. More information about the company can be found at [www.shareinvestor.com.my](http://www.shareinvestor.com.my). We are looking for a suitably experienced, matured and dynamic candidate to join our Malaysia operations.

# WE'RE HIRING!

Position:

## SALES MANAGER *Investor Relations Division*



### Job Responsibilities:

**Reporting to the Group Managing Director - Investor Relations, you will be responsible for:**

- the full sales cycle from initial client contact to presentation, contract negotiation and closing of sales.
- identifying and acquiring new clients.
- managing existing client accounts and maintain excellent relationships for contract renewals and to up-sell new business solutions.
- meeting and exceeding Quarterly & Annual sales targets and KPIs.
- coordinating internal resources for service delivery and clients' satisfaction to ensure quality of service fulfilment.
- working as part of a dynamic sales team where high performance will be highly rewarded.

### Job Requirements:

- Minimum 3-5 years of working experience in sales with strengths in writing, pitching, negotiating & closing sales.
- Degree/Diploma in any discipline.
- Knowledge in Investor Relations (IR) and/or Public Relations (PR) will be an advantage.
- Independent and career-minded.
- Results oriented and performance driven.
- Possess good interpersonal and communication skills.

### Compensation scheme:

- **Hybrid working arrangement:** Work from home option on certain day/s of each week (but subject to change by management).
- Attractive basic salary and incentive scheme plus entertainment, travelling & mobile phone allowance.
- Annual performance review with opportunity for career advancement.
- Opportunity to collaborate with colleagues from other ASEAN countries and cultures.

If you are interested, please send your updated resume, current and expected salary, and a recent photograph via email to [hr.my@shareinvestor.com](mailto:hr.my@shareinvestor.com) before **30th August 2023**.