

“ Inve\$t puts the power of data in the hands of retail investors ”

Inve\$t is 2 years old, and this is our 101st issue. We launched it at the onset of the pandemic and MCO1.0 in April 2020. Many said it was a wrong time to launch an investment themed publication. Happily, it proved a right decision indeed! Who would have thought Inve\$t would fly? People were stuck at home under MCO, not able to travel, shop, dine, club, etc home-bound, flushed with cash but with nowhere to spend it. The local stock market zoomed with trading volume and value through the roof! The pandemic was a boost for glove, technology and pharmaceutical stocks.



Edward Stanislaus
Publisher

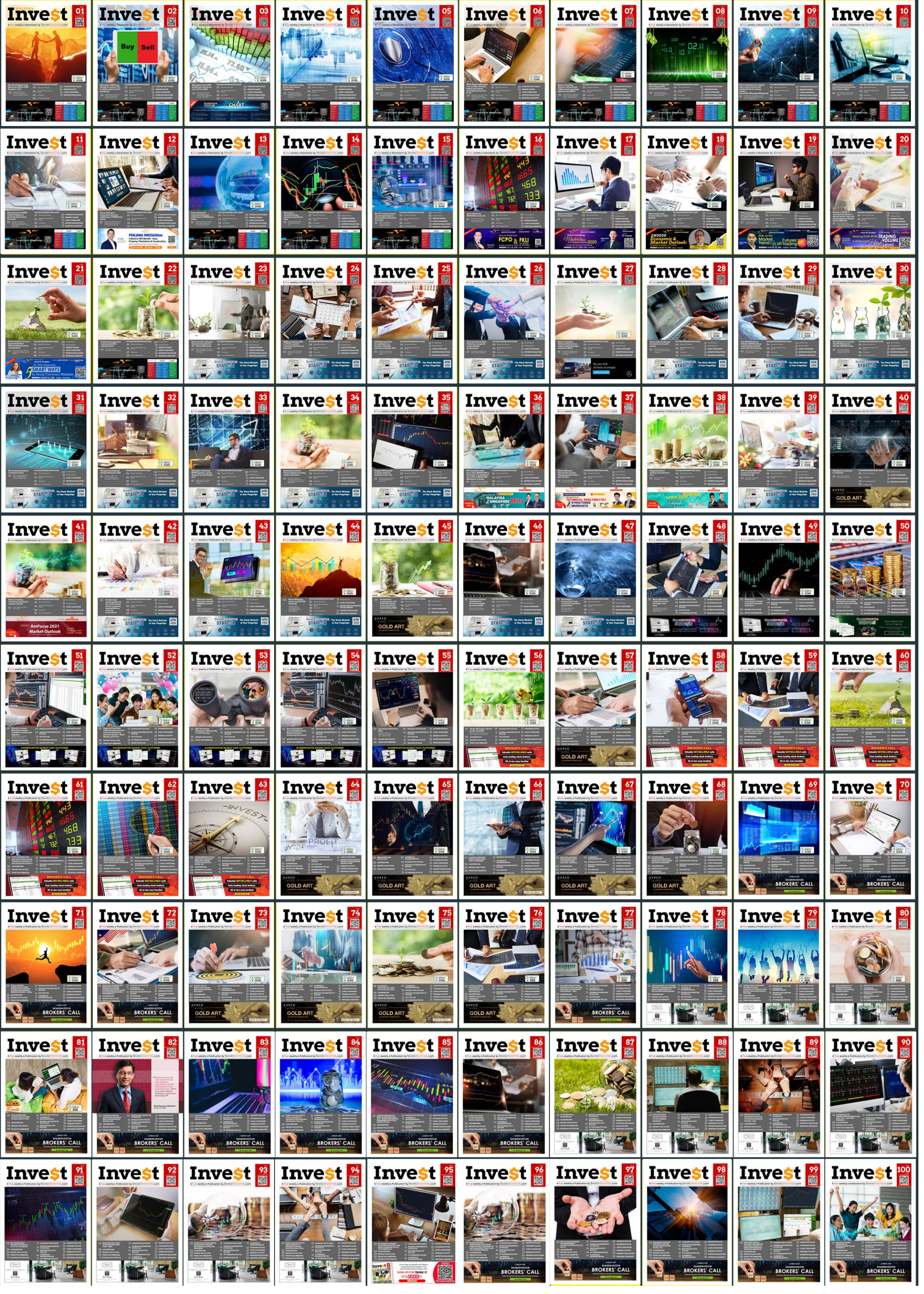
Affluent, digitally savvy regular middle-class Malaysians took the opportunity to upgrade their investment literacy by committing up to RM6,000 each for 3-day investment bootcamps conducted by credible mentors. Inve\$t became a weekly e-publication to guide retail investors on how to leverage stock market data analytics. The DIY step-by-step guide to use the Market Screener on ShareInvestor WebPro to filter out the best stocks on Bursa Malaysia became well sought-after. Investment-minded Malaysians signed up for their free personal Friday lunchtime read.

Fast forward two years, the Inve\$t database grew to over 48,000 regular, middle-class, affluent individuals with one passion – invest & trade profitably in the stock market. Our mission with Inve\$t is to enable younger generation Malaysians to leverage data analytics to identify stocks to invest and trade. The ultimate objective is to enable a steady passive income without the pitfalls of stock market speculation and gambling.

Inve\$t will continue to provide the best guidance to our community. For this milestone issue, we have redesigned our e-publication to better reader experience on mobile devices. We will expand the content to alternative asset classes like crypto, NFTs, art, precious metals, wine, rare commodities etc.

We thank all our registered Inve\$t community of the past two years – and look forward to power you on your investment journey. A big thank you also to our advertisers with the vision and faith in Inve\$t as a vital publication in Malaysia.

Wishing everyone good health and profitable journey ahead!



Invest

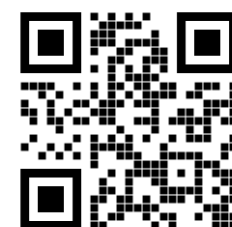
A Weekly e-Publication by SHAREINVESTOR.com

ISSUE

101

FRIDAY
01 APRIL
2022

Scan Me



Via email, every Friday

MALAYSIA'S DIVERSIFIED ECONOMIC STRUCTURE WILL MITIGATE DISRUPTION RISK CAUSED BY RUSSIA-UKRAINE CONFLICT

02	BNM: MALAYSIA'S DIVERSIFIED ECONOMIC STRUCTURE WILL MITIGATE DISRUPTION RISK CAUSED BY RUSSIA- UKRAINE CONFLICT	10	LEADERBOARD	29	UP TRENDING STOCKS
		12	BEHIND THE ACTION	30	GROWTH STOCKS
		17	FROM THE OBSERVER	31	DIVIDEND STOCKS
		22	SHARIAH HOT STOCKS	32	LONG COMPANIES
		23	COMPANY SPOTLIGHT	34	BROKERS' CALL
		25	SHARIAH MOMENTUM UP STOCKS	35	INSIDER ACTIVITY
		27	NON SHARIAH HOT STOCKS	39	INVESTOR RELATIONS
		28	CAREERS AT SHAREINVESTOR	41	REGIONAL MARKETS



SHAREINVESTOR®

Invest with Knowledge

CORPORATE

Managing Director (Malaysia) & Publisher
Edward Stanislaus
edward@shareinvestor.com

SALES & MARKETING

Director
Elizabeth Tan
elizabeth.tan@shareinvestor.com

Online IR

Manager
Letticia Wong
letticia.wong@shareinvestor.com

Advertising & Sponsorship Sales

Manager
Sharon Lee
sharon.lee@shareinvestor.com

MARKET DATA ANALYTICS

(marketdata.my@shareinvestor.com)

Account Manager

Foo Yong Jui

yongjui.foo@shareinvestor.com

Account Manager

Heidee Ahmad

heidee.ahmad@shareinvestor.com

Coordinator Watie Nordin

MARKET DATA ANALYTICS & EDITORIAL

Market Data & Media Coordinator

Silas Emmanuel Joseph

silas.joseph@shareinvestor.com

MARKET DATA ANALYTICS & EDITORIAL

Market Data Analyst
Nickson Aw
nickson.aw@shareinvestor.com

MARKETING COMMUNICATIONS

Marcomm Manager
Danny Ng

CREATIVE & DESIGN

Manager		Andric See
Asst. Manage		Ivy Yap
Web Developer		Nurul Atiqah
		Aiman Jasmin
		Izwa n Rusli
		Umairah Ishak

IT APPS

Project Manager		Amir Yusoff
Sr. Software Engineer		Mohd. Qasem
Software Engineer		Lian Kok Keong

FINANCE, ADMIN & HR

Manager		Shireen Goh
Sn. Accounts Executive		Jessie Ho
Accounts Assistant		Ng Jin Yng

SHAREINVESTOR HOLDINGS

Chairman		Patrick Daniel
Group CEO		Christopher Lee
Group COO		Lim Dau Hee
Group CFO		Teo Siew May



ShareInvestor Malaysia Sdn. Bhd. (200001023956) (526564-M)
(Formerly known as SI Portal.com Sdn. Bhd.)

Unit No. DF2-07-03A, Level 7,
Persoft Tower, 6B Persiaran Tropicana,
47410 Petaling Jaya, Selangor Darul Ehsan.

Hotline : 603 7803 1791

Mobile : 011 6343 8939

Fax : 603 7803 1792

Website : www.ShareInvestor.com.my

www.ShareInvestorHoldings.com

www.Facebook.com/ShareInvestorMalaysia

ADVERTISEMENT ENQUIRY

SHAREINVESTOR WEBPRO

C² CHART

C² Chart is WebPro's new feature-packed technical analysis tool for the modern stock investor



Over 100 Indicators

Select your preferred indicators to best suit your technical strategies



Drawing Tools

Multiple drawing tools to easily identify chart patterns



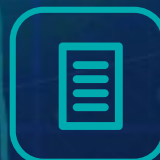
Events Indicators

Key events can be pinned onto your charts for a better overview



Compare Tool

Conveniently compare multiple stock prices at the same time



Historical Data

Extract price data from over 30 years



Over 10 Chart Styles

Various charts to suit your preferred style



No App Needed

Access your charts from any computer or mobile



Easy Zoom

Intuitive zooming function on charts

BNM:
MALAYSIA'S DIVERSIFIED
ECONOMIC STRUCTURE WILL
MITIGATE DISRUPTION RISK
CAUSED BY
RUSSIA-UKRAINE
CONFLICT

According to Bank Negara Malaysia (BNM) governor Tan Sri Nor Shamsiah Mohd Yunus, although Malaysia as a small and open economy will be affected by disruptions caused by the Russia-Ukraine conflict, the impact on growth will be mitigated by a highly diversified economic structure, which has always been the country's source of strength. The ongoing military conflict in Ukraine is expected to weigh on growth prospects via several channels, including disruptions from the trade and financial sanctions, higher commodity prices and volatile financial markets. But having said that, she also highlighted that Malaysia has a diversified economy with various sources of growth and an export structure, which underpins its economic resilience. For instance, being a net commodity exporter, Malaysia would gain from the surge in crude oil and crude palm oil prices. The higher export proceeds would widen Malaysia's trade surplus and benefit firms and workers in the commodities industry. However, the conflict situation in Ukraine remains highly fluid. Things can change very quickly, and how it affects the Malaysian economy will ultimately depend on the length of the conflict, the extent of the countermeasures and the resulting disruptions to global supply chains. The central bank will continue to monitor this closely and update the assessments accordingly. The conflict in Ukraine had already affected global growth and trade activity. The central bank's baseline forecasts assume that global growth will still remain above the long-term average of between 3.8% and 4.3%. It is also projecting that

the Brent crude oil price will range between US\$100 (about RM420.50) and US\$120 per barrel and that the bank had also built in the supply chain disruptions, especially in commodities and auto related industries. The central bank has projected Malaysia's economy to grow by between 5.3% and 6.3% in 2022 amid the reopening of the economy and international borders.

BURSA LAUNCHES NEW PROGRAMME TO RAISE VELOCITY

According to Bursa Malaysia CEO Datuk Muhamad Umar Swift, Bursa Malaysia has launched Bursa Research Incentive Scheme (Bursa RISE) with the objective to improve the trading velocity and corporate profile of participating public-listed companies (PLCs) through research coverage and marketing activities. The new programme would be carried out by licensed research houses to create better appreciation of the PLC's fundamentals, leading to better value recognition for the companies. Bursa RISE is an initiative in line with the evolving capital market landscape where investors seek greater stakeholder engagement and more transparent communication. With the increasing emphasis on sustainable practices, Bursa RISE will help participating PLCs raise the bar in corporate governance, transparency and disclosure through more frequent and meaningful stakeholder engagements. The programme would also include the Investor Relations (IR) and Public Relations (PR) Incentive Programme, that provides IR and PR support to participating PLCs to enable better engagement with their stakeholders, shareholders, the investment community, the media and the public more effectively. Bursa RISE will complement and support the PLC Transformation Programme which has the objective of encouraging PLCs to be more transparent in their performance, allowing investors to gain better insight to facilitate informed investment decision making. Further data based on a study of a past research programme has shown that velocity for participating PLCs had improved as a result of increased research and profiling. With greater engagement and marketing efforts, investors are expected to

pay more attention to the participating PLCs. All these programmes that have been put in place are expected to improve corporate accessibility for participating PLCs, while generating positive outcomes for PLCs, and greater opportunities for investors and stakeholders. A total of 60 participating PLCs were selected based on a set of quantitative and qualitative criteria. The research reports produced under Bursa RISE will be available at <https://www.bursamarketplace.com>.

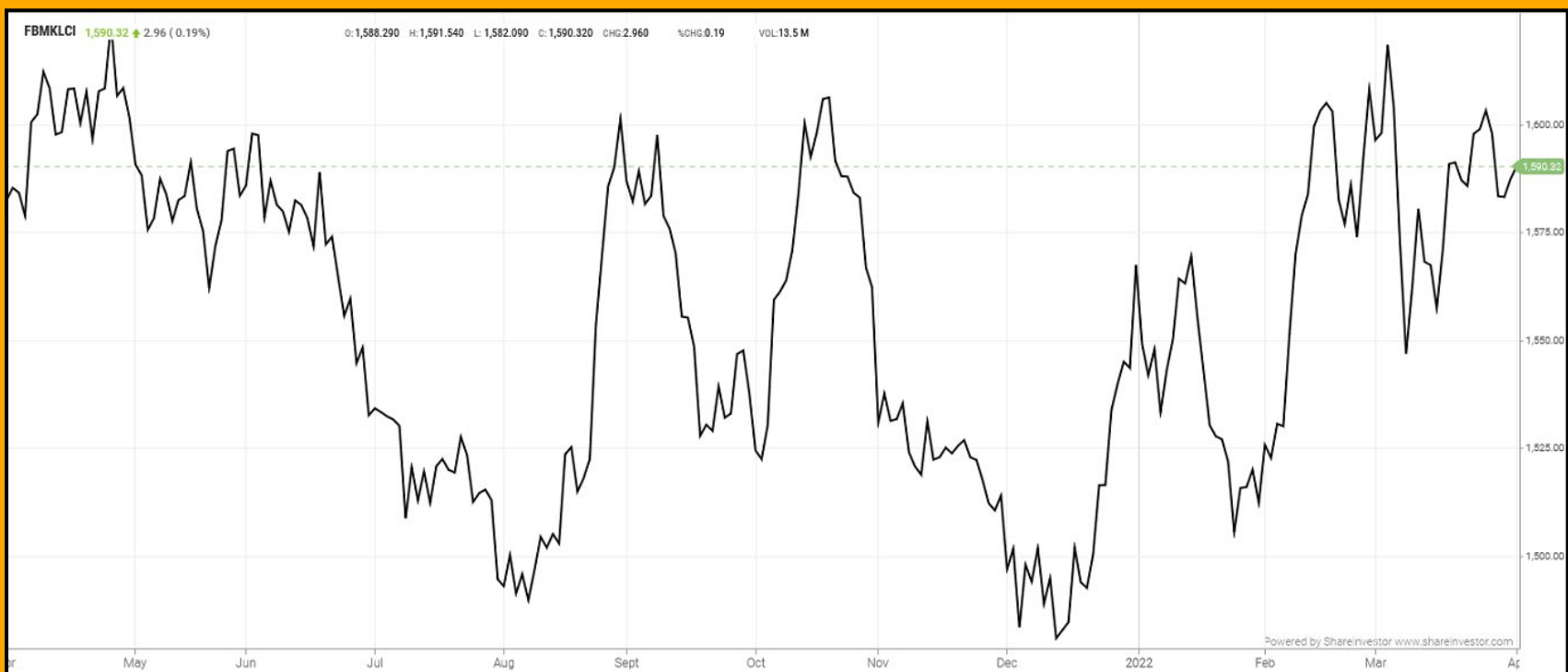
MALAYSIA'S CURRENCY IN CIRCULATION UP 15.1% TO RM150.1B IN 2021, STRONGEST GROWTH IN TWO DECADES

According to Bank Negara Malaysia (BNM) in its 2021 Annual Report, Malaysia's currency in circulation (CIC) grew by 15.1% year-on-year to RM150.1 billion as of end-2021 from RM130.4 billion a year ago, the strongest annual growth in the last two decades. Businesses and households preferred to hold extra cash in hand for precautionary reasons amid the prolonged Covid-19 pandemic, and a similar trend was observed across many other countries globally. There was also sufficient availability of cash during the unexpected severe floods that affected several parts of the country at the end of 2021. Despite growing demand for cash, the share of coins in CIC fell from 5.1% in the pre-pandemic year of 2019 to 4.3% in 2021 as coins do not command the same status as banknotes as a store of value and a medium of exchange. Through various efforts, in particular deployment of coin deposit machines by financial institutions at selected branches, 60.4 million pieces of coins, equivalent to 7.6% of total coins issued in 2021, were recirculated. To maintain the high quality of CIC, BNM shredded 24.6% of the total volume of banknotes processed, the highest rate in the last five years. In prioritising the issuance of fit banknotes, 57% out of 2.72 billion pieces of banknotes issued in 2021 were fit banknotes as this was not only more cost-effective but also reduced the carbon footprint (given that banknote printing is both water- and energy-intensive). Overall, currency operations nationwide remained

uninterrupted last year despite challenges associated with the prolonged Covid-19 pandemic. The availability and accessibility of cash by businesses and households was sustained while maintaining the high quality of CIC and a comparatively low counterfeit rate.

EYE ON THE MARKETS

This week, on Friday (1Apr), the Ringgit opened at 4 2120 against the USD from 4.2090 on Monday (28Mar). Meanwhile, the Ringgit was 3.1049 to the Sing Dollar on Friday (1Apr). On Monday (28Mar), the FBM KLCI opened at 1606.14. As at Friday (1Apr) 10:00am, the FBM KLCI is down 13.29 points for the week at 1592.85. Over in US, the overnight Dow Jones Industrial Average closed down 550.46 points (-1.56%) to 34,678.35 whilst the NASDAQ shed 221.76 points (-1.54%) to 14,220.52.



KLCI 1 Year Chart



SHAREINVESTOR STATION

The advanced analytics software designed for today's active traders

Fully Customisable . Powerful Charting .
Multiple Platform Access . High Speed Updates .
Price Movements . Screener (FA & TA)

[click here to start your 18 days free trial](#)

PURNELL

ONLY TOURBILLON



ESCAPE II FORGED CARBON

Purnell Asia

Tel. : +65.9817.3378

Email : sales.sg@purnellwatches.com

@ Purnell_Official

www.purnellwatches.com

PLAY



www.shareinvestor.com - market data at your fingertips



ShareInvestor WebPro (www.shareinvestor.com/my)
Prices > Stock Prices > Bursa > click Stocks tab

1. mouse over Ranking > select Top Active > all Shariah stocks are denoted with an [S] > mouse over Column Layout > select Edit Customs > select Name > select Volume > select Last Done Price > Mouse Over Column Layout > select Custom
2. mouse over Ranking > select Top Turnover > all Shariah stocks are denoted with an [S] > mouse over Column Layout > select Edit Customs > select Name > select Last Done Price > select Value > Mouse Over Column Layout > select Custom
3. mouse over Ranking > select Top Gainers (Over 5 Trading Days) > mouse over Column Layout > select Edit Customs > select Name > select Last Done Price > select 5 Days Change > select 5 Days % Change > Mouse Over Column Layout > select Custom
4. mouse over Ranking > select Top Losers (Over 5 Trading Days)
5. mouse over Ranking > select Top % Gainers (Over 5 Trading Days)
6. mouse over Ranking > select Top % Losers (Over 5 Trading Days)

Shariah Top Actives (as at Yesterday)

Name	Price (RM)	Volume
MTRONIC [S]	0.020	1,918,412
TWL [S]	0.070	950,204
CAPITALA [S]	0.735	569,105
SMTRACK [S]	0.080	556,790
WIDAD [S]	0.365	363,776
TOPGLOV [S]	1.920	303,241
MALAKOF [S]	0.600	267,391
TANCO [S]	0.350	265,015
VC [S]	0.085	259,663
SAPNRG [S]	0.035	247,652

Shariah Top Turnover (as at Yesterday)

Name	Price (RM)	Value (RM)
PCHEM [S]	9.600	108,758,719
PMETAL [S]	6.200	63,043,140
TOPGLOV [S]	1.920	58,606,244
KLK [S]	25.200	53,834,658
TENAGA [S]	9.000	47,384,319
CAPITALA [S]	0.735	42,492,596
IHH [S]	6.200	39,028,156
SIME [S]	2.400	30,944,523
INARI [S]	3.070	28,665,937
SIMEPLT [S]	4.970	28,647,463

Top Gainers (over 5 Trading days as at Yesterday)

Name	Price (RM)	Change (RM)
AEONCR	15.120	+0.620
AIRPORT	6.950	+0.500
PANAMY	28.500	+0.500
PMBTECH	18.340	+0.480
COMPLET	3.690	+0.410
BJFOOD	3.790	+0.390
BLDPLNT	9.420	+0.320
MILUX	0.885	+0.265
HTPADU	1.190	+0.235
ARTRONIQ	0.700	+0.215

Top % Gainers (over 5 Trading days as at Yesterday)

Name	Price (RM)	Change (%)
TANCO	0.350	+45.83
ARTRONIQ	0.700	+44.33
MILUX	0.885	+42.74
SKBSHUT	0.430	+40.98
MPCORP	0.105	+40.00
DGB	0.020	+33.33
JERASIA	0.040	+33.33
TALAMT	0.020	+33.33
TOPBLDS	0.020	+33.33
BIG	0.820	+28.12

Top Losers (over 5 Trading days as at Yesterday)

Name	Price (RM)	Change (RM)
CARLSBG	133.600	-2.400
PETDAG	20.420	-1.520
MPI	36.400	-1.180
F&N	21.000	-0.520
CARLSBG	21.720	-0.460
KESM	8.600	-0.450
HEIM	22.480	-0.420
TENAGA	9.000	-0.350
IHH	6.200	-0.340
RVIEW	3.370	-0.290

Top % Losers (over 5 Trading days as at Yesterday)

Name	Price (RM)	Change (%)
DAYA	0.005	-50.00
PHB	0.005	-50.00
PASUKGB	0.015	-40.00
COMPUGT	0.010	-33.33
KGROUP	0.010	-33.33
MNC	0.020	-33.33
NEXGRAM	0.010	-33.33
CAP	0.015	-25.00
BERTAM	0.080	-20.00
GOCEAN	0.020	-20.00



Italian Masterpieces

Coupé De Luxe bed designed by GamFratesi
Grant ottoman designed by Tristan Auer

poltronafrau.com



XTRA

The Gardens Mall, Mid Valley City, Lot S-236 & 237
2nd flr Linkaran Syed Putra, Kuala Lumpur
T. +603 2282 9088 | living@xfurniture.com | xfurniture.com
f XTRAFurniture | @xfurnituremsia



DID I HEAR CEASEFIRE?



Pankaj C Kumar

Pankaj is a former CIO and Head of Research, presently focused on economic, market and corporate analyses. The views expressed here are entirely the writer's own.

Despite the continuous pressure seen in the fixed income market with the 10-year and 2-year benchmark papers flirting towards inversion, equity markets rallied on the prospects of a ceasefire between Russia and Ukraine as both returned to the negotiation table. However, at the point of writing, no concrete outcomes were achieved just yet. The S&P500, which went into correction early this month, has now bounced back more than 10% from its recent low and has convincingly exited the correction territory. Meanwhile, the US plan of releasing its statutory oil reserves sent crude oil prices lower as the market sees it as a way to stabilize the current high market price.

As the US prepares itself not only to increase spending but to rein in budget deficits, President Joe Biden has unveiled a US\$5.8 trillion budget request, with more than \$2.5 trillion in tax hikes on wealthy and large corporations over the next ten years on top of the nearly \$1.5 trillion of increases included in the House's version of the Build Back Better plan. The proposal also adds a 20% minimum tax on the unrealized capital gains for households worth at least US\$100mil. Across China, as the spread of Covid-19 has reached major cities, Shanghai entered a staggered 8-day lockdown over two phases to conduct mass testing of its 25 million residents.

ECONOMY

Out of the US, the final University of Michigan's Consumer Sentiment Index for March dipped to a fresh 11-year low of 59.4 and marginally lower than the preliminary print of 59.7. However, the Conference Board's US Consumer Confidence for March rose to 107.2 from the preceding month's reading of 105.7. From the US housing market, the February Pending Home Sales fell by 4.1% m-o-m, steeper than the market's estimate of a 1% rise. In other news, the February headline Personal Consumption Expenditure (PCE) data topped estimate at 6.4% y-o-y gain while Core PCE expanded at 5.4% y-o-y respectively, marginally below the forecast of a 5.5% rise. Both the February prints were higher by 0.2 percentage points than the prior month.

The official Chinese Manufacturing and Non-Manufacturing Purchasing Managers' Index (PMI) for March came in well below expectations at 49.5 and 48.4 against market expectations of 49.8 from 50.3 respectively. Both the readings were also below the February prints of 50.2 and 51.6 and at the same time confirmed that the Chinese economy is now decelerating as reading below 50 suggests that economic activities are contracting.

According to the General Statistic Office, Vietnam's 1Q 2022 GDP slowed down to 5.03% y-o-y from the preceding quarter's growth of 5.22% y-o-y and much lower than the median estimate of 5.7% increase expected by economists. Meanwhile, Thailand left its key benchmark rate unchanged at 0.5%. At the same time, the Bank of Thailand lowered its GDP growth projections to 3.2% from 3.4% previously, while the inflation forecast was raised to 4.9% from the earlier forecast of a 1.7% rise.

Locally, Bank Negara Malaysia's (BNM) 2021 Annual Report was the highlight of the week with the central bank now forecasting a GDP growth of between 5.3-6.3% against the Ministry of Finance's forecast of 5.5-6.5% presented in the Budget 2022. On interest rates, BNM sees the current monetary policy stance as appropriate and the central bank is expected to remain accommodative to support recovery and ensure price stability. As for the inflation outlook, the central bank forecast that the country's headline inflation to average between 2.2-3.2%. The cen-

tral bank also commented on the recently proposed minimum wage of RM1,500 by the government and BNM reckons that the policy should be implemented in an orderly manner to ensure that it can lend support to economic growth and not add to inflationary pressure.

In other economic news, Malaysia's February headline inflation data moderated to register a growth of 2.2% y-o-y but the core inflation, which takes away the volatile items like fresh food and goods under price control, rose by 1.8% y-o-y, against the January print of a 1.6% y-o-y increase. Meanwhile, the Producer Price Index (PPI) - Local Production for February accelerated to register a growth of 9.7% y-o-y from 9.2% in the preceding month, as commodity prices surged.

The plantation sector was very much in the news this week with the Malaysian Palm Oil Council (MPOC) projecting crude palm oil (CPO) price at between RM5,700 and RM6,300 per tonne until May this year and to undergo a correction in the third quarter with a price range of between RM4,500 and RM5,500 per tonne. Meanwhile, the Malaysian Palm Oil Board (MPOB) projects export revenue of palm-based products to increase by 1.4% to RM110bil this year. Malaysian banking sector again proved its resilience as February loans growth expanded 4.7% y-o-y, maintaining the same growth trend in the preceding month.

CORPORATE

PA Resources won a 1-year contract to supply raw materials worth RM550mil to the First Solar group to produce photovoltaic modules effective July 1, 2023, to July 1, 2024. Lim Seong Hai Capital, a LEAP market-listed company, announced a major asset injection exercise involving a total value of RM157.6mil, which will see the company venturing into the property and construction-related business. Meanwhile, the winning bidders for the five coveted digital bank licences will now be known in the near future and upon completion of the legal process.

EQUITY

Global markets closed mostly firmer on the back of a strong showing among major US indices which rose by between 2.5% and 3.7% the past

week. Most major indices were firmer with gains ranging from 0.1% to 2.3% on the Euro Stoxx 50 Price Index, while markets that experienced losses this week fell by between 0.1% and 1%. Stocks on Bursa Malaysia were mixed to lower as mild selling pressure set in among resource-based companies as underlying commodity prices were weaker over the past one week. The KLCI lost 11.61 pts or 0.7% lower to close at 1,587.36 pts.

For the week ended March 30, foreigners and retail market participants emerged as net buyers in the market with inflows of RM530mil and RM41.5mil respectively, leaving the local institutions as net sellers with an outflow of RM571.mil. With just a day to go the month-end and quarterly-end data, net foreign buying as of March 30 stands at RM3.18bil and RM6.36bil respectively.

EYE ON WEEK AHEAD

Later today, the March US jobs report is due to be released with the market looking at Non-Farm Payroll to ease to 490,000 and the unemployment rate to improve to 3.7%. Average Hourly Earnings is expected to increase from a y-o-y increase of 5.1% in the previous month to 5.5% in March.

In addition, a slew of S&P Global Manufacturing PMIs is due today with the release of the Eurozone, ASEAN, and Malaysian readings for March, as well as the JPMorgan Global Manufacturing PMI for the same month. On Tuesday, April 5, the S&P Global Eurozone Composite PMI for March is expected to be released and this is followed by the March JPMorgan Global Composite PMI the next day. On the same day, the Reserve Bank of Australia meets to decide on its official cash rate, which is expected to be held steady at 0.1%, while the March US Institute of Supply Management (ISM) Services PMI is expected to come in at 57.7 from 56.5.

Locally, next week, on Thursday, April 7, BNM will release the international reserves position as at end of March 2022.



ShareInvestor App is now available on iOS

Gain access to free data while on the move.
Keep abreast with all company's movement and price trend, and more!

Prices of companies across 7 markets	Company's key statistics and financial health	Latest company news and market movements	Recorded time and sales of every counter daily	Events Compilation of corporate actions
---	--	---	---	--

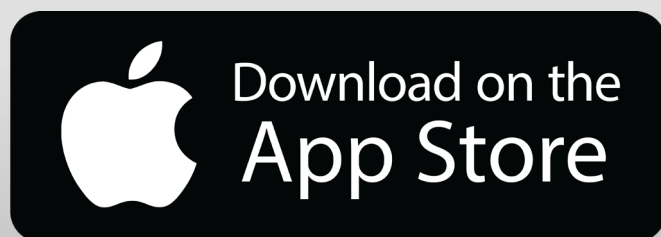
ShareInvestor Station and ShareInvestor WebPro members rejoice!
Log in and access even more features:

FINANCIAL RATIOS
Snapshot of stock price and statistics that helps to make timely decision.

CONSENSUS ESTIMATES
Analysts' forecast of a company's forward earnings

CHARTING TOOL
Comprehensive and customizable to your preference

DIVIDENDS
History of each company and new insights to its pay-out trends



ARE TWO HEADS BETTER THAN ONE?



Devanesan
Evanson

**Chief Executive
Officer, Minority
Shareholders Watch
Group**

In the shipping realm, there is a leadership attribute hinting that we can have two skippers on the same ship, but we cannot afford to have two destinations for there is where failure starts. However, in the kitchen realm, we are often reminded of the age-old adage of too many cooks spoil the broth although large restaurants do welcome more than one chef to ensure its success. In the same light, it is no longer uncommon in today's corporate world for some companies to pursue the co-CEO or joint chief executive model of leadership. While having two heads can be better than having one, such co-leadership model demands professionalism and mutual understanding par excellence from both heads lest the ensuing leadership falls apart. A rarity at best among Bursa Malaysia-listed companies, Berjaya Corporation Berhad (BJCorp) has joined the fray recently with the appointment of company veterans Vivienne Cheng Chi Fan and Syed Ali Shahul Hameed as joint group CEOs, effective 1 April 2022.

This follows the departure of Abdul Jalil Abdul Rasheed as group CEO of the company effective 31 March 2022. This is not the first time Tan Sri Vincent Tan Chee Yioun, BJCorp founder

and chairman, has had the co-leadership model within his stable of companies. Recall that back in October 2020, retail and convenience store operator 7-Eleven Malaysia Holdings Berhad had appointed its then chief financial officer Wong Wai Keong and executive director Tan U-Ming as the co-CEOs for the company, with effect from 1 December 2020. Beyond our shores, American subscription streaming service and production outfit Netflix Inc seems to be coping well by having two CEOs in co-founder Reed Hastings who oversees the streaming side of the company while Ted Sarandos guides Netflix's content. Closer to home, Korean conglomerate Samsung Electronics Co. has two CEOs - Han Jong Hee and Kyung Kye Hyun who were appointed to their position in late 2021, overseeing different businesses within the electronic giant. Samsung used to have three co-CEOs in 2013 and 2018 respectively.

THE GOOD AND BAD

It has been said that the co-CEO leadership concept is gaining more recognition of late following the eruption of the COVID-19 pandemic whereby running a business organisation amid the global health crisis has taken its toll on the mental health of C-suite executives with the pressing needs of managing their remote workforces. Even now as companies are placing intense focus on recovery and growth in the toughest of economic climates, more are beginning to question the status quo. This has led many businesses to adopt a co-CEO model based on the theory that they drive business recovery without the risk of draining one individual. But the truth remains that the success rate of the co-CEO arrangements varies from one industry to another with much mixed outcome. This can be predominantly attributed to the fact that "although two heads are better than one, no two heads can think alike".

Critics of the co-leadership believe that the key to a successful organisation is to have an effective decision process and have the right influences around the sole decision maker – the CEO. In 2020, software firm SAP abandoned its co-CEO structure after just six months, stating

“a lone CEO model” would “provide a clearer leadership structure” to tackle pandemic-related business challenges. Tire maker Pirelli’s co-CEO Angelos Papadimitriou also walked out in January 2021 after only six months on what was said to be a mutual decision. Interestingly, however, HR Asia – a regional publication on HR issues, believes that “counter-intuitively, joint executive leadership structures can and do work given the right conditions.”

BELOW ARE SOME OF ITS PERSPECTIVES:

More robust business decisions:

Having a shared governance structure allows two CEOs with different personalities, backgrounds and experience to share perspectives, knowledge and experience on significant business decisions as well as aiding policymaking. Using the other as a sounding board, there is less chance of major decisions being compromised through personal bias as well as granting a greater level of objectivity.

Better strategic management:

The structure brings together two individuals with job complementarity or educational complementarity (e.g., a CEO with an MBA while the other has a graduate science background). This brings together a broader set of experience and knowledge as well as produce better long-term strategies.

Shareholder interest protected:

With co-CEOs, self-regulation comes into play. Each CEO ensures the other works as hard as them to boost results, reducing the need to link pay and performance as much as with single CEO. Moreover, the presence of a co-CEO creates a situation of implicit mutual monitoring, leading to greater accountability in the management and the protection of the interests of investors and other stakeholders.

CONCLUSION

There are undoubtedly pros and cons in both the single CEO and co-CEO leadership models. From the minority shareholders' standpoint, it is hoped that the board of BCorp has dutifully weighed the suitability of implementing the co-CEO model within the group as this will certainly increase the success rate of its implementation. Unorthodox as it sounds, it is hoped that such a leadership model can further enhance shareholders' value given the share price of BCorp has been on a downslide from an intraday high of 50.5 sen (more than a six-year high) reached on 1 April 2021 to the current price range of 23 sen (a 54% dip). In the end, there should be a partnership between the two co-CEOs and there needs to be boundaries to the roles they play in the operational and decision-making process of the business. Then again, dual CEO situations may very well be an interim measure pending the emergence of a single CEO.

*This article appeared in the The Observer, a weekly newsletter published by The Minority Shareholders Watch Group (MSWG) and reproduced here with their permission.
Do follow MSWG's Twitter account at @MSWGMalaysia and share your thought on their tweets from time to time.*

SHAREINVESTOR

WEBPRO

Stock Market Data At Your Fingertips

Powerful browser-based market analytics platform.
Access from anywhere

Intrinsic Value
Calculator

Consensus
Estimates

C2 Charts
(Customizable &
Comprehensive)

Advance
Market
Screener

Ownership
Tracker

click here to start your
9 Day free trial

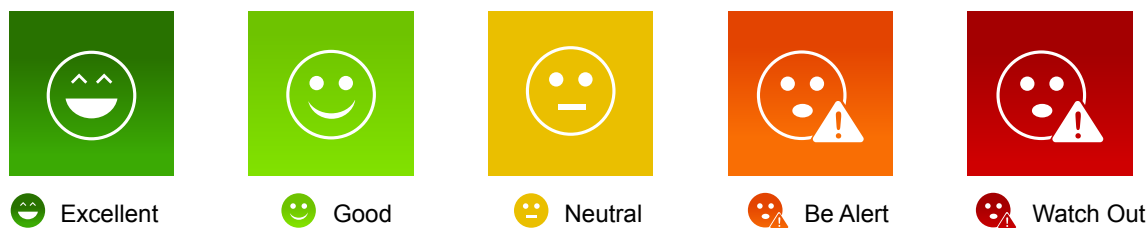
Smiley Grid

**Are you struggling to analyse financial information?
Do you find financial data overwhelming?**

Worry not, introducing our NEW feature, Smiley Grid

Smiley Grid makes the Factsheet fast and easy to understand.

It is a shortcut where key financial data have now been interpreted for you, and presented in easy-to-understand, colour coded icons.



With just a glance, you can easily identify strong or weak areas of a particular counter.

We do the analysis so you can make faster decisions.



Sign up for our 9 Days Free Trial and give it a try

9-Days FREE TRIAL WORTH (RM 9)

Price & Volume Distribution Charts (as at Yesterday)

Technical Analysis

DEFINITION: Shariah compliant stocks with Technical Analysis showing 5-days & 10-days Moving Average Price below Yesterday's Close over past 3 days and with Volume Spike.

CHART GUIDE: Volume Distribution Chart is a statistical interpretation of the current sentiment on each stock in graphical format. The highest bar categorized as >150k is likely to be traded by institutions or super dealers, while the lowest bar categorized as <15k usually represents retail investors. "Buy Up" refers to more buyers snatching up the lots queued at selling price. "Sell Down" refers to sellers selling their shares to the buying queue



ShareInvestor WebPro > Screener > Market Screener (FA & TA) > select BURSA > add criteria

A. Criteria

- > click Add Criteria
- Technical Analysis Conditions tab select (i) Moving Average Below Close (ii) Volume Spike
- Fundamental Analysis Conditions tab > select (iii) Revenue
- Prices & Other Conditions tab > select (iv) Is Shariah Compliant
- Technical Analysis Conditions tab select (v) Moving Average Below Close
- Prices & Other Conditions tab > select (vi) Last Done Price
- Technical Analysis Conditions tab select (vii) Moving Average Below Close

B. Conditions (Criteria Filters)

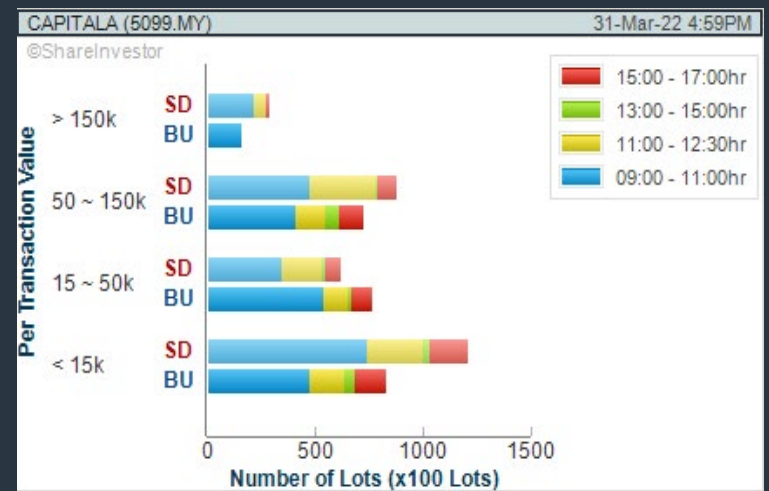
1. Moving Average Below Close - select (MA) type (5) below close price for type (3) days
2. Volume Spike - Volume type (1) greater than type (5) days average
3. Revenue ("000) - select (more than) type (1) for the past select (1) financial year(s)
4. Is Shariah Compliant - select **Yes**
5. Moving Average Below Close - select (MA) type (10) below close price for type (3) days
6. Last Done Price - select (more than) type (0.3)
7. Moving Average Below Close - select (EMA) type (5) below close price for type (3) days

- > click Save Template > Create New Template type (Shariah Hot Stocks) > click Create
- > click Save Template as > select Shariah Hot Stocks > click Save
- > click Screen Now (may take a few minutes)
- > Sort By: Select (Vol) Select (Desc)
- > Mouse over stock name > Charts > click C² Charts or Volume Distribution

CAPITAL A BERHAD (5099)

C² Chart

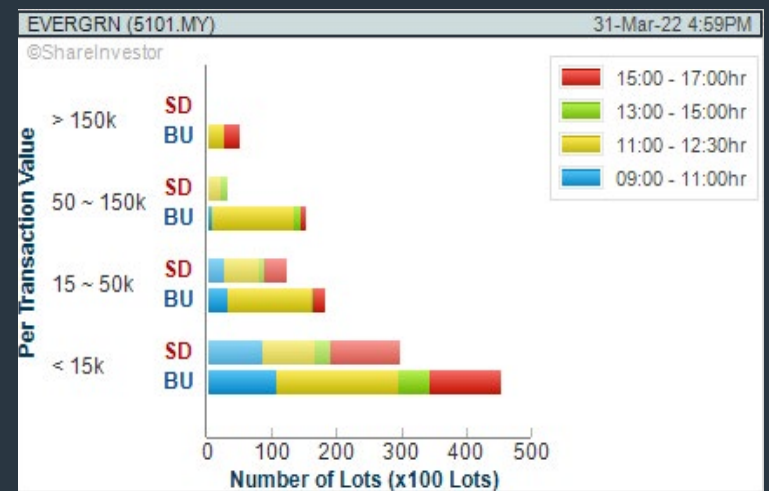
Analysis



EVERGREEN FIBREBOARD BERHAD (5101)

C² Chart

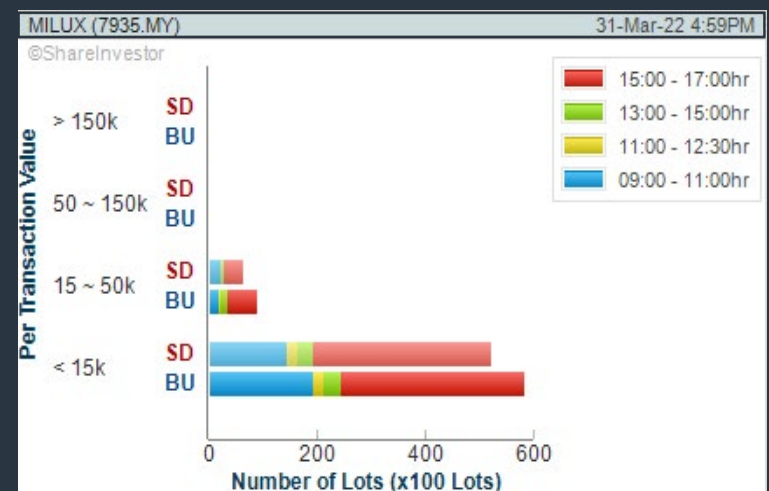
Analysis



MILUX CORPORATION BERHAD (7935)

C² Chart

Analysis



Disclaimer: The information on this page is provided as a service to readers. It does not constitute financial advice and/or any investment recommendations. Past performance is not indicative of future results. We assume no liability for damages resulting from or arising out of the use of such information. It would be best if you did your own research to make your personal investment decisions wisely or consult a licenced investment advisor.

COMPANY BACKGROUND

Widad Group Berhad is an investment holding company which is principally involved in construction activities and integrated facilities management services. It's Integrated Facility Management segment is engaged in the scheduled maintenance, ad-hoc maintenance, and upgrading and renovation. It's Property Management Services includes interior and exterior building cleaning, hard and soft landscaping, security and monitoring, pest and hygiene control, garbage disposal service and swimming pool maintenance. It's Construction segment is engaged in the infrastructure and civil works such as construction of low and high-rise buildings for a variety of uses, sewerage treatments plants among others.

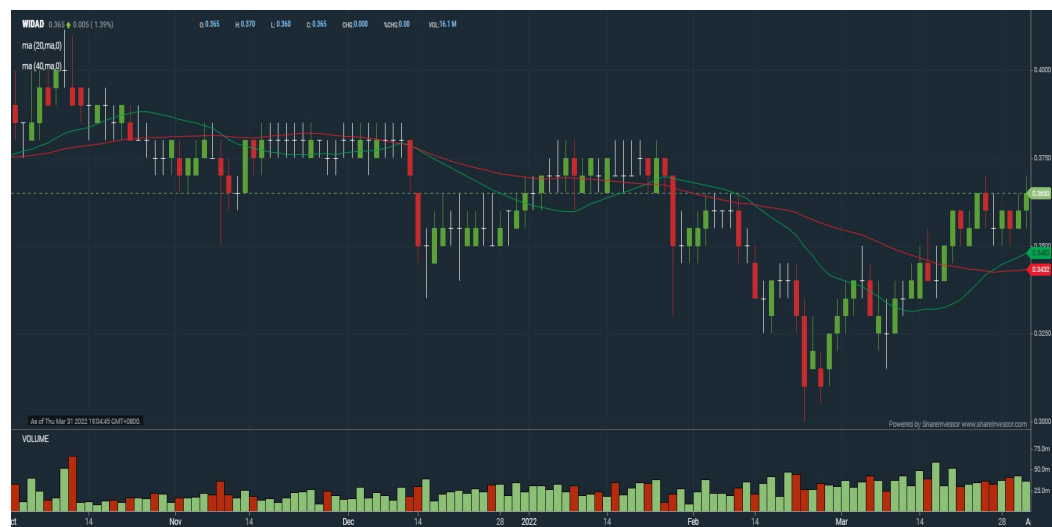


WIDAD WIDAD GROUP BERHAD		Updated at 31 Mar 2022 16:59	
Last (MYR): 0.365 ↑	Change: +0.005 Change (%): +1.39	High: 0.370 Low: 0.355	Remarks: -
Open	0.360	Yesterday's Close	0.360
Buy Price	0.360	Sell Price	0.365
Buy Volume ('00)	53,567	Sell Volume ('00)	5,262
Cumulative Volume ('00)	363,776	Cumulative Value	13,189,932

Financial Analysis

Profit Growth Increasing profit in latest year (with last 2 profitable years)	Excellent	Piotroski F Score The company has below average financial strength (Piotroski F-Score of 3-4)	Be Alert
Debt to Cashflow The company has negative cash flow from operations in most recent year	Watch Out	Debt to Equity High debt to equity for most recent year	Be Alert
Free Cash Flow Negative free cash flow for two years or more	Watch Out	Gross Profit Margin Low gross profit margin for 3 years	Be Alert
Net Earnings Margin High net profit margin of at least 20% for most recent year	Excellent		

Excellent Good Neutral Be Alert Watch Out



Historical Financials



WebPro 9-Days Free Trial Registration
(worth RM9)
Sign Up Now

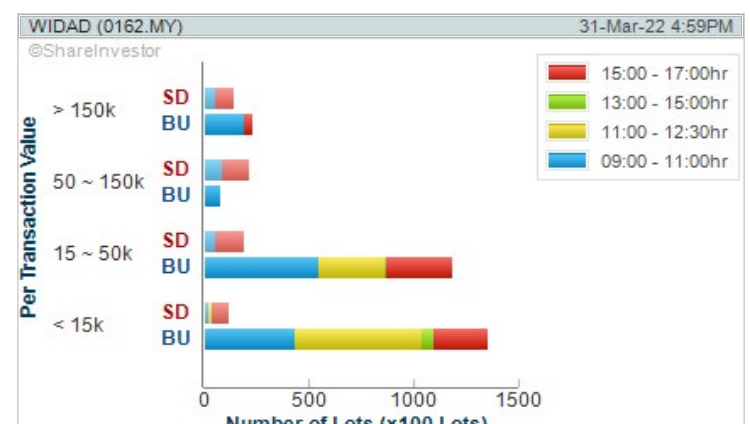


Key Statistics with Total Shareholder Returns

Total Shareholder Return

Period	Dividend Received	Capital Appreciation	Total Shareholder Return
Short Term Return	5 Days	-	-
	10 Days	-	+0.025
	20 Days	-	+0.025
Medium Term Return	3 Months	-	+0.065
	6 Months	-	-0.020
	1 Year	-	-0.220
Long Term Return	2 Years	-	+0.070
	3 Years	-	+0.055
	5 Years	-	+0.105
Annualised Return	Annualised	-	+0.022

Volume Distribution Chart

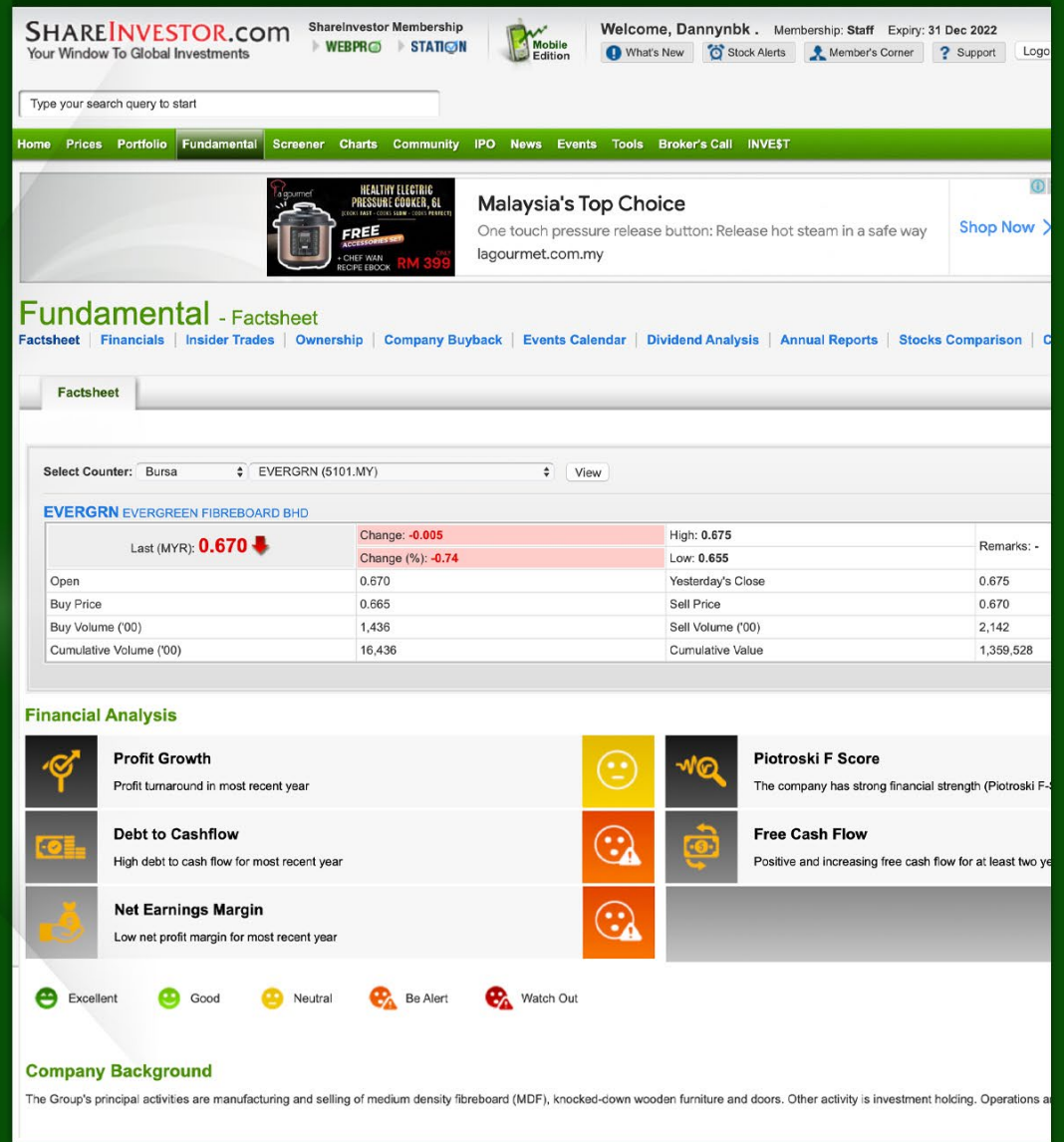
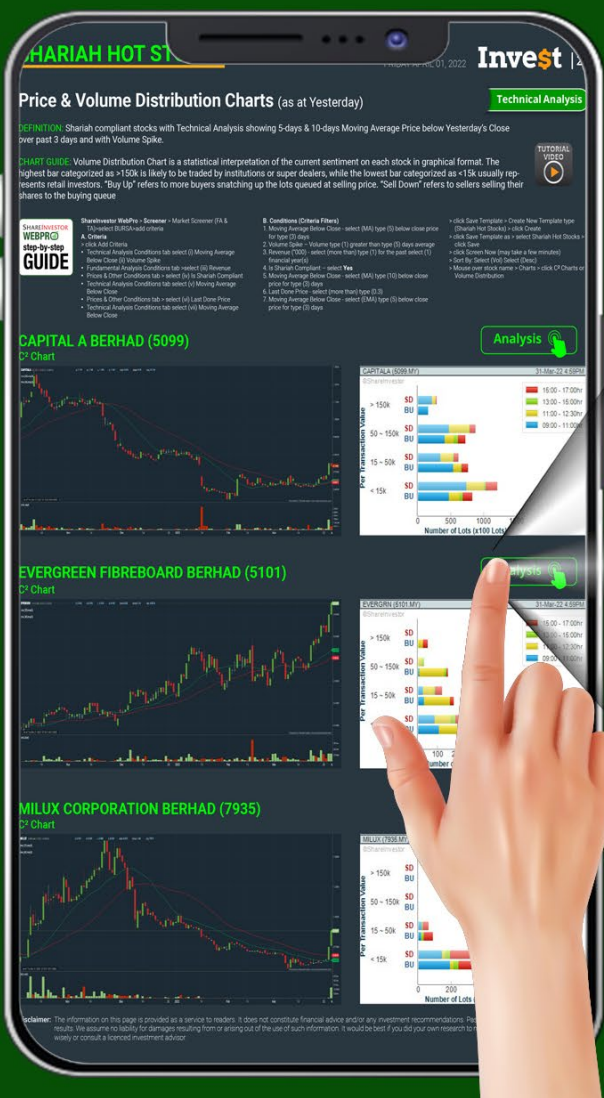


Disclaimer: The information on this page is provided as a service to readers. It does not constitute financial advice and/or any investment recommendations. Past performance is not indicative of future results. We assume no liability for damages resulting from or arising out of the use of such information. It would be best if you did your own research to make your personal investment decisions wisely or consult a licenced investment advisor.

COMPANY ANALYSIS AT YOUR FINGERTIPS

Click the Analysis buttons to access the Factsheets of any company featured on the Hot Stocks, Momentum-Up, Up-Trending, Growth and Dividend Stocks pages.

Invest with knowledge



- Company Background
- Candlestick Chart
- Current Price
- Key Statistics
- Peer Comparison
- Total Shareholder Returns
- Price Movements
- IPO performance
- Financial Reports
- Historical Price Data
- Latest News
- More



Price & Volume Distribution Charts (as at Yesterday)

Technical Analysis

DEFINITION: Shariah compliant stocks with Technical Analysis showing Bullish Momentum and Price Uptrend. The share price closed at the highest price yesterday. The typical price was higher than the previous day's typical price.

CHART GUIDE: Volume Distribution Chart is a statistical interpretation of the current sentiment on each stock in graphical format. The highest bar categorized as >150k is likely to be traded by institutions or super dealers, while the lowest bar categorized as <15k usually represents retail investors. "Buy Up" refers to more buyers snatching up the lots queued at selling price. "Sell Down" refers to sellers selling their shares to the buying queue.



ShareInvestor WebPro > Screener > Market Screener (FA & TA) > select BURSA > add criteria

A. Criteria

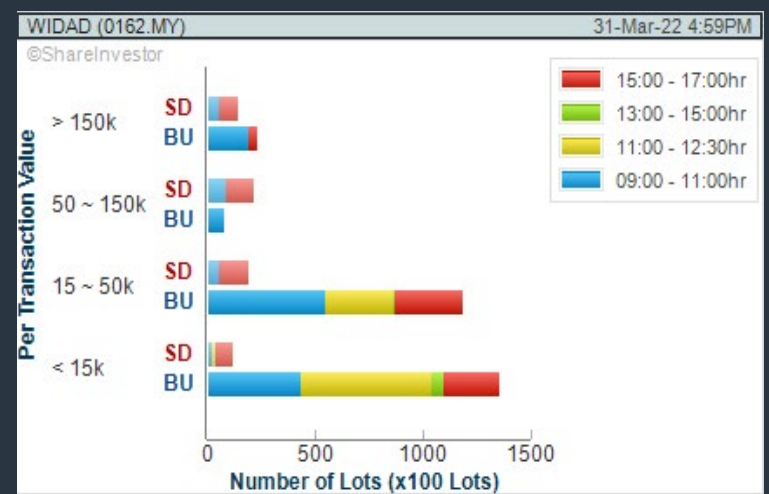
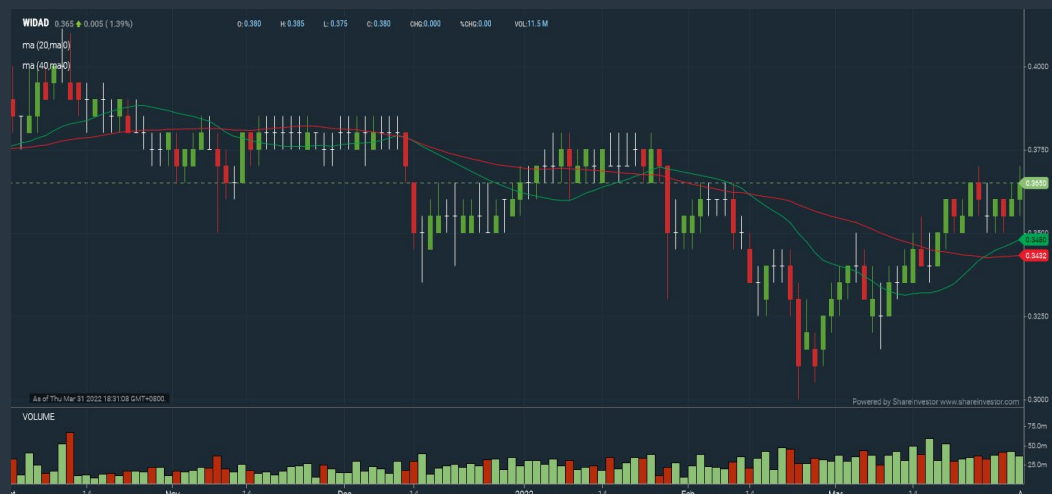
- > click Add Criteria
- Fundamental Analysis Conditions tab > select (i) Revenue
- Technical Analysis Conditions tab select (ii) Average Volume
- Prices & Other Conditions tab > select (iii) Last Done Price
- Prices & Other Conditions tab > select (iv) Is Shariah Compliant
- Technical Analysis Conditions tab select (v) RSI Overbought
- Technical Analysis Conditions tab select (vi) Moving Average Below Close
- Technical Analysis Conditions tab select (vii) CCI Overbought

B. Conditions (Criteria Filters)

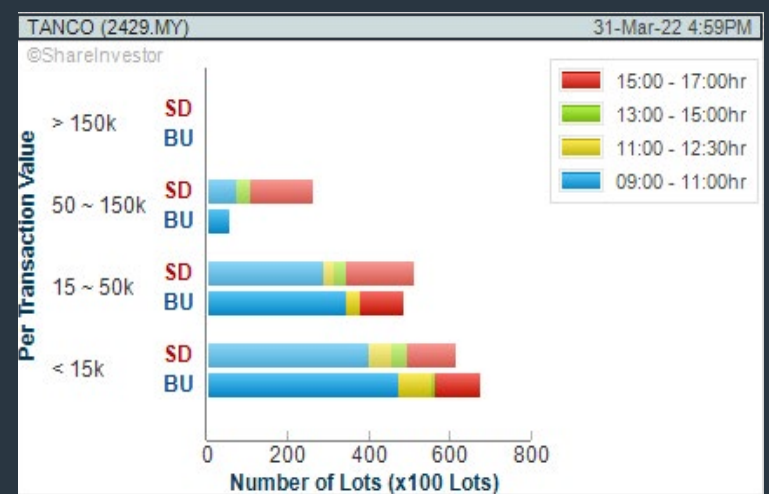
1. Revenue ("000) - select (more than) type (1) for the past select (1) financial year(s)
2. Average Volume - type (1) days average volume greater than type (10000) lots
3. Last Done Price - select (more than) type (0.3)
4. Is Shariah Compliant - select Yes
5. RSI Overbought - select RSI 1 above 99 for 1 days
6. Moving Average Below Close - select (MA) type (10) below close price for type (1) days
7. CCI Overbought - select CCI (2) above (0) for (1) days

- > click Save Template > Create New Template type (Shariah Momentum Up Stocks) > click Create
- > click Save Template as > select Shariah Momentum Up Stocks > click Save
- > click Screen Now (may take a few minutes)
- Sort By: Select (Vol) Select (Desc)
- Mouse over stock name > Charts > click C² Charts tab or Volume Distribution

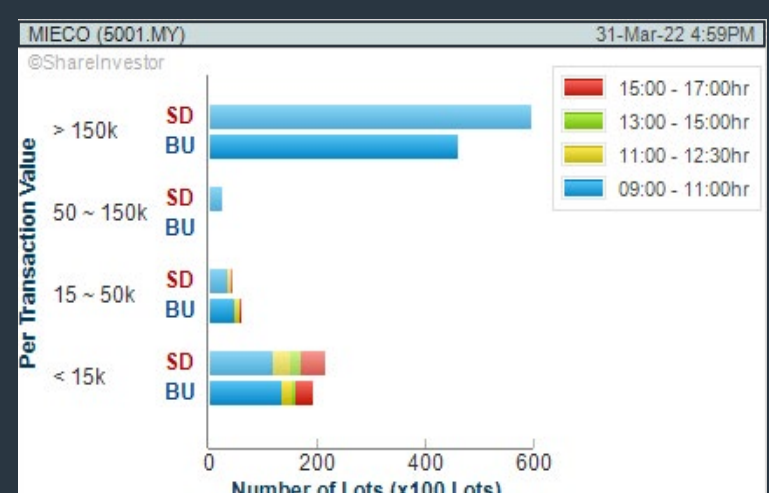
WIDAD GROUP BERHAD (0162) C² Chart



TANCO HOLDINGS BERHAD (2429) C² Chart



MIECO CHIPBOARD BERHAD (5001) C² Chart



Disclaimer: The information on this page is provided as a service to readers. It does not constitute financial advice and/or any investment recommendations. Past performance is not indicative of future results. We assume no liability for damages resulting from or arising out of the use of such information. It would be best if you did your own research to make your personal investment decisions wisely or consult a licenced investment advisor.

BURSASTATION Professional



Stock Scanning

- Technical Analysis (TA) Market Scanner
- Fundamental Analysis (FA) Market Scanner



Market Data

- Equities
- Derivatives

Monitoring

- Portfolio
- Stock Alerts
- Price Spread Calculator



Scan. Chart. Analyse.

Be The Intelligent Investor



Price Movements

- Streaming Prices
- Time & Sales
- Trade Summary Matrix
- Quote Movements
- 5 Levels Market Depth
- Historical Price Download

Charts

- Intraday Charts
- Interactive Charts
- Historical Charts
- Volume Distribution Charts



Fundamentals

- Factsheets
- Financials
- Insider Trades



Brought to you as a collaborative effort by ShareInvestor and Bursa Malaysia, **BursaStation Professional** is designed with you, the user, in mind, as a user-friendly yet full of powerful features that will appeal to investors/traders who need instant access to fundamental, technical, and trading data, anytime, anywhere. **BursaStation Professional** is a state-of-the-art Stock Market Tracker with Charting Software that places in your hands the power to make better investment decisions.

CLICK HERE TO START YOUR 14-DAYS FREE TRIAL

Price & Volume Distribution Charts (as at Yesterday)

Technical Analysis

DEFINITION: Stocks with Technical Analysis showing 5-days & 10-days Moving Average Price below Close over past 1 days and with Volume Spike

CHART GUIDE: Volume Distribution Chart is a statistical interpretation of the current sentiment on each stock in graphical format. The highest bar categorized as >150k is likely to be traded by institutions or super dealers, while the lowest bar categorized as <15k usually represents retail investors. "Buy Up" refers to more buyers snatching up the lots queued at selling price. "Sell Down" refers to sellers selling their shares to the buying queue.



ShareInvestor WebPro > Screener > Market Screener (FA & TA) > select BURSA > add criteria

A. Criteria

- > click Add Criteria
- Technical Analysis Conditions tab select (i) Moving Average Below Close (ii) Volume Spike
- Fundamental Analysis Conditions tab >select (iii) Revenue
- Prices & Other Conditions tab > select (iv) Is Shariah Compliant
- Technical Analysis Conditions tab select (v) Moving Average Below Close
- Prices & Other Conditions tab > select (vi) Last Done Price
- Technical Analysis Conditions tab select (vii) Moving Average Below Close

B. Conditions (Criteria Filters)

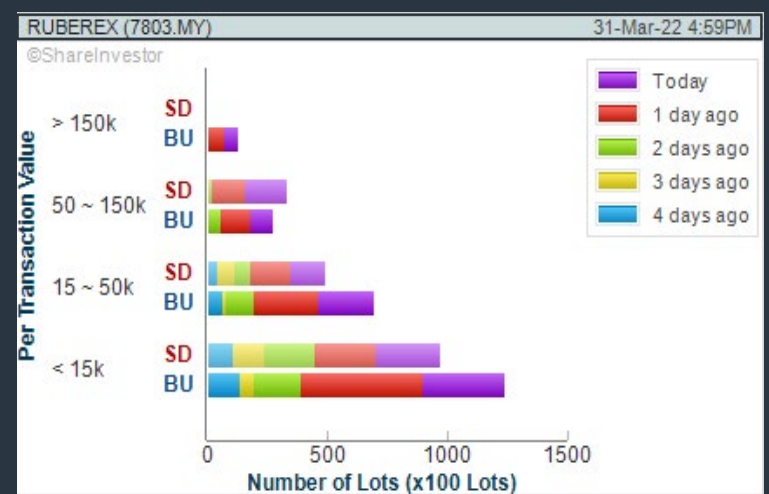
1. Moving Average Below Close - select (MA) type (5) below close price for type (3) days
2. Volume Spike - Volume type (1) greater than type (5) days average
3. Revenue ("000) - select (more than) type (1) for the past select (1) financial year(s)
4. Is Shariah Compliant - select NO
5. Moving Average Below Close - select (MA) type (10) below close price for type (1) days
6. Last Done Price - select (more than) type (0.3)
7. Moving Average Below Close - select (EMA) type (5) below close price for type (1) days

- > click Save Template > Create New Template type (Non-Shariah Hot Stocks) > click Create
- > click Save Template as > select Non-Shariah Hot Stocks > click Save
- > click Screen Now (may take a few minutes)
- Sort By: Select (Vol) Select (Desc)
- Mouse over stock name > Charts > click C² Charts tab or Volume Distribution

RUBBEREX CORPORATION (M) BERHAD (7803)

C² Chart

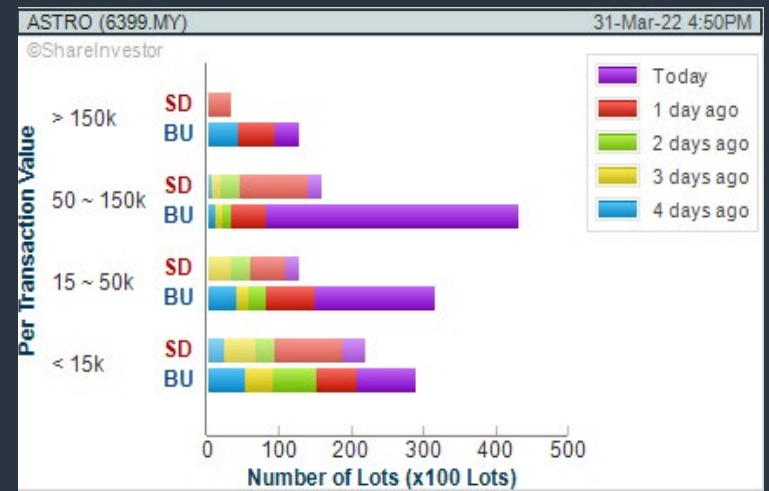
Analysis



ASTRO MALAYSIA HOLDINGS BERHAD (6399)

C² Chart

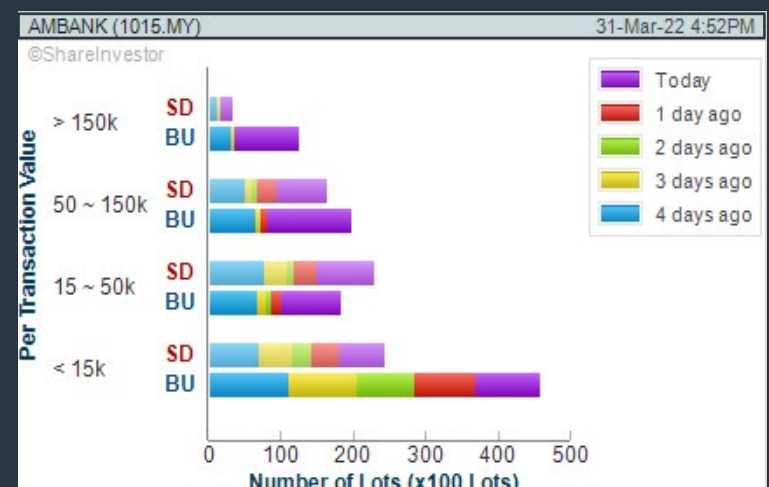
Analysis



AMMB HOLDINGS BERHAD (1015)

C² Chart

Analysis



Disclaimer: The information on this page is provided as a service to readers. It does not constitute financial advice and/or any investment recommendations. Past performance is not indicative of future results. We assume no liability for damages resulting from or arising out of the use of such information. It would be best if you did your own research to make your personal investment decisions wisely or consult a licenced investment advisor.

ShareInvestor is a technology based company with a focus on Internet media and we have operations in Malaysia, Singapore and Thailand.

We are the market leader in providing a combination of market data, analysis and news on various platforms to traders and investors.

Our websites include www.shareinvestor.com and www.bursastation.com.

More information about our products and services can be found at www.shareinvestorholdings.com

We are looking for Developers to join our team, in a challenging, yet fun and fulfilling environment. The successful applicants will leverage on the latest Internet technologies to help create financial applications and platforms for investors, listed companies and financial institutions. Fresh graduates are welcome to apply.

Interested candidates are encouraged to apply with full resume, present and expected salary and a recent photograph.

Please send these to hr.my@shareinvestor.com for processing. ShareInvestor regrets that only shortlisted candidates shall be notified.

Ruby on Rails Developer

Responsibilities:

- Develop quality web-based software modules on schedule with a focus on Ruby and Ruby on Rails applications.
- Explore and utilize the latest web-based technologies.
- Document design specifications, logic concepts and module description.
- Maintain and enhance existing web-based applications.

Requirements:

- Experience in web-based programming/scripting is essential. Candidate must be able to explain clearly technical aspects of his/her past experiences and projects.
- Passion for programming and desire to learn new languages like Go.
- Good Diploma/Degree in Computer Science/Computer Engineering.
- Able to work well in a team and be able to follow documentation and coding standards.
- Knowledge in any of the following would be an added advantage
 - Ruby and Ruby on Rails Framework
 - Javascript and jQuery library
 - Go
 - Perl

Application Developer (C++/STL)

Responsibilities:

- Deliver quality software modules on schedule.
- Document design specifications, conceptions, module description.
- Maintain and enhance existing applications.

Requirements:

- Passion for programming and desire to learn.
- Good Diploma/Degree in Computer Science/Computer Engineering.
- Skills in C++ is essential.
- Experience with Visual Studio, networking stack and Golang would be an advantage.
- Proactive, resourceful and self-motivated with strong analytical skills.
- Good interpersonal, written and communication skills.
- Able to work with little supervision.

Price & Volume Distribution Charts (Over 5 trading days as at Yesterday)

Technical Analysis

DEFINITION: Stocks with Technical Analysis showing Bullish Momentum and Price Uptrend

CHART GUIDE: Volume Distribution Chart is a statistical interpretation of the current sentiment on each stock in graphical format. The highest bar categorized as >150k is likely to be traded by institutions or super dealers, while the lowest bar categorized as <15k usually represents retail investors. "Buy Up" refers to more buyers snatching up the lots queued at selling price. "Sell Down" refers to sellers selling their shares to the buying queue.



ShareInvestor WebPro > Screener > Market Screener (FA & TA) > select BURSA > add criteria

A. Criteria

- > click Add Criteria
- Fundamental Analysis Conditions tab > select (i) Revenue
- Technical Analysis Conditions tab select (ii) Moving Average Below Close
- Technical Analysis Conditions tab select (iii) Average Volume
- Prices & Other Conditions tab > select (iv) Last Done Price
- Technical Analysis Conditions tab select (v) Moving Average Below Close
- Technical Analysis Conditions tab select (v) Moving Average Bullish Crossover

B. Conditions

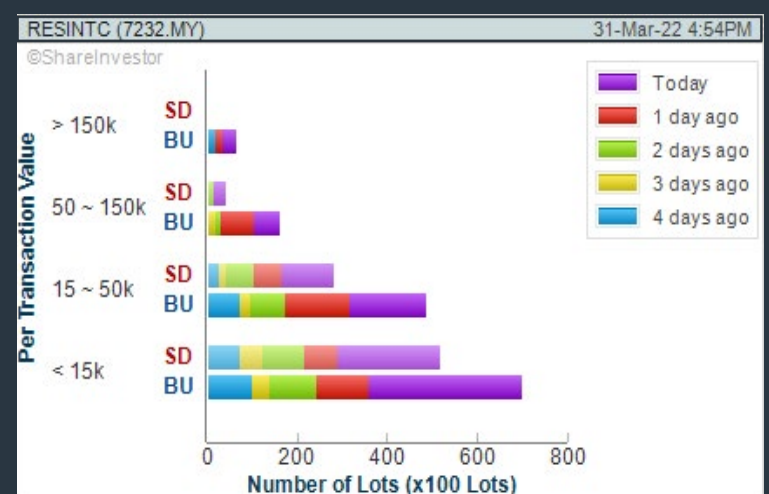
1. Revenue - select (more than) type (1) for the past select (1) financial year(s)
2. Moving Average Below Close - select (MA) type (20) below close price for type (1) days
3. Average Volume - type (5) days average volume type (10000) lots
4. Last Done Price - select (more than) type (0.3)
5. Moving Average Below Close - select (MA) type (10) below close price for type (1) days
6. Moving Average Bullish Crossover - select (MA) type (5) crossed above select (MA) type (10)

> click Save Template > Create New Template type (Non-Shariah Up-Trending Stocks) > click Create Click Save Template As > select Non-Shariah Up Trending Stocks > click Save > click Screen Now (may take a few minutes) Sort By: Select (Vol) Select (Desc) Mouse over stock name > Charts > click C² Charts tab or Volume Distribution

RESINTECH BERHAD (7232)

C² Chart

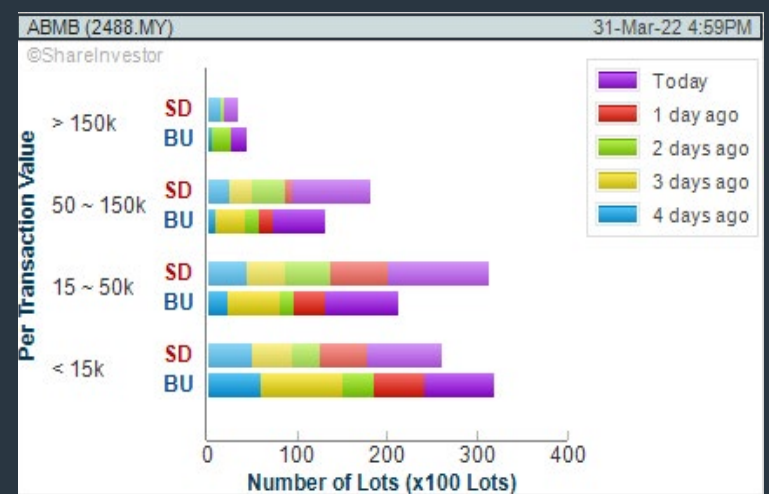
Analysis



ALLIANCE BANK MALAYSIA BERHAD (2488)

C² Chart

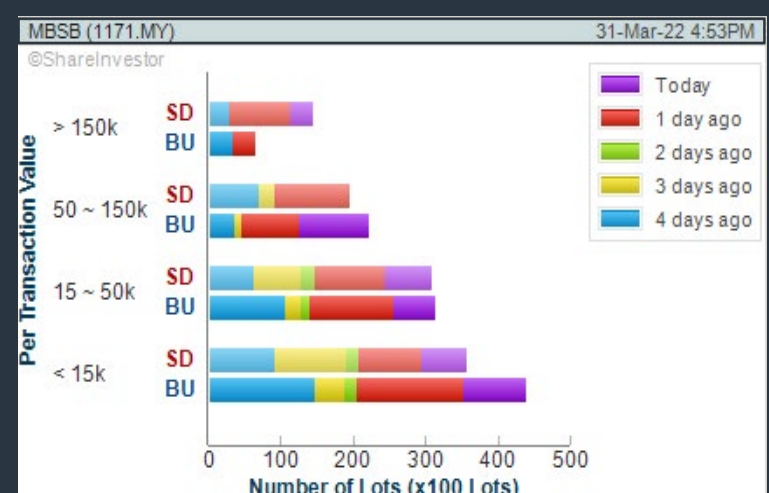
Analysis



MALAYSIA BUILDING SOCIETY BERHAD (1171)

C² Chart

Analysis



Disclaimer: The information on this page is provided as a service to readers. It does not constitute financial advice and/or any investment recommendations. Past performance is not indicative of future results. We assume no liability for damages resulting from or arising out of the use of such information. It would be best if you did your own research to make your personal investment decisions wisely or consult a licenced investment advisor.

Price & Total Shareholder Return (as at Yesterday)

Fundamental Analysis

DEFINITION: Company revenue is growing and making good quality of earnings with positive Free Cash Flow.

CHART GUIDE: Total Shareholder Return (TSR) combines share price appreciation and distributions paid to show the total return to the shareholder expressed as a percentage.



ShareInvestor WebPro > Screener > Market Screener (FA & TA) > select BURSA > add criteria

A. Criteria

1. Fundamental Analysis Conditions tab >select (i) Free Cash Flow, (ii) Revenue Growth, (iii) Gross Profit (Earnings) Margin, (iv) Quality of Earnings, (v) Total Shareholder Returns, > click Add Criteria
2. Fundamental Analysis Conditions tab >select (vi) Total Shareholder Returns > click Add Criteria

B. Conditions (Criteria Filters)

1. Free Cash Flow - select (more than) type (1) for the past select (1) financial year(s)
2. Revenue Growth - select (more than) type (1) for the past select (1) financial year(s)
3. Gross Profit (Earnings) Margin - select (more than) type (30) % for the past select (1) financial year(s)
4. Quality of Earnings - select (more than) type (1) for the past select (1) financial year(s)
5. Total Shareholder Return - select (more than) type (5) % for the past select (3) financial year(s)
6. Total Shareholder Return - select (more than) type (5) % for the past select (5) financial year(s)

- > click Save Template > Create New Template type (Growth Companies) > click Create
- > click Save Template as > select Growth Companies > click Save
- > click Screen Now (may take a few minutes)
- > Sort By: Select (Revenue Growth) Select (Desc)
- > Mouse over stock name > Factsheet > looking for Total Shareholder Return

ES CERAMICS TECHNOLOGY BERHAD (0100)

C² Chart

Analysis



Period	Dividend Received	Capital Appreciation	Total Shareholder Return
Short Term Return	5 Days	-	+1.47 %
	10 Days	+0.040	+13.11 %
	20 Days	+0.010	+2.99 %
Medium Term Return	3 Months	-0.055	-13.75 %
	6 Months	-0.055	-13.75 %
	1 Year	0.040	-54.97 %
Long Term Return	2 Years	0.050	+315.79 %
	3 Years	0.056	+360.92 %
	5 Years	0.068	+63.24 %
Annualised Return	Annualised	-	+10.30 %

KOSSAN RUBBER INDUSTRIES BERHAD (7153)

C² Chart

Analysis

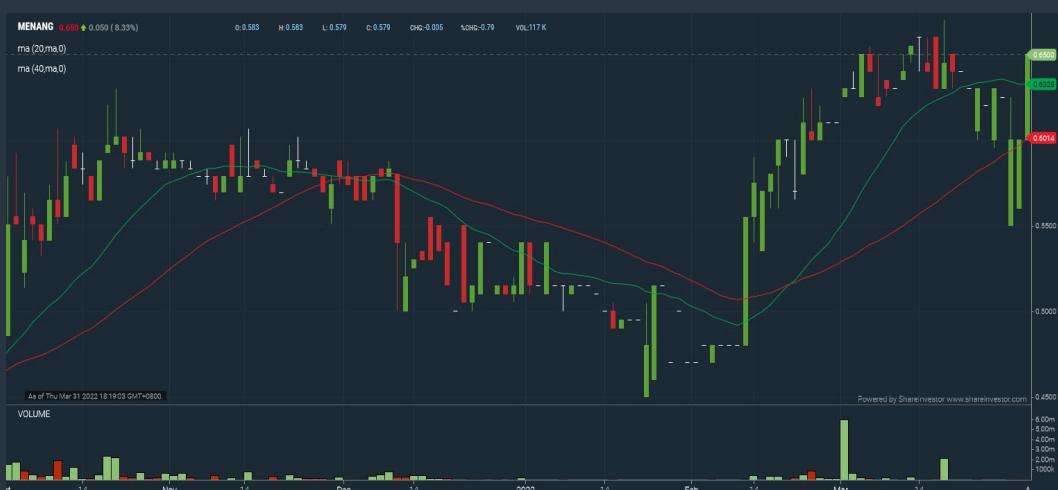


Period	Dividend Received	Capital Appreciation	Total Shareholder Return
Short Term Return	5 Days	-	+3.16 %
	10 Days	-	+3.16 %
	20 Days	+0.140	+7.89 %
Medium Term Return	3 Months	+0.060	+3.16 %
	6 Months	0.120	-9.96 %
	1 Year	0.360	-28.83 %
Long Term Return	2 Years	0.530	+0.77 %
	3 Years	0.590	+45.55 %
	5 Years	0.790	+79.86 %
Annualised Return	Annualised	-	+12.46 %

MENANG CORPORATION (M) BERHAD (1694)

C² Chart

Analysis



Period	Dividend Received	Capital Appreciation	Total Shareholder Return
Short Term Return	5 Days	+0.020	+3.17 %
	10 Days	+0.020	+3.17 %
	20 Days	+0.020	+3.17 %
Medium Term Return	3 Months	+0.140	+27.45 %
	6 Months	+0.155	+31.31 %
	1 Year	+0.202	+45.09 %
Long Term Return	2 Years	+0.407	+167.49 %
	3 Years	+0.300	+85.71 %
	5 Years	+0.240	+58.54 %
Annualised Return	Annualised	-	+9.85 %

Disclaimer: The information on this page is provided as a service to readers. It does not constitute financial advice and/or any investment recommendations. Past performance is not indicative of future results. We assume no liability for damages resulting from or arising out of the use of such information. It would be best if you did your own research to make your personal investment decisions wisely or consult a licenced investment advisor.

Price & Total Shareholder Return (as at Yesterday)

Fundamental Analysis

DEFINITION: Company is paying out dividend with low or moderate leverage.

CHART GUIDE: Total Shareholder Return (TSR) combines share price appreciation and distributions paid to show the total return to the shareholder expressed as a percentage.



ShareInvestor WebPro > Screener > Market Screener (FA & TA) > select BURSA > add criteria

A. Criteria

1. Fundamental Analysis Conditions tab >select (i) Dividend Yield, (ii) Dividend Payout, (iii) Current Ratio, (iv) Total Debt To Equity (v) Total Shareholder Returns, > click Add Criteria
2. Fundamental Analysis Conditions tab >select (vi) Total Shareholder Returns > click Add Criteria

B. Conditions (Criteria Filters)

1. Dividend Yield - select (more than) type (5) % for the past select (1) financial year(s)
2. Dividend Payout (Historical) - select (more than) type (0.5) times for the past select (1) financial year(s)
3. Current Ratio - select (more than) type (1) for the past select (1) financial year(s)
4. Total Debt To Equity - select (less than) type (1) for the past select (1) financial year(s)
5. Total Shareholder Return - select (more than) type (5) % for the past select (3) financial year(s)
6. Total Shareholder Return - select (more than) type (5) % for the past select (5) financial year(s)

- > click Save Template > Create New Template type (Dividend Companies) > click Create
- > click Save Template as > select Dividend Companies > click Save
- > click Screen Now (may take a few minutes)
- > Sort By: Select (Dividend Yield) Select (Desc)
- > Mouse over stock name > Factsheet > looking for Total Shareholder Return

TOP GLOVE CORPORATION BERHAD (7113)

C² Chart

Analysis



Period	Dividend Received	Capital Appreciation	Total Shareholder Return
Short Term Return	5 Days	-	+1.05 %
	10 Days	+0.170	+9.71 %
	20 Days	-0.120	-5.88 %
Medium Term Return	3 Months	-0.490	-20.33 %
	6 Months	0.066	-28.04 %
	1 Year	0.246	-51.53 %
Long Term Return	2 Years	0.848	+31.68 %
	3 Years	0.923	+84.37 %
	5 Years	1.188	+280.88 %
Annualised Return	Annualised	-	+30.66 %

HARTALEGA HOLDINGS BERHAD (5168)

C² Chart

Analysis



Period	Dividend Received	Capital Appreciation	Total Shareholder Return
Short Term Return	5 Days	+0.020	+0.41 %
	10 Days	+0.280	+6.13 %
	20 Days	+0.150	+3.19 %
Medium Term Return	3 Months	0.148	-12.32 %
	6 Months	0.500	-10.68 %
	1 Year	0.875	-35.88 %
Long Term Return	2 Years	1.051	-12.58 %
	3 Years	1.125	+23.96 %
	5 Years	1.331	+148.73 %
Annualised Return	Annualised	-	+19.99 %

HEXZA CORPORATION BERHAD (3298)

C² Chart

Analysis



Period	Dividend Received	Capital Appreciation	Total Shareholder Return
Short Term Return	5 Days	-	-
	10 Days	-	-
	20 Days	-0.045	-4.62 %
Medium Term Return	3 Months	-0.080	-7.92 %
	6 Months	0.150	+0.93 %
	1 Year	0.150	+0.93 %
Long Term Return	2 Years	0.225	+70.61 %
	3 Years	0.275	+77.99 %
	5 Years	0.325	+16.20 %
Annualised Return	Annualised	-	+3.05 %

Disclaimer: The information on this page is provided as a service to readers. It does not constitute financial advice and/or any investment recommendations. Past performance is not indicative of future results. We assume no liability for damages resulting from or arising out of the use of such information. It would be best if you did your own research to make your personal investment decisions wisely or consult a licenced investment advisor.

DEFINITION: Top 10 stocks with Technical Analysis plus Pattern Matching by 60 pre-defined indicators by the system showing a higher probability of bullish sentiment on the share price.



ShareInvestor WebPro > Screener > Predefined TA Screens > select market BURSA > Most Long Signals > click Scan Results or mouse over each company

MALAYSIA AIRPORTS HOLDINGS BERHAD (5014.MY)

AIRPORT

Price updated at 31 Mar 2022 16:27

Last: 6.980	Change: +0.030	Volume: 16,496
	Change (%): +0.43	Range: 6.810 - 6.990

TA Scanner Results based on historical data up to 31 Mar 2022

Condition	Signal	Explanation
Bollinger Band: Bullish Long Term Volatility Breakout and Trending	Long	1. Close price above upper bollinger band(33,1). 2. Volume above average volume(50). 3. Average volume(50) is above 300,000.
Bollinger Band: Bullish Short Term Volatility Breakout and Trending	Long	1. Close price above upper bollinger band(33,1). 2. Volume above average volume(10). 3. Average volume(10) is above 300,000.
Bollinger Band: High Above Upper Bollinger Band	Neutral	1. High above upper bollinger band(20,2). 2. Average volume(5) is above 100,000.
Candlestick: Bullish Engulfing	Long	Bullish: Engulfing
Donchian Channels: High Above Upper Donchian Channels	Long	High crossed above the upper Donchian Channel(14,4)
Volume: 10 Days large value Buy Up trade	Long	1. 150K value Buy Up greater than Sell Down by 20% for 10 days. 2. 50K-100K value Buy Up greater than Sell Down by 20% for 10 days. 3. Average volume(10) is above 1000000
Volume: 5 Days large value Buy Up trade	Long	1. 150K value Buy Up greater than Sell Down by 20% for 5 days. 2. 50K-100K value Buy Up greater than Sell Down by 20% for 5 days. 3. Average volume(10) is above 1000000

MY E.G. SERVICES BERHAD (0138.MY)

MYEG

Price updated at 31 Mar 2022 16:29

Last: 1.010	Change: -0.010	Volume: 181,778
	Change (%): -0.98	Range: 1.000 - 1.030

TA Scanner Results based on historical data up to 31 Mar 2022

Condition	Signal	Explanation
Bollinger Band: Bullish Long Term Volatility Breakout and Trending	Long	1. Close price above upper bollinger band(33,1). 2. Volume above average volume(50). 3. Average volume(50) is above 300,000.
Bollinger Band: Bullish Short Term Volatility Breakout and Trending	Long	1. Close price above upper bollinger band(33,1). 2. Volume above average volume(10). 3. Average volume(10) is above 300,000.
Bollinger Band: High Above Upper Bollinger Band	Neutral	1. High above upper bollinger band(20,2). 2. Average volume(5) is above 100,000.
Candlestick: Bullish Engulfing	Long	Bullish: Engulfing
Donchian Channels: High Above Upper Donchian Channels	Long	High crossed above the upper Donchian Channel(14,4)
Volume: 5 Days large value Buy Up trade	Long	1. 150K value Buy Up greater than Sell Down by 20% for 5 days. 2. 50K-100K value Buy Up greater than Sell Down by 20% for 5 days. 3. Average volume(10) is above 1000000
Williams %R: Bearish Williams %R	Short	1. Williams %R(26) between 0 and -20. 2. Average volume(5) is above 100,000.

Disclaimer: The information on this page is provided as a service to readers. It does not constitute financial advice and/or any investment recommendations. Past performance is not indicative of future results. We assume no liability for damages resulting from or arising out of the use of such information. It would be best if you did your own research to make your personal investment decisions wisely or consult a licenced investment advisor.

DATASONIC GROUP BERHAD (5216.MY)

DSONIC

Price updated at 31 Mar 2022 16:27

Last: 0.465	Change: -0.005	Volume: 39,230
	Change (%): -1.06	Range: 0.465 - 0.475

TA Scanner Results based on historical data up to 31 Mar 2022

Condition	Signal	Explanation
Bollinger Band: Bullish Long Term Volatility Breakout and Trending	Long	1. Close price above upper bollinger band(33,1). 2. Volume above average volume(50). 3. Average volume(50) is above 300,000.
Bollinger Band: Bullish Short Term Volatility Breakout and Trending	Long	1. Close price above upper bollinger band(33,1). 2. Volume above average volume(10). 3. Average volume(10) is above 300,000.
Bollinger Band: High Above Upper Bollinger Band	Neutral	1. High above upper bollinger band(20,2). 2. Average volume(5) is above 100,000.
Candlestick: Bullish Engulfing	Long	Bullish: Engulfing
Donchian Channels: High Above Upper Donchian Channels	Long	High crossed above the upper Donchian Channel(14,4)
Volume: 10 Days large value Buy Up trade	Long	1. 150K value Buy Up greater than Sell Down by 20% for 10 days. 2. 50K-100K value Buy Up greater than Sell Down by 20% for 10 days. 3. Average volume(10) is above 1000000

EVERGREEN FIBREBOARD BERHAD (5101.MY)

EVERGRN

Price updated at 31 Mar 2022 16:50

Last: 0.675	Change: +0.025	Volume: 132,174
	Change (%): +3.85	Range: 0.645 - 0.680

TA Scanner Results based on historical data up to 31 Mar 2022

Condition	Signal	Explanation
Bollinger Band: High Above Upper Bollinger Band	Neutral	1. High above upper bollinger band(20,2). 2. Average volume(5) is above 100,000.
Candlestick: Bullish Engulfing	Long	Bullish: Engulfing
Price: New 52 Week High	Long	1. Stock reach a new 52 week high. 2. Average volume(30) is above 50000.
Volume: 10 Days large value Buy Up trade	Long	1. 150K value Buy Up greater than Sell Down by 20% for 10 days. 2. 50K-100K value Buy Up greater than Sell Down by 20% for 10 days. 3. Average volume(10) is above 1000000
Volume: 5 Days large value Buy Up trade	Long	1. 150K value Buy Up greater than Sell Down by 20% for 5 days. 2. 50K-100K value Buy Up greater than Sell Down by 20% for 5 days. 3. Average volume(10) is above 1000000

OSK VENTURES INTERNATIONAL BERHAD (0053.MY)

OSKVI

Price updated at 31 Mar 2022 16:31

Last: 0.500	Change: +0.015	Volume: 601
	Change (%): +3.09	Range: 0.485 - 0.510

TA Scanner Results based on historical data up to 31 Mar 2022

Condition	Signal	Explanation
DM: Bullish Directional Movement	Long	-DI(14) crossed below +DI(14)
Donchian Channels: High Above Upper Donchian Channels	Long	High crossed above the upper Donchian Channel(14,4)
MA: Bullish Price Crossover	Long	1. Close price crossed above MA(40) within the last 1 day. 2. Previous day close price is below the MA(10) for the last 5 days
MACD: Bullish MACD Crossover	Long	1. MACD(12,26) diff line crossed above the MACD(12,26) signal line. 2. MACD Histogram(12,26) is above 0.
Parabolic SAR: Bearish Parabolic SAR Reversal	Neutral	1. Parabolic SAR 1 day ago above close price 1 day ago for the last 5 days. 2. Parabolic SAR below close price

 **WILLOWGLEN MSC BERHAD (0008.MY)**

WILLOW

Price updated at 31 Mar 2022 16:44

Last: 0.400	Change: -0.005	Volume: 3,527
	Change (%): -1.23	Range: 0.395 - 0.405

TA Scanner Results based on historical data up to 31 Mar 2022

Condition	Signal	Explanation
Bollinger Band: Bullish Long Term Volatility Breakout and Trending	Long	1. Close price above upper bollinger band(33,1). 2. Volume above average volume(50). 3. Average volume(50) is above 300,000.
Bollinger Band: Bullish Short Term Volatility Breakout and Trending	Long	1. Close price above upper bollinger band(33,1). 2. Volume above average volume(10). 3. Average volume(10) is above 300,000.
Bollinger Band: High Above Upper Bollinger Band	Neutral	1. High above upper bollinger band(20,2). 2. Average volume(5) is above 100,000.
Donchian Channels: High Above Upper Donchian Channels	Long	High crossed above the upper Donchian Channel(14,4)
Volume: Volume Spike	Long	1. Volume is more than 500% above average volume(10). 2. Volume above 200000. 3. Close price above 0.10
Williams %R: Bearish Williams %R	Short	1. Williams %R(26) between 0 and -20. 2. Average volume(5) is above 100,000.

 **BOUSTEAD HOLDINGS BERHAD (2771.MY)**

BSTEAD

Price updated at 31 Mar 2022 16:46

Last: 0.670	Change: -0.010	Volume: 35,735
	Change (%): -1.47	Range: 0.660 - 0.680

TA Scanner Results based on historical data up to 31 Mar 2022

Condition	Signal	Explanation
Bollinger Band: High Above Upper Bollinger Band	Neutral	1. High above upper bollinger band(20,2). 2. Average volume(5) is above 100,000.
Donchian Channels: High Above Upper Donchian Channels	Long	High crossed above the upper Donchian Channel(14,4)
MA: Long Term Bullish Moving Average Crossover	Long	MA(50) crossed above MA(200) within the last 1 day.
Volume: 10 Days large value Buy Up trade	Long	1. 150K value Buy Up greater than Sell Down by 20% for 10 days. 2. 50K-100K value Buy Up greater than Sell Down by 20% for 10 days. 3. Average volume(10) is above 1000000
Volume: 5 Days large value Buy Up trade	Long	1. 150K value Buy Up greater than Sell Down by 20% for 5 days. 2. 50K-100K value Buy Up greater than Sell Down by 20% for 5 days. 3. Average volume(10) is above 1000000
Williams %R: Bearish Williams %R	Short	1. Williams %R(26) between 0 and -20. 2. Average volume(5) is above 100,000."

 **AEON CO. (M) BERHAD (6599.MY)**

AEON

Price updated at 31 Mar 2022 16:30

Last: 1.570	Change: +0.020	Volume: 43,067
	Change (%): +1.29	Range: 1.550 - 1.610

TA Scanner Results based on historical data up to 31 Mar 2022

Condition	Signal	Explanation
Bollinger Band: Bullish Long Term Volatility Breakout and Trending	Long	1. Close price above upper bollinger band(33,1). 2. Volume above average volume(50). 3. Average volume(50) is above 300,000.
Bollinger Band: Bullish Short Term Volatility Breakout and Trending	Long	1. Close price above upper bollinger band(33,1). 2. Volume above average volume(10). 3. Average volume(10) is above 300,000.
DM: Bullish Directional Movement	Long	-DI(14) crossed below +DI(14)

 **MICROLINK SOLUTIONS BERHAD (0126.MY)**

MICROLN

Price updated at 31 Mar 2022 16:43

Last: 0.610	Change: +0.020	Volume: 27,226
	Change (%): +3.39	Range: 0.595 - 0.615

TA Scanner Results based on historical data up to 31 Mar 2022

Condition	Signal	Explanation
CCI: Bearish CCI Overbought And Reversing	Short	1. CCI(26) above 100 and CCI(26) 1 day ago increasing for the last 3 days. 2. CCI(26) below CCI(26) 1 day ago
DM: Bullish Directional Movement	Long	-DI(14) crossed below +DI(14)
Donchian Channels: High Above Upper Donchian Channels	Long	High crossed above the upper Donchian Channel(14,4)
Price: Consecutive Days Gains	Long	1. Close price has been increasing over the last 5 days. 2. Average volume(5) above 100,000.
Volume: 10 Days large value Buy Up trade	Long	1. 150K value Buy Up greater than Sell Down by 20% for 10 days. 2. 50K-100K value Buy Up greater than Sell Down by 20% for 10 days. 3. Average volume(10) is above 1000000
Williams %R: Bearish Williams %R	Short	1. Williams %R(26) between 0 and -20. 2. Average volume(5) is above 100,000.

 **RESINTECH BERHAD (7232.MY)**

RESINTC

Price updated at 31 Mar 2022 16:58

Last: 1.150	Change: +0.130	Volume: 99,007
	Change (%): +12.75	Range: 1.030 - 1.150

TA Scanner Results based on historical data up to 31 Mar 2022

Condition	Signal	Explanation
Bollinger Band: Bullish Long Term Volatility Breakout and Trending	Long	1. Close price above upper bollinger band(33,1). 2. Volume above average volume(50). 3. Average volume(50) is above 300,000.
Bollinger Band: Bullish Short Term Volatility Breakout and Trending	Long	1. Close price above upper bollinger band(33,1). 2. Volume above average volume(10). 3. Average volume(10) is above 300,000.
MA: Short Term Bearish Moving Average Crossover	Short	MA(10) crossed below MA(15) within the last 1 day.
Volume: 10 Days large value Buy Up trade	Long	1. 150K value Buy Up greater than Sell Down by 20% for 10 days. 2. 50K-100K value Buy Up greater than Sell Down by 20% for 10 days. 3. Average volume(10) is above 1000000
Volume: 5 Days large value Buy Up trade	Long	1. 150K value Buy Up greater than Sell Down by 20% for 5 days. 2. 50K-100K value Buy Up greater than Sell Down by 20% for 5 days. 3. Average volume(10) is above 1000000

Disclaimer: The information on this page is provided as a service to readers. It does not constitute financial advice and/or any investment recommendations. Past performance is not indicative of future results. We assume no liability for damages resulting from or arising out of the use of such information. It would be best if you did your own research to make your personal investment decisions wisely or consult a licenced investment advisor.

Condition	Signal	Explanation
Price: New 52 Week High	Long	1. Stock reach a new 52 week high. 2. Average volume(30) is above 50000.
Volume: 10 Days large value Buy Up trade	Long	1. 150K value Buy Up greater than Sell Down by 20% for 10 days. 2. 50K-100K value Buy Up greater than Sell Down by 20% for 10 days. 3. Average volume(10) is above 1000000
Williams %R: Bearish Williams %R	Short	1. Williams %R(26) between 0 and -20. 2. Average volume(5) is above 100,000.

Week: 25 - 31 March 2022

APEX	Call	Target Price	Release Date
Beshom Holding Berhad (7668)	HOLD	RM1.72	28 Mar 2022
Aurelius Technologies Berhad (5302)	HOLD	RM1.83	31 Mar 2022
BIMB SECURITIES SDN BHD	Call	Target Price	Release Date
Datasonic Group Berhad (5216)	BUY	RM1.09	25 Mar 2022
CGS CIMB	Call	Target Price	Release Date
VS Industry Berhad	ADD	RM1.33	28 Mar 2022
Yinson Holdings Berhad (7293)	ADD	RM7.91	30 Mar 2022
KENANGA	Call	Target Price	Release Date
MyNews Holdings Berhad (5275)	OUTPERFORM	RM0.85	25 Mar 2022
TSH Resources Berhad (9059)	OUTPERFORM	RM2.08	29 Mar 2022
SCGM Berhad (7247)	MARKET PERFORM	RM2.34	30 Mar 2022
MALACCA SECURITIES SDN BHD	Call	Target Price	Release Date
OM Holdings Limited (5298)	BUY	RM3.65	29 Mar 2022
Kim Loong Resources Berhad (5027)	HOLD	RM1.94	30 Mar 2022
MIDF	Call	Target Price	Release Date
Nestle (Malaysia) Berhad (4707)	SELL	RM116.35	30 Mar 2022
UOB KAYHIAN	Call	Target Price	Release Date
Nextgreen Global Berhad (7241)	BUY	RM1.17	25 Mar 2022
V.S. Industry Berhad (6963)	BUY	RM1.60	28 Mar 2022
TIME DotCom Berhad (5031)	BUY	RM5.20	29 Mar 2022
Yinson Holdings Berhad (7293)	BUY	RM5.95	30 Mar 2022
Sarawak Cable Berhad (5170)	BUY	RM0.28	31 Mar 2022

DEFINITION: Insider Activity shows the trades made by substantial shareholders or directors of the company. Purchases by the directors and company share buyback may indicate the share price is undervalued and brings confidence to the price trend of the share price.



ShareInvestor WebPro > Fundamental > Insider Trades > click Search tab > Select Bursa > click Stock name > scroll up and leave at <Select Counter> Type Date Range for Announcement Date > click Search

Notice Period is 20 March 2022 - 26 March 2022

Effective Change Date	Stock Name	Buyer/ Seller Name [Classification]	Bought / (Sold) ['000]		No. of Shares After Trade ['000]	
			Total	Total	Total	% Held
17 Mar 2022 - 17 Mar 2022	3A	MR TEO KWEE HOCK [SSH]	-92	47,257	9.64	
22 Mar 2022 - 22 Mar 2022	ABLEGLOB	DATUK KAMALUDIN BIN YUSOFF [DIR/CEO]	100	13,501	4.39	
16 Mar 2022 - 16 Mar 2022	ABMB	EMPLOYEES PROVIDENT FUND BOARD [SSH]	-435	198,372	12.814	
21 Mar 2022 - 21 Mar 2022	AEON	EMPLOYEES PROVIDENT FUND BOARD [SSH]	-567	154,984	11.039	
17 Mar 2022 - 17 Mar 2022	AEON	EMPLOYEES PROVIDENT FUND BOARD [SSH]	-95	155,551	11.079	
17 Mar 2022 - 17 Mar 2022	AEONCR	ABRDN PLC (FORMERLY KNOWN AS STANDARD LIFE ABERDEEN PLC) [SSH]	-54	13,414	5.254	
17 Mar 2022 - 17 Mar 2022	AEONCR	ABERDEEN ASSET MANAGEMENT PLC [SSH]	-54	13,414	5.254	
16 Mar 2022 - 16 Mar 2022	AIRPORT	EMPLOYEES PROVIDENT FUND BOARD [SSH]	-242	253,325	15.268	
18 Mar 2022 - 18 Mar 2022	AJIYA	MR YEO ANN SECK [SSH]	-263	37,382	12.814	
18 Mar 2022 - 18 Mar 2022	AJIYA	MR YEO ANN SECK [DIR/CEO]	-263	37,382	12.814	
16 Mar 2022 - 16 Mar 2022	ALLIANZ	EMPLOYEES PROVIDENT FUND BOARD [SSH]	6	11,812	6.637	
18 Mar 2022 - 18 Mar 2022	AMBANK	EMPLOYEES PROVIDENT FUND BOARD [SSH]	367	315,846	9.539	
18 Mar 2022 - 18 Mar 2022	AMEDIA	MR TAN CHIA HONG @ GAN CHIA HONG [DIR/CEO]	357	49,177	15.797	
21 Mar 2022 - 21 Mar 2022	AMTEL	DATO' KOID HUN KIAN [SSH]	1,000	25,615	26.258	
21 Mar 2022 - 21 Mar 2022	AMTEL	DATO KOID HUN KIAN [DIR/CEO]	1,000	25,615	26.258	
21 Mar 2022 - 21 Mar 2022	AMTEL	MR KOID SIANG LOONG [DIR/CEO]	1,000	10,620	10.886	
21 Mar 2022 - 21 Mar 2022	AMTEL	MR KOID SIANG LOONG [SSH]	1,000	6,040	6.191	
22 Mar 2022 - 24 Mar 2022	ANCOM	DATO SIEW KA WEI [DIR/CEO]	-285	54,798	19.217	
22 Mar 2022 - 24 Mar 2022	ANCOM	DATO' SIEW KA WEI [SSH]	-285	54,518	19.217	
22 Mar 2022 - 23 Mar 2022	ANCOM	MR LEE CHEUN WEI [SSH]	90	16,302	5.741	
22 Mar 2022 - 22 Mar 2022	ANCOM	DATO SIEW KA WEI [DIR/CEO]	8	15,449	26.438	
18 Mar 2022 - 18 Mar 2022	ASTRO	EMPLOYEES PROVIDENT FUND BOARD ("EPF") [SSH]	604	344,819	6.613	
17 Mar 2022 - 17 Mar 2022	ASTRO	EMPLOYEES PROVIDENT FUND BOARD ("EPF") [SSH]	2,970	344,614	6.609	
16 Mar 2022 - 16 Mar 2022	ASTRO	EMPLOYEES PROVIDENT FUND BOARD ("EPF") [SSH]	2,300	341,644	6.552	
16 Mar 2022 - 16 Mar 2022	AXIATA	EMPLOYEES PROVIDENT FUND BOARD [SSH]	-578	1,564,052	17.044	
22 Mar 2022 - 22 Mar 2022	AXREIT	EMPLOYEES PROVIDENT FUND BOARD [SSH]	-81	274,729	16.808	
21 Mar 2022 - 21 Mar 2022	AXREIT	EMPLOYEES PROVIDENT FUND BOARD [SSH]	-164	274,810	16.813	
18 Mar 2022 - 18 Mar 2022	AXREIT	EMPLOYEES PROVIDENT FUND BOARD [SSH]	-2,379	274,974	16.823	
17 Mar 2022 - 17 Mar 2022	AXREIT	EMPLOYEES PROVIDENT FUND BOARD [SSH]	-117	277,353	16.968	
16 Mar 2022 - 16 Mar 2022	AXREIT	EMPLOYEES PROVIDENT FUND BOARD [SSH]	-677	277,470	16.976	
22 Mar 2022 - 22 Mar 2022	BAUTO	EMPLOYEES PROVIDENT FUND BOARD [SSH]	-38	212,854	18.315	
22 Mar 2022 - 22 Mar 2022	BAUTO	ABERDEEN ASSET MANAGEMENT PLC [SSH]	-38	69,397	5.971	
22 Mar 2022 - 22 Mar 2022	BAUTO	ABRDN PLC (FORMERLY KNOWN AS STANDARD LIFE ABERDEEN PLC) [SSH]	-38	69,397	5.971	
22 Mar 2022 - 22 Mar 2022	BAUTO	ABRDN MALAYSIA SDN BHD (FORMERLY KNOWN AS ABERDEEN STANDARD INVESTMENTS (MALAYSIA) SDN BHD) [SSH]	-38	67,833	5.837	
21 Mar 2022 - 21 Mar 2022	BAUTO	EMPLOYEES PROVIDENT FUND BOARD [SSH]	-679	212,892	18.318	
21 Mar 2022 - 21 Mar 2022	BAUTO	ABRDN PLC (FORMERLY KNOWN AS STANDARD LIFE ABERDEEN PLC) [SSH]	-679	69,436	5.975	
21 Mar 2022 - 21 Mar 2022	BAUTO	ABERDEEN ASSET MANAGEMENT PLC [SSH]	-679	69,436	5.975	
21 Mar 2022 - 21 Mar 2022	BAUTO	ABRDN MALAYSIA SDN BHD (FORMERLY KNOWN AS ABERDEEN STANDARD INVESTMENTS (MALAYSIA) SDN BHD) [SSH]	-679	67,871	5.84	
18 Mar 2022 - 18 Mar 2022	BAUTO	EMPLOYEES PROVIDENT FUND BOARD [SSH]	-180	214,471	18.454	
18 Mar 2022 - 18 Mar 2022	BAUTO	ABRDN PLC (FORMERLY KNOWN AS STANDARD LIFE ABERDEEN PLC) [SSH]	-180	70,115	6.033	
18 Mar 2022 - 18 Mar 2022	BAUTO	ABERDEEN ASSET MANAGEMENT PLC [SSH]	-180	70,115	6.033	
18 Mar 2022 - 18 Mar 2022	BAUTO	ABRDN MALAYSIA SDN BHD (FORMERLY KNOWN AS ABERDEEN STANDARD INVESTMENTS (MALAYSIA) SDN BHD) [SSH]	-180	68,550	5.898	
18 Mar 2022 - 18 Mar 2022	BAUTO	PRUDENTIAL PLC [SSH]	66	59,214	5.095	
17 Mar 2022 - 17 Mar 2022	BAUTO	EMPLOYEES PROVIDENT FUND BOARD [SSH]	-45	215,134	18.511	
17 Mar 2022 - 17 Mar 2022	BAUTO	ABERDEEN ASSET MANAGEMENT PLC [SSH]	-45	70,295	6.048	
17 Mar 2022 - 17 Mar 2022	BAUTO	ABRDN PLC (FORMERLY KNOWN AS STANDARD LIFE ABERDEEN PLC) [SSH]	-45	70,295	6.048	
17 Mar 2022 - 17 Mar 2022	BAUTO	ABRDN MALAYSIA SDN BHD (FORMERLY KNOWN AS ABERDEEN STANDARD INVESTMENTS (MALAYSIA) SDN BHD) [SSH]	-45	68,730	5.914	
17 Mar 2022 - 17 Mar 2022	BAUTO	PRUDENTIAL PLC [SSH]	284	59,147	5.089	
14 Mar 2022 - 22 Mar 2022	BDB	JINGSHI HOLDINGS (M) SDN BHD [SSH]	-3,634	25,470	8.381	
22 Mar 2022 - 22 Mar 2022	BIMB	EMPLOYEES PROVIDENT FUND BOARD [SSH]	-75	295,387	13.705	
21 Mar 2022 - 21 Mar 2022	BIMB	EMPLOYEES PROVIDENT FUND BOARD [SSH]	-275	295,462	13.709	
18 Mar 2022 - 18 Mar 2022	BIMB	EMPLOYEES PROVIDENT FUND BOARD [SSH]	-483	295,737	13.722	
17 Mar 2022 - 17 Mar 2022	BIMB	EMPLOYEES PROVIDENT FUND BOARD [SSH]	-716	296,220	13.744	
16 Mar 2022 - 16 Mar 2022	BIMB	EMPLOYEES PROVIDENT FUND BOARD [SSH]	-1,314	296,936	13.777	
22 Mar 2022 - 24 Mar 2022	BOILERM	DR CHIA SONG KUN [DIR/CEO]	719	267,236	51.79	
22 Mar 2022 - 24 Mar 2022	BOILERM	DR CHIA SONG KUN [SSH]	719	267,236	51.79	
22 Mar 2022 - 24 Mar 2022	BOILERM	CBG (L) PTE LTD [SSH]	719	266,836	51.71	
22 Mar 2022 - 24 Mar 2022	BOILERM	CBG (L) PTE LTD [SSH]	719	266,836	51.71	
22 Mar 2022 - 24 Mar 2022	BOILERM	QL RESOURCES BERHAD [SSH]	719	266,836	51.71	
22 Mar 2022 - 24 Mar 2022	BOILERM	QL GREEN RESOURCES SDN. BHD. [SSH]	719	266,836	51.71	
17 Mar 2022 - 21 Mar 2022	BOILERM	DR CHIA SONG KUN [DIR/CEO]	327	266,517	51.65	
17 Mar 2022 - 21 Mar 2022	BOILERM	DR CHIA SONG KUN [SSH]	327	266,517	51.65	
17 Mar 2022 - 21 Mar 2022	BOILERM	QL GREEN RESOURCES SDN. BHD. [SSH]	327	266,117	51.57	
17 Mar 2022 - 21 Mar 2022	BOILERM	QL RESOURCES BERHAD [SSH]	327	266,117	51.57	

Notice Period is 20 March 2022 - 26 March 2022

Effective Change Date	Stock Name	Buyer/ Seller Name [Classification]	Bought / (Sold) ['000]		No. of Shares After Trade ['000]	
			Total	Total	Total	% Held
17 Mar 2022 - 21 Mar 2022	BOILERM	CBG (L) FOUNDATION [SSH]	327	266,117	51.57	
17 Mar 2022 - 21 Mar 2022	BOILERM	CBG (L) PTE LTD [SSH]	327	266,117	51.57	
23 Mar 2022 - 23 Mar 2022	BTECH	MR PANG WEE SEE [SSH]	1,000	119,114	47.268	
23 Mar 2022 - 23 Mar 2022	BTECH	PANG WEE SEE [DIR/CEO]	1,000	119,114	47.268	
23 Mar 2022 - 23 Mar 2022	BTECH	YEE OOI PAH @ YEE OOI WAH [DIR/CEO]	1,000	118,777	47.134	
24 Mar 2022 - 24 Mar 2022	BURSA	KUMPULAN WANG PERSARAAN (DIPERBADANKAN) [SSH]	-245	90,374	11.167	
22 Mar 2022 - 22 Mar 2022	BURSA	EMPLOYEES PROVIDENT FUND BOARD [SSH]	96	73,602	9.095	
21 Mar 2022 - 21 Mar 2022	BURSA	EMPLOYEES PROVIDENT FUND BOARD [SSH]	562	73,506	9.083	
18 Mar 2022 - 18 Mar 2022	BURSA	EMPLOYEES PROVIDENT FUND BOARD [SSH]	689	72,944	9.013	
17 Mar 2022 - 17 Mar 2022	BURSA	EMPLOYEES PROVIDENT FUND BOARD [SSH]	468	72,256	8.928	
16 Mar 2022 - 16 Mar 2022	BURSA	EMPLOYEES PROVIDENT FUND BOARD [SSH]	1,290	71,788	8.87	
23 Mar 2022 - 23 Mar 2022	CCB	JARDINE CYCLE & CARRIAGE LIMITED [SSH]	41	90,063	89.398	
23 Mar 2022 - 23 Mar 2022	CCB	JMH INVESTMENTS LIMITED [SSH]	41	90,063	89.398	
23 Mar 2022 - 23 Mar 2022	CCB	JSH ASIAN HOLDINGS LIMITED [SSH]	41	90,063	89.398	
23 Mar 2022 - 23 Mar 2022	CCB	JARDINE MATHESON HOLDINGS LIMITED [SSH]	41	90,063	89.398	
23 Mar 2022 - 23 Mar 2022	CCB	JARDINE STRATEGIC SINGAPORE PTE LTD [SSH]	41	90,063	89.398	
23 Mar 2022 - 23 Mar 2022	CCB	JARDINE STRATEGIC LIMITED [SSH]	41	90,063	89.398	
21 Mar 2022 - 22 Mar 2022	CCB	JARDINE CYCLE & CARRIAGE LIMITED [SSH]	88	90,022	89.357	
21 Mar 2022 - 22 Mar 2022	CCB	JSH ASIAN HOLDINGS LIMITED [SSH]	88	90,022	89.357	
21 Mar 2022 - 22 Mar 2022	CCB	JMH INVESTMENTS LIMITED [SSH]	88	90,022	89.357	
21 Mar 2022 - 22 Mar 2022	CCB	JARDINE STRATEGIC LIMITED [SSH]	88	90,022	89.357	
21 Mar 2022 - 22 Mar 2022	CCB	JARDINE MATHESON HOLDINGS LIMITED [SSH]	88	90,022	89.357	
21 Mar 2022 - 22 Mar 2022	CCB	JARDINE STRATEGIC SINGAPORE PTE LTD [SSH]	88	90,022	89.357	
18 Mar 2022 - 18 Mar 2022	CCB	JARDINE CYCLE & CARRIAGE LIMITED [SSH]	241	89,934	89.269	
18 Mar 2022 - 18 Mar 2022	CCB	JARDINE MATHESON HOLDINGS LIMITED [SSH]	241	89,934	89.269	
18 Mar 2022 - 18 Mar 2022	CCB	JARDINE STRATEGIC SINGAPORE PTE LTD [SSH]	241	89,934	89.269	
18 Mar 2022 - 18 Mar 2022	CCB	JARDINE STRATEGIC LIMITED [SSH]	241	89,934	89.269	
18 Mar 2022 - 18 Mar 2022	CCB	JSH ASIAN HOLDINGS LIMITED [SSH]	241	89,934	89.269	
18 Mar 2022 - 18 Mar 2022	CCB	JMH INVESTMENTS LIMITED [SSH]	241	89,934	89.269	
23 Mar 2022 - 23 Mar 2022	CHOOBEE	MR YEO SENG CHONG [SSH]	75	7,700	5.89	
23 Mar 2022 - 23 Mar 2022	CHOOBEE	MADAM LIM MEE HWA [SSH]	75	7,700	5.89	
23 Mar 2022 - 23 Mar 2022	CHOOBEE	YEOMAN CAPITAL MANAGEMENT PTE LTD [SSH]	75	6,875	5.259	
23 Mar 2022 - 23 Mar 2022	CHOOBEE	YEOMAN 3-RIGHTS VALUE ASIA FUND [SSH]	75	6,725	5.144	
24 Mar 2022 - 24 Mar 2022	CIMB	KUMPULAN WANG PERSARAAN (DIPERBADANKAN) [SSH]	-167	681,170	6.66	
23 Mar 2022 - 23 Mar 2022	CIMB	KUMPULAN WANG PERSARAAN (DIPERBADANKAN) [SSH]	-2,000	681,337	6.66	
22 Mar 2022 - 22 Mar 2022	CIMB	EMPLOYEES PROVIDENT FUND BOARD [SSH]	3,000	1,620,882	15.86	
22 Mar 2022 - 22 Mar 2022	CIMB	KUMPULAN WANG PERSARAAN (DIPERBADANKAN) [SSH]	-131	683,337	6.68	
21 Mar 2022 - 21 Mar 2022	CIMB	EMPLOYEES PROVIDENT FUND BOARD [SSH]	2,416	1,617,882	15.83	
21 Mar 2022 - 21 Mar 2022	CIMB	KUMPULAN WANG PERSARAAN (DIPERBADANKAN) [SSH]	-200	683,468	6.68	
18 Mar 2022 - 18 Mar 2022	CIMB	EMPLOYEES PROVIDENT FUND BOARD [SSH]	1,691	1,615,466	15.8	
17 Mar 2022 - 17 Mar 2022	CIMB	EMPLOYEES PROVIDENT FUND BOARD [SSH]	-1,436	1,613,775	15.79	
16 Mar 2022 - 16 Mar 2022	CIMB	EMPLOYEES PROVIDENT FUND BOARD [SSH]	-181	1,615,211	15.8	
22 Mar 2022 - 22 Mar 2022	CLMT	EMPLOYEES PROVIDENT FUND BOARD [SSH]	173	286,707	13.455	
21 Mar 2022 - 21 Mar 2022	CLMT	EMPLOYEES PROVIDENT FUND BOARD [SSH]	216	286,533	13.447	
17 Mar 2022 - 17 Mar 2022	CLMT	EMPLOYEES PROVIDENT FUND BOARD [SSH]	164	286,318	13.437	
18 Mar 2022 - 18 Mar 2022	CRG	DATO' SRI CHIANG FONG YEE [DIR/CEO]	502	254,127	31.543	
18 Mar 2022 - 18 Mar 2022	CRG	DATO' SRI CHIANG FONG YEE [SSH]	502	180,487	22.403	
17 Mar 2022 - 17 Mar 2022	CTOS	EMPLOYEES PROVIDENT FUND BOARD [SSH]	782	144,280	6.246	
22 Mar 2022 - 22 Mar 2022	CWG	MR OOI CHIN SOON [DIR/CEO]	100	29,300	17.904	
22 Mar 2022 - 22 Mar 2022	CWG	MR OOI CHIN SOON [SSH]	100	29,300	17.904	
21 Mar 2022 - 22 Mar 2022	CWG	DATO KHOR WAN TAT [SSH]	100	8,839	5.4	
21 Mar 2022 - 21 Mar 2022	CWG	MR OOI CHIN SOON [SSH]	100	29,200	17.843	
21 Mar 2022 - 21 Mar 2022	CWG	MR OOI CHIN SOON [DIR/CEO]	100	29,200	17.843	
23 Mar 2022 - 24 Mar 2022	DAN-CO-WA	MR AIK CWO SHING [DIR/CEO]	-2,500	13,766	18.05	
23 Mar 2022 - 24 Mar 2022	DAN-CO-WA	MR AIK SWEE TONG [DIR/CEO]	-2,500	11,766	15.428	
21 Mar 2022 - 22 Mar 2022	DAN-CO-WA	MR AIK CWO SHING [DIR/CEO]	-2,400	16,266	20.989	
21 Mar 2022 - 22 Mar 2022	DAN-CO-WA	MR AIK SWEE TONG [DIR/CEO]	-2,400	14,266	18.408	
22 Mar 2022 - 22 Mar 2022	DBHD	JOHOR CORPORATION [SSH]	2	266,539	81.565	
22 Mar 2022 - 22 Mar 2022	DBHD	JLAND GROUP SDN. BHD. (FORMERLY KNOWN AS ABSOLUTE AMBIENT SDN. BHD.) [SSH]	2	222,574	68.112	
21 Mar 2022 - 21 Mar 2022	DBHD	JOHOR CORPORATION [SSH]	0.3	266,537	81.565	
21 Mar 2022 - 21 Mar 2022	DBHD	JLAND GROUP SDN. BHD. (FORMERLY KNOWN AS ABSOLUTE AMBIENT SDN. BHD.) [SSH]	0.3	222,572	68.111	
18 Mar 2022 - 18 Mar 2022	DBHD	JOHOR CORPORATION [SSH]	2	266,536	81.565	
18 Mar 2022 - 18 Mar 2022	DBHD	JLAND GROUP SDN. BHD. (FORMERLY KNOWN AS ABSOLUTE AMBIENT SDN. BHD.) [SSH]	2	222,572	68.111	
22 Mar 2022 - 23 Mar 2022	DESTINI	DATO' ROZABIL @ ROZAMUJIB BIN ABDUL RAHMAN [SSH]	-2,000	297,731	17.898	
22 Mar 2022 - 23 Mar 2022	DESTINI	DATO ROZABIL @ ROZAMUJIB BIN ABDUL RAHMAN [DIR/CEO]	-2,000	297,731	17.898	

Disclaimer: The Information in Insider Activity is extracted from www.shareinvestor.com/fundamental/insider_trades. The information on this page is provided as a service to readers. It does not constitute financial advice and/or any investment recommendations. We assume no liability for damages resulting from or arising out of the use of such information. Whilst every effort is made to ensure accuracy, the information presented is not the official record of shareholder filings. Readers are advised to read the original filings on the Bursa Malaysia website at www.bursamalaysia.com



STROM
SWISS TIMEPIECES & JEWELLERY



Notice Period is 20 March 2022 - 26 March 2022

Effective Change Date	Stock Name	Buyer/ Seller Name [Classification]	Bought / (Sold) ['000]	No. of Shares After Trade ['000]	
			Total	Total	% Held
16 Mar 2022 - 16 Mar 2022	LITRAK	EMPLOYEES PROVIDENT FUND BOARD [SSH]	40	29,881	5.605
24 Mar 2022 - 24 Mar 2022	LKL	MR LIM MING CHANG [DIR/CEO]	-28,000	1,700	0.177
23 Mar 2022 - 24 Mar 2022	MAGNI	MR TAN POAY SENG [DIR/CEO]	210	104,398	24.09
22 Mar 2022 - 22 Mar 2022	MALAKOF	URUSHARTA JAMAHAH SDN. BHD. [SSH]	6,533	477,192	9.764
18 Mar 2022 - 18 Mar 2022	MALAKOF	URUSHARTA JAMAHAH SDN. BHD. [SSH]	-2,564	470,659	9.63
17 Mar 2022 - 17 Mar 2022	MALAKOF	URUSHARTA JAMAHAH SDN. BHD. [SSH]	-1,020	473,223	9.683
16 Mar 2022 - 16 Mar 2022	MALAKOF	URUSHARTA JAMAHAH SDN. BHD. [SSH]	-1,200	474,243	9.704
22 Mar 2022 - 22 Mar 2022	MALPAC	MR LIM HONG LIANG [SSH]	45	18,758	25.012
22 Mar 2022 - 22 Mar 2022	MALPAC	MR LIM HONG LIANG [DIR/CEO]	45	18,758	25.012
22 Mar 2022 - 22 Mar 2022	MATRIX	EMPLOYEES PROVIDENT FUND BOARD [SSH]	228	74,567	8.938
18 Mar 2022 - 18 Mar 2022	MATRIX	EMPLOYEES PROVIDENT FUND BOARD [SSH]	-1,000	74,339	8.911
17 Mar 2022 - 17 Mar 2022	MATRIX	EMPLOYEES PROVIDENT FUND BOARD [SSH]	-500	75,339	9.031
16 Mar 2022 - 16 Mar 2022	MATRIX	EMPLOYEES PROVIDENT FUND BOARD [SSH]	259	75,839	9.091
23 Mar 2022 - 23 Mar 2022	MAYBANK	AMANAHRAYA TRUSTEES BERHAD - AMANAH SAHAM BUMIPUTERA [SSH]	-2,524	4,000,270	33.677
22 Mar 2022 - 22 Mar 2022	MAYBANK	AMANAHRAYA TRUSTEES BERHAD - AMANAH SAHAM BUMIPUTERA [SSH]	-1,498	4,002,794	33.698
21 Mar 2022 - 21 Mar 2022	MAYBANK	AMANAHRAYA TRUSTEES BERHAD - AMANAH SAHAM BUMIPUTERA [SSH]	-1,577	4,004,292	33.71
18 Mar 2022 - 18 Mar 2022	MAYBANK	EMPLOYEES PROVIDENT FUND BOARD [SSH]	-4,000	1,639,159	13.799
18 Mar 2022 - 18 Mar 2022	MAYBANK	AMANAHRAYA TRUSTEES BERHAD - AMANAH SAHAM BUMIPUTERA [SSH]	-2,500	4,005,870	33.724
17 Mar 2022 - 17 Mar 2022	MAYBANK	EMPLOYEES PROVIDENT FUND BOARD [SSH]	-6,792	1,643,159	13.833
17 Mar 2022 - 17 Mar 2022	MAYBANK	AMANAHRAYA TRUSTEES BERHAD - AMANAH SAHAM BUMIPUTERA [SSH]	-2,500	4,008,370	33.745
16 Mar 2022 - 16 Mar 2022	MAYBANK	EMPLOYEES PROVIDENT FUND BOARD [SSH]	3,000	1,649,951	13.89
23 Mar 2022 - 23 Mar 2022	MEDIA	MORGAN STANLEY [SSH]	-2,230	127,302	11.477
22 Mar 2022 - 22 Mar 2022	MEDIA	MORGAN STANLEY [SSH]	-3,000	128,417	11.577
25 Mar 2022 - 25 Mar 2022	MENANG	DATO' LEE CHIN HWA [SSH]	3,387	82,790	16.977
25 Mar 2022 - 25 Mar 2022	MENANG	MR LEE MIN HUAT [SSH]	3,387	60,106	12.325
25 Mar 2022 - 25 Mar 2022	MENANG	MR LEE MIN HUAT [DIR/CEO]	3,387	60,106	12.325
25 Mar 2022 - 25 Mar 2022	MENANG	CHIN LEONG THYE SDN. BHD. [SSH]	3,387	54,633	11.203
24 Mar 2022 - 24 Mar 2022	MFCB	MR GOH NAN KIOH [DIR/CEO]	25	316,036	33.432
24 Mar 2022 - 24 Mar 2022	MFCB	MR GOH NAN KIOH [SSH]	25	316,036	33.432
24 Mar 2022 - 24 Mar 2022	MFCB	CAMASIA LIMITED [SSH]	25	201,223	21.286
24 Mar 2022 - 24 Mar 2022	MFCB	LAJU RIANG SDN BHD [SSH]	25	199,738	21.129
24 Mar 2022 - 24 Mar 2022	MFCB	CAM PROPERTY (MALAYSIA) SDN BHD [SSH]	25	199,738	21.129
24 Mar 2022 - 24 Mar 2022	MFCB	RUBBER THREAD INDUSTRIES (M) SDN BERHAD [SSH]	25	199,738	21.129
23 Mar 2022 - 23 Mar 2022	MFCB	MR GOH NAN KIOH [SSH]	25	316,011	33.43
23 Mar 2022 - 23 Mar 2022	MFCB	MR GOH NAN KIOH [DIR/CEO]	25	316,011	33.43
23 Mar 2022 - 23 Mar 2022	MFCB	CAMASIA LIMITED [SSH]	25	201,198	21.284
23 Mar 2022 - 23 Mar 2022	MFCB	RUBBER THREAD INDUSTRIES (M) SDN BERHAD [SSH]	25	199,713	21.126
23 Mar 2022 - 23 Mar 2022	MFCB	LAJU RIANG SDN BHD [SSH]	25	199,713	21.127
23 Mar 2022 - 23 Mar 2022	MFCB	CAM PROPERTY (MALAYSIA) SDN BHD [SSH]	25	199,713	21.127
22 Mar 2022 - 22 Mar 2022	MFCB	MR GOH NAN KIOH [SSH]	20	315,986	33.427
22 Mar 2022 - 22 Mar 2022	MFCB	MR GOH NAN KIOH [DIR/CEO]	20	315,986	33.427
22 Mar 2022 - 22 Mar 2022	MFCB	CAMASIA LIMITED [SSH]	20	201,173	21.281
22 Mar 2022 - 22 Mar 2022	MFCB	CAM PROPERTY (MALAYSIA) SDN BHD [SSH]	20	199,688	21.124
22 Mar 2022 - 22 Mar 2022	MFCB	RUBBER THREAD INDUSTRIES (M) SDN BERHAD [SSH]	20	199,688	21.124
22 Mar 2022 - 22 Mar 2022	MFCB	LAJU RIANG SDN BHD [SSH]	20	199,688	21.124
21 Mar 2022 - 21 Mar 2022	MFCB	MR GOH NAN KIOH [SSH]	20	315,966	33.425
21 Mar 2022 - 21 Mar 2022	MFCB	MR GOH NAN KIOH [DIR/CEO]	20	315,966	33.425
21 Mar 2022 - 21 Mar 2022	MFCB	CAMASIA LIMITED [SSH]	20	201,153	21.279
21 Mar 2022 - 21 Mar 2022	MFCB	RUBBER THREAD INDUSTRIES (M) SDN BERHAD [SSH]	20	199,668	21.122
21 Mar 2022 - 21 Mar 2022	MFCB	CAM PROPERTY (MALAYSIA) SDN BHD [SSH]	20	199,668	21.122
21 Mar 2022 - 21 Mar 2022	MFCB	LAJU RIANG SDN BHD [SSH]	20	199,668	21.122
23 Mar 2022 - 23 Mar 2022	MGRC	PIXELVEST SDN BHD [SSH]	100	10,906	8.78
21 Mar 2022 - 21 Mar 2022	MGRC	PIXELVEST SDN BHD [SSH]	300	10,806	8.7
22 Mar 2022 - 22 Mar 2022	MICROLN	DATO' SERI MOHD KHAIRI BIN DATO' MAT JAHYA [DIR/CEO]	-39,776	89,360	8.372
22 Mar 2022 - 22 Mar 2022	MICROLN	DATO' SERI MOHD KHAIRI BIN MAT JAHYA [SSH]	-39,776	89,360	8.372
23 Mar 2022 - 23 Mar 2022	MIKROMB	MR LOW KHEK HENG @ LOW CHOON HUAT [SSH]	19	102,950	17.472
24 Mar 2022 - 24 Mar 2022	MISC	KUMPULAN WANG PERSARAAN (DIPERBADANKAN) (KWAP) [SSH]	-40	229,517	5.14
22 Mar 2022 - 22 Mar 2022	MISC	EMPLOYEES PROVIDENT FUND BOARD [SSH]	500	552,433	12.38
23 Mar 2022 - 23 Mar 2022	MISC	KUMPULAN WANG PERSARAAN (DIPERBADANKAN) (KWAP) [SSH]	-325	229,557	5.14
21 Mar 2022 - 21 Mar 2022	MISC	EMPLOYEES PROVIDENT FUND BOARD [SSH]	638	551,933	12.36
18 Mar 2022 - 18 Mar 2022	MISC	EMPLOYEES PROVIDENT FUND BOARD [SSH]	-53	551,295	12.35
17 Mar 2022 - 17 Mar 2022	MISC	EMPLOYEES PROVIDENT FUND BOARD [SSH]	-1,251	551,347	12.35
16 Mar 2022 - 16 Mar 2022	MISC	EMPLOYEES PROVIDENT FUND BOARD [SSH]	-520	552,598	12.38
22 Mar 2022 - 22 Mar 2022	MSNIAGA	SHAPADU CAPITAL SDN. BHD. [SSH]	2	16,003	26.494
18 Mar 2022 - 18 Mar 2022	MSNIAGA	SHAPADU CAPITAL SDN. BHD. [SSH]	10	16,001	26.49
14 Mar 2022 - 16 Mar 2022	MSNIAGA	SHAPADU CAPITAL SDN. BHD. [SSH]	44	15,991	26.474
22 Mar 2022 - 22 Mar 2022	MTOUCHE	MORGAN STANLEY [SSH]	-0.001	61,800	6.669
22 Mar 2022 - 22 Mar 2022	MTOUCHE	MTSUBISHI UFJ FINANCIAL GROUP INC [SSH]	-0.001	61,800	6.669
21 Mar 2022 - 21 Mar 2022	NESTCON	MR NOR AZZAM BIN ABDUL JALIL [DIR/CEO]	-50	270	0.042
22 Mar 2022 - 22 Mar 2022	NESTLE	EMPLOYEES PROVIDENT FUND BOARD [SSH]	-3	21,960	9.365
21 Mar 2022 - 21 Mar 2022	NESTLE	EMPLOYEES PROVIDENT FUND BOARD [SSH]	-14	21,966	9.367
18 Mar 2022 - 18 Mar 2022	NESTLE	EMPLOYEES PROVIDENT FUND BOARD [SSH]	-82	21,980	9.373
17 Mar 2022 - 17 Mar 2022	NESTLE	EMPLOYEES PROVIDENT FUND BOARD [SSH]	-34	22,063	9.408
16 Mar 2022 - 16 Mar 2022	NESTLE	EMPLOYEES PROVIDENT FUND BOARD [SSH]	-23	22,097	9.423
21 Mar 2022 - 23 Mar 2022	NEXGRAM	OZURA FIRSTLOGIX SDN BHD [SSH]	-103	382,655	8.669
18 Feb 2022 - 18 Feb 2022	NEXGRAM	OZURA FIRSTLOGIX SDN BHD [SSH]	-774	382,758	8.671
16 Mar 2022 - 18 Mar 2022	NGGB	DATO' GAN KONG HIOK [SSH]	100	150,883	19.598
17 Mar 2022 - 17 Mar 2022	NIHSIN	ENCIK SOFIYAN BIN YAHYA [DIR/CEO]	1,000	11,367	2.348
22 Mar 2022 - 23 Mar 2022	OCK	LEMBAGA TABUNG ANGKATAN TENTERA [SSH]	-200	101,774	9.651
18 Mar 2022 - 21 Mar 2022	OCK	LEMBAGA TABUNG ANGKATAN TENTERA [SSH]	-180	101,974	9.67
17 Mar 2022 - 17 Mar 2022	OCK	LEMBAGA TABUNG ANGKATAN TENTERA [SSH]	-100	102,154	9.687
21 Mar 2022 - 22 Mar 2022	OCNCASH	MR TAN SIEW CHIN [SSH]	40	137,899	52.876
21 Mar 2022 - 22 Mar 2022	OCNCASH	MR TAN SIEW CHIN [DIR/CEO]	40	137,899	52.876
21 Mar 2022 - 22 Mar 2022	OCNCASH	MISS CHEN LEE CHEW [SSH]	40	137,899	52.876
17 Mar 2022 - 17 Mar 2022	OCNCASH	MR TAN SIEW CHIN [DIR/CEO]	30	137,859	52.861
17 Mar 2022 - 17 Mar 2022	OCNCASH	MR TAN SIEW CHIN [SSH]	30	137,859	52.861
17 Mar 2022 - 17 Mar 2022	OCNCASH	MISS CHEN LEE CHEW [SSH]	30	137,859	52.861
18 Mar 2022 - 18 Mar 2022	OKA	MR GAN BOON KOO @ GAN BOON KIU [DIR/CEO]	-25	195	0.079
24 Mar 2022 - 24 Mar 2022	PADINI	KUMPULAN WANG PERSARAAN (DIPERBADANKAN) [SSH]	-79	50,543	7.682
21 Mar 2022 - 21 Mar 2022	PADINI	KUMPULAN WANG PERSARAAN (DIPERBADANKAN) [SSH]	-117	50,623	7.694
21 Mar 2022 - 21 Mar 2022	PAVREIT	EMPLOYEES PROVIDENT FUND BOARD [SSH]	20	303,032	9.926

Notice Period is 20 March 2022 - 26 March 2022

Effective Change Date	Stock Name	Buyer/ Seller Name [Classification]	Bought / (Sold) ['000]	No. of Shares After Trade ['000]	
			Total	Total	% Held
22 Mar 2022 - 22 Mar 2022	PBBANK	EMPLOYEES PROVIDENT FUND BOARD [SSH]	-2,384	2,930,376	15.1
21 Mar 2022 - 21 Mar 2022	PBBANK	EMPLOYEES PROVIDENT FUND BOARD [SSH]	5,458	2,931,090	15.1
18 Mar 2022 - 18 Mar 2022	PBBANK	EMPLOYEES PROVIDENT FUND BOARD [SSH]	-1,157	2,925,632	15.07
17 Mar 2022 - 17 Mar 2022	PBBANK	EMPLOYEES PROVIDENT FUND BOARD [SSH]	-7,600	2,927,789	15.08
16 Mar 2022 - 16 Mar 2022	PBBANK	EMPLOYEES PROVIDENT FUND BOARD [SSH]	-8,606	2,935,263	15.12
15 Mar 2022 - 15 Mar 2022	PBBANK	EMPLOYEES PROVIDENT FUND BOARD [SSH]	-6,946	2,943,869	15.17
24 Mar 2022 - 24 Mar 2022	PCCS	MR CHAN CHOO SING [DIR/CEO]	110	100,938	46.954
24 Mar 2022 - 24 Mar 2022	PCCS	MR CHAN CHOO SING [SSH]	110	100,938	46.954
24 Mar 2022 - 24 Mar 2022	PCCS	MADAM TAN KWEE KEE [SSH]	110	100,938	46.955
24 Mar 2022 - 24 Mar 2022	PCCS	MR CHAN WEE KIANG [SSH]	110	93,152	43.333
24 Mar 2022 - 24 Mar 2022	PCCS	MR CHAN WEE KIANG [DIR/CEO]	110	93,152	43.333
24 Mar 2022 - 24 Mar 2022	PCCS	CCS CAPITAL SDN. BHD. [SSH]	110	90,940	42.304
18 Mar 2022 - 18 Mar 2022	PCCS	MR CHAN CHOO SING [DIR/CEO]	100	100,828	46.903
18 Mar 2022 - 18 Mar 2022	PCCS	MADAM TAN KWEE KEE [SSH]	100	100,828	46.904
18 Mar 2022 - 18 Mar 2022	PCCS	MR CHAN CHOO SING [SSH]	100	100,828	46.903
18 Mar 2022 - 18 Mar 2022	PCCS	MR CHAN WEE KIANG [SSH]	100	93,042	43.281
18 Mar 2022 - 18 Mar 2022	PCCS	MR CHAN WEE KIANG [DIR/CEO]	100	93,042	43.281
18 Mar 2022 - 18 Mar 2022	PCCS	CCS CAPITAL SDN. BHD. [SSH]	100	90,830	42.252
22 Mar 2022 - 22 Mar 2022	PCHEM	EMPLOYEES PROVIDENT FUND BOARD ("EPF BOARD") [SSH]	-6,302	534,278	6.678
21 Mar 2022 - 21 Mar 2022	PCHEM	EMPLOYEES PROVIDENT FUND BOARD ("EPF BOARD") [SSH]	-2,439	540,580	6.757
18 Mar 2022 - 18 Mar 2022	PCHEM	EMPLOYEES PROVIDENT FUND BOARD ("EPF BOARD") [SSH]	-4,815	543,019	6.788
17 Mar 2022 - 17 Mar 2022	PCHEM	EMPLOYEES PROVIDENT FUND BOARD ("EPF BOARD") [SSH]	-4,681	547,833	6.848
16 Mar 2022 - 16 Mar 2022	PCHEM	EMPLOYEES PROVIDENT FUND BOARD ("EPF BOARD") [SSH]	-6,366	552,514	6.906
21 Mar 2022 - 21 Mar 2022	PENTA	EMPLOYEES PROVIDENT FUND BOARD [SSH]	235	50,951	7.153
17 Mar 2022 - 17 Mar 2022	PENTA	EMPLOYEES PROVIDENT FUND BOARD [SSH]	370	50,716	7.12
22 Mar 2022 - 22 Mar 2022	PESTECH	MR LIM AH HOCK [SSH]	3,893	323,311	32.713
22 Mar 2022 - 22 Mar 2022	PESTECH	MR LIM AH HOCK [DIR/CEO]	3,893	323,311	32.713
22 Mar 2022 - 22 Mar 2022	PESTECH	MR LIM PAY CHUAN [SSH]	1,320	189,489	19.173
22 Mar 2022 - 22 Mar 2022	PESTECH	MR LIM PAY CHUAN [DIR/CEO]	1,320	189,489	19.173
22 Mar 2022 - 22 Mar 2022	PETGAS	EMPLOYEES PROVIDENT FUND BOARD [SSH]	6	274,648	13.88
21 Mar 2022 - 21 Mar 2022	PETGAS	EMPLOYEES PROVIDENT FUND BOARD [SSH]	79	274,642	13.88
18 Mar 2022 - 18 Mar 2022	PETGAS	EMPLOYEES PROVIDENT FUND BOARD [SSH]	300	274,563	13.876
17 Mar 2022 - 17 Mar 2022	PETGAS	EMPLOYEES PROVIDENT FUND BOARD [SSH]	-288	274,263	13.861
16 Mar 2022 - 16 Mar 2022	PETGAS	EMPLOYEES PROVIDENT FUND BOARD [SSH]	-259	274,551	13.875
21 Mar 2022 - 21 Mar 2022	PIE	MR LOO HOUI BENG [DIR/CEO]	-5	19	0.005
17 Mar 2022 - 17 Mar 2022	PMBTECH	TAN SRI DATO' KOON POH KEONG [DIR/CEO]	546	49,720	21.266
17 Mar 2022 - 17 Mar 2022	PMBTECH	PUAN SRI DATIN KHOO EE PHENG [SSH]	546	49,720	21.266
17 Mar 2022 - 17 Mar 2022	PMBTECH	TAN SRI DATO' KOON POH KEONG [SSH]	546	49,720	21.266
17 Mar 2022 - 17 Mar 2022	PMBTECH	MR KOON POH WENG [DIR/CEO]	2,536	34,445	14.732
17 Mar 2022 - 17 Mar 2022	PMBTECH	MADAM CHAN POH CHOO [SSH]	2,536		

Notice Period is 20 March 2022 - 26 March 2022

Effective Change Date	Stock Name	Buyer/ Seller Name [Classification]	Bought / (Sold) ['000]		No. of Shares After Trade ['000]	
			Total	Total	Total	% Held
22 Mar 2022 - 22 Mar 2022	SIME	AMANAHRAYA TRUSTEES BERHAD - AMANAH SAHAM BUMIPUTERA [SSH]	-2,629	2,781,000	40.837	
21 Mar 2022 - 21 Mar 2022	SIME	EMPLOYEES PROVIDENT FUND BOARD [SSH]	437	598,242	8.785	
18 Mar 2022 - 18 Mar 2022	SIME	EMPLOYEES PROVIDENT FUND BOARD [SSH]	64	597,805	8.779	
17 Mar 2022 - 17 Mar 2022	SIME	EMPLOYEES PROVIDENT FUND BOARD [SSH]	-2,504	597,741	8.778	
17 Mar 2022 - 17 Mar 2022	SIME	KUMPULAN WANG PERSARAAN (DIPERBADANKAN) [SSH]	2,000	505,670	7.425	
15 Mar 2022 - 16 Mar 2022	SIME	EMPLOYEES PROVIDENT FUND BOARD [SSH]	1,772	600,245	8.815	
22 Mar 2022 - 22 Mar 2022	SIMEPLT	EMPLOYEES PROVIDENT FUND BOARD [SSH]	-3,046	1,001,462	14.481	
22 Mar 2022 - 22 Mar 2022	SIMEPLT	KUMPULAN WANG PERSARAAN (DIPERBADANKAN) [SSH]	-500	445,054	6.436	
21 Mar 2022 - 21 Mar 2022	SIMEPLT	EMPLOYEES PROVIDENT FUND BOARD [SSH]	-10	1,004,508	14.525	
18 Mar 2022 - 18 Mar 2022	SIMEPLT	EMPLOYEES PROVIDENT FUND BOARD [SSH]	-717	1,004,518	14.525	
17 Mar 2022 - 17 Mar 2022	SIMEPLT	EMPLOYEES PROVIDENT FUND BOARD [SSH]	-2,994	1,005,235	14.536	
16 Mar 2022 - 16 Mar 2022	SIMEPLT	EMPLOYEES PROVIDENT FUND BOARD [SSH]	-2,383	1,008,229	14.579	
21 Mar 2022 - 23 Mar 2022	SLVEST	DATUK SERI CHIAU BENG TEIK JP [SSH]	123	158,330	23.718	
18 Mar 2022 - 18 Mar 2022	SLVEST	DATUK SERI CHIAU BENG TEIK JP [SSH]	212	158,207	23.699	
24 Mar 2022 - 24 Mar 2022	SMILE	DATO DR. WONG RUEN YUAN [DIR/CEO]	200	132,406	52.877	
24 Mar 2022 - 24 Mar 2022	SMILE	DATIN WONG CHIEN YUE [DIR/CEO]	200	132,061	52.739	
24 Mar 2022 - 24 Mar 2022	SMILE	DATIN WONG CHIEN YUE [SSH]	200	132,061	52.739	
24 Mar 2022 - 24 Mar 2022	SMILE	DATO DR. WONG RUEN YUAN [SSH]	200	130,306	52.877	
24 Mar 2022 - 24 Mar 2022	SMILE	SMILE-LINK RESOURCES (M) SDN BHD [SSH]	200	114,794	45.844	
22 Mar 2022 - 24 Mar 2022	STRAITS	ANG TUN YOUNG [SSH]	170	66,526	7.541	
18 Mar 2022 - 21 Mar 2022	STRAITS	ANG TUN YOUNG [SSH]	175	66,356	7.522	
17 Mar 2022 - 17 Mar 2022	STRAITS	RITHAUDDIN HUSSEIN JAMALATIFF BIN JAMALUDDIN [SSH]	10,000	53,497	6.064	
22 Mar 2022 - 22 Mar 2022	SUNWAY	EMPLOYEES PROVIDENT FUND BOARD [SSH]	-2,000	419,489	8.58	
21 Mar 2022 - 21 Mar 2022	SUNWAY	EMPLOYEES PROVIDENT FUND BOARD [SSH]	-598	421,489	8.62	
18 Mar 2022 - 18 Mar 2022	SUNWAY	EMPLOYEES PROVIDENT FUND BOARD [SSH]	-1,409	422,088	8.63	
16 Mar 2022 - 16 Mar 2022	SUNWAY	EMPLOYEES PROVIDENT FUND BOARD [SSH]	6	423,496	8.66	
18 Mar 2022 - 23 Mar 2022	SWIFT	MR LOO HOOI KEAT [DIR/CEO]	50	340,451	38.261	
18 Mar 2022 - 23 Mar 2022	SWIFT	MR LOO HOOI KEAT [SSH]	50	340,451	38.261	
23 Mar 2022 - 23 Mar 2022	SYSCORP	MR KOH EK CHONG [DIR/CEO]	621	740	0.062	
14 Mar 2022 - 14 Mar 2022	TAANN	DATUK AMAR ABDUL HAMED BIN HAJI SEPAWI [DIR/CEO]	-10	151,875	34.48	
14 Mar 2022 - 14 Mar 2022	TAANN	DATUK AMAR ABDUL HAMED BIN HAJI SEPAWI [SSH]	-10	151,875	34.48	
11 Mar 2022 - 11 Mar 2022	TAANN	DATUK AMAR ABDUL HAMED BIN HAJI SEPAWI [DIR/CEO]	300	151,885	34.482	
11 Mar 2022 - 11 Mar 2022	TAANN	DATUK AMAR ABDUL HAMED BIN HAJI SEPAWI [SSH]	300	151,885	34.482	
09 Mar 2022 - 09 Mar 2022	TAANN	DATUK AMAR ABDUL HAMED BIN HAJI SEPAWI [DIR/CEO]	-217	155,185	35.231	
09 Mar 2022 - 09 Mar 2022	TAANN	DATUK AMAR ABDUL HAMED BIN HAJI SEPAWI [SSH]	-217	155,185	35.231	
02 Mar 2022 - 02 Mar 2022	TAANN	DATUK AMAR ABDUL HAMED BIN HAJI SEPAWI [SSH]	-1,770	155,402	35.281	
02 Mar 2022 - 02 Mar 2022	TAANN	DATUK AMAR ABDUL HAMED BIN HAJI SEPAWI [DIR/CEO]	-1,770	155,402	35.281	
01 Mar 2022 - 01 Mar 2022	TAANN	DATUK AMAR ABDUL HAMED BIN HAJI SEPAWI [DIR/CEO]	-1,230	157,172	35.683	
01 Mar 2022 - 01 Mar 2022	TAANN	DATUK AMAR ABDUL HAMED BIN HAJI SEPAWI [SSH]	-1,230	157,172	35.683	
17 Mar 2022 - 17 Mar 2022	TAANN	DATUK AMAR ABDUL HAMED BIN HAJI SEPAWI [DIR/CEO]	50	151,925	34.48	
17 Mar 2022 - 17 Mar 2022	TAANN	DATUK AMAR ABDUL HAMED BIN HAJI SEPAWI [SSH]	50	151,919	34.492	
22 Mar 2022 - 22 Mar 2022	TAKAFUL	EMPLOYEES PROVIDENT FUND BOARD [SSH]	-1,320	88,321	10.569	
21 Mar 2022 - 21 Mar 2022	TAKAFUL	EMPLOYEES PROVIDENT FUND BOARD [SSH]	-254	89,640	10.727	
18 Mar 2022 - 18 Mar 2022	TAKAFUL	EMPLOYEES PROVIDENT FUND BOARD [SSH]	-1,000	89,895	10.758	
17 Mar 2022 - 17 Mar 2022	TAKAFUL	EMPLOYEES PROVIDENT FUND BOARD [SSH]	-768	90,895	10.877	
16 Mar 2022 - 16 Mar 2022	TAKAFUL	EMPLOYEES PROVIDENT FUND BOARD [SSH]	-1,171	91,663	10.969	
21 Mar 2022 - 21 Mar 2022	TALIWRK	LEMBAGA TABUNG HAJI [SSH]	-13	159,649	7.92	
22 Mar 2022 - 22 Mar 2022	TCHONG	DATO' TAN HENG CHEW [DIR/CEO]	100	322,894	49.512	
22 Mar 2022 - 22 Mar 2022	TCHONG	DATO' (DR) KHOR SWEE WAH @ KOH BEE LENG [DIR/CEO]	100	322,894	49.511	
22 Mar 2022 - 22 Mar 2022	TCHONG	DATO' TAN HENG CHEW [SSH]	100	308,334	47.279	
18 Mar 2022 - 18 Mar 2022	TENAGA	EMPLOYEES PROVIDENT FUND BOARD [SSH]	-168	917,279	16.02	
16 Mar 2022 - 16 Mar 2022	TENAGA	EMPLOYEES PROVIDENT FUND BOARD [SSH]	-320	917,447	16.02	
22 Mar 2022 - 22 Mar 2022	TEOSEN	MR NAM HIOK JOO [DIR/CEO]	400	567	0.193	
22 Mar 2022 - 22 Mar 2022	TIMECOM	EMPLOYEES PROVIDENT FUND BOARD [SSH]	-394	209,422	11.471	
23 Mar 2022 - 23 Mar 2022	TIMECOM	KUMPULAN WANG PERSARAAN (DIPERBADANKAN) ("KWAP") [SSH]	-56	92,710	5.078	
21 Mar 2022 - 21 Mar 2022	TIMECOM	EMPLOYEES PROVIDENT FUND BOARD [SSH]	-309	209,816	11.493	
22 Mar 2022 - 22 Mar 2022	TIMECOM	KUMPULAN WANG PERSARAAN (DIPERBADANKAN) ("KWAP") [SSH]	-31	92,766	5.081	
18 Mar 2022 - 18 Mar 2022	TIMECOM	EMPLOYEES PROVIDENT FUND BOARD [SSH]	-698	210,125	11.51	
21 Mar 2022 - 21 Mar 2022	TIMECOM	KUMPULAN WANG PERSARAAN (DIPERBADANKAN) ("KWAP") [SSH]	-24	92,797	5.083	
17 Mar 2022 - 17 Mar 2022	TIMECOM	EMPLOYEES PROVIDENT FUND BOARD [SSH]	-344	210,823	11.548	
18 Mar 2022 - 18 Mar 2022	TIMECOM	KUMPULAN WANG PERSARAAN (DIPERBADANKAN) ("KWAP") [SSH]	-48	92,821	5.084	
16 Mar 2022 - 16 Mar 2022	TIMECOM	EMPLOYEES PROVIDENT FUND BOARD [SSH]	-340	211,168	11.567	
22 Mar 2022 - 22 Mar 2022	TM	KUMPULAN WANG PERSARAAN (DIPERBADANKAN) [SSH]	301	393,836	10.436	
22 Mar 2022 - 22 Mar 2022	TOPGLOV	EMPLOYEES PROVIDENT FUND BOARD [SSH]	1,000	482,606	6.027	
21 Mar 2022 - 21 Mar 2022	TOPGLOV	EMPLOYEES PROVIDENT FUND BOARD [SSH]	1,268	481,606	6.015	

Notice Period is 20 March 2022 - 26 March 2022

Effective Change Date	Stock Name	Buyer/ Seller Name [Classification]	Bought / (Sold) ['000]		No. of Shares After Trade ['000]	
			Total	Total	Total	% Held
17 Mar 2022 - 17 Mar 2022	TOPGLOV	EMPLOYEES PROVIDENT FUND BOARD [SSH]	-669	480,337	5.999	
16 Mar 2022 - 16 Mar 2022	TOPGLOV	EMPLOYEES PROVIDENT FUND BOARD [SSH]	-241	481,006	6.007	
25 Mar 2022 - 25 Mar 2022	TSH	TAN AIK PEN [DIR/CEO]	150	263,649	19.103	
24 Mar 2022 - 24 Mar 2022	TSH	TAN AIK PEN [SSH]	150	263,499	19.092	
24 Mar 2022 - 24 Mar 2022	TSH	TAN AIK PEN [DIR/CEO]	150	263,499	19.092	
23 Mar 2022 - 23 Mar 2022	TSH	TAN AIK PEN [SSH]	150	263,349	19.081	
23 Mar 2022 - 23 Mar 2022	TSH	TAN AIK PEN [DIR/CEO]	150	263,349	19.081	
22 Mar 2022 - 22 Mar 2022	TSH	TAN AIK PEN [SSH]	150	263,199	19.07	
22 Mar 2022 - 22 Mar 2022	TSH	TAN AIK PEN [DIR/CEO]	150	263,199	19.07	
21 Mar 2022 - 21 Mar 2022	TSH	TAN AIK PEN [SSH]	150	263,049	19.059	
18 Mar 2022 - 21 Mar 2022	TSH	TAN AIK PEN [DIR/CEO]	150	263,049	19.059	
18 Mar 2022 - 18 Mar 2022	TSH	TAN AIK PEN [SSH]	150	262,899	19.048	
24 Mar 2022 - 24 Mar 2022	TWL	DATO' TAN WEI LIAN [DIR/CEO]	2,846	506,539	18.922	
24 Mar 2022 - 24 Mar 2022	TWL	DATIN SEK CHIAN NEE [SSH]	2,846	506,539	18.921	
24 Mar 2022 - 24 Mar 2022	TWL	MISS TAN LEE CHIN [DIR/CEO]	2,846	506,539	18.921	
24 Mar 2022 - 24 Mar 2022	TWL	MISS TAN LEE CHIN [SSH]	2,846	506,539	18.921	
24 Mar 2022 - 24 Mar 2022	TWL	DATO' TAN WEI LIAN [SSH]	2,846	506,539	18.922	
24 Mar 2022 - 24 Mar 2022	TWL	DATIN SEK CHIAN NEE [DIR/CEO]	2,846	506,539	18.921	
22 Mar 2022 - 23 Mar 2022	TWL	MR GOH CHING MUN [SSH]	-10,138	216,064	8.071	
18 Mar 2022 - 21 Mar 2022	TWL	MR GOH CHING MUN [SSH]	-1,420	226,202	8.45	
17 Mar 2022 - 17 Mar 2022	UOAREIT	EMPLOYEES PROVIDENT FUND BOARD ("EPF BOARD") [SSH]	48	67,418	9.979	
16 Mar 2022 - 16 Mar 2022	UOAREIT	EMPLOYEES PROVIDENT FUND BOARD ("EPF BOARD") [SSH]	2	67,370	9.972	
22 Mar 2022 - 22 Mar 2022	UTDPLT	EMPLOYEES PROVIDENT FUND BOARD [SSH]	-700	38,203	9.21	
21 Mar 2022 - 21 Mar 2022	UTDPLT	EMPLOYEES PROVIDENT FUND BOARD [SSH]	-765	38,902	9.379	
18 Mar 2022 - 18 Mar 2022	UTDPLT	EMPLOYEES PROVIDENT FUND BOARD [SSH]	-288	39,668	9.563	
21 Mar 2022 - 21 Mar 2022	UTDPLT	DATO' JEREMY DEREK CAMPBELL DIAMOND [DIR/CEO]	1	760	0.183	
17 Mar 2022 - 17 Mar 2022	UTDPLT	EMPLOYEES PROVIDENT FUND BOARD [SSH]	-52	39,955	9.633	
16 Mar 2022 - 16 Mar 2022	UTDPLT	EMPLOYEES PROVIDENT FUND BOARD [SSH]	-324	40,007	9.645	
22 Mar 2022 - 22 Mar 2022	UWC	EMPLOYEES PROVIDENT FUND BOARD [SSH]	60	74,362	6.752	
21 Mar 2022 - 21 Mar 2022	UWC	EMPLOYEES PROVIDENT FUND BOARD [SSH]	258	74,218	6.739	
17 Mar 2022 - 17 Mar 2022	UWC	EMPLOYEES PROVIDENT FUND BOARD [SSH]	376	74,088	6.727	
24 Mar 2022 - 24 Mar 2022	VC	DATO LIU HAN MING [SSH]	306,525	306,525	28.571	
24 Mar 2022 - 24 Mar 2022	VC	FORTRESS PARADE SDN. BHD. [SSH]	306,525	306,525	28.571	
17 Mar 2022 - 17 Mar 2022	VIS	MR CHOY NGEE HOE [DIR/CEO]	-50	8,988	22.868	
24 Mar 2022 - 24 Mar 2022	VS	KUMPULAN WANG PERSARAAN [SSH]	-3,053	337,336	8.836	
21 Mar 2022 - 21 Mar 2022	VS	KUMPULAN WANG PERSARAAN [SSH]	-663	340,389	8.916	
24 Mar 2022 - 24 Mar 2022	VSOLAR	MR KOO KIEN YOON [DIR/CEO]	500	500	0.01	
17 Mar 2022 - 17 Mar 2022	WARISAN	DATO' TAN HENG CHEW [DIR/CEO]	764	35,321	54.257	
23 Mar 2022 - 23 Mar 2022	WASEONG	MR GIANCARLO MACCAGNO [DIR/CEO]	100	2,760	0.356	
24 Mar 2022 - 24 Mar 2022	WIDAD	TAN SRI MUHAMMAD IKMAL OPAT BIN ABDULLAH [SSH]	10,970	1,460,793	53.072	
24 Mar 2022 - 24 Mar 2022	WIDAD	WIDAD BUSINESS GROUP SDN. BHD. [SSH]	10,970	1,270,247	46.149	
22 Mar 2022 - 23 Mar 2022	WIDAD	TAN SRI MUHAMMAD IKMAL OPAT BIN ABDULLAH [SSH]	-8,300	1,449,823	52.673	
22 Mar 2022 - 22 Mar 2022	WIDAD	WIDAD BUSINESS GROUP SDN. BHD. [SSH]	-7,000	1,259,277	45.751	
18 Mar 2022 - 18 Mar 2022	WIDAD	TAN SRI MUHAMMAD IKMAL OPAT BIN ABDULLAH [SSH]	9,450	1,458,123	52.975	
18 Mar 2022 - 18 Mar 2022	WIDAD	WIDAD BUSINESS GROUP SDN. BHD. [SSH]	-3,550	1,266,277	46.005	
22 Mar 2022 - 22 Mar 2022	WPRTS	EMPLOYEES PROVIDENT FUND BOARD [SSH]	300	251,672	7.38	
21 Mar 2022 - 21 Mar 2022	WPRTS	EMPLOYEES PROVIDENT FUND BOARD [SSH]	727	251,372	7.372	
18 Mar 2022 - 18 Mar 2022	WPRTS	EMPLOYEES PROVIDENT FUND BOARD [SSH]	1,000	250,645	7.35	
17 Mar 2022 - 17 Mar 2022	WPRTS	EMPLOYEES PROVIDENT FUND BOARD [SSH]	864	249,645	7.321	
16 Mar 2022 - 16 Mar 2022	WPRTS	EMPLOYEES PROVIDENT FUND BOARD [SSH]	-92	248,781	7.296	
24 Mar 2022 - 25 Mar 2022	WZSATU	DATO' SRI TENGKU UZIR BIN TENGKU DATO' UBAIDILLAH [DIR/CEO]	-3,300	44,099	4.164	
21 Mar 2022 - 22 Mar 2022	WZSATU	DATO' SRI TENGKU UZIR BIN TENGKU DATO' UBAIDILLAH [DIR/CEO]	-1,800	47,399	4.476	
23 Mar 2022 - 25 Mar 2022	WZ-SATU-WA	DATO' SRI TENGKU UZIR BIN TENGKU DATO' UBAIDILLAH [DIR/CEO]	-1,150	64,064	34.962	
18 Mar 2022 - 21 Mar 2022	WZ-SATU-WA	DATO' SRI TENGKU UZIR BIN TENGKU DATO' UBAIDILLAH [DIR/CEO]	-850	65,214	35.589	
21 Mar 2022 - 21 Mar 2022	YINSON	EMPLOYEES PROVIDENT FUND BOARD [SSH]	-217	169,770	15.944	
18 Mar 2022 - 18 Mar 2022	YINSON	EMPLOYEES PROVIDENT FUND BOARD [SSH]	147	169,987	15.965	
17 Mar 2022 - 17 Mar 2022	YINSON	EMPLOYEES PROVIDENT FUND BOARD [SSH]	88	169,840	15.951	



capital

Capital A Berhad

Capital A Berhad (**CAPITALA**) (formerly known as AirAsia Group Berhad) wish to announce that Malaysia Airports (Sepang) Sdn Bhd's application to strike out AirAsia Berhad's and AirAsia X Berhad's claim for the sum of RM479,781,285.00 was dismissed by the Kuala Lumpur High Court on 25 March 2022. The Kuala Lumpur High Court has fixed the next Case Management for 4 April 2022.



CapitaLand

Capitaland Malaysia Trust

On behalf of the Manager, CIMB Investment Bank Berhad wishes

to announce that Capitaland Malaysia Trust (**CLMT**) had, on 28 March 2022, issued and allotted a total of 21,519,490 new CLMT Units pursuant to the Distribution Reinvestment Plan for the Final Income Distribution. The new CLMT Units have been listed and quoted on the Main Market of Bursa Securities with effect from 29 March 2022. With the listing of the new CLMT Units, the total enlarged number of issued CLMT Units is 2,152,375,224, and the Distribution Reinvestment Plan for the Final Income Distribution is now completed.



GDEX Berhad

GDEX Berhad (**GDEX**) wishes to announce that it has on 31 March 2022 entered into a Memorandum of Understanding with Universiti Tunku Abdul Rahman.

The Memorandum of Understanding serves as an opportunity for the Company to upskill its employees to achieve the vision to be a technology-driven logistics company in the region. This collaboration is also expected to open up new areas of cooperation for research and development in developing solutions to cater for more complex logistics demands from the customers. Through this Memorandum of Understanding, the Company has the opportunity to facilitate community engagement by providing job opportunities as well as industrial placement programs to Universiti Tunku Abdul Rahman graduates and students.



Titijaya Land Berhad

The Board of Directors of Titijaya Land Berhad (**TITIJYA**) wishes to announce that City Meridian Development Sdn. Bhd., a

wholly owned subsidiary of Titijaya Land Berhad, had on 26 March 2022, entered into a Letter of Intent with DHL Properties (M) Sdn. Bhd. of Lot 4, Persiaran Perusahaan Seksyen 23, 40300 Shah Alam, Selangor Darul Ehsan, to negotiate in good faith the proposal for the Build-To-Suit and subsequent lease by DHL of the area situated at Lot 12174, No Hakmilik 4022, Mukim 12, Daerah Barat Daya, Pulau Pinang.

Over 5 trading days



ShareInvestor WebPro (www.shareinvestor.com/my)

1. Price > Stock Prices
2. Select Market: NASDAQ / NYSE / IDX / SET / HKEX / SGX (One bourse at a time)
3. select Stocks Tab
4. select Ranking Top Gainers or Top Losers (Over 5 Trading Days)
5. Mouse over Column Layout > select Edit Customs > select Name > select Last Done Price > select 5 Days Change > select 52 Weeks High > select 52 Weeks Low > Mouse Over Column Layout > select Custom

NASDAQ (USD)

Top Gainers

Name	Last Done	Change Over 5 Days	52 Weeks High	52 Weeks Low
BOOKING HOLDINGS INC	2,348.450	+86.460	2,715.660	1,796.450
TESLA INC	1,077.600	+63.680	1,243.490	546.980
LULULEMON ATHLETICA INC	365.230	+47.490	485.825	278.000
DEXCOM INC	511.600	+43.210	659.452	318.450
EQUINIX INC	741.620	+29.990	885.260	662.260

Top Losers

Name	Last Done	Change Over 5 Days	52 Weeks High	52 Weeks Low
ALPHABET INC (GOOGL.NQ)	2,781.350	-50.090	3,030.932	2,036.150
MERCADOLIBRE INC	1,189.480	-46.960	1,970.130	858.990
ALPHABET INC (GOOG.NQ)	2,792.990	-37.440	3,042.000	2,056.745
AMAZON COM INC	3,259.950	-35.520	3,773.078	2,671.450
SAIA INC	243.820	-33.870	365.500	187.020

NYSE (USD)

Top Gainers

Name	Last Done	Change Over 5 Days	52 Weeks High	52 Weeks Low
WHITE MOUNTAINS INSURANCE GROUP	1,136.240	+58.130	1,243.000	978.505
CHEMED CORP	506.550	+31.560	539.870	403.000
CHIPOTLE MEXICAN GRILL	1,582.030	+25.660	1,958.545	1,277.410
GAMESTOP CORPORATION	166.580	+24.190	344.660	77.580
BLACKROCK INC	764.170	+23.130	973.160	660.150

Top Losers

Name	Last Done	Change Over 5 Days	52 Weeks High	52 Weeks Low
BERKSHIRE HATHAWAY INC	528,921.000	-10,028.000	544,389.260	385,702.000
NVR INC	4,467.270	-272.380	5,982.445	4,518.320
TEXAS PACIFIC LAND CORPORATION	1,352.110	-59.800	1,773.950	946.290
CABLE ONE INC	1,464.240	-42.670	2,136.135	1,375.625
RH	326.090	-35.460	744.560	320.810

IDX (Rupiah)

Top Gainers

Name	Last Done	Change Over 5 Days	52 Weeks High	52 Weeks Low
METROPOLITAN KENTJANA TBK.	24,200.000	+2600.000	27,025.000	21,600.000
BAYAN RESOURCES TBK.	43,350.000	+1725.000	45,000.000	12,000.000
TELEFAST INDONESIA TBK.	5,125.000	+975.000	8,225.000	825.000
HEXINDO ADIPERKASA TBK.	6,150.000	+850.000	6,200.000	2,602.785
INDO TAMBANGRAYA MEGAH TBK.	28,550.000	+750.000	30,200.000	11,475.000

Top Losers

Name	Last Done	Change Over 5 Days	52 Weeks High	52 Weeks Low
SOLUSI TUNAS PRATAMA TBK.	47,500.000	-8,725.000	70,975.000	4,930.000
UNITED TRACTORS TBK.	25,550.000	-1,050.000	27,750.000	18,525.000
HARUM ENERGY TBK.	10,700.000	-700.000	14,750.000	4,700.000
JEMBO CABLE COMPANY TBK.	4,600.000	-675.000	10,000.000	4,440.000
DCI INDONESIA TBK.	43,300.000	-650.000	60,300.000	10,525.000

SET (Thai Baht)

Top Gainers

Name	Last Done	Change Over 5 Days	52 Weeks High	52 Weeks Low
JTS	369.000	+28.000	374.000	10.700
JMT	77.000	+7.750	78.000	38.345
THG	83.250	+7.750	84.000	24.200
TPCS	22.500	+5.500	27.750	12.200
DITTO	63.000	+5.000	63.250	15.000

Top Losers

Name	Last Done	Change Over 5 Days	52 Weeks High	52 Weeks Low
PTTEP	144.000	-10.000	158.000	100.500
UPF	64.000	-7.250	77.000	60.000
TFMAMA	208.000	-5.000	215.000	189.000
BH	156.500	-4.500	175.000	116.500
OHTL	326.000	-4.000	380.000	300.000

HKEX (HKD)

Top Gainers

Name	Last Done	Change Over 5 Days	52 Weeks High	52 Weeks Low
ZAI LAB LIMITED	331.800	+295.660	1,420.000	205.400
ASYMCHEM LABORATORIES (TIANJIN) CO	278.000	+23.400	388.000	210.000
YUM CHINA HOLDINGS INC	347.600	+21.600	544.000	281.000
TENCENT HOLDINGS LIMITED	374.200	+17.800	638.477	297.000
CLOUD VILLAGE INC	92.000	+14.550	205.800	55.800

Top Losers

Name	Last Done	Change Over 5 Days	52 Weeks High	52 Weeks Low
CANSINO BIOLOGICS INC	125.900	-28.800	437.000	102.100
BILIBILI INC	216.400	-27.800	1,052.000	125.000
ORIENT OVERSEAS INT	209.400	-22.800	249.000	91.350
ANGELALIGN TECHNOLOGY INC	134.800	-15.500	490.000	111.000
HONG KONG EXCHANGES & CLEARING	371.400	-12.600	544.000	314.000

SGX (SGD)

Top Gainers

Name	Last Done	Change Over 5 Days	52 Weeks High	52 Weeks Low
AZEUS	6.130	+0.950	10.060	1.730
JARDINE C&C	25.030	+0.580	25.180	18.930
VENTURE	17.570	+0.290	20.790	16.240
CITYDEV	7.870	+0.240	8.301	6.522
SIA ENGINEERING	2.550	+0.220	2.560	1.960

Top Losers

Name	Last Done	Change Over 5 Days	52 Weeks High	52 Weeks Low
JMH USD	55.000	-2.830	67.860	49.980
PLATOCAPITAL	1.030	-0.330	2.020	0.870
PRUDENTIAL USD	16.050	-0.300	20.600	14.500
HAW PAR	11.600	-0.250	13.800	11.100
WILMAR INTL	4.710	-0.160	5.463	3.980