



MARKET SENTIMENTS

EPF'S 1H2024 TOTAL DISTRIBUTABLE INCOME UP 29% TO RM36.7B

+

see more
on pages
29-31

FOREIGN INVESTORS OFFLOADED NEARLY RM770M IN NET EQUITIES LAST WEEK — MIDF

PLUS



See more on pages **21-27**

ALSO

COMPANY SPOTLIGHT

AMMB Holdings Berhad

See more on page **07**

MSWG

Breaking the silence: Why AGMs should be exciting

See more on pages **33-39**

Note From The Publisher: This issue of Inve\$t comes to you today, a day earlier, due to relocation of our office.

04 LEADERBOARD

06 SHARIAH HOT STOCKS

08 SHARIAH MOMENTUM UP STOCKS

10 NON SHARIAH HOT STOCKS

12 UP TRENDING STOCKS

14 VALUE STOCKS

16 GROWTH STOCKS

17 DIVIDEND STOCKS

18 BROKERS' CALL

19 LONG COMPANIES

32 REGIONAL MARKETS

40 INSIDER ACTIVITY

45 INVESTOR RELATIONS

SHAREINVESTOR®

An AlphaInvest Company

Invest with Knowledge

INVESTOR PLATFORMS

Director
Darren Chong
darren.chong@shareinvestor.com

Business Development Manager
Jay Cheong
jay.cheong@shareinvestor.com

Product & Marketing Manager
Daniel Wong
daniel.wong@shareinvestor.com

ADMIN & OPERATIONS

Senior Executive
Watie Nordin
watie.nordin@shareinvestor.com

Executive
Silas Emmanuel Joseph
silas.joseph@shareinvestor.com

PROCESS AUTOMATION & DATA ANALYTICS

Data Analyst
Tan Yong Sheng

INVESTOR RELATIONS

Group Managing Director & Publisher
Edward Stanislaus
edward@shareinvestor.com

Senior Manager
Letticia Wong
letticia.wong@shareinvestor.com

Manager
Aida Norzeti Talib
aida.norzeti@shareinvestor.com

Inve\$t WEEKLY

Senior Manager
Advertising Sales & Marketing
Mark Rodrigues
mark.rodrigues@shareinvestor.com

ALPHAINVEST HOLDINGS BOARD OF DIRECTORS

Chairman	Patrick Daniel
Group CEO	Christopher Lee
Group COO	Lim Dau Hee
Group MD	Shanison Lin



“ GIVE A MAN A FISH AND YOU FEED HIM FOR A DAY; TEACH A MAN TO FISH AND YOU FEED HIM FOR A LIFETIME ”

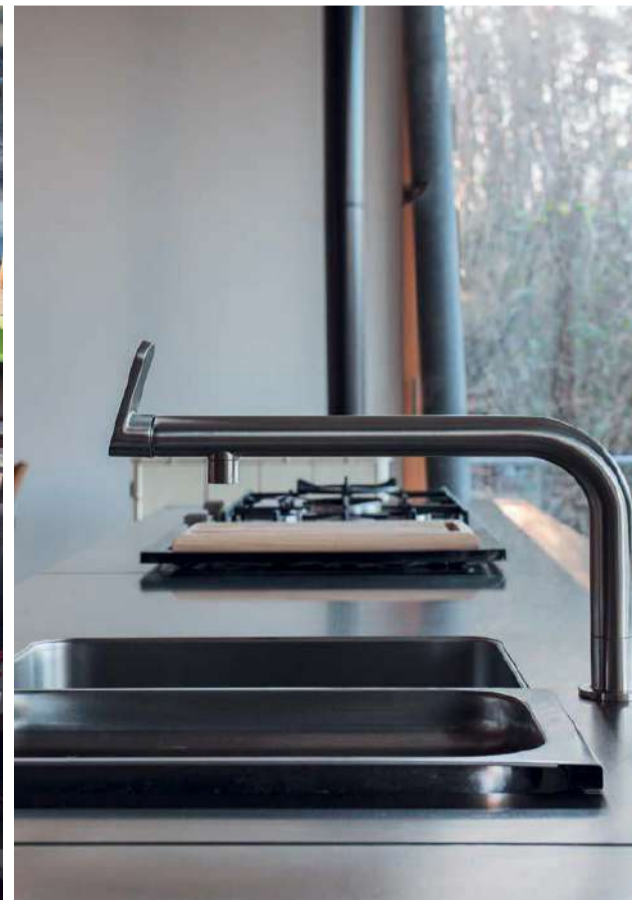
ShareInvestor Malaysia Sdn. Bhd.

(200001023956) (526564-M)
Unit No. DF2-07-03A. Level 7,
Persoft Tower, 6B Persiaran Tropicana,
47410 Petaling Jaya, Selangor Darul Ehsan.

Hotline : 603 7803 1791
Mobile : 011 6343 8939
Website : www.ShareInvestor.com.my
www.alphainvestholdings.com
www.Facebook.com/ShareInvestorMalaysia

ADVERTISEMENT ENQUIRY

bulthaup takes care of the details so that you can enjoy a harmonious environment.



XTRA

XTRA FURNITURE SDN BHD
The Gardens Mall, Mid Valley City
xtrafurniture.com/bulthaup
fb.com/bulthaupmalaysia

bulthaup

WE ARE MOVING!

Effective from Friday August 16, 2024,
ShareInvestor Malaysia is relocating.



Our new address

ShareInvestor Malaysia Sdn Bhd
PJX HM Shah Tower,
L15-03 & 03A,
No 16A Jalan Persiaran Barat, PJS 52,
46200 Petaling Jaya, Selangor.

We look forward to continuing to serve you
from our new office.

www.shareinvestor.com - market data at your fingertips



ShareInvestor WebPro (www.shareinvestor.com/my)
Prices > Stock Prices > Bursa > click Stocks tab

1. mouse over Ranking > select Top Active > all Shariah stocks are denoted with an [S] > mouse over Column Layout > select Edit Customs > select Name > select Volume > select Last Done Price > Mouse Over Column Layout > select Custom
2. mouse over Ranking > select Top Turnover > all Shariah stocks are denoted with an [S] > mouse over Column Layout > select Edit Customs > select Name > select Last Done Price > select Value > Mouse Over Column Layout > select Custom
3. mouse over Ranking > select Top Gainers (Over 5 Trading Days) > mouse over Column Layout > select Edit Customs > select Name > select Last Done Price > select 5 Days Change > select 5 Days % Change > Mouse Over Column Layout > select Custom
4. mouse over Ranking > select Top Losers (Over 5 Trading Days)
5. mouse over Ranking > select Top % Gainers (Over 5 Trading Days)
6. mouse over Ranking > select Top % Losers (Over 5 Trading Days)

Shariah Top Actives (as at Wednesday)

Name	Price (RM)	Volume
TWL [S]	0.030	1,353,767.000
MYEG [S]	0.905	411,105.000
HIAPTEK [S]	0.355	384,967.000
TOPGLOV [S]	0.920	369,914.000
VS [S]	1.240	342,753.000
VELESTO [S]	0.215	307,517.000
HUBLINE [S]	0.080	298,704.000
TANCO [S]	0.985	294,812.000
UNIQUE [S]	0.440	286,170.000
SAUDEE [S]	0.020	249,633.000

Shariah Top Turnover (as at Wednesday)

Name	Price (RM)	Value (RM)
SUNWAY [S]	4.190	73,700,059
TENAGA [S]	13.840	68,717,860
GAMUDA [S]	7.550	61,225,662
PMETAL [S]	5.030	42,689,385
VS [S]	1.240	41,466,051
NOTION [S]	1.730	38,673,939
MYEG [S]	0.905	37,296,864
SIMEPROP [S]	1.490	35,945,436
SIME [S]	2.620	34,518,826
TOPGLOV [S]	0.920	33,814,085

Top Gainers (over 5 Trading days as at Wednesday)

Name	Price (RM)	Change (RM)
PETDAG	19.480	+1.860
HEIM	23.500	+1.600
MPI	36.420	+0.920
CARLSBG	18.860	+0.780
PIE	5.810	+0.620
BURSA	9.650	+0.450
PANAMY	19.420	+0.440
UTDPLT	25.700	+0.400
F&N	29.500	+0.380
PMBTECH	1.970	+0.330

Top % Gainers (over 5 Trading days as at Wednesday)

Name	Price (RM)	Change (%)
KGROUP	0.010	+100.00
TECHNAX	0.175	+75.00
CNASIA	0.120	+50.00
HONGSENG	0.015	+50.00
MQTECH	0.015	+50.00
EURO	0.080	+33.33
FOCUS	0.020	+33.33
MUIPROP	0.360	+30.91
BARAKAH	0.065	+30.00
PGLOBE	0.375	+29.31

Top Losers (over 5 Trading days as at Wednesday)

Name	Price (RM)	Change (RM)
CETECH	0.805	-0.345
GCB	3.530	-0.200
CRESNDO	4.140	-0.170
ALLIANZ	20.240	-0.160
TIMECOM	4.920	-0.160
LYSAGHT	2.600	-0.150
PADINI	3.250	-0.140
CHINTEK	7.570	-0.134
MFCB	4.560	-0.130
TAANN	3.730	-0.120

Top % Losers (over 5 Trading days as at Wednesday)

Name	Price (RM)	Change (%)
PHB	0.005	-50.00
BCMALL	0.010	-33.33
CETECH	0.805	-30.00
RGS	0.155	-18.42
HUBLINE	0.080	-15.79
JIANKUN	0.060	-14.29
CNERGEN	0.440	-13.73
ECM	0.205	-12.77
SAPNRG	0.035	-12.50
SAPRES	0.275	-11.29

SHAREINVESTOR[®]
An AlphaInvest Company

SHAREINVESTOR[®]
An AlphaInvest Company

STATION

WEBPRO

Merdeka Kaw Kaw Promotion

PROMOTION PERIOD : 12 - 31 Aug 2024

Enjoy

20%

OFF



**SUBSCRIBE
NOW!**

Coupon Code

MYMERDEKA24

*T&C Apply

Price & Volume Distribution Charts (as at Wednesday)

Technical Analysis

DEFINITION: Shariah compliant stocks with Technical Analysis showing 5-days & 10-days Moving Average Price below Yesterday's Close over past 3 days and with Volume Spike.

CHART GUIDE: Volume Distribution Chart is a statistical interpretation of the current sentiment on each stock in graphical format. The highest bar categorized as >150k is likely to be traded by institutions or super dealers, while the lowest bar categorized as <15k usually represents retail investors. "Buy Up" refers to more buyers snatching up the lots queued at selling price. "Sell Down" refers to sellers selling their shares to the buying queue



ShareInvestor WebPro > Screener > Market Screener (FA & TA) > select BURSA > add criteria

A. Criteria

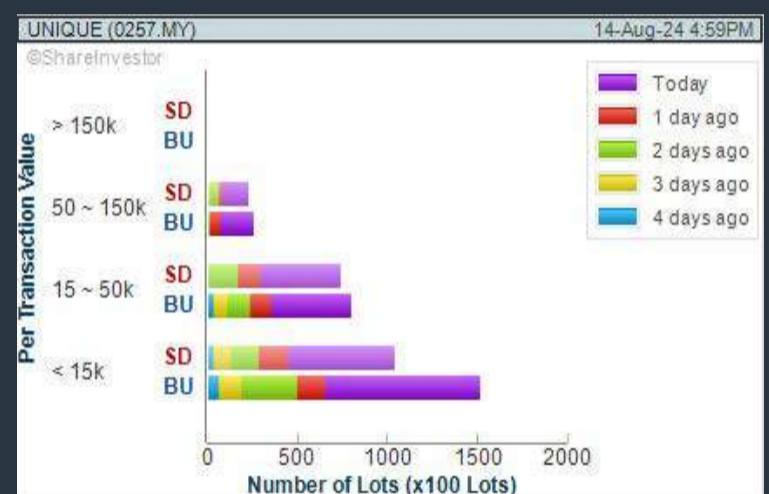
- > click Add Criteria
- Technical Analysis Conditions tab select (i) Moving Average Below Close (ii) Volume Spike
- Fundamental Analysis Conditions tab > select (iii) Revenue
- Prices & Other Conditions tab > select (iv) Is Shariah Compliant
- Technical Analysis Conditions tab select (v) Moving Average Below Close
- Prices & Other Conditions tab > select (vi) Last Done Price
- Technical Analysis Conditions tab select (vii) Moving Average Below Close

B. Conditions (Criteria Filters)

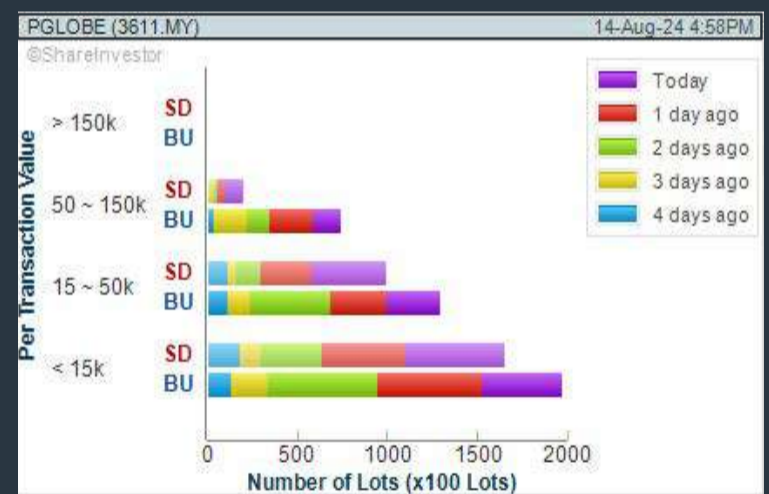
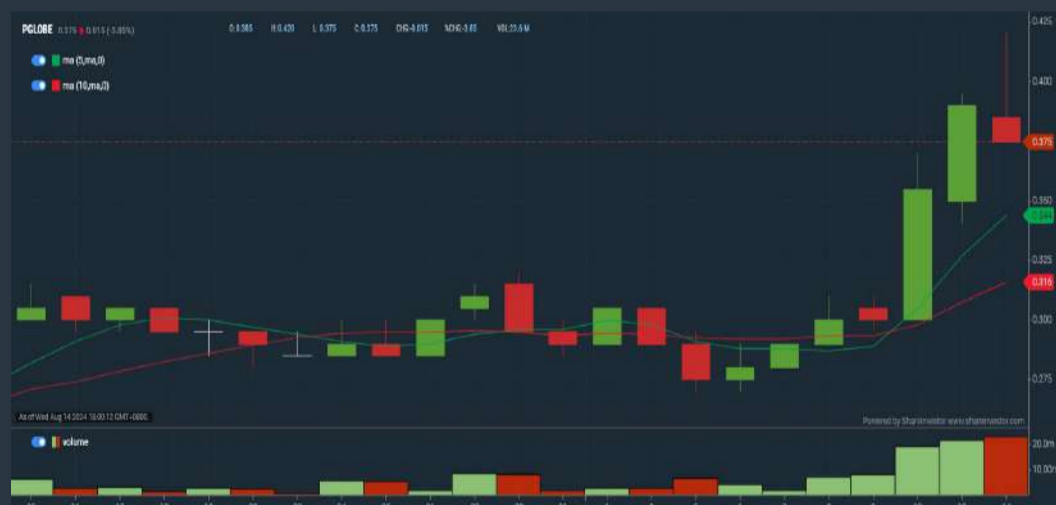
1. Moving Average Below Close - select (MA) type (5) below close price for type (3) days
2. Volume Spike - Volume type (1) greater than type (5) days average
3. Revenue ("000) - select (more than) type (1) for the past select (1) financial year(s)
4. Is Shariah Compliant - select **Yes**
5. Moving Average Below Close - select (MA) type (10) below close price for type (3) days
6. Last Done Price - select (more than) type (0.3)
7. Moving Average Below Close - select (EMA) type (5) below close price for type (3) days

- > click Save Template > Create New Template type (Shariah Hot Stocks) > click Create
- > click Save Template as > select Shariah Hot Stocks > click Save
- > click Screen Now (may take a few minutes)
- > Sort By: Select (Vol) Select (Desc)
- > Mouse over stock name > Charts > click C² Charts or Volume Distribution

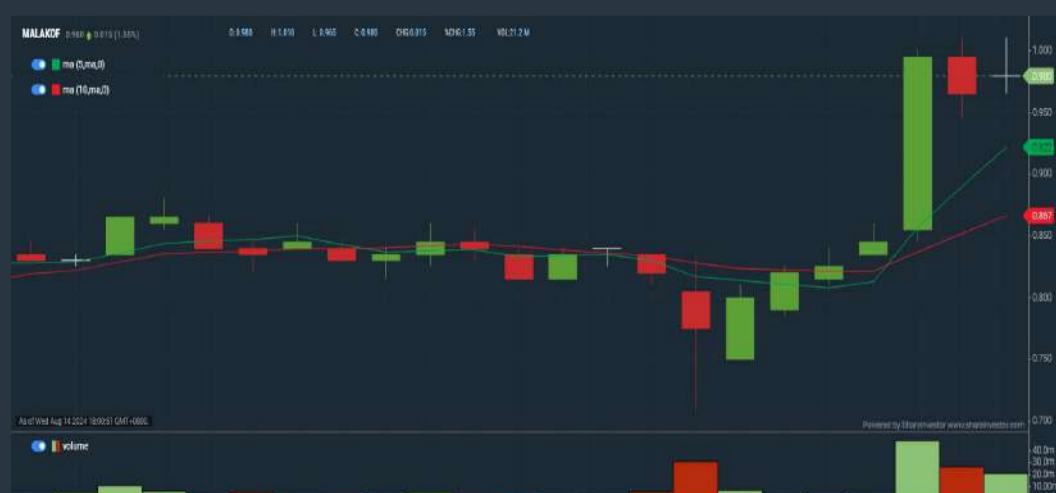
UNIQUE FIRE HOLDINGS BERHAD (0257) C² Chart



PARAGON GLOBE BERHAD (3611) C² Chart



MALAKOFF CORPORATION BERHAD (5264) C² Chart



Disclaimer: The information on this page is provided as a service to readers. It does not constitute financial advice and/or any investment recommendations. Past performance is not indicative of future results. We assume no liability for damages resulting from or arising out of the use of such information. It would be best if you did your own research to make your personal investment decisions wisely or consult a licenced investment advisor.

COMPANY BACKGROUND

AMMB Holdings Berhad (AmBank Group) is a financial services group providing wholesale banking, retail banking, business banking, investment banking and related financial services which include Islamic banking, underwriting of general insurance, life insurance, family takaful, stock and share broking, futures broking, investment advisory and asset management services in unit trusts and real estate investment trusts.



AMBANK AMMB HOLDINGS BHD		Updated at 14 Aug 2024 17:31	
Last (MYR): 4.660 ↑	Change: +0.070	High: 4.680	Remarks: s
	Change (%): +1.53	Low: 4.560	
Open	4.580	Yesterday's Close	4.590
Buy Price	4.640	Sell Price	4.660
Buy Volume ('00)	19	Sell Volume ('00)	100
Cumulative Volume ('00)	89,549	Cumulative Value	41,389,569

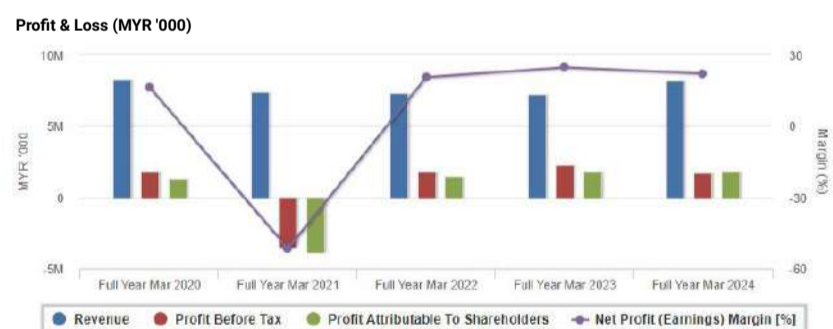
Financial Analysis

Profit Growth Increasing profit in last 2 consecutive years (with last 3 profitable years)	😊	Piotroski F Score The company has below average financial strength (Piotroski F-Score of 3-4)	😟
Dividend Payout Dividend is increasing over the past 60 months.	😊	Current Ratio The company may have difficulty meeting short-term obligations with its current assets for 3 consecutive years	😟
Debt to Cashflow The company has negative cash flow from operations in most recent year	😟	Debt to Equity High debt to equity for most recent year	😟
Free Cash Flow Negative free cash flow for the most recent year	😟	Net Earnings Margin Consistently high net profit margin of at least 20% for 3 years	😊
Return on Equity (ROE) ROE is improving by 10% a year over the past 36 months.	😊		

😊 Excellent 😊 Good 😐 Neutral 😟 Be Alert 😡 Watch Out



Historical Financials



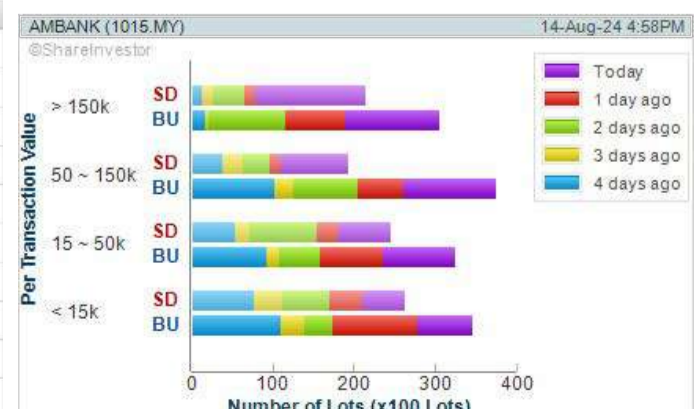
WebPro 9-Days Free Trial Registration (worth RM10) Sign Up Now



Key Statistics with Total Shareholder Returns

Total Shareholder Return

Period	Dividend Received	Capital Appreciation	Total Shareholder Return
Short Term Return	5 Days	+0.300	+6.88%
	10 Days	+0.220	+4.95%
	20 Days	+0.250	+5.67%
Medium Term Return	3 Months	+0.420	+9.91%
	6 Months	+0.370	+8.62%
	1 Year	+0.800	+20.73%
Long Term Return	2 Years	+0.640	+15.92%
	3 Years	+1.740	+59.59%
	5 Years	0.193	+0.740
Annualised Return	Annualised	-	+4.36%



Disclaimer: The information on this page is provided as a service to readers. It does not constitute financial advice and/or any investment recommendations. Past performance is not indicative of future results. We assume no liability for damages resulting from or arising out of the use of such information. It would be best if you did your own research to make your personal investment decisions wisely or consult a licenced investment advisor.

Price & Volume Distribution Charts (as at Wednesday)

Technical Analysis

DEFINITION: Shariah compliant stocks with Technical Analysis showing Bullish Momentum and Price Uptrend. The share price closed at the highest price yesterday. The typical price was higher than the previous day's typical price.

CHART GUIDE: Volume Distribution Chart is a statistical interpretation of the current sentiment on each stock in graphical format. The highest bar categorized as >150k is likely to be traded by institutions or super dealers, while the lowest bar categorized as <15k usually represents retail investors. "Buy Up" refers to more buyers snatching up the lots queued at selling price. "Sell Down" refers to sellers selling their shares to the buying queue.



ShareInvestor WebPro > Screener > Market Screener (FA & TA)>select BURSA>add criteria

A. Criteria

- > click Add Criteria
- Fundamental Analysis Conditions tab >select (i) Revenue
- Technical Analysis Conditions tab select (ii) Average Volume
- Prices & Other Conditions tab > select (iii) Last Done Price
- Prices & Other Conditions tab > select (iv) Is Shariah Compliant
- Technical Analysis Conditions tab select (v) RSI Overbought
- Technical Analysis Conditions tab select (vi) Moving Average Below Close
- Technical Analysis Conditions tab select (vii) CCI Overbought

B. Conditions (Criteria Filters)

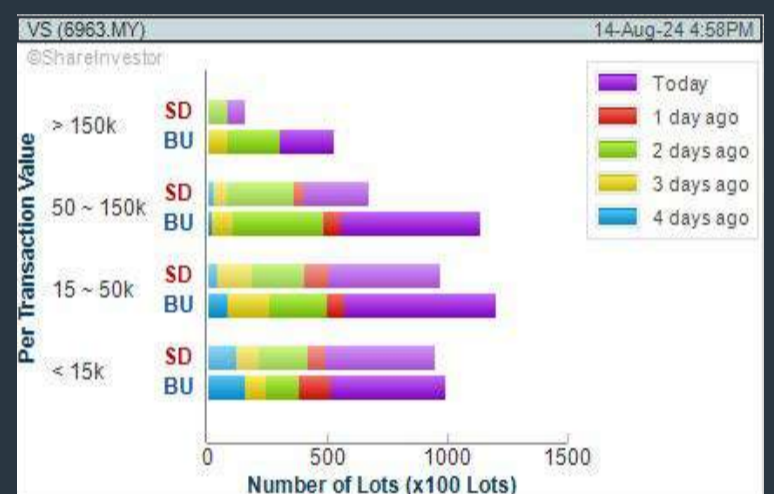
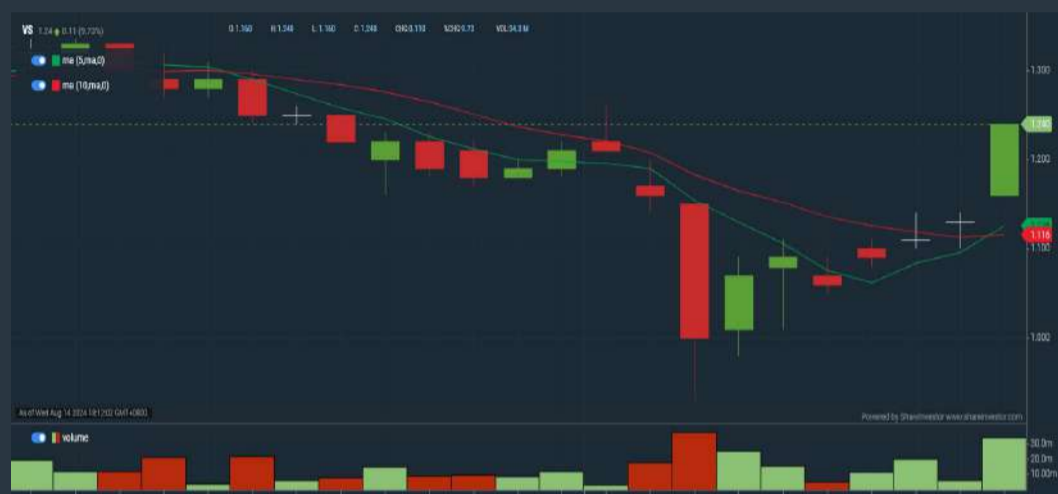
1. Revenue ("000) - select (more than) type (1) for the past select (1) financial year(s)
2. Average Volume - type (1) days average volume greater than type (10000) lots
3. Last Done Price - select (more than) type (0.3)
4. Is Shariah Compliant - select Yes
5. RSI Overbought - select RSI 1 above 99 for 1 days
6. Moving Average Below Close - select (MA) type (10) below close price for type (1) days
7. CCI Overbought - select CCI (2) above (0) for (1) days

- > click Save Template > Create New Template type (Shariah Momentum Up Stocks) > click Create
- > click Save Template as > select Shariah Momentum Up Stocks > click Save
- > click Screen Now (may take a few minutes)
- Sort By: Select (Vol) Select (Desc)
- Mouse over stock name > Charts > click C² Charts tab or Volume Distribution

V.S INDUSTRY BERHAD (6963)

C² Chart

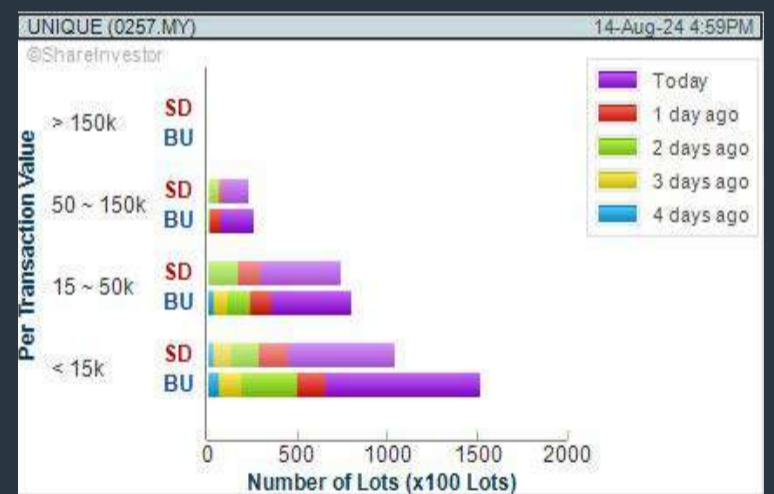
Analysis



UNIQUE FIRE HOLDINGS BERHAD (0257)

C² Chart

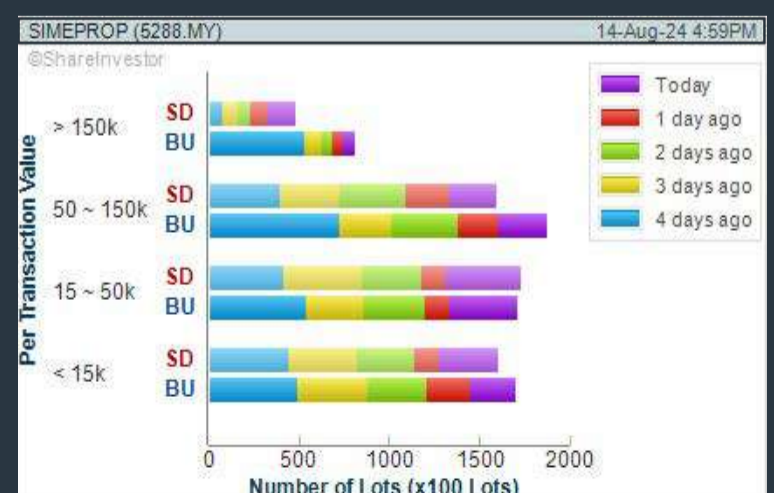
Analysis



SIME DARBY PROPERTY BERHAD (5288)

C² Chart

Analysis



Disclaimer: The information on this page is provided as a service to readers. It does not constitute financial advice and/or any investment recommendations. Past performance is not indicative of future results. We assume no liability for damages resulting from or arising out of the use of such information. It would be best if you did your own research to make your personal investment decisions wisely or consult a licenced investment advisor.

ACTIVE TRADING TOURNAMENT 2024 PRIZES



Cash Prizes



iPhone 15



Cash Vouchers



1ST PRIZE
RM10,000



2ND PRIZE
RM6,000



3RD PRIZE
RM3,000

DAILY TOP TRADE PRIZES

(15 X WINNERS)

Touch n' Go eWallet reload pin (RM 120)

REGISTRATION PRIZES

1 X IPHONE 15

MAKE-A-TRADE PRIZE

Touch n' Go eWallet reload pin (RM 60)
FOR 30X LUCKY PARTICIPANTS

Price & Volume Distribution Charts (as at Yesterday)

Technical Analysis

DEFINITION: Stocks with Technical Analysis showing 5-days & 10-days Moving Average Price below Close over past 1 days and with Volume Spike

CHART GUIDE: Volume Distribution Chart is a statistical interpretation of the current sentiment on each stock in graphical format. The highest bar categorized as >150k is likely to be traded by institutions or super dealers, while the lowest bar categorized as <15k usually represents retail investors. "Buy Up" refers to more buyers snatching up the lots queued at selling price. "Sell Down" refers to sellers selling their shares to the buying queue.



ShareInvestor WebPro > Screener > Market Screener (FA & TA) > select BURSA > add criteria

A. Criteria

- > click Add Criteria
- Technical Analysis Conditions tab select (i) Moving Average Below Close (ii) Volume Spike
- Fundamental Analysis Conditions tab >select (iii) Revenue
- Prices & Other Conditions tab > select (iv) Is Shariah Compliant
- Technical Analysis Conditions tab select (v) Moving Average Below Close
- Prices & Other Conditions tab > select (vi) Last Done Price
- Technical Analysis Conditions tab select (vii) Moving Average Below Close

B. Conditions (Criteria Filters)

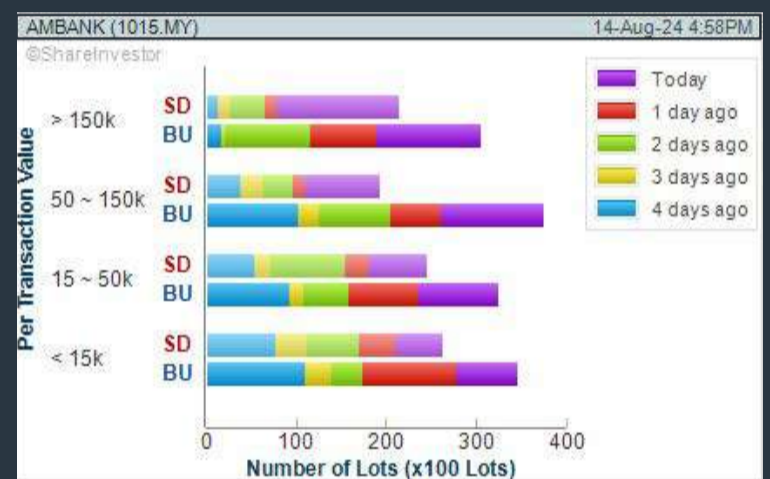
- Moving Average Below Close - select (MA) type (5) below close price for type (3) days
- Volume Spike - Volume type (1) greater than type (5) days average
- Revenue ("000) - select (more than) type (1) for the past select (1) financial year(s)
- Is Shariah Compliant - select NO
- Moving Average Below Close - select (MA) type (10) below close price for type (1) days
- Last Done Price - select (more than) type (0.3)
- Moving Average Below Close - select (EMA) type (5) below close price for type (1) days

- > click Save Template > Create New Template type (Non-Shariah Hot Stocks) > click Create
- > click Save Template as > select Non-Shariah Hot Stocks > click Save
- > click Screen Now (may take a few minutes)
- Sort By: Select (Vol) Select (Desc)
- Mouse over stock name > Charts > click C² Charts tab or Volume Distribution

AMMB HOLDINGS BERHAD (1015)

C² Chart

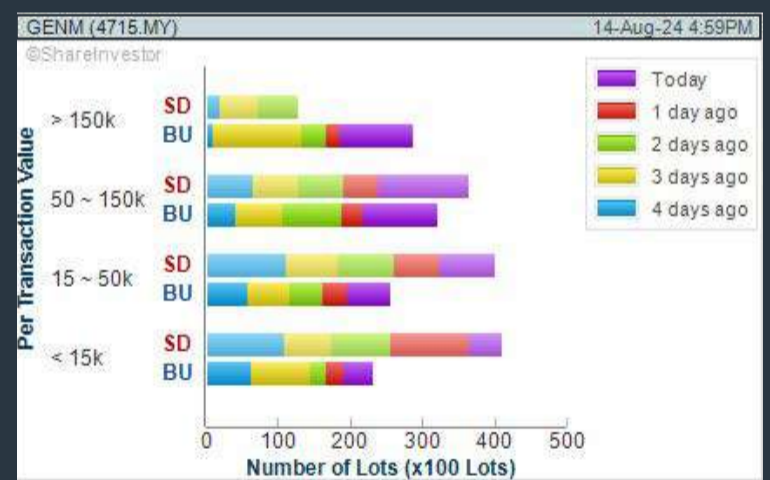
Analysis



GENTING MALAYSIA BERHAD (4715)

C² Chart

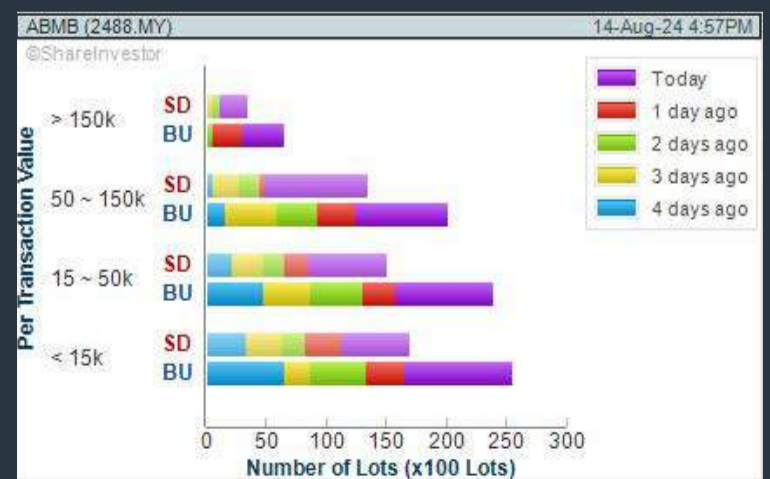
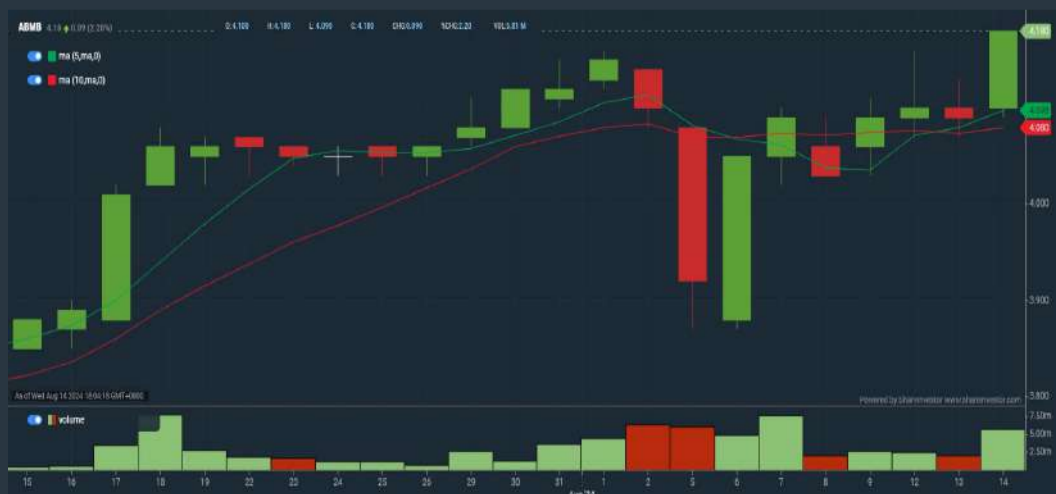
Analysis



ALLIANCE BANK MALAYSIA BERHAD (2488)

C² Chart

Analysis



SHAREINVESTOR WEBPRO

STOCK MARKET DATA AT YOUR FINGERTIPS

Powerful browser-based market analytics platform.
Access from anywhere



8 Markets Data

- ▶ Get access to data from Bursa, NYSE, Nasdaq, HKEX, SGX, IDX, SET & ASX

Portfolio Management

- ▶ Profit & Loss Summary
- ▶ Stock Alert
- ▶ News & Events filtering
- ▶ Customizable column layout

Fundamental Analysis

Financial Analysis Statement

- ▶ Profit & Loss
- ▶ Balance Sheet
- ▶ Cash Flow Statement
- ▶ More than 20 Financial Ratios
- ▶ Dividend Analysis

Technical Charting

- ▶ C² chart (Customisable & Comprehensive)

Brokers' Call

Intrinsic Value Calculator

FactSheet

- ▶ Key Stock Information
- ▶ Ownership
- ▶ Consensus Estimates
- ▶ Annual Report
- ▶ Historical Price
- ▶ Insider Trades

What's new on WebPro (Stable Release 12.1.0)

In our effort to keep our platform at the forefront of trading technology, we have added on some new features onto our C² Chart in WebPro

ADDITIONAL NEW FEATURES:

- ▶ Anchor selector for AVWAP, PVAT, and PAV indicators
- ▶ Volume profile indicator by date range
- ▶ Moving Average Cross indicator
- ▶ Guppy Multiple Moving Average (GMMA) indicator
- ▶ GoNoGo Trend Signal indicators
- ▶ SignalIQ

So what are you waiting for? Head to our platform today and check out our new trading chart features and indicators. We're confident that you'll love the improvements we've made and that they'll help you become a more successful trader.

Click here to start your 9 days FREE trial
(Valued at RM10)



Price & Volume Distribution Charts (Over 3 trading days as at Wednesday)

Technical Analysis

DEFINITION: Stocks with Technical Analysis showing Bullish Momentum and Price Uptrend

CHART GUIDE: Volume Distribution Chart is a statistical interpretation of the current sentiment on each stock in graphical format. The highest bar categorized as >150k is likely to be traded by institutions or super dealers, while the lowest bar categorized as <15k usually represents retail investors. "Buy Up" refers to more buyers snatching up the lots queued at selling price. "Sell Down" refers to sellers selling their shares to the buying queue.



ShareInvestor WebPro > Screener > Market Screener (FA & TA) > select BURSA > add criteria

A. Criteria

- > click Add Criteria
- Fundamental Analysis Conditions tab > select (i) Revenue
- Technical Analysis Conditions tab select (ii) Moving Average Below Close
- Technical Analysis Conditions tab select (iii) Average Volume
- Prices & Other Conditions tab > select (iv) Last Done Price
- Technical Analysis Conditions tab select (v) Moving Average Below Close
- Technical Analysis Conditions tab select (v) Moving Average Bullish Crossover

B. Conditions

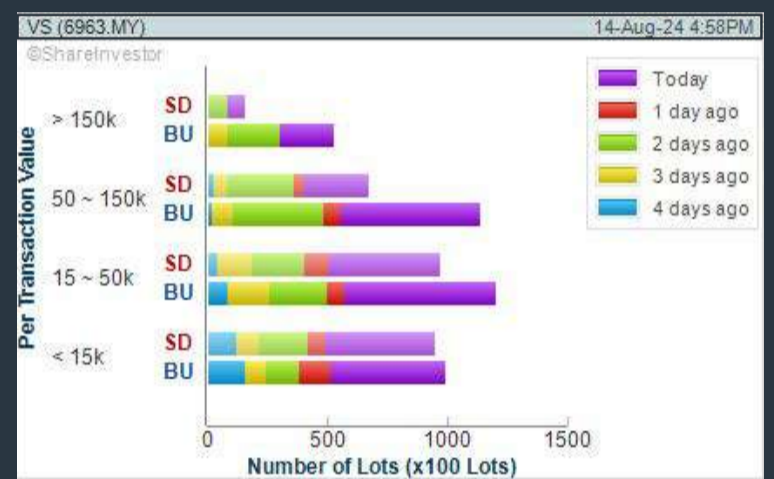
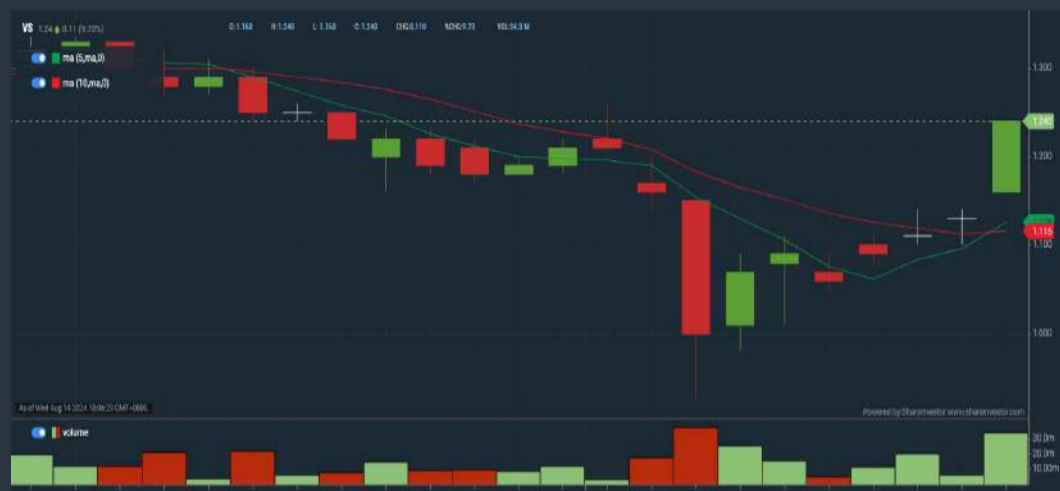
1. Revenue - select (more than) type (1) for the past select (1) financial year(s)
2. Moving Average Below Close - select (MA) type (20) below close price for type (1) days
3. Average Volume - type (5) days average volume type (10000) lots
4. Last Done Price - select (more than) type (0.3)
5. Moving Average Below Close - select (MA) type (10) below close price for type (1) days
6. Moving Average Bullish Crossover - select (MA) type (5) crossed above select (MA) type (10)

> click Save Template > Create New Template type (Non-Shariah Up-Trending Stocks) > click Create Click Save Template As > select Non-Shariah Up Trending Stocks > click Save > click Screen Now (may take a few minutes) Sort By: Select (Vol) Select (Desc) Mouse over stock name > Charts > click C² Charts tab or Volume Distribution

V.S INDUSTRY BERHAD (6963)

C² Chart

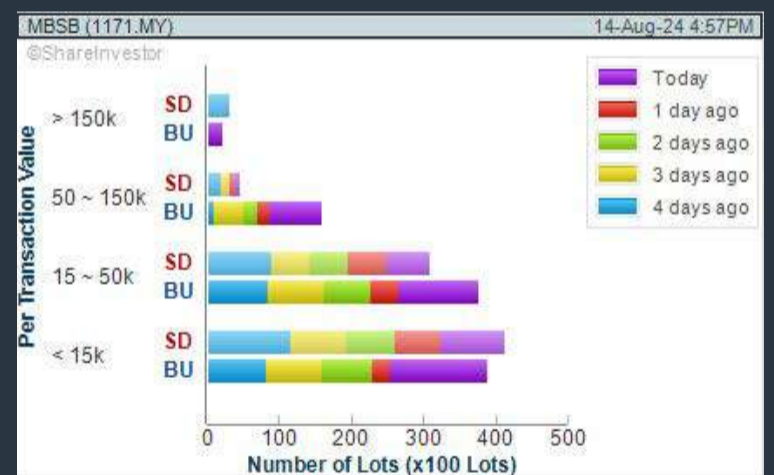
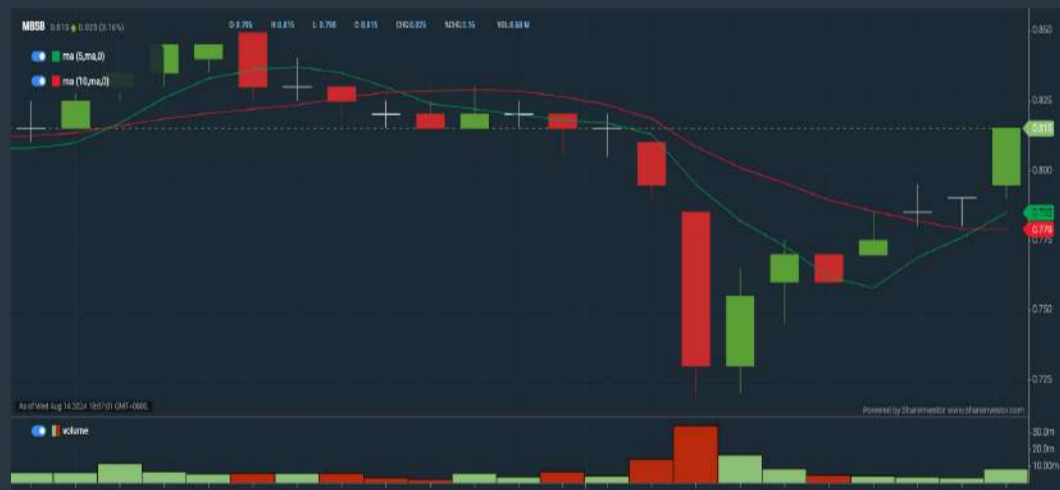
Analysis



MBSB BERHAD (1171)

C² Chart

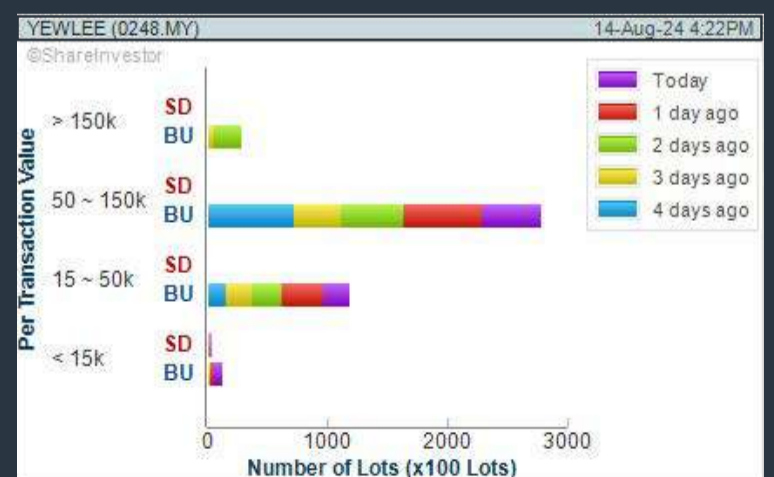
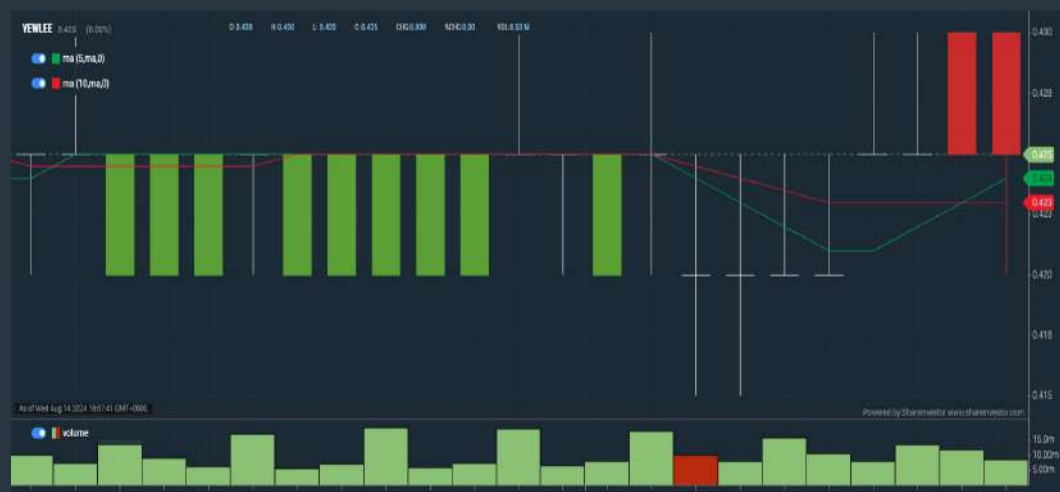
Analysis



YEW LEE PACIFIC GROUP BERHAD (0248)

C² Chart

Analysis

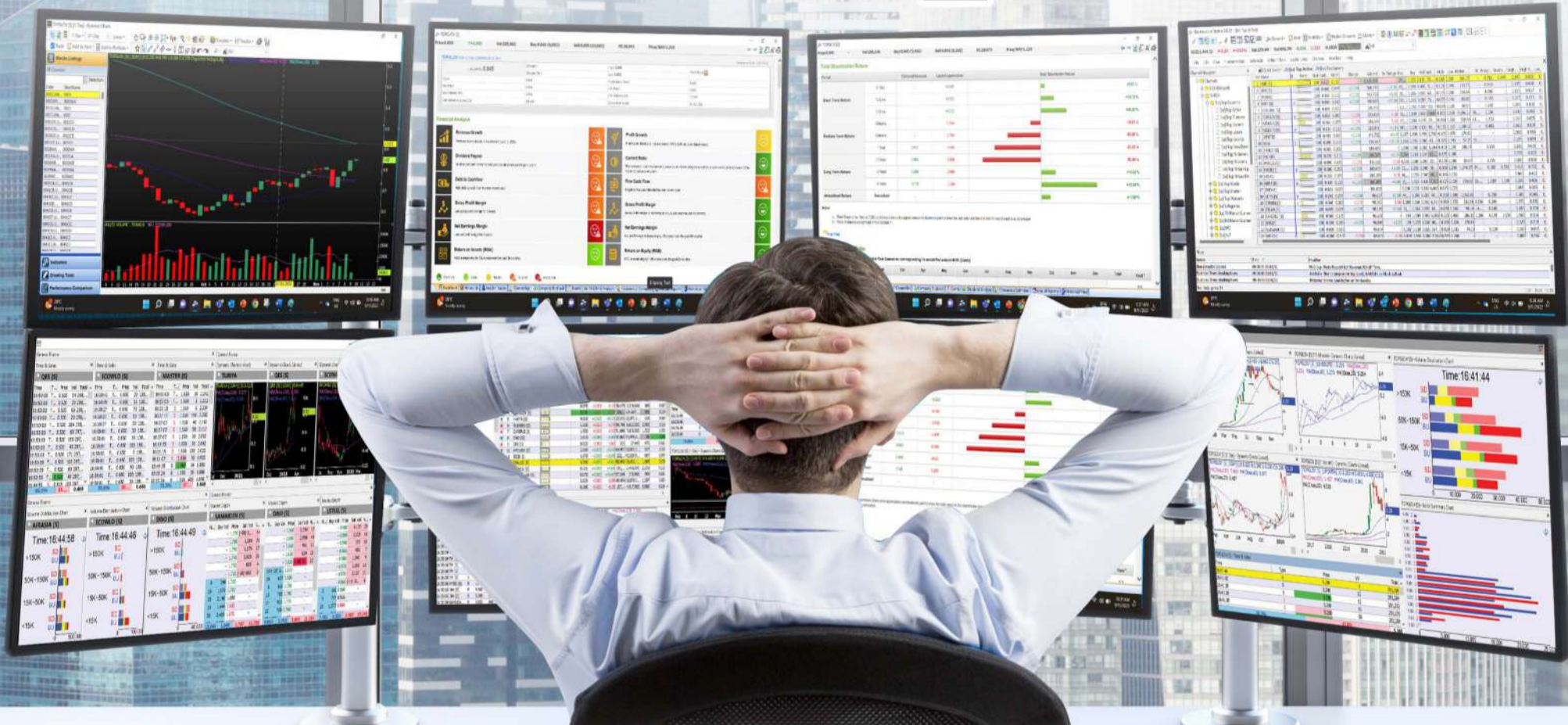


Disclaimer: The information on this page is provided as a service to readers. It does not constitute financial advice and/or any investment recommendations. Past performance is not indicative of future results. We assume no liability for damages resulting from or arising out of the use of such information. It would be best if you did your own research to make your personal investment decisions wisely or consult a licenced investment advisor.

MAKE BETTER TRADING STRATEGIES

with

SHARE INVESTOR STATION



8 Markets Data

- ▶ Get access to data from Bursa, NYSE, Nasdaq, HKEX, SGX, IDX, SET & ASX

Dynamic Chart

- ▶ Candlestick Pattern Recognition
- ▶ 111 Indicators
- ▶ 39 Drawing Tools
- ▶ Performance Comparison Chart

Intraday Data

- ▶ Market Depth
- ▶ Trade Summary Matrix & Chart
- ▶ Times & Sales
- ▶ Intraday Market Ticker

Market Screener

- ▶ 96 criteria ranging from FA, TA, Consensus Estimate
- ▶ Real-time Data

Power Frame

- ▶ Combining few Dynamic Charts together with intraday information in one frame

Technical Analysis

Fundamental Analysis

Financial Analysis Statement

- ▶ Profit & Loss
- ▶ Balance Sheet
- ▶ Cash Flow Statement
- ▶ More than 20 Financial Ratios
- ▶ Dividend Analysis

FactSheet

- ▶ Key Stock Information
- ▶ Ownership
- ▶ Consensus Estimates
- ▶ Annual Report
- ▶ Historical Price
- ▶ Insider Trades

**Start your 18 days
FREE trial now
(Valued at RM82)**



Price & Total Shareholder Return (as at Wednesday)

Fundamental Analysis

DEFINITION: Share price of a company trading at a lower price as compared to its fundamentals (FA) such as financial performance and dividend, allowing it to be attractive to value investors.

CHART GUIDE: Total Shareholder Return (TSR) combines share price appreciation and dividend distributions paid to show the total return to the shareholder expressed as a percentage.



ShareInvestor WebPro > Screener > Market Screener (FA & TA) > select BURSA > add criteria

A. Criteria

- > click Add Criteria
- Fundamental Analysis Conditions tab (i) Price Earnings Ratio
- Fundamental Analysis Conditions tab >select (ii) CAGR of Net Earnings
- Fundamental Analysis Conditions tab >select (iii) Net Debt To Equity
- Fundamental Analysis Conditions tab >select (iv) Return On Equity (ROE)

B. Conditions

1. Price Earnings Ratio - select (less than) type (15) times now
2. CAGR of Net Earnings - select (more than) type (10) % for the past type (3) financial year(s)
3. Net Debt To Equity – select (less than) type (1) for the past select (1) financial year(s)
4. Return On Equity (ROE) – select (more than) type (10) % for the past select (1) financial year(s)

- > click Save Template > Create New Template type (Value Stock) > click Create
- > click Save Template as > select Value Companies > click Save
- > click Screen Now (may take a few minutes)
- Sort by: Select (PE Ratio) Select (Ascending)
- > Mouse over stock name > Factsheet > looking for Total Shareholder Return
- > Mouse over stock name > Charts > click C2 Charts tab

SYNERGY HOUSE BERHAD (0279)

C² Chart

Analysis



Period	Dividend Received	Capital Appreciation	Total Shareholder Return
Short Term Return	5 Days	-0.020	-1.82 %
	10 Days	-0.200	-15.62 %
	20 Days	+0.010	+0.93 %
Medium Term Return	3 Months	-0.400	-27.03 %
	6 Months	+0.205	+23.43 %
	1 Year	+0.705	+188.00 %
Annualised Return	Annualised	-	+188.00 %

AJINOMOTO (M) BERHAD (2658)

C² Chart

Analysis



Period	Dividend Received	Capital Appreciation	Total Shareholder Return
Short Term Return	5 Days	+0.040	+0.20 %
	10 Days	-0.480	-3.25 %
	20 Days	-0.900	-5.92 %
Medium Term Return	3 Months	-2.260	-13.65 %
	6 Months	-0.821	-5.43 %
	1 Year	-0.270	-1.05 %
Long Term Return	2 Years	+3.639	+34.13 %
	3 Years	0.383	+5.27 %
	5 Years	2.152	+20.81 %

SOLID AUTOMOTIVE BERHAD (5242)

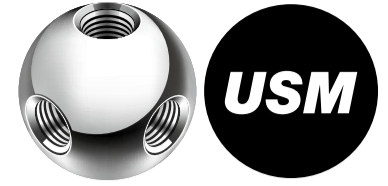
C² Chart

Analysis

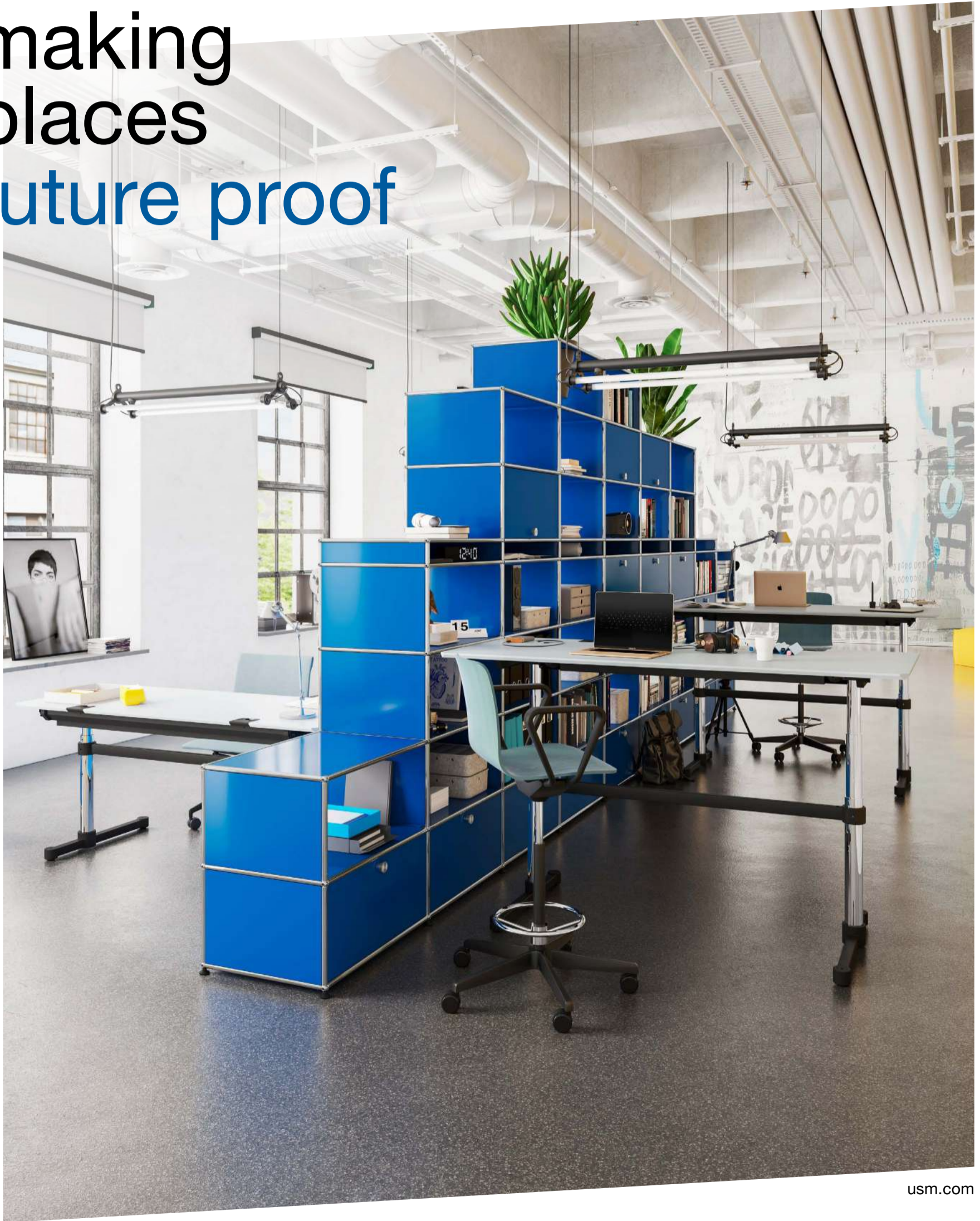


Period	Dividend Received	Capital Appreciation	Total Shareholder Return
Short Term Return	5 Days	+0.015	+0.11 %
	10 Days	-0.020	-0.09 %
	20 Days	-0.025	-0.11 %
Medium Term Return	3 Months	+0.015	+0.11 %
	6 Months	+0.015	+0.11 %
	1 Year	+0.015	+0.11 %
Long Term Return	2 Years	+0.020	+0.11 %
	3 Years	-0.040	-0.67 %
	5 Years	0.000	-0.03 %

Disclaimer: The information on this page is provided as a service to readers. It does not constitute financial advice and/or any investment recommendations. Past performance is not indicative of future results. We assume no liability for damages resulting from or arising out of the use of such information. It would be best if you did your own research to make your personal investment decisions wisely or consult a licenced investment advisor.



making places future proof



usm.com

XTRA

XTRA FURNITURE SDN BHD
The Gardens Mall, Mid Valley City, Lot S-236 & 237
Lingkar Syed Putra, 59200 Kuala Lumpur
T. +603 2282 9088 | living@xtrafurniture.com | xtrafurniture.com
📍 XTRAFurniture | 🌐 xtrafurnituremsia

Price & Total Shareholder Return (as at Wednesday)

Fundamental Analysis

DEFINITION: Company revenue is growing and making good quality of earnings with positive Free Cash Flow.

CHART GUIDE: Total Shareholder Return (TSR) combines share price appreciation and distributions paid to show the total return to the shareholder expressed as a percentage.



ShareInvestor WebPro > Screener > Market Screener (FA & TA) > select BURSA > add criteria

A. Criteria

1. Fundamental Analysis Conditions tab >select (i) Free Cash Flow, (ii) Revenue Growth, (iii) Gross Profit (Earnings) Margin, (iv) Quality of Earnings, (v) Total Shareholder Returns, > click Add Criteria
2. Fundamental Analysis Conditions tab >select (vi) Total Shareholder Returns > click Add Criteria

B. Conditions (Criteria Filters)

1. Free Cash Flow - select (more than) type (1) for the past select (1) financial year(s)
2. Revenue Growth - select (more than) type (1) for the past select (1) financial year(s)
3. Gross Profit (Earnings) Margin - select (more than) type (30) % for the past select (1) financial year(s)
4. Quality of Earnings - select (more than) type (1) for the past select (1) financial year(s)
5. Total Shareholder Return - -- select (more than) type (5) % for the past select (3) financial year(s)
6. Total Shareholder Return - -- select (more than) type (5) % for the past select (5) financial year(s)

- > click Save Template > Create New Template type (Growth Companies) > click Create
- > click Save Template as > select Growth Companies > click Save
- > click Screen Now (may take a few minutes)
- > Sort By: Select (Revenue Growth) Select (Desc)
- > Mouse over stock name > Factsheet > looking for Total Shareholder Return

SL INNOVATION CAPITAL BERHAD (03008)

C² Chart

Analysis

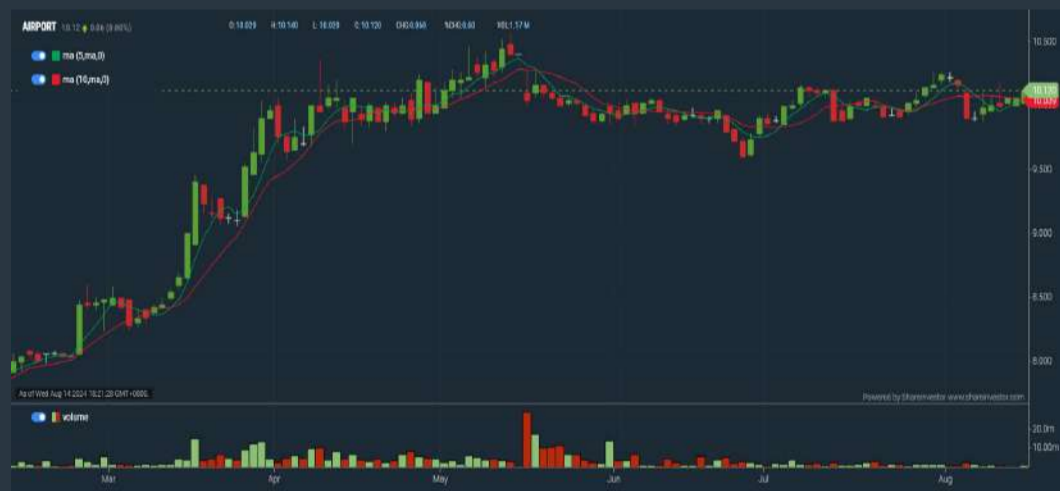


Period	Dividend Received	Capital Appreciation	Total Shareholder Return
Short Term Return	5 Days	-	-
	10 Days	-	-
	20 Days	-	-
Medium Term Return	3 Months	-	-
	6 Months	-	-
	1 Year	-	-
Long Term Return	2 Years	+0.265	+65.43%
	3 Years	+0.265	+65.43%
	5 Years	0.015	+0.250
Annualised Return	Annualised	-	+10.28%

MALAYSIA AIRPORTS HOLDINGS BERHAD (5014)

C² Chart

Analysis



Period	Dividend Received	Capital Appreciation	Total Shareholder Return
Short Term Return	5 Days	+0.140	+1.49%
	10 Days	-0.120	-1.17%
	20 Days	+0.120	+1.29%
Medium Term Return	3 Months	-0.200	-2.09%
	6 Months	+2.130	+26.66%
	1 Year	+3.230	+46.88%
Long Term Return	2 Years	+5.890	+62.44%
	3 Years	+4.290	+73.58%
	5 Years	0.100	+1.570
Annualised Return	Annualised	-	-3.63%

PBA HOLDINGS BERHAD (5041)

C² Chart

Analysis



Period	Dividend Received	Capital Appreciation	Total Shareholder Return	
Short Term Return	5 Days	+0.110	+6.79%	
	10 Days	-0.010	-0.57%	
	20 Days	-0.070	-3.89%	
Medium Term Return	3 Months	-0.350	-16.83%	
	6 Months	-0.530	-23.45%	
	1 Year	+0.910	+110.98%	
Long Term Return	2 Years	+0.960	+124.68%	
	3 Years	0.023	+0.990	+111.20%
	5 Years	0.060	+0.610	+61.61%
Annualised Return	Annualised	-	+10.08%	

Disclaimer: The information on this page is provided as a service to readers. It does not constitute financial advice and/or any investment recommendations. Past performance is not indicative of future results. We assume no liability for damages resulting from or arising out of the use of such information. It would be best if you did your own research to make your personal investment decisions wisely or consult a licenced investment advisor.

Price & Total Shareholder Return (as at Wednesday)

Fundamental Analysis

DEFINITION: Company is paying out dividend with low or moderate leverage.

CHART GUIDE: Total Shareholder Return (TSR) combines share price appreciation and distributions paid to show the total return to the shareholder expressed as a percentage.



ShareInvestor WebPro > Screener > Market Screener (FA & TA) > select BURSA > add criteria

A. Criteria

- > click Add Criteria
- Fundamental Analysis Conditions tab >select (i) Dividend Yield
- Fundamental Analysis Conditions tab >select (ii) Dividend Payout (Historical)
- Fundamental Analysis Conditions tab >select (iii) Total Debt To Equity
- Fundamental Analysis Conditions tab >select (iv) Total Shareholder Returns
- Fundamental Analysis Conditions tab >select (v) Total Shareholder Returns
- Fundamental Analysis Conditions tab / >select (vi) CAGR of Dividend Per Share

• Fundamental Analysis Conditions tab >select (vii) CAGR of Dividend Per Share

B. Conditions (Criteria Filters)

1. Dividend Yield - select (more than) type (1) % for the past select (1) financial year(s)
2. Dividend Payout (Historical) - select (between) type (0.5) to type (1) times for the past select (1) financial year(s)
3. Total Debt to Equity - select (less than) type (1) for the past select (1) financial year(s)
4. Total Shareholder Return - - select (more than) type (5) % for the past select (3) financial year(s)
5. Total Shareholder Return - - select (more than) type (5) % for the past select (5) financial year(s)

6. CAGR of Dividend Per Share - - select (less than) type (30) % for the past select (5) financial year(s)
7. CAGR of Dividend Per Share - - select (more than) type (1) % for the past select (5) financial year(s)

- > click Save Template > Create New Template type (Dividend Companies) > click Create
- > click Save Template as > select Dividend Companies > click Save
- > click Screen Now (may take a few minutes)
- > Sort By: Select (Dividend Yield) Select (Desc)
- > Mouse over stock name > Factsheet > looking for Total Shareholder Return

AMWAY (M) HOLDINGS BERHAD (6351)

C² Chart

Analysis



Period	Dividend Received	Capital Appreciation	Total Shareholder Return
Short Term Return	5 Days	+0.100	+1.88 %
	10 Days	+0.030	+0.43 %
	20 Days	-0.020	-0.28 %
Medium Term Return	3 Months	-0.270	-3.70 %
	6 Months	+0.180	+2.63 %
	1 Year	+1.630	+30.19 %
Long Term Return	2 Years	+1.930	+37.84 %
	3 Years	+1.410	+25.09 %
	5 Years	0.300	+25.54 %
Annualised Return	Annualised	-	+4.65 %

PARAMOUNT CORPORATION BERHAD (1724)

C² Chart

Analysis



Period	Dividend Received	Capital Appreciation	Total Shareholder Return
Short Term Return	5 Days	+0.010	+0.97 %
	10 Days	-0.060	-5.45 %
	20 Days	-0.100	-8.77 %
Medium Term Return	3 Months	-0.180	-14.75 %
	6 Months	+0.600	+2.97 %
	1 Year	+0.135	+14.92 %
Long Term Return	2 Years	+0.458	+78.69 %
	3 Years	+0.389	+59.75 %
	5 Years	0.365	+51.27 %
Annualised Return	Annualised	-	+10.03 %

TA ANN HOLDINGS BERHAD (5012)

C² Chart

Analysis



Period	Dividend Received	Capital Appreciation	Total Shareholder Return
Short Term Return	5 Days	-0.120	-3.12 %
	10 Days	-0.280	-6.90 %
	20 Days	-0.180	-4.60 %
Medium Term Return	3 Months	-0.220	-5.57 %
	6 Months	+0.040	+1.08 %
	1 Year	+0.110	+3.04 %
Long Term Return	2 Years	-0.140	-3.62 %
	3 Years	0.200	+46.10 %
	5 Years	0.500	+101.43 %
Annualised Return	Annualised	-	+15.03 %

Disclaimer: The information on this page is provided as a service to readers. It does not constitute financial advice and/or any investment recommendations. Past performance is not indicative of future results. We assume no liability for damages resulting from or arising out of the use of such information. It would be best if you did your own research to make your personal investment decisions wisely or consult a licenced investment advisor.

Week: 9 August 2024 - 14 August 2024

More Brokers' Call 

AMINVESTMENT BANK <small>... See More</small>	Call	Target Price	Release Date
Bintulu Port Holdings Berhad (5032)	BUY	RM7.20	12 Aug 2024
Dialog Group Berhad (7277)	BUY	RM2.97	9 Aug 2024
MBM Resources Berhad (5983)	HOLD	RM5.47	13 Aug 2024

APEX <small>... See More</small>	Call	Target Price	Release Date
Pekat Group Berhad (0233)	BUY	RM1.20	13 Aug 2024
Seng Fong Holdings Berhad (5308)	BUY	RM1.90	14 Aug 2024
Solarvest Holdings Berhad (0215)	BUY	RM1.94	12 Aug 2024

BIMB SECURITIES SDN BHD <small>... See More</small>	Call	Target Price	Release Date
MR D.I.Y. Group (M) Berhad (5296)	BUY	RM2.49	14 Aug 2024
Swift Haulage Berhad (5303)	HOLD	RM0.53	11 Aug 2024

KENANGA <small>... See More</small>	Call	Target Price	Release Date
MR D.I.Y. Group (M) Berhad (5296)	OUTPERFORM	RM2.27	14 Aug 2024
P.I.E. Industrial Berhad (7095)	OUTPERFORM	RM6.75	12 Aug 2024
Swift Haulage Berhad (5303)	MARKET PERFORM	RM0.50	13 Aug 2024

MIDF <small>... See More</small>	Call	Target Price	Release Date
Pekat Group Berhad (0233)	BUY	RM1.32	13 Aug 2024
Sunway Real Estate Investment Trust (5176)	BUY	RM1.81	9 Aug 2024
Swift Haulage Berhad (5303)	BUY	RM0.54	12 Aug 2024

UOB KAYHIAN <small>... See More</small>	Call	Target Price	Release Date
Coraza Integrated Technology Berhad (0240)	BUY	RM0.62	13 Aug 2024
Dialog Group Berhad (7277)	BUY	RM3.10	9 Aug 2024
Gas Malaysia Berhad (5209)	HOLD	RM3.50	12 Aug 2024
NCT Alliance Berhad (0056)	BUY	RM0.65	13 Aug 2024

DEFINITION: Top 9 stocks with Technical Analysis plus Pattern Matching by 60 pre-defined indicators by the system showing a higher probability of bullish sentiment on the share price.



ShareInvestor WebPro > Screener > Predefined TA Screens > select market BURSA > Most Long Signals > click Scan Results or mouse over each company

MESTRON HOLDINGS BERHAD (0207.MY)

MESTRON

Price updated at 14 Aug 2024 16:59

Last: 0.295	Change: +0.015	Volume: 191,812
	Change (%): +5.36	Range: 0.275 - 0.320

TA Scanner Results based on historical data up to 14 Aug 2024

Condition	Signal	Explanation
Bollinger Band: Bullish Long Term Volatility Breakout and Trending	Long	1. Close price above upper bollinger band(33,1). 2. Volume above average volume(50). 3. Average volume(50) is above 300,000.
Bollinger Band: Bullish Short Term Volatility Breakout and Trending	Long	1. Close price above upper bollinger band(33,1). 2. Volume above average volume(10). 3. Average volume(10) is above 300,000.
DM: Bullish Directional Movement	Long	-DI(14) crossed below +DI(14)
Donchian Channels: High Above Upper Donchian Channels	Long	High crossed above the upper Donchian Channel(14,4)
MA: Bullish Price Crossover	Long	1. Close price crossed above MA(40) within the last 1 day. 2. Previous day close price is below the MA(10) for the last 5 days
MA: Medium Term Bullish Moving Average Crossover	Long	MA(25) crossed above MA(50) within the last 1 day.
MACD: Bullish MACD Crossover	Long	1. MACD(12,26) diff line crossed above the MACD(12,26) signal line. 2. MACD Histogram(12,26) is above 0.
Parabolic SAR: Bearish Parabolic SAR Reversal	Neutral	1. Parabolic SAR 1 day ago above close price 1 day ago for the last 5 days. 2. Parabolic SAR below close price
RSI: Short Term RSI 50 Bullish Crossover	Long	1. RSI(20) crossed above 50 within the last 1 day and RSI(20) 1 day ago below 50 for the last 5 days. 2. Volume above average volume(125). 3. Average volume(5) is above 100,000.
Williams %R: Bearish Williams %R	Short	1. Williams %R(26) between 0 and -20. 2. Average volume(5) is above 100,000.

XIN SYNERGY GROUP BERHAD (7043.MY)

XIN

Price updated at 14 Aug 2024 16:54

Last: 0.205	Change: -	Volume: 39,784
	Change (%): -	Range: 0.190 - 0.205

TA Scanner Results based on historical data up to 14 Aug 2024

Condition	Signal	Explanation
Bollinger Band: Bullish Long Term Volatility Breakout and Trending	Long	1. Close price above upper bollinger band(33,1). 2. Volume above average volume(50). 3. Average volume(50) is above 300,000.
Bollinger Band: Bullish Short Term Volatility Breakout and Trending	Long	1. Close price above upper bollinger band(33,1). 2. Volume above average volume(10). 3. Average volume(10) is above 300,000.
Bollinger Band: High Above Upper Bollinger Band	Neutral	1. High above upper bollinger band(14,2). 2. Average volume(5) is above 100,000.
DM: Bullish Directional Movement	Long	-DI(14) crossed below +DI(14)
Donchian Channels: High Above Upper Donchian Channels	Long	High crossed above the upper Donchian Channel(14,4)
MA: Short Term Bullish Moving Average Crossover	Long	MA(10) crossed above MA(15) within the last 1 day.
Parabolic SAR: Bearish Parabolic SAR Reversal	Neutral	1. Parabolic SAR 1 day ago above close price 1 day ago for the last 5 days. 2. Parabolic SAR below close price
Volume: Volume Spike	Long	1. Volume is more than 500% above average volume(10). 2. Volume above 200000. 3. Close price above 0.10

AMMB HOLDINGS BERHAD (1015.MY)

AMMBANK

Price updated at 14 Aug 2024 16:58

Last: 4.660	Change: +0.070	Volume: 89,549
	Change (%): +1.53	Range: 4.560 - 4.680

TA Scanner Results based on historical data up to 14 Aug 2024

Condition	Signal	Explanation
CCI: Bearish CCI Overbought And Reversing	Short	1. CCI(26) above 100 and CCI(26) 1 day ago increasing for the last 3 days. 2. CCI(26) below CCI(26) 1 day ago
DM: Bullish Directional Movement	Long	-DI(14) crossed below +DI(14)
Donchian Channels: High Above Upper Donchian Channels	Long	High crossed above the upper Donchian Channel(14,4)
MA: Short Term Bullish Moving Average Crossover	Long	MA(10) crossed above MA(15) within the last 1 day.
MACD: Bullish MACD Crossover	Long	1. MACD(12,26) diff line crossed above the MACD(12,26) signal line. 2. MACD Histogram(12,26) is above 0.
Parabolic SAR: Bearish Parabolic SAR Reversal	Neutral	1. Parabolic SAR 1 day ago above close price 1 day ago for the last 5 days. 2. Parabolic SAR below close price
Price: New 52 Week High	Long	1. Stock reach a new 52 week high. 2. Average volume(30) is above 50000.
Volume: 5 Days large value Buy Up trade	Long	1. 150K value Buy Up greater than Sell Down by 20% for 5 days. 2. 50K-100K value Buy Up greater than Sell Down by 20% for 5 days. 3. Average volume(10) is above 1000000
Williams %R: Bearish Williams %R	Short	1. Williams %R(26) between 0 and -20. 2. Average volume(5) is above 100,000.

VESTLAND BERHAD (0273.MY)

VLB

Price updated at 14 Aug 2024 16:59

Last: 0.525	Change: -0.015	Volume: 55,862
	Change (%): -2.78	Range: 0.525 - 0.550

TA Scanner Results based on historical data up to 14 Aug 2024

Condition	Signal	Explanation
Bollinger Band: High Above Upper Bollinger Band	Neutral	1. High above upper bollinger band(14,2). 2. Average volume(5) is above 100,000.
CCI: Bearish CCI Overbought And Reversing	Short	1. CCI(26) above 100 and CCI(26) 1 day ago increasing for the last 3 days. 2. CCI(26) below CCI(26) 1 day ago
Donchian Channels: High Above Upper Donchian Channels	Long	High crossed above the upper Donchian Channel(14,4)
MACD: Bullish MACD Crossover	Long	1. MACD(12,26) diff line crossed above the MACD(12,26) signal line. 2. MACD Histogram(12,26) is above 0.
Price: Consecutive Days Gains	Long	1. Close price has been increasing over the last 5 days. 2. Average volume(5) above 100,000.
Price: New 52 Week High	Long	1. Stock reach a new 52 week high. 2. Average volume(30) is above 50000.
Volume: 5 Days large value Buy Up trade	Long	1. 150K value Buy Up greater than Sell Down by 20% for 5 days. 2. 50K-100K value Buy Up greater than Sell Down by 20% for 5 days. 3. Average volume(10) is above 1000000
Williams %R: Bearish Williams %R	Short	1. Williams %R(26) between 0 and -20. 2. Average volume(5) is above 100,000.

Disclaimer: The information on this page is provided as a service to readers. It does not constitute financial advice and/or any investment recommendations. Past performance is not indicative of future results. We assume no liability for damages resulting from or arising out of the use of such information. It would be best if you did your own research to make your personal investment decisions wisely or consult a licenced investment advisor.

CARLO RINO GROUP BERHAD
(03016.MY)

CRG

Price updated at 14 Aug 2024 16:26

Last: 0.335	Change: +0.025	Volume: 1,670
	Change (%): +8.06	Range: 0.310 - 0.335

TA Scanner Results based on historical data up to 14 Aug 2024

Condition	Signal	Explanation
DM: Bullish Directional Movement	Long	-DI(14) crossed below +DI(14)
Donchian Channels: High Above Upper Donchian Channels	Long	High crossed above the upper Donchian Channel(14,4)
Price: New 52 Week High	Long	1. Stock reach a new 52 week high. 2. Average volume(30) is above 50000.
Volume: Volume Spike	Long	1. Volume is more than 500% above average volume(10). 2. Volume above 200000. 3. Close price above 0.10
Williams %R: Bearish Williams %R	Short	1. Williams %R(26) between 0 and -20. 2. Average volume(5) is above 100,000.

ENRA GROUP BERHAD
(8613.MY)

ENRA

Price updated at 14 Aug 2024 16:39

Last: 0.710	Change: -	Volume: -
	Change (%): -	Range: 0.710 - 0.710

TA Scanner Results based on historical data up to 14 Aug 2024

Condition	Signal	Explanation
Bollinger Band: High Above Upper Bollinger Band	Neutral	1. High above upper bollinger band(14,2). 2. Average volume(5) is above 100,000.
Donchian Channels: High Above Upper Donchian Channels	Long	High crossed above the upper Donchian Channel(14,4)
MA: Bullish Price Crossover	Long	1. Close price crossed above MA(40) within the last 1 day. 2. Previous day close price is below the MA(10) for the last 5 days
MA: Medium Term Bullish Moving Average Crossover	Long	MA(25) crossed above MA(50) within the last 1 day.
MACD: Bullish MACD Crossover	Long	1. MACD(12,26) diff line crossed above the MACD(12,26) signal line. 2. MACD Histogram(12,26) is above 0.
Parabolic SAR: Bearish Parabolic SAR Reversal	Neutral	1. Parabolic SAR 1 day ago above close price 1 day ago for the last 5 days. 2. Parabolic SAR below close price
Williams %R: Bearish Williams %R	Short	1. Williams %R(26) between 0 and -20. 2. Average volume(5) is above 100,000.

TOMYPAK HOLDINGS BERHAD
(7285.MY)

TOMYPAK

Price updated at 14 Aug 2024 16:55

Last: 0.340	Change: -	Volume: -
	Change (%): -	Range: 0.340 - 0.340

TA Scanner Results based on historical data up to 14 Aug 2024

Condition	Signal	Explanation
Bollinger Band: Bullish Lower Bollinger Band Support	Long	1. Low 1 day ago below lower bollinger band(20,2). 2. Close above close 1 day ago. 3. Average volume(5) is above 100,000.
MACD: Bullish MACD Crossover	Long	1. MACD(12,26) diff line crossed above the MACD(12,26) signal line. 2. MACD Histogram(12,26) is above 0.
Parabolic SAR: Bearish Parabolic SAR Reversal	Neutral	1. Parabolic SAR 1 day ago above close price 1 day ago for the last 5 days. 2. Parabolic SAR below close price
RSI: Short Term RSI 50 Bullish Crossover	Long	1. RSI(20) crossed above 50 within the last 1 day and RSI(20) 1 day ago below 50 for the last 5 days. 2. Volume above average volume(125). 3. Average volume(5) is above 100,000.

TIEN WAH PRESS HOLDINGS BERHAD
(7374.MY)

TIENWAH

Price updated at 14 Aug 2024 15:12

Last: 0.890	Change: +0.010	Volume: 200
	Change (%): +1.14	Range: 0.890 - 0.890

TA Scanner Results based on historical data up to 14 Aug 2024

Condition	Signal	Explanation
CCI: Bearish CCI Overbought And Reversing	Short	1. CCI(26) above 100 and CCI(26) 1 day ago increasing for the last 3 days. 2. CCI(26) below CCI(26) 1 day ago
DM: Bullish Directional Movement	Long	-DI(14) crossed below +DI(14)
Donchian Channels: High Above Upper Donchian Channels	Long	High crossed above the upper Donchian Channel(14,4)
MA: Bullish Price Crossover	Long	1. Close price crossed above MA(40) within the last 1 day. 2. Previous day close price is below the MA(10) for the last 5 days
MA: Long Term Bearish Moving Average Crossover	Short	MA(50) crossed below MA(200) within the last 1 day.
MACD: Bullish MACD Crossover	Long	1. MACD(12,26) diff line crossed above the MACD(12,26) signal line. 2. MACD Histogram(12,26) is above 0.
Parabolic SAR: Bearish Parabolic SAR Reversal	Neutral	1. Parabolic SAR 1 day ago above close price 1 day ago for the last 5 days. 2. Parabolic SAR below close price

MALAKOFF CORPORATION BERHAD
(5264.MY)

MALAKOF

Price updated at 14 Aug 2024 16:59

Last: 0.980	Change: +0.015	Volume: 212,084
	Change (%): +1.55	Range: 0.965 - 1.010

TA Scanner Results based on historical data up to 14 Aug 2024

Condition	Signal	Explanation
Bollinger Band: Bearish Upper Bollinger Band Resistance	Short	1. High 1 day ago above upper bollinger band(20,2). 2. Close below close 1 day ago. 3. Average volume(5) is above 100,000.
Bollinger Band: High Above Upper Bollinger Band	Neutral	1. High above upper bollinger band(14,2). 2. Average volume(5) is above 100,000.
Candlestick: Bearish Harami	Short	Bearish: Harami
MA: Short Term Bullish Moving Average Crossover	Long	MA(10) crossed above MA(15) within the last 1 day.
Price: New 52 Week High	Long	1. Stock reach a new 52 week high. 2. Average volume(30) is above 50000.
Volume: 10 Days large value Buy Up trade	Long	1. 150K value Buy Up greater than Sell Down by 20% for 10 days. 2. 50K-100K value Buy Up greater than Sell Down by 20% for 10 days. 3. Average volume(10) is above 1000000
Volume: 5 Days large value Buy Up trade	Long	1. 150K value Buy Up greater than Sell Down by 20% for 5 days. 2. 50K-100K value Buy Up greater than Sell Down by 20% for 5 days. 3. Average volume(10) is above 1000000
Williams %R: Bearish Williams %R	Short	1. Williams %R(26) between 0 and -20. 2. Average volume(5) is above 100,000.

Disclaimer: The information on this page is provided as a service to readers. It does not constitute financial advice and/or any investment recommendations. Past performance is not indicative of future results. We assume no liability for damages resulting from or arising out of the use of such information. It would be best if you did your own research to make your personal investment decisions wisely or consult a licenced investment advisor.

Condition	Signal	Explanation
Volume: Consecutive Days Of Increasing Average Volume	Long	1. Average Volume(20) has been increasing over the last 2 weeks. 2. Average volume(20) is above 100000
Williams %R: Bearish Williams %R	Short	1. Williams %R(26) between 0 and -20. 2. Average volume(5) is above 100,000.



Dato' Eu Hong Chew
Former Group CEO i-Berhad
Non-Executive Director

He has been associated with the Sumurwang Group for many years charting the path for its manufacturing arm, firstly under Dreamland Holdings Berhad and the subsequent acquisition of I-Berhad.

Before that, he was with PA Management Consulting for a decade where he was the Director of Studies for the Cranfield PA MBA Programme in Malaysia.

Educated at the Royal Military College, Dato' Eu has an engineering degree from the University of Glasgow, and a MBA from the University of Bradford, UK.

Is there an investment opportunity in SIMPSON MANUFACTURING

SUMMARY

- Over the past 12 years, Simpson Manufacturing Company Inc (**NYSE: SSD**) achieved an 11.7% CAGR in revenue, with profitability driven by higher revenue, better gross profit margins, and lower SGA margins post-2019.
- Growth was driven partly by the combination of organic growth and acquisitions. At the same time, it benefited from the tailwinds of the strong US Housing Starts and the uptrend in steel prices.

Disclaimer: This article is written for informational purposes only. It does not constitute a solicitation, offer, advice, counseling or recommendation to buy or sell. As such it is not intended to promote the purchase of shares in any way. As a reminder, any type of asset has a risk factor and needs to be evaluated from multiple perspectives. Therefore, any investment decision and the associated risk remains with the investor. The views expressed here are entirely the writer's own.

- Despite being financially sound and fundamentally strong, SSD's market price offers an insufficient margin of safety, even under optimistic growth scenarios.

INVESTMENT THESIS

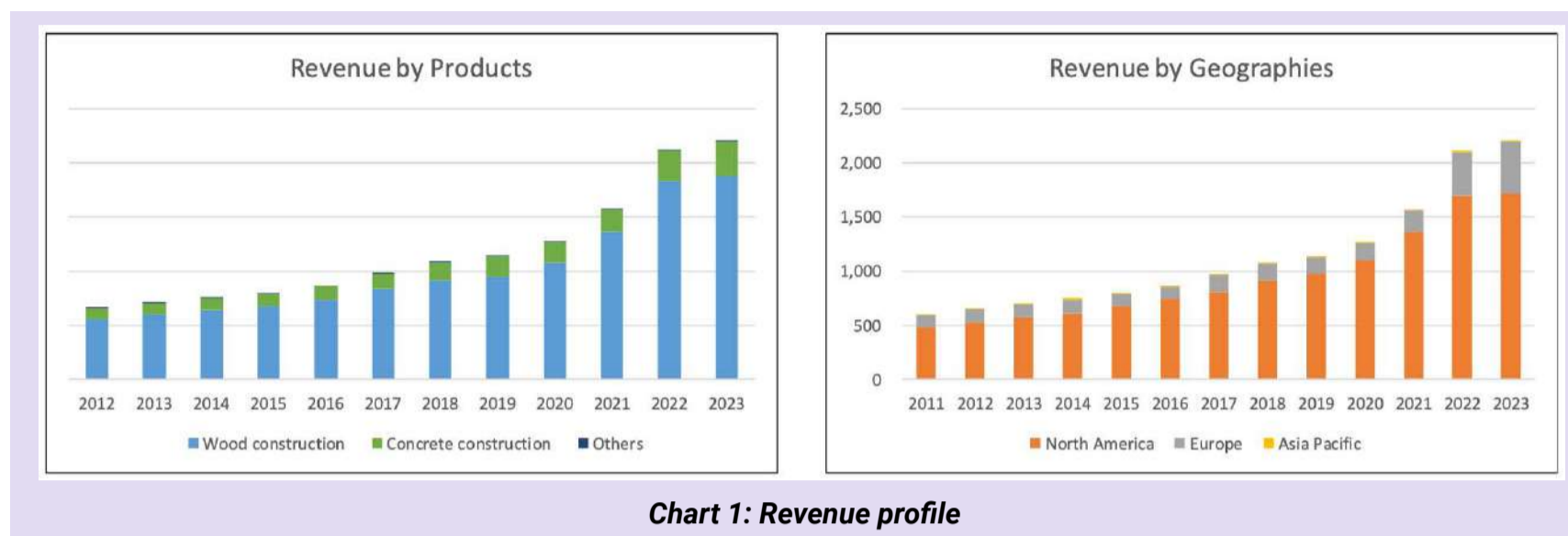
SSD is a fundamentally sound company. Over the past 12 years, it was able to improve its returns. Apart from growing revenue, there were improving operating efficiencies. The company achieved growth mainly through acquisitions. I would expect this strategy to continue. The company is also financially sound with a good capital allocation plan. These will support its acquisition plans. Unfortunately, there is not enough margin of safety even when valuing SSD using a 2-stage-growth model.

BACKGROUND

SSD is a leading manufacturer of high-quality wood and concrete construction products designed to make structures safer and more secure. While the company has two major product categories, the wood products accounted for the bulk of the revenue. Refer to the left part of Chart 1. The company has 3 business segments:

- The North American segment includes operations in the U.S. and Canada.
- The Europe segment includes operations in the UK and several countries in the Eurozone region.
- The Asia/Pacific segment includes operations in Australia, New Zealand, China, Taiwan, and Vietnam.

As can be seen from the right part of Chart 1, the North American segment is the biggest revenue contributor.



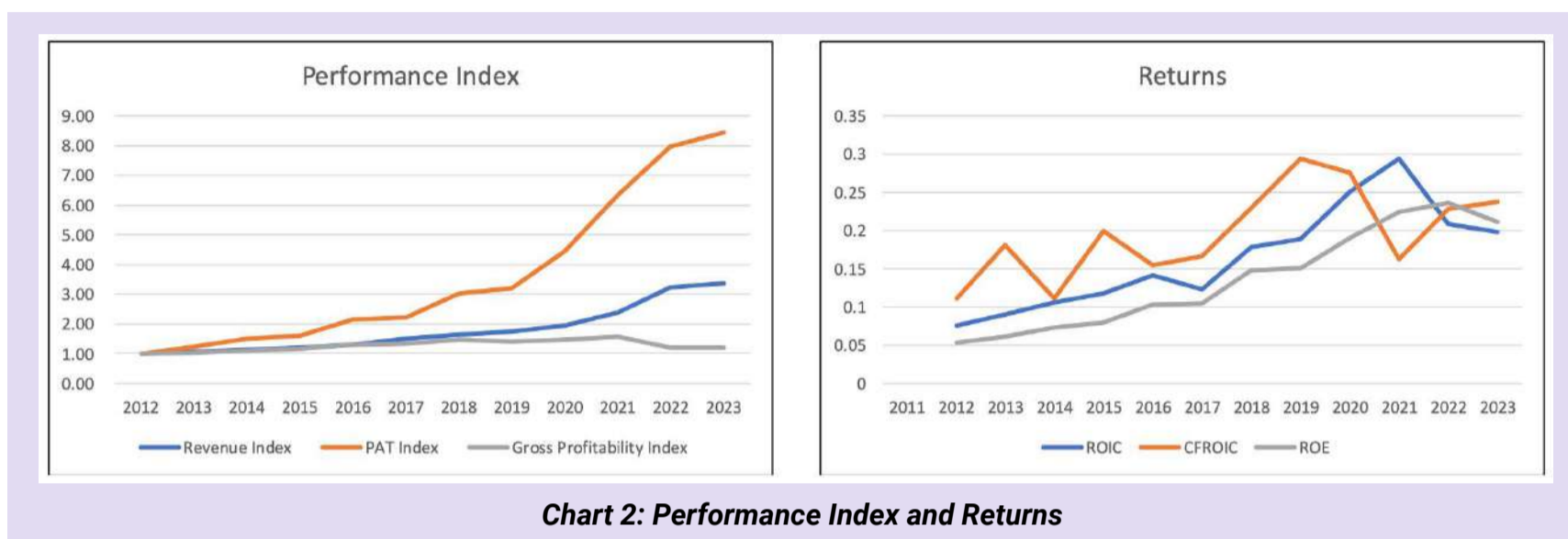
OPERATING TRENDS

Over the past 12 years, revenue grew at 11.7% CAGR. You can see a more significant growth rate post-2019. Refer to the left part of Chart 2. The company was profitable every year. There was a higher profit growth rate post-2019. This was partly due to higher revenue, better gross profit margins, and lower Selling, General, and Admin (SGA) margins.

The other positive sign was the improvements in gross profitability, although this declined a bit over the past 2 years compared to 2021. This indicated improving capital efficiency. The improving profits led to improving returns. This can be seen in the right part of Chart 2. Over the past 12 years,

- Operating returns or ROIC ranged from 7.6% to 29.4% with an average of 16.4%.
- ROE ranged from 5.3% to 23.6% with an average of 13.6%.

I would consider these as good returns since the average returns were greater than the respective cost of funds by about 10% each. A DuPont Analysis showed that the improving returns were driven by better-operating margins, capital turnover, and leverage.



GROWTH

Revenue growth over the past 12 years was due to a combination of organic growth and acquisitions. The company did not provide a breakdown of its revenue growth into those due to acquisitions and organic growth. But I guess that acquisition accounted for more than double the organic growth. Over the past 12 years, the company spent USD452 million on net CAPEX compared to USD928 million on net acquisitions. Assuming a proportionate contribution to growth, you would expect acquisitions to account for more of the growth. There were acquisitions almost every year over the past 12 years. This meant that without the acquisitions, SSD's annual organic growth was probably in the 3% to 4% range. This is about the long-term US GDP growth rate.

Apart from acquisitions, revenue growth over the past decade benefited from the uptrend in US Housing Starts as well as the uptrend in steel prices. This is illustrated by the following from the company's 2022 Annual Report:

"...While we have continued to benefit from the US housing market, we now believe approximately 50% of our revenue is reliant on US housing starts...

...The principal raw material used by the Company is steel... Sales growth was...driven...by the product price increases we implemented... to offset rising raw material costs."

FINANCIAL POSITION

I would rate SSD as financially sound based on the following rationales:

- It has a 0.23 Debt Capital ratio as of the end of Jun 2024. As per the Damodaran Jan 2024 dataset, the Debt Capital ratio for the building materials sector was 0.15.
- As of the end of Jun 2024, it had USD355 million in cash. This was about 13% of its total assets.
- Over the past 12 years, it generated positive cash flow from operations every year. In total, it generated USD2.1 billion cash flow from operations compared to the total PAT of USD1.8 billion. This is a very good cash conversion ratio.
- I had earlier mentioned that its returns were greater than the cost of capital. This indicated that it was able to create shareholders' value.

Items	Sources (USD m)	Uses (USD m)
Cash flow from Ops	2,129	
Net Debt	480	
New shares	50	
Dividends & buybacks		1,008
Net CAPEX incl intangibles		452
Net Acquisitions		928
Cash and misc		270
Total	2,658	2,658

Table 1: Source and Uses of Funds 2012 to 2023

It had a good capital allocation plan as shown in Table 1. The cash flow from operations was sufficient to fund its CAPEX and acquisitions.

VALUATION

The challenge with valuing SSD is that not only are there improving operations, but I suspect that it will continue with its acquisition growth. I thus considered 2 Scenarios in my valuation.

Scenario 1: This is a conservative case where there is no further acquisition. The company will grow at the long-term GDP growth rate of 4%. I used a single-stage growth model here.

Scenario 2: In this scenario, I assumed that the company would continue with a double-digit growth rate and take 5 years to transition to a long-term growth rate. I used a 2-stage growth model here. I assumed that there would be 5% improvements in the key operating metrics by year 5.

The results are:

- Scenario 1 – intrinsic value of USD156 per share
- Scenario 2 – intrinsic value of USD210 per share

The market price of SSD was USD169 per share as of 28 June 2024. You can see that there is no margin of safety under Scenario 1. While there is a 24% margin of safety under Scenario 2, this is still below my target of 30% margin of safety.

For details of the valuation models, refer to the original article. Note that I updated the numbers in the original valuation model to account for the 2023 results.

CONCLUSION

I would rate SSD as fundamentally sound and consider it a "wonderful" company based on the following:

- It has been able to translate its high revenue growth into improving returns.
- The improving returns were driven by improving operating efficiencies. There were improvements in gross profitability, leverage, and capital turnover.
- It is financially sound with a good capital allocation track record.

Unfortunately, despite being a "wonderful" company, there is not enough margin of safety. This is despite valuing it based on a 2-stage growth model. I am a long-term value investor and my analysis and valuation are based on this perspective. This is not an analysis for those hoping to make money over the next quarter or so.

I am a long-term value investor who has held onto stocks for more than 5 years. My analysis and valuation are from such a perspective. I consider quarterly results "noisy" and focus on long-term trends.

*This article was re-purposed from my article "**Simpson Manufacturing: Not Enough Margin Of Safety For This 'Wonderful' Company**" which was first published in Seeking Alpha. Refer to this [link](#) for more of my insights on other US companies.*

UNLOCK THE SECRET OF WEALTH

DO YOU REALLY WANT TO MASTER VALUE INVESTING



SEE HOW TO GET HIGHER RETURNS WITH LOWER RISK



EPF'S 1H2024 TOTAL DISTRIBUTABLE INCOME UP 29% TO RM36.7B

The Employees Provident Fund's (EPF) total distributable income for the six months ended June 30, 2024 (1H2024) increased by 29% to RM36.70 billion, from RM28.40 billion in the previous corresponding period.

According to EPF chief executive officer Ahmad Zulqarnain Onn, the favourable market conditions in Malaysia and internationally contributed to the 29% growth in distributable income in 1H2024, while assets under management grew to RM1.21 trillion.

In a statement, EPF said that the distributable income does not include mark-to-market (MTM) gains of securities that have not been realised. The EPF's total distributable income for the second quarter (2Q2024) after write-downs rose 25% to RM17.50 billion, from RM13.98 billion in the same quarter last year.

FOREIGN INVESTORS OFFLOADED NEARLY RM770M IN NET EQUITIES LAST WEEK — MIDF

A ccording to MIDF Research, the recent turbulence on Wall Street had significant ripple effects on Malaysia, with foreign investors offloading RM768.4 million in net equities on Bursa Malaysia last week. The largest net outflows occurred last Monday (5Aug), with RM336.1 million sold, followed by last Thursday (8Aug) with RM226.7 million.

Only three sectors experienced net buying by foreign investors, namely telecommunications and media (RM10 million), healthcare (RM8.6 million), and plantation (RM7.1 million).

Conversely, the sectors most net sold by foreign investors were consumer products and services (-RM151.8 million), property (-RM149.5 million), and technology (-RM120.2 million). Local institutions took advantage of the situation, net buying RM1.19 billion throughout the week.

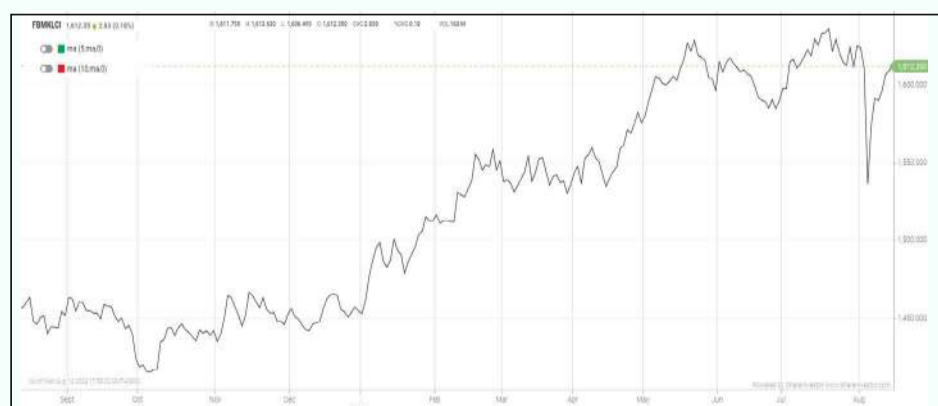
Last Monday (5Aug) marked the largest net buying in a single day since 2018, amounting to RM545.8 million. Local retailers, however, net sold RM424.6 million last week, with last Monday's net selling reaching RM209.7 million. The average daily trading volume (ADTV) increased across all investor classes.

Foreign investors saw the highest ADTV surge of 47.4%, followed closely by local retailers at 47.3%, and local institutional investors at 37.7%.

Note From The Publisher: This issue is published a day earlier in view of our office relocation to PJX HM Shah Tower on Friday August 16, 2024. Our new office address wef from Aug 16, 2024 is as follows: ShareInvestor Malaysia Sdn Bhd. L15-03 & 03A, PJX HM Shah Tower, No 16A Jalan Persiaran Barat, PJS 52, 46200 Petaling Jaya, Selangor.

EYE ON THE MARKETS

On Wednesday (14Aug), the Ringgit closed at 4.4250 against the USD and 3.3626 to the Sing Dollar. On Monday (12Aug), the FBM KLCI opened at 1598.53. As at Wednesday (14Aug) 5:00pm, the FBM KLCI closed up 13.82 points at 1612.35. Over in US, the overnight Dow Jones Industrial Average closed up 242.75 points (+0.61%) to 40,008.39 whilst the NASDAQ added 1.44 points (+0.01%) to 17,189.05.



KLCI 1 Year Chart

Over 5 trading days



ShareInvestor WebPro (www.shareinvestor.com/my)

1. Price > Stock Prices
2. Select Market: NASDAQ / NYSE / IDX / SET / HKEX / SGX (One bourse at a time)
3. select Stocks Tab
4. select Ranking Top Gainers or Top Losers (Over 5 Trading Days)
5. Mouse over Column Layout > select Edit Customs > select Name > select Last Done Price > select 5 Days Change > select 52 Weeks High > select 52 Weeks Low > Mouse Over Column Layout > select Custom

NASDAQ (USD)

Top Gainers

Name	Last Done	Change Over 5 Days	52 Weeks High	52 Weeks Low
BOOKING HOLDINGS INC	3,572.580	+266.960	4,144.320	2,733.040
MONOLITHIC POWER SYSTEM INC	862.620	+105.580	891.670	392.100
LAM RESEARCH CORP	845.330	+97.280	1,130.000	574.420
KLA CORPORATION	793.890	+96.170	896.320	440.150
REGENERON PHARMACEUTICALS INC	1,156.860	+89.060	1,133.000	769.190

Top Losers

Name	Last Done	Change Over 5 Days	52 Weeks High	52 Weeks Low
CREDIT ACCEPTANCE CORPORATION	444.200	-14.290	616.660	379.770
NEXSTAR MEDIA GROUP INC	158.850	-13.050	187.270	132.300
CHARTER COMMUNICATIONS INC	351.220	-12.720	458.300	236.080
B RILEY FINANCIAL INC	6.970	-10.400	52.740	6.890
FENBO HOLDINGS LIMITED	4.410	-10.060	17.680	1.990

NYSE (USD)

Top Gainers

Name	Last Done	Change Over 5 Days	52 Weeks High	52 Weeks Low
BERKSHIRE HATHAWAY INC	657,122.000	+8,234.010	741,971.390	502,000.000
NVR INC	8,571.480	+306.170	8,700.000	5,210.490
FAIR ISAAC CORP	1,809.750	+92.630	1,812.670	811.990
ELI LILLY AND COMPANY	931.680	+86.370	966.100	516.570
PARKER-HANNIFIN CORP	578.390	+65.890	576.540	362.490

Top Losers

Name	Last Done	Change Over 5 Days	52 Weeks High	52 Weeks Low
MCKESSON CORPORATION	552.830	-64.680	637.510	404.720
BIGLARI HOLDINGS INC	899.990	-45.010	1,077.200	700.000
E L F BEAUTY INC	145.430	-36.320	221.830	88.470
CABLE ONE INC	373.250	-29.760	676.225	318.685
ALPHA METALLURGICAL RESOURCES INC	229.490	-26.700	452.000	186.740

IDX (Rupiah)

Top Gainers

Name	Last Done	Change Over 5 Days	52 Weeks High	52 Weeks Low
DIAN SWASTATIKA SENTOSA TBK	41,275.000	+9,350.000	42,900.000	4,800.000
DCI INDONESIA TBK	42,000.000	+2,725.000	59,050.000	32,525.000
MNC DIGITAL ENTERTAINMENT TBK	5,150.000	+2,130.000	5,150.000	1,655.000
PETROSEA	8,700.000	+1,000.000	9,850.000	2,810.000
MD PICTURES TBK	4,710.000	+810.000	6,250.000	2,040.000

Top Losers

Name	Last Done	Change Over 5 Days	52 Weeks High	52 Weeks Low
AMMAN MINERAL INTERNASIONAL TBK	10,425.000	-900.000	15,000.000	3,170.000
GOWA MAKASSAR TOURISM DEVELOPMENT	5,350.000	-175.000	7,000.000	1,485.000
DUTA PERTIWI	3,960.000	-160.000	4,950.000	3,670.000
ASIA SEJAHTERA MINA TBK	438.000	-142.000	690.000	86.000
CHAROEN POKPHAND INDONESIA	5,175.000	-125.000	5,800.000	4,410.000

SET (Thai Baht)

Top Gainers

Name	Last Done	Change Over 5 Days	52 Weeks High	52 Weeks Low
METCO	168.000	+8.000	250.000	159.000
ADVANC	245.000	+6.000	247.000	193.000
JTS	63.000	+5.750	93.500	27.250
TMW	51.500	+5.250	66.500	37.250
BKIH	287.000	+5.000	290.000	279.000

Top Losers

Name	Last Done	Change Over 5 Days	52 Weeks High	52 Weeks Low
GYT	145.000	-20.000	212.000	135.000
INSURE	78.000	-15.000	125.000	77.000
BH	245.000	-11.000	272.000	212.000
CENTEL	31.500	-5.750	48.750	31.000
SCC	196.500	-4.500	320.000	195.500

HKEX (HKD)

Top Gainers

Name	Last Done	Change Over 5 Days	52 Weeks High	52 Weeks Low
ZONQING LTD (1855)	26.400	+17.400	26.400	6.507
VOICECOMM (2495)	201.000	+12.500	202.600	121.000
TENCENT (700)	373.800	+10.400	401.000	260.200
TENCENT-R (80700)	343.000	+9.000	372.800	240.000
QFIN-S (3660)	83.800	+8.100	84.300	52.000

Top Losers

Name	Last Done	Change Over 5 Days	52 Weeks High	52 Weeks Low
INTEL-T (4335)	120.000	-30.100	300.000	120.000
BILIBILI-W (9626)	107.100	-16.000	145.600	67.800
UBTECH ROBOTICS (9880)	86.250	-15.350	328.000	69.800
TME-SW (1698)	43.800	-9.250	62.500	23.850
SKB BIO-B (6990)	150.600	-8.100	195.000	62.000

SGX (SGD)

Top Gainers

Name	Last Done	Change Over 5 Days	52 Weeks High	52 Weeks Low
JMH USD	36.760	+1.240	48.140	33.720
JARDINE C&C	26.600	+1.150	33.900	23.760
DBS	34.610	+0.960	38.550	28.191
AZEUS	10.000	+0.500	10.800	7.400
SGX	10.100	+0.310	10.110	8.870

Top Losers

Name	Last Done	Change Over 5 Days	52 Weeks High	52 Weeks Low
UOB	29.630	-0.210	33.330	26.820
KEPPEL	5.800	-0.180	7.450	5.760
CORTINA	2.990	-0.170	3.393	2.638
SEMBCORP IND	4.600	-0.130	5.870	4.350
OCBC BANK	13.950	-0.120	15.380	12.170

BREAKING THE SILENCE: WHY AGMS SHOULD BE EXCITING

They say speech is silver, but silence is golden. While being a good listener is essential, silence can be dangerous, particularly in general meetings, where it can be misconstrued as complacency or approval. A quiet room may seem like a sign that all is well, but the reality can be far more complex.

At MSWG, our analysts attend hundreds of general meetings every year. So far this year, we have participated in around 250 annual general meetings (AGMs), conducted in various formats—virtual, physical, and hybrid. While some meetings were dynamic and insightful, a disturbing trend has emerged: too many AGMs lack energy, with shareholders and boards seemingly disengaged from meaningful discussion.

The rise of virtual meetings has often been cited as a reason for this quietness, as the format can hinder interaction and stifle expression. In some instances, directors have even leveraged the virtual setting to sidestep shareholder questions. However, this is only sometimes the case.

Take Company F, a tower crane operator, for example. Its AGM in June 2024 attracted about 400 shareholders and proxies. Despite the absence of a performance review and prospects briefing, shareholders eagerly questioned the management via chatbox about industry trends, profitability, and business strategies. The Managing Director responded with patience and clarity, turning the hour-long Q&A session into a lively exchange of ideas. This AGM exemplified how virtual meetings can be engaging and informative, offering valuable insights that transcend geographical boundaries.

In contrast, the physical AGM of IT solution provider Company P was the opposite. Despite a larger turnout of about 200 shareholders, the Q&A session was marked by an awkward silence. However, the voting results told a different story—one of quiet dissent. A few minority shareholders voted against the resolutions, yet they chose not to voice their concerns during the meeting. Their ballots spoke of dissent, but their silence during the proceedings echoed louder.

THE CULTURE OF SILENCE

In Malaysia, it is not uncommon for shareholders to remain silent during AGMs, particularly in physical settings. Several factors contribute to this phenomenon.

Asian cultures, deeply rooted in collectivism, often prioritise social cohesion and harmony over self-expression. Many shareholders prefer to avoid conflict, fearing that being outspoken might be perceived as disruptive, especially when others choose to remain silent.

Moreover, Malaysia ranks exceptionally high on the “Power Distance Index” (PDI), a concept introduced by Professor Geert Hofstede in the 1970s. The PDI measures the extent to which

individuals in a society with less power accept and expect that power is distributed unequally. In high PDI-ranking countries like Malaysia, hierarchical structures are readily accepted, and challenging authority is often frowned upon.

Lastly, many shareholders, particularly novice investors, may need guidance on what to ask during meetings. The AGM Corporate Governance Checklist, published by the Securities Commission Malaysia, MSWG, and the Institutional Investors Council, can guide minority shareholders on critical issues to consider or raise at an AGM before exercising their voting rights. MSWG's questions featured in meetings can also serve as a starting point for shareholders to initiate conversations with the board and management.

How to Be an Effective Shareholder

1. **Stay Informed:** It is important for shareholders to stay informed about growing economic trends and matters that may affect the market, sector, and the company itself. Additionally, staying updated on issues related to economic, social, and governance (ESG) practices or sustainability is crucial, as these factors can significantly impact the company.
2. **Read the Annual Report:** Review the annual report well in advance of the AGM. Focus on key areas like revenue trends, profit margins, cash flows, segment performance, outstanding order book, key audit matters, outlook, and expansion plans. Look out for significant changes or potential red flags that could impact the company's financial and operational health.
3. **Review the Proposed Resolutions:** Scrutinise each resolution proposed at the AGM. For the appointment or reappointment of directors, inquire how these directors add value to the firm. Assess their backgrounds, industry expertise, and any past involvement in corporate governance issues. Consider whether they may be overextended by holding multiple board positions or full-time executive roles elsewhere.
4. **Prepare Questions in Advance:** Draft specific and relevant questions before the meeting. These could include follow-up questions based on the previous meeting minutes, usually available on the company's website.

ENGAGE AND EMPOWER

It has been observed that some minority shareholders may attend AGMs primarily for the door gifts—whether they be goodies, vouchers, e-wallet credits, or cash incentives—rather than fully engaging in the opportunity to gain valuable insights into their investments. The provision of meals further enhances the appeal of attending in person. In some cases, shareholders may register for the meeting to receive the door gifts, but unfortunately, some choose to depart before the meeting commences.

AGMs should not be treated as mere checkboxes on the corporate calendar. They are vital opportunities for shareholders to make informed decisions based on their interactions and conversations with the board and management. Moreover, many small and mid-cap companies, despite their potential, often fly under the radar of media and analysts, leaving a wealth of opportunities unexplored. AGMs provide a golden opportunity to dive deep into these hidden gems.

Ultimately, the success of an AGM lies in both the company's conduct and shareholders' participation. Boards and companies must also take responsibility for improving the conduct of AGMs, ensuring they are platforms for meaningful dialogue and engagement.

AGM CORPORATE GOVERNANCE CHECKLIST FOR SHAREHOLDERS

Source: <https://www.sc.com.my/api/documentms/download.ashx?id=b59a0f5d-c414-4c27-b1c2-37ad15072d47>



ANNUAL GENERAL MEETING

CORPORATE GOVERNANCE CHECKLIST

FOR SHAREHOLDERS

As shareholders, are you prepared to participate effectively at an Annual General Meeting (AGM)? This Checklist highlights questions for shareholders to consider in preparation for an AGM. It covers primarily issues related to resolutions commonly tabled at AGMs such as the appointment or reappointment of directors, approval of directors' fees and the appointment of auditor.

Where shareholders have concerns, including finding gaps in the disclosure or information provided by the company

– they should raise these concerns at the AGM and ensure that the information required is provided. While the Checklist was developed for shareholders, other stakeholders such as consumers and potential investors are encouraged to use the Checklist to understand and evaluate the performance, policies and practices of companies.

Note: This Checklist is not exhaustive but merely serves as a general guidance for shareholders.

PRE-AGM



A. NOTICE OF AGM

1. Did you receive the notice of AGM at least 28 days before the meeting as recommended in the *Malaysian Code on Corporate Governance* (MCCG)?
2. Are the proposed resolutions supported by sufficient information, explanation and/or justification?
3. Is the venue, timing of the AGM and other administrative preparations convenient?
4. Does the company leverage technology to enable remote shareholders participation (e.g. broadcasting the AGM, using digital platform)?

B. DIRECTORS: APPOINTMENT OR REAPPOINTMENT

1. Was the information on the board candidate sufficiently provided (e.g. qualification, experience)?
2. Did the company provide reasons to support the nomination of the board candidate and do you agree with them?
3. Is the board candidate involved with a competitor or connected to a failed or problematic company?
4. Does the board candidate appear 'stretched' in terms of his/her commitment (e.g. sitting on multiple boards or has full time executive position in another company)?
5. How was the board candidate identified? Did the company use independent sources (e.g. search firms, independent directors' registry)?
6. If all board candidates are male, were women candidates considered in the selection process? If not, why?
7. For the reappointment of a director, are you satisfied with his/her performance as a board member?
8. Does the company adopt the MCCG best practice for the reappointment or retention of independent directors with tenure of more than 9 years? If not, why?

✦ *Refer to Practice 4.2 of the MCCG.*

C. REMUNERATION

1. Do you know the company's remuneration policy?
2. Does the remuneration policy or structure encourage executive directors and members of senior management to consider a longer-term horizon of the business?
3. Is justification clearly provided to support the remuneration for the board and senior management including any significant changes in the remuneration?

✦ *The justification provided should help shareholders understand the link between remuneration and performance, including how remuneration is aligned with the company's strategies and priorities.*

4. Did the company disclose the remuneration of the top five members of senior management?
 ✦ *The MCCG recommends the detailed disclosure of the senior management's remuneration including breakdown of each component e.g. director's fees, salaries, bonuses, commission, benefits-in-kind (Practice 7.2 & Step Up 7.3 of MCCG).*
5. Do you agree with the remuneration received by the Chief Executive Officer (CEO)?
6. If the Employee Stock Option Scheme (ESOS) / share grant is granted to non-executive directors, what was the basis or justification provided by the company?

D. ANNUAL REPORT

1. Have you read the company's annual report?
2. Was the information provided in the annual report meaningful?
 ✦ *The standard for meaningful should not be simply a listing of the company's activities rather substantive discussion on significant actions.*
3. Are you satisfied with the financial and non-financial performance of the company?
4. Was explanation clearly provided to explain the performance of the company?

E. ADOPTION OF CORPORATE GOVERNANCE BEST PRACTICES

1. Have you read the company's *Corporate Governance Report*? Are you satisfied with the explanations provided?
2. Are you satisfied with the company's adoption of the MCCG?
3. In relation to the company's departure(s) from the MCCG, do you agree with the alternative practice and timeline for adoption? Is the company meeting the timeline it has committed to?
4. Have you compared the company's corporate governance performance against other listed companies as reported in the SC's *Corporate Governance Monitor (CG Monitor)*?
 ✦ *The CG Monitor is an annual publication of the Securities Commission Malaysia which highlights the adoption of the MCCG and quality of disclosures in the CG Reports.*

F. SUSTAINABILITY

1. Is the company taking into consideration material sustainability issues in its operations (e.g. economic, environmental and social consideration)? Is there oversight by the board on these matters?
2. Are the company's sustainability efforts centred solely around charity, donations or community service?
3. Are any of the operations of the company negatively impacting the environment?
4. Does the company have clear and measureable Key Performance Indicators (KPIs) to indicate the effectiveness of its management of sustainability matters?

G. AUDIT, RISK MANAGEMENT AND INTERNAL AUDIT

Audit

1. Did the audit report highlight any issue(s)?
2. Are there any key audit matters raised by the auditor?
3. Are you aware of the fees paid to the company's auditor for non-audit services?
4. Do you agree with the fees paid to the company's auditor?
 ✦ *The fees paid to the auditor can be found in the annual report.*

Risk Management and Internal Audit

1. Have you read the 'Statement of Risk Management and Internal Control' prepared by the board?
2. Are you satisfied with how the risks are identified and mitigated?
3. Is the company's internal audit function adequately resourced considering the size and complexity of the company's operations? Is the internal audit function carried out effectively?

H. ANTI-CORRUPTION

1. Does the company have an anti-corruption policy? Is the policy adequate?
2. What was the company's assessment of corruption risk for the year?

AT THE AGM



1. Are all board members (including CEO if he/she is not a board member), present at the AGM? If not, were reasons provided by the Chairman for their absence?
2. Did the company explain the voting procedures for the meeting?
3. Are questions posed by shareholders pre-AGM highlighted at the meeting?
 ✦ For example, questions posed by the Minority Shareholders Watch Group (MSWG) or the Institutional Investors Council (IIC).
4. Was sufficient time provided for questions and answers?
5. Are you satisfied with the responses provided by the board?
6. Apart from the Chairman, do other board members respond to questions?
7. Did the company's auditor present the audit findings at the AGM? Were there problems highlighted in relation to the audit?
8. If there is a change in auditor, is the outgoing auditor present?
9. Are there any current allegations or has the company been charged for any breaches of the law? If yes, what is the status and implications on the company and its stakeholders?

POST AGM



1. Have you read the 'Key Matters Discussed'?
 ✦ Listed issuers are required to publish the 'Key Matters Discussed' on its website which is a description of issues discussed and outcomes decided at the AGM.
2. Do the 'Key Matters Discussed' reflect the discussions and outcomes of the AGM accurately?
 ✦ The 'Key Matters Discussed' should not be a mere listing of resolutions and voting outcomes of the AGM.
3. Are shareholders provided with an accessible and effective mechanism to maintain communication with the company?

DEFINITION: Insider Activity shows the trades made by substantial shareholders or directors of the company. Purchases by the directors and company share buyback may indicate the share price is undervalued and brings confidence to the price trend of the share price.



ShareInvestor WebPro > Fundamental > Insider Trades > click Search tab > Select Bursa > click Stock name > scroll up and leave at <Select Counter> Type Date Range for Announcement Date > click Search

Notice Period is 4th August 2024 – 10th August 2024

Effective Change Date	Stock Name	Buyer/ Seller Name [Classification]	Bought / (Sold) ['000]	No. of Shares After Trade ['000]	
			Total	Total	% Held
02 AUG 2024 - 05 AUG 2024	3A	MR TEO KWEE HOCK [SSH]	330	52,126	10.66
02 AUG 2024 - 02 AUG 2024	ABMB	EMPLOYEES PROVIDENT FUND BOARD [SSH]	-2,072	142,261	9.189
31 JUL 2024 - 31 JUL 2024	ABMB	EMPLOYEES PROVIDENT FUND BOARD [SSH]	-2,046	147,417	9.522
05 AUG 2024 - 05 AUG 2024	ADVCON	MR TAN CHEE KEONG [DIR/CEO]	210	600	0.104
05 AUG 2024 - 05 AUG 2024	AEON	EMPLOYEES PROVIDENT FUND BOARD [SSH]	639	94,713	6.746
02 AUG 2024 - 02 AUG 2024	AEON	EMPLOYEES PROVIDENT FUND BOARD [SSH]	-600	94,074	6.7
31 JUL 2024 - 31 JUL 2024	AEON	EMPLOYEES PROVIDENT FUND BOARD [SSH]	112	94,674	6.743
06 AUG 2024 - 06 AUG 2024	AMBANK	EMPLOYEES PROVIDENT FUND BOARD [SSH]	50	511,550	15.475
02 AUG 2024 - 02 AUG 2024	AMBANK	EMPLOYEES PROVIDENT FUND BOARD [SSH]	-300	511,500	15.474
01 AUG 2024 - 01 AUG 2024	AMBANK	EMPLOYEES PROVIDENT FUND BOARD [SSH]	-3,000	511,800	15.483
31 JUL 2024 - 31 JUL 2024	AMBANK	EMPLOYEES PROVIDENT FUND BOARD [SSH]	-2,500	514,800	15.573
08 AUG 2024 - 08 AUG 2024	AME	MR LEE CHAI [DIR/CEO]	-150	115,994	18.15
08 AUG 2024 - 08 AUG 2024	AME	MR LEE CHAI [SSH]	-150	115,994	18.15
05 AUG 2024 - 05 AUG 2024	AME	EMPLOYEES PROVIDENT FUND BOARD [SSH]	899	32,931	5.153
08 AUG 2024 - 08 AUG 2024	AMEREIT	MR LEE CHAI [SSH]	-778	262,964	54.62
01 AUG 2024 - 01 AUG 2024	ANCOMNY	DATO' SIEW KA WEI [DIR/CEO]	10	18,433	21.033
05 AUG 2024 - 06 AUG 2024	ANEKA	MR LOKE KIEN TUCK [DIR/CEO]	364	99,930	14.837
05 AUG 2024 - 06 AUG 2024	ANEKA	MR LOKE KIEN TUCK [SSH]	364	99,930	14.837
07 AUG 2024 - 07 AUG 2024	APPASIA	PELABURAN MARA BERHAD [SSH]	-500	64,896	5.449
07 AUG 2024 - 07 AUG 2024	APPASIA	MR TAN KANG SENG [SSH]	60,000	125,000	10.678
06 AUG 2024 - 06 AUG 2024	APPASIA	MR TOH HONG CHYE [DIR/CEO]	500	309,220	26.414
06 AUG 2024 - 06 AUG 2024	APPASIA	MR TOH HONG CHYE [SSH]	500	309,220	26.414
05 AUG 2024 - 05 AUG 2024	APPASIA	MR TOH HONG CHYE [DIR/CEO]	2,000	308,720	26.39
05 AUG 2024 - 05 AUG 2024	APPASIA	MR TOH HONG CHYE [SSH]	2,000	308,720	26.39
05 AUG 2024 - 05 AUG 2024	APPASIA-WA	MR TOH HONG CHYE [DIR/CEO]	1,000	3,058	1.474
08 AUG 2024 - 08 AUG 2024	ASIAFLE	DATO' LIM SOON HUAT [SSH]	25	90,682	46.485
07 AUG 2024 - 08 AUG 2024	ASIAFLE	DATO' LIM SOON HUAT [DIR/CEO]	120	96,850	49.646
07 AUG 2024 - 07 AUG 2024	ASIAFLE	DATO LIM SOON HUAT [DIR/CEO]	41	96,730	49.637
07 AUG 2024 - 07 AUG 2024	ASIAFLE	DATO LIM SOON HUAT [SSH]	41	90,657	46.52
05 AUG 2024 - 05 AUG 2024	ASIAFLE	DATO' LIM SOON HUAT [DIR/CEO]	124	96,690	49.616
05 AUG 2024 - 05 AUG 2024	ASIAFLE	DATO LIM SOON HUAT [SSH]	124	90,616	46.499
07 AUG 2024 - 07 AUG 2024	ATECH	ABRDN HOLDINGS LIMITED [SSH]	47	28,970	6.683
07 AUG 2024 - 07 AUG 2024	ATECH	ABRDN MALAYSIA SDN. BHD. [SSH]	47	28,445	6.562
07 AUG 2024 - 07 AUG 2024	ATECH	ABRDN PLC [SSH]	47	28,970	6.683
06 AUG 2024 - 06 AUG 2024	ATECH	ABRDN HOLDINGS LIMITED [SSH]	850	28,924	6.673
06 AUG 2024 - 06 AUG 2024	ATECH	ABRDN MALAYSIA SDN. BHD. [SSH]	850	28,399	6.551
06 AUG 2024 - 06 AUG 2024	ATECH	ABRDN PLC [SSH]	850	28,924	6.673
06 AUG 2024 - 06 AUG 2024	ATECH	EMPLOYEES PROVIDENT FUND BOARD [SSH]	605	34,978	8.07
05 AUG 2024 - 05 AUG 2024	ATECH	ABRDN HOLDINGS LIMITED [SSH]	750	28,074	6.476
05 AUG 2024 - 05 AUG 2024	ATECH	ABRDN MALAYSIA SDN. BHD. [SSH]	750	27,549	6.355
05 AUG 2024 - 05 AUG 2024	ATECH	ABRDN PLC [SSH]	750	28,074	6.476
05 AUG 2024 - 05 AUG 2024	ATECH	EMPLOYEES PROVIDENT FUND BOARD [SSH]	1,257	34,373	7.93
02 AUG 2024 - 02 AUG 2024	ATECH	EMPLOYEES PROVIDENT FUND BOARD [SSH]	260	33,116	7.64
01 AUG 2024 - 01 AUG 2024	ATECH	EMPLOYEES PROVIDENT FUND BOARD [SSH]	77	32,856	7.58
31 JUL 2024 - 31 JUL 2024	ATECH	EMPLOYEES PROVIDENT FUND BOARD [SSH]	44	32,780	7.563
01 AUG 2024 - 01 AUG 2024	ATLAN	CHESTERFIELD TRUST COMPANY LIMITED AS TRUSTEES OF THE LIM FAMILY TRUST [SSH]	5,500	135,819	53.546
01 AUG 2024 - 01 AUG 2024	ATLAN	ALPRETZ CAPITAL SDN BHD [SSH]	5,500	52,599	20.737
01 AUG 2024 - 01 AUG 2024	ATLAN	DATO' SRI ADAM SANI BIN ABDULLAH [DIR/CEO]	5,500	135,819	53.546
01 AUG 2024 - 01 AUG 2024	ATLAN	DATO' SRI ADAM SANI BIN ABDULLAH [SSH]	5,500	135,819	53.546
01 AUG 2024 - 01 AUG 2024	ATLAN	LIM FAMILY HOLDINGS LIMITED [SSH]	5,500	135,819	53.546
06 AUG 2024 - 06 AUG 2024	AXIATA	EMPLOYEES PROVIDENT FUND BOARD [SSH]	-1,500	1,708,926	18.612
05 AUG 2024 - 05 AUG 2024	AXIATA	EMPLOYEES PROVIDENT FUND BOARD [SSH]	-1,500	1,710,426	18.628
31 JUL 2024 - 31 JUL 2024	AXIATA	EMPLOYEES PROVIDENT FUND BOARD [SSH]	70	1,711,926	18.645
23 MAY 2024 - 23 MAY 2024	AXIATA	AMANAHRAYA TRUSTEES BERHAD-AMANAH SAHAM BUMIPUTERA [SSH]	-1,200	1,120,204	12.2
01 AUG 2024 - 01 AUG 2024	AXREIT	EMPLOYEES PROVIDENT FUND BOARD [SSH]	2,000	317,299	18.157
31 JUL 2024 - 31 JUL 2024	AXREIT	EMPLOYEES PROVIDENT FUND BOARD [SSH]	2,000	315,299	18.043
06 AUG 2024 - 06 AUG 2024	BAUTO	EMPLOYEES PROVIDENT FUND BOARD [SSH]	227	157,904	13.51
06 AUG 2024 - 06 AUG 2024	BAUTO	DATO' AMER HAMZAH BIN AHMAD [SSH]	150	178,580	15.279
06 AUG 2024 - 06 AUG 2024	BAUTO	DATO' LEE KOK CHUAN [DIR/CEO]	150	178,311	15.256
06 AUG 2024 - 06 AUG 2024	BAUTO	DATO' LEE KOK CHUAN [SSH]	150	178,311	15.256
06 AUG 2024 - 06 AUG 2024	BAUTO	DYNAMIC MILESTONE SDN BHD [SSH]	150	174,136	14.899
06 AUG 2024 - 06 AUG 2024	BAUTO	TAN SRI DATO' SRI YEOH CHOON SAN [DIR/CEO]	150	178,330	15.258
06 AUG 2024 - 06 AUG 2024	BAUTO	TAN SRI DATO' SRI YEOH CHOON SAN [SSH]	150	178,330	15.258
05 AUG 2024 - 05 AUG 2024	BAUTO	EMPLOYEES PROVIDENT FUND BOARD [SSH]	2,000	157,677	13.49
02 AUG 2024 - 02 AUG 2024	BAUTO	EMPLOYEES PROVIDENT FUND BOARD [SSH]	1,985	155,677	13.319

Notice Period is 4th August 2024 – 10th August 2024

Effective Change Date	Stock Name	Buyer/ Seller Name [Classification]	Bought / (Sold) ['000]	No. of Shares After Trade ['000]	
			Total	Total	% Held
01 AUG 2024 - 01 AUG 2024	BAUTO	EMPLOYEES PROVIDENT FUND BOARD [SSH]	289	153,692	13.149
02 AUG 2024 - 02 AUG 2024	BAUTO	LEMBAGA TABUNG HAJI [SSH]	500	66,807	5.716
31 JUL 2024 - 31 JUL 2024	BAUTO	EMPLOYEES PROVIDENT FUND BOARD [SSH]	-1,000	153,403	13.125
06 AUG 2024 - 06 AUG 2024	BIMB	EMPLOYEES PROVIDENT FUND BOARD [SSH]	579	402,815	17.773
05 AUG 2024 - 05 AUG 2024	BIMB	EMPLOYEES PROVIDENT FUND BOARD [SSH]	4,439	402,236	17.747
02 AUG 2024 - 02 AUG 2024	BIMB	EMPLOYEES PROVIDENT FUND BOARD [SSH]	-98	397,796	17.551
01 AUG 2024 - 01 AUG 2024	BIMB	EMPLOYEES PROVIDENT FUND BOARD [SSH]	-400	397,894	17.556
31 JUL 2024 - 31 JUL 2024	BIMB	EMPLOYEES PROVIDENT FUND BOARD [SSH]	-300	398,294	17.573
05 AUG 2024 - 05 AUG 2024	BINTAI	MISS NG SIEW KIM [DIR/CEO]	150	425	0.035
06 AUG 2024 - 06 AUG 2024	BURSA	EMPLOYEES PROVIDENT FUND BOARD [SSH]	1,628	88,325	10.914
06 AUG 2024 - 06 AUG 2024	BURSA	EMPLOYEES PROVIDENT FUND BOARD [SSH]	-600	87,725	10.84
05 AUG 2024 - 05 AUG 2024	BURSA	EMPLOYEES PROVIDENT FUND BOARD [SSH]	4,900	88,103	10.886
05 AUG 2024 - 05 AUG 2024	BURSA	EMPLOYEES PROVIDENT FUND BOARD [SSH]	-1,406	86,697	10.713
01 AUG 2024 - 01 AUG 2024	BURSA	EMPLOYEES PROVIDENT FUND BOARD [SSH]	1,000	83,865	10.363
01 AUG 2024 - 01 AUG 2024	BURSA	EMPLOYEES PROVIDENT FUND BOARD [SSH]	-662	83,203	10.281
31 JUL 2024 - 31 JUL 2024	BURSA	EMPLOYEES PROVIDENT FUND BOARD [SSH]	1,000	82,865	10.239
05 AUG 2024 - 05 AUG 2024	CAB	MADAM CHAN KIM KEOW [SSH]	73	123,356	17.588
05 AUG 2024 - 05 AUG 2024	CAB	MR CHUAH AH BEE [DIR/CEO]	73	321,388	45.824
05 AUG 2024 - 05 AUG 2024	CAB	MR CHUAH AH BEE [SSH]	73	321,388	45.824
05 AUG 2024 - 05 AUG 2024	CAB	MR CHUAH HOON PHONG [DIR/CEO]	73	14,944	2.131
05 AUG 2024 - 05 AUG 2024	CBIP	DATUK LIM CHAI BENG [DIR/CEO]	621	199,012	42.464
05 AUG 2024 - 05 AUG 2024	CBIP	DATUK LIM CHAI BENG [SSH]	621	199,012	42.464
05 AUG 2024 - 05 AUG 2024	CBIP	ZEE CAPITAL SDN BHD [SSH]	621	36,936	7.881
01 AUG 2024 - 01 AUG 2024	CBIP	DATUK LIM CHAI BENG [DIR/CEO]	137	198,392	42.332
01 AUG 2024 - 01 AUG 2024	CBIP	DATUK LIM CHAI BENG [SSH]	137	198,392	42.332
01 AUG 2024 - 01 AUG 2024	CBIP	ZEE CAPITAL SDN BHD [SSH]	137	36,315	7.749
06 AUG 2024 - 06 AUG 2024	CDB	EMPLOYEES PROVIDENT FUND BOARD [SSH]	325	1,172,687	9.996
02 AUG 2024 - 02 AUG 2024	CDB	EMPLOYEES PROVIDENT FUND BOARD [SSH]	1,068	1,172,362	9.993
07 AUG 2024 - 07 AUG 2024	CEB	MISS TEE KIM CHIN [DIR/CEO]	-115,250	138,716	13.983
07 AUG 2024 - 07 AUG 2024	CEB	MISS TEE KIM CHIN [SSH]	-115,250	138,716	13.983
07 AUG 2024 - 07 AUG 2024	CEB	MISS TEE KIM YOK [DIR/CEO]	-32,843	10,094	1.018
06 AUG 2024 - 06 AUG 2024	CEB	MISS TEE KIM YOK [DIR/CEO]	-4,197	42,937	4.328
01 AUG 2024 - 06 AUG 2024	CEB	MISS TEE KIM CHIN [DIR/CEO]	-126,815	253,966	25.601
01 AUG 2024 - 06 AUG 2024	CEB	MISS TEE KIM CHIN [SSH]	-126,815	253,966	25.601
05 AUG 2024 - 05 AUG 2024	CEB	MISS TEE KIM CHIN [DIR/CEO]	-15,224	380,781	38.385
05 AUG 2024 - 05 AUG 2024	CEB	MISS TEE KIM CHIN [SSH]	-15,224	380,781	38.385
08 AUG 2024 - 08 AUG 2024	CGB	MR CHEW HIAN TAT [DIR/CEO]	500	237,506	31.422
08 AUG 2024 - 08 AUG 2024	CGB	MR CHEW HIAN TAT [SSH]	500	237,506	31.422
08 AUG 2024 - 08 AUG 2024	CGB-WA	MR CHEW HIAN TAT [DIR/CEO]	500	62,795	84.597
07 AUG 2024 - 07 AUG 2024	CHINHIN	DATUK SERI CHIAU BENG TEIK JP [DIR/CEO]	1,300	2,081,647	58.823
07 AUG 2024 - 07 AUG 2024	CHINHIN	DATUK SERI CHIAU BENG TEIK JP [SSH]	1,300	2,081,647	58.823
06 AUG 2024 - 06 AUG 2024	CHINHIN	DATUK SERI CHIAU BENG TEIK JP [DIR/CEO]	254	2,080,347	58.786
06 AUG 2024 - 06 AUG 2024	CHINHIN	DATUK SERI CHIAU BENG TEIK JP [SSH]	254	2,080,347	58.786
06 AUG 2024 - 06 AUG 2024	CIMB	KUMPULAN WANG PERSARAAN (DIPERBADANKAN) [SSH]	-210	656,233	6.13
02 AUG 2024 - 02 AUG 2024	CIMB	EMPLOYEES PROVIDENT FUND BOARD [SSH]	-8,798	1,521,398	14.22
05 AUG 2024 - 05 AUG 2024	CIMB	KUMPULAN WANG PERSARAAN (DIPERBADANKAN) [SSH]	-2,977	656,443	6.14
01 AUG 2024 - 01 AUG 2024	CIMB	EMPLOYEES PROVIDENT FUND BOARD [SSH]	6,627	1,530,197	14.3
02 AUG 2024 - 02 AUG 2024	CIMB	KUMPULAN WANG PERSARAAN (DIPERBADANKAN) [SSH]	-2,000	656,820	6.14
31 JUL 2024 - 31 JUL 2024	CIMB	EMPLOYEES PROVIDENT FUND BOARD [SSH]	-32	1,523,570	14.24
06 AUG 2024 - 06 AUG 2024	CLMT	EMPLOYEES PROVIDENT FUND BOARD [SSH]	710	435,572	15.368
06 AUG 2024 - 06 AUG 2024	CLMT	KUMPULAN WANG PERSARAAN (DIPERBADANKAN) [SSH]	100	289,955	10.23
06 AUG 2024 - 06 AUG 2024	CTOS	EMPLOYEES PROVIDENT FUND BOARD [SSH]	487	405,227	17.542
06 AUG 2024 - 06 AUG 2024	CTOS	ABRDN HOLDINGS LIMITED [SSH]	1,171	324,311	14.039
06 AUG 2024 - 06 AUG 2024	CTOS	ABRDN MALAYSIA SDN BHD [SSH]	511	320,829	13.889
06 AUG 2024 - 06 AUG 2024	CTOS	ABRDN PLC [SSH]	1,171	324,311	14.039
05 AUG 2024 - 05 AUG 2024	CTOS	EMPLOYEES PROVIDENT FUND BOARD [SSH]	3,314	405,529	17.555
06 AUG 2024 - 06 AUG 2024	CTOS	KUMPULAN WANG PERSARAAN (DIPERBADANKAN) [SSH]	202	169,072	7.319
05 AUG 2024 - 05 AUG 2024	CTOS	ABRDN HOLDINGS LIMITED [SSH]	1,000	323,140	13.989
05 AUG 2024 - 05 AUG 2024	CTOS	ABRDN MALAYSIA SDN BHD [SSH]	947	320,318	13.867
05 AUG 2024 - 05 AUG 2024	CTOS	ABRDN PLC [SSH]	1,000	323,140	13.989
06 AUG 2024 - 06 AUG 2024	D&O	EMPLOYEES PROVIDENT FUND BOARD [SSH]	159	94,156	7.596
05 AUG 2024 - 05 AUG 2024	D&O	EMPLOYEES PROVIDENT FUND BOARD [SSH]	265	93,997	7.584
02 AUG 2024 - 02 AUG 2024	D&O	EMPLOYEES PROVIDENT FUND BOARD [SSH]	-52	93,732	7.562
01 AUG 2024 - 01 AUG 2024	D&O	EMPLOYEES PROVIDENT FUND BOARD [SSH]	-59	93,784	7.566

Disclaimer: The Information in Insider Activity is extracted from www.shareinvestor.com/fundamental/insider_trades. The information on this page is provided as a service to readers. It does not constitute financial advice and/or any investment recommendations. We assume no liability for damages resulting from or arising out of the use of such information. Whilst every effort is made to ensure accuracy, the information presented is not the official record of shareholder filings. Readers are advised to read the original filings on the Bursa Malaysia website at www.bursamalaysia.com



STROM
SWISS TIMEPIECES & JEWELLERY



StromWatch Asia
Tele : +65.9817.3378
Email : ll.stromasia@gmail.com
WWW.STROMWATCH.SWISS



READ MORE



Gamuda Berhad (GAMUDA) has today made the seventh offer of Options under the Employees Share Option Scheme for Eligible Employees and Executive Directors of Gamuda Berhad and its subsidiaries (excluding dormant subsidiaries).



ENGINEERS

HSS Engineers Berhad (HSSEB) wishes to announce that on 12 August 2024, HSS Integrated Sdn. Bhd., an associate of HEB, accepted a Letter of Instruction from Yellowwood Properties Sdn. Bhd. to provide project construction management services to

YPSB for a new data centre campus to be located at Jalan Digital 11, Sedenak Tech Park, Kulai, Johor Darul Takzim, Malaysia. The LOI was issued pursuant to the Framework Agreement for Consultancy Services executed between YPSB and HSSI on 12 January 2023.

READ MORE



MR D.I.Y. Group (M) Berhad (MRDIY) is set to make a record 73.1% dividend payout ratio for

the second quarter ended 30 June 2024 (2QFY2024), up 50.2% year-on-year and on the back of a 9.0% year-on-year increase in its second-quarter revenue. The dividend of RM113.4 million is equivalent to a payout ratio of 73.1% of profit after tax and is the highest payout ever recorded by the Group since its initial public offering in 2020. Total cumulative dividends for 1HFY2024 was RM207.9 mil, equivalent to 69.3% of profit after tax payout.

READ MORE





On behalf of the Board of **Technodex Berhad (TDEX)**, Mercury Securities wishes to announce that it had on 9 August 2024 submitted an application to Bursa Securities to seek for an extension of time of 6 months up to 28 February 2025 for the Company to complete the implementation of the Private Placement.

[READ MORE](#)[READ MORE](#)

On behalf of the Board of **Telekom Malaysia Berhad (TM)**, Maybank IB wishes to announce that an EGM will no longer be necessary, based on a review of the applicable percentage ratio. As such there is no condition precedent to the Joint Venture Agreement to be fulfilled. Accordingly, the JV Parties will complete the Proposed Joint Venture in accordance with the terms and conditions of the JVA.



Vstecs Berhad (VSTECS), proudly announces that its wholly-owned subsidiary, VSTECS Astar Sdn

Bhd, has been appointed as the sole distributor for the highly anticipated Google Pixel 9 range of smartphones in Malaysia. After eight years of eager anticipation, Google's new Pixel line-up – including the Pixel 9 phones, Pixel Watch 3 and Pixel Buds Pro 2 – is debuting in the Malaysian market today.



NAME OF COMPANY	OFFER PERIOD		ISSUE PRICE (Per Ordinary Share)	LISTING SOUGHT	DATE OF LISTING
	OPENING	CLOSING			
VETECE HOLDINGS BERHAD	8 Aug 2024	14 Aug 2024	RM0.25	ACE MARKET	28 Aug 2024
EPB GROUP BERHAD	27 June 2024	31 July 2024	RM0.56	ACE MARKET	23 Aug 2024
ELRIDGE ENERGY HOLDINGS BERHAD	6 Aug 2024	12 Aug 2024	RM0.29	ACE MARKET	22 Aug 2024

Disclaimer: The information in the Investor Relations page is extracted from individual companies' announcements in www.bursamalaysia.com. The information on this page is provided as a service to readers. We assume no liability for damages resulting from or arising out of the use of such information. Whilst every effort is made to ensure accuracy, the information presented has been simplified for your reading pleasure. Readers are advised to read the original and complete filings on the Bursa Malaysia website at https://www.bursamalaysia.com/market_information/announcements/company_announcement



Learn how to identify Hot Stocks using Technical Analysis (TA) and Fundamental Analysis (FA)

SIGN UP FOR Invest NOW IT'S FREE!!!



Via email, every Friday.

Get market moving news and analyses. Regular columns include **Behind The Action** and **From The Observer**

- Leaderboard • Shariah Hot Stocks • Shariah Momentum Up Stocks • Non Shariah Hot Stocks • Up Trending Stocks • Growth Stocks • Dividend Stocks • Long Companies • Insider Activity • Investor Relations • Regional Markets

