

Invest

A Weekly e-Publication by [SHAREINVESTOR.com](https://www.shareinvestor.com)

ISSUE

178

FRIDAY
13 OCTOBER
2023

Scan/Click QR to Register



Via email, every Friday

MARKET SENTIMENTS

GROWTH OF MALAYSIA'S ISLAMIC BANKS OUTPACING CONVENTIONAL PEERS - MOODY'S

Malaysia's first 5G-powered AI warehouse powered by CelcomDigi and DHL Supply Chain

PIKOM EXPECTS STRONG CONTRIBUTION FROM DIGITAL ECONOMY IN 2023, 2024

See more on pages 23-26

ALSO

07 COMPANY SPOTLIGHT
Malaysian Resources Corporation Berhad

28 MSWG
Timely material information disclosure

04 LEADERBOARD

06 SHARIAH HOT STOCKS

08 SHARIAH MOMENTUM UP STOCKS

10 NON SHARIAH HOT STOCKS

12 UP TRENDING STOCKS

14 VALUE STOCKS

16 GROWTH STOCKS

18 DIVIDEND STOCKS

20 BROKERS' CALL

21 LONG COMPANIES

27 REGIONAL MARKETS

32 INSIDER ACTIVITY

36 INVESTOR RELATIONS



SHAREINVESTOR®

Invest with Knowledge

INVESTOR PLATFORMS

Director
Darren Chong
darren.chong@shareinvestor.com

Business Development Manager
Jay Cheong
jay.cheong@shareinvestor.com

Senior Executive
Daniel Wong
daniel.wong@shareinvestor.com

Executive
Farah Azwani
farah.azwani@shareinvestor.com

Executive
Tan Yong Sheng
yongsheng.tan@shareinvestor.com

ADMIN & OPERATIONS

Senior Executive
Watie Nordin
watie.nordin@shareinvestor.com

Executive
Silas Emmanuel Joseph
silas.joseph@shareinvestor.com

INVESTOR RELATIONS

Group Managing Director & Publisher
Edward Stanislaus
edward@shareinvestor.com

Senior Manager
Letticia Wong
letticia.wong@shareinvestor.com

PROCESS AUTOMATION & DATA ANALYTICS

Data Analyst
Nickson Aw

SHAREINVESTOR HOLDINGS BOARD OF DIRECTORS

- | | |
|------------------|-----------------|
| Chairman | Patrick Daniel |
| Group CEO | Christopher Lee |
| Group COO | Lim Dau Hee |
| Group CFO | Teo Siew May |
| Group MD | Shanison Lin |



“ GIVE A MAN A FISH AND YOU FEED HIM FOR A DAY; TEACH A MAN TO FISH AND YOU FEED HIM FOR A LIFETIME ”

ShareInvestor Malaysia Sdn. Bhd.
(200001023956) (526564-M)
Unit No. DF2-07-03A, Level 7,
Persoft Tower, 6B Persiaran Tropicana,
47410 Petaling Jaya, Selangor Darul Ehsan.

Hotline : 603 7803 1791
Mobile : 011 6343 8939
Website : www.ShareInvestor.com.my
www.ShareInvestorHoldings.com
www.Facebook.com/ShareInvestorMalaysia

ADVERTISEMENT ENQUIRY

bulthaup takes care of the details so that you can enjoy a harmonious environment.



XTRA

XTRA FURNITURE SDN BHD
The Gardens Mall, Mid Valley City
xtrafurniture.com/bulthaup
fb.com/bulthaupmalaysia

bulthaup



Exploring CME Group Micro Futures Contracts

Crude Oil

Gold & Silver

U.S. Indices

Win exciting prizes and up to RM1800 TNG e-wallet when you start trading!*



TRADE NOW

*T&C Apply

From now until 31 December 2023

The content of the advertisement is intended to provide general information only and does not constitute investment advice, recommendation, offer, and/or solicitation to buy or sell any investment product nor does it take into account your specific needs, investment objectives and/or financial situation. All investments involve certain degree of risks and may not be suitable to all investors. The risk of loss can be substantial and you could lose in excess of your initial funds. You are advised to read and understand the governing Terms and Conditions and the Risk Disclosure Statement including any supplemental thereof carefully before investing. You may wish to conduct your own risk assessment and, where necessary, seek professional advice from a registered representative. The Securities Commission Malaysia has not reviewed the content of this advertisement/promotional material and takes no responsibilities for the contents and expressly disclaims all liability arising from this marketing/promotional material.

www.shareinvestor.com - market data at your fingertips



ShareInvestor WebPro (www.shareinvestor.com/my)

Prices > Stock Prices > Bursa > click Stocks tab

1. mouse over Ranking > select Top Active > all Shariah stocks are denoted with an [S] > mouse over Column Layout > select Edit Customs > select Name > select Volume > select Last Done Price > Mouse Over Column Layout > select Custom
2. mouse over Ranking > select Top Turnover > all Shariah stocks are denoted with an [S] > mouse over Column Layout > select Edit Customs > select Name > select Last Done Price > select Value > Mouse Over Column Layout > select Custom
3. mouse over Ranking > select Top Gainers (Over 5 Trading Days) > mouse over Column Layout > select Edit Customs > select Name > select Last Done Price > select 5 Days Change > select 5 Days % Change > Mouse Over Column Layout > select Custom
4. mouse over Ranking > select Top Losers (Over 5 Trading Days)
5. mouse over Ranking > select Top % Gainers (Over 5 Trading Days)
6. mouse over Ranking > select Top % Losers (Over 5 Trading Days)

Shariah Top Actives (as at Yesterday)

Name	Price (RM)	Volume
CLASSITA [S]	0.070	2,224,542.000
MMAG [S]	0.015	1,685,643.000
SSF [S]	0.265	1,483,499.000
BSLCORP [S]	0.040	1,048,915.000
MRCB [S]	0.490	676,129.000
VELESTO [S]	0.260	641,438.000
KANGER [S]	0.115	621,377.000
WIDAD [S]	0.545	612,413.000
SCIB [S]	0.515	533,852.000
UEMS [S]	0.845	504,476.000

Shariah Top Turnover (as at Yesterday)

Name	Price (RM)	Value (RM)
UEMS [S]	0.845	42,928,138
SSF [S]	0.265	38,706,384
TENAGA [S]	10.000	36,770,503
GAMUDA [S]	4.590	36,391,374
UMW [S]	4.750	34,931,733
WIDAD [S]	0.545	33,354,670
MYEG [S]	0.815	33,312,855
MRCB [S]	0.490	32,514,622
BAUTO [S]	2.480	29,375,148
SCIB [S]	0.515	27,530,088

Top Gainers (over 3 Trading days as at Yesterday)

Name	Price (RM)	Change (RM)
HEIM	25.200	+1.080
F&N	26.080	+0.900
RAPID	26.000	+0.720
BKAWAN	20.700	+0.500
LPI	11.880	+0.460
AJI	15.720	+0.420
CARLSBG	20.040	+0.340
HAPSENG	5.120	+0.320
PETDAG	22.720	+0.320
PERTAMA	3.770	+0.290

Top % Gainers (over 3 Trading days as at Yesterday)

Name	Price (RM)	Change (%)
PHB	0.010	+100.00
NEXGRAM	0.025	+66.67
AT	0.015	+50.00
FOCUS	0.015	+50.00
XOX	0.020	+33.33
PARLO	0.120	+29.03
BPURI	0.050	+25.00
G3	0.025	+25.00
PICORP	0.100	+25.00
TALAMT	0.025	+25.00

Top Losers (over 3 Trading days as at Yesterday)

Name	Price (RM)	Change (RM)
NESTLE	123.000	-4.000
PPB	14.780	-0.620
HEXTECH	24.260	-0.540
KESM	7.200	-0.370
SHL	1.990	-0.340
TIMECOM	5.290	-0.230
LTKM	1.270	-0.180
TOCEAN	1.750	-0.140
ALLIANZ	15.860	-0.120
MALPAC	1.050	-0.100

Top % Losers (over 3 Trading days as at Yesterday)

Name	Price (RM)	Change (%)
WAJA	0.055	-35.29
COMPUGT	0.010	-33.33
KNM	0.120	-31.43
XDL	0.020	-20.00
SMTRACK	0.025	-16.67
SHL	1.990	-14.59
ALRICH	0.030	-14.29
INNITY	0.505	-13.68
ADVENTA	0.370	-12.94
ITRONIC	0.035	-12.50

当Thai SDR遇上

孤注一掷

泰国市场探秘：
被低估的投资机会？

26
LIVE
OCTOBER
THURSDAY
8PM - 9PM

Scan Me



< Speaker

Price & Volume Distribution Charts (as at Yesterday)

Technical Analysis

DEFINITION: Shariah compliant stocks with Technical Analysis showing 5-days & 10-days Moving Average Price below Yesterday's Close over past 3 days and with Volume Spike.

CHART GUIDE: Volume Distribution Chart is a statistical interpretation of the current sentiment on each stock in graphical format. The highest bar categorized as >150k is likely to be traded by institutions or super dealers, while the lowest bar categorized as <15k usually represents retail investors. "Buy Up" refers to more buyers snatching up the lots queued at selling price. "Sell Down" refers to sellers selling their shares to the buying queue



ShareInvestor WebPro > Screener > Market Screener (FA & TA) > select BURSA > add criteria

A. Criteria

- > click Add Criteria
- Technical Analysis Conditions tab select (i) Moving Average Below Close (ii) Volume Spike
- Fundamental Analysis Conditions tab > select (iii) Revenue
- Prices & Other Conditions tab > select (iv) Is Shariah Compliant
- Technical Analysis Conditions tab select (v) Moving Average Below Close
- Prices & Other Conditions tab > select (vi) Last Done Price
- Technical Analysis Conditions tab select (vii) Moving Average Below Close

B. Conditions (Criteria Filters)

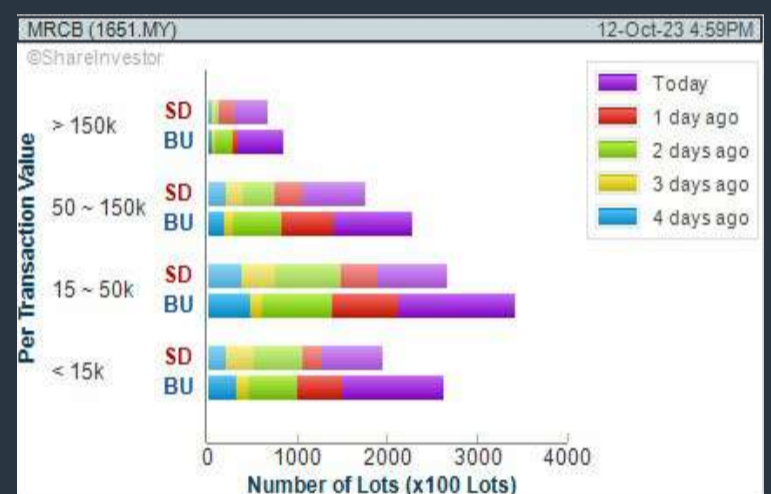
1. Moving Average Below Close - select (MA) type (5) below close price for type (3) days
2. Volume Spike - Volume type (1) greater than type (5) days average
3. Revenue ("000) - select (more than) type (1) for the past select (1) financial year(s)
4. Is Shariah Compliant - select **Yes**
5. Moving Average Below Close - select (MA) type (10) below close price for type (3) days
6. Last Done Price - select (more than) type (0.3)
7. Moving Average Below Close - select (EMA) type (5) below close price for type (3) days

- > click Save Template > Create New Template type (Shariah Hot Stocks) > click Create
- > click Save Template as > select Shariah Hot Stocks > click Save
- > click Screen Now (may take a few minutes)
- > Sort By: Select (Vol) Select (Desc)
- > Mouse over stock name > Charts > click C² Charts or Volume Distribution

MALAYSIAN RESOURCES CORPORATION BERHAD (1651)

C² Chart

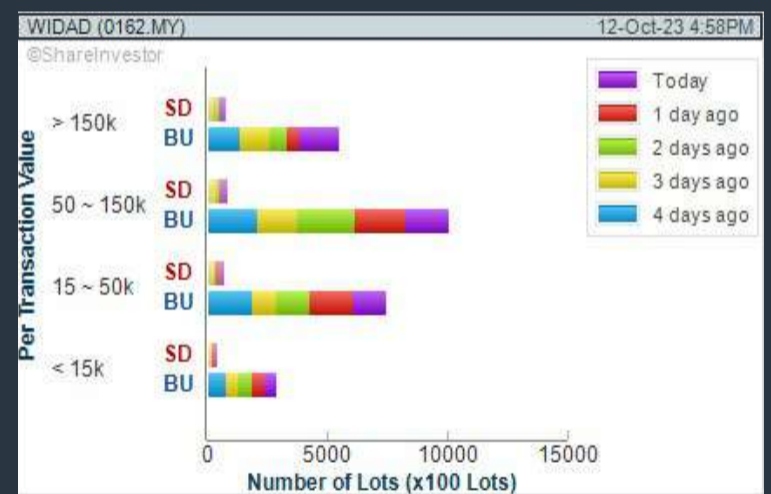
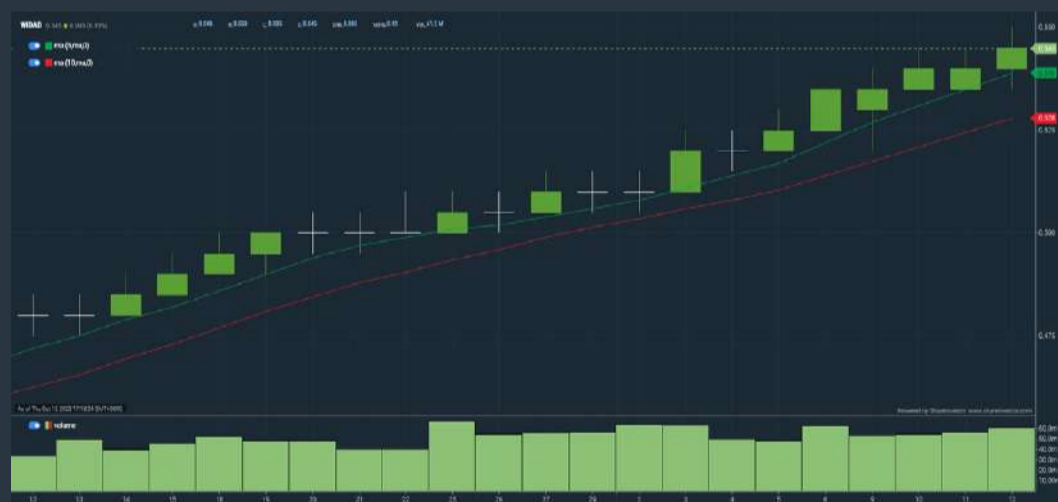
Analysis



WIDAD GROUP BERHAD (0162)

C² Chart

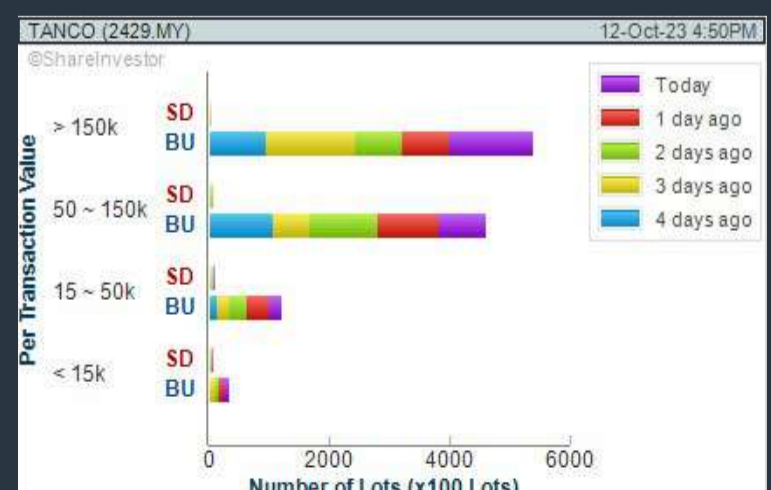
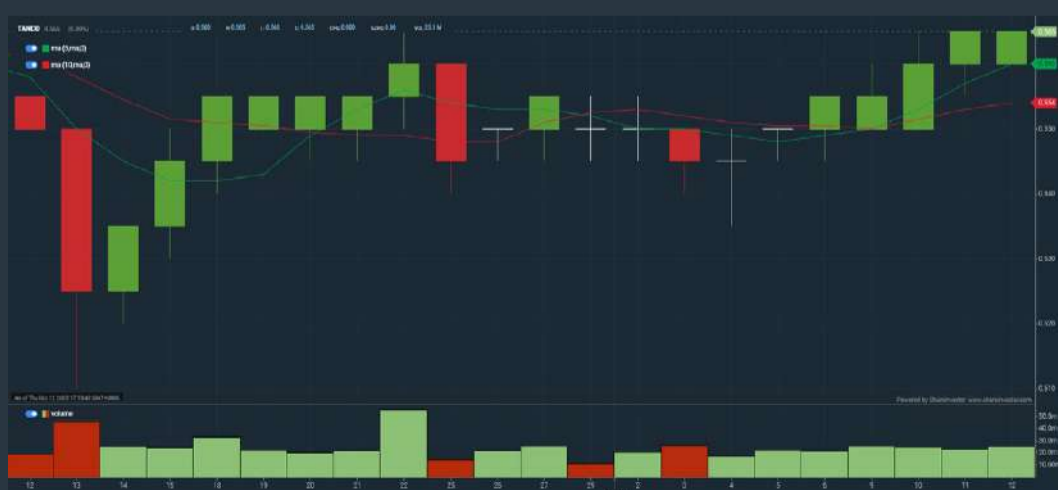
Analysis



TANCO HOLDINGS BERHAD (2429)

C² Chart

Analysis



Disclaimer: The information on this page is provided as a service to readers. It does not constitute financial advice and/or any investment recommendations. Past performance is not indicative of future results. We assume no liability for damages resulting from or arising out of the use of such information. It would be best if you did your own research to make your personal investment decisions wisely or consult a licenced investment advisor.

COMPANY BACKGROUND

Malaysian Resources Corporation Berhad (MRCB) is a property and construction company with diverse business segments, including property development and investment, engineering and construction, environmental engineering, facilities management, parking services, and others.

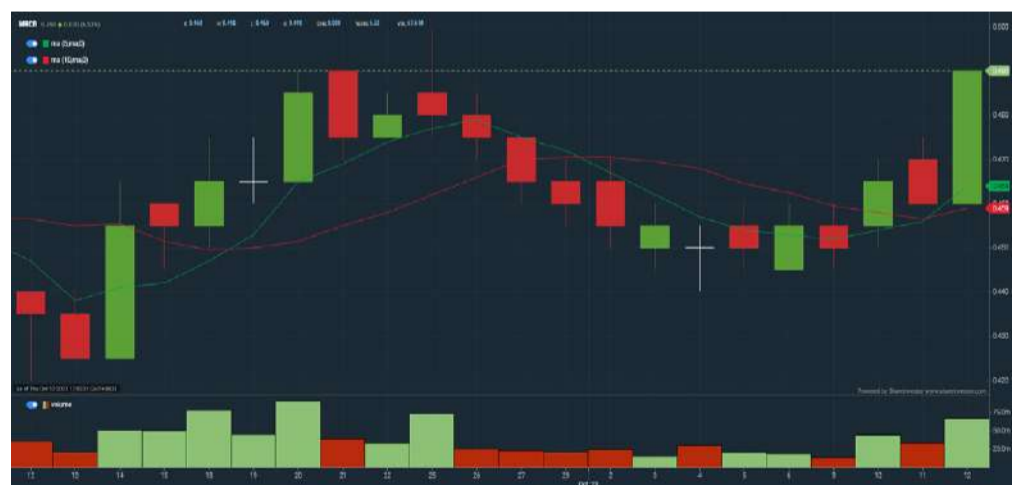


MRCB MALAYSIAN RESOURCES CORPORATION BERHAD Updated at 12 Oct 2023 16:55			
Last (MYR): 0.490 ↑	Change: +0.030	High: 0.490	Remarks: s
	Change (%): +6.52	Low: 0.460	
Open	0.400	Yesterday's Close	0.400
Buy Price	0.485	Sell Price	0.490
Buy Volume ('00)	26,329	Sell Volume ('00)	29,229
Cumulative Volume ('00)	676,129	Cumulative Value	32,514,622

Financial Analysis

Revenue Growth Increasing revenue in last 2 consecutive years	😊	Profit Growth Increasing profit in latest year (with last 2 profitable years)	😊
Piotroski F Score The company has above average financial strength (Piotroski F-Score of 6-7)	😊	Dividend Payout Dividend is decreasing over the past 60 months.	😟
Debt to Cashflow The company has negative cash flow from operations in most recent year	😟	Free Cash Flow Negative free cash flow for two years or more	😟
Gross Profit Margin Low gross profit margin for 3 years	😟	Net Earnings Margin Low net profit margin for 2 years	😟

😊 Excellent 😊 Good 😐 Neutral 😟 Be Alert 😱 Watch Out



Historical Financials

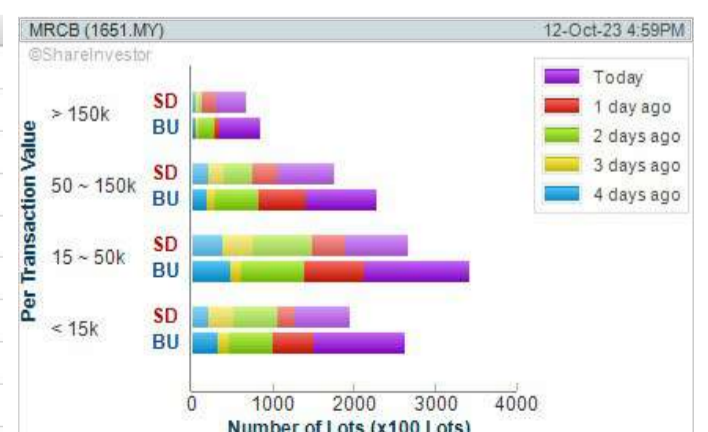


WebPro 9-Days Free Trial Registration
(worth RM9)
Sign Up Now



Key Statistics with Total Shareholder Returns

Period	Dividend Received	Capital Appreciation	Total Shareholder Return
Short Term Return	5 Days	+0.040	+8.89%
	10 Days	+0.025	+5.38%
	20 Days	+0.065	+15.29%
Medium Term Return	3 Months	+0.165	+50.77%
	6 Months	+0.150	+44.12%
	1 Year	+0.105	+60.66%
Long Term Return	2 Years	0.010	+21.46%
	3 Years	0.020	+12.09%
	5 Years	0.048	-32.33%
Annualised Return	-	-	-7.91%



Disclaimer: The information on this page is provided as a service to readers. It does not constitute financial advice and/or any investment recommendations. Past performance is not indicative of future results. We assume no liability for damages resulting from or arising out of the use of such information. It would be best if you did your own research to make your personal investment decisions wisely or consult a licenced investment advisor.

Price & Volume Distribution Charts (as at Yesterday)

Technical Analysis

DEFINITION: Shariah compliant stocks with Technical Analysis showing Bullish Momentum and Price Uptrend. The share price closed at the highest price yesterday. The typical price was higher than the previous day's typical price.

CHART GUIDE: Volume Distribution Chart is a statistical interpretation of the current sentiment on each stock in graphical format. The highest bar categorized as >150k is likely to be traded by institutions or super dealers, while the lowest bar categorized as <15k usually represents retail investors. "Buy Up" refers to more buyers snatching up the lots queued at selling price. "Sell Down" refers to sellers selling their shares to the buying queue.



ShareInvestor WebPro > Screener > Market Screener (FA & TA) > select BURSA > add criteria

A. Criteria

- > click Add Criteria
- Fundamental Analysis Conditions tab > select (i) Revenue
- Technical Analysis Conditions tab select (ii) Average Volume
- Prices & Other Conditions tab > select (iii) Last Done Price
- Prices & Other Conditions tab > select (iv) Is Shariah Compliant
- Technical Analysis Conditions tab select (v) RSI Overbought
- Technical Analysis Conditions tab select (vi) Moving Average Below Close
- Technical Analysis Conditions tab select (vii) CCI Overbought

B. Conditions (Criteria Filters)

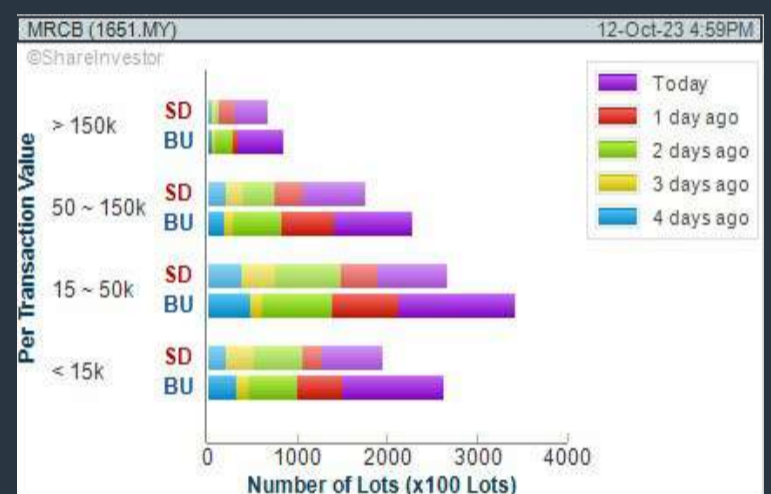
1. Revenue ("000) - select (more than) type (1) for the past select (1) financial year(s)
2. Average Volume - type (1) days average volume greater than type (10000) lots
3. Last Done Price - select (more than) type (0.3)
4. Is Shariah Compliant - select Yes
5. RSI Overbought - select RSI 1 above 99 for 1 days
6. Moving Average Below Close - select (MA) type (10) below close price for type (1) days
7. CCI Overbought - select CCI (2) above (0) for (1) days

- > click Save Template > Create New Template type (Shariah Momentum Up Stocks) > click Create
- > click Save Template as > select Shariah Momentum Up Stocks > click Save
- > click Screen Now (may take a few minutes)
- Sort By: Select (Vol) Select (Desc)
- Mouse over stock name > Charts > click C² Charts tab or Volume Distribution

MALAYSIAN RESOURCES CORPORATION BERHAD (1651)

C² Chart

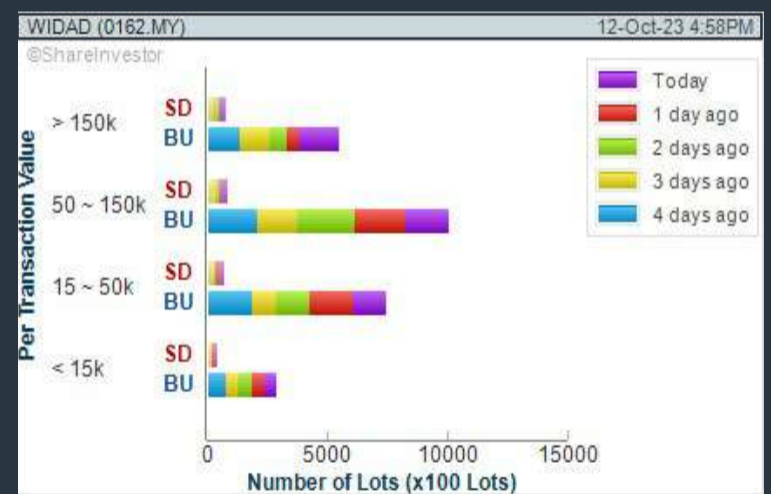
Analysis



WIDAD GROUP BERHAD (0162)

C² Chart

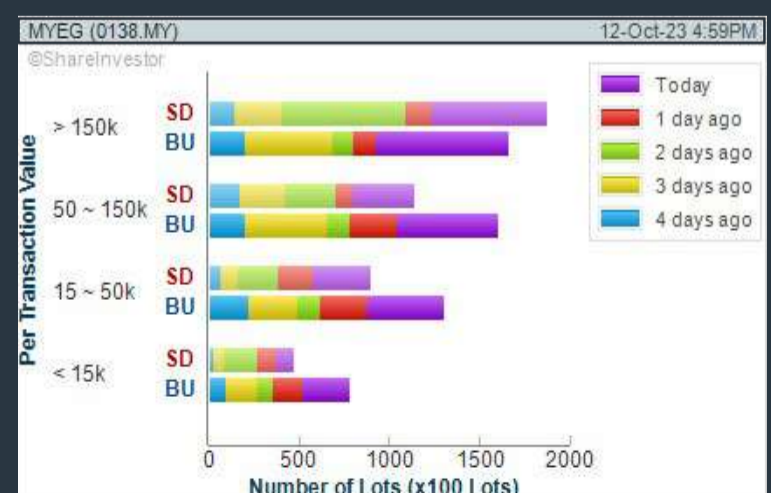
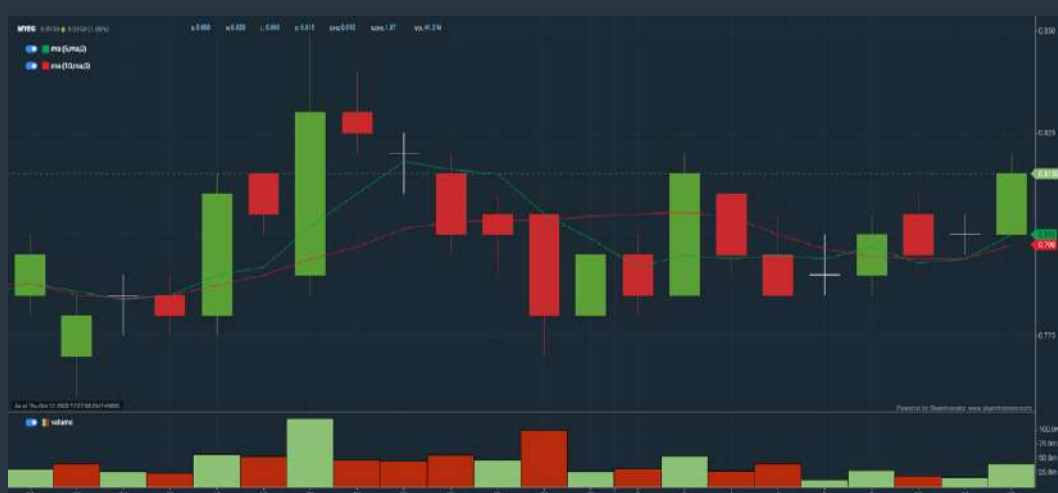
Analysis



MY E.G. SERVICES BERHAD (0138)

C² Chart

Analysis



Disclaimer: The information on this page is provided as a service to readers. It does not constitute financial advice and/or any investment recommendations. Past performance is not indicative of future results. We assume no liability for damages resulting from or arising out of the use of such information. It would be best if you did your own research to make your personal investment decisions wisely or consult a licenced investment advisor.



How to Generate Investment IDEAs with Market Trends and Sector Analysis

17th Oct, 8pm - 9pm

Uncover The Secret of Market Trends: Sector Analysis

BursaMalaysia.com



Speaker:
Loui Low
*Head of Research,
Malacca Securities
Sdn Bhd*

Managed by



Price & Volume Distribution Charts (as at Yesterday)

Technical Analysis

DEFINITION: Stocks with Technical Analysis showing 5-days & 10-days Moving Average Price below Close over past 1 days and with Volume Spike

CHART GUIDE: Volume Distribution Chart is a statistical interpretation of the current sentiment on each stock in graphical format. The highest bar categorized as >150k is likely to be traded by institutions or super dealers, while the lowest bar categorized as <15k usually represents retail investors. "Buy Up" refers to more buyers snatching up the lots queued at selling price. "Sell Down" refers to sellers selling their shares to the buying queue.



ShareInvestor WebPro > Screener > Market Screener (FA & TA) > select BURSA > add criteria

A. Criteria

- > click Add Criteria
- Technical Analysis Conditions tab select (i) Moving Average Below Close (ii) Volume Spike
- Fundamental Analysis Conditions tab >select (iii) Revenue
- Prices & Other Conditions tab > select (iv) Is Shariah Compliant
- Technical Analysis Conditions tab select (v) Moving Average Below Close
- Prices & Other Conditions tab > select (vi) Last Done Price
- Technical Analysis Conditions tab select (vii) Moving Average Below Close

B. Conditions (Criteria Filters)

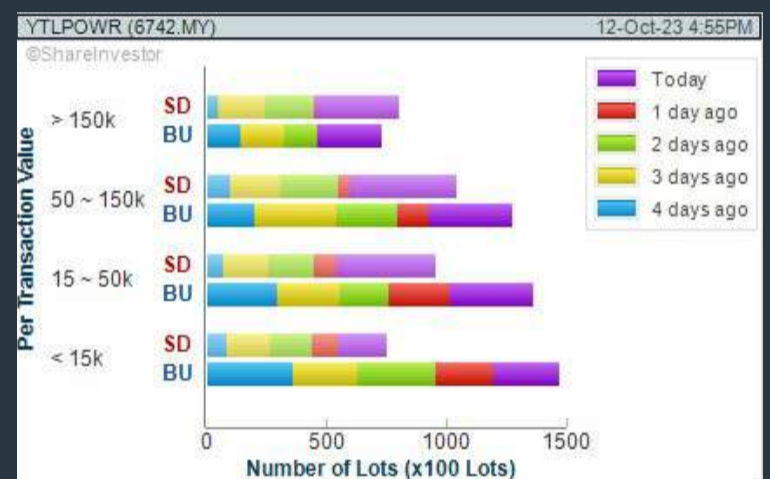
1. Moving Average Below Close - select (MA) type (5) below close price for type (3) days
2. Volume Spike - Volume type (1) greater than type (5) days average
3. Revenue ("000) - select (more than) type (1) for the past select (1) financial year(s)
4. Is Shariah Compliant - select NO
5. Moving Average Below Close - select (MA) type (10) below close price for type (1) days
6. Last Done Price - select (more than) type (0.3)
7. Moving Average Below Close - select (EMA) type (5) below close price for type (1) days

- > click Save Template > Create New Template type (Non-Shariah Hot Stocks) > click Create
- > click Save Template as > select Non-Shariah Hot Stocks > click Save
- > click Screen Now (may take a few minutes)
- Sort By: Select (Vol) Select (Desc)
- Mouse over stock name > Charts > click C² Charts tab or Volume Distribution

YTL POWER INTERNATIONAL BERHAD (6742)

C² Chart

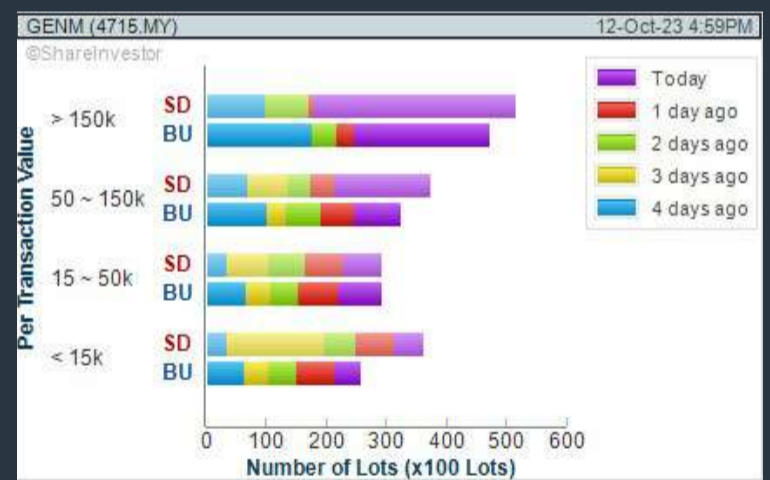
Analysis



GENTING MALAYSIA BERHAD (4715)

C² Chart

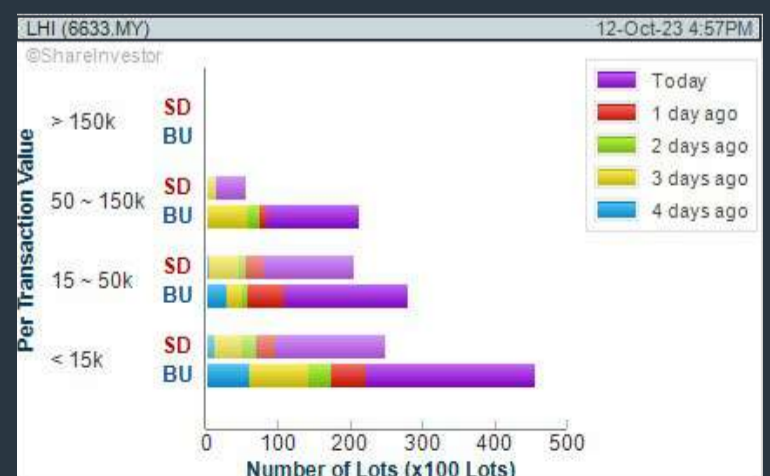
Analysis



LEONG HUP INTERNATIONAL BERHAD (6633)

C² Chart

Analysis



Disclaimer: The information on this page is provided as a service to readers. It does not constitute financial advice and/or any investment recommendations. Past performance is not indicative of future results. We assume no liability for damages resulting from or arising out of the use of such information. It would be best if you did your own research to make your personal investment decisions wisely or consult a licenced investment advisor.

PURNELL

ONLY TOURBILLON



ESCAPE II
ABSOLUTE
SAPPHIRE

Purnell Asia

Tel. : +65.9817.3378

Email : sales.sg@purnellwatches.com

@ Purnell_Official

www.purnellwatches.com

PLAY



Price & Volume Distribution Charts (Over 3 trading days as at Yesterday)

Technical Analysis

DEFINITION: Stocks with Technical Analysis showing Bullish Momentum and Price Uptrend

CHART GUIDE: Volume Distribution Chart is a statistical interpretation of the current sentiment on each stock in graphical format. The highest bar categorized as >150k is likely to be traded by institutions or super dealers, while the lowest bar categorized as <15k usually represents retail investors. "Buy Up" refers to more buyers snatching up the lots queued at selling price. "Sell Down" refers to sellers selling their shares to the buying queue.



ShareInvestor WebPro > Screener > Market Screener (FA & TA) > select BURSA > add criteria

A. Criteria

- > click Add Criteria
- Fundamental Analysis Conditions tab > select (i) Revenue
- Technical Analysis Conditions tab select (ii) Moving Average Below Close
- Technical Analysis Conditions tab select (iii) Average Volume
- Prices & Other Conditions tab > select (iv) Last Done Price
- Technical Analysis Conditions tab select (v) Moving Average Below Close
- Technical Analysis Conditions tab select (v) Moving Average Bullish Crossover

B. Conditions

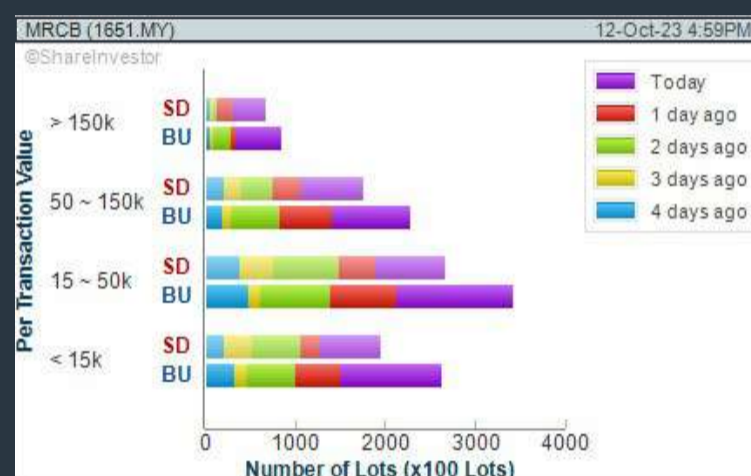
1. Revenue - select (more than) type (1) for the past select (1) financial year(s)
2. Moving Average Below Close - select (MA) type (20) below close price for type (1) days
3. Average Volume - type (5) days average volume type (10000) lots
4. Last Done Price - select (more than) type (0.3)
5. Moving Average Below Close - select (MA) type (10) below close price for type (1) days
6. Moving Average Bullish Crossover - select (MA) type (5) crossed above select (MA) type (10)

> click Save Template > Create New Template type (Non-Shariah Up-Trending Stocks) > click Create Click Save Template As > select Non-Shariah Up Trending Stocks > click Save
> click Screen Now (may take a few minutes)
Sort By: Select (Vol) Select (Desc)
Mouse over stock name > Charts > click C² Charts tab or Volume Distribution

MALAYSIAN RESOURCES CORPORATION BERHAD (1651)

C² Chart

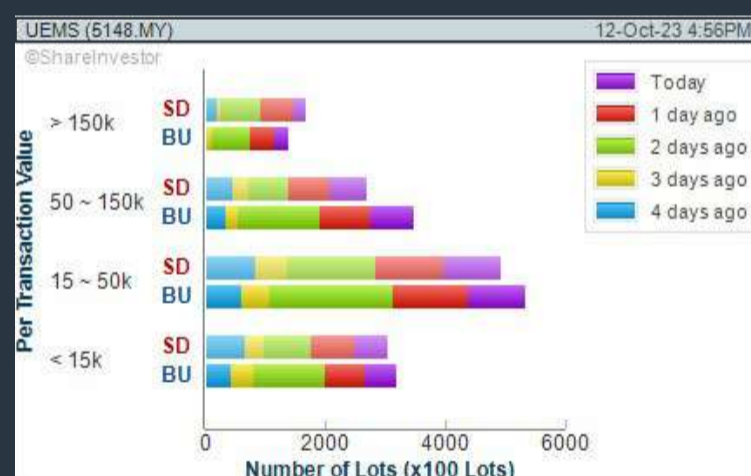
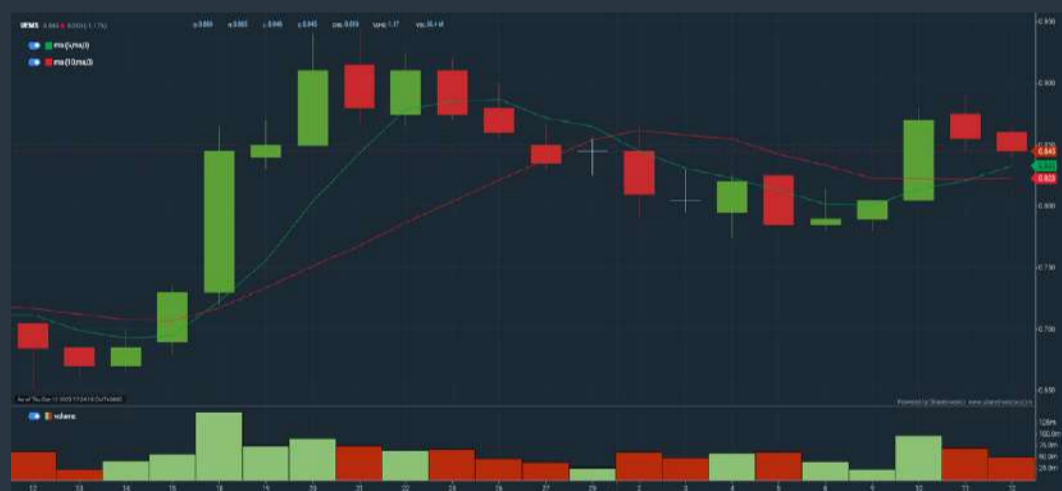
Analysis



UEM SUNRISE BERHAD (5148)

C² Chart

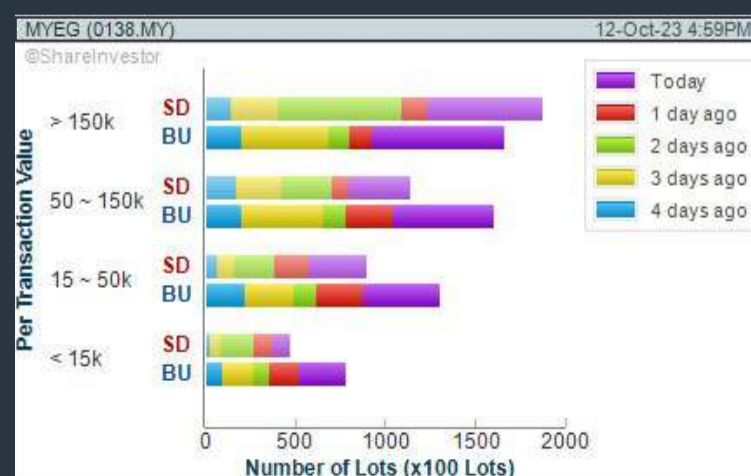
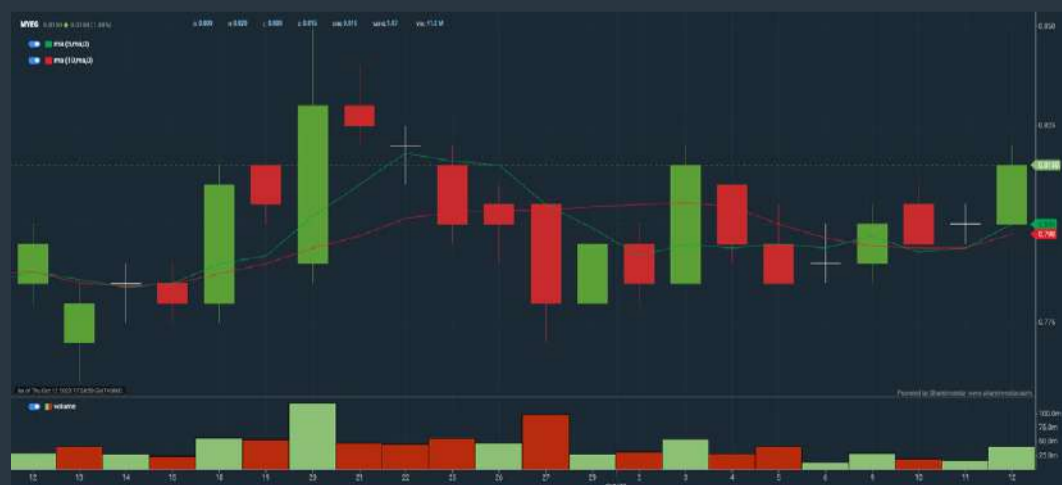
Analysis



MY E.G. SERVICES BERHAD (0138)

C² Chart

Analysis



Disclaimer: The information on this page is provided as a service to readers. It does not constitute financial advice and/or any investment recommendations. Past performance is not indicative of future results. We assume no liability for damages resulting from or arising out of the use of such information. It would be best if you did your own research to make your personal investment decisions wisely or consult a licenced investment advisor.

SHAREINVESTOR WEBPRO

STOCK MARKET DATA AT YOUR FINGERTIPS

Powerful browser-based market analytics platform.
Access from anywhere



8 Markets Data

- ▶ Get access to data from Bursa, NYSE, Nasdaq, HKEX, SGX, IDX, SET & ASX

Portfolio Management

- ▶ Profit & Loss Summary
- ▶ Stock Alert
- ▶ News & Events filtering
- ▶ Customizable column layout

Fundamental Analysis

Financial Analysis Statement

- ▶ Profit & Loss
- ▶ Balance Sheet
- ▶ Cash Flow Statement
- ▶ More than 20 Financial Ratios
- ▶ Dividend Analysis

Technical Charting

- ▶ C² chart (Customisable & Comprehensive)

Brokers' Call

Intrinsic Value Calculator

FactSheet

- ▶ Key Stock Information
- ▶ Ownership
- ▶ Consensus Estimates
- ▶ Annual Report
- ▶ Historical Price
- ▶ Insider Trades

What's new on WebPro (Stable Release 12.1.0)

In our effort to keep our platform at the forefront of trading technology, we have added on some new features onto our C² Chart in WebPro

ADDITIONAL NEW FEATURES:

- ▶ Anchor selector for AVWAP, PVAT, and PAV indicators
- ▶ Volume profile indicator by date range
- ▶ Moving Average Cross indicator
- ▶ Guppy Multiple Moving Average (GMMA) indicator
- ▶ GoNoGo Trend Signal indicators
- ▶ SignalIQ

So what are you waiting for? Head to our platform today and check out our new trading chart features and indicators. We're confident that you'll love the improvements we've made and that they'll help you become a more successful trader.

Click here to start your 9 days FREE trial
(Valued at RM10)



Price & Total Shareholder Return (as at Yesterday)

Fundamental Analysis

DEFINITION: Share price of a company trading at a lower price as compared to its fundamentals (FA) such as financial performance and dividend, allowing it to be attractive to value investors.

CHART GUIDE: Total Shareholder Return (TSR) combines share price appreciation and dividend distributions paid to show the total return to the shareholder expressed as a percentage.



ShareInvestor WebPro > Screener > Market Screener (FA & TA) > select BURSA > add criteria

A. Criteria

- > click Add Criteria
- Fundamental Analysis Conditions tab (i) Price Earnings Ratio
- Fundamental Analysis Conditions tab >select (ii) CAGR of Net Earnings
- Fundamental Analysis Conditions tab >select (iii) Net Debt To Equity
- Fundamental Analysis Conditions tab >select (iv) Return On Equity (ROE)

B. Conditions

1. Price Earnings Ratio - select (less than) type (15) times now
2. CAGR of Net Earnings - select (more than) type (10) % for the past type (3) financial year(s)
3. Net Debt To Equity – select (less than) type (1) for the past select (1) financial year(s)
4. Return On Equity (ROE) – select (more than) type (10) % for the past select (1) financial year(s)

- > click Save Template > Create New Template type (Value Stock) > click Create
- > click Save Template as > select Value Companies > click Save
- > click Screen Now (may take a few minutes)
- Sort by: Select (PE Ratio) Select (Ascending)
- > Mouse over stock name > Factsheet > looking for Total Shareholder Return
- > Mouse over stock name > Charts > click C2 Charts tab

SYNERGY HOUSE BERHAD (0279)

C² Chart



Period	Dividend Received	Capital Appreciation	Total Shareholder Return
Short Term Return	5Days	-4.025	+1.88%
	10Days	-4.880	+4.04%
	30Days	-4.865	+22.17%
Medium Term Return	12Months	-4.865	+11.41%

SUNMOW HOLDING BERHAD (03050)

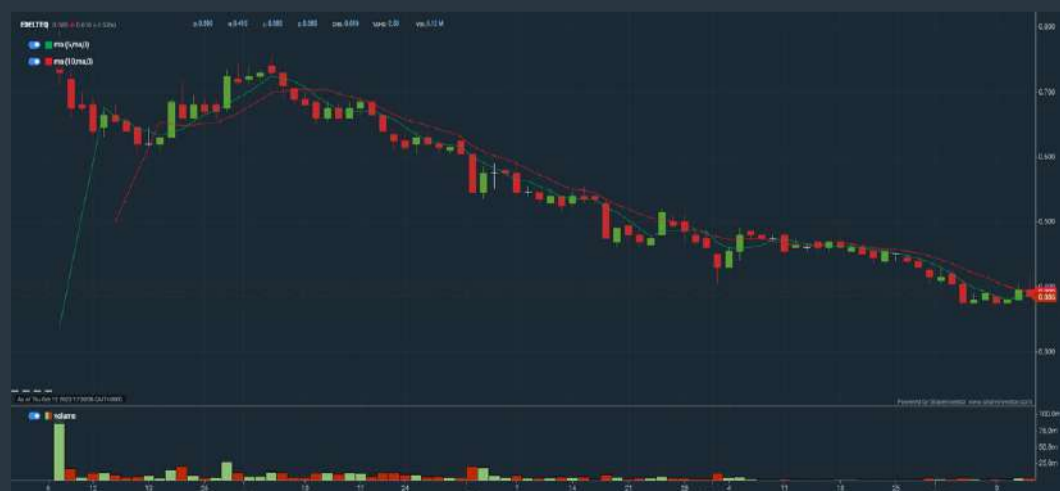
C² Chart



Period	Dividend Received	Capital Appreciation	Total Shareholder Return
Short Term Return	5Days	-	-
	10Days	-	-
	30Days	-3.300	-3.45%
Medium Term Return	12Months	-	-
	6Months	-4.470	+7.00%
	1Year	-4.190	+6.79%
Annualized Return	Annualized	-	+6.79%

EDELTEQ HOLDINGS BERHAD (0278)

C² Chart



Period	Dividend Received	Capital Appreciation	Total Shareholder Return
Short Term Return	5Days	-4.310	+2.81%
	10Days	-4.845	+1.47%
	30Days	-4.075	+1.30%
Medium Term Return	12Months	-4.330	+2.85%

Disclaimer: The information on this page is provided as a service to readers. It does not constitute financial advice and/or any investment recommendations. Past performance is not indicative of future results. We assume no liability for damages resulting from or arising out of the use of such information. It would be best if you did your own research to make your personal investment decisions wisely or consult a licenced investment advisor.

BURSASTATION Professional

Scan. Chart. Analyse.

Be The Intelligent Investor

Stock Scanning

- Technical Analysis (TA) Market Scanner
- Fundamental Analysis (FA) Market Scanner

Monitoring

- Portfolio
- Stock Alerts
- Price Spread Calculator

Market Data

- Equities
- Derivatives

Charts

- Intraday Charts
- Interactive Charts
- Historical Charts
- Volume Distribution Charts

Price Movements

- Streaming Prices
- Time & Sales
- Trade Summary Matrix
- Quote Movements
- 5 Levels Market Depth
- Historical Price Download

Fundamentals

- Factsheets
- Financials
- Insider Trades

Brought to you as a collaborative effort by ShareInvestor and Bursa Malaysia, **BursaStation Professional** is designed with you, the user, in mind, as a user-friendly yet full of powerful features that will appeal to investors/traders who need instant access to fundamental, technical, and trading data, anytime, anywhere. **BursaStation Professional** is a state-of-the-art Stock Market Tracker with Charting Software that places in your hands the power to make better investment decisions.

CLICK HERE TO START YOUR 14-DAYS FREE TRIAL

Price & Total Shareholder Return (as at Yesterday)

Fundamental Analysis

DEFINITION: Company revenue is growing and making good quality of earnings with positive Free Cash Flow.

CHART GUIDE: Total Shareholder Return (TSR) combines share price appreciation and distributions paid to show the total return to the shareholder expressed as a percentage.



ShareInvestor WebPro > Screener > Market Screener (FA & TA) > select BURSA > add criteria

A. Criteria

1. Fundamental Analysis Conditions tab >select (i) Free Cash Flow, (ii) Revenue Growth, (iii) Gross Profit (Earnings) Margin, (iv) Quality of Earnings, (v) Total Shareholder Returns, > click Add Criteria
2. Fundamental Analysis Conditions tab >select (vi) Total Shareholder Returns > click Add Criteria

B. Conditions (Criteria Filters)

1. Free Cash Flow - select (more than) type (1) for the past select (1) financial year(s)
2. Revenue Growth - select (more than) type (1) for the past select (1) financial year(s)
3. Gross Profit (Earnings) Margin - select (more than) type (30) % for the past select (1) financial year(s)
4. Quality of Earnings - select (more than) type (1) for the past select (1) financial year(s)
5. Total Shareholder Return - select (more than) type (5) % for the past select (3) financial year(s)
6. Total Shareholder Return - select (more than) type (5) % for the past select (5) financial year(s)

- > click Save Template > Create New Template type (Growth Companies) > click Create
- > click Save Template as > select Growth Companies > click Save
- > click Screen Now (may take a few minutes)
- > Sort By: Select (Revenue Growth) Select (Desc)
- > Mouse over stock name > Factsheet > looking for Total Shareholder Return

SEAL INCORPORATED BERHAD (4286)

C² Chart

Analysis

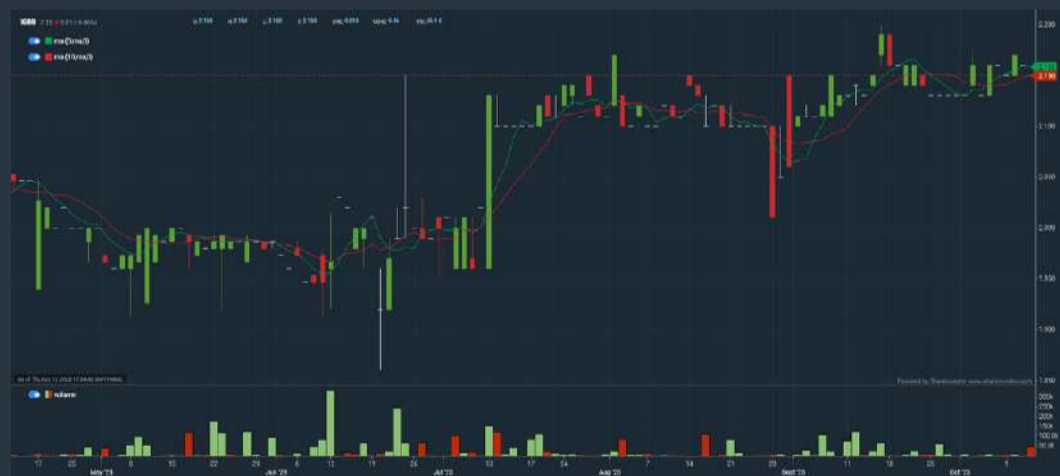


Period	Dividend Received	Capital Appreciation	Total Shareholder Return
Short Term Return	5 Days	-0.010	+1.98%
	10 Days	-0.025	+4.65%
	20 Days	-0.025	+4.65%
Medium Term Return	3 Months	-0.065	+1.98%
	6 Months	-0.225	+7.67%
	1 Year	-0.385	+16.24%
Long Term Return	2 Years	-0.675	+9.47%
	3 Years	-0.965	+6.68%
	5 Years	-1.300	+6.67%
Annualized Return	Annualized	-	+7.72%

IGB BERHAD (5606)

C² Chart

Analysis



Period	Dividend Received	Capital Appreciation	Total Shareholder Return
Short Term Return	5 Days	-0.000	+0.94%
	10 Days	-0.000	+0.94%
	20 Days	-0.000	+0.94%
Medium Term Return	3 Months	-0.050	+2.28%
	6 Months	-0.100	+5.15%
	1 Year	-0.200	+9.20%
Long Term Return	2 Years	0.150	+14.24%
	3 Years	0.220	+19.22%
	5 Years	0.300	+19.42%
Annualized Return	Annualized	-	+6.67%

PECCA GROUP BERHAD (5271)

C² Chart

Analysis

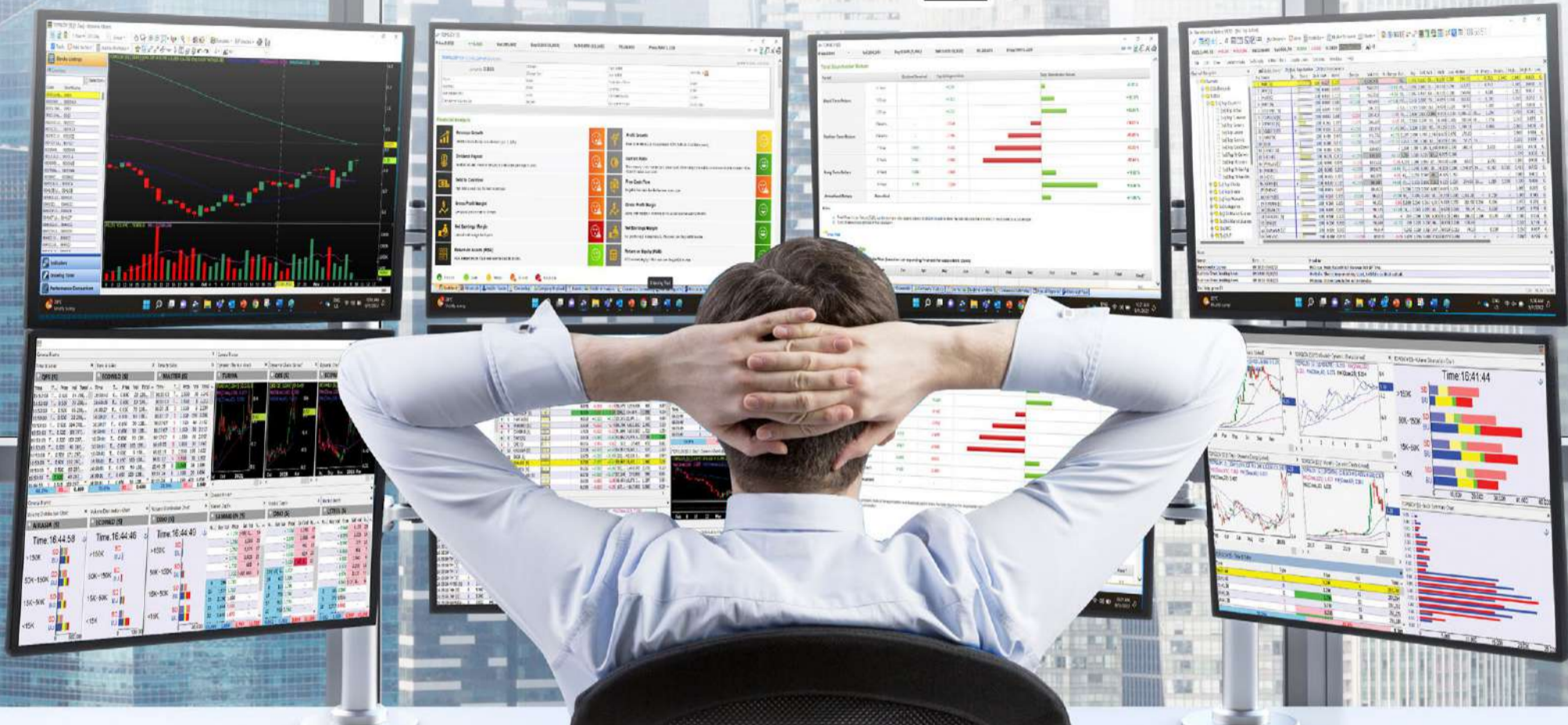


Period	Dividend Received	Capital Appreciation	Total Shareholder Return
Short Term Return	5 Days	-0.000	+3.88%
	10 Days	-0.000	+6.65%
	20 Days	-0.000	+12.44%
Medium Term Return	3 Months	-0.000	+1.84%
	6 Months	-0.000	+6.20%
	1 Year	-0.400	+6.00%
Long Term Return	2 Years	-0.400	+6.00%
	3 Years	-0.650	+20.00%
	5 Years	0.100	+10.77%
Annualized Return	Annualized	-	+6.00%

Disclaimer: The information on this page is provided as a service to readers. It does not constitute financial advice and/or any investment recommendations. Past performance is not indicative of future results. We assume no liability for damages resulting from or arising out of the use of such information. It would be best if you did your own research to make your personal investment decisions wisely or consult a licenced investment advisor.

MAKE BETTER TRADING STRATEGIES

with
SHARE INVESTOR
STATION



8 Markets Data

- ▶ Get access to data from Bursa, NYSE, Nasdaq, HKEX, SGX, IDX, SET & ASX

Dynamic Chart

- ▶ Candlestick Pattern Recognition
- ▶ 111 Indicators
- ▶ 39 Drawing Tools
- ▶ Performance Comparison Chart

Intraday Data

- ▶ Market Depth
- ▶ Trade Summary Matrix & Chart
- ▶ Times & Sales
- ▶ Intraday Market Ticker

Market Screener

- ▶ 96 criteria ranging from FA, TA, Consensus Estimate
- ▶ Real-time Data

Power Frame

- ▶ Combining few Dynamic Charts together with intraday information in one frame

Technical Analysis

Fundamental Analysis

Financial Analysis Statement

- ▶ Profit & Loss
- ▶ Balance Sheet
- ▶ Cash Flow Statement
- ▶ More than 20 Financial Ratios
- ▶ Dividend Analysis

FactSheet

- ▶ Key Stock Information
- ▶ Ownership
- ▶ Consensus Estimates
- ▶ Annual Report
- ▶ Historical Price
- ▶ Insider Trades

**Start your 18 days
 FREE trial now
 (Valued at RM82)**



Price & Total Shareholder Return (as at Yesterday)

Fundamental Analysis

DEFINITION: Company is paying out dividend with low or moderate leverage.

CHART GUIDE: Total Shareholder Return (TSR) combines share price appreciation and distributions paid to show the total return to the shareholder expressed as a percentage.



ShareInvestor WebPro > Screener > Market Screener (FA & TA) > select BURSA > add criteria

A. Criteria

- > click Add Criteria
- Fundamental Analysis Conditions tab >select (i) Dividend Yield (Historical)
- Fundamental Analysis Conditions tab >select (ii) Dividend Payout (Historical)
- Fundamental Analysis Conditions tab >select (iii) Total Debt To Equity
- Fundamental Analysis Conditions tab >select (iv) Total Shareholder Returns
- Fundamental Analysis Conditions tab >select (v) Total Shareholder Returns
- Fundamental Analysis Conditions tab / >select (vi) CAGR of Dividend Per Share

- Fundamental Analysis Conditions tab >select (vii) CAGR of Dividend Per Share

B. Conditions (Criteria Filters)

1. Dividend Yield - select (more than) type (1) % for the past select (1) financial year(s)
2. Dividend Payout (Historical) - select (between) type (0.5) to type (1) times for the past select (1) financial year(s)
3. Total Debt to Equity – select (less than) type (1) for the past select (1) financial year(s)
4. Total Shareholder Return – select (more than) type (5) % for the past select (3) financial year(s)
5. Total Shareholder Return – select (more than) type (5) % for the past select (5) financial year(s)

6. CAGR of Dividend Per Share – select (less than) type (30) % for the past select (5) financial year(s)
7. CAGR of Dividend Per Share – select (more than) type (1) % for the past select (5) financial year(s)

- > click Save Template > Create New Template type (Dividend Companies) > click Create
- > click Save Template as > select Dividend Companies > click Save
- > click Screen Now (may take a few minutes)
- > Sort By: Select (Dividend Yield) Select (Desc)
- > Mouse over stock name > Factsheet > looking for Total Shareholder Return

FORMOSA PROSONIC INDUSTRIES (9172)

C² Chart



Analysis

Period	Dividend Received	Capital Appreciation	Total Shareholder Return
Short Term Return	5 Days	-0.000	+0.46%
	10 Days	-0.000	+0.34%
	20 Days	-0.000	+0.01%
Medium Term Return	3 Months	-0.000	+0.03%
	6 Months	-0.000	+0.02%
	1 Year	-0.000	-0.02%
Long Term Return	2 Years	0.000	+0.02%
	3 Years	0.000	+0.01%
	5 Years	0.000	+0.01%
Annualized Return	Annualized	-	+0.01%

GAS MALAYSIA BERHAD (5209)

C² Chart



Analysis

Period	Dividend Received	Capital Appreciation	Total Shareholder Return
Short Term Return	5 Days	-0.000	+0.29%
	10 Days	-0.000	+0.07%
	20 Days	-0.000	+0.07%
Medium Term Return	3 Months	-0.000	+0.05%
	6 Months	-0.000	-0.07%
	1 Year	-0.000	-0.00%
Long Term Return	2 Years	0.000	+0.01%
	3 Years	0.000	+0.01%
	5 Years	0.000	+0.01%
Annualized Return	Annualized	-	+0.01%

KENANGA INVESTMENT BANK BERHAD (6483)

C² Chart



Analysis

Period	Dividend Received	Capital Appreciation	Total Shareholder Return
Short Term Return	5 Days	-0.000	-0.07%
	10 Days	-0.000	-0.01%
	20 Days	-0.000	-0.00%
Medium Term Return	3 Months	-0.000	-0.00%
	6 Months	-0.000	-0.01%
	1 Year	-0.000	-0.00%
Long Term Return	2 Years	0.000	-0.00%
	3 Years	0.000	-0.01%
	5 Years	0.000	-0.01%
Annualized Return	Annualized	-	-0.00%

Disclaimer: The information on this page is provided as a service to readers. It does not constitute financial advice and/or any investment recommendations. Past performance is not indicative of future results. We assume no liability for damages resulting from or arising out of the use of such information. It would be best if you did your own research to make your personal investment decisions wisely or consult a licenced investment advisor.



making places multifunctional



usm.com

XTRA

XTRA FURNITURE SDN BHD
The Gardens Mall, Mid Valley City, Lot S-236 & 237
Lingkar Syed Putra, 59200 Kuala Lumpur
T. +603 2282 9088 | living@xtrafurniture.com | xtrafurniture.com
📍 XTRAFurniture | 🌐 xtrafurnituremsia

Week: 06 October 2023 - 12 October 2023

More Brokers' Call 

AMINVESTMENT BANK <small>... See More</small>	Call	Target Price	Release Date
Sunway Construction Berhad (6777)	BUY	RM2.20	06 Oct 2023
Top Glove Corporation Berhad (7113)	SELL	RM0.60	09 Oct 2023
Bermaz Auto Berhad (5248)	BUY	RM3.29	10 Oct 2023
Yinson Holdings Berhad (7293)	BUY	RM3.96	11 Oct 2023

APEX <small>... See More</small>	Call	Target Price	Release Date
Top Glove Corporation Berhad (7113)	SELL	RM0.63	09 Oct 2023

BIMB SECURITIES SDN BHD <small>... See More</small>	Call	Target Price	Release Date
Top Glove Corporation Berhad (7113)	HOLD	RM0.74	08 Oct 2023
T7 Global Berhad (7228)	BUY	RM0.52	10 Oct 2023

KENANGA <small>... See More</small>	Call	Target Price	Release Date
Sunway Construction Group Berhad (5263)	OUTPERFORM	RM2.39	06 Oct 2023
Telekom Malaysia Berhad (4863)	OUTPERFORM	RM6.57	09 Oct 2023
Kerjaya Prospek Group Berhad (7161)	OUTPERFORM	RM1.64	11 Oct 2023
Bumi Armada Berhad (6793)	OUTPERFORM	RM0.62	12 Oct 2023

MIDF <small>... See More</small>	Call	Target Price	Release Date
Sunway Construction Group Berhad (5263)	BUY	RM2.09	06 Oct 2023
Top Glove Corporation Berhad (7113)	NEUTRAL	RM0.70	09 Oct 2023
Petronas Chemicals Group Berhad (5183)	BUY	RM7.61	10 Oct 2023

JOB KAYHIAN <small>... See More</small>	Call	Target Price	Release Date
MyNews Holdings Berhad (5275)	SELL	RM0.43	06 Oct 2023
V.S. Industry Berhad (6963)	BUY	RM1.17	10 Oct 2023
Malaysia Airports Holdings Berhad (5014)	BUY	RM8.11	11 Oct 2023
Hap Seng Consolidated Berhad (3034)	BUY	RM6.50	11 Oct 2023

Disclaimer: InveSt does not accept any liability whatsoever for any direct, indirect or consequential losses (including loss of profit) or damages that may arise from the use of information or opinions in this publication. The information and opinions in InveSt are not to be considered as an offer to sell or buy any of the securities discussed. Opinions expressed are subject to change without notice. The Brokers may, from time to time, have interests or positions in the securities mentioned. For the full report on each item listed on this page, please visit https://www.shareinvestor.com/my/brokers_call.

DEFINITION: Top 9 stocks with Technical Analysis plus Pattern Matching by 60 pre-defined indicators by the system showing a higher probability of bullish sentiment on the share price.



ShareInvestor WebPro > Screener > Predefined TA Screens > select market BURSA > Most Long Signals > click Scan Results or mouse over each company

KARYON INDUSTRIES BERHAD (0054.MY)

KARYON

Price updated at 12 Oct 2023 16:42

Last: 0.180	Change: -	Volume: 662
	Change (%): -	Range: 0.175 - 0.180

TA Scanner Results based on historical data up to 12 Oct 2023

Condition	Signal	Explanation
Bollinger Band: Bullish Short Term Volatility Breakout and Trending	Long	1. Close price above upper bollinger band(33,1). 2. Volume above average volume(10). 3. Average volume(10) is above 300,000.
Bollinger Band: High Above Upper Bollinger Band	Neutral	1. High above upper bollinger band(14,2). 2. Average volume(5) is above 100,000.
CCI: Bearish CCI Overbought And Reversing	Short	1. CCI(26) above 100 and CCI(26) 1 day ago increasing for the last 3 days. 2. CCI(26) below CCI(26) 1 day ago
DM: Bullish Directional Movement	Long	-DI(14) crossed below +DI(14)
Donchian Channels: High Above Upper Donchian Channels	Long	High crossed above the upper Donchian Channel(14,4)
MA: Bullish Price Crossover	Long	1. Close price crossed above MA(40) within the last 1 day. 2. Previous day close price is below the MA(10) for the last 5 days
MACD: Bullish MACD Crossover	Long	1. MACD(12,26) diff line crossed above the MACD(12,26) signal line. 2. MACD Histogram(12,26) is above 0.
Parabolic SAR: Bearish Parabolic SAR Reversal	Neutral	1. Parabolic SAR 1 day ago above close price 1 day ago for the last 5 days. 2. Parabolic SAR below close price
RSI: Short Term RSI 50 Bullish Crossover	Long	1. RSI(20) crossed above 50 within the last 1 day and RSI(20) 1 day ago below 50 for the last 5 days. 2. Volume above average volume(125). 3. Average volume(5) is above 100,000.
Volume: Volume Spike	Long	1. Volume is more than 500% above average volume(10). 2. Volume above 200000. 3. Close price above 0.10

KPJ HEALTHCARE BERHAD (5878.MY)

KPJ

Price updated at 12 Oct 2023 16:58

Last: 1.200	Change: -	Volume: 74,672
	Change (%): -	Range: 1.190 - 1.210

TA Scanner Results based on historical data up to 12 Oct 2023

Condition	Signal	Explanation
Bollinger Band: Bullish Long Term Volatility Breakout and Trending	Long	1. Close price above upper bollinger band(33,1). 2. Volume above average volume(50). 3. Average volume(50) is above 300,000.
Bollinger Band: Bullish Short Term Volatility Breakout and Trending	Long	1. Close price above upper bollinger band(33,1). 2. Volume above average volume(10). 3. Average volume(10) is above 300,000.
DM: Bullish Directional Movement	Long	-DI(14) crossed below +DI(14)
MACD: Bullish MACD Crossover	Long	1. MACD(12,26) diff line crossed above the MACD(12,26) signal line. 2. MACD Histogram(12,26) is above 0.
Volume: 10 Days large value Buy Up trade	Long	1. 150K value Buy Up greater than Sell Down by 20% for 10 days. 2. 50K-100K value Buy Up greater than Sell Down by 20% for 10 days. 3. Average volume(10) is above 1000000
Volume: 5 Days large value Buy Up trade	Long	1. 150K value Buy Up greater than Sell Down by 20% for 5 days. 2. 50K-100K value Buy Up greater than Sell Down by 20% for 5 days. 3. Average volume(10) is above 1000000

ARTRONIQ BERHAD (0038.MY)

ARTRONIQ

Price updated at 12 Oct 2023 16:58

Last: 0.875	Change: +0.005	Volume: 178,354
	Change (%): +0.57	Range: 0.860 - 0.875

TA Scanner Results based on historical data up to 12 Oct 2023

Condition	Signal	Explanation
Bollinger Band: High Above Upper Bollinger Band	Neutral	1. High above upper bollinger band(14,2). 2. Average volume(5) is above 100,000.
Donchian Channels: High Above Upper Donchian Channels	Long	High crossed above the upper Donchian Channel(14,4)
MA: Short Term Bullish Moving Average Crossover	Long	MA(10) crossed above MA(15) within the last 1 day.
MACD: Bullish MACD Crossover	Long	1. MACD(12,26) diff line crossed above the MACD(12,26) signal line. 2. MACD Histogram(12,26) is above 0.
Price: New 52 Week High	Long	1. Stock reach a new 52 week high. 2. Average volume(30) is above 50000.
Volume: 10 Days large value Buy Up trade	Long	1. 150K value Buy Up greater than Sell Down by 20% for 10 days. 2. 50K-100K value Buy Up greater than Sell Down by 20% for 10 days. 3. Average volume(10) is above 1000000
Volume: 5 Days large value Buy Up trade	Long	1. 150K value Buy Up greater than Sell Down by 20% for 5 days. 2. 50K-100K value Buy Up greater than Sell Down by 20% for 5 days. 3. Average volume(10) is above 1000000
Williams %R: Bearish Williams %R	Short	1. Williams %R(26) between 0 and -20. 2. Average volume(5) is above 100,000.

IOI PROPERTIES GROUP BERHAD (5249.MY)

IOIPG

Price updated at 12 Oct 2023 16:53

Last: 1.860	Change: +0.070	Volume: 188,244
	Change (%): +3.91	Range: 1.780 - 1.900

TA Scanner Results based on historical data up to 12 Oct 2023

Condition	Signal	Explanation
Bollinger Band: Bullish Long Term Volatility Breakout and Trending	Long	1. Close price above upper bollinger band(33,1). 2. Volume above average volume(50). 3. Average volume(50) is above 300,000.
Bollinger Band: Bullish Short Term Volatility Breakout and Trending	Long	1. Close price above upper bollinger band(33,1). 2. Volume above average volume(10). 3. Average volume(10) is above 300,000.
Bollinger Band: High Above Upper Bollinger Band	Neutral	1. High above upper bollinger band(14,2). 2. Average volume(5) is above 100,000.
MACD: Bullish MACD Crossover	Long	1. MACD(12,26) diff line crossed above the MACD(12,26) signal line. 2. MACD Histogram(12,26) is above 0.
Volume: 10 Days large value Buy Up trade	Long	1. 150K value Buy Up greater than Sell Down by 20% for 10 days. 2. 50K-100K value Buy Up greater than Sell Down by 20% for 10 days. 3. Average volume(10) is above 1000000
Volume: 5 Days large value Buy Up trade	Long	1. 150K value Buy Up greater than Sell Down by 20% for 5 days. 2. 50K-100K value Buy Up greater than Sell Down by 20% for 5 days. 3. Average volume(10) is above 1000000
Williams %R: Bearish Williams %R	Short	1. Williams %R(26) between 0 and -20. 2. Average volume(5) is above 100,000.



PECCA GROUP BERHAD (5271.MY)

PECCA

Price updated at 12 Oct 2023 16:59

Last: 1.230	Change: +0.040	Volume: 75,288
	Change (%): +3.36	Range: 1.170 - 1.230

TA Scanner Results based on historical data up to 12 Oct 2023

Condition	Signal	Explanation
DM: Bullish Directional Movement	Long	-DI(14) crossed below +DI(14)
Volume: 10 Days large value Buy Up trade	Long	1. 150K value Buy Up greater than Sell Down by 20% for 10 days. 2. 50K-100K value Buy Up greater than Sell Down by 20% for 10 days. 3. Average volume(10) is above 1000000
Volume: 5 Days large value Buy Up trade	Long	1. 150K value Buy Up greater than Sell Down by 20% for 5 days. 2. 50K-100K value Buy Up greater than Sell Down by 20% for 5 days. 3. Average volume(10) is above 1000000
Volume: Consecutive Days Of Increasing Average Volume	Long	1. Average Volume(20) has been increasing over the last 2 weeks. 2. Average volume(20) is above 100000



S & F CAPITAL BERHAD (8745.MY)

S&FCAP

Price updated at 12 Oct 2023 16:58

Last: 0.130	Change: -0.005	Volume: 4,582
	Change (%): -3.70	Range: 0.125 - 0.135

TA Scanner Results based on historical data up to 12 Oct 2023

Condition	Signal	Explanation
DM: Bullish Directional Movement	Long	-DI(14) crossed below +DI(14)
MA: Bullish Price Crossover	Long	1. Close price crossed above MA(40) within the last 1 day. 2. Previous day close price is below the MA(10) for the last 5 days
MACD: Bullish MACD Crossover	Long	1. MACD(12,26) diff line crossed above the MACD(12,26) signal line. 2. MACD Histogram(12,26) is above 0.
RSI: Short Term RSI 50 Bullish Crossover	Long	1. RSI(20) crossed above 50 within the last 1 day and RSI(20) 1 day ago below 50 for the last 5 days. 2. Volume above average volume(125). 3. Average volume(5) is above 100,000.



UMS-NEIKEN GROUP BERHAD (7227.MY)

UMSNGB

Price updated at 12 Oct 2023 16:52

Last: 0.950	Change: +0.010	Volume: 1,400
	Change (%): +1.06	Range: 0.950 - 0.950

TA Scanner Results based on historical data up to 12 Oct 2023

Condition	Signal	Explanation
CCI: Bearish CCI Overbought And Reversing	Short	1. CCI(26) above 100 and CCI(26) 1 day ago increasing for the last 3 days. 2. CCI(26) below CCI(26) 1 day ago
DM: Bullish Directional Movement	Long	-DI(14) crossed below +DI(14)
Donchian Channels: High Above Upper Donchian Channels	Long	High crossed above the upper Donchian Channel(14,4)
MA: Bullish Price Crossover	Long	1. Close price crossed above MA(40) within the last 1 day. 2. Previous day close price is below the MA(10) for the last 5 days



PROGRESSIVE IMPACT CORPORATION (7201.MY)

PICORP

Price updated at 12 Oct 2023 16:58

Last: 0.100	Change: +0.005	Volume: 121,887
	Change (%): +5.26	Range: 0.090 - 0.100

TA Scanner Results based on historical data up to 12 Oct 2023

Condition	Signal	Explanation
Bollinger Band: Bullish Long Term Volatility Breakout and Trending	Long	1. Close price above upper bollinger band(33,1). 2. Volume above average volume(50). 3. Average volume(50) is above 300,000.
Bollinger Band: Bullish Short Term Volatility Breakout and Trending	Long	1. Close price above upper bollinger band(33,1). 2. Volume above average volume(10). 3. Average volume(10) is above 300,000.
Bollinger Band: High Above Upper Bollinger Band	Neutral	1. High above upper bollinger band(14,2). 2. Average volume(5) is above 100,000.
Donchian Channels: High Above Upper Donchian Channels	Long	High crossed above the upper Donchian Channel(14,4)
MA: Short Term Bullish Moving Average Crossover	Long	MA(10) crossed above MA(15) within the last 1 day.
MACD: Bullish MACD Crossover	Long	1. MACD(12,26) diff line crossed above the MACD(12,26) signal line. 2. MACD Histogram(12,26) is above 0.
Parabolic SAR: Bearish Parabolic SAR Reversal	Neutral	1. Parabolic SAR 1 day ago above close price 1 day ago for the last 5 days. 2. Parabolic SAR below close price



SIME DARBY BERHAD (4197.MY)

SIME

Price updated at 12 Oct 2023 16:57

Last: 2.280	Change: -0.010	Volume: 119,446
	Change (%): -0.44	Range: 2.280 - 2.320

TA Scanner Results based on historical data up to 12 Oct 2023

Condition	Signal	Explanation
Bollinger Band: Bullish Long Term Volatility Breakout and Trending	Long	1. Close price above upper bollinger band(33,1). 2. Volume above average volume(50). 3. Average volume(50) is above 300,000.
Bollinger Band: Bullish Short Term Volatility Breakout and Trending	Long	1. Close price above upper bollinger band(33,1). 2. Volume above average volume(10). 3. Average volume(10) is above 300,000.
Bollinger Band: High Above Upper Bollinger Band	Neutral	1. High above upper bollinger band(14,2). 2. Average volume(5) is above 100,000.
CCI: Bearish CCI Overbought And Reversing	Short	1. CCI(26) above 100 and CCI(26) 1 day ago increasing for the last 3 days. 2. CCI(26) below CCI(26) 1 day ago
MA: Short Term Bullish Moving Average Crossover	Long	MA(10) crossed above MA(15) within the last 1 day.
Price: Consecutive Days Gains	Long	1. Close price has been increasing over the last 5 days. 2. Average volume(5) above 100,000.

Disclaimer: The information on this page is provided as a service to readers. It does not constitute financial advice and/or any investment recommendations. Past performance is not indicative of future results. We assume no liability for damages resulting from or arising out of the use of such information. It would be best if you did your own research to make your personal investment decisions wisely or consult a licenced investment advisor.

Condition	Signal	Explanation
MACD: Bullish MACD Crossover	Long	1. MACD(12,26) diff line crossed above the MACD(12,26) signal line. 2. MACD Histogram(12,26) is above 0.
Parabolic SAR: Bearish Parabolic SAR Reversal	Neutral	1. Parabolic SAR 1 day ago above close price 1 day ago for the last 5 days. 2. Parabolic SAR below close price

GROWTH OF MALAYSIA'S ISLAMIC BANKS OUTPACING CONVENTIONAL PEERS - MOODY'S

A ccording to Moody's Financial Institutions Group analyst Wong Chong Jun, the growth of Islamic banks in Malaysia has outpaced its conventional peers, with penetration growing tremendously over the past 10 to 15 years and now accounting for around 40% of the total financing in Malaysia. The penetration rate stood around 20% around 10 to 15 years ago.

Islamic banking growth in Malaysia is mainly driven by government policies as well as the 'Islamic First' strategy employed by the banks. He was speaking at the 2023 Global Islamic Finance Industry Update Media Roundtable held online on Oct 11.

On the "Islamic First" strategy, which essentially means prioritising Islamic banks and Islamic products, it was observed that there had been a significant increase in Islamic banking products market share in Malaysia's major banks. A look at the breakdown of loans just for Maybank in Malaysia, Islamic financing shows that it contributed around 70% of the loans. This proportion was actually at around 60%

just a couple of years ago, prior to the (Covid-19) pandemic. Looking at another major bank in Malaysia, RHB, the proportion has increased to around 45% from 40% over the same period.

The government has been very supportive of Malaysia's Islamic banking industry, which has been reflected in the multiple policies announced and implemented over the past few years. Among the policies enacted include the value-based intermediation framework established in 2018 and the Halal Industry Master Plan 2030, which was released earlier this year. In addition to that, in the Madani Economy, there are plans for Malaysia to be a leader in Islamic financing. Even for digital banks, the allocation was two out of five for Islamic digital banks. It is very clear that the government is taking steps to enhance and to develop the Islamic banking market in Malaysia.

MALAYSIA'S FIRST 5G-POWERED AI WAREHOUSE POWERED BY CELCOMDIGI AND DHL SUPPLY CHAIN

Malaysia's first 5G-powered Artificial Intelligence (AI) Autonomous Inventory Management System powered by CelcomDigi Bhd in collaboration with DHL Supply Chain Malaysia was launched by Communications and Digital Minister Fahmi Fadzil on October 12.

Supported by CelcomDigi's 4G LTE network and 5G connectivity at DHL's Integrated Logistics Centre, the warehouse is equipped with the latest AI and robotic solutions for optimised and efficient inventory management.

According to Fahmi, the synergy between CelcomDigi and DHL which utilises the real value of 5G technology and solutions, together with AI and robotics is commendable and on the right track for driving the growth of the nation's digital ecosystem. Aligned with the government's digital aspiration, Malaysia has the potential to be the Asian Digital Tiger as collaborations such as this will potentially expand and significantly enhance the efficiency, innovation, technology adoption in Malaysian enterprises and the nation's digital economy. He was speaking while officiating at the launch.

The warehousing and logistics industry has the potential to be reimaged and transformed into a “lights-out” warehouse, being able to operate around the clock by utilising 5G technology and AI solutions. He was pleased to note that this implementation will not stop here and both organisations are committed to expanding the adoption of 5G technology and solutions across DHL warehouses nationwide as well as potentially collaborating with organisations from other industries. With innovation and technology being utilised within and across industries, he looks forward to more digital transformation initiatives.

CelcomDigi’s collaboration with DHL leverages 5G technology and AI solutions for robotic inventory management systems, providing an enhanced and efficient multi-storey warehouse management at optimum standards. The solution will enable efficient stock counting operations, achieving up to 20 times efficiency with up to 100% precision and accuracy, enhancing space utilisation within the warehouse and reducing daily electricity consumption.

He added that DHL is currently working on 25 warehouses across the country and is building a warehouse in Bayan Lepas, Penang that will operate as a fully automated facility using the latest 5G technology. He hopes more companies will identify and understand the benefits of 5G technology to their respective industries to help improve business efficiency and productivity.

PIKOM EXPECTS STRONG CONTRIBUTION FROM DIGITAL ECONOMY IN 2023, 2024

According to the National Tech Association of Malaysia (PIKOM) deputy chairman Alex Liew, Malaysia’s digital economy is anticipated to contribute 24.4% to GDP in 2023 and rise further to 25.5% in 2024. The momentum will hold its strength amid the national economy forecast to grow 4.5% in 2024.

Speaking at a press conference on Malaysia's Digital Job Market and Economic Outlook 2023/2024 on October 12, he said the robust escalation of the digital economy, even amid global economic upheavals, has cemented its position as a crucial pillar of Malaysia's economic structure.

On the employment front, the digital job market has witnessed double-digit growth in tech salaries, mirroring an economy that is judiciously harnessing technology for heightened efficiency and productivity.

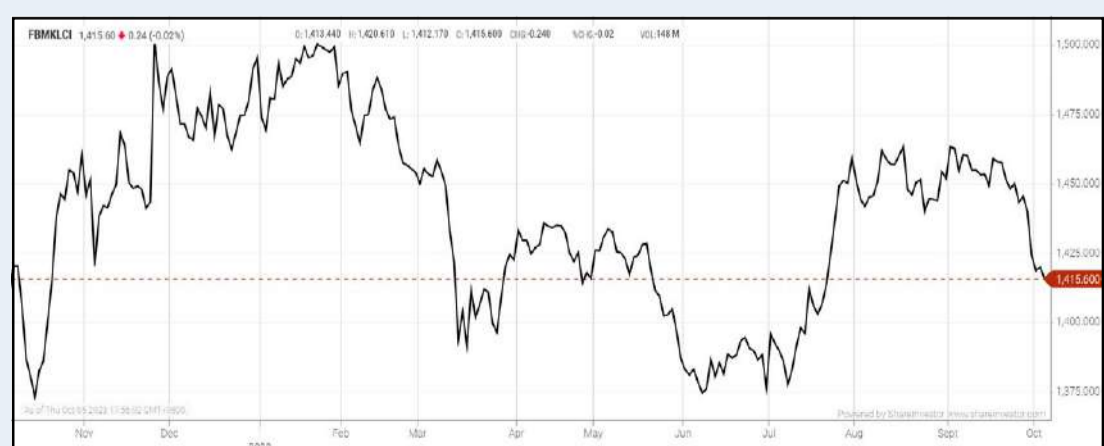
Meanwhile, according to PIKOM advisor and research chair Woon Tai Hai, the tech sector has experienced a notable y-o-y salary growth of 13.9% in 2023, a stark contrast to the two per cent percentile range growth observed in the previous two years. PIKOM is projecting a 4.13% salary growth for 2024 in the sector, and an average annual growth rate of 6.45% over the next decade.

He attributed this to the intensified competition for talent, the repatriation of skilled professionals post-pandemic, a weakening Ringgit, accelerated digital transformation in the private sector and forward-thinking government policies.

PIKOM's chief executive officer Ong Kian Yew said the benchmarking of technology salaries is pivotal as it serves as a lens through which Malaysia's competitive standing within the global and regional tech landscapes can be viewed, thereby nurturing innovation and informed policy-making. PIKOM's membership comprises more than 1,000 companies involved in tech products and services which command 80% of Malaysia's total tech business.

EYE ON THE MARKETS

On Thursday (12Oct), the Ringgit closed at 4.7170 against the USD and 3.4627 to the Sing Dollar. On Monday (09Oct), the FBM KLCI opened at 1417.06. As at Thursday (12Oct) 5:00pm, the FBM KLCI closed up 26.76 points at 1443.82. Over in US, the overnight Dow Jones Industrial Average closed down 173.73 points (-0.51%) to 33,631.14 whilst the NASDAQ shed 85.46 points (-0.63%) to 13,574.22.



KLCI 1 Year Chart

Over 5 trading days



ShareInvestor WebPro (www.shareinvestor.com/my)

1. Price > Stock Prices
2. Select Market: NASDAQ / NYSE / IDX / SET / HKEX / SGX (One bourse at a time)
3. select Stocks Tab
4. select Ranking Top Gainers or Top Losers (Over 5 Trading Days)
5. Mouse over Column Layout > select Edit Customs > select Name > select Last Done Price > select 5 Days Change > select 52 Weeks High > select 52 Weeks Low > Mouse Over Column Layout > select Custom

NASDAQ (USD)

Top Gainers

Name	Last Done	Change Over 5 Days	52 Weeks High	52 Weeks Low
NATIONAL WESTN LIFE GROUP INC	481.000	+61.000	488.900	168.040
BROADCOM INC	905.600	+60.340	923.670	415.068
MONOLITHIC POWER SYSTEM INC	493.040	+41.280	595.980	301.690
KLA CORPORATION	501.110	+40.030	520.190	250.200
SYNOPSIS INC	496.230	+36.480	493.920	267.000

Top Losers

Name	Last Done	Change Over 5 Days	52 Weeks High	52 Weeks Low
AKERO THERAPEUTICS INC	14.690	-32.730	58.380	14.760
INTUITIVE SURGICAL INC	266.120	-23.970	358.070	180.070
INSULET CORPORATION	127.770	-18.310	335.910	141.281
ALIGN TECHNOLOGY INC	268.000	-16.640	413.200	172.050
SHOCKWAVE MEDICAL INC	184.830	-14.110	320.540	172.500

NYSE (USD)

Top Gainers

Name	Last Done	Change Over 5 Days	52 Weeks High	52 Weeks Low
TEXAS PACIFIC LAND CORPORATION	1,862.970	+94.680	2,739.000	1,266.210
ELI LILLY AND COMPANY	610.500	+69.020	608.790	302.140
NORTHROP GRUMMAN CORP	477.310	+57.240	556.270	407.770
LOCKHEED MARTIN CORP	434.140	+36.790	508.100	388.100
GRAINGER W W INC	735.380	+32.830	811.600	488.235

Top Losers

Name	Last Done	Change Over 5 Days	52 Weeks High	52 Weeks Low
BERKSHIRE HATHAWAY INC	524,517.000	-908.000	566,569.970	393,012.250
BIGLARI HOLDINGS INC	725.000	-104.810	1,058.500	607.010
NVR INC	5,896.220	-55.460	6,525.000	3,816.555
METTLER-TOLEDO INTERNATIONAL INC	1,041.810	-36.440	1,615.970	1,065.550
INSPIRE MEDICAL SYSTEMS INC	148.000	-29.130	330.000	157.620

IDX (Rupiah)

Top Gainers

Name	Last Done	Change Over 5 Days	52 Weeks High	52 Weeks Low
AKASHA WIRA INTERNATIONAL TBK	10,950.000	+850.000	14,125.000	6,375.000
TEMBAGA MULIA SEMANAN	2,330.000	+770.000	2,600.000	1,440.000
INDOINTERNET TBK	18,850.000	+700.000	21,575.000	16,500.000
PABRIK KERTAS TJIWI KIMIA	9,050.000	+600.000	10,375.000	5,600.000
INDAH KIAT PULP & PAPER	10,725.000	+525.000	11,850.000	6,775.000

Top Losers

Name	Last Done	Change Over 5 Days	52 Weeks High	52 Weeks Low
METROPOLITAN KENTJ	31,325.000	-2,175.000	46,200.000	16,950.000
SEKAR LAUT	4,430.000	-1,270.000	6,825.000	1,780.000
HEXINDO ADIPERKASA	5,525.000	-1,100.000	6,950.000	4,990.000
INDOFOOD CBP SUKSES MAKMUR TBK PT	10,975.000	-650.000	11,925.000	8,575.000
SIANTAR TOP	9,525.000	-650.000	16,900.000	6,800.000

SET (Thai Baht)

Top Gainers

Name	Last Done	Change Over 5 Days	52 Weeks High	52 Weeks Low
KWC	260.000	+14.000	299.000	224.000
PTTEP	169.000	+7.500	195.000	134.500
EGCO	122.000	+5.500	178.500	114.500
XO	36.000	+5.000	36.000	11.500
HANA	64.750	+3.250	66.250	32.750

Top Losers

Name	Last Done	Change Over 5 Days	52 Weeks High	52 Weeks Low
OHTL	482.000	-12.000	610.000	410.000
JMT	38.000	-11.000	71.250	32.500
KYE	284.000	-7.000	331.000	281.000
MASTER	55.000	-5.500	91.500	53.250
SCC	300.000	-5.000	360.000	296.000

HKEX (HKD)

Top Gainers

Name	Last Done	Change Over 5 Days	52 Weeks High	52 Weeks Low
YUM CHINA HOLDINGS INC	435.000	+17.200	514.500	300.000
NETEASE INC	171.000	+16.800	176.300	84.050
TENCENT HOLDINGS LIMITED	316.600	+16.800	416.600	188.213
BYD COMPANY LIMITED	248.600	+16.400	280.600	161.700
TENCENT HOLDINGS LIMITED	295.800	+15.200	342.000	276.800

Top Losers

Name	Last Done	Change Over 5 Days	52 Weeks High	52 Weeks Low
AIM VACCINE CO LTD	11.060	-13.040	100.000	10.200
JENSCARE SCIENTIFIC CO LTD	31.000	-6.700	94.700	26.000
WINDMILL GROUP LTD	0.580	-4.090	4.790	0.530
MOG DIGITECH HOLDINGS LTD	6.000	-3.990	104.300	3.000
ZHEJIANG LEAPMOTOR TECHNOLOGY CO	33.600	-3.550	48.500	17.500

SGX (SGD)

Top Gainers

Name	Last Done	Change Over 5 Days	52 Weeks High	52 Weeks Low
DBS	34.000	+0.730	35.855	30.300
UOB	28.690	+0.530	31.400	25.910
OCBC BANK	13.080	+0.330	13.390	11.420
AEM SGD	3.680	+0.300	4.020	2.700
PLATOCAPITAL	2.280	+0.280	2.880	0.690

Top Losers

Name	Last Done	Change Over 5 Days	52 Weeks High	52 Weeks Low
JMH USD	44.160	-0.910	54.890	42.600
DFIRG USD	2.390	-0.150	3.380	1.950
TSH	0.190	-0.100	0.310	0.084
ELLIPSIZ	0.230	-0.065	0.355	0.199
FORTRESSMINERALS	0.270	-0.055	0.450	0.265

TIMELY MATERIAL INFORMATION DISCLOSURE



Devanesan
Evanson

**Chief Executive
Officer, Minority
Shareholders Watch
Group**

Bursa Malaysia Securities recently publicly reprimanded a listed company and imposed fines on some directors for breaches of listing requirements over the Company's reply to an unusual market activity (UMA) query on some contracts and acquisitions. Bursa Securities, as the front-line regulator, had issued a UMA query in relation to some unusual market activity in the shares of the Company. In response to the UMA query, the Company had stated that it was unaware of any corporate development relating to its business and affairs, including those in the stage of negotiation or discussion, that had not been previously announced which might account for the UMA.

Bursa Securities found that "the UMA response was not factual, inaccurate and did not contain sufficient information for investors to make

informed investment decisions,”. It also noted that the Company had denied knowledge of the negotiation on the proposed acquisitions, although the proposed acquisitions had been approved in principle by the Board some two weeks earlier. The Exchange Operator pointed out that approximately two weeks after the UMA response, the Company had announced a memorandum of collaboration to undertake contracts and proposed acquisitions. “Bursa Securities views the breach seriously as the requirement to ensure timely and accurate disclosure of material information is fundamental to ensure the investors and public are kept fully informed of and have equal access to all material information to facilitate informed investment decisions. This is critical towards building and maintaining corporate credibility, market integrity and investor confidence,” it stressed.

WHY TIMELY DISCLOSURE

Timely material information disclosure by public listed companies is a critical aspect of maintaining transparency, ensuring fair markets, and upholding investor trust. This practice involves promptly and accurately disseminating information that could impact the company's stock price, financial performance, or strategic direction to the public.

The reasons and the importance of timely material information disclosure are manifold.

- **TRANSPARENCY AND INVESTOR CONFIDENCE**

Timely disclosure fosters transparency by providing investors with accurate and upto-date information about a company's financial health, operations, and strategies. Investors can make informed decisions, which in turn builds confidence in the financial markets. GIGO stands for Garbage In, Garbage Out – the informed investor decision is only as good as the veracity, completeness, and truthfulness of the announcements.

- **FAIR AND EFFICIENT MARKETS**

Rapid dissemination of material information ensures that all investors have equal access to critical data. This helps maintain fair and

efficient markets, preventing information asymmetry, and reducing the likelihood of insider trading or market manipulation. And every time there is unusual market activity without a reason, there is prima facie suspicion that someone is taking advantage of the information asymmetry. There must be a level playing field.

- **COMPLIANCE WITH REGULATORY STANDARDS**

Publicly listed companies are required to adhere to regulatory requirements regarding timely disclosure. Complying with these standards not only ensures legal compliance but also demonstrates the commitment to maintaining ethical business practices. Listed companies must realise that they can commit breaches by both commission and omission – withholding a truth is just as bad as telling a lie.

- **MARKET INTEGRITY AND CREDIBILITY**

Timely disclosure safeguards market integrity by preventing rumours or misinformation from spreading. It also enhances the credibility of the company, as stakeholders perceive the organisation as trustworthy and accountable for its actions. The brand name and reputation, though intangible, do impact the bottom-line. Customers shy away from companies with a sullied brand name or dubious reputation.

- **STAKEHOLDER INCLUSIVITY**

Timely disclosure enables broader stakeholder inclusivity beyond investors, including employees, customers, suppliers, and the public. These stakeholders have vested interest in the company's performance and deserve timely updates to make informed decisions. The definition of corporate governance alludes to the importance of shareholders but also goes on to state that stakeholder interests should not be compromised.

- **RISK MITIGATION**

Swift disclosure of material information helps in managing risk effectively. Investors and analysts can evaluate the potential impact

of the disclosed information and adjust their investment strategies accordingly - reducing financial losses or maximising gains. Research reports will be more up-to-date and price targets will be set based on the latest available information.

- **ENHANCE MARKET EFFICIENCY**

When relevant information is promptly disseminated, market prices can adjust quickly to reflect the new data. This promotes market efficiency by minimizing price volatility and providing a more accurate reflection of the company's value. The much touted and coveted price discovery is allowed to take place.

- **LEGAL COMPLIANCE AND LIABILITY REDUCTION**

Failure to disclose material information in a timely manner can expose the company to legal liabilities, lawsuits, and regulatory sanctions. Shareholders can take derivative actions under the Companies Act 2016 against the directors of the company. Adhering to disclosure requirements reduces these risks and protects the company's reputation and financial stability.

- **GLOBAL COMPETITIVENESS**

In an interconnected global economy, timely disclosure enhances a company's competitiveness. It attracts international investors and enables the company to access capital markets on favourable terms. International investors are something we can do with. As such, Bursa Securities' firm stance against asymmetry of information – the non-disclosure of material information in a timely manner, is the right way to go towards building equity market confidence. And to borrow the words of Bursa Securities, it is all about 'corporate credibility, market integrity and investor confidence'.

Devanesan Evanson
Chief Executive Officer

DEFINITION: Insider Activity shows the trades made by substantial shareholders or directors of the company. Purchases by the directors and company share buyback may indicate the share price is undervalued and brings confidence to the price trend of the share price.



ShareInvestor WebPro > Fundamental > Insider Trades > click Search tab > Select Bursa > click Stock name > scroll up and leave at <Select Counter> Type Date Range for Announcement Date > click Search

Notice Period is 1st Oct – 7th Oct 2023

Effective Change Date	Stock Name	Buyer/ Seller Name [Classification]	Bought / (Sold) ['000]		No. of Shares After Trade ['000]	
			Total	% Held	Total	% Held
29 SEP 2023 - 29 SEP 2023	ACME	MR GOH CHOON LYE [SSH]	-600		47,385	12.892
29 SEP 2023 - 29 SEP 2023	ACME	WWT WELLNESS SOLUTIONS SDN BHD [SSH]	-600		47,385	12.892
02 OCT 2023 - 02 OCT 2023	AEMULUS	MR FRIISCOR HO CHII SSU [DIR/CEO]	12		6,854	1.023
27 SEP 2023 - 27 SEP 2023	AEON	EMPLOYEES PROVIDENT FUND BOARD [SSH]	-880		125,860	8.964
26 SEP 2023 - 26 SEP 2023	AEON	EMPLOYEES PROVIDENT FUND BOARD [SSH]	318		126,740	9.027
03 OCT 2023 - 04 OCT 2023	AHEALTH	APEX HOLDINGS (PTE) LTD [SSH]	35		296,653	41.309
03 OCT 2023 - 04 OCT 2023	AHEALTH	DR KEE KIRK CHIN [DIR/CEO]	35		304,957	42.465
03 OCT 2023 - 04 OCT 2023	AHEALTH	DR KEE KIRK CHIN [SSH]	35		304,957	42.465
03 OCT 2023 - 04 OCT 2023	AHEALTH	DR KEE LOO [SSH]	35		296,653	41.309
03 OCT 2023 - 04 OCT 2023	AHEALTH	MADAM YANG LIEW FANG [SSH]	35		296,653	41.309
03 OCT 2023 - 04 OCT 2023	AHEALTH	MR KEE KIRK CHUEN [DIR/CEO]	35		298,059	41.505
03 OCT 2023 - 04 OCT 2023	AHEALTH	MR KEE KIRK CHUEN [SSH]	35		298,059	41.505
03 OCT 2023 - 04 OCT 2023	AHEALTH	MR KEE TAH PENG @ HEE TECK PENG [SSH]	35		296,653	41.309
03 OCT 2023 - 04 OCT 2023	AHEALTH	XEPA HOLDINGS PTE LTD [SSH]	35		296,653	41.309
03 OCT 2023 - 03 OCT 2023	AIRPORT	EMPLOYEES PROVIDENT FUND BOARD [SSH]	-7,000		133,976	8.029
04 OCT 2023 - 04 OCT 2023	AIRPORT	KUMPULAN WANG PERSARAAN (DIPERBADANKAN) [SSH]	-128		113,723	6.815
02 OCT 2023 - 02 OCT 2023	AIRPORT	EMPLOYEES PROVIDENT FUND BOARD [SSH]	-12,043		140,976	8.448
03 OCT 2023 - 03 OCT 2023	AIRPORT	KUMPULAN WANG PERSARAAN (DIPERBADANKAN) [SSH]	227		113,850	6.823
29 SEP 2023 - 29 SEP 2023	AIRPORT	EMPLOYEES PROVIDENT FUND BOARD [SSH]	143		153,019	9.171
02 OCT 2023 - 02 OCT 2023	AIRPORT	KUMPULAN WANG PERSARAAN (DIPERBADANKAN) [SSH]	1,480		113,623	6.809
27 SEP 2023 - 27 SEP 2023	AIRPORT	EMPLOYEES PROVIDENT FUND BOARD [SSH]	238		152,876	9.162
29 SEP 2023 - 29 SEP 2023	AIRPORT	KUMPULAN WANG PERSARAAN (DIPERBADANKAN) [SSH]	225		112,143	6.721
26 SEP 2023 - 26 SEP 2023	AIRPORT	EMPLOYEES PROVIDENT FUND BOARD [SSH]	-1,276		152,638	9.148
29 SEP 2023 - 29 SEP 2023	ALLIANZ	EMPLOYEES PROVIDENT FUND BOARD [SSH]	-58		12,526	7.038
26 SEP 2023 - 26 SEP 2023	ALLIANZ	EMPLOYEES PROVIDENT FUND BOARD [SSH]	-9		12,584	7.071
02 OCT 2023 - 02 OCT 2023	ANCOMNY	MR LEE CHEUN WEI [DIR/CEO]	100		83,443	8.78
02 OCT 2023 - 02 OCT 2023	ANCOMNY	MR LEE CHEUN WEI [SSH]	100		83,443	8.78
03 OCT 2023 - 03 OCT 2023	APOLLO	AMANAHRAYA TRUSTEES BERHAD-AMANAH SAHAM BUMIPUTERA [SSH]	-120		4,741	5.926
02 OCT 2023 - 02 OCT 2023	APOLLO	AMANAHRAYA TRUSTEES BERHAD-AMANAH SAHAM BUMIPUTERA [SSH]	-41		4,861	6.076
29 SEP 2023 - 29 SEP 2023	APOLLO	AMANAHRAYA TRUSTEES BERHAD-AMANAH SAHAM BUMIPUTERA [SSH]	-47		4,902	6.127
27 SEP 2023 - 27 SEP 2023	APOLLO	AMANAHRAYA TRUSTEES BERHAD-AMANAH SAHAM BUMIPUTERA [SSH]	-23		4,949	6.186
02 OCT 2023 - 02 OCT 2023	BAHVEST	INNOSABAH CAPITAL HOLDINGS SDN BHD [SSH]	6,195		151,493	12.22
04 OCT 2023 - 04 OCT 2023	BAUTO	PRUDENTIAL PLC [SSH]	-714		64,796	5.561
03 OCT 2023 - 03 OCT 2023	BAUTO	EMPLOYEES PROVIDENT FUND BOARD [SSH]	976		132,715	11.39
02 OCT 2023 - 02 OCT 2023	BAUTO	EMPLOYEES PROVIDENT FUND BOARD [SSH]	2,353		131,739	11.306
02 OCT 2023 - 02 OCT 2023	BAUTO	PRUDENTIAL PLC [SSH]	-300		65,510	5.622
29 SEP 2023 - 29 SEP 2023	BAUTO	EMPLOYEES PROVIDENT FUND BOARD [SSH]	1,101		129,386	11.106
29 SEP 2023 - 29 SEP 2023	BAUTO	PRUDENTIAL PLC [SSH]	-200		65,810	5.649
27 SEP 2023 - 27 SEP 2023	BAUTO	EMPLOYEES PROVIDENT FUND BOARD [SSH]	-1,914		128,285	11.012
26 SEP 2023 - 26 SEP 2023	BAUTO	EMPLOYEES PROVIDENT FUND BOARD [SSH]	1,390		130,200	11.176
05 OCT 2023 - 05 OCT 2023	BETA	ENCIK MUHAMMAD FAUZI BIN ABD GHANI [DIR/CEO]	50		5,903	1.312
29 SEP 2023 - 29 SEP 2023	BETA	ENCIK MUHAMMAD FAUZI BIN ABD GHANI [DIR/CEO]	50		5,853	1.301
02 OCT 2023 - 02 OCT 2023	BINACOM	OPCOM VC SDN. BHD. [SSH]	70,000		70,000	18.028
02 OCT 2023 - 02 OCT 2023	BINACOM	DYNAMIC PARADIGM SDN BHD [SSH]	-2,500		25,925	6.677
02 OCT 2023 - 02 OCT 2023	BINACOM	ENCIK MOHD SOLEHUDDIN BIN YAHYA [SSH]	-2,500		25,925	6.677
02 OCT 2023 - 02 OCT 2023	BINACOM	ENCIK NIK ABDUL HAKIM BIN ABD RAZAK [SSH]	-2,500		25,925	6.677
02 OCT 2023 - 02 OCT 2023	BINACOM	OPCOM VC SDN. BHD. [SSH]	70,000		70,000	18.028
02 OCT 2023 - 02 OCT 2023	BINTAI	MR WONG SENG LIANG [DIR/CEO]	-2,000		666	0.071
29 SEP 2023 - 29 SEP 2023	BJASSET	B & B ENTERPRISE SDN BHD [SSH]	221		199,268	7.789
29 SEP 2023 - 29 SEP 2023	BJASSET	TAN SRI DATO' SERI VINCENT TAN CHEE YIOUN [SSH]	221		1,242,607	48.572
29 SEP 2023 - 29 SEP 2023	BJCORP	TAN SRI DATO' SERI VINCENT TAN CHEE YIOUN [SSH]	1,928		1,008,760	18.067
29 SEP 2023 - 29 SEP 2023	BJCORP	TAN SRI DATO' SERI VINCENT TAN CHEE YIOUN [SSH]	117,000		1,010,689	18.101
06 OCT 2023 - 06 OCT 2023	BORNOIL	DATUK JOSEPH LEE YOK MIN @ AMBROSE [DIR/CEO]	8,400		1,888,034	15.772
06 OCT 2023 - 06 OCT 2023	BORNOIL	DATUK JOSEPH LEE YOK MIN @ AMBROSE [SSH]	605,597		1,888,034	15.772
29 SEP 2023 - 29 SEP 2023	BPLANT	ARUSHA ENTERPRISE SDN. BHD. [SSH]	6,108		808,492	36.093
29 SEP 2023 - 29 SEP 2023	BPLANT	BATU KAWAN BERHAD [SSH]	6,108		808,492	36.093
29 SEP 2023 - 29 SEP 2023	BPLANT	CUBIC CRYSTAL CORPORATION [SSH]	6,108		808,492	36.093
29 SEP 2023 - 29 SEP 2023	BPLANT	DATO' LEE HAU HIAN [SSH]	6,108		808,492	36.093
29 SEP 2023 - 29 SEP 2023	BPLANT	DI-YI SDN. BHD. [SSH]	6,108		808,492	36.093
29 SEP 2023 - 29 SEP 2023	BPLANT	GRATEFUL BLESSINGS FOUNDATION [SSH]	6,108		808,492	36.093
29 SEP 2023 - 29 SEP 2023	BPLANT	GRATEFUL BLESSINGS INC. [SSH]	6,108		808,492	36.093
29 SEP 2023 - 29 SEP 2023	BPLANT	HIGH QUEST ANSTALT [SSH]	6,108		808,492	36.093

Notice Period is 1st Oct – 7th Oct 2023

Effective Change Date	Stock Name	Buyer/ Seller Name [Classification]	Bought / (Sold) ['000]		No. of Shares After Trade ['000]	
			Total	% Held	Total	% Held
29 SEP 2023 - 29 SEP 2023	BPLANT	HIGH QUEST HOLDINGS SDN BHD [SSH]	6,108		808,492	36.093
29 SEP 2023 - 29 SEP 2023	BPLANT	KUALA LUMPUR KEPONG BERHAD [SSH]	6,108		808,492	36.093
29 SEP 2023 - 29 SEP 2023	BPLANT	TAN SRI LEE OI HIAN [SSH]	6,108		808,492	36.093
29 SEP 2023 - 29 SEP 2023	BPLANT	WAN HIN INVESTMENTS SDN. BERHAD [SSH]	6,108		808,492	36.093
03 OCT 2023 - 03 OCT 2023	BURSA	EMPLOYEES PROVIDENT FUND BOARD [SSH]	1,266		98,326	12.15
29 SEP 2023 - 29 SEP 2023	BURSA	EMPLOYEES PROVIDENT FUND BOARD [SSH]	-329		97,060	11.993
26 SEP 2023 - 26 SEP 2023	BURSA	EMPLOYEES PROVIDENT FUND BOARD [SSH]	5		97,389	12.034
02 OCT 2023 - 02 OCT 2023	CDB	EMPLOYEES PROVIDENT FUND BOARD [SSH]	-4		1,123,212	9.574
29 SEP 2023 - 29 SEP 2023	CDB	EMPLOYEES PROVIDENT FUND BOARD [SSH]	-1,331		1,123,216	9.574
04 OCT 2023 - 04 OCT 2023	CGB	MR LEE CHEE VUI [DIR/CEO]	10,200		22,497	13.013
04 OCT 2023 - 04 OCT 2023	CGB	MR LEE CHEE VUI [SSH]	10,200		22,497	13.013
04 OCT 2023 - 04 OCT 2023	CGB	MR SOO YU CHAI [SSH]	10,200		20,364	11.779
04 OCT 2023 - 04 OCT 2023	CGB	RYRT HOLDINGS SDN. BHD. [SSH]	10,200		20,168	11.666
03 OCT 2023 - 04 OCT 2023	CGB	MR CHEW HIAN TAT [DIR/CEO]	211		19,190	57.54
02 OCT 2023 - 02 OCT 2023	CHINHIN	DATUK SERI CHIAU BENG TEIK JP [DIR/CEO]	-1,600		1,062,034	60.022
02 OCT 2023 - 02 OCT 2023	CHINHIN	DATUK SERI CHIAU BENG TEIK JP [SSH]	-1,600		1,062,034	60.022
05 OCT 2023 - 05 OCT 2023	CIHLDG	DATIN MARIAM PRUDENCE BINTI YUSOF [DIR/CEO]	-750		34,345	21.201
05 OCT 2023 - 05 OCT 2023	CIHLDG	DATIN MARIAM PRUDENCE BINTI YUSOF [SSH]	-750		34,345	21.201
05 OCT 2023 - 05 OCT 2023	CIMB	KUMPULAN WANG PERSARAAN (DIPERBADANKAN) [SSH]	299		711,675	6.68
03 OCT 2023 - 03 OCT 2023	CIMB	EMPLOYEES PROVIDENT FUND BOARD [SSH]	-6,033		1,673,707	15.69
04 OCT 2023 - 04 OCT 2023	CIMB	KUMPULAN WANG PERSARAAN (DIPERBADANKAN) [SSH]	-1,000		711,376	6.67
02 OCT 2023 - 02 OCT 2023	CIMB	EMPLOYEES PROVIDENT FUND BOARD [SSH]	-802		1,679,739	15.75
03 OCT 2023 - 03 OCT 2023	CIMB	KUMPULAN WANG PERSARAAN (DIPERBADANKAN) [SSH]	-1,019		712,376	6.68
29 SEP 2023 - 29 SEP 2023	CIMB	EMPLOYEES PROVIDENT FUND BOARD [SSH]	-13,187		1,680,541	15.76
29 SEP 2023 - 29 SEP 2023	CIMB	KUMPULAN WANG PERSARAAN (DIPERBADANKAN) [SSH]	2,620		713,395	6.68
27 SEP 2023 - 27 SEP 2023	CIMB	EMPLOYEES PROVIDENT FUND BOARD [SSH]	2,303		1,693,728	15.88
27 SEP 2023 - 27 SEP 2023	CIMB	KUMPULAN WANG PERSARAAN (DIPERBADANKAN) [SSH]	-3,000		710,775	6.66
26 SEP 2023 - 26 SEP 2023	CIMB	EMPLOYEES PROVIDENT FUND BOARD [SSH]	-3,841		1,691,426	15.86
25 SEP 2023 - 25 SEP 2023	CIMB	EMPLOYEES PROVIDENT FUND BOARD [SSH]	-2,232		1,695,267	16.9
05 OCT 2023 - 05 OCT 2023	CLMT	KUMPULAN WANG PERSARAAN (DIPERBADANKAN) [SSH]	538		253,027	9.257
03 OCT 2023 - 03 OCT 2023	CLMT	EMPLOYEES PROVIDENT FUND BOARD [SSH]	1,139		391,417	14.32
04 OCT 2023 - 04 OCT 2023	CLMT	KUMPULAN WANG PERSARAAN (DIPERBADANKAN) [SSH]	430		252,489	9.237
02 OCT 2023 - 02 OCT 2023	CLMT	EMPLOYEES PROVIDENT FUND BOARD [SSH]	617		390,278	14.278
03 OCT 2023 - 03 OCT 2023	CLMT	KUMPULAN WANG PERSARAAN (DIPERBADANKAN) [SSH]	2,012		252,059	9.221
29 SEP 2023 - 29 SEP 2023	CLMT	EMPLOYEES PROVIDENT FUND BOARD [SSH]	364		389,661	14.255
02 OCT 2023 - 02 OCT 2023	CLMT	KUMPULAN WANG PERSARAAN (DIPERBADANKAN) [SSH]	489		250,046	9.148
27 SEP 2023 - 27 SEP 2023	CLMT	EMPLOYEES PROVIDENT FUND BOARD [SSH]	244		389,297	14.242
25 SEP 2023 - 25 SEP 2023	CLMT	MR LIM CHO PIN ANDREW GEOFFREY [DIR/CEO]	1		52	0.002
29 SEP 2023 - 29 SEP 2023	CLMT	KUMPULAN WANG PERSARAAN (DIPERBADANKAN) [SSH]	289		249,557	9.13
26 SEP 2023 - 26 SEP 2023	CLMT	EMPLOYEES PROVIDENT FUND BOARD [SSH]	2,265		389,053	14.233
04 OCT 2023 - 04 OCT 2023	CTOS	ABRDN HOLDINGS LIMITED (FORMERLY KNOWN AS ABERDEEN ASSET MANAGEMENT PLC) [SSH]	747		135,755	5.877
04 OCT 2023 - 04 OCT 2023	CTOS	ABRDN MALAYSIA SDN BHD [SSH]	747		134,036	5.802
04 OCT 2023 - 04 OCT 2023	CTOS	ABRDN PLC [SSH]	747		135,755	5.877
03 OCT 2023 - 03 OCT 2023	CTOS	ABRDN HOLDINGS LIMITED (FORMERLY KNOWN AS ABERDEEN ASSET MANAGEMENT PLC) [SSH]	1,397		135,008	5.844
03 OCT 2023 - 03 OCT 2023	CTOS	ABRDN MALAYSIA SDN BHD [SSH]	1,397		133,289	5.77
03 OCT 2023 - 03 OCT 2023	CTOS	ABRDN PLC [SSH]	1,397		135,008	5.844
02 OCT 2023 - 02 OCT 2023	CTOS	ABRDN HOLDINGS LIMITED (FORMERLY KNOWN AS ABERDEEN ASSET MANAGEMENT PLC) [SSH]	89		133,611	5.784
02 OCT 2023 - 02 OCT 2023	CTOS	ABRDN MALAYSIA SDN BHD [SSH]	89		131,892	5.71
02 OCT 2023 - 02 OCT 2023	CTOS	ABRDN PLC [SSH]	89		133,611	5.784
29 SEP 2023 - 29 SEP 2023	CTOS	ABRDN HOLDINGS LIMITED (FORMERLY KNOWN AS ABERDEEN ASSET MANAGEMENT PLC) [SSH]	299		133,522	5.78
29 SEP 2023 - 29 SEP 2023	CTOS	ABRDN MALAYSIA SDN BHD [SSH]	299		131,804	5.706
29 SEP 2023 - 29 SEP 2023	CTOS	ABRDN PLC [SSH]	299		133,522	5.78
27 SEP 2023 - 27 SEP 2023	CTOS	ABRDN HOLDINGS LIMITED (FORMERLY KNOWN AS ABERDEEN ASSET MANAGEMENT PLC) [SSH]	859		133,224	5.767
27 SEP 2023 - 27 SEP 2023	CTOS	ABRDN MALAYSIA SDN BHD [SSH]	859		131,505	5.693
27 SEP 2023 - 27 SEP 2023	CTOS	ABRDN PLC [SSH]	859		133,224	5.767
02 OCT 2023 - 02 OCT 2023	CYPARK	DATO' DAUD BIN AHMAD [DIR/CEO]	-5,000		45,339	5.682
02 OCT 2023 - 02 OCT 2023	CYPARK	DATO' DAUD BIN AHMAD [SSH]	-5,000		45,339	5.682
03 OCT 2023 - 03 OCT 2023	D&O	EMPLOYEES PROVIDENT FUND BOARD [SSH]	124		65,058	5.254

Disclaimer: The Information in Insider Activity is extracted from www.shareinvestor.com/fundamental/insider_trades. The information on this page is provided as a service to readers. It does not constitute financial advice and/or any investment recommendations. We assume no liability for damages resulting from or arising out of the use of such information. Whilst every effort is made to ensure accuracy, the information presented is not the official record of shareholder filings. Readers are advised to read the original filings on the Bursa Malaysia website at www.bursamalaysia.com



STROM
SWISS TIMEPIECES & JEWELLERY



StromWatch Asia
Tele : +65.9817.3378
Email : ll.stromasia@gmail.com
WWW.STROMWATCH.SWISS

Notice Period is 1st Oct - 7th Oct 2023

Effective Change Date	Stock Name	Buyer/ Seller Name [Classification]	Bought / (Sold) ('000)		No. of Shares After Trade ('000)	
			Total	Total	% Held	
22 SEP 2023 - 02 OCT 2023	D&O	EMPLOYEES PROVIDENT FUND BOARD [SSH]	2,117	64,934	5.244	
03 OCT 2023 - 04 OCT 2023	DFX	DATUK WIRA LAU CHI CHIANG [DIR/CEO]	5,060	19,828	2.659	
29 SEP 2023 - 29 SEP 2023	DFX	DATUK WIRA LAU CHI CHIANG [DIR/CEO]	1,100	14,768	1.981	
26 SEP 2023 - 26 SEP 2023	DIALOG	EMPLOYEES PROVIDENT FUND BOARD [SSH]	34	839,849	14.88	
27 SEP 2023 - 27 SEP 2023	DLADY	CITIGROUP NOMINEES (TEMPATAN) SDN BHD EMPLOYEES PROVIDENT FUND BOARD [SSH]	-43	5,807	9.073	
03 OCT 2023 - 03 OCT 2023	DPHARMA	EMPLOYEES PROVIDENT FUND BOARD [SSH]	500	79,217	8.235	
02 OCT 2023 - 02 OCT 2023	DPHARMA	EMPLOYEES PROVIDENT FUND BOARD [SSH]	200	78,717	8.183	
29 SEP 2023 - 29 SEP 2023	DPHARMA	EMPLOYEES PROVIDENT FUND BOARD [SSH]	141	78,517	8.162	
27 SEP 2023 - 27 SEP 2023	DPHARMA	EMPLOYEES PROVIDENT FUND BOARD [SSH]	200	78,376	8.148	
26 SEP 2023 - 26 SEP 2023	DPHARMA	EMPLOYEES PROVIDENT FUND BOARD [SSH]	445	78,176	8.127	
05 OCT 2023 - 05 OCT 2023	E&O	MR LIM KIEN LAI @ LIM KEAN LAI [DIR/CEO]	30	70	0.004	
02 OCT 2023 - 02 OCT 2023	E&O	AMAZING PARADE SDN BHD [SSH]	34,254	603,414	33.1	
02 OCT 2023 - 02 OCT 2023	E&O	DATIN TOH SIEW CHUON [SSH]	34,254	628,698	34.49	
02 OCT 2023 - 02 OCT 2023	E&O	DATUK TEE ENG HO [DIR/CEO]	34,254	932,124	51.13	
02 OCT 2023 - 02 OCT 2023	E&O	DATUK TEE ENG HO [SSH]	34,254	931,840	51.11	
02 OCT 2023 - 02 OCT 2023	E&O	MR TEE ENG SENG [DIR/CEO]	34,254	931,840	51.11	
02 OCT 2023 - 02 OCT 2023	E&O	MR TEE ENG SENG [SSH]	34,254	931,840	51.11	
03 OCT 2023 - 03 OCT 2023	E&O	KUMPULAN WANG PERSARAAN (DIPERBADANKAN) [SSH]	-2,919	106,605	5.85	
02 OCT 2023 - 02 OCT 2023	E&O-LC	DATUK TEE ENG HO [DIR/CEO]	34,254	511,369	71.38	
02 OCT 2023 - 02 OCT 2023	E&O-LC	MR TEE ENG SENG [DIR/CEO]	34,254	506,137	70.65	
04 OCT 2023 - 04 OCT 2023	EDEN	KOPERASI BELIA ISLAM MALAYSIA BERHAD [SSH]	1,413	34,072	7.416	
02 OCT 2023 - 02 OCT 2023	EDEN	KOPERASI BELIA ISLAM MALAYSIA BERHAD [SSH]	5,245	32,659	7.109	
02 OCT 2023 - 04 OCT 2023	EITA	MISS FU JIA LIK [DIR/CEO]	-800	12,894	14.898	
02 OCT 2023 - 04 OCT 2023	EITA	MR FU MUN WIN [DIR/CEO]	-800	12,894	14.898	
02 OCT 2023 - 02 OCT 2023	ENGTEX	NKG RESOURCES SDN BHD [SSH]	846	25,238	5.718	
02 OCT 2023 - 02 OCT 2023	ENGTEX	PUAN SRI DATIN YAP SENG KUAN [DIR/CEO]	846	134,716	30.522	
02 OCT 2023 - 02 OCT 2023	ENGTEX	PUAN SRI DATIN YAP SENG KUAN [SSH]	846	134,716	30.522	
02 OCT 2023 - 02 OCT 2023	ENGTEX	TAN SRI DATO' NG HOOK [DIR/CEO]	846	134,716	30.522	
02 OCT 2023 - 02 OCT 2023	ENGTEX	TAN SRI DATO' NG HOOK [SSH]	846	134,716	30.522	
03 OCT 2023 - 03 OCT 2023	ESKERAM	MR WONG FOOK LIN [DIR/CEO]	5,000	24,258	17.34	
02 OCT 2023 - 02 OCT 2023	F&N	EMPLOYEES PROVIDENT FUND BOARD [SSH]	345	43,180	11.773	
29 SEP 2023 - 29 SEP 2023	F&N	EMPLOYEES PROVIDENT FUND BOARD [SSH]	20	42,835	11.679	
27 SEP 2023 - 27 SEP 2023	F&N	EMPLOYEES PROVIDENT FUND BOARD [SSH]	299	42,815	11.673	
02 OCT 2023 - 03 OCT 2023	FBBHD	MR NG KIAN BOON [DIR/CEO]	-8,000	191,641	88.723	
02 OCT 2023 - 03 OCT 2023	FBBHD	MR NG KIAN BOON [SSH]	-8,000	191,641	88.723	
04 OCT 2023 - 04 OCT 2023	FFB	ABRDN HOLDINGS LIMITED (FORMERLY KNOWN AS ABERDEEN ASSET MANAGEMENT PLC) [SSH]	815	107,685	5.753	
04 OCT 2023 - 04 OCT 2023	FFB	ABRDN MALAYSIA SDN BHD [SSH]	815	106,341	5.681	
04 OCT 2023 - 04 OCT 2023	FFB	ABRDN PLC [SSH]	815	107,685	5.753	
03 OCT 2023 - 03 OCT 2023	FFB	EMPLOYEES PROVIDENT FUND BOARD [SSH]	289	162,385	8.675	
03 OCT 2023 - 03 OCT 2023	FFB	ABRDN HOLDINGS LIMITED (FORMERLY KNOWN AS ABERDEEN ASSET MANAGEMENT PLC) [SSH]	495	106,871	5.709	
03 OCT 2023 - 03 OCT 2023	FFB	ABRDN MALAYSIA SDN BHD [SSH]	495	105,527	5.637	
03 OCT 2023 - 03 OCT 2023	FFB	ABRDN PLC [SSH]	495	106,871	5.709	
02 OCT 2023 - 02 OCT 2023	FFB	EMPLOYEES PROVIDENT FUND BOARD [SSH]	651	162,096	8.659	
02 OCT 2023 - 02 OCT 2023	FFB	ABRDN HOLDINGS LIMITED (FORMERLY KNOWN AS ABERDEEN ASSET MANAGEMENT PLC) [SSH]	1,117	106,376	5.683	
02 OCT 2023 - 02 OCT 2023	FFB	ABRDN MALAYSIA SDN BHD [SSH]	1,117	105,032	5.611	
02 OCT 2023 - 02 OCT 2023	FFB	ABRDN PLC [SSH]	1,117	106,376	5.683	
29 SEP 2023 - 29 SEP 2023	FFB	EMPLOYEES PROVIDENT FUND BOARD [SSH]	452	161,445	8.625	
29 SEP 2023 - 29 SEP 2023	FFB	ABRDN HOLDINGS LIMITED (FORMERLY KNOWN AS ABERDEEN ASSET MANAGEMENT PLC) [SSH]	774	105,259	5.623	
29 SEP 2023 - 29 SEP 2023	FFB	ABRDN MALAYSIA SDN BHD [SSH]	774	103,915	5.551	
29 SEP 2023 - 29 SEP 2023	FFB	ABRDN PLC [SSH]	774	105,259	5.623	
27 SEP 2023 - 27 SEP 2023	FFB	EMPLOYEES PROVIDENT FUND BOARD [SSH]	103	160,994	8.6	
27 SEP 2023 - 27 SEP 2023	FFB	ABRDN HOLDINGS LIMITED (FORMERLY KNOWN AS ABERDEEN ASSET MANAGEMENT PLC) [SSH]	193	104,485	5.582	
27 SEP 2023 - 27 SEP 2023	FFB	ABRDN MALAYSIA SDN BHD [SSH]	193	103,141	5.51	
27 SEP 2023 - 27 SEP 2023	FFB	ABRDN PLC [SSH]	193	104,485	5.582	
26 SEP 2023 - 26 SEP 2023	FFB	EMPLOYEES PROVIDENT FUND BOARD [SSH]	136	160,891	8.595	
26 SEP 2023 - 26 SEP 2023	FITTERS	DATO' SRI DR PANG CHOW HUAT [SSH]	5,500	195,700	8.359	
02 OCT 2023 - 03 OCT 2023	FRONTKN	MR OOI KENG THYE [SSH]	-3,061	186,505	11.872	
27 SEP 2023 - 29 SEP 2023	FRONTKN	MR OOI KENG THYE [SSH]	-522	189,566	12.067	
03 OCT 2023 - 03 OCT 2023	GAMUDA	EMPLOYEES PROVIDENT FUND BOARD (EPF BOARD) [SSH]	-3,000	310,205	11.5	
02 OCT 2023 - 02 OCT 2023	GAMUDA	EMPLOYEES PROVIDENT FUND BOARD (EPF BOARD) [SSH]	-2,972	313,205	11.61	
29 SEP 2023 - 29 SEP 2023	GAMUDA	EMPLOYEES PROVIDENT FUND BOARD (EPF BOARD) [SSH]	-3,720	316,177	11.72	
27 SEP 2023 - 27 SEP 2023	GAMUDA	EMPLOYEES PROVIDENT FUND BOARD (EPF BOARD) [SSH]	-1,416	319,897	11.86	
26 SEP 2023 - 26 SEP 2023	GAMUDA	EMPLOYEES PROVIDENT FUND BOARD (EPF BOARD) [SSH]	-105	321,313	11.91	
26 SEP 2023 - 26 SEP 2023	GASMSIA	EMPLOYEES PROVIDENT FUND BOARD [SSH]	233	83,283	6.486	
03 OCT 2023 - 03 OCT 2023	GENETEC	MADAM ONG PHOE BE [DIR/CEO]	-800	836	0.11	
03 OCT 2023 - 03 OCT 2023	HARNLEN	LOW NAM HUI UNITED HOLDINGS SDN. BHD. [SSH]	-4,000	132,791	23.51	
03 OCT 2023 - 03 OCT 2023	HARNLEN	MR LOW KOK YAOW [DIR/CEO]	-4,000	309,260	54.752	
03 OCT 2023 - 03 OCT 2023	HARNLEN	MR LOW KOK YAOW [SSH]	-4,000	309,260	54.752	
03 OCT 2023 - 03 OCT 2023	HARNLEN	MR LOW KOK YONG [DIR/CEO]	-4,000	310,256	54.929	
03 OCT 2023 - 03 OCT 2023	HARNLEN	MR LOW KOK YONG [SSH]	-4,000	310,256	54.929	
03 OCT 2023 - 03 OCT 2023	HARNLEN	MR LOW KUECK SHIN [DIR/CEO]	-4,000	297,573	52.683	
03 OCT 2023 - 03 OCT 2023	HARNLEN	MR LOW KUECK SHIN [SSH]	-4,000	297,443	52.66	
03 OCT 2023 - 03 OCT 2023	HARNLEN	MR LOW KUEK KONG [DIR/CEO]	-4,000	297,193	52.616	
03 OCT 2023 - 03 OCT 2023	HARNLEN	MR LOW KUEK KONG [SSH]	-4,000	297,193	52.616	
03 OCT 2023 - 03 OCT 2023	HARNLEN	MR LOW KWEK LEE [DIR/CEO]	-4,000	297,403	52.653	
03 OCT 2023 - 03 OCT 2023	HARNLEN	MR LOW KWEK LEE [SSH]	-4,000	297,403	52.653	
03 OCT 2023 - 03 OCT 2023	HARNLEN	MR LOW QUEK KIONG [DIR/CEO]	-4,000	313,440	55.492	
03 OCT 2023 - 03 OCT 2023	HARNLEN	MR LOW QUEK KIONG [SSH]	-4,000	313,440	55.492	
03 OCT 2023 - 03 OCT 2023	HARNLEN	PUAN SRI DATIN CHAN PUI LEORN [DIR/CEO]	-4,000	310,287	54.934	

Notice Period is 1st Oct - 7th Oct 2023

Effective Change Date	Stock Name	Buyer/ Seller Name [Classification]	Bought / (Sold) ('000)		No. of Shares After Trade ('000)	
			Total	Total	% Held	
03 OCT 2023 - 03 OCT 2023	HARNLEN	PUAN SRI DATIN CHAN PUI LEORN [SSH]	-4,000	310,287	54.934	
03 OCT 2023 - 03 OCT 2023	HARNLEN	TAN SRI LOW NAM HUI [SSH]	-4,000	296,403	52.476	
03 OCT 2023 - 03 OCT 2023	HEKTAR	HEKTAR BLACK SDN BHD [SSH]	-300	125,903	25.242	
02 OCT 2023 - 02 OCT 2023	HEXTAR	DATO' ONG CHOO MENG [SSH]	-6,600	2,591,170	66.85	
02 OCT 2023 - 02 OCT 2023	HEXTAR	DATO' ONG SOON HO [DIR/CEO]	-6,600	2,591,170	66.851	
02 OCT 2023 - 02 OCT 2023	HEXTAR	DATO' ONG SOON HO [SSH]	-6,600	2,591,170	66.851	
02 OCT 2023 - 02 OCT 2023	HEXTAR	HEXTAR HOLDINGS SDN. BHD. [SSH]	-6,600	2,281,976	58.873	
02 OCT 2023 - 02 OCT 2023	HHRG	CFAMILIE HOLDINGS SDN BHD [SSH]	-19,883	162,791	18.802	
02 OCT 2023 - 02 OCT 2023	HHRG	MADAM TAN POH CHENG [SSH]	-19,883	162,791	18.802	
02 OCT 2023 - 02 OCT 2023	HHRG	MR CH'NG CHEN MONG [SSH]	-19,883	174,468	20.151	
02 OCT 2023 - 02 OCT 2023	HHRG	MR GOH BOON LEONG [SSH]	-69,767	261,764	30.234	
02 OCT 2023 - 02 OCT 2023	HHRG	MR HO WHYE CHONG [DIR/CEO]	-69,767	78,595	9.078	
02 OCT 2023 - 02 OCT 2023	HHRG	MR HO WHYE CHONG [SSH]	-69,767	78,595	9.078	
05 OCT 2023 - 05 OCT 2023	HIGHTEC	MR TAN LYE HUAT [DIR/CEO]	62	62,113	52.499	
05 OCT 2023 - 05 OCT 2023	HIGHTEC	MR TAN LYE HUAT [SSH]	62	62,113	52.499	
02 OCT 2023 - 02 OCT 2023	HLBANK	EMPLOYEES PROVIDENT FUND BOARD [SSH]	-1,554	214,097	10.26	
29 SEP 2023 - 29 SEP 2023	HLBANK	EMPLOYEES PROVIDENT FUND BOARD [SSH]	-1,549	215,652	10.335	
27 SEP 2023 - 27 SEP 2023	HLBANK	EMPLOYEES PROVIDENT FUND BOARD [SSH]	-475	217,200	10.409	
26 SEP 2023 - 26 SEP 2023	HLBANK	EMPLOYEES PROVIDENT FUND BOARD [SSH]	38	217,676	10.432	
03 OCT 2023 - 03 OCT 2023	HOHUP	TAN SRI DATUK SERI (DR) MAZLAN BIN LAZIM [DIR/CEO]	-100	205	0.041	
03 OCT 2023 - 03 OCT 2023	IHH	EMPLOYEES PROVIDENT FUND BOARD [SSH]	2,768	930,044	10.56	
02 OCT 2023 - 02 OCT 2023	IHH	EMPLOYEES PROVIDENT FUND BOARD [SSH]	-2,243	927,276	10.529	
29 SEP 2023 - 29 SEP 2023	IHH	EMPLOYEES PROVIDENT FUND BOARD [SSH]	-240	929,659	10.556	
27 SEP 2023 - 27 SEP 2023	IHH	EMPLOYEES PROVIDENT FUND BOARD [SSH]	674	929,899	10.559	
26 SEP 2023 - 26 SEP 2023	IHH	EMPLOYEES PROVIDENT FUND BOARD [SSH]	-2,185	929,225	10.551	
27 SEP 2023 - 27 SEP 2023	IJM	URUSHARTA JAMAAH SDN BHD [SSH]	-1,926	175,461	5.004	
29 SEP 2023 - 29 SEP 2023	IJM	KUMPULAN WANG PERSARAAN (DIPERBADANKAN) [SSH]	2,000	323,271	9.22	
26 SEP 2023 - 26 SEP 2023	IJM	EMPLOYEES PROVIDENT FUND BOARD [SSH]	600	588,308	16.779	
26 SEP 2023 - 26 SEP 2023	IJM	URUSHARTA JAMAAH SDN BHD [SSH]	150	177,387	5.059	
05 OCT 2023 - 05 OCT 2023	ILB	PUAN JAMILAH BINTI KAMAL [DIR/CEO]	10	10	0.005	
04 OCT 2023 - 04 OCT 2023	IMPIANA	ADVANCE OPPORTUNITIES FUND [SSH]	50,000	50,000	6.196	
04 OCT 2023 - 04 OCT 2023	IMPIANA	DATIN SRI JOANNE YEW HONG IM [SSH]	1,000	147,800	18.315	
04 OCT 2023 - 04 OCT 2023	IMPIANA	DATO' SRI LEE HOCK SENG [DIR/CEO]	1,000	147,800	18.315	
04 OCT 2023 - 04 OCT 2023	IMPIANA	DATO' SRI LEE HOCK SENG [SSH]	1,000	147,800	18.315	
02 OCT 2023 - 02 OCT 2023	IMPIANA	DATIN SRI JOANNE YEW HONG IM [SSH]	3,000	146,800	19.392	
02 OCT 2023 - 02 OCT 2023	IMPIANA	DATO' SRI LEE HOCK SENG [DIR/CEO]	3,000	146,800	19.392	
02 OCT 2023 - 02 OCT 2023	IMPIANA	DATO' SRI LEE HOCK SENG [SSH]	3,000	146,800	19.392	
05 OCT 2023 - 05 OCT 2023	INARI	KUMPULAN WANG PERSARAAN (DIPERBADANKAN) [SSH]	-1,000	358,357	9.572	
04 OCT 2023 - 04 OCT 2023	INARI	KUMPULAN WANG PERSARAAN (DIPERBADANKAN) [SSH]	430	359,357	9.599	
03 OCT 2023 - 03 OCT 2023	INARI	KUMPULAN WANG PERSARAAN (DIPERBADANKAN) [SSH]	381	358,927	9.587	
27 SEP 2023 - 27 SEP 2023	INARI	EMPLOYEES PROVIDENT FUND BOARD [SSH]	500	387,256	10.344	
26 SEP 2023 - 26 SEP 2023	INARI	EMPLOYEES PROVIDENT FUND BOARD [SSH]	90	386,756	10.331	
03 OCT 2023 - 03 OCT 2023	INNATURE	PRUDENTIAL PLC [SSH]	-311	35,429	5.019	
03 OCT 2023 - 03 OCT 2023	IOICORP	EMPLOYEES PROVIDENT FUND BOARD [SSH]	468	685,855	11.056	
02 OCT 2023 - 02 OCT 2023	IOICORP	EMPLOYEES PROVIDENT FUND BOARD [SSH]	1,000	685,387	11.048	
27 SEP 2023 - 27 SEP 2023	IOICORP	EMPLOYEES PROVIDENT FUND BOARD [SSH]	2	684,387	11.032	
04 OCT 2023 - 04 OCT 2023	KAWAN	MR LIM HUN SOON @ DAVID LIM [DIR/CEO]	2,500	10,137	2.803	
03 OCT 2023 - 03 OCT 2023	KAWAN	MR NARESHCHANDRA GORDHANDAS NAGRECHA [SSH]	-10,000	62,001	17.142	
03 OCT 2023 - 03 OCT 2023	KAWAN	VG TRUSTEE LIMITED (AS TRUSTEE OF THE NARVEE FOUNDATION) [SSH]	-10,000	62,001	17.142	
29 SEP 2023 - 29 SEP 2023	KAWAN	GFG (L) FOUNDATION [SSH]	7,692	126,257	34.907	
29 SEP 2023 - 29 SEP 2023	KAWAN	MADAM KWAN SOK KAY [DIR/CEO]	7,692	126,257	34.907	
29 SEP 2023 - 29 SEP 2023	KAWAN	MADAM KWAN SOK KAY [SSH]	7,692	126,257	34.907	
29 SEP 2023 - 02 OCT 2023	KFIMA	BHR ENTERPRISE SDN BHD [SSH]	7	150,322	53.262	
29 SEP 2023 - 02 OCT 2023	KFIMA	DATIN ROZILAWATI BINTI HAJI BASIR [DIR/CEO]	7	171,111	60.628	
29 SEP 2023 - 02 OCT 2023	KFIMA	DR ROSHAYATI BINTI BASIR [SSH]	7	171,111	60.628	
29 SEP 2023 - 02 OCT 2023	KFIMA	PUAN ROZANA ZETI BINTI BASIR [DIR/CEO]	7	171,1		

Notice Period is 1st Oct - 7th Oct 2023

Effective Change Date	Stock Name	Buyer/ Seller Name [Classification]	Bought / (Sold) ('000)		No. of Shares After Trade ('000)	
			Total	Total	% Held	% Held
29 SEP 2023 - 29 SEP 2023	KOSSAN	ABRDN PLC [SSH]	723	149,186	5.847	
29 SEP 2023 - 29 SEP 2023	KOSSAN	KOSSAN HOLDINGS (M) SDN BHD [SSH]	366,100	893,068	35	
29 SEP 2023 - 29 SEP 2023	KOSSAN	MR LIM KUANG WANG [SSH]	-292,880	968,288	37.948	
29 SEP 2023 - 29 SEP 2023	KOSSAN	MR LIM KUANG YONG [SSH]	-292,880	969,866	38.01	
29 SEP 2023 - 29 SEP 2023	KOSSAN	MR LIM LENG BUNG [SSH]	-819,848	968,606	37.96	
29 SEP 2023 - 29 SEP 2023	KOSSAN	TAN SRI DATO' LIM KUANG SIA [DIR/CEO]	-292,880	976,485	38.27	
29 SEP 2023 - 29 SEP 2023	KOSSAN	TAN SRI DATO' LIM KUANG SIA [SSH]	-292,880	976,485	38.27	
27 SEP 2023 - 27 SEP 2023	KOSSAN	ABRDN HOLDINGS LIMITED (FORMERLY KNOWN AS ABERDEEN ASSET MANAGEMENT PLC) [SSH]	98	148,463	5.818	
27 SEP 2023 - 27 SEP 2023	KOSSAN	ABRDN MALAYSIA SDN BHD [SSH]	98	146,058	5.724	
27 SEP 2023 - 27 SEP 2023	KOSSAN	ABRDN PLC [SSH]	98	148,463	5.818	
02 OCT 2023 - 04 OCT 2023	KYM	MR SHARMAN A/L ARUMUGAM [DIR/CEO]	53	53	0.035	
29 SEP 2023 - 29 SEP 2023	LIHEN	MR CHUA LEE SENG [DIR/CEO]	35	231,261	42.826	
29 SEP 2023 - 29 SEP 2023	LIHEN	MR CHUA LEE SENG [SSH]	35	231,261	42.826	
03 OCT 2023 - 03 OCT 2023	M&A	RHB TRUSTEES BERHAD [SSH]	-40,000	121,250	6.066	
02 OCT 2023 - 04 OCT 2023	MAGNA	MISS TAN CHIN YEN [DIR/CEO]	588	67,645	16.947	
02 OCT 2023 - 04 OCT 2023	MAGNA	MISS TAN CHIN YEN [SSH]	588	67,645	16.947	
05 OCT 2023 - 05 OCT 2023	MAYBANK	KUMPULAN WANG PERSARAAN (DIPERBADANKAN) ("KWAP") [SSH]	1,000	603,351	5.002	
04 OCT 2023 - 04 OCT 2023	MAYBANK	AMANAHRAYA TRUSTEES BERHAD - AMANAH SAHAM BUMIPUTERA [SSH]	-5	3,748,045	31.078	
03 OCT 2023 - 03 OCT 2023	MAYBANK	EMPLOYEES PROVIDENT FUND BOARD [SSH]	6,000	1,603,948	13.299	
03 OCT 2023 - 03 OCT 2023	MAYBANK	AMANAHRAYA TRUSTEES BERHAD - AMANAH SAHAM BUMIPUTERA [SSH]	-5,410	3,748,050	31.078	
02 OCT 2023 - 02 OCT 2023	MAYBANK	EMPLOYEES PROVIDENT FUND BOARD [SSH]	556	1,597,948	13.25	
02 OCT 2023 - 02 OCT 2023	MAYBANK	AMANAHRAYA TRUSTEES BERHAD - AMANAH SAHAM BUMIPUTERA [SSH]	-3,182	3,753,460	31.123	
29 SEP 2023 - 29 SEP 2023	MAYBANK	EMPLOYEES PROVIDENT FUND BOARD [SSH]	-59	1,597,392	13.245	
27 SEP 2023 - 27 SEP 2023	MAYBANK	EMPLOYEES PROVIDENT FUND BOARD [SSH]	-1,459	1,597,451	13.246	
27 SEP 2023 - 27 SEP 2023	MAYBANK	AMANAHRAYA TRUSTEES BERHAD - AMANAH SAHAM BUMIPUTERA [SSH]	-550	3,756,642	31.149	
26 SEP 2023 - 26 SEP 2023	MAYBANK	EMPLOYEES PROVIDENT FUND BOARD [SSH]	5,733	1,598,911	13.258	
02 OCT 2023 - 02 OCT 2023	MBMR	EMPLOYEES PROVIDENT FUND BOARD [SSH]	400	25,334	6.481	
27 SEP 2023 - 27 SEP 2023	MBMR	EMPLOYEES PROVIDENT FUND BOARD [SSH]	-156	24,934	6.379	
27 SEP 2023 - 27 SEP 2023	MBRIGHT	DATO' LEE WAI MUN DIMP. JP. [DIR/CEO]	10,420	1,302,090	55.042	
27 SEP 2023 - 27 SEP 2023	MBRIGHT	DATO' LEE WAI MUN DIMP. JP. [SSH]	10,420	1,302,090	55.042	
27 SEP 2023 - 27 SEP 2023	MBRIGHT	LEADING VENTURES SDN. BHD. [SSH]	10,420	1,302,090	55.042	
02 OCT 2023 - 02 OCT 2023	MBSB	PERMODALAN NASIONAL BERHAD [SSH]	1,050,829	1,050,829	12.78	
02 OCT 2023 - 02 OCT 2023	MBSB	YAYASAN PELABURAN BUMIPUTERA [SSH]	1,050,829	1,050,829	12.78	
27 SEP 2023 - 27 SEP 2023	MCLEAN	DECOR INDUSTRIES PTE. LTD. [SSH]	-4,650	51,728	26.23	
27 SEP 2023 - 27 SEP 2023	MCLEAN	DGC HOLDINGS PTE LTD [SSH]	-4,650	51,728	26.23	
27 SEP 2023 - 27 SEP 2023	MCLEAN	MR LIM HAN KIAU [DIR/CEO]	-4,650	51,808	26.27	
27 SEP 2023 - 27 SEP 2023	MCLEAN	MR LIM HAN KIAU [SSH]	-4,650	51,808	26.27	
04 OCT 2023 - 06 OCT 2023	MFCB	CAM PROPERTY (MALAYSIA) SDN BHD [SSH]	50	200,507	21.268	
04 OCT 2023 - 06 OCT 2023	MFCB	CAMASIA LIMITED [SSH]	50	201,993	21.426	
04 OCT 2023 - 06 OCT 2023	MFCB	LAJU RIANG SDN BHD [SSH]	50	200,507	21.268	
04 OCT 2023 - 06 OCT 2023	MFCB	MR GOH NAN KIOH [DIR/CEO]	50	328,072	34.799	
04 OCT 2023 - 06 OCT 2023	MFCB	MR GOH NAN KIOH [SSH]	50	328,072	34.799	
04 OCT 2023 - 06 OCT 2023	MFCB	RUBBER THREAD INDUSTRIES (M) SDN BERHAD [SSH]	50	200,507	21.268	
03 OCT 2023 - 03 OCT 2023	MGB	DATO' BEH HANG KONG [DIR/CEO]	1	3,541	0.598	
27 SEP 2023 - 27 SEP 2023	MISC	EMPLOYEES PROVIDENT FUND BOARD [SSH]	-606	570,018	12.77	
26 SEP 2023 - 26 SEP 2023	MISC	EMPLOYEES PROVIDENT FUND BOARD [SSH]	-761	570,624	12.784	
03 OCT 2023 - 04 OCT 2023	MLAB	FIRST UNITED TECHNOLOGY LTD [SSH]	-39,645	264,715	18.26	
03 OCT 2023 - 04 OCT 2023	MLAB	NETX HOLDINGS BERHAD [SSH]	-39,645	264,715	18.26	
02 OCT 2023 - 02 OCT 2023	MLAB	FIRST UNITED TECHNOLOGY LTD [SSH]	-28,975	304,360	21	
02 OCT 2023 - 02 OCT 2023	MLAB	NETX HOLDINGS BERHAD [SSH]	-28,975	304,360	21	
03 OCT 2023 - 03 OCT 2023	MNRB	AMANAHRAYA TRUSTEES BERHAD-AMANAH SAHAM BUMIPUTERA [SSH]	-39	333,250	42.556	
02 OCT 2023 - 02 OCT 2023	MNRB	AMANAHRAYA TRUSTEES BERHAD-AMANAH SAHAM BUMIPUTERA [SSH]	-40	333,289	42.561	
29 SEP 2023 - 29 SEP 2023	MNRB	AMANAHRAYA TRUSTEES BERHAD-AMANAH SAHAM BUMIPUTERA [SSH]	-71	333,329	42.566	
27 SEP 2023 - 27 SEP 2023	MNRB	AMANAHRAYA TRUSTEES BERHAD-AMANAH SAHAM BUMIPUTERA [SSH]	-200	333,400	42.575	
02 OCT 2023 - 02 OCT 2023	MYEG	KUMPULAN WANG PERSARAAN (DIPERBADANKAN) [SSH]	3,000	556,678	7.459	
03 OCT 2023 - 03 OCT 2023	NATGATE	DATO' SERI LEE KAH CHOON [DIR/CEO]	-250	1,750	0.084	
02 OCT 2023 - 02 OCT 2023	NCT	DATUK SERI CHIAU BENG TEIK [SSH]	-5,000	113,804	7.528	
02 OCT 2023 - 02 OCT 2023	NESTLE	EMPLOYEES PROVIDENT FUND BOARD [SSH]	19	21,786	9.29	
29 SEP 2023 - 29 SEP 2023	NESTLE	EMPLOYEES PROVIDENT FUND BOARD [SSH]	-329	21,767	9.282	
27 SEP 2023 - 27 SEP 2023	NESTLE	EMPLOYEES PROVIDENT FUND BOARD [SSH]	19	22,096	9.423	
26 SEP 2023 - 26 SEP 2023	NESTLE	EMPLOYEES PROVIDENT FUND BOARD [SSH]	3	22,077	9.414	
26 SEP 2023 - 26 SEP 2023	NPC	DATO LOO PANG KEE [DIR/CEO]	2,300	58,284	49.874	
03 OCT 2023 - 03 OCT 2023	ORIENT	EMPLOYEES PROVIDENT FUND BOARD [SSH]	-112	49,512	7.981	
02 OCT 2023 - 02 OCT 2023	ORIENT	EMPLOYEES PROVIDENT FUND BOARD [SSH]	-67	49,624	7.999	
29 SEP 2023 - 29 SEP 2023	ORIENT	EMPLOYEES PROVIDENT FUND BOARD [SSH]	-68	49,691	8.01	
27 SEP 2023 - 27 SEP 2023	ORIENT	EMPLOYEES PROVIDENT FUND BOARD [SSH]	-88	49,759	8.021	
26 SEP 2023 - 26 SEP 2023	ORIENT	EMPLOYEES PROVIDENT FUND BOARD [SSH]	-110	49,847	8.035	
02 OCT 2023 - 03 OCT 2023	OVH	MR KENNY RONALD NGALIN [DIR/CEO]	-1,500	45,962	10.945	
02 OCT 2023 - 03 OCT 2023	OVH	MR KENNY RONALD NGALIN [SSH]	-1,500	45,962	10.945	
03 OCT 2023 - 03 OCT 2023	OWG	PUAN SRI DATIN SERI DATO' CHEW LEAN HONG [DIR/CEO]	21,834	276,864	60.335	
03 OCT 2023 - 03 OCT 2023	OWG	PUAN SRI DATIN SERI DATO' CHEW LEAN HONG [DIR/CEO]	21,834	39	0.04	
03 OCT 2023 - 03 OCT 2023	OWG	PUAN SRI DATIN SERI DATO' CHEW LEAN HONG [SSH]	21,834	276,888	60.34	
03 OCT 2023 - 03 OCT 2023	OWG	RICH DAD CAFE SDN. BHD. [SSH]	21,834	276,792	60.32	
03 OCT 2023 - 03 OCT 2023	OWG	TAN SRI DATO' SERI DATO' KOH CHENG KEONG [DIR/CEO]	21,834	39	0.04	
03 OCT 2023 - 03 OCT 2023	OWG	TAN SRI DATO' SERI DATO' KOH CHENG KEONG [DIR/CEO]	21,834	276,864	60.335	
03 OCT 2023 - 03 OCT 2023	OWG	TAN SRI DATO' SERI DATO' KOH CHENG KEONG [SSH]	21,834	276,888	60.34	
29 SEP 2023 - 29 SEP 2023	PADINI	EMPLOYEES PROVIDENT FUND BOARD [SSH]	3	37,024	5.628	

Notice Period is 1st Oct - 7th Oct 2023

Effective Change Date	Stock Name	Buyer/ Seller Name [Classification]	Bought / (Sold) ('000)		No. of Shares After Trade ('000)	
			Total	Total	% Held	% Held
27 SEP 2023 - 27 SEP 2023	PADINI	EMPLOYEES PROVIDENT FUND BOARD [SSH]	562	37,021	5.627	
05 OCT 2023 - 06 OCT 2023	PANTECH	PUAN NOORAINI BINTI MOHD YASIN [DIR/CEO]	-16	99	0.012	
03 OCT 2023 - 03 OCT 2023	PBBANK	EMPLOYEES PROVIDENT FUND BOARD [SSH]	-4,342	2976363	15.33	
29 SEP 2023 - 29 SEP 2023	PBBANK	EMPLOYEES PROVIDENT FUND BOARD [SSH]	-650	2,980,705	15.36	
27 SEP 2023 - 27 SEP 2023	PBBANK	EMPLOYEES PROVIDENT FUND BOARD [SSH]	162	2,981,355	15.36	
26 SEP 2023 - 26 SEP 2023	PBBANK	EMPLOYEES PROVIDENT FUND BOARD [SSH]	2,000	2,981,193	15.36	
29 SEP 2023 - 29 SEP 2023	PCHEM	EMPLOYEES PROVIDENT FUND BOARD ("EPF BOARD") [SSH]	-4,000	931,966	11.65	
02 OCT 2023 - 02 OCT 2023	PENTA	EMPLOYEES PROVIDENT FUND BOARD [SSH]	451	51,431	7.23	
29 SEP 2023 - 29 SEP 2023	PENTA	EMPLOYEES PROVIDENT FUND BOARD [SSH]	100	50,981	7.167	
27 SEP 2023 - 27 SEP 2023	PENTA	EMPLOYEES PROVIDENT FUND BOARD [SSH]	65	50,881	7.153	
26 SEP 2023 - 26 SEP 2023	PENTA	EMPLOYEES PROVIDENT FUND BOARD [SSH]	225	50,816	7.144	
03 OCT 2023 - 03 OCT 2023	PETDAG	EMPLOYEES PROVIDENT FUND BOARD ("EPF BOARD") [SSH]	-369	119,345	12.013	
29 SEP 2023 - 29 SEP 2023	PETDAG	EMPLOYEES PROVIDENT FUND BOARD ("EPF BOARD") [SSH]	-202	119,714	12.05	
27 SEP 2023 - 27 SEP 2023	PETDAG	EMPLOYEES PROVIDENT FUND BOARD ("EPF BOARD") [SSH]	-278	119916	12.071	
26 SEP 2023 - 26 SEP 2023	PETDAG	EMPLOYEES PROVIDENT FUND BOARD ("EPF BOARD") [SSH]	-194	120195	12.099	
02 OCT 2023 - 02 OCT 2023	PETGAS	EMPLOYEES PROVIDENT FUND BOARD [SSH]	-1,500	278562	14.078	
29 SEP 2023 - 29 SEP 2023	PETGAS	EMPLOYEES PROVIDENT FUND BOARD [SSH]	-461	280,062	14.154	
27 SEP 2023 - 27 SEP 2023	PETGAS	EMPLOYEES PROVIDENT FUND BOARD [SSH]	-154	280,523	14.177	
29 SEP 2023 - 29 SEP 2023	PETGAS	KUMPULAN WANG PERSARAAN (DIPERBADANKAN) ("KWAP") [SSH]	120	198,970	10.056	
26 SEP 2023 - 26 SEP 2023	PETGAS	EMPLOYEES PROVIDENT FUND BOARD [SSH]	-217	280,677	14.185	
29 SEP 2023 - 29 SEP 2023	PLS	TAN SRI DATO' LIM KANG YEW [DIR/CEO]	300	36,365	8.272	
29 SEP 2023 - 29 SEP 2023	PLS	TAN SRI DATO' LIM KANG YEW [SSH]	300	36,365	8.272	
02 OCT 2023 - 02 OCT 2023	PMBTECH	DATIN CHAN HEAN HEOH [SSH]	100	85,460	5.338	
02 OCT 2023 - 02 OCT 2023	PMBTECH	DATO' KOON POH TAT [DIR/CEO]	100	85,460	5.338	
02 OCT 2023 - 02 OCT 2023	PMBTECH	DATO' KOON POH TAT [SSH]	100	85,460	5.338	
29 SEP 2023 - 29 SEP 2023	PMBTECH	DATIN CHAN HEAN HEOH [SSH]	100	85,360	5.332	
29 SEP 2023 - 29 SEP 2023	PMBTECH	DATO' KOON POH TAT [DIR/CEO]	100	85,360	5.332	
29 SEP 2023 - 29 SEP 2023	PMBTECH	DATO' KOON POH TAT [SSH]	100	85,360	5.332	
03 OCT 2023 - 03 OCT 2023	PPB	EMPLOYEES PROVIDENT FUND BOARD [SSH]	191	141,751	9.964	
02 OCT 2023 - 02 OCT 2023	PPB	EMPLOYEES PROVIDENT FUND BOARD [SSH]	-935	141,561	9.951	
29 SEP 2023 - 29 SEP 2023	PPB	EMPLOYEES PROVIDENT FUND BOARD [SSH]	100	142,496	10.017	
27 SEP 2023 - 27 SEP 2023	PPB	EMPLOYEES PROVIDENT FUND BOARD [SSH]	-506	142,396	10.01	
26 SEP 2023 - 26 SEP 2023	PPB	EMPLOYEES PROVIDENT FUND BOARD [SSH]	4	142,901	10.045	
04 OCT 2023 - 05 OCT 2023	QUALITY	DATO' WEE SONG CHING [SSH]	63	5859	10.11	
03 OCT 2023 - 03 OCT 2023	QUALITY	DATO' WEE SONG CHING [SSH]	2,903	5796	10	
03 OCT 2023 - 03 OCT 2023	RHBBANK	EMPLOYEES PROVIDENT FUND BOARD [SSH]	1,277	1732632	40.422	
02 OCT 2023 - 02 OCT 2023	RHBBANK	EMPLOYEES PROVIDENT FUND BOARD [SSH]	-2,105	1731355	40.392	
29 SEP 2023 - 29 SEP 2023	RHBBANK	EMPLOYEES PROVIDENT FUND BOARD [SSH]	-8,000	1733460	40.441	
29 SEP 2023 - 29 SEP 2023	RHBBANK	KUMPULAN WANG PERSARAAN (DIPERBADANKAN) [SSH]	1,387	249655	5.824	
26 SEP 2023 - 26 SEP 2023	RHBBANK	EMPLOYEES PROVIDENT FUND BOARD [SSH]	-939	1741460	40.628	
03 OCT 2023 - 03 OCT 2023	RHONEMA	DR LIM BAN KEONG [DIR/CEO]	25	86692	39.187	
03 OCT 2023 - 03 OCT 2023	RHONEMA	DR LIM BAN KEONG [SSH]	25	86692	39.187	
04 OCT 2023 - 04 OCT 2023	SAPIND	MR KOH KOK HOON [SSH]	1	6660	9.151	
03 OCT 2023 - 03 OCT 2023	SAPIND	MR KOH KOK HOON [SSH]	13	6659	9.149	
29 SEP 2023 - 29 SEP 2023	SAPIND	MR KOH KOK HOON [SSH]	1	6646	9.132	
27 SEP 2023 - 27 SEP 2023	SAPIND	MR KOH KOK HOON [SSH]	2	6645	9.13	
03 OCT 2023 - 03 OCT 2023	SCICOM	DATO' SRI LEO SURESH ARIYANAYAKAM [DIR/CEO]	40	92487	26.019	
03 OCT 2023 - 03 OCT 2023	SCICOM	DATO' SRI LEO SURESH ARIYANAYAKAM [SSH]	40	92487	26.019	
04 OCT 2023 - 06 OCT 2023	SDS	MR TAN KIM SENG [DIR/CEO]	174	105682	25.799	
04 OCT 2023 - 06 OCT 2023	SDS	MR TAN KIM SENG [SSH]	174	105682	25.799	
29 SEP 2023 - 02 OCT 2023	SDS	MR TAN KIM SENG [DIR/CEO]	76	105508	25.757	
29 SEP 2023 - 02 OCT 2023	SDS	MR TAN KIM SENG [SSH]	76	105508	25.757	
02 OCT 2023 - 03 OCT 2023	SEAL	MR CHEN KHAI VOON [SSH]	1,720	120523	28.706	
29 SEP 2023 - 29 SEP 2023	SEAL	MR CHEN CHIEH RONG [SSH]	20,339	20339	5.364	
29 SEP 2023 - 29 SEP 2023	SEAL	MR WAN CHUN YEW [SSH]	20,339	20339	5.364	
26 SEP 2023 - 29 SEP 2023	SEAL	MR CHEN KHAI VOON [SSH]	2,469	118803	31.332	
29 SEP 2023 - 29 SEP 2023	SERNKOU	MR LOW PENG SIAN @ CHUA PENG SIAN [DIR/CEO]	4,300	301982	28.011	
29 SEP 2023 - 29 SEP 2023	SERNKOU	MR LOW PENG SIAN @ CHUA PENG SIAN [SSH]	4,300	301982	28.011	
02 OCT 2023 - 02 OCT 2023						

Notice Period is 1st Oct - 7th Oct 2023

Effective Change Date	Stock Name	Buyer/ Seller Name [Classification]	Bought / (Sold) ['000]		No. of Shares After Trade ['000]	
			Total	% Held	Total	% Held
02 OCT 2023 - 02 OCT 2023	SKPRES	KUMPULAN WANG PERSARAAN (DIPERBADANKAN) [SSH]	906		128129	8.201
27 SEP 2023 - 27 SEP 2023	SKPRES	EMPLOYEES PROVIDENT FUND BOARD [SSH]	2,700		135900	8.698
29 SEP 2023 - 29 SEP 2023	SKPRES	KUMPULAN WANG PERSARAAN (DIPERBADANKAN) [SSH]	1,022		127223	8.143
26 SEP 2023 - 26 SEP 2023	SKPRES	EMPLOYEES PROVIDENT FUND BOARD [SSH]	1,457		133200	8.526
03 OCT 2023 - 03 OCT 2023	SLVEST	MR CHONG CHUN SHIONG [DIR/CEO]	1,000		21625	3.236
29 SEP 2023 - 29 SEP 2023	SMILE	DATIN WONG CHIEN YUE [DIR/CEO]	100		135597	54.143
29 SEP 2023 - 29 SEP 2023	SMILE	DATIN WONG CHIEN YUE [SSH]	100		135597	54.143
29 SEP 2023 - 29 SEP 2023	SMILE	DATO DR WONG RUEN YUAN [SSH]	100		135942	54.28
29 SEP 2023 - 29 SEP 2023	SMILE	DATO' DR WONG RUEN YUAN [DIR/CEO]	100		135942	54.28
02 OCT 2023 - 02 OCT 2023	SNTORIA	DATUK CHU BOON TIONG [DIR/CEO]	-5,102		2626	0.428
02 OCT 2023 - 02 OCT 2023	SOLUTN	CANSINO BIOLOGICS (HONG KONG) LIMITED [SSH]	43,969		43969	9.091
02 OCT 2023 - 04 OCT 2023	SPRITZER	DATIN CHUA SHOK TIM @ CHUA SIOK HOON [SSH]	140		162841	51.19
02 OCT 2023 - 04 OCT 2023	SPRITZER	DATO LIM A HENG @ LIM KOK CHEONG [DIR/CEO]	140		162841	51.19
02 OCT 2023 - 04 OCT 2023	SPRITZER	DATO LIM A HENG @ LIM KOK CHEONG [SSH]	140		162841	51.19
02 OCT 2023 - 04 OCT 2023	SPRITZER	LANGIT MAKMUR SDN. BHD. [SSH]	140		101246	31.827
02 OCT 2023 - 04 OCT 2023	SPRITZER	UNIKAMPAR CREDIT AND LEASING SDN. BHD. [SSH]	140		135464	42.584
02 OCT 2023 - 04 OCT 2023	SPRITZER	UNYEELEE SDN. BHD. [SSH]	140		135464	42.584
02 OCT 2023 - 04 OCT 2023	SPRITZER	YEE LEE CORPORATION BHD. [SSH]	140		101246	31.827
02 OCT 2023 - 04 OCT 2023	SPRITZER	YEE LEE ORGANIZATION BHD. [SSH]	140		135464	42.584
02 OCT 2023 - 04 OCT 2023	SPRITZER	YELETA HOLDINGS SDN. BHD. [SSH]	140		135464	42.584
02 OCT 2023 - 04 OCT 2023	SPRITZER	YOUNG WEI HOLDINGS SDN. BHD. [SSH]	140		135464	42.584
27 SEP 2023 - 27 SEP 2023	SPRITZER	DATIN CHUA SHOK TIM @ CHUA SIOK HOON [SSH]	45		162701	51.125
27 SEP 2023 - 27 SEP 2023	SPRITZER	DATO LIM A HENG @ LIM KOK CHEONG [DIR/CEO]	45		162701	51.126
27 SEP 2023 - 27 SEP 2023	SPRITZER	DATO LIM A HENG @ LIM KOK CHEONG [SSH]	45		162701	51.126
05 OCT 2023 - 05 OCT 2023	SPSETIA	KUMPULAN WANG PERSARAAN (DIPERBADANKAN) [SSH]	155		404910	9.895
04 OCT 2023 - 04 OCT 2023	SPSETIA	KUMPULAN WANG PERSARAAN (DIPERBADANKAN) [SSH]	-162		404755	9.892
02 OCT 2023 - 02 OCT 2023	SPSETIA	KUMPULAN WANG PERSARAAN (DIPERBADANKAN) [SSH]	-2,692		404917	9.896
29 SEP 2023 - 29 SEP 2023	SPSETIA	KUMPULAN WANG PERSARAAN (DIPERBADANKAN) [SSH]	-2,158		407609	9.969
03 OCT 2023 - 03 OCT 2023	SSB8	MR GAN YEE HIN [DIR/CEO]	3,300		1517916	66.792
03 OCT 2023 - 03 OCT 2023	SSB8	MR GAN YEE HIN [SSH]	3,300		1517916	66.792
03 OCT 2023 - 03 OCT 2023	SUNCON	EMPLOYEES PROVIDENT FUND BOARD [SSH]	-32		126021	9.774
02 OCT 2023 - 02 OCT 2023	SUNCON	EMPLOYEES PROVIDENT FUND BOARD [SSH]	-37		126054	9.776
29 SEP 2023 - 29 SEP 2023	SUNCON	EMPLOYEES PROVIDENT FUND BOARD [SSH]	-30		126091	9.779
27 SEP 2023 - 27 SEP 2023	SUNCON	EMPLOYEES PROVIDENT FUND BOARD [SSH]	-407		126121	9.782
26 SEP 2023 - 26 SEP 2023	SUNCON	EMPLOYEES PROVIDENT FUND BOARD [SSH]	-63		126528	9.813
29 SEP 2023 - 29 SEP 2023	SUNREIT	EMPLOYEES PROVIDENT FUND BOARD [SSH]	-5,324		532846	15.558
03 OCT 2023 - 03 OCT 2023	SUNWAY	EMPLOYEES PROVIDENT FUND BOARD [SSH]	-2,592		322768	6.51
02 OCT 2023 - 02 OCT 2023	SUNWAY	EMPLOYEES PROVIDENT FUND BOARD [SSH]	-800		325360	6.57
29 SEP 2023 - 29 SEP 2023	SUNWAY	EMPLOYEES PROVIDENT FUND BOARD [SSH]	-1,202		326160	6.58
27 SEP 2023 - 27 SEP 2023	SUNWAY	EMPLOYEES PROVIDENT FUND BOARD [SSH]	-334		327362	6.61
26 SEP 2023 - 26 SEP 2023	SUNWAY	EMPLOYEES PROVIDENT FUND BOARD [SSH]	-1,742		327696	6.61
02 OCT 2023 - 02 OCT 2023	SUNZEN	MR TEO YEK MING [DIR/CEO]	5,000		119074	16.893
02 OCT 2023 - 02 OCT 2023	SUNZEN	MR TEO YEK MING [SSH]	5,000		119074	16.893
04 OCT 2023 - 04 OCT 2023	SWSCAP	DATO SIMON TOH BOON WAN [DIR/CEO]	400		6381	2.319
03 OCT 2023 - 03 OCT 2023	TAFI	DATO' SRI WONG SZE CHIEN [DIR/CEO]	39		212515	56.01
03 OCT 2023 - 03 OCT 2023	TAFI	DATO' SRI WONG SZE CHIEN [SSH]	39		212515	56.01
02 OCT 2023 - 02 OCT 2023	TCHONG	DATO' TAN HENG CHEW [DIR/CEO]	20		323068	49.562
02 OCT 2023 - 02 OCT 2023	TCHONG	DATO' TAN HENG CHEW [SSH]	20		307486	47.172
29 SEP 2023 - 29 SEP 2023	TENAGA	EMPLOYEES PROVIDENT FUND BOARD [SSH]	1,054		908946	15.71
27 SEP 2023 - 27 SEP 2023	TENAGA	EMPLOYEES PROVIDENT FUND BOARD [SSH]	904		907892	15.69
03 OCT 2023 - 03 OCT 2023	TEOSEN	MR NA HAP CHENG [SSH]	20		154443	52.65
03 OCT 2023 - 03 OCT 2023	TGUAN	PRUDENTIAL PLC [SSH]	-265		20228	5.125
02 OCT 2023 - 02 OCT 2023	TGUAN	DATUK ANG POON SEONG [DIR/CEO]	10		4011	1.016
05 OCT 2023 - 05 OCT 2023	TIMECOM	KUMPULAN WANG PERSARAAN (DIPERBADANKAN) ("KWAP") [SSH]	44		107410	5.816
03 OCT 2023 - 03 OCT 2023	TIMECOM	EMPLOYEES PROVIDENT FUND BOARD [SSH]	267		136623	7.398
04 OCT 2023 - 04 OCT 2023	TIMECOM	KUMPULAN WANG PERSARAAN (DIPERBADANKAN) ("KWAP") [SSH]	43		107366	5.814
02 OCT 2023 - 02 OCT 2023	TIMECOM	EMPLOYEES PROVIDENT FUND BOARD [SSH]	272		136356	7.383
03 OCT 2023 - 03 OCT 2023	TIMECOM	KUMPULAN WANG PERSARAAN (DIPERBADANKAN) ("KWAP") [SSH]	44		107323	5.811
29 SEP 2023 - 29 SEP 2023	TIMECOM	EMPLOYEES PROVIDENT FUND BOARD [SSH]	404		136084	7.368
02 OCT 2023 - 02 OCT 2023	TIMECOM	KUMPULAN WANG PERSARAAN (DIPERBADANKAN) ("KWAP") [SSH]	44		107279	5.809
27 SEP 2023 - 27 SEP 2023	TIMECOM	EMPLOYEES PROVIDENT FUND BOARD [SSH]	278		135680	7.347

Notice Period is 1st Oct - 7th Oct 2023

Effective Change Date	Stock Name	Buyer/ Seller Name [Classification]	Bought / (Sold) ['000]		No. of Shares After Trade ['000]	
			Total	% Held	Total	% Held
29 SEP 2023 - 29 SEP 2023	TIMECOM	KUMPULAN WANG PERSARAAN (DIPERBADANKAN) ("KWAP") [SSH]	43		107236	5.806
26 SEP 2023 - 26 SEP 2023	TIMECOM	EMPLOYEES PROVIDENT FUND BOARD [SSH]	-35		135402	7.332
03 OCT 2023 - 03 OCT 2023	TM	KUMPULAN WANG PERSARAAN (DIPERBADANKAN) (KWAP) [SSH]	-553		397476	10.36
03 OCT 2023 - 03 OCT 2023	TOCEAN	ENCIK MUHAMMAD HARIZ BIN MOHD NADZMI [SSH]	-108		13452	20.665
03 OCT 2023 - 03 OCT 2023	TOCEAN	IBRONI SDN. BHD. [SSH]	-108		13452	20.665
03 OCT 2023 - 03 OCT 2023	TOCEAN	KUMPULAN KENDERAAN MALAYSIA BERHAD [SSH]	-108		13452	20.665
03 OCT 2023 - 03 OCT 2023	TOCEAN	NADI CORPORATION SDN. BHD. [SSH]	-108		13452	20.665
03 OCT 2023 - 03 OCT 2023	TOCEAN	NADICORP HOLDINGS SDN. BHD. [SSH]	-108		13452	20.665
03 OCT 2023 - 03 OCT 2023	TOCEAN	TRISILCO EQUITY SDN. BHD. [SSH]	-108		13452	20.665
03 OCT 2023 - 04 OCT 2023	TWL	DATIN SEK CHIAN NEE [DIR/CEO]	27,993		1391628	29.728
03 OCT 2023 - 04 OCT 2023	TWL	DATIN SEK CHIAN NEE [SSH]	27,993		1391628	29.728
03 OCT 2023 - 04 OCT 2023	TWL	DATO' TAN WEI LIAN [DIR/CEO]	27,993		1391628	29.729
03 OCT 2023 - 04 OCT 2023	TWL	DATO' TAN WEI LIAN [SSH]	27,993		1391628	29.729
03 OCT 2023 - 04 OCT 2023	TWL	MISS TAN LEE CHIN [DIR/CEO]	27,993		1391628	29.728
03 OCT 2023 - 04 OCT 2023	TWL	MISS TAN LEE CHIN [SSH]	27,993		1391628	29.728
03 OCT 2023 - 04 OCT 2023	TWL	TWL CAPITAL BERHAD [SSH]	27,993		1391628	29.728
27 SEP 2023 - 27 SEP 2023	ULICORP	LIM MEE HWA [SSH]	-250		12900	5.923
27 SEP 2023 - 27 SEP 2023	ULICORP	YEO SENG CHONG [SSH]	-250		12900	5.923
03 OCT 2023 - 03 OCT 2023	UMW	EMPLOYEES PROVIDENT FUND BOARD [SSH]	3,000		94269	8.069
02 OCT 2023 - 02 OCT 2023	UMW	EMPLOYEES PROVIDENT FUND BOARD [SSH]	2,166		91269	7.812
29 SEP 2023 - 29 SEP 2023	UMW	EMPLOYEES PROVIDENT FUND BOARD [SSH]	1,031		89103	7.627
26 SEP 2023 - 26 SEP 2023	UMW	EMPLOYEES PROVIDENT FUND BOARD [SSH]	900		88072	7.539
02 OCT 2023 - 02 OCT 2023	UOAEV	EMPLOYEES PROVIDENT FUND BOARD ("EPF BOARD") [SSH]	32		304401	12.223
29 SEP 2023 - 29 SEP 2023	UOAEV	EMPLOYEES PROVIDENT FUND BOARD ("EPF BOARD") [SSH]	69		304369	12.222
27 SEP 2023 - 27 SEP 2023	UOAEV	EMPLOYEES PROVIDENT FUND BOARD ("EPF BOARD") [SSH]	32		304300	12.219
26 SEP 2023 - 26 SEP 2023	UOAEV	EMPLOYEES PROVIDENT FUND BOARD ("EPF BOARD") [SSH]	18		304269	12.218
03 OCT 2023 - 03 OCT 2023	UTDPLT	EMPLOYEES PROVIDENT FUND BOARD [SSH]	-7		27169	6.55
02 OCT 2023 - 02 OCT 2023	UTDPLT	EMPLOYEES PROVIDENT FUND BOARD [SSH]	-104		27175	6.552
29 SEP 2023 - 29 SEP 2023	UTDPLT	EMPLOYEES PROVIDENT FUND BOARD [SSH]	-18		27279	6.577
27 SEP 2023 - 27 SEP 2023	UTDPLT	EMPLOYEES PROVIDENT FUND BOARD [SSH]	-41		27297	6.581
26 SEP 2023 - 26 SEP 2023	UTDPLT	EMPLOYEES PROVIDENT FUND BOARD [SSH]	-8		27339	6.591
03 OCT 2023 - 03 OCT 2023	VERSATL	MR LIM AH CHAI [SSH]	260		112043	40.001
03 OCT 2023 - 03 OCT 2023	VERSATL	MR LIM AH CHUAN [SSH]	260		112043	40.001
03 OCT 2023 - 03 OCT 2023	VERSATL	MR LIM CHOU BU [SSH]	260		112043	40.001
03 OCT 2023 - 03 OCT 2023	VERSATL	NSK TRADING SDN BHD [SSH]	260		112043	40.001
04 OCT 2023 - 04 OCT 2023	VS	DATIN LING SOK MOOI [SSH]	1,000		205603	5.348
04 OCT 2023 - 04 OCT 2023	VS	DATUK GAN SEM YAM [DIR/CEO]	1,000		205603	5.348
04 OCT 2023 - 04 OCT 2023	VS	DATUK GAN SEM YAM [SSH]	1,000		205603	5.348
29 SEP 2023 - 29 SEP 2023	VS	EMPLOYEES PROVIDENT FUND BOARD [SSH]	796		260270	6.77
02 OCT 2023 - 02 OCT 2023	VS	KUMPULAN WANG PERSARAAN [SSH]	-198		349077	9.081
29 SEP 2023 - 29 SEP 2023	VS	KUMPULAN WANG PERSARAAN [SSH]	-400		349275	9.086
03 OCT 2023 - 04 OCT 2023	VSTEC	VSTEC HOLDINGS (SINGAPORE) LIMITED [SSH]	128		158170	44.361
03 OCT 2023 - 04 OCT 2023	VSTEC	VSTEC HOLDINGS LIMITED [SSH]	128		158170	44.361
29 SEP 2023 - 29 SEP 2023	VSTEC	VSTEC HOLDINGS (SINGAPORE) LIMITED [SSH]	73		158043	44.325
29 SEP 2023 - 29 SEP 2023	VSTEC	VSTEC HOLDINGS LIMITED [SSH]	73		158043	44.325
04 OCT 2023 - 05 OCT 2023	WIDAD	TAN SRI MUHAMMAD IKMAL OPAT BIN ABDULLAH [SSH]	-1,421		1169340	37.764
03 OCT 2023 - 03 OCT 2023	WIDAD	WIDAD BUSINESS GROUP SDN. BHD. [SSH]	-16,000		1057532	34.153
02 OCT 2023 - 03 OCT 2023	WIDAD	TAN SRI MUHAMMAD IKMAL OPAT BIN ABDULLAH [SSH]	-12,040		1170762	37.81
29 SEP 2023 - 29 SEP 2023	WIDAD	TAN SRI MUHAMMAD IKMAL OPAT BIN ABDULLAH [SSH]	-9,864		1182801	38.199
03 OCT 2023 - 03 OCT 2023	WPRTS	KUMPULAN WANG PERSARAAN (DIPERBADANKAN) [SSH]	67		230380	6.756
02 OCT 2023 - 02 OCT 2023	XINHWA	MR NG AIK CHUAN [DIR/CEO]	6,116		152796	59.766
02 OCT 2023 - 02 OCT 2023	XINHWA	MR NG AIK CHUAN [SSH]	6,116		152796	59.766
02 OCT 2023 - 02 OCT 2023	YENHER	MADAM THEOH MOOI TENG [DIR/CEO]	43		2808	0.936
02 OCT 2023 - 02 OCT 2023	YENHER	MR CHENG MOOH TAT [DIR/CEO]	43		158063	52.688
02 OCT 2023 - 02 OCT 2023	YINSON	EMPLOYEES PROVIDENT FUND BOARD [SSH]	-219		454174	15.625
29 SEP 2023 - 29 SEP 2023	YINSON	EMPLOYEES PROVIDENT FUND BOARD [SSH]	-115		454393	15.632
02 OCT 2023 - 02 OCT 2023	YINSON	KUMPULAN WANG PERSARAAN (DIPERBADANKAN) [SSH]	181		183053	6.297
27 SEP 2023 - 27 SEP 2023	YINSON	EMPLOYEES PROVIDENT FUND BOARD [SSH]	-5,597		454508	15.636
29 SEP 2023 - 29 SEP 2023	YINSON	KUMPULAN WANG PERSARAAN (DIPERBADANKAN) [SSH]	-45		182873	6.291
26 SEP 2023 - 26 SEP 2023	YINSON	EMPLOYEES PROVIDENT FUND BOARD [SSH]	-766		460105	15.829

Disclaimer: The Information in Insider Activity is extracted from www.shareinvestor.com/fundamental/insider_trades. The information on this page is provided as a service to readers. It does not constitute financial advice and/or any investment recommendations. We assume no liability for damages resulting from or arising out of the use of such information. Whilst every effort is made to ensure accuracy, the information presented is not the official record of shareholder filings. Readers are advised to read the original filings on the Bursa Malaysia website at www.bursamalaysia.com



The Board of Directors of **Advance Synergy Berhad (ASB)** wishes to announce that the Company has amended the By-Laws constituting the SGS as detailed in the announcement (hereinafter referred to as "By-Laws Amendments").



We wish to announce that Affin Islamic Bank Berhad, a wholly-owned subsidiary of **Affin Bank Berhad (AFFIN)** had completed the placement of RM500.0 million nominal value of AT1 Sukuk Wakalah and RM500.0 million nominal value of Tier 2 Sukuk Murabahah, under Affin Islamic's existing Islamic medium term notes programme of RM5.0 billion (Sukuk Programme), to selected investors. The new series AT1 Sukuk Wakalah has been issued today whilst the Tier 2 Sukuk Murabahah is targeted to be issued on 13 October 2023.





The Board of Directors of **Awanbiru Technology Berhad (AWANTEC)** wishes to announce that the Company proposes to seek its shareholders' approval for the Proposed Renewal of Share Buy-Back Authority at the forthcoming Annual General Meeting of the Company to be convened at a date which will be announced later.

[READ MORE](#) 



BONIA CORPORATION BERHAD
(223934-T)

The Board of Directors of **Bonia Corporation Berhad (BONIA)** wishes to inform that the Company will seek its shareholders' approvals for the proposed renewal of shareholders' mandate to enable Bonia Corporation Berhad to purchase up to 10% of its total number of issued shares at the forthcoming Thirty-Second Annual General Meeting.

[READ MORE](#) 



The Board of Directors of **Nextgreen Global Berhad (NGGB)** wishes to announce that Nextgreen Resources Sdn Bhd, its wholly-owned subsidiary of the Company had on 11 October 2023 entered into a Joint Venture Agreement with P Teguh Services Sdn Bhd to undertake a joint venture through a special purpose vehicle to be incorporated in Malaysia under the Companies Act 2016 to engage in the business of trading, supply and export of biodiesel, edible cooking oil and various other related products including equipment and facilities, construction of depot and such other related business as the parties may mutually agree from time to time.

READ MORE 

Upcoming IPO					
NAME OF COMPANY	OFFER PERIOD		ISSUE PRICE (Per Ordinary Share)	LISTING SOUGHT	DATE OF LISTING
	OPENING	CLOSING			
MINOX INTERNATIONAL GROUP BERHAD	20 Sept 2023	3 Oct 2023	RM0.25	ACE MARKET	17 Oct 2023

Disclaimer: The information in the Investor Relations page is extracted from individual companies' announcements in www.bursamalaysia.com. The information on this page is provided as a service to readers. We assume no liability for damages resulting from or arising out of the use of such information. Whilst every effort is made to ensure accuracy, the information presented has been simplified for your reading pleasure. Readers are advised to read the original and complete filings on the Bursa Malaysia website at https://www.bursamalaysia.com/market_information/announcements/company_announcement



Learn how to identify Hot Stocks using Technical Analysis (TA) and Fundamental Analysis (FA)

SIGN UP FOR Invest
IT'S FREE!!!

Click here

Scan me



Via email, every Friday.