

Invest

A Weekly e-Publication by **SHAREINVESTOR**

ISSUE
209

FRIDAY
31 MAY 2024

Scan/Click QR to Register



Via email, every Friday

3 Exhibition Booths

Over 20 exhibitors of the top financial service providers in Malaysia!



2 Investment Talks

Over 50 speakers sharing their expertise and investment knowledge!



4

Lucky Draw

Over **RM50,000** worth of prizes for grabs upon **FREE** registration!



INVEST FAIR[®]
by AlphaInvest

22 & 23 | 10am
June 2024 | - 9pm

MID VALLEY
Exhibition Centre Hall 1

1 Panel Discussions

Deep dive into:
- equities
- macro economy
- cryptocurrency
- personal finance and more!



5

Premium Goodies Bag (Limited Availability)

Amazing gifts from ZUS coffee, Kintry, Titar Man and more for participants!



REGISTER FOR FREE

Invest Hunt

STAMP & SPIN!

6 Invest Hunt Stamp & Spin!
Hunt down stamps from investment experts to stand a chance to spin the **Wheel of Treasure** and win amazing prizes!

SPOT the Difference Challenge

moomoo

7 Spot the Difference

Spot the Difference Challenge: Win Exciting Prizes from Moomoo!

A fun activity to test your attention to detail for a chance to **win awesome prizes!**



Organizers

SHAREINVESTOR[®]
An AlphaInvest Company

InvestingNote
By AlphaInvest

Supporting partners

BURSA MALAYSIA

KWSP EPF

CFA Society Malaysia

FIMM
Federation of Investment Managers Malaysia

Invest

A Weekly e-Publication by SHAREINVESTOR

ISSUE
209

FRIDAY
31 MAY 2024

Scan/Click QR to Register



Via email, every Friday

Bursa launches API gateway to enhance CDS account management efficiency



MITI, HR Ministry finalising incentives to bring home local talent - Tengku Zafrul

see more on pages **31-34**



ALSO

COMPANY SPOTLIGHT

Amway Berhad

See more on page **07**

MSWG P.I.E Industrial's disclosure of order wins draws scrutiny

See more on pages **36-39**

PLUS

BEHIND THE TICKER: DECODING COMPANY FUNDAMENTALS

Is WHITE HORSE a value trap?

SUMMARY

White Horse Berhad (WTHORSE:5009.MY) is a leading ceramic tile manufacturer in the Asia-Pacific region. Sales peaked in 2014 and reached a low in 2020, influenced by a slowdown in the Malaysian property sector.

See more on pages **21-29**

- 04** LEADERBOARD
- 06** SHARIAH HOT STOCKS
- 08** SHARIAH MOMENTUM UP STOCKS
- 10** NON SHARIAH HOT STOCKS
- 12** UP TRENDING STOCKS
- 14** VALUE STOCKS
- 16** GROWTH STOCKS
- 17** DIVIDEND STOCKS
- 18** BROKERS' CALL
- 19** LONG COMPANIES
- 35** REGIONAL MARKETS
- 40** INSIDER ACTIVITY
- 44** INVESTOR RELATIONS

SHAREINVESTOR®

An AlphaInvest Company

Invest with Knowledge

INVESTOR PLATFORMS

Director
Darren Chong
darren.chong@shareinvestor.com

Business Development Manager
Jay Cheong
jay.cheong.@shareinvestor.com

Senior Executive
Daniel Wong
daniel.wong@shareinvestor.com

ADMIN & OPERATIONS

Senior Executive
Watie Nordin
watie.nordin@shareinvestor.com

Executive
Silas Emmanuel Joseph
silas.joseph@shareinvestor.com

PROCESS AUTOMATION & DATA ANALYTICS

Data Analyst
Tan Yong Sheng

INVESTOR RELATIONS

Group Managing Director & Publisher
Edward Stanislaus
edward@shareinvestor.com

Senior Manager
Letticia Wong
letticia.wong@shareinvestor.com

Manager
Aida Norzeti Binti Ab Talib
aida.norzeti@shareinvestor.com

Inve\$t WEEKLY

Senior Manager Advertising Sales & Marketing
Mark Rodrigues
mark.rodrigues@shareinvestor.com

ALPHAINVEST HOLDINGS BOARD OF DIRECTORS

Chairman		Patrick Daniel
Group CEO		Christopher Lee
Group COO		Lim Dau Hee
Group MD		Shanison Lin



“ GIVE A MAN A FISH AND YOU FEED HIM FOR A DAY; TEACH A MAN TO FISH AND YOU FEED HIM FOR A LIFETIME ”

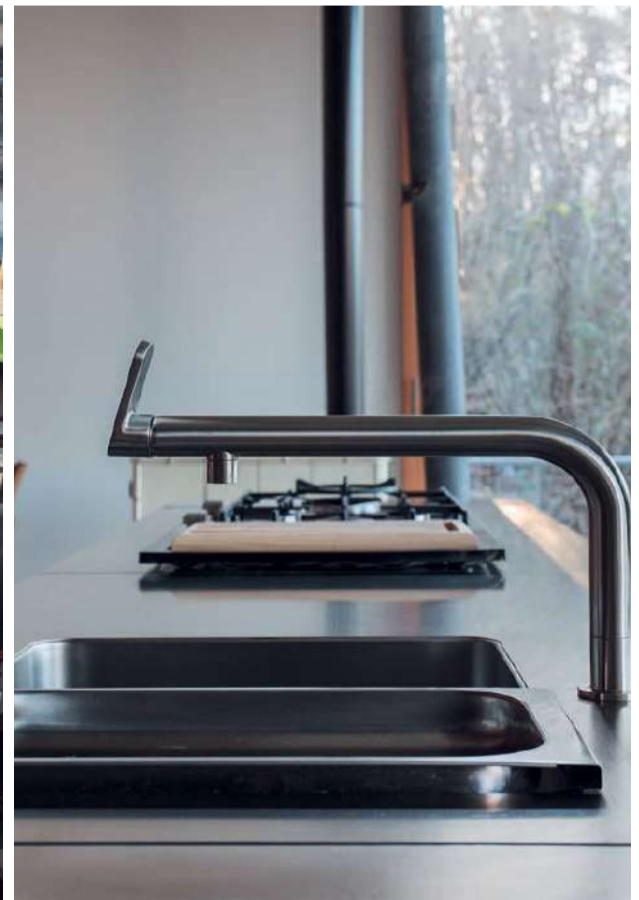
ShareInvestor Malaysia Sdn. Bhd.

(200001023956) (526564-M)
Unit No. DF2-07-03A, Level 7,
Persoft Tower, 6B Persiaran Tropicana,
47410 Petaling Jaya, Selangor Darul Ehsan.

Hotline : 603 7803 1791
Mobile : 011 6343 8939
Website : www.ShareInvestor.com.my
www.alphainvestholdings.com
www.Facebook.com/ShareInvestorMalaysia

ADVERTISEMENT ENQUIRY

bulthaup takes care of the details so that you can enjoy a harmonious environment.



XTRA

XTRA FURNITURE SDN BHD
The Gardens Mall, Mid Valley City
xfurniture.com/bulthaup
fb.com/bulthaupmalaysia

bulthaup

Congratulations

FEY **TECH**

FEYTECH HOLDINGS BERHAD

for the successful listing to the
Main Market of Bursa Securities
on the 21st May 2024

From



SHAREINVESTOR[®]

Online Investor Relations services provider
for Public Listed Companies

<https://www.shareinvestor.com.my/investor-relations.html>

www.shareinvestor.com - market data at your fingertips



ShareInvestor WebPro (www.shareinvestor.com/my)
Prices > Stock Prices > Bursa > click Stocks tab

1. mouse over Ranking > select Top Active > all Shariah stocks are denoted with an [S] > mouse over Column Layout > select Edit Customs > select Name > select Volume > select Last Done Price > Mouse Over Column Layout > select Custom
2. mouse over Ranking > select Top Turnover > all Shariah stocks are denoted with an [S] > mouse over Column Layout > select Edit Customs > select Name > select Last Done Price > select Value > Mouse Over Column Layout > select Custom
3. mouse over Ranking > select Top Gainers (Over 5 Trading Days) > mouse over Column Layout > select Edit Customs > select Name > select Last Done Price > select 5 Days Change > select 5 Days % Change > Mouse Over Column Layout > select Custom
4. mouse over Ranking > select Top Losers (Over 5 Trading Days)
5. mouse over Ranking > select Top % Gainers (Over 5 Trading Days)
6. mouse over Ranking > select Top % Losers (Over 5 Trading Days)

Shariah Top Actives (as at Yesterday)

Name	Price (RM)	Volume
LAGENDA [S]	1.120	2,898,133.000
KENERGY [S]	0.615	1,061,958.000
MYEG [S]	1.060	957,068.000
EPICON [S]	0.345	853,822.000
DATAPRP [S]	0.155	748,617.000
WCT [S]	0.600	742,101.000
SIMEPROP [S]	1.240	609,551.000
MAHSING [S]	1.710	560,601.000
JCY [S]	0.525	482,418.000
SNS [S]	0.610	471,656.000

Shariah Top Turnover (as at Yesterday)

Name	Price (RM)	Value (RM)
LAGENDA [S]	1.120	285,479,418
PMETAL [S]	5.590	120,033,409
TENAGA [S]	13.180	105,309,022
MYEG [S]	1.060	101,557,728
MAHSING [S]	1.710	94,282,196
SIMEPROP [S]	1.240	75,452,928
IJM [S]	2.770	66,390,767
KENERGY [S]	0.615	61,246,934
GAMUDA [S]	6.150	53,860,522
IHH [S]	6.190	51,381,255

Top Gainers (over 5 Trading days as at Yesterday)

Name	Price (RM)	Change (RM)
DLADY	35.980	+2.980
PARAGON	3.620	+0.620
GCB	4.300	+0.490
HLIND	12.000	+0.420
ATECH	3.610	+0.410
NOTION	1.430	+0.390
BLDPLNT	10.980	+0.300
IJM	2.770	+0.280
MAHSING	1.710	+0.240
PMETAL	5.590	+0.230

Top % Gainers (over 5 Trading days as at Yesterday)

Name	Price (RM)	Change (%)
EAH	0.010	+100.00
FOCUS	0.015	+50.00
HONGSENG	0.015	+50.00
NOTION	1.430	+37.50
KHEESAN	0.255	+34.21
COMPUGT	0.020	+33.33
ZENTECH	0.020	+33.33
SSB8	0.670	+32.67
JCY	0.525	+31.25
SMI	0.550	+25.00

Top Losers (over 5 Trading days as at Yesterday)

Name	Price (RM)	Change (RM)
ALLIANZ	21.940	-1.080
PETDAG	19.420	-1.000
HEIM	24.000	-0.900
CARLSBG	19.200	-0.820
LAGENDA	1.120	-0.620
BAT	8.440	-0.600
HTPADU	1.880	-0.590
GESHEN	3.410	-0.460
MPI	38.740	-0.420
KLK	21.460	-0.400

Top % Losers (over 5 Trading days as at Yesterday)

Name	Price (RM)	Change (%)
BORNOIL	0.005	-50.00
CLOUD	0.015	-50.00
LAGENDA	1.120	-35.63
ANEKA	0.205	-33.87
TALAMT	0.010	-33.33
AHB	0.125	-26.47
TAWIN	0.030	-25.00
HTPADU	1.880	-23.89
GOCEAN	0.150	-23.08
DCHCARE	0.205	-22.64



STROM

SWISS TIMEPIECES & JEWELLERY



StromWatch Asia

Tele : +65.9817.3378 Email : ll.stromasia@gmail.com

WWW.STROMWATCH.SWISS



Price & Volume Distribution Charts (as at Yesterday)

Technical Analysis

DEFINITION: Shariah compliant stocks with Technical Analysis showing 5-days & 10-days Moving Average Price below Yesterday's Close over past 3 days and with Volume Spike.

CHART GUIDE: Volume Distribution Chart is a statistical interpretation of the current sentiment on each stock in graphical format. The highest bar categorized as >150k is likely to be traded by institutions or super dealers, while the lowest bar categorized as <15k usually represents retail investors. "Buy Up" refers to more buyers snatching up the lots queued at selling price. "Sell Down" refers to sellers selling their shares to the buying queue



ShareInvestor WebPro > Screener > Market Screener (FA & TA) > select BURSA > add criteria

A. Criteria

- > click Add Criteria
- Technical Analysis Conditions tab select (i) Moving Average Below Close (ii) Volume Spike
- Fundamental Analysis Conditions tab > select (iii) Revenue
- Prices & Other Conditions tab > select (iv) Is Shariah Compliant
- Technical Analysis Conditions tab select (v) Moving Average Below Close
- Prices & Other Conditions tab > select (vi) Last Done Price
- Technical Analysis Conditions tab select (vii) Moving Average Below Close

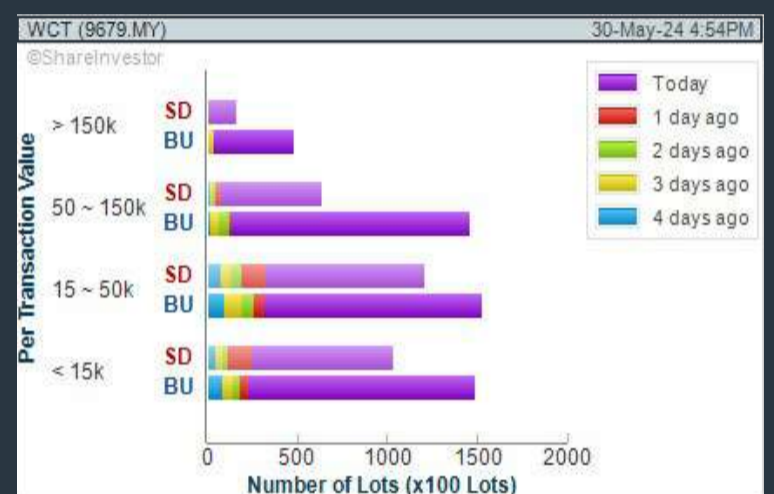
B. Conditions (Criteria Filters)

1. Moving Average Below Close - select (MA) type (5) below close price for type (3) days
2. Volume Spike - Volume type (1) greater than type (5) days average
3. Revenue ("000) - select (more than) type (1) for the past select (1) financial year(s)
4. Is Shariah Compliant - select **Yes**
5. Moving Average Below Close - select (MA) type (10) below close price for type (3) days
6. Last Done Price - select (more than) type (0.3)
7. Moving Average Below Close - select (EMA) type (5) below close price for type (3) days

- > click Save Template > Create New Template type (Shariah Hot Stocks) > click Create
- > click Save Template as > select Shariah Hot Stocks > click Save
- > click Screen Now (may take a few minutes)
- > Sort By: Select (Vol) Select (Desc)
- > Mouse over stock name > Charts > click C² Charts or Volume Distribution

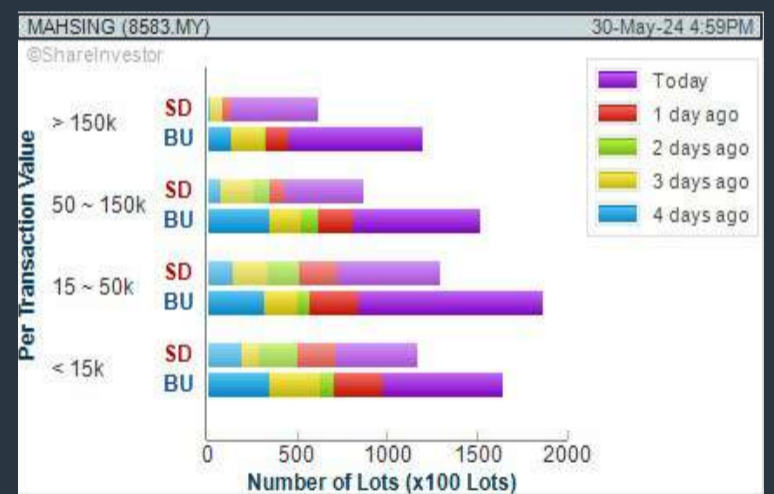
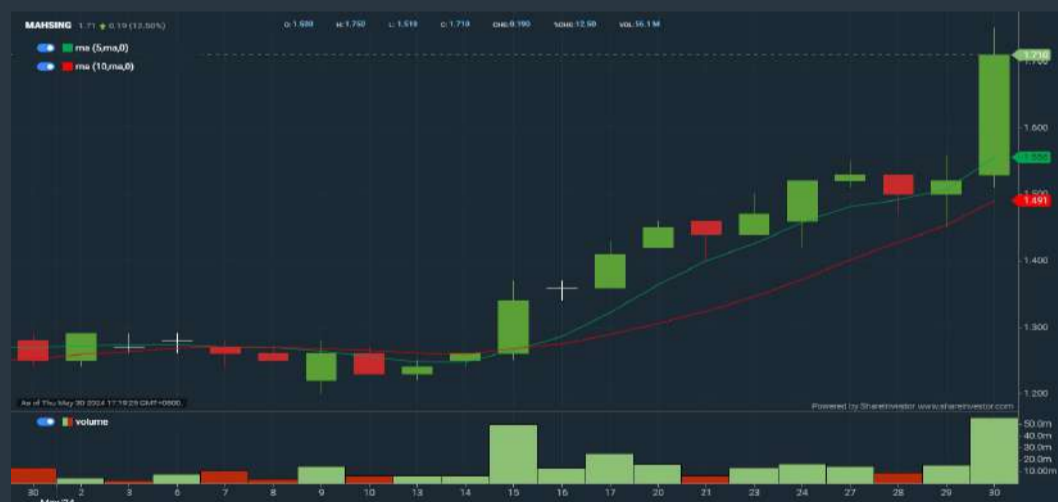
WCT HOLDINGS BERHAD (9679)

C² Chart



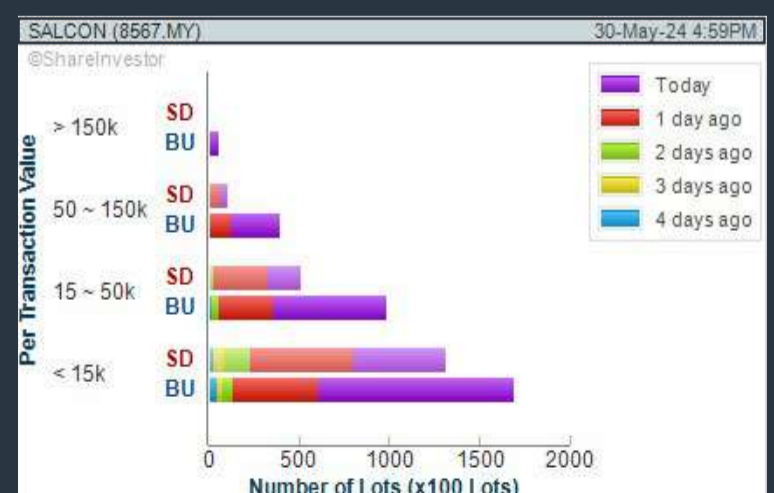
MAH SING GROUP BERHAD (8583)

C² Chart



SALCON BERHAD (8567)

C² Chart



Disclaimer: The information on this page is provided as a service to readers. It does not constitute financial advice and/or any investment recommendations. Past performance is not indicative of future results. We assume no liability for damages resulting from or arising out of the use of such information. It would be best if you did your own research to make your personal investment decisions wisely or consult a licenced investment advisor.

COMPANY BACKGROUND

Amway (M) Holdings Berhad is engaged in the distribution of consumer products under the Amway' trademark.



AMWAY AMWAY (M) HOLDINGS BHD		Updated at 30 May 2024 17:31	
Last (MYR): 7.380 ↓	Change: -0.020	High: 7.420	Remarks: [c] ?
	Change (%): -0.27	Low: 7.380	
Open	7.400	Yesterday's Close	7.400
Buy Price	7.380	Sell Price	7.520
Buy Volume ('00)	32	Sell Volume ('00)	30
Cumulative Volume ('00)	95	Cumulative Value	70,220

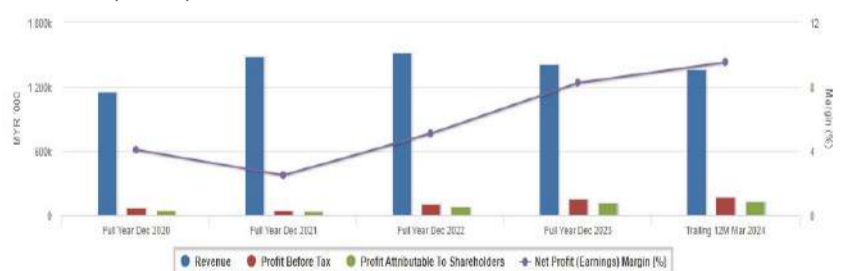
Financial Analysis

	Profit Growth Increasing profit in last 2 consecutive years (with last 3 profitable years)			Piotroski F Score The company has above average financial strength (Piotroski F-Score of 6-7)	
	Dividend Payout Dividend is increasing over the past 60 months.			Gross Profit Margin Good gross profit margin of 20%-40% for 2 years	
	Return on Assets (ROA) ROA above 10% for 2 consecutive years			Return on Equity (ROE) ROE above 20% for 2 consecutive years	
	Return on Equity (ROE) ROE is improving by 5% a year over the past 36 months.				

Excellent
 Good
 Neutral
 Be Alert
 Watch Out

Historical Financials

Profit & Loss (MYR '000)

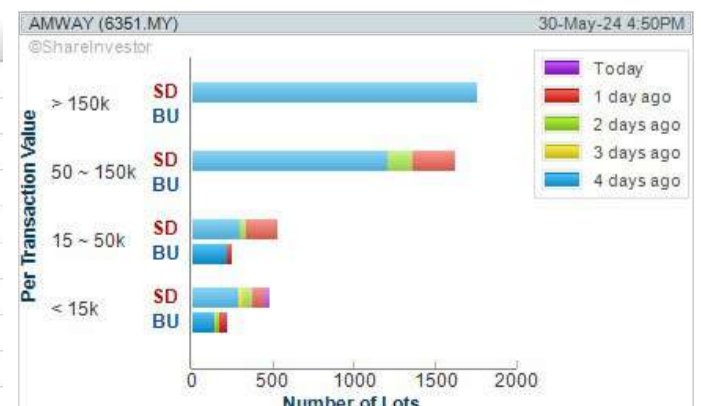


WebPro 9-Days Free Trial Registration (worth RM10) Sign Up Now



Key Statistics with Total Shareholder Returns

Period	Dividend Received	Capital Appreciation	Total Shareholder Return
Short Term Return	5 Days	-0.070	-0.94%
	10 Days	+0.000	-1.10%
	20 Days	+0.150	+2.22%
Medium Term Return	3 Months	+0.890	+12.71%
	6 Months	+1.750	+31.08%
	1 Year	+2.600	+39.26%
Long Term Return	2 Years	+2.200	+44.14%
	3 Years	+1.790	+31.32%
	5 Years	0.350	+14.28%
Annualised Return	Annualised	-	-8.09%



Disclaimer: The information on this page is provided as a service to readers. It does not constitute financial advice and/or any investment recommendations. Past performance is not indicative of future results. We assume no liability for damages resulting from or arising out of the use of such information. It would be best if you did your own research to make your personal investment decisions wisely or consult a licenced investment advisor.

Price & Volume Distribution Charts (as at Yesterday)

Technical Analysis

DEFINITION: Shariah compliant stocks with Technical Analysis showing Bullish Momentum and Price Uptrend. The share price closed at the highest price yesterday. The typical price was higher than the previous day's typical price.

CHART GUIDE: Volume Distribution Chart is a statistical interpretation of the current sentiment on each stock in graphical format. The highest bar categorized as >150k is likely to be traded by institutions or super dealers, while the lowest bar categorized as <15k usually represents retail investors. "Buy Up" refers to more buyers snatching up the lots queued at selling price. "Sell Down" refers to sellers selling their shares to the buying queue.



ShareInvestor WebPro > Screener > Market Screener (FA & TA) > select BURSA > add criteria

A. Criteria

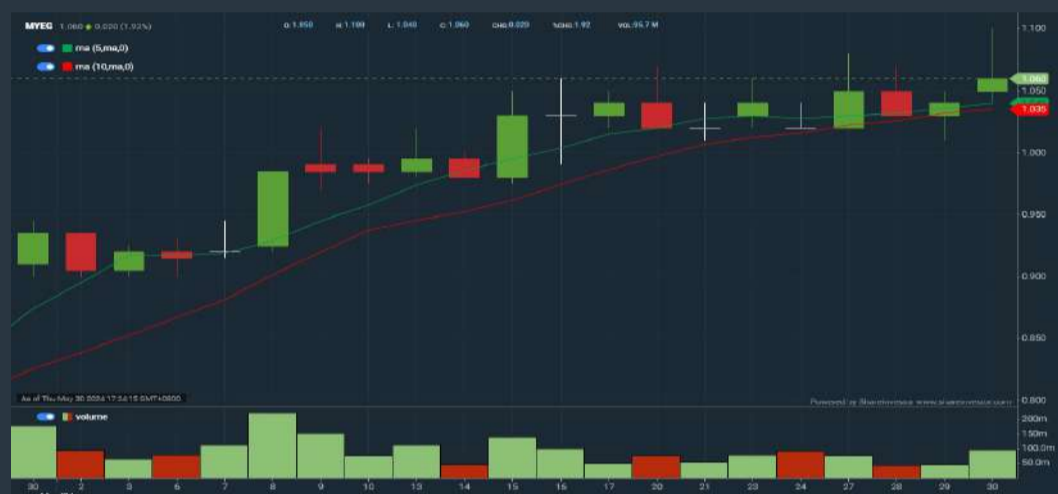
- > click Add Criteria
- Fundamental Analysis Conditions tab > select (i) Revenue
- Technical Analysis Conditions tab select (ii) Average Volume
- Prices & Other Conditions tab > select (iii) Last Done Price
- Prices & Other Conditions tab > select (iv) Is Shariah Compliant
- Technical Analysis Conditions tab select (v) RSI Overbought
- Technical Analysis Conditions tab select (vi) Moving Average Below Close
- Technical Analysis Conditions tab select (vii) CCI Overbought

B. Conditions (Criteria Filters)

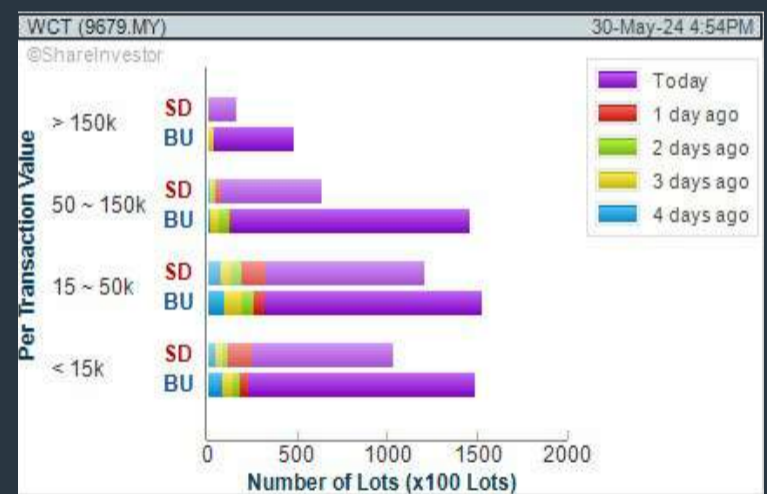
1. Revenue ("000) - select (more than) type (1) for the past select (1) financial year(s)
2. Average Volume - type (1) days average volume greater than type (10000) lots
3. Last Done Price - select (more than) type (0.3)
4. Is Shariah Compliant - select Yes
5. RSI Overbought - select RSI 1 above 99 for 1 days
6. Moving Average Below Close - select (MA) type (10) below close price for type (1) days
7. CCI Overbought - select CCI (2) above (0) for (1) days

- > click Save Template > Create New Template type (Shariah Momentum Up Stocks) > click Create
- > click Save Template as > select Shariah Momentum Up Stocks > click Save
- > click Screen Now (may take a few minutes)
- Sort By: Select (Vol) Select (Desc)
- Mouse over stock name > Charts > click C² Charts tab or Volume Distribution

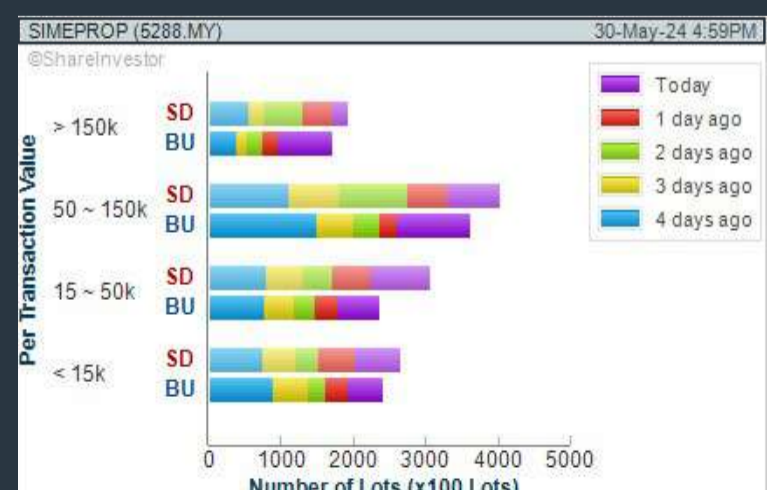
MY E.G. SERVICES BERHAD (0138) C² Chart



WCT HOLDINGS BERHAD (9679) C² Chart



SIME DARBY PROPERTY BERHAD (5288) C² Chart



Disclaimer: The information on this page is provided as a service to readers. It does not constitute financial advice and/or any investment recommendations. Past performance is not indicative of future results. We assume no liability for damages resulting from or arising out of the use of such information. It would be best if you did your own research to make your personal investment decisions wisely or consult a licenced investment advisor.

Congratulations

SMART ASIA CHEMICAL BHD

for the successful listing to the
ACE Market of Bursa Securities on
the 28th May 2024

SACTM

SMART ASIA CHEMICAL BHD

From



SHAREINVESTOR[®]

Online Investor Relations services provider
for Public Listed Companies

<https://www.shareinvestor.com.my/investor-relations.html>

Price & Volume Distribution Charts (as at Yesterday)

Technical Analysis

DEFINITION: Stocks with Technical Analysis showing 5-days & 10-days Moving Average Price below Close over past 1 days and with Volume Spike

CHART GUIDE: Volume Distribution Chart is a statistical interpretation of the current sentiment on each stock in graphical format. The highest bar categorized as >150k is likely to be traded by institutions or super dealers, while the lowest bar categorized as <15k usually represents retail investors. "Buy Up" refers to more buyers snatching up the lots queued at selling price. "Sell Down" refers to sellers selling their shares to the buying queue.



ShareInvestor WebPro > Screener > Market Screener (FA & TA) > select BURSA > add criteria

A. Criteria

- > click Add Criteria
- Technical Analysis Conditions tab select (i) Moving Average Below Close (ii) Volume Spike
- Fundamental Analysis Conditions tab >select (iii) Revenue
- Prices & Other Conditions tab > select (iv) Is Shariah Compliant
- Technical Analysis Conditions tab select (v) Moving Average Below Close
- Prices & Other Conditions tab > select (vi) Last Done Price
- Technical Analysis Conditions tab select (vii) Moving Average Below Close

B. Conditions (Criteria Filters)

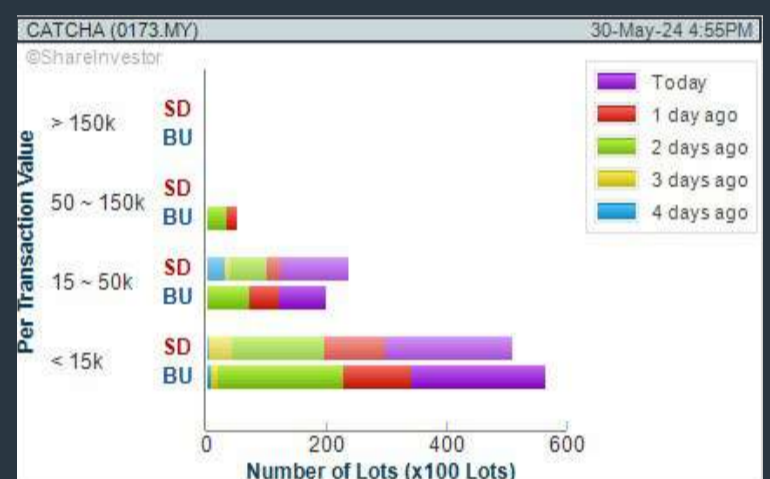
1. Moving Average Below Close - select (MA) type (5) below close price for type (3) days
2. Volume Spike - Volume type (1) greater than type (5) days average
3. Revenue ("000) - select (more than) type (1) for the past select (1) financial year(s)
4. Is Shariah Compliant - select NO
5. Moving Average Below Close - select (MA) type (10) below close price for type (1) days
6. Last Done Price - select (more than) type (0.3)
7. Moving Average Below Close - select (EMA) type (5) below close price for type (1) days

- > click Save Template > Create New Template type (Non-Shariah Hot Stocks) > click Create
- > click Save Template as > select Non-Shariah Hot Stocks > click Save
- > click Screen Now (may take a few minutes)
- Sort By: Select (Vol) Select (Desc)
- Mouse over stock name > Charts > click C² Charts tab or Volume Distribution

CATCHA DIGITAL BERHAD (0173)

C² Chart

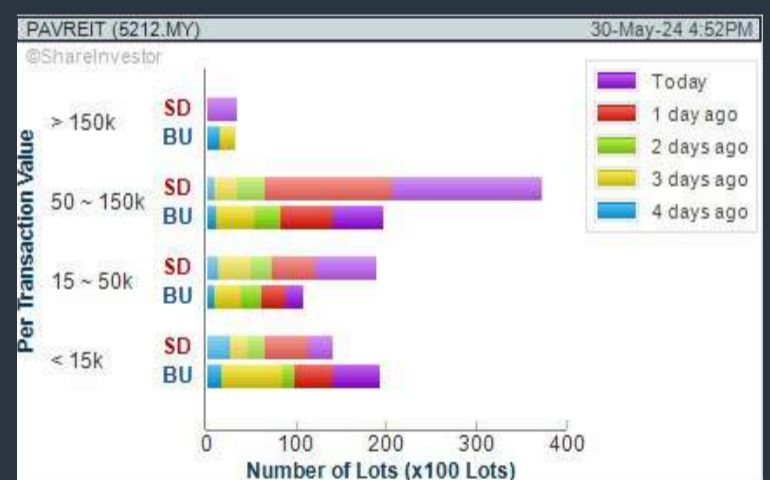
Analysis



PAVILION REAL ESTATE INV TRUST (5212)

C² Chart

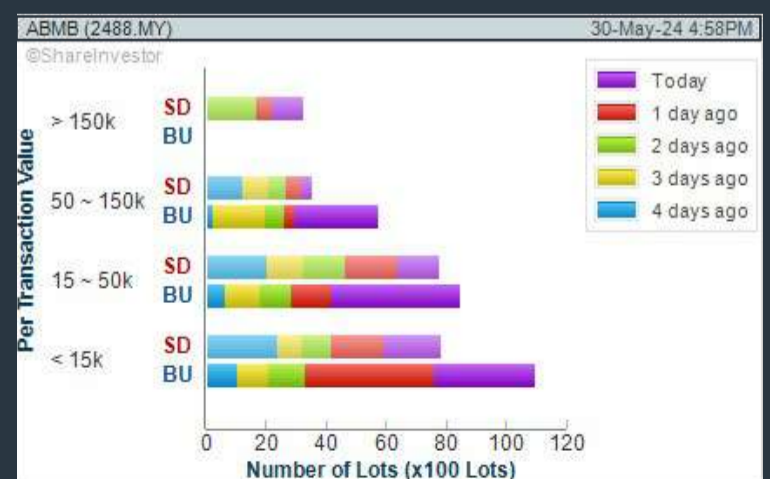
Analysis



ALLIANCE BANK MALAYSIA BERHAD (2488)

C² Chart

Analysis



Disclaimer: The information on this page is provided as a service to readers. It does not constitute financial advice and/or any investment recommendations. Past performance is not indicative of future results. We assume no liability for damages resulting from or arising out of the use of such information. It would be best if you did your own research to make your personal investment decisions wisely or consult a licenced investment advisor.

SHAREINVESTOR WEBPRO

STOCK MARKET DATA AT YOUR FINGERTIPS

Powerful browser-based market analytics platform.
Access from anywhere



8 Markets Data

- ▶ Get access to data from Bursa, NYSE, Nasdaq, HKEX, SGX, IDX, SET & ASX

Portfolio Management

- ▶ Profit & Loss Summary
- ▶ Stock Alert
- ▶ News & Events filtering
- ▶ Customizable column layout

Fundamental Analysis

Financial Analysis Statement

- ▶ Profit & Loss
- ▶ Balance Sheet
- ▶ Cash Flow Statement
- ▶ More than 20 Financial Ratios
- ▶ Dividend Analysis

Technical Charting

- ▶ C² chart (Customisable & Comprehensive)

Brokers' Call

Intrinsic Value Calculator

FactSheet

- ▶ Key Stock Information
- ▶ Ownership
- ▶ Consensus Estimates
- ▶ Annual Report
- ▶ Historical Price
- ▶ Insider Trades

What's new on WebPro (Stable Release 12.1.0)

In our effort to keep our platform at the forefront of trading technology, we have added on some new features onto our C² Chart in WebPro

ADDITIONAL NEW FEATURES:

- ▶ Anchor selector for AVWAP, PVAT, and PAV indicators
- ▶ Volume profile indicator by date range
- ▶ Moving Average Cross indicator
- ▶ Guppy Multiple Moving Average (GMMA) indicator
- ▶ GoNoGo Trend Signal indicators
- ▶ SignalIQ

So what are you waiting for? Head to our platform today and check out our new trading chart features and indicators. We're confident that you'll love the improvements we've made and that they'll help you become a more successful trader.

Click here to start your 9 days FREE trial
(Valued at RM10)



Price & Volume Distribution Charts (Over 3 trading days as at Yesterday)

Technical Analysis

DEFINITION: Stocks with Technical Analysis showing Bullish Momentum and Price Uptrend

CHART GUIDE: Volume Distribution Chart is a statistical interpretation of the current sentiment on each stock in graphical format. The highest bar categorized as >150k is likely to be traded by institutions or super dealers, while the lowest bar categorized as <15k usually represents retail investors. "Buy Up" refers to more buyers snatching up the lots queued at selling price. "Sell Down" refers to sellers selling their shares to the buying queue.



ShareInvestor WebPro > Screener > Market Screener (FA & TA) > select BURSA > add criteria

A. Criteria

- > click Add Criteria
- Fundamental Analysis Conditions tab > select (i) Revenue
- Technical Analysis Conditions tab select (ii) Moving Average Below Close
- Technical Analysis Conditions tab select (iii) Average Volume
- Prices & Other Conditions tab > select (iv) Last Done Price
- Technical Analysis Conditions tab select (v) Moving Average Below Close
- Technical Analysis Conditions tab select (v) Moving Average Bullish Crossover

B. Conditions

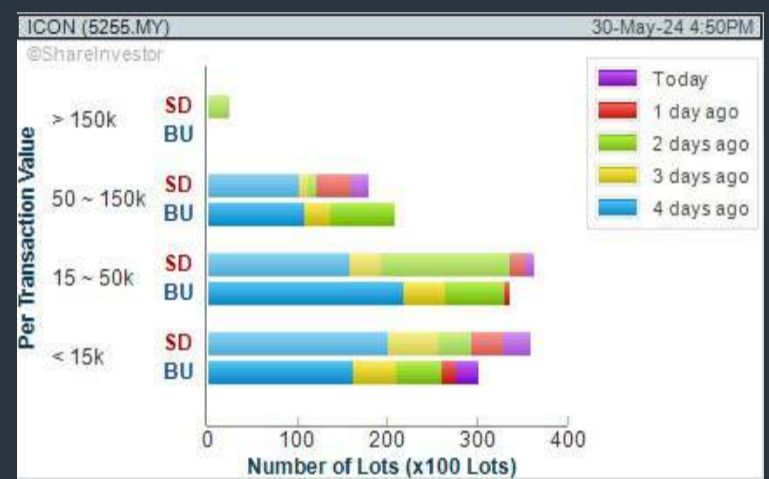
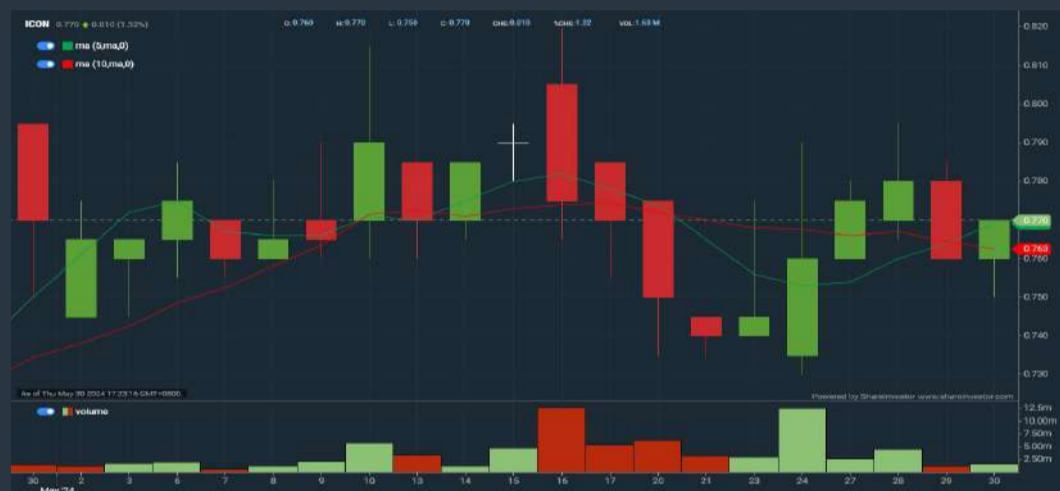
1. Revenue - select (more than) type (1) for the past select (1) financial year(s)
2. Moving Average Below Close - select (MA) type (20) below close price for type (1) days
3. Average Volume - type (5) days average volume type (10000) lots
4. Last Done Price - select (more than) type (0.3)
5. Moving Average Below Close - select (MA) type (10) below close price for type (1) days
6. Moving Average Bullish Crossover - select (MA) type (5) crossed above select (MA) type (10)

> click Save Template > Create New Template type (Non-Shariah Up-Trending Stocks) > click Create Click Save Template As > select Non-Shariah Up Trending Stocks > click Save
 > click Screen Now (may take a few minutes)
 Sort By: Select (Vol) Select (Desc)
 Mouse over stock name > Charts > click C² Charts tab or Volume Distribution

ICON OFFSHORE BERHAD (5255)

C² Chart

Analysis



Disclaimer: The information on this page is provided as a service to readers. It does not constitute financial advice and/or any investment recommendations. Past performance is not indicative of future results. We assume no liability for damages resulting from or arising out of the use of such information. It would be best if you did your own research to make your personal investment decisions wisely or consult a licenced investment advisor.

SHAREINVESTOR MARKET DATA PLATFORMS



SHAREINVESTOR STATION

Advanced Charting Software (8 Markets)



SHAREINVESTOR WEBPRO

Browser-Based Market Data Analytics Platform

MAKE BETTER TRADING STRATEGIES

with

SHARE INVESTOR STATION



8 Markets Data

- ▶ Get access to data from Bursa, NYSE, Nasdaq, HKEX, SGX, IDX, SET & ASX

Dynamic Chart

- ▶ Candlestick Pattern Recognition
- ▶ 111 Indicators
- ▶ 39 Drawing Tools
- ▶ Performance Comparison Chart

Intraday Data

- ▶ Market Depth
- ▶ Trade Summary Matrix & Chart
- ▶ Times & Sales
- ▶ Intraday Market Ticker

Market Screener

- ▶ 96 criteria ranging from FA, TA, Consensus Estimate
- ▶ Real-time Data

Power Frame

- ▶ Combining few Dynamic Charts together with intraday information in one frame

Technical Analysis

Fundamental Analysis

Financial Analysis Statement

- ▶ Profit & Loss
- ▶ Balance Sheet
- ▶ Cash Flow Statement
- ▶ More than 20 Financial Ratios
- ▶ Dividend Analysis

FactSheet

- ▶ Key Stock Information
- ▶ Ownership
- ▶ Consensus Estimates
- ▶ Annual Report
- ▶ Historical Price
- ▶ Insider Trades

**Start your 18 days
FREE trial now
(Valued at RM82)**



Price & Total Shareholder Return (as at Yesterday)

Fundamental Analysis

DEFINITION: Share price of a company trading at a lower price as compared to its fundamentals (FA) such as financial performance and dividend, allowing it to be attractive to value investors.

CHART GUIDE: Total Shareholder Return (TSR) combines share price appreciation and dividend distributions paid to show the total return to the shareholder expressed as a percentage.



ShareInvestor WebPro > Screener > Market Screener (FA & TA) > select BURSA > add criteria

A. Criteria

- > click Add Criteria
- Fundamental Analysis Conditions tab (i) Price Earnings Ratio
- Fundamental Analysis Conditions tab >select (ii) CAGR of Net Earnings
- Fundamental Analysis Conditions tab >select (iii) Net Debt To Equity
- Fundamental Analysis Conditions tab >select (iv) Return On Equity (ROE)

B. Conditions

1. Price Earnings Ratio - select (less than) type (15) times now
2. CAGR of Net Earnings - select (more than) type (10) % for the past type (3) financial year(s)
3. Net Debt To Equity – select (less than) type (1) for the past select (1) financial year(s)
4. Return On Equity (ROE) – select (more than) type (10) % for the past select (1) financial year(s)

- > click Save Template > Create New Template type (Value Stock) > click Create
- > click Save Template as > select Value Companies > click Save
- > click Screen Now (may take a few minutes)
- Sort by: Select (PE Ratio) Select (Ascending)
- > Mouse over stock name > Factsheet > looking for Total Shareholder Return
- > Mouse over stock name > Charts > click C2 Charts tab

SYNERGY HOUSE BERHAD (0279)

C² Chart



Period	Dividend Received	Capital Appreciation	Total Shareholder Return
Short Term Return	5 Days	-0.130	-3.07%
	10 Days	-	-
	20 Days	-0.010	-0.67%
Medium Term Return	3 Months	+0.615	+71.10%
	6 Months	+0.910	+119.65%

TEO SENG CAPITAL BERHAD (7252)

C² Chart



Period	Dividend Received	Capital Appreciation	Total Shareholder Return
Short Term Return	5 Days	-0.120	-5.67%
	10 Days	-0.140	-7.69%
	20 Days	-0.090	-5.00%
Medium Term Return	3 Months	-0.320	-16.00%
	6 Months	+0.094	+5.93%
Long Term Return	1 Year	+0.806	+32.66%
	2 Years	+0.897	+114.56%
	3 Years	+0.941	+127.33%
5 Years	0.060	+0.645	+8.12%

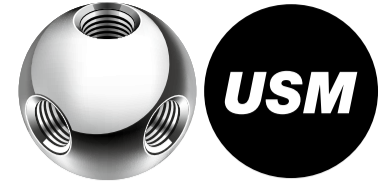
LAY HONG BERHAD (9385)

C² Chart



Period	Dividend Received	Capital Appreciation	Total Shareholder Return
Short Term Return	5 Days	-0.055	-12.22%
	10 Days	-0.025	-5.65%
	20 Days	+0.015	+1.23%
Medium Term Return	3 Months	+0.010	+2.61%
	6 Months	+0.105	+36.21%
Long Term Return	1 Year	+0.110	+30.60%
	2 Years	+0.155	+64.58%
	3 Years	+0.075	+23.44%
5 Years	0.013	-0.025	-2.68%

Disclaimer: The information on this page is provided as a service to readers. It does not constitute financial advice and/or any investment recommendations. Past performance is not indicative of future results. We assume no liability for damages resulting from or arising out of the use of such information. It would be best if you did your own research to make your personal investment decisions wisely or consult a licenced investment advisor.



making
places
infinite



usm.com

XTRA

XTRA FURNITURE SDN BHD
The Gardens Mall, Mid Valley City, Lot S-236 & 237
Lingkar Syed Putra, 59200 Kuala Lumpur
T. +603 2282 9088 | living@xtrafurniture.com | xtrafurniture.com
📍 XTRAFurniture | 🌐 xtrafurnituremsia

Price & Total Shareholder Return (as at Yesterday)

Fundamental Analysis

DEFINITION: Company revenue is growing and making good quality of earnings with positive Free Cash Flow.

CHART GUIDE: Total Shareholder Return (TSR) combines share price appreciation and distributions paid to show the total return to the shareholder expressed as a percentage.



ShareInvestor WebPro > Screener > Market Screener (FA & TA) > select BURSA > add criteria

A. Criteria

1. Fundamental Analysis Conditions tab >select (i) Free Cash Flow, (ii) Revenue Growth, (iii) Gross Profit (Earnings) Margin, (iv) Quality of Earnings, (v) Total Shareholder Returns, > click Add Criteria
2. Fundamental Analysis Conditions tab >select (vi) Total Shareholder Returns > click Add Criteria

B. Conditions (Criteria Filters)

1. Free Cash Flow - select (more than) type (1) for the past select (1) financial year(s)
2. Revenue Growth - select (more than) type (1) for the past select (1) financial year(s)
3. Gross Profit (Earnings) Margin - select (more than) type (30) % for the past select (1) financial year(s)
4. Quality of Earnings - select (more than) type (1) for the past select (1) financial year(s)
5. Total Shareholder Return - select (more than) type (5) % for the past select (3) financial year(s)
6. Total Shareholder Return - select (more than) type (5) % for the past select (5) financial year(s)

- > click Save Template > Create New Template type (Growth Companies) > click Create
- > click Save Template as > select Growth Companies > click Save
- > click Screen Now (may take a few minutes)
- > Sort By: Select (Revenue Growth) Select (Desc)
- > Mouse over stock name > Factsheet > looking for Total Shareholder Return

MALAYSIA AIRPORTS HOLDINGS BERHAD (5014)

C² Chart

Analysis



Period	Dividend Received	Capital Appreciation	Total Shareholder Return
Short Term Return	5 Days	-0.150	-1.28%
	10 Days	-0.470	-4.62%
	20 Days	-0.670	-6.70%
Medium Term Return	3 Months	+1.400	+17.51%
	6 Months	+2.630	+36.03%
	1 Year	+3.020	+43.70%
Long Term Return	2 Years	+3.200	+48.32%
	3 Years	+4.030	+68.31%
	5 Years	0.900	+26.92%
Annualised Return	Annualised	-	+5.37%

SL INNOVATION CAPITAL BERHAD (03008)

C² Chart

Analysis



Period	Dividend Received	Capital Appreciation	Total Shareholder Return
Short Term Return	5 Days	-	-
	10 Days	-	-
	20 Days	-	-
Medium Term Return	3 Months	-	-
	6 Months	-	-
	1 Year	+0.285	+74.03%
Long Term Return	2 Years	+0.265	+65.43%
	3 Years	+0.265	+65.43%
	5 Years	0.015	+63.40%
Annualised Return	Annualised	-	+10.28%

EDARAN BERHAD (5036)

C² Chart

Analysis



Period	Dividend Received	Capital Appreciation	Total Shareholder Return
Short Term Return	5 Days	+0.020	+1.89%
	10 Days	+0.010	+0.84%
	20 Days	+0.050	+4.35%
Medium Term Return	3 Months	-0.139	-9.77%
	6 Months	+0.395	+49.07%
	1 Year	+0.730	+155.32%
Long Term Return	2 Years	+0.575	+92.00%
	3 Years	0.035	+133.02%
	5 Years	0.063	+20.85%
Annualised Return	Annualised	-	+24.73%

Disclaimer: The information on this page is provided as a service to readers. It does not constitute financial advice and/or any investment recommendations. Past performance is not indicative of future results. We assume no liability for damages resulting from or arising out of the use of such information. It would be best if you did your own research to make your personal investment decisions wisely or consult a licenced investment advisor.

Price & Total Shareholder Return (as at Yesterday)

Fundamental Analysis

DEFINITION: Company is paying out dividend with low or moderate leverage.

CHART GUIDE: Total Shareholder Return (TSR) combines share price appreciation and distributions paid to show the total return to the shareholder expressed as a percentage.



ShareInvestor WebPro > Screener > Market Screener (FA & TA) > select BURSA > add criteria

A. Criteria

- > click Add Criteria
- Fundamental Analysis Conditions tab >select (i) Dividend Yield (Historical)
- Fundamental Analysis Conditions tab >select (ii) Dividend Payout (Historical)
- Fundamental Analysis Conditions tab >select (iii) Total Debt To Equity
- Fundamental Analysis Conditions tab >select (iv) Total Shareholder Returns
- Fundamental Analysis Conditions tab >select (v) Total Shareholder Returns
- Fundamental Analysis Conditions tab / >select (vi) CAGR of Dividend Per Share

• Fundamental Analysis Conditions tab >select (vii) CAGR of Dividend Per Share

B. Conditions (Criteria Filters)

1. Dividend Yield - select (more than) type (1) % for the past select (1) financial year(s)
2. Dividend Payout (Historical) - select (between) type (0.5) to type (1) times for the past select (1) financial year(s)
3. Total Debt to Equity - select (less than) type (1) for the past select (1) financial year(s)
4. Total Shareholder Return - select (more than) type (5) % for the past select (3) financial year(s)
5. Total Shareholder Return - select (more than) type (5) % for the past select (5) financial year(s)

6. CAGR of Dividend Per Share - select (less than) type (30) % for the past select (5) financial year(s)
7. CAGR of Dividend Per Share - select (more than) type (1) % for the past select (5) financial year(s)

- > click Save Template > Create New Template type (Dividend Companies) > click Create
- > click Save Template as > select Dividend Companies > click Save
- > click Screen Now (may take a few minutes)
- > Sort By: Select (Dividend Yield) Select (Desc)
- > Mouse over stock name > Factsheet > looking for Total Shareholder Return

AMWAY (M) HOLDINGS BERHAD (6351)

C² Chart

Analysis



Period	Dividend Received	Capital Appreciation	Total Shareholder Return
Short Term Return	5 Days	-0.070	-0.94%
	10 Days	+0.000	+1.40%
	20 Days	+0.100	+2.22%
Medium Term Return	3 Months	+0.090	+3.71%
	6 Months	+1.750	+31.89%
	1 Year	+2.000	+39.25%
Long Term Return	2 Years	+2.200	+44.14%
	3 Years	+1.700	+31.32%
	5 Years	0.350	+34.39%
Annualised Return	Annualised	-	+6.28%

GAS MALAYSIA BERHAD (5209)

C² Chart

Analysis



Period	Dividend Received	Capital Appreciation	Total Shareholder Return
Short Term Return	5 Days	-0.000	-2.24%
	10 Days	-	-
	20 Days	-0.150	-0.59%
Medium Term Return	3 Months	+0.000	+2.35%
	6 Months	+0.390	+12.59%
	1 Year	+0.390	+12.59%
Long Term Return	2 Years	0.069	+14.44%
	3 Years	0.251	+36.80%
	5 Years	0.515	+36.97%
Annualised Return	Annualised	-	+5.96%

TA ANN HOLDINGS BERHAD (5012)

C² Chart

Analysis



Period	Dividend Received	Capital Appreciation	Total Shareholder Return
Short Term Return	5 Days	+0.050	+1.27%
	10 Days	+0.040	+1.01%
	20 Days	-0.240	-6.07%
Medium Term Return	3 Months	+0.330	+9.02%
	6 Months	+0.420	+11.78%
	1 Year	+0.610	+16.05%
Long Term Return	2 Years	-0.570	-19.56%
	3 Years	0.300	+8.48%
	5 Years	0.500	+17.08%
Annualised Return	Annualised	-	+5.35%

Disclaimer: The information on this page is provided as a service to readers. It does not constitute financial advice and/or any investment recommendations. Past performance is not indicative of future results. We assume no liability for damages resulting from or arising out of the use of such information. It would be best if you did your own research to make your personal investment decisions wisely or consult a licenced investment advisor.

Week: 24 May 2024 - 30 May 2024

More Brokers' Call 

AMINVESTMENT BANK <small>... See More</small>	Call	Target Price	Release Date
Hap Seng Plantations Holdings (5138)	BUY	RM2.40	29 May 2024
YTL Power International Bhd (6742)	BUY	RM6.25	29 May 2024

APEX <small>... See More</small>	Call	Target Price	Release Date
Optimax Holdings Berhad (0222)	HOLD	RM0.72	29 May 2024
Wellcall Holdings Berhad (7231)	BUY	RM2.04	29 May 2024
Lagenda Properties Berhad (7179)	HOLD	RM1.12	30 May2024

BIMB SECURITIES SDN BHD <small>... See More</small>	Call	Target Price	Release Date
MY E.G. Services Berhad (0138)	BUY	RM1.21	30 May 2024
Petronas Chemicals Group Berhad (5183)	SELL	RM6.00	30 May 2024
Petronas Gas Berhad (6033)	HOLD	RM16.52	30 May2024

KENANGA <small>... See More</small>	Call	Target Price	Release Date
Petronas Chemicals Group Berhad (5183)	MARKET PERFORM	RM6.28	30 May 2024
Petronas Gas Berhad (6033)	MARKET PERFORM	RM17.87	30 May 2024
RHB Bank Berhad (1066)	OUTPERFORM	RM7.25	30 May 2024

MALACCA SECURITIES SDN BHD <small>... See More</small>	Call	Target Price	Release Date
Malaysia Smelting Corporation Berhad (5916)	HOLD	RM3.41	27 May 2024

MIDF <small>... See More</small>	Call	Target Price	Release Date
MY E.G. Services Berhad (0138)	BUY	RM1.38	30 May 2024
Petronas Chemicals Group Berhad (5183)	NEUTRAL	RM7.34	30 May 2024
Petronas Gas Berhad (6033)	BUY	RM19.44	30 May 2024

UOB KAYHIAN <small>... See More</small>	Call	Target Price	Release Date
CelcomDigi Berhad (6947)	HOLD	RM4.50	29 May 2024
Magnum Berhad (3859)	BUY	RM1.52	29 May2024
Uzma Berhad (7250)	HOLD	RM1.20	29 May 2024

Disclaimer: InveSt does not accept any liability whatsoever for any direct, indirect or consequential losses (including loss of profit) or damages that may arise from the use of information or opinions in this publication. The information and opinions in InveSt are not to be considered as an offer to sell or buy any of the securities discussed. Opinions expressed are subject to change without notice. The Brokers may, from time to time, have interests or positions in the securities mentioned. For the full report on each item listed on this page, please visit https://www.shareinvestor.com/my/brokers_call.

DEFINITION: Top 10 stocks with Technical Analysis plus Pattern Matching by 60 pre-defined indicators by the system showing a higher probability of bullish sentiment on the share price.



ShareInvestor WebPro > Screener > Predefined TA Screens > select market BURSA > Most Long Signals > click Scan Results or mouse over each company

E.A.TECHNIQUE (M) BERHAD (5259.MY)

EATECH

Price updated at 30 May 2024 17:31

Last: 0.430	Change: +0.015	Volume: 368,039
	Change (%): +3.61	Range: 0.410 - 0.455

TA Scanner Results based on historical data up to 30 May 2024

Condition	Signal	Explanation
Bollinger Band: Bullish Long Term Volatility Breakout and Trending	Long	1. Close price above upper bollinger band(33,1). 2. Volume above average volume(50). 3. Average volume(50) is above 300,000.
Bollinger Band: Bullish Short Term Volatility Breakout and Trending	Long	1. Close price above upper bollinger band(33,1). 2. Volume above average volume(10). 3. Average volume(10) is above 300,000.
Bollinger Band: High Above Upper Bollinger Band	Neutral	1. High above upper bollinger band(14,2). 2. Average volume(5) is above 100,000.
DM: Bullish Directional Movement	Long	-DI(14) crossed below +DI(14)
Donchian Channels: High Above Upper Donchian Channels	Long	High crossed above the upper Donchian Channel(14,4)
MACD: Bullish MACD Crossover	Long	1. MACD(12,26) diff line crossed above the MACD(12,26) signal line. 2. MACD Histogram(12,26) is above 0.
Price: New 52 Week High	Long	1. Stock reach a new 52 week high. 2. Average volume(30) is above 50000.
Volume: 10 Days large value Buy Up trade	Long	1. 150K value Buy Up greater than Sell Down by 20% for 10 days. 2. 50K-100K value Buy Up greater than Sell Down by 20% for 10 days. 3. Average volume(10) is above 1000000
Volume: 5 Days large value Buy Up trade	Long	1. 150K value Buy Up greater than Sell Down by 20% for 5 days. 2. 50K-100K value Buy Up greater than Sell Down by 20% for 5 days. 3. Average volume(10) is above 1000000
Williams %R: Bearish Williams %R	Short	1. Williams %R(26) between 0 and -20. 2. Average volume(5) is above 100,000.

SALCON BERHAD (8567.MY)

SALCON

Price updated at 30 May 2024 17:31

Last: 0.350	Change: +0.020	Volume: 294,926
	Change (%): +6.06	Range: 0.330 - 0.375

TA Scanner Results based on historical data up to 30 May 2024

Condition	Signal	Explanation
Bollinger Band: Bullish Long Term Volatility Breakout and Trending	Long	1. Close price above upper bollinger band(33,1). 2. Volume above average volume(50). 3. Average volume(50) is above 300,000.
Bollinger Band: Bullish Short Term Volatility Breakout and Trending	Long	1. Close price above upper bollinger band(33,1). 2. Volume above average volume(10). 3. Average volume(10) is above 300,000.
Bollinger Band: High Above Upper Bollinger Band	Neutral	1. High above upper bollinger band(14,2). 2. Average volume(5) is above 100,000.
Donchian Channels: High Above Upper Donchian Channels	Long	High crossed above the upper Donchian Channel(14,4)
MACD: Bullish MACD Crossover	Long	1. MACD(12,26) diff line crossed above the MACD(12,26) signal line. 2. MACD Histogram(12,26) is above 0.
Volume: Volume Spike	Long	1. Volume is more than 500% above average volume(10). 2. Volume above 200000. 3. Close price above 0.10

JCY INTERNATIONAL BERHAD (5161.MY)

JCY

Price updated at 30 May 2024 17:31

Last: 0.525	Change: +0.025	Volume: 482,418
	Change (%): +5.00	Range: 0.490 - 0.525

TA Scanner Results based on historical data up to 30 May 2024

Condition	Signal	Explanation
Candlestick: Bullish Harami	Long	Bullish: Harami
Price: New 52 Week High	Long	1. Stock reach a new 52 week high. 2. Average volume(30) is above 50000.
Volume: 10 Days large value Buy Up trade	Long	1. 150K value Buy Up greater than Sell Down by 20% for 10 days. 2. 50K-100K value Buy Up greater than Sell Down by 20% for 10 days. 3. Average volume(10) is above 1000000
Volume: 5 Days large value Buy Up trade	Long	1. 150K value Buy Up greater than Sell Down by 20% for 5 days. 2. 50K-100K value Buy Up greater than Sell Down by 20% for 5 days. 3. Average volume(10) is above 1000000
Volume: Consecutive Days Of Increasing Average Volume	Long	1. Average Volume(20) has been increasing over the last 2 weeks. 2. Average volume(20) is above 100000
Williams %R: Bearish Williams %R	Short	1. Williams %R(26) between 0 and -20. 2. Average volume(5) is above 100,000.

PARAGON UNION BERHAD (9407.MY)

PARAGON

Price updated at 30 May 2024 17:31

Last: 3.620	Change: +0.040	Volume: 1,969
	Change (%): +1.12	Range: 3.570 - 3.650

TA Scanner Results based on historical data up to 30 May 2024

Condition	Signal	Explanation
DM: Bullish Directional Movement	Long	-DI(14) crossed below +DI(14)
Donchian Channels: High Above Upper Donchian Channels	Long	High crossed above the upper Donchian Channel(14,4)
MACD: Bullish MACD Crossover	Long	1. MACD(12,26) diff line crossed above the MACD(12,26) signal line. 2. MACD Histogram(12,26) is above 0.
RSI: Short Term RSI 50 Bullish Crossover	Long	1. RSI(20) crossed above 50 within the last 1 day and RSI(20) 1 day ago below 50 for the last 5 days. 2. Volume above average volume(125). 3. Average volume(5) is above 100,000.
Volume: Consecutive Days Of Increasing Average Volume	Long	1. Average Volume(20) has been increasing over the last 2 weeks. 2. Average volume(20) is above 100000

SWS CAPITAL BERHAD (7186.MY)

SWSCAP

Price updated at 30 May 2024 17:31

Last: 0.215	Change: -	Volume: 850
	Change (%): -	Range: 0.215 - 0.215

TA Scanner Results based on historical data up to 30 May 2024

Condition	Signal	Explanation
DM: Bullish Directional Movement	Long	-DI(14) crossed below +DI(14)
MACD: Bullish MACD Crossover	Long	1. MACD(12,26) diff line crossed above the MACD(12,26) signal line. 2. MACD Histogram(12,26) is above 0.
RSI: Short Term RSI 50 Bullish Crossover	Long	1. RSI(20) crossed above 50 within the last 1 day and RSI(20) 1 day ago below 50 for the last 5 days. 2. Volume above average volume(125). 3. Average volume(5) is above 100,000.
Volume: Consecutive Days Of Increasing Average Volume	Long	1. Average Volume(20) has been increasing over the last 2 weeks. 2. Average volume(20) is above 100000



LAGENDA PROPERTIES BERHAD
(7179.MY)

LAGENDA

Price updated at 30 May 2024 17:31

Last: 1.120	Change: -0.050	Volume: 2,898,133
	Change (%): -4.27	Range: 0.850 - 1.220

TA Scanner Results based on historical data up to 23 May 2024

Condition	Signal	Explanation
Bollinger Band: Bearish Long Term Volatility Breakout and Trending	Short	1. Close price below lower bollinger band(33,1). 2. Volume above average volume(50). 3. Average volume(50) is above 300,000.
Bollinger Band: Bearish Short Term Volatility Breakout and Trending	Short	1. Close price below lower bollinger band(33,1). 2. Volume above average volume(10). 3. Average volume(10) is above 300,000.
Bollinger Band: Low Below Lower Bollinger Band	Neutral	1. Low below lower bollinger band(14,2). 2. Average volume(5) is above 100,000.
CCI: Bullish CCI Oversold And Reversing	Long	1. CCI(26) below -100 and CCI(26) 1 day ago decreasing for the last 3 days. 2. CCI(26) above CCI(26) 1 day ago
MA: Short Term Bearish Moving Average Crossover	Short	MA(10) crossed below MA(15) within the last 1 day.
MACD: Bearish MACD Crossover	Short	1. MACD(12,26) diff line crossed below the MACD(12,26) signal line. 2. MACD Histogram(12,26) is below 0.
RSI: Short Term RSI 50 Bearish Crossover	Short	1. RSI(20) crossed below 50 within the last 1 day and RSI(20) 1 day ago above 50 for the last 5 days. 2. Volume above average volume(125). 3. Average volume(5) is above 100,000.
Volume: 10 Days large value Buy Up trade	Long	1. 150K value Buy Up greater than Sell Down by 20% for 10 days. 2. 50K-100K value Buy Up greater than Sell Down by 20% for 10 days. 3. Average volume(10) is above 1000000
Volume: 5 Days large value Buy Up trade	Long	1. 150K value Buy Up greater than Sell Down by 20% for 5 days. 2. 50K-100K value Buy Up greater than Sell Down by 20% for 5 days. 3. Average volume(10) is above 1000000
Volume: Volume Spike	Long	1. Volume is more than 500% above average volume(10). 2. Volume above 200000. 3. Close price above 0.10



KUMPULAN KITACON BERHAD
(5310.MY)

KITACON

Price updated at 30 May 2024 17:31

Last: 0.680	Change: -0.010	Volume: 4,186
	Change (%): -1.45	Range: 0.680 - 0.690

TA Scanner Results based on historical data up to 30 May 2024

Condition	Signal	Explanation
Bollinger Band: Bullish Lower Bollinger Band Support	Long	1. Low 1 day ago below lower bollinger band(20,2). 2. Close above close 1 day ago. 3. Average volume(5) is above 100,000.
Bollinger Band: Bullish Short Term Volatility Breakout and Trending	Long	1. Close price above upper bollinger band(33,1). 2. Volume above average volume(10). 3. Average volume(10) is above 300,000.
Bollinger Band: High Above Upper Bollinger Band	Neutral	1. High above upper bollinger band(14,2). 2. Average volume(5) is above 100,000.
Chaikin Volatility: Increasing Chaikin Volatility	Neutral	Chaikin Volatility(10,10) has been increasing for 5 days
Donchian Channels: High Above Upper Donchian Channels	Long	High crossed above the upper Donchian Channel(14,4)
MA: Bullish Price Crossover	Long	1. Close price crossed above MA(40) within the last 1 day. 2. Previous day close price is below the MA(10) for the last 5 days
Williams %R: Bearish Williams %R	Short	1. Williams %R(26) between 0 and -20. 2. Average volume(5) is above 100,000.

Disclaimer: The information on this page is provided as a service to readers. It does not constitute financial advice and/or any investment recommendations. Past performance is not indicative of future results. We assume no liability for damages resulting from or arising out of the use of such information. It would be best if you did your own research to make your personal investment decisions wisely or consult a licenced investment advisor.



WEGMANS HOLDINGS BERHAD
(0197.MY)

WEGMANS

Price updated at 30 May 2024 17:31

Last: 0.205	Change: -0.010	Volume: 17,374
	Change (%): -4.65	Range: 0.200 - 0.215

TA Scanner Results based on historical data up to 30 May 2024

Condition	Signal	Explanation
Bollinger Band: Bullish Long Term Volatility Breakout and Trending	Long	1. Close price above upper bollinger band(33,1). 2. Volume above average volume(50). 3. Average volume(50) is above 300,000.
Bollinger Band: Bullish Short Term Volatility Breakout and Trending	Long	1. Close price above upper bollinger band(33,1). 2. Volume above average volume(10). 3. Average volume(10) is above 300,000.
Bollinger Band: High Above Upper Bollinger Band	Neutral	1. High above upper bollinger band(14,2). 2. Average volume(5) is above 100,000.
Donchian Channels: High Above Upper Donchian Channels	Long	High crossed above the upper Donchian Channel(14,4)
MACD: Bullish MACD Crossover	Long	1. MACD(12,26) diff line crossed above the MACD(12,26) signal line. 2. MACD Histogram(12,26) is above 0.
Volume: Volume Spike	Long	1. Volume is more than 500% above average volume(10). 2. Volume above 200000. 3. Close price above 0.10



MAH SING GROUP BERHAD
(8583.MY)

MAHSING

Price updated at 30 May 2024 17:31

Last: 1.710	Change: +0.190	Volume: 560,601
	Change (%): +12.50	Range: 1.510 - 1.750

TA Scanner Results based on historical data up to 30 May 2024

Condition	Signal	Explanation
Candlestick: Bullish Harami	Long	Bullish: Harami
Price: New 52 Week High	Long	1. Stock reach a new 52 week high. 2. Average volume(30) is above 50000.
Volume: 10 Days large value Buy Up trade	Long	1. 150K value Buy Up greater than Sell Down by 20% for 10 days. 2. 50K-100K value Buy Up greater than Sell Down by 20% for 10 days. 3. Average volume(10) is above 1000000
Volume: 5 Days large value Buy Up trade	Long	1. 150K value Buy Up greater than Sell Down by 20% for 5 days. 2. 50K-100K value Buy Up greater than Sell Down by 20% for 5 days. 3. Average volume(10) is above 1000000
Williams %R: Bearish Williams %R	Short	1. Williams %R(26) between 0 and -20. 2. Average volume(5) is above 100,000.



MEDIA CHINESE INTERNATIONAL LIMITED
(5090.MY)

MEDIAC

Price updated at 30 May 2024 17:31

Last: 0.135	Change: +0.005	Volume: 34,577
	Change (%): +3.85	Range: 0.130 - 0.140

TA Scanner Results based on historical data up to 30 May 2024

Condition	Signal	Explanation
Bollinger Band: Bullish Long Term Volatility Breakout and Trending	Long	1. Close price above upper bollinger band(33,1). 2. Volume above average volume(50). 3. Average volume(50) is above 300,000.
Bollinger Band: Bullish Lower Bollinger Band Support	Long	1. Low 1 day ago below lower bollinger band(20,2). 2. Close above close 1 day ago. 3. Average volume(5) is above 100,000.
Bollinger Band: Bullish Short Term Volatility Breakout and Trending	Long	1. Close price above upper bollinger band(33,1). 2. Volume above average volume(10). 3. Average volume(10) is above 300,000.
Bollinger Band: High Above Upper Bollinger Band	Neutral	1. High above upper bollinger band(14,2). 2. Average volume(5) is above 100,000.
MACD: Bullish MACD Crossover	Long	1. MACD(12,26) diff line crossed above the MACD(12,26) signal line. 2. MACD Histogram(12,26) is above 0.
Parabolic SAR: Bearish Parabolic SAR Reversal	Neutral	1. Parabolic SAR 1 day ago above close price 1 day ago for the last 5 days. 2. Parabolic SAR below close price



Dato' Eu Hong Chew
Former Group CEO i-Berhad
Non-Executive Director

He has been associated with the Sumurwang Group for many years charting the path for its manufacturing arm, firstly under Dreamland Holdings Berhad and the subsequent acquisition of I-Berhad.

Before that, he was with PA Management Consulting for a decade where he was the Director of Studies for the Cranfield PA MBA Programme in Malaysia.

Educated at the Royal Military College, Dato' Eu has an engineering degree from the University of Glasgow, and a MBA from the University of Bradford, UK.

Is WHITE HORSE a value trap?

SUMMARY

- **White Horse Berhad (WTHORSE:5009.MY)** is a leading ceramic tile manufacturer in the Asia-Pacific region. Sales peaked in 2014 and reached a low in 2020, influenced by a slowdown in the Malaysian property sector.

- The company experienced losses from 2018 to 2020 and in 2023. However, there was a turnaround in gross profitability in 2021. Despite significant write-offs and impairments, White Horse remains financially sound with substantial cash reserves and a low debt-equity ratio.
- Compared to peers, White Horse had the highest revenue and the least decline over 2012-2023. Despite operating losses since 2017, the company is taking measures to improve profitability. My valuation suggests that while having some margin of safety based on the Graham Net-Net, it is a "cigar-butt" investment.

BACKGROUND

White Horse started in Johore in 1992 as a joint venture between Taiwanese, Malaysian, and Singaporean parties. The Group has since grown so that today it is recognized as one of the leading ceramic tile manufacturers in the Asia-Pacific region. The Group currently has 2 manufacturing facilities in Malaysia. Its products are sold in Malaysia, and Vietnam, and exported to more than 30 countries around the world.

The Group's business was carried out in Malaysia until 2012 when it first reported exports amounting to 13% of its revenue. As can be seen from Chart 1, international sales peaked in 2018 at 34% but had since declined to 12% by 2023. Note that the declining Malaysian sales skewed the % of global sales.

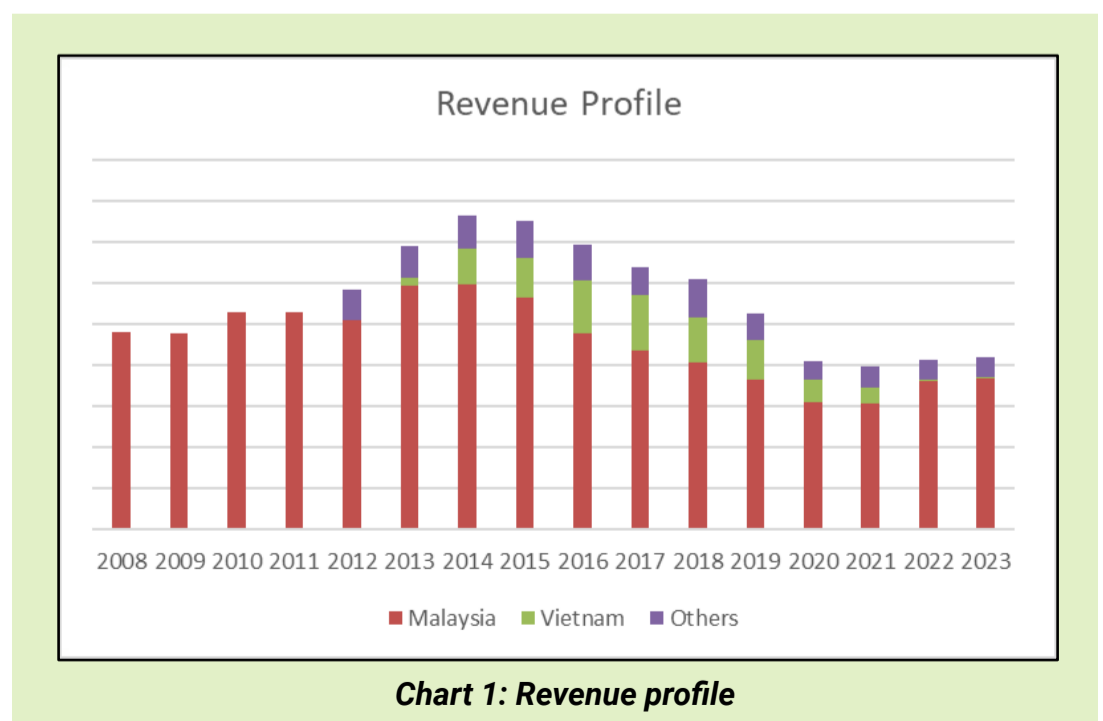


Chart 1: Revenue profile

You can see from Chart 1 that the Group’s revenue peaked in 2014 and declined to reach the bottom in 2020. This was partly due to the declining contribution from Malaysia following the slowdown in the property sector.

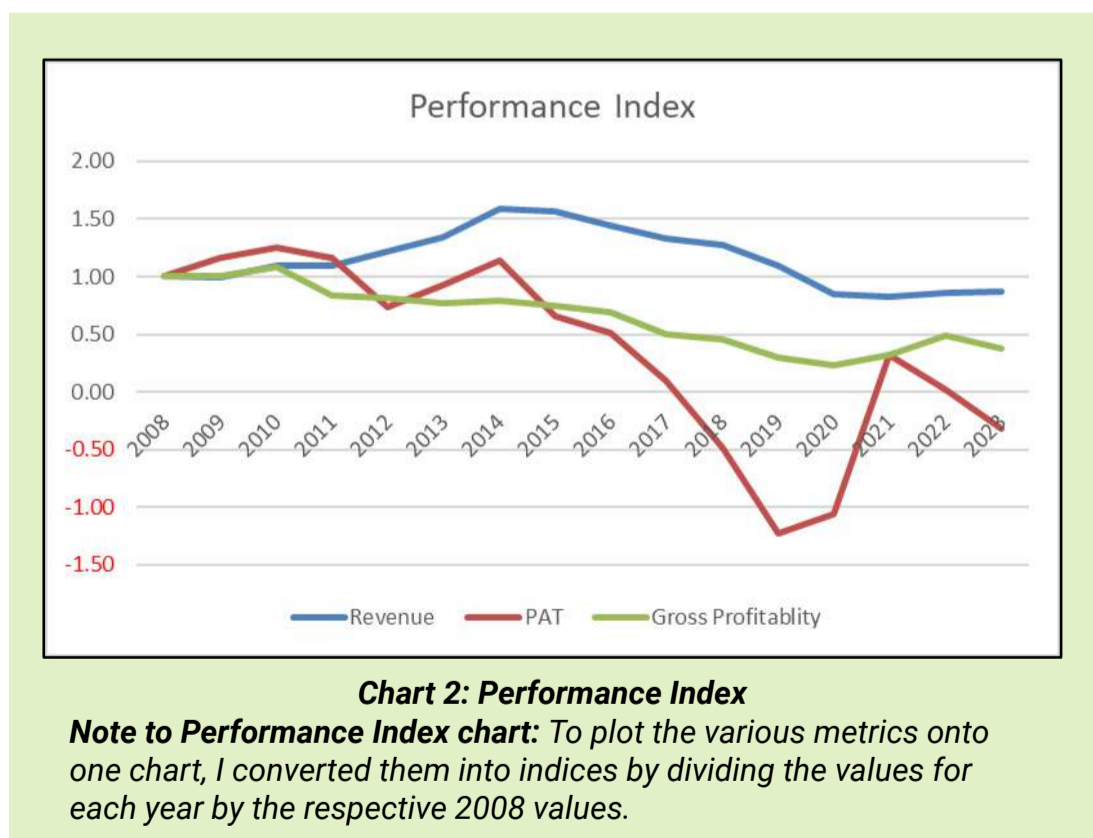
OPERATING TRENDS

I looked at 3 metrics to get an overview of the overall performance – revenue, PAT, and gross profitability (gross profits / total assets). Refer to Chart 2.

- Revenue grew from 2008 to peak in 2014 and has declined since then. But it seemed to have levelled off from 2020.
- The Group incurred losses from 2018 to 2020 and 2023.
- The positive sign is that while gross profitability had been declining since 2010, it seemed to have turned around in 2021.

It should be pointed out that during the period from 2014 to 2019, the Group generated a total EBIT of RM102.4 million after deducting RM82.3 million for the following:

- RM15.5 million (net) from written-off and/or written-down inventories.



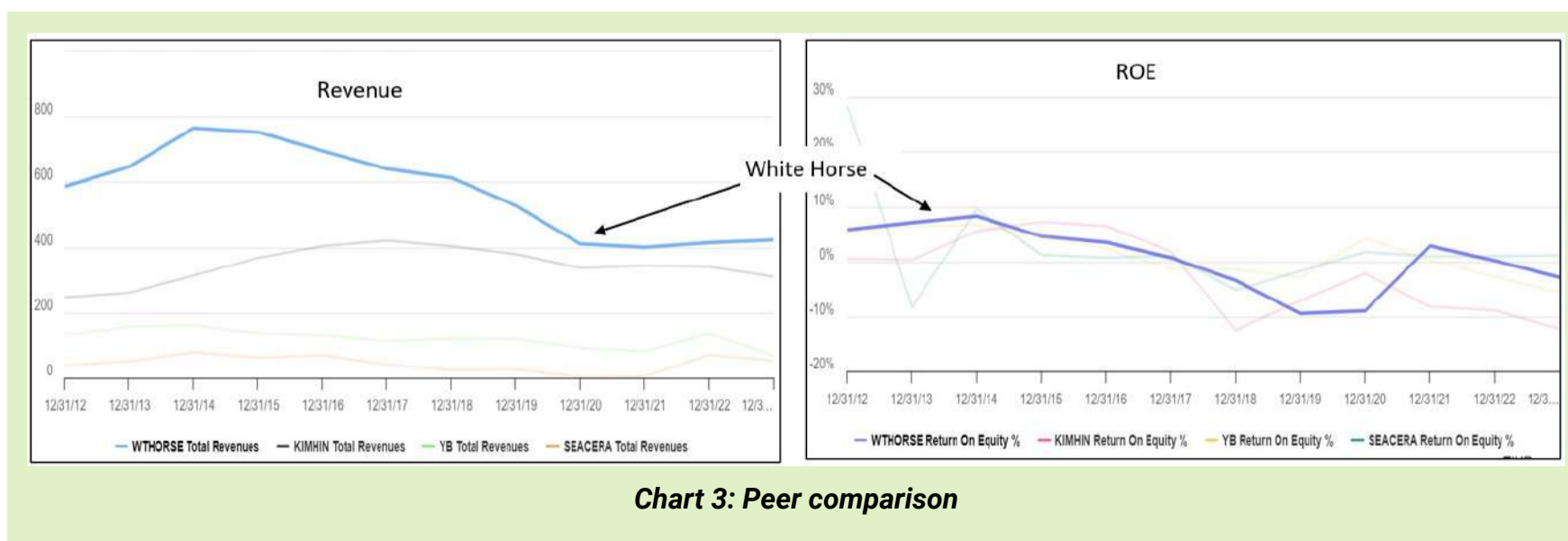
- RM31.2 million from impairment of Property, Plant, and Equipment.
- RM35.6 million of unrealized forex losses.

The long-term outlook of the Group would be different if these were considered as a one-off expenditure. Given the write-offs, you should not be surprised to find that the average ROE over the past 12 years was only 1%.

COMPETITIVE PROFILE

There are 3 other Bursa tile companies – Kim Hing, YB Ventures, and Seacera Group. A comparison between White Horse and its peers as per Chart 3 showed the following:

- White Horse's is the largest in terms of revenue.
- White Horse also had the lowest revenue decline from 2012 to 2023. Its revenue declined by about 3% CAGR. The peers' revenue declined by around 40-odd %.
- All experienced declining ROE with the bottom in 2018/19. I would rate White Horse's return as among the better ones.



FINANCIAL POSITION

I would rate White Horse as financially sound based on the following:

- As of the end of Dec 2023, it had RM171 million cash and short-term securities. This was equivalent to 23% of its total assets.
- It had a debt-equity ratio of 0.2 as of Dec 2023.
- Over the past 12 years, there was only 1 year where it had negative cash flow from operations. During this period, it generated RM489 million from cash flow from operations compared to RM68 million of PAT. This is a good cash conversion ratio.
- The Group also had a good capital allocation plan as shown in Table 1. You can see that its cash flow from operations was well deployed for CAPEX and dividends.

Items	Souces (RM m)	Uses (RM m)
Cash flow from Ops	527	
Debt	29	
CAPEX		226
Dividends		176
Share buybacks		9
Investments		64
Cash, Misc		81
Total	556	556

Table 1: Sources and Uses of Funds 2011 to 2022

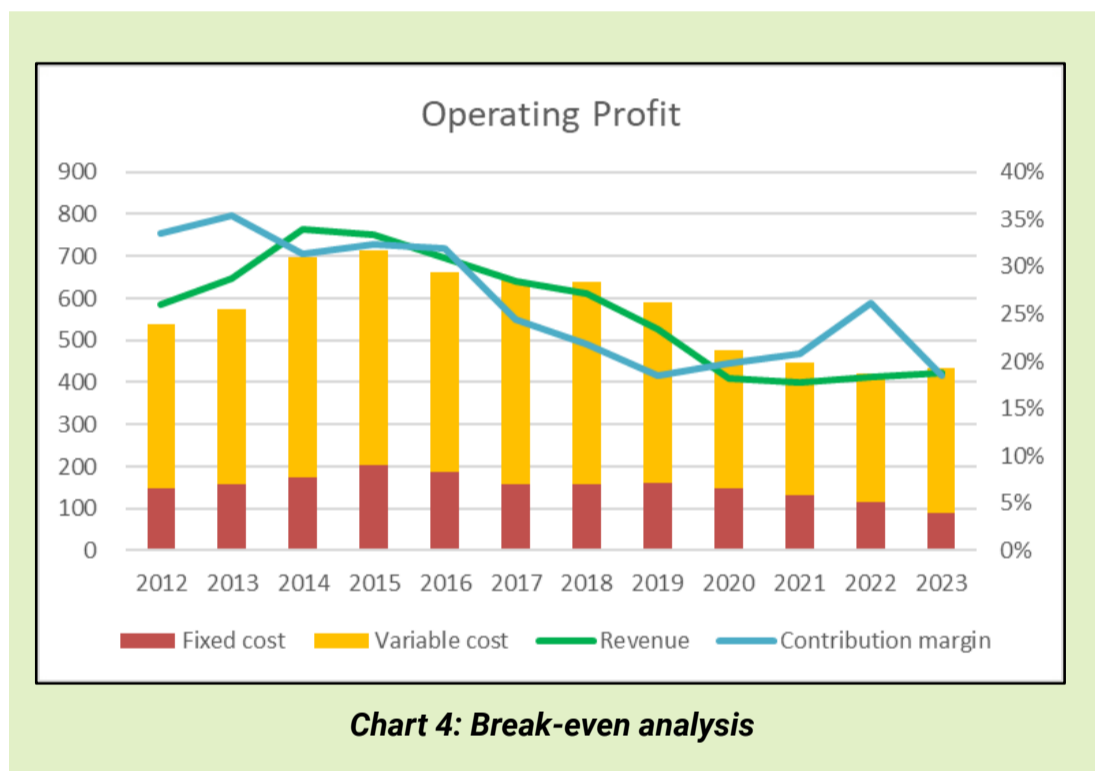
BREAKEVEN ANALYSIS

The losses and low profits for the past 5 years were because the Group was operating below the breakeven level. To turn around, the Group needs to operate above its breakeven level. The breakeven level is dependent on the volume, variable cost, and fixed costs.

There is not enough information in the Annual Report to determine the breakeven picture accurately. But to illustrate the breakeven position, I assumed the following:

- Sales and costs from the various years were used as proxies for changes in volume.
- Variable cost = Cost of sales less depreciation.
- Fixed cost = Selling, General and Admin expenses + depreciation.

The operating profit is represented by the gap between revenue and total costs (fixed cost + variable cost) in Chart 4. The Group has been experiencing operating losses since 2017. It has been operating below its breakeven levels for many years.



To return to profitability, the Group has either to increase its sales volume, sell at higher unit prices, or lower its costs. The Group had taken steps to address all of them. For example, in its 2023 Annual Report, it stated the following:

“To continue improving our bottom line and cash flow, our Group has implemented the following:

- (1) Stringent credit control to improve the Group’s cash inflow and to reduce the risk of non-performance trade receivables.

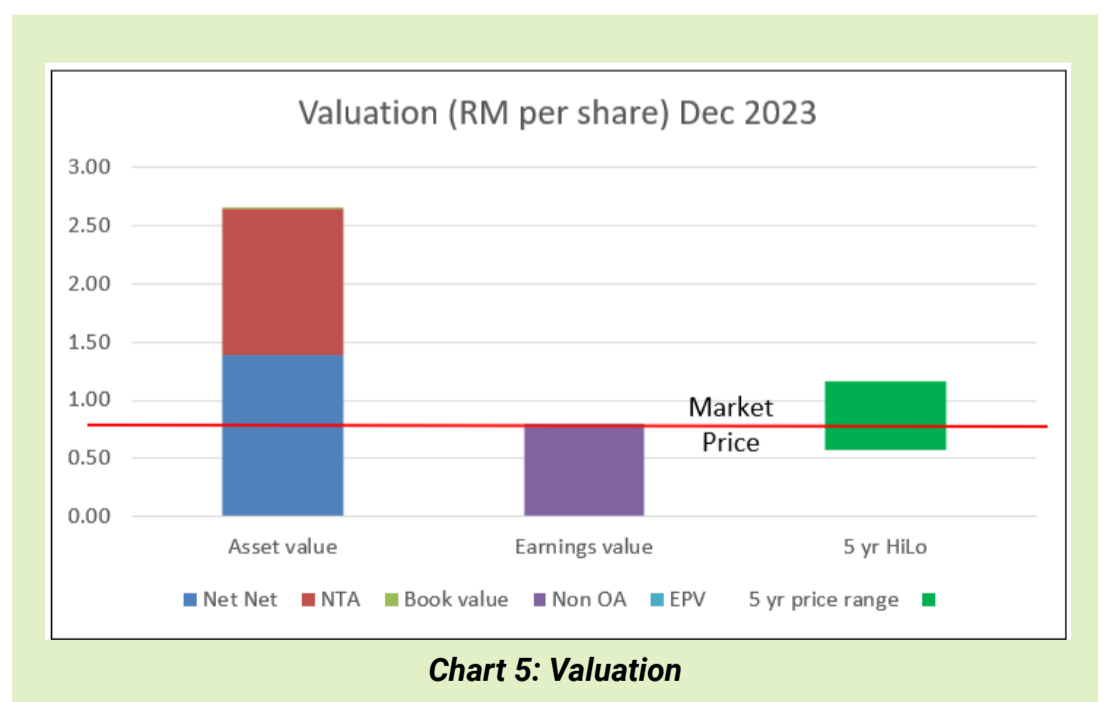
- (2) Rationalisation of inventory management together with the changes in production mix resulted in a positive contribution to the inventories control and improvement of productivity and efficiency.
- (3) Continuing to develop and launch new products with higher margin and launching them into the market regularly”.

Cost control alone is not sufficient to return the business to profitability. There is also the need to increase sales. But White Horse sales since 2014 has been declining. A large part of this was due to the declining Malaysian property market. The Malaysia property sector is cyclical, and I think we are at the bottom of the cycle. When the property market recovers, I would expect White Horse sales to follow suit. This is of course a back-of-envelope analysis as I do not have the production quantity or sales quantity. But it illustrates the direction to return to profitability.

VALUATION

My valuation of White Horse is summarized in Chart 5.

- I estimated its Asset Value as RM2.65 per share
- I estimated its Earnings Power Value as RM0.80 per share.



The market price for White Horse as of 17 May 2024 was RM0.77 per share. You can see that there is more than a 30% margin of safety under the Asset Value.

But when you look at the Asset Value, you can see that the market price is below the Net-Net Value of RM1.39 per share. Net-Net is a valuation metric made famous by Benjamin Graham, often acknowledged as the father of value investing.

The Net Net is derived by deducting total liabilities from the current assets. Many consider the Net Net as a shorthand for the liquidation value. Unless you think that White Horse is going to be liquidated, it does not make sense for the company to be trading below the liquidation value.

But I think White Horse should be considered as a cigar-butt investment. This concept was popularized by Warren Buffett, who initially adopted this approach inspired by his mentor, Benjamin Graham. The term "cigar-butt" comes from the idea that such investments are like picking up a discarded cigar-butt off the street: it might only have one or two puffs left, but those puffs are essentially free.

VALUATION MODEL

My Earnings Power Value of the company was derived based on the average values from 2 valuation approaches:

- Free Cash Flow to the Firm model as per Damodaran.
- Residual Income model as per Penman.

For both models, I used the past 12 years' time-weighted average value to represent the normalized value. You can see why the computed Earnings Value was low as the past 12 years performance was not something to shout about. The cost of capital used in the model was based on the Capital Asset Pricing Model. I followed Damodaran's approach to determine the Beta and the risk premiums. These resulted in a 10.8% cost of equity and a 12.3% WACC.

CONCLUSION

A value trap is an investment that while appearing cheap is facing insurmountable problems. It is cheap for a reason. White Horse does not fall into this category. My analysis showed that the Group is financially sound. It has the resources to see it through a turnaround. I have shown that the business suffered losses because it was operating below the breakeven level. But the Group had taken measures to reduce the breakeven level.

The Group is undergoing a turnaround. The return to profitability is dependent on the property market turning around. I do not expect the Malaysian property market to remain soft forever. The property sector is cyclical. Furthermore, the ceramic tile industry is not a sunset one. I have also estimated that there is a sufficient margin of safety from a Graham Net-Net perspective. White Horse is likely to be a cigar butt investment opportunity.

I am a long-term value investor who has held onto stocks for more than 5 years. My analysis and valuation are from such a perspective. I consider quarterly results "noisy" and focus on long-term trends.

*This article was re-purposed from ["White Horse is still not a value trap"](#) which was first published on *i4value*. Asia. Refer to the article for more detailed fundamental analysis and valuation.*

Disclaimer: This article is written for informational purposes only. It does not constitute a solicitation, offer, advice, counseling or recommendation to buy or sell. As such it is not intended to promote the purchase of shares in any way. As a reminder, any type of asset has a risk factor and needs to be evaluated from multiple perspectives. Therefore, any investment decision and the associated risk remains with the investor. The views expressed here are entirely the writer's own.

UNLOCK THE SECRET OF WEALTH

DO YOU REALLY WANT TO MASTER VALUE INVESTING



SEE HOW TO GET HIGHER RETURNS WITH LOWER RISK



BURSA LAUNCHES API GATEWAY TO ENHANCE CDS ACCOUNT MANAGEMENT EFFICIENCY

According to Bursa Malaysia Bhd chief executive officer Datuk Muhammad Umar Swift, Bursa Malaysia has introduced an application programming interface (API) or API gateway to increase the efficiency of the Central Depository System (CDS) account management process by participating organisations (POs) or brokers. This initiative is key to delivering the local bourse operator's commitment to greater customer centricity.

Bursa will continue to work closely with the POs, and introduce service innovations to attract more investors, bolstering the competitiveness of our market. This initiative is part of its strategy of utilising technology to enhance the experience for CDS account holders, and grow investor participation in the equity market. The API gateway streamlines investors' onboarding journey, shortening the turnaround time for opening, updating, and reactivating accounts.

With such improvements, investors can trade quickly, as and when they see the opportunity. The gateway also enables POs to further digitalise their processes as part of business process improvement for customer experience and sustainability practices to reduce their carbon footprint.

The API gateway for CDS e-services is now operational, with five participating organisations (POs) signed up to date, namely AmInvestment Bank Bhd, FSMOne, the online retail division of iFAST Capital Sdn Bhd, Hong Leong Investment Bank, Malacca Securities, and Moomoo Securities Malaysia. The introduction of the API gateway complements the recent unveiling of the Bursa Remisier Acquisition Hub (Bursa Reach), Malaysia's first profiling platform, which facilitates connections between investors and dealer representatives.



**CHECK OUT
SHAREINVESTOR
BROKERS'
CALL**

Weekly Buy/Sell/Hold calls
from leading Malaysian Brokerages.

[Go To Brokers' Call](#)

BUY **HOLD** **SELL**

MITI, HR MINISTRY FINALISING INCENTIVES TO BRING HOME LOCAL TALENT - TENGGU ZAFRUL

According to MITI Minister Tengku Datuk Seri Zafrul Abdul Aziz, the Ministry of Investment, Trade and Industry (Miti), together with the Human Resources Ministry, is finalising some incentives to bring back highly-skilled local talent from abroad to address the talent shortage in Malaysia. He was speaking during a media briefing on the National Semiconductor Strategy (NSS).

He sees that highly-skilled Malaysian engineers are being poached by global players. It is not only the semiconductor industry that is facing talent shortage, but other industries as well. Hence the need to ensure that Malaysians are attracted to stay in the country, perhaps by offering more attractive salaries. Companies must play a role in this, as ultimately, it is a function of supply and demand.

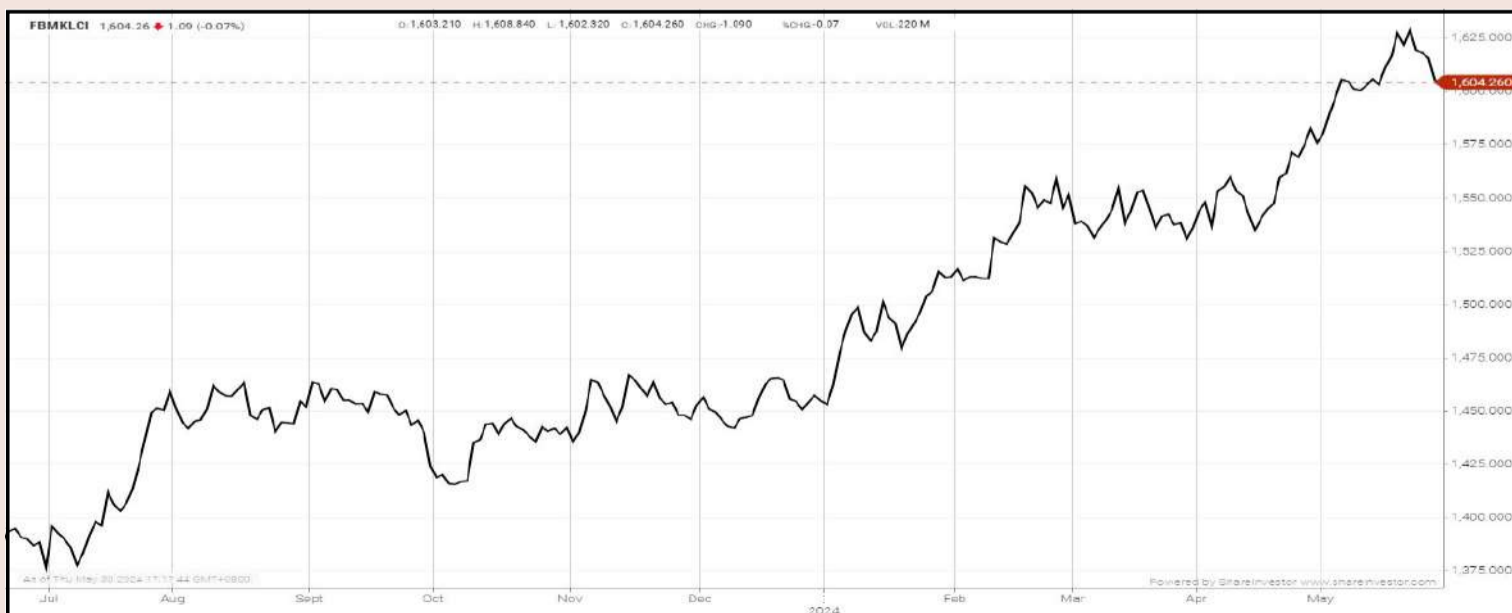
He was responding to questions on what initiatives are being undertaken by the government to address the talent crunch in the semiconductor industry.

He added that the government has an ambitious target to train 60,000 highly-skilled local engineers in the semiconductor industry, as announced by Prime Minister Datuk Seri Anwar Ibrahim. The challenge is not just in ensuring there is enough highly-skilled engineers but also to ensure that the number of workers continues to grow.

Collaboration between the government and the private sector, for example, universities, TVET (technical and vocational education and training) institutions, and other educational bodies is needed to help achieve the target.

EYE ON THE MARKETS

On Thursday (30May), the Ringgit closed at 4.7070 against the USD and 3.4842 to the Sing Dollar. On Monday (27May), the FBM KLCI opened at 1620.67. As at Thursday (30May) 5:00pm, the FBM KLCI closed down 16.41 points at 1604.26. Over in US, the overnight Dow Jones Industrial Average closed down 330.06 points (-0.86%) to 38,111.48 whilst the NASDAQ shed 183.50 points (-1.08%) to 16,737.08.



KLCI 1 Year Chart

Over 5 trading days



ShareInvestor WebPro (www.shareinvestor.com/my)

1. Price > Stock Prices
2. Select Market: NASDAQ / NYSE / IDX / SET / HKEX / SGX (One bourse at a time)
3. select Stocks Tab
4. select Ranking Top Gainers or Top Losers (Over 5 Trading Days)
5. Mouse over Column Layout > select Edit Customs > select Name > select Last Done Price > select 5 Days Change > select 52 Weeks High > select 52 Weeks Low > Mouse Over Column Layout > select Custom

NASDAQ (USD)

Top Gainers

Name	Last Done	Change Over 5 Days	52 Weeks High	52 Weeks Low
NVIDIA CORP	1,105.000	+67.010	1,149.390	373.560
INVESTORS TITLE CO	184.400	+33.520	171.600	127.710
INSMED INC	56.980	+33.380	50.100	18.310
FIRST SOLAR INC	276.780	+26.970	283.635	129.215
SAIA INC	403.740	+23.490	628.335	280.810

Top Losers

Name	Last Done	Change Over 5 Days	52 Weeks High	52 Weeks Low
INTUIT INC	562.970	-99.290	676.620	400.220
WORKDAY INC	207.440	-53.460	311.280	201.420
MONGODB INC	310.000	-45.180	509.620	275.760
BROADCOM INC	1,364.080	-43.760	1,445.400	776.380
BOOKING HOLDINGS INC	3,754.620	-40.730	3,918.000	2,456.930

NYSE (USD)

Top Gainers

Name	Last Done	Change Over 5 Days	52 Weeks High	52 Weeks Low
BERKSHIRE HATHAWAY INC	617,690.000	+1,790.000	647,039.000	486,125.000
NVR INC	7,455.310	+63.170	8,211.400	5,210.490
WHITE MOUNTAINS INSURANCE GROUP	1,772.020	+53.210	1,899.210	1,350.000
DECKERS OUTDOOR CORP	1,082.580	+49.680	1,095.480	464.250
BURLINGTON STORES INC	235.550	+35.180	241.970	115.660

Top Losers

Name	Last Done	Change Over 5 Days	52 Weeks High	52 Weeks Low
SERVICENOW INC	643.290	-114.860	815.320	526.110
METTLER-TOLEDO INTERNATIONAL INC	1,383.570	-95.730	1,535.860	928.495
SALESFORCE INC	218.010	-60.560	318.715	193.680
FAIR ISAAC CORP	1,302.660	-50.520	1,451.780	745.450
GRAINGER W W INC	907.470	-47.230	1,034.180	641.950

IDX (Rupiah)

Top Gainers

Name	Last Done	Change Over 5 Days	52 Weeks High	52 Weeks Low
DIAN SWASTATIKA SENTOSA TBK	212,000.000	+34,000.000	220,000.000	37,300.000
AMMAN MINERAL INTERNASIONAL TBK	12,450.000	+1,900.000	15,000.000	1,700.000
INDO TAMBANGRAYA MEGAH TBK	24,950.000	+625.000	31,425.000	22,325.000
SIANTAR TOP	10,375.000	+475.000	16,900.000	7,500.000
SINAR MAS MULTIARTHA	14,600.000	+400.000	22,200.000	10,975.000

Top Losers

Name	Last Done	Change Over 5 Days	52 Weeks High	52 Weeks Low
PETROSEA	6,750.000	-2,200.000	9,850.000	2,810.000
BARITO RENEWABLES ENERGY TBK	9,125.000	-2,125.000	12,200.000	975.000
DCI INDONESIA TBK	36,400.000	-1,300.000	59,050.000	32,525.000
ADIRA DINAMIKA MULTI FINANCE TBK	12,075.000	-975.000	14,300.000	10,000.000
PETRINDO JAYA KREASI TBK	7,550.000	-550.000	13,750.000	740.000

SET (Thai Baht)

Top Gainers

Name	Last Done	Change Over 5 Days	52 Weeks High	52 Weeks Low
ERWPF	8.800	+7.779	8.800	0.569
FE	191.500	+6.500	199.500	137.500
STA	23.500	+4.600	24.100	12.100
BKI	287.000	+4.000	321.000	273.000
RCL	30.000	+3.750	30.250	16.200

Top Losers

Name	Last Done	Change Over 5 Days	52 Weeks High	52 Weeks Low
SCC	238.000	-10.000	338.000	233.000
NEW	78.750	-9.250	210.000	76.000
BH	242.000	-8.000	272.000	210.000
OHTL	410.000	-6.000	518.000	352.000
METCO	187.500	-5.500	250.000	186.000

HKEX (HKD)

Top Gainers

Name	Last Done	Change Over 5 Days	52 Weeks High	52 Weeks Low
QUNABOX GROUP (917)	39.900	+32.150	42.450	27.000
BYD COMPANY (1211)	219.400	+7.800	280.600	167.800
SUNHO BIO-B (2898)	8.120	+7.740	15.420	7.920
BYD COMPANY-R (81211)	203.400	+7.300	255.800	155.000
MARKETINGFORCE (2556)	66.800	+5.750	67.550	45.000

Top Losers

Name	Last Done	Change Over 5 Days	52 Weeks High	52 Weeks Low
TRIP.COM-S (9961)	398.600	-19.800	452.200	241.000
AKESO (9926)	32.000	-16.050	55.000	26.450
YUM CHINA (9987)	269.200	-14.600	485.000	260.200
HKEX (388)	263.400	-14.400	336.000	212.200
TENCENT (700)	368.000	-13.800	401.000	260.200

SGX (SGD)

Top Gainers

Name	Last Done	Change Over 5 Days	52 Weeks High	52 Weeks Low
GREAT EASTERN	26.380	+0.460	26.480	16.850
AZEUS	8.700	+0.400	9.190	7.400
YZJ SHIPBLDG SGD	2.250	+0.400	2.270	1.210
SEATRIUM LTD	1.860	+0.280	0.147	0.074
SATS	2.790	+0.260	2.950	2.400

Top Losers

Name	Last Done	Change Over 5 Days	52 Weeks High	52 Weeks Low
JMH USD	36.940	-1.510	52.570	34.920
JARDINE C&C	26.060	-1.250	34.900	23.760
SHANGRI-LA HKD	5.520	-0.340	6.570	4.860
DBS	35.620	-0.230	36.000	27.682
NIO Inc. USD OV	4.920	-0.230	15.780	3.730

P.I.E INDUSTRIAL'S DISCLOSURE OF ORDER WINS DRAWS SCRUTINY

Shareholders who attended the recently concluded AGM of P.I.E Industrial Berhad (PIE) were likely buoyed by the record-high share price and substantial orders the company recently secured. Since April 2024, PIE's share prices have consistently tested new highs, especially after Kenanga Research highlighted sizeable orders from two

KEY HIGHLIGHTS

- Recent developments in P.I.E Industrial raised several pertinent questions about its disclosure of material information.
- Notably, its share prices surged by 47% within the three days preceding its announcement of major order wins. Additionally, the disclosure of contract values has drawn scrutiny, as these figures were provided to the press before being officially announced.

clients. In a report dated 18 April 2024, Kenanga Research revealed that a new AI server client would fully occupy PIE's largest facility, Plant 6, which spans 280,000 square feet. Meanwhile, another customer would occupy Plant 5, with a total capacity of approximately 100,000 sq. ft. With this in mind, the research house raised PIE's FY2025 net profit forecast by 10% to account for higher contributions from the new customer. Concurrently, Kenanga Research also raised its target price on PIE by 69% to RM6.75 from RM4.00.

Further fuelling the optimism was an article published by The Edge *1 at 8 a.m. on 19 April, quoting the group managing director Alvin Mui as stating that PIE expects the new customer to contribute an additional RM2.5 billion in revenue to the Group for FY2025 and FY2026. "This customer should contribute about RM1 billion in revenue for 2025 and RM1.5 billion in revenue for 2026. It should represent more than 50% of the group's total revenue. We are optimistic of achieving RM2 billion (total) revenue in 2025," Mui told the Financial Daily.

Interestingly, these lucrative contract figures were not disclosed by PIE until 23 April - three days after its initial announcement on 19 April. In its 23 April filing, PIE said the expected revenue for FY2025 and FY2026 would be RM1 billion and RM1.5 billion, respectively.

*1 *PIE Industrial confirms bagging new client, expects additional RM2.5bil revenue, published on 19 April 2024, theedgemaalaysia.com*

POINTS OF CONTENTION

The above chain of events raised several pertinent questions about PIE's timely disclosure of material information. Firstly, from

31 March to 18 April 2024, PIE's share price surged by a staggering 56%, from RM3.56 to RM5.57. The most significant increase occurred just days before the 19 April announcement to Bursa Malaysia - from 16 April to 18 April 2024 - when the share price soared 47%, from RM3.80 to RM5.57. Moreover, PIE confirmed in its 19 April 2024 filing to the Stock Exchange that the Group secured its customer on 31 March 2024. If so, why did it take the Group more than two weeks to announce this material information to the public?

Secondly, given that PIE disclosed the expected revenue to The Edge on 19 April (i.e. the projected revenue of RM1 billion and RM1.5 billion for FY2025 and FY2026, respectively), why did it not include these figures in its 19 April announcement? Instead, the Company disclosed the numbers four days later, on 23 April.

Under Paragraph 9.03 (1) and (2) of Chapter 9 – Continuing Disclosure, Main Market Listing Requirements (MMLR) -

- (1) A listed issuer must make immediate public disclosure of any material information, except as set out in paragraph 9.05 of MMLR.
- (2) Information is considered material if it is reasonably expected to have a material effect on – (a) the price, value or market activity of any of the listed issuer's securities; or (b) the decision of a holder of securities of the listed issuer or an investor in determining his choice of action.

In Paragraph 9.04 (b), MMLR provides examples of events which may require immediate disclosure by a listed issuer, such as the acquisition or loss of a contract, franchise or distributorship rights.

PIE'S RESPONSES

In all fairness, MSWG has sought the Board's responses in its AGM held on 17 May to listen to its side of the story. PIE explained

that Plant 6, which caters for the new client, is in the construction phase with pilot production by the end of 2024. As this would not have a material impact on FY2024 financials, it had not made an announcement “until overall progress is more matured”.

“However, our company secretary received a call from Bursa Malaysia on 19 April 2024, required us to make an announcement regarding the new customer following the significant increase of company share price on 18 April 2024,” said PIE in a reply to MSWG dated 17 May 2024.

Secondly, the firm added that “further announcement (dated 23 April) on expected revenue for FY2025 and FY2026 is specifically required by Bursa Malaysia to further complement the announcement made on 19 April 2024”.

OUR THOUGHTS

MSWG has always maintained that disseminating timely material information is essential to a vibrant and transparent capital market. Failure to disclose such material information promptly creates an opportunity for insiders to engage in insider trading, resulting in an uneven playing field. Such unlevel playing fields are detrimental to minority shareholders who, more often than not, are the last to learn of the price-sensitive material information.

We are uncertain if its board of directors has intervened to advise management to ensure such information is announced immediately. If they did, it is unclear why management has not heeded their advice.

In summary, PIE’s recent share price performance has been remarkable. The counter recorded an impressive gain of 65.73% for the period between 1 April and 23 April. As of 23 May, PIE reached a new high of RM6.23, surpassing the previous high of RM6.18 on 9 May.

By MSWG team

DEFINITION: Insider Activity shows the trades made by substantial shareholders or directors of the company. Purchases by the directors and company share buyback may indicate the share price is undervalued and brings confidence to the price trend of the share price.



ShareInvestor WebPro > Fundamental > Insider Trades > click Search tab > Select Bursa > click Stock name > scroll up and leave at <Select Counter> Type Date Range for Announcement Date > click Search

Notice Period is 19th May 2024 – 25th May 2024

Effective Change Date	Stock Name	Buyer/ Seller Name [Classification]	Bought / (Sold) ['000]		No. of Shares After Trade ['000]	
			Total	% Held	Total	% Held
17 MAY 2024 - 17 MAY 2024	3A	MR TEO KWEE HOCK [SSH]	-438	10.068	49,235	10.068
17 MAY 2024 - 17 MAY 2024	ABMB	EMPLOYEES PROVIDENT FUND BOARD [SSH]	-73	10.117	156,625	10.117
20 MAY 2024 - 20 MAY 2024	AEON	EMPLOYEES PROVIDENT FUND BOARD [SSH]	-6,388	6.99	98,140	6.99
17 MAY 2024 - 17 MAY 2024	AEON	EMPLOYEES PROVIDENT FUND BOARD [SSH]	-16,863	7.445	104,528	7.445
16 MAY 2024 - 16 MAY 2024	AEON	EMPLOYEES PROVIDENT FUND BOARD [SSH]	-7,718	8.646	121,391	8.646
21 MAY 2024 - 21 MAY 2024	AHB-WC	DATO' RIDZA ABDOSH BIN HAJI SALLEH [DIR/CEO]	38	0.01	38	0.01
21 MAY 2024 - 21 MAY 2024	AHB-WC	MR CHOW HUNG KEYE [DIR/CEO]	3,250	0.874	3,250	0.874
17 MAY 2024 - 17 MAY 2024	AIRPORT	KUMPULAN WANG PERSARAAN (DIPERBADANKAN) [SSH]	-783	7.148	119,254	7.148
17 MAY 2024 - 17 MAY 2024	ALPHA	MADAM SIA BEE KENG [DIR/CEO]	-450	0.02	965	0.02
20 MAY 2024 - 20 MAY 2024	AMBANK	EMPLOYEES PROVIDENT FUND BOARD [SSH]	-1,828	14.288	47,246	14.288
17 MAY 2024 - 17 MAY 2024	AMBANK	EMPLOYEES PROVIDENT FUND BOARD [SSH]	-150	14.343	47,429	14.343
16 MAY 2024 - 16 MAY 2024	AMBANK	EMPLOYEES PROVIDENT FUND BOARD [SSH]	70	14.347	47,445	14.347
23 MAY 2024 - 23 MAY 2024	AMWAY	KUMPULAN WANG PERSARAAN (DIPERBADANKAN) [SSH]	-93	8.919	14,662	8.919
16 MAY 2024 - 20 MAY 2024	ANCOMNY	DATO' SIEW KA WEI [DIR/CEO]	57	19.468	17,767	19.468
16 MAY 2024 - 16 MAY 2024	ANNUM	DATO' SRI LIEW KOK LEONG [SSH]	33,733	24.553	55,848	24.553
16 MAY 2024 - 16 MAY 2024	ANNUM	UKAY ONE SDN BHD [SSH]	33,733	21.89	49,791	21.89
21 MAY 2024 - 21 MAY 2024	APEX	DATUK WIRA FARHASH WAFU SALVADOR J.P. [DIR/CEO]	1,937	0.956	1,937	0.956
16 MAY 2024 - 16 MAY 2024	APOLLO	DATIN SOON GOCK LAN @ SOON GEOK LIN [SSH]	-3,200	74.785	59,828	74.785
16 MAY 2024 - 16 MAY 2024	APOLLO	DATO' CHEAH SEE YEONG [DIR/CEO]	-3,200	74.785	59,828	74.785
16 MAY 2024 - 16 MAY 2024	APOLLO	DATO' CHEAH SEE YEONG [SSH]	-3,200	74.785	59,828	74.785
16 MAY 2024 - 16 MAY 2024	APOLLO	SCOOP CAPITAL SDN BHD [SSH]	-3,200	74.785	59,828	74.785
20 MAY 2024 - 20 MAY 2024	APPASIA	MR TOH HONG CHYE [DIR/CEO]	1,629	27.041	302,267	27.041
20 MAY 2024 - 20 MAY 2024	APPASIA	MR TOH HONG CHYE [SSH]	1,629	27.041	302,267	27.041
20 MAY 2024 - 20 MAY 2024	ASTRA	DATIN WONG MUH RONG [DIR/CEO]	408	17.273	47,009	17.273
20 MAY 2024 - 20 MAY 2024	ASTRA	DATIN WONG MUH RONG [SSH]	408	17.273	47,009	17.273
20 MAY 2024 - 20 MAY 2024	AXIATA	EMPLOYEES PROVIDENT FUND BOARD [SSH]	-1,000	17.903	1,643,802	17.903
17 MAY 2024 - 17 MAY 2024	AXIATA	EMPLOYEES PROVIDENT FUND BOARD [SSH]	220	17.913	1,644,802	17.913
16 MAY 2024 - 16 MAY 2024	AXIATA	EMPLOYEES PROVIDENT FUND BOARD [SSH]	220	17.911	1,644,582	17.911
15 MAY 2024 - 15 MAY 2024	AXIATA	EMPLOYEES PROVIDENT FUND BOARD [SSH]	220	17.909	1,644,362	17.909
20 MAY 2024 - 20 MAY 2024	AXREIT	EMPLOYEES PROVIDENT FUND BOARD [SSH]	2,000	17.1	298,815	17.1
21 MAY 2024 - 21 MAY 2024	AXREIT	KUMPULAN WANG PERSARAAN (DIPERBADANKAN) [SSH]	-1,586	10.397	181,694	10.397
20 MAY 2024 - 20 MAY 2024	AXREIT	KUMPULAN WANG PERSARAAN (DIPERBADANKAN) [SSH]	-697	10.488	183,280	10.488
17 MAY 2024 - 17 MAY 2024	AXREIT	KUMPULAN WANG PERSARAAN (DIPERBADANKAN) [SSH]	-125	10.528	183,977	10.528
16 MAY 2024 - 16 MAY 2024	BAUTO	EMPLOYEES PROVIDENT FUND BOARD [SSH]	185	12.466	145,554	12.466
15 MAY 2024 - 15 MAY 2024	BAUTO	EMPLOYEES PROVIDENT FUND BOARD [SSH]	135	12.45	145,369	12.45
20 MAY 2024 - 20 MAY 2024	BENALEC	DATO' LEAW SENG HAI [DIR/CEO]	2,929	10.613	108,140	10.613
20 MAY 2024 - 20 MAY 2024	BENALEC	DATO' LEAW SENG HAI [SSH]	2,929	10.613	108,140	10.613
20 MAY 2024 - 20 MAY 2024	BIMB	EMPLOYEES PROVIDENT FUND BOARD [SSH]	-83	17.189	389,575	17.189
17 MAY 2024 - 17 MAY 2024	BIMB	EMPLOYEES PROVIDENT FUND BOARD [SSH]	-471	17.192	389,658	17.192
16 MAY 2024 - 16 MAY 2024	BIMB	EMPLOYEES PROVIDENT FUND BOARD [SSH]	-455	17.213	390,128	17.213
15 MAY 2024 - 15 MAY 2024	BIMB	EMPLOYEES PROVIDENT FUND BOARD [SSH]	-55	17.233	390,584	17.233
17 MAY 2024 - 17 MAY 2024	BNASTRA	DATUK TAN KAK SENG [DIR/CEO]	-30,000	57.296	285,189	57.296
17 MAY 2024 - 17 MAY 2024	BNASTRA	DATUK TAN KAK SENG [SSH]	-30,000	57.296	285,189	57.296
17 MAY 2024 - 17 MAY 2024	BNASTRA	JT CONGLOMERATE SDN. BHD. [SSH]	-30,000	45.141	224,689	45.141
17 MAY 2024 - 17 MAY 2024	BNASTRA	MR LEE SENG YONG [DIR/CEO]	30,000	14.164	70,499	14.164
17 MAY 2024 - 17 MAY 2024	BNASTRA	MR LEE SENG YONG [SSH]	30,000	14.164	70,499	14.164
17 MAY 2024 - 17 MAY 2024	BRIGHT	DATO WONG SHEE KAI [SSH]	-20,000	23.196	47,629	23.196
17 MAY 2024 - 17 MAY 2024	BRIGHT	MADAM TEH SEW WAN [SSH]	-20,000	23.237	47,714	23.237
17 MAY 2024 - 17 MAY 2024	BRIGHT	MR LYE JUN FEI [DIR/CEO]	20,000	14.805	30,400	14.805
17 MAY 2024 - 17 MAY 2024	BRIGHT	MR LYE JUN FEI [SSH]	20,000	14.805	30,400	14.805
17 MAY 2024 - 17 MAY 2024	BRIGHT	WONG SK HOLDINGS SDN. BHD. [SSH]	-20,000	23.196	47,629	23.196
20 MAY 2024 - 20 MAY 2024	BURSA	EMPLOYEES PROVIDENT FUND BOARD [SSH]	250	11.389	92,167	11.389
20 MAY 2024 - 20 MAY 2024	BURSA	EMPLOYEES PROVIDENT FUND BOARD [SSH]	-1,252	11.358	91,917	11.358
17 MAY 2024 - 17 MAY 2024	BURSA	EMPLOYEES PROVIDENT FUND BOARD [SSH]	846	11.512	93,169	11.512
17 MAY 2024 - 17 MAY 2024	BURSA	EMPLOYEES PROVIDENT FUND BOARD [SSH]	-2,601	11.408	92,323	11.408
16 MAY 2024 - 16 MAY 2024	BURSA	EMPLOYEES PROVIDENT FUND BOARD [SSH]	54	11.729	94,924	11.729
16 MAY 2024 - 16 MAY 2024	BURSA	EMPLOYEES PROVIDENT FUND BOARD [SSH]	-1,500	11.722	94,870	11.722
15 MAY 2024 - 15 MAY 2024	BURSA	EMPLOYEES PROVIDENT FUND BOARD [SSH]	-545	11.908	96,370	11.908
17 MAY 2024 - 17 MAY 2024	CARZO	DATIN SRI PEH CHAI HOON [DIR/CEO]	181	64.811	61,839	64.811
17 MAY 2024 - 17 MAY 2024	CARZO	DATIN SRI PEH CHAI HOON [SSH]	181	64.811	61,839	64.811
17 MAY 2024 - 17 MAY 2024	CARZO	DATO' SRI DELON LEE KEAN YIP [DIR/CEO]	181	64.811	61,839	64.811
17 MAY 2024 - 17 MAY 2024	CARZO	DATO' SRI DELON LEE KEAN YIP [SSH]	181	64.811	61,839	64.811
20 MAY 2024 - 20 MAY 2024	CDB	EMPLOYEES PROVIDENT FUND BOARD [SSH]	137	9.883	1,159,447	9.883
17 MAY 2024 - 17 MAY 2024	CDB	EMPLOYEES PROVIDENT FUND BOARD [SSH]	124	9.882	1,159,310	9.882
16 MAY 2024 - 16 MAY 2024	CDB	EMPLOYEES PROVIDENT FUND BOARD [SSH]	417	9.881	1,159,186	9.881
15 MAY 2024 - 15 MAY 2024	CDB	EMPLOYEES PROVIDENT FUND BOARD [SSH]	194	9.877	1,158,769	9.877

Notice Period is 19th May 2024 – 25th May 2024

Effective Change Date	Stock Name	Buyer/ Seller Name [Classification]	Bought / (Sold) ['000]		No. of Shares After Trade ['000]	
			Total	% Held	Total	% Held
23 MAY 2024 - 23 MAY 2024	CGB	MR CHEW HIAN TAT [DIR/CEO]	1,312	31.184	234,776	31.184
23 MAY 2024 - 23 MAY 2024	CGB	MR CHEW HIAN TAT [SSH]	1,312	31.184	234,776	31.184
23 MAY 2024 - 23 MAY 2024	CHINHIN	DATUK SERI CHIAU BENG TEIK JP [DIR/CEO]	614	57.966	2,051,279	57.966
23 MAY 2024 - 23 MAY 2024	CHINHIN	DATUK SERI CHIAU BENG TEIK JP [SSH]	614	57.966	2,051,279	57.966
23 MAY 2024 - 23 MAY 2024	CHINHIN	DIVINE INVENTIONS SDN BHD [SSH]	614	37.697	1,334,013	37.697
23 MAY 2024 - 23 MAY 2024	CHINHIN	MR CHIAU HAW CHOON [DIR/CEO]	614	43.449	1,537,580	43.449
23 MAY 2024 - 23 MAY 2024	CHINHIN	MR CHIAU HAW CHOON [SSH]	614	43.449	1,537,580	43.449
23 MAY 2024 - 23 MAY 2024	CHINHIN	PP CHIN HIN REALTY SDN BHD [SSH]	614	37.697	1,334,013	37.697
23 MAY 2024 - 23 MAY 2024	CIMB	KUMPULAN WANG PERSARAAN (DIPERBADANKAN) [SSH]	-1,146	6.29	671,715	6.29
20 MAY 2024 - 20 MAY 2024	CIMB	EMPLOYEES PROVIDENT FUND BOARD [SSH]	11,886	14.94	1,595,830	14.94
21 MAY 2024 - 21 MAY 2024	CIMB	KUMPULAN WANG PERSARAAN (DIPERBADANKAN) [SSH]	-245	6.31	672,861	6.31
17 MAY 2024 - 17 MAY 2024	CIMB	EMPLOYEES PROVIDENT FUND BOARD [SSH]	852	14.83	1,583,945	14.83
20 MAY 2024 - 20 MAY 2024	CIMB	KUMPULAN WANG PERSARAAN (DIPERBADANKAN) [SSH]	-282	6.31	673,106	6.31
16 MAY 2024 - 16 MAY 2024	CIMB	EMPLOYEES PROVIDENT FUND BOARD [SSH]	-5,407	14.82	1,583,093	14.82
17 MAY 2024 - 17 MAY 2024	CIMB	KUMPULAN WANG PERSARAAN (DIPERBADANKAN) [SSH]	-300	6.31	673,388	6.31
15 MAY 2024 - 15 MAY 2024	CIMB	EMPLOYEES PROVIDENT FUND BOARD [SSH]	142	14.87	1,588,499	14.87
20 MAY 2024 - 20 MAY 2024	CLMT	EMPLOYEES PROVIDENT FUND BOARD [SSH]	-1,050	15.042	426,342	15.042
17 MAY 2024 - 17 MAY 2024	CLMT	EMPLOYEES PROVIDENT FUND BOARD [SSH]	470	15.079	427,392	15.079
16 MAY 2024 - 16 MAY 2024	CLMT	EMPLOYEES PROVIDENT FUND BOARD [SSH]	327	15.063	426,922	15.063
24 MAY 2024 - 24 MAY 2024	CLOUDPT	ERA JASAKITA SDN. BHD. [SSH]	-1,000	41.33	219,711	41.33
24 MAY 2024 - 24 MAY 2024	CLOUDPT	MR CHOONG WAI HOONG [DIR/CEO]	-1,200	49.432	262,783	49.432
24 MAY 2024 - 24 MAY 2024	CLOUDPT	MR CHOONG WAI HOONG [SSH]	-1,200	49.432	262,783	49.432
24 MAY 2024 - 24 MAY 2024	CLOUDPT	MR YEW CHOONG CHEONG [DIR/CEO]	-1,000	49.432	262,783	49.432
24 MAY 2024 - 24 MAY 2024	CLOUDPT	MR YEW CHOONG CHEONG [SSH]	-1,000	49.432	262,783	49.432
23 MAY 2024 - 23 MAY 2024	CMSB	LEMBAGA TABUNG HAJI [SSH]	-200	6.976	74,930	6.976
21 MAY 2024 - 21 MAY 2024	CMSB	LEMBAGA TABUNG HAJI [SSH]	-200	6.994	75,130	6.994
20 MAY 2024 - 20 MAY 2024	CMSB	LEMBAGA TABUNG HAJI [SSH]	-250	7.013	75,330	7.013
23 MAY 2024 - 23 MAY 2024	CTOS	KUMPULAN WANG PERSARAAN (DIPERBADANKAN) [SSH]	191	6.875	158,815	6.875
21 MAY 2024 - 21 MAY 2024	CTOS	ABRDN HOLDINGS LIMITED [SSH]	1,687	11.066	255,628	11.066
21 MAY 2024 - 21 MAY 2024	CTOS	ABRDN MALAYSIA SDN BHD [SSH]	1,687	10.965	253,293	10.965
21 MAY 2024 - 21 MAY 2024	CTOS	ABRDN PLC [SSH]	1,687	11.066	255,628	11.066
20 MAY 2024 - 20 MAY 2024	CTOS	EMPLOYEES PROVIDENT FUND BOARD [SSH]	1,881	14.129	326,379	14.129
21 MAY 2024 - 21 MAY 2024	CTOS	KUMPULAN WANG PERSARAAN (DIPERBADANKAN) [SSH]	244	6.867	158,624	6.867
20 MAY 2024 - 20 MAY 2024	CTOS	ABRDN HOLDINGS LIMITED [SSH]	2,203	10.993	253,941	10.993
20 MAY 2024 - 20 MAY 2024	CTOS	ABRDN MALAYSIA SDN BHD [SSH]	2,203	10.892	251,606	10.892
20 MAY 2024 - 20 MAY 2024	CTOS	ABRDN PLC [SSH]	2,203	10.993	253,941	10.993
17 MAY 2024 - 17 MAY 2024	CTOS	EMPLOYEES PROVIDENT FUND BOARD [SSH]	1,499	14.048	324,498	14.048
20 MAY 2024 - 20 MAY 2024	CTOS	KUMPULAN WANG PERSARAAN (DIPERBADANKAN) [SSH]	322	6.856	158,380	6.856
17 MAY 2024 - 17 MAY 2024	CTOS	ABRDN HOLDINGS LIMITED [SSH]	1,525	10.898	251,738	10.898
17 MAY 2024 - 17 MAY 2024	CTOS	ABRDN MALAYSIA SDN BHD [SSH]	1,525	10.797	249,403	10.797
17 MAY 2024 - 17 MAY 2024	CTOS	ABRDN PLC [SSH]	1,525	10.898	251,738	10.898
17 MAY 2024 - 17 MAY 2024	CTOS	WASATCH ADVISORS LP [SSH]	140	5.536	127,882	5.536
16 MAY 2024 - 16 MAY 2024	CTOS	EMPLOYEES PROVIDENT FUND BOARD [SSH]	1,451	13.983	322,999	13.983
17 MAY 2024 - 17 MAY 2024	CTOS	KUMPULAN WANG PERSARAAN (DIPERBADANKAN) [SSH]	26	6.842	158,058	6.842
16 MAY 2024 - 16 MAY 2024	CTOS	ABRDN HOLDINGS LIMITED [SSH]	1,692	10.832	250,213	10.832
16 MAY 2024 - 16 MAY 2024	CTOS	ABRDN MALAYSIA SDN BHD [SSH]	1,692	10.731	247,878	10.731
16 MAY 2024 - 16 MAY 2024	CTOS	ABRDN PLC [SSH]	1,692	10.832	250,213	10.832
15 MAY 2024 - 15 MAY 2024	CTOS	EMPLOYEES PROVIDENT FUND BOARD [SSH]	1,984	13.92	321,548	13.92
21 MAY 2024 - 21 MAY 2024	CVIEW	PUAN SADIHA BINTI SULEIMAN [SSH]	-41	9.84	9,840	9.84
20 MAY 2024 - 20 MAY 2024	CVIEW	PUAN SADIHA BINTI SULEIMAN [SSH]	-15	9.881	9,881	9.881
21 MAY 2024 - 21 MAY 2024	CYPARK	LUQMAN BIN MOHAMED JAKEL [SSH]	383	22.135	182,132	22.135
21 MAY 2024 - 21 MAY 2024	CYPARK	MOHAMED FAROZ BIN MOHAMED JAKEL [SSH]	3,665	25.231	207,606	25.231
21 MAY 2024 - 21 MAY 2024	CYPARK	MOHAMED NIZAM BIN MOHAMED JAKEL [SSH]	150	22.975	189,040	22.975
20 MAY 2024 - 20 MAY 2024	D&O	EMPLOYEES PROVIDENT FUND BOARD [SSH]	225	7.031	87,066	7.031
16 MAY 2024 - 16 MAY 2024	D&O	EMPLOYEES PROVIDENT FUND BOARD [SSH]	140	7.013	86,841	7.013
23 MAY 2024 - 23 MAY 2024	DIALOG	KUMPULAN WANG PERSARAAN (DIPERBADANKAN) [SSH]	-1,000	10.99	620,297	10.99
20 MAY 2024 - 20 MAY 2024	DIALOG	EMPLOYEES PROVIDENT FUND BOARD [SSH]	-142	15.91	897,860	

Notice Period is 19th May 2024 - 25th May 2024

Effective Change Date	Stock Name	Buyer/ Seller Name [Classification]	Bought / (Sold) ('000)		No. of Shares After Trade ('000)	
			Total	Total	% Held	% Held
17 MAY 2024 - 17 MAY 2024	DRBHC0M	EMPLOYEES PROVIDENT FUND BOARD [SSH]	-817	165,310	8.551	
16 MAY 2024 - 16 MAY 2024	DRBHC0M	EMPLOYEES PROVIDENT FUND BOARD [SSH]	-350	166,126	8.593	
15 MAY 2024 - 15 MAY 2024	DRBHC0M	EMPLOYEES PROVIDENT FUND BOARD [SSH]	-158	166,418	8.608	
21 MAY 2024 - 21 MAY 2024	DS0NIC	DATO SAFIAN BIN MOHD YUNUS [SSH]	-300	411,509	14.736	
20 MAY 2024 - 20 MAY 2024	DS0NIC	DATO SAFIAN BIN MOHD YUNUS [SSH]	-1,500	411,809	14.747	
17 MAY 2024 - 17 MAY 2024	DS0NIC	DATO SAFIAN BIN MOHD YUNUS [SSH]	-4,200	413,309	14.801	
20 MAY 2024 - 20 MAY 2024	E&O	KUMPULAN WANG PERSARAAN (DIPERBADANKAN) [SSH]	-3,907	102,869	5.083	
17 MAY 2024 - 17 MAY 2024	E&O	KUMPULAN WANG PERSARAAN (DIPERBADANKAN) [SSH]	-1,200	106,776	5.276	
20 MAY 2024 - 20 MAY 2024	ECONBHD	EMPLOYEES PROVIDENT FUND BOARD [SSH]	1,236	106,357	7.503	
17 MAY 2024 - 17 MAY 2024	ECONBHD	EMPLOYEES PROVIDENT FUND BOARD [SSH]	785	105,122	7.416	
17 MAY 2024 - 17 MAY 2024	EFRAME	DATO HOOI JIA HAO [SSH]	-400	19,393	5.357	
17 MAY 2024 - 17 MAY 2024	EWINT	SINARMAS HARTA SDN BHD [SSH]	48,000	774,727	32.28	
17 MAY 2024 - 17 MAY 2024	EWINT	SYABAS TROPICAL SDN BHD [SSH]	48,000	774,727	32.28	
17 MAY 2024 - 17 MAY 2024	EWINT	DATO' LEONG KOK WAH [SSH]	48,000	776,727	32.363	
17 MAY 2024 - 17 MAY 2024	EWINT	ECO WORLD DEVELOPMENT GROUP BERHAD [SSH]	48,000	696,000	29	
20 MAY 2024 - 20 MAY 2024	F&N	EMPLOYEES PROVIDENT FUND BOARD [SSH]	-1	41,263	11.25	
17 MAY 2024 - 17 MAY 2024	F&N	EMPLOYEES PROVIDENT FUND BOARD [SSH]	-393	41,264	11.25	
16 MAY 2024 - 16 MAY 2024	F&N	EMPLOYEES PROVIDENT FUND BOARD [SSH]	-185	41,657	11.358	
15 MAY 2024 - 15 MAY 2024	F&N	EMPLOYEES PROVIDENT FUND BOARD [SSH]	-207	41,842	11.408	
20 MAY 2024 - 20 MAY 2024	FFB	EMPLOYEES PROVIDENT FUND BOARD [SSH]	392	162,294	8.668	
17 MAY 2024 - 17 MAY 2024	FFB	EMPLOYEES PROVIDENT FUND BOARD [SSH]	111	161,903	8.647	
16 MAY 2024 - 16 MAY 2024	FFB	EMPLOYEES PROVIDENT FUND BOARD [SSH]	-1,000	161,791	8.641	
15 MAY 2024 - 15 MAY 2024	FFB	EMPLOYEES PROVIDENT FUND BOARD [SSH]	-1,000	162,791	8.694	
21 MAY 2024 - 21 MAY 2024	FITTERS	MISS DORIS WONG SING EE [SSH]	39,000	158,900	6.787	
20 MAY 2024 - 20 MAY 2024	FRONTKN	EMPLOYEES PROVIDENT FUND BOARD [SSH]	1,020	162,657	10.341	
17 MAY 2024 - 17 MAY 2024	FRONTKN	EMPLOYEES PROVIDENT FUND BOARD [SSH]	-387	161,637	10.276	
16 MAY 2024 - 16 MAY 2024	FRONTKN	EMPLOYEES PROVIDENT FUND BOARD [SSH]	1,321	162,024	10.301	
15 MAY 2024 - 15 MAY 2024	FRONTKN	EMPLOYEES PROVIDENT FUND BOARD [SSH]	367	160,703	10.217	
20 MAY 2024 - 20 MAY 2024	GAMUDA	EMPLOYEES PROVIDENT FUND BOARD (EPF BOARD) [SSH]	-2,190	257,324	9.29	
17 MAY 2024 - 17 MAY 2024	GAMUDA	EMPLOYEES PROVIDENT FUND BOARD (EPF BOARD) [SSH]	-1,030	259,513	9.37	
16 MAY 2024 - 16 MAY 2024	GAMUDA	EMPLOYEES PROVIDENT FUND BOARD (EPF BOARD) [SSH]	-396	260,537	9.41	
15 MAY 2024 - 15 MAY 2024	GAMUDA	EMPLOYEES PROVIDENT FUND BOARD (EPF BOARD) [SSH]	696	260,923	9.42	
20 MAY 2024 - 20 MAY 2024	GASMSIA	EMPLOYEES PROVIDENT FUND BOARD [SSH]	-454	69,922	5.445	
17 MAY 2024 - 17 MAY 2024	GASMSIA	EMPLOYEES PROVIDENT FUND BOARD [SSH]	-388	70,375	5.48	
16 MAY 2024 - 16 MAY 2024	GASMSIA	EMPLOYEES PROVIDENT FUND BOARD [SSH]	-235	70,763	5.511	
15 MAY 2024 - 15 MAY 2024	GASMSIA	EMPLOYEES PROVIDENT FUND BOARD [SSH]	-0.1	70,998	5.529	
21 MAY 2024 - 21 MAY 2024	GENETEC	MR CHEN KHAI VOON [SSH]	-15,000	59,740	7.692	
16 MAY 2024 - 16 MAY 2024	GENP	EMPLOYEES PROVIDENT FUND BOARD [SSH]	-0.1	116,909	13.031	
15 MAY 2024 - 15 MAY 2024	GENP	EMPLOYEES PROVIDENT FUND BOARD [SSH]	-200	116,909	13.031	
20 MAY 2024 - 21 MAY 2024	GESHEN	MR CHAN CHOONG KONG [SSH]	-101	8,126	6.466	
20 MAY 2024 - 20 MAY 2024	GMUTUAL	MR TEO YU YIN [DIR/CEO]	120,000	139,208	37.062	
20 MAY 2024 - 20 MAY 2024	GMUTUAL	MR TEO YU YIN [SSH]	120,000	139,208	37.062	
21 MAY 2024 - 21 MAY 2024	HCK	HIICHIKOK EQUITIES SDN BHD [SSH]	1,950	306,189	56.264	
21 MAY 2024 - 21 MAY 2024	HCK	TAN SRI HII CHII KOK @ HII CHEE KOK [DIR/CEO]	1,950	308,839	56.751	
21 MAY 2024 - 21 MAY 2024	HCK	TAN SRI HII CHII KOK @ HII CHEE KOK [SSH]	1,950	308,839	56.751	
24 MAY 2024 - 24 MAY 2024	HHRG	DATO' HNG CHOON SENG [DIR/CEO]	-70,000	141,497	16.298	
24 MAY 2024 - 24 MAY 2024	HHRG	DATO' HNG CHOON SENG [SSH]	-70,000	141,497	16.298	
24 MAY 2024 - 24 MAY 2024	HHRG	GH CONSORTIUM SDN BHD [SSH]	-70,000	120,264	13.852	
21 MAY 2024 - 21 MAY 2024	HHRG	DATO' HNG CHOON SENG [DIR/CEO]	-12,000	211,497	24.36	
21 MAY 2024 - 21 MAY 2024	HHRG	DATO' HNG CHOON SENG [SSH]	-12,000	211,497	24.36	
20 MAY 2024 - 20 MAY 2024	HHRG	DATO' HNG CHOON SENG [DIR/CEO]	-70,000	223,497	25.75	
20 MAY 2024 - 20 MAY 2024	HHRG	DATO' HNG CHOON SENG [SSH]	-70,000	223,497	25.75	
20 MAY 2024 - 20 MAY 2024	HHRG	GH CONSORTIUM SDN BHD [SSH]	-70,000	190,264	21.921	
20 MAY 2024 - 20 MAY 2024	HLBANK	EMPLOYEES PROVIDENT FUND BOARD [SSH]	230	202,133	9.687	
17 MAY 2024 - 17 MAY 2024	HLBANK	EMPLOYEES PROVIDENT FUND BOARD [SSH]	296	201,903	9.676	
16 MAY 2024 - 16 MAY 2024	HLBANK	EMPLOYEES PROVIDENT FUND BOARD [SSH]	-78	201,607	9.662	
15 MAY 2024 - 15 MAY 2024	HLBANK	EMPLOYEES PROVIDENT FUND BOARD [SSH]	23	201,685	9.666	
17 MAY 2024 - 17 MAY 2024	HLIND	PROF DATO' DR JIM KHOR MUN WEI [DIR/CEO]	10	489	0.153	
23 MAY 2024 - 23 MAY 2024	ICAP	CITY OF LONDON INVESTMENT MANAGEMENT COMPANY LIMITED [SSH]	-127	32,766	23.404	
20 MAY 2024 - 21 MAY 2024	IGBB	HSBC ASIA HOLDINGS LIMITED (HAHO) [SSH]	-181	98,406	7.331	
20 MAY 2024 - 21 MAY 2024	IGBB	HSBC HOLDINGS PLC (HGQ) [SSH]	-181	98,406	7.331	
20 MAY 2024 - 21 MAY 2024	IGBB	HSBC INTERNATIONAL TRUSTEE (HOLDINGS) PTE. LTD. (HTHL) [SSH]	-181	98,406	7.331	
20 MAY 2024 - 21 MAY 2024	IGBB	HSBC INTERNATIONAL TRUSTEE LIMITED (HKIT) [SSH]	-181	98,406	7.331	
20 MAY 2024 - 21 MAY 2024	IGBB	THE HONGKONG AND SHANGHAI BANKING CORPORATION LIMITED (HBAP) [SSH]	-181	98,406	7.331	
17 MAY 2024 - 17 MAY 2024	IGBB	HSBC ASIA HOLDINGS LIMITED (HAHO) [SSH]	-0.1	98,587	7.343	
17 MAY 2024 - 17 MAY 2024	IGBB	HSBC HOLDINGS PLC (HGQ) [SSH]	-0.1	98,587	7.343	
17 MAY 2024 - 17 MAY 2024	IGBB	HSBC INTERNATIONAL TRUSTEE (HOLDINGS) PTE. LTD. (HTHL) [SSH]	-0.1	98,587	7.343	
17 MAY 2024 - 17 MAY 2024	IGBB	HSBC INTERNATIONAL TRUSTEE LIMITED (HKIT) [SSH]	-0.1	98,587	7.343	
17 MAY 2024 - 17 MAY 2024	IGBB	THE HONGKONG AND SHANGHAI BANKING CORPORATION LIMITED (HBAP) [SSH]	-0.1	98,587	7.343	
15 MAY 2024 - 16 MAY 2024	IGBB	HSBC ASIA HOLDINGS LIMITED (HAHO) [SSH]	-31	98,587	7.343	
15 MAY 2024 - 16 MAY 2024	IGBB	HSBC HOLDINGS PLC (HGQ) [SSH]	-31	98,587	7.343	
15 MAY 2024 - 16 MAY 2024	IGBB	HSBC INTERNATIONAL TRUSTEE (HOLDINGS) PTE. LTD. (HTHL) [SSH]	-31	98,587	7.343	
15 MAY 2024 - 16 MAY 2024	IGBB	HSBC INTERNATIONAL TRUSTEE LIMITED (HKIT) [SSH]	-31	98,587	7.343	
15 MAY 2024 - 16 MAY 2024	IGBB	THE HONGKONG AND SHANGHAI BANKING CORPORATION LIMITED (HBAP) [SSH]	-31	98,587	7.343	
20 MAY 2024 - 20 MAY 2024	IGBREIT	EMPLOYEES PROVIDENT FUND BOARD ("EPF BOARD") [SSH]	-335	414,489	11.484	
17 MAY 2024 - 17 MAY 2024	IGBREIT	EMPLOYEES PROVIDENT FUND BOARD ("EPF BOARD") [SSH]	-120	414,824	11.493	
16 MAY 2024 - 16 MAY 2024	IGBREIT	EMPLOYEES PROVIDENT FUND BOARD ("EPF BOARD") [SSH]	-374	414,944	11.497	
15 MAY 2024 - 15 MAY 2024	IGBREIT	EMPLOYEES PROVIDENT FUND BOARD ("EPF BOARD") [SSH]	-639	415,318	11.507	
20 MAY 2024 - 20 MAY 2024	IHH	EMPLOYEES PROVIDENT FUND BOARD [SSH]	1,917	968,424	10.996	
17 MAY 2024 - 17 MAY 2024	IHH	EMPLOYEES PROVIDENT FUND BOARD [SSH]	911	966,506	10.974	
15 MAY 2024 - 15 MAY 2024	IHH	EMPLOYEES PROVIDENT FUND BOARD [SSH]	171	965,596	10.964	
23 MAY 2024 - 23 MAY 2024	IJM	KUMPULAN WANG PERSARAAN (DIPERBADANKAN) [SSH]	168	347,752	9.918	

Notice Period is 19th May 2024 - 25th May 2024

Effective Change Date	Stock Name	Buyer/ Seller Name [Classification]	Bought / (Sold) ('000)		No. of Shares After Trade ('000)	
			Total	Total	% Held	% Held
20 MAY 2024 - 20 MAY 2024	IJM	EMPLOYEES PROVIDENT FUND BOARD [SSH]	-457	609,968	17.397	
21 MAY 2024 - 21 MAY 2024	IJM	KUMPULAN WANG PERSARAAN (DIPERBADANKAN) [SSH]	168	347,584	9.914	
17 MAY 2024 - 17 MAY 2024	IJM	EMPLOYEES PROVIDENT FUND BOARD [SSH]	358	610,425	17.41	
20 MAY 2024 - 20 MAY 2024	IJM	KUMPULAN WANG PERSARAAN (DIPERBADANKAN) [SSH]	-218	347,416	9.909	
16 MAY 2024 - 16 MAY 2024	IJM	EMPLOYEES PROVIDENT FUND BOARD [SSH]	1,000	610,066	17.4	
15 MAY 2024 - 15 MAY 2024	IJM	EMPLOYEES PROVIDENT FUND BOARD [SSH]	-662	609,066	17.371	
23 MAY 2024 - 23 MAY 2024	INARI	KUMPULAN WANG PERSARAAN (DIPERBADANKAN) [SSH]	339	359,530	9.557	
20 MAY 2024 - 20 MAY 2024	INARI	EMPLOYEES PROVIDENT FUND BOARD [SSH]	130	389,228	10.347	
21 MAY 2024 - 21 MAY 2024	INARI	KUMPULAN WANG PERSARAAN (DIPERBADANKAN) [SSH]	450	359,191	9.548	
21 MAY 2024 - 23 MAY 2024	INARI	MR MAI MANG LEE [DIR/CEO]	-1,400	12,481	0.332	
20 MAY 2024 - 20 MAY 2024	INARI	KUMPULAN WANG PERSARAAN (DIPERBADANKAN) [SSH]	2,293	358,741	9.536	
17 MAY 2024 - 17 MAY 2024	INARI	EMPLOYEES PROVIDENT FUND BOARD [SSH]	1,036	387,838	10.31	
16 MAY 2024 - 16 MAY 2024	INARI	EMPLOYEES PROVIDENT FUND BOARD [SSH]	1,179	386,010	10.261	
17 MAY 2024 - 17 MAY 2024	INARI	KUMPULAN WANG PERSARAAN (DIPERBADANKAN) [SSH]	235	356,448	9.476	
15 MAY 2024 - 15 MAY 2024	INARI	EMPLOYEES PROVIDENT FUND BOARD [SSH]	1,000	384,830	10.23	
20 MAY 2024 - 20 MAY 2024	IOICORP	EMPLOYEES PROVIDENT FUND BOARD [SSH]	2,042	754,604	12.164	
17 MAY 2024 - 17 MAY 2024	IOICORP	EMPLOYEES PROVIDENT FUND BOARD [SSH]	3,000	752,367	12.128	
16 MAY 2024 - 16 MAY 2024	IOICORP	EMPLOYEES PROVIDENT FUND BOARD [SSH]	1,279	749,367	12.079	
15 MAY 2024 - 15 MAY 2024	IOICORP	EMPLOYEES PROVIDENT FUND BOARD [SSH]	1,212	748,088	12.059	
20 MAY 2024 - 20 MAY 2024	IOIPG	EMPLOYEES PROVIDENT FUND BOARD [SSH]	-4,200	349,862	6.354	
17 MAY 2024 - 17 MAY 2024	IOIPG	EMPLOYEES PROVIDENT FUND BOARD [SSH]	-581	354,912	6.446	
16 MAY 2024 - 16 MAY 2024	IOIPG	EMPLOYEES PROVIDENT FUND BOARD [SSH]	-291	355,463	6.456	
20 MAY 2024 - 20 MAY 2024	ITRONIC	DATUK CHU BOON TIONG [DIR/CEO]	-264	12,034	1.701	
21 MAY 2024 - 21 MAY 2024	KAB	DATO' LAI KENG ONN [DIR/CEO]	-15,600	588,497	29.62	
21 MAY 2024 - 21 MAY 2024	KAB	DATO' LAI KENG ONN [SSH]	-15,600	588,497	29.62	
20 MAY 2024 - 20 MAY 2024	KERJAYA	EMPLOYEES PROVIDENT FUND BOARD [SSH]	-39	64,670	5.128	
20 MAY 2024 - 20 MAY 2024	KLCC	EMPLOYEES PROVIDENT FUND BOARD [SSH]	-38	191,092	10.585	
20 MAY 2024 - 20 MAY 2024	KLCC	EMPLOYEES PROVIDENT FUND BOARD [SSH]	-38	191,092	10.585	
20 MAY 2024 - 20 MAY 2024	KLK	EMPLOYEES PROVIDENT FUND BOARD [SSH]	-693	148,811	13.573	
17 MAY 2024 - 17 MAY 2024	KLK	EMPLOYEES PROVIDENT FUND BOARD [SSH]	686	149,504	13.636	
16 MAY 2024 - 16 MAY 2024	KLK	EMPLOYEES PROVIDENT FUND BOARD [SSH]	722	148,817	13.573	
15 MAY 2024 - 15 MAY 2024	KLK	EMPLOYEES PROVIDENT FUND BOARD [SSH]	385	148,094	13.507	
21 MAY 2024 - 21 MAY 2024	KOSSAN	ABRDN HOLDINGS LIMITED [SSH]	-251	137,684	5.396	
21 MAY 2024 - 21 MAY 2024	KOSSAN	ABRDN MALAYSIA SDN BHD [SSH]	-251	135,279	5.302	
21 MAY 2024 - 21 MAY 2024	KOSSAN	ABRDN PLC [SSH]	-251	137,684	5.396	
20 MAY 2024 - 20 MAY 2024	KOSSAN	EMPLOYEES PROVIDENT FUND BOARD [SSH]	-483	138,796	5.44	
20 MAY 2024 - 20 MAY 2024	KOSSAN	ABRDN HOLDINGS LIMITED [SSH]	-164	137,936	5.406	
20 MAY 2024 - 20 MAY 2024	KOSSAN	ABRDN MALAYSIA SDN BHD [SSH]	-164	135,531	5.312	
20 MAY 2024 - 20 MAY 2024	KOSSAN	ABRDN PLC [SSH]	-164	137,936	5.406	
17 MAY 2024 - 17 MAY 2024	KOSSAN	EMPLOYEES PROVIDENT FUND BOARD [SSH]	-1,150	139,279	5.458	
16 MAY 2024 - 16 MAY 2024	KOSSAN	EMPLOYEES PROVIDENT FUND BOARD [SSH]	-2,525	140,430	5.504	
15 MAY 2024 - 15 MAY 2024	KOSSAN	EMPLOYEES PROVIDENT FUND BOARD [SSH]	-1,155	142,955	5.603	
17 MAY 2024 - 20 MAY 2024	LAYHONG	DATO' YAP HOONG CHAI [DIR/CEO]	-70	277,401	36.847	
23 MAY 2024 - 23 MAY 2024	LBS	TAN SRI DATO' SRI IR. (DR.) LIM HOCK SAN JP [DIR/CEO]	100	613,172	39.556	
23 MAY 2024 - 23 MAY 2024	LBS	TAN SRI DATO' SRI IR. (DR.) LIM HOCK SAN JP [SSH]	100	608,419	39.25	
17 MAY 2024 - 17 MAY 2024	LUSTER	MR CHUAH CHONG EWE [DIR/CEO]	350	463,821	15.345	
17 MAY 2024 - 17 MAY 2024	LUSTER	MR CHUAH CHONG EWE [SSH]	350	463,821	15.345	
21 MAY 2024 - 21 MAY 2024	M&A	CIK SITI NUR AISHAH BINTI ISHAK [SSH]	700	108,644	5.436	
21 MAY 2024 - 21 MAY 2024	MATRIX	LEMBAGA TABUNG HAJI [SSH]	-500	70,298	5.618	
20 MAY 2024 - 20 MAY 2024	MAXIS	EMPLOYEES PROVIDENT FUND BOARD ("EPF BOARD") [SSH]	439	885,163	11.302	
17 MAY 2024 - 17 MAY 2024	MAXIS	EMPLOYEES PROVIDENT FUND BOARD ("EPF BOARD") [SSH]	1,000	884,924	11.299	
16 MAY 2024 - 16 MAY 2024	MAXIS	EMPLOYEES PROVIDENT FUND BOARD ("EPF BOARD") [SSH]	590	883,924	11.286	
15 MAY 2024 - 15 MAY 2024	MAXIS	EMPLOYEES PROVIDENT FUND BOARD ("EPF BOARD") [SSH]	600	883,334	1	

Notice Period is 19th May 2024 – 25th May 2024

Effective Change Date	Stock Name	Buyer/ Seller Name [Classification]	Bought / (Sold) ['000]		No. of Shares After Trade ['000]	
			Total	Total	% Held	% Held
20 MAY 2024 - 20 MAY 2024	MQTECH	MR TERENCE CHEAH EU LEE [DIR/CEO]	-26,192	15,000	0.965	
20 MAY 2024 - 20 MAY 2024	MRDIY	EMPLOYEES PROVIDENT FUND BOARD [SSH]	600	587,380	6.216	
17 MAY 2024 - 17 MAY 2024	MRDIY	EMPLOYEES PROVIDENT FUND BOARD [SSH]	3,284	586,780	6.21	
16 MAY 2024 - 16 MAY 2024	MRDIY	EMPLOYEES PROVIDENT FUND BOARD [SSH]	3,969	583,495	6.175	
15 MAY 2024 - 15 MAY 2024	MRDIY	EMPLOYEES PROVIDENT FUND BOARD [SSH]	7,534	579,527	6.133	
23 MAY 2024 - 23 MAY 2024	MYEG	KUMPULAN WANG PERSARAAN (DIPERBADANKAN) [SSH]	-7,262	528,689	7.087	
21 MAY 2024 - 21 MAY 2024	MYEG	KUMPULAN WANG PERSARAAN (DIPERBADANKAN) [SSH]	-7,000	535,951	7.186	
20 MAY 2024 - 20 MAY 2024	MYEG	KUMPULAN WANG PERSARAAN (DIPERBADANKAN) [SSH]	-4,500	542,951	7.28	
16 MAY 2024 - 16 MAY 2024	MYEG	EMPLOYEES PROVIDENT FUND BOARD [SSH]	-9,034	373,203	5.003	
17 MAY 2024 - 17 MAY 2024	MYEG	KUMPULAN WANG PERSARAAN (DIPERBADANKAN) [SSH]	1,210	547,451	7.34	
15 MAY 2024 - 15 MAY 2024	MYEG	EMPLOYEES PROVIDENT FUND BOARD [SSH]	9,133	382,237	5.124	
20 MAY 2024 - 21 MAY 2024	NATGATE	MR LEE KIM SAN [DIR/CEO]	-600	14,600	0.704	
20 MAY 2024 - 21 MAY 2024	NATGATE	MR LEE KIM SAN [DIR/CEO]	-600	14,687	0.708	
20 MAY 2024 - 20 MAY 2024	NESTLE	EMPLOYEES PROVIDENT FUND BOARD [SSH]	-35	26,442	11.276	
17 MAY 2024 - 17 MAY 2024	NESTLE	EMPLOYEES PROVIDENT FUND BOARD [SSH]	45	26,477	11.291	
16 MAY 2024 - 16 MAY 2024	NESTLE	EMPLOYEES PROVIDENT FUND BOARD [SSH]	25	26,425	11.269	
15 MAY 2024 - 15 MAY 2024	NESTLE	EMPLOYEES PROVIDENT FUND BOARD [SSH]	47	26,400	11.258	
20 MAY 2024 - 21 MAY 2024	NEXGRAM	RFC HOLDINGS SDN BHD [SSH]	-23,147	67,968	7.647	
15 MAY 2024 - 16 MAY 2024	NEXGRAM	RFC HOLDINGS SDN BHD [SSH]	-44,600	91,115	10.251	
21 MAY 2024 - 21 MAY 2024	NIHSIN	ENCIK SOFIYAN BIN YAHYA [DIR/CEO]	20	19,359	3.697	
20 MAY 2024 - 20 MAY 2024	NIHSIN	ENCIK SOFIYAN BIN YAHYA [DIR/CEO]	348	19,339	3.693	
23 MAY 2024 - 23 MAY 2024	OMESTI	MR MONTEIRO GERARD CLAIR [DIR/CEO]	-829	79,073	14.625	
23 MAY 2024 - 23 MAY 2024	OMESTI	MR MONTEIRO GERARD CLAIR [SSH]	-829	79,073	14.625	
20 MAY 2024 - 20 MAY 2024	OMESTI	MR MONTEIRO GERARD CLAIR [DIR/CEO]	-2,612	79,902	14.779	
20 MAY 2024 - 20 MAY 2024	OMESTI	MR MONTEIRO GERARD CLAIR [SSH]	-2,612	79,902	14.779	
20 MAY 2024 - 20 MAY 2024	PADINI	EMPLOYEES PROVIDENT FUND BOARD [SSH]	22	44,893	6.824	
17 MAY 2024 - 17 MAY 2024	PADINI	EMPLOYEES PROVIDENT FUND BOARD [SSH]	172	44,871	6.82	
16 MAY 2024 - 16 MAY 2024	PADINI	EMPLOYEES PROVIDENT FUND BOARD [SSH]	108	44,698	6.794	
15 MAY 2024 - 15 MAY 2024	PADINI	EMPLOYEES PROVIDENT FUND BOARD [SSH]	36	44,590	6.778	
20 MAY 2024 - 20 MAY 2024	PANAMY	EMPLOYEES PROVIDENT FUND BOARD [SSH]	-112	6,469	10.649	
17 MAY 2024 - 17 MAY 2024	PANAMY	EMPLOYEES PROVIDENT FUND BOARD [SSH]	-30	6,580	10.832	
17 MAY 2024 - 17 MAY 2024	PANSAR	HIGHLINE SHIPPING SDN BHD [SSH]	875	40,141	7.95	
20 MAY 2024 - 20 MAY 2024	PAVREIT	EMPLOYEES PROVIDENT FUND BOARD [SSH]	1,715	432,933	11.839	
16 MAY 2024 - 16 MAY 2024	PAVREIT	EMPLOYEES PROVIDENT FUND BOARD [SSH]	2,071	431,218	11.792	
20 MAY 2024 - 20 MAY 2024	PBBANK	EMPLOYEES PROVIDENT FUND BOARD [SSH]	2,658	3,110,338	16.02	
17 MAY 2024 - 17 MAY 2024	PBBANK	EMPLOYEES PROVIDENT FUND BOARD [SSH]	1,800	3,107,680	16.01	
16 MAY 2024 - 16 MAY 2024	PBBANK	EMPLOYEES PROVIDENT FUND BOARD [SSH]	8,044	3,105,880	16	
15 MAY 2024 - 15 MAY 2024	PBBANK	EMPLOYEES PROVIDENT FUND BOARD [SSH]	15,500	3,097,837	15.96	
14 MAY 2024 - 14 MAY 2024	PBBANK	EMPLOYEES PROVIDENT FUND BOARD [SSH]	4,250	3,082,337	15.88	
15 MAY 2024 - 15 MAY 2024	PCHEM	EMPLOYEES PROVIDENT FUND BOARD ("EPF BOARD") [SSH]	-2,147	936,278	11.703	
20 MAY 2024 - 20 MAY 2024	PENTA	EMPLOYEES PROVIDENT FUND BOARD [SSH]	-37	61,855	8.696	
16 MAY 2024 - 16 MAY 2024	PENTA	EMPLOYEES PROVIDENT FUND BOARD [SSH]	884	61,892	8.701	
17 MAY 2024 - 17 MAY 2024	PENTA	LEMBAGA TABUNG HAJI [SSH]	-50	35,911	5.049	
20 MAY 2024 - 20 MAY 2024	PETDAG	EMPLOYEES PROVIDENT FUND BOARD ("EPF BOARD") [SSH]	15	123,478	12.429	
20 MAY 2024 - 20 MAY 2024	PETGAS	EMPLOYEES PROVIDENT FUND BOARD [SSH]	269	255,933	12.934	
17 MAY 2024 - 17 MAY 2024	PETGAS	EMPLOYEES PROVIDENT FUND BOARD [SSH]	-223	255,664	12.921	
20 MAY 2024 - 20 MAY 2024	PETGAS	KUMPULAN WANG PERSARAAN (DIPERBADANKAN) ("KWAP") [SSH]	-300	196,984	9.955	
16 MAY 2024 - 16 MAY 2024	PETGAS	EMPLOYEES PROVIDENT FUND BOARD [SSH]	-167	255,886	12.932	
15 MAY 2024 - 15 MAY 2024	PETGAS	EMPLOYEES PROVIDENT FUND BOARD [SSH]	1,111	256,053	12.94	
17 MAY 2024 - 17 MAY 2024	PGF	EQUAPLUS SDN BHD [SSH]	-7,500	54,337	33.06	
17 MAY 2024 - 17 MAY 2024	PGF	MR FONG WAH KAI [DIR/CEO]	-7,500	61,119	37.19	
17 MAY 2024 - 17 MAY 2024	PGF	MR FONG WAH KAI [SSH]	-7,500	61,119	37.19	
08 MAY 2024 - 20 MAY 2024	PJBUMI	PUAN HAFIDAH BINTI PAWANCHIK [SSH]	-515	5,215	6.36	
17 MAY 2024 - 17 MAY 2024	POHKONG	MADAM LIM MEE HWA [SSH]	-214	27,750	6.763	
17 MAY 2024 - 17 MAY 2024	POHKONG	MR YEO SENG CHONG [SSH]	-214	27,750	6.763	
17 MAY 2024 - 17 MAY 2024	POHKONG	YEOMAN 3-RIGHTS VALUE ASIA FUND VCC [SSH]	-214	22,500	11.064	
17 MAY 2024 - 17 MAY 2024	POHKONG	YEOMAN CAPITAL MANAGEMENT PTE LTD [SSH]	-214	23,500	5.727	
17 MAY 2024 - 17 MAY 2024	POHKONG	DATO CHOON YEE SEIONG [DIR/CEO]	-100	256,311	62.46	
17 MAY 2024 - 17 MAY 2024	POHKONG	DATO CHOON YEE SEIONG [SSH]	-100	256,311	62.46	
17 MAY 2024 - 17 MAY 2024	POHKONG	DATO CHOON YOKE YING [SSH]	-100	255,324	62.22	
17 MAY 2024 - 17 MAY 2024	POHKONG	ENCIK MOHD ANNUAR CHOON BIN ABDULLAH [SSH]	-100	255,057	62.16	
17 MAY 2024 - 17 MAY 2024	POHKONG	MADAM CHOON CHING YIH [SSH]	-100	254,929	62.12	
17 MAY 2024 - 17 MAY 2024	POHKONG	MADAM CHOON NEE SIEW [DIR/CEO]	-100	255,170	62.18	
17 MAY 2024 - 17 MAY 2024	POHKONG	MADAM CHOON NEE SIEW [SSH]	-100	255,170	62.18	
17 MAY 2024 - 17 MAY 2024	POHKONG	MADAM CHOON WAN JOO [SSH]	-100	255,029	62.15	
17 MAY 2024 - 17 MAY 2024	POHKONG	MADAM LIM MEE HWA [SSH]	-214	27,750	6.763	
17 MAY 2024 - 17 MAY 2024	POHKONG	MR CHOON YEE BIN [DIR/CEO]	-100	255,200	62.19	
17 MAY 2024 - 17 MAY 2024	POHKONG	MR CHOON YEE BIN [SSH]	-100	255,200	62.19	
17 MAY 2024 - 17 MAY 2024	POHKONG	MR CHOON YEE FOOK [SSH]	-100	255,029	62.15	
17 MAY 2024 - 17 MAY 2024	POHKONG	MR YEO SENG CHONG [SSH]	-214	27,750	6.763	
17 MAY 2024 - 17 MAY 2024	POHKONG	YEOMAN 3-RIGHTS VALUE ASIA FUND VCC [SSH]	-214	22,500	5.483	
17 MAY 2024 - 17 MAY 2024	POHKONG	YEOMAN CAPITAL MANAGEMENT PTE LTD [SSH]	-214	23,500	5.727	
20 MAY 2024 - 20 MAY 2024	PPB	EMPLOYEES PROVIDENT FUND BOARD [SSH]	496	160,883	11.309	
17 MAY 2024 - 17 MAY 2024	PPB	EMPLOYEES PROVIDENT FUND BOARD [SSH]	-96	160,387	11.274	
16 MAY 2024 - 16 MAY 2024	PPB	EMPLOYEES PROVIDENT FUND BOARD [SSH]	429	160,483	11.281	
15 MAY 2024 - 15 MAY 2024	PPB	EMPLOYEES PROVIDENT FUND BOARD [SSH]	10	160,055	11.251	
20 MAY 2024 - 20 MAY 2024	QL	EMPLOYEES PROVIDENT FUND BOARD [SSH]	-218	134,384	5.522	
17 MAY 2024 - 17 MAY 2024	QL	EMPLOYEES PROVIDENT FUND BOARD [SSH]	-303	134,602	5.531	
16 MAY 2024 - 16 MAY 2024	QL	EMPLOYEES PROVIDENT FUND BOARD [SSH]	634	134,905	5.543	
15 MAY 2024 - 15 MAY 2024	QL	EMPLOYEES PROVIDENT FUND BOARD [SSH]	1,195	134,271	5.517	
23 MAY 2024 - 23 MAY 2024	RHBBANK	KUMPULAN WANG PERSARAAN (DIPERBADANKAN) [SSH]	-1,000	256,638	5.887	
20 MAY 2024 - 20 MAY 2024	RHBBANK	EMPLOYEES PROVIDENT FUND BOARD [SSH]	-1,512	1,758,692	40.342	
21 MAY 2024 - 21 MAY 2024	RHBBANK	KUMPULAN WANG PERSARAAN (DIPERBADANKAN) [SSH]	-700	257,638	5.91	
17 MAY 2024 - 17 MAY 2024	RHBBANK	EMPLOYEES PROVIDENT FUND BOARD [SSH]	35,006	1,760,203	40.376	
20 MAY 2024 - 20 MAY 2024	RHBBANK	KUMPULAN WANG PERSARAAN (DIPERBADANKAN) [SSH]	-1,000	258,338	5.926	
16 MAY 2024 - 16 MAY 2024	RHBBANK	EMPLOYEES PROVIDENT FUND BOARD [SSH]	-4,000	1,725,197	40.249	

Notice Period is 19th May 2024 – 25th May 2024

Effective Change Date	Stock Name	Buyer/ Seller Name [Classification]	Bought / (Sold) ['000]		No. of Shares After Trade ['000]	
			Total	Total	% Held	% Held
17 MAY 2024 - 17 MAY 2024	RHBBANK	KUMPULAN WANG PERSARAAN (DIPERBADANKAN) [SSH]	359	259,338	5.949	
15 MAY 2024 - 15 MAY 2024	RHBBANK	EMPLOYEES PROVIDENT FUND BOARD [SSH]	-2,329	1,729,197	40.342	
20 MAY 2024 - 20 MAY 2024	SAM	EMPLOYEES PROVIDENT FUND BOARD [SSH]	-140	44,053	6.507	
17 MAY 2024 - 17 MAY 2024	SAM	EMPLOYEES PROVIDENT FUND BOARD [SSH]	-274	44,193	6.528	
16 MAY 2024 - 16 MAY 2024	SAM	EMPLOYEES PROVIDENT FUND BOARD [SSH]	-263	44,467	6.568	
15 MAY 2024 - 15 MAY 2024	SAM	EMPLOYEES PROVIDENT FUND BOARD [SSH]	-15	44,730	6.607	
17 MAY 2024 - 17 MAY 2024	SCOMNET	MADAM WU HUEI-CHUNG [DIR/CEO]	8,161	450,537	53.94	
17 MAY 2024 - 17 MAY 2024	SCOMNET	MADAM WU HUEI-CHUNG [SSH]	8,161	450,537	53.94	
17 MAY 2024 - 17 MAY 2024	SCOMNET	MR HSUEH CHIH-YU [DIR/CEO]	8,161	450,537	53.941	
17 MAY 2024 - 17 MAY 2024	SCOMNET	MR HSUEH CHIH-YU [SSH]	8,161	450,537	53.941	
17 MAY 2024 - 17 MAY 2024	SCOMNET	MR SHIUE JONG-ZONE A.K.A. JAMES SHIUE [DIR/CEO]	8,161	450,537	53.94	
17 MAY 2024 - 17 MAY 2024	SCOMNET	MR SHIUE JONG-ZONE A.K.A. JAMES SHIUE [SSH]	8,161	450,537	53.94	
17 MAY 2024 - 17 MAY 2024	SCOMNET	MR WU CHUNG-JUNG [DIR/CEO]	8,161	450,537	53.941	
17 MAY 2024 - 17 MAY 2024	SCOMNET	MR WU CHUNG-JUNG [SSH]	8,161	450,537	53.941	
16 MAY 2024 - 16 MAY 2024	SCOMNET	EMPLOYEES PROVIDENT FUND BOARD [SSH]	-667	41,652	5.04	
26 APR 2024 - 17 MAY 2024	SCOMNET	MR SHIUE JYH-JEH @ JERRY [SSH]	9,971	45,417	54.376	
15 MAY 2024 - 15 MAY 2024	SCOMNET	EMPLOYEES PROVIDENT FUND BOARD [SSH]	-3,118	42,319	5.121	
20 MAY 2024 - 20 MAY 2024	SENTRAL	EMPLOYEES PROVIDENT FUND BOARD [SSH]	-214	11,643	9.739	
17 MAY 2024 - 17 MAY 2024	SENTRAL	EMPLOYEES PROVIDENT FUND BOARD [SSH]	-695	11,664	9.757	
21 MAY 2024 - 21 MAY 2024	SERNKOU	MR LOW PENG SIAN @ CHUA PENG SIAN [DIR/CEO]	-4,400	256,777	23.817	
21 MAY 2024 - 21 MAY 2024	SERNKOU	MR LOW PENG SIAN @ CHUA PENG SIAN [SSH]	-4,400	256,777	23.817	
21 MAY 2024 - 21 MAY 2024	SIME	AMANAHRAYA TRUSTEES BERHAD - AMANAH SAHAM BUMIPUTERA [SSH]	-1,952	247,404	36.3	
20 MAY 2024 - 21 MAY 2024	SIME	KUMPULAN WANG PERSARAAN (DIPERBADANKAN) [SSH]	-1,655	50,984	7.454	
16 MAY 2024 - 17 MAY 2024	SIME	EMPLOYEES PROVIDENT FUND BOARD [SSH]	4,821	97,976	14.375	
17 MAY 2024 - 17 MAY 2024	SIME	AMANAHRAYA TRUSTEES BERHAD - AMANAH SAHAM BUMIPUTERA [SSH]	-4,705	247,600	36.328	
16 MAY 2024 - 16 MAY 2024	SIME	AMANAHRAYA TRUSTEES BERHAD - AMANAH SAHAM BUMIPUTERA [SSH]	-720	248,075	36.397	
15 MAY 2024 - 15 MAY 2024	SIME	EMPLOYEES PROVIDENT FUND BOARD [SSH]	5,492	97,496	14.304	
16 MAY 2024 - 16 MAY 2024	SIME	KUMPULAN WANG PERSARAAN (DIPERBADANKAN) [SSH]	-1,000	50,963	7.478	
15 MAY 2024 - 15 MAY 2024	SIME	AMANAHRAYA TRUSTEES BERHAD - AMANAH SAHAM BUMIPUTERA [SSH]	-3,059	248,142	36.408	
14 MAY 2024 - 14 MAY 2024	SIME	EMPLOYEES PROVIDENT FUND BOARD [SSH]	-1,723	96,943	14.224	
17 MAY 2024 - 20 MAY 2024	SIMEPLT	EMPLOYEES PROVIDENT FUND BOARD [SSH]	1,500	10,601	15.33	
16 MAY 2024 - 16 MAY 2024	SIMEPLT	EMPLOYEES PROVIDENT FUND BOARD [SSH]	38	10,586	15.308	
15 MAY 2024 - 15 MAY 2024	SIMEPLT	EMPLOYEES PROVIDENT FUND BOARD [SSH]	463	10,586	15.308	
23 MAY 2024 - 23 MAY 2024	SIMEPROP	KUMPULAN WANG PERSARAAN (DIPERBADANKAN) [SSH]	436	45,021	6.62	
21 MAY 2024 - 21 MAY 2024	SIMEPROP	KUMPULAN WANG PERSARAAN (DIPERBADANKAN) [SSH]	2,210	44,973	6.614	
20 MAY 2024 - 20 MAY 2024	SIMEPROP	KUMPULAN WANG PERSARAAN (DIPERBADANKAN) [SSH]	1,395	44,753	6.581	
17 MAY 2024 - 17 MAY 2024	SIMEPROP	KUMPULAN WANG PERSARAAN (DIPERBADANKAN) [SSH]	650	44,617	6.561	
17 MAY 2024 - 17 MAY 2024	SKPRES	EMPLOYEES PROVIDENT FUND BOARD [SSH]	37	15,223	9.743	
17 MAY 2024 - 17 MAY 2024	SKPRES	ABRDN HOLDINGS LIMITED [SSH]	77	8,393	5.372	
17 MAY 2024 - 17 MAY 2024	SKPRES	ABRDN MALAYSIA SDN BHD [SSH]	77	8,393	5.372	
17 MAY 2024 - 17 MAY 2024	SKPRES	ABRDN PLC [SSH]	77	8,393	5.372	
16 MAY 2024 - 16 MAY 2024	SKPRES	EMPLOYEES PROVIDENT FUND BOARD [SSH]	1,357	15,218	9.741	
17 MAY 2024 - 17 MAY 2024	SKPRES	KUMPULAN WANG PERSARAAN (DIPERBADANKAN) [SSH]	40	14,167	9.068	
16 MAY 2024 - 16 MAY 2024	SKPRES	ABRDN HOLDINGS LIMITED [SSH]	1,357	8,358	5.367	
16 MAY 2024 - 16 MAY 2024	SKPRES	ABRDN MALAYSIA SDN BHD [SSH]	1,357	8,358	5.367	
16 MAY 2024 - 16 MAY 2024	SKPRES	ABRDN PLC [SSH]	1,357	8,358	5.367	
21 MAY 2024 - 21 MAY 2024	SMETRIC	MR LAW SEEH KEY [DIR/CEO]	-5,000	17,065	29.58	
21 MAY 2024 - 21 MAY 2024	SMETRIC	MR LAW SEEH KEY [SSH]	-5,000	17,065	29.58	
20 MAY 2024 - 21 MAY 2024	SMILE	DATIN WONG CHIEN YUE [DIR/CEO]	100	12,632	50.241	

Notice Period is 19th May 2024 - 25th May 2024

Effective Change Date	Stock Name	Buyer/ Seller Name [Classification]	Bought / (Sold) ['000]		No. of Shares After Trade ['000]	
			Total	% Held	Total	% Held
21 MAY 2024 - 21 MAY 2024	TAFI	DATO' SRI WONG SZE CHIEN [DIR/CEO]	20		216277	57.001
21 MAY 2024 - 21 MAY 2024	TAFI	DATO' SRI WONG SZE CHIEN [SSH]	20		216277	57.001
20 MAY 2024 - 20 MAY 2024	TAFI	ARMANI SYNERGY SDN. BHD. [SSH]	85		205972	54.285
20 MAY 2024 - 20 MAY 2024	TAFI	DATO' SRI ANDREW LIM ENG GUAN [DIR/CEO]	85		216401	57.034
20 MAY 2024 - 20 MAY 2024	TAFI	DATO' SRI ANDREW LIM ENG GUAN [SSH]	85		216401	57.034
20 MAY 2024 - 20 MAY 2024	TAFI	DATO' SRI AZLAN BIN AZMI [DIR/CEO]	85		206137	54.328
20 MAY 2024 - 20 MAY 2024	TAFI	DATO' SRI AZLAN BIN AZMI [SSH]	85		206137	54.328
20 MAY 2024 - 20 MAY 2024	TAFI	DATO' SRI WONG SZE CHIEN [DIR/CEO]	85		216257	56.996
20 MAY 2024 - 20 MAY 2024	TAFI	DATO' SRI WONG SZE CHIEN [SSH]	85		216257	56.996
17 MAY 2024 - 17 MAY 2024	TAFI	ARMANI SYNERGY SDN. BHD. [SSH]	71		205887	54.262
17 MAY 2024 - 17 MAY 2024	TAFI	DATO' SRI ANDREW LIM ENG GUAN [DIR/CEO]	71		216316	57.011
17 MAY 2024 - 17 MAY 2024	TAFI	DATO' SRI ANDREW LIM ENG GUAN [SSH]	71		216316	57.011
17 MAY 2024 - 17 MAY 2024	TAFI	DATO' SRI AZLAN BIN AZMI [DIR/CEO]	71		206052	54.305
17 MAY 2024 - 17 MAY 2024	TAFI	DATO' SRI AZLAN BIN AZMI [SSH]	71		206052	54.305
17 MAY 2024 - 17 MAY 2024	TAFI	DATO' SRI WONG SZE CHIEN [DIR/CEO]	137		216172	56.973
17 MAY 2024 - 17 MAY 2024	TAFI	DATO' SRI WONG SZE CHIEN [SSH]	137		216172	56.973
20 MAY 2024 - 20 MAY 2024	TAKAFUL	EMPLOYEES PROVIDENT FUND BOARD [SSH]	-218		129189	15.429
16 MAY 2024 - 16 MAY 2024	TAKAFUL	EMPLOYEES PROVIDENT FUND BOARD [SSH]	-93		129407	15.455
23 MAY 2024 - 23 MAY 2024	TENAGA	KUMPULAN WANG PERSARAAN (DIPERBADANKAN) [SSH]	-500		428731	7.41
20 MAY 2024 - 20 MAY 2024	TENAGA	EMPLOYEES PROVIDENT FUND BOARD [SSH]	1,350		1057922	18.28
21 MAY 2024 - 21 MAY 2024	TENAGA	KUMPULAN WANG PERSARAAN (DIPERBADANKAN) [SSH]	-500		429231	7.42
17 MAY 2024 - 17 MAY 2024	TENAGA	EMPLOYEES PROVIDENT FUND BOARD [SSH]	866		1056571	18.26
20 MAY 2024 - 20 MAY 2024	TENAGA	KUMPULAN WANG PERSARAAN (DIPERBADANKAN) [SSH]	-500		429731	7.43
16 MAY 2024 - 16 MAY 2024	TENAGA	EMPLOYEES PROVIDENT FUND BOARD [SSH]	2,646		1055706	18.24
15 MAY 2024 - 15 MAY 2024	TENAGA	EMPLOYEES PROVIDENT FUND BOARD [SSH]	223		1053060	18.2
20 MAY 2024 - 20 MAY 2024	TIMECOM	EMPLOYEES PROVIDENT FUND BOARD [SSH]	874		215808	11.673
17 MAY 2024 - 17 MAY 2024	TIMECOM	EMPLOYEES PROVIDENT FUND BOARD [SSH]	534		215320	11.646
16 MAY 2024 - 16 MAY 2024	TIMECOM	EMPLOYEES PROVIDENT FUND BOARD [SSH]	1,034		214786	11.617
15 MAY 2024 - 15 MAY 2024	TIMECOM	EMPLOYEES PROVIDENT FUND BOARD [SSH]	200		213550	11.551
23 MAY 2024 - 23 MAY 2024	TM	KUMPULAN WANG PERSARAAN (DIPERBADANKAN) [SSH]	-213		359392	9.365
21 MAY 2024 - 21 MAY 2024	TM	AMANAHRAYA TRUSTEES BERHAD-AMANAH SAHAM BUMIPUTERA [SSH]	-2,886		306914	7.997
20 MAY 2024 - 20 MAY 2024	TM	EMPLOYEE PROVIDENT FUND BOARD (EPF BOARD) [SSH]	3,937		667932	17.405
21 MAY 2024 - 21 MAY 2024	TM	KUMPULAN WANG PERSARAAN (DIPERBADANKAN) [SSH]	-1,661		359605	9.37
20 MAY 2024 - 20 MAY 2024	TM	AMANAHRAYA TRUSTEES BERHAD-AMANAH SAHAM BUMIPUTERA [SSH]	-3,000		309800	8.073
17 MAY 2024 - 17 MAY 2024	TM	EMPLOYEE PROVIDENT FUND BOARD (EPF BOARD) [SSH]	1,967		663995	17.302
20 MAY 2024 - 20 MAY 2024	TM	KUMPULAN WANG PERSARAAN (DIPERBADANKAN) [SSH]	-3,000		361265	9.414
16 MAY 2024 - 16 MAY 2024	TM	EMPLOYEE PROVIDENT FUND BOARD (EPF BOARD) [SSH]	525		662029	17.251
15 MAY 2024 - 15 MAY 2024	TM	EMPLOYEE PROVIDENT FUND BOARD (EPF BOARD) [SSH]	-67		661503	17.237
17 MAY 2024 - 17 MAY 2024	TOPGLOV	KUMPULAN WANG PERSARAAN (DIPERBADANKAN) [SSH]	11,000		527274	6.584

Notice Period is 19th May 2024 - 25th May 2024

Effective Change Date	Stock Name	Buyer/ Seller Name [Classification]	Bought / (Sold) ['000]		No. of Shares After Trade ['000]	
			Total	% Held	Total	% Held
17 MAY 2024 - 17 MAY 2024	TRIMODE	DATIN SAM CHOI LAI [DIR/CEO]	50		34287	20.655
17 MAY 2024 - 17 MAY 2024	TRIMODE	DATIN SAM CHOI LAI [SSH]	50		34287	20.655
17 MAY 2024 - 17 MAY 2024	TRIMODE	DATO' HEW HAN SENG [DIR/CEO]	50		118189	71.198
17 MAY 2024 - 17 MAY 2024	TRIMODE	DATO' HEW HAN SENG [SSH]	50		118189	71.198
23 MAY 2024 - 23 MAY 2024	UMCCA	MR TEE CHENG HUA [DIR/CEO]	9		59492	28.361
21 MAY 2024 - 21 MAY 2024	UMCCA	MR TEE CHENG HUA [DIR/CEO]	49		59483	28.357
20 MAY 2024 - 20 MAY 2024	UTDPLT	EMPLOYEES PROVIDENT FUND BOARD [SSH]	-25		27877	6.721
17 MAY 2024 - 17 MAY 2024	UTDPLT	EMPLOYEES PROVIDENT FUND BOARD [SSH]	63		27901	6.727
16 MAY 2024 - 16 MAY 2024	UTDPLT	EMPLOYEES PROVIDENT FUND BOARD [SSH]	-8		27838	6.711
15 MAY 2024 - 15 MAY 2024	UTDPLT	EMPLOYEES PROVIDENT FUND BOARD [SSH]	51		27846	6.713
16 MAY 2024 - 16 MAY 2024	UWC	EMPLOYEES PROVIDENT FUND BOARD [SSH]	293		94085	8.538
23 MAY 2024 - 23 MAY 2024	VS	KUMPULAN WANG PERSARAAN [SSH]	1,013		361048	9.448
21 MAY 2024 - 21 MAY 2024	VS	KUMPULAN WANG PERSARAAN [SSH]	-1,000		360034	9.422
17 MAY 2024 - 17 MAY 2024	VS	EMPLOYEES PROVIDENT FUND BOARD [SSH]	1,295		286992	7.51
20 MAY 2024 - 20 MAY 2024	VS	KUMPULAN WANG PERSARAAN [SSH]	1,500		361034	9.448
16 MAY 2024 - 16 MAY 2024	VS	EMPLOYEES PROVIDENT FUND BOARD [SSH]	-2,738		285697	7.476
15 MAY 2024 - 15 MAY 2024	VS	EMPLOYEES PROVIDENT FUND BOARD [SSH]	-164		288436	7.548
23 MAY 2024 - 23 MAY 2024	WIDAD	TAN SRI MUHAMMAD IKMAL OPAT BIN ABDULLAH [SSH]	-500		517203	16.703
23 MAY 2024 - 23 MAY 2024	WIDAD	WIDAD BUSINESS GROUP SDN. BHD. [SSH]	-500		509128	16.442
21 MAY 2024 - 21 MAY 2024	WIDAD	TAN SRI MUHAMMAD IKMAL OPAT BIN ABDULLAH [SSH]	-1,000		517703	16.719
21 MAY 2024 - 21 MAY 2024	WIDAD	WIDAD BUSINESS GROUP SDN. BHD. [SSH]	-1,000		509628	16.458
20 MAY 2024 - 20 MAY 2024	WIDAD	TAN SRI MUHAMMAD IKMAL OPAT BIN ABDULLAH [SSH]	-10,250		518703	16.752
20 MAY 2024 - 20 MAY 2024	WIDAD	WIDAD BUSINESS GROUP SDN. BHD. [SSH]	-10,250		510628	16.491
17 MAY 2024 - 17 MAY 2024	WIDAD	TAN SRI MUHAMMAD IKMAL OPAT BIN ABDULLAH [SSH]	-500		528953	17.083
17 MAY 2024 - 17 MAY 2024	WIDAD	WIDAD BUSINESS GROUP SDN. BHD. [SSH]	-500		520878	16.822
20 MAY 2024 - 20 MAY 2024	WPRTS	EMPLOYEES PROVIDENT FUND BOARD [SSH]	9		323890	9.498
15 MAY 2024 - 16 MAY 2024	XL	MR NG MIN LIN [DIR/CEO]	1,242		76995	27.023
15 MAY 2024 - 16 MAY 2024	XL	MR NG MIN LIN [SSH]	1,242		76995	27.023
21 MAY 2024 - 21 MAY 2024	YEWLEE	ENCIK MAHDZIR BIN OTHMAN [DIR/CEO]	-100		400	0.075
23 MAY 2024 - 23 MAY 2024	YEWLEE-WA	ENCIK MAHDZIR BIN OTHMAN [DIR/CEO]	-100		200	0.076
16 MAY 2024 - 16 MAY 2024	YINSON	EMPLOYEES PROVIDENT FUND BOARD [SSH]	4,253		535519	17.691
15 MAY 2024 - 15 MAY 2024	YINSON	EMPLOYEES PROVIDENT FUND BOARD [SSH]	2,975		531266	17.551
23 MAY 2024 - 23 MAY 2024	YTL	DATO' YEOH SEOK KIAN [DIR/CEO]	1,200		76605	0.696
20 MAY 2024 - 23 MAY 2024	ZECON	TAN SRI TOMMY BIN BUGO@HAMID BIN BUGO [SSH]	-279		20715	14.053
16 MAY 2024 - 17 MAY 2024	ZECON	TAN SRI TOMMY BIN BUGO@HAMID BIN BUGO [SSH]	-134		20994	14.242
23 MAY 2024 - 23 MAY 2024	ZHULIAN	MR TEOH BENG SENG [SSH]	-293		268291	58.321
23 MAY 2024 - 23 MAY 2024	ZHULIAN	THE BEST SOURCE HOLDINGS PTE. LTD. [SSH]	-293		65344	14.205
21 MAY 2024 - 21 MAY 2024	ZHULIAN	MR TEOH BENG SENG [SSH]	-300		268584	58.385
21 MAY 2024 - 21 MAY 2024	ZHULIAN	THE BEST SOURCE HOLDINGS PTE. LTD. [SSH]	-300		65637	14.269
20 MAY 2024 - 20 MAY 2024	ZHULIAN	MR TEOH BENG SENG [SSH]	-300		268884	58.45
20 MAY 2024 - 20 MAY 2024	ZHULIAN	THE BEST SOURCE HOLDINGS PTE. LTD. [SSH]	-300		65937	14.334
17 MAY 2024 - 17 MAY 2024	ZHULIAN	MR TEOH BENG SENG [SSH]	-210		269184	58.515
17 MAY 2024 - 17 MAY 2024	ZHULIAN	THE BEST SOURCE HOLDINGS PTE. LTD. [SSH]	-210		66237	14.399

Disclaimer: The Information in Insider Activity is extracted from www.shareinvestor.com/fundamental/insider_trades. The information on this page is provided as a service to readers. It does not constitute financial advice and/or any investment recommendations. We assume no liability for damages resulting from or arising out of the use of such information. Whilst every effort is made to ensure accuracy, the information presented is not the official record of shareholder filings. Readers are advised to read the original filings on the Bursa Malaysia website at www.bursamalaysia.com

Invest 197
A Weekly e-Publication by SHAREINVESTOR.COM
FRIDAY 01 MARCH 2024

It's the right time for retail investors to come back
See more on page 30-37

Kenny Yee
Head of Research, Rakuten Trade Sdn Bhd

MARKET SENTIMENTS
• Net foreign buying on Bursa with RM400.7m inflow - MIDF
• Malaysian debt capital market set to dominate in 2024 - Fitch Ratings
See more on page 41-43

BEHIND THE TICKER
which helps to decode company fundamentals
See more on page 20-22

Learn how to identify Hot Stocks using Technical Analysis (TA) and Fundamental Analysis (FA)

SIGN UP FOR Invest NOW IT'S FREE!!!

[Click here](#)

Scan me



Via email, every Friday.

Get market moving news and analyses. Regular columns include **Behind The Action** and **From The Observer**

Leaderboard • Shariah Hot Stocks • Shariah Momentum Up Stocks • Non Shariah Hot Stocks • Up Trending Stocks • Growth Stocks • Dividend Stocks • Long Companies • Insider Activity • Investor Relations • Regional Markets

MALAYSIA'S DIVERSIFIED ECONOMIC STRUCTURE
INVESTOR RELATIONS

SHARIAH HOT STOCKS
Price & Volume Distribution Charts (as at Yesterday)

LONG COMPANIES
MALAYSIA AIRPORTS HOLDINGS BERHAD (9014.MY)

INSIDER ACTIVITY
Price & Volume Distribution Charts (as at Yesterday)

INVESTOR RELATIONS
KPJ Healthcare Berhad



[READ MORE](#) 

The Board of Directors of **Able Global Berhad (ABLEGLOB)** is pleased to declare a Single Tier 1st Interim Dividend of 2 sen per share in respect of the financial year ended 31 December 2024.



The Board of Directors of **Advance Synergy Berhad (ASB)** wishes to announce that the Board has approved the merger of the Nomination Committee and Remuneration Committee into a single Board Committee known as Nomination and Remuneration Committee with effect from 27 May 2024.

[READ MORE](#) 



The Board of Directors of **Avillion Berhad (AVI)** wishes to announce that the Company, had on 24 May 2024 entered into a Memorandum of Understanding with Sonid Co., Ltd in relation to

a collaboration to develop vacation and/or retirement properties at Avillion Admiral Cove, Port Dickson and Langkawi for the Korean market.

[READ MORE](#) 



Reference is made to the announcements dated 26 July 2023, 30 November 2023 and 28 February 2024 in relation

to the Memorandum of Understanding signed with MX and Anxi County Office concerning cross border socio economic collaboration which include but not limited to conceptualization, planning, prioritizing, financing and implementation of property development, infrastructure development and fresh produce, agriculture and aquaculture distribution and processing development in both China and

The Board of Directors of **Ekovest Berhad (EKOVEST)** wishes to announce that there is no development on the MOU.

[READ MORE](#)



The Board of Directors of **FSBM Holdings Berhad (FSBM)** wishes to announce that the wholly-owned subsidiary of the Company, namely FSBM MES Elite Sdn. Bhd. has on 28 May 2024 entered into a Collaboration Agreement with Syarikat

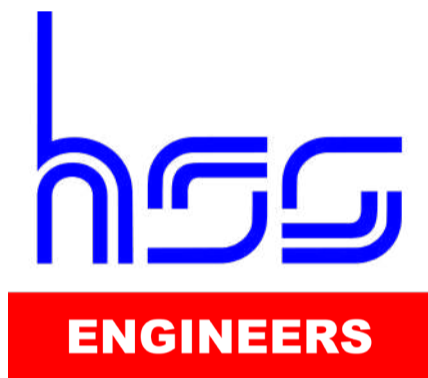
Logam Unitrade Sdn. Bhd. to collaborate to explore business opportunities on a non-exclusive basis to expand market access for the purchase and sale of T-Parus Technology Voltage Sag Protectors (VSP) and Energy Saving Compressor(s) within Southeast Asia, subject to and upon the terms and conditions of the Agreement.

[READ MORE](#)





The Board of Directors of **Gamuda Berhad (GAMUDA)** wishes to announce that its wholly owned subsidiary, Gamuda Engineering Sdn Bhd has been awarded the MEP Fit Out Work for a Hyperscale Data Centre in Elmina Business Park 1A by Pearl Computing Malaysia Sdn Bhd on 24 May 2024.



HSS Engineers Berhad (HSSEB) is pleased to announce that on 30 May 2024, HSS Engineering Sdn Bhd, a wholly owned subsidiary of HEB, has entered into a Contract Agreement with the Ministry of Public Works and Transport, Kingdom of Cambodia for HSSE to provide Consultant's Services for the Assignment of Contract Engineer for the Phnom Penh-Bavet Expressway Project.



The Board of Directors of **Kinergy Advancement Berhad (KAB)** wishes to announce that the Company had on 29 May 2024 accepted a Letter of Award awarded by Kimlun Sdn. Bhd. for the Appointment of the Nominated Sub-Contractor for Supply, Delivery, Installation, Testing, Commissioning and Maintenance of Electrical and Extra Low Voltage Works for Service Apartment at Persiaran Eco Cascadia, Taman Seri Austin, 81100 Johor Bahru, Johor Darul Taksim.





Reference is made to the Company's announcement dated 27 October 2023 in relation to the execution of a binding heads of merger agreement in relation

to the proposed merger of the construction and construction-related businesses of Ekovest and Knusford via the proposed acquisition by Knusford of the entire equity interest in Ekovest Construction Sdn Bhd from Ekovest. Unless otherwise stated, all terms used herein shall have the same meaning as defined in the Announcement.

Knusford Berhad (KNUSFOR) wishes to announce that the Parties have mutually agreed for an extension of 2 months commencing from 28 May 2024 to 27 July 2024, to grant more time for the Parties to assess, evaluate and deliberate the Proposed Knusford-ECSB Merger in detail and to discuss and negotiate on the terms of the Definitive Agreement between the Parties.



The Board of Directors of **LGMS Berhad (LGMS)** wishes to announce that the Board has deliberated and resolved to extend the timeframe for

an additional 12 months of up to 36 months from the date of listing for the utilisation of the remaining unutilised IPO Proceeds allocated for the business expansion of LGMS and its subsidiaries.



Leform Berhad (LEFORM) wishes to announce that the Board of Directors have

deliberated and resolved to vary the utilisation of gross proceeds raised from its IPO and to extend the timeframe for the utilisation of the remaining unutilised IPO Proceeds for an additional 7 months from the date of this announcement.





The Board of Directors of **Malaysia Airports Holding Berhad (AIRPORT)** wishes to announce that MAHB and its wholly-owned subsidiary, Malaysia Airports (Sepang) Sdn Bhd have on 28 May 2024 entered into a supplemental agreement with WCT Berhad, WCT Land Sdn Bhd and Segi Astana Sdn Bhd for purposes of varying the terms and conditions of the following principal agreements in conjunction with MAHB’s agreement on the proposed extension of the concession period of gateway@klia2 in favour of SASB for a further period of twenty-two years subject to the terms and conditions.

[READ MORE](#) 



The Board of Directors of **MBM Resources Berhad (MBMR)** is pleased to enclose the Press Release in relation to the financial results for the first quarter ended 31 March 2024 and new automobile dealership.

[READ MORE](#) 



The Board of Directors of **Naim Holdings Berhad (NAIM)** wishes to announce that PMSB and SMSB have mutually agreed to extend the MOU for a period of one year from 15 January 2024 until 14 January 2025 and all other terms and conditions of the MOU shall remain unchanged and in full force and effect.

[READ MORE](#) 



The Board of **Salcon Berhad (SALCON)** wishes to announce that the conditions precedent of the SSA have been fulfilled as at 27 May 2024, and payments to the

Vendors have been made on 29 May 2024. Accordingly, the Proposed Acquisition has been completed.



Pursuant to Paragraph 9.29 of the Main Market Listing Requirements of Bursa Malaysia Securities Berhad, the Board of Directors of

Sarawak Consolidated Industries Berhad (SCIB) wishes to announce the status of the Memorandum of Understanding, details as set out in the table as disclosed in the attachment.



Disclaimer: The information in the Investor Relations page is extracted from individual companies' announcements in www.bursamalaysia.com. The information on this page is provided as a service to readers. We assume no liability for damages resulting from or arising out of the use of such information. Whilst every effort is made to ensure accuracy, the information presented has been simplified for your reading pleasure. Readers are advised to read the original and complete filings on the Bursa Malaysia website at https://www.bursamalaysia.com/market_information/announcements/company_announcement

Upcoming IPO					
NAME OF COMPANY	OFFER PERIOD		ISSUE PRICE (Per Ordinary Share)	LISTING SOUGHT	DATE OF LISTING
	OPENING	CLOSING			
UUE HOLDINGS BERHAD	28 May 2024	18 June 2024	RM0.24	ACE MARKET	2 July 2024
KTI LANDMARK BERHAD	21 May 2024	4 June 2024	RM0.30	ACE MARKET	19 June 2024