

Invest

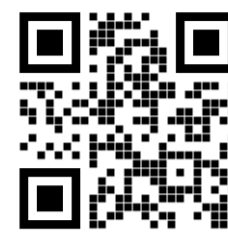
A Weekly e-Publication by SHAREINVESTOR.com

ISSUE

185

FRIDAY
01 DECEMBER
2023

Scan/Click QR to Register



Via email, every Friday

MARKET SENTIMENTS

MEDIAN WAGES OF FORMAL CITIZEN EMPLOYEES ROSE BY 4.9% IN JUNE 2023 TO RM2,600 AS COMPARED TO JUNE 2022 - DOSM

Local financial markets affected by global investor sentiments in October 2023 - BNM

See more on pages 20-23

ALSO

07 COMPANY SPOTLIGHT
AbleGroup Berhad

25 MSWG
Beyond the boardroom: Director steps forward with derivative action

04 LEADERBOARD
06 SHARIAH HOT STOCKS
08 SHARIAH MOMENTUM UP STOCKS
10 NON SHARIAH HOT STOCKS

12 UP TRENDING STOCKS
14 VALUE STOCKS
15 GROWTH STOCKS
16 DIVIDEND STOCKS
17 BROKERS' CALL

18 LONG COMPANIES
24 REGIONAL MARKETS
28 INSIDER ACTIVITY
31 INVESTOR RELATIONS



SHAREINVESTOR®

Invest with Knowledge

INVESTOR PLATFORMS

Director
Darren Chong
darren.chong@shareinvestor.com

Business Development Manager
Jay Cheong
jay.cheong@shareinvestor.com

Senior Executive
Daniel Wong
daniel.wong@shareinvestor.com

Executive
Farah Azwani
farah.azwani@shareinvestor.com

Executive
Tan Yong Sheng
yongsheng.tan@shareinvestor.com

ADMIN & OPERATIONS

Senior Executive
Watie Nordin
watie.nordin@shareinvestor.com

Executive
Silas Emmanuel Joseph
silas.joseph@shareinvestor.com

INVESTOR RELATIONS

Group Managing Director & Publisher
Edward Stanislaus
edward@shareinvestor.com

Senior Manager
Letticia Wong
letticia.wong@shareinvestor.com

PROCESS AUTOMATION & DATA ANALYTICS

Data Analyst
Nickson Aw

SHAREINVESTOR HOLDINGS BOARD OF DIRECTORS

- | | |
|------------------|-----------------|
| Chairman | Patrick Daniel |
| Group CEO | Christopher Lee |
| Group COO | Lim Dau Hee |
| Group CFO | Teo Siew May |
| Group MD | Shanison Lin |



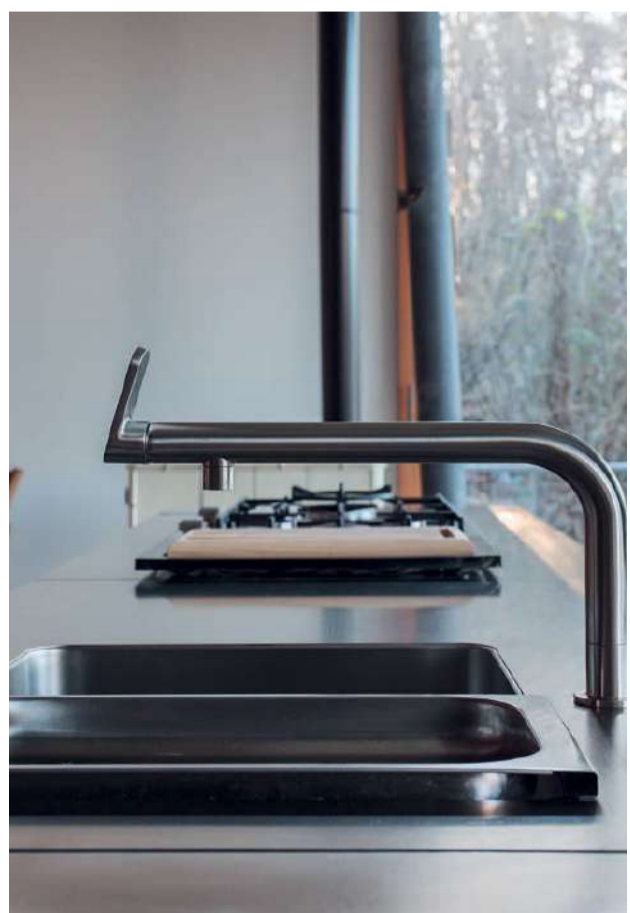
“ GIVE A MAN A FISH AND YOU FEED HIM FOR A DAY; TEACH A MAN TO FISH AND YOU FEED HIM FOR A LIFETIME ”

ShareInvestor Malaysia Sdn. Bhd.
(200001023956) (526564-M)
Unit No. DF2-07-03A, Level 7,
Persoft Tower, 6B Persiaran Tropicana,
47410 Petaling Jaya, Selangor Darul Ehsan.

Hotline : 603 7803 1791
Mobile : 011 6343 8939
Website : www.ShareInvestor.com.my
www.ShareInvestorHoldings.com
www.Facebook.com/ShareInvestorMalaysia

ADVERTISEMENT ENQUIRY

bulthaup takes care of the details so that you can enjoy a harmonious environment.



XTRA
XTRA FURNITURE SDN BHD
The Gardens Mall, Mid Valley City
xtrafurniture.com/bulthaup
fb.com/bulthaupmalaysia

bulthaup

IMPORTANT Announcement!



We are thrilled to announce an upgrade that will take your investment experience to new heights!

BURSA STATION is evolving and will be merged into the SHAREINVESTOR STATION

starting from 1st November 2023

and we can't wait to share all the amazing benefits with you.

ShareInvestor Station is a desktop application that has a similar user interface to Bursa Station, with additional exciting features such as: access to the

- ✓ *Global Market*
 - ✓ *Intrinsic Value Calculator*
 - ✓ *Interactive Charting Tools*
 - ✓ *Customisable Indicator Database*
 - ✓ *Top Shareholder Analysis*
 - ✓ *Company Forecast Revenue*
 - ✓ *Consensus Estimates*
 - ✓ *Dividend Analysis*
- and many more!*



Find out more about ShareInvestor Station here



For Existing Users: Rest assured that you will retain access to Bursa Station until the end of your current subscription period. In addition, as a token of our appreciation for your loyalty, you will receive an email providing complimentary access to explore the ShareInvestor Station.

Thank you for using BursaStation!
We are committed to continuing to serve you better with ShareInvestor Station.

If you have any questions or face any issues, reach out to us at admin.my@shareinvestor.com or dial 03 - 7803 1791.

www.shareinvestor.com - market data at your fingertips



ShareInvestor WebPro (www.shareinvestor.com/my)

Prices > Stock Prices > Bursa > click Stocks tab

1. mouse over Ranking > select Top Active > all Shariah stocks are denoted with an [S] > mouse over Column Layout > select Edit Customs > select Name > select Volume > select Last Done Price > Mouse Over Column Layout > select Custom
2. mouse over Ranking > select Top Turnover > all Shariah stocks are denoted with an [S] > mouse over Column Layout > select Edit Customs > select Name > select Last Done Price > select Value > Mouse Over Column Layout > select Custom
3. mouse over Ranking > select Top Gainers (Over 5 Trading Days) > mouse over Column Layout > select Edit Customs > select Name > select Last Done Price > select 5 Days Change > select 5 Days % Change > Mouse Over Column Layout > select Custom
4. mouse over Ranking > select Top Losers (Over 5 Trading Days)
5. mouse over Ranking > select Top % Gainers (Over 5 Trading Days)
6. mouse over Ranking > select Top % Losers (Over 5 Trading Days)

Shariah Top Actives (as at Yesterday)

Name	Price (RM)	Volume
VELESTO [S]	0.220	1,671,085.000
KANGER [S]	0.075	1,290,152.000
TOPGLOV [S]	0.810	1,204,478.000
DNEX [S]	0.400	763,110.000
SCIB [S]	0.770	658,112.000
WIDAD [S]	0.465	640,834.000
LEFORM [S]	0.320	637,787.000
PANDA [S]	0.250	615,144.000
PMETAL [S]	4.800	578,110.000
UEMS [S]	0.710	549,216.000

Shariah Top Turnover (as at Yesterday)

Name	Price (RM)	Value (RM)
PMETAL [S]	4.800	278,265,108
NESTLE [S]	125.400	167,377,590
CDB [S]	4.340	147,015,604
PCHEM [S]	7.220	111,808,266
TOPGLOV [S]	0.810	99,788,364
TENAGA [S]	9.990	77,731,122
GAMUDA [S]	4.770	72,838,135
MRDIY [S]	1.530	64,783,672
SIME [S]	2.470	62,038,507
PETGAS [S]	16.860	55,359,748

Top Gainers (over 5 Trading days as at Yesterday)

Name	Price (RM)	Change (RM)
NESTLE	125.400	+3.800
F&N	28.160	+0.880
RAPID	28.000	+0.600
KLK	21.880	+0.500
BAT	9.360	+0.420
GENTING	4.680	+0.320
KGB	1.880	+0.300
HUMEIND	2.150	+0.250
ALLIANZ	18.080	+0.200
MCEMENT	4.140	+0.200

Top % Gainers (over 5 Trading days as at Yesterday)

Name	Price (RM)	Change (%)
MLAB	0.010	+100.00
PHB	0.010	+100.00
PUC	0.050	+42.86
BCMALL	0.020	+33.33
AIM	0.125	+27.55
NEXGRAM	0.030	+20.00
SNTORIA	0.090	+20.00
MERCURY	1.100	+19.57
KGB	1.880	+18.99
SCIB	0.770	+16.67

Top Losers (over 5 Trading days as at Yesterday)

Name	Price (RM)	Change (RM)
HEIM	22.140	-1.240
HEXTECH	22.660	-0.940
CARLSBG	19.140	-0.700
PETDAG	22.300	-0.560
HLFG	16.100	-0.500
OPPSTAR	1.250	-0.330
KOBAY	1.440	-0.310
HARISON	8.450	-0.290
KOTRA	4.800	-0.280
PMBTECH	2.730	-0.270

Top % Losers (over 5 Trading days as at Yesterday)

Name	Price (RM)	Change (%)
SAPRES	0.350	-25.53
MTRONIC	0.015	-25.00
SCBUILD	0.030	-25.00
KEYASIC	0.065	-23.53
AGES	0.050	-23.08
OPPSTAR	1.250	-20.89
SALCON	0.250	-20.63
SUNMOW	1.080	-20.00
BTECH	0.280	-18.84
CSH	0.045	-18.18

PURNELL

ONLY TOURBILLON



**ESCAPE II
FORGED CARBON**

Purnell Asia

Tel. : +65.9817.3378

Email : sales.sg@purnellwatches.com

@ Purnell_Official

www.purnellwatches.com

PLAY



Price & Volume Distribution Charts (as at Yesterday)

Technical Analysis

DEFINITION: Shariah compliant stocks with Technical Analysis showing 5-days & 10-days Moving Average Price below Yesterday's Close over past 3 days and with Volume Spike.

CHART GUIDE: Volume Distribution Chart is a statistical interpretation of the current sentiment on each stock in graphical format. The highest bar categorized as >150k is likely to be traded by institutions or super dealers, while the lowest bar categorized as <15k usually represents retail investors. "Buy Up" refers to more buyers snatching up the lots queued at selling price. "Sell Down" refers to sellers selling their shares to the buying queue



ShareInvestor WebPro > Screener > Market Screener (FA & TA) > select BURSA > add criteria

A. Criteria

- > click Add Criteria
- Technical Analysis Conditions tab select (i) Moving Average Below Close (ii) Volume Spike
- Fundamental Analysis Conditions tab > select (iii) Revenue
- Prices & Other Conditions tab > select (iv) Is Shariah Compliant
- Technical Analysis Conditions tab select (v) Moving Average Below Close
- Prices & Other Conditions tab > select (vi) Last Done Price
- Technical Analysis Conditions tab select (vii) Moving Average Below Close

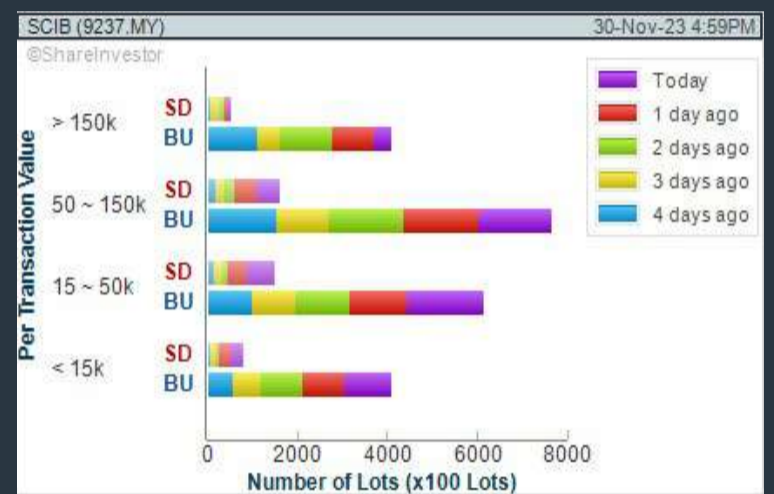
B. Conditions (Criteria Filters)

1. Moving Average Below Close - select (MA) type (5) below close price for type (3) days
2. Volume Spike - Volume type (1) greater than type (5) days average
3. Revenue ("000) - select (more than) type (1) for the past select (1) financial year(s)
4. Is Shariah Compliant - select **Yes**
5. Moving Average Below Close - select (MA) type (10) below close price for type (3) days
6. Last Done Price - select (more than) type (0.3)
7. Moving Average Below Close - select (EMA) type (5) below close price for type (3) days

- > click Save Template > Create New Template type (Shariah Hot Stocks) > click Create
- > click Save Template as > select Shariah Hot Stocks > click Save
- > click Screen Now (may take a few minutes)
- > Sort By: Select (Vol) Select (Desc)
- > Mouse over stock name > Charts > click C² Charts or Volume Distribution

SARAWAK CONSOLIDATED IND BERHAD (9237) C² Chart

Analysis



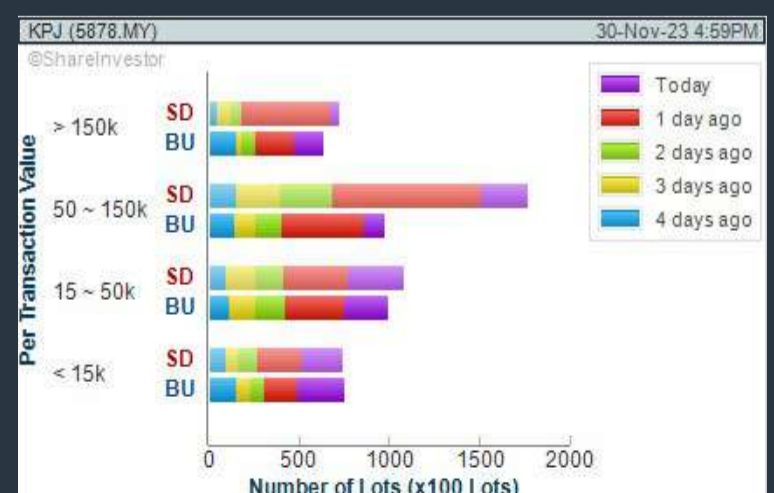
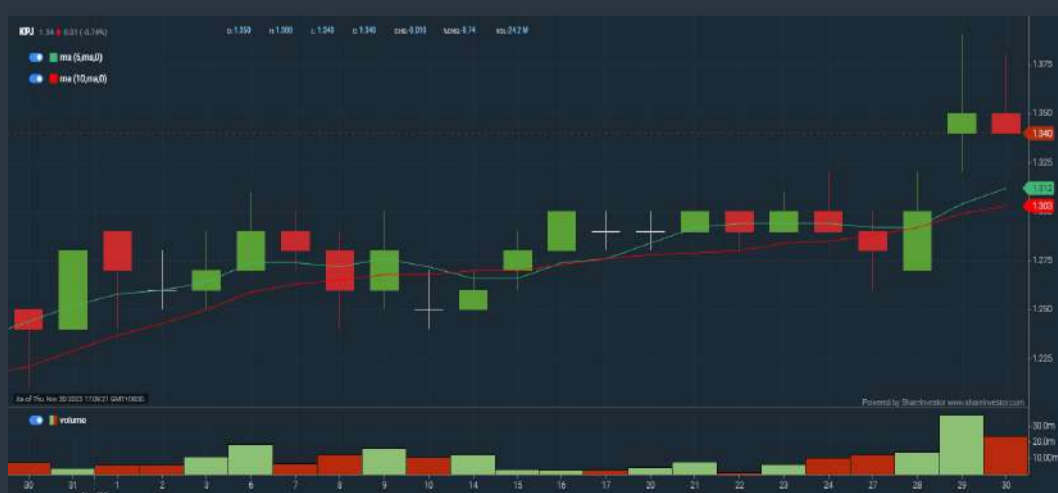
SIME DARBY BERHAD (4197) C² Chart

Analysis



KPJ HEALTHCARE BERHAD (5878) C² Chart

Analysis



Disclaimer: The information on this page is provided as a service to readers. It does not constitute financial advice and/or any investment recommendations. Past performance is not indicative of future results. We assume no liability for damages resulting from or arising out of the use of such information. It would be best if you did your own research to make your personal investment decisions wisely or consult a licenced investment advisor.

COMPANY BACKGROUND

AbleGroup Berhad is the investment holding company for a group of companies that are engaged in the building material business which encompasses the processing, trading, exporting and contract workmanship of high quality marble and granite slabs. The Company is also in the property development business.



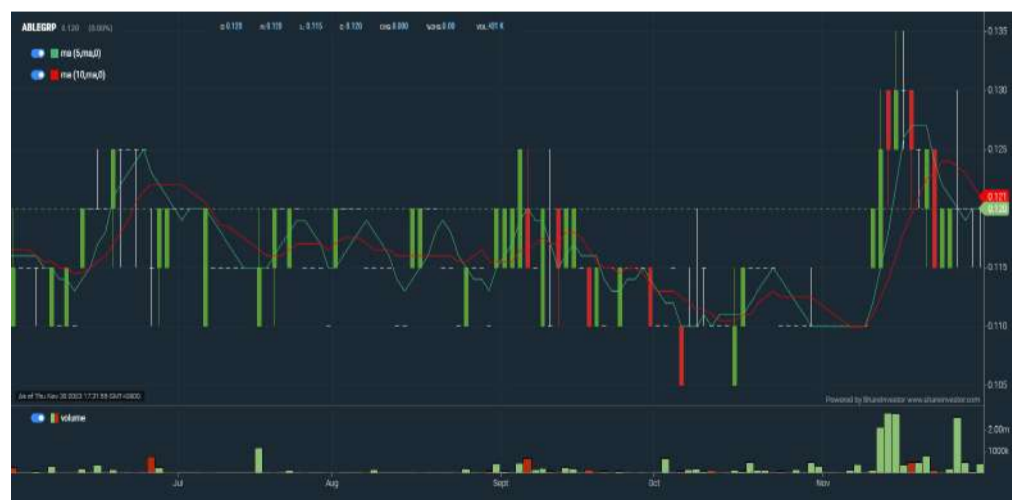
Analysis

ABLEGRP ABLEGROUP BERHAD		Updated at 30 Nov 2023 17:31	
Last (MYR): 0.120	Change: -	High: 0.120	Remarks: -
	Change (%): -	Low: 0.115	
Open	0.120	Yesterday's Close	0.120
Buy Price	0.115	Sell Price	0.120
Buy Volume ('00)	2,710	Sell Volume ('00)	2,478
Cumulative Volume ('00)	4,306	Cumulative Value	49,563

Financial Analysis

Profit Growth Profit turnaround in most recent year		Piotroski F Score The company has above average financial strength (Piotroski F-Score of 6-7)	
Current Ratio The company is well-positioned to cover its short-term obligations with its current assets (ratio between 1.5 to 10) for 3 consecutive years		Debt to Cashflow High debt to cash flow for most recent year	
Free Cash Flow Positive and increasing free cash flow for at least two years		Gross Profit Margin Consistently good gross profit margin of 20%-40% for 3 years	
Net Earnings Margin Low net profit margin for most recent year			

Excellent
 Good
 Neutral
 Be Alert
 Watch Out



Historical Financials

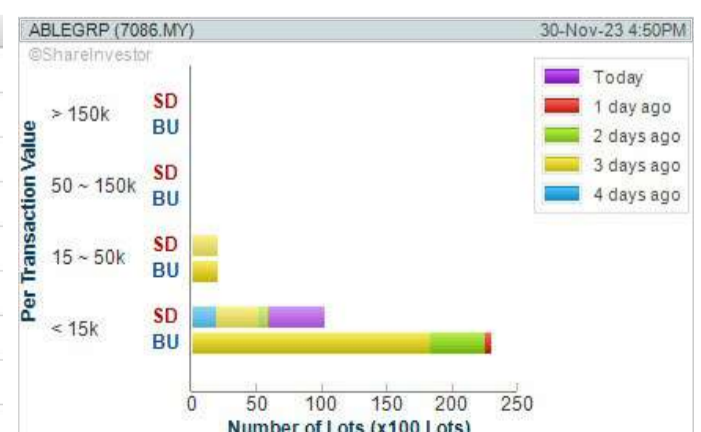


WebPro 9-Days Free Trial Registration (worth RM9) Sign Up Now



Key Statistics with Total Shareholder Returns

Period	Dividend Received	Capital Appreciation	Total Shareholder Return
Short Term Return	5 Days	+0.005	+4.35 %
	10 Days	-0.010	-7.69 %
	20 Days	+0.010	+9.09 %
Medium Term Return	3 Months	-	-
	6 Months	+0.005	+4.35 %
	1 Year	-0.005	-4.00 %
Long Term Return	2 Years	+0.010	+9.09 %
	3 Years	+0.010	+9.09 %
	5 Years	+0.045	+60.00 %
Annualised Return	Annualised	-	+9.06 %



Disclaimer: The information on this page is provided as a service to readers. It does not constitute financial advice and/or any investment recommendations. Past performance is not indicative of future results. We assume no liability for damages resulting from or arising out of the use of such information. It would be best if you did your own research to make your personal investment decisions wisely or consult a licenced investment advisor.

Price & Volume Distribution Charts (as at Yesterday)

Technical Analysis

DEFINITION: Shariah compliant stocks with Technical Analysis showing Bullish Momentum and Price Uptrend. The share price closed at the highest price yesterday. The typical price was higher than the previous day's typical price.

CHART GUIDE: Volume Distribution Chart is a statistical interpretation of the current sentiment on each stock in graphical format. The highest bar categorized as >150k is likely to be traded by institutions or super dealers, while the lowest bar categorized as <15k usually represents retail investors. "Buy Up" refers to more buyers snatching up the lots queued at selling price. "Sell Down" refers to sellers selling their shares to the buying queue.



ShareInvestor WebPro > Screener > Market Screener (FA & TA) > select BURSA > add criteria

A. Criteria

- > click Add Criteria
- Fundamental Analysis Conditions tab > select (i) Revenue
- Technical Analysis Conditions tab select (ii) Average Volume
- Prices & Other Conditions tab > select (iii) Last Done Price
- Prices & Other Conditions tab > select (iv) Is Shariah Compliant
- Technical Analysis Conditions tab select (v) RSI Overbought
- Technical Analysis Conditions tab select (vi) Moving Average Below Close
- Technical Analysis Conditions tab select (vii) CCI Overbought

B. Conditions (Criteria Filters)

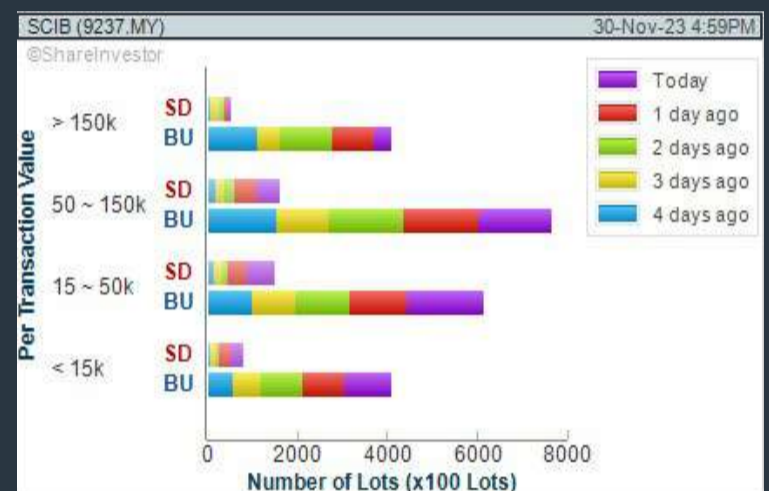
1. Revenue ("000) - select (more than) type (1) for the past select (1) financial year(s)
2. Average Volume - type (1) days average volume greater than type (10000) lots
3. Last Done Price - select (more than) type (0.3)
4. Is Shariah Compliant - select Yes
5. RSI Overbought - select RSI 1 above 99 for 1 days
6. Moving Average Below Close - select (MA) type (10) below close price for type (1) days
7. CCI Overbought - select CCI (2) above (0) for (1) days

- > click Save Template > Create New Template type (Shariah Momentum Up Stocks) > click Create
- > click Save Template as > select Shariah Momentum Up Stocks > click Save
- > click Screen Now (may take a few minutes)
- Sort By: Select (Vol) Select (Desc)
- Mouse over stock name > Charts > click C² Charts tab or Volume Distribution

SARAWAK CONSOLIDATED IND BERHAD (9237)

C² Chart

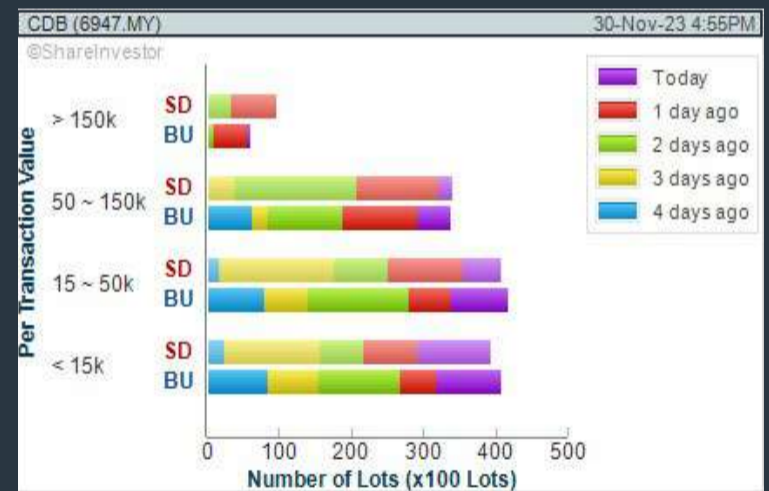
Analysis



CELCOMDIGI BERHAD (6947)

C² Chart

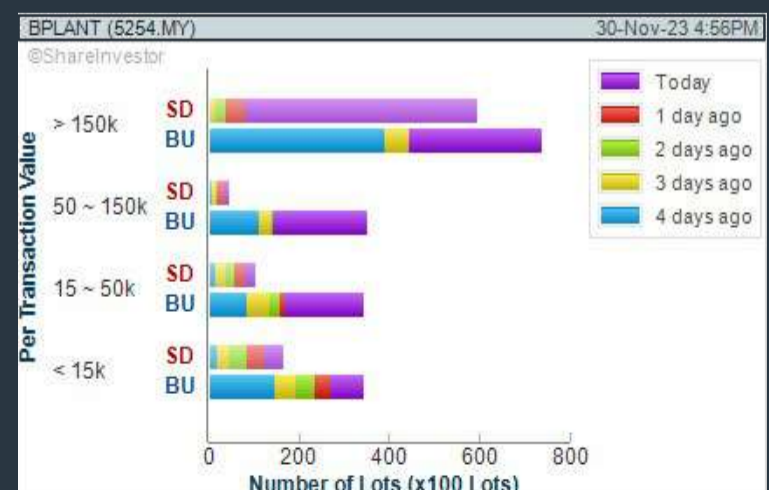
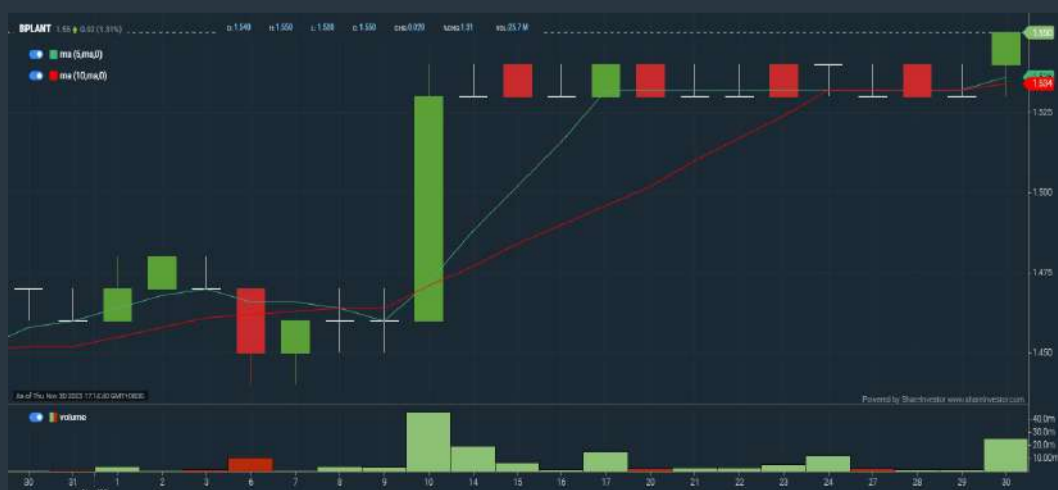
Analysis



BOUSTEAD PLANTATIONS BERHAD (5254)

C² Chart

Analysis



Disclaimer: The information on this page is provided as a service to readers. It does not constitute financial advice and/or any investment recommendations. Past performance is not indicative of future results. We assume no liability for damages resulting from or arising out of the use of such information. It would be best if you did your own research to make your personal investment decisions wisely or consult a licenced investment advisor.

SHAREINVESTOR WEBPRO

STOCK MARKET DATA AT YOUR FINGERTIPS

Powerful browser-based market analytics platform.
Access from anywhere



8 Markets Data

- ▶ Get access to data from Bursa, NYSE, Nasdaq, HKEX, SGX, IDX, SET & ASX

Portfolio Management

- ▶ Profit & Loss Summary
- ▶ Stock Alert
- ▶ News & Events filtering
- ▶ Customizable column layout

Fundamental Analysis

Financial Analysis Statement

- ▶ Profit & Loss
- ▶ Balance Sheet
- ▶ Cash Flow Statement
- ▶ More than 20 Financial Ratios
- ▶ Dividend Analysis

Technical Charting

- ▶ C² chart (Customisable & Comprehensive)

Brokers' Call

Intrinsic Value Calculator

FactSheet

- ▶ Key Stock Information
- ▶ Ownership
- ▶ Consensus Estimates
- ▶ Annual Report
- ▶ Historical Price
- ▶ Insider Trades

What's new on WebPro (Stable Release 12.1.0)

In our effort to keep our platform at the forefront of trading technology, we have added on some new features onto our C2 Chart in WebPro

ADDITIONAL NEW FEATURES:

- ▶ Anchor selector for AVWAP, PVAT, and PAV indicators
- ▶ Volume profile indicator by date range
- ▶ Moving Average Cross indicator
- ▶ Guppy Multiple Moving Average (GMMA) indicator
- ▶ GoNoGo Trend Signal indicators
- ▶ SignalIQ

So what are you waiting for? Head to our platform today and check out our new trading chart features and indicators. We're confident that you'll love the improvements we've made and that they'll help you become a more successful trader.

Click here to start your 9 days FREE trial
(Valued at RM10)



Price & Volume Distribution Charts (as at Yesterday)

Technical Analysis

DEFINITION: Stocks with Technical Analysis showing 5-days & 10-days Moving Average Price below Close over past 1 days and with Volume Spike

CHART GUIDE: Volume Distribution Chart is a statistical interpretation of the current sentiment on each stock in graphical format. The highest bar categorized as >150k is likely to be traded by institutions or super dealers, while the lowest bar categorized as <15k usually represents retail investors. "Buy Up" refers to more buyers snatching up the lots queued at selling price. "Sell Down" refers to sellers selling their shares to the buying queue.



ShareInvestor WebPro > Screener > Market Screener (FA & TA) > select BURSA > add criteria

A. Criteria

- > click Add Criteria
- Technical Analysis Conditions tab select (i) Moving Average Below Close (ii) Volume Spike
- Fundamental Analysis Conditions tab >select (iii) Revenue
- Prices & Other Conditions tab > select (iv) Is Shariah Compliant
- Technical Analysis Conditions tab select (v) Moving Average Below Close
- Prices & Other Conditions tab > select (vi) Last Done Price
- Technical Analysis Conditions tab select (vii) Moving Average Below Close

B. Conditions (Criteria Filters)

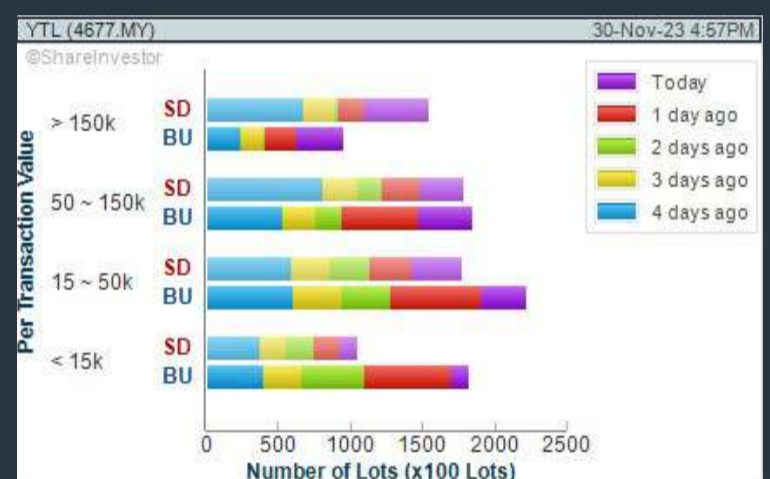
1. Moving Average Below Close - select (MA) type (5) below close price for type (3) days
2. Volume Spike - Volume type (1) greater than type (5) days average
3. Revenue ("000) - select (more than) type (1) for the past select (1) financial year(s)
4. Is Shariah Compliant - select NO
5. Moving Average Below Close - select (MA) type (10) below close price for type (1) days
6. Last Done Price - select (more than) type (0.3)
7. Moving Average Below Close - select (EMA) type (5) below close price for type (1) days

- > click Save Template > Create New Template type (Non-Shariah Hot Stocks) > click Create
- > click Save Template as > select Non-Shariah Hot Stocks > click Save
- > click Screen Now (may take a few minutes)
- Sort By: Select (Vol) Select (Desc)
- Mouse over stock name > Charts > click C² Charts tab or Volume Distribution

YTL CORPORATION BERHAD (4677)

C² Chart

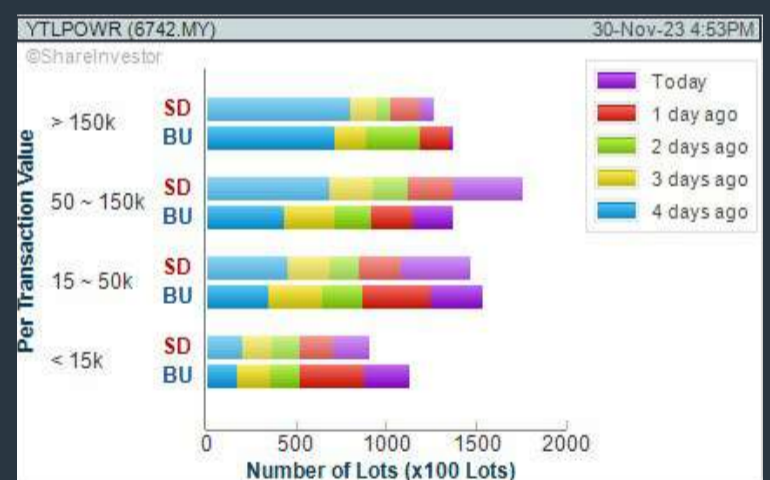
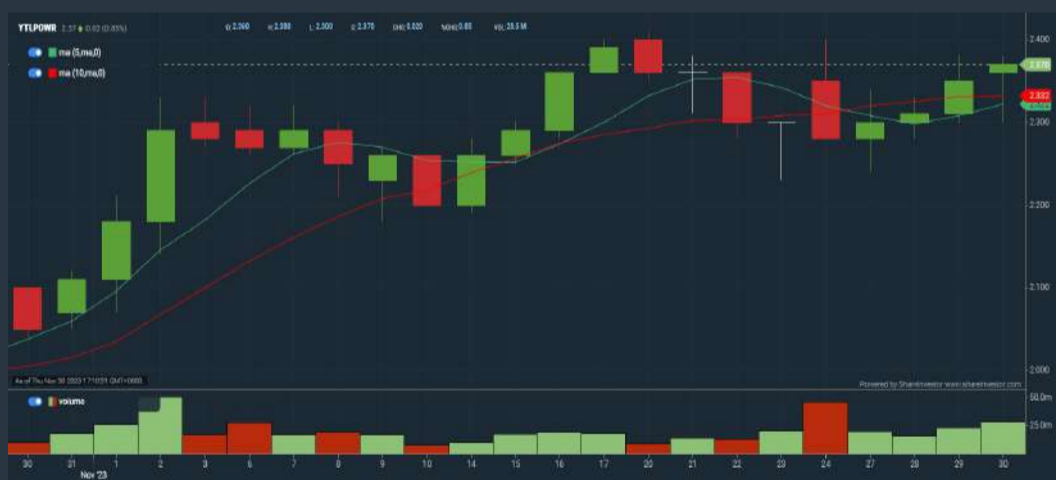
Analysis



YTL POWER INTERNATIONAL BERHAD (6742)

C² Chart

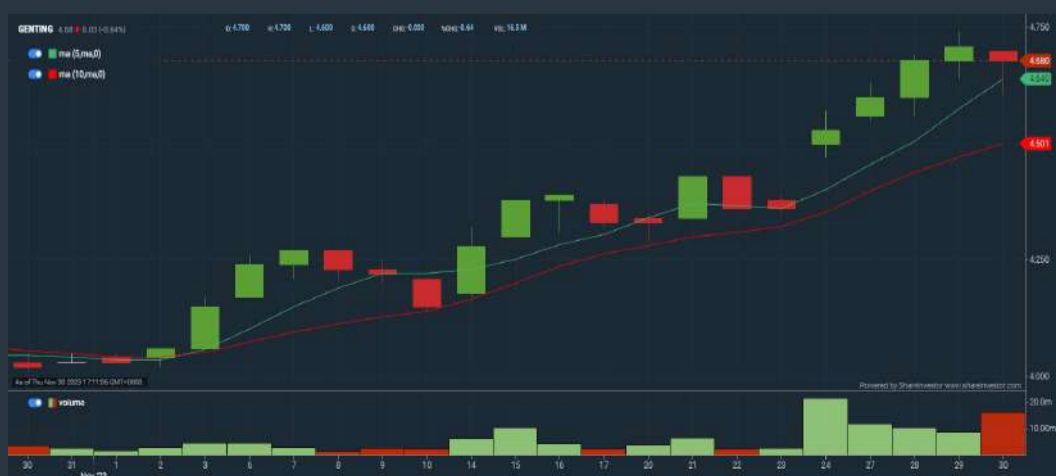
Analysis



GENTING BERHAD (3182)

C² Chart

Analysis



Disclaimer: The information on this page is provided as a service to readers. It does not constitute financial advice and/or any investment recommendations. Past performance is not indicative of future results. We assume no liability for damages resulting from or arising out of the use of such information. It would be best if you did your own research to make your personal investment decisions wisely or consult a licenced investment advisor.

MAKE BETTER TRADING STRATEGIES

with

SHARE INVESTOR STATION



8 Markets Data

- ▶ Get access to data from Bursa, NYSE, Nasdaq, HKEX, SGX, IDX, SET & ASX

Dynamic Chart

- ▶ Candlestick Pattern Recognition
- ▶ 111 Indicators
- ▶ 39 Drawing Tools
- ▶ Performance Comparison Chart

Intraday Data

- ▶ Market Depth
- ▶ Trade Summary Matrix & Chart
- ▶ Times & Sales
- ▶ Intraday Market Ticker

Market Screener

- ▶ 96 criteria ranging from FA, TA, Consensus Estimate
- ▶ Real-time Data

Power Frame

- ▶ Combining few Dynamic Charts together with intraday information in one frame

Technical Analysis

Fundamental Analysis

Financial Analysis Statement

- ▶ Profit & Loss
- ▶ Balance Sheet
- ▶ Cash Flow Statement
- ▶ More than 20 Financial Ratios
- ▶ Dividend Analysis

FactSheet

- ▶ Key Stock Information
- ▶ Ownership
- ▶ Consensus Estimates
- ▶ Annual Report
- ▶ Historical Price
- ▶ Insider Trades

Start your 18 days FREE trial now (Valued at RM82)



Price & Volume Distribution Charts (Over 3 trading days as at Yesterday)

Technical Analysis

DEFINITION: Stocks with Technical Analysis showing Bullish Momentum and Price Uptrend

CHART GUIDE: Volume Distribution Chart is a statistical interpretation of the current sentiment on each stock in graphical format. The highest bar categorized as >150k is likely to be traded by institutions or super dealers, while the lowest bar categorized as <15k usually represents retail investors. "Buy Up" refers to more buyers snatching up the lots queued at selling price. "Sell Down" refers to sellers selling their shares to the buying queue.



ShareInvestor WebPro > Screener > Market Screener (FA & TA) > select BURSA > add criteria

A. Criteria

- > click Add Criteria
- Fundamental Analysis Conditions tab > select (i) Revenue
- Technical Analysis Conditions tab select (ii) Moving Average Below Close
- Technical Analysis Conditions tab select (iii) Average Volume
- Prices & Other Conditions tab > select (iv) Last Done Price
- Technical Analysis Conditions tab select (v) Moving Average Below Close
- Technical Analysis Conditions tab select (v) Moving Average Bullish Crossover

B. Conditions

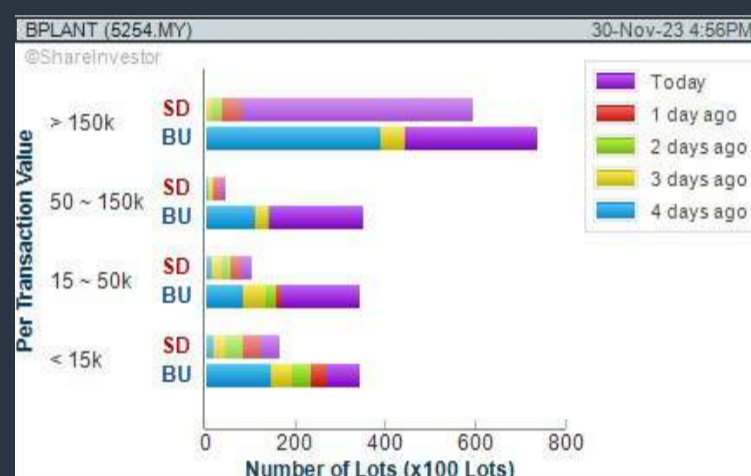
1. Revenue - select (more than) type (1) for the past select (1) financial year(s)
2. Moving Average Below Close - select (MA) type (20) below close price for type (1) days
3. Average Volume - type (5) days average volume type (10000) lots
4. Last Done Price - select (more than) type (0.3)
5. Moving Average Below Close - select (MA) type (10) below close price for type (1) days
6. Moving Average Bullish Crossover - select (MA) type (5) crossed above select (MA) type (10)

> click Save Template > Create New Template type (Non-Shariah Up-Trending Stocks) > click Create Click Save Template As > select Non-Shariah Up Trending Stocks > click Save > click Screen Now (may take a few minutes) Sort By: Select (Vol) Select (Desc) Mouse over stock name > Charts > click C² Charts tab or Volume Distribution

BOUSTEAD PLANTATIONS BERHAD (5254)

C² Chart

Analysis



SIME DARBY BERHAD (4197)

C² Chart

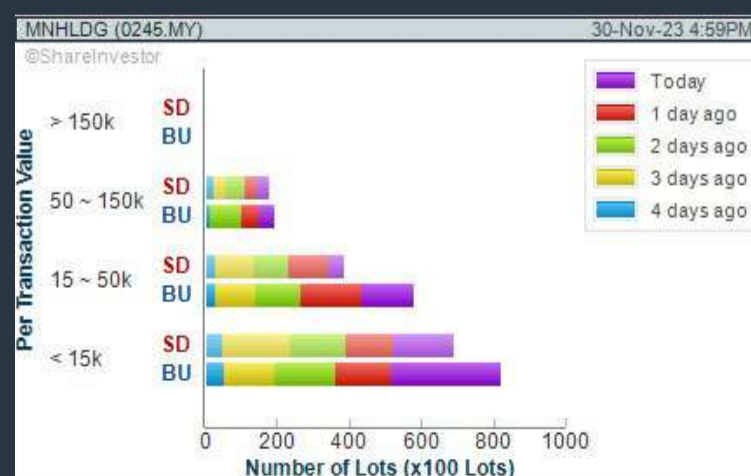
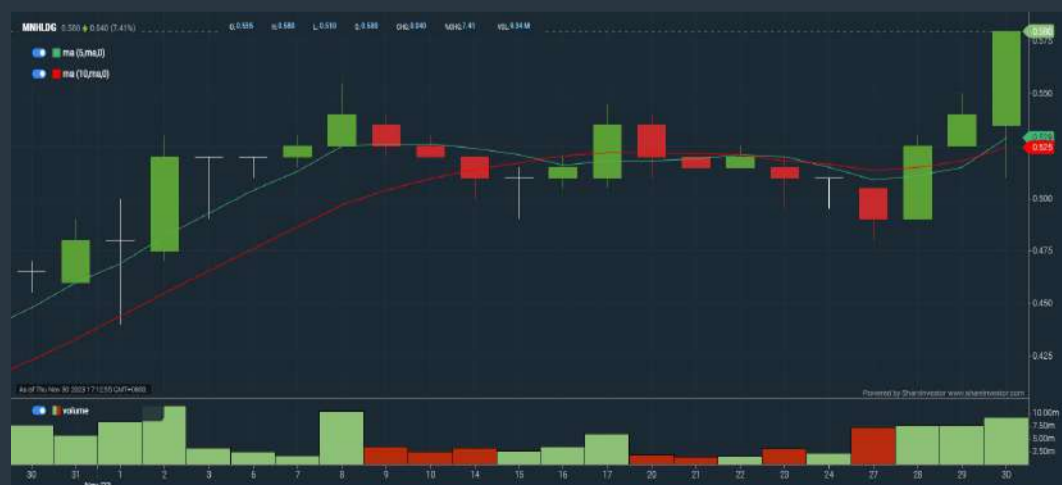
Analysis



MN HOLDINGS BERHAD (0245)

C² Chart

Analysis



Disclaimer: The information on this page is provided as a service to readers. It does not constitute financial advice and/or any investment recommendations. Past performance is not indicative of future results. We assume no liability for damages resulting from or arising out of the use of such information. It would be best if you did your own research to make your personal investment decisions wisely or consult a licenced investment advisor.



making places energizing



usm.com

XTRA

XTRA FURNITURE SDN BHD
The Gardens Mall, Mid Valley City, Lot S-236 & 237
Lingkar Syed Putra, 59200 Kuala Lumpur
T. +603 2282 9088 | living@xtrafurniture.com | xtrafurniture.com
📍 XTRAFurniture | 🌐 xtrafurnituremsia

Price & Total Shareholder Return (as at Yesterday)

Fundamental Analysis

DEFINITION: Share price of a company trading at a lower price as compared to its fundamentals (FA) such as financial performance and dividend, allowing it to be attractive to value investors.

CHART GUIDE: Total Shareholder Return (TSR) combines share price appreciation and dividend distributions paid to show the total return to the shareholder expressed as a percentage.



ShareInvestor WebPro > Screener > Market Screener (FA & TA) > select BURSA > add criteria

A. Criteria

- > click Add Criteria
- Fundamental Analysis Conditions tab (i) Price Earnings Ratio
- Fundamental Analysis Conditions tab >select (ii) CAGR of Net Earnings
- Fundamental Analysis Conditions tab >select (iii) Net Debt To Equity
- Fundamental Analysis Conditions tab >select (iv) Return On Equity (ROE)

B. Conditions

1. Price Earnings Ratio - select (less than) type (15) times now
2. CAGR of Net Earnings - select (more than) type (10) % for the past type (3) financial year(s)
3. Net Debt To Equity – select (less than) type (1) for the past select (1) financial year(s)
4. Return On Equity (ROE) – select (more than) type (10) % for the past select (1) financial year(s)

- > click Save Template > Create New Template type (Value Stock) > click Create
- > click Save Template as > select Value Companies > click Save
- > click Screen Now (may take a few minutes)
- Sort by: Select (PE Ratio) Select (Ascending)
- > Mouse over stock name > Factsheet > looking for Total Shareholder Return
- > Mouse over stock name > Charts > click C2 Charts tab

SYNERGY HOUSE BERHAD (0279)

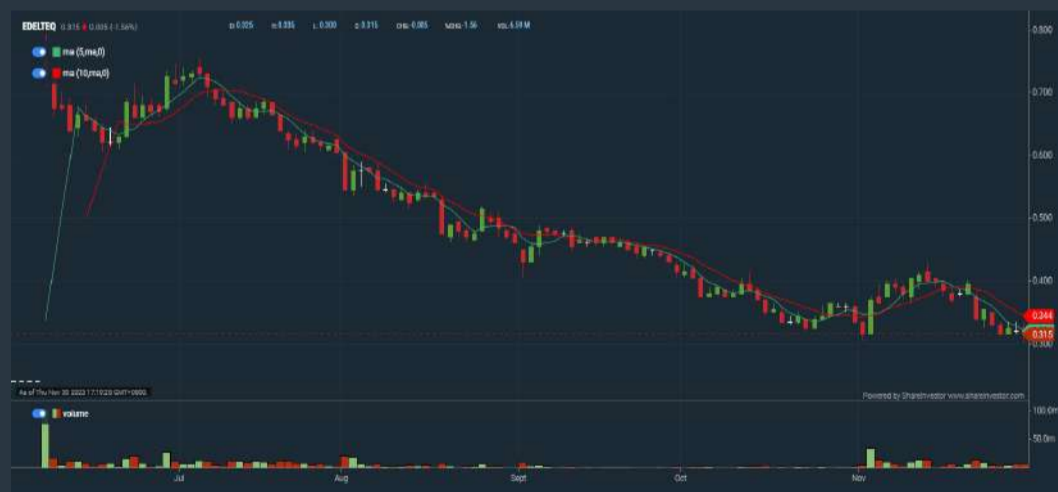
C² Chart



Period	Dividend Received	Capital Appreciation	Total Shareholder Return
Short Term Return	5 Days	-	-1.74%
	10 Days	+0.115	+2.73%
	20 Days	+0.105	+0.71%
Medium Term Return	3 Months	+1.103	+6.75%

EDELTEQ HOLDINGS BERHAD (0278)

C² Chart



Period	Dividend Received	Capital Appreciation	Total Shareholder Return
Short Term Return	5 Days	-	-7.35%
	10 Days	-	-21.26%
	20 Days	-	-
Medium Term Return	3 Months	-	-31.62%
	6 Months	+0.075	+31.25%

SUNMOW HOLDING BERHAD (03050)

C² Chart



Period	Dividend Received	Capital Appreciation	Total Shareholder Return
Short Term Return	5 Days	-	-20.00%
	10 Days	-	-20.00%
	20 Days	-	-20.00%
Medium Term Return	3 Months	-	-10.00%
	6 Months	+0.200	+32.73%
Long Term Return	1 Year	+0.200	+42.41%
	2 Years	+0.200	+38.40%
Annualised Return	Annualised	-	+17.67%

Disclaimer: The information on this page is provided as a service to readers. It does not constitute financial advice and/or any investment recommendations. Past performance is not indicative of future results. We assume no liability for damages resulting from or arising out of the use of such information. It would be best if you did your own research to make your personal investment decisions wisely or consult a licenced investment advisor.

Price & Total Shareholder Return (as at Yesterday)

Fundamental Analysis

DEFINITION: Company revenue is growing and making good quality of earnings with positive Free Cash Flow.

CHART GUIDE: Total Shareholder Return (TSR) combines share price appreciation and distributions paid to show the total return to the shareholder expressed as a percentage.



ShareInvestor WebPro > Screener > Market Screener (FA & TA) > select BURSA > add criteria

A. Criteria

1. Fundamental Analysis Conditions tab >select (i) Free Cash Flow, (ii) Revenue Growth, (iii) Gross Profit (Earnings) Margin, (iv) Quality of Earnings, (v) Total Shareholder Returns, > click Add Criteria
2. Fundamental Analysis Conditions tab >select (vi) Total Shareholder Returns > click Add Criteria

B. Conditions (Criteria Filters)

1. Free Cash Flow - select (more than) type (1) for the past select (1) financial year(s)
2. Revenue Growth - select (more than) type (1) for the past select (1) financial year(s)
3. Gross Profit (Earnings) Margin - select (more than) type (30) % for the past select (1) financial year(s)
4. Quality of Earnings - select (more than) type (1) for the past select (1) financial year(s)
5. Total Shareholder Return - select (more than) type (5) % for the past select (3) financial year(s)
6. Total Shareholder Return - select (more than) type (5) % for the past select (5) financial year(s)

- > click Save Template > Create New Template type (Growth Companies) > click Create
- > click Save Template as > select Growth Companies > click Save
- > click Screen Now (may take a few minutes)
- > Sort By: Select (Revenue Growth) Select (Desc)
- > Mouse over stock name > Factsheet > looking for Total Shareholder Return

ABLEGROUP BERHAD (7086)

C² Chart

Analysis



Period	Dividend Received	Capital Appreciation	Total Shareholder Return
Short Term Return	5 Days	-0.005	+4.35%
	10 Days	-0.010	-7.68%
	20 Days	-0.010	+8.89%
Medium Term Return	3 Months	-	-
	6 Months	-0.005	+4.35%
	1 Year	-0.005	-4.01%
Long Term Return	2 Years	-0.010	+8.89%
	3 Years	-0.010	+8.89%
	5 Years	-0.015	+38.08%
Annualised Return	Annualised	-	+8.85%

IGB BERHAD (5606)

C² Chart

Analysis



Period	Dividend Received	Capital Appreciation	Total Shareholder Return
Short Term Return	5 Days	-0.050	+2.17%
	10 Days	-	-
	20 Days	-0.070	+7.89%
Medium Term Return	3 Months	-0.090	+14.08%
	6 Months	-0.090	+10.27%
	1 Year	-0.030	+54.81%
Long Term Return	2 Years	0.050	+54.25%
	3 Years	0.250	+87.24%
	5 Years	0.930	+192.71%
Annualised Return	Annualised	-	+52.38%

BONIA CORPORATION BERHAD (9288)

C² Chart

Analysis



Period	Dividend Received	Capital Appreciation	Total Shareholder Return
Short Term Return	5 Days	-0.020	+1.01%
	10 Days	-0.050	-2.84%
	20 Days	-0.000	+7.72%
Medium Term Return	3 Months	-0.041	-2.24%
	6 Months	-0.051	-2.90%
	1 Year	-0.034	-18.34%
Long Term Return	2 Years	-0.020	+18.46%
	3 Years	-	+18.46%
	5 Years	0.045	+74.11%
Annualised Return	Annualised	-	+11.73%

Disclaimer: The information on this page is provided as a service to readers. It does not constitute financial advice and/or any investment recommendations. Past performance is not indicative of future results. We assume no liability for damages resulting from or arising out of the use of such information. It would be best if you did your own research to make your personal investment decisions wisely or consult a licenced investment advisor.

Price & Total Shareholder Return (as at Yesterday)

Fundamental Analysis

DEFINITION: Company is paying out dividend with low or moderate leverage.

CHART GUIDE: Total Shareholder Return (TSR) combines share price appreciation and distributions paid to show the total return to the shareholder expressed as a percentage.



ShareInvestor WebPro > Screener > Market Screener (FA & TA) > select BURSA > add criteria

A. Criteria

- > click Add Criteria
- Fundamental Analysis Conditions tab >select (i) Dividend Yield (Historical)
- Fundamental Analysis Conditions tab >select (ii) Dividend Payout (Historical)
- Fundamental Analysis Conditions tab >select (iii) Total Debt To Equity
- Fundamental Analysis Conditions tab >select (iv) Total Shareholder Returns
- Fundamental Analysis Conditions tab >select (v) Total Shareholder Returns
- Fundamental Analysis Conditions tab / >select (vi) CAGR of Dividend Per Share

• Fundamental Analysis Conditions tab >select (vii) CAGR of Dividend Per Share

B. Conditions (Criteria Filters)

1. Dividend Yield - select (more than) type (1) % for the past select (1) financial year(s)
2. Dividend Payout (Historical) - select (between) type (0.5) to type (1) times for the past select (1) financial year(s)
3. Total Debt to Equity – select (less than) type (1) for the past select (1) financial year(s)
4. Total Shareholder Return – select (more than) type (5) % for the past select (3) financial year(s)
5. Total Shareholder Return – select (more than) type (5) % for the past select (5) financial year(s)

6. CAGR of Dividend Per Share – select (less than) type (30) % for the past select (5) financial year(s)
7. CAGR of Dividend Per Share – select (more than) type (1) % for the past select (5) financial year(s)

- > click Save Template > Create New Template type (Dividend Companies) > click Create
- > click Save Template as > select Dividend Companies > click Save
- > click Screen Now (may take a few minutes)
- > Sort By: Select (Dividend Yield) Select (Desc)
- > Mouse over stock name > Factsheet > looking for Total Shareholder Return

JAYCORP BERHAD (7152)

C² Chart



JAYCORP (7152.MY)				
Period	Dividend Received	Capital Appreciation	Total Shareholder Return	
Short Term Return	5 Days	-	-	-
	10 Days	-	+0.05	+0.66%
	30 Days	-	+0.10	+1.32%
Medium Term Return	3 Months	-	+0.30	+4.81%
	6 Months	-	+0.30	+4.81%
	1 Year	-	+0.30	+4.81%
Long Term Return	2 Years	0.05	+0.60	+6.61%
	3 Years	0.10	+0.35	+24.67%
	5 Years	0.35	+0.35	+14.89%
Annualised Return	Annualised	-	-	+20.07%

FORMOSA PROSONIC INDUSTRIES (9172)

C² Chart



FPI (9172.MY)				
Period	Dividend Received	Capital Appreciation	Total Shareholder Return	
Short Term Return	5 Days	-	-0.01	-0.36%
	10 Days	-	-0.01	-0.34%
	30 Days	-	-0.01	-0.36%
Medium Term Return	3 Months	-	+0.10	+5.54%
	6 Months	-	+0.40	+26.68%
	1 Year	-	+0.40	+26.68%
Long Term Return	2 Years	0.20	-0.00	-16.39%
	3 Years	0.34	+0.40	+33.88%
	5 Years	0.55	+1.40	+37.38%
Annualised Return	Annualised	-	-	+11.38%

KENANGA INVESTMENT BANK BERHAD (6483)

C² Chart



KENANGA (6483.MY)				
Period	Dividend Received	Capital Appreciation	Total Shareholder Return	
Short Term Return	5 Days	-	-0.03	-0.31%
	10 Days	-	-0.05	-0.74%
	30 Days	-	-0.01	-0.17%
Medium Term Return	3 Months	-	-0.05	-0.59%
	6 Months	-	-0.05	-0.61%
	1 Year	-	-0.05	-0.61%
Long Term Return	2 Years	0.05	-0.35	-2.49%
	3 Years	0.05	-0.00	+1.22%
	5 Years	0.20	+1.25	+17.38%
Annualised Return	Annualised	-	-	+11.14%

Disclaimer: The information on this page is provided as a service to readers. It does not constitute financial advice and/or any investment recommendations. Past performance is not indicative of future results. We assume no liability for damages resulting from or arising out of the use of such information. It would be best if you did your own research to make your personal investment decisions wisely or consult a licenced investment advisor.

Week: 24 November 2023 - 30 November 2023

More Brokers' Call 

AMINVESTMENT BANK <small>... See More</small>	Call	Target Price	Release Date
Deleum Berhad (5132)	BUY	RM1.27	29 Nov 2023
Guan Chong Berhad (5102)	HOLD	RM2.29	29 Nov 2023

APEX <small>... See More</small>	Call	Target Price	Release Date
Axiata Group Berhad (6888)	BUY	RM3.06	30 Nov 2023
CCK Consolidated Holdings Berhad (7035)	BUY	RM0.98	29 Nov 2023
UMW Holdings Berhad (4588)	HOLD	RM5.00	28 Nov 2023

BIMB SECURITIES SDN BHD <small>... See More</small>	Call	Target Price	Release Date
QL Resources Berhad (7084)	BUY	RM6.70	30 Nov 2023
Velesto Energy Berhad (5243)	BUY	RM0.30	30 Nov 2023

KENANGA <small>... See More</small>	Call	Target Price	Release Date
Axiata Group Berhad (6888)	OUTPERFORM	RM3.55	30 Nov 2023
Bank Islam Malaysia Berhad (5258)	MARKET PERFORM	RM2.15	30 Nov 2023
Malaysia Airports Holdings Berhad (5014)	MARKET PERFORM	RM7.00	30 Nov 2023

MALACCA SECURITIES SDN BHD <small>... See More</small>	Call	Target Price	Release Date
OSK Holdings Berhad (5053)	BUY	RM1.41	28 Nov 2023
Rexit Berhad (0106)	HOLD	RM0.93	29 Nov 2023

MIDF <small>... See More</small>	Call	Target Price	Release Date
Axiata Group Berhad (6888)	NEUTRAL	RM2.420	30 Nov 2023
Bank Islam Malaysia Berhad (5258)	NEUTRAL	RM2.29	30 Nov 2023

JOB KAYHIAN <small>... See More</small>	Call	Target Price	Release Date
Farm Fresh Berhad (5306)	SELL	RM1.00	29 Nov 2023
IOI Corporation Berhad (1961)	BUY	RM4.80	29 Nov 2023
Press Metal Aluminium Holdings Berhad (8869)	BUY	RM5.50	29 Nov 2023
UMW Holdings Berhad (4588)	HOLD	RM5.00	28 Nov 2023

Disclaimer: InveSt does not accept any liability whatsoever for any direct, indirect or consequential losses (including loss of profit) or damages that may arise from the use of information or opinions in this publication. The information and opinions in InveSt are not to be considered as an offer to sell or buy any of the securities discussed. Opinions expressed are subject to change without notice. The Brokers may, from time to time, have interests or positions in the securities mentioned. For the full report on each item listed on this page, please visit https://www.shareinvestor.com/my/brokers_call.

DEFINITION: Top 10 stocks with Technical Analysis plus Pattern Matching by 60 pre-defined indicators by the system showing a higher probability of bullish sentiment on the share price.



ShareInvestor WebPro > Screener > Predefined TA Screens > select market BURSA > Most Long Signals > click Scan Results or mouse over each company

PERTAMA DIGITAL BERHAD (8532.MY)

PERTAMA

Price updated at 30 Nov 2023 16:59

Last: 3.220	Change: +0.190	Volume: 73,199
	Change (%): +6.27	Range: 2.840 - 3.220

TA Scanner Results based on historical data up to 30 Nov 2023

Condition	Signal	Explanation
Bollinger Band: Bullish Lower Bollinger Band Support	Long	1. Low 1 day ago below lower bollinger band(20,2). 2. Close above close 1 day ago. 3. Average volume(5) is above 100,000.
Volume: 10 Days large value Buy Up trade	Long	1. 150K value Buy Up greater than Sell Down by 20% for 10 days. 2. 50K-100K value Buy Up greater than Sell Down by 20% for 10 days. 3. Average volume(10) is above 1000000
Volume: 5 Days large value Buy Up trade	Long	1. 150K value Buy Up greater than Sell Down by 20% for 5 days. 2. 50K-100K value Buy Up greater than Sell Down by 20% for 5 days. 3. Average volume(10) is above 1000000
Volume: Consecutive Days Of Increasing Average Volume	Long	1. Average Volume(20) has been increasing over the last 2 weeks. 2. Average volume(20) is above 100000

EFFICIENT E-SOLUTIONS BERHAD (0064.MY)

EFFICEN

Price updated at 30 Nov 2023 16:56

Last: 0.220	Change: +0.005	Volume: 24,052
	Change (%): +2.33	Range: 0.210 - 0.225

TA Scanner Results based on historical data up to 30 Nov 2023

Condition	Signal	Explanation
Bollinger Band: Bullish Long Term Volatility Breakout and Trending	Long	1. Close price above upper bollinger band(33,1). 2. Volume above average volume(50). 3. Average volume(50) is above 300,000.
Bollinger Band: Bullish Short Term Volatility Breakout and Trending	Long	1. Close price above upper bollinger band(33,1). 2. Volume above average volume(10). 3. Average volume(10) is above 300,000.
Candlestick: Bullish Engulfing	Long	Bullish: Engulfing
MA: Long Term Bullish Moving Average Crossover	Long	MA(50) crossed above MA(200) within the last 1 day.
Volume: Consecutive Days Of Increasing Average Volume	Long	1. Average Volume(20) has been increasing over the last 2 weeks. 2. Average volume(20) is above 100000

GAMUDA BERHAD (5398.MY)

GAMUDA

Price updated at 30 Nov 2023 16:59

Last: 4.770	Change: +0.210	Volume: 155,952
	Change (%): +4.61	Range: 4.490 - 4.770

TA Scanner Results based on historical data up to 30 Nov 2023

Condition	Signal	Explanation
Bollinger Band: Bullish Lower Bollinger Band Support	Long	1. Low 1 day ago below lower bollinger band(20,2). 2. Close above close 1 day ago. 3. Average volume(5) is above 100,000.
CCI: Bullish CCI Oversold And Reversing	Long	1. CCI(26) below -100 and CCI(26) 1 day ago decreasing for the last 3 days. 2. CCI(26) above CCI(26) 1 day ago
Candlestick: Bullish Harami	Long	Bullish: Harami
Williams %R: Bullish Williams %R	Long	1. Williams %R(26) between -80 and -100. 2. Average volume(5) is above 100,000.

LEFORM BERHAD (0266.MY)

LEFORM

Price updated at 30 Nov 2023 16:58

Last: 0.320	Change: -	Volume: 637,787
	Change (%): -	Range: 0.310 - 0.330

TA Scanner Results based on historical data up to 30 Nov 2023

Condition	Signal	Explanation
CCI: Bearish CCI Overbought And Reversing	Short	1. CCI(26) above 100 and CCI(26) 1 day ago increasing for the last 3 days. 2. CCI(26) below CCI(26) 1 day ago
MACD: Overbought	Short	1. MACD Histogram(12,26,9) reached a new 6 month high. 2. MACD Histogram(12,26,9) has been above 0 for the last 3 weeks.
Price: Consecutive Days Gains	Long	1. Close price has been increasing over the last 5 days. 2. Average volume(5) above 100,000.
Volume: 10 Days large value Buy Up trade	Long	1. 150K value Buy Up greater than Sell Down by 20% for 10 days. 2. 50K-100K value Buy Up greater than Sell Down by 20% for 10 days. 3. Average volume(10) is above 1000000
Volume: 5 Days large value Buy Up trade	Long	1. 150K value Buy Up greater than Sell Down by 20% for 5 days. 2. 50K-100K value Buy Up greater than Sell Down by 20% for 5 days. 3. Average volume(10) is above 1000000
Volume: Consecutive Days Of Increasing Average Volume	Long	1. Average Volume(20) has been increasing over the last 2 weeks. 2. Average volume(20) is above 100000
Williams %R: Bearish Williams %R	Short	1. Williams %R(26) between 0 and -20. 2. Average volume(5) is above 100,000.

SARAWAK CONSOLIDATED IND BERHAD (9237.MY)

SCIB

Price updated at 30 Nov 2023 16:59

Last: 0.770	Change: +0.035	Volume: 658,112
	Change (%): +4.76	Range: 0.735 - 0.775

TA Scanner Results based on historical data up to 30 Nov 2023

Condition	Signal	Explanation
Bollinger Band: High Above Upper Bollinger Band	Neutral	1. High above upper bollinger band(14,2). 2. Average volume(5) is above 100,000.
CCI: Bearish CCI Overbought And Reversing	Short	1. CCI(26) above 100 and CCI(26) 1 day ago increasing for the last 3 days. 2. CCI(26) below CCI(26) 1 day ago
Price: Consecutive Days Gains	Long	1. Close price has been increasing over the last 5 days. 2. Average volume(5) above 100,000.
Price: New 52 Week High	Long	1. Stock reach a new 52 week high. 2. Average volume(30) is above 50000.
RSI: RSI Overbought	Short	1. RSI(20) is above 80. 2. RSI(20) is increasing for the last 3 days. 3. Stock has more than 75 days of historical data.
Volume: 10 Days large value Buy Up trade	Long	1. 150K value Buy Up greater than Sell Down by 20% for 10 days. 2. 50K-100K value Buy Up greater than Sell Down by 20% for 10 days. 3. Average volume(10) is above 1000000
Volume: 5 Days large value Buy Up trade	Long	1. 150K value Buy Up greater than Sell Down by 20% for 5 days. 2. 50K-100K value Buy Up greater than Sell Down by 20% for 5 days. 3. Average volume(10) is above 1000000
Williams %R: Bearish Williams %R	Short	1. Williams %R(26) between 0 and -20. 2. Average volume(5) is above 100,000.

Disclaimer: The information on this page is provided as a service to readers. It does not constitute financial advice and/or any investment recommendations. Past performance is not indicative of future results. We assume no liability for damages resulting from or arising out of the use of such information. It would be best if you did your own research to make your personal investment decisions wisely or consult a licenced investment advisor.



WASCO BERHAD (5142.MY)

WASCO

Price updated at 30 Nov 2023 16:50

Last: 0.980	Change: -0.010	Volume: 4,942
	Change (%): -1.01	Range: 0.980 - 1.000

TA Scanner Results based on historical data up to 30 Nov 2023

Condition	Signal	Explanation
Bollinger Band: Bullish Lower Bollinger Band Support	Long	1. Low 1 day ago below lower bollinger band(20,2). 2. Close above close 1 day ago. 3. Average volume(5) is above 100,000.
DM: Bullish Directional Movement	Long	-DI(14) crossed below +DI(14)
MA: Bullish Price Crossover	Long	1. Close price crossed above MA(40) within the last 1 day. 2. Previous day close price is below the MA(10) for the last 5 days
RSI: Short Term RSI 50 Bullish Crossover	Long	1. RSI(20) crossed above 50 within the last 1 day and RSI(20) 1 day ago below 50 for the last 5 days. 2. Volume above average volume(125). 3. Average volume(5) is above 100,000.
Stochastic: Fast Stochastic Buy Signal	Long	1. Fast Stochastic(15,5) %K crossed above 20. 2. Fast Stochastic(15,5) %K 1 day ago was below 20 for the last 5 days. 3. Average volume(30) is above 50000



AXIS REITS (5106.MY)

AXREIT

Price updated at 30 Nov 2023 16:57

Last: 1.840	Change: +0.010	Volume: 43,221
	Change (%): +0.55	Range: 1.830 - 1.860

TA Scanner Results based on historical data up to 30 Nov 2023

Condition	Signal	Explanation
Bollinger Band: Bullish Long Term Volatility Breakout and Trending	Long	1. Close price above upper bollinger band(33,1). 2. Volume above average volume(50). 3. Average volume(50) is above 300,000.
Bollinger Band: Bullish Short Term Volatility Breakout and Trending	Long	1. Close price above upper bollinger band(33,1). 2. Volume above average volume(10). 3. Average volume(10) is above 300,000.
Volume: 10 Days large value Buy Up trade	Long	1. 150K value Buy Up greater than Sell Down by 20% for 10 days. 2. 50K-100K value Buy Up greater than Sell Down by 20% for 10 days. 3. Average volume(10) is above 1000000
Volume: 5 Days large value Buy Up trade	Long	1. 150K value Buy Up greater than Sell Down by 20% for 5 days. 2. 50K-100K value Buy Up greater than Sell Down by 20% for 5 days. 3. Average volume(10) is above 1000000
Williams %R: Bearish Williams %R	Short	1. Williams %R(26) between 0 and -20. 2. Average volume(5) is above 100,000.



TIME DOTCOM BERHAD (5031.MY)

TIMECOM

Price updated at 30 Nov 2023 16:58

Last: 5.100	Change: -0.020	Volume: 93,941
	Change (%): -0.39	Range: 5.060 - 5.140

TA Scanner Results based on historical data up to 30 Nov 2023

Condition	Signal	Explanation
Candlestick: Bearish Hanging Man	Short	Bearish: Hanging Man
Stochastic: Fast Stochastic Buy Signal	Long	1. Fast Stochastic(15,5) %K crossed above 20. 2. Fast Stochastic(15,5) %K 1 day ago was below 20 for the last 5 days. 3. Average volume(30) is above 50000



SMRT HOLDINGS BERHAD (0117.MY)

SMRT

Price updated at 30 Nov 2023 16:58

Last: 1.040	Change: -0.010	Volume: 68,197
	Change (%): -0.95	Range: 1.020 - 1.070

TA Scanner Results based on historical data up to 30 Nov 2023

Condition	Signal	Explanation
Bollinger Band: High Above Upper Bollinger Band	Neutral	1. High above upper bollinger band(14,2). 2. Average volume(5) is above 100,000.
MA: Short Term Bullish Moving Average Crossover	Long	MA(10) crossed above MA(15) within the last 1 day.
MACD: Bullish MACD Crossover	Long	1. MACD(12,26) diff line crossed above the MACD(12,26) signal line. 2. MACD Histogram(12,26) is above 0.
Price: New 52 Week High	Long	1. Stock reach a new 52 week high. 2. Average volume(30) is above 50000.
Volume: 10 Days large value Buy Up trade	Long	1. 150K value Buy Up greater than Sell Down by 20% for 10 days. 2. 50K-100K value Buy Up greater than Sell Down by 20% for 10 days. 3. Average volume(10) is above 1000000
Williams %R: Bearish Williams %R	Short	1. Williams %R(26) between 0 and -20. 2. Average volume(5) is above 100,000.



M & A EQUITY HOLDINGS BERHAD (7082.MY)

M&A

Price updated at 30 Nov 2023 16:53

Last: 0.330	Change: -0.010	Volume: 26,134
	Change (%): -2.94	Range: 0.330 - 0.340

TA Scanner Results based on historical data up to 30 Nov 2023

Condition	Signal	Explanation
Bollinger Band: Bullish Long Term Volatility Breakout and Trending	Long	1. Close price above upper bollinger band(33,1). 2. Volume above average volume(50). 3. Average volume(50) is above 300,000.
Bollinger Band: Bullish Short Term Volatility Breakout and Trending	Long	1. Close price above upper bollinger band(33,1). 2. Volume above average volume(10). 3. Average volume(10) is above 300,000.
Bollinger Band: Low Below Lower Bollinger Band	Neutral	1. Low below lower bollinger band(14,2). 2. Average volume(5) is above 100,000.
Candlestick: Bullish Engulfing	Long	Bullish: Engulfing
DM: Bearish Directional Movement	Short	-DI(14) crossed above +DI(14)
MACD: Bullish MACD Crossover	Long	1. MACD(12,26) diff line crossed above the MACD(12,26) signal line. 2. MACD Histogram(12,26) is above 0.
Parabolic SAR: Bullish Parabolic SAR Reversal	Neutral	1. Parabolic SAR 1 day ago below close price 1 day ago for the last 5 days. 2. Parabolic SAR above close price
Williams %R: Bearish Williams %R	Short	1. Williams %R(26) between 0 and -20. 2. Average volume(5) is above 100,000.

Disclaimer: The information on this page is provided as a service to readers. It does not constitute financial advice and/or any investment recommendations. Past performance is not indicative of future results. We assume no liability for damages resulting from or arising out of the use of such information. It would be best if you did your own research to make your personal investment decisions wisely or consult a licenced investment advisor.

Condition	Signal	Explanation
Volume: 10 Days large value Buy Up trade	Long	1. 150K value Buy Up greater than Sell Down by 20% for 10 days. 2. 50K-100K value Buy Up greater than Sell Down by 20% for 10 days. 3. Average volume(10) is above 1000000
Volume: 5 Days large value Buy Up trade	Long	1. 150K value Buy Up greater than Sell Down by 20% for 5 days. 2. 50K-100K value Buy Up greater than Sell Down by 20% for 5 days. 3. Average volume(10) is above 1000000
Williams %R: Bullish Williams %R	Long	1. Williams %R(26) between -80 and -100. 2. Average volume(5) is above 100,000.

MEDIAN WAGES OF FORMAL CITIZEN EMPLOYEES ROSE BY 4.9% IN JUNE 2023 TO RM2,600 AS COMPARED TO JUNE 2022 - DOSM

According to the Department of Statistics Malaysia Chief Statistician, Dato' Sri Dr Mohd Uzir Mahidin, the median wages of formal citizen employees rose by 4.9% in June 2023 to record RM2,600 as compared to June 2022. The compilation of these statistics is based on administrative data sources obtained from relevant agencies, which focus on the citizens who work in the formal sector, notably in the private sector.

Commenting further on the report, he said that the number of Malaysian formal employees in June 2023 was 6.60 million persons, an increase of 1.6% compared to the same month in the previous year. This number accounted for nearly two-thirds (64.3%) of the total citizens-paid employees in the formal sector.

In the meantime, the median monthly wages in June 2023 increased by 4.9% y-o-y to register RM2,600. Looking at the comparison by gender, male formal employees comprised 55.5% (3.66 million persons) of the total formal employees in June 2023, received higher median monthly wages than females. The median monthly wage for male formal employees stood at RM2,645 while female formal employees who made up 44.5% (2.94 million persons) of total formal employees earned RM2,527.

Looking at detailed wages statistics by age group indicates the group that recorded the highest median monthly wages in June 2023 was 45 to 49 years which received RM3,500. This age group also received the highest median monthly wage in April 2023 (RM3,582) and May 2023 (RM3,482). Comparing June 2023 to the same month in the previous year, all age groups experienced an increase in median monthly wages, except for those below 20 years.

The age group 60 to 64 years demonstrates the highest year-on-year growth in June 2023 which increased 11.7% to RM2,764. Meanwhile, in April 2023, the age group below 20 years enjoyed the highest y-o-y growth (25%), the highest for four consecutive months since January 2023. However, the age group below 20 years recorded slower growth of median monthly wages in May 2023 (y-o-y growth: 5.5%) and stagnant in June 2023 (y-o-y growth: 0.0%) due to the base effect of the implementation of the new minimum wage rate of RM1,500 in 2022 had subsided. For the full report, [please click this link](#).

LOCAL FINANCIAL MARKETS AFFECTED BY GLOBAL INVESTOR SENTIMENTS IN OCTOBER 2023 - BNM

According to Bank Negara Malaysia (BNM), domestic financial markets were mostly affected by global investor sentiments last month. The

global financial conditions were influenced mainly by the rise in the 10-year US Treasury yield as strong US economic data led to growing investor expectations of a higher policy rate environment. Against this backdrop, the 10-year Malaysian Government Securities yield increased by 14bps in October (regional average: +22 bps) while the Ringgit depreciated by 1.6% against the US dollar (regional average: -0.3%). The central bank observed this in its latest monthly financial and economic highlights. Meanwhile, the FTSE Bursa Malaysia KLCI rose by 1.3% amid improved domestic equity market sentiments post-Budget 2024.

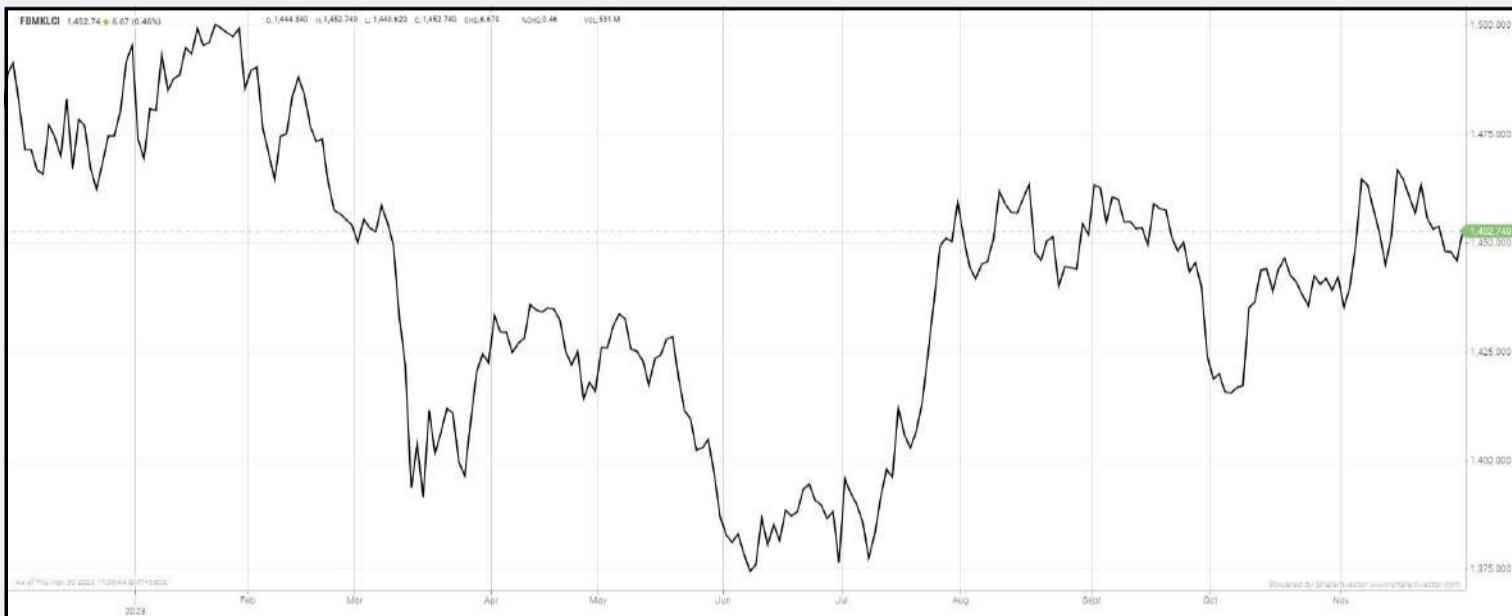
Banks remained well-capitalised to support economic growth. Capital ratios were broadly stable, supportive of banks' financial intermediation activities and bolstering their ability to withstand unexpected losses. The banking system's excess capital buffer remained healthy at RM132.6 billion in October. The banking system continued to record healthy liquidity buffers with the aggregate liquidity coverage ratio at 150.8% (September 2023: 151.5%). The aggregate loan-to-fund ratio remained largely stable at 82.2% (September 2023: 82.5%).

Credit to the private non-financial sector grew by 4.2% as at end-October (September 2023: 4.2%), underpinned by higher outstanding household loan growth amid slower growth in credit to businesses. Outstanding business loans expanded by 1% in October (September 2023: 1.6%), due mainly to more moderate growth in working capital loans among non-small and medium enterprises (non-SMEs). Growth in outstanding loans to SMEs, however, remained forthcoming at 6.9% (September 2023: 6.7%). Growth in outstanding corporate bonds, meanwhile, was sustained at 5%.

For households, outstanding loan growth improved slightly to 5.6% (September 2023: 5.4%), supported by higher growth across most loan purposes. This reflected higher demand for household loans, particularly for the purchase of houses, cars and personal use.


EYE ON THE MARKETS

On Thursday (30Nov), the Ringgit closed at 4.6615 against the USD and 3.4914 to the Sing Dollar. On Monday (27Nov), the FBM KLCI opened at 1453.15. As at Thursday (30Nov) 5:00pm, the FBM KLCI closed down 0.41 points at 1452.74. Over in US, the overnight Dow Jones Industrial Average closed up 520.47 points (+1.47%) to 35,950.89 whilst the NASDAQ shed 32.27 points (-0.23%) to 14,226.22.




KLCI 1 Year Chart

NEW




C² CHART

PLAY




C² Chart is WebPro's new feature-packed technical analysis tool for the modern stock investor




Over 100 Indicators

Select your preferred indicators to best suit your technical strategies



Historical Data

Extract price data from over 30 years




Drawing Tools

Multiple drawing tools to easily identify chart patterns



Over 10 Chart Styles

Various charts to suit your preferred style




Events Indicators

Key events can be pinned onto your charts for a better overview




No App Needed

Access your charts from any computer or mobile



Compare Tool

Conveniently compare multiple stock prices at the same time



Easy Zoom

Intuitive zooming function on charts

Over 5 trading days



ShareInvestor WebPro (www.shareinvestor.com/my)

1. Price > Stock Prices
2. Select Market: NASDAQ / NYSE / IDX / SET / HKEX / SGX (One bourse at a time)
3. select Stocks Tab
4. select Ranking Top Gainers or Top Losers (Over 5 Trading Days)
5. Mouse over Column Layout > select Edit Customs > select Name > select Last Done Price > select 5 Days Change > select 52 Weeks High > select 52 Weeks Low > Mouse Over Column Layout > select Custom

NASDAQ (USD)

Top Gainers

Name	Last Done	Change Over 5 Days	52 Weeks High	52 Weeks Low
MERCADOLIBRE INC	1,620.460	+95.460	1,608.950	815.855
FIRST CITIZENS BANCSHARES INC NRTH	1,467.890	+48.510	1,512.070	505.840
WORKDAY INC	270.720	+36.460	252.720	142.130
PALO ALTO NETWORKS INC	295.090	+31.950	278.690	132.220
PDD HOLDINGS INC SPON ADS EACH REP 4 ORD SHS	147.440	+30.000	139.930	59.670

Top Losers

Name	Last Done	Change Over 5 Days	52 Weeks High	52 Weeks Low
BROADCOM INC	925.730	-46.270	999.870	514.830
ARGENX SE SPON ADR EACH REP 1 ORD SHS	450.610	-44.180	550.760	333.070
SAIA INC	390.390	-32.830	443.850	204.020
NVIDIA CORP	467.700	-19.460	505.480	138.840
OLD DOMINION FREIGHT LINE INC	389.060	-14.690	438.050	277.490

NYSE (USD)

Top Gainers

Name	Last Done	Change Over 5 Days	52 Weeks High	52 Weeks Low
TEXAS PACIFIC LAND CORPORATION	1,671.950	+29.950	2,659.430	1,266.210
SALESFORCE INC	251.900	+28.060	238.220	126.340
DECKERS OUTDOOR CORP	663.970	+26.900	664.630	361.620
HUBSPOT INC	493.930	+26.240	581.400	265.740
DOMINOS PIZZA INC	392.890	+22.570	409.950	285.840

Top Losers

Name	Last Done	Change Over 5 Days	52 Weeks High	52 Weeks Low
BERKSHIRE HATHAWAY INC	545,900.000	-3,600.000	566,569.970	442,363.500
AUTOZONE INC	2,609.930	-78.070	2,750.000	2,277.880
NVR INC	6,155.390	-67.500	6,525.000	4,488.030
HUMANA INC	484.860	-30.740	558.040	423.290
GRAINGER W W INC	786.190	-22.790	815.520	534.010

IDX (Rupiah)

Top Gainers

Name	Last Done	Change Over 5 Days	52 Weeks High	52 Weeks Low
GOWA MAKASSAR TOURISM DEVELOPMENT	19,725.000	+4,675.000	19,725.000	14,500.000
PETRINDO JAYA KREASI TBK	8,825.000	+2,175.000	8,825.000	240.000
GRAHA LAYAR PRIMA	3,780.000	+1,805.000	4,540.000	1,770.000
MULTISTRADA ARAH SARANA	5,225.000	+1,125.000	6,000.000	1,960.000
INDOFOOD CBP SUKSES MAKMUR TBK PT	11,550.000	+1,000.000	11,925.000	9,275.000

Top Losers

Name	Last Done	Change Over 5 Days	52 Weeks High	52 Weeks Low
DCI INDONESIA TBK	42,475.000	-6,750.000	59,050.000	32,850.000
INDOINTERNET TBK	6,450.000	-3,175.000	11,550.000	3,300.000
INDO TAMBANGRAYA MEGAH TBK	24,550.000	-925.000	42,300.000	22,125.000
METROPOLITAN KENTJ	26,800.000	-800.000	46,200.000	16,950.000
SEKAR LAUT	4,030.000	-700.000	6,825.000	1,780.000

SET (Thai Baht)

Top Gainers

Name	Last Done	Change Over 5 Days	52 Weeks High	52 Weeks Low
TOPP	163.500	+10.500	172.000	150.500
CBG	81.750	+2.250	106.000	61.250
BH	223.000	+2.000	272.000	203.000
METCO	231.000	+2.000	298.000	223.000
SIS	21.100	+1.800	29.000	14.900

Top Losers

Name	Last Done	Change Over 5 Days	52 Weeks High	52 Weeks Low
PTTEP	151.500	-8.500	187.500	134.500
JTS	55.000	-8.000	64.750	23.200
SCC	287.000	-7.000	360.000	282.000
RAM	33.250	-5.250	56.000	33.250
MOSHI	46.250	-5.000	62.000	31.250

HKEX (HKD)

Top Gainers

Name	Last Done	Change Over 5 Days	52 Weeks High	52 Weeks Low
SICHUAN KELUN-BIOTECH BIOPHARMACEUT	94.500	+9.100	98.350	60.600
JENSCARE SCIENTIFIC CO LTD	22.300	+6.460	94.700	15.400
NEW ORIENTAL ED & TECHNOLOGY GP INC	63.050	+5.550	63.400	21.350
CLOUD MUSIC INC	90.000	+4.800	115.200	58.450
MINISO GROUP HLDG LTD	52.450	+4.300	59.850	19.800

Top Losers

Name	Last Done	Change Over 5 Days	52 Weeks High	52 Weeks Low
INTEL CORP	156.000	-144.000	300.000	152.000
BYD COMPANY LIMITED	210.000	-31.800	280.600	187.000
BYD COMPANY LIMITED	191.500	-29.900	255.800	187.500
YUM CHINA HOLDINGS INC	330.200	-24.200	514.500	326.800
BILIBILI INC	89.900	-23.200	228.000	87.600

SGX (SGD)

Top Gainers

Name	Last Done	Change Over 5 Days	52 Weeks High	52 Weeks Low
IFAST	8.400	+0.480	8.400	4.150
VERTEX SPAC	4.790	+0.417	4.790	4.064
KEPPEL CORP	6.670	+0.200	7.273	4.451
TJ DARENTANG USD	2.080	+0.080	2.440	1.050
STRACO	0.485	+0.075	0.515	0.395

Top Losers

Name	Last Done	Change Over 5 Days	52 Weeks High	52 Weeks Low
JMH USD	38.610	-1.990	54.890	38.370
JARDINE C&C	28.520	-1.220	35.580	27.250
NIO Inc. USD OV	7.240	-0.540	15.780	7.150
UOL	5.900	-0.280	7.209	5.600
VENTURE	12.530	-0.270	18.750	11.360

BEYOND THE BOARDROOM: DIRECTOR STEPS FORWARD WITH DERIVATIVE ACTION



Devanesan
Evanson
**Chief Executive
Officer, Minority
Shareholders Watch
Group**

The Malaysian stock market encountered a rather unusual or probably unprecedented event recently whereby a company director commenced derivative proceedings against individual directors and management of the company (the Parties) for alleged breaches of fiduciary duties. The involved entity, Malaysian Genomics Resource Centre Bhd (MGRC), received an Originating Summons (OS) on 25 October 2023 from one of its independent non-executive directors (ID/the Applicant) to commence derivative proceedings under Section 347 and Section 348(2) of the Companies Act 2016 (CA2016), in the name of MGRC, against individual directors and management of the Company for alleged breach of fiduciary duties.

In its reply to a query from Bursa Malaysia on 9 November, MGRC disclosed that the OS is about certain transactions entered into by the Company and its subsidiaries with external parties. The following claims were made against MGRC's board and relevant officers of the Company for breaching their fiduciary duties:

- The obtaining of approval from the board prior to executing certain transactions.
- The directors have failed to exercise their duty of supervision of control and failed to make the necessary disclosure at the material time.
- The MGRC board have voted to change the company's financial year end (from 30 June 2023 to 31 December 2023) instead of resolving the audit issues highlighted by its external auditors.
- Lack of management and disclosure in the operational and financial management of the company.

Subsequently, on 16 November, MGRC filed an Affidavit in Reply and a Supplementary Affidavit in Reply in response to the OS at the Shah Alam High Court. Both affidavits defended MGRC's stand with the view that the Applicant is not acting in good faith and for the best interest of the Company, as the parties concerned have taken the necessary steps to review all the affected transactions in ascertaining the next best move to be taken for the best interest of the Company and its stakeholders. Apart from the potential costs which may be awarded against the Company and the corresponding legal costs, MGRC said other costs in relation to it have yet to be determined. A case management was fixed on 23 November by way of e-review.

DERIVATIVE ACTION

Simply put, derivative action is an action brought by a shareholder or director of a company in the name of and on behalf of that company in respect of wrongs done to the company. Often, derivative actions

are brought to enforce any infringement of the company's right when the board of directors refuses to do so. It intends to remedy the wrongdoings committed by the board of directors or its major shareholders. Shareholders or directors could pursue this when a board of directors refuses to pursue or defend actions against harm done to the company by other third parties.

While IDs owe fiduciary duties to the company like other directors, they play a unique role in safeguarding the interests of minority shareholders. If they deem that other directors have breached their fiduciary duties or harmed the company, pursuing a derivative action may be seen as a responsible and necessary step. Derivative actions bolster accountability within a company, serve as a deterrent against future misconduct and reinforce the principles of transparency and accountability in corporate governance.

Conversely, the potential legal liability arising from derivative action encourages IDs to champion and uphold high ethical standards within the organisation. It underscores the importance of active oversight to minimise financial risks and legal repercussions.

Before pursuing a derivative action, IDs should demonstrate that they have exhausted internal remedies within the company, such as bringing their concerns to the attention of the board or attempting to rectify the issues through internal processes. If the dispute involves legal claims, breach of conduct or issues that cannot be resolved in the boardroom, it may be necessary to take the matter to court.

IDs are tasked with oversight and governance roles, ensuring the company is in good hands. The unprecedented steps taken by the director of MGRC may inspire IDs to play a more active and vigilant role in corporate governance.

Lim Cian Yai
Manager, Corporate Monitoring

DEFINITION: Insider Activity shows the trades made by substantial shareholders or directors of the company. Purchases by the directors and company share buyback may indicate the share price is undervalued and brings confidence to the price trend of the share price.



ShareInvestor WebPro > Fundamental > Insider Trades > click Search tab > Select Bursa > click Stock name > scroll up and leave at <Select Counter> Type Date Range for Announcement Date > click Search

Notice Period is 19th Nov - 25th Nov 2023

Effective Change Date	Stock Name	Buyer/ Seller Name [Classification]	Bought / (Sold) ['000]		No. of Shares After Trade ['000]	
			Total	Total	Total	% Held
22 NOV 2023 - 23 NOV 2023	3A	MR TEO KWEE HOCK [SSH]	-669	49,900	10.204	
21 NOV 2023 - 21 NOV 2023	ABMB	EMPLOYEES PROVIDENT FUND BOARD [SSH]	-300	157,811	10.194	
16 NOV 2023 - 16 NOV 2023	ABMB	EMPLOYEES PROVIDENT FUND BOARD [SSH]	-167	158,111	10.213	
15 NOV 2023 - 15 NOV 2023	ABMB	EMPLOYEES PROVIDENT FUND BOARD [SSH]	-578	158,278	10.224	
22 NOV 2023 - 22 NOV 2023	ACME	MR GOH CHOON LYE [SSH]	-330	47,055	12.803	
22 NOV 2023 - 22 NOV 2023	ACME	WWT WELLNESS SOLUTIONS SDN BHD [SSH]	-330	47,055	12.803	
20 NOV 2023 - 20 NOV 2023	ADVENTA	MISS KWEK SIEW LENG [DIR/CEO]	669	1,169	0.382	
20 NOV 2023 - 20 NOV 2023	ADVENTA	MR EDMOND CHEAH SWEE LENG [DIR/CEO]	1,400	1,400	0.458	
20 NOV 2023 - 20 NOV 2023	ADVENTA	MR LOW CHIN GUAN [DIR/CEO]	74,140	133,176	43.583	
20 NOV 2023 - 20 NOV 2023	ADVENTA	MR LOW CHIN GUAN [SSH]	74,140	133,176	43.583	
20 NOV 2023 - 20 NOV 2023	AEONCR	ABRDN HOLDINGS LIMITED (FORMERLY KNOWN AS ABERDEEN ASSET MANAGEMENT PLC) [SSH]	12,966	25,932	5.079	
20 NOV 2023 - 20 NOV 2023	AEONCR	ABRDN PLC [SSH]	12,966	25,932	5.079	
20 NOV 2023 - 20 NOV 2023	AEONCR	AEON CO. LTD. [SSH]	161,661	323,323	63.32	
20 NOV 2023 - 20 NOV 2023	AEONCR	AEON FINANCIAL SERVICE CO. LTD. [SSH]	157,017	314,035	61.501	
20 NOV 2023 - 20 NOV 2023	AEONCR	DATIN YASMIN AHMAD MERICAN [DIR/CEO]	20	40	0.008	
20 NOV 2023 - 20 NOV 2023	AEONCR	MISS LEE TYAN JEN [DIR/CEO]	42	85	0.017	
20 NOV 2023 - 20 NOV 2023	AEONCR	MR NG ENG KIAT [DIR/CEO]	21	43	0.008	
17 NOV 2023 - 17 NOV 2023	AHB	MR CHOW HUNG KEYE [DIR/CEO]	19,846	19,846	3.018	
21 NOV 2023 - 21 NOV 2023	AIRPORT	EMPLOYEES PROVIDENT FUND BOARD [SSH]	-300	141,605	8.487	
20 NOV 2023 - 20 NOV 2023	AIRPORT	EMPLOYEES PROVIDENT FUND BOARD [SSH]	-300	141,905	8.505	
17 NOV 2023 - 17 NOV 2023	AIRPORT	EMPLOYEES PROVIDENT FUND BOARD [SSH]	-600	142,205	8.523	
16 NOV 2023 - 16 NOV 2023	AIRPORT	EMPLOYEES PROVIDENT FUND BOARD [SSH]	-895	142,805	8.559	
15 NOV 2023 - 15 NOV 2023	AIRPORT	EMPLOYEES PROVIDENT FUND BOARD [SSH]	-211	143,700	8.612	
21 NOV 2023 - 21 NOV 2023	AMBANK	EMPLOYEES PROVIDENT FUND BOARD [SSH]	-520	345,054	10.424	
17 NOV 2023 - 17 NOV 2023	AMBANK	EMPLOYEES PROVIDENT FUND BOARD [SSH]	524	345,574	10.44	
16 NOV 2023 - 16 NOV 2023	AMBANK	EMPLOYEES PROVIDENT FUND BOARD [SSH]	1,687	345,050	10.424	
15 NOV 2023 - 15 NOV 2023	AMBANK	EMPLOYEES PROVIDENT FUND BOARD [SSH]	130	343,363	10.373	
20 NOV 2023 - 20 NOV 2023	AMERIT	AME ELITE CONSORTIUM BERHAD [SSH]	-827	259,150	49.46	
20 NOV 2023 - 20 NOV 2023	AMERIT	MR KANG AH CHEE [SSH]	-827	283,663	54.14	
20 NOV 2023 - 20 NOV 2023	AMERIT	MR LEE CHAI [SSH]	-827	285,865	54.56	
20 NOV 2023 - 20 NOV 2023	AMERIT	MR LEE SAI BOON [SSH]	-827	268,124	51.17	
20 NOV 2023 - 20 NOV 2023	AMERIT	MR LIM YOON KIM [SSH]	-827	284,017	54.21	
22 NOV 2023 - 22 NOV 2023	ANALABS	MR KAN YOW KHEONG [DIR/CEO]	1,130	73,069	67.077	
22 NOV 2023 - 22 NOV 2023	ANALABS	MR KAN YOW KHEONG [SSH]	1,130	73,069	67.077	
21 NOV 2023 - 21 NOV 2023	ANCOMNY	DATO' SIEW KA WEI [DIR/CEO]	-1,600	170,790	17.875	
21 NOV 2023 - 21 NOV 2023	ANCOMNY	DATO' SIEW KA WEI [SSH]	-1,600	170,790	17.875	
21 NOV 2023 - 21 NOV 2023	AXREIT	EMPLOYEES PROVIDENT FUND BOARD [SSH]	-151	269,355	15.471	
20 NOV 2023 - 20 NOV 2023	AXREIT	EMPLOYEES PROVIDENT FUND BOARD [SSH]	-1,000	269,506	15.479	
17 NOV 2023 - 17 NOV 2023	AXREIT	EMPLOYEES PROVIDENT FUND BOARD [SSH]	2,000	270,506	15.537	
16 NOV 2023 - 16 NOV 2023	AXREIT	EMPLOYEES PROVIDENT FUND BOARD [SSH]	553	268,506	15.422	
15 NOV 2023 - 15 NOV 2023	AXREIT	EMPLOYEES PROVIDENT FUND BOARD [SSH]	705	267,953	15.39	
21 NOV 2023 - 21 NOV 2023	BAUTO	EMPLOYEES PROVIDENT FUND BOARD [SSH]	-665	140,240	12.011	
20 NOV 2023 - 20 NOV 2023	BAUTO	EMPLOYEES PROVIDENT FUND BOARD [SSH]	3,950	140,905	12.068	
17 NOV 2023 - 17 NOV 2023	BAUTO	EMPLOYEES PROVIDENT FUND BOARD [SSH]	6,000	136,955	11.73	
16 NOV 2023 - 16 NOV 2023	BAUTO	EMPLOYEES PROVIDENT FUND BOARD [SSH]	2,580	130,955	11.226	
17 NOV 2023 - 17 NOV 2023	BAUTO	DATO' LEE KOK CHUAN [DIR/CEO]	-52	177,041	15.163	
17 NOV 2023 - 17 NOV 2023	BAUTO	DATO' LEE KOK CHUAN [SSH]	-52	177,041	15.163	
17 NOV 2023 - 17 NOV 2023	BAUTO	TAN SRI DATO' SRI YEOH CHOON SAN [DIR/CEO]	-63	177,184	15.175	
17 NOV 2023 - 17 NOV 2023	BAUTO	TAN SRI DATO' SRI YEOH CHOON SAN [SSH]	-63	177,184	15.175	
16 NOV 2023 - 16 NOV 2023	BAUTO	PRUDENTIAL PLC [SSH]	-600	58,427	5.009	
15 NOV 2023 - 15 NOV 2023	BAUTO	EMPLOYEES PROVIDENT FUND BOARD [SSH]	1,182	128,375	11.005	
16 NOV 2023 - 16 NOV 2023	BIPORT	EMPLOYEES PROVIDENT FUND BOARD [SSH]	-17	23,194	5.042	
22 NOV 2023 - 22 NOV 2023	BJFOOD	BERJAYA CORPORATION BERHAD [SSH]	10	941,735	53.683	
22 NOV 2023 - 22 NOV 2023	BJFOOD	BERJAYA GROUP BERHAD [SSH]	10	899,984	51.302	
22 NOV 2023 - 22 NOV 2023	BJFOOD	JUARA SEJATI SDN BHD [SSH]	10	117,981	6.725	
17 NOV 2023 - 17 NOV 2023	BJFOOD	BERJAYA CORPORATION BERHAD [SSH]	7,000	941,725	53.682	
17 NOV 2023 - 17 NOV 2023	BJFOOD	BERJAYA GROUP BERHAD [SSH]	7,000	899,974	51.302	
17 NOV 2023 - 17 NOV 2023	BJFOOD	JUARA SEJATI SDN BHD [SSH]	7,000	117,971	6.725	
23 NOV 2023 - 23 NOV 2023	BORNOIL	DATUK JOSEPH LEE YOK MIN @ AMBROSE [DIR/CEO]	550	1,956,479	16.344	
23 NOV 2023 - 23 NOV 2023	BORNOIL	DATUK JOSEPH LEE YOK MIN @ AMBROSE [SSH]	550	674,041	16.344	
20 NOV 2023 - 20 NOV 2023	BORNOIL	DATUK JOSEPH LEE YOK MIN @ AMBROSE [DIR/CEO]	6,675	1,955,929	16.339	
20 NOV 2023 - 20 NOV 2023	BORNOIL	DATUK JOSEPH LEE YOK MIN @ AMBROSE [SSH]	6,675	673,491	16.339	
20 NOV 2023 - 20 NOV 2023	BVLH	DATO' GOH KANG BENG [DIR/CEO]	4,072	119,333	88.004	
20 NOV 2023 - 20 NOV 2023	BVLH	DATO' GOH KANG BENG [SSH]	4,072	119,333	88.004	
21 NOV 2023 - 21 NOV 2023	CDB	EMPLOYEES PROVIDENT FUND BOARD [SSH]	1,150	1,125,420	9.593	
20 NOV 2023 - 20 NOV 2023	CDB	EMPLOYEES PROVIDENT FUND BOARD [SSH]	50	1,124,270	9.583	
17 NOV 2023 - 17 NOV 2023	CDB	EMPLOYEES PROVIDENT FUND BOARD [SSH]	915	1,124,220	9.583	
16 NOV 2023 - 16 NOV 2023	CDB	EMPLOYEES PROVIDENT FUND BOARD [SSH]	10	1,123,305	9.575	
15 NOV 2023 - 15 NOV 2023	CDB	EMPLOYEES PROVIDENT FUND BOARD [SSH]	30	1,123,295	9.575	
21 NOV 2023 - 21 NOV 2023	CEB	MISS LIM CHUE WAN [DIR/CEO]	50	850	0.092	

Notice Period is 19th Nov - 25th Nov 2023

Effective Change Date	Stock Name	Buyer/ Seller Name [Classification]	Bought / (Sold) ['000]		No. of Shares After Trade ['000]	
			Total	Total	Total	% Held
22 NOV 2023 - 23 NOV 2023	CEPAT	DATIN SERI OOI AH THIN [SSH]	194	121,085	39.19	
22 NOV 2023 - 23 NOV 2023	CEPAT	DATO' MAH POOI SOO REALTY SDN. BHD. [SSH]	194	121,085	39.19	
22 NOV 2023 - 23 NOV 2023	CEPAT	DATO' SERI MAH KING SENG [DIR/CEO]	194	121,085	39.19	
22 NOV 2023 - 23 NOV 2023	CEPAT	DATO' SERI MAH KING SENG [SSH]	194	121,085	39.19	
22 NOV 2023 - 23 NOV 2023	CEPAT	MHC PLANTATIONS BHD. [SSH]	194	121,085	39.19	
22 NOV 2023 - 23 NOV 2023	CEPAT	TAN SRI DR MAH KING THIAN @ MAH KING THIAM [DIR/CEO]	194	121,085	39.19	
22 NOV 2023 - 23 NOV 2023	CEPAT	TAN SRI DR MAH KING THIAN @ MAH KING THIAM [SSH]	194	121,085	39.19	
17 NOV 2023 - 17 NOV 2023	CGB	MR CHEW HIAN TAT [DIR/CEO]	1,016	51,780	29.296	
17 NOV 2023 - 17 NOV 2023	CGB	MR CHEW HIAN TAT [SSH]	1,016	51,780	29.296	
23 NOV 2023 - 23 NOV 2023	CIMB	KUMPULAN WANG PERSARAAN (DIPERBADANKAN) [SSH]	-17	691,243	6.48	
21 NOV 2023 - 21 NOV 2023	CIMB	EMPLOYEES PROVIDENT FUND BOARD [SSH]	-630	1,621,276	15.2	
22 NOV 2023 - 22 NOV 2023	CIMB	KUMPULAN WANG PERSARAAN (DIPERBADANKAN) [SSH]	1,554	691,260	6.48	
20 NOV 2023 - 20 NOV 2023	CIMB	EMPLOYEES PROVIDENT FUND BOARD [SSH]	4,775	1,621,906	15.21	
21 NOV 2023 - 21 NOV 2023	CIMB	KUMPULAN WANG PERSARAAN (DIPERBADANKAN) [SSH]	-195	692,814	6.5	
17 NOV 2023 - 17 NOV 2023	CIMB	EMPLOYEES PROVIDENT FUND BOARD [SSH]	468	1,617,131	15.16	
16 NOV 2023 - 16 NOV 2023	CIMB	EMPLOYEES PROVIDENT FUND BOARD [SSH]	3,137	1,616,663	15.16	
17 NOV 2023 - 17 NOV 2023	CIMB	KUMPULAN WANG PERSARAAN (DIPERBADANKAN) [SSH]	-856	693,008	6.5	
16 NOV 2023 - 16 NOV 2023	CIMB	KUMPULAN WANG PERSARAAN (DIPERBADANKAN) [SSH]	-1,160	693,965	6.51	
15 NOV 2023 - 15 NOV 2023	CIMB	EMPLOYEES PROVIDENT FUND BOARD [SSH]	525	1,613,526	15.13	
17 NOV 2023 - 17 NOV 2023	CITAGLB	TAN SRI DATO' SRI DR MOHAMAD NORZA BIN ZAKARIA [DIR/CEO]	-3,600	140,944	33.749	
17 NOV 2023 - 17 NOV 2023	CITAGLB	TAN SRI DATO' SRI DR MOHAMAD NORZA BIN ZAKARIA [SSH]	-3,600	140,944	33.749	
17 NOV 2023 - 17 NOV 2023	CITAGLB	TIZA GLOBAL SDN. BHD. [SSH]	-3,600	137,125	32.834	
23 NOV 2023 - 23 NOV 2023	CLMT	KUMPULAN WANG PERSARAAN (DIPERBADANKAN) [SSH]	1,326	262,455	9.602	
21 NOV 2023 - 21 NOV 2023	CLMT	EMPLOYEES PROVIDENT FUND BOARD [SSH]	65	406,539	14.873	
22 NOV 2023 - 22 NOV 2023	CLMT	KUMPULAN WANG PERSARAAN (DIPERBADANKAN) [SSH]	1,320	261,129	9.553	
20 NOV 2023 - 20 NOV 2023	CLMT	EMPLOYEES PROVIDENT FUND BOARD [SSH]	109	406,474	14.87	
21 NOV 2023 - 21 NOV 2023	CLMT	KUMPULAN WANG PERSARAAN (DIPERBADANKAN) [SSH]	81	259,809	9.505	
17 NOV 2023 - 17 NOV 2023	CLMT	EMPLOYEES PROVIDENT FUND BOARD [SSH]	149	406,365	14.866	
20 NOV 2023 - 20 NOV 2023	CLMT	KUMPULAN WANG PERSARAAN (DIPERBADANKAN) [SSH]	135	259,728	9.502	
16 NOV 2023 - 16 NOV 2023	CLMT	EMPLOYEES PROVIDENT FUND BOARD [SSH]	249	406,216	14.861	
16 NOV 2023 - 17 NOV 2023	CLMT	KUMPULAN WANG PERSARAAN (DIPERBADANKAN) [SSH]	493	259,593	9.497	
15 NOV 2023 - 15 NOV 2023	CLMT	EMPLOYEES PROVIDENT FUND BOARD [SSH]	447	405,966	14.852	
21 NOV 2023 - 21 NOV 2023	CTOS	ABRDN HOLDINGS LIMITED (FORMERLY KNOWN AS ABERDEEN ASSET MANAGEMENT PLC) [SSH]	306	142,839	6.183	
21 NOV 2023 - 21 NOV 2023	CTOS	ABRDN MALAYSIA SDN BHD [SSH]	242	141,056	6.106	
21 NOV 2023 - 21 NOV 2023	CTOS	ABRDN PLC [SSH]	306	142,839	6.183	
20 NOV 2023 - 20 NOV 2023	CTOS	WASATCH ADVISORS LP [SSH]	-2,084	128,227	5.551	
16 NOV 2023 - 17 NOV 2023	CTOS	WASATCH ADVISORS LP [SSH]	-2,611	130,311	5.641	
21 NOV 2023 - 21 NOV 2023	D&O	EMPLOYEES PROVIDENT FUND BOARD [SSH]	588	71,499	5.774	
20 NOV 2023 - 20 NOV 2023	D&O	EMPLOYEES PROVIDENT FUND BOARD [SSH]	73	70,910	5.726	
17 NOV 2023 - 17 NOV 2023	D&O	EMPLOYEES PROVIDENT FUND BOARD [SSH]	-51	70,837	5.721	
16 NOV 2023 - 16 NOV 2023	D&O	EMPLOYEES PROVIDENT FUND BOARD [SSH]	100	70,888	5.725	
15 NOV 2023 - 15 NOV 2023	D&O	EMPLOYEES PROVIDENT FUND BOARD [SSH]	500	70,788	5.717	
21 NOV 2023 - 21 NOV 2023	DIALOG	EMPLOYEES PROVIDENT FUND BOARD [SSH]	-3,596	846,991	15.01	
20 NOV 2023 - 20 NOV 2023	DIALOG	EMPLOYEES PROVIDENT FUND BOARD [SSH]	-34	850,587	15.07	
17 NOV 2023 - 17 NOV 2023	DIALOG	EMPLOYEES PROVIDENT FUND BOARD [SSH]	-300	850,621	15.08	
16 NOV 2023 - 16 NOV 2023	DIALOG	EMPLOYEES PROVIDENT FUND BOARD [SSH]	1,119	850,921	15.08	
16 NOV 2023 - 16 NOV 2023	DIALOG	KUMPULAN WANG PERSARAAN (DIPERBADANKAN) [SSH]	91	564,173	10	
15 NOV 2023 - 15 NOV 2023	DIALOG	EMPLOYEES PROVIDENT FUND BOARD [SSH]	1,850	849,801	15.06	
21 NOV 2023 - 21 NOV 2023	DLADY	CITIGROUP NOMINEES (TEMPATAN) SDN BHD EMPLOYEES PROVIDENT FUND BOARD [SSH]	-0.5	5,316	8.307	
20 NOV 2023 - 20 NOV 2023	DLADY	CITIGROUP NOMINEES (TEMPATAN) SDN BHD EMPLOYEES PROVIDENT FUND BOARD [SSH]	-1	5,317	8.307	
17 NOV 2023 - 17 NOV 2023	DLADY	CITIGROUP NOMINEES (TEMPATAN) SDN BHD EMPLOYEES PROVIDENT FUND BOARD [SSH]	-59	5,318	8.309	
16 NOV 2023 - 16 NOV 2023	DLADY	CITIGROUP NOMINEES (TEMPATAN) SDN BHD EMPLOYEES PROVIDENT FUND BOARD [SSH]	-4	5,377	8.401	
15 NOV 2023 - 15 NOV 2023	DLADY	CITIGROUP NOMINEES (TEMPATAN) SDN BHD EMPLOYEES PROVIDENT FUND BOARD [SSH]	-33	5,381	8.407	
22 NOV 2023 - 23 NOV 2023	ECOFIRS	MADAM YEOH SIOK CHOO [SSH]	6,000	136,436	11.302	
22 NOV 2023 - 23 NOV 2023	ECOFIRS	MR TAN YOU TIONG [SSH]	6,000	219,436	18.178	
21 NOV 2023 - 21 NOV 2023	ECOFIRS	MADAM YEOH SIOK CHOO [SSH]	15,500	130,436	10.805	
21 NOV 2023 - 21 NOV 2023	ECOFIRS	MR TAN YOU TIONG [SSH]	15,500	213,436	17.681	
16 NOV 2023 - 17 NOV 2023	ECOFIRS	MADAM YEOH SIOK CHOO [SSH]	28,700	114,936	9.521	

Disclaimer: The Information in Insider Activity is extracted from www.shareinvestor.com/fundamental/insider_trades. The information on this page is provided as a service to readers. It does not constitute financial advice and/or any investment recommendations. We assume no liability for damages resulting from or arising out of the use of such information. Whilst every effort is made to ensure accuracy, the information presented is not the official record of shareholder filings. Readers are advised to read the original filings on the Bursa Malaysia website at www.bursamalaysia.com

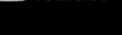


STROM

SWISS TIMEPIECES & JEWELLERY



click here to view video



StromWatch Asia
Tele : +65.9817.3378
Email : ll.stromasia@gmail.com
WWW.STROMWATCH.SWISS

Notice Period is 19th Nov - 25th Nov 2023

Effective Change Date	Stock Name	Buyer/ Seller Name [Classification]	Bought / After Trade ('000)		
			Total	Total	% Held
16 NOV 2023 - 17 NOV 2023	ECOFIRS	MR TAN YOU TIONG [SSH]	28,700	197,936	16.397
21 NOV 2023 - 21 NOV 2023	ECONBHD	EMPLOYEES PROVIDENT FUND BOARD [SSH]	300	100,360	7.08
17 NOV 2023 - 17 NOV 2023	ECONBHD	EMPLOYEES PROVIDENT FUND BOARD [SSH]	-1,779	100,060	7.059
21 NOV 2023 - 21 NOV 2023	EDEN	KOPERASI BELIA ISLAM MALAYSIA BERHAD [SSH]	-4,348	52,612	11.452
22 NOV 2023 - 22 NOV 2023	EFORCE	DATUK WIRA FARHASH WAFIA SALVADOR [DIR/CEO]	5,000	5,000	0.894
20 NOV 2023 - 20 NOV 2023	ELKDESA	ZHONGXIN RESOURCES SDN BHD [SSH]	2,500	175,000	38.477
21 NOV 2023 - 21 NOV 2023	F&N	EMPLOYEES PROVIDENT FUND BOARD [SSH]	-71	42,994	11.722
20 NOV 2023 - 20 NOV 2023	F&N	EMPLOYEES PROVIDENT FUND BOARD [SSH]	-99	43,064	11.741
17 NOV 2023 - 17 NOV 2023	F&N	EMPLOYEES PROVIDENT FUND BOARD [SSH]	-27	43,164	11.768
16 NOV 2023 - 16 NOV 2023	F&N	EMPLOYEES PROVIDENT FUND BOARD [SSH]	-16	43,191	11.776
15 NOV 2023 - 15 NOV 2023	F&N	EMPLOYEES PROVIDENT FUND BOARD [SSH]	-21	43,207	11.78
16 NOV 2023 - 16 NOV 2023	FFB	EMPLOYEES PROVIDENT FUND BOARD [SSH]	25	161,268	8.615
16 NOV 2023 - 16 NOV 2023	FFB	ABRDN HOLDINGS LIMITED (FORMERLY KNOWN AS ABERDEEN ASSET MANAGEMENT PLC) [SSH]	25	116,504	6.224
16 NOV 2023 - 16 NOV 2023	FFB	ABRDN MALAYSIA SDN BHD [SSH]	25	115,104	6.149
16 NOV 2023 - 16 NOV 2023	FFB	ABRDN PLC [SSH]	25	116,504	6.224
15 NOV 2023 - 15 NOV 2023	FFB	EMPLOYEES PROVIDENT FUND BOARD [SSH]	262	161,243	8.614
22 NOV 2023 - 23 NOV 2023	FRONTKN	MR OOI KENG THYE [SSH]	-4,888	146,010	9.294
21 NOV 2023 - 21 NOV 2023	FRONTKN	EMPLOYEES PROVIDENT FUND BOARD [SSH]	1,770	105,244	6.699
20 NOV 2023 - 20 NOV 2023	FRONTKN	EMPLOYEES PROVIDENT FUND BOARD [SSH]	1,779	103,475	6.587
17 NOV 2023 - 17 NOV 2023	FRONTKN	EMPLOYEES PROVIDENT FUND BOARD [SSH]	4,851	101,695	6.473
17 NOV 2023 - 20 NOV 2023	FRONTKN	MR OOI KENG THYE [SSH]	-7,511	150,898	9.606
16 NOV 2023 - 16 NOV 2023	FRONTKN	EMPLOYEES PROVIDENT FUND BOARD [SSH]	1,294	96,844	6.165
15 NOV 2023 - 15 NOV 2023	FRONTKN	EMPLOYEES PROVIDENT FUND BOARD [SSH]	4,241	95,550	6.082
21 NOV 2023 - 21 NOV 2023	GAMUDA	EMPLOYEES PROVIDENT FUND BOARD (EPF BOARD) [SSH]	-6,848	297,104	11.01
20 NOV 2023 - 20 NOV 2023	GAMUDA	EMPLOYEES PROVIDENT FUND BOARD (EPF BOARD) [SSH]	-970	303,952	11.26
17 NOV 2023 - 17 NOV 2023	GAMUDA	EMPLOYEES PROVIDENT FUND BOARD (EPF BOARD) [SSH]	1,404	304,922	11.3
16 NOV 2023 - 16 NOV 2023	GAMUDA	EMPLOYEES PROVIDENT FUND BOARD (EPF BOARD) [SSH]	1,077	303,518	11.25
15 NOV 2023 - 15 NOV 2023	GAMUDA	EMPLOYEES PROVIDENT FUND BOARD (EPF BOARD) [SSH]	2,083	302,441	11.21
21 NOV 2023 - 21 NOV 2023	GASMSIA	EMPLOYEES PROVIDENT FUND BOARD [SSH]	-257	78,190	6.089
20 NOV 2023 - 20 NOV 2023	GASMSIA	EMPLOYEES PROVIDENT FUND BOARD [SSH]	-172	78,447	6.109
17 NOV 2023 - 17 NOV 2023	GASMSIA	EMPLOYEES PROVIDENT FUND BOARD [SSH]	-30	78,619	6.122
16 NOV 2023 - 16 NOV 2023	GASMSIA	EMPLOYEES PROVIDENT FUND BOARD [SSH]	-42	78,648	6.125
20 NOV 2023 - 20 NOV 2023	GBAY	MR PETER LING EE KONG [DIR/CEO]	10	10,109	12.427
20 NOV 2023 - 20 NOV 2023	GBAY	MR PETER LING EE KONG [SSH]	10	10,109	12.427
18 OCT 2023 - 18 OCT 2023	GBGAQRS	YM TUNKU ALIZAN BIN RAJA MUHAMMAD ALIAS [DIR/CEO]	35	1,330	0.245
09 OCT 2023 - 09 OCT 2023	GBGAQRS	YM TUNKU ALIZAN BIN RAJA MUHAMMAD ALIAS [DIR/CEO]	95	1,295	0.239
17 NOV 2023 - 17 NOV 2023	GCB	EMPLOYEES PROVIDENT FUND BOARD [SSH]	858	65,010	5.535
20 NOV 2023 - 20 NOV 2023	GREATEC	MISS OOI HOI KIANG [DIR/CEO]	-200	1,539	0.123
22 NOV 2023 - 22 NOV 2023	HCK	DATO' DIONG TAK CHONG @ TIONG TAK CHONG [DIR/CEO]	1,000	2,764	0.536
22 NOV 2023 - 22 NOV 2023	HCK-WA	DATO' DIONG TAK CHONG @ TIONG TAK CHONG [DIR/CEO]	1,000	57,338	48.84
21 NOV 2023 - 21 NOV 2023	HLBANK	EMPLOYEES PROVIDENT FUND BOARD [SSH]	-279	204,671	9.809
17 NOV 2023 - 17 NOV 2023	HLBANK	EMPLOYEES PROVIDENT FUND BOARD [SSH]	-150	204,949	9.822
20 NOV 2023 - 20 NOV 2023	HONGSENG	MR LESTER CHIN KENT LAKE [DIR/CEO]	264,600	956,828	18.73
20 NOV 2023 - 20 NOV 2023	HONGSENG	MR LESTER CHIN KENT LAKE [SSH]	264,600	956,828	18.73
20 NOV 2023 - 20 NOV 2023	HONGSENG	RADIANCE DYNASTY SDN. BHD. [SSH]	264,600	949,324	18.584
20 NOV 2023 - 20 NOV 2023	IGBCR	MISS ELIZABETH TAN HUI NING [DIR/CEO]	60	836	0.035
23 NOV 2023 - 23 NOV 2023	IGBREIT	KUMPULAN WANG PERSARAAN (DIPERBADANKAN) [SSH]	-274	258,447	7.176
22 NOV 2023 - 22 NOV 2023	IGBREIT	KUMPULAN WANG PERSARAAN (DIPERBADANKAN) [SSH]	-264	258,721	7.184
21 NOV 2023 - 21 NOV 2023	IGBREIT	KUMPULAN WANG PERSARAAN (DIPERBADANKAN) [SSH]	-121	258,985	7.191
20 NOV 2023 - 20 NOV 2023	IGBREIT	KUMPULAN WANG PERSARAAN (DIPERBADANKAN) [SSH]	-500	259,106	7.194
16 NOV 2023 - 17 NOV 2023	IGBREIT	KUMPULAN WANG PERSARAAN (DIPERBADANKAN) [SSH]	-1,380	259,606	7.208
21 NOV 2023 - 21 NOV 2023	IHH	EMPLOYEES PROVIDENT FUND BOARD [SSH]	-3,000	927,806	10.535
20 NOV 2023 - 20 NOV 2023	IHH	EMPLOYEES PROVIDENT FUND BOARD [SSH]	-1,794	930,806	10.569
17 NOV 2023 - 17 NOV 2023	IHH	EMPLOYEES PROVIDENT FUND BOARD [SSH]	-1,391	932,600	10.589
16 NOV 2023 - 16 NOV 2023	IHH	EMPLOYEES PROVIDENT FUND BOARD [SSH]	1,713	933,990	10.605
15 NOV 2023 - 15 NOV 2023	IHH	EMPLOYEES PROVIDENT FUND BOARD [SSH]	-2,787	932,278	10.586
23 NOV 2023 - 23 NOV 2023	IJM	KUMPULAN WANG PERSARAAN (DIPERBADANKAN) [SSH]	2,000	329,029	9.384
17 NOV 2023 - 17 NOV 2023	IJM	URUSHARTA JAMAAH SDN BHD [SSH]	-10	177,227	5.055
16 NOV 2023 - 16 NOV 2023	IJM	EMPLOYEES PROVIDENT FUND BOARD [SSH]	250	590,656	16.846
15 NOV 2023 - 15 NOV 2023	IJM	EMPLOYEES PROVIDENT FUND BOARD [SSH]	267	590,406	16.839
16 NOV 2023 - 17 NOV 2023	IMASPRO	MR YU KUAN CHON [SSH]	34	11,663	14.579
21 NOV 2023 - 21 NOV 2023	INARI	EMPLOYEES PROVIDENT FUND BOARD [SSH]	-3,000	340,648	9.097
20 NOV 2023 - 20 NOV 2023	INARI	EMPLOYEES PROVIDENT FUND BOARD [SSH]	-1,993	343,648	9.177
17 NOV 2023 - 17 NOV 2023	INARI	EMPLOYEES PROVIDENT FUND BOARD [SSH]	-1,450	345,640	9.23
20 NOV 2023 - 20 NOV 2023	INARI	KUMPULAN WANG PERSARAAN (DIPERBADANKAN) [SSH]	-1,373	355,985	9.506
16 NOV 2023 - 16 NOV 2023	INARI	EMPLOYEES PROVIDENT FUND BOARD [SSH]	-2,700	347,090	9.269
15 NOV 2023 - 15 NOV 2023	INARI	EMPLOYEES PROVIDENT FUND BOARD [SSH]	-2,320	349,790	9.341
20 NOV 2023 - 20 NOV 2023	IOICORP	EMPLOYEES PROVIDENT FUND BOARD [SSH]	353	698,846	11.265
17 NOV 2023 - 17 NOV 2023	IOICORP	EMPLOYEES PROVIDENT FUND BOARD [SSH]	540	698,493	11.259
16 NOV 2023 - 16 NOV 2023	JFTECH	DATUK PHANG AH TONG [DIR/CEO]	20	332	0.035
16 NOV 2023 - 16 NOV 2023	JFTECH	DATO' FOONG WEI KUONG [DIR/CEO]	200	470,062	50.705
16 NOV 2023 - 16 NOV 2023	JFTECH	DATO' FOONG WEI KUONG [SSH]	200	470,062	50.705
16 NOV 2023 - 16 NOV 2023	JFTECH	PUAN JAMILAH BINTI KAMAL [DIR/CEO]	10	20	0.002
21 NOV 2023 - 21 NOV 2023	KERJAYA	EMPLOYEES PROVIDENT FUND BOARD [SSH]	-343	68,935	5.467
20 NOV 2023 - 20 NOV 2023	KERJAYA	EMPLOYEES PROVIDENT FUND BOARD [SSH]	-1,515	69,278	5.494
17 NOV 2023 - 17 NOV 2023	KERJAYA	EMPLOYEES PROVIDENT FUND BOARD [SSH]	-200	70,793	5.614
20 NOV 2023 - 20 NOV 2023	KLCC	EMPLOYEES PROVIDENT FUND BOARD [SSH]	3	184,197	10.203
20 NOV 2023 - 20 NOV 2023	KLCC	EMPLOYEES PROVIDENT FUND BOARD [SSH]	3	184,197	10.203
21 NOV 2023 - 21 NOV 2023	KLK	EMPLOYEES PROVIDENT FUND BOARD [SSH]	-323	117,597	10.904
20 NOV 2023 - 20 NOV 2023	KLK	EMPLOYEES PROVIDENT FUND BOARD [SSH]	-38	117,920	10.934
17 NOV 2023 - 17 NOV 2023	KLK	EMPLOYEES PROVIDENT FUND BOARD [SSH]	-134	117,918	10.934
16 NOV 2023 - 16 NOV 2023	KLK	EMPLOYEES PROVIDENT FUND BOARD [SSH]	218	118,050	10.946
15 NOV 2023 - 15 NOV 2023	KLK	EMPLOYEES PROVIDENT FUND BOARD [SSH]	-157	117,832	10.926
22 NOV 2023 - 22 NOV 2023	KOSSAN	ABRDN HOLDINGS LIMITED (FORMERLY KNOWN AS ABERDEEN ASSET MANAGEMENT PLC) [SSH]	-1,640	150,401	5.894

Notice Period is 19th Nov - 25th Nov 2023

Effective Change Date	Stock Name	Buyer/ Seller Name [Classification]	Bought / After Trade ('000)		
			Total	Total	% Held
22 NOV 2023 - 22 NOV 2023	KOSSAN	ABRDN MALAYSIA SDN BHD [SSH]	-1,640	147,996	5.8
22 NOV 2023 - 22 NOV 2023	KOSSAN	ABRDN PLC [SSH]	-1,640	150,401	5.894
21 NOV 2023 - 21 NOV 2023	KOSSAN	EMPLOYEES PROVIDENT FUND BOARD [SSH]	150	130,050	5.097
21 NOV 2023 - 21 NOV 2023	KOSSAN	ABRDN HOLDINGS LIMITED (FORMERLY KNOWN AS ABERDEEN ASSET MANAGEMENT PLC) [SSH]	-71	152,040	5.959
21 NOV 2023 - 21 NOV 2023	KOSSAN	ABRDN MALAYSIA SDN BHD [SSH]	-71	149,636	5.864
21 NOV 2023 - 21 NOV 2023	KOSSAN	ABRDN PLC [SSH]	-71	152,040	5.959
17 NOV 2023 - 17 NOV 2023	KOSSAN	EMPLOYEES PROVIDENT FUND BOARD [SSH]	45	129,900	5.091
16 NOV 2023 - 16 NOV 2023	KOSSAN	EMPLOYEE PROVIDENT FUND BOARD [SSH]	5,393	129,856	5.089
24 NOV 2023 - 24 NOV 2023	LAYHONG	DATO' YAP HOONG CHAI [DIR/CEO]	-100	277,859	37.532
22 NOV 2023 - 22 NOV 2023	LAYHONG	DATO' YAP HOONG CHAI [DIR/CEO]	-400	277,959	37.545
21 NOV 2023 - 21 NOV 2023	LEFORM	MISS LEE WEE LENG [DIR/CEO]	-100	200	0.014
23 NOV 2023 - 23 NOV 2023	LHI	TAN SRI DATO' LAU ENG GUANG [DIR/CEO]	-1,463	110,919	3.039
20 NOV 2023 - 20 NOV 2023	LSH	MADAM LIM PAK LIAN [DIR/CEO]	-60	572,851	81.099
20 NOV 2023 - 20 NOV 2023	LSH	MADAM LIM PAK LIAN [SSH]	-60	572,851	81.099
20 NOV 2023 - 20 NOV 2023	LSH	MR LIM KENG HUN [DIR/CEO]	-100	572,851	81.099
20 NOV 2023 - 20 NOV 2023	LSH	MR LIM KENG HUN [SSH]	-100	572,851	81.099
20 NOV 2023 - 20 NOV 2023	LSH	TAN SRI DATUK SERI LIM KENG CHENG [DIR/CEO]	-67	572,784	81.09
20 NOV 2023 - 20 NOV 2023	LSH	TAN SRI DATUK SERI LIM KENG CHENG [SSH]	-67	572,784	81.09
17 NOV 2023 - 17 NOV 2023	LSH	DATUK LIM KENG GUAN [DIR/CEO]	-100	572,851	81.099
17 NOV 2023 - 17 NOV 2023	LSH	DATUK LIM KENG GUAN [SSH]	-100	572,851	81.099
17 NOV 2023 - 17 NOV 2023	LSH	MADAM LIM PAK LIAN [DIR/CEO]	-40	572,911	81.108
17 NOV 2023 - 17 NOV 2023	LSH	MADAM LIM PAK LIAN [SSH]	-40	572,911	81.108
17 NOV 2023 - 17 NOV 2023	LSH	TAN SRI DATUK SERI LIM KENG CHENG [DIR/CEO]	-100	572,851	81.099
17 NOV 2023 - 17 NOV 2023	LSH	TAN SRI DATUK SERI LIM KENG CHENG [SSH]	-100	572,851	81.099
17 NOV 2023 - 17 NOV 2023	LTKM	DATIN LIM HOI TIN [DIR/CEO]	226	101,877	71.186
17 NOV 2023 - 17 NOV 2023	LTKM	DATIN LIM HOI TIN [SSH]	226	101,877	71.186
17 NOV 2023 - 17 NOV 2023	LTKM	DATUK TAN KOK [DIR/CEO]	226	104,736	73.183
17 NOV 2023 - 17 NOV 2023	LTKM	DATUK TAN KOK [SSH]	226	104,736	73.183
17 NOV 2023 - 17 NOV 2023	LTKM	LADANG TERNAKAN KELANG SDN. BHD. [SSH]	226	96,628	67.518
17 NOV 2023 - 17 NOV 2023	LUXCHEM	MADAM CHIN SONG MOOI [DIR/CEO]	123	457,939	42.808
17 NOV 2023 - 17 NOV 2023	LUXCHEM	MADAM CHIN SONG MOOI [SSH]	123	457,939	42.808
17 NOV 2023 - 17 NOV 2023	LUXCHEM	MR TANG YING SEE [DIR/CEO]	123	457,939	42.808
17 NOV 2023 - 17 NOV 2023	LUXCHEM	MR TANG YING SEE [SSH]	123	457,939	42.808
20 NOV 2023 - 20 NOV 2023	MALAKOF	KUMPULAN WANG PERSARAAN (DIPERBADANKAN) ("KWAP") [SSH]	651	449,335	9.194
16 NOV 2023 - 16 NOV 2023	MALAKOF	URUSHARTA JAMAAH SDN. BHD. [SSH]	-1,000	498,890	10.208
21 NOV 2023 - 21 NOV 2023	MAXIM	DATUK TAN KAK SENG [SSH]	1,705	47,496	6.462
17 NOV 2023 - 20 NOV 2023	MAXIM	DATUK TAN KAK SENG [SSH]	956	45,791	6.23
21 NOV 2023 - 21 NOV 2023	MAXIS	EMPLOYEES PROVIDENT FUND BOARD ("EPF BOARD") [SSH]	-38	865,722	11.054
22 NOV 2023 - 22 NOV 2023	MAYBANK	AMANAHRAYA TRUSTEES BERHAD - AMANAH SAHAM BUMIPUTERA [SSH]	-3,165	3,669,050	30.423
21 NOV 2023 - 21 NOV 2023	MAYBANK	EMPLOYEES PROVIDENT FUND BOARD [SSH]	-3,000	1,629,961	13.515
21 NOV 2023 - 21 NOV 2023	MAYBANK	AMANAHRAYA TRUSTEES BERHAD - AMANAH SAHAM BUMIPUTERA [SSH]	-1,544	3,672,214	30.449
20 NOV 2023 - 20 NOV 2023	MAYBANK	AMANAHRAYA TRUSTEES BERHAD - AMANAH SAHAM BUMIPUTERA [SSH]	-1,727	3,673,758	30.462
17 NOV 2023 - 17 NOV 2023	MAYBANK	EMPLOYEES PROVIDENT FUND BOARD [SSH]	3,500	1,632,961	13.54
17 NOV 2023 - 17 NOV 2023	MAYBANK	AMANAHRAYA TRUSTEES BERHAD - AMANAH SAHAM BUMIPUTERA [SSH]	-4,245	3,675,485	30.476
16 NOV 2023 - 16 NOV 2023	MAYBANK	EMPLOYEES PROVIDENT FUND BOARD [SSH]	3,500	1,629,461	13.511
16 NOV 2023 - 16 NOV 2023					

Notice Period is 19th Nov - 25th Nov 2023

Effective Change Date	Stock Name	Buyer/ Seller Name [Classification]	Bought / (Sold) ['000]		No. of Shares After Trade ['000]	
			Total	Total	% Held	
17 NOV 2023 - 17 NOV 2023	PEN-SONI-WB	DATO' SERI CHEW WENG KHAK @ CHEW WENG KIAK [DIR/CEO]	-2,002	7,890	12.17	
17 NOV 2023 - 17 NOV 2023	PENTA	EMPLOYEES PROVIDENT FUND BOARD [SSH]	-6	53,444	7.513	
16 NOV 2023 - 16 NOV 2023	PENTA	EMPLOYEES PROVIDENT FUND BOARD [SSH]	-55	53,451	7.514	
15 NOV 2023 - 15 NOV 2023	PENTA	EMPLOYEES PROVIDENT FUND BOARD [SSH]	-105	53,506	7.522	
21 NOV 2023 - 21 NOV 2023	PETDAG	EMPLOYEES PROVIDENT FUND BOARD ("EPF BOARD") [SSH]	0.1	121,481	12.228	
17 NOV 2023 - 17 NOV 2023	PETDAG	EMPLOYEES PROVIDENT FUND BOARD ("EPF BOARD") [SSH]	500	121,481	12.228	
21 NOV 2023 - 21 NOV 2023	PETGAS	EMPLOYEES PROVIDENT FUND BOARD [SSH]	474	263,982	13.341	
20 NOV 2023 - 20 NOV 2023	PETGAS	EMPLOYEES PROVIDENT FUND BOARD [SSH]	78	263,508	13.317	
17 NOV 2023 - 17 NOV 2023	PETGAS	EMPLOYEES PROVIDENT FUND BOARD [SSH]	-37	263,430	13.313	
16 NOV 2023 - 16 NOV 2023	PETGAS	EMPLOYEES PROVIDENT FUND BOARD [SSH]	-27	263,467	13.315	
15 NOV 2023 - 15 NOV 2023	PETGAS	EMPLOYEES PROVIDENT FUND BOARD [SSH]	-83	263,494	13.316	
21 NOV 2023 - 21 NOV 2023	PGB	DATO' TAN YEE BOON [DIR/CEO]	8,000	8,000	1.203	
21 NOV 2023 - 21 NOV 2023	PPB	EMPLOYEES PROVIDENT FUND BOARD [SSH]	-425	135,845	9.549	
20 NOV 2023 - 20 NOV 2023	PPB	EMPLOYEES PROVIDENT FUND BOARD [SSH]	-211	136,271	9.579	
17 NOV 2023 - 17 NOV 2023	PPB	EMPLOYEES PROVIDENT FUND BOARD [SSH]	-252	136,481	9.594	
16 NOV 2023 - 16 NOV 2023	PPB	EMPLOYEES PROVIDENT FUND BOARD [SSH]	-21	136,733	9.612	
15 NOV 2023 - 15 NOV 2023	PPB	EMPLOYEES PROVIDENT FUND BOARD [SSH]	-1,290	136,754	9.613	
23 NOV 2023 - 23 NOV 2023	PRESTAR	DATO' SIEW MUN WAI [DIR/CEO]	-134	216	0.06	
23 NOV 2023 - 23 NOV 2023	RANHILL	PUAN SRI DATIN TAN KAI YONG @ TAN KAY NEONG [SSH]	37,398	280,727	21.77	
23 NOV 2023 - 23 NOV 2023	RANHILL	YEOH TIONG LAY & SONS FAMILY HOLDINGS LIMITED [SSH]	37,398	280,727	21.77	
23 NOV 2023 - 23 NOV 2023	RANHILL	YEOH TIONG LAY & SONS HOLDINGS SDN BHD [SSH]	37,398	280,727	21.77	
23 NOV 2023 - 23 NOV 2023	RANHILL	YEOH TIONG LAY & SONS TRUST COMPANY LIMITED [SSH]	37,398	280,727	21.77	
23 NOV 2023 - 23 NOV 2023	RANHILL	YTL CORPORATION BERHAD [SSH]	37,398	280,727	21.77	
23 NOV 2023 - 23 NOV 2023	RANHILL	YTL POWER INTERNATIONAL BERHAD [SSH]	37,398	280,727	21.77	
21 NOV 2023 - 21 NOV 2023	RHBBANK	EMPLOYEES PROVIDENT FUND BOARD [SSH]	-656	1,755,933	40.966	
22 NOV 2023 - 22 NOV 2023	RHBBANK	KUMPULAN WANG PERSARAAN (DIPERBADANKAN) [SSH]	-5	247,173	5.766	
21 NOV 2023 - 21 NOV 2023	RHBBANK	KUMPULAN WANG PERSARAAN (DIPERBADANKAN) [SSH]	-326	247,179	5.766	
20 NOV 2023 - 20 NOV 2023	RHBBANK	KUMPULAN WANG PERSARAAN (DIPERBADANKAN) [SSH]	-152	247,505	5.774	
17 NOV 2023 - 17 NOV 2023	RHBBANK	KUMPULAN WANG PERSARAAN (DIPERBADANKAN) [SSH]	-530	247,656	5.778	
16 NOV 2023 - 16 NOV 2023	RHBBANK	KUMPULAN WANG PERSARAAN (DIPERBADANKAN) [SSH]	-491	248,186	5.79	
17 NOV 2023 - 17 NOV 2023	RHONEMA	DR LIM BAN KEONG [DIR/CEO]	-4,176	86,692	39.187	
17 NOV 2023 - 17 NOV 2023	RHONEMA	DR LIM BAN KEONG [SSH]	-4,176	86,692	39.187	
17 NOV 2023 - 17 NOV 2023	RHONEMA-WA	DR LIM BAN KEONG [DIR/CEO]	-30,611	16,453	20.55	
20 NOV 2023 - 20 NOV 2023	SALCON	BERJAYA CAPITAL BERHAD [SSH]	8,215	103,615	10.238	
20 NOV 2023 - 20 NOV 2023	SALCON	BERJAYA CORPORATION BERHAD [SSH]	20,115	147,145	14.539	
20 NOV 2023 - 20 NOV 2023	SALCON	BERJAYA GROUP BERHAD [SSH]	20,115	147,145	14.539	
20 NOV 2023 - 20 NOV 2023	SALCON	BIZURAI BUJAK (M) SDN BHD [SSH]	8,215	103,615	10.238	
20 NOV 2023 - 20 NOV 2023	SALCON	INTER-PACIFIC CAPITAL SDN BHD [SSH]	8,215	103,615	10.238	
20 NOV 2023 - 20 NOV 2023	SALCON	JUARA SEJATI SDN BHD [SSH]	20,115	147,145	14.539	
17 NOV 2023 - 17 NOV 2023	SALCON	BERJAYA CORPORATION BERHAD [SSH]	10,000	127,030	12.551	
17 NOV 2023 - 17 NOV 2023	SALCON	BERJAYA GROUP BERHAD [SSH]	10,000	127,030	12.551	
17 NOV 2023 - 17 NOV 2023	SALCON	JUARA SEJATI SDN BHD [SSH]	10,000	127,030	12.551	
16 NOV 2023 - 16 NOV 2023	SAPIND	MR KOH KOK HOOI [SSH]	3	6,807	9.353	
16 NOV 2023 - 16 NOV 2023	SAPRES	BROTHERS CAPITAL SDN. BHD. [SSH]	1	72,374	51.844	
16 NOV 2023 - 16 NOV 2023	SAPRES	DATO' SHAHRIMAN BIN SHAMSUDDIN [DIR/CEO]	1	72,457	51.904	
16 NOV 2023 - 16 NOV 2023	SAPRES	DATO' SHAHRIMAN BIN SHAMSUDDIN [SSH]	1	72,374	51.904	
16 NOV 2023 - 16 NOV 2023	SAPRES	SAPURA HOLDINGS SDN. BHD. [SSH]	1	72,374	51.844	
16 NOV 2023 - 16 NOV 2023	SAPRES	TAN SRI DATO' SERI SHAHRI BIN SHAMSUDDIN [DIR/CEO]	1	72,457	51.904	
16 NOV 2023 - 16 NOV 2023	SAPRES	TAN SRI DATO' SERI SHAHRI BIN SHAMSUDDIN [SSH]	1	72,374	51.904	
17 NOV 2023 - 17 NOV 2023	SCGBHD	CIK FAWIZA BINTI FAIZ [DIR/CEO]	-38,000	153,028	19.127	
17 NOV 2023 - 17 NOV 2023	SCGBHD	CIK FAWIZA BINTI FAIZ [SSH]	-38,000	153,028	19.127	
17 NOV 2023 - 17 NOV 2023	SCGBHD	SEMANGAT HANDAL SDN. BHD. [SSH]	-38,000	153,028	19.127	
17 NOV 2023 - 17 NOV 2023	SERNKOU	MR LOW PENG SIAN @ CHUA PENG SIAN [DIR/CEO]	100	284,582	26.396	
17 NOV 2023 - 17 NOV 2023	SERNKOU	MR LOW PENG SIAN @ CHUA PENG SIAN [SSH]	100	284,582	26.396	
23 NOV 2023 - 23 NOV 2023	SGBHD	MISS LAU MENG HONG [SSH]	14,706	18,447	17.128	
20 NOV 2023 - 20 NOV 2023	SIME	EMPLOYEES PROVIDENT FUND BOARD [SSH]	467	1,051,526	15.429	
17 NOV 2023 - 17 NOV 2023	SIME	EMPLOYEES PROVIDENT FUND BOARD [SSH]	-716	1,051,059	15.422	
16 NOV 2023 - 16 NOV 2023	SIME	EMPLOYEES PROVIDENT FUND BOARD [SSH]	-2,466	1,051,775	15.432	
16 NOV 2023 - 16 NOV 2023	SIME	KUMPULAN WANG PERSARAAN (DIPERBADANKAN) [SSH]	-664	525,016	7.704	
15 NOV 2023 - 15 NOV 2023	SIME	EMPLOYEES PROVIDENT FUND BOARD [SSH]	-2,292	1,054,241	15.468	
14 NOV 2023 - 14 NOV 2023	SIME	EMPLOYEES PROVIDENT FUND BOARD [SSH]	-3,132	1,056,532	15.501	
20 NOV 2023 - 20 NOV 2023	SIMEPLT	EMPLOYEES PROVIDENT FUND BOARD [SSH]	75	1,024,786	14.818	
17 NOV 2023 - 17 NOV 2023	SIMEPLT	AMANAHRAYA TRUSTEES BERHAD - AMANAH SAHAM BUMIPUTERA [SSH]	-526	3,169,921	45.836	
16 NOV 2023 - 16 NOV 2023	SIMEPLT	AMANAHRAYA TRUSTEES BERHAD - AMANAH SAHAM BUMIPUTERA [SSH]	-703	3,170,447	45.844	
21 NOV 2023 - 21 NOV 2023	SIMEPROP	EMPLOYEES PROVIDENT FUND BOARD [SSH]	-11,972	345,828	5.085	
20 NOV 2023 - 20 NOV 2023	SIMEPROP	EMPLOYEES PROVIDENT FUND BOARD [SSH]	-22,085	357,800	5.261	
21 NOV 2023 - 21 NOV 2023	SIMEPROP	KUMPULAN WANG PERSARAAN (DIPERBADANKAN) [SSH]	-2,104	455,481	6.697	
17 NOV 2023 - 17 NOV 2023	SIMEPROP	EMPLOYEES PROVIDENT FUND BOARD [SSH]	15,302	379,885	5.586	
16 NOV 2023 - 16 NOV 2023	SIMEPROP	EMPLOYEES PROVIDENT FUND BOARD [SSH]	11,152	364,583	5.361	
15 NOV 2023 - 15 NOV 2023	SIMEPROP	EMPLOYEES PROVIDENT FUND BOARD [SSH]	5,535	353,431	5.197	
21 NOV 2023 - 21 NOV 2023	SKPRES	EMPLOYEES PROVIDENT FUND BOARD [SSH]	476	140,438	8.989	
20 NOV 2023 - 20 NOV 2023	SKPRES	EMPLOYEES PROVIDENT FUND BOARD [SSH]	469	139,962	8.958	
21 NOV 2023 - 21 NOV 2023	SKPRES	KUMPULAN WANG PERSARAAN (DIPERBADANKAN) [SSH]	154	134,729	8.623	
17 NOV 2023 - 17 NOV 2023	SKPRES	EMPLOYEES PROVIDENT FUND BOARD [SSH]	454	139,493	8.928	
20 NOV 2023 - 20 NOV 2023	SKPRES	KUMPULAN WANG PERSARAAN (DIPERBADANKAN) [SSH]	151	134,576	8.614	
16 NOV 2023 - 16 NOV 2023	SKPRES	EMPLOYEES PROVIDENT FUND BOARD [SSH]	333	139,040	8.899	
17 NOV 2023 - 17 NOV 2023	SKPRES	KUMPULAN WANG PERSARAAN (DIPERBADANKAN) [SSH]	147	134,424	8.604	
16 NOV 2023 - 16 NOV 2023	SKPRES	KUMPULAN WANG PERSARAAN (DIPERBADANKAN) [SSH]	107	134,278	8.595	
15 NOV 2023 - 15 NOV 2023	SKPRES	EMPLOYEES PROVIDENT FUND BOARD [SSH]	975	138,707	8.878	
23 NOV 2023 - 23 NOV 2023	SMILE	DATIN WONG CHIEN YUE [DIR/CEO]	230	135,827	54.235	
23 NOV 2023 - 23 NOV 2023	SMILE	DATIN WONG CHIEN YUE [SSH]	230	135,827	54.235	

Notice Period is 19th Nov - 25th Nov 2023

Effective Change Date	Stock Name	Buyer/ Seller Name [Classification]	Bought / (Sold) ['000]		No. of Shares After Trade ['000]	
			Total	Total	% Held	
23 NOV 2023 - 23 NOV 2023	SMILE	DATO DR WONG RUEN YUAN [SSH]	230	136,172	54.372	
23 NOV 2023 - 23 NOV 2023	SMILE	DATO' DR WONG RUEN YUAN [DIR/CEO]	230	136,172	54.372	
16 NOV 2023 - 16 NOV 2023	SMRT	URUSHARTA JAMAAH SDN. BHD. [SSH]	-1,000	26,592	5.871	
17 NOV 2023 - 17 NOV 2023	SPTOTO	BERJAYA CORPORATION BERHAD [SSH]	-10	662,991	50.117	
17 NOV 2023 - 17 NOV 2023	SPTOTO	BERJAYA GROUP BERHAD [SSH]	-10	624,003	47.17	
20 NOV 2023 - 20 NOV 2023	SRIDGE	MR CHEANG SOON SIANG [SSH]	-390	14,353	6.478	
20 NOV 2023 - 20 NOV 2023	SRIDGE	SAPPHIRE PAVILION LIMITED [SSH]	-390	14,353	6.478	
20 NOV 2023 - 20 NOV 2023	SSB8	MR CHAI THAM POH [DIR/CEO]	-1,000	4,206	0.185	
21 NOV 2023 - 21 NOV 2023	SUNCON	EMPLOYEES PROVIDENT FUND BOARD [SSH]	117	128,899	9.997	
20 NOV 2023 - 20 NOV 2023	SUNCON	EMPLOYEES PROVIDENT FUND BOARD [SSH]	95	128,782	9.988	
17 NOV 2023 - 17 NOV 2023	SUNCON	EMPLOYEES PROVIDENT FUND BOARD [SSH]	65	128,687	9.981	
16 NOV 2023 - 16 NOV 2023	SUNCON	EMPLOYEES PROVIDENT FUND BOARD [SSH]	19	128,622	9.976	
21 NOV 2023 - 21 NOV 2023	SUNREIT	EMPLOYEES PROVIDENT FUND BOARD [SSH]	-72	533,260	15.571	
23 NOV 2023 - 23 NOV 2023	T7GLOBAL	ABYSSINA RESOURCES (M) SDN. BHD. [SSH]	18,300	73,441	9.902	
23 NOV 2023 - 23 NOV 2023	T7GLOBAL	TAN SRI DATUK SERI DR. NIK NORZRUL THANI BIN N. HASSAN THANI [DIR/CEO]	18,300	7,441	10.037	
23 NOV 2023 - 23 NOV 2023	T7GLOBAL	TAN SRI DATUK SERI DR. NIK NORZRUL THANI BIN N. HASSAN THANI [SSH]	18,300	7,441	10.037	
21 NOV 2023 - 21 NOV 2023	TAKAFUL	EMPLOYEES PROVIDENT FUND BOARD [SSH]	1,675	119,115	14.226	
17 NOV 2023 - 17 NOV 2023	TAKAFUL	EMPLOYEES PROVIDENT FUND BOARD [SSH]	-1,161	117,440	14.026	
15 NOV 2023 - 15 NOV 2023	TAKAFUL	EMPLOYEES PROVIDENT FUND BOARD [SSH]	1,000	118,601	14.165	
16 NOV 2023 - 16 NOV 2023	TENAGA	EMPLOYEES PROVIDENT FUND BOARD [SSH]	50	95,724	16.54	
21 NOV 2023 - 21 NOV 2023	TGUAN	PRUDENTIAL PLC [SSH]	462	20,480	5.184	
20 NOV 2023 - 20 NOV 2023	TGUAN	PRUDENTIAL PLC [SSH]	522	20,018	5.067	
23 NOV 2023 - 23 NOV 2023	TIMECOM	KUMPULAN WANG PERSARAAN (DIPERBADANKAN) ("KWAP") [SSH]	21	110,916	6.006	
21 NOV 2023 - 21 NOV 2023	TIMECOM	EMPLOYEES PROVIDENT FUND BOARD [SSH]	1,085	145,267	7.866	
22 NOV 2023 - 22 NOV 2023	TIMECOM	KUMPULAN WANG PERSARAAN (DIPERBADANKAN) ("KWAP") [SSH]	21	110,895	6.005	
20 NOV 2023 - 20 NOV 2023	TIMECOM	EMPLOYEES PROVIDENT FUND BOARD [SSH]	70	144,182	7.807	
21 NOV 2023 - 21 NOV 2023	TIMECOM	KUMPULAN WANG PERSARAAN (DIPERBADANKAN) ("KWAP") [SSH]	10	110,874	6.003	
17 NOV 2023 - 17 NOV 2023	TIMECOM	EMPLOYEES PROVIDENT FUND BOARD [SSH]	-1,834	144,112	7.803	
20 NOV 2023 - 20 NOV 2023	TIMECOM	KUMPULAN WANG PERSARAAN (DIPERBADANKAN) ("KWAP") [SSH]	21	110,865	6.003	
16 NOV 2023 - 16 NOV 2023	TIMECOM	EMPLOYEES PROVIDENT FUND BOARD [SSH]	-773	145,946	7.902	
16 NOV 2023 - 17 NOV 2023	TIMECOM	KUMPULAN WANG PERSARAAN (DIPERBADANKAN) ("KWAP") [SSH]	42	110,844	6.002	
15 NOV 2023 - 15 NOV 2023	TIMECOM	EMPLOYEES PROVIDENT FUND BOARD [SSH]	-218	146,719	7.944	
21 NOV 2023 - 21 NOV 2023	TM	EMPLOYEE PROVIDENT FUND BOARD (EPF BOARD) [SSH]	35	660,656	17.22	
20 NOV 2023 - 20 NOV 2023	TM	EMPLOYEE PROVIDENT FUND BOARD (EPF BOARD) [SSH]	2,003	660,622	17.219	
17 NOV 2023 - 17 NOV 2023	TWL	DATIN SEK CHIAN NEE [DIR/CEO]	23,395	151,161	30.981	
17 NOV 2023 - 17 NOV 2023	TWL	DATIN SEK CHIAN NEE [SSH]	23,395	151,161	30.981	
17 NOV 2023 - 17 NOV 2023	TWL	DATO' TAN WEI LIAN [DIR/CEO]	23,395	151,161	30.981	
17 NOV 2023 - 17 NOV 2023	TWL	DATO' TAN WEI LIAN [SSH]	23,395	151,161	30.981	
17 NOV 2023 - 17 NOV 2023	TWL	MISS TAN LEE CHIN [DIR/CEO]	23,395	151,161	30.98	
17 NOV 2023 - 17 NOV 2023	TWL	MISS TAN LEE CHIN [SSH]	23,395	151,161	30.98	
17 NOV 2023 - 17 NOV 2023	TWL	TWL CAPITAL BERHAD [SSH]	23,395	151,161	30.981	
21 NOV 2023 - 21 NOV 2023	UMW	EMPLOYEES PROVIDENT FUND BOARD [SSH]	93	121,433	10.394	
20 NOV 2023 - 20 NOV 2023	UMW	EMPLOYEES PROVIDENT FUND BOARD [SSH]	263	121,341	10.386	
17 NOV 2023 - 17 NOV 2023	UMW	EMPLOYEES PROVIDENT FUND BOARD [SSH]	972	121,077	10.364	
22 NOV 2023 - 22 NOV 2023	UTDPLT	MR R. NADARAJAN [DIR/CEO]	3	162	0.04	
22 NOV 2023 - 22 NOV 2023	UTDPLT	PERBADANAN PEMBANGUNAN PERTANIAN NEGERI PERAK [SSH]	-290	21,877	5.274	
21 NOV 2023 - 21 NOV 2023	UTDPLT	EMPLOYEES PROVIDENT FUND BOARD [SSH]	-1,602	23,382	5.637	
21 NOV 2023 - 21 NOV 2023	UTDPLT	PERBADANAN PEMBANGUNAN PERTANIAN NEGERI PERAK [SSH]	-295	22,167	5.34	



HEINEKEN Malaysia Remains Agile Amidst Weak Consumer Sentiment and Challenging Market Outlook

Heineken Malaysia Berhad announced its financial results for the third quarter ended 30 September 2023, reporting a decline in revenue and net profit due to weak consumer sentiment driven by rising cost of living and macroeconomic concerns. In the third quarter, Group revenue decreased by 17% as compared to the same quarter in 2022, mainly due to lower sales arising from weak consumer sentiment driven by rising cost of living and macroeconomic concerns. The Group had a strong base in the third quarter of 2022 as the market had an upsurge in sales (Revenue +85% versus the third quarter of 2021), following the re-opening of the economy and international borders at the start of the endemic phase. The Group views this quarter's performance as a continuation of the form of market correction as reported in the previous quarter's report. Group profit before tax ("PBT") decreased by 27% alongside with lower revenue, mitigated by efficiency gains through cost and value initiatives.

For the nine-month period, Group revenue was 7% lower mainly due to weaker consumer sentiment attributed to growing macroeconomic concerns and the strong rebound in 2022, buffered by higher sales in the first quarter due to Chinese New Year festive period. Group PBT declined by 14% principally due to lower revenue and relatively higher promotional and marketing expenses incurred during the period.

Commenting on the results, Roland Bala, Managing Director of HEINEKEN Malaysia, said, "2023 remains challenging as the market goes through corrections following the rebound in 2022 coupled with weaker consumer sentiment due to macroeconomic concerns. Nevertheless, our One Strong Winning Team remains agile and resilient. We continued our focus to deliver against our EverGreen strategy to future proof our organisation whilst navigating the challenges in this soft period."

The Board of Directors does not recommend any dividend in respect of the quarter ended 30 September 2023. On outlook, Roland shared, "In light of cautious consumer spending due to macroeconomic concerns, we anticipate the market to remain challenging. The Group will remain agile in the volatile business environment and will continue to focus on our EverGreen strategy to future-proof the business. In the absence of the one-off Prosperity Tax, we also look forward to a positive impact on the Group's net profit this year."

Disclaimer: The information in the Investor Relations page is extracted from individual companies' announcements in www.bursamalaysia.com. The information on this page is provided as a service to readers. We assume no liability for damages resulting from or arising out of the use of such information. Whilst every effort is made to ensure accuracy, the information presented has been simplified for your reading pleasure. Readers are advised to read the original and complete filings on the Bursa Malaysia website at https://www.bursamalaysia.com/market_information/announcements/company_announcement



Learn how to identify Hot Stocks using Technical Analysis (TA) and Fundamental Analysis (FA)

SIGN UP FOR Invest
IT'S FREE!!!

[Click here](#)

Scan me



Via email, every Friday.