

Invest

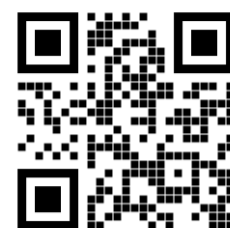
A Weekly e-Publication by SHAREINVESTOR.com

ISSUE

142

FRIDAY
03 FEBRUARY
2023

Scan/Click QR to Register



Via email, every Friday

Angpau BONANZA

PROMOTION PERIOD: 20 January 2023 - 19 February 2023

Get ahead of the game with ShareInvestor!

up to **RM240 off***

Make informed investment decisions with our comprehensive financial tools and data driven analysis.

SHAREINVESTOR
WEBPRO

Normal price: RM397

RM60 off

New User : CNYWP
Renew/Extend: CNYWPR

SUBSCRIBE NOW

SHAREINVESTOR
STATION

Normal price: RM1,606

RM240 off

New User : CNYSIS
Renew/Extend: CNYSISR

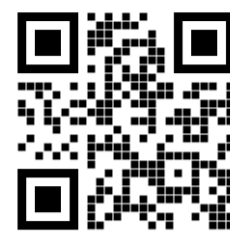
SUBSCRIBE NOW

BURSA
STATION

Normal price: RM1,048

RM157 off

SUBSCRIBE NOW



MALAYSIA'S EXTERNAL TRADE TO EXPAND STEADILY BEYOND 2023 WITH NEW FTAs - MIDF

(page 22)

- | | | | | | |
|----|----------------------------|----|-------------------|----|--------------------------|
| 04 | LEADERBOARD | 14 | VALUE STOCKS | 25 | REGIONAL MARKETS |
| 05 | SHARIAH HOT STOCKS | 16 | GROWTH STOCKS | 26 | FROM THE OBSERVER |
| 06 | COMPANY SPOTLIGHT | 17 | DIVIDEND STOCKS | 28 | INSIDER ACTIVITY |
| 08 | SHARIAH MOMENTUM UP STOCKS | 18 | BROKERS' CALL | 30 | INVESTOR RELATIONS |
| 10 | NON SHARIAH HOT STOCKS | 19 | LONG COMPANIES | 34 | CAREERS AT SHAREINVESTOR |
| 12 | UP TRENDING STOCKS | 21 | MARKET SENTIMENTS | | |



INVESTOR PLATFORMS

General Manager
Darren Chong
darren.chong@shareinvestor.com

MARKET DATA SERVICES
(marketdata.my@shareinvestor.com)

Account Manager
Heidee Ahmad
heidee.ahmad@shareinvestor.com

Admin
Watie Nordin
watie.nordin@shareinvestor.com

Community Growth
Tan Yong Sheng
yongsheng.tan@shareinvestor.com

PROCESS AUTOMATION & DATA ANALYTICS

Data Analyst
Nickson Aw

Market Data & Media Coordinator
Silas Emmanuel Joseph

ADS & EVENTS SPONSORSHIP SALES

Manager
Sharon Lee
sharon.lee@shareinvestor.com

Senior Marketing Executive
Daniel Wong
daniel.wong@shareinvestor.com

CORPORATE

Managing Director (Malaysia) & Publisher
Edward Stanislaus
edward@shareinvestor.com

INVESTOR RELATIONS

Director
Elizabeth Tan
elizabeth.tan@shareinvestor.com

Manager
Letticia Wong
letticia.wong@shareinvestor.com

MARKETING COMMUNICATIONS

Marcomm Manager
Danny Ng
danny.ng@shareinvestor.com

Marcomm Executive
Farah Azwani
farah.azwani@shareinvestor.com

CREATIVE & DESIGN

Manager	Andric See
Asst. Manager	Ivy Yap
Sr. Graphic Designer	Anthony Lau
Web Developers	Nurul Atiqah
	Aiman Jasmin
	Izwan Rusli

IT APPS

Project Manager	Amir Yusoff
Sr. Software Engineers	Mohd. Qasem
	Harris Mulyadi
	Mark Leona
Systems Team Lead	Lucky Phan
Sr. Systems Admin	Law Kee Chai
Software Engineers	Lau Teck Wei
	Lian Kok Keong
	Gary Ooi
Technical Architect	Katrina Delrosario

FINANCE, ADMIN & HR

Manager	Shireen Goh
Sr. Accounts Executive	Jessie Ho
Accounts Assistant	Ng Jin Yng

SHAREINVESTOR HOLDINGS

BOARD OF DIRECTORS

Chairman	Patrick Daniel
Group CEO	Christopher Lee
Group COO	Lim Dau Hee
Group CFO	Teo Siew May
Group MD	Shanison Lin

“ GIVE A MAN A FISH AND YOU FEED HIM FOR A DAY; TEACH A MAN TO FISH AND YOU FEED HIM FOR A LIFETIME ”

ShareInvestor Malaysia Sdn. Bhd.
(200001023956) (526564-M)
Unit No. DF2-07-03A, Level 7,
Persoft Tower, 6B Persiaran Tropicana,
47410 Petaling Jaya, Selangor Darul Ehsan.

Hotline : 603 7803 1791
Mobile : 011 6343 8939
Website : www.ShareInvestor.com.my
www.ShareInvestorHoldings.com
www.Facebook.com/ShareInvestorMalaysia

ADVERTISEMENT ENQUIRY

bulthaup takes care of the details so that you can enjoy a harmonious environment.



XTRA

XTRA FURNITURE SDN BHD
The Gardens Mall, Mid Valley City
2nd flr unit 236+237
kitchen@xtrafurniture.com
xtrafurniture.com/bulthaup
fb.com/bulthaupmalaysia



bulthaup



STROM

SWISS TIMEPIECES & JEWELLERY



StromWatch Asia
Tele : +65.9817.3378 Email : ll.stromasia@gmail.com

WWW.STROMWATCH.SWISS



www.shareinvestor.com - market data at your fingertips



ShareInvestor WebPro (www.shareinvestor.com/my) Prices > Stock Prices > Bursa > click Stocks tab

1. mouse over Ranking > select Top Active > all Shariah stocks are denoted with an [S] > mouse over Column Layout > select Edit Customs > select Name > select Volume > select Last Done Price > Mouse Over Column Layout > select Custom
2. mouse over Ranking > select Top Turnover > all Shariah stocks are denoted with an [S] > mouse over Column Layout > select Edit Customs > select Name > select Last Done Price > select Value > Mouse Over Column Layout > select Custom
3. mouse over Ranking > select Top Gainers (Over 5 Trading Days) > mouse over Column Layout > select Edit Customs > select Name > select Last Done Price > select 5 Days Change > select 5 Days % Change > Mouse Over Column Layout > select Custom
4. mouse over Ranking > select Top Losers (Over 5 Trading Days)
5. mouse over Ranking > select Top % Gainers (Over 5 Trading Days)
6. mouse over Ranking > select Top % Losers (Over 5 Trading Days)

Shariah Top Actives (as at Yesterday)

Name	Price (RM)	Volume
VELESTO [S]	0.255	2,189,642.000
BORNOIL [S]	0.020	2,020,144.000
HONGSENG [S]	0.215	1,956,450.000
SAPNRG [S]	0.050	1,550,632.000
PERDANA [S]	0.205	1,432,378.000
ZENTECH [S]	0.070	1,107,412.000
ICON [S]	0.120	955,020.000
DNEX [S]	0.685	864,543.000
EATECH [S]	0.335	768,636.000
G3 [S]	0.030	672,507.000

Shariah Top Turnover (as at Yesterday)

Name	Price (RM)	Value (RM)
PCHEM [S]	8.220	98,637,859
CTOS [S]	1.460	71,936,244
IHH [S]	5.950	71,156,982
DNEX [S]	0.685	58,630,738
VELESTO [S]	0.255	56,106,989
PMETAL [S]	5.300	41,812,547
HONGSENG [S]	0.215	41,802,271
NATGATE [S]	1.240	39,742,740
DIALOG [S]	2.560	34,680,404
NYLEX [S]	0.630	33,350,854

Top Gainers (over 5 Trading days as at Yesterday)

Name	Price (RM)	Change (RM)
HEIM	29.000	+2.320
HEXTECH	29.120	+1.640
F&N	25.400	+1.320
CARLSBG	24.200	+1.020
BAT	13.080	+0.820
KOBAY	3.300	+0.410
NESTLE	135.500	+0.400
KESM	7.500	+0.380
BIPORT	5.280	+0.370
VITROX	8.200	+0.350

Top % Gainers (over 5 Trading days as at Yesterday)

Name	Price (RM)	Change (%)
ZENTECH	0.070	+75.00
PASUKGB	0.025	+66.67
EATECH	0.335	+59.52
AEM	0.030	+50.00
COMPUGT	0.015	+50.00
SCOMIES	0.075	+50.00
ANCOMLB	0.230	+48.39
NYLEX	0.630	+46.51
PERDANA	0.205	+46.43
M&G	0.145	+45.00

Top Losers (over 5 Trading days as at Yesterday)

Name	Price (RM)	Change (RM)
HLFG	18.380	-0.580
PETDAG	22.300	-0.400
MPI	33.640	-0.360
HLBANK	20.540	-0.340
PCHEM	8.220	-0.290
RAPID	16.280	-0.180
HLIND	8.850	-0.150
LCTITAN	1.460	-0.130
SHANG	3.260	-0.130
MSC	2.140	-0.120

Top % Losers (over 5 Trading days as at Yesterday)

Name	Price (RM)	Change (%)
VSOLAR	0.005	-50.00
PESTECH	0.250	-24.24
BSLCORP	0.120	-22.58
LAMBO	0.040	-20.00
MLAB	0.020	-20.00
PRKCORP	0.200	-20.00
ASIAPLY	0.120	-17.24
NEXGRAM	0.050	-16.67
MENTIGA	0.550	-15.38
CME	0.030	-14.29

Price & Volume Distribution Charts (as at Yesterday)

Technical Analysis

DEFINITION: Shariah compliant stocks with Technical Analysis showing 5-days & 10-days Moving Average Price below Yesterday's Close over past 3 days and with Volume Spike.

CHART GUIDE: Volume Distribution Chart is a statistical interpretation of the current sentiment on each stock in graphical format. The highest bar categorized as >150k is likely to be traded by institutions or super dealers, while the lowest bar categorized as <15k usually represents retail investors. "Buy Up" refers to more buyers snatching up the lots queued at selling price. "Sell Down" refers to sellers selling their shares to the buying queue



ShareInvestor WebPro > Screener > Market Screener (FA & TA) > select BURSA > add criteria

A. Criteria

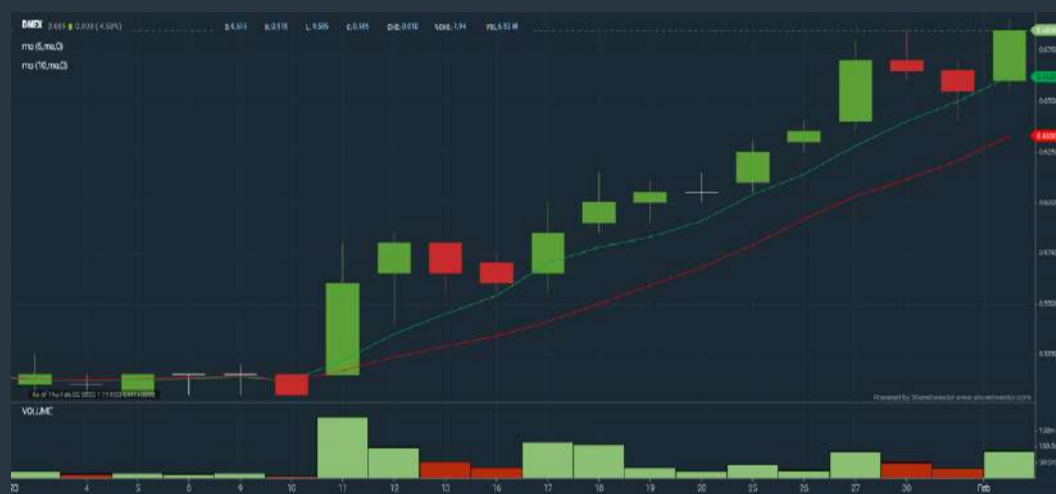
- > click Add Criteria
- Technical Analysis Conditions tab select (i) Moving Average Below Close (ii) Volume Spike
- Fundamental Analysis Conditions tab > select (iii) Revenue
- Prices & Other Conditions tab > select (iv) Is Shariah Compliant
- Technical Analysis Conditions tab select (v) Moving Average Below Close
- Prices & Other Conditions tab > select (vi) Last Done Price
- Technical Analysis Conditions tab select (vii) Moving Average Below Close

B. Conditions (Criteria Filters)

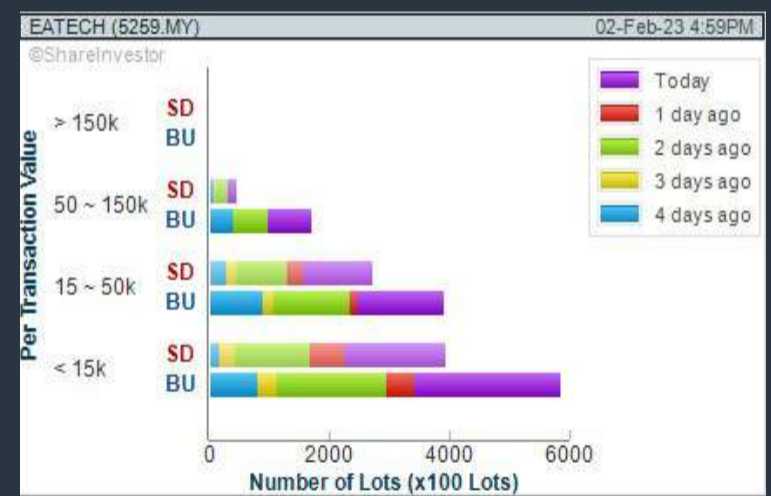
- Moving Average Below Close - select (MA) type (5) below close price for type (3) days
- Volume Spike - Volume type (1) greater than type (5) days average
- Revenue ("000) - select (more than) type (1) for the past select (1) financial year(s)
- Is Shariah Compliant - select **Yes**
- Moving Average Below Close - select (MA) type (10) below close price for type (3) days
- Last Done Price - select (more than) type (0.3)
- Moving Average Below Close - select (EMA) type (5) below close price for type (3) days

- > click Save Template > Create New Template type (Shariah Hot Stocks) > click Create
- > click Save Template as > select Shariah Hot Stocks > click Save
- > click Screen Now (may take a few minutes)
- > Sort By: Select (Vol) Select (Desc)
- > Mouse over stock name > Charts > click C² Charts or Volume Distribution

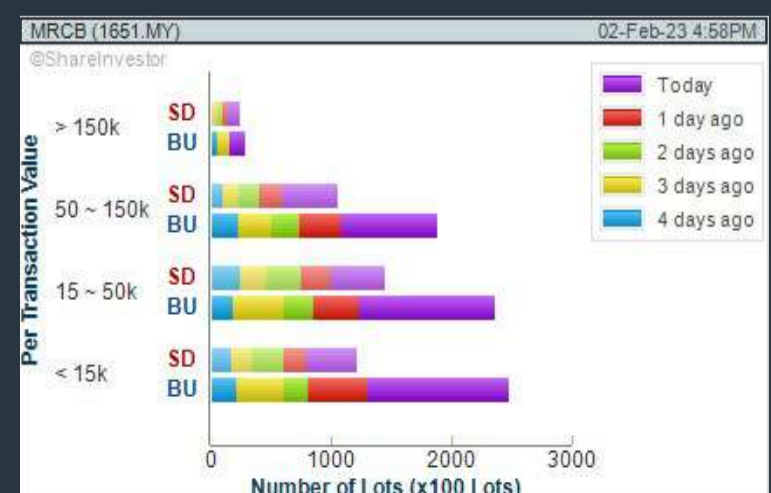
DAGANG NEXCHANGE BERHAD (4456) C² Chart



E.A. TECHNIQUE (M) BERHAD (5259) C² Chart



MALAYSIAN RESOURCES CORPORATION BERHAD (1651) C² Chart



Disclaimer: The information on this page is provided as a service to readers. It does not constitute financial advice and/or any investment recommendations. Past performance is not indicative of future results. We assume no liability for damages resulting from or arising out of the use of such information. It would be best if you did your own research to make your personal investment decisions wisely or consult a licenced investment advisor.

COMPANY BACKGROUND

Jaycorp Berhad operates in various business segments including rubberwood furniture, which is engaged in the manufacture and sale of rubberwood furniture; the packaging segment is engaged in the conversion of corrugated boards into carton boxes; processing of rubberwood is engaged in pressure treatment and kiln-drying of rubberwood; general trading segment sells construction materials, while the others' segment is in the provision of transportation services, property letting and printing.



services, property letting and printing.

Select Counter: Bursa | JAYCORP (7152.MY) | View

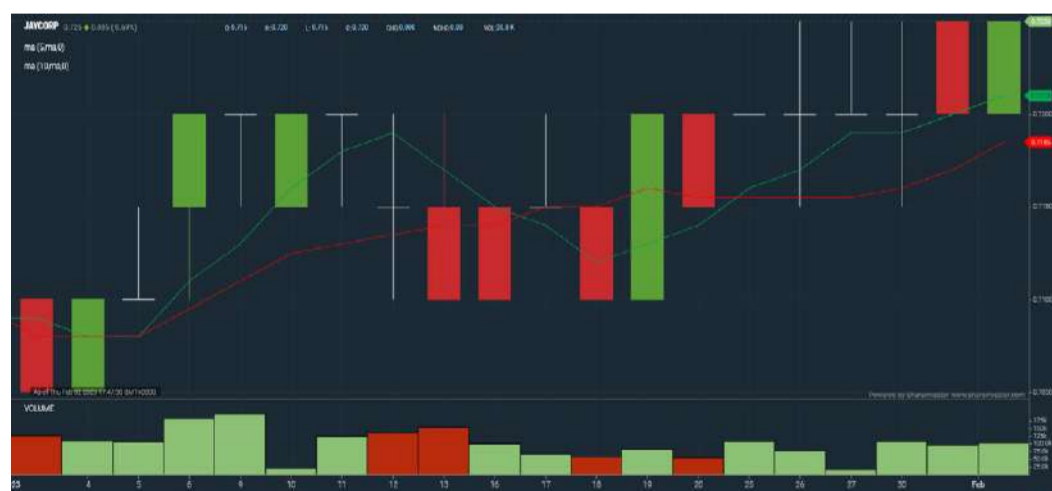
JAYCORP JAYCORP BHD Updated at 02 Feb 2023 16:50

Last (MYR): 0.725 ↑	Change: +0.005	High: 0.725	Remarks: -
	Change (%): +0.69	Low: 0.720	
Open	0.720	Yesterday's Close	0.720
Buy Price	0.720	Sell Price	0.725
Buy Volume ('00)	381	Sell Volume ('00)	316
Cumulative Volume ('00)	1,039	Cumulative Value	74,958

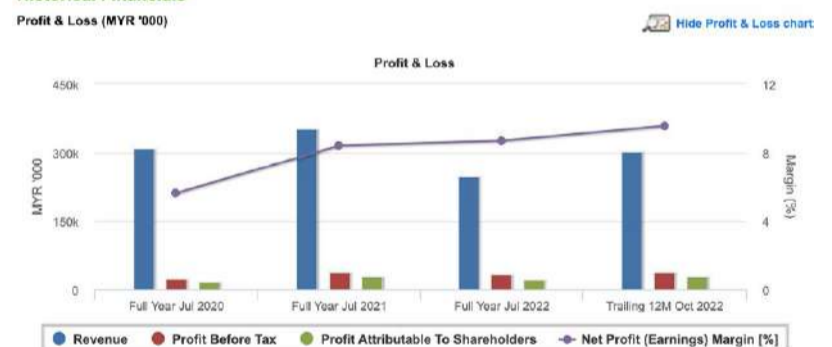
Financial Analysis

Revenue Growth Revenue down sharply in most recent year (> 25%)	Profit Growth Profit up and down in last 3 years (with last 3 profitable years)
Piotroski F Score The company has above average financial strength (Piotroski F-Score of 6-7)	Dividend Payout Dividend is increasing over the past 60 months.
Current Ratio The company is well-positioned to cover its short-term obligations with its current assets (ratio between 1.5 to 10) for 3 consecutive years	Gross Profit Margin Good gross profit margin of 20%-40% for 2 years
Return on Equity (ROE) ROE above 10% for 3 consecutive years	

Excellent
 Good
 Neutral
 Be Alert
 Watch Out



Historical Financials



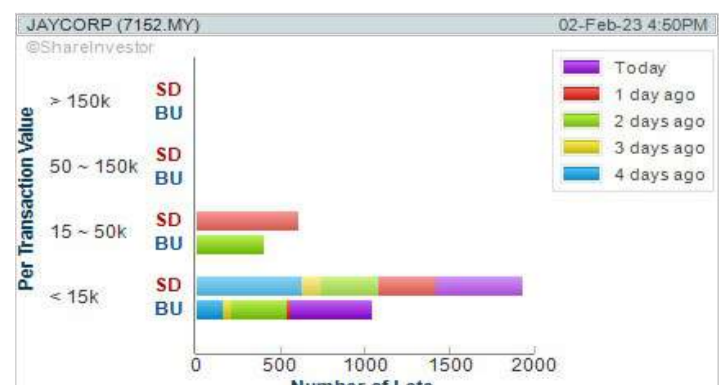
WebPro 9-Days Free Trial Registration
(worth RM9)
Sign Up Now



Key Statistics with Total Shareholder Returns

Total Shareholder Return

Period	Dividend Received	Capital Appreciation	Total Shareholder Return
Short Term Return	5 Days	-0.019	+1.40%
	10 Days	-0.019	+1.40%
	20 Days	-0.020	+2.84%
Medium Term Return	3 Months	0.043	+6.99%
	6 Months	0.040	+4.96%
	1 Year	0.063	+7.29%
Long Term Return	2 Years	0.165	+14.90%
	3 Years	0.289	+22.23%
	5 Years	0.415	+33.87%
Annualised Return	-	-	+12.96%



Disclaimer: The information on this page is provided as a service to readers. It does not constitute financial advice and/or any investment recommendations. Past performance is not indicative of future results. We assume no liability for damages resulting from or arising out of the use of such information. It would be best if you did your own research to make your personal investment decisions wisely or consult a licenced investment advisor.



FREE



English

Intermediate

Equities

Advance Technical Analysis:

Easy Way to

**IDENTIFY
BIG BOYS**

**Accumulation
in KLSE**

FEB | 8.30pm
13 | 9.30pm

Register Here



Kelvin Yap

Price & Volume Distribution Charts (as at Yesterday)

Technical Analysis

DEFINITION: Shariah compliant stocks with Technical Analysis showing Bullish Momentum and Price Uptrend. The share price closed at the highest price yesterday. The typical price was higher than the previous day's typical price.

CHART GUIDE: Volume Distribution Chart is a statistical interpretation of the current sentiment on each stock in graphical format. The highest bar categorized as >150k is likely to be traded by institutions or super dealers, while the lowest bar categorized as <15k usually represents retail investors. "Buy Up" refers to more buyers snatching up the lots queued at selling price. "Sell Down" refers to sellers selling their shares to the buying queue.



ShareInvestor WebPro > Screener > Market Screener (FA & TA) > select BURSA > add criteria

A. Criteria

- > click Add Criteria
- Fundamental Analysis Conditions tab > select (i) Revenue
- Technical Analysis Conditions tab select (ii) Average Volume
- Prices & Other Conditions tab > select (iii) Last Done Price
- Prices & Other Conditions tab > select (iv) Is Shariah Compliant
- Technical Analysis Conditions tab select (v) RSI Overbought
- Technical Analysis Conditions tab select (vi) Moving Average Below Close
- Technical Analysis Conditions tab select (vii) CCI Overbought

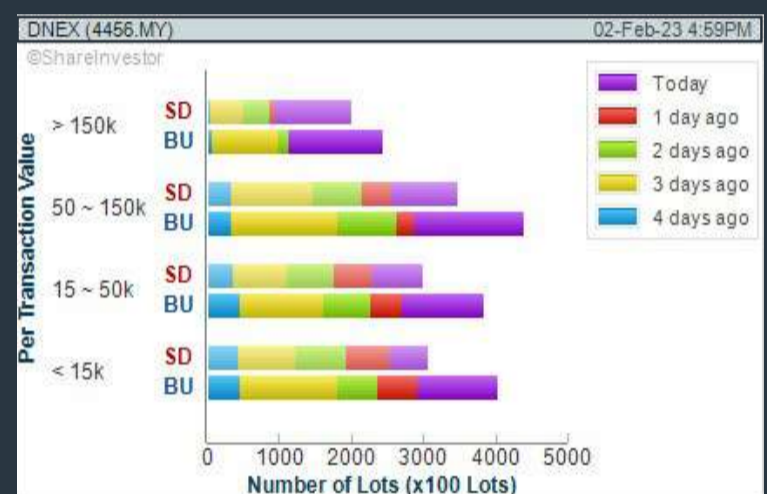
B. Conditions (Criteria Filters)

1. Revenue ("000) - select (more than) type (1) for the past select (1) financial year(s)
2. Average Volume - type (1) days average volume greater than type (10000) lots
3. Last Done Price - select (more than) type (0.3)
4. Is Shariah Compliant - select Yes
5. RSI Overbought - select RSI 1 above 99 for 1 days
6. Moving Average Below Close - select (MA) type (10) below close price for type (1) days
7. CCI Overbought - select CCI (2) above (0) for (1) days

- > click Save Template > Create New Template type (Shariah Momentum Up Stocks) > click Create
- > click Save Template as > select Shariah Momentum Up Stocks > click Save
- > click Screen Now (may take a few minutes)
- Sort By: Select (Vol) Select (Desc)
- Mouse over stock name > Charts > click C² Charts tab or Volume Distribution

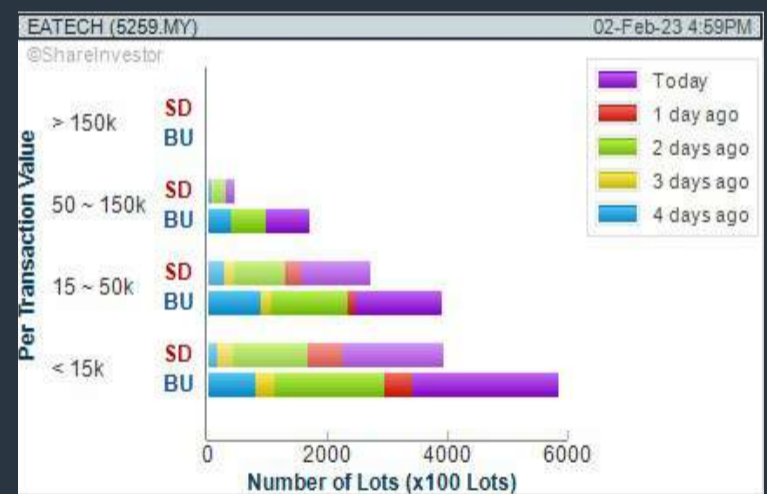
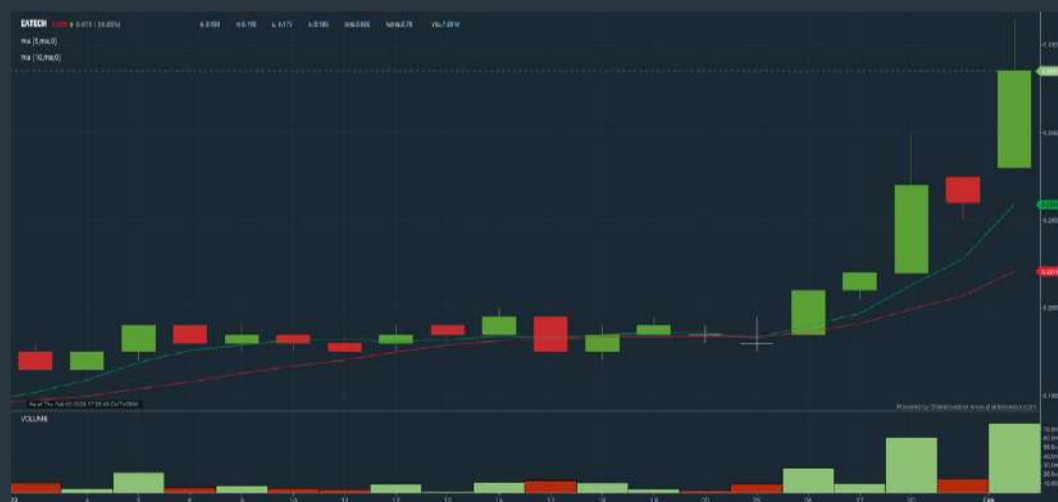
DAGANG NEXCHANGE BERHAD (4456) C² Chart

Analysis



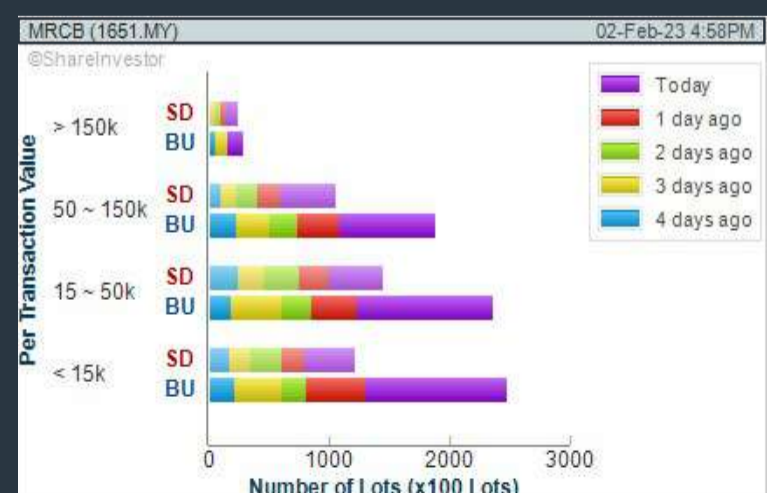
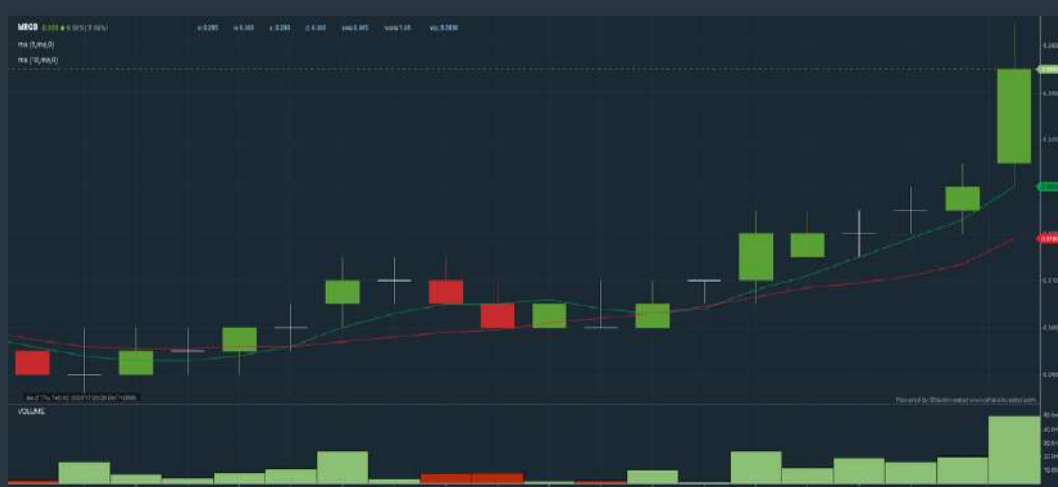
E.A. TECHNIQUE (M) BERHAD (5259) C² Chart

Analysis



MALAYSIAN RESOURCES CORPORATION BERHAD (1651) C² Chart

Analysis



Disclaimer: The information on this page is provided as a service to readers. It does not constitute financial advice and/or any investment recommendations. Past performance is not indicative of future results. We assume no liability for damages resulting from or arising out of the use of such information. It would be best if you did your own research to make your personal investment decisions wisely or consult a licenced investment advisor.

SHARE INVESTOR WEBPRO

STOCK MARKET DATA AT YOUR FINGERTIPS

Powerful browser-based market analytics platform.
Access from anywhere



8 Markets Data

- ▶ Get access to data from Bursa, NYSE, Nasdaq, HKEX, SGX, IDX, SET & ASX

Portfolio Management

- ▶ Profit & Loss Summary
- ▶ Stock Alert
- ▶ News & Events filtering
- ▶ Customizable column layout

Fundamental Analysis

Financial Analysis Statement

- ▶ Profit & Loss
- ▶ Balance Sheet
- ▶ Cash Flow Statement
- ▶ More than 20 Financial Ratios
- ▶ Dividend Analysis

Technical Charting

- ▶ C² chart (Customisable & Comprehensive)

Brokers' Call

Intrinsic Value Calculator

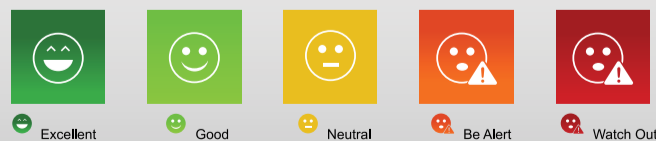
FactSheet

- ▶ Key Stock Information
- ▶ Ownership
- ▶ Consensus Estimates
- ▶ Annual Report
- ▶ Historical Price
- ▶ Insider Trades

Introducing Smiley Grid



- ▶ Smiley Grid makes the Factsheet fast and easy to understand.
- ▶ It is a shortcut where key financial data have now been interpreted for you, and presented in easy-to-understand, colour coded icons



Click here to start your
9 days FREE trial
(Valued at RM10)



Price & Volume Distribution Charts (as at Yesterday)

Technical Analysis

DEFINITION: Stocks with Technical Analysis showing 5-days & 10-days Moving Average Price below Close over past 1 days and with Volume Spike

CHART GUIDE: Volume Distribution Chart is a statistical interpretation of the current sentiment on each stock in graphical format. The highest bar categorized as >150k is likely to be traded by institutions or super dealers, while the lowest bar categorized as <15k usually represents retail investors. "Buy Up" refers to more buyers snatching up the lots queued at selling price. "Sell Down" refers to sellers selling their shares to the buying queue.



ShareInvestor WebPro > Screener > Market Screener (FA & TA) > select BURSA > add criteria

A. Criteria

- > click Add Criteria
- Technical Analysis Conditions tab select (i) Moving Average Below Close (ii) Volume Spike
- Fundamental Analysis Conditions tab >select (iii) Revenue
- Prices & Other Conditions tab > select (iv) Is Shariah Compliant
- Technical Analysis Conditions tab select (v) Moving Average Below Close
- Prices & Other Conditions tab > select (vi) Last Done Price
- Technical Analysis Conditions tab select (vii) Moving Average Below Close

B. Conditions (Criteria Filters)

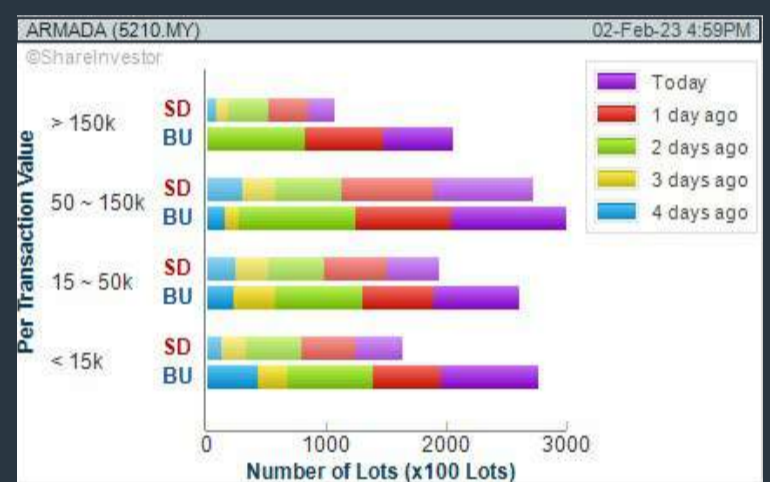
1. Moving Average Below Close - select (MA) type (5) below close price for type (3) days
2. Volume Spike - Volume type (1) greater than type (5) days average
3. Revenue ("000) - select (more than) type (1) for the past select (1) financial year(s)
4. Is Shariah Compliant - select NO
5. Moving Average Below Close - select (MA) type (10) below close price for type (1) days
6. Last Done Price - select (more than) type (0.3)
7. Moving Average Below Close - select (EMA) type (5) below close price for type (1) days

- > click Save Template > Create New Template type (Non-Shariah Hot Stocks) > click Create
- > click Save Template as > select Non-Shariah Hot Stocks > click Save
- > click Screen Now (may take a few minutes)
- Sort By: Select (Vol) Select (Desc)
- Mouse over stock name > Charts > click C² Charts tab or Volume Distribution

BUMI ARMADA BERHAD (5210)

C² Chart

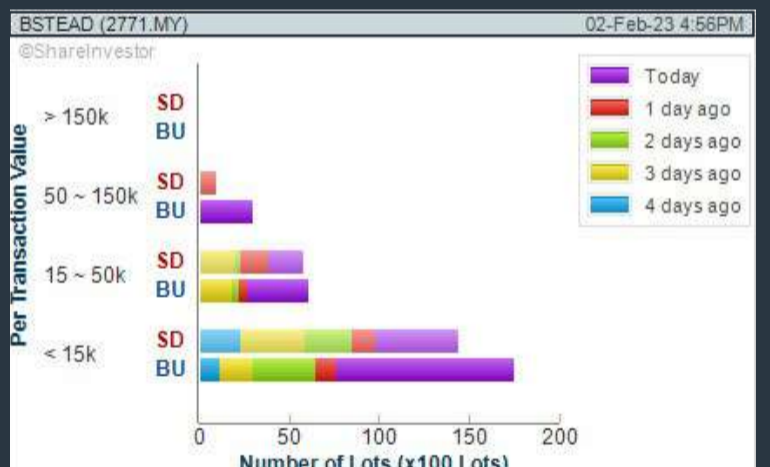
Analysis



BOUSTEAD HOLDINGS BERHAD (2771)

C² Chart

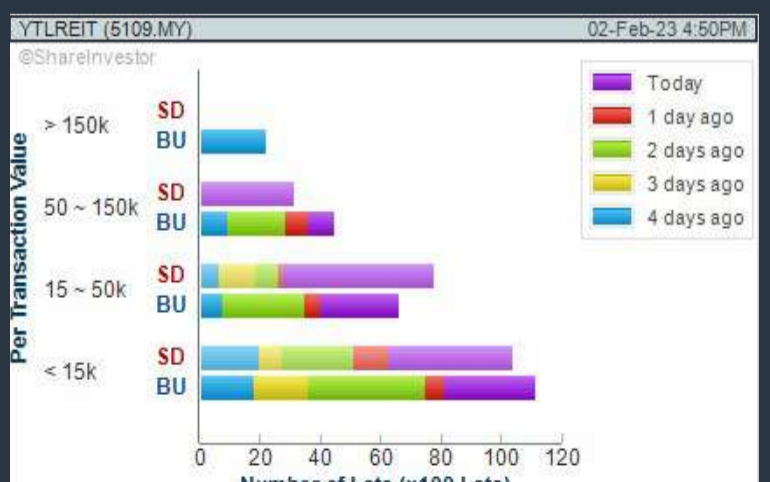
Analysis



YTL HOSPITALITY REIT (5109)

C² Chart

Analysis



Disclaimer: The information on this page is provided as a service to readers. It does not constitute financial advice and/or any investment recommendations. Past performance is not indicative of future results. We assume no liability for damages resulting from or arising out of the use of such information. It would be best if you did your own research to make your personal investment decisions wisely or consult a licenced investment advisor.

MAKE BETTER TRADING STRATEGIES

with

SHARE INVESTOR STATION



8 Markets Data

- ▶ Get access to data from Bursa, NYSE, Nasdaq, HKEX, SGX, IDX, SET & ASX

Dynamic Chart

- ▶ Candlestick Pattern Recognition
- ▶ 111 Indicators
- ▶ 39 Drawing Tools
- ▶ Performance Comparison Chart

Intraday Data

- ▶ Market Depth
- ▶ Trade Summary Matrix & Chart
- ▶ Times & Sales
- ▶ Intraday Market Ticker

Market Screener

- ▶ 96 criteria ranging from FA, TA, Consensus Estimate
- ▶ Real-time Data

Power Frame

- ▶ Combining few Dynamic Charts together with intraday information in one frame

Technical Analysis

Fundamental Analysis

Financial Analysis Statement

- ▶ Profit & Loss
- ▶ Balance Sheet
- ▶ Cash Flow Statement
- ▶ More than 20 Financial Ratios
- ▶ Dividend Analysis

FactSheet

- ▶ Key Stock Information
- ▶ Ownership
- ▶ Consensus Estimates
- ▶ Annual Report
- ▶ Historical Price
- ▶ Insider Trades

**Start your 18 days
FREE trial now
(Valued at RM82)**



Price & Volume Distribution Charts (Over 5 trading days as at Yesterday)

Technical Analysis

DEFINITION: Stocks with Technical Analysis showing Bullish Momentum and Price Uptrend

CHART GUIDE: Volume Distribution Chart is a statistical interpretation of the current sentiment on each stock in graphical format. The highest bar categorized as >150k is likely to be traded by institutions or super dealers, while the lowest bar categorized as <15k usually represents retail investors. "Buy Up" refers to more buyers snatching up the lots queued at selling price. "Sell Down" refers to sellers selling their shares to the buying queue.



ShareInvestor WebPro > Screener > Market Screener (FA & TA) > select BURSA > add criteria

A. Criteria

- > click Add Criteria
- Fundamental Analysis Conditions tab > select (i) Revenue
- Technical Analysis Conditions tab select (ii) Moving Average Below Close
- Technical Analysis Conditions tab select (iii) Average Volume
- Prices & Other Conditions tab > select (iv) Last Done Price
- Technical Analysis Conditions tab select (v) Moving Average Below Close
- Technical Analysis Conditions tab select (v) Moving Average Bullish Crossover

B. Conditions

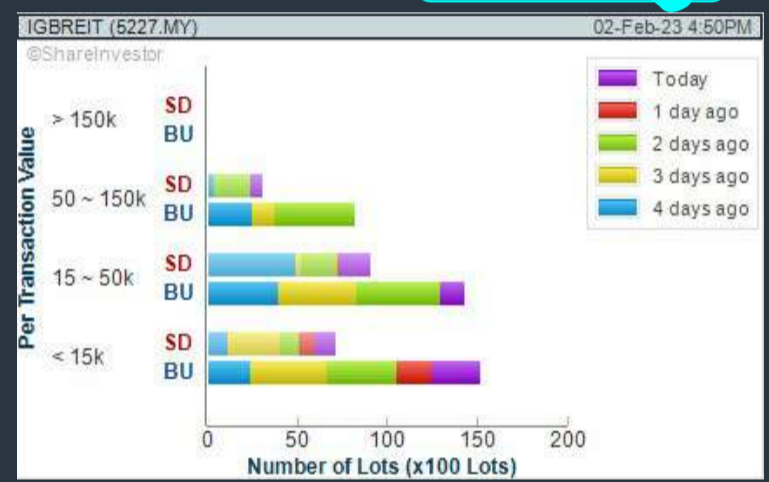
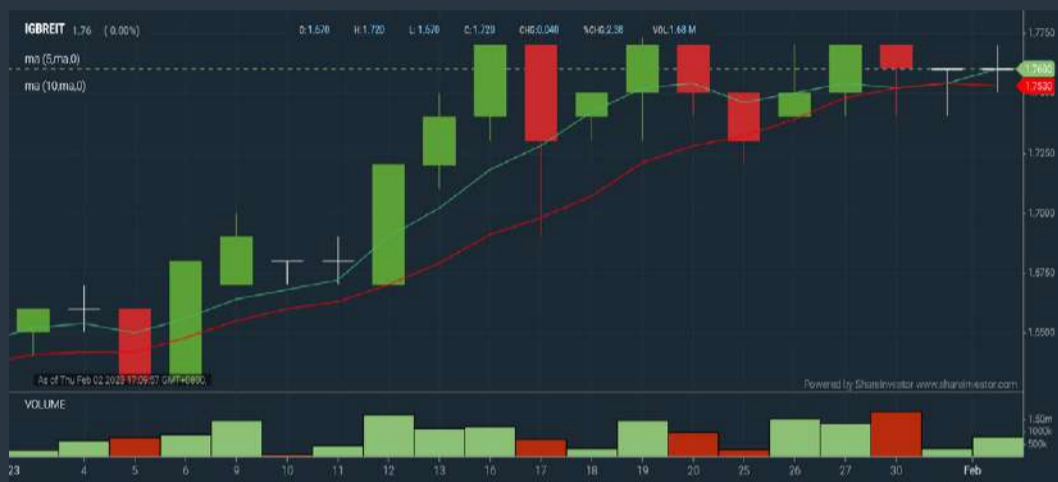
1. Revenue - select (more than) type (1) for the past select (1) financial year(s)
2. Moving Average Below Close - select (MA) type (20) below close price for type (1) days
3. Average Volume - type (5) days average volume type (10000) lots
4. Last Done Price - select (more than) type (0.3)
5. Moving Average Below Close - select (MA) type (10) below close price for type (1) days
6. Moving Average Bullish Crossover - select (MA) type (5) crossed above select (MA) type (10)

> click Save Template > Create New Template type (Non-Shariah Up-Trending Stocks) > click Create Click Save Template As > select Non-Shariah Up Trending Stocks > click Save > click Screen Now (may take a few minutes) Sort By: Select (Vol) Select (Desc) Mouse over stock name > Charts > click C² Charts tab or Volume Distribution

IGB REAL ESTATE INV TRUST (5227)

C² Chart

Analysis



Disclaimer: The information on this page is provided as a service to readers. It does not constitute financial advice and/or any investment recommendations. Past performance is not indicative of future results. We assume no liability for damages resulting from or arising out of the use of such information. It would be best if you did your own research to make your personal investment decisions wisely or consult a licenced investment advisor.

Learn how to identify Hot Stocks using Technical Analysis (TA) and Fundamental Analysis (FA)

SIGN UP FOR Invest NOW IT'S FREE!!!

Click here

Scan me

Via email, every Friday.

Get market moving news and analyses. Regular columns include **Behind The Action** and **From The Observer**

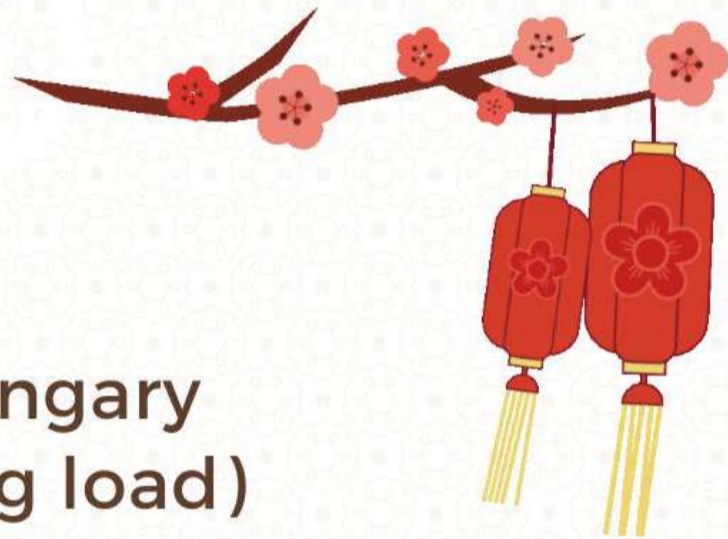
Leaderboard • Shariah Hot Stocks • Shariah Momentum Up Stocks • Non Shariah Hot Stocks • Up Trending Stocks • Growth Stocks • Dividend Stocks • Long Companies • Insider Activity • Investor Relations • Regional Markets



XTRA

PARIPA MAXI

rocking horse from Hungary
for children (up to 70kg load)



Get it at only **RM 1888** with
XTRA CNY ANG POW OFFER
(from RM2899 with angpow worth RM1011)

Usher in 2023 with HAPPINESS!

Terms and Conditions

- while stocks last
- self collection from XTRA showroom to claim this "angpow", rm1011 off rrp of rm2899



Price & Total Shareholder Return (as at Yesterday)

Fundamental Analysis

DEFINITION: Share price of a company trading at a lower price as compared to its fundamentals (FA) such as financial performance and dividend, allowing it to be attractive to value investors.

CHART GUIDE: Total Shareholder Return (TSR) combines share price appreciation and dividend distributions paid to show the total return to the shareholder expressed as a percentage.



ShareInvestor WebPro > Screener > Market Screener (FA & TA) > select BURSA > add criteria

A. Criteria

- > click Add Criteria
- Fundamental Analysis Conditions tab (i) Price Earnings Ratio
- Fundamental Analysis Conditions tab >select (ii) CAGR of Net Earnings
- Fundamental Analysis Conditions tab >select (iii) Net Debt To Equity
- Fundamental Analysis Conditions tab >select (iv) Return On Equity (ROE)

B. Conditions

1. Price Earnings Ratio - select (less than) type (15) times now
2. CAGR of Net Earnings - select (more than) type (10) % for the past type (3) financial year(s)
3. Net Debt To Equity – select (less than) type (1) for the past select (1) financial year(s)
4. Return On Equity (ROE) – select (more than) type (10) % for the past select (1) financial year(s)

- > click Save Template > Create New Template type (Value Stock) > click Create
- > click Save Template as > select Value Companies > click Save
- > click Screen Now (may take a few minutes)
- > Mouse over stock name > Factsheet > looking for Total Shareholder Return
- > Mouse over stock name > Charts > click C2 Charts tab

ANCOM NYLEX BERHAD (4758)

C² Chart

Analysis



Period	Dividend Received	Capital Appreciation	Total Shareholder Return
Short Term Return	5 Days	-	+1.69 %
	10 Days	-	+1.69 %
	20 Days	-	+11.11 %
Medium Term Return	3 Months	+0.260	+27.86 %
	6 Months	+0.150	+14.29 %
	1 Year	+0.077	+6.88 %
Long Term Return	2 Years	+0.843	+236.13 %
	3 Years	+0.993	+479.71 %
	5 Years	+1.052	+710.81 %
Annualised Return	Annualised	-	+51.88 %

ENEST GROUP BERHAD (03025)

C² Chart

Analysis

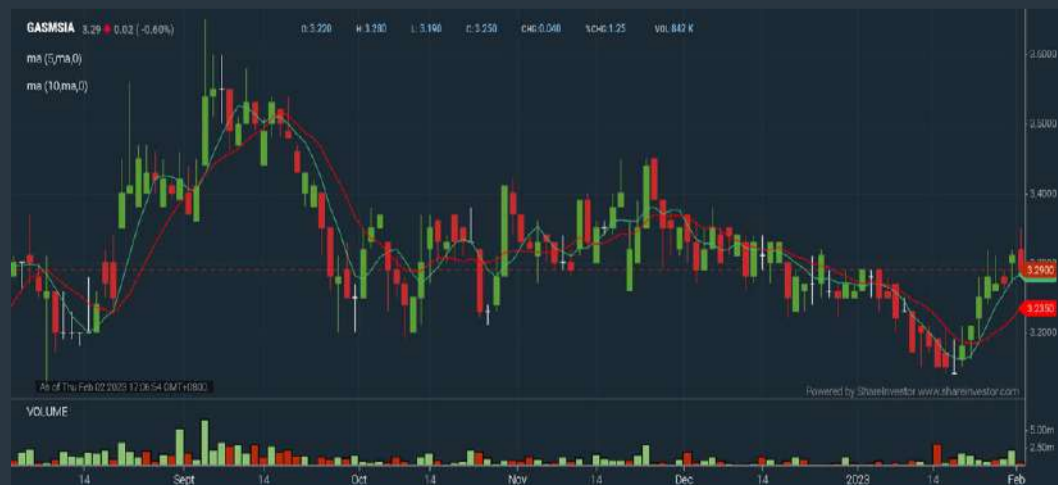


Period	Dividend Received	Capital Appreciation	Total Shareholder Return
Short Term Return	5 Days	-	-
	10 Days	-	-
	20 Days	-	-
Medium Term Return	3 Months	+0.010	+7.14 %
	6 Months	+0.010	+7.14 %
	1 Year	+0.010	+7.14 %
Long Term Return	2 Years	0.001	+16.15 %
	3 Years	0.001	+16.15 %
Annualised Return	Annualised	-	+5.12 %

GAS MALAYSIA BERHAD (5209)

C² Chart

Analysis



Period	Dividend Received	Capital Appreciation	Total Shareholder Return
Short Term Return	5 Days	+0.000	+2.49 %
	10 Days	+0.140	+4.44 %
	20 Days	-	-
Medium Term Return	3 Months	0.040	-1.20 %
	6 Months	0.059	+1.48 %
	1 Year	0.188	+29.78 %
Long Term Return	2 Years	0.344	+39.77 %
	3 Years	0.479	+36.56 %
	5 Years	0.752	+48.06 %
Annualised Return	Annualised	-	+8.16 %

Disclaimer: The information on this page is provided as a service to readers. It does not constitute financial advice and/or any investment recommendations. Past performance is not indicative of future results. We assume no liability for damages resulting from or arising out of the use of such information. It would be best if you did your own research to make your personal investment decisions wisely or consult a licenced investment advisor.

BURSASTATION Professional



Stock Scanning

- Technical Analysis (TA) Market Scanner
- Fundamental Analysis (FA) Market Scanner



Market Data

- Equities
- Derivatives

Monitoring

- Portfolio
- Stock Alerts
- Price Spread Calculator



Scan. Chart. Analyse.

Be The Intelligent Investor

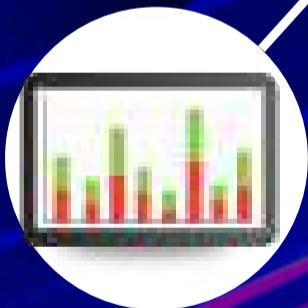


Price Movements

- Streaming Prices
- Time & Sales
- Trade Summary Matrix
- Quote Movements
- 5 Levels Market Depth
- Historical Price Download

Charts

- Intraday Charts
- Interactive Charts
- Historical Charts
- Volume Distribution Charts



Fundamentals

- Factsheets
- Financials
- Insider Trades



Brought to you as a collaborative effort by ShareInvestor and Bursa Malaysia, **BursaStation Professional** is designed with you, the user, in mind, as a user-friendly yet full of powerful features that will appeal to investors/traders who need instant access to fundamental, technical, and trading data, anytime, anywhere. **BursaStation Professional** is a state-of-the-art Stock Market Tracker with Charting Software that places in your hands the power to make better investment decisions.

CLICK HERE TO START YOUR 14-DAYS FREE TRIAL

Price & Total Shareholder Return (as at Yesterday)

Fundamental Analysis

DEFINITION: Company revenue is growing and making good quality of earnings with positive Free Cash Flow.

CHART GUIDE: Total Shareholder Return (TSR) combines share price appreciation and distributions paid to show the total return to the shareholder expressed as a percentage.



ShareInvestor WebPro > Screener > Market Screener (FA & TA) > select BURSA > add criteria

A. Criteria

1. Fundamental Analysis Conditions tab >select (i) Free Cash Flow, (ii) Revenue Growth, (iii) Gross Profit (Earnings) Margin, (iv) Quality of Earnings, (v) Total Shareholder Returns, > click Add Criteria
2. Fundamental Analysis Conditions tab >select (vi) Total Shareholder Returns > click Add Criteria

B. Conditions (Criteria Filters)

1. Free Cash Flow - select (more than) type (1) for the past select (1) financial year(s)
2. Revenue Growth - select (more than) type (1) for the past select (1) financial year(s)
3. Gross Profit (Earnings) Margin - select (more than) type (30) % for the past select (1) financial year(s)
4. Quality of Earnings - select (more than) type (1) for the past select (1) financial year(s)
5. Total Shareholder Return - select (more than) type (5) % for the past select (3) financial year(s)
6. Total Shareholder Return - select (more than) type (5) % for the past select (5) financial year(s)

- > click Save Template > Create New Template type (Growth Companies) > click Create
- > click Save Template as > select Growth Companies > click Save
- > click Screen Now (may take a few minutes)
- > Sort By: Select (Revenue Growth) Select (Desc)
- > Mouse over stock name > Factsheet > looking for Total Shareholder Return

DAGANG NEXCHANGE BERHAD (4456)

C² Chart

Analysis



Period		Dividend Received	Capital Appreciation	Total Shareholder Return	
Short Term Return	5 Days	-	+0.090		+13.22 %
	10 Days	-	+0.100		+17.08 %
	20 Days	-	+0.170		+33.01 %
Medium Term Return	3 Months	-	-0.075		-9.87 %
	6 Months	-	-0.110		-13.84 %
	1 Year	0.005	-0.255		-26.49 %
Long Term Return	2 Years	0.005	+0.420		+169.75 %
	3 Years	0.005	+0.445		+187.93 %
	5 Years	0.011	+0.245		+56.16 %
Annualised Return	Annualised	-	-		+9.61 %

HIBISCUS PETROLEUM BERHAD (5199)

C² Chart

Analysis



Period		Dividend Received	Capital Appreciation	Total Shareholder Return	
Short Term Return	5 Days	-	-		-
	10 Days	-	+0.060		+7.55 %
	20 Days	-	+0.040		+3.64 %
Medium Term Return	3 Months	0.010	+0.145		+15.53 %
	6 Months	0.010	+0.290		+35.29 %
	1 Year	0.020	+0.130		+14.85 %
Long Term Return	2 Years	0.035	+0.600		+117.69 %
	3 Years	0.035	+0.265		+34.29 %
	5 Years	0.035	+0.290		+38.24 %
Annualised Return	Annualised	-	-		+6.69 %

AYER HOLDINGS BERHAD (2305)

C² Chart

Analysis



Period		Dividend Received	Capital Appreciation	Total Shareholder Return	
Short Term Return	5 Days	-	-		-
	10 Days	-	-0.050		-0.76 %
	20 Days	-	-0.050		-0.76 %
Medium Term Return	3 Months	-	+0.550		+9.17 %
	6 Months	-	+0.550		+9.17 %
	1 Year	0.100	+1.150		+23.15 %
Long Term Return	2 Years	0.141	+0.950		+19.46 %
	3 Years	0.186	+1.920		+45.86 %
	5 Years	0.286	+0.950		+10.26 %
Annualised Return	Annualised	-	-		+1.97 %

Disclaimer: The information on this page is provided as a service to readers. It does not constitute financial advice and/or any investment recommendations. Past performance is not indicative of future results. We assume no liability for damages resulting from or arising out of the use of such information. It would be best if you did your own research to make your personal investment decisions wisely or consult a licenced investment advisor.

Price & Total Shareholder Return (as at Yesterday)

Fundamental Analysis

DEFINITION: Company is paying out dividend with low or moderate leverage.

CHART GUIDE: Total Shareholder Return (TSR) combines share price appreciation and distributions paid to show the total return to the shareholder expressed as a percentage.



ShareInvestor WebPro > Screener > Market Screener (FA & TA) > select BURSA > add criteria

A. Criteria

- > click Add Criteria
- Fundamental Analysis Conditions tab >select (i) Dividend Yield (Historical)
- Fundamental Analysis Conditions tab >select (ii) Dividend Payout (Historical)
- Fundamental Analysis Conditions tab >select (iii) Total Debt To Equity
- Fundamental Analysis Conditions tab >select (iv) Total Shareholder Returns
- Fundamental Analysis Conditions tab >select (v) Total Shareholder Returns
- Fundamental Analysis Conditions tab / >select (vi) CAGR of Dividend Per Share

- Fundamental Analysis Conditions tab >select (vii) CAGR of Dividend Per Share

B. Conditions (Criteria Filters)

1. Dividend Yield - select (more than) type (1) % for the past select (1) financial year(s)
2. Dividend Payout (Historical) - select (between) type (0.5) to type (1) times for the past select (1) financial year(s)
3. Total Debt to Equity - select (less than) type (1) for the past select (1) financial year(s)
4. Total Shareholder Return - select (more than) type (5) % for the past select (3) financial year(s)
5. Total Shareholder Return - select (more than) type (5) % for the past select (5) financial year(s)

6. CAGR of Dividend Per Share - select (less than) type (30) % for the past select (5) financial year(s)
7. CAGR of Dividend Per Share - select (more than) type (1) % for the past select (5) financial year(s)

- > click Save Template > Create New Template type (Dividend Companies) > click Create
- > click Save Template as > select Dividend Companies > click Save
- > click Screen Now (may take a few minutes)
- > Sort By: Select (Dividend Yield) Select (Desc)
- > Mouse over stock name > Factsheet > looking for Total Shareholder Return

JAYCORP BERHAD (7152)

C² Chart



Period	Dividend Received	Capital Appreciation	Total Shareholder Return
Short Term Return	5 Days	-	+1.40 %
	10 Days	-	+1.40 %
	20 Days	-	+2.84 %
Medium Term Return	3 Months	0.040	+6.99 %
	6 Months	0.040	+14.18 %
	1 Year	0.080	+1.29 %
Long Term Return	2 Years	0.165	+14.10 %
	3 Years	0.265	+92.23 %
	5 Years	0.415	+83.87 %
Annualised Return	Annualised	-	+12.95 %

UNITED PLANTATIONS BERHAD (2089)

C² Chart



Period	Dividend Received	Capital Appreciation	Total Shareholder Return
Short Term Return	5 Days	-	-0.28 %
	10 Days	-	+1.30 %
	20 Days	-	+2.23 %
Medium Term Return	3 Months	0.400	+13.14 %
	6 Months	0.400	+10.70 %
	1 Year	1.250	+21.80 %
Long Term Return	2 Years	2.200	+30.94 %
	3 Years	3.450	+67.19 %
	5 Years	6.350	+83.37 %
Annualised Return	Annualised	-	+12.89 %

UCHI TECHNOLOGIES BERHAD (7100)

C² Chart



Period	Dividend Received	Capital Appreciation	Total Shareholder Return
Short Term Return	5 Days	-	+1.91 %
	10 Days	-	+0.95 %
	20 Days	-	-1.84 %
Medium Term Return	3 Months	0.120	-2.05 %
	6 Months	0.120	+0.85 %
	1 Year	0.230	+15.10 %
Long Term Return	2 Years	0.415	+29.11 %
	3 Years	0.575	+42.99 %
	5 Years	0.870	+71.15 %
Annualised Return	Annualised	-	+11.35 %

Disclaimer: The information on this page is provided as a service to readers. It does not constitute financial advice and/or any investment recommendations. Past performance is not indicative of future results. We assume no liability for damages resulting from or arising out of the use of such information. It would be best if you did your own research to make your personal investment decisions wisely or consult a licenced investment advisor.

Week: 27 January 2022 – 02 February 2023

More Brokers' Call 

AMINVESTMENT BANK <small>... See More</small>	Call	Target Price	Release Date
CIMB Group Holdings Berhad (1023)	BUY	RM6.70	27 Jan 2023
Berjaya Food Berhad (5196)	BUY	RM1.25	30 Jan 2023
Petronas Gas Berhad (6033)	BUY	RM19.13	30 Jan 2023
Chin Teck Plantations Berhad (1929)	HOLD	RM7.55	31 Jan 2023
Sunway Real Estate Investment Trust (5176)	BUY	RM1.76	31 Jan 2023

KENANGA <small>... See More</small>	Call	Target Price	Release Date
CIMB Group Holdings Berhad (1023)	OUTPERFORM	RM6.40	27 Jan 2023
Malaysia Airports Holdings Berhad (5014)	MARKET PERFORM	RM7.00	30 Jan 2023
PPB Group Berhad (4065)	OUTPERFORM	RM19.30	31 Jan 2023
Bursa Malaysia Berhad (1818)	MARKET PERFORM	RM6.25	02 Feb 2023
CTOS Digital Berhad (5301)	OUTPERFORM	RM1.80	02 Feb 2023

MIDF <small>... See More</small>	Call	Target Price	Release Date
CIMB Group Holdings Berhad (1023)	BUY	RM6.16	27 Jan 2023
Sunway Real Estate Investment Trust (5176)	BUY	RM1.73	31 Jan 2023
MISC Berhad (3816)	NEUTRAL	RM7.77	02 Feb 2023

UOB KAYHIAN <small>... See More</small>	Call	Target Price	Release Date
Solution Group Berhad (0093)	BUY	RM0.395	27 Jan 2023
Tanco Holdings Berhad (2429)	BUY	RM0.495	30 Jan 2023
Cuscapi Berhad (0051)	BUY	RM0.315	31 Jan 2023
NCT Alliance Berhad (0056)	BUY	RM0.44	31 Jan 2023
Press Metal Aluminium Holdings Berhad (8869)	BUY	RM6.30	31 Jan 2023

Disclaimer: InveSt does not accept any liability whatsoever for any direct, indirect or consequential losses (including loss of profit) or damages that may arise from the use of information or opinions in this publication. The information and opinions in InveSt are not to be considered as an offer to sell or buy any of the securities discussed. Opinions expressed are subject to change without notice. The Brokers may, from time to time, have interests or positions in the securities mentioned. For the full report on each item listed on this page, please visit https://www.shareinvestor.com/my/brokers_call.

DEFINITION: Top 9 stocks with Technical Analysis plus Pattern Matching by 60 pre-defined indicators by the system showing a higher probability of bullish sentiment on the share price.



ShareInvestor WebPro > Screener > Predefined TA Screens > select market BURSA > Most Long Signals > click Scan Results or mouse over each company

LYC HEALTHCARE BERHAD (0075.MY)

LYC

Price updated at 02 Feb 2023 16:58

Last: 0.295	Change: -0.015	Volume: 226,670
	Change (%): -4.84	Range: 0.290 - 0.330

TA Scanner Results based on historical data up to 02 Feb 2023

Condition	Signal	Explanation
Bollinger Band: Bullish Long Term Volatility Breakout and Trending	Long	1. Close price above upper bollinger band(33,1). 2. Volume above average volume(50). 3. Average volume(50) is above 300,000.
Bollinger Band: Bullish Short Term Volatility Breakout and Trending	Long	1. Close price above upper bollinger band(33,1). 2. Volume above average volume(10). 3. Average volume(10) is above 300,000.
Bollinger Band: High Above Upper Bollinger Band	Neutral	1. High above upper bollinger band(14,2). 2. Average volume(5) is above 100,000.
Donchian Channels: High Above Upper Donchian Channels	Long	High crossed above the upper Donchian Channel(14,4)
MA: Long Term Bullish Moving Average Crossover	Long	MA(50) crossed above MA(200) within the last 1 day.
MA: Short Term Bullish Moving Average Crossover	Long	MA(10) crossed above MA(15) within the last 1 day.
MACD: Bullish MACD Crossover	Long	1. MACD(12,26) diff line crossed above the MACD(12,26) signal line. 2. MACD Histogram(12,26) is above 0.
Parabolic SAR: Bearish Parabolic SAR Reversal	Neutral	1. Parabolic SAR 1 day ago above close price 1 day ago for the last 5 days. 2. Parabolic SAR below close price
Price: New 52 Week High	Long	1. Stock reach a new 52 week high. 2. Average volume(30) is above 50000.
Volume: Volume Spike	Long	1. Volume is more than 500% above average volume(10). 2. Volume above 200000. 3. Close price above 0.10

MALAYAN FLOUR MILLS BERHAD (3662.MY)

MFLOUR

Price updated at 02 Feb 2023 16:58

Last: 0.815	Change: -0.015	Volume: 30,219
	Change (%): -1.81	Range: 0.800 - 0.835

TA Scanner Results based on historical data up to 02 Feb 2023

Condition	Signal	Explanation
Bollinger Band: Bullish Long Term Volatility Breakout and Trending	Long	1. Close price above upper bollinger band(33,1). 2. Volume above average volume(50). 3. Average volume(50) is above 300,000.
Bollinger Band: Bullish Short Term Volatility Breakout and Trending	Long	1. Close price above upper bollinger band(33,1). 2. Volume above average volume(10). 3. Average volume(10) is above 300,000.
Bollinger Band: High Above Upper Bollinger Band	Neutral	1. High above upper bollinger band(14,2). 2. Average volume(5) is above 100,000.
CCI: Bearish CCI Overbought And Reversing	Short	1. CCI(26) above 100 and CCI(26) 1 day ago increasing for the last 3 days. 2. CCI(26) below CCI(26) 1 day ago
Donchian Channels: High Above Upper Donchian Channels	Long	High crossed above the upper Donchian Channel(14,4)
Volume: 10 Days large value Buy Up trade	Long	1. 150K value Buy Up greater than Sell Down by 20% for 10 days. 2. 50K-100K value Buy Up greater than Sell Down by 20% for 10 days. 3. Average volume(10) is above 1000000
Volume: 5 Days large value Buy Up trade	Long	1. 150K value Buy Up greater than Sell Down by 20% for 5 days. 2. 50K-100K value Buy Up greater than Sell Down by 20% for 5 days. 3. Average volume(10) is above 1000000.
Williams %R: Bearish Williams %R	Short	1. Williams %R(26) between 0 and -20. 2. Average volume(5) is above 100,000.

JKG LAND BERHAD (6769.MY)

JKGLAND

Price updated at 02 Feb 2023 16:50

Last: 0.105	Change: -	Volume: 3,800
	Change (%): -	Range: 0.100 - 0.105

TA Scanner Results based on historical data up to 02 Feb 2023

Condition	Signal	Explanation
Bollinger Band: Bullish Long Term Volatility Breakout and Trending	Long	1. Close price above upper bollinger band(33,1). 2. Volume above average volume(50). 3. Average volume(50) is above 300,000.
Bollinger Band: Bullish Short Term Volatility Breakout and Trending	Long	1. Close price above upper bollinger band(33,1). 2. Volume above average volume(10). 3. Average volume(10) is above 300,000.
Bollinger Band: High Above Upper Bollinger Band	Neutral	1. High above upper bollinger band(14,2). 2. Average volume(5) is above 100,000.
Candlestick: Indecision Doji	Neutral	Indecision: Doji
DM: Bullish Directional Movement	Long	-DI(14) crossed below +DI(14)
Donchian Channels: High Above Upper Donchian Channels	Long	High crossed above the upper Donchian Channel(14,4)
MA: Short Term Bullish Moving Average Crossover	Long	MA(10) crossed above MA(15) within the last 1 day.
MACD: Bullish MACD Crossover	Long	1. MACD(12,26) diff line crossed above the MACD(12,26) signal line. 2. MACD Histogram(12,26) is above 0.
Parabolic SAR: Bearish Parabolic SAR Reversal	Neutral	1. Parabolic SAR 1 day ago above close price 1 day ago for the last 5 days. 2. Parabolic SAR below close price
Stochastic: Fast Stochastic Sell Signal	Short	1. Fast Stochastic(15,5) %K crossed below 80. 2. Fast Stochastic(15,5) %K 1 day ago was above 80 for the last 5 days. 3. Average volume(30) is above 50000
Volume: Volume Spike	Long	1. Volume is more than 500% above average volume(10). 2. Volume above 200000. 3. Close price above 0.10

OLYMPIA INDUSTRIES BERHAD (3018.MY)

OLYMPIA

Price updated at 02 Feb 2023 16:59

Last: 0.080	Change: -0.005	Volume: 1,785
	Change (%): -5.88	Range: 0.080 - 0.085

TA Scanner Results based on historical data up to 02 Feb 2023

Condition	Signal	Explanation
Bollinger Band: Bullish Long Term Volatility Breakout and Trending	Long	1. Close price above upper bollinger band(33,1). 2. Volume above average volume(50). 3. Average volume(50) is above 300,000.
Bollinger Band: Bullish Short Term Volatility Breakout and Trending	Long	1. Close price above upper bollinger band(33,1). 2. Volume above average volume(10). 3. Average volume(10) is above 300,000.
Bollinger Band: High Above Upper Bollinger Band	Neutral	1. High above upper bollinger band(14,2). 2. Average volume(5) is above 100,000.
CCI: Bearish CCI Overbought And Reversing	Short	1. CCI(26) above 100 and CCI(26) 1 day ago increasing for the last 3 days. 2. CCI(26) below CCI(26) 1 day ago
MA: Short Term Bullish Moving Average Crossover	Long	MA(10) crossed above MA(15) within the last 1 day.
MACD: Bullish MACD Crossover	Long	1. MACD(12,26) diff line crossed above the MACD(12,26) signal line. 2. MACD Histogram(12,26) is above 0.
Parabolic SAR: Bearish Parabolic SAR Reversal	Neutral	1. Parabolic SAR 1 day ago above close price 1 day ago for the last 5 days. 2. Parabolic SAR below close price

Disclaimer: The information on this page is provided as a service to readers. It does not constitute financial advice and/or any investment recommendations. Past performance is not indicative of future results. We assume no liability for damages resulting from or arising out of the use of such information. It would be best if you did your own research to make your personal investment decisions wisely or consult a licenced investment advisor.



AE MULTI HOLDINGS BERHAD
(7146.MY)

AEM

Price updated at 02 Feb 2023 16:58

Last: 0.030	Change: -	Volume: 9,675
	Change (%): -	Range: 0.025 - 0.030

TA Scanner Results based on historical data up to 02 Feb 2023

Condition	Signal	Explanation
Bollinger Band: Bullish Long Term Volatility Breakout and Trending	Long	1. Close price above upper bollinger band(33,1). 2. Volume above average volume(50). 3. Average volume(50) is above 300,000.
Bollinger Band: Bullish Short Term Volatility Breakout and Trending	Long	1. Close price above upper bollinger band(33,1). 2. Volume above average volume(10). 3. Average volume(10) is above 300,000.
Bollinger Band: High Above Upper Bollinger Band	Neutral	1. High above upper bollinger band(14,2). 2. Average volume(5) is above 100,000.
CCI: Bearish CCI Overbought And Reversing	Short	1. CCI(26) above 100 and CCI(26) 1 day ago increasing for the last 3 days. 2. CCI(26) below CCI(26) 1 day ago
Donchian Channels: High Above Upper Donchian Channels	Long	High crossed above the upper Donchian Channel(14,4)
MA: Bullish Price Crossover	Long	1. Close price crossed above MA(40) within the last 1 day. 2. Previous day close price is below the MA(10) for the last 5 days
MACD: Bullish MACD Crossover	Long	1. MACD(12,26) diff line crossed above the MACD(12,26) signal line. 2. MACD Histogram(12,26) is above 0.
Parabolic SAR: Bearish Parabolic SAR Reversal	Neutral	1. Parabolic SAR 1 day ago above close price 1 day ago for the last 5 days. 2. Parabolic SAR below close price
RSI: Short Term RSI 50 Bullish Crossover	Long	1. RSI(20) crossed above 50 within the last 1 day and RSI(20) 1 day ago below 50 for the last 5 days. 2. Volume above average volume(125). 3. Average volume(5) is above 100,000.
Stochastic: Fast Stochastic Buy Signal	Long	1. Fast Stochastic(15,5) %K crossed above 20. 2. Fast Stochastic(15,5) %K 1 day ago was below 20 for the last 5 days. 3. Average volume(30) is above 50000



GAS MALAYSIA BERHAD
(5209.MY)

GASMSIA

Price updated at 02 Feb 2023 16:58

Last: 3.290	Change: -0.020	Volume: 4,378
	Change (%): -0.60	Range: 3.290 - 3.350

TA Scanner Results based on historical data up to 02 Feb 2023

Condition	Signal	Explanation
Bollinger Band: Bullish Long Term Volatility Breakout and Trending	Long	1. Close price above upper bollinger band(33,1). 2. Volume above average volume(50). 3. Average volume(50) is above 300,000.
Bollinger Band: Bullish Short Term Volatility Breakout and Trending	Long	1. Close price above upper bollinger band(33,1). 2. Volume above average volume(10). 3. Average volume(10) is above 300,000.
Donchian Channels: High Above Upper Donchian Channels	Long	High crossed above the upper Donchian Channel(14,4)
MA: Short Term Bullish Moving Average Crossover	Long	MA(10) crossed above MA(15) within the last 1 day.
Volume: 5 Days large value Sell Down trade	Short	1. 150K value Sell Down greater than Buy Up by 20% for 5 days. 2. 50K-100K value Sell Down greater than Buy Up by 20% for 5 days. 3. Average volume(10) is above 1000000
Volume: Consecutive Days Of Increasing Average Volume	Long	1. Average Volume(20) has been increasing over the last 2 weeks. 2. Average volume(20) is above 100000
Williams %R: Bearish Williams %R	Short	1. Williams %R(26) between 0 and -20. 2. Average volume(5) is above 100,000.

Disclaimer: The information on this page is provided as a service to readers. It does not constitute financial advice and/or any investment recommendations. Past performance is not indicative of future results. We assume no liability for damages resulting from or arising out of the use of such information. It would be best if you did your own research to make your personal investment decisions wisely or consult a licenced investment advisor.



BERMAZ AUTO BERHAD
(5248.MY)

BAUTO

Price updated at 02 Feb 2023 16:57

Last: 2.180	Change: +0.010	Volume: 38,440
	Change (%): +0.46	Range: 2.140 - 2.180

TA Scanner Results based on historical data up to 02 Feb 2023

Condition	Signal	Explanation
Candlestick: Bullish Engulfing	Long	Bullish: Engulfing
DM: Bullish Directional Movement	Long	-DI(14) crossed below +DI(14)
Volume: 10 Days large value Buy Up trade	Long	1. 150K value Buy Up greater than Sell Down by 20% for 10 days. 2. 50K-100K value Buy Up greater than Sell Down by 20% for 10 days. 3. Average volume(10) is above 1000000
Volume: 5 Days large value Buy Up trade	Long	1. 150K value Buy Up greater than Sell Down by 20% for 5 days. 2. 50K-100K value Buy Up greater than Sell Down by 20% for 5 days. 3. Average volume(10) is above 1000000
Williams %R: Bearish Williams %R	Short	1. Williams %R(26) between 0 and -20. 2. Average volume(5) is above 100,000.



ANEKA JARINGAN HOLDINGS BERHAD
(0226.MY)

ANEKA

Price updated at 02 Feb 2023 16:59

Last: 0.225	Change: +0.020	Volume: 54,472
	Change (%): +9.76	Range: 0.210 - 0.240

TA Scanner Results based on historical data up to 02 Feb 2023

Condition	Signal	Explanation
Bollinger Band: High Above Upper Bollinger Band	Neutral	1. High above upper bollinger band(14,2). 2. Average volume(5) is above 100,000.
Donchian Channels: High Above Upper Donchian Channels	Long	High crossed above the upper Donchian Channel(14,4)
MA: Short Term Bullish Moving Average Crossover	Long	MA(10) crossed above MA(15) within the last 1 day.
Price: New 52 Week High	Long	1. Stock reach a new 52 week high. 2. Average volume(30) is above 50000.
Volume: Consecutive Days Of Increasing Average Volume	Long	1. Average Volume(20) has been increasing over the last 2 weeks. 2. Average volume(20) is above 100000
Williams %R: Bearish Williams %R	Short	1. Williams %R(26) between 0 and -20. 2. Average volume(5) is above 100,000.



SOUTHERN SCORE BUILDERS BERHAD
(0045.MY)

SSB8

Price updated at 02 Feb 2023 16:58

Last: 0.200	Change: -0.005	Volume: 104,866
	Change (%): -2.44	Range: 0.195 - 0.205

TA Scanner Results based on historical data up to 02 Feb 2023

Condition	Signal	Explanation
Bollinger Band: Bullish Long Term Volatility Breakout and Trending	Long	1. Close price above upper bollinger band(33,1). 2. Volume above average volume(50). 3. Average volume(50) is above 300,000.
Bollinger Band: Bullish Short Term Volatility Breakout and Trending	Long	1. Close price above upper bollinger band(33,1). 2. Volume above average volume(10). 3. Average volume(10) is above 300,000.
DM: Bullish Directional Movement	Long	-DI(14) crossed below +DI(14)
Historical Volatility: Increasing Historical Volatility	Neutral	Historical Volatility(100,365) increasing for the last 10 days
MA: Medium Term Bullish Moving Average Crossover	Long	MA(25) crossed above MA(50) within the last 1 day.

MALAYSIA'S EXTERNAL TRADE TO EXPAND STEADILY BEYOND 2023 WITH NEW FTAs - MIDF

A ccording to MIDF Research, Malaysia's external trade activities is expected to expand steadily beyond 2023 amid the impact of new trade agreements, apart from elevated commodity prices and lower monetary rates. The Regional Comprehensive Economic Partnership (RCEP) and Comprehensive and Progressive Agreement for Trans-Pacific Partnership (CPTPP) are also expected to alleviate the external trade performance in 2024. In the post-pandemic era, Malaysia has ratified the RCEP and CPTPP, which came into force on March 18, 2022 (RCEP), and Nov 29, 2022 (CPTPP). As of 2022, RCEP members contributed 58.1% of Malaysia's total trade, while CPTPP members sponsored 27.5%.

With these two free trade agreements (FTAs), Malaysian products are able to penetrate into wider markets and enjoy cheaper imported goods,

allowing the country's growth rates to achieve +12.1% (exports) and +10.9% (imports) in 2024. MIDF Research is also of the view that the external front is still on a challenging path, with concerns over a global economic slowdown, inflation bite, tightening monetary policy in many countries, and geopolitical risks in Europe and Asia. As such, it foresees slight moderation in the export growth forecast from +25% year-on-year (y-o-y) in 2022 to +9.2% y-o-y in 2023.

On the bright side, China's reopening provides a silver lining for global trade flows. Malaysia's export market can still hold, underpinned by, among others, overseas sales of commodity products with commodity prices remaining elevated, crude palm oil at RM3,500 per tonne, and Brent crude oil at US\$94 per barrel for 2023. Hence the research house maintains its "neutral" stance on the plantation sector.

Imports are forecast to grow 9.5% y-o-y, higher than exports, as domestic demand is expected to stay sturdy. MIDF Research anticipates that in the plantation sector, the palm oil supply tightness situation would likely ease in 2023, on better weather conditions aided by a recovery from the foreign labour shortage in the second half of this year.

Meanwhile, for the oil and gas sector, it reiterated its "positive" call despite an estimated average price of US\$92 per barrel of Brent crude in 2023, compared with US\$98 per barrel last year, due to risks and uncertainties from Russian oil and gas sanctions, US production, and China's long-term demand.

The research house also maintains a favourable outlook on the semiconductor sector in 2023, due to its ongoing growth potential driven by advanced technologies, and believes that the recent decline in the tech sector has been overstated, offering opportunities for forward-looking investors to invest in growth stocks.

MITI BAGS RM13B IN FDI VIA INVESTMENT MISSION TO SINGAPORE - ZAFRUL

According to the Ministry of International Trade and Industry (MITI) minister Tengku Datuk Seri Zafrul AbdulAziz, MITI has secured an

additional RM13 billion in committed foreign direct investment from three investors via its investment mission to Singapore. The three companies - Sea Ltd, Yondr Group, and INSEACT - had collectively committed to investing RM13 billion in Malaysia. These investments are scheduled to be operationalised within the next three years. The cumulative value of RM13 billion reflects Malaysia's attractiveness as an investment destination. It is also a testimony to the long-standing, mutually beneficial relationship between Malaysia and Singapore in trade and investments.

MITI intends to grow and strengthen this special relationship, particularly in building supply chain resilience for the respective industries, premised on cooperation in the digital and green economies. The three companies are:

SHOPEE

Sea Ltd is the parent company of Shopee and the largest pan-regional e-commerce platform in Southeast Asia and Taiwan, has committed to expanding its investments in Malaysia, creating over 2,000 job opportunities. The company intends to set up cloud services, data hosting and processing, and a new e-commerce logistics warehouse in the country.

YONDR GROUP

Yondr Group is a UK-headquartered global leader in the development and operation of data centres. The group, which has delivered more than 500MW globally to leading hyperscale clients, has entered the Malaysian market with the acquisition of a 75-acre (30.35-hectare) plot in Johor, and is developing a 300MW IT load hyperscale data centre campus. Its deployment in Johor is expected to become Southeast Asia's largest hyperscale data centre campus, and will be a major part of Malaysia's growing digital ecosystem.

INSEACT

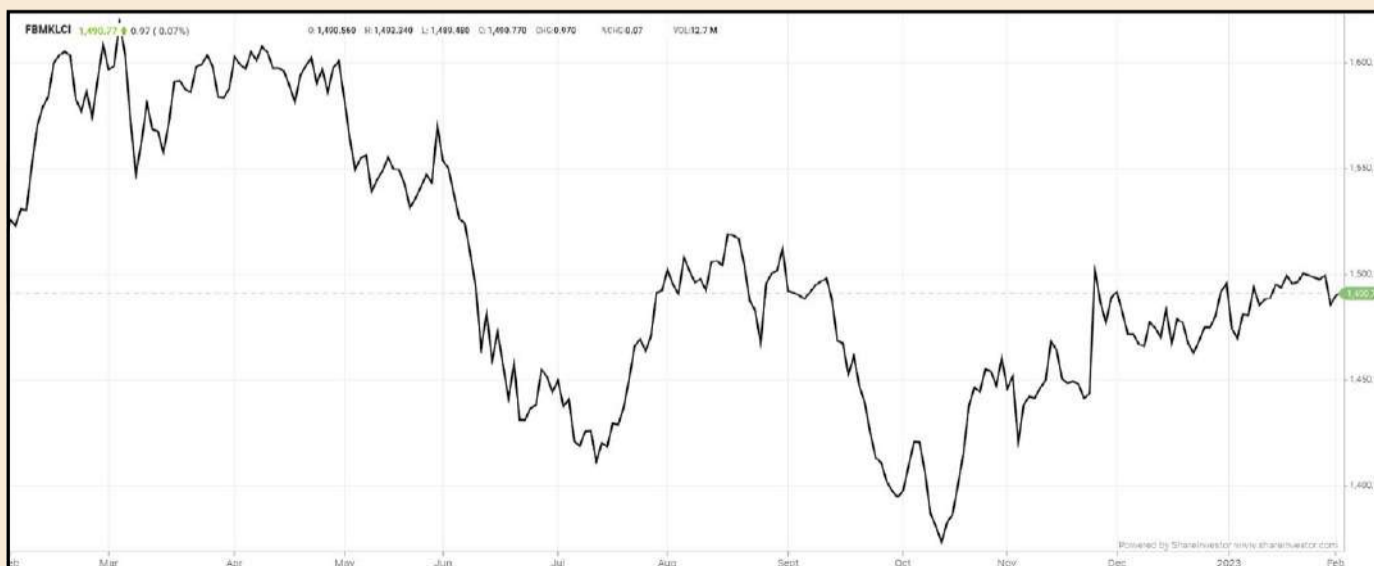
INSEACT is a Singapore-based alternative protein company specialising

in insect protein for aquaculture feed. It intends to set up a production facility in Johor, its first in Southeast Asia. The company's unique approach to alternative protein production has the potential to address Asia's growing demand for sustainable food sources.

MITI is determined to prove to investors that Malaysia is pro-trade, pro-business, and pro-investment. Miti and its agencies like MIDA (Malaysian Investment Development Authority) will continue to pursue high-quality, strategic and sustainable investments that will not only grow the country's gross domestic product and boost the development of the local digital economy, but also create new job opportunities for Malaysians. The investment mission, attended by senior officials of MITI and MIDA, is an important milestone towards realising Malaysia's goal of becoming a hi-tech, global innovation hub with a resilient and sustainable investment ecosystem.

EYE ON THE MARKETS

This week, on Friday (03Feb), the Ringgit opened at 4.2625 against the USD from 4.2360 on Monday (30Jan). Meanwhile, the Ringgit was 3.2513 to the Sing Dollar on Friday (03Feb). On Monday (30Jan), the FBM KLCI opened at 1499.75. As at Friday (03Feb) 10:00am, the FBM KLCI is down 8.96 points for the week at 1490.79. Over in US, the overnight Dow Jones Industrial Average closed down 39.02 points (-0.11%) to 34,053.94 whilst the NASDAQ added 384.50 points (+3.25%) to 12,200.82.



KLCI 1 Year Chart

Over 5 trading days



ShareInvestor WebPro (www.shareinvestor.com/my)

1. Price > Stock Prices
2. Select Market: NASDAQ / NYSE / IDX / SET / HKEX / SGX (One bourse at a time)
3. select Stocks Tab
4. select Ranking Top Gainers or Top Losers (Over 5 Trading Days)
5. Mouse over Column Layout > select Edit Customs > select Name > select Last Done Price > select 5 Days Change > select 52 Weeks High > select 52 Weeks Low > Mouse Over Column Layout > select Custom

NASDAQ (USD)

Top Gainers

Name	Last Done	Change Over 5 Days	52 Weeks High	52 Weeks Low
CREDIT ACCEPTANCE CORPORATION	548.990	+93.040	648.950	358.000
ALIGN TECHNOLOGY INC	359.880	+90.680	552.000	172.050
POOL CORPORATION	422.170	+57.760	488.750	278.100
OLD DOMINION FREIGHT LINE INC	371.410	+52.160	337.965	231.310
MICROSTRATEGY	292.130	+46.810	522.803	132.560

Top Losers

Name	Last Done	Change Over 5 Days	52 Weeks High	52 Weeks Low
MODERNA INC	176.350	-16.890	217.250	115.030
KLA CORPORATION	414.260	-14.500	429.460	250.200
MADRIGAL PHARMACEUTICALS INC	286.220	-14.420	315.450	54.341
ELECTRONIC ARTS INC	115.990	-13.150	142.790	109.240
DIAMONDBACK ENERGY INC	137.570	-12.320	168.950	103.710

NYSE (USD)

Top Gainers

Name	Last Done	Change Over 5 Days	52 Weeks High	52 Weeks Low
BERKSHIRE HATHAWAY INC	472,115.000	+2115.000	544,389.260	393,012.250
NVR INC	5,405.670	+293.450	5,569.800	3,576.010
GRAINGER W W INC	675.570	+110.640	612.060	440.480
CHIPOTLE MEXICAN GRILL	1,689.670	+83.380	1,754.560	1,196.280
AUTOZONE INC	2,443.550	+74.210	2,610.050	1,703.320

Top Losers

Name	Last Done	Change Over 5 Days	52 Weeks High	52 Weeks Low
TEXAS PACIFIC LAND CORPORATION	1,933.880	-158.190	2,739.000	986.005
MARKEL CORP	1,303.640	-101.710	1,519.245	1,064.090
WHITE MOUNTAINS INSURANCE GROUP	1,443.190	-55.480	1,539.475	1,017.584
HESS CORPORATION	138.780	-21.660	160.520	89.090
UNITEDHEALTH GROUP INC	470.830	-21.650	558.100	436.510

IDX (Rupiah)

Top Gainers

Name	Last Done	Change Over 5 Days	52 Weeks High	52 Weeks Low
GUDANG GARAM TBK	25,300.000	+3025.000	33,575.000	16,500.000
MIDI UTAMA INDONES	4,490.000	+1490.000	4,890.000	1,910.000
DCI INDONESIA TBK	37,750.000	+750.000	45,300.000	31,975.000
MASKAPAI REASURANSI INDONESIA TBK	5,475.000	+515.000	6,500.000	2,870.000
INDOINTERNET TBK	20,300.000	+500.000	25,625.000	18,300.000

Top Losers

Name	Last Done	Change Over 5 Days	52 Weeks High	52 Weeks Low
METROPOLITAN KENTJ	34,600.000	-2,000.000	46,200.000	16,950.000
UNITED TRACTORS	24,100.000	-1,150.000	36,200.000	22,100.000
RODA VIVATEX	11,300.000	-925.000	17,000.000	6,700.000
INDOSTERLING TECHNOMEDIA TBK	1,185.000	-385.000	9,400.000	1,185.000
PETROSEA	4,700.000	-375.000	5,350.000	2,220.000

SET (Thai Baht)

Top Gainers

Name	Last Done	Change Over 5 Days	52 Weeks High	52 Weeks Low
DELTA	916.000	+38.000	990.000	287.000
AEONTS	204.000	+15.000	209.000	152.000
BH	217.000	+10.000	241.000	142.500
HANA	65.000	+7.750	73.250	32.750
KCE	56.750	+7.750	74.500	39.750

Top Losers

Name	Last Done	Change Over 5 Days	52 Weeks High	52 Weeks Low
FE	171.500	-48.500	246.000	158.500
CHOTI	170.000	-4.000	179.000	116.000
OHTL	464.000	-4.000	610.000	316.000
CPALL	66.750	-3.000	73.750	52.750
TFMAMA	202.000	-3.000	218.000	192.000

HKEX (HKD)

Top Gainers

Name	Last Done	Change Over 5 Days	52 Weeks High	52 Weeks Low
NOAH HOLDINGS PRIVATE WEALTH AND AS	308.400	+28.400	313.800	200.800
BYD COMPANY LIMITED	262.000	+22.000	333.000	161.700
BAIDU INC	151.500	+17.000	165.600	73.700
KEYMED BIOSCIENCES INC	79.200	+11.950	82.850	16.900
TECHTRONIC INDUSTRIES CO	106.900	+10.750	141.600	72.700

Top Losers

Name	Last Done	Change Over 5 Days	52 Weeks High	52 Weeks Low
CHINA TOURISM GROUP DUTY FREE CORP	236.800	-37.600	280.000	120.000
TENCENT HOLDINGS LIMITED	383.000	-23.800	462.478	188.213
HONG KONG EXCHANGES & CLEARING	352.400	-22.600	454.400	208.200
TRIP COM GROUP LTD	290.600	-20.000	318.400	123.300
YUM CHINA HOLDINGS INC	477.200	-16.800	500.000	281.000

SGX (SGD)

Top Gainers

Name	Last Done	Change Over 5 Days	52 Weeks High	52 Weeks Low
SHANGRI-LA HKD	7.150	+0.750	7.200	4.300
GREAT EASTERN	19.050	+0.430	21.900	17.490
JMH USD	54.060	+0.290	62.100	42.600
PARKWAYLIFE REIT	4.160	+0.200	4.980	3.670
CROMWELL REIT SGD	2.400	+0.170	3.780	2.090

Top Losers

Name	Last Done	Change Over 5 Days	52 Weeks High	52 Weeks Low
DBS	35.080	-0.620	37.490	29.450
UOB	29.630	-0.500	33.330	25.910
PEGASUS SPAC	4.400	-0.400	5.000	4.300
JARDINE C&C	29.160	-0.370	36.850	20.420
NIO INC. USD OV	11.890	-0.240	25.350	9.000

CONTINUING DISCLOSURE OBLIGATIONS



Devanesan
Evanson

**Chief Executive
Officer, Minority
Shareholders Watch
Group**

Continuing disclosure of price-sensitive information is the bedrock of a fair, orderly and transparent stock market. It is the basis of informed investment decision-making. It creates a level playing field so that there is parity of information – that there is no preferential knowledge of such information as this may give rise to undue advantage to the person who possesses the preferential knowledge.

Delays in disclosure of price-sensitive information create a vacuum. And where there is a vacuum of information, rumours tend to abound. And when rumours abound, especially in the media, the stock exchange will ask the PLC to confirm, clarify or deny the rumours. It is a listing requirement for PLCs to make the first move to confirm, clarify or deny and price sensitive speculation or rumours without waiting for the stock exchange to query the PLC about the rumours or speculation. To summarise, timely disclosure of information creates a level playing field and discourages speculation and rumours.

Timely public announcements also discourage or rather mitigates the risk of insider trading as the window for people privy to price-sensitive information is that much narrower. The more open the window, meaning the longer the delay,

the greater the opportunity for insider trading to take place. Insider trading is a serious offence under the capital market law, the Capital Market and Services Act 2007. The Securities Commission has been vigilant in this area. Rampant insider trading results again in an unlevel playing field and investors, both local and foreign, will tend to prefer not to play in such an unlevel playing field. That is why any country that wants greater participation in its stock market will try and ensure that insider trading is discouraged with the appropriate sanctions. Unpunished insider trading serves as a black mark on a stock market. Regulators must guard jealously the continuing obligation of a PLC to disseminate price sensitive information in a timely manner.

Sometimes, we come across cases where information is delayed, and disclosures happen days later when there seem to be no valid reasons for such delays. Minority shareholders must take note of PLCs that have a habit of such delayed disclosures as it is not reflective of a good corporate citizen. It is better to stay away from such habitual recalcitrant PLCs and thankfully they are a handful only.

Listed issuers and their directors are expected to uphold the principles of full and fair disclosure pertinent to material information. Chapter 9 of Bursa Malaysia Listing Requirements spells out the continuing disclosure requirements that PLCs must comply with. A PLC must immediately disclose any information that is expected to have material effects on making investment decisions, affecting the price, value or market activity of the PLC's securities.

Material information may include information that:

- concerns the assets and liabilities, business, financial condition or prospects of the PLC
- relates to dealings with employees, suppliers, customers and others
- relates to any event affecting the present or potential dilution of the rights or interests of the PLC's securities
- relates to any event materially affecting the size of the public holding of its securities.

PLCs are reminded of the need to make timely disclosures of material information so that shareholders can make informed investment decisions. And minority shareholders are reminded to be aware of the habitual late announcers of price-sensitive information when there appear to be no valid reasons for such delays.

INSIDER ACTIVITY

FRIDAY FEB 03, 2023

DEFINITION: Insider Activity shows the trades made by substantial shareholders or directors of the company. Purchases by the directors and company share buyback may indicate the share price is undervalued and brings confidence to the price trend of the share price.



ShareInvestor WebPro > Fundamental > Insider Trades > click Search tab > Select Bursa > click Stock name > scroll up and leave at <Select Counter> Type Date Range for Announcement Date > click Search

Notice Period is 22 January - 28 January 2023

Effective Change Date	Stock Name	Buyer/ Seller Name [Classification]	Bought / (Sold) After Trade ['000]		
			Total	No. of Shares	% Held
20 Jan 2023 - 25 Jan 2023	3A	MR TEO KWEE HOCK [SSH]	-69	44,969	9.196
20 Jan 2023 - 20 Jan 2023	AEON	EMPLOYEES PROVIDENT FUND BOARD [SSH]	200	154,860	11.03
20 Jan 2023 - 20 Jan 2023	AIRPORT	EMPLOYEES PROVIDENT FUND BOARD [SSH]	-363	257,950	15.547
20 Jan 2023 - 26 Jan 2023	ANCOMNY	DATO' SIEW KA WEI [DIR/CEO]	198	204,553	22.501
20 Jan 2023 - 26 Jan 2023	ANCOMNY	DATO' SIEW KA WEI [SSH]	198	204,553	22.501
20 Jan 2023 - 20 Jan 2023	APOLLO	AMANAHRAYA TRUSTEES BERHAD-AMANAH SAHAM BUMIPUTERA [SSH]	-16	9,528	11.911
19 Jan 2023 - 19 Jan 2023	APOLLO	AMANAHRAYA TRUSTEES BERHAD-AMANAH SAHAM BUMIPUTERA [SSH]	-115	9,545	11.931
25 Jan 2023 - 25 Jan 2023	BAUTO	PRUDENTIAL PLC [SSH]	-30	58,956	5.062
20 Jan 2023 - 20 Jan 2023	BAUTO	EMPLOYEES PROVIDENT FUND BOARD [SSH]	-119	176,992	15.198
19 Jan 2023 - 19 Jan 2023	BAUTO	EMPLOYEES PROVIDENT FUND BOARD [SSH]	-779	177,111	15.208
19 Jan 2023 - 19 Jan 2023	BAUTO	PRUDENTIAL PLC [SSH]	-314	58,986	5.065
18 Jan 2023 - 18 Jan 2023	BAUTO	EMPLOYEES PROVIDENT FUND BOARD [SSH]	-213	177,890	15.275
25 Jan 2023 - 25 Jan 2023	BJASSET	TAN SRI DATO' SERI VINCENT TAN CHEE YIUON [SSH]	-414,629	1,254,829	49.049
26 Jan 2023 - 26 Jan 2023	BJCORP	TAN SRI DATO' SERI VINCENT TAN CHEE YIUON [DIR/CEO]	-200	1,064,030	19.057
25 Jan 2023 - 25 Jan 2023	BJCORP	TAN SRI DATO' SERI VINCENT TAN CHEE YIUON [DIR/CEO]	-126,000	1,064,230	19.061
25 Jan 2023 - 25 Jan 2023	BJCORP	TAN SRI DATO' SERI VINCENT TAN CHEE YIUON [SSH]	-126,000	1,041,261	18.649
25 Jan 2023 - 25 Jan 2023	BJCORP	MR LIM KUANG WANG [SSH]	80,000	370,000	6.627
25 Jan 2023 - 25 Jan 2023	BJCORP	DATO' SRI ROBIN TAN YEONG CHING [DIR/CEO]	-110,084	213,769	3.829
25 Jan 2023 - 26 Jan 2023	BJLAND	TAN SRI DATO' SERI VINCENT TAN CHEE YIUON [SSH]	-249,697	307,624	6.252
19 Jan 2023 - 19 Jan 2023	BJLAND	TAN SRI DATO' SERI VINCENT TAN CHEE YIUON [SSH]	2,825	4,289,385	87.174
26 Jan 2023 - 26 Jan 2023	BONIA	MR CHIANG SANG SEM [DIR/CEO]	1,543	146,876	73.074
26 Jan 2023 - 26 Jan 2023	BONIA	MR CHIANG SANG SEM [SSH]	1,543	134,232	66.783
25 Jan 2023 - 26 Jan 2023	CFM	ARENA EVOLUSI SDN. BHD. [SSH]	189	16,904	6.339
20 Jan 2023 - 20 Jan 2023	CFM	DATO' SRI DR PANG CHOW HUAT [SSH]	5,100	143,196	53.732
25 Jan 2023 - 25 Jan 2023	CGB	MR SOO YU CHAI [SSH]	17	9,470	6.636
18 Jan 2023 - 18 Jan 2023	CIMB	EMPLOYEES PROVIDENT FUND BOARD [SSH]	10,130	1,372,215	12.87
20 Jan 2023 - 20 Jan 2023	CORAZA	MR NG FOOK SAN [DIR/CEO]	-400	1,386	0.323
26 Jan 2023 - 26 Jan 2023	CRG	DATO' SRI CHIANG FONG YEE [DIR/CEO]	600	278,994	34.63
26 Jan 2023 - 26 Jan 2023	CRG	DATO' SRI CHIANG FONG YEE [SSH]	600	254,824	31.63
20 Jan 2023 - 20 Jan 2023	CTOS	EMPLOYEES PROVIDENT FUND BOARD [SSH]	200	163,616	7.083
18 Jan 2023 - 18 Jan 2023	CTOS	EMPLOYEES PROVIDENT FUND BOARD [SSH]	640	163,416	7.074
20 Jan 2023 - 20 Jan 2023	CYL	MR CHEN TECK SHIN [DIR/CEO]	-16	19,724	19.724
20 Jan 2023 - 20 Jan 2023	CYL	MR CHEN TECK SHIN [SSH]	-16	19,724	19.724
18 Jan 2023 - 18 Jan 2023	CYL	MR CHEN TECK SHIN [SSH]	-3	19,740	19.74
18 Jan 2023 - 18 Jan 2023	CYL	MR CHEN TECK SHIN [DIR/CEO]	-3	19,740	19.74
19 Jan 2023 - 19 Jan 2023	DIALOG	EMPLOYEES PROVIDENT FUND BOARD [SSH]	473	818,859	14.51
18 Jan 2023 - 18 Jan 2023	DIALOG	EMPLOYEES PROVIDENT FUND BOARD [SSH]	345	818,386	14.5
19 Jan 2023 - 19 Jan 2023	DIGI	EMPLOYEES PROVIDENT FUND BOARD [SSH]	212	1,169,534	9.969
18 Jan 2023 - 18 Jan 2023	DIGI	EMPLOYEES PROVIDENT FUND BOARD [SSH]	-498	1,169,322	9.967
18 Jan 2023 - 18 Jan 2023	DPHARMA	EMPLOYEES PROVIDENT FUND BOARD [SSH]	50	95,857	10.067
20 Jan 2023 - 20 Jan 2023	ETH	MR ALVIN VONG CHEN WENG [SSH]	-4,000	105,962	39.168
20 Jan 2023 - 20 Jan 2023	ETH	ALVIN VONG CHEN WENG [DIR/CEO]	-4,000	105,962	39.168
20 Jan 2023 - 26 Jan 2023	ETH	ANDREW VONG CHEN KWONG [DIR/CEO]	-5,000	90,379	33.408
20 Jan 2023 - 26 Jan 2023	ETH	MR ANDREW VONG CHEN KWONG [SSH]	-5,000	90,379	33.408
18 Jan 2023 - 18 Jan 2023	FGV	FEDERAL LAND DEVELOPMENT AUTHORITY (FELDA) [SSH]	4,304	2,987,863	81.901
27 Jan 2023 - 27 Jan 2023	FIMACOR	FIMA CORPORATION BERHAD [SSH]	2	8,118	3.309
20 Jan 2023 - 20 Jan 2023	GAMUDA	EMPLOYEES PROVIDENT FUND BOARD (EPF BOARD) [SSH]	-658	401,412	15.33
20 Jan 2023 - 25 Jan 2023	GIIB	MR TAI QISHENG [DIR/CEO]	725	21,873	3.699
20 Jan 2023 - 20 Jan 2023	HLBANK	EMPLOYEES PROVIDENT FUND BOARD [SSH]	-4	204,109	9.782
19 Jan 2023 - 19 Jan 2023	HLBANK	EMPLOYEES PROVIDENT FUND BOARD [SSH]	1,182	204,113	9.782
18 Jan 2023 - 18 Jan 2023	HLBANK	EMPLOYEES PROVIDENT FUND BOARD [SSH]	-87	202,931	9.725
20 Jan 2023 - 20 Jan 2023	IGBREIT	EMPLOYEES PROVIDENT FUND BOARD ("EPF BOARD") [SSH]	-240	412,543	11.501
20 Jan 2023 - 20 Jan 2023	IHH	EMPLOYEES PROVIDENT FUND BOARD [SSH]	638	904,383	10.27
19 Jan 2023 - 19 Jan 2023	IHH	EMPLOYEES PROVIDENT FUND BOARD [SSH]	194	903,744	10.263
18 Jan 2023 - 18 Jan 2023	IHH	EMPLOYEES PROVIDENT FUND BOARD [SSH]	1,734	903,551	10.261
26 Jan 2023 - 26 Jan 2023	IJM	KUMPULAN WANG PERSARAAN (DIPERBADANKAN) [SSH]	552	291,900	8.309
18 Jan 2023 - 18 Jan 2023	IJM	EMPLOYEES PROVIDENT FUND BOARD [SSH]	300	611,282	17.401
25 Jan 2023 - 25 Jan 2023	IMPIANA	DATO' SERI ISMAIL @ FAROUK BIN ABDULLAH [DIR/CEO]	-300	124,562	35.94
25 Jan 2023 - 25 Jan 2023	IMPIANA	DATO' SERI ISMAIL @ FAROUK BIN ABDULLAH [SSH]	-300	124,562	35.94
25 Jan 2023 - 25 Jan 2023	IMPIANA	IMPIANA SDN BHD [SSH]	-300	65,813	18.989
19 Jan 2023 - 19 Jan 2023	INARI	EMPLOYEES PROVIDENT FUND BOARD [SSH]	662	399,064	10.691
20 Jan 2023 - 20 Jan 2023	INNATURE	PRUDENTIAL PLC [SSH]	-400	41,076	5.819
25 Jan 2023 - 27 Jan 2023	INTA	MR LIM OOI JOO [DIR/CEO]	179	236,586	44.201
25 Jan 2023 - 27 Jan 2023	INTA	MR LIM OOI JOO [SSH]	179	236,586	44.201

Notice Period is 22 January - 28 January 2023

Effective Change Date	Stock Name	Buyer/ Seller Name [Classification]	Bought / (Sold) After Trade ['000]		
			Total	No. of Shares	% Held
25 Jan 2023 - 27 Jan 2023	INTA	MADAM KOK CHIN SEOW [SSH]	179	188,854	35.283
25 Jan 2023 - 27 Jan 2023	INTA	APEXJAYA INDUSTRIES SDN BHD [SSH]	179	187,548	35.039
20 Jan 2023 - 20 Jan 2023	INTA	MR LIM OOI JOO [SSH]	229	236,407	44.167
20 Jan 2023 - 20 Jan 2023	INTA	MR LIM OOI JOO [DIR/CEO]	229	236,407	44.167
20 Jan 2023 - 20 Jan 2023	INTA	MADAM KOK CHIN SEOW [SSH]	229	188,676	35.249
20 Jan 2023 - 20 Jan 2023	INTA	APEXJAYA INDUSTRIES SDN BHD [SSH]	229	187,369	35.005
20 Jan 2023 - 20 Jan 2023	MAYBANK	EMPLOYEES PROVIDENT FUND BOARD [SSH]	6,000	1,634,504	13.56
20 Jan 2023 - 20 Jan 2023	MAYBANK	AMANAHRAYA TRUSTEES BERHAD - AMANAH SAHAM BUMIPUTERA [SSH]	-2,450	3,901,870	32.37
19 Jan 2023 - 19 Jan 2023	MAYBANK	EMPLOYEES PROVIDENT FUND BOARD [SSH]	4,515	1,628,504	13.51
19 Jan 2023 - 19 Jan 2023	MAYBANK	AMANAHRAYA TRUSTEES BERHAD - AMANAH SAHAM BUMIPUTERA [SSH]	-1,550	3,904,320	32.39
18 Jan 2023 - 18 Jan 2023	MAYBANK	EMPLOYEES PROVIDENT FUND BOARD [SSH]	8,418	1,623,989	13.472
19 Jan 2023 - 19 Jan 2023	MINETEC	MR CHOY SEN @ CHIN KIM SANG [DIR/CEO]	7,000	235,505	15.47
19 Jan 2023 - 19 Jan 2023	MINETEC	MR CHOY SEN @ CHIN KIM SANG [SSH]	7,000	235,505	15.47
19 Jan 2023 - 19 Jan 2023	MINETEC	MR CHIN LEONG CHOY [SSH]	7,000	81,456	5.351
19 Jan 2023 - 19 Jan 2023	MINETEC	MR CHIN LEONG CHOY [DIR/CEO]	7,000	81,456	5.351
19 Jan 2023 - 19 Jan 2023	MISC	EMPLOYEES PROVIDENT FUND BOARD [SSH]	148	584,720	13.099
25 Jan 2023 - 26 Jan 2023	MUHIHAH	PANDANUS ASSOCIATES INC. [SSH]	140	43,242	5.963
25 Jan 2023 - 26 Jan 2023	MUHIHAH	FIL LIMITED [SSH]	140	43,242	5.963
25 Jan 2023 - 26 Jan 2023	MUHIHAH	FIL FINANCIAL SERVICES HOLDINGS LIMITED [SSH]	140	43,242	5.963
25 Jan 2023 - 26 Jan 2023	MUHIHAH	FIL INVESTMENT MANAGEMENT (HONG KONG) LIMITED [SSH]	140	43,192	5.956
19 Jan 2023 - 20 Jan 2023	MUHIHAH	FIL LIMITED [SSH]	623	43,102	5.944
19 Jan 2023 - 20 Jan 2023	MUHIHAH	PANDANUS ASSOCIATES INC. [SSH]	623	43,102	5.944
19 Jan 2023 - 20 Jan 2023	MUHIHAH	FIL FINANCIAL SERVICES HOLDINGS LIMITED [SSH]	623	43,102	5.944
19 Jan 2023 - 20 Jan 2023	MUHIHAH	FIL INVESTMENT MANAGEMENT (HONG KONG) LIMITED [SSH]	623	43,052	5.937
26 Jan 2023 - 26 Jan 2023	MYEG	KUMPULAN WANG PERSARAAN (DIPERBADANKAN) [SSH]	928	533,129	7.168
25 Jan 2023 - 25 Jan 2023	MYEG	KUMPULAN WANG PERSARAAN (DIPERBADANKAN) [SSH]	2,448	532,200	7.156
25 Jan 2023 - 25 Jan 2023	NATGATE	DATO' FAIZA BINTI ZULKIFLI [DIR/CEO]	-100	1,200	0.058
20 Jan 2023 - 20 Jan 2023	NESTLE	EMPLOYEES PROVIDENT FUND BOARD [SSH]	-26	20,653	8.807
19 Jan 2023 - 19 Jan 2023	NESTLE	EMPLOYEES PROVIDENT FUND BOARD [SSH]	-13	20,679	8.818
18 Jan 2023 - 18 Jan 2023	NESTLE	EMPLOYEES PROVIDENT FUND BOARD [SSH]	-16	20,692	8.824
26 Jan 2023 - 26 Jan 2023	NGBB	DATO' LIM THIAM HUAT [SSH]	250	110,636	13.962
26 Jan 2023 - 26 Jan 2023	NGBB	DATO' LIM THIAM HUAT [DIR/CEO]	250	110,636	13.962
26 Jan 2023 - 26 Jan 2023	NGBB	MISS LIM KAH YEN [SSH]	250	98,640	12.447
26 Jan 2023 - 26 Jan 2023	NGBB	MISS LIM KAH YEN [DIR/CEO]	250	98,640	12.447
26 Jan 2023 - 26 Jan 2023	NGBB	MISS LIM KAH YEE [DIR/CEO]	250	79,643	10.051
26 Jan 2023 - 26 Jan 2023	NGBB	MISS LIM KAH YEE [SSH]	250	79,643	10.051
26 Jan 2023 - 26 Jan 2023	NWP	DATO' TAN LIK HOUE [DIR/CEO]	1,700	36,811	6.489
26 Jan 2023 - 26 Jan 2023	NWP	DATO' TAN LIK HOUE [SSH]	1,700	36,811	6.489
18 Jan 2023 - 18 Jan 2023	PANAMY	EMPLOYEES PROVIDENT FUND BOARD [SSH]	-14	8,028	13.216
20 Jan 2023 - 20 Jan 2023	PANTECH	MR TAN ANG ANG [DIR/CEO]	-146	15,518	1.885
20 Jan 2023 - 20 Jan 2023	PBBANK	EMPLOYEES PROVIDENT FUND BOARD [SSH]	2,112	2,864,136	14.76
19 Jan 2023 - 19 Jan 2023	PBBANK	EMPLOYEES PROVIDENT FUND BOARD [SSH]	11,469	2,862,024	14.74
18 Jan 2023 - 18 Jan 2023	PBBANK	EMPLOYEES PROVIDENT FUND BOARD [SSH]	3,932	2,850,555	14.69
20 Jan 2023 - 20 Jan 2023	PCHEM	EMPLOYEES PROVIDENT FUND BOARD ("EPF BOARD") [SSH]	959	769,543	9.619
19 Jan 2023 - 19 Jan 2023	PCHEM	EMPLOYEES PROVIDENT FUND BOARD ("EPF BOARD") [SSH]	2,157	768,584	9.607
18 Jan 2023 - 18 Jan 2023	PCHEM	EMPLOYEES PROVIDENT FUND BOARD ("EPF BOARD") [SSH]	6,000	766,426	9.58
20 Jan 2023 - 20 Jan 2023	PENTA	EMPLOYEES PROVIDENT FUND BOARD [SSH]	-58	54,419	7.65
19 Jan 2023 - 19 Jan 2023	PENTA	EMPLOYEES PROVIDENT FUND BOARD [SSH]	-122	54,477	7.659
18 Jan 2023 - 18 Jan 2023	PENTA	EMPLOYEES PROVIDENT FUND BOARD [SSH]	-224	54,599	7.676
20 Jan 2023 - 20 Jan 2023	PESTECH	MR LIM AH HOCK [DIR/CEO]	-260	323,987	32.907
20 Jan 2023 - 20 Jan 2023	PESTECH	MR LIM AH HOCK [SSH]	-260	323,987	32.907
20 Jan 2023 - 20 Jan 2023	PPB	EMPLOYEES PROVIDENT FUND BOARD [SSH]	-84	141,685	9.96
19 Jan 2023 - 19 Jan 2023	PPB	EMPLOYEES PROVIDENT FUND BOARD [SSH]	-164	141,769	9.966
18 Jan 2023 - 18 Jan 2023	PPB	EMPLOYEES PROVIDENT FUND BOARD [SSH]	-276	141,933	9.977
26 Jan 2023 - 26 Jan 2023	REVENUE	MR LEONG SENG WUI [DIR/CEO]	9,000	9,000	5.751
20 Jan 2023 - 20 Jan 2023	REVENUE	MR OOI JUAN HOE [DIR/CEO]	-350	850	0.19
19 Jan 2023 - 19 Jan 2023	RHBBANK	EMPLOYEES PROVIDENT FUND BOARD [SSH]	3,000	1,740,388	40.976
20 Jan 2023 - 20 Jan 2023	RHBBANK	KUMPULAN WANG PERSARAAN (DIPERBADANKAN) [SSH]	740	241,042	5.675
18 Jan 2023 - 18 Jan 2023	RHBBANK	EMPLOYEES PROVIDENT FUND BOARD [SSH]	1,261	1,737,388	40.905
25 Jan 2023 - 25 Jan 2023	RKI	SAMARANG UCITS - SAMARANG ASIAN PROSPERITY [SSH]	17	14,867	7.653
19 Jan 2023 - 19 Jan 2023	SAPIND	MR KOH KOK HOOI [SSH]	2	6,074	8.346
26 Jan 2023 - 26 Jan 2023	SDS	MR TAN KIM SENG [SSH]	250	103,232	25.201
26 Jan 2023 - 26 Jan 2023	SDS	MR TAN KIM SENG [DIR/CEO]	250	103,232	25.201

Disclaimer: The Information in Insider Activity is extracted from www.shareinvestor.com/fundamental/insider_trades. The information on this page is

Notice Period is 22 January - 28 January 2023

Effective Change Date	Stock Name	Buyer/ Seller Name [Classification]	Bought / (Sold) ['000]	No. of Shares After Trade ['000]	
			Total	Total	% Held
26 Jan 2023 - 26 Jan 2023	SEEHUP	MR LEE HEAN HUAT [DIR/CEO]	-200	13,177	16.577
26 Jan 2023 - 26 Jan 2023	SEEHUP	MR LEE HEAN HUAT [SSH]	-200	10,552	13.274
25 Jan 2023 - 25 Jan 2023	SEM	TAN SRI DATO' SERI VINCENT TAN CHEE YIOUN [SSH]	-30,258	361,122	32.532
25 Jan 2023 - 25 Jan 2023	SFPTECH	MR KEOH BENG HUAT [DIR/CEO]		550,770	68.846
25 Jan 2023 - 25 Jan 2023	SFPTECH	MR KEOH BENG HUAT [SSH]		540,770	67.596
26 Jan 2023 - 26 Jan 2023	SIME	KUMPULAN WANG PERSARAAN (DIPERBADANKAN) [SSH]	87	534,037	7.835
20 Jan 2023 - 20 Jan 2023	SIME	EMPLOYEES PROVIDENT FUND BOARD [SSH]	3,696	815,186	11.961
20 Jan 2023 - 20 Jan 2023	SIME	KUMPULAN WANG PERSARAAN (DIPERBADANKAN) [SSH]	-1,725	533,950	7.834
19 Jan 2023 - 19 Jan 2023	SIME	EMPLOYEES PROVIDENT FUND BOARD [SSH]	3,804	811,490	11.906
18 Jan 2023 - 18 Jan 2023	SIME	EMPLOYEES PROVIDENT FUND BOARD [SSH]	950	807,686	11.851
19 Jan 2023 - 19 Jan 2023	SIMEPLT	EMPLOYEES PROVIDENT FUND BOARD [SSH]	2,226	977,277	14.131
20 Jan 2023 - 20 Jan 2023	SIMEPLT	KUMPULAN WANG PERSARAAN (DIPERBADANKAN) [SSH]	-500	462,650	6.69
20 Jan 2023 - 20 Jan 2023	SKPRES	EMPLOYEES PROVIDENT FUND BOARD [SSH]	369	93,325	5.973
19 Jan 2023 - 19 Jan 2023	SKPRES	EMPLOYEES PROVIDENT FUND BOARD [SSH]	7	92,956	5.95
18 Jan 2023 - 18 Jan 2023	SKPRES	EMPLOYEES PROVIDENT FUND BOARD [SSH]	3,010	92,949	5.949
19 Jan 2023 - 19 Jan 2023	SPRITZER	DATO' LIM A HENG @ LIM KOK CHEONG [DIR/CEO]	41	106,814	50.182
19 Jan 2023 - 19 Jan 2023	SPRITZER	DATIN CHUA SHOK TIM @ CHUA SIOK HOON [SSH]	41	106,814	50.183
19 Jan 2023 - 19 Jan 2023	SPRITZER	DATO' LIM A HENG @ LIM KOK CHEONG DPMP JSM JP [SSH]	41	106,814	50.182
20 Jan 2023 - 20 Jan 2023	SUBUR	DATO' TIONG ING [DIR/CEO]	34	2,421	1.286
20 Jan 2023 - 20 Jan 2023	SUCCESS	FIDELITY INVESTMENTS CANADA ULC [SSH]	-172	13,210	5.76
20 Jan 2023 - 20 Jan 2023	SUCCESS	ABIGAIL P. JOHNSON [SSH]	-172	13,210	5.76
20 Jan 2023 - 20 Jan 2023	SUCCESS	483A BAY STREET HOLDINGS MANAGEMENT LLC [SSH]	-172	13,210	5.76
20 Jan 2023 - 20 Jan 2023	SUCCESS	PANDANUS ASSOCIATES INC. [SSH]	-172	13,210	5.76
20 Jan 2023 - 20 Jan 2023	SUCCESS	FMR LLC [SSH]	-172	13,210	5.76
20 Jan 2023 - 20 Jan 2023	SUCCESS	483A BAY STREET HOLDINGS MANAGEMENT LIMITED [SSH]	-172	13,210	5.76
20 Jan 2023 - 20 Jan 2023	SUCCESS	FIDELITY MANAGEMENT & RESEARCH COMPANY LLC [SSH]	-172	13,210	5.76
20 Jan 2023 - 20 Jan 2023	SUCCESS	FIL FINANCIAL SERVICES HOLDINGS LIMITED [SSH]	-172	13,210	5.76
20 Jan 2023 - 20 Jan 2023	SUCCESS	BLUEJAY LUX 1 S.A.R.L. [SSH]	-172	13,210	5.76
20 Jan 2023 - 20 Jan 2023	SUCCESS	FIL LIMITED [SSH]	-172	13,210	5.76
19 Jan 2023 - 19 Jan 2023	SUNCON	EMPLOYEES PROVIDENT FUND BOARD [SSH]	-23	121,372	9.413
18 Jan 2023 - 18 Jan 2023	SUNCON	EMPLOYEES PROVIDENT FUND BOARD [SSH]	-53	121,395	9.415
19 Jan 2023 - 19 Jan 2023	SUNREIT	EMPLOYEES PROVIDENT FUND BOARD [SSH]	472	523,146	15.28
18 Jan 2023 - 18 Jan 2023	SUNREIT	EMPLOYEES PROVIDENT FUND BOARD [SSH]	128	522,675	15.26
19 Jan 2023 - 19 Jan 2023	SWIFT	MR LOO HOOI KEAT [DIR/CEO]	10	351,723	39.863
19 Jan 2023 - 19 Jan 2023	SWIFT	MR LOO HOOI KEAT [SSH]	10	351,723	39.863
20 Jan 2023 - 26 Jan 2023	SYF	DATO' SRI NG AH CHAI [SSH]	-68,100	68,096	11.97
20 Jan 2023 - 26 Jan 2023	SYF	NG AH CHAI [DIR/CEO]	-68,100	68,096	11.97
26 Jan 2023 - 26 Jan 2023	TAANN	DATO WONG KUO HEA [DIR/CEO]	200	132,417	30.062
26 Jan 2023 - 26 Jan 2023	TAANN	DATO WONG KUO HEA [SSH]	200	128,607	29.197
20 Jan 2023 - 20 Jan 2023	TAKAFUL	EMPLOYEES PROVIDENT FUND BOARD [SSH]	100	105,429	12.591
26 Jan 2023 - 26 Jan 2023	TIMECOM	KUMPULAN WANG PERSARAAN (DIPERBADANKAN) ("KWAP") [SSH]	85	106,090	5.77
20 Jan 2023 - 20 Jan 2023	TIMECOM	EMPLOYEES PROVIDENT FUND BOARD [SSH]	2,170	92,053	5.007

Notice Period is 22 January - 28 January 2023

Effective Change Date	Stock Name	Buyer/ Seller Name [Classification]	Bought / (Sold) ['000]	No. of Shares After Trade ['000]	
			Total	Total	% Held
20 Jan 2023 - 20 Jan 2023	TIMECOM	KUMPULAN WANG PERSARAAN (DIPERBADANKAN) ("KWAP") [SSH]	115	106,005	5.766
26 Jan 2023 - 26 Jan 2023	TM	KUMPULAN WANG PERSARAAN (DIPERBADANKAN) [SSH]	-238	412,772	10.802
25 Jan 2023 - 25 Jan 2023	TM	KUMPULAN WANG PERSARAAN (DIPERBADANKAN) [SSH]	340	413,010	10.808
20 Jan 2023 - 20 Jan 2023	TOPGLOV	TAN SRI DR LIM WEE CHAI [DIR/CEO]	3,000	2,922,535	36.499
20 Jan 2023 - 20 Jan 2023	TOPGLOV	TAN SRI DR LIM WEE CHAI [SSH]	3,000	2,922,535	36.499
20 Jan 2023 - 20 Jan 2023	TOPGLOV	PUAN SRI TONG SIEW BEE [SSH]	3,000	2,922,535	36.498
20 Jan 2023 - 20 Jan 2023	TOPGLOV	MR LIM HOOI SIN [SSH]	3,000	2,922,335	36.496
20 Jan 2023 - 20 Jan 2023	TOPGLOV	MR LIM HOOI SIN [DIR/CEO]	3,000	2,922,335	36.496
20 Jan 2023 - 20 Jan 2023	TOPGLOV	MR LIM JIN FENG [SSH]	3,000	2,822,473	35.248
26 Jan 2023 - 26 Jan 2023	TRC	DATO RICHARD KHOO TENG SAN [DIR/CEO]	25	10,930	2.32
20 Jan 2023 - 20 Jan 2023	UCHITEC	EMPLOYEES PROVIDENT FUND BOARD [SSH]	155	23,832	5.227
19 Jan 2023 - 19 Jan 2023	UCHITEC	EMPLOYEES PROVIDENT FUND BOARD [SSH]	213	23,677	5.193
25 Jan 2023 - 25 Jan 2023	UMCCA	DATO' SRI TEE LIP SIN [DIR/CEO]	7	49,803	23.742
25 Jan 2023 - 25 Jan 2023	UMCCA	MR TEE CHENG HUA [DIR/CEO]	7	44,010	20.981
25 Jan 2023 - 25 Jan 2023	UMCCA	PROSPER CAPITAL HOLDINGS SDN BHD [SSH]	7	25,348	12.084
20 Jan 2023 - 20 Jan 2023	UMW	EMPLOYEES PROVIDENT FUND BOARD [SSH]	-114	129,200	11.059
19 Jan 2023 - 19 Jan 2023	UMW	EMPLOYEES PROVIDENT FUND BOARD [SSH]	-119	129,388	11.075
18 Jan 2023 - 18 Jan 2023	UMW	EMPLOYEES PROVIDENT FUND BOARD [SSH]	-86	129,507	11.085
19 Jan 2023 - 19 Jan 2023	UTDPLT	EMPLOYEES PROVIDENT FUND BOARD [SSH]	0.5	36,387	8.773
18 Jan 2023 - 18 Jan 2023	UTDPLT	EMPLOYEES PROVIDENT FUND BOARD [SSH]	600	36,387	8.772
18 Jan 2023 - 18 Jan 2023	UTDPLT	DATO' MOHAMAD NASIR BIN AB. LATIF [DIR/CEO]	2	52	0.013
19 Jan 2023 - 19 Jan 2023	UWC	EMPLOYEES PROVIDENT FUND BOARD [SSH]	957	75,724	6.875
19 Jan 2023 - 19 Jan 2023	UWC	DATO' NG CHAI ENG [DIR/CEO]	-24,959	667,262	60.585
19 Jan 2023 - 19 Jan 2023	UWC	DATO' NG CHAI ENG [SSH]	-24,959	636,862	57.825
19 Jan 2023 - 19 Jan 2023	UWC	MR LAU CHEE KHEONG [DIR/CEO]	-24,959	635,885	57.736
19 Jan 2023 - 19 Jan 2023	UWC	MR LAU CHEE KHEONG [SSH]	-24,959	635,885	57.736
19 Jan 2023 - 19 Jan 2023	UWC	UWC CAPITAL SDN BHD [SSH]	-24,959	553,408	50.247
20 Jan 2023 - 20 Jan 2023	UZMA	DATO' CHE NAZAHATUHIAMUDIN BIN CHE HARON [DIR/CEO]	-170	3,989	1.133
26 Jan 2023 - 26 Jan 2023	VS-WB	MR CHONG CHIN SIONG [DIR/CEO]	-772	120	0.016
20 Jan 2023 - 20 Jan 2023	WELLS	MR TANG YUEN KIN [DIR/CEO]	-100	100	0.014
20 Jan 2023 - 20 Jan 2023	WIDAD	TAN SRI MUHAMMAD IKMAL OPAT BIN ABDULLAH [SSH]	3,741	1,410,160	50.199
20 Jan 2023 - 20 Jan 2023	WILLOW	MR WONG AH CHEW [SSH]	40	275,217	56.77
20 Jan 2023 - 20 Jan 2023	WILLOW	MR WONG AH CHEW [DIR/CEO]	40	275,217	56.77
20 Jan 2023 - 20 Jan 2023	WPRTS	EMPLOYEES PROVIDENT FUND BOARD [SSH]	143	302,325	8.866
19 Jan 2023 - 19 Jan 2023	WPRTS	EMPLOYEES PROVIDENT FUND BOARD [SSH]	980	302,182	8.862
18 Jan 2023 - 18 Jan 2023	WPRTS	EMPLOYEES PROVIDENT FUND BOARD [SSH]	163	301,202	8.833
26 Jan 2023 - 26 Jan 2023	YINSON	MR LIM HAN WENG [DIR/CEO]	100	99,419	27.479
25 Jan 2023 - 25 Jan 2023	YINSON	MR LIM HAN WENG [DIR/CEO]	540	99,319	27.451
19 Jan 2023 - 19 Jan 2023	YINSON	EMPLOYEES PROVIDENT FUND BOARD [SSH]	-299	504,557	17.423
20 Jan 2023 - 20 Jan 2023	YINSON	KUMPULAN WANG PERSARAAN (DIPERBADANKAN) [SSH]	-416	206,072	7.116
18 Jan 2023 - 18 Jan 2023	YINSON	EMPLOYEES PROVIDENT FUND BOARD [SSH]	-1,327	504,857	17.434
18 Jan 2023 - 18 Jan 2023	YTL	EMPLOYEES PROVIDENT FUND BOARD [SSH]	-478	612,692	5.588

Disclaimer: The Information in Insider Activity is extracted from www.shareinvestor.com/fundamental/insider_trades. The information on this page is provided as a service to readers. It does not constitute financial advice and/or any investment recommendations. We assume no liability for damages resulting from or arising out of the use of such information. Whilst every effort is made to ensure accuracy, the information presented is not the official record of shareholder filings. Readers are advised to read the original filings on the Bursa Malaysia website at www.bursamalaysia.com

**CHECK OUT
SHAREINVESTOR
BROKERS'
CALL**

Weekly Buy/Sell/Hold calls
from leading Malaysian Brokerages.

[Go To Brokers' Call](#)

BUY **HOLD** **SELL**



BONIA CORPORATION BERHAD
(223934-T)

The Board of Directors of **Bonia Corporation Berhad (BONIA)** wishes to inform that the Company has appointed Kenanga Investment Bank Berhad of Level 17, Kenanga Tower, 237 Jalan

Tun Razak, 50400 Kuala Lumpur for the purpose of share buy back by the Company. A second securities account designated as "Share Buy-Back Account" has been opened with the aforesaid stockbroker for the sole purpose of purchasing the Company's own shares and/or resale of treasury shares of the Company on the Bursa Malaysia Securities Berhad.



Bursa Malaysia Berhad (BURSA MALAYSIA)

recorded a Profit After Tax and Zakat of RM226.6 million for the financial year ended 31 December 2022, a 36.2% reduction

from the RM355.3 million reported in the previous financial year ended 31 December 2021. The decrease was due to lower overall trading revenue of RM377.1 million in FY2022, lower by 30.7% as compared to FY2021. Total operating expenses in FY2022 increased marginally by 1.4% to RM292.7 million from RM288.6 million in FY2021. The Board of Directors approved and declared a final dividend of 11.5 sen per share amounting to approximately RM93.1 million. This brings the total dividend payout for FY2022 to 26.5 sen per share, which includes the interim dividend of 15 sen per share paid out in August 2022.





On behalf of the Board of the Manager of **Capitaland Malaysia Trust (CLMT)**, CIMB wishes to announce that Bursa Securities had vide its letter dated 31 January 2023, resolved to approve the listing



of and quotation for up to 1,031,770,000 new units in CLMT to be issued pursuant to the Proposed Placement. The approval by Bursa Securities is subject to the following conditions: -

1. Confirmation by CIMB on the compliance of at least 25% of the public unitholding spread of requirements pursuant to Paragraph 8.02(1) of the Main Market Listing Requirements of Bursa Securities upon the listing and quotation of the Placement Units;
2. CLMT and CIMB must fully comply with the relevant provisions under MMLR pertaining to the implementation of the Proposed Placement;
3. CIMB to furnish Bursa Securities with the certified true copy of the resolutions passed by the unitholders at general meeting approving the Proposed Placement;
4. CIMB to inform Bursa Securities upon the completion of the Proposed Placement; and
5. CIMB to furnish Bursa Securities with a written confirmation of its compliance with the terms and conditions of Bursa Securities' approval once the Proposed Placement is completed.



The Board of **KLCC REIT Management Sdn Bhd (KLCC)** wishes to announce that a Fourth Interim Income Distribution of 6.31 sen per unit for financial year ended 31 December 2022 will be paid on 28 February 2023 to the holders of Stapled Securities whose names appear in the Record of Depositors of KLCC Real Estate Investment Trust on 16 February 2023.



On behalf of the Board of Directors of **KPJ Healthcare Berhad (KPJ)**, AmInvestment Bank Berhad wishes to provide additional information to the Earlier Announcement. In addition, the Company's subsidiary Jeta Gardens, had on 17 January 2023, issued a supplemental letter to JLand Australia to vary the CCLB and to include additional terms and conditions into the CCLB, which include inter-alia that the CCLB is conditional upon the shareholders' approval of KPJ on the Proposed Disposal being obtained by the settlement date. The Supplemental Letter has been acknowledged and agreed by JLand Australia, and received by KPJ on 27 January 2023.



Further to **Leong Hup International Berhad's (LHI)** announcements made on 5 August 2022, 9 August 2022, 5 September 2022, 14 October 2022 and 19 December 2022 pertaining to the notice of proposed decision issued by the MyCC, the Board of Directors wishes to inform that LFM had on 31 January 2023 filed its written representations with the MyCC. Further announcement will be made as and when there is material development on the above matter.



Malaysia Airports Holdings Berhad (AIRPORT) is pleased to announce the passenger traffic snapshot at airports operated by Malaysia Airports Group for the month of December 2022, as below:

- MAHB network of airports ended the year on a positive note recording 83.9million passengers and reaching 59.4% of 2019 levels, primarily against a backdrop of favourable conditions for traffic recovery. The high vaccination rates and effectiveness in preventing severe illness and hospitalisation have propelled more countries to ease travel restrictions and helped induced air travel demand that was suppressed by the border closures in 2020 and 2021.

- International and domestic passenger movements reached 47.7% and 70.1% of 2019 levels with 32.2million and 51.6million passengers respectively.
- December 2022 recorded the highest monthly passenger movements since February 2020 with 9.5million passengers, reaching 74.0% of 2019 levels.
- Malaysia passenger movements fared equally well in 2022, recording 52.7million passengers reaching 50.0% of 2019 level. The reopening of international borders from 1 April 2022 was a significant milestone for Malaysia and was in line with other countries in the region in easing travel restrictions.
- Malaysia domestic passenger movements recovery momentum continued in 2022 after the lifting of interstate travel ban on 11 October 2021, recording 36.2million passengers for the year, reaching 69.6% of 2019 levels. International passenger movements recorded a modest movement of 16.5million passengers amid the gradual lifting of travel restrictions in other countries such as Japan, Taiwan, Australia and Indonesia. December 2022 international passenger movements of 2.9million was the highest recorded to-date since the border reopened in April.
- The recent announcement on China's reopening of borders from 8 January 2023 also provides further optimism for a better recovery in the international sector for 2023.
- Istanbul SGIA ended the year strong with 31.2million passenger movements equivalent to 86.7% of 2019 levels facilitated by less rigorous travel restrictions in the region. International passengers increased by 75.1% with 15.7million passengers. It is noteworthy that international passenger movements have surpassed 2019 level, recording a growth of 10.4% over the corresponding period in 2019.
- Overall cargo movements for the network of airports remained resilient for 2022, registering a growth of 3.6% to 1,063 metric tonnes over 2021. Domestic cargo recorded a double-digit growth of 11.3% over 2021 to 302,229 metric tonnes, while international cargo movements recorded 0.9% growth to 760,931 metric tonnes.

ShareInvestor is a technology based company with a focus on Internet media and we have operations in Malaysia, Singapore and Thailand.

We are the market leader in providing a combination of market data, analysis and news on various platforms to traders and investors.

Our websites include www.shareinvestor.com and www.bursastation.com.

More information about our products and services can be found at www.shareinvestorholdings.com

We're looking for Drupal Developers who will be in charge of front-end development and back-end/module development. This role requires expertise in PHP, HTML, CSS, JS, and an eye for design aesthetics. The candidates should be familiar and have a passion working with content management systems.

Interested candidates are encouraged to apply with full resume, present and expected salary and a recent photograph. Please send these to hr.my@shareinvestor.com for processing. ShareInvestor regrets that only shortlisted candidates shall be notified.

Drupal Developers (2 vacancies)

Job Responsibilities:

- Active participation in all UI / UX decisions
- Contribute actively to the continuous development and maintenance of development projects
- Enhance Drupal development quality
- Provide solutions to issues and suggestions for improvements.
- Designing and implementing new features to the system
- Ensuring optimal performance

Required Skills:

- At least 3 years of Drupal Theming and Front-End Development experience
- Proficient in PHP, HTML5/XHTML, CSS, Javascript, jQuery, AJAX, XML, Json
- Good Diploma/Degree in Computer Science/Computer Engineering.
- Experience working with Drupal's main modules, such as CTools, Views, Rules, Webform, and so on
- Ability to create custom Drupal modules
- Strong troubleshooting skills to fix bugs

Benefits:

- Career & growth opportunities
- Interesting projects
- Medical Insurance
- Incentives

Ruby on Rails Developer (1 vacancy)

Job Responsibilities:

- Develop quality web-based software modules on schedule with a focus on Ruby and Ruby on Rails applications.
- Explore and utilize the latest web-based technologies.
- Document design specifications, logic concepts and module description.
- Maintain and enhance existing web-based applications.

Required Skills:

- Experience in web-based programming/scripting is essential. Candidate must be able to explain clearly technical aspects of his/her past experiences and projects.
- Passion for programming and desire to learn new languages like Go.
- Good Diploma/Degree in Computer Science/Computer Engineering.
- Able to work well in a team and be able to follow documentation and coding standards.
- Knowledge in any of the following would be an added advantage
 - Ruby and Ruby on Rails Framework
 - Javascript and jQuery library
 - Go
 - Perl

Application Developer (C++/STL) (1 vacancy)

Job Responsibilities

- Deliver quality software modules on schedule.
- Document design specifications, conceptions, module description.
- Maintain and enhance existing applications.

Required Skills:

- Passion for programming and desire to learn.
- Good Diploma/Degree in Computer Science/Computer Engineering.
- Skills in C++ is essential.
- Experience with Visual Studio, networking stack and Golang would be an advantage.
- Proactive, resourceful and self-motivated with strong analytical skills.
- Good interpersonal, written and communication skills.
- Able to work with little supervision.

Junior Market Data Support Specialist

As a Junior Market Data Support Specialist, you will be involved in reviewing, analysing and collecting accurate and timely financial information on listed companies for our market data information services.

Job Responsibilities

- Collect, compute and analyse relevant financial data of listed companies, organise and present them on the company portal, in timely manner, for the consumption by our subscribers and our corporate clients
- Capture corporate events / actions and translate them to adjustments of impacted financial data
- Research, evaluate, propose new solutions or recommendations for adhoc project requirements that are related to the financial data or the financial fundamentals of listed companies
- Provide support to users' queries related to financial information displayed on our platforms
- Perform any other duties assigned from time to time, including rare occasions of working during weekends

Required Skills

- Minimum academic qualification: Diploma in any finance-related discipline
- Knowledge of basic accounting and financial terms is required
- Flair for data precision / accuracy / quality / thoroughness plus strict adherence to structured data process and timeline is a must
- Proficient in Microsoft Excel
- Team player with pleasant personality
- Proficient in English, oral and written.

Fresh graduates are welcome to apply.

Interested candidates are encouraged to apply with full resume, present and expected salary and a recent photograph. Please send these to hr.my@shareinvestor.com for processing. ShareInvestor regrets that only shortlisted candidates shall be notified.