

Invest

A Weekly e-Publication by SHAREINVESTOR.com

CAPITAL MARKET STAKEHOLDERS SHOULD ALIGN FOCUS, ASSESS IMPACT TO BEST CATER TO NEEDS - SC

ISSUE

104

FRIDAY
22 APRIL
2022

Scan Me



Via email, every Friday

03	CAPITAL MARKET STAKEHOLDERS SHOULD ALIGN FOCUS, ASSESS IMPACT TO BEST CATER TO NEEDS - SC	09	LEADERBOARD	30	UP TRENDING STOCKS
		11	BEHIND THE ACTION	31	GROWTH STOCKS
		16	FROM THE OBSERVER	32	DIVIDEND STOCKS
		22	SHARIAH HOT STOCKS	33	LONG COMPANIES
		23	COMPANY SPOTLIGHT	35	BROKERS' CALL
		25	SHARIAH MOMENTUM UP STOCKS	36	INSIDER ACTIVITY
		27	NON SHARIAH HOT STOCKS	39	INVESTOR RELATIONS
		28	CAREERS AT SHAREINVESTOR	42	REGIONAL MARKETS



SHAREINVESTOR®

Invest with Knowledge

CORPORATE

Managing Director (Malaysia) & Publisher
Edward Stanislaus
edward@shareinvestor.com

SALES & MARKETING

Director
Elizabeth Tan
elizabeth.tan@shareinvestor.com

Online IR

Manager
Letticia Wong
letticia.wong@shareinvestor.com

Advertising & Sponsorship Sales

Manager
Sharon Lee
sharon.lee@shareinvestor.com

MARKET DATA ANALYTICS

(marketdata.my@shareinvestor.com)

Account Manager
Foo Yong Jui
yongjui.foo@shareinvestor.com

Account Manager
Heidee Ahmad
heidee.ahmad@shareinvestor.com

Coordinator Watie Nordin

MARKET DATA ANALYTICS

& EDITORIAL

Market Data & Media Coordinator
Silas Emmanuel Joseph
silas.joseph@shareinvestor.com

MARKET DATA ANALYTICS

& EDITORIAL

Market Data Analyst
Nickson Aw
nickson.aw@shareinvestor.com

MARKETING COMMUNICATIONS

Marcomm Manager
Danny Ng

CREATIVE & DESIGN

Manager		Andric See
Asst. Manager		Ivy Yap
Web Developer		Nurul Atiqah
		Aiman Jasmin
		Izwa n Rusli
		Umairah Ishak

IT APPS

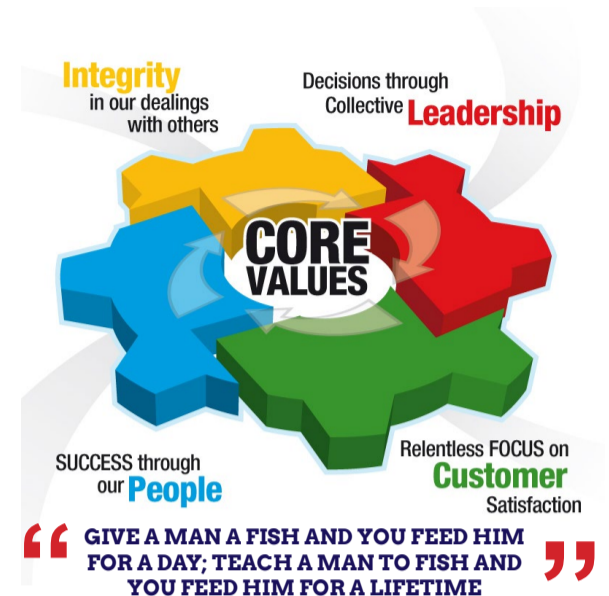
Project Manager		Amir Yusoff
Sr. Software Engineer		Mohd. Qasem
Software Engineer		Lian Kok Keong

FINANCE, ADMIN & HR

Manager		Shireen Goh
Sn. Accounts Executive		Jessie Ho
Accounts Assistant		Ng Jin Yng

SHAREINVESTOR HOLDINGS

Chairman		Patrick Daniel
Group CEO		Christopher Lee
Group COO		Lim Dau Hee
Group CFO		Teo Siew May



ShareInvestor Malaysia Sdn. Bhd. (200001023956) (526564-M)
(Formerly known as SI Portal.com Sdn. Bhd.)
Unit No. DF2-07-03A, Level 7,
Persoft Tower, 6B Persiaran Tropicana,
47410 Petaling Jaya, Selangor Darul Ehsan.

Hotline : 603 7803 1791
Mobile : 011 6343 8939
Fax : 603 7803 1792

Website : www.ShareInvestor.com.my
www.ShareInvestorHoldings.com
www.Facebook.com/ShareInvestorMalaysia



SHAREINVESTOR
WEBPRO

C² CHART

C² Chart is WebPro's new feature-packed technical analysis tool for the modern stock investor



Over 100 Indicators
Select your preferred indicators to best suit your technical strategies



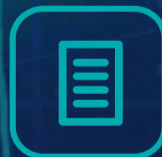
Drawing Tools
Multiple drawing tools to easily identify chart patterns



Events Indicators
Key events can be pinned onto your charts for a better overview



Compare Tool
Conveniently compare multiple stock prices at the same time



Historical Data
Extract price data from over 30 years



Over 10 Chart Styles
Various charts to suit your preferred style



No App Needed
Access your charts from any computer or mobile



Easy Zoom
Intuitive zooming function on charts

CAPITAL MARKET STAKEHOLDERS SHOULD ALIGN FOCUS, ASSESS IMPACT TO BEST CATER TO NEEDS - SC

According to Securities Commission Malaysia (SC) executive director (Islamic capital market development) Sharifatul Hanizah Said Ali, while the Malaysian capital market is set to benefit from the projected domestic economic recovery, it is essential for the stakeholders to align focus and assess the impact to deploy different approaches and initiatives that best cater to the market's needs. The SC has produced the Capital Market Master Plan 3 (CMP3), a five-year strategic plan for the growth of Malaysia's capital market. The strategic initiatives over the next five years will be guided by key development and regulatory priorities. These strategic thrusts focus on catalysing competitive growth, empowering investors for a better future, and shaping a stakeholder economy, whilst embedding shared accountability, prioritising efficiency, and outcomes, as well as embracing technology. She said this in her keynote address at the ninth Malaysian Financial Planning Council e-Conference. The SC aims to facilitate a conducive environment to support investor empowerment and elevate financial literacy in line with the CMP3. The Malaysian capital market has remained resilient with a 3.0 per cent growth to RM3.5 trillion in 2021 from RM3.4 trillion in 2020. Notwithstanding the various challenges brought by the fluctuating economic conditions, the capital market continued to play its critical roles in financing

the economy with a notable increase in fundraising activities and encouraging the growth of the overall fund management industry. Total funds raised in the capital market remained robust, rising to RM130.9 billion in 2021 – above the five-year pre-pandemic average of RM121.4 billion. It is imperative to raise the bar on professional standards and conduct requirements to enhance professionalism in the financial planning industry. The SC issued Guidelines on Conduct for Capital Market Intermediaries on April 1, which also applies to licensed financial planners to foster good business conduct and a good corporate culture that is centred on the fair treatment of clients and to promote trust in all intermediaries. While regulation can play a role to promote the right culture, the industry must also continue to shape the right behaviours within their own organisations. To this end, it is commendable to see the industry's harmonisation and elevation of the code of ethics and best practice standards by the relevant certification associations.

MALAYSIA'S TOTAL TRADE SOARS TO NEW HIGH OF RM236.6BLN IN MARCH : DOSM

According to the Department of Statistics Malaysia (DOSM) chief statistician Datuk Seri Dr Mohd Uzir Mahidin, Malaysia's total trade recorded a double digit growth of 27.3 per cent year-on-year (y-o-y) in March 2022 to reach a new high of RM236.6 billion. Export and import values in March once again broke the record for all-time highs at RM131.6 billion and RM104.9 billion, respectively. Malaysia's imports surpassed the RM100 billion mark for the first time ever, in line with the surge in intermediate goods, signifying a positive sign of domestic economic activity. Trade surplus widened by 10.3 per cent from RM24.2 billion in the preceding year to RM26.7 billion, marking 23 consecutive months of trade surplus since May 2020. Malaysia's exports accelerated by 25.4 per cent from RM105.0 billion to RM131.6 billion, surpassing the RM100 billion mark for the seventh consecutive month since September 2021. Export value growth in March 2022 was supported by both domestic exports and re-exports. Domestic

exports were valued at RM106.9 billion, contributing 81.2 per cent to total exports, picking up strongly by 22.8 per cent y-o-y. Meanwhile, re-exports amounted to RM24.7 billion, expanded by 38.0 per cent compared to March 2021. Along with the export performance, imports also registered a strong growth of 29.9 per cent from RM80.8 billion to RM104.9 billion. In comparison to February 2022, the performance of total trade, exports, imports and trade surplus showed the increases of 28.1 per cent, 28.7 per cent, 27.3 per cent, and 34.8 per cent, respectively. An outstanding annual growth in exports was portrayed in 166 out of 255 commodity groups, showing increases compared to the same month of the previous year, led by thermionic valves and tubes. As for imports, 186 of 259 groups posted a positive growth. The rise in exports was attributable mainly to higher exports to Singapore (+RM5.1 billion), followed by Japan (+RM2.1 billion), South Korea (+RM1.8 billion), the European Union (+RM1.8 billion), China (+RM1.7 billion), Taiwan (+RM1.4 billion), Thailand (+RM1.4 billion), Indonesia (+RM1.4 billion), and the United States (+RM1.3 billion). On top of that, China was a key contributor to the increase in imports, which increased by RM3.4 billion, followed by Saudi Arabia (+RM2.9 billion), Taiwan (+RM2.8 billion), Indonesia (+RM2.5 billion), Singapore (+RM2.3 billion), the United States (+RM1.4 billion), and Thailand (+RM1.2 billion). The expansion of export was driven by electrical and electronics products (+RM13.0 billion); petroleum products (+RM4.6 billion); palm oil and palm oil-based agriculture products (+RM3.1 billion); liquefied natural gas (+RM2.5 billion); crude petroleum (+RM1.6 billion); and palm oil-based manufactured products (+RM1.1 billion). Meanwhile, the rise in imports were noted for electrical and electronics products (+RM7.1 billion); crude petroleum (+RM6.1 billion); petroleum products (+RM3.0 billion); chemical and chemical products (+RM2.2 billion); machinery, equipment and parts (+RM1.6 billion); metalliferous ores and metal scrap (+RM1.2 billion); and coal (+RM1.2 billion). On the performance for the first quarter of 2022, the total trade, exports, imports, and trade surplus continued to record strong double-digit growth. The total trade went up by 23.6 per cent, supported by the expansion in exports (+22.2 per cent), as well as imports (+25.2 per cent). Consequently, trade surplus recorded a higher value of RM65.1 billion.

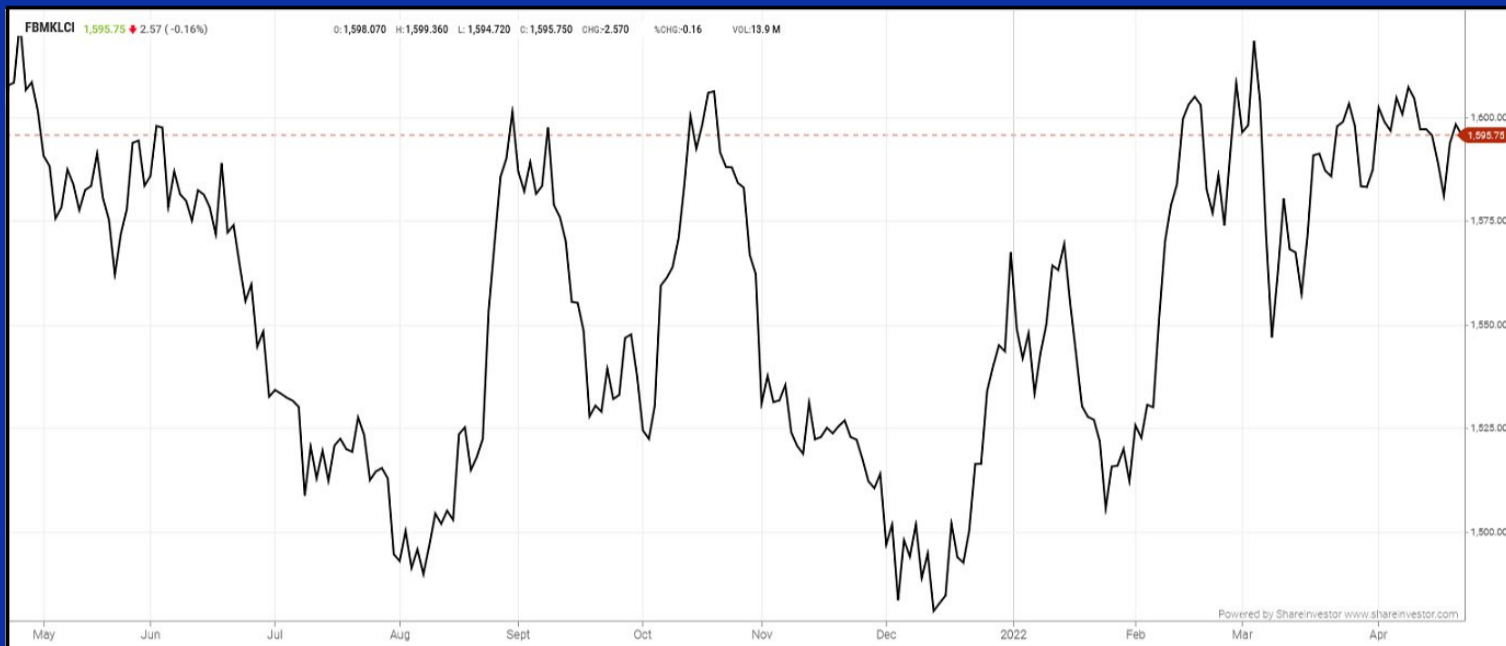
LOCAL BOURSE MARKET CAP DOWN SLIGHTLY IN MARCH AS INVESTORS BOOKED PROFIT - BURSA

According to Bursa Malaysia, the total market capitalisation of the local bourse slightly moderated to RM1.795 trillion in March this year compared with RM1.81 trillion reported in the previous corresponding month. The reduction was due to investors booking their profit in the plantation and energy sectors, subsequent to the record high commodity prices last month. Meanwhile, foreign inflows further accelerated to RM3.29 billion in March as foreign investors turned net buyers in financial services, industrial and plantation sectors. However, foreign investors emerged as net sellers in the technology, telecoms and utility sectors. In March, total average daily volume further escalated to RM2.96 billion, with strengthened trading activities among foreign and local institutional investors. In terms of stocks, counters that saw the biggest foreign inflows were Petronas Chemicals Group Bhd (RM1.1 billion), Public Bank Bhd (RM935 million), Malayan Banking Bhd (RM348 million), Kuala Lumpur Kepong Bhd (KLK) (RM345 million) and Hong Seng Consolidated Bhd (RM174 million). Foreign investors further increased their stakes in plantation stocks with a total of RM962 million inflow in March, despite the moderation in crude palm oil price after hitting its peak last month. Meanwhile, local institutions sold RM692 million worth of plantation stocks, while local retailers offloaded RM181 million in the same month. The stock exchange also highlighted selected plantation stocks, such as KLK, which saw a RM345 million inflow by foreign investors, while local institutions took profit, resulting in an outflow of RM342 million.

EYE ON THE MARKETS

This week, on Friday (22Apr), the Ringgit opened at 4.3060 against the USD from 4.2390 on Monday (18Apr). Meanwhile, the Ringgit was 3.1554 to the Sing Dollar on Friday (22Apr). On Monday (18Apr), the FBM KLCI opened at 1591.64. As

at Friday (22Apr) 10:00am, the FBM KLCI is down 4.70 points for the week at 1596.34. Over in US, the overnight Dow Jones Industrial Average closed down 368.03 points (-1.05%) to 34,792.76 whilst the NASDAQ shed 278.41 points (-2.07%) to 13,174.65.



KLCI 1 Year Chart

SHAREINVESTOR WEBPRO

Stock Market Data
At Your Fingertips

Powerful browser-based market analytics platform.
Access from anywhere



- Intrinsic Value Calculator
- Consensus Estimates
- C2 Charts (Customizable & Comprehensive)
- Advance Market Screener
- Ownership Tracker

click here to start your
9 Day free trial



STROM

SWISS TIMEPIECES & JEWELLERY



StromWatch Asia

Tele : +65.9817.3378 Email : ll.stromasia@gmail.com

WWW.STROMWATCH.SWISS



www.shareinvestor.com - market data at your fingertips



ShareInvestor WebPro (www.shareinvestor.com/my) Prices > Stock Prices > Bursa > click Stocks tab

1. mouse over Ranking > select Top Active > all Shariah stocks are denoted with an [S] > mouse over Column Layout > select Edit Customs > select Name > select Volume > select Last Done Price > Mouse Over Column Layout > select Custom
2. mouse over Ranking > select Top Turnover > all Shariah stocks are denoted with an [S] > mouse over Column Layout > select Edit Customs > select Name > select Last Done Price > select Value > Mouse Over Column Layout > select Custom
3. mouse over Ranking > select Top Gainers (Over 5 Trading Days) > mouse over Column Layout > select Edit Customs > select Name > select Last Done Price > select 5 Days Change > select 5 Days % Change > Mouse Over Column Layout > select Custom
4. mouse over Ranking > select Top Losers (Over 5 Trading Days)
5. mouse over Ranking > select Top % Gainers (Over 5 Trading Days)
6. mouse over Ranking > select Top % Losers (Over 5 Trading Days)

Shariah Top Actives (as at Yesterday)

Name	Price (RM)	Volume
MNC [S]	0.030	1,418,541
VIZIONE [S]	0.105	1,011,878
SAPNRG [S]	0.045	785,718
TANCO [S]	0.355	661,080
TAWIN [S]	0.160	630,820
DSONIC [S]	0.570	513,714
WIDAD [S]	0.365	452,193
FITTERS [S]	0.125	441,874
TECHNAX [S]	0.105	429,287
DNEX [S]	1.090	393,250

Shariah Top Turnover (as at Yesterday)

Name	Price (RM)	Value (RM)
PMETAL [S]	6.590	94,453,315
KLK [S]	28.280	82,033,326
PCHEM [S]	10.380	71,531,526
DNEX [S]	1.090	42,286,068
TOPGLOV [S]	1.720	34,936,856
SIMEPLT [S]	5.250	32,037,890
INARI [S]	2.920	30,805,403
MISC [S]	7.810	30,242,000
DSONIC [S]	0.570	28,814,318
SIME [S]	2.390	23,377,270

Top Gainers (over 5 Trading days as at Yesterday)

Name	Price (RM)	Change (RM)
KLK	28.280	+1.220
BKAWAN	27.480	+0.820
TEXCHEM	2.800	+0.580
SUBUR	2.400	+0.500
ORIENT	7.030	+0.430
PMBTECH	18.840	+0.340
PETDAG	21.700	+0.320
SOP	6.470	+0.320
UTDPLT	16.480	+0.300
MSC	5.430	+0.280

Top % Gainers (over 5 Trading days as at Yesterday)

Name	Price (RM)	Change (%)
MPCORP	0.115	+53.33
IQZAN	0.065	+44.44
KHEESAN	0.155	+29.17
JERASIA	0.045	+28.57
SUBUR	2.400	+26.32
TEXCHEM	2.800	+26.13
BIG	0.980	+24.05
MYCRON	0.715	+21.19
ACME	0.280	+16.67
DSONIC	0.570	+15.15

Top Losers (over 5 Trading days as at Yesterday)

Name	Price (RM)	Change (RM)
DLADY	33.600	-0.780
MPI	32.500	-0.700
NESTLE	132.800	-0.700
F&N	22.080	-0.580
HLFG	19.240	-0.260
PANAMY	28.740	-0.260
KOBAY	3.870	-0.180
CARLSBG	21.620	-0.160
TOCEAN	2.430	-0.160
KLUANG	4.030	-0.150

Top % Losers (over 5 Trading days as at Yesterday)

Name	Price (RM)	Change (%)
COMPUGT	0.010	-33.33
MTRONIC	0.015	-25.00
XOX	0.015	-25.00
AGES	0.265	-23.19
TANCO	0.355	-18.39
IREKA	0.490	-18.33
ALAM	0.025	-16.67
BORNOIL	0.025	-16.67
DOLMITE	0.025	-16.67
ANZO	0.030	-14.29



Italian Masterpieces

Coupé De Luxe bed designed by GamFratesi
Grant ottoman designed by Tristan Auer

poltronafrau.com



XTRA

The Gardens Mall, Mid Valley City, Lot S-236 & 237
 2nd flr Linkaran Syed Putra, Kuala Lumpur
 T. +603 2282 9088 | living@xtrafurniture.com | xtrafurniture.com
 f XTRAfurniture | @ xtrafurnituremsia



EXCEPTIONAL UNCERTAINTY



Pankaj C Kumar

Pankaj is a former CIO and Head of Research, presently focused on economic, market and corporate analyses. The views expressed here are entirely the writer's own.

Those were the exact words used by the World Bank in assessing the current global economy as the world body slashed its growth estimate to just 3.2% from 4.1% predicted just three months ago. The lowered estimates may be subjected to further downgrades if the war in Ukraine takes a longer time horizon to be resolved. The cut in global GDP forecast this time is mainly from the lower economic growth expectations for Europe and Central Asia, which includes Russia and Ukraine.

The International Monetary Fund (IMF) too had a similar assessment of the global economic outlook as it slashed the GDP growth forecast to 3.6% from 4.4% estimated in late January this year. The US GDP growth is expected to see a slower growth of 3.7% this year from the earlier estimate of 4%, while the Chinese economy is expected to grow 4.4% from the previous forecast of 4.8%. IMF also expects this year's inflation to rise much quicker, with a forecast of 5.7% for advanced economies and 8.7% for emerging and developing countries. According to the IMF, this will likely lead to a more aggressive tightening by central banks globally.

ECONOMY

Out of the US, the University of Michigan's preliminary April Consumer Sentiment Index rose to 65.7, which was a significant jump from the preceding month's print of 59.4. Meanwhile, the March Existing Home Sales fell by 4.5% y-o-y to an annual rate of 5.77mil but still ahead of the market's forecast of 5.75mil. China's 1Q GDP data came in well above expectations as the world's second-largest economy grew by 4.8% y-o-y, beating the forecast of a 4.4% expansion. Two key March economic data points too were surprisingly better than expected as Industrial Production grew by 5% y-o-y against a forecast of a 4.5% increase, while the cumulative 1Q Fixed Asset Investments jumped 9.3% y-o-y. However, the key March Retail Sales data was weaker than expected as it fell by 3.5% y-o-y, well below the expected 1.6% contraction. China also unveiled a 23-point plan to support the economy, especially after extended lockdown periods seen damaging businesses.

On rates, Bank Indonesia held its benchmark 7-day reverse repurchase rate unchanged at 3.5% to provide continuous economic support. The bank also lowered the GDP growth forecast by 20bps to a range of between 4.5%-5.3% from the previous estimate of between 4.7%-5.5%, on the back of slowing global growth and lower consumer spending due to higher food and energy prices. Meanwhile, the People's Bank of China (PBoC) left its key 1-year Loan Prime Rate (LPR) and the 5-year LPR unchanged at 3.7% and 4.6% respectively.

Locally, the Employees Provident Fund revealed that it had received 5.3mil applications under the Special Withdrawal scheme, which will see members withdrawing RM40.1bil from their retirement fund. Together with the earlier withdrawal schemes amounting to RM101.1bil, members have so far withdrawn RM141.2bil from their savings. As the new minimum wage is closer to the effective date, the Ministry of Human Resources has reiterated that it will proceed with it despite objections made by several quarters. However, the new wage order will not be imposed on several sectors including the informal sector as well as companies that employ less than five workers. The Minister did not name which sectors will be exempted from the new minimum

wage order. Meanwhile, in economic data points, Malaysia's exports for March 2022 surged 25.4% y-o-y to RM131.6bil while imports rose by 29.9% to RM104.9bil. Trade surplus showed a growth of 10.3% to RM26.7bil. For the 1Q 2022 period, Malaysia's export performance was spectacular as exports jumped 22.2% to RM345bil while imports rose by 25.2% to RM279.9bil. The total trade surplus increased by 10.9% or RM6.4bil to RM65.1bil.

CORPORATE

The Malaysian Anti-Corruption Commission (MACC) has issued a freeze order on all of the bank accounts owned by Caely Holdings group of companies. In response, the company said that it is not aware of any wrongdoings and will seek further clarification from the MACC to unfreeze the accounts. In other news and as expected, the vendors for the four urban highways have all accepted the offer made by Amanat Lebuhraya Rakyat (ALR). In contract news, Permata Rebana & Vizione Holdings JV has won a RM654m contract to build Social Security Organisation's (SOCSO) National Robotics and Cybernetics Rehabilitation Centre (Phase 1) in Bandar Meru Raya, Perak.

EQUITY

Global equity markets were mostly firmer the past week despite the dimmer outlook on growth as painted by both the World Bank and the IMF. Markets that closed on a positive note saw gains of between 0.1% to as much as 1.8% on the Euro Stoxx 50 Price Index, while markets that retreated during the past week witnessed losses of between 0.7% to 4.5% on the Shanghai Stock Exchange Composite Index. Stocks on Bursa Malaysia closed the holiday-shortened week on a flat note with the KLCI last seen at 1,598.32 pts, up 2.62 pts or 0.2% for the week in review. For the week ended April 21, after weeks of net buying interest, foreign market participants turned net sellers with an outflow of RM7mil. Local institutions too maintained their net selling pressure with a smaller outflow of RM6.9mil. This left the retail market participants as the sole net buyers in the market with an inflow of RM13.9mil.

EYE ON WEEK AHEAD

Later today, the Department of Statistics will be releasing the March 2022 Consumer Price Index (CPI) data as the market will be looking for any hints of potential inflationary pressure, especially with respect to core inflation, which increased by 1.8% y-o-y in February. The S&P Global Flash Eurozone Composite PMI for April is also due later today and the market will be looking at further evidence of actual weakness in this key barometer which will likely confirm the full impact of the war in Ukraine.

Next week, on Tuesday, April 26, the US Durable Goods Order for March is due, with the consensus looking for an increase of 1% m-o-m, after falling 2.1% in the preceding month. On the same day, data from the US New Home Sales are expected to be released with the market expecting a slight uptick to an annual rate of 776,000 from 772,000 in the previous month. Meanwhile, the Conference Board's US Consumer Confidence for April too will be released. On Wednesday, April 27, the US Pending Home Sales data is expected to be out, while the Bureau of Economic Analysis (BEA) will be releasing the annualized rate of the US 1Q GDP on Thursday, April 29. Consensus is expecting a sharp pullback in growth to just 1% for the 1Q period against the stellar 6.9% growth achieved in the 4Q period of 2021 and 6.1% growth for the same quarterly period in 2021.

Locally, on Monday, April 25, Bank Negara Malaysia will be releasing Malaysia's international reserves position as at April 15, 2022. On Thursday, April 28 the Producer Price Index-Local Production for March is due. Economists will again be watching the data to see further price pressures at the manufacturers' level as the gauge rose by 9.7% y-o-y for February 2022.



ShareInvestor App is now available on iOS

Gain access to free data while on the move.
Keep abreast with all company's movement and price trend, and more!

Prices of companies across **7 markets**

Company's **key statistics** and financial health

Latest company news and **market movements**

Recorded time and sales of every counter daily

Events
Compilation of corporate actions

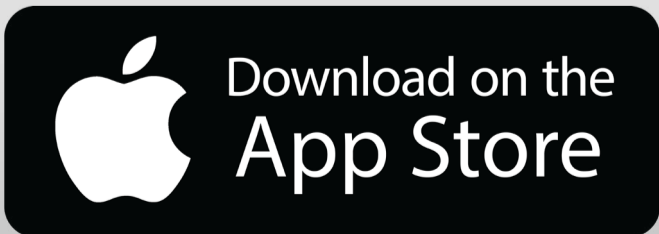
ShareInvestor Station and ShareInvestor WebPro members rejoice!
Log in and access even more features:

FINANCIAL RATIOS
Snapshot of stock price and statistics that helps to make timely decision.

CONSENSUS ESTIMATES
Analysts' forecast of a company's forward earnings

CHARTING TOOL
Comprehensive and customizable to your preference

DIVIDENDS
History of each company and new insights to its pay-out trends



AVOID OVERBOARDING: DON'T BITE OFF MORE THAN YOU CAN CHEW



Devanesan
Evanson

**Chief Executive
Officer, Minority
Shareholders Watch
Group**

Set against the backdrop of increasing responsibilities and workload for board members – in particular, time commitment and how this impacts board performance as well as conflicting interest – overboarding has become a sensitive topic in the realm of today’s corporate governance. The US Institutional Shareholder Services (ISS) has described the surge in average time commitment for board directors as having “exploded”. One of the important issues with regard to time constraint is the inability for overboarded directors to squeeze in last-minute emergency board meetings to deliberate on pressing issues. Towards this end, ISS recommends shareholders to vote against or withhold their votes for individual directors who serve on more than five public company boards.

Governance services provider Glass Lewis followed the precedent set by ISS by stating that it intended to review closely board director commitments by considering their concerns regarding non-executive directors who have served on more than five boards. As for directors in executive position at public listed companies

(PLCs), Glass Lewis recommends that they do not serve on more than a total of two boards

FULL-TIME/PART-TIME EMPLOYEES

Unlike independent non-executive directors (INEDs), executive directors are full-time employees who are hired with salary while holding a board position. Typically, they work for the company in a senior capacity which is mainly associated with policy concerns or functional areas of primary strategic importance (e.g., finance, human resources or project management). They are elected to the board by the Nomination Committee or by the company's board itself whereby their role is to formulate and implement strategies which are not just cost-efficient but time-efficient as well.

Contrast this with the flexibility enjoyed by INEDs who do not participate in the management and operation of the company but play a crucial role in the formulation of policies and plans, and decision making of the company. In a way, INEDs can be assumed to be "part-time employees" whose board appointment is based on their qualification such as depth of knowledge and breadth of experience which helps the board in availing relevant insights and building contacts. Given there are fewer timing constraints in discharging their duties, INEDs can sit on a few boards (up to a limit of five as per ISS and Glass Lewis' recommendation and as per Bursa Malaysia Listing Requirements) so long as they are able to keep a well-planned meeting schedule or abstain from indulging in conflict of interest

PROS AND CONS

Whether one is an executive director or INED, there are mixed views about overboarding among corporate governance practitioners. One school of thought opines shareholders are the ultimate beneficiaries as participation on less boards enable directors to sharpen their focus on value enhancement.

Three primary concerns contribute to the renewed interest in director overboarding:

- **RISING BOARD RESPONSIBILITIES:**

This has led to directors being expected to dedicate more time to their duties. A wide variety of issues is driving the expanding mandate, i.e., increasing regulatory requirements, expectations for shareholder engagement, cybersecurity threats, disruptive technologies, climate change, human capital management, and company culture.

- **INVESTOR STEWARDSHIP EFFORTS ARE GETTING MORE SOPHISTICATED AND INTENSIFIED:**

As asset owners and asset managers dedicate more resources to monitoring corporate governance risks while emphasising on board quality, overboarding becomes a critical issue along with board diversity, director qualifications, and board refreshment.

- **INFORMED INVESTORS:**

As disclosures on outside board mandates are better databased, investors are able to apply complex criteria to overboarding policies that go beyond just the number of board mandates but also take into account individual roles and responsibilities.

Nevertheless, another school of thought believes that there are distinct advantages to having directors who sit on multiple boards in terms of:

- **SHARING VALUABLE KNOWLEDGE:**

Board members with multiple board seats can contribute key knowledge and contacts that are sometimes essential to move forward. They can do so without being unethical.

- **IMPROVED AGILITY:**

Directors with experience of sitting on several boards have the right mix of 'scaling' expertise and industry partnerships to help chart a profitable path forward.

- **A BROADER PERSPECTIVE:**

Directors who hold multiple roles learn to work more closely with other directors, develop greater self-awareness and become more effective at governance.

Locally, a director can only serve on a maximum of five PLCs as per Bursa Malaysia Listing Requirements. What minority shareholders must bear in mind is that not all PLCs are created equal – there are PLCs that demand much more time compared to other PLCs. And as such, directors may not be able to do justice to the PLCs that they sit on if the PLCs on which they sit are all ‘demanding PLCs’ or even if most of them are such ‘demanding PLCs’. Directors, on their part, must exercise much self-discretion and self-evaluation to see if they are able to afford the time and energy required when they sit on several PLCs. And this again, against the backdrop of the several other unlisted companies and organisations on which they may sit. Executive directors (EDs) are deemed as full-time jobs and as such, it is difficult to imagine how an ED can serve as such on more than one PLC. In a way, this may give rise to conflict of interest when it comes to the time to be spent on a PLC

CAELY RESORTS TO FORENSIC AUDIT PROBE TO ASCERTAIN FINANCIAL IMPACT

As the Securities Commission’s (SC) Audit Oversight Board (AOB) is calling for audit committees (AC) of PLCs to continuously and rigorously engage auditors to promote an effective audit process, Perak-based lingerie manufacturer Caely Holdings Bhd has gone a step further to appoint an independent forensic auditor to investigate allegations of suspicious and irregular transactions at one of its subsidiaries. The appointment of VirDOS Lima Consultancy (M) Sdn. Bhd, an independent forensic auditor was announced by Caely on 7 April 2022. Subsequently, in a filing in response to Bursa Securities’ request for additional information on its forensic audit exercise, Caely said, it shall update accordingly on the forensic audit investigation progress. “Upon receipt of the forensic audit report, the company will take all necessary recourse available under the law upon taking further legal advice,” it said. For now, it is unable to ascertain the financial and operational impact of the matters until the investigation is completed. The forensic probe is slated for completion by 31 May.

In the circumstances leading to the forensic investigation, Caely said one of the group's independent non-executive directors had received an anonymous package containing documents raising concerns about several suspicious transactions involving Caely's wholly-owned unit, Caely (M) Sdn Bhd (CMSB).

Earlier, Caely's external auditor PKF Malaysia had issued a qualified opinion on the group's audited financial statements for the year ended 31 March 2020 in relation to CMSB's ability to recover certain receivables. The auditor noted that CMSB had trade receivables of close to RM12 million as of 31 March 2020 related to construction works for Felcra Bhd which were completed on 28 February 2018. However, only RM250,000 in repayment had been received by the company since completing the works which it attributed to the change of government and the COVID-19 pandemic. As all payments for the construction have been delayed, PKF is of the view that with the prolonged delay, the carrying amount of trade receivables might be impaired due to uncertainty over the recoverable amount. "We are uncertain of the full recovery of certain trade receivables of the group amounting to RM11.995 million as at financial year end as a substantial amount on the completed constructions payments have not been received," justified the external auditor. PKF added: "We were unable to obtain sufficient and appropriate audit evidence on the impairment assessment of the above-mentioned carrying amount of the said receivables in accordance with MFRS 9 Financial Instruments. Consequently, we were unable to determine whether any adjustments to these amounts were necessary."

This article appeared in the The Observer, a weekly newsletter published by The Minority Shareholders Watch Group (MSWG) and reproduced here with their permission.

Do follow MSWG's Twitter account at @MSWGMalaysia and share your thought on their tweets from time to time.



SHAREINVESTOR STATION

The advanced analytics software
designed for today's active traders

Fully Customisable . Powerful Charting .
Multiple Platform Access . High Speed Updates .
Price Movements . Screener (FA & TA)

[click here to start your
18 days free trial](#)

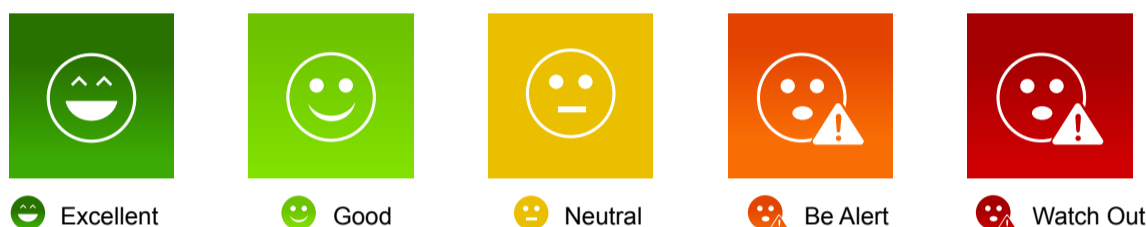
Smiley Grid

**Are you struggling to analyse financial information?
Do you find financial data overwhelming?**

Worry not, introducing our NEW feature, Smiley Grid

Smiley Grid makes the Factsheet fast and easy to understand.

It is a shortcut where key financial data have now been interpreted for you, and presented in easy-to-understand, colour coded icons.



With just a glance, you can easily identify strong or weak areas of a particular counter.

We do the analysis so you can make faster decisions.



Sign up for our 9 Days Free Trial and give it a try

9-Days FREE TRIAL WORTH (RM 9)

Price & Volume Distribution Charts (as at Yesterday)

Technical Analysis

DEFINITION: Shariah compliant stocks with Technical Analysis showing 5-days & 10-days Moving Average Price below Yesterday's Close over past 3 days and with Volume Spike.

CHART GUIDE: Volume Distribution Chart is a statistical interpretation of the current sentiment on each stock in graphical format. The highest bar categorized as >150k is likely to be traded by institutions or super dealers, while the lowest bar categorized as <15k usually represents retail investors. "Buy Up" refers to more buyers snatching up the lots queued at selling price. "Sell Down" refers to sellers selling their shares to the buying queue



ShareInvestor WebPro > Screener > Market Screener (FA & TA) > select BURSA > add criteria

A. Criteria

- > click Add Criteria
- Technical Analysis Conditions tab select (i) Moving Average Below Close (ii) Volume Spike
- Fundamental Analysis Conditions tab > select (iii) Revenue
- Prices & Other Conditions tab > select (iv) Is Shariah Compliant
- Technical Analysis Conditions tab select (v) Moving Average Below Close
- Prices & Other Conditions tab > select (vi) Last Done Price
- Technical Analysis Conditions tab select (vii) Moving Average Below Close

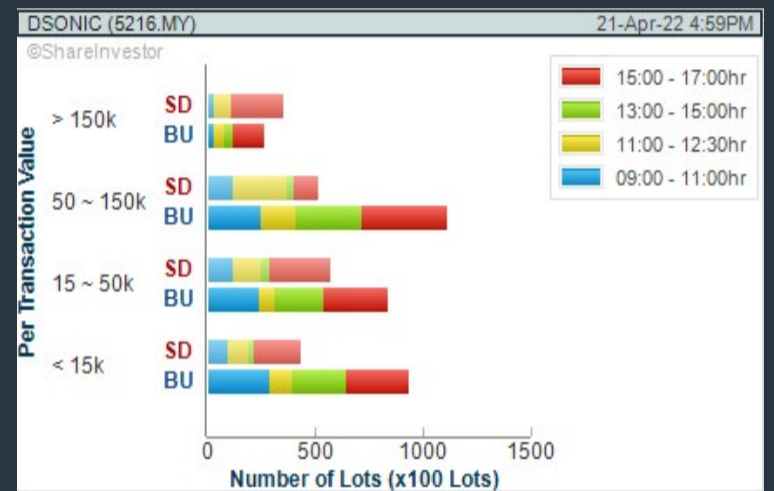
B. Conditions (Criteria Filters)

1. Moving Average Below Close - select (MA) type (5) below close price for type (3) days
2. Volume Spike - Volume type (1) greater than type (5) days average
3. Revenue ("000) - select (more than) type (1) for the past select (1) financial year(s)
4. Is Shariah Compliant - select **Yes**
5. Moving Average Below Close - select (MA) type (10) below close price for type (3) days
6. Last Done Price - select (more than) type (0.3)
7. Moving Average Below Close - select (EMA) type (5) below close price for type (3) days

- > click Save Template > Create New Template type (Shariah Hot Stocks) > click Create
- > click Save Template as > select Shariah Hot Stocks > click Save
- > click Screen Now (may take a few minutes)
- > Sort By: Select (Vol) Select (Desc)
- > Mouse over stock name > Charts > click C² Charts or Volume Distribution

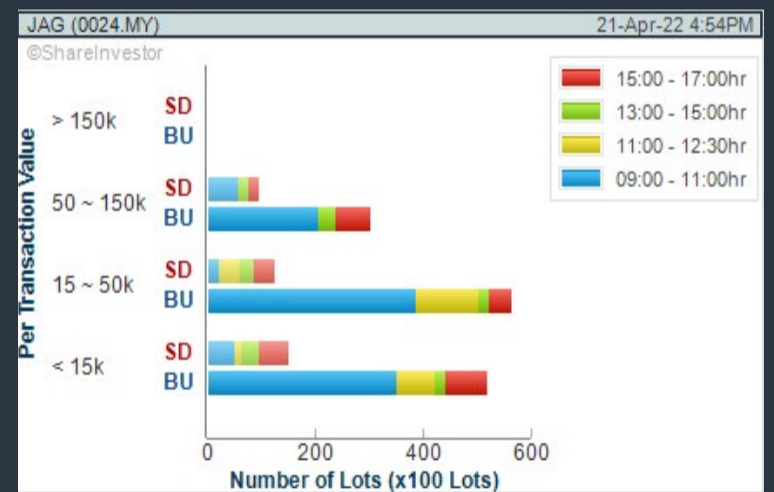
DATASONIC GROUP BERHAD (5216) C² Chart

Analysis



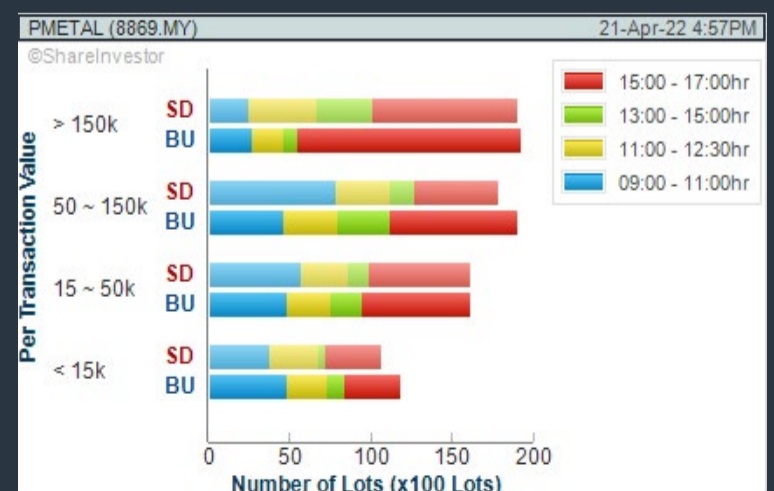
JAG BERHAD (0024) C² Chart

Analysis



PRESS METAL ALUMINIUM HOLDINGS BERHAD (8869) C² Chart

Analysis



Disclaimer: The information on this page is provided as a service to readers. It does not constitute financial advice and/or any investment recommendations. Past performance is not indicative of future results. We assume no liability for damages resulting from or arising out of the use of such information. It would be best if you did your own research to make your personal investment decisions wisely or consult a licenced investment advisor.

COMPANY BACKGROUND

Datasonic Group Berhad is an investment holding company, involved in the provision of ICT solutions including smart card personalisation such as secure ID or chip-based credit / debit / bank cards, customisation of software and hardware solutions, project management, consultancy, R&D and technical consultancy services. The group is also involved in manufacturing of cards.



Select Counter: Bursa | DSONIC (5216.MY) | View

DSONIC DATASONIC GROUP BERHAD Updated at 21 Apr 2022 16:59

Last (MYR): 0.570 ↑	Change: +0.020	High: 0.580	Remarks: s ?
	Change (%): +3.64	Low: 0.540	
Open	0.550	Yesterday's Close	0.550
Buy Price	0.565	Sell Price	0.570
Buy Volume ('00)	1,247	Sell Volume ('00)	7,994
Cumulative Volume ('00)	513,714	Cumulative Value	28,814,318

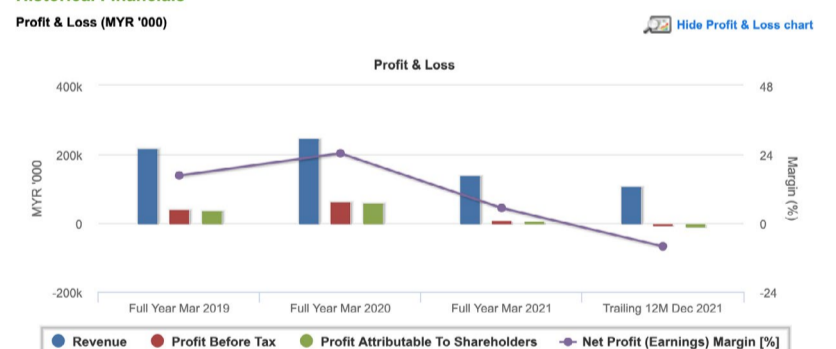
Financial Analysis

Revenue Growth Revenue down sharply in most recent year (> 25%)	Profit Growth Profit down drastically in latest year (< 60%) (with last 3 profitable years)
Piotroski F Score The company has above average financial strength (Piotroski F-Score of 6-7)	Dividend Payout Dividend is decreasing over the past 60 months.
Current Ratio The company is well-positioned to cover its short-term obligations with its current assets (ratio between 1.5 to 10) for 3 consecutive years	Gross Profit Margin Consistently high gross profit margin of at least 40% for 3 years
Return on Equity (ROE) ROE is decreasing by 5% a year over the past 36 months.	

🟢 Excellent 🟡 Good 🟠 Neutral 🔴 Be Alert 🔴 Watch Out



Historical Financials



WebPro 9-Days Free Trial Registration (worth RM9) Sign Up Now

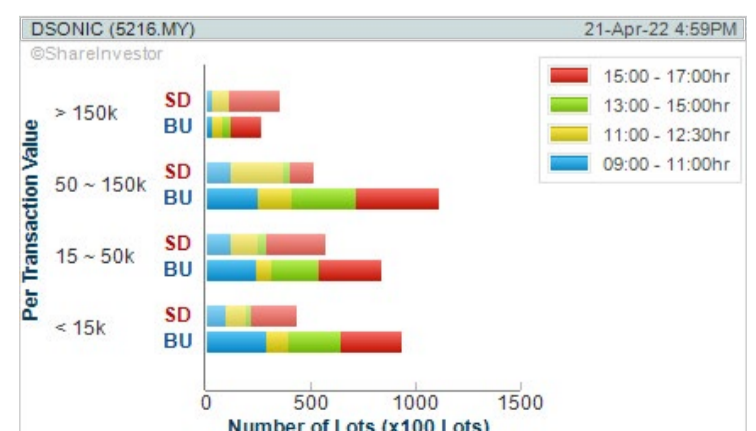


Key Statistics with Total Shareholder Returns

Total Shareholder Return

Period	Dividend Received	Capital Appreciation	Total Shareholder Return
Short Term Return	5 Days	-	+0.075
	10 Days	-	+0.090
	20 Days	-	+0.110
Medium Term Return	3 Months	0.001	+0.140
	6 Months	0.003	+0.105
	1 Year	0.004	-
Long Term Return	2 Years	0.019	+0.070
	3 Years	0.054	+0.312
	5 Years	0.124	-0.065
Annualised Return	Annualised	-	-

Volume Distribution Chart

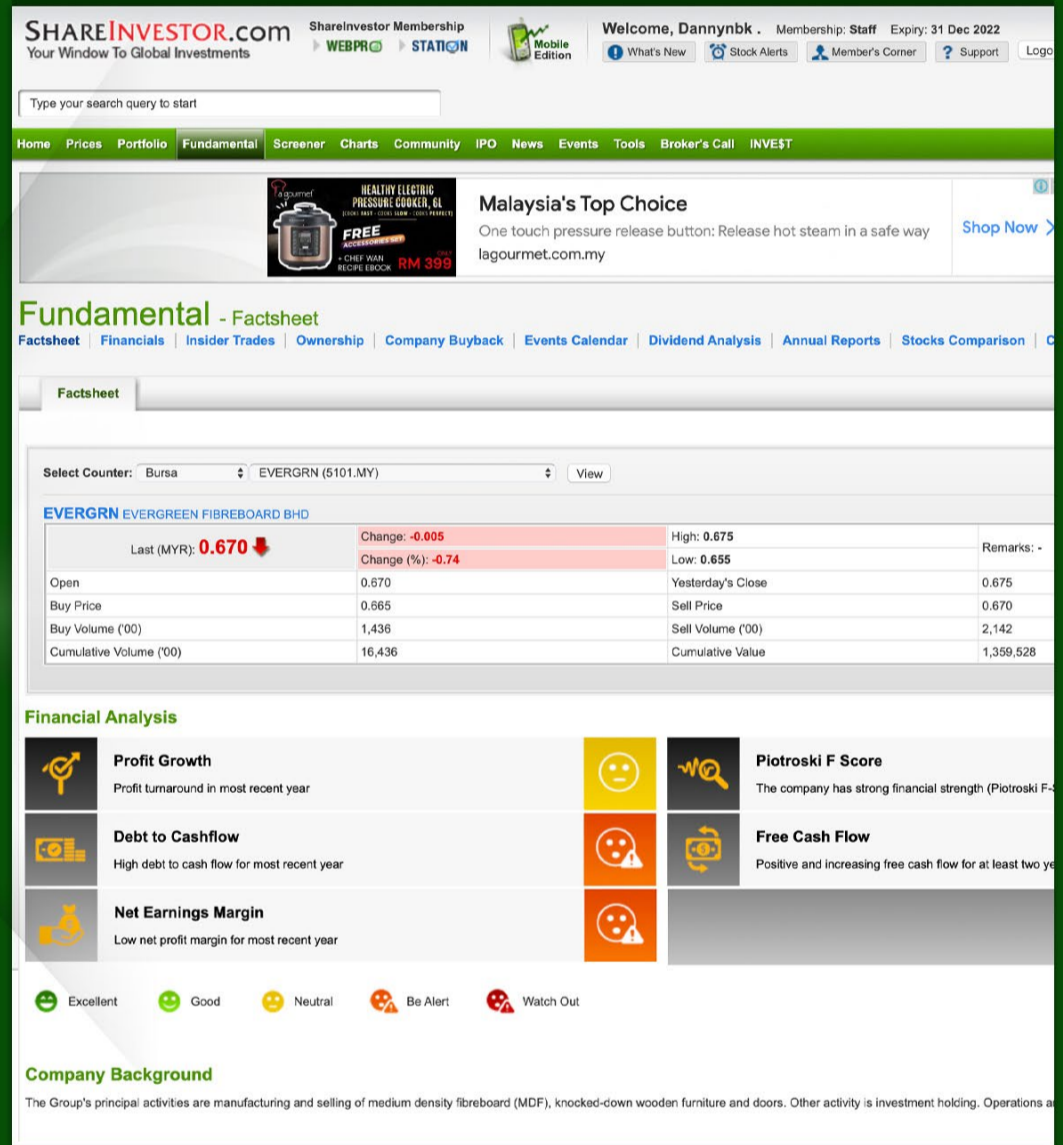
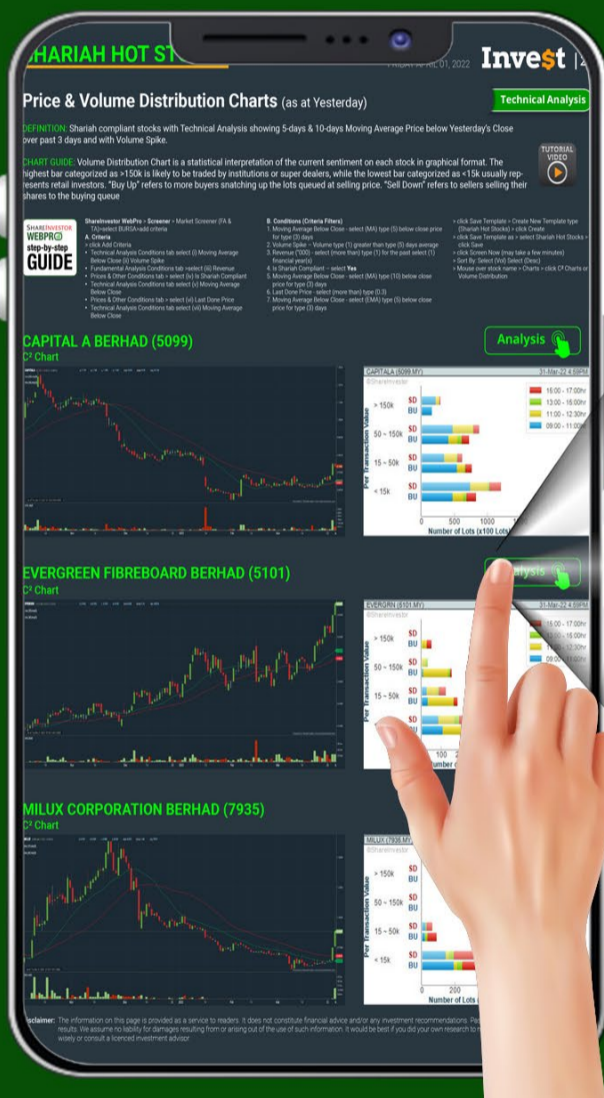


Disclaimer: The information on this page is provided as a service to readers. It does not constitute financial advice and/or any investment recommendations. Past performance is not indicative of future results. We assume no liability for damages resulting from or arising out of the use of such information. It would be best if you did your own research to make your personal investment decisions wisely or consult a licenced investment advisor.

COMPANY ANALYSIS AT YOUR FINGERTIPS

Click the Analysis buttons to access the Factsheets of any company featured on the Hot Stocks, Momentum-Up, Up-Trending, Growth and Dividend Stocks pages.

Invest with knowledge



- Company Background
- Candlestick Chart
- Current Price
- Key Statistics
- Peer Comparison
- Total Shareholder Returns
- Price Movements
- IPO performance
- Financial Reports
- Historical Price Data
- Latest News
- More



Price & Volume Distribution Charts (as at Yesterday)

Technical Analysis

DEFINITION: Shariah compliant stocks with Technical Analysis showing Bullish Momentum and Price Uptrend. The share price closed at the highest price yesterday. The typical price was higher than the previous day's typical price.

CHART GUIDE: Volume Distribution Chart is a statistical interpretation of the current sentiment on each stock in graphical format. The highest bar categorized as >150k is likely to be traded by institutions or super dealers, while the lowest bar categorized as <15k usually represents retail investors. "Buy Up" refers to more buyers snatching up the lots queued at selling price. "Sell Down" refers to sellers selling their shares to the buying queue.



ShareInvestor WebPro > Screener > Market Screener (FA & TA)>select BURSA>add criteria

A. Criteria

- > click Add Criteria
- Fundamental Analysis Conditions tab >select (i) Revenue
- Technical Analysis Conditions tab select (ii) Average Volume
- Prices & Other Conditions tab > select (iii) Last Done Price
- Prices & Other Conditions tab > select (iv) Is Shariah Compliant
- Technical Analysis Conditions tab select (v) RSI Overbought
- Technical Analysis Conditions tab select (vi) Moving Average Below Close
- Technical Analysis Conditions tab select (vii) CCI Overbought

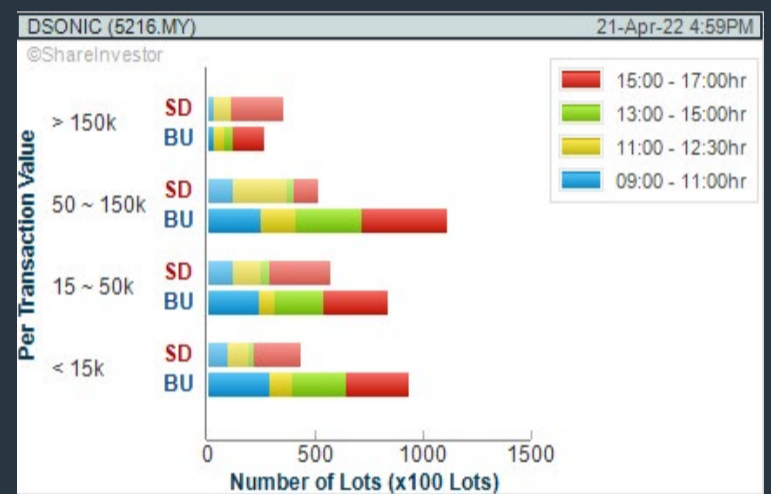
B. Conditions (Criteria Filters)

1. Revenue ("000) - select (more than) type (1) for the past select (1) financial year(s)
2. Average Volume - type (1) days average volume greater than type (10000) lots
3. Last Done Price - select (more than) type (0.3)
4. Is Shariah Compliant - select Yes
5. RSI Overbought - select RSI 1 above 99 for 1 days
6. Moving Average Below Close - select (MA) type (10) below close price for type (1) days
7. CCI Overbought - select CCI (2) above (0) for (1) days

- > click Save Template > Create New Template type (Shariah Momentum Up Stocks) > click Create
- > click Save Template as > select Shariah Momentum Up Stocks > click Save
- > click Screen Now (may take a few minutes)
- Sort By: Select (Vol) Select (Desc)
- Mouse over stock name > Charts > click C² Charts tab or Volume Distribution

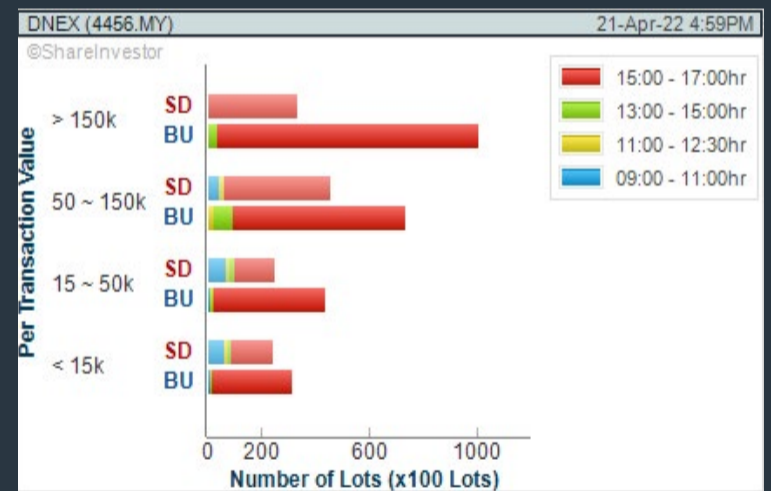
DATASONIC GROUP BERHAD (5216) C² Chart

Analysis



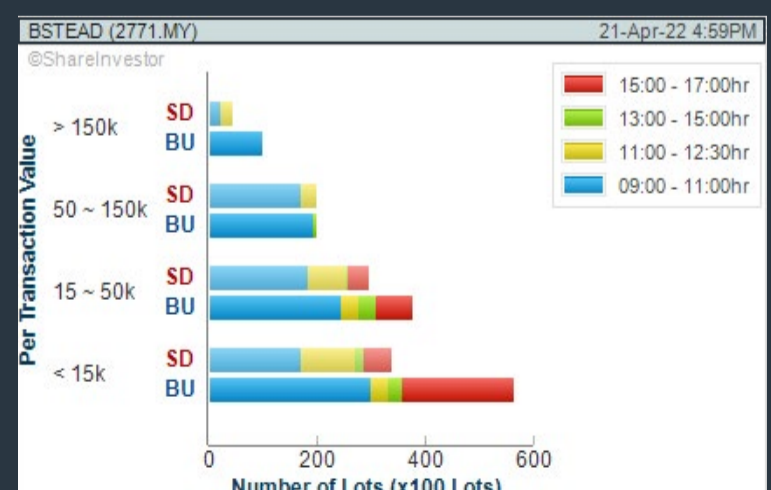
DAGANG NEXCHANGE BERHAD (4456) C² Chart

Analysis



BOUSTEAD HOLDINGS BERHAD (2771) C² Chart

Analysis



Disclaimer: The information on this page is provided as a service to readers. It does not constitute financial advice and/or any investment recommendations. Past performance is not indicative of future results. We assume no liability for damages resulting from or arising out of the use of such information. It would be best if you did your own research to make your personal investment decisions wisely or consult a licenced investment advisor.

BURSASTATION Professional



Stock Scanning

- Technical Analysis (TA) Market Scanner
- Fundamental Analysis (FA) Market Scanner



Market Data

- Equities
- Derivatives

Monitoring

- Portfolio
- Stock Alerts
- Price Spread Calculator



Scan. Chart. Analyse.

Be The Intelligent Investor



Price Movements

- Streaming Prices
- Time & Sales
- Trade Summary Matrix
- Quote Movements
- 5 Levels Market Depth
- Historical Price Download

Charts

- Intraday Charts
- Interactive Charts
- Historical Charts
- Volume Distribution Charts



Fundamentals

- Factsheets
- Financials
- Insider Trades



Brought to you as a collaborative effort by ShareInvestor and Bursa Malaysia, **BursaStation Professional** is designed with you, the user, in mind, as a user-friendly yet full of powerful features that will appeal to investors/traders who need instant access to fundamental, technical, and trading data, anytime, anywhere. **BursaStation Professional** is a state-of-the-art Stock Market Tracker with Charting Software that places in your hands the power to make better investment decisions.

CLICK HERE TO START YOUR 14-DAYS FREE TRIAL

Price & Volume Distribution Charts (as at Yesterday)

Technical Analysis

DEFINITION: Stocks with Technical Analysis showing 5-days & 10-days Moving Average Price below Close over past 1 days and with Volume Spike

CHART GUIDE: Volume Distribution Chart is a statistical interpretation of the current sentiment on each stock in graphical format. The highest bar categorized as >150k is likely to be traded by institutions or super dealers, while the lowest bar categorized as <15k usually represents retail investors. "Buy Up" refers to more buyers snatching up the lots queued at selling price. "Sell Down" refers to sellers selling their shares to the buying queue.



ShareInvestor WebPro > Screener > Market Screener (FA & TA) > select BURSA > add criteria

A. Criteria

- > click Add Criteria
- Technical Analysis Conditions tab select (i) Moving Average Below Close (ii) Volume Spike
- Fundamental Analysis Conditions tab >select (iii) Revenue
- Prices & Other Conditions tab > select (iv) Is Shariah Compliant
- Technical Analysis Conditions tab select (v) Moving Average Below Close
- Prices & Other Conditions tab > select (vi) Last Done Price
- Technical Analysis Conditions tab select (vii) Moving Average Below Close

B. Conditions (Criteria Filters)

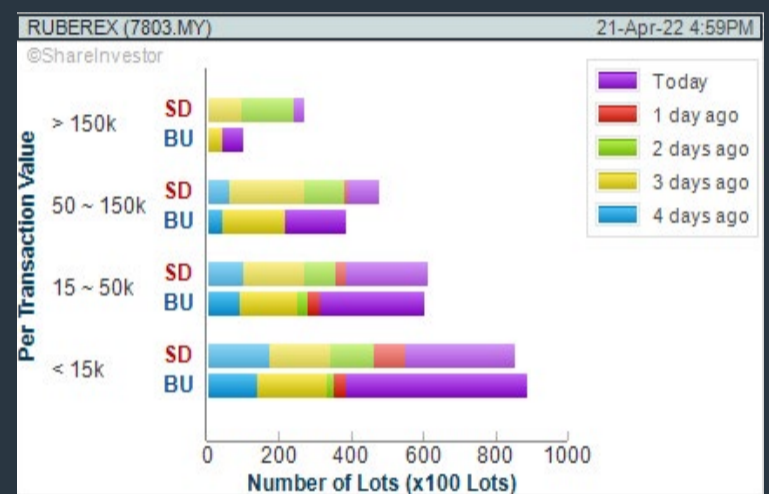
1. Moving Average Below Close - select (MA) type (5) below close price for type (3) days
2. Volume Spike - Volume type (1) greater than type (5) days average
3. Revenue ("000) - select (more than) type (1) for the past select (1) financial year(s)
4. Is Shariah Compliant - select NO
5. Moving Average Below Close - select (MA) type (10) below close price for type (1) days
6. Last Done Price - select (more than) type (0.3)
7. Moving Average Below Close - select (EMA) type (5) below close price for type (1) days

- > click Save Template > Create New Template type (Non-Shariah Hot Stocks) > click Create
- > click Save Template as > select Non-Shariah Hot Stocks > click Save
- > click Screen Now (may take a few minutes)
- Sort By: Select (Vol) Select (Desc)
- Mouse over stock name > Charts > click C² Charts tab or Volume Distribution

RUBBEREX CORPORATION (M) BERHAD (7803)

C² Chart

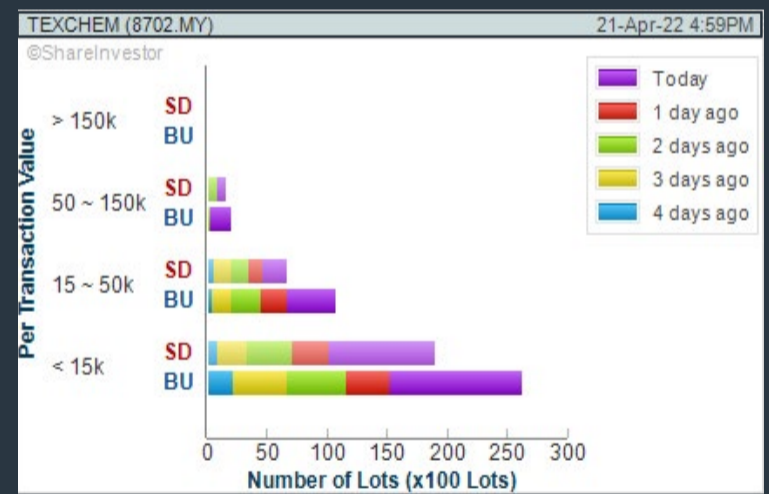
Analysis



TEXCHEM RESOURCES BERHAD (8702)

C² Chart

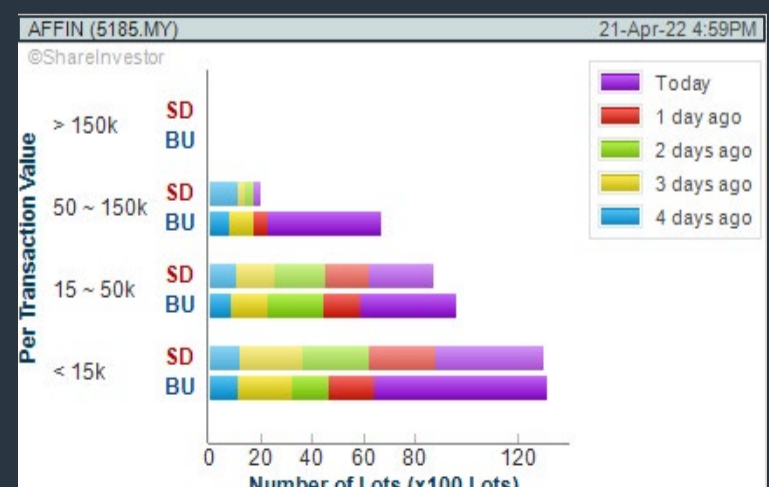
Analysis



AFFIN BANK BERHAD (5185)

C² Chart

Analysis



Disclaimer: The information on this page is provided as a service to readers. It does not constitute financial advice and/or any investment recommendations. Past performance is not indicative of future results. We assume no liability for damages resulting from or arising out of the use of such information. It would be best if you did your own research to make your personal investment decisions wisely or consult a licenced investment advisor.

ShareInvestor is a technology based company with a focus on Internet media and we have operations in Malaysia, Singapore and Thailand.

We are the market leader in providing a combination of market data, analysis and news on various platforms to traders and investors.

Our websites include www.shareinvestor.com and www.bursastation.com.
More information about our products and services can be found at www.shareinvestorholdings.com

We're looking for Drupal Developers who will be in charge of front-end development and back-end/module development. This role requires expertise in PHP, HTML, CSS, JS, and an eye for design aesthetics. The candidates should be familiar and have a passion working with content management systems.

Interested candidates are encouraged to apply with full resume, present and expected salary and a recent photograph.

Please send these to hr.my@shareinvestor.com for processing. ShareInvestor regrets that only shortlisted candidates shall be notified.

Drupal Developers (2 vacancies)

Job Responsibilities:

- Active participation in all UI / UX decisions
- Contribute actively to the continuous development and maintenance of development projects
- Enhance Drupal development quality
- Provide solutions to issues and suggestions for improvements.
- Designing and implementing new features to the system
- Ensuring optimal performance

Required Skills:

- At least 3 years of Drupal Theming and Front-End Development experience
- Proficient in PHP, HTML5/XHTML, CSS, Javascript, jQuery, AJAX, XML, Json
- Good Diploma/Degree in Computer Science/Computer Engineering.
- Experience working with Drupal's main modules, such as CTools, Views, Rules, Webform, and so on
- Ability to create custom Drupal modules
- Strong troubleshooting skills to fix bugs

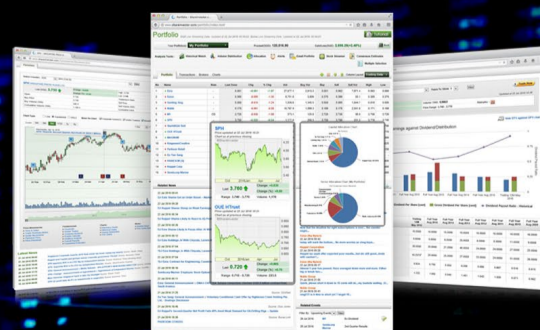
Benefits:

- Career & growth opportunities
- Interesting projects
- Medical Insurance
- Incentives

SHAREINVESTOR MARKET DATA PLATFORMS



**SHAREINVESTOR
STATION**
Advanced Charting Software
(8 Markets)



**SHAREINVESTOR
WEBPRO**
Browser-Based Market Data
Analytics Platform



BURSASTATION
Advanced Charting Software
(Bursa Malaysia Only)

ShareInvestor is a technology based company with a focus on Internet media and we have operations in Malaysia, Singapore and Thailand.

We are the market leader in providing a combination of market data, analysis and news on various platforms to traders and investors.

Our websites include www.shareinvestor.com and www.bursastation.com.

More information about our products and services can be found at www.shareinvestorholdings.com

We are looking for Developers to join our team, in a challenging, yet fun and fulfilling environment. The successful applicants will leverage on the latest Internet technologies to help create financial applications and platforms for investors, listed companies and financial institutions. Fresh graduates are welcome to apply.

Interested candidates are encouraged to apply with full resume, present and expected salary and a recent photograph.

Please send these to hr.my@shareinvestor.com for processing. ShareInvestor regrets that only shortlisted candidates shall be notified.

Ruby on Rails Developer (1 vacancy)

Responsibilities:

- Develop quality web-based software modules on schedule with a focus on Ruby and Ruby on Rails applications.
- Explore and utilize the latest web-based technologies.
- Document design specifications, logic concepts and module description.
- Maintain and enhance existing web-based applications.

Requirements:

- Experience in web-based programming/scripting is essential. Candidate must be able to explain clearly technical aspects of his/her past experiences and projects.
- Passion for programming and desire to learn new languages like Go.
- Good Diploma/Degree in Computer Science/Computer Engineering.
- Able to work well in a team and be able to follow documentation and coding standards.
- Knowledge in any of the following would be an added advantage
 - Ruby and Ruby on Rails Framework
 - Javascript and jQuery library
 - Go
 - Perl

Application Developer (C++/STL) (1 vacancy)

Responsibilities:

- Deliver quality software modules on schedule.
- Document design specifications, conceptions, module description.
- Maintain and enhance existing applications.

Requirements:

- Passion for programming and desire to learn.
- Good Diploma/Degree in Computer Science/Computer Engineering.
- Skills in C++ is essential.
- Experience with Visual Studio, networking stack and Golang would be an advantage.
- Proactive, resourceful and self-motivated with strong analytical skills.
- Good interpersonal, written and communication skills.
- Able to work with little supervision.

Price & Volume Distribution Charts (Over 5 trading days as at Yesterday)

Technical Analysis

DEFINITION: Stocks with Technical Analysis showing Bullish Momentum and Price Uptrend

CHART GUIDE: Volume Distribution Chart is a statistical interpretation of the current sentiment on each stock in graphical format. The highest bar categorized as >150k is likely to be traded by institutions or super dealers, while the lowest bar categorized as <15k usually represents retail investors. "Buy Up" refers to more buyers snatching up the lots queued at selling price. "Sell Down" refers to sellers selling their shares to the buying queue.



ShareInvestor WebPro > Screener > Market Screener (FA & TA) > select BURSA > add criteria

A. Criteria

- > click Add Criteria
- Fundamental Analysis Conditions tab > select (i) Revenue
- Technical Analysis Conditions tab select (ii) Moving Average Below Close
- Technical Analysis Conditions tab select (iii) Average Volume
- Prices & Other Conditions tab > select (iv) Last Done Price
- Technical Analysis Conditions tab select (v) Moving Average Below Close
- Technical Analysis Conditions tab select (v) Moving Average Bullish Crossover

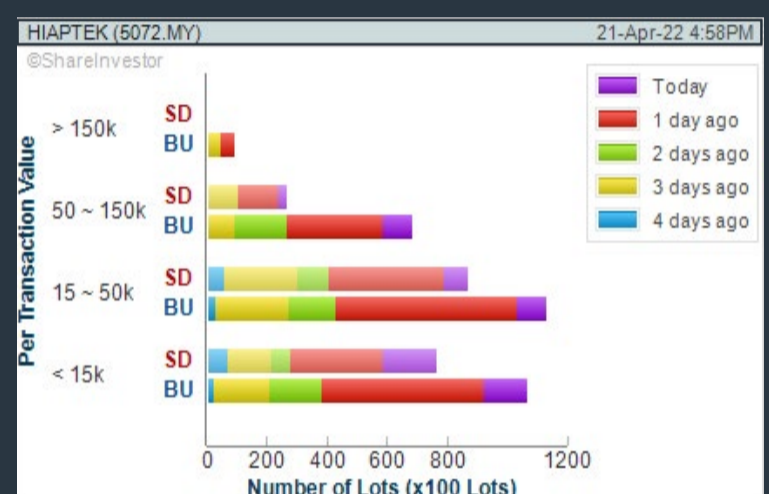
B. Conditions

- Revenue - select (more than) type (1) for the past select (1) financial year(s)
- Moving Average Below Close - select (MA) type (20) below close price for type (1) days
- Average Volume - type (5) days average volume type (10000) lots
- Last Done Price - select (more than) type (0.3)
- Moving Average Below Close - select (MA) type (10) below close price for type (1) days
- Moving Average Bullish Crossover - select (MA) type (5) crossed above select (MA) type (10)

> click Save Template > Create New Template type (Non-Shariah Up-Trending Stocks) > click Create Click Save Template As > select Non-Shariah Up Trending Stocks > click Save
> click Screen Now (may take a few minutes)
Sort By: Select (Vol) Select (Desc)
Mouse over stock name > Charts > click C² Charts tab or Volume Distribution

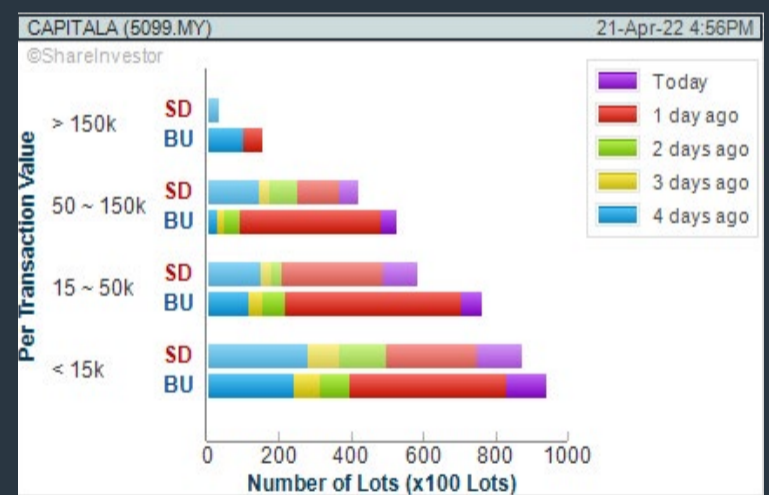
HIAP TECK VENTURE BERHAD (5072)

C² Chart



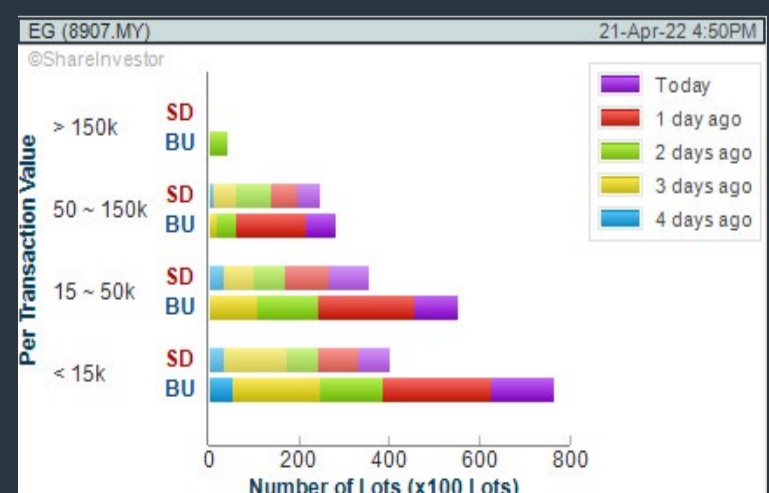
CAPITAL A BERHAD (5099)

C² Chart



EG INDUSTRIES BERHAD (8907)

C² Chart



Disclaimer: The information on this page is provided as a service to readers. It does not constitute financial advice and/or any investment recommendations. Past performance is not indicative of future results. We assume no liability for damages resulting from or arising out of the use of such information. It would be best if you did your own research to make your personal investment decisions wisely or consult a licenced investment advisor.

Price & Total Shareholder Return (as at Yesterday)

Fundamental Analysis

DEFINITION: Company revenue is growing and making good quality of earnings with positive Free Cash Flow.

CHART GUIDE: Total Shareholder Return (TSR) combines share price appreciation and distributions paid to show the total return to the shareholder expressed as a percentage.



ShareInvestor WebPro > Screener > Market Screener (FA & TA) > select BURSA > add criteria

A. Criteria

1. Fundamental Analysis Conditions tab > select (i) Free Cash Flow, (ii) Revenue Growth, (iii) Gross Profit (Earnings) Margin, (iv) Quality of Earnings, (v) Total Shareholder Returns, > click Add Criteria
2. Fundamental Analysis Conditions tab > select (vi) Total Shareholder Returns > click Add Criteria

B. Conditions (Criteria Filters)

1. Free Cash Flow - select (more than) type (1) for the past select (1) financial year(s)
2. Revenue Growth - select (more than) type (1) for the past select (1) financial year(s)
3. Gross Profit (Earnings) Margin - select (more than) type (30) % for the past select (1) financial year(s)
4. Quality of Earnings - select (more than) type (1) for the past select (1) financial year(s)
5. Total Shareholder Return - select (more than) type (5) % for the past select (3) financial year(s)
6. Total Shareholder Return - select (more than) type (5) % for the past select (5) financial year(s)

- > click Save Template > Create New Template type (Growth Companies) > click Create
- > click Save Template as > select Growth Companies > click Save
- > click Screen Now (may take a few minutes)
- > Sort By: Select (Revenue Growth) Select (Desc)
- > Mouse over stock name > Factsheet > looking for Total Shareholder Return

ES CERAMICS TECHNOLOGY BERHAD (0100)

C² Chart

Analysis



Period	Dividend Received	Capital Appreciation	Total Shareholder Return
Short Term Return	5 Days	-0.005	-1.49 %
	10 Days	-0.005	-1.49 %
	20 Days	-0.010	-2.94 %
Medium Term Return	3 Months	-0.030	-8.33 %
	6 Months	-0.125	-27.47 %
	1 Year	0.040	-52.26 %
Long Term Return	2 Years	0.050	+165.73 %
	3 Years	0.056	+451.43 %
	5 Years	0.068	+69.36 %
Annualised Return	Annualised	-	+11.11 %

KOSSAN RUBBER INDUSTRIES BERHAD (7153)

C² Chart

Analysis

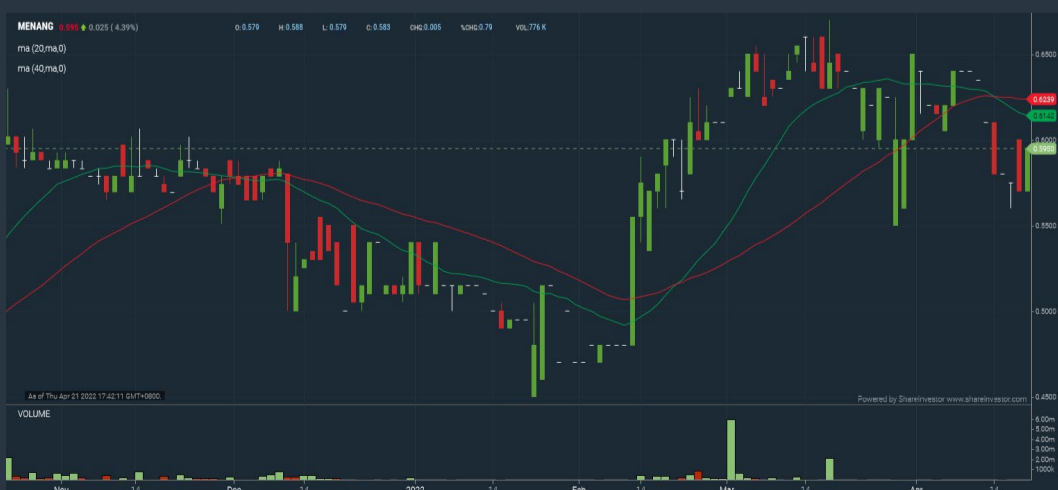


Period	Dividend Received	Capital Appreciation	Total Shareholder Return
Short Term Return	5 Days	-0.015	-2.46 %
	10 Days	-0.025	-4.03 %
	20 Days	-0.035	-5.56 %
Medium Term Return	3 Months	+0.100	+20.20 %
	6 Months	-0.002	-0.34 %
	1 Year	+0.128	+27.41 %
Long Term Return	2 Years	+0.338	+131.52 %
	3 Years	+0.245	+70.00 %
	5 Years	+0.131	+28.23 %
Annualised Return	Annualised	-	+5.10 %

MENANG CORPORATION (M) BERHAD (1694)

C² Chart

Analysis



Period	Dividend Received	Capital Appreciation	Total Shareholder Return
Short Term Return	5 Days	+0.030	+1.66 %
	10 Days	-0.050	-2.65 %
	20 Days	0.120	+3.16 %
Medium Term Return	3 Months	0.120	+0.51 %
	6 Months	0.240	-11.49 %
	1 Year	0.480	-40.97 %
Long Term Return	2 Years	0.650	-5.61 %
	3 Years	0.710	+39.34 %
	5 Years	0.910	+91.77 %
Annualised Return	Annualised	-	+13.91 %

Disclaimer: The information on this page is provided as a service to readers. It does not constitute financial advice and/or any investment recommendations. Past performance is not indicative of future results. We assume no liability for damages resulting from or arising out of the use of such information. It would be best if you did your own research to make your personal investment decisions wisely or consult a licenced investment advisor.

Price & Total Shareholder Return (as at Yesterday)

Fundamental Analysis

DEFINITION: Company is paying out dividend with low or moderate leverage.

CHART GUIDE: Total Shareholder Return (TSR) combines share price appreciation and distributions paid to show the total return to the shareholder expressed as a percentage.



ShareInvestor WebPro > Screener > Market Screener (FA & TA) > select BURSA > add criteria

A. Criteria

- > click Add Criteria
- Fundamental Analysis Conditions tab >select (i) Dividend Yield (Historical)
- Fundamental Analysis Conditions tab >select (ii) Dividend Payout (Historical)
- Fundamental Analysis Conditions tab >select (iii) Total Debt To Equity
- Fundamental Analysis Conditions tab >select (iv) Total Shareholder Returns
- Fundamental Analysis Conditions tab >select (v) Total Shareholder Returns
- Fundamental Analysis Conditions tab / >select (vi) CAGR of Dividend Per Share

• Fundamental Analysis Conditions tab >select (vii) CAGR of Dividend Per Share

B. Conditions (Criteria Filters)

1. Dividend Yield - select (more than) type (1) % for the past select (1) financial year(s)
2. Dividend Payout (Historical) - select (between) type (0.5) to type (1) times for the past select (1) financial year(s)
3. Total Debt to Equity - select (less than) type (1) for the past select (1) financial year(s)
4. Total Shareholder Return - select (more than) type (5) % for the past select (3) financial year(s)
5. Total Shareholder Return - select (more than) type (5) % for the past select (5) financial year(s)

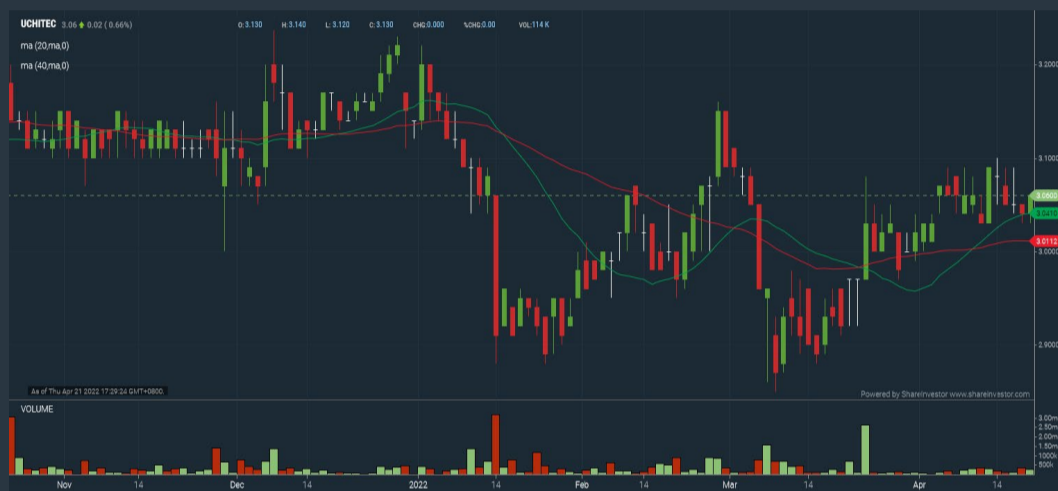
6. CAGR of Dividend Per Share - select (less than) type (30) % for the past select (5) financial year(s)
7. CAGR of Dividend Per Share - select (more than) type (1) % for the past select (5) financial year(s)

- > click Save Template > Create New Template type (Dividend Companies) > click Create
- > click Save Template as > select Dividend Companies > click Save
- > click Screen Now (may take a few minutes)
- > Sort By: Select (Dividend Yield) Select (Desc)
- > Mouse over stock name > Factsheet > looking for Total Shareholder Return

UCHI TECHNOLOGIES BERHAD (7100)

C² Chart

Analysis



Period	Dividend Received	Capital Appreciation	Total Shareholder Return	
Short Term Return	5 Days	-	-0.87 %	
	10 Days	-	-	
	20 Days	-	+0.89 %	
Medium Term Return	3 Months	+0.150	+5.15 %	
	6 Months	0.090	-0.84 %	
	1 Year	0.185	-0.080	+3.34 %
Long Term Return	2 Years	0.345	+0.710	+44.89 %
	3 Years	0.490	+0.230	+25.44 %
	5 Years	0.890	+1.440	+143.83 %
Annualised Return	Annualised	-	+19.51 %	

BURSA MALAYSIA BERHAD (1818)

C² Chart

Analysis



Period	Dividend Received	Capital Appreciation	Total Shareholder Return	
Short Term Return	5 Days	+0.020	+0.29 %	
	10 Days	-	-1.96 %	
	20 Days	-	+1.16 %	
Medium Term Return	3 Months	0.170	+0.790	+15.46 %
	6 Months	0.170	-0.750	-7.48 %
	1 Year	0.410	-1.460	-12.41 %
Long Term Return	2 Years	0.580	+1.260	+32.06 %
	3 Years	0.788	+0.070	+12.38 %
	5 Years	1.659	+0.495	+33.11 %
Annualised Return	Annualised	-	+5.89 %	

UNITED PLANTATIONS BERHAD (2089)

C² Chart

Analysis



Period	Dividend Received	Capital Appreciation	Total Shareholder Return	
Short Term Return	5 Days	+0.180	+1.10 %	
	10 Days	+0.780	+4.97 %	
	20 Days	+1.480	+9.87 %	
Medium Term Return	3 Months	+2.480	+17.71 %	
	6 Months	0.300	+2.280	+18.17 %
	1 Year	0.950	+2.299	+22.91 %
Long Term Return	2 Years	2.200	+4.694	+58.49 %
	3 Years	3.600	+4.072	+61.83 %
	5 Years	5.400	+4.474	+82.24 %
Annualised Return	Annualised	-	+12.75 %	

Disclaimer: The information on this page is provided as a service to readers. It does not constitute financial advice and/or any investment recommendations. Past performance is not indicative of future results. We assume no liability for damages resulting from or arising out of the use of such information. It would be best if you did your own research to make your personal investment decisions wisely or consult a licenced investment advisor.

DEFINITION: Top 10 stocks with Technical Analysis plus Pattern Matching by 60 pre-defined indicators by the system showing a higher probability of bullish sentiment on the share price.



ShareInvestor WebPro > Screener > Predefined TA Screens > select market BURSA > Most Long Signals > click Scan Results or mouse over each company

DELEUM BERHAD (5132.MY)

DELEUM

Price updated at 21 Apr 2022 16:58

Last: 0.695	Change: +0.025	Volume: 14,990
	Change (%): +3.73	Range: 0.670 - 0.700

TA Scanner Results based on historical data up to 21 Apr 2022

Condition	Signal	Explanation
Bollinger Band: Bullish Long Term Volatility Breakout and Trending	Long	1. Close price above upper bollinger band(33,1). 2. Volume above average volume(50). 3. Average volume(50) is above 300,000.
Bollinger Band: Bullish Short Term Volatility Breakout and Trending	Long	1. Close price above upper bollinger band(33,1). 2. Volume above average volume(10). 3. Average volume(10) is above 300,000.
Bollinger Band: High Above Upper Bollinger Band	Neutral	1. High above upper bollinger band(20,2). 2. Average volume(5) is above 100,000.
Chaikin Volatility: Increasing Chaikin Volatility	Neutral	Chaikin Volatility(10,10) has been increasing for 5 days
Donchian Channels: High Above Upper Donchian Channels	Long	High crossed above the upper Donchian Channel(14,4)
MACD: Bullish MACD Crossover	Long	1. MACD(12,26) diff line crossed above the MACD(12,26) signal line. 2. MACD Histogram(12,26) is above 0.
Price: New 52 Week High	Long	"1. Stock reach a new 52 week high. 2. Average volume(30) is above 50000.

CITRA NUSA HOLDINGS BERHAD (5104.MY)

CNH

Price updated at 21 Apr 2022 16:53

Last: 0.080	Change: -	Volume: 13,897
	Change (%): -	Range: 0.075 - 0.080

TA Scanner Results based on historical data up to 21 Apr 2022

Condition	Signal	Explanation
Bollinger Band: Bullish Long Term Volatility Breakout and Trending	Long	1. Close price above upper bollinger band(33,1). 2. Volume above average volume(50). 3. Average volume(50) is above 300,000.
Bollinger Band: Bullish Short Term Volatility Breakout and Trending	Long	1. Close price above upper bollinger band(33,1). 2. Volume above average volume(10). 3. Average volume(10) is above 300,000.
Bollinger Band: High Above Upper Bollinger Band	Neutral	1. High above upper bollinger band(20,2). 2. Average volume(5) is above 100,000.
CCI: Bearish CCI Overbought And Reversing	Short	1. CCI(26) above 100 and CCI(26) 1 day ago increasing for the last 3 days. 2. CCI(26) below CCI(26) 1 day ago
Donchian Channels: High Above Upper Donchian Channels	Long	High crossed above the upper Donchian Channel(14,4)
MA: Bullish Price Crossover	Long	1. Close price crossed above MA(40) within the last 1 day. 2. Previous day close price is below the MA(10) for the last 5 days
RSI: Short Term RSI 50 Bullish Crossover	Long	1. RSI(20) crossed above 50 within the last 1 day and RSI(20) 1 day ago below 50 for the last 5 days. 2. Volume above average volume(125). 3. Average volume(5) is above 100,000.
Stochastic: Fast Stochastic Buy Signal	Long	1. Fast Stochastic(15,5) %K crossed above 20. 2. Fast Stochastic(15,5) %K 1 day ago was below 20 for the last 5 days. 3. Average volume(30) is above 50000

Disclaimer: The information on this page is provided as a service to readers. It does not constitute financial advice and/or any investment recommendations. Past performance is not indicative of future results. We assume no liability for damages resulting from or arising out of the use of such information. It would be best if you did your own research to make your personal investment decisions wisely or consult a licenced investment advisor.

BERMAZ AUTO BERHAD (5248.MY)

BAUTO

Price updated at 21 Apr 2022 16:53

Last: 1.780	Change: -0.020	Volume: 7,159
	Change (%): -1.11	Range: 1.760 - 1.800

TA Scanner Results based on historical data up to 21 Apr 2022

Condition	Signal	Explanation
Bollinger Band: Bullish Long Term Volatility Breakout and Trending	Long	1. Close price above upper bollinger band(33,1). 2. Volume above average volume(50). 3. Average volume(50) is above 300,000.
Bollinger Band: Bullish Lower Bollinger Band Support	Long	1. Low 1 day ago below lower bollinger band(20,2). 2. Close above close 1 day ago. 3. Average volume(5) is above 100,000.
Bollinger Band: Bullish Short Term Volatility Breakout and Trending	Long	1. Close price above upper bollinger band(33,1). 2. Volume above average volume(10). 3. Average volume(10) is above 300,000.
Candlestick: Bullish Engulfing	Long	Bullish: Engulfing
DM: Bullish Directional Movement	Long	-DI(14) crossed below +DI(14)
MACD: Bullish MACD Crossover	Long	1. MACD(12,26) diff line crossed above the MACD(12,26) signal line. 2. MACD Histogram(12,26) is above 0.

SALUTICA BERHAD (0183.MY)

SALUTE

Price updated at 21 Apr 2022 16:53

Last: 0.400	Change: -	Volume: 10,574
	Change (%): -	Range: 0.390 - 0.405

TA Scanner Results based on historical data up to 21 Apr 2022

Condition	Signal	Explanation
Bollinger Band: Bullish Long Term Volatility Breakout and Trending	Long	1. Close price above upper bollinger band(33,1). 2. Volume above average volume(50). 3. Average volume(50) is above 300,000.
Bollinger Band: Bullish Short Term Volatility Breakout and Trending	Long	1. Close price above upper bollinger band(33,1). 2. Volume above average volume(10). 3. Average volume(10) is above 300,000.
Candlestick: Bullish Harami	Long	Bullish: Harami
RSI: Short Term RSI 50 Bullish Crossover	Long	1. RSI(20) crossed above 50 within the last 1 day and RSI(20) 1 day ago below 50 for the last 5 days. 2. Volume above average volume(125). 3. Average volume(5) is above 100,000.

HAP SENG PLANTATIONS HOLDINGS (5138.MY)

HSPLANT

Price updated at 21 Apr 2022 16:57

Last: 3.240	Change: -	Volume: 16,088
	Change (%): -	Range: 3.220 - 3.260

TA Scanner Results based on historical data up to 21 Apr 2022

Condition	Signal	Explanation
Candlestick: Bullish Engulfing	Long	Bullish: Engulfing
Donchian Channels: High Above Upper Donchian Channels	Long	High crossed above the upper Donchian Channel(14,4)
Price: New 52 Week High	Long	1. Stock reach a new 52 week high. 2. Average volume(30) is above 50000.
Volume: 5 Days large value Buy Up trade	Long	1. 150K value Buy Up greater than Sell Down by 20% for 5 days. 2. 50K-100K value Buy Up greater than Sell Down by 20% for 5 days. 3. Average volume(10) is above 100000



LEON FUAT BERHAD (5232.MY)

LEONFB

Price updated at 21 Apr 2022 16:57

Last: 0.820	Change: -0.005	Volume: 11,016
	Change (%): -0.61	Range: 0.810 - 0.835

TA Scanner Results based on historical data up to 21 Apr 2022

Condition	Signal	Explanation
Bollinger Band: Bullish Long Term Volatility Breakout and Trending	Long	1. Close price above upper bollinger band(33,1). 2. Volume above average volume(50). 3. Average volume(50) is above 300,000.
Bollinger Band: Bullish Short Term Volatility Breakout and Trending	Long	1. Close price above upper bollinger band(33,1). 2. Volume above average volume(10). 3. Average volume(10) is above 300,000.
Bollinger Band: High Above Upper Bollinger Band	Neutral	1. High above upper bollinger band(20,2). 2. Average volume(5) is above 100,000.
MA: Bullish Price Crossover	Long	1. Close price crossed above MA(40) within the last 1 day. 2. Previous day close price is below the MA(10) for the last 5 days
RSI: Short Term RSI 50 Bullish Crossover	Long	1. RSI(20) crossed above 50 within the last 1 day and RSI(20) 1 day ago below 50 for the last 5 days. 2. Volume above average volume(125). 3. Average volume(5) is above 100,000.
Volume: Consecutive Days Of Increasing Average Volume	Long	1. Average Volume(20) has been increasing over the last 2 weeks. 2. Average volume(20) is above 100000
Williams %R: Bearish Williams %R	Short	1. Williams %R(26) between 0 and -20. 2. Average volume(5) is above 100,000.



IRIS CORPORATION BERHAD (0010.MY)

IRIS

Price updated at 21 Apr 2022 16:50

Last: 0.180	Change: -	Volume: 102,058
	Change (%): -	Range: 0.175 - 0.185

TA Scanner Results based on historical data up to 21 Apr 2022

Condition	Signal	Explanation
Candlestick: Bullish Engulfing	Long	Bullish: Engulfing
DM: Bullish Directional Movement	Long	-DI(14) crossed below +DI(14)
MA: Bullish Price Crossover	Long	1. Close price crossed above MA(40) within the last 1 day. 2. Previous day close price is below the MA(10) for the last 5 days
RSI: Short Term RSI 50 Bullish Crossover	Long	1. RSI(20) crossed above 50 within the last 1 day and RSI(20) 1 day ago below 50 for the last 5 days. 2. Volume above average volume(125). 3. Average volume(5) is above 100,000.



PERTAMA DIGITAL BERHAD (8532.MY)

PERTAMA

Price updated at 21 Apr 2022 16:58

Last: 0.905	Change: -	Volume: 141,949
	Change (%): -	Range: 0.890 - 0.910

TA Scanner Results based on historical data up to 21 Apr 2022

Condition	Signal	Explanation
Bollinger Band: Bullish Long Term Volatility Breakout and Trending	Long	1. Close price above upper bollinger band(33,1). 2. Volume above average volume(50). 3. Average volume(50) is above 300,000.
Bollinger Band: Bullish Short Term Volatility Breakout and Trending	Long	1. Close price above upper bollinger band(33,1). 2. Volume above average volume(10). 3. Average volume(10) is above 300,000.
Candlestick: Bullish Engulfing	Long	Bullish: Engulfing
Volume: 10 Days large value Buy Up trade	Long	1. 150K value Buy Up greater than Sell Down by 20% for 10 days. 2. 50K-100K value Buy Up greater than Sell Down by 20% for 10 days. 3. Average volume(10) is above 1000000
Williams %R: Bearish Williams %R	Short	1. Williams %R(26) between 0 and -20. 2. Average volume(5) is above 100,000.



JAYA TIASA HOLDINGS BERHAD (4383.MY)

JTIASA

Price updated at 21 Apr 2022 16:58

Last: 1.140	Change: 0.020	Volume: 98,075
	Change (%): -1.72	Range: 1.120 - 1.180

TA Scanner Results based on historical data up to 21 Apr 2022

Condition	Signal	Explanation
Bollinger Band: Bullish Long Term Volatility Breakout and Trending	Long	1. Close price above upper bollinger band(33,1). 2. Volume above average volume(50). 3. Average volume(50) is above 300,000.
Bollinger Band: Bullish Short Term Volatility Breakout and Trending	Long	1. Close price above upper bollinger band(33,1). 2. Volume above average volume(10). 3. Average volume(10) is above 300,000.
Bollinger Band: High Above Upper Bollinger Band	Neutral	1. High above upper bollinger band(20,2). 2. Average volume(5) is above 100,000.
Donchian Channels: High Above Upper Donchian Channels	Long	High crossed above the upper Donchian Channel(14,4)
Volume: 10 Days large value Buy Up trade	Long	1. 150K value Buy Up greater than Sell Down by 20% for 10 days. 2. 50K-100K value Buy Up greater than Sell Down by 20% for 10 days. 3. Average volume(10) is above 1000000
Volume: 5 Days large value Buy Up trade	Long	1. 150K value Buy Up greater than Sell Down by 20% for 5 days. 2. 50K-100K value Buy Up greater than Sell Down by 20% for 5 days. 3. Average volume(10) is above 1000000
Williams %R: Bearish Williams %R	Short	1. Williams %R(26) between 0 and -20. 2. Average volume(5) is above 100,000.



HIAP TECK VENTURE BERHAD (5072.MY)

HIAPTEK

Price updated at 21 Apr 2022 16:59

Last: 0.465	Change: -0.005	Volume: 85,204
	Change (%): -1.06	Range: 0.460 - 0.475

TA Scanner Results based on historical data up to 21 Apr 2022

Condition	Signal	Explanation
Bollinger Band: Bullish Long Term Volatility Breakout and Trending	Long	1. Close price above upper bollinger band(33,1). 2. Volume above average volume(50). 3. Average volume(50) is above 300,000.
Bollinger Band: Bullish Short Term Volatility Breakout and Trending	Long	1. Close price above upper bollinger band(33,1). 2. Volume above average volume(10). 3. Average volume(10) is above 300,000.
Bollinger Band: High Above Upper Bollinger Band	Neutral	1. High above upper bollinger band(20,2). 2. Average volume(5) is above 100,000.
Donchian Channels: High Above Upper Donchian Channels	Long	High crossed above the upper Donchian Channel(14,4)
Parabolic SAR: Bearish Parabolic SAR Reversal	Neutral	1. Parabolic SAR 1 day ago above close price 1 day ago for the last 5 days. 2. Parabolic SAR below close price
RSI: Short Term RSI 50 Bullish Crossover	Long	1. RSI(20) crossed above 50 within the last 1 day and RSI(20) 1 day ago below 50 for the last 5 days. 2. Volume above average volume(125). 3. Average volume(5) is above 100,000.
Volume: 10 Days large value Buy Up trade	Long	1. 150K value Buy Up greater than Sell Down by 20% for 10 days. 2. 50K-100K value Buy Up greater than Sell Down by 20% for 10 days. 3. Average volume(10) is above 1000000
Volume: 5 Days large value Buy Up trade	Long	1. 150K value Buy Up greater than Sell Down by 20% for 5 days. 2. 50K-100K value Buy Up greater than Sell Down by 20% for 5 days. 3. Average volume(10) is above 1000000
Williams %R: Bearish Williams %R	Short	1. Williams %R(26) between 0 and -20. 2. Average volume(5) is above 100,000.

Disclaimer: The information on this page is provided as a service to readers. It does not constitute financial advice and/or any investment recommendations. Past performance is not indicative of future results. We assume no liability for damages resulting from or arising out of the use of such information. It would be best if you did your own research to make your personal investment decisions wisely or consult a licenced investment advisor.

Week: 15 - 21 April 2022

More Brokers' Call 

APEX <small>... See More</small>	Call	Target Price	Release Date
CCK Consolidated Holdings Berhad (7035)	HOLD	RM0.58	15 Apr 2022
Axiata Group Berhad (6888)	BUY	RM 4.53	21 Apr 2022

BIMB SECURITIES SDN BHD <small>... See More</small>	Call	Target Price	Release Date
Petronas Chemicals Group Berhad (5183)	SELL	RM9.00	20 Apr 2022

KENANGA <small>... See More</small>	Call	Target Price	Release Date
LPI Capital Berhad (8621)	MARKET PERFORM	RM14.10	15 Apr 2022
CIMB Group Holdings Berhad (1023)	OUTPERFORM	RM5.65	20 Apr 2022
Axis Real Estate Investment Trust (5106)	OUTPERFORM	RM 2.10	21 Apr 2022

MALACCA SECURITIES SDN BHD <small>... See More</small>	Call	Target Price	Release Date
Econpile Holdings Berhad (5253)	BUY	RM0.32	18 Apr 2022
Malaysia Smelting Corporation Berhad (5916)	HOLD	RM 5.36	21 Apr 2022

MIDF <small>... See More</small>	Call	Target Price	Release Date
Telekom Malaysia Berhad (4863)	BUY	RM6.91	15 Apr 2022
CIMB Group Holdings Berhad (1023)	BUY	RM5.55	20 Apr 2022
Axis Real Estate Investment Trust (5106)	BUY	RM2.08	21 Apr 2022

JOB KAYHIAN <small>... See More</small>	Call	Target Price	Release Date
Press Metal Aluminium Holdings Berhad (8869)	BUY	RM7.29	15 Apr 2022
Scientex Berhad (4731)	HOLD	RM4.39	18 Apr 2022
Malakoff Berhad (2496)	BUY	RM1.05	20 Apr 2022
QL Resources Berhad (7084)	BUY	RM 5.40	21 Apr 2022

DEFINITION: Insider Activity shows the trades made by substantial shareholders or directors of the company. Purchases by the directors and company share buyback may indicate the share price is undervalued and brings confidence to the price trend of the share price.



ShareInvestor WebPro > Fundamental > Insider Trades > click Search tab > Select Bursa > click Stock name > scroll up and leave at <Select Counter> Type Date Range for Announcement Date > click Search

Notice Period is 10 April 2022 - 16 April 2022

Effective Change Date	Stock Name	Buyer/ Seller Name [Classification]	Bought / (Sold) ['000]	No. of Shares After Trade ['000]	
			Total	Total	% Held
11 Apr 2022 - 11 Apr 2022	3A	MR TEO KWEE HOCK [SSH]	133	47,426	9.674
12 Apr 2022 - 12 Apr 2022	ABMB	EMPLOYEES PROVIDENT FUND BOARD [SSH]	-149	187,861	12.135
11 Apr 2022 - 11 Apr 2022	ABMB	EMPLOYEES PROVIDENT FUND BOARD [SSH]	-27	188,010	12.145
08 Apr 2022 - 08 Apr 2022	ABMB	EMPLOYEES PROVIDENT FUND BOARD [SSH]	-500	188,037	12.146
07 Apr 2022 - 07 Apr 2022	ABMB	EMPLOYEES PROVIDENT FUND BOARD [SSH]	-500	188,537	12.179
06 Apr 2022 - 06 Apr 2022	ABMB	EMPLOYEES PROVIDENT FUND BOARD [SSH]	-635	189,037	12.211
12 Apr 2022 - 12 Apr 2022	ACME	MR GOH CHOON LYE [SSH]	271	60,064	16.342
12 Apr 2022 - 12 Apr 2022	ACME	WWT WELLNESS SOLUTIONS SDN BHD [SSH]	271	60,064	16.342
12 Apr 2022 - 12 Apr 2022	AEON	EMPLOYEES PROVIDENT FUND BOARD [SSH]	-650	150,783	10.74
11 Apr 2022 - 11 Apr 2022	AEON	EMPLOYEES PROVIDENT FUND BOARD [SSH]	-1,163	151,433	10.786
07 Apr 2022 - 07 Apr 2022	AEON	EMPLOYEES PROVIDENT FUND BOARD [SSH]	-72	152,596	10.869
06 Apr 2022 - 06 Apr 2022	AEON	EMPLOYEES PROVIDENT FUND BOARD [SSH]	-200	152,668	10.874
08 Apr 2022 - 08 Apr 2022	AIRPORT	EMPLOYEES PROVIDENT FUND BOARD [SSH]	-351	253,087	15.254
08 Apr 2022 - 08 Apr 2022	AIRPORT	KUMPULAN WANG PERSARAAN (DIPERBADANKAN) [SSH]	-20	91,559	5.518
06 Apr 2022 - 06 Apr 2022	AIRPORT	EMPLOYEES PROVIDENT FUND BOARD [SSH]	-41	253,439	15.275
12 Apr 2022 - 12 Apr 2022	ALLIANZ	EMPLOYEES PROVIDENT FUND BOARD [SSH]	3	11,866	6.668
11 Apr 2022 - 11 Apr 2022	ALLIANZ	EMPLOYEES PROVIDENT FUND BOARD [SSH]	6	11,863	6.666
12 Apr 2022 - 12 Apr 2022	AMBANK	EMPLOYEES PROVIDENT FUND BOARD [SSH]	158	318,408	9.617
11 Apr 2022 - 11 Apr 2022	AMBANK	EMPLOYEES PROVIDENT FUND BOARD [SSH]	500	318,250	9.612
07 Apr 2022 - 07 Apr 2022	AMBANK	EMPLOYEES PROVIDENT FUND BOARD [SSH]	162	317,750	9.597
13 Apr 2022 - 13 Apr 2022	AMEDIA	MR TAN CHIA HONG @ GAN CHIA HONG [DIR/CEO]	174	49,352	15.853
12 Apr 2022 - 14 Apr 2022	ANCOMNY	DATO SIEW KA WEI [DIR/CEO]	65	60,019	20.795
12 Apr 2022 - 14 Apr 2022	ANCOMNY	DATO SIEW KA WEI [SSH]	65	60,019	20.795
12 Apr 2022 - 13 Apr 2022	ANCOMNY	DATO SIEW KA WEI [DIR/CEO]	9	13,987	26.014
07 Apr 2022 - 11 Apr 2022	ANCOMNY	DATO SIEW KA WEI [DIR/CEO]	30	59,954	20.782
07 Apr 2022 - 11 Apr 2022	ANCOMNY	DATO SIEW KA WEI [SSH]	30	59,954	20.782
11 Apr 2022 - 11 Apr 2022	ASTRO	EMPLOYEES PROVIDENT FUND BOARD ("EPF") [SSH]	-7	351,364	6.738
08 Apr 2022 - 08 Apr 2022	ASTRO	EMPLOYEES PROVIDENT FUND BOARD ("EPF") [SSH]	-1,618	351,371	6.738
06 Apr 2022 - 06 Apr 2022	ASTRO	EMPLOYEES PROVIDENT FUND BOARD ("EPF") [SSH]	484	352,989	6.769
11 Apr 2022 - 11 Apr 2022	AXREIT	EMPLOYEES PROVIDENT FUND BOARD [SSH]	600	270,636	16.557
07 Apr 2022 - 07 Apr 2022	AXREIT	EMPLOYEES PROVIDENT FUND BOARD [SSH]	-206	270,036	16.521
15 Apr 2022 - 15 Apr 2022	AXTERIA	MR ONG LI TAK [DIR/CEO]	800	5,300	1.103
13 Apr 2022 - 13 Apr 2022	AXTERIA	MR ONG LI TAK [DIR/CEO]	1,800	4,500	0.937
08 Apr 2022 - 08 Apr 2022	BAUTO	PRUDENTIAL PLC [SSH]	290	59,851	5.15
08 Apr 2022 - 08 Apr 2022	BAUTO	KUMPULAN WANG PERSARAAN (DIPERBADANKAN) [SSH]	72	62,298	5.36
11 Apr 2022 - 11 Apr 2022	BIMB	EMPLOYEES PROVIDENT FUND BOARD [SSH]	-6	288,287	13.376
08 Apr 2022 - 08 Apr 2022	BIMB	EMPLOYEES PROVIDENT FUND BOARD [SSH]	-9	288,293	13.376
07 Apr 2022 - 07 Apr 2022	BIMB	EMPLOYEES PROVIDENT FUND BOARD [SSH]	-155	288,302	13.377
06 Apr 2022 - 06 Apr 2022	BIMB	EMPLOYEES PROVIDENT FUND BOARD [SSH]	-60	288,457	13.384
07 Apr 2022 - 07 Apr 2022	BJCORP	TAN SRI DATO SRI VINCENT TAN CHEE YIOUN [DIR/CEO]	50,571	2,140,091	41.909
07 Apr 2022 - 07 Apr 2022	BJCORP	TAN SRI DATO SRI VINCENT TAN CHEE YIOUN [SSH]	50,571	2,125,142	41.616
07 Apr 2022 - 08 Apr 2022	BUFOOD	MR TAN THIAM CHAI [DIR/CEO]	-180	495	0.137
08 Apr 2022 - 12 Apr 2022	BOILERM	DR CHIA SONG KUN [DIR/CEO]	136	268,983	52.13
08 Apr 2022 - 12 Apr 2022	BOILERM	DR CHIA SONG KUN [SSH]	136	268,983	52.13
08 Apr 2022 - 12 Apr 2022	BOILERM	CBG (L) FOUNDATION [SSH]	136	268,583	52.05
08 Apr 2022 - 12 Apr 2022	BOILERM	CBG (L) PTE LTD [SSH]	136	268,583	52.05
08 Apr 2022 - 12 Apr 2022	BOILERM	QL RESOURCES BERHAD [SSH]	136	268,583	52.05
08 Apr 2022 - 12 Apr 2022	BOILERM	QL GREEN RESOURCES SDN. BHD. [SSH]	136	268,583	52.05
13 Apr 2022 - 13 Apr 2022	BONIA	MR CHIANG SANG SEM [DIR/CEO]	-1,818	144,500	71.892
13 Apr 2022 - 13 Apr 2022	BONIA	DATO SRI CHIANG FONG TAT [DIR/CEO]	-400	991	0.492
12 Apr 2022 - 12 Apr 2022	BURSA	EMPLOYEES PROVIDENT FUND BOARD [SSH]	42	74,354	9.188
11 Apr 2022 - 11 Apr 2022	BURSA	KUMPULAN WANG PERSARAAN (DIPERBADANKAN) [SSH]	28	89,185	11.02
08 Apr 2022 - 08 Apr 2022	BURSA	KUMPULAN WANG PERSARAAN (DIPERBADANKAN) [SSH]	26	89,157	11.017
11 Apr 2022 - 11 Apr 2022	CBIP	DATUK LIM CHAI BENG [SSH]	200	178,624	37.434
11 Apr 2022 - 11 Apr 2022	CBIP	DATUK LIM CHAI BENG [DIR/CEO]	200	178,624	37.434
13 Apr 2022 - 13 Apr 2022	CCB	JSH ASIAN HOLDINGS LIMITED [SSH]	5	90,149	89.482
13 Apr 2022 - 13 Apr 2022	CCB	JARDINE CYCLE & CARRIAGE LIMITED [SSH]	5	90,149	89.482
13 Apr 2022 - 13 Apr 2022	CCB	JARDINE MATHESON HOLDINGS LIMITED [SSH]	5	90,149	89.482
13 Apr 2022 - 13 Apr 2022	CCB	JMH INVESTMENTS LIMITED [SSH]	5	90,149	89.482
13 Apr 2022 - 13 Apr 2022	CCB	JARDINE STRATEGIC LIMITED [SSH]	5	90,149	89.482
13 Apr 2022 - 13 Apr 2022	CCB	JARDINE STRATEGIC SINGAPORE PTE LTD [SSH]	5	90,149	89.482
12 Apr 2022 - 12 Apr 2022	CIMB	KUMPULAN WANG PERSARAAN (DIPERBADANKAN) [SSH]	-1,336	677,984	6.63
08 Apr 2022 - 08 Apr 2022	CIMB	EMPLOYEES PROVIDENT FUND BOARD [SSH]	-2,000	1,607,252	15.72
14 Apr 2021 - 14 Apr 2021	CIMB	KHAZHANA NASIONAL BERHAD [SSH]	-105,000	2,523,760	24.69
11 Apr 2022 - 11 Apr 2022	CIMB	KUMPULAN WANG PERSARAAN (DIPERBADANKAN) [SSH]	-350	679,320	6.65
07 Apr 2022 - 07 Apr 2022	CIMB	EMPLOYEES PROVIDENT FUND BOARD [SSH]	-2,120	1,609,252	15.74
06 Apr 2022 - 06 Apr 2022	CIMB	EMPLOYEES PROVIDENT FUND BOARD [SSH]	-2,216	1,611,372	15.76
12 Apr 2022 - 12 Apr 2022	CJCEN	MR TEOW CHOO HING [SSH]	110	50,209	8.594
12 Apr 2022 - 12 Apr 2022	CJCEN	MR TEOW CHOO HING [DIR/CEO]	110	50,209	8.594
08 Apr 2022 - 08 Apr 2022	CORAZA	MR NG HONG KIAT @ NG HAN KIAT [DIR/CEO]	-236	1,550	0.362

Disclaimer: The information in Insider Activity is extracted from www.shareinvestor.com/fundamental/insider_trades. The information on this page is provided as a service to readers. It does not constitute financial advice and/or any investment recommendations. We assume no liability for damages resulting from or arising out of the use of such information. Whilst every effort is made to ensure accuracy, the information presented is not the official record of shareholder filings. Readers are advised to read the original filings on the Bursa Malaysia website at www.bursamalaysia.com

Notice Period is 10 April 2022 - 16 April 2022

Effective Change Date	Stock Name	Buyer/ Seller Name [Classification]	Bought / (Sold) ['000]	No. of Shares After Trade ['000]	
			Total	Total	% Held
14 Apr 2022 - 14 Apr 2022	CRG	DATO SRI CHIANG FONG YEE [DIR/CEO]	25	254,409	31.578
14 Apr 2022 - 14 Apr 2022	CRG	DATO SRI CHIANG FONG YEE [SSH]	25	180,769	22.438
11 Apr 2022 - 11 Apr 2022	CRG	DATO SRI CHIANG FONG YEE [DIR/CEO]	229	254,384	31.575
11 Apr 2022 - 11 Apr 2022	CRG	DATO SRI CHIANG FONG YEE [SSH]	229	180,744	22.435
08 Apr 2022 - 08 Apr 2022	CRG	DATO SRI CHIANG FONG YEE [DIR/CEO]	10	254,155	31.546
08 Apr 2022 - 08 Apr 2022	CRG	DATO SRI CHIANG FONG YEE [SSH]	10	180,515	22.406
12 Apr 2022 - 12 Apr 2022	CTOS	EMPLOYEES PROVIDENT FUND BOARD [SSH]	20	144,419	6.252
08 Apr 2022 - 08 Apr 2022	CTOS	EMPLOYEES PROVIDENT FUND BOARD [SSH]	80	144,399	6.251
11 Apr 2022 - 11 Apr 2022	CWG	MR LOH SEONG YEW [DIR/CEO]	50	100	0.061
12 Apr 2022 - 12 Apr 2022	CYPARK	ENCK HEADIR BIN MAHFIDZ [DIR/CEO]	-100	287	0.049
08 Apr 2022 - 08 Apr 2022	DANCO-WA	MR AIK CWO SHING [DIR/CEO]	-500	7,966	13.477
07 Apr 2022 - 07 Apr 2022	DAYANG	URUSHARTA JAMAAN SDN. BHD. [SSH]	486	94,829	8.191
12 Apr 2022 - 12 Apr 2022	DIALOG	EMPLOYEES PROVIDENT FUND BOARD [SSH]	1,266	774,889	13.73
11 Apr 2022 - 11 Apr 2022	DIALOG	EMPLOYEES PROVIDENT FUND BOARD [SSH]	1,200	773,623	13.71
08 Apr 2022 - 08 Apr 2022	DIALOG	EMPLOYEES PROVIDENT FUND BOARD [SSH]	439	772,423	13.69
06 Apr 2022 - 06 Apr 2022	DIALOG	EMPLOYEES PROVIDENT FUND BOARD [SSH]	1,000	771,984	13.68
12 Apr 2022 - 12 Apr 2022	DPHARMA	PERMODALAN NASIONAL BERHAD [SSH]	1,821	402,248	42.712
12 Apr 2022 - 12 Apr 2022	DPHARMA	YAYASAN PELABURAN BUMIPUTRA [SSH]	1,821	402,248	42.712
11 Apr 2022 - 11 Apr 2022	DPHARMA	PERMODALAN NASIONAL BERHAD [SSH]	236	400,427	42.519
11 Apr 2022 - 11 Apr 2022	DPHARMA	YAYASAN PELABURAN BUMIPUTRA [SSH]	236	400,427	42.519
08 Apr 2022 - 08 Apr 2022	DPHARMA	PERMODALAN NASIONAL BERHAD [SSH]	786	400,192	42.494
08 Apr 2022 - 08 Apr 2022	DPHARMA	YAYASAN PELABURAN BUMIPUTRA [SSH]	786	400,192	42.494
07 Apr 2022 - 07 Apr 2022	DPHARMA	EMPLOYEES PROVIDENT FUND BOARD [SSH]	462	86,574	9.193
07 Apr 2022 - 07 Apr 2022	DPHARMA	PERMODALAN NASIONAL BERHAD [SSH]	1,068	399,406	42.41
07 Apr 2022 - 07 Apr 2022	DPHARMA	YAYASAN PELABURAN BUMIPUTRA [SSH]	1,068	399,406	42.41
06 Apr 2022 - 06 Apr 2022	DRBHCOC	EMPLOYEES PROVIDENT FUND BOARD [SSH]	223	209,485	10.836
12 Apr 2022 - 12 Apr 2022	ECOWLD	DATO LEONG KOK WAH [DIR/CEO]	-616	1,191,779	40.477
12 Apr 2022 - 12 Apr 2022	ECOWLD	DATO LEONG KOK WAH [SSH]	-616	1,191,779	40.477
12 Apr 2022 - 12 Apr 2022	ECOWLD	TAN SRI ABDUL RASHID BIN ABDUL MANAF [SSH]	-616	221,860	7.535
12 Apr 2022 - 12 Apr 2022	ECOWLD	ECO WORLD DEVELOPMENT HOLDINGS SDN. BHD. [SSH]	-616	221,860	7.535
12 Apr 2022 - 12 Apr 2022	ECOWLD	TAN SRI ABDUL RASHID BIN ABDUL MANAF [DIR/CEO]	-616	221,860	7.535
13 Apr 2022 - 13 Apr 2022	ENKKAH	MR EWE ENG KAH [SSH]	10	54,950	46.52
13 Apr 2022 - 13 Apr 2022	ENKKAH	MADAM NEOH LAY HWA [SSH]	10	54,950	46.52
13 Apr 2022 - 13 Apr 2022	ENKKAH	MR EWE ENG KAH [DIR/CEO]	10	54,950	46.52
11 Apr 2022 - 11 Apr 2022	ENKKAH	MR EWE ENG KAH [DIR/CEO]	60	54,940	46.52
11 Apr 2022 - 11 Apr 2022	ENKKAH	MADAM NEOH LAY HWA [SSH]	60	54,940	46.52
11 Apr 2022 - 11 Apr 2022	ENKKAH	MR EWE ENG KAH [SSH]	60	54,940	46.52
11 Apr 2022 - 11 Apr 2022	FFB	EMPLOYEES PROVIDENT FUND BOARD [SSH]	-1,500	100,055	5.385
08 Apr 2022 - 08 Apr 2022	FFB	EMPLOYEES PROVIDENT FUND BOARD [SSH]	-379	101,555	5.466
06 Apr 2022 - 06 Apr 2022	FFB	EMPLOYEES PROVIDENT FUND BOARD [SSH]	27	101,934	5.486
12 Apr 2022 - 14 Apr 2022	FPGROUP	DATO ONG CHOO HENG [DIR/CEO]	183	185,816	34.39
12 Apr 2022 - 14 Apr 2022	FPGROUP	DATO ONG CHOO HENG [SSH]	183	185,816	34.39
12 Apr 2022 - 12 Apr 2022	GAMUDA	KUMPULAN WANG PERSARAAN (DIPERBADANKAN) [KWAP] [SSH]	-733	205,058	8.03
11 Apr 2022 - 11 Apr 2022	GAMUDA	KUMPULAN WANG PERSARAAN (DIPERBADANKAN) [KWAP] [SSH]	-146	205,791	8.06
06 Apr 2022 - 06 Apr 2022	GBGAQRS	EMPLOYEES PROVIDENT FUND BOARD [SSH]	-1,000	36,609	6.745
06 Apr 2022 - 07 Apr 2022	GDEX	MR TEONG TECK LEAN [SSH]	1,010	2,198,486	39.399
06 Apr 2022 - 07 Apr 2022	GDEX	MR TEONG TECK LEAN [DIR/CEO]	1,010	2,198,486	39.399
14 Apr 2022 - 14 Apr 2022	GENP	KUMPULAN WANG PERSARAAN (DIPERBADANKAN) [SSH]	9	66,377	7.398
12 Apr 2022 - 12 Apr 2022	GENP	EMPLOYEES PROVIDENT FUND BOARD [SSH]	-170	113,008	12.596
13 Apr 2022 - 13 Apr 2022	GENP	KUMPULAN WANG PERSARAAN (DIPERBADANKAN) [SSH]	23	66,368	7.397
11 Apr 2022 - 11 Apr 2022	GENP	EMPLOYEES PROVIDENT FUND BOARD [SSH]	-229	113,178	12.615
12 Apr 2022 - 12 Apr 2022	GENP	KUMPULAN WANG PERSARAAN (DIPERBADANKAN) [SSH]	172	66,345	7.395
08 Apr 2022 - 08 Apr 2022	GENP	EMPLOYEES PROVIDENT FUND BOARD [SSH]	10	113,407	12.64
07 Apr 2022 - 07 Apr 2022	GENP	EMPLOYEES PROVIDENT FUND BOARD [SSH]	194	113,397	12.639
08 Apr 2022 - 08 Apr 2022	GENP	KUMPULAN WANG PERSARAAN (DIPERBADANKAN) [SSH]	50	66,173	7.376
06 Apr 2022 - 06 Apr 2022	GENP	EMPLOYEES PROVIDENT FUND BOARD [SSH]	95	113,203	12.617
06 Apr 2022 - 06 Apr 2022	GETS	DATO SYED ABU HUSSIN BIN HAFIZ SYED ABDUL FASAL [SSH]	20,000	24,927	8.777
13 Apr 2022 - 13 Apr 2022	GIIB	MR TAI QIYAO [SSH]	500	76,695	12.97
13 Apr 2022 - 13 Apr 2022	GIIB	MR TAI QIYAO [DIR/CEO]	500	76,695	12.97
13 Apr 2022 - 13 Apr 2022	GIIB	MR TAI BOON WEE [DIR/CEO]	500	76,615	12.957
13 Apr 2022 - 13 Apr 2022	GIIB	MR TAI QISHENG [SSH]	500	76,615	12.957
13 Apr 2022 - 13 Apr 2022	GIIB	MR TAI QISHENG [DIR/CEO]	500	76,615	12.957
13 Apr 2022 - 13 Apr 2022	GIIB	MR TAI BOON WEE [SSH]	500	76,615	12.957
12 Apr 2022 - 12 Apr 2022	HLBANK	EMPLOYEES PROVIDENT FUND BOARD [SSH]	-460	207,797	9.959
11 Apr 2022 - 11 Apr 2022	HLBANK	EMPLOYEES PROVIDENT FUND BOARD [SSH]	50	208,256	9.981
08 Apr 2022 - 08 Apr 2022	HLBANK	EMPLOYEES PROVIDENT FUND BOARD [SSH]	-105	208,207	9.978
07 Apr 2022 - 07 Apr 2022	HLBANK	EMPLOYEES PROVIDENT FUND BOARD [SSH]	27	208,312	9.983
06 Apr 2022 - 06 Apr 2022	HLBANK	EMPLOYEES PROVIDENT FUND BOARD [SSH]	127	208,285	9.982
14 Apr 2022 - 14 Apr 2022	HONGSENG	DATO SRI TEOW HAI HIN [SSH]	-9,300	335,216	13.124

Notice Period is 10 April 2022 - 16 April 2022

Effective Change Date	Stock Name	Buyer/ Seller Name [Classification]	Bought / (Sold) ['000]		No. of Shares After Trade ['000]	
			Total	Total	% Held	
14 Apr 2022 - 14 Apr 2022	HONGSENG	DATO' SERI TEOH HAI HIN [DIR/CEO]	-9,300	335,216	13.124	
13 Apr 2022 - 14 Apr 2022	HSL	DATO YU CHEE HOE [SSH]	305	495,375	90.147	
13 Apr 2022 - 14 Apr 2022	HSL	DATO YU CHEE HOE [DIR/CEO]	305	495,375	90.147	
13 Apr 2022 - 14 Apr 2022	HSL	MADAM TANG SING NGIHK [SSH]	305	473,536	86.173	
13 Apr 2022 - 14 Apr 2022	HSL	HOCK SENG LEE ENTERPRISE SDN BHD [SSH]	305	465,904	84.784	
11 Apr 2022 - 12 Apr 2022	HSL	DATO YU CHEE HOE [SSH]	434	495,070	90.092	
11 Apr 2022 - 12 Apr 2022	HSL	DATO YU CHEE HOE [DIR/CEO]	434	495,070	90.092	
11 Apr 2022 - 12 Apr 2022	HSL	MADAM TANG SING NGIHK [SSH]	434	473,231	86.118	
11 Apr 2022 - 12 Apr 2022	HSL	HOCK SENG LEE ENTERPRISE SDN BHD [SSH]	434	465,599	84.729	
07 Apr 2022 - 08 Apr 2022	HSL	DATO YU CHEE HOE [SSH]	8,093	494,636	90.013	
07 Apr 2022 - 08 Apr 2022	HSL	DATO YU CHEE HOE [DIR/CEO]	8,093	494,636	90.013	
07 Apr 2022 - 08 Apr 2022	HSL	MADAM TANG SING NGIHK [SSH]	8,093	472,797	86.039	
07 Apr 2022 - 08 Apr 2022	HSL	HOCK SENG LEE ENTERPRISE SDN BHD [SSH]	8,093	465,165	84.65	
08 Apr 2022 - 08 Apr 2022	IBHD-PA	TAN SRI LIM KIM HONG [SSH]	5	601,773	83.529	
08 Apr 2022 - 08 Apr 2022	IBHD-PA	TAN SRI LIM KIM HONG [DIR/CEO]	5	601,773	83.529	
08 Apr 2022 - 08 Apr 2022	IBHD-PA	SUMUR VENTURES SDN BHD [SSH]	5	579,210	80.397	
08 Apr 2022 - 08 Apr 2022	IBHD-PA	SUMURWANG SDN BHD [SSH]	5	510,883	70.912	
08 Apr 2022 - 08 Apr 2022	IDMENSN	MR YAU MING TECK [SSH]	3,917	3,917	9.002	
08 Apr 2022 - 08 Apr 2022	IDMENSN	MR YEW AH CHAI [SSH]	3,100	3,100	7.124	
08 Apr 2022 - 08 Apr 2022	IDMENSN	MR TOO TIAN JEN [SSH]	3,100	3,100	7.124	
08 Apr 2022 - 08 Apr 2022	IDMENSN	MR TEOH TENG GUAN [SSH]	3,100	3,100	7.124	
08 Apr 2022 - 08 Apr 2022	IDMENSN	MR DAVID TAN CHAO HSIUNG [SSH]	3,100	3,100	7.124	
14 Apr 2022 - 14 Apr 2022	IGBREIT	KUMPULAN WANG PERSARAAN (DIPERBADANKAN) [SSH]	-593	266,243	7.447	
12 Apr 2022 - 12 Apr 2022	IGBREIT	EMPLOYEES PROVIDENT FUND BOARD ("EPF BOARD") [SSH]	50	405,279	11.335	
13 Apr 2022 - 13 Apr 2022	IGBREIT	KUMPULAN WANG PERSARAAN (DIPERBADANKAN) [SSH]	-172	266,836	7.463	
11 Apr 2022 - 11 Apr 2022	IGBREIT	EMPLOYEES PROVIDENT FUND BOARD ("EPF BOARD") [SSH]	8	405,229	11.334	
07 Apr 2022 - 07 Apr 2022	IGBREIT	EMPLOYEES PROVIDENT FUND BOARD ("EPF BOARD") [SSH]	78	405,221	11.333	
06 Apr 2022 - 06 Apr 2022	IGBREIT	EMPLOYEES PROVIDENT FUND BOARD ("EPF BOARD") [SSH]	486	405,144	11.331	
12 Apr 2022 - 12 Apr 2022	IHH	EMPLOYEES PROVIDENT FUND BOARD [SSH]	22	858,372	9.751	
07 Apr 2022 - 07 Apr 2022	IHH	EMPLOYEES PROVIDENT FUND BOARD [SSH]	144	858,349	9.751	
06 Apr 2022 - 06 Apr 2022	IHH	EMPLOYEES PROVIDENT FUND BOARD [SSH]	51	858,205	9.749	
08 Apr 2022 - 08 Apr 2022	IJM	EMPLOYEES PROVIDENT FUND BOARD [SSH]	-100	601,083	17.023	
08 Apr 2022 - 08 Apr 2022	IJM	URUSHARTA JAMAHAH SDN BHD [SSH]	-407	217,728	6.166	
07 Apr 2022 - 07 Apr 2022	IJM	URUSHARTA JAMAHAH SDN BHD [SSH]	386	218,135	6.177	
06 Apr 2022 - 06 Apr 2022	IJM	URUSHARTA JAMAHAH SDN BHD [SSH]	760	217,749	6.166	
12 Apr 2022 - 12 Apr 2022	INARI	EMPLOYEES PROVIDENT FUND BOARD [SSH]	3,564	276,585	7.463	
13 Apr 2022 - 13 Apr 2022	INARI	KUMPULAN WANG PERSARAAN (DIPERBADANKAN) [SSH]	236	333,761	9.005	
11 Apr 2022 - 11 Apr 2022	INARI	EMPLOYEES PROVIDENT FUND BOARD [SSH]	3,564	273,021	7.366	
12 Apr 2022 - 12 Apr 2022	INARI	KUMPULAN WANG PERSARAAN (DIPERBADANKAN) [SSH]	236	333,525	8.998	
08 Apr 2022 - 08 Apr 2022	INARI	EMPLOYEES PROVIDENT FUND BOARD [SSH]	3,000	269,457	7.27	
12 Apr 2022 - 12 Apr 2022	INARI	Y.A.M TENGKU PUTERI SERI KEMALA TENGKU HAJJAH AISHAH BINTI ALMARHUM SULTAN HAJI AHMAD SHAH [DIR/CEO]	-175	522	0.014	
11 Apr 2022 - 11 Apr 2022	INARI	KUMPULAN WANG PERSARAAN (DIPERBADANKAN) [SSH]	-120	333,289	8.992	
07 Apr 2022 - 07 Apr 2022	INARI	EMPLOYEES PROVIDENT FUND BOARD [SSH]	2,000	266,457	7.189	
08 Apr 2022 - 08 Apr 2022	INARI	KUMPULAN WANG PERSARAAN (DIPERBADANKAN) [SSH]	940	333,408	8.996	
06 Apr 2022 - 06 Apr 2022	INARI	EMPLOYEES PROVIDENT FUND BOARD [SSH]	2,355	264,457	7.135	
12 Apr 2022 - 12 Apr 2022	IOICORP	EMPLOYEES PROVIDENT FUND BOARD [SSH]	-514	713,540	11.485	
11 Apr 2022 - 11 Apr 2022	IOICORP	EMPLOYEES PROVIDENT FUND BOARD [SSH]	-774	714,055	11.493	
08 Apr 2022 - 08 Apr 2022	IOICORP	EMPLOYEES PROVIDENT FUND BOARD [SSH]	-450	714,829	11.505	
07 Apr 2022 - 07 Apr 2022	IOICORP	EMPLOYEES PROVIDENT FUND BOARD [SSH]	-2,328	715,279	11.513	
06 Apr 2022 - 06 Apr 2022	IOICORP	EMPLOYEES PROVIDENT FUND BOARD [SSH]	-483	717,606	11.55	
11 Apr 2022 - 11 Apr 2022	IOIPG	EMPLOYEES PROVIDENT FUND BOARD [SSH]	164	442,452	8.036	
14 Apr 2022 - 14 Apr 2022	IREKA	ENCIK WAN AHMAD NAZIM BIN MOHAMED NOOR [DIR/CEO]	249	2,702	1.186	
14 Apr 2022 - 14 Apr 2022	IREKA	ENCIK MOHD HASNUL ISMAR BIN MOHD ISMAIL [DIR/CEO]	249	2,702	1.186	
08 Apr 2022 - 08 Apr 2022	IREKA	ENCIK WAN AHMAD NAZIM BIN MOHAMED NOOR [DIR/CEO]	100	2,454	1.077	
08 Apr 2022 - 08 Apr 2022	IREKA	ENCIK MOHD HASNUL ISMAR BIN MOHD ISMAIL [DIR/CEO]	100	2,454	1.077	
12 Apr 2022 - 12 Apr 2022	JADI	XOX (HONG KONG) LIMITED [SSH]	821	302,293	28.084	
12 Apr 2022 - 12 Apr 2022	JADI	XOX BHD [SSH]	821	302,293	28.084	
08 Apr 2022 - 08 Apr 2022	JADI	XOX BHD [SSH]	1,944	301,472	28.008	
08 Apr 2022 - 08 Apr 2022	JADI	XOX (HONG KONG) LIMITED [SSH]	1,944	301,472	28.008	
13 Apr 2022 - 13 Apr 2022	JAG	DATO' NG AIK KEE [SSH]	2,000	134,241	21.417	
13 Apr 2022 - 13 Apr 2022	JERASIA	MR YEE JIA CHENG [SSH]	-70	4,230	5.156	
11 Apr 2022 - 11 Apr 2022	JERASIA	MR YEE JIA CHENG [SSH]	-460	4,300	5.241	
08 Apr 2022 - 08 Apr 2022	JERASIA	MR YEE JIA CHENG [SSH]	210	4,760	5.802	
07 Apr 2022 - 07 Apr 2022	JERASIA	MR YEE JIA CHENG [SSH]	-950	4,550	5.546	
11 Apr 2022 - 11 Apr 2022	JTIASA	MADAM TIONG CHOON [DIR/CEO]	-20	1,432	0.148	
07 Apr 2022 - 08 Apr 2022	KAB	MR KINGTAN TONG KUM LOONG [SSH]	4,000	231,599	12.88	
11 Apr 2022 - 12 Apr 2022	KAWAN	MR GAN THIAM CHAI [DIR/CEO]	61	102,221	28.503	
11 Apr 2022 - 12 Apr 2022	KAWAN	MR GAN THIAM CHAI [SSH]	61	102,221	28.503	
08 Apr 2022 - 08 Apr 2022	KAWAN	MR GAN THIAM CHAI [SSH]	5	102,160	28.486	
08 Apr 2022 - 08 Apr 2022	KAWAN	MR GAN THIAM CHAI [DIR/CEO]	5	102,160	28.486	
11 Apr 2022 - 11 Apr 2022	KENANGA	KENANGA INVESTMENT BANK BERHAD [SSH]	30	2,512	0.341	
12 Apr 2022 - 12 Apr 2022	KLCC	EMPLOYEES PROVIDENT FUND BOARD [SSH]	9	180,908	10.021	
12 Apr 2022 - 12 Apr 2022	KLCC	EMPLOYEES PROVIDENT FUND BOARD [SSH]	9	180,908	10.021	
12 Apr 2022 - 12 Apr 2022	KLK	EMPLOYEES PROVIDENT FUND BOARD [SSH]	-102	111,615	10.352	
11 Apr 2022 - 11 Apr 2022	KLK	EMPLOYEES PROVIDENT FUND BOARD [SSH]	-340	111,717	10.362	
08 Apr 2022 - 08 Apr 2022	KLK	EMPLOYEES PROVIDENT FUND BOARD [SSH]	56	112,057	10.393	
07 Apr 2022 - 07 Apr 2022	KLK	EMPLOYEES PROVIDENT FUND BOARD [SSH]	-346	112,001	10.388	
06 Apr 2022 - 06 Apr 2022	KLK	EMPLOYEES PROVIDENT FUND BOARD [SSH]	-600	112,346	10.42	
06 Apr 2022 - 06 Apr 2022	KTB	LENGKAP SUCI SDN. BHD. [SSH]	-19,600	44,807	9.538	
06 Apr 2022 - 06 Apr 2022	KUB	ANCHORSCAPE SDN BHD [SSH]	-200	52,740	9.478	
05 Apr 2022 - 05 Apr 2022	KUB	ANCHORSCAPE SDN BHD [SSH]	-500	52,940	9.514	
11 Apr 2022 - 13 Apr 2022	LAYHONG	DATO' YAP HOONG CHAI [DIR/CEO]	88	298,799	40.361	
06 Apr 2022 - 08 Apr 2022	LAYHONG	DATO' YAP HOONG CHAI [DIR/CEO]	105	298,711	40.349	
08 Apr 2022 - 11 Apr 2022	LIHEN	CHUA LEE SENG [DIR/CEO]	-44	77,169	42.871	
08 Apr 2022 - 11 Apr 2022	LIHEN	CHUA LEE SENG [SSH]	-44	77,169	42.871	
12 Apr 2022 - 12 Apr 2022	MALAKOF	EMPLOYEES PROVIDENT FUND BOARD [SSH]	-1,025	534,592	10.939	
11 Apr 2022 - 11 Apr 2022	MALAKOF	EMPLOYEES PROVIDENT FUND BOARD [SSH]	-3,000	535,617	10.96	
08 Apr 2022 - 08 Apr 2022	MALAKOF	EMPLOYEES PROVIDENT FUND BOARD [SSH]	-2,512	538,617	11.021	
07 Apr 2022 - 07 Apr 2022	MALAKOF	EMPLOYEES PROVIDENT FUND BOARD [SSH]	-1,426	541,129	11.072	
06 Apr 2022 - 06 Apr 2022	MALAKOF	EMPLOYEES PROVIDENT FUND BOARD [SSH]	-3,000	542,555	11.102	
12 Apr 2022 - 12 Apr 2022	MATRIX	EMPLOYEES PROVIDENT FUND BOARD [SSH]	290	74,747	8.96	
11 Apr 2022 - 11 Apr 2022	MATRIX	EMPLOYEES PROVIDENT FUND BOARD [SSH]	-26	74,457	8.925	
08 Apr 2022 - 08 Apr 2022	MATRIX	EMPLOYEES PROVIDENT FUND BOARD [SSH]	-211	74,484	8.928	
07 Apr 2022 - 07 Apr 2022	MATRIX	EMPLOYEES PROVIDENT FUND BOARD [SSH]	209	74,695	8.954	
06 Apr 2022 - 06 Apr 2022	MATRIX	EMPLOYEES PROVIDENT FUND BOARD [SSH]	-57	74,486	8.929	

Notice Period is 10 April 2022 - 16 April 2022

Effective Change Date	Stock Name	Buyer/ Seller Name [Classification]	Bought / (Sold) ['000]		No. of Shares After Trade ['000]	
			Total	Total	% Held	
13 Apr 2022 - 13 Apr 2022	MAYBANK	AMANAHRAYA TRUSTEES BERHAD - AMANAH SAHAM BUMIPUTERA [SSH]	-3,100	3,968,870	33.157	
12 Apr 2022 - 12 Apr 2022	MAYBANK	EMPLOYEES PROVIDENT FUND BOARD [SSH]	1,550	1,642,317	13.72	
12 Apr 2022 - 12 Apr 2022	MAYBANK	AMANAHRAYA TRUSTEES BERHAD - AMANAH SAHAM BUMIPUTERA [SSH]	-3,049	3,971,970	33.183	
11 Apr 2022 - 11 Apr 2022	MAYBANK	EMPLOYEES PROVIDENT FUND BOARD [SSH]	1,400	1,640,767	13.707	
11 Apr 2022 - 11 Apr 2022	MAYBANK	AMANAHRAYA TRUSTEES BERHAD - AMANAH SAHAM BUMIPUTERA [SSH]	-1,851	3,975,019	33.464	
08 Apr 2022 - 08 Apr 2022	MAYBANK	EMPLOYEES PROVIDENT FUND BOARD [SSH]	387	1,639,367	13.801	
08 Apr 2022 - 08 Apr 2022	MAYBANK	AMANAHRAYA TRUSTEES BERHAD - AMANAH SAHAM BUMIPUTERA [SSH]	-423	3,976,870	33.48	
07 Apr 2022 - 07 Apr 2022	MAYBANK	EMPLOYEES PROVIDENT FUND BOARD [SSH]	-1,881	1,638,980	13.798	
07 Apr 2022 - 07 Apr 2022	MAYBANK	AMANAHRAYA TRUSTEES BERHAD - AMANAH SAHAM BUMIPUTERA [SSH]	-1,900	3,977,292	33.483	
06 Apr 2022 - 06 Apr 2022	MAYBANK	EMPLOYEES PROVIDENT FUND BOARD [SSH]	1,040	1,640,861	13.814	
13 Apr 2022 - 13 Apr 2022	MEDIA	MORGAN STANLEY [SSH]	-2,100	114,680	10.339	
12 Apr 2022 - 12 Apr 2022	MEDIA	MORGAN STANLEY [SSH]	-960	115,730	10.434	
11 Apr 2022 - 11 Apr 2022	MEDIA	MORGAN STANLEY [SSH]	-1,240	116,210	10.477	
08 Apr 2022 - 08 Apr 2022	MEDIA	MORGAN STANLEY [SSH]	-2,640	116,830	10.533	
07 Apr 2022 - 07 Apr 2022	MEDIA	MORGAN STANLEY [SSH]	-1,000	118,150	10.652	
13 Apr 2022 - 15 Apr 2022	MFCB	MR GOH NAN KIOH [SSH]	35	316,258	33.456	
13 Apr 2022 - 15 Apr 2022	MFCB	MR GOH NAN KIOH [DIR/CEO]	35	316,258	33.456	
13 Apr 2022 - 15 Apr 2022	MFCB	CAMASIA LIMITED [SSH]	35	201,445	21.31	
13 Apr 2022 - 15 Apr 2022	MFCB	LAJU RIANG SDN BHD [SSH]	35	199,960	21.153	
13 Apr 2022 - 15 Apr 2022	MFCB	CAM PROPERTY (MALAYSIA) SDN BHD [SSH]	35	199,960	21.153	
13 Apr 2022 - 15 Apr 2022	MFCB	RUBBER THORN INDUSTRIES (M) SDN BERHAD [SSH]	35	199,960	21.152	
11 Apr 2022 - 11 Apr 2022	MGRIC	PIXELVEST SDN BHD [SSH]	-135	10,366	8.346	
11 Apr 2022 - 11 Apr 2022	MI	EMPLOYEES PROVIDENT FUND BOARD [SSH]	300	45,657	5.1	
11 Mar 2022 - 11 Mar 2022	MI	EMPLOYEES PROVIDENT FUND BOARD [SSH]	77	45,840	5.12	
10 Mar 2022 - 10 Mar 2022	MI	EMPLOYEES PROVIDENT FUND BOARD [SSH]	701	45,763	5.11	
09 Mar 2022 - 09 Mar 2022	MI	EMPLOYEES PROVIDENT FUND BOARD [SSH]	510	45,062	5.03	
12 Apr 2022 - 12 Apr 2022	MIKROMB	MR LOW KHEK HENG @ LOW CHUON HUAT [SSH]	700	103,650	17.591	
12 Apr 2022 - 12 Apr 2022	MISC	EMPLOYEES PROVIDENT FUND BOARD [SSH]	566	552,555	12.38	
13 Apr 2022 - 13 Apr 2022	MISC	KUMPULAN WANG PERSARAAN (DIPERBADANKAN) (KWAP) [SSH]	-500	229,222	5.13	
11 Apr 2022 - 11 Apr 2022	MISC	EMPLOYEES PROVIDENT FUND BOARD [SSH]	-222	551,989	12.37	
12 Apr 2022 - 12 Apr 2022	MISC	KUMPULAN WANG PERSARAAN (DIPERBADANKAN) (KWAP) [SSH]	-400	229,722	5.14	
08 Apr 2022 - 08 Apr 2022	MISC	EMPLOYEES PROVIDENT FUND BOARD [SSH]	112	552,211	12.37	
07 Apr 2022 - 07 Apr 2022	MISC	EMPLOYEES PROVIDENT FUND BOARD [SSH]	325	552,099	12.37	
08 Apr 2022 - 08 Apr 2022	MISC	KUMPULAN WANG PERSARAAN (DIPERBADANKAN) (KWAP) [SSH]	-608	230,122	5.16	
06 Apr 2022 - 06 Apr 2022	MISC	EMPLOYEES PROVIDENT FUND BOARD [SSH]	-267	551,774	12.36	
12 Apr 2022 - 12 Apr 2022	MP					

Notice Period is 10 April 2022 - 16 April 2022

Effective Change Date	Stock Name	Buyer/ Seller Name [Classification]	Bought / (Sold) ['000]	No. of Shares After Trade ['000]	
			Total	Total	% Held
06 Apr 2022 - 06 Apr 2022	PETDAG	EMPLOYEES PROVIDENT FUND BOARD ("EPF BOARD") [SSH]	11	116,857	11.763
12 Apr 2022 - 12 Apr 2022	PETGAS	EMPLOYEES PROVIDENT FUND BOARD [SSH]	242	274,974	13.896
11 Apr 2022 - 11 Apr 2022	PETGAS	EMPLOYEES PROVIDENT FUND BOARD [SSH]	-63	274,732	13.884
08 Apr 2022 - 08 Apr 2022	PETGAS	EMPLOYEES PROVIDENT FUND BOARD [SSH]	-76	274,795	13.887
11 Apr 2022 - 11 Apr 2022	PETGAS	KUMPULAN WANG PERSARAAN (DIPERBADANKAN) [SSH]	8	207,278	10.476
08 Apr 2022 - 08 Apr 2022	PETGAS	KUMPULAN WANG PERSARAAN (DIPERBADANKAN) [SSH]	18	207,270	10.475
12 Apr 2022 - 12 Apr 2022	POHKONG	DATO CHOON YEE SEIONG [SSH]	-200	256,464	62.5
12 Apr 2022 - 12 Apr 2022	POHKONG	DATO CHOON YOE YING [SSH]	-200	255,424	62.24
12 Apr 2022 - 12 Apr 2022	POHKONG	MR CHOON YEE BIN [SSH]	-200	255,300	62.21
12 Apr 2022 - 12 Apr 2022	POHKONG	MADAM CHOON NEE SIEW [SSH]	-200	255,263	62.2
12 Apr 2022 - 12 Apr 2022	POHKONG	ENCIK MOHD ANNUAR CHOON BIN ABDULLAH [SSH]	-200	255,157	62.18
12 Apr 2022 - 12 Apr 2022	POHKONG	MADAM CHOON WAN JOO [SSH]	-200	255,129	62.18
12 Apr 2022 - 12 Apr 2022	POHKONG	MR CHOON YEE FOOK [SSH]	-200	255,129	62.17
12 Apr 2022 - 12 Apr 2022	POHKONG	MADAM CHOON CHING YIH [SSH]	-200	255,029	62.15
12 Apr 2022 - 12 Apr 2022	PPB	EMPLOYEES PROVIDENT FUND BOARD [SSH]	-615	162,788	11.443
11 Apr 2022 - 11 Apr 2022	PPB	EMPLOYEES PROVIDENT FUND BOARD [SSH]	-42	163,403	11.486
08 Apr 2022 - 08 Apr 2022	PPB	EMPLOYEES PROVIDENT FUND BOARD [SSH]	-53	163,445	11.489
07 Apr 2022 - 07 Apr 2022	PPB	EMPLOYEES PROVIDENT FUND BOARD [SSH]	43	163,498	11.493
06 Apr 2022 - 06 Apr 2022	PPB	EMPLOYEES PROVIDENT FUND BOARD [SSH]	-32	163,454	11.49
11 Apr 2022 - 11 Apr 2022	PRESTAR	ENCIK SHAMSUDIN @ SAMAD BIN KASSIM [DIR/CEO]	114	1,028	0.3
06 Apr 2022 - 06 Apr 2022	PRLEX-US-WB	MR CHIN CHEW MUN [DIR/CEO]	-0.1	222	0.17
11 Apr 2022 - 11 Apr 2022	PUC	DATUK OH CHONG PENG [DIR/CEO]	500	1,000	0.062
08 Apr 2022 - 08 Apr 2022	PWROOT	DATO' WONG FUEI BOON [SSH]	480	78,248	18.769
08 Apr 2022 - 08 Apr 2022	PWROOT	DATO' WONG FUEI BOON [DIR/CEO]	480	78,248	18.769
11 Apr 2022 - 11 Apr 2022	PWRWELL	MADAM WONG YOKE YEN [DIR/CEO]	1,171	328,017	56.501
11 Apr 2022 - 11 Apr 2022	PWRWELL	MADAM WONG YOKE YEN [SSH]	1,171	328,017	56.501
12 Apr 2022 - 12 Apr 2022	QL	EMPLOYEES PROVIDENT FUND BOARD [SSH]	-17	167,542	6.884
11 Apr 2022 - 11 Apr 2022	QL	EMPLOYEES PROVIDENT FUND BOARD [SSH]	-65	167,559	6.885
08 Apr 2022 - 08 Apr 2022	QL	EMPLOYEES PROVIDENT FUND BOARD [SSH]	-387	167,624	6.888
06 Apr 2022 - 06 Apr 2022	QL	EMPLOYEES PROVIDENT FUND BOARD [SSH]	-378	167,982	6.902
13 Apr 2022 - 13 Apr 2022	REVENUE	MR OOI GUAN HOE [DIR/CEO]	110	110	0.07
12 Apr 2022 - 13 Apr 2022	REVENUE	DATUK NG CHEE SIONG [DIR/CEO]	-2,103	3,982	2.545
12 Apr 2022 - 13 Apr 2022	RGTECH	MR TEVANAGAM RANDY CHITTY [DIR/CEO]	40	1,570	0.299
14 Apr 2022 - 14 Apr 2022	RHBBANK	KUMPULAN WANG PERSARAAN (DIPERBADANKAN) [SSH]	321	232,413	5.609
12 Apr 2022 - 12 Apr 2022	RHBBANK	EMPLOYEES PROVIDENT FUND BOARD [SSH]	1,790	1,744,496	42.108
11 Apr 2022 - 11 Apr 2022	RHBBANK	EMPLOYEES PROVIDENT FUND BOARD [SSH]	369	1,742,706	42.065
12 Apr 2022 - 12 Apr 2022	RHBBANK	KUMPULAN WANG PERSARAAN (DIPERBADANKAN) [SSH]	100	232,092	5.602
08 Apr 2022 - 08 Apr 2022	RHBBANK	EMPLOYEES PROVIDENT FUND BOARD [SSH]	-500	1,742,337	42.056
07 Apr 2022 - 07 Apr 2022	RHBBANK	EMPLOYEES PROVIDENT FUND BOARD [SSH]	-574	1,742,837	42.068
06 Apr 2022 - 06 Apr 2022	RHBBANK	EMPLOYEES PROVIDENT FUND BOARD [SSH]	-291	1,743,411	42.082
06 Apr 2022 - 06 Apr 2022	SCGM	DATO' SRI LEE HOCK GUAN [SSH]	-74	42,137	21.882
12 Apr 2022 - 12 Apr 2022	SCIPACK	SAMARANG UCITS - SAMARANG ASIAN PROSPERITY [SSH]	0.1	17,267	5.274
08 Apr 2022 - 08 Apr 2022	SCIPACK	SAMARANG UCITS - SAMARANG ASIAN PROSPERITY [SSH]	0.9	17,267	5.274
12 Apr 2022 - 12 Apr 2022	SIAB	DATO CHANG LIK SEAN [SSH]	-1,000	55,084	11.25
14 Apr 2022 - 14 Apr 2022	SIME	KUMPULAN WANG PERSARAAN (DIPERBADANKAN) [SSH]	2,000	517,796	7.603
13 Apr 2022 - 13 Apr 2022	SIME	AMANAHRAYA TRUSTEES BERHAD - AMANAH SAHAM BUMIPUTERA [SSH]	-3,000	2,738,000	40.206
12 Apr 2022 - 12 Apr 2022	SIME	EMPLOYEES PROVIDENT FUND BOARD [SSH]	3,313	589,007	8.649
13 Apr 2022 - 13 Apr 2022	SIME	KUMPULAN WANG PERSARAAN (DIPERBADANKAN) [SSH]	232	515,796	7.574
12 Apr 2022 - 12 Apr 2022	SIME	AMANAHRAYA TRUSTEES BERHAD - AMANAH SAHAM BUMIPUTERA [SSH]	-2,000	2,741,000	40.25
11 Apr 2022 - 11 Apr 2022	SIME	EMPLOYEES PROVIDENT FUND BOARD [SSH]	1,526	585,694	8.601
11 Apr 2022 - 11 Apr 2022	SIME	AMANAHRAYA TRUSTEES BERHAD - AMANAH SAHAM BUMIPUTERA [SSH]	-2,000	2,743,000	40.279
11 Apr 2022 - 11 Apr 2022	SIME	YAYASAN PELABURAN BUMIPUTERA [SSH]	-2,000	421,005	6.182
11 Apr 2022 - 11 Apr 2022	SIME	PERMODALAN NASIONAL BERHAD [SSH]	-2,000	421,005	6.182
08 Apr 2022 - 08 Apr 2022	SIME	EMPLOYEES PROVIDENT FUND BOARD [SSH]	-5,334	584,167	8.578
11 Apr 2022 - 11 Apr 2022	SIME	KUMPULAN WANG PERSARAAN (DIPERBADANKAN) [SSH]	280	515,564	7.571
08 Apr 2022 - 08 Apr 2022	SIME	AMANAHRAYA TRUSTEES BERHAD - AMANAH SAHAM BUMIPUTERA [SSH]	-2,000	2,745,000	40.309
07 Apr 2022 - 07 Apr 2022	SIME	EMPLOYEES PROVIDENT FUND BOARD [SSH]	2,136	589,501	8.656
08 Apr 2022 - 08 Apr 2022	SIME	KUMPULAN WANG PERSARAAN (DIPERBADANKAN) [SSH]	138	515,284	7.567
06 Apr 2022 - 07 Apr 2022	SIME	AMANAHRAYA TRUSTEES BERHAD - AMANAH SAHAM BUMIPUTERA [SSH]	-4,000	2,747,000	40.338
06 Apr 2022 - 06 Apr 2022	SIME	EMPLOYEES PROVIDENT FUND BOARD [SSH]	842	587,365	8.625
08 Apr 2022 - 11 Apr 2022	SIMEPLT	EMPLOYEES PROVIDENT FUND BOARD [SSH]	-1,330	982,412	14.202
12 Apr 2022 - 12 Apr 2022	SIMEPLT	KUMPULAN WANG PERSARAAN (DIPERBADANKAN) [SSH]	182	444,949	6.434
11 Apr 2022 - 11 Apr 2022	SIMEPLT	AMANAHRAYA TRUSTEES BERHAD - AMANAH SAHAM BUMIPUTERA [SSH]	-1,580	3,198,907	46.256
08 Apr 2022 - 08 Apr 2022	SIMEPLT	AMANAHRAYA TRUSTEES BERHAD - AMANAH SAHAM BUMIPUTERA [SSH]	-615	3,200,486	46.278
08 Apr 2022 - 11 Apr 2022	SIMEPLT	KUMPULAN WANG PERSARAAN (DIPERBADANKAN) [SSH]	496	444,768	6.431
07 Apr 2022 - 07 Apr 2022	SIMEPLT	EMPLOYEES PROVIDENT FUND BOARD [SSH]	-2,724	983,741	14.221
06 Apr 2022 - 06 Apr 2022	SIMEPLT	EMPLOYEES PROVIDENT FUND BOARD [SSH]	-2,196	986,465	14.261
07 Apr 2022 - 07 Apr 2022	SIMEPLT	KUMPULAN WANG PERSARAAN (DIPERBADANKAN) [SSH]	115	444,272	6.424
05 Apr 2022 - 05 Apr 2022	SIMEPLT	EMPLOYEES PROVIDENT FUND BOARD [SSH]	-81	988,661	14.291
12 Apr 2022 - 12 Apr 2022	SIMEPROP	EMPLOYEES PROVIDENT FUND BOARD [SSH]	500	615,339	9.048
07 Apr 2022 - 07 Apr 2022	SIMEPROP	EMPLOYEES PROVIDENT FUND BOARD [SSH]	501	614,839	9.04
07 Apr 2022 - 08 Apr 2022	SLVEST	DATUK SERI CHIAU BENG TEIK JP [SSH]	1,720	160,584	24.055
15 Apr 2022 - 15 Apr 2022	SMILE	SMILE-LINK RESOURCES (M) SDN BHD [SSH]	50	115,234	46.015
13 Apr 2022 - 14 Apr 2022	SMILE	DATO DR. WONG RUEN YUAN [DIR/CEO]	100	133,006	53.117
13 Apr 2022 - 14 Apr 2022	SMILE	DATO DR. WONG RUEN YUAN [SSH]	100	132,996	53.117
13 Apr 2022 - 14 Apr 2022	SMILE	DATIN WONG CHIEN YUE [SSH]	100	132,661	52.89
13 Apr 2022 - 14 Apr 2022	SMILE	DATIN WONG CHIEN YUE [DIR/CEO]	100	132,491	52.89
14 Apr 2022 - 14 Apr 2022	SPSETIA	KUMPULAN WANG PERSARAAN (DIPERBADANKAN) [SSH]	-1,000	398,438	9.794
13 Apr 2022 - 13 Apr 2022	SPSETIA	KUMPULAN WANG PERSARAAN (DIPERBADANKAN) [SSH]	-500	399,438	9.819
11 Apr 2022 - 11 Apr 2022	SPSETIA	EMPLOYEES PROVIDENT FUND BOARD [SSH]	286	234,017	5.752
08 Apr 2022 - 08 Apr 2022	SPSETIA	EMPLOYEES PROVIDENT FUND BOARD [SSH]	58	233,731	5.745
07 Apr 2022 - 07 Apr 2022	SPSETIA	EMPLOYEES PROVIDENT FUND BOARD [SSH]	216	233,673	5.744
06 Apr 2022 - 06 Apr 2022	SPSETIA	EMPLOYEES PROVIDENT FUND BOARD [SSH]	11	233,457	5.739
08 Apr 2022 - 12 Apr 2022	STRAITS	ANG TUN YOUNG [SSH]	685	67,311	7.63
12 Apr 2022 - 12 Apr 2022	SUNWAY	EMPLOYEES PROVIDENT FUND BOARD [SSH]	-500	409,197	8.37
11 Apr 2022 - 11 Apr 2022	SUNWAY	EMPLOYEES PROVIDENT FUND BOARD [SSH]	-1,147	409,697	8.38
08 Apr 2022 - 08 Apr 2022	SUNWAY	EMPLOYEES PROVIDENT FUND BOARD [SSH]	-13	410,844	8.4
07 Apr 2022 - 07 Apr 2022	SUNWAY	EMPLOYEES PROVIDENT FUND BOARD [SSH]	-641	410,857	8.4
06 Apr 2022 - 06 Apr 2022	SUNWAY	EMPLOYEES PROVIDENT FUND BOARD [SSH]	-1,435	411,462	8.42
14 Apr 2022 - 14 Apr 2022	SWIFT	MR LOO HOUI KEAT [SSH]	100	340,642	38.283
14 Apr 2022 - 14 Apr 2022	SWIFT	MR LOO HOUI KEAT [DIR/CEO]	100	340,642	38.283
14 Apr 2022 - 14 Apr 2022	SWIFT	KUMPULAN WANG PERSARAAN (DIPERBADANKAN) [SSH]	-217	80,966	9.099
14 Apr 2022 - 14 Apr 2022	SWKPLNT	DATO WONG KUO HEA [DIR/CEO]	-175	87,366	31.311
14 Apr 2022 - 14 Apr 2022	SWKPLNT	DATO WONG KUO HEA [SSH]	-175	87,366	31.311
14 Apr 2022 - 14 Apr 2022	SWKPLNT	DATUK ABDUL HAMED BIN SEPAWI [DIR/CEO]	-55	82,291	29.491
14 Apr 2022 - 14 Apr 2022	SWKPLNT	DATUK ABDUL HAMED BIN SEPAWI [SSH]	-55	82,291	29.491
14 Apr 2022 - 14 Apr 2022	SWKPLNT	MOUNTDEX SDN. BHD. [SSH]	-55	82,990	29.419
14 Apr 2022 - 14 Apr 2022	SWKPLNT	TA ANN HOLDINGS BERHAD [SSH]	-55	82,090	29.419
13 Apr 2022 - 13 Apr 2022	SWKPLNT	DATO WONG KUO HEA [SSH]	-451	87,541	31.373

Notice Period is 10 April 2022 - 16 April 2022

Effective Change Date	Stock Name	Buyer/ Seller Name [Classification]	Bought / (Sold) ['000]	No. of Shares After Trade ['000]	
			Total	Total	% Held
13 Apr 2022 - 13 Apr 2022	SWKPLNT	DATO WONG KUO HEA [DIR/CEO]	-451	87,541	31.373
13 Apr 2022 - 13 Apr 2022	SWKPLNT	DATUK ABDUL HAMED BIN SEPAWI [SSH]	-351	82,346	29.512
13 Apr 2022 - 13 Apr 2022	SWKPLNT	DATUK ABDUL HAMED BIN SEPAWI [DIR/CEO]	-351	82,346	29.512
13 Apr 2022 - 13 Apr 2022	SWKPLNT	TA ANN HOLDINGS BERHAD [SSH]	-351	82,145	29.44
13 Apr 2022 - 13 Apr 2022	SWKPLNT	MOUNTDEX SDN. BHD. [SSH]	-351	82,145	29.44
12 Apr 2022 - 12 Apr 2022	SWKPLNT	DATO WONG KUO HEA [DIR/CEO]	-304	87,992	31.535
12 Apr 2022 - 12 Apr 2022	SWKPLNT	DATO WONG KUO HEA [SSH]	-304	87,992	31.535
12 Apr 2022 - 12 Apr 2022	SWKPLNT	DATUK ABDUL HAMED BIN SEPAWI [SSH]	-154	82,697	29.637
12 Apr 2022 - 12 Apr 2022	SWKPLNT	DATUK ABDUL HAMED BIN SEPAWI [DIR/CEO]	-154	82,697	29.637
12 Apr 2022 - 12 Apr 2022	SWKPLNT	MOUNTDEX SDN. BHD. [SSH]	-154	82,496	29.565
12 Apr 2022 - 12 Apr 2022	SWKPLNT	TA ANN HOLDINGS BERHAD [SSH]	-154	82,496	29.565
14 Apr 2022 - 14 Apr 2022	TAANN	DATUK AMAR ABDUL HAMED BIN HAJI SEPAWI [DIR/CEO]	1,500	150,425	34.15
14 Apr 2022 - 14 Apr 2022	TAANN	DATUK AMAR ABDUL HAMED BIN HAJI SEPAWI [SSH]	1,500	150,425	34.15
14 Apr 2022 - 14 Apr 2022	TAANN	DATO WONG KUO HEA [DIR/CEO]	5,500	134,648	30.569
14 Apr 2022 - 14 Apr 2022	TAANN	DATO WONG KUO HEA [SSH]	5,500	129,838	29.477
14 Apr 2022 - 14 Apr 2022	TAANN	WONG SIK ONN [DIR/CEO]	-20	586	0.133
13 Apr 2022 - 13 Apr 2022	TAANN	WONG SIK ONN [DIR/CEO]	-171	606	0.137
12 Apr 2022 - 12 Apr 2022	TAANN	WONG SIK ONN [DIR/CEO]	-9	777	0.176
12 Apr 2022 - 12 Apr 2022	TAKAFUL	EMPLOYEES PROVIDENT FUND BOARD [SSH]	394	84,781	10.146
11 Apr 2022 - 11 Apr 2022	TAKAFUL	EMPLOYEES PROVIDENT FUND BOARD [SSH]	860	84,387	10.099
07 Apr 2022 - 07 Apr 2022	TAKAFUL	EMPLOYEES PROVIDENT FUND BOARD [SSH]	-300	83,527	9.996
06 Apr 2022 - 06 Apr 2022	TAKAFUL	EMPLOYEES PROVIDENT FUND BOARD [SSH]	-186	83,827	10.032
12 Apr 2022 - 12 Apr 2022	TANCO	DATO' SRI ANDREW TAN JUN SUAN [DIR/CEO]	2,000	944,559	54.307
12 Apr 2022 - 12 Apr 2022	TANCO	DATO' SRI ANDREW TAN JUN SUAN [SSH]	2,000	944,559	54.307
12 Apr 2022 - 12 Apr 2022	TENAGA	EMPLOYEES PROVIDENT FUND BOARD [SSH]	982	919,330	16.06
11 Apr 2022 - 11 Apr 2022	TENAGA	EMPLOYEES PROVIDENT FUND BOARD [SSH]	500	918,348	16.04
07 Apr 2022 - 07 Apr 2022	TENAGA	EMPLOYEES PROVIDENT FUND BOARD [SSH]	50	917,848	16.03
11 Apr 2022 - 11 Apr 2022	TGL	MADAM TOH KIAN BENG [DIR/CEO]	35	29,246	35.563
11 Apr 2022 - 11 Apr 2022	TGL	MADAM TOH KIAN BENG [SSH]	35	29,226	35.539
11 Apr 2022 - 11 Apr 2022	TGL	MR TOH CHOON KEAT [DIR/CEO]	35	27,620	33.587
11 Apr 2022 - 11 Apr 2022	TGL	MR TOH CHOON NENG [SSH]	9	27,523	33.468



AXIATA GROUP BERHAD

Axiata Group Berhad

(**AXIATA**) is pleased to announce that ISOC edotco Towers, Inc, a wholly owned subsidiary of edotco Group Sdn Bhd which in turn is a 63.0% owned subsidiary of Axiata, had on 19 April 2022 entered into a Sale and Purchase Agreement with Smart Communications, Inc. and Digitel Mobile Philippines, Inc. for the acquisition of 2,973 telecom towers and related assets in the Philippines for a total purchase consideration of PHP42,000 million (equivalent to RM3.42 billion).



HEINEKEN MALAYSIA BERHAD

The Board wishes to inform that HEINEKEN Malaysia Berhad (**HEIM**) has scheduled to release its financial report for the first quarter ended 31 March 2022 on Wednesday, 11 May 2022. Details on the Company's performance for the said period will be reported thereon. We refer to the financial results for the first quarter ended 31 March 2022 released by Heineken N.V. on 20 April 2022 which encapsulates, among others, the following commentary:

“In Malaysia, beer volume increased in the low-twenties versus last year and ahead of 2019, benefitting from relatively lower COVID-related restrictions in the market. The premium portfolio outperformed, led by Heineken.”



ENGINEERS

HSS ENGINEERS BERHAD

HSS Engineers Berhad (**HSSEB**) wishes to announce that on 15th April 2022, HSS Integrated Sdn Bhd, an associate of HSS Engineers Berhad, has accepted a Letter of Appointment from Mass Rapid Transit Corporation Sdn. Bhd. appointing HSS Integrated Sdn Bhd to provide peer review consultancy services for:

- (a) Tender Documentation for Civil Main Contractor; and
- (b) Tender Documentation for Line Wide Systems Contractor; for “Projek Mass Rapid Transit Laluan 3: Laluan Lingkaran”.

The role of HSS Integrated Sdn Bhd is to undertake an independent review and provide an endorsement that the said Tender Documentation are in compliance with requirements prescribed by Mass Rapid Transit Corporation Sdn Bhd.



KEJURUTERAAB ASASTERA BERHAD

KEJURUTERAAN ASASTERA BERHAD

The Board of Directors of Kejuruteraan Asastera Berhad (**KAB**) wishes to announce that KAB Telco Sdn. Bhd. a wholly-owned subsidiary of the Company had on 20 April 2022, entered into A Term Sheet dated 20 April 2022 with MRH Empire Sdn. Bhd. to form a joint venture in respect of the identified projects and prospective projects to expand into the telecommunication infrastructure sector.



MALAYAN BANKING BERHAD

On behalf of the Board of Malayan Banking Berhad (**MAYBANK**) wishes to announce that Maybank

has allotted and issued 91,500,212 new Maybank Shares on 14 April 2022 pursuant to the 22nd Dividend Reinvestment Plan. The said new Maybank Shares were listed and quoted on the Main Market of Bursa Securities with effect from 9:00 a.m. on Friday, 15 April 2022. With the listing of the said new Maybank Shares, the enlarged issued share capital of Maybank comprises 11,970,013,430 Maybank Shares.



STEEL HAWK BERHAD

The Board of Directors of Steel Hawk Berhad (**SKHAWK**) is pleased to announce that the Company has incorporated a wholly-owned subsidiary known as Steel Hawk Defence Sdn. Bhd. on 18 April 2022 with an issued share capital of RM100,000.00 comprising 100,000 ordinary shares of RM1.00 each. The subscription of shares in Steel Hawk Defence will be funded wholly from internally generated funds of Steel Hawk.

The intended principal activities of Steel Hawk Defence are as follows:-

- (1) Supply, maintenance, design, sales, technical training for defence engineering equipment;
- (2) Supply and maintenance of safety gear products/devices and other support services; and
- (3) Service provider of fire and explosion protection systems.

<p>Upcoming IPO</p>	<p>28th April 2022</p>	<p>MN HOLDINGS BERHAD (ACE MARKET)</p>
--------------------------------	------------------------	---

Over 5 trading days



ShareInvestor WebPro (www.shareinvestor.com/my)

1. Price > Stock Prices
2. Select Market: NASDAQ / NYSE / IDX / SET / HKEX / SGX (One bourse at a time)
3. select Stocks Tab
4. select Ranking Top Gainers or Top Losers (Over 5 Trading Days)
5. Mouse over Column Layout > select Edit Customs > select Name > select Last Done Price > select 5 Days Change > select 52 Weeks High > select 52 Weeks Low > Mouse Over Column Layout > select Custom

NASDAQ (USD)

Top Gainers

Name	Last Done	Change Over 5 Days	52 Weeks High	52 Weeks Low
AVIS BUDGET GROUP INC	308.820	+43.400	545.110	65.870
TESLA INC	1,008.780	+23.780	1,243.490	546.980
EQUINIX INC	757.630	+22.390	885.260	662.260
ASML HOLDING NV EURO.09 NY REGISTRY SHS 2012	619.980	+22.110	895.930	558.770
BROADCOM INC	592.730	+18.880	677.760	419.140

Top Losers

Name	Last Done	Change Over 5 Days	52 Weeks High	52 Weeks Low
NETFLIX INC	218.220	-122.910	700.989	329.820
AMAZON COM INC	2,965.920	-68.210	3,773.078	2,671.450
SOLAREEDGE TECHNOLOGIES INC	254.150	-46.510	389.710	199.330
MERCADOLIBRE INC	1,014.010	-46.330	1,970.130	858.990
ALPHABET INC	2,498.750	-46.310	3,042.000	2,230.050

NYSE (USD)

Top Gainers

Name	Last Done	Change Over 5 Days	52 Weeks High	52 Weeks Low
NVR INC	4,411.740	+76.290	5,982.445	4,250.010
AUTOZONE INC	2,233.310	+68.710	2,267.230	1,367.960
VALMONT INDUSTRIES INC	264.610	+23.900	265.090	203.305
GRAINGER W W INC	511.990	+20.560	529.910	391.160
M & T BANK CORP	177.780	+18.220	186.950	128.460

Top Losers

Name	Last Done	Change Over 5 Days	52 Weeks High	52 Weeks Low
BERKSHIRE HATHAWAY INC	515,815.000	-620.000	544,389.260	403,602.970
SHOPIFY INC	481.000	-98.510	1,762.918	510.020
CHIPOTLE MEXICAN GRILL	1,521.110	-82.060	1,958.545	1,277.410
CABLE ONE INC	1,356.390	-71.610	2,136.135	1,364.045
HUBSPOT INC	404.280	-41.190	866.000	378.880

IDX (Rupiah)

Top Gainers

Name	Last Done	Change Over 5 Days	52 Weeks High	52 Weeks Low
SOLUSI TUNAS PRATAMA TBK.	42,125.000	+11475.000	70,975.000	5,350.000
INDOSAT TBK.	7,025.000	+1800.000	8,300.000	5,000.000
PRIMA ANDALAN MANDIRI TBK.	5,600.000	+1040.000	5,825.000	1,325.000
KINO INDONESIA TBK.	5,025.000	+1015.000	5,150.000	1,990.000
BANK NEGARA INDONESIA (PERSERO) TBK.	9,375.000	+975.000	9,400.000	4,560.000

Top Losers

Name	Last Done	Change Over 5 Days	52 Weeks High	52 Weeks Low
DIAN SWASTATIKA SENTOSA TBK	33,300.000	-2,275.000	56,400.000	9,100.000
DCI INDONESIA TBK.	39,300.000	-2,200.000	60,300.000	10,700.000
UNITED TRACTORS TBK.	28,125.000	-1,675.000	30,300.000	18,525.000
INDO KORDSA TBK.	10,850.000	-1,125.000	13,750.000	4,750.000
INDO TAMBANGRAYA MEGAH TBK.	27,275.000	-1,025.000	30,200.000	11,700.000

SET (Thai Baht)

Top Gainers

Name	Last Done	Change Over 5 Days	52 Weeks High	52 Weeks Low
JTS	548.000	+58.000	570.000	10.700
DELTA	381.000	+29.000	790.000	310.000
DITTO	87.000	+17.500	88.750	15.000
BKI	272.000	+7.000	308.000	263.000
CBG	107.000	+6.500	156.000	96.750

Top Losers

Name	Last Done	Change Over 5 Days	52 Weeks High	52 Weeks Low
ABFTH	1,245.000	-20.000	1,329.000	1,242.000
SCB	88.000	-15.500	138.000	85.750
METCO	243.000	-5.000	324.000	226.000
TIPH	52.500	-4.250	90.000	31.750
NKI	44.750	-4.250	56.000	42.750

HKEX (HKD)

Top Gainers

Name	Last Done	Change Over 5 Days	52 Weeks High	52 Weeks Low
YUM CHINA HOLDINGS INC	340.800	+11.600	544.000	281.000
SIRNAOMICS LTD	84.750	+4.000	101.000	64.800
TECHTRONIC INDUSTRIES CO	114.800	+3.800	180.000	108.200
HANG SENG BANK	154.000	+2.900	169.500	131.000
HONG KONG AEROSPACE TECHNOLOGY GRP	20.800	+2.500	50.000	9.500

Top Losers

Name	Last Done	Change Over 5 Days	52 Weeks High	52 Weeks Low
BILIBILI INC	173.700	-32.300	1,052.000	125.000
TENCENT HOLDINGS LIMITED	348.000	-26.400	621.011	297.000
JD.COM INC	206.400	-20.000	365.000	160.100
HONG KONG EXCHANGES & CLEARING	322.800	-19.000	544.000	314.000
ASYMCHEM LABORATORIES (TIANJIN) CO	203.000	-18.400	388.000	201.000

SGX (SGD)

Top Gainers

Name	Last Done	Change Over 5 Days	52 Weeks High	52 Weeks Low
JARDINE C&C	26.870	+1.420	26.960	18.930
UOB	31.150	+0.390	33.330	24.730
AEM USD	3.600	+0.180	3.910	3.420
VENTURE	17.160	+0.170	20.730	16.240
SATS	4.470	+0.150	4.480	3.550

Top Losers

Name	Last Done	Change Over 5 Days	52 Weeks High	52 Weeks Low
JMH USD	55.500	-1.090	67.860	49.980
DIGILIFE TECH	1.460	-0.440	2.680	1.140
IFAST	5.550	-0.280	10.100	5.230
STRAITS TRADING	3.210	-0.160	3.780	2.510
HONGKONGLAND USD	4.720	-0.140	5.800	4.130