

Invest

A free weekly e-Publication by SHAREINVESTOR.com

ISSUE

86

FRIDAY
10 DECEMBER 2021



FREE WEBINAR



SHOW ME THE MONEY

MARKET OUTLOOK
2022

Opportunities
in the
Recovery
Market

8 JAN 2022 (Saturday)
9.30 a.m. - 12.30 p.m.

REGISTER HERE

Organised By



Presented By

BURSA STATION

Invest

ISSUE
86
FRIDAY
10 DECEMBER 2021



Scan / Click Me To Register

A **free** weekly e-Publication by SHAREINVESTOR.com



02	BURSA MALAYSIA LAUNCHES BURSA DIGITAL RESEARCH	10	SHARIAH HOT STOCKS	16	GROWTH STOCKS
04	LEADERBOARD	12	SHARIAH MOMENTUM UP STOCKS	17	DIVIDEND STOCKS
06	BEHIND THE ACTION	13	CAREERS AT SHAREINVESTOR	18	LONG COMPANIES
08	FROM THE OBSERVER	14	NON SHARIAH HOT STOCKS	19	INSIDER ACTIVITY
		15	UP TRENDING STOCKS	23	INVESTOR RELATIONS
				24	REGIONAL MARKETS



CHECK OUT
**SHAREINVESTOR
BROKERS' CALL**

Weekly Buy/Sell/Hold calls from leading Malaysian Brokerages.

[Go To Brokers' Call](#)



SHAREINVESTOR®

Invest with Knowledge

Corporate

Managing Director (Malaysia) & Publisher | **Edward Stanislaus**
edward@shareinvestor.com

Sales & Marketing

Director | **Elizabeth Tan**
elizabeth.tan@shareinvestor.com

Online IR

Manager | **Letticia Wong**
letticia.wong@shareinvestor.com

Advertising & Sponsorship Sales

Manager | **Sharon Lee**
sharon.lee@shareinvestor.com

Market Data Analytics: (marketdata.my@shareinvestor.com)

Account Manager | **Heidee Ahmad**
heidee.ahmad@shareinvestor.com

Assistant Manager | **Foo Yong Jui**
yongjui.foo@shareinvestor.com

Coordinator | **Watie Nordin**

Market Data Analytics & Editorial

Market Data & Media Coordinator | **Silas Emmanuel Joseph**
silas.joseph@shareinvestor.com

Market Data Analyst | **Nickson Aw**
nickson.aw@shareinvestor.com

Marketing Communications

Marcomm Manager | **Danny Ng**

Creative & Design

Manager | **Andric See**

Asst. Manager | **Ivy Yap**

Web Developer | **Nurul Atiqah**

| **Aiman Jasmin**

| **Izwan Rusli**

| **Hamed Bohloul**

IT Apps

Project Manager | **Amir Yusoff**

Sr. Software Engineer | **Mohd. Qasem**

Software Engineer | **Lian Kok Keong**

Finance, Admin & HR

Manager | **Shireen Goh**

Accounts Executive | **Jessie Ho**

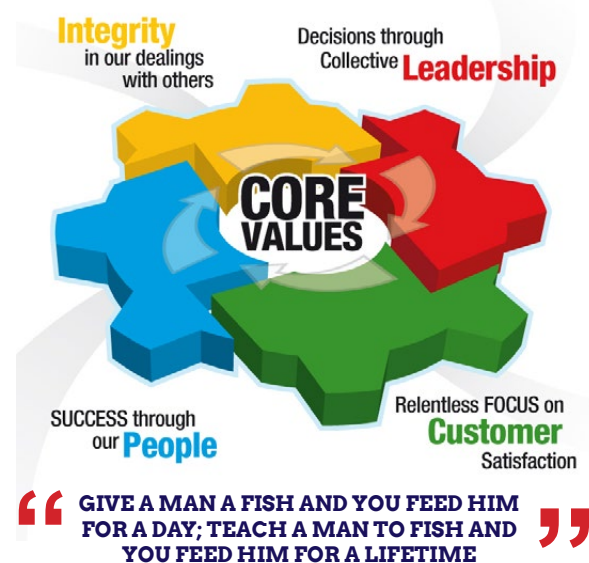
Shareinvestor Holdings

Chairman | **Patrick Daniel**

Group CEO | **Christopher Lee**

Group COO | **Lim Dau Hee**

Group CFO | **Teo Siew May**



“ GIVE A MAN A FISH AND YOU FEED HIM FOR A DAY; TEACH A MAN TO FISH AND YOU FEED HIM FOR A LIFETIME ”

ShareInvestor Malaysia Sdn. Bhd. (200001023956) (526564-M)
(Formerly known as SI Portal.com Sdn. Bhd.)
Unit No. DF2-07-03A, Level 7,
Persoft Tower, 6B Persiaran Tropicana,
47410 Petaling Jaya, Selangor Darul Ehsan.

Hotline : 603 7803 1791
Mobile : 011 6343 8939
Fax : 603 7803 1792

Website : www.ShareInvestor.com.my
www.ShareInvestorHoldings.com
[www.Facebook.com/ShareInvestorMalaysia](https://www.facebook.com/ShareInvestorMalaysia)

ADVERTISEMENT ENQUIRY

Bursa Malaysia launches Bursa Digital Research

Bursa Malaysia Bhd launched Bursa Digital Research (BDR), a multi-faceted research portal that serves to provide investors with an added source of research and data analysis with the objective of improving financial literacy and facilitating informed investment decision making. In addition, the BDR platform offers public listed companies (PLCs) a direct digital touch point with investors to improve PLCs' overall visibility, enable better understanding of business operations and value propositions, while facilitating price discovery. This platform complements the Bursa Broadcast platform which seeks to enrich investors' capital market understanding. According to Bursa Malaysia CEO Datuk Muhamad Umar Swift, BDR aims to provide an additional resource to help investors gain market insight and keep abreast of the latest developments in the stock market. Four main content categories are now available on the BDR portal, with more content to be added from time to time. Research data and market information are crucial to making informed investment decisions which will act as a catalyst for greater investor participation on Bursa Malaysia.

Market Updates:

In-house research analysis offering latest insights within the capital market, covering a wide range of topics including but not limited to trading momentum of stocks, global and local market trends, compilation of analyst consensus, indices revisions and highlights of investor product segments.

Bursa Blitz:

A series of FAQs touching on matters related to PLCs' businesses and industries, covering latest development and future prospects.

Initial Public Offering (IPO):

A factsheet offering quick read about latest IPO launches while the quarterly performance report provides a comprehensive performance review, key statistics and insights on the trading of new listings.

Exchange Traded Fund (ETF):

Monthly performance reports to enrich investors' understanding about ETFs available on the exchange.

The BDR is accessible at https://www.bursamalaysia.com/reference/bursa_digital_research/

Night trading session to boost Bursa Derivatives' competitiveness

According to Bursa Malaysia Derivatives chief executive officer Samuel Ho, Bursa Malaysia Derivatives Bhd's after-hours (T+1) night trading session, which has gone live, is expected to bode well for the country's derivatives market and enhance the competitiveness of the exchange's products. The after-hours trading offered by Bursa Malaysia Derivatives is an extension

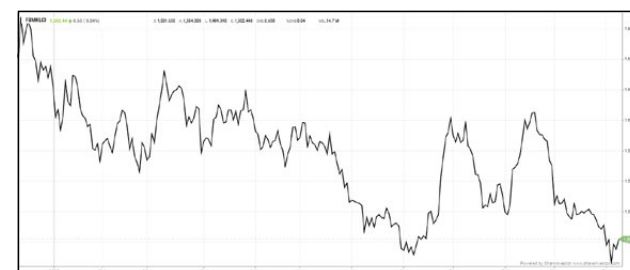
of the exchange's current market trading hours in line with global market practices. With its improved price discovery, the after-hours trading can be used as a hedging and risk management tool, allowing investors to manage their risk exposure to price fluctuations in response to any major market movement that occurs during the United States and European market hours. More recently, the exchange's trading volume for Bursa Malaysia's crude palm oil futures in the third quarter of this year recorded a positive growth momentum with a total of 11.8 million contracts, an increase from 10.8 million in the same period last year. After-hours trading is important for hedging in the highly volatile crude palm oil market. Market participants will now have an avenue to better manage their risk exposure based on real-time global developments. By strengthening the connection between the Malaysian derivatives market and the global markets, the price discovery and effectiveness of its products as risk management solutions will be improved, hence enticing global investors to trade in our market. Market participants are able to trade between 9pm and 11.30pm from Monday to Thursday, thereby closing the gap between local and foreign market trading hours.

Eye On The Markets

This week, on Friday (10Dec), the Ringgit opened at 4.2220 against the USD from 4.2325 on Monday (6Dec). Meanwhile, the Ringgit was 3.0924 to the Sing Dollar on Friday (10Dec). On Monday (6Dec), the FBM KLCI opened at 1503.66. As at Friday (10Dec) 10:00am, the FBM KLCI is down 0.9 points for the week at 1502.76. Over in US, the overnight Dow Jones Industrial Average closed down 0.06 points (0.00%) to 35,754.69 whilst the NASDAQ shed 269.60 points (-1.71%) to 15,517.40.

Note from Publisher: Please take note that the Interactive Price Charts on each of the Stocks Pages look different. That's because since December 1, 2021 we have introduced a more user-friendly, more feature-packed and more powerful C2 Charts in our WebPro Market Data Analytics platform. We are using the dark night-setting which is easier on the eyes. Your analytics for stock market investing just got more exciting. Remember to use the Step-By-Step Guide at the top of each page so that you too can pull up the best performing stocks by yourself.

#remembershareinvestor
#investwithknowledge
#dontspeculatewithstocks
#dontgamblewithstocks



KLCI 1 Year Chart

Deep Dive into sembcorp marine

Special feature from INVESTOR-ONE

All data are accurate as of 30th November 2021.

Corporate Profile

Sembcorp Marine provides innovative engineering solutions to the global offshore, marine and energy industries. Headquartered in Singapore, the Group has close to 60 years of track record in the design and construction of rigs, floaters, offshore platforms and specialised vessels, as well as in the repair, upgrading and conversion of different ship types.

Its solutions focus on the following areas: Renewables, Process, Gas, Ocean Living and Advanced Drilling Rigs. Their customers include major energy companies, owners of floating production units, shipping companies and cruise and ferry operators.

Key Statistics

EPS (SGD) ^a	-0.01856	Trailing EPS (SGD) ^b	-0.03306	NAV (SGD) ^c	0.1441
PE ^a	-	Trailing PE ^d	-	Price / NAV ^c	0.5829
Dividend Yield (%) ^e	-	Cash In Hand (SGD) ^f	0.0251	Issued & Paid-up Shares ^g	31,386,834,000
Piotroski F Score	2	Market Cap (M)	2,636.494	Free Float (%)	98.6

Source: ShareInvestor WebPro

Technical Analysis



Source: ShareInvestor C² Chart

Based on the weekly chart, after consolidating from the start of the year till the end of March 2021, its share price has experienced a breakout in April 2021. This can be seen from the surge in buying activities (volume bar chart displayed) as well as the various candlesticks which are trading above the upper limit of the Bollinger Band.

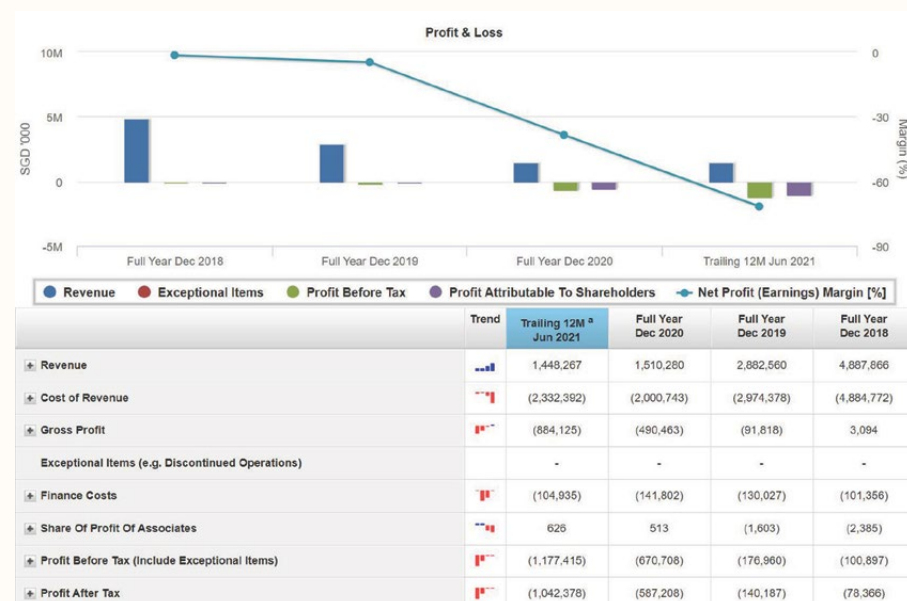
Subsequently, its share price underwent a minor correction in May 2021, accompanied by low trading volume and the MACD line trading below zero.

With the announcement of the rights issue in June 2021, its share price saw a sharp drop with high selling volume, hence breaching the 20-Day moving average and its MACD line sinks further below.

Since then, Sembcorp Marine's share price has been trading below the 20-Day moving average line and its Relative Strength Index ("RSI") is trading near the oversold territory. In November 2021, its Bollinger band is starting to showcase a form of tightening.

Coupled with the low trading volume and the candlestick is about to breach the 20-Day moving average, this could mean that there is a possibility of a breakout for its share price.

Past Financial Performance



Source: ShareInvestor WebPro

For FY2020, its revenue declined by more than 47% year-on-year to S\$1.51 billion. The sharp decline in revenue can be attributed to the adverse impact from COVID-19 resulting in delays in the execution and completion of existing projects.

However, this was mitigated by higher revenue recognition from offshore platforms and specialised shipbuilding projects.

Meanwhile, they recorded a higher loss in FY2020, which came in at S\$587.20 million. This was attributed to the double whammy of substantial inventories being written down and higher costs in relation to shipbuilding projects.

For the trailing 12-month financial performance, its revenue dipped a further 4% to S\$1.44 billion as the pandemic continues to affect the company's operations.

With the higher cost of revenue and impairment on property, plant and equipment and right-of-use assets, Sembcorp Marine's losses further expanded to a whopping S\$1.04 billion.

Conclusion & Management Outlook

To conclude, Sembcorp Marine's financial performance has been severely impacted by COVID-19 and the ongoing weakness in the Oil and Gas industry.

On that note, the latest Rights Issues ensure that the Group has sufficient financial resources on hand to weather the storm ahead of them.

In terms of management outlook, Sembcorp Marine highlighted that the Group still faces significant challenges and risks given the ongoing pandemic.

Looking beyond the near-term headwinds, the Group expects significant growth in renewables and other clean energy segments over the next decade and beyond. Therefore, the Group will focus on accelerating its transformation to gain further traction in this segment and strengthen its market share.

At the same time, Sembcorp Marine will continue to build on its integrated offshore and marine engineering capabilities to move up the value chain and provide a wider suite of products and solutions for its existing business segments. This will help to strengthen the Group's competitiveness in winning more orders and improving its overall profitability over the longer term.

More investing ideas on SGX listed companies are available at Investor-One, click here to read.

Supported by Singapore Exchange and managed by ShareInvestor, Investor-One is a portal that provides content with a holistic approach to assess companies through a wide array of viewpoint.

Check out the preferred brokers to trade SGX listed companies





Leaderboard

www.shareinvestor.com - market data at your fingertips



ShareInvestor WebPro (www.shareinvestor.com/my)

Prices > Stock Prices > Bursa > click Stocks tab
 1. mouse over Ranking > select Top Active > all Shariah stocks are denoted with an [S] > mouse over Column Layout > select Edit Customs > select Name > select Volume > select Last Done Price > Mouse Over Column Layout > select Custom

2. mouse over Ranking > select Top Turnover > all Shariah stocks are denoted with an [S] > mouse over Column Layout > select Edit Customs > select Name > select Last Done Price > select Value > Mouse Over Column Layout > select Custom
 3. mouse over Ranking > select Top Gainers (Over 5 Trading Days) > mouse over Column Layout > select Edit Customs > select Name

> select Last Done Price > select 5 Days Change > select 5 Days % Change > Mouse Over Column Layout > select Custom
 4. mouse over Ranking > select Top Losers (Over 5 Trading Days)
 5. mouse over Ranking > select Top % Gainers (Over 5 Trading Days)
 6. mouse over Ranking > select Top % Losers (Over 5 Trading Days)

Shariah Top Actives
(as at Yesterday)

Name	Price (RM)	Volume
SAPNRG [S]	0.050	1,696,763
G3 [S]	0.110	1,017,227
ATAIMS [S]	0.505	937,976
WZSATU [S]	0.215	662,769
KGROUP [S]	0.015	628,100
MMAG [S]	0.085	594,075
DNEX [S]	0.770	588,413
NWP [S]	0.270	535,530
OPCOM [S]	0.955	427,327
PERMAJU [S]	0.060	340,083

Top Gainers
(over 5 Trading days as at Yesterday)

Name	Price (RM)	Change (RM)
GENETEC	38.540	+0.940
RAPID	10.660	+0.710
PETDAG	20.300	+0.520
IMASPRO	2.700	+0.420
SAM	20.780	+0.380
PMBTECH	12.680	+0.360
AYER	5.550	+0.350
AMLEX	0.500	+0.275
HLCAP	7.290	+0.240
COCOLND	1.140	+0.230

Top Losers
(over 5 Trading days as at Yesterday)

Name	Price (RM)	Change (RM)
MPI	48.080	-1.920
VITROX	20.300	-1.780
NESTLE	132.300	-1.600
MGRC	0.820	-1.560
HARTA	5.520	-0.660
BLDPLNT	8.690	-0.560
DLADY	33.000	-0.500
PANAMY	29.260	-0.440
MILUX	0.980	-0.430
TOPGLOV	2.410	-0.400

Shariah Top Turnover
(as at Yesterday)

Name	Price (RM)	Value (RM)
PCHEM [S]	8.460	54,799,296
ATAIMS [S]	0.505	47,445,235
INARI [S]	3.980	47,258,840
DNEX [S]	0.770	45,743,689
OPCOM [S]	0.955	41,935,636
TOPGLOV [S]	2.410	41,212,680
IHH [S]	6.570	36,995,516
TENAGA [S]	9.110	36,922,367
MYEG [S]	1.070	32,887,776
PMETAL [S]	5.520	32,047,899

Top % Gainers
(over 5 Trading days as at Yesterday)

Name	Price (RM)	Change (%)
AMLEX	0.500	+122.22
CRG	0.150	+42.86
CAELY	0.490	+27.27
COCOLND	1.140	+25.27
EG	0.645	+25.24
IMASPRO	2.700	+18.42
BONIA	1.000	+17.65
BRIGHT	0.240	+17.07
JOE	0.035	+16.67
SUNZEN	0.220	+15.79

Top % Losers
(over 5 Trading days as at Yesterday)

Name	Price (RM)	Change (%)
MGRC	0.820	-65.55
KANGER	0.020	-50.00
PHB	0.005	-50.00
KGROUP	0.015	-40.00
BCMALL	0.025	-37.50
SAPNRG	0.050	-37.50
FINTEC	0.010	-33.33
THHEAVY	0.010	-33.33
MILUX	0.980	-30.50
GOCEAN	0.025	-28.57

Disclaimer: The information on this page is provided as a service to readers. It does not constitute financial advice and/or any investment recommendations. Past performance is not indicative of future results. We assume no liability for damages resulting from or arising out of the use of such information. It would be best if you did your own research to make your personal investment decisions wisely or consult a licenced investment advisor.

NEW

C² CHART

C² Chart is WebPro's new feature-packed technical analysis tool for the modern stock investor

Over 100 Indicators
Select your preferred indicators to best suit your technical strategies

Drawing Tools
Multiple drawing tools to easily identify chart patterns

Events Indicators
Key events can be pinned onto your charts for a better overview

Compare Tool
Conveniently compare multiple stock prices at the same time

Historical Data
Extract price data from over 30 years

Over 10 Chart Styles
Various charts to suit your preferred style

No App Needed
Access your charts from any computer or mobile

Easy Zoom
Intuitive zooming function on charts

PURNELL

ONLY TOURBILLON



ESCAPE II
ABSOLUTE
SAPPHIRE

Purnell Asia

Tel.: +65.9817.3378

Email: sales.sg@purnellwatches.com

Instagram: [Purnell_Official](https://www.instagram.com/Purnell_Official)

Website: www.purnellwatches.com





Pankaj C Kumar

What Omicron?

Markets

After last week's sell-off in global markets, sanity returned to financial markets as investors weigh the impact of Omicron on business activities as well as the rate of infections. News of Pfizer and BioNTech studies showed that the third dose of their vaccine may be needed to neutralize the Omicron variant was perhaps the most welcome news of the week as investors expect the dose to be a necessity.

Meanwhile, The People's Bank of China (PBoC) is set to cut the Reserve Requirement Ratio (RRR) for banks by 50 basis points with effect from December 15 in a move to provide liquidity and to support the slowing economy. In a related matter this week, the Reserve Bank of Australia (RBA) left its key cash rate unchanged at 0.1%, as expected.

Economy

The J.P. Morgan Global Composite Output Index hit a four-month high of 54.8 in November, marginally higher than the 54.5 print in October. The headline figure has signalled expansion for the past 17 months now, uninterrupted. Meanwhile, the November Eurozone Final Composite Output Index came in at 55.4, slightly below the Flash estimate of 55.8.

Out of the US, the November jobs report was a huge miss as non-farm payrolls came at just 210,000 against the market forecast of 573,000. Surprisingly, despite the lower number of jobs, the unemployment rate hit a new post-pandemic low of 4.2% from 4.6% in October. Meanwhile, the Institute of Supply Management Services Purchasing Managers' Index (PMI) for November came in well ahead of expectations and at a fresh record high of 69.1 against 66.7 posted in the preceding month. In other news, the US trade deficit fell by 18% in October as an 8.1% jump in exports to US\$223.6bil and a slower imports growth of 0.9% allowed the trade deficit to fall to just \$67.1bil from \$81.4bil in the preceding month.

Meanwhile, Chinese external trade data beat market expectations as the November data showed export growth of 22% y-o-y while imports jumped 31.7% y-o-y, well ahead of market expectations of 20.3% and 21.5% y-o-y growth respectively. In other news, China's Producer Price Index remained elevated with an increase of 12.9% y-o-y in November, well above the market estimate of a 12.1% jump. In the meantime, headline inflation surged to a fresh 15-month high of 2.3%, but it was below the market forecast of a 2.5% rise.

Locally, Malaysia's international reserves as at end of November rose by US\$0.2bil to

US\$116.7bil, and in Ringgit terms, the reserves amounted to RM488.98bil, a new record high. Meanwhile, the Retail Group Malaysia (RGM) predicts retail sales will bounce back with a growth of 6% in 2022 from the revised 0.5% growth for this year. In other news, Malaysia's labour market improved markedly in October as the unemployment rate fell to 4.3% from 4.5% in September. The number of unemployed persons fell by 24,600 to 705,000, while employed persons improved by 91,100 m-o-m to 15.55mil.

Corporate

In an amendment to the semi-annual review of the FTSE Bursa Malaysia Index Series, the FBM KLCI will now see the emergence of Inari Amertron as a new index constituent and not Westports Holdings as previously announced. This will take effect from Monday, December 20, 2021.

Alliance Bank has agreed to dispose of the entire stake in its stockbroking business activities to Philip Futures in a deal worth RM205.2mil plus 60% of the aggregate brokerage fee for one year from the date of completion of the transaction.

In contract news, Taliworks won a RM293.9mil contract from Air Selangor to build a booster station and reservoirs and to undertake associated works for the Sg Rasau water treatment plant. Meanwhile, T7 Global obtained three letters of appointment worth RM300mil under its energy division. Ireka Corporation was also in the news this week as it secured RM468mil contract from the Terengganu State Government involving two projects.

In other news, KNM Group (KNM) triggered PN17 criteria due to an event of default in relation to its Thai bond issuance. However, due to the relief measures previously announced by Bursa Malaysia, KNM will not be classified as an affected issuer.

Meanwhile, shareholders of Top Glove Corporation approved the company's proposed dual primary listing on the Hong Kong Stock Exchange (HkEX), which will see the company raising as much as HK\$4.24bil. Toyo Ventures Holdings has proposed to issue a 208.7mil 5-year zero-coupon Irredeemable Convertible Unsecured Loan Stock (ICULS) owing to certain creditors to settle sum owing amounting to RM250.5mil. The ICULS will have a nominal value of RM1.20 per ICULS and convertible to ordinary shares on the basis of one for one.

Equity

World equity markets closed broadly firmer across the globe with gains ranging from as low as 0.6% on India's Sensex Index to as high as 5.1% on the Dow as investors returned to the market on the back of positive news flow from the new Covid-19 virus variant as well as selective positive economic data points. Locally, the benchmark index closed just a shade firmer as the KLCI gained a mere 0.05 points to close at 1,501.79.

For the unexpected holiday-shortened week ended December 8, both retail and local institutions were net buyers in the market with an inflow of RM216.5mil and RM204.1mil respectively. This suggests that the foreign selling pressure was sustained with an outflow of RM420.6mil.

Eye on Week Ahead

Later today, the US will be releasing the headline and core inflation reading for November, which the market is looking at a 6.8% and 4.9%, much faster than the pace of 6.2% and 4.6% in the preceding month respectively. The market will also get the first glimpse of the impact from the Omicron variant as the Preliminary December Michigan Consumer Sentiment reading will be released, which the market expects a reading of 67.1 from 67.4 in November.

Next week, on Wednesday, December 15, China's cumulative Fixed Asset Investments up to November and the November Industrial Production Index and Retail Sales data is due. On the same day, the market's attention will switch towards the Federal Reserve as members of the Federal Open Market Committee (FOMC) meet for the last time this year. Investors will be on the lookout as the market language the Fed will be communicating this time around, especially in relation to any adjustment as to the size of its scheduled tapering program. US Retail Sales for November is also due on the same day.

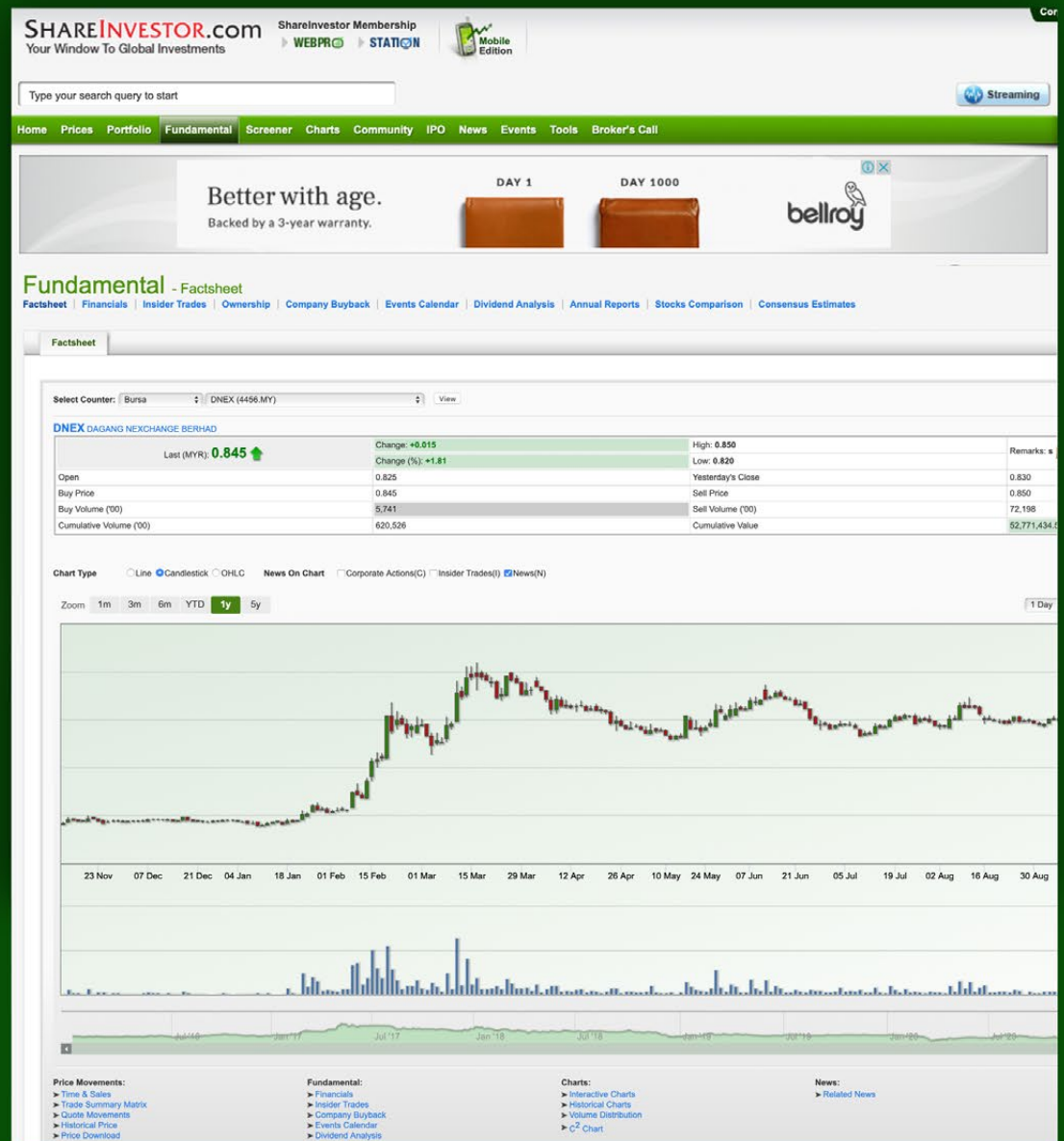
Markets will also be looking at reactions from the European Central Bank (ECB) and Bank of England for their respective rate decision on Thursday, December 16. Later on the same day, attention will switch back to the US as key data are due which among others include US Housing Starts and Building Permits for the same month.

Locally, later today, the Department of Statistics (DOSM) will be releasing the October Industrial Production Index, the performance of the Manufacturing Sector as well as the Wholesale and Retail Sector. Next week, the only key data is the Malaysian Rubber Statistics for October.

COMPANY ANALYSIS AT YOUR FINGERTIPS

Click the Analysis buttons to access the Factsheets of any company featured on the Hot Stocks, Momentum-Up, Up-Trending, Growth and Dividend Stocks pages.

Invest with knowledge



Company Background

Candlestick Chart

Current Price

Key Statistics

Peer Comparison

Total Shareholder Returns

Price Movements

IPO performance

Financial Reports

Historical Price Data

Latest News

More

Analysis



Devanesan Evanson
Chief Executive Officer, Minority Shareholders Watch Group

Customer Concentration Risk: How over-reliance on one major customer can pose major threat to business

There are a few invaluable lessons that companies and investing public can learn from the recent downfall of ATA IMS Bhd. From a solely business perspective, the Johor-based electronic manufacturing service provider (EMS) was operating amid an extremely high customer concentration risk so much so that the loss of one customer was capable of crippling most of its revenue stream. Recently, the decision of high-tech home appliance maker Dyson Ltd to terminate its contract with ATA IMS on grounds of labour abuse allegations had caught the company and its shareholders off-guard. Sales to Dyson accounts for over 80% of ATA IMS' revenue. In a bourse filing dated 25 November, ATA IMS announced that it had received three notices of contract termination on 24 November from Dyson Operations Pte Ltd and Dyson Manufacturing Sdn Bhd in respect of the following contracts with effect from 1 June 2022:

- A contract manufacturing agreement dated 15 October 2020 between Dyson Operations and its wholly owned subsidiary ATA Industrial (M) Sdn Bhd (ATAIM);
- An agreement for the supply of goods and services dated 1 March 2013 between Dyson Manufacturing and AAIM; and
- The framework agreement for the supply of goods (tooling) dated 17 June 2009 between Dyson Manufacturing and AAIM.

In response to queries by Bursa Malaysia on the financial and operational impact arising from the termination of Dyson's contracts, ATA IMS estimated that its turnover for the financial year ending 31 March 2022 will be reduced by about 30% compared to FY2021, with another 40% drop in revenue in FY2023. Cost cutting measures will be undertaken in response to the termination of contracts. On top of that, ATA IMS expected to incur losses from the termination with respect to impairment of property, plant and equipment, write down of right-of-use assets, inventory for raw materials and components.

Losses abound

This is a double whammy given that ATA IMS had earlier posted a net loss of RM11.17 million for its second quarter ended 30 September 2021 for FY2022 from a net profit of RM52.29 million a year ago. Over at an analyst briefing, however, ATA's management was cited by AmResearch for claiming that the company's order forecast remains high albeit limited by manpower constraints. "ATA IMS is in the midst of obtaining special approval from the Government for 5,000 more workers by March

2022 while projecting an annualised revenue of RM1.9 billion - RM2.1 billion after the contract termination with its main customer effective June 1, 2022," noted the research house. "Moreover, ATA IMS further expects its operations to remain profitable even after the contract termination with Dyson by projecting a pre-tax profit margin of 5% (vs 1% in 1HFY2022), largely premised on significantly lower finance costs coupled with a relatively leaner operation." However, AmResearch did not share the same optimistic guidance. Instead, the research house maintained its loss forecasts in FY2022, FY2023 and FY2024, reflecting only organic growth from the Group's existing remaining customers coupled with some small new orders to be secured in FY2023 and FY2024 at a gross profit margin of 2%-2.5% from diseconomies of scale. "In our view, ATA IMS may not be in the most favourable position to negotiate with potential new customers," projected AmResearch. "Hence, we believe ATA's recovery from the current crisis will be bumpy, exacerbated by the ongoing labour shortage crisis." All-in-all, AmResearch reiterated its "sell" rating on ATA IMS with a lower fair value of 30 sen (from 56 sen previously).

Lesson drawn from the past

At a glance, ATA IMS's over-dependency on a single major customer brings back to mind the predicament encountered by Tien Wah Press Holdings Bhd in 2016 when news broke out that British American Tobacco (M) Bhd (BAT) was shutting down its manufacturing plant in Petaling Jaya. Like Dyson is to ATA IMS, BAT was a major customer of Tien Wah which specialises in printing services for tobacco packaging. The Tien Wah-BAT deal dated back to 2008 when Tien Wah, together with its major shareholder New Toyo International Holdings Ltd successfully bid for a seven-year exclusive supply agreement with the right to extend for an additional three years to supply BAT's printed carton requirements in Australasia, Vietnam, Singapore and Malaysia. This agreement was subsequently extended on 13 November 2014 for an additional one year from the existing period of seven years ending 31 October 2015 to 31 October 2016 and the continuing right to extend for an additional three years. Given that fulfilling the demands spelt out in the agreement represented the group's core business, BAT Malaysia's decision to source tobacco products from its sister companies in the region instead of producing locally would have repercussions on Tien Wah's earnings. Despite all the uncertainties, Tien Wah not only

managed to wrangle out of such predicament but managed to safeguard its contract by successfully re-negotiating a future contract as evident in its success in securing a five-year extension to supply printed cartons to BAT on March 18, 2020. While it was an 'all's well that ends well' situation for Tien Wah, nobody can vouch if ATA IMS will be as fortunate as Tien Wah considering the controversy surrounding Dyson's termination of ATA IMS' contract.

Litmus test on ESG

As an international brand, it is understandable that Dyson can ill-afford to be labelled as a company supporting forced labour - after all, reputation is more important than anything for a multinational company like Dyson. In all fairness, ATA IMS is not the first Malaysian public listed company (PLC) to be penalised for allegation of labour abuses. There have already been numerous cases of Malaysian glove makers and plantation giants being slapped with Withhold Release Orders (WRO) by the US Customs and Border Protection (CBP) for forced labour practices. However, the manner in which ATA IMS' stock plummeted from a four-week high of RM2.60 to a four-year low of 38 sen (intraday) on 30 November is quite alarming. This was further compounded by the resignation of its independent non-executive director (INED) Wong Chin Chin with effect from 29 November due to "differences of opinion" with ATA IMS' board of directors.

For the record, Wong, 56, had served as a director of the company for almost five years since 21 March 2017, according to earlier stock exchange filings when the company was known as Denko Industrial Corp Bhd. Wong had also served as a member of ATA IMS' audit committee as well as a member of the nomination and remuneration committee. Board resignation aside, ATA IMS' woes only got worse with the Human Resources Ministry contemplating to haul ATA IMS to court if there was evidence of forced labour practices at its premises. Additionally, ATA IMS said it has also appointed a reputable and professional law firm in Malaysia to conduct an independent review of the allegations of physical abuse by a former worker who has since become a whistleblower.

As ATA IMS seeks to find a way out from its current predicament, there is one ultimate lesson that PLCs which rely on labour-intensive workforce in their business operations need to learn: ESG (environmental, social and governance) considerations are not only here to stay but they can adversely disrupt the operational and financial performance of a company overnight.

BURSASTATION



Financials



Candlestick Patterns Recognition



Dynamic TA Chart



FA Market Scanner

BursaStation Professional is a state-of-the-art Stock Market Tracker / Share Market Tracker cum Charting Software (Charting Tool) that places in your hands the power to make better investment decisions.

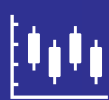
BursaStation is designed with you, the user, in mind, as a user-friendly yet full of powerful features that will appeal to investors/traders who need instant access to fundamental, technical, and trading data, via the Internet, anywhere, anytime.

[CLICK HERE for 14-Days FREE TRIAL](#)

Other Key Features



Intraday Market Ticker



Intraday Charts



Portfolio Management



World Indices



Bursa news



Financial Results



Stock Alerts



Dynamic Data Exchange

SHARIAH HOT STOCKS

Price & Volume Distribution Charts (as at Yesterday)

Technical Analysis

Definition

Shariah compliant stocks with Technical Analysis showing the closing price Yesterday is higher than previous closing price and 5-days Moving Average Price with Volume Spike

Chart Guide

Volume Distribution Chart is a statistical interpretation of the current sentiment on each stock in graphical format. The highest bar categorized as >150k is likely to be traded by institutions or super dealers, while the lowest bar categorized as <15k usually represents retail investors. "Buy Up" refers to more buyers snatching up the lots queued at selling price. "Sell Down" refers to sellers selling their shares to the buying queue



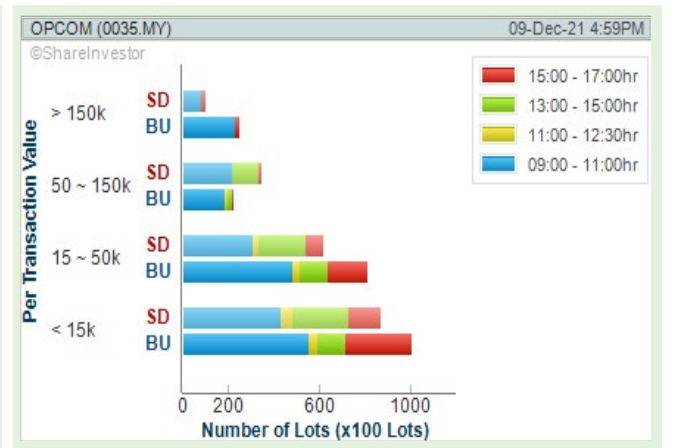
ShareInvestor WebPro > Screener > Market Screener (FA & TA) > select BURSA > add criteria
A. Criteria
 • Fundamental Analysis Conditions tab > select (i) Revenue
 • Technical Analysis Conditions tab select (ii) Moving Average Below Close (iii) select ADX Trend (iv) select Bullish ADX +DI/-DI (v) select Volume Spike (vi) select RSI Overbought
 • Prices & Other Conditions tab > select (vii) Is Shariah Compliant

> click Add Criteria
B. Conditions (Criteria Filters)
 • Revenue - select (more than) type (1) for the past select (1) financial year(s)
 • Moving Average Below Close - select (MA) type (5) below close price for type (1) days
 • ADX Trend - ADX type (5) type (1) above type (20) for type (1) days
 • Bullish ADX +DI/-DI - ADX type (5) type (1); +DI above -DI
 • Volume Spike - Volume type (1) times greater than type (5) days average
 • RSI Overbought - RSI type (1) above (99) for (1) days
 • Is Shariah Compliant - select Yes

> click Save Template > Create New Template type (Shariah Hot Stocks) > click Create
 > click Save Template as > select Shariah Hot Stocks > click Save
 > click Screen Now (may take a few minutes)
 > Sort By: Select (Vol) Select (Desc)
 > Mouse over stock name > Charts > click C? Chart or Volume Distribution

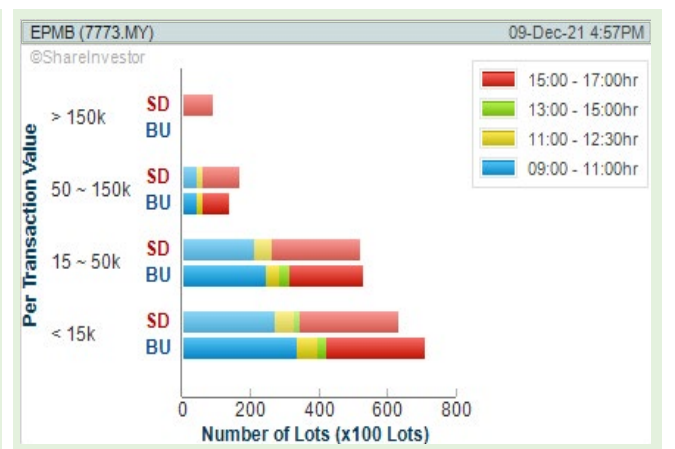
OPCOM HOLDINGS BERHAD (0035)

Analysis



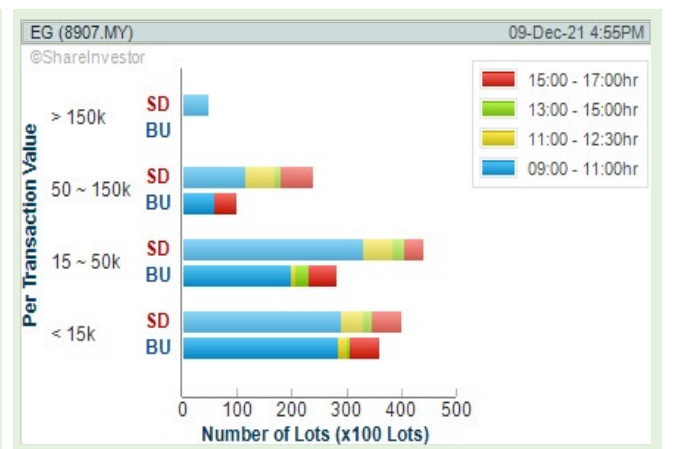
EP MANUFACTURING BERHAD (7773)

Analysis



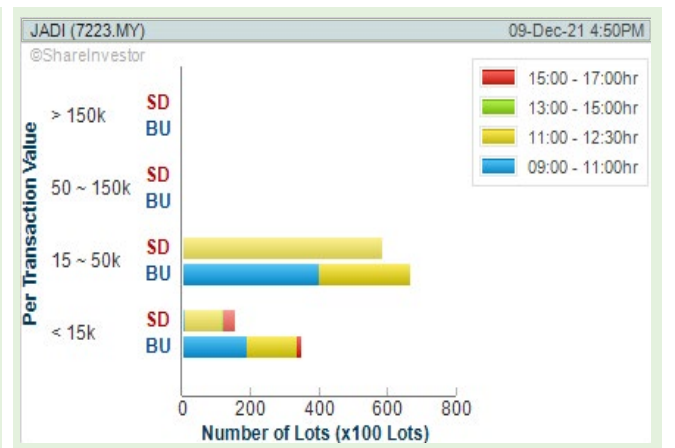
EG INDUSTRIES BERHAD (8907)

Analysis



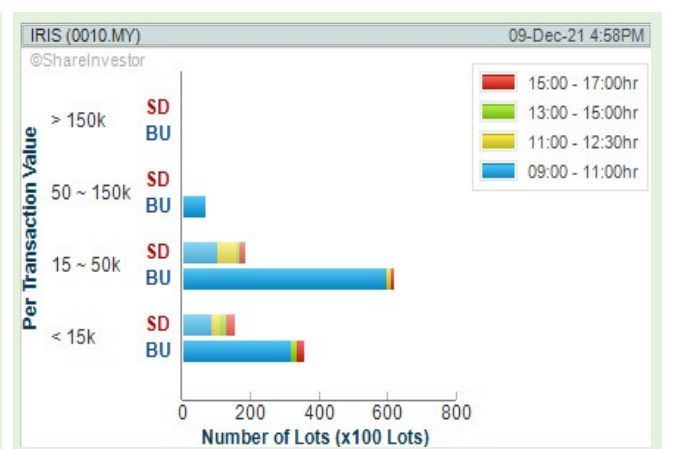
JADI IMAGING HOLDINGS BERHAD (7223)

Analysis



IRIS CORPORATION BERHAD (0010)

Analysis



Extraordinary moments happen on ordinary days.
Let's set the stage for the extraordinary to happen every day.



XTRA

XTRA FURNITURE SDN BHD
The Gardens Mall, Mid Valley City
Lot S-201A&B (2nd flr centre escalator)
Lingkaran Syed Putra, 59200 Kuala Lumpur
Facebook @XTRAfurniture
Instagram @xtrafurnituremsia
www.malaysia.bulthaup.com



bulthaup

SHARIAH MOMENTUM UP STOCKS

Price & Volume Distribution Charts (as at Yesterday)

Technical Analysis

Definition

Shariah compliant stocks with Technical Analysis showing Bullish Momentum and Price Uptrend. The share price closed at the highest price yesterday. Both the highest and lowest price were higher than the previous day's highest and lowest price.

Chart Guide

Volume Distribution Chart is a statistical interpretation of the current sentiment on each stock in graphical format. The highest bar categorized as >150k is likely to be traded by institutions or super dealers, while the lowest bar categorized as <15k usually represents retail investors. "Buy Up" refers to more buyers snatching up the lots queued at selling price. "Sell Down" refers to sellers selling their shares to the buying queue.



ShareInvestor WebPro > Screener > Market Screener (FA & TA) > select BURSA > add criteria

A. Criteria

- Fundamental Analysis Conditions tab: select (i) Revenue
- Technical Analysis Conditions tab: select (ii) Stochastic Overbought (iii) select Bullish ADX +DI/-DI (iv) select Average Volume (v) select RSI Overbought
- Prices & Other Conditions tab: select (vi) Last Done Price (vii) select Is Shariah Compliant

B. Conditions

- Revenue - select (more than) type (1) for the past select (1) financial year(s)
- Stochastic Overbought - FatSO type (1), type (1) above type (99) for type (1) days
- Bullish ADX+DI/-DI - ADX Type (1), type (1): +DI above -DI
- Average Volume - type (1) days average volume greater than type (1000) lots
- RSI Overbought - RSI type (1) above (99) for (1) days
- Last Done Price - select (more than) type (0.3)
- Is Shariah Compliant - select Yes

> click Save Template > Create New Template type (Shariah Momentum Up Stocks) > click Create

> click Save Template as > select Shariah Momentum Up Stocks > click Save

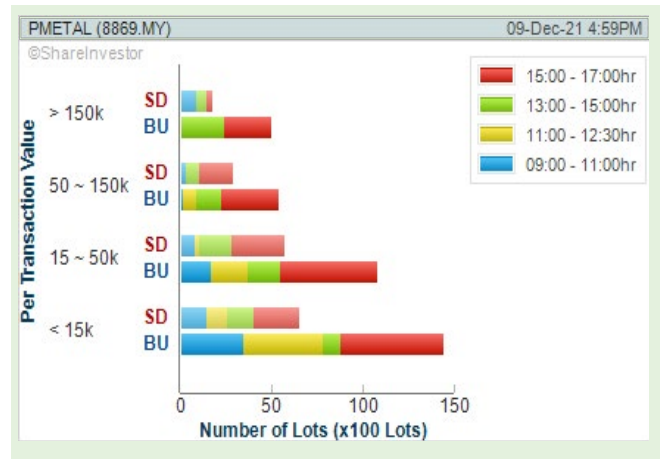
> click Screen Now (may take a few minutes)

Sort By: Select (Vol) Select (Desc)

Mouse over stock name > Charts > click C² Chart or Volume Distribution

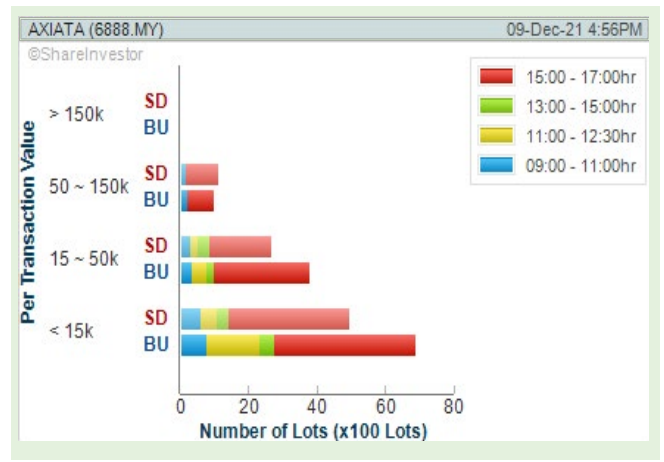
PRESS METAL ALUMINIUM HOLDINGS BERHAD (8869)

Analysis



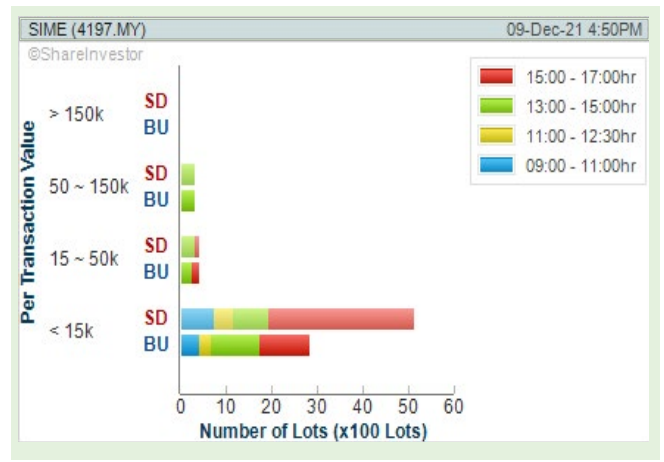
AXIATA GROUP BERHAD (6888)

Analysis



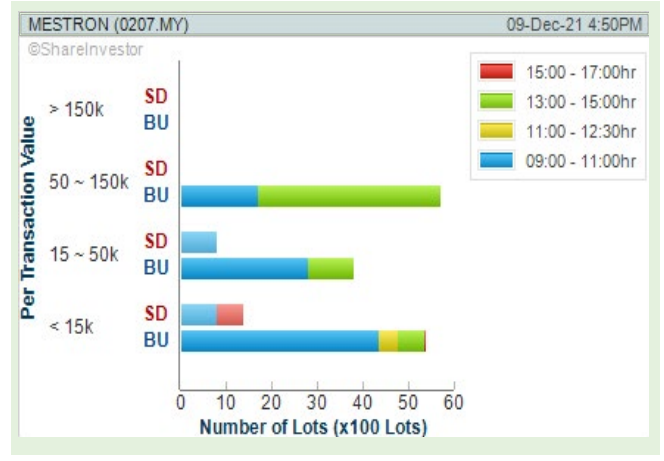
SIME DARBY BERHAD (4197)

Analysis



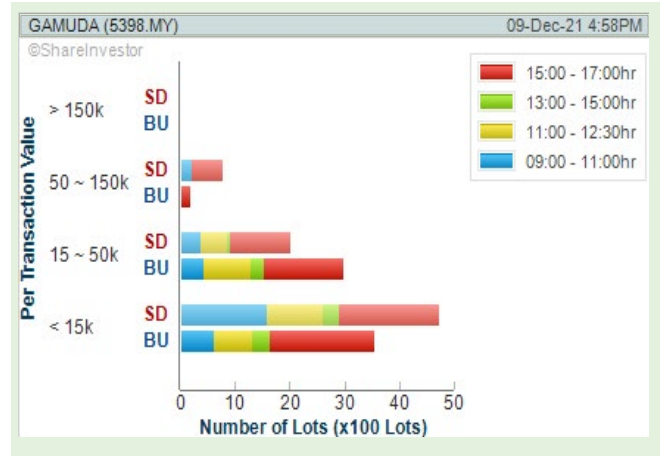
MESTRON HOLDINGS BERHAD (0207)

Analysis



GAMUDA BERHAD (5398)

Analysis



Disclaimer: The information on this page is provided as a service to readers. It does not constitute financial advice and/or any investment recommendations. Past performance is not indicative of future results. We assume no liability for damages resulting from or arising out of the use of such information. It would be best if you did your own research to make your personal investment decisions wisely or consult a licenced investment advisor.

ShareInvestor is a technology based company with a focus on Internet media and we have operations in Malaysia, Singapore and Thailand. We are the market leader in providing a combination of market data, analysis and news on various platforms to traders and investors.

Our websites include www.shareinvestor.com and www.bursastation.com. More information about our products and services can be found at www.shareinvestorholdings.com

We are looking for Developers to join our team, in a challenging, yet fun and fulfilling environment. The successful applicants will leverage on the latest Internet technologies to help create financial applications and platforms for investors, listed companies and financial institutions. Fresh graduates are welcome to apply.

Interested candidates are encouraged to apply with full resume, present and expected salary and a recent photograph. Please send these to hr.my@shareinvestor.com for processing. ShareInvestor regrets that only shortlisted candidates shall be notified.

Ruby on Rails Developer

Responsibilities:

- Develop quality web-based software modules on schedule with a focus on Ruby and Ruby on Rails applications.
- Explore and utilize the latest web-based technologies.
- Document design specifications, logic concepts and module description.
- Maintain and enhance existing web-based applications.

Requirements:

- Experience in web-based programming/scripting is essential. Candidate must be able to explain clearly technical aspects of his/her past experiences and projects.
- Passion for programming and desire to learn new languages like Go.
- Good Diploma/Degree in Computer Science/Computer Engineering.
- Able to work well in a team and be able to follow documentation and coding standards.
- Knowledge in any of the following would be an added advantage
 - Ruby and Ruby on Rails Framework
 - Javascript and jQuery library
 - Go
 - Perl

Application Developer (C++/STL)

Responsibilities:

- Deliver quality software modules on schedule.
- Document design specifications, conceptions, module description.
- Maintain and enhance existing applications.

Requirements:

- Passion for programming and desire to learn.
- Good Diploma/Degree in Computer Science/Computer Engineering.
- Skills in C++ is essential.
- Experience with Visual Studio, networking stack and Golang would be an advantage.
- Proactive, resourceful and self-motivated with strong analytical skills.
- Good interpersonal, written and communication skills.
- Able to work with little supervision.

PHP Developer

Responsibilities:

- Develop web applications in PHP
- Work with Front-End Developers for integration with visuals.
- Perform R&D work based on new ideas and concepts for future requirements and enhancement.
- Use JSON and REST API's for integration
- Advise and consult on technical queries on web development.
- Present ideas and concepts internally and be creative to propose and deliver solutions
- Provide support and maintenance for all related projects.
- Be actively involved in internal discussions, brainstorm-sessions, and other meetings.

Requirements:

- Bachelor's Degree/Diploma in Computer Science; Information Technology or equivalent.
- Minimum 3-5 years of experience working with at least one of the following PHP based frameworks: Symfony, WordPress
- Experience with AWS & Containerisation (Docker, GitLab, Podman) strongly preferred.
- Proven experience developing custom modules or framework extensions
- Very comfortable integrating with 3rd party APIs
- Strong skills in PHP, MySQL, Bootstrap, HTML, CSS, Javascript/Jquery.
- Excellent communication skills to support healthy relationships with teammates and clients
- Good problem solving capabilities
- Able to showcase PHP projects which the candidate has implemented before.
- Familiar with secure coding practices

NON SHARIAH HOT STOCK

Price & Volume Distribution Charts
(Over 5 trading days as at Yesterday)

Technical Analysis

Definition

Non-Shariah compliant stocks with Technical Analysis showing the closing price Yesterday is higher than previous closing price and 5-days Moving Average Price with Volume Spike

Chart Guide

Volume Distribution Chart is a statistical interpretation of the current sentiment on each stock in graphical format. The highest bar categorized as >150k is likely to be traded by institutions or super dealers, while the lowest bar categorized as <15k usually represents retail investors. "Buy Up" refers to more buyers snatching up the lots queued at selling price. "Sell Down" refers to sellers selling their shares to the buying queue.



SHAREINVESTOR WEBPRO step-by-step GUIDE

ShareInvestor WebPro > Screener > Market Screener (FA & TA) > select BURSAs > add criteria

A. Criteria

- Fundamental Analysis Conditions tab > select (i) Revenue
- Technical Analysis Conditions tab select (ii) Moving Average Below Close (iii) select Volume Spike (iv) select RSI Overbought
- Price & Other Conditions tab > select (v) Is Shariah Compliant

> click Add Criteria

B. Conditions

- Revenue - select (more than) type (1) for the past select (1) financial year(s)
- Moving Average Below Close - select (MA) type (5) below close price for type (1) days
- Volume Spike - Volume type (1) times greater than type (5) days average
- RSI Overbought - RSI type (1) above (99) for (1) days
- Is Shariah Compliant - select No

> click Save Template > Create New Template type (Non-Shariah Hot Stocks) > click Create

> click Save Template as > select Non-Shariah Hot Stocks > click Save

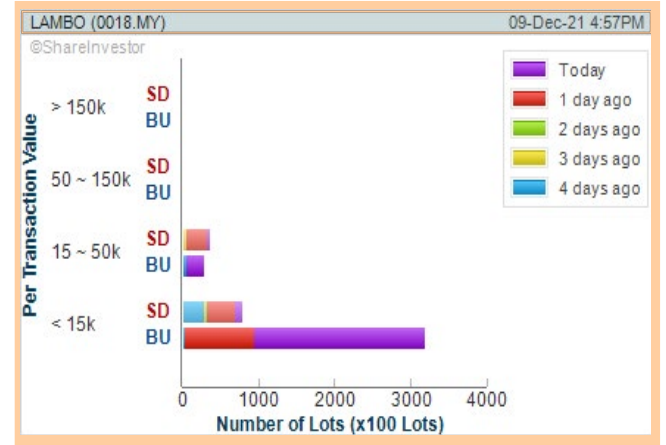
> click Screen Now (may take a few minutes)

> Sort By: Select (Vol) Select (Desc)

> Mouse over stock name > Charts > click C² Chart tab or Volume Distribution

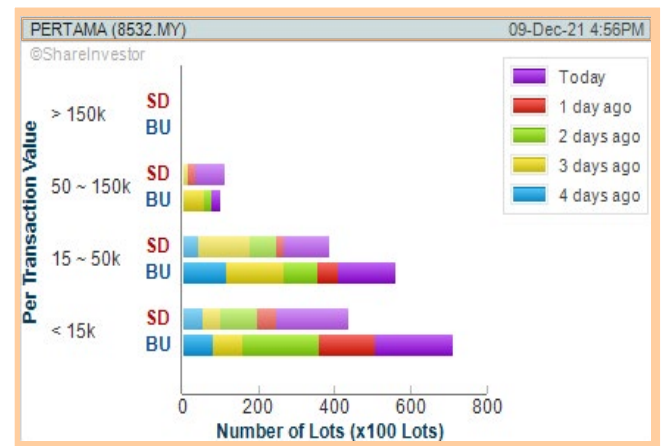
LAMBO GROUP BERHAD (0018)

Analysis



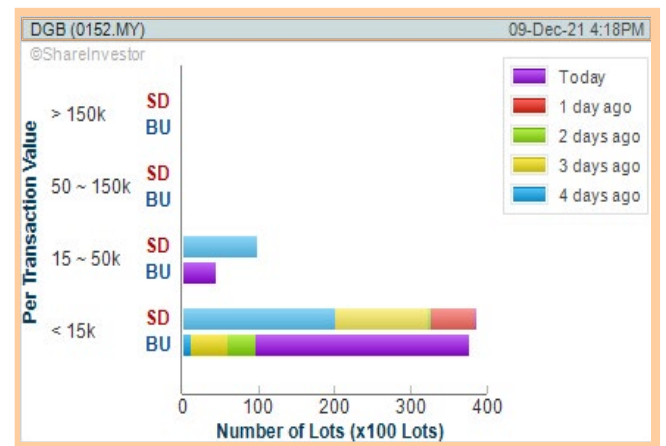
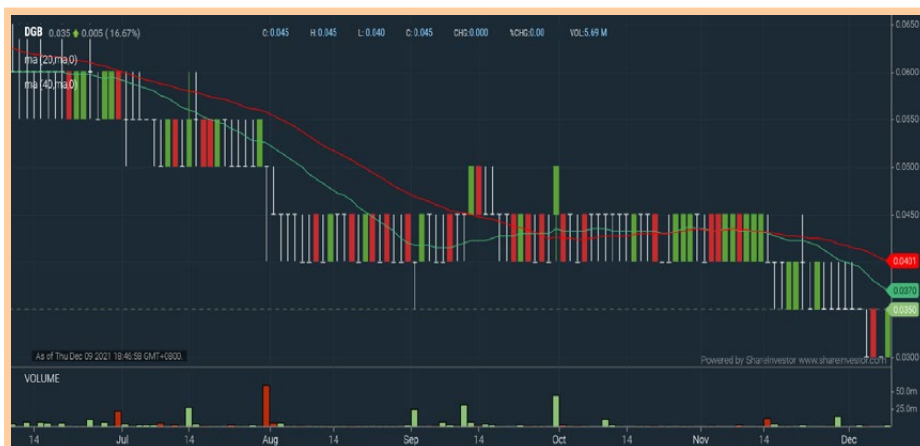
PERTAMA DIGITAL BERHAD (8532)

Analysis



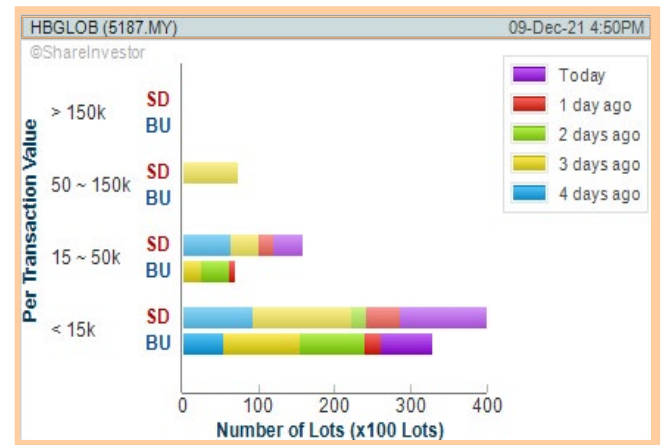
DGB ASIA BERHAD (0152)

Analysis



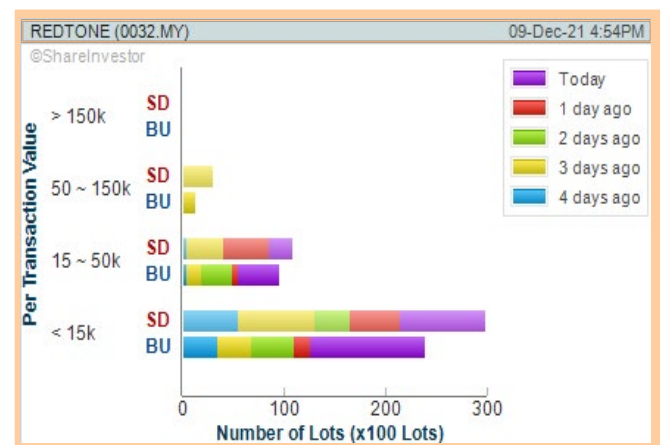
HB GLOBAL LIMITED (5187)

Analysis



REDTONE DIGITAL BERHAD (0032)

Analysis



UP TRENDING STOCKS

Price & Volume Distribution Charts (Over 5 trading days as at Yesterday)

Technical Analysis

Definition

Stocks with Technical Analysis showing Bullish Momentum and Price Uptrend.

Chart Guide

Volume Distribution Chart is a statistical interpretation of the current sentiment on each stock in graphical format. The highest bar categorized as >150k is likely to be traded by institutions or super dealers, while the lowest bar categorized as <15k usually represents retail investors. "Buy Up" refers to more buyers snatching up the lots queued at selling price. "Sell Down" refers to sellers selling their shares to the buying queue.



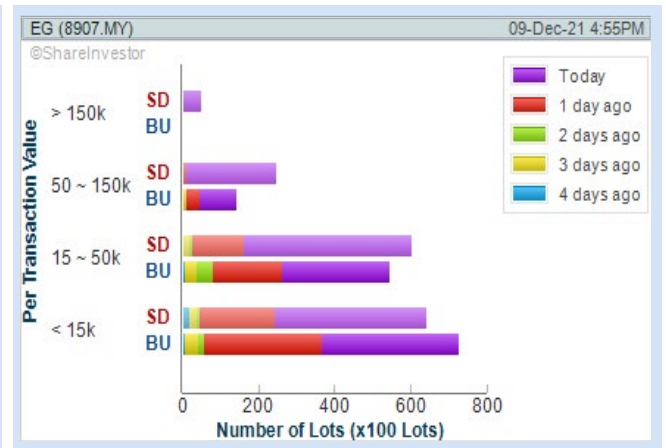
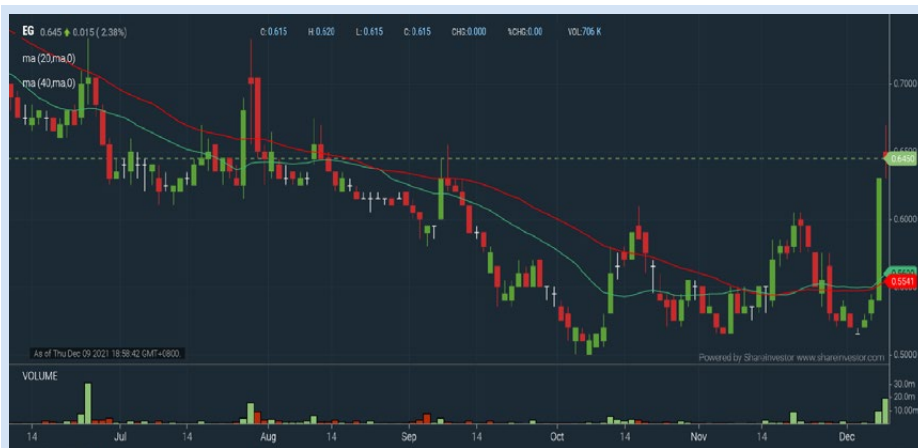
ShareInvestor WebPro > Screener > Market Screener (FA & TA) > select BURSA > add criteria
A. Criteria
 • Fundamental Analysis Conditions tab > select (i) Revenue
 • Technical Analysis Conditions tab (ii) select Moving Average Below Close (iii) select Average Volume (iv) select Bullish ADX +DI/-DI (v) select ADX Trend
 • Prices & Other Conditions tab: select (vi) Last Done Price
 > click Add Criteria
 • Technical Analysis Conditions tab (vii) select Moving Average Below Close
 > click Add Criteria

B. Conditions
 • Revenue - select (more than) type (1) for the past select (1) financial year(s)
 • Moving Average Below Close - select (MA) type (20) below close price for type (1) days
 • Average Volume - type (5) days average volume type (1000) lots
 • Last Done Price - select (more than) type (0.3)
 • Moving Average Below Close - select (MA) type (40) below close price for type (1) days
 • Bullish ADX - ADX type (20) type (1): +DI above -DI
 • ADX Trend - ADX type (20), type (1) above type (20) for type (1) days

> click Save Template > Create New Template type (Non-Shariah Up-Trending Stocks) > click Create
 Click Save Template As > select Non-Shariah Up Trending Stocks > click Save
 > click Screen Now (may take a few minutes)
 Sort By: Select (Vol) Select (Desc)
 Mouse over stock name > Charts > click C? Chart tab or Volume Distribution

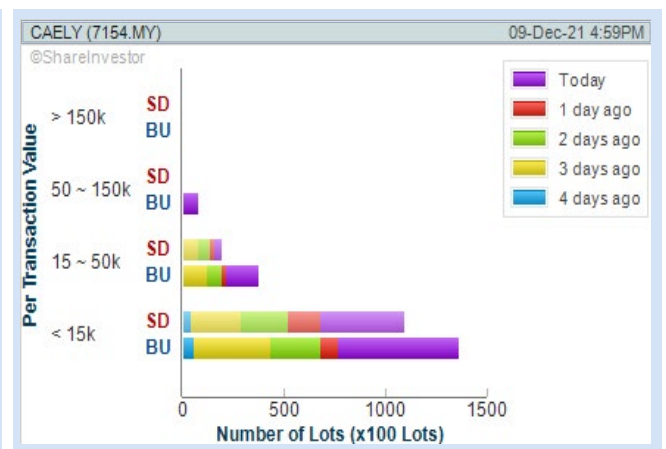
EG INDUSTRIES BERHAD (8907)

Analysis



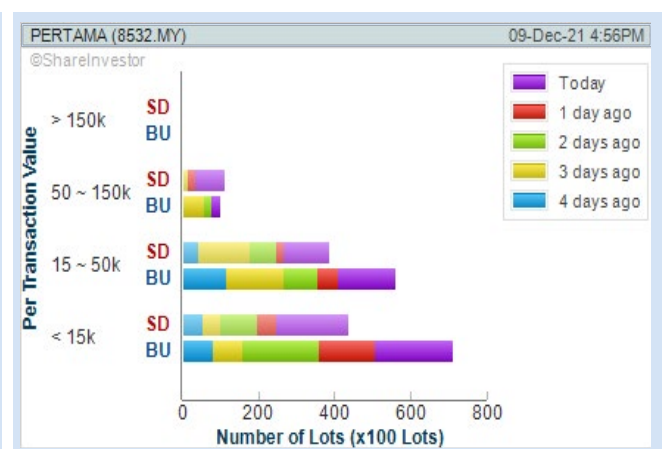
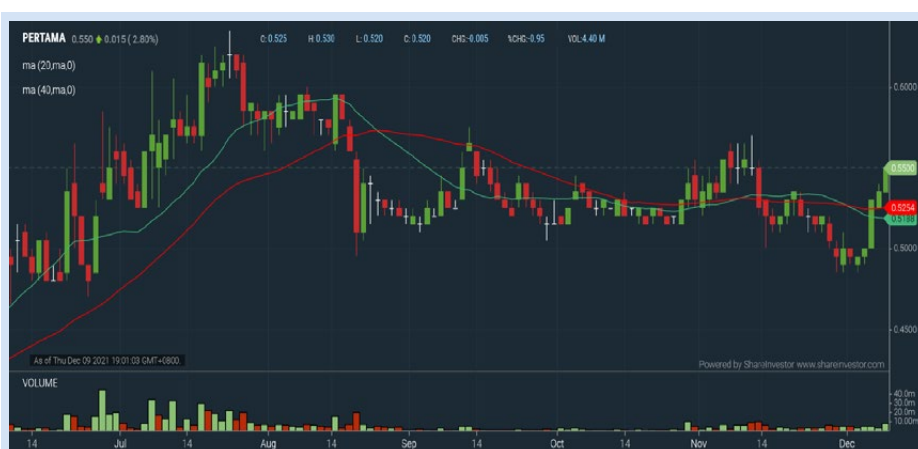
CAELY HOLDINGS BERHAD (7154)

Analysis



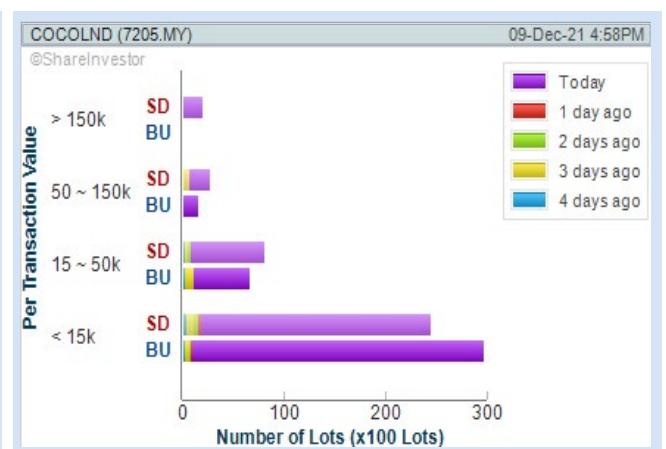
PERTAMA DIGITAL BERHAD (8532)

Analysis



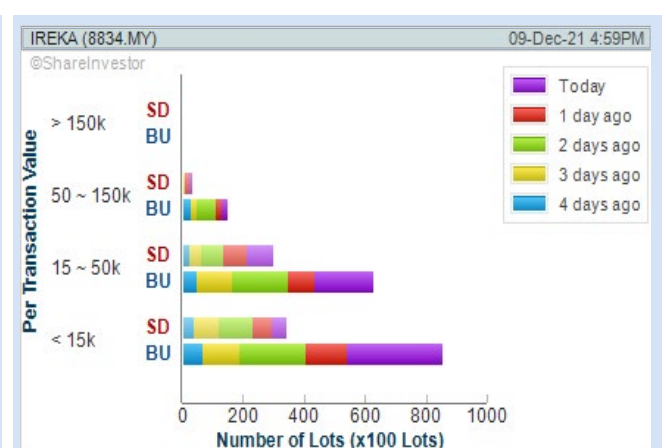
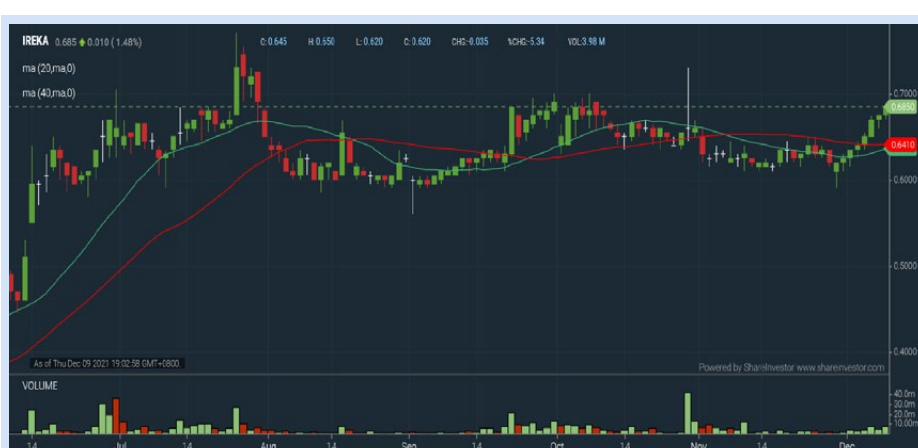
COCOALAND HOLDINGS BERHAD (7205)

Analysis



IREKA CORPORATION BERHAD (8834)

Analysis



GROWTH STOCKS

Price & Total Shareholder Return (as at Yesterday)

Fundamental Analysis

Definition

A growth company is any company whose business generates significant positive cash flows or earnings which increase at significantly faster rates than the overall economy. A growth company tends to have very profitable reinvestment opportunities for its own retained earnings.

Chart Guide

Total Shareholder Return (TSR) combines share price appreciation and dividends paid to show the total return to the shareholder expressed as a percentage.



ShareInvestor WebPro > Screener > Market Screener (FA & TA) > select BURSA > add criteria
A.Criteria
 • Fundamental Analysis Conditions tab > select (i) Free Cash Flow, (ii) Revenue Growth, (iii) Gross Profit (Earnings) Margin, (iv) Quality of Earnings, (v) Total Shareholder Returns,
 > click Add Criteria
 • Fundamental Analysis Conditions tab >select (vi) Total Shareholder Returns
 > click Add Criteria

B.Conditions (Criteria Filters)
 • Free Cash Flow - select (more than) type (1) for the past select (1) financial year(s)
 • Revenue Growth - select (more than) type (1) for the past select (1) financial year(s)
 • Gross Profit (Earnings) Margin - select (more than) type (30) % for the past select (1) financial year(s)
 • Quality of Earnings - select (more than) type (1) for the past select (1) financial year(s)
 • Total Shareholder Return - select (more than) type (5) % for the past select (3) financial year(s)
 • Total Shareholder Return - select (more than) type (5) % for the past select (5) financial year(s)

> click Save Template > Create New Template type (Growth Companies) > click Create
 > click Save Template as > select Growth Companies > click Save
 > click Screen Now (may take a few minutes)
 > Sort By: Select (Revenue Growth) Select (Desc)
 > Mouse over stock name > Factsheet > looking for Total Shareholder Return

ES CERAMICS TECHNOLOGY BERHAD (0100)

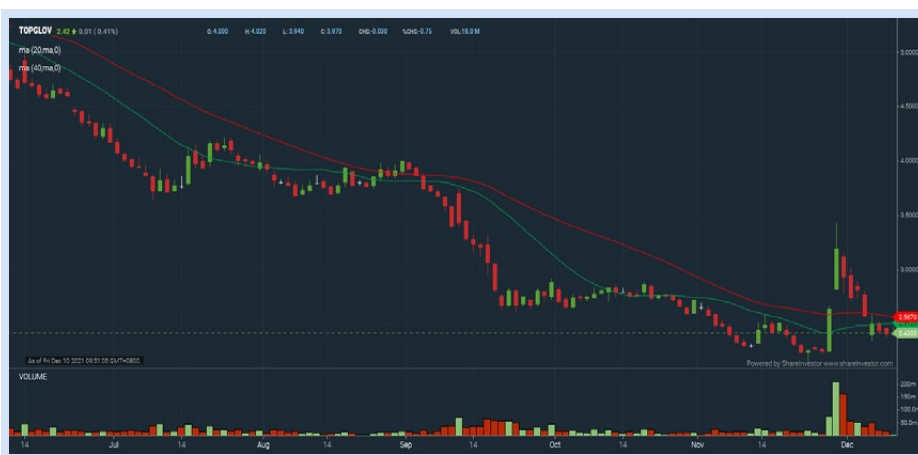
Analysis



Period	Dividend Received	Capital Appreciation	Total Shareholder Return
Short Term Return	5 Days	-0.020	-4.76 %
	10 Days	-0.015	-3.61 %
	20 Days	-0.035	-8.05 %
Medium Term Return	3 Months	-0.060	-13.04 %
	6 Months	-0.125	-23.81 %
	1 Year	0.040	-15.38 %
Long Term Return	2 Years	0.050	+400.00 %
	3 Years	0.056	+524.66 %
	5 Years	0.068	+103.46 %
Annualised Return	Annualised	-	+15.77 %

TOP GLOVE CORPORATION BERHAD (7113)

Analysis



Period	Dividend Received	Capital Appreciation	Total Shareholder Return
Short Term Return	5 Days	-0.330	-12.04 %
	10 Days	+0.140	+6.17 %
	20 Days	+0.110	+4.78 %
Medium Term Return	3 Months	0.054	-31.17 %
	6 Months	0.234	-44.74 %
	1 Year	0.651	-54.73 %
Long Term Return	2 Years	0.836	+121.42 %
	3 Years	0.961	+79.50 %
	5 Years	1.261	+347.14 %
Annualised Return	Annualised	-	+34.92 %

MENANG CORPORATION (M) BERHAD (1694)

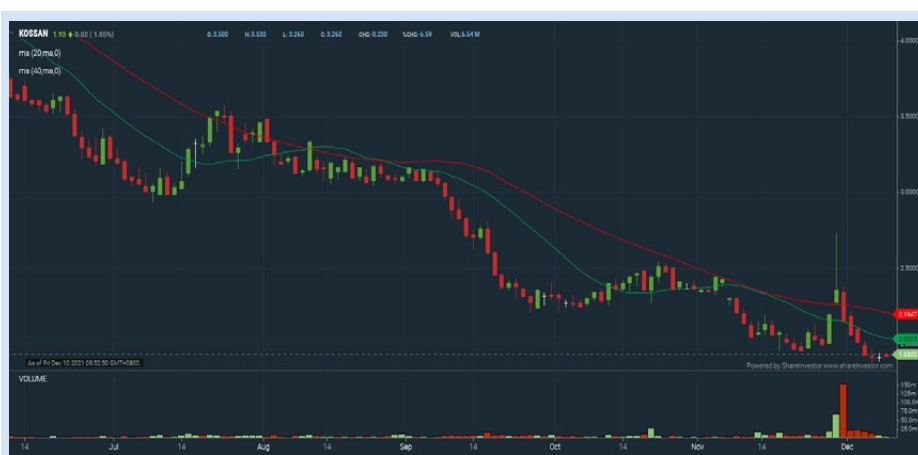
Analysis



Period	Dividend Received	Capital Appreciation	Total Shareholder Return
Short Term Return	5 Days	+0.010	+1.63 %
	10 Days	-	-
	20 Days	+0.005	+0.81 %
Medium Term Return	3 Months	+0.145	+30.24 %
	6 Months	+0.165	+35.87 %
	1 Year	+0.040	+7.70 %
Long Term Return	2 Years	+0.315	+101.61 %
	3 Years	+0.200	+47.06 %
	5 Years	+0.242	+63.19 %
Annualised Return	Annualised	-	+10.29 %

KOSSAN RUBBER INDUSTRIES BERHAD (7153)

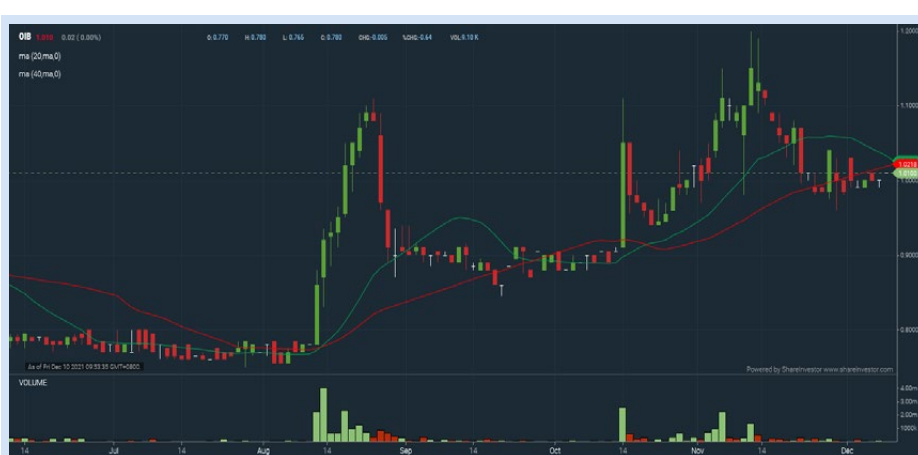
Analysis



Period	Dividend Received	Capital Appreciation	Total Shareholder Return
Short Term Return	5 Days	-0.140	-6.83 %
	10 Days	-0.110	-5.45 %
	20 Days	-0.220	-10.33 %
Medium Term Return	3 Months	0.120	-31.65 %
	6 Months	0.240	-41.89 %
	1 Year	0.470	-58.22 %
Long Term Return	2 Years	0.560	+22.22 %
	3 Years	0.620	+19.11 %
	5 Years	0.840	+75.05 %
Annualised Return	Annualised	-	+11.85 %

ORIENTAL INTEREST BERHAD (5827)

Analysis



Period	Dividend Received	Capital Appreciation	Total Shareholder Return
Short Term Return	5 Days	+0.010	+1.00 %
	10 Days	+0.025	+2.54 %
	20 Days	-0.060	-8.18 %
Medium Term Return	3 Months	+0.110	+12.22 %
	6 Months	+0.230	+26.40 %
	1 Year	0.000	+75.52 %
Long Term Return	2 Years	0.080	+75.52 %
	3 Years	0.160	+66.36 %
	5 Years	0.300	+47.86 %
Annualised Return	Annualised	-	+8.14 %

DIVIDEND STOCKS

Price & Total Shareholder Return (as at Yesterday)

Fundamental Analysis

Definition

A dividend company is any company that pays out regular dividends. It is usually a well-established company with a track record of distributing earnings back to shareholders.

Chart Guide

Total Shareholder Return (TSR) combines share price appreciation and dividends paid to show the total return to the shareholder expressed as a percentage.



ShareInvestor WebPro > Screener > Market Screener (FA & TA) > select BURSA > add criteria
A.Criteria
 • Fundamental Analysis Conditions tab > select (i) Dividend Yield, (ii) Dividend Payout, (iii) Total Debt To Equity, (iv) Total Shareholder Returns > click Add Criteria
 • Fundamental Analysis Conditions tab > select (v) Total Shareholder Returns > click Add Criteria

B.Conditions (Criteria Filters)
 • Dividend Yield - select (more than) type (5) % for the past select (1) financial year(s)
 • Dividend Payout (Historical) - select (more than) type (0.5) times for the past select (1) financial year(s)
 • Total Debt To Equity - select (less than) type (1) for the past select (1) financial year(s)
 • Total Shareholder Return - select (more than) type (5) % for the past select (3) financial year(s)
 • Total Shareholder Return - select (more than) type (5) % for the past select (5) financial year(s)

> click Save Template > Create New Template type (Dividend Companies) > click Create
 > click Save Template as > select Dividend Companies > click Save
 > click Screen Now (may take a few minutes)
 > Sort By: Select (Dividend Yield) Select (Desc)
 > Mouse over stock name > Factsheet > looking for Total Shareholder Return

TOP GLOVE CORPORATION BERHAD (7113)

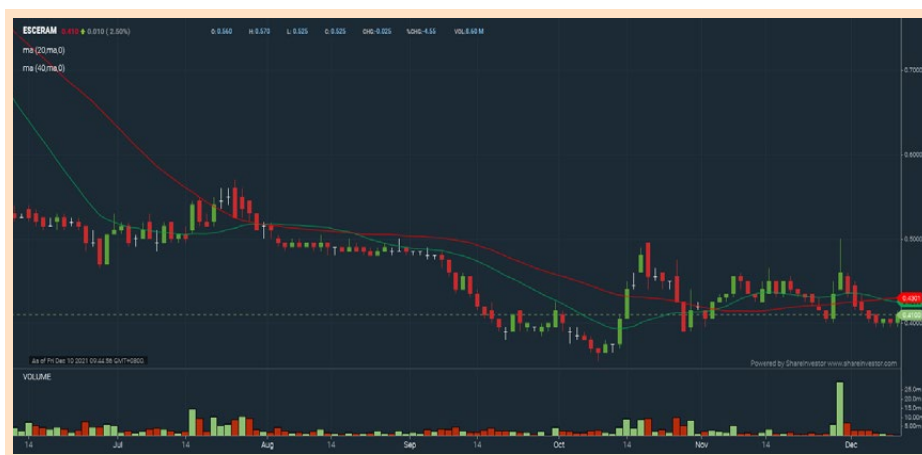
Analysis



Period	Dividend Received	Capital Appreciation	Total Shareholder Return
Short Term Return	5 Days	-0.035	-4.70%
	10 Days	-0.065	-8.39%
	20 Days	-0.090	-11.25%
Medium Term Return	3 Months	+0.080	+12.70%
	6 Months	+0.130	+22.41%
	1 Year	+0.390	+121.88%
Long Term Return	2 Years	+0.330	+86.84%
	3 Years	+0.240	+51.06%
	5 Years	+0.100	+16.39%
Annualised Return	Annualised	-	+3.08%

ES CERAMICS TECHNOLOGY BERHAD (0100)

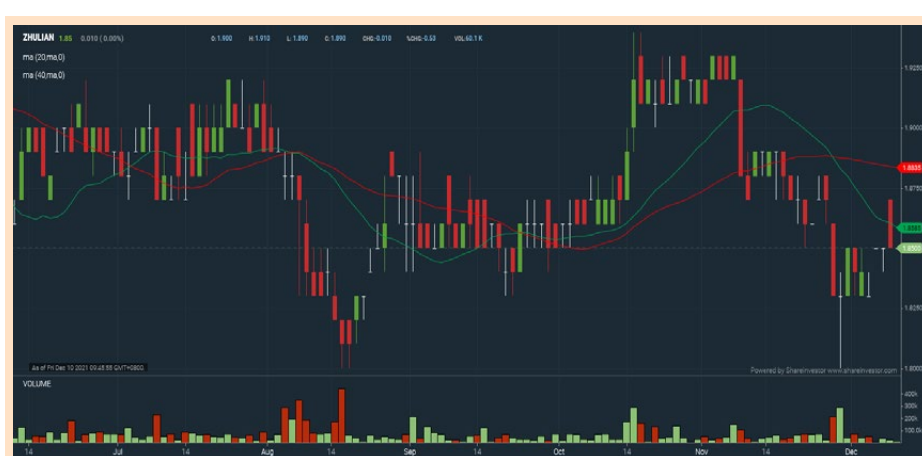
Analysis



Period	Dividend Received	Capital Appreciation	Total Shareholder Return
Short Term Return	5 Days	-0.035	-4.70%
	10 Days	-0.065	-8.39%
	20 Days	-0.090	-11.25%
Medium Term Return	3 Months	+0.080	+12.70%
	6 Months	+0.130	+22.41%
	1 Year	+0.390	+121.88%
Long Term Return	2 Years	+0.330	+86.84%
	3 Years	+0.240	+51.06%
	5 Years	+0.100	+16.39%
Annualised Return	Annualised	-	+3.08%

ZHULIAN CORPORATION BERHAD (5131)

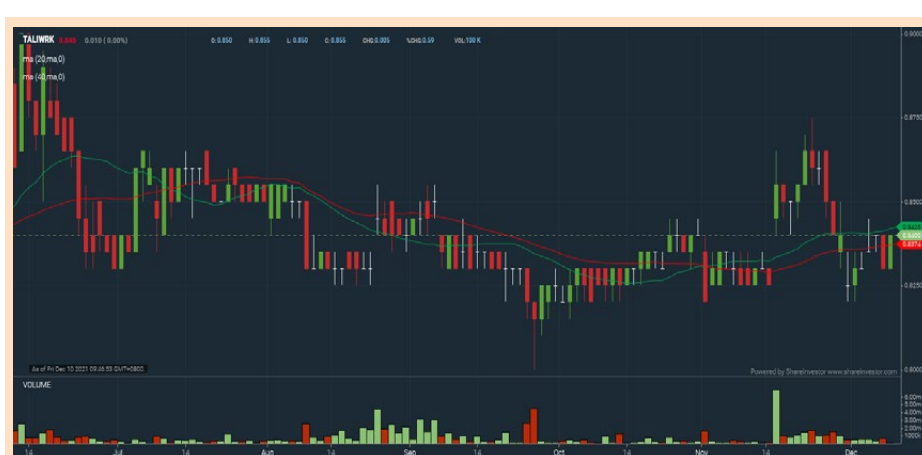
Analysis



Period	Dividend Received	Capital Appreciation	Total Shareholder Return
Short Term Return	5 Days	-0.035	-4.70%
	10 Days	-0.065	-8.39%
	20 Days	-0.090	-11.25%
Medium Term Return	3 Months	+0.080	+12.70%
	6 Months	+0.130	+22.41%
	1 Year	+0.390	+121.88%
Long Term Return	2 Years	+0.330	+86.84%
	3 Years	+0.240	+51.06%
	5 Years	+0.100	+16.39%
Annualised Return	Annualised	-	+3.08%

TALIWORKS CORPORATION BERHAD (8524)

Analysis



Period	Dividend Received	Capital Appreciation	Total Shareholder Return
Short Term Return	5 Days	-0.035	-4.70%
	10 Days	-0.065	-8.39%
	20 Days	-0.090	-11.25%
Medium Term Return	3 Months	+0.080	+12.70%
	6 Months	+0.130	+22.41%
	1 Year	+0.390	+121.88%
Long Term Return	2 Years	+0.330	+86.84%
	3 Years	+0.240	+51.06%
	5 Years	+0.100	+16.39%
Annualised Return	Annualised	-	+3.08%

HEXZA CORPORATION BERHAD (3298)

Analysis



Period	Dividend Received	Capital Appreciation	Total Shareholder Return
Short Term Return	5 Days	-0.035	-4.70%
	10 Days	-0.065	-8.39%
	20 Days	-0.090	-11.25%
Medium Term Return	3 Months	+0.080	+12.70%
	6 Months	+0.130	+22.41%
	1 Year	+0.390	+121.88%
Long Term Return	2 Years	+0.330	+86.84%
	3 Years	+0.240	+51.06%
	5 Years	+0.100	+16.39%
Annualised Return	Annualised	-	+3.08%



Long Companies

SHAREINVESTOR WEBPRO step-by-step GUIDE
 ShareInvestor WebPro > Screener > Predefined TA Screens > select market BURSA > Most Long Signals > click Scan Results or mouse over each company

Definition

Top 10 stocks with Technical Analysis plus Pattern Matching by 60 pre-defined indicators by the system showing a higher probability of bullish sentiment on the share price.

EG INDUSTRIES BHD (8907.MY)

EG

Price updated at 09 Dec 2021 16:59

Last: 0.645	Change: +0.015	Volume: 192,165
	Change (%): +2.38	Range: 0.630 - 0.670

TA Scanner Results based on historical data up to 09 Dec 2021

Condition	Signal	Explanation
Bollinger Band: Bullish Long Term Volatility Breakout and Trending	Long	1. Close price above upper bollinger band(33,1). 2. Volume above average volume(50). 3. Average volume(50) is above 300,000.
Bollinger Band: Bullish Short Term Volatility Breakout and Trending	Long	1. Close price above upper bollinger band(33,1). 2. Volume above average volume(10). 3. Average volume(10) is above 300,000.
Bollinger Band: High Above Upper Bollinger Band	Neutral	1. High above upper bollinger band(20,2). 2. Average volume(5) is above 100,000.
Donchian Channels: High Above Upper Donchian Channels	Long	High crossed above the upper Donchian Channel(14,4)
MA: Medium Term Bullish Moving Average Crossover	Long	MA(25) crossed above MA(50) within the last 1 day.
MACD: Bullish MACD Crossover	Long	1. MACD(12,26) diff line crossed above the MACD(12,26) signal line. 2. MACD Histogram(12,26) is above 0.
Parabolic SAR: Bearish Parabolic SAR Reversal	Neutral	1. Parabolic SAR 1 day ago above close price 1 day ago for the last 5 days. 2. Parabolic SAR below close price
RSI: Short Term RSI 50 Bullish Crossover	Long	1. RSI(20) crossed above 50 within the last 1 day and RSI(20) 1 day ago below 50 for the last 5 days. 2. Volume above average volume(125). 3. Average volume(5) is above 100,000.

CHIN HIN GROUP BERHAD (5273.MY)

CHINHIN

Price updated at 09 Dec 2021 16:54

Last: 1.900	Change: -0.080	Volume: 18,125
	Change (%): -4.04	Range: 1.860 - 2.020

TA Scanner Results based on historical data up to 09 Dec 2021

Condition	Signal	Explanation
Bollinger Band: Bullish Long Term Volatility Breakout and Trending	Long	1. Close price above upper bollinger band(33,1). 2. Volume above average volume(50). 3. Average volume(50) is above 300,000.
Bollinger Band: Bullish Short Term Volatility Breakout and Trending	Long	1. Close price above upper bollinger band(33,1). 2. Volume above average volume(10). 3. Average volume(10) is above 300,000.
Bollinger Band: High Above Upper Bollinger Band	Neutral	1. High above upper bollinger band(20,2). 2. Average volume(5) is above 100,000.
Chaikin Volatility: Increasing Chaikin Volatility	Neutral	Chaikin Volatility(10,10) has been increasing for 5 days
Donchian Channels: High Above Upper Donchian Channels	Long	High crossed above the upper Donchian Channel(14,4)
MACD: Bullish MACD Crossover	Long	1. MACD(12,26) diff line crossed above the MACD(12,26) signal line. 2. MACD Histogram(12,26) is above 0.
Volume: 10 Days large value Buy Up trade	Long	1. 150K value Buy Up greater than Sell Down by 20% for 10 days. 2. 50K-100K value Buy Up greater than Sell Down by 20% for 10 days. 3. Average volume(10) is above 1000000
Volume: 5 Days large value Buy Up trade	Long	1. 150K value Buy Up greater than Sell Down by 20% for 5 days. 2. 50K-100K value Buy Up greater than Sell Down by 20% for 5 days. 3. Average volume(10) is above 1000000
Volume: Consecutive Days Of Decreasing Average Volume	Short	1. Average Volume(20) has been decreasing over the last 2 week. 2. Average volume(20) is above 50000

RAPID SYNERGY BHD (7765.MY)

RAPID

Price updated at 09 Dec 2021 16:53

Last: 10.660	Change: +0.100	Volume: 448
	Change (%): +0.95	Range: 10.180 - 10.660

TA Scanner Results based on historical data up to 09 Dec 2021

Condition	Signal	Explanation
Accumulation Distribution: Bullish Accumulation Distribution	Long	Accumulation distribution increasing for the last 7 days
Candlestick: Bullish Engulfing	Long	Bullish: Engulfing
DM: Bullish Directional Movement	Long	-DI(14) crossed below +DI(14)
Donchian Channels: High Above Upper Donchian Channels	Long	High crossed above the upper Donchian Channel(14,4)
Parabolic SAR: Bearish Parabolic SAR Reversal	Neutral	1. Parabolic SAR 1 day ago above close price 1 day ago for the last 5 days. 2. Parabolic SAR below close price
Price: New 52 Week High	Long	1. Stock reach a new 52 week high. 2. Average volume(30) is above 50000.

MSIAN GENOMICS RES CENTRE BHD (0155.MY)

MSC

Price updated at 09 Dec 2021 16:53

Last: 3.450	Change: -0.050	Volume: 13,301
	Change (%): -1.43	Range: 3.420 - 3.570

TA Scanner Results based on historical data up to 09 Dec 2021

Condition	Signal	Explanation
Donchian Channels: High Above Upper Donchian Channels	Long	High crossed above the upper Donchian Channel(14,4)
MACD: Bullish MACD Crossover	Long	1. MACD(12,26) diff line crossed above the MACD(12,26) signal line. 2. MACD Histogram(12,26) is above 0.
Price: New 52 Week High	Long	1. Stock reach a new 52 week high. 2. Average volume(30) is above 50000.
Volume: 10 Days large value Buy Up trade	Long	1. 150K value Buy Up greater than Sell Down by 20% for 10 days. 2. 50K-100K value Buy Up greater than Sell Down by 20% for 10 days. 3. Average volume(10) is above 1000000
Volume: 5 Days large value Buy Up trade	Long	1. 150K value Buy Up greater than Sell Down by 20% for 5 days. 2. 50K-100K value Buy Up greater than Sell Down by 20% for 5 days. 3. Average volume(10) is above 1000000

IREKA CORPORATION BHD (8834.MY)

IREKA

Price updated at 09 Dec 2021 16:59

Last: 0.685	Change: +0.010	Volume: 70,940
	Change (%): +1.48	Range: 0.670 - 0.690

TA Scanner Results based on historical data up to 09 Dec 2021

Condition	Signal	Explanation
Accumulation Distribution: Bullish Accumulation Distribution	Long	Accumulation distribution increasing for the last 7 days
Bollinger Band: High Above Upper Bollinger Band	Neutral	1. High above upper bollinger band(20,2). 2. Average volume(5) is above 100,000.
CCI: Bearish CCI Overbought And Reversing	Short	1. CCI(26) above 100 and CCI(26) 1 day ago increasing for the last 3 days. 2. CCI(26) below CCI(26) 1 day ago
Price: Consecutive Days Gains	Long	1. Close price has been increasing over the last 5 days. 2. Average volume(5) above 100,000.
Volume: 10 Days large value Buy Up trade	Long	1. 150K value Buy Up greater than Sell Down by 20% for 10 days. 2. 50K-100K value Buy Up greater than Sell Down by 20% for 10 days. 3. Average volume(10) is above 1000000
Volume: 5 Days large value Buy Up trade	Long	1. 150K value Buy Up greater than Sell Down by 20% for 5 days. 2. 50K-100K value Buy Up greater than Sell Down by 20% for 5 days. 3. Average volume(10) is above 1000000

RHB BANK BERHAD (1066.MY)

RHBBANK

Price updated at 09 Dec 2021 16:59

Last: 5.420	Change: +0.040	Volume: 26,462
	Change (%): +0.74	Range: 5.370 - 5.430

TA Scanner Results based on historical data up to 09 Dec 2021

Condition	Signal	Explanation
Bollinger Band: High Above Upper Bollinger Band	Neutral	1. High above upper bollinger band(20,2). 2. Average volume(5) is above 100,000.
Chaikin Volatility: Increasing Chaikin Volatility	Neutral	Chaikin Volatility(10,10) has been increasing for 5 days
Donchian Channels: High Above Upper Donchian Channels	Long	High crossed above the upper Donchian Channel(14,4)
Parabolic SAR: Bearish Parabolic SAR Reversal	Neutral	1. Parabolic SAR 1 day ago above close price 1 day ago for the last 5 days. 2. Parabolic SAR below close price
RSI: Short Term RSI 50 Bullish Crossover	Long	1. RSI(20) crossed above 50 within the last 1 day and RSI(20) 1 day ago below 50 for the last 5 days. 2. Volume above average volume(125). 3. Average volume(5) is above 100,000.
Volume: 5 Days large value Buy Up trade	Long	1. 150K value Buy Up greater than Sell Down by 20% for 5 days. 2. 50K-100K value Buy Up greater than Sell Down by 20% for 5 days. 3. Average volume(10) is above 1000000

Disclaimer: The information on this page is provided as a service to readers. It does not constitute financial advice and/or any investment recommendations. Past performance is not indicative of future results. We assume no liability for damages resulting from or arising out of the use of such information. It would be best if you did your own research to make your personal investment decisions wisely or consult a licenced investment advisor.

TROPICANA CORPORATION BERHAD (5401.MY)

TROP

Price updated at 09 Dec 2021 16:52

Last: 1.070	Change: +0.020	Volume: 3,742
	Change (%): +1.90	Range: 1.050 - 1.070

TA Scanner Results based on historical data up to 09 Dec 2021

Condition	Signal	Explanation
Bollinger Band: High Above Upper Bollinger Band	Neutral	1. High above upper bollinger band(20,2). 2. Average volume(5) is above 100,000.
Candlestick: Indecision Doji	Neutral	Indecision: Doji
DM: Bullish Directional Movement	Long	-DI(14) crossed below +DI(14)
Donchian Channels: High Above Upper Donchian Channels	Long	High crossed above the upper Donchian Channel(14,4)
MA: Short Term Bullish Moving Average Crossover	Long	MA(10) crossed above MA(15) within the last 1 day.
Price: New 52 Week High	Long	1. Stock reach a new 52 week high. 2. Average volume(30) is above 50000.

PHARMANIAGA BHD (7081.MY)

PHARMA

Price updated at 09 Dec 2021 16:56

Last: 0.760	Change: -0.015	Volume: 18,787
	Change (%): -1.94	Range: 0.750 - 0.775

TA Scanner Results based on historical data up to 09 Dec 2021

Condition	Signal	Explanation
Bollinger Band: Bullish Lower Bollinger Band Support	Long	1. Low 1 day ago below lower bollinger band(20,2). 2. Close above close 1 day ago. 3. Average volume(5) is above 100,000.
Candlestick: Bullish Engulfing	Long	Bullish: Engulfing
Chaikin Volatility: Decreasing Chaikin Volatility	Neutral	Chaikin Volatility(10,10) has been decreasing for 5 days
MA: Short Term Bearish Moving Average Crossover	Short	MA(10) crossed below MA(15) within the last 1 day.
Volume: Consecutive Days Of Increasing Average Volume	Long	1. Average Volume(20) has been increasing over the last 2 weeks. 2. Average volume(20) is above 100000
Williams %R: Bullish Williams %R	Long	1. Williams %R(26) between -80 and -100. 2. Average volume(5) is above 100,000.

AEMULUS HOLDINGS BERHAD (0181.MY)

AEMULUS

Price updated at 09 Dec 2021 16:57

Last: 1.170	Change: -	Volume: 45,147
	Change (%): -	Range: 1.160 - 1.200

TA Scanner Results based on historical data up to 09 Dec 2021

Condition	Signal	Explanation
Bollinger Band: Bullish Long Term Volatility Breakout and Trending	Long	1. Close price above upper bollinger band(33,1). 2. Volume above average volume(50). 3. Average volume(50) is above 300,000.
Bollinger Band: Bullish Short Term Volatility Breakout and Trending	Long	1. Close price above upper bollinger band(33,1). 2. Volume above average volume(10). 3. Average volume(10) is above 300,000.
DM: Bullish Directional Movement	Long	-DI(14) crossed below +DI(14)
MACD: Bullish MACD Crossover	Long	1. MACD(12,26) diff line crossed above the MACD(12,26) signal line. 2. MACD Histogram(12,26) is above 0.
Parabolic SAR: Bearish Parabolic SAR Reversal	Neutral	1. Parabolic SAR 1 day ago above close price 1 day ago for the last 5 days. 2. Parabolic SAR below close price

CHIN HIN GROUP PROPERTY BERHAD (7187.MY)

CHGP

Price updated at 09 Dec 2021 16:50

Last: 0.875	Change: -	Volume: 32,798
	Change (%): -	Range: 0.850 - 0.885

TA Scanner Results based on historical data up to 09 Dec 2021

Condition	Signal	Explanation
MA: Bullish Price Crossover	Long	1. Close price crossed above MA(40) within the last 1 day. 2. Previous day close price is below the MA(10) for the last 5 days
Stochastic: Fast Stochastic Buy Signal	Long	1. Fast Stochastic(15,5) %K crossed above 20. 2. Fast Stochastic(15,5) %K 1 day ago was below 20 for the last 5 days. 3. Average volume(30) is above 50000
Volume: 10 Days large value Buy Up trade	Long	1. 150K value Buy Up greater than Sell Down by 20% for 10 days. 2. 50K-100K value Buy Up greater than Sell Down by 20% for 10 days. 3. Average volume(10) is above 1000000
Volume: 5 Days large value Buy Up trade	Long	1. 150K value Buy Up greater than Sell Down by 20% for 5 days. 2. 50K-100K value Buy Up greater than Sell Down by 20% for 5 days. 3. Average volume(10) is above 1000000



Insider Activity

Definition

Insider Activity shows the trades made by substantial shareholders or directors of the company. Purchases by the directors and company share buyback may indicate the share price is undervalued and brings confidence to the price trend of the share price.



ShareInvestor WebPro > Fundamental > Insider Trades > click Search tab > Select Bursa > click Stock name > scroll up and leave at <Select Counter> Type Date Range for Announcement Date > click Search

Notice Period is 28 November - 04 December 2021					
Effective Change Date	Stock Name	Buyer/ Seller Name (Classification)	Bought / (Sold) ['000]	No. of Shares After Trade ['000]	
			Total	Total	% Held
29 Nov 2021 - 01 Dec 2021	3A	MR TEO KWEE HOCK [SSH]	-2,003	45,419	9.265
26 Nov 2021 - 26 Nov 2021	3A	MR TEO KWEE HOCK [SSH]	100	47,423	9.673
29 Nov 2021 - 29 Nov 2021	ABMB	EMPLOYEES PROVIDENT FUND BOARD [SSH]	-300	215,118	13.896
26 Nov 2021 - 26 Nov 2021	ABMB	EMPLOYEES PROVIDENT FUND BOARD [SSH]	420	215,418	13.915
25 Nov 2021 - 25 Nov 2021	ABMB	EMPLOYEES PROVIDENT FUND BOARD [SSH]	63	214,998	13.888
24 Nov 2021 - 24 Nov 2021	ABMB	EMPLOYEES PROVIDENT FUND BOARD [SSH]	128	214,935	13.884
29 Nov 2021 - 29 Nov 2021	AEON	EMPLOYEES PROVIDENT FUND BOARD [SSH]	85	158,680	11.302
26 Nov 2021 - 26 Nov 2021	AEON	EMPLOYEES PROVIDENT FUND BOARD [SSH]	1,861	158,595	11.296
24 Nov 2021 - 24 Nov 2021	AEON	EMPLOYEES PROVIDENT FUND BOARD [SSH]	470	156,734	11.163
30 Nov 2021 - 30 Nov 2021	AEONCR	ABRDN PLC (FORMERLY KNOWN AS STANDARD LIFE ABERDEEN PLC) [SSH]	-4	13,702	5.367
30 Nov 2021 - 30 Nov 2021	AEONCR	ABERDEEN ASSET MANAGEMENT PLC [SSH]	-4	13,702	5.367
25 Nov 2021 - 25 Nov 2021	AEONCR	ABRDN PLC (FORMERLY KNOWN AS STANDARD LIFE ABERDEEN PLC) [SSH]	-20	13,706	5.369
25 Nov 2021 - 25 Nov 2021	AEONCR	ABERDEEN ASSET MANAGEMENT PLC [SSH]	-20	13,706	5.369
29 Nov 2021 - 29 Nov 2021	AIRPORT	EMPLOYEES PROVIDENT FUND BOARD [SSH]	-150	255,026	15.37
26 Nov 2021 - 26 Nov 2021	AIRPORT	EMPLOYEES PROVIDENT FUND BOARD [SSH]	-54	255,176	15.38
25 Nov 2021 - 25 Nov 2021	AIRPORT	EMPLOYEES PROVIDENT FUND BOARD [SSH]	-100	255,230	15.383
26 Nov 2021 - 26 Nov 2021	AIRPORT	KUMPULAN WANG PERSARAAN (DIPERBADANKAN) [SSH]	216	91,698	5.527
24 Nov 2021 - 24 Nov 2021	AIRPORT	EMPLOYEES PROVIDENT FUND BOARD [SSH]	-100	255,330	15.389
01 Dec 2021 - 01 Dec 2021	AJYA	MISS LEE XIA LIEN [DIR/CEO]	-20	20	0.01
26 Nov 2021 - 26 Nov 2021	APM	DATO TAN HENG CHEW [DIR/CEO]	51	104,161	53.281
26 Nov 2021 - 26 Nov 2021	APM	DATO TAN HENG CHEW [SSH]	51	100,558	51.438
26 Nov 2021 - 26 Nov 2021	APM	EMPLOYEES PROVIDENT FUND BOARD [SSH]	66	10,950	5.601
24 Nov 2021 - 24 Nov 2021	APM	EMPLOYEES PROVIDENT FUND BOARD [SSH]	149	10,884	5.568
30 Nov 2021 - 30 Nov 2021	ASIAPLY	MR LIM TECK SENG [DIR/CEO]	100	1,000	0.115
30 Nov 2021 - 30 Nov 2021	ATAIMS	DATUK BALACHANDRAN A/L GOVINDASAMY [SSH]	100	95,775	7.962
30 Nov 2021 - 30 Nov 2021	ATAIMS	DATUK BALACHANDRAN A/L GOVINDASAMY [DIR/CEO]	100	95,775	7.962
29 Nov 2021 - 29 Nov 2021	ATAIMS	DATUK BALACHANDRAN A/L GOVINDASAMY [DIR/CEO]	950	95,675	7.954
29 Nov 2021 - 29 Nov 2021	ATAIMS	DATUK BALACHANDRAN A/L GOVINDASAMY [SSH]	950	95,675	7.954
24 Sep 2021 - 24 Sep 2021	AXIATA	EMPLOYEES PROVIDENT FUND BOARD [SSH]	-213	1,558,310	16.984
29 Nov 2021 - 29 Nov 2021	AXREIT	EMPLOYEES PROVIDENT FUND BOARD [SSH]	-29	225,794	15.61
25 Nov 2021 - 25 Nov 2021	AXREIT	EMPLOYEES PROVIDENT FUND BOARD [SSH]	-227	225,823	15.612
24 Nov 2021 - 24 Nov 2021	AXREIT	EMPLOYEES PROVIDENT FUND BOARD [SSH]	-300	226,050	15.628
29 Nov 2021 - 29 Nov 2021	AXTERIA	MR YEE WEI MENG [DIR/CEO]	4,000	44,367	10.306
29 Nov 2021 - 29 Nov 2021	AXTERIA	MR YEE WEI MENG [SSH]	4,000	44,367	10.306
26 Nov 2021 - 26 Nov 2021	BAHVEST	DATUK LO FUJI MING [SSH]	150	196,471	15.92
26 Nov 2021 - 26 Nov 2021	BAHVEST	DATUK LO FUJI MING [DIR/CEO]	150	196,471	15.92
29 Nov 2021 - 01 Dec 2021	BAUTO	DATO' AMER HAMZAH BIN AHMAD [SSH]	120	171,305	14.74
29 Nov 2021 - 01 Dec 2021	BAUTO	DATO' SRI YEOH CHOON SAN [DIR/CEO]	120	170,391	14.662
29 Nov 2021 - 01 Dec 2021	BAUTO	DATO' SRI YEOH CHOON SAN [SSH]	120	170,391	14.662
29 Nov 2021 - 01 Dec 2021	BAUTO	DATO' LEE KOK CHUAN [DIR/CEO]	120	170,182	14.644
29 Nov 2021 - 01 Dec 2021	BAUTO	DATO' LEE KOK CHUAN [SSH]	120	170,182	14.644
29 Nov 2021 - 01 Dec 2021	BAUTO	DYNAMIC MILESTONE SDN BHD [SSH]	120	166,861	14.358
30 Nov 2021 - 30 Nov 2021	BAUTO	KUMPULAN WANG PERSARAAN (DIPERBADANKAN) [SSH]	300	60,296	5.188
23 Nov 2021 - 23 Nov 2021	BESHOM	MADAM TAN KENG SONG [SSH]	1,932	77,884	25.953
23 Nov 2021 - 23 Nov 2021	BESHOM	MR TAN KENG KANG [DIR/CEO]	-12,865	77,121	25.698
23 Nov 2021 - 23 Nov 2021	BESHOM	MR TAN KENG KANG [SSH]	12,865	77,121	25.698
23 Nov 2021 - 23 Nov 2021	BESHOM	MR TAN KAI HEE [DIR/CEO]	32,001	77,121	25.698
23 Nov 2021 - 23 Nov 2021	BESHOM	MADAM PHAN VAN DENH [SSH]	878	77,121	25.698
23 Nov 2021 - 23 Nov 2021	BESHOM	MR TAN KAI HEE [SSH]	32,001	77,121	25.698
23 Nov 2021 - 23 Nov 2021	BESHOM	AKINTAN SDN BHD [SSH]	24,396	24,396	8.129
23 Nov 2021 - 23 Nov 2021	BESHOM	EXCELLANT COMMUNICATION SDN BHD [SSH]	16,147	16,147	5.38
23 Nov 2021 - 23 Nov 2021	BESHOM	MR CHIA KUO WUJ [DIR/CEO]	1,434	1,434	0.478
23 Nov 2021 - 23 Nov 2021	BESHOM	MR HEW VON KIN [DIR/CEO]	-417	417	0.139
23 Nov 2021 - 23 Nov 2021	BESHOM	MR TAN KIM SIONG [DIR/CEO]	-8	62	0.021
23 Nov 2021 - 23 Nov 2021	BESHOM	MR SOON ENG SING [DIR/CEO]	-52	52	0.017
29 Nov 2021 - 29 Nov 2021	BIMB	EMPLOYEES PROVIDENT FUND BOARD [SSH]	1,000	263,693	12.703
26 Nov 2021 - 26 Nov 2021	BIMB	EMPLOYEES PROVIDENT FUND BOARD [SSH]	308	262,693	12.655
25 Nov 2021 - 25 Nov 2021	BIMB	EMPLOYEES PROVIDENT FUND BOARD [SSH]	501	262,385	12.64
24 Nov 2021 - 24 Nov 2021	BIMB	EMPLOYEES PROVIDENT FUND BOARD [SSH]	269	261,884	12.616
29 Dec 2021 - 29 Dec 2021	BINTAI	M&A NOMINEES (TEMPATAN) SDN BHD- PLEDGED SECURITIES ACC FOR MAJESTIC SALUTE SDN BHD FOR YEO ENG LAM [SSH]	28,537	58,537	10.547
29 Dec 2021 - 29 Dec 2021	BINTAI	M&A NOMINEES (TEMPATAN) SDN BHD - PLEDGED SECURITIES ACCOUNT FOR TEH & LEE FOR YEO ENG LAM [SSH]	30,000	30,000	5.405
01 Dec 2021 - 02 Dec 2021	BJCORP	TAN SRI DATO' SERI VINCENT TAN CHEE YIUON [DIR/CEO]	5,500	2,298,949	44.458
01 Dec 2021 - 02 Dec 2021	BJCORP	TAN SRI DATO' SERI VINCENT TAN CHEE YIUON [SSH]	5,500	2,284,000	44.169
29 Nov 2021 - 29 Nov 2021	BJCORP	TAN SRI DATO' SERI VINCENT TAN CHEE YIUON [DIR/CEO]	5,500	2,293,449	44.351
29 Nov 2021 - 29 Nov 2021	BJCORP	TAN SRI DATO' SERI VINCENT TAN CHEE YIUON [SSH]	5,500	2,278,500	44.062
25 Nov 2021 - 26 Nov 2021	BJCORP	TAN SRI DATO' SERI VINCENT TAN CHEE YIUON [DIR/CEO]	-218,900	2,287,949	44.245
25 Nov 2021 - 26 Nov 2021	BJCORP	TAN SRI DATO' SERI VINCENT TAN CHEE YIUON [SSH]	-218,900	2,273,000	43.956
25 Nov 2021 - 25 Nov 2021	BJCORP	DATO' SRI ROBIN TAN YEONG CHING [DIR/CEO]	-230,000	399,942	7.734
25 Nov 2021 - 25 Nov 2021	BJCORP	DATO' SRI ROBIN TAN YEONG CHING [SSH]	-230,000	399,937	7.734
25 Nov 2021 - 25 Nov 2021	BJCORP	HOTEL RESORT ENTERPRISE SDN BHD [SSH]	-230,000	397,395	7.685

Notice Period is 28 November - 04 December 2021					
Effective Change Date	Stock Name	Buyer/ Seller Name (Classification)	Bought / (Sold) ['000]	No. of Shares After Trade ['000]	
			Total	Total	% Held
29 Nov 2021 - 01 Dec 2021	BOILERM	DR CHIA SONG KUN [DIR/CEO]	470	262,054	50.79
29 Nov 2021 - 01 Dec 2021	BOILERM	DR CHIA SONG KUN [SSH]	470	262,054	50.79
29 Nov 2021 - 01 Dec 2021	BOILERM	CBG (L) FOUNDATION [SSH]	470	261,654	50.71
29 Nov 2021 - 01 Dec 2021	BOILERM	CBG (L) PTE LTD [SSH]	470	261,654	50.71
29 Nov 2021 - 01 Dec 2021	BOILERM	QL RESOURCES BERHAD [SSH]	470	261,654	50.71
29 Nov 2021 - 01 Dec 2021	BOILERM	QL GREEN RESOURCES SDN. BHD. [SSH]	470	261,654	50.71
01 Dec 2021 - 01 Dec 2021	BORNOIL	DATUK JOSEPH LEE YOK MIN @ AMBROSE [DIR/CEO]	100	163,839	2.256
30 Nov 2021 - 30 Nov 2021	BORNOIL	DATUK JOSEPH LEE YOK MIN @ AMBROSE [DIR/CEO]	200	163,739	2.254
29 Nov 2021 - 29 Nov 2021	BORNOIL	VICTORIA LIMITED [SSH]	-2,500	1,258,108	17.323
29 Nov 2021 - 29 Nov 2021	BORNOIL	DATUK JOSEPH LEE YOK MIN @ AMBROSE [DIR/CEO]	2,500	163,539	2.251
29 Nov 2021 - 29 Nov 2021	CAREPLS	MR LIM KWEE SHYAN [DIR/CEO]	-500	132,990	23.418
29 Nov 2021 - 29 Nov 2021	CAREPLS	MADAM NG SHU SI [SSH]	-500	132,990	23.418
29 Nov 2021 - 29 Nov 2021	CAREPLS	MR LIM KWEE SHYAN [SSH]	-500	132,990	23.418
30 Nov 2021 - 30 Nov 2021	CARIMIN	CIPTA PANTAS SDN. BHD. [SSH]	-2,500	38,787	16.584
29 Nov 2021 - 30 Nov 2021	CENSOF	TAN SRI DATO' MOHD IBRAHIM BIN MOHD ZAIN [DIR/CEO]	1,000	36,000	6.518
29 Nov 2021 - 30 Nov 2021	CENSOF	TAN SRI DATO' MOHD IBRAHIM BIN MOHD ZAIN [SSH]	1,000	36,000	6.518
29 Nov 2021 - 01 Dec 2021	CHGP	DATUK SERI CHIAU BENG TEIK [SSH]	5,730	237,800	54.256
29 Nov 2021 - 01 Dec 2021	CHGP	CHIN HIN GROUP BERHAD [SSH]	5,730	237,800	54.256
29 Nov 2021 - 01 Dec 2021	CHGP	PP CHIN HIN REALTY SDN BHD [SSH]	5,730	237,800	54.256
29 Nov 2021 - 01 Dec 2021	CHGP	MR CHIAU HAW CHOON [SSH]	5,730	237,800	54.256
29 Nov 2021 - 01 Dec 2021	CHGP	DATUK SERI CHIAU BENG TEIK [DIR/CEO]	5,730	237,800	54.256
29 Nov 2021 - 01 Dec 2021	CHGP	DATIN SERI WONG MEE LENG [SSH]	5,730	237,800	54.256
29 Nov 2021 - 01 Dec 2021	CHGP	MR CHIAU HAW CHOON [DIR/CEO]	5,730	237,800	54.256
29 Nov 2021 - 01 Dec 2021	CHGP	DIVINE INVENTIONS SDN BHD [SSH]	5,730	237,800	54.256
26 Nov 2021 - 26 Nov 2021	CHGP	DATUK SERI CHIAU BENG TEIK [SSH]	1,550	232,070	52.949
26 Nov 2021 - 26 Nov 2021	CHGP	DATUK SERI CHIAU BENG TEIK [DIR/CEO]	1,550	232,070	52.949
26 Nov 2021 - 26 Nov 2021	CHGP	MR CHIAU HAW CHOON [DIR/CEO]	1,550	232,070	52.949
26 Nov 2021 - 26 Nov 2021	CHGP	DATIN SERI WONG MEE LENG [SSH]	1,550	232,070	52.949
26 Nov 2021 - 26 Nov 2021	CHGP	DIVINE INVENTIONS SDN BHD [SSH]	1,550	232,070	52.949
26 Nov 2021 - 26 Nov 2021	CHGP	CHIN HIN GROUP BERHAD [SSH]	1,550	232,070	52.949
26 Nov 2021 - 26 Nov 2021	CHGP	PP CHIN HIN REALTY SDN BHD [SSH]	1,550	232,070	52.949
26 Nov 2021 - 26 Nov 2021	CHGP	MR CHIAU HAW CHOON [SSH]	1,550	232,070	52.949
26 Nov 2021 - 26 Nov 2021	CIHLDG	DATO' SUKUMARAN S/O RAMASAMY [DIR/CEO]	11	3,430	2.117
29 Nov 2021 - 29 Nov 2021	CIMB	EMPLOYEES PROVIDENT FUND BOARD [SSH]	3,684	1,521,637	14.89
26 Nov 2021 - 26 Nov 2021	CIMB	EMPLOYEES PROVIDENT FUND BOARD [SSH]	4,000	1,517,954	14.85
25 Nov 2021 - 25 Nov 2021	CIMB	EMPLOYEES PROVIDENT FUND BOARD [SSH]	4,299	1,513,954	14.81
24 Nov 2021 - 24 Nov 2021	CIMB	EMPLOYEES PROVIDENT FUND BOARD [SSH]	5,404	1,509,655	14.77
23 Nov 2021 - 23 Nov 2021	CIMB	EMPLOYEES PROVIDENT FUND BOARD [SSH]	6,852	1,504,251	14.72
26 Nov 2021 - 26 Nov 2021	CJEN	MR YEAP KHOO SOON EDWIN [DIR/CEO]	100	3,382	0.576
26 Nov 2021 - 26 Nov 2021	CLMT	EMPLOYEES PROVIDENT FUND BOARD [SSH]	-200	288,745	13.551
25 Nov 2021 - 25 Nov 2021	CLMT	EMPLOYEES PROVIDENT FUND BOARD [SSH]	-14	288,945	13.56
29 Nov 2021 - 29 Nov 2021	COMFORT	TAN SRI DATO' LAU ENG GUANG [DIR/CEO]	-630	17,352	9.965
26 Nov 2021 - 26 Nov 2021	CRG	DATO' SRI CHIANG FONG YEE [DIR/CEO]	15	249,611	30.982
26 Nov 2021 - 26 Nov 2021	CRG	DATO' SRI CHIANG FONG YEE [SSH]	15	175,972	21.842
25 Nov 2021 - 25 Nov 2021	D&O	DR LIM THIAN SOO [SSH]	-630	62,351	5.201
01 Dec 2021 - 01 Dec 2021	DBHD	JOHOR CORPORATION [SSH]	89	258,153	81.084
01 Dec 2021 - 01 Dec 2021	DBHD	JLAND GROUP SDN. BHD. (FORMERLY KNOWN AS ABSOLUTE AMBIENT SDN. BHD.) [SSH]	89	214,189	67.275
30 Nov 2021 - 30 Nov 2021	DBHD	JOHOR CORPORATION [SSH]	102	258,065	81.056
30 Nov 2021 - 30 Nov 2021	DBHD	JLAND GROUP SDN. BHD. (FORMERLY KNOWN AS ABSOLUTE AMBIENT SDN. BHD.) [SSH]	102	214,100	67.247
29 Nov 2021 - 29 Nov 2021	DBHD	JOHOR CORPORATION [SSH]	-1,235	257,963	81.024
29 Nov 2021 - 29 Nov 2021	DBHD	JLAND GROUP SDN. BHD. (FORMERLY KNOWN AS ABSOLUTE AMBIENT SDN. BHD.) [SSH]	-1,235	213,998	67.215
26 Nov 2021 - 26 Nov 2021	DBHD	JOHOR CORPORATION [SSH]	-581	257,578	80.903
26 Nov 2021 - 26 Nov 2021	DBHD	JLAND GROUP SDN. BHD. (FORMERLY KNOWN AS ABSOLUTE AMBIENT SDN. BHD.) [SSH]	-581	213,614	67.094
29 Nov 2021 - 29 Nov 2021	DIALOG	EMPLOYEES PROVIDENT FUND BOARD [SSH]	943	715,106	12.67
26 Nov 2021 - 26 Nov 2021	DIALOG	EMPLOYEES PROVIDENT FUND BOARD [SSH]	2,000	714,162	12.66
29 Nov 2021 - 29 Nov 2021	DIALOG	KUMPULAN WANG PERSARAAN (DIPERBADANKAN) [SSH]	502	530,352	9.4
25 Nov 2021 - 25 Nov 2021	DIALOG	EMPLOYEES PROVIDENT FUND BOARD [SSH]	1,000	712,162	12.62
24 Nov 2021 - 24 Nov 2021	DIALOG	EMPLOYEES PROVIDENT FUND BOARD [SSH]	2,000	711,162	12.6
29 Nov 2021 - 29 Nov 2021	DOLMITE	MR LEW CHOONG KEONG [DIR/CEO]	50	50	0.008
29 Nov 2021 - 29 Nov 2021	DRBHCORP	EMPLOYEES PROVIDENT FUND BOARD [SSH]	966	201,453	10.421
26 Nov 2021 - 26 Nov 2021	DRBHCORP	EMPLOYEES PROVIDENT FUND BOARD [SSH]	1,799	200,488	10.371
25 Nov 2021 - 25 Nov 2021	DRBHCORP	EMPLOYEES PROVIDENT FUND BOARD [SSH]	868	198,689	10.278
24 Nov 2021 - 24 Nov 2021	DRBHCORP	EMPLOYEES PROVIDENT FUND BOARD [SSH]	24	197,821	10.233
29 Nov 2021 - 29 Nov 2021	DSOINIC	URUSHARTA JAMAAH SDN. BHD. [SSH]	400	247,476	8.621
30 Nov 2021 - 30 Nov 2021	DSOINIC	DATO' HAJI RAZALI BIN MOHD YUSOF [SSH]	-3,700	426,063	14.832
29 Nov 2021 - 29 Nov 2021	DSOINIC	DATO' HAJI RAZALI BIN MOHD YUSOF [SSH]	-10,000	429,763	14.955
29 Nov 2021 - 29 Nov 2021	DSOINIC	ENCIK SAFIAN BIN MOHD YUNUS [DIR/CEO]	10,000	124,000	4.315
25 Nov					

Notice Period is 28 November - 04 December 2021

Effective Change Date	Stock Name	Buyer/ Seller Name [Classification]	Bought / (Sold) ('000)		
			Total	Total	% Held
25 Nov 2021 - 25 Nov 2021	ECONBHD	EMPLOYEES PROVIDENT FUND BOARD [SSH]	1,228	126,339	8.913
26 Nov 2021 - 26 Nov 2021	EIG	MR RODERICK CHIENG NGEE KAI [SSH]	15	164,086	69.18
26 Nov 2021 - 26 Nov 2021	EIG	MR RODERICK CHIENG NGEE KAI [DIR/CEO]	15	164,086	69.18
26 Nov 2021 - 26 Nov 2021	EIG	MR BRIAN CHIENG NGEE WEN [DIR/CEO]	15	163,584	68.97
26 Nov 2021 - 26 Nov 2021	EIG	MR BRIAN CHIENG NGEE WEN [SSH]	15	163,584	68.97
26 Nov 2021 - 26 Nov 2021	EIG	MISS JANET CHIENG LING MIN [DIR/CEO]	15	161,706	68.17
26 Nov 2021 - 26 Nov 2021	EIG	MISS JANET CHIENG LING MIN [SSH]	15	161,706	68.17
26 Nov 2021 - 26 Nov 2021	EIG	PROVIDENCE CAPITAL SDN BHD [SSH]	15	161,386	68.04
26 Nov 2021 - 26 Nov 2021	EIG	MR CHIENG ING HUONG [SSH]	15	161,386	68.04
26 Nov 2021 - 26 Nov 2021	EIG	MR CHIENG ING HUONG [DIR/CEO]	15	161,386	68.04
26 Nov 2021 - 26 Nov 2021	EITA	MR FU WING HOONG [SSH]	50	51,790	19.919
26 Nov 2021 - 26 Nov 2021	EITA	MR FU WING HOONG [DIR/CEO]	50	51,790	19.919
26 Nov 2021 - 26 Nov 2021	EITA	MADAM LEE PEK SEE [SSH]	50	51,748	19.902
01 Dec 2021 - 01 Dec 2021	EMETALL	DATO' GOH CHENG HUAT [DIR/CEO]	10	116,740	57.307
01 Dec 2021 - 01 Dec 2021	EMETALL	DATIN TAN PAK SAY [SSH]	10	116,740	57.307
01 Dec 2021 - 01 Dec 2021	EMETALL	DATO' GOH CHENG HUAT [SSH]	10	116,740	57.307
30 Nov 2021 - 30 Nov 2021	EMETALL	DATO' GOH CHENG HUAT [DIR/CEO]	3	116,730	57.302
30 Nov 2021 - 30 Nov 2021	EMETALL	DATO' GOH CHENG HUAT [SSH]	3	116,730	57.302
30 Nov 2021 - 30 Nov 2021	EMETALL	DATIN TAN PAK SAY [SSH]	3	116,730	57.302
29 Nov 2021 - 29 Nov 2021	EMETALL	DATO' GOH CHENG HUAT [SSH]	50	116,727	57.3
29 Nov 2021 - 29 Nov 2021	EMETALL	DATO' GOH CHENG HUAT [DIR/CEO]	50	116,727	57.3
29 Nov 2021 - 29 Nov 2021	EMETALL	DATIN TAN PAK SAY [SSH]	50	116,727	57.3
30 Nov 2021 - 01 Dec 2021	ENGAH	MR EWE ENG KAH [SSH]	38	53,478	45.28
30 Nov 2021 - 01 Dec 2021	ENGAH	MADAM NEOH LAY HWA [SSH]	38	53,478	45.28
30 Nov 2021 - 01 Dec 2021	ENGAH	MR EWE ENG KAH [DIR/CEO]	38	53,478	45.28
26 Nov 2021 - 29 Nov 2021	ENGAH	MADAM NEOH LAY HWA [SSH]	19	53,440	45.25
26 Nov 2021 - 29 Nov 2021	ENGAH	MR EWE ENG KAH [DIR/CEO]	19	53,440	45.25
26 Nov 2021 - 29 Nov 2021	ENGAH	MR EWE ENG KAH [SSH]	19	53,440	45.25
02 Dec 2021 - 02 Dec 2021	ENGTEX-WB	DATIN YAP SENG KUAN [SSH]	43	38,366	35.17
01 Dec 2021 - 01 Dec 2021	ENGTEX-WB	DATO' NG HOOK [SSH]	43	38,366	35.171
01 Dec 2021 - 01 Dec 2021	ENGTEX-WB	DATIN YAP SENG KUAN [DIR/CEO]	43	38,366	35.17
01 Dec 2021 - 01 Dec 2021	ENGTEX-WB	DATO' NG HOOK [DIR/CEO]	43	38,366	35.171
26 Nov 2021 - 26 Nov 2021	ENGTEX-WB	DATO' NG HOOK [SSH]	280	38,323	35.131
26 Nov 2021 - 26 Nov 2021	ENGTEX-WB	DATIN YAP SENG KUAN [DIR/CEO]	280	38,323	35.131
26 Nov 2021 - 26 Nov 2021	ENGTEX-WB	DATO' NG HOOK [DIR/CEO]	280	38,323	35.131
26 Nov 2021 - 26 Nov 2021	ENGTEX-WB	DATIN YAP SENG KUAN [SSH]	280	38,323	35.131
24 Nov 2021 - 24 Nov 2021	F&N	EMPLOYEES PROVIDENT FUND BOARD [SSH]	6	46,052	12.556
26 Nov 2021 - 26 Nov 2021	FAJAR	DATUK SERI LAU KUANG KAM [DIR/CEO]	100	33,557	4.525
26 Nov 2021 - 26 Nov 2021	FAJAR	TAN SRI DATUK TA KIN YAN [SSH]	200	86,341	11.642
25 Nov 2021 - 29 Nov 2021	FGV	FEDERAL LAND DEVELOPMENT AUTHORITY (FELDA) [SSH]	1,369	2,907,786	79.706
30 Nov 2021 - 30 Nov 2021	FIMACOR	DR ROSHAYATI BINTI BASIR [DIR/CEO]	4	150,559	61.372
29 Nov 2021 - 29 Nov 2021	FIMACOR	DR ROSHAYATI BINTI BASIR [DIR/CEO]	2	150,555	61.37
26 Nov 2021 - 26 Nov 2021	FIMACOR	DR ROSHAYATI BINTI BASIR [DIR/CEO]	2	150,553	61.369
26 Nov 2021 - 26 Nov 2021	FITTERS	DATO' IR HO SHU KEONG [SSH]	-4,023	25,499	5.452
26 Nov 2021 - 26 Nov 2021	FITTERS	DATO' IR HO SHU KEONG [DIR/CEO]	-4,023	25,499	5.452
25 Nov 2021 - 25 Nov 2021	FITTERS	DATO' SRI DR PANG CHOW HUAT [SSH]	48,050	48,050	10.274
29 Nov 2021 - 29 Nov 2021	FLBHD	MR LIN HAO YU [SSH]	194	8,570	8.668
29 Nov 2021 - 29 Nov 2021	FLBHD	MR LIN HAO YU [DIR/CEO]	194	8,570	8.668
29 Nov 2021 - 29 Nov 2021	FPI	MR KOH MENG CHING [DIR/CEO]	100	270	0.107
26 Nov 2021 - 26 Nov 2021	FREIGHT	MR YANG HENG LAM [SSH]	55	104,550	18.721
26 Nov 2021 - 26 Nov 2021	FREIGHT	MR YANG HENG LAM [DIR/CEO]	55	104,550	18.721
29 Nov 2021 - 29 Nov 2021	G3	GREEN PACKET BERHAD [SSH]	-10,000	189,111	8.738
29 Nov 2021 - 29 Nov 2021	G3	GREEN PACKET HOLDINGS LTD [SSH]	-10,000	189,111	8.738
26 Nov 2021 - 26 Nov 2021	G3	DATO' SRI AMINUL ISLAM BIN ABDUL NOR [SSH]	537,889	537,889	24.853
24 Nov 2021 - 25 Nov 2021	G3	GREEN PACKET BERHAD [SSH]	-41,250	199,111	9.2
24 Nov 2021 - 25 Nov 2021	G3	GREEN PACKET HOLDINGS LTD [SSH]	-41,250	199,111	9.2
01 Dec 2021 - 01 Dec 2021	GCAP	DATUK YAP YEE PING [DIR/CEO]	177	12,576	3.921
02 Dec 2021 - 02 Dec 2021	GENETEC	MR CHEN KHAI VOON [SSH]	18	10,066	19.32
01 Dec 2021 - 01 Dec 2021	GENETEC	MR CHEN KHAI VOON [SSH]	22	10,048	19.286
30 Nov 2021 - 30 Nov 2021	GENETEC	MR CHEN KHAI VOON [SSH]	21	10,026	19.243
29 Nov 2021 - 29 Nov 2021	GENETEC	MR CHEN KHAI VOON [SSH]	25	10,005	19.203
29 Nov 2021 - 30 Nov 2021	GENM	DATO' KOH HONG SUN [DIR/CEO]	20	30	0.001
01 Dec 2021 - 01 Dec 2021	GOCEAN	FOCUS DYNAMICS GROUP BERHAD [SSH]	60,000	474,932	22.492
01 Dec 2021 - 01 Dec 2021	GOCEAN	FOCUS DYNAMICS CENTRE SDN. BHD. [SSH]	60,000	474,932	22.492
29 Nov 2021 - 02 Dec 2021	GTRONIC	MR NG KWENG CHONG [DIR/CEO]	16	38,990	5.82
29 Nov 2021 - 29 Nov 2021	GUH	DATO HARRY H'NG BAK SEAH [DIR/CEO]	200	2,498	0.9
29 Nov 2021 - 29 Nov 2021	HANDAL	DATO' MOHSIN ABDUL HALIM [SSH]	-100	15,091	6.54
29 Nov 2021 - 29 Nov 2021	HANDAL	ENCIK MALLEK RIZAL BIN MOHSIN [SSH]	-100	15,091	6.54
29 Nov 2021 - 29 Nov 2021	HANDAL	ENCIK MALLEK RIZAL BIN MOHSIN [DIR/CEO]	-100	15,091	6.54
29 Nov 2021 - 29 Nov 2021	HARNLEN	MR LOW KUEK KIONG [DIR/CEO]	-8,000	116,663	57.62
29 Nov 2021 - 29 Nov 2021	HARNLEN	MR LOW KUEK KIONG [SSH]	-8,000	115,663	57.13
29 Nov 2021 - 29 Nov 2021	HARNLEN	PUAN SRI DATIN CHAN PUI LEORN [DIR/CEO]	-8,000	115,303	56.95
29 Nov 2021 - 29 Nov 2021	HARNLEN	PUAN SRI DATIN CHAN PUI LEORN [SSH]	-8,000	115,303	56.95
29 Nov 2021 - 29 Nov 2021	HARNLEN	MR LOW KOK YONG [SSH]	-8,000	115,291	56.94
29 Nov 2021 - 29 Nov 2021	HARNLEN	MR LOW KOK YONG [DIR/CEO]	-8,000	115,291	56.94
29 Nov 2021 - 29 Nov 2021	HARNLEN	MR LOW KOK YAOW [DIR/CEO]	-8,000	114,908	56.75
29 Nov 2021 - 29 Nov 2021	HARNLEN	MR LOW KOK YAOW [SSH]	-8,000	114,908	56.75
29 Nov 2021 - 29 Nov 2021	HARNLEN	MR LOW KWEE LEE [DIR/CEO]	-8,000	110,538	54.59
29 Nov 2021 - 29 Nov 2021	HARNLEN	MR LOW KWEE LEE [SSH]	-8,000	110,463	54.56
29 Nov 2021 - 29 Nov 2021	HARNLEN	MR LOW KUEK KONG [SSH]	-8,000	110,363	54.51
29 Nov 2021 - 29 Nov 2021	HARNLEN	MR LOW KUEK KONG [DIR/CEO]	-8,000	110,363	54.51
29 Nov 2021 - 29 Nov 2021	HARNLEN	MR LOW KUECK SHIN [DIR/CEO]	-8,000	110,313	54.48
29 Nov 2021 - 29 Nov 2021	HARNLEN	MR LOW KUECK SHIN [SSH]	-8,000	110,263	54.46
29 Nov 2021 - 29 Nov 2021	HARNLEN	TAN SRI DATO' LOW NAM HUI (DECEASED) [SSH]	-8,000	109,963	54.31
29 Nov 2021 - 29 Nov 2021	HARNLEN	LOW NAM HUI UNITED HOLDINGS SDN BHD [SSH]	-8,000	44,266	21.86
29 Nov 2021 - 29 Nov 2021	HARTA	EMPLOYEES PROVIDENT FUND BOARD [SSH]	-2,548	268,997	7.848
26 Nov 2021 - 26 Nov 2021	HARTA	EMPLOYEES PROVIDENT FUND BOARD [SSH]	-1,274	271,545	7.922
25 Nov 2021 - 25 Nov 2021	HARTA	EMPLOYEES PROVIDENT FUND BOARD [SSH]	-540	272,819	7.959
24 Nov 2021 - 24 Nov 2021	HARTA	EMPLOYEES PROVIDENT FUND BOARD [SSH]	-860	273,359	7.975
30 Nov 2021 - 30 Nov 2021	HEVEA	MR YOONG YAN PIN [DIR/CEO]	250	250	0.044
29 Nov 2021 - 29 Nov 2021	HEVEA	MR YOONG TEIN SENG @ YONG KIAN SENG [DIR/CEO]	200	196,634	34.749
29 Nov 2021 - 29 Nov 2021	HEVEA	MR YOONG TEIN SENG @ YONG KIAN SENG [SSH]	200	196,634	34.749
29 Nov 2021 - 29 Nov 2021	HEVEA	MR YOONG HAU CHUN [DIR/CEO]	200	187,181	33.079
29 Nov 2021 - 29 Nov 2021	HEVEA	MR YOONG HAU CHUN [SSH]	200	187,181	33.079
29 Nov 2021 - 29 Nov 2021	HEVEA	MISS YOONG LI YEN [DIR/CEO]	200	185,854	32.845
29 Nov 2021 - 29 Nov 2021	HEVEA	MISS YOONG LI YEN [SSH]	200	185,854	32.845
30 Nov 2021 - 01 Dec 2021	HEXTAR	MADAM LEE CHOOI KENG [DIR/CEO]	100	1,922	0.147
26 Nov 2021 - 26 Nov 2021	HEXTAR	MADAM LEE CHOOI KENG [DIR/CEO]	60	1,822	0.14
25 Nov 2021 - 25 Nov 2021	HEXTAR	DATO' ONG SOON HO [SSH]	23,000	840,767	64.432
25 Nov 2021 - 25 Nov 2021	HEXTAR	HEXTAR HOLDINGS SDN. BHD. [SSH]	23,000	840,767	64.432
25 Nov 2021 - 25 Nov 2021	HEXTAR	DATO' ONG SOON HO [DIR/CEO]	23,000	840,767	64.432
29 Nov 2021 - 29 Nov 2021	HLBANK	EMPLOYEES PROVIDENT FUND BOARD [SSH]	305	194,293	9.311
26 Nov 2021 - 26 Nov 2021	HLBANK	EMPLOYEES PROVIDENT FUND BOARD [SSH]	670	193,988	9.297
25 Nov 2021 - 25 Nov 2021	HLBANK	EMPLOYEES PROVIDENT FUND BOARD [SSH]	92	193,318	9.265

Notice Period is 28 November - 04 December 2021

Effective Change Date	Stock Name	Buyer/ Seller Name [Classification]	Bought / (Sold) ('000)		
			Total	Total	% Held
24 Nov 2021 - 24 Nov 2021	HLBANK	EMPLOYEES PROVIDENT FUND BOARD [SSH]	105	193,226	9.26
26 Nov 2021 - 26 Nov 2021	HLFG	MR TAN KONG KHOON [DIR/CEO]	125	125	0.011
01 Dec 2021 - 01 Dec 2021	HLT	SUNTEL INTERNATIONAL CO. LTD. [SSH]	-1,000	82,908	11.72
02 Dec 2021 - 02 Dec 2021	HUBLINE	DATO RICHARD WEE LIANG HUAT @ RICHARD WEE LIANG CHIAT [DIR/CEO]	-17,000	1,186,473	27.657
02 Dec 2021 - 02 Dec 2021	HUBLINE	DATO RICHARD WEE LIANG HUAT @ RICHARD WEE LIANG CHIAT [SSH]	-17,000	1,186,473	27.657
02 Dec 2021 - 02 Dec 2021	HUBLINE	BNDM INCORPORATED HOLDINGS SDN. BHD. [SSH]	-17,000	1,186,401	27.655
30 Nov 2021 - 01 Dec 2021	HWATAI	DATUK SOO CHUNG YEE [DIR/CEO]	45	1,316	1.76
26 Nov 2021 - 26 Nov 2021	HWATAI	DATUK SOO CHUNG YEE [DIR/CEO]	240	1,270	1.7
29 Nov 2021 - 01 Dec 2021	IBHD	TAN SRI LIM KIM HONG [DIR/CEO]	330	773,831	68.067
29 Nov 2021 - 01 Dec 2021	IBHD	TAN SRI LIM KIM HONG [SSH]	330	773,831	68.067
29 Nov 2021 - 01 Dec 2021	IBHD	SUMUR VENTURES SDN BHD [SSH]	330	738,164	64.93
29 Nov 2021 - 01 Dec 2021	IBHD	SUMURWANG SDN BHD [SSH]	330	652,574	57.401
25 Nov 2021 - 26 Nov 2021	IBHD	TAN SRI LIM KIM HONG [SSH]	328	773,501	68.038
25 Nov 2021 - 26 Nov 2021	IBHD	TAN SRI LIM KIM HONG [DIR/CEO]	328	773,501	68.038
25 Nov 2021 - 26 Nov 2021	IBHD	SUMUR VENTURES SDN BHD [SSH]	320	737,834	64.901
25 Nov 2021 - 26 Nov 2021	IBHD	SUMURWANG SDN BHD [SSH]	320	652,244	57.372
29 Nov 2021 - 01 Dec 2021	IBHD-PA	TAN SRI LIM KIM HONG [DIR/CEO]	219	595,515	82.66
29 Nov 2021 - 01 Dec 2021	IBHD-PA	TAN SRI LIM KIM HONG [SSH]	219	595,515	82.66
29 Nov 2021 - 01 Dec 2021	IBHD-PA	SUMUR VENTURES SDN BHD [SSH]	219	573,129	79.553
29 Nov 2021 - 01 Dec 2021	IBHD-PA	SUMURWANG SDN BHD [SSH]	219	504,801	70.068
26 Nov 2021 - 26 Nov 2021	IBHD-PA	TAN SRI LIM KIM HONG [DIR/CEO]	208	595,296	82.63
26 Nov 2021 - 26 Nov 2021	IBHD-PA	TAN SRI LIM KIM HONG [SSH]	208	595,296	82.63
26 Nov 2021 - 26 Nov 2021	IBHD-PA	SUMUR VENTURES SDN BHD [SSH]	197	572,910	79.522
26 Nov 2021 - 26 Nov 2021	IBHD-PA	SUMURWANG SDN BHD [SSH]	197	504,583	70.038
30 Nov 2021 - 30 Nov 2021	IGBB	TAN CHIN NAM SDN BHD [SSH]	-1,233	434,591	48.575
30 Nov 2021 - 30 Nov 2021	IGBREIT	TAN CHIN NAM SENDIRIAN BERHAD [SSH]	-1,375	1,917,337	53.679
26 Nov 2021 - 26 Nov 2021	IGBREIT	EMPLOYEES PROVIDENT FUND BOARD ("EPF BOARD") [SSH]	1,000	380,664	10.657
25 Nov 2021 - 25 Nov 2021	IGBREIT	EMPLOYEES PROVIDENT FUND BOARD ("EPF BOARD") [SSH]	150	379,664	10.629
24 Nov 2021 - 24 Nov 2021	IGBREIT	EMPLOYEES PROVIDENT FUND BOARD ("EPF BOARD") [SSH]			

Notice Period is 28 November - 04 December 2021

Effective Change Date	Stock Name	Buyer/ Seller Name [Classification]	Bought / (Sold) ('000)		No. of Shares After Trade ('000)	
			Total	% Held	Total	% Held
26 Nov 2021 - 29 Nov 2021	KLK	GRATEFUL BLESSINGS INC. [SSH]	810	513,089	47.601	
26 Nov 2021 - 29 Nov 2021	KLK	DI-YI SDN BHD [SSH]	810	513,089	47.601	
26 Nov 2021 - 29 Nov 2021	KLK	WAN HIN INVESTMENTS SDN BERHAD [SSH]	810	513,067	47.599	
26 Nov 2021 - 29 Nov 2021	KLK	BATU KAWAN BERHAD [SSH]	810	512,612	47.557	
26 Nov 2021 - 29 Nov 2021	KLK	ARUSHA ENTERPRISE SDN. BHD. [SSH]	810	512,612	47.557	
30 Nov 2021 - 30 Nov 2021	KOBAY	DATO SERI KOAY HEAN ENG [DIR/CEO]	2,750	109,049	34.06	
30 Nov 2021 - 30 Nov 2021	KOBAY	MR KOAY CHENG LYE [DIR/CEO]	2,750	109,049	34.06	
30 Nov 2021 - 30 Nov 2021	KOBAY	KOBAY HOLDINGS SDN. BHD. [SSH]	2,750	109,049	34.06	
30 Nov 2021 - 30 Nov 2021	KOBAY	MR KOAY AH CHENG HOCK [DIR/CEO]	2,750	109,049	34.06	
30 Nov 2021 - 30 Nov 2021	KOBAY	PREMIERGROW CAPITAL SDN. BHD. [SSH]	-2,750	15,067	4.706	
26 Nov 2021 - 26 Nov 2021	KOMARK	KEY ALLIANCE GROUP BERHAD [SSH]	3,500	90,482	15.672	
24 Nov 2021 - 26 Nov 2021	KOSSAN	EMPLOYEES PROVIDENT FUND BOARD [SSH]	-235	211,430	8.286	
25 Nov 2021 - 25 Nov 2021	KOSSAN	MR LIM KUANG YONG [SSH]	100	1,200,884	47.064	
29 Nov 2021 - 29 Nov 2021	KPSCB	MR KOH POH SENG [SSH]	34	67,830	45.885	
26 Nov 2021 - 26 Nov 2021	KPSCB	MR KOH POH SENG [SSH]	62	67,796	45.862	
01 Dec 2021 - 01 Dec 2021	KSSC	MR YAP CHEE KHENG [DIR/CEO]	82	8,250	7.161	
01 Dec 2021 - 01 Dec 2021	KSSC	MR YAP CHEE KHENG [SSH]	82	8,250	7.161	
29 Nov 2021 - 30 Nov 2021	KSSC	MR YAP CHEE KHENG [SSH]	207	8,168	7.09	
29 Nov 2021 - 30 Nov 2021	KSSC	MR YAP CHEE KHENG [DIR/CEO]	207	8,168	7.09	
29 Nov 2021 - 29 Nov 2021	KSSC	DR LIM PANG KIAM [SSH]	22	6,195	5.378	
26 Nov 2021 - 26 Nov 2021	KSSC	DR LIM PANG KIAM [SSH]	31	6,173	5.359	
26 Nov 2021 - 26 Nov 2021	LAMBO	MR KOO KIEN YOON [SSH]	104,500	108,525	7.91	
26 Nov 2021 - 26 Nov 2021	LAMBO	MR KOO KIEN YOON [DIR/CEO]	104,500	108,525	7.91	
01 Dec 2021 - 02 Dec 2021	LBICAP	DATIN LOW WEE CHIN [DIR/CEO]	562	60,280	57.19	
01 Dec 2021 - 02 Dec 2021	LBICAP	DATO' NG CHIN HENG [SSH]	562	60,280	57.19	
01 Dec 2021 - 02 Dec 2021	LBICAP	DATIN LOW WEE CHIN [SSH]	562	60,280	57.19	
01 Dec 2021 - 02 Dec 2021	LBICAP	MR RAYMOND NG YEW FOONG [SSH]	562	60,280	57.195	
01 Dec 2021 - 02 Dec 2021	LBICAP	DATO' NG CHIN HENG [DIR/CEO]	562	60,280	57.19	
01 Dec 2021 - 02 Dec 2021	LBICAP	MR RAYMOND NG YEW FOONG [DIR/CEO]	562	60,280	57.195	
01 Dec 2021 - 02 Dec 2021	LBICAP	MISS NG POOI MUN [SSH]	562	59,280	56.24	
01 Dec 2021 - 02 Dec 2021	LBICAP	DATO' NG TIONG SENG [SSH]	562	59,030	56	
01 Dec 2021 - 02 Dec 2021	LBICAP	MISS NG POOI YEE [SSH]	562	59,030	56	
01 Dec 2021 - 02 Dec 2021	LBICAP	MISS NG POOI CHENG [SSH]	562	59,030	56	
01 Dec 2021 - 02 Dec 2021	LBICAP	DATIN CHAN LAI HAR [SSH]	562	59,030	56	
01 Dec 2021 - 02 Dec 2021	LBICAP	NG C.H. HOLDINGS SDN. BHD. [SSH]	562	40,368	38.3	
01 Dec 2021 - 02 Dec 2021	LBICAP	GALAKSI SEJATI SDN. BHD. [SSH]	-570	7,183	6.81	
29 Nov 2021 - 30 Nov 2021	LBICAP	MR RAYMOND NG YEW FOONG [SSH]	440	59,718	56.66	
29 Nov 2021 - 30 Nov 2021	LBICAP	DATIN LOW WEE CHIN [SSH]	440	59,718	56.66	
29 Nov 2021 - 30 Nov 2021	LBICAP	DATO' NG CHIN HENG [SSH]	440	59,718	56.66	
29 Nov 2021 - 30 Nov 2021	LBICAP	DATIN LOW WEE CHIN [DIR/CEO]	440	59,718	56.66	
29 Nov 2021 - 30 Nov 2021	LBICAP	MR RAYMOND NG YEW FOONG [DIR/CEO]	440	59,718	56.66	
29 Nov 2021 - 30 Nov 2021	LBICAP	DATO' NG CHIN HENG [DIR/CEO]	440	59,718	56.66	
29 Nov 2021 - 30 Nov 2021	LBICAP	MISS NG POOI MUN [SSH]	440	58,718	55.7	
29 Nov 2021 - 30 Nov 2021	LBICAP	DATIN CHAN LAI HAR [SSH]	440	58,468	55.47	
29 Nov 2021 - 30 Nov 2021	LBICAP	DATO' NG TIONG SENG [SSH]	440	58,468	55.46	
29 Nov 2021 - 30 Nov 2021	LBICAP	MISS NG POOI CHENG [SSH]	440	58,468	55.47	
29 Nov 2021 - 30 Nov 2021	LBICAP	MISS NG POOI YEE [SSH]	440	58,468	55.47	
29 Nov 2021 - 30 Nov 2021	LBICAP	NG C.H. HOLDINGS SDN. BHD. [SSH]	440	40,368	38.3	
29 Oct 2021 - 30 Nov 2021	LBICAP	GALAKSI SEJATI SDN. BHD. [SSH]	-450	7,753	7.36	
30 Nov 2021 - 30 Nov 2021	LHI	MISS GOH WEN LING [DIR/CEO]	100	700	0.019	
29 Nov 2021 - 29 Nov 2021	LITRAK	EMPLOYEES PROVIDENT FUND BOARD [SSH]	-253	31,437	5.9	
26 Nov 2021 - 26 Nov 2021	LITRAK	EMPLOYEES PROVIDENT FUND BOARD [SSH]	-9	31,690	5.947	
26 Nov 2021 - 25 Nov 2021	LITRAK	EMPLOYEES PROVIDENT FUND BOARD [SSH]	-43	31,700	5.949	
24 Nov 2021 - 24 Nov 2021	LITRAK	EMPLOYEES PROVIDENT FUND BOARD [SSH]	-157	31,743	5.957	
26 Nov 2021 - 30 Dec 2021	LYC	TEE CHEE CHIANG [SSH]	767	24,518	5.278	
26 Nov 2021 - 26 Nov 2021	MACPIE	KEY ALLIANCE GROUP BERHAD [SSH]	5,000	140,451	14.84	
02 Dec 2021 - 02 Dec 2021	MAG	MR NG MIN LIN [SSH]	1,000	347,529	24.677	
02 Dec 2021 - 02 Dec 2021	MAG	MR NG MIN LIN [DIR/CEO]	1,000	347,529	24.677	
01 Dec 2021 - 01 Dec 2021	MAG	MR NG MIN LIN [SSH]	390	346,529	24.606	
01 Dec 2021 - 01 Dec 2021	MAG	MR NG MIN LIN [DIR/CEO]	390	346,529	24.606	
29 Nov 2021 - 29 Nov 2021	MALAKOF	EMPLOYEES PROVIDENT FUND BOARD [SSH]	-1,290	611,541	12.513	
26 Nov 2021 - 26 Nov 2021	MALAKOF	EMPLOYEES PROVIDENT FUND BOARD [SSH]	-385	612,831	12.54	
25 Nov 2021 - 25 Nov 2021	MALAKOF	EMPLOYEES PROVIDENT FUND BOARD [SSH]	-577	613,215	12.547	
24 Nov 2021 - 24 Nov 2021	MALAKOF	EMPLOYEES PROVIDENT FUND BOARD [SSH]	-370	613,792	12.559	
26 Nov 2021 - 26 Nov 2021	MATANG	DATUK TEOH SEW HOCK [DIR/CEO]	2,000	7,828	0.36	
29 Nov 2021 - 29 Nov 2021	MATRIX	EMPLOYEES PROVIDENT FUND BOARD [SSH]	-233	80,985	9.708	
29 Nov 2021 - 29 Nov 2021	MAYBANK	EMPLOYEES PROVIDENT FUND BOARD [SSH]	425	1,671,413	14.077	
26 Nov 2021 - 26 Nov 2021	MAYBANK	EMPLOYEES PROVIDENT FUND BOARD [SSH]	3	1,670,988	14.074	
26 Nov 2021 - 26 Nov 2021	MAYBANK	PERMODALAN NASIONAL BERHAD [SSH]	-876	843,489	7.104	
26 Nov 2021 - 26 Nov 2021	MAYBANK	YAYASAN PELABURAN BUMIPUTRA ("YPB") [SSH]	-876	843,489	7.104	
25 Nov 2021 - 25 Nov 2021	MAYBANK	EMPLOYEES PROVIDENT FUND BOARD [SSH]	-889	1,670,985	14.074	
25 Nov 2021 - 25 Nov 2021	MAYBANK	PERMODALAN NASIONAL BERHAD [SSH]	-960	844,364	7.112	
25 Nov 2021 - 25 Nov 2021	MAYBANK	YAYASAN PELABURAN BUMIPUTRA ("YPB") [SSH]	-960	844,364	7.112	
24 Nov 2021 - 24 Nov 2021	MAYBANK	EMPLOYEES PROVIDENT FUND BOARD [SSH]	58	1,671,875	14.081	
29 Nov 2021 - 29 Nov 2021	MBMR	EMPLOYEES PROVIDENT FUND BOARD [SSH]	130	35,222	9.011	
30 Nov 2021 - 30 Nov 2021	MGB	DATUK LIM LIT CHEK [SSH]	20	86,225	14.574	
30 Nov 2021 - 30 Nov 2021	MGB	DATUK LIM LIT CHEK [DIR/CEO]	20	86,225	14.574	
26 Nov 2021 - 26 Nov 2021	MGB	DATUK LIM LIT CHEK [DIR/CEO]	16	86,205	14.571	
26 Nov 2021 - 26 Nov 2021	MGB	DATUK LIM LIT CHEK [SSH]	16	86,205	14.571	
01 Dec 2021 - 01 Dec 2021	MGRC	PIXELVEST SDN BHD [SSH]	250	9,786	7.879	
26 Nov 2021 - 26 Nov 2021	MGRC	PIXELVEST SDN BHD [SSH]	480	9,536	7.678	
29 Nov 2021 - 29 Nov 2021	MHB	CITIGROUP NOMINEES (TEMPATAN) SDN BHD URUSHARTA JAMAHA SDN BHD (I-C) [SSH]	1	82,778	5.174	
30 Nov 2021 - 30 Nov 2021	MICROLN	MONTEIRO GERARD CLAIR [DIR/CEO]	479	28,456	2.932	
30 Nov 2021 - 01 Dec 2021	MIKROMB	MR MICHAEL AW MING HAN [DIR/CEO]	182	22,716	3.855	
29 Nov 2021 - 29 Nov 2021	MISC	EMPLOYEES PROVIDENT FUND BOARD [SSH]	89	534,253	11.97	
26 Nov 2021 - 26 Nov 2021	MISC	EMPLOYEES PROVIDENT FUND BOARD [SSH]	500	534,163	11.97	
25 Nov 2021 - 25 Nov 2021	MISC	EMPLOYEES PROVIDENT FUND BOARD [SSH]	404	533,663	11.96	
24 Nov 2021 - 24 Nov 2021	MISC	EMPLOYEES PROVIDENT FUND BOARD [SSH]	500	533,260	11.95	
26 Nov 2021 - 29 Nov 2021	MPAY	DATO' CHEW CHEE SENG [DIR/CEO]	5,684	197,722	22.954	
26 Nov 2021 - 29 Nov 2021	MPAY	DATO' CHEW CHEE SENG [SSH]	5,684	197,722	22.954	
29 Nov 2021 - 30 Nov 2021	MPI	MR MANUEL ZARAUZA BRANDULAS [DIR/CEO]	-31	308	0.155	
25 Nov 2021 - 26 Nov 2021	MPI	MR MANUEL ZARAUZA BRANDULAS [DIR/CEO]	-30	339	0.171	
30 Nov 2021 - 30 Nov 2021	MRDIY	MADAM TAN GAIK HOON [SSH]	66,004	400,296	6.375	
30 Nov 2021 - 30 Nov 2021	MRDIY	MR GAN CHOON LENG [SSH]	66,004	399,946	6.369	
30 Nov 2021 - 30 Nov 2021	MRDIY	PLATINUM ALPHABET SDN. BHD. [SSH]	50,000	383,842	6.113	
02 Dec 2021 - 02 Dec 2021	MSNIAGA	SHAPADU CAPITAL SDN. BHD. [SSH]	28	14,886	24.646	
01 Dec 2021 - 01 Dec 2021	MSNIAGA	SHAPADU CAPITAL SDN. BHD. [SSH]	19	14,858	24.599	
29 Nov 2021 - 30 Nov 2021	MSNIAGA	SHAPADU CAPITAL SDN. BHD. [SSH]	42	14,840	24.568	
26 Nov 2021 - 26 Nov 2021	MSNIAGA	SHAPADU CAPITAL SDN. BHD. [SSH]	72	14,798	24.499	
29 Nov 2021 - 30 Nov 2021	MUDA	DATUK WIRA LIM CHIUN CHEONG [DIR/CEO]	85	128,726	42.199	
29 Nov 2021 - 30 Nov 2021	MUDA	PUAN SRI TEOW SOOK INN @ TEO AH KIANG [SSH]	85	128,726	42.198	
29 Nov 2021 - 30 Nov 2021	MUDA	DATUK WIRA LIM CHIUN CHEONG [SSH]	85	128,726	42.199	
29 Nov 2021 - 30 Nov 2021	MUDA	TAN SRI LIM GUAN TEIK [SSH]	85	128,726	42.198	
29 Nov 2021 - 30 Nov 2021	MUDA	TAN SRI LIM GUAN TEIK [DIR/CEO]	85	128,726	42.198	
29 Nov 2021 - 30 Nov 2021	MUDA	MISS LIM YEN WEE [DIR/CEO]	85	119,134	39.054	
29 Nov 2021 - 30 Nov 2021	MUDA	MISS LIM YEN WEE [SSH]	85	119,134	39.054	
29 Nov 2021 - 30 Nov 2021	MUDA	DATIN CHEONG KOON HOOI [SSH]	85	118,444	38.827	
29 Nov 2021 - 30 Nov 2021	MUDA	MISS LIM SIEW LING [DIR/CEO]	85	118,011	38.686	
29 Nov 2021 - 30 Nov 2021	MUDA	MISS LIM SIEW LING [SSH]	85	118,011	38.686	
29 Nov 2021 - 30 Nov 2021	MUDA	MADAM SIN POAY SIM [SSH]	85	118,011	38.686	

Notice Period is 28 November - 04 December 2021

Effective Change Date	Stock Name	Buyer/ Seller Name [Classification]	Bought / (Sold) ('000)		No. of Shares After Trade ('000)	
			Total	% Held	Total	% Held
29 Nov 2021 - 30 Nov 2021	MUDA	DATO' AZAMAN ABU BAKAR [DIR/CEO]	85	115,255	37.782	
29 Nov 2021 - 30 Nov 2021	MUDA	DATO' AZAMAN ABU BAKAR [SSH]	85	115,255	37.782	
29 Nov 2021 - 30 Nov 2021	MUDA	HARTABAN HOLDINGS SDN BHD [SSH]	85	114,444	37.517	
25 Nov 2021 - 25 Nov 2021	MUDA	DATO' LIM SOON HUAT [SSH]	101	78,859	25.851	
25 Nov 2021 - 25 Nov 2021	MUDA	PRESTIGE ELEGANCE (M) SDN BHD [SSH]	101	70,792	23.207	
25 Nov 2021 - 25 Nov 2021	MUDA	DATIN KHOO SAW SIM [SSH]	101	70,792	23.207	
25 Nov 2021 - 25 Nov 2021	MUDA	ASIA FILE CORPORATION BHD [SSH]	101	70,792	23.207	
26 Nov 2021 - 26 Nov 2021	MUH	MR ANG KIM CHENG @ ANG TENG KOK [SSH]	60	17,765	31.487	
26 Nov 2021 - 26 Nov 2021	MUH	MR ANG KIM CHENG @ ANG TENG KOK [DIR/CEO]	60	17,765	31.487	
26 Nov 2021 - 26 Nov 2021	MUH	MADAM CHEONG CHIEW YOON [SSH]	60	17,739	31.442	
26 Nov 2021 - 26 Nov 2021	MUH	INTERASIA BLUECHIP SDN BHD [SSH]	55	16,257	28.814	
26 Nov 2021 - 26 Nov 2021	MUH	MISS ANG AI WAY [DIR/CEO]	55	16,257	28.814	
26 Nov 2021 - 26 Nov 2021	MUH	MR ANG HWEI CHYN [SSH]	55	16,257	28.814	
26 Nov 2021 - 26 Nov 2021	MUH	MR ANG HWEI CHYN [DIR/CEO]	55	16,257	28.814	
26 Nov 2021 - 26 Nov 2021	MUH	MISS ANG AI WAY [SSH]	55	16,257	28.814	
01 Dec 2021 - 01 Dec 2021	MYEG	KUMPULAN WANG PERSARAAN (DIPERBADANKAN) [SSH]	-3	511,250	6.901	
30 Nov 2021 - 30 Nov 2021	MYEG	KUMPULAN WANG PERSARAAN (DIPERBADANKAN) [SSH]	777	511,252	6.901	
26 Nov 2021 - 26 Nov 2021	N2N	DATO' TAN BOON LENG [DIR/CEO]	100	1,101	0.786	
29 Nov 2021 - 29 Nov 2021	NESTLE	EMPLOYEES PROVIDENT FUND BOARD [SSH]	56	22,038	9.398	
26 Nov 2021 - 26 Nov 2021	NESTLE	EMPLOYEES PROVIDENT FUND BOARD [SSH]	57	21,982	9.374	
25 Nov 2021 - 25 Nov 2021	NESTLE	EMPLOYEES PROVIDENT FUND BOARD [SSH]	20	21,926	9.35	
24 Nov 2021 - 24 Nov 2021	NESTLE	EMPLOYEES PROVIDENT FUND BOARD [SSH]	33	21,905	9.341	
01 Dec 2021 - 01 Dec 2021	NETX	FINTEC GLOBAL LIMITED [SSH]	2,500	131,784	15.76	
01 Dec 2021 - 01 Dec 2021	NETX	FINTEC GLOBAL BERHAD [SSH]	2,500	131,784	15.76	
30 Nov 2021 - 30 Nov 2021	NETX	FINTEC GLOBAL LIMITED [SSH]	11,044	129,284	15.47	
30 Nov 2021 - 30 Nov 2021	NETX	FINTEC GLOBAL BERHAD [SSH]	11,044	129,284	15.47	
29 Nov 2021 - 29 Nov 2021	NETX	FINTEC GLOBAL BERHAD [SSH]	17,400	118,241	14.14	
29 Nov 2021 - 29 Nov 2021	NETX	FINTEC GLOBAL LIMITED [SSH]	17,400	118,241	14.14	
26 Nov 2021 - 26 Nov 2021	NETX	FINTEC GLOBAL LIMITED [SSH]	4,122	100,841	12.06	
26 Nov 2021 - 26 Nov 2021	NETX	FINTEC GLOBAL BERHAD [SSH]	4,122	100,841	12.06	
29 Nov 2						

Notice Period is 28 November - 04 December 2021

Effective Change Date	Stock Name	Buyer/ Seller Name [Classification]	Bought / (Sold) ('000)		
			Total	Total	% Held
30 Nov 2021 - 30 Nov 2021	RUBEREX	DATO' ONG CHOO MENG [DIR/CEO]	-7,000	302,947	35.067
30 Nov 2021 - 30 Nov 2021	RUBEREX	HEXTAR RUBBER SDN BHD [SSH]	-7,000	302,947	35.067
30 Nov 2021 - 30 Nov 2021	RUBEREX	DATO' ONG CHOO MENG [SSH]	-7,000	302,947	35.067
29 Nov 2021 - 29 Nov 2021	SAPIND	MR KOH KOK HOON [SSH]	8	4,502	6.186
26 Nov 2021 - 26 Nov 2021	SAPIND	MR KOH KOK HOON [SSH]	26	4,494	6.175
26 Nov 2021 - 26 Nov 2021	SCOPE	MR LIM EE TATT [DIR/CEO]	30,880	30,880	8.922
26 Nov 2021 - 26 Nov 2021	SCOPE	MR LEE MIN HUAT [DIR/CEO]	27,630	27,630	7.983
26 Nov 2021 - 26 Nov 2021	SCOPE	MR LIM CHIEW HOO [DIR/CEO]	20,434	20,434	5.904
26 Nov 2021 - 26 Nov 2021	SCOPE	MR YEE WEI MENG [DIR/CEO]	10,445	10,445	3.018
26 Nov 2021 - 26 Nov 2021	SCOPE	MR TAN POH HENG [DIR/CEO]	158	158	0.046
29 Nov 2021 - 30 Nov 2021	SEM	TAN SRI DATO' SERI VINCENT TAN CHEE YIUON [SSH]	10	500,375	44.426
25 Nov 2021 - 26 Nov 2021	SEM	TAN SRI DATO' SERI VINCENT TAN CHEE YIUON [SSH]	10	500,365	44.425
29 Nov 2021 - 01 Dec 2021	SHL	DATO' SRI IR. YAP CHONG LEE [SSH]	-634	93,355	38.557
29 Nov 2021 - 01 Dec 2021	SHL	DATO' SRI IR. YAP CHONG LEE [DIR/CEO]	-634	93,355	38.557
25 Nov 2021 - 26 Nov 2021	SHL	DATO' SRI IR. YAP CHONG LEE [SSH]	-163	93,989	38.819
25 Nov 2021 - 26 Nov 2021	SHL	DATO' SRI IR. YAP CHONG LEE [DIR/CEO]	-163	93,989	38.819
26 Nov 2021 - 26 Nov 2021	SIME	EMPLOYEES PROVIDENT FUND BOARD [SSH]	386	572,148	8.411
24 Nov 2021 - 24 Nov 2021	SIME	EMPLOYEES PROVIDENT FUND BOARD [SSH]	-712	571,761	8.405
26 Nov 2021 - 26 Nov 2021	SIMEPROP	EMPLOYEES PROVIDENT FUND BOARD [SSH]	1,500	622,292	9.151
01 Dec 2021 - 01 Dec 2021	SKPRES	KUMPULAN WANG PERSARAAN (DIPERBADANKAN) [SSH]	-211	146,777	9.395
30 Nov 2021 - 30 Nov 2021	SKPRES	KUMPULAN WANG PERSARAAN (DIPERBADANKAN) [SSH]	190	146,989	9.408
30 Nov 2021 - 01 Dec 2021	SLVEST	CHIN HIN GROUP BERHAD [SSH]	2,850	175,887	26.348
30 Nov 2021 - 01 Dec 2021	SLVEST	MR CHIAU HAW CHOON [SSH]	2,850	175,887	26.348
30 Nov 2021 - 01 Dec 2021	SLVEST	MR CHIAU HAW CHOON [DIR/CEO]	2,850	175,887	26.348
30 Nov 2021 - 01 Dec 2021	SLVEST	DATIN SERI WONG MEE LENG [SSH]	2,850	175,887	26.348
30 Nov 2021 - 01 Dec 2021	SLVEST	DATUK SERI CHIAU BENG TEIK JP [SSH]	2,850	175,887	26.348
30 Nov 2021 - 01 Dec 2021	SLVEST	PP CHIN HIN REALTY SDN. BHD. [SSH]	2,850	175,887	26.348
30 Nov 2021 - 01 Dec 2021	SLVEST	DIVINE INVENTIONS SDN. BHD. [SSH]	2,850	175,887	26.348
26 Nov 2021 - 26 Nov 2021	SLVEST	CHIN HIN GROUP BERHAD [SSH]	1,020	173,037	25.921
26 Nov 2021 - 26 Nov 2021	SLVEST	MR CHIAU HAW CHOON [DIR/CEO]	1,020	173,037	25.921
26 Nov 2021 - 26 Nov 2021	SLVEST	DATUK SERI CHIAU BENG TEIK JP [SSH]	1,020	173,037	25.921
26 Nov 2021 - 26 Nov 2021	SLVEST	DATIN SERI WONG MEE LENG [SSH]	1,020	173,037	25.921
26 Nov 2021 - 26 Nov 2021	SLVEST	MR CHIAU HAW CHOON [SSH]	1,020	173,037	25.921
26 Nov 2021 - 26 Nov 2021	SLVEST	PP CHIN HIN REALTY SDN. BHD. [SSH]	1,020	173,037	25.921
26 Nov 2021 - 26 Nov 2021	SLVEST	DIVINE INVENTIONS SDN. BHD. [SSH]	1,020	173,037	25.921
30 Nov 2021 - 01 Dec 2021	SLVEST-WA	MR CHIAU HAW CHOON [DIR/CEO]	-10,110	9,665	6.099
30 Nov 2021 - 30 Nov 2021	SPRITZER	MR CHOK HOA @ CHOK YIN FATT [DIR/CEO]	4	176	0.084
29 Nov 2021 - 29 Nov 2021	SPSETIA	EMPLOYEES PROVIDENT FUND BOARD [SSH]	382	226,410	5.566
26 Nov 2021 - 26 Nov 2021	SPSETIA	EMPLOYEES PROVIDENT FUND BOARD [SSH]	1,230	226,029	5.556
29 Nov 2021 - 29 Nov 2021	SPSETIA	KUMPULAN WANG PERSARAAN (DIPERBADANKAN) [SSH]	-258	409,728	10.072
25 Nov 2021 - 25 Nov 2021	SPSETIA	EMPLOYEES PROVIDENT FUND BOARD [SSH]	425	224,799	5.526
24 Nov 2021 - 24 Nov 2021	SPSETIA	EMPLOYEES PROVIDENT FUND BOARD [SSH]	379	224,374	5.516
02 Dec 2021 - 02 Dec 2021	SRIDGE	DATO' MOHD SUHAIMI BIN ABDULLAH [SSH]	-6,296	5,551	29.715
02 Dec 2021 - 02 Dec 2021	SRIDGE	DATO' MOHD SUHAIMI BIN ABDULLAH [DIR/CEO]	-6,296	5,551	29.715
02 Dec 2021 - 02 Dec 2021	STRAITS	DATO' SRI HO KAM CHOY [DIR/CEO]	314	142,736	18.281
02 Dec 2021 - 02 Dec 2021	STRAITS	DATO' SRI HO KAM CHOY [SSH]	314	142,736	18.281
30 Nov 2021 - 30 Nov 2021	STRAITS	DATO' SRI HO KAM CHOY [SSH]	300	142,423	18.241
30 Nov 2021 - 30 Nov 2021	STRAITS	DATO' SRI HO KAM CHOY [DIR/CEO]	300	142,423	18.241
29 Nov 2021 - 29 Nov 2021	STRAITS	DATO' SRI HO KAM CHOY [SSH]	255	142,123	18.203
29 Nov 2021 - 29 Nov 2021	STRAITS	DATO' SRI HO KAM CHOY [DIR/CEO]	255	142,123	18.203
29 Nov 2021 - 29 Nov 2021	SUNREIT	EMPLOYEES PROVIDENT FUND BOARD [SSH]	293	527,111	15.39
29 Nov 2021 - 29 Nov 2021	SUNWAY	EMPLOYEES PROVIDENT FUND BOARD [SSH]	112	414,041	8.47
26 Nov 2021 - 26 Nov 2021	SUNWAY	EMPLOYEES PROVIDENT FUND BOARD [SSH]	410	413,930	8.47
25 Nov 2021 - 25 Nov 2021	SUNWAY	EMPLOYEES PROVIDENT FUND BOARD [SSH]	1,000	413,520	8.46
24 Nov 2021 - 24 Nov 2021	SUNWAY	EMPLOYEES PROVIDENT FUND BOARD [SSH]	162	412,520	8.44
25 Nov 2021 - 25 Nov 2021	SUNZEN	MR TEO YEK MING [DIR/CEO]	14,330	109,546	17.69
25 Nov 2021 - 25 Nov 2021	SUNZEN	MR TEO YEK MING [SSH]	14,330	109,546	17.69
25 Nov 2021 - 25 Nov 2021	SUNZEN	MR TEO YEK MING [DIR/CEO]	14,330	60,670	55.77
30 Nov 2021 - 30 Nov 2021	SYMLIFE	DATO CHUA HEOK WEE [SSH]	300	119,340	16.672
30 Nov 2021 - 30 Nov 2021	SYMLIFE	DATO CHUA HEOK WEE [DIR/CEO]	300	119,340	16.672
26 Nov 2021 - 29 Nov 2021	SYMLIFE	TAN SRI DATO' SERI TAN KING TAI @ TAN KHOON HAI [DIR/CEO]	1,000	3,358	0.469
02 Dec 2021 - 02 Dec 2021	TAFI	DATO' SRI WONG SZE CHIEN [SSH]	-6,463	66,391	53.569
02 Dec 2021 - 02 Dec 2021	TAFI	DATO' SRI WONG SZE CHIEN [DIR/CEO]	-6,463	66,391	53.569
02 Dec 2021 - 02 Dec 2021	TAFI	DATO' SRI ANDREW LIM ENG GUAN [DIR/CEO]	-6,463	66,135	53.363
02 Dec 2021 - 02 Dec 2021	TAFI	DATO' SRI ANDREW LIM ENG GUAN [SSH]	-6,463	66,135	53.363
02 Dec 2021 - 02 Dec 2021	TAFI	DATO' SRI AZLAN BIN AZMI [SSH]	-6,463	64,916	52.379
02 Dec 2021 - 02 Dec 2021	TAFI	DATO' SRI AZLAN BIN AZMI [DIR/CEO]	-6,463	64,916	52.379
02 Dec 2021 - 02 Dec 2021	TAFI	ARMANI SYNERGY SDN. BHD. [SSH]	-6,463	64,861	52.335
02 Dec 2021 - 02 Dec 2021	TAFI	KOPERASI PERMODALAN FELDA MALAYSIA 2 BERHAD [SSH]	12,648	12,648	10.205
29 Nov 2021 - 29 Nov 2021	TAFI	DATO' SRI WONG SZE CHIEN [DIR/CEO]	-6,184	72,855	58.784
29 Nov 2021 - 29 Nov 2021	TAFI	DATO' SRI WONG SZE CHIEN [SSH]	-6,184	72,855	58.784
29 Nov 2021 - 29 Nov 2021	TAFI	DATO' SRI ANDREW LIM ENG GUAN [SSH]	-6,184	72,598	58.578
29 Nov 2021 - 29 Nov 2021	TAFI	DATO' SRI ANDREW LIM ENG GUAN [DIR/CEO]	-6,184	72,598	58.578
29 Nov 2021 - 29 Nov 2021	TAFI	DATO' SRI AZLAN BIN AZMI [SSH]	-6,184	71,380	57.594
29 Nov 2021 - 29 Nov 2021	TAFI	DATO' SRI AZLAN BIN AZMI [DIR/CEO]	-6,184	71,380	57.594
29 Nov 2021 - 29 Nov 2021	TAFI	ARMANI SYNERGY SDN. BHD. [SSH]	-6,184	71,325	57.55
29 Nov 2021 - 29 Nov 2021	TAKAFUL	EMPLOYEES PROVIDENT FUND BOARD [SSH]	1,621	87,092	10.422
26 Nov 2021 - 26 Nov 2021	TAKAFUL	EMPLOYEES PROVIDENT FUND BOARD [SSH]	1,000	85,471	10.228
25 Nov 2021 - 25 Nov 2021	TAKAFUL	EMPLOYEES PROVIDENT FUND BOARD [SSH]	1,000	84,579	10.122
24 Nov 2021 - 24 Nov 2021	TAKAFUL	EMPLOYEES PROVIDENT FUND BOARD [SSH]	2,358	83,579	10.002
01 Dec 2021 - 02 Dec 2021	TAMBUN	MR TEH KIAK SENG [DIR/CEO]	105	200,634	46.08
29 Nov 2021 - 29 Nov 2021	TAMBUN	MR TEH KIAK SENG [DIR/CEO]	100	200,529	46.06
26 Nov 2021 - 26 Nov 2021	TAMBUN	MR TEH KIAK SENG [DIR/CEO]	1,056	200,429	46.04
26 Nov 2021 - 26 Nov 2021	TECHBND	MR LEE SEH MENG [DIR/CEO]	500	1,022	0.193
26 Nov 2021 - 26 Nov 2021	TECHBND	MR LEE YUEN SHUAN [DIR/CEO]	500	1,022	0.193
29 Nov 2021 - 29 Nov 2021	TENAGA	EMPLOYEES PROVIDENT FUND BOARD [SSH]	-1,500	949,017	16.57
26 Nov 2021 - 26 Nov 2021	TENAGA	EMPLOYEES PROVIDENT FUND BOARD [SSH]	-939	950,517	16.67
25 Nov 2021 - 25 Nov 2021	TENAGA	EMPLOYEES PROVIDENT FUND BOARD [SSH]	-326	951,456	16.62

Notice Period is 28 November - 04 December 2021

Effective Change Date	Stock Name	Buyer/ Seller Name [Classification]	Bought / (Sold) ('000)		
			Total	Total	% Held
24 Nov 2021 - 24 Nov 2021	TENAGA	EMPLOYEES PROVIDENT FUND BOARD [SSH]	-326	951,456	16.62
26 Nov 2021 - 26 Nov 2021	TGL	MADAM TOH KIAN BENG [DIR/CEO]	70	70	9.235
26 Nov 2021 - 26 Nov 2021	TGL	MR TOH CHOON GUAN [DIR/CEO]	70	70	9.235
26 Nov 2021 - 26 Nov 2021	TGL	MR TOH CHOON KEAT [DIR/CEO]	70	70	9.235
26 Nov 2021 - 26 Nov 2021	TGL	MADAM TOH KIAN BENG [DIR/CEO]	30	30	12.876
26 Nov 2021 - 26 Nov 2021	TGL	MR TOH CHOON GUAN [DIR/CEO]	30	30	12.876
26 Nov 2021 - 26 Nov 2021	TGL	MR TOH CHOON KEAT [DIR/CEO]	30	30	12.876
30 Nov 2021 - 30 Nov 2021	TIGER	DATO' TAN WEI LIAN [DIR/CEO]	3,000	398,746	15.515
30 Nov 2021 - 30 Nov 2021	TIGER	DATIN SEK CHIAN NEE [SSH]	3,000	398,746	15.515
30 Nov 2021 - 30 Nov 2021	TIGER	DATIN SEK CHIAN NEE [DIR/CEO]	3,000	398,746	15.515
30 Nov 2021 - 30 Nov 2021	TIGER	MISS TAN LEE CHIN [DIR/CEO]	3,000	398,746	15.515
30 Nov 2021 - 30 Nov 2021	TIGER	DATO' TAN WEI LIAN [SSH]	3,000	398,746	15.515
23 Nov 2021 - 23 Nov 2021	TIGER	MISS TAN LEE CHIN [SSH]	3,000	398,746	15.515
01 Dec 2021 - 01 Dec 2021	TIMECOM	KUMPULAN WANG PERSARAAN (DIPERBADANKAN) ("KWAP") [SSH]	304	93,813	5.138
30 Nov 2021 - 01 Dec 2021	TIMECOM	MR LEE GUAN HONG [DIR/CEO]	-383	2,219	0.122
29 Nov 2021 - 29 Nov 2021	TIMECOM	EMPLOYEES PROVIDENT FUND BOARD [SSH]	-1,217	209,338	11.467
26 Nov 2021 - 26 Nov 2021	TIMECOM	EMPLOYEES PROVIDENT FUND BOARD [SSH]	-74	210,555	11.533
25 Nov 2021 - 25 Nov 2021	TIMECOM	EMPLOYEES PROVIDENT FUND BOARD [SSH]	-37	210,629	11.537
24 Nov 2021 - 24 Nov 2021	TIMECOM	EMPLOYEES PROVIDENT FUND BOARD [SSH]	379	210,666	11.539
30 Jul 2021 - 30 Jul 2021	TITIJYA	MR LIM POH YIT [SSH]	7,700	787,320	61.699
30 Jul 2021 - 30 Jul 2021	TITIJYA	MR LIM POH YIT [DIR/CEO]	7,700	787,320	61.699
30 Jul 2021 - 30 Jul 2021	TITIJYA	MISS LIM PUAY FUNG [SSH]	7,700	721,708	56.557
30 Jul 2021 - 30 Jul 2021	TITIJYA	MISS LIM PUAY FUNG [DIR/CEO]	7,700	721,708	56.557
30 Jul 2021 - 30 Jul 2021	TITIJYA	TITIJAYA GROUP SDN. BHD. [SSH]	7,700	721,218	56.519
29 Nov 2021 - 29 Nov 2021	TM	EMPLOYEE PROVIDENT FUND BOARD (EPF BOARD) [SSH]	2,411	694,046	18.392
26 Nov 2021 - 26 Nov 2021	TM	EMPLOYEE PROVIDENT FUND BOARD (EPF BOARD) [SSH]	1,156	691,635	18.328
29 Nov 2021 - 29 Nov 2021	TM	KUMPULAN WANG PERSARAAN (DIPERBADANKAN) [SSH]	285	385,780	10.222
25 Nov 2021 - 25 Nov 2021	TM	EMPLOYEE PROVIDENT FUND BOARD (EPF BOARD) [SSH]	528	690,480	18.297
24 Nov 2021 - 24 Nov 2021	TM	EMPLOYEE PROVIDENT FUND BOARD (EPF BOARD) [SSH]	43	689,952	18.283
29 Nov 2021 - 29 Nov 2021	TOPGLOV	EMPLOYEES PROVIDENT FUND BOARD [SSH]	-3,961	484,853	6.055
26 Nov 2021 - 26 Nov 2021	TOPGLOV	EMPLOYEES PROVIDENT FUND BOARD [SSH]	-1,500	488,814	6.105
25 Nov 2021 - 25 Nov 2021	TOPGLOV	EMPLOYEES PROVIDENT FUND BOARD [SSH]	-500	490,314	6.123
24 Nov 2021 - 24 Nov 2021	TOPGLOV	EMPLOYEES PROVIDENT FUND BOARD [SSH]	-500	490,814	6.13
01 Dec 2021 - 01 Dec 2021	TRC	DATO RICHARD KHOO TENG SAN [DIR/CEO]	100	10,434	2.214
29 Nov 2021 - 29 Nov 2021	ULICORP	LIM MEE HWA [SSH]	250	12,650	5.808
29 Nov 2021 - 29 Nov 2021	ULICORP	YEO SENG CHONG [SSH]	250	12,650	5.808
29 Nov 2021 - 29 Nov 2021	UOAEV	EMPLOYEES PROVIDENT FUND BOARD ("EPF BOARD") [SSH]	127	242,988	10.445
25 Nov 2021 - 25 Nov 2021	UOAEV	EMPLOYEES PROVIDENT FUND BOARD ("EPF BOARD") [SSH]	227	242,861	10.439
29 Nov 2021 - 29 Nov 2021	UTDPLT	DATO' MOHAMMAD NASIR BIN AB. LATIF [DIR/CEO]	2	30	0.007
29 Nov 2021 - 29 Nov 2021	UTDPLT	DATO' JEREMY DEREK CAMPBELL DIAMOND [DIR/CEO]	2	753	0.182
26 Nov 2021 - 26 Nov 2021	UTDPLT	DATO' JEREMY DEREK CAMPBELL DIAMOND [DIR/CEO]	2	751	0.181
24 Nov 2021 - 24 Nov 2021	UTDPLT	EMPLOYEES PROVIDENT FUND BOARD [SSH]	-0.6	51,072	12.313
30 Nov 2021 - 30 Nov 2021	VINVEST				



Axiata Group Berhad

Axiata Group Berhad (**AXIATA**) wishes to announce that it has entered into a shareholder's loan agreement dated 7 December 2021 of USD20.0 million

with its subsidiary, edotco Group Sdn Bhd. edotco is a company incorporated in Malaysia and is a 63% owned subsidiary of Axiata Group Berhad. The Shareholder Loan is a loan to be disbursed by Axiata Group Berhad to edotco Group Sdn Bhd and is intended for edotco to inject further capital into edotco Tower Pakistan (Private) Limited. The Shareholder Loan will have a tenure of 12 months which will end on 7 December 2022. The Shareholder Loan is provided on comparable commercial terms and on an arms-length basis. It is expected to contribute positively to the interest income of Axiata based on prevailing market benchmarks.



Aemulus Holdings Berhad

On behalf of Aemulus Holdings Berhad (**AEMULUS**), CIMB Investment Bank Berhad wishes to announce that the book-building exercise in relation to the Proposed Placement has been completed. Under the Proposed Placement, Aemulus Holdings Berhad will be issuing 60,678,000 new Aemulus Shares, representing 10% of the total number of issued shares of Aemulus. The Company had fixed the Issue Price at RM1.05 per Placement Share. The Issue Price represents a discount of about 5.06% to the 5-day Volume Weighted Average Market Price of Aemulus Shares up to and including 1 December 2021 of RM1.1060. The total gross proceeds to be raised from the Proposed Placement is about RM63.71 million.



Boustead Holdings Berhad

Boustead Holdings Berhad

The Board of Boustead Holdings Berhad (**BSTEAD**)

is pleased to announce that on 8 December 2021, the Company entered into a Memorandum of Understanding with The Hive Southeast Asia General Partner Limited and Aimcloud Sdn Bhd. The purpose of this Memorandum Of Understanding is to provide the framework for any future binding agreement regarding the collaboration agreement between Boustead Digital Services Sdn Bhd, The Hive Southeast Asia General Partner Limited and Aimcloud Sdn Bhd. This Memorandum of Understanding is to record the understanding of the parties and to provide the platform and governance for the pooling of resources and expertise in achieving the co-creation of seed company.



Gamuda Berhad

On behalf of the Board, HLIB is pleased to announce that Gamuda Berhad (**GAMUDA**) has implemented the

Employees Share Option Scheme with effect from 8 December 2021. Gamuda Berhad has made an Offer of Options under the Scheme on 9 December 2021. The details of which are as follows:-

NO.	DESCRIPTION OF OFFER	FACTS
1	Date of Offer	9 December 2021
2	Exercise price of Options offered	RM2.85
3	Closing market price of Gamuda ordinary shares on date of Offer	RM2.96
4	Total number of Options offered	Up to 210,154,000 Options
5	Number of Options offered to the Executive Directors of Gamuda, their Alternate Directors and eligible employees of the Gamuda Group ("Other Eligible Employees"):	
	(i) Y. Bhg. Dato' Lin Yun Ling	6,000,000 Options
	(ii) Y. Bhg. Dato' Ir Ha Tiing Tai	3,500,000 Options
	(iii) Encik Mohammed Rashdan bin Mohd Yusof	3,500,000 Options
	(iv) Mr. Justin Chin Jing Ho	3,000,000 Options
	(v) Other Eligible Employees	Up to 194,154,000 Options
6	Vesting period of the Options offered	Options are vested upon acceptance of the Offer; however shares will be subjected to moratorium over a period of 5 years



YNH Property Berhad

YNH PROPERTY BHD

YNH Property Berhad (**YNHPROP**) is pleased to announce that the

Company has made a lodgement with the Securities Commission Malaysia for the establishment of the Sukuk Wakalah Programme. The Sukuk Wakalah Programme is structured based on the Shariah principle of Wakalah Bi Al-Istithmar and accords the Company the flexibility to issue secured or unsecured Sukuk Wakalah from time to time. The Sukuk Wakalah Programme has been assigned a preliminary rating of A+IS by Malaysian Rating Corporation Berhad. The proceeds raised from the issuance of the Sukuk Wakalah shall be utilised by the Company for Shariah compliant purposes.



Upcoming IPO

16th Dec 2021
AURELIUS TECHNOLOGIES BERHAD
(MAIN MARKET)

21st Dec 2021
SWIFT HAULAGE BERHAD
(MAIN MARKET)

Over 5 trading days



ShareInvestor WebPro (www.shareinvestor.com/my)

1. Price > Stock Prices
2. Select Market: NASDAQ / NYSE / IDX / SET / HKEX / SGX (One bourse at a time)
3. select Stocks Tab
4. select Ranking Top Gainers or Top Losers (Over 5 Trading Days)
5. Mouse over Column Layout > select Edit Customs > select Name > select Last Done Price > select 5 Days Change > select 52 Weeks High > select 52 Weeks Low > Mouse Over Column Layout > select Custom



NASDAQ (USD)

Top Gainers

Name	Last Done	Change Over 5 Days	52 Weeks High	52 Weeks Low
ALPHABET INC	2,952.770	+112.740	3,019.330	1,694.000
ALPHABET INC	2,962.120	+111.710	3,037.000	1,699.000
BOOKING HOLDINGS INC	2,267.610	+95.680	2,687.290	1,860.730
AMAZON COM INC	3,483.420	+93.630	3,773.078	2,881.000
ALIGN TECHNOLOGY INC	673.590	+53.840	737.452	494.450

Top Losers

Name	Last Done	Change Over 5 Days	52 Weeks High	52 Weeks Low
MICROSTRATEGY	591.880	-91.480	1,315.000	274.090
DOCUSIGN INC	149.370	-84.450	314.760	131.510
TESLA INC	1,003.800	-80.800	1,243.490	539.490
CHARTER COMMUNICATIONS INC	611.970	-58.430	825.620	585.450
BIONTECH SE SPON ADS EACH REP 1 ORD SHS	284.210	-49.280	464.000	80.550

NYSE (USD)

Top Gainers

Name	Last Done	Change Over 5 Days	52 Weeks High	52 Weeks Low
BERKSHIRE HATHAWAY INC	428,402.000	+9726.000	445,000.000	333,150.000
NVR INC	5,863.520	+314.340	5,908.160	3,885.000
CHIPOTLE MEXICAN GRILL	1,722.600	+111.160	1,958.545	1,256.265
AUTOZONE INC	1,965.830	+102.830	2,028.660	1,111.710
EPAM SYS INC	700.010	+80.170	725.400	314.080

Top Losers

Name	Last Done	Change Over 5 Days	52 Weeks High	52 Weeks Low
CABLE ONE INC	1,705.910	-108.130	2,326.800	1,674.350
HUBSPOT INC	738.940	-54.780	866.000	347.780
SILVERGATE CAPITAL CORPORATION	148.120	-46.140	239.260	35.000
GENERAC HLDGS INC	360.640	-45.820	524.310	207.068
GAMESTOP CORPORATION	155.760	-25.800	483.000	12.140

IDX (Rupiah)

Top Gainers

Name	Last Done	Change Over 5 Days	52 Weeks High	52 Weeks Low
BANK BUMI ARTA TBK.	5,025.000	+1605.000	5,175.000	376.000
INDOCEMENT TUNGGAL PRAKARSA TBK.	12,000.000	+1250.000	15,975.000	8,800.000
GOLDEN ENERGY MINES TBK.	5,450.000	+1200.000	5,925.000	2,550.000
HARUM ENERGY TBK.	10,725.000	+1075.000	10,875.000	2,830.000
INDOINTERNET TBK.	23,450.000	+900.000	47,000.000	8,850.000

Top Losers

Name	Last Done	Change Over 5 Days	52 Weeks High	52 Weeks Low
BAYAN RESOURCES TBK.	25,900.000	-1,775.000	16,000.000	11,175.000
DCI INDONESIA TBK.	42,550.000	-1,400.000	4,780.000	525.000
M CASH INTEGRASI TBK.	11,150.000	-1,325.000	15,000.000	2,550.000
DIAN SWASTATIKA SENTOSA TBK	52,750.000	-1,250.000	22,500.000	12,775.000
INDOSAT TBK.	6,550.000	-1,225.000	6,475.000	1,190.000

SET (Thai Baht)

Top Gainers

Name	Last Done	Change Over 5 Days	52 Weeks High	52 Weeks Low
JTS	118.000	+25.500	118.000	1.810
CHOTI	131.000	+19.500	133.000	59.000
TIPH	67.750	+12.000	68.750	31.750
BUI	21.000	+5.700	21.000	9.000
BBL	120.000	+5.500	133.000	100.000

Top Losers

Name	Last Done	Change Over 5 Days	52 Weeks High	52 Weeks Low
DELTA	428.000	-8.000	838.000	286.000
METCO	266.000	-3.000	340.000	188.000
ADD	26.750	-2.500	37.750	14.800
SCCC	153.500	-2.500	188.500	131.000
MEGA	51.750	-2.250	56.500	32.250

HKEX (HKD)

Top Gainers

Name	Last Done	Change Over 5 Days	52 Weeks High	52 Weeks Low
HONG KONG EXCHANGES & CLEARING	471.200	+39.200	587.000	379.400
ORIENT OVERSEAS INT	172.400	+22.100	201.600	52.050
SUNNY OPTICAL TECHNOLOGY GROUP	246.200	+11.000	259.400	141.200
YUM CHINA HOLDINGS INC	406.800	+10.600	544.000	387.800
TENCENT HOLDINGS LIMITED	472.600	+10.000	775.500	412.200

Top Losers

Name	Last Done	Change Over 5 Days	52 Weeks High	52 Weeks Low
JD.COM INC	311.000	-31.000	422.800	236.400
ANGELALIGN TECHNOLOGY INC	322.400	-25.000	490.000	301.200
BEIGENE LTD	193.800	-20.600	278.600	130.400
LI AUTO INC	124.400	-18.700	145.000	98.050
BYD COMPANY LIMITED	291.600	-13.800	324.600	138.400

SGX (SGD)

Top Gainers

Name	Last Done	Change Over 5 Days	52 Weeks High	52 Weeks Low
UOB	26.870	+0.670	28.170	22.240
SHANGRI-LA HKD	6.770	+0.520	8.990	6.070
JARDINE C&C	21.220	+0.460	24.500	18.930
DBS	31.950	+0.400	32.700	24.710
SGX	9.450	+0.380	12.130	8.930

Top Losers

Name	Last Done	Change Over 5 Days	52 Weeks High	52 Weeks Low
JMH USD	55.800	-1.110	68.880	49.130
SHINVEST	3.300	-0.390	3.700	2.210
HAW PAR	11.300	-0.260	13.800	10.030
ZHENENG JINJIANG	0.435	-0.165	0.740	0.380
STAMFORD LAND	0.355	-0.135	0.575	0.310