

Invest

A Weekly e-Publication by SHAREINVESTOR.com

ISSUE

204

FRIDAY
26 APRIL
2024

Scan/Click QR to Register



Via email, every Friday

ALSO

COMPANY SPOTLIGHT MYE.G.

Services Berhad

See more on page 07

MSWG

Scrutiny on fundraising exercises, disclosures and utilisation of proceeds raised

See more on pages 35-38

PLUS

BEHIND THE TICKET

which helps to decode company fundamentals

See more on pages 20-27

EPF MEMBERS UNDER AGE 55 WILL GET ACCOUNT 3 FOR FLEXIBLE WITHDRAWALS FROM MAY 11

FOREIGN FUNDS OFFLOADED RM1.59B IN LOCAL EQUITIES LAST WEEK, HIGHEST IN FOUR YEARS - MIDF

see more on pages 29-33

BEHIND THE TICKET: DECODING COMPANY FUNDAMENTALS

Is there an investment opportunity in TERNIUM?

SUMMARY

- Ternium S.A. (NYSE: TX) is fundamentally sound with doubled revenue over the past 12 years, driven by organic growth and acquisitions.
- The company exhibits improving ROE and operational efficiencies, evidenced by growing PAT and gross profitability.

04 LEADERBOARD

06 SHARIAH HOT STOCKS

08 SHARIAH MOMENTUM UP STOCKS

10 NON SHARIAH HOT STOCKS

12 UP TRENDING STOCKS

14 VALUE STOCKS

15 GROWTH STOCKS

16 DIVIDEND STOCKS

17 BROKERS' CALL

18 LONG COMPANIES

34 REGIONAL MARKETS

39 INSIDER ACTIVITY

43 INVESTOR RELATIONS

SHAREINVESTOR®

An AlphaInvest Company

Invest with Knowledge

INVESTOR PLATFORMS

Director
Darren Chong
darren.chong@shareinvestor.com

Business Development Manager
Jay Cheong
jay.cheong.@shareinvestor.com

Senior Executive
Daniel Wong
daniel.wong@shareinvestor.com

ADMIN & OPERATIONS

Senior Executive
Watie Nordin
watie.nordin@shareinvestor.com

Executive
Silas Emmanuel Joseph
silas.joseph@shareinvestor.com

PROCESS AUTOMATION & DATA ANALYTICS

Data Analyst
Tan Yong Sheng

INVESTOR RELATIONS

Group Managing Director & Publisher
Edward Stanislaus
edward@shareinvestor.com

Senior Manager
Letticia Wong
letticia.wong@shareinvestor.com

Manager
Aida Norzeti Binti Ab Talib
aida.norzeti@shareinvestor.com

Inve\$t WEEKLY

Senior Manager Advertising Sales & Marketing
Mark Rodrigues
mark.rodrigues@shareinvestor.com

ALPHAINVEST HOLDINGS BOARD OF DIRECTORS

Chairman		Patrick Daniel
Group CEO		Christopher Lee
Group COO		Lim Dau Hee
Group CFO		Teo Siew May
Group MD		Shanison Lin



“ GIVE A MAN A FISH AND YOU FEED HIM FOR A DAY; TEACH A MAN TO FISH AND YOU FEED HIM FOR A LIFETIME ”

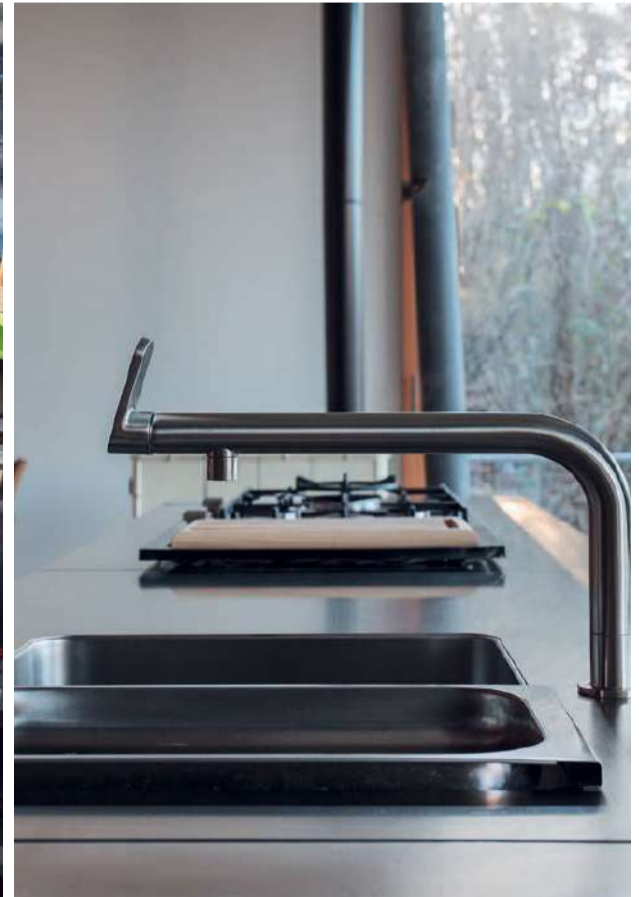
ShareInvestor Malaysia Sdn. Bhd.

(200001023956) (526564-M)
Unit No. DF2-07-03A, Level 7,
Persoft Tower, 6B Persiaran Tropicana,
47410 Petaling Jaya, Selangor Darul Ehsan.

Hotline : 603 7803 1791
Mobile : 011 6343 8939
Website : www.ShareInvestor.com.my
www.ShareInvestorHoldings.com
www.facebook.com/ShareInvestorMalaysia

ADVERTISEMENT ENQUIRY

bulthaup takes care of the details so that you can enjoy a harmonious environment.



XTRA

XTRA FURNITURE SDN BHD
The Gardens Mall, Mid Valley City
xtrafurniture.com/bulthaup
fb.com/bulthaupmalaysia

bulthaup

PURNELL

ONLY TOURBILLON



ESCAPE II FORGED CARBON

Purnell Asia

Tel.: +65.9817.3378

Email: sales.sg@purnellwatches.com

Instagram: Purnell_Official

www.purnellwatches.com



www.shareinvestor.com - market data at your fingertips



ShareInvestor WebPro (www.shareinvestor.com/my)
Prices > Stock Prices > Bursa > click Stocks tab

1. mouse over Ranking > select Top Active > all Shariah stocks are denoted with an [S] > mouse over Column Layout > select Edit Customs > select Name > select Volume > select Last Done Price > Mouse Over Column Layout > select Custom
2. mouse over Ranking > select Top Turnover > all Shariah stocks are denoted with an [S] > mouse over Column Layout > select Edit Customs > select Name > select Last Done Price > select Value > Mouse Over Column Layout > select Custom
3. mouse over Ranking > select Top Gainers (Over 5 Trading Days) > mouse over Column Layout > select Edit Customs > select Name > select Last Done Price > select 5 Days Change > select 5 Days % Change > Mouse Over Column Layout > select Custom
4. mouse over Ranking > select Top Losers (Over 5 Trading Days)
5. mouse over Ranking > select Top % Gainers (Over 5 Trading Days)
6. mouse over Ranking > select Top % Losers (Over 5 Trading Days)

Shariah Top Actives (as at Yesterday)

Name	Price (RM)	Volume
SAPNRG [S]	0.045	1,241,017.000
INGENIEU [S]	0.115	938,990.000
EKOVEST [S]	0.450	760,414.000
FITTERS [S]	0.050	634,523.000
BPURI [S]	0.075	584,286.000
MYEG [S]	0.810	525,559.000
ICONIC [S]	0.085	437,189.000
VELESTO [S]	0.265	344,859.000
KGW [S]	0.195	324,764.000
NOTION [S]	0.585	323,464.000

Shariah Top Turnover (as at Yesterday)

Name	Price (RM)	Value (RM)
TENAGA [S]	11.860	81,632,678
QL [S]	6.440	71,565,893
SIME [S]	2.800	43,921,873
AXIATA [S]	2.720	43,573,041
MYEG [S]	0.810	42,302,553
PMETAL [S]	5.430	36,069,870
EKOVEST [S]	0.450	34,346,932
TM [S]	6.110	28,671,739
SIMEPROP [S]	0.915	28,042,201
NAIM [S]	1.070	27,675,342

Top Gainers (over 5 Trading days as at Yesterday)

Name	Price (RM)	Change (RM)
NESTLE	127.000	+4.000
UTDPLT	26.380	+1.759
HEIM	23.360	+0.580
CHINHIN	4.960	+0.380
AEONCR	7.250	+0.290
PIE	5.860	+0.290
HLFG	16.760	+0.280
PPB	15.880	+0.280
TROP	1.500	+0.270
SIGN	1.190	+0.265

Top % Gainers (over 5 Trading days as at Yesterday)

Name	Price (RM)	Change (%)
BORNOIL	0.010	+100.00
KGROUP	0.010	+100.00
XOX	0.015	+50.00
RENEUCO	0.100	+42.86
KAMDAR	0.265	+35.90
MTRONIC	0.020	+33.33
ZENTECH	0.020	+33.33
SIGN	1.190	+28.65
MCLEAN	0.280	+27.27
JISHAN	0.660	+26.92

Top Losers (over 5 Trading days as at Yesterday)

Name	Price (RM)	Change (RM)
MPI	29.940	-0.920
AMLEX	0.250	-0.180
BAT	8.220	-0.170
GESHEN	3.770	-0.170
HTPADU	2.130	-0.170
PENTA	4.160	-0.170
KHIND	2.650	-0.150
NSOP	3.800	-0.150
SAB	3.250	-0.150
SURIA	2.170	-0.130

Top % Losers (over 5 Trading days as at Yesterday)

Name	Price (RM)	Change (%)
FINTEC	0.005	-50.00
AMLEX	0.250	-41.86
HBGLOB	0.155	-20.51
AWANTEC	0.255	-20.31
INGENIEU	0.115	-17.86
KANGER	0.050	-16.67
XOXNET	0.025	-16.67
ICONIC	0.085	-15.00
DESTINI	0.030	-14.29
EDUSPEC	0.120	-14.29



Main Sponsors



SRI KOTA SPECIALIST MEDICAL CENTRE
The Heart of Healthcare



Southern Acids (M) Berhad



VCI GLOBAL LIMITED
(NASDAQ: VCIG)

TEE OFF FOR HOPE

Since 2010, Make-A-Wish Malaysia has been granting wishes of critically ill children around the country. Funds from this event will help us reach these critically ill children without delay.



BOOK NOW

Date: **Wednesday, 8 May 2024**

Time: **1.30pm Tee Off**

Venue: **Tropicana GCR**

Flight cost: **RM5,000** (for 4 golfers)



SHARE THE POWER OF A WISH

To find out more please call **Make-A-Wish**
T: (03) 2276 3344 E: info@makeawish.org.my

Price & Volume Distribution Charts (as at Yesterday)

Technical Analysis

DEFINITION: Shariah compliant stocks with Technical Analysis showing 5-days & 10-days Moving Average Price below Yesterday's Close over past 3 days and with Volume Spike.

CHART GUIDE: Volume Distribution Chart is a statistical interpretation of the current sentiment on each stock in graphical format. The highest bar categorized as >150k is likely to be traded by institutions or super dealers, while the lowest bar categorized as <15k usually represents retail investors. "Buy Up" refers to more buyers snatching up the lots queued at selling price. "Sell Down" refers to sellers selling their shares to the buying queue



ShareInvestor WebPro > Screener > Market Screener (FA & TA) > select BURSA > add criteria

A. Criteria

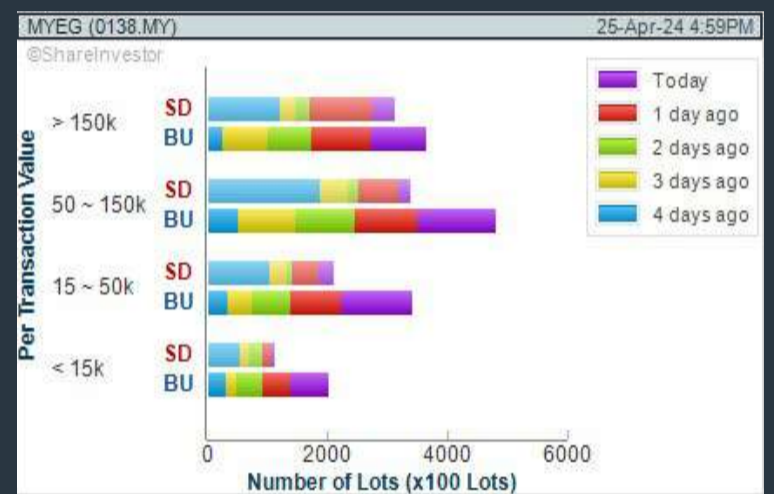
- > click Add Criteria
- Technical Analysis Conditions tab select (i) Moving Average Below Close (ii) Volume Spike
- Fundamental Analysis Conditions tab > select (iii) Revenue
- Prices & Other Conditions tab > select (iv) Is Shariah Compliant
- Technical Analysis Conditions tab select (v) Moving Average Below Close
- Prices & Other Conditions tab > select (vi) Last Done Price
- Technical Analysis Conditions tab select (vii) Moving Average Below Close

B. Conditions (Criteria Filters)

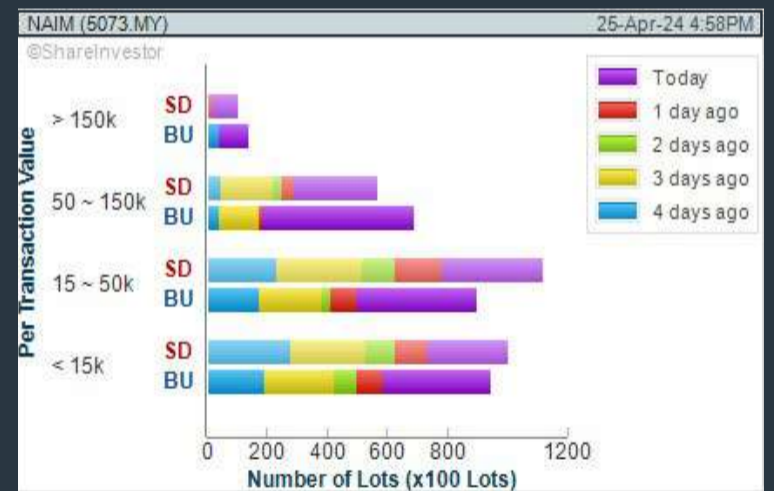
1. Moving Average Below Close - select (MA) type (5) below close price for type (3) days
2. Volume Spike - Volume type (1) greater than type (5) days average
3. Revenue ("000) - select (more than) type (1) for the past select (1) financial year(s)
4. Is Shariah Compliant - select **Yes**
5. Moving Average Below Close - select (MA) type (10) below close price for type (3) days
6. Last Done Price - select (more than) type (0.3)
7. Moving Average Below Close - select (EMA) type (5) below close price for type (3) days

- > click Save Template > Create New Template type (Shariah Hot Stocks) > click Create
- > click Save Template as > select Shariah Hot Stocks > click Save
- > click Screen Now (may take a few minutes)
- > Sort By: Select (Vol) Select (Desc)
- > Mouse over stock name > Charts > click C² Charts or Volume Distribution

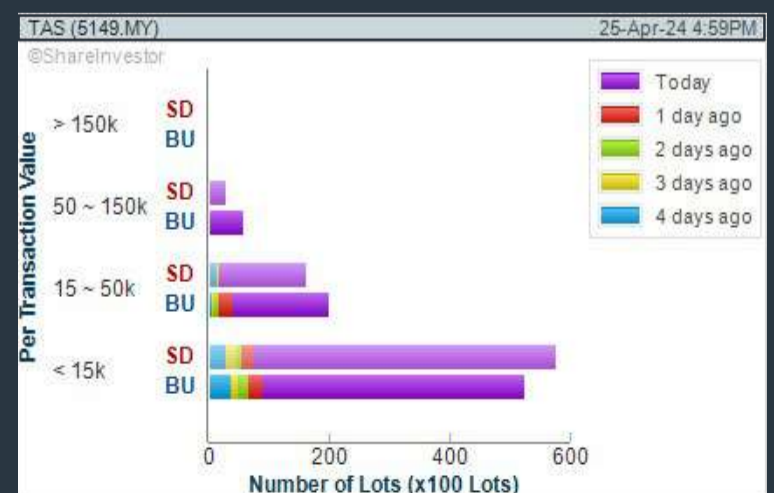
MY E.G. SERVICES BERHAD (0138) C² Chart



NAIM HOLDINGS BERHAD (5073) C² Chart



TAS OFFSHORE BERHAD (5149) C² Chart



Disclaimer: The information on this page is provided as a service to readers. It does not constitute financial advice and/or any investment recommendations. Past performance is not indicative of future results. We assume no liability for damages resulting from or arising out of the use of such information. It would be best if you did your own research to make your personal investment decisions wisely or consult a licenced investment advisor.

COMPANY BACKGROUND

MY E.G. Services Berhad is engaged in the provision of electronic-government services and solutions in Malaysia. The Company owns and operates the electronic channels to deliver services from various government agencies to consumers and businesses. The company offers a variety of online delivery of government services including vehicle ownership transfer, vehicle road tax renewal, renewal of drivers' licenses, vehicle insurance, renewal of foreign worker permits, bankruptcy search status, and other services.



MYEG MY E.G. SERVICES BHD		Updated at 25 Apr 2024 17:31	
Last (MYR): 0.810 ↑	Change: +0.010	High: 0.810	Remarks: s ?
	Change (%): +1.25	Low: 0.795	
Open	0.805	Yesterday's Close	0.800
Buy Price	0.805	Sell Price	0.810
Buy Volume ('00)	7,276	Sell Volume ('00)	22,140
Cumulative Volume ('00)	525,559	Cumulative Value	42,302,553

Financial Analysis

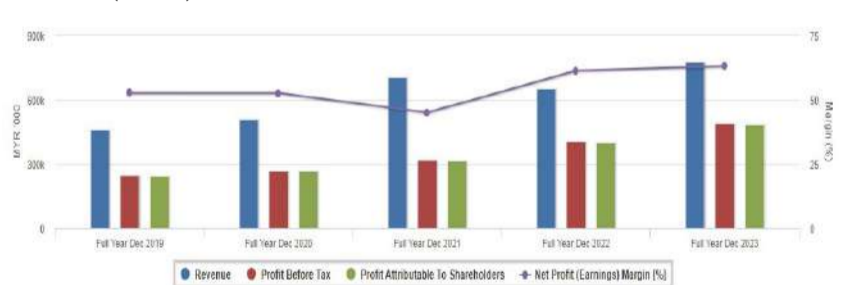
Revenue Growth Revenue up and down in past years	😊	Profit Growth Increasing profit in last 3 consecutive years and min growth is 10% (with at least 4 profitable years)	😊
Dividend Payout Dividend is increasing over the past 48 months.	😊	Current Ratio The company is well-positioned to cover its short-term obligations with its current assets (ratio between 1.5 to 10) for 3 consecutive years	😊
Debt to Cashflow High debt to cash flow for most recent year	😟	Gross Profit Margin Consistently high gross profit margin of at least 40% for 3 years	😊
Net Earnings Margin Consistently high net profit margin of at least 20% for 3 years	😊	Net Earnings Margin Net profit margin is improving by 5% a year over the past 60 months.	😊
Return on Assets (ROA) ROA above 10% for 3 consecutive years	😊	Return on Equity (ROE) ROE above 20% for 3 consecutive years	😊

😊 Excellent 😊 Good 😐 Neutral 😟 Be Alert 😱 Watch Out



Historical Financials

Profit & Loss (MYR '000)

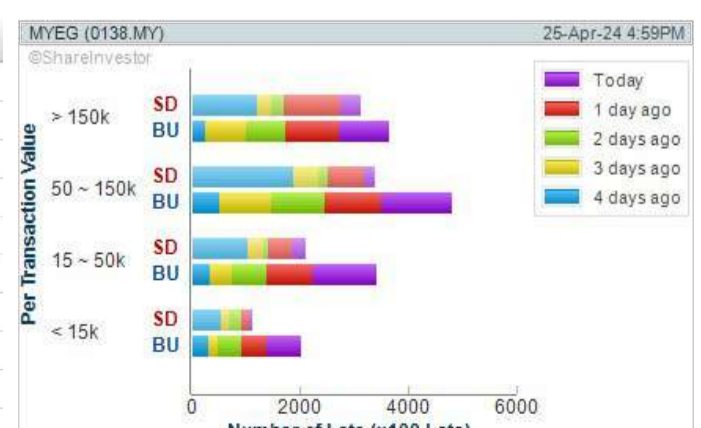


WebPro 9-Days Free Trial Registration (worth RM10) Sign Up Now



Key Statistics with Total Shareholder Returns

Period	Dividend Received	Capital Appreciation	Total Shareholder Return
Short Term Return	5 Days	+0.035	+4.52 %
	10 Days	+0.015	+1.89 %
	20 Days	+0.020	+2.53 %
Medium Term Return	3 Months	+0.030	+3.85 %
	6 Months	+0.025	+3.18 %
	1 Year	+0.031	+3.98 %
Long Term Return	2 Years	-0.120	-12.90 %
	3 Years	0.017	-16.96 %
	5 Years	0.061	+17.39 %
Annualised Return	Annualised	-	+3.28 %



Disclaimer: The information on this page is provided as a service to readers. It does not constitute financial advice and/or any investment recommendations. Past performance is not indicative of future results. We assume no liability for damages resulting from or arising out of the use of such information. It would be best if you did your own research to make your personal investment decisions wisely or consult a licenced investment advisor.

Price & Volume Distribution Charts (as at Yesterday)

Technical Analysis

DEFINITION: Shariah compliant stocks with Technical Analysis showing Bullish Momentum and Price Uptrend. The share price closed at the highest price yesterday. The typical price was higher than the previous day's typical price.

CHART GUIDE: Volume Distribution Chart is a statistical interpretation of the current sentiment on each stock in graphical format. The highest bar categorized as >150k is likely to be traded by institutions or super dealers, while the lowest bar categorized as <15k usually represents retail investors. "Buy Up" refers to more buyers snatching up the lots queued at selling price. "Sell Down" refers to sellers selling their shares to the buying queue.



ShareInvestor WebPro > Screener > Market Screener (FA & TA)>select BURSA>add criteria

A. Criteria

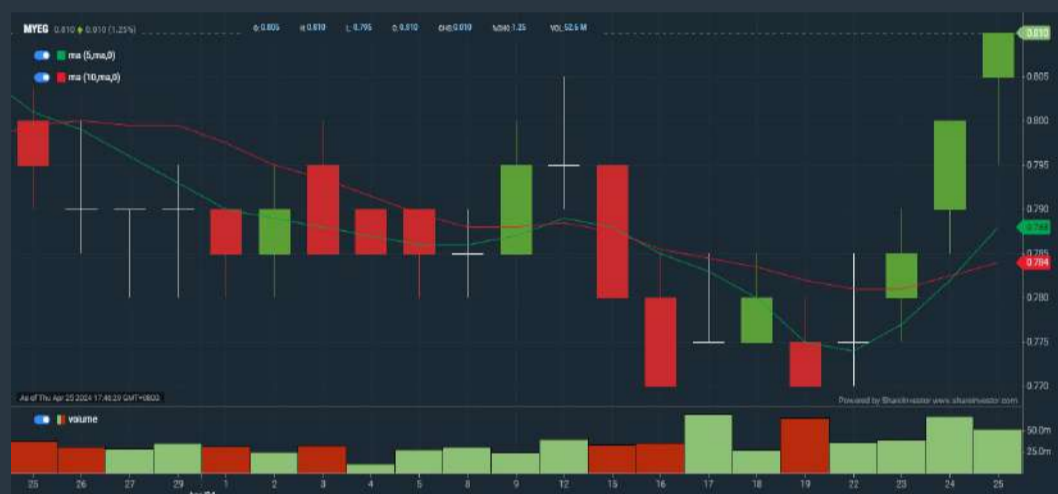
- > click Add Criteria
- Fundamental Analysis Conditions tab >select (i) Revenue
- Technical Analysis Conditions tab select (ii) Average Volume
- Prices & Other Conditions tab > select (iii) Last Done Price
- Prices & Other Conditions tab > select (iv) Is Shariah Compliant
- Technical Analysis Conditions tab select (v) RSI Overbought
- Technical Analysis Conditions tab select (vi) Moving Average Below Close
- Technical Analysis Conditions tab select (vii) CCI Overbought

B. Conditions (Criteria Filters)

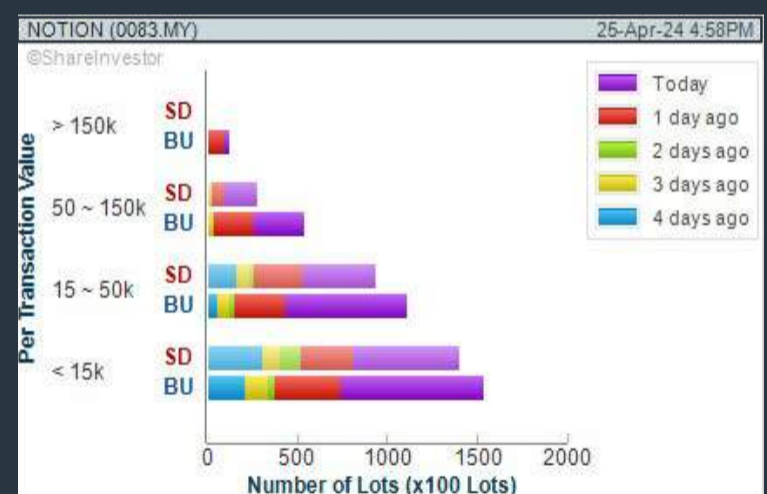
1. Revenue ("000) - select (more than) type (1) for the past select (1) financial year(s)
2. Average Volume - type (1) days average volume greater than type (10000) lots
3. Last Done Price - select (more than) type (0.3)
4. Is Shariah Compliant - select Yes
5. RSI Overbought - select RSI 1 above 99 for 1 days
6. Moving Average Below Close - select (MA) type (10) below close price for type (1) days
7. CCI Overbought - select CCI (2) above (0) for (1) days

- > click Save Template > Create New Template type (Shariah Momentum Up Stocks) > click Create
- > click Save Template as > select Shariah Momentum Up Stocks > click Save
- > click Screen Now (may take a few minutes)
- Sort By: Select (Vol) Select (Desc)
- Mouse over stock name > Charts > click C² Charts tab or Volume Distribution

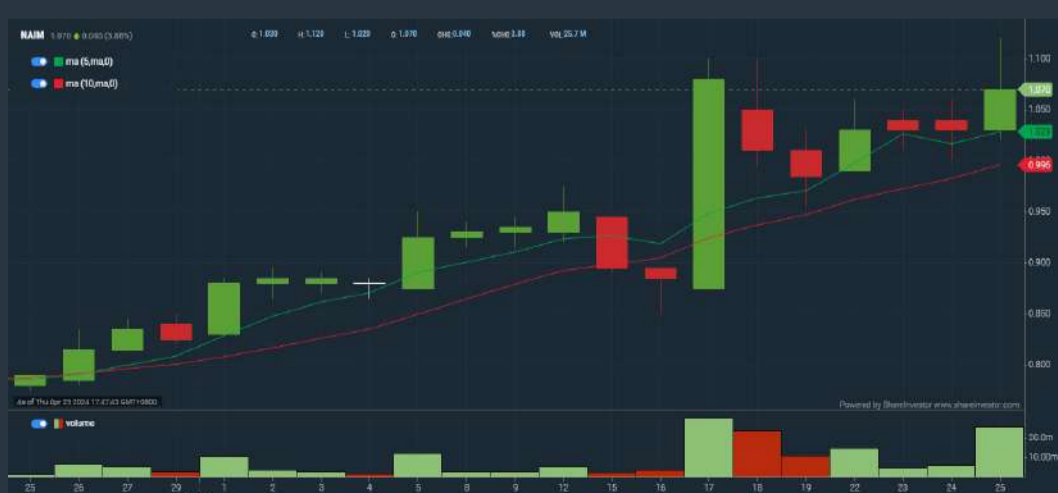
MY E.G. SERVICES BERHAD (0138) C² Chart



NOTION VTEC BERHAD (0083) C² Chart



NAIM HOLDINGS BERHAD (5073) C² Chart



Disclaimer: The information on this page is provided as a service to readers. It does not constitute financial advice and/or any investment recommendations. Past performance is not indicative of future results. We assume no liability for damages resulting from or arising out of the use of such information. It would be best if you did your own research to make your personal investment decisions wisely or consult a licenced investment advisor.

SHAREINVESTOR WEBPRO

STOCK MARKET DATA AT YOUR FINGERTIPS

Powerful browser-based market analytics platform.
Access from anywhere



8 Markets Data

- ▶ Get access to data from Bursa, NYSE, Nasdaq, HKEX, SGX, IDX, SET & ASX

Portfolio Management

- ▶ Profit & Loss Summary
- ▶ Stock Alert
- ▶ News & Events filtering
- ▶ Customizable column layout

Fundamental Analysis

Financial Analysis Statement

- ▶ Profit & Loss
- ▶ Balance Sheet
- ▶ Cash Flow Statement
- ▶ More than 20 Financial Ratios
- ▶ Dividend Analysis

Technical Charting

- ▶ C² chart (Customisable & Comprehensive)

Brokers' Call

Intrinsic Value Calculator

FactSheet

- ▶ Key Stock Information
- ▶ Ownership
- ▶ Consensus Estimates
- ▶ Annual Report
- ▶ Historical Price
- ▶ Insider Trades

What's new on WebPro (Stable Release 12.1.0)

In our effort to keep our platform at the forefront of trading technology, we have added on some new features onto our C² Chart in WebPro

ADDITIONAL NEW FEATURES:

- ▶ Anchor selector for AVWAP, PVAT, and PAV indicators
- ▶ Volume profile indicator by date range
- ▶ Moving Average Cross indicator
- ▶ Guppy Multiple Moving Average (GMMA) indicator
- ▶ GoNoGo Trend Signal indicators
- ▶ SignalIQ

So what are you waiting for? Head to our platform today and check out our new trading chart features and indicators. We're confident that you'll love the improvements we've made and that they'll help you become a more successful trader.

Click here to start your 9 days FREE trial
(Valued at RM10)



Price & Volume Distribution Charts (as at Yesterday)

Technical Analysis

DEFINITION: Stocks with Technical Analysis showing 5-days & 10-days Moving Average Price below Close over past 1 days and with Volume Spike

CHART GUIDE: Volume Distribution Chart is a statistical interpretation of the current sentiment on each stock in graphical format. The highest bar categorized as >150k is likely to be traded by institutions or super dealers, while the lowest bar categorized as <15k usually represents retail investors. "Buy Up" refers to more buyers snatching up the lots queued at selling price. "Sell Down" refers to sellers selling their shares to the buying queue.



ShareInvestor WebPro > Screener > Market Screener (FA & TA) > select BURSA > add criteria

A. Criteria

- > click Add Criteria
- Technical Analysis Conditions tab select (i) Moving Average Below Close (ii) Volume Spike
- Fundamental Analysis Conditions tab >select (iii) Revenue
- Prices & Other Conditions tab > select (iv) Is Shariah Compliant
- Technical Analysis Conditions tab select (v) Moving Average Below Close
- Prices & Other Conditions tab > select (vi) Last Done Price
- Technical Analysis Conditions tab select (vii) Moving Average Below Close

B. Conditions (Criteria Filters)

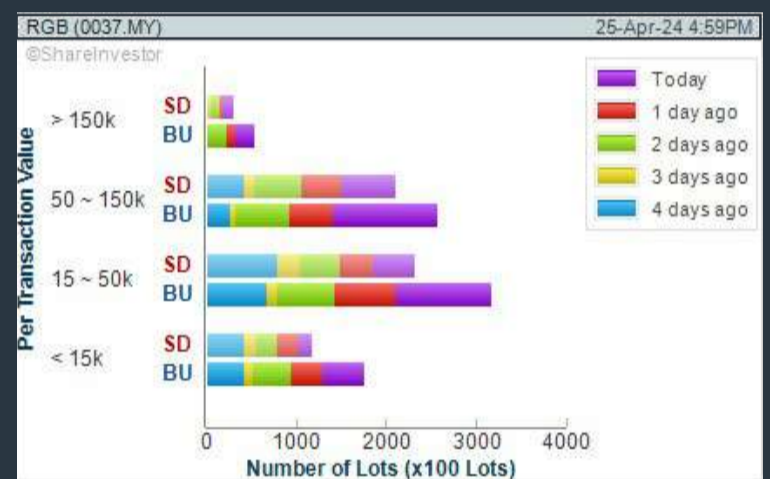
1. Moving Average Below Close - select (MA) type (5) below close price for type (3) days
2. Volume Spike - Volume type (1) greater than type (5) days average
3. Revenue ("000) - select (more than) type (1) for the past select (1) financial year(s)
4. Is Shariah Compliant - select NO
5. Moving Average Below Close - select (MA) type (10) below close price for type (1) days
6. Last Done Price - select (more than) type (0.3)
7. Moving Average Below Close - select (EMA) type (5) below close price for type (1) days

- > click Save Template > Create New Template type (Non-Shariah Hot Stocks) > click Create
- > click Save Template as > select Non-Shariah Hot Stocks > click Save
- > click Screen Now (may take a few minutes)
- Sort By: Select (Vol) Select (Desc)
- Mouse over stock name > Charts > click C² Charts tab or Volume Distribution

RGB INTERNATIONAL BERHAD (0037)

C² Chart

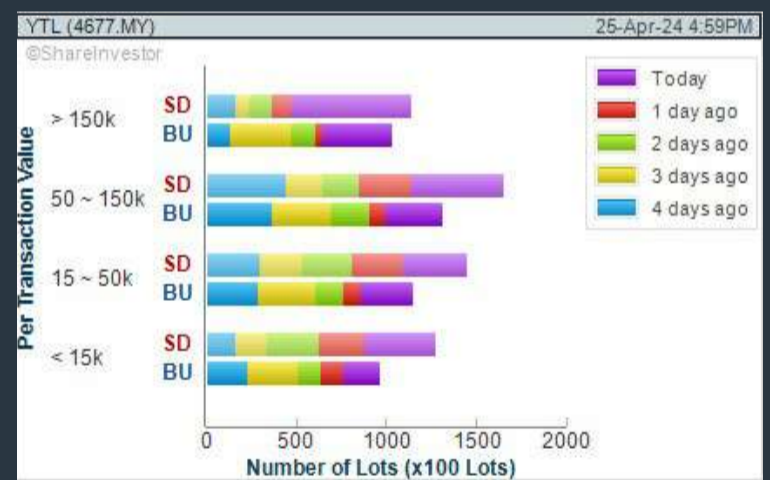
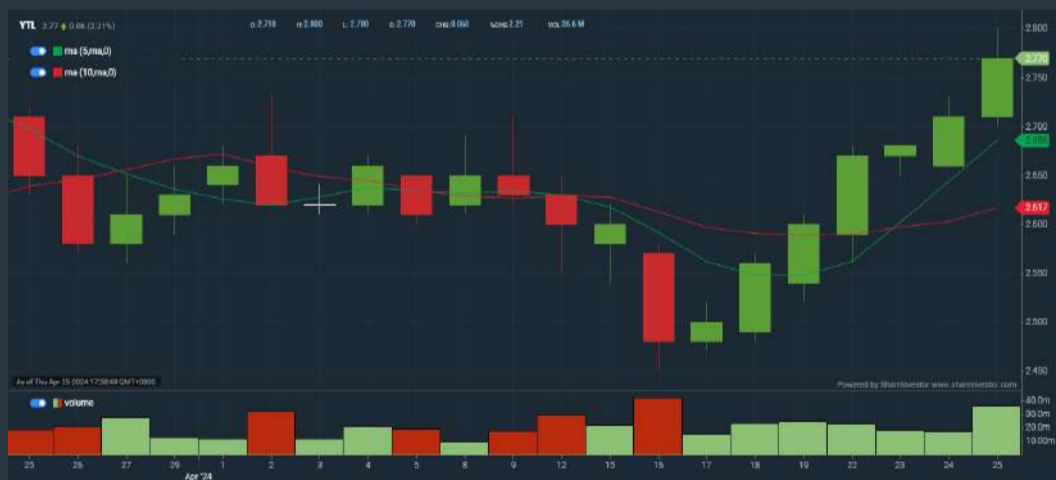
Analysis



YTL CORPORATION BERHAD (4677)

C² Chart

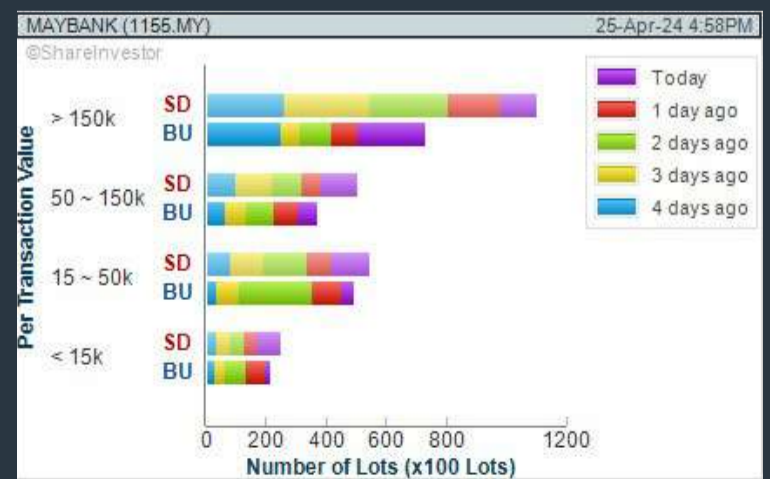
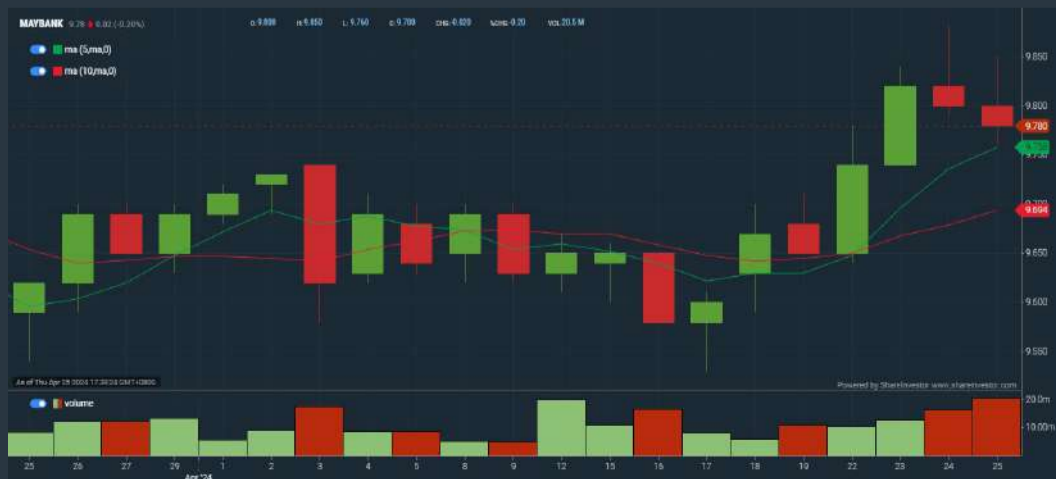
Analysis



MALAYAN BANKING BERHAD (1155)

C² Chart

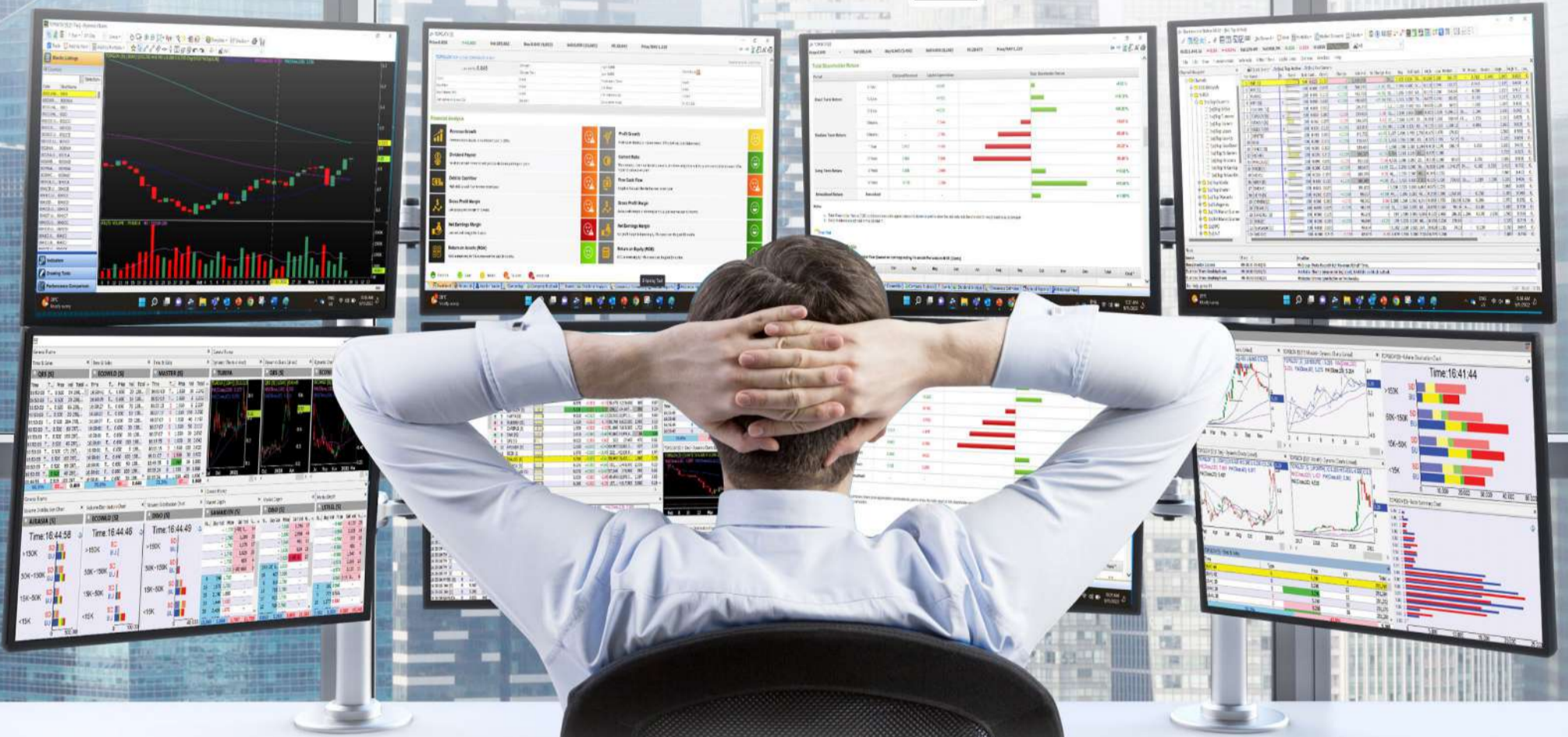
Analysis



Disclaimer: The information on this page is provided as a service to readers. It does not constitute financial advice and/or any investment recommendations. Past performance is not indicative of future results. We assume no liability for damages resulting from or arising out of the use of such information. It would be best if you did your own research to make your personal investment decisions wisely or consult a licenced investment advisor.

MAKE BETTER TRADING STRATEGIES

with
SHARE INVESTOR
STATION



8 Markets Data

- ▶ Get access to data from Bursa, NYSE, Nasdaq, HKEX, SGX, IDX, SET & ASX

Dynamic Chart

- ▶ Candlestick Pattern Recognition
- ▶ 111 Indicators
- ▶ 39 Drawing Tools
- ▶ Performance Comparison Chart

Intraday Data

- ▶ Market Depth
- ▶ Trade Summary Matrix & Chart
- ▶ Times & Sales
- ▶ Intraday Market Ticker

Market Screener

- ▶ 96 criteria ranging from FA, TA, Consensus Estimate
- ▶ Real-time Data

Power Frame

- ▶ Combining few Dynamic Charts together with intraday information in one frame

Technical Analysis

Fundamental Analysis

Financial Analysis Statement

- ▶ Profit & Loss
- ▶ Balance Sheet
- ▶ Cash Flow Statement
- ▶ More than 20 Financial Ratios
- ▶ Dividend Analysis

FactSheet

- ▶ Key Stock Information
- ▶ Ownership
- ▶ Consensus Estimates
- ▶ Annual Report
- ▶ Historical Price
- ▶ Insider Trades

**Start your 18 days
 FREE trial now
 (Valued at RM82)**



Price & Volume Distribution Charts (Over 3 trading days as at Yesterday)

Technical Analysis

DEFINITION: Stocks with Technical Analysis showing Bullish Momentum and Price Uptrend

CHART GUIDE: Volume Distribution Chart is a statistical interpretation of the current sentiment on each stock in graphical format. The highest bar categorized as >150k is likely to be traded by institutions or super dealers, while the lowest bar categorized as <15k usually represents retail investors. "Buy Up" refers to more buyers snatching up the lots queued at selling price. "Sell Down" refers to sellers selling their shares to the buying queue.



ShareInvestor WebPro > Screener > Market Screener (FA & TA) > select BURSA > add criteria

A. Criteria

- > click Add Criteria
- Fundamental Analysis Conditions tab > select (i) Revenue
- Technical Analysis Conditions tab select (ii) Moving Average Below Close
- Technical Analysis Conditions tab select (iii) Average Volume
- Prices & Other Conditions tab > select (iv) Last Done Price
- Technical Analysis Conditions tab select (v) Moving Average Below Close
- Technical Analysis Conditions tab select (v) Moving Average Bullish Crossover

B. Conditions

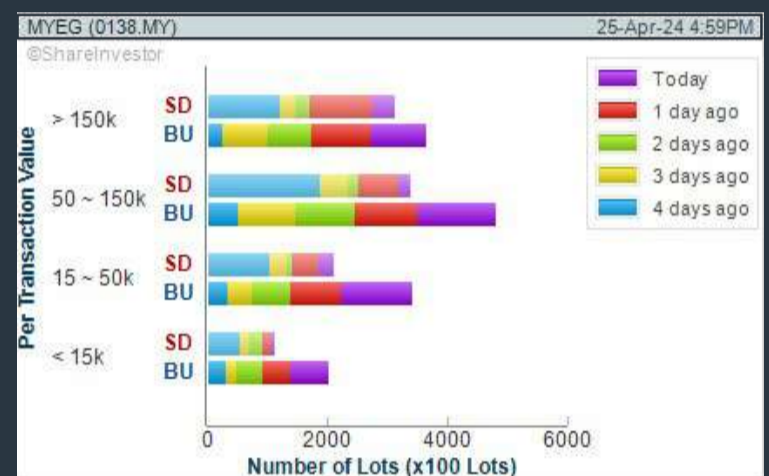
1. Revenue - select (more than) type (1) for the past select (1) financial year(s)
2. Moving Average Below Close - select (MA) type (20) below close price for type (1) days
3. Average Volume - type (5) days average volume type (10000) lots
4. Last Done Price - select (more than) type (0.3)
5. Moving Average Below Close - select (MA) type (10) below close price for type (1) days
6. Moving Average Bullish Crossover - select (MA) type (5) crossed above select (MA) type (10)

> click Save Template > Create New Template type (Non-Shariah Up-Trending Stocks) > click Create Click Save Template As > select Non-Shariah Up Trending Stocks > click Save
> click Screen Now (may take a few minutes)
Sort By: Select (Vol) Select (Desc)
Mouse over stock name > Charts > click C² Charts tab or Volume Distribution

MY E.G. SERVICES BERHAD (0138)

C² Chart

Analysis



SIME DARBY PROPERTY BERHAD (5288)

C² Chart

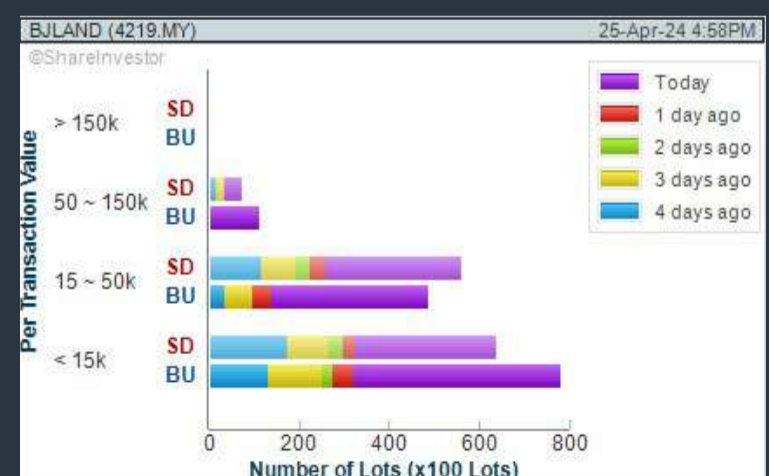
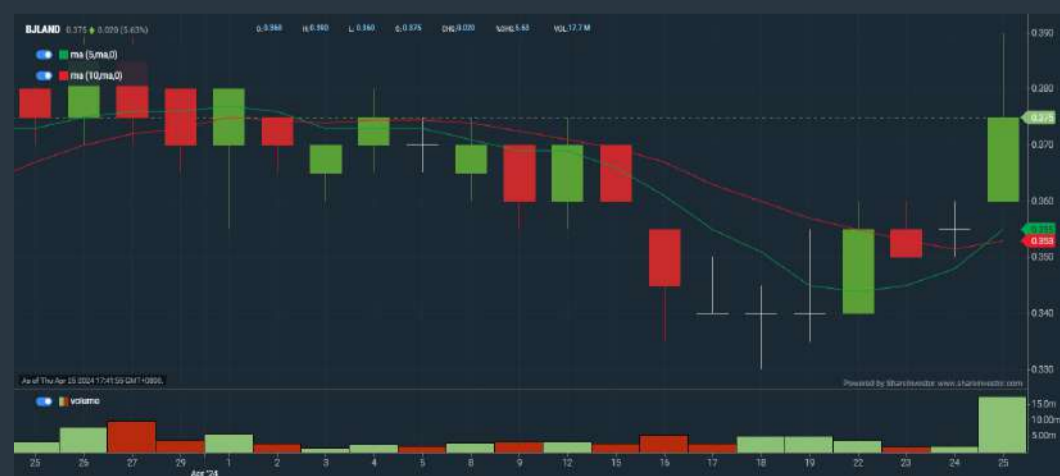
Analysis



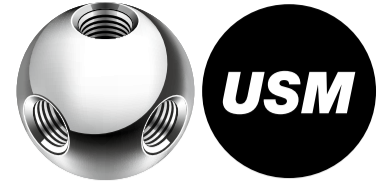
BERJAYA LAND BERHAD (4219)

C² Chart

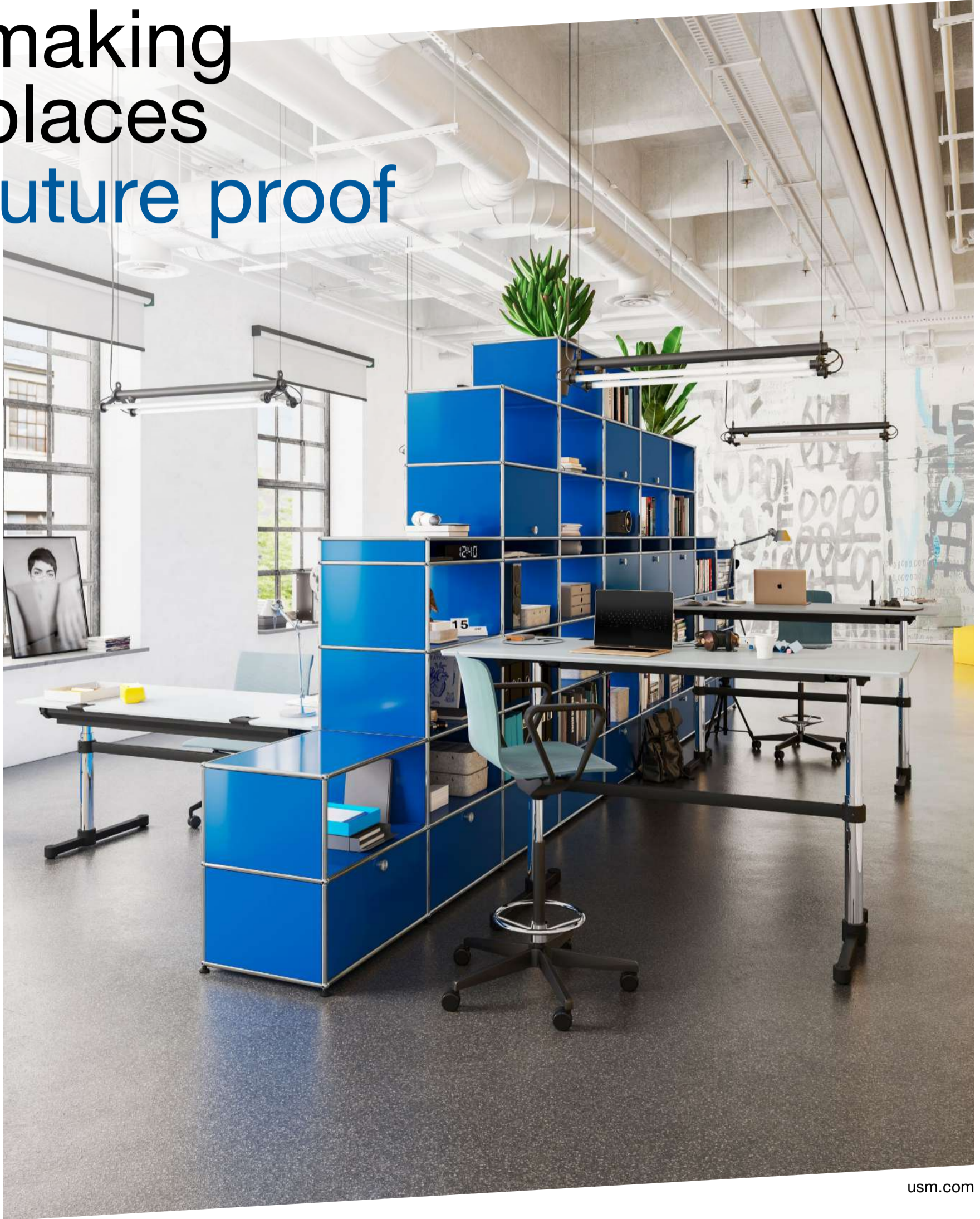
Analysis



Disclaimer: The information on this page is provided as a service to readers. It does not constitute financial advice and/or any investment recommendations. Past performance is not indicative of future results. We assume no liability for damages resulting from or arising out of the use of such information. It would be best if you did your own research to make your personal investment decisions wisely or consult a licenced investment advisor.



making places future proof



usm.com

XTRA

XTRA FURNITURE SDN BHD
The Gardens Mall, Mid Valley City, Lot S-236 & 237
Lingkar Syed Putra, 59200 Kuala Lumpur
T. +603 2282 9088 | living@xtrafurniture.com | xtrafurniture.com
📍 XTRAFurniture | 🌐 xtrafurnituremsia

Price & Total Shareholder Return (as at Yesterday)

Fundamental Analysis

DEFINITION: Share price of a company trading at a lower price as compared to its fundamentals (FA) such as financial performance and dividend, allowing it to be attractive to value investors.

CHART GUIDE: Total Shareholder Return (TSR) combines share price appreciation and dividend distributions paid to show the total return to the shareholder expressed as a percentage.



ShareInvestor WebPro > Screener > Market Screener (FA & TA) > select BURSA > add criteria

A. Criteria

- > click Add Criteria
- Fundamental Analysis Conditions tab (i) Price Earnings Ratio
- Fundamental Analysis Conditions tab >select (ii) CAGR of Net Earnings
- Fundamental Analysis Conditions tab >select (iii) Net Debt To Equity
- Fundamental Analysis Conditions tab >select (iv) Return On Equity (ROE)

B. Conditions

1. Price Earnings Ratio - select (less than) type (15) times now
2. CAGR of Net Earnings - select (more than) type (10) % for the past type (3) financial year(s)
3. Net Debt To Equity – select (less than) type (1) for the past select (1) financial year(s)
4. Return On Equity (ROE) – select (more than) type (10) % for the past select (1) financial year(s)

- > click Save Template > Create New Template type (Value Stock) > click Create
- > click Save Template as > select Value Companies > click Save
- > click Screen Now (may take a few minutes)
- Sort by: Select (PE Ratio) Select (Ascending)
- > Mouse over stock name > Factsheet > looking for Total Shareholder Return
- > Mouse over stock name > Charts > click C2 Charts tab

SYNERGY HOUSE BERHAD (0279)

C² Chart



Period	Dividend Received	Capital Appreciation	Total Shareholder Return
Short Term Return	5 Days	-0.270	+24.65%
	10 Days	-0.410	+42.71%
	20 Days	-0.575	+72.33%
Medium Term Return	3 Months	-0.585	+70.19%
	6 Months	-0.935	+194.62%

TEO SENG CAPITAL BERHAD (7252)

C² Chart



Period	Dividend Received	Capital Appreciation	Total Shareholder Return
Short Term Return	5 Days	-0.110	-0.57%
	10 Days	-0.160	-8.47%
	20 Days	-0.160	-8.47%
Medium Term Return	3 Months	-0.142	-7.59%
	6 Months	-0.429	+32.97%
Long Term Return	1 Year	-0.912	+111.49%
	2 Years	-0.873	+101.87%
	3 Years	-0.947	+120.95%
	5 Years	0.060	+53.91%
	Annualised Return	-	-

COASTAL CONTRACTS BERHAD (5071)

C² Chart



Period	Dividend Received	Capital Appreciation	Total Shareholder Return
Short Term Return	5 Days	-0.030	-2.00%
	10 Days	-	-
	20 Days	-	-
Medium Term Return	3 Months	-0.200	-11.88%
	6 Months	-0.450	-32.44%
	1 Year	-0.030	-38.89%
Long Term Return	2 Years	-0.360	-19.67%
	3 Years	-0.670	-48.75%
	5 Years	-0.420	+40.88%
Annualised Return	-	-	+9.96%

Disclaimer: The information on this page is provided as a service to readers. It does not constitute financial advice and/or any investment recommendations. Past performance is not indicative of future results. We assume no liability for damages resulting from or arising out of the use of such information. It would be best if you did your own research to make your personal investment decisions wisely or consult a licenced investment advisor.

Price & Total Shareholder Return (as at Yesterday)

Fundamental Analysis

DEFINITION: Company revenue is growing and making good quality of earnings with positive Free Cash Flow.

CHART GUIDE: Total Shareholder Return (TSR) combines share price appreciation and distributions paid to show the total return to the shareholder expressed as a percentage.



ShareInvestor WebPro > Screener > Market Screener (FA & TA) > select BURSA > add criteria

A. Criteria

1. Fundamental Analysis Conditions tab >select (i) Free Cash Flow, (ii) Revenue Growth, (iii) Gross Profit (Earnings) Margin, (iv) Quality of Earnings, (v) Total Shareholder Returns, > click Add Criteria
2. Fundamental Analysis Conditions tab >select (vi) Total Shareholder Returns > click Add Criteria

B. Conditions (Criteria Filters)

1. Free Cash Flow - select (more than) type (1) for the past select (1) financial year(s)
2. Revenue Growth - select (more than) type (1) for the past select (1) financial year(s)
3. Gross Profit (Earnings) Margin - select (more than) type (30) % for the past select (1) financial year(s)
4. Quality of Earnings - select (more than) type (1) for the past select (1) financial year(s)
5. Total Shareholder Return - select (more than) type (5) % for the past select (3) financial year(s)
6. Total Shareholder Return - select (more than) type (5) % for the past select (5) financial year(s)

- > click Save Template > Create New Template type (Growth Companies) > click Create
- > click Save Template as > select Growth Companies > click Save
- > click Screen Now (may take a few minutes)
- > Sort By: Select (Revenue Growth) Select (Desc)
- > Mouse over stock name > Factsheet > looking for Total Shareholder Return

MALAYSIA AIRPORTS HOLDINGS BERHAD (5014)

C² Chart

Analysis



Period	Dividend Received	Capital Appreciation	Total Shareholder Return
Short Term Return	5 Days	-	-
	10 Days	-4,170	-8.89%
	20 Days	-8,010	-10.19%
Medium Term Return	3 Months	+2,200	+28.98%
	6 Months	+2,520	+34.18%
	1 Year	+2,750	+38.52%
Long Term Return	2 Years	+5,200	+67.03%
	3 Years	+3,910	+53.38%
	5 Years	0.190	+2.26%
Annualised Return	Annualised	-	+6.73%

SL INNOVATION CAPITAL BERHAD (03008)

C² Chart

Analysis



Period	Dividend Received	Capital Appreciation	Total Shareholder Return
Short Term Return	5 Days	-	-
	10 Days	-	-
	20 Days	-	-
Medium Term Return	3 Months	-	-
	6 Months	-	-
	1 Year	+0.200	+71.79%
Long Term Return	2 Years	+0.295	+65.43%
	3 Years	+0.295	+65.43%
	5 Years	0.015	+81.11%
Annualised Return	Annualised	-	+10.21%

EDARAN BERHAD (5036)

C² Chart

Analysis



Period	Dividend Received	Capital Appreciation	Total Shareholder Return
Short Term Return	5 Days	-	-
	10 Days	-0.060	-6.00%
	20 Days	-0.040	-3.39%
Medium Term Return	3 Months	-0.120	-8.82%
	6 Months	+0.635	+126.74%
	1 Year	+0.625	+124.36%
Long Term Return	2 Years	+0.480	+75.38%
	3 Years	0.035	+111.71%
	5 Years	0.053	+128.42%
Annualised Return	Annualised	-	+16.07%

Disclaimer: The information on this page is provided as a service to readers. It does not constitute financial advice and/or any investment recommendations. Past performance is not indicative of future results. We assume no liability for damages resulting from or arising out of the use of such information. It would be best if you did your own research to make your personal investment decisions wisely or consult a licenced investment advisor.

Price & Total Shareholder Return (as at Yesterday)

Fundamental Analysis

DEFINITION: Company is paying out dividend with low or moderate leverage.

CHART GUIDE: Total Shareholder Return (TSR) combines share price appreciation and distributions paid to show the total return to the shareholder expressed as a percentage.



ShareInvestor WebPro > Screener > Market Screener (FA & TA) > select BURSA > add criteria

A. Criteria

- > click Add Criteria
- Fundamental Analysis Conditions tab >select (i) Dividend Yield (Historical)
- Fundamental Analysis Conditions tab >select (ii) Dividend Payout (Historical)
- Fundamental Analysis Conditions tab >select (iii) Total Debt To Equity
- Fundamental Analysis Conditions tab >select (iv) Total Shareholder Returns
- Fundamental Analysis Conditions tab >select (v) Total Shareholder Returns
- Fundamental Analysis Conditions tab / >select (vi) CAGR of Dividend Per Share

• Fundamental Analysis Conditions tab >select (vii) CAGR of Dividend Per Share

B. Conditions (Criteria Filters)

1. Dividend Yield - select (more than) type (1) % for the past select (1) financial year(s)
2. Dividend Payout (Historical) - select (between) type (0.5) to type (1) times for the past select (1) financial year(s)
3. Total Debt to Equity - select (less than) type (1) for the past select (1) financial year(s)
4. Total Shareholder Return - select (more than) type (5) % for the past select (3) financial year(s)
5. Total Shareholder Return - select (more than) type (5) % for the past select (5) financial year(s)

6. CAGR of Dividend Per Share - select (less than) type (30) % for the past select (5) financial year(s)
7. CAGR of Dividend Per Share - select (more than) type (1) % for the past select (5) financial year(s)

- > click Save Template > Create New Template type (Dividend Companies) > click Create
- > click Save Template as > select Dividend Companies > click Save
- > click Screen Now (may take a few minutes)
- > Sort By: Select (Dividend Yield) Select (Desc)
- > Mouse over stock name > Factsheet > looking for Total Shareholder Return

FORMOSA PROSONIC INDUSTRIES (9172)

C² Chart



Analysis

Period	Dividend Received	Capital Appreciation	Total Shareholder Return
Short Term Return	5 Days	-0.010	+0.35%
	10 Days	-0.060	+2.16%
	20 Days	-0.250	-0.39%
Medium Term Return	3 Months	-0.040	-1.39%
	6 Months	-0.100	-3.40%
	1 Year	-0.100	+6.77%
Long Term Return	2 Years	0.310	+6.61%
	3 Years	0.200	+10.69%
	5 Years	0.450	+16.00%
Annualised Return	Annualised	-	+13.41%

GAS MALAYSIA BERHAD (5209)

C² Chart



Analysis

Period	Dividend Received	Capital Appreciation	Total Shareholder Return
Short Term Return	5 Days	-0.099	+2.56%
	10 Days	-0.046	+1.12%
	20 Days	-0.150	+4.35%
Medium Term Return	3 Months	-0.256	-6.75%
	6 Months	-0.356	+9.77%
	1 Year	-0.200	+6.43%
Long Term Return	2 Years	0.069	+23.42%
	3 Years	0.231	+41.88%
	5 Years	0.513	+43.21%
Annualised Return	Annualised	-	+7.46%

BERMAZ AUTO BERHAD (5248)

C² Chart



Analysis

Period	Dividend Received	Capital Appreciation	Total Shareholder Return
Short Term Return	5 Days	-0.070	-2.89%
	10 Days	-0.150	-6.00%
	20 Days	-0.040	-1.67%
Medium Term Return	3 Months	-0.120	-4.80%
	6 Months	-0.110	-4.47%
	1 Year	-0.000	+5.52%
Long Term Return	2 Years	-0.064	+38.38%
	3 Years	0.075	+72.68%
	5 Years	0.207	+18.65%
Annualised Return	Annualised	-	+3.65%

Disclaimer: The information on this page is provided as a service to readers. It does not constitute financial advice and/or any investment recommendations. Past performance is not indicative of future results. We assume no liability for damages resulting from or arising out of the use of such information. It would be best if you did your own research to make your personal investment decisions wisely or consult a licenced investment advisor.

Week: 19 April 2024 - 25 April 2024

More Brokers' Call 

AMINVESTMENT BANK <small>... See More</small>	Call	Target Price	Release Date
Infomina Berhad (0265)	HOLD	RM1.60	19 Apr 2024
Suria Capital Holdings Berhad (6521)	BUY	RM2.55	19 Apr 2024
Axiata Group Berhad (6888)	HOLD	RM2.90	22 Apr 2024
Ancom Nylex Berhad (4758)	BUY	RM1.28	24 Apr 2024

APEX <small>... See More</small>	Call	Target Price	Release Date
Ramssol Group Berhad (0236)	BUY	RM0.70	24 Apr 2024

BIMB SECURITIES SDN BHD <small>... See More</small>	Call	Target Price	Release Date
MISC Berhad (3816)	BUY	RM10.10	23 Apr 2024
Sapura Energy Berhad (5218)	BUY	RM0.06	23 Apr 2024

KENANGA <small>... See More</small>	Call	Target Price	Release Date
Aeon Co. (M) Berhad (6599)	UNDERPERFORM	RM1.01	25 Apr 2024
Axis Real Estate Investment Trust (5106)	MARKET PERFORM	RM1.72	25 Apr 2024
CapitaLand Malaysia Trust (5180)	MARKET PERFORM	RM0.58	25 Apr 2024

MIDF <small>... See More</small>	Call	Target Price	Release Date
Capital A Berhad (5099)	NEUTRAL	RM0.74	23 Apr 2024
Nestle (Malaysia) Berhad (4707)	NEUTRAL	RM127.00	23 Apr 2024
Axis REIT (5106)	BUY	RM2.00	24 Apr 2024
Suria Capital Holdings Berhad (6521)	SELL	RM1.60	25 Apr 2024

JOB KAYHIAN <small>... See More</small>	Call	Target Price	Release Date
Aurelius Technologies Berhad (5302)	BUY	RM2.99	24 Apr 2024
CAB Cakaran Corporation Berhad (7174)	BUY	RM0.83	24 Apr 2024
Scientex Berhad (4731)	BUY	RM4.58	24 Apr 2024
SDS Group Berhad (0212)	BUY	RM1.00	24 Apr 2024

Disclaimer: InveSt does not accept any liability whatsoever for any direct, indirect or consequential losses (including loss of profit) or damages that may arise from the use of information or opinions in this publication. The information and opinions in InveSt are not to be considered as an offer to sell or buy any of the securities discussed. Opinions expressed are subject to change without notice. The Brokers may, from time to time, have interests or positions in the securities mentioned. For the full report on each item listed on this page, please visit https://www.shareinvestor.com/my/brokers_call.

DEFINITION: Top 8 stocks with Technical Analysis plus Pattern Matching by 60 pre-defined indicators by the system showing a higher probability of bullish sentiment on the share price.



ShareInvestor WebPro > Screener > Predefined TA Screens > select market BURSA > Most Long Signals > click Scan Results or mouse over each company

SIGNATURE INTERNATIONAL BERHAD (7246.MY)

SIGN

Price updated at 25 Apr 2024 16:57

Last: 1.190	Change: +0.060	Volume: 49,583
	Change (%): +5.31	Range: 1.140 - 1.200

TA Scanner Results based on historical data up to 25 Apr 2024

Condition	Signal	Explanation
Bollinger Band: High Above Upper Bollinger Band	Neutral	1. High above upper bollinger band(14,2). 2. Average volume(5) is above 100,000.
CCI: Bearish CCI Overbought And Reversing	Short	1. CCI(26) above 100 and CCI(26) 1 day ago increasing for the last 3 days. 2. CCI(26) below CCI(26) 1 day ago
Donchian Channels: High Above Upper Donchian Channels	Long	High crossed above the upper Donchian Channel(14,4)
MACD: Bullish MACD Crossover	Long	1. MACD(12,26) diff line crossed above the MACD(12,26) signal line. 2. MACD Histogram(12,26) is above 0.
Parabolic SAR: Bearish Parabolic SAR Reversal	Neutral	1. Parabolic SAR 1 day ago above close price 1 day ago for the last 5 days. 2. Parabolic SAR below close price
Price: Consecutive Days Gains	Long	1. Close price has been increasing over the last 5 days. 2. Average volume(5) above 100,000.
Volume: 10 Days large value Buy Up trade	Long	1. 150K value Buy Up greater than Sell Down by 20% for 10 days. 2. 50K-100K value Buy Up greater than Sell Down by 20% for 10 days. 3. Average volume(10) is above 1000000
Volume: 5 Days large value Buy Up trade	Long	1. 150K value Buy Up greater than Sell Down by 20% for 5 days. 2. 50K-100K value Buy Up greater than Sell Down by 20% for 5 days. 3. Average volume(10) is above 1000000
Volume: Consecutive Days Of Increasing Average Volume	Long	1. Average Volume(20) has been increasing over the last 2 weeks. 2. Average volume(20) is above 100000
Williams %R: Bearish Williams %R	Short	1. Williams %R(26) between 0 and -20. 2. Average volume(5) is above 100,000.

AEON CO. (M) BERHAD (6599.MY)

AEON

Price updated at 25 Apr 2024 16:59

Last: 1.110	Change: -0.020	Volume: 14,310
	Change (%): -1.77	Range: 1.100 - 1.140

TA Scanner Results based on historical data up to 25 Apr 2024

Condition	Signal	Explanation
Bollinger Band: Bullish Long Term Volatility Breakout and Trending	Long	1. Close price above upper bollinger band(33,1). 2. Volume above average volume(50). 3. Average volume(50) is above 300,000.
Bollinger Band: Bullish Short Term Volatility Breakout and Trending	Long	1. Close price above upper bollinger band(33,1). 2. Volume above average volume(10). 3. Average volume(10) is above 300,000.
DM: Bullish Directional Movement	Long	-DI(14) crossed below +DI(14)
MA: Bullish Price Crossover	Long	1. Close price crossed above MA(40) within the last 1 day. 2. Previous day close price is below the MA(10) for the last 5 days
MA: Short Term Bearish Moving Average Crossover	Short	MA(10) crossed below MA(15) within the last 1 day.
MACD: Bullish MACD Crossover	Long	1. MACD(12,26) diff line crossed above the MACD(12,26) signal line. 2. MACD Histogram(12,26) is above 0.
Parabolic SAR: Bearish Parabolic SAR Reversal	Neutral	1. Parabolic SAR 1 day ago above close price 1 day ago for the last 5 days. 2. Parabolic SAR below close price
RSI: Short Term RSI 50 Bullish Crossover	Long	1. RSI(20) crossed above 50 within the last 1 day and RSI(20) 1 day ago below 50 for the last 5 days. 2. Volume above average volume(125). 3. Average volume(5) is above 100,000.
Williams %R: Bearish Williams %R	Short	1. Williams %R(26) between 0 and -20. 2. Average volume(5) is above 100,000.

NOTION VTEC BERHAD (0083.MY)

NOTION

Price updated at 25 Apr 2024 16:59

Last: 0.585	Change: +0.050	Volume: 323,464
	Change (%): +9.35	Range: 0.530 - 0.590

TA Scanner Results based on historical data up to 25 Apr 2024

Condition	Signal	Explanation
Bollinger Band: Bullish Long Term Volatility Breakout and Trending	Long	1. Close price above upper bollinger band(33,1). 2. Volume above average volume(50). 3. Average volume(50) is above 300,000.
Bollinger Band: Bullish Short Term Volatility Breakout and Trending	Long	1. Close price above upper bollinger band(33,1). 2. Volume above average volume(10). 3. Average volume(10) is above 300,000.
Donchian Channels: High Above Upper Donchian Channels	Long	High crossed above the upper Donchian Channel(14,4)
MACD: Bullish MACD Crossover	Long	1. MACD(12,26) diff line crossed above the MACD(12,26) signal line. 2. MACD Histogram(12,26) is above 0.
Volume: 10 Days large value Buy Up trade	Long	1. 150K value Buy Up greater than Sell Down by 20% for 10 days. 2. 50K-100K value Buy Up greater than Sell Down by 20% for 10 days. 3. Average volume(10) is above 1000000
Volume: 5 Days large value Buy Up trade	Long	1. 150K value Buy Up greater than Sell Down by 20% for 5 days. 2. 50K-100K value Buy Up greater than Sell Down by 20% for 5 days. 3. Average volume(10) is above 1000000
Williams %R: Bearish Williams %R	Short	1. Williams %R(26) between 0 and -20. 2. Average volume(5) is above 100,000.

CREST BUILDER HOLDINGS BERHAD (8591.MY)

CRESBLD

Price updated at 25 Apr 2024 16:53

Last: 0.480	Change: -0.005	Volume: 150
	Change (%): -1.03	Range: 0.480 - 0.480

TA Scanner Results based on historical data up to 25 Apr 2024

Condition	Signal	Explanation
Bollinger Band: Bullish Lower Bollinger Band Support	Long	1. Low 1 day ago below lower bollinger band(20,2). 2. Close above close 1 day ago. 3. Average volume(5) is above 100,000.
Bollinger Band: High Above Upper Bollinger Band	Neutral	1. High above upper bollinger band(14,2). 2. Average volume(5) is above 100,000.
DM: Bullish Directional Movement	Long	-DI(14) crossed below +DI(14)
Donchian Channels: High Above Upper Donchian Channels	Long	High crossed above the upper Donchian Channel(14,4)
Parabolic SAR: Bearish Parabolic SAR Reversal	Neutral	1. Parabolic SAR 1 day ago above close price 1 day ago for the last 5 days. 2. Parabolic SAR below close price
RSI: Short Term RSI 50 Bullish Crossover	Long	1. RSI(20) crossed above 50 within the last 1 day and RSI(20) 1 day ago below 50 for the last 5 days. 2. Volume above average volume(125). 3. Average volume(5) is above 100,000.
Volume: Volume Spike	Long	1. Volume is more than 500% above average volume(10). 2. Volume above 200000. 3. Close price above 0.10
Williams %R: Bearish Williams %R	Short	1. Williams %R(26) between 0 and -20. 2. Average volume(5) is above 100,000.

DXN HOLDINGS BERHAD (5318.MY)

DXN

Price updated at 25 Apr 2024 16:59

Last: 0.635	Change: +0.005	Volume: 106,339
	Change (%): +0.79	Range: 0.630 - 0.645

TA Scanner Results based on historical data up to 25 Apr 2024

Condition	Signal	Explanation
Bollinger Band: Bullish Long Term Volatility Breakout and Trending	Long	1. Close price above upper bollinger band(33,1). 2. Volume above average volume(50). 3. Average volume(50) is above 300,000.
Bollinger Band: Bullish Short Term Volatility Breakout and Trending	Long	1. Close price above upper bollinger band(33,1). 2. Volume above average volume(10). 3. Average volume(10) is above 300,000.
Bollinger Band: High Above Upper Bollinger Band	Neutral	1. High above upper bollinger band(14,2). 2. Average volume(5) is above 100,000.
DM: Bullish Directional Movement	Long	-DI(14) crossed below +DI(14)
Donchian Channels: High Above Upper Donchian Channels	Long	High crossed above the upper Donchian Channel(14,4)
Parabolic SAR: Bearish Parabolic SAR Reversal	Neutral	1. Parabolic SAR 1 day ago above close price 1 day ago for the last 5 days. 2. Parabolic SAR below close price
RSI: Short Term RSI 50 Bullish Crossover	Long	1. RSI(20) crossed above 50 within the last 1 day and RSI(20) 1 day ago below 50 for the last 5 days. 2. Volume above average volume(125). 3. Average volume(5) is above 100,000.
Volume: 10 Days large value Sell Down trade	Short	1. 150K value Sell Down greater than Buy Up by 20% for 10 days. 2. 50K-100K value Sell Down greater than Buy Up by 20% for 10 days. 3. Average volume(10) is above 1000000
Volume: 5 Days large value Sell Down trade	Short	1. 150K value Sell Down greater than Buy Up by 20% for 5 days. 2. 50K-100K value Sell Down greater than Buy Up by 20% for 5 days. 3. Average volume(10) is above 1000000
Volume: Volume Spike	Long	1. Volume is more than 500% above average volume(10). 2. Volume above 200000. 3. Close price above 0.10

EVERSAFE RUBBER BERHAD (0190.MY)

ESAFE

Price updated at 25 Apr 2024 16:52

Last: 0.225	Change: +0.005	Volume: 6,361
	Change (%): +2.27	Range: 0.215 - 0.230

TA Scanner Results based on historical data up to 25 Apr 2024

Condition	Signal	Explanation
Donchian Channels: High Above Upper Donchian Channels	Long	High crossed above the upper Donchian Channel(14,4)
MA: Bullish Price Crossover	Long	1. Close price crossed above MA(40) within the last 1 day. 2. Previous day close price is below the MA(10) for the last 5 days
MACD: Bullish MACD Crossover	Long	1. MACD(12,26) diff line crossed above the MACD(12,26) signal line. 2. MACD Histogram(12,26) is above 0.
Parabolic SAR: Bearish Parabolic SAR Reversal	Neutral	1. Parabolic SAR 1 day ago above close price 1 day ago for the last 5 days. 2. Parabolic SAR below close price
RSI: Short Term RSI 50 Bullish Crossover	Long	1. RSI(20) crossed above 50 within the last 1 day and RSI(20) 1 day ago below 50 for the last 5 days. 2. Volume above average volume(125). 3. Average volume(5) is above 100,000.
Volume: Volume Spike	Long	1. Volume is more than 500% above average volume(10). 2. Volume above 200000. 3. Close price above 0.10

JENTAYU SUSTAINABLES BERHAD (5673.MY)

JSB

Price updated at 25 Apr 2024 16:52

Last: 0.920	Change: -	Volume: 59,609
	Change (%): -	Range: 0.905 - 0.930

TA Scanner Results based on historical data up to 25 Apr 2024

Condition	Signal	Explanation
CCI: Bullish CCI Oversold And Reversing	Long	1. CCI(26) below -100 and CCI(26) 1 day ago decreasing for the last 3 days. 2. CCI(26) above CCI(26) 1 day ago
Volume: 10 Days large value Buy Up trade	Long	1. 150K value Buy Up greater than Sell Down by 20% for 10 days. 2. 50K-100K value Buy Up greater than Sell Down by 20% for 10 days. 3. Average volume(10) is above 1000000
Volume: 5 Days large value Buy Up trade	Long	1. 150K value Buy Up greater than Sell Down by 20% for 5 days. 2. 50K-100K value Buy Up greater than Sell Down by 20% for 5 days. 3. Average volume(10) is above 1000000
Volume: Consecutive Days Of Increasing Average Volume	Long	1. Average Volume(20) has been increasing over the last 2 weeks. 2. Average volume(20) is above 100000
Williams %R: Bullish Williams %R	Long	1. Williams %R(26) between -80 and -100. 2. Average volume(5) is above 100,000.

V.S INDUSTRY BERHAD (6963.MY)

VS

Price updated at 25 Apr 2024 16:59

Last: 0.925	Change: +0.020	Volume: 110,920
	Change (%): +2.21	Range: 0.900 - 0.935

TA Scanner Results based on historical data up to 25 Apr 2024

Condition	Signal	Explanation
Bollinger Band: Bullish Long Term Volatility Breakout and Trending	Long	1. Close price above upper bollinger band(33,1). 2. Volume above average volume(50). 3. Average volume(50) is above 300,000.
Bollinger Band: Bullish Short Term Volatility Breakout and Trending	Long	1. Close price above upper bollinger band(33,1). 2. Volume above average volume(10). 3. Average volume(10) is above 300,000.
Bollinger Band: High Above Upper Bollinger Band	Neutral	1. High above upper bollinger band(14,2). 2. Average volume(5) is above 100,000.
Chaikin Volatility: Increasing Chaikin Volatility	Neutral	Chaikin Volatility(10,10) has been increasing for 5 days
Donchian Channels: High Above Upper Donchian Channels	Long	High crossed above the upper Donchian Channel(14,4)
Parabolic SAR: Bearish Parabolic SAR Reversal	Neutral	1. Parabolic SAR 1 day ago above close price 1 day ago for the last 5 days. 2. Parabolic SAR below close price
Volume: 10 Days large value Buy Up trade	Long	1. 150K value Buy Up greater than Sell Down by 20% for 10 days. 2. 50K-100K value Buy Up greater than Sell Down by 20% for 10 days. 3. Average volume(10) is above 1000000
Volume: 5 Days large value Buy Up trade	Long	1. 150K value Buy Up greater than Sell Down by 20% for 5 days. 2. 50K-100K value Buy Up greater than Sell Down by 20% for 5 days. 3. Average volume(10) is above 1000000
Williams %R: Bearish Williams %R	Short	1. Williams %R(26) between 0 and -20. 2. Average volume(5) is above 100,000.

Disclaimer: The information on this page is provided as a service to readers. It does not constitute financial advice and/or any investment recommendations. Past performance is not indicative of future results. We assume no liability for damages resulting from or arising out of the use of such information. It would be best if you did your own research to make your personal investment decisions wisely or consult a licenced investment advisor.



Dato' Eu Hong Chew
Former Group CEO i-Berhad
Non-Executive Director

He has been associated with the Sumurwang Group for many years charting the path for its manufacturing arm, firstly under Dreamland Holdings Berhad and the subsequent acquisition of I-Berhad.

Before that, he was with PA Management Consulting for a decade where he was the Director of Studies for the Cranfield PA MBA Programme in Malaysia.

Educated at the Royal Military College, Dato' Eu has an engineering degree from the University of Glasgow, and a MBA from the University of Bradford, UK.

Is there an investment opportunity in **TERNIUM** ?

SUMMARY

- Ternium S.A (NYSE: TX) is fundamentally sound with doubled revenue over the past 12 years, driven by organic growth and acquisitions.
- The company exhibits improving ROE and operational efficiencies, evidenced by growing PAT and gross profitability.

- My valuation of Ternium over the steel price cycle indicates a substantial margin of safety based on its market price as at early April 2024. This suggests that it is as an investment opportunity.

INVESTMENT THESIS

I would rate Ternium as fundamentally sound. It doubled its revenue over the past 12 years through organic growth and acquisitions. It achieved a growing ROE with corresponding improvements in operating efficiencies. At the same time, my valuation of TX over the steel price cycle showed that there is more than a sufficient margin of safety.

BACKGROUND

Ternium and its subsidiaries manufacture, process, and sell various steel products mainly in South America. The bulk of its revenue came from Mexico as shown in Chart 1. Although it has some mining operations, these serve mainly in-house and are a small component relative to the steel output. Ternium also produces electricity and sells unused balances to the Mexican and Brazilian electric grids. But these external sales were small. Accordingly, in my analysis and valuation, I focused on steel. Ternium has a range of steel products covering slab, long, flat-rolled, tubular, structural, and construction & cladding materials.

As illustrated in the right part of Chart 1, from 2012 to 2022 steel shipments grew at 3.3% CAGR. Mexico accounted for most of the shipment volume with 58% in 2022.

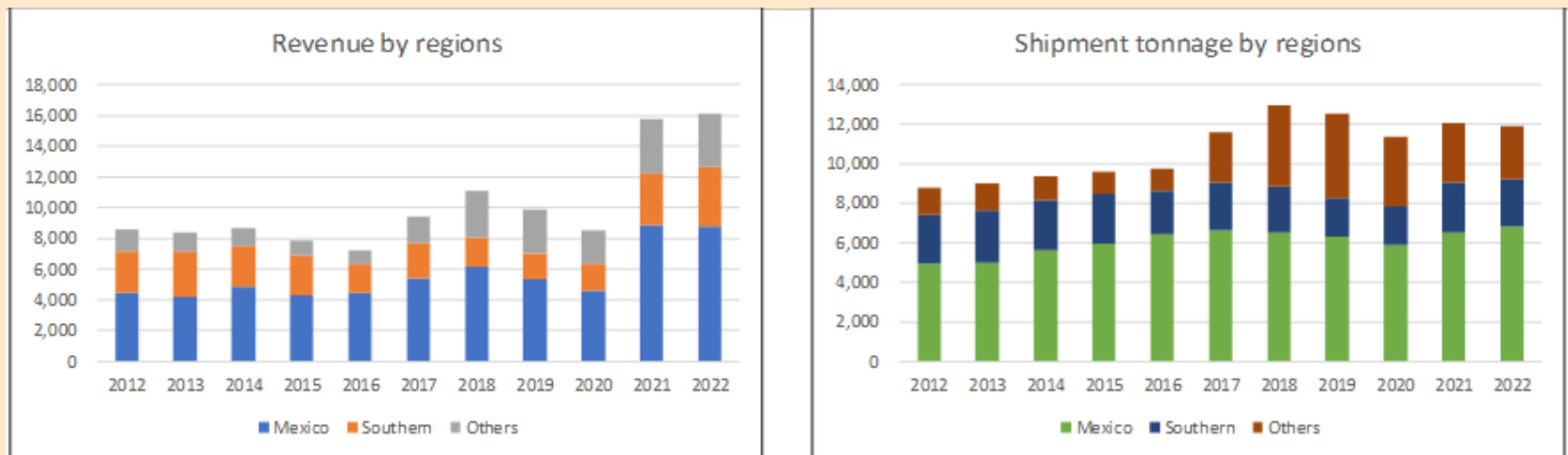


Chart 1: Revenue and shipment tonnage

Notes to Chart 1:

- a) The Southern region covers Argentina, Bolivia, Chile, Paraguay, and Uruguay.
- b) The US is part of the Others category.

OPERATING TRENDS

I looked at 2 groups of metrics to get an overview of the overall performance as shown in Chart 2:

- The left part shows the trends for 3 metrics – revenue, PAT, and gross profitability (gross profits / total assets).
- The right part shows the steel trends broken down into revenue, steel shipment, and average unit selling price.

From 2012 to 2022, there were growths in revenue, PAT, and gross profitability. But there were some hiccups:

- The PAT decline in 2014 was due to the write-downs in the non-controlled entities.
- The dip in 2019 was due to lower steel prices while in 2020 we had Covid-19.

The strong PAT uptrend led to improving ROE from an average of 6% in 2012/13 to an average of 11% in 2022/23. The other positive sign is the improving gross profitability. This is an indication of improving capital efficiency.

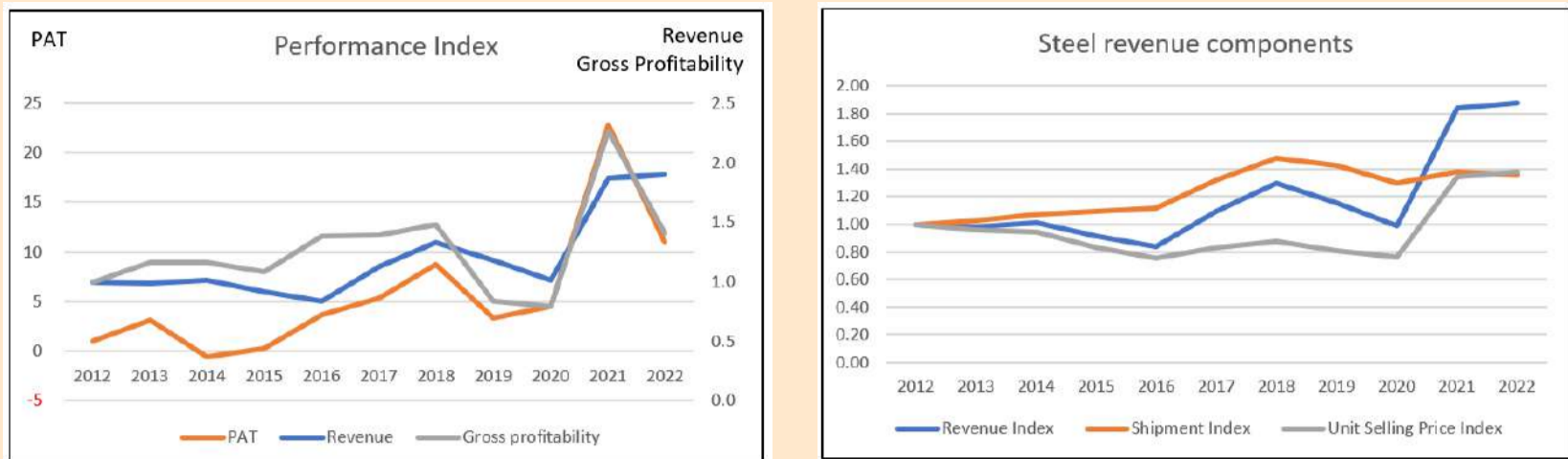


Chart 2: Performance Index and Steel Revenue Components

Notes: To plot the various metrics on one chart, I converted them into indices. I used the respective 2012 value as the base of 1.

Steel revenue is made up of shipment tonnage and unit selling price as shown in the right part of Chart 2. You can see that steel revenue growth was driven more by unit selling price growth than volume growth. From 2012 to 2022:

- Average selling price per ton grew at 3.3% CAGR. There was a 0.89 correlation between the selling price per ton and steel revenue.
- Volume or shipment tonnage grew at 3.1% CAGR. There was a 0.60 correlation between shipment tonnage and steel revenue.

CYCLICAL SECTOR

Steel is a cyclical commodity and there are close links with steel prices around the world as illustrated in Chart 3.

- From 2012 to early 2023, there were at least 2 peak-to-peak price cycles.
- From 2021 to part of 2023, there were extraordinary spikes in steel prices.

Looking at Charts 2 and 3, you can see that Ternium's performance exhibited a cyclical nature. It also benefited from the past few years of price spikes.

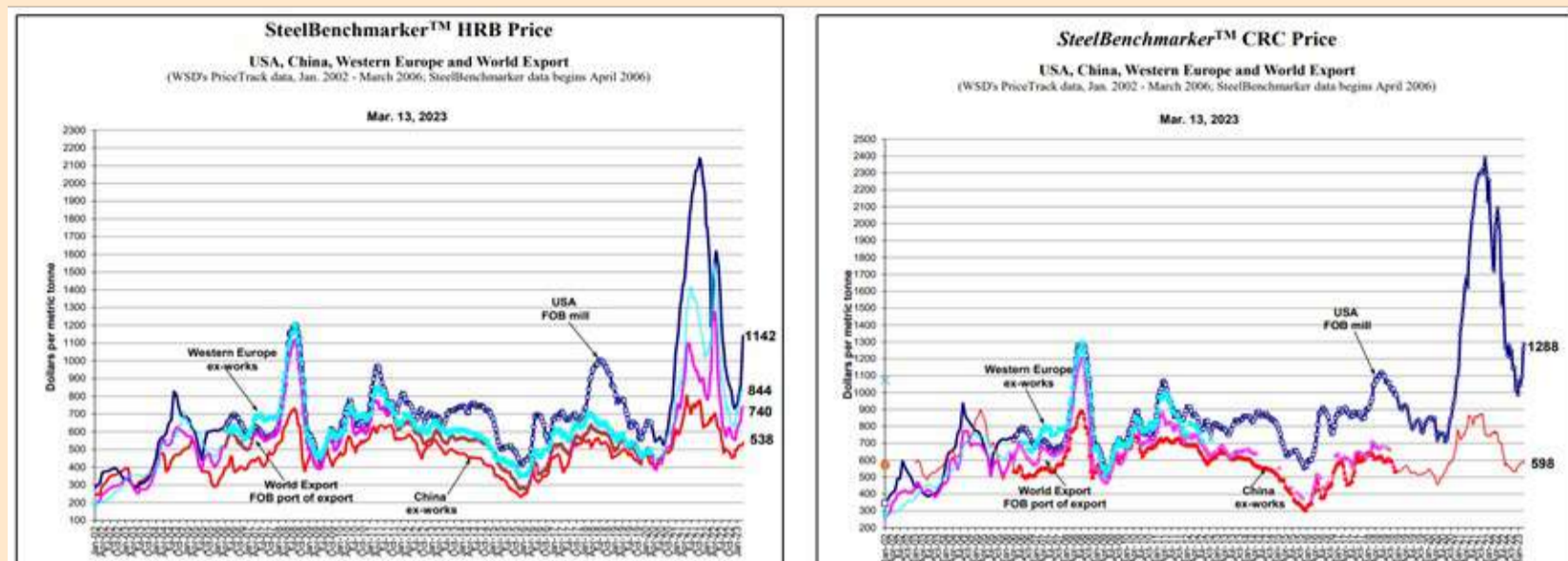


Chart 3: Steel price trends

Professor Damodaran opined that cyclical companies' performance depends on where they are in the cycle. Extrapolating the performance based on the current earnings and cash flows can lead to misleading valuations. To overcome the cyclical issue, we have to normalize the performance over the cycle. To reflect the current size of the business, Damodaran suggested that we take the current revenue and determine the earnings by multiplying it with the normalized margins.

I developed my financial model of Ternium based on this approach.

- I took the average 2021 to 2022 tonnage to represent the latest shipment size. If you look at Chart 1, you can see that the shipments for these 2 years were about the same.
- The revenue for this shipment size would depend on the price assumptions. The normalized margins would also depend on whether I included the past few years' outlier prices.

FINANCIAL STRENGTHS

I would assess Ternium as financially sound based on the following:

- It has a 0.12 Debt Capital ratio as of the end of Dec 2023. The steel sector Debt Capital ratio was 0.22 as per the Damodaran Jan 2023 dataset.
- As of the end of Dec 2023, it had USD3.8 billion in cash and short-term investments. This was about 16% of its total assets.
- From 2012 to 2023, it generated positive cash flow from operations every year. During this period, it generated about USD18.5 billion in cash flow from operations compared to its cumulative PAT of USD13.1 billion. This is a good cash conversion ratio.
- From 2012 to 2023, it achieved an average return on capital of 16.1% compared to its WACC of 10.2%. This implied that it managed to create shareholders' value.
- It has a good capital allocation track record as can be seen from Table 1. The cash flow from operations was more than enough to fund its CAPEX, acquisitions, dividends, and share buybacks.

Items	Sources (USD m)	Uses (USD m)
Cash flow from Ops	16,038	
Net Debt repayment		594
Dividends & buybacks		2,523
Net CAPEX incl intangibles		6,882
Acquisitions		3,885
Securities		2,144
Misc		11
Total	16,038	16,038

Table 1: Source and Uses of Funds 2012 to 2022

VALUATION

The value of a company depends on its expected future cash flow as per the following equation.

$$\text{Free Cash Flow to the Firm (FCFF)} \\ = \text{EBIT}(1-t) \times (1 - \text{Reinvestment rate})$$

For a cyclical sector, the key is determining the normalized FCFF. This in turn depends on the normalized EBIT and Reinvestment rate. Because of the past 2 years outlier price situation, I broke down the valuation into 2 parts.

- The "normal price" situation as represented by the 2012 to 2020 performance. This is represented by Scenario 1 in Table 2.
- The "outlier price" situation is represented by the 2021 and 2022 performance. This is represented by Scenario 2 in Table 2.

The long-term value of Ternium is that some probability-weighted scenario. This is represented by Scenario 3 where I assumed that there is a 95% probability of Scenario 1 and a 5% probability of Scenario 2.

The results of the valuation and the key parameters are shown in Table 2. My valuation is based on the single-stage Free Cash Flow to the Firm model I used in all my earlier articles. For further details refer to the original article.

There is more than a 30% margin of safety under all Scenarios. The positive sign is that there is even a good margin of safety under Scenario 1.

Scenarios	Value USD/share	Margin of safety %	Shipment 000 ton/yr	Price USD/ton	GP margin %	SGA margin %	Reinvestment (USD m)	Notes
Scenario 1 - normal	69	64%	11,985	844	22%	6%	615	a
Scenario 2 -outlier	230	447%	11,985	1,331	31%	5%	710	b
Scenario 3 - weighted	77	83%						c
Market price 4 April 2024	42							

Table 2: Valuation of Ternium

Notes:

- a) 2021 to 2022 tonnage. 2012 to 2020 average selling price. GP margin, SGA margin, Reinvestment based on 2012 to 2020 average
- b) 2021 to 2022 tonnage. 2021 to 2020 average selling price. GP margin, SGA margin, Reinvestment based on 2021 to 2020 average
- c) Weighted average with 95% probability of Scenario 1 and 5% probability of Scenario 2

CONCLUSION

I would rate Ternium as fundamentally sound based on the following:

- There is an improving ROE accompanied by improving operating efficiencies.
- It is financially sound.
- It has a good capital allocation plan.
- It has been able to create shareholders' value.

My valuation of Ternium based on its performance over the steel price cycle showed that there is a sufficient margin of safety. I see this as an investment opportunity.

I am a long-term value investor who has held onto stocks for more than 5 years. My analysis and valuation are from such a perspective. I consider quarterly results "noisy" and focus on long-term trends.

This article was re-purposed from my article "Ternium: Improving Fundamentals And Good Margin Of Safety" which was first published in Seeking Article. Refer to this [link](#) for more of my insights on other US companies.

Disclaimer: This article is written for informational purposes only. It does not constitute a solicitation, offer, advice, counseling or recommendation to buy or sell. As such it is not intended to promote the purchase of shares in any way. As a reminder, any type of asset has a risk factor and needs to be evaluated from multiple perspectives. Therefore, any investment decision and the associated risk remains with the investor. The views expressed here are entirely the writer's own.



SIGN UP FOR Invest
IT'S FREE!!!

Click here

Scan me



Via email, every Friday.

UNLOCK THE SECRET OF WEALTH

DO YOU REALLY WANT TO MASTER VALUE INVESTING



SEE HOW TO GET HIGHER RETURNS WITH LOWER RISK



EPF MEMBERS UNDER AGE 55 WILL GET ACCOUNT 3 FOR FLEXIBLE WITHDRAWALS FROM MAY 11

According to the Employees Provident Fund (EPF), members who are below 55 years old will have an Account 3 starting from May 11, 2024 from which they can make withdrawals at any time for any purpose – subject to a minimum withdrawal amount of RM50. This is on top of the two existing accounts they currently have for retirement savings. Hence, members' contributions will be divided in the portions of 75:15:10 into Account 1 (Retirement Account), Account 2 (Sejahtera Account) and Account 3 (Flexible Account) respectively.

EPF members' monthly contributions are currently split in the ratio of 70:30 into Account 1 and Account 2. The balances in Account 1 and Account 2 will remain, while Account 3 will start with a zero balance.

For members above the age of 55, all savings in those three accounts will be merged into “Akaun 55”, while new contributions from this age group members will be credited into “Akaun Emas”. Account 3 will start with new contributions that will be credited into the member's account after the implementation date.

If the member chooses to opt-in with an initial amount, the transfer of the initial amount to Account 3 and other accounts (if applicable) is based on the balance in the member's Account 2 on the date the opt-in application is made.

The transfer method will be according to this breakdown:

a) If the balance in Account 2 is RM3,000 and above

A third or 10/30 of the balance in Account Sejahtera (Account 2) will be transferred to Account 3, while 5/30 of the balance in Account 2 will be transferred to Account 1; the balance 15/30 will be retained in Account 2.

b) If the balance in Account 2 is less than RM3,000

Account 2 with a balance of RM1,000 or less will have the full balance transferred to Account 3, while those with a balance of more than RM1,000 but less than RM3,000 will have RM1,000 transferred to Account 3; no transfers will be made to Account 1.

Members can only choose to opt-in for the transfer of the initial amount to the Flexible Account (Account 3) one time, starting from the effective date (May 11) until Aug 31, 2024, after which the opt-in cannot be cancelled. Members who wish to take advantage of this opt-in can submit their application through the KWSP (EPF) i-Akaun application, or the self-service terminals at any EPF branches nationwide.

Applications for the opt-in and withdrawals can be made online through the KWSP i-Akaun, or at any EPF branch nationwide. EPF also encouraged members who have yet to register with KWSP i-Akaun to do so, in order for withdrawal transactions from Account 3 to be made. The main focus of the EPF account restructuring initiative is to empower members in making decisions to balance future needs for retirement between short-, medium- and long-term financial needs.

According to EPF chief executive officer Ahmad Zulqarnain Onn, this initiative will also help increase members' retirement savings, so that they will have sufficient retirement income to sustain their needs after retirement.

Members can fully access the system on May 12. Members can visit any EPF branch nationwide, or refer to the EPF official website at <https://www.kwsp.gov.my/>, or access the KWSP i-Akaun for more information.

**SHAREINVESTOR
MARKET DATA PLATFORMS**

**SHAREINVESTOR
STATION**
Advanced Charting Software
(8 Markets)

**SHAREINVESTOR
WEBPRO**
Browser-Based Market Data
Analytics Platform

FOREIGN FUNDS OFFLOADED RM1.59B IN LOCAL EQUITIES LAST WEEK, HIGHEST IN FOUR YEARS - MID

According to MIDF Research, foreign investors offloaded RM1.59 billion in local equities on Bursa Malaysia last week in tandem with most Asian markets. In its weekly fund flow report on Monday April 22, it said this was the highest weekly net outflow in four years since the country went into movement control order in March 2020.

The research house said this was the eighth consecutive week of net selling in Malaysia by foreign investors. Foreign investors net sold every day last week and have been net selling Malaysian equities for nine straight trading days.

The only sector with a net foreign inflow last week was telecommunication and media (RM9.3 million), while the top three sectors that recorded the highest net foreign outflows were financial services (RM425.8 million), consumer products and

services (RM308.9 million), and industrial products and services (RM206.3 million).

The local bourse continued to be supported by local institutions, net buying RM1.79 billion for the week, a six-year high since February 2018. This was their eighth consecutive week of net buying. In terms of days, the local institutions have been net buying for 11 straight trading days.

Meanwhile, local retailers remained net sellers for the sixth consecutive week, with net sales amounting to RM195.8 million. They net bought RM59.5 million only on Monday April 22 but were net sellers for the rest of the week.

In terms of participation, average daily trading volume saw increases across the board, led by local institutions (30.2%), followed by foreign investors at 28.4% and local retailers at 19.5%.

EYE ON THE MARKETS

On Thursday (25Apr), the Ringgit closed at 4.7800 against the USD and 3.5164 to the Sing Dollar. On Monday (22Apr), the FBM KLCI opened at 1548.57. As at Thursday (25Apr) 5:00pm, the FBM KLCI closed up 20.68 points at 1569.25.

Over in US, the overnight Dow Jones Industrial Average closed down

375.12 points

(-0.98%) to

38,085.80

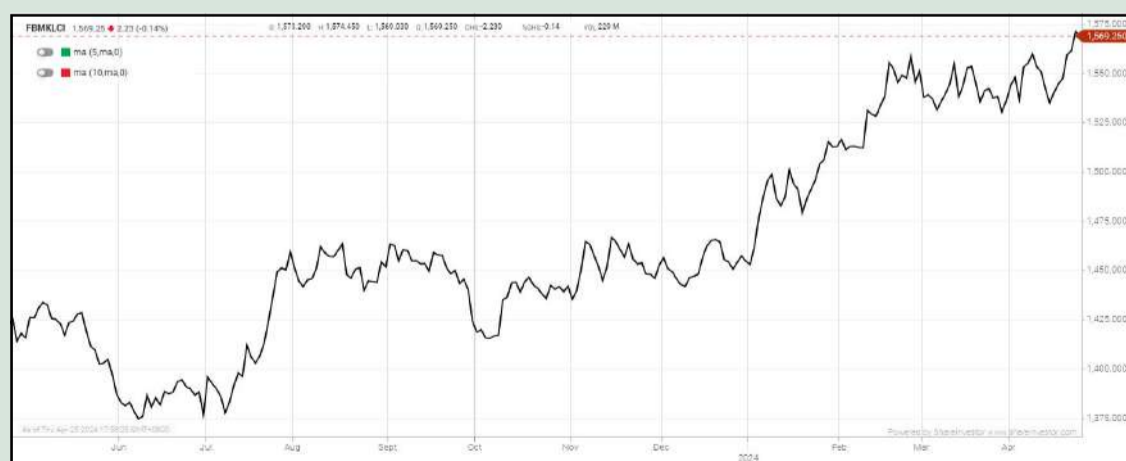
whilst the

NASDAQ shed

100.99 points

(-0.64%) to

15,611.76.



KLCI 1 Year Chart

Over 5 trading days



ShareInvestor WebPro (www.shareinvestor.com/my)

1. Price > Stock Prices
2. Select Market: NASDAQ / NYSE / IDX / SET / HKEX / SGX (One bourse at a time)
3. select Stocks Tab
4. select Ranking Top Gainers or Top Losers (Over 5 Trading Days)
5. Mouse over Column Layout > select Edit Customs > select Name > select Last Done Price > select 5 Days Change > select 52 Weeks High > select 52 Weeks Low > Mouse Over Column Layout > select Custom

NASDAQ (USD)

Top Gainers

Name	Last Done	Change Over 5 Days	52 Weeks High	52 Weeks Low
FIRST CITIZENS BANCSHARES INC NRTH	1,800.350	+248.440	1,652.040	945.320
BROADCOM INC	1,294.420	+35.430	1,438.170	601.290
BOOKING HOLDINGS INC	3,502.480	+72.340	3,918.000	2,456.930
ASML HOLDING NV EURO.09 NY REGISTRY SHS 2012	902.510	+13.480	1,056.340	563.995
MONOLITHIC POWER SYSTEM INC	660.340	+40.030	778.150	383.188

Top Losers

Name	Last Done	Change Over 5 Days	52 Weeks High	52 Weeks Low
SUPER MICRO COMPUTER INC	787.400	-141.080	1,229.000	93.190
META PLATFORMS INC	441.380	-60.420	531.490	207.130
O'REILLY AUTOMOTIVE INC NEW	1,054.130	-46.930	1,169.110	860.100
NETFLIX INC	564.800	-45.760	639.000	315.620
MADRIGAL PHARMACEUTICALS INC	194.380	-27.880	322.670	119.760

NYSE (USD)

Top Gainers

Name	Last Done	Change Over 5 Days	52 Weeks High	52 Weeks Low
BERKSHIRE HATHAWAY INC	611,560.000	+316.000	647,039.000	482,500.000
CHIPOTLE MEXICAN GRILL	3,111.970	+242.860	3,145.690	1,768.635
FAIR ISAAC CORP	1,193.660	+31.410	1,349.751	708.000
UNITED RENTALS INC	690.920	+58.040	732.370	325.150
TYLER TECHNOLOGIES INC	458.070	+55.120	454.740	361.157

Top Losers

Name	Last Done	Change Over 5 Days	52 Weeks High	52 Weeks Low
NEWMARKET CORP	533.590	-49.790	650.000	362.160
MSCI INC	464.490	-41.270	617.390	439.950
AUTOZONE INC	2,945.250	-40.290	3,256.370	2,277.880
RELIANCE INC	292.130	-28.030	342.200	229.120
CHEMED CORP	573.340	-27.070	654.620	492.840

IDX (Rupiah)

Top Gainers

Name	Last Done	Change Over 5 Days	52 Weeks High	52 Weeks Low
DIAN SWASTATIKA SENTOSA TBK	125,000.000	+2,000.000	163,000.000	33,950.000
DCI INDONESIA TBK	36,150.000	+900.000	59,050.000	32,525.000
INDOFOOD CBP SUKSES MAKMUR TBK PT	10,700.000	+600.000	11,925.000	9,600.000
AMMAN MINERAL INTERNASIONAL TBK	9,500.000	+550.000	9,500.000	1,700.000
INDOSAT (PT INDOSAT TBK)	11,200.000	+500.000	12,250.000	6,600.000

Top Losers

Name	Last Done	Change Over 5 Days	52 Weeks High	52 Weeks Low
UNITED TRACTORS	24,250.000	-1,275.000	31,400.000	20,925.000
INDO TAMBANGRAYA MEGAH TBK	24,975.000	-950.000	33,950.000	22,125.000
INDOCEMENT TUNGGAL PRAKARSA	7,625.000	-600.000	11,500.000	7,500.000
SEMEN INDONESIA (PERSERO) TBK	4,800.000	-550.000	7,250.000	4,750.000
TIGARAKSA SATRIA	6,300.000	-500.000	8,000.000	6,150.000

SET (Thai Baht)

Top Gainers

Name	Last Done	Change Over 5 Days	52 Weeks High	52 Weeks Low
BH	253.000	+29.000	272.000	210.000
SAPPE	96.750	+6.500	100.000	58.250
AEONTS	163.000	+5.000	203.000	144.000
BCT	68.000	+4.000	70.000	48.000
CBG	65.750	+3.000	89.500	61.250

Top Losers

Name	Last Done	Change Over 5 Days	52 Weeks High	52 Weeks Low
BBL	136.500	-7.000	175.000	135.500
FE	168.000	-7.000	201.000	155.000
TFMAMA	208.000	-5.000	240.000	187.000
BUI	17.600	-4.300	23.300	14.100
TISCO	96.000	-3.750	103.500	90.000

HKEX (HKD)

Top Gainers

Name	Last Done	Change Over 5 Days	52 Weeks High	52 Weeks Low
TENCENT (700)	339.400	+35.000	364.400	260.200
TENCENT-R (80700)	314.400	+31.400	342.000	240.000
HKEX (388)	246.800	+28.200	336.000	212.200
HKEX-R (80388)	228.400	+25.800	307.600	196.900
SKB BIO-B (6990)	153.900	+15.300	177.900	60.600

Top Losers

Name	Last Done	Change Over 5 Days	52 Weeks High	52 Weeks Low
LI AUTO-W (2015)	93.500	-21.300	185.500	88.100
ASMPT (522)	95.450	-8.050	113.400	57.650
UBTECH ROBOTICS (9880)	165.800	-7.600	328.000	69.800
TIANQI LITHIUM (9696)	29.350	-6.950	61.250	28.250
ZX INC (9890)	19.960	-5.990	72.450	9.320

SGX (SGD)

Top Gainers

Name	Last Done	Change Over 5 Days	52 Weeks High	52 Weeks Low
DBS	34.450	+1.314	34.780	27.546
JMH USD	38.000	+1.100	52.570	34.920
OCBC BANK	14.330	+0.620	14.330	12.000
UOB	30.520	+0.370	31.350	26.820
GREAT EASTERN	18.620	+0.350	19.240	16.850

Top Losers

Name	Last Done	Change Over 5 Days	52 Weeks High	52 Weeks Low
JARDINE C&C	26.220	-0.670	35.580	23.760
AZEUS	8.150	-0.200	9.190	7.400
KEPPEL	6.860	-0.140	7.450	5.908
FRENCKEN	1.450	-0.110	1.740	0.785
PLATOCAPITAL	2.390	-0.110	2.880	1.800

SCRUTINY ON FUNDRAISING EXERCISES, DISCLOSURES AND UTILISATION OF PROCEEDS RAISED

In its recently published Annual Report 2023, the Securities Commission Malaysia (SC) reiterates its stance to proactively monitoring the conduct of public-listed companies (PLCs) through its surveillance efforts to ensure compliance with securities laws and regulations, with the aim to safeguard the interests of investors and maintain the integrity of the capital market.

The regulator said fundraising via share issuances by PLCs and disclosures on corporate transactions remain its key priorities in the near future. This comes about as the capital market regulator's surveillance team had in 2023 highlighted some concerns relating to disclosures, utilisation of funds raised and the application of financial reporting standards.

During the year, the SC performed surveillance reviews on 118 PLCs based on announcements by PLCs, news in mainstream and non-mainstream media as well as complaints received to detect potential breaches of securities laws or non-compliance with financial reporting standards.

As part of its review process, the SC engaged with the directors, officers, auditors and other professionals involved in the PLCs for further fact-finding. These engagements also served to remind directors of the need to consistently act in the best interest of the companies and their shareholders.

Where irregularities or possible securities law breaches were detected, they were escalated for formal investigation and/or enforcement action. Where relevant, Bursa Malaysia was also engaged in matters requiring closer scrutiny as the frontline regulator.

More broadly, the SC strengthened its surveillance approach by targeting specific areas of concern for review, thus resulting in more effective and efficient detection of potential misconduct. As a result of the more targeted approach, 166 reviews of potential corporate misconduct were completed in FY2023 (2022: 317 reviews), with eight cases being referred for formal investigation (2022: four cases).

After recording a high of RM22.6 billion in 2022, secondary fundraising activities declined to RM5.8 billion amid lower corporate activities in 2023.

A CASE IN POINT

Perhaps the equity fundraising track record of an ACE Market-listed PLC is a case in point to illustrate the SC's concerns. Involving in the fibre optic business, the company is seeking

shareholders' greenlight at an EGM to approve a private placement (PP) exercise of issuing up to 134 million shares, representing not more than 30% of its total number of issued shares. Based on an illustrative issue price of 31 sen per share, the proposed PP would raise approximately RM41.57 million, primarily to fund its existing and future contracts, acquisition and working capital.

A closer look at its track record found that the company had undertaken multiple fundraising exercises via private placement and ESOS in the past three years (refer to the table below). In addition, it issued 48.5 million shares pursuant to ESOS for RM36.35 million during its financial year, which ended on 31 March 2022.

The company has RM36.90 million of deposits, cash and bank balance, with another RM10 million proceeds pending the completion of asset disposal exercises. Furthermore, the company's balance sheet suggests that it has plenty of room to gear up with a low gearing ratio of 0.27 times with total bank borrowings of RM28.49 million as of 31 December 2023, instead of resorting to frequent equity fundraising, which is dilutive, especially for minority shareholders.

SHARE ACQUISITIONS AT A PREMIUM

On top of the multiple cash calls, its share acquisitions of another Bursa Malaysia-listed company also raised eyebrows if these transactions were performed in the best interest of minority shareholders. Recently, it bought close to a 25% stake in a telecommunication services provider via two transactions at a premium of between 30.7% and 80.65%, compared to the five-day volume-weighted average market price (VWAMP) of the acquired company.

In justifying the high premium paid, the company said the acquisition would be synergistic, as it intends to leverage the latter to set foot in the telecommunications sector and strengthen its prospect for future work. Notwithstanding the optimism, the acquired company turned to loss-making with a net loss of RM13.4 million for the 18-month financial period ended 31 December 2023. Hence, it is not surprising to see the share price of the said company dwindled from a 52-week high of 46 sen in September 2023 to 25.5 sen currently.

All in all, the justifications for paying such a high premium to the market price of the acquired company seem implausible. Alas, it also does not seem to reflect the best utilisation of shareholders' funds. Elsewhere, the company has also obtained a general mandate from shareholders for directors to issue shares pursuant to Sections 75 and 76 of the Companies Act 2016 at its AGM held last month.

Proposed Amendments to Listing Requirements in relation to the new issue of securities

Complementing the Securities Commission Malaysia in its quest to scrutinise fundraising exercises, stock market regulator Bursa Malaysia had on 30 November 2023 issued a consultation paper which brought forth proposed amendments to the Main Market Listing Requirements (MMLR) and ACE Market Listing Requirements (AMLR) in relation to new issue of securities, among others.

The Paper sought feedback from the public over the proposal to enhance transparency on fundraising exercises involving new issues of securities by requiring PLCs to:

- i. Furnish quarterly announcements on details of placement exercises which are implemented on a staggered basis; and
- ii. Disclosure of placees' financial capability in subscribing for the placement securities
- iii. Furnish quarterly announcements on the status and details of utilisation of proceeds raised from a fundraising exercise
- iv. Disclosures relating to equity fundraising exercises where the proceeds raised have yet to be fully utilised.

Date	Number of placement shares (up to)	Amount raised / to be raised (RM' million)
2 April 2021	16,124,900	9.27
9 September 2021	53,212,400	23.15
31 January 2023	27,908,700	19.26

Judging from the frequent cash call activities in the past, it is everyone's question if the company has a multi-year capital plan that extends beyond meeting its immediate financial commitments.

By MSWG Team

INSIDER ACTIVITY

FRIDAY APRIL 26 2024

Invest | 39

DEFINITION: Insider Activity shows the trades made by substantial shareholders or directors of the company. Purchases by the directors and company share buyback may indicate the share price is undervalued and brings confidence to the price trend of the share price.



ShareInvestor WebPro > Fundamental > Insider Trades > click Search tab > Select Bursa > click Stock name > scroll up and leave at <Select Counter> Type Date Range for Announcement Date > click Search

Notice Period is 14th Apr 2024 – 20th Apr 2024

Effective Change Date	Stock Name	Buyer/ Seller Name [Classification]	Bought / (Sold) ['000]		No. of Shares After Trade ['000]	
			Total	% Held	Total	% Held
16 APR 2024 - 16 APR 2024	3A	PRUDENTIAL PLC [SSH]	-89	25,152	5.144	
15 APR 2024 - 15 APR 2024	3A	PRUDENTIAL PLC [SSH]	-181	25,241	5.162	
15 APR 2024 - 16 APR 2024	3A	MR TEO KWEE HOCK [SSH]	226	50,220	10.27	
09 APR 2024 - 12 APR 2024	3A	MR TEO KWEE HOCK [SSH]	185	49,995	10.223	
12 APR 2024 - 12 APR 2024	ABMB	EMPLOYEES PROVIDENT FUND BOARD [SSH]	-182	160,802	10.387	
09 APR 2024 - 09 APR 2024	ABMB	EMPLOYEES PROVIDENT FUND BOARD [SSH]	677	160,985	10.399	
08 APR 2024 - 08 APR 2024	ABMB	EMPLOYEES PROVIDENT FUND BOARD [SSH]	380	160,308	10.355	
16 APR 2024 - 16 APR 2024	AGX	DATO' ROZALILA BINTI ABDUL RAHMAN [DIR/CEO]	-1,048	9,400	2.172	
16 APR 2024 - 16 APR 2024	AGX	MR PENU MARK [DIR/CEO]	500	79,500	18.366	
16 APR 2024 - 16 APR 2024	AGX	MR PENU MARK [SSH]	500	79,500	18.366	
12 APR 2024 - 12 APR 2024	AGX	PUAN AIDA MOSIRA BINTI MOKHTAR [DIR/CEO]	-23	107	0.025	
09 APR 2024 - 12 APR 2024	AGX	DATO' ROZALILA BINTI ABDUL RAHMAN [DIR/CEO]	-1,052	10,448	2.414	
09 APR 2024 - 09 APR 2024	AGX	MR PENU MARK [DIR/CEO]	400	79,000	18.25	
09 APR 2024 - 09 APR 2024	AGX	MR PENU MARK [SSH]	400	79,000	18.25	
18 APR 2024 - 18 APR 2024	AIRPORT	KUMPULAN WANG PERSARAAN (DIPERBADANKAN) [SSH]	-37	120,038	7.194	
16 APR 2024 - 16 APR 2024	AIRPORT	EMPLOYEES PROVIDENT FUND BOARD [SSH]	2,556	126,485	7.581	
15 APR 2024 - 15 APR 2024	AIRPORT	EMPLOYEES PROVIDENT FUND BOARD [SSH]	558	123,929	7.427	
16 APR 2024 - 16 APR 2024	AIRPORT	KUMPULAN WANG PERSARAAN (DIPERBADANKAN) [SSH]	-120	120,074	7.197	
12 APR 2024 - 12 APR 2024	AIRPORT	EMPLOYEES PROVIDENT FUND BOARD [SSH]	630	123,371	7.394	
15 APR 2024 - 15 APR 2024	AIRPORT	KUMPULAN WANG PERSARAAN (DIPERBADANKAN) [SSH]	628	120,194	7.204	
09 APR 2024 - 09 APR 2024	AIRPORT	EMPLOYEES PROVIDENT FUND BOARD [SSH]	830	122,741	7.356	
08 APR 2024 - 08 APR 2024	AIRPORT	EMPLOYEES PROVIDENT FUND BOARD [SSH]	791	121,910	7.306	
16 APR 2024 - 16 APR 2024	ALPHA	DATO DR LEE SOON SOO [SSH]	2,500	2,110,588	43.428	
16 APR 2024 - 16 APR 2024	ALPHA	DATO' DR LEE SOON SOO [DIR/CEO]	2,500	2,110,588	43.428	
16 APR 2024 - 16 APR 2024	AMBANK	EMPLOYEES PROVIDENT FUND BOARD [SSH]	3,102	459,333	13.89	
15 APR 2024 - 15 APR 2024	AMBANK	EMPLOYEES PROVIDENT FUND BOARD [SSH]	3,102	456,231	13.797	
12 APR 2024 - 12 APR 2024	AMBANK	EMPLOYEES PROVIDENT FUND BOARD [SSH]	1,086	453,129	13.703	
09 APR 2024 - 09 APR 2024	AMBANK	EMPLOYEES PROVIDENT FUND BOARD [SSH]	46	452,043	13.67	
08 APR 2024 - 08 APR 2024	AMBANK	EMPLOYEES PROVIDENT FUND BOARD [SSH]	941	451,997	13.669	
15 APR 2024 - 16 APR 2024	ANCOMNY	MR LEE CHEUN WEI [DIR/CEO]	2,016	90,378	9.405	
15 APR 2024 - 16 APR 2024	ANCOMNY	MR LEE CHEUN WEI [SSH]	2,016	90,378	9.405	
19 APR 2024 - 19 APR 2024	AXIATA	MR VIVEK SOOD [DIR/CEO]	1,364	4,109	0.045	
16 APR 2024 - 16 APR 2024	AXIATA	EMPLOYEES PROVIDENT FUND BOARD [SSH]	-3,880	1,643,469	17.899	
15 APR 2024 - 15 APR 2024	AXIATA	EMPLOYEES PROVIDENT FUND BOARD [SSH]	-2,381	1,647,348	17.941	
08 APR 2024 - 08 APR 2024	AXIATA	EMPLOYEES PROVIDENT FUND BOARD [SSH]	55	1,649,729	17.967	
15 APR 2024 - 15 APR 2024	AXREIT	EMPLOYEES PROVIDENT FUND BOARD [SSH]	500	286,177	16.376	
15 APR 2024 - 15 APR 2024	BAHVEST	MR CHONG MEE FAH @ FREDERICK CHONG [DIR/CEO]	500	24,347	1.964	
16 APR 2024 - 16 APR 2024	BAUTO	EMPLOYEES PROVIDENT FUND BOARD [SSH]	4	158,078	13.539	
15 APR 2024 - 15 APR 2024	BAUTO	EMPLOYEES PROVIDENT FUND BOARD [SSH]	326	158,074	13.538	
12 APR 2024 - 12 APR 2024	BAUTO	EMPLOYEES PROVIDENT FUND BOARD [SSH]	1,000	157,748	13.51	
15 APR 2024 - 15 APR 2024	BAUTO	DATO' LEE KOK CHUAN [DIR/CEO]	46	177,418	15.195	
15 APR 2024 - 15 APR 2024	BAUTO	DATO' LEE KOK CHUAN [SSH]	46	177,418	15.195	
09 APR 2024 - 09 APR 2024	BAUTO	EMPLOYEES PROVIDENT FUND BOARD [SSH]	169	156,637	13.415	
08 APR 2024 - 08 APR 2024	BAUTO	EMPLOYEES PROVIDENT FUND BOARD [SSH]	1,014	156,468	13.401	
15 APR 2024 - 15 APR 2024	BETA	ENCIK AHMAD SUBRI BIN ABDULLAH [DIR/CEO]	4	73	0.016	
15 APR 2024 - 15 APR 2024	BIMB	EMPLOYEES PROVIDENT FUND BOARD [SSH]	1,631	387,256	17.086	
09 APR 2024 - 09 APR 2024	BIMB	EMPLOYEES PROVIDENT FUND BOARD [SSH]	1,000	385,417	17.005	
16 APR 2024 - 17 APR 2024	BJFOOD	BERJAYA CORPORATION BERHAD [SSH]	10,810	1,076,591	60.763	
16 APR 2024 - 17 APR 2024	BJFOOD	BERJAYA GROUP BERHAD [SSH]	10,810	975,605	55.062	
16 APR 2024 - 17 APR 2024	BJFOOD	JUARA SEJATI SDN BHD [SSH]	10,810	196,497	11.09	
12 APR 2024 - 15 APR 2024	BJFOOD	BERJAYA CORPORATION BERHAD [SSH]	10,570	1,065,781	60.152	
12 APR 2024 - 15 APR 2024	BJFOOD	BERJAYA GROUP BERHAD [SSH]	10,570	964,795	54.452	
12 APR 2024 - 15 APR 2024	BJFOOD	JUARA SEJATI SDN BHD [SSH]	10,570	185,687	10.48	
15 APR 2024 - 15 APR 2024	BMGREEN	DR CHIA SONG KUN [DIR/CEO]	160	272,134	52.74	
15 APR 2024 - 15 APR 2024	BMGREEN	DR CHIA SONG KUN [SSH]	160	272,134	52.74	
02 APR 2024 - 09 APR 2024	BTM	DATO SERI YONG TU SANG [SSH]	-5,000	199,154	15.85	
02 APR 2024 - 09 APR 2024	BTM	DATO' SERI YONG TU SANG [DIR/CEO]	-5,000	199,154	15.85	
15 APR 2024 - 15 APR 2024	BURSA	EMPLOYEES PROVIDENT FUND BOARD [SSH]	431	105,348	13.017	
12 APR 2024 - 12 APR 2024	BURSA	EMPLOYEES PROVIDENT FUND BOARD [SSH]	194	104,917	12.964	
12 APR 2024 - 12 APR 2024	CAREPLS	MADAM NG SHU SI [SSH]	723	124,635	17.801	

Notice Period is 14th Apr 2024 – 20th Apr 2024

Effective Change Date	Stock Name	Buyer/ Seller Name [Classification]	Bought / (Sold) ['000]		No. of Shares After Trade ['000]	
			Total	% Held	Total	% Held
12 APR 2024 - 12 APR 2024	CAREPLS	MR LIM KWEE SHYAN [DIR/CEO]	1,514	126,078	18.007	
12 APR 2024 - 12 APR 2024	CAREPLS	MR LIM KWEE SHYAN [SSH]	1,514	126,078	18.007	
12 APR 2024 - 12 APR 2024	CAREPLS	MR LOO TECK LOOI [DIR/CEO]	603	3,036	0.434	
17 APR 2024 - 18 APR 2024	CBIP	DATUK LIM CHAI BENG [DIR/CEO]	607	201,334	42.96	
17 APR 2024 - 18 APR 2024	CBIP	DATUK LIM CHAI BENG [SSH]	607	201,334	42.96	
15 APR 2024 - 16 APR 2024	CBIP	DATUK LIM CHAI BENG [DIR/CEO]	317	200,727	42.83	
15 APR 2024 - 16 APR 2024	CBIP	DATUK LIM CHAI BENG [SSH]	317	200,727	42.83	
12 APR 2024 - 12 APR 2024	CDB	EMPLOYEES PROVIDENT FUND BOARD [SSH]	50	1,156,001	9.854	
08 APR 2024 - 08 APR 2024	CDB	EMPLOYEES PROVIDENT FUND BOARD [SSH]	100	1,155,951	9.853	
17 APR 2024 - 17 APR 2024	CEB	MR CHEN KOK SENG [DIR/CEO]	240	900	0.091	
16 APR 2024 - 18 APR 2024	CGB	MR CHEW HIAN TAT [DIR/CEO]	4,000	233,464	31.056	
16 APR 2024 - 18 APR 2024	CGB	MR CHEW HIAN TAT [SSH]	4,000	233,464	31.056	
18 APR 2024 - 18 APR 2024	CGB-WA	MR CHEW HIAN TAT [DIR/CEO]	2,000	64,295	82.081	
15 APR 2024 - 17 APR 2024	CHINHIN	DATUK SERI CHIAU BENG TEIK JP [DIR/CEO]	127	1,025,762	57.972	
15 APR 2024 - 17 APR 2024	CHINHIN	DATUK SERI CHIAU BENG TEIK JP [SSH]	127	1,025,762	57.972	
08 APR 2024 - 12 APR 2024	CHINHIN	DATUK SERI CHIAU BENG TEIK JP [DIR/CEO]	119	1,025,635	57.965	
08 APR 2024 - 12 APR 2024	CHINHIN	DATUK SERI CHIAU BENG TEIK JP [SSH]	119	1,025,635	57.965	
18 APR 2024 - 18 APR 2024	CIMB	KUMPULAN WANG PERSARAAN (DIPERBADANKAN) [SSH]	-111	674,650	6.32	
16 APR 2024 - 16 APR 2024	CIMB	EMPLOYEES PROVIDENT FUND BOARD [SSH]	2,150	1,581,289	14.83	
17 APR 2024 - 17 APR 2024	CIMB	KUMPULAN WANG PERSARAAN (DIPERBADANKAN) [SSH]	480	674,761	6.32	
15 APR 2024 - 15 APR 2024	CIMB	EMPLOYEES PROVIDENT FUND BOARD [SSH]	9,749	1,579,139	14.81	
15 APR 2024 - 15 APR 2024	CIMB	KUMPULAN WANG PERSARAAN (DIPERBADANKAN) [SSH]	-74	674,281	6.32	
12 APR 2024 - 12 APR 2024	CIMB	EMPLOYEES PROVIDENT FUND BOARD [SSH]	7,081	1,569,390	14.72	
09 APR 2024 - 09 APR 2024	CIMB	EMPLOYEES PROVIDENT FUND BOARD [SSH]	5,312	1,562,309	14.65	
08 APR 2024 - 08 APR 2024	CIMB	EMPLOYEES PROVIDENT FUND BOARD [SSH]	4,667	1,556,998	14.67	
15 APR 2024 - 15 APR 2024	CLMT	EMPLOYEES PROVIDENT FUND BOARD [SSH]	-837	435,144	15.4	
09 APR 2024 - 09 APR 2024	CLMT	EMPLOYEES PROVIDENT FUND BOARD [SSH]	-282	436,731	15.456	
08 APR 2024 - 08 APR 2024	CLMT	EMPLOYEES PROVIDENT FUND BOARD [SSH]	-598	437,013	15.466	
12 APR 2024 - 12 APR 2024	CNERGEN	MR LYE THIM LOONG [DIR/CEO]	97	10,213	2.051	
17 APR 2024 - 17 APR 2024	CTOS	ABRDN HOLDINGS LIMITED [SSH]	758	211,893	9.173	
17 APR 2024 - 17 APR 2024	CTOS	ABRDN MALAYSIA SDN BHD [SSH]	758	209,558	9.072	
17 APR 2024 - 17 APR 2024	CTOS	ABRDN PLC [SSH]	758	211,893	9.173	
16 APR 2024 - 16 APR 2024	CTOS	EMPLOYEES PROVIDENT FUND BOARD [SSH]	1,327	287,559	12.448	
16 APR 2024 - 16 APR 2024	CTOS	ABRDN HOLDINGS LIMITED [SSH]	1,327	211,135	9.14	
16 APR 2024 - 16 APR 2024	CTOS	ABRDN MALAYSIA SDN BHD [SSH]	1,327	208,800	9.039	
16 APR 2024 - 16 APR 2024	CTOS	ABRDN PLC [SSH]	1,327	211,135	9.14	
08 APR 2024 - 08 APR 2024	CTOS	EMPLOYEES PROVIDENT FUND BOARD [SSH]	397	286,231	12.391	
17 APR 2024 - 17 APR 2024	CYPARK	MR CHUNG CHEE YANG [SSH]	150	45,545	5.535	
12 APR 2024 - 12 APR 2024	CYPARK	MR CHUNG CHEE YANG [SSH]	145	45,395	5.517	
12 APR 2024 - 12 APR 2024	CYPARK	MR CHUNG DAO [SSH]	55	47,105	5.725	
18 APR 2024 - 18 APR 2024	D&O	TAY KHENG CHIONG [DIR/CEO]	16	24,337	1.965	
15 APR 2024 - 15 APR 2024	D&O	EMPLOYEES PROVIDENT FUND BOARD [SSH]	149	85,241	6.884	
12 APR 2024 - 12 APR 2024	D&O	EMPLOYEES PROVIDENT FUND BOARD [SSH]	99	85,092	6.872	
08 APR 2024 - 08 APR 2024	D&O	EMPLOYEES PROVIDENT FUND BOARD [SSH]	328	84,994	6.864	
09 APR 2024 - 15 APR 2024	DATAPRP	TAN SRI MUHAMMAD IKMAL OPAT BIN ABDULLAH [SSH]	-284	44,168	5.985	
09 APR 2024 - 15 APR 2024	DATAPRP	WARDAH COMMUNICATION SDN BHD [SSH]	-284	44,168	5.985	
09 APR 2024 - 15 APR 2024	DATAPRP	WIDAD BUSINESS GROUP SDN BHD [SSH]	-284	44,168	5.985	
15 APR 2024 - 04 SEP 2024	DFX	DATUK WIRA LAU CHI CHIANG [DIR/CEO]	-4,870	7,964	1.068	
18 APR 2024 - 18 APR 2024	DIALOG	KUMPULAN WANG PERSARAAN (DIPERBADANKAN) [SSH]	500	622,173	11.03	
12 APR 2024 - 12 APR 2024	DIALOG	EMPLOYEES PROVIDENT FUND BOARD [SSH]	550	881,690	15.63	
08 APR 2024 - 08 APR 2024	DIALOG	EMPLOYEES PROVIDENT FUND BOARD [SSH]	150	881,140	15.62	
15 APR 2024 - 15 APR 2024	DRBHC0M	EMPLOYEES PROVIDENT FUND BOARD [SSH]	-496	172,191	8.907	
12 APR 2024 - 12 APR 2024	DRBHC0M	EMPLOYEES PROVIDENT FUND BOARD [SSH]	-1,111	172,674	8.932	
16 APR 2024 - 16 APR 2024	E&O	KUMPULAN WANG PERSARAAN (DIPERBADANKAN) [SSH]	-2,600	112,846	5.641	
18 APR 2024 - 18 APR 2024	ECONBHD	KUMPULAN WANG PERSARAAN (DIPERBADANKAN) [SSH]	674	76,825	5.42	
16 APR 2024 - 16 APR 2024	ECONBHD	EMPLOYEES PROVIDENT FUND BOARD [SSH]	2,307	100,740	7.107	
17 APR 2024 - 17 APR 2024	ECONBHD	KUMPULAN WANG PERSARAAN (DIPERBADANKAN) [SSH]	468	76,151	5.372	

Disclaimer: The Information in Insider Activity is extracted from www.shareinvestor.com/fundamental/insider_trades. The information on this page is provided as a service to readers. It does not constitute financial advice and/or any investment recommendations. We assume no liability for damages resulting from or arising out of the use of such information. Whilst every effort is made to ensure accuracy, the information presented is not the official record of shareholder filings. Readers are advised to read the original filings on the Bursa Malaysia website at www.bursamalaysia.com



STROM
SWISS TIMEPIECES & JEWELLERY



StromWatch Asia
Tele : +65.9817.3378
Email : ll.stromasia@gmail.com
WWW.STROMWATCH.SWISS

Notice Period is 14th Apr 2024 - 20th Apr 2024

Effective Change Date	Stock Name	Buyer/ Seller Name [Classification]	Bought / (Sold) ['000]		No. of Shares After Trade ['000]	
			Total	Total	% Held	% Held
12 APR 2024 - 12 APR 2024	ECONBHD	KUMPULAN WANG PERSARAAN (DIPERBADANKAN) [SSH]	1,230	75,683	5.339	
08 APR 2024 - 08 APR 2024	ECONBHD	EMPLOYEES PROVIDENT FUND BOARD [SSH]	2,141	98,433	6.944	
16 APR 2024 - 16 APR 2024	EFRAME	DATO HOOI JIA HAO [SSH]	470	28,793	7.955	
15 APR 2024 - 15 APR 2024	ELKDESA	MR TEOH HOCK CHAI @ TEW HOCK CHAI [SSH]	-520	193,658	42.58	
15 APR 2024 - 15 APR 2024	ELKDESA	MR TEOH HOCK CHAI@TEW HOCK CHAI [DIR/CEO]	-520	193,658	42.58	
15 APR 2024 - 15 APR 2024	ELKDESA	MR TEOH SENG HEE [DIR/CEO]	600	4,220	0.928	
15 APR 2024 - 15 APR 2024	ELKDESA	TEOH HOCK CHAI FAMILY (L) FOUNDATION [SSH]	80	183,930	40.441	
15 APR 2024 - 15 APR 2024	ELKDESA	ZHONGXIN RESOURCES SDN BHD [SSH]	80	175,930	38.682	
09 APR 2024 - 12 APR 2024	ELKDESA	MR TEOH HOCK CHAI @ TEW HOCK CHAI [SSH]	250	194,178	42.695	
09 APR 2024 - 12 APR 2024	ELKDESA	MR TEOH HOCK CHAI@TEW HOCK CHAI [DIR/CEO]	250	194,178	42.695	
09 APR 2024 - 12 APR 2024	ELKDESA	TEOH HOCK CHAI FAMILY (L) FOUNDATION [SSH]	250	183,850	40.424	
09 APR 2024 - 12 APR 2024	ELKDESA	ZHONGXIN RESOURCES SDN BHD [SSH]	250	175,850	38.664	
09 APR 2024 - 09 APR 2024	EWINT	TAN SRI DATO' SRI LIEW KEE SIN [DIR/CEO]	-5,328	270,241	11.26	
09 APR 2024 - 09 APR 2024	EWINT	TAN SRI DATO' SRI LIEW KEE SIN [SSH]	-5,328	270,241	11.26	
16 APR 2024 - 16 APR 2024	F&N	EMPLOYEES PROVIDENT FUND BOARD [SSH]	39	42,698	11.641	
15 APR 2024 - 15 APR 2024	F&N	EMPLOYEES PROVIDENT FUND BOARD [SSH]	58	42,659	11.631	
12 APR 2024 - 12 APR 2024	F&N	EMPLOYEES PROVIDENT FUND BOARD [SSH]	5	42,601	11.615	
09 APR 2024 - 09 APR 2024	F&N	EMPLOYEES PROVIDENT FUND BOARD [SSH]	103	42,596	11.613	
08 APR 2024 - 08 APR 2024	F&N	EMPLOYEES PROVIDENT FUND BOARD [SSH]	41	42,492	11.585	
15 APR 2024 - 16 APR 2024	FAJAR	TAN SRI DATUK TA KIN YAN [SSH]	400	91,792	12.377	
04 MAR 2024 - 04 MAR 2024	FAST	MR TAN WYE CHUAN [DIR/CEO]	350	700	0.162	
04 MAR 2024 - 04 MAR 2024	FAST-WB	MR TAN WYE CHUAN [DIR/CEO]	175	175	0.162	
16 APR 2024 - 16 APR 2024	FFB	EMPLOYEES PROVIDENT FUND BOARD [SSH]	367	164,128	8.768	
17 APR 2024 - 17 APR 2024	FFB	KUMPULAN WANG PERSARAAN (DIPERBADANKAN) [SSH]	1,745	102,657	5.484	
15 APR 2024 - 15 APR 2024	FFB	EMPLOYEES PROVIDENT FUND BOARD [SSH]	2,000	163,761	8.748	
16 APR 2024 - 16 APR 2024	FFB	KUMPULAN WANG PERSARAAN (DIPERBADANKAN) [SSH]	981	100,912	5.391	
09 APR 2024 - 09 APR 2024	FFB	EMPLOYEES PROVIDENT FUND BOARD [SSH]	68	162,129	8.661	
16 APR 2024 - 16 APR 2024	FRONTKN	EMPLOYEES PROVIDENT FUND BOARD [SSH]	944	146,171	9.293	
15 APR 2024 - 15 APR 2024	FRONTKN	EMPLOYEES PROVIDENT FUND BOARD [SSH]	664	145,149	9.228	
12 APR 2024 - 12 APR 2024	FRONTKN	EMPLOYEES PROVIDENT FUND BOARD [SSH]	25	144,485	9.186	
08 APR 2024 - 08 APR 2024	FRONTKN	EMPLOYEES PROVIDENT FUND BOARD [SSH]	3	144,460	9.184	
16 APR 2024 - 16 APR 2024	GAMUDA	EMPLOYEES PROVIDENT FUND BOARD (EPF BOARD) [SSH]	415	250,847	9.06	
15 APR 2024 - 15 APR 2024	GAMUDA	EMPLOYEES PROVIDENT FUND BOARD (EPF BOARD) [SSH]	305	250,532	9.05	
12 APR 2024 - 12 APR 2024	GAMUDA	EMPLOYEES PROVIDENT FUND BOARD (EPF BOARD) [SSH]	2,144	250,227	9.04	
09 APR 2024 - 09 APR 2024	GAMUDA	EMPLOYEES PROVIDENT FUND BOARD (EPF BOARD) [SSH]	132	248,083	8.96	
08 APR 2024 - 08 APR 2024	GAMUDA	EMPLOYEES PROVIDENT FUND BOARD (EPF BOARD) [SSH]	226	247,951	8.95	
12 APR 2024 - 12 APR 2024	GASMSIA	EMPLOYEES PROVIDENT FUND BOARD [SSH]	-26	71,123	5.539	
09 APR 2024 - 09 APR 2024	GASMSIA	EMPLOYEES PROVIDENT FUND BOARD [SSH]	-60	71,149	5.541	
08 APR 2024 - 08 APR 2024	GASMSIA	EMPLOYEES PROVIDENT FUND BOARD [SSH]	-190	71,094	5.536	
16 APR 2024 - 16 APR 2024	GBAY	MR PETER LING EE KONG [DIR/CEO]	5	10,512	12.921	
16 APR 2024 - 16 APR 2024	GBAY	MR PETER LING EE KONG [SSH]	5	10,512	12.894	
16 APR 2024 - 16 APR 2024	GCB	MR HIA CHENG [DIR/CEO]	100	78,892	6.717	
16 APR 2024 - 16 APR 2024	GCB	MR HIA CHENG [SSH]	100	78,892	6.717	
15 APR 2024 - 15 APR 2024	GENP	EMPLOYEES PROVIDENT FUND BOARD [SSH]	70	118,477	13.206	
12 APR 2024 - 12 APR 2024	GENP	EMPLOYEES PROVIDENT FUND BOARD [SSH]	65	118,407	13.198	
09 APR 2024 - 09 APR 2024	GENP	EMPLOYEES PROVIDENT FUND BOARD [SSH]	-112	118,342	13.191	
12 APR 2024 - 12 APR 2024	GENP	KUMPULAN WANG PERSARAAN (DIPERBADANKAN) [SSH]	27	67,343	7.506	
08 APR 2024 - 08 APR 2024	GENP	EMPLOYEES PROVIDENT FUND BOARD [SSH]	-474	118,454	13.203	
12 APR 2024 - 12 APR 2024	GREATEC	DATO' OOI BOON CHYE [DIR/CEO]	50	258	0.021	
15 APR 2024 - 15 APR 2024	HCK	HIICHIKOK EQUITIES SDN BHD [SSH]	180	304,419	55.94	
15 APR 2024 - 15 APR 2024	HCK	TAN SRI HII CHII KOK @ HII CHEE KOK [DIR/CEO]	600	306,889	56.394	
15 APR 2024 - 15 APR 2024	HCK	TAN SRI HII CHII KOK @ HII CHEE KOK [SSH]	600	306,889	56.394	
16 APR 2024 - 16 APR 2024	HLBANK	EMPLOYEES PROVIDENT FUND BOARD [SSH]	108	201,440	9.654	
15 APR 2024 - 15 APR 2024	HLBANK	EMPLOYEES PROVIDENT FUND BOARD [SSH]	615	201,332	9.649	
12 APR 2024 - 12 APR 2024	HLBANK	EMPLOYEES PROVIDENT FUND BOARD [SSH]	178	200,717	9.619	
15 APR 2024 - 16 APR 2024	HONGSENG	MR LEONG SENG WUI [DIR/CEO]	11,518	275,000	5.383	
15 APR 2024 - 16 APR 2024	HONGSENG	MR LEONG SENG WUI [SSH]	11,518	275,000	5.383	
12 APR 2024 - 12 APR 2024	HONGSENG	MR LEONG SENG WUI [DIR/CEO]	3,482	263,482	5.158	
12 APR 2024 - 12 APR 2024	HONGSENG	MR LEONG SENG WUI [SSH]	3,482	263,482	5.158	
18 APR 2024 - 18 APR 2024	IGBREIT	KUMPULAN WANG PERSARAAN (DEPERBADANKAN) [SSH]	-447	250,532	6.949	
09 APR 2024 - 09 APR 2024	IGBREIT	EMPLOYEES PROVIDENT FUND BOARD ("EPF BOARD") [SSH]	1,001	416,887	11.563	
16 APR 2024 - 16 APR 2024	IHH	EMPLOYEES PROVIDENT FUND BOARD [SSH]	667	974,903	11.07	
15 APR 2024 - 15 APR 2024	IHH	EMPLOYEES PROVIDENT FUND BOARD [SSH]	2,000	974,236	11.062	
12 APR 2024 - 12 APR 2024	IHH	EMPLOYEES PROVIDENT FUND BOARD [SSH]	-124	972,236	11.039	
09 APR 2024 - 09 APR 2024	IHH	EMPLOYEES PROVIDENT FUND BOARD [SSH]	-434	972,359	11.041	
08 APR 2024 - 08 APR 2024	IHH	EMPLOYEES PROVIDENT FUND BOARD [SSH]	-780	972,793	11.046	
18 APR 2024 - 18 APR 2024	IJM	KUMPULAN WANG PERSARAAN (DIPERBADANKAN) [SSH]	143	345,505	9.854	
16 APR 2024 - 16 APR 2024	IJM	EMPLOYEES PROVIDENT FUND BOARD [SSH]	1,000	602,350	17.18	
17 APR 2024 - 17 APR 2024	IJM	KUMPULAN WANG PERSARAAN (DIPERBADANKAN) [SSH]	143	345,362	9.85	
15 APR 2024 - 15 APR 2024	IJM	EMPLOYEES PROVIDENT FUND BOARD [SSH]	-17	601,350	17.151	
16 APR 2024 - 16 APR 2024	IJM	KUMPULAN WANG PERSARAAN (DIPERBADANKAN) [SSH]	-227	345,219	9.846	
08 APR 2024 - 08 APR 2024	IJM	EMPLOYEES PROVIDENT FUND BOARD [SSH]	1,564	601,368	17.152	
16 APR 2024 - 16 APR 2024	INARI	EMPLOYEES PROVIDENT FUND BOARD [SSH]	406	356,978	9.498	
17 APR 2024 - 17 APR 2024	INARI	KUMPULAN WANG PERSARAAN (DIPERBADANKAN) [SSH]	-443	353,225	9.399	

Notice Period is 14th Apr 2024 - 20th Apr 2024

Effective Change Date	Stock Name	Buyer/ Seller Name [Classification]	Bought / (Sold) ['000]		No. of Shares After Trade ['000]	
			Total	Total	% Held	% Held
09 APR 2024 - 09 APR 2024	INARI	EMPLOYEES PROVIDENT FUND BOARD [SSH]	1,689	361,572	9.621	
08 APR 2024 - 08 APR 2024	INARI	EMPLOYEES PROVIDENT FUND BOARD [SSH]	1,173	359,883	9.576	
16 APR 2024 - 16 APR 2024	IOICORP	EMPLOYEES PROVIDENT FUND BOARD [SSH]	2,401	736,448	11.871	
15 APR 2024 - 15 APR 2024	IOICORP	EMPLOYEES PROVIDENT FUND BOARD [SSH]	2,556	734,047	11.832	
12 APR 2024 - 12 APR 2024	IOICORP	EMPLOYEES PROVIDENT FUND BOARD [SSH]	2,268	731,492	11.791	
09 APR 2024 - 09 APR 2024	IOICORP	EMPLOYEES PROVIDENT FUND BOARD [SSH]	387	729,224	11.755	
08 APR 2024 - 08 APR 2024	IOICORP	EMPLOYEES PROVIDENT FUND BOARD [SSH]	942	728,837	11.748	
16 APR 2024 - 16 APR 2024	IOIPG	EMPLOYEES PROVIDENT FUND BOARD [SSH]	2,000	363,975	6.61	
15 APR 2024 - 15 APR 2024	IOIPG	EMPLOYEES PROVIDENT FUND BOARD [SSH]	960	361,911	6.573	
12 APR 2024 - 12 APR 2024	IOIPG	EMPLOYEES PROVIDENT FUND BOARD [SSH]	-419	360,950	6.555	
12 APR 2024 - 12 APR 2024	IOIPG	MR LEE YEOW SENG [DIR/CEO]	-1,200	3,768,236	68.437	
12 APR 2024 - 12 APR 2024	IOIPG	MR LEE YEOW SENG [SSH]	-1,200	3,768,236	68.437	
09 APR 2024 - 09 APR 2024	IOIPG	EMPLOYEES PROVIDENT FUND BOARD [SSH]	2,000	361,345	6.563	
08 APR 2024 - 08 APR 2024	IOIPG	EMPLOYEES PROVIDENT FUND BOARD [SSH]	-1,000	358,539	6.512	
15 APR 2024 - 16 APR 2024	JETSON	DATUK TEH KIAN AN [SSH]	200	27,697	10.336	
12 APR 2024 - 12 APR 2024	JSB	MITSUBISHI UFJ FINANCIAL GROUP INC [SSH]	-600	34,656	7.895	
12 APR 2024 - 12 APR 2024	JSB	MORGAN STANLEY [SSH]	-600	34,656	7.895	
16 APR 2024 - 16 APR 2024	KERJAYA	EMPLOYEES PROVIDENT FUND BOARD [SSH]	450	71,806	5.694	
15 APR 2024 - 15 APR 2024	KERJAYA	EMPLOYEES PROVIDENT FUND BOARD [SSH]	154	71,357	5.659	
15 APR 2024 - 15 APR 2024	KGB	MR SOO YUIT WENG [DIR/CEO]	100	570	0.294	
17 APR 2024 - 17 APR 2024	KHEESAN	DATO' NG MENG KEE [SSH]	-1,000	10,052	7.322	
15 APR 2024 - 15 APR 2024	KLCC	EMPLOYEES PROVIDENT FUND BOARD [SSH]	-30	188,826	10.459	
15 APR 2024 - 15 APR 2024	KLCC	EMPLOYEES PROVIDENT FUND BOARD [SSH]	-30	188,826	10.459	
12 APR 2024 - 12 APR 2024	KLCC	EMPLOYEES PROVIDENT FUND BOARD [SSH]	-4	188,856	10.461	
12 APR 2024 - 12 APR 2024	KLCC	EMPLOYEES PROVIDENT FUND BOARD [SSH]	-4	188,856	10.461	
09 APR 2024 - 09 APR 2024	KLCC	EMPLOYEES PROVIDENT FUND BOARD [SSH]	-4	188,860	10.461	
09 APR 2024 - 09 APR 2024	KLCC	EMPLOYEES PROVIDENT FUND BOARD [SSH]	-4	188,860	10.461	
08 APR 2024 - 08 APR 2024	KLCC	EMPLOYEES PROVIDENT FUND BOARD [SSH]	-2	188,864	10.461	
08 APR 2024 - 08 APR 2024	KLCC	EMPLOYEES PROVIDENT FUND BOARD [SSH]	-2	188,864	10.461	
16 APR 2024 - 16 APR 2024	KLK	EMPLOYEES PROVIDENT FUND BOARD [SSH]	278	138,742	12.654	
15 APR 2024 - 15 APR 2024	KLK	EMPLOYEES PROVIDENT FUND BOARD [SSH]	575	138,465	12.629	
12 APR 2024 - 12 APR 2024	KLK	EMPLOYEES PROVIDENT FUND BOARD [SSH]	308	137,890	12.577	
09 APR 2024 - 09 APR 2024	KLK	EMPLOYEES PROVIDENT FUND BOARD [SSH]	602	137,582	12.548	
08 APR 2024 - 08 APR 2024	KLK	EMPLOYEES PROVIDENT FUND BOARD [SSH]	306	136,980	12.494	
16 APR 2024 - 16 APR 2024	KNM	ANDREAS HEESCHEN [SSH]	-73,866	259,734	6.423	
09 APR 2024 - 09 APR 2024	KOSSAN	EMPLOYEES PROVIDENT FUND BOARD [SSH]	-400	142,379	5.58	
18 APR 2024 - 18 APR 2024	LBS	TAN SRI DATO' SRI IR. (DR.) LIM HOCK SAN JP [DIR/CEO]	200	612,922	39.668	
18 APR 2024 - 18 APR 2024	LBS	TAN SRI DATO' SRI IR. (DR.) LIM HOCK SAN JP [SSH]	200	608,169	39.36	
16 APR 2024 - 17 APR 2024	LBS	TAN SRI DATO' SRI IR. (DR.) LIM HOCK SAN JP [DIR/CEO]	400	612,722	39.655	
16 APR 2024 - 17 APR 2024	LBS	TAN SRI DATO' SRI IR. (DR.) LIM HOCK SAN JP [SSH]	400	607,969	39.347	
16 APR 2024 - 16 APR 2024	LFECORP	MR CHUAH CHONG EWE [DIR/CEO]	860	158,493	14.296	
16 APR 2024 - 16 APR 2024	LFECORP	MR CHUAH CHONG EWE [SSH]	860	158,493	14.296	
17 APR 2024 - 17 APR 2024	M&A	CIK SITI NUR AISHAH BINTI ISHAK [SSH]	3,600	103,296	5.168	
08 APR 2024 - 08 APR 2024	MAGMA	DATO' SERI ISMAIL @ FAROUK BIN ABDULLAH [DIR/CEO]	65	99,541	10.501	
08 APR 2024 - 08 APR 2024	MAGMA	DATO' SERI ISMAIL @ FAROUK BIN ABDULLAH [SSH]	65	99,541	10.501	
08 APR 2024 - 08 APR 2024	MAGMA	IMPPIANA SDN BHD [SSH]	65	63,008	6.647	
15 APR 2024 - 15 APR 2024	MATRIX	LEMBAGA TABUNG HAJI [SSH]	150	70,898	5.666	
12 APR 2024 - 12 APR 2024	MATRIX	LEMBAGA TABUNG HAJI [SSH]	350	70,748	5.654	
17 APR 2024 - 17 APR 2024	MAXIM	TAN SRI DATUK SERI GAN SEONG LIAM [DIR/CEO]	820	186,270	25.342	
17 APR 2024 - 17 APR 2024	MAXIM	TAN SRI DATUK SERI GAN SEONG LIAM [SSH]	820	186,270	25.342	
15 APR 2024 - 16 APR 2024	MAXIM	TAN SRI DATUK SERI GAN SEONG LIAM [DIR/CEO]	700	185,450	25.23	
15 APR 2024 - 16 APR 2024	MAXIM	TAN SRI DATUK SERI GAN SEONG LIAM [SSH]	700	185,450	25.23	
08 APR 2024 - 08 APR 2024	MAXIS	EMPLOYEES PROVIDENT FUND BOARD ("EPF BOARD") [SSH]	474	879,725	11.233	
16 APR 2024 - 16 APR 2024	MAYBANK	EMPLOYEES PROVIDENT FUND BOARD [SSH]	6,004	1,458,944	12.09	
15 APR 2024 - 15 APR 2024	MAYBANK	EMPLOYEES PROVIDENT FUND BOARD [SSH]	5,337	1,452,940	12.041	
12 APR 2024 - 12 APR 2024	MAYBANK	EMPLOYEES PROVIDENT FUND BOARD [SSH]	9,711	1,447,604	11.996	
09 APR 2024 - 09 APR 2024	MAYBANK	EMPLOYEES PROVIDENT FUND BOARD [SSH]	1,000	1,437,893	11.916	
08 APR 2024 - 08 APR 2024	MAYBANK	EMPLOYEES PROVIDENT FUND BOARD [SSH]	1,980	1,436,894	11.908	
15 APR 2024 - 15 APR 2024	MAYU	MISS TAN QIAN HUI [DIR/CEO]	10	35	0.008	
15 APR 2024 - 15 APR 2024	MAYU	MR TAN KIM HEE [DIR/CEO]	10	53,535	12.065	
15 APR 2024 - 15 APR 2024	MAYU	MR TAN KIM HEE [SSH]	10	53,535	12.065	
17 APR 2024 - 18 APR 2024	MINOX	MR. NG KUAN HUA [DIR/CEO]	1,400			

Notice Period is 14th Apr 2024 – 20th Apr 2024

Effective Change Date	Stock Name	Buyer/ Seller Name [Classification]	Bought / (Sold) ['000]		No. of Shares After Trade ['000]	
			Total	Total	% Held	% Held
17 APR 2024 - 17 APR 2024	MYEG	KUMPULAN WANG PERSARAAN (DIPERBADANKAN) [SSH]	2,821	541,537	7.26	
12 APR 2024 - 12 APR 2024	MYEG	EMPLOYEES PROVIDENT FUND BOARD [SSH]	2,373	391,102	5.243	
09 APR 2024 - 09 APR 2024	MYEG	EMPLOYEES PROVIDENT FUND BOARD [SSH]	3,947	388,729	5.212	
12 APR 2024 - 12 APR 2024	MYEG	KUMPULAN WANG PERSARAAN (DIPERBADANKAN) [SSH]	1,154	538,716	7.223	
08 APR 2024 - 08 APR 2024	MYEG	EMPLOYEES PROVIDENT FUND BOARD [SSH]	4,337	384,782	5.159	
17 APR 2024 - 18 APR 2024	NCT	DATUK SERI CHIAU BENG TEIK [SSH]	2,090	132,715	8.512	
16 APR 2024 - 16 APR 2024	NESTLE	EMPLOYEES PROVIDENT FUND BOARD [SSH]	38	25,366	10.817	
15 APR 2024 - 15 APR 2024	NESTLE	EMPLOYEES PROVIDENT FUND BOARD [SSH]	99	25,328	10.801	
12 APR 2024 - 12 APR 2024	NESTLE	EMPLOYEES PROVIDENT FUND BOARD [SSH]	200	25,229	10.759	
09 APR 2024 - 09 APR 2024	NESTLE	EMPLOYEES PROVIDENT FUND BOARD [SSH]	53	25,029	10.673	
08 APR 2024 - 08 APR 2024	NESTLE	EMPLOYEES PROVIDENT FUND BOARD [SSH]	17	24,976	10.651	
18 APR 2024 - 18 APR 2024	NIHSIN	ENCIK SOFIYAN BIN YAHYA [DIR/CEO]	10	17,689	3.378	
16 APR 2024 - 16 APR 2024	NIHSIN	MISS KHOO WUAN RU [DIR/CEO]	895	97,820	18.68	
16 APR 2024 - 16 APR 2024	NIHSIN	MR KHOO CHEE KONG [SSH]	895	97,820	18.68	
12 APR 2024 - 12 APR 2024	NIHSIN	MISS KHOO WUAN RU [DIR/CEO]	100	96,925	18.509	
12 APR 2024 - 12 APR 2024	NIHSIN	MR KHOO CHEE KONG [SSH]	100	96,925	18.509	
08 APR 2024 - 08 APR 2024	OCK	MR LOW HOCK KEONG [DIR/CEO]	1,663	16,718	1.583	
15 APR 2024 - 17 APR 2024	OLYMPIA	DATO' SRI YAP WEE KEAT [DIR/CEO]	341	541,893	52.944	
15 APR 2024 - 17 APR 2024	OLYMPIA	DATO' SRI YAP WEE KEAT [SSH]	341	541,893	52.944	
15 APR 2024 - 17 APR 2024	OLYMPIA	DATUK YAP WEE CHUN [SSH]	341	541,848	52.94	
15 APR 2024 - 17 APR 2024	OLYMPIA	DUTA EQUITIES SDN BHD [SSH]	341	541,848	52.94	
15 APR 2024 - 17 APR 2024	OLYMPIA	TAN SRI DATO' YAP YONG SEONG [DIR/CEO]	341	541,904	52.945	
15 APR 2024 - 17 APR 2024	OLYMPIA	TAN SRI DATO' YAP YONG SEONG [SSH]	341	541,904	52.945	
15 APR 2024 - 15 APR 2024	OMESTI	DATO' MAH SIEW KWOK [SSH]	16,000	101,340	18.744	
15 APR 2024 - 04 DEC 2024	OMESTI	MR MONTEIRO GERARD CLAIR [DIR/CEO]	-17,400	85,773	15.864	
12 APR 2024 - 15 APR 2024	OMESTI	MR MONTEIRO GERARD CLAIR [SSH]	-17,400	85,773	15.864	
18 APR 2024 - 18 APR 2024	PADINI	KUMPULAN WANG PERSARAAN (DIPERBADANKAN) [SSH]	500	57,951	8.808	
16 APR 2024 - 16 APR 2024	PADINI	EMPLOYEES PROVIDENT FUND BOARD [SSH]	173	47,365	7.199	
17 APR 2024 - 17 APR 2024	PADINI	KUMPULAN WANG PERSARAAN (DIPERBADANKAN) [SSH]	94	57,451	8.732	
12 APR 2024 - 12 APR 2024	PANAMY	EMPLOYEES PROVIDENT FUND BOARD [SSH]	-16	6,828	11.24	
08 APR 2024 - 08 APR 2024	PANAMY	EMPLOYEES PROVIDENT FUND BOARD [SSH]	-1	6,843	11.266	
09 APR 2024 - 09 APR 2024	PAVREIT	EMPLOYEES PROVIDENT FUND BOARD [SSH]	2,000	429,266	11.739	
16 APR 2024 - 16 APR 2024	PBBANK	EMPLOYEES PROVIDENT FUND BOARD [SSH]	5,104	3,080,227	15.87	
15 APR 2024 - 15 APR 2024	PBBANK	EMPLOYEES PROVIDENT FUND BOARD [SSH]	3,104	3,075,123	15.84	
12 APR 2024 - 12 APR 2024	PBBANK	EMPLOYEES PROVIDENT FUND BOARD [SSH]	5,500	3,072,019	15.83	
09 APR 2024 - 09 APR 2024	PBBANK	EMPLOYEES PROVIDENT FUND BOARD [SSH]	6,000	3,066,519	15.8	
08 APR 2024 - 08 APR 2024	PBBANK	EMPLOYEES PROVIDENT FUND BOARD [SSH]	10,000	3,060,519	15.77	
09 APR 2024 - 09 APR 2024	PCCS	CCS CAPITAL SDN. BHD. [SSH]	43	93,734	42.493	
09 APR 2024 - 09 APR 2024	PCCS	MADAM TAN KWEE KEE [SSH]	43	104,012	47.152	
09 APR 2024 - 09 APR 2024	PCCS	MR CHAN CHOO SING [SSH]	43	104,012	47.152	
09 APR 2024 - 09 APR 2024	PCCS	MR CHAN WEE KIANG [DIR/CEO]	43	95,946	43.496	
09 APR 2024 - 09 APR 2024	PCCS	MR CHAN WEE KIANG [SSH]	43	95,946	43.496	
16 APR 2024 - 16 APR 2024	PENTA	EMPLOYEES PROVIDENT FUND BOARD [SSH]	246	62,474	8.783	
08 APR 2024 - 08 APR 2024	PENTA	EMPLOYEES PROVIDENT FUND BOARD [SSH]	242	62,227	8.748	
15 APR 2024 - 15 APR 2024	PESTECH	MR LIM AH HOCK [DIR/CEO]	-1,500	246,787	25.065	
15 APR 2024 - 15 APR 2024	PESTECH	MR LIM AH HOCK [SSH]	-1,500	246,787	25.065	
16 APR 2024 - 16 APR 2024	PETGAS	EMPLOYEES PROVIDENT FUND BOARD [SSH]	185	256,684	12.972	
15 APR 2024 - 15 APR 2024	PETGAS	EMPLOYEES PROVIDENT FUND BOARD [SSH]	-1,174	256,499	12.963	
12 APR 2024 - 12 APR 2024	PETGAS	EMPLOYEES PROVIDENT FUND BOARD [SSH]	-319	257,673	13.022	
09 APR 2024 - 09 APR 2024	PETGAS	EMPLOYEES PROVIDENT FUND BOARD [SSH]	-40	257,992	13.038	
08 APR 2024 - 08 APR 2024	PETGAS	EMPLOYEES PROVIDENT FUND BOARD [SSH]	1,056	258,032	13.04	
15 APR 2024 - 15 APR 2024	PINEAPP	MISS LIM YEN LING [DIR/CEO]	267	762	1.571	
12 APR 2024 - 17 APR 2024	PJBUMI	PUAN HAFIDAH BINTI PAWANCHIK [SSH]	-115	5,481	6.684	
15 APR 2024 - 15 APR 2024	PLABS	MR BU YAW SENG [SSH]	177	19,282	7.006	
16 APR 2024 - 16 APR 2024	PPB	EMPLOYEES PROVIDENT FUND BOARD [SSH]	464	152,226	10.701	
15 APR 2024 - 15 APR 2024	PPB	EMPLOYEES PROVIDENT FUND BOARD [SSH]	512	151,762	10.668	
12 APR 2024 - 12 APR 2024	PPB	EMPLOYEES PROVIDENT FUND BOARD [SSH]	1,000	151,251	10.632	
09 APR 2024 - 09 APR 2024	PPB	EMPLOYEES PROVIDENT FUND BOARD [SSH]	620	150,251	10.562	
08 APR 2024 - 08 APR 2024	PPB	EMPLOYEES PROVIDENT FUND BOARD [SSH]	719	149,631	10.518	
16 APR 2024 - 16 APR 2024	PRIVA	DATUK PUVANESAN A/L SUBENTHIRAN [SSH]	-150,886	168,128	26.33	
12 APR 2024 - 12 APR 2024	PWRWELL	MADAM WONG YOKE YEN [DIR/CEO]	-40,000	276,235	47.582	
12 APR 2024 - 12 APR 2024	PWRWELL	MADAM WONG YOKE YEN [SSH]	-40,000	276,235	47.582	
12 APR 2024 - 12 APR 2024	PWRWELL	MR THAM KIEN WAI [DIR/CEO]	-45,000	272,786	46.987	
12 APR 2024 - 12 APR 2024	PWRWELL	MR THAM KIEN WAI [SSH]	-45,000	272,786	46.987	
12 APR 2024 - 12 APR 2024	PWRWELL	PW SYNERGY SDN BHD [SSH]	-40,000	256,082	44.11	
08 APR 2024 - 09 APR 2024	QL	MR CHIA MAK HOOI [DIR/CEO]	-100	4,848	0.199	
28 MAR 2023 - 28 MAR 2023	REACH	CHEUNG SIU FAI [SSH]	1,032,544	1,032,544	48.5	
12 APR 2024 - 12 APR 2024	RGTBHD	DATUK LIM SEAT HOE [DIR/CEO]	200	285,600	27.502	
12 APR 2024 - 12 APR 2024	RGTBHD	DATUK LIM SEAT HOE [SSH]	200	285,600	27.502	
12 APR 2024 - 12 APR 2024	RGTBHD	MADAM HOR LIM CHEE [SSH]	100	361,480	34.809	
12 APR 2024 - 12 APR 2024	RGTBHD	MR NG CHOON KEAT [DIR/CEO]	100	320,425	30.856	
12 APR 2024 - 12 APR 2024	RGTBHD	MR NG CHOON KEAT [SSH]	100	320,425	30.856	
12 APR 2024 - 12 APR 2024	RGTBHD	MR TAN SONG CHAI [SSH]	100	320,380	30.851	
12 APR 2024 - 12 APR 2024	RGTBHD	RGT EQUITY HOLDINGS SDN. BHD [SSH]	100	267,600	25.769	
19 APR 2024 - 19 APR 2024	RGTECH	MR TEVANAIGAM RANDY CHITTY [DIR/CEO]	100	2,150	0.409	
16 APR 2024 - 17 APR 2024	RGTECH	MR TEVANAIGAM RANDY CHITTY [DIR/CEO]	100	2,050	0.39	
16 APR 2024 - 16 APR 2024	RHBBANK	EMPLOYEES PROVIDENT FUND BOARD [SSH]	2,338	1,724,713	40.237	
15 APR 2024 - 15 APR 2024	RHBBANK	EMPLOYEES PROVIDENT FUND BOARD [SSH]	2,750	1,722,375	40.183	
12 APR 2024 - 12 APR 2024	RHBBANK	EMPLOYEES PROVIDENT FUND BOARD [SSH]	4,776	1,719,625	40.119	
09 APR 2024 - 09 APR 2024	RHBBANK	EMPLOYEES PROVIDENT FUND BOARD [SSH]	-2,150	1,714,850	40.007	

Notice Period is 14th Apr 2024 – 20th Apr 2024

Effective Change Date	Stock Name	Buyer/ Seller Name [Classification]	Bought / (Sold) ['000]		No. of Shares After Trade ['000]	
			Total	Total	% Held	% Held
08 APR 2024 - 08 APR 2024	RHBBANK	EMPLOYEES PROVIDENT FUND BOARD [SSH]	-3,000	1,717,000	40.057	
09 APR 2024 - 09 APR 2024	RSAWIT	MR WONG ING SENG [DIR/CEO]	255	520	0.026	
17 APR 2024 - 18 APR 2024	SALCON	BERJAYA CAPITAL BERHAD [SSH]	5,850	116,705	11.531	
17 APR 2024 - 18 APR 2024	SALCON	BERJAYA CORPORATION BERHAD [SSH]	5,850	160,235	15.832	
17 APR 2024 - 18 APR 2024	SALCON	BERJAYA GROUP BERHAD [SSH]	5,850	160,235	15.832	
17 APR 2024 - 18 APR 2024	SALCON	BIZURAI BIJAK (M) SDN BHD [SSH]	5,850	116,705	11.531	
17 APR 2024 - 18 APR 2024	SALCON	INTER-PACIFIC CAPITAL SDN BHD [SSH]	5,850	116,705	11.531	
17 APR 2024 - 18 APR 2024	SALCON	JUARA SEJATI SDN BHD [SSH]	5,850	160,235	15.832	
15 APR 2024 - 16 APR 2024	SALCON	BERJAYA CAPITAL BERHAD [SSH]	2,600	110,855	10.953	
15 APR 2024 - 16 APR 2024	SALCON	BERJAYA CORPORATION BERHAD [SSH]	2,600	154,385	15.254	
15 APR 2024 - 16 APR 2024	SALCON	BERJAYA GROUP BERHAD [SSH]	2,600	154,385	15.254	
15 APR 2024 - 16 APR 2024	SALCON	BIZURAI BIJAK (M) SDN BHD [SSH]	2,600	110,855	10.953	
15 APR 2024 - 16 APR 2024	SALCON	INTER-PACIFIC CAPITAL SDN BHD [SSH]	2,600	110,855	10.953	
15 APR 2024 - 16 APR 2024	SALCON	JUARA SEJATI SDN BHD [SSH]	2,600	154,385	15.254	
09 APR 2024 - 12 APR 2024	SALCON	BERJAYA CAPITAL BERHAD [SSH]	190	108,255	10.696	
09 APR 2024 - 12 APR 2024	SALCON	BERJAYA CORPORATION BERHAD [SSH]	190	151,785	14.997	
09 APR 2024 - 12 APR 2024	SALCON	BERJAYA GROUP BERHAD [SSH]	190	151,785	14.997	
09 APR 2024 - 12 APR 2024	SALCON	BIZURAI BIJAK (M) SDN BHD [SSH]	190	108,255	10.696	
09 APR 2024 - 12 APR 2024	SALCON	INTER-PACIFIC CAPITAL SDN BHD [SSH]	190	108,255	10.696	
09 APR 2024 - 12 APR 2024	SALCON	JUARA SEJATI SDN BHD [SSH]	190	151,785	14.997	
15 APR 2024 - 17 APR 2024	SCIENTX	MR LIM PENG CHEONG [DIR/CEO]	700	851,933	54.918	
15 APR 2024 - 17 APR 2024	SCIENTX	MR LIM PENG CHEONG [SSH]	700	845,890	54.529	
15 APR 2024 - 17 APR 2024	SCIENTX	MR LIM PENG JIN [DIR/CEO]	700	898,079	57.893	
15 APR 2024 - 17 APR 2024	SCIENTX	MR LIM PENG JIN [SSH]	700	897,987	57.887	
15 APR 2024 - 17 APR 2024	SCIENTX	SCIENTEX INFINITY SDN BHD [SSH]	700	713,763	46.012	
15 APR 2024 - 15 APR 2024	SCOMNET	EMPLOYEES PROVIDENT FUND BOARD [SSH]	824	46,951	5.725	
09 APR 2024 - 09 APR 2024	SCOMNET	EMPLOYEES PROVIDENT FUND BOARD [SSH]	1,040	46,127	5.625	
09 APR 2024 - 09 APR 2024	SCOMNET	MR SHIUE JYH-JEH @ JERRY [SSH]	-3,000	458,207	55.881	
08 APR 2024 - 08 APR 2024	SCOMNET	EMPLOYEES PROVIDENT FUND BOARD [SSH]	831	45,087	5.499	
16 APR 2024 - 16 APR 2024	SIME	AMANAHRAYA TRUSTEES BERHAD - AMANAH SAHAM BUMIPUTERA [SSH]	3,803	2,472,803	36.282	
16 APR 2024 - 16 APR 2024	SIME	KUMPULAN WANG PERSARAAN (DIPERBADANKAN) [SSH]	-3,328	516,305	7.575	
15 APR 2024 - 15 APR 2024	SIME	AMANAHRAYA TRUSTEES BERHAD - AMANAH SAHAM BUMIPUTERA [SSH]	3,000	2,469,000	36.226	
15 APR 2024 - 15 APR 2024	SIME	EMPLOYEES PROVIDENT FUND BOARD [SSH]	6,210	972,177	14.264	
12 APR 2024 - 12 APR 2024	SIME	EMPLOYEES PROVIDENT FUND BOARD [SSH]	4,087	965,967	14.173	
15 APR 2024 - 15 APR 2024	SIME	KUMPULAN WANG PERSARAAN (DIPERBADANKAN) [SSH]	-1,000	519,633	7.624	
09 APR 2024 - 09 APR 2024	SIME	EMPLOYEES PROVIDENT FUND BOARD [SSH]	4,582	961,881	14.113	
08 APR 2024 - 08 APR 2024	SIME	EMPLOYEES PROVIDENT FUND BOARD [SSH]	3,977	957,298	14.045	
09 APR 2024 - 09 APR 2024	SIME	KUMPULAN WANG PERSARAAN (DIPERBADANKAN) [SSH]	53	520,633	7.639	
05 APR 2024 - 05 APR 2024	SIME	EMPLOYEES PROVIDENT FUND BOARD [SSH]	7,314	954,122	13.999	
16 APR 2024 - 17 APR 2024	SIMEPLT	KUMPULAN WANG PERSARAAN (DIPERBADANKAN) [SSH]	100	459,350	6.642	
12 APR 2024 - 15 APR 2024	SIMEPLT	EMPLOYEES PROVIDENT FUND BOARD [SSH]	1,030	1,053,367	15.232	
15 APR 2024 - 15 APR 2024	SIMEPLT	KUMPULAN WANG PERSARAAN (DIPERBADANKAN) [SSH]	33	459,250	6.641	
09 APR 2024 - 09 APR 2024	SIMEPLT	EMPLOYEES PROVIDENT FUND BOARD [SSH]	904	1,052,338	15.217	
12 APR 2024 - 12 APR 2024	SIMEPLT	KUMPULAN WANG PERSARAAN (DIPERBADANKAN) [SSH]	75	459,217	6.64	
08 APR 2024 - 08 APR 2024	SIMEPLT	EMPLOYEES PROVIDENT FUND BOARD [SSH]	644	1,051,433	15.204	
17 APR 2024 - 17 APR 2024	SKPRES	ABRDN HOLDINGS LIMITED [SSH]	750	82,501	5.281	
17 APR 2024 - 17 APR 2024	SKPRES	ABRDN MALAYSIA SDN BHD [SSH]	750	82,501	5.281	
17 APR 2024 - 17 APR 2024	SKPRES	ABRDN PLC [SSH]	750	82,501	5.281	
16 APR 2024 - 16 APR 2024	SKPRES	EMPLOYEES PROVIDENT FUND BOARD [SSH]	258	146,870	9.4	
17 APR 2024 - 17 APR 2024	SKPRES	KUMPULAN WANG PERSARAAN (DIPERBADANKAN) [SSH]	181	141,810	9.077	
16 APR 2024 - 16 APR 2024	SKPRES	ABRDN HOLDINGS LIMITED [SSH]	340	81,751	5.233	
16 APR 2024 - 16 APR 2024	SKPRES	ABRDN MALAYSIA SDN BHD [SSH]	340	81,751	5.233	
16 APR 2024 - 16 APR 2024	SKPRES	ABRDN PLC [SSH]	340	81,751	5.233	
16 APR 2024 - 16 APR 2024	SKPRES	KUMPULAN WANG PERSARAAN (DIPERBADANKAN) [SSH]	82	141,629	9.065	
12 APR 2024 - 12 APR 2024	SMILE	DATIN WONG CHIEN YUE [DIR/CEO]	225	126,266	50.056	
12 APR 2024 - 12 APR 2024	SMILE	DATIN WONG CHIEN YUE [SSH]	225	126,266	50.	

Notice Period is 14th Apr 2024 – 20th Apr 2024

Effective Change Date	Stock Name	Buyer/ Seller Name [Classification]	Bought / (Sold) ['000]		No. of Shares After Trade ['000]	
			Total	% Held	Total	% Held
09 APR 2024 - 09 APR 2024	SPRITZER	DATIN CHUA SHOK TIM @ CHUA SIOK HOON [SSH]	10	163801	51.3	
09 APR 2024 - 09 APR 2024	SPRITZER	DATO' LIM A HENG @ LIM KOK CHEONG [DIR/CEO]	10	163801	51.3	
09 APR 2024 - 09 APR 2024	SPRITZER	DATO' LIM A HENG @ LIM KOK CHEONG [SSH]	10	163801	51.3	
09 APR 2024 - 09 APR 2024	SPRITZER	LANGIT MAKMUR SDN. BHD. [SSH]	10	101638	31.831	
09 APR 2024 - 09 APR 2024	SPRITZER	UNIKAMPAR CREDIT AND LEASING SDN. BHD. [SSH]	10	135856	42.548	
09 APR 2024 - 09 APR 2024	SPRITZER	UNIYELEE SDN. BHD. [SSH]	10	135856	42.548	
09 APR 2024 - 09 APR 2024	SPRITZER	YEE LEE CORPORATION BHD. [SSH]	10	101638	31.831	
09 APR 2024 - 09 APR 2024	SPRITZER	YEE LEE ORGANIZATION BHD. [SSH]	10	135856	42.548	
09 APR 2024 - 09 APR 2024	SPRITZER	YELETA HOLDINGS SDN. BHD. [SSH]	10	135856	42.548	
09 APR 2024 - 09 APR 2024	SPRITZER	YOUNG WEI HOLDINGS SDN. BHD. [SSH]	10	135856	42.548	
16 APR 2024 - 16 APR 2024	SPSETIA	KUMPULAN WANG PERSARAAN (DIPERBADANKAN) [SSH]	998	433780	9.437	
15 APR 2024 - 15 APR 2024	SPSETIA	KUMPULAN WANG PERSARAAN (DIPERBADANKAN) [SSH]	1,056	432781	9.417	
12 APR 2024 - 12 APR 2024	SPSETIA	AMANAHRAYA TRUSTEES BERHAD - AMANAH SAHAM BUMIPUTERA [SSH]	-7,316	1007602	21.925	
12 APR 2024 - 12 APR 2024	SPSETIA	KUMPULAN WANG PERSARAAN (DIPERBADANKAN) [SSH]	-250	431725	9.394	
09 APR 2024 - 09 APR 2024	SPSETIA	AMANAHRAYA TRUSTEES BERHAD - AMANAH SAHAM BUMIPUTERA [SSH]	-12,200	1014919	22.084	
18 APR 2024 - 18 APR 2024	SUNCON	MADAM SARENA CHEAH YEAN TIH [SSH]	3,652	855173	66.325	
18 APR 2024 - 18 APR 2024	SUNCON	MR ADRIAN CHEAH YEAN SUN [SSH]	3,652	855115	66.321	
18 APR 2024 - 18 APR 2024	SUNCON	MR EVAN CHEAH YEAN SHIN [DIR/CEO]	3,652	855129	66.322	
18 APR 2024 - 18 APR 2024	SUNCON	MR EVAN CHEAH YEAN SHIN [SSH]	3,652	855129	66.322	
18 APR 2024 - 18 APR 2024	SUNCON	PUAN SRI DATIN SERI (DR) SUSAN CHEAH SEOK CHENG [SSH]	3,652	855186	66.326	
18 APR 2024 - 18 APR 2024	SUNCON	TAN SRI SIR DR JEFFREY CHEAH FOOK LING KBE AO [SSH]	3,652	855186	66.327	
16 APR 2024 - 16 APR 2024	SUNCON	EMPLOYEES PROVIDENT FUND BOARD [SSH]	1,875	77464	6.008	
15 APR 2024 - 15 APR 2024	SUNCON	EMPLOYEES PROVIDENT FUND BOARD [SSH]	100	75588	5.862	
12 APR 2024 - 12 APR 2024	SUNCON	EMPLOYEES PROVIDENT FUND BOARD [SSH]	-1,435	75488	5.855	
09 APR 2024 - 09 APR 2024	SUNCON	EMPLOYEES PROVIDENT FUND BOARD [SSH]	-174	76923	5.966	
08 APR 2024 - 08 APR 2024	SUNCON	EMPLOYEES PROVIDENT FUND BOARD [SSH]	-199	77097	5.979	
16 APR 2024 - 16 APR 2024	SUNWAY	EMPLOYEES PROVIDENT FUND BOARD [SSH]	1,411	295060	5.25	
15 APR 2024 - 15 APR 2024	SUNWAY	EMPLOYEES PROVIDENT FUND BOARD [SSH]	3,956	293649	5.23	
12 APR 2024 - 12 APR 2024	SUNWAY	EMPLOYEES PROVIDENT FUND BOARD [SSH]	-2,018	289694	5.23	
09 APR 2024 - 09 APR 2024	SUNWAY	EMPLOYEES PROVIDENT FUND BOARD [SSH]	2,791	290712	5.25	
08 APR 2024 - 08 APR 2024	SUNWAY	EMPLOYEES PROVIDENT FUND BOARD [SSH]	-1,249	287108	5.18	
08 APR 2024 - 12 APR 2024	SUNWAY	TAN SRI DATO' (DR.) CHEW CHEE KIN [DIR/CEO]	-1,052	15452	0.28	
15 APR 2024 - 15 APR 2024	TAANN	DATO WONG KUO HEA [DIR/CEO]	10	133314	30.266	
17 APR 2024 - 17 APR 2024	TANCO	DATO' SRI ANDREW TAN JUN SUAN [DIR/CEO]	-8,000	127902	19.228	
17 APR 2024 - 17 APR 2024	TANCO	DATO' SRI ANDREW TAN JUN SUAN [DIR/CEO]	1,300	1074921	51.538	
17 APR 2024 - 17 APR 2024	TANCO	DATO' SRI ANDREW TAN JUN SUAN [SSH]	1,300	1074921	51.538	
17 APR 2024 - 17 APR 2024	TANCO	TJM CAPITAL SDN BHD [SSH]	1,300	804059	38.551	
15 APR 2024 - 15 APR 2024	TANCO	DATO' SRI ANDREW TAN JUN SUAN [DIR/CEO]	26,356	1073621	51.476	
15 APR 2024 - 15 APR 2024	TANCO	DATO' SRI ANDREW TAN JUN SUAN [SSH]	26,356	1073621	51.476	
16 APR 2024 - 16 APR 2024	TCHONG	EMPLOYEES PROVIDENT FUND BOARD [SSH]	-13	39222	6.018	
15 APR 2024 - 15 APR 2024	TCHONG	EMPLOYEES PROVIDENT FUND BOARD [SSH]	-127	39235	6.02	
16 APR 2024 - 16 APR 2024	TENAGA	EMPLOYEES PROVIDENT FUND BOARD [SSH]	2,000	1060653	18.33	
15 APR 2024 - 15 APR 2024	TENAGA	EMPLOYEES PROVIDENT FUND BOARD [SSH]	4,000	1058653	18.29	
15 APR 2024 - 15 APR 2024	TENAGA	AMANAHRAYA TRUSTEES BERHAD - AMANAH SAHAM BUMIPUTERA [SSH]	-1,044	581356	10.05	
12 APR 2024 - 12 APR 2024	TENAGA	EMPLOYEES PROVIDENT FUND BOARD [SSH]	2,611	1054653	18.22	
09 APR 2024 - 09 APR 2024	TENAGA	EMPLOYEES PROVIDENT FUND BOARD [SSH]	309	1052042	18.18	
12 APR 2024 - 12 APR 2024	TENAGA	KUMPULAN WANG PERSARAAN (DIPERBADANKAN) [SSH]	149	429700	7.42	
09 APR 2024 - 09 APR 2024	TENAGA	KUMPULAN WANG PERSARAAN (DIPERBADANKAN) [SSH]	88	429551	7.42	
08 APR 2024 - 08 APR 2024	TENAGA	EMPLOYEES PROVIDENT FUND BOARD [SSH]	570	1051733	18.17	
08 APR 2024 - 08 APR 2024	TENAGA	KUMPULAN WANG PERSARAAN (DIPERBADANKAN) [SSH]	235	429463	7.42	
05 APR 2024 - 05 APR 2024	TENAGA	EMPLOYEES PROVIDENT FUND BOARD [SSH]	705	1051163	18.16	
15 APR 2024 - 15 APR 2024	TEOSEN	ADVANTAGE VALUATIONS SDN. BHD. [SSH]	2,289	155658	52.298	
15 APR 2024 - 15 APR 2024	TEOSEN	CW LAU & SONS SDN BHD [SSH]	2,439	165857	55.725	
15 APR 2024 - 15 APR 2024	TEOSEN	DATUK LAU JOO HONG [SSH]	2,439	165857	55.725	
15 APR 2024 - 15 APR 2024	TEOSEN	EMERGING GLORY SDN BHD [SSH]	2,439	165857	55.725	
15 APR 2024 - 15 APR 2024	TEOSEN	LEONG HUP (MALAYSIA) SDN BHD [SSH]	2,439	165857	55.725	
15 APR 2024 - 15 APR 2024	TEOSEN	LEONG HUP INTERNATIONAL BERHAD [SSH]	2,439	165857	55.725	
15 APR 2024 - 15 APR 2024	TEOSEN	MR LAU JOO HAN [SSH]	2,439	165857	55.725	
15 APR 2024 - 15 APR 2024	TEOSEN	MR LAU JOO HENG [SSH]	2,439	165857	55.725	
15 APR 2024 - 15 APR 2024	TEOSEN	MR LAU JUI PENG [DIR/CEO]	2,439	165857	55.725	
15 APR 2024 - 15 APR 2024	TEOSEN	MR LAU JUI PENG [SSH]	2,439	165857	55.725	
15 APR 2024 - 15 APR 2024	TEOSEN	MR NA HAP CHENG [SSH]	2,312	157231	52.827	

Notice Period is 14th Apr 2024 – 20th Apr 2024

Effective Change Date	Stock Name	Buyer/ Seller Name [Classification]	Bought / (Sold) ['000]		No. of Shares After Trade ['000]	
			Total	% Held	Total	% Held
15 APR 2024 - 15 APR 2024	TEOSEN	MR NA YOK CHEE [SSH]	2,332	158590	53.283	
15 APR 2024 - 15 APR 2024	TEOSEN	MR NAM HIOKJOO [DIR/CEO]	22	1466	0.493	
15 APR 2024 - 15 APR 2024	TEOSEN	UNIGOLD CAPITAL SDN BHD [SSH]	2,289	155658	52.298	
16 APR 2024 - 16 APR 2024	TIMECOM	EMPLOYEES PROVIDENT FUND BOARD [SSH]	26	201272	10.886	
08 APR 2024 - 08 APR 2024	TIMECOM	EMPLOYEES PROVIDENT FUND BOARD [SSH]	492	201246	10.885	
16 APR 2024 - 16 APR 2024	TM	EMPLOYEE PROVIDENT FUND BOARD (EPF BOARD) [SSH]	1,929	681576	17.76	
15 APR 2024 - 15 APR 2024	TM	EMPLOYEE PROVIDENT FUND BOARD (EPF BOARD) [SSH]	573	679647	17.71	
16 APR 2024 - 16 APR 2024	TM	KUMPULAN WANG PERSARAAN (DIPERBADANKAN) [SSH]	-1,580	362402	9.443	
12 APR 2024 - 12 APR 2024	TM	EMPLOYEE PROVIDENT FUND BOARD (EPF BOARD) [SSH]	1,023	679070	17.695	
15 APR 2024 - 15 APR 2024	TM	KUMPULAN WANG PERSARAAN (DIPERBADANKAN) [SSH]	150	363982	9.485	
09 APR 2024 - 09 APR 2024	TM	EMPLOYEE PROVIDENT FUND BOARD (EPF BOARD) [SSH]	1,091	678040	17.668	
09 APR 2024 - 09 APR 2024	TM	KUMPULAN WANG PERSARAAN (DIPERBADANKAN) [SSH]	24	363832	9.481	
08 APR 2024 - 08 APR 2024	TM	EMPLOYEE PROVIDENT FUND BOARD (EPF BOARD) [SSH]	-523	676949	17.64	
15 APR 2024 - 15 APR 2024	TOCEAN	DATO' SYED BUDRIZ PUTRA JAMALULLAIL [SSH]	21,000	21000	32.259	
15 APR 2024 - 15 APR 2024	TOCEAN	DIGITAL PLANNERS SDN. BHD. [SSH]	21,000	21000	32.259	
15 APR 2024 - 15 APR 2024	TOCEAN	SULTAN IDRIS SHAH [SSH]	21,000	21000	32.259	
17 APR 2024 - 17 APR 2024	TOPGLOV	KUMPULAN WANG PERSARAAN (DIPERBADANKAN) [SSH]	2,400	428469	5.35	
09 APR 2024 - 12 APR 2024	TOPGLOV	MR LIM HOOI SIN [DIR/CEO]	3,500	2940037	36.712	
09 APR 2024 - 12 APR 2024	TOPGLOV	MR LIM HOOI SIN [SSH]	3,500	2940037	36.712	
09 APR 2024 - 12 APR 2024	TOPGLOV	MR LIM JIN FENG [SSH]	3,500	2828259	35.316	
09 APR 2024 - 12 APR 2024	TOPGLOV	PUAN SRI TONG SIEW BEE [SSH]	3,500	2940237	36.715	
09 APR 2024 - 12 APR 2024	TOPGLOV	TAN SRI DR LIM WEE CHAI [DIR/CEO]	3,500	2940237	36.716	
09 APR 2024 - 12 APR 2024	TOPGLOV	TAN SRI DR LIM WEE CHAI [SSH]	3,500	2940237	36.716	
18 APR 2024 - 18 APR 2024	TOYOVEN	MR LIM GUAN LEE [SSH]	-140	6836	5.144	
16 APR 2024 - 17 APR 2024	TOYOVEN	MR LIM GUAN LEE [SSH]	-318	6976	5.249	
09 APR 2024 - 12 APR 2024	TOYOVEN	MR LIM GUAN LEE [SSH]	-443	7294	5.488	
17 APR 2024 - 17 APR 2024	UCHITEC	MR LIM TIAN HOW [DIR/CEO]	-30	274	0.06	
16 APR 2024 - 16 APR 2024	UTDPLT	EMPLOYEES PROVIDENT FUND BOARD [SSH]	266	25786	6.217	
15 APR 2024 - 15 APR 2024	UTDPLT	EMPLOYEES PROVIDENT FUND BOARD [SSH]	500	25520	6.152	
12 APR 2024 - 12 APR 2024	UTDPLT	EMPLOYEES PROVIDENT FUND BOARD [SSH]	44	25020	6.031	
09 APR 2024 - 09 APR 2024	UTDPLT	EMPLOYEES PROVIDENT FUND BOARD [SSH]	-91	24975	6.021	
08 APR 2024 - 08 APR 2024	UTDPLT	EMPLOYEES PROVIDENT FUND BOARD [SSH]	-219	25067	6.043	
15 APR 2024 - 15 APR 2024	UWC	EMPLOYEES PROVIDENT FUND BOARD [SSH]	37	92860	8.427	
12 APR 2024 - 12 APR 2024	UWC	EMPLOYEES PROVIDENT FUND BOARD [SSH]	54	92820	8.423	
09 APR 2024 - 09 APR 2024	UWC	EMPLOYEES PROVIDENT FUND BOARD [SSH]	48	92669	8.41	
08 APR 2024 - 08 APR 2024	UWC	EMPLOYEES PROVIDENT FUND BOARD [SSH]	201	92485	8.393	
19 APR 2024 - 19 APR 2024	VS	DATUK GAN SEM YAM [DIR/CEO]	4,420	180023	4.715	
12 APR 2024 - 12 APR 2024	VSTEC	VSTEC HOLDINGS (SINGAPORE) LIMITED [SSH]	70	162559	45.592	
12 APR 2024 - 12 APR 2024	VSTEC	VSTEC HOLDINGS LIMITED [SSH]	70	162559	45.592	
08 APR 2024 - 09 APR 2024	VSTEC	VSTEC HOLDINGS (SINGAPORE) LIMITED [SSH]	441	162489	45.572	
08 APR 2024 - 09 APR 2024	VSTEC	VSTEC HOLDINGS LIMITED [SSH]	441	162489	45.572	
15 APR 2024 - 16 APR 2024	WIDAD	TAN SRI MUHAMMAD IKMAL OPAT BIN ABDULLAH [SSH]	-9,100	585293	18.902	
15 APR 2024 - 16 APR 2024	WIDAD	WIDAD BUSINESS GROUP SDN. BHD. [SSH]	-9,100	573218	18.512	
08 APR 2024 - 12 APR 2024	WIDAD	TAN SRI MUHAMMAD IKMAL OPAT BIN ABDULLAH [SSH]	-10,500	594393	19.196	
08 APR 2024 - 12 APR 2024	WIDAD	WIDAD BUSINESS GROUP SDN. BHD. [SSH]	-10,500	582318	18.806	
16 APR 2024 - 16 APR 2024	WPRTS	KUMPULAN WANG PERSARAAN (DIPERBADANKAN) [SSH]	22	231396	6.785	
15 APR 2024 - 15 APR 2024	XL	MR NG MIN LIN [DIR/CEO]	1,450	67298	23.906	
15 APR 2024 - 15 APR 2024	XL	MR NG MIN LIN [SSH]	1,450	67298	23.906	
15 APR 2024 - 15 APR 2024	YINSON	EMPLOYEES PROVIDENT FUND BOARD [SSH]	-169	518565	17.131	
12 APR 2024 - 12 APR 2024	YINSON	EMPLOYEES PROVIDENT FUND BOARD [SSH]	-297	518734	17.137	
15 APR 2024 - 15 APR 2024	YINSON	KUMPULAN WANG PERSARAAN (DIPERBADANKAN) [SSH]	-62	232062	7.667	
09 APR 2024 - 09 APR 2024	YINSON	EMPLOYEES PROVIDENT FUND BOARD [SSH]	-171	519031	17.146	
12 APR 2024 - 12 APR 2024	YINSON	KUMPULAN WANG PERSARAAN (DIPERBADANKAN) [SSH]	-131	232124	7.669	
08 APR 2024 - 08 APR 2024	YINSON	EMPLOYEES PROVIDENT FUND BOARD [SSH]	-245	519202	17.152	
16 APR 2024 - 16 APR 2024	YTL	PUAN RAJA NOORMA BINTI RAJA OTHMAN [DIR/CEO]	200	200	0.002	
16 APR 2024 - 16 APR 2024	YTL	UBS GROUP AG [SSH]	-5,343	575533	5.245	
16 APR 2024 - 16 APR 2024	ZENTECH	MR SIVA KUMAR A/L KALUGASALAM [DIR/CEO]	61,295	61295	1.971	
18 APR 2024 - 18 APR 2024	ZHULIAN	MR TEOH BENG SENG [SSH]	-300	273529	59.46	
18 APR 2024 - 18 APR 2024	ZHULIAN	THE BEST SOURCE HOLDINGS PTE. LTD. [SSH]	-300	70582	15.344	

Disclaimer: The Information in Insider Activity is extracted from www.shareinvestor.com/fundamental/insider_trades. The information on this page is provided as a service to readers. It does not constitute financial advice and/or any investment recommendations. We assume no liability for damages resulting from or arising out of the use of such information. Whilst every effort is made to ensure accuracy, the information presented is not the official record of shareholder filings. Readers are advised to read the original filings on the Bursa Malaysia website at www.bursamalaysia.com

CHECK OUT
SHAREINVESTOR
BROKERS' CALL

Weekly Buy/Sell/Hold calls from leading Malaysian Brokerages.

BUY

HOLD

SELL

Go To Brokers' Call



We are pleased to announce that Axiata Group Berhad (AXIATA) had today offered 13,936,600 ordinary shares in Axiata (Axiata Shares) under the Axiata Long Term

Incentive Plan to the eligible employees of the Axiata Group of Companies.



CapitaLand Malaysia Trust (CLMT) increased distribution per unit by 36.8% to 1.19 sen for the period 1 January 2024 to 31 March 2024 (1Q 2024) compared to the same period last year.

Distributable income for 1Q 2024 was RM33.6 million, which was 69.8% higher than the RM19.8 million in 1Q 2023. CLMT's gross revenue grew 42.5% year-on-year to RM111.9 million in 1Q 2024. The significant increase was mainly due to the full quarter revenue contribution from Queensbay Mall, higher occupancies and positive rental reversions. Net property income for 1Q 2024 was RM64.0 million, up 63.0% from the same period a year ago.



[READ MORE](#)

Cypark Resources Berhad (CYPARK) today announced that its 100MWac Large Scale Solar 3 (LSS3) hybrid solar plant project has achieved initial Operations (IOD) as of 21 April 2024. The hybrid solar plant consists of 83MWac ground mounted solar PVs and 32MWac of floating solar PVs.



We refer to the financial results for the first quarter ended 31 March 2024 released by Heineken N.V. on 24 April 2024 which encapsulates, among others, the following commentary:

In Malaysia, beer volume increased by a mid-single-digit versus last year, led by Tiger. The premium portfolio also grew by a mid-single-digit, led by Heineken®.

The Board wishes to inform that **HEINEKEN Malaysia Berhad (HEIM)** has scheduled to release its financial report for the first quarter ended 31 March 2024 on Tuesday, 14 May 2024 in accordance with Paragraph 9.22 of the Main Market Listing Requirements of Bursa Malaysia Securities Berhad. Details on the Company's performance for the said period will be reported thereon.

[READ MORE](#)



ENGINEERS

READ MORE 



The Board of Directors of **HSS Engineers Berhad (HSSEB)** has resolved to recommend a final single tier dividend of 1.21 sen per ordinary share in respect of the financial year ended 31

December 2023, subject to the shareholders' approval at the forthcoming Ninth Annual General Meeting of the Company.



On behalf of the Board of **Leong Hup International Berhad (LHI)**, AmInvestment Bank Berhad wishes to announce that the Company proposes to undertake the proposed establishment of an employees' share option scheme of up to 5% of the total number of issued shares of LHI (excluding treasury shares, if any) at any point in time over the period of the Proposed ESOS as set out in the By-Laws for eligible Executive Directors and employees of LHI and its subsidiaries (excluding subsidiaries which are dormant).

READ MORE 



**MBM Resources Berhad
(MBMR)**

READ MORE



The Board of Directors of **MBM Resources Berhad (MBMR)** is pleased to announce that the Company is proposing a single tier final dividend of 15.0 sen per ordinary share in respect of the financial year ended 31 December 2023, subject to the shareholders' approval at the forthcoming Thirtieth Annual General Meeting.

Disclaimer: The information in the Investor Relations page is extracted from individual companies' announcements in www.bursamalaysia.com. The information on this page is provided as a service to readers. We assume no liability for damages resulting from or arising out of the use of such information. Whilst every effort is made to ensure accuracy, the information presented has been simplified for your reading pleasure. Readers are advised to read the original and complete filings on the Bursa Malaysia website at https://www.bursamalaysia.com/market_information/announcements/company_announcement

NAME OF COMPANY	OFFER PERIOD		ISSUE PRICE (Per Ordinary Share)	LISTING SOUGHT	DATE OF LISTING
	OPENING	CLOSING			
SIN-KUNG LOGISTICS BERHAD	18 Apr 2024	02 May 2024	RM0.13	ACE MARKET	15 May 2024
FARM PRICE HOLDINGS BERHAD	24 Apr 2024	30 Apr 2024	RM0.24	ACE MARKET	14 May 2024
MKH OIL PALM (EAST KALIMANTAN BERHAD)	29 Mar 2024	16 Apr 2024	RM0.62	MAIN MARKET	30 Apr 2024

Upcoming IPO



SIGN UP FOR Invest
IT'S FREE!!!

Click here

Scan me



Via email, every Friday.