

Invest

A Weekly e-Publication by [SHAREINVESTOR.com](https://www.shareinvestor.com)

ISSUE

176

FRIDAY
29 SEPTEMBER
2023

Scan/Click QR to Register



Via email, every Friday

PLUS

MARKET SENTIMENTS

National Energy Transition Roadmap, New Industrial Master Plan To Boost Malaysia's Investment Opportunities - BNM

Malaysia's economy expected to continue to moderate in the near term - DOSM

Median monthly salaries and wages up 7.7% in 2022 after RM1,500 minimum wage implementation – DOSM
(page 29-33)

Gan Yee Hin

Executive Director and CEO
Southern Score Builders Berhad

“SSBB Defines The Future Of Construction”

(page 22-28)



MSWG Shareholders Stand To Gain With More Women Directors And IDs On Board (page 35-39)

CONTENTS

04	LEADERBOARD	14	VALUE STOCKS	40	INSIDER ACTIVITY
06	SHARIAH HOT STOCKS	16	GROWTH STOCKS	44	INVESTOR RELATIONS
07	COMPANY SPOTLIGHT	18	DIVIDEND STOCKS		
08	SHARIAH MOMENTUM UP STOCKS	19	BROKERS' CALL		
10	NON SHARIAH HOT STOCKS	20	LONG COMPANIES		
12	UP TRENDING STOCKS	34	REGIONAL MARKETS		

ISSUE
176
FRIDAY
29 SEPTEMBER 2023



SHAREINVESTOR[®]

Invest with Knowledge

INVESTOR PLATFORMS

Director

Darren Chong
darren.chong@shareinvestor.com

Business Development Manager

Jay Cheong
jay.cheong@shareinvestor.com

Senior Executive

Daniel Wong
daniel.wong@shareinvestor.com

Executive

Farah Azwani
farah.azwani@shareinvestor.com

Executive

Tan Yong Sheng
yongsheng.tan@shareinvestor.com

ADMIN & OPERATIONS

Senior Executive

Watie Nordin
watie.nordin@shareinvestor.com

Executive

Silas Emmanuel Joseph
silas.joseph@shareinvestor.com

INVESTOR RELATIONS

Group Managing Director & Publisher

Edward Stanislaus
edward@shareinvestor.com

Senior Manager

Letticia Wong
letticia.wong@shareinvestor.com

PROCESS AUTOMATION & DATA ANALYTICS

Data Analyst

Nickson Aw

SHAREINVESTOR HOLDINGS BOARD OF DIRECTORS

Chairman		Patrick Daniel
Group CEO		Christopher Lee
Group COO		Lim Dau Hee
Group CFO		Teo Siew May
Group MD		Shanison Lin



ShareInvestor Malaysia Sdn. Bhd.

(200001023956) (526564-M)
Unit No. DF2-07-03A. Level 7,
Persoft Tower, 6B Persiaran Tropicana,
47410 Petaling Jaya, Selangor Darul Ehsan.

Hotline : 603 7803 1791

Mobile : 011 6343 8939

Website : www.ShareInvestor.com.my

www.ShareInvestorHoldings.com

www.Facebook.com/ShareInvestorMalaysia

ADVERTISEMENT ENQUIRY



STROM

SWISS TIMEPIECES & JEWELLERY



StromWatch Asia

Tele : +65.9817.3378 Email : ll.stromasia@gmail.com

WWW.STROMWATCH.SWISS



www.shareinvestor.com - market data at your fingertips



ShareInvestor WebPro (www.shareinvestor.com/my)

Prices > Stock Prices > Bursa > click Stocks tab

1. mouse over Ranking > select Top Active > all Shariah stocks are denoted with an [S] > mouse over Column Layout > select Edit Customs > select Name > select Volume > select Last Done Price > Mouse Over Column Layout > select Custom
2. mouse over Ranking > select Top Turnover > all Shariah stocks are denoted with an [S] > mouse over Column Layout > select Edit Customs > select Name > select Last Done Price > select Value > Mouse Over Column Layout > select Custom
3. mouse over Ranking > select Top Gainers (Over 5 Trading Days) > mouse over Column Layout > select Edit Customs > select Name > select Last Done Price > select 5 Days Change > select 5 Days % Change > Mouse Over Column Layout > select Custom
4. mouse over Ranking > select Top Losers (Over 5 Trading Days)
5. mouse over Ranking > select Top % Gainers (Over 5 Trading Days)
6. mouse over Ranking > select Top % Losers (Over 5 Trading Days)

Shariah Top Actives (as at Wednesday)

Name	Price (RM)	Volume
MYEG [S]	0.780	994,749.000
VSOLAR [S]	0.180	683,990.000
VELESTO [S]	0.255	609,797.000
WIDAD [S]	0.510	560,171.000
TWL [S]	0.030	479,792.000
SCIB [S]	0.460	463,760.000
UEMS [S]	0.835	388,234.000
EKOVEST [S]	0.560	355,355.000
ICON [S]	0.115	300,486.000
TANCO [S]	0.555	257,217.000

Shariah Top Turnover (as at Wednesday)

Name	Price (RM)	Value (RM)
MYEG [S]	0.780	78,275,563
TENAGA [S]	10.020	66,832,694
UEMS [S]	0.835	32,826,994
PMETAL [S]	4.790	29,509,492
WIDAD [S]	0.510	28,561,806
BAUTO [S]	2.470	25,016,587
SCIB [S]	0.460	21,285,411
INARI [S]	2.850	20,748,464
KPJ [S]	1.170	20,240,940
EKOVEST [S]	0.560	19,992,621

Top Gainers (over 3 Trading days as at Wednesday)

Name	Price (RM)	Change (RM)
RAPID	24.720	+0.720
KESM	7.600	+0.500
HEIM	24.140	+0.460
AEONCR	11.800	+0.400
HEXTECH	24.400	+0.400
PANAMY	19.140	+0.280
IMASPRO	5.650	+0.210
CARLSBG	20.000	+0.200
UNIMECH	1.920	+0.200
COMCORP	1.420	+0.170

Top % Gainers (over 3 Trading days as at Wednesday)

Name	Price (RM)	Change (%)
AT	0.015	+50.00
FOCUS	0.020	+33.33
SINARAN	0.080	+33.33
JADI	0.070	+27.27
G3	0.025	+25.00
KAMDAR	0.200	+25.00
TALAMT	0.025	+25.00
SKBSHUT	0.795	+23.26
MERIDIAN	0.110	+22.22
MQTECH	0.030	+20.00

Top Losers (over 3 Trading days as at Wednesday)

Name	Price (RM)	Change (RM)
PETDAG	22.700	-0.500
UTDPLT	16.900	-0.460
SAM	4.320	-0.380
CIHLDG	3.030	-0.310
NESTLE	129.000	-0.300
DOLPHIN	0.030	-0.220
HAPSENG	4.520	-0.190
AJI	15.500	-0.180
RHBBANK	5.500	-0.180
PENTA	5.130	-0.170

Top % Losers (over 3 Trading days as at Wednesday)

Name	Price (RM)	Change (%)
DOLPHIN	0.030	-88.00
FINTEC	0.005	-50.00
KGROUP	0.005	-50.00
AEM	0.010	-33.33
GOCEAN	0.010	-33.33
JOE	0.010	-33.33
VSOLAR	0.180	-33.33
BVLH	0.210	-30.00
NEXGRAM	0.015	-25.00
PERMAJU	0.040	-20.00

BURSA In-Depth Equity Analysis (IDEA) Research Competition

IDEA

9 October - 3 November 2023

Calling all aspiring researchers,
analysts, and market enthusiasts!

Showcase your aptitude and prowess in
equity analysis and stand a chance to bring
home prizes worth up to RM10,000!



Price & Volume Distribution Charts (as at Wednesday)

Technical Analysis

DEFINITION: Shariah compliant stocks with Technical Analysis showing 5-days & 10-days Moving Average Price below Yesterday's Close over past 3 days and with Volume Spike.

CHART GUIDE: Volume Distribution Chart is a statistical interpretation of the current sentiment on each stock in graphical format. The highest bar categorized as >150k is likely to be traded by institutions or super dealers, while the lowest bar categorized as <15k usually represents retail investors. "Buy Up" refers to more buyers snatching up the lots queued at selling price. "Sell Down" refers to sellers selling their shares to the buying queue



ShareInvestor WebPro > Screener > Market Screener (FA & TA) > select BURSA > add criteria

A. Criteria

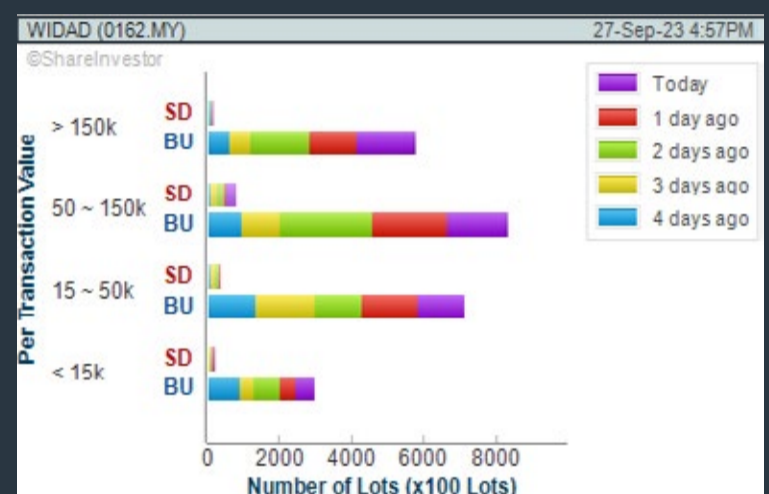
- > click Add Criteria
- Technical Analysis Conditions tab select (i) Moving Average Below Close (ii) Volume Spike
- Fundamental Analysis Conditions tab > select (iii) Revenue
- Prices & Other Conditions tab > select (iv) Is Shariah Compliant
- Technical Analysis Conditions tab select (v) Moving Average Below Close
- Prices & Other Conditions tab > select (vi) Last Done Price
- Technical Analysis Conditions tab select (vii) Moving Average Below Close

B. Conditions (Criteria Filters)

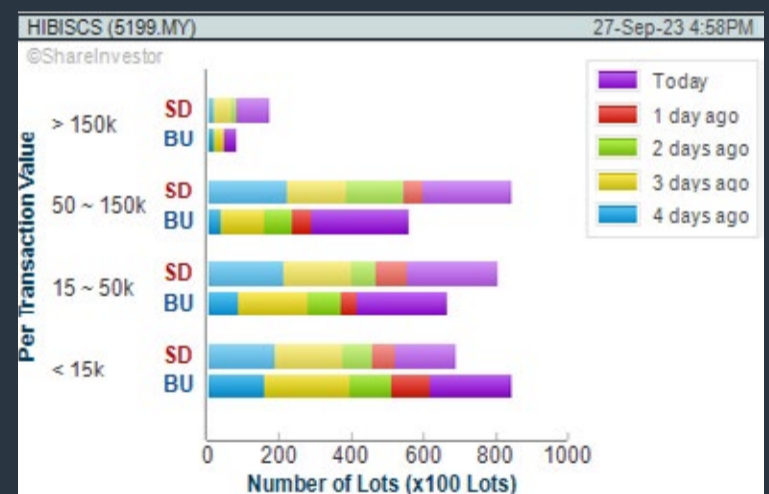
- Moving Average Below Close - select (MA) type (5) below close price for type (3) days
- Volume Spike - Volume type (1) greater than type (5) days average
- Revenue ("000) - select (more than) type (1) for the past select (1) financial year(s)
- Is Shariah Compliant - select **Yes**
- Moving Average Below Close - select (MA) type (10) below close price for type (3) days
- Last Done Price - select (more than) type (0.3)
- Moving Average Below Close - select (EMA) type (5) below close price for type (3) days

- > click Save Template > Create New Template type (Shariah Hot Stocks) > click Create
- > click Save Template as > select Shariah Hot Stocks > click Save
- > click Screen Now (may take a few minutes)
- > Sort By: Select (Vol) Select (Desc)
- > Mouse over stock name > Charts > click C² Charts or Volume Distribution

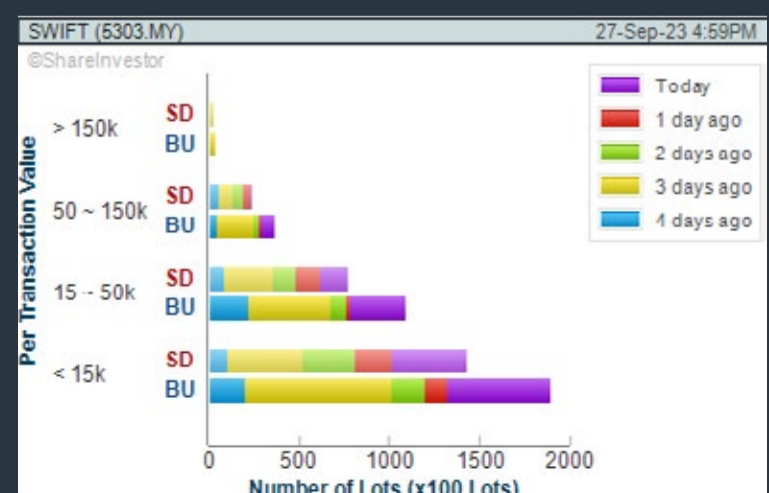
WIDAD GROUP BERHAD (0162) C² Chart



HIBISCUS PETROLEUM BERHAD (5199) C² Chart



SWIFT HAULAGE BERHAD (5303) C² Chart



Disclaimer: The information on this page is provided as a service to readers. It does not constitute financial advice and/or any investment recommendations. Past performance is not indicative of future results. We assume no liability for damages resulting from or arising out of the use of such information. It would be best if you did your own research to make your personal investment decisions wisely or consult a licenced investment advisor.

COMPANY BACKGROUND

Leong Hup International Berhad is a fully integrated poultry operator. The Company's operations span the entire poultry supply chain which encompasses livestock feed production, poultry breeding, broiler farming, layer production, further processed poultry products and retailing of ready-to-eat poultry and bakery products.



Select Counter: Bursa | LHI (6633.MY) | View

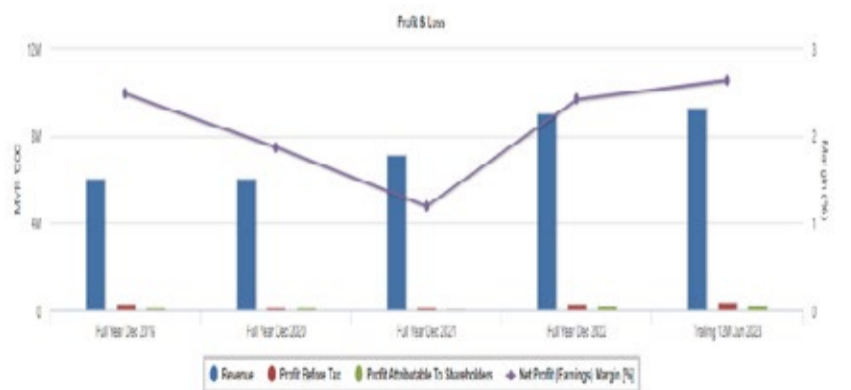
LHI LEONG HUP INTERNATIONAL BERHAD Updated at 27 Sep 2023 16:51

Last (MYR): 0.550 ↓	Change: -0.005	High: 0.550	Remarks:
	Change (%): -0.90	Low: 0.540	
Open: 0.550	Yesterday's Close: 0.555		
Buy Price: 0.645	Sell Price: 0.550		
Buy Volume ('00): 87	Sell Volume ('00): 1,318		
Cumulative Volume ('00): 32,117	Cumulative Value: 1,751,513		

Financial Analysis

	Revenue Growth Increasing revenue in last 2 consecutive years			Profit Growth Increasing profit in latest year (with last 2 profitable years)	
	Piotroski F Score The company has strong financial strength (Piotroski F-Score of 8-9)			Dividend Payout No dividend paid in most recent year but dividends paid in prior years	
	Debt to Cashflow High debt to cash flow for most recent year			Debt to Equity High debt to equity for most recent year	
	Gross Profit Margin Low gross profit margin for 3 years			Net Earnings Margin Low net profit margin for 3 years	

Excellent
 Good
 Neutral
 Be Alert
 Watch Out

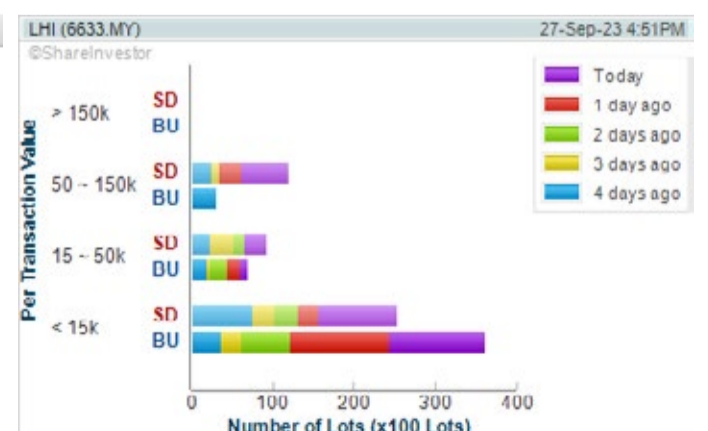


WebPro 9-Days Free Trial Registration (worth RM9) Sign Up Now



Key Statistics with Total Shareholder Returns

Period	Dividend Received	Capital Appreciation	Total Shareholder Return
Short Term Return	5 Days	+0.015	+2.80%
	10 Days	-	-
	20 Days	+0.020	+3.77%
Medium Term Return	3 Months	+0.035	+11.11%
	6 Months	+0.030	+5.77%
	1 Year	+0.085	+18.28%
Long Term Return	2 Years	-0.110	-15.67%
	3 Years	0.007	-14.95%
Annualised Return	Annualised	-	-5.26%



Disclaimer: The information on this page is provided as a service to readers. It does not constitute financial advice and/or any investment recommendations. Past performance is not indicative of future results. We assume no liability for damages resulting from or arising out of the use of such information. It would be best if you did your own research to make your personal investment decisions wisely or consult a licenced investment advisor.

Price & Volume Distribution Charts (as at Wednesday)

Technical Analysis

DEFINITION: Shariah compliant stocks with Technical Analysis showing Bullish Momentum and Price Uptrend. The share price closed at the highest price yesterday. The typical price was higher than the previous day's typical price.

CHART GUIDE: Volume Distribution Chart is a statistical interpretation of the current sentiment on each stock in graphical format. The highest bar categorized as >150k is likely to be traded by institutions or super dealers, while the lowest bar categorized as <15k usually represents retail investors. "Buy Up" refers to more buyers snatching up the lots queued at selling price. "Sell Down" refers to sellers selling their shares to the buying queue.



ShareInvestor WebPro > Screener > Market Screener (FA & TA)>select BURSA>add criteria

A. Criteria

- > click Add Criteria
- Fundamental Analysis Conditions tab >select (i) Revenue
- Technical Analysis Conditions tab select (ii) Average Volume
- Prices & Other Conditions tab > select (iii) Last Done Price
- Prices & Other Conditions tab > select (iv) Is Shariah Compliant
- Technical Analysis Conditions tab select (v) RSI Overbought
- Technical Analysis Conditions tab select (vi) Moving Average Below Close
- Technical Analysis Conditions tab select (vii) CCI Overbought

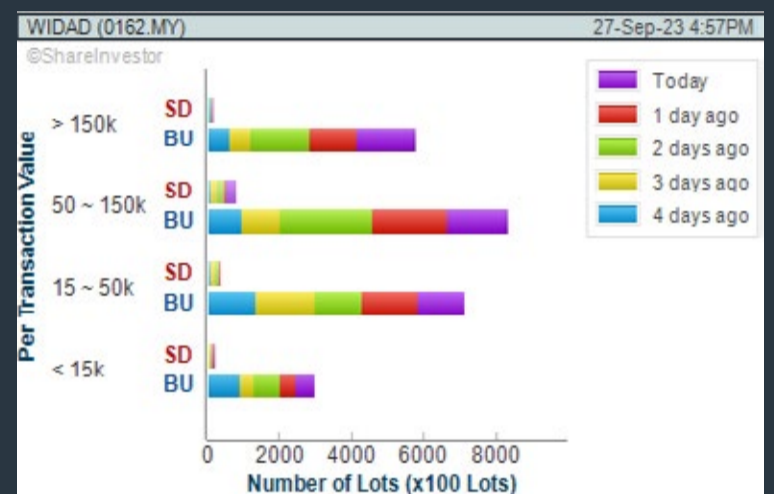
B. Conditions (Criteria Filters)

1. Revenue ("000) - select (more than) type (1) for the past select (1) financial year(s)
2. Average Volume - type (1) days average volume greater than type (10000) lots
3. Last Done Price - select (more than) type (0.3)
4. Is Shariah Compliant - select Yes
5. RSI Overbought - select RSI 1 above 99 for 1 days
6. Moving Average Below Close - select (MA) type (10) below close price for type (1) days
7. CCI Overbought - select CCI (2) above (0) for (1) days

- > click Save Template > Create New Template type (Shariah Momentum Up Stocks) > click Create
- > click Save Template as > select Shariah Momentum Up Stocks > click Save
- > click Screen Now (may take a few minutes)
- Sort By: Select (Vol) Select (Desc)
- Mouse over stock name > Charts > click C² Charts tab or Volume Distribution

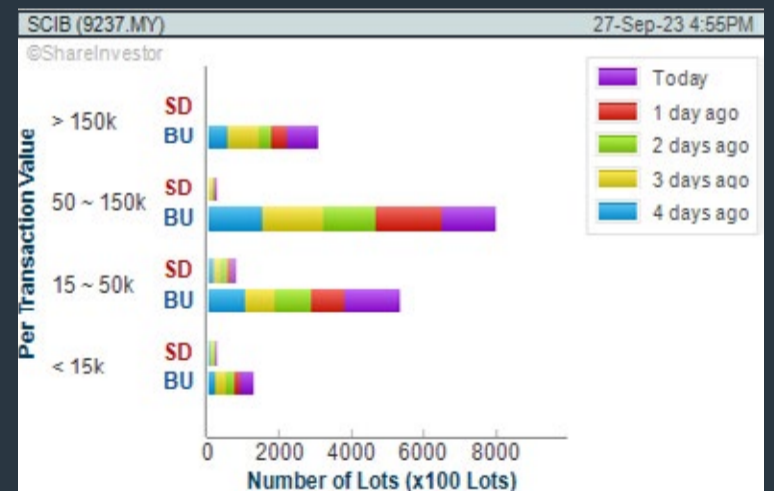
WIDAD GROUP BERHAD (0162) C² Chart

Analysis



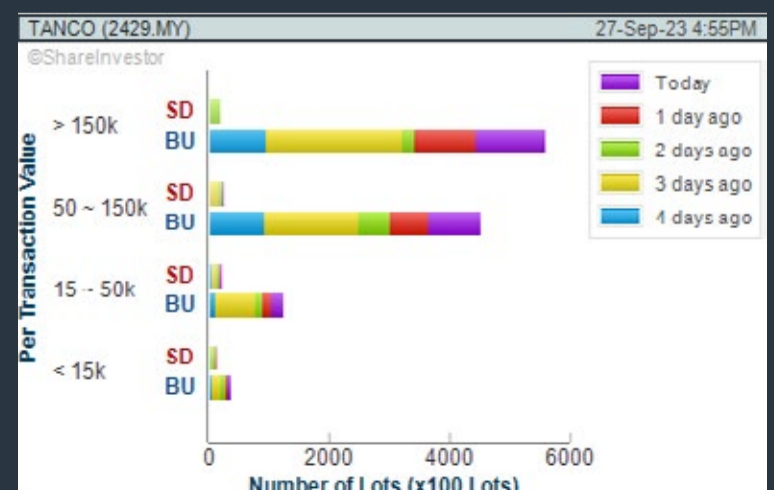
SARAWAK CONSOLIDATED IND BERHAD (9237) C² Chart

Analysis



TANCO HOLDINGS BERHAD (2429) C² Chart

Analysis



Disclaimer: The information on this page is provided as a service to readers. It does not constitute financial advice and/or any investment recommendations. Past performance is not indicative of future results. We assume no liability for damages resulting from or arising out of the use of such information. It would be best if you did your own research to make your personal investment decisions wisely or consult a licenced investment advisor.

VOTE AND WIN!

13 SEP – 01 OCT 2023

HOW TO WIN

AI?

GOLD?

S&P 500?

Apple
Facebook
Microsoft
Nvidia
Amazon

1

VOTE FOR
YOUR
FAVOURITE
ETF
(x1 chance)

2

COMMENT
WHY YOU
LIKE IT
(x3 chances)

[CLICK HERE TO VOTE](#)



50
lucky winners

X

RM 50
worth ETF

Price & Volume Distribution Charts (as at Wednesday)

Technical Analysis

DEFINITION: Stocks with Technical Analysis showing 5-days & 10-days Moving Average Price below Close over past 1 days and with Volume Spike

CHART GUIDE: Volume Distribution Chart is a statistical interpretation of the current sentiment on each stock in graphical format. The highest bar categorized as >150k is likely to be traded by institutions or super dealers, while the lowest bar categorized as <15k usually represents retail investors. "Buy Up" refers to more buyers snatching up the lots queued at selling price. "Sell Down" refers to sellers selling their shares to the buying queue.



ShareInvestor WebPro > Screener > Market Screener (FA & TA) > select BURSA > add criteria

A. Criteria

- > click Add Criteria
- Technical Analysis Conditions tab select (i) Moving Average Below Close (ii) Volume Spike
- Fundamental Analysis Conditions tab >select (iii) Revenue
- Prices & Other Conditions tab > select (iv) Is Shariah Compliant
- Technical Analysis Conditions tab select (v) Moving Average Below Close
- Prices & Other Conditions tab > select (vi) Last Done Price
- Technical Analysis Conditions tab select (vii) Moving Average Below Close

B. Conditions (Criteria Filters)

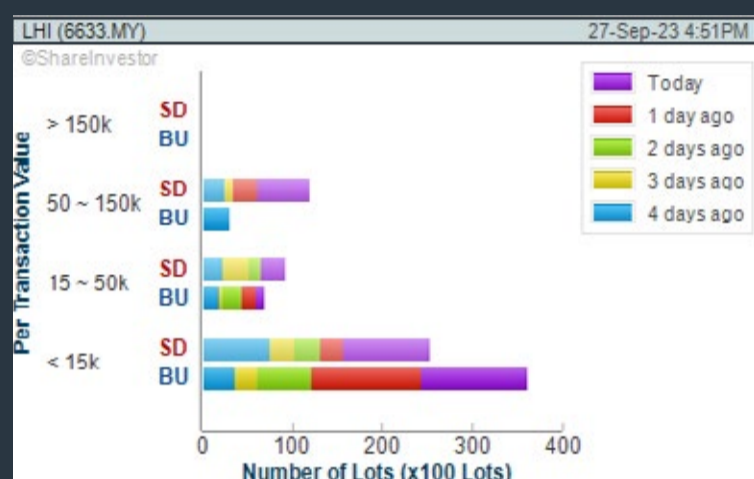
1. Moving Average Below Close - select (MA) type (5) below close price for type (3) days
2. Volume Spike - Volume type (1) greater than type (5) days average
3. Revenue ("000) - select (more than) type (1) for the past select (1) financial year(s)
4. Is Shariah Compliant - select NO
5. Moving Average Below Close - select (MA) type (10) below close price for type (1) days
6. Last Done Price - select (more than) type (0.3)
7. Moving Average Below Close - select (EMA) type (5) below close price for type (1) days

- > click Save Template > Create New Template type (Non-Shariah Hot Stocks) > click Create
- > click Save Template as > select Non-Shariah Hot Stocks > click Save
- > click Screen Now (may take a few minutes)
- Sort By: Select (Vol) Select (Desc)
- Mouse over stock name > Charts > click C² Charts tab or Volume Distribution

LEONG HUP INTERNATIONAL BERHAD (6633)

C² Chart

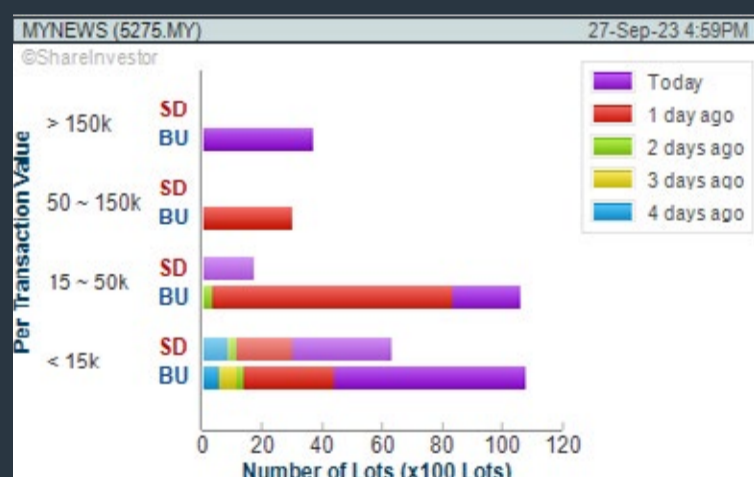
Analysis



MYNEWS HOLDINGS BERHAD (5275)

C² Chart

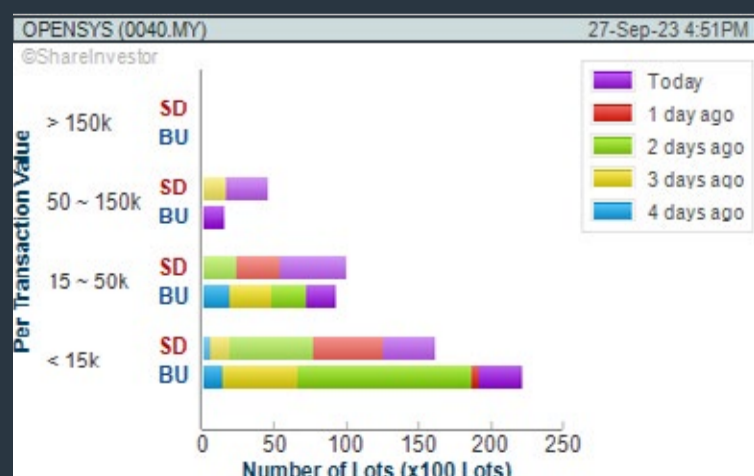
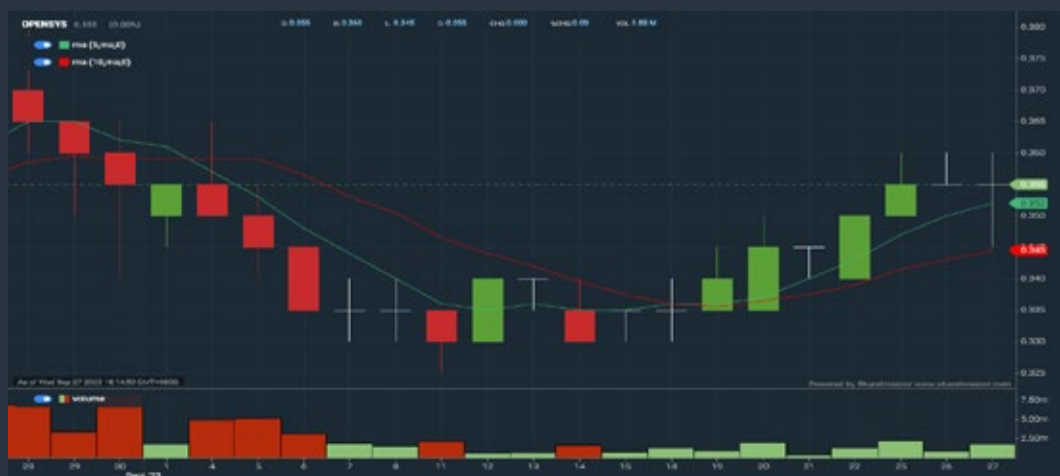
Analysis



OPENSYS (M) BERHAD (0040)

C² Chart

Analysis



Disclaimer: The information on this page is provided as a service to readers. It does not constitute financial advice and/or any investment recommendations. Past performance is not indicative of future results. We assume no liability for damages resulting from or arising out of the use of such information. It would be best if you did your own research to make your personal investment decisions wisely or consult a licenced investment advisor.

SHAREINVESTOR WEBPRO

STOCK MARKET DATA AT YOUR FINGERTIPS

Powerful browser-based market analytics platform.
Access from anywhere



8 Markets Data

- ▶ Get access to data from Bursa, NYSE, Nasdaq, HKEX, SGX, IDX, SET & ASX

Portfolio Management

- ▶ Profit & Loss Summary
- ▶ Stock Alert
- ▶ News & Events filtering
- ▶ Customizable column layout

Fundamental Analysis

Financial Analysis Statement

- ▶ Profit & Loss
- ▶ Balance Sheet
- ▶ Cash Flow Statement
- ▶ More than 20 Financial Ratios
- ▶ Dividend Analysis

Technical Charting

- ▶ C² chart (Customisable & Comprehensive)

Brokers' Call

Intrinsic Value Calculator

FactSheet

- ▶ Key Stock Information
- ▶ Ownership
- ▶ Consensus Estimates
- ▶ Annual Report
- ▶ Historical Price
- ▶ Insider Trades

What's new on WebPro (Stable Release 12.1.0)

In our effort to keep our platform at the forefront of trading technology, we have added on some new features onto our C² Chart in WebPro

ADDITIONAL NEW FEATURES:

- ▶ Anchor selector for AVWAP, PVAT, and PAV indicators
- ▶ Volume profile indicator by date range
- ▶ Moving Average Cross indicator
- ▶ Guppy Multiple Moving Average (GMMA) indicator
- ▶ GoNoGo Trend Signal indicators
- ▶ SignalIQ

So what are you waiting for? Head to our platform today and check out our new trading chart features and indicators. We're confident that you'll love the improvements we've made and that they'll help you become a more successful trader.

Click here to start your 9 days FREE trial
(Valued at RM10)



Price & Volume Distribution Charts (Over 3 trading days as at Wednesday)

Technical Analysis

DEFINITION: Stocks with Technical Analysis showing Bullish Momentum and Price Uptrend

CHART GUIDE: Volume Distribution Chart is a statistical interpretation of the current sentiment on each stock in graphical format. The highest bar categorized as >150k is likely to be traded by institutions or super dealers, while the lowest bar categorized as <15k usually represents retail investors. "Buy Up" refers to more buyers snatching up the lots queued at selling price. "Sell Down" refers to sellers selling their shares to the buying queue.



ShareInvestor WebPro > Screener > Market Screener (FA & TA) > select BURSA > add criteria

A. Criteria

- > click Add Criteria
- Fundamental Analysis Conditions tab > select (i) Revenue
- Technical Analysis Conditions tab select (ii) Moving Average Below Close
- Technical Analysis Conditions tab select (iii) Average Volume
- Prices & Other Conditions tab > select (iv) Last Done Price
- Technical Analysis Conditions tab select (v) Moving Average Below Close
- Technical Analysis Conditions tab select (v) Moving Average Bullish Crossover

B. Conditions

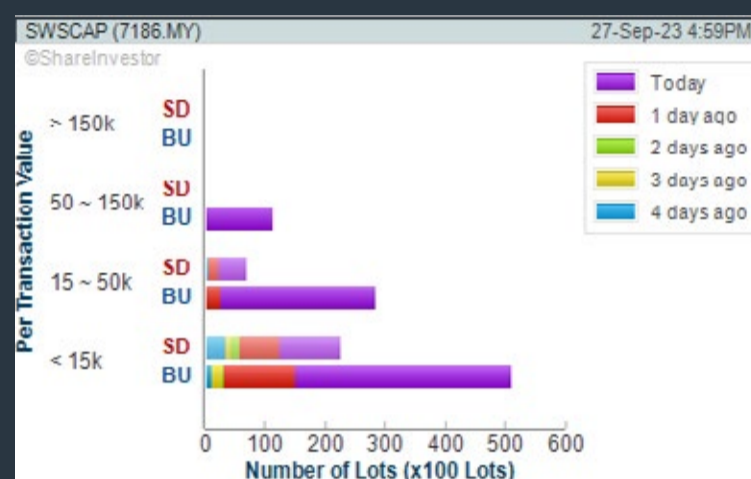
1. Revenue - select (more than) type (1) for the past select (1) financial year(s)
2. Moving Average Below Close - select (MA) type (20) below close price for type (1) days
3. Average Volume - type (5) days average volume type (10000) lots
4. Last Done Price - select (more than) type (0.3)
5. Moving Average Below Close - select (MA) type (10) below close price for type (1) days
6. Moving Average Bullish Crossover - select (MA) type (5) crossed above select (MA) type (10)

> click Save Template > Create New Template type (Non-Shariah Up-Trending Stocks) > click Create Click Save Template As > select Non-Shariah Up Trending Stocks > click Save
> click Screen Now (may take a few minutes)
Sort By: Select (Vol) Select (Desc)
Mouse over stock name > Charts > click C² Charts tab or Volume Distribution

SWS CAPITAL BERHAD (7186)

C² Chart

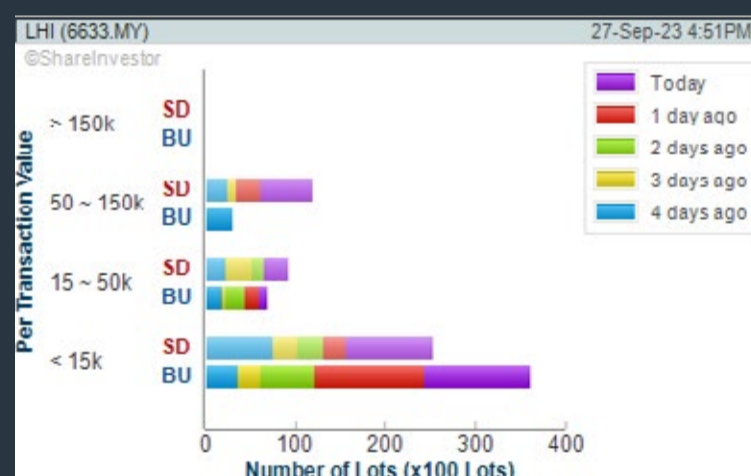
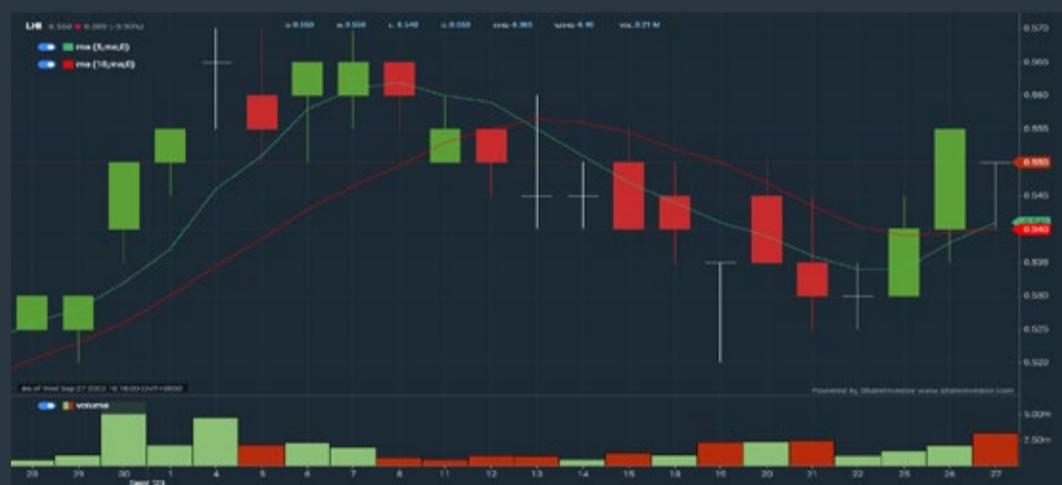
Analysis



LEONG HUP INTERNATIONAL BERHAD (6633)

C² Chart

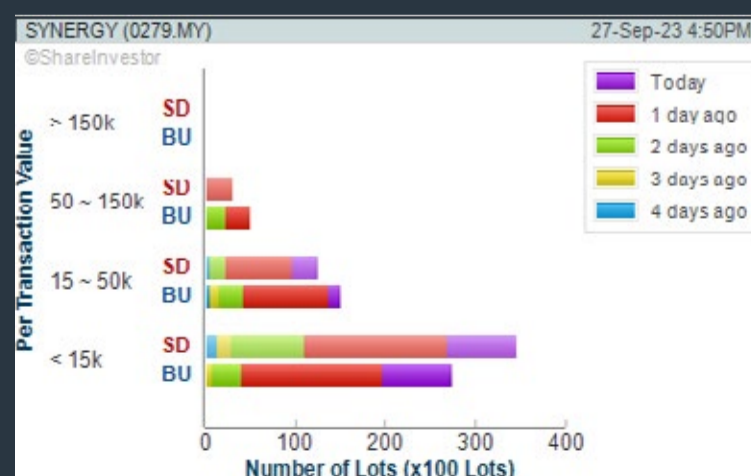
Analysis



SYNERGY HOUSE BERHAD (0279)

C² Chart

Analysis



Disclaimer: The information on this page is provided as a service to readers. It does not constitute financial advice and/or any investment recommendations. Past performance is not indicative of future results. We assume no liability for damages resulting from or arising out of the use of such information. It would be best if you did your own research to make your personal investment decisions wisely or consult a licenced investment advisor.

BURSASTATION

Professional

Stock Scanning

- Technical Analysis (TA) Market Scanner
- Fundamental Analysis (FA) Market Scanner

Monitoring

- Portfolio
- Stock Alerts
- Price Spread Calculator

Market Data

- Equities
- Derivatives

Scan. Chart. Analyse.

Be The Intelligent Investor

Charts

- Intraday Charts
- Interactive Charts
- Historical Charts
- Volume Distribution Charts

Price Movements

- Streaming Prices
- Time & Sales
- Trade Summary Matrix
- Quote Movements
- 5 Levels Market Depth
- Historical Price Download

Fundamentals

- Factsheets
- Financials
- Insider Trades

Brought to you as a collaborative effort by ShareInvestor and Bursa Malaysia, **BursaStation Professional** is designed with you, the user, in mind, as a user-friendly yet full of powerful features that will appeal to investors/traders who need instant access to fundamental, technical, and trading data, anytime, anywhere. **BursaStation Professional** is a state-of-the-art Stock Market Tracker with Charting Software that places in your hands the power to make better investment decisions.

[CLICK HERE TO START YOUR 14-DAYS FREE TRIAL](#)

Price & Total Shareholder Return (as at Wednesday)

Fundamental Analysis

DEFINITION: Share price of a company trading at a lower price as compared to its fundamentals (FA) such as financial performance and dividend, allowing it to be attractive to value investors.

CHART GUIDE: Total Shareholder Return (TSR) combines share price appreciation and dividend distributions paid to show the total return to the shareholder expressed as a percentage.



ShareInvestor WebPro > Screener > Market Screener (FA & TA) > select BURSA > add criteria

A. Criteria

- > click Add Criteria
- Fundamental Analysis Conditions tab (i) Price Earnings Ratio
- Fundamental Analysis Conditions tab >select (ii) CAGR of Net Earnings
- Fundamental Analysis Conditions tab >select (iii) Net Debt To Equity
- Fundamental Analysis Conditions tab >select (iv) Return On Equity (ROE)

B. Conditions

1. Price Earnings Ratio - select (less than) type (15) times now
2. CAGR of Net Earnings - select (more than) type (10) % for the past type (3) financial year(s)
3. Net Debt To Equity – select (less than) type (1) for the past select (1) financial year(s)
4. Return On Equity (ROE) – select (more than) type (10) % for the past select (1) financial year(s)

- > click Save Template > Create New Template type (Value Stock) > click Create
- > click Save Template as > select Value Companies > click Save
- > click Screen Now (may take a few minutes)
- Sort by: Select (PE Ratio) Select (Ascending)
- > Mouse over stock name > Factsheet > looking for Total Shareholder Return
- > Mouse over stock name > Charts > click C2 Charts tab

SYNERGY HOUSE BERHAD (0279)

C² Chart



Period	Dividend Received	Capital Appreciation	Total Shareholder Return
Short Term Return	5 Days	-0.05	-1.0%
	10 Days	-0.05	-1.6%
	20 Days	-0.03	-1.9%
Medium Term Return	3 Months	-0.10	-2.1%

SUNMOW HOLDING BERHAD (03050)

C² Chart



Period	Dividend Received	Capital Appreciation	Total Shareholder Return
Short Term Return	5 Days	0.00	-0.8%
	10 Days	-0.40	-26.7%
	20 Days	-0.10	-8.3%
Medium Term Return	3 Months	-0.30	-1.7%
	1 Year	-0.45	-15.9%
Annualized Return	Annualized	-	-15.9%

EDELTEQ HOLDINGS BERHAD (0278)

C² Chart



Period	Dividend Received	Capital Appreciation	Total Shareholder Return
Short Term Return	5 Days	0.03	4.5%
	10 Days	-0.05	-1.5%
	20 Days	-0.10	-3.5%
Medium Term Return	3 Months	-0.20	-10.2%

Disclaimer: The information on this page is provided as a service to readers. It does not constitute financial advice and/or any investment recommendations. Past performance is not indicative of future results. We assume no liability for damages resulting from or arising out of the use of such information. It would be best if you did your own research to make your personal investment decisions wisely or consult a licenced investment advisor.

MAKE BETTER TRADING STRATEGIES

with

SHARE INVESTOR STATION



8 Markets Data

- ▶ Get access to data from Bursa, NYSE, Nasdaq, HKEX, SGX, IDX, SET & ASX

Dynamic Chart

- ▶ Candlestick Pattern Recognition
- ▶ 111 Indicators
- ▶ 39 Drawing Tools
- ▶ Performance Comparison Chart

Intraday Data

- ▶ Market Depth
- ▶ Trade Summary Matrix & Chart
- ▶ Times & Sales
- ▶ Intraday Market Ticker

Market Screener

- ▶ 96 criteria ranging from FA, TA, Consensus Estimate
- ▶ Real-time Data

Power Frame

- ▶ Combining few Dynamic Charts together with intraday information in one frame

Technical Analysis

Fundamental Analysis

Financial Analysis Statement

- ▶ Profit & Loss
- ▶ Balance Sheet
- ▶ Cash Flow Statement
- ▶ More than 20 Financial Ratios
- ▶ Dividend Analysis

FactSheet

- ▶ Key Stock Information
- ▶ Ownership
- ▶ Consensus Estimates
- ▶ Annual Report
- ▶ Historical Price
- ▶ Insider Trades

Start your 18 days
FREE trial now
(Valued at RM82)



Price & Total Shareholder Return (as at Wednesday)

Fundamental Analysis

DEFINITION: Company revenue is growing and making good quality of earnings with positive Free Cash Flow.

CHART GUIDE: Total Shareholder Return (TSR) combines share price appreciation and distributions paid to show the total return to the shareholder expressed as a percentage.



ShareInvestor WebPro > Screener > Market Screener (FA & TA) > select BURSA > add criteria

A. Criteria

1. Fundamental Analysis Conditions tab >select (i) Free Cash Flow, (ii) Revenue Growth, (iii) Gross Profit (Earnings) Margin, (iv) Quality of Earnings, (v) Total Shareholder Returns, > click Add Criteria
2. Fundamental Analysis Conditions tab >select (vi) Total Shareholder Returns > click Add Criteria

B. Conditions (Criteria Filters)

1. Free Cash Flow - select (more than) type (1) for the past select (1) financial year(s)
2. Revenue Growth - select (more than) type (1) for the past select (1) financial year(s)
3. Gross Profit (Earnings) Margin - select (more than) type (30) % for the past select (1) financial year(s)
4. Quality of Earnings - select (more than) type (1) for the past select (1) financial year(s)
5. Total Shareholder Return - select (more than) type (5) % for the past select (3) financial year(s)
6. Total Shareholder Return - select (more than) type (5) % for the past select (5) financial year(s)

- > click Save Template > Create New Template type (Growth Companies) > click Create
- > click Save Template as > select Growth Companies > click Save
- > click Screen Now (may take a few minutes)
- > Sort By: Select (Revenue Growth) Select (Desc)
- > Mouse over stock name > Factsheet > looking for Total Shareholder Return

SEAL INCORPORATED BERHAD (4286)

C² Chart

Analysis



Period	Dividend Received	Capital Appreciation	Total Shareholder Return
Short Term Return	5 Days	-0.015	-3.82%
	10 Days	-0.005	-0.95%
	20 Days	-0.030	-5.26%
Medium Term Return	3 Months	-0.005	+1.24%
	6 Months	-0.250	+8.21%
	1 Year	-0.135	+53.41%
Long Term Return	2 Years	-0.200	+8.82%
	3 Years	-0.225	+1.15%
	5 Years	-0.185	+44.80%
Annualised Return	Annualised	-	+7.87%

IGB BERHAD (5606)

C² Chart

Analysis



Period	Dividend Received	Capital Appreciation	Total Shareholder Return
Short Term Return	5 Days	-0.030	-3.59%
	10 Days	-0.010	-0.47%
	20 Days	-0.000	+3.90%
Medium Term Return	3 Months	-0.140	+7.04%
	6 Months	-0.100	+7.58%
	1 Year	-0.000	+28.49%
Long Term Return	2 Years	0.100	+29.96%
	3 Years	0.220	+56.45%
	5 Years	0.300	+61.26%
Annualised Return	Annualised	-	+9.28%

PECCA GROUP BERHAD (5271)

C² Chart

Analysis



Period	Dividend Received	Capital Appreciation	Total Shareholder Return
Short Term Return	5 Days	-0.040	+3.42%
	10 Days	-	+3.42%
	20 Days	-0.270	+29.72%
Medium Term Return	3 Months	-0.210	+26.00%
	6 Months	-0.255	+26.26%
	1 Year	-0.310	+34.84%
Long Term Return	2 Years	-0.407	+42.55%
	3 Years	-0.000	+36.87%
	5 Years	0.120	+58.51%
Annualised Return	Annualised	-	+45.76%

Disclaimer: The information on this page is provided as a service to readers. It does not constitute financial advice and/or any investment recommendations. Past performance is not indicative of future results. We assume no liability for damages resulting from or arising out of the use of such information. It would be best if you did your own research to make your personal investment decisions wisely or consult a licenced investment advisor.



making places creative



usm.com

XTRA

XTRA FURNITURE SDN BHD
The Gardens Mall, Mid Valley City, Lot S-236 & 237
Lingkar Syed Putra, 59200 Kuala Lumpur
T. +603 2282 9088 | living@xtrafurniture.com | xtrafurniture.com
● XTRAFurniture | ● xtrafurnituremsia

Price & Total Shareholder Return (as at Wednesday)

Fundamental Analysis

DEFINITION: Company is paying out dividend with low or moderate leverage.

CHART GUIDE: Total Shareholder Return (TSR) combines share price appreciation and distributions paid to show the total return to the shareholder expressed as a percentage.



ShareInvestor WebPro > Screener > Market Screener (FA & TA) > select BURSA > add criteria
A. Criteria
 > click Add Criteria
 • Fundamental Analysis Conditions tab >select (i) Dividend Yield
 • Fundamental Analysis Conditions tab >select (ii) Dividend Payout (Historical)
 • Fundamental Analysis Conditions tab >select (iii) Total Debt To Equity
 • Fundamental Analysis Conditions tab >select (iv) Total Shareholder Returns
 • Fundamental Analysis Conditions tab >select (v) Total Shareholder Returns
 • Fundamental Analysis Conditions tab / >select (vi) CAGR of Dividend Per Share

• Fundamental Analysis Conditions tab >select (vii) CAGR of Dividend Per Share
B. Conditions (Criteria Filters)
 1. Dividend Yield - select (more than) type (1) % for the past select (1) financial year(s)
 2. Dividend Payout (Historical) - select (between) type (0.5) to type (1) times for the past select (1) financial year(s)
 3. Total Debt to Equity – select (less than) type (1) for the past select (1) financial year(s)
 4. Total Shareholder Return – select (more than) type (5) % for the past select (3) financial year(s)
 5. Total Shareholder Return – select (more than) type (5) % for the past select (5) financial year(s)

6. CAGR of Dividend Per Share – select (less than) type (30) % for the past select (5) financial year(s)
 7. CAGR of Dividend Per Share – select (more than) type (1) % for the past select (5) financial year(s)
 > click Save Template > Create New Template type (Dividend Companies) > click Create
 > click Save Template as > select Dividend Companies > click Save
 > click Screen Now (may take a few minutes)
 > Sort By: Select (Dividend Yield) Select (Desc)
 > Mouse over stock name > Factsheet > looking for Total Shareholder Return

JAYCORP BERHAD (7152)

C² Chart

Analysis



Period	Dividend Received	Capital Appreciation	Total Shareholder Return
Short Term Return	5 Days	-	-
	10 Days	-	+0.71%
	20 Days	-	+1.43%
Medium Term Return	3 Months	-	+2.15%
	6 Months	-	-
	1 Year	-	+2.15%
Long Term Return	2 Years	0.055	+3.13%
	3 Years	0.170	+6.16%
	5 Years	0.355	+12.24%
Annualized Return	Annualized	-	+17.27%

FORMOSA PROSONIC INDUSTRIES (9172)

C² Chart

Analysis



Period	Dividend Received	Capital Appreciation	Total Shareholder Return
Short Term Return	5 Days	-	+1.45%
	10 Days	-	+2.84%
	20 Days	-	+3.37%
Medium Term Return	3 Months	-	+4.39%
	6 Months	-	-0.43%
	1 Year	-	-0.53%
Long Term Return	2 Years	0.200	+6.69%
	3 Years	0.340	+11.95%
	5 Years	0.550	+15.34%
Annualized Return	Annualized	-	+16.25%

GAS MALAYSIA BERHAD (5209)

C² Chart

Analysis



Period	Dividend Received	Capital Appreciation	Total Shareholder Return
Short Term Return	5 Days	-	-
	10 Days	-	-
	20 Days	-	-0.15%
Medium Term Return	3 Months	-	+0.47%
	6 Months	-	-0.73%
	1 Year	-	-2.93%
Long Term Return	2 Years	0.177	+5.74%
	3 Years	0.205	+7.61%
	5 Years	0.550	+17.70%
Annualized Return	Annualized	-	+8.11%

Disclaimer: The information on this page is provided as a service to readers. It does not constitute financial advice and/or any investment recommendations. Past performance is not indicative of future results. We assume no liability for damages resulting from or arising out of the use of such information. It would be best if you did your own research to make your personal investment decisions wisely or consult a licenced investment advisor.

Week: 22 September 2023 - 27 September 2023

More Brokers' Call 

AMINVESTMENT BANK <small>... See More</small>	Call	Target Price	Release Date
Hong Leong Financial Group Berhad (1082)	BUY	RM22.30	26 Sep 2023
Malakoff Berhad (2496)	BUY	RM0.75	26 Sep 2023

APEX <small>... See More</small>	Call	Target Price	Release Date
Kronologi Asia Berhad (0176)	BUY	RM0.53	22 Sep 2023
SSF Home Group Berhad (0287)	BUY	RM0.34	25 Sep 2023

BIMB SECURITIES SDN BHD <small>... See More</small>	Call	Target Price	Release Date
Kumpulan Perangsang Selangor Berhad (5843)	HOLD	RM0.770	25 Sep 2023
Malakoff Corporation Berhad (5264)	HOLD	RM0.62	27 Sep 2023

CGS CIMB <small>... See More</small>	Call	Target Price	Release Date
HSS Engineers Berhad (0185)	ADD	RM1.21	25 Sep 2023

KENANGA <small>... See More</small>	Call	Target Price	Release Date
United U-Li Corporation Berhad (7133)	OUTPERFORM	RM2.18	22 Sep 2023
Malakoff Corporation Berhad (5264)	MARKET PERFORM	RM0.62	25 Sep 2023
Astro Malaysia Holdings Berhad (6399)	MARKET PERFORM	RM0.56	26 Sep 2023
AEON Credit Service (M) Berhad (5139)	OUTPERFORM	RM16.95	27 Sep 2023

MIDF <small>... See More</small>	Call	Target Price	Release Date
Eco World Development Group Berhad (8206)	NEUTRAL	RM1.07	22 Sep 2023
MISC Berhad (3816)	BUY	RM8.16	25 Sep 2023
Bumi Armada Berhad (6793)	BUY	RM0.67	26 Sep 2023

UOB KAYHIAN <small>... See More</small>	Call	Target Price	Release Date
OpenSys (M) Berhad (0040)	BUY	RM0.45	25 Sep 2023
Astro Malaysia Holdings Berhad (6399)	HOLD	RM0.44	26 Sep 2023
Malakoff Corporation Berhad (5264)	BUY	RM0.70	26 Sep 2023
MMS Ventures Berhad (0113)	BUY	RM0.65	26 Sep 2023

Disclaimer: InveSt does not accept any liability whatsoever for any direct, indirect or consequential losses (including loss of profit) or damages that may arise from the use of information or opinions in this publication. The information and opinions in InveSt are not to be considered as an offer to sell or buy any of the securities discussed. Opinions expressed are subject to change without notice. The Brokers may, from time to time, have interests or positions in the securities mentioned. For the full report on each item listed on this page, please visit https://www.shareinvestor.com/my/brokers_call.

DEFINITION: Top 10 stocks with Technical Analysis plus Pattern Matching by 60 pre-defined indicators by the system showing a higher probability of bullish sentiment on the share price.



ShareInvestor WebPro > Screener > Predefined TA Screens > select market BURSA > Most Long Signals > click Scan Results or mouse over each company

MIECO CHIPBOARD BERHAD (5001.MY)

MIECO

Price updated at 27 Sep 2023 16:58

Last: 0.660	Change: -	Volume: 1,006
	Change (%): -	Range: 0.645 - 0.670

TA Scanner Results based on historical data up to 27 Sep 2023

Condition	Signal	Explanation
Bollinger Band: Bullish Long Term Volatility Breakout and Trending	Long	1. Close price above upper bollinger band(33,1). 2. Volume above average volume(50). 3. Average volume(50) is above 300,000.
Bollinger Band: Bullish Short Term Volatility Breakout and Trending	Long	1. Close price above upper bollinger band(33,1). 2. Volume above average volume(10). 3. Average volume(10) is above 300,000.
Bollinger Band: High Above Upper Bollinger Band	Neutral	1. High above upper bollinger band(14,2). 2. Average volume(5) is above 100,000.
Donchian Channels: High Above Upper Donchian Channels	Long	High crossed above the upper Donchian Channel(14,4)
MACD: Bullish MACD Crossover	Long	1. MACD(12,26) diff line crossed above the MACD(12,26) signal line. 2. MACD Histogram(12,26) is above 0.
Volume: 10 Days large value Buy Up trade	Long	1. 150K value Buy Up greater than Sell Down by 20% for 10 days. 2. 50K-100K value Buy Up greater than Sell Down by 20% for 10 days. 3. Average volume(10) is above 1000000
Volume: 5 Days large value Buy Up trade	Long	1. 150K value Buy Up greater than Sell Down by 20% for 5 days. 2. 50K-100K value Buy Up greater than Sell Down by 20% for 5 days. 3. Average volume(10) is above 1000000
Volume: Volume Spike	Long	1. Volume is more than 500% above average volume(10). 2. Volume above 200000. 3. Close price above 0.10

SYNERGY HOUSE BERHAD (0279.MY)

SYNERGY

Price updated at 27 Sep 2023 16:57

Last: 0.405	Change: -	Volume: 23,903
	Change (%): -	Range: 0.400 - 0.415

TA Scanner Results based on historical data up to 27 Sep 2023

Condition	Signal	Explanation
Bollinger Band: Bullish Long Term Volatility Breakout and Trending	Long	1. Close price above upper bollinger band(33,1). 2. Volume above average volume(50). 3. Average volume(50) is above 300,000.
Bollinger Band: Bullish Short Term Volatility Breakout and Trending	Long	1. Close price above upper bollinger band(33,1). 2. Volume above average volume(10). 3. Average volume(10) is above 300,000.
Bollinger Band: High Above Upper Bollinger Band	Neutral	1. High above upper bollinger band(14,2). 2. Average volume(5) is above 100,000.
DM: Bullish Directional Movement	Long	-DI(14) crossed below +DI(14)
Donchian Channels: High Above Upper Donchian Channels	Long	High crossed above the upper Donchian Channel(14,4)
MACD: Bullish MACD Crossover	Long	1. MACD(12,26) diff line crossed above the MACD(12,26) signal line. 2. MACD Histogram(12,26) is above 0.
Parabolic SAR: Bearish Parabolic SAR Reversal	Neutral	1. Parabolic SAR 1 day ago above close price 1 day ago for the last 5 days. 2. Parabolic SAR below close price
Williams %R: Bearish Williams %R	Short	1. Williams %R(26) between 0 and -20. 2. Average volume(5) is above 100,000.

HEXTAR GLOBAL BERHAD (5151.MY)

HEXTAR

Price updated at 27 Sep 2023 16:55

Last: 0.765	Change: -0.010	Volume: 43,847
	Change (%): -1.29	Range: 0.750 - 0.770

TA Scanner Results based on historical data up to 27 Sep 2023

Condition	Signal	Explanation
Bollinger Band: Bullish Long Term Volatility Breakout and Trending	Long	1. Close price above upper bollinger band(33,1). 2. Volume above average volume(50). 3. Average volume(50) is above 300,000.
Bollinger Band: High Above Upper Bollinger Band	Neutral	1. High above upper bollinger band(14,2). 2. Average volume(5) is above 100,000.
CCI: Bearish CCI Overbought And Reversing	Short	1. CCI(26) above 100 and CCI(26) 1 day ago increasing for the last 3 days. 2. CCI(26) below CCI(26) 1 day ago
MA: Bullish Price Crossover	Long	1. Close price crossed above MA(40) within the last 1 day. 2. Previous day close price is below the MA(10) for the last 5 days
MACD: Bullish MACD Crossover	Long	1. MACD(12,26) diff line crossed above the MACD(12,26) signal line. 2. MACD Histogram(12,26) is above 0.
Volume: 10 Days large value Buy Up trade	Long	1. 150K value Buy Up greater than Sell Down by 20% for 10 days. 2. 50K-100K value Buy Up greater than Sell Down by 20% for 10 days. 3. Average volume(10) is above 1000000
Volume: 5 Days large value Buy Up trade	Long	1. 150K value Buy Up greater than Sell Down by 20% for 5 days. 2. 50K-100K value Buy Up greater than Sell Down by 20% for 5 days. 3. Average volume(10) is above 1000000

PCCS GROUP BERHAD (6068.MY)

PCCS

Price updated at 27 Sep 2023 16:50

Last: 0.410	Change: -	Volume: 413
	Change (%): -	Range: 0.395 - 0.410

TA Scanner Results based on historical data up to 27 Sep 2023

Condition	Signal	Explanation
Bollinger Band: High Above Upper Bollinger Band	Neutral	1. High above upper bollinger band(14,2). 2. Average volume(5) is above 100,000.
Bollinger Band: Low Below Lower Bollinger Band	Neutral	1. Low below lower bollinger band(14,2). 2. Average volume(5) is above 100,000.
DM: Bullish Directional Movement	Long	-DI(14) crossed below +DI(14)
Donchian Channels: High Above Upper Donchian Channels	Long	High crossed above the upper Donchian Channel(14,4)
MA: Bullish Price Crossover	Long	1. Close price crossed above MA(40) within the last 1 day. 2. Previous day close price is below the MA(10) for the last 5 days
MACD: Bullish MACD Crossover	Long	1. MACD(12,26) diff line crossed above the MACD(12,26) signal line. 2. MACD Histogram(12,26) is above 0.
Parabolic SAR: Bearish Parabolic SAR Reversal	Neutral	1. Parabolic SAR 1 day ago above close price 1 day ago for the last 5 days. 2. Parabolic SAR below close price
Price: New 52 Week Low	Short	1. Stock reach a new 52 week low. 2. Average volume(30) is above 50000.
RSI: Short Term RSI 50 Bullish Crossover	Long	1. RSI(20) crossed above 50 within the last 1 day and RSI(20) 1 day ago below 50 for the last 5 days. 2. Volume above average volume(125). 3. Average volume(5) is above 100,000.
Volume: Volume Spike	Long	1. Volume is more than 500% above average volume(10). 2. Volume above 200000. 3. Close price above 0.10
Williams %R: Bearish Williams %R	Short	1. Williams %R(26) between 0 and -20. 2. Average volume(5) is above 100,000.



SPRITZER BERHAD (7103.MY)

SPRITZER

Price updated at 27 Sep 2023 16:57

Last: 1.600	Change: -0.030	Volume: 5,129
	Change (%): -1.84	Range: 1.580 - 1.630

TA Scanner Results based on historical data up to 27 Sep 2023

Condition	Signal	Explanation
Accumulation Distribution: Bullish Accumulation Distribution	Long	Accumulation distribution increasing for the last 7 days
Bollinger Band: High Above Upper Bollinger Band	Neutral	1. High above upper bollinger band(14,2). 2. Average volume(5) is above 100,000.
Donchian Channels: High Above Upper Donchian Channels	Long	High crossed above the upper Donchian Channel(14,4)
MACD: Bullish MACD Crossover	Long	1. MACD(12,26) diff line crossed above the MACD(12,26) signal line. 2. MACD Histogram(12,26) is above 0.
Volume: Volume Spike	Long	1. Volume is more than 500% above average volume(10). 2. Volume above 200000. 3. Close price above 0.10
Williams %R: Bearish Williams %R	Short	1. Williams %R(26) between 0 and -20. 2. Average volume(5) is above 100,000.



MIKRO MSC BERHAD (0112.MY)

MIKROMB

Price updated at 27 Sep 2023 16:56

Last: 0.235	Change: +0.005	Volume: 8,611
	Change (%): +2.17	Range: 0.225 - 0.235

TA Scanner Results based on historical data up to 27 Sep 2023

Condition	Signal	Explanation
Bollinger Band: Bullish Short Term Volatility Breakout and Trending	Long	1. Close price above upper bollinger band(33,1). 2. Volume above average volume(10). 3. Average volume(10) is above 300,000.
Bollinger Band: High Above Upper Bollinger Band	Neutral	1. High above upper bollinger band(14,2). 2. Average volume(5) is above 100,000.
DM: Bullish Directional Movement	Long	-DI(14) crossed below +DI(14)
Donchian Channels: High Above Upper Donchian Channels	Long	High crossed above the upper Donchian Channel(14,4)
MACD: Bullish MACD Crossover	Long	1. MACD(12,26) diff line crossed above the MACD(12,26) signal line. 2. MACD Histogram(12,26) is above 0.
Parabolic SAR: Bearish Parabolic SAR Reversal	Neutral	1. Parabolic SAR 1 day ago above close price 1 day ago for the last 5 days. 2. Parabolic SAR below close price
RSI: Short Term RSI 50 Bullish Crossover	Long	1. RSI(20) crossed above 50 within the last 1 day and RSI(20) 1 day ago below 50 for the last 5 days. 2. Volume above average volume(125). 3. Average volume(5) is above 100,000.
Williams %R: Bearish Williams %R	Short	1. Williams %R(26) between 0 and -20. 2. Average volume(5) is above 100,000.



SPRING ART HOLDINGS BERHAD (0216.MY)

SPRING

Price updated at 27 Sep 2023 16:58

Last: 0.165	Change: -0.005	Volume: 15,669
	Change (%): -2.94	Range: 0.160 - 0.170

TA Scanner Results based on historical data up to 27 Sep 2023

Condition	Signal	Explanation
Bollinger Band: Bullish Short Term Volatility Breakout and Trending	Long	1. Close price above upper bollinger band(33,1). 2. Volume above average volume(10). 3. Average volume(10) is above 300,000.
Bollinger Band: High Above Upper Bollinger Band	Neutral	1. High above upper bollinger band(14,2). 2. Average volume(5) is above 100,000.



METRONIC GLOBAL BERHAD (0043.MY)

MTRONIC

Price updated at 27 Sep 2023 16:59

Last: 0.015	Change: -0.005	Volume: 13,407
	Change (%): -25.00	Range: 0.015 - 0.020

TA Scanner Results based on historical data up to 27 Sep 2023

Condition	Signal	Explanation
Bollinger Band: Bullish Long Term Volatility Breakout and Trending	Long	1. Close price above upper bollinger band(33,1). 2. Volume above average volume(50). 3. Average volume(50) is above 300,000.
Bollinger Band: Bullish Short Term Volatility Breakout and Trending	Long	1. Close price above upper bollinger band(33,1). 2. Volume above average volume(10). 3. Average volume(10) is above 300,000.
Bollinger Band: High Above Upper Bollinger Band	Neutral	1. High above upper bollinger band(14,2). 2. Average volume(5) is above 100,000.
Chaikin Volatility: Increasing Chaikin Volatility	Neutral	Chaikin Volatility(10,10) has been increasing for 5 days
DM: Bullish Directional Movement	Long	-DI(14) crossed below +DI(14)
Donchian Channels: High Above Upper Donchian Channels	Long	High crossed above the upper Donchian Channel(14,4)
MA: Medium Term Bullish Moving Average Crossover	Long	MA(25) crossed above MA(50) within the last 1 day.
Price: New 52 Week Low	Short	1. Stock reach a new 52 week low. 2. Average volume(30) is above 50000.



UMW HOLDINGS BERHAD (4588.MY)

UMW

Price updated at 27 Sep 2023 16:59

Last: 4.770	Change: -0.130	Volume: 28,079
	Change (%): -2.65	Range: 4.760 - 4.860

TA Scanner Results based on historical data up to 27 Sep 2023

Condition	Signal	Explanation
Bollinger Band: Bullish Long Term Volatility Breakout and Trending	Long	1. Close price above upper bollinger band(33,1). 2. Volume above average volume(50). 3. Average volume(50) is above 300,000.
Bollinger Band: Bullish Short Term Volatility Breakout and Trending	Long	1. Close price above upper bollinger band(33,1). 2. Volume above average volume(10). 3. Average volume(10) is above 300,000.
Bollinger Band: High Above Upper Bollinger Band	Neutral	1. High above upper bollinger band(14,2). 2. Average volume(5) is above 100,000.
Donchian Channels: High Above Upper Donchian Channels	Long	High crossed above the upper Donchian Channel(14,4)
Parabolic SAR: Bearish Parabolic SAR Reversal	Neutral	1. Parabolic SAR 1 day ago above close price 1 day ago for the last 5 days. 2. Parabolic SAR below close price
Price: New 52 Week High	Long	1. Stock reach a new 52 week high. 2. Average volume(30) is above 50000.
Volume: 10 Days large value Sell Down trade	Short	1. 150K value Sell Down greater than Buy Up by 20% for 10 days. 2. 50K-100K value Sell Down greater than Buy Up by 20% for 10 days. 3. Average volume(10) is above 1000000
Volume: 5 Days large value Sell Down trade	Short	1. 150K value Sell Down greater than Buy Up by 20% for 5 days. 2. 50K-100K value Sell Down greater than Buy Up by 20% for 5 days. 3. Average volume(10) is above 1000000

Disclaimer: The information on this page is provided as a service to readers. It does not constitute financial advice and/or any investment recommendations. Past performance is not indicative of future results. We assume no liability for damages resulting from or arising out of the use of such information. It would be best if you did your own research to make your personal investment decisions wisely or consult a licenced investment advisor.

Condition	Signal	Explanation
Candlestick: Bullish Engulfing	Long	Bullish: Engulfing
Donchian Channels: High Above Upper Donchian Channels	Long	High crossed above the upper Donchian Channel(14,4)
MACD: Bullish MACD Crossover	Long	1. MACD(12,26) diff line crossed above the MACD(12,26) signal line. 2. MACD Histogram(12,26) is above 0.



Gan Yee Hin

Executive Director and
CEO of Southern Score
Builders Berhad

**SSBB defines
the future of
construction**

Pioneering technological breakthrough for future
construction methods

Innovation, automation and sustainability are oft-spoken buzzwords, but for Southern Score Builders Berhad (SSBB), it's a guiding credo. Committed to pioneer the development of robotic construction technology in Malaysia, the construction management company is working hard to expedite testing and make it suitable for the local construction environment.

Gan Yee Hin, its Executive Director and CEO, revealed that SSBB aims to integrate automation and robotics across the entire spectrum of design, manufacturing and construction processes within the framework of Industrialised Building Systems (IBS) in Malaysia. He added that using technologies, such as Building Information Modelling (BIM) and robotics, gives the company an edge in the construction sector and positions it for future growth and efficiency gains.

In June, SSBB forged a collaborative alliance with MCC Overseas (M) Sdn Bhd (MCC) and Guangdong Bright Dream Robotics Co Ltd (GBDR) through a Memorandum of Understanding (MOU) to bring in construction robots technology to automate the design, manufacturing and construction process of IBS in Malaysia. The aim is to achieve efficiency in building residential homes.

According to the MOU, the trio will collaborate to construct 5,000 units of houses in Malaysia using the new robotic construction technology.

"Given that the machines were developed by foreign companies with distinct environmental requirements, we need to assess their compatibility with the Malaysian climate. So, our first step is to test it on targeted projects to ensure the suitability of these machines before wider implementation," Gan explained.

SSBB provides professional project management services, from project initiation stages to the completion of construction works. These

“ We feel it is our responsibility to ensure the suitability of these machines prior to wide implementation by the industry. ”

services cover project initiation, planning and design, appointment of subcontractors, procurement, construction project management and inspection until completion and handover. In 2015, the company was awarded turnkey contractor for PR1MA Jalan Jubilee. Other construction and development projects SSBB undertook over the years include Vista Sentul Residence, Platinum Arena Residences, Vista Wirajaya 1@PV 9 Residences, PV 18 Residence and Platinum Teratai Residences.

SSBB's experience in building and infrastructure construction management services sparked the interest in automating the processes to achieve faster delivery, cleaner construction sites and better productivity. Gan said their [SSBB team] interest was piqued during a working visit to Bozhilin Robotics in Guangdong, China, where they witnessed the construction robotics technology in action.

"Our team then conducted extensive research into construction robots, Building Information Modelling (BIM) technology, and other innovative construction methods and we think it is important for us to adopt it in Malaysia," he said.

The adoption of robotic construction technology will cut down construction time and enhance precision and consistency of tasks. The young



leader, who took over the company's management from his father, Tan Sri Gan Yu Chai, noted that an important aspect of the technology was its contribution to the environmental, social and governance (ESG) aspects.

"The adoption of automation in construction will enhance worker safety by mitigating exposure to hazardous conditions, while minimising dust and other hazardous materials," he told Inve\$t.

According to Gan, the machine has the capability to vacuum and grind, converting the collected dust into bricks for alternative use on construction sites. This would contribute to cleaner and more environmentally friendly construction sites and better cradle-to-cradle management of resources.

In construction today, you have to go green

"When it comes to balancing cost and green initiatives in construction, we take a comprehensive approach that aligns environmental stewardship with cost-effectiveness. We work closely with our clients to ensure all our projects are GreenRE certified," Gan informed.

GreenRE certification is an assessment of the sustainability and performance of a building according to a set of tools and guidelines issued by GreenRE, Malaysia's largest green building certification body.

SSBB also leverages incentives offered in the regulatory landscape including tax benefits that support

green initiatives which can significantly offset upfront costs, making green construction more financially viable. He said SSBB complies with green certification requirements by ensuring the companies it works with are also GreenRE certified.

“ We comply with green certification requirements and also ensure companies we work with are GreenRE certified. **”**

He acknowledged that green technologies or materials come with higher upfront costs, however, the lifecycle cost analysis often reveals

significant savings over the operational lifespan of the building. Incorporating energy-efficient features, such as solar panels, LED lighting, and advanced insulation, which lead to substantial energy savings, lowering utility bills for occupants.

According to Gan, as innovative solutions providers for the building and infrastructure construction industry, SSBB seeks to synergise its green practices through technology.

“When we use BIM technology, our construction plans are audited efficiently. This will save us a lot of time and cost, and emphasises the safety of our workers on site,” he explained.

He pointed out that SSBB also incorporates green practices from a project’s inception, factoring in passive design features which optimise the building’s layout, orientation, and systems to minimise energy consumption and waste.

Steadfast in its green mission, SSBB shoulders the responsibility to educate and spur awareness among its stakeholders to realise the long-term benefits of green initiatives and stimulate a willingness to invest in sustainable practices and technologies.

Coping with the challenges

As the economy revives post pandemic, prospects in construction began to emerge, however, challenges from supply chain disruption to labour shortages plague margins and timely delivery. To overcome the delays in obtaining essential construction materials, SSBB diversified its supplier-base and explored more local sourcing options.

“Sourcing local options has multiple benefits, as not only did we overcome the delays and additional logistics costs, we have contributed to growing local SMEs and stimulating the domestic industry. Also, we have managed to secure a steady supply well into the future, improving margins,” explained Gan.

To address the labour shortages that persist even after the pandemic, SSBB invests in upskilling and reskilling its workforce, while leveraging its strength in technology to increase productivity and enhance efficiency, contributing towards the company’s long-term sustainability.

“ We were shielded by the worst of the pandemic due to our role as consultants as well as our strong industry partnerships. ”

Gan pointed out that SSBB was somewhat shielded by the worst of the pandemic due to its role as consultants in the construction industry mitigated by the spread of projects it was involved in.

“Our strong industry partnerships and the fact that we operate an asset-light model contributed to our resilience during these challenging times,” Gan revealed.

Dynamic market signals good potential for growth

SSBB focuses on the affordable residential sector, a segment experiencing rapid growth to cater for the nation’s urbanisation needs. As of March 2023, the company reported RM738 million worth of projects completed, while its outstanding order book is worth RM603 million. The company actively seeks new projects to bolster its order book and with the government emphasising the rakyat’s housing needs, SSBB is well-positioned for a busy and prosperous outlook over the next two to three years.

When asked about the plans for the future, Gan, a Masters of Eng graduate from the University of Sheffield, confidently replied ‘we are currently preparing for our debut on the Main Board of Bursa Malaysia.’

“Our earnings outlook appears promising, given our strong order book. At this juncture, I am confident that we are well-positioned to sustain our growth and further expand our business,” he reinforced.

Gan believes in a hands-on approach to managing the organisation he inherited from his father, founded in 2010. Motivated by a sense of duty and responsibility towards his family, Gan pushes himself to excel, as he is 'resolute not to disappoint them.'

According to Gan, SSBB is actively exploring partnerships with other companies to pioneer robotic construction technologies within Malaysia, in line with its goals to broaden its geographical reach and vary revenue streams.

"We have widely implemented the IBS across the majority of our development and construction projects. This strategic move aims to enhance both productivity and quality," he added.

SSBB's focus on IBS exemplifies its dedication to refining operations and maintaining competitiveness

within the industry, as it remains focused on the development of innovative technologies and enhancing operational efficiency.

The company assumed its listed status on Bursa Securities's ACE Market in November 2022, following a reverse takeover of G Neptune Bhd by Southern Score Sdn Bhd. The regularisation plan came with a profit guarantee of RM80 million over the period of 2022 to 2024, which SSBB is confident of meeting given its prospects. The company recorded net profits of RM35.18 million in the financial year ended 31 December 2021, while net profits in the similar period of the preceding two years was recorded at RM6.51 million and RM19.20 million respectively. In February 2023, SSBB announced the change of its financial year end from 31 December to 30 June. The company recorded profits of RM25.4 million for the six months ended 30 June 2023.

“In assuming a leadership role, we must acknowledge the individuals who uphold our vision and objectives, as their support is paramount to our effectiveness.”

NATIONAL ENERGY TRANSITION ROADMAP, NEW INDUSTRIAL MASTER PLAN TO BOOST MALAYSIA'S INVESTMENT OPPORTUNITIES - BNM

A ccording to Bank Negara Malaysia (BNM) Governor Datuk Abdul Rasheed Ghaffour, the National Energy Transition Roadmap (NETR) and New Industrial Master Plan (NIMP) are expected to accelerate the country's transition and open large investment opportunities.

The central bank, along with the Securities Commission Malaysia, has focused efforts on laying down relevant building blocks for a conducive green finance ecosystem to facilitate a just and orderly transition. Frameworks and practical tools such as the climate

change and principle-based taxonomy, sectoral guides, and climate risk management and scenario analysis policy document have been developed as guidance for the industry in building its climate resilience as well as capability in contributing towards transition.

Macroeconomic stability, a strong and stable financial sector, and sound policymaking institutions have been essential factors supporting Malaysia's economic development journey thus far. He was speaking during a panel discussion titled "Macro Resilience and Market Insights" at Invest Malaysia New York organised by Bursa Malaysia.

BNM's mandate reaffirms its commitment to promote monetary and financial stability conducive to the sustainable growth of the Malaysian economy. Malaysia's growth will continue to be driven by resilient domestic expenditure underpinned by continued employment and wage growth. He added that investment activity will be supported by the continued progress of multi-year infrastructure projects and implementation of catalytic initiatives under the recently announced national master plans. Domestic financial conditions also remain conducive to financial intermediation amid sustained credit growth.

On the Ringgit, he said that despite the depreciation during 1H 2023, the local currency and several regional currencies have strengthened against the US dollar since July 1, 2023. He added that recently, the Ringgit appreciated against most major trade partners' currencies.

Looking ahead, he expects further clarity on the end of the monetary policy tightening cycle by major central banks to provide support to the Ringgit and emerging market currencies in general. He stressed that the value of the Ringgit is market-determined. The presence in the foreign exchange market is only to prevent excessive volatility and to ensure orderly market conditions and that there is no target of any specific level for the Ringgit.

Malaysia's portfolio investors and its financial markets are progressive, dynamic and supported by steady market development. He concluded by saying that the Malaysian government bond market stands out as one of the largest and most developed in the region. And that it remains stable and liquid with attractive real yields to investors.

Malaysia's economy expected to continue to moderate in the near term - DOSM

According to Department of Statistics Malaysia (DOSM) Chief statistician Datuk Seri Mohd Uzir Mahidin, Malaysia's economy is expected to continue to moderate in the near term, based on data in July and August. Malaysia's economy exhibited moderate growth during the first half of 2023, expanding by 4.2%. The half-year performance came after a 5.6% growth in the first quarter and a 2.9% growth in the second quarter.

Total trade in July 2023 declined 14.4% from RM252.8 billion in the same month last year to RM216.4 billion. Exports shrank 13.1% to RM116.8 billion, while imports contracted 15.9% to RM99.7 billion. Meanwhile, the trade surplus increased 7.9% from the previous year to RM17.1 billion.

Malaysia's total trade registered a value of RM213.0 billion, with a contraction of 19.8% or RM52.7 billion, while exports and imports recorded a negative double-digit growth at 18.6% and 21.2% respectively, year-on-year. On the contrary, the trade surplus increased marginally by 0.1% to post a value of RM17.3 billion.

In July 2023, Malaysia's Industrial Production Index (IPI) rebounded to 0.7% in July 2023, from -2.2% in the previous month. The marginal increase in July 2023 was supported by growth in the mining sector (4.2%) and the electricity sector (1.5%). The manufacturing sector remained negative, although at a lower rate of 0.2%.

At the same time, the value of manufacturing sales in Malaysia totalled RM144.0 billion in July 2023, down for a second consecutive month, decreasing to -3.0% year-on-year (y-o-y), from -4.0% in the preceding month. The performance was primarily influenced by continuous decline in the petroleum, chemical, rubber and plastic sub-sector, reaching to -15.3% during the month. The sales value of export-oriented industries, which represented 72.1% of total sales, continued to decline by 7.0% in July 2023, versus June's -7.4%.

The performance of domestic-oriented industries remained vigorous, reaching 9.2% in July 2023, compared to 6.8% in June 2023, mitigating the impact of deterioration in the export-oriented industries.

Median monthly salaries and wages up 7.7% in 2022 after RM1,500 minimum wage implementation – DOSM

According to chief statistician Datuk Seri Dr Mohd Uzir Mahidin, the median monthly salaries and wages rose 7.7% in 2022 to RM2,424, from RM2,250 in 2021 after Malaysia implemented the minimum wage of RM1,500 in May last year.

In a statement, he attributed the increase to continuous economic and social activities, supported by increasing tourist arrivals and improvements in the labour market, especially in the services sector. The Malaysian government had increased the minimum wage to RM1,500 starting from May 2022, mandating a monthly wage of RM1,500 for employees in all sectors, as a measure that is expected to improve overall salaries and wages conditions in the country as compared to the previous years.

This situation is reflected by the increase in the median monthly salaries and wages received by Malaysian citizens in 2022 which rose by 7.7% to RM2,424 (2021: RM2,250). About 50% of full-time citizen workers received salaries and wages of RM2,424 and below in 2022. Likewise, the mean monthly salaries and wages received by Malaysians in 2022 rose by 5.8%, registering RM3,212 compared to RM3,037 in 2021.

• Mean monthly salaries for all sectors, skilled employees increase

By economic activity, all sectors recorded increases in mean monthly salaries and wages in 2022. The services sector, which was the largest sector in the economy, recorded the highest number of salary and wage recipients, particularly in the sub-sector of wholesale and retail trade activities, education, food and beverages (F&B) and accommodation. This was followed by the manufacturing sector.

The services sector recorded an increase in mean monthly salaries and wages of 5% while the manufacturing sector notched an increase in mean monthly salaries and wages of 7.9%. The mean monthly salaries and wages for skilled employees also increased by 3.7%, registering an additional RM177 to RM5,025 compared to RM4,848 in 2021.

Among skilled employees, managers took home the highest mean monthly salaries and wages at RM6,385, increased by 1.4% as against

RM6,296 in 2021 and followed by professionals (RM5,900) and technicians and associate professionals (RM3,668).

The mean monthly salaries and wages of semi-skilled employees rose to RM2,241 (2021: RM2,064), particularly contributed by clerical support workers (RM2,555), followed by plant and machine operators and assemblers (RM2,158), craft and related trades workers (RM2,154) and services and sales workers (RM2,139). The low-skilled category, which includes elementary workers, also increased by RM66 to RM1,815 as compared to RM1,749 in the previous year.

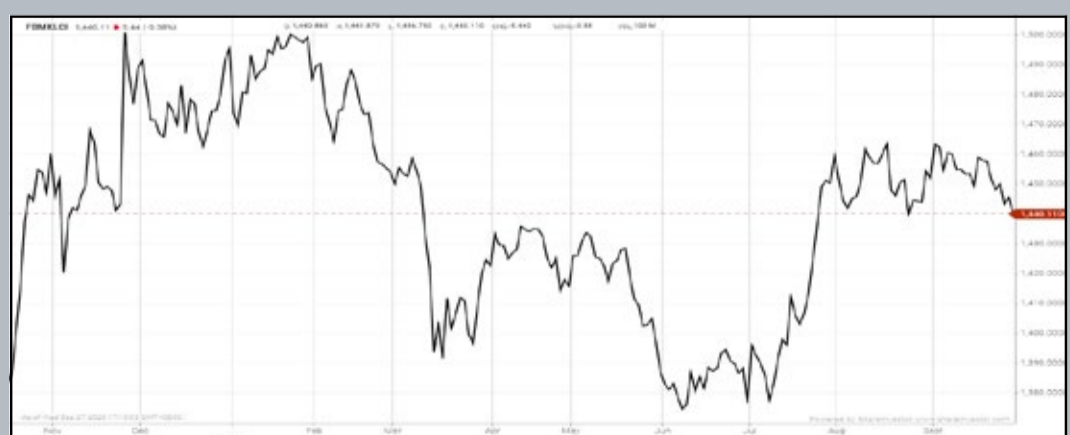
- **Mean monthly salaries for urban and rural areas continue to rise**

Meanwhile, the mean monthly salaries and wages for both urban and rural areas recorded an upward trend to RM3,351 for urban areas and RM2,393 for rural areas as compared to 2021. Specifically, the mean monthly salaries and wages in urban areas posted a growth of 5.1% (2021: RM3,188, +3.2%), while rural areas exhibited a relatively more substantial growth of 10.5% (2021: RM2,166, +3.9%).

By states, Putrajaya recorded the highest mean monthly salaries and wages at RM4,666. Four other states surpassed the national mean level of RM3,212, namely Kuala Lumpur (RM4,207), Selangor (RM3,737), Labuan (RM3,418) and Pulau Pinang (RM3,313).

EYE ON THE MARKETS

On Wednesday (27Sept), the Ringgit closed at 4.7045 against the USD and 3.4343 to the Sing Dollar. On Monday (25Sept), the FBM KLCI opened at 1449.83. As at Wednesday (27Sept) 5:00pm, the FBM KLCI closed down 9.72 points at 1440.11. Over in US, the overnight Dow Jones Industrial Average closed up 116.07 points (+0.35%) to 33,666.34 whilst the NASDAQ added 108.43 points (+0.83%) to 13,201.28.



KLCI 1 Year Chart

Over 5 trading days



ShareInvestor WebPro (www.shareinvestor.com/my)

1. Price > Stock Prices
2. Select Market: NASDAQ / NYSE / IDX / SET / HKEX / SGX (One bourse at a time)
3. select Stocks Tab
4. select Ranking Top Gainers or Top Losers (Over 5 Trading Days)
5. Mouse over Column Layout > select Edit Customs > select Name > select Last Done Price > select 5 Days Change > select 52 Weeks High > select 52 Weeks Low > Mouse Over Column Layout > select Custom

NASDAQ (USD)

Top Gainers

Name	Last Done	Change Over 5 Days	52 Weeks High	52 Weeks Low
BOOKING HOLDINGS INC	3,104.830	+42.290	3,251.709	1,616.850
SUPER MICRO COMPUTER INC	269.380	+37.840	357.000	50.280
SOLENO THERAPEUTICS INC	27.590	+23.480	30.300	0.850
NVIDIA CORP	430.890	+20.720	502.660	108.130
IMMUNOVANT INC	39.790	+18.540	41.720	4.495

Top Losers

Name	Last Done	Change Over 5 Days	52 Weeks High	52 Weeks Low
MORPHIC HOLDING INC	22.490	-28.910	63.083	21.180
CINTAS CORP	483.890	-20.540	524.760	370.930
NATIONAL WESTN LIFE GROUP INC	433.130	-20.500	476.630	166.939
ARGENX SE SPON ADR EACH REP 1 ORD SHS	485.960	-19.870	550.760	333.070
MERCADOLIBRE INC	1,274.140	-19.140	1,451.560	754.760

NYSE (USD)

Top Gainers

Name	Last Done	Change Over 5 Days	52 Weeks High	52 Weeks Low
NVR INC	6,061.920	+173.450	6,525.000	3,816.555
WATSCO INC	380.370	+33.900	383.830	228.610
ALPHA METALLURGICAL RESOURCES INC	265.530	+30.100	266.580	130.540
BIGLARI HOLDINGS INC	837.490	+26.490	1,058.500	597.000
METTLER-TOLEDO INTERNATIONAL INC	1,118.240	+24.210	1,615.970	1,065.550

Top Losers

Name	Last Done	Change Over 5 Days	52 Weeks High	52 Weeks Low
BERKSHIRE HATHAWAY INC	541,105.030	-5,109.970	566,569.970	393,012.250
CHIPOTLE MEXICAN GRILL	1,838.730	-36.850	2,175.010	1,344.050
CABLE ONE INC	602.050	-26.200	905.175	599.040
NEXTERA ENERGY PARTNERS LP	30.540	-17.320	81.320	37.170
ACCENTURE PLC	300.770	-15.320	330.435	242.800

IDX (Rupiah)

Top Gainers

Name	Last Done	Change Over 5 Days	52 Weeks High	52 Weeks Low
RODA VIVATEX	15,550.000	+1,650.000	17,000.000	8,625.000
PRIMA ANDALAN MANDIRI TBK	5,500.000	+860.000	7,900.000	4,030.000
METROPOLITAN KENTJ	34,200.000	+750.000	46,200.000	16,950.000
TELEFAST INDONESIA TBK	2,500.000	+705.000	5,500.000	720.000
DCI INDONESIA TBK	34,700.000	+700.000	38,000.000	32,850.000

Top Losers

Name	Last Done	Change Over 5 Days	52 Weeks High	52 Weeks Low
TRANSCOAL PACIFIC TBK	8,750.000	-950.000	11,025.000	5,875.000
SIANTAR TOP	10,700.000	-825.000	16,900.000	6,800.000
INDO TAMBANGRAYA MEGAH TBK	28,375.000	-625.000	45,650.000	22,125.000
GUDANG GARAM TBK	24,300.000	-425.000	30,050.000	16,500.000
ADIRA DINAMIKA MULTI FINANCE TBK	10,500.000	-375.000	13,250.000	8,150.000

SET (Thai Baht)

Top Gainers

Name	Last Done	Change Over 5 Days	52 Weeks High	52 Weeks Low
OHTL	496.000	+16.000	610.000	410.000
BH	267.000	+9.000	270.000	203.000
PTTEP	170.500	+5.000	195.000	134.500
ADVANC	225.000	+3.000	231.000	181.500
HANA	61.500	+2.750	66.000	32.750

Top Losers

Name	Last Done	Change Over 5 Days	52 Weeks High	52 Weeks Low
SCB	101.000	-7.500	118.500	97.500
SCC	299.000	-7.000	360.000	298.000
EGCO	120.000	-5.500	178.500	120.000
EA	50.500	-5.250	99.750	50.000
GPSC	43.250	-5.000	75.500	43.250

HKEX (HKD)

Top Gainers

Name	Last Done	Change Over 5 Days	52 Weeks High	52 Weeks Low
WUXI APPTec CO LTD	93.000	+9.850	114.000	57.900
EVEREST MEDICINES LTD	24.450	+6.310	30.000	5.980
KEYMED BIOSCIENCES INC	55.000	+4.050	82.850	32.750
ASYMChem LABORATORIES (TIANJIN) CO	107.900	+3.800	140.800	80.350
WUXI BIOLOGICS (CAYMAN) INC	44.100	+3.350	77.400	35.000

Top Losers

Name	Last Done	Change Over 5 Days	52 Weeks High	52 Weeks Low
MOG DIGITECH HOLDINGS LTD	6.000	-72.750	104.300	2.980
LI AUTO INC	133.500	-17.200	185.500	52.050
AIM VACCINE CO LTD	29.900	-9.950	100.000	14.940
TRIP COM GROUP LTD	272.200	-8.200	330.200	159.800
MANULIFE FINANCIAL CORP	143.100	-7.500	157.200	120.000

SGX (SGD)

Top Gainers

Name	Last Done	Change Over 5 Days	52 Weeks High	52 Weeks Low
Jardine C&C	32.480	+0.870	36.170	27.250
Creative	1.700	+0.530	2.000	1.100
JMH USD	47.080	+0.440	54.890	42.600
OCBC Bank	12.800	+0.320	13.390	11.420
DBS	33.500	+0.280	35.855	30.300

Top Losers

Name	Last Done	Change Over 5 Days	52 Weeks High	52 Weeks Low
NIO Inc. USD OV	8.300	-0.550	17.550	7.420
Venture	12.360	-0.540	18.750	12.350
SIA	6.460	-0.160	8.050	4.990
HPL	3.560	-0.140	3.990	3.331
Cromwell Reit SGD	1.800	-0.130	2.560	1.800

SHAREHOLDERS STAND TO GAIN WITH MORE WOMEN DIRECTORS AND INDEPENDENT DIRECTORS ON BOARD



Devanesan
Evanson

**Chief Executive
Officer, Minority
Shareholders Watch
Group**

Contract manufacturer of automated industrial equipment Genetec Technology Bhd should not consider as burdensome the criteria set forth by the Securities Commission Malaysia (SC) that its proposed listing transfer to the Main Market of Bursa Malaysia can only materialise upon its corporate governance enhancement by raising the number of independent directors on its board to over 50% and women directors to 30%. Reading between the lines, these are two requirements that aspiring debutants to the Main Market must comply with. In a stock exchange filing dated 24 August 2023, Genetec announced that the SC had in principle

approved its proposed transfer from the ACE Market under Section 214(1) of the Capital Markets and Services Act 2007 and under the Bumiputera equity requirement for public listed companies. But the transfer is subject to the Group implementing “appropriate actions to remedy the non-adoption with Practices 5.2 and 5.9 of the Malaysian Code on Corporate Governance (MCCG).

For the uninitiated, Practice 5.2 of MCCG recommends at least half of a company’s board be comprised of independent directors. The board of Large Companies must comprise a majority of independent directors (IDs). Large companies are defined as companies on the FBM Bursa Malaysia Top 100 Index or those with a market capitalisation of RM2 billion and above. Meanwhile, Practice 5.9 requires boardrooms to comprise at least 30% women directors.

Genetec’s current boardroom consists of seven members – three of whom are independent – but with only one female on its board. In all frankness, minority shareholders should hail the condition imposed by the market regulator as not something restrictive but rather as something beneficial in terms of enhancement to shareholders’ value to the Group whose clientele includes suppliers to electric vehicle behemoth Tesla.

DIVERSITY PAYS

In pushing for more diverse boards, especially on the gender dimension, the revised MCCG 2021 has recommended that all boards to comprise at least 30% women directors. Similarly, the Institutional Investors Council Malaysia (IIC) which comprises large institutional investors such as EPF, PNB, KWAP and Khazanah, too, had in their Malaysian Code for Institutional Investors 2022 clearly laid expectations for investee companies to comprise at least 30% women representation on their boards within three years. The IIC’s stance is in line with the large global institutional investors such as BlackRock who have started voting against companies with all-male boards.

As a result of persistent efforts undertaken by various stakeholders, Malaysia has made much progress along the gender diversity front in

the past decade. Across the entire population of PLCs listed on Bursa Malaysia, the average percentage of women directors currently stand at approximately 22% as of 1 May 2023. In fact, according to the Gender Equality in Corporate Leadership: Regional Analysis Report published in December 2022 by the United Nations Sustainable Stock Exchange Initiative, Malaysia is one of only four emerging markets where more than 20% of the top 100 PLCs' board seats are held by women. It is worth noting that the report covered 3,246 PLCs on 35 stock exchanges across seven regions around the world.

Despite the considerable progress observed over the years, a number of challenges persist in the journey towards achieving the aspirational target of 30% women on Boards. One such challenge is to tackle the phenomenon of some PLCs continuing the practice of having an all-male Board.

Thus, to catalyse change, Bursa Malaysia had on January 2022 announced the requirement for PLCs with a market capitalisation of RM2 billion as at 31 December 2021 to appoint at least one woman board member by 1 September 2022. For the remaining PLCs, the requirement must be complied with by 1 June 2023.

As of 1 June 2023, Bursa Malaysia has publicly named 24 PLCs that have yet to appoint at least one woman director, thus failing to comply with the requirement stipulated by the Exchange. It has to be realised that moving forward, promoting diversity across all PLCs will continue to be a key agenda championed by Bursa Malaysia. This commitment demonstrates an appreciation of the wealth of benefits derived from having a diverse board such as improved decision-making, enhanced ability to attract talent, increased resilience and stronger stakeholder relationships while contributing to nation building.

Specifically, starting from the financial year ending 31 December 2023, Main Market PLCs are required to effectively manage diversity within their respective organisations by implementing relevant policies, processes and initiatives to promote diversity – and making corresponding disclosures within their Sustainability Statement or Report.

On the same note, ACE Market PLCs will be subject to these requirements

from the financial year ending 31 December 2025. To further enhance transparency and accountability, Bursa Malaysia will also be mandating all PLCs to report on the following two indicators to show improvements over time:

- Percentage of directors by gender and age group
- Percentage of employees by gender and age group for each employee category.

KEY ADVANTAGES OF INDEPENDENT DIRECTORS

In the same light as how gender diversity by upping board participation for women to 30% can enhance board robustness and efficiency, raising the percentage of independent directors in a company's board to over 50%, too, is a welcome move for they are able to offer unbiased assessment on thorny issues within a PLC's corporate structure.

Here are four advantages of how having an independent director-heavy board can raise the corporate structure bar:

Independent directors bring a fresh perspective: Expect independent directors to bring clarity and objectivity to the table by complementing the rest of the board's understanding while providing a critical perspective and challenging the status quo, especially in the context of closely-knit family businesses.

A fresh set of highly developed skills: This includes possessing vast knowledge when it comes to finances, marketing, governance, transparency and strategy. On top of that, these talented individuals have their own resources and business networks that can be of benefit to the organisation.

A level head in times of conflict/deadlocks: When conflict of interest arises, independent directors can resolve the problem. As a neutral party, they may deter certain board members from making decisions for their own interests, arbitrate internal conflicts between board members or stakeholders, and ensure that all motions and transactions are passed in

the best interest of the company and shareholders.

An objective evaluator for succession planning: When boards become too ingrained in the culture of the company, it can give them tunnel vision. There's a tendency to earmark future leaders and never revisit or reassess the situation whereas an independent director is far more likely to find those diamonds in the rough which are often overlooked by the board. Above all else, independent board members can also act as mentors to the next generation of family business leaders.

Devanesan Evanson
Chief Executive Officer

This article appeared in the The Observer, a weekly newsletter published by The Minority Shareholders Watch Group (MSWG) and reproduced here with their permission. Do follow MSWG's Twitter account at @MSWGMalaysia and share your thought on their tweets from time to time.



Learn how to identify Hot Stocks using Technical Analysis (TA) and Fundamental Analysis (FA)

SIGN UP FOR Invest NOW IT'S FREE!!!

[Click here](#)

Scan me



Via email, every Friday.

Get market moving news and analyses. Regular columns include **Behind The Action** and **From The Observer**

- **Leaderboard**
- **Shariah Hot Stocks**
- **Shariah Momentum Up Stocks**
- **Non Shariah Hot Stocks**
- **Up Trending Stocks**
- **Growth Stocks**
- **Dividend Stocks**
- **Long Companies**
- **Insider Activity**
- **Investor Relations**
- **Regional Markets**



DEFINITION: Insider Activity shows the trades made by substantial shareholders or directors of the company. Purchases by the directors and company share buyback may indicate the share price is undervalued and brings confidence to the price trend of the share price.



ShareInvestor WebPro > Fundamental > Insider Trades > click Search tab > Select Bursa > click Stock name > scroll up and leave at <Select Counter> Type Date Range for Announcement Date > click Search

Notice Period is 17th Sep – 23rd Sep 2023

Effective Change Date	Stock Name	Buyer/ Seller Name [Classification]	Bought / (Sold) ['000]			No. of Shares After Trade ['000]		
			Total	Total	% Held	Total	Total	% Held
19 SEP 2023 - 20 SEP 2023	3A	MR TEO KWEE HOCK [SSH]	440			49,034		10.027
20 SEP 2023 - 20 SEP 2023	ACME	MR GOH CHOON LYE [SSH]	-13,148			50,685		13.79
20 SEP 2023 - 20 SEP 2023	ACME	MR GOH CHOON LYE [SSH]	13,148			76,981		20.945
20 SEP 2023 - 20 SEP 2023	ACME	WWT WELLNESS SOLUTIONS SDN BHD [SSH]	13,148			76,981		20.945
20 SEP 2023 - 20 SEP 2023	ACME	WWT WELLNESS SOLUTIONS SDN BHD [SSH]	-13,148			50,685		13.79
20 SEP 2023 - 20 SEP 2023	ADVPKG	MR ANDREW LING YEW CHUNG [DIR/CEO]	171			10,072		12.388
20 SEP 2023 - 20 SEP 2023	ADVPKG	MR PETER LING EE KONG [DIR/CEO]	171			10,072		12.388
20 SEP 2023 - 20 SEP 2023	ADVPKG	MR PETER LING EE KONG [SSH]	171			9,901		12.388
18 SEP 2023 - 18 SEP 2023	AEON	EMPLOYEES PROVIDENT FUND BOARD [SSH]	-122			130,941		9.326
15 SEP 2023 - 15 SEP 2023	AEON	EMPLOYEES PROVIDENT FUND BOARD [SSH]	-500			131,063		9.335
14 SEP 2023 - 14 SEP 2023	AEON	EMPLOYEES PROVIDENT FUND BOARD [SSH]	-50			131,563		9.371
13 SEP 2023 - 13 SEP 2023	AEON	EMPLOYEES PROVIDENT FUND BOARD [SSH]	-535			131,613		9.374
20 SEP 2023 - 21 SEP 2023	AHEALTH	APEX HOLDINGS (PTE) LTD [SSH]	46			296,423		41.277
20 SEP 2023 - 21 SEP 2023	AHEALTH	DR KEE KIRK CHIN [DIR/CEO]	46			304,727		42.433
20 SEP 2023 - 21 SEP 2023	AHEALTH	DR KEE KIRK CHIN [SSH]	46			304,727		42.433
20 SEP 2023 - 21 SEP 2023	AHEALTH	DR KEE LOO [SSH]	46			296,423		41.277
20 SEP 2023 - 21 SEP 2023	AHEALTH	MADAM YANG LIEW FANG [SSH]	46			296,423		41.277
20 SEP 2023 - 21 SEP 2023	AHEALTH	MR KEE KIRK CHUEN [DIR/CEO]	46			297,829		41.473
20 SEP 2023 - 21 SEP 2023	AHEALTH	MR KEE KIRK CHUEN [SSH]	46			297,829		41.473
20 SEP 2023 - 21 SEP 2023	AHEALTH	MR KEE TAH PENG @ HEE TECK PENG [SSH]	46			296,423		41.277
20 SEP 2023 - 21 SEP 2023	AHEALTH	XEPA HOLDINGS PTE LTD [SSH]	46			296,423		41.277
20 SEP 2023 - 21 SEP 2023	AHEALTH	XEPA HOLDINGS SDN. BHD. [SSH]	46			292,422		40.719
18 SEP 2023 - 19 SEP 2023	AHEALTH	APEX HOLDINGS (PTE) LTD [SSH]	75			296,377		41.27
18 SEP 2023 - 19 SEP 2023	AHEALTH	DR KEE KIRK CHIN [DIR/CEO]	75			304,681		42.426
18 SEP 2023 - 19 SEP 2023	AHEALTH	DR KEE KIRK CHIN [SSH]	75			304,681		42.426
18 SEP 2023 - 19 SEP 2023	AHEALTH	DR KEE LOO [SSH]	75			296,377		41.27
18 SEP 2023 - 19 SEP 2023	AHEALTH	MADAM YANG LIEW FANG [SSH]	75			296,377		41.27
18 SEP 2023 - 19 SEP 2023	AHEALTH	MR KEE KIRK CHUEN [DIR/CEO]	75			297,783		41.466
18 SEP 2023 - 19 SEP 2023	AHEALTH	MR KEE KIRK CHUEN [SSH]	75			297,783		41.466
18 SEP 2023 - 19 SEP 2023	AHEALTH	MR KEE TAH PENG @ HEE TECK PENG [SSH]	75			296,377		41.27
18 SEP 2023 - 19 SEP 2023	AHEALTH	XEPA HOLDINGS PTE LTD [SSH]	75			296,377		41.27
18 SEP 2023 - 19 SEP 2023	AHEALTH	XEPA HOLDINGS SDN. BHD. [SSH]	75			292,376		40.713
19 SEP 2023 - 19 SEP 2023	AIRPORT	EMPLOYEES PROVIDENT FUND BOARD [SSH]	-3,859			159,158		9.539
18 SEP 2023 - 18 SEP 2023	AIRPORT	EMPLOYEES PROVIDENT FUND BOARD [SSH]	-1,677			163,017		9.77
15 SEP 2023 - 15 SEP 2023	AIRPORT	EMPLOYEES PROVIDENT FUND BOARD [SSH]	-1,500			164,693		9.87
14 SEP 2023 - 14 SEP 2023	AIRPORT	EMPLOYEES PROVIDENT FUND BOARD [SSH]	-1,300			166,193		9.96
15 SEP 2023 - 15 SEP 2023	AIRPORT	KUMPULAN WANG PERSARAAN (DIPERBADANKAN) [SSH]	8			111,861		6.704
13 SEP 2023 - 13 SEP 2023	AIRPORT	EMPLOYEES PROVIDENT FUND BOARD [SSH]	978			167,493		10.038
18 SEP 2023 - 18 SEP 2023	ALLIANZ	EMPLOYEES PROVIDENT FUND BOARD [SSH]	-12			12,593		7.076
15 SEP 2023 - 15 SEP 2023	ALLIANZ	EMPLOYEES PROVIDENT FUND BOARD [SSH]	-11			12,604		7.082
14 SEP 2023 - 14 SEP 2023	ALLIANZ	EMPLOYEES PROVIDENT FUND BOARD [SSH]	-3			12,615		7.088
13 SEP 2023 - 13 SEP 2023	ALLIANZ	EMPLOYEES PROVIDENT FUND BOARD [SSH]	-2			12,618		7.09
14 SEP 2023 - 14 SEP 2023	AMBANK	EMPLOYEES PROVIDENT FUND BOARD [SSH]	3,000			335,357		10.132
15 SEP 2023 - 15 SEP 2023	AMWAY	EMPLOYEES PROVIDENT FUND BOARD [SSH]	-29			10,538		6.411
18 SEP 2023 - 20 SEP 2023	ANCOMNY	MR LEE CHEUN WEI [DIR/CEO]	608			83,193		8.747
18 SEP 2023 - 20 SEP 2023	ANCOMNY	MR LEE CHEUN WEI [SSH]	608			83,193		8.747
14 SEP 2023 - 14 SEP 2023	ANCOMNY	MR LEE CHEUN WEI [DIR/CEO]	100			82,585		8.682
14 SEP 2023 - 14 SEP 2023	ANCOMNY	MR LEE CHEUN WEI [SSH]	100			82,585		8.682
14 SEP 2023 - 15 SEP 2023	ANCOMNY	MR CHAN THYE SENG [DIR/CEO]	-156			380		0.04
20 SEP 2023 - 20 SEP 2023	APM	DATO' TAN HENG CHEW [DIR/CEO]	10			104,586		53.498
20 SEP 2023 - 20 SEP 2023	APM	DATO' TAN HENG CHEW [SSH]	10			96,532		49.378
20 SEP 2023 - 20 SEP 2023	APOLLO	AMANAHRAYA TRUSTEES BERHAD-AMANAH SAHAM BUMIPUTERA [SSH]	-131			5,497		6.871
14 SEP 2023 - 14 SEP 2023	APOLLO	AMANAHRAYA TRUSTEES BERHAD-AMANAH SAHAM BUMIPUTERA [SSH]	-172			5,628		7.035
13 SEP 2023 - 13 SEP 2023	APOLLO	AMANAHRAYA TRUSTEES BERHAD-AMANAH SAHAM BUMIPUTERA [SSH]	-50			5,800		7.25
13 SEP 2023 - 13 SEP 2023	AXIATA	EMPLOYEES PROVIDENT FUND BOARD [SSH]	-216			1,618,387		17.631
13 SEP 2023 - 13 SEP 2023	AXREIT	EMPLOYEES PROVIDENT FUND BOARD [SSH]	-309			282,494		16.225
19 SEP 2023 - 19 SEP 2023	BAUTO	EMPLOYEES PROVIDENT FUND BOARD [SSH]	87			134,449		11.542
19 SEP 2023 - 19 SEP 2023	BAUTO	PRUDENTIAL PLC [SSH]	-300			66,645		5.721
18 SEP 2023 - 18 SEP 2023	BAUTO	EMPLOYEES PROVIDENT FUND BOARD [SSH]	-13			134,363		11.534
18 SEP 2023 - 18 SEP 2023	BAUTO	PRUDENTIAL PLC [SSH]	-600			66,945		5.747
15 SEP 2023 - 15 SEP 2023	BAUTO	EMPLOYEES PROVIDENT FUND BOARD [SSH]	3,577			134,375		11.535
14 SEP 2023 - 14 SEP 2023	BAUTO	EMPLOYEES PROVIDENT FUND BOARD [SSH]	2,100			130,798		11.228
13 SEP 2023 - 13 SEP 2023	BAUTO	EMPLOYEES PROVIDENT FUND BOARD [SSH]	1,563			128,698		11.048
15 SEP 2023 - 15 SEP 2023	BETA	ENCIK MUHAMMAD FAUZI BIN ABD GHANI [DIR/CEO]	50			5,803		1.29
19 SEP 2023 - 19 SEP 2023	BIMB	EMPLOYEES PROVIDENT FUND BOARD [SSH]	-267			364,818		16.096
19 SEP 2023 - 19 SEP 2023	BINACOM	DATO' SEOW THIAM FATT [DIR/CEO]	-100			300		0.077
19 SEP 2023 - 19 SEP 2023	BIPORT	EMPLOYEES PROVIDENT FUND BOARD [SSH]	-4			24,110		5.241
14 SEP 2023 - 14 SEP 2023	BIPORT	EMPLOYEES PROVIDENT FUND BOARD [SSH]	-1			24,113		5.242
20 SEP 2023 - 20 SEP 2023	BJCORP	TAN SRI DATO' SERI VINCENT TAN CHEE YIUON [SSH]	-1,727			900,986		16.136
18 SEP 2023 - 18 SEP 2023	BORNOIL	DATUK JOSEPH LEE YOK MIN @ AMBROSE [DIR/CEO]	2,500			1,879,634		15.7
18 SEP 2023 - 18 SEP 2023	BPLANT	ARUSHA ENTERPRISE SDN. BHD. [SSH]	1,340			802,383		35.821
18 SEP 2023 - 18 SEP 2023	BPLANT	BATU KAWAN BERHAD [SSH]	1,340			802,383		35.821
18 SEP 2023 - 18 SEP 2023	BPLANT	CUBIC CRYSTAL CORPORATION [SSH]	1,340			802,383		35.821
18 SEP 2023 - 18 SEP 2023	BPLANT	DATO' LEE HAU HIAN [SSH]	1,340			802,383		35.821
18 SEP 2023 - 18 SEP 2023	BPLANT	DI-YI SDN. BHD. [SSH]	1,340			802,383		35.821
18 SEP 2023 - 18 SEP 2023	BPLANT	GRATEFUL BLESSINGS FOUNDATION [SSH]	1,340			802,383		35.821
18 SEP 2023 - 18 SEP 2023	BPLANT	GRATEFUL BLESSINGS INC. [SSH]	1,340			802,383		35.821

Notice Period is 17th Sep – 23rd Sep 2023

Effective Change Date	Stock Name	Buyer/ Seller Name [Classification]	Bought / (Sold) ['000]			No. of Shares After Trade ['000]		
			Total	Total	% Held	Total	Total	% Held
18 SEP 2023 - 18 SEP 2023	BPLANT	HIGH QUEST ANSTALT [SSH]	1,340			802,383		35.821
18 SEP 2023 - 18 SEP 2023	BPLANT	HIGH QUEST HOLDINGS SDN BHD [SSH]	1,340			802,383		35.821
18 SEP 2023 - 18 SEP 2023	BPLANT	KUALA LUMPUR KEPONG BERHAD [SSH]	1,340			802,383		35.821
18 SEP 2023 - 18 SEP 2023	BPLANT	TAN SRI LEE OI HIAN [SSH]	1,340			802,383		35.821
18 SEP 2023 - 18 SEP 2023	BPLANT	WAN HIN INVESTMENTS SDN. BERHAD [SSH]	1,340			802,383		35.821
20 SEP 2023 - 20 SEP 2023	BPURI	MAJU OFFSHORE CAPITAL SDN. BHD. [SSH]	169,656			169,656		5.035
20 SEP 2023 - 20 SEP 2023	BTECH	MR PANG WEE SEE [SSH]	1,200			121,514		48.22
20 SEP 2023 - 20 SEP 2023	BTECH	PANG WEE SEE [DIR/CEO]	1,200			121,514		48.22
20 SEP 2023 - 20 SEP 2023	BTECH	YEE OI PAH @ YEE OOI WAH [DIR/CEO]	1,200			121,177		48.086
18 SEP 2023 - 18 SEP 2023	BURSA	EMPLOYEES PROVIDENT FUND BOARD [SSH]	1,438			94,133		11.631
15 SEP 2023 - 15 SEP 2023	BURSA	EMPLOYEES PROVIDENT FUND BOARD [SSH]	26			92,695		11.454
18 SEP 2023 - 18 SEP 2023	BURSA	KUMPULAN WANG PERSARAAN (DIPERBADANKAN) [SSH]	-500			88,364		10.919
14 SEP 2023 - 14 SEP 2023	BURSA	EMPLOYEES PROVIDENT FUND BOARD [SSH]	53			92,669		11.451
13 SEP 2023 - 13 SEP 2023	BURSA	EMPLOYEES PROVIDENT FUND BOARD [SSH]	75			92,617		11.444
15 SEP 2023 - 15 SEP 2023	CAREPLS	MADAM NG SHU SI [SSH]	300			123,712		21.163
15 SEP 2023 - 15 SEP 2023	CAREPLS	MR LIM KWEE SHYAN [DIR/CEO]	470			124,464		21.292
15 SEP 2023 - 15 SEP 2023	CAREPLS	MR LIM KWEE SHYAN [SSH]	470			124,464		21.292
15 SEP 2023 - 15 SEP 2023	CAREPLS	MR LOO TECK LOOI [DIR/CEO]	225			3,095		0.529
22 SEP 2023 - 22 SEP 2023	CBIP	ZEE CAPITAL SDN BHD [SSH]	1,081			35,257		7.415
19 SEP 2023 - 19 SEP 2023	CBIP	DATUK LIM CHAI BENG [DIR/CEO]	1,081			198,976		41.845
19 SEP 2023 - 19 SEP 2023	CBIP	DATUK LIM CHAI BENG [SSH]	1,081			198,976		41.845
15 SEP 2023 - 15 SEP 2023	CBIP	DATUK LIM CHAI BENG [DIR/CEO]	100			197,895		41.596
15 SEP 2023 - 15 SEP 2023	CBIP	DATUK LIM CHAI BENG [SSH]	100			197,895		41.596
15 SEP 2023 - 15 SEP 2023	CBIP	ZEE CAPITAL SDN BHD [SSH]	100			34,177		7.184
18 SEP 2023 - 18 SEP 2023	CDB	EMPLOYEES PROVIDENT FUND BOARD [SSH]	-73			1,124,347		9.584
15 SEP 2023 - 15 SEP 2023	CDB	EMPLOYEES PROVIDENT FUND BOARD [SSH]	-627			1,124,419		9.585
13 SEP 2023 - 13 SEP 2023	CDB	EMPLOYEES PROVIDENT FUND BOARD [SSH]	-526			1,125,046		9.59
21 SEP 2023 - 21 SEP 2023	CEB	MISS TEE KIM YOK [DIR/CEO]	-20,000			107,550		11.652
21 SEP 2023 - 21 SEP 2023	CEB	MISS TEE KIM YOK [SSH]	-20,000			107,550		11.652
20 SEP 2023 - 20 SEP 2023	CEPAT	DATIN SERI OOI AH THIN [SSH]	76			120,633		39.04
20 SEP 2023 - 20 SEP 2023	CEPAT	DATO' MAH POOI SOO REALTY SDN. BHD. [SSH]	76			120,633		39.04
20 SEP 2023 - 20 SEP 2023	CEPAT	DATO' SERI MAH KING SENG [DIR/CEO]	76			120,633		39.04
20 SEP 2023 - 20 SEP 2023	CEPAT	DATO' SERI MAH KING SENG [SSH]	76			120,633		39.04
20 SEP 2023 - 20 SEP 2023	CEPAT	MHC PLANTATIONS BHD. [SSH]	76			120,633		39.04
20 SEP 2023 - 20 SEP 2023	CEPAT	TAN SRI DR MAH KING THIAN @ MAH KING THIAM [DIR/CEO]	76			120,633		39.04
20 SEP 2023 - 20 SEP 2023	CEPAT	TAN SRI DR MAH KING THIAN @ MAH KING THIAM [SSH]	76			120,633		39.04
20 SEP 2023 - 20 SEP 2023	CGB	MR SOO YU CHAI [SSH]	179			10,164		6.301
19 SEP 2023 - 19 SEP 2023	CIMB	EMPLOYEES PROVIDENT FUND BOARD [SSH]	-3,084			1,703,918		15.98
20 SEP 2023 - 20 SEP 2023	CIMB	KUMPULAN WANG PERSARAAN (DIPERBADANKAN) [SSH]	-3,000			713,807		6.69
18 SEP 2023 - 18 SEP 2023	CIMB	EMPLOYEES PROVIDENT FUND BOARD [SSH]	3,652			1,707,002		16.01
15 SEP 2023 - 15 SEP 2023	CIMB	EMPLOYEES PROVIDENT FUND BOARD [SSH]	-8,835			1,703,351		15.97
18 SEP 2023 - 18 SEP 2023	CIMB	KUMPULAN WANG PERSARAAN (DIPERBADANKAN) [SSH]	-2,303			716,807		6.72
14 SEP 2023 - 14 SEP 2023	CIMB	EMPLOYEES PROVIDENT FUND BOARD [SSH]	-4,837			1,712,186		16.05
15 SEP 2023 - 15 SEP 2023	CIMB	KUMPULAN WANG PERSARAAN (DIPERBADANKAN) [SSH]	-164			719,110		6.74
13 SEP 2023 - 13 SEP 2023	CIMB	EMPLOYEES PROVIDENT FUND BOARD [SSH]	-1,742			1,717,023		16.1
21 SEP 2023 - 21 SEP 2023	CLMT	KUMPULAN WANG PERSARAAN (DIPERBADANKAN) [SSH]	152					

Notice Period is 17th Sep - 23rd Sep 2023

Effective Change Date	Stock Name	Buyer/ Seller Name [Classification]	Bought / (Sold) ['000]	No. of Shares After Trade ['000]	
			Total	Total	% Held
21 SEP 2023 - 21 SEP 2023	DCHCARE	DR LAI NGAN CHEE [DIR/CEO]	200	697,610	70.02
21 SEP 2023 - 21 SEP 2023	DCHCARE	DR LAI NGAN CHEE [SSH]	200	697,610	70.02
18 SEP 2023 - 19 SEP 2023	DFX	DATUK WIRA LAU CHI CHIANG [DIR/CEO]	-5,382	15,168	2.034
18 SEP 2023 - 18 SEP 2023	DFX	MR LIAU KIM KEONG [SSH]	100	37,521	5.031
18 SEP 2023 - 18 SEP 2023	DGB	DATO' KUA KHAI SHYUAN [DIR/CEO]	-9	9	0.005
18 SEP 2023 - 18 SEP 2023	DGB	MR NICHOLAS WONG YEW KHID [DIR/CEO]	-10	10	0.005
18 SEP 2023 - 18 SEP 2023	DIALOG	EMPLOYEES PROVIDENT FUND BOARD [SSH]	611	838,615	14.86
18 SEP 2023 - 18 SEP 2023	DIALOG	KUMPULAN WANG PERSARAAN (DIPERBADANKAN) [SSH]	156	562,075	9.96
14 SEP 2023 - 14 SEP 2023	DIALOG	EMPLOYEES PROVIDENT FUND BOARD [SSH]	6	838,004	14.85
14 SEP 2023 - 14 SEP 2023	DLADY	CITIGROUP NOMINEES (TEMPATAN) SDN BHD EMPLOYEES PROVIDENT FUND BOARD [SSH]	-3	5,966	9.322
13 SEP 2023 - 13 SEP 2023	DLADY	CITIGROUP NOMINEES (TEMPATAN) SDN BHD EMPLOYEES PROVIDENT FUND BOARD [SSH]	-1	5,969	9.327
18 SEP 2023 - 18 SEP 2023	DXN	DATIN LEONG BEE LING [SSH]	115	3,393,469	68.074
18 SEP 2023 - 18 SEP 2023	DXN	DATUK LIM SIOW JIN [DIR/CEO]	115	3,393,469	68.074
18 SEP 2023 - 18 SEP 2023	DXN	DATUK LIM SIOW JIN [SSH]	115	3,393,469	68.074
18 SEP 2023 - 18 SEP 2023	DXN	LSJ GLOBAL SDN. BHD. [SSH]	115	3,393,469	68.074
15 SEP 2023 - 15 SEP 2023	DXN	DATIN LEONG BEE LING [SSH]	191	3,393,354	68.071
15 SEP 2023 - 15 SEP 2023	DXN	DATUK LIM SIOW JIN [DIR/CEO]	191	3,393,354	68.071
15 SEP 2023 - 15 SEP 2023	DXN	DATUK LIM SIOW JIN [SSH]	191	3,393,354	68.071
15 SEP 2023 - 15 SEP 2023	DXN	LSJ GLOBAL SDN. BHD. [SSH]	191	3,393,354	68.071
13 SEP 2023 - 14 SEP 2023	DXN	DATIN LEONG BEE LING [SSH]	775	3,393,164	68.067
13 SEP 2023 - 14 SEP 2023	DXN	DATUK LIM SIOW JIN [DIR/CEO]	775	3,393,164	68.067
13 SEP 2023 - 14 SEP 2023	DXN	DATUK LIM SIOW JIN [SSH]	775	3,393,164	68.067
13 SEP 2023 - 14 SEP 2023	DXN	LSJ GLOBAL SDN. BHD. [SSH]	775	3,393,164	68.067
21 SEP 2023 - 21 SEP 2023	E&O	KUMPULAN WANG PERSARAAN (DIPERBADANKAN) [SSH]	4,035	109,224	6.37
20 SEP 2023 - 20 SEP 2023	E&O	KUMPULAN WANG PERSARAAN (DIPERBADANKAN) [SSH]	2,145	105,189	6.14
19 SEP 2023 - 20 SEP 2023	EITA	MISS FU JIA LIK [DIR/CEO]	-540	13,794	15.938
19 SEP 2023 - 20 SEP 2023	EITA	MR FU MUN WIN [DIR/CEO]	-540	13,794	15.938
20 SEP 2023 - 20 SEP 2023	EKOVEST	TAN SRI DATUK SERI LIM KENG CHENG [DIR/CEO]	-2,000	107,057	3.61
14 SEP 2023 - 15 SEP 2023	ELKDESA	MR TEOH HOCK CHAI @ TEW HOCK CHAI [SSH]	170	190,138	41.806
14 SEP 2023 - 15 SEP 2023	ELKDESA	TEOH HOCK CHAI@TEW HOCK CHAI [DIR/CEO]	170	190,138	41.806
14 SEP 2023 - 15 SEP 2023	ELKDESA	ZHONGXIN RESOURCES SDN BHD [SSH]	170	172,150	37.851
08 SEP 2023 - 21 SEP 2023	EWEIN	MR GOH KIANG TENG [DIR/CEO]	127	7,927	2.628
21 SEP 2023 - 21 SEP 2023	EWINT	TAN SRI DATO' SRI LIEW KEE SIN [DIR/CEO]	-354	284,098	11.838
21 SEP 2023 - 21 SEP 2023	EWINT	TAN SRI DATO' SRI LIEW KEE SIN [SSH]	-354	284,098	11.838
19 SEP 2023 - 19 SEP 2023	F&N	EMPLOYEES PROVIDENT FUND BOARD [SSH]	-1	42,400	11.56
18 SEP 2023 - 18 SEP 2023	F&N	EMPLOYEES PROVIDENT FUND BOARD [SSH]	0.1	42,402	11.561
15 SEP 2023 - 15 SEP 2023	F&N	EMPLOYEES PROVIDENT FUND BOARD [SSH]	175	42,402	11.561
14 SEP 2023 - 14 SEP 2023	F&N	EMPLOYEES PROVIDENT FUND BOARD [SSH]	243	42,226	11.513
13 SEP 2023 - 13 SEP 2023	F&N	EMPLOYEES PROVIDENT FUND BOARD [SSH]	7	41,984	11.447
14 SEP 2023 - 14 SEP 2023	FAJAR	TAN SRI DATUK TA KIN YAN [SSH]	100	90,492	12.202
22 SEP 2023 - 22 SEP 2023	FAREAST	DATO' ASMIN BINTI YAHYA [DIR/CEO]	1	338	0.06
14 SEP 2023 - 15 SEP 2023	FRONTKN	MR OOI KENG THYE [SSH]	-5,096	191,503	12.19
19 SEP 2023 - 19 SEP 2023	FSBM	DATO TAN HOCK SAN @ TAN HOCK MING [DIR/CEO]	1	2	0.001
19 SEP 2023 - 19 SEP 2023	FSBM	DR CHEW WENG YEW [SSH]	48,565	95,690	20.217
19 SEP 2023 - 19 SEP 2023	FSBM	MR LOW KANG WEI [SSH]	14,428	28,428	6.006
19 SEP 2023 - 19 SEP 2023	FSBM	MR PANG KIEW KUN [DIR/CEO]	19,279	38,069	8.043
19 SEP 2023 - 19 SEP 2023	FSBM	MR PANG KIEW KUN [SSH]	19,279	38,069	8.043
19 SEP 2023 - 19 SEP 2023	FSBM	TAN SRI DATO' SRI SYED ZAINAL ABIDIN BIN SYED MOHAMED TAHIR [SSH]	30,916	60,916	12.87
19 SEP 2023 - 19 SEP 2023	FSBM	MR YEO ANN SECK [SSH]	14,000	28,000	5.916
19 SEP 2023 - 19 SEP 2023	GAMUDA	EMPLOYEES PROVIDENT FUND BOARD (EPF BOARD) [SSH]	-49	326,629	12.11
18 SEP 2023 - 18 SEP 2023	GAMUDA	EMPLOYEES PROVIDENT FUND BOARD (EPF BOARD) [SSH]	-2,000	326,678	12.11
15 SEP 2023 - 15 SEP 2023	GAMUDA	EMPLOYEES PROVIDENT FUND BOARD (EPF BOARD) [SSH]	-2,187	328,678	12.19
14 SEP 2023 - 14 SEP 2023	GAMUDA	EMPLOYEES PROVIDENT FUND BOARD (EPF BOARD) [SSH]	-1,378	330,865	12.27
13 SEP 2023 - 13 SEP 2023	GAMUDA	EMPLOYEES PROVIDENT FUND BOARD (EPF BOARD) [SSH]	-2,000	332,243	12.32
19 SEP 2023 - 19 SEP 2023	GASMSIA	EMPLOYEES PROVIDENT FUND BOARD [SSH]	-213	83,590	6.51
18 SEP 2023 - 18 SEP 2023	GASMSIA	EMPLOYEES PROVIDENT FUND BOARD [SSH]	-44	83,803	6.526
15 SEP 2023 - 15 SEP 2023	GASMSIA	EMPLOYEES PROVIDENT FUND BOARD [SSH]	-420	83,846	6.53
14 SEP 2023 - 14 SEP 2023	GASMSIA	EMPLOYEES PROVIDENT FUND BOARD [SSH]	-51	84,266	6.562
13 SEP 2023 - 13 SEP 2023	GASMSIA	EMPLOYEES PROVIDENT FUND BOARD [SSH]	-178	84,318	6.566
14 SEP 2023 - 14 SEP 2023	GBGAQRS	EMPLOYEES PROVIDENT FUND BOARD [SSH]	-250	28,063	5.17
13 SEP 2023 - 13 SEP 2023	GBGAQRS	EMPLOYEES PROVIDENT FUND BOARD [SSH]	-100	28,313	5.216
18 SEP 2023 - 18 SEP 2023	GENP	EMPLOYEES PROVIDENT FUND BOARD [SSH]	158	109,876	12.247
14 SEP 2023 - 14 SEP 2023	GENP	EMPLOYEES PROVIDENT FUND BOARD [SSH]	87	109,718	12.229
13 SEP 2023 - 13 SEP 2023	GENP	EMPLOYEES PROVIDENT FUND BOARD [SSH]	475	108,503	12.093
21 SEP 2023 - 21 SEP 2023	HCK	HIICHIKOK EQUITIES SDN BHD [SSH]	-1,400	287,785	56.326
21 SEP 2023 - 21 SEP 2023	HCK	TAN SRI HII CHII KOK @ HII CHEE KOK [DIR/CEO]	-1,400	289,835	56.727
21 SEP 2023 - 21 SEP 2023	HCK	TAN SRI HII CHII KOK @ HII CHEE KOK [SSH]	-1,400	289,835	56.727
21 SEP 2023 - 21 SEP 2023	HIBISCS	DR KENNETH GERARD PEREIRA [DIR/CEO]	500	182,058	9.047
21 SEP 2023 - 21 SEP 2023	HIBISCS	DR KENNETH GERARD PEREIRA [SSH]	500	182,058	9.047
19 SEP 2023 - 20 SEP 2023	HIBISCS	DR KENNETH GERARD PEREIRA [DIR/CEO]	2,000	181,558	9.022
19 SEP 2023 - 20 SEP 2023	HIBISCS	DR KENNETH GERARD PEREIRA [SSH]	2,000	181,558	9.022
19 SEP 2023 - 19 SEP 2023	HLBANK	EMPLOYEES PROVIDENT FUND BOARD [SSH]	-928	219,722	10.53
18 SEP 2023 - 18 SEP 2023	HLBANK	EMPLOYEES PROVIDENT FUND BOARD [SSH]	56	220,650	10.575
15 SEP 2023 - 15 SEP 2023	HLBANK	EMPLOYEES PROVIDENT FUND BOARD [SSH]	-257	220,593	10.572
14 SEP 2023 - 14 SEP 2023	HLBANK	EMPLOYEES PROVIDENT FUND BOARD [SSH]	276	220,850	10.584
13 SEP 2023 - 13 SEP 2023	HLBANK	EMPLOYEES PROVIDENT FUND BOARD [SSH]	-83	220,575	10.571
18 SEP 2023 - 18 SEP 2023	ICON	DATO' SRI HADIAN BIN HASHIM [DIR/CEO]	5,000	109,724	4.054

Notice Period is 17th Sep - 23rd Sep 2023

Effective Change Date	Stock Name	Buyer/ Seller Name [Classification]	Bought / (Sold) ['000]	No. of Shares After Trade ['000]	
			Total	Total	% Held
20 SEP 2023 - 21 SEP 2023	IGBB	TAN CHIN NAM SDN BHD ("TCNSB") [SSH]	29	657,125	48.71
20 SEP 2023 - 20 SEP 2023	IGBCR	TAN CHIN NAM SENDIRIAN BERHAD ("TCNSB") [SSH]	100	1,650,578	70.021
14 SEP 2023 - 18 SEP 2023	IGBCR	TAN CHIN NAM SENDIRIAN BERHAD ("TCNSB") [SSH]	24	1,650,478	70.016
18 SEP 2023 - 18 SEP 2023	IGBREIT	EMPLOYEES PROVIDENT FUND BOARD ("EPF BOARD") [SSH]	-851	416,327	11.572
15 SEP 2023 - 15 SEP 2023	IGBREIT	EMPLOYEES PROVIDENT FUND BOARD ("EPF BOARD") [SSH]	-890	417,178	11.595
19 SEP 2023 - 19 SEP 2023	IHH	EMPLOYEES PROVIDENT FUND BOARD [SSH]	-606	928,438	10.542
18 SEP 2023 - 18 SEP 2023	IHH	EMPLOYEES PROVIDENT FUND BOARD [SSH]	-172	929,044	10.549
15 SEP 2023 - 15 SEP 2023	IHH	EMPLOYEES PROVIDENT FUND BOARD [SSH]	-891	929,216	10.551
14 SEP 2023 - 14 SEP 2023	IHH	EMPLOYEES PROVIDENT FUND BOARD [SSH]	-1,125	930,107	10.561
13 SEP 2023 - 13 SEP 2023	IHH	EMPLOYEES PROVIDENT FUND BOARD [SSH]	-762	931,232	10.574
21 SEP 2023 - 21 SEP 2023	IJM	KUMPULAN WANG PERSARAAN (DIPERBADANKAN) [SSH]	2,424	318,901	9.095
19 SEP 2023 - 19 SEP 2023	IJM	EMPLOYEES PROVIDENT FUND BOARD [SSH]	500	587,628	16.76
20 SEP 2023 - 20 SEP 2023	IJM	KUMPULAN WANG PERSARAAN (DIPERBADANKAN) [SSH]	1,480	316,477	9.026
18 SEP 2023 - 18 SEP 2023	IJM	EMPLOYEES PROVIDENT FUND BOARD [SSH]	127	587,128	16.746
18 SEP 2023 - 18 SEP 2023	IJM	URUSHARTA JAMAAH SDN BHD [SSH]	-2,000	179,450	5.118
19 SEP 2023 - 19 SEP 2023	IJM	KUMPULAN WANG PERSARAAN (DIPERBADANKAN) [SSH]	2,000	314,998	8.984
15 SEP 2023 - 15 SEP 2023	IJM	EMPLOYEES PROVIDENT FUND BOARD [SSH]	20	587,001	16.742
15 SEP 2023 - 15 SEP 2023	IJM	AMANAHRAYA TRUSTEES BERHAD - AMANAH SAHAM BUMIPUTERA [SSH]	-791	254,300	7.253
15 SEP 2023 - 15 SEP 2023	IJM	KUMPULAN WANG PERSARAAN (DIPERBADANKAN) [SSH]	2,000	312,998	8.927
13 SEP 2023 - 13 SEP 2023	IJM	URUSHARTA JAMAAH SDN BHD [SSH]	2,269	181,450	5.175
18 SEP 2023 - 19 SEP 2023	IMPIANA	DATIN SRI JOANNE YEW HONG IM [SSH]	23,000	143,800	18.996
18 SEP 2023 - 19 SEP 2023	IMPIANA	DATO' SRI LEE HOCK SENG [DIR/CEO]	23,000	143,800	18.996
18 SEP 2023 - 19 SEP 2023	IMPIANA	DATO' SRI LEE HOCK SENG [SSH]	23,000	143,800	18.996
21 SEP 2023 - 21 SEP 2023	INARI	KUMPULAN WANG PERSARAAN (DIPERBADANKAN) [SSH]	67	358,546	9.585
19 SEP 2023 - 19 SEP 2023	INARI	EMPLOYEES PROVIDENT FUND BOARD [SSH]	229	388,116	10.376
20 SEP 2023 - 20 SEP 2023	INARI	KUMPULAN WANG PERSARAAN (DIPERBADANKAN) [SSH]	811	358,479	9.583
18 SEP 2023 - 18 SEP 2023	INARI	EMPLOYEES PROVIDENT FUND BOARD [SSH]	820	387,887	10.369
15 SEP 2023 - 15 SEP 2023	INARI	EMPLOYEES PROVIDENT FUND BOARD [SSH]	761	387,067	10.347
14 SEP 2023 - 14 SEP 2023	INARI	EMPLOYEES PROVIDENT FUND BOARD [SSH]	4,500	387,506	10.359
15 SEP 2023 - 15 SEP 2023	INARI	KUMPULAN WANG PERSARAAN (DIPERBADANKAN) [SSH]	-69	357,668	9.561
13 SEP 2023 - 13 SEP 2023	INARI	EMPLOYEES PROVIDENT FUND BOARD [SSH]	3,000	383,006	10.239
19 SEP 2023 - 19 SEP 2023	IOICORP	EMPLOYEES PROVIDENT FUND BOARD [SSH]	39	683,507	11.018
18 SEP 2023 - 18 SEP 2023	IOICORP	EMPLOYEES PROVIDENT FUND BOARD [SSH]	1,000	683,468	11.017
15 SEP 2023 - 15 SEP 2023	IOICORP	EMPLOYEES PROVIDENT FUND BOARD [SSH]	2,000	682,468	11.001
14 SEP 2023 - 14 SEP 2023	IOICORP	EMPLOYEES PROVIDENT FUND BOARD [SSH]	300	680,468	10.969
13 SEP 2023 - 13 SEP 2023	IOIPG	EMPLOYEES PROVIDENT FUND BOARD [SSH]	-1,500	412,105	7.484
18 SEP 2023 - 19 SEP 2023	ITRONIC	BLUEMOUNT INVESTMENT FUND SPC [SSH]	-4,380	70,470	9.959
18 SEP 2023 - 18 SEP 2023	JSB	ENCIK JEEFRI BIN MUHAMAD YUSUP [DIR/CEO]	994	28,349	6.746
18 SEP 2023 - 18 SEP 2023	JSB	ENCIK JEEFRI BIN MUHAMAD YUSUP [SSH]	994	28,349	6.746
20 SEP 2023 - 21 SEP 2023	JTIASA	GENINE CHAIN LIMITED [SSH]	-2,303	71,397	7.376
20 SEP 2023 - 21 SEP 2023	JTIASA	MR CHANG MENG [SSH]	-2,303	71,397	7.376
20 SEP 2023 - 21 SEP 2023	JTIASA	MR HO CHEUNG CHOI [SSH]	-2,303	71,397	7.376
18 SEP 2023 - 19 SEP 2023	JTIASA	GENINE CHAIN LIMITED [SSH]	-1,356	73,699	7.614
18 SEP 2023 - 19 SEP 2023	JTIASA	MR CHANG MENG [SSH]	-1,356	73,699	7.614
18 SEP 2023 - 19 SEP 2023	JTIASA	MR HO CHEUNG CHOI [SSH]	-1,356	73,699	7.614
15 SEP 2023 - 15 SEP 2023	JTIASA	GENINE CHAIN LIMITED [SSH]	-1,178	75,055	7.754
15 SEP 2023 - 15 SEP 2023	JTIASA	MR CHANG MENG [SSH]	-1,178	75,055	7.754
15 SEP 2023 - 15 SEP 2023	JTIASA	MR HO CHEUNG CHOI [SSH]	-1,178	75,055	7.754
19 SEP 2023 - 19 SEP 2023	KERJAYA	EMPLOYEES PROVIDENT FUND BOARD [SSH]	179	81,059	6.428
18 SEP 2023 - 18 SEP 2023	KERJAYA	EMPLOYEES PROVIDENT FUND BOARD [SSH]	285	80,880	6.414
15 SEP 2023 - 15 SEP 2023	KERJAYA	EMPLOYEES PROVIDENT FUND BOARD [SSH]	-97	80,594	6.391
14 SEP 2023 - 14 SEP 2023	KERJAYA	EMPLOYEES PROVIDENT FUND BOARD [SSH]	-28	80,691	6.399
13 SEP 2023 - 13 SEP 2023	KERJAYA	EMPLOYEES PROVIDENT FUND BOARD [SSH]	-199	80,719	6.401
20 SEP 2023 - 21 SEP 2023	KFIMA	BHR ENTERPRISE SDN BHD [SSH]	7	150,315	53.259
20 SEP 2023 - 21 SEP 2023	KFIMA	DATIN ROZILAWATI BINTI HAJI BASIR [DIR/CEO]	7	171,104	60.625
20 SEP 2023 - 21 SEP 2023	KFIMA	DR ROSHAYATI BINTI BASIR [SSH]	7	171,104	60.626
20 SEP 2023 - 21 SEP 2023	KFIMA	PUAN ROZANA ZETI BINTI BASIR [DIR/CEO]	7	171,104	60.626
20 SEP 2023 - 21 SEP 2023	KFIMA	PUAN ROZANA ZETI BINTI BASIR [SSH]	7	171,104	60.626
15 SEP 2023 - 15 SEP 2023	KFIMA	BHR ENTERPRISE SDN BHD [SSH]	7	150,308	53.257
15 SEP 2023 - 15 SEP 2023	KFIMA	DATIN ROZILAWATI BINTI HAJI BASIR [DIR/CEO]	7	171,098	60.623
15 SEP 2023 - 15 SEP 2023	KFIMA	DR ROSHAYATI BINTI BASIR [SSH]	7	171,098	60.623
15 SEP 2023 - 15 SEP 2023	KFIMA	PUAN ROZANA ZETI BINTI BASIR [DIR/CEO]	7	171,098	60.623
15 SEP 2023 - 15 SEP 2023	KFIMA	PUAN ROZANA ZETI BINTI BASIR [SSH]	7	171,098	60.623
18 SEP 2023 - 19 SEP 2023	KIMLUN	MR PANG TIN @ PANG YON TIN [DIR/CEO]	120	163,477	46.263
19 SEP 2023 - 21 SEP 2023	KKB	DATIN SRI LIEW MOI FAH [SSH]	9		

Notice Period is 17th Sep – 23rd Sep 2023

Effective Change Date	Stock Name	Buyer/ Seller Name [Classification]	Bought / (Sold) ['000]	No. of Shares After Trade ['000]	
			Total	Total	% Held
14 SEP 2023 - 14 SEP 2023	KLK	EMPLOYEES PROVIDENT FUND BOARD [SSH]	-3	115,499	10.71
13 SEP 2023 - 13 SEP 2023	KLK	EMPLOYEES PROVIDENT FUND BOARD [SSH]	185	115,502	10.71
19 SEP 2023 - 19 SEP 2023	KOSSAN	MR LIM KUANG WANG [SSH]	300	1,261,168	49.426
18 SEP 2023 - 18 SEP 2023	KYM	MR LEE JI JIN DARREN [DIR/CEO]	200	2,010	1.317
19 SEP 2023 - 20 SEP 2023	LAYHONG	DATO' YAP HOONG CHAI [DIR/CEO]	-300	283,059	38.234
14 SEP 2023 - 15 SEP 2023	LAYHONG	DATO' YAP HOONG CHAI [DIR/CEO]	-100	283,359	38.275
21 SEP 2023 - 21 SEP 2023	LBS	TAN SRI DATO' SRI IR. LIM HOCK SAN JP [DIR/CEO]	100	609,072	39.54
21 SEP 2023 - 21 SEP 2023	LBS	TAN SRI DATO' SRI IR. LIM HOCK SAN JP [SSH]	100	604,319	39.231
19 SEP 2023 - 20 SEP 2023	LBS	TAN SRI DATO' SRI IR. LIM HOCK SAN JP [DIR/CEO]	200	608,972	39.534
19 SEP 2023 - 20 SEP 2023	LBS	TAN SRI DATO' SRI IR. LIM HOCK SAN JP [SSH]	200	604,219	39.225
21 SEP 2023 - 21 SEP 2023	MAGNI	MR TAN POAY SENG [DIR/CEO]	52	118,611	27.36
19 SEP 2023 - 19 SEP 2023	MAGNI	KP HOLDINGS SDN. BHD. [SSH]	80	57,380	13.24
19 SEP 2023 - 19 SEP 2023	MAGNI	TAN SRI DATO' SERI TAN KOK PING [DIR/CEO]	80	102,880	23.73
19 SEP 2023 - 19 SEP 2023	MAGNI	TAN SRI DATO' SERI TAN KOK PING [SSH]	80	87,080	20.09
15 SEP 2023 - 18 SEP 2023	MATANG	HUAREN HOLDINGS SDN BHD [SSH]	210	400,852	16.778
15 SEP 2023 - 18 SEP 2023	MATANG	MALAYSIAN CHINESE ASSOCIATION [SSH]	210	422,670	17.691
20 SEP 2023 - 20 SEP 2023	MAXIM	MISS GAN LEE HA [SSH]	-17,821	38,478	5.235
20 SEP 2023 - 20 SEP 2023	MAXIM	MR LEE CHEH HIAN [SSH]	-17,821	38,478	5.235
20 SEP 2023 - 20 SEP 2023	MAXIM	TAN SRI DATUK SERI GAN SEONG LIAM [DIR/CEO]	35,641	192,858	26.237
20 SEP 2023 - 20 SEP 2023	MAXIM	TAN SRI DATUK SERI GAN SEONG LIAM [SSH]	35,641	192,858	26.237
18 SEP 2023 - 18 SEP 2023	MAXIM	TAN SRI DATUK SERI GAN SEONG LIAM [DIR/CEO]	390	157,217	21.388
18 SEP 2023 - 18 SEP 2023	MAXIM	TAN SRI DATUK SERI GAN SEONG LIAM [SSH]	390	157,217	21.388
14 SEP 2023 - 14 SEP 2023	MAXIM	TAN SRI DATUK SERI GAN SEONG LIAM [DIR/CEO]	745	156,827	21.335
14 SEP 2023 - 14 SEP 2023	MAXIM	TAN SRI DATUK SERI GAN SEONG LIAM [SSH]	745	156,827	21.335
19 SEP 2023 - 19 SEP 2023	MAYBANK	EMPLOYEES PROVIDENT FUND BOARD [SSH]	457	1,591,506	13.203
18 SEP 2023 - 18 SEP 2023	MAYBANK	EMPLOYEES PROVIDENT FUND BOARD [SSH]	-94	1,591,049	13.199
15 SEP 2023 - 15 SEP 2023	MAYBANK	EMPLOYEES PROVIDENT FUND BOARD [SSH]	-3,000	1,591,143	13.2
15 SEP 2023 - 15 SEP 2023	MAYBANK	AMANAHRAYA TRUSTEES BERHAD - AMANAH SAHAM BUMIPUTERA [SSH]	-5,769	3,777,050	31.334
14 SEP 2023 - 14 SEP 2023	MAYBANK	EMPLOYEES PROVIDENT FUND BOARD [SSH]	-2,500	1,594,143	13.225
13 SEP 2023 - 13 SEP 2023	MAYBANK	EMPLOYEES PROVIDENT FUND BOARD [SSH]	-3,411	1,596,643	13.246
19 SEP 2023 - 19 SEP 2023	MBMR	EMPLOYEES PROVIDENT FUND BOARD [SSH]	-7	25,190	6.444
18 SEP 2023 - 18 SEP 2023	MBMR	EMPLOYEES PROVIDENT FUND BOARD [SSH]	-29	25,197	6.446
15 SEP 2023 - 15 SEP 2023	MBMR	EMPLOYEES PROVIDENT FUND BOARD [SSH]	-19	25,226	6.454
15 SEP 2023 - 15 SEP 2023	MBMR	EMPLOYEES PROVIDENT FUND BOARD [SSH]	-19	25,266	6.454
14 SEP 2023 - 14 SEP 2023	MBMR	EMPLOYEES PROVIDENT FUND BOARD [SSH]	-157	25,245	6.458
13 SEP 2023 - 13 SEP 2023	MBMR	EMPLOYEES PROVIDENT FUND BOARD [SSH]	-20	25,402	6.498
18 SEP 2023 - 18 SEP 2023	MENANG-WC	MISS LIEW SOOK PIN [DIR/CEO]	29,225	42,129	20.421
18 SEP 2023 - 18 SEP 2023	MENANG-WC	MR TOH MAY FOOK [DIR/CEO]	175	42,000	20.359
15 SEP 2023 - 15 SEP 2023	MERSEC	DATO' A. RAHMAN BIN SAFAR [DIR/CEO]	25	73,616	8.244
15 SEP 2023 - 15 SEP 2023	MERSEC	MR CHAN KIM HING [DIR/CEO]	650	650	0.073
15 SEP 2023 - 15 SEP 2023	MERSEC	MR CHEW SING GUAN [DIR/CEO]	110	331,267	37.096
19 SEP 2023 - 21 SEP 2023	MFCB	CAM PROPERTY (MALAYSIA) SDN BHD [SSH]	296	200,313	21.248
19 SEP 2023 - 21 SEP 2023	MFCB	CAMASIA LIMITED [SSH]	296	201,798	21.406
19 SEP 2023 - 21 SEP 2023	MFCB	LAJU RIANG SDN BHD [SSH]	296	200,313	21.248
19 SEP 2023 - 21 SEP 2023	MFCB	MR GOH NAN KIOH [DIR/CEO]	296	327,878	34.778
19 SEP 2023 - 21 SEP 2023	MFCB	MR GOH NAN KIOH [SSH]	296	327,878	34.778
19 SEP 2023 - 21 SEP 2023	MFCB	RUBBER THREAD INDUSTRIES (M) SDN BERHAD [SSH]	296	200,313	21.248
15 SEP 2023 - 15 SEP 2023	MGB	TAN SRI DATO' SRI IR. LIM HOCK SAN JP [DIR/CEO]	2	348,221	58.855
15 SEP 2023 - 15 SEP 2023	MGB	TAN SRI DATO' SRI IR. LIM HOCK SAN JP [SSH]	2	348,221	58.855
20 SEP 2023 - 20 SEP 2023	MICROLN	RHB TRUSTEES BERHAD [SSH]	2,200	60,758	5.666
20 SEP 2023 - 20 SEP 2023	MICROLN	RHB TRUSTEES BERHAD [SSH]	2,200	154,458	14.403
15 SEP 2023 - 15 SEP 2023	MICROLN	OMESTI BERHAD [SSH]	-9,000	367,458	34.265
15 SEP 2023 - 15 SEP 2023	MICROLN	OMESTI HOLDINGS BERHAD [SSH]	-9,000	367,458	34.265
19 SEP 2023 - 19 SEP 2023	MISC	EMPLOYEES PROVIDENT FUND BOARD [SSH]	-1,630	576,728	12.92
18 SEP 2023 - 18 SEP 2023	MISC	EMPLOYEES PROVIDENT FUND BOARD [SSH]	-5	578,358	12.957
19 SEP 2023 - 19 SEP 2023	MISC	KUMPULAN WANG PERSARAAN (DIPERBADANKAN) (KWAP) [SSH]	300	241,497	5.41
15 SEP 2023 - 15 SEP 2023	MISC	EMPLOYEES PROVIDENT FUND BOARD [SSH]	-719	578,363	12.957
14 SEP 2023 - 14 SEP 2023	MISC	EMPLOYEES PROVIDENT FUND BOARD [SSH]	-500	579,082	12.973
13 SEP 2023 - 13 SEP 2023	MISC	EMPLOYEES PROVIDENT FUND BOARD [SSH]	-35	579,582	12.984
12 SEP 2023 - 12 SEP 2023	MISC	EMPLOYEES PROVIDENT FUND BOARD [SSH]	984	579,617	12.985
21 SEP 2023 - 21 SEP 2023	MYEG	KUMPULAN WANG PERSARAAN (DIPERBADANKAN) [SSH]	491	551,178	7.372
20 SEP 2023 - 20 SEP 2023	MYEG	ASIA INTERNET HOLDINGS SDN BHD [SSH]	19,161	1,210,714	16.194
20 SEP 2023 - 20 SEP 2023	MYEG	DATO' DR NORRAESAH BINTI HAJI MOHAMAD [DIR/CEO]	842	53607	0.717
20 SEP 2023 - 20 SEP 2023	MYEG	DATUK MOHD JIMMY WONG BIN ABDULLAH [DIR/CEO]	113	7034	0.094
20 SEP 2023 - 20 SEP 2023	MYEG	MR WONG THEAN SOON [DIR/CEO]	32,422	2153608	28.805
20 SEP 2023 - 20 SEP 2023	MYEG	MR WONG THEAN SOON [SSH]	32,422	2,153,608	28.805
19 SEP 2023 - 19 SEP 2023	MYEG	KUMPULAN WANG PERSARAAN (DIPERBADANKAN) [SSH]	-800	550,687	7.446
19 SEP 2023 - 19 SEP 2023	NESTLE	EMPLOYEES PROVIDENT FUND BOARD [SSH]	4	21,563	9.195
18 SEP 2023 - 18 SEP 2023	NESTLE	EMPLOYEES PROVIDENT FUND BOARD [SSH]	13	21,559	9.194
15 SEP 2023 - 15 SEP 2023	NESTLE	EMPLOYEES PROVIDENT FUND BOARD [SSH]	27	21,546	9.188
14 SEP 2023 - 14 SEP 2023	NESTLE	EMPLOYEES PROVIDENT FUND BOARD [SSH]	-49	21,519	9.177
13 SEP 2023 - 13 SEP 2023	NESTLE	EMPLOYEES PROVIDENT FUND BOARD [SSH]	-36	21,568	9.197
12 SEP 2023 - 12 SEP 2023	OKA	DATO' NIK MOHAMAD PENA BIN NIK MUSTAPHA [DIR/CEO]	30	3,351	1.365
19 SEP 2023 - 19 SEP 2023	ORIENT	EMPLOYEES PROVIDENT FUND BOARD [SSH]	-123	50,286	8.106
18 SEP 2023 - 18 SEP 2023	ORIENT	EMPLOYEES PROVIDENT FUND BOARD [SSH]	-39	50,408	8.126
15 SEP 2023 - 15 SEP 2023	ORIENT	EMPLOYEES PROVIDENT FUND BOARD [SSH]	-294	50,448	8.132
14 SEP 2023 - 14 SEP 2023	ORIENT	EMPLOYEES PROVIDENT FUND BOARD [SSH]	-32	50,742	8.179
13 SEP 2023 - 13 SEP 2023	ORIENT	EMPLOYEES PROVIDENT FUND BOARD [SSH]	-104	50,774	8.185

Notice Period is 17th Sep – 23rd Sep 2023

Effective Change Date	Stock Name	Buyer/ Seller Name [Classification]	Bought / (Sold) ['000]	No. of Shares After Trade ['000]	
			Total	Total	% Held
18 SEP 2023 - 18 SEP 2023	PA	DATO' LIM SIEW MEI [DIR/CEO]	500	13,489	0.903
14 SEP 2023 - 14 SEP 2023	PA	TAN SRI LAU KUAN KAM [DIR/CEO]	505	90,280	6.044
14 SEP 2023 - 14 SEP 2023	PA	TAN SRI LAU KUAN KAM [SSH]	505	90,280	6.044
19 SEP 2023 - 19 SEP 2023	PADINI	EMPLOYEES PROVIDENT FUND BOARD [SSH]	32	35,738	5.432
18 SEP 2023 - 18 SEP 2023	PADINI	EMPLOYEES PROVIDENT FUND BOARD [SSH]	88	35707	5.427
15 SEP 2023 - 15 SEP 2023	PADINI	EMPLOYEES PROVIDENT FUND BOARD [SSH]	77	35619	5.414
14 SEP 2023 - 14 SEP 2023	PADINI	EMPLOYEES PROVIDENT FUND BOARD [SSH]	22	35542	5.402
13 SEP 2023 - 13 SEP 2023	PADINI	EMPLOYEES PROVIDENT FUND BOARD [SSH]	0.1	35520	5.399
21 SEP 2023 - 21 SEP 2023	PANTECH	DATIN SHUM KAH LIN [SSH]	40	154961	18.669
21 SEP 2023 - 21 SEP 2023	PANTECH	DATO' CHEW TING LENG [DIR/CEO]	40	154961	18.67
21 SEP 2023 - 21 SEP 2023	PANTECH	DATO' CHEW TING LENG [SSH]	40	154961	18.67
18 SEP 2023 - 18 SEP 2023	PANTECH	MR LIM YOONG XAO [DIR/CEO]	200	302	0.036
19 SEP 2023 - 19 SEP 2023	PBBANK	EMPLOYEES PROVIDENT FUND BOARD [SSH]	2,201	2977603	15.34
18 SEP 2023 - 18 SEP 2023	PBBANK	EMPLOYEES PROVIDENT FUND BOARD [SSH]	33	2975403	15.33
15 SEP 2023 - 15 SEP 2023	PBBANK	EMPLOYEES PROVIDENT FUND BOARD [SSH]	-6,000	2975370	15.33
14 SEP 2023 - 14 SEP 2023	PBBANK	EMPLOYEES PROVIDENT FUND BOARD [SSH]	-3,410	2981370	15.36
13 SEP 2023 - 13 SEP 2023	PBBANK	EMPLOYEES PROVIDENT FUND BOARD [SSH]	-3,000	2984780	15.38
19 SEP 2023 - 19 SEP 2023	PICHEM	EMPLOYEES PROVIDENT FUND BOARD ("EPF BOARD") [SSH]	212	936252	11.703
12 SEP 2023 - 12 SEP 2023	PICHEM	EMPLOYEES PROVIDENT FUND BOARD ("EPF BOARD") [SSH]	657	936836	11.71
15 SEP 2023 - 15 SEP 2023	PENSONI	CHEW WENG KHAK REALTY SDN BHD [SSH]	-13,000	13062	10.393
15 SEP 2023 - 15 SEP 2023	PENSONI	DATO' SERI CHEW WENG KHAK @ CHEW WENG KIAK [DIR/CEO]	-13,000	30296	24.106
15 SEP 2023 - 15 SEP 2023	PENSONI	DATO' SERI CHEW WENG KHAK @ CHEW WENG KIAK [SSH]	-13,000	26296	20.923
15 SEP 2023 - 15 SEP 2023	PENSONI	SPHERE CORPORATION SDN BHD [SSH]	13,000	13000	10.344
15 SEP 2023 - 15 SEP 2023	PEN-SONI-WB	DATO' SERI CHEW WENG KHAK @ CHEW WENG KIAK [DIR/CEO]	-11,600	7890	12.17
19 SEP 2023 - 19 SEP 2023	PENTA	EMPLOYEES PROVIDENT FUND BOARD [SSH]	50	51546	7.247
18 SEP 2023 - 18 SEP 2023	PENTA	EMPLOYEES PROVIDENT FUND BOARD [SSH]	-68	51496	7.239
15 SEP 2023 - 15 SEP 2023	PENTA	EMPLOYEES PROVIDENT FUND BOARD [SSH]	20	51564	7.249
14 SEP 2023 - 14 SEP 2023	PENTA	EMPLOYEES PROVIDENT FUND BOARD [SSH]	-17	51544	7.246
13 SEP 2023 - 13 SEP 2023	PENTA	EMPLOYEES PROVIDENT FUND BOARD [SSH]	200	51560	7.249
19 SEP 2023 - 19 SEP 2023	PETDAG	EMPLOYEES PROVIDENT FUND BOARD ("EPF BOARD") [SSH]	-222	121572	12.237
18 SEP 2023 - 18 SEP 2023	PETDAG	EMPLOYEES PROVIDENT FUND BOARD ("EPF BOARD") [SSH]	-367	121794	12.26
15 SEP 2023 - 15 SEP 2023	PETDAG	EMPLOYEES PROVIDENT FUND BOARD ("EPF BOARD") [SSH]	-61	122161	12.297
14 SEP 2023 - 14 SEP 2023	PETDAG	EMPLOYEES PROVIDENT FUND BOARD ("EPF BOARD") [SSH]	-141	122222	12.303
19 SEP 2023 - 19 SEP 2023	PETGAS	EMPLOYEES PROVIDENT FUND BOARD [SSH]	-812	282492	14.276
18 SEP 2023 - 18 SEP 2023	PETGAS	EMPLOYEES PROVIDENT FUND BOARD [SSH]	-189	283304	14.317
15 SEP 2023 - 15 SEP 2023	PETGAS	EMPLOYEES PROVIDENT FUND BOARD [SSH]	1,971	283493	14.327
14 SEP 2023 - 14 SEP 2023	PETGAS	EMPLOYEES PROVIDENT FUND BOARD [SSH]	-140	281521	14.227
13 SEP 2023 - 13 SEP 2023	PETGAS	EMPLOYEES PROVIDENT FUND BOARD [SSH]	-74	281661	14.234
14 SEP 2023 - 14 SEP 2023	PMBTECH	MADAM CHAN POH CHOO [SSH]	-103,400	170641	10.66
14 SEP 2023 - 14 SEP 2023	PMBTECH	MR KOON POH WENG [DIR/CEO]	-103,400	170641	10.661
14 SEP 2023 - 14 SEP 2023	PMBTECH	MR KOON POH WENG [SSH]	-103,400	170641	10.661
19 SEP 2023 - 19 SEP 2023	PPB	EMPLOYEES PROVIDENT FUND BOARD [SSH]	-27	143367	10.078
18 SEP 2023 - 18 SEP 2023	PPB	EMPLOYEES PROVIDENT FUND BOARD [SSH]	-300	143395	10.08
15 SEP 2023 - 15 SEP 2023	PPB	EMPLOYEES PROVIDENT FUND BOARD [SSH]	-261	143695	10.101
14 SEP 2023 - 14 SEP 2023	PPB	EMPLOYEES PROVIDENT FUND BOARD [SSH]	-34	143955	10.119
14 SEP 2023 - 14 SEP 2023	PRESTAR	DATO' TOH YEWE PENG [DIR/CEO]	43	140298	39.072
14 SEP 2023 - 14 SEP 2023	PRESTAR	DATO' TOH YEWE PENG [SSH]	43	139962	38.979
19 SEP 2023 - 19 SEP 2023	RHBBANK	EMPLOYEES PROVIDENT FUND BOARD [SSH]	-2,500	1744927	40.709
18 SEP 2023 - 18 SEP 2023	RHBBANK	EMPLOYEES PROVIDENT FUND BOARD [SSH]	-1,229	1747427	40.767
15 SEP 2023 - 15 SEP 2023	RHBBANK	EMPLOYEES PROVIDENT FUND BOARD [SSH]	-1,652	1748656	40.796
14 SEP 2023 - 14 SEP 2023	RHBBANK	EMPLOYEES PROVIDENT FUND BOARD [SSH]	-401	1750308	40.834
13 SEP 2023 - 13 SEP 2023	RHBBANK	EMPLOYEES PROVIDENT FUND BOARD [SSH]	-1,091	1750708	40.844
22 SEP 2023 - 22 SEP 2023	RHONEMA	DR LIM BAN KEONG [DIR/CEO]	17	86667	39.176
22 SEP 2023 - 22 SEP 2023	RHONEMA	DR LIM BAN KEONG [SSH]	17	86667	39.176
15 SEP 2023 - 15 SEP 2023	SAPIND	MR KOH KOK HOOI [SSH]	13	6643	9.127
14 SEP 2023 - 14 SEP 2023	SAPIND	MR KOH KOK HOOI [SSH]	2	6630	9.11
19 SEP 2023 - 19 SEP 2023	SCBUILD	VANTAGE MATRIX SDN. BHD. [SSH]	-31,500	243500	22.67
20 SEP 2023 - 20 SEP 2023	SCICOM	DATO' SRI LEO SURESH ARIYANAYAKAM [DIR/CEO]	40	92447	26.008
20 SEP 2023 - 20 SEP 2023	SCICOM	DATO' SRI LEO SURESH ARIYANAYAKAM [SSH]	40	92447	26.008
19 SEP 2023 - 21 SEP 2023	SDS	MR TAN KIM SENG [DIR/CEO]	70	105352	25.719
19 SEP 2023 - 21 SEP 2023	SDS	MR TAN KIM SENG [SSH]	70	105352	25.719
14 SEP 2023 - 18 SEP 2023	SEAL	MR CHEN KHAI VOON [SSH]	330	115944	30.578
19 SEP 2023 - 19 SEP 2023	SIMEPLT	EMPLOYEES PROVIDENT FUND BOARD [SSH]	-106	1012191	14.636
21 SEP 2023 - 21 SEP 2023	SIMEPROP	KUMPULAN WANG PERSARAAN (DIPERBADANKAN) [SSH]	39	448821	6.599
20 SEP 2023 - 20 SEP 2023	SIMEPROP	AMANAHRAYA TRUSTEES BERHAD - AMANAH SAHAM BUMIPUTERA [SSH]	-2,000	3045366	44.779
19 SEP 2					

Notice Period is 17th Sep - 23rd Sep 2023

Effective Change Date	Stock Name	Buyer/ Seller Name [Classification]	Bought / (Sold) ['000]	No. of Shares After Trade ['000]	
			Total	Total	% Held
18 SEP 2023 - 18 SEP 2023	SKPRES	EMPLOYEES PROVIDENT FUND BOARD [SSH]	-23	130737	8.368
19 SEP 2023 - 19 SEP 2023	SKPRES	KUMPULAN WANG PERSARAAN (DIPERBADANKAN) [SSH]	104	126202	8.078
15 SEP 2023 - 15 SEP 2023	SKPRES	EMPLOYEES PROVIDENT FUND BOARD [SSH]	-99	130760	8.369
18 SEP 2023 - 18 SEP 2023	SKPRES	KUMPULAN WANG PERSARAAN (DIPERBADANKAN) [SSH]	170	126097	8.071
15 SEP 2023 - 15 SEP 2023	SKPRES	KUMPULAN WANG PERSARAAN (DIPERBADANKAN) [SSH]	186	125927	8.06
20 SEP 2023 - 22 SEP 2023	SNTORIA	DATUK CHU BOON TIONG [DIR/CEO]	-1,200	9228	1.504
21 SEP 2023 - 21 SEP 2023	SPSETIA	KUMPULAN WANG PERSARAAN (DIPERBADANKAN) [SSH]	2,608	411061	10.055
19 SEP 2023 - 19 SEP 2023	SPSETIA	KUMPULAN WANG PERSARAAN (DIPERBADANKAN) [SSH]	300	408453	9.991
20 SEP 2023 - 20 SEP 2023	SRIDGE	DATO' KHOO YIK CHOU [DIR/CEO]	66	11632	5.526
20 SEP 2023 - 20 SEP 2023	SRIDGE	DATO' KHOO YIK CHOU [SSH]	66	11632	5.526
21 SEP 2023 - 21 SEP 2023	SSB8	MR GAN YEE HIN [DIR/CEO]	-25,616	1514616	66.647
21 SEP 2023 - 21 SEP 2023	SSB8	MR GAN YEE HIN [SSH]	-25,616	1514616	66.647
21 SEP 2023 - 21 SEP 2023	SSB8	TAN SRI DATUK SERI GAN YU CHAI [DIR/CEO]	-25,616	1216273	53.519
21 SEP 2023 - 21 SEP 2023	SSB8	TAN SRI DATUK SERI GAN YU CHAI [SSH]	-25,616	1216273	53.519
20 SEP 2023 - 20 SEP 2023	SSB8	MR CHAI THAM POH [DIR/CEO]	-1,000	6872	0.303
15 SEP 2023 - 18 SEP 2023	STAR	MALAYSIAN CHINESE ASSOCIATION [SSH]	725	330707	45.63
19 SEP 2023 - 19 SEP 2023	SUNCON	EMPLOYEES PROVIDENT FUND BOARD [SSH]	-53	126777	9.833
18 SEP 2023 - 18 SEP 2023	SUNCON	EMPLOYEES PROVIDENT FUND BOARD [SSH]	-34	126830	9.837
15 SEP 2023 - 15 SEP 2023	SUNCON	EMPLOYEES PROVIDENT FUND BOARD [SSH]	91	126864	9.839
14 SEP 2023 - 14 SEP 2023	SUNCON	EMPLOYEES PROVIDENT FUND BOARD [SSH]	29	126774	9.832
13 SEP 2023 - 13 SEP 2023	SUNCON	EMPLOYEES PROVIDENT FUND BOARD [SSH]	12	126745	9.83
15 SEP 2023 - 15 SEP 2023	SUNREIT	EMPLOYEES PROVIDENT FUND BOARD [SSH]	11,232	536712	15.671
15 SEP 2023 - 15 SEP 2023	SUNREIT	KUMPULAN WANG PERSARAAN (DIPERBADANKAN) ("KWAP") [SSH]	4,172	202032	5.899
19 SEP 2023 - 19 SEP 2023	SUNWAY	EMPLOYEES PROVIDENT FUND BOARD [SSH]	-1,208	336052	6.78
18 SEP 2023 - 18 SEP 2023	SUNWAY	EMPLOYEES PROVIDENT FUND BOARD [SSH]	250	337260	6.81
15 SEP 2023 - 15 SEP 2023	SUNWAY	EMPLOYEES PROVIDENT FUND BOARD [SSH]	-371	337010	6.8
14 SEP 2023 - 14 SEP 2023	SUNWAY	EMPLOYEES PROVIDENT FUND BOARD [SSH]	-431	338381	6.83
13 SEP 2023 - 13 SEP 2023	SUNWAY	EMPLOYEES PROVIDENT FUND BOARD [SSH]	22	338342	6.83
19 SEP 2023 - 19 SEP 2023	T7GLOBAL-WC	MISS TAN SAM ENG [DIR/CEO]	372	4566	3.129
14 SEP 2023 - 14 SEP 2023	T7GLOBAL-WC	MISS TAN SAM ENG [DIR/CEO]	64	4194	2.874
19 SEP 2023 - 19 SEP 2023	TAFI	DATO' SRI ONG CHEE KEAN [DIR/CEO]	50	1100	0.29
18 SEP 2023 - 19 SEP 2023	TAFI	DATO' SRI WONG SZE CHIEN [DIR/CEO]	191	212431	55.987
18 SEP 2023 - 19 SEP 2023	TAFI	DATO' SRI WONG SZE CHIEN [SSH]	191	212431	55.987
13 SEP 2023 - 14 SEP 2023	TAFI	ARMANI SYNERGY SDN. BHD. [SSH]	40	203821	53.718
13 SEP 2023 - 14 SEP 2023	TAFI	DATO' SRI ANDREW LIM ENG GUAN [DIR/CEO]	40	212869	56.103
13 SEP 2023 - 14 SEP 2023	TAFI	DATO' SRI ANDREW LIM ENG GUAN [SSH]	40	212869	56.103
13 SEP 2023 - 14 SEP 2023	TAFI	DATO' SRI AZLAN BIN AZMI [DIR/CEO]	40	203986	53.761
13 SEP 2023 - 14 SEP 2023	TAFI	DATO' SRI AZLAN BIN AZMI [SSH]	40	203986	53.761
13 SEP 2023 - 14 SEP 2023	TAFI	DATO' SRI WONG SZE CHIEN [DIR/CEO]	40	212239	55.937
13 SEP 2023 - 14 SEP 2023	TAFI	DATO' SRI WONG SZE CHIEN [SSH]	40	212239	55.937
18 SEP 2023 - 18 SEP 2023	TAKAFUL	EMPLOYEES PROVIDENT FUND BOARD [SSH]	-62	107960	12.894
15 SEP 2023 - 15 SEP 2023	TAKAFUL	EMPLOYEES PROVIDENT FUND BOARD [SSH]	-74	108022	12.901
14 SEP 2023 - 14 SEP 2023	TAKAFUL	EMPLOYEES PROVIDENT FUND BOARD [SSH]	-150	108096	12.91
13 SEP 2023 - 13 SEP 2023	TAKAFUL	EMPLOYEES PROVIDENT FUND BOARD [SSH]	-50	108246	12.928
22 SEP 2023 - 22 SEP 2023	TANCO	DATO' SRI ANDREW TAN JUN SUAN [DIR/CEO]	5,000	996035	50.231
22 SEP 2023 - 22 SEP 2023	TANCO	DATO' SRI ANDREW TAN JUN SUAN [SSH]	5,000	996035	50.231
22 SEP 2023 - 22 SEP 2023	TANCO	TJN CAPITAL SDN BHD [SSH]	5,000	785059	39.591
18 SEP 2023 - 19 SEP 2023	TCHONG	DATO' TAN HENG CHEW [DIR/CEO]	27	323048	49.558
18 SEP 2023 - 19 SEP 2023	TCHONG	DATO' TAN HENG CHEW [SSH]	27	307466	47.168
18 SEP 2023 - 18 SEP 2023	TCHONG	EMPLOYEES PROVIDENT FUND BOARD [SSH]	-60	41793	6.411
19 SEP 2023 - 19 SEP 2023	TDEX	YTM DATO' SERI DIRAJA TAN SRI TENGKU ABDUL HAMID THANI IBNI ALMARHUM SULTAN BADLISHAH [DIR/CEO]	450	46150	5.469
19 SEP 2023 - 19 SEP 2023	TDEX	YTM DATO' SERI DIRAJA TAN SRI TENGKU ABDUL HAMID THANI IBNI ALMARHUM SULTAN BADLISHAH [SSH]	450	46150	5.469
15 SEP 2023 - 15 SEP 2023	TENAGA	EMPLOYEES PROVIDENT FUND BOARD [SSH]	150	908233	15.69
18 SEP 2023 - 18 SEP 2023	TENAGA	KUMPULAN WANG PERSARAAN (DIPERBADANKAN) [SSH]	100	430087	7.43
15 SEP 2023 - 15 SEP 2023	TENAGA	KUMPULAN WANG PERSARAAN (DIPERBADANKAN) [SSH]	-85	429987	7.43
20 SEP 2023 - 21 SEP 2023	TEOSEN	CW LAU & SONS SDN BHD [SSH]	164	160815	54.823
20 SEP 2023 - 21 SEP 2023	TEOSEN	DATUK LAU JOO HONG [SSH]	164	160815	54.823
20 SEP 2023 - 21 SEP 2023	TEOSEN	EMERGING GLORY SDN BHD [SSH]	164	160815	54.823
20 SEP 2023 - 21 SEP 2023	TEOSEN	LEONG HUP (MALAYSIA) SDN BHD [SSH]	164	160815	54.822
20 SEP 2023 - 21 SEP 2023	TEOSEN	LEONG HUP INTERNATIONAL BERHAD [SSH]	164	160815	54.823
20 SEP 2023 - 21 SEP 2023	TEOSEN	MR LAU JOO HAN [SSH]	164	160815	54.823
20 SEP 2023 - 21 SEP 2023	TEOSEN	MR LAU JOO HENG [SSH]	164	160815	54.823
20 SEP 2023 - 21 SEP 2023	TEOSEN	MR LAU JUI PENG [DIR/CEO]	164	160815	54.823
20 SEP 2023 - 21 SEP 2023	TEOSEN	MR LAU JUI PENG [SSH]	164	160815	54.823
15 SEP 2023 - 15 SEP 2023	TEOSEN	CW LAU & SONS SDN BHD [SSH]	162	160651	54.767
15 SEP 2023 - 15 SEP 2023	TEOSEN	DATUK LAU JOO HONG [SSH]	162	160651	54.767
15 SEP 2023 - 15 SEP 2023	TEOSEN	EMERGING GLORY SDN BHD [SSH]	162	160651	54.767
15 SEP 2023 - 15 SEP 2023	TEOSEN	LEONG HUP (MALAYSIA) SDN BHD [SSH]	162	160651	54.767
15 SEP 2023 - 15 SEP 2023	TEOSEN	LEONG HUP INTERNATIONAL BERHAD [SSH]	162	160651	54.767
15 SEP 2023 - 15 SEP 2023	TEOSEN	MR DATUK LAU JOO HONG [SSH]	162	160651	54.767
15 SEP 2023 - 15 SEP 2023	TEOSEN	MR LAU JOO HAN [SSH]	162	160651	54.767
15 SEP 2023 - 15 SEP 2023	TEOSEN	MR LAU JOO HENG [SSH]	162	160651	54.767
15 SEP 2023 - 15 SEP 2023	TEOSEN	MR LAU JUI PENG [DIR/CEO]	162	160651	54.767
15 SEP 2023 - 15 SEP 2023	TEOSEN	MR LAU JUI PENG [SSH]	162	160651	54.767
21 SEP 2023 - 21 SEP 2023	TGUAN	DATO' ANG POON KHIM [DIR/CEO]	100	4174	1.057
21 SEP 2023 - 21 SEP 2023	TIMECOM	KUMPULAN WANG PERSARAAN (DIPERBADANKAN) ("KWAP") [SSH]	44	107017	5.795
19 SEP 2023 - 19 SEP 2023	TIMECOM	EMPLOYEES PROVIDENT FUND BOARD [SSH]	-656	139776	7.568

Notice Period is 17th Sep - 23rd Sep 2023

Effective Change Date	Stock Name	Buyer/ Seller Name [Classification]	Bought / (Sold) ['000]	No. of Shares After Trade ['000]	
			Total	Total	% Held
20 SEP 2023 - 20 SEP 2023	TIMECOM	KUMPULAN WANG PERSARAAN (DIPERBADANKAN) ("KWAP") [SSH]	44	106973	5.792
18 SEP 2023 - 18 SEP 2023	TIMECOM	EMPLOYEES PROVIDENT FUND BOARD [SSH]	-317	140432	7.604
19 SEP 2023 - 19 SEP 2023	TIMECOM	KUMPULAN WANG PERSARAAN (DIPERBADANKAN) ("KWAP") [SSH]	44	106929	5.79
15 SEP 2023 - 15 SEP 2023	TIMECOM	EMPLOYEES PROVIDENT FUND BOARD [SSH]	-1,344	140749	7.621
18 SEP 2023 - 18 SEP 2023	TIMECOM	KUMPULAN WANG PERSARAAN (DIPERBADANKAN) ("KWAP") [SSH]	44	106885	5.787
14 SEP 2023 - 14 SEP 2023	TIMECOM	EMPLOYEES PROVIDENT FUND BOARD [SSH]	323	142092	7.694
15 SEP 2023 - 15 SEP 2023	TIMECOM	KUMPULAN WANG PERSARAAN (DIPERBADANKAN) ("KWAP") [SSH]	-956	106841	5.785
13 SEP 2023 - 13 SEP 2023	TIMECOM	EMPLOYEES PROVIDENT FUND BOARD [SSH]	-389	141769	7.676
21 SEP 2023 - 21 SEP 2023	TM	KUMPULAN WANG PERSARAAN (DIPERBADANKAN) (KWAP) [SSH]	-139	398705	10.432
20 SEP 2023 - 20 SEP 2023	TM	KUMPULAN WANG PERSARAAN (DIPERBADANKAN) (KWAP) [SSH]	-1,279	398844	10.435
19 SEP 2023 - 19 SEP 2023	TM	KUMPULAN WANG PERSARAAN (DIPERBADANKAN) (KWAP) [SSH]	-2,000	400123	10.469
18 SEP 2023 - 18 SEP 2023	TM	KUMPULAN WANG PERSARAAN (DIPERBADANKAN) (KWAP) [SSH]	-1,000	402123	10.521
15 SEP 2023 - 15 SEP 2023	TM	KUMPULAN WANG PERSARAAN (DIPERBADANKAN) (KWAP) [SSH]	-1,646	403123	10.548
15 SEP 2023 - 15 SEP 2023	TOCEAN	ENCIK MUHAMMAD HARIZ BIN MOHD NADZMI [SSH]	-40	13560	20.831
15 SEP 2023 - 15 SEP 2023	TOCEAN	IBRONI SDN. BHD. [SSH]	-40	13560	20.831
15 SEP 2023 - 15 SEP 2023	TOCEAN	KUMPULAN KENDERAAN MALAYSIA BERHAD [SSH]	-40	13560	20.831
15 SEP 2023 - 15 SEP 2023	TOCEAN	NADI CORPORATION SDN. BHD. [SSH]	-40	13560	20.831
15 SEP 2023 - 15 SEP 2023	TOCEAN	NADICORP HOLDINGS SDN. BHD. [SSH]	-40	13560	20.831
15 SEP 2023 - 15 SEP 2023	TOCEAN	TRISILCO EQUITY SDN. BHD. [SSH]	-40	13560	20.831
19 SEP 2023 - 19 SEP 2023	TWL	DATIN SEK CHIAN NEE [DIR/CEO]	32,717	1363636	29.13
19 SEP 2023 - 19 SEP 2023	TWL	DATIN SEK CHIAN NEE [SSH]	32,717	1363636	29.13
19 SEP 2023 - 19 SEP 2023	TWL	DATO' TAN WEI LIAN [DIR/CEO]	32,717	1363636	29.13
19 SEP 2023 - 19 SEP 2023	TWL	DATO' TAN WEI LIAN [SSH]	32,717	1363636	29.13
19 SEP 2023 - 19 SEP 2023	TWL	MISS TAN LEE CHIN [DIR/CEO]	32,717	1363636	29.131
19 SEP 2023 - 19 SEP 2023	TWL	MISS TAN LEE CHIN [SSH]	32,717	1363636	29.131
19 SEP 2023 - 19 SEP 2023	TWL	TWL CAPITAL BERHAD [SSH]	32,717	1363636	29.13
19 SEP 2023 - 19 SEP 2023	UMW	EMPLOYEES PROVIDENT FUND BOARD [SSH]	604	86954	7.443
19 SEP 2023 - 19 SEP 2023	UOAEV	EMPLOYEES PROVIDENT FUND BOARD ("EPF BOARD") [SSH]	14	304196	12.215
18 SEP 2023 - 18 SEP 2023	UOAEV	EMPLOYEES PROVIDENT FUND BOARD ("EPF BOARD") [SSH]	22	304182	12.214
15 SEP 2023 - 15 SEP 2023	UOAEV	EMPLOYEES PROVIDENT FUND BOARD ("EPF BOARD") [SSH]	697	304160	12.213
14 SEP 2023 - 14 SEP 2023	UOAEV	EMPLOYEES PROVIDENT FUND BOARD ("EPF BOARD") [SSH]	28	303463	12.185
13 SEP 2023 - 13 SEP 2023	UOAEV	EMPLOYEES PROVIDENT FUND BOARD ("EPF BOARD") [SSH]	59	303435	12.184
11 SEP 2023 - 11 SEP 2023	UOAEV	KONG CHONG SOON @ CHI SUIM [SSH]	41	1741563	69.931
11 SEP 2023 - 11 SEP 2023	UOAEV	MISS ANG KHENG IM [DIR/CEO]	29	228	0.009
11 SEP 2023 - 11 SEP 2023	UOAEV	MR KONG CHONG SOON @ CHI SUIM [DIR/CEO]	41	1741563	69.931
11 SEP 2023 - 11 SEP 2023	UOAEV	MR KONG SZE CHOON [DIR/CEO]	25	203	0.008
19 SEP 2023 - 19 SEP 2023	UTDPLT	EMPLOYEES PROVIDENT FUND BOARD [SSH]	117	27274	6.575
18 SEP 2023 - 18 SEP 2023	UTDPLT	EMPLOYEES PROVIDENT FUND BOARD [SSH]	-196	27157	6.547
15 SEP 2023 - 15 SEP 2023	UTDPLT	EMPLOYEES PROVIDENT FUND BOARD [SSH]	-100	27352	6.594
18 SEP 2023 - 18 SEP 2023	UTDPLT	MR LOH HANG PAI @ LOW HENG FONG [DIR/CEO]	-5	115	0.028
14 SEP 2023 - 14 SEP 2023	UTDPLT	EMPLOYEES PROVIDENT FUND BOARD [SSH]	-42	27452	6.618
13 SEP 2023 - 13 SEP 2023	UTDPLT	EMPLOYEES PROVIDENT FUND BOARD [SSH]	17	27494	6.629
19 SEP 2023 - 19 SEP 2023	UWC	EMPLOYEES PROVIDENT FUND BOARD [SSH]	-211	80323	7.291
14 SEP 2023 - 14 SEP 2023	UWC	EMPLOYEES PROVIDENT FUND BOARD [SSH]	400	80469	7.304
13 SEP 2023 - 13 SEP 2023	UWC	EMPLOYEES PROVIDENT FUND BOARD [SSH]	455	79905	7.253
20 SEP 2023 - 21 SEP 2023	VERSATL	MR LIM AH CHAI [SSH]	610	108455	38.72
20 SEP 2023 - 21 SEP 2023	VERSATL	MR LIM AH CHUAN [SSH]	610	108455	38.72
20 SEP 2023 - 21 SEP 2023	VERSATL	MR LIM CHOU BU [SSH]	610	108455	38.72
20 SEP 2023 - 21 SEP 2023	VERSATL	NSK TRADING SDN BHD [SSH]	610	108455	38.72
18 SEP 2023 - 19 SEP 2023	VERSATL	MR LIM AH CHAI [SSH]	578	107845	38.503
18 SEP 2023 - 19 SEP 2023	VERSATL	MR LIM AH CHUAN [SSH]	578	107845	38.503
18 SEP 2023 - 19 SEP 2023	VERSATL	MR LIM CHOU BU [SSH]	578	107845	38.503
18 SEP 2023 - 19 SEP 2023	VERSATL	NSK TRADING SDN BHD [SSH]	578	107845	38.503
22 SEP 2023 - 22 SEP 2023	VS	DATIN LING SOK MOOI [SSH]	500	201603	5.244
22 SEP 2023 - 22 SEP 2023	VS	DATUK GAN SEM YAM [DIR/CEO]	500	201603	5.244
22 SEP 2023 - 22 SEP 2023	VS	DATUK GAN SEM YAM [SSH]	500	201603	5.244
14 SEP 2023 - 14 SEP 2023	VS	EMPLOYEES PROVIDENT FUND BOARD [SSH]	-761	260765	6.784
19 SEP 2023 - 20 SEP 2023	VSTEC	VSTEC HOLDINGS (SINGAPORE) LIMITED [SSH]	261	157845	44.269
19 SEP 2023 - 20 SEP 2023	VSTEC	VSTEC HOLDINGS LIMITED [SSH]	261	157845	44.269
19 SEP 2023 - 19 SEP 2023	WARISAN	DATO' TAN HENG CHEW [DIR/CEO]	2	35624	54.723
19 SEP 2023 - 19 SEP 2023	WARISAN	DATO' TAN HENG CHEW [SSH]	2	31600	48.541
15 SEP 2023 - 15 SEP 2023	WELLS	CIMB COMMERCE TRUSTEE BERHAD [SSH]	18,000	47222	6.631
18 SEP 2023 - 18 SEP 2023	WIDAD	TAN SRI MUHAMMAD IKMAL OPAT BIN ABDULLAH [SSH]	-4,000	1181266	38.149
19 SEP 2023 - 19 SEP 2023	WOODLAN	DATO' SERI MUN WENG SUM [DIR/CEO]	2	7139	17.847
19 SEP 2023 - 19 SEP 2023	WOODLAN	DATO' SERI MUN WENG SUM [SSH]	2	7139	17.847
15 SEP 2023 - 15 SEP 2023	WOODLAN	DATO' SERI MUN WENG SUM [DIR/CEO]	1	7138	17.843
15 SEP 2023 - 15 SEP 202					



The Board of Directors of **Cypark Resources Berhad (CYPARK)** wishes to announce that its wholly-owned subsidiary, Cypark Renewable Energy Sdn Bhd on 26 September 2023 issued the third tranche of the Perpetual Sukuk Musharakah of RM165 million in nominal value on an unsecured basis from the issuance size of up to RM265 million under its Perpetual Sukuk Musharakah Programme. The proceeds raised from the Tranche 3 Issuance shall be utilised for working capital, capital expenditure, repayment of existing financing/ borrowings, defraying costs and other expenses in relation to the issuance of the Perpetual Sukuk Musharakah Programme.

[READ MORE](#) 



On behalf of the Board of Directors of CapitaMalls Malaysia REIT Management Sdn. Bhd, CIMB Investment Bank Berhad wishes to announce that **CapitaLand Malaysia Trust (CLMT)** had, on 25 September 2023, issued and allotted a total of 35,332,383 new CLMT Units pursuant to the DRP for the 1H 2023 Income Distribution.

[READ MORE](#) 





Pursuant to Paragraph 9.19(51) of the Main Market Listing Requirements of Bursa Malaysia Securities Berhad, the Company wishes to announce that **Maxis Berhad (MAXIS)** had today, made the offer of performance share grant involving 11,146,700 ordinary shares in Maxis (Maxis Shares) to the eligible employees of Maxis and its subsidiaries.

[READ MORE](#)



Further to **PT Resources Holdings Berhad's (PTRB)** announcement made on 30 June 2023 pertaining to the MOU entered into between PT Resources and Ocean Exchange to establish cooperation between PT Resources and Ocean Exchange for the joint development of the Malaysia East Coast International Supply Chain Intelligent Park, the Board of Directors of the Company wishes to announce that there is no material development on the status of the MOU as announced previously.

[READ MORE](#)

Upcoming IPO

NAME OF COMPANY	OFFER PERIOD		ISSUE PRICE (Per Ordinary Share)	LISTING SOUGHT	DATE OF LISTING
	OPENING	CLOSING			
SSF HOME GROUP BERHAD	08 Sept 2023	27 Sept 2023	RM0.25	ACE MARKET	12 Oct 2023
MINOX INTERNATIONAL GROUP BERHAD	20 Sept 2023	03 Oct 2023	RM0.25	ACE MARKET	17 Oct 2023

Disclaimer: The information in the Investor Relations page is extracted from individual companies' announcements in www.bursamalaysia.com. The information on this page is provided as a service to readers. We assume no liability for damages resulting from or arising out of the use of such information. Whilst every effort is made to ensure accuracy, the information presented has been simplified for your reading pleasure. Readers are advised to read the original and complete filings on the Bursa Malaysia website at https://www.bursamalaysia.com/market_information/announcements/company_announcement