

Invest

ISSUE
205

FRIDAY
03 MAY 2024

Scan/Click QR to Register



Via email, every Friday

A Weekly e-Publication by SHAREINVESTOR

ALSO

COMPANY SPOTLIGHT

Top Glove Corporation Berhad

See more on page 07

MSWG

Exploring Cross-Shareholdings: A Closer Look at Malaysia's Corporate Landscape

See more on pages 34-38

MICROSOFT TO INVEST US\$2.2 BIL IN MALAYSIA OVER NEXT FOUR YEARS ON CLOUD & AI

STEADY CLIMB IN AIR PASSENGER TRAFFIC - MAVCOM

see more on pages 28-32

PLUS

BEHIND THE TICKER: DECODING COMPANY FUNDAMENTALS



Is POH KONG a gold proxy?

SUMMARY

- Poh Kong is Malaysia's largest gold-based jewellery retailer. While historically not a high-growth company, its performance has improved post-2020, correlating strongly with gold prices.
- Poh Kong is financially stable, with a reasonable debt-equity ratio and positive cash flow from operations.
- Poh Kong's current market price offers a significant margin of safety. Its correlation with gold prices makes it an attractive option for investors seeking exposure to the gold market through equities.

See more on pages 20-26

04 LEADERBOARD

06 SHARIAH HOT STOCKS

08 SHARIAH MOMENTUM UP STOCKS

10 NON SHARIAH HOT STOCKS

12 UP TRENDING STOCKS

14 VALUE STOCKS

15 GROWTH STOCKS

16 DIVIDEND STOCKS

17 BROKERS' CALL

18 LONG COMPANIES

33 REGIONAL MARKETS

39 INSIDER ACTIVITY

44 INVESTOR RELATIONS

SHAREINVESTOR®

An AlphaInvest Company

Invest with Knowledge

INVESTOR PLATFORMS

Director
Darren Chong
darren.chong@shareinvestor.com

Business Development Manager
Jay Cheong
jay.cheong.@shareinvestor.com

Senior Executive
Daniel Wong
daniel.wong@shareinvestor.com

ADMIN & OPERATIONS

Senior Executive
Watie Nordin
watie.nordin@shareinvestor.com

Executive
Silas Emmanuel Joseph
silas.joseph@shareinvestor.com

PROCESS AUTOMATION & DATA ANALYTICS

Data Analyst
Tan Yong Sheng

INVESTOR RELATIONS

Group Managing Director & Publisher
Edward Stanislaus
edward@shareinvestor.com

Senior Manager
Letticia Wong
letticia.wong@shareinvestor.com

Manager
Aida Norzeti Binti Ab Talib
aida.norzeti@shareinvestor.com

Inve\$t WEEKLY

Senior Manager Advertising Sales & Marketing
Mark Rodrigues
mark.rodrigues@shareinvestor.com

ALPHAINVEST HOLDINGS BOARD OF DIRECTORS

Chairman	Patrick Daniel
Group CEO	Christopher Lee
Group COO	Lim Dau Hee
Group CFO	Teo Siew May
Group MD	Shanison Lin



“ GIVE A MAN A FISH AND YOU FEED HIM FOR A DAY; TEACH A MAN TO FISH AND YOU FEED HIM FOR A LIFETIME ”

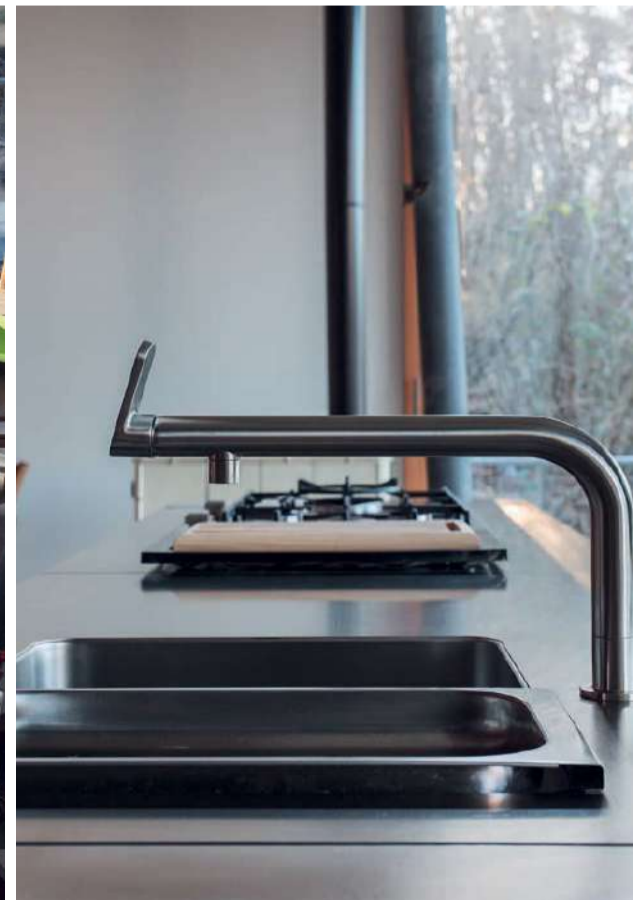
ShareInvestor Malaysia Sdn. Bhd.

(200001023956) (526564-M)
Unit No. DF2-07-03A, Level 7,
Persoft Tower, 6B Persiaran Tropicana,
47410 Petaling Jaya, Selangor Darul Ehsan.

Hotline : 603 7803 1791
Mobile : 011 6343 8939
Website : www.ShareInvestor.com.my
www.alphainvestholdings.com
www.Facebook.com/ShareInvestorMalaysia

ADVERTISEMENT ENQUIRY

bulthaup takes care of the details so that you can enjoy a harmonious environment.



XTRA

XTRA FURNITURE SDN BHD
The Gardens Mall, Mid Valley City
xtrafurniture.com/bulthaup
fb.com/bulthaupmalaysia

bulthaup



STROM

SWISS TIMEPIECES & JEWELLERY



StromWatch Asia

Tele : +65.9817.3378 Email : ll.stromasia@gmail.com

WWW.STROMWATCH.SWISS



www.shareinvestor.com - market data at your fingertips



ShareInvestor WebPro (www.shareinvestor.com/my) Prices > Stock Prices > Bursa > click Stocks tab

1. mouse over Ranking > select Top Active > all Shariah stocks are denoted with an [S] > mouse over Column Layout > select Edit Customs > select Name > select Volume > select Last Done Price > Mouse Over Column Layout > select Custom
2. mouse over Ranking > select Top Turnover > all Shariah stocks are denoted with an [S] > mouse over Column Layout > select Edit Customs > select Name > select Last Done Price > select Value > Mouse Over Column Layout > select Custom
3. mouse over Ranking > select Top Gainers (Over 5 Trading Days) > mouse over Column Layout > select Edit Customs > select Name > select Last Done Price > select 5 Days Change > select 5 Days % Change > Mouse Over Column Layout > select Custom
4. mouse over Ranking > select Top Losers (Over 5 Trading Days)
5. mouse over Ranking > select Top % Gainers (Over 5 Trading Days)
6. mouse over Ranking > select Top % Losers (Over 5 Trading Days)

Shariah Top Actives (as at Yesterday)

Name	Price (RM)	Volume
MYEG [S]	0.905	943,866.000
BPURI [S]	0.075	586,433.000
TOPGLOV [S]	0.870	494,215.000
VELESTO [S]	0.260	463,431.000
GHLSYS [S]	0.905	457,154.000
SNS [S]	0.380	428,131.000
ICONIC [S]	0.105	396,365.000
INGENIEU [S]	0.130	368,089.000
MRDIY [S]	1.660	283,645.000
CAPITALA [S]	0.810	283,265.000

Shariah Top Turnover (as at Yesterday)

Name	Price (RM)	Value (RM)
TENAGA [S]	12.020	121,474,994
MYEG [S]	0.905	86,514,272
IHH [S]	6.330	57,555,827
SUNWAY [S]	3.600	56,451,874
TM [S]	6.140	54,652,509
KLK [S]	23.240	53,976,114
SIME [S]	2.800	47,864,240
MRDIY [S]	1.660	46,809,272
TOPGLOV [S]	0.870	43,891,465
OPPSTAR [S]	1.470	41,165,895

Top Gainers (over 5 Trading days as at Yesterday)

Name	Price (RM)	Change (RM)
NESTLE	127.900	+0.900
APOLLO	7.040	+0.570
AJI	19.740	+0.520
CHINHIN	2.980	+0.500
YTLPOWR	4.610	+0.490
MPI	30.420	+0.480
GESHEN	4.190	+0.420
YTL	3.160	+0.390
ALLIANZ	21.280	+0.380
CHGP	2.200	+0.370

Top % Gainers (over 5 Trading days as at Yesterday)

Name	Price (RM)	Change (%)
EAH	0.010	+100.00
FINTEC	0.010	+100.00
HONGSENG	0.015	+50.00
SCBUILD	0.015	+50.00
MERIDIAN	0.055	+37.50
ETH	0.200	+33.33
CVIEW	1.510	+25.83
MAGMA	0.245	+25.64
GHLSYS	0.905	+24.83
AAX	1.500	+23.97

Top Losers (over 5 Trading days as at Yesterday)

Name	Price (RM)	Change (RM)
UTDPLT	25.300	-0.680
CRESNDO	3.470	-0.410
HLBANK	19.240	-0.220
VITROX	7.400	-0.220
KESM	6.030	-0.170
TIMECOM	5.160	-0.160
UWC	2.990	-0.160
HIBISCS	2.620	-0.130
PBBANK	4.100	-0.130
MALPAC	0.905	-0.125

Top % Losers (over 5 Trading days as at Yesterday)

Name	Price (RM)	Change (%)
BORNOIL	0.005	-50.00
MQTECH	0.015	-25.00
ITRONIC	0.045	-18.18
NEXGRAM	0.025	-16.67
ANCOMLB	0.150	-14.29
MCLEAN	0.240	-14.29
HBGLOB	0.135	-12.90
VIZIONE	0.035	-12.50
MALPAC	0.905	-12.14
CNOUHUA	0.040	-11.11



Main Sponsors



SRI KOTA SPECIALIST MEDICAL CENTRE
The Heart of Healthcare



Southern Acids (M) Berhad



VCI GLOBAL LIMITED
(NASDAQ: VCIG)

TEE OFF FOR HOPE

Since 2010, Make-A-Wish Malaysia has been granting wishes of critically ill children around the country. Funds from this event will help us reach these critically ill children without delay.



BOOK NOW

Date: **Wednesday, 8 May 2024**

Time: **1.30pm Tee Off**

Venue: **Tropicana GCR**

Flight cost: **RM5,000** (for 4 golfers)



SHARE THE POWER OF A WISH

To find out more please call **Make-A-Wish**
T: (03) 2276 3344 E: info@makeawish.org.my

Price & Volume Distribution Charts (as at Yesterday)

Technical Analysis

DEFINITION: Shariah compliant stocks with Technical Analysis showing 5-days & 10-days Moving Average Price below Yesterday's Close over past 3 days and with Volume Spike.

CHART GUIDE: Volume Distribution Chart is a statistical interpretation of the current sentiment on each stock in graphical format. The highest bar categorized as >150k is likely to be traded by institutions or super dealers, while the lowest bar categorized as <15k usually represents retail investors. "Buy Up" refers to more buyers snatching up the lots queued at selling price. "Sell Down" refers to sellers selling their shares to the buying queue



ShareInvestor WebPro > Screener > Market Screener (FA & TA) > select BURSA > add criteria

A. Criteria

- > click Add Criteria
- Technical Analysis Conditions tab select (i) Moving Average Below Close (ii) Volume Spike
- Fundamental Analysis Conditions tab > select (iii) Revenue
- Prices & Other Conditions tab > select (iv) Is Shariah Compliant
- Technical Analysis Conditions tab select (v) Moving Average Below Close
- Prices & Other Conditions tab > select (vi) Last Done Price
- Technical Analysis Conditions tab select (vii) Moving Average Below Close

B. Conditions (Criteria Filters)

1. Moving Average Below Close - select (MA) type (5) below close price for type (3) days
2. Volume Spike - Volume type (1) greater than type (5) days average
3. Revenue ("000) - select (more than) type (1) for the past select (1) financial year(s)
4. Is Shariah Compliant - select **Yes**
5. Moving Average Below Close - select (MA) type (10) below close price for type (3) days
6. Last Done Price - select (more than) type (0.3)
7. Moving Average Below Close - select (EMA) type (5) below close price for type (3) days

- > click Save Template > Create New Template type (Shariah Hot Stocks) > click Create
- > click Save Template as > select Shariah Hot Stocks > click Save
- > click Screen Now (may take a few minutes)
- > Sort By: Select (Vol) Select (Desc)
- > Mouse over stock name > Charts > click C² Charts or Volume Distribution

TOP GLOVE CORPORATION BERHAD (7113)

C² Chart

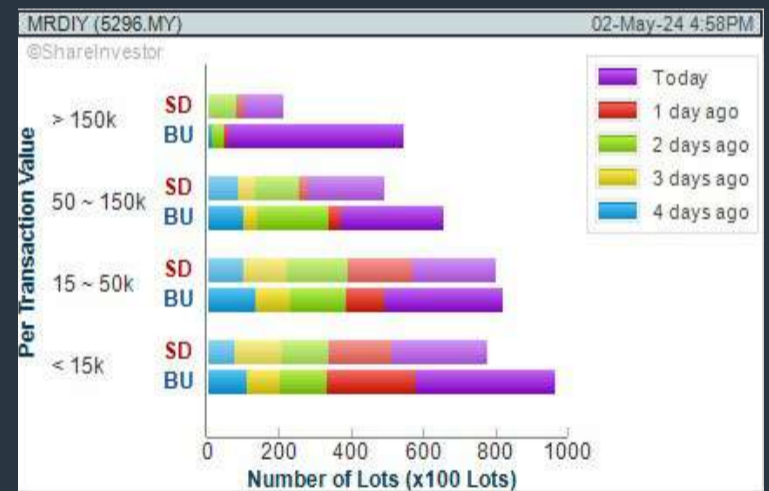
Analysis



MR D.I.Y. GROUP (M) BERHAD (5296)

C² Chart

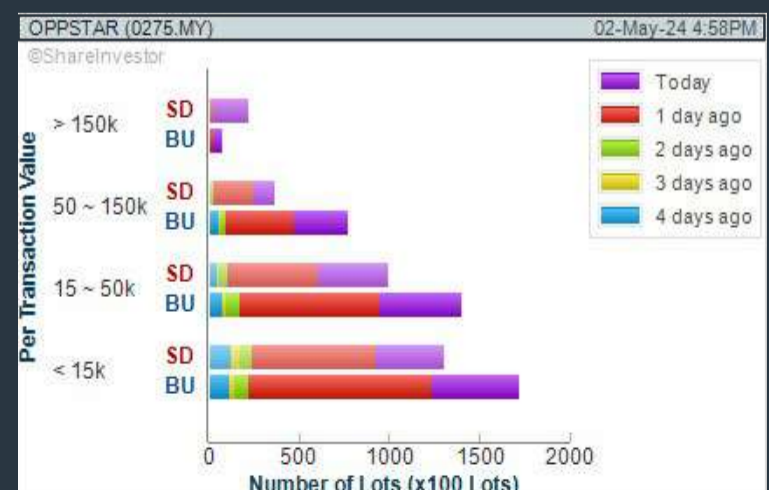
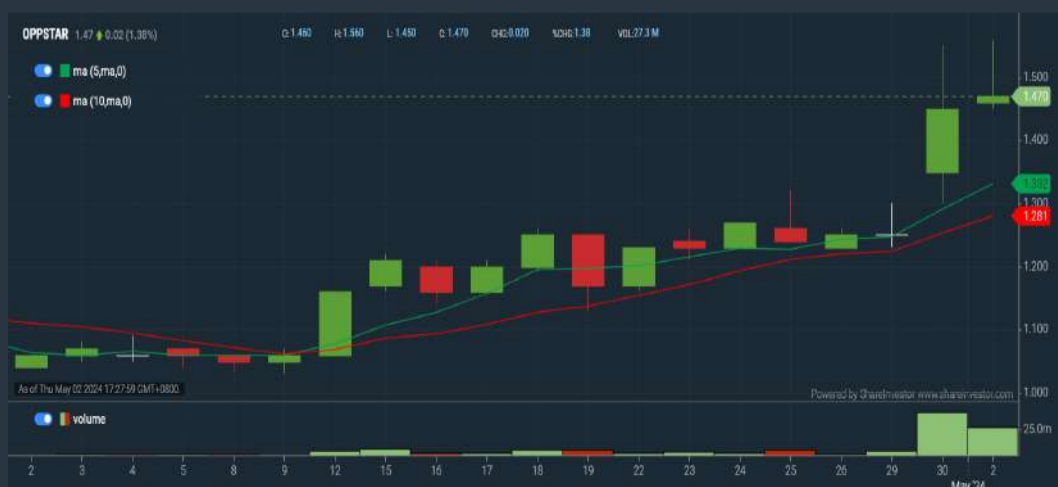
Analysis



OPPSTAR BERHAD (0275)

C² Chart

Analysis



Disclaimer: The information on this page is provided as a service to readers. It does not constitute financial advice and/or any investment recommendations. Past performance is not indicative of future results. We assume no liability for damages resulting from or arising out of the use of such information. It would be best if you did your own research to make your personal investment decisions wisely or consult a licenced investment advisor.

COMPANY BACKGROUND

Top Glove Corporation Berhad is the world's largest rubber glove manufacturer. It is a comprehensive one-stop glove sourcing centre, with more than a dozen variations of latex and nitrile gloves. It also offers a wide range non-glove products. It's market spans every corner of the globe with operations in Malaysia, Thailand, Vietnam, China, USA, Germany and Brazil. In the glove segment, it's products serve the medical, surgical procedure, food & services, clean room and safety & industrial sectors. The non-glove segment serves medical care, personal care,



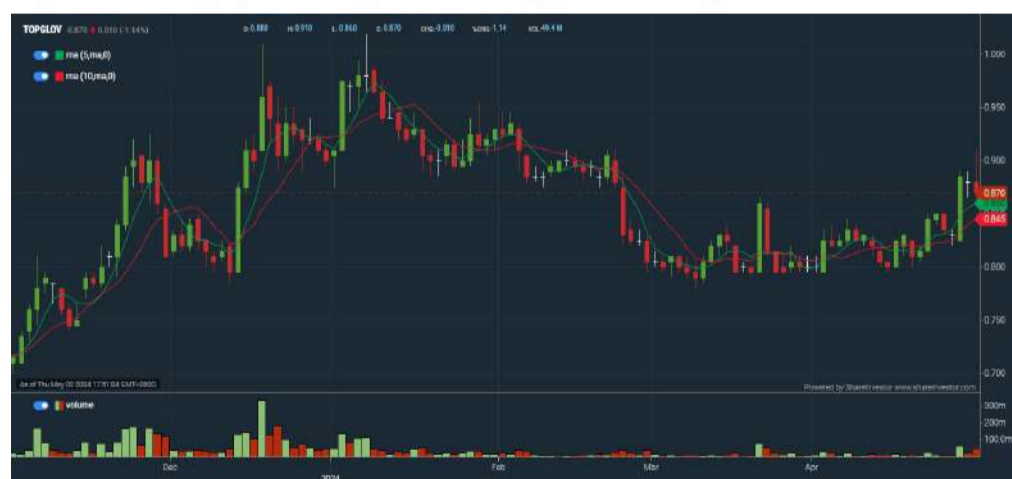
oral care, home care, industrial care and the food sectors.

TOPGLOV TOP GLOVE CORPORATION BHD		Updated at 02 May 2024 17:31	
Last (MYR): 0.870 ↓	Change: -0.010	High: 0.910	Remarks: s ?
	Change (%): -1.14	Low: 0.860	
Open	0.880	Yesterday's Close	0.880
Buy Price	0.865	Sell Price	0.870
Buy Volume ('00)	290	Sell Volume ('00)	3,586
Cumulative Volume ('00)	494,215	Cumulative Value	43,891,465

Financial Analysis

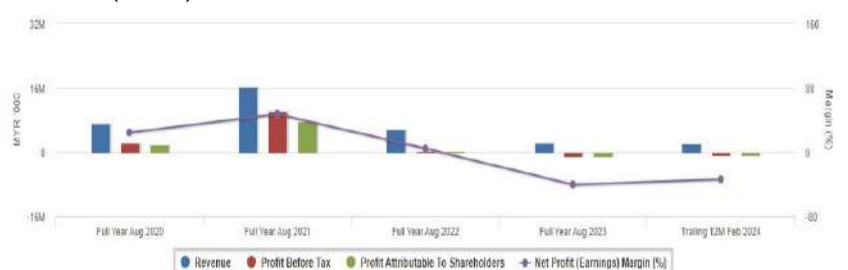
Revenue Growth Revenue down sharply in last 2 consecutive years (> 25%)	🔴	Profit Growth Profit to loss in most recent year	🔴
Piotroski F Score The company has weak financial strength (Piotroski F-Score of 0-2)	🔴	Dividend Payout No dividend paid in most recent year but dividends paid in prior years	🟡
Current Ratio The company is well-positioned to cover its short-term obligations with its current assets (ratio between 1.5 to 10) for 3 consecutive years	🟢	Debt to Cashflow High debt to cash flow for most recent year	🟡
Free Cash Flow Negative free cash flow for two years or more	🔴	Gross Profit Margin Low gross profit margin for 3 years	🟡
Gross Profit Margin Gross profit margin is decreasing by 5% a year over the past 60 months.	🔴	Net Earnings Margin Company is losing money but net profit margin is improving by 5% a year over the past 60 months.	🟡
Return on Assets (ROA) Negative ROA for most recent year	🟡	Return on Assets (ROA) ROA is decreasing by 10% a year over the past 36 months.	🔴
Return on Equity (ROE) Negative ROE for most recent year	🟡	Return on Equity (ROE) ROE is decreasing by 10% a year over the past 36 months.	🔴

🟢 Excellent 🟡 Good 🟠 Neutral 🔴 Be Alert 🚨 Watch Out



Historical Financials

Profit & Loss (MYR '000)

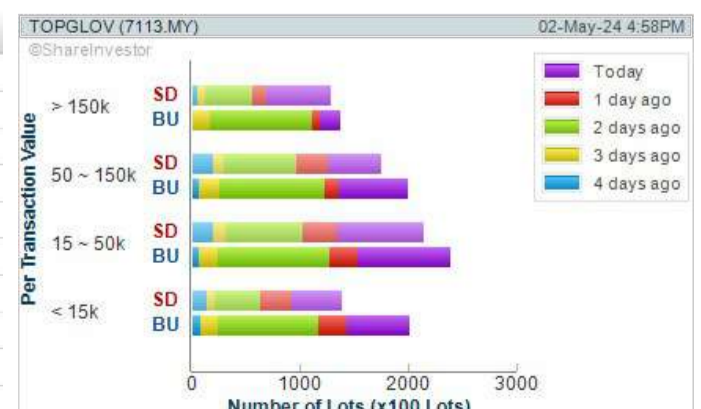


WebPro 9-Days Free Trial Registration (worth RM10) Sign Up Now



Key Statistics with Total Shareholder Returns

Period	Dividend Received	Capital Appreciation	Total Shareholder Return
Short Term Return	5 Days	-	+0.025
	10 Days	-	+0.070
	20 Days	-	+0.045
Medium Term Return	3 Months	-	-0.650
	6 Months	-	+0.145
	1 Year	-	-0.140
Long Term Return	2 Years	-	-0.610
	3 Years	0.246	-4.510
	5 Years	0.923	-0.715
Annualised Return	Annualised	-	-



Disclaimer: The information on this page is provided as a service to readers. It does not constitute financial advice and/or any investment recommendations. Past performance is not indicative of future results. We assume no liability for damages resulting from or arising out of the use of such information. It would be best if you did your own research to make your personal investment decisions wisely or consult a licenced investment advisor.

Price & Volume Distribution Charts (as at Yesterday)

Technical Analysis

DEFINITION: Shariah compliant stocks with Technical Analysis showing Bullish Momentum and Price Uptrend. The share price closed at the highest price yesterday. The typical price was higher than the previous day's typical price.

CHART GUIDE: Volume Distribution Chart is a statistical interpretation of the current sentiment on each stock in graphical format. The highest bar categorized as >150k is likely to be traded by institutions or super dealers, while the lowest bar categorized as <15k usually represents retail investors. "Buy Up" refers to more buyers snatching up the lots queued at selling price. "Sell Down" refers to sellers selling their shares to the buying queue.



ShareInvestor WebPro > Screener > Market Screener (FA & TA) > select BURSA > add criteria

A. Criteria

- > click Add Criteria
- Fundamental Analysis Conditions tab > select (i) Revenue
- Technical Analysis Conditions tab select (ii) Average Volume
- Prices & Other Conditions tab > select (iii) Last Done Price
- Prices & Other Conditions tab > select (iv) Is Shariah Compliant
- Technical Analysis Conditions tab select (v) RSI Overbought
- Technical Analysis Conditions tab select (vi) Moving Average Below Close
- Technical Analysis Conditions tab select (vii) CCI Overbought

B. Conditions (Criteria Filters)

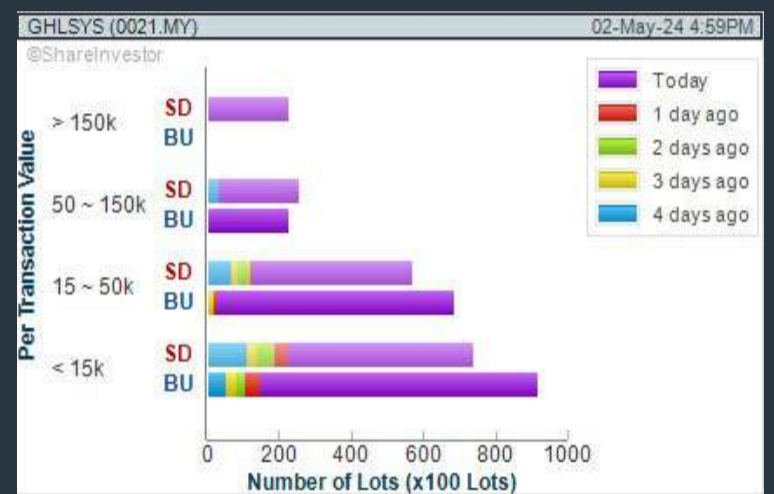
1. Revenue ("000) - select (more than) type (1) for the past select (1) financial year(s)
2. Average Volume - type (1) days average volume greater than type (10000) lots
3. Last Done Price - select (more than) type (0.3)
4. Is Shariah Compliant - select Yes
5. RSI Overbought - select RSI 1 above 99 for 1 days
6. Moving Average Below Close - select (MA) type (10) below close price for type (1) days
7. CCI Overbought - select CCI (2) above (0) for (1) days

- > click Save Template > Create New Template type (Shariah Momentum Up Stocks) > click Create
- > click Save Template as > select Shariah Momentum Up Stocks > click Save
- > click Screen Now (may take a few minutes)
- Sort By: Select (Vol) Select (Desc)
- Mouse over stock name > Charts > click C² Charts tab or Volume Distribution

GHL SYSTEMS BERHAD (0021)

C² Chart

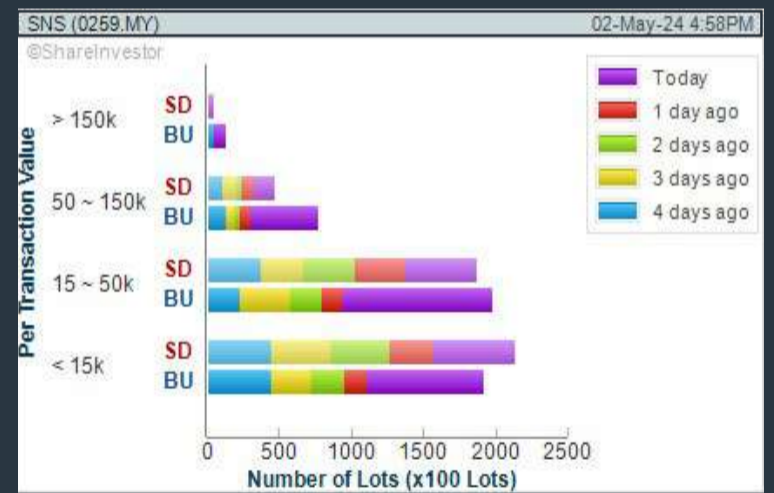
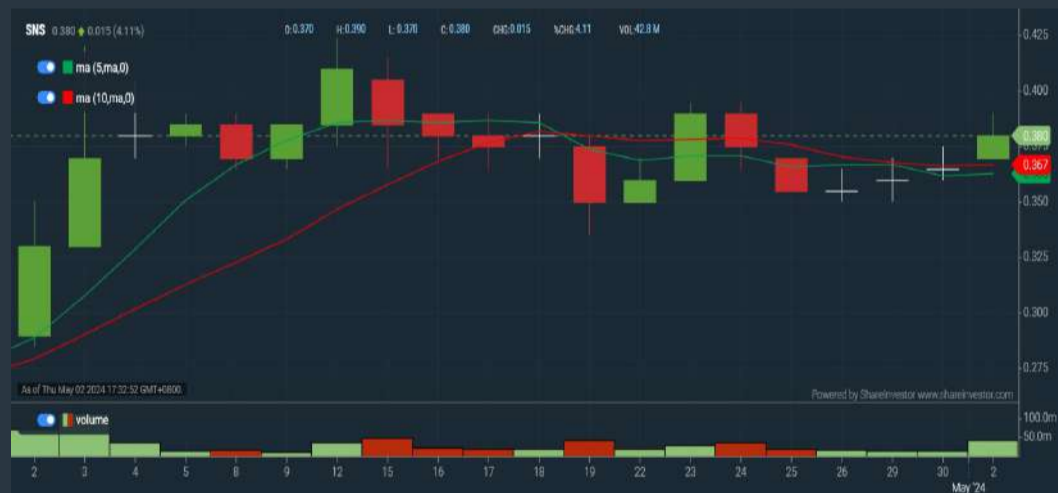
Analysis



SNS NETWORK TECHNOLOGY BERHAD (0259)

C² Chart

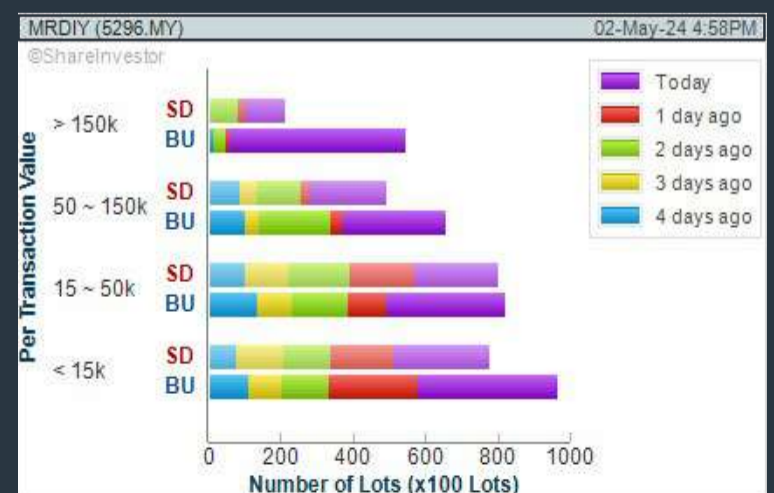
Analysis



MR D.I.Y. GROUP (M) BERHAD (5296)

C² Chart

Analysis



Disclaimer: The information on this page is provided as a service to readers. It does not constitute financial advice and/or any investment recommendations. Past performance is not indicative of future results. We assume no liability for damages resulting from or arising out of the use of such information. It would be best if you did your own research to make your personal investment decisions wisely or consult a licenced investment advisor.

SHAREINVESTOR WEBPRO

STOCK MARKET DATA AT YOUR FINGERTIPS

Powerful browser-based market analytics platform.
Access from anywhere



8 Markets Data

- ▶ Get access to data from Bursa, NYSE, Nasdaq, HKEX, SGX, IDX, SET & ASX

Portfolio Management

- ▶ Profit & Loss Summary
- ▶ Stock Alert
- ▶ News & Events filtering
- ▶ Customizable column layout

Fundamental Analysis

Financial Analysis Statement

- ▶ Profit & Loss
- ▶ Balance Sheet
- ▶ Cash Flow Statement
- ▶ More than 20 Financial Ratios
- ▶ Dividend Analysis

Technical Charting

- ▶ C² chart (Customisable & Comprehensive)

Brokers' Call

Intrinsic Value Calculator

FactSheet

- ▶ Key Stock Information
- ▶ Ownership
- ▶ Consensus Estimates
- ▶ Annual Report
- ▶ Historical Price
- ▶ Insider Trades

What's new on WebPro (Stable Release 12.1.0)

In our effort to keep our platform at the forefront of trading technology, we have added on some new features onto our C² Chart in WebPro

ADDITIONAL NEW FEATURES:

- ▶ Anchor selector for AVWAP, PVAT, and PAV indicators
- ▶ Volume profile indicator by date range
- ▶ Moving Average Cross indicator
- ▶ Guppy Multiple Moving Average (GMMA) indicator
- ▶ GoNoGo Trend Signal indicators
- ▶ SignalIQ

So what are you waiting for? Head to our platform today and check out our new trading chart features and indicators. We're confident that you'll love the improvements we've made and that they'll help you become a more successful trader.

Click here to start your 9 days FREE trial
(Valued at RM10)



Price & Volume Distribution Charts (as at Yesterday)

Technical Analysis

DEFINITION: Stocks with Technical Analysis showing 5-days & 10-days Moving Average Price below Close over past 1 days and with Volume Spike

CHART GUIDE: Volume Distribution Chart is a statistical interpretation of the current sentiment on each stock in graphical format. The highest bar categorized as >150k is likely to be traded by institutions or super dealers, while the lowest bar categorized as <15k usually represents retail investors. "Buy Up" refers to more buyers snatching up the lots queued at selling price. "Sell Down" refers to sellers selling their shares to the buying queue.



ShareInvestor WebPro > Screener > Market Screener (FA & TA) > select BURSA > add criteria

A. Criteria

- > click Add Criteria
- Technical Analysis Conditions tab select (i) Moving Average Below Close (ii) Volume Spike
- Fundamental Analysis Conditions tab >select (iii) Revenue
- Prices & Other Conditions tab > select (iv) Is Shariah Compliant
- Technical Analysis Conditions tab select (v) Moving Average Below Close
- Prices & Other Conditions tab > select (vi) Last Done Price
- Technical Analysis Conditions tab select (vii) Moving Average Below Close

B. Conditions (Criteria Filters)

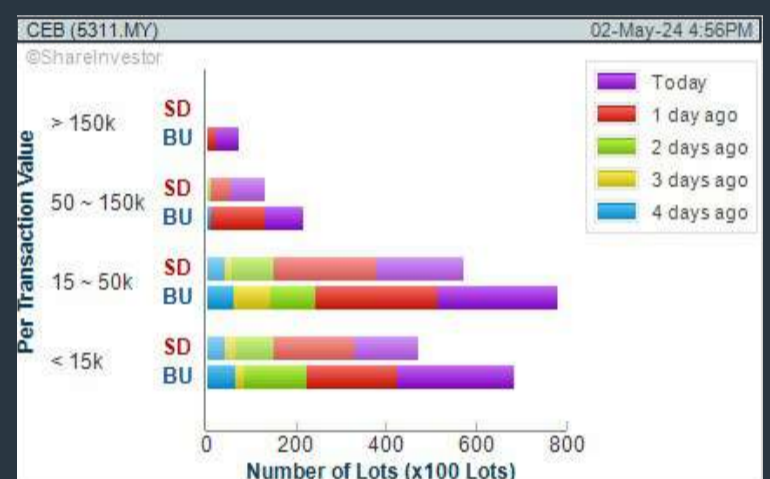
1. Moving Average Below Close - select (MA) type (5) below close price for type (3) days
2. Volume Spike - Volume type (1) greater than type (5) days average
3. Revenue ("000) - select (more than) type (1) for the past select (1) financial year(s)
4. Is Shariah Compliant - select NO
5. Moving Average Below Close - select (MA) type (10) below close price for type (1) days
6. Last Done Price - select (more than) type (0.3)
7. Moving Average Below Close - select (EMA) type (5) below close price for type (1) days

- > click Save Template > Create New Template type (Non-Shariah Hot Stocks) > click Create
- > click Save Template as > select Non-Shariah Hot Stocks > click Save
- > click Screen Now (may take a few minutes)
- Sort By: Select (Vol) Select (Desc)
- Mouse over stock name > Charts > click C² Charts tab or Volume Distribution

CAPE EMS BERHAD (5311)

C² Chart

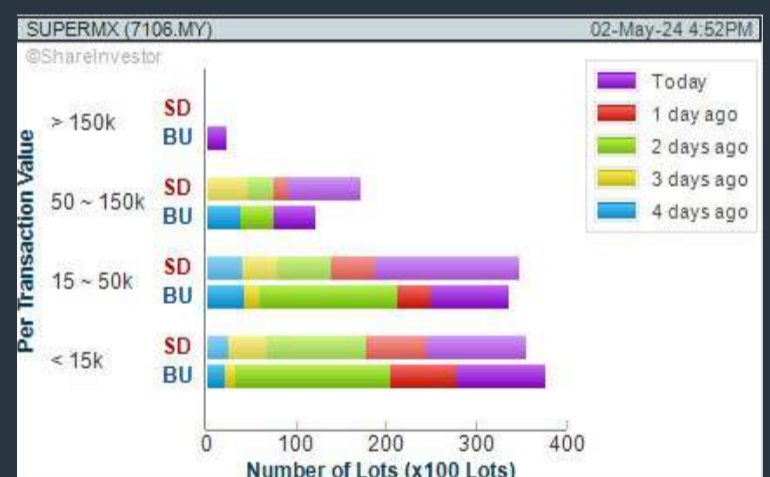
Analysis



SUPERMAX CORPORATION BERHAD (7106)

C² Chart

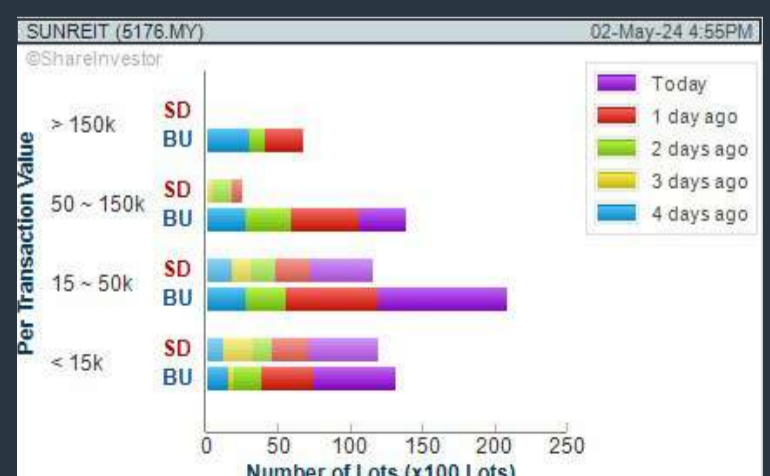
Analysis



SUNWAY REAL ESTATE INVT TRUST (5176)

C² Chart

Analysis

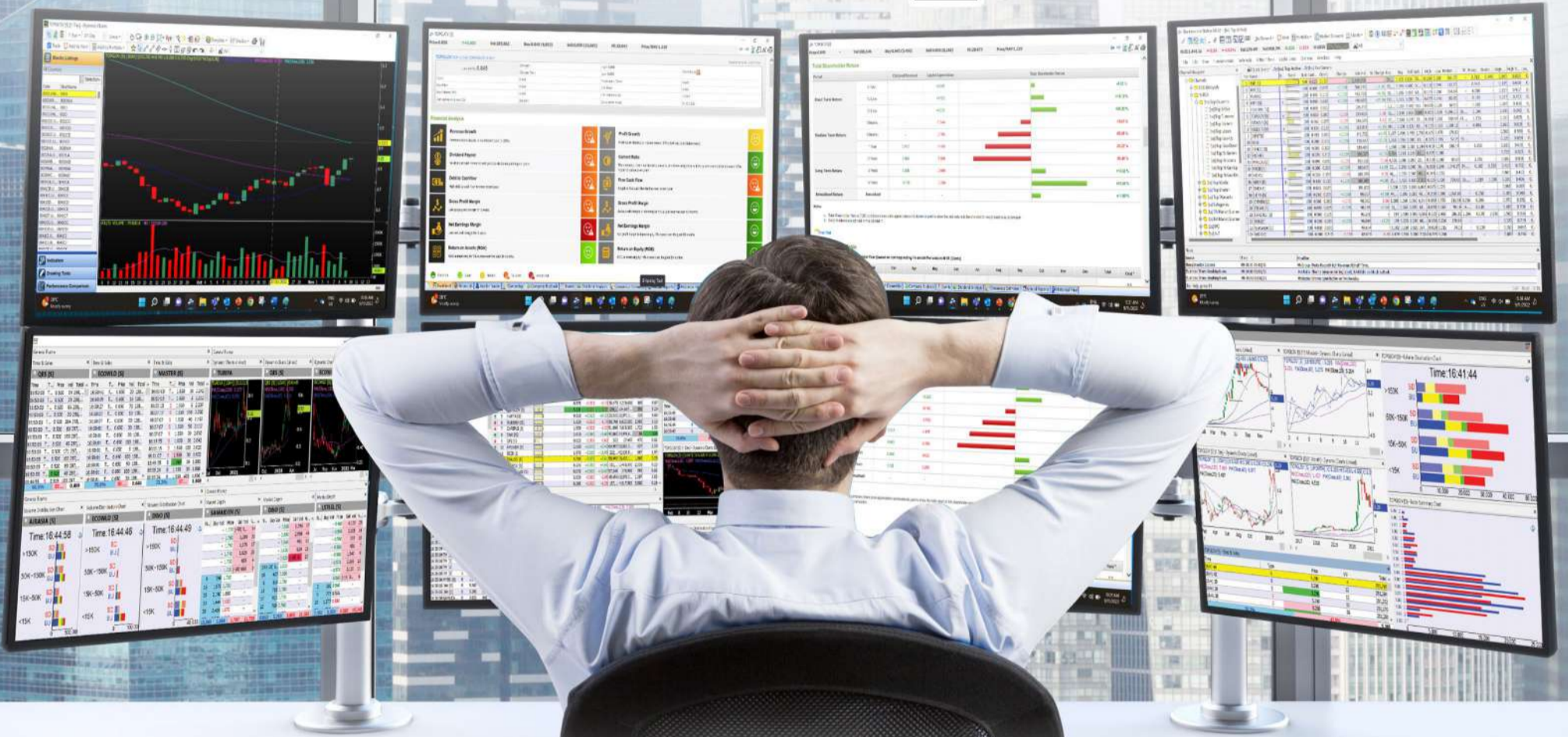


Disclaimer: The information on this page is provided as a service to readers. It does not constitute financial advice and/or any investment recommendations. Past performance is not indicative of future results. We assume no liability for damages resulting from or arising out of the use of such information. It would be best if you did your own research to make your personal investment decisions wisely or consult a licenced investment advisor.

MAKE BETTER TRADING STRATEGIES

with

SHARE INVESTOR STATION



8 Markets Data

- ▶ Get access to data from Bursa, NYSE, Nasdaq, HKEX, SGX, IDX, SET & ASX

Dynamic Chart

- ▶ Candlestick Pattern Recognition
- ▶ 111 Indicators
- ▶ 39 Drawing Tools
- ▶ Performance Comparison Chart

Intraday Data

- ▶ Market Depth
- ▶ Trade Summary Matrix & Chart
- ▶ Times & Sales
- ▶ Intraday Market Ticker

Market Screener

- ▶ 96 criteria ranging from FA, TA, Consensus Estimate
- ▶ Real-time Data

Power Frame

- ▶ Combining few Dynamic Charts together with intraday information in one frame

Technical Analysis

Fundamental Analysis

Financial Analysis Statement

- ▶ Profit & Loss
- ▶ Balance Sheet
- ▶ Cash Flow Statement
- ▶ More than 20 Financial Ratios
- ▶ Dividend Analysis

FactSheet

- ▶ Key Stock Information
- ▶ Ownership
- ▶ Consensus Estimates
- ▶ Annual Report
- ▶ Historical Price
- ▶ Insider Trades

**Start your 18 days
FREE trial now
(Valued at RM82)**



Price & Volume Distribution Charts (Over 3 trading days as at Yesterday)

Technical Analysis

DEFINITION: Stocks with Technical Analysis showing Bullish Momentum and Price Uptrend

CHART GUIDE: Volume Distribution Chart is a statistical interpretation of the current sentiment on each stock in graphical format. The highest bar categorized as >150k is likely to be traded by institutions or super dealers, while the lowest bar categorized as <15k usually represents retail investors. "Buy Up" refers to more buyers snatching up the lots queued at selling price. "Sell Down" refers to sellers selling their shares to the buying queue.



ShareInvestor WebPro > Screener > Market Screener (FA & TA) > select BURSA > add criteria

A. Criteria

- > click Add Criteria
- Fundamental Analysis Conditions tab > select (i) Revenue
- Technical Analysis Conditions tab select (ii) Moving Average Below Close
- Technical Analysis Conditions tab select (iii) Average Volume
- Prices & Other Conditions tab > select (iv) Last Done Price
- Technical Analysis Conditions tab select (v) Moving Average Below Close
- Technical Analysis Conditions tab select (v) Moving Average Bullish Crossover

B. Conditions

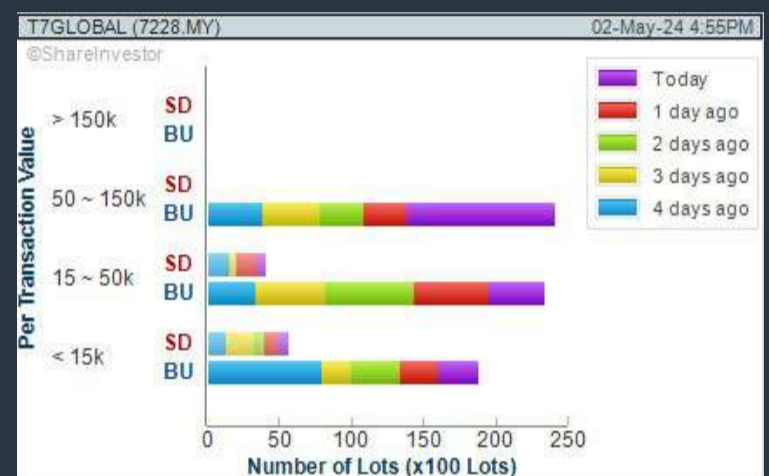
1. Revenue - select (more than) type (1) for the past select (1) financial year(s)
2. Moving Average Below Close - select (MA) type (20) below close price for type (1) days
3. Average Volume - type (5) days average volume type (10000) lots
4. Last Done Price - select (more than) type (0.3)
5. Moving Average Below Close - select (MA) type (10) below close price for type (1) days
6. Moving Average Bullish Crossover - select (MA) type (5) crossed above select (MA) type (10)

> click Save Template > Create New Template type (Non-Shariah Up-Trending Stocks) > click Create Click Save Template As > select Non-Shariah Up Trending Stocks > click Save
> click Screen Now (may take a few minutes)
Sort By: Select (Vol) Select (Desc)
Mouse over stock name > Charts > click C² Charts tab or Volume Distribution

T7 GLOBAL BERHAD (7228)

C² Chart

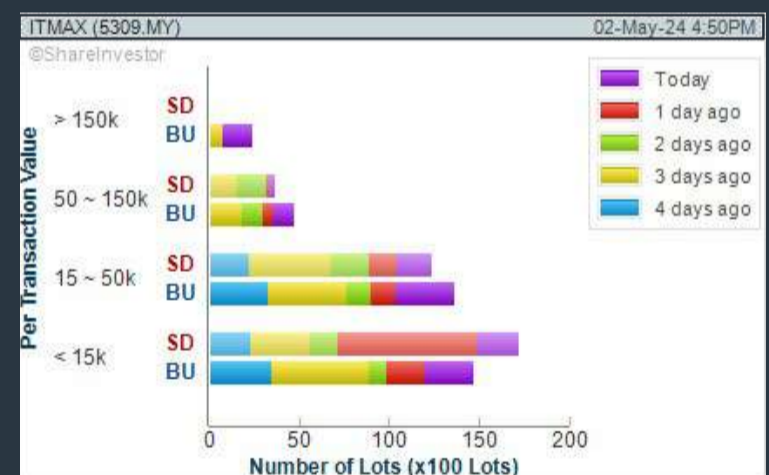
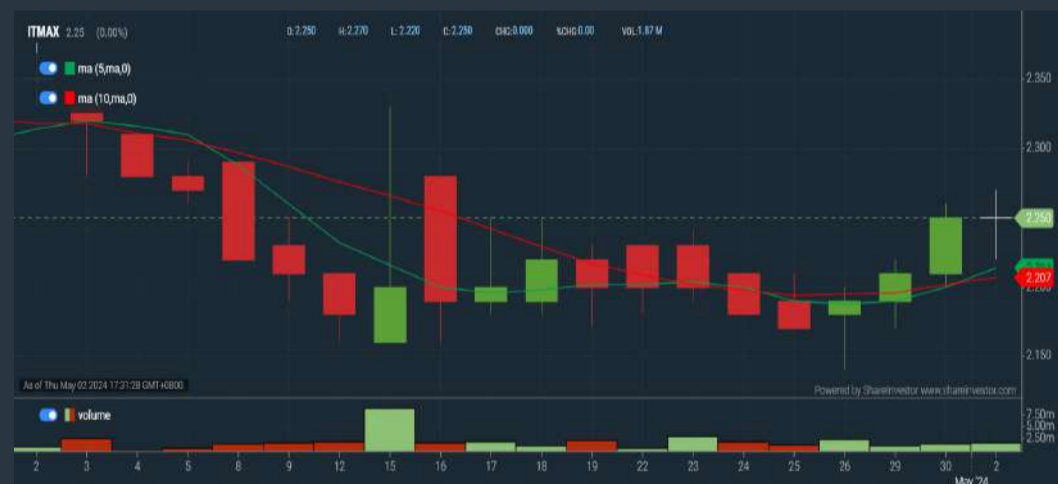
Analysis



ITMAX SYSTEM BERHAD (5309)

C² Chart

Analysis

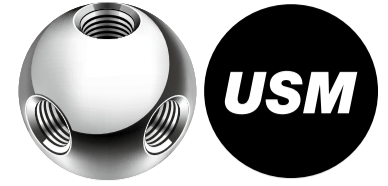


Disclaimer: The information on this page is provided as a service to readers. It does not constitute financial advice and/or any investment recommendations. Past performance is not indicative of future results. We assume no liability for damages resulting from or arising out of the use of such information. It would be best if you did your own research to make your personal investment decisions wisely or consult a licenced investment advisor.

**CHECK OUT
SHAREINVESTOR
BROKERS' CALL**

Weekly Buy/Sell/Hold calls from leading Malaysian Brokerages.

[Go To Brokers' Call](#)



making
places
infinite



usm.com

XTRA

XTRA FURNITURE SDN BHD
The Gardens Mall, Mid Valley City, Lot S-236 & 237
Lingkar Syed Putra, 59200 Kuala Lumpur
T. +603 2282 9088 | living@xtrafurniture.com | xtrafurniture.com
📍 XTRAFurniture | 🌐 xtrafurnituremsia

Price & Total Shareholder Return (as at Yesterday)

Fundamental Analysis

DEFINITION: Share price of a company trading at a lower price as compared to its fundamentals (FA) such as financial performance and dividend, allowing it to be attractive to value investors.

CHART GUIDE: Total Shareholder Return (TSR) combines share price appreciation and dividend distributions paid to show the total return to the shareholder expressed as a percentage.



ShareInvestor WebPro > Screener > Market Screener (FA & TA) > select BURSA > add criteria

A. Criteria

- > click Add Criteria
- Fundamental Analysis Conditions tab (i) Price Earnings Ratio
- Fundamental Analysis Conditions tab >select (ii) CAGR of Net Earnings
- Fundamental Analysis Conditions tab >select (iii) Net Debt To Equity
- Fundamental Analysis Conditions tab >select (iv) Return On Equity (ROE)

B. Conditions

1. Price Earnings Ratio - select (less than) type (15) times now
2. CAGR of Net Earnings - select (more than) type (10) % for the past type (3) financial year(s)
3. Net Debt To Equity - select (less than) type (1) for the past select (1) financial year(s)
4. Return On Equity (ROE) - select (more than) type (10) % for the past select (1) financial year(s)

- > click Save Template > Create New Template type (Value Stock) > click Create
- > click Save Template as > select Value Companies > click Save
- > click Screen Now (may take a few minutes)
- Sort by: Select (PE Ratio) Select (Ascending)
- > Mouse over stock name > Factsheet > looking for Total Shareholder Return
- > Mouse over stock name > Charts > click C2 Charts tab

SYNERGY HOUSE BERHAD (0279)

C² Chart



Period	Dividend Received	Capital Appreciation	Total Shareholder Return
Short Term Return	5 Days	-0.270	-21.55%
	10 Days	-0.410	-37.81%
	20 Days	-0.605	-46.25%
Medium Term Return	3 Months	-0.655	-47.51%
	6 Months	-1.030	-78.15%

TEO SENG CAPITAL BERHAD (7252)

C² Chart



Period	Dividend Received	Capital Appreciation	Total Shareholder Return
Short Term Return	5 Days	-0.050	-2.81%
	10 Days	-0.020	+1.17%
	20 Days	-0.200	-10.36%
Medium Term Return	3 Months	-0.099	-5.19%
	6 Months	-0.410	-23.85%
Long Term Return	1 Year	-0.092	+0.44%
	2 Years	-0.058	+0.33%
Annualised Return	3 Years	-0.956	-55.51%
	5 Years	0.060	+0.32%
Annualised Return	Annualised	-	+0.28%

TIME DOTCOM BERHAD (5031)

C² Chart



Period	Dividend Received	Capital Appreciation	Total Shareholder Return
Short Term Return	5 Days	-0.060	-1.15%
	10 Days	-0.040	-0.77%
	20 Days	-0.020	-0.38%
Medium Term Return	3 Months	-0.340	-6.51%
	6 Months	-0.160	-3.01%
Long Term Return	1 Year	-0.530	-9.91%
	2 Years	-0.710	-13.56%
Annualised Return	3 Years	0.214	+3.94%
	5 Years	0.035	+0.68%
Annualised Return	Annualised	-	+1.58%

Disclaimer: The information on this page is provided as a service to readers. It does not constitute financial advice and/or any investment recommendations. Past performance is not indicative of future results. We assume no liability for damages resulting from or arising out of the use of such information. It would be best if you did your own research to make your personal investment decisions wisely or consult a licenced investment advisor.

Price & Total Shareholder Return (as at Yesterday)

Fundamental Analysis

DEFINITION: Company revenue is growing and making good quality of earnings with positive Free Cash Flow.

CHART GUIDE: Total Shareholder Return (TSR) combines share price appreciation and distributions paid to show the total return to the shareholder expressed as a percentage.



ShareInvestor WebPro > Screener > Market Screener (FA & TA) > select BURSA > add criteria

A. Criteria

1. Fundamental Analysis Conditions tab > select (i) Free Cash Flow, (ii) Revenue Growth, (iii) Gross Profit (Earnings) Margin, (iv) Quality of Earnings, (v) Total Shareholder Returns, > click Add Criteria
2. Fundamental Analysis Conditions tab > select (vi) Total Shareholder Returns > click Add Criteria

B. Conditions (Criteria Filters)

1. Free Cash Flow - select (more than) type (1) for the past select (1) financial year(s)
2. Revenue Growth - select (more than) type (1) for the past select (1) financial year(s)
3. Gross Profit (Earnings) Margin - select (more than) type (30) % for the past select (1) financial year(s)
4. Quality of Earnings - select (more than) type (1) for the past select (1) financial year(s)
5. Total Shareholder Return - select (more than) type (5) % for the past select (3) financial year(s)
6. Total Shareholder Return - select (more than) type (5) % for the past select (5) financial year(s)

- > click Save Template > Create New Template type (Growth Companies) > click Create
- > click Save Template as > select Growth Companies > click Save
- > click Screen Now (may take a few minutes)
- > Sort By: Select (Revenue Growth) Select (Desc)
- > Mouse over stock name > Factsheet > looking for Total Shareholder Return

MALAYSIA AIRPORTS HOLDINGS BERHAD (5014)

C² Chart

Analysis



Period	Dividend Received	Capital Appreciation	Total Shareholder Return
Short Term Return	5 Days	+0.180	+1.81%
	10 Days	+0.060	+0.60%
	20 Days	+0.400	+4.96%
Medium Term Return	3 Months	+2.460	+32.11%
	6 Months	+2.730	+36.94%
	1 Year	+2.950	+41.14%
Long Term Return	2 Years	+3.260	+47.52%
	3 Years	+4.320	+74.48%
	5 Years	0.190	+2.58%
Annualised Return	Annualised	-	+6.40%

SL INNOVATION CAPITAL BERHAD (03008)

C² Chart

Analysis



Period	Dividend Received	Capital Appreciation	Total Shareholder Return
Short Term Return	5 Days	-	-
	10 Days	-	-
	20 Days	-	-
Medium Term Return	3 Months	-	-
	6 Months	-	-
	1 Year	+0.270	+67.50%
Long Term Return	2 Years	+0.265	+65.43%
	3 Years	+0.265	+65.43%
	5 Years	0.015	+2.50%
Annualised Return	Annualised	-	+10.28%

EDARAN BERHAD (5036)

C² Chart

Analysis



Period	Dividend Received	Capital Appreciation	Total Shareholder Return
Short Term Return	5 Days	+0.040	+3.64%
	10 Days	+0.040	+3.64%
	20 Days	-0.020	-1.68%
Medium Term Return	3 Months	-0.050	-4.88%
	6 Months	+0.655	+131.88%
	1 Year	+0.645	+122.86%
Long Term Return	2 Years	+0.525	+81.40%
	3 Years	0.035	+0.65%
	5 Years	0.053	+4.80%
Annualised Return	Annualised	-	+17.76%

Disclaimer: The information on this page is provided as a service to readers. It does not constitute financial advice and/or any investment recommendations. Past performance is not indicative of future results. We assume no liability for damages resulting from or arising out of the use of such information. It would be best if you did your own research to make your personal investment decisions wisely or consult a licenced investment advisor.

Price & Total Shareholder Return (as at Yesterday)

Fundamental Analysis

DEFINITION: Company is paying out dividend with low or moderate leverage.

CHART GUIDE: Total Shareholder Return (TSR) combines share price appreciation and distributions paid to show the total return to the shareholder expressed as a percentage.



ShareInvestor WebPro > Screener > Market Screener (FA & TA) > select BURSA > add criteria

A. Criteria

- > click Add Criteria
- Fundamental Analysis Conditions tab >select (i) Dividend Yield (Historical)
- Fundamental Analysis Conditions tab >select (ii) Dividend Payout (Historical)
- Fundamental Analysis Conditions tab >select (iii) Total Debt To Equity
- Fundamental Analysis Conditions tab >select (iv) Total Shareholder Returns
- Fundamental Analysis Conditions tab >select (v) Total Shareholder Returns
- Fundamental Analysis Conditions tab / >select (vi) CAGR of Dividend Per Share

• Fundamental Analysis Conditions tab >select (vii) CAGR of Dividend Per Share

B. Conditions (Criteria Filters)

1. Dividend Yield - select (more than) type (1) % for the past select (1) financial year(s)
2. Dividend Payout (Historical) - select (between) type (0.5) to type (1) times for the past select (1) financial year(s)
3. Total Debt to Equity - select (less than) type (1) for the past select (1) financial year(s)
4. Total Shareholder Return - select (more than) type (5) % for the past select (3) financial year(s)
5. Total Shareholder Return - select (more than) type (5) % for the past select (5) financial year(s)

6. CAGR of Dividend Per Share - select (less than) type (30) % for the past select (5) financial year(s)
7. CAGR of Dividend Per Share - select (more than) type (1) % for the past select (5) financial year(s)

- > click Save Template > Create New Template type (Dividend Companies) > click Create
- > click Save Template as > select Dividend Companies > click Save
- > click Screen Now (may take a few minutes)
- > Sort By: Select (Dividend Yield) Select (Desc)
- > Mouse over stock name > Factsheet > looking for Total Shareholder Return

FORMOSA PROSONIC INDUSTRIES (9172)

C² Chart

Analysis



Period	Dividend Received	Capital Appreciation	Total Shareholder Return
Short Term Return	5 Days	+0.050	+1.76%
	10 Days	+0.130	+4.71%
	20 Days	-0.260	-8.25%
Medium Term Return	3 Months	-0.070	-2.38%
	6 Months	+0.030	+1.05%
Long Term Return	1 Year	+0.200	+7.43%
	2 Years	-0.300	-11.68%
Annualised Return	3 Years	0.200	+25.10%
	5 Years	0.450	+91.95%
Annualised Return	Annualised	-	+13.91%

GAS MALAYSIA BERHAD (5209)

C² Chart

Analysis



Period	Dividend Received	Capital Appreciation	Total Shareholder Return
Short Term Return	5 Days	-	-
	10 Days	+0.040	+1.14%
	20 Days	+0.060	+1.72%
Medium Term Return	3 Months	+0.250	+7.58%
	6 Months	+0.260	+7.90%
Long Term Return	1 Year	+0.220	+6.61%
	2 Years	0.069	+31.60%
Annualised Return	3 Years	0.231	+35.01%
	5 Years	0.513	+42.58%
Annualised Return	Annualised	-	+7.35%

BERMAZ AUTO BERHAD (5248)

C² Chart

Analysis



Period	Dividend Received	Capital Appreciation	Total Shareholder Return
Short Term Return	5 Days	-0.040	-1.69%
	10 Days	-0.100	-4.13%
	20 Days	-0.130	-5.31%
Medium Term Return	3 Months	-0.140	-5.69%
	6 Months	-0.100	-7.20%
Long Term Return	1 Year	+0.079	+3.63%
	2 Years	+0.634	+37.60%
Annualised Return	3 Years	0.075	+75.20%
	5 Years	0.287	+19.81%
Annualised Return	Annualised	-	+3.66%

Disclaimer: The information on this page is provided as a service to readers. It does not constitute financial advice and/or any investment recommendations. Past performance is not indicative of future results. We assume no liability for damages resulting from or arising out of the use of such information. It would be best if you did your own research to make your personal investment decisions wisely or consult a licenced investment advisor.

Week: 26 April 2024 - 2 May 2024

More Brokers' Call 

AMINVESTMENT BANK <small>... See More</small>	Call	Target Price	Release Date
Axiata Group Berhad (6888)	HOLD	RM2.90	30 Apr 2024
Nestle (Malaysia) Berhad (4707)	HOLD	RM129.00	30 Apr 2024
Kuala Lumpur Kepong Berhad (2445)	BUY	RM25.20	29 Apr 2024

APEX <small>... See More</small>	Call	Target Price	Release Date
Kawan Renergy Berhad (0307)	BUY	RM0.46	2 May 2024
Tasco Berhad (5140)	BUY	RM1.12	2 May 2024
CCK Consolidated Holdings Berhad (7035)	HOLD	RM1.11	30 Apr 2024

BIMB SECURITIES SDN BHD <small>... See More</small>	Call	Target Price	Release Date
Nestlé (Malaysia) Berhad (4707)	HOLD	RM134.20	29 Apr 2024

KENANGA <small>... See More</small>	Call	Target Price	Release Date
Maxis Berhad (6012)	OUTPERFORM	RM5.30	2 May 2024
Oppstar Berhad (0275)	OUTPERFORM	RM1.72	2 May 2024
Axiata Group Berhad (6888)	OUTPERFORM	RM3.00	30 Apr 2024
Nestlé (Malaysia) Berhad (4707)	UNDERPERFORM	RM115.00	30 Apr 2024

MIDF <small>... See More</small>	Call	Target Price	Release Date
CIMB Group Holdings Berhad (1023)	BUY	RM6.95	2 May 2024
Tasco Berhad (5140)	BUY	RM1.20	2 May 2024
Nestlé (Malaysia) Berhad (4707)	NEUTRAL	RM126.00	30 Apr 2024
Unisem (M) Berhad (5005)	NEUTRAL	RM3.41	29 Apr 2024

UOB KAYHIAN <small>... See More</small>	Call	Target Price	Release Date
IOI Properties Group Berhad (5249)	BUY	RM3.06	30 Apr 2024
Nestlé (Malaysia) Berhad (4707)	BUY	RM146.00	30 Apr 2024
Malaysia Airports Holdings Berhad (5014)	HOLD	RM9.86	29 Apr 2024

Disclaimer: InveSt does not accept any liability whatsoever for any direct, indirect or consequential losses (including loss of profit) or damages that may arise from the use of information or opinions in this publication. The information and opinions in InveSt are not to be considered as an offer to sell or buy any of the securities discussed. Opinions expressed are subject to change without notice. The Brokers may, from time to time, have interests or positions in the securities mentioned. For the full report on each item listed on this page, please visit https://www.shareinvestor.com/my/brokers_call.

DEFINITION: Top 7 stocks with Technical Analysis plus Pattern Matching by 60 pre-defined indicators by the system showing a higher probability of bullish sentiment on the share price.



ShareInvestor WebPro > Screener > Predefined TA Screens > select market BURSA > Most Long Signals > click Scan Results or mouse over each company

ICONIC WORLDWIDE BERHAD (9113.MY)

ICONIC

Price updated at 02 May 2024 16:54

Last: 0.105	Change: -	Volume: 396,365
	Change (%): -	Range: 0.100 - 0.110

TA Scanner Results based on historical data up to 02 May 2024

Condition	Signal	Explanation
Bollinger Band: Bullish Long Term Volatility Breakout and Trending	Long	1. Close price above upper bollinger band(33,1). 2. Volume above average volume(50). 3. Average volume(50) is above 300,000.
Bollinger Band: Bullish Lower Bollinger Band Support	Long	1. Low 1 day ago below lower bollinger band(20,2). 2. Close above close 1 day ago. 3. Average volume(5) is above 100,000.
Bollinger Band: Bullish Short Term Volatility Breakout and Trending	Long	1. Close price above upper bollinger band(33,1). 2. Volume above average volume(10). 3. Average volume(10) is above 300,000.
Bollinger Band: High Above Upper Bollinger Band	Neutral	1. High above upper bollinger band(14,2). 2. Average volume(5) is above 100,000.
Bollinger Band: Low Below Lower Bollinger Band	Neutral	1. Low below lower bollinger band(14,2). 2. Average volume(5) is above 100,000.
Candlestick: Bullish Engulfing	Long	Bullish: Engulfing
DM: Bullish Directional Movement	Long	-DI(14) crossed below +DI(14)
Donchian Channels: High Above Upper Donchian Channels	Long	High crossed above the upper Donchian Channel(14,4)
Historical Volatility: Increasing Historical Volatility	Neutral	Historical Volatility(100,365) increasing for the last 10 days
MA: Bullish Price Crossover	Long	1. Close price crossed above MA(40) within the last 1 day. 2. Previous day close price is below the MA(10) for the last 5 days
Parabolic SAR: Bearish Parabolic SAR Reversal	Neutral	1. Parabolic SAR 1 day ago above close price 1 day ago for the last 5 days. 2. Parabolic SAR below close price
Price: New 52 Week Low	Short	1. Stock reach a new 52 week low. 2. Average volume(30) is above 50000.
RSI: Short Term RSI 50 Bullish Crossover	Long	1. RSI(20) crossed above 50 within the last 1 day and RSI(20) 1 day ago below 50 for the last 5 days. 2. Volume above average volume(125). 3. Average volume(5) is above 100,000.
Volume: Volume Spike	Long	1. Volume is more than 500% above average volume(10). 2. Volume above 200000. 3. Close price above 0.10

MARCO HOLDINGS BERHAD (3514.MY)

MARCO

Price updated at 02 May 2024 16:53

Last: 0.190	Change: -0.005	Volume: 84,017
	Change (%): -2.56	Range: 0.185 - 0.195

TA Scanner Results based on historical data up to 02 May 2024

Condition	Signal	Explanation
Bollinger Band: Bullish Long Term Volatility Breakout and Trending	Long	1. Close price above upper bollinger band(33,1). 2. Volume above average volume(50). 3. Average volume(50) is above 300,000.
Bollinger Band: Bullish Short Term Volatility Breakout and Trending	Long	1. Close price above upper bollinger band(33,1). 2. Volume above average volume(10). 3. Average volume(10) is above 300,000.

SWIFT HAULAGE BERHAD (5303.MY)

SWIFT

Price updated at 02 May 2024 16:57

Last: 0.535	Change: -	Volume: 24,560
	Change (%): -	Range: 0.530 - 0.545

TA Scanner Results based on historical data up to 02 May 2024

Condition	Signal	Explanation
Bollinger Band: Bullish Long Term Volatility Breakout and Trending	Long	1. Close price above upper bollinger band(33,1). 2. Volume above average volume(50). 3. Average volume(50) is above 300,000.
Bollinger Band: Bullish Short Term Volatility Breakout and Trending	Long	1. Close price above upper bollinger band(33,1). 2. Volume above average volume(10). 3. Average volume(10) is above 300,000.
Bollinger Band: High Above Upper Bollinger Band	Neutral	1. High above upper bollinger band(14,2). 2. Average volume(5) is above 100,000.
DM: Bullish Directional Movement	Long	-DI(14) crossed below +DI(14)
Donchian Channels: High Above Upper Donchian Channels	Long	High crossed above the upper Donchian Channel(14,4)
Parabolic SAR: Bearish Parabolic SAR Reversal	Neutral	1. Parabolic SAR 1 day ago above close price 1 day ago for the last 5 days. 2. Parabolic SAR below close price
RSI: Short Term RSI 50 Bullish Crossover	Long	1. RSI(20) crossed above 50 within the last 1 day and RSI(20) 1 day ago below 50 for the last 5 days. 2. Volume above average volume(125). 3. Average volume(5) is above 100,000.
Volume: 10 Days large value Buy Up trade	Long	1. 150K value Buy Up greater than Sell Down by 20% for 10 days. 2. 50K-100K value Buy Up greater than Sell Down by 20% for 10 days. 3. Average volume(10) is above 1000000
Volume: 5 Days large value Buy Up trade	Long	1. 150K value Buy Up greater than Sell Down by 20% for 5 days. 2. 50K-100K value Buy Up greater than Sell Down by 20% for 5 days. 3. Average volume(10) is above 1000000
Williams %R: Bearish Williams %R	Short	1. Williams %R(26) between 0 and -20. 2. Average volume(5) is above 100,000.

Disclaimer: The information on this page is provided as a service to readers. It does not constitute financial advice and/or any investment recommendations. Past performance is not indicative of future results. We assume no liability for damages resulting from or arising out of the use of such information. It would be best if you did your own research to make your personal investment decisions wisely or consult a licenced investment advisor.

Condition	Signal	Explanation
Bollinger Band: High Above Upper Bollinger Band	Neutral	1. High above upper bollinger band(14,2). 2. Average volume(5) is above 100,000.
DM: Bullish Directional Movement	Long	-DI(14) crossed below +DI(14)
Donchian Channels: High Above Upper Donchian Channels	Long	High crossed above the upper Donchian Channel(14,4)
MA: Short Term Bullish Moving Average Crossover	Long	MA(10) crossed above MA(15) within the last 1 day.
Parabolic SAR: Bearish Parabolic SAR Reversal	Neutral	1. Parabolic SAR 1 day ago above close price 1 day ago for the last 5 days. 2. Parabolic SAR below close price
RSI: Short Term RSI 50 Bullish Crossover	Long	1. RSI(20) crossed above 50 within the last 1 day and RSI(20) 1 day ago below 50 for the last 5 days. 2. Volume above average volume(125). 3. Average volume(5) is above 100,000.
Volume: Volume Spike	Long	1. Volume is more than 500% above average volume(10). 2. Volume above 200000. 3. Close price above 0.10

 **CAPE EMS BERHAD (5311.MY)**

CEB

Price updated at 02 May 2024 16:56

Last: 0.985	Change: +0.035	Volume: 126,042
	Change (%): +3.68	Range: 0.935 - 0.995

TA Scanner Results based on historical data up to 02 May 2024

Condition	Signal	Explanation
Bollinger Band: Bullish Long Term Volatility Breakout and Trending	Long	1. Close price above upper bollinger band(33,1). 2. Volume above average volume(50). 3. Average volume(50) is above 300,000.
Bollinger Band: Bullish Short Term Volatility Breakout and Trending	Long	1. Close price above upper bollinger band(33,1). 2. Volume above average volume(10). 3. Average volume(10) is above 300,000.
Bollinger Band: High Above Upper Bollinger Band	Neutral	1. High above upper bollinger band(14,2). 2. Average volume(5) is above 100,000.
Donchian Channels: High Above Upper Donchian Channels	Long	High crossed above the upper Donchian Channel(14,4)
MA: Short Term Bullish Moving Average Crossover	Long	MA(10) crossed above MA(15) within the last 1 day.
RSI: Short Term RSI 50 Bullish Crossover	Long	1. RSI(20) crossed above 50 within the last 1 day and RSI(20) 1 day ago below 50 for the last 5 days. 2. Volume above average volume(125). 3. Average volume(5) is above 100,000.
Volume: 10 Days large value Buy Up trade	Long	1. 150K value Buy Up greater than Sell Down by 20% for 10 days. 2. 50K-100K value Buy Up greater than Sell Down by 20% for 10 days. 3. Average volume(10) is above 1000000
Volume: 5 Days large value Buy Up trade	Long	1. 150K value Buy Up greater than Sell Down by 20% for 5 days. 2. 50K-100K value Buy Up greater than Sell Down by 20% for 5 days. 3. Average volume(10) is above 1000000
Williams %R: Bearish Williams %R	Short	1. Williams %R(26) between 0 and -20. 2. Average volume(5) is above 100,000.

 **SUNWAY BERHAD (5211.MY)**

SUNWAY

Price updated at 02 May 2024 16:59

Last: 3.600	Change: +0.080	Volume: 158,206
	Change (%): +2.27	Range: 3.480 - 3.600

TA Scanner Results based on historical data up to 02 May 2024

Condition	Signal	Explanation
Bollinger Band: High Above Upper Bollinger Band	Neutral	1. High above upper bollinger band(14,2). 2. Average volume(5) is above 100,000.
CCI: Bearish CCI Overbought And Reversing	Short	1. CCI(26) above 100 and CCI(26) 1 day ago increasing for the last 3 days. 2. CCI(26) below CCI(26) 1 day ago
Donchian Channels: High Above Upper Donchian Channels	Long	High crossed above the upper Donchian Channel(14,4)
Price: Consecutive Days Gains	Long	1. Close price has been increasing over the last 5 days. 2. Average volume(5) above 100,000.
Price: New 52 Week High	Long	1. Stock reach a new 52 week high. 2. Average volume(30) is above 50000.
Volume: 10 Days large value Buy Up trade	Long	1. 150K value Buy Up greater than Sell Down by 20% for 10 days. 2. 50K-100K value Buy Up greater than Sell Down by 20% for 10 days. 3. Average volume(10) is above 1000000
Volume: 5 Days large value Buy Up trade	Long	1. 150K value Buy Up greater than Sell Down by 20% for 5 days. 2. 50K-100K value Buy Up greater than Sell Down by 20% for 5 days. 3. Average volume(10) is above 1000000

 **CAPITAL A BERHAD (5099.MY)**

CAPITALA

Price updated at 02 May 2024 16:59

Last: 0.810	Change: +0.015	Volume: 283,265
	Change (%): +1.89	Range: 0.795 - 0.825

TA Scanner Results based on historical data up to 02 May 2024

Condition	Signal	Explanation
Bollinger Band: High Above Upper Bollinger Band	Neutral	1. High above upper bollinger band(14,2). 2. Average volume(5) is above 100,000.
CCI: Bearish CCI Overbought And Reversing	Short	1. CCI(26) above 100 and CCI(26) 1 day ago increasing for the last 3 days. 2. CCI(26) below CCI(26) 1 day ago
Candlestick: Indecision Doji	Neutral	Indecision: Doji
MA: Medium Term Bullish Moving Average Crossover	Long	MA(25) crossed above MA(50) within the last 1 day.
MA: Short Term Bullish Moving Average Crossover	Long	MA(10) crossed above MA(15) within the last 1 day.
Price: Consecutive Days Gains	Long	1. Close price has been increasing over the last 5 days. 2. Average volume(5) above 100,000.
Volume: 10 Days large value Buy Up trade	Long	1. 150K value Buy Up greater than Sell Down by 20% for 10 days. 2. 50K-100K value Buy Up greater than Sell Down by 20% for 10 days. 3. Average volume(10) is above 1000000
Volume: 5 Days large value Buy Up trade	Long	1. 150K value Buy Up greater than Sell Down by 20% for 5 days. 2. 50K-100K value Buy Up greater than Sell Down by 20% for 5 days. 3. Average volume(10) is above 1000000
Williams %R: Bearish Williams %R	Short	1. Williams %R(26) between 0 and -20. 2. Average volume(5) is above 100,000.

Disclaimer: The information on this page is provided as a service to readers. It does not constitute financial advice and/or any investment recommendations. Past performance is not indicative of future results. We assume no liability for damages resulting from or arising out of the use of such information. It would be best if you did your own research to make your personal investment decisions wisely or consult a licenced investment advisor.

 **GAMUDA BERHAD (5398.MY)**

GAMUDA

Price updated at 02 May 2024 16:57

Last: 5.360	Change: +0.050	Volume: 48,850
	Change (%): +0.94	Range: 5.300 - 5.400

TA Scanner Results based on historical data up to 02 May 2024

Condition	Signal	Explanation
Bollinger Band: Bearish Upper Bollinger Band Resistance	Short	1. High 1 day ago above upper bollinger band(20,2). 2. Close below close 1 day ago. 3. Average volume(5) is above 100,000.
Bollinger Band: High Above Upper Bollinger Band	Neutral	1. High above upper bollinger band(14,2). 2. Average volume(5) is above 100,000.
Candlestick: Bearish Harami	Short	Bearish: Harami
Donchian Channels: High Above Upper Donchian Channels	Long	High crossed above the upper Donchian Channel(14,4)
MA: Short Term Bullish Moving Average Crossover	Long	MA(10) crossed above MA(15) within the last 1 day.
Price: New 52 Week High	Long	1. Stock reach a new 52 week high. 2. Average volume(30) is above 50000.
Volume: 10 Days large value Buy Up trade	Long	1. 150K value Buy Up greater than Sell Down by 20% for 10 days. 2. 50K-100K value Buy Up greater than Sell Down by 20% for 10 days. 3. Average volume(10) is above 1000000
Volume: 5 Days large value Buy Up trade	Long	1. 150K value Buy Up greater than Sell Down by 20% for 5 days. 2. 50K-100K value Buy Up greater than Sell Down by 20% for 5 days. 3. Average volume(10) is above 1000000



Dato' Eu Hong Chew
Former Group CEO i-Berhad
Non-Executive Director

He has been associated with the Sumurwang Group for many years charting the path for its manufacturing arm, firstly under Dreamland Holdings Berhad and the subsequent acquisition of I-Berhad.

Before that, he was with PA Management Consulting for a decade where he was the Director of Studies for the Cranfield PA MBA Programme in Malaysia.

Educated at the Royal Military College, Dato' Eu has an engineering degree from the University of Glasgow, and a MBA from the University of Bradford, UK.

Is POH KONG a gold proxy?

SUMMARY

- Poh Kong is Malaysia's largest gold-based jewellery retailer. While historically not a high-growth company, its performance has improved post-2020, correlating strongly with gold prices.
- Poh Kong is financially stable, with a reasonable debt-equity ratio and positive cash flow from operations.
- Poh Kong's current market price offers a significant margin of safety. Its correlation with gold prices makes it an attractive option for investors seeking exposure to the gold market through equities

Disclaimer: This article is written for informational purposes only. It does not constitute a solicitation, offer, advice, counseling or recommendation to buy or sell. As such it is not intended to promote the purchase of shares in any way. As a reminder, any type of asset has a risk factor and needs to be evaluated from multiple perspectives. Therefore, any investment decision and the associated risk remains with the investor. The views expressed here are entirely the writer's own.

INVESTMENT THESIS

Poh Kong Holdings Berhad (Poh Kong or the Group) (**POHKONG:5080.MY**) presents an intriguing investment opportunity for those looking to capitalise on the rising trend in gold prices.

While Poh Kong hasn't been a high-growth company historically, its recent performance has shown improvement, particularly post-2020. The correlation between its revenue and gold prices indicates that Poh Kong can be considered a proxy for investing in gold. Poh Kong's established market presence, diversified business model, and financial stability make it a compelling choice. At the same time, there is a margin of safety in its current market valuation.

BACKGROUND

Poh Kong is the largest gold-based jewellery retailer in Bursa Malaysia. Set up in 1976 with its first outlet in Petaling Jaya, Poh Kong today has 88 retail outlets with its manufacturing facility in Shah Alam, Malaysia. Its business straddles the two major areas of gold utilization - the crafting and sale of jewellery and gold investments. The majority of its sales are within Malaysia. Besides developing its range of in-house brands, Poh Kong is also the sole distributor of world-renowned international jewellery brands such as Luca Carati and Moraglione 1922 from Italy.

OPERATING TRENDS

Over the past 12 years, revenue only grew at 5.3% CAGR. PAT grew at a lower rate of 3.9% CAGR. This is not a high-growth company. There was only significant revenue and PAT growth post-2020. As can be seen from the left part of Chart 1, the PAT pre-2020 was lower than that for 2012. You can see declining revenue and PAT in 2014.

The Group attributed its 2014 performance to the following:

“Industry players’ decline in revenues were mainly due to weaker demand and the absence of gold rush compared to the previous year. The volatility of gold prices resulted in thin profit margins.” There was not much growth in revenue or PAT from 2014 till about 2020. But the Group performance over the past few years was much better than those pre-2020. Poh Kong attributed its strong 2022 performance to the surge in gold prices.

Given the profit profile, you should not be surprised to see similar patterns of decline and upturn in the various return metrics. Refer to the right part of Chart 2.

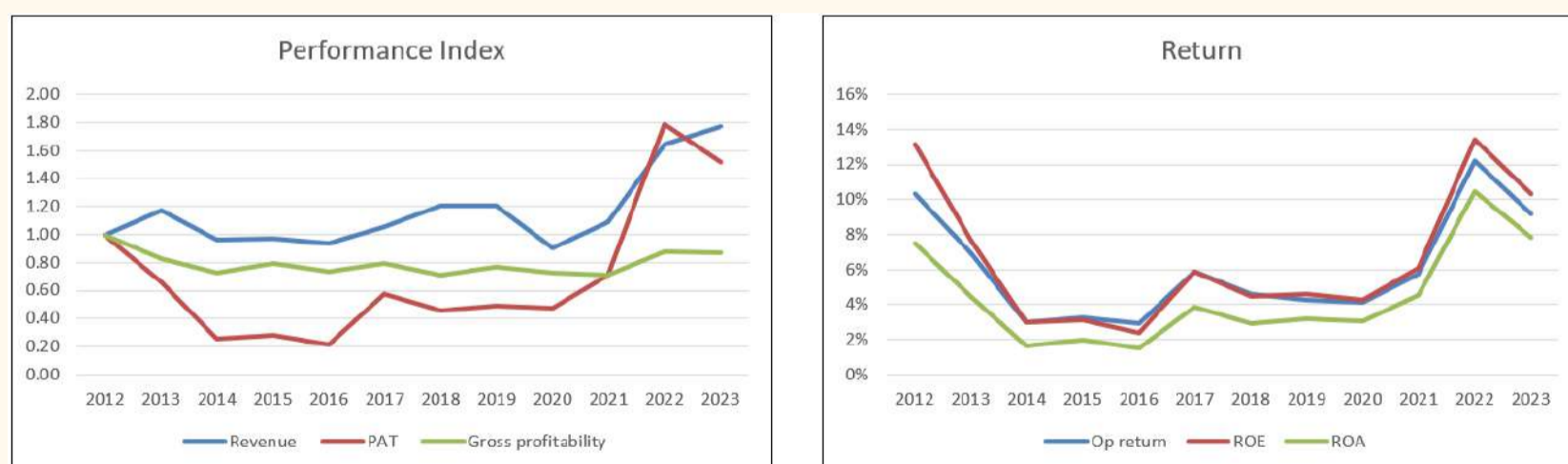
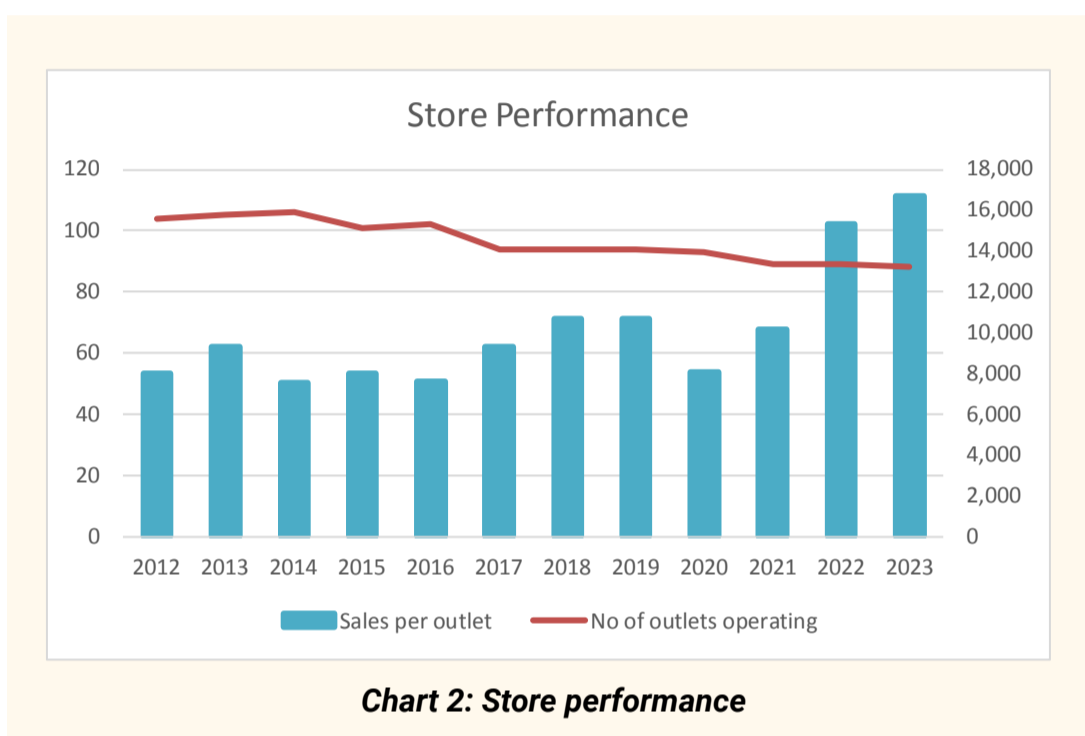


Chart 1: Performance Index and Returns

a) Note to Performance Index chart: To plot the various metrics onto one chart, I converted them into indices by dividing the values for each year by the respective 2012 values.

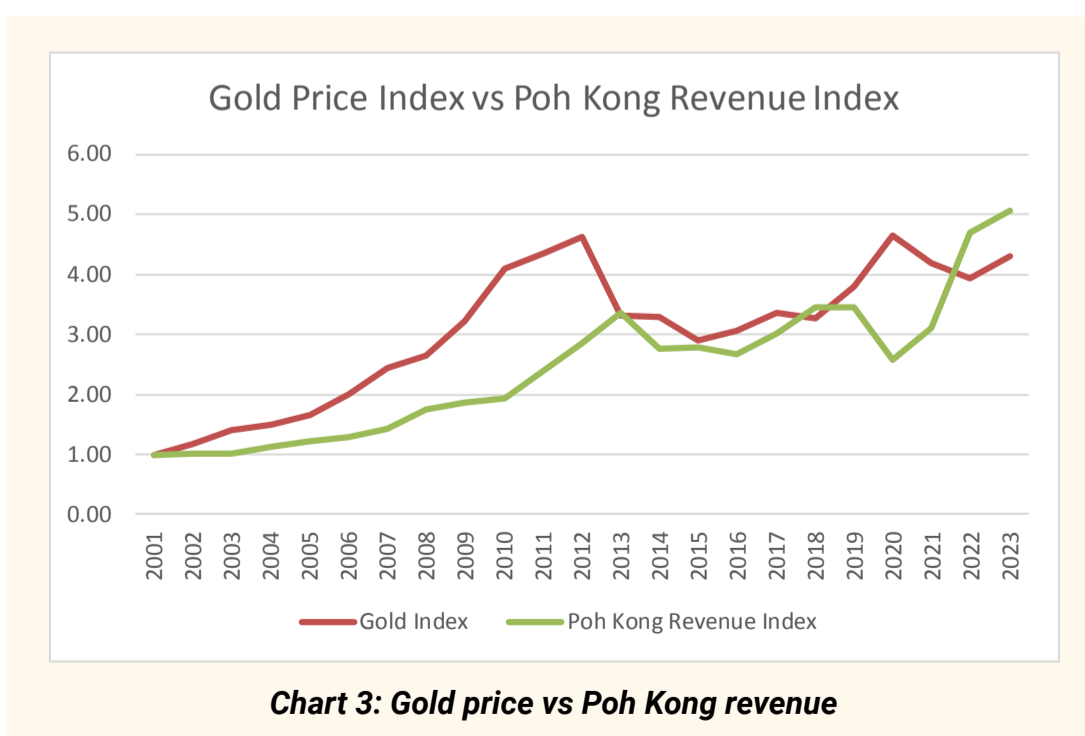
While the Group achieved double-digit ROE over the past 2 years, it only averaged 7% over the past 12 years. This is not exactly a good performance considering that its cost of equity was about 10%. The other concern is that over the past 12 years, there was a slight downtrend in gross profitability. In other words, there was some decline in capital efficiency.

As a retailing operation, the performance of the stores is critical. Poh Kong did not provide any information on the same-store sales. However, I tracked the revenue per outlet. Although the number of outlets has declined since its peak in 2014, the revenue per outlet has an improving trend. Refer to Chart 2.



GOLD PROXY

Poh Kong deals with gold. Can an investment in Poh Kong be considered a proxy for investing in gold? Chart 3 compares the revenue trend for Poh Kong vs the price of gold since 2001. You can see similar trends.



*Please refer to the disclaimer on first page and last page.

There is a 0.74 correlation between the price of gold and Poh Kong's revenue. This meant that gold price movements could explain about 55% of the changes in Poh Kong's revenue.

I would consider this significant and hence an investment in Poh Kong can be considered an investment in a gold proxy. This is of course looking at Poh Kong as a long-term fundamental investor.

But if you have a shorter time frame, would this be realistic? In such cases, you should be comparing gold price movements with Poh Kong's share price movements. Table 1 shows the 6-month correlations for 3 different periods of gold price movements with Poh Kong share prices. Refer to Chart 3:

- 2010 when there was an uptrend in gold prices.
- 2015 when gold prices moved sideways.
- Past 6 months when there was an uptrend in gold prices.

You can see that during periods of gold price uptrends, there were significant correlations between them. When gold prices moved sideways, there was a negative correlation. I would conclude that the market is anticipating the better performance of Poh Kong during periods when gold prices were trending up.

Period	correlation
Jul 2010 to Dec 2010	82%
Jul 2015 to Dec 2015	-64%
Sep 2023 to Mid Apr 2024	82%

Table 1: Correlation between Poh Kong share price and a Gold ETF price

Note that for these correlations I compared Poh Kong's daily prices with those of a Gold ETF. I looked at the prices over the corresponding 6 months period rather than matching them daily

FINANCIAL STRENGTHS

I would rate Poh Kong as financially stable based on the following:

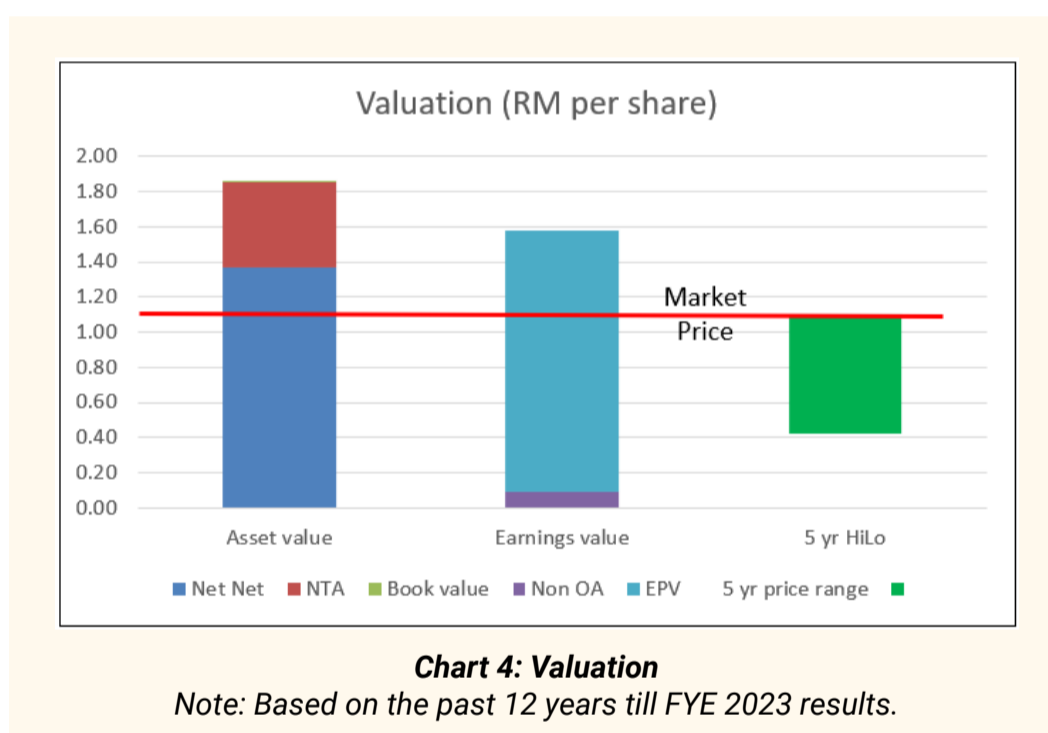
- As of the end of Dec 2023, it had cash and securities of RM46 million. This is slightly above its past 12 years' average amount of RM36 million.

- As of the end of Dec 2023, it had a 0.24 Debt Equity ratio. This ratio had not gone beyond 0.4 over the past 12 years.
- It has been able to generate positive cash flow from operations for 10 years over the past 12 years.
- Over the past 12 years, it generated RM403 million in cash flow from operations compared to its cumulative PAT of RM434 million per year. This is a reasonable cash conversion record.

VALUATION

My value of Poh Kong is summarised in Chart 4.

- I estimated its Asset Value as RM1.86 per share.
- I estimated its Earnings Power Value as RM1.58 per share. The Earnings Power Value here ignored growth.



The market price for Poh Kong as of 19 April 2024 was RM1.10 per share. You can see that there is more than a 30% margin of safety under both the Asset Value and Earnings Power Value.

VALUATION MODEL

My Earnings Power Value of the company was derived based on the average values from 2 valuation approaches:

- Free Cash Flow to the Firm model as per Damodaran
- Residual Income model as per Penman.

For both models, I used the past 12 years' time-weighted average value to represent the normalized value. The cost of capital used in the model was based on the Capital Asset Pricing Model. I followed Damodaran's approach to determine the Beta and the risk premiums. This resulted in a cost of equity of 9.9% and a WACC of 7.8%.

CONCLUSION

Poh Kong is not a wonderful company in the Warren Buffett sense.

- Over the past 12 years, its average ROE was lower than its cost of equity.
- Over the past 12 years revenue only grew at 5.3% CAGR. PAT growth was lower at 3.9% CAGR

Having said that, the Group is financially stable. The business is steady with a strong correlation between its revenue and gold prices. Gold prices are currently on the rise and I would expect the Group's performance to improve in the immediate term. There is still a margin of safety based on the market price as of 19 April 2024.

For those looking for an alternative to investing in gold, Poh Kong can be a gold proxy.

I am a long-term value investor who has held onto stocks for more than 5 years. My analysis and valuation are from such a perspective. I consider quarterly results "noisy" and focus on long-term trends.

This article was re-purposed from "[Is Poh Kong a proxy for gold?](#)" which was first published on [i4value](#). Asia. Refer to the article for more detailed fundamental analysis and valuation.

UNLOCK THE SECRET OF WEALTH

DO YOU REALLY WANT TO MASTER VALUE INVESTING



SEE HOW TO GET HIGHER RETURNS WITH LOWER RISK



MICROSOFT TO INVEST US\$2.2 BILL IN MALAYSIA OVER NEXT FOUR YEARS ON CLOUD & AI

According to Microsoft Corp chief executive officer Satya Nadella, Microsoft would invest US\$2.2 billion (RM10.5 billion) over the next four years in cloud and artificial intelligence (AI) infrastructure in Malaysia. The investment plan was announced during his visit to Malaysia at the Microsoft Build AI Day event. The investment also marks the single largest investment by Microsoft in its 32-year history in Malaysia.

He added that Microsoft is committed to supporting Malaysia's AI transformation and ensuring it benefits all Malaysians. In his keynote address at the event, he said that the investments in digital infrastructure and skilling will help Malaysian businesses, communities and developers apply the latest technology to drive inclusive economic growth and innovation across the country.

The latest investment by Microsoft is set to transform Malaysia into a leading digital hub regionally, while targeting to skill 200,000 Malaysians, and powering up the nation's economic growth through Microsoft's cutting edge technology. Microsoft will continue to partner with the government of Malaysia to enhance the nation's digital ecosystem through several initiatives. These include establishing a national AI centre in collaboration with the Ministry of Digital to drive AI adoption across key industries, while ensuring AI governance and regulatory compliance.

Meanwhile, in a statement, the Ministry of Investment, Trade and Industry (MITI) said that the investment by Microsoft will firmly position Malaysia as a preferred destination for digital investments. It also supports Malaysia's national initiative to embrace new, enabling technology, including AI and generative AI, which could unlock US\$113.4 billion in productive capacity in Malaysia.

The US software giant had also announced that, besides Malaysia, it will open its first regional data centre in neighbouring Thailand and will make an investment worth US\$1.7 billion in AI and cloud facilities in Indonesia. It has pledged to train 2.5 million people in Southeast Asia in the use of AI by 2025.

STEADY CLIMB IN AIR PASSENGER TRAFFIC - MAVCOM

According to the Malaysian Aviation Commission (MAVCOM), air passenger traffic in 1Q24 saw a significant increase YoY compared to 1Q23, where quarterly traffic rose by 16.1 per cent YoY to 22.6 million passengers. This increase was primarily driven by international air traffic, which surged by 39.9 per cent YoY, reaching 11.9 million passengers. Quarterly domestic air passenger traffic experienced a slight dip of 2.3 per cent, totalling 10.7 million passengers.

Compared to 4Q23, total air passenger traffic in 1Q24 increased quarter-on-quarter (QoQ) by 2.7 per cent, despite a slight decline in domestic air traffic by 2.5 per cent. International air passenger traffic increased by 7.9 per cent QoQ.

The growth in quarterly air traffic was recorded despite a 10% month-on-month (MoM) decline from 8.1 million in February 2024

to 7.3 million in March 2024. The month saw a marked decline in domestic air travel, with a 14.8 per cent decrease from 4.0 million in February to 3.4 million in March 2024, while international air traffic also saw a decline of 5.4 per cent MoM. Passenger numbers were reflective of subdued travel activities during the holy month of Ramadan. Nevertheless, air passenger traffic in March 2024 showcased a 5.6 per cent YoY increase from March 2023, which recorded 6.9 million passengers.

The industry recovery trajectory from COVID-19 indicates that the 1Q24 reached 85.5 per cent of 2019 levels, with international air traffic recovery at 89.3 per cent and domestic at 81.7 per cent. For the first time since the pandemic, the share of international air traffic exceeded domestic air traffic, reflecting a robust recovery in international routes and frequencies as well as a shift back to international travel as global tourism recovers. Domestic and international air passenger traffic accounted for 47.5 per cent and 52.5 per cent of total quarterly air passenger traffic, respectively.

Looking ahead to the second quarter of 2024, the Commission is optimistic about the continued recovery and growth of the aviation industry, despite recent cancellations and rerouting of flights due to the ongoing tension in the Middle East. While it is still too early to determine the impact of the conflict, the Commission anticipates total passenger traffic in 2024 to still land between the Commission's forecasted range.

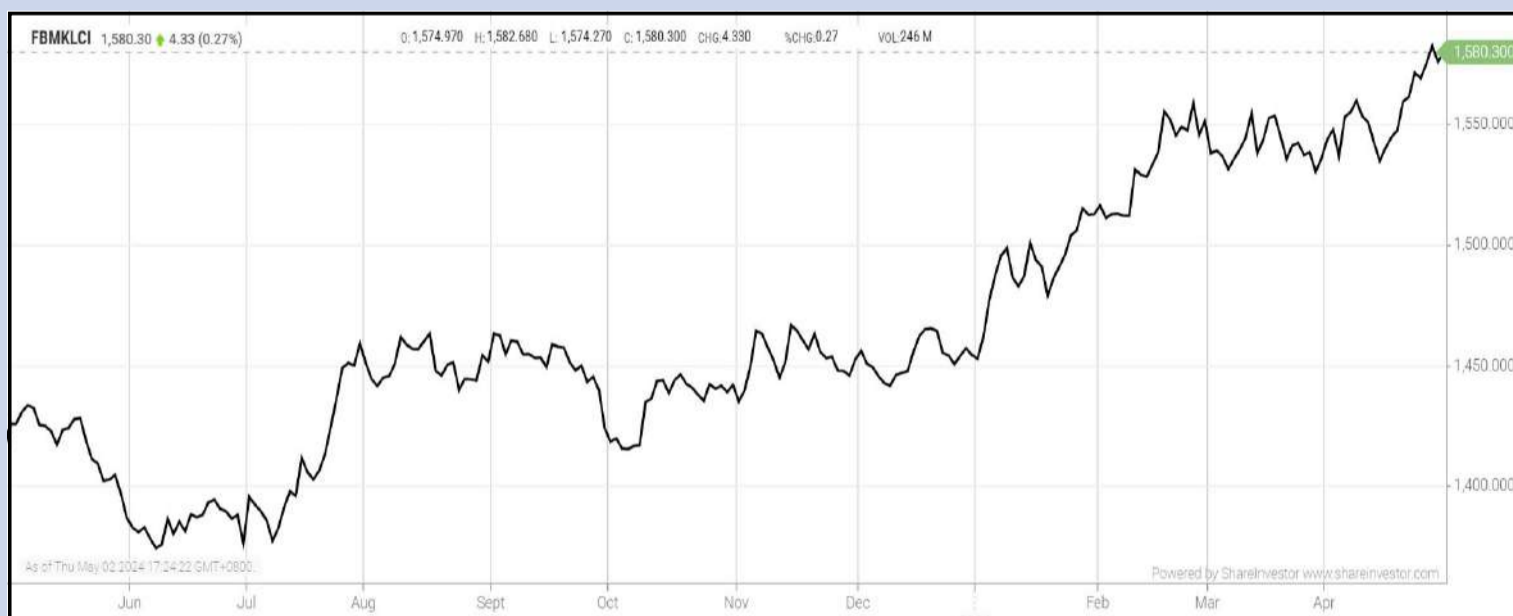
According to Executive Chairman of MAVCOM, Datuk Seri Hj. Saripuddin Hj. Kasim, he said that as we review the air traffic figures for the 1Q24, it is clear that the aviation sector is on a robust path to recovery. Airlines have shifted their attention to restoring and adding new international destinations in their networks, and the establishment of 30-day visa exemptions for tourists from China and India has provided a conducive environment for the accelerated return of international air travel.

Additionally, despite a reduction in air cargo movements in the first quarter, Malaysia’s air cargo movements have remained above pre-pandemic levels at 100.7 per cent of air cargo movements during the first quarter of 2019.”

He further emphasised that MAVCOM’s commitment to robust consumer protection measures and regulatory oversight remains unwavering, underscoring the industry’s pivotal role in fostering connections and driving economic sustainability.

EYE ON THE MARKETS

On Thursday (02May), the Ringgit closed at 4.7535 against the USD and 3.4977 to the Sing Dollar. On Monday (29Apr), the FBM KLCI opened at 1576.30. As at Thursday (02May) 5:00pm, the FBM KLCI closed up 4.00 points at 1580.30. Over in US, the overnight Dow Jones Industrial Average closed up 322.37 points (+0.85%) to 38,225.66 whilst the NASDAQ added 235.48 points (+1.51%) to 15,840.96.



KLCI 1 Year Chart

Over 5 trading days



ShareInvestor WebPro (www.shareinvestor.com/my)

1. Price > Stock Prices
2. Select Market: NASDAQ / NYSE / IDX / SET / HKEX / SGX (One bourse at a time)
3. select Stocks Tab
4. select Ranking Top Gainers or Top Losers (Over 5 Trading Days)
5. Mouse over Column Layout > select Edit Customs > select Name > select Last Done Price > select 5 Days Change > select 52 Weeks High > select 52 Weeks Low > Mouse Over Column Layout > select Custom

NASDAQ (USD)

Top Gainers

Name	Last Done	Change Over 5 Days	52 Weeks High	52 Weeks Low
MERCADOLIBRE INC	1,505.990	+142.160	1,825.000	1,063.020
MONOLITHIC POWER SYSTEM INC	712.890	+52.550	778.150	383.188
REGENERON PHARMACEUTICALS INC	937.610	+46.930	998.325	684.805
UFP TECHNOLOGIES	255.280	+45.630	257.285	127.290
TRANSMEDICS GROUP INC	124.440	+35.190	99.630	36.420

Top Losers

Name	Last Done	Change Over 5 Days	52 Weeks High	52 Weeks Low
SAIA INC	405.950	-137.070	628.335	266.910
MICROSTRATEGY	1,129.420	-110.990	1,999.990	266.000
FIRST CITIZENS BANCSHARES INC NRTH	1,713.500	-86.850	1,810.030	945.320
BROADCOM INC	1,238.570	-55.850	1,438.170	601.290
ASML HOLDING NV EURO.09 NY REGISTRY SHS 2012	870.280	-48.690	1,056.340	563.995

NYSE (USD)

Top Gainers

Name	Last Done	Change Over 5 Days	52 Weeks High	52 Weeks Low
MARKEL GROUP INC	1,576.550	+125.600	1,560.000	1,295.650
WHITE MOUNTAINS INSURANCE GROUP	1,825.000	+40.890	1,849.990	1,319.050
VALMONT INDUSTRIES INC	244.570	+35.000	303.570	188.625
RESMED INC	218.150	+34.730	240.090	132.240
CARVANA CO	116.500	+32.190	122.300	6.920

Top Losers

Name	Last Done	Change Over 5 Days	52 Weeks High	52 Weeks Low
BERKSHIRE HATHAWAY INC	606,413.450	-5,146.550	647,039.000	482,500.000
NVR INC	7,479.010	-245.990	8,211.400	5,210.490
KINSALE CAPITAL GROUP INC	373.110	-79.980	548.470	297.330
HUBSPOT INC	590.890	-45.210	693.850	407.230
CHIPOTLE MEXICAN GRILL	3,141.990	-44.980	3,241.420	1,768.635

IDX (Rupiah)

Top Gainers

Name	Last Done	Change Over 5 Days	52 Weeks High	52 Weeks Low
BARITO RENEWABLES ENERGY TBK	9,875.000	+1,600.000	9,875.000	975.000
PETRINDO JAYA KREASI TBK	7,600.000	+1,375.000	13,750.000	740.000
PETROSEA	6,100.000	+1,310.000	7,650.000	2,810.000
AKASHA WIRA INTERNATIONAL TBK	10,075.000	+950.000	14,125.000	7,800.000
HILLCON TBK	2,340.000	+910.000	4,000.000	940.000

Top Losers

Name	Last Done	Change Over 5 Days	52 Weeks High	52 Weeks Low
DIAN SWASTATIKA SENTOSA TBK	123,000.000	-2,000.000	163,000.000	36,500.000
GUDANG GARAM TBK	17,900.000	-1,250.000	30,050.000	17,875.000
ASAHIMAS FLAT GLASS	4,830.000	-770.000	6,650.000	4,800.000
BANK MANDIRI (PERSERO) TBK	6,325.000	-625.000	7,500.000	4,950.000
PT BANK NEGARA INDONESIA(PERSERO)	4,830.000	-470.000	6,250.000	4,312.500

SET (Thai Baht)

Top Gainers

Name	Last Done	Change Over 5 Days	52 Weeks High	52 Weeks Low
TOPP	169.500	+29.500	172.000	140.000
KYE	327.000	+10.000	331.000	275.000
ADVANC	207.000	+9.500	231.000	193.000
STANLY	224.000	+9.000	233.000	171.500
KBANK	131.000	+4.500	138.000	118.500

Top Losers

Name	Last Done	Change Over 5 Days	52 Weeks High	52 Weeks Low
BH	243.000	-10.000	272.000	210.000
PTTEP	150.500	-6.500	175.000	137.500
MASTER	59.250	-6.250	89.000	41.500
GYT	181.000	-6.000	212.000	178.000
ALUCON	174.500	-4.500	190.000	170.000

HKEX (HKD)

Top Gainers

Name	Last Done	Change Over 5 Days	52 Weeks High	52 Weeks Low
BYD COMPANY (1211)	225.000	+21.200	280.600	167.800
TENCENT (700)	360.400	+21.000	364.400	260.200
UBTECH ROBOTICS (9880)	186.500	+20.700	328.000	69.800
BYD COMPANY-R (81211)	208.400	+19.000	255.800	155.000
TENCENT-R (80700)	333.200	+18.800	342.000	240.000

Top Losers

Name	Last Done	Change Over 5 Days	52 Weeks High	52 Weeks Low
YUM CHINA (9987)	285.800	-17.800	504.500	260.200
TRIP.COM-S (9961)	389.000	-5.600	410.800	240.600
SINOSYNERGY (9663)	16.320	-2.800	24.000	14.380
GRAND FIELD GP (115)	0.145	-2.755	11.000	0.145
SINOPHARM (1099)	19.420	-2.330	28.450	17.440

SGX (SGD)

Top Gainers

Name	Last Done	Change Over 5 Days	52 Weeks High	52 Weeks Low
NIO Inc. USD OV	5.570	+1.390	15.780	3.730
DBS	35.550	+1.100	36.000	27.546
IFAST	7.530	+0.590	8.510	4.150
JMH USD	38.520	+0.520	52.570	34.920
JARDINE C&C	26.590	+0.370	35.580	23.760

Top Losers

Name	Last Done	Change Over 5 Days	52 Weeks High	52 Weeks Low
GREAT EASTERN	18.320	-0.300	19.240	16.850
WILMAR INTL	3.210	-0.290	4.100	3.070
AZEUS	8.000	-0.150	9.190	7.400
SEMBCORP IND	5.300	-0.150	6.100	4.500
UOI	5.890	-0.100	6.328	5.801

EXPLORING CROSS-SHAREHOLDINGS: A CLOSER LOOK AT MALAYSIA'S CORPORATE LANDSCAPE

In the intricate tapestry of corporate structures, a peculiar trend has emerged in recent years. This trend involves public listed companies (PLCs) making substantial investments in other PLCs, sometimes without having a meaningful core activity of their own. While cross-shareholdings are not uncommon in the business world, the scale and frequency of such investments in Malaysia have raised eyebrows and prompted discussions about their implications for the economy and from a corporate governance standpoint.

KEY HIGHLIGHTS

- Cross-shareholdings among Malaysian PLCs have become prominent, sparking discussions on their economic and corporate governance implications.
- While cross-shareholdings can offer strategic advantages like risk mitigation and access to new markets, excessive diversification or straying from core competencies can pose risks such as conflicts of interest and diluted managerial focus.

Cross-shareholdings have deep historical roots, dating back to the early days of industrialisation. Family-owned conglomerates, known as "keiretsu" in Japanese parlance, dominate the corporate landscape. These conglomerates, or "corporate giants," typically have interests spanning multiple sectors, including finance, manufacturing and real estate. Cross-shareholdings among these conglomerates are widespread, forming intricate webs of corporate relationships.

These investments often take the form of equity stakes, strategic partnerships, or even outright acquisitions. While such transactions can bring synergies and strategic advantages, they also raise questions when companies deviate from their core activities.

Holding companies often wield significant influence and control over their investee companies, leveraging their stakes to shape corporate strategies and decision-making processes. The motivations behind these cross-shareholdings vary widely and can be influenced by a multitude of factors. One key driver is the pursuit of diversification and risk management. By spreading their investments across multiple companies and industries, firms aim to mitigate risks associated with economic downturns or sector-specific challenges. Additionally, cross-shareholdings can offer access to new markets, technologies, or talent pools, bolstering competitiveness and long-term growth prospects.

While cross-shareholdings may offer strategic advantages, they are not without risks and challenges, particularly when companies stray too far from their core competencies. One concern is the potential for conflicts of interest, especially in cases where a company's management is simultaneously involved in multiple entities within the same industry or value chain. This situation can blur the lines of accountability and raise questions about market transparency.

Moreover, excessive diversification or investment in unrelated businesses can dilute managerial focus and strain resources, leading to suboptimal performance and value destruction. Investors may also be wary of companies that lack a clear strategic direction or coherent business model, preferring instead to allocate capital to companies with a focused and disciplined approach to value creation.

CROSS-HOLDINGS AND THEIR INTRICACIES

An illustration shall elucidate the irregularities of cross-holdings observed amongst some PLCs. PLC A recorded approximately RM10.00 million in revenue for its last financial year. Its investment in quoted securities amounted to RM50.00 million with minimal disclosure made in the annual report. Upon inquiry from a shareholder, it was revealed that PLC A has invested in quoted securities in various unrelated industries, but no specific name was provided. During the said financial year, PLC A incurred impairment losses on quoted securities of RM10.00 million, together with a loss on fair value changes of about RM8.00 million. Exacerbating the situation, PLC A made additional investments in quoted securities of approximately RM60.00 million during the same financial year.

One of the key listing criteria for admission to the Main Market or ACE Market of Bursa Malaysia Securities Berhad is that the core business of the entity seeking listing must not be the holding of investments in other listed companies. However, it has been observed that the core business of PLC A is now mainly that of a holding company for other listed entities, given its meagre revenue recorded.

PLC A isn't navigating the cross-shareholdings field alone. PLC B's primary involvement is in industrial automation, and despite its loss-making position for the last five financial years, the company has invested RM140.00 million in quoted shares across various unrelated industries. These investments include a 26% equity stake in a packaging solution provider, a 26% equity stake in a green energy solution provider, and a 31% stake in a printed circuit board manufacturer. The market value of these quoted shares is only RM50.00 million.

PLC A and B have invested in quoted shares using shareholders' funds. The pinnacle of cross-shareholdings came when PLC C, mainly involved in the telecommunications business, drew down a security-backed advance facility of RM92.00 million to fund its investment in quoted securities. PLC C recorded RM270 million in revenue in the last financial year and has been in a loss-making position for the past five financial years. PLC C has also invested RM270 million in quoted securities in various unrelated industries as of the end of the last financial year. The market value of these quoted securities was merely RM94.00 million.

CROSS-HOLDING FROM CG AND VALUATION PERSPECTIVE

From a corporate governance perspective, cross-shareholdings raise issues related to transparency, disclosure, and shareholder rights. Investors rely on accurate and timely information to assess companies' financial health and performance, yet complex ownership structures and interlocking directorates can obscure visibility and hinder effective oversight.

As such, regulators and policymakers play a crucial role in ensuring that corporate actions are conducted in the best interests of all stakeholders and accordance with applicable laws and regulations.

From a valuation perspective, cross-shareholdings can impact the valuation of individual firms and the overall market. When conglomerates hold significant stakes in each other's companies, fluctuations in one firm's share price can have cascading effects on others, amplifying market volatility.

Further, cross-shareholdings introduce complexity and uncertainty, as investors must assess the implications of interlocking ownership structures on cash flows and risk. Moreover, the presence of cross-shareholdings can obscure the true financial health of companies, making it difficult for investors to make informed decisions.

As Malaysia's corporate landscape continues to evolve, stakeholders and potential investors must navigate the complexities of cross-holdings with caution and foresight. Companies should articulate clear and coherent strategies that align with their core competencies and long-term objectives, avoiding indiscriminate diversification or speculative investments.

Transparent communication and robust corporate governance practices are essential for fostering trust and accountability among investors, regulators, and other stakeholders. Companies should disclose relevant information about their investment activities, ownership structures, and risk management practices, enabling stakeholders to make informed decisions and hold management accountable for their actions.

By MSWG Team

DEFINITION: Insider Activity shows the trades made by substantial shareholders or directors of the company. Purchases by the directors and company share buyback may indicate the share price is undervalued and brings confidence to the price trend of the share price.



ShareInvestor WebPro > Fundamental > Insider Trades > click Search tab > Select Bursa > click Stock name > scroll up and leave at <Select Counter> Type Date Range for Announcement Date > click Search

Notice Period is 21st Apr 2024 - 27th Apr 2024

Effective Change Date	Stock Name	Buyer/ Seller Name [Classification]	Bought / (Sold) ['000]		No. of Shares After Trade ['000]	
			Total	Total	% Held	
19 APR 2024 - 22 APR 2024	3A	MR TEO KWEE HOCK [SSH]	195	50,415	10.31	
23 APR 2024 - 23 APR 2024	ABMB	EMPLOYEES PROVIDENT FUND BOARD [SSH]	-830	159,105	10.277	
18 APR 2024 - 18 APR 2024	ABMB	EMPLOYEES PROVIDENT FUND BOARD [SSH]	-867	159,936	10.331	
25 APR 2024 - 25 APR 2024	AGX	PUAN AIDA MOSIRA BINTI MOKHTAR [DIR/CEO]	-10	55	0.013	
23 APR 2024 - 23 APR 2024	AGX	MR PENU MARK [DIR/CEO]	800	81,000	18.713	
23 APR 2024 - 23 APR 2024	AGX	MR PENU MARK [SSH]	800	81,000	18.713	
23 APR 2024 - 23 APR 2024	AGX	PUAN AIDA MOSIRA BINTI MOKHTAR [DIR/CEO]	-10	65	0.015	
22 APR 2024 - 22 APR 2024	AGX	MR PENU MARK [DIR/CEO]	600	80,200	18.528	
22 APR 2024 - 22 APR 2024	AGX	MR PENU MARK [SSH]	600	80,200	18.528	
22 APR 2024 - 22 APR 2024	AGX	PUAN AIDA MOSIRA BINTI MOKHTAR [DIR/CEO]	-5	75	0.017	
19 APR 2024 - 19 APR 2024	AGX	DATO' ROZALILA BINTI ABDUL RAHMAN [DIR/CEO]	-3,980	3956	0.914	
22 APR 2024 - 22 APR 2024	AGX	MR PENU MARK [DIR/CEO]	100	79,600	18.389	
19 APR 2024 - 19 APR 2024	AGX	MR NEO LIP PHENG PETER [DIR/CEO]	281	76,865	17.757	
19 APR 2024 - 19 APR 2024	AGX	MR NEO LIP PHENG PETER [SSH]	281	76,865	17.757	
19 APR 2024 - 19 APR 2024	AGX	MR PENU MARK [SSH]	100	79,600	18.389	
19 APR 2024 - 19 APR 2024	AGX	PUAN AIDA MOSIRA BINTI MOKHTAR [DIR/CEO]	-27	80	0.018	
17 APR 2024 - 18 APR 2024	AGX	DATO' ROZALILA BINTI ABDUL RAHMAN [DIR/CEO]	-1,464	7,936	1.833	
23 APR 2024 - 23 APR 2024	AIRPORT	EMPLOYEES PROVIDENT FUND BOARD [SSH]	296	129,320	7.75	
22 APR 2024 - 22 APR 2024	AIRPORT	EMPLOYEES PROVIDENT FUND BOARD [SSH]	-64	129,024	7.733	
19 APR 2024 - 19 APR 2024	AIRPORT	EMPLOYEES PROVIDENT FUND BOARD [SSH]	1,465	129,088	7.736	
18 APR 2024 - 18 APR 2024	AIRPORT	EMPLOYEES PROVIDENT FUND BOARD [SSH]	58	127,623	7.649	
17 APR 2024 - 17 APR 2024	AIRPORT	EMPLOYEES PROVIDENT FUND BOARD [SSH]	1,080	127,565	7.645	
23 APR 2024 - 23 APR 2024	AMBANK	EMPLOYEES PROVIDENT FUND BOARD [SSH]	3,632	469,247	14.19	
22 APR 2024 - 22 APR 2024	AMBANK	EMPLOYEES PROVIDENT FUND BOARD [SSH]	2,764	465,615	14.08	
19 APR 2024 - 19 APR 2024	AMBANK	EMPLOYEES PROVIDENT FUND BOARD [SSH]	3,219	462,852	13.997	
18 APR 2024 - 18 APR 2024	AMBANK	EMPLOYEES PROVIDENT FUND BOARD [SSH]	1,418	459,633	13.899	
17 APR 2024 - 17 APR 2024	AMBANK	EMPLOYEES PROVIDENT FUND BOARD [SSH]	-1,118	458,215	13.857	
23 APR 2024 - 23 APR 2024	ANCOMNY	MR LEE CHEUN WEI [DIR/CEO]	2,000	92,378	9.623	
23 APR 2024 - 23 APR 2024	ANCOMNY	MR LEE CHEUN WEI [SSH]	2,000	92,378	9.623	
23 APR 2024 - 23 APR 2024	ASTRA	DATIN WONG MUH RONG [DIR/CEO]	700	46,101	16.939	
23 APR 2024 - 23 APR 2024	ASTRA	DATIN WONG MUH RONG [SSH]	700	46,101	16.939	
23 APR 2024 - 23 APR 2024	AXIATA	EMPLOYEES PROVIDENT FUND BOARD [SSH]	-654	1,646,215	17.929	
22 MAR 2024 - 22 MAR 2024	AXIATA	EMPLOYEES PROVIDENT FUND BOARD [SSH]	182	1,644,649	17.912	
19 APR 2024 - 19 APR 2024	AXIATA	DR SHRIDHIR SARIPUTTA HANSA WIJAYASURIYA [DIR/CEO]	1,219	2,773	0.03	
19 APR 2024 - 19 APR 2024	AXIATA	EMPLOYEES PROVIDENT FUND BOARD [SSH]	734	1,644,387	17.909	
18 APR 2024 - 18 APR 2024	AXIATA	EMPLOYEES PROVIDENT FUND BOARD [SSH]	1,117	1,643,653	17.901	
17 APR 2024 - 17 APR 2024	AXIATA	EMPLOYEES PROVIDENT FUND BOARD [SSH]	-948	1,642,521	17.889	
25 APR 2024 - 25 APR 2024	AXREIT	KUMPULAN WANG PERSARAAN (DIPERBADANKAN) [SSH]	390	182,306	10.432	
17 APR 2024 - 17 APR 2024	AXREIT	EMPLOYEES PROVIDENT FUND BOARD [SSH]	600	286,776	16.411	
23 APR 2024 - 23 APR 2024	BAUTO	EMPLOYEES PROVIDENT FUND BOARD [SSH]	1,216	158,251	13.554	
22 APR 2024 - 24 APR 2024	BAUTO	DATO' AMER HAMZAH BIN AHMAD [SSH]	250	178,080	15.252	
22 APR 2024 - 24 APR 2024	BAUTO	DATO' LEE KOK CHUAN [DIR/CEO]	250	177,693	15.218	
22 APR 2024 - 24 APR 2024	BAUTO	DATO' LEE KOK CHUAN [SSH]	250	177,693	15.218	
22 APR 2024 - 24 APR 2024	BAUTO	DYNAMIC MILESTONE SDN BHD [SSH]	250	173,636	14.871	
22 APR 2024 - 24 APR 2024	BAUTO	TAN SRI DATO' SRI YEOH CHOOH SAN [DIR/CEO]	250	177,734	15.222	
22 APR 2024 - 24 APR 2024	BAUTO	TAN SRI DATO' SRI YEOH CHOOH SAN [SSH]	250	177,734	15.222	
18 APR 2024 - 18 APR 2024	BAUTO	EMPLOYEES PROVIDENT FUND BOARD [SSH]	-1,277	157,023	13.448	
19 APR 2024 - 19 APR 2024	BAUTO	DATO' LEE KOK CHUAN [DIR/CEO]	25	177,443	15.197	
19 APR 2024 - 19 APR 2024	BAUTO	DATO' LEE KOK CHUAN [SSH]	25	177,443	15.197	
23 APR 2024 - 23 APR 2024	BIMB	EMPLOYEES PROVIDENT FUND BOARD [SSH]	164	388,906	17.159	
22 APR 2024 - 22 APR 2024	BIMB	EMPLOYEES PROVIDENT FUND BOARD [SSH]	-600	388,742	17.152	
19 APR 2024 - 19 APR 2024	BIMB	EMPLOYEES PROVIDENT FUND BOARD [SSH]	185	389,342	17.178	
18 APR 2024 - 18 APR 2024	BIMB	EMPLOYEES PROVIDENT FUND BOARD [SSH]	424	389,157	17.17	
17 APR 2024 - 17 APR 2024	BIMB	EMPLOYEES PROVIDENT FUND BOARD [SSH]	1,477	388,733	17.151	
22 APR 2024 - 22 APR 2024	BJFOOD	BERJAYA CORPORATION BERHAD [SSH]	2,253	1,089,511	61.492	
22 APR 2024 - 22 APR 2024	BJFOOD	BERJAYA GROUP BERHAD [SSH]	2,253	988,525	55.792	
22 APR 2024 - 22 APR 2024	BJFOOD	JUARA SEJATI SDN BHD [SSH]	2,253	209,417	11.819	
18 APR 2024 - 19 APR 2024	BJFOOD	BERJAYA CORPORATION BERHAD [SSH]	10,667	1,087,258	61.365	
18 APR 2024 - 19 APR 2024	BJFOOD	BERJAYA GROUP BERHAD [SSH]	10,667	986,272	55.664	
18 APR 2024 - 19 APR 2024	BJFOOD	JUARA SEJATI SDN BHD [SSH]	10,667	207,164	11.692	
18 APR 2024 - 19 APR 2024	BJLAND	BERJAYA CORPORATION BERHAD [SSH]	1,000	3,595,588	73.413	
18 APR 2024 - 19 APR 2024	BJLAND	BERJAYA GROUP BERHAD [SSH]	1,000	3,177,488	64.877	
18 APR 2024 - 19 APR 2024	BJLAND	BIZURAI BIJAK (M) SDN BHD [SSH]	1,000	823,215	16.808	

Notice Period is 21st Apr 2024 - 27th Apr 2024

Effective Change Date	Stock Name	Buyer/ Seller Name [Classification]	Bought / (Sold) ['000]		No. of Shares After Trade ['000]	
			Total	Total	% Held	
18 APR 2024 - 19 APR 2024	BJLAND	JUARA SEJATI SDN BHD [SSH]	1,000	1,514,889	30.93	
23 APR 2024 - 25 APR 2024	BMGREEN	DR CHIA SONG KUN [DIR/CEO]	484	272,618	52.84	
23 APR 2024 - 25 APR 2024	BMGREEN	DR CHIA SONG KUN [SSH]	484	272,618	52.84	
23 APR 2024 - 23 APR 2024	BURSA	EMPLOYEES PROVIDENT FUND BOARD [SSH]	488	106,597	13.172	
23 APR 2024 - 23 APR 2024	BURSA	EMPLOYEES PROVIDENT FUND BOARD [SSH]	-556	106,041	13.103	
22 APR 2024 - 22 APR 2024	BURSA	EMPLOYEES PROVIDENT FUND BOARD [SSH]	-500	106,109	13.111	
22 APR 2024 - 22 APR 2024	BURSA	EMPLOYEES PROVIDENT FUND BOARD [SSH]	838	106,609	13.173	
19 APR 2024 - 19 APR 2024	BURSA	EMPLOYEES PROVIDENT FUND BOARD [SSH]	610	105,770	13.069	
18 APR 2024 - 18 APR 2024	BURSA	EMPLOYEES PROVIDENT FUND BOARD [SSH]	276	105,160	12.994	
17 APR 2024 - 17 APR 2024	BURSA	EMPLOYEES PROVIDENT FUND BOARD [SSH]	36	104,884	12.96	
17 APR 2024 - 17 APR 2024	BURSA	EMPLOYEES PROVIDENT FUND BOARD [SSH]	-500	104,848	12.955	
23 APR 2024 - 23 APR 2024	CDB	EMPLOYEES PROVIDENT FUND BOARD [SSH]	500	1,156,501	9.858	
24 APR 2024 - 24 APR 2024	CGB	MR LEE CHEE VUI [DIR/CEO]	620	85,464	11.369	
24 APR 2024 - 24 APR 2024	CGB	MR LEE CHEE VUI [SSH]	620	85,464	11.369	
24 APR 2024 - 24 APR 2024	CGB	MR SOO YU CHAI [SSH]	620	73,828	9.821	
24 APR 2024 - 24 APR 2024	CGB	MYRT HOLDINGS SDN. BHD. [SSH]	620	73,046	9.717	
18 APR 2024 - 19 APR 2024	CHINHIN	DATUK SERI CHIAU BENG TEIK JP [DIR/CEO]	31	1,025,793	57.974	
18 APR 2024 - 19 APR 2024	CHINHIN	DATUK SERI CHIAU BENG TEIK JP [SSH]	31	1,025,793	57.974	
22 APR 2024 - 22 APR 2024	CIMB	EMPLOYEES PROVIDENT FUND BOARD [SSH]	-6,592	1,591,534	14.92	
19 APR 2024 - 19 APR 2024	CIMB	EMPLOYEES PROVIDENT FUND BOARD [SSH]	13,358	1,598,126	14.98	
19 APR 2024 - 19 APR 2024	CIMB	KUMPULAN WANG PERSARAAN (DIPERBADANKAN) [SSH]	-763	673,887	6.32	
18 APR 2024 - 18 APR 2024	CIMB	EMPLOYEES PROVIDENT FUND BOARD [SSH]	3,045	1,584,768	14.86	
17 APR 2024 - 17 APR 2024	CIMB	EMPLOYEES PROVIDENT FUND BOARD [SSH]	434	1,581,723	14.83	
23 APR 2024 - 23 APR 2024	CLMT	EMPLOYEES PROVIDENT FUND BOARD [SSH]	184	429,482	15.2	
24 APR 2024 - 24 APR 2024	CLMT	KUMPULAN WANG PERSARAAN (DIPERBADANKAN) [SSH]	97	297,375	10.525	
22 APR 2024 - 22 APR 2024	CLMT	EMPLOYEES PROVIDENT FUND BOARD [SSH]	99	429,299	15.193	
23 APR 2024 - 23 APR 2024	CLMT	KUMPULAN WANG PERSARAAN (DIPERBADANKAN) [SSH]	113	297,278	10.521	
19 APR 2024 - 19 APR 2024	CLMT	EMPLOYEES PROVIDENT FUND BOARD [SSH]	-2,272	429,200	15.19	
22 APR 2024 - 22 APR 2024	CLMT	KUMPULAN WANG PERSARAAN (DIPERBADANKAN) [SSH]	61	297,165	10.517	
18 APR 2024 - 18 APR 2024	CLMT	EMPLOYEES PROVIDENT FUND BOARD [SSH]	-3,000	431,472	15.27	
19 APR 2024 - 19 APR 2024	CLMT	KUMPULAN WANG PERSARAAN (DIPERBADANKAN) [SSH]	448	297,104	10.515	
17 APR 2024 - 17 APR 2024	CLMT	EMPLOYEES PROVIDENT FUND BOARD [SSH]	-672	434,472	15.376	
17 APR 2024 - 17 APR 2024	CLMT	MR TAN CHOON SIANG [DIR/CEO]	379	379	0.013	
24 APR 2024 - 24 APR 2024	CMSB	LEMBAGA TABUNG HAJI [SSH]	-300	78,580	7.315	
23 APR 2024 - 23 APR 2024	CMSB	LEMBAGA TABUNG HAJI [SSH]	-200	78,880	7.343	
18 APR 2024 - 19 APR 2024	CNERGEN	MR LYE THIM LOONG [DIR/CEO]	50	10,263	2.061	
17 APR 2024 - 17 APR 2024	CPETECH	NORGES BANK [SSH]	3,500	36,597	5.45	
24 APR 2024 - 24 APR 2024	CTOS	ABRDN HOLDINGS LIMITED [SSH]	3,332	220,806	9.559	
24 APR 2024 - 24 APR 2024	CTOS	ABRDN MALAYSIA SDN BHD [SSH]	3,332	218,471	9.458	
24 APR 2024 - 24 APR 2024	CTOS	ABRDN PLC [SSH]	3,332	220,806	9.559	
23 APR 2024 - 23 APR 2024	CTOS	EMPLOYEES PROVIDENT FUND BOARD [SSH]	639	294,593	12.753	
22 APR 2024 - 22 APR 2024	CTOS	EMPLOYEES PROVIDENT FUND BOARD [SSH]	1,907	293,955	12.725	
22 APR 2024 - 23 APR 2024	CTOS	ABRDN HOLDINGS LIMITED [SSH]	1,849	217,474	9.414	
22 APR 2024 - 23 APR 2024	CTOS	ABRDN MALAYSIA SDN BHD [SSH]	1,849	215,139	9.313	
22 APR 2024 - 23 APR 2024	CTOS	ABRDN PLC [SSH]	1,849	217,474	9.414	
19 APR 2024 - 19 APR 2024	CTOS	EMPLOYEES PROVIDENT FUND BOARD [SSH]	3,494	292,048	12.643	
22 APR 2024 - 22 APR 2024	CTOS	WASATCH ADVISORS LP [SSH]	-3,830	128,218	5.551	
19 APR 2024 - 19 APR 2024	CTOS	ABRDN HOLDINGS LIMITED [SSH]	3,494	215,624	9.334	
19 APR 2024 - 19 APR 2024	CTOS	ABRDN MALAYSIA SDN BHD [SSH]	3,494	213,289	9.233	
19 APR 2024 - 19 APR 2024	CTOS	ABRDN PLC [SSH]	3,494	215,624	9.334	
18 APR 2024 - 18 APR 2024	CTOS	EMPLOYEES PROVIDENT FUND BOARD [SSH]	238	288,554	12.492	
18 APR 2024 - 18 APR 2024	CTOS	ABRDN HOLDINGS LIMITED [SSH]	238	212,130	9.183	
18 APR 2024 - 18 APR 2024	CTOS	ABRDN MALAYSIA SDN BHD [SSH]	238	209,795	9.082	
18 APR 2024 - 18 APR 2024	CTOS	ABRDN PLC [SSH]	238	212,130	9.183	
17 APR 2024 - 17 APR 2024	CTOS	EMPLOYEES PROVIDENT FUND BOARD [SSH]	758	288,316	12.481	
23 APR 2024 - 23 APR 2024	CYPARK	MR CHUNG CHEE YANG [SSH]	300	45,895	5.578	
22 APR 2024 - 22 APR 2024	CYPARK	MR CHUNG CHEE YANG [SSH]	50	45,595	5.541	
22 APR 2024 - 22 APR 2024	D&O	EMPLOYEES PROVIDENT FUND BOARD [SSH]	245	85,524	6.907	
19 APR 2024 - 19 APR 2024	D&O	EMPLOYEES PROVIDENT FUND BOARD [SSH]	39	85,280	6.887	
19 APR 2024 - 19 APR 2024	DAYANG	DATIN WONG SIEW HONG [SSH]	-500	147,108	12.706	
19 APR 2024 - 19 APR 2024	DAYANG	DATUK LING SUK KIONG [DIR/CEO]	-500	147,108	12.706	

Disclaimer: The Information in Insider Activity is extracted from www.shareinvestor.com/fundamental/insider_trades. The information on this page is provided as a service to readers. It does not constitute financial advice and/or any investment recommendations. We assume no liability for damages resulting from or arising out of the use of such information. Whilst every effort is made to ensure accuracy, the information presented is not the official record of shareholder filings. Readers are advised to read the original filings on the Bursa Malaysia website at www.bursamalaysia.com



STROM
SWISS TIMEPIECES & JEWELLERY



StromWatch Asia
Tele : +65.9817.3378
Email : ll.stromasia@gmail.com
WWW.STROMWATCH.SWISS

Notice Period is 21st Apr 2024 – 27th Apr 2024

Effective Change Date	Stock Name	Buyer/ Seller Name [Classification]	Bought / (Sold) ('000)	No. of Shares After Trade ('000)	
			Total	Total	% Held
19 APR 2024 - 19 APR 2024	DAYANG	DATUK LING SUK KIONG [SSH]	-500	147,108	12.706
19 APR 2024 - 19 APR 2024	DAYANG	MR JOE LING SIEW LOUNG @ LIN SHOU LONG [DIR/CEO]	-500	147,108	12.707
19 APR 2024 - 19 APR 2024	DAYANG	MR JOEL LING SIEW LOUNG @ LIN SHOU LONG [SSH]	-500	147,108	12.707
25 APR 2024 - 25 APR 2024	DIALOG	KUMPULAN WANG PERSARAAN (DIPERBADANKAN) [SSH]	45	623,299	11.05
23 APR 2024 - 23 APR 2024	DIALOG	EMPLOYEES PROVIDENT FUND BOARD [SSH]	1,150	884,308	15.67
24 APR 2024 - 24 APR 2024	DIALOG	KUMPULAN WANG PERSARAAN (DIPERBADANKAN) [SSH]	81	623,254	11.05
22 APR 2024 - 22 APR 2024	DIALOG	EMPLOYEES PROVIDENT FUND BOARD [SSH]	136	883,158	15.65
23 APR 2024 - 23 APR 2024	DIALOG	KUMPULAN WANG PERSARAAN (DIPERBADANKAN) [SSH]	210	623,173	11.05
19 APR 2024 - 19 APR 2024	DIALOG	EMPLOYEES PROVIDENT FUND BOARD [SSH]	1,332	883,022	15.65
22 APR 2024 - 22 APR 2024	DIALOG	KUMPULAN WANG PERSARAAN (DIPERBADANKAN) [SSH]	790	622,963	11.04
23 APR 2024 - 23 APR 2024	DRBHCOM	EMPLOYEES PROVIDENT FUND BOARD [SSH]	-900	170,033	8.795
19 APR 2024 - 19 APR 2024	DRBHCOM	EMPLOYEES PROVIDENT FUND BOARD [SSH]	-1,057	170,767	8.833
17 APR 2024 - 17 APR 2024	DRBHCOM	EMPLOYEES PROVIDENT FUND BOARD [SSH]	-400	171,816	8.887
19 APR 2024 - 19 APR 2024	DSR	MR NG SOH KIAN [DIR/CEO]	-500	107,990	33.077
19 APR 2024 - 19 APR 2024	DSR	MR NG SOH KIAN [SSH]	-500	107,990	33.077
22 APR 2024 - 22 APR 2024	ECONBHD	EMPLOYEES PROVIDENT FUND BOARD [SSH]	-325	102,363	7.221
19 APR 2024 - 19 APR 2024	ECONBHD	EMPLOYEES PROVIDENT FUND BOARD [SSH]	-338	102,688	7.244
17 APR 2024 - 17 APR 2024	ECONBHD	EMPLOYEES PROVIDENT FUND BOARD [SSH]	2,286	103,026	7.268
23 APR 2024 - 23 APR 2024	EDEN	KOPERASI BELIA ISLAM MALAYSIA BERHAD [SSH]	-1,612	30,398	6.015
26 APR 2024 - 26 APR 2024	EDUSPEC	DATO' KANG PANG KIANG [DIR/CEO]	13,200	155,461	13.236
26 APR 2024 - 26 APR 2024	EDUSPEC	DATO' KANG PANG KIANG [SSH]	13,200	155,461	13.236
25 APR 2024 - 25 APR 2024	ELKDESA	MR TEOH HOCK CHAI @ TEW HOCK CHAI [SSH]	150	193,808	42.613
25 APR 2024 - 25 APR 2024	ELKDESA	MR TEOH HOCK CHAI@TEW HOCK CHAI [DIR/CEO]	150	193,808	42.613
25 APR 2024 - 25 APR 2024	ELKDESA	TEOH HOCK CHAI FAMILY (L) FOUNDATION [SSH]	150	184,080	40.474
25 APR 2024 - 25 APR 2024	ELKDESA	ZHONGXIN RESOURCES SDN BHD [SSH]	150	176,080	38.715
23 APR 2024 - 23 APR 2024	F&N	EMPLOYEES PROVIDENT FUND BOARD [SSH]	-25	42,725	11.649
22 APR 2024 - 22 APR 2024	F&N	EMPLOYEES PROVIDENT FUND BOARD [SSH]	6	42,750	11.655
19 APR 2024 - 19 APR 2024	F&N	EMPLOYEES PROVIDENT FUND BOARD [SSH]	-6	42,744	11.654
18 APR 2024 - 18 APR 2024	F&N	EMPLOYEES PROVIDENT FUND BOARD [SSH]	70	42,750	11.656
17 APR 2024 - 17 APR 2024	F&N	EMPLOYEES PROVIDENT FUND BOARD [SSH]	-17	42,680	11.637
23 APR 2024 - 23 APR 2024	FFB	EMPLOYEES PROVIDENT FUND BOARD [SSH]	500	164,693	8.798
23 APR 2024 - 23 APR 2024	FFB	KUMPULAN WANG PERSARAAN (DIPERBADANKAN) [SSH]	3,331	105,988	5.662
17 APR 2024 - 17 APR 2024	FFB	EMPLOYEES PROVIDENT FUND BOARD [SSH]	62	164,190	8.771
23 APR 2024 - 23 APR 2024	FRONTKN	EMPLOYEES PROVIDENT FUND BOARD [SSH]	205	151,012	9.601
22 APR 2024 - 22 APR 2024	FRONTKN	EMPLOYEES PROVIDENT FUND BOARD [SSH]	1,529	150,807	9.588
19 APR 2024 - 19 APR 2024	FRONTKN	EMPLOYEES PROVIDENT FUND BOARD [SSH]	2,168	149,279	9.491
18 MAR 2024 - 18 APR 2024	FRONTKN	EMPLOYEES PROVIDENT FUND BOARD [SSH]	339	147,110	9.353
17 APR 2024 - 17 APR 2024	FRONTKN	EMPLOYEES PROVIDENT FUND BOARD [SSH]	600	146,771	9.331
23 APR 2024 - 23 APR 2024	GAMUDA	EMPLOYEES PROVIDENT FUND BOARD (EPF BOARD) [SSH]	-2,760	247,323	8.93
22 APR 2024 - 22 APR 2024	GAMUDA	EMPLOYEES PROVIDENT FUND BOARD (EPF BOARD) [SSH]	403	250,083	9.03
19 APR 2024 - 19 APR 2024	GAMUDA	EMPLOYEES PROVIDENT FUND BOARD (EPF BOARD) [SSH]	93	249,680	9.02
18 APR 2024 - 18 APR 2024	GAMUDA	EMPLOYEES PROVIDENT FUND BOARD (EPF BOARD) [SSH]	-1,698	249,587	9.01
17 APR 2024 - 17 APR 2024	GAMUDA	EMPLOYEES PROVIDENT FUND BOARD (EPF BOARD) [SSH]	438	251,285	9.07
23 APR 2024 - 23 APR 2024	GASMSIA	EMPLOYEES PROVIDENT FUND BOARD [SSH]	-391	70,732	5.508
24 APR 2024 - 24 APR 2024	GBAY	MR PETER LING EE KONG [DIR/CEO]	10	10,530	12.944
24 APR 2024 - 24 APR 2024	GBAY	MR PETER LING EE KONG [SSH]	10	10,530	12.944
23 APR 2024 - 23 APR 2024	GBAY	MR PETER LING EE KONG [DIR/CEO]	4	10,520	12.931
23 APR 2024 - 23 APR 2024	GBAY	MR PETER LING EE KONG [SSH]	4	10,520	12.931
19 APR 2024 - 19 APR 2024	GBAY	MR PETER LING EE KONG [DIR/CEO]	5	10,516	12.926
19 APR 2024 - 19 APR 2024	GBAY	MR PETER LING EE KONG [SSH]	5	10,516	12.926
23 APR 2024 - 23 APR 2024	GCAP	BAN-SENG PACKAGING SDN BHD [SSH]	177	19,600	6.03
23 APR 2024 - 23 APR 2024	GCAP	MR LEE POH HIN [SSH]	177	45,326	13.938
23 APR 2024 - 23 APR 2024	GCAP	MR LEE YEE LONG [SSH]	177	42,938	13.202
24 APR 2024 - 24 APR 2024	GCB	MR HIA CHENG [DIR/CEO]	100	79,272	6.749
24 APR 2024 - 24 APR 2024	GCB	MR HIA CHENG [SSH]	100	79,272	6.749
19 APR 2024 - 23 APR 2024	GCB	MR HIA CHENG [DIR/CEO]	280	79,172	6.741
19 APR 2024 - 23 APR 2024	GCB	MR HIA CHENG [SSH]	280	79,172	6.741
24 APR 2024 - 24 APR 2024	GENP	KUMPULAN WANG PERSARAAN (DIPERBADANKAN) [SSH]	-130	67,213	7.492
19 APR 2024 - 19 APR 2024	GLOMAC	SHAPADU CAPITAL SDN. BHD. [SSH]	119	89,110	11.61
19 APR 2024 - 19 APR 2024	GREENYB	GREENYIELD HOLDINGS SDN. BHD. [SSH]	-12,000	229,432	42.308
19 APR 2024 - 19 APR 2024	GREENYB	MR THAM CHONG SING [SSH]	-12,000	232,709	42.912
19 APR 2024 - 19 APR 2024	GREENYB	MR THAM FAU SIN [SSH]	-12,000	232,409	42.856
19 APR 2024 - 19 APR 2024	GREENYB	MR THAM FOO CHOON [DIR/CEO]	-12,000	256,949	47.383
19 APR 2024 - 19 APR 2024	GREENYB	MR THAM FOO CHOON [SSH]	-12,000	256,949	47.383
19 APR 2024 - 19 APR 2024	GREENYB	MR THAM FOO KEONG [DIR/CEO]	-12,000	313,588	57.826
19 APR 2024 - 19 APR 2024	GREENYB	MR THAM FOO KEONG [SSH]	-12,000	313,588	57.826
22 APR 2024 - 22 APR 2024	HARNLEN	LNH ENTERPRISE SDN. BHD. [SSH]	-7,500	137,692	24.43
22 APR 2024 - 22 APR 2024	HARNLEN	MR LOW KOK YAOW [DIR/CEO]	-7,500	292,534	51.902
22 APR 2024 - 22 APR 2024	HARNLEN	MR LOW KOK YAOW [SSH]	-7,500	292,534	51.902
22 APR 2024 - 22 APR 2024	HARNLEN	MR LOW KOK YONG [SSH]	-7,500	293,529	52.079
22 APR 2024 - 22 APR 2024	HARNLEN	MR LOW KUECK SHIN [DIR/CEO]	-7,500	280,847	49.829
22 APR 2024 - 22 APR 2024	HARNLEN	MR LOW KUECK SHIN [SSH]	-7,500	280,717	49.806
22 APR 2024 - 22 APR 2024	HARNLEN	MR LOW KUEK KONG [DIR/CEO]	-7,500	280,467	49.761
22 APR 2024 - 22 APR 2024	HARNLEN	MR LOW KUEK KONG [SSH]	-7,500	280,717	49.761
22 APR 2024 - 22 APR 2024	HARNLEN	MR LOW KWEEK LEE [DIR/CEO]	-7,500	280,677	49.798
22 APR 2024 - 22 APR 2024	HARNLEN	MR LOW KWEEK LEE [SSH]	-7,500	280,677	49.798
22 APR 2024 - 22 APR 2024	HARNLEN	MR LOW QUEK KIONG [DIR/CEO]	-7,500	316,391	56.135
22 APR 2024 - 22 APR 2024	HARNLEN	MR LOW QUEK KIONG [SSH]	-7,500	308,711	54.772

Notice Period is 21st Apr 2024 – 27th Apr 2024

Effective Change Date	Stock Name	Buyer/ Seller Name [Classification]	Bought / (Sold) ('000)	No. of Shares After Trade ('000)	
			Total	Total	% Held
22 APR 2024 - 22 APR 2024	HARNLEN	PUAN SRI DATIN CHAN PUI LEORN [DIR/CEO]	-7,500	293,561	52.084
22 APR 2024 - 22 APR 2024	HARNLEN	PUAN SRI DATIN CHAN PUI LEORN [SSH]	-7,500	293,561	52.084
22 APR 2024 - 22 APR 2024	HARNLEN	TAN SRI LOW NAM HUI [SSH]	-7,500	279,677	49.621
23 APR 2024 - 23 APR 2024	HLBANK	EMPLOYEES PROVIDENT FUND BOARD [SSH]	259	201,976	9.68
22 APR 2024 - 22 APR 2024	HLBANK	EMPLOYEES PROVIDENT FUND BOARD [SSH]	3	201,718	9.667
19 APR 2024 - 19 APR 2024	HLBANK	EMPLOYEES PROVIDENT FUND BOARD [SSH]	119	201,715	9.667
18 APR 2024 - 18 APR 2024	HLBANK	EMPLOYEES PROVIDENT FUND BOARD [SSH]	156	201,596	9.661
22 APR 2024 - 22 APR 2024	ICON	LIANNEX CORPORATION (S) PTE LTD [SSH]	0.084	272,000	50.218
22 APR 2024 - 22 APR 2024	ICON	LIANNEX MARITIME SDN. BHD. [SSH]	0.084	272,000	50.218
22 APR 2024 - 22 APR 2024	ICON	LIM HAN WENG [SSH]	0.084	272,000	50.218
22 APR 2024 - 22 APR 2024	ICONIC	DATO' SERI TAN KEAN TET [DIR/CEO]	470,588	617,360	36.594
22 APR 2024 - 22 APR 2024	ICONIC	DATO' SERI TAN KEAN TET [SSH]	470,588	617,360	36.594
22 APR 2024 - 22 APR 2024	ICONIC	MODERN REWARDS SDN BHD [SSH]	134,882	192,207	11.393
22 APR 2024 - 22 APR 2024	ICONIC-WA	DATO' SERI TAN KEAN TET [DIR/CEO]	313,725	313,725	41.841
24 APR 2024 - 25 APR 2024	IGBB	TAN CHIN NAM SDN BHD ("TCNSB") [SSH]	1,451	662,936	49.315
23 APR 2024 - 23 APR 2024	IGBB	HSBC ASIA HOLDINGS LIMITED (HAHO) [SSH]	-4,261	103,771	7.719
23 APR 2024 - 23 APR 2024	IGBB	HSBC HOLDINGS PLC (HGHC) [SSH]	-4,261	103,771	7.719
23 APR 2024 - 23 APR 2024	IGBB	HSBC INTERNATIONAL TRUSTEE (HOLDINGS) PTE. LTD. (HTHL) [SSH]	-4,261	103,771	7.719
23 APR 2024 - 23 APR 2024	IGBB	HSBC INTERNATIONAL TRUSTEE LIMITED (HKIT) [SSH]	-4,261	103,771	7.719
23 APR 2024 - 23 APR 2024	IGBB	THE HONGKONG AND SHANGHAI BANKING CORPORATION LIMITED (HBAP) [SSH]	-4,261	103,771	7.719
22 APR 2024 - 23 APR 2024	IGBB	TAN CHIN NAM SDN BHD ("TCNSB") [SSH]	1,754	661,486	49.207
18 APR 2024 - 18 APR 2024	IGBB	HSBC ASIA HOLDINGS LIMITED (HAHO) [SSH]	-2,000	108,032	8.036
18 APR 2024 - 18 APR 2024	IGBB	HSBC HOLDINGS PLC (HGHC) [SSH]	-2,000	108,032	8.036
18 APR 2024 - 18 APR 2024	IGBB	HSBC INTERNATIONAL TRUSTEE (HOLDINGS) PTE. LTD. (HTHL) [SSH]	-2,000	108,032	8.036
18 APR 2024 - 18 APR 2024	IGBB	HSBC INTERNATIONAL TRUSTEE LIMITED (HKIT) [SSH]	-2,000	108,032	8.036
18 APR 2024 - 18 APR 2024	IGBB	THE HONGKONG AND SHANGHAI BANKING CORPORATION LIMITED (HBAP) [SSH]	-2,000	108,032	8.036
18 APR 2024 - 19 APR 2024	IGBB	TAN CHIN NAM SDN BHD ("TCNSB") [SSH]	692	659,732	49.004
22 APR 2024 - 22 APR 2024	IGBCR	DATO' SERI ROBERT TAN CHUNG MENG [DIR/CEO]	8,641	1,560,283	65.488
22 APR 2024 - 22 APR 2024	IGBCR	DATO' SERI ROBERT TAN CHUNG MENG [SSH]	8,641	1,560,283	65.488
22 APR 2024 - 22 APR 2024	IGBCR	IGB BERHAD [SSH]	8,641	1,275,139	53.52
22 APR 2024 - 22 APR 2024	IGBCR	MISS PAULINE TAN SUAT MING [SSH]	8,641	1,549,180	65.022
22 APR 2024 - 22 APR 2024	IGBCR	MR TONY TAN CHOON KEAT [SSH]	8,641	1,544,953	64.845
22 APR 2024 - 22 APR 2024	IGBCR	TAN CHIN NAM SENDIRIAN BERHAD ("TCNSB") [SSH]	8,641	1,660,575	69.697
22 APR 2024 - 22 APR 2024	IGBCR	TAN KIM YEOW SENDIRIAN BERHAD ("TKYSB") [SSH]	8,641	1,544,953	64.845
22 APR 2024 - 22 APR 2024	IGBCR	WAH SEONG (MALAYA) TRADING CO. SDN BHD [SSH]	8,641	1,477,217	62.001
25 APR 2024 - 25 APR 2024	IGBREIT	KUMPULAN WANG PERSARAAN (DEPERBADANKAN) [SSH]	-121	248,863	6.895
23 APR 2024 - 23 APR 2024	IGBREIT	EMPLOYEES PROVIDENT FUND BOARD ("EPF BOARD") [SSH]	210	417,576	11.568
24 APR 2024 - 24 APR 2024	IGBREIT	KUMPULAN WANG PERSARAAN (DEPERBADANKAN) [SSH]	-280	248,984	6.899
22 APR 2024 - 22 APR 2024	IGBREIT	EMPLOYEES PROVIDENT FUND BOARD ("EPF BOARD") [SSH]	-390	417,366	11.564
23 APR 2024 - 23 APR 2024	IGBREIT	KUMPULAN WANG PERSARAAN (DEPERBADANKAN) [SSH]	-194	249,264	6.907
19 APR 2024 - 19 APR 2024	IGBREIT	EMPLOYEES PROVIDENT FUND BOARD ("EPF BOARD") [SSH]	-685	417,756	11.575
22 APR 2024 - 22 APR 2024	IGBREIT	DATO SERI ROBERT TAN CHUNG MENG [DIR/CEO]	3,826	1,974,755	54.714
22 APR 2024 - 22 APR 2024	IGBREIT	DATO SERI ROBERT TAN CHUNG MENG [SSH]	3,826	1,974,755	54.714
22 APR 2024 - 22 APR 2024	IGBREIT	IGB BERHAD [SSH]	3,826	1,943,392	53.845
22 APR 2024 - 22 APR 2024	IGBREIT	IGB REIT MANAGEMENT SDN BHD [SSH]	3,826	209,229	5.797
22 APR 2024 - 22 APR 2024	IGBREIT	KUMPULAN WANG PERSARAAN (DEPERBADANKAN) [SSH]	-390	249,458	6.912
22 APR 2024 - 22 APR 2024	IGBREIT	MADAM PAULINE TAN SUAT MING [SSH]	3,826	1,958,482	54.263
22 APR 2024 - 22 APR 2024	IGBREIT	MR TONY TAN CHOON KEAT [SSH]	3,826	1,959,482	54.291
22 APR 2024 - 22 APR 2024	IGBREIT	TAN CHIN NAM SENDIRIAN BERHAD (TCNSB) [SSH]	3,826	1,952,531	54.098
22 APR 2024 - 22 APR 2024	IGBREIT	TAN KIM YEOW SENDIRIAN BERHAD [SSH]	3,826	1,958,48	

Notice Period is 21st Apr 2024 – 27th Apr 2024

Effective Change Date	Stock Name	Buyer/ Seller Name [Classification]	Bought / Sold ('000)		No. of Shares After Trade ('000)	
			Total	Total	% Held	% Held
17 APR 2024 - 17 APR 2024	IOICORP	EMPLOYEES PROVIDENT FUND BOARD [SSH]	1,636	738,084	11.897	
22 APR 2024 - 22 APR 2024	IOIPG	EMPLOYEES PROVIDENT FUND BOARD [SSH]	1,207	369,205	6.705	
22 APR 2024 - 23 APR 2024	IOIPG	MR LEE YEOW SENG [DIR/CEO]	-19,450	3,747,278	68.056	
22 APR 2024 - 23 APR 2024	IOIPG	MR LEE YEOW SENG [SSH]	-19,450	3,747,278	68.056	
19 APR 2024 - 19 APR 2024	IOIPG	EMPLOYEES PROVIDENT FUND BOARD [SSH]	1,665	367,639	6.677	
18 APR 2024 - 18 APR 2024	IOIPG	EMPLOYEES PROVIDENT FUND BOARD [SSH]	1,550	365,974	6.647	
18 APR 2024 - 18 APR 2024	IOIPG	MR LEE YEOW SENG [DIR/CEO]	-1,508	3,766,728	68.409	
18 APR 2024 - 18 APR 2024	IOIPG	MR LEE YEOW SENG [SSH]	-1,508	3,766,728	68.409	
17 APR 2024 - 17 APR 2024	IOIPG	EMPLOYEES PROVIDENT FUND BOARD [SSH]	449	364,424	6.618	
23 APR 2024 - 23 APR 2024	KAB	DATO' LAI KENG ONN [DIR/CEO]	4,256	616,051	31.01	
23 APR 2024 - 23 APR 2024	KAB	DATO' LAI KENG ONN [SSH]	4,256	616,051	31.01	
19 APR 2024 - 19 APR 2024	KAREX	DATO' SIEW MUN WAI (EDWARD) [DIR/CEO]	50	50	0.005	
19 APR 2024 - 19 APR 2024	KERJAYA	EMPLOYEES PROVIDENT FUND BOARD [SSH]	135	72,504	5.749	
18 APR 2024 - 18 APR 2024	KERJAYA	EMPLOYEES PROVIDENT FUND BOARD [SSH]	161	72,369	5.739	
17 APR 2024 - 17 APR 2024	KERJAYA	EMPLOYEES PROVIDENT FUND BOARD [SSH]	402	72,208	5.726	
22 APR 2024 - 22 APR 2024	KEYFIELD	MR LIM CHEE HWA [DIR/CEO]	-50	350	0.05	
22 APR 2024 - 22 APR 2024	KEYFIELD	PUAN HAIDA SHENNY BINTI HAZRI [DIR/CEO]	-135	165	0.022	
22 APR 2024 - 22 APR 2024	KEYFIELD	PUAN JULANNAR BINTI ABD KADIR [DIR/CEO]	-50	250	0.03	
22 APR 2024 - 22 APR 2024	KEYFIELD	MR CHIA CHEE HOONG [DIR/CEO]	-100	200	0.03	
22 APR 2024 - 22 APR 2024	KEYFIELD	DATO' KEE CHIT HUEI [DIR/CEO]	2,800	2,800	10	
22 APR 2024 - 22 APR 2024	KEYFIELD	ENCIK MOHD ERWAN BIN AHMAD [DIR/CEO]	2,800	2,800	10	
22 APR 2024 - 22 APR 2024	KEYFIELD	MR CHIA CHEE HOONG [DIR/CEO]	500	500	1.79	
22 APR 2024 - 22 APR 2024	KEYFIELD	MR LIM CHEE HWA [DIR/CEO]	500	500	1.79	
22 APR 2024 - 22 APR 2024	KEYFIELD	PUAN HAIDA SHENNY BINTI HAZRI [DIR/CEO]	500	500	1.79	
22 APR 2024 - 22 APR 2024	KEYFIELD	PUAN JULANNAR BINTI ABD KADIR [DIR/CEO]	500	500	1.79	
17 APR 2024 - 17 APR 2024	KEYFIELD	DATIN OOI SOO PING [SSH]	1,500	215,943	26.99	
17 APR 2024 - 17 APR 2024	KEYFIELD	DATO' KEE CHIT HUEI [DIR/CEO]	1,500	215,943	26.99	
17 APR 2024 - 17 APR 2024	KEYFIELD	DATO' KEE CHIT HUEI [SSH]	1,500	215,943	26.99	
17 APR 2024 - 17 APR 2024	KEYFIELD	ENCIK MOHD ERWAN BIN AHMAD [DIR/CEO]	1,000	80,610	10.08	
17 APR 2024 - 17 APR 2024	KEYFIELD	ENCIK MOHD ERWAN BIN AHMAD [SSH]	1,000	80,610	10.08	
17 APR 2024 - 17 APR 2024	KEYFIELD	LAVIN GROUP SDN. BHD. [SSH]	80,000	216,182	27.02	
17 APR 2024 - 17 APR 2024	KEYFIELD	MR CALVIN LAU CHUEN YIEN [SSH]	80,000	216,182	27.02	
17 APR 2024 - 17 APR 2024	KEYFIELD	MR CHIA CHEE HOONG [DIR/CEO]	300	300	0.04	
17 APR 2024 - 17 APR 2024	KEYFIELD	MR LIM CHEE HWA [DIR/CEO]	400	400	0.05	
17 APR 2024 - 17 APR 2024	KEYFIELD	PUAN HAIDA SHENNY BINTI HAZRI [DIR/CEO]	300	300	0.04	
17 APR 2024 - 17 APR 2024	KEYFIELD	PUAN JULANNAR BINTI ABD KADIR [DIR/CEO]	300	300	0.04	
09 AUG 2023 - 09 AUG 2023	KGW	YM TENGGU FAIZWA BINTI TENGGU RAZIF [DIR/CEO]	50	550	0.114	
23 APR 2024 - 23 APR 2024	KHEESAN	ASIA CAPITAL ASSETS LIMITED [SSH]	2,794	31,674	23.073	
23 APR 2024 - 23 APR 2024	KHEESAN	DATO' SRI NGU TIENG UNG [SSH]	2,794	31,794	23.16	
23 APR 2024 - 23 APR 2024	KHEESAN	TIMUR ENTERPRISE SDN BHD [SSH]	2,794	31,674	23.073	
19 APR 2024 - 19 APR 2024	KHEESAN	DATO' NG MENG KEE [SSH]	-1,000	9,052	6.594	
23 APR 2024 - 23 APR 2024	KLCC	EMPLOYEES PROVIDENT FUND BOARD [SSH]	210	189,034	10.471	
23 APR 2024 - 23 APR 2024	KLCC	EMPLOYEES PROVIDENT FUND BOARD [SSH]	210	189,034	10.471	
17 APR 2024 - 17 APR 2024	KLCC	EMPLOYEES PROVIDENT FUND BOARD [SSH]	-2	188,824	10.459	
17 APR 2024 - 17 APR 2024	KLCC	EMPLOYEES PROVIDENT FUND BOARD [SSH]	-2	188,824	10.459	
23 APR 2024 - 23 APR 2024	KLK	EMPLOYEES PROVIDENT FUND BOARD [SSH]	1,000	140,471	12.812	
22 APR 2024 - 22 APR 2024	KLK	EMPLOYEES PROVIDENT FUND BOARD [SSH]	323	139,471	12.721	
19 APR 2024 - 19 APR 2024	KLK	EMPLOYEES PROVIDENT FUND BOARD [SSH]	41	139,147	12.691	
18 APR 2024 - 18 APR 2024	KLK	EMPLOYEES PROVIDENT FUND BOARD [SSH]	186	139,107	12.688	
17 APR 2024 - 17 APR 2024	KLK	EMPLOYEES PROVIDENT FUND BOARD [SSH]	178	138,921	12.671	
23 APR 2024 - 23 APR 2024	KOSSAN	EMPLOYEES PROVIDENT FUND BOARD [SSH]	-900	140,756	5.516	
22 APR 2024 - 22 APR 2024	KOSSAN	EMPLOYEES PROVIDENT FUND BOARD [SSH]	-723	141,656	5.552	
23 APR 2024 - 23 APR 2024	LBS	TAN SRI DATO' SRI IR. (DR.) LIM HOCK SAN JP [DIR/CEO]	100	613,072	39.679	
23 APR 2024 - 23 APR 2024	LBS	TAN SRI DATO' SRI IR. (DR.) LIM HOCK SAN JP [SSH]	100	608,319	39.372	
19 APR 2024 - 19 APR 2024	LBS	TAN SRI DATO' SRI IR. (DR.) LIM HOCK SAN JP [DIR/CEO]	50	612,972	39.671	
19 APR 2024 - 19 APR 2024	LBS	TAN SRI DATO' SRI IR. (DR.) LIM HOCK SAN JP [SSH]	50	608,219	39.363	
18 APR 2024 - 22 APR 2024	LSTEEL	DATIN TAN PAK SAY [DIR/CEO]	2,951	71,621	46.347	
18 APR 2024 - 22 APR 2024	LSTEEL	DATIN TAN PAK SAY [SSH]	2,951	71,621	46.347	
18 APR 2024 - 22 APR 2024	LSTEEL	DATO' GOH CHENG HUAT [DIR/CEO]	2,951	71,621	46.347	
18 APR 2024 - 22 APR 2024	LSTEEL	DATO' GOH CHENG HUAT [SSH]	2,951	71,621	46.347	
19 APR 2024 - 19 APR 2024	M&A	CIK SITI NUR AISHAH BINTI ISHAK [SSH]	1,000	104,296	5.218	
23 APR 2024 - 23 APR 2024	MAG	MR MELVIN LIM CHUN WOEI [DIR/CEO]	-1,000	1,718	0.607	
25 APR 2024 - 25 APR 2024	MALAKOF	KUMPULAN WANG PERSARAAN (DIPERBADANKAN) ("KWAP") [SSH]	1,100	461,352	9.44	
23 APR 2024 - 23 APR 2024	MALAKOF	KUMPULAN WANG PERSARAAN (DIPERBADANKAN) ("KWAP") [SSH]	1,615	460,252	9.418	
22 APR 2024 - 22 APR 2024	MALAKOF	KUMPULAN WANG PERSARAAN (DIPERBADANKAN) ("KWAP") [SSH]	866	458,637	9.384	
24 APR 2024 - 24 APR 2024	MAYBANK	AMANAHRAYA TRUSTEES BERHAD - AMANAH SAHAM BUMIPUTERA [SSH]	-3,391	3,684,419	30.533	
23 APR 2024 - 23 APR 2024	MAYBANK	EMPLOYEES PROVIDENT FUND BOARD [SSH]	91	1,469,353	12.177	
22 APR 2024 - 22 APR 2024	MAYBANK	EMPLOYEES PROVIDENT FUND BOARD [SSH]	2,626	1,469,262	12.176	
19 APR 2024 - 19 APR 2024	MAYBANK	EMPLOYEES PROVIDENT FUND BOARD [SSH]	8,190	1,466,636	12.154	
18 APR 2024 - 18 APR 2024	MAYBANK	EMPLOYEES PROVIDENT FUND BOARD [SSH]	272	1,458,446	12.086	
17 APR 2024 - 17 APR 2024	MAYBANK	EMPLOYEES PROVIDENT FUND BOARD [SSH]	-770	1,458,174	12.084	
23 APR 2024 - 23 APR 2024	MBRIGHT-WB	MR LEE CHEE KIANG [DIR/CEO]	-25,000	21,869	3.068	
19 APR 2024 - 19 APR 2024	MCEMENT	PUAN SRI DATIN TAN KAI YONG @ TAN KAY NEONG [SSH]	3,000	1,032,616	78.476	
19 APR 2024 - 19 APR 2024	MCEMENT	TAN SRI (SIR) FRANCIS YEOH SOCK PING [DIR/CEO]	-3,000	500	0.038	
19 APR 2024 - 19 APR 2024	MCEMENT	YEOH TIONG LAY & SONS FAMILY HOLDINGS LIMITED [SSH]	3,000	1,032,616	78.476	
19 APR 2024 - 19 APR 2024	MCEMENT	YEOH TIONG LAY & SONS HOLDINGS SDN BHD [SSH]	3,000	1,032,616	78.476	
19 APR 2024 - 19 APR 2024	MCEMENT	YEOH TIONG LAY & SONS TRUST COMPANY LIMITED [SSH]	3,000	1,032,616	78.476	
22 APR 2024 - 22 APR 2024	MESTRON	MR LOON CHIN SENG [DIR/CEO]	-4,050	204,253	20.41	
22 APR 2024 - 22 APR 2024	MESTRON	MR LOON CHIN SENG [SSH]	-4,050	204,253	20.41	
22 APR 2024 - 22 APR 2024	MESTRON	MR POR TEONG ENG [DIR/CEO]	-3,950	157,487	15.737	

Notice Period is 21st Apr 2024 – 27th Apr 2024

Effective Change Date	Stock Name	Buyer/ Seller Name [Classification]	Bought / Sold ('000)		No. of Shares After Trade ('000)	
			Total	Total	% Held	% Held
22 APR 2024 - 22 APR 2024	MESTRON	MR POR TEONG ENG [SSH]	-3,950	157,487	28.241	
19 APR 2024 - 19 APR 2024	MESTRON	DATO' TEO CHEE HONG [SSH]	104,000	104,000	10.392	
19 APR 2024 - 19 APR 2024	MESTRON	MR LOON CHIN SENG [DIR/CEO]	-56,000	208,303	20.814	
19 APR 2024 - 19 APR 2024	MESTRON	MR LOON CHIN SENG [SSH]	-56,000	208,303	20.814	
19 APR 2024 - 19 APR 2024	MESTRON	MR POR TEONG ENG [DIR/CEO]	-56,000	161,437	16.131	
19 APR 2024 - 19 APR 2024	MESTRON	MR POR TEONG ENG [SSH]	-56,000	161,437	16.131	
25 APR 2024 - 25 APR 2024	MGB	TAN SRI DATO' SRI IR. (DR.) LIM HOCK SAN JP [DIR/CEO]	20	344,309	58.194	
25 APR 2024 - 25 APR 2024	MGB	TAN SRI DATO' SRI IR. (DR.) LIM HOCK SAN JP [SSH]	20	344,309	58.194	
24 APR 2024 - 24 APR 2024	MGB	TAN SRI DATO' SRI IR. (DR.) LIM HOCK SAN JP [DIR/CEO]	68	344,289	58.191	
24 APR 2024 - 24 APR 2024	MGB	TAN SRI DATO' SRI IR. (DR.) LIM HOCK SAN JP [SSH]	68	344,289	58.191	
19 APR 2024 - 19 APR 2024	MICROLN	OMESTI BERHAD [SSH]	-5,500	347,867	32.438	
19 APR 2024 - 19 APR 2024	MICROLN	OMESTI HOLDINGS BERHAD [SSH]	-5,500	347,867	32.438	
25 APR 2024 - 25 APR 2024	MISC	KUMPULAN WANG PERSARAAN (DIPERBADANKAN) (KWAP) [SSH]	-616	240,276	5.382	
23 APR 2024 - 23 APR 2024	MISC	EMPLOYEES PROVIDENT FUND BOARD [SSH]	548	536,160	12.011	
22 APR 2024 - 22 APR 2024	MISC	EMPLOYEES PROVIDENT FUND BOARD [SSH]	-49	535,612	11.999	
19 APR 2024 - 19 APR 2024	MISC	EMPLOYEES PROVIDENT FUND BOARD [SSH]	-1,315	535,661	12	
18 APR 2024 - 18 APR 2024	MISC	EMPLOYEES PROVIDENT FUND BOARD [SSH]	-511	536,976	12.03	
17 APR 2024 - 17 APR 2024	MISC	EMPLOYEES PROVIDENT FUND BOARD [SSH]	-977	537,487	12.041	
24 APR 2024 - 25 APR 2024	MNHLDG	DATO' SERI IR. BAHARIN BIN DIN [DIR/CEO]	110	110	0.025	
23 APR 2024 - 23 APR 2024	MRDIY	EMPLOYEES PROVIDENT FUND BOARD [SSH]	994	552,794	5.851	
22 APR 2024 - 22 APR 2024	MRDIY	EMPLOYEES PROVIDENT FUND BOARD [SSH]	2,918	551,800	5.84	
19 APR 2024 - 19 APR 2024	MRDIY	EMPLOYEES PROVIDENT FUND BOARD [SSH]	3,000	548,882	5.809	
09 APR 2024 - 09 APR 2024	MUDA	MISS LIM YEN WEE [DIR/CEO]	-39	119,395	39.139	
09 APR 2024 - 09 APR 2024	MUDA	MISS LIM YEN WEE [SSH]	-39	119,395	39.139	
25 APR 2024 - 25 APR 2024	MYEG	KUMPULAN WANG PERSARAAN (DIPERBADANKAN) [SSH]	1,000	551,537	7.394	
23 APR 2024 - 23 APR 2024	MYEG	EMPLOYEES PROVIDENT FUND BOARD [SSH]	4,375	412,609	5.532	
24 APR 2024 - 24 APR 2024	MYEG	KUMPULAN WANG PERSARAAN (DIPERBADANKAN) [SSH]	1,500	550,537	7.381	
22 APR 2024 - 22 APR 2024	MYEG	EMPLOYEES PROVIDENT FUND BOARD [SSH]	4,131	408,234	5.473	
23 APR 2024 - 23 APR 2024	MYEG	KUMPULAN WANG PERSARAAN (DIPERBADANKAN) [SSH]	2,100	549,037	7.361	
19 APR 2024 - 19 APR 2024	MYEG	EMPLOYEES PROVIDENT FUND BOARD [SSH]	9,010	404,103	5.418	
22 APR 2024 - 22 APR 2024	MYEG	KUMPULAN WANG PERSARAAN (DIPERBADANKAN) [SSH]	1,983	546,937	7.333	
18 APR 2024 - 18 APR 2024	MYEG	EMPLOYEES PROVIDENT FUND BOARD [SSH]	869	395,093	5.297	
19 APR 2024 - 19 APR 2024	MYEG	KUMPULAN WANG PERSARAAN (DIPERBADANKAN) [SSH]	3,000	544,954	7.306	
17 APR 2024 - 17 APR 2024	MYEG	EMPLOYEES PROVIDENT FUND BOARD [SSH]	5,122	394,224	5.285	
24 APR 2024 - 24 APR 2024	NATGATE	MR LEE KIM SAN [DIR/CEO]	-171	15,300	0.738	
19 APR 2024 - 19 APR 2024	NCT	DATUK SERI CHIAU BENG TEIK [SSH]	950	133,665	8.573	
23 APR 2024 - 23 APR 2024	NESTLE	EMPLOYEES PROVIDENT FUND BOARD [SSH]	129	26,009	11.091	
22 APR 2024 - 22 APR 2024	NESTLE	EMPLOYEES PROVIDENT FUND BOARD [SSH]	6	25,880	11.036	
19 APR 2024 - 19 APR 2024	NESTLE	EMPLOYEES PROVIDENT FUND BOARD [SSH]	164	25,873	11.033	
18 APR 2024 - 18 APR 2024	NESTLE	EMPLOYEES PROVIDENT FUND BOARD [SSH]	191	25,711	10.964	
17 APR 2024 - 17 APR 2024	NESTLE	EMPLOYEES PROVIDENT FUND BOARD [SSH]	148	25,514	10.88	
23 APR 2024 - 23 APR 2024	NEXGRAM	RFC HOLDINGS SDN BHD [SSH]	23,851	135,715	16.017	
24 APR 2024 - 24 APR 2024	NIHSIN	MISS KHOO WAN RU [DIR/CEO]	155	9,795	18.709	
24 APR 2024 - 24 APR 2024	NIHSIN	MR KHOO CHEE KONG [SSH]	155	9,795	18.709	
23 APR 2024 - 23 APR 2024	NIHSIN	ENCIK SOFIYAN BIN YAHYA [DIR/CEO]	12	17,991	3.436	
19 APR 2024 - 19 APR 2024	NIHSIN	ENCIK SOFIYAN BIN YAHYA [DIR/CEO]	290	17,979	3.433	
18 APR 2024 - 18 APR 2024	OCNCASH	MISS CHEN LEE CHEW [SSH]	30	138,477	53.098	
18 APR 2024 - 18 APR 2024	OCNCASH	MR TAN SIEW CHIN [DIR/CEO]	30	138,477	53.098	
18 APR 2024 - 18 APR 2024	OCNCASH	MR TAN SIEW CHIN [SSH]	30	138,477	53.098	
23 APR 2024 - 25 APR 2024	OLYMPIA	DATO' SRI YAP WEE KEAT [DIR/CEO]	698	543,424	53.094	
23 APR 2024 - 25 APR 2024	OLYMPIA	DATO' SRI YAP WEE KEAT [SSH]	698	543,424	53.094	
23 APR 2024 - 25 APR 2024	OLYMPIA	DATUK YAP WEE CHUN [SSH]	698	543,379	53.09	
23 APR 2024 - 25 APR 2024	OLYMPIA	DUTA EQUITIES SDN BHD [SSH]	698	543,379	53.09	
23 APR 2024 - 25 APR 2024	OLYMPIA	TAN SRI DATO' YAP YONG SEONG [DIR/CEO]	698	543,435	53.095	
23 APR 2024 - 25 APR 2024	OLYMPIA</					

Notice Period is 21st Apr 2024 – 27th Apr 2024

Effective Change Date	Stock Name	Buyer/ Seller Name [Classification]	Bought / (Sold) ['000]		No. of Shares After Trade ['000]	
			Total	% Held	Total	% Held
17 APR 2024 - 17 APR 2024	PESTECH	MR LIM AH HOCK [SSH]	-11,000		235787	23.948
23 APR 2024 - 23 APR 2024	PETGAS	EMPLOYEES PROVIDENT FUND BOARD [SSH]	295		255443	12.909
22 APR 2024 - 22 APR 2024	PETGAS	EMPLOYEES PROVIDENT FUND BOARD [SSH]	-158		255149	12.895
19 APR 2024 - 19 APR 2024	PETGAS	EMPLOYEES PROVIDENT FUND BOARD [SSH]	-222		255306	12.903
18 APR 2024 - 18 APR 2024	PETGAS	EMPLOYEES PROVIDENT FUND BOARD [SSH]	-302		255528	12.914
17 APR 2024 - 17 APR 2024	PETGAS	EMPLOYEES PROVIDENT FUND BOARD [SSH]	-854		255831	12.929
25 APR 2024 - 25 APR 2024	PGF	EQUAPLUS SDN BHD [SSH]	-5,400		61837	37.619
25 APR 2024 - 25 APR 2024	PGF	MR FONG WAH KAI [DIR/CEO]	-5,400		68619	41.749
25 APR 2024 - 25 APR 2024	PGF	MR FONG WAH KAI [SSH]	-5,400		68619	41.749
24 APR 2024 - 24 APR 2024	PLINTAS	PROJEK LINTASAN KOTA HOLDINGS SDN BHD [SSH]	174		561174	51.016
12 APR 2024 - 12 APR 2024	PMCORP	ENG FOOD HOLDINGS PTE LTD [SSH]	111,127		174240	19.741
12 APR 2024 - 12 APR 2024	PMCORP	INTER MARK RESOURCES SDN BHD [SSH]	111,127		174240	19.741
12 APR 2024 - 12 APR 2024	PMCORP	MR ANG CHOON YAN @ GEORGE ANG [SSH]	111,127		180419	20.441
19 APR 2024 - 19 APR 2024	PMHLDG	EXSIM HOSPITALITY HOLDINGS SDN BHD [SSH]	44		612167	65.905
19 APR 2024 - 19 APR 2024	PMHLDG	MR LIM AIK FU [SSH]	44		612167	65.905
19 APR 2024 - 19 APR 2024	PMHLDG	MR LIM AIK HOE [SSH]	44		612167	65.905
19 APR 2024 - 19 APR 2024	PMHLDG	MR LIM AIK KIAT [SSH]	44		612167	65.905
23 APR 2024 - 23 APR 2024	PPB	EMPLOYEES PROVIDENT FUND BOARD [SSH]	1,000		154499	10.86
22 APR 2024 - 22 APR 2024	PPB	EMPLOYEES PROVIDENT FUND BOARD [SSH]	216		153499	10.79
19 APR 2024 - 19 APR 2024	PPB	EMPLOYEES PROVIDENT FUND BOARD [SSH]	510		153282	10.775
18 APR 2024 - 18 APR 2024	PPB	EMPLOYEES PROVIDENT FUND BOARD [SSH]	232		152787	10.74
17 APR 2024 - 17 APR 2024	PPB	EMPLOYEES PROVIDENT FUND BOARD [SSH]	339		152565	10.724
22 APR 2024 - 22 APR 2024	RAMSSOL	MISS LEE MIEW LAN [SSH]	-7,111		18681	5.857
22 APR 2024 - 22 APR 2024	RAMSSOL	MISS LEE MIEW LAN [SSH]	-7,111		18681	5.857
22 APR 2024 - 22 APR 2024	RGTECH	MR TEVANAIGAM RANDY CHITTY [DIR/CEO]	30		2180	0.415
23 APR 2024 - 23 APR 2024	RHBBANK	EMPLOYEES PROVIDENT FUND BOARD [SSH]	-1,962		1731814	40.403
22 APR 2024 - 22 APR 2024	RHBBANK	EMPLOYEES PROVIDENT FUND BOARD [SSH]	814		1733776	40.449
23 APR 2024 - 23 APR 2024	RHBBANK	KUMPULAN WANG PERSARAAN (DIPERBADANKAN) [SSH]	1,100		253885	5.923
19 APR 2024 - 19 APR 2024	RHBBANK	EMPLOYEES PROVIDENT FUND BOARD [SSH]	6,000		1732962	40.43
18 APR 2024 - 18 APR 2024	RHBBANK	EMPLOYEES PROVIDENT FUND BOARD [SSH]	3,000		1726962	40.29
17 APR 2024 - 17 APR 2024	RHBBANK	EMPLOYEES PROVIDENT FUND BOARD [SSH]	-751		1723962	40.22
18 APR 2024 - 18 APR 2024	RSAWIT	MR TIONG CHIONG IE [DIR/CEO]	500		8584	0.42
23 APR 2024 - 24 APR 2024	SALCON	BERJAYA CAPITAL BERHAD [SSH]	400		118985	11.756
23 APR 2024 - 24 APR 2024	SALCON	BERJAYA CORPORATION BERHAD [SSH]	400		162515	16.057
23 APR 2024 - 24 APR 2024	SALCON	BERJAYA GROUP BERHAD [SSH]	400		162515	16.057
23 APR 2024 - 24 APR 2024	SALCON	BIZURAI BIJAK (M) SDN BHD [SSH]	400		118985	11.756
23 APR 2024 - 24 APR 2024	SALCON	INTER-PACIFIC CAPITAL SDN BHD [SSH]	400		118985	11.756
23 APR 2024 - 24 APR 2024	SALCON	JUARA SEJATI SDN BHD [SSH]	400		162515	16.057
19 APR 2024 - 22 APR 2024	SALCON	BERJAYA CAPITAL BERHAD [SSH]	1,880		118585	11.717
19 APR 2024 - 22 APR 2024	SALCON	BERJAYA CORPORATION BERHAD [SSH]	1,880		162115	16.018
19 APR 2024 - 22 APR 2024	SALCON	BERJAYA GROUP BERHAD [SSH]	1,880		162115	16.018
19 APR 2024 - 22 APR 2024	SALCON	BIZURAI BIJAK (M) SDN BHD [SSH]	1,880		118585	11.717
19 APR 2024 - 22 APR 2024	SALCON	INTER-PACIFIC CAPITAL SDN BHD [SSH]	1,880		118585	11.716
19 APR 2024 - 22 APR 2024	SALCON	JUARA SEJATI SDN BHD [SSH]	1,880		162115	16.018
23 APR 2024 - 23 APR 2024	SAM	ACCURON TECHNOLOGIES LIMITED [SSH]	-70,000		373995	55.244
23 APR 2024 - 23 APR 2024	SAM	SINGAPORE AEROSPACE MANUFACTURING PTE LTD ("SAM SINGAPORE") [SSH]	-70,000		373995	55.244
23 APR 2024 - 23 APR 2024	SAM	TEMASEK HOLDINGS (PRIVATE) LIMITED [SSH]	-70,000		373995	55.244
19 APR 2024 - 19 APR 2024	SCIENTX	MR LIM PENG CHEONG [DIR/CEO]	400		852333	54.944
19 APR 2024 - 19 APR 2024	SCIENTX	MR LIM PENG CHEONG [SSH]	400		846290	54.554
19 APR 2024 - 19 APR 2024	SCIENTX	MR LIM PENG JIN [DIR/CEO]	400		898479	57.919
19 APR 2024 - 19 APR 2024	SCIENTX	MR LIM PENG JIN [SSH]	400		898387	57.913
19 APR 2024 - 19 APR 2024	SCIENTX	SCIENTEX INFINITY SDN BHD [SSH]	400		714163	46.037
24 APR 2024 - 24 APR 2024	SCOMNET	MADAM WU HUEI-CHUNG [DIR/CEO]	-14,000		442377	53.877
24 APR 2024 - 24 APR 2024	SCOMNET	MADAM WU HUEI-CHUNG [SSH]	-14,000		442377	53.877
24 APR 2024 - 24 APR 2024	SCOMNET	MR HSUEH CHIH-YU [DIR/CEO]	-14,000		442377	53.877
24 APR 2024 - 24 APR 2024	SCOMNET	MR HSUEH CHIH-YU [SSH]	-14,000		442377	53.877
24 APR 2024 - 24 APR 2024	SCOMNET	MR SHIUE JONG-ZONE A.K.A. JAMES SHIUE [DIR/CEO]	-14,000		442377	53.877
24 APR 2024 - 24 APR 2024	SCOMNET	MR SHIUE JONG-ZONE A.K.A. JAMES SHIUE [SSH]	-14,000		442377	53.877
24 APR 2024 - 24 APR 2024	SCOMNET	MR SHIUE JYH-JEH @ JERRY [SSH]	-14,000		444207	54.1
24 APR 2024 - 24 APR 2024	SCOMNET	MR WU CHUNG-JUNG [DIR/CEO]	-14,000		442377	53.877
24 APR 2024 - 24 APR 2024	SCOMNET	MR WU CHUNG-JUNG [SSH]	-14,000		442377	53.877
23 APR 2024 - 24 APR 2024	SDRED	MISS TEH LIP KIM [DIR/CEO]	705		257772	60.492
23 APR 2024 - 24 APR 2024	SDRED	MISS TEH LIP KIM [SSH]	705		256889	60.284
23 APR 2024 - 23 APR 2024	SEAL	MR CHEN KHAI VOON [SSH]	20		128706	30.655
19 APR 2024 - 19 APR 2024	SEAL	MR CHEN KHAI VOON [SSH]	426		128686	30.65
24 APR 2024 - 24 APR 2024	SERNKOU	MR LOW PENG SIAN @ CHUA PENG SIAN [DIR/CEO]	565		263574	24.448
24 APR 2024 - 24 APR 2024	SERNKOU	MR LOW PENG SIAN @ CHUA PENG SIAN [SSH]	565		263574	24.448
24 APR 2024 - 24 APR 2024	SGBHD	MISS LAU MENG HONG [DIR/CEO]	-4,000		10447	9.031
23 APR 2024 - 23 APR 2024	SGBHD	MISS LAU MENG HONG [SSH]	-4,000		10447	9.031
23 APR 2024 - 25 APR 2024	SIGN	CHIN HIN GROUP BERHAD [SSH]	191,385		401077	63.192
23 APR 2024 - 25 APR 2024	SIGN	DATUK SERI CHIAU BENG TEIK JP [DIR/CEO]	191,385		401077	63.192
23 APR 2024 - 25 APR 2024	SIGN	DATUK SERI CHIAU BENG TEIK JP [SSH]	191,385		401077	63.192
23 APR 2024 - 25 APR 2024	SIGN	DIVINE INVENTIONS SDN BHD [SSH]	191,385		401077	63.192
23 APR 2024 - 25 APR 2024	SIGN	MR CHIAU HAW CHOON [DIR/CEO]	191,385		401077	63.192
23 APR 2024 - 25 APR 2024	SIGN	MR CHIAU HAW CHOON [SSH]	191,385		401077	63.192
23 APR 2024 - 25 APR 2024	SIGN	PP CHIN HIN REALTY SDN BHD [SSH]	191,385		401077	63.192
25 APR 2024 - 25 APR 2024	SIME	KUMPULAN WANG PERSARAAN (DIPERBADANKAN) [SSH]	-2,204		514101	7.543
23 APR 2024 - 23 APR 2024	SIME	EMPLOYEES PROVIDENT FUND BOARD [SSH]	7,509		980219	14.382
22 APR 2024 - 22 APR 2024	SIME	EMPLOYEES PROVIDENT FUND BOARD [SSH]	5,603		972711	14.272
19 APR 2024 - 19 APR 2024	SIME	EMPLOYEES PROVIDENT FUND BOARD [SSH]	12,210		967108	14.189

Notice Period is 21st Apr 2024 – 27th Apr 2024

Effective Change Date	Stock Name	Buyer/ Seller Name [Classification]	Bought / (Sold) ['000]		No. of Shares After Trade ['000]	
			Total	% Held	Total	% Held
17 APR 2024 - 18 APR 2024	SIME	EMPLOYEES PROVIDENT FUND BOARD [SSH]	-1,160		954898	14.01
19 APR 2024 - 19 APR 2024	SIMEPLT	EMPLOYEES PROVIDENT FUND BOARD [SSH]	160		1054810	15.252
17 APR 2024 - 18 APR 2024	SIMEPLT	EMPLOYEES PROVIDENT FUND BOARD [SSH]	610		1054650	15.25
25 APR 2024 - 25 APR 2024	SIMEPROP	KUMPULAN WANG PERSARAAN (DIPERBADANKAN) [SSH]	-163		448790	6.599
24 APR 2024 - 24 APR 2024	SIMEPROP	KUMPULAN WANG PERSARAAN (DIPERBADANKAN) [SSH]	-800		448953	6.601
19 APR 2024 - 19 APR 2024	SIMEPROP	KUMPULAN WANG PERSARAAN (DIPERBADANKAN) [SSH]	1,000		449753	6.613
23 APR 2024 - 23 APR 2024	SKPRES	EMPLOYEES PROVIDENT FUND BOARD [SSH]	2,501		149940	9.597
24 APR 2024 - 24 APR 2024	SKPRES	KUMPULAN WANG PERSARAAN (DIPERBADANKAN) [SSH]	155		142400	9.114
23 APR 2024 - 23 APR 2024	SKPRES	KUMPULAN WANG PERSARAAN (DIPERBADANKAN) [SSH]	435		142245	9.104
17 APR 2024 - 17 APR 2024	SKPRES	EMPLOYEES PROVIDENT FUND BOARD [SSH]	569		147438	9.437
19 APR 2024 - 19 APR 2024	SLVEST	DATIN SERI WONG MEE LENG [SSH]	-1,690		37310	5.562
19 APR 2024 - 19 APR 2024	SLVEST	DIVINE INVENTIONS SDN. BHD. [SSH]	-1,690		37310	5.562
19 APR 2024 - 19 APR 2024	SLVEST	MR CHIAU HAW CHOON [SSH]	-1,690		37310	5.562
19 APR 2024 - 19 APR 2024	SLVEST	PP CHIN HIN REALTY SDN. BHD. [SSH]	-1,690		37310	5.562
18 APR 2024 - 19 APR 2024	SLVEST	DATUK SERI CHIAU BENG TEIK [SSH]	-5,825		4138	6.159
22 APR 2024 - 22 APR 2024	SMETRIC	MR YONG KIM FUJ [DIR/CEO]	4,500		11386	1.973
22 APR 2024 - 22 APR 2024	SMETRIC	MR YONG KIM FUJ [DIR/CEO]	11,386		11386	1.973
24 APR 2024 - 25 APR 2024	SMILE	DATIN WONG CHIEN YUE [DIR/CEO]	180		126476	50.14
24 APR 2024 - 25 APR 2024	SMILE	DATIN WONG CHIEN YUE [SSH]	180		126476	50.14
24 APR 2024 - 25 APR 2024	SMILE	DATO DR WONG RUEN YUAN [SSH]	180		126394	50.108
24 APR 2024 - 25 APR 2024	SMILE	DATO' DR WONG RUEN YUAN [DIR/CEO]	180		126394	50.108
19 APR 2024 - 22 APR 2024	SMILE	DATIN WONG CHIEN YUE [DIR/CEO]	30		126296	50.069
19 APR 2024 - 22 APR 2024	SMILE	DATIN WONG CHIEN YUE [SSH]	30		126296	50.069
19 APR 2024 - 22 APR 2024	SMILE	DATO DR WONG RUEN YUAN [SSH]	30		126214	50.036
19 APR 2024 - 22 APR 2024	SMILE	DATO' DR WONG RUEN YUAN [DIR/CEO]	30		126214	50.036
23 APR 2024 - 23 APR 2024	SPRITZER	DATIN CHUA SHOK TIM @ CHUA SIOK HOON [SSH]	42		164283	51.451
23 APR 2024 - 23 APR 2024	SPRITZER	DATO' LIM A HENG @ LIM KOK CHEONG [DIR/CEO]	42		164283	51.451
23 APR 2024 - 23 APR 2024	SPRITZER	DATO' LIM A HENG @ LIM KOK CHEONG [SSH]	42		164283	51.451
23 APR 2024 - 23 APR 2024	SPRITZER	LANGIT MAKMUR SDN. BHD. [SSH]	42		101970	31.935
23 APR 2024 - 23 APR 2024	SPRITZER	UNIKAMPAR CREDIT AND LEASING SDN. BHD. [SSH]	42		136188	42.652
23 APR 2024 - 23 APR 2024	SPRITZER	UNIYEE SDN. BHD. [SSH]	42		136188	42.652
23 APR 2024 - 23 APR 2024	SPRITZER	YEE LEE CORPORATION BHD. [SSH]	42		101970	31.935
23 APR 2024 - 23 APR 2024	SPRITZER	YEE LEE ORGANIZATION BHD. [SSH]	42		136188	42.652
23 APR 2024 - 23 APR 2024	SPRITZER	YELETA HOLDINGS SDN. BHD. [SSH]	42		136188	42.652
23 APR 2024 - 23 APR 2024	SPRITZER	YOUNG WEI HOLDINGS SDN. BHD. [SSH]	42		136188	42.652
19 APR 2024 - 22 APR 2024	SPRITZER	DATIN CHUA SHOK TIM @ CHUA SIOK HOON [SSH]	141		164241	51.438
19 APR 2024 - 22 APR 2024	SPRITZER	DATO' LIM A HENG @ LIM KOK CHEONG [DIR/CEO]	141		164241	51.438
19 APR 2024 - 22 APR 2024	SPRITZER	DATO' LIM A HENG @ LIM KOK CHEONG [SSH]	141		164241	51.438
19 APR 2024 - 22 APR 2024	SPRITZER	LANGIT MAKMUR SDN. BHD. [SSH]	141		101928	31.922
19 APR 2024 - 19 APR 2024	SPRITZER	MR LAM SANG [DIR/CEO]	6		2860	0.896
19 APR 2024 - 22 APR 2024	SPRITZER	UNIKAMPAR CREDIT AND LEASING SDN. BHD. [SSH]	141		136146	42.638
19 APR 2024 - 22 APR 2024	SPRITZER	UNIYEE SDN. BHD. [SSH]	141		136146	42.638
19 APR 2024 - 22 APR 2024	SPRITZER	YEE LEE CORPORATION BHD. [SSH]	141		101928	31.922
19 APR 2024 - 22 APR 2024	SPRITZER	YEE LEE ORGANIZATION BHD. [SSH]	141		136146	42.638
19 APR 2024 - 22 APR 2024	SPRITZER	YELETA HOLDINGS SDN. BHD. [SSH]	141		136146	42.638
19 APR 2024 - 22 APR 2024	SPRITZER	YOUNG WEI HOLDINGS SDN. BHD. [SSH]	141		136146	42.638
25 APR 2024 - 25 APR 2024	SPSETIA	KUMPULAN WANG PERSARAAN (DIPERBADANKAN) [SSH]	151		435517	9.42
24 APR 2024 - 24 APR 2024	SPSETIA	KUMPULAN WANG PERSARAAN (DIPERBADANKAN) [SSH]	1,236		435365	9.416
23 APR 2024 - 23 APR 2024	SPSETIA	KUMPULAN WANG PERSARAAN (DIPERBADANKAN) [SSH]	350		434129	9.39
25 APR 2024 - 25 APR 2024	SRIDGE	MR LOH SEONG YEW [DIR/CEO]	300		830	0.373
24 APR 2024 - 24 APR 2024	SRIDGE	DATO' KHOO YIK CHOU [DIR/CEO]	-728		10893	4.893
24 APR 2024 - 24 APR 2024	SRIDGE	DATO' KHOO YIK CHOU [SSH]	-728		10893	4.893
22 APR 2024 - 22 APR 2024	SUBUR	DATO' TIONG ING [DIR/CEO]	9		2569	1.363
23 APR 2024 - 23 APR 2024	SUNCON	EMPLOYEES PROVIDENT FUND BOARD [SSH]	-137		79545	6.169
22 APR 2024 - 22 APR 2024	SUNCON	EMPLOYEES PROVIDENT FUND BOARD [SSH]	-10		79682	6.18
19 APR 2024 - 19 APR 2024	SUNCON	EMPLOYEES PROVIDENT FUND BOARD [SSH]				

Notice Period is 21st Apr 2024 – 27th Apr 2024

Effective Change Date	Stock Name	Buyer/ Seller Name [Classification]	Bought / (Sold) ['000]		No. of Shares After Trade ['000]	
			Total	% Held	Total	% Held
24 APR 2024 - 24 APR 2024	SWIFT	MR LOO HOOI KEAT [DIR/CEO]	110		254439	28.811
24 APR 2024 - 24 APR 2024	SWIFT	MR LOO HOOI KEAT [SSH]	110		254439	28.811
22 APR 2024 - 22 APR 2024	SWIFT	MISS KEE CHUNG CHING [DIR/CEO]	182		1192	0.135
22 APR 2024 - 22 APR 2024	SWIFT	MR LOO HOOI KEAT [DIR/CEO]	177		254329	28.796
22 APR 2024 - 22 APR 2024	SWIFT	MR LOO HOOI KEAT [SSH]	177		254329	28.796
22 APR 2024 - 22 APR 2024	SWIFT	MR LOO YONG HUI [DIR/CEO]	671		212067	24.012
23 APR 2024 - 23 APR 2024	SYGROUP	MR LING CHIONG SIENG [SSH]	-96		663550	55.295
24 APR 2024 - 24 APR 2024	SYGROUP	MR LING CHIONG SIENG [SSH]	-132		663646	55.303
22 APR 2024 - 22 APR 2024	SYGROUP	MR LING CHIONG SIENG [SSH]	-400		663778	55.314
23 APR 2024 - 23 APR 2024	TAKAFUL	EMPLOYEES PROVIDENT FUND BOARD [SSH]	67		128335	15.327
22 APR 2024 - 22 APR 2024	TAKAFUL	EMPLOYEES PROVIDENT FUND BOARD [SSH]	314		128268	15.319
18 APR 2024 - 18 APR 2024	TASHIN	FORMULA NAGA SDN. BHD. [SSH]	-3,200		103116	29.547
18 APR 2024 - 18 APR 2024	TASHIN	MR LEE MENG YIM [SSH]	-3,200		106686	30.57
18 APR 2024 - 18 APR 2024	TASHIN	MR LIM CHOON TEIK [DIR/CEO]	-3,200		107116	30.693
18 APR 2024 - 18 APR 2024	TASHIN	MR LIM CHOON TEIK [SSH]	-3,200		107116	30.693
23 APR 2024 - 23 APR 2024	TCHONG	EMPLOYEES PROVIDENT FUND BOARD [SSH]	-65		39049	5.992
22 APR 2024 - 22 APR 2024	TCHONG	EMPLOYEES PROVIDENT FUND BOARD [SSH]	-50		39114	6.002
19 APR 2024 - 19 APR 2024	TCHONG	EMPLOYEES PROVIDENT FUND BOARD [SSH]	-43		39164	6.009
17 APR 2024 - 17 APR 2024	TCHONG	EMPLOYEES PROVIDENT FUND BOARD [SSH]	-15		39207	6.016
23 APR 2024 - 23 APR 2024	TECHNAX	DATUK LIM CHIH LI @ LIN ZHILI [DIR/CEO]	1,544,118		1546468	32.886
24 APR 2024 - 24 APR 2024	TENAGA	AMANAHRAYA TRUSTEES BERHAD - AMANAH SAHAM BUMIPUTERA [SSH]	-1,079		580276	10.03
23 APR 2024 - 23 APR 2024	TENAGA	EMPLOYEES PROVIDENT FUND BOARD [SSH]	-789		1062380	18.36
24 APR 2024 - 24 APR 2024	TENAGA	KUMPULAN WANG PERSARAAN (DIPERBADANKAN) [SSH]	31		429731	7.42
22 APR 2024 - 22 APR 2024	TENAGA	EMPLOYEES PROVIDENT FUND BOARD [SSH]	-1,755		1063169	18.37
19 APR 2024 - 19 APR 2024	TENAGA	EMPLOYEES PROVIDENT FUND BOARD [SSH]	1,892		1064924	18.4
18 APR 2024 - 18 APR 2024	TENAGA	EMPLOYEES PROVIDENT FUND BOARD [SSH]	144		1063031	18.37
17 APR 2024 - 17 APR 2024	TENAGA	EMPLOYEES PROVIDENT FUND BOARD [SSH]	2,135		1062887	18.37
23 APR 2024 - 23 APR 2024	TIMECOM	EMPLOYEES PROVIDENT FUND BOARD [SSH]	500		202036	10.928
22 APR 2024 - 22 APR 2024	TIMECOM	EMPLOYEES PROVIDENT FUND BOARD [SSH]	24		201536	10.901
22 APR 2024 - 22 APR 2024	TIMECOM	KUMPULAN WANG PERSARAAN (DIPERBADANKAN) ("KWAP") [SSH]	95		130989	7.085
18 APR 2024 - 18 APR 2024	TIMECOM	EMPLOYEES PROVIDENT FUND BOARD [SSH]	327		201612	10.905
17 APR 2024 - 17 APR 2024	TIMECOM	EMPLOYEES PROVIDENT FUND BOARD [SSH]	13		201284	10.887
25 APR 2024 - 25 APR 2024	TM	KUMPULAN WANG PERSARAAN (DIPERBADANKAN) [SSH]	1,060		363262	9.466
24 APR 2024 - 24 APR 2024	TM	AMANAHRAYA TRUSTEES BERHAD-AMANAH SAHAM BUMIPUTERA [SSH]	-2,000		337800	8.802
23 APR 2024 - 23 APR 2024	TM	EMPLOYEE PROVIDENT FUND BOARD (EPF BOARD) [SSH]	471		680295	17.727
24 APR 2024 - 24 APR 2024	TM	KUMPULAN WANG PERSARAAN (DIPERBADANKAN) [SSH]	-200		362202	9.438
22 APR 2024 - 22 APR 2024	TM	EMPLOYEE PROVIDENT FUND BOARD (EPF BOARD) [SSH]	-2,454		679812	17.714
19 APR 2024 - 19 APR 2024	TM	EMPLOYEE PROVIDENT FUND BOARD (EPF BOARD) [SSH]	-17		682224	17.778
18 APR 2024 - 18 APR 2024	TM	EMPLOYEE PROVIDENT FUND BOARD (EPF BOARD) [SSH]	128		682241	17.778
17 APR 2024 - 17 APR 2024	TM	EMPLOYEE PROVIDENT FUND BOARD (EPF BOARD) [SSH]	525		682101	17.774
24 APR 2024 - 24 APR 2024	TOPGLOV	KUMPULAN WANG PERSARAAN (DIPERBADANKAN) [SSH]	3,000		435260	5.435
23 APR 2024 - 23 APR 2024	TOPGLOV	KUMPULAN WANG PERSARAAN (DIPERBADANKAN) [SSH]	3,791		432260	5.398
19 APR 2024 - 19 APR 2024	TOPGLOV	MR LIM HOOI SIN [DIR/CEO]	1,000		2941037	36.725
19 APR 2024 - 19 APR 2024	TOPGLOV	MR LIM HOOI SIN [SSH]	1,000		2941037	36.725
19 APR 2024 - 19 APR 2024	TOPGLOV	PUAN SRI TONG SIEW BEE [SSH]	1,000		2941237	36.727
19 APR 2024 - 19 APR 2024	TOPGLOV	TAN SRI DR LIM WEE CHAI [DIR/CEO]	1,000		2941237	36.728
19 APR 2024 - 19 APR 2024	TOPGLOV	TAN SRI DR LIM WEE CHAI [SSH]	1,000		2941237	36.728
18 APR 2024 - 18 APR 2024	TOPMIX	MISS NG YEW KUAN [DIR/CEO]	300		300	0.076
18 APR 2024 - 18 APR 2024	TOPMIX	MISS TAN LEE HONG [DIR/CEO]	-9,847		291454	74
18 APR 2024 - 18 APR 2024	TOPMIX	MISS TAN LEE HONG [SSH]	-9,847		291454	74
18 APR 2024 - 18 APR 2024	TOPMIX	MR CHANG TIAN KWANG [DIR/CEO]	500		500	0.126
18 APR 2024 - 18 APR 2024	TOPMIX	MR KHOR HANG CHENG [DIR/CEO]	300		300	0.076
18 APR 2024 - 18 APR 2024	TOPMIX	MR TEO QUEK SIANG [DIR/CEO]	-9,847		291454	74
18 APR 2024 - 18 APR 2024	TOPMIX	MR TEO QUEK SIANG [SSH]	-9,847		291454	74

Notice Period is 21st Apr 2024 – 27th Apr 2024

Effective Change Date	Stock Name	Buyer/ Seller Name [Classification]	Bought / (Sold) ['000]		No. of Shares After Trade ['000]	
			Total	% Held	Total	% Held
18 APR 2024 - 18 APR 2024	TOPMIX	MR WILLIAM LAU SI YI [DIR/CEO]	300		300	0.076
23 APR 2024 - 23 APR 2024	TOYOVEN	MR LIM GUAN LEE [SSH]	-116		6720	5.057
25 APR 2024 - 25 APR 2024	TTVHB	MADAM JENNIE TAN YEN-LI [DIR/CEO]	-2,500		110080	23.52
25 APR 2024 - 25 APR 2024	TTVHB	MADAM JENNIE TAN YEN-LI [SSH]	-2,500		110080	23.52
25 APR 2024 - 25 APR 2024	TTVHB	MR WONG YIH HSOW [DIR/CEO]	-2,500		110080	23.52
25 APR 2024 - 25 APR 2024	TTVHB	MR WONG YIH HSOW [SSH]	-2,500		110080	23.52
22 APR 2024 - 22 APR 2024	UPA	MR CHUA NGEUN LOK [DIR/CEO]	811		9495	4.099
23 APR 2024 - 23 APR 2024	UTDPLT	EMPLOYEES PROVIDENT FUND BOARD [SSH]	50		26157	6.306
22 APR 2024 - 22 APR 2024	UTDPLT	EMPLOYEES PROVIDENT FUND BOARD [SSH]	-200		26106	6.294
19 APR 2024 - 19 APR 2024	UTDPLT	EMPLOYEES PROVIDENT FUND BOARD [SSH]	144		26306	6.342
18 APR 2024 - 18 APR 2024	UTDPLT	EMPLOYEES PROVIDENT FUND BOARD [SSH]	263		26162	6.307
17 APR 2024 - 17 APR 2024	UTDPLT	EMPLOYEES PROVIDENT FUND BOARD [SSH]	114		25899	6.244
23 APR 2024 - 23 APR 2024	UWC	EMPLOYEES PROVIDENT FUND BOARD [SSH]	-450		92295	8.376
23 APR 2024 - 23 APR 2024	VS	EMPLOYEES PROVIDENT FUND BOARD [SSH]	-2,496		299492	7.844
23 APR 2024 - 23 APR 2024	WASCO	MR CHAN CHEU LEONG [DIR/CEO]	-84		64606	8.343
25 APR 2024 - 25 APR 2024	WIDAD	TAN SRI MUHAMMAD IKMAL OPAT BIN ABDULLAH [SSH]	-3,500		555203	17.931
25 APR 2024 - 25 APR 2024	WIDAD	WIDAD BUSINESS GROUP SDN. BHD. [SSH]	-500		547128	17.669
24 APR 2024 - 24 APR 2024	WIDAD	TAN SRI MUHAMMAD IKMAL OPAT BIN ABDULLAH [SSH]	-500		558703	18.044
24 APR 2024 - 24 APR 2024	WIDAD	WIDAD BUSINESS GROUP SDN. BHD. [SSH]	-500		547628	17.686
22 APR 2024 - 23 APR 2024	WIDAD	TAN SRI MUHAMMAD IKMAL OPAT BIN ABDULLAH [SSH]	-13,590		559203	18.06
22 APR 2024 - 23 APR 2024	WIDAD	WIDAD BUSINESS GROUP SDN. BHD. [SSH]	-12,590		548128	17.702
17 APR 2024 - 19 APR 2024	WIDAD	TAN SRI MUHAMMAD IKMAL OPAT BIN ABDULLAH [SSH]	-12,500		572793	18.498
17 APR 2024 - 19 APR 2024	WIDAD	WIDAD BUSINESS GROUP SDN. BHD. [SSH]	-12,500		560718	18.108
25 APR 2024 - 25 APR 2024	WPRTS	KUMPULAN WANG PERSARAAN (DIPERBADANKAN) [SSH]	8		231408	6.786
23 APR 2024 - 23 APR 2024	WPRTS	EMPLOYEES PROVIDENT FUND BOARD [SSH]	359		322953	9.471
24 APR 2024 - 24 APR 2024	WPRTS	KUMPULAN WANG PERSARAAN (DIPERBADANKAN) [SSH]	4		231400	6.785
24 APR 2024 - 24 APR 2024	XL	MR NG MIN LIN [DIR/CEO]	1,100		69898	24.83
24 APR 2024 - 24 APR 2024	XL	MR NG MIN LIN [SSH]	1,100		69898	24.83
19 APR 2024 - 19 APR 2024	XL	MR NG MIN LIN [DIR/CEO]	1,500		68798	24.439
19 APR 2024 - 19 APR 2024	XL	MR NG MIN LIN [SSH]	1,500		68798	24.439
24 APR 2024 - 24 APR 2024	YBS	MR LOW HEE CHUNG [DIR/CEO]	40		380	0.146
24 APR 2024 - 24 APR 2024	YBS	MR YONG CHAN CHEAH [DIR/CEO]	523		37815	14.52
24 APR 2024 - 24 APR 2024	YBS	MR YONG CHAN CHEAH [SSH]	523		37815	14.52
24 APR 2024 - 24 APR 2024	YBS	MR YONG SWEE CHUAN [DIR/CEO]	523		37815	14.52
24 APR 2024 - 24 APR 2024	YBS	MR YONG SWEE CHUAN [SSH]	523		37815	14.52
23 APR 2024 - 23 APR 2024	YINSON	EMPLOYEES PROVIDENT FUND BOARD [SSH]	3,429		521455	17.226
23 APR 2024 - 23 APR 2024	YINSON	KUMPULAN WANG PERSARAAN (DIPERBADANKAN) [SSH]	-454		231527	7.649
19 APR 2024 - 19 APR 2024	YINSON	EMPLOYEES PROVIDENT FUND BOARD [SSH]	-221		517794	17.105
19 APR 2024 - 19 APR 2024	YINSON	KUMPULAN WANG PERSARAAN (DIPERBADANKAN) [SSH]	-81		231981	7.664
24 APR 2024 - 24 APR 2024	YTLPOWR	DATUK LOO TOOK GEE [DIR/CEO]	200		200	0.002
19 APR 2024 - 19 APR 2024	YTLPOWR	PUAN SRI DATIN TAN KAI YONG @ TAN KAY NEONG [SSH]	3,000		5333818	65.71
19 APR 2024 - 19 APR 2024	YTLPOWR	TAN SRI (SIR) FRANCIS YEOH SOCK PING [DIR/CEO]	-3,000		22733	0.28
19 APR 2024 - 19 APR 2024	YTLPOWR	YEOH TIONG LAY & SONS FAMILY HOLDINGS LIMITED [SSH]	3,000		5308527	65.398
19 APR 2024 - 19 APR 2024	YTLPOWR	YEOH TIONG LAY & SONS HOLDINGS SDN BHD [SSH]	3,000		5308527	65.398
19 APR 2024 - 19 APR 2024	YTLPOWR	YEOH TIONG LAY & SONS TRUST COMPANY LIMITED [SSH]	3,000		5308527	65.398
25 APR 2024 - 25 APR 2024	ZHULIAN	MR TEOH BENG SENG [SSH]	-300		272029	59.134
25 APR 2024 - 25 APR 2024	ZHULIAN	THE BEST SOURCE HOLDINGS PTE. LTD. [SSH]	-300		69082	15.018
24 APR 2024 - 24 APR 2024	ZHULIAN	MR TEOH BENG SENG [SSH]	-300		272329	59.199
24 APR 2024 - 24 APR 2024	ZHULIAN	THE BEST SOURCE HOLDINGS PTE. LTD. [SSH]	-300		69382	15.083
23 APR 2024 - 23 APR 2024	ZHULIAN	MR TEOH BENG SENG [SSH]	-300		272629	59.264
23 APR 2024 - 23 APR 2024	ZHULIAN	THE BEST SOURCE HOLDINGS PTE. LTD. [SSH]	-300		69682	15.148
22 APR 2024 - 22 APR 2024	ZHULIAN	MR TEOH BENG SENG [SSH]	-300		272929	59.329
22 APR 2024 - 22 APR 2024	ZHULIAN	THE BEST SOURCE HOLDINGS PTE. LTD. [SSH]	-300		69982	15.213

Disclaimer: The Information in Insider Activity is extracted from www.shareinvestor.com/fundamental/insider_trades. The information on this page is provided as a service to readers. It does not constitute financial advice and/or any investment recommendations. We assume no liability for damages resulting from or arising out of the use of such information. Whilst every effort is made to ensure accuracy, the information presented is not the official record of shareholder filings. Readers are advised to read the original filings on the Bursa Malaysia website at www.bursamalaysia.com

SHAREINVESTOR

WEBPRO

Stock Markets Data
At Your Fingertips

Powerful browser-based market analytics platform.
Access from anywhere

Intrinsic Value Calculator

Consensus Estimates

C2 Charts (Customizable & Comprehensive)

Advance Market Screener

Ownership Tracker

click here to start your
9 Day free trial



The Board of Directors of **AGX Group Berhad (AGX)** is pleased to propose a final tax-exempt dividend of 0.45 sen per ordinary share in respect of the financial year ended 31 December 2023 for the approval of the shareholders at the forthcoming Fourth Annual General Meeting of the Company.



The CEO of **AirAsia X Berhad (AAX)** is pleased to inform that on 25 April, 2024, AirAsia X signed a sale and purchase agreement to acquire Capital A's aviation business subject to all requisite approvals. This strategic move is a deliberate and deeply considered initiative aimed at unlocking and enhancing shareholder value meaningfully for both AirAsia X and its shareholders.



APM Automotive Holdings Berhad (APM) had on 10 October 2016 announced the establishment of an Islamic Commercial Papers Programme of up to RM1.5 billion in nominal value and Islamic Medium-Term Notes Programme of up to RM1.5 billion in nominal value subject to a combined aggregate limit of up to RM1.5 billion in nominal value under the Shariah principle of Murabahah. The Board of Directors of APM is pleased to announce that the Company has successfully completed its third issuance of RM200.0 million in nominal value of IMTN under the IMTN Programme.





Axiata Group Berhad (Axiata) wishes to announce that Edotco Urban Infrashare Ltd, a wholly owned subsidiary of EDOTCO Investments Singapore Pte Ltd which in turn is a wholly owned subsidiary of EDOTCO Investments (Labuan) Limited had today appointed Daw Hnin Su Mon, Senior Manager of WIN Consulting Limited as liquidator for the purpose of voluntary liquidation of EUIL. EDOTCO Labuan is a wholly owned subsidiary of EDOTCO Group Sdn. Bhd., a 63% subsidiary of Axiata.

[READ MORE](#)

The Board of Directors of **Capital A Berhad (CAPITALA)** wishes to refer to the announcement on the unaudited 4th quarter results ended 31 December 2023 released to Bursa Malaysia Securities Berhad on 29 February 2024.

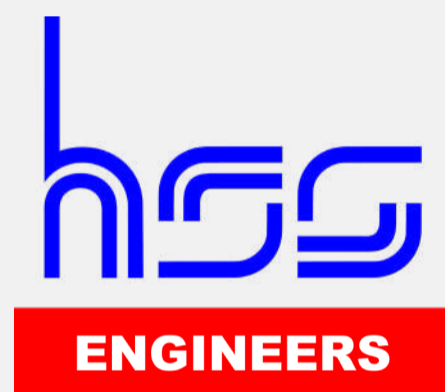
[READ MORE](#)

Ekovest Berhad (EKOVEST) wishes to announce that the Company has sought the mutual agreement of the Vendors for an extension of 3 months commencing from 28 April 2024 to 27 July 2024, to grant more time for the Company to assess, evaluate and deliberate the Proposed TOD Lands Acquisition in detail and to discuss and negotiate on the terms of the Definitive Agreements between the parties.

[READ MORE](#)



Circular to **Hengyuan Refining Company Berhad (HENGYUAN)** Shareholders in relation to the Proposed Renewal of Existing Shareholders' Mandate for Recurrent Related Party Transactions of a Revenue or Trading Nature and Proposed New Shareholders' Mandate for additional Recurrent Related Party Transactions of a Revenue or Trading Nature.



Circular to **HSS Engineers Berhad (HSSEB)** shareholders in relation to proposed variation for the utilisation of proceeds raised from the initial public offering of HSS Engineers Berhad.



The Board of Directors of **Kinergy Advancement Berhad (KAB)** wishes to announce that the Company intends to seek shareholders' approval for the Proposed Renewal of Authority for the Company to purchase its own shares on Bursa Malaysia Securities Berhad of up to ten per centum (10%) of the issued share capital at the forthcoming Twenty-Seventh Annual General Meeting. A Statement to Shareholders setting out the details of the Proposed Renewal of Share Buy-Back Authority pertaining thereto will be issued to the shareholders of the Company in due course.



The Board of Directors of **KPJ Healthcare Berhad (KPJ)** wishes to announce that the Company proposes to seek its shareholders' approval for the proposed renewal of existing shareholders' mandate for recurrent related party transactions of a revenue or trading nature and proposed new shareholders' mandate for additional recurrent related party transactions of a revenue or trading nature at the forthcoming Annual General Meeting of the Company.

[READ MORE](#) 



Circular to **Leong Hup International Berhad (LHI)** shareholders in relation to the Proposed Renewal of Shareholders' Mandate and Proposed New Shareholder's Mandate for Recurrent Related Party Transactions of a Revenue or Trading.

[READ MORE](#) 



Circular to **Leform Berhad (LEFORM)** shareholders in relation to the Proposed Renewal of Shareholders' Mandate and Proposed New Shareholder's Mandate for Recurrent Related Party Transactions of a Revenue or Trading.

[READ MORE](#) 



Mr D.I.Y. Group (M) Berhad (MRDIY) has scheduled to release its financial results for the first quarter ended 31 March 2024 on Thursday, 9 May 2024 in accordance with Paragraph 9.22 of the Main Market Listing Requirements of Bursa Malaysia Securities Berhad.



MALAYSIA BUILDING SOCIETY BERHAD (9417-K)

Proposed change of name of the company from **Malaysia Building Society Berhad (MBSB)** to MBSB Berhad



Circular to **MBM Resources Berhad (MBMR)** shareholders in relation to the Proposed Renewal of Shareholders' Mandate and Proposed New Shareholder's Mandate for Recurrent Related Party Transactions of a Revenue or Trading.





Mclean Technologies Berhad (MCLEAN) proposed renewal of the existing shareholders mandate for recurrent related party transactions of a revenue or trading nature.



Circular to **Optimax Holdings Berhad (OPTIMAX)** shareholders in relation to the Proposed Renewal of Shareholders' Mandate and Proposed New Shareholder's Mandate for Recurrent Related Party Transactions of a Revenue or Trading.



Circular to **Pentamaster Corporation Berhad (PENTA)** shareholders in relation to the Proposed Renewal of Shareholders' Mandate and Proposed New Shareholder's Mandate for Recurrent Related Party Transactions of a Revenue or Trading.





Circular to **Radium Development Berhad (RADIUM)** shareholders in relation to the Proposed Renewal of Shareholders' Mandate and Proposed

New Shareholder's Mandate for Recurrent Related Party Transactions of a Revenue or Trading.



Rimbunan Sawit

Rimbunan Sawit Berhad (RSAWIT) proposed renewal of the existing shareholders mandate for recurrent related party transactions of a revenue or trading nature.



The Board of Directors of **Salcon Berhad (SALCON)** wishes to announce that Salcon Smile Sdn Bhd, an indirect 90%-owned subsidiary of Salcon, proposed acquisition of SPH Dental Sdn Bhd.



TAN CHONG MOTOR HOLDINGS BERHAD
(12969-P)

Circular to **Tan Chong Motor Holdings Berhad (TCHONG)** shareholders in relation to the Proposed Renewal of Shareholders' Mandate and Proposed New Shareholder's Mandate for Recurrent Related Party Transactions of a Revenue or Trading.





Statement to **Teladan Group Berhad (TELADAN)** shareholders in relation to the proposed Shareholders' approval for share Buy-Back by the company up to ten per centum (10%) of the total number of issued shares of the company.



YNH PROPERTY BHD

Kar Sin Bhd, the wholly-owned subsidiary of **YNH Property Berhad (YNHPROP)**, had on 6 September 2023, entered into a Sale and Purchase Agreement with Frazel Group Sdn Bhd for the proposed disposal of all that parcel of freehold land held under Geran Mukim 54, Lot 448, Kepong Rly Line 8th Mile, Mukim Batu, Daerah Kuala Lumpur, Negeri Wilayah Persekutuan Kuala Lumpur measuring approximately 26,253.121 square meters subject to the terms and conditions of the SPA for a total disposal consideration of RM59,577,250.00 only.



Disclaimer: The information in the Investor Relations page is extracted from individual companies' announcements in www.bursamalaysia.com. The information on this page is provided as a service to readers. We assume no liability for damages resulting from or arising out of the use of such information. Whilst every effort is made to ensure accuracy, the information presented has been simplified for your reading pleasure. Readers are advised to read the original and complete filings on the Bursa Malaysia website at https://www.bursamalaysia.com/market_information/announcements/company_announcement

Upcoming IPO

NAME OF COMPANY	OFFER PERIOD		ISSUE PRICE (Per Ordinary Share)	LISTING SOUGHT	DATE OF LISTING
	OPENING	CLOSING			
KAWAN RENERGY BERHAD	29 Apr 2024	14 May 2024	RM0.30	ACE MARKET	29 May 2024
SMART ASIA CHEMICAL BERHAD	02 May 2024	13 May 2024	RM0.40	ACE MARKET	28 May 2024
FEYTECH HOLDINGS BERHAD	02 May 2024	08 May 2024	RM0.80	MAIN MARKET	21 May 2024
SIN-KUNG LOGISTICS BERHAD	18 Apr 2024	02 May 2024	RM0.13	ACE MARKET	15 May 2024
FARM PRICE HOLDINGS BERHAD	24 Apr 2024	30 Apr 2024	RM0.24	ACE MARKET	14 May 2024