

Invest

A Weekly e-Publication by SHAREINVESTOR

ISSUE
218

FRIDAY
02 AUGUST 2024

Scan/Click QR to Register



Via email, every Friday

MARKET SENTIMENTS

BURSA'S 1H 2024 PERFORMANCE MARKED BY SEVERAL RECORD HIGHS

see more
on pages
30-33

+ MOF SETS THREE SHORT-TERM PRIORITIES FOR BUDGET 2025



PLUS

BEHIND THE TICKER: DECODING COMPANY FUNDAMENTALS

Is there an investment opportunity in CARPENTER TECHNOLOGIES

SUMMARY

- Carpenter Technology Corporation (NYSE:CRS) experienced low revenue growth over the past 11 years. ROIC averaged 4.6%. This was lower than its 10% Weighted Average Cost of Capital (WACC) suggesting that it did not create shareholders' value.
- Despite generating positive cash flow from operations, it has an unsustainable Reinvestment rate and poor capital allocation, leading to concerns about its financial health.

ALSO

COMPANY SPOTLIGHT
XOX Berhad

MSWG
Total Control

See more on pages **20-28**

See more on page **07**

See more on pages **35-40**

- 04** LEADERBOARD
- 06** SHARIAH HOT STOCKS
- 08** SHARIAH MOMENTUM UP STOCKS
- 10** NON SHARIAH HOT STOCKS
- 12** UP TRENDING STOCKS
- 14** VALUE STOCKS
- 15** GROWTH STOCKS
- 16** DIVIDEND STOCKS
- 17** BROKERS' CALL
- 18** LONG COMPANIES
- 34** REGIONAL MARKETS
- 41** INSIDER ACTIVITY
- 45** INVESTOR RELATIONS

SHAREINVESTOR®

An AlphaInvest Company

Invest with Knowledge

INVESTOR PLATFORMS

Director
Darren Chong
darren.chong@shareinvestor.com

Business Development Manager
Jay Cheong
jay.cheong@shareinvestor.com

Product & Marketing Manager
Daniel Wong
daniel.wong@shareinvestor.com

ADMIN & OPERATIONS

Senior Executive
Watie Nordin
watie.nordin@shareinvestor.com

Executive
Silas Emmanuel Joseph
silas.joseph@shareinvestor.com

PROCESS AUTOMATION & DATA ANALYTICS

Data Analyst
Tan Yong Sheng

INVESTOR RELATIONS

Group Managing Director & Publisher
Edward Stanislaus
edward@shareinvestor.com

Senior Manager
Letticia Wong
letticia.wong@shareinvestor.com

Manager
Aida Norzeti Talib
aida.norzeti@shareinvestor.com

Inve\$t WEEKLY

Senior Manager
Advertising Sales & Marketing
Mark Rodrigues
mark.rodrigues@shareinvestor.com

ALPHAINVEST HOLDINGS BOARD OF DIRECTORS

Chairman	Patrick Daniel
Group CEO	Christopher Lee
Group COO	Lim Dau Hee
Group MD	Shanison Lin



“ GIVE A MAN A FISH AND YOU FEED HIM FOR A DAY; TEACH A MAN TO FISH AND YOU FEED HIM FOR A LIFETIME ”

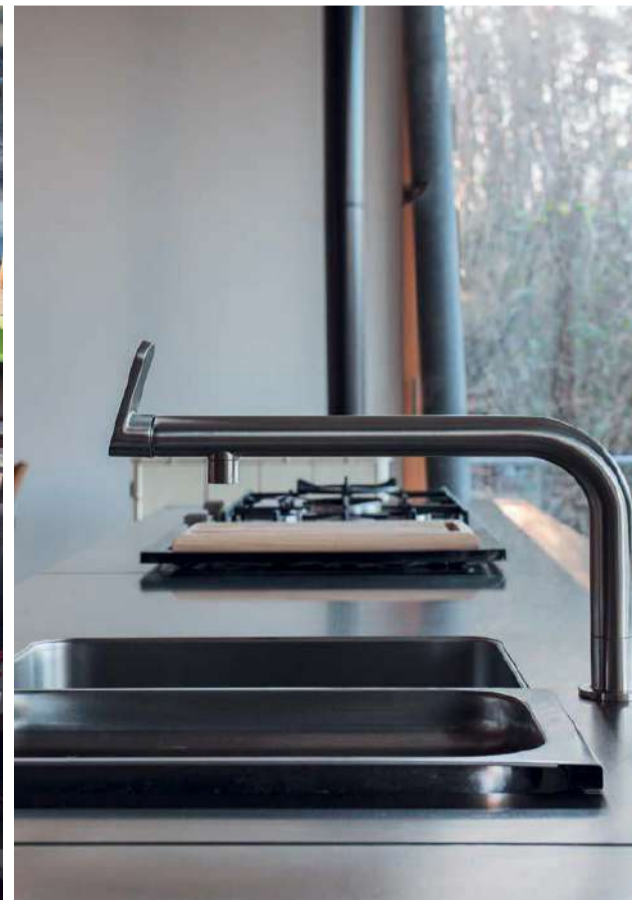
ShareInvestor Malaysia Sdn. Bhd.

(200001023956) (526564-M)
Unit No. DF2-07-03A. Level 7,
Persoft Tower, 6B Persiaran Tropicana,
47410 Petaling Jaya, Selangor Darul Ehsan.

Hotline : 603 7803 1791
Mobile : 011 6343 8939
Website : www.ShareInvestor.com.my
www.alphainvestholdings.com
www.Facebook.com/ShareInvestorMalaysia

ADVERTISEMENT ENQUIRY

bulthaup takes care of the details so that you can enjoy a harmonious environment.



XTRA

XTRA FURNITURE SDN BHD
The Gardens Mall, Mid Valley City
xtrafurniture.com/bulthaup
fb.com/bulthaupmalaysia

bulthaup

ACTIVE TRADING TOURNAMENT 2024

Challenge Yourself to be the BEST in the Most Prestigious Trade-Sport Tournament!

REGISTER NOW



Tournament period:
12 August – 30 August 2024

Organized by



InvestingNote

Up to
RM30,000
to be won

www.shareinvestor.com - market data at your fingertips



ShareInvestor WebPro (www.shareinvestor.com/my)
Prices > Stock Prices > Bursa > click Stocks tab

1. mouse over Ranking > select Top Active > all Shariah stocks are denoted with an [S] > mouse over Column Layout > select Edit Customs > select Name > select Volume > select Last Done Price > Mouse Over Column Layout > select Custom
2. mouse over Ranking > select Top Turnover > all Shariah stocks are denoted with an [S] > mouse over Column Layout > select Edit Customs > select Name > select Last Done Price > select Value > Mouse Over Column Layout > select Custom
3. mouse over Ranking > select Top Gainers (Over 5 Trading Days) > mouse over Column Layout > select Edit Customs > select Name > select Last Done Price > select 5 Days Change > select 5 Days % Change > Mouse Over Column Layout > select Custom
4. mouse over Ranking > select Top Losers (Over 5 Trading Days)
5. mouse over Ranking > select Top % Gainers (Over 5 Trading Days)
6. mouse over Ranking > select Top % Losers (Over 5 Trading Days)

Shariah Top Actives (as at Yesterday)

Name	Price (RM)	Volume
EKOVEST [S]	0.440	571,270.000
VELESTO [S]	0.220	543,725.000
SMETRIC [S]	0.255	398,608.000
TOPGLOV [S]	1.030	359,920.000
JIANKUN [S]	0.120	353,515.000
TECHNAX [S]	0.355	351,202.000
HUBLINE [S]	0.130	338,891.000
MYEG [S]	1.010	334,787.000
XOX [S]	0.350	270,301.000
ASDION [S]	0.040	237,257.000

Shariah Top Turnover (as at Yesterday)

Name	Price (RM)	Value (RM)
TENAGA [S]	14.100	148,131,496
SUNWAY [S]	4.150	46,128,561
GAMUDA [S]	7.840	45,460,930
BURSA [S]	9.630	45,286,682
TM [S]	6.970	41,168,577
PMETAL [S]	5.300	40,881,120
TOPGLOV [S]	1.030	36,909,681
ECOWLD [S]	1.770	36,080,427
MYEG [S]	1.010	33,455,780
IJM [S]	3.490	28,797,989

Top Gainers (over 5 Trading days as at Yesterday)

Name	Price (RM)	Change (RM)
UTDPLT	26.440	+1.140
CRESNDO	4.900	+0.770
CHINTEK	8.090	+0.590
KLK	21.120	+0.500
F&N	30.420	+0.420
CVIEW	1.950	+0.410
AEONCR	7.450	+0.400
GOHUB	1.310	+0.390
PPB	14.840	+0.340
HLBANK	19.380	+0.320

Top % Gainers (over 5 Trading days as at Yesterday)

Name	Price (RM)	Change (%)
CLOUD	0.065	+333.33
GOHUB	1.310	+42.39
MUIPROP	0.330	+40.43
SANICHI	0.020	+33.33
CVIEW	1.950	+26.62
PCCS	0.510	+20.00
XOXNET	0.030	+20.00
CRESNDO	4.900	+18.64
CRG	0.295	+18.00
SHH	1.450	+17.89

Top Losers (over 5 Trading days as at Yesterday)

Name	Price (RM)	Change (RM)
NESTLE	109.000	-13.000
DLADY	30.780	-0.760
MPI	37.100	-0.480
UNISEM	3.680	-0.370
HARTA	3.000	-0.360
HARISON	8.790	-0.310
KOSSAN	2.090	-0.300
BURSA	9.630	-0.230
PCHEM	5.780	-0.230
SUNCON	4.700	-0.220

Top % Losers (over 5 Trading days as at Yesterday)

Name	Price (RM)	Change (%)
HONGSENG	0.010	-33.33
ASDION	0.040	-27.27
MLAB	0.115	-25.81
COMPUGT	0.015	-25.00
FOCUS	0.015	-25.00
NEXGRAM	0.015	-25.00
OCR	0.075	-25.00
RPLANET	0.210	-25.00
SMTRACK	0.030	-25.00
CEB	0.695	-21.91

With our fintech innovation,

Investing has never been more promising

Regulated by Securities Commission Malaysia (SC)

About CapBay P2P

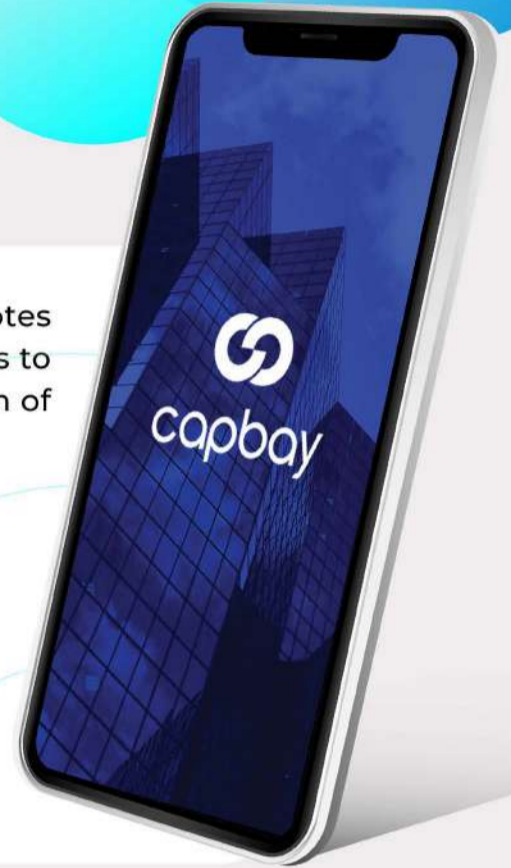
CapBay P2P allows investors to invest into Peer-to-Peer [P2P] SME financing notes hosted on our platform. P2P Financing is a form of crowdfunding that enables SMEs to obtain financing directly from investors at a predetermined interest rate in the form of a fixed income asset known as investment note.

Total Funded: RM1.7B **Investment Notes: 12,950**

Average Net Returns: 8.3% per annum
[Post-fees]

Minimum Initial Top-up: RM10,000

Trustee: MTrustee Berhad [AmBank]



Auto Invest Feature

CapBay P2P utilises the Auto Invest Function ranging from 3 different profiles:

- Conservative
- Moderate
- Aggressive

Investors can choose depending on their risk appetite. The funds are then automatically diversified into various financing notes.

Lowest Default Rate

CapBay P2P has a default rate of

0.2%

The lowest default rate among Malaysia's major P2P players.
Cumulative data as at 30 June 2024

Short Tenures

CapBay P2P has a lock-in period of only

3-6 months

Shorter compared to the industry standard of 12-18 months. Investors can withdraw unallocated funds anytime without charge.

EXCLUSIVE EVENT

INVEST MEETUP #4

Balancing Risk and Reward:

P2P Investments in Comprehensive Financial Planning

Level 12, Experiential Hall, Tropicana Gardens Office Tower

13 August 2024 | 6:30PM - 9:30PM

Financial Planning Essentials:

Get expert insights on saving, investing, and managing risks.

Key Investment Principles:

Learn about diversification and risk tolerance to build a robust portfolio.

Enhanced Financial Literacy:

Gain a deeper understanding of financial products and market dynamics.

P2P Investment Integration:

Explore how P2P investments can complement your financial plan and drive growth.



REGISTER HERE

Organised by



Awards



CapBay |

investor@capbay.com

+6018-777 7000

capbay.com/invest

Price & Volume Distribution Charts (as at Yesterday)

Technical Analysis

DEFINITION: Shariah compliant stocks with Technical Analysis showing 5-days & 10-days Moving Average Price below Yesterday's Close over past 3 days and with Volume Spike.

CHART GUIDE: Volume Distribution Chart is a statistical interpretation of the current sentiment on each stock in graphical format. The highest bar categorized as >150k is likely to be traded by institutions or super dealers, while the lowest bar categorized as <15k usually represents retail investors. "Buy Up" refers to more buyers snatching up the lots queued at selling price. "Sell Down" refers to sellers selling their shares to the buying queue



ShareInvestor WebPro > Screener > Market Screener (FA & TA)>select BURSA>add criteria

A. Criteria

- > click Add Criteria
- Technical Analysis Conditions tab select (i) Moving Average Below Close (ii) Volume Spike
- Fundamental Analysis Conditions tab >select (iii) Revenue
- Prices & Other Conditions tab > select (iv) Is Shariah Compliant
- Technical Analysis Conditions tab select (v) Moving Average Below Close
- Prices & Other Conditions tab > select (vi) Last Done Price
- Technical Analysis Conditions tab select (vii) Moving Average Below Close

B. Conditions (Criteria Filters)

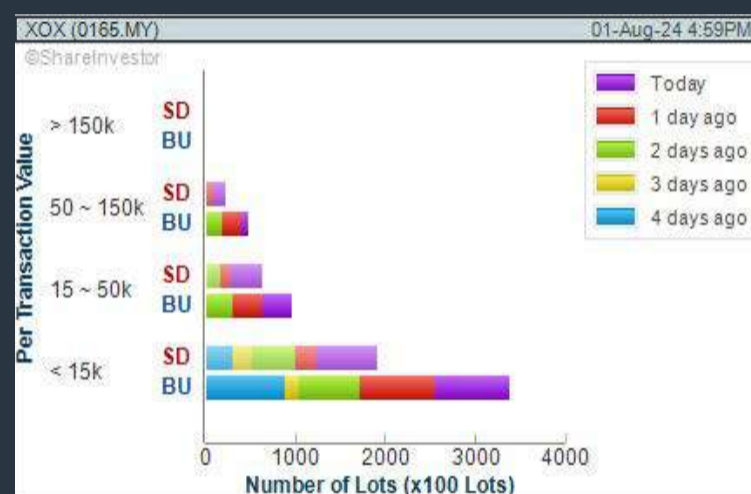
1. Moving Average Below Close - select (MA) type (5) below close price for type (3) days
2. Volume Spike - Volume type (1) greater than type (5) days average
3. Revenue ("000) - select (more than) type (1) for the past select (1) financial year(s)
4. Is Shariah Compliant - select **Yes**
5. Moving Average Below Close - select (MA) type (10) below close price for type (3) days
6. Last Done Price - select (more than) type (0.3)
7. Moving Average Below Close - select (EMA) type (5) below close price for type (3) days

- > click Save Template > Create New Template type (Shariah Hot Stocks) > click Create
- > click Save Template as > select Shariah Hot Stocks > click Save
- > click Screen Now (may take a few minutes)
- > Sort By: Select (Vol) Select (Desc)
- > Mouse over stock name > Charts > click C² Charts or Volume Distribution

XOX BERHAD (0165)

C² Chart

Analysis



ECO WORLD DEVELOPMENT GROUP BERHAD (8206)

C² Chart

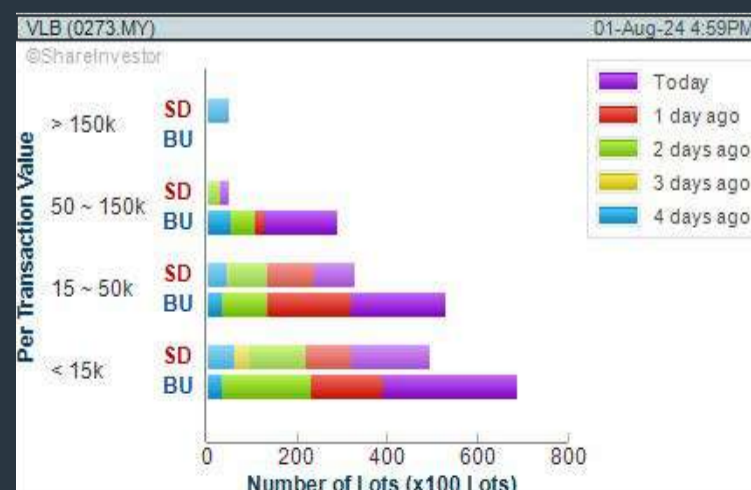
Analysis



VESTLAND BERHAD (0273)

C² Chart

Analysis



Disclaimer: The information on this page is provided as a service to readers. It does not constitute financial advice and/or any investment recommendations. Past performance is not indicative of future results. We assume no liability for damages resulting from or arising out of the use of such information. It would be best if you did your own research to make your personal investment decisions wisely or consult a licenced investment advisor.

COMPANY BACKGROUND

XOX Berhad is primarily involved in offering mobile telecommunications products and services, e-Wallet services, e-commerce solutions, and digital advertising. Since June 2011, the company has held the distinction of being the only publicly listed Mobile Virtual Network Operator in Malaysia.



XOX.XOX.BHD		Updated at 01 Aug 2024 16:53	
Last (MYR): 0.350 ↓	Change: -0.025	High: 0.410	Remarks: -
	Change (%): -6.67	Low: 0.350	
Open	0.375	Yesterday's Close	0.375
Buy Price	0.345	Sell Price	0.350
Buy Volume ('00)	1,255	Sell Volume ('00)	3,164
Cumulative Volume ('00)	270,301	Cumulative Value	10,384,968.5

Financial Analysis

Revenue Growth Decreasing revenue in last 2 years	Profit Growth Losses for past 5 years
Debt to Cashflow High debt to cash flow for most recent year	Free Cash Flow Negative free cash flow for two years or more
Gross Profit Margin Consistently high gross profit margin of at least 40% for 3 years	Net Earnings Margin Company is losing money but net profit margin is improving by 5% a year over the past 60 months.
Return on Assets (ROA) Negative ROA for 3 consecutive years	Return on Equity (ROE) Negative ROE for 3 consecutive years
Return on Equity (ROE) ROE is decreasing by 10% a year over the past 36 months.	

Excellent
 Good
 Neutral
 Be Alert
 Watch Out

Historical Financials

Profit & Loss (MYR '000)



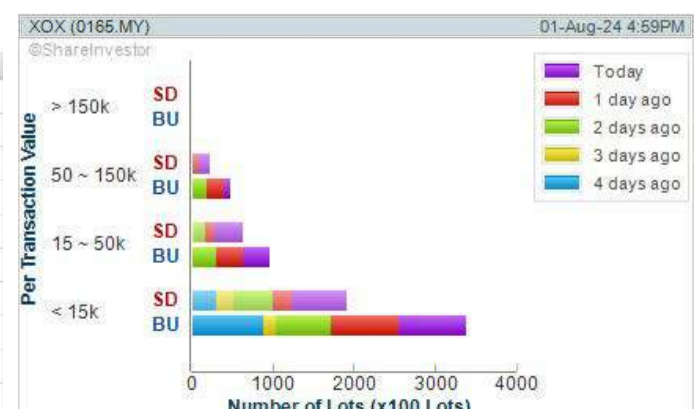
WebPro 9-Days Free Trial Registration (worth RM10) Sign Up Now



Key Statistics with Total Shareholder Returns

Total Shareholder Return

Period	Dividend Received	Capital Appreciation	Total Shareholder Return
Short Term Return	5 Days	+0.050	+16.67%
	10 Days	+0.050	+16.67%
	20 Days	-0.100	-22.22%
Medium Term Return	3 Months	-0.100	-22.22%
	6 Months	+0.050	+16.67%
Long Term Return	1 Year	-0.250	-41.67%
	2 Years	-0.100	-22.22%
	3 Years	-0.050	-7.03%
5 Years	-0.552	-73.12%	
Annualised Return	Annualised	-	-23.11%



Disclaimer: The information on this page is provided as a service to readers. It does not constitute financial advice and/or any investment recommendations. Past performance is not indicative of future results. We assume no liability for damages resulting from or arising out of the use of such information. It would be best if you did your own research to make your personal investment decisions wisely or consult a licenced investment advisor.

Price & Volume Distribution Charts (as at Yesterday)

Technical Analysis

DEFINITION: Shariah compliant stocks with Technical Analysis showing Bullish Momentum and Price Uptrend. The share price closed at the highest price yesterday. The typical price was higher than the previous day's typical price.

CHART GUIDE: Volume Distribution Chart is a statistical interpretation of the current sentiment on each stock in graphical format. The highest bar categorized as >150k is likely to be traded by institutions or super dealers, while the lowest bar categorized as <15k usually represents retail investors. "Buy Up" refers to more buyers snatching up the lots queued at selling price. "Sell Down" refers to sellers selling their shares to the buying queue.



ShareInvestor WebPro > Screener > Market Screener (FA & TA) > select BURSA > add criteria

A. Criteria

- > click Add Criteria
- Fundamental Analysis Conditions tab > select (i) Revenue
- Technical Analysis Conditions tab select (ii) Average Volume
- Prices & Other Conditions tab > select (iii) Last Done Price
- Prices & Other Conditions tab > select (iv) Is Shariah Compliant
- Technical Analysis Conditions tab select (v) RSI Overbought
- Technical Analysis Conditions tab select (vi) Moving Average Below Close
- Technical Analysis Conditions tab select (vii) CCI Overbought

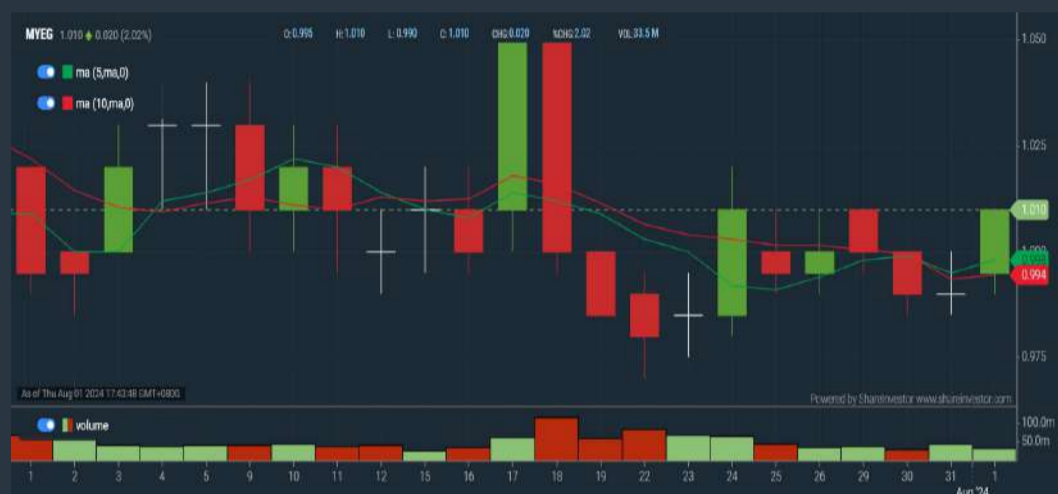
B. Conditions (Criteria Filters)

1. Revenue ("000) - select (more than) type (1) for the past select (1) financial year(s)
2. Average Volume - type (1) days average volume greater than type (10000) lots
3. Last Done Price - select (more than) type (0.3)
4. Is Shariah Compliant - select Yes
5. RSI Overbought - select RSI 1 above 99 for 1 days
6. Moving Average Below Close - select (MA) type (10) below close price for type (1) days
7. CCI Overbought - select CCI (2) above (0) for (1) days

- > click Save Template > Create New Template type (Shariah Momentum Up Stocks) > click Create
- > click Save Template as > select Shariah Momentum Up Stocks > click Save
- > click Screen Now (may take a few minutes)
- Sort By: Select (Vol) Select (Desc)
- Mouse over stock name > Charts > click C² Charts tab or Volume Distribution

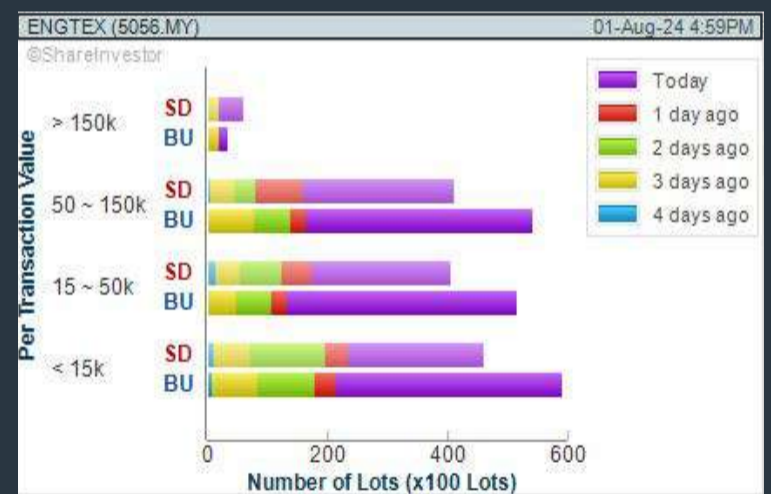
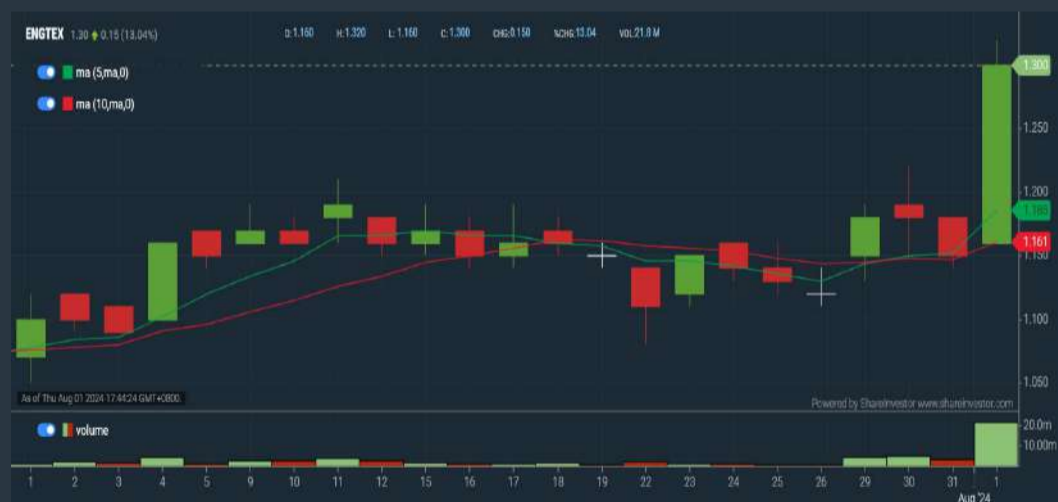
MY E.G. SERVICES BERHAD (0138) C² Chart

Analysis



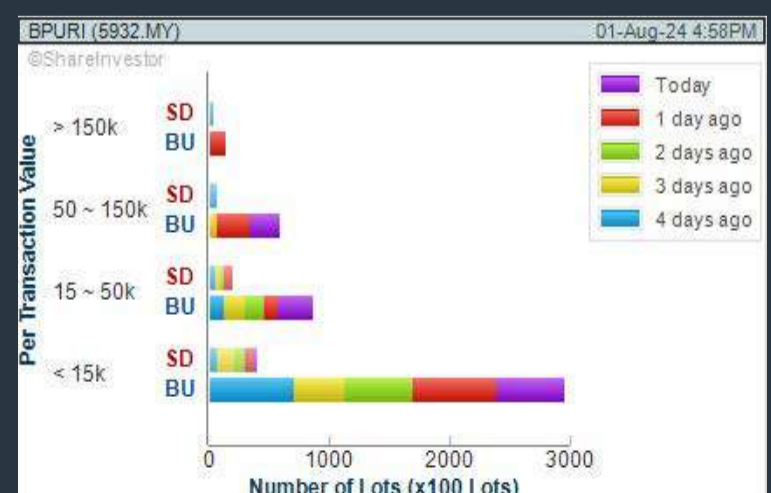
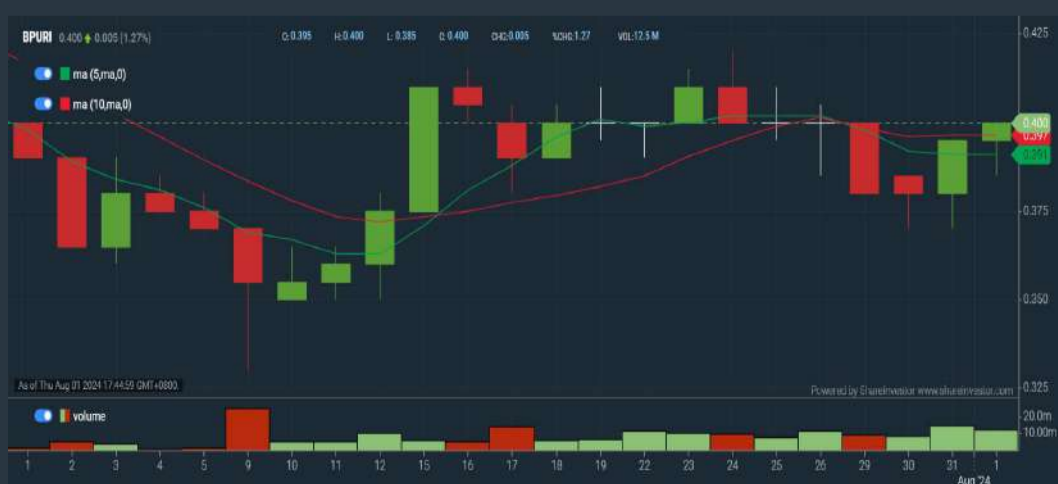
ENGTEX GROUP BERHAD (5056) C² Chart

Analysis



BINA PURI HOLDINGS BERHAD (5932) C² Chart

Analysis



Disclaimer: The information on this page is provided as a service to readers. It does not constitute financial advice and/or any investment recommendations. Past performance is not indicative of future results. We assume no liability for damages resulting from or arising out of the use of such information. It would be best if you did your own research to make your personal investment decisions wisely or consult a licenced investment advisor.

SHAREINVESTOR WEBPRO

STOCK MARKET DATA AT YOUR FINGERTIPS

Powerful browser-based market analytics platform.
Access from anywhere



8 Markets Data

- ▶ Get access to data from Bursa, NYSE, Nasdaq, HKEX, SGX, IDX, SET & ASX

Portfolio Management

- ▶ Profit & Loss Summary
- ▶ Stock Alert
- ▶ News & Events filtering
- ▶ Customizable column layout

Fundamental Analysis

Financial Analysis Statement

- ▶ Profit & Loss
- ▶ Balance Sheet
- ▶ Cash Flow Statement
- ▶ More than 20 Financial Ratios
- ▶ Dividend Analysis

Technical Charting

- ▶ C² chart (Customisable & Comprehensive)

Brokers' Call

Intrinsic Value Calculator

FactSheet

- ▶ Key Stock Information
- ▶ Ownership
- ▶ Consensus Estimates
- ▶ Annual Report
- ▶ Historical Price
- ▶ Insider Trades

What's new on WebPro (Stable Release 12.1.0)

In our effort to keep our platform at the forefront of trading technology, we have added on some new features onto our C2 Chart in WebPro

ADDITIONAL NEW FEATURES:

- ▶ Anchor selector for AVWAP, PVAT, and PAV indicators
- ▶ Volume profile indicator by date range
- ▶ Moving Average Cross indicator
- ▶ Guppy Multiple Moving Average (GMMA) indicator
- ▶ GoNoGo Trend Signal indicators
- ▶ SignalIQ

So what are you waiting for? Head to our platform today and check out our new trading chart features and indicators. We're confident that you'll love the improvements we've made and that they'll help you become a more successful trader.

Click here to start your 9 days FREE trial
(Valued at RM10)



Price & Volume Distribution Charts (as at Yesterday)

Technical Analysis

DEFINITION: Stocks with Technical Analysis showing 5-days & 10-days Moving Average Price below Close over past 1 days and with Volume Spike

CHART GUIDE: Volume Distribution Chart is a statistical interpretation of the current sentiment on each stock in graphical format. The highest bar categorized as >150k is likely to be traded by institutions or super dealers, while the lowest bar categorized as <15k usually represents retail investors. "Buy Up" refers to more buyers snatching up the lots queued at selling price. "Sell Down" refers to sellers selling their shares to the buying queue.



ShareInvestor WebPro > Screener > Market Screener (FA & TA) > select BURSA > add criteria

A. Criteria

- > click Add Criteria
- Technical Analysis Conditions tab select (i) Moving Average Below Close (ii) Volume Spike
- Fundamental Analysis Conditions tab > select (iii) Revenue
- Prices & Other Conditions tab > select (iv) Is Shariah Compliant
- Technical Analysis Conditions tab select (v) Moving Average Below Close
- Prices & Other Conditions tab > select (vi) Last Done Price
- Technical Analysis Conditions tab select (vii) Moving Average Below Close

B. Conditions (Criteria Filters)

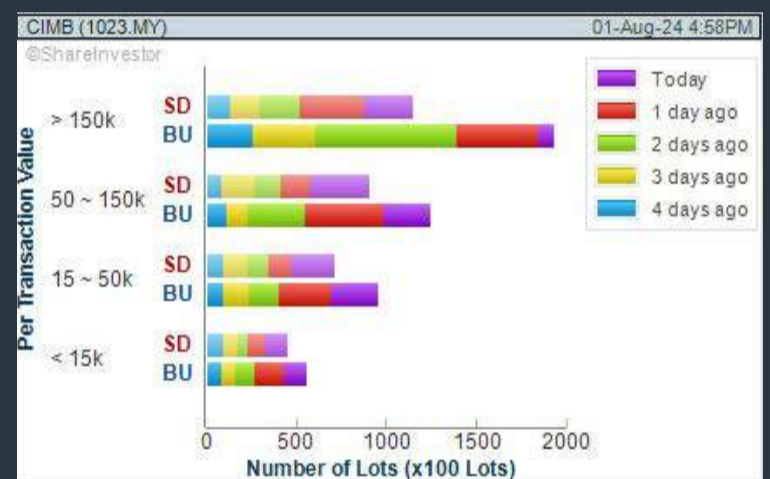
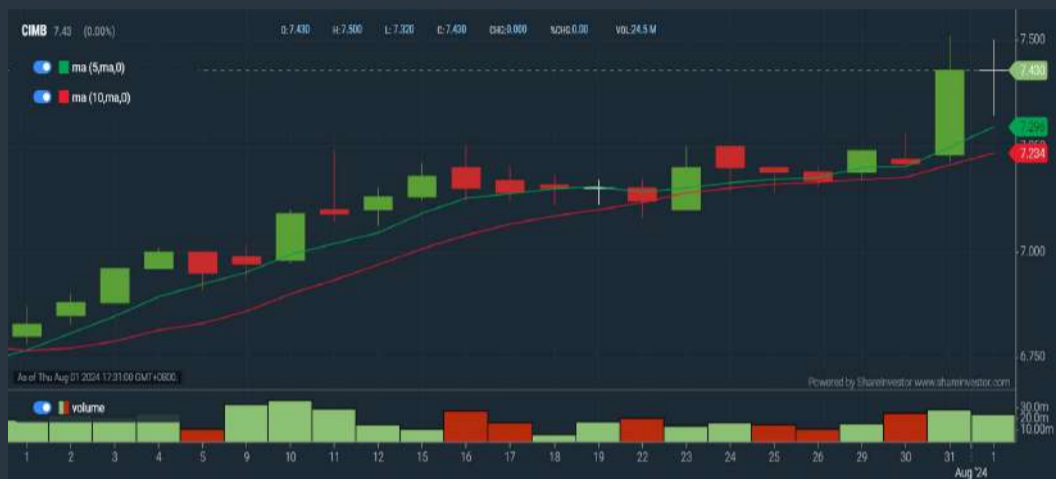
1. Moving Average Below Close - select (MA) type (5) below close price for type (3) days
2. Volume Spike - Volume type (1) greater than type (5) days average
3. Revenue ("000) - select (more than) type (1) for the past select (1) financial year(s)
4. Is Shariah Compliant - select NO
5. Moving Average Below Close - select (MA) type (10) below close price for type (1) days
6. Last Done Price - select (more than) type (0.3)
7. Moving Average Below Close - select (EMA) type (5) below close price for type (1) days

- > click Save Template > Create New Template type (Non-Shariah Hot Stocks) > click Create
- > click Save Template as > select Non-Shariah Hot Stocks > click Save
- > click Screen Now (may take a few minutes)
- Sort By: Select (Vol) Select (Desc)
- Mouse over stock name > Charts > click C² Charts tab or Volume Distribution

CIMB GROUP HOLDINGS BERHAD (1023)

C² Chart

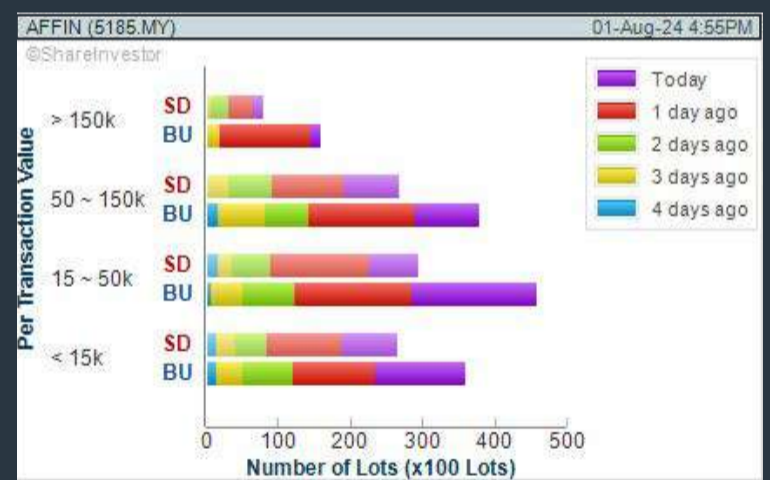
Analysis



AFFIN BANK BERHAD (5185)

C² Chart

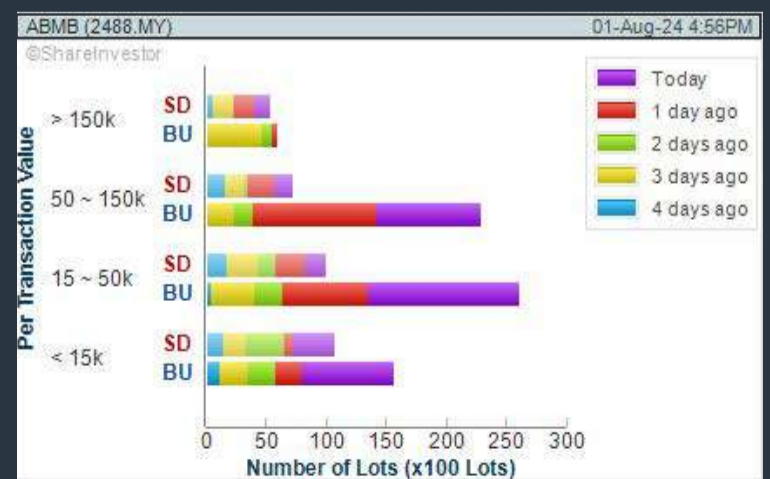
Analysis



ALLIANCE BANK MALAYSIA BERHAD (2488)

C² Chart

Analysis

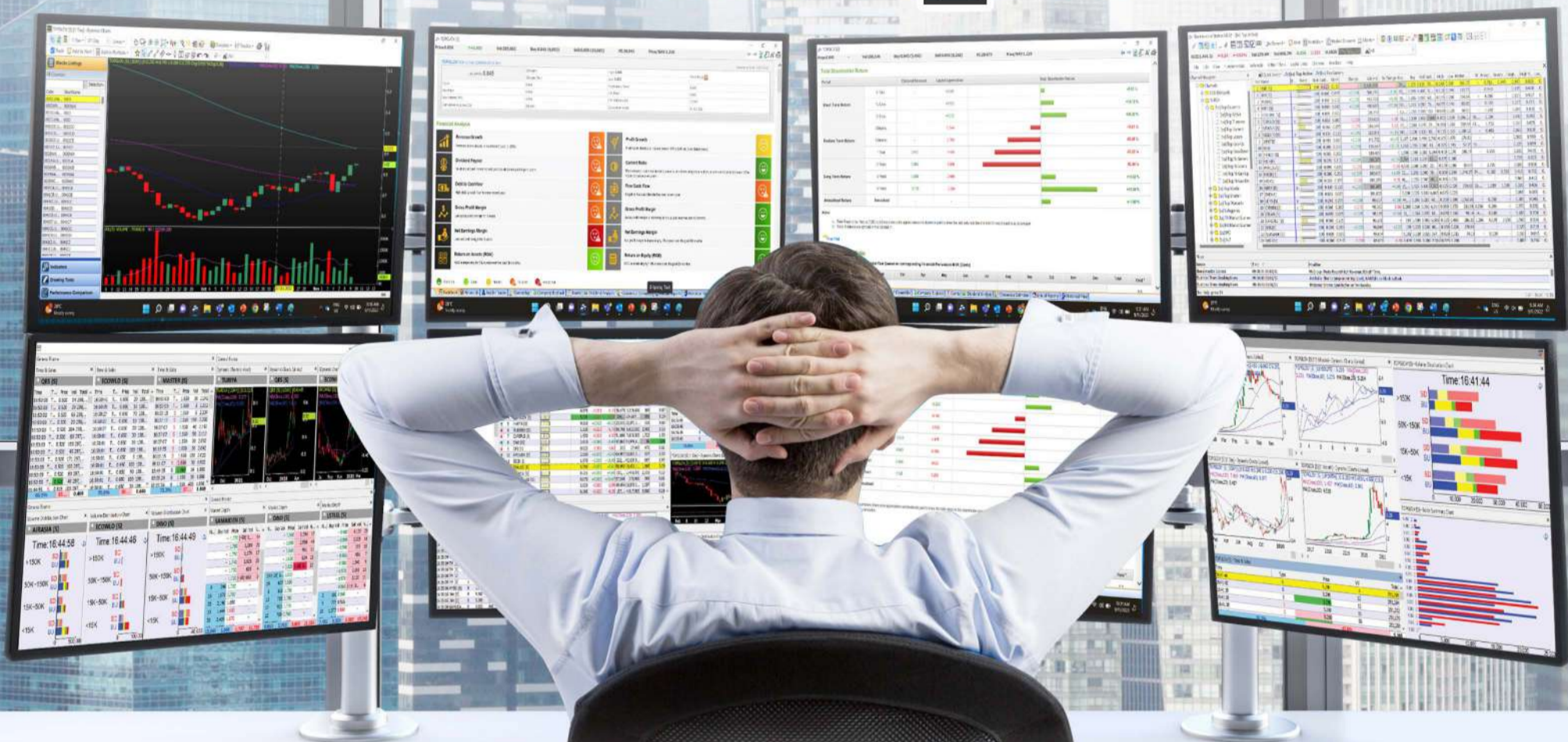


Disclaimer: The information on this page is provided as a service to readers. It does not constitute financial advice and/or any investment recommendations. Past performance is not indicative of future results. We assume no liability for damages resulting from or arising out of the use of such information. It would be best if you did your own research to make your personal investment decisions wisely or consult a licenced investment advisor.

MAKE BETTER TRADING STRATEGIES

with

SHARE INVESTOR STATION



8 Markets Data

- ▶ Get access to data from Bursa, NYSE, Nasdaq, HKEX, SGX, IDX, SET & ASX

Dynamic Chart

- ▶ Candlestick Pattern Recognition
- ▶ 111 Indicators
- ▶ 39 Drawing Tools
- ▶ Performance Comparison Chart

Intraday Data

- ▶ Market Depth
- ▶ Trade Summary Matrix & Chart
- ▶ Times & Sales
- ▶ Intraday Market Ticker

Market Screener

- ▶ 96 criteria ranging from FA, TA, Consensus Estimate
- ▶ Real-time Data

Power Frame

- ▶ Combining few Dynamic Charts together with intraday information in one frame

Technical Analysis

Fundamental Analysis

Financial Analysis Statement

- ▶ Profit & Loss
- ▶ Balance Sheet
- ▶ Cash Flow Statement
- ▶ More than 20 Financial Ratios
- ▶ Dividend Analysis

FactSheet

- ▶ Key Stock Information
- ▶ Ownership
- ▶ Consensus Estimates
- ▶ Annual Report
- ▶ Historical Price
- ▶ Insider Trades

Start your 18 days
FREE trial now
(Valued at RM82)



Price & Volume Distribution Charts (Over 3 trading days as at Yesterday)

Technical Analysis

DEFINITION: Stocks with Technical Analysis showing Bullish Momentum and Price Uptrend

CHART GUIDE: Volume Distribution Chart is a statistical interpretation of the current sentiment on each stock in graphical format. The highest bar categorized as >150k is likely to be traded by institutions or super dealers, while the lowest bar categorized as <15k usually represents retail investors. "Buy Up" refers to more buyers snatching up the lots queued at selling price. "Sell Down" refers to sellers selling their shares to the buying queue.



ShareInvestor WebPro > Screener > Market Screener (FA & TA) > select BURSA > add criteria

A. Criteria

- > click Add Criteria
- Fundamental Analysis Conditions tab > select (i) Revenue
- Technical Analysis Conditions tab select (ii) Moving Average Below Close
- Technical Analysis Conditions tab select (iii) Average Volume
- Prices & Other Conditions tab > select (iv) Last Done Price
- Technical Analysis Conditions tab select (v) Moving Average Below Close
- Technical Analysis Conditions tab select (v) Moving Average Bullish Crossover

B. Conditions

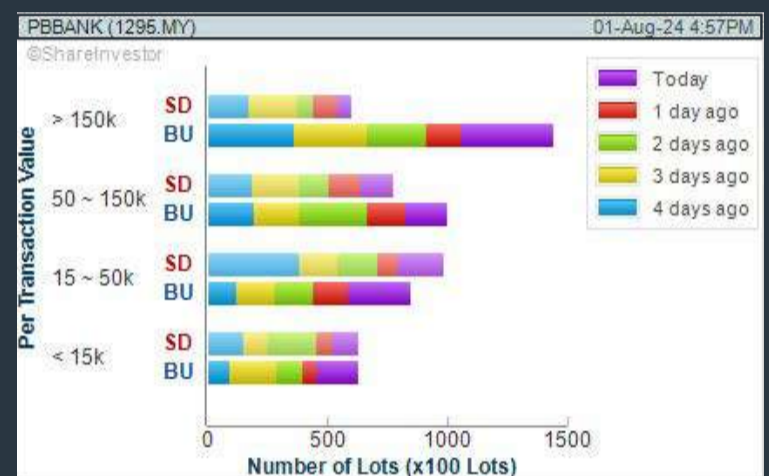
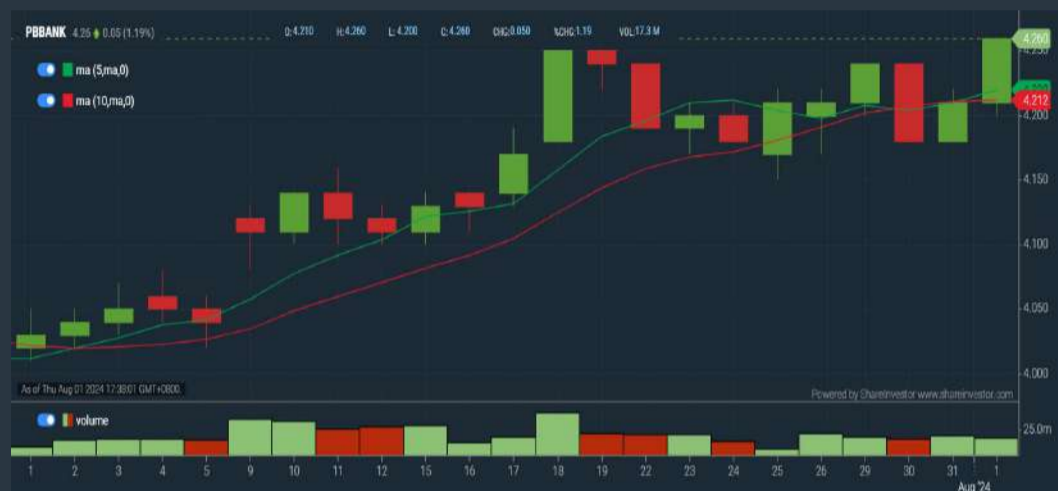
1. Revenue - select (more than) type (1) for the past select (1) financial year(s)
2. Moving Average Below Close - select (MA) type (20) below close price for type (1) days
3. Average Volume - type (5) days average volume type (10000) lots
4. Last Done Price - select (more than) type (0.3)
5. Moving Average Below Close - select (MA) type (10) below close price for type (1) days
6. Moving Average Bullish Crossover - select (MA) type (5) crossed above select (MA) type (10)

> click Save Template > Create New Template type (Non-Shariah Up-Trending Stocks) > click Create Click Save Template As > select Non-Shariah Up Trending Stocks > click Save > click Screen Now (may take a few minutes) Sort By: Select (Vol) Select (Desc) Mouse over stock name > Charts > click C² Charts tab or Volume Distribution

PUBLIC BANK BERHAD (1295)

C² Chart

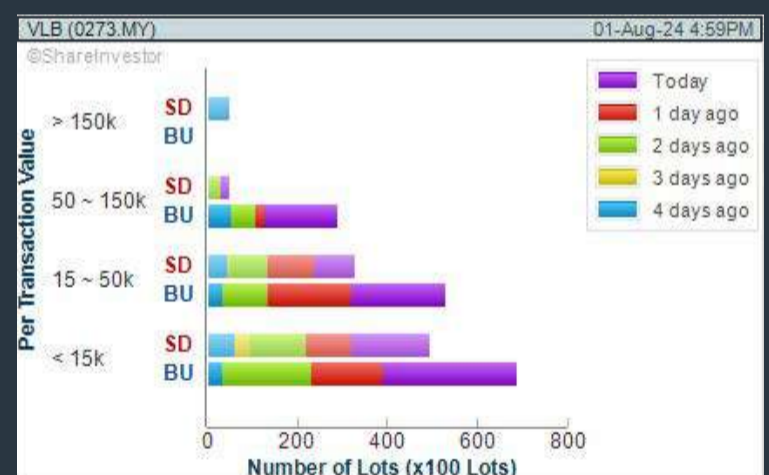
Analysis



VESTLAND BERHAD (0273)

C² Chart

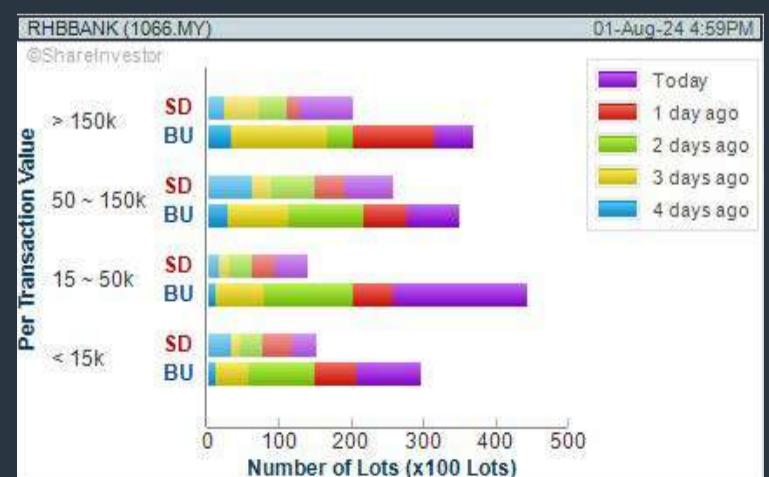
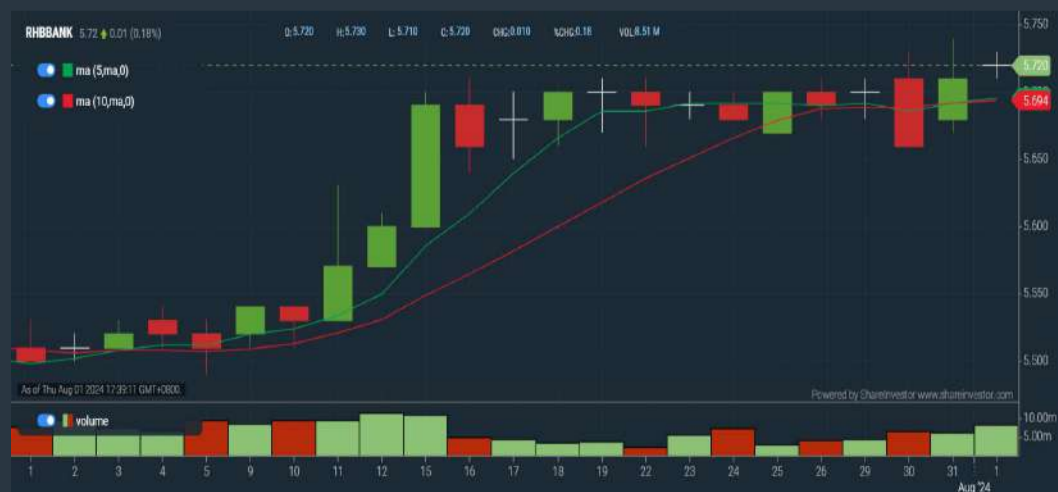
Analysis



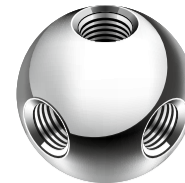
RHB BANK BERHAD (1066)

C² Chart

Analysis



Disclaimer: The information on this page is provided as a service to readers. It does not constitute financial advice and/or any investment recommendations. Past performance is not indicative of future results. We assume no liability for damages resulting from or arising out of the use of such information. It would be best if you did your own research to make your personal investment decisions wisely or consult a licenced investment advisor.



making
places
relaxing



usm.com

XTRA

XTRA FURNITURE SDN BHD
The Gardens Mall, Mid Valley City, Lot S-236 & 237
Lingkar Syed Putra, 59200 Kuala Lumpur
T. +603 2282 9088 | living@xtrafurniture.com | xtrafurniture.com
XTRAFurniture | xtrafurnituremsia

Price & Total Shareholder Return (as at Yesterday)

Fundamental Analysis

DEFINITION: Share price of a company trading at a lower price as compared to its fundamentals (FA) such as financial performance and dividend, allowing it to be attractive to value investors.

CHART GUIDE: Total Shareholder Return (TSR) combines share price appreciation and dividend distributions paid to show the total return to the shareholder expressed as a percentage.



ShareInvestor WebPro > Screener > Market Screener (FA & TA) > select BURSA > add criteria

A. Criteria

- > click Add Criteria
- Fundamental Analysis Conditions tab (i) Price Earnings Ratio
- Fundamental Analysis Conditions tab >select (ii) CAGR of Net Earnings
- Fundamental Analysis Conditions tab >select (iii) Net Debt To Equity
- Fundamental Analysis Conditions tab >select (iv) Return On Equity (ROE)

B. Conditions

1. Price Earnings Ratio - select (less than) type (15) times now
2. CAGR of Net Earnings - select (more than) type (10) % for the past type (3) financial year(s)
3. Net Debt To Equity – select (less than) type (1) for the past select (1) financial year(s)
4. Return On Equity (ROE) – select (more than) type (10) % for the past select (1) financial year(s)

- > click Save Template > Create New Template type (Value Stock) > click Create
- > click Save Template as > select Value Companies > click Save
- > click Screen Now (may take a few minutes)
- Sort by: Select (PE Ratio) Select (Ascending)
- > Mouse over stock name > Factsheet > looking for Total Shareholder Return
- > Mouse over stock name > Charts > click C2 Charts tab

SYNERGY HOUSE BERHAD (0279)

C² Chart



Period	Dividend Received	Capital Appreciation	Total Shareholder Return
Short Term Return	5 Days	-0.010	-0.79%
	10 Days	-0.200	-16.59%
	20 Days	-0.430	-35.29%
Medium Term Return	3 Months	-0.220	-17.77%
	6 Months	+0.435	+32.10%
	1 Year	+0.890	+24.24%
Annualised Return	Annualised	-	+24.24%

AJINOMOTO (M) BERHAD (2658)

C² Chart



Period	Dividend Received	Capital Appreciation	Total Shareholder Return
Short Term Return	5 Days	-0.160	-1.07%
	10 Days	-0.300	-2.50%
	20 Days	-0.600	-3.99%
Medium Term Return	3 Months	-2.433	-14.10%
	6 Months	+0.268	+1.84%
	1 Year	+0.339	+2.34%
Long Term Return	2 Years	+4.248	+18.18%
	3 Years	0.383	+9.27%
	5 Years	1.346	+4.57%
Annualised Return	Annualised	-	+8.90%

SOLID AUTOMOTIVE BERHAD (5242)

C² Chart



Period	Dividend Received	Capital Appreciation	Total Shareholder Return
Short Term Return	5 Days	-0.020	-8.80%
	10 Days	-0.020	-8.80%
	20 Days	-0.025	-10.87%
Medium Term Return	3 Months	+0.020	+10.81%
	6 Months	+0.025	+13.89%
	1 Year	+0.020	+10.81%
Long Term Return	2 Years	+0.010	+5.13%
	3 Years	-0.035	-14.58%
	5 Years	-0.070	-26.45%
Annualised Return	Annualised	-	-5.71%

Disclaimer: The information on this page is provided as a service to readers. It does not constitute financial advice and/or any investment recommendations. Past performance is not indicative of future results. We assume no liability for damages resulting from or arising out of the use of such information. It would be best if you did your own research to make your personal investment decisions wisely or consult a licenced investment advisor.

Price & Total Shareholder Return (as at Yesterday)

Fundamental Analysis

DEFINITION: Company revenue is growing and making good quality of earnings with positive Free Cash Flow.

CHART GUIDE: Total Shareholder Return (TSR) combines share price appreciation and distributions paid to show the total return to the shareholder expressed as a percentage.



ShareInvestor WebPro > Screener > Market Screener (FA & TA) > select BURSA > add criteria

A. Criteria

1. Fundamental Analysis Conditions tab >select (i) Free Cash Flow, (ii) Revenue Growth, (iii) Gross Profit (Earnings) Margin, (iv) Quality of Earnings, (v) Total Shareholder Returns, > click Add Criteria
2. Fundamental Analysis Conditions tab >select (vi) Total Shareholder Returns > click Add Criteria

B. Conditions (Criteria Filters)

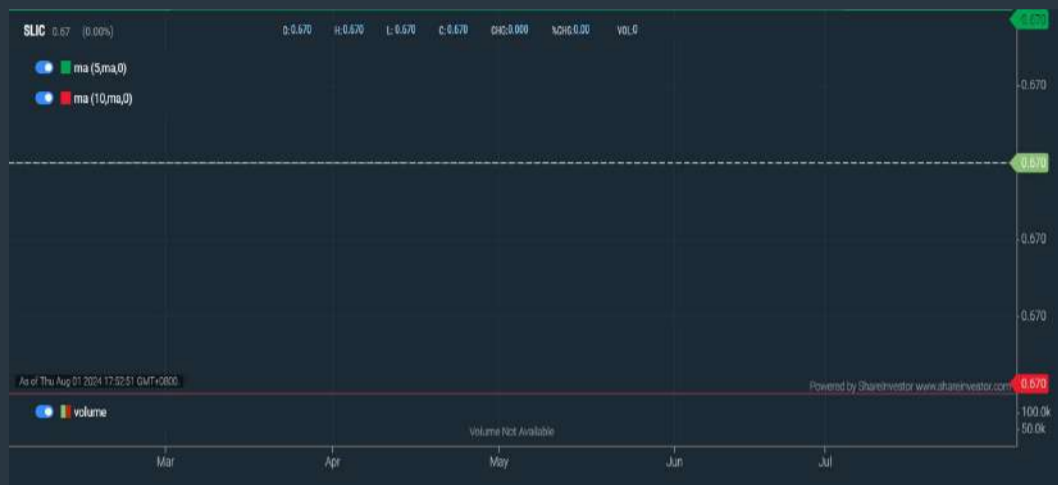
1. Free Cash Flow - select (more than) type (1) for the past select (1) financial year(s)
2. Revenue Growth - select (more than) type (1) for the past select (1) financial year(s)
3. Gross Profit (Earnings) Margin - select (more than) type (30) % for the past select (1) financial year(s)
4. Quality of Earnings - select (more than) type (1) for the past select (1) financial year(s)
5. Total Shareholder Return - select (more than) type (5) % for the past select (3) financial year(s)
6. Total Shareholder Return - select (more than) type (5) % for the past select (5) financial year(s)

- > click Save Template > Create New Template type (Growth Companies) > click Create
- > click Save Template as > select Growth Companies > click Save
- > click Screen Now (may take a few minutes)
- > Sort By: Select (Revenue Growth) Select (Desc)
- > Mouse over stock name > Factsheet > looking for Total Shareholder Return

SL INNOVATION CAPITAL BERHAD (03008)

C² Chart

Analysis



Period	Dividend Received	Capital Appreciation	Total Shareholder Return
Short Term Return	5 Days	-	-
	10 Days	-	-
	20 Days	-	-
Medium Term Return	3 Months	-	-
	6 Months	-	-
	1 Year	-	-
Long Term Return	2 Years	+0.265	+85.43%
	3 Years	+0.265	+85.43%
	5 Years	0.015	+0.250
Annualised Return	Annualised	-	+10.28%

MALAYSIA AIRPORTS HOLDINGS BERHAD (5014)

C² Chart

Analysis



Period	Dividend Received	Capital Appreciation	Total Shareholder Return
Short Term Return	5 Days	+0.310	+3.15%
	10 Days	+0.220	+2.20%
	20 Days	+0.220	+2.20%
Medium Term Return	3 Months	+0.220	+2.20%
	6 Months	+2.530	+32.80%
	1 Year	+3.370	+48.20%
Long Term Return	2 Years	+3.940	+62.74%
	3 Years	+4.570	+80.88%
	5 Years	0.100	+1.810
Annualised Return	Annualised	-	+4.18%

PBA HOLDINGS BERHAD (5041)

C² Chart

Analysis



Period	Dividend Received	Capital Appreciation	Total Shareholder Return	
Short Term Return	5 Days	-0.050	-3.33%	
	10 Days	-0.050	-3.33%	
	20 Days	-0.129	-6.45%	
Medium Term Return	3 Months	-0.219	-10.77%	
	6 Months	-0.509	-22.32%	
	1 Year	-0.930	-44.81%	
Long Term Return	2 Years	+0.970	+42.97%	
	3 Years	0.023	+0.915	+11.370%
	5 Years	0.000	+0.650	+66.97%
Annualised Return	Annualised	-	+10.20%	

Disclaimer: The information on this page is provided as a service to readers. It does not constitute financial advice and/or any investment recommendations. Past performance is not indicative of future results. We assume no liability for damages resulting from or arising out of the use of such information. It would be best if you did your own research to make your personal investment decisions wisely or consult a licenced investment advisor.

Price & Total Shareholder Return (as at Yesterday)

Fundamental Analysis

DEFINITION: Company is paying out dividend with low or moderate leverage.

CHART GUIDE: Total Shareholder Return (TSR) combines share price appreciation and distributions paid to show the total return to the shareholder expressed as a percentage.



ShareInvestor WebPro > Screener > Market Screener (FA & TA) > select BURSA > add criteria

A. Criteria

- > click Add Criteria
- Fundamental Analysis Conditions tab >select (i) Dividend Yield (Historical)
- Fundamental Analysis Conditions tab >select (ii) Dividend Payout (Historical)
- Fundamental Analysis Conditions tab >select (iii) Total Debt To Equity
- Fundamental Analysis Conditions tab >select (iv) Total Shareholder Returns
- Fundamental Analysis Conditions tab >select (v) Total Shareholder Returns
- Fundamental Analysis Conditions tab / >select (vi) CAGR of Dividend Per Share

• Fundamental Analysis Conditions tab >select (vii) CAGR of Dividend Per Share

B. Conditions (Criteria Filters)

1. Dividend Yield - select (more than) type (1) % for the past select (1) financial year(s)
2. Dividend Payout (Historical) - select (between) type (0.5) to type (1) times for the past select (1) financial year(s)
3. Total Debt to Equity - select (less than) type (1) for the past select (1) financial year(s)
4. Total Shareholder Return - select (more than) type (5) % for the past select (3) financial year(s)
5. Total Shareholder Return - select (more than) type (5) % for the past select (5) financial year(s)

6. CAGR of Dividend Per Share - select (less than) type (30) % for the past select (5) financial year(s)
7. CAGR of Dividend Per Share - select (more than) type (1) % for the past select (5) financial year(s)

- > click Save Template > Create New Template type (Dividend Companies) > click Create
- > click Save Template as > select Dividend Companies > click Save
- > click Screen Now (may take a few minutes)
- > Sort By: Select (Dividend Yield) Select (Desc)
- > Mouse over stock name > Factsheet > looking for Total Shareholder Return

AMWAY (M) HOLDINGS BERHAD (6351)

C² Chart

Analysis



Period	Dividend Received	Capital Appreciation	Total Shareholder Return
Short Term Return	5 Days	-	-
	10 Days	-0.050	-0.71%
	20 Days	-0.050	-0.71%
Medium Term Return	3 Months	-0.220	-3.05%
	6 Months	+0.160	+2.34%
Long Term Return	1 Year	+1.670	+31.33%
	2 Years	+2.010	+40.00%
	3 Years	+1.400	+26.81%
	5 Years	0.300	+25.02%
	Annualised Return	Annualised	-

CSC STEEL HOLDINGS BERHAD (5094)

C² Chart

Analysis



Period	Dividend Received	Capital Appreciation	Total Shareholder Return
Short Term Return	5 Days	-0.020	-1.46%
	10 Days	-0.030	-2.21%
	20 Days	-0.040	-2.92%
Medium Term Return	3 Months	-0.000	-5.67%
	6 Months	+0.000	+6.40%
Long Term Return	1 Year	+0.190	+13.68%
	2 Years	+0.130	+10.03%
	3 Years	0.140	+10.53%
	5 Years	0.276	+57.45%
	Annualised Return	Annualised	-

LII HEN INDUSTRIES BHD (7089)

C² Chart

Analysis



Period	Dividend Received	Capital Appreciation	Total Shareholder Return
Short Term Return	5 Days	-0.030	-3.06%
	10 Days	-0.035	-3.66%
	20 Days	-0.025	-2.56%
Medium Term Return	3 Months	-0.110	-10.38%
	6 Months	-	-
Long Term Return	1 Year	+0.110	+12.10%
	2 Years	+0.065	+9.83%
	3 Years	0.090	+9.50%
	5 Years	0.425	+46.04%
	Annualised Return	Annualised	-

Disclaimer: The information on this page is provided as a service to readers. It does not constitute financial advice and/or any investment recommendations. Past performance is not indicative of future results. We assume no liability for damages resulting from or arising out of the use of such information. It would be best if you did your own research to make your personal investment decisions wisely or consult a licenced investment advisor.

Week: 26 July 2024 - 1 August 2024

More Brokers' Call 

AMINVESTMENT BANK <small>... See More</small>	Call	Target Price	Release Date
CIMB Group Holdings Berhad (1023)	BUY	RM8.00	31 Jul 2024
Vestland Berhad (0273)	BUY	RM0.70	30 Jul 2024

APEX <small>... See More</small>	Call	Target Price	Release Date
Tasco Berhad (5140)	BUY	RM1.00	31 Jul 2024
Westports Holdings Berhad (5246)	BUY	RM5.08	29 Jul 2024

BIMB SECURITIES SDN BHD <small>... See More</small>	Call	Target Price	Release Date
Lotte Chemical Titan Holding Berhad (5284)	TRADING BUY	RM1.39	1 Aug 2024
Datasonic Group Berhad (5216)	BUY	RM0.63	29 Jul 2024
Nestle (Malaysia) Berhad (4707)	HOLD	RM119.40	26 Jul 2024

KENANGA <small>... See More</small>	Call	Target Price	Release Date
Petronas Chemicals Group Berhad (5183)	MARKET PERFORM	RM6.28	1 Aug 2024
Unisem (M) Berhad (5005)	MARKET PERFORM	RM3.70	31 Jul 2024
Marine & General Berhad (5078)	ADD	RM0.46	30 Jul 2024
Westports Holdings Berhad (5246)	UNDERPERFORM	RM3.80	29 Jul 2024

MALACCA SECURITIES SDN BHD <small>... See More</small>	Call	Target Price	Release Date
UOA Real Estate Investment Trust (5110)	SELL	RM0.93	26 Jul 2024

MIDF <small>... See More</small>	Call	Target Price	Release Date
CIMB Group Holdings Berhad (1023)	BUY	RM8.12	31 Jul 2024
IHH Healthcare Berhad (5225)	BUY	RM7.35	30 Jul 2024
Westports Holdings Berhad (5246)	NEUTRAL	RM4.30	29 Jul 2024

UOB KAYHIAN <small>... See More</small>	Call	Target Price	Release Date
Dialog Group Berhad (7277)	BUY	RM2.91	31 Jul 2024
DXN Holdings Berhad (5074)	BUY	RM0.72	31 Jul 2024
CIMB Group Holdings Berhad (1023)	BUY	RM8.12	30 Jul 2024

DEFINITION: Top 9 stocks with Technical Analysis plus Pattern Matching by 60 pre-defined indicators by the system showing a higher probability of bullish sentiment on the share price.



ShareInvestor WebPro > Screener > Predefined TA Screens > select market BURSA > Most Long Signals > click Scan Results or mouse over each company

SHH RESOURCES HOLDINGS BERHAD (7412.MY)

SHH

Price updated at 01 Aug 2024 16:54

Last: 1.450	Change: +0.100	Volume: 1,616
	Change (%): +7.41	Range: 1.390 - 1.460

TA Scanner Results based on historical data up to 01 Aug 2024

Condition	Signal	Explanation
Bollinger Band: High Above Upper Bollinger Band	Neutral	1. High above upper bollinger band(14,2). 2. Average volume(5) is above 100,000.
CCI: Bearish CCI Overbought And Reversing	Short	1. CCI(26) above 100 and CCI(26) 1 day ago increasing for the last 3 days. 2. CCI(26) below CCI(26) 1 day ago
DM: Bullish Directional Movement	Long	-DI(14) crossed below +DI(14)
Donchian Channels: High Above Upper Donchian Channels	Long	High crossed above the upper Donchian Channel(14,4)
MA: Bullish Price Crossover	Long	1. Close price crossed above MA(40) within the last 1 day. 2. Previous day close price is below the MA(10) for the last 5 days
MA: Short Term Bullish Moving Average Crossover	Long	MA(10) crossed above MA(15) within the last 1 day.
MACD: Bullish MACD Crossover	Long	1. MACD(12,26) diff line crossed above the MACD(12,26) signal line. 2. MACD Histogram(12,26) is above 0.
Parabolic SAR: Bearish Parabolic SAR Reversal	Neutral	1. Parabolic SAR 1 day ago above close price 1 day ago for the last 5 days. 2. Parabolic SAR below close price
RSI: Short Term RSI 50 Bullish Crossover	Long	1. RSI(20) crossed above 50 within the last 1 day and RSI(20) 1 day ago below 50 for the last 5 days. 2. Volume above average volume(125). 3. Average volume(5) is above 100,000.
Volume: Volume Spike	Long	1. Volume is more than 500% above average volume(10). 2. Volume above 200000. 3. Close price above 0.10
Williams %R: Bearish Williams %R	Short	1. Williams %R(26) between 0 and -20. 2. Average volume(5) is above 100,000.

MYCRON STEEL BERHAD (5087.MY)

MYCRON

Price updated at 01 Aug 2024 16:29

Last: 0.450	Change: -0.005	Volume: 568
	Change (%): -1.10	Range: 0.440 - 0.455

TA Scanner Results based on historical data up to 01 Aug 2024

Condition	Signal	Explanation
Bollinger Band: Bullish Lower Bollinger Band Support	Long	1. Low 1 day ago below lower bollinger band(20,2). 2. Close above close 1 day ago. 3. Average volume(5) is above 100,000.
Bollinger Band: Low Below Lower Bollinger Band	Neutral	1. Low below lower bollinger band(14,2). 2. Average volume(5) is above 100,000.
CCI: Bullish CCI Oversold And Reversing	Long	1. CCI(26) below -100 and CCI(26) 1 day ago decreasing for the last 3 days. 2. CCI(26) above CCI(26) 1 day ago
Candlestick: Bullish Hammer	Long	Bullish: Hammer
Candlestick: Bullish Harami	Long	Bullish: Harami
MA: Short Term Bearish Moving Average Crossover	Short	MA(10) crossed below MA(15) within the last 1 day.
MACD: Oversold	Long	1. MACD Histogram(12,26,9) reached a new 6 month low. 2. MACD Histogram(12,26,9) has been below 0 for the last 3 weeks.

PETRONAS DAGANGAN BERHAD (5681.MY)

PETDAG

Price updated at 01 Aug 2024 16:58

Last: 17.240	Change: -0.500	Volume: 4,726
	Change (%): -2.82	Range: 17.220 - 17.800

TA Scanner Results based on historical data up to 01 Aug 2024

Condition	Signal	Explanation
Bollinger Band: Bullish Long Term Volatility Breakout and Trending	Long	1. Close price above upper bollinger band(33,1). 2. Volume above average volume(50). 3. Average volume(50) is above 300,000.
Bollinger Band: Bullish Short Term Volatility Breakout and Trending	Long	1. Close price above upper bollinger band(33,1). 2. Volume above average volume(10). 3. Average volume(10) is above 300,000.
Bollinger Band: High Above Upper Bollinger Band	Neutral	1. High above upper bollinger band(14,2). 2. Average volume(5) is above 100,000.
CCI: Bearish CCI Overbought And Reversing	Short	1. CCI(26) above 100 and CCI(26) 1 day ago increasing for the last 3 days. 2. CCI(26) below CCI(26) 1 day ago
Donchian Channels: High Above Upper Donchian Channels	Long	High crossed above the upper Donchian Channel(14,4)
Price: Consecutive Days Gains	Long	1. Close price has been increasing over the last 5 days. 2. Average volume(5) above 100,000.
RSI: Short Term RSI 50 Bullish Crossover	Long	1. RSI(20) crossed above 50 within the last 1 day and RSI(20) 1 day ago below 50 for the last 5 days. 2. Volume above average volume(125). 3. Average volume(5) is above 100,000.
Williams %R: Bearish Williams %R	Short	1. Williams %R(26) between 0 and -20. 2. Average volume(5) is above 100,000.

PWF CORPORATION BERHAD (7134.MY)

PWF

Price updated at 01 Aug 2024 16:54

Last: 0.895	Change: -0.005	Volume: 19,897
	Change (%): -0.56	Range: 0.890 - 0.900

TA Scanner Results based on historical data up to 01 Aug 2024

Condition	Signal	Explanation
Bollinger Band: Bullish Long Term Volatility Breakout and Trending	Long	1. Close price above upper bollinger band(33,1). 2. Volume above average volume(50). 3. Average volume(50) is above 300,000.
Bollinger Band: Bullish Short Term Volatility Breakout and Trending	Long	1. Close price above upper bollinger band(33,1). 2. Volume above average volume(10). 3. Average volume(10) is above 300,000.
Bollinger Band: High Above Upper Bollinger Band	Neutral	1. High above upper bollinger band(14,2). 2. Average volume(5) is above 100,000.
Candlestick: Bullish Engulfing	Long	Bullish: Engulfing
Donchian Channels: High Above Upper Donchian Channels	Long	High crossed above the upper Donchian Channel(14,4)
MACD: Bullish MACD Crossover	Long	1. MACD(12,26) diff line crossed above the MACD(12,26) signal line. 2. MACD Histogram(12,26) is above 0.

Disclaimer: The information on this page is provided as a service to readers. It does not constitute financial advice and/or any investment recommendations. Past performance is not indicative of future results. We assume no liability for damages resulting from or arising out of the use of such information. It would be best if you did your own research to make your personal investment decisions wisely or consult a licenced investment advisor.

 **KSL HOLDINGS BERHAD (5038.MY)**

KSL

Price updated at 01 Aug 2024 16:59

Last: 1.930	Change: -0.080	Volume: 23,506
	Change (%): -3.98	Range: 1.920 - 2.020

TA Scanner Results based on historical data up to 01 Aug 2024

Condition	Signal	Explanation
Bollinger Band: Bullish Long Term Volatility Breakout and Trending	Long	1. Close price above upper bollinger band(33,1). 2. Volume above average volume(50). 3. Average volume(50) is above 300,000.
Bollinger Band: Bullish Short Term Volatility Breakout and Trending	Long	1. Close price above upper bollinger band(33,1). 2. Volume above average volume(10). 3. Average volume(10) is above 300,000.
Candlestick: Bullish Engulfing	Long	Bullish: Engulfing
MACD: Bullish MACD Crossover	Long	1. MACD(12,26) diff line crossed above the MACD(12,26) signal line. 2. MACD Histogram(12,26) is above 0.
Volume: 10 Days large value Sell Down trade	Short	1. 150K value Sell Down greater than Buy Up by 20% for 10 days. 2. 50K-100K value Sell Down greater than Buy Up by 20% for 10 days. 3. Average volume(10) is above 1000000
Volume: Consecutive Days Of Increasing Average Volume	Long	1. Average Volume(20) has been increasing over the last 2 weeks. 2. Average volume(20) is above 100000
Williams %R: Bearish Williams %R	Short	1. Williams %R(26) between 0 and -20. 2. Average volume(5) is above 100,000.

 **OPTIMAX HOLDINGS BERHAD (0222.MY)**

OPTIMAX

Price updated at 01 Aug 2024 16:59

Last: 0.710	Change: -0.005	Volume: 13,237
	Change (%): -0.70	Range: 0.705 - 0.730

TA Scanner Results based on historical data up to 01 Aug 2024

Condition	Signal	Explanation
Bollinger Band: Bullish Long Term Volatility Breakout and Trending	Long	1. Close price above upper bollinger band(33,1). 2. Volume above average volume(50). 3. Average volume(50) is above 300,000.
Bollinger Band: Bullish Short Term Volatility Breakout and Trending	Long	1. Close price above upper bollinger band(33,1). 2. Volume above average volume(10). 3. Average volume(10) is above 300,000.
Bollinger Band: High Above Upper Bollinger Band	Neutral	1. High above upper bollinger band(14,2). 2. Average volume(5) is above 100,000.
Bollinger Band: Low Below Lower Bollinger Band	Neutral	1. Low below lower bollinger band(14,2). 2. Average volume(5) is above 100,000.
Candlestick: Bullish Engulfing	Long	Bullish: Engulfing
Donchian Channels: High Above Upper Donchian Channels	Long	High crossed above the upper Donchian Channel(14,4)
MACD: Bullish MACD Crossover	Long	1. MACD(12,26) diff line crossed above the MACD(12,26) signal line. 2. MACD Histogram(12,26) is above 0.

 **AFFIN BANK BERHAD (5185.MY)**

AFFIN

Price updated at 01 Aug 2024 16:57

Last: 3.110	Change: +0.060	Volume: 79,712
	Change (%): +1.97	Range: 3.060 - 3.150

TA Scanner Results based on historical data up to 01 Aug 2024

Condition	Signal	Explanation
Bollinger Band: High Above Upper Bollinger Band	Neutral	1. High above upper bollinger band(14,2). 2. Average volume(5) is above 100,000.
CCI: Bearish CCI Overbought And Reversing	Short	1. CCI(26) above 100 and CCI(26) 1 day ago increasing for the last 3 days. 2. CCI(26) below CCI(26) 1 day ago

 **BINA PURI HOLDINGS BERHAD (5932.MY)**

BPURI

Price updated at 01 Aug 2024 16:58

Last: 0.400	Change: +0.005	Volume: 124,853
	Change (%): +1.27	Range: 0.385 - 0.400

TA Scanner Results based on historical data up to 01 Aug 2024

Condition	Signal	Explanation
Bollinger Band: Low Below Lower Bollinger Band	Neutral	1. Low below lower bollinger band(14,2). 2. Average volume(5) is above 100,000.
Candlestick: Bullish Engulfing	Long	Bullish: Engulfing
Volume: 10 Days large value Buy Up trade	Long	1. 150K value Buy Up greater than Sell Down by 20% for 10 days. 2. 50K-100K value Buy Up greater than Sell Down by 20% for 10 days. 3. Average volume(10) is above 1000000
Volume: 5 Days large value Buy Up trade	Long	1. 150K value Buy Up greater than Sell Down by 20% for 5 days. 2. 50K-100K value Buy Up greater than Sell Down by 20% for 5 days. 3. Average volume(10) is above 1000000
Volume: Consecutive Days Of Increasing Average Volume	Long	1. Average Volume(20) has been increasing over the last 2 weeks. 2. Average volume(20) is above 100000

 **MAG HOLDINGS BERHAD (0095.MY)**

MAG

Price updated at 01 Aug 2024 15:28

Last: 0.180	Change: -0.005	Volume: 81,616
	Change (%): -2.70	Range: 0.180 - 0.180

TA Scanner Results based on historical data up to 01 Aug 2024

Condition	Signal	Explanation
Bollinger Band: Bullish Long Term Volatility Breakout and Trending	Long	1. Close price above upper bollinger band(33,1). 2. Volume above average volume(50). 3. Average volume(50) is above 300,000.
Bollinger Band: Bullish Short Term Volatility Breakout and Trending	Long	1. Close price above upper bollinger band(33,1). 2. Volume above average volume(10). 3. Average volume(10) is above 300,000.
Bollinger Band: High Above Upper Bollinger Band	Neutral	1. High above upper bollinger band(14,2). 2. Average volume(5) is above 100,000.
Bollinger Band: Low Below Lower Bollinger Band	Neutral	1. Low below lower bollinger band(14,2). 2. Average volume(5) is above 100,000.
MA: Short Term Bullish Moving Average Crossover	Long	MA(10) crossed above MA(15) within the last 1 day.
Price: New 52 Week Low	Short	1. Stock reach a new 52 week low. 2. Average volume(30) is above 50000.
RSI: Short Term RSI 50 Bullish Crossover	Long	1. RSI(20) crossed above 50 within the last 1 day and RSI(20) 1 day ago below 50 for the last 5 days. 2. Volume above average volume(125). 3. Average volume(5) is above 100,000.

Disclaimer: The information on this page is provided as a service to readers. It does not constitute financial advice and/or any investment recommendations. Past performance is not indicative of future results. We assume no liability for damages resulting from or arising out of the use of such information. It would be best if you did your own research to make your personal investment decisions wisely or consult a licenced investment advisor.

Condition	Signal	Explanation
Donchian Channels: High Above Upper Donchian Channels	Long	High crossed above the upper Donchian Channel(14,4)
MACD: Bullish MACD Crossover	Long	1. MACD(12,26) diff line crossed above the MACD(12,26) signal line. 2. MACD Histogram(12,26) is above 0.
Price: New 52 Week High	Long	1. Stock reach a new 52 week high. 2. Average volume(30) is above 50000.
Volume: 5 Days large value Buy Up trade	Long	1. 150K value Buy Up greater than Sell Down by 20% for 5 days. 2. 50K-100K value Buy Up greater than Sell Down by 20% for 5 days. 3. Average volume(10) is above 1000000
Volume: Consecutive Days Of Increasing Average Volume	Long	1. Average Volume(20) has been increasing over the last 2 weeks. 2. Average volume(20) is above 100000
Williams %R: Bearish Williams %R	Short	1. Williams %R(26) between 0 and -20. 2. Average volume(5) is above 100,000.



Dato' Eu Hong Chew
Former Group CEO i-Berhad
Non-Executive Director

He has been associated with the Sumurwang Group for many years charting the path for its manufacturing arm, firstly under Dreamland Holdings Berhad and the subsequent acquisition of I-Berhad.

Before that, he was with PA Management Consulting for a decade where he was the Director of Studies for the Cranfield PA MBA Programme in Malaysia.

Educated at the Royal Military College, Dato' Eu has an engineering degree from the University of Glasgow, and a MBA from the University of Bradford, UK.

Is there an investment opportunity in CARPENTER TECHNOLOGIES

SUMMARY

- Carpenter Technology Corporation (NYSE:CRS) experienced low revenue growth over the past 11 years. ROIC averaged 4.6%. This was lower than its 10% Weighted Average Cost of Capital (WACC) suggesting that it did not create shareholders' value.
- Despite generating positive cash flow from operations, it has an unsustainable Reinvestment rate and poor capital allocation, leading to concerns about its financial health.

Disclaimer: This article is written for informational purposes only. It does not constitute a solicitation, offer, advice, counseling or recommendation to buy or sell. As such it is not intended to promote the purchase of shares in any way. As a reminder, any type of asset has a risk factor and needs to be evaluated from multiple perspectives. Therefore, any investment decision and the associated risk remains with the investor. The views expressed here are entirely the writer's own.

- My valuation over the cycle showed that there is no margin of safety at the current market price.

INVESTMENT THESIS

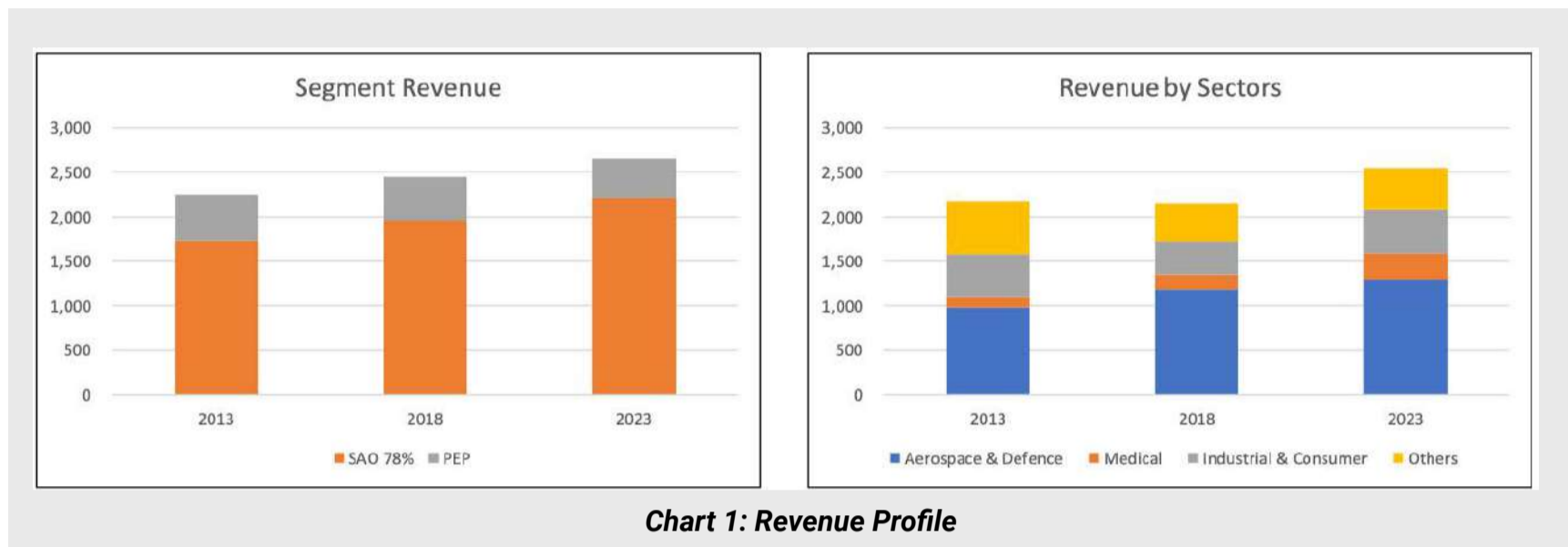
Over the past 11 years, Carpenter Tech's revenue only grew at 1.2% CAGR. Its earnings have been very volatile and I have concerns about its business fundamentals. There is no track record of improving operations. It also has an unsustainable Reinvestment rate. This is a cyclical company and my valuation on such a basis showed no margin of safety. The current market price far exceeds its business value. If you had bought it much earlier, this is a good time to exit.

BACKGROUND

Carpenter Tech is engaged in the manufacturing, fabrication, and distribution of specialty metals. The company has 2 reportable segments.

- Specialty Alloys Operations (SAO) covering the company's major premium alloy and stainless-steel operations. This is the larger revenue contributor. In 2023, it accounted for about 87% of the external revenue.
- Performance Engineered Products (PEP) covers the company's differentiated operations. The % contribution by this segment had shrunk over the past 11 years as can be seen from the left part of Chart 1.

While it serves several sectors, the Aerospace & Defence sector accounted for about half of the revenue. In 2023, sales in the US accounted for about 60% of its revenue. Note that Carpenter Tech has June as its financial year-end. As such, unless stated otherwise, the years in this article refer to the financial years.



OPERATING TRENDS

This is not a high-growth company. Over the past 11 years, revenue grew at only 1.2% CAGR. As can be seen from the left part of Chart 2, the bulk of the growth came in the past 2 years. Revenue was also cyclical. The prices of certain of the raw materials used are volatile. To manage this, the company uses pricing surcharges and other measures such as indexing mechanisms and raw material forward contracts. But as illustrated in the right part of Chart 2, even if we exclude the surcharges, the revenue also shows a cyclical pattern.

Given the revenue pattern, you should not be surprised to see that PAT was also cyclical. In addition, PAT was volatile. The decline in profits in 2015, 2016, 2020, and 2021 was due to declining revenue as well as impairments and restructuring charges.

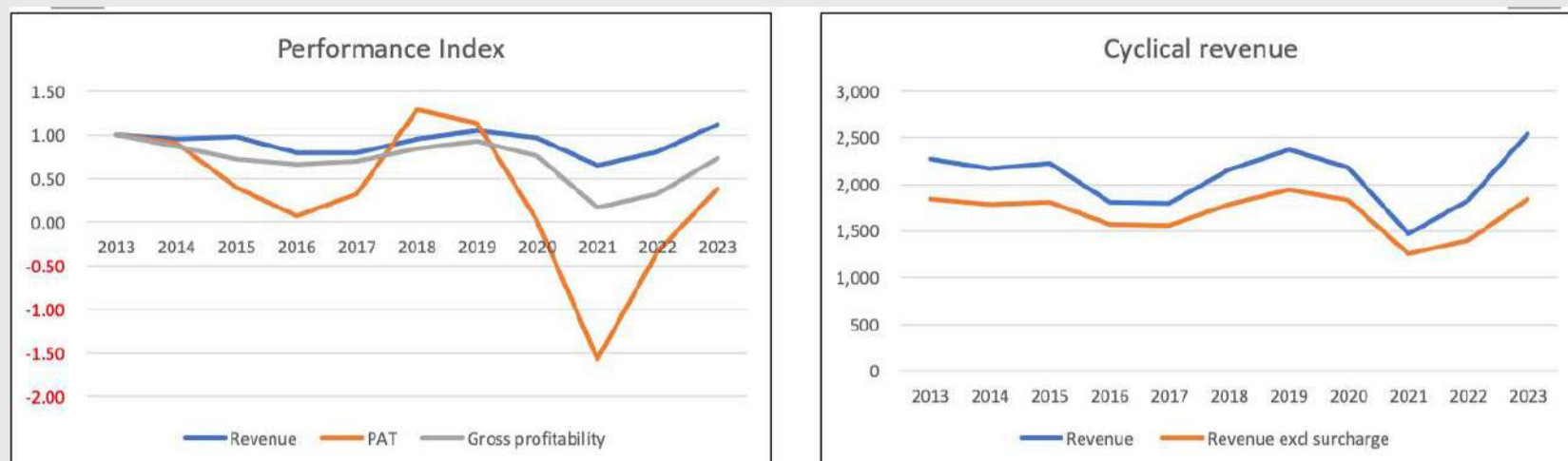


Chart 2: Performance Index

You can see that Carpenter Tech's performance has improved over the past few years. Part of this is due to the extraordinary steel prices post-COVID-19. But as can be seen from Chart 3, prices have come down.

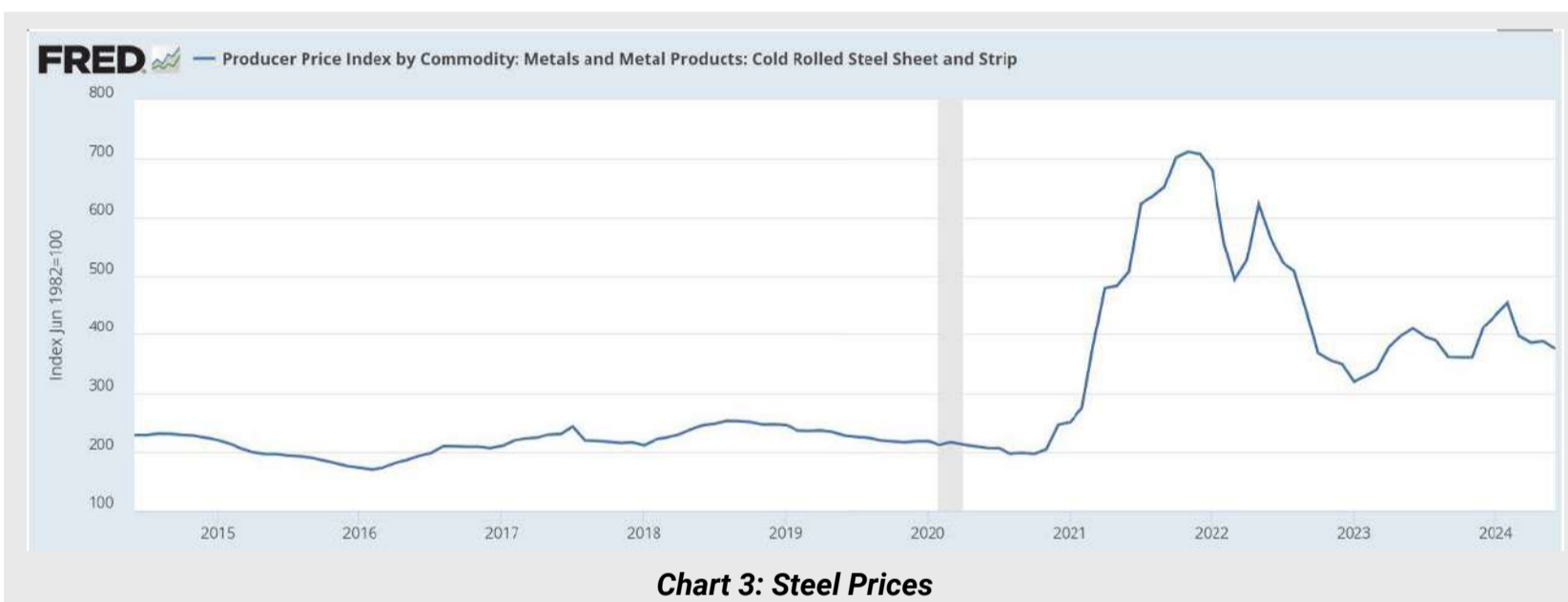


Chart 3: Steel Prices

Given the volatile PAT, ROIC was also volatile ranging from negative 4.4% in 2021 to positive 9.7% in 2013. Over the past 11 years, it averaged 4.6%. This was much lower than its current WACC of 10% implying that the company failed to create shareholders' value.

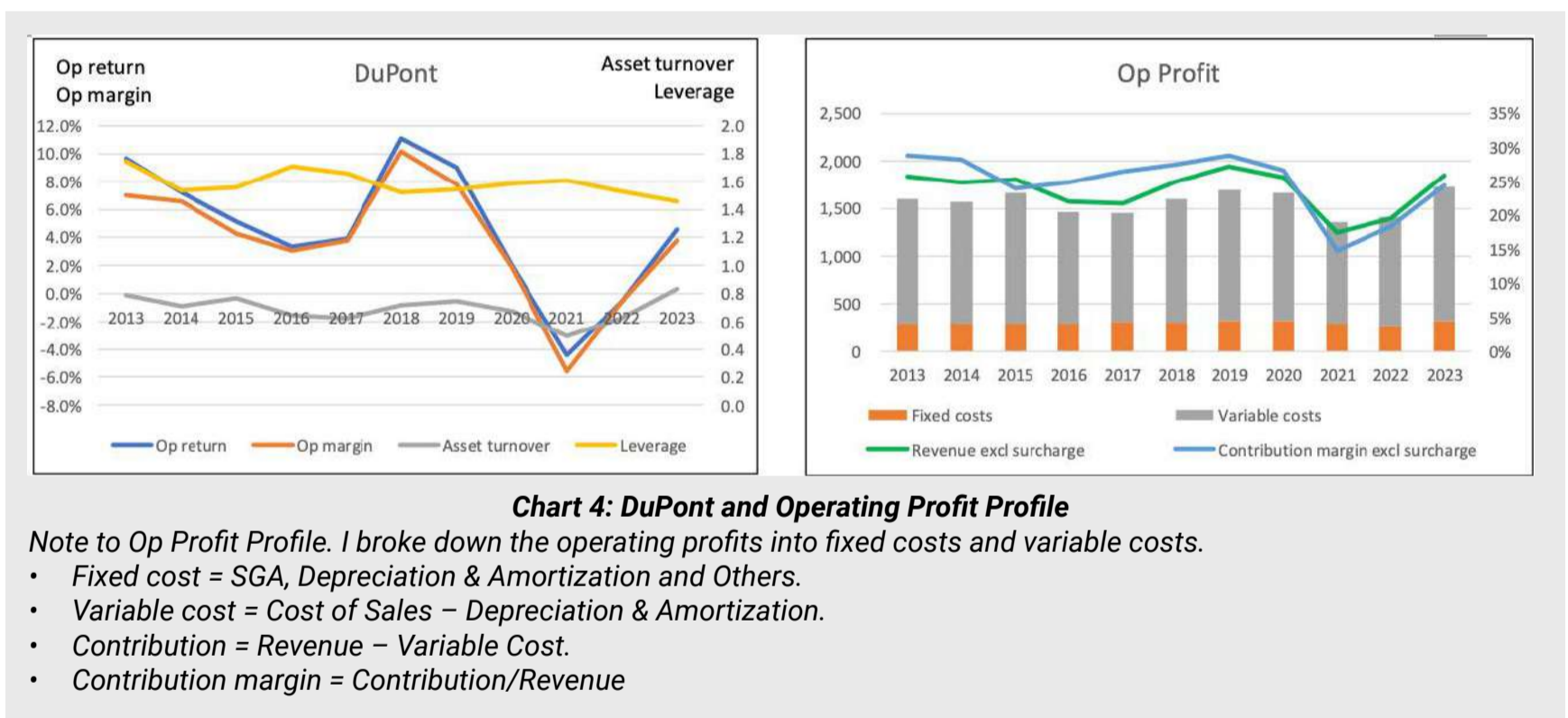
In 2016, the company launched the Carpenter Operating Model to:

"...unlocking manufacturing efficiencies and commercial opportunities, while also driving further improvements in working capital efficiency and capital spending discipline."

The company has also stated that its goal is to double the 2019 operating profits by 2027.

As such I was expecting operating improvements. But there are no clear signs of these:

- Gross profitability declined. Refer to the left part of Chart 2. This meant that there was no improvement in the capital efficiency.
- A DuPont Analysis showed no improvement in the asset turnover and leverage. Refer to the left part of Chart 4.
- There was no uptrend in the contribution margin. Refer to the right part of Chart 4.



FINANCIAL POSITION

I also have concerns about Carpenter Tech's financial position:

- It has a 0.30 Debt Capital ratio as of the end of Mar 2024. As per the Damodaran Jan 2023 dataset, the Debt Capital ratio for the steel sector was 0.22.
- As of the end of Mar 2024, it had USD53.5 million in cash. This was only 2% of its total assets.

- It does not have a good capital allocation track record. As can be seen from Table 1, over the past 11 years, it spent about 91% of its cash flow from operations on CAPEX and acquisitions. You may wonder whether it is money well spent considering that the returns were lower than the cost of funds.

Items	Sources (USD m)	Uses (USD m)
Cash flow from Ops	2,043	
Net Debt	278	
New shares	41	
Dividends & buybacks		687
Net CAPEX incl intangibles		1,741
Acquisitions		128
Cash and misc	194	
Total	2,555	2,555

Table 1: Source and Uses of Funds 2013 to 2023

Over the past 11 years, it had an average Reinvestment rate of 137%. This is not a sustainable rate.

Reinvestment rate = Reinvestment / NOPAT.
Reinvestment = CAPEX & acquisitions – Depreciation & Amortization + Increase in Net Working Capital.

But on the positive side, it does not have a liquidity problem. Over the past 11 years, it generated positive cash flow from operations every year. It generated about USD2.0 billion in cash flow from operations compared to its PAT of USD0.5 billion. This is a good cash conversion ratio.

VALUATION

Damodaran opined that cyclical companies' performance depends on where they are in the cycle. Extrapolating the performance based on the current earnings can lead to misleading valuations. To overcome the cyclical issue, we have to normalize the

performance over the cycle. In this context, I analyzed the performance of CRS from 2013 to 2024 so that I covered at least 2 revenue cycles.

I do not consider Carpenter Tech a growth company. As such I valued it based on an Earnings Power Value. On such a basis I estimated its intrinsic value to be USD14 per share compared to its market price of USD118 per share (18 July 2024).

RISKS AND LIMITATIONS

In my analysis, I covered the 2013 to 2023 performance. However, over the past 9 months, there has been significant improvements in its performance.

- The March 2024 LTM revenue was 7% higher than that for FYE 2023.
- The company delivered USD131 million PAT for March 2024 LTM compared to USD 56 million for FYE 2023.

But Carpenter Tech is a cyclical company. As a long-term investor, I am more interested in the long-term outlook than just the current performance. Having said that, you may wonder why there is such a big difference between my valuation and the market price. To try to understand the market price, I used the following values in my valuation model.

- Instead of an average contribution margin and capital turnover, I used the 2024 values.
- I assumed a 4% growth rate with zero Reinvestment rate.

You can see that these are values for a very unlikely performance. Yet I only obtained a value of USD66 per share. The market price is about double the unlikely value. I would interpret that the market has overpriced the company. To give you another overpricing perspective, the company is trading at about PE 45. This is very high for a brick-and-mortar company.

VALUATION MODEL

I valued Carpenter Tech based on the single-stage Free Cash Flow to the Firm (FCFF) model where:

$$FCFF = EBIT(1-t).$$

EBIT = Revenue X Contribution margin – Fixed cost.
(This was based on the operating model shown in the right part of Chart 4.)

Table 2 shows the sample calculation. The WACC was based on the first page results of a Google search for “Carpenter Technology WACC”.

Item	Units	Value	Notes
Revenue	USD m	2,719	a. LTM
Contribution	USD m	560	b. Revenue X 12 yr ave margin
Fixed costs	USD m	355	c. Incl ave past 12 yrs write-offs
EBIT	USD m	205	d = b - c
Tax	%	21%	e. 2022 to 2024 ave
EBIT(1-t)	USD m	162	f = d X (1 - e)
Growth rate	%	0.0%	g. Based on EPV
Revenue/TCE	%	111%	h. 12 year ave
TCE	USD m	2,441	i = a X h
Return	USD m	7%	j = f / i
Reinvestment rate	%	0%	k = g / j
FCFF	USD m	162	m = f X (1 - k)
WACC	%	10%	n as per Google search
Value to the firm	USD m	1,652	o = m X (1 + g) / (n - g)
Actual TCE	USD m	2,152	p. 2024
Excess TCE	USD m	-290	q = p - i
Cash	USD m	54	r. Mar 2024
Other investments	USD m	0	s. Mar 2024
Debt	USD m	703	t. Mar 2024
Minority Interests	USD m	0	u. Mar 2024
Value of equity	USD m	713	v = o + q + r + s - t - u
No of shares	m	49	w. Sep 2023
Value of equity per share	USD per share	14	x = v / w
Market price	USD per share	118	18-Jul-24

Table 2: Sample calculation

CONCLUSION

This is not a high-growth company. On top of this, I have concerns about its fundamentals:

- Its average ROIC is lower than its cost of funds.
- There is no clear evidence that it has become more efficient.
- It had an unsustainable Reinvestment rate.
- I also have concerns about its financial standing.

The positive thing is that it does not have a liquidity problem. It has been able to generate positive cash flow from operations every year over the past 11 years, despite 2 years of losses. Carpenter Tech is a cyclical company and as such I valued it based on its performance over the price cycle. There is no margin of safety based on such a lens.

Together with my concerns about its fundamentals, why would this be an investment opportunity?

I am a long-term value investor who has held onto stocks for more than 5 years. My analysis and valuation are from such a perspective. I consider quarterly results “noisy” and focus on long-term trends.

*This article was re-purposed from my article “**Carpenter Technology: Volatile Earnings Resulting In Poor Cyclical Performance**” which was first published in Seeking Alpha. Refer to this [link](#) for more of my insights on other US companies.*

UNLOCK THE SECRET OF WEALTH

DO YOU REALLY WANT TO MASTER VALUE INVESTING



SEE HOW TO GET HIGHER RETURNS WITH LOWER RISK



BURSA'S 1H 2024 PERFORMANCE MARKED BY SEVERAL RECORD HIGHS

A ccording to Datuk Muhamad Umar Swift, Chief Executive Officer of Bursa Malaysia, Malaysia's capital market witnessed strong performance in the first half of 2024, marked by several record highs, notwithstanding ongoing external macroeconomic headwinds. These included surpassing a record high market capitalisation of RM2.0 trillion and the FBM KLCI breaching the psychological 1,600-point mark and hitting the highest level in three years, both achieved in May this year. Trading in the Securities Market have remained active, contributing significantly to the Exchange's performance. Based on the current economic conditions and improved market sentiment, he is optimistic that this positive momentum can be sustained. The Exchange is committed to enhancing its appeal to create value for stakeholders, while driving economic growth.

Bursa Malaysia recorded Profit After Tax, Zakat and Minority Interest ("PATAMI") of RM155.5 million for 1H2024 representing an increase of 17.4% from RM132.4 million recorded for 1H2023. The

increase in PATAMI is attributed to a 29.3% increase in operating revenue to RM374.5 million in 1H2024 from RM289.6 million in 1H2023. The Board of Directors has accordingly declared a higher interim dividend of 18 sen per share for the financial year ending 31 December 2024. This amounts to approximately RM145.7 million, representing a dividend payout ratio of 93.7%.

Datuk Muhamad Umar Swift said, “We are pleased to have achieved several significant milestones in the first half of 2024, including among others, the launch of Bursa Gold Dinar and the Centralised Sustainability Intelligence (CSI) Solution, as well as the completion of the inaugural Renewal Energy Certificates (RECs) auction. As a multi-asset exchange, we will leverage our strengths and drive changes that will excite investor interest and increase market liquidity. The Exchange will expand its range of innovative products and solutions, including a Waqf-featured exchange-traded fund, and new retail investor access to investment notes via BR Capital.”

Bursa Malaysia Chairman Tan Sri Abdul Wahid Omar said, “I am very pleased with Bursa Malaysia’s strong performance in the first half of 2024, resulting from improved liquidity and market sentiments on the back of increased optimism in Malaysia’s economic progress and plans. Recent estimate from the Department of Statistics Malaysia suggests Malaysia’s GDP is likely to expand by 5.8% in the second quarter of this year, indicating higher growth and renewed global investor interest in the country’s ongoing reform efforts. This interest could positively influence market momentum and stimulate capital market activities. With Malaysia’s economic conditions anticipated to remain favourable, we are optimistic that strong results will be reflected in the Exchange’s performance for the second half of the year.”

The financial results for 1H2024 are available on Bursa Malaysia’s website at [bursamalaysia.com](https://www.bursamalaysia.com).

MOF SETS THREE SHORT-TERM PRIORITIES FOR BUDGET 2025

According to Finance Minister II Datuk Seri Amir Hamzah Azizan, the Ministry of Finance (MOF) has outlined three short-term priorities for Budget 2025 to achieve the objectives of the Madani Economy. In MOF's Pre-Budget Statement (PBS) for Budget 2025, the three goals are: i) raising the ceiling in terms of restructuring the economy towards greater competitiveness and higher value-added activities; ii) raising the floor in terms of improving quality of life and inclusiveness of opportunities; and iii) strengthening governance and public delivery. The PBS has set out the theme of 'Ekonomi Madani: Negara Makmur, Rakyat Sejahtera' to guide the national consultation process for Budget 2025.

In line with the Madani principles, the MOF said the government is committed to a holistic and inclusive process in formulating Budget 2025, and welcomes feedback from the people. The MOF is dedicated to advancing fiscal reforms in Budget 2025, aligning with the Fiscal Responsibility Act's medium-term goals to reduce deficits and manage debt sustainably. At the same time, the MOF will also ensure that fiscal policy remains supportive of private sector-led growth.

Malaysia's economy is experiencing robust growth, with gross domestic product increasing from 2.9% in the fourth quarter of 2023 (4Q2023) to 4.2% in 1Q2024 and is projected to have expanded

by 5.8% in 2Q2024. This growth was fuelled by, among others, a recovery in exports, which grew by 5.2% in 1Q2024, compared with an 8.1% contraction in 2023. Private investment growth strengthened to 9.2% in 1Q2024, compared with 4.6% in 1Q2023.

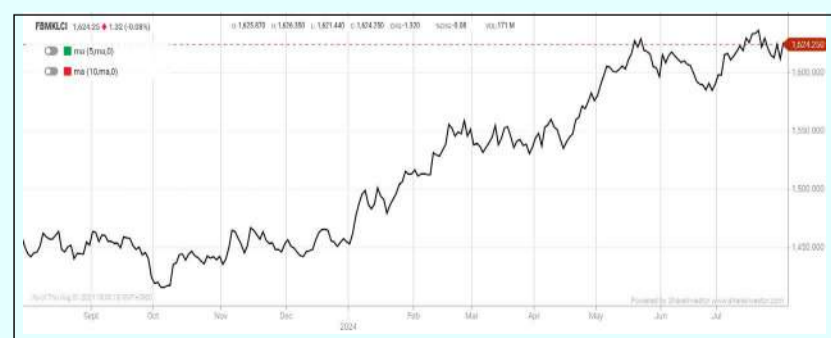
The PBS is in line with global best practices to promote public discourse and transparency in formulating annual budgets. Hence, the PBS was issued to communicate the government’s priorities for Budget 2025 to stakeholders, to guide inputs and proposals for the national budget.

MOF noted that the national budget formulation process kicked off on July 9 through the Budget 2025 consultation chaired by Prime Minister Datuk Seri Anwar Ibrahim, who is also the finance minister. More than 400 participants representing government agencies, the private sector, academics, non-governmental organisations and civil society organisations participated in the inaugural consultation session. This will soon be followed by a series of nationwide consultations over the coming weeks.

Concurrently, the MOF said members of the public can submit their comments, feedback and proposals to the Budget 2025 portal at <https://belanjawan.mof.gov.my>. Budget 2025 will be tabled in the Dewan Rakyat on Oct 18.

EYE ON THE MARKETS

On Thursday (1Aug), the Ringgit closed at 4.5710 against the USD and 3.4163 to the Sing Dollar. On Monday (29July), the FBM KLCI opened at 1617.16. As at Thursday (1Aug) 5:00pm, the FBM KLCI closed up 7.09 points at 1624.25. Over in US, the overnight Dow Jones Industrial Average closed down 494.82 points (-1.21%) to 40,347.97 whilst the NASDAQ shed 403.79 points (-2.29%) to 17,195.61.



KLCI 1 Year Chart

Over 5 trading days



ShareInvestor WebPro (www.shareinvestor.com/my)

1. Price > Stock Prices
2. Select Market: NASDAQ / NYSE / IDX / SET / HKEX / SGX (One bourse at a time)
3. select Stocks Tab
4. select Ranking Top Gainers or Top Losers (Over 5 Trading Days)
5. Mouse over Column Layout > select Edit Customs > select Name > select Last Done Price > select 5 Days Change > select 52 Weeks High > select 52 Weeks Low > Mouse Over Column Layout > select Custom

NASDAQ (USD)

Top Gainers					Top Losers				
Name	Last Done	Change Over 5 Days	52 Weeks High	52 Weeks Low	Name	Last Done	Change Over 5 Days	52 Weeks High	52 Weeks Low
COCA-COLA CONSOLIDATED INC	1,241.380	+137.360	1,144.000	614.220	MICROSTRATEGY	1,511.810	-94.660	1,999.990	307.110
CHARTER COMMUNICATIONS INC	376.970	+61.740	458.300	236.080	SAIA INC	395.010	-94.100	628.335	341.260
ERIE INDEMNITY CO	439.720	+52.210	444.800	217.640	CREDIT ACCEPTANCE CORPORATION	489.290	-84.640	616.660	379.770
META PLATFORMS INC	497.740	+44.330	542.810	274.380	QXO INC	12.350	-71.480	290.000	10.750
EQUINIX INC	811.180	+41.870	914.930	677.800	LAM RESEARCH CORP	830.330	-53.790	1,130.000	574.420

NYSE (USD)

Top Gainers					Top Losers				
Name	Last Done	Change Over 5 Days	52 Weeks High	52 Weeks Low	Name	Last Done	Change Over 5 Days	52 Weeks High	52 Weeks Low
METTLER-TOLEDO INTERNATIONAL INC	1,515.350	+104.350	1,545.880	928.495	BERKSHIRE HATHAWAY INC	647,000.000	-10,179.990	741,971.390	502,000.000
NVR INC	8,554.510	+82.630	8,700.000	5,210.490	GRAHAM HOLDINGS CO	738.740	-72.360	822.180	563.390
WHITE MOUNTAINS INSURANCE GROUP	1,782.010	+79.010	1,899.210	1,401.010	UNITED RENTALS INC	716.490	-37.770	789.799	387.010
KINSALE CAPITAL GROUP INC	447.330	+70.080	548.470	325.010	VIRTUS INVESTMENT PARTNERS INC	214.810	-30.980	263.390	209.960
AUTOZONE INC	3,148.360	+58.050	3,256.370	2,375.350	DEERE & CO	357.910	-28.640	441.465	345.935

IDX (Rupiah)

Top Gainers					Top Losers				
Name	Last Done	Change Over 5 Days	52 Weeks High	52 Weeks Low	Name	Last Done	Change Over 5 Days	52 Weeks High	52 Weeks Low
SOLUSI TUNAS PRATAMA TBK PT	43,875.000	+4,800.000	43,875.000	34,000.000	DCI INDONESIA TBK	40,200.000	-1,450.000	59,050.000	32,525.000
DIAN SWASTATIKA SENTOSA TBK	29,750.000	+750.000	30,300.000	4,800.000	GUDANG GARAM TBK	15,400.000	-1,225.000	27,125.000	15,400.000
PRODIA WIDYAHUSADA TBK	3,520.000	+670.000	6,800.000	2,700.000	INDOSAT(PT INDOSAT TBK)	10,700.000	-800.000	12,250.000	8,600.000
UNITED TRACTORS	25,550.000	+650.000	28,775.000	20,925.000	ADIRA DINAMIKA MULTI FINANCE TBK	11,275.000	-775.000	14,300.000	10,175.000
INDO TAMBANGRAYA MEGAH TBK	26,625.000	+575.000	31,425.000	23,575.000	SIANTAR TOP	12,975.000	-625.000	16,000.000	9,000.000

SET (Thai Baht)

Top Gainers					Top Losers				
Name	Last Done	Change Over 5 Days	52 Weeks High	52 Weeks Low	Name	Last Done	Change Over 5 Days	52 Weeks High	52 Weeks Low
DELTA	103.500	+12.000	116.000	63.250	KYE	302.000	-34.000	342.000	275.000
ADVANC	233.000	+10.000	235.000	193.000	NEW	75.000	-16.000	141.500	60.000
PTTEP	151.000	+7.000	175.000	137.500	GYT	162.000	-11.500	212.000	162.000
AEONTS	117.000	+6.500	179.000	107.000	TMW	51.250	-8.250	66.500	36.000
BH	247.000	+6.000	272.000	211.000	SCC	220.000	-5.000	324.000	217.000

HKEX (HKD)

Top Gainers					Top Losers				
Name	Last Done	Change Over 5 Days	52 Weeks High	52 Weeks Low	Name	Last Done	Change Over 5 Days	52 Weeks High	52 Weeks Low
ZONQING LTD (1855)	26.400	+17.200	26.400	6.507	TRIP.COM-S (9961)	328.000	-19.800	452.200	251.400
CHENQI TECH (9680)	31.000	+15.000	40.050	14.400	HANG SENG BANK (11)	92.350	-9.050	117.500	78.050
TENCENT (700)	365.600	+14.400	401.000	260.200	HANGSENG BANK-R (80011)	85.650	-8.450	108.800	72.900
TENCENT-R (80700)	339.800	+14.400	372.800	240.000	BYD COMPANY (1211)	226.800	-7.400	273.800	167.800
TECHTRONIC IND (669)	102.000	+8.600	116.100	67.350	NEW ORIENTAL-S (9901)	50.450	-7.050	77.050	38.850

SGX (SGD)

Top Gainers					Top Losers				
Name	Last Done	Change Over 5 Days	52 Weeks High	52 Weeks Low	Name	Last Done	Change Over 5 Days	52 Weeks High	52 Weeks Low
JARDINE C&C	25.880	+0.630	33.970	23.760	ACMA	0.041	-2.959	3.000	0.019
VENTURE	15.550	+0.550	15.640	11.360	JMH USD	35.190	-0.780	48.340	33.720
IFAST	7.420	+0.310	8.510	5.290	SIA	6.240	-0.710	7.420	5.870
YZJ SHIPBLDG SGD	2.660	+0.260	2.750	1.370	DBS	35.980	-0.560	38.550	28.191
AZEUS	9.710	+0.210	10.800	7.400	UOB	32.040	-0.460	33.330	26.820

TOTAL CONTROL

It is common to see directors receiving substantial compensation despite poor company performance. Although Remuneration and Long Term Incentive Plan (LTIP) committees are crucial for ensuring fair and transparent practices, their effectiveness and independence are often questioned. Are they serving shareholders' best interests, or is more work needed to ensure accountability and transparency?

POOR PERFORMANCE, FAT PAYCHECK

Directors' remuneration typically consists of monetary compensation, including salary, bonus, and other benefits such as EPF contributions, benefits-in-kind, and allowances. Additionally, companies may offer stock compensation to directors, including share grants or stock options under schemes like the Employee Share Option Scheme (ESOS).

While investors acknowledge that fair remuneration rewards directors' contributions to the company and helps attract and retain talent, there have been numerous concerns about the amounts paid. It is common to see Malaysian listed companies generously remunerating directors despite poor financial performance for the year.

A case in point is an infrastructure construction company, PLC J, listed in Bursa Malaysia's Main Market. PLC J rewarded both

its Chief Executive Officer (CEO) and Executive Director (ED) a whopping RM11.82 million collectively in the financial year ended 31 December 2023 (FY2023), despite the worsened financial performance. During FY2023, the company’s revenue and net profit declined by 58.2% and 68.9% to RM39.56 million (FY2022: RM94.65 million) and RM16.74 million (FY2022: RM53.78 million), respectively.

In addition to the monetary compensation, the two directors were rewarded with shares issued under a Share Grant Plan (SGP), part of the Long Term Incentive Plan (LTIP). A total of 47 million shares valued at RM8.46 million were issued under the SGP to the two directors. The shares issued constitute 70% of the total remuneration paid to both directors. Over the past five years, approximately 120 million shares have been issued to the two directors under the SGP (refer to Table 1). All shares were vested immediately upon being granted, resulting in RM43.88 million (the total value of SGP) being recorded under directors' remuneration. It is also worth noting that as of 1 April 2024, the CEO held a 14.11% equity interest in the Company. Meanwhile, their monetary compensation remained largely unchanged at around RM2million and RM1 million (refer to Table 2), despite declining net profit from RM108.1million in FY2019 to RM16.7 million in FY2023 (refer to graph titled PLC J’s 5-year earnings). The CEO and ED, the main recipients of the SGP, also sit on the four-member LTIP Committee.

Table 1: Number of shares granted under SGP in the past five years

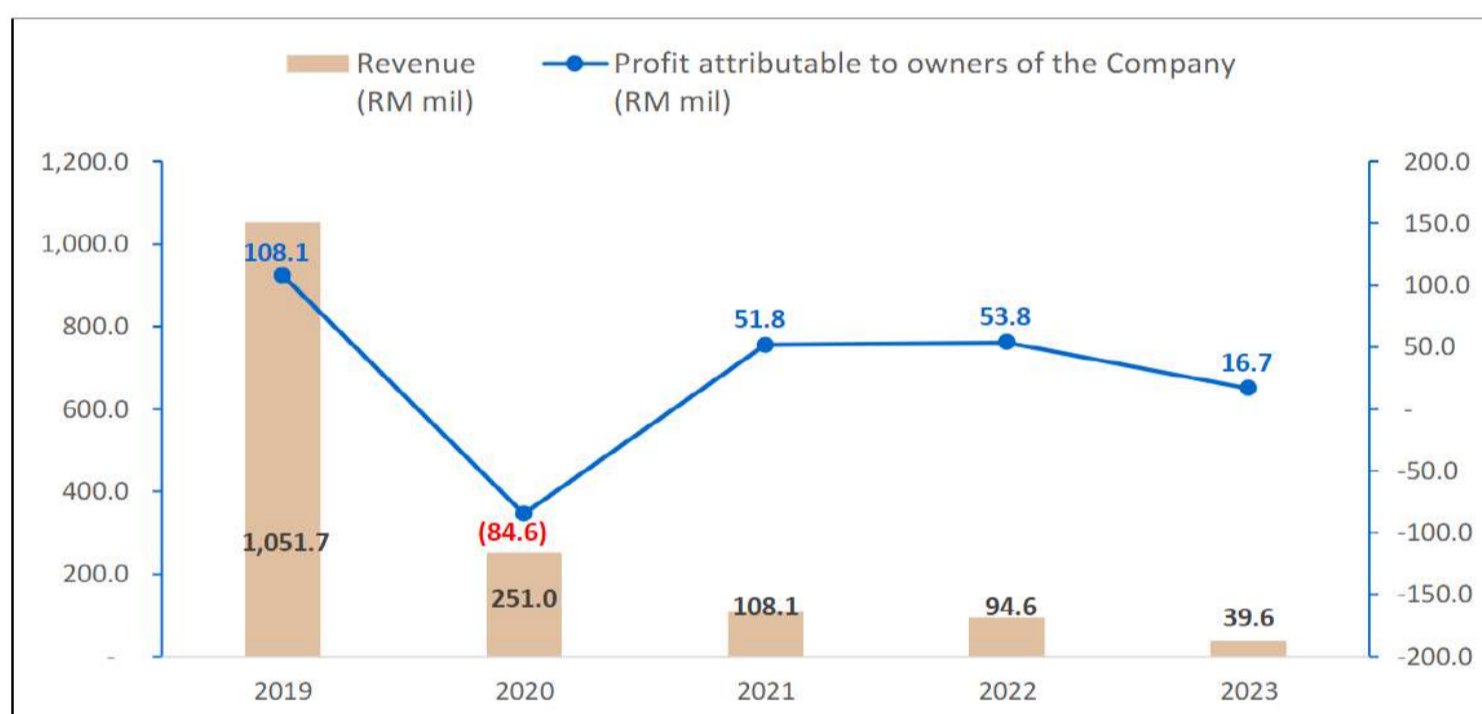
Year	CEO		ED		Total	
	No. of shares granted	RM	No. of shares granted	RM	No. of shares granted	RM
2019	25,164,960	12,834,130	2,460,800	1,255,008	27,625,760	14,089,138
2021	15,000,000	12,825,000	830,000	709,650	15,830,000	13,534,650
2022	27,000,000	7,020,000	3,000,000	780,000	30,000,000	7,800,000
2023	42,300,000	7,614,000	4,700,000	846,000	47,000,000	8,460,000
	109,464,960	40,293,130	10,990,800	3,590,658	120,455,760	43,883,788

Table 2: Total remuneration received by the two directors over the past five years

Year	CEO		ED		Total	
	Remuneration RM	SGP RM	Remuneration RM	SGP RM	Remuneration RM	SGP RM
2019	2,138,462	12,834,130	1,063,975	1,255,008	3,202,437	14,089,138
2020	1,843,524	12,825,000	897,271	709,650	2,740,795	13,534,650
2021	2,251,623	-	1,105,943	-	3,357,566	-
2022	2,251,702	7,020,000	1,106,022	780,000	3,357,724	7,800,000
2023	2,251,859	7,614,000	1,106,179	846,000	3,358,038	8,460,000
	10,737,170	40,293,130	5,279,390	3,590,658	16,016,560	43,883,788

Note: Remuneration includes salaries, Bonus, EPF, SOCSO, Benefit-in-kind/ allowance

Graph 1: PLC J's 5-year Earnings



We are troubled by the excessive pay given to these two directors. We sought clarification from the Chairman of the Remuneration Committee (RC) and LTIP Committee during its recently held virtual AGM. Disappointingly, the Head of Finance responded to our questions during the meeting. He explained that the criteria for issuing the SGP were primarily tied to the performance of a subsidiary involved in an overseas construction project from 2015 to 2021. The substantial incentive to the CEO was in line with the approved remuneration scheme, with shares granted and vested immediately due to their link to past performance, thus eliminating any vesting requirement. He explained that the CEO and ED abstained from deliberating and voting on their respective allocations.

However, this explanation could have been more convincing, given that SGPs were granted in 2022 and 2023, even after the overseas construction project was completed in 2021. We raised follow-up questions during the AGM regarding the rationale for linking a subsidiary's past performance to the ongoing SGP. We are concerned that future SGPs will be issued under the same criteria. Regrettably, these questions went unanswered during the meeting.

We later received a written reply from the PLC approximately two weeks after the AGM. The reply stated that the SGP granted in 2022 and 2023 was not linked to the past performance of a subsidiary, as the construction profit was already recognised until 2021. They were granted SGP shares amounting to RM16.3 million in FY2022 and FY2023. This raises more questions than answers. If the PLC was committed to issuing SGP staggered after the project's completion, why was this not disclosed earlier and prudently recorded as a liability on its balance sheet?

Moreover, considering the award given to the CEO and ED without a vesting period and linked to past performance, the nature of these awards resembles a performance bonus. As it is, the SGP criteria do not seem to align the directors' and employees' interests with the PLC's long-term objectives and business strategies. This raises further concerns about the appropriateness of awarding the SGP to directors at the expense of minority shareholders' interests, as it causes massive dilution.

Besides, it is worth noting that the Company has been conducting private placements almost annually since FY2017, except FY2020, probably due to a rights issue exercise carried out during that year. A combination of rights issues, private placements, exercise of warrants, share grants and share options schemes over the years resulted in an astonishing number of issued shares at 2.55 billion, compared to 438.36 million in early 2017.

THE ROLE OF THE RC AND LTIP COMMITTEE

Section 230(1) of the Companies Act 2016 requires that fees and benefits payable to the directors of a listed company and its subsidiaries shall be approved at a general meeting. However, this Section does not mandate shareholder approval for the remunerations and emoluments of executive directors. In the absence of laws to govern this issue, it is up to the boards to decide the remuneration of EDs upon recommendation from the RC. While Bursa Malaysia's Listing Requirements do not mandate an RC, Practice 7.2 of the Malaysian Code on Corporate Governance (MCCG) recommends that a board establish one.

RC is accountable for implementing remuneration policies and procedures, including reviewing and recommending matters related to the board's remuneration and senior management's remuneration. Each director shall abstain from deliberations and voting on decisions regarding his/her remuneration. When a remuneration package involves SGP and ESOS, the LTIP Committee will recommend to the RC the size and value of shares to be granted to eligible directors and employees. The RC will approve any LTIP matters based on the LTIP Committee's recommendations. The RC should ensure that remuneration packages are based on merit, qualifications, and competence while considering the company's operating results, individual performance, and relevant market comparisons. It is also responsible for providing shareholders with clarification on matters pertaining to the remuneration of directors and senior management and the company's overall remuneration framework. The RC and LTIP committees are integral for maintaining corporate governance standards in PLCs. They are responsible for ensuring that remuneration and incentive plans are transparent, fair, and aligned with the company's long-term goals.

AMENDMENTS TO THE REGULATORY FRAMEWORK MAY BE NECESSARY

In the absence of strict laws governing the approval of EDs' remuneration, minority shareholders entrust RC and the board to safeguard their interests by ensuring fair compensation practices carried out in the company. However, the effectiveness and independence of the RC are sometimes questionable, mainly when exorbitant pay packages and substantial share grants are awarded under schemes like SGP. While the RC ensures directors' remuneration is aligned with company performance and shareholder interests, a significant number of shares issued, and substantial compensation suggest potential lapses in oversight and governance.

This raises concerns about whether the RC is fulfilling its role in ensuring a fair and transparent remuneration policy, as excessive rewards can undermine shareholder value and trust in the company's corporate governance practices. After all, despite the proper governance structure and processes, companies often get away with paying excessive remuneration in the form of salaries, bonuses and shares to their EDs. It is of little wonder that minority shareholders often mockingly say such action is akin to milking a PLC to the last drop.

To further enhance greater transparency and accountability, the current legal framework should be reviewed to require shareholders to approve the variable remuneration of directors, such as bonuses and LTIP.

DEFINITION: Insider Activity shows the trades made by substantial shareholders or directors of the company. Purchases by the directors and company share buyback may indicate the share price is undervalued and brings confidence to the price trend of the share price.



ShareInvestor WebPro > Fundamental > Insider Trades > click Search tab > Select Bursa > click Stock name > scroll up and leave at <Select Counter> Type Date Range for Announcement Date > click Search

Notice Period is 21st July 2024 – 27th July 2024

Effective Change Date	Stock Name	Buyer/ Seller Name [Classification]	Bought / (Sold) ['000]		
			Total	No. of Shares After Trade ['000]	% Held
22 JUL 2024 - 22 JUL 2024	ABMB	EMPLOYEES PROVIDENT FUND BOARD [SSH]	-430	152,920	9.878
19 JUL 2024 - 19 JUL 2024	ABMB	EMPLOYEES PROVIDENT FUND BOARD [SSH]	-1,307	153,350	9.906
18 JUL 2024 - 18 JUL 2024	ABMB	EMPLOYEES PROVIDENT FUND BOARD [SSH]	-2,000	154,657	9.99
17 JUL 2024 - 17 JUL 2024	ABMB	EMPLOYEES PROVIDENT FUND BOARD [SSH]	300	156,657	10.119
22 JUL 2024 - 22 JUL 2024	ACME	MR OOI SOON HONG [SSH]	591	73,493	19.996
23 JUL 2024 - 23 JUL 2024	AMBANK	EMPLOYEES PROVIDENT FUND BOARD [SSH]	-861	521,719	15.783
19 JUL 2024 - 23 JUL 2024	ANCOMNY	DATO' SIEW KA WEI [DIR/CEO]	66	18,377	20.965
23 JUL 2024 - 23 JUL 2024	APPASIA	PELABURAN MARA BERHAD [SSH]	-854	66,396	5.873
23 JUL 2024 - 23 JUL 2024	ASIAFLE	AMANAHRAYA TRUSTEES BERHAD-AMANAH SAHAM BUMIPUTERA [SSH]	-14	37,348	19.165
18 JUL 2024 - 18 JUL 2024	ASIAFLE	AMANAHRAYA TRUSTEES BERHAD-AMANAH SAHAM BUMIPUTERA [SSH]	-163	37362	19.172
23 JUL 2024 - 23 JUL 2024	AXIATA	EMPLOYEES PROVIDENT FUND BOARD [SSH]	532	1713764	18.665
22 JUL 2024 - 22 JUL 2024	AXIATA	EMPLOYEES PROVIDENT FUND BOARD [SSH]	5,296	1713232	18.659
19 JUL 2024 - 19 JUL 2024	AXIATA	EMPLOYEES PROVIDENT FUND BOARD [SSH]	2,279	1,707,936	18.601
18 JUL 2024 - 18 JUL 2024	AXIATA	EMPLOYEES PROVIDENT FUND BOARD [SSH]	359	1,705,657	18.576
17 JUL 2024 - 17 JUL 2024	AXIATA	EMPLOYEES PROVIDENT FUND BOARD [SSH]	5,412	1,705,299	18.572
25 JUL 2024 - 25 JUL 2024	AXREIT	KUMPULAN WANG PERSARAAN (DIPERBADANKAN) [SSH]	-400	179,981	10.299
24 JUL 2024 - 24 JUL 2024	AXREIT	KUMPULAN WANG PERSARAAN (DIPERBADANKAN) [SSH]	-249	180,381	10.322
23 JUL 2024 - 23 JUL 2024	AXREIT	KUMPULAN WANG PERSARAAN (DIPERBADANKAN) [SSH]	-206	180,630	10.337
22 JUL 2024 - 22 JUL 2024	AXREIT	KUMPULAN WANG PERSARAAN (DIPERBADANKAN) [SSH]	-254	180,837	10.348
19 JUL 2024 - 19 JUL 2024	AXREIT	KUMPULAN WANG PERSARAAN (DIPERBADANKAN) [SSH]	-75	181,091	10.363
17 JUL 2024 - 17 JUL 2024	AXREIT	EMPLOYEES PROVIDENT FUND BOARD [SSH]	1,000	312,299	17.871
19 JUL 2024 - 19 JUL 2024	BAHVEST	MR LEE VUI HAN [SSH]	-5,828	67,130	5.393
25 JUL 2024 - 25 JUL 2024	BAUTO	LEMBAGA TABUNG HAJI [SSH]	500	64,307	5.502
23 JUL 2024 - 23 JUL 2024	BAUTO	EMPLOYEES PROVIDENT FUND BOARD [SSH]	542	155,373	13.293
24 JUL 2024 - 24 JUL 2024	BAUTO	LEMBAGA TABUNG HAJI [SSH]	500	63,807	5.459
22 JUL 2024 - 22 JUL 2024	BAUTO	EMPLOYEES PROVIDENT FUND BOARD [SSH]	452	154,403	13.21
23 JUL 2024 - 23 JUL 2024	BAUTO	LEMBAGA TABUNG HAJI [SSH]	500	63,307	5.416
22 JUL 2024 - 22 JUL 2024	BAUTO	LEMBAGA TABUNG HAJI [SSH]	500	62,807	5.374
18 JUL 2024 - 18 JUL 2024	BAUTO	EMPLOYEES PROVIDENT FUND BOARD [SSH]	1,000	153,951	13.172
19 JUL 2024 - 19 JUL 2024	BAUTO	LEMBAGA TABUNG HAJI [SSH]	500	62,307	5.331
17 JUL 2024 - 17 JUL 2024	BAUTO	EMPLOYEES PROVIDENT FUND BOARD [SSH]	-208	152,951	13.086
23 JUL 2024 - 23 JUL 2024	BCB	EFFECTIVE STRATEGY SDN. BHD. [SSH]	386	38,995	9.661
23 JUL 2024 - 23 JUL 2024	BCB	EVERGREEN RATIO SDN BHD [SSH]	2,465	248,984	61.689
23 JUL 2024 - 23 JUL 2024	BCB	TAN SRI DATO' TAN SENG LEONG [DIR/CEO]	2,465	248,984	61.688
23 JUL 2024 - 23 JUL 2024	BCB	TAN SRI DATO' TAN SENG LEONG [SSH]	2,465	248,984	61.688
17 JUL 2024 - 17 JUL 2024	BIMB	EMPLOYEES PROVIDENT FUND BOARD [SSH]	733	398,525	17.583
26 JUL 2024 - 26 JUL 2024	BINTAI	MR TEO LAY BAN [SSH]	1,000	83,721	6.862
22 JUL 2024 - 22 JUL 2024	BINTAI	DATUK MOHD IDZWAN IZUDDIN BIN DATUK AB RAHMAN [DIR/CEO]	500	3,000	0.246
24 JUL 2024 - 24 JUL 2024	BJCORP	TAN SRI DATO' SERI VINCENT TAN CHEE YOUN [SSH]	200	923,645	15.815
23 JUL 2024 - 23 JUL 2024	BJCORP	LIM KUANG WANG [SSH]	40,000	421,600	7.219
22 JUL 2024 - 23 JUL 2024	BJCORP	TAN SRI DATO' SERI VINCENT TAN CHEE YOUN [SSH]	-48,333	923,445	15.811
19 JUL 2024 - 19 JUL 2024	BJCORP	MISS CHRYSSEIS TAN SHEIK LING [DIR/CEO]	-2,482	35,515	0.608
23 JUL 2024 - 23 JUL 2024	BORNOIL	DATUK JOSEPH LEE YOK MIN @ AMBROSE [DIR/CEO]	2,390	1,775,447	14.805
23 JUL 2024 - 23 JUL 2024	BORNOIL	DATUK JOSEPH LEE YOK MIN @ AMBROSE [SSH]	2,390	449,592	14.805
22 JUL 2024 - 22 JUL 2024	BURSA	EMPLOYEES PROVIDENT FUND BOARD [SSH]	771	81,204	10.034
22 JUL 2024 - 22 JUL 2024	BURSA	EMPLOYEES PROVIDENT FUND BOARD [SSH]	-170	81,034	10.013
19 JUL 2024 - 19 JUL 2024	BURSA	EMPLOYEES PROVIDENT FUND BOARD [SSH]	537	80,433	9.939
17 JUL 2024 - 17 JUL 2024	BURSA	EMPLOYEES PROVIDENT FUND BOARD [SSH]	-1,087	79,897	9.872
22 JUL 2024 - 22 JUL 2024	BWYS	MADAM SEE SWEE SIE [DIR/CEO]	-50	250	0.024
22 JUL 2024 - 22 JUL 2024	BWYS	MADAM TERESA TAN SIEW KUAN [DIR/CEO]	-50	250	0.024
18 JUL 2024 - 18 JUL 2024	BWYS	DATO' SAIDI BIN ISMAIL [DIR/CEO]	300	300	0.029
18 JUL 2024 - 18 JUL 2024	BWYS	MISS KANG YI KI [DIR/CEO]	1,000	1,000	0.098
18 JUL 2024 - 18 JUL 2024	BWYS	MISS SEE SWEE SIE [DIR/CEO]	300	300	0.029
18 JUL 2024 - 18 JUL 2024	BWYS	MISS TERESA TAN SIEW KUAN [DIR/CEO]	300	300	0.029
18 JUL 2024 - 18 JUL 2024	BWYS	MR KANG BENG HAI [DIR/CEO]	668,910	668,910	65.2
18 JUL 2024 - 18 JUL 2024	BWYS	MR LIM CHEE HOONG [DIR/CEO]	300	300	0.029
19 JUL 2024 - 19 JUL 2024	CCK	MR LAU LIONG KII [DIR/CEO]	-335	56,035	9.025
23 JUL 2024 - 23 JUL 2024	CDB	EMPLOYEES PROVIDENT FUND BOARD [SSH]	1,618	1,167,097	9.948
22 JUL 2024 - 22 JUL 2024	CDB	EMPLOYEES PROVIDENT FUND BOARD [SSH]	100	1,165,479	9.935
19 JUL 2024 - 19 JUL 2024	CDB	EMPLOYEES PROVIDENT FUND BOARD [SSH]	4,000	1,165,379	9.934
22 JUL 2024 - 23 JUL 2024	CGB	MR LEE SWEE MENG [DIR/CEO]	-50	507	0.067
24 JUL 2024 - 25 JUL 2024	CHINHIN	DATUK SERI CHIAU BENG TEIK JP [DIR/CEO]	385	2,078,437	58.732
24 JUL 2024 - 25 JUL 2024	CHINHIN	DATUK SERI CHIAU BENG TEIK JP [SSH]	385	2,078,437	58.732
19 JUL 2024 - 22 JUL 2024	CHINHIN	DATUK SERI CHIAU BENG TEIK JP [DIR/CEO]	310	2,078,052	58.721
19 JUL 2024 - 22 JUL 2024	CHINHIN	DATUK SERI CHIAU BENG TEIK JP [SSH]	310	2,078,052	58.721
24 JUL 2024 - 24 JUL 2024	CIMB	KUMPULAN WANG PERSARAAN (DIPERBADANKAN) [SSH]	-109	664,717	6.21
22 JUL 2024 - 22 JUL 2024	CIMB	EMPLOYEES PROVIDENT FUND BOARD [SSH]	-9,343	1,570,032	14.67

Notice Period is 21st July 2024 – 27th July 2024

Effective Change Date	Stock Name	Buyer/ Seller Name [Classification]	Bought / (Sold) ['000]		
			Total	No. of Shares After Trade ['000]	% Held
23 JUL 2024 - 23 JUL 2024	CIMB	KUMPULAN WANG PERSARAAN (DIPERBADANKAN) [SSH]	302	664,826	6.21
19 JUL 2024 - 19 JUL 2024	CIMB	EMPLOYEES PROVIDENT FUND BOARD [SSH]	-4,905	1,579,376	14.76
18 JUL 2024 - 18 JUL 2024	CIMB	EMPLOYEES PROVIDENT FUND BOARD [SSH]	-188	1,584,281	14.81
17 JUL 2024 - 17 JUL 2024	CIMB	EMPLOYEES PROVIDENT FUND BOARD [SSH]	-8,493	1,584,469	14.81
25 JUL 2024 - 25 JUL 2024	CITAGLB	DATUK TANG VEE MUN [SSH]	270	29,361	7.024
24 JUL 2024 - 24 JUL 2024	CLMT	KUMPULAN WANG PERSARAAN (DIPERBADANKAN) [SSH]	-1,000	293,050	10.339
22 JUL 2024 - 22 JUL 2024	CLMT	EMPLOYEES PROVIDENT FUND BOARD [SSH]	-1,539	435,493	15.365
26 JUL 2024 - 26 JUL 2024	CLOUDPT	ERA JASAKITA SDN. BHD. [SSH]	-4,000	182,311	34.295
26 JUL 2024 - 26 JUL 2024	CLOUDPT	MR CHOONG WAI HOONG [DIR/CEO]	-4,000	225,383	42.397
26 JUL 2024 - 26 JUL 2024	CLOUDPT	MR CHOONG WAI HOONG [SSH]	-4,000	225,383	42.397
26 JUL 2024 - 26 JUL 2024	CLOUDPT	MR YEW CHOONG CHEONG [DIR/CEO]	-4,000	225,383	42.397
26 JUL 2024 - 26 JUL 2024	CLOUDPT	MR YEW CHOONG CHEONG [SSH]	-4,000	225,383	42.397
19 JUL 2024 - 23 JUL 2024	CLOUDPT	ERA JASAKITA SDN. BHD. [SSH]	-31,000	186,311	35.047
19 JUL 2024 - 23 JUL 2024	CLOUDPT	MR CHOONG WAI HOONG [DIR/CEO]	-31,000	229,383	43.149
19 JUL 2024 - 23 JUL 2024	CLOUDPT	MR CHOONG WAI HOONG [SSH]	-31,000	229,383	43.149
19 JUL 2024 - 23 JUL 2024	CLOUDPT	MR YEW CHOONG CHEONG [DIR/CEO]	-31,000	229,383	43.149
19 JUL 2024 - 23 JUL 2024	CLOUDPT	MR YEW CHOONG CHEONG [SSH]	-31,000	229,383	43.149
25 JUL 2024 - 25 JUL 2024	CTOS	KUMPULAN WANG PERSARAAN (DIPERBADANKAN) [SSH]	14	166,496	7.208
18 JUL 2024 - 18 JUL 2024	CTOS	EMPLOYEES PROVIDENT FUND BOARD [SSH]	547	403,954	17.487
18 JUL 2024 - 18 JUL 2024	CTOS	ABRDN HOLDINGS LIMITED [SSH]	866	322,040	13.941
18 JUL 2024 - 18 JUL 2024	CTOS	ABRDN MALAYSIA SDN BHD [SSH]	849	319,273	13.821
18 JUL 2024 - 18 JUL 2024	CTOS	ABRDN PLC [SSH]	866	322,040	13.941
17 JUL 2024 - 17 JUL 2024	CTOS	EMPLOYEES PROVIDENT FUND BOARD [SSH]	1,699	403,408	17.464
18 JUL 2024 - 18 JUL 2024	D&O	EMPLOYEES PROVIDENT FUND BOARD [SSH]	-109	94,178	7.598
17 JUL 2024 - 17 JUL 2024	D&O	EMPLOYEES PROVIDENT FUND BOARD [SSH]	-110	94,287	7.607
23 JUL 2024 - 23 JUL 2024	DLADY	AMANAHRAYA TRUSTEES BERHAD - AMANAH SAHAM BUMIPUTERA [SSH]	-33	4,483	7.005
18 JUL 2024 - 18 JUL 2024	DPHARMA	EMPLOYEES PROVIDENT FUND BOARD [SSH]	1,000	83,901	8.722
17 JUL 2024 - 17 JUL 2024	DPHARMA	EMPLOYEES PROVIDENT FUND BOARD [SSH]	-145	82,901	8.618
19 JUL 2024 - 19 JUL 2024	DPS	EDMUND SOW YONG MING [SSH]	4,800	129,470	52.915
19 JUL 2024 - 19 JUL 2024	DPS	EDWARD SOW YUEN SENG [DIR/CEO]	4,800	129,470	52.915
19 JUL 2024 - 19 JUL 2024	DPS	EMILY SOW MEI CHET [DIR/CEO]	4,800	129,470	52.915
19 JUL 2024 - 19 JUL 2024	DPS	EUGENE SOW CHUAN SHENG [DIR/CEO]	4,800	129,470	52.915
19 JUL 2024 - 19 JUL 2024	DPS	EUGENE SOW CHUAN SHENG [SSH]	4,800	129,470	52.915
19 JUL 2024 - 19 JUL 2024	DPS	MISS EMILY SOW MEI CHET [SSH]	4,800	129,470	52.915
19 JUL 2024 - 19 JUL 2024	DPS	MR EDWARD SOW YUEN SENG [SSH]	4,800	129,470	52.915
19 JUL 2024 - 19 JUL 2024	DPS	MR ERIC SOW YONG SHING [SSH]	4,800	129,512	52.932
19 JUL 2024 - 19 JUL 2024	DPS	PUAN SRI CHU KIM GUEK [DIR/CEO]	4,800	129,512	52.932
19 JUL 2024 - 19 JUL 2024	DPS	PUAN SRI CHU KIM GUEK [SSH]	4,800	129,512	52.932
19 JUL 2024 - 19 JUL 2024	DPS	TAN SRI (DR) SOW CHIN CHUAN [DIR/CEO]	4,800	129,512	52.932
19 JUL 2024 - 19 JUL 2024	DPS	TAN SRI (DR) SOW CHIN CHUAN [SSH]	4,800	129,512	52.932
18 JUL 2024 - 18 JUL 2024	DRBHCORP	EMPLOYEES PROVIDENT FUND BOARD [SSH]	-881	160,781	8.317
17 JUL 2024 - 17 JUL 2024	DRBHCORP	EMPLOYEES PROVIDENT FUND BOARD [SSH]	-163	161,661	8.362
25 JUL 2024 - 25 JUL 2024	E&O	KUMPULAN WANG PERSARAAN (DIPERBADANKAN) [SSH]	-2,117	113,564	5.465
22 JUL 2024 - 22 JUL 2024	ECOFIRS	TEOH SENG AUN [SSH]	362	63,063	5.333
23 JUL 2024 - 25 JUL 2024	ECOWLD-WB	MR LIEW TIAN XIONG [DIR/CEO]	2,245	54,901	9.393
19 JUL 2024 - 22 JUL 2024	ECOWLD-WB	MR LIEW TIAN XIONG [DIR/CEO]	2,697	52,656	9.009
18 JUL 2024 - 18 JUL 2024	EFRAME	DATO HOOI JIA HAO [SSH]	-2,307	49,746	13.703
22 JUL 2024 - 22 JUL 2024	EG	DATO' KANG PANG KIANG [DIR/CEO]	465	72,383	15.924
22 JUL 2024 - 22 JUL 2024	EG	DATO' KANG PANG KIANG [SSH]	465	72,383	15.924
24 JUL 2024 - 24 JUL 2024	F&N	AMANAHRAYA TRUSTEES BERHAD - AMANAH SAHAM BUMIPUTERA [SSH]	-464	26,779	7.301
23 JUL 2024 - 23 JUL 2024	F&N	EMPLOYEES PROVIDENT FUND BOARD [SSH]	45	42,040	11.462
23 JUL 2024 - 23 JUL 2024	F&N	AMANAHRAYA TRUSTEES BERHAD - AMANAH SAHAM BUMIPUTERA [SSH]	-28	27,243	7.428
22 JUL 2024 - 22 JUL 2024	F&N	EMPLOYEES PROVIDENT FUND BOARD [SSH]	72	41,995	11.45
19 JUL 2024 - 19 JUL 2024	F&N	EMPLOYEES PROVIDENT FUND BOARD [SSH]	100	41,923	11.43
19 JUL 2024 - 19 JUL 2024	F&N	AMANAHRAYA TRUSTEES BERHAD - AMANAH SAHAM BUMIPUTERA [SSH]	-70	27,271	7.435
18 JUL 2024 - 18 JUL 2024	F&N	AMANAHRAYA TRUSTEES BERHAD - AMANAH SAHAM BUMIPUTERA [SSH]	-61	27,340	7.454
18 JUL 2024 - 18 JUL 2024	FAJAR	TAN SRI DATO' SERI LAU KUAN KAM [DIR/CEO]	-160	24,598	6.634
22 JUL 2024 - 22 JUL 2024	FAREAST	MISS NG YEE KIM [DIR/CEO]	208	280	0.047
23 JUL 2024 - 23 JUL 2024	FFB	EMPLOYEES PROVIDENT FUND BOARD [SSH]	1,500	224,519	11.988
22 JUL 2024 - 22 JUL 2024	FFB	EMPLOYEES PROVIDENT FUND BOARD [SSH]	1,998	223,019	11.908
18 JUL 2024 - 18 JUL 2024	FFB	EMPLOYEES PROVIDENT FUND BOARD [SSH]	3,000	221,008	11.8
17 JUL 2024 - 17 JUL 2024	FFB	EMPLOYEES PROVIDENT FUND BOARD [SSH]	-331	218,008	11.64
19 JUL 2024 - 19 JUL 2024	FOCUSP	PERBADANAN NASIONAL BERHAD [SSH]	-253	39,560	8.563
18 JUL 2024 - 18 JUL 2024	FOCUSP	PERBADANAN NASIONAL BERHAD [SSH]	-687	39,813	8.618
17 JUL 2024 - 17 JUL 2024	FOCUSP	PERBADANAN NASIONAL BERHAD [SSH]	-1,000	40,500	8.766
19 JUL 2024 - 19 JUL 2024	FPGROUP	DATO' SERI ABDUL HALIM BIN HUSSAIN [DIR/CEO]	50	50	0.009
22 JUL 2024 - 22 JUL 2024	FPHB	MRS LIEW TSUEY ER [DIR/CEO]	181	281,827	62.628
22 JUL 2024 - 22 JUL 2024	FPHB	MRS LIEW TSUEY ER [SSH]	181	281,827	62.628

Disclaimer: The Information in Insider Activity is extracted from www.shareinvestor.com/fundamental/insider_trades. The information on this page is provided as a service to readers. It does not constitute financial advice and/or any investment recommendations. We assume no liability for damages resulting from or arising out of the use of such information. Whilst every effort is made to ensure accuracy, the information presented is not the official record of shareholder filings. Readers are advised to read the original filings on the Bursa Malaysia website at www.bursamalaysia.com



STROM
SWISS TIMEPIECES & JEWELLERY

Notice Period is 21st July 2024 – 27th July 2024

Effective Change Date	Stock Name	Buyer/ Seller Name [Classification]	Bought / (Sold) ['000]	No. of Shares After Trade ['000]	
			Total	Total	% Held
23 JUL 2024 - 23 JUL 2024	GAMUDA	EMPLOYEES PROVIDENT FUND BOARD (EPF BOARD) [SSH]	670	294,971	10.63
22 JUL 2024 - 22 JUL 2024	GAMUDA	EMPLOYEES PROVIDENT FUND BOARD (EPF BOARD) [SSH]	471	294,301	10.6
19 JUL 2024 - 19 JUL 2024	GAMUDA	EMPLOYEES PROVIDENT FUND BOARD (EPF BOARD) [SSH]	2,895	293,830	10.6
18 JUL 2024 - 18 JUL 2024	GAMUDA	EMPLOYEES PROVIDENT FUND BOARD (EPF BOARD) [SSH]	5,810	290,935	10.49
17 JUL 2024 - 17 JUL 2024	GAMUDA	EMPLOYEES PROVIDENT FUND BOARD (EPF BOARD) [SSH]	5,988	285,125	10.28
22 JUL 2024 - 22 JUL 2024	GASMSIA	EMPLOYEES PROVIDENT FUND BOARD [SSH]	-64	71,465	5.565
23 JUL 2024 - 23 JUL 2024	GCE	ADITAN HOLDINGS SDN. BHD. [SSH]	800	97,064	73.06
23 JUL 2024 - 23 JUL 2024	GCE	BIZEST SDN. BHD. [SSH]	800	97,064	73.06
23 JUL 2024 - 23 JUL 2024	GCE	MR TAN ENG HOW [DIR/CEO]	800	143,989	73.09
23 JUL 2024 - 23 JUL 2024	GCE	MR TAN ENG HOW [SSH]	800	97,064	73.09
23 JUL 2024 - 23 JUL 2024	GCE	MR TAN ENG SIN [SSH]	800	97,064	73.089
23 JUL 2024 - 23 JUL 2024	GCE	MR TAN ENG TEONG [DIR/CEO]	800	144,546	73.373
23 JUL 2024 - 23 JUL 2024	GCE	MR TAN ENG TEONG [SSH]	800	97,064	73.373
23 JUL 2024 - 23 JUL 2024	GCE	MR TAN TECK LIN [DIR/CEO]	800	145,055	73.632
23 JUL 2024 - 23 JUL 2024	GCE	MR TAN TECK LIN [SSH]	800	97,064	73.632
23 JUL 2024 - 23 JUL 2024	GCE	TAN CHEE HOE & SONS SDN. BHD. [SSH]	800	97,064	73.06
23 JUL 2024 - 23 JUL 2024	GCE	TAN ENG TEONG HOLDINGS SDN. BHD. [SSH]	800	97,064	73.089
23 JUL 2024 - 23 JUL 2024	GCE	TAN TECK LIN HOLDINGS SDN. BHD. [SSH]	800	97,064	73.218
24 JUL 2024 - 24 JUL 2024	GENP	KUMPULAN WANG PERSARAAN (DIPERBADANKAN) [SSH]	-50	67,120	7.481
22 JUL 2024 - 22 JUL 2024	GENP	EMPLOYEES PROVIDENT FUND BOARD [SSH]	300	120,329	13.412
23 JUL 2024 - 23 JUL 2024	GENP	KUMPULAN WANG PERSARAAN (DIPERBADANKAN) [SSH]	-44	67,170	7.487
19 JUL 2024 - 19 JUL 2024	GENP	EMPLOYEES PROVIDENT FUND BOARD [SSH]	275	120,029	13.379
24 JUL 2024 - 24 JUL 2024	GFM	ENCIK ZAINAL BIN AMIR [DIR/CEO]	-1,000	46,342	12.2
25 JUL 2024 - 25 JUL 2024	GHLSSYS	NTT DATA JAPAN CORPORATION [SSH]	16	1,127,994	98.817
22 JUL 2024 - 24 JUL 2024	GHLSSYS	NTT DATA JAPAN CORPORATION [SSH]	1,509	1,127,978	98.815
18 JUL 2024 - 19 JUL 2024	GHLSSYS	NTT DATA JAPAN CORPORATION [SSH]	2,000	1,126,469	98.683
25 JUL 2024 - 25 JUL 2024	GLOMAC	SHAPADU CAPITAL SDN. BHD. [SSH]	100	89,590	11.673
23 JUL 2024 - 24 JUL 2024	GLOMAC	SHAPADU CAPITAL SDN. BHD. [SSH]	250	89,490	11.66
23 JUL 2024 - 23 JUL 2024	GREENYB	MR THAM FOO KEONG [DIR/CEO]	-1,960	307,471	56.698
17 JUL 2024 - 18 JUL 2024	GREENYB	MR THAM FOO KEONG [DIR/CEO]	-409	309,431	57.06
17 JUL 2024 - 18 JUL 2024	GREENYB	MR THAM FOO KEONG [SSH]	-409	309,431	57.06
17 JUL 2024 - 18 JUL 2024	GREENYB	MR THAM KIN-ON [DIR/CEO]	-409	22,592	4.166
22 JUL 2024 - 22 JUL 2024	HEKTAR	HEKTAR BLACK SDN BHD [SSH]	-195	123,870	17.525
22 JUL 2024 - 24 JUL 2024	HEKTAR	DATO' ONG CHOO MENG [SSH]	-9,603	134,295	19.001
23 JUL 2024 - 25 JUL 2024	HEXCARE	DATO' ONG CHOO MENG [SSH]	-9,804	252,172	24.473
23 JUL 2024 - 25 JUL 2024	HEXCARE	HEXTAR RUBBER SDN BHD [SSH]	-9,804	252,172	24.473
25 JUL 2024 - 25 JUL 2024	HEXTAR	DATO' ONG CHOO MENG [SSH]	4,047	2,385,034	61.533
25 JUL 2024 - 25 JUL 2024	HEXTAR	DATO' ONG SOON HO [DIR/CEO]	4,047	2,385,034	61.532
25 JUL 2024 - 25 JUL 2024	HEXTAR	DATO' ONG SOON HO [SSH]	4,047	2,385,034	61.532
24 JUL 2024 - 24 JUL 2024	HEXTAR	DATO' ONG CHOO MENG [SSH]	3,456	2,380,987	61.428
24 JUL 2024 - 24 JUL 2024	HEXTAR	DATO' ONG SOON HO [DIR/CEO]	3,456	2,380,987	61.428
24 JUL 2024 - 24 JUL 2024	HEXTAR	DATO' ONG SOON HO [SSH]	3,456	2,380,987	61.428
25 JUL 2024 - 25 JUL 2024	HIBISCS	DATUK MICHAEL TANG VEE MUN [SSH]	400	93,445	11.701
23 JUL 2024 - 23 JUL 2024	HLBANK	EMPLOYEES PROVIDENT FUND BOARD [SSH]	97	206,064	9.876
18 JUL 2024 - 18 JUL 2024	HLBANK	EMPLOYEES PROVIDENT FUND BOARD [SSH]	510	205,967	9.871
17 JUL 2024 - 17 JUL 2024	HLBANK	EMPLOYEES PROVIDENT FUND BOARD [SSH]	600	205,457	9.846
25 JUL 2024 - 25 JUL 2024	IBHD	TAN SRI LIM KIM HONG [DIR/CEO]	215	1,399,607	75.357
25 JUL 2024 - 25 JUL 2024	IBHD	TAN SRI LIM KIM HONG [SSH]	215	1,399,607	75.357
24 JUL 2024 - 24 JUL 2024	IBHD	TAN SRI LIM KIM HONG [DIR/CEO]	385	1,399,392	75.345
24 JUL 2024 - 24 JUL 2024	IBHD	TAN SRI LIM KIM HONG [SSH]	385	1,399,392	75.345
23 JUL 2024 - 23 JUL 2024	ICAP	CITY OF LONDON INVESTMENT MANAGEMENT COMPANY LIMITED [SSH]	-71	32,433	23.167
25 JUL 2024 - 25 JUL 2024	IFCAMSC	MR ENG KIM HAW [DIR/CEO]	30	72	0.012
18 JUL 2024 - 18 JUL 2024	IFCAMSC	MR LEONG NYU KUAN [DIR/CEO]	100	1,100	0.182
23 JUL 2024 - 23 JUL 2024	IHH	EMPLOYEES PROVIDENT FUND BOARD [SSH]	-637	989,793	11.239
22 JUL 2024 - 22 JUL 2024	IHH	EMPLOYEES PROVIDENT FUND BOARD [SSH]	2,145	990,429	11.246
19 JUL 2024 - 19 JUL 2024	IHH	EMPLOYEES PROVIDENT FUND BOARD [SSH]	2,736	988,285	11.221
18 JUL 2024 - 18 JUL 2024	IHH	EMPLOYEES PROVIDENT FUND BOARD [SSH]	798	985,548	11.19
17 JUL 2024 - 17 JUL 2024	IHH	EMPLOYEES PROVIDENT FUND BOARD [SSH]	376	984,751	11.181
25 JUL 2024 - 25 JUL 2024	IJM	KUMPULAN WANG PERSARAAN (DIPERBADANKAN) [SSH]	-1,635	335,261	9.562
24 JUL 2024 - 24 JUL 2024	IJM	AMANAHRAYA TRUSTEES BERHAD - AMANAH SAHAM BUMIPUTERA [SSH]	-7,744	183,557	5.235
23 JUL 2024 - 23 JUL 2024	IJM	EMPLOYEES PROVIDENT FUND BOARD [SSH]	-6,275	512,210	14.609
23 JUL 2024 - 23 JUL 2024	IJM	AMANAHRAYA TRUSTEES BERHAD - AMANAH SAHAM BUMIPUTERA [SSH]	-1,700	191,300	5.456
22 JUL 2024 - 22 JUL 2024	IJM	EMPLOYEES PROVIDENT FUND BOARD [SSH]	-676	518,485	14.788
23 JUL 2024 - 23 JUL 2024	IJM	KUMPULAN WANG PERSARAAN (DIPERBADANKAN) [SSH]	-100	336,896	9.609
19 JUL 2024 - 19 JUL 2024	IJM	EMPLOYEES PROVIDENT FUND BOARD [SSH]	-6,381	519,161	14.807
22 JUL 2024 - 22 JUL 2024	IJM	KUMPULAN WANG PERSARAAN (DIPERBADANKAN) [SSH]	-2,551	336,996	9.612
19 JUL 2024 - 19 JUL 2024	IJM	AMANAHRAYA TRUSTEES BERHAD - AMANAH SAHAM BUMIPUTERA [SSH]	-3,245	193,000	5.505
18 JUL 2024 - 18 JUL 2024	IJM	EMPLOYEES PROVIDENT FUND BOARD [SSH]	-5,834	525,542	14.989
18 JUL 2024 - 18 JUL 2024	IJM	AMANAHRAYA TRUSTEES BERHAD - AMANAH SAHAM BUMIPUTERA [SSH]	-10,011	196,245	5.597
17 JUL 2024 - 17 JUL 2024	IJM	EMPLOYEES PROVIDENT FUND BOARD [SSH]	-4,898	531,376	15.155
25 JUL 2024 - 25 JUL 2024	INARI	KUMPULAN WANG PERSARAAN (DIPERBADANKAN) [SSH]	-1,400	348,614	9.213
23 JUL 2024 - 23 JUL 2024	INARI	EMPLOYEES PROVIDENT FUND BOARD [SSH]	-1,344	354,159	9.36
24 JUL 2024 - 24 JUL 2024	INARI	KUMPULAN WANG PERSARAAN (DIPERBADANKAN) [SSH]	-9	350,014	9.25
22 JUL 2024 - 22 JUL 2024	INARI	EMPLOYEES PROVIDENT FUND BOARD [SSH]	-531	355,504	9.395
23 JUL 2024 - 23 JUL 2024	INARI	KUMPULAN WANG PERSARAAN (DIPERBADANKAN) [SSH]	-204	350,023	9.27
19 JUL 2024 - 19 JUL 2024	INARI	EMPLOYEES PROVIDENT FUND BOARD [SSH]	-2,050	355,986	9.427
18 JUL 2024 - 18 JUL 2024	INARI	EMPLOYEES PROVIDENT FUND BOARD [SSH]	-4,094	357,926	9.479
17 JUL 2024 - 17 JUL 2024	INARI	EMPLOYEES PROVIDENT FUND BOARD [SSH]	1,250	362,020	9.587
17 JUL 2024 - 19 JUL 2024	INARI	MR LAU KEAN CHEONG [DIR/CEO]	-6,111	44,235	1.171
22 JUL 2024 - 22 JUL 2024	IOICORP	EMPLOYEES PROVIDENT FUND BOARD [SSH]	1,691	805,534	12.985
19 JUL 2024 - 19 JUL 2024	IOICORP	EMPLOYEES PROVIDENT FUND BOARD [SSH]	1,728	803,843	12.957
18 JUL 2024 - 18 JUL 2024	IOICORP	EMPLOYEES PROVIDENT FUND BOARD [SSH]	1,072	802,115	12.93
23 JUL 2024 - 23 JUL 2024	IOIPG	EMPLOYEES PROVIDENT FUND BOARD [SSH]	662	400,787	7.279
19 JUL 2024 - 19 JUL 2024	IOIPG	EMPLOYEES PROVIDENT FUND BOARD [SSH]	3,000	399,955	7.264
15 JUL 2024 - 15 JUL 2024	JCY	MADAM LIEW WAN [SSH]	-40,000	1,475,833	69.29

Notice Period is 21st July 2024 – 27th July 2024

Effective Change Date	Stock Name	Buyer/ Seller Name [Classification]	Bought / (Sold) ['000]	No. of Shares After Trade ['000]	
			Total	Total	% Held
15 JUL 2024 - 15 JUL 2024	JCY	MISS CHERYL YONG SUNN SUNN [SSH]	-40,000	1,475,833	69.29
15 JUL 2024 - 15 JUL 2024	JCY	MR JEREMY YONG WEI QUAN [SSH]	-40,000	1,475,833	69.29
15 JUL 2024 - 15 JUL 2024	JCY	MR YONG YOONG KIONG [SSH]	-40,000	1,475,833	69.29
15 JUL 2024 - 15 JUL 2024	JCY	YKY INVESTMENT LTD [SSH]	-40,000	1,475,833	69.29
23 JUL 2024 - 23 JUL 2024	JFTECH	PUAN JAMILAH BINTI KAMAL [DIR/CEO]	10	30	0.003
24 JUL 2024 - 24 JUL 2024	JPG	KUMPULAN WANG PERSARAAN (DIPERBADANKAN) [SSH]	-3,000	129,961	5.198
22 JUL 2024 - 22 JUL 2024	JPG	EMPLOYEES PROVIDENT FUND BOARD [SSH]	3,319	252,318	10.093
23 JUL 2024 - 23 JUL 2024	JPG	KUMPULAN WANG PERSARAAN (DIPERBADANKAN) [SSH]	-3,000	132,961	5.318
22 JUL 2024 - 22 JUL 2024	JPG	KUMPULAN WANG PERSARAAN (DIPERBADANKAN) [SSH]	-3,000	135,961	5.438
19 JUL 2024 - 19 JUL 2024	JPG	KUMPULAN WANG PERSARAAN (DIPERBADANKAN) [SSH]	-3,000	138,961	5.558
19 JUL 2024 - 19 JUL 2024	JSB	DATIN NOOR AFZALINAH BINTI MOHD AFZUL KHAN [DIR/CEO]	35	518	0.116
23 JUL 2024 - 24 JUL 2024	KARYON	DR CHUA KEE LAM [SSH]	850	71,176	14.96
23 JUL 2024 - 24 JUL 2024	KARYON	MADAM CHUA LING LEE [SSH]	850	71,176	14.97
23 JUL 2024 - 24 JUL 2024	KARYON	MADAM TEOH KOOI KIM [SSH]	850	104,139	21.89
23 JUL 2024 - 24 JUL 2024	KARYON	MR CHUA LING HONG [DIR/CEO]	850	71,176	14.96
23 JUL 2024 - 24 JUL 2024	KARYON	MR CHUA LING HONG [SSH]	850	71,176	14.96
22 JUL 2024 - 22 JUL 2024	KERJAYA	EMPLOYEES PROVIDENT FUND BOARD [SSH]	-200	68,863	5.461
19 JUL 2024 - 19 JUL 2024	KERJAYA	EMPLOYEES PROVIDENT FUND BOARD [SSH]	-300	69,063	5.477
18 JUL 2024 - 18 JUL 2024	KERJAYA	EMPLOYEES PROVIDENT FUND BOARD [SSH]	-300	69,363	5.5
24 JUL 2024 - 24 JUL 2024	KEYFIELD	MR CHIA CHEE HOONG [DIR/CEO]	75	175	0.02
24 JUL 2024 - 24 JUL 2024	KEYFIELD	PUAN HAIDA SHENNY BINTI HAZRI [DIR/CEO]	75	150	0.02
18 JUL 2024 - 18 JUL 2024	KGB	MR SOO YUIT WENG [DIR/CEO]	20	630	0.342
25 JUL 2024 - 25 JUL 2024	KIALIM	DATUK NG YENG KENG @ NG KA HIAT [DIR/CEO]	-50	29,487	47.61
25 JUL 2024 - 25 JUL 2024	KIALIM	DATUK NG YENG KENG @ NG KA HIAT [SSH]	-50	29,487	47.61
25 JUL 2024 - 25 JUL 2024	KIALIM	KIA LIM TIMBER TRADING SDN BHD [SSH]	-50	12,362	19.95
25 JUL 2024 - 25 JUL 2024	KIALIM	MR NG CHIN KANG [SSH]	-50	12,362	19.96
25 JUL 2024 - 25 JUL 2024	KIALIM	NG CHIN KANG [DIR/CEO]	-50	12,362	19.96
25 JUL 2024 - 25 JUL 2024	KIALIM	NG HOO TEE HOLDINGS SDN BHD [SSH]	-50	5,298	8.55
22 JUL 2024 - 22 JUL 2024	KLK	EMPLOYEES PROVIDENT FUND BOARD [SSH]	203	167,406	15.269
19 JUL 2024 - 19 JUL 2024	KLK	EMPLOYEES PROVIDENT FUND BOARD [SSH]	136	167,203	15.25
18 JUL 2024 - 18 JUL 2024	KLK	EMPLOYEES PROVIDENT FUND BOARD [SSH]	257	167,067	15.238
17 JUL 2024 - 17 JUL 2024	KLK	EMPLOYEES PROVIDENT FUND BOARD [SSH]	354	166,810	15.214
24 JUL 2024 - 25 JUL 2024	KNM	DATO' TUNKU YAACOB KHYRA [DIR/CEO]	8,000	743,840	18.393
24 JUL 2024 - 25 JUL 2024	KNM	DATO' TUNKU YAACOB KHYRA [SSH]	8,000	743,840	18.393
24 JUL 2024 - 25 JUL 2024	KNM	MAA GROUP BERHAD [SSH]	8,000	705,640	17.449
22 JUL 2024 - 25 JUL 2024	KOBAY	MR KOAY WOUI SEONG [DIR/CEO]	2,118	12,282	3.765
23 JUL 2024 - 24 JUL 2024	KOSSAN	ABRDN HOLDINGS LIMITED [SSH]	-873	132,845	5.206
23 JUL 2024 - 24 JUL 2024	KOSSAN	ABRDN MALAYSIA SDN BHD [SSH]	-873	130,712	5.123
23 JUL 2024 - 24 JUL 2024	KOSSAN	ABRDN PLC [SSH]	-873	132,845	5.206
22 JUL 2024 - 22 JUL 2024	KOSSAN	EMPLOYEES PROVIDENT FUND BOARD [SSH]	-120	138,523	5.429
22 JUL 2024 - 22 JUL 2024	KOSSAN	ABRDN HOLDINGS LIMITED [SSH]	-120	133,717	5.24
22 JUL 2024 - 22 JUL 2024	KOSSAN	ABRDN MALAYSIA SDN BHD [SSH]	-120	131,585	5.157
22 JUL 2024 - 22 JUL 2024	KOSSAN	ABRDN PLC [SSH]	-120	133,717	5.24
19 JUL 2024 - 19 JUL 2024	KOSSAN	EMPLOYEES PROVIDENT FUND BOARD [SSH]	-750	138,643	5.434
19 JUL 2024 - 19 JUL 2024	KOSSAN	ABRDN HOLDINGS LIMITED [SSH]	-792	133,837	5.245
19 JUL 2024 - 19 JUL 2024	KOSSAN	ABRDN MALAYSIA SDN BHD [SSH]	-784	131,705	5.162
19 JUL 2024 - 19 JUL 2024	KOSSAN	ABRDN PLC [SSH]	-792	133,837	5.245
18 JUL 2024 - 18 JUL 2024	KOSSAN	EMPLOYEES PROVIDENT FUND BOARD [SSH]	-915	139,392	5.463
18 JUL 2024 - 18 JUL 2024	KOSSAN	ABRDN HOLDINGS LIMITED [SSH]	-1,280	134,629	5.276
18 JUL 2024 - 18 JUL 2024	KOSSAN	ABRDN MALAYSIA SDN BHD [SSH]	-1,210	132,488	5.192
18 JUL 2024 - 18 JUL 2024	KOSSAN	ABRDN PLC [SSH]	-1,280	134,629	5.276
17 JUL 2024 - 17 JUL 2024	KOSSAN	EMPLOYEES PROVIDENT FUND BOARD [SSH]	1,457	140,307	5.499
23 JUL 2024 - 23 JUL 2024	KUCINGKO	MISS ELAINE LAW SOH YING [DIR/CEO]	100	100	0.02
23 JUL 2024 - 23 JUL 2024	KUCINGKO	MISS QUAH BEE FONG [DIR/CEO]	300	300	0.06
23 JUL 2024 - 23 JUL 2024	KUCINGKO	MR KOO HONG @ KU HONG HAI [SSH]	-60,000	76,267	15.25
23 JUL 2024 - 23 JUL 2024	KUCINGKO	MR KU CHIA LOON [DIR/CEO]	300	300	0.06
23 JUL 2024 - 23 JUL 2024	KUCINGKO	MR LIM CHOR GHEE [DIR/CEO]	300	300	0.06
23 JUL 2024 - 23 JUL 2024	KUCINGKO	MR OOI KOK HONG [DIR/CEO]	300	173,189	34.64
23 JUL 2024 - 23 JUL 2024					

Notice Period is 21st July 2024 – 27th July 2024

Effective Change Date	Stock Name	Buyer/ Seller Name [Classification]	Bought / (Sold) ['000]	No. of Shares After Trade ['000]	
			Total	Total	% Held
18 JUL 2024 - 18 JUL 2024	MAYBANK	EMPLOYEES PROVIDENT FUND BOARD [SSH]	-1,379	1,559,040	12.92
18 JUL 2024 - 18 JUL 2024	MAYBANK	AMANAHRAYA TRUSTEES BERHAD - AMANAH SAHAM BUMIPUTERA [SSH]	-1,461	3,758,123	31.144
17 JUL 2024 - 17 JUL 2024	MAYBANK	EMPLOYEES PROVIDENT FUND BOARD [SSH]	-1,208	1,560,419	12.931
26 JUL 2024 - 26 JUL 2024	MENANG	MISS LIEW SOOK PIN [DIR/CEO]	11,100	128,496	18.526
26 JUL 2024 - 26 JUL 2024	MENANG	MISS LIEW SOOK PIN [SSH]	11,100	128,496	18.526
26 JUL 2024 - 26 JUL 2024	MENANG	MR TOH MAY FOOK [DIR/CEO]	14,100	147,209	21.224
26 JUL 2024 - 26 JUL 2024	MENANG	MR TOH MAY FOOK [SSH]	14,100	147,209	21.224
26 JUL 2024 - 26 JUL 2024	MENANG	TTYC HOLDINGS SDN. BHD. [SSH]	11,100	69,109	9.964
23 JUL 2024 - 23 JUL 2024	MENANG	MR TOH MAY FOOK [DIR/CEO]	4,000	133,109	19.214
23 JUL 2024 - 23 JUL 2024	MENANG	MR TOH MAY FOOK [SSH]	4,000	133,109	19.214
18 JUL 2024 - 19 JUL 2024	MFCB	DATO' SETIA PROF DR TAN HUI MENG [DIR/CEO]	28	3,420	0.363
02 JUL 2024 - 03 JUL 2024	MFLOUR	MADAM AZLIN BINTI ARSHAD [SSH]	-4,710	83,871	6.77
23 JUL 2024 - 23 JUL 2024	MICROLN	OMESTI BERHAD [SSH]	-150	314,398	29.317
23 JUL 2024 - 23 JUL 2024	MICROLN	OMESTI HOLDINGS BERHAD [SSH]	-150	314,398	29.317
23 JUL 2024 - 23 JUL 2024	MISC	EMPLOYEES PROVIDENT FUND BOARD [SSH]	-636	533,590	11.954
22 JUL 2024 - 22 JUL 2024	MISC	EMPLOYEES PROVIDENT FUND BOARD [SSH]	-3,058	534,226	11.968
19 JUL 2024 - 19 JUL 2024	MISC	EMPLOYEES PROVIDENT FUND BOARD [SSH]	-2,743	537,284	12.037
22 JUL 2024 - 22 JUL 2024	MISC	KUMPULAN WANG PERSARAAN (DIPERBADANKAN) (KWAP) [SSH]	245	226,975	5.085
18 JUL 2024 - 18 JUL 2024	MISC	EMPLOYEES PROVIDENT FUND BOARD [SSH]	-1,640	540,026	12.098
17 JUL 2024 - 17 JUL 2024	MISC	EMPLOYEES PROVIDENT FUND BOARD [SSH]	-2,666	541,666	12.135
24 JUL 2024 - 24 JUL 2024	MNHLDG	DATO' TOH ENG KEAT [DIR/CEO]	2,740	91,299	19.298
24 JUL 2024 - 24 JUL 2024	MNHLDG	DATO' TOH ENG KEAT [SSH]	2,740	91,299	19.298
24 JUL 2024 - 24 JUL 2024	MNHLDG	DATUK DANG SIONG DIANG [DIR/CEO]	2,740	41,886	8.853
24 JUL 2024 - 24 JUL 2024	MNHLDG	DATUK DANG SIONG DIANG [SSH]	2,740	41,886	8.853
24 JUL 2024 - 24 JUL 2024	MNHLDG	DATUK LOY SIONG HAY [DIR/CEO]	2,740	86,105	18.2
24 JUL 2024 - 24 JUL 2024	MNHLDG	DATUK LOY SIONG HAY [SSH]	2,740	86,105	18.2
23 JUL 2024 - 23 JUL 2024	MRDIY	EMPLOYEES PROVIDENT FUND BOARD [SSH]	-1,109	633,014	6.697
22 JUL 2024 - 22 JUL 2024	MRDIY	EMPLOYEES PROVIDENT FUND BOARD [SSH]	-300	634,374	6.711
19 JUL 2024 - 19 JUL 2024	MRDIY	EMPLOYEES PROVIDENT FUND BOARD [SSH]	-853	634,679	6.714
18 JUL 2024 - 18 JUL 2024	MRDIY	EMPLOYEES PROVIDENT FUND BOARD [SSH]	500	635,532	6.723
17 JUL 2024 - 17 JUL 2024	MRDIY	EMPLOYEES PROVIDENT FUND BOARD [SSH]	-1,383	635,032	6.718
23 JUL 2024 - 25 JUL 2024	MUIIND	MR ANDREW KHOO BOO YEOW [DIR/CEO]	4,000	4,000	0.124
19 JUL 2024 - 19 JUL 2024	MULPHA	MR LEE MING TEE [SSH]	-236	199,422	64.26
19 JUL 2024 - 19 JUL 2024	MULPHA	MR LEE SENG HUANG [DIR/CEO]	-236	219,422	70.71
19 JUL 2024 - 19 JUL 2024	MULPHA	MR LEE SENG HUANG [SSH]	-236	219,422	70.71
24 JUL 2024 - 24 JUL 2024	MYNEWS	D&D CONSOLIDATED SDN BHD [SSH]	207	395,157	52.663
24 JUL 2024 - 24 JUL 2024	MYNEWS	MR DANG TAI HOCK [DIR/CEO]	207	402,633	53.659
24 JUL 2024 - 24 JUL 2024	MYNEWS	MR DANG TAI HOCK [SSH]	207	402,633	53.659
24 JUL 2024 - 24 JUL 2024	MYNEWS	MR DANG TAI LUK [DIR/CEO]	207	402,633	53.659
24 JUL 2024 - 24 JUL 2024	MYNEWS	MR DANG TAI LUK [SSH]	207	402,633	53.659
24 JUL 2024 - 24 JUL 2024	MYNEWS	MR DANG TAI WEN [DIR/CEO]	207	402,633	53.659
24 JUL 2024 - 24 JUL 2024	MYNEWS	MR DANG TAI WEN [SSH]	207	402,633	53.659
23 JUL 2024 - 23 JUL 2024	MYNEWS	D&D CONSOLIDATED SDN BHD [SSH]	100	394,951	52.635
23 JUL 2024 - 23 JUL 2024	MYNEWS	MR DANG TAI HOCK [DIR/CEO]	100	402,426	53.631
23 JUL 2024 - 23 JUL 2024	MYNEWS	MR DANG TAI HOCK [SSH]	100	402,426	53.631
23 JUL 2024 - 23 JUL 2024	MYNEWS	MR DANG TAI LUK [DIR/CEO]	100	402,426	53.631
23 JUL 2024 - 23 JUL 2024	MYNEWS	MR DANG TAI LUK [SSH]	100	402,426	53.631
23 JUL 2024 - 23 JUL 2024	MYNEWS	MR DANG TAI WEN [DIR/CEO]	100	402,426	53.631
23 JUL 2024 - 23 JUL 2024	MYNEWS	MR DANG TAI WEN [SSH]	100	402,426	53.631
22 JUL 2024 - 22 JUL 2024	MYNEWS	D&D CONSOLIDATED SDN BHD [SSH]	105	394,851	52.622
22 JUL 2024 - 22 JUL 2024	MYNEWS	MR DANG TAI HOCK [DIR/CEO]	105	402,326	53.618
22 JUL 2024 - 22 JUL 2024	MYNEWS	MR DANG TAI HOCK [SSH]	105	402,326	53.618
22 JUL 2024 - 22 JUL 2024	MYNEWS	MR DANG TAI LUK [DIR/CEO]	105	402,326	53.618
22 JUL 2024 - 22 JUL 2024	MYNEWS	MR DANG TAI LUK [SSH]	105	402,326	53.618
22 JUL 2024 - 22 JUL 2024	MYNEWS	MR DANG TAI WEN [DIR/CEO]	105	402,326	53.618
22 JUL 2024 - 22 JUL 2024	MYNEWS	MR DANG TAI WEN [SSH]	105	402,326	53.618
19 JUL 2024 - 19 JUL 2024	MYNEWS	D&D CONSOLIDATED SDN BHD [SSH]	100	394,746	52.608
19 JUL 2024 - 19 JUL 2024	MYNEWS	MR DANG TAI HOCK [DIR/CEO]	100	402,221	53.604
19 JUL 2024 - 19 JUL 2024	MYNEWS	MR DANG TAI HOCK [SSH]	100	402,221	53.604
19 JUL 2024 - 19 JUL 2024	MYNEWS	MR DANG TAI LUK [DIR/CEO]	100	402,221	53.604
19 JUL 2024 - 19 JUL 2024	MYNEWS	MR DANG TAI LUK [SSH]	100	402,221	53.604
19 JUL 2024 - 19 JUL 2024	MYNEWS	MR DANG TAI WEN [DIR/CEO]	100	402,221	53.604
19 JUL 2024 - 19 JUL 2024	MYNEWS	MR DANG TAI WEN [SSH]	100	402,221	53.604
22 JUL 2024 - 24 JUL 2024	NCT	DATO' YAP FOOK CHOY [DIR/CEO]	3,578	932,064	55.77
22 JUL 2024 - 24 JUL 2024	NCT	DATO' YAP FOOK CHOY [SSH]	3,578	932,064	55.77
18 JUL 2024 - 19 JUL 2024	NCT	DATO' YAP FOOK CHOY [DIR/CEO]	424	928,486	55.556
18 JUL 2024 - 19 JUL 2024	NCT	DATO' YAP FOOK CHOY [SSH]	424	928,486	55.556
23 JUL 2024 - 23 JUL 2024	NESTLE	EMPLOYEES PROVIDENT FUND BOARD [SSH]	21	27,338	11.658
22 JUL 2024 - 22 JUL 2024	NESTLE	EMPLOYEES PROVIDENT FUND BOARD [SSH]	100	27,317	11.649
19 JUL 2024 - 19 JUL 2024	NESTLE	EMPLOYEES PROVIDENT FUND BOARD [SSH]	-14	27,217	11.606
18 JUL 2024 - 18 JUL 2024	NESTLE	EMPLOYEES PROVIDENT FUND BOARD [SSH]	-9	27,231	11.612
17 JUL 2024 - 17 JUL 2024	NESTLE	EMPLOYEES PROVIDENT FUND BOARD [SSH]	-4	27,240	11.616
23 JUL 2024 - 23 JUL 2024	NTPM	MR LEE SEE JIN [DIR/CEO]	305	468,956	41.758
23 JUL 2024 - 23 JUL 2024	NTPM	MR LEE SEE JIN [SSH]	305	468,956	41.758
22 JUL 2024 - 22 JUL 2024	NTPM	MR LEE SEE JIN [DIR/CEO]	1,112	468,652	41.731
22 JUL 2024 - 22 JUL 2024	NTPM	MR LEE SEE JIN [SSH]	1,112	468,652	41.731
22 JUL 2024 - 22 JUL 2024	PADINI	EMPLOYEES PROVIDENT FUND BOARD [SSH]	115	48,127	7.315
18 JUL 2024 - 18 JUL 2024	PADINI	EMPLOYEES PROVIDENT FUND BOARD [SSH]	8	48,012	7.298
17 JUL 2024 - 17 JUL 2024	PADINI	EMPLOYEES PROVIDENT FUND BOARD [SSH]	250	48,003	7.296
22 JUL 2024 - 22 JUL 2024	PANAMY	EMPLOYEES PROVIDENT FUND BOARD [SSH]	-53	6,217	10.234
19 JUL 2024 - 19 JUL 2024	PANAMY	EMPLOYEES PROVIDENT FUND BOARD [SSH]	-28	6,270	10.322
18 JUL 2024 - 18 JUL 2024	PANAMY	EMPLOYEES PROVIDENT FUND BOARD [SSH]	-21	6,298	10.367
17 JUL 2024 - 17 JUL 2024	PANAMY	EMPLOYEES PROVIDENT FUND BOARD [SSH]	27	6,319	10.402
23 JUL 2024 - 23 JUL 2024	PBBANK	EMPLOYEES PROVIDENT FUND BOARD [SSH]	2,260	310,320	15.99
22 JUL 2024 - 22 JUL 2024	PBBANK	EMPLOYEES PROVIDENT FUND BOARD [SSH]	-3,959	310,944	15.98
19 JUL 2024 - 19 JUL 2024	PBBANK	EMPLOYEES PROVIDENT FUND BOARD [SSH]	-9,925	310,490	16
18 JUL 2024 - 18 JUL 2024	PBBANK	EMPLOYEES PROVIDENT FUND BOARD [SSH]	-13,489	311,482	16.05
17 JUL 2024 - 17 JUL 2024	PBBANK	EMPLOYEES PROVIDENT FUND BOARD [SSH]	-4,291	312,831	16.12
24 JUL 2024 - 24 JUL 2024	PCCS	CCS CAPITAL SDN. BHD. [SSH]	-3,000	90734	41.133
24 JUL 2024 - 24 JUL 2024	PCCS	MADAM TAN KWEE KEE [SSH]	-3,000	101,012	45.792
24 JUL 2024 - 24 JUL 2024	PCCS	MR CHAN CHOO SING [SSH]	-3,000	101,012	45.792
24 JUL 2024 - 24 JUL 2024	PCCS	MR CHAN WEE KIANG [DIR/CEO]	-3,000	92,946	42.136
24 JUL 2024 - 24 JUL 2024	PCCS	MR CHAN WEE KIANG [SSH]	-3,000	92,946	42.136
18 JUL 2024 - 18 JUL 2024	PCHEM	EMPLOYEES PROVIDENT FUND BOARD ("EPF BOARD") [SSH]	382	939,028	11.738

Notice Period is 21st July 2024 – 27th July 2024

Effective Change Date	Stock Name	Buyer/ Seller Name [Classification]	Bought / (Sold) ['000]	No. of Shares After Trade ['000]	
			Total	Total	% Held
19 JUL 2024 - 19 JUL 2024	PECCA	DATIN SAM YIN THING [DIR/CEO]	300	426,137	56.684
19 JUL 2024 - 19 JUL 2024	PECCA	DATIN SAM YIN THING [SSH]	300	426,137	56.684
25 JUL 2024 - 25 JUL 2024	PENTA	LEMBAGA TABUNG HAJI [SSH]	137	38,963	5.477
23 JUL 2024 - 23 JUL 2024	PESTECH	MISS HELEN TAN MIANG KIENG [DIR/CEO]	-259	300	0.03
19 JUL 2024 - 19 JUL 2024	PESTECH	MR LIM AH HOCK [DIR/CEO]	-500	211,768	21.509
19 JUL 2024 - 19 JUL 2024	PESTECH	MR LIM AH HOCK [SSH]	-500	211,768	21.509
23 JUL 2024 - 23 JUL 2024	PETDAG	EMPLOYEES PROVIDENT FUND BOARD ("EPF BOARD") [SSH]	52	125,215	12.604
22 JUL 2024 - 22 JUL 2024	PETDAG	EMPLOYEES PROVIDENT FUND BOARD ("EPF BOARD") [SSH]	181	125,177	12.6
19 JUL 2024 - 19 JUL 2024	PETDAG	EMPLOYEES PROVIDENT FUND BOARD ("EPF BOARD") [SSH]	200	125,052	12.588
18 JUL 2024 - 18 JUL 2024	PETDAG	EMPLOYEES PROVIDENT FUND BOARD ("EPF BOARD") [SSH]	83	124,864	12.569
17 JUL 2024 - 17 JUL 2024	PETDAG	EMPLOYEES PROVIDENT FUND BOARD ("EPF BOARD") [SSH]	200	124,875	12.57
24 JUL 2024 - 24 JUL 2024	PETGAS	KUMPULAN WANG PERSARAAN (DIPERBADANKAN) ("KWAP") [SSH]	-23	19,734	9.974
22 JUL 2024 - 22 JUL 2024	PETGAS	EMPLOYEES PROVIDENT FUND BOARD [SSH]	40	261,275	13.204
18 JUL 2024 - 18 JUL 2024	PETGAS	EMPLOYEES PROVIDENT FUND BOARD [SSH]	14	261,235	13.202
23 JUL 2024 - 23 JUL 2024	PGF	TAN MING CHONG [DIR/CEO]	3	387	0.2
24 JUL 2024 - 24 JUL 2024	PINEAPP	MR LIM KEAN CHOONG [DIR/CEO]	60	90	0.186
05 JUN 2024 - 26 JUN 2024	PJBUMI	PUAN HAFIDAH BINTI PAWANCIK [SSH]	-365	4,687	5.716
23 JUL 2024 - 23 JUL 2024	PLINTAS	EMPLOYEES PROVIDENT FUND BOARD [SSH]	169	6,296	5.724
22 JUL 2024 - 22 JUL 2024	PLINTAS	EMPLOYEES PROVIDENT FUND BOARD [SSH]	-230	6,280	5.709
19 JUL 2024 - 19 JUL 2024	PLINTAS	EMPLOYEES PROVIDENT FUND BOARD [SSH]	-510	6,303	5.73
18 JUL 2024 - 18 JUL 2024	PLINTAS	EMPLOYEES PROVIDENT FUND BOARD [SSH]	-220	6,350	5.776
17 JUL 2024 - 17 JUL 2024	PLINTAS	EMPLOYEES PROVIDENT FUND BOARD [SSH]	-1,000	6,379	5.796
23 JUL 2024 - 23 JUL 2024	PPB	EMPLOYEES PROVIDENT FUND BOARD [SSH]	135	17,215	12.101
22 JUL 2024 - 22 JUL 2024	PPB	EMPLOYEES PROVIDENT FUND BOARD [SSH]	103	17,191	12.088
19 JUL 2024 - 19 JUL 2024	PPB	EMPLOYEES PROVIDENT FUND BOARD [SSH]	4	17,194	12.084
18 JUL 2024 - 18 JUL 2024	PPB	EMPLOYEES PROVIDENT FUND BOARD [SSH]	121	17,189	12.083
17 JUL 2024 - 17 JUL 2024	PPB	EMPLOYEES PROVIDENT FUND BOARD [SSH]	79	17,179	12.075
17 JUL 2024 - 17 JUL 2024	QL	EMPLOYEES PROVIDENT FUND BOARD [SSH]	-2,499	12,250	5.037
19 JUL 2024 - 19 JUL 2024	RADIUM	CENGAL 2020 SDN. BHD. [SSH]	-30,000	114,740	33.086
19 JUL 2024 - 19 JUL 2024	RADIUM	DATUK GAN KAH SIONG [DIR/CEO]	-30,000	165,504	47.723
19 JUL 2024 - 19 JUL 2024	RADIUM	DATUK GAN KAH SIONG [SSH]	-30,000	165,504	47.723
22 JUL 2024 - 22 JUL 2024	RANHILL	PUAN SRI DATIN SERI TAN KAI YONG @ TAN KAY NEONG [SSH]	2,026	689,369	53.194
22 JUL 2024 - 22 JUL 2024	RANHILL	SIPP POWER SDN BHD [SSH]	2,026	44,823	34.324
22 JUL 2024 - 22 JUL 2024	RANHILL	YEOH TIONG LAY & SONS FAMILY HOLDINGS LIMITED [SSH]	2,026	689,369	53.194
22 JUL 2024 - 22 JUL 2024	RANHILL	YEOH TIONG LAY & SONS HOLDINGS SDN BHD [SSH]	2,026	689,369	53.194
22 JUL 2024 - 22 JUL 2024	RANHILL	YEOH TIONG LAY & SONS TRUST COMPANY LIMITED [SSH]	2,026	689,369	53.194
22 JUL 2024 - 22 JUL 2024	RANHILL	YTL CORPORATION BERHAD [SSH]	2,026	689,369	

Notice Period is 21st July 2024 – 27th July 2024

Effective Change Date	Stock Name	Buyer/ Seller Name [Classification]	Bought / (Sold) ['000]	No. of Shares After Trade ['000]	
			Total	Total	% Held
25 JUL 2024 - 25 JUL 2024	SIMEPROP	KUMPULAN WANG PERSARAAN (DIPERBADANKAN) [SSH]	291	441116	6.486
24 JUL 2024 - 24 JUL 2024	SIMEPROP	AMANAHRAYA TRUSTEES BERHAD - AMANAH SAHAM BUMIPUTERA [SSH]	-5,026	2860974	42.068
24 JUL 2024 - 24 JUL 2024	SIMEPROP	PERMODALAN NASIONAL BERHAD [SSH]	-500	363130	5.339
24 JUL 2024 - 24 JUL 2024	SIMEPROP	YAYASAN PELABURAN BUMIPUTRA [SSH]	-500	363130	5.339
23 JUL 2024 - 23 JUL 2024	SIMEPROP	EMPLOYEES PROVIDENT FUND BOARD [SSH]	5,875	411871	6.056
24 JUL 2024 - 24 JUL 2024	SIMEPROP	KUMPULAN WANG PERSARAAN (DIPERBADANKAN) [SSH]	297	440825	6.482
23 JUL 2024 - 23 JUL 2024	SIMEPROP	AMANAHRAYA TRUSTEES BERHAD - AMANAH SAHAM BUMIPUTERA [SSH]	-8,076	2866000	42.142
23 JUL 2024 - 23 JUL 2024	SIMEPROP	PERMODALAN NASIONAL BERHAD [SSH]	-600	363630	5.347
23 JUL 2024 - 23 JUL 2024	SIMEPROP	YAYASAN PELABURAN BUMIPUTRA [SSH]	-600	363630	5.347
22 JUL 2024 - 22 JUL 2024	SIMEPROP	EMPLOYEES PROVIDENT FUND BOARD [SSH]	6,234	406201	5.973
23 JUL 2024 - 23 JUL 2024	SIMEPROP	KUMPULAN WANG PERSARAAN (DIPERBADANKAN) [SSH]	584	440528	6.478
22 JUL 2024 - 22 JUL 2024	SIMEPROP	PERMODALAN NASIONAL BERHAD [SSH]	-743	364230	5.356
22 JUL 2024 - 22 JUL 2024	SIMEPROP	YAYASAN PELABURAN BUMIPUTRA [SSH]	-743	364230	5.356
19 JUL 2024 - 19 JUL 2024	SIMEPROP	EMPLOYEES PROVIDENT FUND BOARD [SSH]	448	399967	5.881
22 JUL 2024 - 22 JUL 2024	SIMEPROP	KUMPULAN WANG PERSARAAN (DIPERBADANKAN) [SSH]	262	439944	6.469
19 JUL 2024 - 19 JUL 2024	SIMEPROP	AMANAHRAYA TRUSTEES BERHAD - AMANAH SAHAM BUMIPUTERA [SSH]	-2,924	2874076	42.261
19 JUL 2024 - 19 JUL 2024	SIMEPROP	PERMODALAN NASIONAL BERHAD [SSH]	-108	364973	5.367
19 JUL 2024 - 19 JUL 2024	SIMEPROP	YAYASAN PELABURAN BUMIPUTRA [SSH]	-108	364973	5.367
18 JUL 2024 - 18 JUL 2024	SIMEPROP	EMPLOYEES PROVIDENT FUND BOARD [SSH]	8,136	399519	5.874
19 JUL 2024 - 19 JUL 2024	SIMEPROP	KUMPULAN WANG PERSARAAN (DIPERBADANKAN) [SSH]	395	439683	6.465
18 JUL 2024 - 18 JUL 2024	SIMEPROP	AMANAHRAYA TRUSTEES BERHAD - AMANAH SAHAM BUMIPUTERA [SSH]	-13,000	2877000	42.304
18 JUL 2024 - 18 JUL 2024	SIMEPROP	PERMODALAN NASIONAL BERHAD [SSH]	-1,500	365081	5.368
18 JUL 2024 - 18 JUL 2024	SIMEPROP	YAYASAN PELABURAN BUMIPUTRA [SSH]	-1,500	365081	5.368
17 JUL 2024 - 17 JUL 2024	SIMEPROP	EMPLOYEES PROVIDENT FUND BOARD [SSH]	6,584	391384	5.755
18 JUL 2024 - 18 JUL 2024	SKPRES	EMPLOYEES PROVIDENT FUND BOARD [SSH]	105	150721	9.647
19 JUL 2024 - 19 JUL 2024	SLVEST	EMPLOYEES PROVIDENT FUND BOARD [SSH]	206	443999	6.365
17 JUL 2024 - 17 JUL 2024	SLVEST	EMPLOYEES PROVIDENT FUND BOARD [SSH]	950	44193	6.34
22 JUL 2024 - 22 JUL 2024	SMRT	URUSHARTA JAMAAH SDN. BHD. [SSH]	-750	37621	8.306
24 JUL 2024 - 25 JUL 2024	SPRITZER	DATO' LIM A HENG @ LIM KOK CHEONG [DIR/CEO]	61	165521	51.838
24 JUL 2024 - 24 JUL 2024	SPRITZER	DATO' LIM A HENG @ LIM KOK CHEONG [DIR/CEO]	200	165459	51.819
24 JUL 2024 - 24 JUL 2024	SPRITZER	DATO' LIM A HENG @ LIM KOK CHEONG [SSH]	200	165459	51.819
24 JUL 2024 - 25 JUL 2024	SPRITZER	DATO' LIM A HENG @ LIM KOK CHEONG [SSH]	61	165521	51.838
23 JUL 2024 - 25 JUL 2024	SPRITZER	DATIN CHUA SHOK TIM @ CHUA SIOK HOON [SSH]	278	165521	51.839
23 JUL 2024 - 23 JUL 2024	SPRITZER	DATO' LIM A HENG @ LIM KOK CHEONG [DIR/CEO]	16	165259	51.756
23 JUL 2024 - 23 JUL 2024	SPRITZER	DATO' LIM A HENG @ LIM KOK CHEONG [SSH]	16	165259	51.756
23 JUL 2024 - 25 JUL 2024	SPRITZER	LANGIT MAKMUR SDN. BHD. [SSH]	78	102501	32.102
23 JUL 2024 - 25 JUL 2024	SPRITZER	UNIKAMPAR CREDIT AND LEASING SDN. BHD. [SSH]	78	136719	42.818
23 JUL 2024 - 25 JUL 2024	SPRITZER	UNIVELEE SDN. BHD. [SSH]	78	136719	42.818
23 JUL 2024 - 25 JUL 2024	SPRITZER	YEE LEE CORPORATION BHD. [SSH]	78	102501	32.102
23 JUL 2024 - 25 JUL 2024	SPRITZER	YEE LEE ORGANIZATION BHD. [SSH]	78	136719	42.818
23 JUL 2024 - 25 JUL 2024	SPRITZER	YELETA HOLDINGS SDN. BHD. [SSH]	78	136719	42.818
23 JUL 2024 - 25 JUL 2024	SPRITZER	YOUNG WEI HOLDINGS SDN. BHD. [SSH]	78	136719	42.818
19 JUL 2024 - 22 JUL 2024	SPRITZER	DATIN CHUA SHOK TIM @ CHUA SIOK HOON [SSH]	51	165243	51.752
19 JUL 2024 - 22 JUL 2024	SPRITZER	DATO' LIM A HENG @ LIM KOK CHEONG [DIR/CEO]	51	165243	51.751
19 JUL 2024 - 22 JUL 2024	SPRITZER	DATO' LIM A HENG @ LIM KOK CHEONG [SSH]	51	165243	51.751
19 JUL 2024 - 22 JUL 2024	SPRITZER	LANGIT MAKMUR SDN. BHD. [SSH]	51	102424	32.077
19 JUL 2024 - 22 JUL 2024	SPRITZER	UNIKAMPAR CREDIT AND LEASING SDN. BHD. [SSH]	51	136641	42.794
19 JUL 2024 - 22 JUL 2024	SPRITZER	UNIVELEE SDN. BHD. [SSH]	51	136641	42.794
19 JUL 2024 - 22 JUL 2024	SPRITZER	YEE LEE CORPORATION BHD. [SSH]	51	102424	32.077
19 JUL 2024 - 22 JUL 2024	SPRITZER	YEE LEE ORGANIZATION BHD. [SSH]	51	136641	42.794
19 JUL 2024 - 22 JUL 2024	SPRITZER	YELETA HOLDINGS SDN. BHD. [SSH]	51	136641	42.794
19 JUL 2024 - 22 JUL 2024	SPRITZER	YOUNG WEI HOLDINGS SDN. BHD. [SSH]	51	136641	42.794
25 JUL 2024 - 25 JUL 2024	SPSETIA	KUMPULAN WANG PERSARAAN (DIPERBADANKAN) [SSH]	-6,296	423662	8.895
24 JUL 2024 - 24 JUL 2024	SPSETIA	AMANAHRAYA TRUSTEES BERHAD - AMANAH SAHAM BUMIPUTERA [SSH]	-2,790	1041812	21.873
23 JUL 2024 - 23 JUL 2024	SPSETIA	EMPLOYEES PROVIDENT FUND BOARD [SSH]	934	247371	5.194
24 JUL 2024 - 24 JUL 2024	SPSETIA	KUMPULAN WANG PERSARAAN (DIPERBADANKAN) [SSH]	-197	429958	9.027
23 JUL 2024 - 23 JUL 2024	SPSETIA	AMANAHRAYA TRUSTEES BERHAD - AMANAH SAHAM BUMIPUTERA [SSH]	-6,234	1044602	21.932
22 JUL 2024 - 22 JUL 2024	SPSETIA	EMPLOYEES PROVIDENT FUND BOARD [SSH]	3,206	246437	5.175
23 JUL 2024 - 23 JUL 2024	SPSETIA	KUMPULAN WANG PERSARAAN (DIPERBADANKAN) [SSH]	-391	430154	9.031
19 JUL 2024 - 19 JUL 2024	SPSETIA	EMPLOYEES PROVIDENT FUND BOARD [SSH]	-460	243231	5.107
23 JUL 2024 - 23 JUL 2024	SPSETIA	DATUK CHOONG KAI WAI [DIR/CEO]	151	630	0.013
22 JUL 2024 - 22 JUL 2024	SPSETIA	KUMPULAN WANG PERSARAAN (DIPERBADANKAN) [SSH]	-438	430545	9.041
18 JUL 2024 - 18 JUL 2024	SPSETIA	EMPLOYEES PROVIDENT FUND BOARD [SSH]	2,080	243691	5.117
19 JUL 2024 - 19 JUL 2024	SPSETIA	KUMPULAN WANG PERSARAAN (DIPERBADANKAN) [SSH]	-111	430983	9.05
17 JUL 2024 - 17 JUL 2024	SPSETIA	EMPLOYEES PROVIDENT FUND BOARD [SSH]	-3,407	241611	5.073
23 JUL 2024 - 23 JUL 2024	SUNCON	EMPLOYEES PROVIDENT FUND BOARD [SSH]	-275	78963	6.124
22 JUL 2024 - 22 JUL 2024	SUNCON	EMPLOYEES PROVIDENT FUND BOARD [SSH]	-367	79237	6.145
19 JUL 2024 - 19 JUL 2024	SUNCON	EMPLOYEES PROVIDENT FUND BOARD [SSH]	-82	79604	6.174
18 JUL 2024 - 18 JUL 2024	SUNCON	EMPLOYEES PROVIDENT FUND BOARD [SSH]	-6	79686	6.18
17 JUL 2024 - 17 JUL 2024	SUNCON	EMPLOYEES PROVIDENT FUND BOARD [SSH]	223	79692	6.181
23 JUL 2024 - 23 JUL 2024	SUNWAY	EMPLOYEES PROVIDENT FUND BOARD [SSH]	-5,800	345483	6.11
23 JUL 2024 - 23 JUL 2024	SUNWAY	TAN SRI DATO' (DR.) CHEW CHEE KIN [DIR/CEO]	-125	8137	0.14
22 JUL 2024 - 22 JUL 2024	SUNWAY	EMPLOYEES PROVIDENT FUND BOARD [SSH]	493	351283	6.22
18 JUL 2024 - 19 JUL 2024	SUNWAY	TAN SRI DATO' (DR.) CHEW CHEE KIN [DIR/CEO]	-940	8262	0.15
17 JUL 2024 - 17 JUL 2024	SUNWAY	EMPLOYEES PROVIDENT FUND BOARD [SSH]	-1,360	350790	6.21
23 JUL 2024 - 24 JUL 2024	SUNWAY-PA	TAN SRI DATO' (DR.) CHEW CHEE KIN [DIR/CEO]	151	7440	0.76
17 JUL 2024 - 19 JUL 2024	SUNWAY-PA	TAN SRI DATO' (DR.) CHEW CHEE KIN [DIR/CEO]	336	7290	0.75
24 JUL 2024 - 24 JUL 2024	SUNWAY-WB	TAN SRI DATO' (DR.) CHEW CHEE KIN [DIR/CEO]	-142	1687	3.63
17 JUL 2024 - 17 JUL 2024	SUNWAY-WB	TAN SRI DATO' (DR.) CHEW CHEE KIN [DIR/CEO]	-384	1829	3.73

Notice Period is 21st July 2024 – 27th July 2024

Effective Change Date	Stock Name	Buyer/ Seller Name [Classification]	Bought / (Sold) ['000]	No. of Shares After Trade ['000]	
			Total	Total	% Held
22 JUL 2024 - 22 JUL 2024	TAKAFUL	EMPLOYEES PROVIDENT FUND BOARD [SSH]	130	129732	15.494
24 JUL 2024 - 24 JUL 2024	TALIWRK	DATO' LIM CHEE MENG [SSH]	-230,932	821692	40.763
24 JUL 2024 - 24 JUL 2024	TALIWRK	LGB GROUP SDN BHD [SSH]	-335,534	632778	31.39
24 JUL 2024 - 24 JUL 2024	TALIWRK	LIM CHIN SEAN [SSH]	-230,932	737630	36.592
22 JUL 2024 - 22 JUL 2024	TALIWRK	DATO' LIM CHEE MENG [SSH]	-28,936	1052624	52.219
22 JUL 2024 - 22 JUL 2024	TALIWRK	LGB GROUP SDN BHD [SSH]	-28,936	968313	48.036
22 JUL 2024 - 22 JUL 2024	TALIWRK	LGB HOLDINGS SDN BHD [SSH]	-28,936	967188	47.98
22 JUL 2024 - 22 JUL 2024	TALIWRK	LIM CHIN SEAN [SSH]	-28,936	968563	48.048
23 JUL 2024 - 24 JUL 2024	TCHONG	DATO' TAN HENG CHEW [DIR/CEO]	36	324008	49.72
23 JUL 2024 - 24 JUL 2024	TCHONG	DATO' TAN HENG CHEW [SSH]	36	308426	47.329
18 JUL 2024 - 22 JUL 2024	TCHONG	DATO' TAN HENG CHEW [DIR/CEO]	76	323972	49.713
18 JUL 2024 - 22 JUL 2024	TCHONG	DATO' TAN HENG CHEW [SSH]	76	308391	47.322
18 JUL 2024 - 18 JUL 2024	TECHBND	LEE SENG THYE [SSH]	-30,000	15676	9.719
18 JUL 2024 - 18 JUL 2024	TECHBND	LEE SENG THYE [SSH]	30,000	328755	53.46
18 JUL 2024 - 18 JUL 2024	TECHBND	MR LEE SENG THYE [DIR/CEO]	-30,000	15676	9.719
18 JUL 2024 - 18 JUL 2024	TECHBND	MR LEE SENG THYE [DIR/CEO]	30,000	328755	53.46
18 JUL 2024 - 18 JUL 2024	TECHBND	SONICBOND SDN BHD [SSH]	-30,000	15676	9.719
18 JUL 2024 - 18 JUL 2024	TECHBND	SONICBOND SDN BHD [SSH]	30,000	328755	53.46
25 JUL 2024 - 25 JUL 2024	TENAGA	KUMPULAN WANG PERSARAAN (DIPERBADANKAN) [SSH]	-1,206	414977	7.13
23 JUL 2024 - 23 JUL 2024	TENAGA	EMPLOYEES PROVIDENT FUND BOARD [SSH]	1,937	1008882	17.36
23 JUL 2024 - 23 JUL 2024	TENAGA	AMANAHRAYA TRUSTEES BERHAD - AMANAH SAHAM BUMIPUTERA [SSH]	-2,503	518144	8.91
22 JUL 2024 - 22 JUL 2024	TENAGA	EMPLOYEES PROVIDENT FUND BOARD [SSH]	872	1006946	17.32
19 JUL 2024 - 19 JUL 2024	TENAGA	EMPLOYEES PROVIDENT FUND BOARD [SSH]	609	1006073	17.31
19 JUL 2024 - 19 JUL 2024	TENAGA	AMANAHRAYA TRUSTEES BERHAD - AMANAH SAHAM BUMIPUTERA [SSH]	-1,049	520647	8.96
18 JUL 2024 - 18 JUL 2024	TENAGA	EMPLOYEES PROVIDENT FUND BOARD [SSH]	1,750	1005464	17.3
18 JUL 2024 - 18 JUL 2024	TENAGA	AMANAHRAYA TRUSTEES BERHAD - AMANAH SAHAM BUMIPUTERA [SSH]	-1,130	521696	8.97
17 JUL 2024 - 17 JUL 2024	TENAGA	EMPLOYEES PROVIDENT FUND BOARD [SSH]	917	1003714	17.27
22 JUL 2024 - 22 JUL 2024	THETA	BERJAYA CORPORATION BERHAD [SSH]	155	11800	10.003
22 JUL 2024 - 22 JUL 2024	THETA	BERJAYA GROUP BERHAD [SSH]	155	11800	10.003
22 JUL 2024 - 22 JUL 2024	THETA	JUARA SEJATI SDN BHD [SSH]	155	11800	10.003
22 JUL 2024 - 22 JUL 2024	THETA	REDTONE DIGITAL BERHAD [SSH]	155	11800	10.003
18 JUL 2024 - 19 JUL 2024	THETA	BERJAYA CORPORATION BERHAD [SSH]	1,240	11645	9.871
18 JUL 2024 - 19 JUL 2024	THETA	BERJAYA GROUP BERHAD [SSH]	1,240	11645	9.871
18 JUL 2024 - 19 JUL 2024	THETA	JUARA SEJATI SDN BHD [SSH]	1,240	11645	9.871
18 JUL 2024 - 19 JUL 2024	THETA	REDTONE DIGITAL BERHAD [SSH]	1,240	11645	9.871
19 JUL 2024 - 19 JUL 2024	TIMECOM	EMPLOYEES PROVIDENT FUND BOARD [SSH]	10,000	240352	13
19 JUL 2024 - 19 JUL 2024	TIMECOM	KHAZANAH NASIONAL BERHAD [SSH]	-22,000	597920	32.34
25 JUL 2024 - 25 JUL 2024	TM	KUMPULAN WANG PERSARAAN (DIPERBADANKAN) [SSH]	-1,874	351771	9.166
22 JUL 2024 - 22 JUL 2024	TM	KUMPULAN WANG PERSARAAN (DIPERBADANKAN) [SSH]	-1,560	353644	9.215
23 JUL 2024 - 23 JUL 2024	TM	AMANAHRAYA TRUSTEES BERHAD-AMANAH SAHAM BUMIPUTERA [SSH]	-4,050	195823	5.103
22 JUL 2024 - 22 JUL 2024	TM	EMPLOYEE PROVIDENT FUND BOARD (EPF BOARD) [SSH]	-1,163	665801	17.349
19 JUL 2024 - 19 JUL 2024	TM	EMPLOYEE PROVIDENT FUND BOARD (EPF BOARD) [SSH]	70	666964	17.379
22 JUL 2024 - 22 JUL 2024	TM	KUMPULAN WANG PERSARAAN (DIPERBADANKAN) [SSH]	-1,560	353644	9.215
19 JUL 2024 - 19 JUL 2024	TM	AMANAHRAYA TRUSTEES BERHAD-AMANAH SAHAM BUMIPUTERA [SSH]	-74	199873	5.208
18 JUL 2024 - 18 JUL 2024	TM	EMPLOYEE PROVIDENT FUND BOARD (EPF BOARD) [SSH]	-1,183	666894	17.377
18 JUL 2024 - 18 JUL 2024	TM	AMANAHRAYA TRUSTEES BERHAD-AMANAH SAHAM BUMIPUTERA [SSH]	-257	199947	5.21
17 JUL 2024 - 17 JUL 2024	TM	EMPLOYEE PROVIDENT FUND BOARD (EPF BOARD) [SSH]	-1,136	668077	17.408
25 JUL 2024 - 25 JUL 2024	TOPGLOV	KUMPULAN WANG PERSARAAN (DIPERBADANKAN) [SSH]	380	525212	6.556
24 JUL 2024 - 24 JUL 2024	TOPGLOV	KUMPULAN WANG PERSARAAN (DIPERBADANKAN) [SSH]	496	524832	6.552
19 JUL 2024 - 19 JUL 2024	TOPGLOV				



The Board of Directors of **AGX Group Berhad (AGX)** wishes to announce that the Company had on 16 July 2024 entered into a shareholders' agreement with Kongsak Chakornviroj and Phetdavanh Phatsalouphon for the acquisition of 6,000 shares representing 30% equity interest in AGX Logistics (Thailand) Co., Ltd. (Formerly known as JK Freight Global Co., Ltd.) for a total cash consideration of THB600,000 (approximately equivalent to RM77,000).



AwanBiru Technology Berhad (AWANTEC) wishes to announce that its wholly-owned subsidiary, Awantec Systems Sdn Bhd had on 30 July 2024 entered into a Memorandum of Understanding with the Government of Malaysia as represented by the National Cyber Security Agency.



EkoVest Berhad (EKOVEST) wishes to announce that the Parties have mutually agreed for a further extension of 6 months commencing from 28 July 2024 to 27 January 2025, to grant more time for the Parties to assess, evaluate and deliberate the Proposed Knusford-ECSB Merger in detail and to discuss and negotiate on the terms of the Definitive Agreement between the Parties.





READ MORE 



FSBM Holdings Berhad (FSBM) is pleased to announce that its wholly owned subsidiary, FSBM MES Elite Sdn Bhd, has entered into a strategic partnership with the Federation of Malaysian Manufacturers on Mission-Based Project (MBP) 2.1, effective from 24 July 2024. This partnership is set to build a strong technology ecosystem, accelerate technology adoption among manufacturers, and facilitate the transition to advanced manufacturing practices.

Disclaimer: The information in the Investor Relations page is extracted from individual companies' announcements in www.bursamalaysia.com. The information on this page is provided as a service to readers. We assume no liability for damages resulting from or arising out of the use of such information. Whilst every effort is made to ensure accuracy, the information presented has been simplified for your reading pleasure. Readers are advised to read the original and complete filings on the Bursa Malaysia website at https://www.bursamalaysia.com/market_information/announcements/company_announcement

NAME OF COMPANY	OFFER PERIOD		ISSUE PRICE (Per Ordinary Share)	LISTING SOUGHT	DATE OF LISTING
	OPENING	CLOSING			
EPB GROUP BERHAD	27 June 2024	31 July 2024	RM0.56	ACE MARKET	23 Aug 2024
SIK CHEONG BERHAD	19 July 2024	30 July 2024	RM0.27	ACE MARKET	13 Aug 2024

Upcoming IPO



SIGN UP FOR Invest
IT'S FREE!!!

Click here

Scan me



Via email, every Friday.